

Reply to Comments by the Co-Editor

We thank the Co-Editor for reviewing our manuscript and pointing out the spelling errors. Beside the corrections to those spelling errors, we made other corrections and modifications. We report here our changes. The Co-Editor's comments are copied in italic and red.

please check your manuscript again. I found many spelling errors, and I am not even a native speaker

In a paragraph on page 2, L23-L37, we found ten misspelt words (including references). They have been corrected. Other spelling and grammar errors in the manuscript were corrected. Also, we revised the text to improve some of the more poorly worded sentences.

check again your references and make sure they are consistent. Bergamschi is spelled Bergam_a_schi. The name Bergamschi does not appear in the references list.

Bergamschi et al., 2013 should be Bergamaschi et al., 2013, which is in the reference list. We have corrected the short citations in the main text. Also the following six references (in Introduction) were missing in the reference list and we have added them into the list.

Schroeder et al., 2015

Miller et al., 2016; Hartery et al. 2018

Karion et al., 2016; Sasakawa et al., 2010; Chang et al., 2014

Other changes and corrections:

References:

- 1) Reference information of He et al. (2018) has been updated.

Editorial Corrections:

Following the journal guidelines,

- 1) "Section" has been changed into the abbreviation "Sect."
- 2) Some of short citations in the main text have been corrected. For example, given/middle name initials were removed.

Rephrasing:

In order to improve the readability and clarity in our manuscript, we have revised phrases and expressions throughout the manuscript. There is no change to the scientific contents or interpretations presented previously.

Analysis of atmospheric CH₄ in Canadian Arctic and estimation of the regional CH₄ fluxes

Misa Ishizawa¹, Douglas Chan¹, Doug Worthy¹, Elton Chan¹, Felix Vogel¹ and Shamil Maksyutov²

¹Environment and Climate Change Canada, Toronto, M3H 5T4, Canada

²National Institute for Environmental Studies, Tsukuba, 305-8506, Japan

Correspondence to: Misa Ishizawa (misa.ishizawa@canada.ca)

Abstract. The Canadian Arctic (>60°N, 60°W–141°W) ~~has the potential for enhanced~~ may undergo drastic changes if the Arctic warming trend continues. For atmospheric methane (CH₄), ~~source regions as a response to the ongoing global warming~~ Arctic reservoirs are large and widespread, and the climate feedbacks from such changes may be potentially substantial. Current bottom-up and top-down estimates of the regional CH₄ flux range widely. This study analyses the recent observations of atmospheric CH₄ from five arctic monitoring sites and presents estimates of the regional CH₄ fluxes for 2012–2015. The observational data reveal sizeable synoptic summertime enhancements in the atmospheric CH₄ that are clearly distinguishable from background variations, which indicate strong regional fluxes (mainly primarily wetland and biomass burning CH₄ emissions) around Behchoko and Inuvik in the western Canadian Arctic. Three regional Bayesian inversion modelling systems with two Lagrangian Particle Dispersion Models and three meteorological datasets are applied to estimate fluxes for the entire Canadian Arctic and show relatively robust results in amplitude and temporal variations even across different transport models, prior fluxes and sub-region masking. The estimated mean total CH₄ annual flux for the entire Canadian Arctic is 1.8 ± 0.6 TgCH₄ yr⁻¹. The flux estimate in this study is partitioned into biomass burning of 0.3 ± 0.1 TgCH₄ yr⁻¹, and the remaining natural (wetland) flux of 1.5 ± 0.5 TgCH₄ yr⁻¹. The estimated summertime natural CH₄ fluxes estimates clearly show clear inter-annual variability that is positively correlated with surface temperature anomalies. This indicates that the hot summer weather conditions stimulate the wetland CH₄ emissions. More data and analysis are required to statistically characterise the dependence of regional CH₄ fluxes on the climate in the Arctic. These Arctic measurement sites will aid in should help quantifying the inter-annual variations and long-term trends in CH₄ emissions in the Canadian Arctic.

1 Introduction

Atmospheric methane (CH₄) is one of the principal greenhouse gases with a global warming potential (GWP), 34 times stronger than carbon dioxide (CO₂) over a time period of 100 years time period, and 96 times stronger over a 20 years time period (Gasser et al., 2017). The Atmospheric level of CH₄ level has doubled since increased to twice the level of the pre-industrial era, from about 722 ppb to 1803 ppb in 2011 (Ciais et al., 2013). The Arctic Natural wetland CH₄ emission in Arctic regions is an area of much interest to the scientific community because the as it is a potentially growing CH₄ emissions can potentially increase in a warming source under climate change (AMAP, 2015). The Arctic is underlain with mainly continuous permafrost that contains large quantities of soil carbon, ~1700 PgC,

(Tarnocai et al., 2009), which is. Under warming scenarios, this stored carbon may be highly vulnerable to conversion to CH₄ and CO₂, which can be emitted to the atmosphere under the globally warming climate. However, there is only low confidence in the exact magnitude of CO₂ and CH₄ emissions caused by the carbon lost and whether the permafrost thawing and whether carbon will decompose aerobically to release CO₂ or anaerobically to release CH₄ (e.g. McGuire et al., 2009; Schuur et al., 2015; Thornton et al., 2016).

The natural CH₄ flux estimates remain largely are highly uncertain in higher-northern high latitudes. There have been many studies on CH₄ emission using both bottom-up and top-down methods and, A Saunois et al. (2016) provide a thorough review of the different these studies can be found in Saunois et al. (2016). In general, bottom-up flux estimates for the northern high latitudes from biogeochemical CH₄ models have large variations, and with the mean estimates being is much higher than top-down estimates from the inverse modelling (Saunois et al., 2016). For the Boreal North America region including Alaska and the Hudson Bay Lowlands (HBL, the second largest boreal wetland in the world), the bottom-up mean estimate is ~32 TgCH₄ yr⁻¹, with a wide range from 15 to 60 TgCH₄ yr⁻¹. On the other hand, the top-down mean estimate is ~12 TgCH₄ yr⁻¹ with a narrower range from ~7 to 21 TgCH₄ yr⁻¹.

Bottom-up estimates from wetland methane models in WETCHIMP show large discrepancies in the spatial distribution of wetlands CH₄ source, as well as its magnitude (Melton et al., 2013). In the higher latitudes, the limited ground-based information has hindered the mapping of wetland area. Recently, remote sensing has been providing more information, but the high-latitude wetland extent still contains has large uncertainties (Olefeldt et al., 2016; Thornton et al., 2016). In addition to uncertainty in wetland extent, other factors affecting high-latitude wetland emissions in different models still remain. A In a recent inter-comparison of CH₄ wetland models (Poulter et al., 2017) in which all models used the same wetland extent, Surface Water Microwave Product Series (SWAMPS) (Schroeder et al., 2015) with Global Lakes and Wetland Database (GLWD) (Lehner and Döll, 2004) and the same meteorological data (CRU-NCEP v4.0 reconstructed climate data) to drive their models. The models showed a large range in estimated CH₄ emission for North American Boreal/Arctic region, which remains larger than that for compared to other regions in the world. This large range of the CH₄ emissions for North American Boreal/Arctic region clearly shows indicates the uncertainty in our current understanding of the physical and biogeochemical processes that contribute to wetland CH₄ emissions.

Top-down atmospheric inverse models have been developed to infer the fluxes with observed atmospheric CH₄ mixing ratios as constraints. Global CH₄ inversion studies estimate global distribution of emissions and sinks from observational sites from around the world and/or space (e.g. Bousquet et al., 2011; Bergamaschi et al., 2013; Bruhweiler et al., 2014), but with very limited observational information in higher-northern high latitudes for these studies. Recently ground-based observational coverage in high-northern high latitudes has been improved with the expansion of, including towers and aircraft atmospheric observing platforms in Arctic regions measurements (e.g., Karion et al., 2016; Sasakawa et al., 2010; Chang et al., 2014). These observations have been used for CH₄ flux estimation in specific regions. For North America, previous atmospheric CH₄ studies were mainly focused on Alaska (e.g., Miller et al., 2016; Hartery et al. 2018). Thompson et al., (2017) conducted CH₄ flux estimates for the entire region north of 50°N, combining recent high-latitude surface observations. Estimated CH₄ emissions for the Canadian Arctic (representing the land region of Canada north of 60°N) show discrepancies among the inverse studies; the

mean total CH₄ emission (2006-2010) is ~1.8 TgCH₄ by TM5-4DVAR (Bergamaschi et al., 2013), 0.5 TgCH₄ by CarbonTracker-CH₄ (Bruhwiler et al., 2014), and 2.1 TgCH₄ by FLEXINVERT (Thompson et al., 2017). Differences including model transports, prior fluxes and observational datasets could affect the inversion results. The previous CH₄ inversion studies used only observations from Alert in the Canadian Arctic, the most northern observational site in the world. Several new sites in the Canadian Arctic (described in the next paragraph) might be helpful in constraining flux estimation.

Canada has a large-vast Arctic/sub-Arctic region (~39% of Canada's total land) with wetlands and permafrost. It is important to study the methane cycle and monitor the impact-effects of climate change in this sensitive region as it-these effects could impacts-atmospheric CH₄ levels at national, continental and hemispheric scales. Environment and Climate Change Canada (ECCC) has recently added five greenhouse gas (GHG) measurement sites in the-northern Canada to monitor the time evolution of Arctic GHGs in view of better and-to-help constraining flux estimates in the region. In October 2010, ECCC started the-continuous GHG measurements at Behchoko (BCK, 115.9°W, 62.8°N), that-is the first ground-based site of continuous measurements in the Canadian Arctic (representing the land-region-of Canada-north-of 60°N), other than except-for Alert (ALT, 82.5°N, 62.5°W) which-where continuous measurements was implemented started in 1988. Following BCK, additional more-continuous measurement programs systems have-been-installed,were implemented at Churchill (CHL, 58.7N, 93.8W) in 2011, Inuvik (INU, 68.3°N, 133.5°W), and-Cambridge Bay (CBY, 69.1°N, 105.1°W) in 2012, and -The most recent one is at Baker Lake (BLK, 64.3°N, 96.0°W) in July 2017.

This is We present the first study to analyse the atmospheric CH₄ mixing ratios from the above new ECCC observational sites located in the Canadian Arctic region. In this study, we address three key questions: (1) what information can these new measurements see-from provide in regards to local and regional sources? (2) what are the estimated CH₄ fluxes in the Canadian Arctic using-from inverse modelling using-with these new measurements? and (3) are there any relationships between-for the Canadian Arctic CH₄ fluxes with-and climate/environmental variations? This paper is structured as follows: In Section 2, the description of the measurement sitestations as well as the observational data analyses from daily to inter-annual time scales are given. Section 3 describes the inversion model framework, and Section 4 presents flux estimates along with and-discusses-the flux uncertainties and potential correlations with relationship to climate anomalies.

2 Measurements

ECCC has-been-operatesing six measurement sites around-in the Canadian Arctic region to monitor the GHG mixing ratios. Alert (ALT) is the most northern GHG monitoring site on the globe, since-w Weekly flask samples for CO₂ measurements began in 1975. Continuous CH₄ measurement at-ALT started in 1988. The other five Arctic/sub-Arctic sites, Behchoko (BCK), Churchill (CHL), Inuvik (INU), Cambridge Bay (CBY), and Baker Lake (BLK) gradually, have beacome operational gradually-sincestarting in 2007. BLK is the newest-most recent site in the Canadian Arctic with continuous measurement started in July 2017, which augmented; the flask air sampling measurement program (began-started in 2014), and-continuous-measurement started in July 2017. At the four other

sites, continuous measurement systems were ~~installed-initiated~~ during the period of 2010–2012, ~~and these~~ The observational ~~data~~ ~~from these four sites~~ were used for the inversion in this study. ~~Further detailed site~~ The information of ~~all the~~ six measurement sites are in Table 1, ~~A map showing and~~ their locations ~~are-is shown~~ in Fig. 1. Currently, all ~~the~~ ECCC continuous measurements are ~~conducted-performed~~ using ~~an~~ in-situ cavity ring-down spectrometer (CRDS, Picarro G1301, G2301 or G2401), and discrete flask air ~~samplingsamples are~~ measurements ~~are-performed~~ using a gas chromatograph equipped with flame ionisation detectors (GC-FID, Agilent 6890). Both measurements are ~~traceable to ealibrated-against the~~ World Meteorological Organization (WMO) X2004 scale (Dlugokencky et al., 2005). In the following sections, we describe the sites briefly and characterise the observed variations of the CH₄ mixing ratios at the sites.

2.1 Site Descriptions

Alert (ALT, 82.5°N, 62.5°W) ~~has been referred to as an Arctic background site,~~ being located thousands of kilometres from major GHG source regions ~~is often referred to as an Arctic background site.~~ The Alert observatory is ~~located~~ ~6 km away from the ~~main~~ military base camp. The lack of local source surrounding the site results in no significant diurnal variation in observed atmospheric CH₄ mixing ratios ~~-throughout the year all year around.~~ In winter, under weak vertical mixing, well-defined synoptic variations are observed due to inter-continental scale transport along with mainly anthropogenic CH₄ originating from the Eurasia continent (Worthy et al., 2009). The measurements at Alert ~~typically year~~ represent ~~the~~ large-scale background conditions ~~like and thus ideal for providing information on the~~ long-term trend and ~~mean~~ seasonal cycle ~~in-for~~ the Arctic (Worthy et al., 2009).

Behchoko (BCK, 62.8°N, 115.9°W) is located on the northwest tip of Great Slave Lake. The continuous measurement ~~program was~~ started in October 2012. ~~There is no~~ Flask sampling ~~is not conducted~~ at this site. The air sampling intake is ~~installed~~ at the top of a 60 m communication tower. ~~The observational equipment is placed in a small isolated room~~ in a local ~~backup~~ power generation station ~~that is rarely turned on;~~ BCK is ~~located~~ 10 km away from the town of Behchoko ~~that is~~ a community ~80 km northwest of Yellowknife, the capital of ~~the~~ Northwest Territories. Mixed forests, lakes and ponds surround ~~the~~ BCK ~~site~~.

Inuvik (INU, 68.3°N, 133.5°W) is ~~located~~ ~120 km south of the coast of the Arctic Ocean. The continuous measurement ~~program was~~ started in February 2012, ~~followed by flask-Flask~~ sampling ~~began~~ in May 2012. The measurement system is located in the ECCC upper air weather station building, 5 km southeast of the town of Inuvik. INU is ecologically surrounded by Arctic tundra and geologically located in the east channel of the Mackenzie Delta, where a number of water streams and ponds are formed, and vast hydrocarbon deposits are found. Although there are proposed developments of natural gas and pipeline project, ~~they-most~~ have been on hold.

Cambridge Bay (CBY, 69.1°N, 105.1°W) is on the southeast coast of Victoria Island. CBY is located ~1 km north of the town of Cambridge Bay, the largest port of the Arctic Ocean's Northwest Passage. Both continuous and flask

sampling measurements ~~were~~ started in December 2012. The measurement system is located in the ECCC upper air weather station building.

Baker Lake (BKL, 64.3°N, 96.0°W) is located on the shore of Baker Lake, ~320 km inland of Hudson Bay. Weekly flask air sampling ~~has been conducted~~ started in since June 2014, ~~and the~~ and the continuous measurement program ~~was started~~ in July 2017. The air sampling system is located in the ECCC upper air weather station. BCK ~~As same with INU, BCK is in the midst of an~~ Arctic tundra region, surrounded by and small lakes.

Churchill (CHL, 58.7°N, 93.8°W) is located on the west coast of Hudson Bay. The GHG monitoring program began with flask air sampling in 2007. ~~before~~ The continuous observational program measurement was initiated ~~started~~ in October 2011. The sampling equipment is ~~installed~~ placed in the Churchill Northern Studies Research Facility, ~23 km east of the town of Churchill. CHL is situated in an area with Arctic tundra to the north and ~~in on~~ the northern perimeter of the Hudson Bay Lowlands, the largest contiguous boreal wetland region in North America.

2.2 Temporal Variations

Figure 2 shows ~~the a~~ time-series of CH₄ mixing ratios; ~~the hourly~~ means ~~and their~~ afternoon means (using hourly data from between 12:00–16:00 local time) ~~from continuous measurements~~, and values from flask sampling for each site. The fitted curve and long-term trend ~~were generated using to~~ the merged time-series data containing both of ~~afternoon mean~~ continuous measurements ~~afternoon means~~ and flask sampling measurements data ~~at each site are also plotted~~. The curve-fitting method applied to all the merged time series has two harmonics of one-year and a half-year cycles ~~and along with~~ two low and high pass digital filters with cut-off periods of 4 months and 24 months respectively (Nakazawa et al., 1997).

Overall, the features of the continuous and flask measurements ~~are show~~ similar regarding long-term trend and seasonal cycles. ~~Compared to the weekly flask sampling measurements,~~ The continuous measurements reveal short timescale variations that are less visible in the flask data records. The diurnal and synoptic variations of atmospheric CH₄ ~~are indications provide information on of~~ local and regional scale interactions between the atmosphere and the source fluxes (Chan et al., 2004).

All the sites show similar upward trends of atmospheric CH₄. The growth rates observed at the Canadian Arctic sites are comparable to the global mean growth rates ~~provided by NOAA~~ based on the global network of National Oceanic and Atmospheric Administration (NOAA) air sampling (www.esrl.noaa.gov/gmd/ccgg/trends_ch4/). In 2014, the growth rates jumped at all the sites except BCK. In the following year 2015, the growth rates ~~were lowered dropped,~~ but were still higher than the ~~ones~~ growth rates prior to 2014. The rapid enhancement in growth rates at the Canadian Arctic sites is consistent with the globally averaged atmospheric CH₄ (www.esrl.noaa.gov/gmd/ccgg/trends_ch4/). The 2014 growth rate at BCK was also enhanced, but the enhancement was not as high as those at the other Arctic sites were. This moderate growth rate for BCK might be an artefact in its long-term component partially due to a two month period of missing data ~~(a data missing period for two months~~ (mid-November, 2014 to mid-January 2015).

2.2.1 Seasonal and inter-annual variations

Since the long-term trends reflect the global-scale source/sink changes, the long-term component at ALT is subtracted from all the sites ~~to focus in order to isolate on~~ the regional scale ~~features signals~~ in the observed atmospheric CH₄ data ~~records~~ (Fig. 3). The mean seasonal cycles ~~show a maximum are high~~ in winter and ~~a minimum low~~ in summer.

5 The summer minimum is mainly due to strong chemical reaction with OH in the warm season. All sites show a similar pattern with a maximum in are relatively in-phase in winter with high peaks around January/February, while the site differences are more noticeable in summer. The summer minimum ~~that is typically~~ representative of the large-scale Arctic background ~~condition evident at Alert occurs can be seen from in~~ July to August ~~at ALT~~. The summer minima at the other Arctic sites ~~could vary considerably~~ are generally enhanced (with higher CH₄ mixing ratios) relative to
10 ALT, and very considerably amongst the sites and from year to year. These enhancements and inter-annual variability are as they are due to the superposition of the enhanced atmospheric CH₄ sink and increased wetland emissions during warmer seasons. Minima are seen in June at BCK, INU and CHL, followed by BKL and CBY with ~1 to 1.5 month lags. In fact, Another interesting feature seen at INU, BCK and CHL have is a summer-secondary-maximum in summer feature (a summer bump), also indicative of the influence of local/regional wetland and biomass burning
15 emissions. As seen in Figure 3, these secondary maxima/summer bumps are not regular vary in timing and amplitude from, but vary year-to-year. The bumps were observed at BCK, INU and CHL in 2012 which 2012, which were in phase with each other, but not at any site in 2013. In 2014, a larger-more substantial summer bump was observed at BCK than 2012 (2014 has strong biomass burning contributions) while the summer bump at CHL was similar to the one in 2012. The cause(s) for the “summer bumps” at BCK, CHL and INU, might vary year-to-year, such as
20 local/regional (wetland and forest fires) emission change due to climate anomaly. Another possible cause is inter-annually varying atmospheric transport.

2.2.2 Synoptic and diurnal variability

All measurements of atmospheric CH₄ in the Canadian Arctic show synoptic and daily variations with seasonally changing amplitudes. One quantitative measure of synoptic variability in the observed CH₄ mixing ratios is the
25 monthly Standard Deviation (SD) of the residual of observed time series relative to their fitted curves. Figure 4 shows the mean seasonality in SD of all 24 hourly data (SD₂₄) in CH₄ mixing ratios at each site except BKL, as well as the mean seasonality of the afternoon hourly data (SD_{PM}). Although SD₂₄ and SD_{PM} appear similar (some are almost identical) except during summer months, the differences between SD_{PM} and SD₂₄ give provide a measure if the daily variability is reflecting a local scale change in emission or rather a change on the seasonally-changing
30 atmospheric transport processes. The nighttime planetary boundary layer (PBL) is usually shallow, while the daytime boundary layer is usually deeper and well mixed. If there are local CH₄ sources, the emission is will be mixed into a shallow PBL at night (yielding higher mixing ratio) and diluted through a deeper PBL during the day (yielding lower mixing ratio). The resultant diurnal variations in the CH₄ mixing ratios are evident as larger CH₄ SD₂₄ compared to SD_{PM}. In the absence of local sources, SD₂₄ is comparable to SD_{PM}.

35 The most substantial synoptic variations are observed in summer at all sites except ALT (Fig. 4). This indicates that the major regional CH₄ emissions in the continental Canadian Arctic occur in summer. At ALT, In

winter, the largest synoptic variations are observed at ALT in winter. The winter synoptic variations are relatively large for the rest of the sites. The wintertime variability might indicate local anthropogenic emission signals amplified under winter shallow planetary boundary layer (PBL) or mainly due to strong long-range transport from other regions which has been demonstrated for ALT (Worthy et al., 2009).

The diurnal variability of atmospheric CH₄ is mainly caused by a local CH₄ emission signal modulated by daily PBL development, or a temporal change of the local source. In the summer, the SD₂₄ values are higher by > 5ppb than the SD_{PM} except for ALT. The larger SD₂₄ in the summer supports the existence of local CH₄ sources around the sites, likely wetland CH₄ emissions. In contrast, the fact ALT has identical SD₂₄ and SD_{PM} all year round confirms that there is no significant local source at ALT as mentioned earlier near the site.

Similar to the three continental sites (BCK, INU, CHL), CBY also shows the maxima of SD₂₄ and SD_{PM} in summer, but they remain lower than BCK, INU and CHL, but higher than ALT. This indicates that there is a weaker local source of CH₄ around CBY than around the three continental sites. In the cold season (September to May), the SD₂₄ and SD_{PM} at CBY are almost identical to ALT. It is noticeable that the SD₂₄ and SD_{PM} at BCK, INU and CHL are still higher than ALT until December. These higher SD₂₄ and SD_{PM} values in the first half of the cold season might indicate the possible CH₄ emissions from the ground. Zona et al. (2016) suggested that there are on-going CH₄ emissions from the Alaskan Arctic tundra during the “zero curtain” period when the soil temperature is near zero with average air temperature below 0°C until the surface is completely frozen.

The SD₂₄ and SD_{PM} for winter to spring (January to May) at INU remain higher than the other sites. Also, SD₂₄ at INU becomes higher than SD_{PM} from April, and remains higher over summer. At the other sites, the difference between SD₂₄ and SD_{PM} are seen mainly in the summer months (June–August). This higher variability in atmospheric CH₄ at INU in winter and spring, when the surrounding wetland ecosystem is inactive, might likely indicate a strong local CH₄ sources, such as anthropogenic CH₄ emissions from natural gas well/refinery facilities. During winter, such local CH₄ signals are amplified by the seasonally calm condition (the mean seasonal cycles of wind speed are shown in Fig. S2 in the Supplemental Information Section) as well as by and by reduced less vertical mixing under within the shallow PBL due to the shorter period of daylight in the polar region. Figure S3 shows the deviations (from the fitted curve) of observed hourly and afternoon mean CH₄ at INU and BCK along with the wind speed. For In April and May, the difference of deviations between hourly CH₄ and afternoon mean CH₄ becomes larger again after the relatively quiet period. This could may indicate the signals of local (anthropogenic) emission around INU are being amplified as the PBL diurnal variation starts developing due to longer daytime periods. Another possible local source for the large spring SD₂₄ and SD_{PM} at INU is may be the natural CH₄ emissions originating from lakes and ponds during the spring thaw (Jammet et al., 2015). In contrast, SD₂₄ and SD_{PM} at BCK become less smaller as the wind speed becomes higher increases, indicating a lack of local CH₄ source around BCK in spring.

Since ALT is representative of the Arctic background state in synoptic variability, the difference of SD₂₄ or SD_{PM} between ALT and each of other sites gives a measure of the regional source influence to the site. The large sizeable regional source influence signals in summer shown in Figure 4 should be useful in constraining the regional flux estimation modelling in the next sections.

3 Regional inversion model description

To estimate the regional CH₄ fluxes in the Canadian Arctic, we apply a Bayesian inversion approach, based on the backward simulations by Lagrangian Particle Dispersion Models (LPDM). In this study, three different transport models and three prior CH₄ flux distributions were used to help estimate the model uncertainties. The following sections describe the various components of our regional inverse modelling.

3.1 Transport models and meteorological data

LPDMs simulate an ensemble of air-following particles which are released from the measurement sites. The air particles travel backwards in time for 5 days with the wind field. Previous studies (e.g. Cooper et al., 2010; Gloor et al., 2001; Stohl et al., 2009) have shown 5 days are typically sufficient to capture the surface influence to a measurement site from the surrounding region. The backward trajectories ~~is~~ are used to calculate the footprints as the integrated residence times the particles spent inside the PBL at a resolution of 1.0°×1.0°. We use three different regional model setups combining two different LPDMs: FLEXPART and STILT, and three different meteorological data from the European Centre for Medium-range Weather Forecasts (ECMWF), Japanese Meteorological Agency (JMA), and Weather Research and Forecasting model (WRF).

LPDMs simulate local contributions for 5 days prior to the measurements at sites. The background condition of atmospheric CH₄ mixing ratios at the endpoints of the particles is provided by a global model, National Institute for Environmental Studies-Transport Model (NIES-TM) with global CH₄ flux fields. Below are the details of model setups in this study.

3.1.1 LPDM: FLEXPART_EI

The first model setup is FLEXible PARTicle dispersion model (FLEXPART) (Stohl et al., 2005) driven by Reanalysis meteorology from the European Centre for Medium-range Weather Forecasts (ECMWF) ERA-Interim (Dee et al., 2011; Uppala et al., 2005). The input meteorological data are at 3-hourly time step and interpolated to 1.0°×1.0° horizontal resolution with 62 vertical layers.

3.1.2 LPDM: FLEXPART_JRA55

The second model setup is also FLEXPART, but driven by the Japanese 55-year Reanalysis (JRA55) from Japanese Meteorological Agency (JMA, Kobayashi et al., 2015; Harada et al., 2016). JRA55 is at 6 hourly time step ~~resolution~~ and on TL319 (~0.5625°, ~55 km) horizontal resolution ~~and, has with~~ 60 vertical layers. For this study, we used the JRA55 dataset at ~~half~~ the lower resolution (~1.25°). This model setup was used for a global inverse modelling system by Global Eulerian-Lagrangian Coupled Atmospheric Model (GELCA) ~~that, -GELCA-~~ is a coupled atmospheric model of NIES-TM and FLEXPART (Ishizawa et al., 2016). The primary meteorological observational data for JRA55 have been supplied by ECMWF. In addition to the ECMWF data, the observational data obtained by JMA and other sources are also used.

2.1.3 LPDM:WRF-STILT

The third model setup uses Stochastic, Time-Inverted, Lagrangian Transport Model (STILT) (Lin et al., 2003; Lin and Gerbig, 2005). The wind fields to drive STILT are from the Weather Research and Forecasting model (WRF) (Skamarock et al., 2008) ~~on-at~~ 10 km resolutions. Detailed descriptions are found elsewhere (Hu et al., 2018; Miller et al., 2014; Henderson et al., 2015). The footprints are aggregated to $1.0^{\circ} \times 1.0^{\circ}$ horizontal resolution, similar to the other models in this study. The STILT footprint data are provided from CarbonTracker-Lagrange ~~which-that~~ is a Lagrangian assimilation framework developed at NOAA Earth System Research Laboratory (<https://www.esrl.noaa.gov/gmd/ccgg/carbontracker-lagrange/>).

3.1.4 Global background model: NIES-TM

The background or initial condition for the LPDMs is obtained by sampling a global model of CH_4 at the 5-day back endpoint locations of the LPDM particles. The global background field of CH_4 mixing ratio is simulated by NIES-TM version 8.1i (Belikov et al., 2013) with the optimised CH_4 fluxes with GELCA- CH_4 inversion system (Ishizawa et al., 2016; Saunois et al., 2016). The GELCA- CH_4 inverse modelling system optimised the monthly CH_4 fluxes for 2000-2015 to assimilate a global network of surface CH_4 measurements available through GAW World Data Center for Greenhouse Gases (WDCGG, <http://ds.data.jma.go.jp/gmd/wdogg/>). The prior CH_4 fluxes for the GELCA- CH_4 global inversion are also used for the regional inversion in this study as described in the later section. The NIES-TM has $2.5^{\circ} \times 2.5^{\circ}$ horizontal resolution and 32 vertical layers, driven by JRA55. For the global simulation, the CH_4 loss in ~~the~~ atmosphere is included; the stratospheric CH_4 loss and OH oxidation schemes are adapted from a model inter-comparison project “TransCom- CH_4 ” (Patra et al., 2011).

3.2 Prior fluxes

Three cases of prior emissions, ~~labelled as~~ VIS, GEL and WetC, ~~were-are~~ used as listed in Table 2. Since the global background atmospheric CH_4 field ~~is was~~ calculated with GELCA- CH_4 inversion posterior fluxes, we chose the prior (VIS) and posterior (GEL) fluxes from GELCA as two cases of prior fluxes in our regional inversion, respectively. Note that the continuous CH_4 mixing ratio data from the new Canadian Arctic sites were not used in the GELCA- CH_4 inversion. In this study, the mean wetland fluxes for the last 5 years of the GELCA global model were used, ~~and~~ the prior forest fire CH_4 fluxes are detailed in Sect.~~ion~~ 3.2.2. The third prior case (WetC) -is the same as GEL, but with wetland CH_4 fluxes from WetCHARTs (a recent global wetland methane emission model ensemble for use in atmospheric chemical transport models). WetCHARTs provide inter-annually varying monthly wetland CH_4 fluxes for this study period. The details of prior fluxes are described in the following sections.

3.2.1 Wetland CH_4 fluxes

We used the monthly CH_4 wetland fluxes from two different models. The first model is Vegetation Integrative Simulator for Trace gases (VISIT) (Ito and Inatomi, 2012). VISIT is a process-based model, using GLWD as wetland extent. Beside wetland CH_4 flux, VISIT calculates soil CH_4 uptake and CH_4 emission through rice cultivation. The

Formatted: Subscript

Formatted: Subscript

wetland fluxes combined with CH₄ fluxes from rice cultivation were optimised through the GELCA-CH₄ global inversion as a natural CH₄ flux. The second model is WetCHARTs version 1.0 (Bloom et al., 2017a). WetCHARTs derives wetland CH₄ fluxes as a function of a global scaling factor, wetland extent, carbon heterotrophic respiration and temperature dependence (Bloom et al., 2017b). We used the ensemble mean fluxes over 18 model sets which are available for 2001-2015, using 1) three global scaling factors, 2) two wetland extents: GLWD and GLOBCOVER, 3) CARDAMOM (the global CARbon Data MODEL fraMework) as terrestrial carbon analysis, and 4) three temperature dependent CH₄ respiration functions. The WetCHARTs horizontal resolution is 0.5°×0.5°. The modelled CH₄ fluxes are aggregated into 1.0°×1.0° for this study. Figure 5 shows the spatial distribution of three wetland CH₄ fluxes for the summer months (July-August). Overall, they are similar, while WetCHARTs (WetC) has stronger emissions in Northwest Territories than the two wetland fluxes from VIS and GEL, which are based on VISIT.

3.2.2 Forest fire CH₄ fluxes

GFAS (Global Fire Assimilation System) v1.2 (Kaiser et al., 2012) provides biomass burning (BB) emissions by assimilating Fire Radiative Power (FRP) from the ~~Moderate-MODerate~~ resolution ~~imaging-Imaging~~ Spectrometer (MODIS). The FRP observations are firstly corrected for data gaps and then linked to dry matter combustion rates with CH₄ emission factors. GFAS has a daily temporal resolution and 0.1°×0.1° horizontal resolution. In this study, the daily fire CH₄ emissions are spatially aggregated into 1.0°×1.0° resolutions for the regional inversion, though monthly fluxes were used for the GELCA global inversion.

3.2.3 Anthropogenic Emission

The anthropogenic CH₄ emissions are provided from EDGAR (Emission Database for Global Atmospheric Research) v4.2FT2010 (<http://edgar.jrc.ec.europa.eu>), except for rice cultivation. EDGARv4.2FT2010 emission which is originally at 0.1°×0.1° resolution is aggregated into 1.0°×1.0°. Since the EDGARv4.2FT2010 data are available until 2010, the same values for 2010 are used for the years beyond 2010. The CH₄ emission from rice cultivation was replaced with the one from VISIT-CH₄ and then treated as a part of natural fluxes, ~~because~~Since there is no rice field in the Canadian Arctic and ~~also in~~ the rest of North American Arctic/Boreal region, the influence of CH₄ emission from rice cultivation in the region of interest in this study is negligible. The difference of the optimised anthropogenic emissions in the Canadian Arctic from the prior by the global GELCA inversion is almost negligible (from 0.0247 TgCH₄ yr⁻¹ to 0.0250 TgCH₄ yr⁻¹). Compared to the wetland emissions, the anthropogenic emissions are substantially smaller and localised (see Fig. 5).

3.2.4 Other natural CH₄ fluxes

For other natural CH₄ fluxes, we used a map of climatological termite emissions from Fung et al. (1991) and modelled soil uptake from VISIT-CH₄. Because of no termite CH₄ emissions in the Canadian Arctic, termite CH₄ emission has no direct impact, but it is included in global simulation for the background CH₄ mixing ratio. The prior soil CH₄ uptake is provided by VISIT-CH₄ as oxidative consumption by methanotrophic bacteria in unsaturated lands. Soil CH₄ uptake has large uncertainty regionally and also globally. Kirschke et al. (2013) reported that ~~the~~ global soil uptake

ranges from 9 to 47 TgCH₄ yr⁻¹. In the Canadian Arctic, the VISIT-modelled soil uptake is weak (0.094 TgCH₄ yr⁻¹) but spread widely (Fig. 5). In some parts of the eastern Canadian Arctic, soil uptakes exceed other CH₄ emissions, resulting in negative fluxes/net sink of atmospheric CH₄.

3.3 Inversion Setup

3.3.1 Regional inversion

In this study, we use the Bayesian Inversion approach (Tarantola, 1987; Rodgers, 2000; Enting, 2002). The Bayesian inversion used here optimises the scaling factors of posterior fluxes by minimising the mismatch between modelled and observed mixing ratios with constraints and given uncertainties using the cost function (J) minimisation method.

$$J(\lambda) = (\mathbf{y} - \mathbf{K}\lambda)^T \mathbf{D}_\epsilon^{-1} (\mathbf{y} - \mathbf{K}\lambda) + (\lambda - \lambda_{prior})^T \mathbf{D}_{prior}^{-1} (\lambda - \lambda_{prior}) \quad (1)$$

where \mathbf{y} (N×1) is the vector of observations (with the background mixing ratio ~~representing the modelled CH₄ signal from 5 days prior to the observation time~~ subtracted, see Section 3.2.1.4). \mathbf{y} is the number of time points ~~times multiplied by~~ number of stations (N is reduced if observations are missing). λ (R×1) is the vector of the posterior scaling factors to be estimated, R is the number of fluxes to be solved. R is two fluxes per sub-regions × number of sub-regions (i.e., 2 to 6 in this study). λ_{prior} is the vector of the prior scaling factors which are all initialised to 1 for all sub-regions, and \mathbf{K} (N×R) is the matrix of contributions on the observations (N) from all the fluxes (R) of sub-regions. \mathbf{K} is a product of two matrices, \mathbf{M} (N × LL) and \mathbf{x} (LL×R), \mathbf{M} is the modelled transport (or footprints in this study), and \mathbf{x} is the spatial distribution of the surface fluxes. LL (=LAT×LON) is the dimension of our domain (1°×1° in latitudes (LAT) by longitudes (LON)). A linear regularisation term has been added which is the second term on the right-hand side of the equation. \mathbf{D}_ϵ and \mathbf{D}_{prior} are the error covariance matrices. \mathbf{D}_ϵ is the prior model-observation error/uncertainty matrix (N×N) where the diagonal elements are $(\sigma_\epsilon)^2$. \mathbf{D}_{prior} is the prior scaling factor uncertainty matrix (R×R) where the diagonal elements are $(\sigma_{prior})^2$. We assume that the model-observation mismatch errors are uncorrelated each other and the contributions from the sub-regions are uncorrelated. All the off-diagonal elements in \mathbf{D}_ϵ and \mathbf{D}_{prior} are assumed to be zero. We assigned $\sigma_\epsilon = 0.33$ for the model-observation error (Gerbig et al., 2013; Lin et al., 2004, Zhao et al., 2009), and $\sigma_{prior} = 0.30$ for the prior uncertainty (Zhao et al., 2009). We examined the inversion's sensitivity to these uncertainties by doubling their values. The posterior fluxes changed by less than 5% for all sub-regions (and the different sub-region masks). The results showed the optimised fluxes are not strongly dependent on these prescribed uncertainties. The estimate for λ is calculated according to the expression below.

$$\lambda = (\mathbf{K}^T \mathbf{D}_\epsilon^{-1} \mathbf{K} + \mathbf{D}_{prior}^{-1})^{-1} (\mathbf{K}^T \mathbf{D}_\epsilon^{-1} \mathbf{y} + \mathbf{D}_{prior}^{-1} \lambda_{prior}) \quad (2)$$

The posterior error variance-covariance, Σ_{post} , for the estimates of λ is calculated,

$$\Sigma_{post} = (\mathbf{K}^T \mathbf{D}_\epsilon^{-1} \mathbf{K} + \mathbf{D}_{prior}^{-1})^{-1}. \quad (3)$$

We optimise the CH₄ fluxes from biomass burning and separately the remaining fluxes (consisting of wetland emission, soil uptake and anthropogenic emission) on a monthly time resolution.

3.3.2 Domain/Sub-regions

For the Canadian Arctic ~~based on, which consists of~~ three territories, Northwest Territories (NT), Yukon (YT), and Nunavut (NU), we set up three sub-region masks, Mask A, B and C, as shown in Fig. S4. Outside of the Canadian Arctic is treated as one outer region. Regarding the subdivision of the Arctic region, we examined the sensitivity of the flux estimation to the number of sub-regions. As a starting point, the three territories are treated separately (~~Mask A~~). Secondly, YT is combined with NT (~~Mask B~~). There is no existing measurement site in Yukon and no significant CH₄ emissions in prior fluxes. The inversion results in the next section will show ~~that~~ YT could not be reliably constrained as a separate sub-region (model uncertainties made the estimated fluxes in YT fluctuate from positive to negative). As the third region mask, we solve the fluxes for one region ~~of representing~~ the entire Canadian Arctic (~~Mask C~~). Like YT, NU is a weak source region, compared to NT, and weak observational constraint might lead to unrealistic flux estimates. This exercise on the subdivision gives insights on the constraining power of the existing measurements. Table 3 shows all the inversion experiments in this study. We perform totally 27 experiments with 3 prior emission cases, 3 different transport models and 3 different sub-region masks.

3.3.3 Atmospheric Measurements

This regional inversion study used the continuous measurements at BCK, INU, CBY, and CHL for the four years, 2012–2015 (Fig. 2). First, the afternoon mean values are calculated by averaging the hourly data over 4 hours from 12:00 to 16:00 local time so that the observations we use in this study are more regionally representative assuming mid-day is in well-mixed planetary boundary layer. Second, the modelled background mixing ratios, which were described ~~earlier in Sect. 3.1.4~~, are subtracted from the afternoon mean ~~observations~~. The differences ~~in~~ mixing ratio between observations and background were input into the regional inversion system as local contributions. The observational data examined in ~~Sect. 2~~ have been already pre-screened for possible contaminations due to mechanical/technical problems during sampling ~~or~~ analysing processes. Except for the pre-screening, we did not apply any additional data screening or filtering.

4 Results and Discussions

4.1 Comparison of footprints

Figure 6 shows the mean footprints (mean emission sensitivities) of all 4 sites by the three different LPDMs. There are common features, but there are also noticeable seasonal differences and differences between the models. The spatial coverage is similar, but the sensitivity to emissions around sites depends on the models. Among the models, STILT shows the strongest sensitivity near the sites, while FLEXPART_JRA55 has the weakest sensitivity. All the footprints near the sites for winter season are stronger than summer season. The footprint differences among the models are also ~~more~~ significant. STILT appears to be more localised ~~to around~~ the sites. These differences indicate that choosing multiple implementations for the atmospheric transport will allow us to reflect some of the uncertainties introduced to our inversion estimate by transport models.

4.2 Signals in the observations (relative to background)

The regional inversion depends on how well local signals can be detected in the observations. Therefore, we first look at the detectability of local/regional fluxes in the observed atmospheric CH₄ mixing ratios. If the amplitude of local signals is comparable to the background contribution, estimated regional fluxes would be more uncertain because local signals would be difficult to distinguish from the background contributions. In [Section 2.2.2](#), we examined the synoptic variability in observed CH₄. Here we apply the same procedures to the modelled background CH₄ for the sites to see if the local synoptic signal is distinguishable from the background CH₄. Figure 7 shows the mean monthly SD of modelled background CH₄ to their fitted curves for the case of FLEXPART_EI (other model setups are analogous), along with those of observed CH₄ (SD_PM in Fig. 4) for the 4 sites to be used as observational constraints (BCK, INU, CBY and CHL). In summer, all the SD_PM values of the observations are much larger (up to three times), than the respective background SDs, indicating strong local influence. While, in winter, both the observation SD_PM and the background SD are comparable. Thus, the observations could provide more constraints on the estimated regional fluxes in summer than in winter.

4.3 Comparison of prior and posterior fluxes with different transport models

The inversion experiments outlined in Table 3 were made to estimate the CH₄ fluxes in the Canadian Arctic using atmospheric observations from the [aforementioned five-four ECCC _stationssites as mentioned in Sect. 3.3.3](#). We calculated the posterior flux estimates as the mean of the fluxes estimated in the 9 experiments in Table 3 (for each set of sub-region masks). The variations in the flux results (Standard Deviation) are used to represent the flux uncertainty due to transport errors (3 transport models) and prior flux errors (3 prior emission cases). This flux uncertainty is larger than the posterior flux covariance uncertainty estimates, Eq. (3). Figure 8 shows the monthly posterior fluxes with sub-region masks A and B. The monthly posterior fluxes with mask C are shown in Fig. S5, along with the aggregated fluxes with masks A and B for the entire Canadian Arctic. As shown in Fig. 8a, the fluxes in NT are dominant, and all the posterior fluxes in NT show clear seasonal cycle and inter-annual variations that are reflected in the total fluxes for the entire Canadian Arctic (Fig. S5). In contrast, no clear seasonal pattern is found for NU and YT (Figs. 8a and 8b). The inversion model has difficulty optimising the weak flux regions. As a result, negative mean fluxes, i.e. CH₄ sinks, could appear, especially in YT (Fig. 8a); the negative biomass burning fluxes are “spurious” since the biomass burning CH₄ source cannot be negative. However, a null-flux would be consistent within error bars.

Next, the differences and similarities in the inversion results from the three transport models are summarised.

The differences in the flux estimates by the three different transport models can be seen in Fig. 9. Figure 9 displays the [example of the experiments-results for YT+NT](#) with Mask B by the three different transport models ~~for YT+NT~~. FLEXPART_JRA55 tends to estimate higher total fluxes than the other models, resulting in higher emissions by ~0.6 TgCH₄ yr⁻¹ than the average of ~1.8 TgCH₄ yr⁻¹. WRF-STILT tends to yield the lowest estimate among the three models, lower by ~0.5 TgCH₄ yr⁻¹ than the average. The posterior total fluxes by FLEXPART_EI appear to be moderate. In winter, the FLEXPART-EI fluxes are close to zero, same with WRF-STILT. These results are consistent

with their footprints (mean emission sensitivities) in Fig. 6. Higher footprint sensitivities near the sites tend to yield lower posterior fluxes and vice versa.

The inter-model differences in the posterior forest fire fluxes (Biomass Burning, BB) are quite noticeable in 2014 that is the extreme fire year in NT. Due to the sporadic nature of the fire events, the differences in transport (transport errors) are evident in the modelled prior CH₄ mixing ratios (Fig. S6c) and could lead to substantial differences in the posterior fluxes (Fig. 9). The WRF-STILT estimated BB in 2014 appears to be moderate (0.23 TgCH₄ yr⁻¹), similar to in 2013 (~0.3 TgCH₄ yr⁻¹), while the other two models show the highest BB flux estimates (0.55–0.67 TgCH₄ yr⁻¹) in 2014, comparable to the prior flux, GFAS estimates.

In contrast, the inter-annual variability in total posterior fluxes is very similar among all three transport model results (as shown in Figs. 8 and S5). The inter-annual variability in the transport models (an intra-model result) appears to be consistent, yielding similar posterior flux inter-annual variability. Since all three different transport models capture this inter-annual variability, it appears to be a robust feature of the CH₄ source/sink in the Canadian Arctic.

Another robust feature appears to be the similarity in the results for the total Arctic emission with different numbers of sub-regions used in the inversion. The sub-region with strong signals in the prior fluxes (NT) and strong observational constraints (BCK and INU within NT) yielded posterior flux results with small uncertainties, while sub-region with weak signals in the prior fluxes (YT) and weak observational constraint (no observations in YT) yielded large uncertainties in the posterior flux estimates. Weak sub-region like YT could be combined with other sub-region (NT) without strong impact on the inversion results. The temporal variations in the inversion results with different numbers of sub-regions (an intra-model result) seem to be a robust feature also. Given that the strong observational constraints and the strong wetland emissions are both located in the central part of the Canadian Arctic, representing the Canadian Arctic as a single region was able to yield reasonable inversion results.

4.4 Comparison with previous estimates

The estimated fluxes for the entire Canadian Arctic in this study are relatively robust in amplitude and temporal variations even with the different prior fluxes and sub-region masking. The mean estimated total CH₄ annual flux for the Canadian Arctic is 1.8 ± 0.6 TgCH₄ yr⁻¹. Compared with two previous inversion estimates, our estimate is slightly lower than the mean total flux of 2.14 TgCH₄ yr⁻¹ (average from 2009–2013) inferred by FLEXINVERT regional inversion (Thompson et al. 2017), but much higher than the estimate of 0.5 TgCH₄ yr⁻¹ (average from 2006–2010) from the CarbonTracker-CH₄ global inversion (Bruhwiler et al., 2014) (Fig. 10-a).

All the estimated fluxes are seasonally high around July and August (Fig. 10b). The mean summertime maximum of our estimates is quite consistent with the one by Thompson et al. (2017), but our estimated fluxes have narrow high summer emission period and low wintertime emission compared with the estimates by Thompson et al. (2017).—These temporal differences in estimated fluxes might reflect the observational constraints used in the respective inversions. Thompson et al. (2017) employed a similar type of regional inversion but for the entire northern high latitudes (north of 50°N). Except for the flask measurement data at CHL, none of the Canadian Arctic sites used in this study was included in Thompson et al. (2017). The strong regional CH₄ signals at INU and BCK in this study

appear to yield flux estimates with narrower high summer emission period and lower wintertime wetland emission compared with the estimates by Thompson et al. (2017).

The flux estimate in this study is partitioned into biomass burning (BB), $0.3 \pm 0.1 \text{ TgCH}_4 \text{ yr}^{-1}$, and the remaining flux, $1.5 \pm 0.5 \text{ TgCH}_4 \text{ yr}^{-1}$. The remaining flux is mainly natural/wetland CH_4 emissions, given that anthropogenic contribution to the total prior fluxes without BB is $\sim 2\%$ according to the EDGAR prior fluxes. The estimated wetland flux is comparable to the WetCHARTs (wetland) ensemble mean of $1.35 \text{ TgCH}_4 \text{ yr}^{-1}$ (Bloom et al. 2017a; 2017b).

The estimated summertime natural CH_4 fluxes show clear inter-annual variability. The higher emissions are estimated for 2012 and 2014 in this study, which is similar to the results from Carbon Arctic Reservoirs Vulnerability Experiment (CARVE) aircraft measurements over Alaska for 2012 to 2014 (Hartery et al., 2018).

4.5 Relationship of fluxes with climate anomalies

Inter-annual variations of estimated CH_4 fluxes are examined in relation to climate parameters here, specifically with surface air temperature and precipitation from NCEP reanalysis (Kalnay et al., 1996). First, monthly mean values at the sub-regions as well as the 4-year mean (2012-2015) for each month are calculated, then the monthly anomalies are computed from the monthly mean values and the 4-year mean of the corresponding month. The temperature and precipitation anomalies are aggregated to the respective regions, NT, YT and NU. On the regional level, climate anomalies in NT and NU are quite similar, though YT is less similar to NT and NU. YT is mainly covered by mountains with little wetland. Furthermore, among the three Arctic territories, NT has the largest wetland extent and most of the forest fire emissions in 2012-2015. Thus, we look into the correlation in monthly anomalies of CH_4 fluxes with summer climate anomalies in NT.

In Fig. 11, the inter-annual variability of wetland CH_4 fluxes exhibits a moderate positive correlation with the surface temperature anomaly ($r = 0.55$) and only weakly correlated with precipitation anomalies ($r = 0.11$). This indicates that the hotter summer weather condition stimulates the wetland CH_4 emission, and precipitation appears to have a less immediate or no direct impact on wetland conditions. In prior cases, VIS and GEL, natural CH_4 fluxes (wetland and other fluxes except biomass burning CH_4 flux) are multi-year mean monthly fluxes. Therefore, these prior fluxes have no year-to-year anomalies and no correlation with the meteorological anomalies. Only in WetC, the prior with wetland CH_4 fluxes from WetCHARTs ensemble mean exhibits inter-annual variations, the correlations with temperature and precipitation anomalies are $r = 0.26$ and $r = 0.90$ respectively. The posterior natural fluxes with WetC show slightly higher correlations ($r = 0.55$ with temperature, $r = 0.16$ with precipitation) than the mean correlation values. But-However, overall there is no clear dependency of posterior correlations on the inherent climate anomaly correlations in the prior fluxes. This result indicates that the inter-annual variations in posterior wetland fluxes in this study are mainly determined by the observations, rather than by prior fluxes.

Inter-annual variations of estimated BB CH_4 fluxes show a negative correlation with precipitation ($r = -0.41$). Also throughout the fire season (June-September), all estimated BB fluxes negatively correlate with precipitation while the prior BB fluxes appear to have no consistent correlations. The inversion results support that dry condition would enhance the forest fire. The estimated BB fluxes show a weakly negative correlation with surface

temperature ($r = -0.23$) on mid-summer average, but the monthly correlations are fluctuating from $r = -0.40$ to $r = 0.47$ over the fire season. Since the period is limited in this study (2012–2015), these statistical relationships are still not clear. Also, the relationship of CH₄ emissions with climate conditions could be complex and non-linear (with extreme fires events in some years). More data and analysis are required to characterise the dependency of CH₄ fluxes on climate in the Arctic.

4.6 Comparison of modelled and observed mixing ratios

The model-observation statistical comparison is shown with the Taylor diagrams of correlation coefficients and normalised standard deviation (NSD) by three different transport models for the four Arctic sites (Fig. 12) using the inversion results with Mask B and prior flux case -WetC. At BCK and INU, the correlation coefficients and NSD for each model are improved by the inversion. At these two sites, the observations contain large synoptic signals from the Canadian Arctic wetland and provide strong constraints to the inversions. At INU, the improvement for STILT is noticeable, especially with NSD. This improvement of STILT is explained further below. At CBY and CHL, no significant changes between the prior and posterior results are seen. This indicates that the regional flux in the Canadian Arctic only weakly influences CBY and CHL.

Further investigation has been ~~done~~ conducted for INU. Figure S7a shows the time-series of modelled prior and posterior mixing ratios by the three transport models and the observed mixing ratio. The Taylor diagrams in Fig. S7b show the comparison results of modelled mixing ratios with the observations annually and by seasons, summer months (June–September) and winter months (October–May) separately, as well as for the entire period together. The modelled mixing ratios by STILT with the prior fluxes could be much higher than the mixing ratios by the other two models. That results in the higher prior NSD values, especially in winter season. The inversion was able to improve the results by reducing the fluxes and consequently the posterior NSD.

Another qualitative measure of the goodness of fit of the model to the observations is the reduced chi-square statistics (Drosg, M., 2009; Hughes, I. G. and T. Hase, 2010). In the limit of infinite number of data points and the data are independent and normally distributed, the value of reduced chi-square should be 1. The overall reduced chi-squares for all our experiments are in a narrow range of 1.23–1.27. Given that the observations and modelled mixing ratios are not normally distributed (more frequent high and very high-mixing ratio events than low mixing ratio events) and the limited amount of observations, there does not seem to be a strong reason to reject the model results.

4.7 Sensitivity tests

4.7.1 Prior fluxes: wetland CH₄ fluxes

Wetland CH₄ emissions are the dominant flux in the Canadian Arctic. To examine how the prior fluxes impact on the posterior fluxes, two inversion experiments were conducted with modified WetCHARTs fluxes. One is 50 % reduced emissions in the Canadian Arctic, and another is 50 % increased emissions in the Canadian Arctic. The results are shown as mean posterior natural fluxes in Fig. S8. Despite the change in wetland prior emissions, all the posterior

fluxes are similar to the ones in the control case; the changes in the posterior fluxes are less than 5% annually. This indicates that the posterior fluxes are not very sensitive to the amplitude/strength of prior fluxes.

4.7.2 Contributions of background CH₄ mixing ratios on the posterior fluxes

We used the same background CH₄ mixing ratios for the different transport models, which are calculated using the particle endpoints from FLEXPART_JRA55. The idea of using the same background CH₄ fields is to focus on the impact of local/regional transport contribution on regional inversion, separating from the background contribution.

One notable feature in the background CH₄ mixing ratios is the relatively large synoptic variability, especially in winter compared to the observed CH₄, which might contribute to large uncertainties in flux estimation. To examine how sensitive the inversion results are to these temporal variations in the background CH₄ mixing ratios, additional experiments with background CH₄ with smoothing windows of 5 days, 10 days and 30 days were made (see Fig. S9a).

The examples of the results are shown in Figs. S9b and S9c. The posterior fluxes are not strongly dependent on the different background CH₄ mixing ratios. Compared with the unsmoothed background case, slightly small values of NSD are found in the model-observation statistical comparison for summer with 30-day smoothing. It seems there are sufficient observations (signal level) above the background CH₄ mixing ratios (noise level) to constrain the inversion results (Fig. 7).

5 Conclusions

The Canadian Arctic region is one of the potential enhanced CH₄ source regions related to the ongoing global warming (AMAP, 2015), and Earth system models differ in their prediction how the carbon loss there will be split up between CO₂ and CH₄ emissions. Even current bottom-up and top-down estimates of CH₄ flux in the region vary widely. This study:

- 1) analysed the measurements of atmospheric CH₄ mixing ratios that include from 5 sites established in the Canadian Arctic by ECCC, to characterise the observed variations and examine the detectability of regional fluxes; And,
- 2) estimated the regional fluxes for 4 years (2012–2015) with the continuous observational data of atmospheric CH₄, and also examined the relationship of the estimated fluxes with the climate anomalies.

The observational data analysis reveals large synoptic summertime signals in the atmospheric CH₄, indicating strong regional fluxes (most likely wetland and biomass burning CH₄ emissions) around Behchoko and Inuvik in Northwest Territory, the western Canadian Arctic. The local signals of atmospheric CH₄ also allow inverse models to optimise biomass burning CH₄ flux (emissions due to forest fire), separately from the remaining natural CH₄ fluxes (including wetland, soil sink and anthropogenic, but mostly due to wetland CH₄ emissions).

The estimated mean total CH₄ annual flux for the Canadian Arctic is 1.8 ± 0.6 TgCH₄ yr⁻¹ (wetland flux is 1.5 ± 0.5 TgCH₄ yr⁻¹, biomass burning flux 0.3 ± 0.1 TgCH₄ yr⁻¹). The mean total flux in this study is comparable to another regional flux inversion result of 2.14 TgCH₄ yr⁻¹ by Thompson et al. (2017), but much higher than the global inversion result of 0.5 TgCH₄ yr⁻¹ by CarbonTracker-CH₄ (Bruhwiler et al., 2014). The strong regional CH₄ signals

at INU and BCK appear to yield flux estimates in this study with narrower high summer emission period and lower wintertime wetland emission compared with the estimates by Thompson et al. (2017).

Clear inter-annual variability is found in all the estimated summertime natural CH₄ fluxes for the Canadian Arctic, mostly due to Northwest Territories. These summertime flux variations are positively correlated with the surface temperature anomaly ($r = 0.55$). This result indicates that the hotter summer weather condition stimulates the wetland CH₄ emission.

With longer data records and more analysis in the Arctic, inversion CH₄ flux estimates could yield more details on CH₄ emission strength and seasonal cycle (onset and termination of wetland emissions), and dependence of wetland fluxes on climate conditions. More knowledge on the flux and climate relationship could help evaluate and improve bottom-up wetland CH₄ flux models.

Next, we will perform a similar study for the CO₂ measurements from these sites to estimate the Canadian Arctic CO₂ fluxes. Estimation of CO₂ and CH₄ fluxes and monitoring how these fluxes change in the future will improve our understanding on the response of the Arctic carbon cycle to climate change, and also yield long-term trends in CO₂ and CH₄ emissions in the Canadian Arctic.

Data availability

The data measured at ECCC sites used in this study are available upon request to Doug Worthy (doug.worthy@canada.ca). The Alert data are also periodically updated to WDCGG, <http://ds.data.jma.go.jp/gmd/wdcgg>. The model-related data are available upon request to corresponding author.

Author Contributions

MI and DC designed the research and prepared the manuscript. MI performed data analysis and inversion experiments. DW led the measurement programs and collected the observational data. MI, DC and EC provided footprints (potential emission sensitivities) information for inversions. All authors contributed to the discussion and interpretation of the results.

Competing Interest

Authors declare that they have no conflict of interest.

Acknowledgments

We acknowledge CarbonTracker (CT) Lagrange program for providing the WRF-STILT footprint data for our inversion study. CT_Lagrange has been supported by NOAA Climate Program Office's Atmospheric Chemistry, Carbon Cycle, & Climate (AC4) Program and the NASA Carbon Monitoring System. We would like to extend our

gratitude to the conscientious care taken by the program technicians, Robert Kessler and Larry Giroux, and IT support provided by Senen Racki. Appreciation is also forwarded to the Northwest Territories Power Corporation (NTPC) for making available their building facility to house our equipment and tower to string our sampling lines. NTPC also provided IT communication to permit access to our equipment and transmission of data.

5 References

- AMAP: Assessment 2015: Methane as an Arctic climate forcer, Arctic Monitoring and Assessment Programme (AMAP), Oslo, Norway, 2015.
- Belikov, D. A., Maksyutov, S., Sherlock, V., Aoki, S., Deutscher, N. M., Dohe, S., Griffith, D., Kyrö, E., Morino, I., Nakazawa, T., Notholt, J., Rettinger, M., Schneider, M., Sussmann, R., Toon, G. C., Wennberg, P. O., and Wunch, D.: Simulations of column-averaged CO₂ and CH₄ using the NIES TM with a hybrid sigma-isentropic (σ - θ) vertical coordinate, *Atmos. Chem. Phys.*, 13, 1713-1732, 10.5194/acp-13-1713-2013, 2013.
- Bergamaschi, P., Houweling, S., Segers, A., Krol, M., Frankenberg, C., Scheepmaker, R. A., Dlugokencky, E., Wofsy, S. C., Kort, E. A., Sweeney, C., Schuck, T., Brenninkmeijer, C., Chen, H., Beck, V., and Gerbig, C.: Atmospheric CH₄ in the first decade of the 21st century: Inverse modeling analysis using SCIAMACHY satellite retrievals and NOAA surface measurements, *J. Geophys. Res.*, 118, 7350-7369, 10.1002/jgrd.50480, 2013.
- Bloom, A. A., Bowman, K. W., Lee, M., Turner, A. J., Schroeder, R., Worden, J. R., Wedner, R. J., McDonald, K. C., and Jacob, D. J.: CMS: Global 0.5-deg Wetland Methane Emissions and Uncertainty (WetCHARTs v1.0), ORNL Distributed Active Archive Center, 2017a.
- Bloom, A. A., Bowman, K. W., Lee, M., Turner, A. J., Schroeder, R., Worden, J. R., Weidner, R., McDonald, K. C., and Jacob, D. J.: A global wetland methane emissions and uncertainty dataset for atmospheric chemical transport models (WetCHARTs version 1.0), *Geosci. Model Dev.*, 10, 2141-2156, 10.5194/gmd-10-2141-2017, 2017b.
- Bousquet, P., Ringeval, B., Pison, I., Dlugokencky, E. J., Brunke, E. G., Carouge, C., Chevallier, F., Fortems-Cheiney, A., Frankenberg, C., Hauglustaine, D. A., Krummel, P. B., Langenfelds, R. L., Ramonet, M., Schmidt, M., Steele, L. P., Szopa, S., Yver, C., Viovy, N., and Ciais, P.: Source attribution of the changes in atmospheric methane for 2006–2008, *Atmos. Chem. Phys.*, 11, 3689-3700, 10.5194/acp-11-3689-2011, 2011.
- Bruhwyler, L., Dlugokencky, E., Masarie, K., Ishizawa, M., Andrews, A., Miller, J., Sweeney, C., Tans, P., and Worthy, D.: CarbonTracker-CH₄: an assimilation system for estimating emissions of atmospheric methane, *Atmos. Chem. Phys.*, 14, 8269-8293, 10.5194/acp-14-8269-2014, 2014.
- Chan, D., Yuen C. W., Higuchi, K., Shashkov, A., Liu, J., Chen, J., Worthy, D.: On the CO₂ exchange between the atmosphere and the biosphere: the role of synoptic and mesoscale processes, *Tellus*, 56B, 194-212, 2004.
- [Chang, R. Y.-W., Miller, C. E., Dinardo, S. J., Karion, A., Sweeney, C., Daube, B. C., Henderson, J. M., Mountain, M. E., Eluszkiewicz, J., Miller, J. B., Bruhwiler, L. M. P., and Wofsy, S. C.: Methane emissions from Alaska in 2012 from CARVE airborne observations, *Proc. Natl. Acad. Sci. U.S.A.*, 111, 16694-16699, 10.1073/pnas.1412953111, 2014](#)
- Ciais, P., Sabine, C., Bala, G., Bopp, L., Brovkin, V., Canadell, J., Chhabra, A., DeFries, R., Galloway, J., Heimann, M., Jones, C., Le Quéré, C., Myneni, R. B., Piao, S., and Thornton, P.: Carbon and Other Biogeochemical Cycles,

- in: *Climate Change 2013: The Physical Science Basis. Contribution of Working Group I to the Fifth Assessment Report of the Intergovernmental Panel on Climate Change*, edited by: Stocker, T. F., Qin, D., Plattner, G.-K., Tignor, M., Allen, S. K., Boschung, J., Nauels, A., Xia, Y., Bex, V., and Midgley, P. M., Cambridge University Press, Cambridge, United Kingdom and New York, NY, USA, 465–570, 2013.
- 5 Cooper, O. R., Parrish, D. D., Stohl, A., Trainer, M., Nédélec, P., Thouret, V., Cammas, J. P., Oltmans, S. J., Johnson, B. J., Tarasick, D., Leblanc, T., McDermid, I. S., Jaffé, D., Gao, R., Stith, J., Ryerson, T., Aikin, K., Campos, T., Weinheimer, A., and Avery, M. A.: Increasing springtime ozone mixing ratios in the free troposphere over western North America, *Nature*, 463, 344, 10.1038/nature08708
 - Dee, D. P., Uppala, S. M., Simmons, A. J., Berrisford, P., Poli, P., Kobayashi, S., Andrae, U., Balmaseda, M. A., Balsamo, G., Bauer, P., Bechtold, P., Beljaars, A. C. M., van de Berg, L., Bidlot, J., Bormann, N., Delsol, C., Dragani, R., Fuentes, M., Geer, A. J., Haimberger, L., Healy, S. B., Hersbach, H., Hólm, E. V., Isaksen, I., Kållberg, P., Köhler, M., Matricardi, M., McNally, A. P., Monge-Sanz, B. M., Morcrette, J. J., Park, B. K., Peubey, C., de Rosnay, P., Tavolato, C., Thépaut, J. N., and Vitart, F.: The ERA-Interim reanalysis: configuration and performance of the data assimilation system, *Q. J. R. Meteorol. Soc.*, 137, 553–597, 10.1002/qj.828, 2011.
 - 15 Dlugokencky, E. J., Myers, R. C., Lang, P. M., Masarie, K. A., Crotwell, A. M., Thoning, K. W., Hall, B. D., Elkins, J. W. and L. P. Steele, L. P.: Conversion of NOAA atmospheric dry air CH₄ mole fractions to a gravimetrically prepared standard scale, *J. Geophys. Res.*, 110, D18306, doi:10.1029/2005JD006035, 2005.
 - Drosg, M.: *Dealing with Uncertainties: A Guide to Error Analysis* Springer-Verlag Berlin Heidelberg, 2009.
 - Enting, I. G.: *Inverse Problems in Atmospheric Constituent Transport*, Cambridge University Press, Cambridge, UK, 392 pp., 2002.
 - 20 Fung, I., John, J., Lerner, J., Matthews, E., Prather, M., Steele, L. P., and Fraser, P. J.: Three-dimensional model synthesis of the global methane cycle, *J. Geophys. Res.*, 96, 13033–13065, 10.1029/91JD01247, 1991.
 - Gasser, T., Peters, G. P., Fuglestad, J. S., Collins, W. J., Shindell, D. T., and Ciais, P.: Accounting for the climate–carbon feedback in emission metrics, *Earth Syst. Dynam.*, 8, 235–253, 10.5194/esd-8-235-2017, 2017.
 - 25 Gerbig, C., Lin, J. C., Wofsy, S. C., Daube, B. C., Andrews, A. E., Stephens, B. B., Bakwin, P. S., and Grainger, C. A.: Toward constraining regional-scale fluxes of CO₂ with atmospheric observations over a continent: 2. Analysis of COBRA data using a receptor-oriented framework, *J. Geophys. Res.*, 108, doi:10.1029/2003JD003770, 2003.
 - Gloor, M., Bakwin, P., Hurst, D., Lock, L., Draxler, R., and Tans, P.: What is the concentration footprint of a tall tower?, *J. Geophys. Res.*, 106, 17831–17840, 10.1029/2001JD000021, 2001.
 - 30 Harada, Y., Kamahori, H., Kobayashi, C., Endo, H., Kobayashi, S., Ota, Y., Onoda, H., Onogi, K., Miyaoka, K., and Takahashi, K.: The JRA-55 Reanalysis: Representation of Atmospheric Circulation and Climate Variability, *J. Meteor. Soc. Japan*, 94, 269–302, 10.2151/jmsj.2016-015, 2016.
 - [Hartery, S., Commane, R., Lindaas, J., Sweeney, C., Henderson, J., Mountain, M., Steiner, N., McDonald, K., Dinardo, S. J., Miller, C. E., Wofsy, S. C., and Chang, R. Y.-W.: Estimating regional-scale methane flux and budgets using CARVE aircraft measurements over Alaska, *Atmos. Chem. Phys.*, 18, 185–202, 10.5194/acp-18-185-2018.](#)
 - 35 Henderson, J. M., Eluszkiewicz, J., Mountain, M. E., Nehrkorn, T., Chang, R. Y. W., Karion, A., Miller, J. B., Sweeney, C., Steiner, N., Wofsy, S. C., and Miller, C. E.: Atmospheric transport simulations in support of the

Carbon in Arctic Reservoirs Vulnerability Experiment (CARVE), *Atmos. Chem. Phys.*, 15, 4093–4116, 10.5194/acp-15-4093-2015, 2015.

He, W., van der Velde, I. R., Andrews, A. E., Sweeney, C., Miller, J., Tans, P., van der Laan-Luijkx, I. T., Nehrkorn, T., Mountain, M., Ju, W., Peters, W., and Chen, H.: CTDAS Lagrange v1.0: a high-resolution data assimilation system for regional carbon dioxide observations, *Geosci. Model Dev.*, 11, 3515–3536, <https://doi.org/10.5194/gmd-11-3515-2018>, 2018.

Hu, L., Andrews, A. E., Thoning, K. W., Sweeney, C., Miller, J. B., Dlugokencky, E., Tans, P. P., Michalak, A., Mountain, M., Nehrkorn, T., Montzka, S. A., Worthy, D., McKain, K., Michel, S., Vaughn, B., White, J., Fischer, M., Biraud, S., Basu, S., van der Velde I. R.: Water is the dominant control on interannual variability of North American carbon uptake, submitted to *Nature*, 2018.

Hughes, I. G., and Hase, T.: *Measurements and their Uncertainties: A Practical Guide to Modern Error Analysis*, Oxford University Press, New York, 2010.

Ishizawa, M., Mabuchi, K., Shirai, T., Inoue, M., Morino, I., Uchino, O., Yoshida, Y., Belikov, D., and Maksyutov, S.: Inter-annual variability of summertime CO₂ exchange in Northern Eurasia inferred from GOSAT XCO₂, *Environ. Res. Lett.*, 11, 105001, doi:10.1088/1748-9326/11/10/105001, 2016.

Ito, A., and Inatomi, M.: Use of a process-based model for assessing the methane budgets of global terrestrial ecosystems and evaluation of uncertainty, *Biogeosciences*, 9, 759–773, 10.5194/bg-9-759-2012, 2012.

Jammet, M., Crill, P., Dengel, S., and Friborg, T.: Large methane emissions from a subarctic lake during spring thaw: Mechanisms and landscape significance, *J. Geophys. Res.*, 120, 2289–2305, doi:10.1002/2015JG003137, 2015.

Kaiser, J. W., Heil, A., Andreae, M. O., Benedetti, A., Chubarova, N., Jones, L., Morcrette, J. J., Razinger, M., Schultz, M. G., Suttie, M., and van der Werf, G. R.: Biomass burning emissions estimated with a global fire assimilation system based on observed fire radiative power, *Biogeosciences*, 9, 527–554, 10.5194/bg-9-527-2012, 2012.

Kalnay, E., Kanamitsu, M., Kistler, R., Collins, W., Deaven, D., Gandin, L., Iredell, M., Saha, S., White, G., Woollen, J., Zhu, Y., Leetmaa, A., Reynolds, R., Chelliah, M., Ebisuzaki, W., Higgins, W., Janowiak, J., Mo, K. C., Ropelewski, C., Wang, J., Roy, J., and Dennis, J.: The NCEP/NCAR 40-Year Reanalysis Project, *Bull. Am. Meteorol. Soc.*, 77, 437–471, 1996.

Karion, A., Sweeney, C., Miller, J. B., Andrews, A. E., Commane, R., Dinardo, S., Henderson, J. M., Lindaas, J., Lin, J. C., Luus, K. A., Newberger, T., Tans, P., Wofsy, S. C., Wolter, S., and Miller, C. E.: Investigating Alaskan methane and carbon dioxide fluxes using measurements from the CARVE tower, *Atmos. Chem. Phys.*, 16, 5383–5398, <https://doi.org/10.5194/acp-16-5383-2016>, 2016.

Kirschke, S., Bousquet, P., Ciais, P., Saunio, M., Canadell, J. G., Dlugokencky, E. J., Bergamaschi, P., Bergmann, D., Blake, D. R., Bruhwiler, L., Cameron-Smith, P., Castaldi, S., Chevallier, F., Feng, L., Fraser, A., Heimann, M., Hodson, E. L., Houweling, S., Josse, B., Fraser, P. J., Krummel, P. B., Lamarque, J.-F., Langenfelds, R. L., Le Quéré, C., Naik, V., O'Doherty, S., Palmer, P. I., Pison, I., Plummer, D., Poulter, B., Prinn, R. G., Rigby, M., Ringeval, B., Santini, M., Schmidt, M., Shindell, D. T., Simpson, I. J., Spahni, R., Steele, L. P., Strode, S. A., Sudo, K., Szopa, S., van der Werf, G. R., Voulgarakis, A., van Weele, M., Weiss, R. F., Williams, J. E., and Zeng, G.: Three decades of global methane sources and sinks, *Nat. Geosci.*, 6, 813–823, 10.1038/ngeo1955, 2013.

- Kobayashi, S., Ota, Y., Harada, Y., Ebata, A., Moriya, M., Onoda, H., Onogi, K., Kamahori, H., Kobayashi, C., Endo, H., Miyaoka, K., and Takahashi, K.: The JRA-55 Reanalysis: General Specifications and Basic Characteristics, *J. Meteor. Soc. Japan*, 93, 5-48, 10.2151/jmsj.2015-001, 2015.
- Lehner, B., and Döll, P.: Development and validation of a global database of lakes, reservoirs and wetlands, *Journal of Hydrology*, 296, 1-22, <https://doi.org/10.1016/j.jhydrol.2004.03.028>, 2004.
- 5 Lin, J. C., Gerbig, C., Wofsy, S. C., Andrews, A. E., Daube, B. C., Davis, K. J., and Grainger, C. A.: A near-field tool for simulating the upstream influence of atmospheric observations: The Stochastic Time-Inverted Lagrangian Transport (STILT) model, *J. Geophys. Res.-Atmos.*, 108, Doi 10.1029/2002jd003161, 2003.
- Lin, J. C., Gerbig, C., Wofsy, S. C., Andrews, A. E., Daube, B. C., Grainger, C. A., Stephens, B. B., Bakwin, P. S., and Hollinger, D. Y.: Measuring fluxes of trace gases at regional scales by Lagrangian observations: Application to the CO₂ Budget and Rectification Airborne (COBRA) study, *J. Geophys. Res.*, 109, doi:10.1029/2004JD004754, 2004.
- 10 Lin, J. C., and Gerbig, C.: Accounting for the effect of transport errors on tracer inversions, *Geophys. Res. Lett.*, 32, 10.1029/2004GL021127, 2005.
- 15 McGuire, A. D., Anderson, L. G., Christensen, T. R., Dallimore, S., Guo, L., Hayes, D. J., Heimann, M., Lorensen, T. D., Macdonald, R. W., and Roulet, N.: Sensitivity of the carbon cycle in the Arctic to climate change, *Ecol. Monogr.*, 79, 523-555, 10.1890/08-2025.1, 2009
- Melton, J. R., Wania, R., Hodson, E. L., Poulter, B., Ringeval, B., Spahni, R., Bohn, T., Avis, C. A., Beerling, D. J., Chen, G., Eliseev, A. V., Denisov, S. N., Hopcroft, P. O., Lettenmaier, D. P., Riley, W. J., Singarayer, J. S., Subin, Z. M., Tian, H., Zürcher, S., Brovkin, V., van Bodegom, P. M., Kleinen, T., Yu, Z. C., and Kaplan, J. O.: Present state of global wetland extent and wetland methane modelling: conclusions from a model inter-comparison project (WETCHIMP), *Biogeosciences*, 10, 753-788, 10.5194/bg-10-753-2013, 2013.
- 20 Michalak, A. M., Bruhwiler, L., and Tans, P.: A geostatistical approach to surface flux estimation of atmospheric trace gases, *J. Geophys. Res.*, 109, 10.1029/2003jd004422, 2004.
- 25 [Miller, S. M., Miller, C. E., Commane, R., Chang, R. Y.-W., Dinardo, S. J., Henderson, J. M., Karion, A., Lindaas, J., Melton, J. R., Miller, J. B., Sweeney, C., Wofsy, S. C., and Michalak, A. M.: A multiyear estimate of methane fluxes in Alaska from CARVE atmospheric observations, *Global Biogeochem. Cycles*, 30, 1441-1453, doi:10.1002/2016GB005419, 2016.](#)
- Miller, S. M., Worthy, D. E. J., Michalak, A. M., Wofsy, S. C., Kort, E. A., Havice, T. C., Andrews, A. E., Dlugokencky, E. J., Kaplan, J. O., Levi, P. J., Tian, H., and Zhang, B.: Observational constraints on the distribution, seasonality, and environmental predictors of North American boreal methane emissions, *Global Biogeochem. Cycles*, 28, 146-160, 10.1002/2013GB004580, 2014.
- 30 Nakazawa, T., Ishizawa, M., Higuchi, K., and Trivett, N. B. A.: Two curve fitting methods applied to CO₂ flask data, *Environmetrics*, 8, 197-218, 1997.
- 35 Olefeldt, D., Goswami, S., Grosse, G., Hayes, D., Hugelius, G., Kuhry, P., McGuire, A. D., Romanovsky, V. E., Sannel, A. B. K., Schuur, E. A. G., and Turetsky, M. R.: Circumpolar distribution and carbon storage of thermokarst landscapes, *Nature Communications*, 7, 13043, 10.1038/ncomms13043, 2016.

- Patra, P. K., Houweling, S., Krol, M., Bousquet, P., Belikov, D., Bergmann, D., Bian, H., Cameron-Smith, P., Chipperfield, M. P., Corbin, K., Fortems-Cheiney, A., Fraser, A., Gloor, E., Hess, P., Ito, A., Kawa, S. R., Law, R. M., Loh, Z., Maksyutov, S., Meng, L., Palmer, P. I., Prinn, R. G., Rigby, M., Saito, R., and Wilson, C.: TransCom model simulations of CH₄ and related species: linking transport, surface flux and chemical loss with CH₄ variability in the troposphere and lower stratosphere, *Atmos. Chem. Phys.*, 11, 12813-12837, 10.5194/acp-11-12813-2011, 2011.
- Poulter, B., Bousquet, P., Canadell, J. G., Philippe, C., Philippe, P., Peregon, A., Marielle, S., Arora, V. K., Beerling, D. J., Victor, B., Chris, D. J., Fortunat, J., Nicola, G., Akihito, I., Thomas, K., Charles, D. K., Kyle, M., Joe, R. M., Changhui, P., Shushi, P., Catherine, P., Ronny, S., William, J. R., Makoto, S., Renato, S., Hanqin, T., Lyla, T., Nicolas, V., David, W., Andy, W., Xiyan, X., Bowen, Z., Zhen, Z., and Qiu, Z.: Global wetland contribution to 2000–2012 atmospheric methane growth rate dynamics, *Environ. Res. Lett.*, 12, 094013, 2017.
- Rodgers, C. D.: *Inverse Methods for Atmospheric Sounding: Theory and Practice*, World Scientific, 2000.
- [Sasakawa, M., Shimoyama, K., Machida, T., Tsuda, N., Suto, H., Arshinov, M., Davydov, D., Fofonov, A., Krasnov, O., Saeki, T., Koyama, Y., and Maksyutov, S.: Continuous measurements of methane from a tower network over Siberia, *Tellus B*, 62, 403-416, 10.1111/j.1600-0889.2010.00494.x, 2010.](#)
- Saunio, M., Bousquet, P., Poulter, B., Peregon, A., Ciais, P., Canadell, J. G., Dlugokencky, E. J., Etiope, G., Bastviken, D., Houweling, S., Janssens-Maenhout, G., Tubiello, F. N., Castaldi, S., Jackson, R. B., Alexe, M., Arora, V. K., Beerling, D. J., Bergamaschi, P., Blake, D. R., Brailsford, G., Brovkin, V., Bruhwiler, L., Crevoisier, C., Crill, P., Covey, K., Curry, C., Frankenberg, C., Gedney, N., Höglund-Isaksson, L., Ishizawa, M., Ito, A., Joos, F., Kim, H. S., Kleinen, T., Krummel, P., Lamarque, J. F., Langenfelds, R., Locatelli, R., Machida, T., Maksyutov, S., McDonald, K. C., Marshall, J., Melton, J. R., Morino, I., Naik, V., O'Doherty, S., Parmentier, F. J. W., Patra, P. K., Peng, C., Peng, S., Peters, G. P., Pison, I., Prigent, C., Prinn, R., Ramonet, M., Riley, W. J., Saito, M., Santini, M., Schroeder, R., Simpson, I. J., Spahni, R., Steele, P., Takizawa, A., Thornton, B. F., Tian, H., Tohjima, Y., Viovy, N., Voulgarakis, A., van Weele, M., van der Werf, G. R., Weiss, R., Wiedinmyer, C., Wilton, D. J., Wiltshire, A., Worthy, D., Wunch, D., Xu, X., Yoshida, Y., Zhang, B., Zhang, Z., and Zhu, Q.: The global methane budget 2000–2012, *Earth Syst. Sci. Data*, 8, 697-751, 10.5194/essd-8-697-2016, 2016.
- [Schroeder, R., McDonald, K., Chapman, B., Jensen, K., Podest, E., Tessler, Z., Bohn, T., and Zimmermann, R.: Development and Evaluation of a Multi-Year Fractional Surface Water Data Set Derived from Active/Passive Microwave Remote Sensing Data, *Remote Sensing*, 7, 15843, 2015.](#)
- Schuur, E. A. G., McGuire, A. D., Schadel, C., Grosse, G., Harden, J. W., Hayes, D. J., Hugelius, G., Koven, C. D., Kuhry, P., Lawrence, D. M., Natali, S. M., Olefeldt, D., Romanovsky, V. E., Schaefer, K., Turetsky, M. R., Treat, C. C., and Vonk, J. E.: Climate change and the permafrost carbon feedback, *Nature*, 520, 171-179, 10.1038/nature14338, 2015.
- Skamarock, W. C., Klemp, J. B., Dudhia, J., Gill, D. O., Baker, D. M., Huang, X.-Y., Wang, W., and Powers, J. G.: A Description of the Advanced Research WRF Version 4, NCAR Technical Notes NCAR/TN-475+STR, 2008.
- Stohl, A., Forster, C., Frank, A., Seibert, P., and Wotawa, G.: Technical note: The Lagrangian particle dispersion model FLEXPART version 6.2, *Atmos. Chem. Phys.*, 5, 2461-2474, 10.5194/acp-5-2461-2005, 2005.

- Stohl, A., Seibert, P., Arduini, J., Eckhardt, S., Fraser, P., Grealley, B. R., Lunder, C., Maione, M., Mühle, J., O'Doherty, S., Prinn, R. G., Reimann, S., Saito, T., Schmidbauer, N., Simmonds, P. G., Vollmer, M. K., Weiss, R. F., and Yokouchi, Y.: An analytical inversion method for determining regional and global emissions of greenhouse gases: Sensitivity studies and application to halocarbons, *Atmos. Chem. Phys.*, 9, 1597-1620, 10.5194/acp-9-1597-2009, 2009.
- 5 Tarantola, A.: *Inverse Problem Theory: Methods for Data Fitting and Parameter Estimation*, Elsevier Sci., New York, 1987.
- Tarnocai, C., Canadell, J. G., Schuur, E. A. G., Kuhry, P., Mazhitova, G., and Zimov, S.: Soil organic carbon pools in the northern circumpolar permafrost region, *Global Biogeochem. Cycles*, 23, doi:10.1029/2008GB003327, 2009.
- 10 Thompson, R. L., Sasakawa, M., Machida, T., Aalto, T., Worthy, D., Lavric, J. V., Lund Myhre, C., and Stohl, A.: Methane fluxes in the high northern latitudes for 2005–2013 estimated using a Bayesian atmospheric inversion, *Atmos. Chem. Phys.*, 17, 3553-3572, 10.5194/acp-17-3553-2017, 2017.
- Thornton, B. F., Wik, M., and Crill, P. M.: Double-counting challenges the accuracy of high-latitude methane inventories, *Geophys. Res. Lett.*, 43, 12,569-512,577, 10.1002/2016GL071772, 2016.
- 15 Uppala, S. M., Kållberg, P. W., Simmons, A. J., Andrae, U., Bechtold, V. D. C., Fiorino, M., Gibson, J. K., Haseler, J., Hernandez, A., Kelly, G. A., Li, X., Onogi, K., Saarinen, S., Sokka, N., Allan, R. P., Andersson, E., Arpe, K., Balmaseda, M. A., Beljaars, A. C. M., Berg, L. V. D., Bidlot, J., Bormann, N., Caires, S., Chevallier, F., Dethof, A., Dragosavac, M., Fisher, M., Fuentes, M., Hagemann, S., Hólm, E., Hoskins, B. J., Isaksen, I., Janssen, P. A. E. M., Jenne, R., McNally, A. P., Mahfouf, J. F., Morcrette, J. J., Rayner, N. A., Saunders, R. W., Simon, P., Sterl, A., Trenberth, K. E., Untch, A., Vasiljevic, D., Viterbo, P., and Woollen, J.: The ERA-40 re-analysis, *Q. J. R. Meteorolog. Soc.*, 131, 2961-3012, doi:10.1256/qj.04.176, 2005.
- 20 Worthy, D. E. J., Chan, E., Ishizawa, M., Chan, D., Poss, C., Dlugokencky, E. J., Maksyutov, S., and Levin, I.: Decreasing anthropogenic methane emissions in Europe and Siberia inferred from continuous carbon dioxide and methane observations at Alert, Canada, *J. Geophys. Res.*, 114, 10.1029/2008JD011239, 2009.
- 25 Zhao, C., Andrews, A. E., Bianco, L., Eluszkiewicz, J., Hirsch, A., MacDonald, C., Nehrkorn, T., and Fischer, M. L.: Atmospheric inverse estimates of methane emissions from Central California, *J. Geophys. Res.*, 114, D16302, 10.1029/2008JD011671, 2009.

Table 1. ECCC atmospheric measurements sites in the Canadian Arctic.

Site	ID	Latitude [°]	Longitude [°]	Elevation [m]	Sampling height [m]	Start (conti.) Start (flask)
Alert	ALT	82.5N	62.5W	200	10	1988/01 1999/10
Behchoko ^a	BCK	62.8N	115.9W	160	60	2010/10 NA
Inuvik ^a	INU	68.3N	133.5W	113	10	2012/02 2012/05
Cambridge Bay ^a	CBY	69.1N	105.1W	35	10	2012/12 2012/12
Baker Lake	BKL	64.3N	96.0W	95	10	2014/06 2017/07
Churchill ^a	CHL	58.7N	93.8W	29	60	2007/05 2011/10

^a The sites are used in the inversion in this study

Table 2. Three cases of prior emissions.

Source	VIS	GEL	WetC
Wetland ¹	VISIT	VISIT (optimized, as Natural ¹)	WetCHARTs Extended (Ver.1.0)
Soil Uptake ²	VISIT	VISIT (optimized, as Soil Uptake ²)	VISIT (optimized, as Soil Uptake ²)
Anthropogenic ³ (excl. Rice cultivation)	EDGARv4.2FT2010	EDGARv4.2FT2010 (optimized as Anthropogenic ³)	EDGARv4.2FT2010 (optimized as Anthropogenic ³)
Biomass Bunning ⁴	GFASv1.2	GFASv1.2	GFASv1.2
Rice cultivation ¹	VISIT	VISIT (optimized, as Natural ¹)	VISIT (optimized, as Natural ¹)
Termites ¹	GISS	GISS (optimized, as Natural ¹)	GISS (optimized, as Natural ¹)

VIS used the same prior fluxes with those for global GELCA-CH₄ inversion except Biomass Burning. GELCA-CH₄ inversion optimised CH₄ fluxes for 4 source types, 1) natural, 2) soil uptake, 3) anthropogenic and 4) biomass burning, which are also indicated by superscripted numbers. GEL used the posterior fluxes from global GELCA-CH₄ inversion. For VIS and GEL, five-year mean of each source type was used. WetC used WetCHARTs extended mean fluxes as wetland CH₄, while other fluxes were same with GEL. For all the scenarios, GFAS v1.2 daily fluxes are used as biomass burning.

Table 3. Experiment configurations. Using each of 3 different masks (A, B and C in Fig. S3), 9 inversion runs were conducted with a combination of 3 prior emission cases (VIS, GEL and WetC on Table 2) and 3 different models (FLEXPART_EI, FLEXPART_JRA55 and WRF-STILT). Totally 27 inversion runs were conducted.

Exp	Mask					
	Mask A (NT, YT, NU)		Mask B (NT+NT, NU)		Mask C (NT+NT+NU)	
	Fluxes	Model	Fluxes	Model	Fluxes	Model
Exp1	VIS	FLEXPART_EI	VIS	FLEXPART_EI	VIS	FLEXPART_EI
Exp2	VIS	FLEXPART_JRA55	VIS	FLEXPART_JRA55	VIS	FLEXPART_JRA55
Exp3	VIS	WRF-STILT	VIS	WRF-STILT	VIS	WRF-STILT
Exp4	GEL	FLEXPART_EI	GEL	FLEXPART_EI	GEL	FLEXPART_EI
Exp5	GEL	FLEXPART_JRA55	GEL	FLEXPART_JRA55	GEL	FLEXPART_JRA55
Exp6	GEL	WRF-STILT	GEL	WRF-STILT	GEL	WRF-STILT
Exp7	WetC	FLEXPART_EI	WetC	FLEXPART_EI	WetC	FLEXPART_EI
Exp8	WetC	FLEXPART_JRA55	WetC	FLEXPART_JRA55	WetC	FLEXPART_JRA55
Exp9	WetC	WRF-STILT	WetC	WRF-STILT	WetC	WRF-STILT

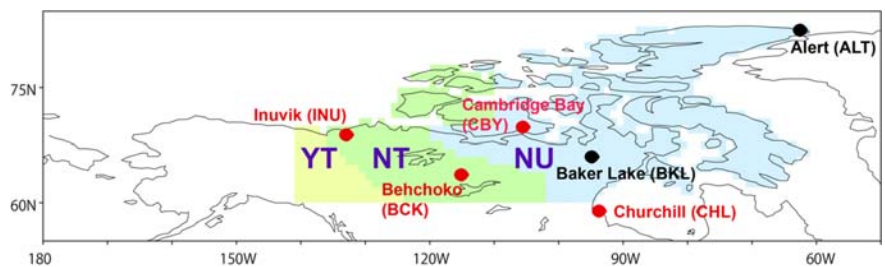


Figure 1: The ECCC atmospheric measurement sites around the Arctic. The sites used for the inversion are indicated in red. The three shaded areas are the three territories which are used as sub-regions in the inversions: YT (Yukon), NT (Northwest Territories) and NU (Nunavut).

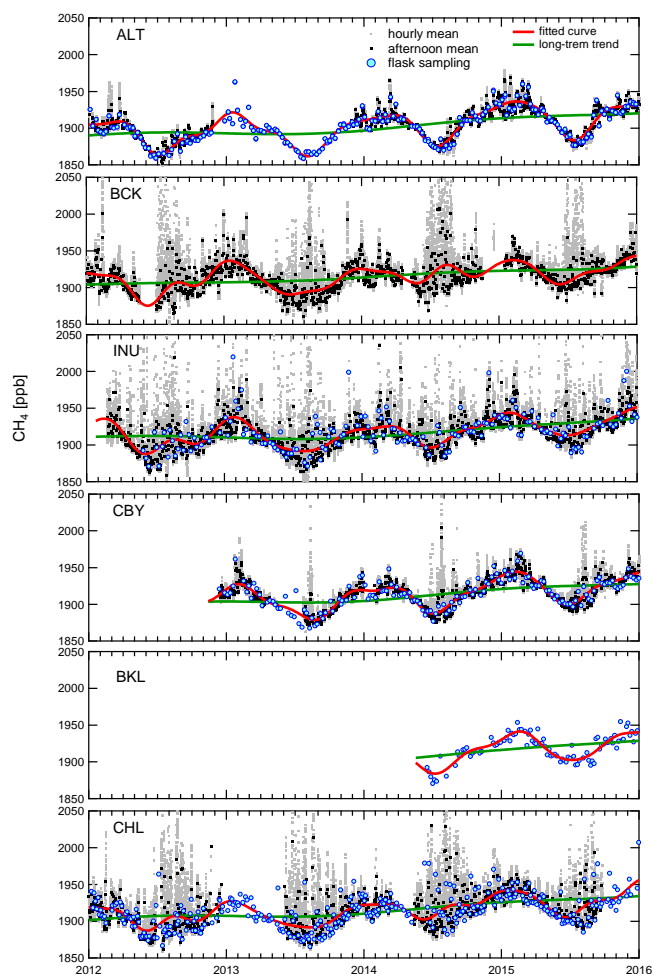


Figure 2: Time-series of atmospheric CH_4 mixing ratios at Canadian Arctic sites. The observed values are the hourly means (grey dot), the afternoon means (black dot, 12:00–16:00 local time) from the continuous measurements and the ones from flask sampling (circle in light blue). BCK has only continuous measurements. At BKL, flask air sampling is only available after being initiated in 2014. The red and green curves are fitted curves and long-term trends which are obtained by applying a fitting-curve method to the observed afternoon means.

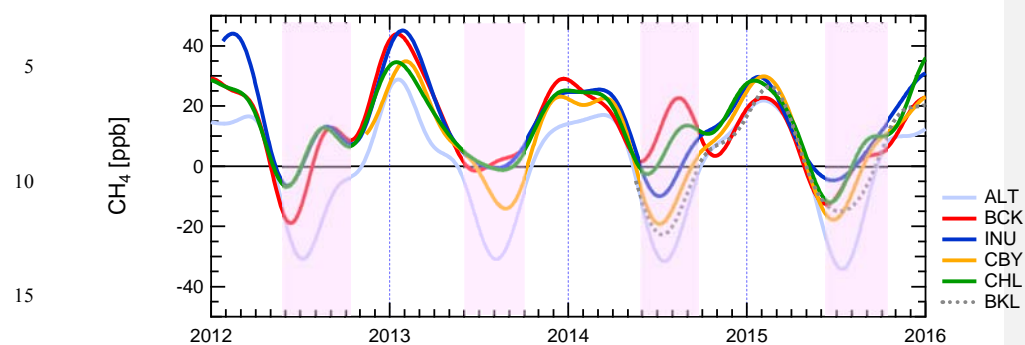


Figure 3: Seasonal components in fitted curves of observed atmospheric CH₄ mixing ratios at Canadian Arctic Sites. Each fitted curve has subtracted the long-term trend component of Alert. Summer months (June–September) are highlighted by light pink shaded background.

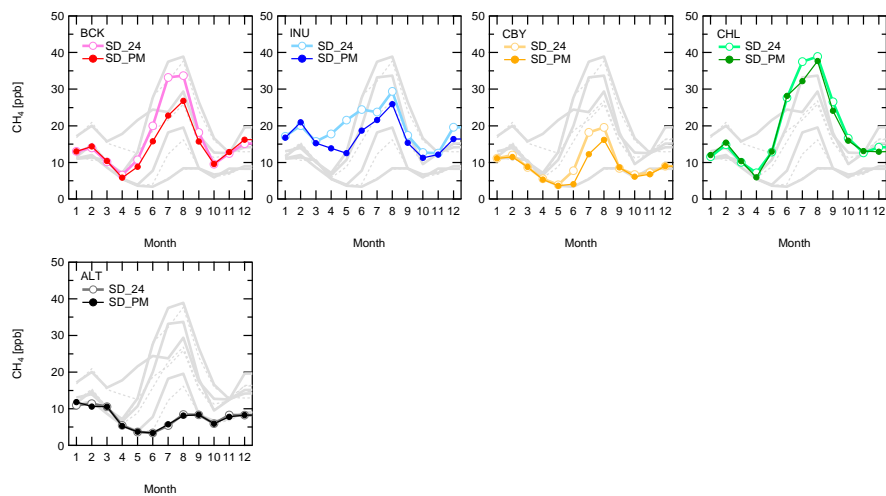
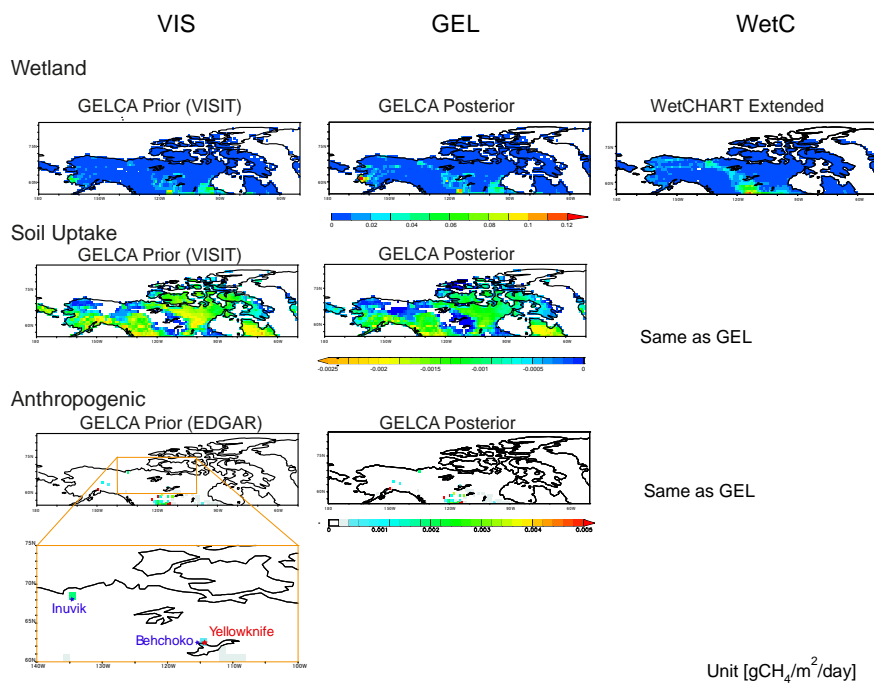
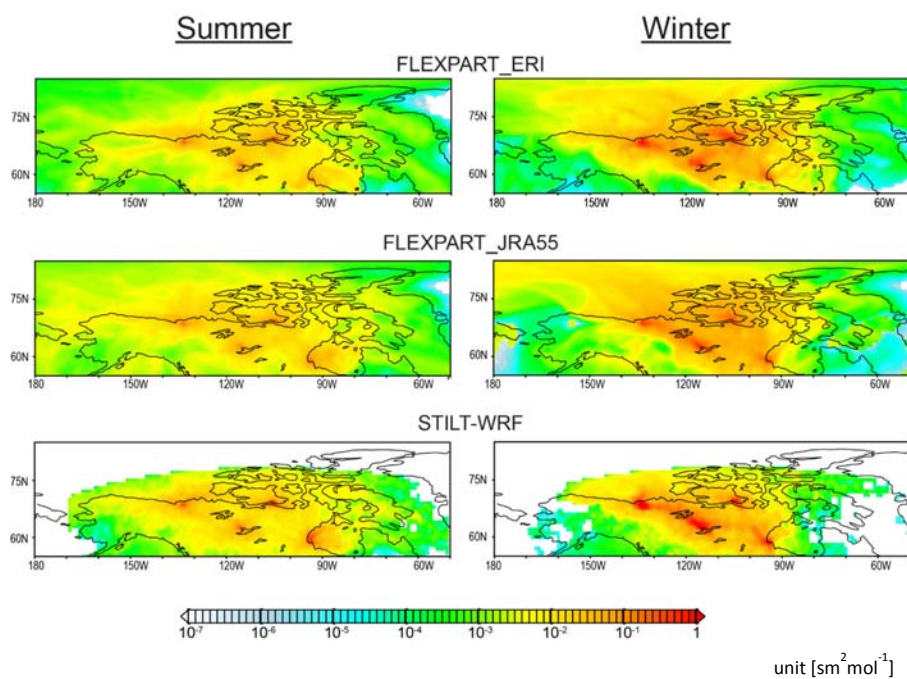


Figure 4: Mean seasonal cycles of monthly standard deviation (SD) of observed CH_4 mixing ratios, SD_{24} of all 24 hourly data (closed circles) and SD_{PM} of afternoon data (12:00–16:00 local time, open circles) to the fitted curves respectively. For BCK, 2014 data have been excluded from the analysis, because of high variability due to massive large forest fires around the site.

5



5 Figure 5: Spatial distributions of summertime prior CH_4 fluxes of wetland emission, soil uptake and anthropogenic emissions for the three cases of prior fluxes, VIS, GEL and WetC, which are listed in table 2. Bottom left panel is a zoomed anthropogenic emission distribution in Northwest Territories. The locations of two sites, Behchoko (BCK) and Inuvik (INU) and the capital city, Yellowknife, are also plotted.



5

Figure 6: Seasonal mean footprints of all sites by three models, shown for summer, July–August 2013) and winter (January–February 2013).

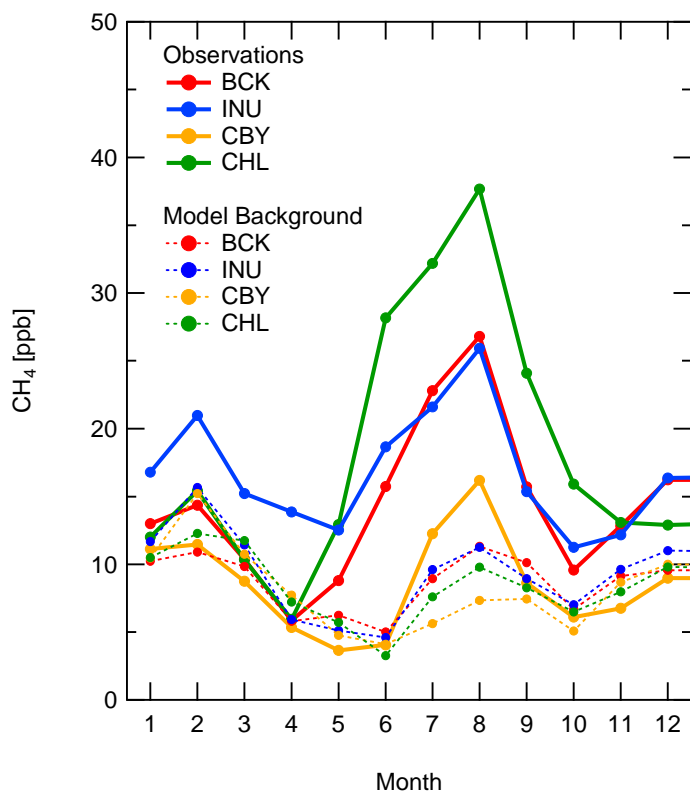


Figure 7: Four-year (2012–2015) mean monthly SD of modelled background CH₄ mixing ratios and SD of observed CH₄ mixing ratios (afternoon data only, SD_{PM}). The background CH₄ mixing ratios are NIES-TM modelled mixing ratios weighted by the endpoints of 5-day back trajectory.

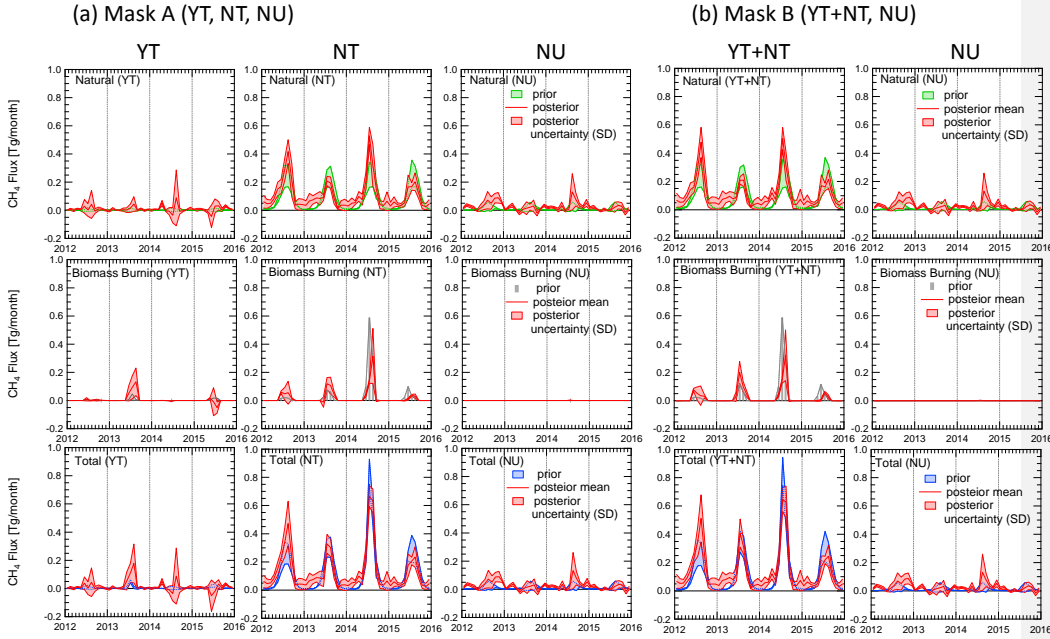


Figure 8: Monthly posterior mean fluxes with (a) sub-region Mask A (YT, NT, NU) and (b) Mask B (YT+NT, NU). Posterior mean flux is an average of nine experiments with 3 models (FLEXPART_EI, FLEXPART_JRA55 and WRF-STILT) and 3 prior emission cases (VIS, GEL and WetC). The posterior SD is shown by the red shaded area. Prior fluxes for natural include wetland flux, soil uptake and anthropogenic emissions. Biomass burning prior fluxes are from GFAS. The (non-red) shaded areas for natural and total prior fluxes indicate the range of prior fluxes.

5

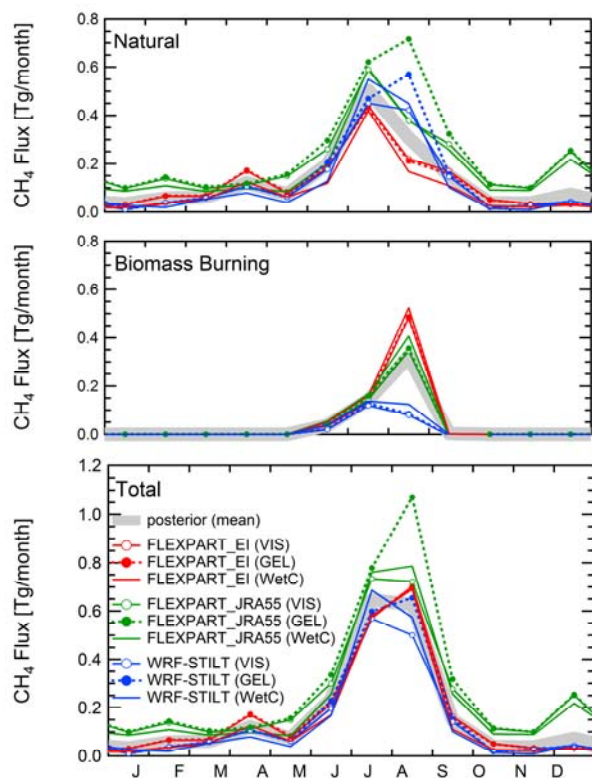
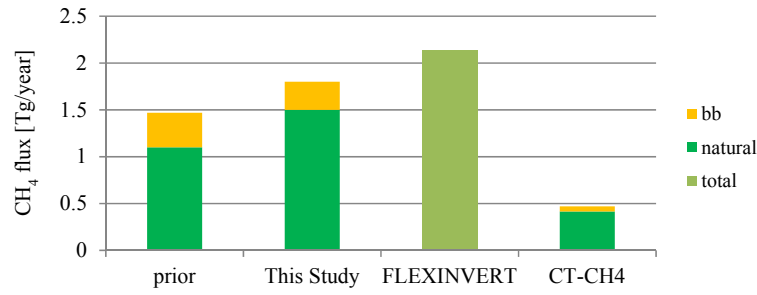


Figure 9: Examples of monthly posterior fluxes by 9 inversion experiments of 3 different models (FLEXPART_EI, FLEXPART_JRA55 and WRF-STILT) with 3 prior emission cases (VIS, GEL and WetC). The posterior fluxes are plotted for sub-region YT+NT in Mask B. The posterior flux means over all nine experiments with Mask B are also plotted.

(a) Mean annual Fluxes



(b) Mean monthly Fluxes

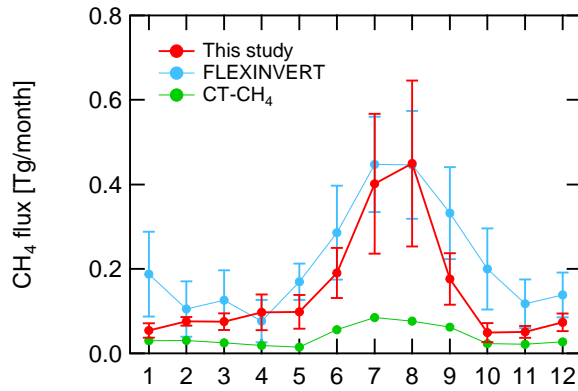


Figure 10: mean prior and posterior (a) annual and (b) monthly fluxes for the Canadian Arctic. FLEXINVERT (Thompson et al., 2017) and CarbonTracker-CH₄ (CT-CH₄, Bruhwiler et al. (2014)) are plotted for comparison. FLEXINVERT and CT-CH₄ fluxes are their last 5-year means, that is, 2009–2013 and 2006–2010 respectively. “natural” in CT-CH₄ are combined with the fluxes estimated as “anthropogenic” and “agriculture”. The bars in monthly fluxes are SD of multi-year mean monthly fluxes.

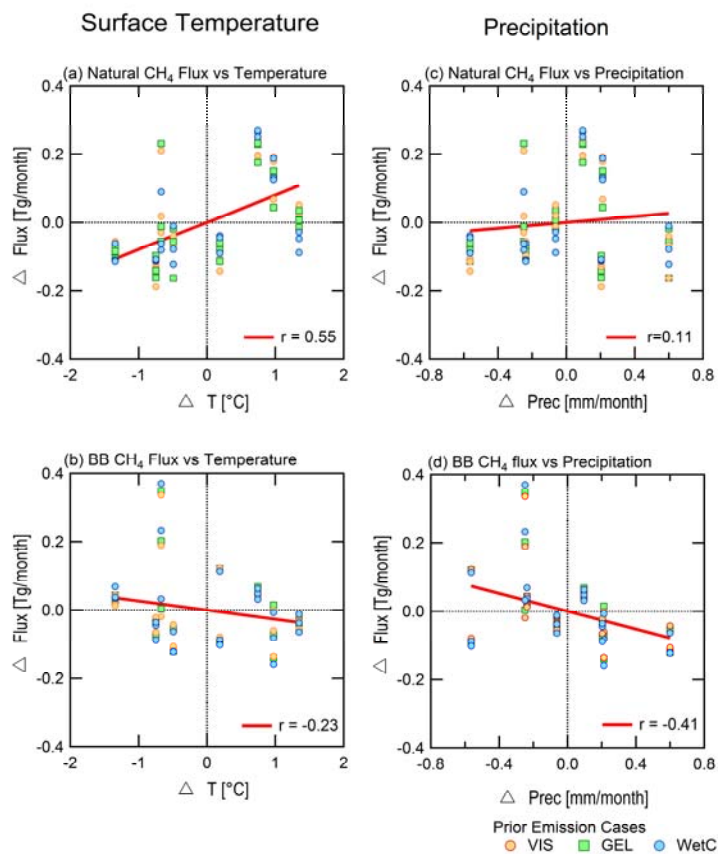


Figure 11: CH₄ flux anomalies vs surface temperature and precipitation anomalies for summer (July and August). The CH₄ fluxes are July and August posterior fluxes for Northwest Territories (NT) from 9 inversion experiments with Mask A. Regional climate parameter anomalies in NT are monthly deviations from the four-year (2012–2015) means

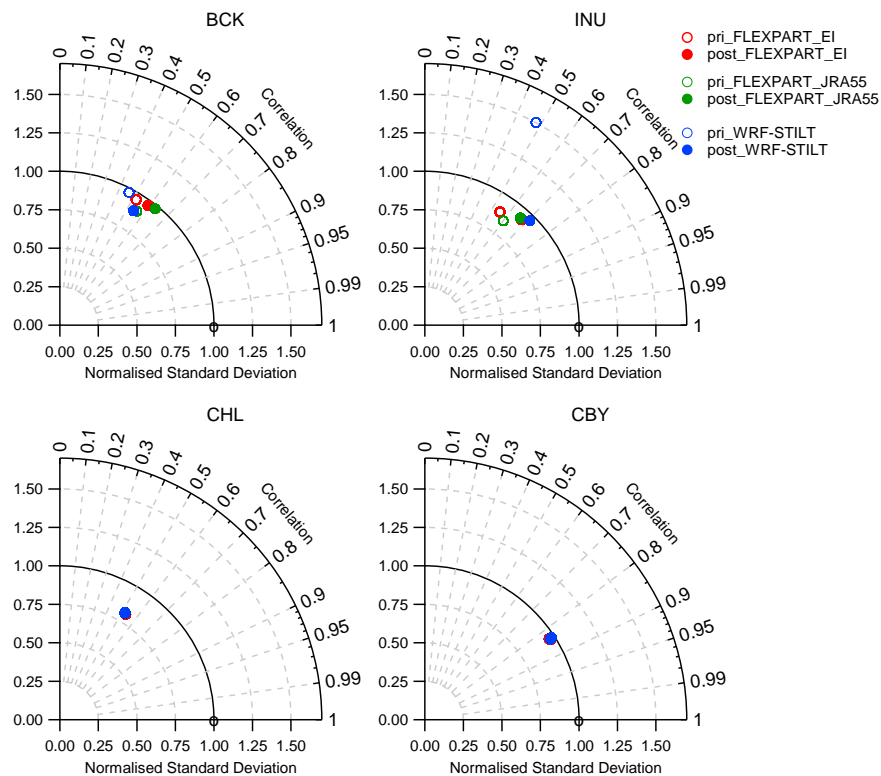


Figure 12: Taylor diagrams for the comparison between the prior (open circles) and posterior (closed circles) mixing ratios by three models: FLEXPART_EI (red), FLEXPART_JRA55 (green), and WRF-STILT (blue), with Mask B and prior flux case WetC. The radius is the normalised standard deviation (NSD) of modelled mixing ratios against observations. The angle is the correlation coefficient. The values are the means with all observations and modelled mixing ratios per each simulation for each site.