

The authors' replies solve most of my concerns; however, it will be great that if the authors can have more discussions on the spatial distributions and time variations of pollutants over Beijing area (see Figures 1 and 2 obtained from aqicn.org website on Dec. 28, 2018). One station observation sometime may not represent the whole area. Anyway, in my point of view, the paper can be accepted for publication.

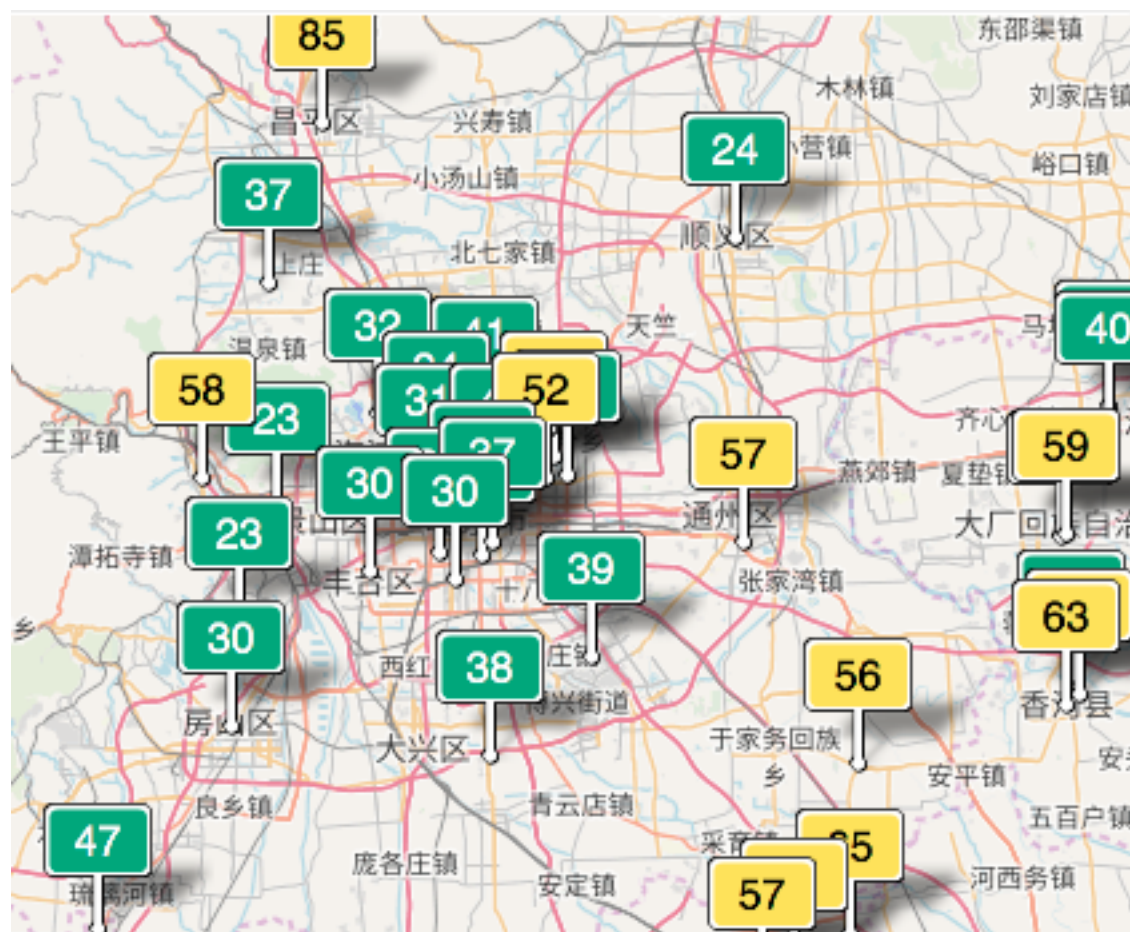


Figure 1, Spatial distribution of AQI over Beijing area

Beijing AQI: Beijing Real-time Air Quality Index (AQI).



52

Moderate

Updated on Friday 6:00

Primary pollutant: pm10

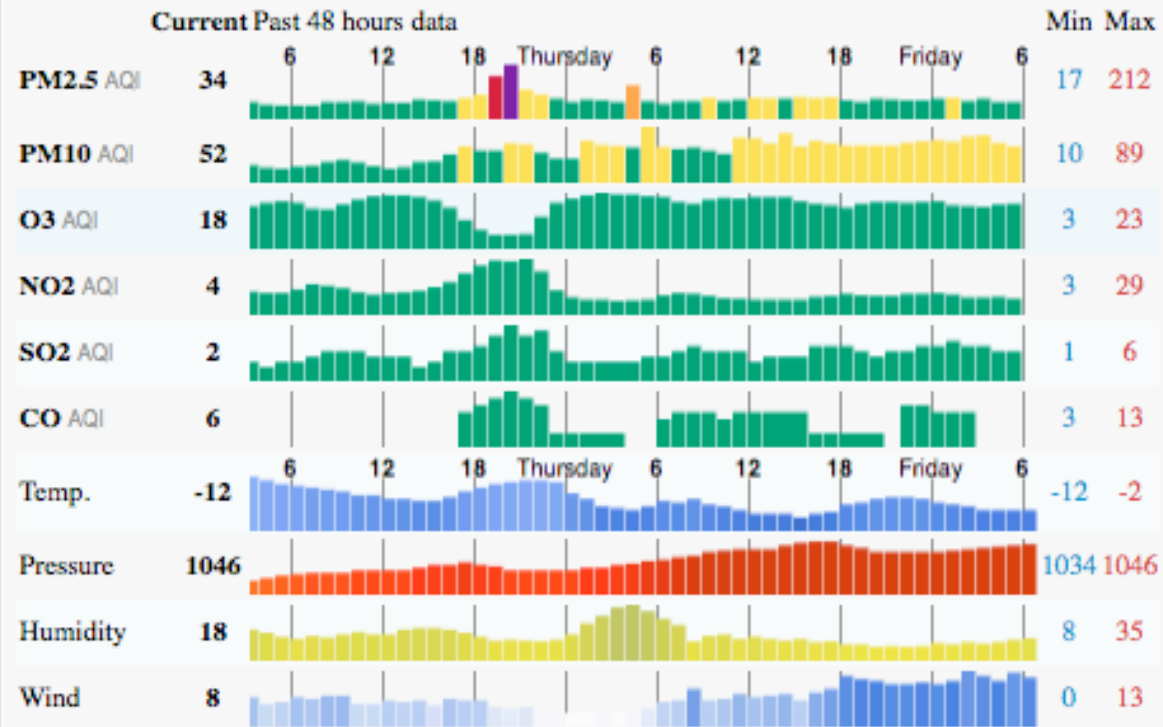


Figure 2, time variation of different pollutants.