

Response to Referee #1

Dear reviewer,

We all appreciate your hard work on this paper. These constructive opinions help to improve our work to a great extent. We did our best to respond to each comment and make this work well-organized. With the help of your detailed comments, some mistakes in the original manuscript were found and revised. Details are listed as follows:

General comments:

- 10 This manuscript analyzed the turbulence data observed from several severe haze pollution episodes in Beijing and its nearby suburbs by using the developed automated algorithm of identifying the spectral gap to separate pure turbulence and submesoscale motions from a 30-min signal based on the arbitrary-order Hilbert spectral method. Although I agree that the motivation of this study is good and its results are interesting, the presented study still needs some minor revision including the improvement in English before consideration for publication.

Specific comments:

1. In the abstract, “Urbanization seems to help reduce the consequences of pollution” may be somewhat misleading.
- 20 **Response:** Thanks for your comments. It was really somewhat misleading. We changed the expression to “The turbulent effects caused by urbanization seems to help reduce the consequences of pollution within the same weather and pollution source condition, because the turbulence intermittency is weaker and the reduction of turbulence exchange is smaller over urban underlying surface.” in the abstract. Next, I will explain in detail why we made such changes.
- 25 Suburban site is located at locally flat underlying surface, as shown in Fig.1, is 20 km away from the urban site. At this distance, we believe that the impact of the large-scale weather situation on both sites is consistent. Recent studies have shown that Beijing's winter pollution process can be divided into pollutant transport stage and accumulation stage (Zheng et al., 2015a; Liu et al., 2013; Guo et al., 2014; Zhong et al. 2017; Zhong et al., 2018). Some studies have shown that emissions from

outside Beijing can contribute 28–70% of the ambient $\text{PM}_{2.5}$ concentrations in Beijing (An et al., 2007; Streets et al., 2007; Wang et al., 2014; Chang et al. 2018). During the period we are concerned, as shown in Fig. 2, Zhong et al.'s research indicates that the pollution process is composed of the transportation of pollutants by southerly wind and accumulation of pollutants under the static wind (wind speed less than 2 m/s). Pollutant transport is dominated by large-scale weather processes, so the contribution to the source of $\text{PM}_{2.5}$ due to transport can be considered to be substantially consistent between the two sites separated by 20 km. In the accumulation stage of pollutants, it can be seen that the wind speed is less than 2 m/s in the layer below 1 km, and there is no longer large-scale transportation. At this time, the contribution of the local source may be highlighted. Due to the regulatory measures such as factory shutdowns implemented by the government in the fall of 2016 (“Bulletin on the State of China's Ecological Environment in 2016”), there were few major industrial sources in Beijing during our research phase, and there are only a small number of residential sources. In fact, in the government regulation in 2017, the residential sources had also been strictly controlled. Although the suburban site is located in a relatively flat farmland, it is still in the vicinity of the Changping county. Therefore, the residential sources between the two sites may be different, but this difference is not significant compared to the large number of sources in the transportation process. In summary, we think that the sources of $\text{PM}_{2.5}$ of the two sites are generally consistent.

So, what we concluded in the manuscript is based on the background that the urban and suburban site are under the same weather and pollution source condition. That is why we changed the expression in that way.

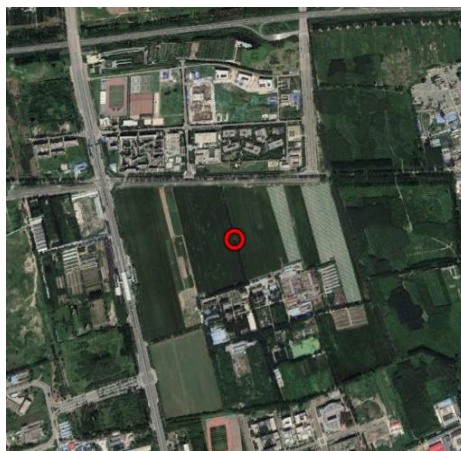


Figure 1 Google earth map of the suburban site within a range of approximately 1 km.

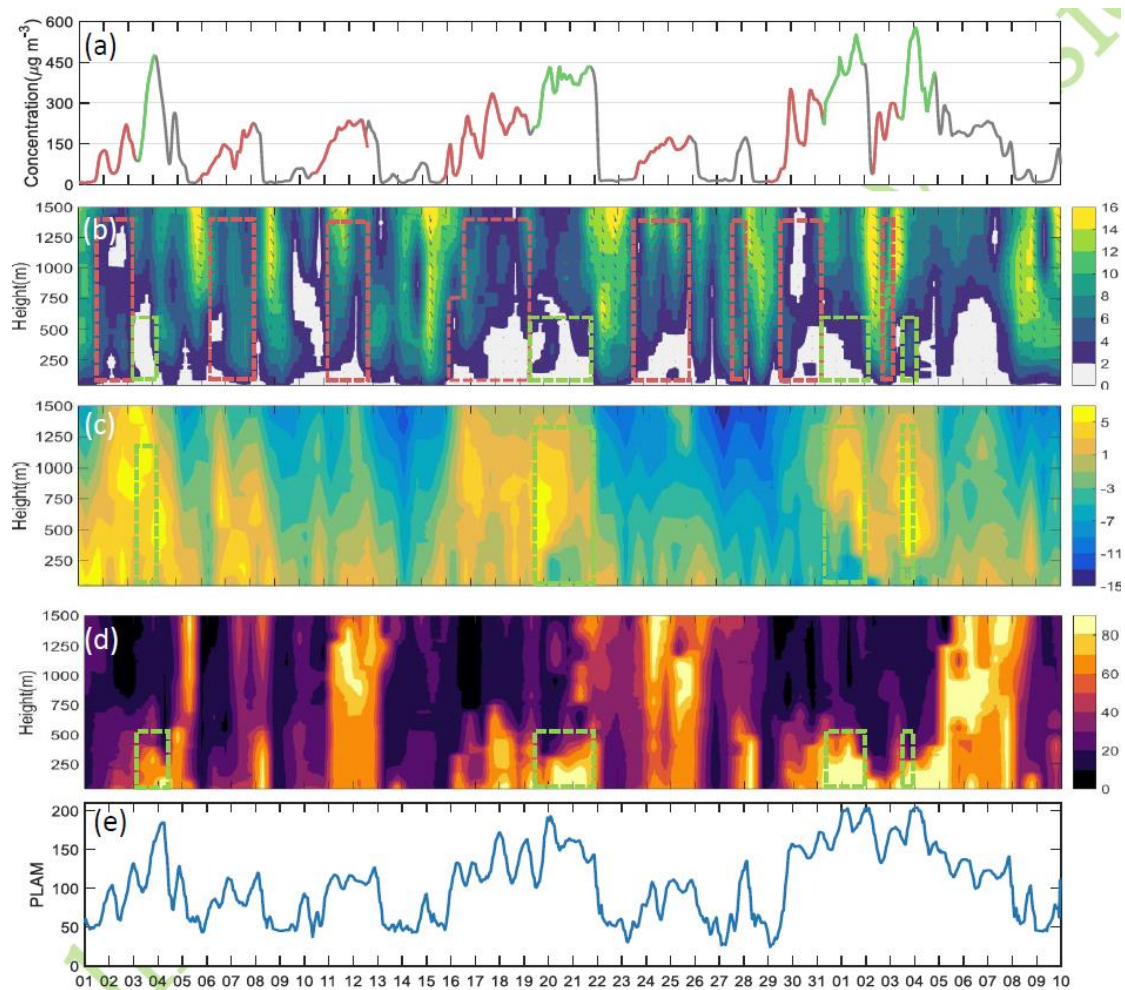


Figure 2 Temporal variations in PM_{2.5}, PLAM, and vertical distributions of meteorological factors from 1 December 2016 to 10 January 2017 by Zhong et al. (2017), their Fig.1. (a) PM_{2.5} mass concentration, (b) wind vector and wind velocity (shading; m s⁻¹), (c) temperature (shading; °C), (d) RH (shading; %), and (e) PLAM. Red boxes correspond to original/transport explosive growth processes, while green boxes correspond to subsequent/cumulative explosive growth processes.

According to your comments, the following changes were made:

Changed the description in the abstract on the first page, line 24-27:

“The turbulent effects caused by urbanization seems to help reduce the consequences of pollution under the same weather and pollution source condition, because the turbulence intermittency is weaker and the reduction of turbulence exchange is smaller over urban underlying surface.”

Figure 1 on page 5 in the revised manuscript has been modified to reflect the condition of the underlying surface around the two sites. The new Fig. 1 for the manuscript is shown as Fig. 3 here:

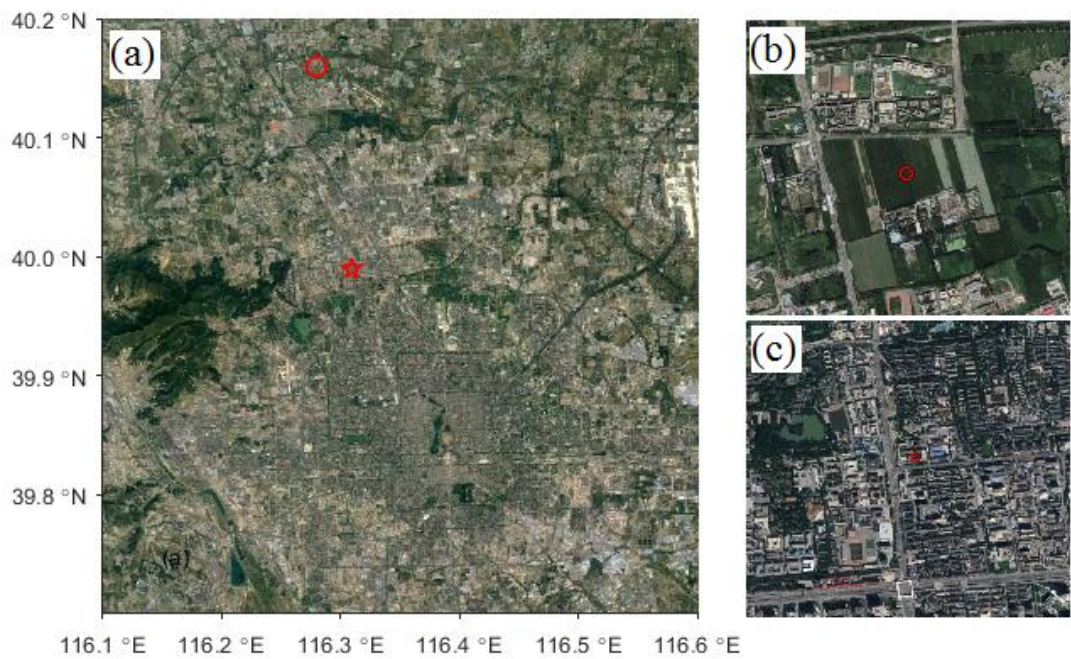


Figure 3 Figure 1 in the manuscript: Google Earth map of the observation sites in Beijing: (a) the observation site located in the urban underlying surface region (marked by the red pentagram) and the observation site located in the suburban underlying surface region with a flat terrain (marked by the red circle). The corresponding terrains (within a range of approximately 1 km) around the observation sites are shown in (b) and (c), respectively.

Details of the suburban site are added on page 3, lines 26-28:

“Data over a locally flat underlying surface were collected at a continuous measurement site (40.16 ° N, 116.28 ° E) in the Beijing suburb. The observational site was set up in the middle of a vast and horizontal farmland, near the Changping county.”

We added a description of the location relationship between the two sites on page 4, lines 17-18:

“Suburban site is 20 km away from the urban site. At this distance, the large-scale weather background is consistent. As flat terrain of the suburban site, it was used as a reference. The sources of PM_{2.5} of the two sites are generally consistent.”

2. Line 16 in Page 3, “turbulence data observed from several severe haze pollution episodes”, “from” should be changed to “in” or “during”.

Response: Thanks for pointing out that. “from” has been corrected to “during”.

3. The data source of PM_{2.5} mass concentration, horizontal wind speed, virtual temperature and water vapor mixing ratio need be described. The details of all the data used in this study should be included in the Section.

Response: Thanks for your suggestion. We have supplemented the details of the observation instruments and data of the two sites respectively.

We added some descriptions of the suburban site at page 4, lines 1-3. Details are given as follows:

“The turbulence data such as the horizontal wind vector, virtual temperature and water vapor content were collected using a data logger (CR3000, Campbell Scientific, Inc., USA) at a frequency of 10 Hz and were averaged over an interval of 30 min for the analysis of meteorological elements.”

We added some descriptions of the urban site at page 4, lines 9-15. Details are given as follows:

“The concentrations of PM_{2.5} were collected using a Thermo-Fisher Sci. Co. instrument (series FH-62-C14), and 30-min averaging time series were performed to remove outliers. The system was equipped with an integrated CO₂/H₂O open-path gas analyzer (LI-7500, LI-COR Biosciences, Inc., USA) and three-dimensional sonic anemometer-thermometer (IRGASON, Campbell Scientific, Inc., USA). The IRGASON was leveled and pointed north. The turbulence data such as the horizontal wind vector, virtual temperature and water vapor content were collected using a data logger

(CR3000, Campbell Scientific, Inc., USA) at a frequency of 10 Hz and were averaged over an interval of 30 min for the analysis of meteorological elements.”

We added a description of the location relationship between the two sites on page 4, lines 17-21:

“Suburban site is 20 km away from the urban site. At this distance, the large-scale weather background is consistent. As flat terrain of the suburban site, it was used as a reference. The sources of PM_{2.5} of the two sites are generally consistent. The observations of PM_{2.5} at urban sites are used to represent the evolution of the entire pollution process, as this study focuses on pollution processes rather than specific values. Since the observations at both sites are located in the surface layer, i.e. the constant flux layer, the values of turbulence flux are comparable.”

4. It may be better to modify the title of Section 3 as “Methodology” or “Methodology of reconstructing signals”. Section 2.2 may be merged into “Methodology”. In a word, Section 2 and Section 3 should be rearranged.

Response: Thanks so much for your constructive advice. We modified the title of Section 3 as “Methodology”. You are right that the description of method of calculating the turbulent quantities in Section 2.2 should be merged into Section 3. So we retain the content of data processing in Section 2.2 and move the content of description of method to the Section 3 which was rearranged.

The new Section 3.1 at page 7, lines 2-17 are given as follows:

“3.1 Turbulent kinetic energy and turbulent fluxes

The physical quantities used in this paper are turbulent kinetic energy (TKE), several variances ($\sigma_u, \sigma_v, \sigma_w, \sigma_\theta$ and σ_q), friction speed (u_*), and fluxes ($-\overline{u'w'}$, $\overline{w'\theta'}$ and $\overline{w'q'}$). Among these, the TKE is calculated as:

$$e = \frac{1}{2}(\overline{u'^2} + \overline{v'^2} + \overline{w'^2}), \quad (1)$$

the variance is calculated as

$$\begin{aligned} \sigma_u &= \overline{u'u'}, \\ \sigma_v &= \overline{v'v'}, \\ \sigma_w &= \overline{w'w'}, \\ \sigma_\theta &= \overline{\theta'\theta'}, \end{aligned} \quad (2)$$

$$\sigma_q = \overline{q'q'},$$

the turbulence flux is calculated as

$$\tau = \rho u_*^2 = \rho \overline{u'w'},$$

$$H = \rho C_p \overline{w'\theta'}, \quad (3)$$

$$5 \quad E = \rho \overline{w'q'},$$

and the friction speed is calculated as:

$$u_* = \left[\left(-\overline{u'w'} \right)^2 + \left(-\overline{v'w'} \right)^2 \right]^{\frac{1}{4}}. \quad (4)$$

”

The original Section 3.1 and Section 3.2 became the new Section 3.2 and Section 3.3

10

5. In Figure4, the comparison is made between the new half-hour results with those from the old results. Which is the reference? Is the overestimation of the variations in the variables calculated by the traditional EC method for 30 min referenced to the results using the new method? Then, what is the reference to assess the new method? Here, the description is confused.

15 **Response:** Thanks for your suggestion. Yes, the overestimation of the variations in the variables calculated by the traditional EC method for 30 min is referenced to the results using the new method. In this work, we recognize that the new method can get the pure turbulence part and eliminate the effects caused by sub-mesoscale motion. Because we can get the conclusion by comparison of the spectra between the raw data and reconstructed data. For example, Fig. 3 in the manuscript shows the second-order Hilbert spectra from the newly reconstructed data and raw data. The raw data spectrums, which are shown by the black solid lines in Fig. 3 in the manuscript, are inconsistent with the structure of the turbulent energy spectrum in the classic theory on frequency bands with lower frequency, that is, smaller than the frequency indicated by the grey solid lines. The new spectrum, which is shown by the black dotted lines in Fig. 3 in the manuscript, is consistent with the structure of the turbulent energy spectrum in the classic theory. It is obvious that the reconstruction successfully eliminated the energy contained by large-scale motion while retaining turbulent energy. Under the situation that there are spectra gaps, the turbulence data we obtained during the heavy pollution process contains the sub-mesoscale motion signal. Turbulent

20

25

flux calculated by the traditional time-averaging method is contaminated by sub-mesoscale motions during the heavy pollution process. Similarly, this kind of contamination to turbulence flux caused by sub-mesoscale motion was also studied in some other works (Vickers and Mahrt, 2006; Acevedo et al., 2006, 2007; Aubinet, 2008; Mahrt, 2010). All in all, we can find that the method we developed in this paper which is based on the Hilbert-Huang transform can get more realistic exchange between the surface and atmosphere during the heavy haze pollution.

However, you are right that the description here may easily cause confusion. We changed the expression of “old results” to “original results” in the manuscript which maybe can make it more clear. The figures involved the expression of “old” in the manuscript are Fig. 4 (on page 12) and Fig.5 (on page 13) which were also modified.

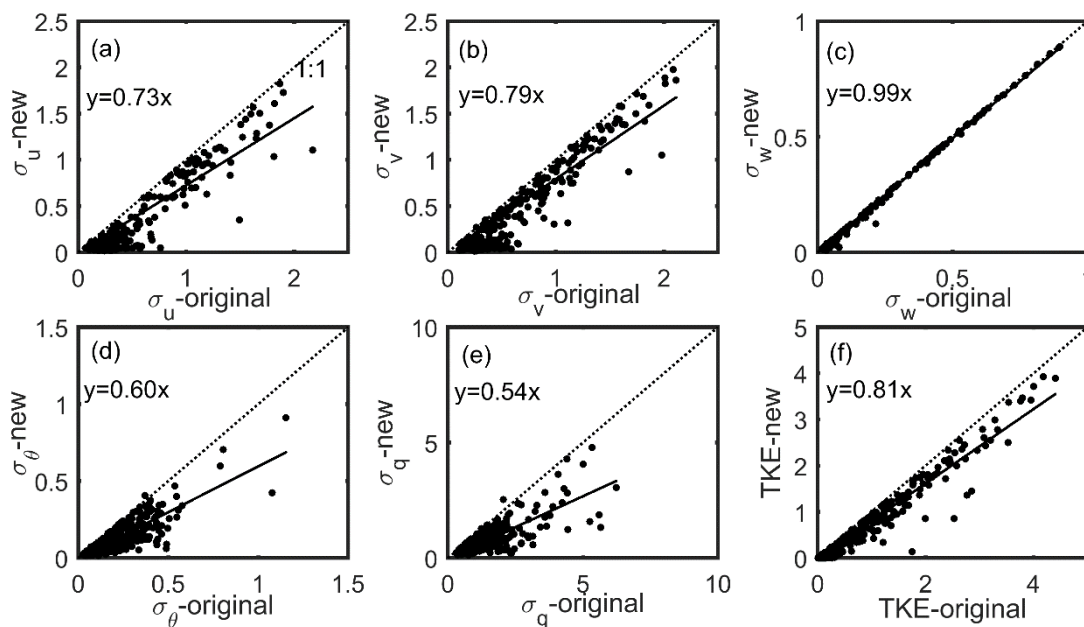


Figure 4 in the manuscript: Comparison of σ_u (a), σ_v (b), σ_w (c), σ_θ (d), σ_q (e) and TKE (f) from the new half-hour results with those from the original results from 16 December 2016 to 8 January 2017 at the suburban site. The black dotted line represents the 1:1 line in the figures. The black solid line represents the fitted results.

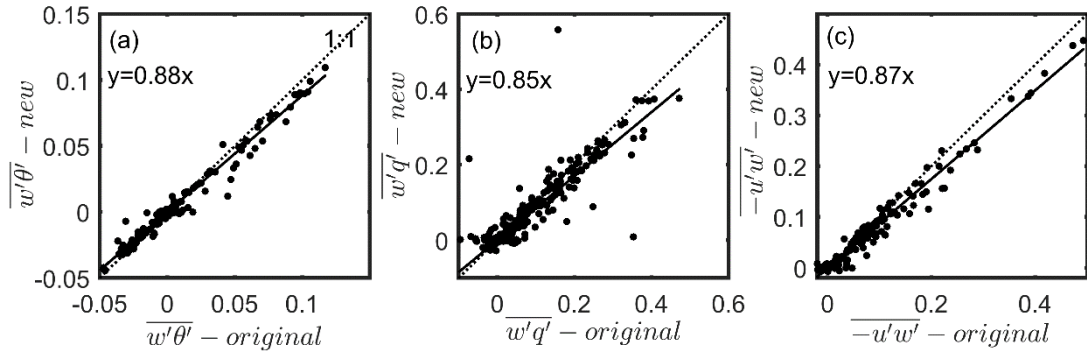


Figure 5 in the manuscript: A comparison of the vertical heat flux ($\overline{w'\theta'}$) (a), vertical water-vapor flux ($\overline{w'q'}$) (b) and momentum flux ($-\overline{u'w'}$) (c) from the new half-hour results with those from the original results from 6 December 2016 to 8 January 2017 at the suburban site. The black dotted line represents the 1:1 line in the figure. The black solid line represents the fitted results.

6. What's the difference of PM_{2.5} in Fig.6-8 and Fig.2? How about the difference of data source? More details need be described.

Response: Thanks for your suggestion. The data source of PM_{2.5} is the same in Fig.6-8 and Fig.2. We are sorry that we have not described clearly. In order to facilitate comparative analysis and display intuitively, the time series of PM_{2.5} was added in Fig.6-8. The observations of PM_{2.5} at urban sites are used to represent the evolution of the entire pollution process, as this manuscript focuses on pollution processes rather than specific values. As mentioned in the answer of the first question, the sources of PM_{2.5} of the two sites are not much different. In fact, the trends in concentration of PM_{2.5} across all environmental monitoring sites throughout the Beijing area are consistent, although there are some numerical differences. We choose three environmental monitoring stations, Changping (116.23°N, 40.22°E), Haidian (116.29°N, 39.99°E) and Daxing (116.40°N, 39.72°E), to prove that. The time series of mass concentration of PM_{2.5} at the three environmental monitoring stations are shown in Fig. 6, their locations are shown in Fig. 7.

The data of PM_{2.5} used in this manuscript is mainly to show the corresponding relationship between the trend of pollution development and intermittent turbulence, as shown in Fig.7 and Fig.8 in the manuscript. For the purposes of this work, the difference in the magnitude of the PM_{2.5} values between the two sites does not affect the results. And because the pollution data from environmental monitoring sites have a large number of missing measurements during the study

period, so we still use the observations from the urban site to represent the evolution of the entire pollution process.

An explanation of the data problem of $\text{PM}_{2.5}$ is added to Section 2, page 4, lines 18-20:

“The observations of $\text{PM}_{2.5}$ at urban sites are used to represent the evolution of the entire pollution process, as this study focuses on pollution processes rather than specific values.”

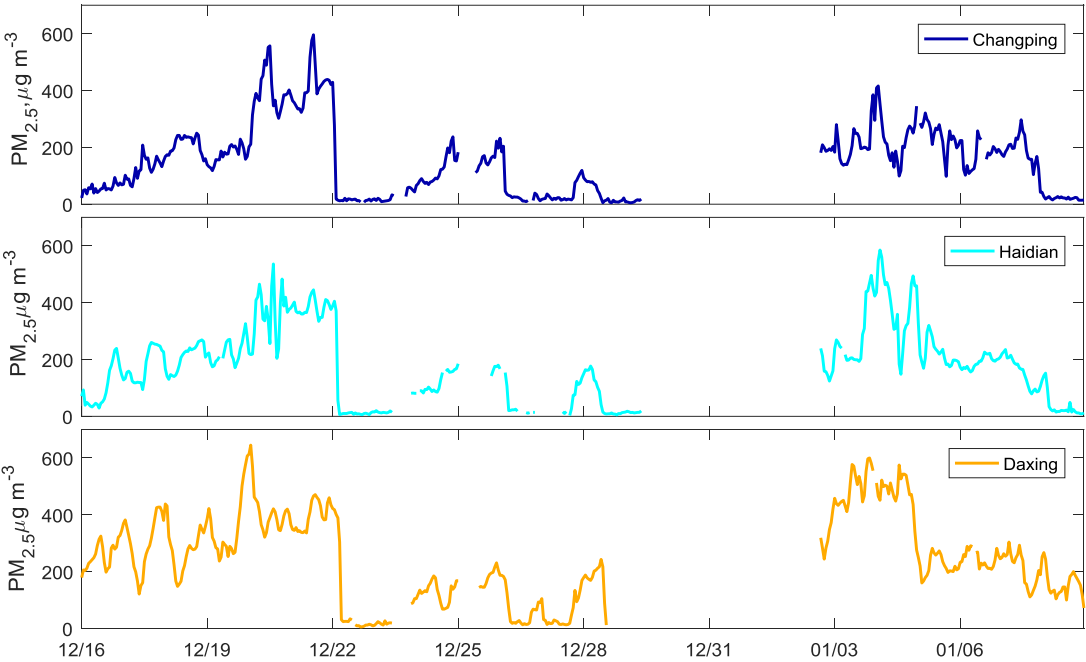


Figure 6 The time series of mass concentration of $\text{PM}_{2.5}$ at the three environmental monitoring stations in Beijing.

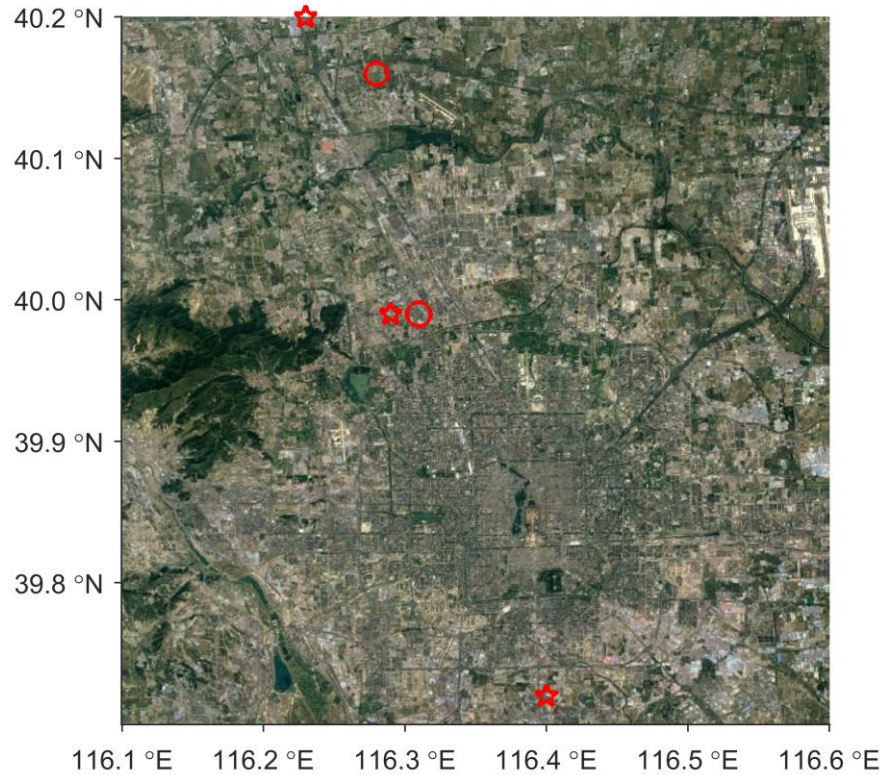


Figure 7 Google Earth map of the observation sites in Beijing. The locations of the three environmental monitoring stations are marked by the red pentagram. The urban and suburban sites in manuscript are marked by red circle.

5 **7.** In Fig. 9-11, the description of lines is wrong.

Response: Thanks for your suggestion. We are sorry for these faults. We corrected the descriptions of lines in Fig. 9-11 as follows:

10 “Figure 9: Normalized standard deviations in wind speed in the horizontal and vertical directions (σ_u/u_* , σ_v/u_* , and σ_w/u_*) as functions of the stability parameter ζ . The red (blue) solid line in the figure represents the results under polluted (clear) weather conditions. Observations marked with * (°) were made under polluted (clear) weather conditions.” (page 19).

“Figure 10: Normalized standard deviations in the potential temperature ($\sigma_\theta/|\theta_*|$) and moisture content ($\sigma_q/|q_*|$) as functions of the stability parameter ζ . The red (blue) solid line in the figure

represents the results under polluted (clear) weather conditions. Observations marked with * () were made under polluted (clear) weather conditions.” (page 20, lines 2-4).

“Figure 11: Diurnal variations in the mean vertical heat flux ($\overline{w'\theta'}$) (a), vertical water-vapor flux ($\overline{w'q'}$) (b), momentum flux ($-\overline{u'w'}$) (c) and TKE (d) under polluted weather (red solid line) and clear weather (blue solid line) conditions over the urban site. Diurnal variations in these variables over the suburban site are shown in (e), (f), (g), and (h), respectively.” (page 21, lines 15-17).

References

- Acevedo, O.C., Moraes, O. L. L., Degrazia, G. A., and Medeiros, L. E.: Intermittency and the exchange of scalars in the nocturnal surface layer, *Bound. Layer Meteor.*, 119, 41–55, 2006.
- Acevedo, O. C., Moraes, O. L. L., Fitzjarrald, D. R., Sakai, R. K., and Mahrt, L.: Turbulent carbon exchange in very stable conditions, *Bound. Layer Meteor.*, 125 (1), 49-61., 2007.
- An, X., Zhu, T., Wang, Z., Li, C., and Wang, Y.: A modeling analysis of a heavy air pollution episode occurred in Beijing, *Atmos. Chem. Phys.*, 7, 3103–3114, 2007.
- Aubinet, M.: Eddy Covariance CO₂ Flux Measurements in Nocturnal Conditions: An Analysis of the Problem, *Ecol. Appl.*, 18 (6), 1368-78, 2008.
- Chang, X., Wang, S., Zhao, B., Cai, S., and Hao, J.: Assessment of inter-city transport of particulate matter in the Beijing–Tianjin–Hebei region, *Atmos. Chem. Phys.*, 18, 4843-4858, 2018.
- Guo, S., Hu, M., M. L. Zamora, Peng, J., Shang, D., Zheng, J., Du, Z., Wu, Z., Shao, M., Zeng, L., Mario, J., and Zhang, R.: Elucidating severe urban haze formation in China. *Proc. Natl. Acad. Sci. USA.*, 111, 17373-17378, 2014.
- Liu, X., Li, J., Qu, Y., Han, T., Hou, L., Gu, J., Chen, C., Yang, Y., Liu, X., Yang, T., Zhang, Y., Tian, H., and Hu, M.: Formation and evolution mechanism of regional haze: A case study in the megacity Beijing, China. *Atmos. Chem. Phys.*, 13, 4501-4514, 2013.
- Mahrt, L.: Variability and Maintenance of Turbulence in the Very Stable Boundary Layer, *Bound.-Layer Meteor.*, 135(1), 1-18, 2010.

- Streets, D. G., Fu, J. S., Jang, C. J., Hao, J., He, K., Tang, X., Zhang, Y., Wang, Z., Li, Z., Zhang, Q., Wang, L., Wang, B., and Yu, C.: Air quality during the 2008 Beijing Olympic Games, *Atmos. Environ.*, 41, 480–492, 2007.
- Vickers, D. and Mahrt, L.: A Solution for Flux Contamination by Mesoscale Motions With Very Weak
 5 Turbulence, *Bound. Layer Meteor.*, 118 (3), 431–447, 2006.
- Wang, Z., Li, J., Wang, Z., Yang, W., Tang, X., Ge, B., Yan, P., Zhu, L., Chen, X., Chen, H., Wand, W., Li, J., Liu, B., Wang, X., Wand, W., Zhao, Y., Lu, N., and Su, D.: Modeling study of regional severe hazes over mid-eastern China in January 2013 and its implications on pollution prevention and control, *Sci. China Earth-Sci.*, 57, 3–13, 2014.
- 10 Zheng, G. J., Duan, F. K., Su, H., Ma, Y. L., Cheng, Y., Zheng, B., Zhang, Q., Huang, T., Kimoto, T., Chang, D., U., Cheng, Y. F. and He, K. B.: Exploring the severe winter haze in Beijing: The impact of synoptic weather, regional transport and heterogeneous reactions, *Atmos. Chem. Phys.*, 15(6), 2969–983, 2015.
- Zhong, J., Zhang, X., Dong, Y., Wang, Y., Wang, J., Zhang, Y. and Che, H.: Feedback effects of
 15 boundary-layer meteorological factors on cumulative explosive growth of PM_{2.5} during winter heavy pollution episodes in Beijing from 2013 to 2016, *Atmos. Chem. Phys.*, 18, 247–258, 2018.
- Zhong, J., Zhang, X., Wang, Y., Sun, J., Zhang, Y., Wang, J., Tan, K., Shen, X., Che, H., Zhang, L., Zhang, Z., Qi, X., Zhao, H., Ren, S., Li, Y.: Relative Contributions of Boundary-Layer Meteorological Factors to the Explosive Growth of PM_{2.5} during the Red-Alert Heavy Pollution
 20 Episodes in Beijing in December 2016, *J. Meteor. Res.*, 31 (5), 809–819, 2017.

*: All line numbers and page numbers in the present response refer to the revision manuscript, unless otherwise stated.

Response to Referee #2

Dear reviewer,

5 We really appreciate your revealing questions and comments. These constructive opinions help to improve our work to a great extent. We did our best to respond to these comments one by one. We hope the reviewer would approve of our following response. Details are listed as follows

10 The authors investigated the influence of turbulence structure and urbanization on the heavy haze pollution process, and did a very detailed analysis. The results provide valuable information on the interaction between pollution and turbulence flux and the differences between urban and rural area during heavy haze time. However, further study according to following comments is needed:

Major comments:

15 1) the authors mentioned “the impact of the pollution process on suburb areas is much greater than that on urban areas. Urbanization seems to help reduce the consequences of pollution” in the end of abstract. What are the dynamic/physical mechanism behind that? What is the difference in PM_{2.5} source at urban areas and suburb areas?

Response: We really appreciate your questions. We want to introduce more details about these two sites and try to explain the second question before answering the dynamic/physical mechanism
20 behind the sentence. Suburban site is located at locally flat underlying surface, as shown in Fig.1, 20 km away from the urban site. At this distance, we believe that the impact of the large-scale weather situation on both sites is consistent. Recent studies have shown that Beijing's winter pollution process can be divided into pollutant transport stage and accumulation stage (Zheng et al., 2015a; Liu et al., 2013; Guo et al., 2014; Zhong et al. 2017; Zhong et al., 2018). Some studies have
25 shown that emissions from outside Beijing can contribute 28–70% of the ambient PM_{2.5} concentrations in Beijing (An et al., 2007; Streets et al., 2007; Z. Wang et al., 2014; Chang et al. 2018). During the period we are concerned, as shown in Fig. 2, Zhong et al.'s research indicates that the pollution process is composed of the transportation of pollutants by southerly wind and

accumulation of pollutants under the static wind (wind speed less than 2 m/s). Pollutant transport is dominated by large-scale weather processes, so the contribution to the source of $PM_{2.5}$ due to transport can be considered to be substantially consistent between the two sites separated by 20 km. In the accumulation stage of pollutants, it can be seen that the wind speed is less than 2 m/s in the layer below 1 km, and there is no longer large-scale transportation. At this time, the contribution of the local source may be highlighted. Due to the regulatory measures such as factory shutdowns implemented by the government in the fall of 2016 (“Bulletin on the State of China's Ecological Environment in 2016”), there are few major industrial sources in Beijing during our research phase, and there are only a small number of residential sources. In fact, in the government regulation in 2017, the residential sources had also been strictly controlled. Although the suburban site is located in a relatively flat farmland, it is still in the vicinity of the Changping county. Therefore, the residential sources between the two sites may be different, but this difference is not significant compared to the large number of sources in the transportation process. In summary, we think that the sources of $PM_{2.5}$ of the two sites are generally consistent.

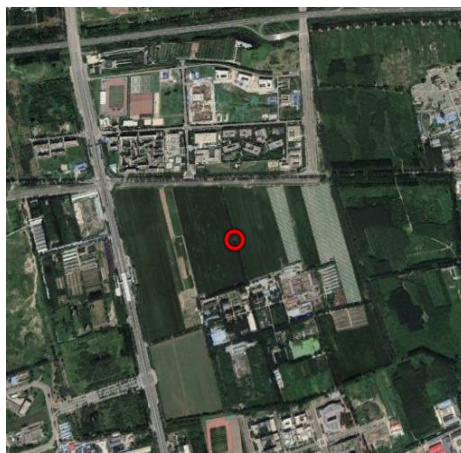


Figure 1 Google earth map of the suburban site within a range of approximately 1 km.

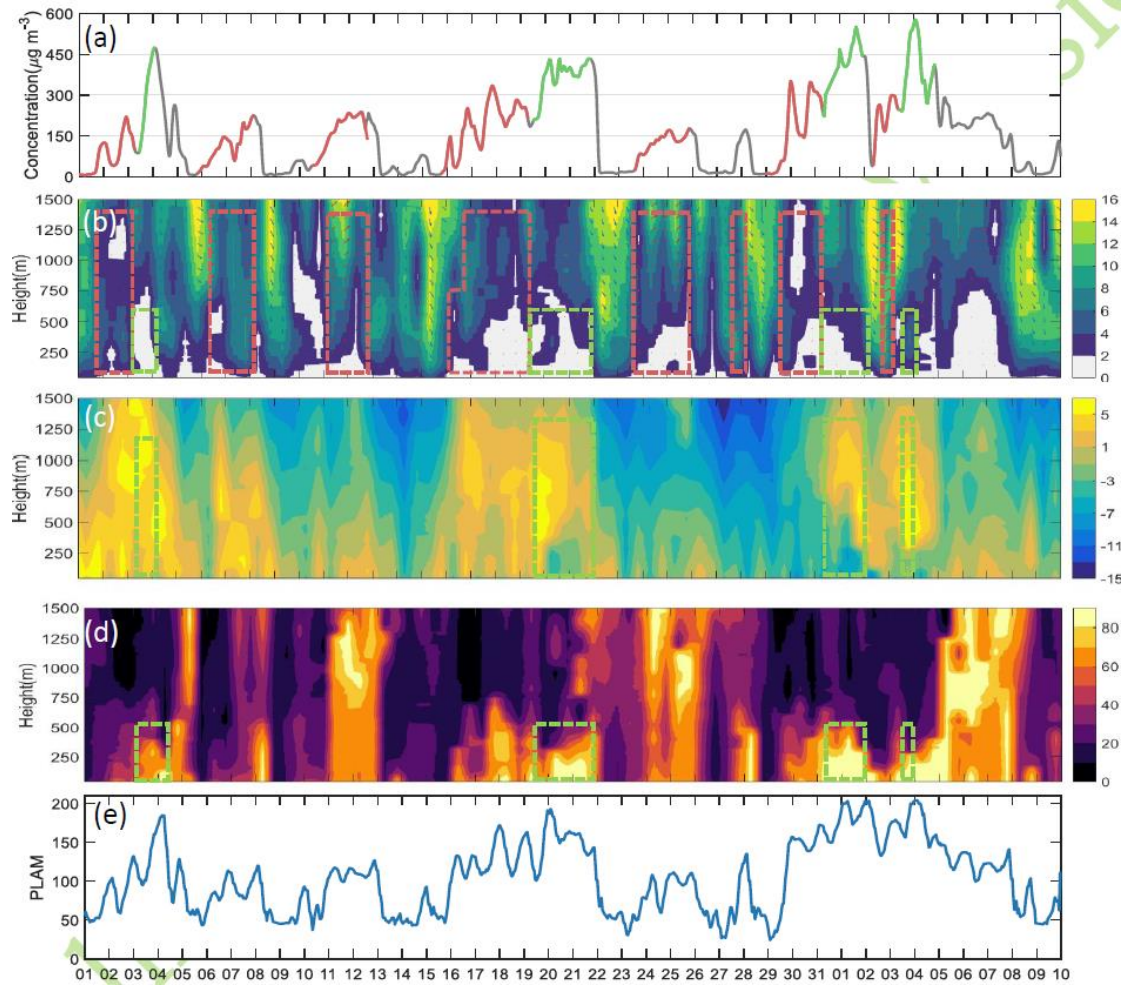


Figure 2 Temporal variations in PM_{2.5}, PLAM, and vertical distributions of meteorological factors from 1 December 2016 to 10 January 2017 by Zhong et al. (2017), their Fig.1. (a) PM_{2.5} mass concentration, (b) wind vector and wind velocity (shading; m s⁻¹), (c) temperature (shading; °C), (d) RH (shading; %), and (e) PLAM. Red boxes correspond to original/transport explosive growth processes, while green boxes correspond to subsequent/cumulative explosive growth processes.

Due to the close distance between the two stations, the large-scale weather background is consistent, and the underlying surface of the suburban site is locally flat, so the flat terrain of the suburb is used as a reference. We consider the turbulence structure over the flat surface of the suburban area as the normal state in this area under such weather and pollution source conditions, then the urban turbulent structure is influenced by urbanization. Next, we want to discuss the dynamic mechanism

behind this sentence from two aspects. First, the LIST (intermittent intensity) at the suburban site is smaller (stronger) than that at the urban site (as shown in Fig.7 and Fig.8 in the manuscript). The value of $V_{smeso}(V_{turb})$ at the urban site is slightly smaller (larger) than that at the suburban site. All of these mean that the proportion of turbulence in the acquired signal at the urban site is stronger than that at the suburban site which was caused by rough underlying surface mainly. So from the turbulence intermittency perspective, the value of the LIST at the urban site is significantly greater than that at the suburban site, which means that the dynamic effect of the underlying surface of the urban area is stronger than that of the flat underlying surface of the suburban area. That is correspond to the previous studies on atmospheric turbulence over cities, such as, Roth (2000) concluded that there was an intense shear layer near the top of the city canopy which provided increased mechanical mixing in his review paper. Second, the change in turbulent flux during the pollution process also showed a difference in turbulence between the two sites. As shown in Fig.11 in the manuscript, the sensible heat flux, latent heat flux, momentum flux, and TKE in the urban and suburban sites are all weaken when pollution occurs. More importantly, the reduction of turbulence exchange during the pollution period in suburban sites is greater, compared to urban sites. In other words, the impact of the pollution process on the suburbs is much greater than that on the urban area. As mentioned earlier, we consider the turbulent structure over the suburb site as the normal state in this area under such weather and pollution conditions, the change in the underlying surface of the urban site (the dynamic effect of complex terrain and the heat island effect caused by human activities) leads to a greater resistance to the weakening effects of turbulent exchange caused by pollution. To sum up two points, the change in turbulence structure brought about by urbanization has a weakening effect on the consequences caused by pollution.

The weaker turbulence intermittently caused by urbanization provides stronger turbulent flow during heavy pollution, so from the perspective of turbulent structure, the complexity of the urban underlying surface provides better turbulent transfer conditions compared to flat underlying surface. However, maybe this sentence is somewhat misleading when it appears alone. We changed the expression to “The turbulent effects caused by urbanization seems to help reduce the consequences of pollution under the same weather and pollution source condition, because the turbulence

intermittency is weaker and the reduction of turbulence exchange is smaller over urban underlying surface.” in the abstract.

According to your comments, the following changes were made:

Figure 1 in the manuscript has been modified to reflect the condition of the underlying surface around the two sites. The new Fig. 1 for the manuscript is shown as Fig. 3 here:

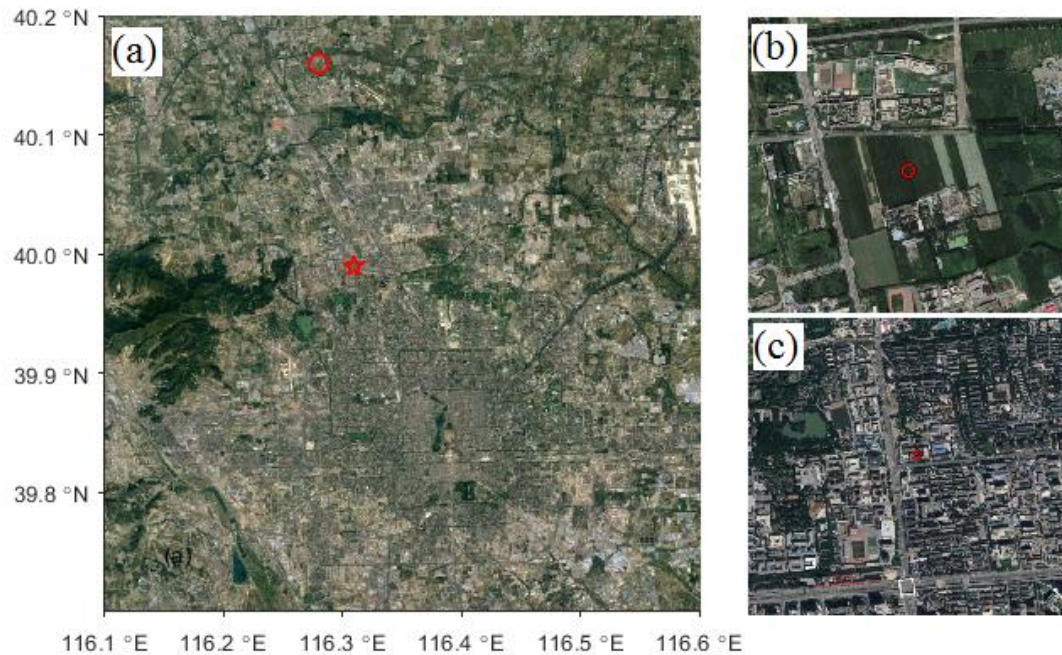


Figure 3 Figure 1 in the manuscript: Google Earth map of the observation sites in Beijing: (a) the observation site located in the urban underlying surface region (marked by the red pentagram) and the observation site located in the suburban underlying surface region with a flat terrain (marked by the red circle). The corresponding terrains (within a range of approximately 1 km) around the observation sites are shown in (b) and (c), respectively.

Details of the suburban site are added on page 3, lines 26-28:

“Data over a locally flat underlying surface were collected at a continuous measurement site (40.16° N, 116.28° E) in the Beijing suburb. The observational site was set up in the middle of a vast and horizontal farmland, near the Changping county.”

We added a description of the location relationship between the two sites on page 4, lines 17-18:

“Suburban site is 20 km away from the urban site. At this distance, the large-scale weather background is consistent. As flat terrain of the suburban site, it was used as a reference. The sources of PM_{2.5} of the two sites are generally consistent.”

We changed the description in the abstract on the first page, line 24-27:

5 “The turbulent effects caused by urbanization seems to help reduce the consequences of pollution under the same weather and pollution source condition, because the turbulence intermittency is weaker and the reduction of turbulence exchange is smaller over urban underlying surface.”

The last paragraph of the conclusion was reorganized, on page 24, lines 10-17:

10 “Due to the close distance between the two stations, the large-scale weather background is consistent, and the suburban site is locally flat, so the turbulent structure over the flat surface of the suburban area is considered as the normal state in this area under such weather and pollution source conditions, then the urban turbulent structure is influenced by urbanization. More importantly, the reduction of turbulence exchange during the pollution period in suburban sites is greater, compared to urban sites. In other words, the impact of the pollution process on the suburbs is much greater
15 than that on the urban area. The change in the underlying surface of the urban site (the dynamic effect of complex terrain and the heat island effect caused by human activities) leads to a greater resistance to the weakening effects of turbulent exchange caused by pollution.”

20 2) The heights of two observational sites are different, one at 25m and the other at 10m. What are differences of temperature, wind speed, specific humidity and PM_{2.5} caused by the height difference?

The authors used one point to represent the whole Beijing, how much is the difference in surface temperature, wind speed, specific humidity and PM_{2.5} at different locations of urban Beijing?

Response: Thanks for your question. The problem you mentioned does exist. However, this manuscript focuses on the difference of the turbulent structure and exchange between surface and atmosphere
25 between two sites which have different underlying surfaces and are not far apart under control of the same weather and pollution source background, the meteorological elements are only the background for the process of pollution and not the focus of this work. In the manuscript, the Fig. 2 was only used to reflect the overview of the pollution process in two sites. The sentence which

describes the difference between two sites is on page 5, line 10-12 in the original manuscript. Considering the present study of turbulence characteristics, we have deleted this sentence. While for turbulence flux in the two sites, they are comparable because in our work both sites were thought to be located within the surface layer, i.e. the constant flux layer.

5 The structure of the atmospheric boundary layer on different underlying surfaces is shown in Fig. 4. In urban boundary layers, the constant flux layer is generally located above the urban canopy (Roth, 2000; Wood 2010;). It is generally believed that the turbulent flux in the surface layer varies little with height, and M-O similarly is applicable (Arnfield, 2003). Roth (2000) provided a comprehensive, critical review of turbulence observations over cities, which included many
10 experiments (Kato et al. 1992; Oikawa, 1993; Oikawa and Meng, 1995; Oikawa et al., 1995; Casadio et al. 1996; Xu et al., 1996; Feigenwinter et al.,1999) that the height of the observation is above the height of dominant roughness elements. The same is true of research on urban boundary layers in recent years (Weber et al., 2010; Fortuniak et al. 2013; Nordo et al. 2013; Ao et al., 2016;). The height of the urban observation site is 25 m. As shown in Fig.5, the buildings around the site
15 are neat and uniform, average building height is 20 m. So the urban site is thought to be located within the surface layer. The suburban site is locally flat and its observation height is 10 m, which is also located in the surface layer. Because of the constant flux assumption in surface layer, the turbulence characteristics between the two sites is comparable. For meteorological elements, although both sites are within the surface layer, the height of observation will have an inevitable
20 impact on their value. However, the differences in meteorological elements brought by different observational heights are not the focus of this manuscript, and have no impact on the conclusions. It is unreasonable to use one point to represent the whole Beijing, there are differences in meteorological elements between different stations due to differences in underlying surfaces. The buildings around the urban site are evenly distributed, and the observations at the site can represent
25 the typical underlying surface conditions of this part of the city, and the comparison with the flat underlying surface of the suburbs is also effective.

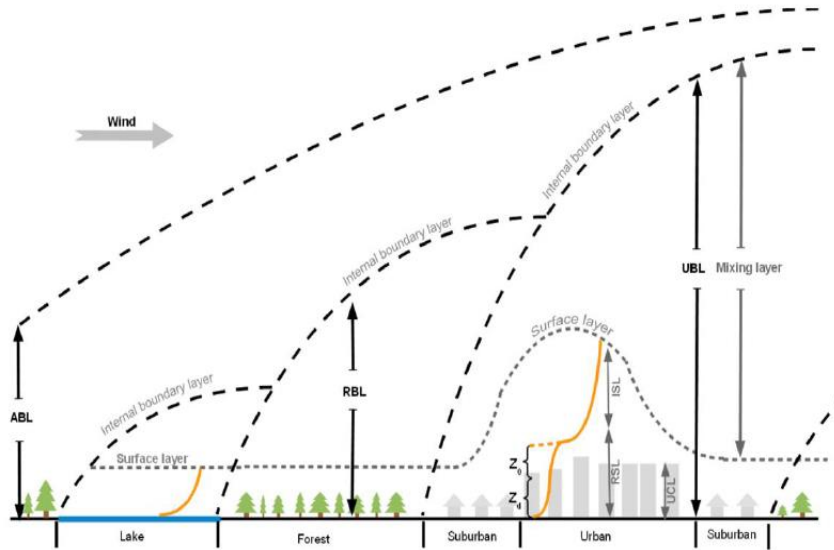


Figure 4 Schematic structure of the atmospheric boundary layer (ABL) that comprises internal boundary layers between dominant surface-cover types (lake, forest, suburban, urban; not to scale) by Nordbo (2012), their Fig. 3. RBL { rural boundary layer, UBL{urban boundary layer, RSL{roughness sublayer, ISL{inertial sublayer, UCL{urban canopy layer. Logarithmic wind profiles in the near-neutral surface layers (orange) are shown with the displacement height (z_d) and roughness length (z_0) over the urban surface. The urban boundary-layer structure is adapted partly from Oke (1987).

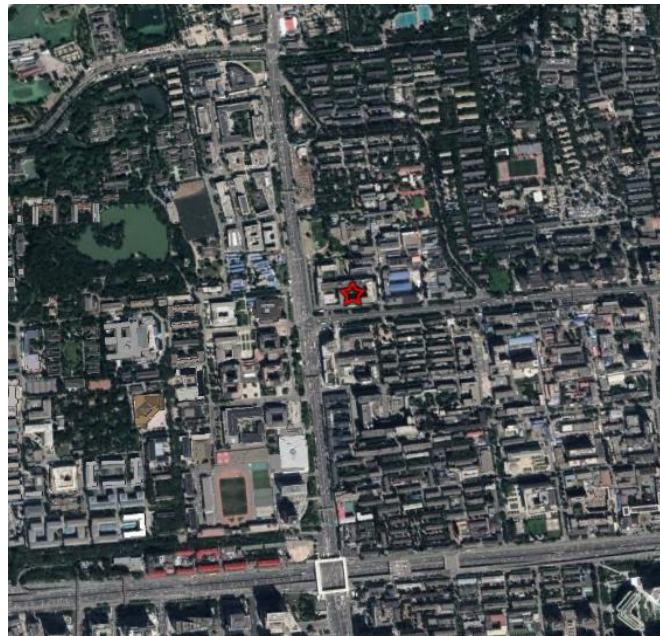


Figure 5 Google earth map of the urban site within a range of approximately 1 km.

According to your comments, the following changes were made:

A little detail about the suburban site is added on page 3, line 29:

“The EC system was mounted at a height of 8.3-m above ground which was located within the surface layer”

Details of the urban site are added on page 4, lines 7-8:

“The buildings around the site are neat and uniform, average building height is 20 m. So observations at the urban site are located within the surface layer.”

A description of the turbulence quantities for both sites is added on page 4, lines 20-21:

“Since the observations at both sites are located in the surface layer, i.e. the constant flux layer, the values of turbulence flux are comparable.”

The sentence which describes the difference between two sites is on page 5, line 10-12 in the original manuscript, we have deleted this sentence because the comparison between two sites is meaningless and has no impact on our work. The sentence is shown as follows:

“The horizontal wind speed, virtual temperature and water vapor at the suburban site are greater, lower, and higher than those at the city site, respectively. These differences between the two sites are caused by the difference in surface type. High-rise buildings across the city landscape weaken the horizontal wind speed.”

3) The authors pointed out the differences between clear and pollution days in the mass and energy exchanges at surface and concluded that the pollution inhibits the mass and energy exchange at surface. However, weak vertical mixing and surface wind can cause pollutants to accumulate and lead to heavy pollution.

Response: You’re right that weak vertical mixing and surface wind can cause pollutants to accumulate and lead to heavy pollution. In fact, the relationship between the turbulence exchange and pollution accumulation is a kind of positive feedback. In the early stage of pollution, with the cooperation of the weather system, the southerly wind transports pollutants from the industrial area to the Beijing area (Zheng et al., 2015a; Liu et al., 2013; Guo et al., 2014). In the process of gradual development

of pollution, the weather system is stagnant, and the southerly wind transport is weakened or even disappeared. At this time, the small wind condition causes the weakening of the turbulent dynamic effect, and due to the accumulation of pollutants in the initial stage of pollution, the high aerosol loading greatly cool the surface by reducing surface insolation caused by scattering and absorption of sunlight in the atmosphere (Forkel et al., 2012; Ding et al., 2016; Petaja et al., 2016; Zhong et al., 2018). Therefore, the turbulent thermal effect is weakened, the inversion layer develops, and turbulent exchange is suppressed. The weakening of turbulent exchange has caused further accumulation of pollution. The accumulation of pollutants and the weakening of turbulent exchange are positive feedback processes that interact and promote each other before the static weather situation is broken.

Minor comments:

1)Figure 2a only has one line, but 2b and 2c have two lines. Figure 2a should have two line to show the results from two stations.

Response: Thank you for your comments. The suburban site did not have observations of particulate matter. The observations of $PM_{2.5}$ at urban sites are used to represent the evolution of the entire pollution process, as this manuscript focuses on pollution processes rather than specific values. As mentioned in the answer of the first major comment, the sources of $PM_{2.5}$ of the two sites are not much different. In fact, the trends in contaminants across all environmental monitoring sites throughout the Beijing area are consistent, although there are some numerical differences. We choose three environmental monitoring stations, Changping (116.23 ° N, 40.22 ° E), Haidian (116.29°N, 39.99°E) and Daxing (116.40°N, 39.72°E), to prove that. The time series of mass concentration of $PM_{2.5}$ at the three environmental monitoring stations are shown in Fig. 6, their locations are shown in Fig. 7.

The data of $PM_{2.5}$ used in this manuscript is mainly to show the corresponding relationship between the trend of pollution development and intermittent turbulence, as shown in Fig.7 and Fig.8 in the manuscript. For the purposes of this work, the difference in the magnitude of the $PM_{2.5}$ values between the two sites does not affect the results. And because the pollution data from

environmental monitoring sites have a large number of missing measurements during the study period, so we still use the observations from the urban site to represent the evolution of the entire pollution process.

An explanation of the data problem of PM_{2.5} is added to Section 2, page 4, lines 18-20:

5 “The observations of PM_{2.5} at urban sites are used to represent the evolution of the entire pollution process, as this study focuses on pollution processes rather than specific values.”

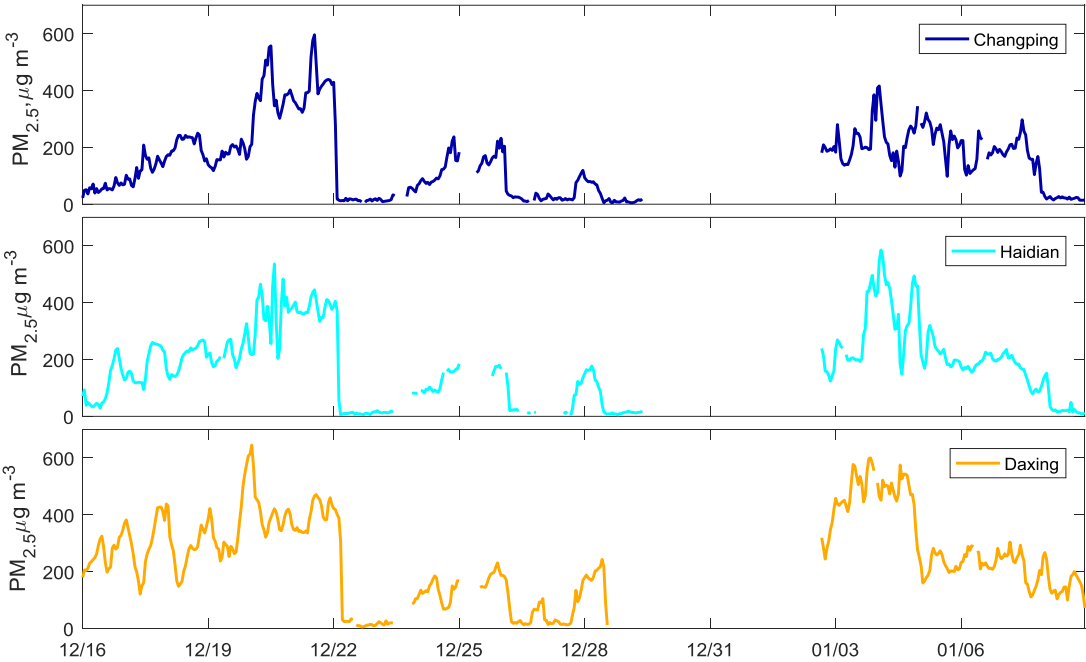


Figure 6 The time series of mass concentration of PM_{2.5} at the three environmental monitoring stations in Beijing.

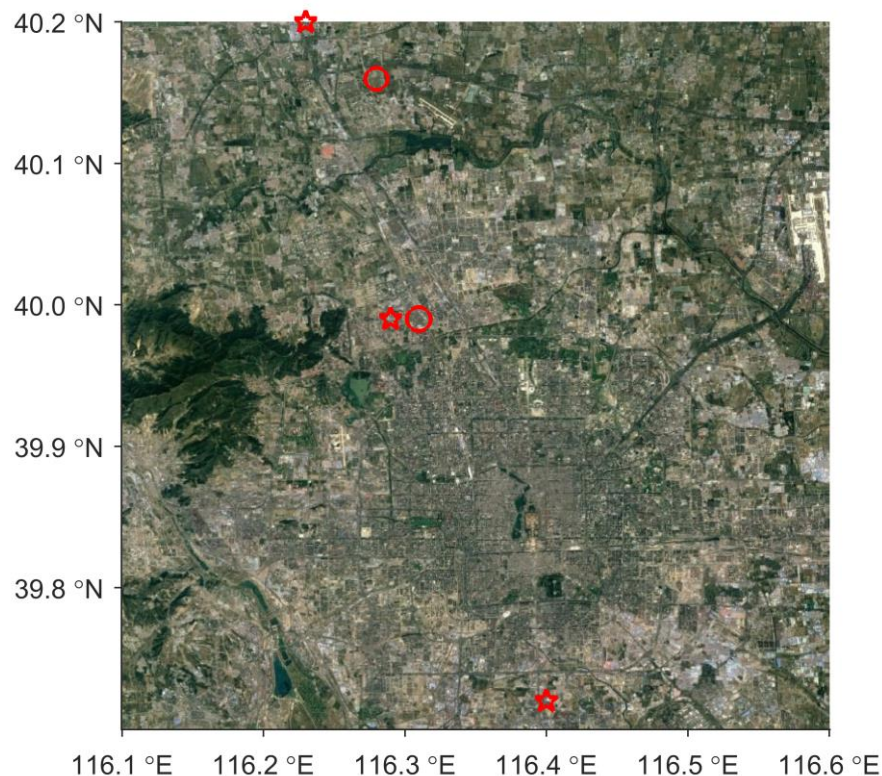


Figure 7 Google Earth map of the observation sites in Beijing. The locations of the three environmental monitoring stations are marked by the red pentagram. The urban and suburban sites in manuscript are marked by red circle.

5 References

- An, X., Zhu, T., Wang, Z., Li, C., and Wang, Y.: A modeling analysis of a heavy air pollution episode occurred in Beijing, *Atmos. Chem. Phys.*, 7, 3103–3114, 2007.
- Ao, X.Y., Grimmond, C. S. B., Chang, Y., Liu, D., Tang, Y., Hu, P., Wang, Y., J. Zou and Tan J.: Heat, water and carbon exchanges in the tall megacity of Shanghai: challenges and results. *Int. J. Climatol.*, 36(14), 4608 – 4624, 2016.
- Arnfield, A.J.: Two decades of urban climate research: A review of turbulence, exchanges of energy and water, and the urban heat island. *International Journal of Climatology*, 23(1):1–26, 2003.

- Casadio, S., Di Sarra, A., Fiocco, G., Fuii, D., Lena, F. and Rao, M. P. : Convective characteristics of the nocturnal urban boundary layer as observed with Doppler sodar and Raman lidar. *Boundary-Layer Meteorol.*, 79, 375-391, 1996.
- Chang, X., Wang, S., Zhao, B., Cai, S., and Hao, J.: Assessment of inter-city transport of particulate matter in the Beijing–Tianjin–Hebei region, *Atmos. Chem. Phys.*, 18, 4843-4858, 2018.
- Ding, A. J., Huang, X., Nie, W., Sun, J. N., Kerminen, V.M., Petäjä T., Su, H., Cheng, Y. F., Yang, X.Q., Wang, M. H., Chi, X. G., Wang, J. P., Virkkula, A., Guo, W. D., Yuan, J., Wang, S. Y., Zhang, R. J., Wu, Y. F., Song, Y., Zhu, T., Zilitinkevich, S., Kulmala, M. & Fu, C. B.: Enhanced haze pollution by black carbon in megacities in China. *Geophysical Research Letters*, 43(6), 2873-2879, 2016.
- Feigenwinter, Ch., Vogt, R. and Parlow, E. Vertical structure of selected turbulence characteristics above an urban canyon. *Theo. and Appl. Climatol.*, 62,51-63. 1999.
- Fortuniak, K., Włodzimierz Pawlak, Mariusz Siedlecki. *Integral Turbulence Statistics Over a Central European City Centre*, *Boundary-Layer Meteorol*, 146, 257–276, 2013.
- Forkel, R., Werhahn, J., Hansen, A.B., McKeen, S., Peckham, S., Grell, G., Suppan, P.: Effect of aerosol-radiation feedback on regional air quality – A case study with WRF/Chem. *Atmos. Environ.* 53, 202-211, 2012.
- Guo, S., Hu, M., M. L. Zamora, Peng, J., Shang, D., Zheng, J., Du, Z., Wu, Z., Shao, M., Zeng, L., Mario, J., and Zhang, R.: Elucidating severe urban haze formation in China. *Proc. Natl. Acad. Sci. USA.*, 111, 17373-17378, 2014.
- Kato, N., Ohkuma, T., Kim, J. R., Marukawa, H. and Niihori, Y. Full scale measurements of wind velocity in two urban areas using an ultrasonic anemometer. *J. Wind Eng. Ind. Aerodyn.*, 41-44,67-78, 1992
- Liu, X., Li, J., Qu, Y., Han, T., Hou, L., Gu, J., Chen, C., Yang, Y., Liu, X., Yang, T., Zhang, Y., Tian, H., and Hu, M.: Formation and evolution mechanism of regional haze: A case study in the megacity Beijing, China. *Atmos. Chem. Phys.*, 13, 4501-4514, 2013.
- Nordbo, A.: Extending the applicability of the eddy-covariance flux-measurement technique. *Helsingin yliopiston verkkojulkaisut*.2012.

- Nordbo, A., Järvi, L., Haapanala, S., Moilanen, J. and Vesala, T.: Intra-City Variation in Urban Morphology and Turbulence Structure in Helsinki, Finland, *Bound.-Layer Meteor.*, 146 (3),469-496, 2013.
- Oikawa, S. Vertical turbulence structure in an above the urban canopy. *J. Jpn. SOC. Air Pollution*, 28,348-358 (in Japanese). 1993.
- Oikawa, S. and Meng, Y. Turbulence characteristics and organized motion in a suburban roughness sublayer. *Boundary-Layer Meteorol.*, 74,289-312. 1995.
- Oikawa, S., Meng, Y., Uehara, K. and Ohara, T. A field study on diffusion around a model cube in a suburban canopy. *J. Jpn SOC. Air Pollution*, 30,5948 (in Japanese). 1995.
- Oke, T. R.: *Boundary Layer Climates*. Routledge, London, 2nd edition.1987.
- Petäjä T., Järvi, L., Kerminen, V.M., Ding, A.J., Sun, J.N., Nie, W., Kujansuu, J., Virkkula, A., Yang, X.Q., Fu, C.B., Zilitinkevich, S., Kulmala, M., 2016. Enhanced air pollution via aerosol-boundary layer. feedback in China. *Sci. Rep.* 6, 18998.
- Roth, M.: Review of atmospheric turbulence over cities. *Quarterly Journal of the Royal Meteorological Society*, 126(564), 941–990, 2000.
- Streets, D. G., Fu, J. S., Jang, C. J., Hao, J., He, K., Tang, X., Zhang, Y., Wang, Z., Li, Z., Zhang, Q., Wang, L., Wang, B., and Yu, C.: Air quality during the 2008 Beijing Olympic Games, *Atmos. Environ.*, 41, 480–492, 2007.
- Wang, Z., Li, J., Wang, Z., Yang, W., Tang, X., Ge, B., Yan, P., Zhu, L., Chen, X., Chen, H., Wand, W., Li, J., Liu, B., Wang, X., Wand, W., Zhao, Y., Lu, N., and Su, D.: Modeling study of regional severe hazes over mid-eastern China in January 2013 and its implications on pollution prevention and control, *Sci. China Earth-Sci.*, 57, 3–13, 2014.
- Weber S and Klaus K.: Comparison of atmospheric turbulence characteristics and turbulent fluxes from two urban sites in Essen, Germany, *Theor Appl Climatol*,102, 61–74, 2010.
- Wood, C. R., Lacser, A., Barlow, J. F., Padhra, A., Belcher, S.E., Nemitz, E., Helfter, C., Famulari, D. and Grimmond, C.S.B.: Turbulent flow at 190 m height above London during 2006–2008: a climatology and the applicability of similarity theory. *Boundary-layer meteorology*, 137(1), 77-96, 2010.

Xu, Y., Zhou, C., Li, Z. and Zhang, W.: Turbulent structure and local similarity in the tower layer over the Nanjing area. *Boundary- Layer Meteorol.*, 82, 1-21, 1997.

Zheng, G. J., Duan, F. K., Su, H., Ma, Y. L., Cheng, Y., Zheng, B., Zhang, Q., Huang, T., Kimoto, T., Chang, D., U., Cheng, Y. F. and He, K. B.: Exploring the severe winter haze in Beijing: The impact of synoptic weather, regional transport and heterogeneous reactions, *Atmos. Chem. Phys.*, 15(6), 2969-983, 2015.

Zhong, J., Zhang, X., Dong, Y., Wang, Y., Wang, J., Zhang, Y. and Che, H.: Feedback effects of boundary-layer meteorological factors on cumulative explosive growth of PM_{2.5} during winter heavy pollution episodes in Beijing from 2013 to 2016, *Atmos. Chem. Phys.*, 18, 247-258, 2018.

Zhong, J., Zhang, X., Wang, Y., Sun, J., Zhang, Y., Wang, J., Tan, K., Shen, X., Che, H., Zhang, L., Zhang, Z., Qi, X., Zhao, H., Ren, S., Li, Y.: Relative Contributions of Boundary-Layer Meteorological Factors to the Explosive Growth of PM_{2.5} during the Red-Alert Heavy Pollution Episodes in Beijing in December 2016, *J. Meteor. Res.*, 31 (5),809-819, 2017.

*: All line numbers and page numbers in the present response refer to the revision manuscript, unless otherwise stated.

Effects of turbulence structure and urbanization on the heavy haze pollution process

Yan Ren¹, Hongsheng Zhang¹, Wei Wei², Bingui Wu³, Xuhui Cai⁴, Yu Song⁴

¹Laboratory for Climate and Ocean-Atmosphere Studies, Department of Atmospheric and Oceanic Sciences, School of Physics, Peking University, Beijing 100081, P.R. China

²State Key Laboratory of Severe Weather, Chinese Academy of Meteorological Sciences, Beijing 100081, P.R. China

10 ³Tianjin Municipal Meteorological Bureau, Tianjin 300074, P.R. China

⁴State Key Joint Laboratory of Environmental Simulation and Pollution Control, Department of Environmental Science, Peking University, Beijing 100081, P.R. China

Correspondence to: Hongsheng Zhang (hsdq@pku.edu.cn)

Abstract. In this paper, an automated algorithm, which is used to identify the spectral gap during the heavy haze pollution process, reconstruct acquired data, and obtain pure turbulence data, is developed. Comparisons of the reconstructed turbulent flux and eddy covariance (EC) flux show that there are overestimations regarding the exchange between the surface and the atmosphere during heavy haze pollution episodes. After reconstruction via the automated algorithm, pure turbulence data can be obtained. We introduce a definition to characterize the local intermittent strength of turbulence (LIST). The trend in the LIST during pollution episodes shows that when pollution is more intense, the LIST is smaller, and intermittency is stronger; when pollution is weaker, the LIST is larger, and intermittency is weaker. ~~During the heavy pollution process, air quality on an hourly scale is determined via turbulent motion.~~ At the same time, the LIST at the city site is greater than that at the suburban site, which means that intermittency over the complex city area is weaker than that over the flat terrain area. Urbanization seems to reduce intermittency during heavy haze pollution episodes, which means that urbanization reduces the degree of weakening in turbulent exchange during pollution episodes. This result is confirmed by comparing the average diurnal variations in turbulent fluxes at urban and suburban sites during polluted and clean periods. The sensible heat flux, latent heat flux, momentum flux, and turbulent kinetic energy (TKE) in urban and suburban areas are all affected when pollution occurs. Material and energy exchanges between the surface and the atmosphere are inhibited. Moreover, the impact of the pollution process on suburban areas is much greater than that on urban areas. ~~Urbanization seems to help reduce the consequences of pollution.~~ The turbulent effects caused by urbanization seems to help reduce the consequences of pollution under the same weather and pollution source condition, because the turbulence intermittency is weaker and the reduction of turbulence exchange is smaller over urban underlying surface

1 Introduction

PM_{2.5} (fine particular matter, with a diameter smaller than 2.5 μm) has become the foremost pollution issue in China (Zhang et al. 2012; Hu et al., 2014), particularly in Beijing and its vicinity, in terms of severity and duration (Watts, 2005; Tang et al., 2009, 2012, 2015; Zhang, et al. 2014; Yang et al.,2015;). Because of its negative impacts on human health (Dominici et al. 2014; Thompson et al., 2014) and complicated effects on weather and climate (Liepert et al., 2004; Wang et al., 2010; Zhang et al., 2015; Wang et al., 2015), heavy aerosol pollution has prompted the close attention of not only scientists but also government and everyday people.

During pollution periods, previous studies have indicated that meteorological conditions always include constant stagnant winds, relatively increased water-vapor density, and strong stable stratification, which inhibits the diffusion of vertical pollution and results in the explosive growth of PM_{2.5} in Beijing (Zhang et al., 2015; Wei et al. 2018; Zhong et al. 2018). The diurnal variations in particulate concentrations are mostly dominated by the diurnal variability of the boundary layer and source emissions (Liu et al., 2014); Turbulent motion determines the meteorological elements in the atmospheric boundary layer, such as turbulence diffusion, PBL height and atmospheric circulation patterns, are all key to hazy weather (Wang et al., 2015; Tang et al., 2016; Zhu et al., 2018; W. Zhang et al., 2016;) and dominate whether the haze occurs or not, since emissions can remain stable within a defined period in a certain area. Therefore, the spatial and temporal characteristics of turbulent activity have significant effects on the local air quality from hourly to diurnal scales under a stable boundary layer (Salmond and Kendry, 2005).

Turbulence in the stable boundary layer is weak and typically characterized by intermittent turbulence or even no turbulence at a variety of heights, temporal scales and spatial locations (Mahrt, 1998; Coulter and Doran, 2002; Van de Wiel et al., 2003; Salmond, 2005; Mahrt, 2014). The term intermittency has different meanings that vary among studies (Coulter and Doran, 2002; Muschinski et al., 2004; Acevedo et al., 2006; Mahrt, 2007). Mahrt (1989, 1999) defines intermittency as the case where eddies at all scales are missing or suppressed at scales that are large compared to those for large eddies. A number of studies have indicated that intermittency is driven by nonstationarity due to motion at time scales that are slightly greater than those for turbulence (Mahrt, 2007; Mahrt, 2010) when the large-scale flow is weak. These motions are sometimes referred to as submesoscale motions (Nappo, 2002; Sun et al., 2004; Anfossi et al., 2005; Conangla et al., 2008; Mahrt et al., 2008). Some studies have simply defined intermittency as “another name for nonstationary” (Treviño, 2000).

As mentioned earlier, the occurrence of heavy haze is always accompanied by low wind speeds and strong stable stratification. Under these conditions, exchanges between the surface and the atmosphere cannot be calculated with the eddy-correlation technique when intermittent turbulence exists because of the nonstationarity imposed by submesoscale motions (Vickers and Mahrt, 2006; Acevedo et al., 2006, 2007; Aubinet, 2008; Mahrt, 2010), which makes it very difficult to accurately determine the transport, storage and diffusion of pollutants, particularly in regions with complex terrain (Bowen et al., 2000), such as Beijing. Densely constructed buildings on the underlying surface aggravate the complexity of turbulent exchange during pollution periods, and the impact of urbanization on pollution is unknown. The Monin-Obukhov similarity

theory establishes the relationship between turbulent flux and the vertical gradient in the surface layer and has been widely used in weather and climate models (Wood et al., 2010; Wilson, 2008). However, turbulent flux calculated by the traditional time-averaging method is contaminated by submesoscale motions during the heavy pollution process, which makes the application of similar theories difficult and may be the reason that the simulated pollutant concentration is lower during the heavy pollution process (Li et al., 2016). To provide a basis for improving the parameterization scheme of the atmospheric pollution diffusion model, it is very important to accurately calculate pure turbulent transport during the heavy pollution process.

Therefore, the purpose of this study is to separate classic turbulent motions from submesoscale motions. At the same time, intermittency can be defined by the turbulent and nonturbulent portions of a signal once the criteria for identifying the boundary between them have been established (Salmond, 2005). Only in this way can we identify the classic turbulence exchange during pollution periods, regardless of whether turbulence occurs over a flat underlying surface or a complex underlying surface. In a previous study, Muschinski (2004) found a plateau in the intermittency spectra. Vickers and Mahrt (2003) showed the existence of a cospectral gap, which separated turbulent and mesoscale contributions to calculate the fluxes in heat, moisture, and momentum used the multiresolution decomposition technique. Salmond (2005) used the wavelet analysis to objectively isolate intermittent turbulent bursts within vertical velocity time series. Wei et al. (2017) found that the spectral gap separates fine-scale turbulence from large-scale motions using the arbitrary-order Hilbert spectral analysis during intermittency in the Cooperative Atmosphere–Surface Exchange Study-1999 (CASE-99). Because of the nonstationarity and nonlinearity of intermittent turbulence, analytical techniques have significant impacts on the results. A new technique, named the arbitrary-order Hilbert spectral analysis (Huang et al., 2011), showed its advantage and validity in the application of turbulent flow and intermittency (Wei et al. 2016, 2017, 2018).

In this paper, we use the arbitrary-order Hilbert spectral method to analyze turbulence data observed ~~during from~~ several severe haze pollution episodes that occurred in Beijing and its nearby suburbs from 16 December 2016 to 8 January 2017 to identify the spectral gap and separate classic turbulence from the original signal. After obtaining the pure turbulence signal and the strength of the submesoscale motions, the classic turbulent flux and intermittency strength can be calculated. Then, we can obtain the macrostatistical characteristics of turbulence over a flat terrain in suburban Beijing and discover the difference between clean and polluted days. This analysis is helpful for improving the current understanding of the transport and diffusion of $\text{PM}_{2.5}$ and the intermittency strength of turbulence when heavy haze pollution occurs. The effect of urbanization on the heavy pollution process is simultaneously studied by comparing the results of the urban and suburban sites.

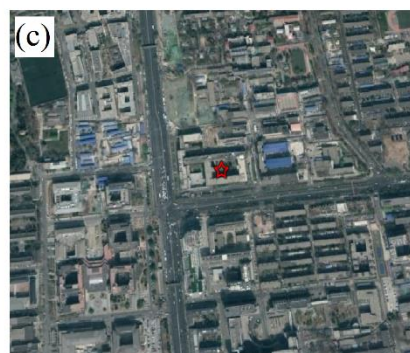
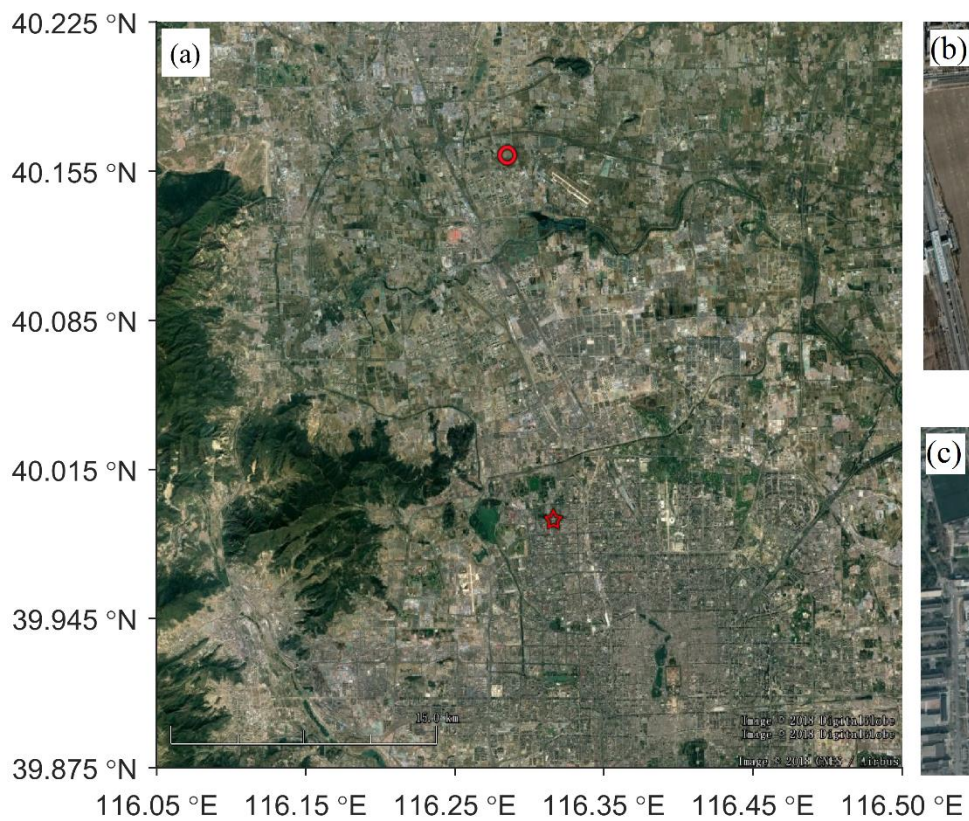
2 Description of the sites and data

2.1 Experimental site

The data used in this paper are from two measurement sites (Fig. 1 shows the location of the two sites). Data over a flat terrain were collected at a continuous measurement site (~~40.16°N, 116.28°E~~~~40°16'N, 116°28'E~~) in a Beijing suburb. The observational site was set up in the middle of a vast and horizontal farmland, near the Changping county. A 10-m tower was erected for the eddy covariance (EC) and meteorological measurements. The EC system was mounted at a height of 8.3-m above ground which was located within the surface layer. The system was equipped with an integrated CO₂/H₂O open-path gas analyzer and three-dimensional sonic anemometer-thermometer~~sonic anemometer~~ (IRGASON, Campbell Scientific, Inc., USA). The IRGASON was leveled and pointed north. The turbulence data such as the horizontal wind vector, virtual
5 temperature and water vapor content were collected using a data logger (CR3000, Campbell Scientific, Inc., USA) at a frequency of 10 Hz and were averaged over an interval of 30 min for the analysis of meteorological elements. For convenience of description, this site is described as the suburban site.

The second dataset was collected over urban terrain at a continuous measurement site at Peking University (~~39.99°N, 116.31°E~~) in Beijing, which is the capital of China. The instruments are situated on top of a building at the School of
15 Physics (Peking University) and extend 25-m above ground. There are teaching and residential buildings and public transit facilities that surround the station. The site is located in a typical urban landscape. The buildings around the site are neat and uniform, average building height is 20 m. So observations at the urban site are located within the surface layer. Details on the site introduction and data background have been shown in Ren et al. (2018). The concentrations of PM_{2.5} were collected using a Thermo-Fisher Sci. Co. instrument (series FH-62-C14), and 30-min averaging time series were performed to remove
20 outliers. The system was equipped with an integrated CO₂/H₂O open-path gas analyzer (LI-7500, LI-COR Biosciences, Inc., USA) and three-dimensional sonic anemometer-thermometer (IRGASON, Campbell Scientific, Inc., USA). The IRGASON was leveled and pointed north. The turbulence data such as the horizontal wind vector, virtual temperature and water vapor content were collected using a data logger (CR3000, Campbell Scientific, Inc., USA) at a frequency of 10 Hz and were averaged over an interval of 30 min for the analysis of meteorological elements.~~Wind vectors and temperature fluctuations were logged at 10 Hz using a 3D sonic anemometer (Campbell Co., USA).~~ For convenience of description, this site is described as the urban site.

Suburban site is 20 km away from the urban site. At this distance, the large-scale weather background is consistent. As flat terrain of the suburban site, it was used as a reference. The sources of PM_{2.5} of the two sites are generally consistent. The observations of PM_{2.5} at urban sites are used to represent the evolution of the entire pollution process, as this study focuses
30 on pollution processes rather than specific values. Since the observations at both sites are located in the surface layer, i.e. the constant flux layer, the values of turbulence flux are comparable.



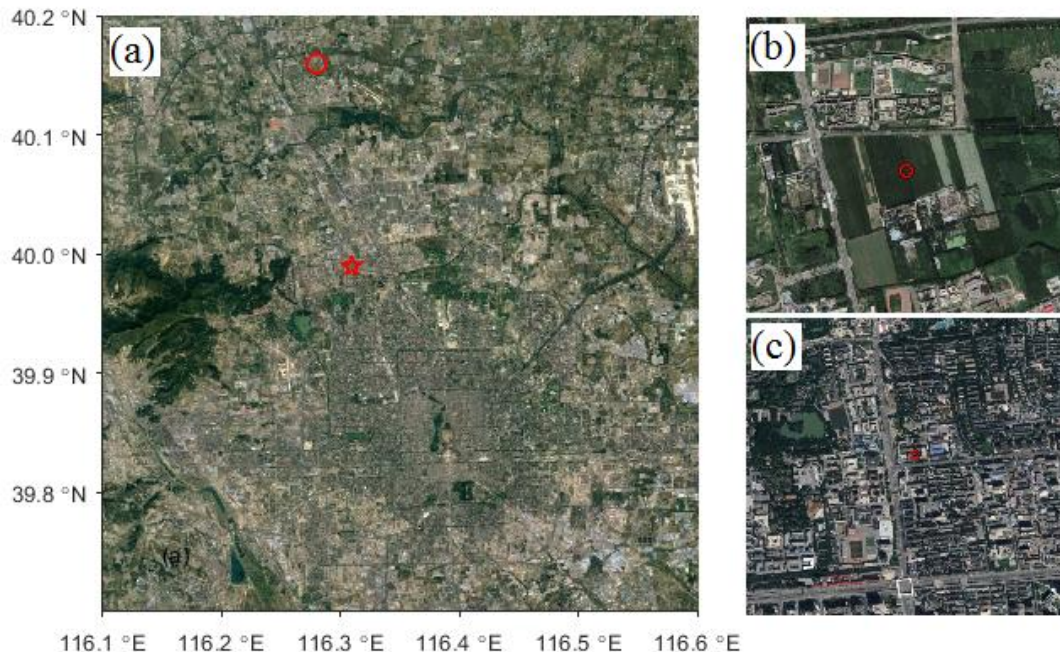


Figure 1: Google Earth map of the observation sites in Beijing: (a) the observation site located in the urban underlying surface region (marked by the red pentagram) and the observation site located in the suburban underlying surface region with a flat terrain (marked by the red concentric-circle). The corresponding terrains (within a range of approximately 1 km~~500 m~~) around the observation sites are shown in (b) and (c), respectively.

2.2 Data processing

In this study, we select a 24-day pollution period from 16 December 2016 to 8 January 2017; the number of heavy pollution days with $\text{PM}_{2.5}$ concentrations exceeding $200 \mu\text{g m}^{-3}$ reached 15 (17-21, 24-25, 28, and 30-31 December 2016 and 1-7 January 2017). The remaining days were identified as clear days. The $\text{PM}_{2.5}$ mass concentration, horizontal wind speed, virtual temperature and water vapor mixing ratio are shown in Fig. 2 during the days of concern. The trends in meteorological elements over time are consistent at both sites. The horizontal wind speed is larger during clear days and smaller during pollution days; the virtual temperature seems to be greater during pollution days, but this result is not obvious. The water-vapor content is significantly higher during pollution days than that during clear days. The characteristics of these meteorological elements during the pollution process are similar to those in previous studies (Wang et al., 2014; Sun et al., 2014; Tai et.al, 2010). ~~The horizontal wind speed, virtual temperature and water vapor at the suburban site are greater, lower, and higher than those at the city site, respectively. These differences between the two sites are caused by the difference in surface type. High-rise buildings across the city landscape weaken the horizontal wind speed.~~

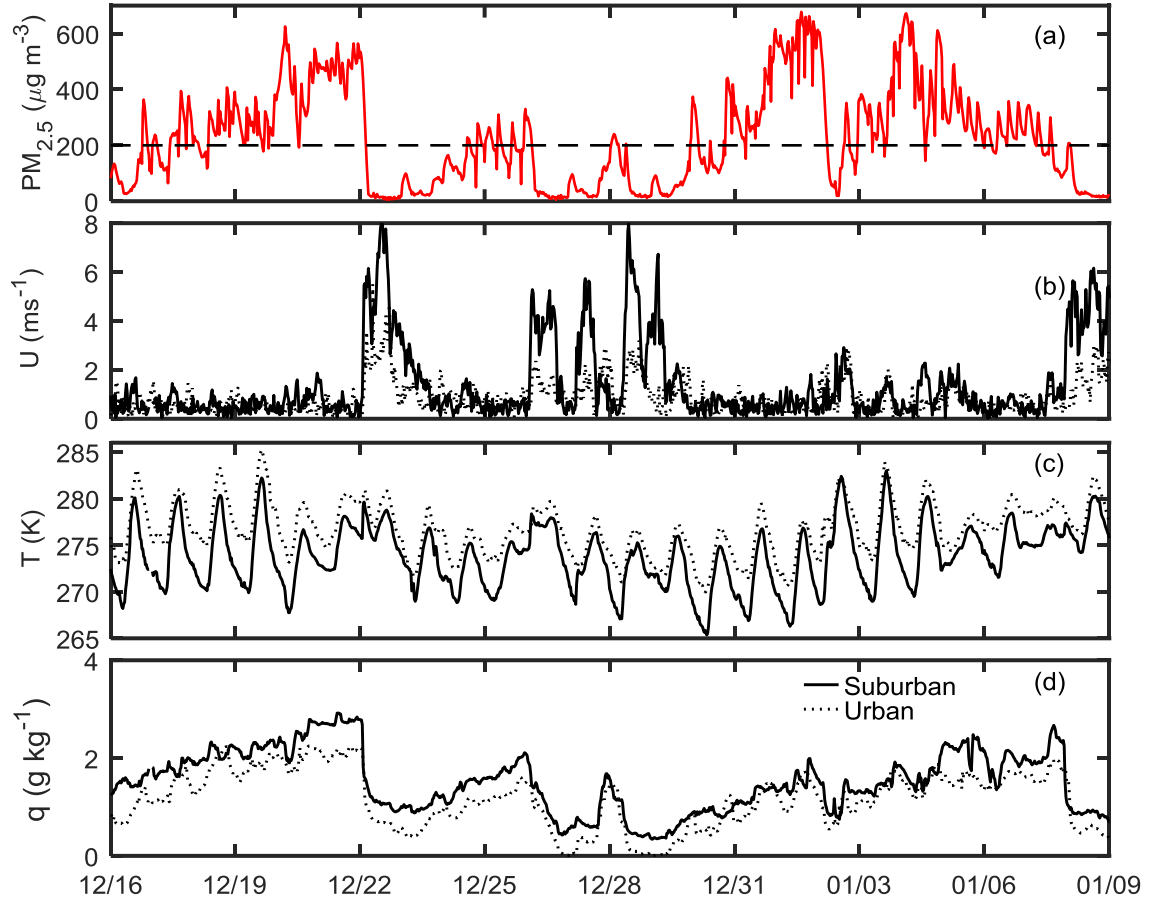


Figure 2: The $PM_{2.5}$ mass concentration (a), horizontal wind speed (b), virtual temperature (c) and water-vapor mixing ratio (d) from 16 December 2016 to 8 January 2017. The black solid line represents data from the suburbs of Beijing (flat terrain), and the black dotted line represents data from the Peking University site (urban landscape).

- 5 The raw turbulence data were preprocessed over an averaging interval of 30 min by the Eddy Pro software (Advanced 4.2.1, LI-COR Biosciences, Inc., USA). Preprocessing included procedures involving error flags, despiking (following Vickers and Mahrt, 1997), double rotations (following Wiczak et al., 2001), and detrending, which are implemented using the block averaging method. In this paper, the EC method is used to calculate the flux for comparison, where the average time is 30 min. At the same time, strict quality control is performed on the data and data groups to remove data meeting any of the
- 10 following conditions: (1) the EC method runs with more than $\pm 120^\circ$ between the wind direction and direction of the sonic anemometer, (2) the included angle between the wind direction and horizontal plane is greater than 3° , (3) the wind speed is less than 0.5 m s^{-1} , (4) the friction speed is less than 0.05 m s^{-1} , (5) the sensible heat flux is less than 5 W m^{-2} , and (6) data groups that are obviously incorrect. ~~The physical quantities used in this paper are turbulent kinetic energy (TKE), several~~

variances (σ_u , σ_v , σ_w , σ_θ and σ_q), friction speed (u_*), and fluxes ($-\overline{u'w'}$, $\overline{w'\theta'}$ and $\overline{w'q'}$). Among these, the TKE is calculated as:

$$e = \frac{1}{2}(\overline{u'^2} + \overline{v'^2} + \overline{w'^2}), \quad (1)$$

the variance is calculated as

$$5 \quad \sigma_u = \overline{u'u'}, \sigma_v = \overline{v'v'}, \sigma_w = \overline{w'w'}, \sigma_\theta = \overline{\theta'\theta'}, \text{ and } \sigma_q = \overline{q'q'}, \quad (2)$$

and the friction speed is calculated as:

$$u_* = \left[\left(\overline{-u'w'} \right)^2 + \left(\overline{-v'w'} \right)^2 \right]^{\frac{1}{4}}, \quad (3)$$

3 Reconstructed Signals Methodology

3.1 Automated algorithm to identify the spectral gap Turbulent kinetic energy and Turbulent fluxes

- 10 The physical quantities used in this paper are turbulent kinetic energy (TKE), several variances (σ_u , σ_v , σ_w , σ_θ and σ_q), friction speed (u_*), and fluxes ($-\overline{u'w'}$, $\overline{w'\theta'}$ and $\overline{w'q'}$). Among these, the TKE is calculated as:

$$e = \frac{1}{2}(\overline{u'^2} + \overline{v'^2} + \overline{w'^2}), \quad (1)$$

the variance is calculated as

$$15 \quad \begin{aligned} \sigma_u &= \overline{u'u'}, \\ \sigma_v &= \overline{v'v'}, \\ \sigma_w &= \overline{w'w'}, \end{aligned} \quad (2)$$

$$\sigma_\theta = \overline{\theta'\theta'},$$

$$\sigma_q = \overline{q'q'},$$

the turbulence flux is calculated as:

$$20 \quad \begin{aligned} \tau &= \rho u_*^2 = \rho \overline{u'w'}, \\ H &= \rho C_p \overline{w'\theta'}, \end{aligned} \quad (3)$$

$$E = \rho \overline{w'q'},$$

and the friction speed is calculated as:

$$u_* = \left[\left(\overline{-u'w'} \right)^2 + \left(\overline{-v'w'} \right)^2 \right]^{\frac{1}{4}}, \quad (4)$$

25 3.2 Automated algorithm to identify the spectral gap

In the traditional turbulence theory, Van der Hoven (1957) presented an analysis on the large spectrum of horizontal wind speeds, which showed a notable spectral gap of approximately 1 cycle h^{-1} between the macroscale (synoptic) and microscale

(turbulent) parts of the spectrum. Many other studies have generally proven the existence of the spectral gap (Panofsky, 1969; Fiedler and Panofsky, 1970; Smedman and Hogstrom, 1974). As observations progress, many studies on the stable boundary layer have indicated that the turbulent part of the signal decreases, the time scale for turbulence decreases, and the time scale for the spectral gap also decreases, as mentioned above. These studies used the multiresolution decomposition method to choose a variable averaging time to remove the effects of mesoscale motions. The method we used here to separate pure turbulence and submesoscale motion is based on half-hour data (i.e., the fixed averaging time). The multiresolution basis utilized is a wavelet set, as it is the only wavelet set that satisfies Reynolds averaging (Howell and Mahrt, 1997; Mallat, 1998; Vickers and Mahrt, 2003, 2006). In this study, we adopt the Hilbert-Huang transform (Huang et al., 1998, 1999), which is fully data-driven and local in both the physical and frequency domains (Huang et al., 1998; Flandrin et al., 2004). The advantages of researching turbulence data that are nonstationary and nonlinear have been proven previously (Huang et al., 2008; Schmitt et al., 2009; Huang et al., 2013; Wei et al., 2013, 2016, 2017).

The spectral gap was examined by studying the second-order Hilbert spectra (u' , v' , w' , θ' and q') for each 30-min period. The calculation method for the second-order Hilbert spectra comes from the arbitrary-order Hilbert spectral analysis (Huang et al., 2008), which is an extended version of the Hilbert-Huang transform. A joint probability density function (PDF), $p(\omega, A)$, can be extracted from ω_i and A_i for all intrinsic mode functions. Then, the arbitrary-order Hilbert marginal spectrum is defined as an amplitude-frequency space by the marginal integration of the joint PDF $p(\omega, A)$

$$\mathcal{L}_q(\omega) = \int p(\omega, A) A^q dA, \quad (54)$$

where ω represents the instantaneous frequency, A represents the instantaneous amplitude, $q \geq 0$ represents the arbitrary moment, and $p(\omega, A)$ represents the PDF. Specifically, $h(\omega)$ corresponds to the second-order Hilbert marginal spectrum ($h(\omega) = \mathcal{L}_2(\omega) = \int p(\omega, A) A^2 dA$).

An automated algorithm was developed to objectively find the frequency location of the spectral gap. This method is based on the characteristics in Fig. 4b in Wei et al. (2017). The spectral gap between turbulence and the submesoscale motions is identified as the frequency interval in which the second-order Hilbert spectral values are approximately constant, or the slope is approximately equal to 0. Figure 3 shows the second-order Hilbert spectra from the newly reconstructed data and raw data.

As shown in Fig. 3a, the lower frequency limit of the spectral gap is $\omega = 0.008$ Hz, and the upper frequency limit is not used to reconstruct the data. The part of the frequency larger than ω indicates the turbulence signal, and the part of the frequency smaller than ω indicates nonstationary motion, which has a scale larger than that for turbulence. Then, we can search for the mode of the intrinsic mode function (IMF) ($N=9$ in this case), whose mean frequency is closest to ω . Therefore, modes 1- N are chosen to reconstruct the pure turbulence signal, and the remaining modes are chosen to reconstruct the signal of the submesoscale motion.

As shown in Figs. 3a-c, it is obvious that the reconstruction successfully eliminated the energy contained by large-scale motion while retaining turbulent energy. The new spectrum, which is shown by the black dotted lines in Fig. 3, is consistent with the structure of the turbulent energy spectrum in the classic theory. We reconstructed the data for all time periods when

the spectral gap existed in our dataset. The results of the total reconstructed data spectrum showed that the whole process removed the effects of large-scale motion and retained classic turbulence, while simultaneously obtaining large-scale motions.

3.2.3 The local intermittent strength of turbulence

- 5 We use the ratio of turbulent intensity compared to all signals to indicate the intermittent strength. To obtain the strength of submesoscale motion, we introduce the definition of the velocity scale for submesoscale motion from Mahrt (2007; 2009; 2010; 2011). The velocity scale for submesoscale motion represents the kinetic energy of submesoscale motions and is defined as:

$$V_{smeso} = \sqrt{u'^2_{smeso} + v'^2_{smeso} + w'^2_{smeso}} \quad (6)$$

10 (5)

where u'_{smeso} , v'_{smeso} , and w'_{smeso} , represent the deviations reconstructed from the IMF corresponding to the submesoscale motions during each 30-min period. Similarly, the turbulent velocity scale is defined as:

$$V_{turb} = \sqrt{u'^2_{turb} + v'^2_{turb} + w'^2_{turb}} \quad (7)$$

(6)

- 15 where u'_{turb} , v'_{turb} , and w'_{turb} , represent the deviations reconstructed from the IMF corresponding to the turbulent motions during each 30-min period. Then, we can define the local intermittent strength from an energy point of view as

$$LIST = \frac{V_{turb}}{\sqrt{V_{smeso}^2 + V_{turb}^2}} \quad (8)$$

(7)

- The value of the LIST is equal to the ratio of turbulent intensity in the acquired signal. When the LIST is large and close to 1, there are more turbulent components in the acquired signal, the influence of the submesoscale motion is weaker, and the intermittency is weaker. When the LIST is small and far from 1, there are fewer turbulent components in the collected signal, the influence of submesoscale motion is stronger, and the intermittency is stronger.

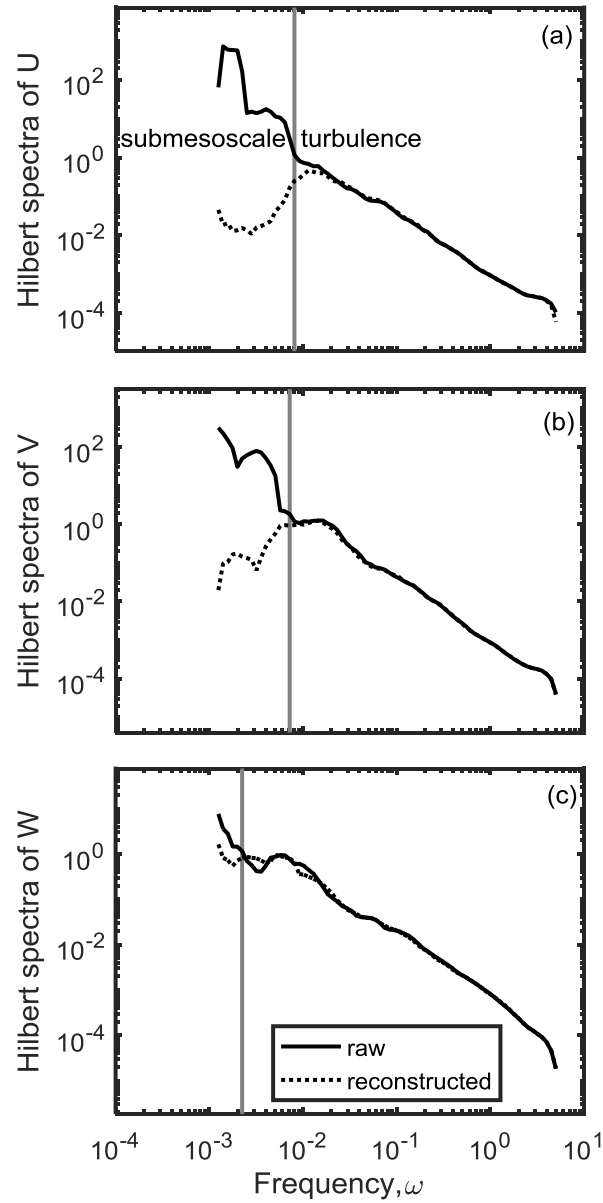


Figure 3: Second-order Hilbert spectra of three wind speed components U (a), V(b) and W (c) at 08:00 on 31 December 2016 at the suburban site. The black solid line indicates the spectra from the raw data, and the black dotted line indicates the spectra from the reconstructed data for pure turbulence. The solid gray lines indicate the position of the spectral gap.

4 Results and discussion

4.1 Comparison of the macro-statistical parameters for reconstructed turbulence and the results of the fixed averaging time

We use the automated algorithm to identify the spectral gaps in 1152 groups of 10-Hz high-frequency data from 16
5 December 2016 to 8 January 2017 at the urban and suburban sites. There are 440 groups of data in the along-wind direction, 519 groups of data in the cross-wind direction, 390 groups of data in the vertical direction, 467 groups of data in the scalar θ , and 501 groups of data in the scalar q , which is where the spectral gap occurs at the suburban site. The datasets encompassing the spectral gap account for 38%, 45%, 34%, 41%, and 43% of the total data at the suburban site, respectively. The proportions are 41% (481), 37% (425), 35% (402), 41% (476), and 45% (520) for the u , v , w , t , and q components at the
10 urban site, respectively. The occurrence of a spectral gap is common throughout the pollution process, which means that the effects of nonstationary motion on the collected signals are common throughout the entire process. Under these conditions, the usual half-hour length is not suitable for stationary conditions. The eddy-correlation flux calculated using a conventional averaging time of 30 min to define the perturbations is severely contaminated by poorly sampled mesoscale motions.

During the half-hour period, we refer to the variance in the pure turbulent fluctuations as the new results, and that calculated
15 via the classic EC system is referred to as the original ~~old~~-variance results. A comparison of the TKE and variance parameters (σ_u , σ_v , σ_w , σ_θ and σ_q) between the new results and original ~~old~~ results is shown in Fig. 4, and a comparison among the vertical heat flux ($\overline{w'\theta'}$), vertical water-vapor flux ($\overline{w'q'}$), and momentum flux ($-\overline{u'w'}$) is presented in Fig. 5; the fitted lines are given in both figures. When there is no spectral gap, the 30-min time length is suitable for stationary conditions; therefore, the classic EC method is credible. Figure 4 and Fig. 5 present only the results when there is a spectral
20 gap (i.e., when there is nonstationarity at the suburban site).

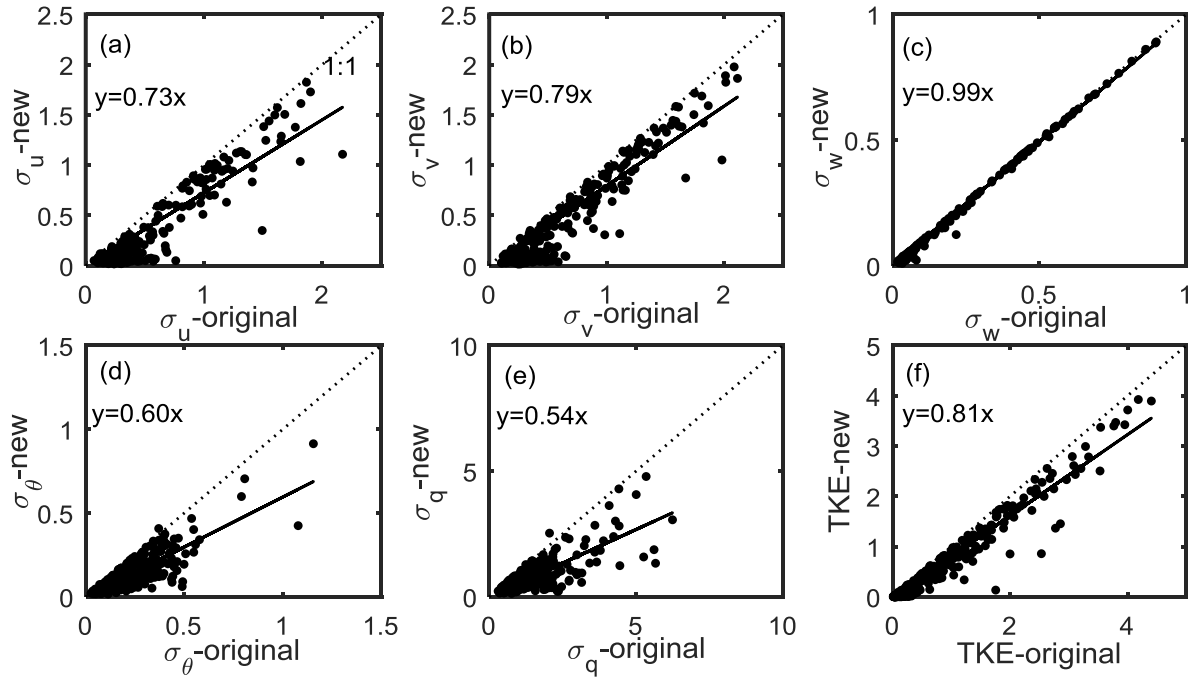
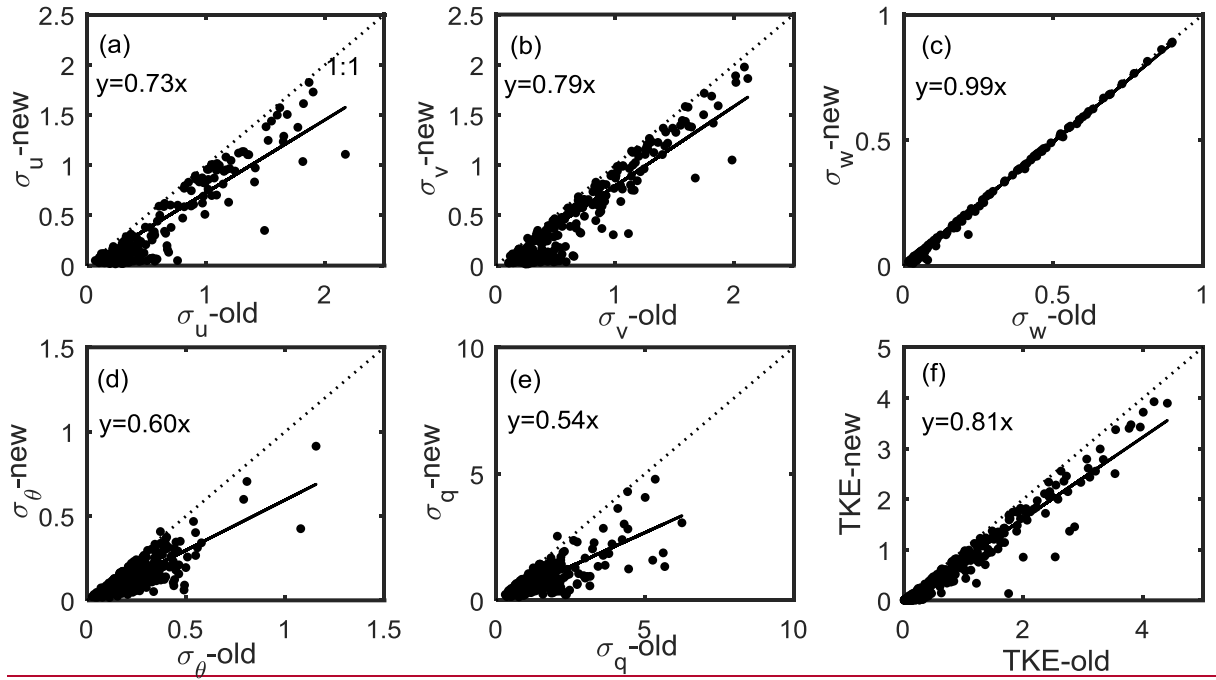


Figure 4: Comparison of σ_u (a), σ_v (b), σ_w (c), σ_θ (d), σ_q (e) and TKE (f) from the new half-hour results with those from the original old-results from 16 December 2016 to 8 January 2017 at the suburban site. The black dotted line represents the 1:1 line in the figures. The black solid line represents the fitted results.

All of the fitted results show that there are certain degrees of overestimated variance in Fig. 4. The slope of the fitted line is 0.81 for the TKE, as Fig. 4f shows, which means that the TKE originally calculated by the conventional method is overestimated by approximately 19%. The comparison of σ_u and σ_v shows the same pattern as that for the TKE. The traditional method for the half-hour eddy correlation overestimates by approximately 27% (slope of 0.73) and 21% (slope of 0.79) for σ_u and σ_v , respectively. The overestimation of σ_w is not as obvious as those for σ_u and σ_v . The slope of the fitted line in Fig. 4 c is 0.99, which indicates that the appearance of the spectral gap has fewer effects on the variance in vertical velocity. The overestimation is even more pronounced when the TKE and σ_u , σ_v and σ_w are small, which indicates that the overestimation can be more significant when the turbulence is weak. Similarly, we examine the variance in potential temperature and moisture content in Figs. 4d and 4e, respectively. The variations in potential temperature and moisture content are also overestimated; the difference is that the overestimation percentages are larger. The slopes of the fitted lines in Figs. 4d and 4e are 0.60 and 0.54, respectively, which means that the traditional method for the half-hour eddy correlation overestimates approximately 40% and 46% of σ_θ and σ_q , respectively, when the spectral gap occurs. Such a substantial overestimation cannot be ignored. In general, the variations in σ_u , σ_v , σ_w , σ_θ and σ_q calculated by the traditional EC method for 30 min are all overestimated, especially when the turbulence is weak, due to the impact of submesoscale motion. In addition, the overestimation in the horizontal direction is more significant than that in the vertical direction. However, the overestimation of these quantities cannot be ignored.

After separating pure turbulence and submesoscale motion from the signal, the pure turbulent flux can be calculated during heavy haze pollution periods. The comparison of the pure turbulent flux with the flux calculated by the eddy-correlation method at a fixed averaging time is presented in Fig. 5. The momentum flux, $-\overline{u'w'}$, is overestimated by approximately 13%, and the slope of the fitted line in Fig. 5c is approximately equal to 0.87. The effect of nonstationary motion on heat transfer and water-vapor transfer is similar to that on momentum, as seen in Fig. 5. Overestimation can reach 12% (slope of 0.88) and 15% (slope of 0.85) for $\overline{w'\theta'}$ and $\overline{w'q'}$ in Figs. 5a and b, respectively. The reconstructed turbulence data results at the urban site show that the traditional half-hour eddy-correlation results have a certain degree of overestimation regarding the turbulent fluxes and variances during the pollution period. However, the degree of overestimation in urban areas is less than that in suburban areas. A comparison of the macrostatistical parameters for turbulence from the new half-hour results with those from the ~~original~~ results at the city site is not shown here.

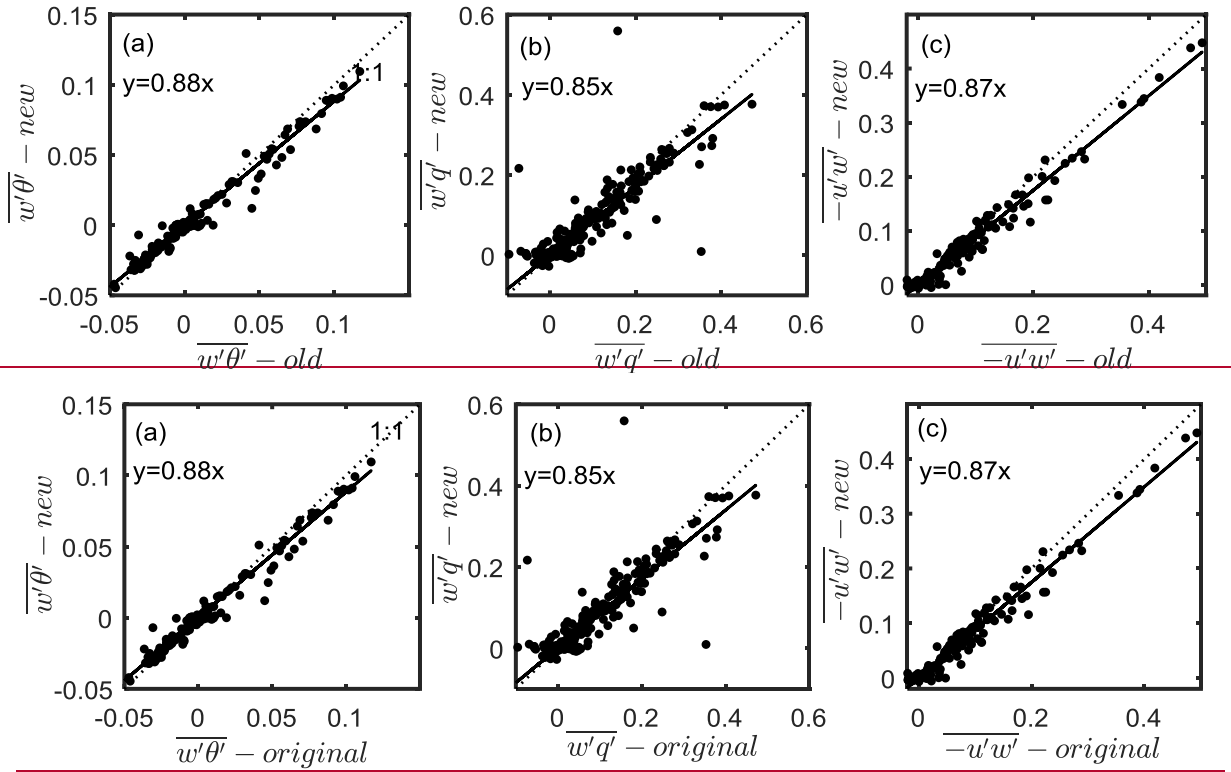


Figure 5: A comparison of the vertical heat flux ($\overline{w'\theta'}$) (a), vertical water-vapor flux ($\overline{w'q'}$) (b) and momentum flux ($-\overline{u'w'}$) (c) from the new half-hour results with those from the ~~original~~ old results from 6 December 2016 to 8 January 2017 at the suburban site. The black dotted line represents the 1:1 line in the figure. The black solid line represents the fitted results

In the majority of recent research, the EC technique has become the most frequently used method to estimate the flux between land surfaces and the atmosphere (Baldocchi et al., 2003). Under weak stability conditions, eddy-correlation fluxes calculated using a conventional averaging time of 5 min or longer to define the perturbations are severely contaminated by poorly sampled mesoscale motions (Vickers and Mahrt, 2005). The average block time that has always been used is 30 min, which has been used in practice since Kaimal and Finnigan (1994), who proposed that a 30-min averaging time was a reasonable compromise for daytime analyses. From the above analysis, we can see that turbulent fluxes are overestimated due to the effects of submesoscale motions when there is a spectral gap. During the heavy haze pollution process, turbulence is weak, which causes this overestimation to become even more apparent. Zhong et al. (2017, 2018) proposed that heavy pollution events in Beijing are characterized by the transport stage (TS), whose formation of aerosol pollution is primarily caused by pollutants transported from regions south of Beijing, and the cumulative stage (CS), where the cumulative explosive growth in $PM_{2.5}$ mass concentration is dominated by stable stratification characteristics in the atmosphere, such as slight or calm southerlies, anomalous inversions near the ground, and moisture accumulation. According to the classification criteria for the CS and TS, we briefly compared the characteristics of turbulent fluctuation, variance and flux at different

times during the pollution process from 15 December to 23 December 2016, as shown in Fig. 6. Due to the consistent patterns of different variables, only the results for horizontal velocity are shown in this paper. We can clearly see from Fig. 6 that the turbulent fluctuation, variance, heat flux and momentum flux are obviously smaller during polluted periods (CS and TS) than those during clean periods. Therefore, the exchange of fluxes between the ground and atmosphere can be easily overestimated with the traditional eddy-correlation method during the pollution process, which can result in false forecasts of contaminant concentrations and pollution levels. Some works have found that current pollution forecasts tend to underestimate pollutant concentrations (Li et al., 2016). The overestimation of turbulent flux during heavy pollution episodes may be one of the reasons for this result.

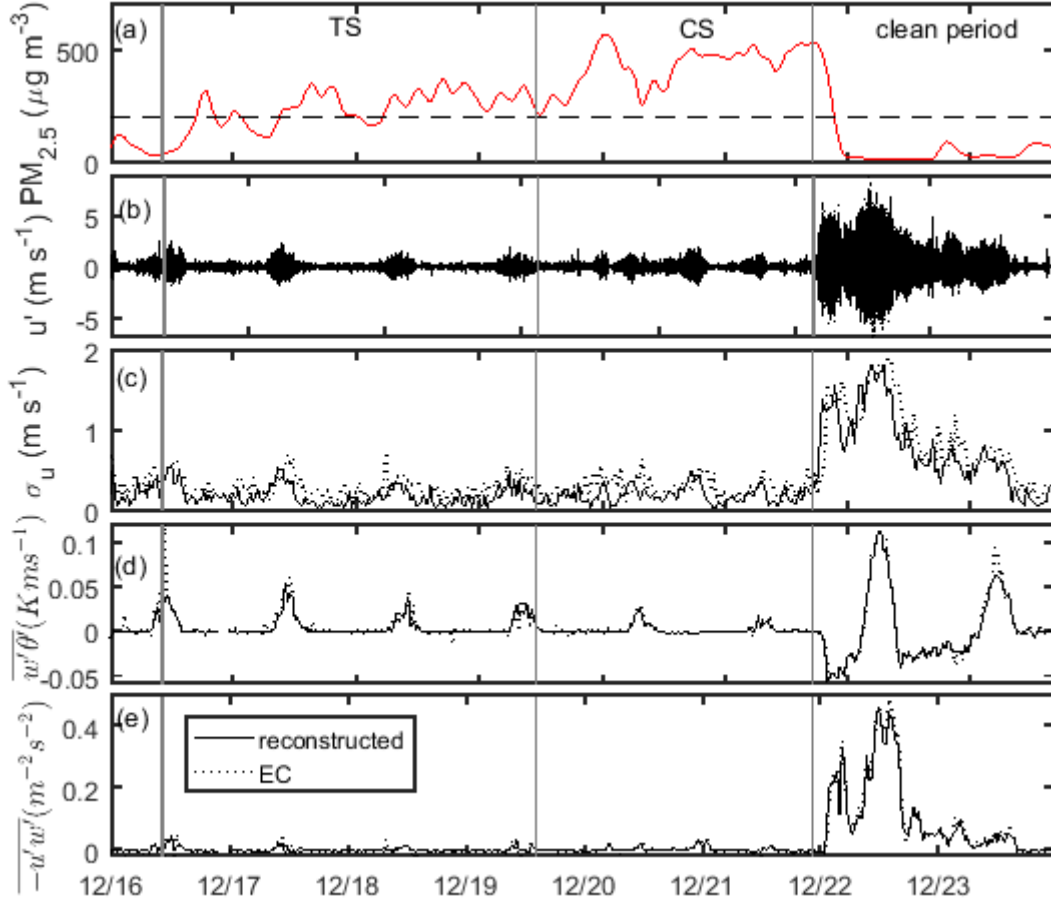


Figure 6: Time series of (a) $PM_{2.5}$ concentration, (b) horizontal wind speed, (c) variation in horizontal wind speed, (d) vertical heat flux $\overline{w'\theta'}$, and (e) momentum flux $-\overline{u'w'}$ from 15 December to 23 December 2016 at the suburban site.

4.2 The relationship between the local intermittent strength and pollution

After reconstruction via the automated algorithm, pure turbulent data can be obtained. The LIST from 16 December 2016 to 8 January 2017 is discussed in this section. We calculated the LIST of the urban and suburban sites separately and discussed the relationship between the LIST and degree of pollution.

5 Figure 7 shows the time series for (a) $PM_{2.5}$ concentrations, (b) the intermittency factor (IF) of vertical velocity, (c) the velocity scale for submesoscale motions (V_{meso}), (d) the velocity scale for turbulence (V_{turb}), and (e) the LIST for turbulence from 16 December 2016 to 8 January 2017 at the suburban site. Figure 8 shows the results of the same variables at the city site. Wei et al. (2018) has shown that there is a relationship between the IF, which characterizes the intensity of intermittent mixing, and the concentration of $PM_{2.5}$. In this section, we also present the IF of the vertical wind speed in Fig.
10 7b and Fig. 8b to discuss internal relations and differences with the local intermittent strength. Low $PM_{2.5}$ concentrations correspond to large values of IF, V_{meso} , and V_{turb} and weak intermittent intensity (i.e., the LIST is closer to 1) in Figs. 7 and 8. The decrease in $PM_{2.5}$ concentration corresponds to the increases in IF, V_{meso} , and V_{turb} and the decrease in local intermittent intensity. For several heavy pollution events with $PM_{2.5}$ concentrations higher than $200 \mu g m^{-3}$, the absolute value of the IF is smaller, the intensity of the submesoscale motion is weaker than that during the clean period, and the
15 energy of the turbulent flow is also weaker. Correspondingly, the local intermittent intensity is strong, as the LIST is farther from 1. Specifically, for the period of explosive growth in pollutant concentration (CS) during the two pollution processes of Case I and Case II in Fig. 7, the intermittent intensity (LIST) is significantly stronger (weaker) than that during the clean period and other weak pollution events, with a concentration of approximately $200 \mu g m^{-3}$. The two processes Case I and Case II are similar in that both experience a rapid decline in the concentration of $PM_{2.5}$ (from a heavy pollution level greater
20 than $500 \mu g m^{-3}$ to one less than $30 \mu g m^{-3}$) on a time scale of several hours. The difference is that there is a clean period approximately 1 day after the rapid decline in the Case I process, but in the Case II process, the $PM_{2.5}$ concentration decreases sharply in just a few hours and then rapidly increases to the $600 \mu g m^{-3}$ level. By comparing the rapid reduction in the $PM_{2.5}$ concentrations during the Case I and Case II processes, we find that there is no significant difference in submesoscale motion strength, whereas turbulent intensity during the Case I process is significantly greater than that during
25 the Case II process, which leads to a weaker (stronger) LIST during the Case I (Case II). During the Case II process, although the LIST (intermittent intensity) increases (decreases) when the $PM_{2.5}$ concentration begins to decrease, the larger (weaker) LIST (intermittent intensity) does not maintain but decreases (increases) rapidly, which indicates that the pollutant concentration does not fully diffuse and rapidly increases again to $600 \mu g m^{-3}$ within a few hours. The difference between these two processes also indicates that the diffusion of pollutants directly depends on the diffusion of turbulent flow
30 during heavy pollution processes. Submesoscale motion may be an important source of turbulent energy under stable weather conditions, but it is not directly involved in the dissipation of pollutants.

From the analysis of the clean and polluted periods, we can see that the submesoscale motion persists throughout the 30-min acquired signal. During heavily polluted periods, the intensity of turbulence is weak, and the effects of submesoscale motion

on weak turbulence begin to appear. During clean periods, the intensity of turbulence is strong, and the effect of submesoscale motion is relatively small. Meanwhile, the submesoscale motion is a source of turbulent energy when the turbulence is very weak under heavy pollution and stable weather conditions. It can be said that turbulence derives energy from nonstationary, large-scale motion and has a very large effect on the concentration of pollutants over time scales of 5 hours (e.g., Case I and Case II). We also note the relationship between the LIST and IF. Wei et al. (2018) mentioned that the larger the absolute value of the IF is, the stronger the intermittent mixing. From the perspective of intermittent mixing strength, the IF tends to be consistent with the LIST defined in this paper. When the pollutant concentrations decreased sharply, intermittent mixing increased, the IF absolute value increased, the LIST (intermittent intensity) increased(decreased), and turbulent exchange was enhanced.

10 The tendency of the LIST under pollution conditions in Fig. 8 is consistent with that in Fig. 7, which indicates that the above analysis conclusions apply not only to suburban sites but also to urban sites. However, there is a significant difference between the urban and suburban sites: the LIST (intermittent intensity) at suburban sites is weaker (stronger) than that at urban sites. The value of V_{smeso} at the city site is slightly smaller than that at the suburban site, and the value of V_{turb} at the city site is larger than that at the suburban site. Correspondingly, the value of the LIST at the city site is significantly greater 15 than that at the suburban site, which means that the dynamic effect of the underlying surface of the urban area is stronger than that of the flat underlying surface of the suburban area. Next, in Sections 4.3 and 4.4, we verify the results from the statistical characteristics of turbulence and the daily changes in turbulent flux during polluted and clear periods, respectively.

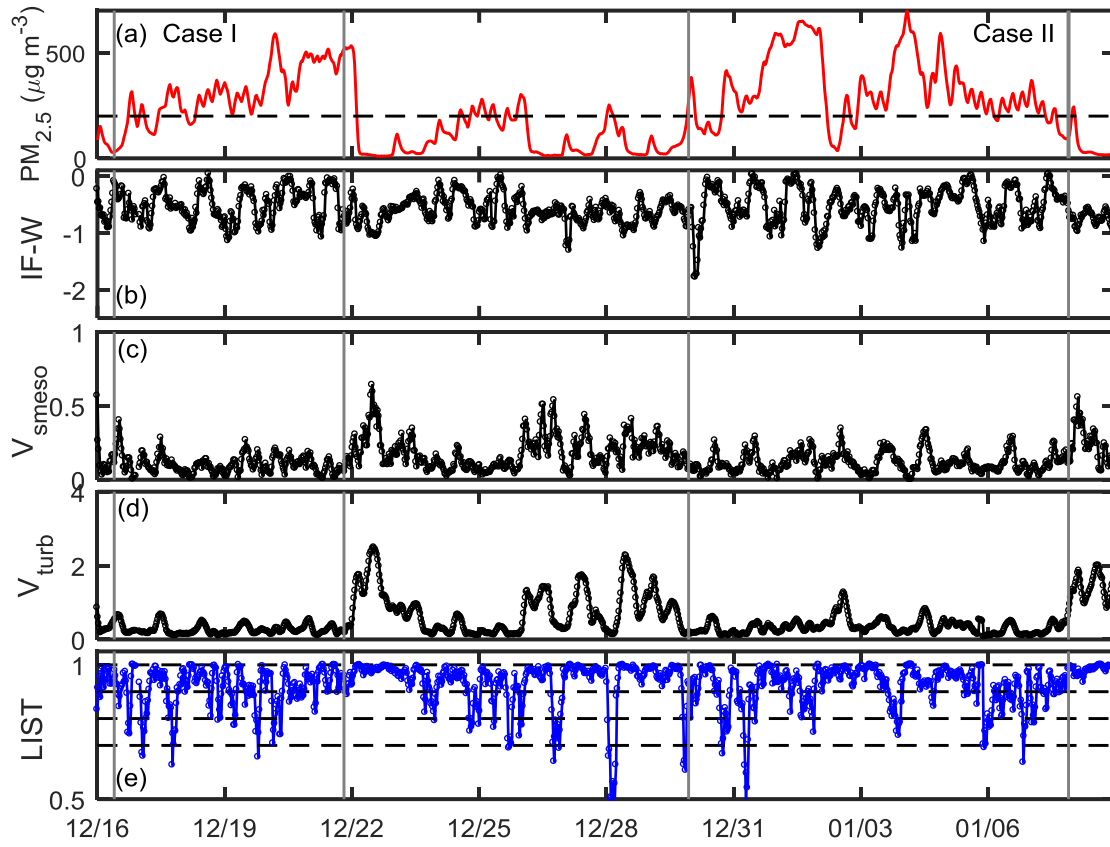


Figure 7: Time series of the (a) $PM_{2.5}$ concentrations, (b) intermittency factor (IF) of vertical velocity, (c) velocity scale of submesoscale motions (V_{smeso}), (d) velocity scale of turbulence (V_{turb}), and (e) LIST from 16 December 2016 to 8 January 2017 at the suburban site.

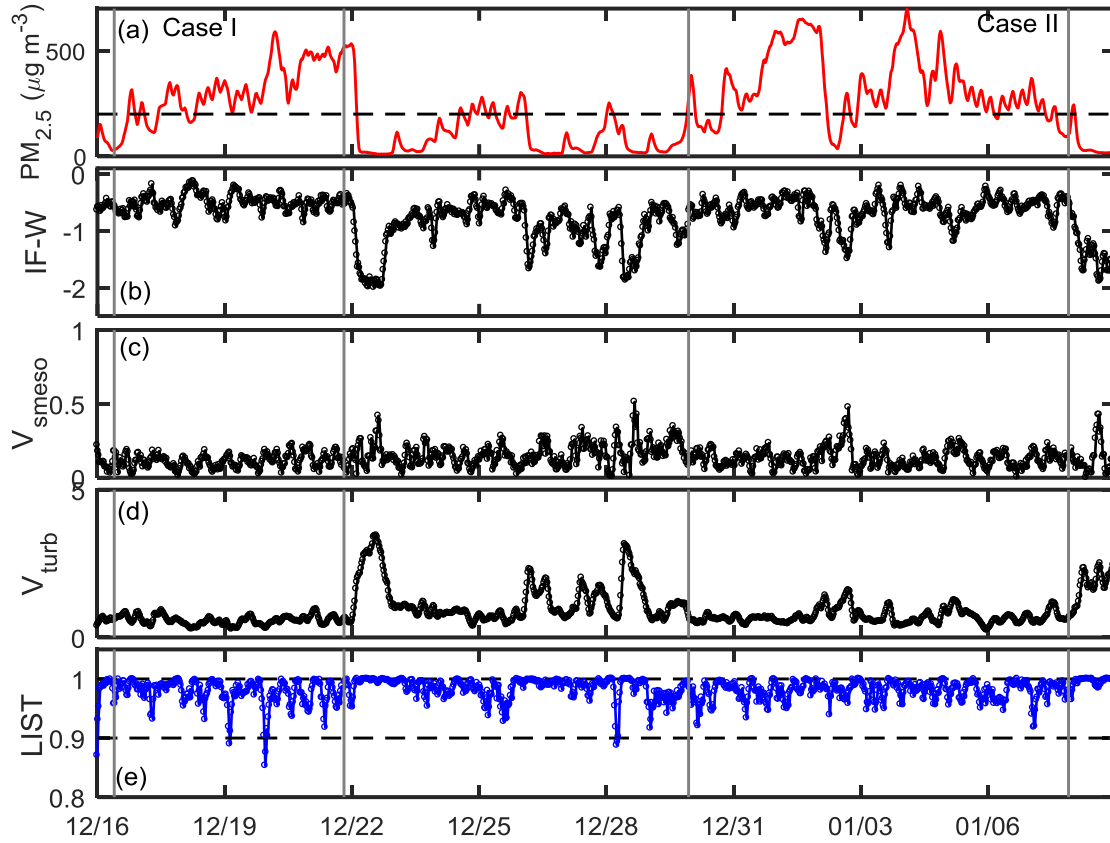


Figure 8: Time series of the (a) $\text{PM}_{2.5}$ concentrations, (b) intermittency factor (IF) of vertical velocity, (c) velocity scale of submesoscale motions (V_{smeso}), (d) velocity scale of turbulence (V_{turb}), and (e) LIST from 16 December 2016 to 8 January 2017 at the city site.

5 4.3 Macrostatistical characteristics of turbulence

Figures 9 and 10 show the relationship of the normalized standard deviations in wind speed in the horizontal and vertical directions (σ_u/u_* , σ_v/u_* , and σ_w/u_*) with potential temperature ($\sigma_\theta/|\theta_*|$) and moisture content ($\sigma_q/|q_*|$) as functions of the stability parameter ζ at the suburban site, respectively. It should be noted that the reconstructions of the data have two benefits. One is that the discrete situation of the fitted line has been significantly improved after reconstruction. The other is that the statistical characteristics of turbulence are more consistent with the classic statistical pattern for turbulence, and the normalized standard deviations in potential temperature and water vapor under near-neutral conditions are closer to those of Panofsky et al. 1984 and Wyngaard (1971). The figures regarding the macrostatistical characteristics of turbulence before reconstruction are not shown here.

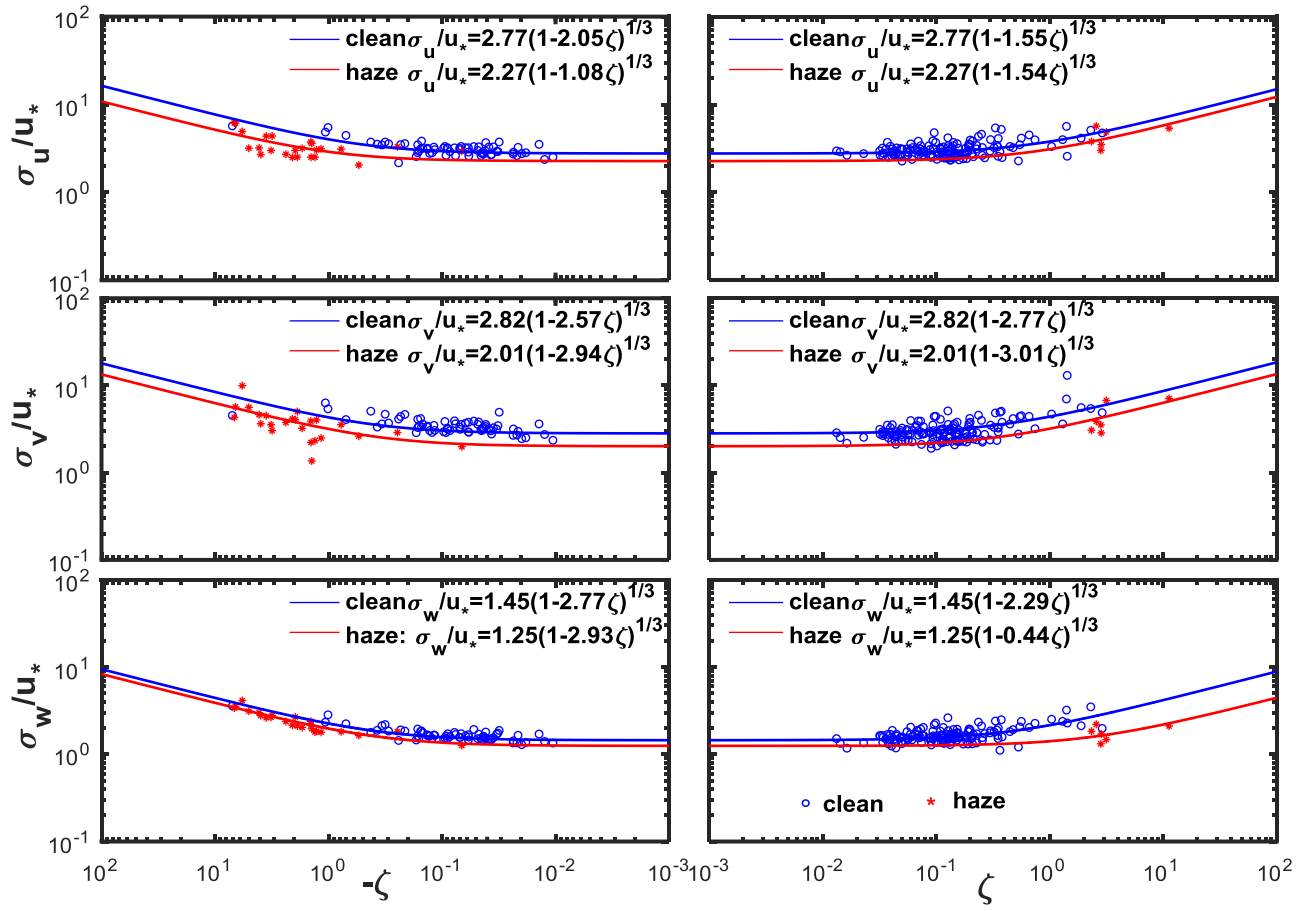


Figure 9: Normalized standard deviations in wind speed in the horizontal and vertical directions (σ_u/u_* , σ_v/u_* , and σ_w/u_*) as functions of the stability parameter ζ . The ~~redsolid~~ (blue dashed) line in the figure represents the results ~~underfor~~ polluted (clear) weather conditions. Observations marked with * (°) were made under polluted (clear) weather conditions.

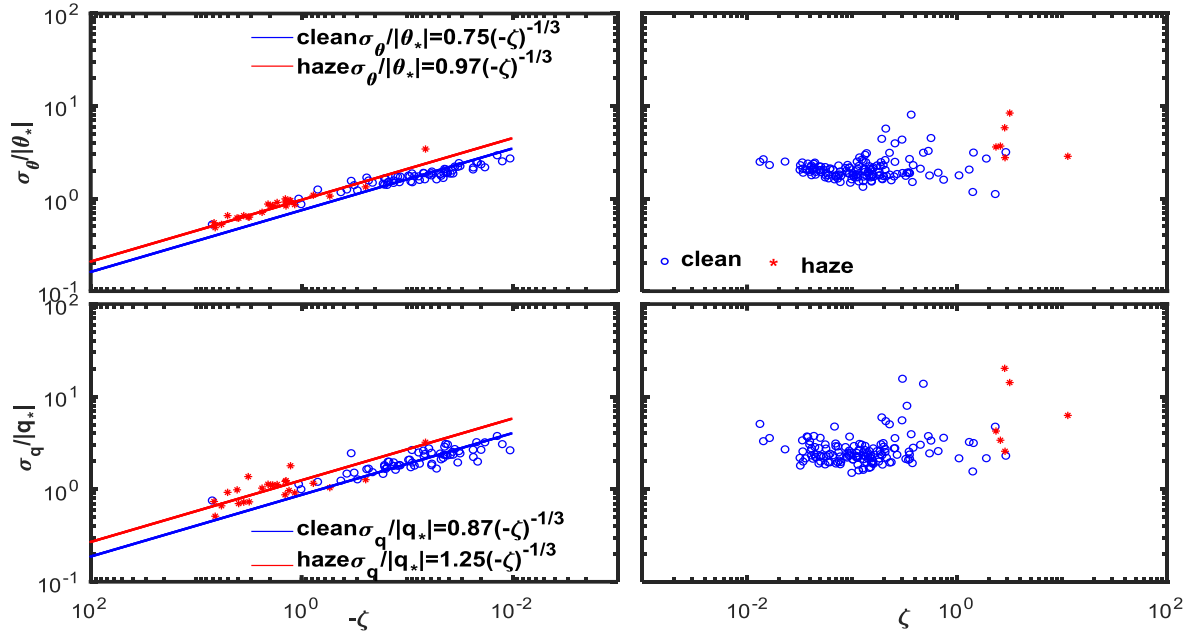


Figure 10: Normalized standard deviations in the potential temperature ($\sigma_\theta/|\theta_*|$) and moisture content ($\sigma_q/|q_*|$) as functions of the stability parameter ζ . The ~~red solid~~ (blue dashed) line in the figure represents the results ~~under for~~ polluted (clear) weather conditions. Observations marked with * (°) were made under polluted (clear) weather conditions.

5 Figure 9 shows that under both polluted and clear weather conditions, the relations of the normalized standard deviations in horizontal and vertical wind speeds with the stability parameter ζ follows the 1/3 power law well under stable and unstable stratification conditions. The normalized standard deviation was more dispersed in the horizontal direction than that in the vertical direction, which is consistent with the results presented in Zhang et al. (2004) and Ma et al. (2002) and shows that the physical characteristics of the land surface (e.g., topography and roughness) affect the statistical properties of the vertical

10 wind speed less than those of the horizontal wind speed. The normalized standard deviations in the horizontal and vertical wind speeds are nearly constant under near-neutral conditions (i.e., $-0.01 < \zeta < 0.01$), and the constants are slightly larger than those from Panofsky et al. (1984), which is similar to the results from other suburban works (i.e., Zhang et al. (1991), Roth et al. (1993) and Su et al. (1994)). Figure 9 shows that the values during clean periods (circle) are slightly larger than those during haze periods (asterisk) under unstable conditions. Ren et al. 2018 (Fig. 4) shows the significant difference in the

15 normalized standard deviations in the horizontal and vertical wind speeds between clear and haze periods. The reconstructed data from the city site also show the same conclusion (the figures are not shown in this paper), which means that the dynamic effect of turbulence during pollution episodes is reduced significantly at both the city and suburban sites. At the same time, the normalized standard deviations in wind speed in three directions over the suburban area are smaller than those

over urban areas under near-neutral conditions, which shows that the dynamic effect of turbulence at the urban site is stronger than that at the suburban site.

Figure 10 shows the relationships of the normalized standard deviations in potential temperature and moisture with the stability parameter ζ . Given unstable stratification, $\sigma_\theta/|\theta_*|$ and $\sigma_q/|q_*|$ fit the function $\zeta^{-1/3}$. The fitting coefficients are larger than the typical value of 0.95 presented in Wyngaard (1971), which used data from a grassland area in Kansas (United States). Similar to the conclusion for the normalized standard deviations in the three-directional wind speeds, Ren et al. 2018 (Fig. 5) shows the slight differences in the normalized standard deviations in potential temperature between clear and haze periods, while Fig. 10 in this paper shows a significant difference between clear and haze periods. Since the time periods studied are the same, the difference in the performance of these turbulence statistics during polluted and clean periods over city and suburban sites indicates the impact of urbanization. In other words, the pollution process has a more significant influence on the turbulent statistical characteristics of potential temperature and moisture in the suburbs and a less significant impact on those in the urban area.

4.4 The impact of urbanization on turbulent transport during heavy pollution episodes

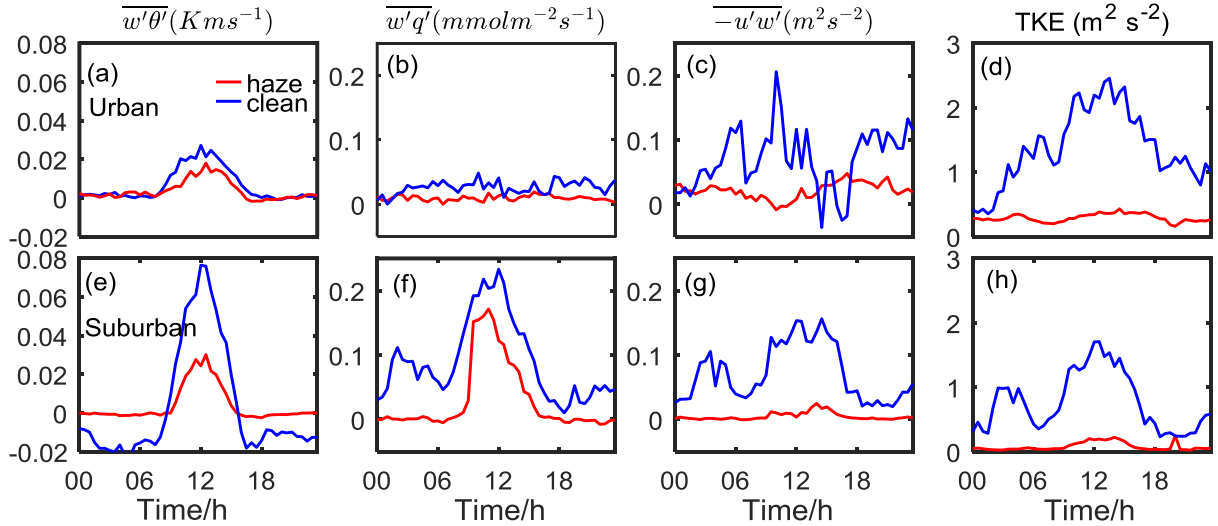


Figure 11: Diurnal variations in the mean vertical heat flux ($\overline{w'\theta'}$) (a), vertical water-vapor flux ($\overline{w'q'}$) (b), momentum flux ($-\overline{u'w'}$) (c) and TKE (d) under polluted weather (red solid line) and clear weather (blue solid line) conditions over the urban site. Diurnal variations in these variables over the suburban site are shown in (e), (f), (g), and (h), respectively.

Figure 11 shows the diurnal variations in the mean $\overline{w'\theta'}$, $\overline{w'q'}$, $-\overline{u'w'}$ and TKE under both polluted weather and clear weather conditions. The sensible heat flux (vertical heat flux) exhibits unimodal diurnal variations during both clean and polluted periods over either the suburban site or city site, as shown in Figs. 11a and e, respectively. During the clean period, the peak in the daily sensible heat flux at the suburban site appears around 12 noon (local time), reaching a maximum of 0.07

K m s^{-1} ; the peak in the daily sensible heat flux at the urban site also appears around 12 noon, with a peak value close to 0.04 K m s^{-1} , which is less than that in the suburban area. One possible reason is that the buildings in the urban area are denser and have higher reflectivity, resulting in less net radiation and, consequently, a lower peak in the sensible heat flux. Another difference in the sensible heat flux between the city and suburban sites during the clean period is that the sensible heat flux over the suburbs is negative at night, with a downward heat transfer, but not in urban areas. This pattern may be due to the emission of anthropogenic heat sources at nighttime in cities and the difficulty of dissipating heat over tall and dense buildings; therefore, there is not a vast temperature difference between the surface of the city and the upper air and, accordingly, the sensible heat flux is not completely below zero. Previous research on city and suburban sites in Helsinki has also found the same features (Nordbo et al., 2013). During the pollution period, the peak in sensible heat flux at the urban site dropped to approximately 0.02 K m s^{-1} . In addition, other trends were exactly the same as those during the clean period. At the same time, the peak in sensible heat flux at the suburban site dropped to 0.02 K m s^{-1} , and the daily change in sensible heat flux was somewhat different than that during the clean period (i.e., the characteristic of downward sensible heat flux at night disappeared completely). In general, pollution caused a reduction in the upward transport of sensible heat flux, and it had a weaker impact on the city and a stronger impact on the suburbs. In addition, pollution can also hinder the downward transmission of nighttime sensible heat flux in the suburbs.

The daily changes in latent heat flux over the urban and suburban areas are completely different. During the clean period, the latent heat flux at the city site (Fig. 11b, dotted line) does not have obvious daily variations and fluctuates at approximately 0, which is related to low winter temperatures, the presence of water in the form of solid ice, and very dry air. However, the daily changes in latent heat in the suburbs during the clean period show a unimodal change, reaching a peak at approximately 12 noon. It seems that the pollution process has no significant effect on the transport of latent heat over the urban area. As the solid line in Fig. 11b shows, the latent heat flux over the urban area during the pollution period remains low, fluctuating at approximately 0. However, the pollution process has a greater impact on the transfer of latent heat in the suburbs. As shown by the dotted line in Fig. 11f, the transfer of latent heat is reduced throughout the day.

The magnitude of the momentum flux is related to the roughness of the underlying surface, wind speed, and stability of the boundary layer. During the clean period, the momentum flux over the city site experiences a wide range of changes, and the peak value is larger due to the high roughness of the city's underlying surface; the suburban momentum flux also has obvious daily changes, but the peak value is slightly lower than that over the city site. During the pollution period, the momentum fluxes at the urban and suburban sites are significantly lower than those during the clean period and remain low throughout the day. However, at this time, the momentum flux over the city is greater than that over the suburbs, as Figs. 11c and 11g show, respectively. The change in TKE is similar to that in momentum flux. During the clean period, the TKE values over the urban and suburban sites all showed obvious unimodal diurnal variations. The TKE values over the urban area were greater than those over the suburban area, which is due to the strong turbulence in wake vortices caused by underlying surfaces, such as high buildings in urban areas. During the pollution process, the urban and suburban TKEs both decreased

significantly and remained low throughout the day. However, the TKE over the city site was still greater than that over the suburban site.

Based on the above analysis, we know that the sensible heat flux and latent heat flux of the urban site are less than those of the suburban site, and the momentum transport and TKE of the urban areas are greater than those of the suburban sites due to different underlying surfaces. The sensible heat flux, latent heat flux, momentum flux, and TKE in the urban and suburban areas are all affected when pollution occurs. Pollution inhibits the material and energy exchanges between the surface and atmosphere. Moreover, the impact of the pollution process on the suburbs is much greater than that on the urban area. If the turbulent structure over the flat surface of the suburban area is considered the normal state for turbulent structures in this area during the studied period, then the urban turbulent structure is influenced by urbanization. From this perspective, urbanization has reduced the impact of pollution on water and heat exchanges between the surface and atmosphere. In conjunction with Section 4.2, the value of the LIST in urban areas is greater than that in suburban areas, which means that the intermittent intensity of urban turbulence is less than that of suburban turbulence. Therefore, the turbulence signal over the urban site is stronger than that over the suburban site, and pollution in urban areas is weaker than in adjacent suburbs.

5 Conclusions and discussions

In this paper, we developed an automated algorithm to identify the spectral gap to separate pure turbulence and submesoscale motions from a 30-min signal based on the arbitrary-order Hilbert spectral method. We used this automated algorithm to analyze turbulence data observed from several severe haze pollution episodes in Beijing and its nearby suburbs from 16 December 2016 to 8 January 2017. The datasets with a spectral gap accounted for approximately 30% of the total data, indicating that the eddy-correlation flux calculated using a conventional averaging time of 30 min to define perturbations is severely contaminated by poorly sampled mesoscale motions. Due to space limitations, only the detailed suburban site results are listed in the text. The results of the urban site reflect are consistent with the conclusions of the suburban site. A comparison between the reconstructed variances of u' , v' , w' , θ' and q' and those calculated by the conventional method revealed overestimations of approximately 27%, 21%, 1%, 40%, and 46%, respectively, when there was a spectral gap. The vertical wind speed was overestimated less than the horizontal wind speed. The scalar, potential temperatures were overestimated more than the vector, wind speed. The calculations of the fluxes were also overestimated. The momentum flux, heat flux and water-vapor flux were overestimated by approximately 13%, 12%, and 15%, respectively. We can see from these comparisons that the overestimation of flux during haze events cannot be ignored. After reconstruction via the automated algorithm, pure turbulent data can be obtained. Then, we explore the relationship between the LIST and pollution. The results indicate that when pollution is heavy, the LIST is smaller, and the intermittency is stronger; when pollution is lighter, the LIST is larger, and the intermittency is weaker. During the heavy pollution process, air quality is determined by turbulent motion on the hourly scale. At the same time, the LIST at the city site is greater than that at the suburban site, which means that the intermittency over the complex city surface is weaker than that over the flat

terrain of the suburbs. Urbanization seems to reduce the intermittency during heavy haze pollution episodes. The results were validated via the statistics on the impact of urbanization on turbulence and turbulent transport during polluted and clean periods.

The results for the statistical characteristics of turbulence show a significant difference in the normalized standard deviations in the horizontal and vertical wind speeds between clear and haze periods at the suburban site, which is the same as that at the city site; significant differences in the normalized standard deviations in potential temperature and water-vapor content between clear and haze periods are also observed at the suburban site, which are substantially different from those at the city site. These conclusions are consistent with the diurnal variations in mean flux under both polluted weather and clear weather conditions at the city site and suburban site. The sensible heat flux, latent heat flux, momentum flux, and TKE over the urban

and suburban areas are all affected when pollution occurs. ~~Pollution inhibits material and energy exchanges between the surface and atmosphere. Moreover, the impact of the pollution process on suburban areas is much greater than that on urban areas. Urbanization seems to help reduce the consequences of pollution. Due to the close distance between the two stations, the large-scale weather background is consistent, and the suburban site is locally flat, so the turbulent structure over the flat surface of the suburban area is considered as the normal state in this area under such weather and pollution source conditions, then the urban turbulent structure is influenced by urbanization. More importantly, the reduction of turbulence exchange during the pollution period in suburban sites is greater, compared to urban sites. In other words, the impact of the pollution process on the suburbs is much greater than that on the urban area. The change in the underlying surface of the urban site (the dynamic effect of complex terrain and the heat island effect caused by human activities) leads to a greater resistance to the weakening effects of turbulent exchange caused by pollution.~~

Data availability. Data used in this study are available from the corresponding author upon request (hsdq@pku.edu.cn).

Competing interests. The authors declare that they have no conflict of interest.

Acknowledgement. This work was jointly funded by grant from National Key R&D Program of China (2016YFC0203300), the National Natural Science Foundation of China (91544216, 41705003, 41675018, 41475007).

References

Acevedo, O.C., Moraes, O. L. L., Degrazia, G. A., and Medeiros, L. E.: Intermittency and the exchange of scalars in the nocturnal surface layer, *Bound.-Layer Meteor.*, 119, 41–55, doi: 10.1007/s10546-005-9019-3, 2006.

Acevedo, O. C., Moraes, O. L. L., Fitzjarrald, D. R., Sakai, R. K., and Mahrt, L.: Turbulent carbon exchange in very stable conditions, *Bound.-Layer Meteor.*, 125 (1), 49–61., doi:10.1007/s10546-007-9193-6, 2007.

Anfossi, D., Oettl, D., Degrazia, G., and Goulart, A.: An analysis of sonic anemometer observations in low wind speed

- conditions. *Bound.-Layer Meteor.*, 114:179–203., doi:10.1007/s10546-004-1984-4, 2005.
- Aubinet, M.: Eddy Covariance CO₂ Flux Measurements in Nocturnal Conditions: An Analysis of the Problem, *Ecol. Appl.*, 18 (6), 1368-78, doi:10.1890/06-1336.1, 2008.
- Baldocchi, D., Finnigan, J., Wilson, K., Paw U, K. T. and Falge, E.: On measuring net ecosystem carbon exchange over tall
5 vegetation on complex terrain. *Bound.-Layer Meteor.*, 96, 257–291, doi:10.1023/A:1002497616547, 2000.
- Bowen, B. M., Baars, J. A., Stone, G. L.: Nocturnal Wind Direction Shear and Its Potential Impact on Pollutant Transport, *J. Appl. Meteorol.*, 39 (3), 165-233, doi: 10.1175/1520-0450(2000)039<0437:NWDSAI>2.0.CO;2, 2000.
- Conangla, L., Cuxart, J. and Soler, M. R.: Characterisation of the nocturnal boundary layer at a site in northern Spain, *Bound.-Layer Meteor.*, 128:255–76, doi:10.1007/s10546-008-9280-3, 2008.
- 10 Coulter, R. L. and Doran, J. C.: Spatial and Temporal Occurrences of Intermittent Turbulence During CASES-99, *Bound-Layer Meteor.*, 105 (2), 329-349, doi:10.1023/A:1019993703820, 2002.
- Dominici, F., Greenstone, M. and Sunstein, C. R.: Particulate Matter Matters, *Science*, 344 (6181) ,257-259, doi:10.1126/science.1247348, 2014.
- Fiedler, F. and Panofsky, H. A.: Atmospheric Scales and Spectral Gaps, *Bull. Am. Meteorol. Soc.*, 51 (12) ,1114-1120,
15 doi:10.1175/1520-0477(1970)051<1114:ASASG>2.0.CO;2, 1970.
- Finnigan, J. J., Clement, R., Malhi, Y., Leuning, R. and Cleugh, H. A.: A Re-Evaluation of Long-Term Flux Measurement Techniques Part I: Averaging and Coordinate Rotation, *Bound.-Layer Meteor.*, 107 (1), 1-48, doi:10.1023/A:1021554900225, 2003.
- Flandrin, P., Rilling, G. and Goncalves, P.: Empirical mode decomposition as a filter bank, *IEEE Signal Proc. Let.*,
20 11 (2), 112-114, doi:10.1109/LSP.2003.821662, 2004.
- Howell, J. F. and Mahrt, L.: Multiresolution Flux Decomposition, *Bound.-Layer Meteor.*, 83, 117–137, doi:10.1023/A:1000210427798, 1997.
- Hu, J., Wang, Y., Ying, Q. and Zhang, H.: Spatial and temporal variability of PM 2.5 and PM 10 over the North
China Plain and the Yangtze River Delta , China, *Atmos. Environ.*, 95, 598–609,
25 doi:10.1016/j.atmosenv.2014.07.019, 2014.
- Huang, Y. X., Schmitt, F. G., Hermand, J. P., Gagne, Y., Lu, Z. M. and Liu, Y. L.: Arbitrary-order Hilbert spectral analysis for time series possessing scaling statistics: Comparison study with detrended fluctuation analysis and wavelet leaders, *Phys. Rev. E*, 84(1), 16208, doi:10.1103/PhysRevE.84.016208, 2011.
- Huang, N. E., Shen Z., Long, S.R., Wu, M.C., Shi, H. H., Zheng, Q., Yen, N. C., Tung, C. C. and Liu, H. H.: The empirical
30 mode decomposition and the Hilbert spectrum for nonlinear and non-stationary time series analysis. *Proc. R. Soc.*, 454, 903–995, doi:10.1098/rspa.1998.0193, 1998.
- Huang, N. E., Shen, Z., Long, S. R.: A new view of nonlinear water waves: the Hilbert spectrum 1. *Annu. Rev. Fluid. Mech.*, 31, 417–457, doi: 10.1146/annurev.fluid.31.1.417, 1999.
- Huang, Y., Schmitt, F. G., Lu, Z. and Liu, Y. An amplitude-frequency study of turbulent scaling intermittency using

- Empirical Mode Decomposition and Hilbert Spectral Analysis, *EPL (Europhysics Letters)*, 84(4), 40010, doi: 10.1209/0295-5075/84/40010, 2008.
- Huang, Y., Biferale, L., Calzavarini, E., Sun, C. and Toschi, F.: Lagrangian single-particle turbulent statistics through the Hilbert-Huang transform, *Physical Review E*, 87(4), 041003, doi: 10.1103/PhysRevE.87.041003, 2013.
- 5 Kaimal, J. C. and Finnigan, J. J.: *Atmospheric boundary layer flows : Their structure and measurement*, Oxford University Press, New York, 255-261 ,1994.
- Li, T., Wang, H., Zhao, T., Xue, M., Wang, Y., Che, H. and Jiang, C.: The Impacts of Different PBL Schemes on the Simulation of PM_{2.5} during Severe Haze Episodes in the Jing-Jin-Ji Region and Its Surroundings in China, *Adv. Meteorol.*, 1-15, doi: 10.1155/2016/6295878,2016.
- 10 Liepert, B. G., Feichter, J., Lohmann, U., and Roeckner, E.: Can aerosols spin down the water cycle in a warmer and moister world? *Geophys. Res. Lett.*, 31 (6), 177-182, 2004.
- Liu, Z., Hu, B., Wang, L., Wu, F., Gao, W., and Wang, Y.: Seasonal and diurnal variation in particulate matter (PM₁₀ and PM_{2.5}) at an urban site of Beijing: analyses from a 9-year study, *Environ. Sci. Pollut. R.*, 22, 627–642, doi: 10.1007/s11356-014-3347-0, 2014.
- 15 Ma, Y. M., Ma, W. Q. , Hu, Z. Y., Li M. , Wang J., Hirohiko I. and Osamu T.: Similarity analysis of atmospheric turbulent intensity over grassland surface of Qinghai-Xizang Plateau, *Plateau Meteor.*, 21,514-517, 2002.
- Mahrt, L.: Nocturnal Boundary-Layer Regimes, *Boundary-layer Meteorol.*, 88(2), 255–278, doi:10.1023/A:1001171313493, 1998.
- Mahrt, L.: Stably Stratified Atmospheric Boundary Layers, *Annu. Rev. Fluid Mech.*, 46, 23–45, doi:10.1146/annurev-fluid-010313-141354, doi:10.1029/2003GL019060, 2014.
- 20 Mahrt, L.: The influence of nonstationarity on the turbulent flux–gradient relationship for stable stratification, *Bound.-Layer Meteor.*, 125 (2), 245-264, doi:10.1007/s10546-007-9154-0, 2007.
- Mahrt, L.: Mesoscale wind direction shifts in the stable boundary-layer, *Tellus.*, 60(4), 700-705, doi: 10.1111/j.1600-0870.2008.00324.x, 2008.
- 25 Mahrt, L.: Computing turbulent fluxes near the surface: Needed improvements, *Agr. Forest Meteorol.*, 150 (4), 501-509, doi:10.1016/j.agrformet.2010.01.015, 2010.
- Mahrt, L.: Intermittency of Atmospheric Turbulence, *J. Atmos. Sci.*, 46(1), 79–95, doi:10.1175/1520-0469(1989)046<0079:IOAT>2.0.CO;2, 1989.
- Mahrt, L.: Stratified atmospheric boundary layers, *Bound.-Layer Meteor.*, 90(3), 375-396, doi:10.1023/A:1001765727956, 30 1999.
- Mahrt, L.: The influence of nonstationarity on the turbulent flux–gradient relationship for stable stratification, *Bound.-Layer Meteor.*, 125 (2), 245-264, doi: 10.1007/s10546-007-9154-0, 2007.
- Mahrt, L.: Variability and Maintenance of Turbulence in the Very Stable Boundary Layer, *Bound.-Layer Meteor.*, 135

- (1) :1-18, doi: 10.1007/s10546-009-9463-6, 2010.
- Mahrt, L.: Weak-wind mesoscale meandering in the nocturnal boundary layer. *Environ. Fluid. Mech.*, 7 (4) ,331-347, doi:10.1007/s10652-007-9024-9, 2007.
- Mahrt, L.: Characteristics of submeso winds in the stable boundary layer, *Bound.-Layer Meteor.*, 130, 1–14, doi: 10.1007/s10546-008-9336-4, 2009.
- 5 Mahrt, L.: Variability and Maintenance of Turbulence in the Very Stable Boundary Layer, *Bound.-Layer Meteor.*, 135(1),1-18, doi: 10.1007/s10546-009-9463-6, 2010.
- Mahrt, L.: The Near-Calm Stable Boundary Layer, *Bound.-Layer Meteor.*, 140 (3), 343-360, doi: 10.1007/s10546-011-9616-2, 2011.
- 10 Mallat, S.G.: The Theory of Multiresolution Signal Decomposition: the Wavelet Representation, *IEEE Trans. Pattern Anal. Machine Intell.*,11(7), 674–693, doi: 10.1109/34.192463, 1989.
- Muschinski, A., Frehlich, R. G., and Balsley, B. B.: Small-scale and large-scale intermittency in the nocturnal boundary layer and the residual layer, *J. Fluid Mech.*, 515,319-351, doi:10.1017/S0022112004000412, 2004.
- Nappo, C. J., Miller, D. R. , and Hiscox, A. L.: Wave-modified flux and plume dispersion in the stable boundary layer, *Bound.-Layer Meteorol.*, 129, 211–23. doi: 10.1007/s10546-008-9315-9, 2008.
- 15 Nordbo, A., Järvi, L., Haapanala, S., Moilanen, J. and Vesala, T.: Intra-City Variation in Urban Morphology and Turbulence Structure in Helsinki, Finland, *Bound.-Layer Meteor.*, 146 (3),469-496, doi:10.1007/s10546-012-9773-y, 2013.
- Panofsky, H. A.: Spectra of atmospheric variables in the boundary layer, *Radio Science*, 4,1101-1109, doi:10.1029/RS004i012p01101, 1969.
- 20 Panfsky, H. A. and Dutton, J. A.: Atmospheric turbulence: Models and methods for engineering application, John Wiley, NewYork, 156-173, 1984.
- Ren, Y., Zheng, S., Wei, W., Wu, B., Zhang, H., Cai, X. and Song Y.: Characteristics of the Turbulent Transfer during the Heavy Haze in Winter 2016/17 in Beijing, *J. Meteor. Res.*, 32 (1), 69-80, doi: 10.1007/s13351-018-7072-3, 2018.
- Roth, M.: Turbulent transfer relationships over an urban surface. II: Integral statistics, *Quart. J. Roy. Meteor. Soc.*, 119, 1105-1120, doi: 10.1002/qj.49711951312, 1993.
- 25 Salmond, J. A.: Wavelet analysis of intermittent turbulence in a very stable nocturnal boundary layer: implications for the vertical mixing of ozone, *Bound.-Layer Meteor.*, 114 (3), 463-488, doi: 10.1007/s10546-004-2422-3, 2005.
- Salmond, J. A. and McKendry, I.G.: A review of turbulence in the very stable nocturnal boundary layer and its implications for air quality, *Prog. Phys. Geo.*, 29(2), 171-188, doi:10.1191/0309133305pp442ra, 2005.
- 30 Schmitt, F. G., Huang, Y., Lu, Z., Liu, Y. and Fernandez, N.: Analysis of velocity fluctuations and their intermittency properties in the surf zone using empirical mode decomposition, *J. Mar. Syst.*, 77(4), 473-481, doi: 10.1016/j.jmarsys.2008.11.012, 2009.
- Smedmanhögröm, A. S. and Högröm, U.: Spectral Gap in Surface-Layer Measurements, *J. Atmos. Sci.*, 32 (2), 340-350, doi: 10.1175/1520-0469(1975)032<0340:SGISLM>2.0.CO;2, 1975.

- Su, H. B., and Hong, Z. X.: An experimental study of turbulence in northern suburban surface layer of Beijing, Chinese J. Atmos. Sci., 18, 739-750, 1994.
- Sun, J., Lenschow, D. H., Burns, S. P., Banta, R. M., Newsom, R. K., Coulter, R., Frasier, S., Ince, T., Nappo, C., Balsley, B. B., Jensen, M., Mahrt, L., Miller, D. and Skelly, B.: Atmospheric Disturbances that Generate Intermittent Turbulence in Nocturnal Boundary Layers, *Boundary-Layer Meteorol.*, 110, 255–279, doi: 10.1023/A:1026097926169, 2004.
- Sun, Y., Jiang, Q., Wang, Z., Fu, P., Li, J., Yang, T., and Yin, Yan.: Investigation of the sources and evolution processes of severe haze pollution in Beijing in January 2013, *J. Geophys. Res.*, 119 (7), 4380-4398, doi:10.1002/2014JD021641, 2014.
- Tai, A. P. K., Mickley, L. J., and Jacob, D. J.: Correlations between fine particulate matter (PM_{2.5}) and meteorological variables in the United States: Implications for the sensitivity of PM_{2.5} to climate change, *Atmos. Environ.*, 44 (32), 3976-3984, doi: 10.1016/j.atmosenv.2010.06.060, 2010.
- Tang, G., Zhang, J., Zhu, X., Song, T., Münkler, C., Hu, B., Schäfer, K., Liu, Z., Zhang, J., Wang, L., Xin, J., Suppan, P. and Wang, Y.: Mixing layer height and its implications for air pollution over Beijing, China, *Atmos. Chem. Phys.*, 16(4), 2459–2475, doi:10.5194/acp-16-2459-2016, 2016.
- Tang, G., Li, X., Wang, Y., Xin, J., and Ren, X.: Surface ozone trend details and interpretations in Beijing, 2001–2006, *Atmos. Chem. Phys.*, 9, 8813–8823, doi:10.5194/acp-9-8813-2009, 2009.
- Tang, G., Wang, Y., Li, X., Ji, D., Hsu, S., and Gao, X.: Spatialtemporal variations in surface ozone in Northern China as observed during 2009–2010 and possible implications for future air quality control strategies, *Atmos. Chem. Phys.*, 12, 2757–2776, doi:10.5194/acp-12-2757-2012, 2012.
- Tang, G., Zhu, X., Hu, B., Xin, J., Wang, L., Münkler, C., Mao, G., and Wang, Y.: Impact of emission controls on air quality in Beijing during APEC 2014: lidar ceilometer observations, *Atmos. Chem. Phys.*, 15, 12667–12680, doi:10.5194/acp-15-12667-2015, 2015.
- Thompson, T. M., Saari, R. K. and Selin, N. E.: Air quality resolution for health impact assessment: influence of regional characteristics, *Atmos. Chem. Phys.*, 14(2), 969-978, doi:10.5194/acpd-13-14141-2013, 2014.
- Treviño, G. and Andreas, E. L.: Averaging intervals for spectral analysis of nonstationary turbulence, *Bound.-Layer Meteor.*, 95(2), 231-247, doi:10.1023/A:1002632004254, 2000.
- Van de Wiel, B. J. H., Moene, A. F., Hartogensis, O. K., de Bruin, H. A. R. and Holtslag, A. A. M.: Intermittent Turbulence in the Stable Boundary Layer over Land. Part III: A Classification for Observations during CASES-99, *J. Atmos. Sci.*, 60, 2509-2522, doi:10.1175/1520-0469(2003)060<2509:ITITSB>2.0.CO;2, 2003.
- Van der Hoven, I.: Power Spectrum of Horizontal Wind Speed in the Frequency Range from 0.0007 to 900 Cycles Per Hour, *J. Atmos. Sci.*, 14 (2), 160-164, 1957.
- Vickers, D. and Mahrt, L.: A Solution for Flux Contamination by Mesoscale Motions With Very Weak Turbulence, *Bound.-Layer Meteor.*, 118 (3), 431-447, doi: 10.1007/s10546-005-9003-y, 2006.
- Vickers, D. and Mahrt, L.: Quality control and flux sampling problems for tower and aircraft data, *J. Atmospheric Ocean. Technol.*, 14, 512-526, doi:10.1175/1520-0426(1997)014<0512:QCAFSP>2.0.CO;2, 1997.

- Vickers, D. and Mahrt, L.: The Cospectral Gap and Turbulent Flux Calculations, *J. Atmospheric Ocean. Technol.*, 20 (5), 660-672, doi: 10.1175/1520-0426(2003)20<660:TCGATF>2.0.CO;2, 2003.
- Wang, H., Zhang, X., Gong, S., Chen, Y., Shi, G., and Li, W.: Radiative feedback of dust aerosols on the East Asian dust storms, *J. Geophys. Res.*, 115, 6696–6705, doi: 10.1029/2009JD013430, 2010.
- 5 Wang H, Xue M, Zhang XY, Liu HL, Zhou CH. Tan SC, Chen B, Che HZ and Li T.: Mesoscale modeling study of the interactions between aerosols and PBL meteorology during a haze episode in China Jing-Jin-Ji and its near surrounding region-part 1: aerosol distributions and meteorological features, *Atmos. Chem. Phys.*, 15 (6) ,3277-3287, doi: 10.5194/acp-15-3277-2015, 2015.
- Wang H, Shi GY, Zhang XY, Gong SL, Tan SC, Chen B, Che HZ, and Li T.: Mesoscale modelling study of the interactions
10 between aerosols and PBL meteorology during a haze episode in China Jing–Jin–Ji and its near surrounding region - part 2: aerosols' radiative feedback effects, *Atmos. Chem. Phys.* 15(6): 3277–3287, doi: 10.5194/acp-15-3277-2015, 2015.
- Wang, Y.S., Yao, L., Wang, L.L., Liu, Z. R., Ji, D. S., Tang, G. Q., Zhang, J. K., Sun, Y., Hu, B. and Xin, J.Y.: Mechanism for the formation of the January 2013 heavy haze pollution episode over central and eastern China, *Sci. China Earth Sci.*, 57 (1),14-25, doi: 10.1007/s11430-013-4773-4,2014.
- 15 Watts, J.: China: the air pollution capital of the world, *Lancet*, 366 (9499), 1761–1762, doi:10.1016/S0140-6736(05)67711-2, 2005.
- Wei, W., Schmitt, F. G., Huang, Y. X. and Zhang, H. S.: The Analyses of Turbulence Characteristics in the Atmospheric Surface Layer Using Arbitrary-Order Hilbert Spectra, *Bound.-Layer Meteor.*, 159(2), 391–406, doi:10.1007/s10546-015-0122-9, 2016.
- 20 Wei, W., Zhang, H. S., Schmitt, F. G., Huang, Y. X., Cai, X. H., Song, Y., Huang, X. and Zhang, H.: Investigation of Turbulence Behaviour in the Stable Boundary Layer Using Arbitrary-Order Hilbert Spectra, *Bound.-Layer Meteor.*, 1–16, doi:10.1007/s10546-016-0227-9, 2017.
- Wei W., Zhang H.S., Wu B., Huang Y., Cai X., Song Y. and Li J.: Intermittent turbulence contributes to vertical diffusion of PM_{2.5} in the North China Plain, *Atmos. Chem. Phys. Discuss.*, 1-21, doi: 10.5194/acp-2018-121, 2018.
- 25 Wei, W. and Zhang H. S.: The Hilbert-Huang transform technique and its applications to the study of the turbulence boundary layer, *Acta Meteor. Sinica.*, (6) :1183-1193, doi:10.11676/qxxb2013.096, 2013.
- Wilczak, J. M., S. P. Oncley, and S. A. Stage.: Sonic anemometer tilt correction algorithms, *Bound.-Layer Meteor.*, 99, 127-150, doi:10.1023/A:1018966204465, 2001.
- Wilson, J. D.: Monin-Obukhov Functions for Standard Deviations of Velocity, *Bound.-Layer Meteor.*, 129 (3) :353-369, doi:10.1007/s10546-008-9319-5, 2008.
- 30 Wood, C. R., Lacser, A., Barlow, J. F., Padhra, A., Belcher, S. E., Nemitz, E., Helfter, C. and Famulari, D.: Turbulent Flow at 190 m Height Above London During 2006–2008: A Climatology and the Applicability of Similarity Theory, *Bound.-Layer Meteor.*, 137 (1),77-96, doi: 10.1007/s10546-010-9516-x, 2010.
- Wyngaard, J. C., O. R. Coté and Y. Izumi.: Local free convection, similarity, and the budgets of shear stress and heat flux,

- J. Atmos. Sci., 28, 1171-1182, doi:10.1175/1520-0469(1971)028<1171:LFCSAT>2.0.CO;2, 1971.
- Yang, Y. R., Liu, X. G., Qu, Y., An, J. L., Jiang, R., Zhang, Y. H., Sun, Y. L., Wu, Z. J., Zhang, F., Xu, W. Q., and Ma, Q. X.: Characteristics and formation mechanism of continuous hazes in China: a case study during the autumn of 2014 in the North China Plain, Atmos. Chem. Phys., 15, 8165–8178, doi:10.5194/acp-15-8165-2015, 2015.
- 5 Zhang, A., Lu, J., Zhang, B. and Liu, S.: The turbulence characteristics in the boundary layer of the rural area and border of urban area of Beijing, Chinese J. Atmos. Sci., 39 (6), 1051-1060, 1991.
- Zhang, H. S., Li, F. Y. and Chen, J. Y.: Statistical characteristics of atmospheric turbulence in different underlying surface conditions, Plateau Meteor., 23, 598-604, 2004.
- Zhang, L., Sun, J. Y., Shen, X. J., Zhang, Y. M., Che, H., Ma, Q. L., Zhang, Y. W., Zhang, X. Y., and Ogren, J. A.:
 10 Observations of relative humidity effects on aerosol light scattering in the Yangtze River Delta of China, Atmos. Chem. Phys., 15, 8439–8454, <https://doi.org/10.5194/acp-15-8439-2015>, 2015.
- Zhang, J. K., Sun, Y., Liu, Z. R., Ji, D. S., Hu, B., Liu, Q. and Wang, Y. S.: Characterization of submicron aerosols during a month of serious pollution in Beijing, Atmos. Chem. Phys., 14(6), 1431-1432, doi: 10.5194/acp-14-2887-2014, 2014.
- Zhang, R., Wang, G., Guo, S., Zamora, M.L., Ying, Q., Lin, Y., Wang, W., Hu, M. and Wang, Y.: Formation of urban fine
 15 particulate matter, Chem. Rev., 115, 3803-3855, doi:10.1021/acs.chemrev.5b00067, 2015.
- Zhang, W., Guo, J., Miao, Y., Liu, H., Zhang, Y., Li, Z., and Zhai, P.: Planetary boundary layer height from CALIOP compared to radiosonde over China, Atmos. Chem. Phys., 16, 9951–9963, doi: 10.5194/acp-16-9951-2016, 2016.
- Zhang, X. Y., Y. Q. Wang, T. Niu,: Atmospheric aerosol compositions in China: Spatial/temporal variability, chemical signature, regional haze distribution and comparisons with global aerosols, Atmos. Chem. Phys., 11, 26571-26615, doi:
 20 10.5194/acp-12-779-2012, 2012.
- Zhang, Q., Quan, J., Tie, X., and Liu, Q. : Effects of meteorology and secondary particle formation on visibility during heavy haze events in Beijing, China, Sci. Total Environ. , 502, 578-584, doi: 10.1016/j.scitotenv.2014.09.079, 2015.
- Zhong, J., Zhang, X., Dong, Y., Wang, Y., Wang, J., Zhang, Y. and Che, H.: Feedback effects of boundary-layer meteorological factors on cumulative explosive growth of PM_{2.5} during winter heavy pollution episodes in Beijing from
 25 2013 to 2016, Atmos. Chem. Phys., 18, 247-258, doi:10.5194/acp-2017-845, 2018.
- Zhong J, Zhang X, Wang Y, Sun J, Zhang Y, Wang J, Tan K, Shen X, Che H, Zhang L, Zhang Z, Qi X, Zhao H, Ren S, Li Y.: Relative Contributions of Boundary-Layer Meteorological Factors to the Explosive Growth of PM_{2.5} during the Red-Alert Heavy Pollution Episodes in Beijing in December 2016, J. Meteor. Res., 31 (5),809-819, doi: 10.1007/s13351-017-7088-0, 2017.
- 30 Zhu X., Tang G., Guo J., Hu B., Song T., Wang L., Xin J., Gao W., Münkler C., Schäfer K., Li X., and Wang Y.: Mixing layer height on the North China Plain and meteorological evidence of serious air pollution in southern Hebei, Atmos. Chem. Phys., 18 (7) ,1-21, doi: 10.5194/acp-18-4897-2018, 2018.