

# Future climatic drivers and their effect on PM<sub>10</sub> components in Europe and the Mediterranean Sea

Arineh Cholakian<sup>1,2,\*</sup>, Augustin Colette<sup>2</sup>, ~~Giancarlo Ciarelli<sup>1</sup>~~, Isabelle Coll<sup>1</sup>, Giancarlo Ciarelli<sup>1,\*\*</sup> and Matthias Beekmann<sup>1</sup>

1 Laboratoire Inter-Universitaire des Systèmes Atmosphériques (LISA), UMR CNRS 7583, Université Paris Est Créteil et Université Paris Diderot, Institut Pierre Simon Laplace, Créteil, France ([arineh.cholakian@lisa.u-pec.fr](mailto:arineh.cholakian@lisa.u-pec.fr))  
2 Institut National de l'Environnement Industriel et des Risques, Parc Technologique ALATA, Verneuil en Halatte, France

\* Now at EPOC, UMR 5805, Université de Bordeaux, Pessac, France

\*\* Now at Department of Chemical Engineering, Carnegie Mellon University, Pittsburgh, USA

**Abstract.** Multiple CMIP5 future scenarios ran with the CHIMERE CTM are compared to historic simulations in order to study some of the drivers governing air pollution. Here, the focus is on regional climate, anthropogenic emissions and long-range transport. Two major sub-domains are explored, the European region and the Mediterranean basin, both areas showing high sensitivity to climate change. The Mediterranean area is explored in the context of the ChArMEx project, which examines the current and future meteorological and chemical conditions of the Mediterranean area. The climate impact study covers the period from 2031 to 2100, and considers possible future scenarios in comparison with 1976 to 2005 historic simulations, through three RCPs (RCP2.6, RCP4.5 and RCP8.5). A detailed analysis of the total PM<sub>10</sub> concentrations is carried out, including its evolution and its composition changes. The individual effects of meteorological conditions on PM<sub>10</sub> components are explored in these scenarios in an effort to pinpoint the meteorological parameter(s) governing each component. The anthropogenic emission impact study covers the period of 2046 and 2055 using current legislation (CLE) and maximum feasible reduction (MFR) anthropogenic emissions for the year 2050, compared with historic simulations covering the period of 1996 to 2005 and using CLE2010 emissions data. Long-range transport is explored by changing the boundary conditions in the chemistry-transport model, over the same period as the emission impact studies. Finally, a cumulative effect analysis of these drivers is performed and the contribution of each driver on PM<sub>10</sub> and its components is estimated. The results show that regional climate change causes a decrease in PM10 concentrations in our scenarios (in both European and Mediterranean sub-domains), as a result of a decrease in nitrate, sulfate, ammonium and dust atmospheric concentrations in most scenarios. On the contrary, BSOA shows an important increase in all scenarios, showing more pronounced concentrations for the European sub-domain compared to the Mediterranean region. Regarding to the relationship of different meteorological parameters with concentrations of different species, nitrate and BSOA show strong temperature dependence, while sulfate is most strongly correlated with relative humidity. The temperature-dependent behavior of BSOA changes when looking at the Mediterranean sub-domain, showing more dependence to wind speed, because of the transported nature of BSOA existing in this sub-domain. A cumulative look at all drivers shows that anthropogenic emission changes overshadow changes caused by climate and long-range transport for both explored sub-domains, with the exception of dust particles for which long-range transport changes are more influential, especially in the Mediterranean basin. For certain species (such as sulfates and BSOA), for most explored sub-domains, the changes caused by anthropogenic emissions are to a certain extent reduced by boundary condition and regional climate changes.~~The results show that regional climate change causes a decrease in PM<sub>10</sub> concentrations in our scenarios, as a result of a decrease in nitrate, sulfate, ammonium and dust atmospheric concentrations in most scenarios. On the contrary, BSOA shows an important increase in all~~

~~scenarios. Nitrate and BSOA show a strong temperature dependence, while sulfates mostly depend on relative humidity. A cumulative look at all drivers shows that anthropogenic emission changes overshadow changes caused by climate and long range transport for most components except for dust, for which long range transport changes seem to be more influential. For certain species, for most explored sub domains, the changes caused by anthropogenic emissions are to a certain extent reduced by boundary condition and regional climate changes.~~

## 1 Introduction

Particulate matter (PM) is one of the most important constituents of air pollution. It can have a variety of adverse effects on air quality (Seinfeld and Pandis, 2016) and subsequently on human health ( Pope and Dockery, 2006 ; Kampa and Castanas, 2008 ; Anderson et al., 2012; Im et al., 2018) and ecosystems (Grantz et al., 2003). Studies have shown that the life expectancy of the population can change drastically in areas densely polluted by atmospheric aerosols (Pope et al., 2009). ~~PM comprise a large number of different components, each one having with different origins and very diverse behaviors with respect to meteorological parameters.~~ Therefore, there are many different ways in which the particles can affect air quality, making their investigation both important and complex.

The intricacy of studying PM becomes deeper when coupling its effects with climate change since air quality and climate change have intertwined interactions (e.g. Kinney, 2008; Wild, 2009; Seinfeld and Pandis, 2016). In other words, changes in meteorological conditions have varied effects on air quality, but at the same time climate change may be affected by radiative forcing of air pollutants. These effects can, in some cases, go in the same direction as each other, or they may show opposite outcomes. ~~Thus, when exploring future air quality, it is important to take into account that different drivers can have different impacts while having non-linear interactions among themselves. Therefore it is interesting to explore the effects of each driver separately. Thus, when exploring the future air quality, it is important to consider different drivers of air quality and, if possible, to examine the effects of each driver separately.~~

Air pollution is governed mainly by four factors; anthropogenic and/or biogenic emissions of primary pollutants and precursors of secondary pollutants, atmospheric chemistry, long-range transport and of course, meteorology (Jacob and Winner, 2009). While these factors are listed separately, they have interactions among themselves. For example, atmospheric chemistry is directly affected by temperature and radiative forcing. Similarly, parameters such as precipitation, wind speed and wind direction can ~~have positive or negative effects on~~ enhance or reduce dispersion and deposition. Also, indirectly, meteorological conditions such as temperature and wind speed can have impacts on the emission of primary pollutants, which may also be precursors of secondary pollutant (EEA, 2004). As a result, the sensitivity of air quality to climate change seems to be crucial, but complex to investigate.

The sensitivity to climate change of different areas in the world depends on the existing local meteorological conditions. Giorgi, (2006) calculated a factor to determine the climate change hotspots in future scenarios to show the sensitivity of different regions when faced with climate change. ~~Using the differences between wet season and dry season-historic and future precipitation and temperature for different regions and seasons in an ensemble of scenarios and models, he has shown that the Mediterranean and the north-eastern European area are more sensitive to climate change than the other regions of the world, followed by the Western Europe. According to his calculations, the European area (both western and eastern regions as an average) and the Mediterranean as a~~

*whole, are one of the most important hotspots for climate change.* This highlights the importance of understanding the changes that might affect these regions. Therefore, the focus of this study will be on the European area with a special attention to the Mediterranean basin. This is why the current work is related to the ChArMEx (the Chemistry Aerosol Mediterranean Experiment; <http://charmex.lsce.ipsl.fr>) project. The goals of ChArMEx are to better assess the sources, formation, transformation and mechanisms of transportation of gases and aerosols in the western Mediterranean basin and also to better estimate the future composition of the atmosphere of the Mediterranean Sea. The measurement part of this campaign took place in the western Mediterranean basin during the period of 2012-2014, the analysis of the data obtained during the campaign and the assessment of future atmospheric changes for the basin are still ongoing.

A regional Chemistry-Transport Model (CTM) was used to explore *possible future possible-changes* in these regions. Running such regional simulations requires inputs from a global CTM, a Global Circulation Model (GCM) and a Regional Climate Model (RCM), as well as anthropogenic/biogenic emission inputs. Changes made to these inputs make it possible to distinguish the effects of different drivers on air pollution one by one. Modifying RCM inputs allows estimation of the effects of meteorology alone, while a combined modification of RCM and global CTM inputs allows simultaneous assessment of the impacts of meteorology and long-range transport. On the other hand, apart from RCM inputs, changes in anthropogenic emissions allow to explore the effects of meteorology and emissions on air pollution.

These kinds of studies of course already exist for different parts of the world, for one or multiple drivers and for different components. For example, Liao et al., 2006 used a global model to explore the atmospheric changes expected in the year 2100, by comparing a year of historic simulations to a yearlong simulation in 2100, where all factors were changed. The first study that investigated the future atmospheric conditions of European area focused only on ozone changes and used the two 30-year long future scenarios compared to a 30 year-long historic period (Meleux et al., 2007). Other studies use an ensemble of future simulations, each with a different model, in order to compare the results given by each of these models (e.g. Langner et al., 2012). Based on the IMPACT2C project (Jacob, 2017), Lacressonnière et al., 2016 and Lacressonnière et al., 2017 focus on European regional simulations, exploring the effects of a 2°C climate change combined with anthropogenic emission changes in an ensemble of four models. Similarly, Fortems-Cheiney et al., 2017 explored the same scenarios for a 3°C of climate change, with a focus on gaseous species, and Carvalho et al., 2010 conducted a SRES A2 climate change scenario over the end of the 21st century for Europe, zooming on Portugal. The common point of all these studies is that all the impacting factors have been changed simultaneously in a future scenario. A review of existing scenarios is presented in Colette et al. (2015).

Unlike these studies, other papers have investigated the impact of emissions and meteorology on atmospheric composition in future scenarios separately. Dawson et al., 2007 focused on determining the atmospheric sensitivity to changes in meteorological conditions in the Eastern US, over a simulation period of two months. Megaritis et al., 2014 have used a similar approach as Dawson et al. (2007), exploring the sensitivity of the atmospheric composition to changes in meteorological conditions for Europe over a three month-long simulation period. These two studies have conducted sensitivity tests on short (months-long) periods of time. Lemaire et al., (2016) have explored climate change effects from the same dataset as the one used in our work, developing a statistical method to ascertain the meteorological parameters that affects atmospheric pollutants in future scenarios. Hedegaard et al.,

2013 also looked at the relative importance of emissions and meteorological drivers in a hemispheric model. Finally, Colette et al. (2013) explored the same scenarios that we worked on with the aim of analyzing the global effects of the three drivers (meteorology, emissions and boundary conditions) on atmospheric composition, although only focusing on Europe as a whole and not investigating the individual effect of the drivers on PM composition. Our aim is to complement the previous works by providing a deeper insight into the respective impacts of climate, atmospheric ~~content~~ composition and emission-related forcing. This is why the work described here focuses ~~ed~~ on simulating a set of future and climatic scenarios over long periods of times, and observing the differences between the drivers discussed above. The chosen approach is to change the drivers one by one and to assess the differences induced in PM components, in order to access the individual effects of the parameters of the simulation. Finally, the simulations are compared to a series of simulations, where all the aforementioned drivers change at the same time, which can show us the overall impact of all which may be different to the sum of impacts of individual drivers due to non-linear effects.

It should be noted that other studies have explored the dependence of PM components on meteorological conditions as well (Dawson et al., 2007 ; Carvalho et al., 2010 ; Fiore et al., 2012 ; Jiménez-Guerrero et al., 2012 ; Juda-Rezler et al., 2012 ; Hedegaard et al., 2013 ; Megaritis et al., 2014). Still, most of these studies were performed for short time-periods, such as 1 year-long simulations (shorter in most cases) and several used sensitivity tests and not actual future scenarios to assess the changes of different meteorological parameters. Conversely, Lemaire et al., (2016) have explored the sensitivity of ozone and PM<sub>2.5</sub> to different meteorological parameters, using 30 years of RCP8.5 scenario simulations. However, they do not consider in detail the relationship between the speciation of PM components and these parameters. To the best of our knowledge, the sensitivity of PM components to meteorological parameters for a dataset this extensive containing multiple scenarios and calculation of effects of different drivers on same data pool has not been done up to now.

In this paper, after a brief introduction to the simulations and the modeling framework, the impacts of different drivers will be explored. The analysis first deals with climate impacts; then, the effects of long-range transport and emission changes will be discussed. Finally, the impact of each of these three drivers on the concentration of PM<sub>10</sub> and its components will be calculated. The discussions of the results will be divided into two parts corresponding to geographic areas: the European and the Mediterranean sub-domains. Finally, a prospective view of what the PM component concentrations in the Mediterranean basin may be like at the end of the 21<sup>st</sup> century will be given in the last part of the paper.

## 2 Method

In this section, we introduce the architecture of the modelling framework, with a focus on the most sensitive component which is the chemistry transport model. We also provide references to the input data used by the CHIMERE model in terms of future scenarios and for the various combinations of input parameters.

### 2.1 Modeling framework

The assessment of the long term evolution of air quality in the context of a changing climate is performed with a suite of deterministic models following the framework introduced by Jacob and Winner (2009). Global climate

projections are obtained from a global circulation model (GCM) that feeds a global chemistry-transport model and a regional climate model. Finally, the latter two drive a regional chemistry transport model. The setup used in this study is presented in detail in Colette et al., (2013) and Colette et al., (2015).

The global circulation model is the IPSL-CM5A-MR large-scale atmosphere-ocean model (Dufresne et al., 2013).

5 It provides input to the regional climate model and the global chemistry-transport model with global meteorological fields. It uses LMDz (Hourdin et al., 2006) as its meteorological model, ORCHIDEE (Krinner et al., 2005) as its land surface model, NEMO (Madec and Delecluse, 1998) and LIM (Fichefet and Maqueda, 1999) being respectively the oceanic and the sea-ice models. The horizontal resolution of this global model is  $2.5^{\circ} \times 1.25^{\circ}$  with 39 vertical levels. For each scenario, the corresponding RCP is used for the anthropogenic radiative forcing.

10 The Weather Research and Forecasting model (WRF, Wang et al., 2015) is used as the Regional Climate Model (RCM). The regional climate simulations were part of the EURO-CORDEX (Jacob et al., 2014) with a spatial resolution of  $0.44^{\circ}$ . The historic simulations were evaluated by comparison to experimental data (Menut et al., 2012 ; Kotlarski et al., 2014 ; Katragkou et al., 2015). The LMDZ-INCA (Hauglustaine et al., 2014) global CTM is used for the production of chemical initial/boundary conditions for the regional CTM. *The LMDZ-INCA runs used in this study have been analyzed in Szopa et al. (2013) and (Markakis et al., (2014)) and inter-comparisons of the same runs with other global chemistry-transport models have been analyzed in Shindell et al., (2013) and Young et al (2013) in the framework of the ACCMIP experiment. Monthly climatological fields are used as the boundary condition inputs: since background changes over long periods of time and it was not possible to store hourly global model output to create hourly varying boundary conditions. This induces an unavoidable inconsistency between meteorology and dust fields.*

15  
20

## 2.2 CHIMERE CTM

The CHIMERE offline regional CTM has been widely used both for future scenarios (Colette et al., 2015; Lacressonnière et al., 2016) and for research activities in France (Zhang et al., 2013 ; Petetin et al., 2014 ; Menut et al., 2015 ; Rea et al., 2015 ; Cholakian et al., 2018) and abroad (Hodzic and Jimenez, 2011). In this work, the 2013b version of the model has been used for all simulations (Menut et al., 2013). The simulations were conducted with the Euro-CORDEX domain with a horizontal resolution of  $0.44^{\circ}$  and 9 vertical levels ranging from the surface to 500mb. The aerosol module is ran with a simple two-product scheme for the simulation of Secondary Organic Aerosols (SOA, Bessagnet et al., 2008) and with the ISORROPIA module for the simulation of inorganic aerosols (Fountoukis and Nenes, 2007). It provides simulated aerosol fields including EC, sulfate, nitrate, ammonium, SOA, dust, salt and PPM (primary particulate matter other than the ones mentioned above) considering coagulation, nucleation and condensation processes, as well as dry and wet deposition. *The same unchanged land-use data from Globcover The land use data come from Globeover (Arino et al., 2008) with a base resolution of  $300 \times 300m^2$  which does not change have been used in different series of simulations. Dust emissions are taken into account inside the simulation domain based on the method proposed by (Marticorena and Bergametti, 1995);*

25  
30  
35 ~~therefore. Therefore, land use changes are not discussed in the current work.~~

The simulation domain has a  $0.44^{\circ}$  resolution (figure 1). The analysis is performed using the sub-domains presented in figure 1. The EUR sub-domain only concerns the European continent (including British Isles) and a land-sea mask was used to remove other parts of the domain. The MED sub-domain was produced using a land-sea mask as well, but this time it only contains the Mediterranean Sea. The MEDW and MEDE are the last two

sub-domains. They refer to the western and eastern Mediterranean areas respectively. It is important to bear in mind that these two sub-domains, contrary to the previous ones, contain both land and sea for the purpose of seeing the effects of enclosing lands on the Mediterranean area. Due to this set-up, the sum of MEDW and MEDE is different from MED.

## 5 2.3 Climate scenarios

Representative Concentrations Pathway scenarios designed for the fifth IPCC report (Meinshausen et al., 2011; van Vuuren et al., 2011b) are used. Simulations with three of these CMIP5 RCPs (Taylor et al., 2012; Young et al., 2013) are selected: RCP2.6, RCP4.5 and RCP8.5 respectively consider 2.6 W.m<sup>-2</sup>, 4.5 W.m<sup>-2</sup> and 8.5 W.m<sup>-2</sup> of radiative forcing at the end of the 21<sup>st</sup> century. It is worth noting that RCP8.5 includes by far the least mitigation policies compared to the other two scenarios, therefore resulting in a high radiative forcing at the end of the century, with a temperature increase comprised between 2.6 and 4.8°C for Europe according to EEA (European Environmental Agency<sup>1</sup>). On the contrary, RCP2.6 scenario considers a radiative forcing leading to a low range temperature increase by 2100 (between 0.3 and 1.7°C). This means, it has to consider ambitious greenhouse gas emissions reductions as well as carbon capture and storage. The RCP4.5 is an intermediate scenario with less stringent climate mitigation policies, which results in a temperature increase range comprised between the two extreme scenarios mentioned before.

## 2.4 Air pollutant Emissions

The biogenic emissions input is obtained from the Model of Emissions of Gases and Aerosols from Nature, v2.04 (MEGAN, Guenther et al., 2006). It is worth mentioning that the emission factors and the Leaf Area Indexes (LAI) provided by this model are the same for all simulations, but since many of the biogenic gases have a temperature-dependent nature, their emissions increase with higher temperatures. The MEGAN version used in CHIMERE takes into account six *biogenic volatile organic compound BVOC-emissions* (BVOC, isoprene,  $\alpha$ -pinene,  $\beta$ -pinene, humulene, limonene and ocimene) and their dependence on temperature, solar radiation and LAI.

Anthropogenic emissions are taken from the global emissions projections ECLIPSE-V4a (Amann et al., 2013; Klimont et al., 2013, 2017). This database covers the 2005-2050 time period with two main prospective pathways: the Current Legislation Emissions (CLE) and the Maximum Feasible Reduction (MFR) scenario. These two scenarios show the effects of minimum and maximum mitigation efforts that can be expected until 2050, therefore giving us a spectrum of possible influences of anthropogenic emissions in future scenarios. For both scenarios, the atmospheric emissions of the main anthropogenic pollutants are available as global maps at a resolution of 0.5°.

## 30 2.5 Simulations

The simulations used for this study are summarized in table 1. As the goal of this study is to separately investigate the drivers of the regional CTM that can affect the results of future simulations, different series of simulations

---

<sup>1</sup> <https://www.eea.europa.eu/data-and-maps/indicators/global-and-european-temperature-8/assessment>  
<https://www.eea.europa.eu/data-and-maps/indicators/global-and-european-temperature-4/assessment>



were performed, each one allowing the evaluation of the climate, anthropogenic emission and boundary condition impacts on PM concentrations.

As for the climate impact study, RCP2.6, RCP4.5 and RCP8.5 scenarios are used together with constant anthropogenic emissions and identical boundary conditions. These scenarios will be compared to the historic simulations.

In order to explore the changes induced by boundary conditions on the CTM outputs, RCP4.5 scenarios were conducted with two different sets of boundary conditions from the same global CTM and compared to historic simulations. The difference between these two is the fact that for one of them anthropogenic pollutants from the RCP emissions (emissions produced for RCP scenarios exclusively) are used as anthropogenic inputs (Szopa et al., 2006, 2013) while for the other one relies on ECLIPSE-V4a emissions are used as these inputs (Markakis et al., 2014).

The emission impact study uses the RCP4.5 climate forcing with CLE 2010, CLE 2050 and MFR 2050 anthropogenic emissions, each one being again compared with historic simulations.

As seen in table 1, we simulated different prospective periods in the different series of simulations. In the case of the climate impact studies, a 30 year long historical simulation and 70 yearlong future simulation have been used for each future scenario. As for the other simulations, 10 years of historical simulations (1996 to 2005) were compared with 10 years of future scenarios representing the 2050s (2045 to 2054). This latter period was chosen because it is centered on year 2050, for which CLE/MFR 2050 emissions are available. In the end, a 10 year long simulation is performed with all these factors being simultaneously changed. We have to mention that it would have been numerically too strenuous to perform 70 years of simulations for emission/boundary condition drivers, bearing in mind that the climatic impact simulations already mount up to 240 years of simulations.

A validation of our historic simulations is presented in Menut et al., (2012) and Kotlarski et al., (2014) for the meteorological parameters, while a validation of some chemical species is presented in this article in the supplementary materials (SI1) using an annual profile of 10 years of historic simulations from 1996 to 2005 (with 2010 constant anthropogenic emissions) compared to an annual profile of all available measurements in EEA and airbase stations between 2005 to 2015 (EEA, 2016).

### 3 Climate impacts

This section discusses the comparisons between the simulations presented as RCP2.6, RCP4.5 and RCP8.5 with historic simulations (simulations 1 to 4 in table 1). Since all the inputs except the meteorological fields remain identical in these 4 series of simulations, it is possible to disentangle the effects of climate alone on PM concentration in different RCPs. While the specific goal of the paper is to focus on only the PM changes in the Mediterranean area, a general overview at the European domain is also provided. Before exploring PM changes, temperature changes will be analyzed as they imply important effects on biogenic *volatile organic compounds* (VOC) emissions which are precursors for the production of secondary organic aerosols (SOA) and on gas/particle phase partitioning in simulations. The dependency of total PM<sub>10</sub> and its components on other meteorological parameters will also be discussed in detail in this section.

#### 3.1 Meteorological parameters

The RCP2.6 reaches its maximum radiative forcing ( $2.6 \text{ W.m}^{-2}$ ) in the 2040s (van Vuuren et al., 2011a), meaning that an increase in radiative forcing is seen in this scenario until this year, while afterwards we observe a continuous decrease. Therefore, in the bulk of RCP2.6 simulations over Europe, a temperature decrease appears from about 2050 onwards, followed by a new increase in temperature over the last 10 years simulated (figure 2). As for the RCP4.5 scenario, this maximum radiative forcing is reached in the 2070s (Thomson et al., 2011) while such a maximum is not reached for RCP8.5 until the end of the century. As a consequence, in RCP4.5 the temperature increase levels out after about 2070 while for RCP8.5 temperature keeps increasing over the whole period in RCP8.5. Those elements explain the larger similarities of RCP4.5 and RCP8.5 as well as their structural differences with RCP2.6. These time evolutions are similar for the European (EUR) and Mediterranean (MED) domains, albeit absolute temperatures are nearly 10 degrees warmer over the Mediterranean in average (SI2 fig.1 for 2D temperature fields).

In the following comparisons, we calculated annual average values over each sub-domain and for each parameter and time series corresponding to 30 years of historic simulations and 70 years of future scenarios are presented. The uncertainties associated with each value account for the spatial variability of each parameter.

2m Temperatures are generally higher for the Mediterranean area than for the European continent, however, the increase in temperature is more pronounced for EUR than for MED ( $+1.69$ ,  $+2.63$  and  $+3.62^\circ$  for EUR and  $+1.06$ ,  $+1.79$  and  $+2.91^\circ$  for MED for RCP2.6, RCP4.5 and RCP8.5 respectively). In the two other Mediterranean sub-domains temperature changes are higher for MEDE than for MEDW ( $+0.73$ ,  $+1.77$  and  $+2.88^\circ$  for MEDW and  $+1.25$ ,  $+2.05$  and  $+3.38^\circ$  for MEDE for RCP2.6, RCP4.5 and RCP8.5 respectively). While the European sub-domain shows a more important temperature increase in winter ( $+1.86$ ,  $+3.44$  and  $+4.42^\circ$  for RCP2.6, RCP4.5 and RCP8.5 respectively), the Mediterranean sub-domains show a larger increase in summer (for MED  $+1.40$ ,  $+2.06$  and  $+3.22^\circ$  for RCP2.6, RCP4.5 and RCP8.5 respectively). Maps of differences in temperature for the different scenarios and seasons are presented in the supplementary materials (SI2 fig.2). It should be noted that the average temperature change discussed here agree with the literature (Knutti and Sedláček, 2012; Vautard et al., 2014).

As seen also in figure 2, some of the parameters behave differently in the two sub-domains. For example, for the precipitation amount, an increase is simulated in EUR for RCP8.5 while a slight decrease is simulated for RCP2.6 after the 2050s, which makes precipitation stronger on the average in RCP8.5 than in RCP2.6 for the future period. In the MED area, a rather opposite behavior is noted: precipitation is stronger in RCP2.6 than in RCP8.5. On the contrary, there is a steady decrease in the number of *total rain duration of rain episodes* (sum of hours rained each year in each scenario, a threshold being fixed for each sub-domain using the average of 25<sup>th</sup> percentile for the whole duration of simulations). Therefore, rain events are expected to become more intense (Vautard et al., 2014). As for the *total duration of rain number of episodes*, the same result as EUR is obtained, except for RCP2.6 where an increase in the number of rainy hours is simulated. This increase corresponds to the western basin of the Mediterranean Sea. For the Eastern basin, all scenarios show a decrease in this parameter (SI3 fig1 for MEDW and MEDE).

The same type of comparison is performed for wind speed (10m wind), relative humidity and PBL height in figure 3 for EUR and MED. 2D maps for these parameters are presented in SI (SI3 fig.2). Relative humidity remains rather constant without significant trend over EUR and MED, with the exception of RCP2.6 for MED showing a significant decrease. Wind speed shows mostly non-significant trends, with the exception of RCP2.6 over the



MED domain. The results for wind speed changes were also seen in other studies (Dobrynin et al., 2012; de Winter et al., 2013). Finally, PBL height increases are significant for RCP8.5 over EUR and for RCP2.6 over MED.

These meteorological parameters have interactions between themselves, *showing correlations with each other since they are driven by circulation patterns*. The values of correlations between different meteorological parameters examined in this work are shown in SI (SI4). *The main points that should be taken into account about cross-correlations between meteorological parameters are the positive correlations between wind speed and boundary layer height, between wind speed and precipitation and also the anti-correlation of wind speed with relative humidity. All these correlations are above 0.6 as an absolute value.*

*Also it should be noted that if the GCM used to provide boundary conditions to the regional climate model was changed, the results seen here might be different* (Olesen et al., 2007); (Teichmann et al., 2013); (Kerkhoff et al., 2015); (Lacressonnière et al., 2016).

### 3.2 PM<sub>10</sub> concentrations

The simulated PM<sub>10</sub> concentrations are shown in figure 4 for the EUR and MED sub-domains. The difference between future (2031 - 2100) and historical (1976 – 2005) simulations are presented, with historical simulations being used as a reference. Compared with historical simulations, we observe a decrease in PM<sub>10</sub> for all scenarios, for both EUR (0±0.95%, -2.57±0.90 and -4.40±0.87% for RCP2.6, RCP4.5 and RCP8.5 respectively) and MED (0.9-1.77±0.09%, -5.65±0.11% and -8.10±0.12% for RCP2.6, RCP4.5 and RCP8.5 respectively). The uncertainties shown here and in the rest of the document refer to spatial one sigma intervals. The reasons for these changes in PM<sub>10</sub> will be discussed in the next sub-section, by analyzing individual PM components.

Alternatively, we also calculate linear trends for the future periods. A statistically significant positive trend is observed for RCP2.6 in the future, while it is significantly negative for RCP8.5, and non-significant for RCP4.5 (p-values are given in figure 4 for linear trend lines).

Evidently, PM<sub>10</sub> has a seasonal variation which is shown in figure 5, box plot graphs of PM<sub>10</sub> for all four seasons and all four sub-domains are shown in figure 6 (SI5 fig.1 for PM<sub>2.5</sub>). Interestingly, for EUR, the general PM<sub>10</sub> decrease noted above for the scenarios HIST/RCP2.6/RCP4.5/RCP8.5 is reversed in the summer period. We can see that elevated concentrations of PM<sub>10</sub> are simulated over the Mediterranean area for all seasons, reaching their maximum in spring (figure 6). Another interesting result in figure 5 is the increasing concentrations of PM<sub>10</sub> over Eastern Europe in summer, and over the Scandinavian and Eastern Europe both in summer and winter, in RCP4.5 and RCP8.5. *This increase for the summer period is due to BVOC emission increases, which will be discussed in section 3.4.2.* Yet, the same effect is not seen in RCP2.6 in any of these two seasons, highlighting therefore a structural difference between RCP2.6 and the other two scenarios. Such a result will be discussed in the light of PM<sub>10</sub> components and meteorological parameters covariance in section 3.4. A more general explanation for these structural differences can be found in the nature of the three scenarios, caused by the discriminated changes in meteorological parameters mentioned before (section 3.1).

### 3.3 Distribution of chemical PM<sub>10</sub> components

*Figure 7 shows the PM<sub>10</sub> concentrations and concentration changes for all different scenarios and subdomains, as well as the contributions of all the different PM<sub>10</sub> components* ~~Figure 7 shows the distribution of PM<sub>10</sub>~~

concentrations for all the sub domains and for all climate impact simulations (SI5 fig.2 for PM<sub>2.5</sub>). For each PM component, the relative differences between future scenarios and historical simulations are also reported. Major differences can be seen in the distribution of different PM components: for PM<sub>10</sub> the major contributors are salt and dust particles for the domains of our interest, while their contribution to PM<sub>2.5</sub> is lower. As a consequence, secondary inorganic (SO<sub>4</sub><sup>2-</sup>, NO<sub>3</sub><sup>-</sup> NH<sub>4</sub><sup>+</sup>) and carbonaceous aerosol (BC, POA, BSOA) are the major contributors to PM<sub>2.5</sub> (SI5 fig.2).

*Another interesting point from this study is that primary aerosol species such as primary organic aerosols (POA), anthropogenic secondary organic aerosols (ASOA), PPM and black carbon (BC) change only slightly under a future climate (when emissions are kept constant), both over Europe and the Mediterranean basin (a maximum of ±5% change for most of them). It should be noted here that this article deals with annual averages and not extreme events, regional climate changes can have strong effects on primary pollutant peaks as it is shown in (Vautard et al., 2018). The evolution of these species will be again discussed in section 4.2 which respect to anthropogenic emission changes are discussed.*

The most important changes in the future scenarios outputs (with respect to historic simulations) are found to be a decrease in nitrates (for EUR -11.2±0.8%, -21.4±0.7% and -28.8±0.8% for RCP2.6, RCP4.5 and RCP8.5 respectively) and an increase in organic aerosol concentration (for EUR +15.1±1.2%, +22.7±1.3% and +34.9±1.3% for RCP2.6, RCP4.5 and RCP8.5 respectively). A slight increase in sea salt particles (for EUR +0.8±0.05%, +1.4±0.06% and +0.2±0.06% for RCP2.6, RCP4.5 and RCP8.5 respectively) and in sulfates (for EUR +4.50±0.62%, +3.0±0.6% and +1.6±0.6% for RCP2.6, RCP4.5 and RCP8.5 respectively) is found as well. An interesting ~~fact~~ *result* about sulfates is that its concentration shows an increase in all scenarios compared with historical simulations, but this happens in a reverse order compared to temperature increase (i.e. RCP2.6>RCP4.5>RCP8.5). This phenomenon will be discussed later in this section. While a decrease in dust particles is observed for RCP4.5 and RCP8.5 (for EUR -5.6±2.4% and -5.3±2.2% respectively), these particles stay nearly constant in RCP2.6. A decrease is seen for the ammonium particles in all scenarios (for EUR -2.1±0.2%, -6.4±0.2% and -10.6±0.2% for RCP2.6, RCP4.5 and RCP8.5 respectively). The main driving force for the decrease in the concentration of total PM<sub>10</sub> (seen in figure 4) for RCP4.5 and RCP8.5 scenarios is the decrease of nitrates. The increase in the concentration of other species, especially BSOA, is compensated by the decrease in nitrate concentrations in the case of these two scenarios with a seasonal dependence. As for RCP2.6, in general, since the decrease in nitrates is the lowest among all future scenarios, the slight increase in BSOA, sulfates, dust and salt particles drives the increase in PM<sub>10</sub> concentrations (figure 7).

In the Mediterranean area, however, the predictions appears to be quite different: in general, the aerosol burden over the Mediterranean area (MED) is higher than that of the European area (average of 9.8µg.m<sup>-3</sup>, 9.5 µg.m<sup>-3</sup> and 9.4 µg.m<sup>-3</sup> for EUR compared to 17.4 µg.m<sup>-3</sup>, 16.7 µg.m<sup>-3</sup> and 16.6 µg.m<sup>-3</sup> for MED for RCP2.6, RCP4.5 and RCP8.5 respectively, figure 7). This is mainly due to sea salt (approximately 9 µg.m<sup>-3</sup> in all scenarios) and dust (nearly 4 µg.m<sup>-3</sup> in all scenarios). Note that the MED region by definition only contains grid cells over sea, which explains the large sea salt contribution. On the other hand, for this area, the concentrations of aerosols that depend on continental emissions are considerably lower (-25%, -33% and -32% for black carbon, POAs and ammoniums in MED compared to EUR for RCP4.5 in PM<sub>10</sub>). Nitrates also show a significantly lower concentration here (from 1.03 µg.m<sup>-3</sup> for EUR to 0.21 µg.m<sup>-3</sup>, 0.39 µg.m<sup>-3</sup> and 0.25 µg.m<sup>-3</sup> for RCP4.5 in PM<sub>10</sub> for MED, MEDW and

MEDE respectively). Sulfur emissions from maritime shipping lead to high sulfate concentrations over the Mediterranean area and especially over its eastern part (2.5  $\mu\text{g}\cdot\text{m}^{-3}$  in MEDE compared to 1.99  $\mu\text{g}\cdot\text{m}^{-3}$  in EUR for RCP4.5 in  $\text{PM}_{10}$ ). Finally, it is worth noting that the BSOA fraction is lower over the Mediterranean (-36%, -31% and -23% of BSOA compared to EUR in MED, MEDW and MEDE respectively). The relative changes in the Mediterranean domain compared to historic simulations are close to those for the European sub-domain for most species, albeit showing different intensities for most components. An interesting behavior is seen for BSOA, where the increase in the concentration of this component becomes more homogenous between the three future climatic scenarios in the Mediterranean basin with respect to continental Europe. The reason for this behavior is the origin of BSOA by advection over the Mediterranean sub-domain. Also, sulfates, while showing the same general behavior as in the European sub-domain, show lower changes between future and historic simulations over the Mediterranean Basin, resulting in a decrease in concentration in the RCP8.5 scenario.

~~While figure 8 shows that nitrates, sulfates and dusts show a high seasonal variability, sulfates are quite stable along the year. 2D concentration fields for nitrates, BSOA, sulfates and dust particles are shown in figure 9, for the season when each component shows its highest concentration. This corresponds to the summer period for sulfates and BSOA, and winter and spring for nitrates and dust.~~

### 3.4 Dependence of $\text{PM}_{10}$ components to meteorological parameters

In order to explain the evolution of PM components under future climate scenarios, they are correlated here to different meteorological parameters. The ones tested here are temperature, wind speed, precipitation, relative humidity, planetary boundary layer height and shortwave radiation. Because of the variations in the seasonality of the different PM components, the analysis of their dependencies upon meteorological parameters must be conducted for each season separately. Figure 8 shows the seasonal changes for nitrates, sulfates, BSOA and dust particles for all sub-domains. 2D concentration fields for nitrates, BSOA, sulfates and dust particles are shown in figure 9, for the season when each component shows its highest concentration (figure 8). The correlations for all seasons and for the five selected meteorological parameters with  $\text{PM}_{10}$  components are shown in figure 10 and figure 11 for EUR and MED sub-domains for different years. This makes up to 30 pairs of values for the historic period and 70 for the future period. Here, a Pearson correlation coefficient of greater than 0.6 is considered to account for a significant relationship. Correlations between the different meteorological parameters themselves are shown in SI6 fig.1 and SI6 fig.2. SI6 fig.3 shows the 3-dimensional correlations for the same species as figure 8, with the parameter that correlates best with them for selected seasons when their concentration is highest (i.e. nitrates, BSOA, sulfates and dust with temperature, temperature, relative humidity and PBL height for winter, summer, summer and spring respectively).

#### 3.4.1 Inorganic PM components

Particle nitrate concentrations appear to be strongly anti-correlated with temperature (figure 10). That is why, in most regions, they show a decrease in the future scenarios, mainly because of the higher temperature predicted in those scenarios, which might lead to a shift in the nitrate gas-aerosol partitioning towards the gaseous phase, and more volatilization of already formed nitrate aerosols. Especially during the winter season, anti-correlations are seen with wind speed, precipitation, boundary layer height, and a correlation with surface radiation. This fits into the picture of a switch from anti-cyclonic conditions - characterized by cold continental weather, clear skies and

high solar radiation, large vertical stability and low boundary layer height - to marine conditions. Continental conditions during this season indeed favor enhanced nitrate concentrations while marine conditions are related to lower concentrations.

5 The correlation coefficient between nitrates and temperature is the lowest in summer. If we stay again in our synoptic scale framework, hot summer days favor pollution build-up and accumulation, but decrease the partitioning in favor of the particle phase, so these effects compensate each other. In spring, relative humidity shows high correlation with nitrate along-side temperature because higher relative humidity favors nitrate partitioning into the particulate phase, in particular if it exceeds the deliquescence point of ammonium nitrate (RH > 50%). These hypotheses are supported by the correlations presented in SI4, showing the correlations between  
10 different meteorological parameters. For the MED region, a strong anti-correlation is still observed especially for winter and spring. However, the (anti)correlations with other meteorological parameters are less pronounced and not necessarily in the same direction as for EUR, because the distinction between continental and maritime conditions is not valid for this region. Overall, the analysis suggests that the major point to be taken into account for particle nitrates is their high anti-correlation with temperature (seen in figure 10). This confirms the results  
15 seen in Dawson et al. (2010), Jiménez-Guerrero et al. (2012) and Megaritis et al. (2014), who conducted sensitivity studies to individual meteorological parameters.

Sulfates are the second most abundant species in Europe after sea-salt, and the third most important species after sea-salt and dust over Mediterranean. They show an increase in all the future scenarios compared with historical simulations, but in the inverse order of the degree of severity projected temperature increase (i.e. the increase is  
20 strongest for RCP2.6 (5%) and less pronounced for RCP8.5 (1.2%) as seen in figure 7). The spatial distribution of this species varies quite strongly between RCP2.6 scenario and RCP4.5 and RCP8.5 scenarios (figure 9). For instance, in RCP2.6, sulfate increases with respect to historic in the SW part of the domain, while it decreases for the same area in RCP4.5 and RCP8.5. 2D correlation maps of sulfates with relative humidity show a strong correlation between these two parameters, especially for the Mediterranean and for the Atlantic, but also for the  
25 EUR sub-domain at winter and spring periods (SI6 fig.3). The positive relationship between sulfates and RH could be related to two different processes. First, during the winter half year, the major pathway of  $\text{SO}_4^{2-}$  formation from  $\text{SO}_2$  proceeds via aqueous chemistry, and large scale RH values are a tracer of sub grid scale cloud formation (Seinfeld and Pandis, 2016). On the contrary, during summer, over MED, gas phase  $\text{SO}_4^{2-}$  formation via  $\text{SO}_2$  oxidation by OH is dominant, and increased future RH levels, along with increasing temperatures, may lead to  
30 increased OH levels (Hedegaard et al., 2008). However for summer and fall, the PBL height shows more correlation with this pollutant, which is shown in figure 10. *Another parameter that shows a strong anti-correlation with sulfate concentrations is the wind speed in spring and winter periods, which can be explained by the correlation between PBL height and wind speed (figure 10).*

Ammonium concentrations show a steady decrease in all future scenarios and in all sub-domains. Correlations of  
35  $\text{NH}_4^+$  with meteorological variables appear to be a combination of those simulated for  $\text{SO}_4^{2-}$  and  $\text{NO}_3^-$  with whom  $\text{NH}_4^+$  forms inorganic aerosol. When looking at correlations, a relationship is seen for ammonium with relative humidity and wind speed, as well as a strong correlation with PBL height (figure 11).

### 3.4.2 Biogenic SOA

BSOA concentrations show a steady increase in future scenarios for the European sub-domain (figure 8 and 9). While the increase is seen in all sub-domains, their intensity and the scenario dependence are not the same. The formation of the biogenic organic aerosol fraction greatly depends on its precursors (isoprene and mono-terpenes), which emissions globally increase with temperature. In EUR, isoprene emissions increase by 20.3%, 31.1% and 52.5%, and mono-terpenes emissions by 15.7%, 24.0% and 38.1% respectively for RCP2.6, RCP4.5 and RCP8.5. There are many studies that investigated the changes of BVOC emissions in the future. However, not many of them took into account the climate effects only. For example, Lathièrè et al., (2005) used the full version of MEGAN (which includes CO<sub>2</sub> inhibition and the dependence of isoprene emissions upon ozone concentrations) to calculate a 27% and 51% increase in isoprene and mono-terpenes respectively in 2100 compared to 1990s with a scenario that is close to RCP4.5. This is rather similar for isoprene, but more than the double for mono-terpenes, as compared to our study. Pacifico et al. (2012) calculated a 69% increase in isoprene with a RCP8.5 scenario in 2100 compared to 2000s, Hantson et al. (2017) found 41%/25% ratio in 2100 compared to 2000 for isoprene/mono-terpenes respectively with RCP4.5. Langner et al. (2012) explored four different models for the European region (DEHM, EMEP, SILAM and MATCH) finding an isoprene increase in the range of 21%-26%, the increase in isoprene emissions in our simulations for the same period amounts to 21%. ~~These results are consistent with our simulations~~ *Our simulations are consistent with these results.* In general, isoprene and mono-terpenes emissions show high sensitivity to temperature, CO<sub>2</sub> inhibition (Arneeth et al., 2007 ; Young et al., 2009 ; Tai et al., 2013) and land-use changes, which makes their estimation for future scenarios highly uncertain.

This increase in precursors results in an increase in ~~production-concentration~~ of BSOAs (for EUR 15.1%, 22.7% and 34.9% for RCP2.6, RCP4.5 and RCP8.5 respectively), with similar effect predicted in other studies (Heald et al., 2008 ; Megaritis et al. 2014). *This increase in BSOA reflects the summer increase in the PM10 mentioned in section 3.2 as well.* However, higher temperatures induce higher evaporation for semi-volatile organic compounds, therefore, lower formation of organic aerosols is to be expected. This fact has been shown in Dawson et al. (2007), where without changing biogenic emissions, the temperature was increased by 5°C and a decrease of almost 20% was seen for SOA ~~production-concentration~~ over the eastern US. In the case of our simulations, the increase in biogenic precursors resulting to formation of biogenic SOA trumps the evaporation effect due to higher temperature, therefore an increase in biogenic SOA is seen. Figure 10 shows the correlation coefficient of BSOA with temperature for the EUR and MED sub-domains (SI6 fig.3 for spatial correlations). For the EUR sub-domain, statistically significant regressions are seen for all scenarios during summer for temperature and also for shortwave radiation. For the Mediterranean sub-domains, no mono-terpenes or isoprene is emitted from the sea surface, therefore the *concentration* of BSOA in the Mediterranean area is the result of transport from the continental area, which results in low correlations between temperature and BSOA for the Mediterranean sub-domains, while a high correlation is found between wind speed, relative humidity and PBL height. *The correlation of BSOA concentration in the Mediterranean with wind speed corresponds to the point raised above about the advective nature of BSOA concentrations in this sub-domain, while the high correlations of PBL height and RH with BSOA come from the correlation of wind speed with these two parameters.* Another fact that seems to be interesting to mention is the percentage of the ~~production-concentration~~ of BSOA forming from isoprene and mono-terpenes; year-long sensitivity tests (reduction of terpene and isoprene emissions each by 10% in two separate one year long simulations) for the year 1998 with historic climate show a distribution of 21% and 79% annually and 39% and 61% for the summer period for the ~~production-concentration~~ of BSOA forming from isoprene and mono-terpenes

respectively. The isoprene to mono-terpene emissions ratio is 2.9 annually and 6.1 for the summer. Similar results were seen in Aksoyoglu et al., (2017).

### 3.4.3 Dust and salt particles

5 Dust concentrations are predicted to be at their maximum during spring (figure 9). This phenomenon is also described in the literature for different regions (Werner et al., 2002 and Ginoux et al., 2004 exploring global simulations, Laurent et al., 2005 for China and Mongolia as well as Vincent et al., 2016 for the western Mediterranean). In our simulations, spatial maximum in dust particle concentrations normally occurs in the eastern Mediterranean (figure 8, 9 and 10). While a decrease is observed for RCP4.5 and RCP8.5 (figure 7, for EUR - 5.6% and -5.3% respectively), these particles do not exhibit any sensible variations in RCP2.6. Since dust emissions are not taken into account within the simulated domain in our simulations and boundary conditions are the same in these scenarios, changes in advection of dust aerosols is responsible for these variations. Therefore only advection plays a role, and cannot be captured by a local correlation analysis by definition.

15 The reason for the increase of dust particles in RCP2.6 scenarios for MEDE can be the different behavior that is seen in meteorological parameters for this sub-domain compared to the others. Its temperature decreases after 2040s in contrast to the other two scenarios, and therefore induces changes in relative humidity that are different from the other scenarios. The average of RH in RCP2.6 stays higher than the other scenarios, while it is lower than historic simulations for MEDE (SI3 fig.2). Up to now, we mostly have discussed climate change related modifications in PM sources, some sinks and transport. We also should take into account the effect of climate related changes effecting wet deposition. For RCP4.5 and RCP8.5, precipitation amount stay rather constant over the MEDW, while it increases in RCP2.6 (SI3 fig1). Precipitation duration decreases for RCP4.5 and 8.5 over this sub-domain, while it stays quite constant for RCP2.6 for MEDW. Thus both precipitation amount and duration is stronger in RCP2.6 than in RCP4.5 or RCP8.5. This could, in addition to different advection patterns, explain the lower MEDW dust concentrations in RCP2.6. However, for MEDE, precipitation amount increases as the number of rainy hours decreases, which shows strong, but non-frequent rain episodes, which would explain the increase in the dust concentrations in this sub-domain. *The impact of changing precipitation frequency/amount is the dominant factor in our simulations when it comes to dust concentration changes, since changes in precipitation patterns result in changes the wet deposition amounts.*

30 Salt particles show a high concentration in the Mediterranean area and also in the Atlantic Ocean, they are the most important PM species for the EUR and MED sub-domains. Sea salt emissions are very sensitive to wind speed, leading to a correlation between salt concentrations and wind speed (figure 11). Therefore, the small changes of salt concentration in future scenarios compared to historic simulations are mostly because of small wind speed changes in future climate.

### 3.4.4 Total PM<sub>10</sub> and PM<sub>2.5</sub> dependencies to meteorological components

35 Investigating the correlation between PM<sub>10</sub> and PM<sub>2.5</sub> and different meteorological parameters, reveals high spatial and temporal variability. For the EUR sub-domain, for both PM<sub>10</sub> and PM<sub>2.5</sub> the PBL height parameter shows the highest correlation (anti-correlation). For the Mediterranean region, among all the investigated meteorological parameters, PM<sub>10</sub> seems to be more affected by wind speed and PM<sub>2.5</sub> more by relative humidity. The analysis of the link between total PM<sub>10</sub> and total PM<sub>2.5</sub> with meteorological parameters (figure 11) is far less conclusive



compared to individual component analysis. As a generalized conclusion, PM<sub>10</sub> and PM<sub>2.5</sub> tend to follow the correlations of their largest contributor.

Finally, precipitation has been pointed out as a crucial, but difficult to model/predict parameter in both current and future ~~climate scenarios~~ meteorological/climatic simulations (Dale et al., 2001). In our study, the correlation of PM or PM components with the annual precipitation amount are generally weak (and sometimes even positive correlations are seen instead of expected anti-correlations). It has also been discussed, that total annual precipitation duration could be more impactful on the PM than the total amount (Dale et al., 2001). No correlation study has been performed with this parameter in this work, but the decreasing total precipitation duration in all scenarios could induce some increase in PM and its components.

#### 10 4 Impacts of boundary condition and anthropogenic emissions

While climate on its own can have important impacts on the future concentrations of different species, other drivers might have their specific effects on PM concentrations, which can either amplify or compensate the climate-related effects. This section explores the impacts of two other drivers: boundary conditions and anthropogenic emissions. Five sets of simulations have been used to achieve this goal, one where boundary conditions were changed together with climate inputs, and two where anthropogenic emissions were changed alongside climate inputs; these simulations have been compared with historic simulations as well as climate simulations with constant boundary condition and anthropogenic emissions. It should be noted that boundary conditions are taken from a global chemistry-transport model, therefore, changing the boundary conditions corresponds to changing the global climate and the global anthropogenic emissions at the same time. However, comparison between the regional climate change and the BC impact are for all compounds sufficiently strong (see below) to conclude on a major driver, very probably beyond uncertainty. At last, in an effort to give a more comprehensive view of what the accumulative effects of all drivers would be, the aforementioned simulations will be compared to a series of simulations where all drivers change at the same time. Keep in mind that the series of simulations where all drivers change at the same time show not only the accumulative impacts of all drivers, but also the non-linear relationships that exists between different drivers. In these simulations, RCP4.5 related climate and boundary conditions are compared to the historic ones, 2050 regional current legislations emissions (CLE) and maximum feasible reductions (MRF) are compared against 2010 emissions. In total, in this section, six series of simulations are presented (the numbers inside parenthesis refer to table 1): historic simulation (simulation #1), climate impact simulation (simulation #3), boundary condition impact (simulation #5), emission impact (simulations #6-7) and accumulative impacts (simulation #8)). For each series, 10-year long simulations are used, between 2046-2055 for future scenarios and 1996-2005 for historic simulations. In this way, the effect of boundary conditions, emissions and climate were calculated separately and compared with the overall changes of simulation #8. In figures 12 the impact of each driver is shown separately, in terms of relative change (SI8 for seasonal changes).

#### 4.1 Boundary conditions

Among PM<sub>10</sub> components, dust, nitrate, BSOA, ~~primary organic aerosols (POA)~~ and sulfates show the highest impact on future PM concentrations when boundary conditions change, the other species showing only minor changes or no change at all (figure 12). Among these species, dust particles show the strongest dependence on boundary conditions, that is an increase of +77±2%, 30±10.7%, 9±1.9% and 51±15.2% for EUR, MED, MEDW

and MEDE for future RCP4.5 with respect to historic boundary conditions. Their simulated dependence on regional climate was indeed much smaller ( $-9\pm 0.3\%$ ,  $-4\pm 1.4\%$ ,  $+3\pm 0.6\%$  and  $-4\pm 1.8\%$  for EUR, MED, MEDW and MEDE for the same period). It is important to bear in mind that the concentration of dusts in the European sub-domain in our simulations is on average  $0.8\mu\text{g}\cdot\text{m}^{-3}$  with an important spatial variability, concentrations dropping significantly as we go further north (figure 9). Therefore, the low relative changes simulated for the Mediterranean sub-domains have to be considered as the sign of a high absolute sensitivity to the scenario. The reason for the important changes in these species can be due to wind intensity and humidity in source regions and on the other hand land-use changes caused by climate change outside our domain. There are many uncertainties regarding the future changes of the dust concentrations (Tegen et al., 2004; Woodward et al., 2005). Changes in climate drivers such as precipitation, wind speed, regional moisture balance in source areas, and land use changes, either resulting from anthropogenic changes or climatic reasons can have important effects on dust emissions (Harrison et al., 2001). Projection of changes in land use resulting from both sources are highly uncertain, which results in strong uncertainties in projections of dust concentrations changes in future scenarios (Tegen et al., 2004; Evan et al., 2014). Also, the Mediterranean Sea is located at the southern borders of the domain used for this study, therefore, it should be noted that although the results of dust concentration changes seen in this study are consistent with the existing literature, the model might not be capable of consistently capturing the relationship between boundary condition changes and southern parts of the Mediterranean because of the position of the domain. This is not the case for the European sub-domain.

Nitrates and BSOA are more affected by climate change impact than by boundary condition input changes both for all sub-domains ( $-13\pm 2.6\%$ ,  $+14\pm 0.5\%$ ,  $-2\pm 0.8\%$  and  $+12\pm 0.7\%$  for RCP4.5 compared to  $-6\pm 2.5\%$ ,  $-26\pm 0.5\%$ ,  $-23\pm 0.9\%$  and  $-25\pm 0.7\%$  for boundary condition changes for nitrates and  $+12\pm 1.3\%$ ,  $+23\pm 1\%$ ,  $+24\pm 1\%$  and  $+12\pm 1.1\%$  for RCP4.5 compared to  $+6\pm 1.3\%$ ,  $+14\pm 1.3\%$ ,  $+7\pm 1\%$  and  $+14\pm 1.4\%$  for BSOA for EUR, MED, MEDW and MEDE respectively).

Contrary to the species discussed above, sulfates and POA are more sensitive to boundary conditions than to climate effects. Sulfates show a  $-2\pm 1.2\%$ ,  $(-7\pm 1.6\%$ ,  $-6\pm 0.9\%$  and  $-7\pm 1\%$  decrease. POA shows  $-9\pm 0.7\%$ ,  $-26\pm 0.1\%$ ,  $-11\pm 0.1\%$  and  $-19\pm 0.1\%$  of decrease related to boundary conditions for EUR, MED, MEDW and MEDE respectively, while climate effects on these particles were negligible smaller.

Ammonium shows a negligible change with regards to boundary conditions in EUR, and an increase in most Mediterranean sub-domain ( $+12\pm 0.3\%$ ,  $-1\pm 0.1\%$  and  $+12\pm 0.2\%$  for MED, MEDW and MEDE), while their change was mostly negative for climate impact results.

#### 4.2 Anthropogenic emissions

Changes in anthropogenic emissions in CLE and MFR 2050 inputs are compared to CLE 2010 emissions for different species in SI (SI7 fig.1). As expected, a decrease is seen for most species in CLE 2050 emissions, but to a higher extent in the MFR 2050 ones. A simple comparison between CLE and MFR 2050 emission scenarios is shown in figure 13. Bear in mind that this figure shows the effects of climate change (RCP4.5) and emission change at the same time, so does every value presented in this paragraph. For CLE simulations, sulfates show a decrease of  $-28\pm 1.2\%$ ,  $-29\pm 1.3\%$ ,  $-34\pm 0.9\%$  and  $-18\pm 0.9\%$  for EUR, MED, MEDW and MEDE respectively with respect to historic simulations, while for MFR scenarios, they show a  $-60\pm 1\%$ ,  $-51\pm 1.1\%$ ,  $-55\pm 0.8\%$  and  $-52\pm 0.7\%$

decrease for the same order of sub-domains. The reason for this decrease is the decrease in the emissions of SO<sub>2</sub> (SO<sub>2</sub> emissions reduction of -30%, -53%, -52% and -42% for CLE and -60%, -53%, -57% and -68% for MFR for the same order of sub-domains). Particle nitrates show a strong decrease with decrease of precursor emissions as well, presenting -48±2.5%, -32±0.4%, -36±0.8% and -28±0.6% for CLE and -79±2.2%, -61±0.4%, -74±0.8% and -77±0.5% for MFR for EUR, MED, MEDW and MEDE respectively (NO<sub>x</sub> emissions reduction of -60%, -38%, -48% and -30% for CLE and -84%, -38%, -76% and -76% for MFR for the same order of sub-domains). Ammonium shows the same behavior, showing -36±1%, -55±0.2%, -56±0.1% and -18±0.1% for CLE and -68±0.9%, -87±0.2%, -87±0.1% and -64±0.1% for MFR for EUR, MED, MEDW and MEDE respectively. Other components such as BC and POA show strong decrease since their concentrations depend directly on the amount of anthropogenic emissions. Interestingly, BSOA concentrations show a strong decrease related to changes in anthropogenic emissions (contrary to the increase for climate change alone). A -7±1.3%, -34±1.1%, -39±1.1% and +4±1.3% for CLE and -36±1.1%, -64±1%, -65±0.9% and -35±1.1% for MFR for EUR, MED, MEDW and MEDE is seen respectively for this species. The fact that the decrease in anthropogenic emissions overshadows the increase in BSOA when looking at climate and boundary condition effects is an important message to take away from these simulations. The exact mechanism of this effect is not clear, it could be due to the general decrease of seed aerosol in these scenarios modifying the gas/particle equilibrium for SVOC (semi volatile organic compounds) formed from mono-terpenes and isoprene oxidation. Changes in oxidant levels because of decrease in anthropogenic emissions and also a direct decrease in anthropogenic COVs are other reasons for this change (i.e. less OA mass available for oxidation products to condense on).

For the comparison of driver impacts (figure 12), only CLE 2050 simulations for emission impact scenarios are used since CLE 2050 emissions are used in the simulation where all drivers change (~~to be presented in section 4.3 later~~). Almost all species show strong dependence to emission changes, except dust and salt particles. Quantitative effects vary for the Mediterranean sub-domains: the effect of emission changes becomes less pronounced for species without maritime emission sources (such as NH<sub>4</sub><sup>+</sup>), while they stay high for species like POA, BC and SO<sub>4</sub><sup>2-</sup> which can be emitted by shipping lines.

### 4.3 Cumulative impacts

To provide a more complete view of the 2050's probable atmospheric composition (under the hypotheses of the scenario), the "all" scenario (Figures 12) shows the combined effects of all drivers changing at the same time. There are many uncertainties affecting future scenarios as it can be surmised; but with regard to drivers that are being explored here, this scenario shows what a more realistic future air composition might look like. As seen in figure 12, and with regard to total PM<sub>10</sub> and PM<sub>10</sub> components, the changes in emissions set the tone for the future, meaning that reduction in anthropogenic emissions, overshadows the climate and the boundary condition drivers for most of species, pointing out that mitigating air pollution with respect to air quality in the future depends greatly on the reduction of anthropogenic emissions.

For PM<sub>10</sub> and for the period of 2046-2055 with RCP4.5, the different drivers indicate a decrease of -15.6%, -6.7%, -10.5% and +4% for EUR, MED, MEDW and MEDE respectively mainly driven by anthropogenic emissions. Because of the boundary condition changes, PM increases of +5.3%, +6.8%, +1.2% and +15.1% for EUR, MED, MEDW and MEDE respectively are observed, mainly because of dust concentration increase. The climate impacts on PM<sub>10</sub> concentrations for the same period are -2.9%, -0.5%, +0.6% and -1.6% for EUR, MED, MEDW and

MEDE respectively. The total change for the period of 2046-2055 and RCP4.5 (meaning in simulations where all drivers change at the same time) a decrease is seen for all sub-domains for PM<sub>10</sub> (-11.8%, -1% and -9.2% for EUR, MED MEDW, and MEDE respectively) except for MEDE where an increase of 9.1% is seen. Thus, for most of the domains, the effect of emission reductions on PM<sub>10</sub> concentrations around 2050 is to a certain extent reduced by modifications of boundary condition and regional climate.

## 5 Conclusion/discussion

We investigated the effect of different drivers on total PM<sub>10</sub> and PM<sub>10</sub> components in future scenarios for different sub-domains. For this purpose, an exhaustive number of scenarios plus historic simulations were performed. The drivers that are taken into account include climate change, anthropogenic emissions and boundary condition changes. For each driver, simulations are compared against historic simulations and then the effect of a specific factor is calculated separately and compared to a scenario where all drivers change at the same time. This approach is taken since in the existing climate change literature, the effects of different drivers are taken into account either all at once (Lacressonnière et al., 2017), separately but for a single driver and for a short period of time (REF), separately but using sensitivity tests (Dawson et al., 2007; Megaritis et al., 2014), or in the best of cases, separately and for an acceptable period of time but for only one driver (Lemaire et al., 2016). The goal of this work was to explore multiple drivers separately for PM<sub>10</sub> and its components for a coherent and comparable set of future scenarios, therefore making climate change analysis more comprehensible and finding the drivers with the most impact on the PM<sub>10</sub> future concentration changes easier. *This work focuses on the Mediterranean area as well as the European area, since there have not been many studies focusing on the climate change drivers in the Mediterranean area, although this region might be highly sensitive to climate change, therefore directly responding to one of the major goals of the ChArMEx project, in the context of which the study was performed.*

Future scenarios that we performed show that in the 2050s, in the case of an RCP4.5 scenario and CLE 2050 emissions, a general increase in temperature and a decrease of PM<sub>10</sub> total average concentration is seen both in the European sub-domain (-12%) and the Mediterranean one (-1%). The diminution of PM<sub>10</sub> has also been reported in the literature in other studies for the European sub-domain (e.g. Markakis et al., 2014; Lacressonnière et al., 2014; Lacressonnière et al., 2017), the intensity of this decrease changes with the period that was taken into account and also the inputs used. The PM changes are far from uniform for different seasons: a maximum change of -24% for spring and +9% for summer for the European area. For the Mediterranean area, a maximum change of +25% for winter and -19% for spring are observed. These values seem to indicate different behaviors observed in the Mediterranean compared to the European area. The reasons for these changes were explored driver by driver and the effect of each driver was estimated.

Regional climate change alone, results in a decrease of PM<sub>10</sub> in RCP4.5 and RCP8.5, while RCP2.6 shows an increase for PM<sub>10</sub>. Among the PM<sub>10</sub> components, BSOA and nitrate particles show the most sensitivity to climate change. It appears that, when exploring the impacts of climate change, nitrate decrease governs the decrease of PM<sub>10</sub> and PM<sub>2.5</sub> in RCP4.5 and RCP8.5, however, in RCP2.6, the increase in dust, salt and BSOA particles outweighs the decrease in nitrates. Seeking for reasons for the changes seen for PM components, correlations of meteorological parameters to individual components were investigated. Nitrates show a strong dependence (anti-correlation) to temperature, especially during winter, when a correlation to shortwave radiation and anti-correlations to wind speed and PBL height are also observed. These relationships seem to suggest a switch to

slightly more “marine-type” conditions for a future climate during winter (supported by correlations calculated between different meteorological parameters). BSOA also shows a strong correlation to temperature (and therefore shows a strong increase in future scenarios) in all sub-domains, resulting from an increase in BVOC emissions because of higher temperatures. Sulfate particles are seen to have a correlation with relative humidity and PBL

height, the extent of this correlation changes depending on the sub-domain explored. The relationship of  $\text{SO}_4^{2-}$  with RH can be related to either production of this aerosol from  $\text{SO}_2$  or formation of gas phase  $\text{SO}_4^{2-}$  from oxidation of  $\text{SO}_2$  by OH, the domination of these processes depend on the sub-domain and the season in which they are studied. Because of the general RH pattern differences between RCP2.6 compared to RCP4.5 and RCP8.5 sulfates show a particular 2D structure in RCP2.6, different from the general pattern seen for RCP4.5 and RCP8.5.

Relationship of ammonium aerosols with meteorological conditions is a combination of those of  $\text{SO}_4^{2-}$  and  $\text{NO}_3^-$ . Salt particles show a clear correlation to wind speed, while dust concentrations present a weak relationship with the tested meteorological parameters since their changes are related to advection from outside the model domain and therefore not captured by local correlation analysis.

~~while dust concentrations present a weak relationship with the tested meteorological parameters since their changes are related to advection and therefore not captured by local correlation analysis.~~

Future changes in boundary conditions (depicting long range transport from outside of Europe) greatly affect dust concentrations, especially over the Mediterranean area ~~(see below)~~. On the contrary~~In contrast~~, they have only limited impact on sulfate, nitrate ammonium and OA concentrations. It is important to keep in mind that, because of the location position of the EUROCORDEX domain and the fact that the southern part of the Mediterranean is located at the southern borders of the domain, the model might not be able to capture the effects of global climate change and dust activity in a fully consistent way, although the results show an important increase in dust concentrations because of long range transport.

Emission changes show the largest effect on all non-sea salt and non-dust  $\text{PM}_{10}/\text{PM}_{2.5}$  components ~~except salt and dust particles~~. One of the most interesting cases that was encountered in emission change scenarios, was the decrease in BSOA because of anthropogenic emission changes. This is tentatively attributed to changes in seed aerosol and the changes in oxidant levels because of decrease in anthropogenic emissions and also a direct decrease in anthropogenic COVs. Same impact was seen in a study in preparation by Ciarelli et al. (2019) with also important intensity, when looking at an ensemble of simulations in the framework of the EURODELTA multi-model experiment. (Sartelet et al. (-2012) see an important change in SOA concentration in their simulation as well when changing the anthropogenic emissions. However, the exact mechanism of this relationship still needs further investigation. Compared to the other two drivers, the effects shown by the anthropogenic emission reduction are undeniably more important for most species. This gives us the take-away message that, according to our study, anthropogenic emission reduction policies (or lack thereof) will have a strong impact on the concentrations of PM seen in the future and also the fact that its impact will be more significant than that of regional climate and long-range transport.

Another point that has been raised in this article is the differences between the European sub-domain and the Mediterranean Sea on one hand and between western and eastern Mediterranean on the other hand. The behavior of these sub-domains differ when they are exposed to climate change. Meteorological changes in the domain show increasing temperatures, increasing PBL height and decreasing humidity. Winters and springs seem to become

drier and the other two seasons wetter when regarding to precipitation amount, while rain episodes become more intense and shorter in most cases (except RCP2.6). The concentration of PM<sub>10</sub> in general is higher in the Mediterranean due to higher concentrations of dust and salt particles, while its annually averaged changes in the future stay quite similar to what was seen for the European sub-domain. Seasonally, in the Mediterranean a maximum of PM<sub>10</sub> concentrations is seen for spring when dust episodes are more common, contrary to the European sub-domain (maximum at winter for EUR). Emission reduction policies will reduce the concentrations of anthropogenic species in the basin by almost the same percentage as the European sub-domain as shown in this work (for example, for sulfates, anthropogenic emissions reduction results in -29% and -30% for EUR and MED respectively for CLE2050 emissions). While this fact shows that emission reduction policies will reduce the PM<sub>2,5</sub> and lower aerosol fraction pollution, they will not lessen the Mediterranean PM<sub>10</sub> burden by much, since in this area the PM<sub>10</sub> concentration ~~revolves around~~ is dominated by dust and salt concentrations. For the dust concentrations, our scenarios show an increased concentration in the Mediterranean due to long-range transport, especially in the eastern basin. However, changing land-use in the northern African area will affect the concentration of dust in the Mediterranean, but the extent and even the direction of this change is uncertain, literature suggests that the dust concentrations due to land-use changes in future scenarios can decrease or increase depending on the scenario that has been taken into account (Tegen et al., 2004; Woodward et al., 2005). ~~The salt particle concentration changes are also uncertain, literature have shown that there seems to be a correlation between rising temperature, rising sea levels and salinity (Rohling and Bryden, 1992; Tsimplis and Rixen, 2002), but the results of model studies of sea salinity are highly uncertain (Meier et al., 2006).~~

While exploring the three aforementioned drivers is important to understand the behavior of PM and PM components in the future, there are other aspects that need exploring as well in future studies. Other additions to this study would be for example to explore the effects of land use changes, OA simulation scheme changes and BSOA trend changes related to ASOA changes. Land-use changes, apart from effects on dust emission mentioned above, can affect the emissions of BVOC, which can change the future concentrations of BSOA, they also can change the deposition of different species in future scenarios. Additions to inorganic aerosol formation in future scenarios (such as different salt formation schemes, dimethyl sulfide formation from sea surface...) would be useful additions to the field of climate change study as well. The driver by driver approach can be taken with each of these parameters in order to explore their effects on future changes of PM concentrations.

### Author's contributions

A.Ch., A.Co. and M.B. designed the experiment. A.Co performed the simulations and A.Ch carried out the post-processing of aforementioned simulations. Article reduction was performed by A.Ch, and all authors contributed to the text, interpretation of the results and review of the article.

### **Acknowledgements**

This research has received funding from the French National Research Agency (ANR) projects SAF-MED (grant ANR-15 12-BS06-0013). This work is part of the ChArMEx project supported by ADEME, CEA, CNRS-INSU and Météo-France through the multidisciplinary program MISTRALS (Mediterranean Integrated Studies at Regional And Local Scales). The work presented here received support from the French Ministry in charge of ecology. This work was performed using HPC resources from GENCI-CCRT (Grant 2017- t2015017232). R.



Vautard is acknowledged for providing the WRF/IPSL-CM5-MR Cordex simulations, and D. Hauglustaine and S. Szopa are acknowledged for providing the INCA simulations. Z. Klimont is acknowledged for providing ECLIPSE-v4 emission projections. The thesis work of Arineh Cholakian is supported by ADEME, INERIS (with the support of the French Ministry in charge of Ecology), and via the ANR SAF-MED project. [Giancarlo Ciarelli thanks ADEME and the Swiss National Science Foundation \(grant no. P2EZP2\\_175166\).](#)

## References

- Aksoyoglu, S., Ciarelli, G., El-Haddad, I., Baltensperger, U. and Prévôt, A. S. H.: Secondary inorganic aerosols in Europe: sources and the significant influence of biogenic VOC emissions, especially on ammonium nitrate, *Atmos. Chem. Phys.*, 17(12), 7757–7773, doi:10.5194/acp-17-7757-2017, 2017.
- 10 Amann, M., Klimont, Z. and Wagner, F.: Regional and Global Emissions of Air Pollutants: Recent Trends and Future Scenarios, *Annu. Rev. Environ. Resour.*, 38(1), 31–55, doi:10.1146/annurev-environ-052912-173303, 2013.
- Anderson, J. O., Thundiyil, J. G. and Stolbach, A.: Clearing the Air: A Review of the Effects of Particulate Matter Air Pollution on Human Health, *J. Med. Toxicol.*, 8(2), 166–175, doi:10.1007/s13181-011-0203-1, 2012.
- 15 Arino, O., Bicheron, P., Achard, F., Latham, J., Witt, R. and Weber, J.: Globcover: The most detailed protrait of Earth, *Eur. Sp. Agency Bull.*, 36, 24–31, 2008.
- Arnth, A., Miller, P. A., Scholze, M., Hickler, T., Schurgers, G., Smith, B. and Prentice, I. C.: CO<sub>2</sub> inhibition of global terrestrial isoprene emissions: Potential implications for atmospheric chemistry, *Geophys. Res. Lett.*, 34(18), L18813, doi:10.1029/2007GL030615, 2007.
- 20 Bessagnet, B., Menut, L., Curci, G., Hodzic, A., Guillaume, B., Liousse, C., Moukhtar, S., Pun, B., Seigneur, C. and Schulz, M.: Regional modeling of carbonaceous aerosols over Europe—focus on secondary organic aerosols, *J. Atmos. Chem.*, 61(3), 175–202, doi:10.1007/s10874-009-9129-2, 2008.
- Carvalho, A., Monteiro, A., Solman, S., Miranda, A. I. and C., B.: Climate-driven changes in air quality over Europe by the end of the 21st century, with special reference to Portugal, *Environ. Sci. Policy*, 13(6), 445–458, doi:10.1016/J.ENVSCI.2010.05.001, 2010.
- 25 Cholakian, A., Beekmann, M., Colette, A., Coll, I., Siour, G., Sciare, J., Marchand, N., Couvidat, F., Pey, J., Gros, V., Sauvage, S., Michoud, V., Sellegri, K., Colomb, A., Sartelet, K., Langley DeWitt, H., Elser, M., Prévôt, A. S. H., Szidat, S. and Dulac, F.: Simulation of fine organic aerosols in the western Mediterranean area during the ChArMEx 2013 summer campaign, *Atmos. Chem. Phys.*, 18(10), 7287–7312, doi:10.5194/acp-18-7287-2018, 2018.
- 30 Colette, A., Bessagnet, B., Vautard, R., Szopa, S., Rao, S., Schucht, S., Klimont, Z., Menut, L., Clain, G., Meleux, F., Curci, G. and Rouïl, L.: European atmosphere in 2050, a regional air quality and climate perspective under CMIP5 scenarios, *Atmos. Chem. Phys.*, 13(15), 7451–7471, doi:10.5194/acp-13-7451-2013, 2013.
- Colette, A., Andersson, C., Baklanov, A., Bessagnet, B., Brandt, J., Christensen, J. H., Doherty, R., Engardt, M., Geels, C., Giannakopoulos, C., Hedegaard, G. B., Katragkou, E., Langner, J., Lei, H., Manders, A., Melas, D.,
- 35

- Meleux, F., Rouil, L., Sofiev, M., Soares, J., Stevenson, D. S., Tombrou-Tzella, M., Varotsos, K. V and Young, P.: Is the ozone climate penalty robust in Europe?, *Environ. Res. Lett.*, 10(8), 084015, doi:10.1088/1748-9326/10/8/084015, 2015a.
- 5 Colette, A., Andersson, C., Baklanov, A., Bessagnet, B., Brandt, J., Christensen, J. H., Doherty, R., Engardt, M., Geels, C., Giannakopoulos, C., Hedegaard, G. B., Katragkou, E., Langner, J., Lei, H., Manders, A., Melas, D., Meleux, F., Rouil, L., Sofiev, M., Soares, J., Stevenson, D. S., Tombrou-Tzella, M., Varotsos, K. V and Young, P.: Is the ozone climate penalty robust in Europe?, *Environ. Res. Lett.*, 10(8), 084015, doi:10.1088/1748-9326/10/8/084015, 2015b.
- 10 Dale, V. H., Joyce, L. A., McNulty, S., Neilson, R. P., Ayres, M. P., Flannigan, M. D., Hanson, P. J., Irland, L. C., Lugo, A. E., Peterson, C. J., Simberloff, D., Swanson, F. J., Stocks, B. J. and Wotton, B. M.: Climate Change and Forest Disturbances: Climate change can affect forests by altering the frequency, intensity, duration, and timing of fire, drought, introduced species, insect and pathogen outbreaks, hurricanes, windstorms, ice storms, or landslides, *Bioscience*, 51(9), 723–734, doi:10.1641/0006-3568(2001)051[0723:ccafd]2.0.co;2, 2001.
- 15 Dawson, J. P., Adams, P. J. and Pandis, S. N.: Sensitivity of PM<sub>2.5</sub> to climate in the Eastern US: a modeling case study, *Atmos. Chem. Phys.*, 7(16), 4295–4309, doi:10.5194/acp-7-4295-2007, 2007.
- Dobrynin, M., Murawsky, J. and Yang, S.: Evolution of the global wind wave climate in CMIP5 experiments, *Geophys. Res. Lett.*, 39(18), doi:10.1029/2012GL052843, 2012.
- 20 Dufresne, J.-L., Foujols, M.-A., Denvil, S., Caubel, A., Marti, O., Aumont, O., Balkanski, Y., Bekki, S., Bellenger, H., Benschila, R., Bony, S., Bopp, L., Braconnot, P., Brockmann, P., Cadule, P., Cheruy, F., Codron, F., Cozic, A., Cugnet, D., de Noblet, N., Duvel, J.-P., Ethé, C., Fairhead, L., Fichet, T., Flavoni, S., Friedlingstein, P., Grandpeix, J.-Y., Guez, L., Guilyardi, E., Hauglustaine, D., Hourdin, F., Idelkadi, A., Ghattas, J., Joussaume, S., Kageyama, M., Krinner, G., Labetoulle, S., Lahellec, A., Lefebvre, M.-P., Lefebvre, F., Levy, C., Li, Z. X., Lloyd, J., Lott, F., Madec, G., Mancip, M., Marchand, M., Masson, S., Meurdesoif, Y., Mignot, J., 25 Musat, I., Parouty, S., Polcher, J., Rio, C., Schulz, M., Swingedouw, D., Szopa, S., Talandier, C., Terray, P., Viovy, N. and Vuichard, N.: Climate change projections using the IPSL-CM5 Earth System Model: from CMIP3 to CMIP5, *Clim. Dyn.*, 40(9–10), 2123–2165, doi:10.1007/s00382-012-1636-1, 2013.
- EEA: EEA: Air pollution and climate change policies in Europe: exploring linkages and the added value of an integrated approach — European Environment Agency, Copenhagen. [online] Available from: 30 [https://www.eea.europa.eu/publications/technical\\_report\\_2004\\_5](https://www.eea.europa.eu/publications/technical_report_2004_5) (Accessed 7 December 2017), 2004.
- EEA: Air quality in Europe - 2016. [online] Available from: <https://www.eea.europa.eu/publications/air-quality-in-europe-2016> (Accessed 11 December 2017), 2016.
- Evan, A. T., Flamant, C., Fiedler, S. and Doherty, O.: An analysis of aeolian dust in climate models, *Geophys. Res. Lett.*, 41(16), 5996–6001, doi:10.1002/2014GL060545, 2014.
- 35 Fichet, T. and Maqueda, M. A. M.: Modelling the influence of snow accumulation and snow-ice formation on the seasonal cycle of the Antarctic sea-ice cover, *Clim. Dyn.*, 15(4), 251–268, doi:10.1007/s003820050280,

1999.

- 5 Fiore, A. M., Naik, V., Spracklen, D. V., Steiner, A., Unger, N., Prather, M., Bergmann, D., Cameron-Smith, P. J., Cionni, I., Collins, W. J., Dalsøren, S., Eyring, V., Folberth, G. A., Ginoux, P., Horowitz, L. W., Josse, B., Lamarque, J.-F., MacKenzie, I. A., Nagashima, T., O'Connor, F. M., Righi, M., Rumbold, S. T., Shindell, D. T., Skeie, R. B., Sudo, K., Szopa, S., Takemura, T. and Zeng, G.: Global air quality and climate, *Chem. Soc. Rev.*, 41(19), 6663, doi:10.1039/c2cs35095e, 2012.
- Fortems-Cheiney, A., Foret, G., Siour, G., Vautard, R., Szopa, S., Dufour, G., Colette, A., Lacrosonniere, G. and Beekmann, M.: A 3 °C global RCP8.5 emission trajectory cancels benefits of European emission reductions on air quality., *Nat. Commun.*, 8(1), 89, doi:10.1038/s41467-017-00075-9, 2017.
- 10 Fountoukis, C. and Nenes, A.: ISORROPIA II: a computationally efficient thermodynamic equilibrium model for K–H<sub>2</sub>O aerosols, *Atmos. Chem. Phys. Atmos. Chem. Phys.*, 7, 4639–4659 [online] Available from: [www.atmos-chem-phys.net/7/4639/2007/](http://www.atmos-chem-phys.net/7/4639/2007/) (Accessed 11 December 2017), 2007.
- Ginoux, P., Prospero, J. M., Torres, O. and Chin, M.: Long-term simulation of global dust distribution with the GOCART model: correlation with North Atlantic Oscillation, *Environ. Model. Softw.*, 19, 113–128, doi:10.1016/S1364-8152(03)00114-2, 2004.
- 15 Giorgi, F.: Climate change hot-spots, *Geophys. Res. Lett.*, 33(8), 1–4, doi:10.1029/2006GL025734, 2006.
- Grantz, D. ., Garner, J. H. . and Johnson, D. .: Ecological effects of particulate matter, *Environ. Int.*, 29(2–3), 213–239, doi:10.1016/S0160-4120(02)00181-2, 2003.
- Guenther, A., Karl, T., Harley, P., C.Wiedinmyer, Palmer, P. I. and Geron<sup>3</sup>, C.: Estimates of global terrestrial isoprene emissions using MEGAN (Model of Emissions of Gases and Aerosols from Nature), *Atmos. Chem. Phys.*, 6, 3181–3210, doi:10.1016/j.cognition.2008.05.007, 2006.
- 20 Hantson, S., Knorr, W., Schurgers, G., Pugh, T. A. M. and Arneth, A.: Global isoprene and monoterpene emissions under changing climate, vegetation, CO<sub>2</sub> and land use, , doi:10.1016/j.atmosenv.2017.02.010, 2017.
- Harrison, S. P., Kohfeld, K. E., Roelandt, C. and Claquin, T.: The role of dust in climate changes today, at the last glacial maximum and in the future, *Earth-Science Rev.*, 54(1–3), 43–80, doi:10.1016/S0012-8252(01)00041-1, 2001.
- 25 Hauglustaine, D. A., Balkanski, Y. and Schulz, M.: A global model simulation of present and future nitrate aerosols and their direct radiative forcing of climate, *Atmos. Chem. Phys.*, 14(20), 11031–11063, doi:10.5194/acp-14-11031-2014, 2014.
- 30 Heald, C. L., Henze, D. K., Horowitz, L. W., Feddema, J., Lamarque, J.-F., Guenther, A., Hess, P. G., Vitt, F., Seinfeld, J. H., Goldstein, A. H. and Fung, I.: Predicted change in global secondary organic aerosol concentrations in response to future climate, emissions, and land use change, *J. Geophys. Res. Atmos.*, 113(D5), n/a-n/a, doi:10.1029/2007JD009092, 2008.
- 35 Hedegaard, G. B., Brandt, J., Christensen, J. H., Frohn, L. M., Geels, C., Hansen, K. M. and Stendel, M.: Impacts of Climate Change on Air Pollution Levels in the Northern Hemisphere with Special Focus on Europe

- and the Arctic, in *Air Pollution Modeling and Its Application XIX*, pp. 568–576, Springer Netherlands, Dordrecht., 2008.
- Hedegaard, G. B., Christensen, J. H. and Brandt, J.: Geoscientific Instrumentation Methods and Data Systems The relative importance of impacts from climate change vs . emissions change on air pollution levels in the 21st century, *Atmos . Chem . Phys*, 13, 3569–3585, doi:10.5194/acpd-12-24501-2012, 2013.
- Hodzic, A. and Jimenez, J. L.: Modeling anthropogenically controlled secondary organic aerosols in a megacity: a simplified framework for global and climate models, *Geosci. Model Dev.*, 4(4), 901–917, doi:10.5194/gmd-4-901-2011, 2011.
- Hourdin, F., Musat, I., Bony, S., Braconnot, P., Codron, F., Dufresne, J.-L., Fairhead, L., Filiberti, M.-A., Friedlingstein, P., Grandpeix, J.-Y., Krinner, G., LeVan, P., Li, Z.-X. and Lott, F.: The LMDZ4 general circulation model: climate performance and sensitivity to parametrized physics with emphasis on tropical convection, *Clim. Dyn.*, 27(7–8), 787–813, doi:10.1007/s00382-006-0158-0, 2006.
- Im, U., Brandt, J., Geels, C., Hansen, K. M., Christensen, J. H., Andersen, M. S., Solazzo, E., Kioutsioukis, I., Alyuz, U., Balzarini, A., Baro, R., Bellasio, R., Bianconi, R., Bieser, J., Colette, A., Curci, G., Farrow, A., Flemming, J., Fraser, A., Jimenez-Guerrero, P., Kitwiroon, N., Liang, C.-K., Nopmongcol, U., Pirovano, G., Pozzoli, L., Prank, M., Rose, R., Sokhi, R., Tuccella, P., Unal, A., Vivanco, M. G., West, J., Yarwood, G., Hogrefe, C. and Galmarini, S.: Assessment and economic valuation of air pollution impacts on human health over Europe and the United States as calculated by a multi-model ensemble in the framework of AQMEII3, *Atmos. Chem. Phys.*, 18(8), 5967–5989, doi:10.5194/acp-18-5967-2018, 2018.
- Jacob, D.: IMPACT2C – An introduction, *Clim. Serv.*, 7, 1–2, doi:10.1016/J.CLISER.2017.07.006, 2017.
- Jacob, D., Petersen, J., Eggert, B., Alias, A., Christensen, O. B., Bouwer, L. M., Braun, A., Colette, A., Déqué, M., Georgievski, G., Georgopoulou, E., Gobiet, A., Menut, L., Nikulin, G., Haensler, A., Hempelmann, N., Jones, C., Keuler, K., Kovats, S., Kröner, N., Kotlarski, S., Kriegsmann, A., Martin, E., van Meijgaard, E., Moseley, C., Pfeifer, S., Preuschmann, S., Radermacher, C., Radtke, K., Rechid, D., Rounsevell, M., Samuelsson, P., Somot, S., Soussana, J.-F., Teichmann, C., Valentini, R., Vautard, R., Weber, B. and Yiou, P.: EURO-CORDEX: new high-resolution climate change projections for European impact research, *Reg. Environ. Chang.*, 14(2), 563–578, doi:10.1007/s10113-013-0499-2, 2014.
- Jacob, D. J. and Winner, D. A.: Effect of Climate Change on Air Quality, *Atmos. Environ.*, 43(1), 51–63, doi:10.1016/j.atmosenv.2008.09.051, 2009.
- Jiménez-Guerrero, P., Montávez, J. P., Gómez-Navarro, J. J., Jerez, S. and Lorente-Plazas, R.: Impacts of climate change on ground level gas-phase pollutants and aerosols in the Iberian Peninsula for the late XXI century, *Atmos. Environ.*, 55, 483–495, doi:10.1016/j.atmosenv.2012.02.048, 2012.
- Juda-Rezler, K., Reizer, M., Huszar, P., Krüger, B., Zanis, P., Syrakov, D., Katragkou, E., Trapp, W., Melas, D., Chervenkov, H., Tegoulas, I. and Halenka, T.: Modelling the effects of climate change on air quality over Central and Eastern Europe: concept, evaluation and projections, *Clim. Res.*, 53(3), 179–203, doi:10.3354/cr01072, 2012.

- Kampa, M. and Castanas, E.: Human health effects of air pollution, *Environ. Pollut.*, 151(2), 362–367, doi:10.1016/J.ENVPOL.2007.06.012, 2008.
- Katragkou, E., García-Díez, M., Vautard, R., Sobolowski, S., Zanis, P., Alexandri, G., Cardoso, R. M., Colette, A., Fernandez, J., Gobiet, A., Goergen, K., Karacostas, T., Knist, S., Mayer, S., Soares, P. M. M., Pytharoulis, I., Tegoulis, I., Tsikerdekis, A. and Jacob, D.: Regional climate hindcast simulations within EURO-CORDEX: evaluation of a WRF multi-physics ensemble, *Atmos. Chem. Phys.*, 8(3), 603–618, doi:10.5194/gmd-8-603-2015, 2015.
- Kerkhoff, C., Künsch, H. R., Schär, C., Kerkhoff, C., Künsch, H. R. and Schär, C.: A Bayesian Hierarchical Model for Heterogeneous RCM–GCM Multimodel Ensembles\*, *J. Clim.*, 28(15), 6249–6266, doi:10.1175/JCLI-D-14-00606.1, 2015.
- 10 Kinney, P. L.: Climate Change, Air Quality, and Human Health, *Am. J. Prev. Med.*, 35(5), 459–467, doi:10.1016/j.amepre.2008.08.025, 2008.
- Klimont, Z., Smith, S. J. and Cofala, J.: The last decade of global anthropogenic sulfur dioxide: 2000–2011 emissions, *Environ. Res. Lett.*, 8(1), 014003, doi:10.1088/1748-9326/8/1/014003, 2013.
- Klimont, Z., Kupiainen, K., Heyes, C., Purohit, P., Cofala, J., Rafaj, P., Borken-Kleefeld, J. and Schöpp, W.: Global anthropogenic emissions of particulate matter including black carbon, *Atmos. Chem. Phys.*, 17(14), 8681–8723 [online] Available from: <https://www.atmos-chem-phys.net/17/8681/2017/> (Accessed 23 May 2017), 2017.
- 15 Knutti, R. and Sedláček, J.: Robustness and uncertainties in the new CMIP5 climate model projections, *Nat. Clim. Chang.*, 3, doi:10.1038/NCLIMATE1716, 2012.
- 20 Kotlarski, S., Keuler, K., Christensen, O. B., Colette, A., Déqué, M., Gobiet, A., Goergen, K., Jacob, D., Lüthi, D., Van Meijgaard, E., Nikulin, G., Schär, C., Teichmann, C., Vautard, R., Warrach-Sagi, K. and Wulfmeyer, V.: Regional climate modeling on European scales: a joint standard evaluation of the EURO-CORDEX RCM ensemble, *Geosci. Model Dev.*, 7, 1297–1333, doi:10.5194/gmd-7-1297-2014, 2014.
- Krinner, G., Viovy, N., de Noblet-Ducoudré, N., Ogée, J., Polcher, J., Friedlingstein, P., Ciais, P., Sitch, S. and Prentice, I. C.: A dynamic global vegetation model for studies of the coupled atmosphere-biosphere system, *Global Biogeochem. Cycles*, 19(1), doi:10.1029/2003GB002199, 2005.
- 25 Lacressonnière, G., Peuch, V.-H., Vautard, R., Arteta, J., Déqué, M., Joly, M. and Josse, B.: European air quality in the 2030s and 2050s: Impacts of global and regional emission trends and of climate change, *Atmos. Environ.*, 92, 348–358, doi:10.1016/J.ATMOENV.2014.04.033, 2014.
- 30 Lacressonnière, G., Foret, G., Beekmann, M., Siour, G., Engardt, M., Gauss, M., Watson, L., Andersson, C., Colette, A., Josse, B., Marécal, V., Nyiri, A. and Vautard, R.: Impacts of regional climate change on air quality projections and associated uncertainties, *Clim. Change*, 136(2), 309–324, doi:10.1007/s10584-016-1619-z, 2016.
- Lacressonnière, G., Watson, L., Gauss, M., Magnuz, E., Andersson, C. B. M., Augustin, C., Gilles, F., Josse, B., Marécal, V., Nyiri, A., Siour, G., Sobolowski, S. and Vautard, R.: Particulate matter air pollution in Europe in a +2 °C warming world, *Atmos. Environ.*, 154, 129–140, doi:10.1016/J.ATMOENV.2017.01.037, 2017.
- 35

- Langner, J., Engardt, M., Baklanov, A., Christensen, J. H., Gauss, M., Geels, C., Hedegaard, G. B., Nuterman, R., Simpson, D., Soares, J., Sofiev, M., Wind, P. and Zakey, A.: A multi-model study of impacts of climate change on surface ozone in Europe, *Atmos. Chem. Phys.*, 12(21), 10423–10440, doi:10.5194/acp-12-10423-2012, 2012.
- 5 Lathière, J., Hauglustaine, D. A., De Noblet-Ducoudré, N., Krinner, G. and Folberth, G. A.: Past and future changes in biogenic volatile organic compound emissions simulated with a global dynamic vegetation model, *Geophys. Res. Lett.*, 32(20), L20818, doi:10.1029/2005GL024164, 2005.
- Laurent, B., Marticorena, B., Bergametti, G., Chazette, P., Maignan, F. and Schmechtig, C.: Simulation of the mineral dust emission frequencies from desert areas of China and Mongolia using an aerodynamic roughness length map derived from the POLDER/ADEOS 1 surface products, *J. Geophys. Res.*, 110(D18), D18S04, doi:10.1029/2004JD005013, 2005.
- 10 Lemaire, V. E. P., Colette, A. and Menut, L.: Using statistical models to explore ensemble uncertainty in climate impact studies: the example of air pollution in Europe, *Atmos. Chem. Phys.*, 16(4), 2559–2574, doi:10.5194/acp-16-2559-2016, 2016.
- 15 Liao, H., Chen, W.-T. and Seinfeld, J. H.: Role of climate change in global predictions of future tropospheric ozone and aerosols, *J. Geophys. Res.*, 111(D12), D12304, doi:10.1029/2005JD006852, 2006.
- Madec, G. and Delecluse, P.: OPA 8.1 Ocean General Circulation Model Reference Manual, Inst. Pierre Simon Laplace des Sci. l'environnement Glob. [online] Available from: [https://www.researchgate.net/profile/Gurvan\\_Madec/publication/243055542\\_OPA\\_81\\_Ocean\\_General\\_Circulation\\_Model\\_reference\\_manual/links/02e7e51d1b695c81c5000000/OPA-81-Ocean-General-Circulation-Model-reference-manual.pdf](https://www.researchgate.net/profile/Gurvan_Madec/publication/243055542_OPA_81_Ocean_General_Circulation_Model_reference_manual/links/02e7e51d1b695c81c5000000/OPA-81-Ocean-General-Circulation-Model-reference-manual.pdf) (Accessed 26 January 2018), 1998.
- 20 Markakis, K., Valari, M., Colette, A., Sanchez, O., Perrussel, O., Honore, C., Vautard, R., Klimont, Z. and Rao, S.: Air quality in the mid-21st century for the city of Paris under two climate scenarios; from the regional to local scale, *Atmos. Chem. Phys.*, 14, 7323–7340, doi:10.5194/acp-14-7323-2014, 2014.
- 25 Marticorena, B. and Bergametti, G.: Modeling the atmospheric dust cycle: 1. Design of a soil-derived dust emission scheme, *J. Geophys. Res.*, 100(D8), 16415, doi:10.1029/95JD00690, 1995.
- Megaritis, A. G., Fountoukis, C., Charalampidis, P. E., Denier Van Der Gon, H. A. C., Pilinis, C. and Pandis, S. N.: Linking climate and air quality over Europe: effects of meteorology on PM 2.5 concentrations, *Atmos. Chem. Phys.*, 14, 10283–10298, doi:10.5194/acp-14-10283-2014, 2014.
- 30 Meinshausen, M., Smith, S. J., Calvin, K., Daniel, J. S., Kainuma, M. L. T., Lamarque, J.-F., Matsumoto, K., Montzka, S. A., Raper, S. C. B., Riahi, K., Thomson, A., Velders, G. J. M. and van Vuuren, D. P. P.: The RCP greenhouse gas concentrations and their extensions from 1765 to 2300, *Clim. Change*, 109(1–2), 213–241, doi:10.1007/s10584-011-0156-z, 2011.
- Meleux, F., Solmon, F. and Giorgi, F.: Increase in summer European ozone amounts due to climate change, *Atmos. Environ.*, 41(35), 7577–7587, doi:10.1016/J.ATMOSENV.2007.05.048, 2007.
- 35



- Menut, L., Tripathi, O. P., Colette, A., Vautard, R., Menut, L., Flaounas, E., Tripathi, O. P., Vautard, R. and Bessagnet, B.: Evaluation of regional climate simulations for air quality modelling purposes, *Clim. Dyn.*, 40(9–10), 2515–2533, doi:10.1007/s00382-012-1345-9, 2012.
- 5 Menut, L., Bessagnet, B., Khvorostyanov, D., Beekmann, M., Blond, N., Colette, A., Coll, I., Curci, G., Foret, G., Hodzic, A., Mailler, S., Meleux, F., Monge, J.-L., Pison, I., Siour, G., Turquety, S., Valari, M., Vautard, R. and Vivanco, M. G.: CHIMERE 2013: a model for regional atmospheric composition modelling, *Geosci. Model Dev.*, 6(4), 981–1028, doi:10.5194/gmd-6-981-2013, 2013.
- 10 Menut, L., Rea, G., Mailler, S., Khvorostyanov, D. and Turquety, S.: Aerosol forecast over the Mediterranean area during July 2013 (ADRI-MED/CHARMEX), *Atmos. Chem. Phys.*, 15(14), 7897–7911, doi:10.5194/acp-15-7897-2015, 2015.
- Olesen, J. E., Carter, T. R., Díaz-Ambrona, C. H., Fronzek, S., Heidmann, T., Hickler, T., Holt, T., Minguéz, M. I., Morales, P., Palutikof, J. P., Quemada, M., Ruiz-Ramos, M., Rubæk, G. H., Sau, F., Smith, B. and Sykes, M. T.: Uncertainties in projected impacts of climate change on European agriculture and terrestrial ecosystems based on scenarios from regional climate models, *Clim. Change*, 81(S1), 123–143, doi:10.1007/s10584-006-9216-1, 2007.
- 15 Pacifico, F., Folberth, G. A., Jones, C. D., Harrison, S. P. and Collins, W. J.: Sensitivity of biogenic isoprene emissions to past, present, and future environmental conditions and implications for atmospheric chemistry, *J. Geophys. Res. Atmos.*, 117(D22), n/a-n/a, doi:10.1029/2012JD018276, 2012.
- Petetin, H., Beekmann, M., Sciare, J., Bressi, M., Rosso, A., Sanchez, O. and Ghersi, V.: A novel model evaluation approach focusing on local and advected contributions to urban PM<sub>2.5</sub> levels - Application to Paris, France, *Geosci. Model Dev.*, 7(4), 1483–1505, doi:10.5194/gmd-7-1483-2014, 2014.
- 20 Pope, C. A. and Dockery, D. W.: Health Effects of Fine Particulate Air Pollution: Lines that Connect, *J. Air Waste Manage. Assoc.*, 56(6), 709–742, doi:10.1080/10473289.2006.10464485, 2006.
- Pope, C. A., Ezzati, M. and Dockery, D. W.: Fine-Particulate Air Pollution and Life Expectancy in the United States, *N. Engl. J. Med.*, 360(4), 376–386, doi:10.1056/NEJMs0805646, 2009.
- 25 Rea, G., Turquety, S., Menut, L., Briant, R., Mailler, S. and Siour, G.: Source contributions to 2012 summertime aerosols in the Euro-Mediterranean region, *Atmos. Chem. Phys.*, 15(14), 8013–8036, doi:10.5194/acp-15-8013-2015, 2015.
- Sartelet, K. N., Couvidat, F., Seigneur, C. and Roustan, Y.: Impact of biogenic emissions on air quality over Europe and North America, *Atmos. Environ.*, 53, 131–141, doi:10.1016/J.ATMOSENV.2011.10.046, 2012.
- 30 Seinfeld, J. H. and Pandis, S. N.: Atmospheric chemistry and physics : from air pollution to climate change., 2016.
- Shindell, D. T., Lamarque, J.-F., Schulz, M., Flanner, M., Jiao, C., Chin, M., Young, P. J., Lee, Y. H., Rotstayn, L., Mahowald, N., Milly, G., Faluvegi, G., Balkanski, Y., Collins, W. J., Conley, A. J., Dalsoren, S., Easter, R., Ghan, S., Horowitz, L., Liu, X., Myhre, G., Nagashima, T., Naik, V., Rumbold, S. T., Skeie, R., Sudo, K.,
- 35

- Szopa, S., Takemura, T., Voulgarakis, A., Yoon, J.-H. and Lo, F.: Radiative forcing in the ACCMIP historical and future climate simulations, *Atmos. Chem. Phys.*, 13(6), 2939–2974, doi:10.5194/acp-13-2939-2013, 2013.
- Szopa, S., Hauglustaine, D. A., Vautard, R. and Menut, L.: Future global tropospheric ozone changes and impact on European air quality, *Geophys. Res. Lett.*, 33(14), L14805, doi:10.1029/2006GL025860, 2006.
- 5 Szopa, S., Balkanski, Y., Schulz, M., Bekki, S., Cugnet, D., Fortems-Cheiney, A., Turquety, S., Cozic, A., Déandreis, C., Hauglustaine, D., Idelkadi, A., Lathière, J., Lefevre, F., Marchand, M., Vuolo, R., Yan, N. and Dufresne, J.-L.: Aerosol and ozone changes as forcing for climate evolution between 1850 and 2100, *Clim. Dyn.*, 40(9–10), 2223–2250, doi:10.1007/s00382-012-1408-y, 2013.
- Tai, A. P. K., Mickley, L. J., Heald, C. L. and Wu, S.: Effect of CO<sub>2</sub> inhibition on biogenic isoprene emission: Implications for air quality under 2000 to 2050 changes in climate, vegetation, and land use, *Geophys. Res. Lett.*, 40(13), 3479–3483, doi:10.1002/grl.50650, 2013.
- 10 Taylor, K. E., Stouffer, R. J., Meehl, G. A., Taylor, K. E., Stouffer, R. J. and Meehl, G. A.: An Overview of CMIP5 and the Experiment Design, *Bull. Am. Meteorol. Soc.*, 93(4), 485–498, doi:10.1175/BAMS-D-11-00094.1, 2012.
- 15 Tegen, I., Werner, M., Harrison, S. P. and Kohfeld, K. E.: Relative importance of climate and land use in determining present and future global soil dust emission, *Geophys. Res. Lett.*, 31(5), n/a-n/a, doi:10.1029/2003GL019216, 2004.
- Teichmann, C., Eggert, B., Elizalde, A., Haensler, A., Jacob, D., Kumar, P., Moseley, C., Pfeifer, S., Rechid, D., Remedio, A., Ries, H., Petersen, J., Preuschmann, S., Raub, T., Saeed, F., Sieck, K., Weber, T., Teichmann, C., Eggert, B., Elizalde, A., Haensler, A., Jacob, D., Kumar, P., Moseley, C., Pfeifer, S., Rechid, D., Remedio, A., Ries, H., Petersen, J., Preuschmann, S., Raub, T., Saeed, F., Sieck, K. and Weber, T.: How Does a Regional Climate Model Modify the Projected Climate Change Signal of the Driving GCM: A Study over Different CORDEX Regions Using REMO, *Atmosphere (Basel)*, 4(2), 214–236, doi:10.3390/atmos4020214, 2013.
- 20 Thomson, A. M., Calvin, K. V., Smith, S. J., Page Kyle, G., Volke, A., Patel, P., Delgado-Arias, S., Bond-Lamberty, B., Wise, M. A., Clarke, L. E. and Edmonds, J. A.: RCP4.5: a pathway for stabilization of radiative forcing by 2100, , doi:10.1007/s10584-011-0151-4, 2011.
- Vautard, R., Gobiet, A., Sobolowski, S., Kjellström, E., Stegehuis, A., Watkiss, P., Mendlik, T., Landgren, O., Nikulin, G., Teichmann, C. and Jacob, D.: The European climate under a 2 C global warming, *Environ. Res. Lett. Environ. Res. Lett.*, 9, 34006–11, doi:10.1088/1748-9326/9/3/034006, 2014.
- 25 Vautard, R., Colette, A., van Meijgaard, E., Meleux, F., Jan van Oldenborgh, G., Otto, F., Tobin, I., Yiou, P., Vautard, R., Colette, A., Meijgaard, E. van, Meleux, F., Oldenborgh, G. J. van, Otto, F., Tobin, I. and Yiou, P.: Attribution of Wintertime Anticyclonic Stagnation Contributing to Air Pollution in Western Europe, *Bull. Am. Meteorol. Soc.*, 99(1), S70–S75, doi:10.1175/BAMS-D-17-0113.1, 2018.
- Vincent, J., Laurent, B., Losno, R., Bon Nguyen, E., Rouillet, P., Sauvage, S., Chevaillier, S., Coddeville, P., Ouboulmane, N., di Sarra, A. G., Tovar-Sánchez, A., Sferlazzo, D., Massanet, A., Triquet, S., Morales Baquero, R., Fornier, M., Coursier, C., Desboeufs, K., Dulac, F. and Bergametti, G.: Variability of mineral dust deposition
- 35

- in the western Mediterranean basin and south-east of France, *Atmos. Chem. Phys.*, 16(14), 8749–8766, doi:10.5194/acp-16-8749-2016, 2016.
- van Vuuren, D. P., Stehfest, E., J den Elzen, M. G., Kram, T., van Vliet, J., Deetman, S., Isaac, M., Klein Goldewijk, K., Hof, A., Mendoza Beltran, A., Oostenrijk, R. and van Ruijven, B.: RCP2.6: exploring the possibility to keep global mean temperature increase below 2°C, *Clim. Change*, 109, 95–116, doi:10.1007/s10584-011-0152-3, 2011a.
- van Vuuren, D. P., Edmonds, J., Kainuma, M., Riahi, K., Thomson, A., Hibbard, K., Hurtt, G. C., Kram, T., Krey, V., Lamarque, J.-F., Masui, T., Meinshausen, M., Nakicenovic, N., Smith, S. J. and Rose, S. K.: The representative concentration pathways: an overview, *Clim. Change*, 109(1–2), 5–31, doi:10.1007/s10584-011-0148-z, 2011b.
- Wang, W., Bruyère, C., Duda, M., Dudhia, J., Gill, D., Kavulich, M., Keene, K., Lin, H.-C., Michalakes, J., Rizvi, S., Zhang, X., Berner, J. and Smith, K.: WRF ARW Version 3 Modeling System User’s Guide, , (January), 1–428, doi:10.1525/jps.2007.37.1.204, 2015.
- Werner, M., Tegen, I., Harrison, S. P., Kohfeld, K. E., Prentice, I. C., Balkanski, Y., Rodhe, H. and Roelandt, C.: Seasonal and interannual variability of the mineral dust cycle under present and glacial climate conditions, *J. Geophys. Res.*, 107(D24), 4744, doi:10.1029/2002JD002365, 2002.
- Wild, M.: Global dimming and brightening: A review, *J. Geophys. Res.*, 114(D10), D00D16, doi:10.1029/2008JD011470, 2009.
- de Winter, R. C., Sterl, A. and Ruessink, B. G.: Wind extremes in the North Sea Basin under climate change: An ensemble study of 12 CMIP5 GCMs, *J. Geophys. Res. Atmos.*, 118(4), 1601–1612, doi:10.1002/jgrd.50147, 2013.
- Woodward, S., Roberts, D. L. and Betts, R. A.: A simulation of the effect of climate change-induced desertification on mineral dust aerosol, *Geophys. Res. Lett.*, 32(18), n/a-n/a, doi:10.1029/2005GL023482, 2005.
- Young, P. J., Arneth, A., Schurgers, G., Zeng, G. and Pyle, J. A.: The CO<sub>2</sub>; inhibition of terrestrial isoprene emission significantly affects future ozone projections, *Atmos. Chem. Phys.*, 9(8), 2793–2803, doi:10.5194/acp-9-2793-2009, 2009.
- Young, P. J., Archibald, A. T., Bowman, K. W., Lamarque, J.-F., Naik, V., Stevenson, D. S. and Tilmes, S.: Geoscientific Instrumentation Methods and Data Systems Pre-industrial to end 21st century projections of tropospheric ozone from the Atmospheric Chemistry and Climate Model Intercomparison Project (ACCMIP), *Atmos. Chem. Phys.*, 13, 2063–2090, doi:10.5194/acp-13-2063-2013, 2013.
- Zhang, Q. J., Beekmann, M., Drewnick, F., Freutel, F., Schneider, J., Crippa, M., Prevot, A. S. H., Baltensperger, U., Poulain, L., Wiedensohler, A., Sciare, J., Gros, V., Borbon, A., Colomb, A., Michoud, V., Doussin, J. F., Denier Van Der Gon, H. A. C., Haeffelin, M., Dupont, J. C., Siour, G., Petetin, H., Bessagnet, B., Pandis, S. N., Hodzic, A., Sanchez, O., Honor??, C. and Perrussel, O.: Formation of organic aerosol in the Paris region during the MEGAPOLI summer campaign: Evaluation of the volatility-basis-set approach within the CHIMERE model, *Atmos. Chem. Phys.*, 13(11), 5767–5790, doi:10.5194/acp-13-5767-2013, 2013.



Tables

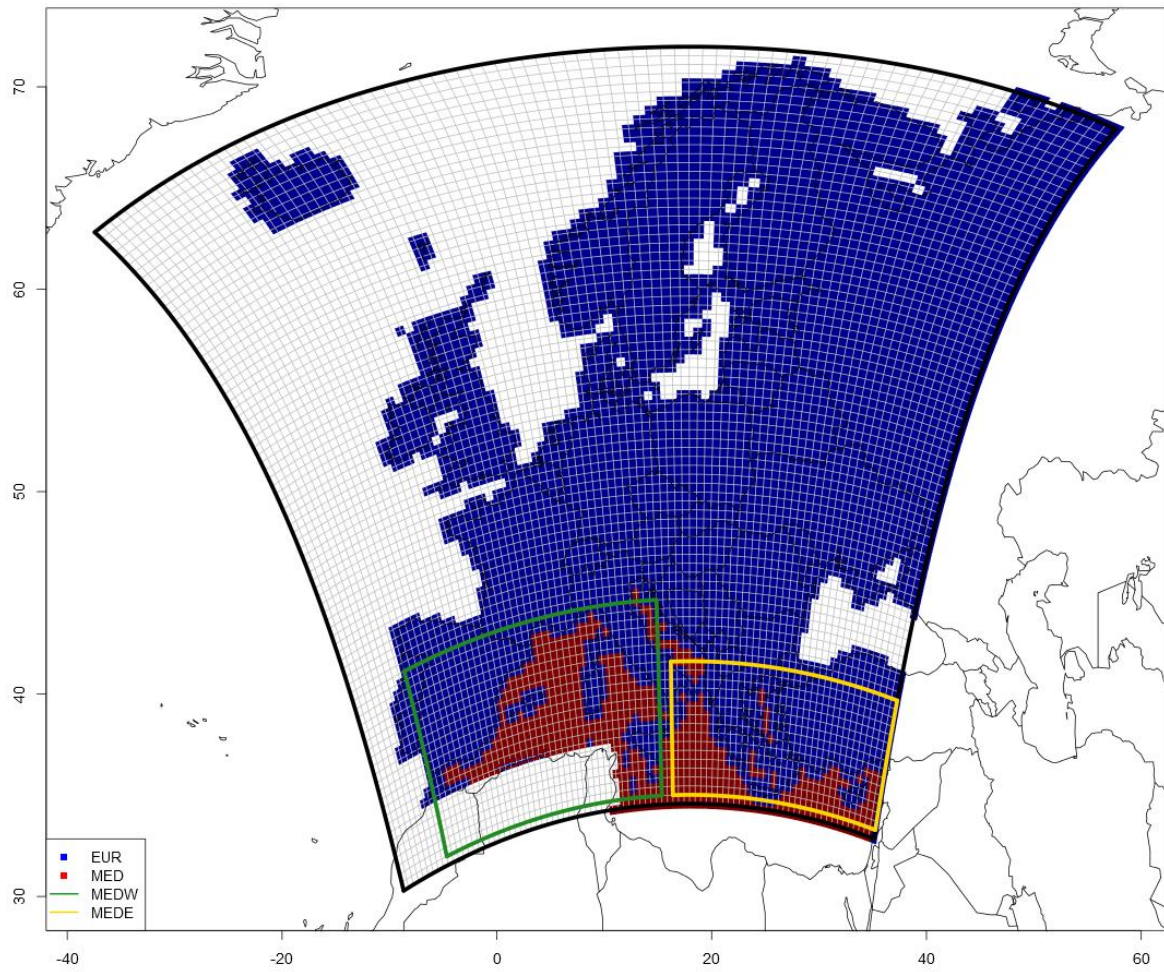
	#	Simulation name	Simulation period	Global chemistry model	Regional climate model	Anthropogenic emissions
Climate	1	Hist	1976-2005	LMDZ-INCA-RCP2.6 <u>RCP emissions</u>	WRF Historic	ECLIPSE-V4a CLE2010
	2	RCP2.6	2031-2100		WRF RCP2.6	
	3	RCP4.5	2031-2100		WRF RCP4.5	
	4	RCP8.5	2031-2100		WRF RCP8.5	
BC	5	RCP4.5-BC	2046-2055	LMDZ-INCA-RCP4.5 <u>ECLIPSE emissions</u>	WRF RCP4.5	ECLIPSE-V4a CLE2010
Emissions	6	RCP4.5-CLE2050	2046-2055	LMDZ-INCA-RCP2.6 RCP <u>emissions</u>	WRF RCP4.5	ECLIPSE-V4a CLE2050
	7	RCP4.5-MFR2050	2046-2055			ECLIPSE-V4a MFR2050
all	8	RCP4.5-BC-CLE2050	2046-2055	LMDZ-INCA-RCP4.5 <u>ECLIPSE emissions</u>	WRF RCP4.5	ECLIPSE-V4a CLE2050

**Table 1: The different scenarios used in this work**

5

10

## Figures



5 **Figure 1: Extension of the main domain and sub-domains. Four sub-domains are used in this study : EUR – containing only continental Europe (blue cells), MED – containing only the Mediterranean Sea (red cells), MEDW – western Mediterranean region (green rectangle), MEDE – eastern Mediterranean region (yellow rectangle)**

10

15



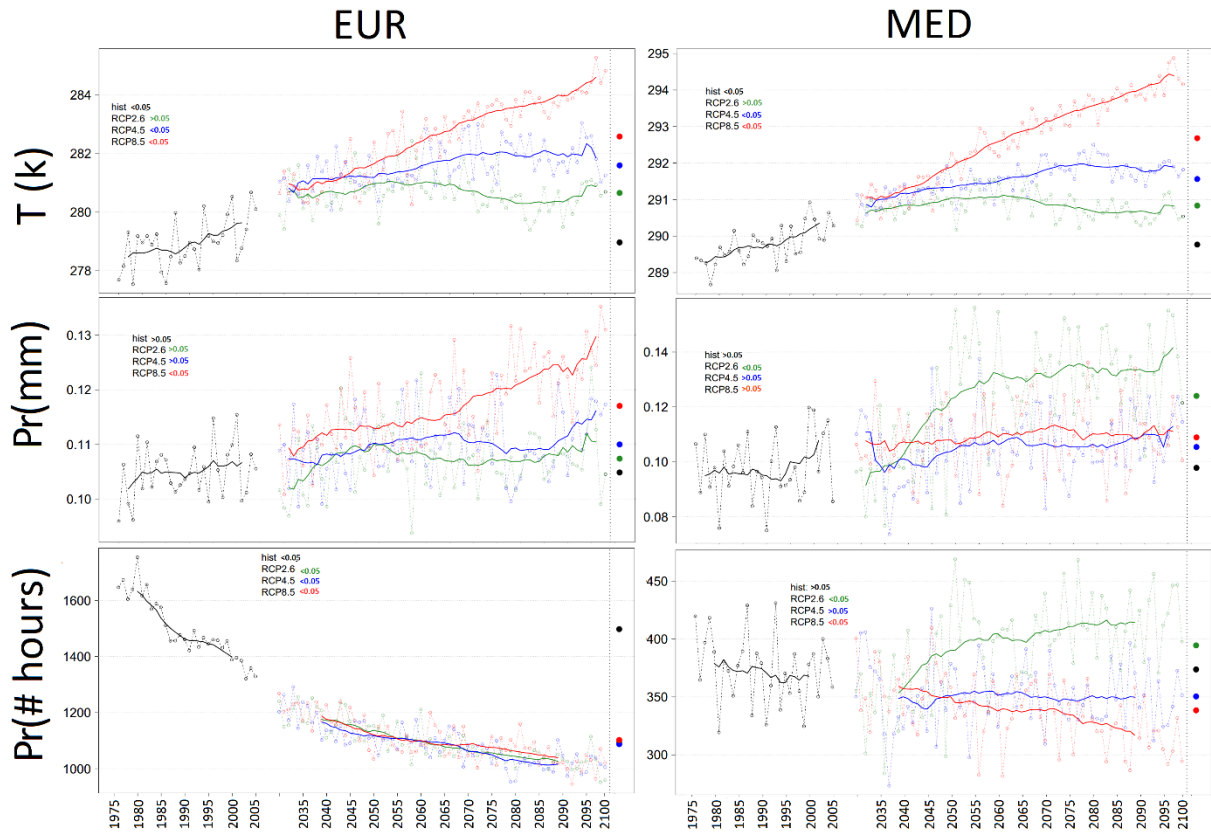


Figure 2: Time series of temperature (K), precipitation (mm) and number of rainy hours (from the top to bottom) for EUR and MED sub-domains (from left to right) for all climate change scenarios as well as historic simulations. The average for each scenario is shown by the points at right side of the plot. The solid lines show the rolling average of 30 years for future scenarios and 20 years for historic scenarios. Numbers in the legend show the p-value of the linear regression for each scenario.

5

10

15

20

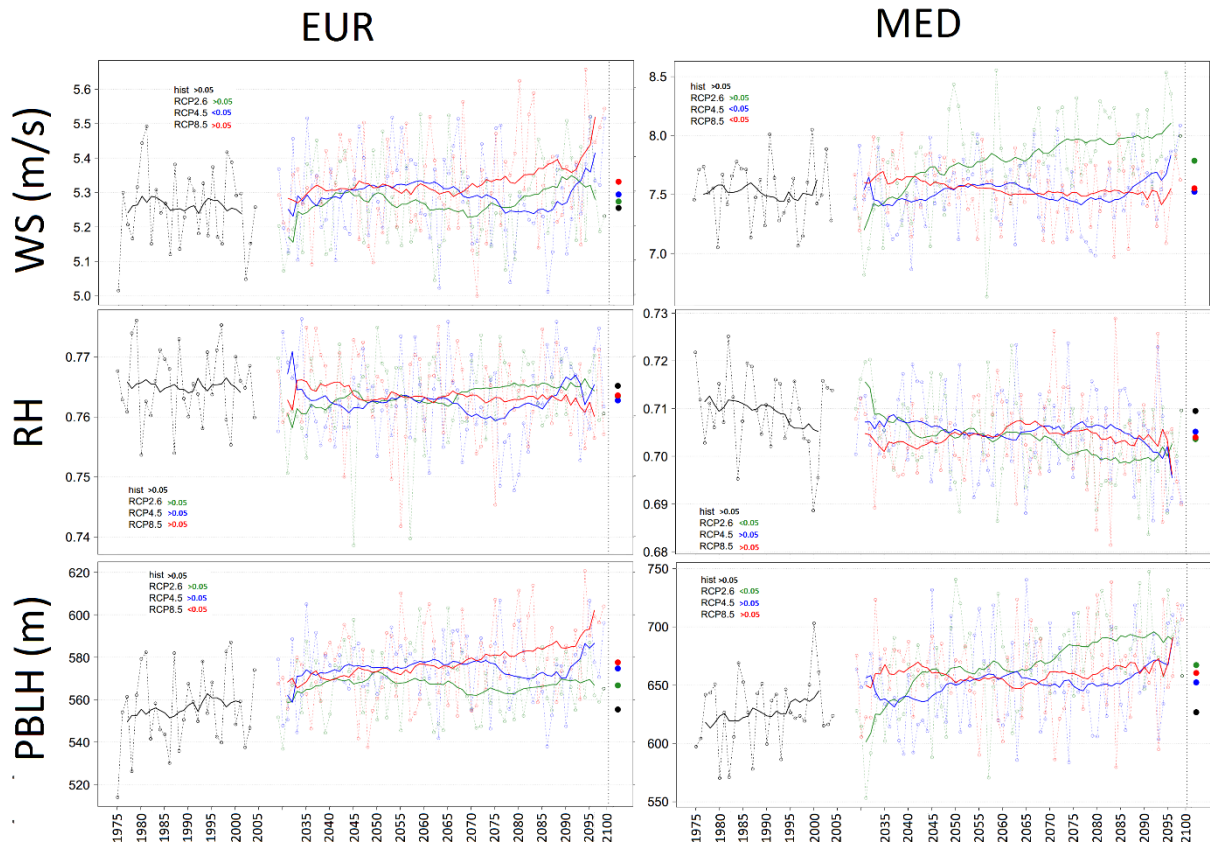


Figure 3: Time series of wind speed ( $\text{m}\cdot\text{s}^{-1}$ ), relative humidity and PBL height (m) (from the top to the bottom) for EUR and MED sub-domains (from left to right) for all climate change scenarios as well as historic simulations. The average for each scenario is shown by the points at right side of the plots. The solid lines show the rolling average of 30 years for future scenarios and 20 years for historic scenarios. Numbers in the legend show the p-value of the linear regression for each scenario.

5

10

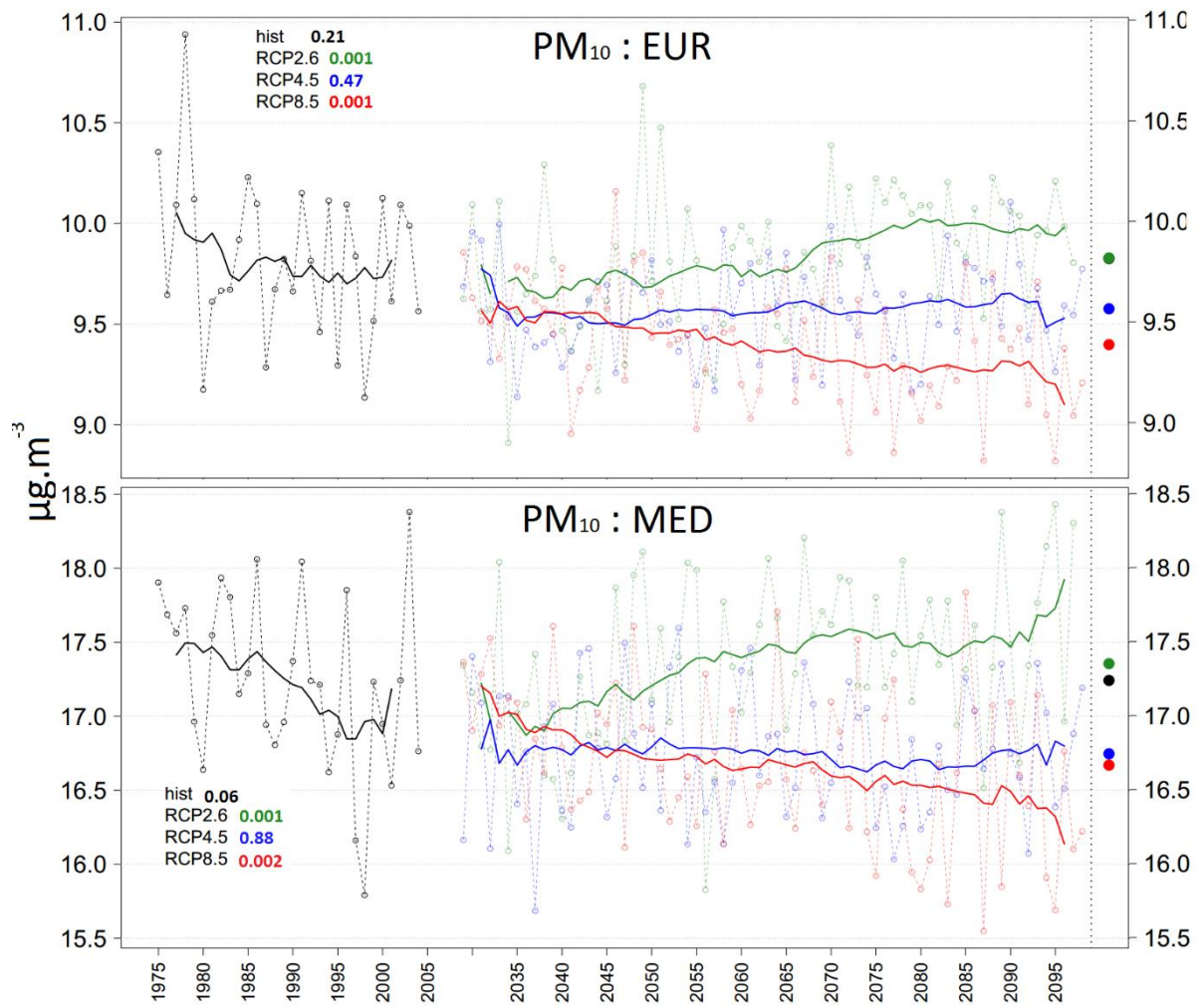


Figure 4: PM<sub>10</sub> time series for EUR and MED sub-domains for all climate change scenarios and historic simulations. The average for each scenario is shown by the points at right side of the plot. The solid lines show the rolling average of 30 years for future scenarios and 20 years for historic scenarios. Numbers in the legend indicate the p-value of the linear regression for each scenario.

5

10

15

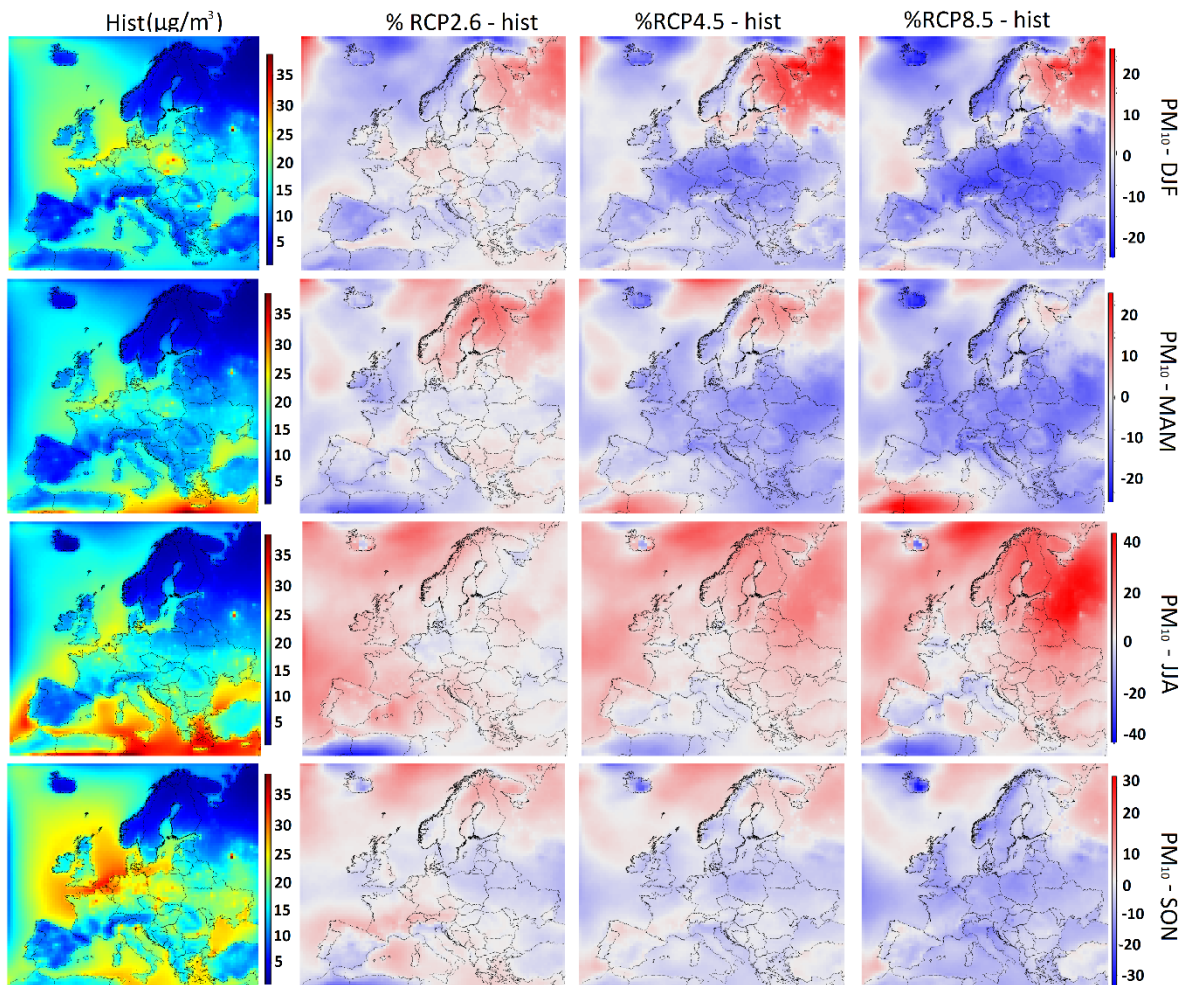


Figure 5: PM<sub>10</sub> seasonal average concentrations in the historical simulation (first column). Relative differences between the climate simulations (RCP2.6, RCP4.5 and RCP8.5) and the historical simulation (hist) (second, third and four columns) Rows represents the different seasons (winter, spring, autumn and summer, from top to the bottom). Please notice that a different scale is used between the seasons in order to facilitate the reading of the panel.

5

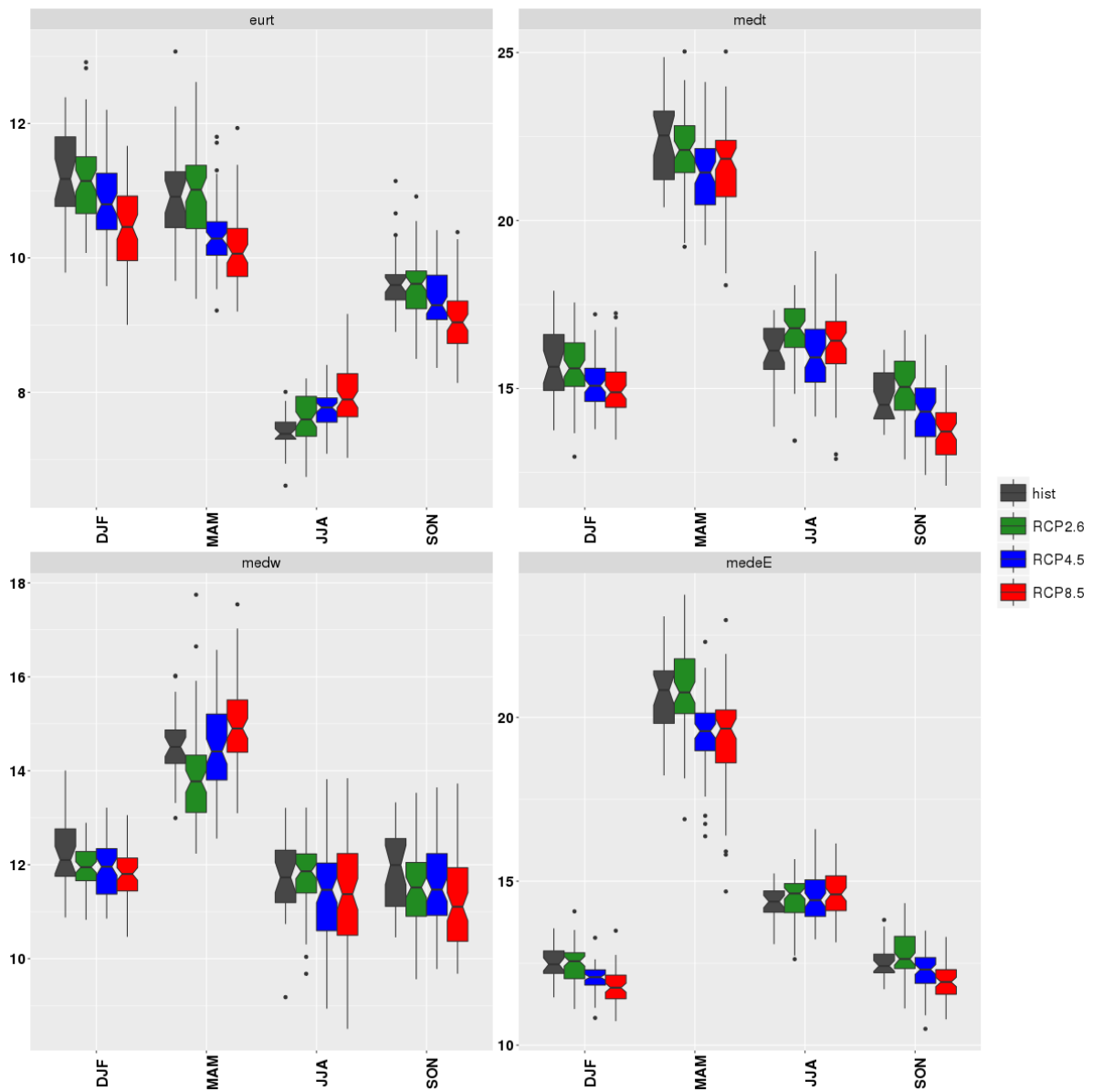


Figure 6: Seasonal boxplots for all scenarios for all seasons for  $PM_{10}$  (historic simulations: black, RCP2.6: redgreen, RCP4.5: green-blue and RCP8.5: bluered) for different sub-domains. Scales are different for different sub-domains.

5

10

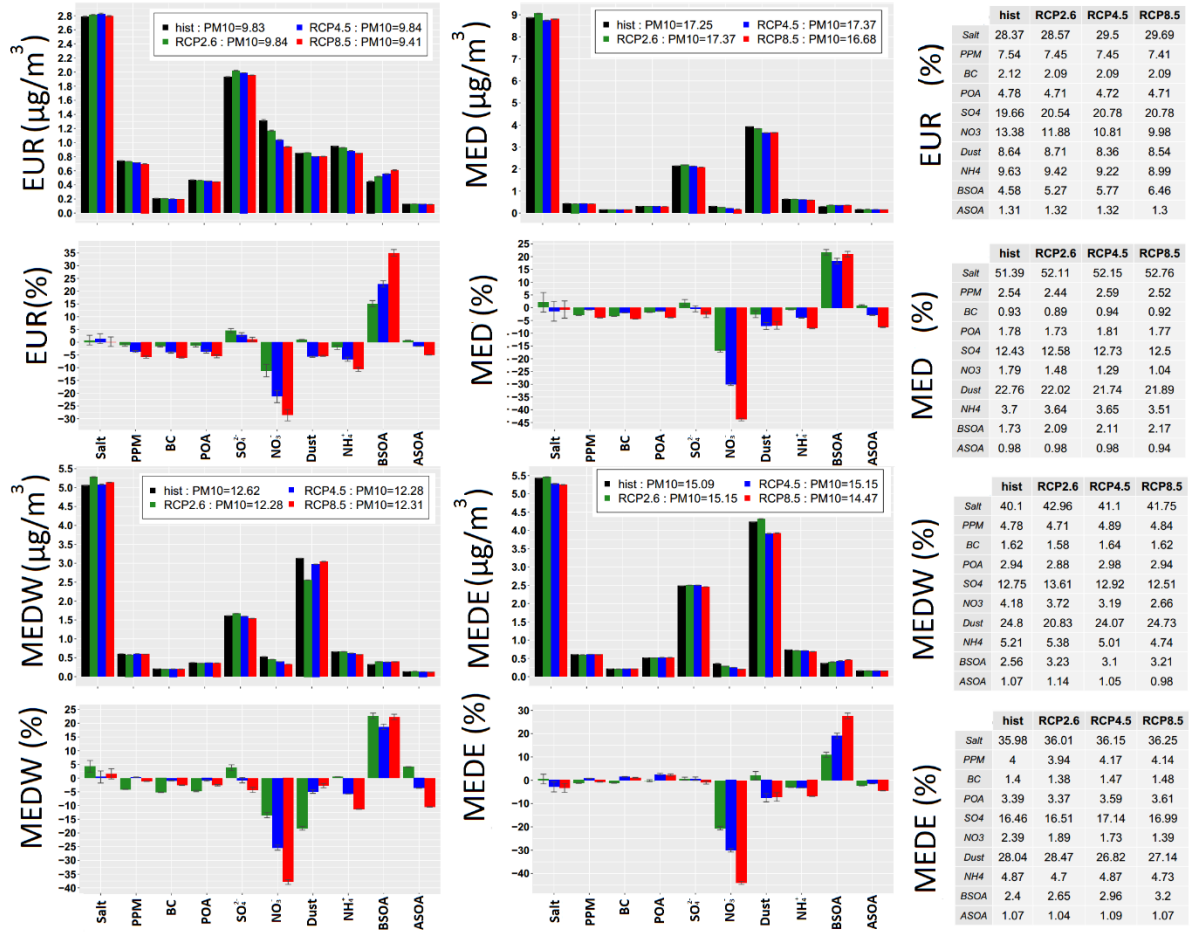


Figure 7: Concentrations and relative changes of PM<sub>10</sub> components (same color code as in figure 6) for all sub-domains averaged over the whole period of simulations in climate change scenarios and for the different sub-domains. Error bars show the confidence interval calculated for annual averages for each sub-domain. The changes show (future-historic)/historic\*100. Tables report the percentage of each component in each scenario. The concentration of PM<sub>10</sub> in total is written in the legend above each figure.

5

10

15



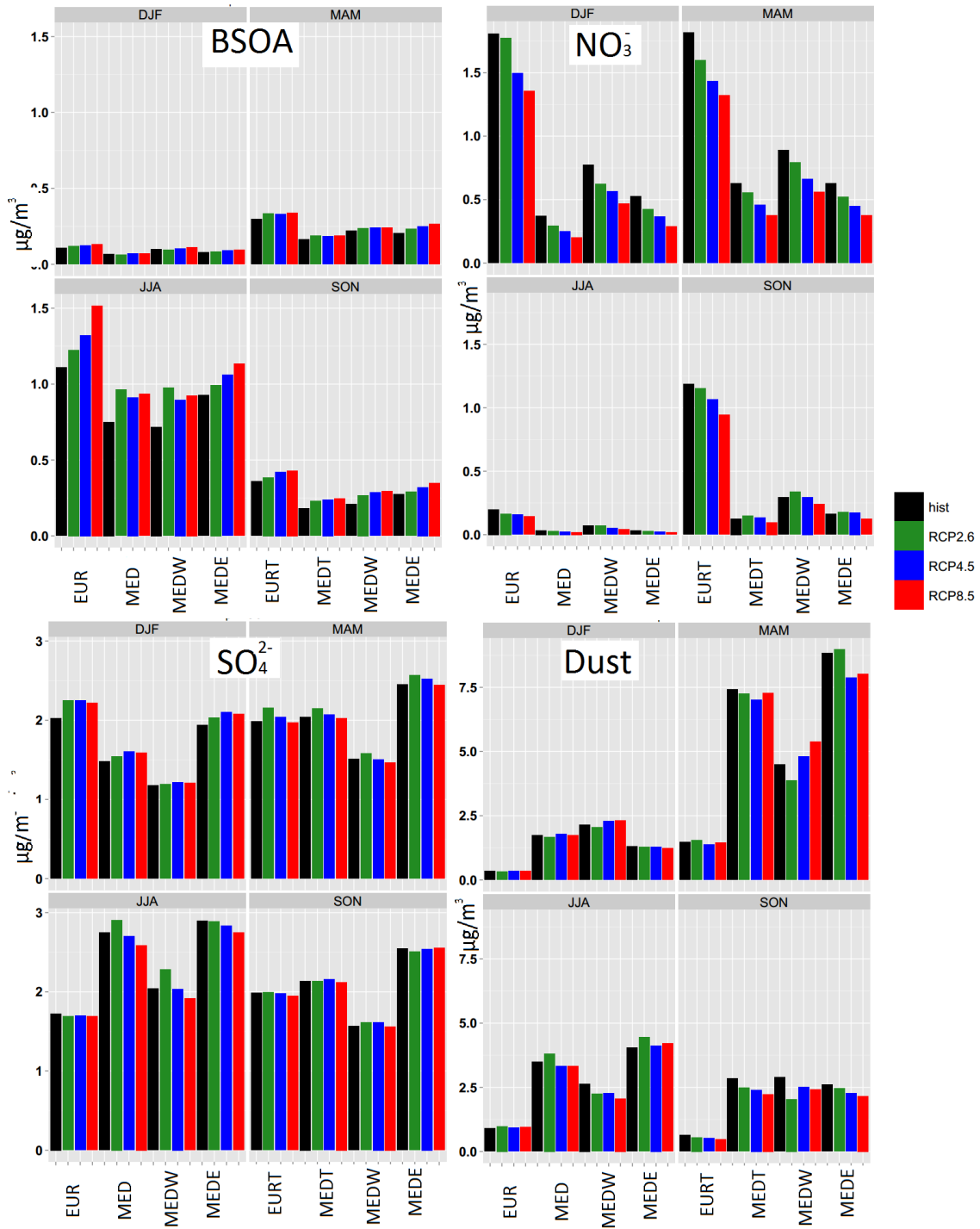


Figure 8: Seasonal absolute concentrations of BSOA, nitrate (NO<sub>3</sub><sup>-</sup>), sulfate (SO<sub>4</sub><sup>2-</sup>) and dust particles (same color code as in figure 6) for different sub-domains. Each panel shows one of the species mentioned above for four scenarios and each sub-panel shows one season.



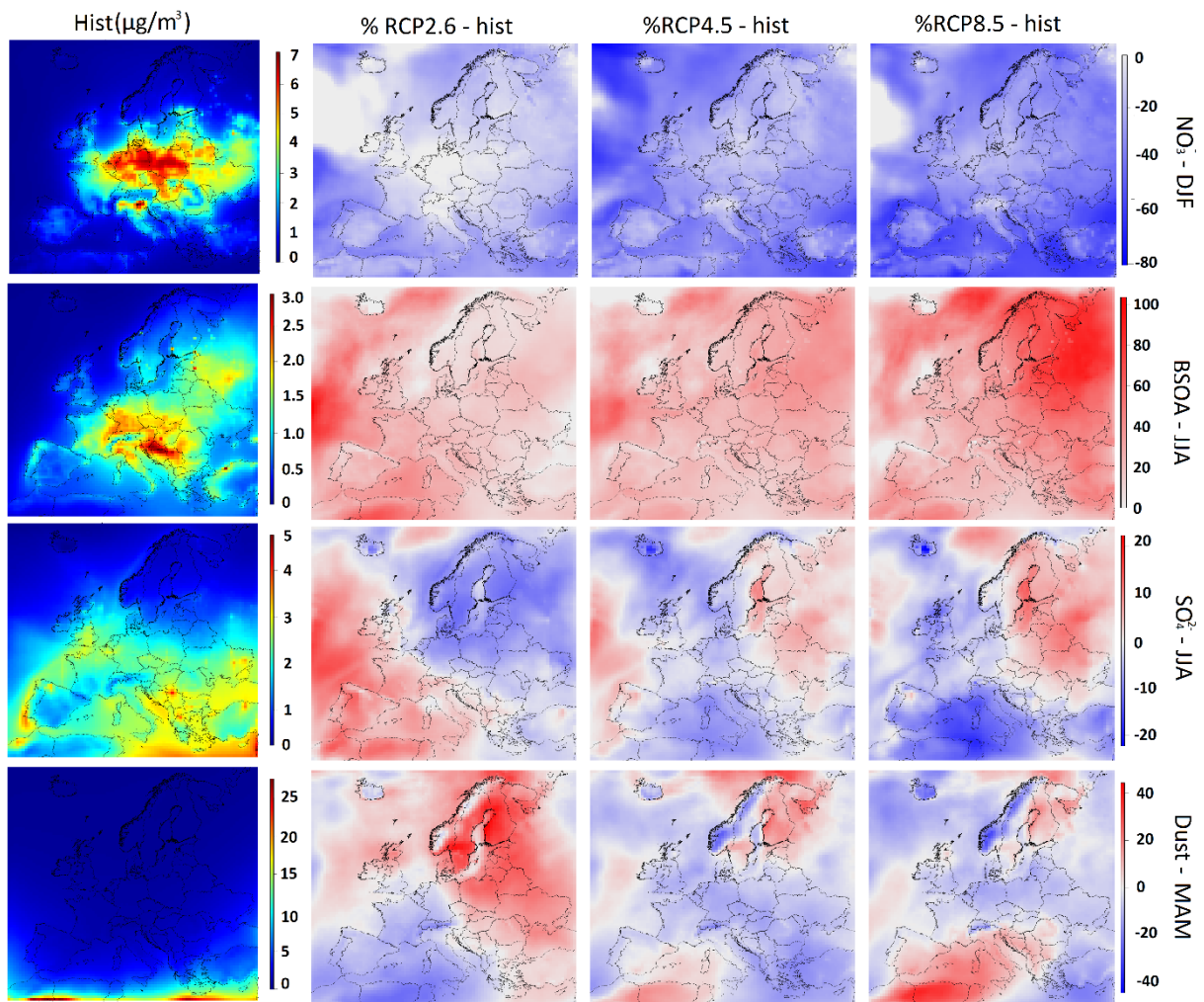


Figure 9: Historic concentrations and relative changes in future scenarios for BSOA, ( $\text{NO}_3^-$ ), sulfate ( $\text{SO}_4^{2-}$ ) and dust particles for selected season in which the concentrations are the highest. Figures on the left column show the average concentration of historic simulations, the three columns on the right show the relative difference of RCP2.6, RCP4.5 and RCP8.5 future scenarios respectively to historic simulations. Each row shows one season, scales are different for each row of simulations.

5

10

15

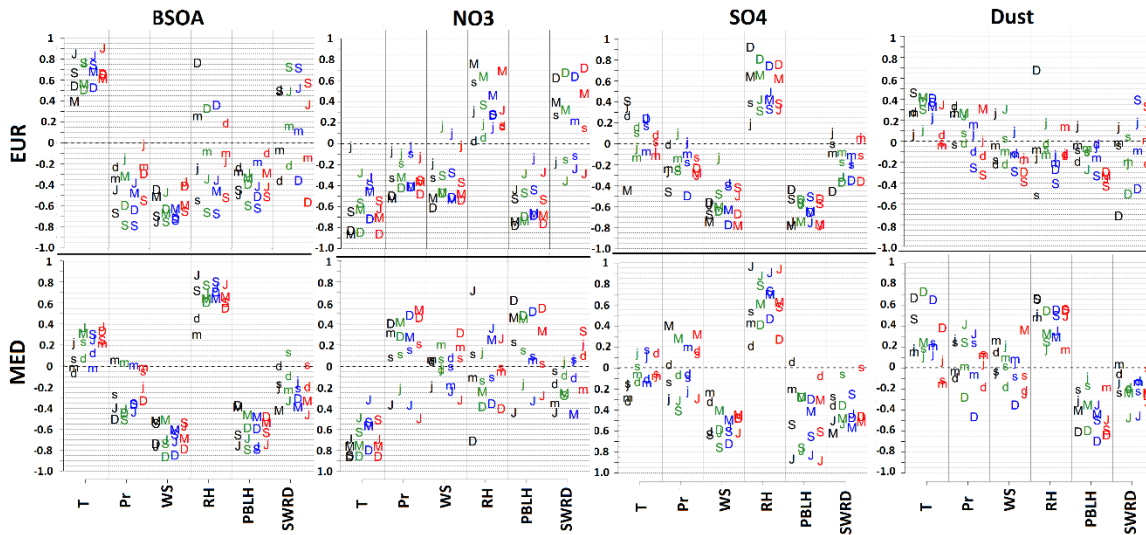


Figure 10: Correlation coefficient between all tested meteorological parameters to BSOA, ( $\text{NO}_3^-$ ), sulfate ( $\text{SO}_4^{2-}$ ) and dust particles for all seasons and EUR and MED sub-domains. D, M, J and S represent winter, spring, summer and fall (first letter of the first month of each season). *Upper-case-Upper-case* letters mean that the correlation between the two parameters is statistically significant, lowercase letters show the contrary. Color coding for different scenarios is the same as previous figures.

5

10

15

20

25

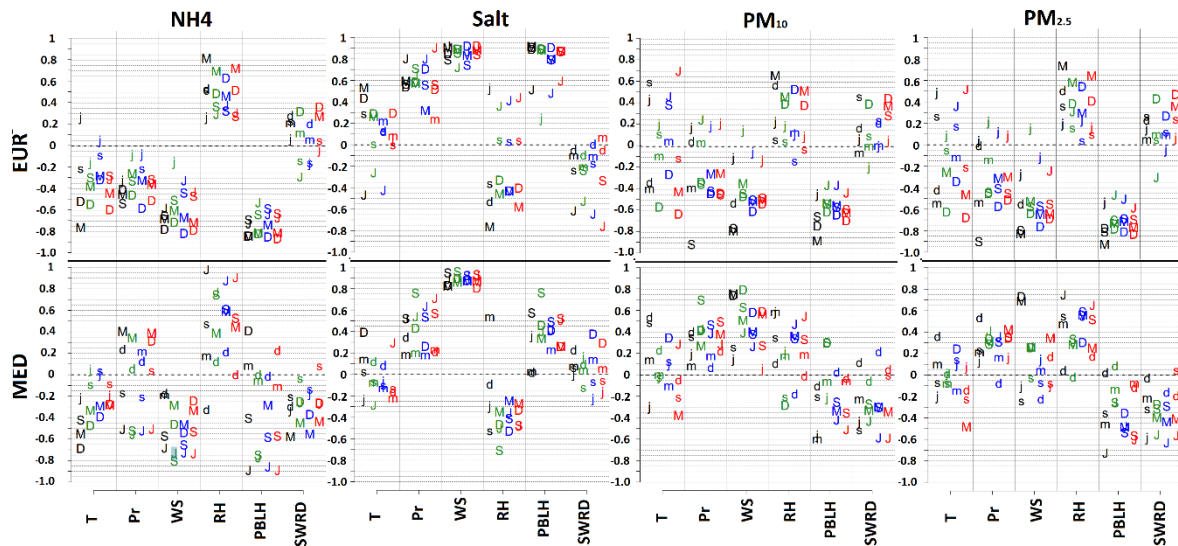


Figure 11: Correlation coefficient between all tested meteorological parameters to Ammonium ( $\text{NH}_4^+$ ), salt,  $\text{PM}_{10}$  and  $\text{PM}_{2.5}$  particles for all seasons and EUR and MED sub-domains. D, M, J and S represent winter, spring, summer and fall (first letter of the first month of each season). Uppercase letters mean that the correlation between the two parameters is statistically significant, lowercase letters show the contrary. Color coding for different scenarios is the same as previous figures.

5

10

15

20

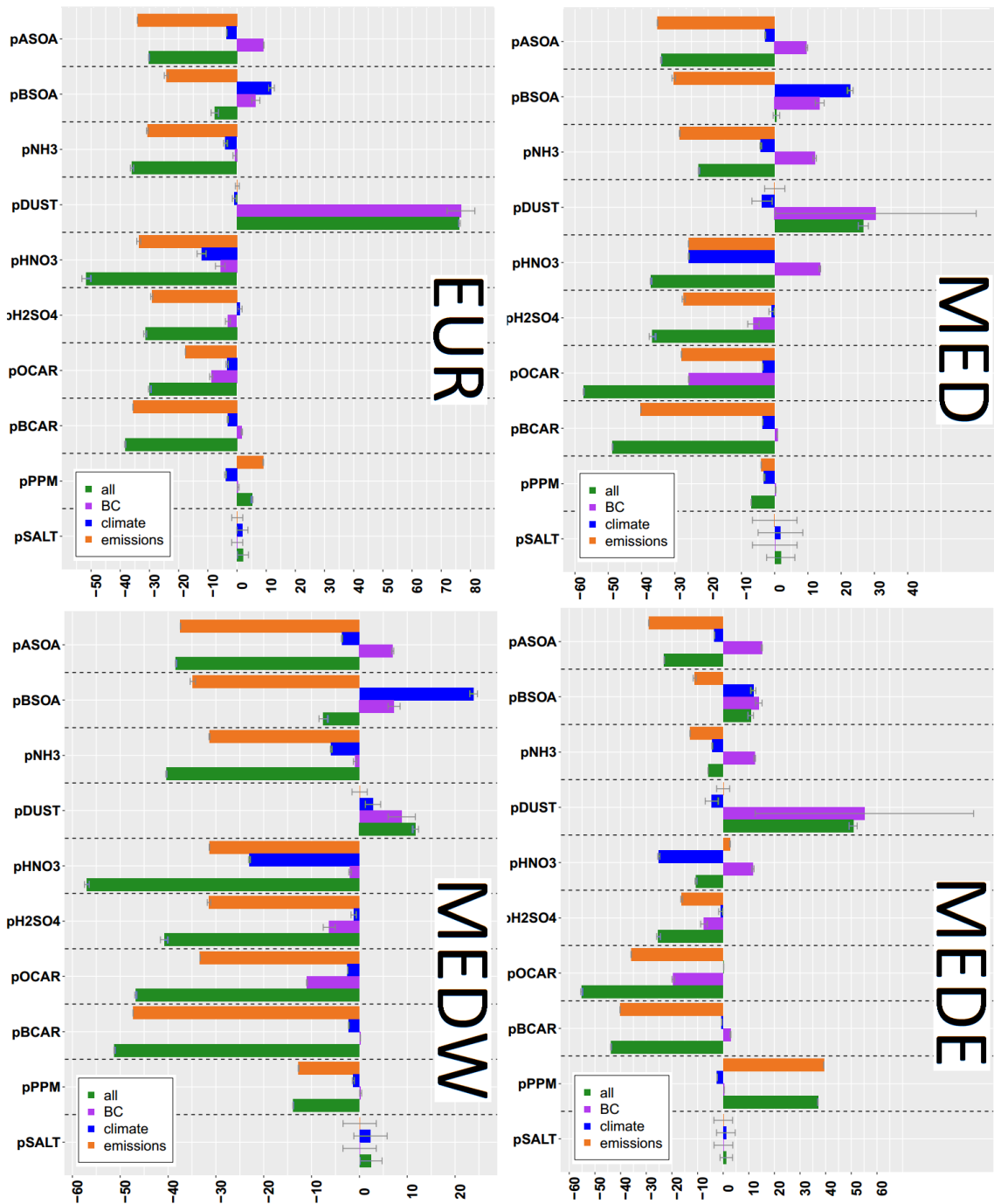


Figure 12: Relative impact of climate, boundary conditions and emission drivers on PM<sub>10</sub> components for different sub-domains. Error bars show the confidence interval calculated on annual averages.

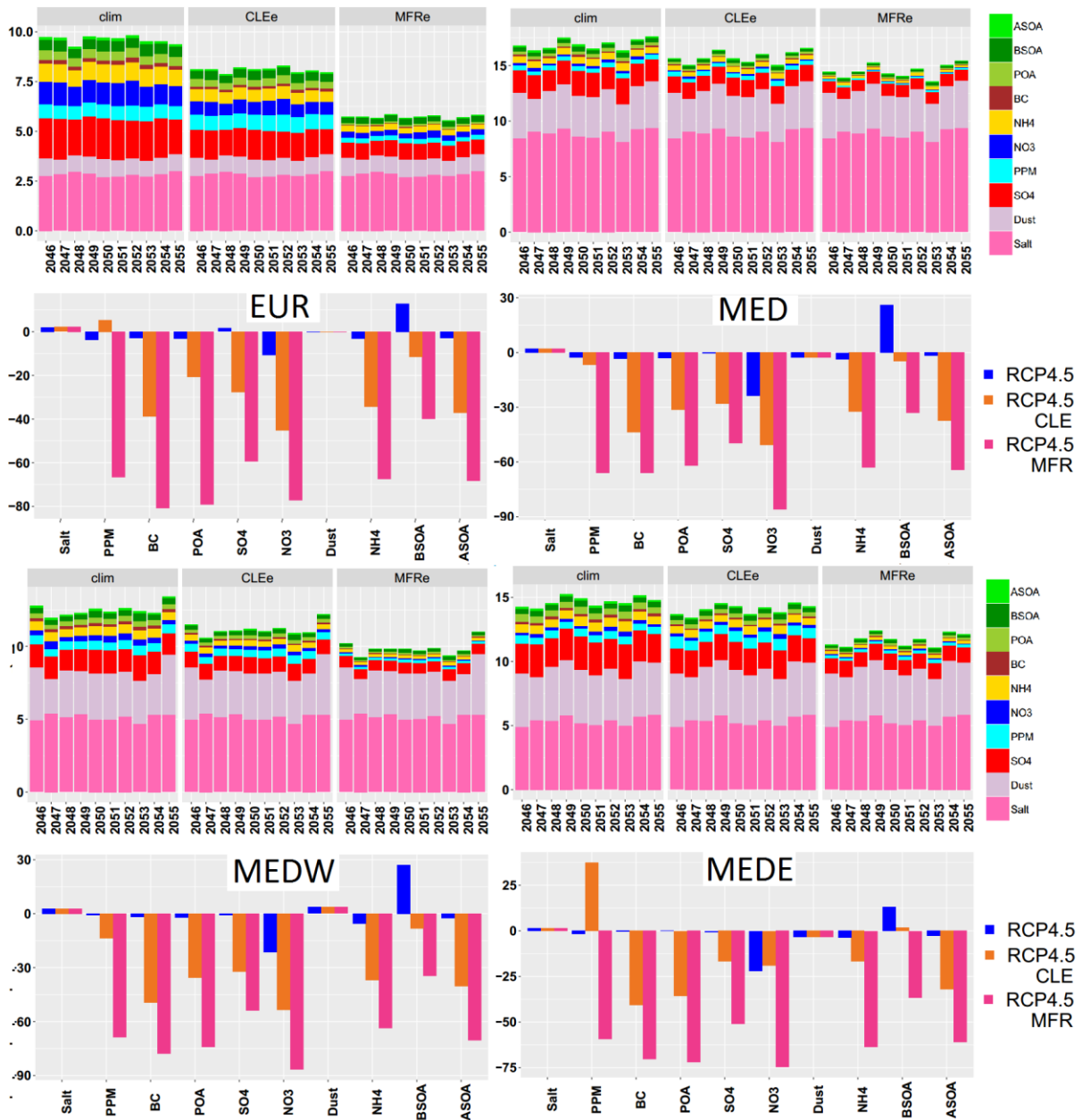


Figure 13: Emission scenario comparisons. Each panel shows one sub-domain, the upper sub-panels show the PM<sub>10</sub> components for each scenario, the lower sub-panel shows the percentage of difference for each scenario ((future – historic)/historic\*100).

5

### Author's response:

The authors thank both referees for their thorough and pertinent reviews, which certainly allow us to improve the paper. Below we provide answers to points raised by each of the referees.

5 In this response, bold parts in quotes are direct extracts of referee comments, blue italic parts are changes made in the article and black normal texts are answers/explanations on each comment made by the referees.

### Referee 1 comments:

#### Referee 1 general comments:

10 **“The paper presents a wealth of data on future climate, based on several climate simulations, emission scenarios, and boundary condition scenarios, for a domain covering Europe and the Mediterranean Sea. The data are analyzed in detail, with attention to all contributors to PM10 (PM2.5) and the impact of the different drivers. The analysis is done for the European continent, for the Mediterranean basin and two smaller subdomains covering parts of the Mediterranean area. The problem with the paper is that there is**  
15 **nearly too much information, and that it is difficult to remain focused on the main results. A major point of criticism is that the Mediterranean domain, and more so for the subdomains, are far smaller than the European domain. It is not completely fair to contrast them, and within Europe, different regimes could be found as well (e.g.EUROCORDEX regions). Also, the Mediterranean are is not even fully covered by**  
20 **the model and significantly affected by the boundary conditions. Nevertheless, the approach as such is not wrong, if one is clear on the limitations, and I would encourage the authors to motivate the choices more clearly.”**

As a general answer to the comments made by the referee, the goal of this article is to explore the effects of climate change on the Mediterranean region, while exploring the European continent as a whole as  
25 well in order to provide a reference point for the study of the Mediterranean area. The simulations in this work were performed and analyzed in the context of the EUROCORDEX project in Colette et al (2013) for all the EUROCORDEX regions, Therefore any regimes existing in the EURPCORDEX subdomains have been explored in the aforementioned study. In this work, we chose to provide a more detailed analysis for the European region compared to the aforementioned reference (in particular in  
30 relation with aerosol composition) regarding to PM concentrations as well as including the Mediterranean region which was not explored before. In order to study the Mediterranean region, a point of reference was needed, which was chosen to be the European continent as a whole. This choice makes more sense when taking into account the transportation of atmospheric components from the European region towards the Mediterranean area (apart from dust emissions). Also, the analysis pertaining the  
35 Mediterranean region answers directly to one of the goals of this campaign, studying the future conditions of this basin in different climatic conditions. About the Mediterranean sub-domain being at the southern borders of the domain, the following phrases were added in order to highlight the point raised by the referee.

40 *It is important to keep in mind that, because of the location of the EUROCORDEX domain and the fact that the southern part of the Mediterranean is at the southern borders of the domain, the model might not be able to capture the effects of global climate change and dust activity in a fully consistent way, although the results show an important increase in dust concentrations because of long range transport. (p19, 11-5)*

#### Referee 1 major comments:



1. **“Abstract: No discrimination was made in the conclusion for the European area and for the Mediterranean area, whereas a lot of attention was given to the differences in the main text. Add a few sentences on the major differences. Dust is not an anthropogenic emission, so only long-range transport and boundary condition effects can be studied in the present set-up.”**

We agree with this comment, the following modifications were made to the results part of the abstract:

*The results show that regional climate change causes a decrease in PM<sub>10</sub> concentrations in our scenarios (in both European and Mediterranean sub-domains), as a result of a decrease in nitrate, sulfate, ammonium and dust atmospheric concentrations in most scenarios. On the contrary, BSOA shows an important increase in all scenarios, showing more pronounced concentrations for the European sub-domain compared to the Mediterranean region. Regarding to the relationship of different meteorological parameters with concentrations of different species, nitrate and BSOA show strong temperature dependence, while sulfate is most strongly correlated with relative humidity. The temperature-dependent behavior of BSOA changes when looking at the Mediterranean sub-domain, showing more dependence to wind speed, because of the transported nature of BSOA existing in this sub-domain. A cumulative look at all drivers shows that anthropogenic emission changes overshadow changes caused by climate and long-range transport for both explored sub-domains, with the exception of dust particles for which long-range transport changes are more influential, especially in the Mediterranean basin. For certain species (such as sulfates and BSOA), for most explored sub-domains, the changes caused by anthropogenic emissions are to a certain extent reduced by boundary condition and regional climate changes. (p1-126-40)*

2. **“P2 38-51: Here the motivation of the choice for Europe and Mediterranean is made, but could be improved. North-eastern Europe and Mediterranean are mentioned as hotspot, but in the next sentence Europe as a whole is mentioned. The relation to Charmex is only mentioned, not made in the paper. Should this come back in the conclusions?”**

Yes, North-Eastern Europe and the Mediterranean are in fact the two regions showing the highest sensitivity to climate change (according to the provided reference), while the Western Europe is among the second most sensitive areas. As an average, if we were to consider Europe as a whole, the sensitivity is still one of the highest in the world, as it is explained in the text as well. Some modifications were made in the text (added below) in order to better highlight this fact. The authors agree that the relationship of the article to the ChArmEx project can be better presented in the abstract, the introduction, as well as in the conclusions (added below).

*Two major sub-domains are explored, the European region and the Mediterranean basin, both areas showing high sensitivity to climate change. The Mediterranean area is explored in the context of the ChArMEx project, which examines the current and future meteorological and chemical conditions of the Mediterranean area. (p1 –113-13)*

*Using the differences between historic and future precipitation and temperature for different regions and seasons in an ensemble of scenarios and models, he has shown that the Mediterranean and the north-eastern European area are more sensitive to climate change than the other regions of the world, followed by the Western Europe. According to his calculations, the European area (both western and eastern regions as an average) and the Mediterranean as a whole, are one of the most important hotspots for climate change. (p2, 125-30)*



*This work focuses on the Mediterranean area as well as the European area, since there have not been many studies focusing on the climate change drivers in the Mediterranean area, although this region might be highly sensitive to climate change, therefore directly responding to one of the major goals of the ChArMEx project, in the context of which the study was performed. (p18, 13-6)*

5  
3. **“P3 It would be good to note explicitly that meteorological drivers are correlated, it is not possible to fully separate them. They are driven by circulation patterns. This is analyzed in the SI but could be taken into account more in the main text at several instances. It should also be mentioned here that the choice of global circulation model driving WRF has an impact on the results, for the same RCP scenario, a different GCM may give the same global temperature change but different seasonal /regional impacts.”**

10  
15 On the first point made by the referee, yes, it is true, as mentioned by the referee it has been mentioned in the article and treated in the SI. A phrase was added to the text of the article (added below) in order to mention this fact more explicitly.

*These meteorological parameters have interactions between themselves, showing correlations with each other since they are driven by circulation patterns. The values of correlations between different meteorological parameters examined in this work are shown in SI (SI4). (p8-130-33)*

20 For the second point (a very good point as well), the following phrase was added to the same paragraph.

*Also it should be noted that if the GCM used to provide boundary conditions to the regional climate model was changed, the results seen here might be different (Olesen et al., 2007; Teichmann et al., 2013; Kerkhoff et al., 2015; Lacressonnière et al., 2016). (p8, 136-38)*

25  
4. **“P3 I24 Since there may be nonlinear effects, the simulation with all drivers changed at once will not be the sum of the individual scenarios with one driver changed. This notion could be added to the text.”**

The following phrase has been added to the introduction in order to highlight this comment.

30  
*Finally, the simulations are compared to a series of simulations, where all the aforementioned drivers change at the same time, which can show us the overall impact of all which may be different to the sum of impacts of individual drivers due to non-linear effects. (p4, 11-3)*

5. **“P6 I 85 Reference to EEA is not precise enough: which document/web page?”**

The following URL was added as a footnote.

35  
<https://www.eea.europa.eu/data-and-maps/indicators/global-and-european-temperature-8/assessment> (p6, footnote)

6. **“P9 I do not understand the approach towards rain episode: unit in Fig 2 is number of hours (per year), but the number of episodes is mentioned in the text. I would call it total duration of rain if I understand your definition correctly (1 57-59). Is the threshold set to exclude drizzle? Number of rain events is something else.”**

40 Indeed, the limit is used to remove drizzle and the hours when the amount of rain was negligible. If the threshold was not used (and only a zero/non-zero treatment was done) almost all the hourly time steps

would be counted as having rain. The numbers provided in the images and discussed in the article correspond to the “number of rainy hours with an amount higher than the fixed threshold of the 25<sup>th</sup> percentile of all the simulations and all the domains”. The number of different rain events has not been calculated, only the number of hours in which rain has occurred in each cell have been counted. The phrase “number of rain episodes” was changed to “total duration of rain” in all this section.

7. **“P10 I68 Is there a main message from these correlations that should be mentioned here? Maybe conclusions that are used in the interpretation of the PM10 relationships to meteorological drivers?”**

The following phrase was added to the text using the correlations represented in the SI (SI4).

*The main points that should be taken into account about cross-correlations between meteorological parameters are the positive correlations between wind speed and boundary layer height, between wind speed and precipitation and also the anti-correlation of wind speed with relative humidity. All these correlations are above 0.6 as an absolute value. (p8, I32-35)*

8. **“P13 This section is difficult to follow. First relative changes due to climate change for EUR are discussed, then absolute concentrations for the Mediterranean and EUR are presented. For MED the impact of climate change is not presented, whereas this is the main subject of the paper. Transition to p14 is a surprise. Figure 8 and 9 are just mentioned without further explanation here. Why do you show them?”**

The section first describes the relative changes in the European sub-domain, then the differences between the Mediterranean and the European sub-domains are explored in form of absolute values. Figures 8 and 9 are used (and explored) later in the articles, they are just introduced in this section. The authors agree that this introduction should take place in the next section, therefore the paragraph removed from this section and the introduction of these two figures added to the next section (added below). The authors also agree that some information regarding the impacts of regional climate on the Mediterranean are necessary to be added to this section (added below).

*Figure 8 shows the seasonal changes for nitrates, sulfates, BSOA and dust particles for all sub-domains. 2D concentration fields for nitrates, BSOA, sulfates and dust particles are shown in figure 9, for the season when each component shows its highest concentration (figure 8). (p11, I5-7)*

*The relative changes in the Mediterranean domain compared to historic simulations are close to those for the European sub-domain for most species, albeit showing different intensities for most components. An interesting behavior is seen for BSOA, where the increase in the concentration of this component becomes more homogenous between the three future climatic scenarios in the Mediterranean basin with respect to continental Europe. The reason for this behavior is the origin of BSOA by advection over the Mediterranean sub-domain. Also, sulfates, while showing the same general behavior as in the European sub-domain, show lower changes between future and historic simulations over the Mediterranean Basin, resulting in a decrease in concentration in the RCP8.5 scenario. (p10, I31-37)*

9. **“P14 Section 3.4: this section is quite long and repeats many well-known relations between PM10 and meteorology. Could you highlight the interesting parts (difference in distribution for sulfate) by reducing the description of the non-surprising parts? (e.g. nitrate analysis). I miss a short description of the behavior for the primary components PPM/POA/BC to start with.”**

The goal of this part was to explore every PM<sub>10</sub> component in the model that has apparent relationship with meteorological components or has a high contribution to the PM<sub>10</sub> concentration in any of the sub-domains, therefore the authors would like to leave all the information provided in this section the way it is. However, we agree with the referee that because of the length of the section and the amount of the information provided in it, it can be hard to see the principal points of the discussion. In order to address this issue, an effort was made to include what we find interesting and what we want to pass along in the conclusions part of the article. The authors also recognize primary species not appearing in this section. However, since their concentrations do not show strong changes with climate change alone or do not constitute a major component of the PM<sub>10</sub>, they are discussed directly in section 4.2 (anthropogenic emission changes). However, following the referees suggestion, we added some specific sentences about the climate impact on primary particulate matter.

*Another interesting point from this study is that primary aerosol species such as primary organic aerosols (POA), anthropogenic secondary organic aerosols (ASOA), PPM and black carbon (BC) change only slightly under a future climate (when emissions are kept constant), both over Europe and the Mediterranean basin (a maximum of ±5% change for most of them). It should be noted here that this article deals with annual averages and not extreme events, regional climate changes can have strong effects on primary pollutant peaks as it is shown in Vautard et al. (2018). The evolution of these species will be again discussed in section 4.2 which respect to anthropogenic emission changes are discussed. (p9, 132-38)*

10. **“P16 I36: but PBL and wind speed are highly correlated themselves, so this is no surprise.”**

That’s true, the phrase was changed to:

*Another parameter that shows a strong anti-correlation with sulfate concentrations is the wind speed in spring and winter periods, which can be explained by the correlation between PBL height and wind speed (figure 10). (p12, 115-17)*

11. **“P17 I59 I would say increase in concentration, not production, as you analyze concentration which is a results of production/chemistry, transport and deposition. How confident are you in the SOA scheme/literature, given the evolution in SOA parameterizations over the past 10 years?”**

Yes, the word “production” was changed to the word “concentration” in order to be more precise.

The referee raises a very good point about the recent evolution of SOA simulation schemes, but which goes beyond the present study. In this work, we have used the standard aerosol scheme in CHIMERE (Bessagnet et al. 2009), in which representative hydrophilic and hydrophobic semi-volatile organic species are formed from various VOC precursors. In future work, we address the sensitivity of BSOA and SOA concentration changes with respect to several schemes, for a selected period of time, as we do not dispose of computer time for such a sensitivity analysis for the full 100 year period addressed here. Although the concentration change simulated by the three tested schemes (the CHIMERE standard scheme and two VBS schemes) are different , they all show the same pattern of climate response as observed in the current work, however with different intensities.

12. **“P20 I90-96 think that changes in wet deposition are far more relevant than changes in RH and T for mineral dust, as it is hardly takes up water, and dust is dominated by inflow through the boundary of the model domain.”**

The authors agree with the referee about the wet deposition having a more important impact than RH and T. In order to show this better, we have added the following phrase:

*The impact of changing precipitation frequency/amount is the dominant factor in our simulations when it comes to dust concentration changes, since changes in precipitation patterns result in changes the wet deposition amounts. (p14, 110-12)*

**13. “P20 15-9 Precipitation is difficult to model accurately, also for present-day conditions. The analysis does not provide an indication of rain intensity/frequency, only total number of hours and total amount, as far as I understood.”**

The referee is correct. In this study the total number of rainy hours in each year has been counted, the word duration used in this paragraph refers to that amount and not the duration of different rain episodes. The paragraph has been changed (added below) in order to highlight the point made by the referee.

*Finally, precipitation has been pointed out as a crucial, but difficult to model/predict parameter in both current and future meteorological/climatic simulations (Dale et al., 2001). In our study, the correlation of PM or PM components with the annual precipitation amount are generally weak (and sometimes even positive correlations are seen instead of expected anti-correlations). It has also been discussed, that total annual precipitation duration could be more impactful on the PM than the total amount (Dale et al., 2001). No correlation study has been performed with this parameter in this work, but the decreasing total precipitation duration in all scenarios could induce some increase in PM and its components. (p14, 126-32)*

**14. “P21 not only accumulated effects but also taking into account nonlinearities/compensating effect.”**

The following phrase was added to highlight the point raised by the referee.

*Keep in mind that the series of simulations where all drivers change at the same time show not only the accumulative impacts of all drivers, but also the non-linear relationships that exists between different drivers. (p15, 18-10)*

**15. “P25 12 Focus: EUR and MED get more or less same attention in the paper.”**

The referee is correct, the phrase was changed to:

*This work focuses on the Mediterranean area as well as the European area, since there have not been many studies focusing on the climate change drivers in the Mediterranean area, although this region might be highly sensitive to climate change, therefore directly responding to one of the major goals of the ChArMEx project, in the context of which the study was performed. (p18, 13-6)*

**16. “P27 1 30 But also secondary aerosols are relatively sensitive to advection, as it takes time to form them, but there are more processes involved.”**

The sensitivity of BSOA concentrations to advection is discussed in section 3.4.2, where its relationship with wind speed for the Mediterranean area has been pointed out and the following sentences were added to clarify more (added below). The difference in the sensitivity of dust and BSOA to advection lies in the fact that the emissions of dust is more episodic, while that of BSOA is a constant source especially during summer. Also, the advection of the dust emissions happens from outside of our domain, while the transportation of BSOA happens inside the domain. It should also be taken into account that averaged seasonal meteorological parameters and concentrations are compared for each

sub-domain, therefore what is shown here does not correspond to local correlations, but regional ones. These reasons explain why the model can predict the advection of BSOA to the Mediterranean area, while it seems to miss that of dust aerosols. The phrase below has been modified in order to present this difference.

5                    *The correlation of BSOA concentration in the Mediterranean with wind speed corresponds to the point raised above about the advective nature of BSOA concentrations in this sub-domain, while the high correlations of PBL height and RH with BSOA come from the correlation of wind speed with these two parameters. (p13, 117-20)*

10                    *... while dust concentrations present a weak relationship with the tested meteorological parameters since their changes are related to advection from outside the model domain and therefore not captured by local correlation analysis. (p18, 135-37)*

15                    **17. “P28 For sea salt emissions, I expect that changes in wind speed/circulation patterns and wet deposition will dominate over changes in salinity and density. Given the still large uncertainties in sea spray emission parameterizations, I would consider the relation between temperature, sea level and salinity that is mentioned irrelevant here and leave it out. There is a large difference between sea spray emissions in the Mediterranean and in the Baltic Sea due to the far lower salinity of the latter, but I would by no means expect such a drastic change in salinity for the Mediterranean. Eventually sea level rise could give an effect on total area covered by the sea. Other**

20                    **land use changes are also not addressed in the paper, and they may have more impact (BVOC emissions, deposition) without being mentioned in the conclusions.”**

The part corresponding to sea salt changes was removed taking into account the referees’ remarks. The following phrases regarding land-use changes were added.

25                    *Land-use changes, apart from effects on dust emission mentioned above, can affect the emissions of BVOC, which can change the future concentrations of BSOA, they also can change the deposition of different species in future scenarios. (p20, 12-4)*

**Referee 1 minor textual comments:**

**1. P1 14 dependency on temperature/humidity**

The section was changed at the request of the referee, therefore the comment has been modified before.

30                    **2. P1 22 large number of components, with different origins and different behavior with respect to ...**

Changed to:

*PM comprise a large number of components, with different origins and diverse behaviors with respect to meteorological parameters. (p2, 15-6)*

35                    **3. P2 28-29 formulate more precisely**

Changed to:

*Thus, when exploring future air quality, it is important to take into account that different drivers can have different impacts while having non-linear interactions among themselves. Therefore it is interesting to explore the effects of each driver separately. (p2, 12-14)*

40                    **4. P2 30 positive/negative: use enhance or reduce**

Changed.

**5. P2 52 possible future changes**

Changed.

**6. P3 20 composition (instead of content)**

5 Changed.

**7. P6 170: Land use does not change in the simulations (and leave out the last sentence)**

Sentence was changed to:

*The same unchanged land-use data from Globcover (Arino et al., 2008) with a base resolution of  $300 \times 300m^2$  have been used in different series of simulations. (p5, 121-22)*

10 **8. P12 section numbers 3.4 and 3.1**

Changed.

**9. P13 Figure 7 shows the PM10 concentrations and concentration changes for all different scenarios and subdomains, as well as the contributions of all the different PM10 components.**

15 Changed.

**10. P13l 25 An interesting results is that sulfate concentrations show an increase...**

Fact changed to result in that sentence.

**11. P17 56 Our simulations are consistent with these results**

Changed.

20 **12. P21 Typo in caption fig 10, 3rd line.**

Corrected.

**13. P22 l 51 climate effects were a few percent. I would not call them negligible, they are small but still visible**

The word “negligible” was changed to “smaller”.

25 **14. P24 l 77 COV not explained, this is first instance**

The definition of VOC as well as BVOC were added to section 3 and section 2.4, when they were first used.

**15. P24 l 80. To be presented later: next paper or next section?**

Sentence changed to:

30 *(presented in section 4.3)*

**16. P27 l 32 In contrast (instead of on the contrary)**

Changed.



**17. P27134 emission changes show larger effects on non-dust and non-sea salt PM10 and PM2.5 components than changes in boundary conditions and climate conditions**

Changed to:

*Emission changes show the largest effect on all non-sea salt and non-dust PM<sub>10</sub>/PM<sub>2.5</sub> components. (p19, 16)*

**18. P27137 further investigation**

Changed.

**19. P2716 is dominated by dust**

Changed.

Referee 2 comments:

**“For any regional climate study it is good to have information on the driving system, especially because both dynamic and chemistry are driven by LMDZ-INCA here. If possible provide references where LMDZ-INCA scenarios are analyzed in term of climate change (e.g. CMIP5 intercomparison) and future PM conditions.”**

The LMDZ-INCA runs used in this work have been analyzed in Szopa et al (2013). Intercomparison studies regarding these runs are analyzed in Shindell et al (2013) and Young et al (2013) in the framework of the ACCMIP project. The following passage has been added to the article to explain this more.

*The LMDZ-INCA runs used in this study have been analyzed in Szopa et al. (2013) and Markakis et al. (2014) and inter-comparisons of the same runs with other global chemistry-transport models have been analyzed in Shindell et al (2013) and Young et al (2013) in the framework of the ACCMIP experiment. (p5, 14-7)*

**“Are the LMDZ-INCA runs also driven by ECLIPSE emission for the chemistry part?”**

Two runs of LMDZ-INCA are used in this study, one for all the simulation series (with the exception of the following two series), the second one for the series of simulations used to explore the boundary condition change impacts and the series of simulations in which all drivers change at the same time. The first series of simulations uses RCP emissions, while the second one uses ECLIPSE emissions. Table one was modified in order to show the emissions used for each series. More information about the LMDZ-INCA runs are provided in Szopa et al, (2013), Shindell et al (2013), Young et al (2013) and Markakis et al (2014).

**“Please specify the frequency of the chemical boundary coupling with CHIMERE. Is it monthly or higher frequency? This could be relevant especially for dust outbreak simulations via the southern and eastern boundaries.”**

Monthly data is used for the boundary condition input fields for all the series of simulations discussed in this study. Given that background changes over long periods of time are discussed in this study, monthly inputs provide the necessary information, and it was not possible to store hourly large scale model output. This induces an unavoidable inconsistency between three-hour meteorology and the monthly dust fields. The following phrase has been added in order to highlight this point.



*Monthly climatological fields are used as the boundary condition inputs; since background changes over long periods of time and it was not possible to store hourly global model output to create hourly varying boundary conditions. This induces an unavoidable inconsistency between meteorology and dust fields. (p5, 17-10)*

5       **“Vertical grid. The top of the model is 500 mb, but we know that Mediterranean basin could be influenced by long range transport in the upper troposphere. Is there also a chemical boundary conditions at the top of the model, driven by INCA?”**

Yes, boundary chemical conditions are used from the top of the model as well, from the same source and with the same frequency as for horizontal boundary conditions.

10       **“You choose to include natural emission change as part of regional climate change analysis. That makes sense but it should be clearly stated (perhaps natural emission should not go under the air pollutant umbrella). It is clear that MEGAN is used for BVOC, apparently but do you have also seasalt and dust production within your regional WRF/CHIMERE domain?”**

15       Yes, both sea salt and dust emissions are taken into account inside the simulation domain and these emissions are modified under a changing climate. This becomes clear in the following sentences in the manuscript.

*Dust emissions are taken into account inside the simulation domain based on the method proposed by (Marticorena and Bergametti, 1995).(p5,123-24)*

20       Sea salt emissions are treated by the Monahan, 1986 method in the model.

**“The description of chemical BC experiment is a bit unclear to me. You mentioned that you considered two emission scenarios RCP and ECLIPSE for the global CTM. This does not reflect in table 1 however.”**

25       As mentioned for the previous comment made by the referee, two runs of LMDZ-INCA are used in this study, one for all the simulation series (with the exception of the following two series), the second one for the series of simulations used to explore the boundary condition change impacts and the series of simulations in which all drivers change at the same time. The first series of simulations uses RCP emissions, while the second one uses ECLIPSE emissions. Table one was modified in order to show the emissions used for each series. More information about the LMDZ-INCA runs are provided in Szopa et al, (2013), Shindell et al (2013), Young et al (2013) and Markakis et al (2014).

30       **“Also another question is what would have been the dust boundary conditions change provided by INCA if you had considered another climate scenario? In the global forcing fields, are there a lot of differences between dust changes simulated under different RCP projections?”**

35       Szopa et al (2013) discusses this point when exploring the global runs that we use as boundary conditions. A general decrease in the aerosol burden is seen in all scenarios, while an increase in dust concentration is observed in all scenarios as well. This increase becomes more important for more severe scenarios (RCP8.5>RCP6>RCP4.5>RCP2.6). So, if instead of RCP4.5 RCP8.5 was used, it normally should have resulted in a higher increase in dust concentrations towards the end of the century according to the aforementioned reference. The reason for this increase has been associated to weakened wet deposition around 40°N in the global simulations.

**“In general, PM boundary condition change is driven by climate (and emission) change in the GCM. Caution should be taken in the final interpretation of BC change vs regional climate change, especially when discussing dust and the MED region.”**

5 Yes, the boundary condition change corresponds to the global climate changes as well as global emission changes. The following phrase was added to section 4 in order to reflect this fact. It is affected by uncertainty, so as the impact of regional climate changes. However, comparison between the regional climate change and the BC impact are for all compounds sufficiently strong to conclude on a major driver, very probably beyond uncertainty. The following phrase was added to section 4 in order to reflect this fact.

10 *It should be noted that boundary conditions are taken from a global chemistry-transport model, therefore, changing the boundary conditions corresponds to changing the global climate and the global anthropogenic emissions at the same time. However, comparison between the regional climate change and the BC impact are for all compounds sufficiently strong (see below) to conclude on a major driver, very probably beyond uncertainty. (p15, 12-6)*

15 **“Section 3.2 L 70. Actually for MED/RCP26 you have a slight increase of PM on figure 4 when in the text you mention -1.77%?”**

Yes, the value in the text has been corrected to 0.9%.

**“L90-90. Can the summer increase in all scenario be related to biogenic emission and if yes make the link with section 3.4.2.”**

20 The summer increase is indeed partly due to the biogenic SOA formation, a link is added to section 3.4.2 in this section.

*This increase for the summer period is due to BVOC emission increases, which will be discussed in section 3.4.2. (p9, 118-19)*

**“Decrease in nitrate: just a side question, is there a significant trend in gas phase HNO<sub>3</sub>?”**

25 Yes, there is a significant positive trends for all scenarios for gas-phase HNO<sub>3</sub>.

**“Sulfate: you mention the importance of aqueous formation can you confirm that just by looking at cloud cover trend given by wrf?”**

Yes, there is a correlation between cloud cover and the sulfate concentration, not a particularly strong one though (average of 0.42 of correlation for all scenarios and all seasons).

30 **“BVOC: that could also explain the seasonal pattern of total PM change (general decrease but increase in summer).”**

Yes, it does, a sentence has been added to this section (and to the section before per referee’s previous comment) to address this point.

35 *This increase in BSOA reflects the summer increase in the PM<sub>10</sub> mentioned in section 3.2 as well. (p13, 15-6)*

**“DUST: Again, caution should be taken since regional climate change impact on dust sources, strongly determined by the Mediterranean due to southern boundary location.”**

See the response for the comment below.

**“Line 20. See the above discussions. Dust boundary conditions change is related to Mediterranean climate change, as simulated by the GCM.”**

The following phrases were added to section 4 and the conclusion in order to reflect this issue.

5 *It should be noted that boundary conditions are taken from a global chemistry-transport model, therefore, changing the boundary conditions corresponds to changing the global climate and the global anthropogenic emissions at the same time. (p15, l2-6)*

10 *Also, the Mediterranean Sea is located at the southern borders of the domain used for this study, therefore, it should be noted that although the results of dust concentration changes seen in this study are consistent with the existing literature, the model might not be capable of consistently capturing the relationship between boundary condition changes and southern parts of the Mediterranean because of the placement of the domain. This is not the case for the European sub-domain. (p15, l36-p16, l2)*

15 *It is important to keep in mind that, because of the position of the EUROCORDEX domain and the fact that the southern part of the Mediterranean is at the southern borders of the domain, the model might not be able to capture the effects of global climate change and dust activity in a fully consistent way, although the results show an important increase in dust concentrations because of long range transport. (p19, l1-5)*

**“You mentioned land use change. Does the LMDZ-INCA simulation include CMIP land use change?”**

20 According to Szopa et al. (2013), land use changes have not been considered in the LMDZ-INCA model.

**“Decrease of Sulfate: is it mainly related to a decrease in SO<sub>2</sub> emission just outside the domain (northern Africa sources) that you could see from the ECLIPSE scenario used to drive LMDZ-INCA?”**

The referee is correct, it is mainly due to the emission reductions just outside of the domain.

25 **“The decrease in BSOA associated to a decrease in anthropogenic aerosol is indeed very interesting... but the magnitude of this decrease is quite “impressive” especially when compared to the impact of biogenic emissions in a changing climate. How much confidence do we have in this result? Do you see a large decrease of oxidant activity in the chimere outputs? Do you see a relative increase of isoprene and monoterpenes concentration?”**

30 There are several factors that could cause the decrease that we see in our BSOA concentrations because of anthropogenic emission changes. In the article, decrease in seed aerosol for formation of new SOA and change in the equilibrium of SVOC because of changes in the anthropogenic VOC emissions have been mentioned. Another reason, as mentioned by the referee, could be a change in the oxidant levels because of changes in anthropogenic emissions. As to respond to the two questions asked by the referee,  
35 yes, there is a decrease in oxidant levels which is manifested by an increase in isoprene/mono-terpene concentrations (under constant emissions in this scenario). Thus, in our opinion, atmospheric chemistry could cause such a decrease in BSOA concentrations because of anthropogenic emissions changes. In line with this issue, same impact was seen in a study in preparation by Ciarelli et al (2019) with also important intensity, when looking at an ensemble of simulations in the framework of the EURODELTA  
40 multi-model experiment. Sartelet et al. (2012) see an important change in SOA concentration in their simulation as well when changing the anthropogenic emissions. So we are confident in the effect, as it

is seen by many models, but at this time, we cannot explain it quantitatively. The following phrases have been added to the article:

5 *Same impact was seen in a study in preparation by Ciarelli et al. (2019) with also important intensity, when looking at an ensemble of simulations in the framework of the EURODELTA multi-model experiment. Sartelet et al. (2012) see an important change in SOA concentration in their simulation as well when changing the anthropogenic emissions. (p19,19-13)*

10 **“In line with previous comment, the discussion between regional climate change and boundary condition effect should mention that Mediterranean climate change and dust activity are linked but could not be captured in a fully consistent way because of the choice of the CORDEX domain.”**

The following phrases were added to section 4 and the conclusion in order to reflect this issue (same modifications as another comment of the referee).

15 *Also, the Mediterranean Sea is located at the southern borders of the domain used for this study, therefore, it should be noted that although the results of dust concentration changes seen in this study are consistent with the existing literature, the model might not be capable of consistently capturing the relationship between boundary condition changes and southern parts of the Mediterranean because of the placement of the domain. This is not the case for the European sub-domain. (p15, 136-p16, 12)*

20 *It is important to keep in mind that, because of the position of the EUROCORDEX domain and the fact that the southern part of the Mediterranean is at the southern borders of the domain, the model might not be able to capture the effects of global climate change and dust activity in a fully consistent way, although the results show an important increase in dust concentrations because of long range transport. (p19, 11-5)*

25