

The influence of $^{14}\text{CO}_2$ releases from regional nuclear facilities at the Heidelberg $^{14}\text{CO}_2$ sampling site (1986 - 2014)

Matthias Kuderer, Samuel Hammer and Ingeborg Levin

Institut für Umweltphysik, Heidelberg University, Heidelberg, 69120, Germany

5 *Correspondence to:* Ingeborg Levin (Ingeborg.Levin@iup.uni-heidelberg.de)

Abstract. Atmospheric $\Delta^{14}\text{CO}_2$ measurements are a well-established tool to estimate the regional fossil fuel-derived CO_2 component. However, emissions from nuclear facilities can significantly alter the regional $\Delta^{14}\text{CO}_2$ level. In order to accurately quantify the signal originating from fossil CO_2 emissions, a correction term for anthropogenic $^{14}\text{CO}_2$ sources has to be determined. In this study, the HYSPLIT atmospheric dispersion model has been applied to calculate this correction for the long-term $\Delta^{14}\text{CO}_2$ monitoring site in Heidelberg. Wind fields with a spatial resolution of $2.5^\circ \times 2.5^\circ$, $1^\circ \times 1^\circ$ and $0.5^\circ \times 0.5^\circ$ show systematic deviations, with coarser resolved wind fields leading to higher mean values for the correction. The finally applied mean $\Delta^{14}\text{CO}_2$ correction for the period from 1986-2014 is 2.3 ‰ with a standard deviation of 2.1 ‰ and maximum values up to 15.2 ‰. These results are based on the $0.5^\circ \times 0.5^\circ$ wind field simulations in years when these fields were available (2009, 2011-2014) and, for the other years, they are based on $2.5^\circ \times 2.5^\circ$ wind field simulations, corrected with a factor of 0.43. After operations at the Philippsburg boiling water reactor ceased in 2011, the monthly nuclear correction terms decreased to less than 2 ‰, with a mean value of (0.44 ± 0.32) ‰ from 2012 to 2014.

1 Introduction

Evaluation of the perturbation of atmospheric $^{14}\text{CO}_2$ by nuclear bomb tests in the middle of the last century has given very useful insight into carbon cycle dynamics (e.g. Levin and Hesshaimer, 2000). Today this artificial spike has almost equilibrated with the fast exchanging carbon reservoirs, and the currently observed global $\Delta^{14}\text{CO}_2$ trend ($\Delta^{14}\text{CO}_2$ being the relative deviation of the $^{14}\text{C}/\text{C}$ ratio in atmospheric carbon dioxide from standard material in permil (Stuiver and Polach, 1977)) is almost exclusively due to the ongoing input of ^{14}C -free fossil fuel CO_2 into the atmosphere (Levin et al., 2010; Graven, 2015). This long-term trend can potentially be used to estimate the global input of fossil fuel CO_2 into the atmosphere. However, the uncertainty of this estimate is still large (ca. 30%, Levin et al., 2010) due to the uncertainty of the large $^{14}\text{CO}_2$ disequilibrium fluxes from biosphere and ocean, as well as artificial ^{14}C sources. On the continental scale, however, atmospheric $\Delta^{14}\text{CO}_2$ measurements provide a powerful and the only direct and quantitative tool for estimating the regional fossil fuel component. $\Delta^{14}\text{CO}_2$ measurements at a polluted station allow separating fossil fuel-derived regional CO_2 enhancements relative to a clean reference level from those originating from biospheric fluxes if also the $\Delta^{14}\text{CO}_2$ level at the reference site is known (Levin et al., 2003; Turnbull et al., 2009). However, on that local to regional scale (several 10 km), $^{14}\text{CO}_2$ emissions from nuclear facilities, such as boiling water reactors, can significantly contaminate atmospheric $\Delta^{14}\text{CO}_2$. The ^{14}C signals from such point sources are well detectable in their immediate neighborhood in atmospheric CO_2 (and CH_4 , e.g. Levin et al., 1992; Uchirin et al., 1998; Povinec et al., 2009) but also in plant samples (Levin et al., 1988). $^{14}\text{CO}_2$ “plumes” from point sources normally quickly disperse at distances of some tens of kilometers (Pasquill, 1961; Turner, 1970). But if a sampling station is located in the catchment of such $^{14}\text{CO}_2$ point sources, special care is required to accurately quantify the $\Delta^{14}\text{CO}_2$ contamination and correct for it to estimate reliable fossil fuel CO_2 values (e.g. Levin et al., 2003).

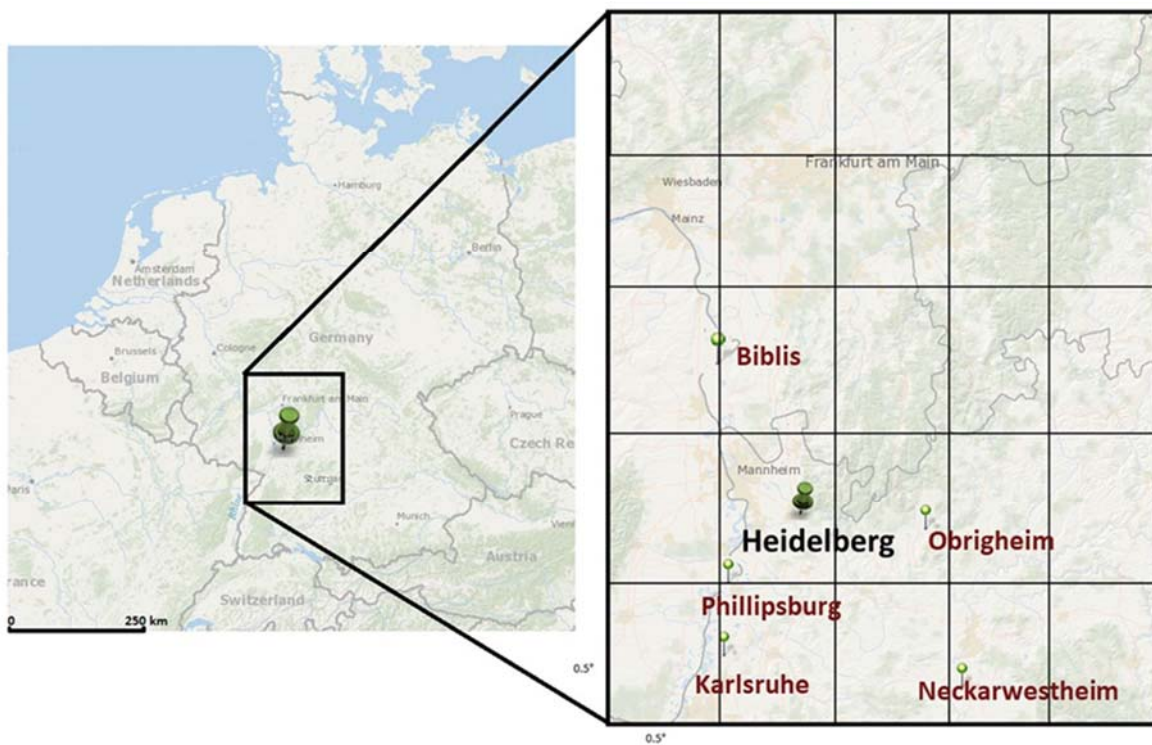
Here we present results from HYSPLIT dispersion modelling (Draxler and Hess, 1998) of $^{14}\text{CO}_2$ emissions from five nuclear installations in the < 60 km neighborhood of our long-term $\Delta^{14}\text{CO}_2$ monitoring site in Heidelberg. We apply the HYSPLIT model for the period of 1986-2014 with available wind fields of $2.5^\circ \times 2.5^\circ$, $1^\circ \times 1^\circ$ and $0.5^\circ \times 0.5^\circ$ resolution. Using reported $^{14}\text{CO}_2$ emission rates, these model estimates for the Heidelberg sampling site allow us to correct for the local $^{14}\text{CO}_2$ contaminations from nuclear facilities (Kuderer, 2016). Our model results, however, turned out to strongly depend on the resolution of the wind field used for the calculation. We discuss this important finding and present the currently most reliable corrections of our long-term $\Delta^{14}\text{CO}_2$ measurements.

2 Methods

2.1 Site description

10 The Heidelberg monitoring site is located on the University campus in the outskirts of Heidelberg, a medium size city in the upper Rhine valley in southwestern Germany ($49^\circ 25' \text{ N}$, $8^\circ 41' \text{ E}$, 116 m a.s.l., and see Figure 1). From 1986-2001, CO_2 samples for $\Delta^{14}\text{C}$ analysis have been collected from the roof of the former building of the Institute (INF 366) and from 2001 to present, from the new building about 500 m to the east (INF 229). At both locations, air was sampled from about 25 – 30 m a.g.l. The small difference in location of the two sampling sites is not relevant when estimating the nuclear $^{14}\text{CO}_2$ contamination
15 with HYSPLIT.

Five nuclear installations with reported $^{14}\text{CO}_2$ emissions are found at distances between 25 km and 55 km to the Heidelberg station. Figure 1 shows their locations; details of reactor type, installed electrical output, period of operation, distance from the Heidelberg station and mean reported $^{14}\text{CO}_2$ emission during their operation up to 2014 are listed in Tab. 1. As the prevailing
20 winds in the Upper Rhine valley are from south-west, Philippsburg (KKP I & II) is the most important source of potential $^{14}\text{CO}_2$ contamination in Heidelberg. Philippsburg I is the only boiling water reactor (BWR) with its major ^{14}C emissions being $^{14}\text{CO}_2$, whereas pressurized water reactors (PWR) emit ^{14}C mainly as $^{14}\text{CH}_4$ (Kunz, 1985). All the other nuclear installations except for Neckarwestheim II (GKN II) emit less than 15 % of Philippsburg I. Neckarwestheim is, however, located to the southeast of Heidelberg in the Neckar valley at a distance of 55 km, so that its relative contribution to the total $^{14}\text{CO}_2$
25 contamination is only less than 10 % (see Table 3).



5 **Figure 1:** Map of the Heidelberg sampling site in southwest Germany. The locations of the five nearest nuclear facilities are shown in the enlargement. This enlargement corresponds to the size of the 2.5° x 2.5° wind field grid. The 0.5° x 0.5° wind field resolution is indicated by the grid in the enlargement.

2.2 ¹⁴CO₂ sampling and analysis

Two- and, for limited periods, also one-week integrated large volume samples of atmospheric CO₂ were collected from the roof of the Institute's buildings by quantitative chemical absorption in basic sodium hydroxide (NaOH) solution, as described
 10 by Levin et al. (1980). Except for the first few years, samples were collected only during night (from 19:00 to 7:00 Central European Winter Time), in order to avoid CO₂ contamination from local traffic. Moving the Institute to a new building in the year 2000 required parallel CO₂ sampling at both, the old and the new sampling locations on the Heidelberg University campus, in order to quantify possible differences and then allow combining the data sets from the two locations about 500 m apart. As
 15 the new building is located closer to the Heidelberg city center, slightly lower $\Delta^{14}\text{C}$ values (by on average 0.8 ‰) were found at the new location over the more than one-year overlapping period from late 2000 to early 2002. The results obtained from samples collected until 2002 at INF 366 at about 25 m a.g.l. were adjusted accordingly, and are now comparable with those

obtained at the current sampling location at INF 229 at about 30 m a.g.l. (for details of this comparison and correction, see Levin et al. (2008)).

$^{14}\text{CO}_2$ samples were processed in the Heidelberg ^{14}C laboratory by acidification of the NaOH solution in a vacuum system.

5 The extracted CO_2 was subsequently purified over charcoal. The $^{14}\text{C}/\text{C}$ ratio was then measured by low level counting (Kromer and Münnich, 1992). All results are presented here as ^{13}C -corrected $\Delta^{14}\text{C}$ deviations from the international reference standard (Oxalic acid) in permil. They are corrected for decay to the date of CO_2 sampling (Stuiver and Polach, 1977). Note that Stuiver and Polach (1977) refer to this ^{14}C notation as Δ not $\Delta^{14}\text{C}$, however in order to be consistent with other atmospheric radiocarbon literature we stick to using $\Delta^{14}\text{C}$ instead of Δ . Precision of $\Delta^{14}\text{C}$ values was of order 4-5 ‰ in the 1980s and 1990s, of 3-4 ‰
10 in the 2000s and of 2-3 ‰ thereafter.

2.3 Reported $^{14}\text{CO}_2$ emissions from nuclear facilities in the surroundings of Heidelberg

According to the German Atomic Energy Act (Strahlenschutzverordnung, 2001), emissions of radioactive substances from nuclear facilities with the exhaust air must be monitored and reported quarterly to regional and federal authorities. The Bundesamt für Strahlenschutz (BfS, German Federal Office for Radiation Protection), releases yearly reports on radioactive
15 emissions from all German reactors and research facilities; here the $^{14}\text{CO}_2$ emissions are reported separately from other radioactive substances. These BfS reports are available for the years 1986 – 2014 (BfS, 1986 – 2015). For Philippsburg I and II higher resolution, i.e. monthly emission data are available (Kernkraftwerk Philippsburg, pers. comm.); these monthly data were used in this work to estimate the $^{14}\text{CO}_2$ contamination in Heidelberg.

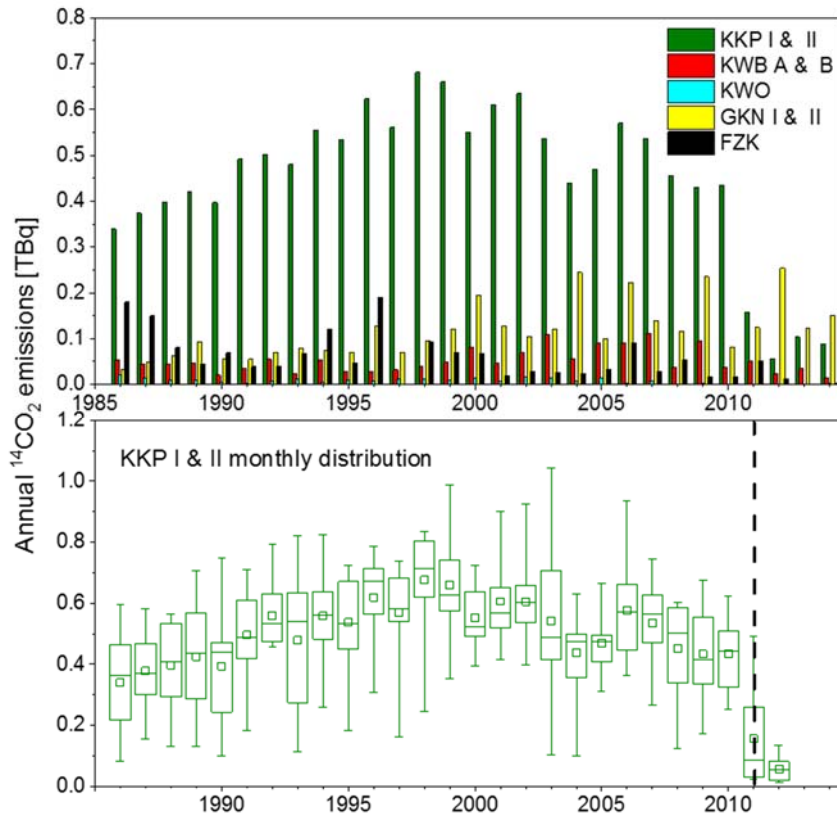


Figure 2: $^{14}\text{CO}_2$ emissions from nuclear facilities: Annual mean emissions from all facilities (upper panel) and box plots of the distribution of monthly values from Philippsburg (KKP I & II, lower panel); the boxes include 50% of all months of the year with the horizontal bar indicating the mean and the square indicating the median value of the year. The whiskers show the minimum and maximum monthly values of the individual years. The dashed line indicates the shutdown of Philippsburg I shortly after the Fukushima accident.

5

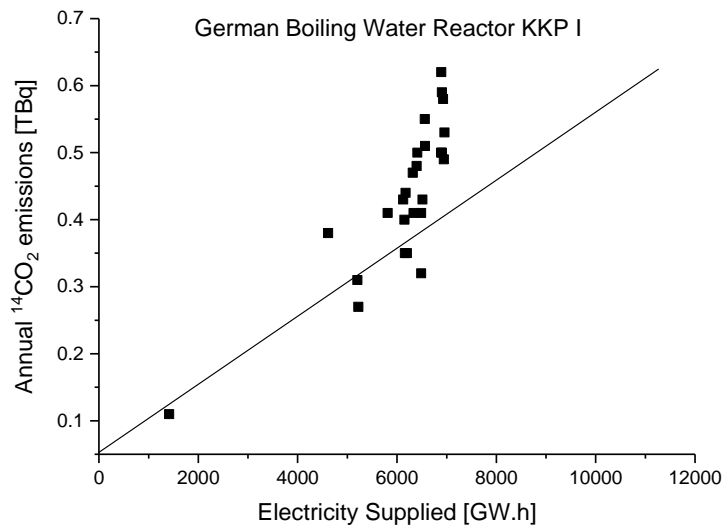
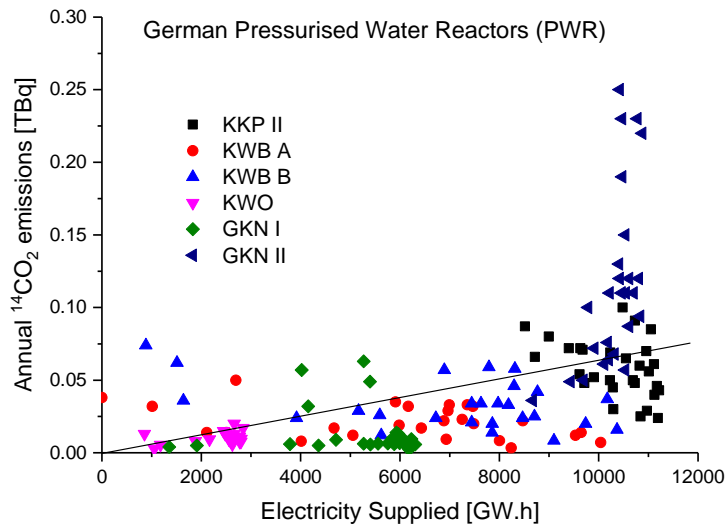
10 Figure 2 (upper panel) shows annual $^{14}\text{CO}_2$ emissions from 1986 – 2014 for all five facilities listed in Tab. 1, while Fig. 2
 (lower panel) shows the distribution of monthly emissions from Philippsburg I and II for the years 1986 - 2012. Note the huge
 variability of monthly emissions, which can differ from month to month by more than a factor of two. No seasonal variation
 nor any relation to particular maintenance activities was observed. Graven and Gruber (2011) estimated mean emission factors
 of $0.06 \text{ TBq } ^{14}\text{CO}_2 \text{ GWa}^{-1}$ for PWRs and $0.51 \text{ TBq } ^{14}\text{CO}_2 \text{ GWa}^{-1}$ for BWRs. From our emission data and corresponding power
 15 production reports, we do see, however, large differences from these emission factors and for PWRs no correlation at all, as
 displayed in Fig. 3. Moreover, keeping in mind the huge month-to-month variability of $^{14}\text{CO}_2$ emissions from Philippsburg

(Fig. 2, lower panel), underlines the necessity of reliable high-resolution $^{14}\text{CO}_2$ emission data from nuclear installations, if accurate corrections shall be applied to atmospheric $\Delta^{14}\text{CO}_2$ observations for fossil fuel CO_2 estimates.

- 5 **Table 1:** Nuclear facilities in the surroundings of Heidelberg. Reactor type (BWR: boiling water reactor, PWR: pressurized water reactor), installed electrical power and the average annual $^{14}\text{CO}_2$ emissions during their respective period of operation up to 2014 as well as the distance to the Heidelberg sampling site are given. Different reactor blocks are separated by slash. RR are research reactors and RP is the research reprocessing plant (WAK) of the Karlsruhe Research Center (FZK). After the operation period, further emissions occur during the decommissioning of the facilities (data taken from BfS (1986-2015)).

Nuclear facility	Installed electric capacity (MWe)	Type	Operation period	Mean $^{14}\text{CO}_2$ emission (TBq/yr)	Distance from Heidelberg
Philippsburg (KKP) I/II	926/1468	BWR /PWR	1980-2011/ 1984-2019	0.414/0.055	25 km
Obrigheim (KWO)	357	PWR/PWR	1969-2005	0.008	30 km
Biblis (KWB) A/B	1225/1300	PWR/PWR	1975-2011	0.025/0.037	37 km
Karlsruhe FZK/WAK	-	RR/RP	1971-1991	0.036	39 km
Neckarwestheim (GKN) I/II	840/1400	PWR/PWR	1976-2011/ 1989-2022	0.008/0.135	55 km

10



5 **Figure 3:** Relationship between annual $^{14}\text{CO}_2$ emissions from Pressurized Water Reactors (upper panel) and the Boiling Water Reactor Philippsburg I (lower panel) and their annual electricity supplied. The solid lines show the specific emission factors reported by Graven and Gruber (2011).

2.4 The HYSPLIT model

The Hybrid Single-Particle Lagrangian Integrated Trajectory model (HYSPLIT) from NOAA offers a variety of services ranging from computing simple air parcel trajectories up to complex dispersion simulations (Draxler and Hess 1998). During the simulations, virtual particles are emitted at the source location and advected to the new particle position, described by the position vector \mathbf{P} , using the input wind velocity vector field \mathbf{V} :

$$\mathbf{P}(t + \Delta t)_{\text{advection}} = \mathbf{P}(t) + 0.5 \cdot [\mathbf{V}(\mathbf{P}, t) + \mathbf{V}(\mathbf{P}'(t+\Delta t), t+\Delta t)] \cdot \Delta t. \quad (1)$$

The advection equation is solved with a dynamic time step Δt , demanding that the advective displacement is smaller than the size of a grid cell (Draxler, 1999). Equation 1 is solved numerically by integrating the velocity vector over time, making use of the trapezoidal rule, i.e. averaging the velocity vectors at the initial position $\mathbf{V}(\mathbf{P}, t)$ and first-guess position $\mathbf{V}(\mathbf{P}'(t+\Delta t), t+\Delta t) = \mathbf{V} \{(\mathbf{P}(t) + \mathbf{V}(\mathbf{P}, t) \cdot \Delta t), (t + \Delta t)\}$ of the particle. To account for atmospheric dispersion, the particles are displaced stochastically (Eq. 2a & b):

$$X_{\text{final}}(t + \Delta t) = X(t + \Delta t)_{\text{advection}} + U'_{\text{dispersion}}(t + \Delta t) \cdot \Delta t \quad (2a)$$

$$Y_{\text{final}}(t + \Delta t) = Y(t + \Delta t)_{\text{advection}} + W'_{\text{dispersion}}(t + \Delta t) \cdot \Delta t \quad (2b)$$

where the turbulent velocity components U' , W' are estimated from the standard deviations σ of the horizontal or respective vertical velocity components (Fay et al., 1995). For more details, see Stein et al. (2015) and references therein.

The HYSPLIT model was run here in the forward mode with an internal spatial resolution of $0.05^\circ \times 0.05^\circ$ and an internal time step fixed by the stability ratio 0.75, i.e. the time step is chosen such that the maximal advective displacement is smaller than 0.75 times the grid size. For every nuclear facility location, a separate run has been conducted with a constant emission rate. Due to the small distance between ^{14}C sources and the measurement station Heidelberg, simulations were limited to 48 hours, where each run consisted of a 24-hour period, with 2500 particles being emitted every hour, followed by 24 hours of sole propagation of the particles. Thus, for each day the simulated nuclear ^{14}C activity included the actual emissions of this day arriving at the sampling site and the propagated emissions from the day before. This could potentially lead to loss of particles, which arrive at the measurement site more than 24-48 hours after the release, but for an extended reference period only a minor effect has been observed. Note that typical travel times from the nuclear power plants to Heidelberg are of order 6-12 hours. The HYSPLIT model computes for every hour the particle concentration in every grid box, which gives a dilution factor f (see Eq. 3), describing how much the point source emissions are diluted over the respective grid. This dilution factor is strongly depending on the prevailing meteorological conditions. All relevant control parameters of the different runs are listed in Table 2.

2.5 Wind fields

Previous studies have shown that HYSPLIT calculations are sensitive to the meteorological input data (e.g., Cabello et al., 2008; Lin et al., 2015). Here we used three different wind velocity fields that have a horizontal resolution of $2.5^\circ \times 2.5^\circ$, $1^\circ \times 1^\circ$ and $0.5^\circ \times 0.5^\circ$. The GDAS (Global Data Assimilation System) assimilates meteorological observations in numerical weather prediction models and archives the results. The one degree fields GDAS1 are available since 2005 and the half degree fields GDAS0p5 since 2008. GDAS1 and GDAS0p5 differ besides the horizontal also in the vertical resolution (Lin et al., 2015). The NCEP/NCAR (National Centre for Environmental Prediction/National Centre for Atmospheric Research) reanalysis provides atmospheric analyses with a spatial resolution of $2.5^\circ \times 2.5^\circ$, using historical data from 1948 onwards. All three wind fields are readily available at <ftp://arlftp.arlhq.noaa.gov/pub/archives/>.

10 2.6 Estimation of $\Delta^{14}\text{C}_{\text{nuclear}}$

The ^{14}C signal at the sampling site $\Delta^{14}\text{C}_{\text{nuclear}}$ originating from $^{14}\text{CO}_2$ emissions from each nuclear facility is calculated by scaling the meteorological dilution factor f (s m^{-3}) at the measurement station obtained from the HYSPLIT simulation with the time-varying emission strength Q (Bq s^{-1}) of the source. This specific ^{14}C activity is converted (according to its definition from Stuiver and Polach (1977)) into $\Delta^{14}\text{C}_{\text{nuclear}}$ in ‰ according to Eq. 3

$$15 \quad \Delta^{14}\text{C}_{\text{nuclear}} = f \cdot Q \cdot X_{\text{CO}_2} / (M_{\text{C}} \cdot V_{\text{m}} \cdot a) \cdot 1000 \text{ ‰}, \quad (3)$$

with the molar volume at standard atmospheric temperature and pressure (STP) $V_{\text{m}} = 24.465 \text{ mole m}^{-3}$, molar mass of carbon $M_{\text{C}} = 12 \text{ g mole}^{-1}$, mole fraction of CO_2 , X_{CO_2} , and specific activity of the ^{14}C standard $a = 0.238 \text{ Bq gC}^{-1}$.

20

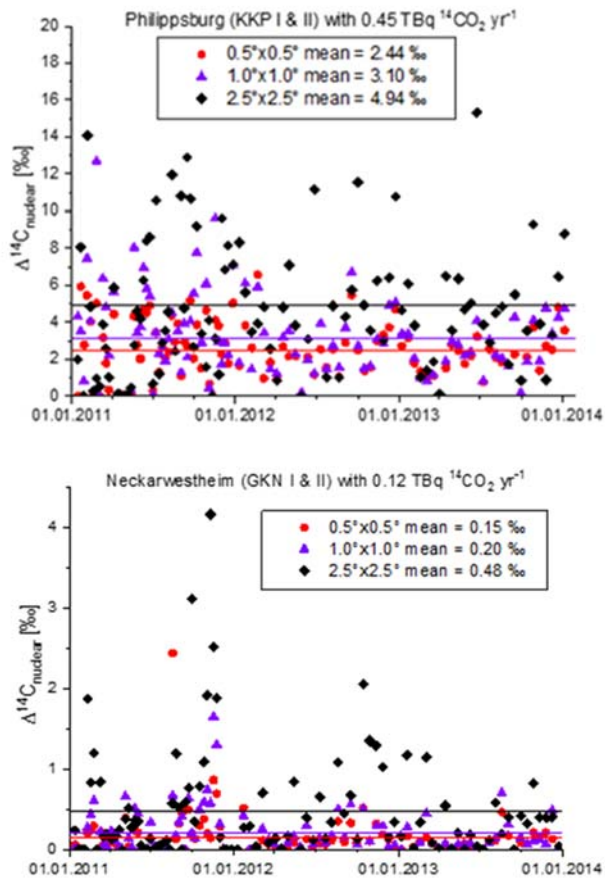


Figure 4: Upper panel: Calculated $\Delta^{14}\text{C}_{\text{nuclear}}$ contributions from Philippsburg with assumed constant $^{14}\text{CO}_2$ emissions using the three wind fields with different resolution. Lower panel: Same as upper panel, showing the contributions from Neckarwestheim.

5

3 Results

3.1 $\Delta^{14}\text{C}_{\text{nuclear}}$ estimates using wind fields of different resolution

Figure 4 (upper panel) shows two-weekly (i.e. sampling period) integrated HYSPLIT-estimated $\Delta^{14}\text{C}_{\text{nuclear}}$ contributions in Heidelberg for 2011 – 2013, originating from assumed constant $^{14}\text{CO}_2$ emissions from Philippsburg of 0.45 TBq yr^{-1} (corresponding to the long-term average emission from this facility). The different symbols distinguish the results when using the three different wind fields, i.e. with resolution of $2.5^\circ \times 2.5^\circ$ (black diamonds), of $1^\circ \times 1^\circ$ (blue triangles) and of the highest resolution of $0.5^\circ \times 0.5^\circ$ (red circles). The two-week integrated $\Delta^{14}\text{C}_{\text{nuclear}}$ signals vary between 0‰ and 16 ‰ for the coarse

resolution wind field, and show on average lower signals when using the higher resolved wind fields. There are, however, also situations when we obtain lower contamination signals with the coarse resolution wind field than with the higher resolved fields. The $1^\circ \times 1^\circ$ wind field also yields, on average, slightly higher $\Delta^{14}\text{C}_{\text{nuclear}}$ signals from Philippsburg than the highest resolution $0.5^\circ \times 0.5^\circ$ wind field, but the differences between those two are often only marginal. Looking at the contributions from the Neckarwestheim reactors (GKN I & II) (Figure 4 lower panel), we also estimate the largest $\Delta^{14}\text{C}_{\text{nuclear}}$ signals with the low-resolution wind field, while the highest resolution wind field yields the smallest signals. The mean ratio between the contamination signals estimated with the highest resolution wind field and those estimated with the $2.5^\circ \times 2.5^\circ$ resolution field is 0.43. We consider the results from the higher-resolution wind fields more reliable to calculate $\Delta^{14}\text{C}_{\text{nuclear}}$ than those with the coarse resolution field (see discussion below). We can further see that the contributions from Neckarwestheim $^{14}\text{CO}_2$ emissions on the Heidelberg $\Delta^{14}\text{CO}_2$ signal are, on average, about one order of magnitude smaller than those from Philippsburg and, thus, with an average $\Delta^{14}\text{C}_{\text{nuclear}}$ of less than 0.2 ‰, almost negligible.

3.2 Estimation of $\Delta^{14}\text{C}_{\text{nuclear}}$ in Heidelberg from all five nuclear installations

Owing to its source strength and proximity to Heidelberg, Philippsburg I is the dominant contributor to the nuclear contamination at our sampling site. Therefore, and considering the high month-to-month variability of emissions (Fig. 2, lower panel), it is important to use monthly resolved emission data to estimate the $\Delta^{14}\text{C}_{\text{nuclear}}$ signals originating from this facility. The other four nuclear installations are secondary contributors permitting the use of annual average $^{14}\text{CO}_2$ emission rates in absence of higher temporally resolved emission data. For each source location, the HYSPLIT model was run for every calendar day separately covering the period 1986 - 2014.

20

Table 2: Control parameters of the HYSPLIT runs and used wind field data for $^{14}\text{CO}_2$ contamination estimates for the different nuclear facilities

Internal spatial resolution	$0.05^\circ \times 0.05^\circ$
Internal temporal resolution	fixed internally by stability criterion (0.75)
Direction of the run	forward
Number of source locations per run	1
Number of runs with different source locations	5
Emission rate (per hour)	1
Hours of emission	24
Total run time (hours)	48
Particles released per cycle	2 500
Maximum number of particles	50 000

Wind field resolution:	
Philippsburg I & II	1986-2008, 2010: 2.5° x 2.5°*; 2009, 2011-2014: 0.5° x 0.5°
Obrigheim	1986-2014: 2.5° x 2.5°*
Biblis A & B	1986-2014: 2.5° x 2.5°*
Neckarwestheim I & II	1986-2014: 2.5° x 2.5°*
Karlsruhe	1986-2014: 2.5° x 2.5°*

*The HYSPLIT results obtained with 2.5° x 2.5° wind fields have been corrected with a factor of 0.43

Table 3: Relative average $\Delta^{14}\text{C}_{\text{nuclear}}$ contribution in Heidelberg from 1986 to spring 2011 (shutdown of Philippsburg I)

	Obrigheim	Biblis A & B	Neckarwestheim I & II	Philippsburg I & II	Karlsruhe
%	1.05	1.39	6.80	88.13	2.63

- 5 For the Philippsburg reactor site, the following meteorological data has been used (Tab. 2): For 1986 – 2008 and 2010, we used the 2.5° x 2.5° fields, for 2009 and 2011 – 2014 the 0.5° x 0.5° fields. For the other four source locations (Obrigheim, Biblis A & B, Neckarwestheim 1 & 2 and Karlsruhe), the 2.5° x 2.5° wind field data have been used for the entire period 1986 – 2014, in order to save computing time. All coarse grid dilution factors were then corrected with a factor of 0.43 as an attempt to account for the effect of under-estimating atmospheric dispersion in coarse grid simulations. This factor was obtained from
- 10 the comparison made for the 3-year period 2011-2013 at Philippsburg and Neckarwestheim (Fig. 4). The average relative contributions to the total $\Delta^{14}\text{C}_{\text{nuclear}}$ signal for all facilities are listed in Tab. 3. The largest correction terms for a two-week sampling period originating from Philippsburg I & II were 15.2 ‰, from Neckarwestheim I & II, it was 3.3 ‰ and from Biblis A & B it was 1.1 ‰. From the other two facilities, they were always smaller than 1 ‰.

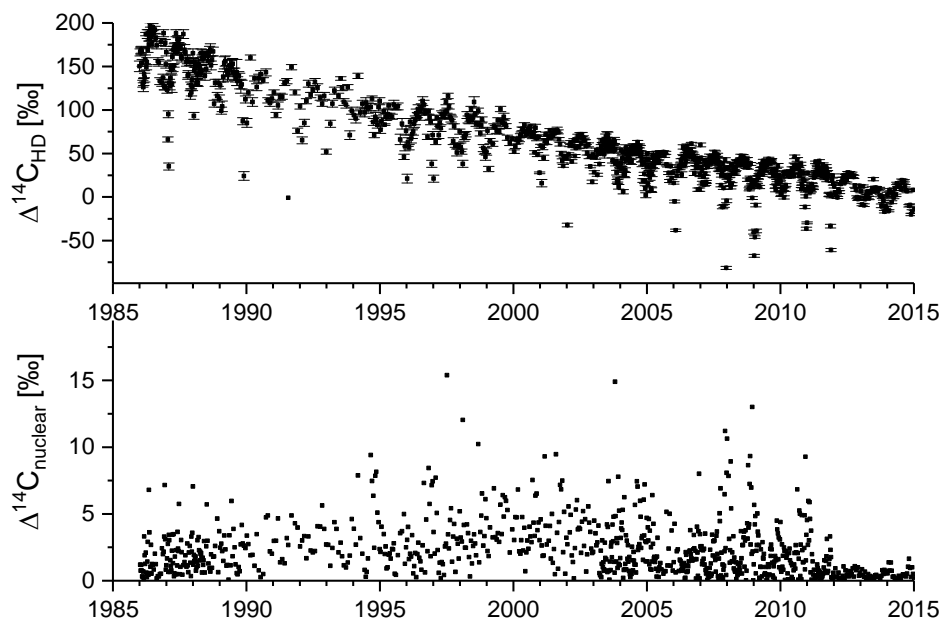


Figure 5: Upper panel: Results of $\Delta^{14}\text{CO}_2$ measurements in Heidelberg (uncorrected); lower panel: nuclear contribution from all installations in Heidelberg (note expanded $\Delta^{14}\text{C}$ scale)

5

The individual uncorrected Heidelberg $\Delta^{14}\text{CO}_2$ data are displayed in Fig. 5 (upper panel) together with the individual total $\Delta^{14}\text{C}_{\text{nuclear}}$ corrections (lower panel). In the years before the Philippsburg I shutdown, about 1 % of all corrections were above 10 ‰ and less than 2 % above 5 ‰. The mean correction was 2.3 ‰ with a standard deviation of 2.1 ‰. After the shutdown of the BWR Philippsburg I, the largest $^{14}\text{CO}_2$ source before 2011, $\Delta^{14}\text{C}_{\text{nuclear}}$ decreased to less than 2 ‰, with a mean value of 10 (0.44 ± 0.32) ‰ from 2012 to 2014. It is therefore feasible to apply only an average correction of this size to the Heidelberg measurements of all subsequent years.

3.3 Uncertainty of estimated $\Delta^{14}\text{C}_{\text{nuclear}}$

The uncertainty of our $\Delta^{14}\text{C}_{\text{nuclear}}$ estimates originates from uncertainties in emission data and uncertainties in the HYSPLIT model transport. From comparison of results based on the differently resolved wind fields (Fig. 4), we find the largest deviations between the $2.5^\circ \times 2.5^\circ$ and the $1^\circ \times 1^\circ$ fields while the average differences between the two finer resolved wind fields are of order 30 %, they can, however, be as large as a factor of two for individual two-week periods. The uncertainty of the measured monthly emission data is probably less than 10-20 % and thus small if compared to the uncertainty of the model

transport (although sub-monthly variability in the emissions may also contribute to the uncertainty of the $\Delta^{14}\text{C}_{\text{nuclear}}$ estimates). For the contributions from nuclear installations where only annual average emission data were available to us, the uncertainty of emissions is estimated to 30 %. As the contribution from all four installations except Philippsburg contribute on average only 12 % (Tab. 3) this uncertainty is small compared to the transport uncertainty of the contributions from Philippsburg. We, therefore, estimate the typical uncertainty of individual total $\Delta^{14}\text{C}_{\text{nuclear}}$ signals to less than 35 %. It is worth noting from Fig. 4 a & b that the variability of $\Delta^{14}\text{C}_{\text{nuclear}}$ is larger for the $2.5^\circ \times 2.5^\circ$ wind field calculations than would be expected from the mean differences between the fine and the coarse resolution wind field simulations. Applying a simple correction factor of 0.43 on all values estimated for the years 1986-2008 and 2010 with the $2.5^\circ \times 2.5^\circ$ wind field, therefore, adds variability and uncertainty to the $\Delta^{14}\text{C}_{\text{nuclear}}$ corrections, which is, however, not possible to quantify with the currently available information.

10 4 Discussion and Conclusions

Our HYSPLIT estimates of $^{14}\text{CO}_2$ contaminations from nuclear facilities in the catchment area of Heidelberg showed large differences when using wind fields of different resolution. The calculated mean contamination was approximately twice as large when using the coarse resolution $2.5^\circ \times 2.5^\circ$ wind field compared to the two higher resolution fields. Previous studies have shown, that meteorological coarse grid re-analyses can be well suited to capture synoptic-scale dynamical processes, but biases in surface wind speeds may be introduced as re-analysis data are not well adapted to reproduce transient strong wind events occurring at the mesoscale and generating a large sub-grid scale variability (Largeron et al., 2015). These can arise in HYSPLIT trajectory calculations, which are the basis for concentration simulations, when the air mass passes through areas with complicated topography and meteorological patterns that are on a smaller scale than the data resolution (Su et al., 2015). Another and possibly more important factor is that atmospheric dispersion is included in the model by using the standard deviation of the interpolated velocity field. Linearly interpolating the coarse wind field to the internal HYSPLIT grid (here $0.05^\circ \times 0.05^\circ$) leads to a less variable velocity field compared to initially starting with a fine grid. This generates more distinct plume shapes in coarse grid simulations (Kuderer, 2016). Therefore, using the coarse wind field may underestimate the effect of atmospheric dispersion, leading to high values when the plume directly passes the measurement point. We expect this to occur frequently in the case of the Philippsburg $^{14}\text{CO}_2$ plume, where the source lies in the main wind direction at rather short distance from the measurement point. This effect may explain the occasionally high $\Delta^{14}\text{C}_{\text{nuclear}}$ values estimated for a number of sampling periods before 2009 (Fig. 5b), which are not seen in the measured uncorrected data (Fig. 5a). In the case of Neckarwestheim, this explanation does not hold. However, also here we consider the results obtained with the finest resolution wind field as more accurate. Neckarwestheim lies in the hilly Neckar valley with a complex topography, which is probably better represented by the finer resolution wind fields. Overall, we expect the HYSPLIT estimates that are based on higher resolution wind fields to provide more realistic results, in particular as the topography around Heidelberg is not flat. We therefore correct the HYSPLIT results obtained with the $2.5^\circ \times 2.5^\circ$ wind fields for the earlier years when high-resolution wind

fields ($0.5^\circ \times 0.5^\circ$) are not available. Note, however, that this first rough correction comes with additional uncertainty and variability (see above).

In an earlier study by Levin et al. (2003), Philippsburg I & II were considered as the sole sources for the nuclear contamination at the Heidelberg sampling site. A Gaussian plume model (Turner, 1970) with a constant mean dispersion factor had been applied there to calculate $\Delta^{14}\text{C}_{\text{nuclear}}$ as a first approximation, but using the same monthly $^{14}\text{CO}_2$ emissions as in the present study. The mean nuclear signal estimated by Levin et al. (2003) was $\Delta^{14}\text{C}_{\text{nuclear}} = (4.8 \pm 2.0) \text{‰}$ ranging from 0.2 ‰ to 10 ‰ for monthly mean values. This earlier estimate of $^{14}\text{CO}_2$ contamination is approximately twice the value obtained with the HYSPLIT model and the high-resolution wind fields. Graven and Gruber (2011) used the TM3 model with a spatial resolution of $1.8^\circ \times 1.8^\circ$ and estimated for 2005 a total $\Delta^{14}\text{C}_{\text{nuclear}}$ of 2.1 (1.1 - 3.7) ‰ for the Heidelberg grid cell. Their estimate is in agreement with our results for that year ($(2.1 \pm 1.6) \text{‰}$) obtained with the $2.5^\circ \times 2.5^\circ$ resolution wind field corrected by the factor of 0.43. As in the present study, Graven and Gruber (2011) also included ^{14}C contributions from other nuclear installations in their estimates. However, their assumed emissions from the Philippsburg I reactor were estimated with the average emission factor for BWR, which is about 20 % smaller than the measured value for 2005 used in our estimate. They also mention that their Eulerian model may have under-estimated the true contamination due to its coarse resolution, which would dilute point source emissions over a large grid in an Eulerian approach.

These comparisons with earlier studies indicate that more work and higher resolution models and wind fields are needed to reduce the uncertainty of the $^{14}\text{CO}_2$ contamination estimates from nuclear installations at measurement sites where $\Delta^{14}\text{CO}_2$ observations shall be used to precisely determine the regional fossil fuel CO_2 component. Currently, we have to take into account a model transport uncertainty of about 1-2 ‰ in the estimated $\Delta^{14}\text{C}_{\text{nuclear}}$ contamination, if the measurement site is located closer than about 30 km downwind from a nuclear facility, which has a $^{14}\text{CO}_2$ emission rate of about 0.5 TBq yr^{-1} similar to the Philippsburg I boiling water reactor with 1 MWe power production. Other reactor types, such as the Canadian CANDU reactors may have significantly larger emission rates (Graven and Gruber, 2011; Vogel et al., 2013); the uncertainty of corresponding $\Delta^{14}\text{C}_{\text{nuclear}}$ estimates in their close neighbourhood may then be considerably larger.

The limited temporal resolution of $^{14}\text{CO}_2$ emission rates from nuclear installations cause additional uncertainty on the $\Delta^{14}\text{C}_{\text{nuclear}}$ estimates, as generally only annual mean emissions are reported. Graven and Gruber (2011) assume that $^{14}\text{CO}_2$ emissions are proportional to the annual power production. However, the present study on the influence from German reactors on the Heidelberg measurement site does not fully support this finding. Figure 3 does not show significant correlations between annual $^{14}\text{CO}_2$ emissions and corresponding electricity supply. Therefore, assuming emission factors as suggested by Graven and Gruber (2011) will add considerable uncertainty to the $\Delta^{14}\text{C}_{\text{nuclear}}$ estimates, which may be as large as the uncertainties estimated here for the wind field-based model transport error.

Overall, we conclude that careful investigation of potential $^{14}\text{CO}_2$ emissions in the catchment of sampling sites is required when using $\Delta^{14}\text{CO}_2$ observations for fossil fuel CO_2 estimates. The differences of our HYSPLIT modelling results, when based on differently resolved wind fields, together with the findings from earlier studies suggest that current $\Delta^{14}\text{C}_{\text{nuclear}}$ estimates may be wrong by a factor of two. Therefore, careful investigations with high-resolution models must be performed at all stations where ^{14}C -based fossil fuel CO_2 measurements are conducted. Based on our simulations, the shutdown of Philippsburg I in 2011, if not accounted for in the $\Delta^{14}\text{C}_{\text{nuclear}}$ correction, would have masked a fossil fuel CO_2 signal of 1 ppm, corresponding to 10% of the average total fossil fuel CO_2 signal in Heidelberg. We, therefore, plan similar studies for the European ICOS atmospheric station network (<https://www.icos-ri.eu/icos-stations-network>). The basis must be high-resolution $^{14}\text{CO}_2$ emissions data from nuclear facilities, which need to be made available for these investigations, if contamination estimates shall be accurate.

Data availability

Data will be available from the Heidelberg University data depository under <https://heidata.uni-heidelberg.de/dataverse/carbon>

15 Author contributions

I.L. and S.H. have designed the study. M.K. made the HYSPLIT model calculations and evaluated the data. I.L. prepared the manuscript with support from M.K. and S.H.

Acknowledgements

The authors gratefully acknowledge the NOAA Air Resources Laboratory (ARL) for providing the HYSPLIT transport and dispersion model used in this publication. We especially like to thank Bernd Kromer and the staff of the Heidelberg ^{14}C laboratory for their careful work analysing the $^{14}\text{CO}_2$ samples, and Ute Karstens for helpful discussions on the manuscript. Financial support came from a number of agencies in Germany and Europe. These are the Heidelberg Academy of Sciences, the German Ministries for the Environment, of Education and Science, and of Transportation and digital Infrastructure, the German Umweltbundesamt and the European Commission, Brussels. We acknowledge financial support by Deutsche Forschungsgemeinschaft within the funding programme Open Access Publishing, by the Baden-Württemberg Ministry of Science, Research and the Arts and by Ruprecht-Karls-Universität Heidelberg.

References

- BfS 1986-2015: Umweltradioaktivität und Strahlenbelastung: Jahresberichte, Bundesamt für Strahlenschutz (BfS), Bundesministerium für Umwelt, Naturschutz, Bau und Reaktorsicherheit (BMBU) (available at <http://nbn-resolving.de/urn:nbn:de:0221-2017072814305>).
- 5 Cabello M., Orza, J.A.G., Galiano, V., and Ruiz, G.: Influence of meteorological input data on back trajectory cluster analysis: a seven-year study for southern Spain, *Adv. Sci. Res.*, 2, 65–70, 2008.
- Draxler, R. R., and Hess, G. D.: An Overview of the HYSPLIT_4 modeling system for trajectories, dispersion and deposition, *Aust. Met. Mag.*, 47, 295–308, 1998.
- Draxler, R.: HYSPLIT4 user's guide. Technical report, NOAA ARL. NOAA Air Resources Laboratory, Silver Spring, MD,
10 1999.
- Fay, B., Glaab, H., Jacobsen, I., and Schrodin, R.: Evaluation of Eulerian and Lagrangian atmospheric transport models at the Deutscher Wetterdienst using anateX surface tracer data, *Atmospheric Environment*, 29(18), 2485–2497. 1995.
- Graven, H.: Impact of fossil fuel emissions on atmospheric radiocarbon and various applications of radiocarbon over this century. *PNAS*, 112, 9542–9545, 2015.
- 15 Graven, H., and Gruber, N.: Continental-scale enrichment of atmospheric $^{14}\text{CO}_2$ from the nuclear power industry: potential impact on the estimation of fossil fuel-derived CO_2 , *Atmospheric Chemistry and Physics*, 11(23), 12339–12349, 2011.
- Kromer, B., and Münnich, K.O.: CO_2 gas proportional counting in Radiocarbon dating – review and perspective, In: Taylor, R.E., A. Long and R.S. Kra (Eds.) *Radiocarbon after four decades*. Springer-Verlag, New York, pp 184-197, 1992.
- 20 Kuderer, M.: Influence of nuclear power plants to the radiocarbon budget in Heidelberg and trajectory-based sampling, Master -Thesis, Universität Heidelberg, 2016.
- Kunz, C.: Carbon-14 discharge at three light-water reactors, *Health Physics*, 49, 25-35, 1985.
- Largeron, Y., Guichard, F., Bouniol, D., Couvreur, F., Kergoat, L., and Marticorena, B.: Can we use surface wind fields from meteorological reanalyses for Sahelian dust emission simulations? *Geophysical Research Letters*, 42(7), 2490–2499,
25 2015.
- Levin, I., Münnich, K.O., and Weiss, W.: The effect of anthropogenic CO_2 and ^{14}C sources on the distribution of $^{14}\text{CO}_2$ in the atmosphere, *Radiocarbon* 22, 379-391, 1980.
- Levin, I., Kromer, B., Barabas, M., and Münnich, K.O.: Environmental distribution and long-term dispersion of reactor $^{14}\text{CO}_2$ around two German nuclear power plants. *Health Physics* 54, 149-156, 1988.
- 30 Levin, I., Bösinger, R., Bonani, G., Francey, R.J., Kromer, B., Münnich, K.O., Suter, M., Trivett, N.B.A., and Wölfli, W.: Radiocarbon in atmospheric carbon dioxide and methane: global distribution and trends, in: R.E. Taylor, A. Long and R.S. Kra (Eds.) *Radiocarbon After Four Decades: An Interdisciplinary Perspective*, Springer-Verlag, New York, 503-517, 1992.
- Levin, I., and Heshaimer, V.: Radiocarbon – a unique tracer of global carbon cycle dynamics, *Radiocarbon* 42, 69-80, 2000.

- Levin, I., Kromer, B., Schmidt, M., and Sartorius, H.: A novel approach for independent budgeting of fossil fuels CO₂ over Europe by ¹⁴CO₂ observations, *Geophys. Res. Lett.*, 30(23), 2194, 2003.
- Levin, I., Hammer, S., Kromer, B., and Meinhardt, F.: Radiocarbon Observations in Atmospheric CO₂: Determining Fossil Fuel CO₂ over Europe using Jungfrauoch Observations as Background, *Sci. Total. Environ.*, 391, 211-216, 2008, doi: 10.1016/j.scitotenv.2007.10.019.
- Levin, I., Naegler, T., Kromer, E., Diehl, M., Francey, R. J., Gomez-Pelaez, A.J., Schäfer, A., Steele, L. P., Wagenbach, D., Weller, R., and Worthy, D. E.: Observations and modelling of the global distribution and long-term trend of atmospheric ¹⁴CO₂, *Tellus*, 62B, 26-46, 2010, DOI: 10.1111/j.1600-0889.2009.00446.x.
- Lin S., Zibing Y., Fung, J.C.H., and Lau, A.K.H.: A comparison of HYSPLIT backward trajectories generated from two GDAS datasets, *Sci. Total. Environ.*, 506–507, 527-537, 2015, ISSN 0048-9697, <http://dx.doi.org/10.1016/j.scitotenv.2014.11.072>.
- Pasquill, F.: The estimation of the dispersion of windborne material, *Meteorol. Mag.*, 90, 1063, 33-49, 1961. Povinec, P.P., Chudý, M., Šivo, A., Šimon, J., Holý, K., Richtáriková, M.: Forty years of atmospheric radiocarbon monitoring around Bohunice nuclear power plant, Slovakia, *Journal of Environmental Radioactivity*, 100 (2), 125-130, 2009.
- Stein, A. F., Rolph, G. D., Draxler, R. R., Stunder, B., and Ruminski, M.: Verification of the NOAA Smoke Forecasting System: Model Sensitivity to the Injection Height. *Weather and Forecasting*, 24(2), 379–394, 2009.
- Strahlenschutzverordnung 2001. § 47. <https://www.jurion.de/Gesetze/StrlSchV-1/47> Last accessed 29.03.2016.
- Stuiver, M., and Polach, H.: Discussion: Reporting of ¹⁴C Data, *Radiocarbon*, 3(19), 355–363, 1977.
- Su, L., Yuan, Z., Fung, J. C., and Lau, A. K.: A comparison of HYSPLIT backward trajectories generated from two GDAS datasets, *Science of The Total Environment*, 506–507, 527–537, 2015.
- Turnbull, J., Rayner, P., Miller, J., Naegler, T., Ciais, P., and Cozic, A.: On the use of ¹⁴CO₂ as a tracer for fossil fuel CO₂: Quantifying uncertainties using an atmospheric transport model, *J. Geophys. Res.*, 114, D22302, 2009, doi:10.1029/2009JD012308.
- Turner, D. B.: Workbook of atmospheric dispersion estimates. Publication No. AP-26, U.S. Environ. Prot. Agency, Raleigh, 1970.
- Uchirin, G., Hertelendi, E., Volent, G., Slavik, O., Morávek, J., Kobal, I., Vokal, B.: ¹⁴C measurements at PWR-type nuclear power plants in three middle European countries, *Radiocarbon*, 40 (1), 439-446, 1998.
- Vogel, F., Levin, I., and Worthy, D.E.J.: Implications of using parameterized nuclear power plant emissions of ¹⁴CO₂ on deriving reliable estimates of fossil fuel CO₂ from atmospheric observations, in: A J T Jull & C Hatté (Eds.) *Proceedings of the 21st International Radiocarbon Conference*, *Radiocarbon* 55(2–3), 1556–1572, 2013.