

Thank you to the Reviewers for providing constructive comments, which have helped us to improve the manuscript. Our point-by-point responses are provided below in blue text following each of the Reviewer comments, shown in black.

Reviewer #1

This article provides some interesting datasets about the physical nature of fogs and their radiative forcing that are worthwhile of publication. Aside from technical and scientific concerns outlined below, the primary criticism is that the writing quality is of poor quality, and this obscures the potential impact of the results. It suffers from “rambling”, lacking concision that leads the reader clearly from the introduction to the conclusions. It contains many sentences that are nearly impossible to follow, statements that lack justification, and the sin of using non-quantitative descriptors like “very” and “quite”. It is not clear that anyone other than the lead author read the manuscript in detail.

We appreciate that the reviewer recognizes the value of this study. We have addressed the technical concerns as well as the specific stylistic and editorial comments itemized below. We have also edited for grammar, reduced unnecessary words and asides within the text, and removed qualitative descriptors such as those identified, as well as others (e.g., “fairly” and “relatively”). We edited the text throughout, but focused on Section 3 in accordance with the recommendations in Comment 3.

Specific items

1. p.2 l. 19. “liquid more efficiently absorbs and emits longwave radiation than ice likely increasing the forcing from liquid fog per unit mass compared to ice fogs or clear-sky ice precipitation”. Avoid words like “likely”. Otherwise, what does this mean without stating the wavelength band? Is this really true? Does it even matter that much given the size of particles is the dominant consideration determining the specific absorption?

Thank you for highlighting this sentence as problematic. Phase does influence absorptivity, but it is dependent on wavelength, as you say (see e.g., Fig. 1 in Turner 2003 [doi:10.1175/1520-0450(2003)042<0701:CPDUGA>2.0.CO;2]). The word “likely” qualifies the second clause of the sentence as a hypothesis. However, we do not test this hypothesis directly in this study. The intended purpose of the statement was to alert the reader to the fact that the microphysical and radiative properties of clouds are linked. We have reworked the sentence to be more generalized and to remove the speculative clause. We have also reordered the structure of the paragraph to improve the flow.

2. p.4 l. 26 No mention is made of size ambiguities by forward scattering probes to the assumed shape of particles. The relationship between integrated intensity in angular regime considered as a function of size is a strong function of ice crystal shape model and can result in uncertainties in measured size much greater than 100%.

The main focus of this study is on fogs that are composed of spherical liquid droplets. The sizes calculated from the FM100 measurement should be interpreted as optically-equivalent spheres. For non-spherical ice, the sizes calculated from the measurements do indeed have large uncertainties. Therefore, data collected when fogs were composed of ice is shown only in Figure 9 and only for contrast to the liquid cases. In the section of the paper where Figure 9 is discussed, we actually did note the errors associated with the sizing of ice. We felt that these errors were sufficiently important for the reader to understand that we noted them when Figure 9 was introduced instead of earlier within the methods section. Specifically, at the beginning of Section 5.1, we stated the following: *Ice particles are non-spherical and, thus, the distributions represent an effective size with reference to the scattering properties of spherical liquid; asphericity and orientation are important factors in the sizing of ice using a scattering spectrometer that impose significant uncertainties (Borrmann et al., 2000). Thus, the distributions of ice classes should be treated cautiously and are shown here for context.*

Section 3 (methods) already indicates how the calculation should be interpreted, but we agree that an explicit acknowledgement of non-spherical size uncertainties is warranted there too. Therefore, we have kept the original statements in Section 5.1, but have also expanded the discussion in Section 3 and included the Borrmann et al. reference there as well.

3. I generally cannot follow the writing or justifications for the methods outlined in Chapter 3. This section in particular needs careful editing.

We have edited this section. We have also restructured the organization to be consistent with the classification procedure and positioned these steps under subheadings.

4. p. 6 l. 25 How is it known that the clouds are single layer?

This is a reasonable assumption because we focus on fogs occurring during otherwise clear skies, but it is an assumption nonetheless. We have clarified the statement accordingly.

5. p. 7 l. 16 I do not see any reference in Shupe et al. (2013) to justify the systematic statement that reflectivities >-5 dBz are indicative of snow.

This is stated in the caption for Figure 14 in Shupe et al. (2013). This is a conservative estimate relative to Shupe et al. (2007; doi 10.1029/2007GL031008), a threshold that Shupe et al. (2013) refers to as “light precipitation” (note that it does not rain at Summit). We have clarified this in the text.

6. What justification is there to support that blowing snow does not extend above 300 m?

We do not have detailed estimates of the depth of blowing snow plumes in Greenland. However, some work has been done in Antarctica, which is the closest analogue available. Distributions of blowing snow from two Antarctic stations presented in Figure 11 of Gossart et al. (2017, doi: 10.5149/tc-11-2755-2017) show nearly all events to be less than 300 m

depth. Gossart et al. reported that some events were much deeper (heights above 1000 m), but these were the exception rather than the norm and were generally found to coincide with precipitation. We have added the Gossart et al. reference to 3.2.3.

7. What is the “lofting parameterization”?

The reference is Li and Pomeroy (1997), as described in the sentence prior to the phrase in question. To improve clarity, we have replaced “lofting parameterization” with “Li and Pomeroy parameterization” and clarified the terms “lofting” and “blowing”.

8. When observations are mentioned, mention the instrument used. Presumably it is the FM100 that was used to observe particles in the lowest 10 m? Say so.

We believe this comment references the distinction between the 2 m FM100 and the 10 m FM100 rather than the distinction between the FM100s and other instruments, but it is unclear from the comment precisely where in the text this ambiguity was identified. Generally, the distinctions are clearly stated in the text where necessary, as well as in all relevant figures/captions. In some parts of the manuscript, such as the section that describes the processing of the FM100 data, no such distinction is made, but we feel that it is sufficiently clear that we are referring to both probes. We have clarified one statement where we felt there was ambiguity in the list that appears at the end of Section 3.

9. “Recall from Figure 3 that the threshold for identification used to construct Figure 5 is small (10-3 cm-3). Figure 3 also shows that the threshold at which events begin to be missed, and the rate at which missed events increase, is different for each class. For example, as expected, low density types such as snow also require a low threshold to be captured while high density types such as the fogs are relatively insensitive to the threshold.” Completely incomprehensible.

This sentence was intended to demonstrate support for the classification methodology by explaining that the behavior of the lines in Figure 5 is consistent with expectations for low density (e.g., snow) and high density (e.g., fog) events. This is not a critical statement and it was removed when we edited Section 3 in response to Comment 3 and your Summary comments.

10. p. 7 l. 4 “Snow occurred more often without significant blowing snow” ??? Writing

We have rewritten the sentence in question.

11. Case studies. An allowance needs to be made for observed changes in atmospheric and fog state being due to advection into the observation region rather than the apparent default assumption that the changes are evolutions within the region due to local physical processes.

We have added this qualification to the introductory statements at the top of Section 4. Reviewer #2 asked a similar question about the effects of local topography, which we have also acknowledged in the same place.

12. p. 10 “Thus, while the fog was likely induced by radiation initially, it was maintained, and ultimately continued to grow without additional infrared loss at the surface driving saturation in the air column” The sentences that follow are generally incomprehensible but I do not understand how it could be that cloud top continued radiative cooling would not be able to maintain and deepen the fog layer. If the boundary layer cools, then the saturation mixing ratio decreases and the condensate mixing ratio increases.

The sentence in question refers to cooling from the surface, not the cloud top. We know that the surface stopped cooling because we observed the near-surface air to warm due to increased radiative forcing from the fog. Cloud top cooling is suggested later as a plausible mechanism to introduce moisture to the surface in a manner consistent with your statements. We have edited the sentences following the one in question. We acknowledge that one of these sentences (beginning “While...”) was fragmented and we have fixed this. We have also added clarity and we hope that this addresses your concerns.

13. p. 12 l. 25. Referencing Hansen and Travis (1974), while correct, is a bit unnecessary given how far removed that paper is from this one. Just mention the effective diameter as being the ratio of moments of the size distribution.

We have made this change.

14. The fog bows are interesting. The physics should be described, noting in particular that the presence of fog bows does not exclude the presence of ice, only requiring the presence of liquid.

We have added a brief explanation and a reference for the optical physics of fogbows. You are correct that the occurrence of the fogbow does not rule out ice. We appreciate this suggestion and have added the qualification. We have also added an additional qualification (with references) indicating that quasi-spherical ice has been observed by others in other locations. This fact implies that we should also not rule out the possibility that under certain conditions ice fogs might produce optical phenomena similar to what is regularly observed in liquid fogs. However, this possibility is speculative for the following reasons: First, the science on habits for ice fogs is not settled (e.g., Gultepe et al. 2015, doi: 10.1016/j.atmosres.2014.04.014); second, regions such as Fairbanks, Alaska, where much of the literature on ice fogs originates is a poor analogue for Greenland due to differences in ice nucleating aerosols; and third, we are not aware of any literature specifically linking optical phenomena normally associated with liquid droplets to ice fogs.

Reviewer #2

The paper provides a detailed analysis of fog hydrometeors and their effects at the Summit site from 2012 to 2014. Interesting results include the identification of liquid versus ice fogs, their microphysical properties including their time evolution and seasonality, how ice particles and super-cooled droplets can co-exist in a vertical column in the boundary layer, and their effects on radiative forcing. The paper is well-written and organized, the measurements are of scientific significance and the

novel results improve our understanding of the role of cold fogs in an Arctic setting. I would accept the paper as it stands but ask the authors to address the following minor questions.

We appreciate the reviewer's positive feedback. We found the questions below to be intriguing and have endeavored to address them.

5

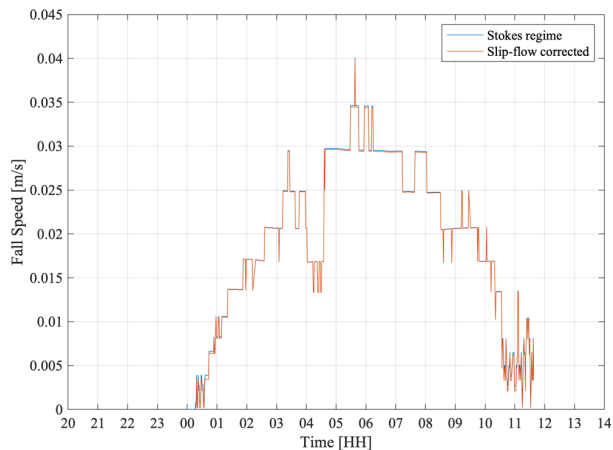
1. A fairly convincing case is made for the settling of hydrometers to explain the difference of microphysical properties between 10 and 2 m in some cases. Based on the mean particle size can you calculate the terminal velocity and see if it is consistent with the time lag identified at 2 m with respect to 10 m?

Following your suggestion, we calculated a time series of theoretical particle terminal velocities for the summertime case study, which is the case we used to estimate the settling rates you reference from the manuscript. We made these calculations following Pruppacher and Klett (2010, doi: 10.1007/978-0-306-48100-0) and the results are displayed in the figure below. Two calculations are shown: The first is based on the simple assumption of the Stokes regime (blue in the figure) and the second is corrected for slip-flow effects, which become important for small particles (red in the figure). All particles are assumed to be spherical liquid droplets and the flow is assumed to be laminar. The two theoretical calculations are similar and agree with the velocities we derived from the probes. Specifically, the theoretical calculations indicate settling rates between 0 and 0.01 m/s during the first hour of the case when we estimated ~0.01 m/s using the probe data and 0.03-0.035 m/s during the mature phase of the fog when the probes suggested a settling rate of 0.03-0.04 m/s. We decided to show the new figure here to document our work to address this question, but have elected not to add it to the manuscript. Instead, we have added two sentences to the text explaining that the settling rates implied by the time series derived from the probes are consistent with theoretical calculations, referring readers to Pruppacher and Klett (2010).

10

15

20



2. Although the Summit site is likely quite flat, can the authors rule out the possibility of any uplift effects when the wind direction and speed might favor adiabatic cooling based on the local but subtle topography.

5 This is an excellent question. Reviewer #1 asked a similar question, but referring to advection from more distant regions. The area around Summit Station is indeed quite flat. A number of detailed topographic surveys have been conducted in the area by the Cold Regions Research and Engineering Laboratory (CRREL) for logistical management of the station structures. For example, see https://www.geosummit.org/sites/default/files/docs/Summit-Station_ERDC-CRREL_TR-16-16.pdf. These surveys indicate that the maximum slope is approximately 1% at the kilometer scale. It is <1% towards the south, into the predominant wind direction from which our sampling was conducted. Locally around the station, variability in surface height is $\sim \pm 2\text{-}3$ m and is generally more complex than the surrounding environment because of localized drifting associated with station structures. Much of our analysis of the case studies assumes relative spatial homogeneity. Unfortunately, we cannot rule out the possibility that local topographic effects (or advection from more distant areas) might explain some of the observed time-evolution of the fogs at the location of the measurements. Therefore, we have included a statement acknowledging these limitations in the introductory remarks at the beginning of the case study section.

10

15

3. Is it possible that thermal tides, as measured by the surface barometer, might have a role in the observed diurnal signals when solar radiation is not the obvious forcing mechanism?

This is a very intriguing hypothesis! We have conducted some work linking buoyancy waves above the boundary layer to fluctuations in the thermal structure of the surface layer and associated modification of the fog microphysics. This was presented at the POLAR2018 conference in June 2018 in Davos, Switzerland, and is the subject of ongoing study (AC3-2010: <http://www.professionalabstracts.com/POLAR2018/iPlanner/#!/grid/1529539200>). Only a small portion of that work was

5 incorporated into the current manuscript and can be found in the discussion of Figure 7. Because we have observed buoyancy waves to create areas of convergence and divergence at the surface (see Section 4.2) that also appear to modulate fog microphysics (discussed in the poster, but not in the manuscript), it is plausible that gravitational waves, such as thermal tides could be responsible and that such phenomena could trigger condensation. We revisited the POLAR2018 study and some additional cases and believe that while the occurrence of the buoyancy waves in the case study coincides with the diurnal cycle,

10 this is incidental and not causal. We will certainly keep this idea in mind as a plausible candidate for the missing mechanism we highlight at the end of Section 4.2, but as yet we have not found supporting evidence.

15

20

25

Super-cooled liquid fogs over the central Greenland ice sheet

Christopher J. Cox^{1,2}, David C. Noone³, Max Berkelhammer⁴, Matthew D. Shupe^{1,2}, William D. Neff^{1,2}, Nathaniel B. Miller⁵, Von P. Walden⁶, Konrad Steffen⁶

- ¹ Cooperative Institute for Research in Environmental Sciences, Boulder, Colorado, 80309, USA
- ² NOAA Earth System Research Laboratory, Boulder, Colorado, 80305, USA
- ³ College of Earth, Ocean, and Atmospheric Sciences, Oregon State University, Corvallis, Oregon, 97331, USA
- ⁴ Department of Earth and Environmental Sciences, University of Illinois at Chicago, Chicago, Illinois, 60607, USA
- ⁵ Department of Civil and Environmental Engineering, Washington State University, Pullman, Washington, 99164, USA
- ⁶ Swiss Federal Research Institute WSL, Birmensdorf, CH-8903, Switzerland

Correspondence to: Christopher J. Cox (christopher.j.cox@noaa.gov)

Abstract. Radiation fogs at Summit, Greenland (72.58°N, 38.48°W, 3210 masl) are frequently reported by observers. The fogs are often accompanied by fogbows, indicating the particles are composed of liquid and because of the low temperatures at Summit, this liquid is super-cooled. Here we analyse the formation of these fogs as well as their physical and radiative properties. In situ observations of particle size and droplet number concentration were made using scattering spectrometers near 2 m and 10 m height from 2012 to 2014. These data are complemented by co-located observations of meteorology, turbulent and radiative fluxes, and remote sensing. We find that liquid fogs occur in all seasons with the highest frequency in September and a minimum in April. Due to the characteristics of the boundary-layer meteorology, the fogs are elevated, forming between 2 m and 10 m and the particles then fall toward the surface. The diameter of mature particles is typically 20–25 µm in summer. Number concentrations are higher at warmer temperatures and, thus, higher in summer compared to winter. The fogs form at temperatures as warm as warm as -5 °C, while the coldest form at temperatures approaching -40 °C. Facilitated by the elevated condensation, in winter 2/3 of fogs occurred within a relatively warm layer above the surface when the near-surface air was below -40 °C, as cold as -57 °C, which is too cold to support liquid water. This implies that fog particles settling through this layer of cold air freeze in the air column before contacting the surface, thereby accumulating at the surface as ice without riming. Liquid fogs observed under otherwise clear skies imparted annually 1.5 W m⁻² of cloud radiative forcing (CRF). While this is a small contribution to the surface radiation climatology, individual events are influential. The mean CRF during liquid fog events was 26 W m⁻², and was sometimes be much higher. An extreme case study was observed to radiatively force 5 °C of surface warming during the coldest part of the day, effectively damping the diurnal cycle. At lower elevations of the ice sheet where melting is more common, such damping could signal a role for fogs in preconditioning the surface for melting later in the day.

- Deleted: i
- Deleted: well
- Deleted: below that which
- Deleted: can
- Deleted: relatively
- Deleted: i
- Deleted: but can

1 Introduction

Fogs are reported by observers at Summit, Greenland (72.58°N, 38.48°W, 3210 masl) approximately 18% of the time in autumn and 8-10% of the time in other months (Starkweather, 2004). In sunlight, these fogs are at times accompanied by characteristic fogbows, the presence of which suggests the fog is optically thin and therefore transmits solar radiation, and that the particles are spherical, indicating that the fog is composed of liquid. Since Summit is situated in the ice sheet accumulation zone, a region that rarely experiences temperatures above freezing (Nghiem et al., 2012), the liquid in fogs observed there is super-cooled. Persistent and strong surface-based temperature inversions occur throughout the year (Miller et al. 2013). The cooling associated with the development of the inversions drives saturation in the atmospheric boundary-layer and produces the fog condensate (e.g., Bergin et al., 1995; Hoch et al., 2007; Berkelhammer et al., 2016). Cooling rates during fog events have been observed to be up to -35 K d⁻¹ within the lowest 50 m (Hoch et al. 2007). Due to seasonal differences in the vapor mixing ratio gradient, the moisture more likely originates from the free atmosphere in summer, while in winter when the boundary-layer is decoupled from the free troposphere, moisture is more likely to be recycled within a few meters above the surface through a process involving sublimation, condensation and settling (Berkelhammer et al., 2016). Meteorology is insufficient to explain fog presence (Tjernström, 2005) and thus, other parameters such as aerosols (Bergin et al. 1995), turbulent fluxes (Gultepe et al., 2007; Hoch et al., 2007; Berkelhammer et al., 2016) and dynamics (Nakanishi 2000) are necessary to understand the processes that govern fog development and the hydrological and energetic interactions that fogs have with the surface.

Fogs at Summit have been reported to increase the downwelling longwave flux by up to 20 W m⁻² in summer and 75 W m⁻² in winter (Starkweather, 2004). ~~Because cloud microphysical and radiative properties are linked (e.g., Garrett and Zhao, 2006; Shupe and Intrieri, 2004), microphysical observations of the fogs at Summit are needed to better understand their radiative forcing and to provide constraints for modelling.~~ In summer, radiative processes associated with optically thin tropospheric clouds can influence surface melt (Bennartz et al., 2013), a mechanism that could plausibly pertain to fogs as well. ~~The fogs have also been linked to reduced aerosol loading through surface riming (Borys et al., 1992; Bergin et al. 1995) and to limiting ice sheet accumulation loss via sublimation in the decoupled wintertime state (Berkelhammer et al., 2016).~~

Fogs observed at Summit occur within a shallow layer above the surface, just a few tens of meters thick (Berkelhammer et al., 2016). Consequently, fogs are likely under-represented by cloud climatologies because occurrence estimates from surface observations typically rely on lidar and radar measurements (e.g., Shupe et al., 2011), which are insensitive in the lowest hundred meters of the atmosphere. Satellite-based studies may also miss them because they are difficult to distinguish from the surface, which has a similar temperature (Crane and Anderson, 1984). Since the relevant processes occur at scales smaller than the vertical spacing of levels in climate models, the models are unlikely to resolve them. Despite these potential omissions, the coupled hydrological and energetic processes associated with fogs could have important implications for monitoring and projecting ice sheet surface mass balance and properly calibrating paleoclimate records derived from ice cores. Additionally, the cold temperatures and persistent stable-stratification of central Greenland make

Deleted: Fog microphysics influence their radiative properties. For example, liquid more efficiently absorbs and emits longwave radiation than ice (e.g., Garrett and Zhao, 2006; Shupe and Intrieri, 2004), likely increasing the forcing from liquid fog per unit mass compared to ice fogs or clear-sky ice precipitation ("diamond dust", Intrieri and Shupe, 2004).

Deleted: Despite being optically thin, f

Deleted: They have also been linked to reduced aerosol loading through surface riming (Borys et al., 1992; Bergin et al. 1995) and to limiting ice sheet accumulation loss via sublimation in the decoupled wintertime state (Berkelhammer et al., 2016).

Summit a useful location for fog process studies, in particular as examples in meteorological extremes for informing model development of fogs, the forecasts for which are important for aviation and transportation safety. Furthermore, shallow fogs afford opportunities to study the evolution of clouds in situ for extended periods, which contributes to broader studies of cloud physics and cloud-aerosol interactions. Therefore, a focused effort on Greenland fog processes is warranted, building on previous studies (Borys et al., 1992; Bergin et al., 1995; Starkweather, 2004; Hoch et al., 2007; Berkelhammer et al., 2016).

From June 2012 through June 2014, measurements were made on and near a 46 m tower by the Closing the Isotope Balance at Summit (CIBS) experiment, in collaboration with personnel from ETH Zürich, who maintained the tower and nearby broadband radiometric measurements. The CIBS suite included light-scattering spectrometers (DMT Fog Monitors, “FM100”) mounted on the tower close to 2 m and 10 m alongside measurements suitable for deriving turbulent heat fluxes. The FM100 probes made in situ observations of near-surface hydrometeors between 1 and 50 μm . These data were collected adjacent to the Integrated Characterization of Energy, Clouds, Atmospheric state and Precipitation at Summit (ICECAPS) atmospheric observatory (Shupe et al., 2013), which operates ground-based remote sensor instruments for cloud and tropospheric studies. These observations are analysed to characterize the shallow liquid fogs occurring at Summit.

2. Experimental Design

Figure 1 shows a plan view of the configuration of the CIBS instruments on the tower at Summit. The tower was positioned approximately 500 m east of the main camp, and the ICECAPS facility was 150 m to the northeast (true). While we refer to the instrument heights as 10 m and 2 m, they were actually installed slightly higher and their heights varied with accumulation and scouring around the tower. Over time, accumulation dominates and thus the 10 m (2 m) instrument, which was located at $\sim 12(3)$ m in 2012, was closer to 11(2) m by June 2014. The instruments were positioned on the tower so that they pointed to the southwest, into the predominant wind direction. Data were screened for wind directions susceptible to flow distortion caused by the tower super structure, defined by a wedge $310^\circ - 130^\circ$ using independent observations of wind acquired at ~ 10 m by the NOAA Global Monitoring Division (GMD) approximately 1 km southwest of the tower. Data acquired when the tower was downwind of the station operations were also rejected (conservatively defined as a 45° wedge centred on 315°). When winds were $< 0.5 \text{ m s}^{-1}$, the data were retained unless they were from the direction of station. This procedure removed 33.1% of observations. Thus, the analysis discussed in this study represents 67% of the wind conditions that occur at Summit.

Valid observations for each FM100 require availability of all ancillary measurements (Fig. 2a) and also that the wind direction relative to the probe inlet horn was within an acceptable range (refer to Supplement). For this work, fog microphysics are presented only for data collected when the wind direction was within 50° of the inlet horn while radiative, meteorological and occurrence data are presented for all previously described valid wind directions with respect to the tower. Fig. 2b shows both the operational uptime and effective uptime (or microphysical analysis uptime) for the FM100s, given these criteria. The effective uptime varied between about 10% and 80%, depending on the month. The 2 m FM100 was not operational until April

2013 due to mechanical problems. In general, uptime was greater than 50% during the summer, but was less than 50% in winter. Downtime was typically due to data dropouts associated with cold-soaked electronics.

Wind velocity and direction are necessary for processing the data acquired by the FM100s. At Summit, wind measurements were acquired from Metek USA-1 sonic anemometers that were installed alongside both FM100s. These data were acquired at ~20 Hz and were averaged to 1-minute. The anemometers were operated year-round and were heated during icing conditions to prevent riming and frosting of the sensors. Overall, the sonic anemometer at 2 m was operational 74% of the time and the sonic anemometer at 10 m was operational 79% of the time during the study period. Gaps in the data at both heights were filled using the station measurements. Though local wind measurements are preferred, this is justified because for wind directions in the range used for analysis, the station data were well correlated with sonic anemometers (at 10 m (2 m) $r = 0.94$ (0.88) and 0.88 (0.78) for wind speed and direction, respectively). With the station data supplementing the sonic anemometers, the total availability for wind measurements was > 99% for the valid range of wind directions at both heights.

The FM100 is a single-particle light scattering spectrometer. The instruments were adapted for cold temperatures by limiting internal ventilation of electronics and adding external insulation around the instruments. Ambient air is drawn into a contraction horn inlet using pumps installed on the tower. The air flow within the instrument (the probe air speed, PAS) is measured continuously with a Pitot tube located in the probe's inlet tunnel; at Summit the PAS was approximately 15 m s⁻¹ and 7.5 m s⁻¹ at 2 m and 10 m, respectively. Sample air in the instrument is drawn past a narrow 658 nm laser. Hydrometeors that pass through the inlet scatter the beam and a portion of the forward-scattered light (between approximately 3° and 12°) is collected by a detector. An equivalent optical diameter is then derived for each particle from the voltage measured by the detector, which is calibrated to the scattering cross sections for liquid spheres. The detectable particle size range is 1-50 μm and individual detections are binned to provide size distribution measurements at 1 Hz. The data were averaged to 1-min temporal resolution. Thus, for the present work, the term particle size refers to measurements of individual hydrometeors averaged over measurements made 60 times each minute and should be interpreted as an optically-equivalent diameter of spheres, regardless of the particle's geometric shape. Refer to Borrmann et al. (2000) for information on sizing errors associated with ice particles.

There are two main uncertainties associated with the FM100 measurement (Spiegel et al., 2012). The first is sizing ambiguities arising from the non-monotonic Mie scattering function used to convert voltage measured at the detector to particle size. Following Pinnick and Auvermann (1979) and Dye and Baumgardner (1984), ambiguous sizing bins were identified and combined. The second set of uncertainties involve sampling losses in the aspiration and transmission of particles. The data were corrected for these biases following the recommendations of Spiegel et al. (2012). Details of this post-processing can be found in the Supplementary document.

Between November and March, the FM100 heaters were frequently unable to maintain continuously ice-free Pitot tubes, resulting in disruptions to the monitoring of the PAS. The problem affected the 2 m instrument more because it was located closer to the surface where the temperature is typically colder, and the problem persisted even after insulation was applied to the instrument case. Analysis of the data, in addition to measurements made by station technicians, confirmed that the pumps

Deleted: ,

Deleted: each

Deleted: ,

Deleted:

continued to operate normally during this time. In spring, the return of sunlight was found to provide sufficient heating to correct the problem, even when temperatures remained low. The affected data were recalculated using the mean PAS for normal operating conditions, which varies by approximately $\pm 5\%$ (1σ). Note that the pumps may operate more efficiently in colder temperatures, potentially producing a small positive bias in estimated PAS.

Several ICECAPS data sets were also used to support the analysis of the probe data, including from an Atmospheric Emitted Radiance Interferometer (AERI), a Millimeter Cloud Radar (MMCR), a Microwave Radiometer (MWR), a Micropulse Lidar (MPL), radiosondes, and a sodar acoustic sounder. The AERI is a self-calibrated infrared spectrometer (Knuteson et al., 2004a,b) that acquires spectra at sub-minute intervals from about 490 to 3000 cm^{-1} (3–20 μm) with a spectral resolution of $\sim 1 \text{ cm}^{-1}$. The spectra were post-processed using a principal components algorithm that reduces spectral noise (Antonelli et al., 2004; Turner et al. 2006). Quality control procedures removed 7.7% of the data due to instability of the reference sources, excessive noise, and iced optics (Fig. 2a). The AERI is used to determine the phase of particles measured by the FM100s, as described in Sect. 3. The MMCR and MPL data were used to identify tropospheric clouds. The MMCR is a zenith-pointing 35 GHz Doppler radar (Moran et al. 1998) with high sensitivity to cloud particles and little attenuation through the typical clouds observed at Summit. It samples with ~ 4 -sec temporal and 45 m vertical resolutions. It has been used previously to identify precipitation at Summit by Castellani et al. (2015) and Pettersen et al. (2018). The MPL is a 532 nm depolarization lidar with 5-sec temporal and 15 m vertical resolutions. The MPL data product used here is from a phase-resolved cloud mask described by Edwards-Opperman et al. (2017). MWR data are used to retrieve liquid water path (LWP) during fog conditions using a physical retrieval algorithm (Turner et al. 2007). The sodar (Neff et al. 2008) is a 2100-Hz acoustic sounder that samples ~ 1 -sec with a vertical resolution of 1 m. More details on each of these instruments and data streams can be found in Shupe et al. (2013) and references therein.

Broadband radiometric fluxes (Shupe and Miller, 2016) were measured by Kipp and Zonen CG4 pyrgeometers (longwave) and CM22 pyranometers (shortwave). The processing of these data is described by Miller et al. (2015; 2017). Cloud radiative forcing (CRF) is defined as the instantaneous effect of clouds on the radiative flux at the surface. CRF is calculated by subtracting a modelled clear-sky estimate from the measured radiative flux, as described by Miller et al. (2015). The cloud radiative effect of the longwave component (LWCRE) is calculated in the same manner as CRF but only includes measured and modelled estimates from the downwelling longwave (e.g., Cox et al., 2015). Sensible and latent heat fluxes (Shupe and Miller, 2016) were estimated via the bulk aerodynamic method and a two-level approach (10 m and 2 m), respectively (Miller et al., 2017).

3. Classification

3.1 Introduction to the classification

The FM100 observations may be liquid fog, ice fog (note that we do not distinguish between ice fog and clear-sky precipitation, also known as “diamond dust”), blowing snow, or snow. Thus, it is desirable to classify the probe observations

Deleted: is

Deleted: fairly stable,

Deleted: ying

Deleted: ,

Deleted: as described by Miller et al. (2015),

Formatted: Heading 3

in order to identify the scenes containing liquid fogs. To do this, information about particle phase, precipitation occurrence, the presence of elevated cloud layers, and the likelihood of blowing snow is needed.

The classification procedure is as follows: (1) scenes containing near-surface particles are separated from clear boundary layer scenes using a number concentration (N , cm^{-3}) threshold in the 10 m FM100, (2) elevated tropospheric cloud layers are identified, followed by (3) occurrences of blowing snow and snow, and then (4) the phase of the particles is determined for all cases where particles were observed near the surface (step 1) but the sky was otherwise clear (step 2) and there was not blowing snow (step 3). Next, we will describe the individual classifications.

3.2.1. Identification of near-surface particles

A large proportion of the observations at Summit are of particle concentrations with low density ($< 1 \text{ cm}^{-3}$), such as snow and light blowing snow. It is desirable to set a threshold low enough to capture these conditions. Using an FM100, Spiegel et al. (2012) set a threshold $N > 10 \text{ cm}^{-3}$ for similar purposes, which is low enough to observe snow (Braham 1990). Figure 3 shows frequency of occurrence of FM100 observations classified as containing any type of surface-based cloud (red/black lines) as a function of N . The other lines in the figure represent classifications of cloud types that are discussed later. Overall, particles are identified $\sim 80\%$ of the time at 10 m when the threshold for detection is 10 cm^{-3} . Due to the consistent volume size of the FM100, this is also roughly the lowest N it can measure. Therefore, $N = 10 \text{ cm}^{-3}$ is a natural threshold for this study.

3.2.2. Tropospheric clouds

Scenes with elevated cloud layers are identified because the phase classification (see below) is only valid when no other clouds are present in the scene. Cases with elevated cloud layers are therefore rejected from analysis of the fogs presented later. Using the MPL cloud mask, elevated clouds are defined as clouds with bases above 200 m, similar to the definitions used by Starkweather (2004) and Castellani et al. (2015).

3.2.3. Snow and Blowing Snow

Radar reflectivities greater than -5 dBZ , which are indicative of light snow (Shupe et al. 2013), are used as a conservative threshold to identify precipitation falling between 200 and 300 m. These particles are assumed to be formed above the height of blowing snow and fall to the surface as precipitation and are therefore classified as snow. While estimates of the depth of blowing snow layers are currently unavailable at Summit, in Antarctica layer depths exceeding 300 m are infrequent and when they do occur, they generally coincide with precipitation (Gossart et al., 2017). The radar data are combined with wind parameterizations for lofting (i.e., blowing) snow calculated for western Canada by Li and Pomeroy (1997). When the radar data indicates snow and the Li and Pomeroy parameterization indicates blowing snow, the classification of a combination of snow and blowing snow is assigned.

3.2.4. Phase Classification

Events composed of ice are distinguished from those composed of liquid using the AERI data, which is collected at intervals of about 20-75 seconds. These spectra are linearly interpolated to the regular 1-min sampling used for the FM100 data. The imaginary component of the complex index of refraction, which is proportional to absorption, has different spectral

Deleted: subset

Deleted: This information comes from a blowing snow/precipitation mask derived using meteorological measurements and the MMCR, particle phase derived from the AERI infrared spectral radiances, and the MPL cloud mask.

Deleted: consists of five steps

Deleted: elevated

Deleted: with bases above the surface

Deleted: Finally, (5), (1)-(4) are combined optimally.

Formatted: Font: Bold

Formatted: Font: Bold

Deleted: which include observations that are not traditionally classified as clouds,

Deleted: ,

Deleted: , and transient particles, but also include forming and dissipating fogs

Deleted: various

Deleted: P

Deleted: of any type are measured

Deleted: observed

Deleted: between

Deleted: and 90%

Deleted: , but there is relatively little sensitivity to

Deleted: s

Deleted: of order

Deleted: or smaller

Deleted: lower

Formatted: Font: Bold

Formatted: Font: Bold

Formatted: Indent: First line: 0.5"

Formatted: Font: Bold

Formatted: Font: Bold

Formatted: Font: Bold

dependencies for ice and liquid in the infrared. Previous studies have exploited these dependencies to infer phase using spectral differencing techniques (Strabala et al., 1994; Turner et al., 2003). Particle size and habit also exhibit spectral dependencies, which is a large source of uncertainty in these methods, as is uncertainty in water vapour amount and cloud temperature. In general, the uncertainty also increases for optically thin clouds because of reduced signal and for optically thick clouds because of loss of spectral structure (Turner, 2005). However, the spectral differencing approach is justified for this work because the cases of interest are less sensitive to the associated uncertainties. First, atmospheric transmission between the surface and the cloud is close to unity in the dry Arctic atmosphere (Turner et al., 2003) and can be assumed to be unity for the present purposes because the focus is on clouds with bases at the surface. Second, cloud temperature is well-characterized because it is measured in situ. Finally, because the scenes that are tested feature fogs that were observed when the sky was otherwise clear, it is reasonable to assume that these scenes were single-layer, negating ambiguity from multiple cloud layers.

Calculations of cloud emissivity are used for the phase identification using spectral microwindows that are sensitive to cloud detection (Turner et al., 2003). The necessary radiative transfer calculations were performed using the Line-by-line Radiative Transfer Model (LBLRTM), version 12.2 (Clough et al., 2005). Inputs to LBLRTM include twice daily radiosonde profiles from Summit and estimates of trace gas profiles, as described by Cox et al. (2014). A small positive bias common in AERIs [less $0.5 \text{ mW m}^{-2} \text{ sr}^{-1} (\text{cm}^{-1})^{-1}$] was estimated empirically for each microwindow by comparison to the radiative transfer calculations during clear days and was subtracted from the microwindow radiance before analysis.

We use two spectral cloud emissivity differencing tests. The first, adapted from Strabala et al. (1994), is a threshold-set to the $11 \mu\text{m}$ minus $12 \mu\text{m}$ emissivity versus the $11 \mu\text{m}$ minus $8.1 \mu\text{m}$ emissivity. The threshold to separate the clusters was qualitatively set to $y = -2.5(\epsilon_{8.1})$. As indicated by the example in Figure 4a, the clusters separate distinctly and therefore the precise slope of the threshold is not important. The second test is applied in the far-infrared where ice and liquid absorption characteristics are different and determines whether the $11 \mu\text{m}$ minus $17.8 \mu\text{m}$ emissivity is greater or less than zero (see example in Figure 4b). If both tests agree, the identification is deemed valid. If the tests disagree, the observation is considered ambiguous. Ambiguous identifications are expected when the microwindow differences are near 0, which typically occur when the emissivity of the fog is low. However, Figure 4b also indicates that a small number of cases are not clustered as expected in the far-infrared, even when the microwindow signal differences are large (red points near the centre of the figure). The reason for these ambiguous identifications is not known and their source may be from instrumental errors or environmental conditions. These cases represent < 1% of the data, and the methodology has successfully screened them out.

3.3. Summary of Classification

Figure 5 summarizes the fractional occurrence of the classified cloud types. Particles were observed in the lowest 10 m a majority of the time in all months, from 65% of the time in July to > 85% of the time in winter. Liquid fogs under otherwise clear skies were classified between 1% of the time (April) and 12% of the time (September); if liquid fogs could be reliably detected in the presence of tropospheric clouds, these percentages would likely be higher. While most common in late summer, liquid fogs were also identifiable 3-7% of the time January-March. The fact that there were fewer ice identifications than liquid does not necessarily indicate that in situ formation of ice near the surface at Summit is less common than liquid formation for

Deleted: in the absence of clouds above the boundary layer

Deleted: a

Deleted: or multiple layers within a cloud

Deleted: §

Formatted: Indent: First line: 0.5"

Deleted: quite

Deleted: very

Deleted: very

Deleted: Generally, a

Deleted: are also likely to be cases when the absolute

Deleted: wa

Deleted: quite

Deleted: relatively

Deleted: clear

Deleted: democratic

Deleted: §

Deleted: Scenes with elevated cloud layers are identified to determine the correspondence between the formation of hydrometeors near the surface and the presence of otherwise clear-skies, and because the phase classification described previously is only valid when no other clouds are present in the scene. Because no phase classification is possible, cases with elevated cloud layers are rejected from analysis of the fogs presented later. Using the MPL cloud mask, elevated clouds are defined as clouds with bases above 200 m, similar to the definitions used by Starkweather (2004) and Castellani et al. (2015).§

§ Radar reflectivities greater than -5 dBZ, which are indicative of snow (Shupe et al. 2013), are used to identify precipitation falling between 200 and 300 m. These particles are assumed to be formed above the height of blowing snow and fall to the surface as precipitation and are therefore classified as snow. The radar data are combined with wind parameterizations for lofting snow calculated for western Canada by Li and Pomeroy (1997), which is classified as blowing snow. When the radar data indicates snow and the lofting parameterization indicates blowing snow, the classification of a combination of snow and blowing snow is given.

Formatted: Indent: First line: 0"

Deleted: §

three reasons: 1) the number density of liquid fog is expected to be higher, so liquid is more likely to be identifiable using the AERI, 2) some ice fog events may be incorporated within the blowing snow or snow categories, and 3) the phase partitioning for events from which phase could not be retrieved using the AERI is unknown.

The classification scheme reveals several key features of hydrometeor occurrence over the Greenland ice sheet:

1. Precipitation occurred predominantly from July through October (similar to the study by Pettersen et al., 2018). This seasonal cycle is shifted later in the year compared to total precipitation amount, which peaks in July (Castellani et al., 2015).
2. In months when blowing snow occurred most frequently (winter and spring), precipitating snow was less common and during summer when most of the precipitating snow occurred was when blowing snow was least common.
3. A large frequency of events (composite annual average = 27.3%) were detected by the 10 m FM100 under tropospheric clouds, which are common at Summit (Miller et al. 2015).
4. Identification of ice fog was less frequent than liquid and ice fog had a distinctly different seasonal cycle than that of liquid, with a peak in April (9.2%) and a low in July (0.3%).

Deleted: Recall from Figure 3 that the threshold for identification used to construct Figure 5 is small (10^{-4} cm⁻³). Figure 3 also shows that the threshold at which events begin to be missed, and the rate at which missed events increase, is different for each class. For example, as expected, low density types such as snow also require a low threshold to be captured while high density types such as the fogs are relatively insensitive to the threshold.

Deleted: 3.1 Summary of classification

Deleted: S

Deleted: occurred more often without significant blowing snow, and blowing snow alone was most common in late winter and spring.

Formatted: List Paragraph, Numbered + Level: 1 + Numbering Style: 1, 2, 3, ... + Start at: 1 + Alignment: Left + Aligned at: 0.75" + Indent at: 1"

Deleted: ¶

4. Liquid Fog Case Studies

We contrast two cases of liquid fogs to illustrate the conditions captured with the categorization scheme. We first discuss a case of near idealized fog formation conditions that appeared on the 16th of June 2013 in Sect. 4.1. Then, this case is contrasted with a winter case from January 2014 in Sect. 4.2. The discussion of the time evolution of the fogs assumes spatial homogeneity. While the meteorology observed during the cases generally supports this assumption, we cannot rule out advection, either from distant regions or associated with local topographical variability ($\sim \pm 2$ -3 m) as a source of some of the observed variability.

Deleted: While remarkable at first glance, the fact that there were fewer ice identifications than liquid does not necessarily indicate that in situ formation of ice near the surface at Summit is less common than liquid formation for three reasons: 1) the number density of liquid fog is expected to be higher and liquid more efficiently emits in the longwave, so therefore liquid is more likely to be identifiable using the AERI (i.e., it is associated with a larger infrared signal), 2) some ice fog events may be incorporated within the blowing snow or snow categories, and 3) the phase partitioning for events from which phase could not be retrieved using the AERI is unknown.

Deleted: s

Deleted: and

Deleted: t

4.1. Case of 16 June 2013

Clear skies persisted from 15-24 June 2013, and liquid fogs were observed in the early morning on most days during this period. While this case represents an ideal illustration of fog formation at Summit, several similar cases can be found in the dataset. Figures 6a and 6b show the time-particle size cross-sections of N from the FM100s beginning at 2000 UTC on 15 June extending through 1400 UTC on the 16th. During this period, the 10 m air temperature was -15 to -22 °C with light southerly winds (Fig. 6e). At 10 m, condensate first occurred ~0010 UTC as the solar elevation angle (SEA) dipped to 10° (< 20 W m⁻² SW_{in}, Fig. 6d) and 7 hours into development of the surface-based inversion (Fig. 6d). Initiation was followed by a period of uniform growth lasting 4-5 hours that closely aligns with a theoretical growth curve (Houghton 1985), calculated assuming a constant supersaturation of 0.1% (Fig. 6a). During the first hour of growth, the droplets reached approximately 25

Deleted: Indeed, w

µm in diameter after which the growth slowed and deviated from the theoretical curve, with particles eventually reaching ~40 µm. The curve neglects the gradual decrease in supersaturation that accompanies condensation without replacement of moisture, implying a decrease in supersaturation during development and indicating that the moisture source did not introduce new vapour as quickly as it was condensed. While most of the droplets closely followed the main growth curve, nucleation of new droplets continued until about 0300 UTC. The fog disappeared completely by ~1030 UTC when the sun reached an elevation angle of ~30°.

The sodar detects thermal turbulence where mixing occurs within a vertical temperature gradient. Note that structure in the sodar record may only reflect structure in temperature and not necessarily the boundaries of the fog, although in some cases radiative cooling at the top of the fog may account for the thermal contrast that is observable with the sodar. The sodar record shows a typical pattern of a “night time” stable surface layer 10-25 m deep before 0700 and after 2000 UTC (Figure 7a). This surface layer represents a shallow, but strong temperature inversion embedded within a deeper inversion that extended about 100 m above the surface at initiation, further deepening to several hundred meters 12 hours later. The surface layer increased in depth from about 15 m to about 65 m during the course of the duration of the fog layer, transitioning from statically-stable to a shallow convective layer in association with the diurnal cycle (Figure 7a). The convective plumes are visible in Fig. 7a as vertically oriented echoes below the red dashed line with intervals of order minutes. Dissipation occurred shortly after the onset of convection ~0845 UTC (SEA ~23°, SW₀ = 61 W m⁻², SWD = 426 W m⁻²), and the fog disappeared when the convection reached a developed stage around 1000 UTC (SEA ~29°, SW₀ = 87 W m⁻², SWD = 562 W m⁻²).

Particles were observed at 2 m 10-20 minutes after initiation at 10 m. Both the *N* and the width of the size distribution were larger at 2 m than 10 m, consistent with particle formation near 10 m followed by settling and evaporation (~0.01 m s⁻¹). At Summit, condensation in radiation-induced fog frequently occurs near 10 m because non-linearity between temperature and saturation within the inversion leads to supersaturation first between 3 and 18 m, with lower vapour pressures both above and below this layer (Berkelhammer et al., 2016). A lag in *N* of 3 to 4 min between 10 m and 2 m near the peak particle size is evident in the time series (Fig. 6c), implying a maximum settling rate of 0.03 to 0.04 m s⁻¹. Theoretical calculations of settling rates assuming laminar conditions following Pruppacher and Klett (2010) agree with these estimates. Specifically, the calculations indicate settling rates up to 0.01 m s⁻¹ during the first hour of the case and 0.03-0.035 m s⁻¹ during the mature phase of the fog between 0600 and 0800 UTC.

Between 0200 and 0500 UTC, the 2 m air temperature deviated by ~+5 C from the smooth diurnal cycle that is evident both before and after the fog, and the LWP increased to ~15 g m⁻³ with no clouds observed above the fog layer by the radar or lidar. This corresponded to an increase in CRF from < 10 W m⁻² to ~65 W m⁻², caused primarily by increased downwelling longwave, as evidenced by the LWCRE (Fig. 6f). These values are within the range of the thickest clouds at Summit (Cox et al. 2014; Miller et al. 2015) and large enough to drive latent and sensible heat fluxes to near-neutral (Fig. 6g), indicating a well-mixed surface layer. As we will see later, fogs generally produce closer to ~10-20 W m⁻², but larger values such as the 16 June case occur occasionally. Because of these factors, the temperature inversion within the surface layer completely eroded by around 0330 UTC. Surprisingly, this did not dissipate the fog, and, in fact, an increase in *N* at 2 m

Deleted:

Deleted: flow

Deleted: ab

Deleted: le

occurred in conjunction with a brief interruption in the otherwise smooth growth rate. Following the brief interruption, the particle size and N were larger than before with N at 2 m exceeding 200 cm^{-3} ; as we will see later, such high N , as observed from 0400-0500 UTC are atypical.

Thus, while the fog was likely induced by radiation initially, it was maintained, and ultimately continued to grow without additional infrared loss at the surface driving saturation in the air column. Indeed, with warming of the surface layer, introduction of large quantities of vapour would have been necessary to maintain the relative humidity supporting the fog. The large LWP (Fig. 6f) implies significant cloud-top radiative cooling may have occurred; therefore, buoyancy-driven mixing is a plausible mechanism to have supplied the moisture that maintained the fog. However, the moisture was more likely introduced to the surface layer from above by mixing generated by wind shear. This is supported by the sodar data, which shows signatures of turbulence in the form of Kelvin-Helmholtz instabilities (Figure 7b) driven by shear at the top of the surface layer (30-50m) between 0300 and 0500 UTC, corresponding to the period of time with enhanced LWP, CRF, and N , and generally more variable particle size at both measurement heights. Indeed, in June, the firm is generally colder than the surface (Miller et al., 2017) so vapour transfer tends to be downward, toward the surface, from the atmosphere because the mixing ratio is higher in the (saturated) air immediately above the surface than in the firm (Berkelhammer et al., 2016). The latent heat flux (LH) was positive (defined positive into the surface) for the duration of the case study, consistent with the hypothesis that the fog was driven by moisture from aloft (Fig. 6g). Therefore, the moisture source for this case was likely the atmosphere and not the local surface. Interestingly, the N at 10 m was consistently lower than at 2 m. The reasons for this are unclear, but since there were also more smaller particles at 2 m, it is possible that concentration of particles at 2 m associated with partial evaporation and subsequent slowing of their descent was a factor. The difference may also be associated with the heights of the instruments relative to the height of maximum supersaturation (see Fig. 2 by Berkelhammer et al. (2016)).

Deleted: While t

Deleted: relatively

Deleted: (and thus, plausibly

Deleted:) may have occurred. The necessary

Deleted: thus

4.2. 16 January 2014

Figure 8 is similar to Figure 6, but for a wintertime case. The fog was detected at ~0530 UTC at 10 m, and the particles grew quickly to ~35 μm within approximately 30 minutes (Figs. 8a,b). The N at both heights was about an order of magnitude smaller than the June case (Fig. 8c). The troposphere was clear with intermittent ice clouds above 2 km (Fig. 8d). Similar to the June case, the wind was southerly and light with lower wind speeds during the period of the fog (Fig. 8f). The net atmospheric heat flux was generally negative (Fig. 8h) due to radiative cooling at the surface that maintained a temperature inversion with a gradient of ~10 $^{\circ}\text{C}$ between 2 m and 10 m (Fig. 8e). There was not enough LWP for reliable detection by the MWR (uncertainty ~5.5 g m^{-3}), but the CRF was between 10 and 40 W m^{-2} ; note that the upper level clouds contributed some to this forcing, in particular after 1430 UTC. The CRF quickly spiked to 40 W m^{-2} during the initial fog development around 0600 UTC, which was also the time period when the N was the highest. Later increases in CRF also corresponded in time to increased N . Consistent with variable wind direction, the apparent intermittence of N may be explained by a spatially heterogeneous fog periodically passing the tower instruments.

Deleted: strong

This case was likely a mixed-phase fog with a liquid formation layer precipitating into an underlying settling layer composed of homogeneously-frozen ice. The air temperature at 10 m (near the formation height) was between -35 and -38 °C. While the homogeneous freezing point for liquid is imprecise and dependent on conditions (generally about -40 °C), the 2 m air temperature and skin temperatures were ~ -47 °C and -50 °C, respectively, both too cold to support liquid particles. Thus, it is likely that the particles observed at 2 m were frozen droplets. While we can only infer the phase of the underlying layer from the measured temperature, we do have confidence that the droplets that formed aloft were liquid: The AERI classifications were not ambiguous as 176 of 177 samples for this event were identified as liquid; the AERI classification should not have been confounded by the presence of the ice because the viewport for the AERI is a few meters above the surface, and therefore near the top or above the ice layer; the AERI results are also supported by the MPL data, which indicates mostly liquid at levels where the MPL has sensitivity, between 100 and 150 m (Fig. 8d).

The ceilometer (not shown) and MPL (Fig. 8d) data indicate a deeper fog layer than the previous case, which may have been enabled by generally deeper and more persistent inversions in winter (Miller et al., 2013); the height of the maximum temperature within the troposphere for this case was 300-400 m compared to ~ 100 m at initiation for the June case. However, the sodar record (Figure 7b) shows that the depth of the surface layer embedded within the deeper inversion for the winter case was actually much shallower than in the summer case, < 10 m during the duration of the fog. The particles within the surface layer were sampled by the measurements made at the tower (e.g., Figs. 8a,b) and may be distinct from the deeper fog layer visible in the MPL data: The sodar record also shows a significant amount of structure throughout the upper fog layer indicating additional stable layers (Fig. 7c). This structure is physically decoupled from the surface layer, separated by a thin layer of low reflectivity that may be indicative of a low-level jet, which could suppress mixing between the layers. However, the layers may be dynamically coupled in other ways. Buoyancy waves with periods of a few minutes to 15 min in the upper layer have an observable remote influence on the surface layer through fluctuations in the horizontal pressure field that produce a moving pattern of convergence and divergence (not shown). It is unknown if the observed microphysics below 10 m are representative of the fog above the surface layer. However, radiatively, the combined physically-thick layer of fog compensates somewhat for the low N observed near the surface, enhancing the CRF relative to the summer case with a larger optical depth. The strength of the inversion also contributed to enhancing the CRF because the particles were warmer than the surface.

Interestingly, the fog development coincides closely with the weak early-season diurnal cycle. In mid-January, the sun does not get above the horizon at Summit but is about 3° below the horizon at solar noon (Fig. 8e). Atmospheric scattering in these twilight conditions produced 1-3 W m⁻² of diffuse incident solar radiation (Fig. 8e) that corresponded in time with the fog initiation. Though the mechanism is unknown, there is a possibility that the fog was diurnally forced, similar to the June case, yet unlike summer, the timing was coincident with peak in solar radiation rather than the minimum.

The stably-stratified surface layer was largely isolated from the free troposphere in this case. The temperature gradient within the firm (which is warmer at depth than at the surface) produces a constant supply of vapour towards the surface from below, providing moisture for the fog, which is then returned via settling (Berkelhammer et al., 2016). As before, we observed higher concentrations and more smaller particles at 2 m than 10 m.

Deleted: indeed

Deleted: fog that is

Deleted: is the fog that was

Deleted: very

Deleted: and likely

Deleted: es

Deleted: considerably

5. Statistics of Fog Properties, 2012-2014

5.1. Physical Properties

Figure 9 shows distributions of the particle sizes for liquid fogs (blue) compared to those for the ice categories; the figure displays sensor height as rows (10-m – top row, 2-m - bottom row) and season as columns (left column - low-light winter season (NDJF) and right column - sunlit summer season (JJAS)). Ice particles are non-spherical and, thus, the distributions represent an effective size with reference to the scattering properties of spherical liquid; asphericity and orientation are important factors in the sizing of ice using a scattering spectrometer that impose significant uncertainties (Borrmann et al., 2000). Thus, the distributions of ice classes should be treated cautiously and are shown here for context. The liquid classification stands out distinctly from the ice both in the shape of the distribution and the overall N within each size bin. For smaller particles, liquid particles are present in higher concentrations than ice particles in summer and are smaller in winter, while the opposite is generally true for larger particles. Despite the uncertainties in sizing ice particles, the relative N within each size bin separates logically between the different types. For example, there are more particles in blowing snow at 2 m than at 10 m, while the two heights show similar concentrations of ice fog. Also, the occurrences of snow have consistently low N .

As implied by the case studies, fogs in winter have lower N overall compared to summer. This relationship between temperature and fog N is evident when analysed directly: N is smaller in colder fogs, with temperature being correlated with the log of N ($r=0.54$). Gultepe et al. (2002; 2004) reported a similar finding in tropospheric Arctic clouds containing super-cooled liquid. Note that while aerosol concentration is likely a factor, dynamical and thermodynamical processes can also play a role (Gultepe et al., 2002; Gultepe and Isaac, 2004).

The distribution of liquid particles in summer peaks between 20 and 25 μm in diameter at 2 m (Figure 9b) while the distribution at 10 m (Figure 9a) is broader with more small particle sizes. This is consistent with particles preferentially forming near 10 m before settling to 2 m. Specifically, multiple growth stages are likely represented in the distribution at 10 m, while the distribution at 2 m is more idealized because it is composed primarily of mature particles. Though the winter liquid distributions are more difficult to interpret owing to a limited amount of data, this finding is supported by a calculation of the effective diameter (the ratio of the 3rd and 2nd moments of the size distribution) for all liquid fog scenes in all months, which shows a correlative relationship between effective diameter and N at 10 m (Figure 10a) ($r = -0.55$), but not at 2 m (Figure 10b). This indicates that at 10 m, when the N is high, the particles are small (forming), while at the same time low N for large particles is consistent with loss via settling out of the layer. While a similar relationship might be expected from a range of aerosol concentrations, if aerosols were the explanation for the observations at 10 m, a similar result should be found at 2 m, but it is not.

The overall distributions of N (Figure 11), at both heights show concentrations in winter that are smaller than in summer. In winter, there are typically more particles at 2 m than 10 m whereas during summer the differences between the

Deleted: Thus

Deleted: Hansen and Travis 1974

Formatted: Superscript

Formatted: Superscript

Deleted: When considering t

Deleted: ,

Deleted: the

heights are less discernible. The median value of N was typically $< 7 \text{ cm}^{-3}$ in winter and between 5 and 20 cm^{-3} in summer (Fig. 11).

Figure 12 shows the temperature distributions for times classified as liquid fog and ice fog (the two types associated with in situ formation). In Fig. 12, N was only used for identification of events. Thus, precise estimates of N are not important, and the threshold for wind direction is less restrictive than the microphysical results shown in Figs. 9-11. Consequently, larger sample sizes are incorporated into this analysis. Three different temperatures are plotted beginning with brightness temperatures derived from near-saturated CO_2 emission between $675\text{-}680 \text{ cm}^{-1}$ measured by the AERI in Fig. 12a. These frequencies are sensitive to the lowest few 10s of meters above the instrument and may be most similar to the fog thermodynamic temperature. Since liquid freezes homogeneously near -40°C , observations at lower temperatures are not possible; less than 1% of observations classified as liquid occur at temperatures $< -40^\circ\text{C}$ in Fig. 12a. The air temperatures at 10 m (Fig. 12b) are similar to the AERI-derived temperatures. Air temperatures closer to the surface at 2 m (Fig. 12c) are generally colder and include many more instances with temperatures below -40°C . Note that this is not an indication of water existing in a liquid phase below -40°C , but rather indicates that the liquid layer lies above this cold air where the temperature is warm enough to permit the existence of liquid droplets. Between November and March, two thirds of the liquid fog identifications occurred when the 2 m air temperature was below -40°C . This result indicates that the 16 January case is typical. A stretch of such occurrences was observed when the 2 m air temperature was $< -45^\circ\text{C}$ during an extended clear-sky period during the last two weeks of March 2013. Unlike the 16 January case, for cases during the spring and autumn, there was sufficient daylight for images acquired by cameras mounted to the tower to show evidence of optical phenomena caused by liquid droplets. Images of fogbows appeared at times that coincided with the identification of liquid fogs in March 2013.

Fogbows are formed by scattering processes dominated by diffraction when the size of spherical particles are within the Mie regime (e.g., Lynch and Schwartz 1991). Note that the presence of a fogbow is suggestive of the presence of liquid, but that it does not rule out the presence of ice. Additionally, spherical or quasi-spherical ice formed by freezing of supercooled liquid has been reported by other studies (e.g., Thuman and Robinson 1954), though the preferred habits of ice fog particles remains controversial (see Gultepe et al. 2015) and we are unaware of any studies linking ice fogs to optical phenomena normally associated with liquid droplets.

For both ice and liquid identifications in Fig. 12a-c, the temperatures at which they occur are lower in winter and higher in summer. Liquid generally occurs during cooler temperatures than ice in summer and thus the seasonal cycle for liquid is muted compared to that of ice. This is likely a result of diurnally-forced radiation fogs occurring during the colder part of the day in summer. There is also a notable difference in the timing of the seasonal cycle with the liquid tending to be warmer than ice in the spring transition and cooler than ice in fall. It is unclear whether this is more closely tied to the seasonal cycle in aerosols (e.g., Schmeisser et al. 2018) or to meteorology. The wind regimes are similar between ice and liquid in winter, but liquid fogs in summer occur during particularly calm conditions in association with the diurnal development of stable stratification (Fig. 12d).

Deleted: quite

Deleted: specifically

5.2. Radiative Properties

The impact on the surface radiation budget from the various classifications is evaluated in Figure 13. The sample sizes in Fig. 13 are analogous to those in Fig. 12. First, distributions of LWCRE for the classes appear alongside that for all observations in Fig. 13a. The peak for both liquid fog and ice fog are close to 10 W m⁻². Both ice and liquid show long tails to larger values and thus the mean is 19.8 (median =14.8) W m⁻² for ice and 26.1 (median = 18.1) W m⁻² for liquid. It is notable that unlike distributions of temperature and microphysics shown earlier, the distributions of LWCRE for ice and liquid are similar. It is therefore possible that a similar amount of downward longwave radiation is needed, when both liquid and ice fogs form, to achieve radiation balance between the surface and the lower atmosphere. However, note that the sample selection was radiative in origin in the first place, and the proportions of missed classifications, in particular at the low end of LWCRE, may be different for the two types. The other ice classes, snow, blowing snow and a mixture of both are also plotted in the panel for context. Blowing snow is distributed across the range of LWCRE with the larger values more likely to be associated with higher wind speeds ($r = 0.31$). Snow also is distributed over a wide range of values, but generally higher than blowing snow alone, which is expected because LWCRE during snowy conditions is associated with a precipitating cloud whereas blowing snow may occur under otherwise clear skies. When snow and blowing snow occur together, the distribution is clustered near the largest values, a condition mostly associated with storms.

When the total CRF is considered (Fig. 13b), the results are similar. The forcing is smaller because of the addition of shortwave cloud-cooling, but only slightly smaller because the high year-round albedo at Summit limits the ability of clouds to cool the surface there (Miller et al., 2015). Notably, there is increased separation in CRF compared to LWCRE between the ice fog class ($\mu = 12.1$ W m⁻², median = 7.9 W m⁻²) and liquid fog ($\mu = 22.1$ W m⁻², median = 17.1 W m⁻²). This is because a larger proportion of ice fog occurs at higher sun angles when the shortwave cloud-cooling effect is larger. Therefore, the time of day when liquid fogs typically occur maximizes their net radiative forcing.

The lower panels in Figure 13 give the statistics for each month and annually for liquid (Fig. 13c) and ice (Fig. 13d). The annual mean CRF for liquid fogs under otherwise clear skies was 1.5 W m⁻² when normalized by the frequency of occurrence. The maximum occurred in July (2.6 W m⁻²) and the minimum in was in April (~0 W m⁻²). Due to subsampling, this estimate is probably slightly lower than the total annual CRF from the fogs under all sky types because fogs that were present under optically-thin cloud cover may have contributed additional CRF. However, events that were missed for being too thin contributed little radiatively (and consequently, no identification was possible), only a small number of “too thick” (0.8%) were identified, limiting the influence of this class on the mean CRF, and when ambiguous identifications are included in the analysis (not shown), the annual mean CRF decreases slightly to 1.2 W m⁻². For ice, the normalized annual mean is 0.7 W m⁻². While the magnitude of the values is similar between ice and liquid, the seasonal cycles are different, with ice peaking in July/September (2.2 W m⁻²). For reference, the mean annual CRF for all sky conditions at Summit is 33 W m⁻² and is positive in all months (Miller et al., 2015).

Deleted: fairly evenly

Deleted: i

Deleted: s

Deleted: very

Deleted: very

6. Discussion and Conclusions

This study analysed in situ measurements of fog properties over the Greenland Ice Sheet at Summit Station within the predominant southerly-to-westerly wind regimes. At 10 m above the surface, particles associated with snow, blowing snow, fog or transient particles were observed more than 60% of the time in all months and over 90% of the time in winter. Liquid fogs occurring under otherwise clear skies are observed in all months, peaking in September and with a minimum in April. Generally, winter fogs had significantly lower number concentration (N), but only slightly smaller particle sizes compared to summer when mature particles were measured to be typically 20-25 μm in diameter, similar to reports from Borys et al. (1992). Typically, we find that N in fogs are $< 7 \text{ cm}^{-3}$ in winter and between 5 and 20 cm^{-3} in summer. While these are lower number concentrations than the 30 to 165 cm^{-3} reported by Borys et al., their study was limited to six well-developed fog cases in August. Their results are actually similar to the well-developed fog analysed as a case study discussed here in Sect. 4 when N was briefly observed above 200 cm^{-3} .

In isolation, the average cloud radiative forcing (CRF) from the liquid fogs when the sky was otherwise clear was 26.1 W m^{-2} but was much higher in some cases. When normalized by the fractional occurrence when no other clouds were present, the annual average CRF for liquid fog was 1.5 W m^{-2} . As discussed, this estimate may be conservative given subsampling. Given the small overall forcing, it may be more instructive to consider the role of fogs at times in which they occur. Fogs that occur in summer generally appear near the cold times of the diurnal cycle when the surface layer is typically stably-stratified. For the 16 June 2013 case, the fog produced enough radiative forcing to increase temperatures by about 5 $^{\circ}\text{C}$. Thus, the development of fog under these conditions constitutes a negative feedback on surface temperature during the coldest part of the day. While surface melt is rare at Summit, at lower elevations where melting produces runoff and is more frequent, this damping of surface cooling by fogs could precondition the surface for melting later in the day.

Previous analysis of vapour isotope profiles up to 38 m at Summit (Berkelhammer et al., 2016) indicate that condensation occurs preferentially between 2 m and 10 m. In situ observations of particles from the FM100 scattering spectrometers at the two heights support this finding, showing distinct signatures of droplet growth near 10 m and concentration of mature particles near 2 m. The higher number concentrations observed at 2 m may indicate that surface riming is an inefficient process, possibly associated with evaporation of the descending particles. Though most of the droplets nucleated at initiation of the fog in the case studies, some new droplets nucleated later. While recycling of aerosols following droplet evaporation is plausible, Bergin et al. (1995) found that large aerosols ($> 0.5 \mu\text{m}$) occurring in low concentrations were scavenged while populations of smaller aerosols ($> 0.01 \mu\text{m}$) were only partially activated.

The liquid fogs at Summit are super-cooled because temperatures are (nearly) always below freezing. However, winter temperatures are frequently near or below -40°C , which is approximately the homogeneous freezing point of liquid. We have observed liquid fogs to develop very close to this threshold, which can only occur in environments that are devoid of ice forming nuclei. Elevated fog formation at Summit has the important implication that it extends the season under which liquid fogs can form to the winter months. Two out of three scenes containing liquid fogs from November-March occurred

Deleted: relatively

when the surface was colder than -40°C with skin temperatures as low as -57°C . Particles were large enough to settle out and were observed at 2 m for these cases. We postulate that such fogs were therefore mixed-phase, with a liquid formation layer residing above and feeding a settling layer of frozen ice particles. The resulting surface accumulation may be more likely to behave like light precipitation than rime with respect to surface roughness and has more potential to be re-lofted. Additionally, the lower density of the ice particles compared to their liquid state could serve to reduce their settling rate, while the phase change may buffer the settling particles somewhat from re-vaporizing, or even reverse the process, as their sublimation rate as ice would be weaker than their evaporation rate as liquid.

The interplay between thermal, dynamical, and microphysical processes, coupled with the significant radiative impact of fogs, highlight that more work is needed to understand the dynamics of the boundary layer during fog events. For example, the multiple fog layers apparent from the sodar record in the wintertime case study are intriguing, but will require additional analyses and possibly new measurements in order to ascertain the processes involved in developing and maintaining the distinct layers, as well as to identify the ways they are coupled and what role they may have in regulating the surface mass balance. A complete physical characterization of the fogs also requires detailed observations of aerosols, which were not collected during the period the FM100s operated. While aerosol optical properties are routinely observed at Summit (Schmeisser et al., 2018), additional observations previously only made for brief periods (e.g., Bergin et al., 1995) of number concentration and speciation are necessary for further study. Indeed, such measurements are warranted as the influence of the fogs on climate is likely important for surface melt potential (this work), aerosol cycling (Bergin et al., 1995) and sublimation/deposition processes (Berkelhammer et al., 2016). We anticipate that these processes will act differently at other locations over the Greenland Ice Sheet where different boundary-layer characteristics occur, including wind regimes associated with sloped topography (e.g., katabatic wind), cloud occurrence (e.g., Starkweather, 2004; Cox et al., 2014) and moisture availability. The findings presented here suggest that fogs significantly influence the surface mass and energy budgets over the Greenland Ice Sheet and therefore requires consideration when modelling ice sheet boundary-layer processes.

Author Contributions

DC, MB, VW and KS lead collected the observations with assistance from NM, MB and CC. CC lead the analysis with contributions from DC, MB, WN, NM and MS. CC prepared the manuscript with contributions from DC, MB, MS, NM, and VW.

Acknowledgments

This research was supported by National Science Foundation grants PLR1023574, 1303879, 1314156, 1414314, and 1420932. CJC also received support from the Arctic Research Program of the National Oceanic and Atmospheric Administration (NOAA) Climate Program Office (CPO). The broadband radiation data was collected by the Swiss Federal Institute, ETH;

Deleted: relatively

Deleted: intricate

the data from Miller et al. (2015; 2017) is archived at the NSF Arctic Data Center, doi:10.18739/A2Z37J. Meteorological data collected by NOAA's Global Monitoring Division (GMD) may be accessed from <https://www.esrl.noaa.gov/gmd/>. The ICECAPS data is available from the NSF Arctic Data Center from the following dois: ceilometer (10.18739/A2221V), radar (10.18739/A2BJ3X, 10.18739/A2318G, 10.18739/A2121J), sodar (10.18739/A21V2V), radiosondes (10.18739/A2X508, 10.18739/A2NN44, 10.18739/A2WZ18), AERI (10.18739/A2TF7R, 10.18739/A2VF6P, 10.18739/A2JZ2J, 10.18739/A29F73, 10.18739/A2PJ65), MWR (10.18739/A22J6K, 10.18739/A2HJ57), and MPL (10.18739/A20R48, 10.18739/A2MJ55, 10.18739/A2V210). The cloud probe data and sonic anemometer data are available from <https://www.esrl.noaa.gov/psd/arctic/observatories/summit/index.html>. The Department of Energy's Atmospheric Radiation Measurement (ARM) Program provided the MPL and ceilometer. We appreciate the CIBS program data management and field efforts of Michael O'Neill (formerly NOAA) and David Schneider (CIRES, NCAR). We acknowledge useful conversations on aerosols with Jessie Creamean (CIRES/NOAA) and instrumentation with Bill Dawson and Matt Freer at Droplet Measurement Technologies (DMT). We appreciate the efforts of David Turner (NOAA), Claire Pettersen (SSEC), Aronne Merrelli (SSEC), and Jonathan Edwards-Opperman (Univ. Oklahoma) in product development for the MWR and MPL data sets. We also appreciate the efforts of the technicians at Summit Station and Polar Field Services who provide high quality science support as well as the efforts of the many contributors to the ICECAPS and CIBS research programs.

References

- Antonelli, P., Revercomb, H. E., Sromovsky, L. A., Smith, W. L., Knuteson, R. O., Tobin, D. C., Garcia, R. K., Howell, H. B., Huang, H. L. and Best, F. A.: A principal component noise filter for high spectral resolution infrared measurements, *J. Geophys. Res. Atmos.*, 109(D23), 332–22, doi:10.1029/2004JD004862, 2004.
- Bennartz, R., Shupe, M. D., Turner, D. D., Walden, V. P., Steffen, K., Cox, C. J., Kulie, M. S., Miller, N. B., and Pettersen, C.: July 2012 Greenland melt extent enhanced by low-level liquid clouds, *Nature*, 496, 83-86, doi:10.1038/nature12002, 2013.
- Berkelhammer, M., Noone, D. C., Steen-Larsen, H. C., Bailey, A., Cox, C. J., O'Neill, M. S., Schneider, D., Steffen, K., and White, J. W. C.: Surface-atmosphere decoupling limits accumulation at Summit, Greenland, *Science Adv.*, 2, e1501704, doi:10.1126/sciadv.1501704, 2016.
- Bergin, M. H., Jaffrezo, J.-L., Davidson, C. I., Dibb, J. E., Pandis, S. N., Hillamo, R., Maenhaut, W., Kuhns, H. D., and Makela, T.: The contributions of snow, fog, and dry deposition to the summer flux anions and cations at Summit, Greenland, *J. Geophys. Res.*, 100, 16275–16288, doi:10.1029/95JD01267, 1995.

Borrmann, S., Luo, B., and Mishchenki, M.: Application of the T-Matrix method to the measurement of aspherical (ellipsoidal) particles with forward scattering optical particle counters, *J. Aerosol Sci.*, 31, 789-799, doi:10.1016/S0021-8502(99)00563-7, 2000.

- 5 Borys, R. D., Del Vecchio, D., Jaffrezo, J. L., Dibb, J. E., and Mitchell, D. L.: Field observations, measurements and preliminary results from a study of wet deposition processes influencing snow and ice chemistry at Summit, Greenland, in *Precipitation, Scavenging and Atmospheric Surface Exchange*, edited by S. E. Schwartz, and W. G. N. Slinn, pp. 1693-1702, Hemisphere Pub., Philadelphia, 1992.

- 10 Braham, R. R.: Snow particle size spectra in lake effect snows, *J. Atmos. Sci.*, 29, 200-207, doi:10.1175/1520-0450(1990)029<0200:SPSSIL>2.0.CO;2, 1990.

Castellani, B., Shupe, M. D., Hudak, D. R., and Sheppard, B. E.: The annual cycle of snowfall at Summit, Greenland, *J. Geophys. Res.-Atmos.*, 120, 6654-6668, doi:10.1002/2015JD023072, 2015.

- 15 Clough, S. A., Shepard, M. W., Mlawer, E. J., Delamere, J. S., Iacono, M. J., Cady-Pereira, K., Boukabara, S., and Brown, P. D.: Atmospheric radiative transfer modeling: a summary of the AER codes, short communications, *J. Quant. Spectrosc. Ra.*, 91, 233-244, doi:10.1016/j.jqrst.2004.05.058, 2005.

- 20 Cox, C. J., Walden, V. P., Rowe, P. M., and Shupe, M. D.: Humidity trends imply increased sensitivity to clouds in a warming Arctic, *Nat. Commun.*, 6, 10117, doi:10.1038/ncomms10117, 2015.

Cox, C. J., Walden, V. P., Compo, G. P., Rowe, P. M., Shupe, M. D., and Steffen, K.: Downwelling longwave flux over Summit, Greenland, 2010-2012: Analysis of surface-based observations and evaluation of ERA-Interim using wavelets, *J. Geophys. Res.-Atmos.*, 119, 12317-12337, doi:10.1002/2014JD021975, 2014.

- 25

Crane, R. G. and Anderson, M. R.: Satellite discrimination of snow/cloud surfaces, *Int. J. Remote Sens.*, 5, 213-223, doi:10.1080/01431168408948799, 1984.

- 30 Dye, J. E., and Baumgardner, D.: Evaluation of the forward scattering spectrometer probe, I: Electronic and optical studies, *J. Atmos. Ocean Tech.*, 1, 329-344, doi:10.1175/1520-0426(1984)001<0329:EOTFSS>2.0.CO;2, 1984.

Edwards-Opperman, J., Cavallo, S., and Turner, D. D.: The occurrence and properties of long-lived liquid bearing clouds over the Greenland Ice Sheet and their relationship to the North Atlantic Oscillation, *J. Appl. Meteorol. Clim.*, in review, 2017.

Formatted: Font: Not Italic

Garrett, T. J. and Zhao, C.: Increased Arctic cloud longwave emissivity associated with pollution from mid-latitudes, *Nature*, 440, 787-789, doi:10.1038/nature04636, 2006.

5 [Gossart, A., Souverijns, N., Gorodetskaya, I. V., Lhermitte, S., Lenaerts, J. T. M., Schween, J. H., Mangold, A., Laffineur, Q., and van Lipzig, N. P. M.: Blowing snow detection from ground-based ceilometers: Application to East Antarctica, *The Cryosphere*, 11, 2755-2772, doi: 10.5194/tc-11-2755-2017, 2017.](#)

Gultepe, I. and Isaac, G. A.: Aircraft observations of cloud droplet number concentration: Implications for climate studies, *Q. J. Roy. Meteor. Soc.*, 130, 2377-2390, doi:10.1256/qj.03.120, 2004.

10 [Gultepe, I. R., Zhou, B., Milbrandt, J., Bott, A., Li, Y., Heymsfield, A. J., Ferrier, B., Ware, R., Pavolonis, M., Kuhn, T., Gurka, J., Liu, P., and Cermak, J.: A review on ice fog measurements and modeling, *Atmos. Res.*, 151, 2-19, doi: 10.1016/j.atmosres.2014.04.014, 2015.](#)

15 [Gultepe, I. R., Tardif, S. C., Michaelides, J., Cermak, A., Bott, A., Bendix, J., Müller, M. D., Pagaowski, M., Hansen, B., Ellrod, G., Jacobs, W., Toth, G., and Tober, S. G.: Fog research: A review of past achievements and future perspectives, *Pure Appl. Geophys.*, 164, 1121-1159, doi:10.1007/s00024-007-0211-x, 2007.](#)

20 [Gultepe, I. R., Isaac, G. A., and Cober, S. G.: Cloud microphysical characteristics versus temperature for three Canadian field projects, *Ann. Geophys.*, 20, 1891-1898, doi:10.5194/angeo-20-1891-2002, 2002.](#)

[Hoch, S. W., Calanca, P., Philipona, R., and Ohmura, A.: Year-round observation of longwave radiative flux divergence in Greenland, *J. Appl. Meteorol. Clim.*, 46, 1469-1479, 2007.](#)

25 [Houghton, H. G.: Physical Meteorology, MIT Press, 1985.](#)

[Knuteson, R. O., Revercomb, H. E., Best, F. A., Ciganovich, N. C., Dedecker, R. G., Dirx, T. P., Ellington, S. C., Feltz, W. F., Garcia, R. K., Howell, H. B., Smith, W. L., Short, J. F., and Tobin, D. C.: Atmospheric Emitted Radiance Interferometer: Part I: Instrument design, *J. Atmos. Ocean. Tech.*, 21, 1763-1776, J. doi:10.1175/JTECH-1662.1., 2004a.](#)

30 [Knuteson, R. O., Revercomb, H. E., Best, F. A., Ciganovich, N. C., Dedecker, R. G., Dirx, T. P., Ellington, S. C., Feltz, W. F., Garcia, R. K., Howell, H. B., Smith, W. L., Short, J. F., and Tobin, D. C.: Atmospheric Emitted Radiance Interferometer: Part II: Instrument performance, *J. Atmos. Ocean. Tech.*, 21, 1777-1789, J. doi:10.1175/JTECH-1663.1., 2004b.](#)

Deleted: .

Formatted: Font: Not Italic

Deleted: [Intrieri, J. M. and Shupe, M. D.: Characterization and radiative effects of diamond dust of the Western Arctic Ocean, *J. Climate*, 17, 2953-2960, doi:10.1175/1520-0442\(2004\)017<2953:CAREOD>2.0.CO;2, 2004.](#)

- Li, L. and Pomeroy, J. W.: Probability of occurrence of blowing snow, *J. Geophys. Res.-Atmos.*, 102, 21955-21964, doi:10.1029/97JD01522, 1997.
- 5 [Lynch, D. K. and Schwartz, P.: Rainbows and fogbows, *Appl. Optics*, 30, 3415-3420, doi: 10.1364/AO.30.003415,1991.](#)
- Miller, N. B., Shupe, M. D., Cox, C. J., Noone, D., Persson, P. O. G., and Steffen, K.: Surface energy budget responses to radiative forcing at Summit, Greenland, *The Cryosphere*, 11, 497-516, doi:10.5194/tc-11-497-2017, 2017.
- 10 Miller, N. B., Shupe, M. D., Cox, C. J., Walden, V. P., Turner, D. D., and Steffen, K.: Cloud radiative forcing at Summit, Greenland, *J. Climate*, 28, 6267-6280, doi:10.1175/JCLI-D-15-0076, 2015.
- Miller, N. B., Turner, D. D., Bennartz, R., Shupe, M. D., Kulie, M. S., Cadeddu, M. P., and Walden, V. P.: Surface-based inversions above central Greenland, *J. Geophys. Res.-Atmos.*, 118, 495-506, doi:10.1029/2012JD018867, 2013.
- 15 Moran, K. P., Martner, B. E., Post, M. J., Kropfli, R. A., Welsh, D. C., and Widener, K. B.: An unattended cloud-profiling radar for use in climate research, *B. Am. Meteorol. Soc.*, 79, 443-455, doi:10.1175/1520-0477(1998)079<0443:AUCRPF>2.0.CO;2, 1998.
- 20 Nakanishi, M.: Large-Eddy Simulation of radiation fog, *Bound.-Lay. Meteorol.*, 94, 461-493, doi:10.1023/A:1002490423389, 2000.
- Neff, W., Helmig, D., Grachev, A., and Davis, D.: A study of boundary layer behavior associated with high NO concentrations at the South Pole using a minisodar, tethered balloon, and sonic anemometer, *Atmos. Environ.*, 42, 2762-2779, doi:10.1016/j.atmosenv.2007.01.033, 2008.
- 25 Nghiem, S. V., Hall, D. K., More, T. L., Tedesco, M., Albert, M. R., Keegan, K., Shuman, C. A., DiGirolamo, N. E., and Neumann, G.: The extreme melt across the Greenland ice sheet in 2012, *Geophys. Res. Lett.*, 39, L20502, doi:10.1029/2012GL053611, 2012.
- 30 Pettersen, C., Bennartz, R., Merrelli, A. J., Shupe, M. D., Turner, D. D., and Walden, V. P.: Precipitation regimes over central Greenland inferred from 5 years of ICECAPS observations, *Atmos. Chem. Phys.*, 18(7), 4715-4735, doi:10.5194/acp-18-4715-2018, 2018

Pinnick, R. and Auvermann, H.: Response characteristics of Knollenberg light-scattering aerosol counters, *J. Aerosol Sci.*, 10, 55-74, doi:10.1016/0021-8502(79)90136-8, 1979.

Pruppacher, H. R. and Klett, J. D.: *Microphysics of Clouds and Precipitation*, 2nd ed., Springer Science & Business Media, London, 954 pp., doi:10.1007/978-0-306-48100-0, 2010.

Schmeisser, L., Backman, J., Ogren, J. A., Andrews, E., Asmi, E., Starkweather, S., Uttal, T., Fiebig, M., Sharma, S., Eleftheriadis, K., Vratolis, S., Bergin, M., Tunved, P., and Jefferson, A.: Seasonality of optical properties in the Arctic, *Atmos. Chem. Phys. Disc.*, doi:10.5194/acp-2017-1117, 2018.

Shupe, M. D. and Miller, N. B.: Surface-energy budget at Summit, Greenland, NSF Arctic Data Center, doi:10.18739/A2Z37J, 2016.

Shupe, M. D. and Intrieri, J. M.: Cloud radiative forcing of the Arctic surface: Influence of cloud properties, surface albedo, and solar zenith angle, *J. Climate*, 17, 616-628, doi:10.1175/1520-0442(2004)017<0616:CRFOTA>2.0.CO;2, 2004.

Shupe, M. D., Turner, D. D., Walden, V. P., Bennartz, R., Cadeddu, M. P., Castellani, B. B., Cox, C. J., Hudak, D. R., Kulie, M. S., Miller, N. B., Neely, R. R. III, Neff, W. D., and Rowe, P. M.: High and Dry: New observations of tropospheric and cloud properties above the Greenland ice sheet, *B. Am. Meteorol. Soc.*, 94, 169-186, doi:10.1175/BAMS-D-11-00249.1., 2013.

Shupe, M. D., Walden, V. P., Eloranta, E., Uttal, T., Campbell, J. R., Starkweather, S. M., and Shiobara, M.: Clouds at Arctic atmospheric observatories. Part I: Occurrence and macrophysical properties, *J. Appl. Meteorol. Clim.*, 50, 626-644, doi:10.1175/2010JAMC2467.1., 2011.

Spiegel, J. K., Zieger, P., Bukowiecki, N., Hammer, E., Weingartner, E., and Eugster, W.: Evaluating the capabilities and uncertainties of droplet measurements for the fog droplet spectrometer (FM-100), *Atmos. Meas. Tech.*, 5, 2237-2260, doi:10.5194/amt-5-2237-2012, 2012.

Starkweather, S. M.: Characteristics of cloud cover and its radiative impacts over high elevations of the Greenland ice sheet, PhD dissertation, Dep. of Atmos. Oceanic Sci., Univ. of Colorado, Boulder, 2004.

Strabala, K. I., Ackerman, S. A., and Menzel, W. P.: Cloud properties inferred from 8-12- μ m data, *J. Appl. Meteorol.*, 33, 212-229, doi:10.1175/1520-0450(1994)033<0212:CPIFD>2.0.CO;2, 1994.

Formatted: Superscript

Thuman, W. C. and Robinson, E.: Studies on Alaskan ice-fog particles, *J. Meteorol.*, 11, 151-156, doi: 10.1175/1520-0469(1954)011<0151:SOAIFP>2.0.CO;2, 1954.

Tjernström, M.: The summer Arctic boundary layer during the Arctic Ocean Experiments 2001 (AOE-2001), *Bound.-Lay. Meteorol.*, 117, 5-36, doi:10.1007/s10546-004-5641-8, 2005.

Turner, D. D.: Arctic mixed-phase cloud properties from AERI lidar observations: Algorithm and results from SHEBA, *J. Appl. Meteorol.*, 44, 427-444, doi:10.1175/JAM2208.1, 2005.

10 Turner, D. D., Clough, S. A., Liljegren, J. C., Clothiaux, E. E., Cady-Pereira, K. E., Gaustad, K. L.: Retrieving liquid water path and precipitable water vapor from the Atmospheric Radiation Measurement (ARM) microwave radiometers, *IEEE T. Geosci. Remote*, 45, 3680-3690, doi:10.1109/TGRS.2007.903703, 2007.

Turner, D. D., Knuteson, R. O., Revercomb, H. E., Lo, C., and Dedecker, R. G.: Noise reduction of Atmospheric Emitted
15 Radiance Interferometer (AERI) observations using Principal Component Analysis, *J. Atmos. Ocean. Tech.*, 23, 1223-1238, doi:10.1175/JTECH1906.1, 2006.

Turner, D. D., Ackerman, S. A., Baum, B. A., Revercomb, H. E., and Yang, P.: Cloud phase determination using ground-based AERI observations at SHEBA, *J. Appl. Meteorol.*, 42, 701-715, doi:10.1175/1520-
20 0450(2003)042<0701:CPDUGA>2.0.CO;2, 2003.

25

30

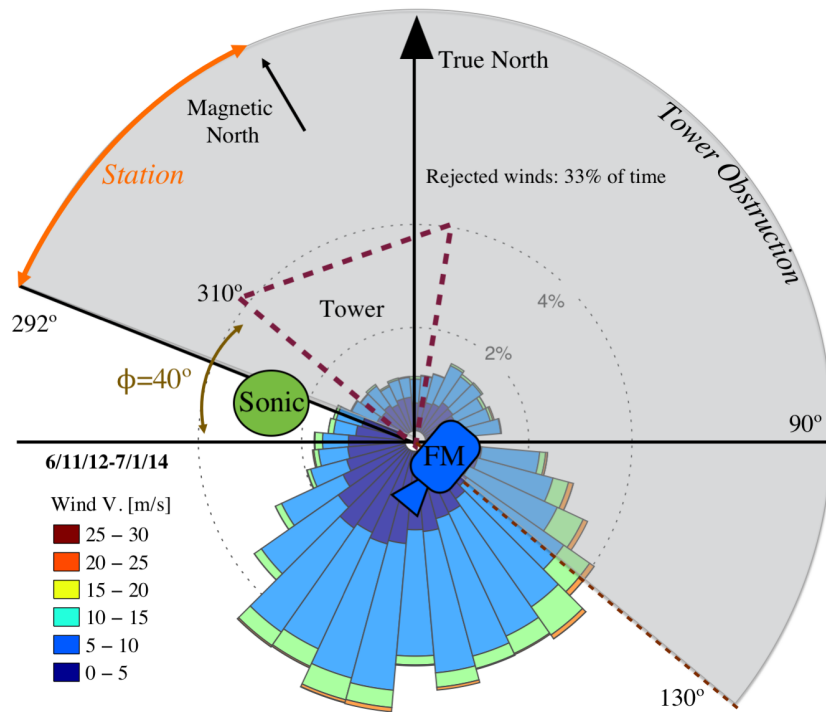
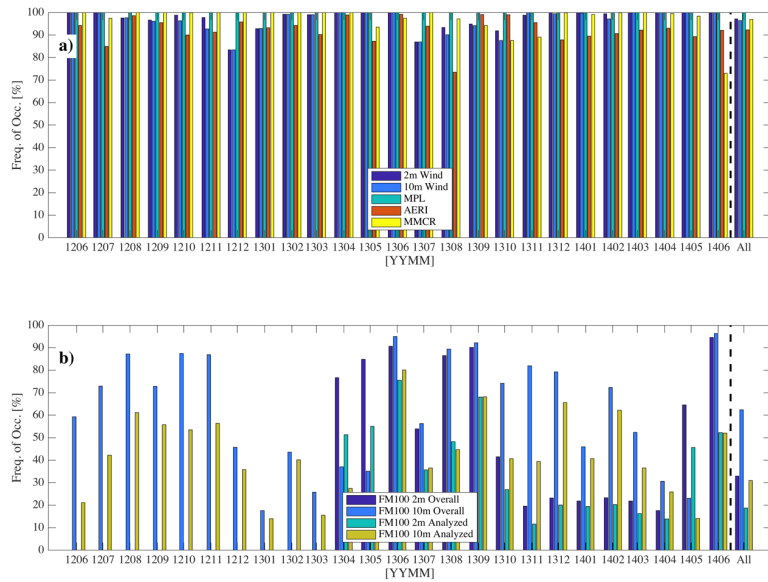
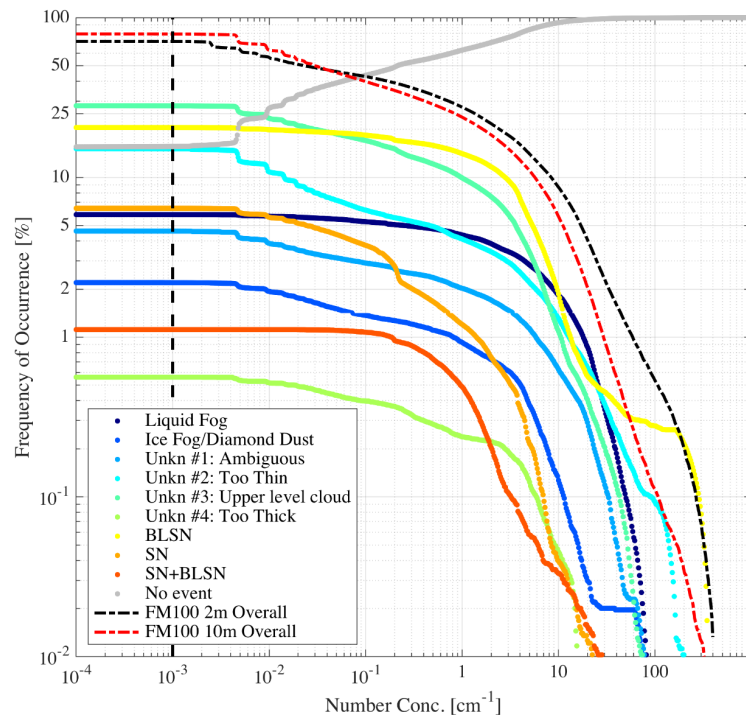


Figure 1. Schematic plan view of the field setup of the FM100 (blue icon labelled “FM”) on the tower (dashed triangle) at Summit Station. The green oval (“sonic”) is the position of the Metek sonic anemometer. The grey shaded area are the wind directions that were rejected and the orange arrow denotes the sector facing the station. The wind rose is also shown centered on the FM position.



5 **Figure 2.** (a) Percent of available data: wind (blues), MPL (green), AERI (red) and MMCR (yellow) for each month in the study period. (b) Similar to (a), but for the FM100s at 10 m (dark blue/green) and 2 m (light blue/yellow). Blues show the amount of available data and yellow/green shows the amount of analysed data after screening for wind direction and availability of ancillary measurements from (a).



5 **Figure 3.** Percent of time clouds are identified in FM100 data at 2 m (black dashed) and 10 m (red dashed) as a function of threshold in number concentration. Colours show the same for the classifications that are reported in Figure 5.

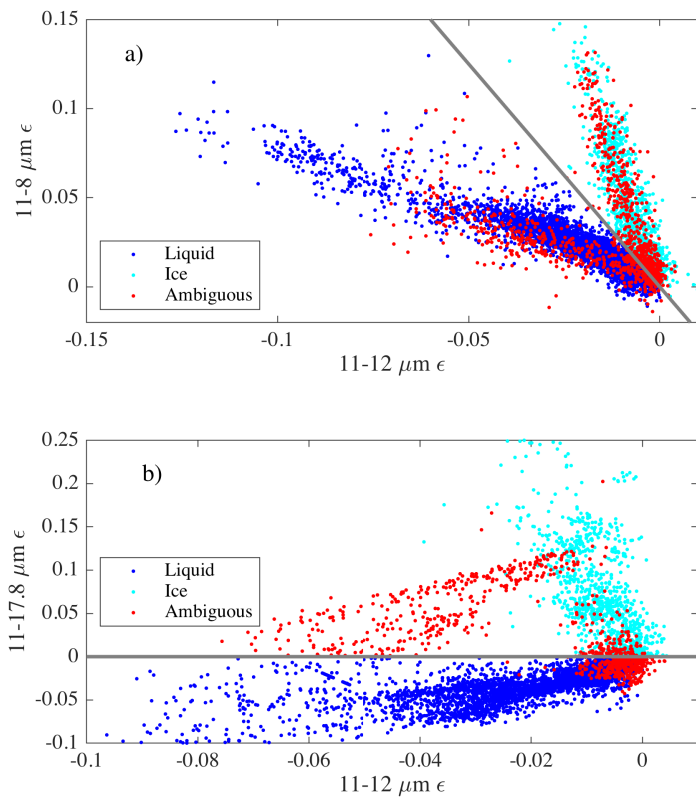
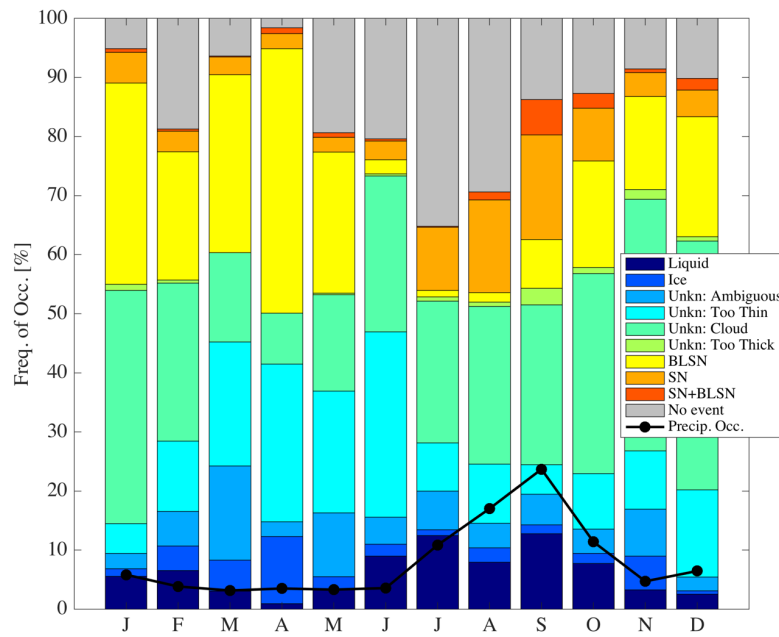


Figure 4. Example of phase classification using microwindow cloud emissivity measured by the AERI for the month of June.

- 5 (a) shows the first test described in the text and (b) shows the second. The colours indicate the classification. Only scenes containing identified events where the AERI 11 μm emissivity was > 0.02 and no upper level clouds were detected are shown ($n = 4527$).



5 **Figure 5.** Composite monthly frequencies of occurrence of each classification. BLSN and SN refer to blowing snow and snow, respectively. Precipitation occurrence is the sum of SN and BLSN+SN.

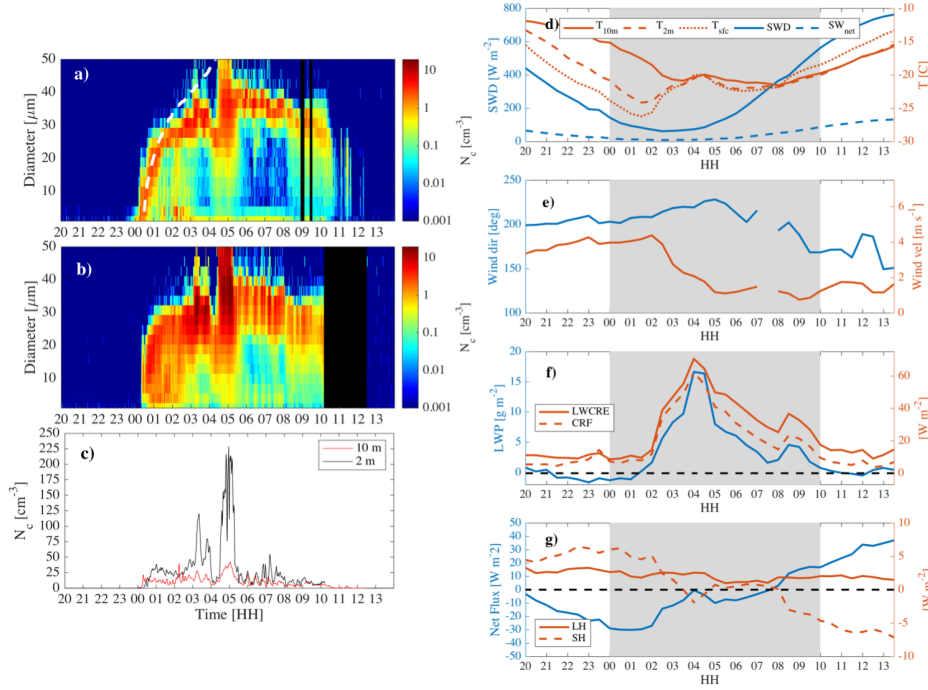


Figure 6. 16 June 2013 case study. Number concentration and particle diameter from FM100 at (a) 10 m and (b) 2 m. (c) total number concentration (N_c) in all bins for the 10 m FM100 (red) and the 2 m FM100 (black). (d) temperatures at surface (skin), 2 m and 10 m (reds) and downwelling shortwave radiation (SWD) and net shortwave radiation (SW_{net}) (blues). (e) wind direction (blue) and velocity (red). (f) longwave cloud radiative effect (LWCRE) and total cloud radiative forcing (CRF) (reds) and liquid water path (LWP) (blue). (g) latent (LH) and sensible (SH) (reds) turbulent fluxes and net flux (blue). The white dashed line in (a) is a theoretical growth curve calculated from Houghton (1985).

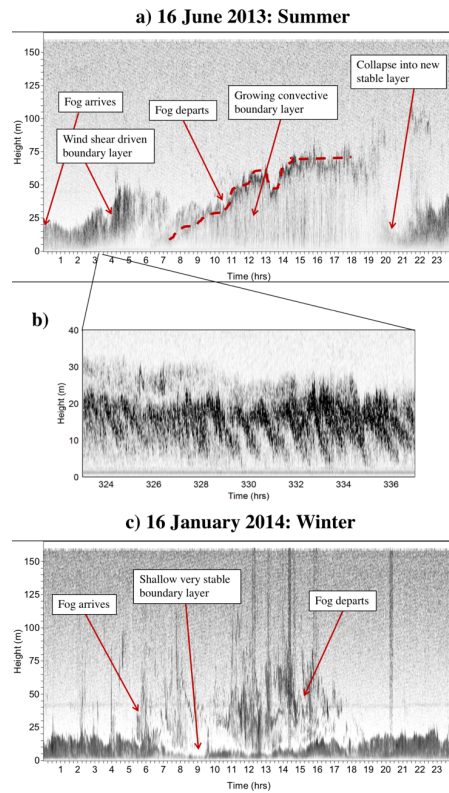


Figure 7. Sodar facsimile records between the surface and 160 m height for the summer case (16 June 2013) (a). (b) shows an expansion of a brief period from 0323-0337 UTC and 0-40 m height from (a) to highlight the Kelvin-Helmholtz instabilities observed at this time. (c) is similar to (a) but for the winter case on 16 January 2014. Dark features that extend to the top of the plot in (c) (e.g., near 2000 UTC) are likely noise from station activities and the horizontal feature in (c) near 40 m height is due to reflections of a side lobe from an object nearby on the ice surface.

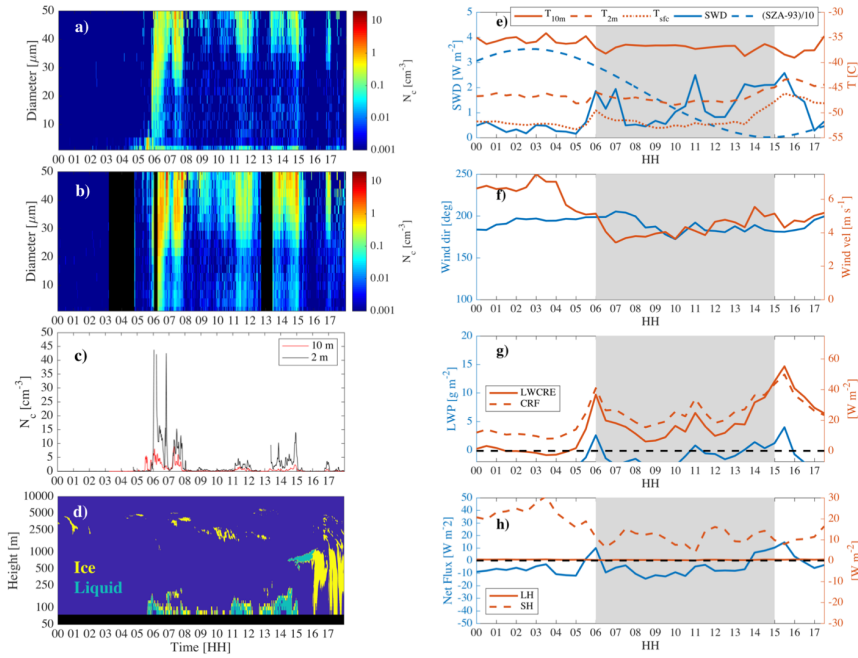


Figure 8. 16 January 2014 case study. Number concentration from FM100 at 10 m (a) and 2 m (b). (c) total number concentration (N) in all bins for the 10 m FM100 (red) and the 2 m FM100 (black). (d) cloud mask from the MPL: yellow is ice, green is liquid, blue is clear and black is below the minimum height for acceptable data. The height scale is log. (e) Temperatures at surface (skin), 2 m and 10 m (reds) and downwelling shortwave radiation (SWD), net shortwave radiation (SW_{net}) and solar zenith angle (minus 93 then divided by 10 to fit on the figure) (blues). (f) wind direction (blue) and velocity (red). (g) longwave cloud radiative effect (LWCRE) and total cloud radiative forcing (CRF) (reds) and liquid water path (LWP) (blue). (h) latent (LH) and sensible (SH) (reds) turbulent fluxes and net flux (blue).

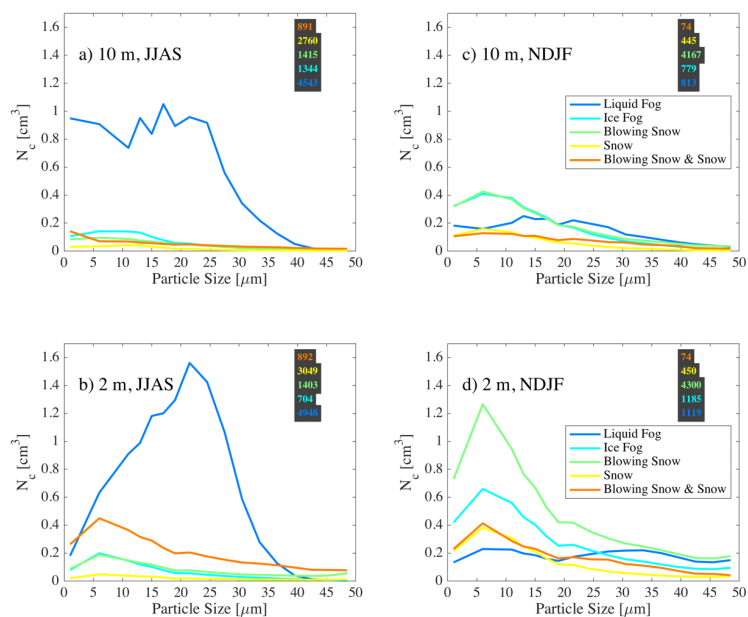


Figure 9. Average number concentration (N) within the FM100 size bins for different classifications measured at 10 m (top row; a, c) and 2 m (bottom row; b, d). The left column (a,b) is for June-September (JJAS) and the right column (c,d) is for November-February (NDJF). The bin centres for the sizes are 1, 6, 11, 13, 15, 17, 19, 21.5, 24.5, 27.5, 30.5, 33.5, 36.5, 39.5, 42.5, 45.5 and 48.5 μm (refer also to the Supplement for additional information on FM100 sizing). Because the FM100 bin sizes are variable, the bin counts have been normalized such that the integral of the curves = average concentration for all bins. The values over the grey background are the number of 1-minute samples in each distribution.

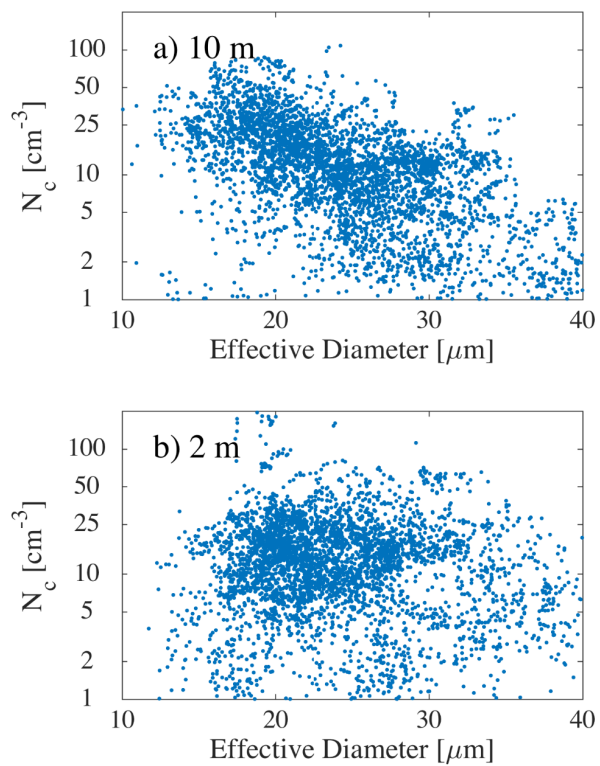


Figure 10. Number concentration (N) as a function of particle size for liquid fogs measured by FM100s at 10 m (a) and 2 m (b). Note that the y-axis is log.

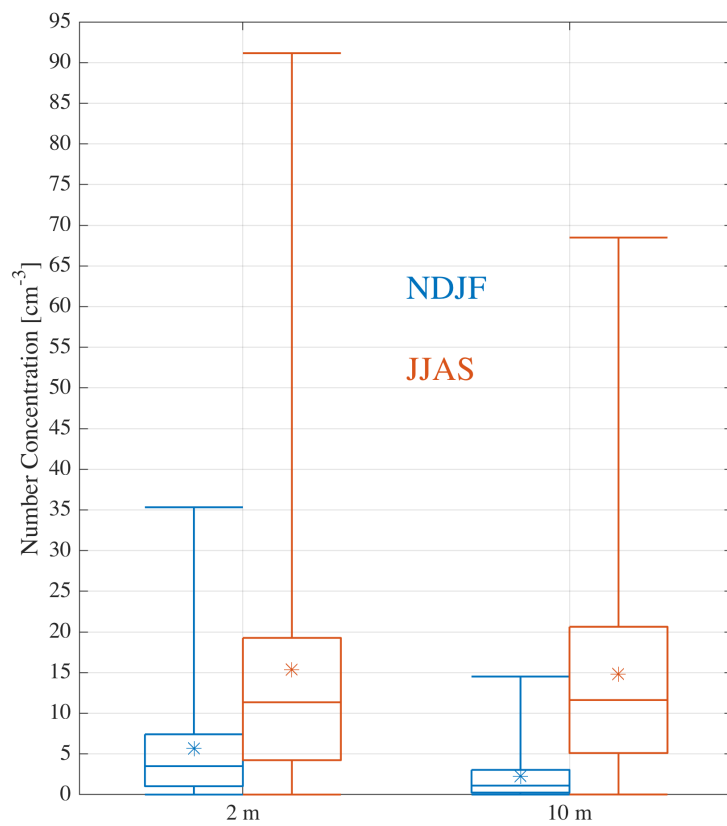


Figure 11. Box and whisker plots (* = mean, boxes are 25th, 50th, 75th percentile, whiskers are 1st and 99th percentiles) for all observations at times when both probes were operational in winter (NDJF, blue) and summer (JJAS, red) at 2 m and 10 m.

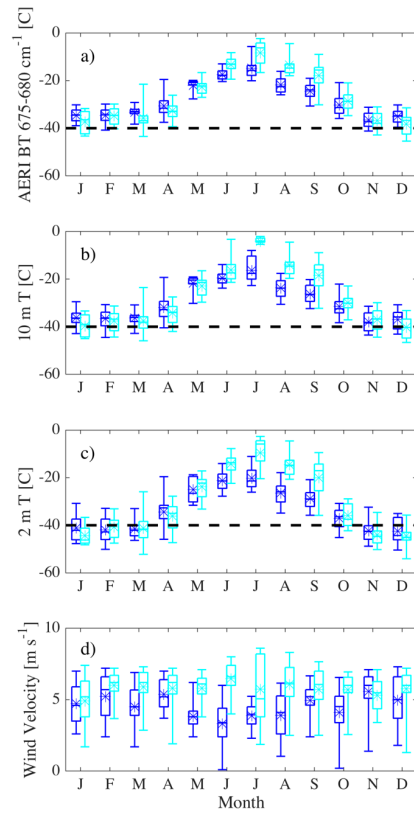


Figure 12. Box and whisker plots (* = mean, boxes are 25th, 50th, 75th percentile, whiskers are 5th and 95th percentiles) for each month for the ice fog category (cyan) and liquid fogs (blue). (a) AERI 675-680 cm⁻¹ brightness temperatures (BT), (b) 10 m air and (c) 2 m air. (d) is wind velocity at 10 m.

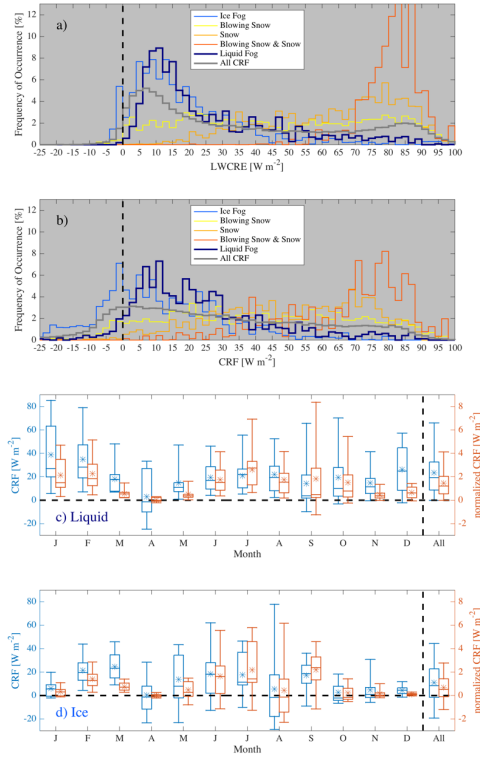


Figure 13. Distributions for all seasons for classified data types of (a) longwave cloud radiative effect (LWCRE), defined as the perturbation to the downwelling longwave radiation (LWD) cause by clouds, $LWD - LWD_{clear}$. (b) cloud radiative forcing (CRF). (c) for just liquid fog classifications, box and whisker plots (* = mean, boxes are 25th, 50th, 75th percentile, whiskers are 5th and 95th percentiles) for each month for CRF of identified cases (blue) and CRF normalized by frequency of occurrence of liquid fog (red). (d) as in (c), but for the ice fog category.