

Reply to Comments:

Note that original reviewer comments are in bold below, while the author reply is in regular type font. The tracked changes manuscript is attached after the reply to comments, with removed text in red and added text in blue.

**1. One of significant results of the study is the difference between PCFs for the L2 case and the other three cases, the asymptotic value at small scales. I strongly feel that some interpretation of this difference is needed. One possibility would be to expand Fig. 1 so the left panel is replaced with two panels showing PCFs with different asymptotic values similar to the difference between L2 and other cases. Right now, the asymptotic value at small scales in the left panel of Fig. 1 is about an order of magnitude smaller than in Figs. 5, 9 and 10. Why? Should the artificial data be generated in such a way that the PCF has the asymptotic value similar to that in the real data? I simply have no intuition what the asymptotic value means and why there is a difference between L2 and other cases. This needs to be better explained in the revised manuscript.**

A couple points to comment on here.

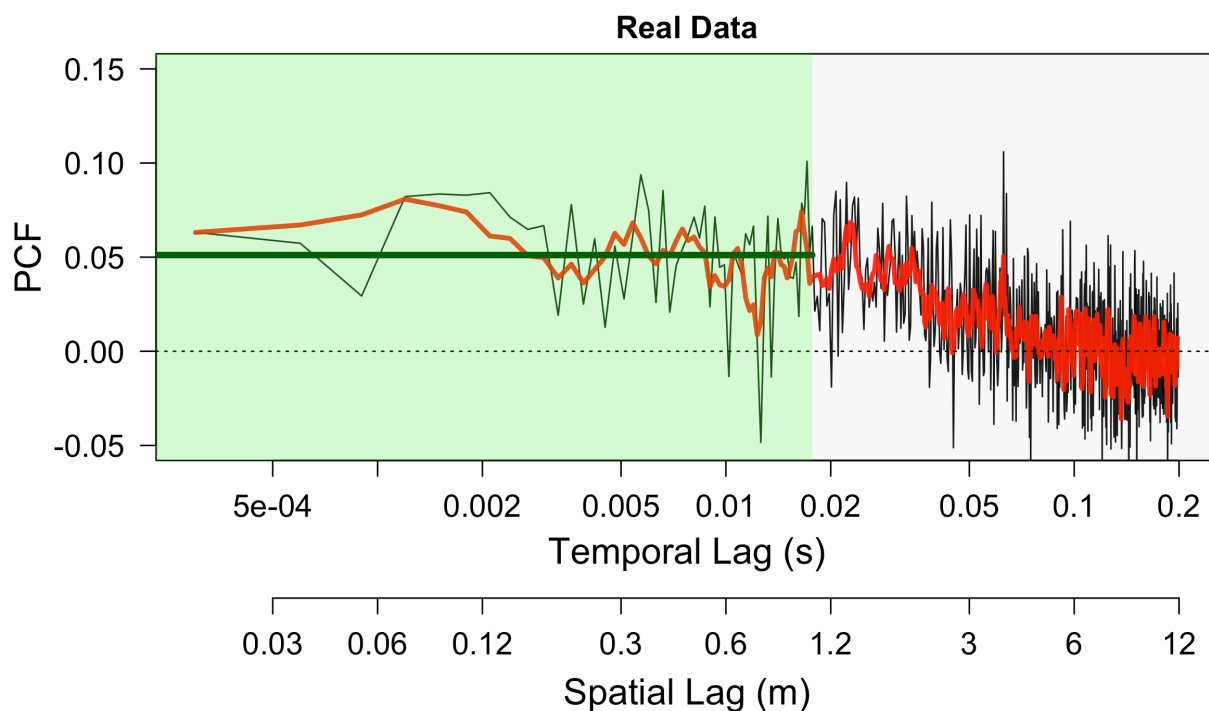
(1) The asymptotic value of the PCF is the mean value of the ‘shoulder’ region of the PCF curve. For example, the asymptotic value of the PCF from the left-hand side of Figure 1 is calculated by taking the mean of the first 60 PCF values (all PCF values that are within the green rectangle in the figure provided below). This provides a way to quantify the PCF curve by giving it a single value. For the case of Figure 1, the asymptotic value is displayed as the thick green line which represents the mean of all the values within the green rectangle). In the revised manuscript, a dashed green line has been added to Figure 1 to give reference to this process, which is described on page 9 lines 15 – 17.

(2) We feel that there may be some confusion here, as the PCF displayed in the left-hand panel of Figure 1 is not synthetic data, but real data collected from a randomly selected cloud. Although the y-axis has a much smaller range in Figure 1 as compared to those of Figures 5, 9 and 10, the figures are in essence showing the same thing. The smaller the PCF, the less inhomogeneous the droplet population is. The asymptotic value of the PCF displayed on the left-hand side in Figure 1 has a mean value just above 0.05. The bottom of the 15<sup>th</sup> percent quantile envelopes displayed in Figure 5 have mean values of 0.008 (H1 center), 0.090 (H1 edge), 0.022 (L1 center), 0.086 (L1 edge), 0.018 (H2 center), 0.179 (H2 edge), 0.163 (L2 center), and 0.137 (L2 edge). Therefore, the mean PCF value in the left-hand panel of Figure 1 is actually the same magnitude as some of the PCF curves which are embedded in the envelopes that make up Figure 5. Page 7 lines 11-12 of the revised manuscript have added ... real data “from a randomly selected cloud” ... to hopefully make clear that the PCF from the left-hand panel represents real data.

(3) The asymptotic value is an attempt to give the PCF a single value to define it. The meaning of this value is described on page 6 lines 12-14. For example, it is clear that L2 has a larger average PCF value than that of L1. The mean PCF value for L2 center is 0.61, where the mean PCF value for L1 center is 0.18 (see Table 4). This means that there is a factor of 1.61

enhancement of finding a droplet time  $t$  away for L2 center (here  $t$  is the mean time-lag covered in calculating the asymptotic value). There is also a factor of 1.18 enhancement of finding a droplet time  $t$  away for L1 center. Therefore, there is more clustering in L2 center as compared to L1 center.

(4) Why there is a difference in L2 as compared to the other three cases is unclear to us as well. We attempt to come up with hypothesis for why there is enhanced inhomogeneities within flight L2 in the discussion section (Section 5.1). However, determining the exact reason for enhanced inhomogeneities in L2 is beyond the scope of this manuscript. We simply set out to determine if (1) inhomogeneities change based on cloud edge or center and (2) if the aerosol number concentration can affect the amount of inhomogeneity. We believe the two goals of this paper have been met with what is presented within the results section (Section 4).



**2. There are numerous unclear statements, phrases, and figure details that make reading and understanding the manuscript difficult. I list several of them in the specific comment section. These needs to be corrected.**

These issues should be corrected in the updated manuscript, please see the reply to specific comments below.

**3. Section 5.1. This section is a pure speculation that is not supported with any data you present. I really do not know what to suggest. One possibility is to leave this subject out and**

**perhaps replace L2 with another flight that has PCFs similar to L1, H1, and H2. This is also related to 1 above as the manuscript really does not provide any explanation what the difference in the asymptotic value means. I also feel the discussion in section 5.2 (edge versus center) is speculative. Perhaps the discussion in the two sections can be put on a better footing if other cloud parameters are included in the analysis (e.g., adiabatic fraction, spectral width of the droplet size distribution, etc.). At the moment, the PCF analysis alone and the way it is presented in the paper is not sufficient.**

Again, a couple points to comment on here.

(1) Section 5.1 was/is part of the discussion section. We are not presenting the data and results displayed in this section as part of the results in the results section, but as a possible hypothesis for why we see the enhanced inhomogeneities in L2. One of your own major comments was the fact that you have no intuition for why there is a difference between L2 and the other three cases. For us to completely ignore L2 and not at least propose ideas/hypothesis for why it is different would be unreasonable as authors. Section 5.1 provided, although not in a definite way, agreed, a possible explanation for why we see the enhanced PCF values for L2. At the very least, Figure 11 shows that flight L2 is statistically different from the other three flights in terms of the vertical velocity, LWC, cloud width, CDNC, and buoyancy. It is our hopes as authors that this discussion will stimulate readers and lead to future work to possibly confirm or deny the hypothesis that we propose. Section 5.1 has been renamed “Cloud Lifetime Hypothesis and Inhomogeneity in L2” as opposed to “Cloud Lifetime Theory” to help clarify that we are proposing a possible hypothesis for the clustering in L2.

(2) Removing flight L2 and replacing it with another flight to make all the flights more familiar in terms of the clustering signatures produced by the PCF would go against the purpose of the paper. We picked flight L2 because it had a sufficient number of clouds and the aerosol number concentration was low. In a perfect world, we would expect larger PCF values for both of the high pollution flights, However, this is not a perfect world and we must account for the results we find, not change the original flights to match a narrative we want or believe we should see.

(3) In section 5.2, we have now added an analysis of the drop size distribution (median drop size and spectral width), along with the cloud droplet number concentration. This tells us with certainty that entrainment is occurring at the edge of the cloud, and the type of entrainment is inhomogeneous (since the drop size distributions are unshifted between edge and center while the cloud drop number concentration is reduced at cloud edge). This added discussion helps in describing why we see enhanced inhomogeneities at cloud edge as compared to cloud center.

**4. In view of the above criticism, I am not surprised that the conclusion section 6 is relatively short and thin on merit.**

Even if the discussion section were longer, the conclusion section we present would still be short. The purpose of the conclusion is to briefly describe the work done and summarize the results. An example of this would be Small et al. (2013), where the conclusion section is a mere 297 words, as compared to the manuscript in question which has 425 words in the conclusion section. The conclusion section, its main purpose, and how it is written varies based on the

authors and their preference.

**1\*. In general, I do not like when the authors refer to concentration inhomogeneities at large scales as “clustering”. Yes, the authors make it clear early in the paper that one needs to distinguish between inertial clustering at sub-cm scales, and concentration heterogeneities at larger scales. However, applying the term “clustering” for the latter is not appropriate in my view. I would prefer to refer to them as “heterogeneities” as they likely result from entrainment and filamentation during turbulent stirring. The authors suggest that these are because of “cloud holes”, but I would prefer to think about them as “filaments”, not holes. This point is related to my major point 1 above.**

We have changed all references to “clustering” that are not related to inertial clustering (small-scale mm-cm clustering) to “inhomogeneities”. This can be found throughout the revised manuscript. In particular, the title has been changed to “Droplet Inhomogeneity in Shallow Cumuli: ...” Also, see the first paragraph of the revised manuscript on page 1 lines 18 – 23. We have added a discussion describing the cloud ‘holes’ as areas of decreased droplet concentration due to the entrainment of dry environmental air into the cloud and subsequent filamentation during turbulent mixing. See page 6 lines 20 -24.

**2. P2L3 (page 2, line 3): “climate sensitivity” should be explained or a reference that explains this term should be provided.**

A reference has been added, i.e., Ramaswmy et al., (2001). This reference was in the very first draft of the manuscript, but was mistakenly removed in making the first round of revisions.

**3. Fig. 1. It is difficult to see that the symbols at the very bottom of the lower graphs are squares. Perhaps replacing squares with crosses or just vertical bars would be better.**

The squares have been replaced with vertical bars. We do agree this makes the figure much easier to interpret.

**4. Beginning of section 2.1. The role of the Stokes number should be brought here. The Stokes number is discussed later, but bringing it in the first paragraph would be more appropriate.**

We have added the discussion on the Stokes number directly after the first paragraph in section 2.1. See page 4 lines 10 – 25 of the revised manuscript.

**5. P6L2 and 3: “...represents: given...”: please rephrase; “time bin”: please define.**

This portion of the text has been rewritten. See page 6 lines 1 – 5. Time bin is defined more precisely in the very next section (Section 2.3). See page 6 lines 26 – 31 for more information on the time bin. After several attempts in trying to define what is meant by time bin when it is first introduced seemed forced or out of place. Particularly when the equation itself (EQ2) provides (albeit indirectly) the time bin when interpreting the meaning of  $p(t_0+t | t_0)$ . We therefore believe

it is more appropriate to directly define the time bin (dt) when discussing how we selected the time bin value in Section 2.3, where we describe the actual process of calculating the PCF.

**6. Fig. 5: lower and upper panel heights are different. Please replot.**

This figure has been corrected. All panels now have the same height.

**7\*. Figure 6 and its discussion on p. 10 is unclear. Specifically, I do not understand the boxplot, its horizontal scale, and the phrase “that is 3 to the 0.998 quantile”. The relation of the boxplot to PCF is unclear. Please explain how one gets the boxplot from the PCF. Or maybe these are different ways to represent the same sequence of droplet positions?**

Your last statement here is correct. Figure 6 is simply a different way to represent the same sequence of droplet positions. The histogram data represented in figure 6 is of the mean inter-arrival times which are used in calculating the PCF. In the simplest terms, we are looking at the distribution of inter-arrival times before the data has been plugged into the PCF. We have added the text on page 10 lines 20 -22 stating “We can use the inter-arrival times used in calculating the PCF to develop a better understanding of the overall droplet spatial distributions and the largest inhomogeneities measured by directly analyzing the inter-arrival time distribution”. This statement directly tells the reader what it is they are looking at.

The boxplot is taking the largest 0.2 percent of data represented in the histograms (i.e., all values greater than or equal to the 0.998 quantile of the data). This is a more precise way of analyzing how the largest spatial inhomogeneities between droplet measurements are distributed between edge and center data. The horizontal scale of the boxplot comes directly from the x-axis of the histogram (since the boxplot is taking the largest data points from the histogram). We have changed the  $\geq$  symbol with “greater than or equal to” on page 10 line 16 of the revised manuscript, along with adding “i.e., the largest 0.2 percent of the IAD data) on page 10 lines 17 of the revised manuscript in order to clarify any misunderstanding.

Hopefully this response clarifies that the boxplot is coming directly from the histogram data. And it is the histogram data that is used to create the PCF curves. Therefore, one does not get the boxplots from the PCF.

**8\*. Fig. 7 and its discussion. I think the boxplots are similar to those in Fig. 6, correct? As with Fig. 6, I do not understand what they show. Also, what are the numbers in each panel? The caption does not explain that.**

Yes, the boxplots for figure 7 are derived from the same histogram shown for the L1 case, but from the histograms from the L2, H1, and H2 cases (not shown). The left-hand panel of Figure 7 (L1) is the exact same boxplot as is shown in Figure 6. It is included so a comparison can be made between the other 3 cases. This fact has been added to the caption. An explanation of the numbers in each panel have also been added to the figure caption (that explanation is already contained in the text on page 10 line 33 of the revised manuscript).

**9. Fig. 8. PCF is a function, so I do not understand what Fig 8 shows. Is that the asymptotic**

**value? Also, how come the RH is over 100%? This is also repeated later in the paper (e.g., Table 2 and Fig. 11). This is not possible. Please explain and/or check the data.**

Yes, Figure 8 shows the asymptotic value of the PCF. We have made this more clear by stating "...Shows how the mean PCF value (where again, the mean PCF value is obtained by taking the mean of all individual PCF values to the left of the green reference line in Figure 1) ..." on page 11 lines 3 – 4 of the revised manuscript. The revised manuscript has corrected all RH values. We have filtered the RH to remove bad data (i.e., data that is over 103 %). The discussion on filtering RH values can be found on page 8 lines 14 -15 of the revised manuscript. Note that this issue has also been discussed in other papers working GoMACCS RH data, including Small et al., (2013) and Lu et al., (2008).

**10. P11L23: what is the "average PCF value"? Is this different from the asymptotic value I refer to above? Again, I do not know what the difference between the mean values of 0.54 and 0.43 means. And where do they come from (i.e., what does the difference represent)? Again, this goes back to my major comment 1.**

We believe that this comments has been addressed in previous replies. The "average PCF value" has been changed to "mean PCF value" on page 11 line 34 to try and keep consistency throughout the manuscript. But yes, the mean PCF value or the "average PCF value" as originally states refers to the asymptotic value. The mean value of 0.54 means there is a factor of 1.54 times more clustering as compared to a homogeneous distribution. The mean value of 0.43 means that there is a factor of 1.43 times more clustering as compared to a homogeneous distribution. The difference therefore represents that there is more inhomogeneity in the droplet population with a mean value of 0.54 as compared to the inhomogeneity in the droplet population with a mean value of 0.43.

#### REFERENCES:

Lu, M., Jonsson, H., Chuang, P., Peingold, G., and Flagan, R.: Aerosol-cloud relationships in continental shallow cumulus, *J. Geophys. Res.*, 113, D15 201, 2008.

Small, J.D., Chuang, P.Y., and Jonsson, H.H.: Microphysical imprint of entrainment in warm cumulus, *Tellus B*, 65, 1-18, 2013.

# Droplet Clustering Inhomogeneity in Shallow Cumuli: The Effects of In-Cloud Location and Aerosol Number Concentration

Dillon S. Dodson.<sup>1</sup> and Jennifer Small Griswold<sup>1</sup>

<sup>1</sup>Department of Atmospheric Sciences, University of Hawaii, Manoa, Honolulu, HI, USA

**Correspondence:** Jennifer Small Griswold (smalljen@hawaii.edu)

**Abstract.** Aerosol–cloud interactions are complex, including albedo and lifetime effects that cause modifications to cloud characteristics. With most cloud–aerosol interactions focused on the previously stated phenomena, there has been no in–situ studies that focus explicitly on how aerosols can affect large–scale (centimeters to tens of meters) droplet inhomogeneities (droplet clustering) within clouds. This research therefore aims to gain a better understanding of how droplet clustering inhomogeneities within cumulus clouds can be influenced by in–cloud droplet location (cloud edge vs. center) and the surrounding environmental aerosol number concentration. The pair–correlation function (PCF) is used to identify the magnitude of droplet clustering inhomogeneity from data collected onboard the Center for interdisciplinary Remotely–Piloted Aircraft Studies (CIRPAS) Twin Otter aircraft, flown during the 2006 Gulf of Mexico Atmospheric Composition and Climate Study (GoMACCS). Time stamps (at  $10^{-4}$  m spatial resolution) of cloud droplet arrival times were measured by the Artium Flight Phase–Doppler Interferometer (PDI). Using four complete days of data with 81 non–precipitating cloud penetrations organized into two flights of low (L1, L2) and high (H1, H2) pollution data shows more clustering enhanced spatial inhomogeneities near cloud edge as compared to cloud center for all four cases. Low pollution clouds are shown to have enhanced overall clustering inhomogeneity, with flight L2 being solely responsible for this enhanced clustering increased inhomogeneity. Analysis suggests cloud age plays a larger role in the clustering amount of inhomogeneity experienced than the aerosol number concentration, with dissipating clouds showing increased clustering inhomogeneities as compared to growing or mature clouds. Results using a single, vertically developed cumulus cloud demonstrate more clustering enhanced droplet inhomogeneity near cloud top as compared to cloud base.

## 1 Introduction

The spatial inhomogeneity of cloud droplets (i.e., droplet clustering) at different spatial scales has impacts on multiple cloud processes, including precipitation formation on the smallest scales (Kolmogorov scale millimeter to centimeter scale, from here on termed *inertial clustering or just clustering*) and radiative heating and cooling on the largest spatial scales. The work presented here deals with in–situ measurements of the magnitude of cloud droplet spatial inhomogeneities at scales of centimeters to tens of meters (from here on termed *droplet clustering inhomogeneities* or just *clustering inhomogeneities*) to provide information on how the entrainment mixing present at cloud–clear air interfaces impacts inertial particles (i.e. cloud droplets).

This information is of interest due to the complex physical processes controlling clouds, in particular the formation of precipitation and aerosol–cloud interactions, both of which can affect cloud lifetime and size. Along with these uncertainties, one of the main problems with cloud microphysical research has been determining how turbulence and mixing processes occurring on smaller scales affect the macroscopic evolution of clouds (in particular the cloud droplet size distribution), along with gathering in–situ data to better understand these properties (Shaw, 2003; Grabowski and Wang, 2013). Due to the complexity of these processes, clouds are responsible for the greatest uncertainty when estimating climate sensitivity (Ramaswamy et al., 2001).

Cloud droplets grow through the diffusion of water vapor up to sizes where collision-coalescence occurs. However, the rapid onset of rain (typically 15 to 20 minutes observed through radar measurements (Laird et al., 2000; Szumowski et al., 1997)) is difficult to explain using classical droplet growth theory. This is due to uniform condensational growth of cloud droplets leading to a narrowing of the drop size distribution, while most observed distributions are much broader. For example, the predicted growth time of precipitation calculated by Jonas (1996) of 80 minutes is four times slower than that observed. Although progress in modeling the formation of rain has been made (i.e., Wyszogrodzki et al. (2013); Seifert et al. (2010); vanZanten et al. (2011)), improvements still need to be implemented; in particular, in developing a better understanding of precipitating processes and the resulting feedbacks to implement better microphysical schemes (Wyszogrodzki et al., 2013). It has long been proposed that the entrainment of dry air into the cloud causes the broad size distributions observed (J. Warner, 1969; Telford and Chai, 1980; Jonas and Mason, 1982). Khain et al. (2000) states that the smallest droplets form through nucleation of drops during entrainment of drop-free air into the cloud, while the largest droplets are formed during inhomogeneous mixing leading to a local increase in the supersaturation.

Enhanced evaporation from smaller droplet sizes arises from aerosol perturbations, resulting in a stronger horizontal buoyancy gradient and increased entrainment (known as the evaporation–entrainment feedback mechanism), as shown in both simulation (Xue and Feingold, 2006) and observational (Small et al., 2009) studies, where increased (decreased) entrainment leads to decreased (increased) cloud lifetimes. This suggests that aerosol perturbations can lead to modifications in the turbulent environment within clouds, specifically at the entrainment interface, influencing the amount of dry air being entrained into the cloud.

It is generally assumed that sub–saturated (droplet free and laminar) ambient air is entrained in ‘blobs’ due to the turbulent motions of the cloud. This results in a reduction in the total liquid water and directly influences the droplet size distribution. As suggested by Baker et al. (1980), the exact influence of entrainment mixing on the drop size distribution can be described by the Damkohler number (see Small et al. (2013)), which relates the time scales for turbulent mixing ( $\tau_{mix}$ ) and droplet evaporation ( $\tau_{evap}$ ). Homogeneous mixing ( $\tau_{evap} \gg \tau_{mix}$ ) results in the drop size distribution shifting towards smaller diameters due to all droplets experiencing the same sub–saturation. Inhomogeneous mixing ( $\tau_{evap} \ll \tau_{mix}$ ) results in a decrease in the overall droplet number (while the drop size distribution remains unshifted) due to droplets experiencing different sub–saturated and super–saturated values.

After initial entrainment of the ambient, drop free air into the cloud, the subsequent turbulent mixing within the cloud acts to produce smaller and smaller parcels of sub–saturated cloudy and ambient air until the Kolmogorov length scale (approximately



1 mm for atmospheric conditions, depending on the turbulent kinetic energy dissipation rate) is reached (Baker et al., 1984; Brenguier, 1993). Direct Numerical simulations (DNS) by Ireland and Collins (2012) and experimental results by Good et al. (2012) of particle entrainment showed droplet **clustering inhomogeneity** resulting from the initial entrainment of particle free (non-turbulent) air into the particle laden turbulent air, with a decrease in the observed **clustering inhomogeneity** in time due to turbulent mixing. Large scale spatial inhomogeneities resulting from mixing have also been observed and discussed by Saw et al. (2008) and Saw et al. (2012).

Up until the late 1980's, it was mostly accepted that droplet spacing within clouds was statistically homogeneous, or uniformly distributed according to Poisson statistics (Marshak et al., 2005; Rogers and Yau, 1989). Srivastava (1989) argued that in most numerical studies of cloud physics it is assumed that droplet to droplet variability is not important in calculating the growth of an ensemble of droplets. However, this conclusion must be viewed as tentative due to evidence that has been gathered over the past three decades for the inhomogeneous distribution of droplet populations at all length scales (i.e., Baker (1992); Kostinski and Jameson (1997); Kostinski and Shaw (2001); Larsen (2007); Shaw et al. (1998, 2002); Saw et al. (2008, 2012); Good et al. (2012)). The presumption that droplet spacing is homogenous has consequences for cloud parameterizations in microphysical models such as the formation of precipitation. For example, the stochastic collection equation, used to describe the growth of droplets via collision-coalescence, assumes that droplets are homogeneously distributed and not preferentially concentrated (Kostinski and Shaw, 2001). An enhanced collision kernel and collision efficiency also results from droplet clustering (Pinsky et al., 1999; Grabowski and Wang, 2013).

Analysis of droplet observations in adiabatic cores of cumulus clouds from Chaumat and Brenguier (2001) display droplets that are randomly distributed (homogeneous) on the small and large scales, albeit, this homogeneous droplet distribution is observed in adiabatic cores away from dry air entrainment at cloud edge. These results are in disagreement with the aforementioned studies in the previous paragraph, suggesting more in-situ studies into droplet **clustering drople tnhomogeneity** need to be performed. The in-situ observations of droplet spatial distributions that do exist are scarce, with most studies (i.e., Shaw et al. (2002); Lehmann et al. (2007)) focusing on single cloud traverses and/or quantifying the statistical tools used to measure said **clustering inhomogeneity**. Our understanding of the motion of inertial particles in turbulence has advanced considerably, particularly due to the study of inertial clustering at the Kolmogorov scales (i.e., Maxey (1987); Squires and Eaton (1991); Shaw et al. (1998); Eaton and Fessler (1994); Sundaram and Collins (1997)). However, this understanding has not been extended to particles being clustered due to larger scale influences such as the entrainment mixing found at the boundaries of clouds. The work conducted here therefore becomes important due to the fact that a dataset is provided that gives in-situ cloud droplet spatial data allowing for an investigation into the influence that entrainment has on **the droplet clustering spatial distribution**.

Specific questions in regards to droplet **clustering inhomogeneity** in shallow, warm continental cumulus clouds to be answered include: (1) Does droplet **clustering inhomogeneity** change as a function of location (cloud center vs. edge)? It is hypothesized that **clustering said inhomogeneity** will be enhanced at cloud edge where entrainment of dry air is directly occurring. Turbulent mixing will reduce the large scale inhomogeneities in the droplet population moving towards cloud center. (2) Does droplet **clustering inhomogeneity** change as a function of cloud height? It is hypothesized that an increase in **clustering**

inhomogeneity will be present near cloud top due to the entrainment of dry air. (3) Does droplet clustering inhomogeneity depend on aerosol number concentration? It is hypothesized that an increased aerosol load leads to enhanced clustering inhomogeneities due to the resulting increased entrainment from smaller droplet sizes and evaporation.

This a first step in developing a better understanding of droplet clustering inhomogeneities as a result of entrainment mixing, in the hopes of eventually leading to better cloud microphysical parameterizations for modeling precipitation and the overall role of clouds in radiation models. Section 2 will provide a deeper introduction into droplet clustering inhomogeneity along with the pair-correlation function (the statistical tool used to measure the clustering magnitude of droplet inhomogeneities). Section 3 will discuss data collection and instrumentation along with environmental and flight characteristics. Results related to the three scientific questions proposed above are presented in Section 4. Finally, in Section 5 we discuss and summarize the work presented and provide suggestions for extending the analysis presented here.

## 2 Droplet Clustering Inhomogeneity and the Pair–Correlation Function (PCF)

### 2.1 Droplet Clustering Inhomogeneity

As briefly introduced in Section 1, droplet inhomogeneity inherently occurs on different spatial scales. It has been proposed in multiple studies (i.e., Shaw et al. (1998); Eaton and Fessler (1994); Sundaram and Collins (1997)) that inertial clustering can be understood as the result of particles being centrifuged out of regions of high fluid vorticity (where vorticity is a measure of local rotation in a fluid flow) and thus preferentially concentrating into regions of high strain or low fluid vorticity as a consequence of their inertia. Sundaram and Collins (1997) have shown that the scale most responsible for preferential concentration is the Kolmogorov scale. This is partially supported by the fact that vorticity plays a key role in concentrating particles, and vorticity is predominantly concentrated in the smallest eddies (Tennekes and Lumley, 1972).

Saw et al. (2008); Hogan and Cuzzi (2001); Wood et al. (2005) have shown that inertial clustering is very sensitive to the particle Stokes number, given by:

$$S_t = \frac{\tau_d}{\tau_K} = \frac{\rho_w d^2 \varepsilon^{\frac{1}{2}}}{18 \rho_a \nu^{\frac{3}{2}}} \quad (1)$$

where  $\rho_a$  and  $\rho_w$  represent the density of air and liquid droplets, respectively,  $d$  the droplet diameter,  $\nu$  the fluid kinematic viscosity,  $\varepsilon$  the turbulent energy dissipation rate,  $\tau_d$  the particle response time, and  $\tau_K$  the Kolmogorov timescale. The Stokes number characterizes a particles inertial response to the flow. Particles with  $St \gg 1$  react very slowly to changes in the flow, while particles with  $St \ll 1$  follow the flow exactly. For the range of Stokes number in clouds ( $St \ll 1$  to  $St < 1$ ), inertial clustering increases as the droplet size increases or as the turbulent dissipation rate increases, with inertial clustering peaking at  $St \sim 1$  and decreasing for smaller Stokes values.

However, the mechanism responsible for inertial clustering is completely unrelated to clustering droplet inhomogeneities that results from entrainment mixing, which is the focus of the work presented here. Inhomogeneous mixing (i.e., entrainment mixing) leads to the mixing of particles from one region of the flow to another on a spatial scale comparable to the length scale of the mixing eddies. The largest eddies are slightly smaller than the length scale of the cloud itself (Grabowski and Clark,

1993), while the smallest mixing eddies are on centimeter scales. These mixing length scales have been observed in non-precipitating continental cumulus, with observations of the largest mixed cloud and clear air parcels on the scale of meters to tens of meters (Paluch and Baumgardner, 1989), with the smallest parcels down to centimeter scales from turbulent mixing of the larger parcels. Other observations (Baker, 1992; Brenguier, 1993) suggest sharp interfaces between mixed parcels down to  
5 centimeter scales, with Brenguier (1993) observing a change from near 0 to 2000 drops per cubic centimeter over a length scale of approximately 5 mm. These observations support the conceptual ideas of entrainment mixing, with the initial engulfment of ambient air followed by turbulent mixing of cloudy air down to the smallest scales.

Entrainment is found to be governed by the large-scale parameters of the flow. Veeravalli and Warhaft (1989) and Kang and Meneveau (2008) show that the entrainment interface is characteristic of turbulent bursts penetrating the low-turbulent  
10 region, resulting in non-turbulent (drop free) air being entrained into the turbulent region. The non-turbulent air then becomes turbulent through the viscous diffusion of vorticity at the interface. The viscous diffusion of vorticity is a Kolmogorov length scale process, while the entrainment rate at large Reynolds numbers is known to be independent of viscosity. This suggests that although the transition from non-turbulent to turbulent occurs through small eddies, its rate is governed by the larger eddies (Hunt et al., 2006). This suggests that the rate of entrainment determines the amount magnitude of droplet clustering  
15 inhomogeneity present, with more entrainment leading to a larger droplet inhomogeneityies due to larger and more numerous packets of environmental air being mixed with the cloud.

Saw et al. (2008); Hogan and Cuzzi (2001); Wood et al. (2005) have shown that inertial clustering is very sensitive to the particle Stokes number, given by:

$$S_t = \frac{\tau_d}{\tau_K} = \frac{\rho_w d^2 \varepsilon^{\frac{1}{2}}}{18 \rho_a \nu^{\frac{3}{2}}} \quad (2)$$

20 where  $\rho_a$  and  $\rho_w$  represent the density of air and liquid droplets, respectively,  $d$  the droplet diameter,  $\nu$  the fluid kinematic viscosity,  $\varepsilon$  the turbulent energy dissipation rate,  $\tau_d$  the particle response time, and  $\tau_K$  the Kolmogorov timescale. The Stokes number characterizes a particles inertial response to the flow. Particles with  $St \gg 1$  react very slowly to changes in the flow, while particles with  $St \ll 1$  follow the flow exactly. For the range of Stokes number in clouds ( $St \ll 1$  to  $St < 1$ ), inertial clustering increases as the droplet size increases or as the turbulent dissipation rate increases, with inertial clustering peaking  
25 at  $St \sim 1$  and decreasing for smaller Stokes values.

However, Good et al. (2012) and Ireland and Collins (2012) have shown that mixing-driven droplet clustering is inhomogeneities are only weakly dependent on the particle Stokes number. Unlike inertial clustering, large scale droplet clustering inhomogeneities due to entrainment should exist even as the Stokes number approaches zero. Droplet clustering inhomogeneity would only be reduced as the Stokes number approaches infinity (such as heavy particles) due to the droplets not following the  
30 turbulent flow as dry air is entrained.

The effect that gravity (i.e., droplet sedimentation) has on the droplet response to the fluid must also be considered. Grabowski and Vaillancourt (1999) suggest if the droplet terminal velocity is much larger than the Kolmogorov velocity scale, then the particle will fall through the microscale structures associated with the turbulent flow regardless of the particle inertia. Ireland and Collins (2012) found that particles are less dependent on the turbulent fluctuation for enhanced gravity, leading

to lower levels of droplet **clustering inhomogeneity** as compared to the reduced gravity case. Ireland and Collins (2012) also found enhanced settling of droplets with moderate Stokes numbers (larger droplet size), consistent with the findings in Wang and Maxey (1993) where droplets tended to cluster at the edges of vortical eddies leading to a preferential sweeping of the particles in a downward moving fluid. On the other hand, Good et al. (2012) observed reduced settling for droplets with moderate Stokes numbers. This contradiction suggests more research into droplet spatial tendencies is needed. It is also important to note that the studies just discussed present results for Reynolds numbers that are smaller than those encountered in atmospheric clouds. Although the Reynolds number is shown to have a very weak dependence (if any at all) on droplet **clustering inhomogeneities**, the results presented here can be used to compare in-cloud **clustering** measurements with **clustering** measurements from laboratory experiments made by Ireland and Collins (2012) and Good et al. (2012).

## 10 2.2 Pair-Correlation Function

There are multiple tools that can be used to measure droplet clustering using a time series of droplet detection times, but the 1-D temporal pair-correlation function (PCF) will be used throughout this paper due to the advantages of the PCF outlined in Shaw et al. (2002); Shaw (2003); Larsen (2007, 2012); Baker and Lawson (2010). The PCF can be introduced as a scale-localized deviation from a stationary Poisson distribution, where the PCF is given by:

$$15 \quad \eta(t) = \frac{p(t_o + t|t_o)}{\lambda} - 1 \quad (3)$$

from Larsen (2012), where  $\eta(t)$  is the PCF,  $p(t_o + t|t_o)$  **represents: is the probability of finding a particle in the time lag  $t_o + t$  given a particle detected at some time  $t_o$ , what is the probability of finding another particle in the time lag  $t_o + t$ . and  $\lambda$  is the mean number of droplets per time bin is given by  $\lambda$ .** Calculating  $p(t_o + t|t_o)$  can become simplified by using:

$$\eta(t) = -1 + \frac{1}{\lambda} \sum_{k=1}^{\infty} f_k(t) \quad (4)$$

20 where  $f_k(t)$  is the probability distribution function that the  $k^{th}$  particle posterior to a particle at  $t_o$  (the  $k^{th}$  nearest neighbor) is located at  $t_o + t$ , where it is assumed that co-located particles are impossible. Each of the  $f_k(t)$  can be estimated from the observed inter-arrival distributions (time between droplet arrival), thus allowing a computationally simple way to compute the PCF from particle arrival times (Picinbono and Bendjaballah, 2005; Larsen, 2007, 2012).

The main advantage of the PCF is the fact that it is scale localized. The PCF depends only on the presence or absence of particles separated by  $t$  in time (Larsen, 2012). Physically, when  $\eta(t) > 0$  there is an enhanced probability of finding a particle in the time frame  $t$ . The range of the PCF is  $(-1, \infty)$  with  $\eta(t) = 0$  representing perfect randomness and  $\eta(t) = 3$ , for example, resulting in a factor of 4 enhancement of finding another droplet time  $t$  away, as discussed in Kostinski and Shaw (2001).

When measuring data that is non-stationary (i.e., large scale spatial inhomogeneities are present), the PCF **is affected by clustering due to inertial measures droplet heterogeneities that are a result of both inertial clustering** and entrainment mixing **affects** (Saw et al., 2008, 2012). This results in a PCF (see Figure 4 in Saw et al. (2012)) with a power-law-like region at the smallest scales (Kolmogorov scales) due to inertial clustering, followed by an extended ‘shoulder’ region due to entrainment

mixing at larger scales (above Kolmogorov to tens of meters), followed by a rapid drop-off at even larger scales. Figure 3 in Shaw et al. (2002) demonstrates two PCF plots, one with data from an entire cloud penetration and another with only cloud center data. The PCF for the entire cloud traverse is shown to be shifted to larger clustering values due to large scale droplet concentration fluctuations caused by ‘holes’ in the cloud. Although Shaw et al. (2002) does not elaborate on the cause of these cloud ‘holes’, for our purposes we can think of them as areas of decreased droplet concentration due to the entrainment of dry environmental air into the cloud and subsequent filamentation during turbulent mixing.

### 2.3 Calculating the PCF

The PCF was calculated three times for each cloud penetration (120 m section, representing roughly 2 seconds worth of data) at cloud edge (cloud entry and exit) and cloud center. To calculate the  $k^{th}$  nearest neighbor, a maximum time interval ( $t_{max}$ ) and time bin ( $dt$ ) are selected. Careful consideration must be given. Set  $dt$  too small, the PCF will be too noisy. Set  $dt$  too large, you end up doing unnecessary scale averaging which results in a poor estimate of the PCF. Typically,  $t_{max}$  is an order of magnitude or so above the mean inter-arrival time (MIT, mean time between each droplet within the data) of the particles and sets the maximum temporal lag. A  $dt$  of 0.0003 seconds and a  $t_{max}$  of 0.2 seconds were selected for all PCF calculations throughout this paper. This results in a vector ranging from 0.000 to 0.2 by 0.0003, giving the temporal lag ( $x$ -axis) for each PCF measurement. This results in a spatial range of  $\sim 3$  cm to 12 m, ideal for analyzing droplet clustering inhomogeneities due to entrainment mixing.

The PCF is calculated by binning the inter-arrival times of the droplets into the vector sequence seen above. An inter-arrival time is first determined between every subsequent droplet, binned and summed (the sum of each inter-arrival time per bin). An inter-arrival time is then determined for every other droplet, every third droplet, every fourth droplet, and so on. The inter-arrival times are binned and added to the previously summed binned inter-arrival times up until the minimum inter-arrival time in the data is no longer less than  $t_{max}$ . The total summed binned data is then used to calculate the PCF from Equation 4.

Figure 1 gives a visualization and description of the PCF clustering signature, giving both temporal and spatial lag on the  $x$ -axis. Note that the PCF results presented from this point on will be in spatial lag (where spatial lag was estimated using the mean aircraft velocity) for the simplicity of being able to more easily comprehend spatial lag over temporal lag. The real data (top left) from a randomly selected cloud shows a peak in the PCF at smaller spatial scales and a decrease to zero at larger spatial scales (where the decrease starts at  $\sim 1.2$  m) while the simulated Poisson data (top right) shows the PCF varying around zero, indicating no clustering inhomogeneities at any scale. The PCF signature for the real data is indicative of droplet inhomogeneity at larger scales, where the ‘shoulder’ region of the curve is present before a decrease to zero (note that inertial clustering is not presented since the curve does not extend into the Kolmogorov small enough length scales). In comparing the two PCF curves, it is clear that the real cloud droplets have a greater amount of clustering spatial inhomogeneity as compared to droplets that have a perfectly random orientation, i.e., the simulated Poisson data. A better visual representation of the droplet clustering inhomogeneity that the PCF is displaying can be gained by analyzing the raw droplets (bottom panels), where the real data is patchy or clustered and the Poisson point data is nearly perfectly homogeneous.

### 3 Data Collection and Characteristics

The Gulf of Mexico Atmospheric Composition and Climate Study (GoMACCS) was conducted jointly with the 2006 Texas Air Quality Study (TexAQS) during August and September of 2006 as a combined climate change and air quality intensive field campaign. The Center for Interdisciplinary Remotely-Piloted Aircraft Studies (CIRPAS) Twin Otter (flight speed of about 60 m s<sup>-1</sup>) performed 22 research flights to explore aerosol-cloud relationships over the Houston and northwestern Gulf of Mexico regions (Lu et al., 2008). Among the 22 research flights, 14 intensive cloud measurements were carried out (where the clouds were all continental warm cumulus subjected to various levels of anthropogenic influence), including one flight in which an isolated cumulus cloud of sufficient size and lifetime existed to allow detailed sampling at different altitudes. The other 13 cases involved scattered cumuli that were sampled in such a manner as to provide statistical properties over the cloud field (Lu et al., 2008), with each cloud being traversed through once and no one cloud being measured multiple times.

Table 1 shows each flight conducted during GoMACCS, with the corresponding Research Flight (RF) number, date, number of clouds in the flight after filtering (including clouds that are only > 300 m in length and non-precipitating), the aerosol number concentration ( $N_a$ , measured by the condensation particle counter (CPC)), and the aerosol number concentration for accumulation mode particles ( $N_{acc}$ , measured by the passive cavity aerosol spectrometer probe (PCASP)), which includes aerosols that are only in the size range of  $0.1 \mu\text{m} < \text{particle size} < 2.5 \mu\text{m}$ . The Phase-Doppler interferometer (PDI, see Chuang et al. (2008)) was used to collect droplet velocity, size, and measurement time. It was found that the droplet arrival time can accurately be measured to  $< 3.5 \mu\text{s}$  from Saw (2008), resulting in accurately mapping droplets down to  $2.1 \cdot 10^{-4}$  m (assuming average aircraft speed). Note that there is no dead time in PDI measurements. For more information on each of the flights and the instrument payload, see Lu et al. (2008).

Following the methods in Small et al. (2013), two low (L1 and L2, where L1 (L2) is given by RF 5 (RF 22)) and high (H1 and H2, where H1 (H2) is given by RF 12 (RF 18)) pollution flights were selected out of the 22 research flights that occurred. The two least and most polluted flights were selected which had satisfactory cloud sampling for analysis of how aerosol number concentration effects droplet clustering inhomogeneity. A Case Flight (RF 18) was selected where an isolated cumulus cloud was sampled at different altitudes for analysis of droplet clustering inhomogeneity as a function of cloud height. Table 2 shows variables highlighting different cloud and environmental conditions within each flight. Note that the environmental lapse rate and relative humidity (RH) in Table 2 was calculated from data collected from out of cloud spirals, where the average RH was computed for the vertical range of cloud measurements for the respected flight. As a result of RH measurement problems occurring throughout the campaign (i.e., values considerably above 100%) the RH data was filtered to include values that were only less than 103%. Table 3 gives a summary of average values for low and high pollution cases for select properties from Table 2.

Figures 2 and 3 show the flight altitude as a function of time with droplet counts per second overlaid (top panels) and the flight paths (bottom panels) for low and high polluted clouds, respectively. Note that the flight path for the Case Flight is not shown here. The average droplet counts (clouds) encountered per second (flight) for L1 and L2 were 660 (18) and 1016 (13), respectively. Whereas for H1 and H2, the average counts (clouds) encountered per second (flight) were 958 (29) and 3300 (21),

respectively. Low pollution clouds were sampled to the North of Houston (upwind) and high pollution clouds were sampled to the Southwest (H1) and West (H2) of Houston (downwind), as confirmed using archived wind data from the NOAA National Center for Environmental Information and HYSPLIT trajectories (not shown here) from the Air Resources Laboratory (Stein et al., 2015).

5 It can be calculated from analyzing Table 3 that the high pollution clouds had roughly 2.5 times more aerosols per cubic centimeter than the low pollution clouds. The difference in aerosol number concentration between the low and high pollution clouds produce clouds that are statistically different from one another. Figure 4 shows cloud droplet diameter in microns ( $\mu\text{m}$ ) on the x-axis with aerosol number concentration ( $\text{cm}^{-3}$ ) on the y-axis, with low pollution data in green and high pollution data in gold. Density curves are given to show how the data is distributed for the respected axis. The p-value (used to determine  
10 statistical significance between two datasets, where p-value  $< 0.05$  is considered significant, see Wilks (2011)) between low and high pollution cloud droplet size is  $3.99 \cdot 10^{-10}$  (average droplet diameter is  $13.4 \mu\text{m}$  ( $10.7 \mu\text{m}$ ) for low (high) pollution clouds). The linear best fit trend lines show that droplet size decreases with increasing aerosol number concentration, with R-squared values (the proportion of the variance in droplet size that is predictable from the aerosol number concentration) of 0.24 and 0.07 for low and high pollution, respectively. The p-value for the aerosol number concentration is  $< 2.22 \cdot 10^{-16}$ .  
15 Both properties of the droplet population have p-values less than 0.05, making the difference in droplet size and aerosol number concentration significant for the two populations of data. Having two statistically different data populations is ideal for comparing PCF values for low and high pollution clouds. If **clustering the magnitude of spatial inhomogeneity** does not change between the two, then an argument cannot be made for the statistical similarities in the data sets as a possible reason. Note that all p-values in this paper were calculated using the Wilcoxon-rank-sum-test, which is used to determine a statistical  
20 difference in the medians of two datasets that have different populations (Wilks (2011)).

## 4 Results

### 4.1 Edge, Center, and Cloud Top **Clustering Inhomogeneities**

PCF functions for L1, L2, H1, and H2 are given in Figure 5, moving from top left to bottom right, respectively, with blue (red) representing cloud edge (cloud center) data. The two envelopes represent the 85<sup>th</sup> and 15<sup>th</sup> percent quantile of the data. The  
25 center lines in each envelope represent the edge and center mean **clustering inhomogeneity**, with bold mean lines representing data that is statistically significant (p-value less than 0.05) and thin mean lines representing data that is statistically similar. The PCF functions for both center and edge data indicate clustering associated with larger-scale inhomogeneity, with the ‘shoulder’ region of the curves present out to  $\sim 1.2$  m, before a decrease to zero at spatial scales beyond  $\sim 1.2$  m .

The main takeaway from Figure 5 is the larger degree of **clustering inhomogeneity** for cloud edge as compared to the center  
30 zones for all four flights. Mean PCF and quantile values for edge and center data can be found in Table 4. The mean and quantile values were calculated by taking the first 60 PCF values (**taking PCF values to the left of the green reference line in Figure 1**), (covering a spatial scale up to  $\sim 1$  m), since it is the ‘shoulder’ region of the PCF curve that we are interested in analyzing. The percent of statistically significant data (for the first 60 PCF values, **spatial lag  $\leq 1$  m**) and the corresponding

p-values can be found in Table 5. Note to calculate the p-value, every PCF curve generated for the respective plot was grouped. A p-value was then generated for each spatial-lag on the x-axis by calculating the Wilcoxon-rank-sum-test between the two sets of data for the specific x-axis location.

From analyzing Figure 5 and the corresponding tables, L1, H1 and H2 show clustering PCF characteristics which are comparable to one another, including: (1) the mean PCF value for the edge data is always greater than the mean PCF value for the center data. (2) The 15<sup>th</sup> percent quantile value for the center data is always smaller than the 15<sup>th</sup> percent quantile value for the edge data. (3) The 85<sup>th</sup> percent quantile value for the edge data is always larger than the 85<sup>th</sup> percent quantile value for the center data. (4) There is a statistical significance between the clustering inhomogeneities occurring between the edge and center zones of the clouds. Note that the statistical significance in the clustering inhomogeneities between the two zones breaks down at larger spatial scales (this is very apparent in the H1 case) as the PCF decays towards zero for both entrainment and center data.

From analyzing L2 (bottom left panel) and the corresponding tables, there are significant differences from the other 3 cases. Although the mean edge clustering inhomogeneity is enhanced as compared to the center zone, the difference is not statistically significant, with zero percent of the data having a p-value below 0.05 (average p-value of 0.40). Another difference is the range of the quantile values, with the cloud edge data having a lower 15<sup>th</sup> percent quantile value than that of the center data, in contrast to what is observed in L1, H1, and H2. Note that the mean clustering inhomogeneity amount for L2 (both center and edge) is enhanced as compared to the other three cases (Table 4).

It is clear that there is enhanced clustering inhomogeneities in the edge zone as compared to the center zone, but one needs to understand how to define if the overall clustering inhomogeneities (both edge and center) is are significant as compared to a randomly distributed droplet population. This is done by analyzing the range that the PCF can take on due to the random nature of the data. If the physical clustering inhomogeneities measured falls outside of this range, then the conclusion can be made that the clustering droplet spatial inhomogeneities being viewed is are indeed real and not perfectly homogeneous. This test was performed on each of the four cases, following the methods outlined in Larsen and Kostinski (2005). For the data, 1000 Poisson simulations were produced (as is seen in the top right of Figure 1, showing a single Poisson simulation) using the same time duration and droplet count as the original data. These Poisson simulations then form an envelope of PCF values (using the maximum and minimum values from the 1000 simulations) one would consider homogeneous. PCF values that lie within the Poissonian simulation envelope were recorded by using the average PCF value and were labeled non-significant. Table 6 shows the percentage of PCF values for each flight, and each location (edge and center) that were considered non-significant and significant. From analyzing Table 6 it can be seen that not every cloud section measured experienced clustering inhomogeneity that would be considered a statistical difference from a random distribution. However, a majority of the data sets do display clustering inhomogeneities that is are statistically significant, with the exception of the L1 center and H1 center data, which shows that less than 50 percent of the droplet populations display statistically significant clustering inhomogeneities. With the exception of the L2 case (which does not have a statistical difference between edge and center clustering inhomogeneity), the center clustering inhomogeneity contains a higher percentage of PCF values that are non-significant as compared to the edge data.



We can use the inter-arrival times used in calculating the PCF to develop a better understanding of the overall droplet spatial distributions and the largest inhomogeneities measured, we can by directly analyzing the inter-arrival time distribution (as is done in Baker (1992)). Figure 6 shows the inter-arrival distance (IAD, distance between each droplet measurement) binned for L1 and zoomed in on a frequency of 60 as to put more emphasis on the largest IAD's measured. Zooming in further on the first bin (range of 0 to 60 cm), where 98.4 percent and 99.5 percent of the data lies for edge and center data, respectively, it can be seen that the IAD's follow a Poisson distribution. Analyzing the largest IAD's, the boxplot in the top left corner shows the data for center and edge that is  $\geq$  greater than or equal to the 0.998 quantile of the IAD data, i.e., the largest 0.2 percent of the IAD data. This results in approximately the largest 100 IAD's to be represented in the boxplot.

Although the raw histograms of IAD data are not displayed for L2, H1, and H2 (they appear very similar in nature to that of L1), the resulting boxplots of the IAD data which is  $\geq$  are greater than or equal to the 0.998 quantile for each of the four flights are presented in Figure 7, where the tickmarks occurring on the upper whiskers represent the raw data positions for a better visualization of how the data is distributed. For each of the four flights, the edge data is shifted to larger IAD values as compared to the center data, with the IAD's between the edge and center data being statistically significant for each of the four cases. Note that the median value for each dataset is displayed within the boxplot. This tells us that there are more numerous, larger pockets of droplet free air within the edge zone as compared to the center zone. For example, in analyzing the boxplots for L2, we can see that there are five cases where there is a distance of 20 meters or greater between droplet measurements for the edge zone, as compared to only one case for the cloud center zone.

Figure 8 shows how the mean PCF value (where again, the mean PCF value is obtained by taking the mean of all individual PCF values to the left of the green reference line in Figure 1) and other environmental properties (cloud droplet number concentration ( $\text{cm}^{-3}$ ), liquid water content ( $\text{g m}^{-3}$ ), RH (%), and vertical velocity ( $\text{m s}^{-1}$ )) vary with normalized cloud height from the Case Flight. Variable quantities for each normalized cloud height can be found in Table 7. The liquid water content (LWC) increases from cloud base ( $0.073 \text{ g m}^{-3}$ ) to a normalized cloud height of 0.7 ( $0.98 \text{ g m}^{-3}$ ) before decreasing to  $0.23 \text{ g m}^{-3}$  at cloud top. Accompanied by the decrease in LWC is a sharp decrease in the RH from 99.74 91.8 % to 64.17 38.4 % between normalized cloud heights of 0.7 and 0.9, before increasing again at cloud top to 95.7 %. As both the LWC and RH decrease, the PCF has a sharp increase from 0.36 to 1.49 between normalized cloud heights of 0.8 and 1.0, indicating enhanced clustering inhomogeneity at cloud top. The PCF values at cloud top (between normalized cloud heights of 0.8 to 1.0) are statistically significant as compared to the PCF values below a normalized altitude of 0.8 (with a p-value of 0.043), making clustering the inhomogeneity that is present at cloud top statistically significant from the clustering inhomogeneity that is occurring in lower cloud layers.

Panel (a) gives the cloud drop size distribution for each normalized cloud height while Panel (b) gives the median droplet diameter along with the 5<sup>th</sup> and 95<sup>th</sup> percent quantiles of the drop size distribution. The median drop size increases from  $8.29 \mu\text{m}$  at cloud base to  $19.67 \mu\text{m}$  at cloud top. In comparing the median drop size to the mean PCF value for each normalized height, the R-squared value is 0.041, indicating no correlation between the PCF and median droplet size. Particularly at cloud top where the PCF increases, there is no associated changes in the median drop size or the quantile values of the size distribu-

tion. Panel (d) shows that the vertical velocity is negative in the upper portion of the cloud, while an updraft is present in the lower 50 % of the cloud.

#### 4.2 Low vs. High Pollution **clustering Inhomogeneity**

Figure 9, Panels (1a) and (1b) gives the same information as in Figure 5, except for the PCF values for total low pollution (average of L1 and L2) and total high pollution (average of H1 and H2), respectively. The characteristics of the two clustering signatures are similar to that of Figure 5. The average PCF values for low and high pollution edge and center data can be found in Table 4, along with the 15<sup>th</sup> and 85<sup>th</sup> percent quantile values. Table 4 reveals that the mean PCF values (for both edge and center data) for the low pollution case are larger than the corresponding mean PCF values for the high pollution case. As can be seen in Table 5, 100 percent of the first 60 spatial lags are statistically significant for both average low and high pollution cases between the edge and center data.

The larger **average mean clustering inhomogeneity** amount for the low pollution clouds can be seen well in Panel (2a), which shows low pollution data in green and high pollution data in gold. The boundaries of each green and gold envelopes are created by the **average mean center** (bottom of each envelope) and edge (top of each envelope) **clustering inhomogeneity**. Low pollution clouds are clearly offset to a higher **clustering inhomogeneity** amount for both **average center** and edge **clustering inhomogeneity**. Panel (2b) shows the overall **average mean** of all the PCF values for low and high pollution clouds. The overall **average mean** PCF value for low pollution clouds (average of entrainment and center **clustering inhomogeneity** for both L1 and L2) is 0.54, while the overall **average mean** PCF value for high pollution clouds is 0.43. Although it appears that low pollution clouds experience more **clustering inhomogeneity** as compared to high pollution clouds, the difference is statistically similar. The average p-value is 0.19 for the first 60 spatial lags with zero percent of the data being statistically significant.

Although it appears that low pollution clouds have a non-statistically significant higher amount of **clustering inhomogeneity** than high pollution clouds, further analysis shows that the higher amount of **clustering inhomogeneity** in the low pollution case is due entirely to the L2 flight. Figure 10 gives the same information as Panels (2a) and (2b) in Figure 9, except for the individual flights (L1, L2, H1, H2) are shown. From analyzing Panel (a), one can see the **average mean center** and edge **clustering inhomogeneity** for L2 (light green envelope) is beyond the range of the other three flights. The total **average mean** PCF for the clouds in L1, L2, H1, and H2 is shown in Panel (b). L2 has an **average mean** PCF value of 0.76, which is roughly twice the **average mean** PCF values (and statistically significant, see Table 8) of the other three flights, where L1 (dark green), H1 (dark gold), and H2 (light gold) have **average mean** PCF values of 0.39, 0.40, and 0.46, respectively. The question of whether **clustering inhomogeneity** depends on aerosol number concentration cannot confidently be answered. Although Figure 9 shows that low pollution clouds have a larger amount of **clustering inhomogeneity**, statistically speaking the **clustering inhomogeneity** between low and high pollution clouds is the same. Further analysis shows that L1, H1, and H2 all have statistically similar **clustering inhomogeneity** values (see Table 8) with **average clustering mean inhomogeneity** amounts that are almost identical. Flight L2 has statistically significant **clustering inhomogeneity** as compared to the other three cases, and is solely responsible for causing the low pollution clouds to have a higher **average mean** PCF value than that of the high pollution clouds.

## 5 Discussion

### 5.1 Cloud Lifetime Theory Hypothesis and Clustering Inhomogeneity in L2

An explanation for the statistically different clustering in L2 as compared to the other three cases could be cloud age. A study by Schmeissner et al. (2015) found that dissipating clouds have five main characteristics, including: a negative buoyancy ( $m$   $s^{-2}$ ) and vertical velocity, lower LWC and cloud droplet number concentrations (CDNC) as compared to actively growing clouds, and a larger RH shell around the cumulus cloud. Decaying clouds are also associated with the enhanced entrainment of dry air, where Cooper and Lawson (1984) found that the LWC decreases due to entrainment as cumulus clouds deteriorate. Lu et al. (2013) and Cheng et al. (2015) also found enhanced entrainment leads to decreases in cloud droplet concentration, droplet size, and LWC.

Figure 11 shows box plots of vertical velocity, LWC, cloud width, CDNC, buoyancy, and RH. Red median lines represent datasets that are statistically different when compared to L2. Note that except for cloud width, each variable is represented from 1-Hz data collected during in-cloud sampling. From analyzing Figure 11 (exact median values for variables can be found in Table 9), L2 has the lowest median vertical velocity, LWC, cloud width, and CDNC, with L2 being statistically significant ( $p$ -values found in Table 10) when compared to the other three flights. The fact that L2 has the lowest median vertical velocity reflects the fact that clouds have smaller positive vertical velocities than those measured in the other three flights, suggesting weaker growth potential. The low LWC in L2 signifies that entrainment of dry air has been occurring, resulting in the evaporation of liquid water droplets, reducing the LWC and the CDNC (Pruppacher and Klett, 1997). Although Schmeissner et al. (2015) does not discuss cloud width, clouds that are dissipating would be expected to have a smaller horizontal extent due to entrainment of dry air leading to evaporation of cloud edge droplets as compared to mature clouds.

Panel (f) gives a box plot of in-cloud RH, with L2 having the second lowest (by 0.1 percent) in-cloud RH, while being statistically similar to that of L1 the other three flights. The red dots represent the median out-of-cloud RH (100 m before and after cloud edge). L2 is the only flight where the RH increases out of the cloud. The fact that the RH is larger, on average, outside of the clouds in L2 as compared to inside of the clouds could be a sign of a large humid shell that is surrounding the individual clouds. The humid shell results from entrainment of dry air into the cloud while moist air is detrained out of the cloud into the cloud free environment, resulting in a lower (larger) RH inside (outside) the cloud. More evidence for the large humid shell can be gathered from the vertical profiles of environmental RH reported in Table 2, where the average RH (measured out-of-cloud) for the vertical range of cloud measurements was 105.2 96.3 % for L2, while for the other flights the RH was considerably lower.

Panel (e) shows the in-cloud buoyancy, which was calculated by taking the in-cloud and out-of-cloud (100 m before and after cloud edge) virtual potential temperatures. L2 has the largest median buoyancy and is statistically significant as compared to the other three flights. The clouds in the L2 flight have five out of the six characteristics for decaying clouds, including (1) lowest vertical velocity; (2) lowest LWC; (3) lowest CDNC; (4) lowest cloud width; (5) largest humid shell. The evidence points to the clouds in L2 to be decaying on average, and therefore to be more turbulent leading to larger droplet inhomogeneities as more dry air is mixed into the clouds causing dissipation as compared to the other three cases. The statistically similar values

between center and edge clustering for L2 adds to the cloud lifetime **theory hypothesis**, as it is not only the cloud edge zone that is experiencing mixing, but the entire horizontal extent of the clouds (both edge and center zones) that are experiencing mixing and dissipation. However, one would expect the buoyancy of dissipating clouds to be negatively buoyant, not positively buoyant as is shown. Although cloud age is a good **theory hypothesis** in describing the higher clustering amounts measured in the L2 flight, the data presented does not offer a conclusive resolution.

Aerosols can act as cloud condensation nuclei (CCN), increasing the number of droplets in clouds and decreasing the mean droplet size (Twomey, 1977). Although not shown in Figure 11, for the clouds measured in this study the median droplet size was 15.01 (L1), 11.45 (L2), 11.19 (H1) and 10.92  $\mu\text{m}$  (H2). Although L2 has roughly half the aerosol number concentration as that of H1 and H2, the droplet size for L2 is more comparable to that of the high pollution flights as compared to L1. This suggests that some physical process is resulting in the droplet sizes of L2 to be smaller than what is expected based on the reported  $N_a$  values. The most likely explanation is the entrainment of dry air leading to enhanced evaporation.

Other possible explanations for the increased clustering in L2 could be due to flight path or the atmospheric environment for a given flight. The flight path through the cumuli for L2 could have favored cloud edge or cloud top instead of true cloud center. Favoring cloud edge would result in measuring areas of cloud that favor a higher amount of clustering (as displayed in Figure 5), and could result in the overall larger amount of average clustering experienced. Measuring just cloud edge would result in: a lower vertical velocity, LWC and CDNC due to evaporation from entrainment, and a shorter cloud width from not traversing the maximum diameter of the cloud. However, just as with the cloud lifetime **theory hypothesis**, the buoyancy is expected to be negative, not positive, in the edge zone of the cloud due to evaporational cooling of the air.

Comparing cloud width on different days can become complicated due to the environmental factors that control cloud size. As is discussed in Hill (1973), the dominant factor governing the size of cumulus clouds is the size and strength of the sub-cloud circulations. There is no way to know what the sub-cloud circulation was for the given days. Only vertical velocity is available, which, as we saw from Panel (a) in Figure 11, was smallest for the in-cloud portions of the L2 flight. Whether the fact that L2 clouds were smaller as compared to the other flights is due to dissipation through entrainment of dry air or environmental characteristics is unknown.

## 5.2 Edge vs. Center Clustering and Aerosol Number Concentration

The finding that **clustering is enhanced droplet spacing is inhomogeneous** agrees with the findings in multiple other papers, including Good et al. (2012); Ireland and Collins (2012); Saw et al. (2012). Note that in this paper **clustering inhomogeneity** is measured down to  $\sim 2$  cm. It is expected from the inertial clustering hypothesis that **droplet** clustering continues to increase at scales below what was measured here, into the millimeter scales (Shaw, 2003) due to inertial clustering from fluid vorticity. It is important to note however, that not all the **clustering inhomogeneities** measured **was were** statistically different from a random poisson distribution. Only 60.8 % of the traverses for center data showed a statistical deviation from a randomly distributed droplet population, as compared to 72.2% for edge data. This suggests that although a majority of the data displays large-scale inhomogeneity, 31.7 % of the data are randomly distributed. This is partially in agreement with Chaumat and Brenguier (2001), which found that droplets displayed homogeneous distributions on small and large scales.

PCF curves measuring inertial clustering in other literature (Larsen, 2007; Shaw, 2003; Shaw et al., 2002) show an elevated value of the PCF at the smallest separations that is naturally accompanied with lower values of the PCF at larger separations. The PCF curves presented here are measured over separations ranging from 2 cm (just above the Kolmogorov scale) to 12 m (on the order of the integral scale) and show elevated values over a large spatial range (2 cm to 1.2 m) before the PCF begins to  
5 decay. It is important to keep in mind that this suggests that the elevated PCF values examined here are the result of spatial holes in the droplet concentrations (non-stationary) due to mixing with dryer air, and not preferential concentration from particle inertia. Note that other possible causes of larger scale inhomogeneity that are not examined here include fluctuations in the vertical velocity and cloud condensation nuclei (Pinsky and Khain, 2002, 2003).

From the clouds measured, the conclusion can be made that droplet **clustering inhomogeneity** does change as a function  
10 of cloud center vs. cloud edge, with the edge zone having a larger amount of **clustering inhomogeneity** than the center of the cloud, which is shown to be statistically significant. The decrease in **clustering inhomogeneity** in the center of the cloud as compared to the edge may be attributed to several aspects, including (1) the mean entrainment rate decreases from cloud edge to cloud center, as has been shown with in-situ measurements made by Cheng et al. (2015). **Although the entrainment rate is not directly measured here, an analysis of the type of entrainment that is occurring is provided in Table 11. It can clearly**  
15 **be seen from Table 11 that the median droplet size along with the spectral width of the drop size distribution is virtually the same between the center and edge zones for each respective flight. This suggests that the drop size distribution is unshifted between center and edge zones. The CDNC is reduced for the edge zone as compared to the center zone for each of the four cases however, with percent reductions of the CDNC in the edge zone of 35, 40, 47, and 42 percent, for L1, L2, H1, and H2, respectively. The unshifted drop size distribution along with a reduction in the CDNC at cloud edge is evident to the**  
20 **occurrence of inhomogeneous mixing. The fact that the CDNC is reduced at cloud edge suggests increased evaporation at the edge zone due to enhanced mixing with dry air as compared to cloud center. The altitude between edge and center zones for each respective flight is virtually the same, suggesting that the analysis conducted on the drop size distribution is not affected by differences in altitude.** (2) Turbulent mixing within the cloud leads to a breakup of the larger-scale clustering, reducing the PCF. Ireland and Collins (2012) through simulations observed a larger degree of non-uniformity for a turbulent-non-turbulent  
25 interface (i.e., cloud edge) as compared to a turbulent-turbulent interface (i.e., cloud center) due to the lower turbulence levels at the edge weakening the homogenization process of the **clustering droplet spacing**.

Along with enhanced **clustering inhomogeneity** at cloud edge, enhanced **clustering inhomogeneity** at cloud top is also evident due to entrainment as is shown in Figure 8, where the LWC and RH have a sharp decrease near cloud top accompanied by an increase in the PCF. The decrease in RH and LWC is characteristic of dry air being entrained into the cloud. The entrainment  
30 at cloud top can also be seen to cause a negative vertical velocity (from evaporative cooling, typically termed cloud-top entrainment instability) in the upper portion of the cloud (Figure 8, Panel (c)), where the average vertical velocity is increasingly negative above a normalized cloud height of 0.5, suggesting penetrative downdrafts extend into the middle section of the cloud.

Although the conclusion in this paper is that aerosol number concentration does not affect droplet **clustering inhomogeneity**, this conclusion can only be made for the range of  $N_a$  given and the resulting mean droplet sizes. For example, Xue and  
35 Feingold (2006) showed that smaller droplets evaporate more readily, leading to dissipation of the cloud through entrainment.

However, in Xue and Feingold (2006) the difference in droplet size was roughly -81 % between clean and polluted clouds. Although the difference in droplet size is statistically significant between flights, the largest percent difference analyzed here is only -28 % between flights L1 and H2. Perhaps the aerosol number concentration can affect the amount of clustering that is occurring if there are more significant changes in the sizes of the droplet populations than those analyzed here. Such a case could be comparing a highly polluted cloud in Houston (mean droplet diameter  $\sim 11 \mu\text{m}$ ) to a clean cloud over the ocean (mean droplet diameter  $\sim 35 \mu\text{m}$ , as was found for some Atlantic trade wind cumuli (Wang et al., 2009)). This would result in droplet populations that have a large enough percent different in their size that evaporative effects may be severe enough to lead to statistically different entrainment rates and droplet **clustering inhomogeneity**. However, sampling clouds in two different types of boundary layers would result in vast differences in their environmental characteristics. One way in which sampling could be achieved would be to analyze cumuli that are exposed to a point source of pollution (such as volcanic gas emissions in Hawaii) in the marine boundary layer and cumuli that lie outside the pollution plume. This would allow for the sampling of clouds which are exposed to vast differences in  $N_a$  but still share many of the same environmental characteristics.

## 6 Conclusions

Flight data obtained from the CIRPAS Twin otter aircraft flown during the GoMACCS campaign near Houston, TX from 2006 were used to investigate 81 non-precipitating cumulus clouds, and one vertically developed cumulus cloud, to better understand how droplet **clustering inhomogeneity** changes as a function of cloud location (cloud edge vs. cloud center) and aerosol number concentration. Of the 22 flights flown, two low (L1, L2) and high (H1, H2) pollution flights were selected to analyze how droplet **clustering inhomogeneity** changed with aerosol number concentration.

It has been shown that (1) droplet **clustering inhomogeneity** is enhanced at cloud edge as compared to cloud center, with a statistically significant difference. Most of the **clustering inhomogeneity** measured is shown to be real, physical variability (non-Poissonian). Statistically significant, enhanced **clustering inhomogeneity** is also shown at cloud top as compared to the lower portion of the cloud. (2) There is no statistical difference at the 5 percent level for droplet **clustering inhomogeneity** between low and high pollution clouds, at least for the range of  $N_a$  that was measured in this research. Although it was found that low pollution clouds do, on average, have a larger amount of **clustering inhomogeneity** in both the center and edge zones, this is due entirely to the L2 flight. (3) L1, H1, and H2 have a statistically similar amount of **clustering inhomogeneity** at the 5 percent level, while L2 has a larger, statistically significant amount of **clustering inhomogeneity**. It is proposed that cloud age plays an important role in the amount of **clustering inhomogeneity** that is occurring, with decaying clouds demonstrating an **higher enhanced** amount of **clustering inhomogeneity** as compared to developing clouds due to enhanced entrainment of dry air, although this **theory hypothesis** needs more work as the buoyancy data is not in agreement for decaying clouds.

This work provides a good statistical base for analyzing how droplet **clustering inhomogeneity** changes with cloud location and aerosol number concentration. The conclusions from this work are drawn only from 81 clouds whose properties are highly variable and influenced by environmental aspects that are not constrained by the observations, including the sub-cloud layer properties and the lifecycle stage of the clouds. This study examined the cloud properties at instantaneous moments, resulting in

a mean behaviour averaged over each cloud and each flight. Further analysis and data from more clouds is required to confirm some of the ideas that have been presented here. For example, if a field campaign takes place in the future for the purposes of illuminating these results, constraints on the lifecycle stage of the observed clouds must be considered, along with the proper instrumentation for turbulent analysis.

5 *Author contributions.* Both authors contributed equally to both the analysis and the writing of this manuscript.

*Competing interests.* There are no competing interests to declare

*Acknowledgements.* We thank Hafliði Jonsson and Patrick Chuang for their support during the original field campaign. We also thank the CIRPAS Twin Otter crew and personnel for their effort and support during the field program and John Seinfeld and Rick Flagan (Caltech) and their research groups for assistance and discussions in the field regarding other GoMACCS data sets. Michael Larsen (College of Charleston)  
10 also deserves thanks for his suggestions and intellectual help which made this paper possible. This work was funded by NSF CAREERS grant 1255649.

## References

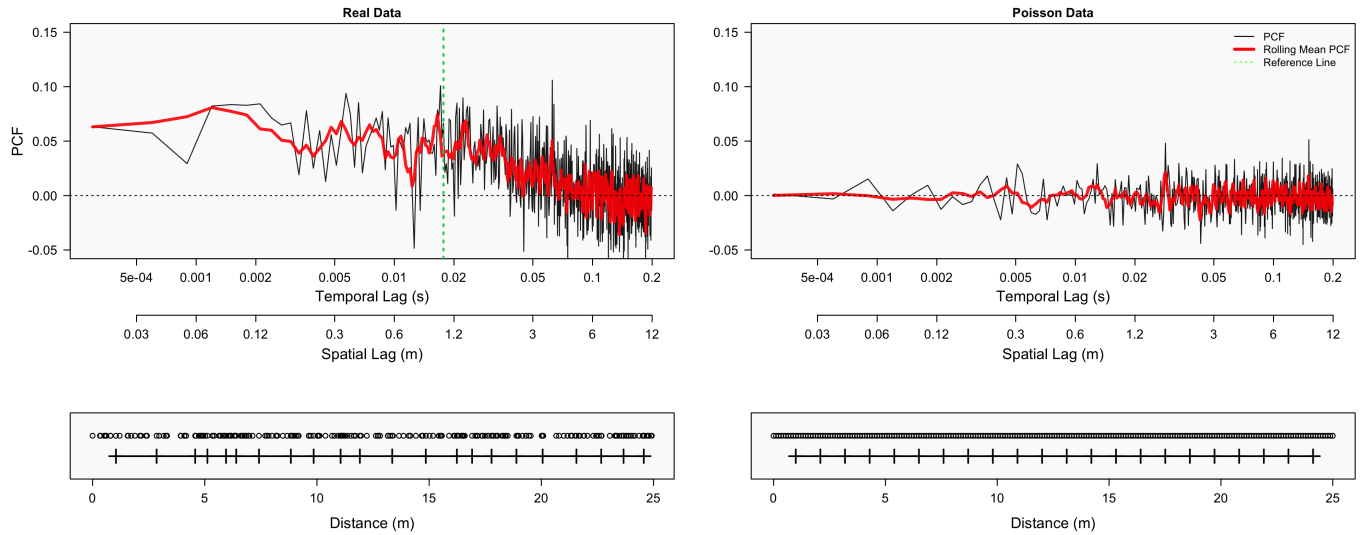
- Baker, B.: Turbulent Entrainment and Mixing in Clouds: A New Observation Approach, *J. Atmos. Sci.*, 49, 387–404, 1992.
- Baker, B. A. and Lawson, R. P.: Analysis of Tools used to Quantify Droplet Clustering in Clouds, *J. Atmos. Sci.*, <https://doi.org/10.1175/2010JAS3409.1>, 2010.
- 5 Baker, M., Corbin, R., and Latham, J.: The influence of entrainment on the evolution of cloud droplet spectra: I. A model of inhomogeneous mixing, *Quart. J. Roy. Meteor. Soc.*, 106, 581–598, 1980.
- Baker, M., Breidenthal, R., Choullarton, T., and Latham, J.: The effects of turbulent mixing in clouds, *J. Atmos. Sci.*, 41, 209–304, 1984.
- Brenguier, J.: Observations of cloud microstructure at the centimeter scale, *J. Appl. Meteor.*, 32, 783–793, 1993.
- Chaumat, L. and Brenguier, J.: Droplet Spectra Broadening in Cumulus Clouds. Part II: Microscale Droplet Concentration Heterogeneities, *J. Atmos. Sci.*, 58, 642–654, 2001.
- 10 Cheng, M., Lu, C., and Liu, Y.: Variation in entrainment rate and relationship with cloud microphysical properties on the scale of 5 m, *Sci. Bull.*, 60, 707–717, 2015.
- Chuang, P. Y., Saw, E. W., Small, J. D., Shaw, R. A., Sopperley, C. M., Payne, G. A., and Bachalo, W. D.: Airborne Phase Doppler Interferometry for Cloud Microphysical measurements, *Aerosol Sci. Tech.*, 42, 685–703, 2008.
- 15 Cooper, W. A. and Lawson, R. P.: Physical interpretation of results from HIPLEX-1 Experiment, *J. Climate Appl. Meteor.*, 23, 532–540, 1984.
- Eaton, J. K. and Fessler, J. R.: Preferential concentration of particles by turbulence, *Int. J. Multiphase Flow*, 20, 169–209, 1994.
- Good, G., Gerashchenko, S., and Warhaft, Z.: Intermittency and inertial particle entrainment at a turbulent interface: the effect of the large-scale eddies, *J. Fluid Mech.*, 694, 371–398, 2012.
- 20 Grabowski, W. and Clark, T.: Cloud–environment interface instability: Rising thermal calculations in two spatial dimensions, *J. Atmos. Sci.*, 48, 527–546, 1993.
- Grabowski, W. and Vaillancourt, P.: Comments on "Preferential concentration of cloud droplets by turbulence: Effects on the early evolution of cumulus cloud droplet spectra", *J. Atmos. Sci.*, 56, 1433–1436, 1999.
- Grabowski, W. and Wang, L.: Growth of Cloud Droplets in a Turbulent Environment, *Annu. Rev. Fluid Mech.*, 45, 293–324, 2013.
- 25 Hill, G. E.: Factors controlling the size and spacing of cumulus clouds as revealed by numerical experiments, *J. Atmos. Sci.*, 31, 646–673, 1973.
- Hogan, R. C. and Cuzzi, J. N.: Stokes and reynolds number dependence of preferential concentration in simulated three-dimensional turbulence, *Phys. Fluids*, 13, 2938–2945, 2001.
- Hunt, J., Eames, I., and Westerweel, J.: Mechanics of inhomogeneous turbulence and interfacial layers, *J. Fluid Mech.*, 554, 499–519, 2006.
- 30 Ireland, P. and Collins, L.: Direct numerical simulation of inertial particle entrainment in a shearless mixing layer, *J. Fluid Mech.*, 704, 301–332, 2012.
- Jonas, P.: Turbulence and cloud microphysics, *Atmos. Res.*, 40, 283–306, 1996.
- Jonas, P. R. and Mason, B. J.: Entrainment and the droplet spectrum in cumulus clouds, *Quart. J. Roy. Meteor. Soc.*, 108, 857–869, 1982.
- J. Warner: The microstructure of cumulus cloud: Part II: The effect on droplet size distribution of the cloud nucleus spectrum and updraft velocity, *J. Atmos. Sci.*, 26, 1035–1040, 1969.
- 35 Kang, H. and Meneveau, C.: Experimental study of an active grid-generated shearless mixing layer and comparisons with large-eddy simulation, *Phys. Fluids*, 20, 125–102, 2008.



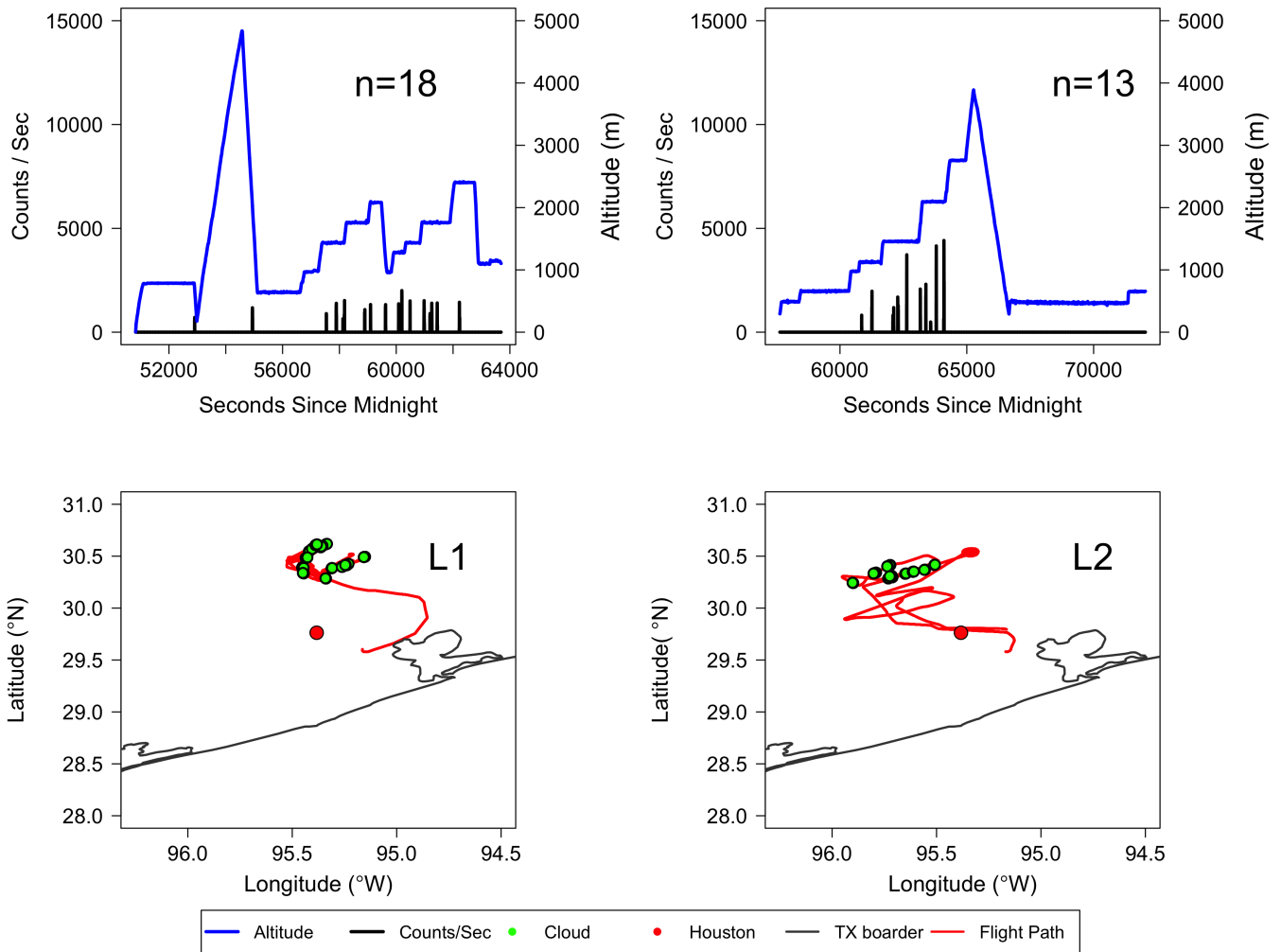
- Khain, A., Ovtchinnikov, M., Pinsky, M., Pokrovsky, A., and Krugliak, H.: Notes on the state-of-the-art numerical modeling of cloud microphysics, *Atmos. Res.*, 55, 159–224, 2000.
- Kostinski, A. B. and Jameson, A. R.: Fluctuation properties of precipitation. Part I. On Deviations of Single-Size Drop Counts from the Poisson Distribution, *J. Atmos. Sci.*, 54, 2174–2186, 1997.
- 5 Kostinski, A. B. and Shaw, R. A.: Scale dependent droplet clustering in turbulent clouds, *J. Fluid Mech.*, 434, 389–398, 2001.
- Laird, N. F., Ochs, H. T., Rauber, R. M., and Miller, L. J.: Initial Precipitation Formation in Warm Florida Cumulus, *J. Atmos. Sci.*, 57, 3740–3751, 2000.
- Larsen, M.: Spatial distributions of aerosol particles: Investigation of the Poisson assumption, *Aerosol Sci.*, 38, 807–822, 2007.
- Larsen, M.: Scale Localization of Cloud Particle Clustering Statistics, *J. Atmos. Sci.*, 69, 3277–3289, 2012.
- 10 Larsen, M. L. and Kostinski, A. B.: Observations and Analysis of Uncorrelated Rain, *J. Atmos. Sci.*, 62, 4071–4083, 2005.
- Lehmann, K., Siebert, H., Wendisch, M., and Shaw, R.: Evidence for Inertial droplet clustering in weakly turbulent clouds, *Tellus B*, 59, 57–65, 2007.
- Lu, C., Niu, S., Liu, Y., and Vogelmann, A.: Empirical relationship between entrainment rate and microphysics in cumulus clouds, *Geophys. Res. Lett.*, 60, 2333–2338, 2013.
- 15 Lu, M., Jonsson, H., Chuang, P., Feingold, G., and Flagan, R.: Aerosol–cloud relationships in continental shallow cumulus, *J. Geophys. Res.*, 113, D15 201, 2008.
- Marshak, A., Knyazikhin, Y., Larsen, M. L., and Wiscombe, W.: Small-Scale Drop Variability: Empirical Models for Drop-Size-Dependent Clustering in Clouds, *J. Atmos. Sci.*, 62, 551–558, 2005.
- Maxey, M. R.: The gravitational settling of aerosol particles in homogeneous turbulence and random flow fields, *J. Fluid Mech.*, 174, 441–
- 20 465, 1987.
- Paluch, I. and Baumgardner, D.: Entrainment and fine-scale mixing in a continental convective cloud, *J. Atmos. Sci.*, 46, 261–278, 1989.
- Picinbono, B. and Bendjaballah, C.: Characterization of nonclassical optical fields by photodetection statistics, *Phys. Rev. A*, 71, 1–12, 2005.
- Pinsky, M. and Khain, A.: Fine Structure of cloud droplet concentration as seen from the Fast-FSSP Measurements. Part II: Results of In Situ Observations, *J. Appl. Meteor.*, 42, 65–73, 2003.
- 25 Pinsky, M., Khain, A., and Shapiro, M.: Collision of Small Drops in a Turbulent Flow. Part I: Collision Efficiency. Problem Formulation and Preliminary Results, *J. Atmos. Sci.*, 56, 2585–2600, 1999.
- Pinsky, M. B. and Khain, A. P.: Effect of in-cloud nucleation and turbulence on droplet spectrum formation in cumulus clouds, *Q. J. R. Meteorol. Soc.*, 128, 501–533, 2002.
- Pruppacher, H. and Klett, J.: *Microphysics of clouds and precipitation*, Kluwer Academic Publishers, 2 edn., 1997.
- 30 Ramaswamy, V., Boucher, O., Haigh, J., Hauglustaine, D., Haywood, J., Myhre, G., Nakajima, T., Shi, G. Y., and Solomon, S.: Radiative forcing of climate change, in: *Climate Change: 2001: The Scientific Basis. Contribution of working group I to the Third Assessment Report of the Intergovernmental Panel on Climate Change*, Cambridge Univ. Press, 2001.
- Rogers, R. R. and Yau, M. K.: *A Short Course in Cloud Microphysics*, Pergamon Press, 3 edn., 1989.
- Saw, E.: *Studies of spatial clustering of inertial particles in turbulence*, Ph.D. thesis, Michigan Technological University, 2008.
- 35 Saw, E., Shaw, R., Salazar, J., and Collins, L.: Spatial clustering of polydisperse inertial particles in turbulence: II. Comparing simulation with experiment, *New Journal of Physics*, 14, 105 031, 2012.
- Saw, E. W., Shaw, R. A., Ayyalasomayajula, S., Chuang, P. Y., and Gylfason, A.: Inertial Clustering of Particles in High Reynolds-Number Turbulence, *Phys. Rev. Lett.*, 100, 214 501, 2008.

- Schmeissner, T., Shaw, R. A., Ditas, J., Strathmann, F., Wendisch, M., and Siebert, H.: Turbulent mixing in shallow Trade Wind cumuli: dependence on cloud life cycle, *J. Atmos. Sci.*, 72, 1447–1465, 2015.
- Seifert, A., Nuijens, L., and Stevens, B.: Turbulence effects on warm-rain autoconversion in precipitating shallow convections, *Quart. J. Roy. Meteor. Soc.*, 136, 1753–1762, 2010.
- 5 Shaw, R. A.: Particle–Turbulence Interactions in Atmospheric Clouds, *Annu. Rev. Fluid Mech.*, 35, 183–227, 2003.
- Shaw, R. A., Reade, W. C., Collins, L. R., and Verlinde, J.: Preferential Concentration of Cloud Droplets by Turbulence: Effects on the Early Evolution of Cumulus Cloud Droplet Spectra, *J. Atmos. Sci.*, 55, 1965–1976, 1998.
- Shaw, R. A., Kostinski, A. B., and Larsen, M. L.: Towards quantifying droplet clustering in clouds, *Q. J. Roy. Meteor. Soc.*, 128, 1043–1057, 2002.
- 10 Small, J. D., Chuang, P., Feingold, G., and Jiang, H.: Can aerosol decrease cloud lifetime?, *Geophys. Res. Lett.*, 36, L16 806, 2009.
- Small, J. D., Chuang, P. Y., and Jonsson, H. H.: Microphysical imprint of entrainment in warm cumulus, *Tellus B*, 65, 1–18, 2013.
- Squires, K. and Eaton, J.: Measurements of particle dispersion from direct numerical simulations of isotropic turbulence, *J. Fluid Mech.*, 226, 1–35, 1991.
- Srivastava, R. C.: Growth of Cloud Drops by Condensation: A Criticism of Currently Accepted Theory and a New Approach, *J. Atmos. Sci.*, 46, 869–887, 1989.
- 15 Stein, A. F., Draxler, R. R., Rolph, G. D., Stunder, B. J., Cohen, M. D., and Ngan, F.: HYSPLIT atmospheric transport and dispersion modeling system, *Bull. Amer. Meteor. Soc.*, 96, 2059–2077, 2015.
- Sundaram, S. and Collins, L. R.: Collision statistics in an isotropic particle–laden turbulent suspension. Part I. Direct numerical simulations, *J. Fluid. Mech.*, 335, 75–109, 1997.
- 20 Szumowski, M. J., Rauber, R. M., III, H. T. O., and Miller, L. J.: The Microphysical Structure and Evolution of Hawaiian Rainband Clouds. Part I: Radar Observations of Rainbands Containing High Reflectivity Cores, *J. Atmos. Sci.*, 48, 112–121, 1997.
- Telford, J. W. and Chai, S. K.: A new aspect of condensation theory, *Pure Appl. Geophys*, 118, 720–742, 1980.
- Tennekes, J. and Lumley, J. L.: *A First Course in Turbulence*, The MIT press, 1972.
- Twomey, S.: The Influence of pollution on the shortwave albedo of clouds, *J. Atm. Sci.*, 34, 1149–1152, 1977.
- 25 vanZanten, M. C., Stevens, B., Nuijens, L., Siebesma, A., Ackerman, A., Burnet, F., Cheng, A., Couvreux, F., Jiang, H., Khairoutdinov, M., Kogan, Y., Lewellen, D., Mechem, D., Nakamura, K., Noda, A., Shipway, B., Slawinska, J., Wang, S., and Wyszogrodzki, A.: Controls on precipitation and cloudiness in simulations of trade–wind cumulus as observed during RICO, *J. Adv. Model. Earth Syst.*, 3, M06 001, 2011.
- Veeravalli, S. and Warhaft, V.: The shearless turbulence mixing layer, *J. Fluid Mech.*, 207, 191–229, 1989.
- 30 Wang, L.-P. and Maxey, M. R.: Settling velocity and concentration distribution of heavy particles in homogeneous isotropic turbulence, *J. Fluid. Mech.*, 256, 27–68, 1993.
- Wang, Y., Geerts, B., and French, J.: Dynamics of the cumulus cloud margin: An observational Study, *J. Atmos. Sci.*, 66, 3660–3677, 2009.
- Wilks, D. S.: *Statistical methods in the atmospheric sciences*, vol. 100 of *International Geophysics Series*, Academic Press, 3 edn., 2011.
- Wood, A. M., Hwang, W., and Eaton, J. K.: Preferential concentration of particles in homogeneous and isotropic turbulence, *Int. J. of Multiphase Flow*, 31, 1220–1230, 2005.
- 35 Wyszogrodzki, A. A., Grabowski, W. W., Wang, L. P., and Ayala, O.: Turbulent collision–coalescence in maritime shallow convection, *Atmos. Chem. Phys.*, 13, 8471–8487, 2013.

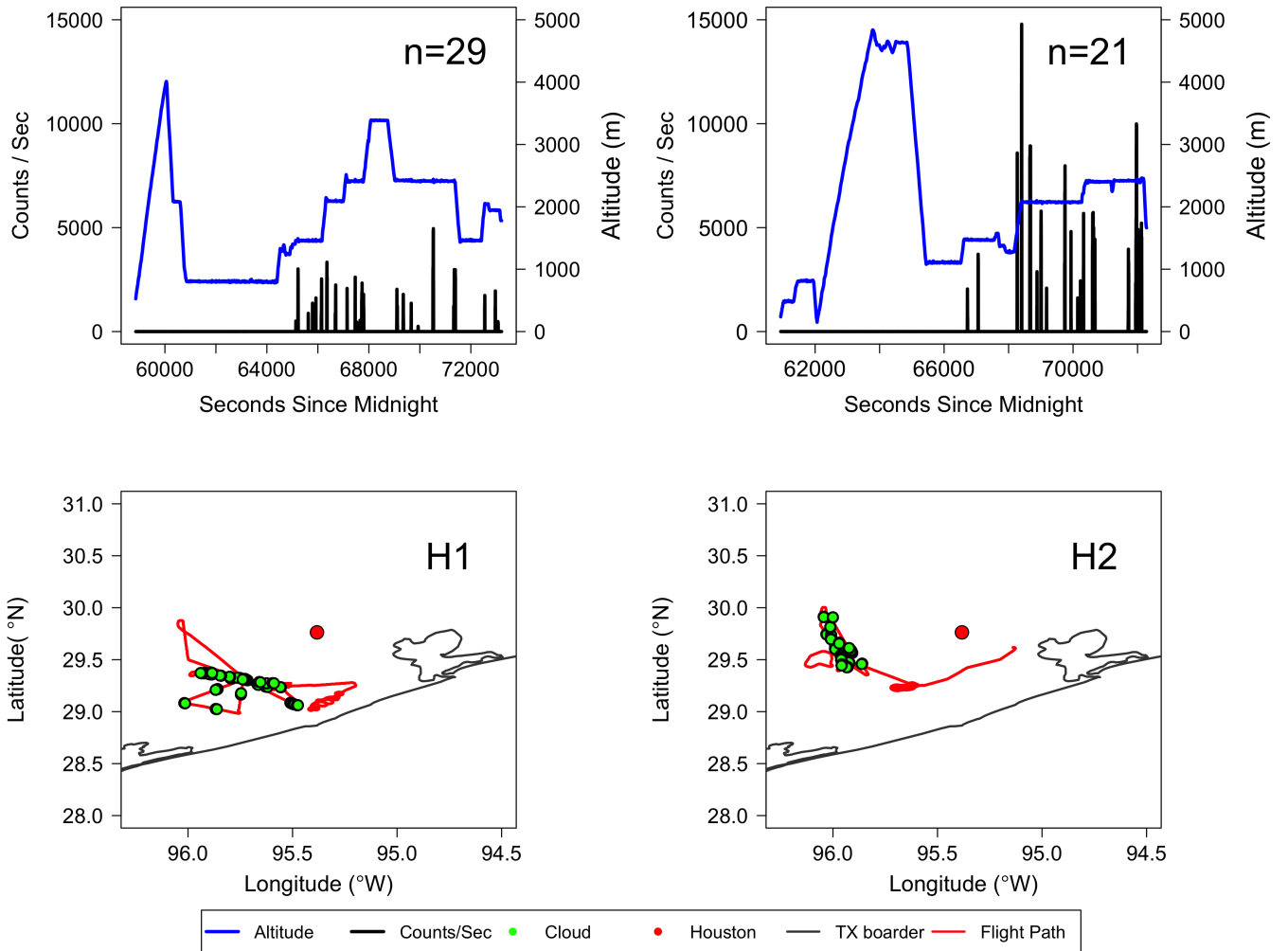
Xue, H. and Feingold, G.: Large-Eddy Simulations of Trade Wind Cumuli: Investigation of Aerosol Indirect Effects, *J. Atmos. Sci.*, 63, 1605–1622, 2006.



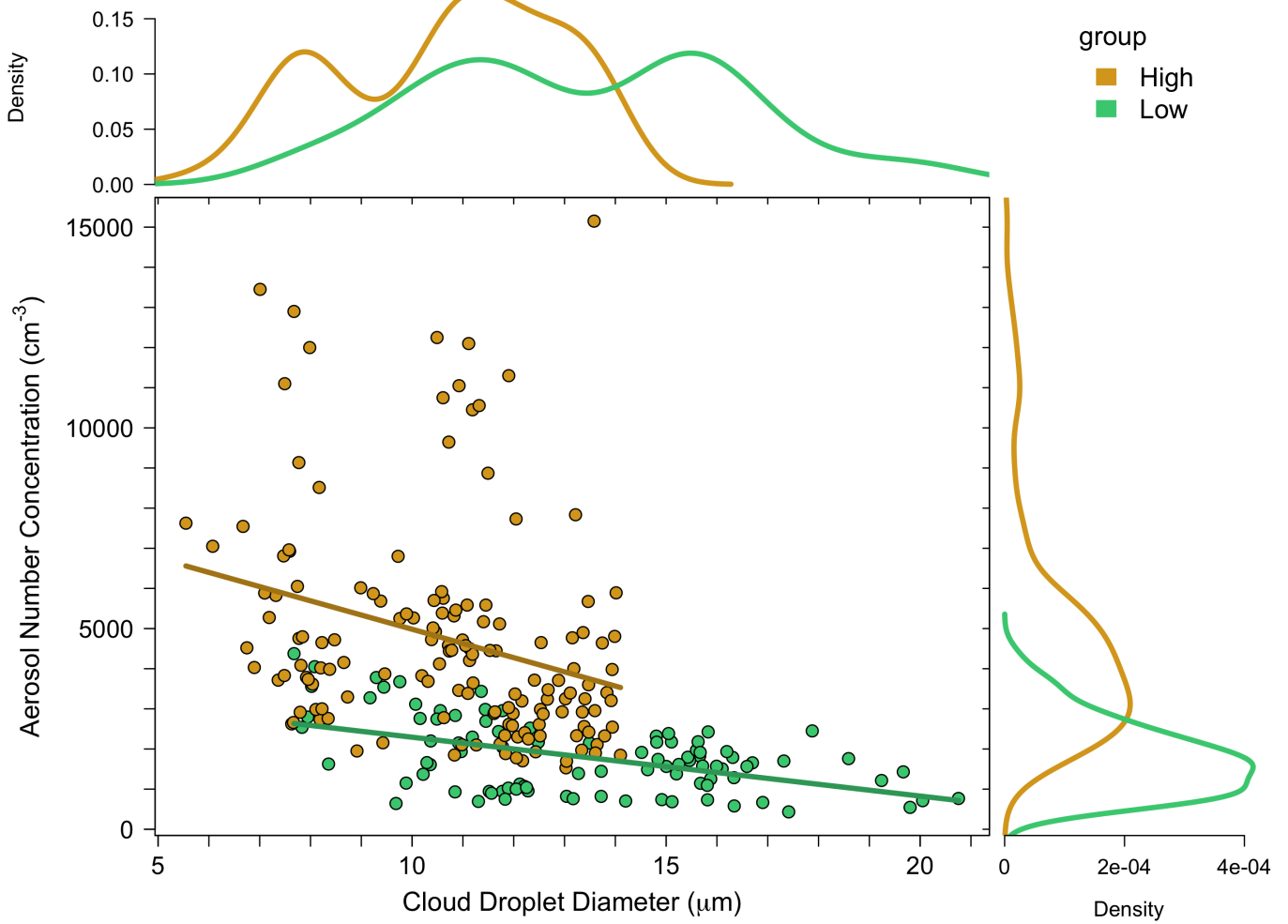
**Figure 1.** Top panels represent the clustering signature for the PCF, with the x-axis showing the temporal and spatial lag on a log-scale and the y-axis representing the PCF (unitless). The top-left shows the PCF for data from a randomly selected portion of cloud covering a temporal range of 2 seconds ( $\sim 120$  m) with a population of 2168 droplets. The top-right panel shows simulated Poisson point data with the same temporal scale and droplet population. The red line represents a rolling mean of five for the raw PCF values (shown in black). The bottom panels represent short 25 m subsets ( $\sim 270$  droplets) of the data used in generating the PCF curves. Each circle represents a cloud droplet, and each line with a square vertical bars represents the distance traversed for each sampling volume, with each square vertical bar corresponding to a droplet count of 10. The green vertical line is used for reference, where the mean value of the PCF is obtained by taking PCF values to the left of the green line.



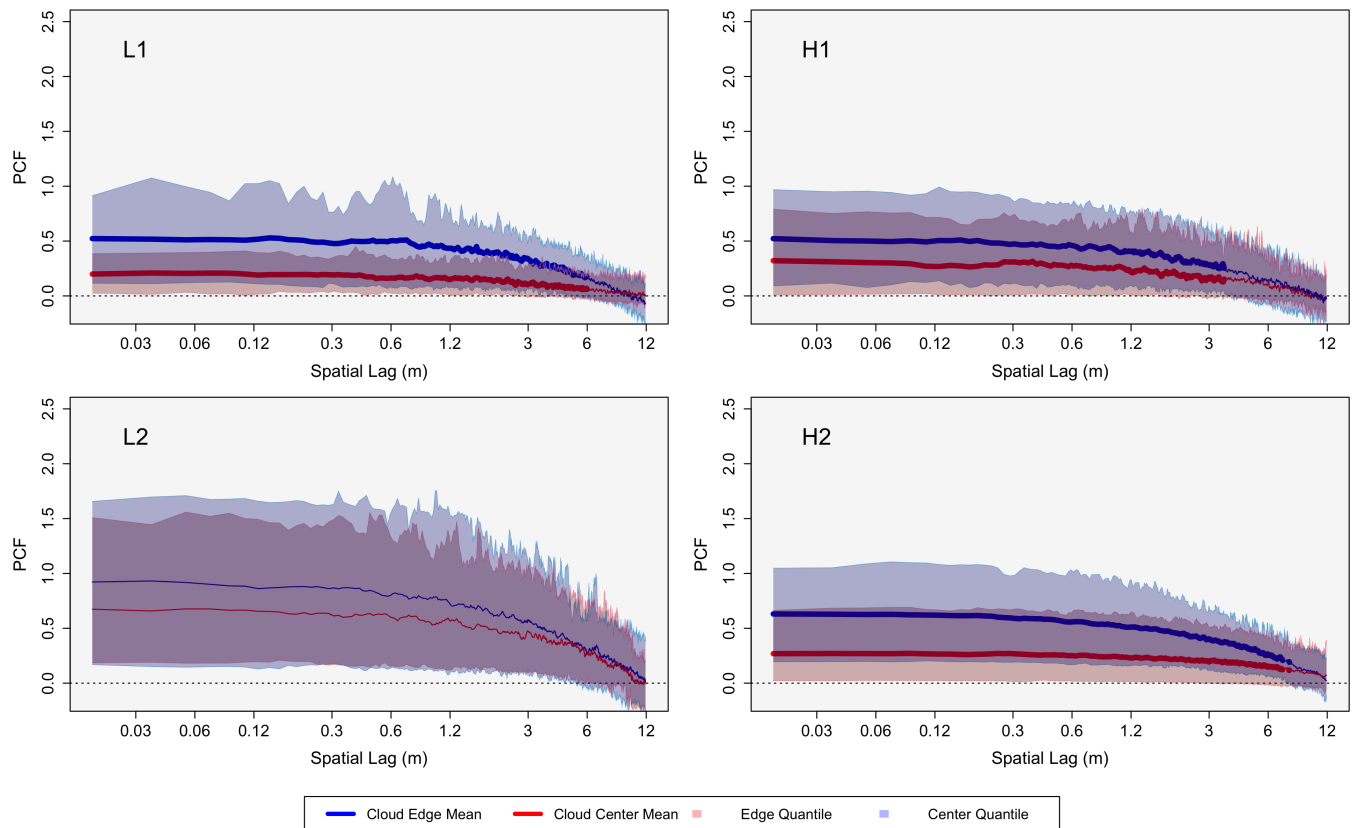
**Figure 2.** Shows L1 and L2 on the left and right, respectively. Flight altitude (blue) as a function of time is displayed in the top panels, with droplet counts per second in black. The “n=” represents the number of clouds sampled for each flight after filtering. The bottom panels show the Texas coast in grey with the location of Houston represented by the red dot. The flight path is outlined in red with the location of clouds displayed by green dots.



**Figure 3.** As in Figure 1, but for H1 and H2.

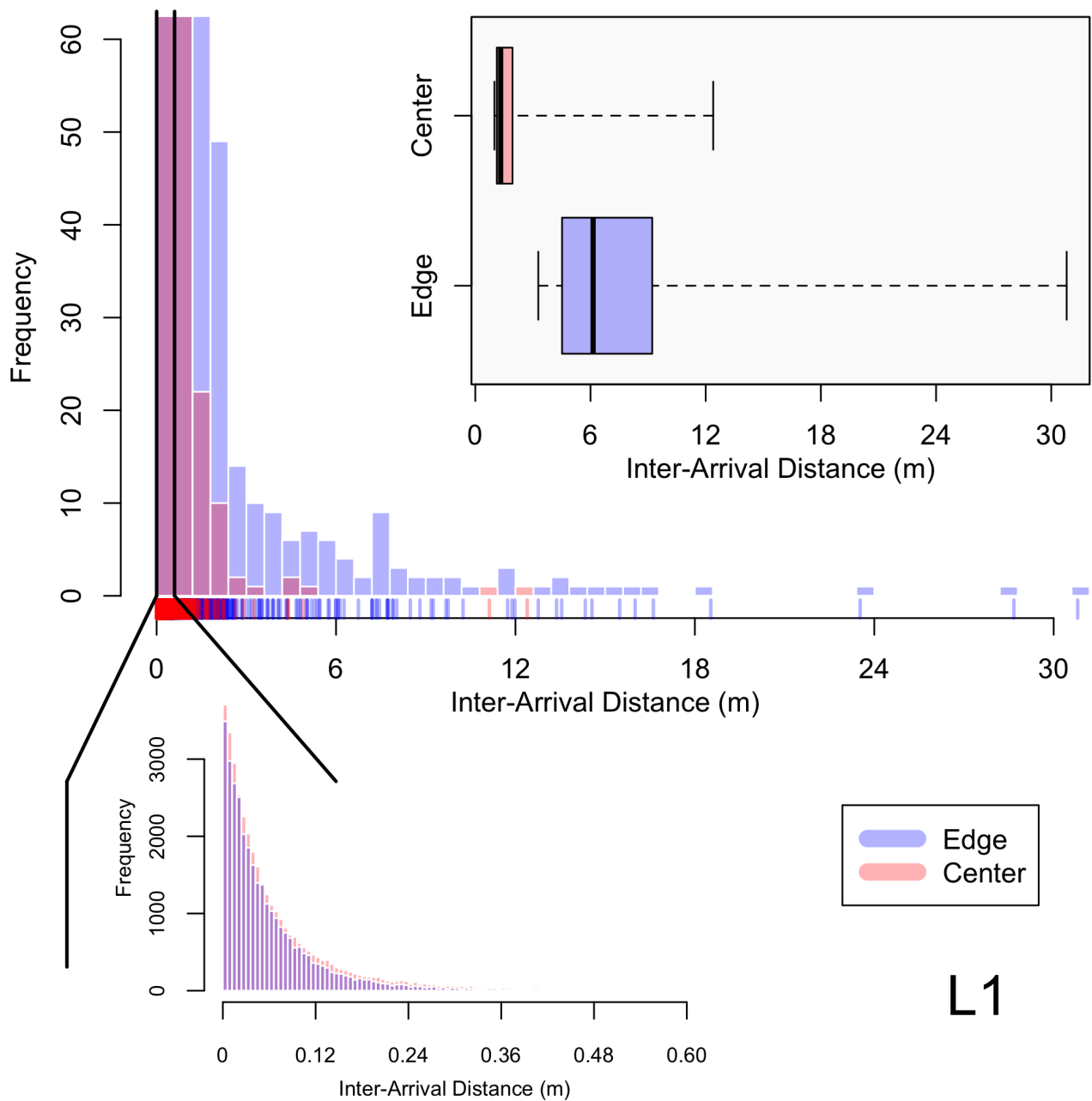


**Figure 4.** Shows cloud droplet diameter ( $\mu\text{m}$ ) on the x-axis and aerosol number concentration ( $\text{cm}^{-3}$ ) on the y-axis, with low pollution data in green and high pollution data in gold. The corresponding density curves of the high and low pollution data are given on the outer margins of the plot.

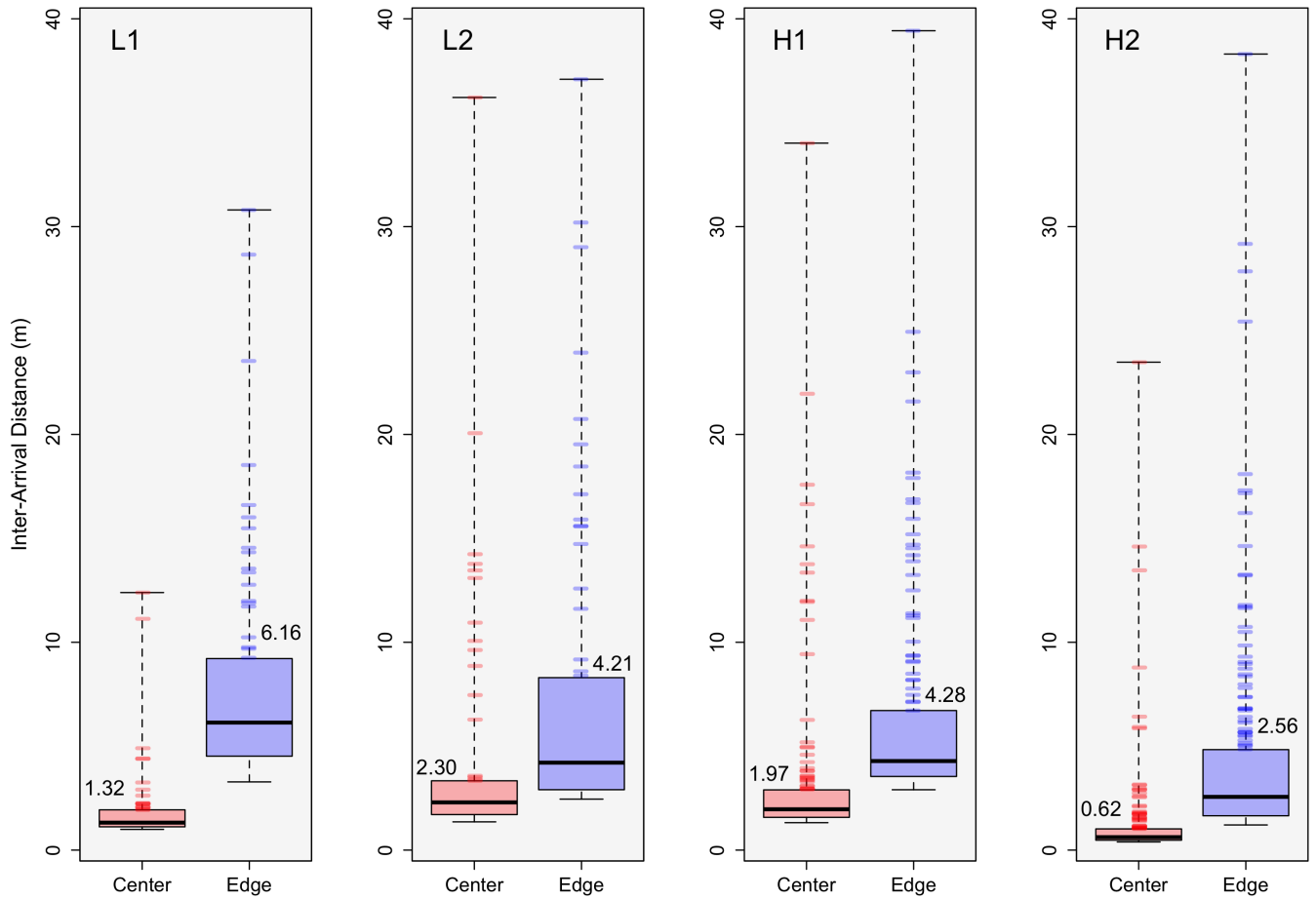


**Figure 5.** PCF clustering signatures for L1 (top right), L2 (bottom left), H1 (top right), and H2 (bottom right) with spatial lag (m) on the x-axis and PCF values (unitless) on the y-axis. Edge data is in blue and cloud center data is in red, with the envelopes representing the 85<sup>th</sup> (top) and 15<sup>th</sup> (bottom) percent quantile values of the data. The mean PCF value for each case is represented by the middle line in each envelope, where a bold mean line represents edge and center differences that are statistically significant.

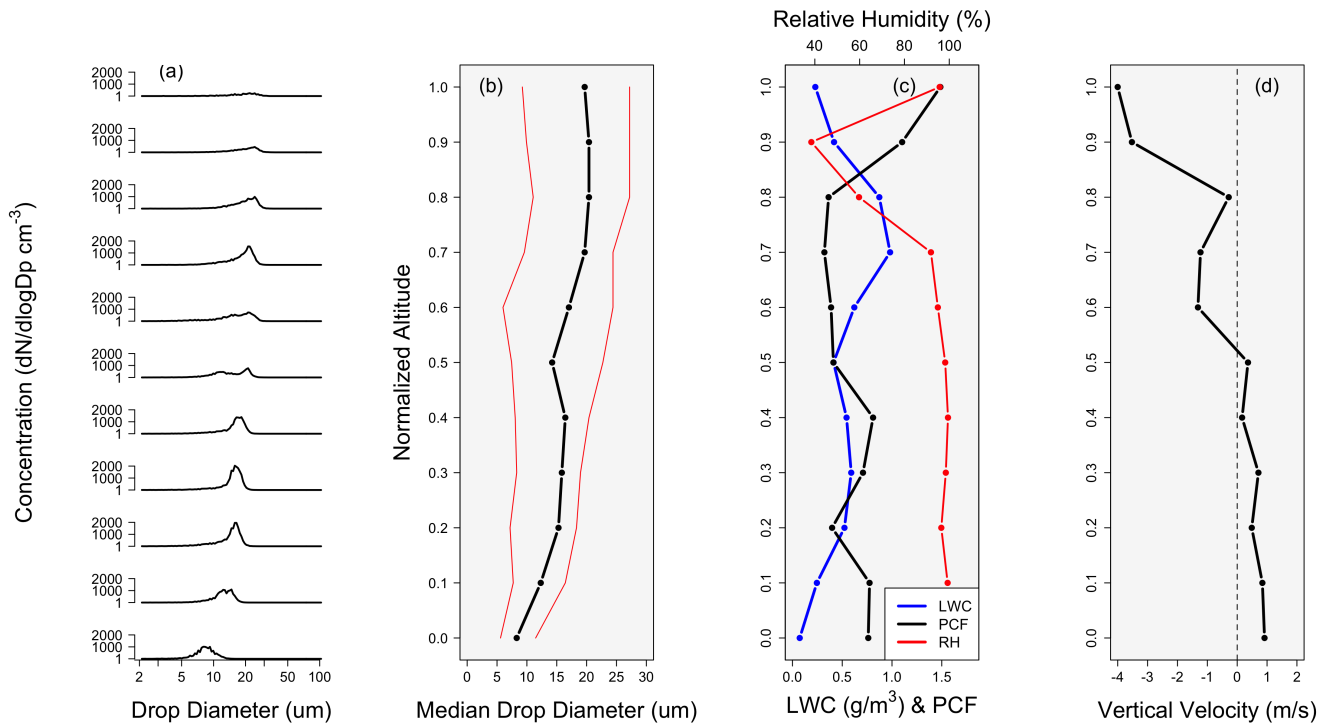




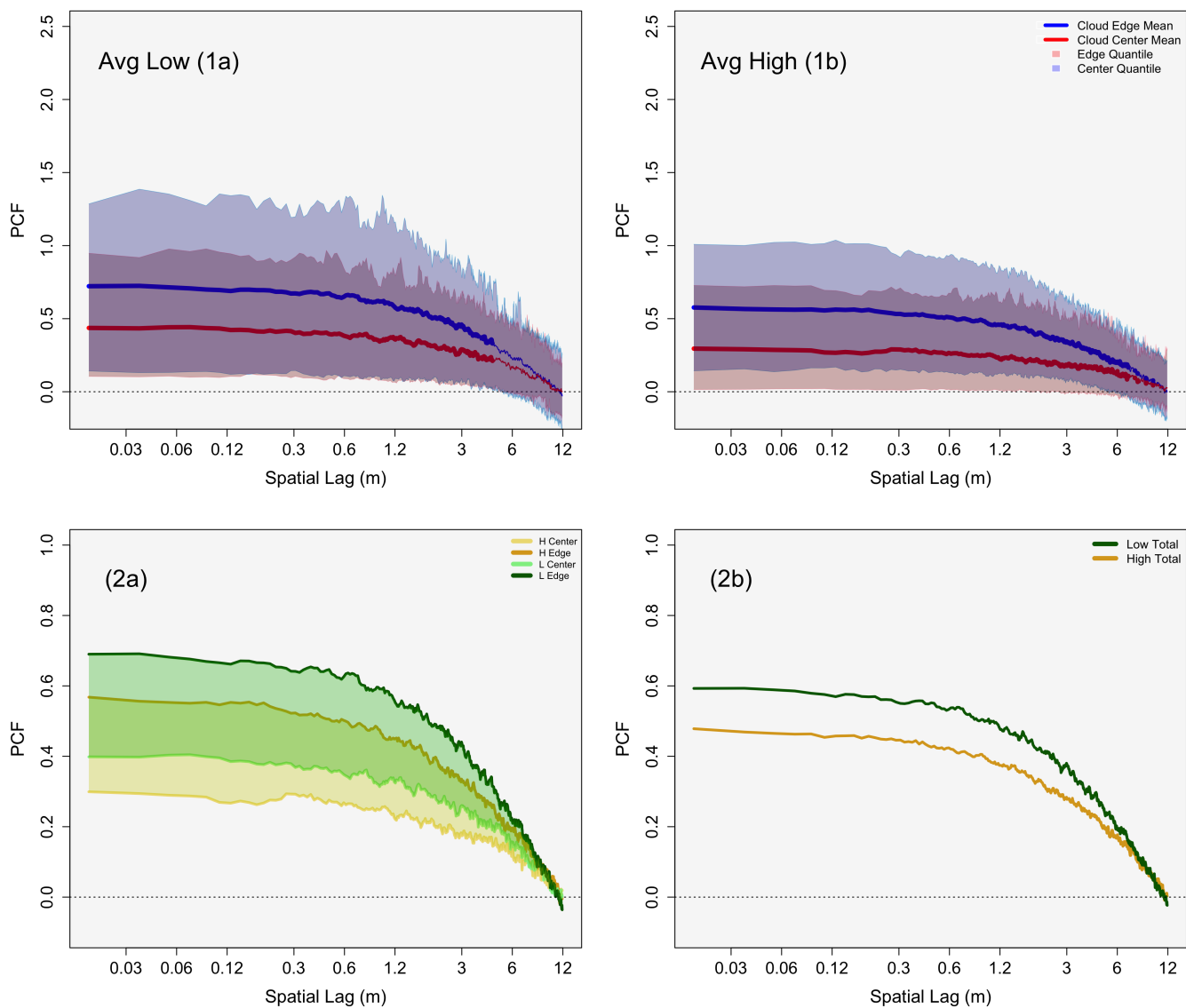
**Figure 6.** Histogram distributions of the inter-arrival distance (IAD) for droplet populations measured in flight L1, with edge data in blue and center data in red. Note that the main histogram is zoomed in to a value of 60 on the y-axis, with further analysis of the first bin (representing a range from 0 to 0.60 m) below the main histogram. The boxplots in the top right represents the IAD data that is  $\geq$  greater than or equal to the 0.998 quantile of the overall data sets for entrainment and center.



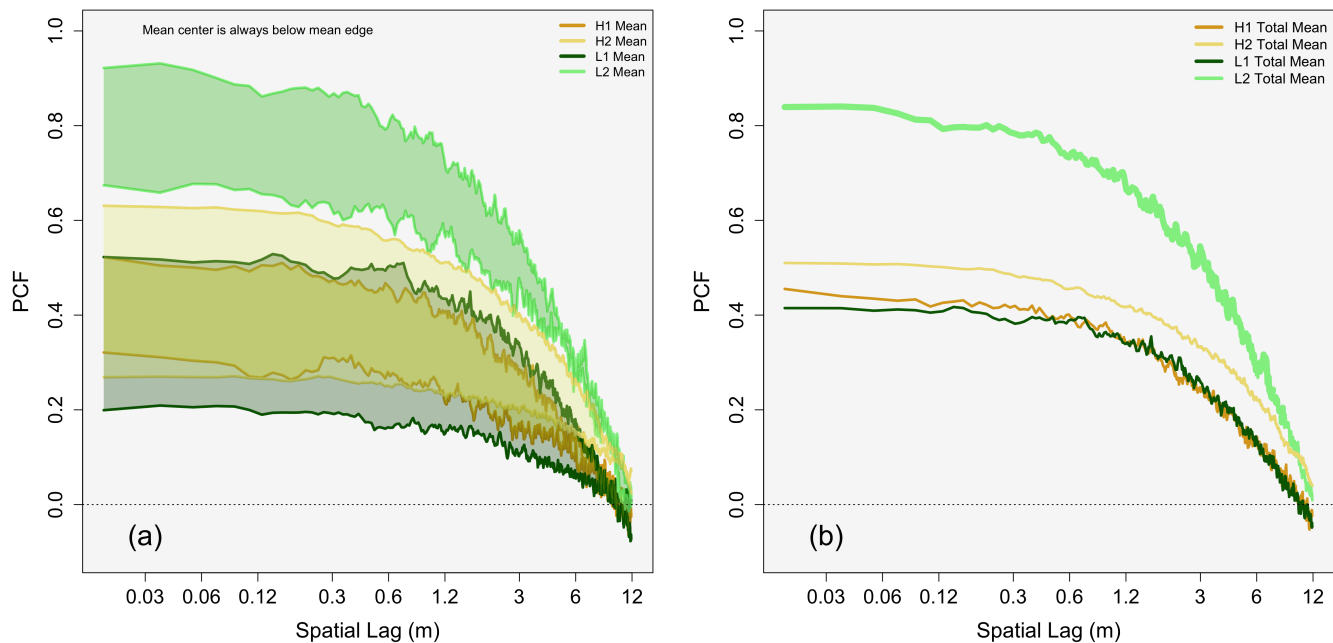
**Figure 7.** Boxplots for the IAD data which is  $\geq$  greater than or equal to the 0.998 quantile of the overall data sets for edge (blue) and center (red), with L1, L2, H1, and H2 shown moving from left to right, respectively. The median value for each dataset is displayed within the plot. Tickmarks occurring on the upper whiskers represent the raw data positions. Note that Panel L1 represents the same boxplot displayed in Figure 6.



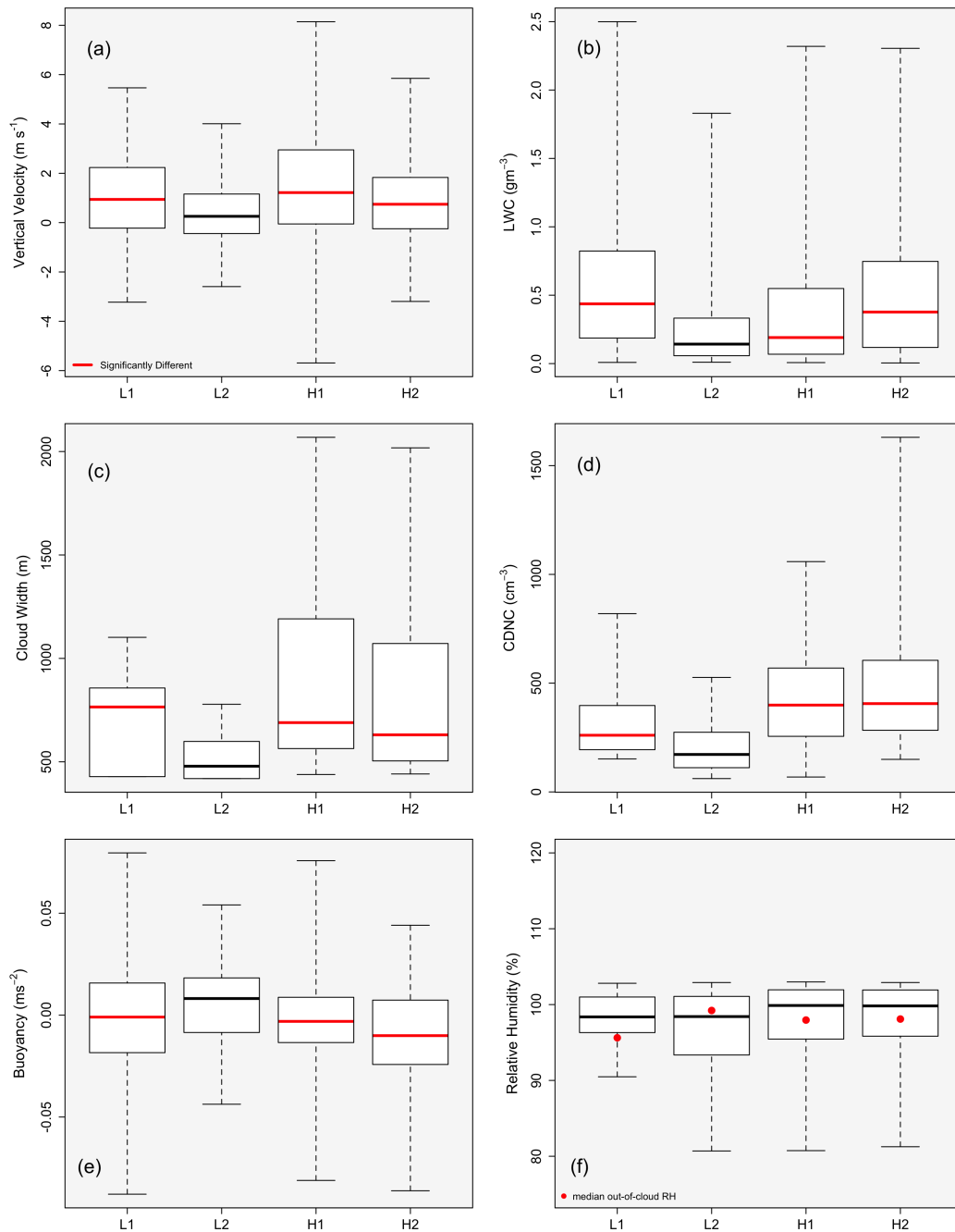
**Figure 8.** Shows the cloud droplet size distribution in panel (a). Panel (b) gives the median droplet size along with the 5<sup>th</sup> and 95<sup>th</sup> percent quantiles (red) of the droplet size distribution. Panel (c) shows LWC (blue), RH (red), and the mean PCF value (black). Panel (d) shows vertical velocity. All variables are represented as a function of cloud normalized altitude.



**Figure 9.** Panels (1a) and (1b): as in Figure 5, except for average low pollution PCF values (L1, L2) in Panel (1a) and average high pollution PCF values (H1, H2) in Panel (1b). Panels (2a) and (2b): low pollution data in green and high pollution data in gold. Panel (2a) shows envelopes that span the average mean center PCF value (lower limit of the envelopes) to the average mean edge PCF value (upper limit of the envelopes). Panel (2b) gives the overall average mean PCF value for low and high pollution clouds.



**Figure 10.** As in Panels (2a) and (2b) from Figure 9, except for the individual flights of L1 (dark green), L2 (light green), H1 (dark gold), and H2 (light gold). Note that the envelopes in Panel (a) represents the range from the mean center clustering inhomogeneity (lower limit of each envelope) to the mean edge clustering inhomogeneity (upper limit of each envelope).



**Figure 11.** Box plots of L1, L2, H1, and H2, represented in that order on the x-axis, with Panels (a) through (f) representing vertical velocity ( $\text{m s}^{-1}$ ), LWC ( $\text{g m}^{-3}$ ), cloud width (m), CDNC ( $\text{cm}^{-3}$ ), buoyancy ( $\text{m s}^{-2}$ ), and in-cloud RH (%), respectively. Red median lines represent datasets that are statistically significant as compared to the L2 dataset. Each red dot in Panel (f) represents out-of-cloud RH.

**Table 1.** Shows the flight information for 20 of the 22 flights that occurred during the GoMACCS campaign. Each flight corresponds to a RF number, date, the number of clouds (after filtering, see text), the total aerosol number concentration ( $N_a$ ), and the accumulation mode aerosol number concentration ( $N_{acc}$ ). Values in parentheses represent the standard deviation.

RF Number	Date	Clouds	$N_a$ cm <sup>-3</sup>	$N_{acc}$ cm <sup>-3</sup>
1	8/21/06	1	NA	NA
2	8/22/06	11	NA	NA
3	8/23/06	9	2984 (588)	413 (66)
4	8/25/06	17	22667 (10672)	1797 (4184)
5	8/26/06	18	1304 (699)	290 (223)
6	8/27/06	0	NA	NA
7	8/28/06	0	NA	NA
9	8/29/06	28	3157 (1980)	360 (169)
11	8/31/06	37	3205 (650)	972 (214)
12	9/2/06	29	4768 (2826)	710 (169)
13	9/3/06	0	NA	NA
14	9/4/06	14	2770 (758)	697 (126)
15	9/6/06	10	1427 (398)	465 (147)
16	9/7/06	32	3547 (966)	949 (306)
17	9/8/06	21	4824 (1806)	821 (154)
18	9/10/06	1	1396 (918)	943 (472)
19	9/11/06	27	6561 (5419)	1280 (4172)
20	9/13/06	0	NA	NA
21	9/14/06	25	2230 (1157)	653 (276)
22	9/15/06	13	2323 (688)	436 (159)

**Table 2.** A summary of cloud, flight, and environmental properties from the L1, L2, H1, H2, and Case flights. Note that CDNC stands for cloud droplet number concentration, LWC stands for liquid water content, and Mean Drops ( $s^{-1}$ ) represents the mean number of drops measured by the PDI per second. Standard deviation values are represented in parentheses.

Variable	L1	L2	H1	H2	Case
Date	2006–Aug–26	2006–Sept–15	2006–Sept–02	2006–Sept–06	2006–Sept–10
Flight Number	RF 5	RF 22	RF 12	RF 17	RF 18
UTC for Cloud Sampling	1447–1717	1654–1748	1806–2018	1832–2002	1633–1742
Clouds > 300 m in width	18	13	29	21	1
Min cloud base height (m)	672	1120	1457	1476	806
Max cloud top height (m)	2412	2101	2463	2451	3381
Cloud thickness (m)	1740	981	1007	976	2575
Cloud width (m)	700 (235)	520 (110)	850 (404)	861 (451)	943 (472)
Mean true air speed ( $m s^{-1}$ )	61.2 (1.5)	59.9 (1.3)	62.7 (2.3)	63.0(2.3)	61.4 (2.2)
Mean CDNC ( $cm^{-3}$ )	318 (163)	210 (141)	421 (255)	531(363)	472 (404)
Max CDNC ( $cm^{-3}$ )	819	526	1059	1630	2342
Mean drops ( $s^{-1}$ )	661 (448)	1016 (1037)	958 (895)	3300 (2704)	1679 (1441)
Cloud top LWC ( $g m^{-3}$ )	0.97 (0.66)	0.55 (0.54)	0.47 (0.48)	0.60 (0.48)	0.45 (0.35))
Mean vertical velocity ( $m s^{-1}$ )	1.81 (1.67)	1.16 (1.28)	2.34 (2.21)	1.61 (1.62)	0.35 (1.89)
$N_a$ ( $cm^{-3}$ )	1304 (699)	2323 (688)	4768 (2826)	4824 (1806)	1396 (918)
$N_{acc}$ ( $cm^{-3}$ )	290 (223)	436 (159)	710 (169)	821 (154)	943 (472)
Environmental lapse rate ( $^{\circ}C km^{-1}$ )	5.4	4.5	4.8	5.7	NA
Environmental RH (%)	77	96	74	86	NA

**Table 3.** Average values for low (L1, L2) and high (H1, H2) pollution clouds for select variables from Table 2

Variable	Low	High
Mean CDNC ( $cm^{-3}$ )	264	476
Mean Drops ( $s^{-1}$ )	839	2129
$N_a$ ( $cm^{-3}$ )	1814	4796
$N_{acc}$ ( $cm^{-3}$ )	363	766
Cloud thickness (m)	1361	992
Cloud width (m)	610	856
Clouds > 300 m in width	31 (total)	50 (total)



**Table 4.** Provides the mean PCF, 85<sup>th</sup> percent quantile and 15<sup>th</sup> percent quantile values for center data (on the left) and edge data (on the right) for L1, L2, H1, and H2 in Figure 5, along with average low and high values from Figure 9

Flight	Center Data			Edge Data		
	Mean PCF	Upper Quantile	Lower Quantile	Mean PCF	Upper Quantile	Lower Quantile
<b>L1</b>	0.18	0.36	0.02	0.49	0.89	0.09
<b>L2</b>	0.61	1.39	0.16	0.83	1.62	0.14
<b>Avg. Low</b>	0.39	0.88	0.09	0.66	1.26	0.11
<b>H1</b>	0.26	0.69	0.009	0.46	0.86	0.09
<b>H2</b>	0.26	0.65	0.02	0.57	1.01	0.18
<b>Avg. High</b>	0.27	0.67	0.01	0.52	0.93	0.14

**Table 5.** Provides the mean p-value and the percent of data that is statistically significant (for the first 60 PCF values) between edge and center data for L1, L2, H1, and H2 in Figure 5 and for Average Low and High in Figure 9

Flight	p-value	% Significant
<b>L1</b>	$5.9 \cdot 10^{-3}$	100
<b>L2</b>	0.40	0
<b>Avg. Low</b>	0.01	100
<b>H1</b>	0.01	100
<b>H2</b>	$3.5 \cdot 10^{-4}$	100
<b>Avg. High</b>	$3.1 \cdot 10^{-5}$	100

**Table 6.** Provides the percentage of **clustering inhomogeneities** that **is are** significant and non-significant (as compared to a randomly distributed droplet population) for center (C) and edge (E) data in L1, L2, H1, and H2.

Flight	% Significant	% Non-significant
<b>L1 C</b>	44.4	55.5
<b>L1 E</b>	61.1	38.9
<b>L2 C</b>	92.3	7.7
<b>L2 E</b>	76.9	23.1
<b>H1 C</b>	48.3	51.7
<b>H1 E</b>	58.6	41.4
<b>H2 C</b>	71.4	28.6
<b>H2 E</b>	97.6	2.4

**Table 7.** Gives values for vertical velocity ( $\text{m s}^{-1}$ ), RH (%), LWC ( $\text{g m}^{-3}$ ), the PCF, and the median drop size ( $\mu\text{m}$ ), respectively, for each normalized cloud height in Figure 8

Normalized height	Vertical Velocity ( $\text{m s}^{-1}$ )	RH (%)	LWC ( $\text{g m}^{-3}$ )	PCF	Median drop size ( $\mu\text{m}$ )
0	0.91	100.38	0.07	0.76	8.29
0.1	0.84	99.28	0.24	0.77	12.32
0.2	0.49	96.46	0.52	0.40	15.29
0.3	0.71	98.46	0.59	0.71	15.85
0.4	0.16	99.43	0.54	0.81	16.43
0.5	0.36	98.19	0.41	0.41	14.23
0.6	-1.31	94.91	0.62	0.39	17.03
0.7	-1.22	91.83	0.98	0.32	19.67
0.8	-0.28	59.72	0.87	0.36	20.39
0.9	-3.52	38.43	0.41	1.10	20.37
1	-4.00	95.72	0.22	1.49	19.67

**Table 8.** Provides the mean p-value and the percent of data that is statistically significant (for the first 60 PCF values) between PCF functions provided in Panel (b) of Figure 10.

Comparison	p-value	% Significant
<b>L2-L1</b>	$2.2 \cdot 10^{-3}$	100
<b>L2-H1</b>	$1.3 \cdot 10^{-3}$	100
<b>L2-H2</b>	$2.2 \cdot 10^{-2}$	100
<b>L1-H1</b>	0.86	0
<b>L1-H2</b>	0.21	0
<b>H1-H2</b>	0.19	0

**Table 9.** Median values of vertical velocity ( $\text{m s}^{-1}$ ), LWC ( $\text{g m}^{-3}$ ), cloud width (m), CDNC ( $\text{cm}^{-3}$ ), buoyancy ( $\text{m s}^{-2}$ ), in-cloud RH and out-of-cloud RH (%) from Figure 11.

Variable Median	L1	L2	H1	H2
Vertical velocity ( $\text{m s}^{-1}$ )	0.94	0.25	1.21	0.74
LWC ( $\text{g m}^{-3}$ )	0.43	0.14	0.19	0.38
Cloud width (m)	765	480	690	631
CDNC ( $\text{cm}^{-3}$ )	261	172	399	406
Buoyancy ( $\text{m s}^{-3}$ )	-0.00097	0.0081	-0.0031	-0.010
in-cloud RH	98.3	98.4	99.1	99.8
out-of-cloud RH	95.6	99.2	97.9	98.0

**Table 10.** Gives p-values between L2 and L1, L2 and H1, and L2 and H2 for in-cloud vertical velocity ( $\text{m s}^{-1}$ ), LWC ( $\text{g m}^{-3}$ ), RH (%), CDNC ( $\text{cm}^{-3}$ ), cloud width (m), and in-cloud buoyancy ( $\text{m s}^{-2}$ ). Statistically significant values are presented in bold.

Comparison	Vertical Velocity (m/s)	LWC $\text{gm}^{-3}$	RH (Percent)	CDNC ( $\text{cm}^{-3}$ )	Width (m)	Buoyancy ( $\text{ms}^{-2}$ )
L2-L1	<b><math>6.0 \cdot 10^{-4}</math></b>	<b><math>2.1 \cdot 10^{-12}</math></b>	0.48	<b>0.03</b>	<b>0.008</b>	<b>0.011</b>
L2-H1	<b><math>2.9 \cdot 10^{-7}</math></b>	<b>0.009</b>	0.19	<b>0.002</b>	<b><math>7.8 \cdot 10^{-4}</math></b>	<b><math>3.9 \cdot 10^{-5}</math></b>
L2-H2	<b>0.011</b>	<b><math>2.2 \cdot 10^{-7}</math></b>	0.10	<b><math>1.9 \cdot 10^{-4}</math></b>	<b>0.003</b>	<b><math>5.5 \cdot 10^{-11}</math></b>

**Table 11.** Provides the median value and spectral width ( $10^{\text{th}}$  to  $90^{\text{th}}$  percent quantile range) of the drop size distribution, the altitude at which measurements occurred, and the cloud droplet number concentration (CDNC) for both the center and edge zone of cloud passages for each of L1, L2, H1 and H2. Standard deviation values are given in parenthesis.

Variable	L1		L2		H1		H2	
	Center	Edge	Center	Edge	Center	Edge	Center	Edge
<b>Median (<math>\mu\text{m}</math>)</b>	13.7	13.4	12.7	11.7	11.0	11.4	10.9	10.7
<b>Spectral Width (<math>\mu\text{m}</math>)</b>	8.5 - 20.3	8.6 - 20.0	8.5 - 18.5	8.0 - 17.4	7.1 - 15.4	7.0 - 15.5	6.8 - 14.7	6.6 - 14.8
<b>CDNC (<math>\text{cm}^{-3}</math>)</b>	405 (393)	264 (232)	268 (341)	170 (169)	570 (613)	301 (289)	692 (790)	402 (423)
<b>Altitude (m)</b>	1577 (393)	1573 (385)	1673 (372)	1673 (369)	2146 (382)	2141 (380)	2137 (301)	2135 (296)