



## Direct effect of aerosols on solar radiation and gross primary production in boreal and hemiboreal forests

Ekaterina Ezhova<sup>1</sup>, Ilona Ylivinkka<sup>1</sup>, Joel Kuusk<sup>2</sup>, Kaupo Komsaare<sup>3</sup>, Marko Vana<sup>3</sup>, Alisa Krasnova<sup>4</sup>, Steffen Noe<sup>4</sup>, Mikhail Arshinov<sup>5</sup>, Boris Belan<sup>5</sup>, Sung-Bin Park<sup>6</sup>, Jošt Valentin Lavrič<sup>6</sup>, Martin Heimann<sup>1,6</sup>, Tuukka Petäjä<sup>1</sup>, Timo Vesala<sup>1,7</sup>, Ivan Mammarella<sup>1</sup>, Pasi Kolari<sup>1</sup>, Jaana Bäck<sup>7</sup>, Üllar Rannik<sup>1</sup>, Veli-Matti Kerminen<sup>1</sup>, and Markku Kulmala<sup>1</sup>

<sup>1</sup>Institute for Atmospheric and Earth System Research / Physics, Faculty of Science, University of Helsinki, P.O. Box 64, 00014 Helsinki, Finland

<sup>2</sup>Tartu Observatory, Faculty of Science and Technology, University of Tartu, Tõravere, Nõo parish, 61602 Tartu county, Estonia

<sup>3</sup>Institute of Physics, Faculty of Science and Technology, University of Tartu, 50411, Tartu, Estonia

<sup>4</sup>Department of Plant Physiology, Institute of Agricultural and Environmental Sciences, Estonian University of Life Sciences, EE-51006 Tartu, Estonia

<sup>5</sup>V.E. Zuev Institute of Atmospheric Optics of Siberian Branch of the Russian Academy of Sciences, 634055 Tomsk, Russia

<sup>6</sup>Max Planck Institute for Biogeochemistry, Hans-Knöll-Str. 10, 07745 Jena, Germany

<sup>7</sup>Institute for Atmospheric and Earth System Research / Forest Sciences, Faculty of Science, University of Helsinki, P.O. Box 64, 00014 Helsinki, Finland

*Correspondence to:* Ekaterina Ezhova (ekaterina.ezhova@helsinki.fi)

**Abstract.** The effect of an aerosol loading on solar radiation and further on photosynthesis is a relevant question for estimating climate feedback mechanisms. This effect is quantified in the present study using ground-based measurements from five remote sites in boreal and hemiboreal (coniferous and mixed) forests of Eurasia. The diffuse fraction of global radiation associated with the direct effect of aerosols, that is excluding the effect of clouds, increases with an increasing aerosol loading. The increase in the diffuse fraction of global radiation from approximately 0.11 on the days characterized by low aerosol loading up to 0.2 - 0.27 pertaining to relatively high aerosol loading leads to the increase in gross primary production (GPP) at all sites by 6-14%. The largest increase in GPP (relative to the days with low aerosol loading) is observed for two types of ecosystems: a coniferous forest at the high latitudes and a mixed forest at the middle latitudes. For the former ecosystem the change in GPP due to relatively large increase in the diffuse radiation is compensated by the moderate increase in the light use efficiency. For the latter ecosystem, the increase in diffuse radiation is smaller for the same aerosol loading, but the smaller change in GPP due to this relationship between radiation and aerosol loading is compensated by the higher increase in the light use efficiency. The dependency of GPP on the diffuse fraction of solar radiation has a weakly pronounced maximum related to clouds.

### 1 Introduction

According to the IPCC report (Pachauri et al., 2014), the influence of aerosol loading on solar irradiance remains a relevant open question. Aerosol particles influence the radiative balance of the Earth by aerosol-radiation and aerosol-cloud interactions.



The aerosol-radiation interaction includes scattering and absorption of solar radiation (direct effect), and potential changes in cloud properties associated with these radiative effects (semi-direct effect). Another important consequence of aerosol-radiation interactions is an increase in the diffuse fraction of solar radiation entering the Earth surface.

The influence of aerosol-radiation interaction on the diffuse fraction of solar radiation is relevant for the estimates of the terrestrial carbon sink and in understanding of climate feedback mechanisms. The increase in the land carbon sink due to the enhanced industrial aerosols was estimated to be 20-25% during the period of ‘global dimming’ between 1960 and 1999 in the modelling study by Mercado et al. (2009). The physical mechanism behind the growth of the terrestrial carbon sink is as follows. An increased diffuse fraction of solar irradiance due to aerosol makes it easier for light photons to penetrate into the canopy. Moreover, diffuse light coming from different angles increases the efficiency of CO<sub>2</sub> uptake by leaves of different orientation (Alton et al., 2007). This leads to an increase in the light use efficiency of plants (LUE, quantifying the amount of CO<sub>2</sub> fixed by an ecosystem per unit photosynthetically active radiation) and gross primary production (GPP, quantifying the amount of CO<sub>2</sub> fixed by an ecosystem per unit area per unit time). This mechanism, however, is ecosystem-dependent and presumably depends on canopy height and leaf area index (Niyogi et al., 2004; Kanniah et al., 2012; Cheng et al., 2015): an enhanced diffuse radiation does not lead to an increase in grasslands’ GPP, while GPP of broadleaf forests can be significantly increased. Similarly, the study based on AmeriFlux data from several sites (Cheng et al., 2015), including broadleaf forests and crops, suggests an increase in GPP due to diffuse radiation for forests rather than for crops.

Estimates of aerosol effect on GPP are uncertain for two reasons. First, it is not clear how large aerosol effect on diffuse radiation is. Second, the associated effect of diffuse radiation on GPP can be both negative and positive (Niyogi et al., 2004; Alton, 2008; Park et al., 2018). Therefore, aerosol-radiation interaction may lead either to increase or decrease in GPP, depending on aerosol loading. As an example, Niyogi et al. (2004) reports an increase in GPP for broadleaf forests at any aerosol loading typical for the sites they considered. On the contrary, a recent model study suggests that for a substantial part of boreal forests on the territories of Finland, Estonia and Russia, the direct aerosol effect at relatively high aerosol loading leads to a decrease in the annual diffuse irradiance and GPP (Lu et al., 2017). Often estimates on the effects of solar radiation on GPP have been obtained involving parametrizations (Alton, 2008), based on the results of numerical modelling and satellite observations (Lu et al., 2017). The aims of this study are to provide a comprehensive data analysis related to the direct effect of aerosol on solar radiation, to separate cloud and aerosol effects on solar irradiance, and to further quantify the influence of solar radiation on GPP. The data sets include continuous field measurements from five stations in Finland, Estonia and Russia.

Note that this analysis can be put into a broader context regarding the quantification of terrestrial feedback loops, e.g. the COntinental Biosphere-Atmosphere-Cloud-Clim ate (COBACC) feedback loop (Kulmala et al., 2014). This loop considers the effect of carbon dioxide concentration on biogenic volatile organic compound emissions (BVOC), further relates BVOC-aerosol interactions to the variability in solar radiation and finally the loop is closed with the effects of radiation for the ecosystem GPP and CO<sub>2</sub> concentration. Here we provide the quantification of the part of this loop related to aerosol - solar radiation - photosynthesis interactions in boreal and hemiboreal forests.

The study consists of two parts, using in situ measurements from the five selected sites (the information about the sites and corresponding data sets is given in Section 2). In the first part (Section 3) we quantify the effect of aerosol-radiation interaction



on diffuse radiation in boreal forests. For the estimates of the effect of aerosol on solar radiation it is important to separate clear time of the day from cloudy time, because clouds are much more effective than aerosols in scattering of solar irradiance. In some of previous studies (Gu et al., 2002; Kulmala et al., 2014) this separation was made based on the ratio between actually measured global irradiance and that theoretically calculated at the top of the atmosphere. This criterion of clear days can indeed be acceptable when one needs to distinguish between mostly sunny/mostly cloudy days from the point of view of the incoming global irradiance or the incoming solar energy. However, it fails to separate sunny/cloudy time from the point of view of diffuse irradiance amount, which is crucially important for photosynthesis. Generally, radiation data used for analyses is averaged over some time interval (often half an hour). Some types of clouds, such as cumulus, are rather intermittent with a period of oscillations of several minutes (e.g., Duchon and O'Malley, 1999). During the periods when there is no cloud in front of the sun, global irradiance can be even higher than theoretically predicted due to a global radiation enhancement (Pecenak et al., 2016). As a result, an averaged global irradiance can be close to that theoretically predicted for the clear sky, while at the same time an averaged diffuse irradiance is significantly enhanced due to the presence of clouds. Such data can be erroneously attributed to clear sky conditions, so that the effects of clouds on the diffuse radiation can be associated with the direct aerosol effect. These kind of conditions are most likely to cause the highest GPP, because global irradiance does not decrease while diffuse irradiance is already high.

In the second part of this study (Section 4), we will consider the effect of solar radiation on GPP. We will investigate the effect of diffuse fraction of solar radiation on LUE and further quantify the maximum effect on GPP due to aerosol-radiation interaction for different ecosystems in boreal forest.

## 2 Sites and data sets

We used data from five remote forest sites located at the middle and relatively high latitudes in Finland, Estonia and Russia: SMEAR I (Värriö, Finland), SMEAR II (Hyytiälä, Finland), SMEAR Estonia (Järvelja, Estonia), Zotino (Zotino, Krasnoyarsk region, Russia) and Fonovaya (Tomsk region, Russia). Fig. 1 illustrates sites' location on the map, while Table 1 summarizes the information on the data sets used in the present study. The information on instruments can be found from the separate papers describing the stations (listed below) and AVAA Internet site for SMEAR I and II (<https://avaa.tdata.fi/web/smart>).

SMEAR II (Hari and Kulmala, 2005) is located at Hyytiälä Forestry Field Station in a conifer boreal forest near the lake, central Finland. The site is a managed, 55-year old Scots pine (*Pinus sylvestris* L.) forest stand with closed canopy and average tree height ca 18 m.

SMEAR I (Hari et al., 1994) is the site characterized by the highest latitude, it is located in Finnish Lapland. The site has ca 60-year old Scots pines with a rather open canopy, average tree height is ca 10 m.

SMEAR Estonia (Noe et al., 2015) is located in a hemiboreal forest zone and the stands in the tower footprint consist of a mixture of coniferous (Scots pine and Norway spruce (*Picea abies* L. Karst)) and deciduous (silver birch (*Betula pendula* Roth.) and downy birch (*Betula pubescens* Ehrh.)) trees. Because of the high heterogeneity and the mosaic of stands of hemiboreal forests the stand age is on average 65 years ranging from 43-year old Larch stands to 120-year old Pine stands. The



average age of the dominating species are 102 years for Pine, 79 years for Spruce and 68 years for Birch. Also tree height is therefore variable and it is 22 m on average (ranging between 10 m and 30 m).

Fonovaya, Tomsk region is the most southern site (Matvienko et al., 2015). It is located on the river Ob' in West Siberia, Russia, and forest stand is represented by mixed forest. The stand is dominated by 50-year old Scots pine, 45-year old Birch  
5 (*Betula verrucósa*) and 27-year old Aspen (*Populus tremula*). Average tree height is ca 30 m, ranging from 25 m for Birch and up to 40 m for Pines.

Zotino (Heimann et al., 2014; Park et al., 2018) is located near the river Yenisei in Central Siberia. The forest is dominated by 100-year old Scots pines with average height ca 20 m.

Thus, we have data sets from five sites with three of them represented by pine stands and two by mixed forests, all of them  
10 located at the middle latitudes. Note that currently the data from these five stations form the largest possible set of simultaneous atmospheric observations on trace gases, meteorology, solar radiation and aerosols, conducted in boreal and hemiboreal forests in Eurasia. Some of these sites lack certain components necessary for the analysis and therefore we use parametrizations when needed (and possible). For example, the diffuse fraction of solar radiation was parameterized in the dataset from Fonovaya. Following Gu et al. (2002) and Alton (2008), we used the formula

$$15 \quad f_{diff} = R_d/R_g = 1.45 - 1.81x, \quad (1)$$

where  $x = R_g/R_{TOA}$  is the ratio of the measured global irradiance to the modelled irradiance on the top of atmosphere. The radiation on the top of atmosphere was calculated as  $R_{TOA} = I_0 \cos(sza)$ , where  $I_0$  is the solar constant.

Currently aerosol characteristics are not measured at Zotino and there are no Aeronet sites nearby, therefore aerosol-radiation  
20 interaction has not been studied for Zotino. However, radiation and CO<sub>2</sub> flux, necessary for the radiation-photosynthesis analysis, are measured and therefore Zotino set has been included in this study.

The data used in this study correspond to the peak growing season defined as the time period with maximum GPP. Typically it includes June-August and partly May and September for all the sites except SMEAR I, where it includes July-August and part of June and September. For consistency, we used June-August data for SMEAR II, SMEAR Estonia, Fonovaya and Zotino and July-August data for SMEAR I. The analysis is performed for daytime (09:00 – 15:00 local time), half an hour-averaged  
25 data.

### 3 Aerosol effect on the incoming solar radiation

#### 3.1 Criterion of clear sky based on clear sky model Solis

To demonstrate the difference between the effect of aerosol and clouds on solar radiation, we used a simplified broadband version of a clear sky radiative transfer model (RTM) - Solis (Ineichen, 2008). This is a quasi-physical model which means  
30 that it employs Lambert-Beer relations for the general estimates of irradiance while using parametrizations for the total optical depths. The input parameters are the aerosol optical depth at 700 nm (AOD<sub>700</sub>) and precipitable water (PW). Parameterizations



are developed for the following range of parameters: sea level < altitude < 7000 m,  $0 < \text{AOD}_{700} < 0.45$  and  $0.2 \text{ cm} < \text{PW} < 10 \text{ cm}$ .

Solis parameterizations were obtained with 'urban' type of aerosol size distribution in the full RTM (Ineichen, 2008). The difference between calculations for 'urban' and 'rural' types of aerosol for the same  $\text{AOD}_{700} = 0.18$  was reported by Mueller et al. (2004). This value of  $\text{AOD}_{700}$  is larger than the typical values for all the places that we consider in this study, hence, we expect smaller errors due to the inconsistent aerosol type. The difference reported by Mueller et al. (2004) was negligible for direct irradiance, whereas global irradiance for 'rural' aerosol was around  $20 \text{ W/m}^2$  larger during the daytime. Given that for clear sky conditions between 9:00 and 15:00 and during the growing season, global irradiance falls down to  $\sim 600 \text{ W/m}^2$ , this difference introduces a maximum error of 3%. More tests for several sites in the USA and comparison between Solis and two more simplified clear-sky models, Bird and REST2, were reported by Sengupta and Gotseff (2013). Solis is the optimal model from the point of view of the required parameters. By performing only slightly worse as compared with the two other models, it requires only two input parameters. The input parameters for the model (AOD at 675 nm and PW) were taken from Aeronet (Holben et al., 1998) and averaged over daytime. We used Version 2, Level 2 data (cloud screened and quality controlled), except for Fonovaya where we used Version 3, Level 2 data. For SMEAR I we used AOD and PW measured at Sodankylä in approximately 70 km from Värriö.

We used Solis to model both global and diffuse irradiance. The horizontal global irradiance,  $I_{\text{gh}}$ , was calculated as follows

$$I_{\text{gh}} = R_{\text{g,mod}} = I'_0 \exp\left(-\frac{\tau_{\text{g}}}{\cos^g(sza)}\right) \cos(sza), \quad (2)$$

while the direct irradiance,  $I_{\text{dir}}$ , was calculated as

$$I_{\text{dir}} = I'_0 \exp\left(-\frac{\tau_{\text{b}}}{\cos^b(sza)}\right). \quad (3)$$

Here  $I'_0$  is a common modified (enhanced) irradiance defined in (Ineichen, 2008),  $\tau_{\text{b}}$  and  $\tau_{\text{g}}$  are the direct and global total optical depths,  $b$  and  $g$  are the fitting parameters,  $sza$  is the solar zenith angle. Diffuse radiation can be found from the global radiation balance as

$$I_{\text{dh}} = R_{\text{d,mod}} = I_{\text{gh}} - I_{\text{dir}} \cos(sza). \quad (4)$$

All the parametrizations used in the model are given in (Ineichen, 2008). The algorithm used for calculations is written in Fortran. For the calculation of  $sza$ , the on-line calculator Solar Position Algorithm (SPA) was used (available from <http://www.nrel.gov>).

We first report the model test against diffuse and global irradiance measurements at SMEAR Estonia. Examples of the global and diffuse radiation diurnal cycles for clear and cloudy days are displayed in Fig. 2. In general, the model performs well during clear sky conditions as can be seen in the left panel of Fig. 2. This is in accordance with the results of Sengupta and Gotseff (2013). On a cloudy day (right panel, Fig. 2), there were times (e.g. at 09:00 and 17:00) when the measured and modelled global irradiance ( $R_{\text{g,meas}}$  and  $R_{\text{g,mod}}$ ) were nearly equal while the measured diffuse irradiance ( $R_{\text{d,meas}}$ ) was significantly higher than the modelled one ( $R_{\text{d,mod}}$ ). The criterion of clear sky based on the comparison between the modelled and measured global irradiance, i.e. involving only global irradiance, does not filter out these points.



A further illustration of the simplified criterion and its consequences for the diffuse fraction of global irradiance is given in Fig. 3, displaying the diffuse fraction of global irradiance under clear sky conditions at SMEAR Estonia (summer 2016). The open symbols together with the closed symbols correspond to the data obtained using the clear sky criterion involving only global radiation:

$$5 \quad R_{g,\text{meas}}/R_{g,\text{mod}} \geq 0.9 \quad (5)$$

while the closed symbols show the data obtained with the criterion involving both diffuse and global radiation:

$$R_{g,\text{meas}}/R_{g,\text{mod}} \geq 0.9 \text{ and } 0.8 \leq R_{d,\text{meas}}/R_{d,\text{mod}} \leq 1.2. \quad (6)$$

The criterion of clear sky suggested here is based on the results of Sengupta and Gotseff (2013), who determined an r.m.s. error of the linear regression corresponding to the measured global radiation and modelled one using Solis for eight sites. This r.m.s. error did not exceed 10% (cf. criterion (5) using global radiation), and generally was lower than that. As for diffuse radiation, we took 20% difference between measured and modelled diffuse radiation in criterion (6). This difference was chosen based on the estimated  $18 \text{ W m}^{-2}$  error in diffuse radiation between the full radiative transfer model Solis and measurements, reported by Ineichen (2008), and by assuming a typical diffuse radiation value of  $120 \text{ W m}^{-2}$ , an by adding 5% error between the simplified model and the full radiative transfer model Solis. Closed symbols in Fig. 3 show a good agreement between the measured and modelled diffuse fractions of solar irradiance  $R_d/R_g$ , while a considerable part of open symbols has large measured  $R_d/R_g$ , that is, they contain a big fraction of cloud-influenced data. Therefore, the criterion of clear sky based on the global and diffuse radiation can be used to detect clear sky data when it is important to separate the effect of aerosol and clouds on diffuse radiation.

Note that the diffuse fraction of solar irradiance due to aerosol loading at SMEAR Estonia lies between 0.08 and 0.21. As shown later, this relatively low ratio pertains to all the sites under this study: the maximum diffuse fraction of solar irradiance due to the direct aerosol effect was no more than 0.27 at the remote sites in boreal forests during the growing season.

### 3.2 Comparison between PAR and broadband radiation measurements

Note that at different sites the measurement methods of solar radiation are different. At SMEAR II before 2009 and Fonovaya only broadband radiation is measured, while at SMEAR I and Zotino only photosynthetically active radiation (PAR) is measured. At SMEAR II after 2009 both global PAR and broadband global radiation, as well as diffuse PAR are measured. Shortwave broadband radiation, referred to as broadband radiation, is the radiation in the spectral range between  $0.3 \mu\text{m}$  and  $4.8 \mu\text{m}$ , while PAR is the radiation relevant for photosynthesis, i.e. in the range of wavelengths between 400 and 700 nm. The former is typically measured with thermopile pyranometers (energy sensors) and reported in energy units [ $\text{W m}^{-2}$ ], while the latter is measured with quantum sensors and is reported in quantum units [ $\mu\text{mol s}^{-1} \text{m}^{-2}$ ].

Aerosol particles influence a certain part of the spectra of solar irradiance depending on the particle size distribution (e.g., Seinfeld and Pandis, 2016). This effect can be better understood by using a dimensionless size parameter  $\pi d_p/\lambda$ , where  $\lambda$  is the wavelength of incident irradiance and  $d_p$  is the particle diameter. If  $\pi d_p/\lambda \ll 1$ , then Rayleigh scattering is prevailing,



while  $\pi d_p/\lambda \gg 1$  means that the scattering properties of the particles are determined by the geometrical optics, so-called geometric scattering. The characteristics of aerosol distribution become important for solar irradiance if  $\pi d_p/\lambda \sim 1$ . For boreal forests with the particle size distribution governed typically by the well-pronounced mode with the geometric mean diameter  $d_p \approx 100$  nm (Dal Maso et al., 2008), the effective interaction of aerosols with solar radiation occurs in the ultraviolet range of the wavelengths (100-400 nm) and in the blue part of the optical spectrum (400-500 nm). As compared to PAR, the essential part of the broadband radiation energy is contained in the near infrared part of the spectrum (700-1400 nm), which is not affected by the relatively small particles prevailing in aerosol distributions typical for boreal forest. This means that in principle, the effect of aerosols on the diffuse fraction of solar irradiance can be different for PAR and broadband radiation. Qualitatively, one would expect that both the increase in diffuse radiation and the decrease in global radiation would be more pronounced for PAR, so that the diffuse fraction of solar irradiance pertaining to PAR would be higher under the same aerosol conditions.

Global irradiance should be less sensitive to the aerosol effect, at least at clean remote sites, because the aerosol loading is relatively small and the attenuation of global radiation due to backscattering away from the Earth is expected to be small both for PAR and broadband radiation. Hence, the ratio of global PAR to the global broadband radiation is largely constant. Hereafter, following Ross and Sulev (2000), the ratio of PAR [ $\mu\text{mol s}^{-1} \text{m}^{-2}$ ] to the broadband radiation [ $\text{W m}^{-2}$ ] is called PAR quantum efficiency  $\chi$ . By comparing measurements of broadband global radiation and global PAR for clear sky conditions at SMEAR II,  $\chi_{\text{glob}} = 2.06 \mu\text{mol s}^{-1} \text{W}^{-1}$  was obtained, somewhat higher than  $1.81 \mu\text{mol s}^{-1} \text{W}^{-1}$  reported by Ross and Sulev (2000) for Estonia.

On clear sky days, broadband diffuse radiation is significantly smaller than global radiation and, consequently, it is more affected by the wavelength-sensitive interactions with aerosols. In order to make our analysis consistent and to be able to compare results from different sites, we performed analysis of the data from SMEAR Estonia to compare diffuse fraction of PAR and broadband radiation. The data set includes four years, from 2014 to 2017.

The measurements at SMEAR Estonia are made using an energy sensor. The hyperspectral radiometer SkySpec (Kuusk and Kuusk, 2018) is a purpose-built instrument for automated measurement of global and diffuse sky irradiance. To obtain PAR radiation, the spectral data are converted from energy units to quantum units and integrated over 400 nm to 700 nm spectral range. Integration over the whole available spectral range in energy units is used for simulating a thermopile pyranometer.

Fig. 4 displays the ratio between the diffuse fraction of PAR,  $f_{\text{dif}} f_{\text{PAR}}$ , and the diffuse fraction of broadband radiation,  $f_{\text{dif}} f_{\text{bb}}$ , as a function of  $f_{\text{dif}} f_{\text{bb}}$  where  $f_{\text{dif}} f = R_d/R_g$ . Since the radiation level depends on a solar zenith angle, we cast the daytime data into three solar zenith angle bins, the width of each bin being  $10^\circ$ . Each data set was fitted by the exponential function

$$f(x) = a \exp(-(x - b)/c) + d. \quad (7)$$

The coefficients of the fitting function for each bin are reported in Table 2. Note that we obtained PAR quantum efficiency for diffuse radiation and clear sky, at the high sun position, around 2.4, in accordance with the results of Ross and Sulev (2000). However, here we report the coefficient that makes it possible to compare the diffuse fractions of PAR and broadband radiation over the whole range of sky conditions, including clear and cloudy skies. As expected, we observed an increase in the diffuse fraction of PAR up to 27% as compared to the value for broadband radiation at small  $f_{\text{dif}} f_{\text{bb}}$ , corresponding to



clear-sky conditions. The ratio  $f_{di}f_{PAR}/f_{di}f_{bb}$  approaches one for overcast cloudy conditions, as in this case diffuse radiation prevails for both PAR and broadband radiation. In absolute values, the difference between the diffuse fraction of the PAR and broadband radiation is not very large (e.g.,  $f_{di}f_{bb} = 0.15$  corresponds to  $f_{di}f_{PAR} = 0.18$  under clear sky). However, since the diffuse fraction of global radiation in boreal forests varies in a relatively small range due to the direct effect of aerosol (e.g., Fig.3), it is important to make corrections. We will use these results in section 3.3 to obtain the diffuse fraction of global broadband irradiance for the sites where only PAR was measured. In what follows we use the term 'diffuse fraction of global radiation' for broadband radiation.

### 3.3 Aerosol influence on the diffuse fraction of global irradiance: comparative analysis for four sites

In this section, we consider the effect of aerosol on the diffuse fraction of global irradiance. Following Kulmala et al. (2014), we chose the condensation sink (CS) as a parameter that represents an aerosol loading in the air. CS is calculated from the particle number-size distribution as (Kulmala et al., 2001):

$$CS = 2\pi D_v \int_0^{d_{p,max}} d_p \beta n(d_p) dd_p, \quad (8)$$

where  $D_v$  is the diffusion coefficient of the condensing vapour,  $n(d_p)$  is the particle number-size distribution, and  $\beta$  is the Fuchs-Sutugin coefficient. The physical meaning of the CS is the inverse time needed for vapours to be uptaken by existing aerosol particles. Similar to the scattering efficiency, which is an important parameter for diffuse irradiance, the value of CS depends on an aerosol surface area. However, the contribution of large particles to the CS diminishes with the increasing particles' diameter, opposite to an aerosol surface area. This effect becomes pronounced for the particles with the diameter larger than about 300 nm. For boreal forests, where the mode with a geometric mean diameter of around 100 nm dominates in the particle number-size distribution, CS can be assumed to be directly proportional to the aerosol surface area (Ezhova et al., 2018). Thus, one can expect that CS is an appropriate measure of atmospheric aerosols for the radiation studies in boreal forests.

In the following analysis the data were filtered to include only clear sky conditions, based on the modelled and measured global irradiance, using criterion (5) for all the sites. We deliberately used the criterion based only on the global irradiance in order to demonstrate the effect of unfiltered cloud-contaminated data on the diffuse fraction of solar irradiance. Fig. 5 displays  $R_d/R_g$  vs CS in at SMEAR I and II, SMEAR Estonia and Fonovaya (no aerosol data is available from Zotino). To separate the effect of clouds and aerosol particles, we report two quantities: the measured diffuse fraction of global irradiance (blue symbols) and the modelled diffuse fraction of global irradiance (orange symbols). Based on the analysis in Subsection 3.1, modelling provides information about the direct effect of aerosol on the diffuse fraction of global irradiance, while measurements illustrate the combined effects due to aerosols and clouds. Note that for consistency all the ratios  $R_d/R_g$  were corrected in accordance with the previous section, that is, only the ratios corresponding to the broadband radiation are reported (though PAR is measured at SMEAR I and II). For SMEAR I, the model data set includes four years, while only two years of measured data are available. Diffuse radiation is not measured at Fonovaya station, hence only model results are shown. Moreover, the data from 2016 were





not used due to the forest fires in Siberia. Smoke plumes have large influences on the aerosol size distribution as a result of which the clear-sky model fails to predict diffuse and global radiation.

We observed an increase in  $R_d/R_g$  with increasing CS is observed at all the sites, as follows from the model results. Note that the modelled values of  $R_d/R_g$  correspond to the lower points in the measured data sets. The blue points above the modelled data are characterized by a larger diffuse radiation than those obtained for current AODs using Solis, and hence represent the effect of clouds. According to the model calculations, the maximum diffuse fraction of global radiation due to the direct effect of aerosol did not exceed 0.27, while the minimum fraction was about 0.1. Also, aerosol population with CS smaller than approximately  $0.005 \text{ s}^{-1}$  do not contribute significantly to light scattering, since the diffuse fraction of global irradiance for these values of CS is almost constant and close to 0.1, which can be attributed mostly to Rayleigh scattering.

We fitted modelled and measured data with the linear function  $y = kx + b$ . The best-fit coefficients and correlation coefficients for four sites are reported in Table 3. All the dependences pertaining to modelled data and corresponding to the direct effect of aerosol particles on solar radiation had correlation coefficients larger than 0.53 (except Fonovaya, where  $R = 0.44$  supposedly because of the small data set). On the contrary, cloud-influenced data demonstrate rather weak correlations with  $0.18 < R < 0.33$ .

It follows from Table 3 that, in addition to making correlations insignificant, cloud-biased data lead to the overestimation of the diffuse fraction of global radiation at low aerosol loading and consequently underestimation of the effect of increasing aerosol loading. If CS increases from  $0.002 \text{ s}^{-1}$  to  $0.02 \text{ s}^{-1}$ , a relative increase in the diffuse fraction of global radiation following from the clear-sky model is from 110% to 165% at all the sites except Fonovaya, while this increase is between 65% and 118% for cloud-biased data. In absolute values this increase was quite small: from 0.11 to  $\sim 0.27$  at SMEAR I and II, from 0.11 to  $\sim 0.18$ -0.22 at SMEAR Estonia and Fonovaya. We will use these data in Section 4 to estimate an increase in GPP due to the direct aerosol effect on radiation.

## 4 Gross primary production vs the diffuse fraction of global radiation

### 4.1 Diffuse radiation effect on GPP: comparative analysis for all the sites

In this section, we focus on the photosynthetic activity of ecosystems and the effect of the diffuse fraction of global radiation on photosynthesis (represented by GPP). Note, that  $\text{CO}_2$  flux was obtained by the micrometeorological (eddy covariance) method at SMEAR stations and Zotino, while the gradient method was applied to obtain  $\text{CO}_2$  flux from Fonovaya data set. GPP was calculated from the formula

$$\text{GPP} = \text{TER} - \text{NEE}, \quad (9)$$

where TER is the total ecosystem respiration and NEE is the net ecosystem exchange. TER was obtained for all ecosystems using the nighttime method of  $\text{CO}_2$  flux partitioning (Reichstein et al., 2005). Eq. (9) is written to yield a positive GPP. The partitioning method at SMEAR I and II was based on soil temperature which makes the method more precise (Kolari et al., 2009; Lasslop et al., 2012), while at other sites it was based on air temperature (soil temperature is not measured). According



to Lasslop et al. (2012), a possible consequence for average GPP calculated during daytime (9:00-15:00), is a decrease in GPP calculated using soil temperature by about  $0.5 \mu\text{mol s}^{-1} \text{m}^{-2}$  as compared to GPP calculated using air temperature. This will not significantly affect our results.

There is a strong evidence that the dependence on  $R_d/R_g$  is not linear and has a maximum (Alton, 2008; Moffat et al., 2010; Park et al., 2018), but this maximum is not always well pronounced. In what follows we explain the GPP maximum based on the ecosystem LUE and PAR dependences on  $R_d/R_g$ . Following Cheng et al. (2015), we defined LUE as GPP per unit PAR, therefore  $\text{GPP} = \text{LUE} \cdot \text{PAR}$ . Strictly speaking, LUE is defined as GPP per unit absorbed PAR, which is typically  $\text{PAR}_{\text{abs}} = 0.8\text{PAR}$ . Therefore, one can obtain LUE defined with absorbed PAR simply dividing LUE used in the present study by 0.8. For all ecosystems with sufficiently deep canopy and high leaf area index, LUE is expected to increase with  $R_d/R_g$ , as more photons can penetrate inside the canopy and they can be used for photosynthesis. Some studies (e.g., Niyogi et al., 2004) reported a linearly growing dependence of LUE on  $R_d/R_g$ . Furthermore, a decrease of PAR with  $R_d/R_g$  can be expected, because an increase in the diffuse fraction of global irradiance corresponds to the enhancement of the scattering and reflecting properties of the atmosphere due to the presence of aerosols or clouds. Therefore, for each site the dependences of LUE and PAR on  $R_d/R_g$  were investigated separately, after which the GPP dependence on  $R_d/R_g$  was derived from these two dependences.

Again, in order to have consistent data sets, we recalculated  $R_d/R_g$  obtained from PAR measurements to have it in terms of broadband radiation at all the sites. Conversely, broadband global radiation from Fonovaya data set was recalculated to PAR when investigating LUE and PAR dependence on  $R_d/R_g$ . We multiplied global radiation by  $\chi_{\text{glob}} = 2.06 \mu\text{mol s}^{-1} \text{W}^{-1}$  in order to get PAR in quantum units. The PAR quantum efficiency was chosen equal to the one at SMEAR II, since for the daytime and similar solar zenith angles it is mostly aerosol dependent, and SMEAR II and Fonovaya have in general similar aerosol loading which can be confirmed by their similar values of CS (Fig. 5). Considering LUE, we filter out the data having a low global irradiance,  $R_g \leq 100 \text{W m}^{-2}$  ( $\text{PAR} \leq 200 \mu\text{mol s}^{-1} \text{m}^{-2}$ ). Below this critical  $R_g$ , LUE may either significantly increase or decrease, which is probably a consequence of plants physiology under low light conditions.

Fig. 6 displays the dependences of LUE on  $R_d/R_g$  for all sites. All these dependences exhibit a linear relationship with the correlation coefficients between  $R = 0.67$  and  $R = 0.83$  (except Fonovaya with  $R = 0.44$ , which can be attributed to both short data set and less precise gradient method used for the  $\text{CO}_2$  flux calculations). The LUE slope reflects the canopy properties, i.e. it characterizes the ability of a forest stand to uptake more  $\text{CO}_2$  in response to an increasing diffuse fraction of solar irradiance. The steepest LUE slopes pertain to the mixed forests at SMEAR Estonia and Fonovaya, while the slopes are approximately 60% less steep in coniferous forests (Table 4). This difference is presumably due to the forest type, as mixed forests have a larger potential for the photosynthetic activity enhancement due to a larger leaf area index and deeper canopy. Note that the increase in LUE from approximately 0.01 to 0.03-0.04  $\text{mol CO}_2 \text{mol photons}^{-1}$  observed for mixed forests is similar to that reported by Cheng et al. (2015) for mixed and broadleaf forests in the United States of America.

Fig. 7 displays the dependences of the global PAR on  $R_d/R_g$  for all sites. As expected, PAR decreases with an increasing  $R_d/R_g$ : at smaller values due to aerosol particles, and at larger values due to clouds. As follows from Fig. 5, the values of  $R_d/R_g < (0.2 - 0.27)$  correspond mostly to the influence of aerosol particles (but they can also be influenced by thin clouds),



while larger values of  $R_d/R_g$  are associated with the presence of clouds. Similarly to LUE, these dependences are linear with high correlation coefficients ( $0.78 < R < 0.90$ ). Generally, the slopes of the linear dependences in Fig. 7 were similar ( $1130 \text{ W m}^{-2} \pm 5 \%$ ), which can probably be attributed to similar cloud attenuating properties over all the sites at the middle latitudes. The exception is SMEAR I, where the slope is lower ( $944 \text{ W m}^{-2}$ ). Solar radiation under clear sky conditions is also significantly lower at SMEAR I as compared to other places, which is partly due to the high latitude, and partly because the growing season at SMEAR I is July and August (i.e., it does not include June with the highest global irradiance values).

The vertical scattering of the data in Fig. 7 is presumably due to two factors: first, due to the variability in the radiation intensity during daytime and growing season, and second, due to the different influences of clouds, as the same diffuse fraction of global irradiance may pertain to the different attenuations of global radiation by clouds. Note that the latter factor is excluded from the Fonovaya data set by the parameterization. One can conclude that the PAR variability due to clouds was larger than the diurnal (associated with different solar zenith angles during the day) and day-to-day PAR variability in the growing season. Thus, additional binning by, e.g. solar zenith angle, would be redundant, since the decrease in PAR variability due to binning would be hidden by the stronger scattering due to clouds.

Finally, based on the linear dependences of LUE on  $R_d/R_g$  and PAR on  $R_d/R_g$ , we can estimate how GPP depends on  $R_d/R_g$ . When we multiplied LUE by PAR, a parabolic dependences were obtained for all the sites, with a maximum due to the effect of diffuse radiation on photosynthesis. Fig. 8 shows estimated GPP dependences on  $R_d/R_g$  for different sites.

Several conclusions can be made based on these dependences. First, an increase in aerosol loading from their minimum values ( $CS \approx 0.002 \text{ 1/s}$ ) up to the maximum values ( $CS \approx 0.02 \text{ 1/s}$ , see Fig. 5) leads to an increase in GPP at all sites. From Fig. 5, we can estimate that  $R_d/R_g$  varies between 0.11 and 0.27 for SMEAR I and II, and between 0.11 and 0.2 for Fonovaya and SMEAR Estonia. The increases in  $R_d/R_g$  over these value ranges lead to increases in GPP from 17.2 to 18.6  $\mu\text{mol s}^{-1} \text{ m}^{-2}$  at Fonovaya, from 18.5 to 20.9  $\mu\text{mol s}^{-1} \text{ m}^{-2}$  at SMEAR Estonia, from 15.8 to 16.9  $\mu\text{mol s}^{-1} \text{ m}^{-2}$  at SMEAR II and from 8.8 to 10.0  $\mu\text{mol s}^{-1} \text{ m}^{-2}$  at SMEAR I. The largest relative increase in GPP due to the increasing aerosol loading from its minimum value to the maximum value was observed for SMEAR I and SMEAR Estonia (14% and 13% respectively). Note, however, that the median value of CS should be increased by a factor of about 5 at SMEAR I to get this maximum gain in GPP, whereas this same increase in GPP would be observed at SMEAR Estonia if the median CS increases by a factor of 2-3. Note that aerosol loading observed at all sites corresponds to  $0.04 < \text{AOD}_{675} < 0.35$  with the typical values being in the range 0.05-0.10, which means that  $\text{AOD}_{500}$  is less than 1. In accordance with the previous studies (Cirino et al., 2014; Park et al., 2018), we reported an increase in GPP with increasing aerosol loading (CS) at all sites for these relatively low AOD values. Second, all the GPP dependences have a maximum due to clouds. The largest increase is 32-33% at SMEAR Estonia and Fonovaya, whereas the smallest increase is 11% at SMEAR II as compared to the GPP values on clear days characterized by low aerosol loading. At the middle latitudes with the similar attenuation of radiation due to aerosols and clouds, the increase in GPP depends on the LUE slope: the steeper is LUE slope is, the more pronounced is the maximum. Third, similar forest stands at Zotino and SMEAR I demonstrated similar dependencies of GPP on  $R_d/R_g$ , while this dependence was different for the coniferous forest at SMEAR II. GPP at SMEAR II under clear sky is almost 1.5 times larger than the corresponding GPP at SMEAR I and Zotino, but GPP increase under cloudy sky is smaller at SMEAR II. This could be the consequence of the



closed canopy and higher leaf area index of the SMEAR II forest stand. Finally, we considered the data from Zotino including the periods of forest fires (Park et al., 2018). Fig. 7 suggests that forest fires do not have any specific influence on PAR decrease with increasing  $R_d/R_g$  as compared to cloudy sky. In other words, plumes from forest fires lead to similar decrease in PAR as some of clouds. The same holds for the LUE of an ecosystem: the dependence of LUE on  $R_d/R_g$  at Zotino is similar to that of other coniferous sites. However, a significant increase in GPP under wildfire plumes can be potentially obtained on the daily time scale because the radiation regime with  $(R_d/R_g)_{\max}$ , i.e. close to the optimal conditions for ecosystem photosynthesis, can persist for a long time under plume. At the same time, clouds may be intermittent and the effect of sporadic GPP increase can be compensated by the smaller GPP when clouds are in front of the sun and radiation is reduced (Pedruzo-Bagazgoitia et al., 2017).

#### 10 4.2 Constraints on LUE and diffuse fraction of solar radiation associated with the maximum ecosystem GPP under diffuse light

Well-pronounced linear dependences of LUE and PAR on  $R_d/R_g$  can be used to estimate how large an increase in LUE should be in order to have GPP increase under diffuse radiation and at what diffuse fraction of solar radiation the maximum GPP can be observed. If

$$15 \quad \text{LUE} = L_1 + L_2 \cdot (R_d/R_g), \quad \text{PAR} = R_1 + R_2 \cdot (R_d/R_g), \quad (10)$$

then the maximum of GPP is reached at  $(R_d/R_g)_{\max} = -0.5(L_1/L_2 + R_1/R_2)$ , estimated as the point where the parabola  $\text{GPP} = \text{LUE} \cdot \text{PAR}$  has its maximum. The position of this maximum depends on the ratios  $L_2/L_1$  and  $R_2/R_1$ . For a certain range of parameters, the maximum of parabola can be located at  $R_d/R_g < 0.08$ , which is not feasible for the latitudes we consider in this study. In this case, GPP monotonically decreases when  $R_d/R_g$  increases from  $\sim 0.1$  to 1. Conversely,  $(R_d/R_g)_{\max}$  should be larger than  $0.08 - 0.1$  for GPP to have a maximum under diffuse light. Note, that PAR dependences on  $R_d/R_g$  at the middle latitudes are similar, with  $R_1/R_2 \approx -1.5$  while for SMEAR I this ratio is  $R_1/R_2 \approx -1.3$ . From these estimates,  $L_2 > L_1/1.2$  for the middle latitudes. Since  $L_1$  is roughly the minimum value of LUE at  $R_d/R_g \approx 0.1$  (clear sky), while  $L_1 + L_2$  is the maximum of LUE at  $R_d/R_g = 1$  (overcast conditions),  $L_2$  can be treated as the maximal gain in LUE under diffuse light. Thus, GPP will have a maximum associated with diffuse radiation if the ecosystem LUE under diffuse light increases by more than approximately 80% of its minimum possible value (which is observed under clean conditions on clear days). For the sites considered in the present study, the smallest gain in LUE due to diffuse radiation is observed at SMEAR II, where LUE under diffuse light was almost twice as large as its value on clear days. The largest gain was at SMEAR Estonia and Fonovaya where LUE grew almost by a factor of 3 if the dominating radiation conditions in the area changed from mostly direct to mostly diffuse radiation. Therefore, all ecosystems displayed maxima of GPP dependence on  $R_d/R_g$  due to diffuse light, though at different values of  $R_d/R_g$ .

Moreover, this approach clearly demonstrates that the maximum of GPP can never be reached under overcast conditions. If we take again  $R_1/R_2 = -1.4$  as for the middle latitudes, then the position of the maximum is at  $(R_d/R_g)_{\max} = -1/2(L_1/L_2) + 0.7$ . One can immediately deduce that for the large slopes of LUE, i.e. when  $L_1/L_2$  approaches zero,  $(R_d/R_g)_{\max}$  approaches 0.7.



At SMEAR I, this position is restricted by  $(R_d/R_g)_{max} \approx 0.65$ . The maximum of GPP dependence on  $R_d/R_g$  for five sites considered in this study is at  $(R_d/R_g)_{max} \approx 0.4 - 0.5$ .

## 5 Conclusion

We quantified the direct effect of aerosol on solar radiation and GPP in boreal and hemiboreal forests in Eurasia. The analysis was based on the data from five sites including coniferous and mixed forest ecosystems in Eurasia. The diffuse fraction of global radiation due to the direct aerosol effect was estimated to be in the range  $0.11 < R_d/R_g < 0.27$  at all the sites.

For the first time we demonstrated a connection between solar radiation properties (the diffuse fraction of global radiation) and condensation sink. The latter parameter is used in aerosol studies and it is obtained from ground-based observations. Employing CS instead of a column-averaged aerosol parameter AOD is a necessary step towards further investigation of the COBACC climate feedback loop, linking biogenic volatile organic compounds emissions and aerosol characteristics.

The GPP-radiation analysis was performed using the separation of GPP into LUE and PAR. We found a linear dependency between the diffuse fraction of solar radiation LUE and PAR on for all the sites. While the PAR dependences were quite similar to each other (except for SMEAR I located at relatively high latitude), the LUE dependences were different: the slopes were 60% steeper for mixed forests than for coniferous forests and the intercepts were about 40% lower for coniferous forests with open canopies. We obtained a parabolic shape for the GPP dependence on the diffuse fraction of solar radiation. The maximum of the parabola was more pronounced for mixed forests due to the above-mentioned differences in the LUE dependences between the mixed and coniferous forests. Note that parabolic, or near parabolic, shapes have been reported for different forest sites also by Alton (2008) and Moffat et al. (2010) using other methods than were used in this study.

We showed that GPP can be increased by 6-14% due to the direct effect of aerosol particles at remote sites as compared to clean conditions with low values of CS. The maximum increase was observed for mixed forests at the mid latitudes and for coniferous forests at relatively high latitudes.

Furthermore, based on the similarity in the PAR dependences on the diffuse fraction of solar radiation for all the sites, we obtained the constraints on the ecosystems' LUE increase under diffuse light necessary for a GPP maximum due to diffuse light. At the mid latitudes, the LUE of an ecosystem should increase not less than by  $\sim 80\%$  under diffuse light as compared to its value under clear sky conditions. Moreover, at the mid latitude sites, the diffuse fraction of solar radiation corresponding to the maximum GPP can not exceed 0.7.

The specific shape of the GPP dependence on the diffuse fraction of solar radiation suggests that clouds with half an hour-averaged fraction  $R_d/R_g$  between 0.4 and 0.5 play an important role for ecosystems' GPP and demand further investigation. An increase in GPP due to clouds can reach 32-33% for mixed forests and 21-26% for coniferous forests with open canopy. Other relevant questions include cloud effects on the radiation regime and ecosystems' GPP on annual scale and investigation of potential aerosol effects on the evolution of clouds over forests.



*Data availability.* Data measured at the SMEAR II and SMEAR I stations are available on the following website: <http://avaa.tdata.fi/web/smart/>. The data are licensed under a Creative Commons 4.0 Attribution (CC BY) license. Other data sets can be available from the authors upon request.

*Competing interests.* The authors declare that they have no conflict of interest.

- 5 *Disclaimer.* This study is a part of the Pan-Eurasian Experiment program (Lappalainen et al., 2016), and the results are reported from all the sites in Eurasia being partners of the PEEEX program and performing continuous multidisciplinary measurements pertaining to boreal forests.

*Acknowledgements.* This work was supported by the Academy of Finland Center of Excellence programme (grant no. 307331) and Academy of Finland professor grant to MK (no. 302958). The results are part of a project (ATM-GTP/ERC) that has received funding from the European Research Council (ERC) under the European Union's Horizon 2020 research and innovation programme (grant agreement no. 742206). SN and AK acknowledge the support through the project the European network for observing our changing planet (ERA-PLANET, grant agreement 689443) under the European Union's Horizon 2020 research and innovation programme and the Estonian Ministry of Sciences project "Biosphere-atmosphere interaction and climate research applying the SMEAR Estonia research infrastructure" (grant P170026PKTF). Measurements at Fonovaya station are performed under support of Russian Science Foundation (grant No 17-17-01095). Aerosol measurements at SMEAR Estonia were supported by the institutional research funding IUT20-11 and IUT20-52 of the Estonian Ministry of Education and  
15 Research.



## References

- Alton, P.: Reduced carbon sequestration in terrestrial ecosystems under overcast skies compared to clear skies, *Agricultural and Forest Meteorology*, 148, 1641 – 1653, <https://doi.org/https://doi.org/10.1016/j.agrformet.2008.05.014>, 2008.
- Alton, P., Mercado, L., and North, P.: A sensitivity analysis of the land-surface scheme JULES conducted for three forest biomes: Biophysical parameters, model processes, and meteorological driving data, *Global Biogeochemical Cycles*, 20, <https://doi.org/10.1029/2005GB002653>, 2007.
- Cheng, S. J., Bohrer, G., Steiner, A. L., Hollinger, D. Y., Suyker, A., Phillips, R. P., and Nadelhoffer, K. J.: Variations in the influence of diffuse light on gross primary productivity in temperate ecosystems, *Agricultural and Forest Meteorology*, 201, 98 – 110, <https://doi.org/https://doi.org/10.1016/j.agrformet.2014.11.002>, 2015.
- 10 Cirino, G. G., Souza, R. A. F., Adams, D. K., and Artaxo, P.: The effect of atmospheric aerosol particles and clouds on net ecosystem exchange in the Amazon, *Atmospheric Chemistry and Physics*, 14, 6523–6543, <https://doi.org/10.5194/acp-14-6523-2014>, 2014.
- Dal Maso, M., Hyvärinen, A., Komppula, M., Tunved, P., Kerminen, V.-M., Lihavainen, H., Viisanen, Y., Hansson, H.-C., and Kulmala, M.: Annual and interannual variation in boreal forest aerosol particle number and volume concentration and their connection to particle formation, *Tellus*, 60, 495–508, 2008.
- 15 Duchon, C. E. and O'Malley, M. S.: Estimating Cloud Type from Pyranometer Observations, *Journal of Applied Meteorology*, 38, 132–141, [https://doi.org/10.1175/1520-0450\(1999\)038<0132:ECTFPO>2.0.CO;2](https://doi.org/10.1175/1520-0450(1999)038<0132:ECTFPO>2.0.CO;2), 1999.
- Ezhova, E., Kerminen, V.-M., Lehtinen, K. E. J., and Kulmala, M.: A simple model for the time evolution of the condensation sink in the atmosphere for intermediate Knudsen numbers, *Atmospheric Chemistry and Physics*, 18, 2431–2442, <https://doi.org/10.5194/acp-18-2431-2018>, <https://www.atmos-chem-phys.net/18/2431/2018/>, 2018.
- 20 Gu, L., Baldocchi, D., Verma, S. B., Black, T. A., Vesala, T., Falge, E. M., and Dowty, P. R.: Advantages of diffuse radiation for terrestrial ecosystem productivity, *Journal of Geophysical Research: Atmospheres*, 107, ACL 2–1–ACL 2–23, <https://doi.org/10.1029/2001JD001242>, 2002.
- Hari, P. and Kulmala, M.: Station for measuring ecosystem-atmosphere relations (SMEAR II), *Boreal. Env. Res.*, 10, 315–322, 2005.
- Hari, P., Kulmala, M., Pohja, T., Lahti, T., Siivola, E., Palva, L., Aalto, P., Hämeri, K., Vesälä, T., Luoma, S., and Pulliainen, E.: Air pollution in eastern Lapland: challenge for an environmental research station, *Sylva Fenn.*, 28, 29–39, 1994.
- 25 Heimann, M., Schulze, E.-D., Winderlich, J., Andreae, M., Chi, X., Gerbig, C., Kolle, O., Kübler, K., Lavric, J., Mikhailov, E., Panov, A., Park, S., Rödenbeck, C., and Skorochod, A.: The Zotino Tall Tower Observatory (ZOTTO): Quantifying large scale biogeochemical changes in central Siberia, *Nova Acta Leopold.*, 117, 51–64, 2014.
- Holben, B., Eck, T., Slutsker, I., Tanré, D., Buis, J., Setzer, A., Vermote, E., Reagan, J., Kaufman, Y., Nakajima, T., Lavenu, F., Jankowiak, I., and Smirnov, A.: AERONET—A Federated Instrument Network and Data Archive for Aerosol Characterization, *Remote Sensing of Environment*, 66, 1 – 16, [https://doi.org/https://doi.org/10.1016/S0034-4257\(98\)00031-5](https://doi.org/https://doi.org/10.1016/S0034-4257(98)00031-5), <http://www.sciencedirect.com/science/article/pii/S0034425798000315>, 1998.
- 30 Ineichen, P.: A broadband simplified version of the Solis clear sky model, *Solar Energy*, 82, 758–762, 2008.
- Kanniah, K. D., Beringer, J., North, P., and Hutley, L.: Control of atmospheric particles on diffuse radiation and terrestrial plant productivity: A review, *Progress in Physical Geography: Earth and Environment*, 36, 209–237, <https://doi.org/10.1177/0309133311434244>, 2012.
- Kolari, P., Kulmala, L., Pumpanen, J., Launiainen, S., Ilvesniemi, H., Hari, P., and Nikinmaa, E.: CO<sub>2</sub> exchange and component CO<sub>2</sub> fluxes of a boreal Scots pine forest, *Boreal Env. Res.*, 14, 761–783, 2009.



- Kulmala, M., Dal Maso, M., Mäkelä, J. M., Pirjola, L., Väkevä, M., Aalto, P., Mikkilainen, P., Hämeri, K., and O'Dowd, C. D.: On the formation, growth and composition of nucleation mode particles, *Tellus B*, 53, 479–490, 2001.
- Kulmala, M., Nieminen, T., Nikandrova, A., Lehtipalo, K., Manninen, H. E., Kajos, M. K., Kolari, P., Lauri, A., Petäjä, T., Krejci, R., Hansson, H.-C., Swietlicki, E., Lindroth, A., Christensen, T. R., Arneth, A., Hari, P., Bäck, J., Vesala, T., and Kerminen, V.-M.: CO<sub>2</sub>-induced terrestrial climate feedback mechanism: From carbon sink to aerosol source and back, *Boreal Env. Res.*, 19B, 122–131, 2014.
- 5 Kuusk, J. and Kuusk, A.: Hyperspectral radiometer for automated measurement of global and diffuse sky irradiance, *Journal of Quantitative Spectroscopy and Radiative Transfer*, 204, 272 – 280, <https://doi.org/https://doi.org/10.1016/j.jqsrt.2017.09.028>, 2018.
- Lappalainen, H. K., Kerminen, V.-M., Petäjä, T., Kurten, T., Baklanov, A., Shvidenko, A., Bäck, J., Vihma, T., Alekseychik, P., Andreae, M. O., Arnold, S. R., Arshinov, M., Asmi, E., Belan, B., Bobylev, L., Chalov, S., Cheng, Y., Chubarova, N., de Leeuw, G., Ding, A., Dobrolyubov, S., Dubtsov, S., Dyukarev, E., Elansky, N., Eleftheriadis, K., Esau, I., Filatov, N., Flint, M., Fu, C., Glezer, O., Gliko, A., Heimann, M., Holtslag, A. A. M., Hörrak, U., Janhunen, J., Juhola, S., Järvi, L., Järvinen, H., Kanukhina, A., Konstantinov, P., Kotlyakov, V., Kieloaho, A.-J., Komarov, A. S., Kujansuu, J., Kukkonen, I., Duplissy, E.-M., Laaksonen, A., Laurila, T., Lihavainen, H., Lisitzin, A., Mahura, A., Makshtas, A., Mareev, E., Mazon, S., Matishov, D., Melnikov, V., Mikhailov, E., Moiseev, D., Nigmatulin, R., Noe, S. M., Ojala, A., Pihlatie, M., Popovicheva, O., Pumpanen, J., Regerand, T., Repina, I., Shcherbinin, A., Shevchenko, V., Sipilä, M., Skorokhod, A., Spracklen, D. V., Su, H., Subetto, D. A., Sun, J., Terzhevik, A. Y., Timofeyev, Y., Troitskaya, Y., Tynkkynen, V.-P., Kharuk, V. I., Zaytseva, N., Zhang, J., Viisanen, Y., Vesala, T., Hari, P., Hansson, H. C., Matvienko, G. G., Kasimov, N. S., Guo, H., Bondur, V., Zilitinkevich, S., and Kulmala, M.: Pan-Eurasian Experiment (PEEX): towards a holistic understanding of the feedbacks and interactions in the land–atmosphere–ocean–society continuum in the northern Eurasian region, *Atmospheric Chemistry and Physics*, 16, 14 421–14 461, <https://doi.org/10.5194/acp-16-14421-2016>, 2016.
- 10 Lasslop, G., Migliavacca, M., Bohrer, G., Reichstein, M., Bahn, M., Ibrom, A., Jacobs, C., Kolari, P., Papale, D., Vesala, T., Wohlfahrt, G., and Cescatti, A.: On the choice of the driving temperature for eddy-covariance carbon dioxide flux partitioning, *Biogeosciences*, 9, 5243–5259, <https://doi.org/10.5194/bg-9-5243-2012>, 2012.
- Lu, X., Chen, M., Liu, Y., Miralles, D. G., and Wang, F.: Enhanced water use efficiency in global terrestrial ecosystems under increasing aerosol loadings, *Agricultural and Forest Meteorology*, 237–238, 39 – 49, <https://doi.org/https://doi.org/10.1016/j.agrformet.2017.02.002>, 2017.
- 25 Matvienko, G. G., Belan, B. D., Panchenko, M. V., Romanovskii, O. A., Sakerin, S. M., Kabanov, D. M., Turchinovich, S. A., Turchinovich, Y. S., Eremina, T. A., Kozlov, V. S., Terpugova, S. A., Pol'kin, V. V., Yausheva, E. P., Chernov, D. G., Zhuravleva, T. B., Bedareva, T. V., Odintsov, S. L., Burlakov, V. D., Nevzorov, A. V., Arshinov, M. Y., Ivlev, G. A., Savkin, D. E., Fofonov, A. V., Gladkikh, V. A., Kamardin, A. P., Balin, Y. S., Kokhanenko, G. P., Penner, I. E., Samoilova, S. V., Antokhin, P. N., Arshinova, V. G., Davydov, D. K., Kozlov, A. V., Pestunov, D. A., Rasskazhikova, T. M., Simonenkov, D. V., Sklyadneva, T. K., Tolmachev, G. N., Belan, S. B., Shmargunov, V. P., Kozlov, A. S., and Malyshev, S. B.: Complex experiment on studying the microphysical, chemical, and optical properties of aerosol particles and estimating the contribution of atmospheric aerosol-to-earth radiation budget, *Atmos. Meas. Tech.*, 8, 4507–4520, <https://doi.org/10.5194/amt-8-4507-2015>, 2015.
- 30 Mercado, L., Bellouin, N., Sitch, S., Boucher, O., Huntingford, C., Wild, M., and Cox, P.: Impact of changes in diffuse radiation on the global land carbon sink, *Nature*, 458, 1015–1018, 2009.
- Moffat, A. M., Beckstein, C., Churkina, G., Mund, M., and Heimann, M.: Characterization of ecosystem responses to climatic controls using artificial neural networks, *Global Change Biology*, 16, 2737–2749, <https://doi.org/10.1111/j.1365-2486.2010.02171.x>, 2010.





- Mueller, R., Dagestad, K., Ineichen, P., Schroedter-Homscheidt, M., Cros, S., Dumortier, D., Kuhlemann, R., Olseth, J., Piernavieja, G., Reise, C., Wald, L., and Heinemann, D.: Rethinking satellite-based solar irradiance modelling: The SOLIS clear-sky module, *Remote Sensing of Environment*, 91, 160 – 174, <https://doi.org/https://doi.org/10.1016/j.rse.2004.02.009>, 2004.
- Niyogi, D., Chang, H., Saxena, V. K., Holt, T., Alapaty, K., Booker, F., Chen, F., Davis, K. J., Holben, B., Matsui, T., Meyers, T., Oechel, W. C., Pielke, R. A., Wells, R., Wilson, K., and Xue, Y.: Direct observations of the effects of aerosol loading on net ecosystem CO<sub>2</sub> exchanges over different landscapes, *Geophysical Research Letters*, 31, <https://doi.org/10.1029/2004GL020915>, 2004.
- Noe, S., Niinemets, ., Krasnova, A., Krasnov, D., Motallebi, A., Kängsepp, V., Jögiste, K., Hörrak, U., Komsaare, K., Mirmo, S., Vana, M., Tammet, H., Bäck, J., Vesala, T., Kulmala, M., Petäjä, T., and Kangur, A.: SMEAR Estonia: Perspectives of a large-scale forest ecosystem – atmosphere research infrastructure, *Forestry Studies*, 63, 56–84, 2015.
- 10 Pachauri, R. K., Allen, M. R., Barros, V. R., Broome, J., Cramer, W., Christ, R., Church, J. A., Clarke, L., Dahe, Q., Dasgupta, P., Dubash, N. K., Edenhofer, O., Elgizouli, I., Field, C. B., Forster, P., Friedlingstein, P., Fuglestvedt, J., Gomez-Echeverri, L., Hallegatte, S., Hegerl, G., Howden, M., Jiang, K., Cisneroz, B. J., Kattsov, V., Lee, H., Mach, K. J., Marotzke, J., Mastrandrea, M. D., Meyer, L., Minx, J., Mulugetta, Y., O'Brien, K., Oppenheimer, M., Pereira, J. J., Pichs-Madruga, R., Plattner, G.-K., Pörtner, H.-O., Power, S. B., Preston, B., Ravindranath, N. H., Reisinger, A., Riahi, K., Rusticucci, M., Scholes, R., Seyboth, K., Sokona, Y., Stavins, R., Stocker, T. F., Tschakert, P., van Vuuren, D., and van Ypserle, J.-P.: *Climate Change 2014: Synthesis Report. Contribution of Working Groups I, II and III to the Fifth Assessment Report of the Intergovernmental Panel on Climate Change*, IPCC, Geneva, Switzerland, 2014.
- 15 Park, S.-B., Knohl, A., Lucas-Moffat, A. M., Migliavacca, M., Gerbig, C., Vesala, T., Peltola, O., Mammarella, I., Kolle, O., Lavrič, J. V., Prokushkin, A., and Heimann, M.: Strong radiative effect induced by clouds and smoke on forest net ecosystem productivity in central Siberia, *Agricultural and Forest Meteorology*, 250-251, 376 – 387, <https://doi.org/https://doi.org/10.1016/j.agrformet.2017.09.009>, 2018.
- 20 Pecenek, Z. K., Mejia, F. A., Kurtz, B., Evan, A., and Kleissl, J.: Simulating irradiance enhancement dependence on cloud optical depth and solar zenith angle, *Solar Energy*, 136, 675 – 681, <https://doi.org/https://doi.org/10.1016/j.solener.2016.07.045>, 2016.
- Pedruzo-Bagazgoitia, X., Ouwersloot, H. G., Sikma, M., van Heerwaarden, C. C., Jacobs, C. M. J., and Vilà-Guerau de Arellano, J.: Direct and Diffuse Radiation in the Shallow Cumulus–Vegetation System: Enhanced and Decreased Evapotranspiration Regimes, *Journal of Hydrometeorology*, 18, 1731–1748, <https://doi.org/10.1175/JHM-D-16-0279.1>, 2017.
- 25 Reichstein, M., Falge, E., Baldocchi, D., Papale, D., Aubinet, M., Berbigier, P., Bernhofer, C., Buchmann, N., Gilmanov, T., Granier, A., Grünwald, T., Havránková, K., Ilvesniemi, H., Janous, D., Knohl, A., Laurila, T., Lohila, A., Loustau, D., Matteucci, G., Meyers, T., Miglietta, F., Ourcival, J., Pumpanen, J., Rambal, S., Rotenberg, E., Sanz, M., Tenhunen, J., Seufert, G., Vaccari, F., Vesala, T., Yakir, D., and Valentini, R.: On the separation of net ecosystem exchange into assimilation and ecosystem respiration: review and improved algorithm, *Global Change Biology*, 11, 1424–1439, <https://doi.org/10.1111/j.1365-2486.2005.001002.x>, 2005.
- 30 Ross, J. and Sulev, M.: Sources of errors in measurements of PAR, *Agricultural and Forest Meteorology*, 100, 103 – 125, [https://doi.org/https://doi.org/10.1016/S0168-1923\(99\)00144-6](https://doi.org/https://doi.org/10.1016/S0168-1923(99)00144-6), 2000.
- Seinfeld, J. H. and Pandis, S. N.: *Atmospheric chemistry and physics: from air pollution to climate change*, Wiley, New Jersey, USA, 2016.
- Sengupta, M. and Gotseff, P.: *Evaluation of Clear Sky Models for Satellite-Based Irradiance Estimates*, Tech. Rep. NREL/TP-5D00-60735, National Renewable Energy Laboratory, 2013.

**Table 1.** Data sets from different sites used in this study.

Station	Parameters	Years
SMEAR I (67°46'N, 29°36'E, 390 m a.s.l.)	Global and diffuse radiation (PAR), particle number-size distribution, GPP	2015-2016
SMEAR II (61°51'N, 24°17'E, 80 m a.s.l.)	Global and diffuse radiation (broadband), particle number-size distribution, GPP	2008-2009
SMEAR II (61°51'N, 24°17'E, 80 m a.s.l.)	Global and diffuse radiation (PAR), particle number-size distribution, GPP	2010,2014-2015
SMEAR Estonia (58°16'N, 27°16'E, 36 m a.s.l.)	Global and diffuse radiation (broadband and hyperspectral), particle number-size distribution, GPP	2015-2016
Fonovaya (56°25'N, 84°04'E, 80 m a.s.l.)	Global radiation (short wave), particle number-size distribution, CO <sub>2</sub> concentration at 10 and 30 m, wind speed, pressure, air temperature, relative humidity	2016-2017
Zotino (60°48'N, 89°21'E, 180 m a.s.l.)	Global and diffuse radiation (PAR), CO <sub>2</sub> flux, air temperature	2012-2016

**Table 2.** Best fit parameters according eq. (7).

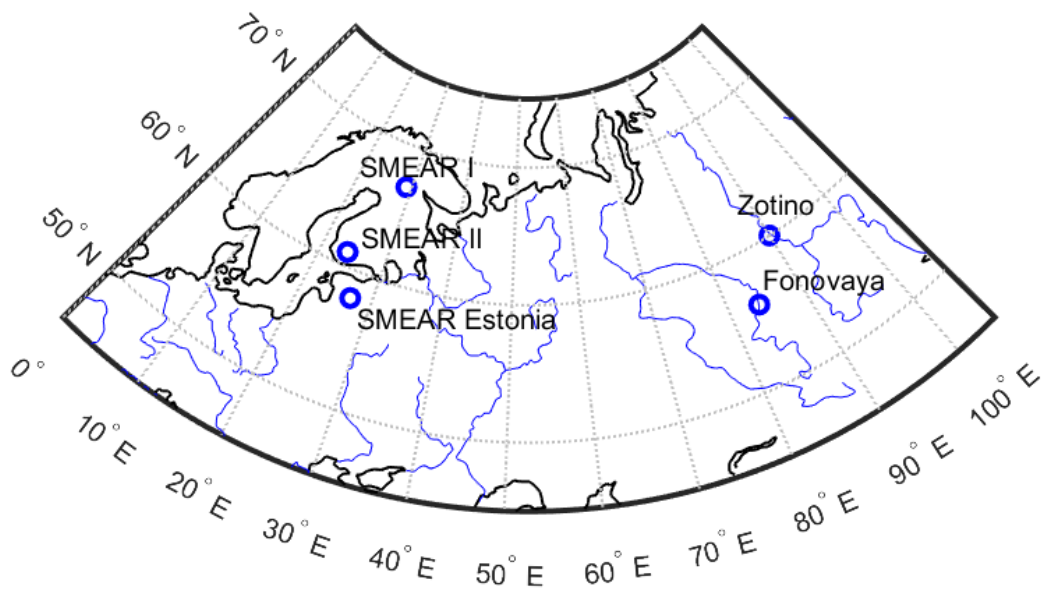
Solar zenith angle	<i>a</i>	<i>b</i>	<i>c</i>	<i>d</i>
35° < <i>sza</i> < 45°	0.186	0.140	0.318	0.990
45° < <i>sza</i> < 55°	0.191	0.146	0.296	0.990
55° < <i>sza</i> < 65°	0.143	0.351	0.346	0.980

**Table 3.** Best fit parameters and correlation coefficients for radiation data ( $R_d/R_g = kCS + b$ ).

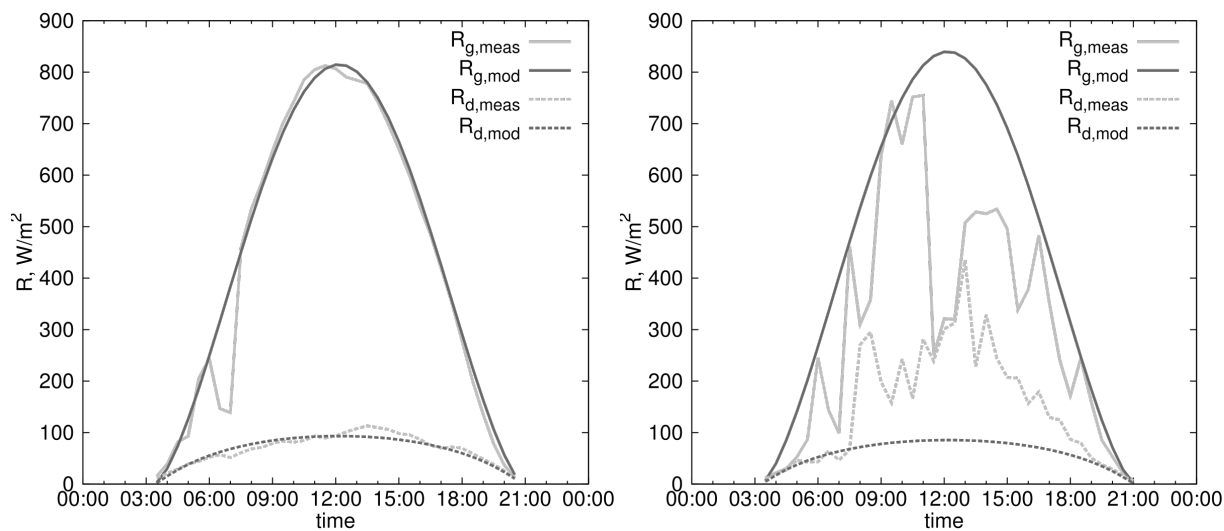
Station	$k_{\text{mod}}, s$	$b_{\text{mod}}$	$R_{\text{mod}}$	$k_{\text{meas}}, s$	$b_{\text{meas}}$	$R_{\text{meas}}$
SMEAR I	8.30	0.108	0.53	6.73	0.176	0.18
SMEAR II	10.21	0.092	0.69	11.59	0.153	0.33
SMEAR Estonia	6.39	0.094	0.60	5.50	0.123	0.23
Fonovaya	3.32	0.113	0.44	-	-	-

**Table 4.** Linear regression coefficients for PAR and LUE at different sites.

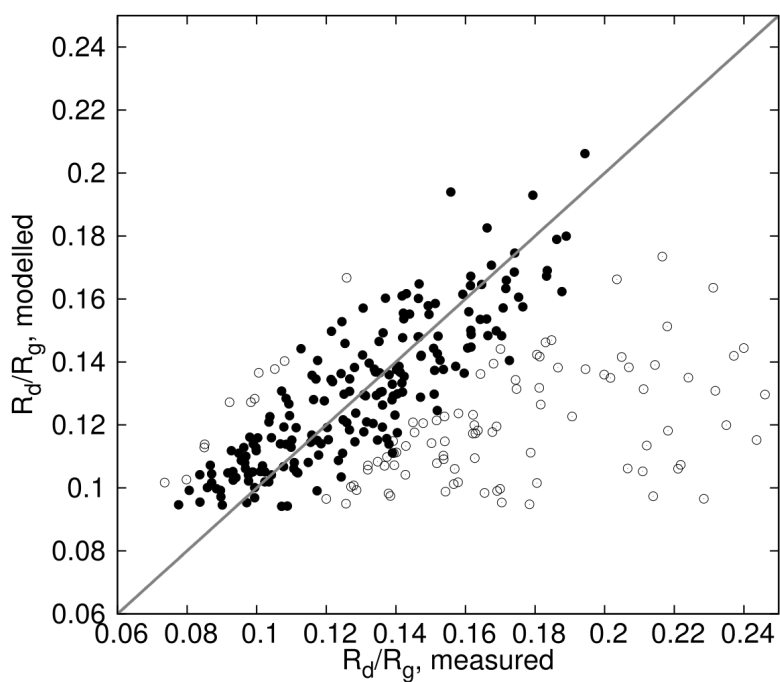
Station	$L_2, \frac{\text{molCO}_2}{\text{mol}_{\text{photons}}}$	$L_1, \frac{\text{molCO}_2}{\text{mol}_{\text{photons}}}$	$R_2, \text{W m}^{-2}$	$R_1, \text{W m}^{-2}$
SMEAR I	0.0157	0.0062	-944	1212
SMEAR II	0.0164	0.0098	-1081	1480
SMEAR Estonia	0.0278	0.0094	-1194	1608
Fonovaya	0.0238	0.0092	-1085	1575
Zotino	0.0143	0.0058	-1118	1548



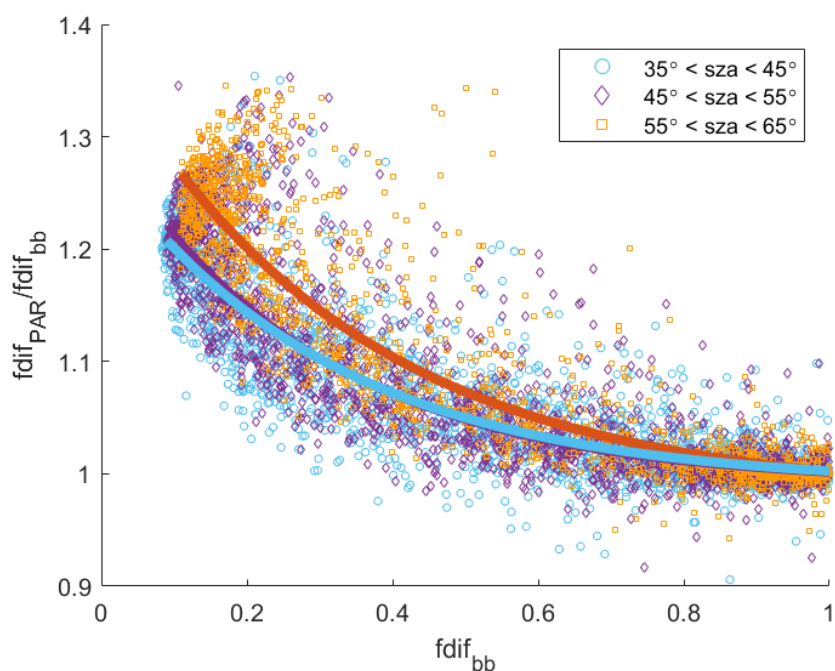
**Figure 1.** Location of the sites.



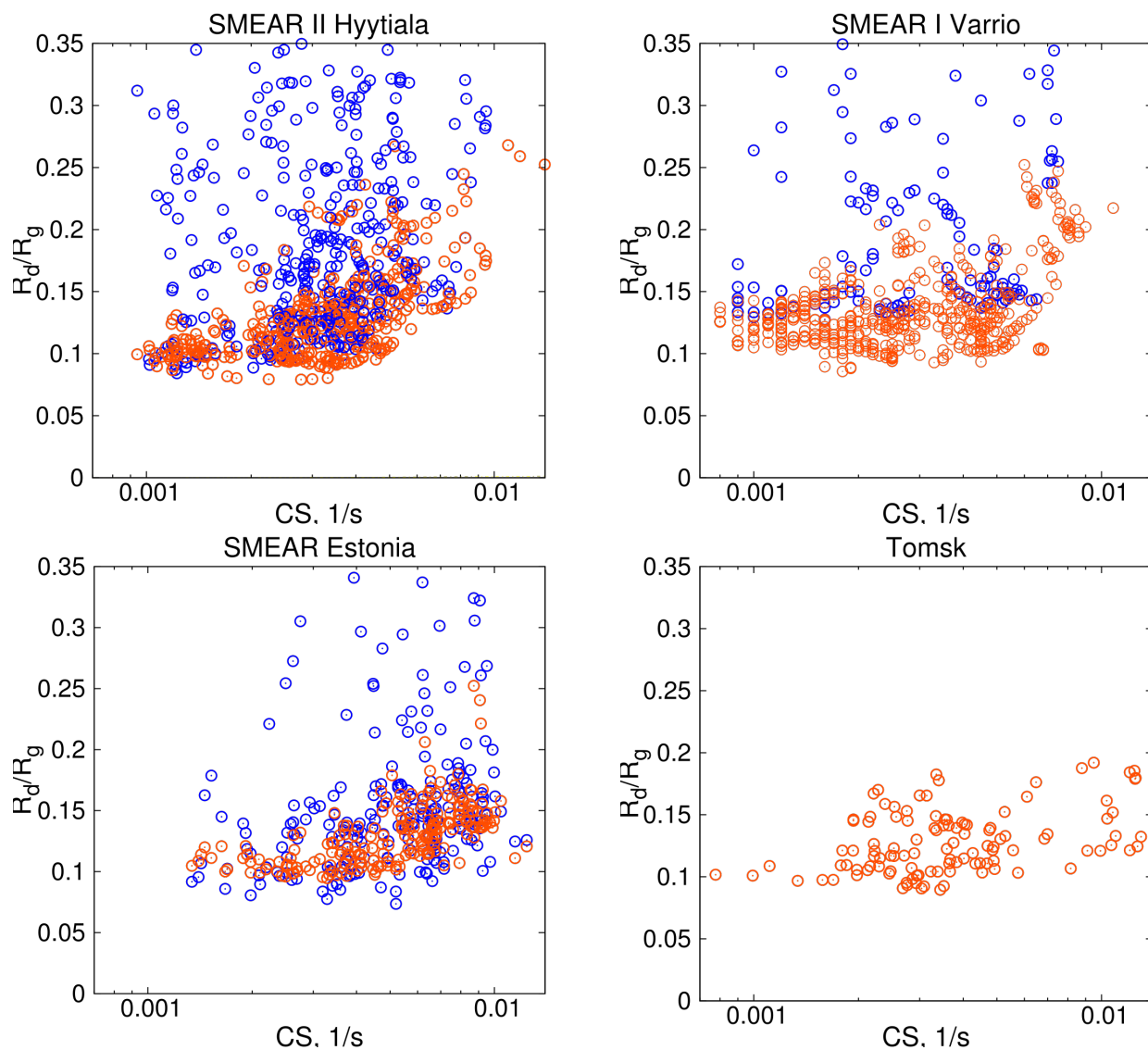
**Figure 2.** Modelled vs measured irradiance, SMEAR Estonia: measured global radiation  $R_{g,\text{meas}}$ , modelled global radiation  $R_{g,\text{mod}}$ , measured diffuse radiation  $R_{d,\text{meas}}$ , modelled diffuse radiation  $R_{d,\text{mod}}$ . Left panel: 01 June 2016, clear day; right panel: 06 June 2016, cloudy day. Time scale corresponds to local winter time (UTC+2).



**Figure 3.** Diffuse fraction of global irradiance: modelled vs measured (SMEAR Estonia, 2016). Closed symbols: criterion of clear sky based on diffuse and global irradiance ( $R_{g,\text{meas}}/R_{g,\text{mod}} > 0.9$ ,  $R_{d,\text{meas}}/R_{d,\text{mod}} > 0.8$ ), closed symbols and open symbols: criterion of clear sky based on global irradiance ( $R_{g,\text{meas}}/R_{g,\text{mod}} > 0.9$ ).

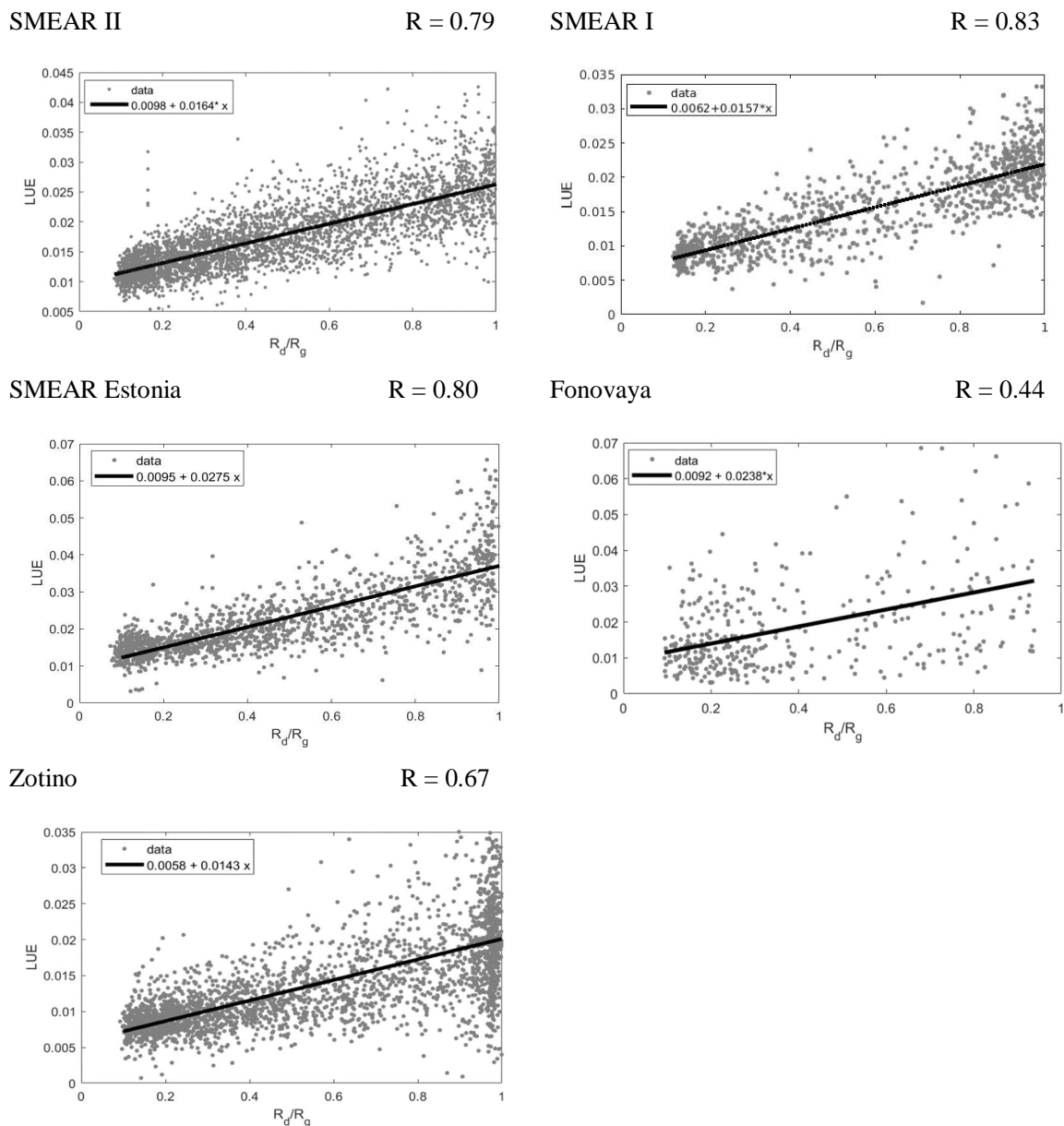


**Figure 4.** Ratio  $fdi_{PAR}/fdi_{bb}$  as a function of  $fdi_{bb}$  (SMEAR Estonia). Different curves correspond to the best fits of the data for different solar zenith angles  $sza$ .

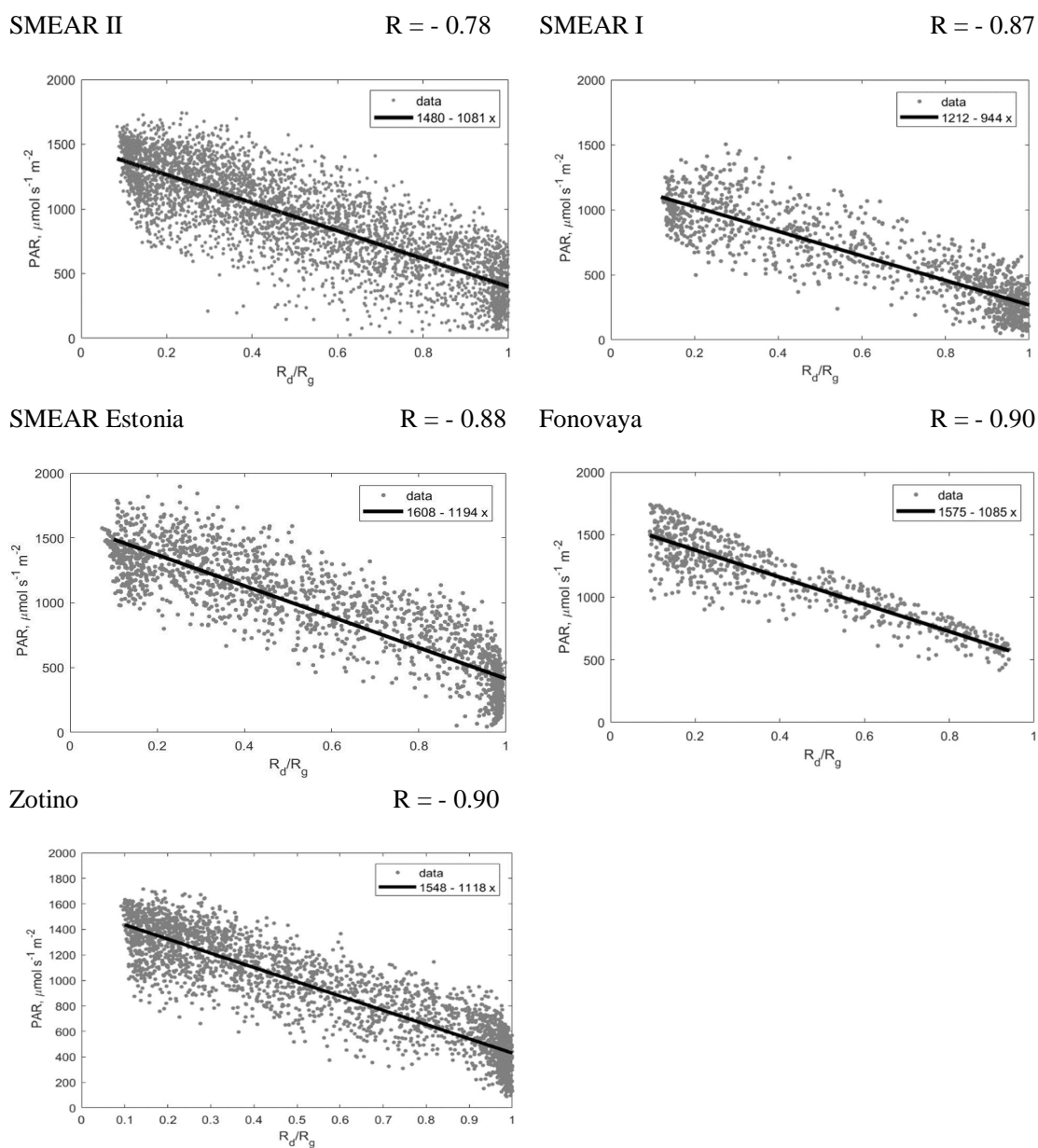


**Figure 5.** The diffuse fraction of global irradiance as a function of CS (clear sky data). Red symbols: calculations with the clear sky model, blue symbols: measurements.

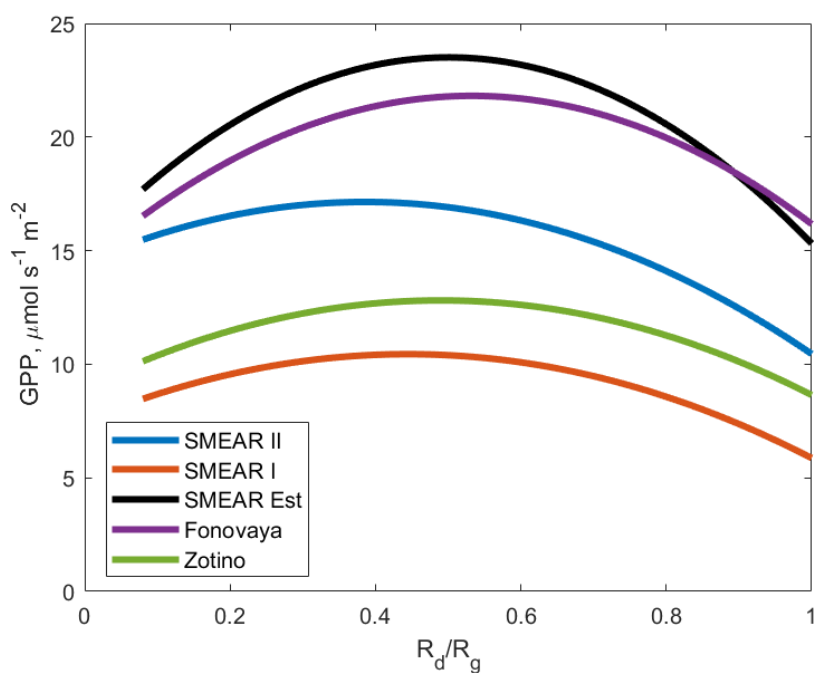




**Figure 6.** Light use efficiency (LUE) as a function of diffuse fraction of global irradiance ( $R_d/R_g$ ). Red symbols: model results, blue symbols: measurements.



**Figure 7.** Photosynthetically active global radiation (PAR) as a function of diffuse fraction of global irradiance ( $R_d/R_g$ ).



**Figure 8.** Estimated GPP dependences on  $R_d/R_g$  for all the sites (obtained as  $GPP = LUE \cdot PAR$  using the coefficients for PAR and LUE dependences on  $R_d/R_g$  reported in Table 4).