

## Response to Anonymous Referee #2

Received and published: 23 September 2018

Journal: ACP

Title: A new Description of Probability Density Distributions of Polar Mesospheric Clouds (PMC)

Author(s): Uwe Berger et al.

MS No.: acp-2018-642

MS Type: Research article

Special Issue: Layered phenomena in the mesopause region (ACP/AMT inter-journal SI)

### *Introductory remarks:*

*We greatly appreciate the comments from the reviewer. We have taken his/her suggestions for improvements into account when preparing the revised version of the manuscript. In the following we respond to the reviewer's comments point by point.*

*We have marked the changes in the tracked version of the manuscript. Author responses are in italics. Line numbers refer to the first paper version. In the new tracked version deleted sequences are marked *red*. New text is marked in *blue*.*

*We want to thank the reviewer for the detailed review with many useful ideas and suggestions which, we think, have significantly increased the quality of the manuscript.*

---

GENERAL COMMENTS: This is an interesting and generally well written article dealing with probability density functions of various noctilucent cloud (NLC) parameters such as particle radius, cloud backscatter, ice particle density and ice mass density. While the backscatter is found to follow an exponential distribution, this is not the case for the other parameters considered. The NLC parameter database employed is based on the well-known Alomar LIDAR dataset. I do not have major objections against the publication of this article but ask the authors to consider the comments listed below. In addition, I have the following general comment: The LIDAR backscatter measurements, like all other optical measurements, are quite insensitive to particles with radii below a certain threshold. This is related to the finding that radii below about 20 nm are very infrequent in the data set, despite the fact that there are typically many more small particles than large particles. I think this aspect should be discussed in the paper, because it also (qualitatively) explains some of the differences between the PDFs of the different parameters.

*The Referee #2 is correct that optical instruments can not observe the smallest particles in PMC. However the cutoff at  $r > 20$  nm is caused by the threshold of  $\max \beta > 3$  and the fact that the limit the analysis to the peak of the layer.*

*In this paper we discuss 3 maximum backscatter signals that relate to a certain height within the PMC column (the height where backscatter maximizes). These are our measurements. From these 3 measurements we derive some more ice parameters as mean ice radius, standard deviation and ice mass density. These values refer exclusively to this specific height where the PMC shines brightest. Assuming a threshold in  $\max \beta$  of 3 produce the measured histograms in ice radius, ice mass density, and number density as shown in the plots. So it is not the question that the lidars are insensitive to small ice particles, a case that happens at the nucleation zone near the mesopause (87-90 km) where ice formation starts and up to several thousand ice particles exist ( $r < 10$  nm). But our lidar analysis takes into account only measurements from faint to strong brightness levels near the bottom (at height of  $\beta_{\max}$ , 83 km) of the vertical PMC ice column.*

*We have extended the description of the retrieval of particle sizes in section 2 'Description of ALOMAR lidar':*

*...After separation of the ice particle and molecular backscatter signal, we extract three vertical profiles of so-called backscatter ratios which are a measure of height dependent brightness of the ice cloud. From each backscatter height profile we estimate three maximum backscatter (MBS) values. We assume that at the altitude of MBS, typically located near 83 km, the actual shape of the ice particle distribution can be described by a Normal-distribution. Then we derive from the three measured MBS values the characteristics of the Normal-distribution with mean ice radius, ice number density and variance. Finally, we also estimate from these ice parameters the actual ice mass density (IMD) at the MBS height...*

This paper is well-written. Some suggestions and comments related to specific items are provided below.

#### SPECIFIC COMMENTS

Page 1, line 1 and line 15: "of Polar Mesospheric Clouds (PMC) and noctilucent clouds (NLC)."

This sounds like the two are different clouds. I suggest changing this sentence.

*Done: The expression NLC was considered redundant and was removed everywhere. Now, only the expression PMC is used throughout this paper.*

Page 1, line 5: "previously statistical methods" -> "previous statistical methods" or "previously used statistical methods"

*Done*

Page 1, line 6: "probability statistic"

Does "statistic" exist?

*Done: replaced by 'distributions'*

Page 1, line 12: "that facilitate" -> "that facilitates", because "facilitates" refers to "assessment",

right?

*Done*

Page 2, line 3: "many .. analysis" -> "many .. analyses"

*Done*

Page 2, line 8: "analysis have used" -> "analyses have used"

*Done*

Page 2, line 17 and line 18: "statistic" ?

*Done: statistics*

Page 2, line 31: "From each backscatter height profile we estimate a maximum backscatter (MBS) signal which corresponds to mean height of maximum brightness"

I don't fully understand this sentence. It mixes "signal" and "height" in a way, which makes it difficult to understand. Can you clarify, please?

*Done: ... From each backscatter height profile we estimate three maximum backscatter (MBS) values. We assume that at the altitude of MBS, typically located near 83 km, the actual shape of the ice particle distribution can be described by a Normal-distribution. Then we*

*derive from the three measured MBS values the characteristics of the Normal-distribution with mean ice radius, ice number density and variance. Finally, we also estimate from these ice parameters the actual ice mass density (IMD) at the MBS height.*

Page 3, line 15: “exponential distributed“ -> "exponentially distributed”

*Done*

Page 3, line 30: “mode” is not a really frequently used term and I suggest briefly explaining it. It is explained on the next page and I suggest moving the explanation here.

*Done*

Page 4, line 19: “in a semi-logarithm scale”. I suggest replacing this by “in a semilogarithmic diagram” (a scale can be linear or logarithmic, but not semi-logarithmic)

*Done*

Page 4, line 22: “Consequently, the relative error is rather small”

Please explain briefly how this relative error is determined.

*Done: The good quality of the fit is characterized by a small relative error of 6.5 % that is calculated as a sum of 100% ·  $\frac{\sum_j |E_j - X_j|}{\sum_j E_j}$  for  $x > 3$  with theoretical exponential frequencies  $E_j$  and normalized frequencies  $X_j$  of data  $x$  per class  $j$  with a total of  $M$  classes.*

Page 5, line 5: “. . . as expected”

It’s not entirely clear, what you consider to be expected. Do you expect that these other parameters also follow an exponential distribution or do you not? Please clarify.

*Done: ‘as expected’ has been deleted.*

Page 5, line 6: “in a semi-logarithmic scale” -> “in a semi-logarithmic diagram”

*Done*

Page 5, line 9: “significant smaller“ -> "significantly smaller”

*Done*

Page 6, Caption Fig. 2, line 2: “least square fit” -> “least squares fit”

*Done*

Page 7, Fig. 3: I suggestion mentioning in the Figure caption what the dashed lines are.

*Done: The solid line shows the regression defined by regression points and corresponding (c,d)-values. Dashed lines result from regression analysis of  $y(x) : x \Rightarrow y$  and  $x(y) : x \Rightarrow y$ .*

Page 7, line 7: “Linearity between maximum backscatter (MBS) and ice mass density (IMD), ice radius  $r$  and ice number density  $n$  data is a necessary and sufficient condition that also IMD,  $r$  and  $n$  data samples are exponentially distributed”

I’m not sure you would really expect that MBS scales linearly with, e.g. radius. The intensity of the backscattered radiation does certainly not scale linearly with particle radius, right? Why should the maximum backscatter depend linearly on radius? If there are other indications etc. for that, please discuss. Considering that you use a power law to describe the relationship between two parameters, you don’t really assume linearity, right? I think the term “linearity” should be replaced and then all is fine.

*This section is titled 'Test on linearity between maximum backscatter and ice mass density, ice radius, ice number density data'. Here we show in a first step that there exist no linearity between (MBS, r), (MBS, n), (MBS,IMD), and also other pairs as e.g. (n,r).*

*This gives a first theoretical hint why IMD,n, and r do not follow an exponential distribution as has been tested empirically in the section before (section 3.1.2.).*

*Or vice versus: In section 3.1.2 we plot exponential fit functions to all data samples (IBS,IMD,r, and n) and see for IMD,n, and r large statistical uncertainties for exponential fits that indicate that there is 'something wrong'!. Section 3.2 investigates this hypothesis in a different second way with the method of correlation and regression pairs.*

*Now we find a second reason for missing exponential fits of IMD,n, and r, since also linear regression fails. These are two independent different ways, and both saying that a g-function can't be the universal pdf for all four ice parameters.*

*This is the motivation why we introduce in the following sections a new z-pdf which now fits equally to ALL four parameters MBS,IMD,n, and r.*

Page 8, line 1: “. . . also relate to the half width of the angle”

Can you mention how the regression points “relate to“ the half width of this angle? To me this is not obvious, but perhaps I'm missing something.

*Let us assume two data samples x and y. First, we calculate the means (x\_mean, y\_mean) and standard deviatons s\_x and s\_y of x and y, plus the Pearson correlation coefficient R between x and y. Then a linear regression from x to y means to construct a linear fit with:*

$$y = y\_mean + R*(s\_y/s\_x) * (x - x\_mean) \quad -> \text{dashed line } y(x)$$

*A linear regression from y to x means to construct a linear fit with:*

$$x = x\_mean + R*(s\_x/s\_y) * (y - y\_mean)$$

*This equation can be transformed to y as  $y = y\_mean + 1/R * (s\_y/s\_x) * (x - x\_mean)$  and plotted as a second dashed line named x(y).*

*For R unequal to one the two regression lines are different. Then the best estimate is a 'mean' regression line as shown in Figure 3 (solid line) that cut the angle of the two classical regression lines (y(x),x(y))in half. The Formula is  $y = y\_mean + R * s\_y/s\_x * (x - x\_mean)$  setting R=1.*

Page 8, line 5: “criteria” -> “criterion”

Done

Page 8, line 6: “which is far away from unity”

This is not surprising at all, because the backscatter does not scale linearly with radius.

But perhaps this is discussed below.

*At this point we simply show (prove) that, in fact, our lidar measurements of radius and max. backscatter do not scale linearly. Consequently, this non-linearity forces a modification of the exponential distribution (g-function) called Z-approach in our paper. The derivation and the characteristics of new Z-pdf and its connection to the former g-function are discussed in the following sections 4,5, and 6.*

Page 9, last line: Something is missing in this equation. “C” is not defined and it is neither required here. The integral can be explicitly evaluated, but I find that  $b > 1$  is a requirement for the integral being 1. Please check.

*Done: “C” was the constant of integration that has been deleted. Instead we use a vertical bar in order to show the integration boundaries of the antiderivative. This change has been also applied in the appendix.*

Page 10, line 10: Meaning of “Only, ” at beginning of sentence not clear, at least to me. Without the comma it would make sense.

*Done*

Page 12, line 26: “should be here possible too” -> “should be possible here too”

*Done*

Page 13, line 15: Suggest replacing “, and resulting” by “, resulting in “

*Done*

Page 16, line 8: “in turns” -> “in turn”

*Done*

Page 16, line 12: “of an practical example” -> “of a practical example”

*Done*

Page 16, line 25: “Now the Z-distribution approach offers a more general possibility to derive artificial data samples without any knowledge of correlation and regression coefficients.”

I’m not sure I fully agree with this statement, because information on the power law relationship between the two quantities is required, right?

*No: no information on the relationship between the two quantities is required. This is precisely the advantage of the new method. See text in section 6.1.*

The statement suggests (or may suggest) that no prior information on the relationship between the two quantities is needed, which is certainly not the case, because you assume that  $a_r$  and  $b_r$  are known.

*Sure this is true that  $a_r$  and  $b_r$  are assumed to be known. As we explain in detail in the text, the constants  $a_r$  and  $b_r$  are calculated from a Z-analysis of the sole radius data sample. No relationship between a pair of parameters is needed. We had already described these two assumptions one sentence later:*

*First, we assume that a data sample of  $x=MBS$  of number  $N$  exists and also its Z-distribution  $Z(x, a_x, b_x)$  with  $a_x = 0.140$  and  $b_x = 0.931$  is well known, see Figure 5a. Secondly, we assume that we know a priori the form of the Z-distribution  $Z(r, a_r, b_r)$  ...*

Page 18, line 19: “of an satellite“ -> "of a satellite”

*Done*

Page 19, line 7: I think “for  $r_i > 37.5$  nm“ should be "for  $r_i < 37.5$  nm”

*Done, yes a typing error.*

Page 19, line 10: “signal result“ -> “signals result”

*Done*

Page 19, line 11: “of an spherical ice particle” -> “of a spherical ice particle”

*Done*

Page 19, line 11/12: you assume a fixed relationship between LIDAR backscatter signal and particle radius. In reality, the power will decrease with increasing particle radius. For your estimation this certainly does not have to be considered, but it's perhaps worth mentioning.

*In reality, the power will sharply **increase** with increasing particle radius ( $\sim r^{5.8}$ ). We use this relationship explicitly in section 6.2 when calculating the integrals.*

Page 21, last line: "We present two numerically stable .."

*Done*

Page 21, line 6: "The Z-distribution approach offers a more general possibility to derive artificial data samples without any knowledge of correlation and regression coefficients" OK, but the approach requires a priori knowledge on the Z-distribution parameters, right?

*Comment: This sentence is related to a brief summary of section 6.1 (Construction of artificial data). In section 6.1 we state clearly for several times the assumption of a priori knowledge on the Z-distribution parameters.*

# A new Description of Probability Density Distributions of Polar Mesospheric Clouds (PMC)

Uwe Berger<sup>1</sup>, Gerd Baumgarten<sup>1</sup>, Jens Fiedler<sup>1</sup>, and Franz-Josef Lübken<sup>1</sup>

<sup>1</sup>Leibniz-Institute of Atmospheric Physics, Rostock University, Kühlungsborn, Germany

**Correspondence:** Uwe Berger (berger@iap-kborn.de)

**Abstract.** In this paper we present a new description about statistical probability density distributions (pdfs) of Polar Mesospheric Clouds (PMC) ~~and noctilucent clouds (NLC)~~. The analysis is based on observations of maximum backscatter, ice mass density, ice particle radius, and number density of ice particles measured by the ALOMAR RMR-lidar for all ~~NLC~~ PMC seasons from 2002 to 2016. From this data set we derive a new class of pdfs that describe the statistics of PMC/~~NLC~~ events which is  
5 different from previously statistical methods using the approach of an exponential distribution commonly named g-distribution. The new analysis describes successfully the probability ~~statistic~~ distributions of ALOMAR lidar data. It turns out that the former g-function description is a special case of our new approach. In general the new statistical function can be applied to many kinds of different PMC parameters, e.g. maximum backscatter, integrated backscatter, ice mass density, ice water content, ice particle radius, ice particle number density or albedo measured by satellites. As a main advantage the new method allows to  
10 connect different observational PMC distributions of lidar, and satellite data, and also to compare with distributions from ice model studies. In particular, the statistical distributions of different ice parameters can be compared with each other on the basis of a common assessment that facilitates, for example, trend analysis of PMC/~~NLC~~.

*Copyright statement.* (will be included by Copernicus)

## 1 Introduction

15 First studies of probability distributions of Polar Mesospheric Clouds (PMC) ~~and noctilucent clouds (NLC)~~ were reported by *Thomas* (1995) using data from the UVS instrument on board the Solar Mesosphere Explorer (SME) satellite and from the Solar Backscatter Ultraviolet (SBUV) instrument on the Nimbus-7 satellite over the period 1978-1986, measuring scattered limb albedo at 265 nm and nadir albedo at 273.5 nm, respectively. *Thomas* (1995) introduced empirical measures in the statistical analysis of PMC brightness distributions. He showed that the frequency distribution of PMC albedo derived from  
20 both SME and SBUV satellite data can be approximated by a (normalized) exponential probability function, see Figure 3 in *Thomas* (1995). Secondly, the author also proposed to use cumulative frequency numbers (the so-called g-function) of clouds  $g(A)$  exceeding a certain albedo  $A$ , in order to better represent the exponential populations. Examples of g-distributions are

plotted on a semi-logarithmic scale in Figure 4 in *Thomas* (1995), clearly indicating an approximately linear behavior of cumulative frequencies in a logarithmic format.

In the following years many observational PMC analyses of seasonal statistics have been published frequently using the g-function, e.g. reports from Wind Imaging Interferometer (WINDII) and Polar Ozone and Aerosol Measurement II data (*Shettle et al.*, 2002), SBUV data (*DeLand et al.*, 2003), Student Nitric Oxide Explorer (SNOE) data (*Bailey et al.*, 2007), ice water content data derived from SBUV (*DeLand and Thomas*, 2015), or ALOMAR lidar data (*Fiedler et al.*, 2017). Also model analyses have used the g-function investigating trends and long-term changes in PMC parameters (*Lübken et al.*, 2013; *Berger and Lübken*, 2015).

The g-function approach has been relatively successfully applied to many kinds of different PMC parameters as brightness, albedo, maximum backscatter ratio, integrated backscatter, ice water content, ice mass densities, ice particle size, or ice particle number density since frequency histograms of all these parameters have sometimes a nearly, at least piecewise exponential shape. Furthermore, sometimes PMC data seem to fit almost perfectly to exponential distributions, particularly when using cumulative standardizations of data (*Thomas*, 1995). An example of a good exponential fit is the frequency distribution of ALOMAR backscatter data that are discussed in Sect. 3.1.1. On the other hand, in some statistical applications it is obvious that the exponential approach describes the data rather insufficiently, see examples of ice mass density, ice radius and ice number density in Sect. 3.1.2. Therefore it is a desirable task to provide some more aspects on the theory of PMC/NLC statistics.

This paper makes an attempt to investigate in more detail the statistics of probability density functions (pdf) of PMC/NLC climatology for various ice parameters. In the following we analyze a PMC/NLC data record of maximum backscatter, ice mass density, ice particle radius, and number density from the period 2002–2016 measured by the ALOMAR RMR lidar. From the analysis of these ALOMAR data, we derive a new class of pdfs of PMC/NLC distributions that, as we will show, modifies and improves the exponential (g-function) approach as introduced by *Thomas* (1995).

## 2 Description of ALOMAR lidar data

The data set obtained by the ground-based Rayleigh/Mie/Raman (RMR)-lidar, located at the Arctic station ALOMAR (69°N, 16°E), consists of occurrence frequency, brightness and altitude of NL PMC (noctilucent clouds). The RMR-lidar is in operation on a routine basis during the summer seasons (NLP MC season: 20 May to 20 August) since 1997. Since summer 2002 the lidar system has the general capability to run in a multiple wavelength (3-color) mode. We shortly summarize the 3-color lidar technique: laser pulses at three separated wavelengths (355 nm, 532 nm, 1064 nm) are emitted, scattered back by air molecules and ice particles in the atmosphere and collected by telescopes. The received light is recorded by single photon counting detectors with an integration time of 15 minutes. After separation of the ice particle and molecular backscatter signal, we extract three vertical profiles of so-called backscatter ratios coefficients which are a measure of height dependent brightness of the ice cloud. From each backscatter height profile we estimate At the height of maximum backscatter (MBS) at 532 nm we calculate three MBS values signal which corresponds to a mean height of as an average over the three wavelengths.



We assume that at the altitude of MBS, typically located near 83 km, the actual shape of the ice particle distribution can be described by a Normal-distribution. Then we derive from the three measured MBS values the characteristics of the Normal-distribution with mean ice radius, ice number density and variance (*Baumgarten et al., 2007*). Finally, we also estimate from these ice parameters the actual ice mass density (IMD) at the MBS height. Such a Gaussian assumption has been widely used in PMC data processing of lidar and satellite data, e.g. ALOMAR lidar (*Baumgarten et al., 2010*) and AIM satellite with SOFIE/CIPS instruments (*Hervig and Stevens, 2014; Bailey et al., 2015*). Also microphysical model studies show a strong evidence of Gaussian distributed ice particles at the height of maximum brightness of PMC, e.g. *Berger and von Zahn (2002), Rapp and Thomas (2006)*.

In this paper we will analyze the climatology of all ice seasons from 2002 until 2016 merging all 15 seasons to one data record. Within this combined data set we then get a total number  $N$  of 8,597 observations which is sufficiently numerous in order to avoid too large statistical irregularities in a frequency histogram of the data.

### 3 The exponential probability distribution (g-function)

In general, the seasonal climatology of PMC events with measured ice parameters as e.g. integrated backscatter, maximum backscatter, column ice mass, albedo or ice mass density, has been supposed to follow an exponential distribution which we name  $\mathcal{E}(x)$  with ice parameter variable  $x$ . In the following we summarize the general characteristics of the exponential distribution which allows to compute a numerical test for exponentially distributed data. The properties of the exponential probability distribution will be also compared with the characteristics of our new probability distribution approach introduced in Sect. 4.

The general form of the exponential distribution  $\mathcal{E}(x)$  with scale parameter  $\alpha > 0$  is defined as a probability density function (pdf) given by  $\mathcal{E}(x) = \alpha \exp(-\alpha x)$  which fulfills the normalization condition of a pdf with  $\int_0^\infty \mathcal{E}(x) dx = 1$ . *Thomas (1995)* defined the g-function  $g(x)$  as the cumulative probability  $\mathcal{E}_{cum}$  with

$$g(x) = \mathcal{E}_{cum}(x) = \int_x^\infty \alpha e^{-\alpha x'} dx' = e^{-\alpha x}. \quad (1)$$

Taking the logarithm of  $\mathcal{E}$  yields a straight line  $\ln(\mathcal{E}) = \ln \alpha - \alpha x$ . For a given class of values  $[x_1; x_2]$  the likeliness of this class is proportional to the area enclosed by the continuous probability distribution and is obtained by integrating  $\mathcal{E}$  on the segment length (bin size)  $\Delta x = x_2 - x_1$  as  $\int_{x_1}^{x_2} \mathcal{E} dx = -e^{-\alpha x_2} + e^{-\alpha x_1}$ .

A statistical analysis of ice parameters has to take into account the aspect of specific sensitivities of different instruments. For example the ALOMAR lidar is generally sensitive to a backscatter signal larger than a threshold about  $2-3 \cdot 10^{-10} m^{-1} sr^{-1}$  (*Fiedler et al., 2017*). When considering a threshold ( $x_{th}$ ) the exponential pdf  $\mathcal{E}(x)$  is normalized according to  $A \int_{x_{th}}^\infty \mathcal{E}(x) dx = 1$  with a scaling factor  $A = \exp(\alpha x_{th})$ . We summarize the properties of the exponential distribution taking into account a threshold in Appendix A.

For a threshold of zero ( $x_{th} = 0$ ) we get the regular exponential distribution  $\mathcal{E}(x)$  which has the mean  $\mu = 1/\alpha$ , median  $\nu = \ln(2)/\alpha$ , mode  $\eta = 0$  which is the value that occurs most frequently in the data sample, variance  $\sigma^2 = 1/\alpha^2$  and standard

deviation  $\sigma = 1/\alpha$ . Note that the exponential distribution has the unique property that the mean  $\mu$  and standard deviation  $\sigma$  are identical, see also Eq. (A1) and Eq. (A4). In combination with the median (Eq. A2), these equations form a simple statistical constraint, namely

$$\mu - x_{th} = \sigma = (\nu - x_{th})/\ln(2). \quad (2)$$

- 5 This allows to test whether a given observational data sample shows good conformity with an exponential (g-function) distribution.

For a given data sample  $x_i$  ( $i = 1, \dots, N$ ) assuming a threshold  $x_i > x_{th}$  we use the common estimates of mean  $\bar{m}$  and variance  $s^2$  (standard deviation  $s$ ) with

$$\bar{m} = \frac{1}{N} \sum_i^N x_i, \quad s^2 = \frac{1}{N-1} \sum_i^N (x_i - \bar{m})^2, \quad x > x_{th}. \quad (3)$$

- 10 In addition we also calculate the median  $\tilde{m}$  and mode  $\hat{m}$  ~~which is the value that occurs most frequently in the data sample~~. Hence testing a data sample to be exponentially distributed means that mean, median and standard deviation of the sample have to fulfill the following identity:

$$\mu - x_{th} = \sigma = \frac{\nu - x_{th}}{\ln(2)} \rightarrow \bar{m} - x_{th} = s = \frac{\tilde{m} - x_{th}}{\ln(2)}. \quad (4)$$

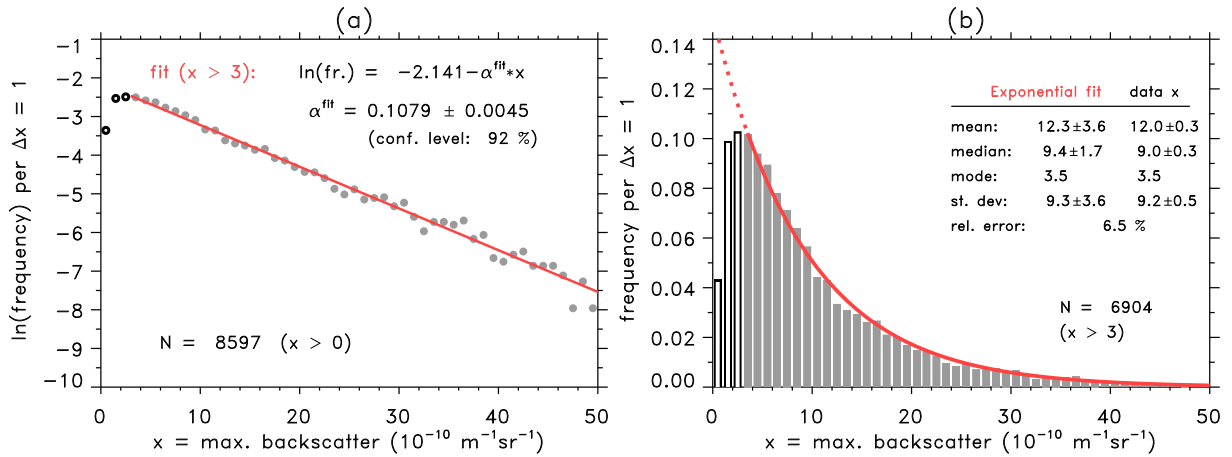
We will use this condition to analyze the ALOMAR data with respect to possible exponential (g-function) distributions.

### 15 3.1 Analysis of ALOMAR data on exponential distributions (g-function)

#### 3.1.1 Analysis of maximum backscatter data

- We investigate the frequency distribution of maximum backscatter (MBS) ~~data at 532 nm~~ in units of  $10^{-10} m^{-1} sr^{-1}$ . We assume a threshold of 3 that corresponds to the instrumental sensitivity of the ALOMAR lidar. Then we sort the  $x$ =MBS data to a bin size of one per class starting from the threshold value and calculate a frequency histogram. Finally, we normalize the
- 20 histogram so that the sum of all frequency classes equals one.

- Figure 1a shows the frequency distribution of  $x$ =MBS data in a semi-logarithm ~~scale diagram~~. The first impression is that the data points are almost perfectly approximated by a linear regression besides some statistical noise. This indicates that an exponential function describes the distribution of data with a high accuracy. Figure 1b shows the distribution histogram in an original non-logarithmic representation. We see that the exponential fit matches the data histogram with a high precision. ~~The~~
- 25 ~~good quality of the fit is characterized by a small relative error of 6.5 % that is calculated as a sum of  $100\% \cdot \sum_j^M |\mathcal{E}_j - \mathcal{X}_j|$  for  $x > 3$  with theoretical exponential frequencies  $\mathcal{E}_j$  and normalized frequencies  $\mathcal{X}_j$  of data  $x$  per class  $j$  with a total of  $M$  classes.~~ The high quality of the fit is also supported by the fact that theoretical mean, median, mode, and standard deviation ( $\mu, \nu, \eta, \sigma$ ) using Eq. (A1–A4) and estimates of mean, median, mode, and standard deviation ( $\bar{m}, \tilde{m}, \hat{m}, s$ ) from the data sample derived from Eq. (3) all coincide within their error bars. Now we perform the proposed exponential (g-function) test
- 30 with  $\bar{m} - x_{th} = s = (\tilde{m} - x_{th})/\ln(2)$ , see Eq. (4), and insert the values from the data sample of mean ( $\bar{m} = 12.0 \pm 0.3$ ), median

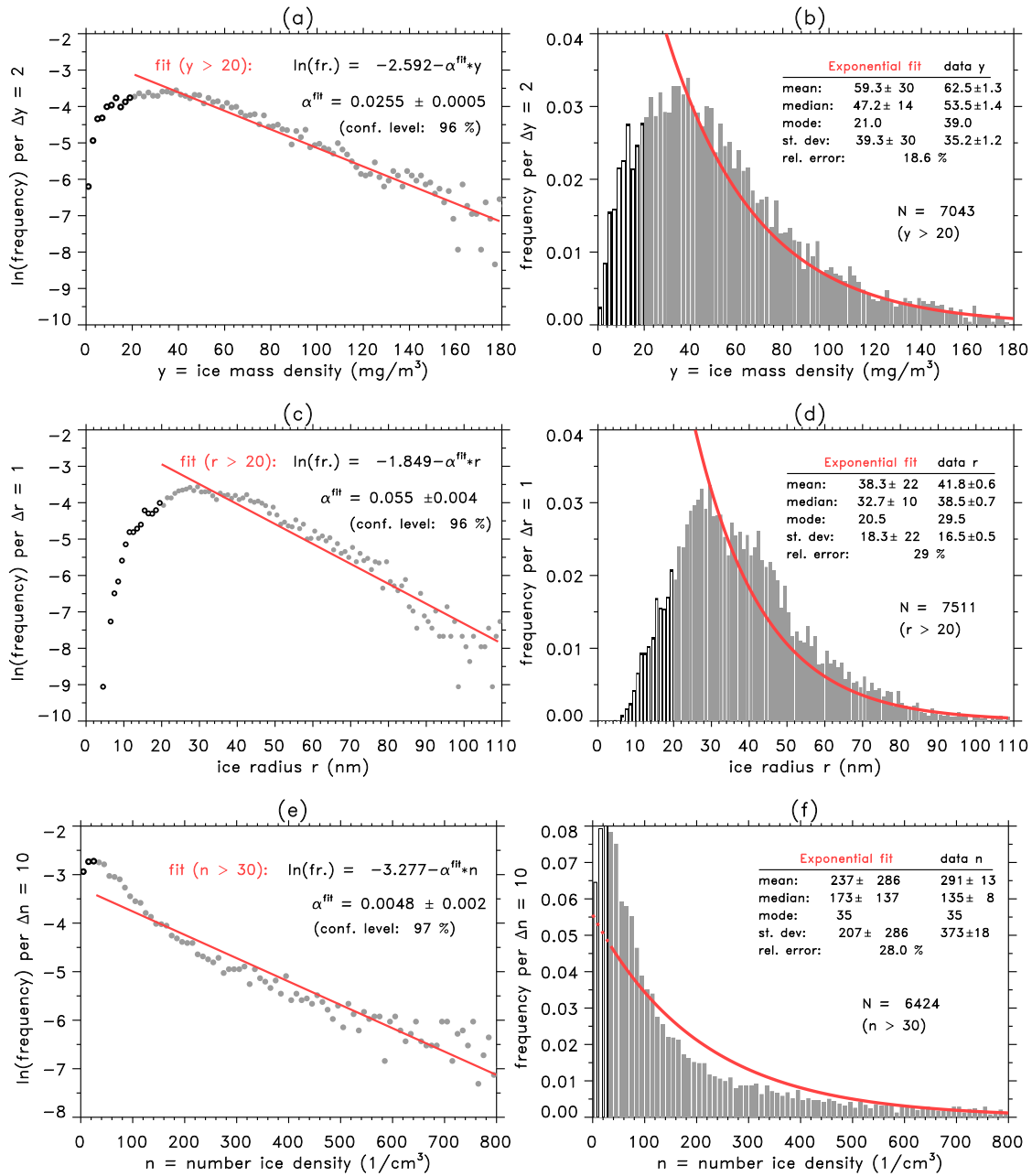


**Figure 1.** (a) Logarithm of frequency distribution of maximum backscatter ( $x$ =MBS) in units of  $10^{-10} m^{-1} sr^{-1}$  (gray points  $x > 3$ ; black circles  $0 < x < 3$ ). The bin size is  $\Delta x = 1$ . The straight line (solid red) has been derived from a least squares fit to MBS data with  $x > 3$ . (b) Same as panel a, but original, non-logarithmic frequency distribution (gray bars  $x > 3$ ; black bars  $0 < x < 3$ ). The exponential fit derived from panel a is shown as a red curve. Values of mean, median, standard deviation are given to compare fit and original data taking into account a threshold of  $x_{th} = 3$ . The relative error given in percent describes the quality of exponential fitting, [see text for details](#).

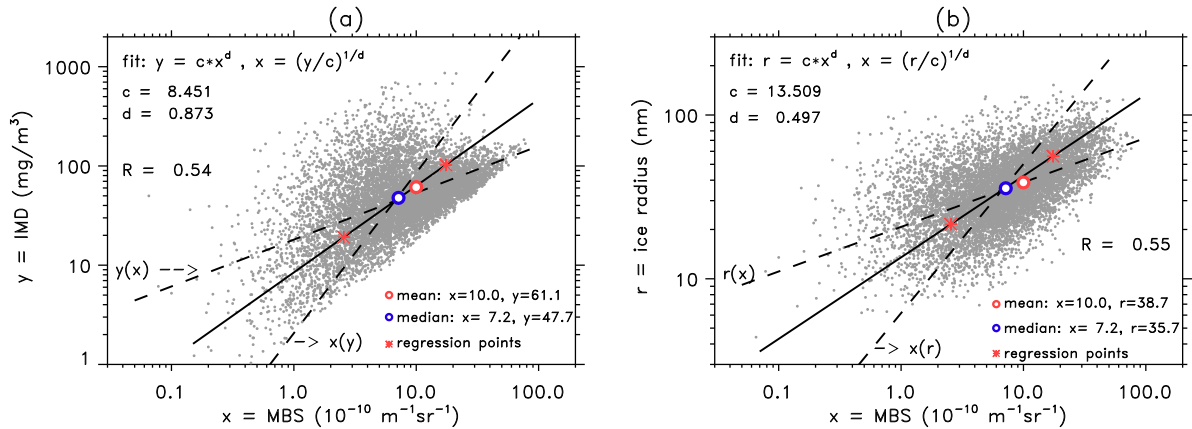
( $\tilde{m} = 9.0 \pm 0.4$ ), and standard deviation ( $s = 9.2 \pm 0.5$ ). The error uncertainties have been estimated with bootstrap methods. We find that  $\tilde{m} - x_{th} = 12.0 - 3 = 9 \pm 0.3$ ,  $s = 9.2 \pm 0.5$ , and  $(\tilde{m} - x_{th})/\ln(2) = (9.0 - 3)/0.69315 = 8.7 \pm 0.6$ . Hence the identity is fulfilled when allowing for uncertainties introduced by statistical errors. We conclude that lidar MBS-data are very likely exponentially distributed and follow a g-function, respectively.

### 5 3.1.2 Analysis of ice mass density, ice radius, and ice number density data

Now we investigate other ice parameters from the ALOMAR data set with respect to exponential distributions, namely the frequency distributions of ice mass density (IMD) in units of  $mg \cdot m^{-3}$  (threshold 20, bin size of 2), ice radius  $r$  in units of nm (threshold 20, bin size of 1) and ice number density  $n$  in units of  $cm^{-3}$  (threshold 30, bin size of 10). We will show that these parameters do not follow an exponential distribution (g-function). **as expected.** In Figure 2a we plot the frequency distribution for  $y$ =IMD data in a semi-logarithmic **seale diagram**. **Obviously, We show in the following that** the data points have no dominant linear shape. There exist systematic deviations between data and theoretical exponential fit. In comparison to the fit curve, data points are systematically smaller at  $y = 20 - 40$ . Vice versa, data points exceed substantially fit values in the range  $y = 40 - 90$ . Also, frequencies in all classes below the threshold are significantly smaller than a proposed exponential fit. Indeed, the frequency histogram in the non-logarithmic frame shows these systematic deviations between data and exponential fit even more pronounced, see Figure 2b. With a relative error of about 19% the exponential curve fails to fit satisfactorily the data. Also significant differences exist between fit and data parameter of mean, median, mode, and standard deviation (Figure 2b). Finally, we apply the exponential (g-function) test for IMD data and get the following results: finding the mean ( $\tilde{m} = 62.5 \pm 1.3$ ),



**Figure 2.** (a) Logarithm of frequency distribution of ice mass density ( $y$ =IMD) in units of  $\text{mg/m}^3$  (gray points  $y > 20$ ; black circles  $0 < y < 20$ ). The bin size is  $\Delta y = 2$ . The straight line (solid red) has been derived from a least squares fit to IMD data with  $y > 20$ . (b) Same as panel a, but original, non-logarithmic frequency distribution (gray bars  $y > 20$ ; black bars  $0 < y < 20$ ). The exponential fit derived from panel a is shown as a red curve. Values of mean, median, standard deviation are given to compare fit and original data taking into account a threshold of  $y_{th} = 20$ . The relative error given in percent describes the quality of exponential fitting. (c) and (d) Same, but for ice radius  $r$  in units of nm with bin size  $\Delta r = 1$  and threshold  $r_{th} = 20$ . (e) and (f) Same, but for ice number density  $n$  in units of  $1/\text{cm}^3$  with bin size  $\Delta n = 10$  and threshold  $n_{th} = 30$ .



**Figure 3.** (a) Maximum backscatter ( $x$ =MBS) versus ice mass density ( $y$ =IMD) in a logarithmic frame for all data with correlation coefficient  $R$  and regression parameters  $c$  and  $d$ , see text for more details. Regression points  $p_{1/2} = [m \pm \Delta m; n \pm \Delta n]$  are calculated with  $m = 1/N \sum_i^N \ln x_i$ ,  $n = 1/N \sum_i^N \ln y_i$ ,  $\Delta m = \sqrt{1/N \sum_i^N (\ln x_i - m)^2}$ , and  $\Delta n = \sqrt{1/N \sum_i^N (\ln y_i - n)^2}$ . Mean and median are calculated from original, non-logarithmic data. The solid line shows the mean regression defined by regression points and corresponding  $(c,d)$ -values. Dashed lines result from simple regression analysis of  $y(x) : x \Rightarrow y$  and  $x(y) : x \Rightarrow y$ . (b) Same for  $x$ =MBS versus ice radius  $r$ .

median ( $\tilde{m} = 53.5 \pm 1.4$ ), and standard deviation ( $s = 35.2 \pm 1.2$ ) directly calculated from the data sample, we get  $\tilde{m} - y_{th} = 62.5 - 20 = 42.5$  unequal not equal to  $s = 35.2$  unequal not equal to  $(\tilde{m} - y_{th})/\ln(2) = (53.5 - 20)/0.69315 = 48.3$ . Hence the condition of identity is not satisfied even allowing for uncertainties introduced by statistical errors again calculated from bootstrap methods. That is why we have to conclude that the lidar IMD data are very likely not exponentially distributed. When we investigate a possible exponential distribution for ice radius  $r$  and ice number density  $n$  data, see Figure 2c–f, we even see larger discrepancies between data and exponential fits with e.g. relative errors about 29 %, indicating that also both  $r$  and  $n$  are very likely not exponentially distributed. This is supported by the fact that the test of mean, median, and variance fails again and shows large inequalities.

We summarize that ice mass density, ice radius, and ice number density do not follow an exponential distribution in contrast to maximum backscatter. In the following section we will show that this is reasonable and is based on the fact that a functional link between MBS to the other data sets of IMD,  $r$  and  $n$  does miss a linear relationship.

### 3.2 Test on linearity between maximum backscatter and ice mass density, ice radius, ice number density data

Linearity between maximum backscatter (MBS) and ice mass density (IMD), ice radius  $r$  and ice number density  $n$  data is a necessary and sufficient condition that also IMD,  $r$  and  $n$  data samples are exponentially distributed, see also next section. In the following we will test this constraint. Figure 3a shows a scatter plot in a logarithmic frame for simultaneously measured MBS and IMD data. In order to test a linear relationship between  $x$ =MBS and  $y$ =IMD we introduce a general fit function

described by a power law condition as

$$y(x) = cx^d \Leftrightarrow x(y) = (y/c)^{1/d} \quad (5)$$

with the two constants  $c$  (linear constant) and  $d$  (power constant). Only for  $d = 1$  we expect a perfect linear dependence between  $x$  and  $y$ . First of all, the logarithmic values of  $x$  and  $y$  do not yet have a high linear correlation ( $R = 0.54$ ), see Figure 3a. Since the correlation coefficient  $R$  is unequal one, the two regression lines resulting from  $y(x) : \ln x \mapsto \ln y$  and  $x(y) : \ln y \mapsto \ln x$  differ from each other. This means that the best choice of a regression fit is determined by a straight line through the two regression points which are defined by the means plus/minus standard deviations of logarithmic  $x$  and  $y$  data. Note that the positions of regression points also relate to the half width of the angle which is spanned by the two regression lines  $y(x)$  and  $x(y)$ . For our mean regression line we estimate  $d=0.873$ . The statistical error for  $d$  is  $\Delta d = \pm 0.012$  with a confidence level of 95 % which indicates a significant non-linearity. Hence we conclude that the pdf describing the distribution of IMD data is very likely not an exact exponential function and its cumulative distribution does not follow precisely a g-function description because the criterion of 'linearity' is violated. In Figure 3b we show a second example for the correlation between MBS and ice radius  $n$ . Again the correlation is about  $R = 0.55$ , but now the power constant is even much smaller with  $d=0.497$  which is far away from unity. Finally, we investigated the linearity between MBS and ice number density  $n$  where we find a weak negative correlation of  $R = -0.15$  (not shown here). A best fit analysis yields a power value of  $d=-0.534$  which again fails significantly the constraint of unity. Hence we conclude that also ice radius and ice number densities distributions should not follow exponential (g-function) distributions.

#### 4 A new probability density function for PMC parameters

In this section we will present the major part of the new statistical approach in order to describe frequency distributions of different PMC parameters.

There exists a general mathematical method ('integration by substitution') that provides the opportunity to transform between probability density functions (pdf) with different statistical variables. This is done by the following procedure: Assuming a given pdf  $P(x)$  with variable  $x$ , then the transformation from  $x$  to a new variable  $y(x)$  with a new pdf  $Q(y)$  is specified by

$$Q(y) = \left| \frac{\partial x}{\partial y} \right| \cdot P(x(y)) \quad (6)$$

with  $x(y)$  being the inverse function of  $y(x)$ . Here the absolute value of the derivative  $\partial x / \partial y$  has to be calculated so that the new pdf  $Q$  is defined positively everywhere. In order to apply this approach one needs generally two requirements: (1) Any transformation between the two pdfs  $P$  and  $Q$  needs an initial guess in one of the two pdfs, either  $P$  or  $Q$ . (2) An analytic formula of a forward and backward model must be available that describes the functional dependence between the two statistical ice variables  $x$  and  $y$ . In the following we discuss how we satisfy these two requirements.

We apply this method for two ice parameters, namely MBS with variable  $x$  and an unknown ice parameter named  $u$  (e.g. this unknown ice parameter might be ice particle radius). For condition (1) we use the hypothesis that the distribution of

maximum backscatter data (MBS) is perfectly represented by an exponential pdf and its cumulative distribution is described by a g-function according to Eq. (1). For condition (2) we assume a power form of a fit function used in Eq. (5) that also allows us to calculate analytically the inverse function. We discuss a suitable justification of this assumption in Sect. 6.2. Hence the forward model is  $u(x) = cx^d$  and the backward model is  $x(u) = (u/c)^{1/d}$ . Then the new distribution  $\mathcal{U}$  for the arbitrary ice parameter  $u$  using Eq. (6) is given by

$$\mathcal{U}(u) = \|\partial x/\partial u\| \cdot \mathcal{E}(x(u)) = \left\| \frac{1}{du} \cdot \left(\frac{u}{c}\right)^{1/d} \right\| \cdot \alpha e^{-\alpha(u/c)^{1/d}}. \quad (7)$$

Equation (7) can be simplified to a more general form with

$$\mathcal{U}(u) = \tilde{a}|\tilde{b}|u^{\tilde{b}-1}e^{-\tilde{a}u^{\tilde{b}}}, \quad \tilde{a} = \alpha \left(\frac{1}{c}\right)^{1/d}, \quad \tilde{b} = \frac{1}{d}. \quad (8)$$

In a next step we introduce in an arbitrary manner a third ice parameter named  $z$ , for which we assume again the same power law (Eq. 5) now valid between  $z$  and  $u$  as

$$z(u) = \tilde{c}u^{\tilde{d}} \Leftrightarrow u(z) = (z/\tilde{c})^{1/\tilde{d}}.$$

Again we apply Eq. (6) and calculate the unknown pdf  $\mathcal{Z}(z)$ :

$$\begin{aligned} \mathcal{Z}(z) = \|\partial u/\partial z\| \cdot \mathcal{U}(u(z)) &= \left\| \frac{1}{\tilde{d}z} \cdot \left(\frac{z}{\tilde{c}}\right)^{1/\tilde{d}} \right\| \cdot \tilde{a}\tilde{b} \left((z/\tilde{c})^{1/\tilde{d}}\right)^{\tilde{b}-1} e^{-\tilde{a}(z/\tilde{c})^{\tilde{b}/\tilde{d}}} \\ &= \left\| \frac{\tilde{a}\tilde{b}}{\tilde{d}} \right\| \cdot z^{-1} \left((z/\tilde{c})^{1/\tilde{d}}\right)^{\tilde{b}} e^{-\tilde{a}(z/\tilde{c})^{\tilde{b}/\tilde{d}}}. \end{aligned}$$

At first glance the algebraic expression for  $\mathcal{Z}$  looks particularly complex, but  $\mathcal{Z}$  can be transformed to a general form with  $a = \tilde{a}(1/\tilde{c})^{\tilde{b}/\tilde{d}}$  and  $b = \tilde{b}/\tilde{d}$  as

$$\mathcal{Z}(z) = a|b|z^{b-1}e^{-az^b} \quad (a > 0, b \neq 0). \quad (9)$$

Equation (9) represents our final result. The pdf  $\mathcal{Z}(z)$  describes the general form of the new statistical distribution. Note that the algebraic expressions of Eq. (8) and Eq. (9) formally coincide. This means that any probability distribution of a new ice parameter that is connected to other ice parameters through our functional power law (Eq. 5), can be described by the general pdf given by Eq. (9). The constants  $a$  and  $b$  represent two free parameters in the  $\mathcal{Z}$ -distribution which we name the scale parameter  $a$  and the shape parameter  $b$ . Obviously, the  $\mathcal{Z}$ -pdf is identical with an exponential pdf (or g-function) in the limit  $b = 1$ . This shows the close interconnection of the new  $\mathcal{Z}$ -pdf to the commonly used exponential (g-function) approach. We will show in the following that any distribution from so different ice parameters as maximum backscatter, ice mass density, ice radius, and number density of ice particles can be described on a uniform basis with a high accuracy by  $\mathcal{Z}$ . Vice versa this indicates that these ice parameters are connected depending on each other by the uniform power law relation (Eq. 5), more details are discussed in Sect. 6.2.

## 5 Application of the $\mathcal{Z}$ -distribution to real data

### 5.1 General properties of the $\mathcal{Z}$ -distribution

In this section we first show some general characteristics of the new  $\mathcal{Z}$ -distribution. From these properties we derive conditions and constraints that will allow to estimate the specific values of the two free constants in  $\mathcal{Z}$ , the scale parameter  $a$  and shape parameter  $b$ , for a given data sample.

First we show that  $\mathcal{Z}$  is a correct pdf satisfying the normalization condition  $\int_0^{\infty} \mathcal{Z} dz = 1$ :

$$\int_0^{\infty} \mathcal{Z} dz = \int_0^{\infty} a|b|z^{b-1}e^{-az^b} dz = -\frac{|b|}{b}e^{-az^b} \Big|_0^{\infty} = 1.$$

The definition range of  $\mathcal{Z}(z; a, b)$  is  $z \geq 0$ ,  $a > 0$ , and  $b \neq 0$  with  $\mathcal{Z}(z < 0) = 0$  and

$$\mathcal{Z} = a|b|z^{b-1}e^{-az^b}, \quad \ln(\mathcal{Z}) = \ln(a|b|) + (b-1) \cdot \ln(z) - az^b, \quad b > 0. \quad (10a)$$

For a negative  $b$  the distribution  $\mathcal{Z}$  is described by

$$\mathcal{Z} = a|b| \left(\frac{1}{z}\right)^{|b-1|} e^{-a(1/z)^{|b|}}, \quad \ln(\mathcal{Z}) = \ln(a|b|) + |b-1| \cdot \ln(1/z) - a(1/z)^{|b|}, \quad b < 0. \quad (10b)$$

The cumulative form of  $\mathcal{Z}$  for  $b > 0$  is given by

$$\mathcal{Z}_{cum}(z) = \int_z^{\infty} \mathcal{Z} dz' = e^{-az^b}, \quad \ln(\mathcal{Z}_{cum}) = -az^b, \quad \ln(|\ln(\mathcal{Z}_{cum})|) = \ln(a) + b \ln(z). \quad (11a)$$

For  $b < 0$  we have to choose the cumulative calculation in reverse order starting the integration at zero. Naming the reverse

cumulative with index zero as  $\mathcal{Z}_{cum}^0$  we get

$$\mathcal{Z}_{cum}^0(z) = \int_0^z \mathcal{Z} dz' = e^{-a(1/z)^{|b|}} = e^{-az^b}, \quad \ln(\mathcal{Z}_{cum}^0) = -az^b, \quad \ln(|\ln(\mathcal{Z}_{cum}^0)|) = \ln(a) + b \ln(z). \quad (11b)$$

Only the cumulative descriptions from Eq. (11a,b) allow in principle to estimate roughly the constants  $a$  and  $b$  for a given data sample using the double logarithmic functional dependence, whereas the direct logarithm of  $\mathcal{Z}$  (Eq 10a,b) offers no possibility to solve for  $a$  and  $b$ . However, the method calculating the double logarithmic cumulative is not recommended.

Several numerical tests showed that a stable estimation of  $a$  and  $b$  from noisy data applying this double logarithmic approach is an almost impossible task. Instead, we propose two different methods that rely on much more powerful principles (see next Sect. 5.2). Additionally, we have to take care about a possible negative value of  $b$  that can be only identified using Eq. (11b). In fact such a case occurs in the analysis of ALOMAR data. We will give in Sect. 5.3 an example that only a negative slope parameter describes the distribution of number density of ice particles.

Generally, the  $\mathcal{Z}$ -distribution has the ability to characterize many different types of distributions, see Figure 4. Especially, the shape parameter  $b$  determines the shape of the  $\mathcal{Z}$ -distribution describing non-linear exponential, exponential, right-skewed, left-skewed or symmetric curves. For  $0 < b < 1$  the pdf increase is non-linear exponentially accelerated to infinity as  $z$  approaches



zero. For  $b = 1$  the pdf is exactly an exponential distribution having a positive finite value for  $z$  equal zero. For  $b > 1$ , the function tends to zero as  $z$  approaches zero. When  $b$  is between one and two, the function is right-skewed and rises to a peak quickly, then decreases for large  $z$ . When  $b$  has approximately a value between three and four, the function becomes symmetric and bell-shaped like a normal distribution. Note that exact symmetry is given for a skewness equal to zero which is true at  $z = 3.60232$ . For  $b$  values larger than approximately five, the function becomes again asymmetric changing the skewness to the left. For  $b < 0$ , the function is skewed to the right and decreases steeply towards zero as  $z$  approaches zero. Note that  $\mathcal{Z}$  is never negative and owns a local maximum described by the mode whenever  $b$  is negative or larger than one. Finally we see that a double logarithmic presentation of cumulative functions describes linear shapes with slope  $b$ , see Figure 4j-1.

It is interesting to note that our new  $\mathcal{Z}$ -distribution is closely related to a more general Weibull-distribution (Wilks, 1995). Nevertheless there is a difference concerning the shape parameter  $b$  which in our case is not only defined for positive values but also for negative values. Such a case is disregarded by a classical 2-d Weibull-distribution.

Now we shortly summarize the mathematical descriptions of median, mode, mean, variance, and standard deviation parameters of  $\mathcal{Z}$  for the case of a zero threshold. The calculations are described in detail in Appendix B for the general case of a non-zero threshold.

15 Median:

$$\nu = \left( \frac{\ln 2}{a} \right)^{1/b} \quad (12a)$$

Mode:

$$\eta = \left( \frac{b-1}{ab} \right)^{1/b} \quad \text{for } b > 1, b < 0 ; \quad \eta = 0 \quad \text{for } 0 < b \leq 1 \quad (12b)$$

Mean:

20 
$$\mu = \frac{\Gamma\left(\frac{b+1}{b}\right)}{a^{\frac{1}{b}}} \quad (12c)$$

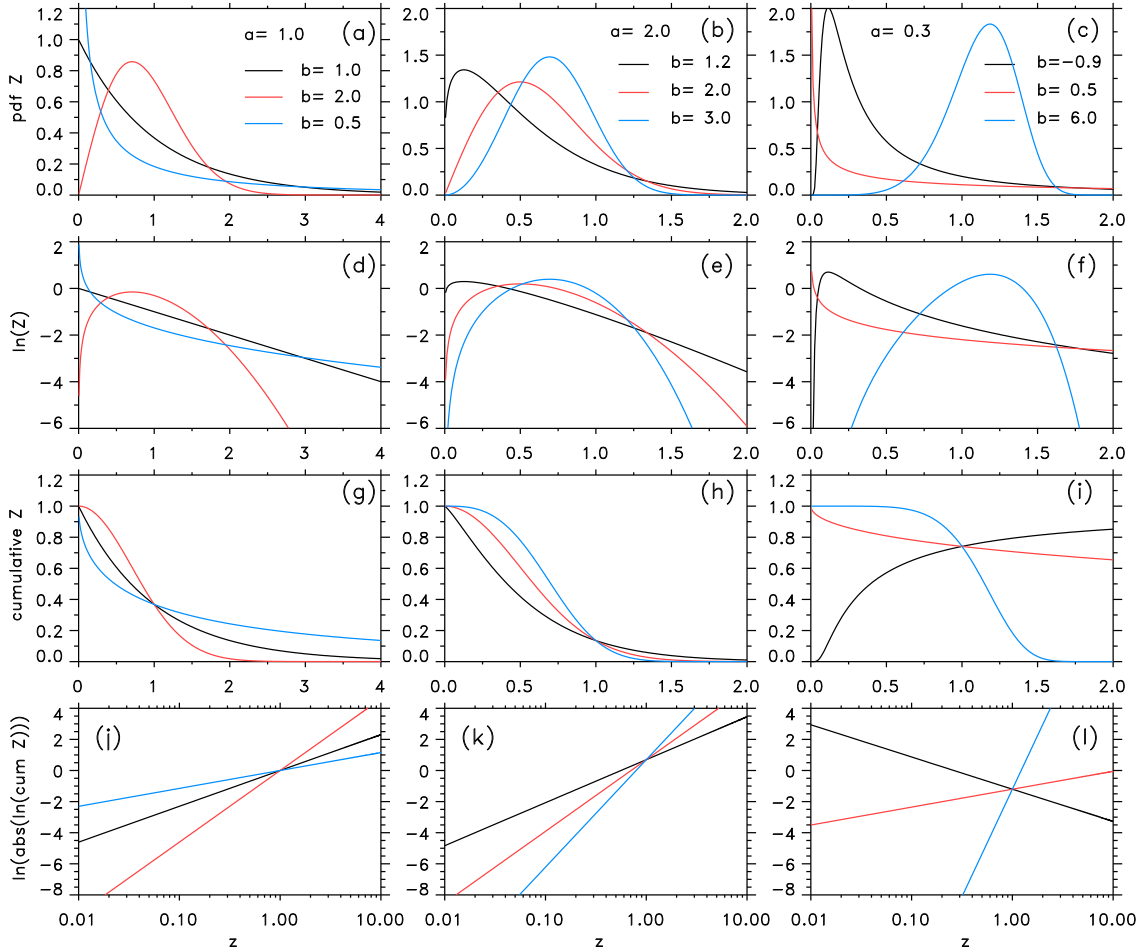
Variance and standard deviation:

$$\sigma^2 = \frac{\Gamma\left(\frac{b+2}{b}\right)}{a^{\frac{2}{b}}} - \mu^2, \quad \sigma = \sqrt{\frac{\Gamma\left(\frac{b+2}{b}\right)}{a^{\frac{2}{b}}} - \mu^2} \quad (12d)$$

The expressions of mean and variance use the Gamma-function  $\Gamma(t) = \int_0^{\infty} x^{t-1} e^{-x} dx$ . Notice that the Gamma-function is defined for all real values of  $t$  except  $t=0$  and all negative integer values of  $t$ . Note also that median, mode, mean, variance, and standard deviation parameters of  $\mathcal{Z}$  coincide with those of an exponential distribution in the limit as  $b$  equals one.

## 5.2 Two computational methods to estimate the free parameters $a$ and $b$ of $\mathcal{Z}$ from a given data sample

In this section we present two numerical methods to calculate the scale parameter  $a$  and shape parameter  $b$  describing the new  $\mathcal{Z}$ -distribution. First of all, since any measurement depends on a specific instrumental sensitivity, we have to introduce a



**Figure 4.** (a–c) Examples of  $\mathcal{Z}(z)$ -function with different parameter values  $a$  and  $b$ , see Eq. (10). (d–f) same but for  $\ln(\mathcal{Z})$  from Eq. (10). (g–i) Same but for  $\mathcal{Z}_{cum}$  from Eq. (11). (j–l) Same but for  $\ln(|\ln(\mathcal{Z}_{cum})|)$  from Eq. (11).

threshold which we name  $z_{th}$ . The remaining data sample consists of  $N$  observations  $z_i$  with  $z_i > z_{th}$ . Then we calculate the mean  $\bar{m}$  and standard deviation  $s$  of data  $z_i$  using Eq. (3), and also the median value  $\tilde{m}$  from data  $z_i$ .

Method (1): we investigate the corresponding theoretical moments from  $\mathcal{Z}$ . In Appendix B we derive the theoretical mean  $\mu$  (Eq. B5) and median  $\nu$  (Eq. B3) for the  $\mathcal{Z}$ -distribution with a threshold constraint. Taking the estimates of mean  $\bar{m}$  and median  $\tilde{m}$  from the sample as best proxies for the theoretical mean  $\mu$  and median  $\nu$  values of  $\mathcal{Z}$ , we get the following equations:

$$\nu = \left( \frac{\ln 2}{a} + z_{th}^b \right)^{1/b} \rightarrow a = \frac{\ln 2}{\tilde{m}^b - z_{th}^b}, \quad (13a)$$

$$\mu = - \frac{A|b|\Gamma\left(\frac{b+1}{b}, az_{th}^b\right)}{ba^{1/b}} \rightarrow 0 = \bar{m} \cdot ba^{1/b} + A|b|\Gamma\left(\frac{b+1}{b}, az_{th}^b\right). \quad (13b)$$

Note that the use of a threshold constraint involves the introduction of a scaling factor  $A = \exp(az_{th}^b)$  which is present in Eq. (13b). Inserting the algebraic term of  $a$  (right side of Eq. (13a)) into the right side zero-equation (Eq. 13b) and using the threshold value of  $z_{th}$  yields an equation only for  $b$  which has to be computed iteratively. Once a numerical value of  $b$  has been estimated with a sufficient accuracy, we insert this  $b$  value into the upper right equation to get the numerical value for  $a$ .

5 We note that in classical statistics the method of moments determines  $a$  and  $b$  from the mean and variance equations. In principle this approach should be [here](#) possible [here](#) too, but in practise the algebraic structure of the variance equation is too complicated, see Eq. (B6) in Appendix B. This means that the variance equation, if at all, is only iteratively solvable whereas the use of the median equation offers an analytical transformation to  $a$ . Generally, we recommend to apply the proposed method using the mean and median equations. This straight-forward method is easy to program and produces reliable estimates of  
10 parameters  $a$  and  $b$ .

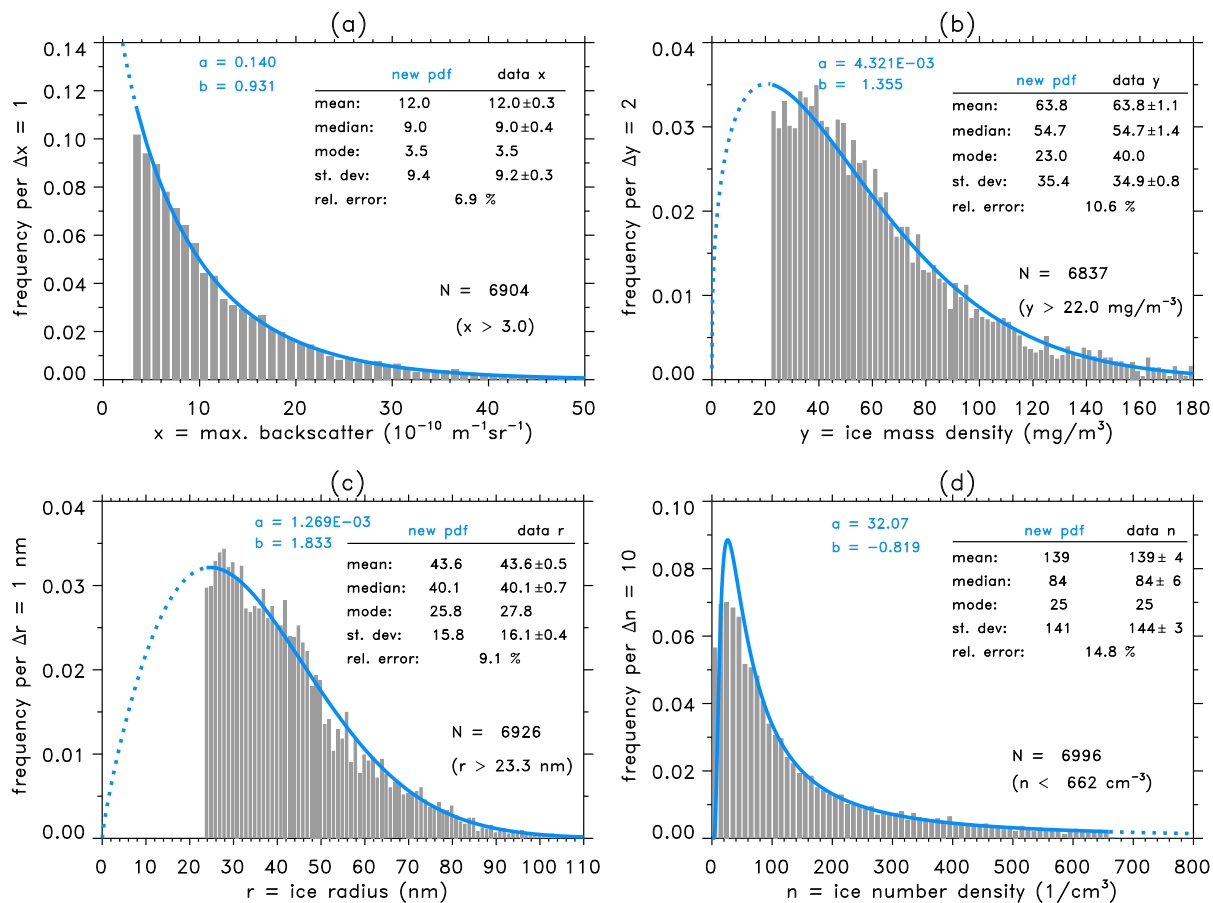
Method (2): we also present a second method using a maximum likelihood approach, see Appendix C. The parameters are again calculated from two equations (Eq. C5) with

$$\frac{1}{a} = -z_{th}^b + \frac{\sum z_i^b}{N}, \quad 0 = \frac{1}{b} + a \cdot \ln z_{th} \cdot z_{th}^b + \frac{\sum \ln z_i}{N} - a \cdot \frac{\sum \ln z_i \cdot z_i^b}{N}. \quad (14)$$

15 Interestingly, the left equation includes a term  $1/N \sum z_i^b$  which is the mean of the sample values weighted by power  $b$  whereas the right equation includes the mean  $1/N \sum \ln z_i$  of logarithmic data and  $1/N \sum z_i^b \ln z_i$ . This shows a similarity to the computation of regression points used in Figure 3. We insert  $a$  into the right equation which yields a unique equation for  $b$  which again can be solved iteratively. Once  $b$  is fixed, the left equation allows to determine  $a$ . In the following we will test our lidar data samples with these two procedures and we will show that both methods produce almost identical results.

### 5.3 $\mathcal{Z}$ -distributions applied to ALOMAR data

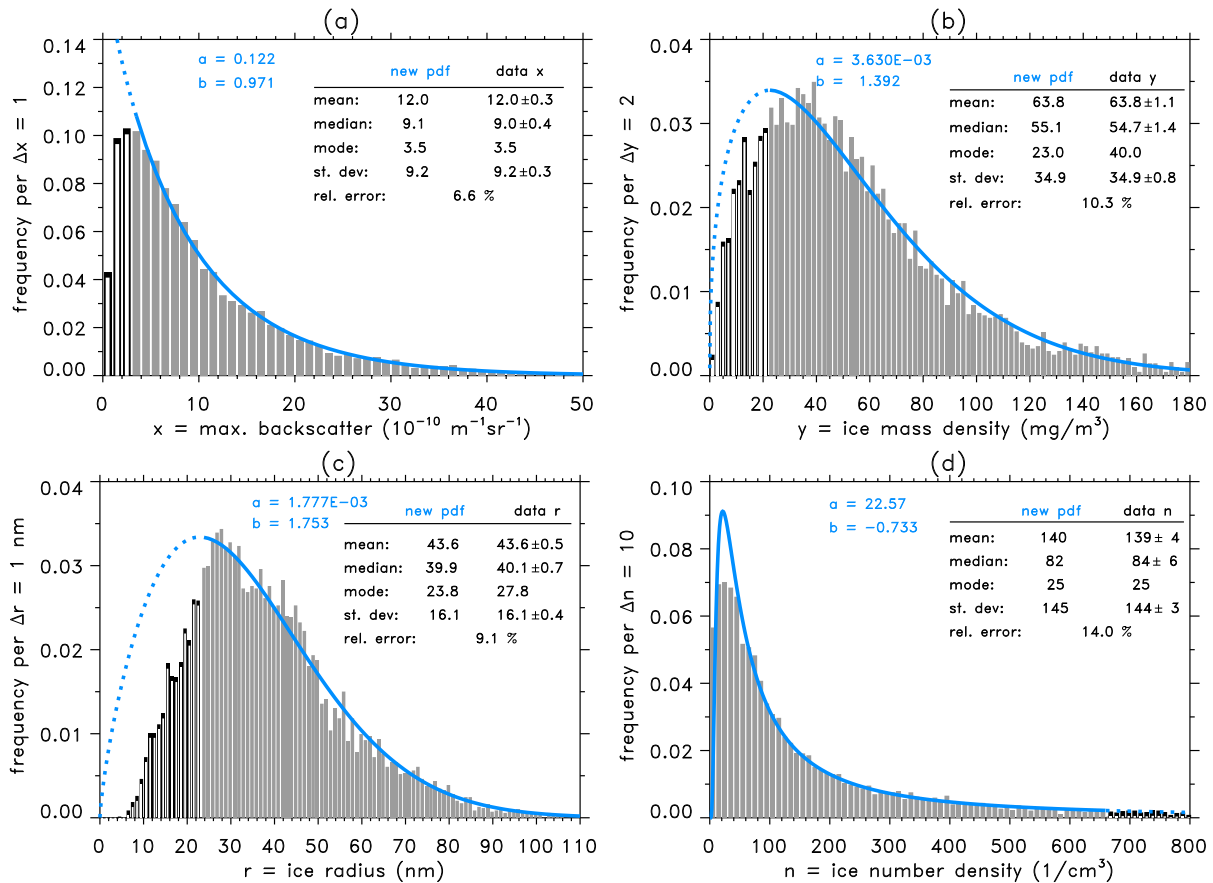
20 Applications of the  $\mathcal{Z}$ -distribution to ALOMAR data of maximum backscatter ( $x$ ), ice mass density ( $y$ ), ice particle radius ( $r$ ) and ice number density ( $n$ ) are shown in Figure 5. Note that thresholds have been computed from the regression functions (Eq. 5) described in Sect. 3.2 on the basis of  $x_{th} = 3 \cdot 10^{-10} \text{m}^{-1} \text{sr}^{-1}$ , [and](#) resulting in  $y_{th} = 22 \text{mg/m}^3$ ,  $r_{th} = 22.3 \text{nm}$  and  $n_{th} = 662 \text{cm}^{-3}$ . The values of scale parameter  $a$  and shape parameter  $b$  have been calculated with the method of mean and median equations (method 1). Then the theoretical curves of  $\mathcal{Z}$  and theoretical values of mean, median, mode and standard  
25 deviation have been calculated by inserting the values of  $a$ ,  $b$  and threshold  $z_{th}$  into Eq. B1–B6. Obviously the pdf  $\mathcal{Z}$  has sometimes no simple exponential shape which is the case for ice mass density, ice radius and ice number density. As we see in Figure 5 all  $\mathcal{Z}$ -pdf curves (in blue) match the original data histograms with a high accuracy. The relative error is in a range about 6-10 percent except that ice number density has a relative error of 15 percent. When we compare the mean, median, mode, and  
30 coincidence of mean and median values. Not surprising this is due to the fact that the parameters  $a$  and  $b$  have been computed by the mean and median method which guarantees the preservation of mean and median values. Nevertheless standard deviation and mode also show always a good agreement within the error range. A closer look to the maximum backscatter distribution shows that MBS data are almost perfectly exponentially distributed with  $b = 0.931$  which is not too far away from  $b = 1$  for



**Figure 5.** Frequency distributions and Z-function analysis of ALOMAR data. Parameter  $a$  and  $b$  have been estimated with the mean and median method. The relative error given in percent describes the quality of the Z-function fit. (a) Maximum backscatter data  $x$ . (b) Ice mass density  $y$ . (c) Ice particle radius  $r$ . (d) Ice number density  $n$ , see text for more details.

an exact exponential pdf. As we had already shown, see Sect. 3.1.1, MBS data are very likely exponentially distributed, now the  $\mathcal{Z}$ -distribution analysis confirms this result. Hence we conclude that the commonly used exponential (g-function) analysis might be only a reasonable statistical method in case of analyzing MBS lidar data.

In contrast to MBS, the  $\mathcal{Z}$ -distribution of IMD shows a function that converges rapidly to zero for small IMD values. The distribution is described with  $b = 1.355$  which significantly deviates from  $b = 1$  for a precise exponential function. Note that the mode of the data sample at  $40 \text{ mg/m}^3$  differs from the theoretical mode of  $23 \text{ mg/m}^3$  because of a relatively large statistical noise in the data. But mean, median and standard deviation values agree almost perfectly. Similar to IMD, the ice radius distribution indicates a significant non-exponential behavior with  $b = 1.833$ . The distribution converges to zero as the radius approaches zero. The curve is skewed to the right and has a maximum at  $r = 25.8 \text{ nm}$  which differs only slightly from the mode of the data sample at  $r = 27.8 \text{ nm}$ . Again mean, median and standard deviation values agree almost perfectly.



**Figure 6.** Same as Figure 5, but parameters  $a$  and  $b$  have been estimated from the maximum likelihood method. (a-c) Maximum backscatter, ice mass density and ice radius: gray bars indicate values larger than the threshold, black bars indicate values smaller than the threshold. (d) Ice number density: gray bars indicate values smaller than the threshold, black bars indicate values larger than the threshold.

The sample of ice number density shows a completely different behavior with a slope parameter that is negative with  $b = -0.819$ . The physical meaning is that the parameter ice number density is negatively correlated with all other ice parameters. For example, large ice numbers  $n$  correspond to small ice radii, IMD and MBS values. As a consequence this leads to a threshold of  $n$  in the reverse direction, that is from large values to small values defined by  $n < n_{th} = 662 \text{ cm}^{-3}$ . One can see this feature in the right **tale tail** of  $\mathcal{Z}(n)$  plotted as a dashed curve, see Figure 5d. The reversal behavior is also present for small values of  $n$ . Small values of  $n$  are measured for very bright PMC events with large MBS that have small occurrence rates. Therefore, the number of small ice particles has a relatively high uncertainty due to their low occurrence frequency, and it is this statistical error which produces some deviations from the fit curve to the data in the range of  $n = 0 - 80 \text{ cm}^{-3}$ . We note that the numerical procedure computing the pair  $(a, b)$  from the method of mean/median (Eq. 13a,b) has automatically detected the existence of a negative slope parameter  $b$  without any a priori information.

Now we repeat the analysis using method 2. Figure 6 summarizes the  $(a,b)$ -values and statistical moments calculated from the method of maximum likelihood estimators. As can be seen the maximum likelihood approach computes almost identical results for all ice parameters. We have added in Figure 6a-c also the histogram bars (in black) for all data being smaller than the threshold. **Have in mind** Please keep in mind that the calculation of theoretical distribution curves is based exclusively on data larger than the threshold. Hence, decreasing or increasing a threshold will change the specific values of  $a$  and  $b$ . Figure 6d shows the ice number density distribution where we have added in the histogram (in black) all data being larger than the threshold. Again, also the maximum likelihood method has automatically detected the existence of a negative slope parameter  $b$  for the ice number density distribution.

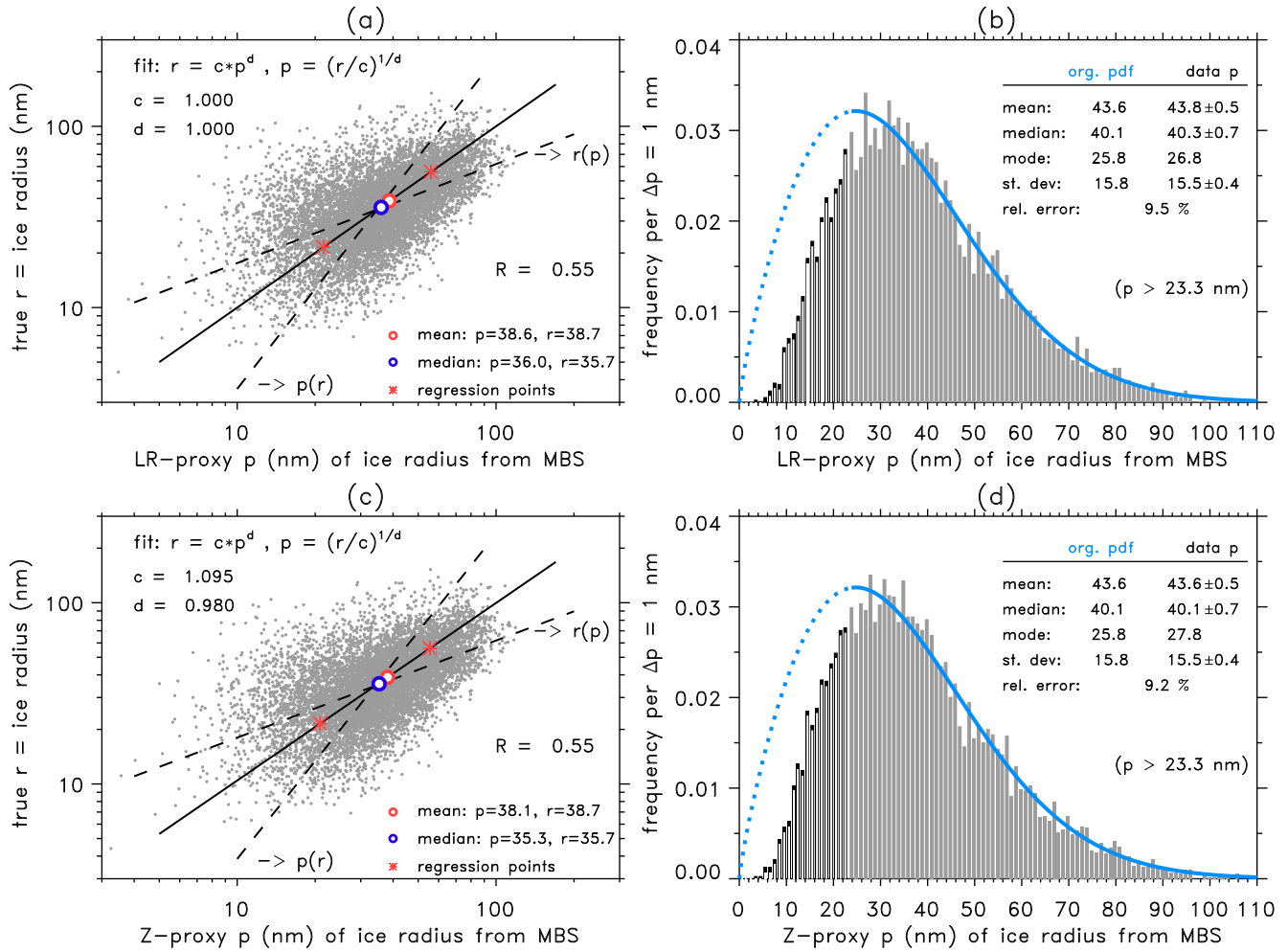
## 6 Discussion

### 6.1 Construction of artificial data

In the derivation of the  $\mathcal{Z}$ -distribution we used the assumption that all ice parameters of maximum backscatter  $x$ =MBS, ice mass density  $y$ =IMD, ice particle radius  $r$  and ice number density  $n$  are connected with one another by the power law given in Eq. (5). In Sect. 5.3 we showed that the  $\mathcal{Z}$ -pdf describes with a high accuracy each distribution of these ice parameters which, in turns, means that indeed there exists at least an approximative power law between ice parameters. We discuss a suitable justification of this power law relation in more detail in Sect. 6.2. In the following we will show that the use of a  $\mathcal{Z}$ -distribution allows to construct artificial unknown data samples of various ice parameters which approximate true data to a high degree. We think that such an application is one of the most beneficial outcomes from the new  $\mathcal{Z}$ -distribution approach. We explain the numerical procedure by the help of a practical example.

We already showed a linear dependance in the logarithmic frame using linear regression (LR) for maximum backscatter and ice particle radius, see Figure 3b. Hence we can compute artificial ice radius proxies  $\tilde{r}_i$ , named as LR-proxy of true data  $r_i$ , as a function of MBS-data  $x_i$  from the regression power law function (Eq. 5) with  $\tilde{r}_i = cx_i^d$  and with power law coefficients  $c=13.509$  and  $d=0.497$ . Figure 7a shows a comparison between LR-proxy and original ice radius data where we test the identity of the two data samples. The correlation coefficient is the same as shown in Figure 3b with  $R=0.55$ . Mean and median values of proxy and original data are almost identical, and a regression analysis shows a perfect identity ( $c=1.000$  and  $d=1.000$ ). Now we calculate the frequency histogram of LR-proxy ice radii, see Figure 7b, and compare the histogram with the original  $\mathcal{Z}$ -distribution of ice radii already shown in Figure 5c. We find that the LR-proxy approximates the mean, median, mode and standard deviation values of the original  $\mathcal{Z}$ -distribution with an relative error of 9.5% comparable to the original error of 9.1%. We conclude that a linear regression analysis of logarithmic data offers a good opportunity to approximate data provided that a pair of data samples exists that allows the calculation of power law coefficients  $c$  and  $d$  from regression methods.

Now the  $\mathcal{Z}$ -distribution approach offers a more general possibility to derive artificial data samples without any knowledge of correlation and regression coefficients. Indeed we will show that results from the  $\mathcal{Z}$ -approach are very close to results from a regression analysis. Again, our goal is to approximate ice radius data from a given maximum backscatter data sample. But



**Figure 7.** (a) Proxy  $p$  of ice radius versus original ice radius data without any threshold. The proxy has been derived from maximum backscatter data using the fit function that has been estimated by linear regression (LR-proxy) between original logarithmic MBS and ice radius data, see Figure 3b. (b) Frequency distribution of LR-proxy (gray and black histogram) with a threshold  $r_{th} = 23.3$  nm. For comparison we also plot the original Z-pdf curve (blue) from the analysis of original ice radius data, see Figure 5c. The relative error describes the accuracy between LR-proxy data and original Z-function fit. (c) Same as a, but for Z-proxy data resulting from the Z-pdf analysis of MBS data, see text for more details. (d) Same as b with Z-proxy data.

now we suppose that no data of ice particle radii  $r$  exist, hence any correlation and regression analysis is not possible. First, we assume that a data sample of  $x = \text{MBS}$  of number  $N$  exists and also its  $\mathcal{Z}$ -distribution  $\mathcal{Z}(x, a_x, b_x)$  with  $a_x = 0.140$  and  $b_x = 0.931$  is well known, see Figure 5a. Secondly, we assume that we know a priori the form of the  $\mathcal{Z}$ -distribution  $\mathcal{Z}(r, a_r, b_r)$  of ice radius  $r$ , e.g. with values of parameters  $a_r$  and  $b_r$  from Figure 5c ( $a_r = 1.269 \cdot 10^{-3}$ ,  $b_r = 1.833$ ). ~~Have in mind Please~~

5 ~~keep in mind~~ that such information about scale and shape parameters of the ice radius distribution could be also provided from independent satellite measurements that are capable to measure ice particles radii, e.g. AIM-SOFIE.

Our new proxy method ( $\mathcal{Z}$ -proxy) requires the following transformations. We first transform the  $x_i$ -values ( $i = 1, \dots, N$ ) into the  $z$ -domain with  $x_i \mapsto z_i: z = a_x x_i^{b_x}$  followed by a second transformation with  $z_i \mapsto r_i: r_i = (z_i / a_r)^{1/b_r}$  resulting in

$$x_i \mapsto z_i \mapsto r_i: r_i = \left[ \frac{a_x \cdot x_i^{b_x}}{a_r} \right]^{1/b_r} = c \cdot x_i^d \quad \text{with} \quad c = \left( \frac{a_x}{a_r} \right)^{1/b_r}, \quad d = \frac{b_x}{b_r}. \quad (15)$$

10 Note that the derivation of  $c$  and  $d$  in Eq. (15) is based on the same mathematical steps when we developed the  $\mathcal{Z}$ -distribution from Eq. (8) to Eq. (9). Inserting the  $a_x$ ,  $b_x$ ,  $a_r$  and  $b_r$  values into Eq. (15) determines the power law coefficients for  $\mathcal{Z}$ -proxy  $\tilde{r}$  with  $c = 12.994$  and  $d = 0.508$ . These values do not exactly coincide with  $c$  and  $d$  values obtained from the regression method, see above, but the identity test between  $\mathcal{Z}$ -proxies and true ice radii shows a very good coincidence, see Figure 7c. Again, mean and median values of proxy and original data are practically identical, and a regression analysis shows almost a perfect identity

15 ( $c = 1.095$  and  $d = 0.980$ ). Finally we calculate a frequency histogram of  $\mathcal{Z}$ -proxies, see Figure 7d, and find a good agreement between proxies and true pdf. Mean, median, and standard deviations of  $\mathcal{Z}$ -proxy data correspond perfectly to original ice radius data, and the relative error has now even decreased to 9.2%.

We summarize that we present a new method in order to construct artificial data samples provided  $\mathcal{Z}$ -descriptions of these data sets exist. By means of a consecutive arranging of ice parameters starting at one given data sample this method allows

20 to construct any artificial data sample within  $(x, y, r, n)$ . This method can be also applied to other data sets, e.g. ice parameter measurements from satellite observations. For example, a data sample of ice water content (IWC) obtained from satellite measurements might be analyzed in terms of a  $\mathcal{Z}$ -distribution estimating the scale and shape parameters  $a$  and  $b$  of the IWC distribution. This would allow to establish a connection of satellite IWC data to lidar data samples  $(x, y, r, n)$  through Eq. (15), hence the satellite IWC data could be transferred to lidar maximum backscatter, ice mass density, ice particle radius and ice

25 number density. Vice versa the knowledge of an satellite IWC  $\mathcal{Z}$ -distribution would allow to transform lidar observations into IWC proxies and compare these with the original IWC observed by the satellite. We think that our proposed transformation method could be very helpful to connect different ice parameter data from different instruments, either from satellite observations or ground based measurements. We also think that this new approach might be important in trend analysis of ~~NLC/~~ PMC.

30 In the next section we will discuss the power law assumption (Eq. 5) and the physical meaning of the shape parameter  $b$  which might be introduced as a new trend variable in the analysis of ~~NLC/~~ PMC long-term changes.



## 6.2 Discussion of the power law assumption between PMC parameters

In this section we discuss some theoretical aspects of the power law dependence on ice parameters in order to validate the justification of Eq. (5). We use again the assumption as already discussed in Sect. 2 that at the altitude of maximum brightness (MBS) and ice mass density (IMD) there exists in the real atmospheric background an ice particle distribution that is perfectly

5 Gaussian ( $\mathcal{N}_i$ ) distributed as

$$\mathcal{N}_i(\tau) = \frac{1}{\sigma_i \sqrt{2\pi}} \exp\left(-\frac{1}{2} \left(\frac{\tau - r_i}{\sigma_i}\right)^2\right).$$

We also assume that the geometric shapes of these ice particles are spheres with ice radii  $\tau$  with mean radius  $r_i$  and variance  $\sigma_i^2$ . Again index  $i = 1, \dots, N$  relates to the  $i$ -th measurement in a given data sample of number  $N$ .  $\mathcal{N}_i$  is normalized to  $\int_0^\infty \mathcal{N}_i(\tau) d\tau = 1$ . When we assume an ice number density of  $n_i$  particles per  $\text{cm}^3$  we get the expression  $\int_0^\infty n_i \cdot \mathcal{N}_i(\tau) d\tau = n_i$ .

10 Note that mean ice radii  $r_i$  and ice number densities  $n_i$  are elements of our lidar data climatology which we have introduced in Sect. 2.

Furthermore, we assume from the analysis of lidar observations (3-color measurements) that the relation of mean radius and variance is according to  $\sigma_i = 0.4r_i$  for  $r_i < 37.5$  nm and  $\sigma_i = 15$  nm for  $r_i \geq 37.5$  nm (Baumgarten et al., 2010). This assumption has been also applied in the analysis of AIM/SOFIE-CIPS PMC satellite data (Lumpe et al., 2013; Hervig and  
15 Stevens, 2014). In order to simplify calculations we apply this relation  $\sigma_i = 0.4r_i$  also for  $r_i$  larger than 37.5 nm. We now investigate the question which backscatter lidar and ice mass signals result from such an ice distribution?

We compute the mass of a spherical ice particle with radius  $\tau$  as  $4/3\pi\rho_{ice}\tau^3$  with density of ice  $\rho_{ice} = 932$   $\text{kg/m}^3$ . The backscatter signal from a single ice particle is calculated as  $a_L\tau^{5.8}$  with the lidar constant  $a_L = 1.5 \cdot 10^{-11}$   $\text{m}^2$ . Then the maximum backscatter  $x_i$  and ice mass density  $y_i$  are estimated by an integration of the radius distribution from zero to infinity

20 as

$$x_i = a_L n \int_0^\infty \tau^{5.8} \mathcal{N}_i(\tau) d\tau = a_L n \int_0^\infty \tau^{5.8} \frac{1}{0.4r_i \sqrt{2\pi}} \exp\left(-\frac{1}{2} \left(\frac{\tau - r_i}{0.4r_i}\right)^2\right) d\tau$$

$$y_i = \frac{4}{3} \pi \rho_{ice} n \int_0^\infty \tau^3 \mathcal{N}_i(\tau) d\tau = \frac{4}{3} \pi \rho_{ice} n \int_0^\infty \tau^3 \frac{1}{0.4r_i \sqrt{2\pi}} \exp\left(-\frac{1}{2} \left(\frac{\tau - r_i}{0.4r_i}\right)^2\right) d\tau$$

assuming a constant number density  $n$  of ice particles. Only the integral of  $y_i$  is analytically computable with a solution in which the error function defined by the integral  $\text{erf}(x) = 2/\sqrt{\pi} \int_0^x \exp(-t^2) dt$  is part of the solution:

$$25 \quad x_i = \frac{4}{3} \pi \rho_{ice} n \left[ \frac{37}{50} r_i^3 \text{erf}\left(\frac{5(\tau - r_i)}{\sqrt{8}r_i}\right) - \frac{\sqrt{2}}{125\sqrt{\pi}} r_i (25\tau^2 + 25r_i\tau + 33r_i^2) \exp\left(\frac{25\tau}{4r_i} - \frac{25(\tau^2 + r_i^2)}{8r_i^2}\right) \right] \Bigg|_0^\infty.$$

The integral for  $x_i$  includes the term  $\tau^{5.8}$  that arises from Mie-scatter theory for light scattering of a wavelength of 532 nm (ALOMAR RMR-lidar) at spheres in a range of radii with 1–100 nm. The exponential value of 5.8 approximates exact Mie-scatter calculations with an relative error less than 0.5 % in this radii range. Unfortunately, the integral can only be solved analytically if the exponent is an integer number as 5 or 6, respectively. Nevertheless, we are able to solve this integral by

means of numerical methods with the specific exponent of 5.8. In a next step, we construct analytical approximations  $f_x(r_i)$  and  $f_y(r_i)$  for both integral solutions using a typical value of  $n = 200 \text{ cm}^{-3}$  with

$$f_x(r_i) = x_i = a_1 a_L n r_i^{5.8}, \quad f_y(r_i) = y_i = a_2 \frac{4}{3} \pi \rho_{ice} n r_i^3.$$

The linear constants  $a_1$  and  $a_2$  with values  $a_1 = 4.20$  and  $a_2 = 1.47$  are optimal dimensionless parameters.  $f_y$  approximates the analytical solution of  $y_i$  with a relative error less than 0.7 percent in the range  $r_i = [0 \text{ nm}; 45 \text{ nm}]$ , and less than 1.2 percent in the range  $r_i = [45 \text{ nm}; 70 \text{ nm}]$ . A precise solution of  $x_i$  resulting from numerical methods of integration is approximated by  $f_x$  with a relative error less than 0.3 percent in the range  $r_i = [0 \text{ nm}; 45 \text{ nm}]$ , then the relative error increases linearly to a maximum error of 5 percent at  $r_i = 70 \text{ nm}$ . We find that the solutions  $f_x$  and  $f_y$  approximate the general power law condition  $p = c q^d$  (Eq. 5) inside a small error range. Hence these analytical examples show that MBS is a function of ice radius proportional to  $\sim r^{5.8}$  ( $d=5.8$ ), the same is also true for IMD ( $\sim r^3$ ,  $d=3$ ). It also follows that MBS and IMD are consequently connected through a power law condition with  $\text{MBS} \sim \text{IMD}^{5.8/3}$  ( $d = 5.8/3 = 1.93$ ).

But the new form of the  $\mathcal{Z}$ -distribution technique opens up whole new perspectives for the validation of the analytical examples based on the ALOMAR lidar data samples. We transform the  $z$ -distribution of IMD into the MBS domain using Eq. (15) with  $y_i \mapsto z_i: z = a_y y_i^{b_y}$  and  $z_i \mapsto x_i: x_i = (z_i/a_x)^{1/b_x}$  that gives

$$x = \left[ \frac{a_y \cdot y^{b_y}}{a_x} \right]^{1/b_x} = c \cdot y^d \quad \text{with} \quad c = \left( \frac{a_y}{a_x} \right)^{1/b_x}, \quad d = \frac{b_y}{b_x}. \quad (16)$$

We insert into Eq. (16) the values of  $a_x = 0.140$ ,  $b_x = 0.931$ ,  $a_y = 4.321 \cdot 10^{-3}$  and  $b_y = 1.355$  from Figure 5a,b and get  $c = 0.023$  and  $d = 1.46$ . Obviously, the power constant ( $d = 1.46$ ) derived from the shape parameters  $b_x$  and  $b_y$  of the  $\mathcal{Z}$ -distribution analysis of real ALOMAR IBS and IMD data is sufficiently significantly different from the power estimate ( $d = 1.93$ ) belonging to the analytical example that necessitates various assumptions, e.g Gaussian distributed ice particles at the height of maximum backscatter, constant ice particle number or spherical shape of ice particles. Hence, we conclude that the determination of shape parameters  $b$  from a  $\mathcal{Z}$ -distribution analysis of observational data therefore provides a qualitative indication of the actual microphysical state that controls real ice formation processes. This leads to the idea that as a future task long-term changes in PMC formation might be characterized by potential long-term changes in  $b$  that indicate long-term changes of atmospheric background conditions and microphysical ice constraints of ice formation.

## 7 Summary and conclusions

In this study we present a new method to describe statistical probability density distributions (pdfs) for different ice parameters of PMC/NLC. We analyze a climatology of ice seasons from 2002 until 2016 as measured by the ALOMAR lidar. From this data set we derive ice cloud parameters of maximum backscatter, ice mass density, ice radius and ice number density whose occurrence frequencies are investigated with respect to exponential distributions. We show that only maximum backscatter follows an exponential distribution whereas ice mass density, ice radius and ice number density frequencies fail to fit satisfactorily to an exponential distribution. The reason for these deviations from exponential behavior is based on the fact that these ice parameters are not linearly dependent on each other.

We introduce a new probability density distribution ( $\mathcal{Z}$ -function, see Eq. 9) that assumes instead a general power law relation among ice parameters, see Eq. (5). The new  $\mathcal{Z}$ -distribution is described by two free constants with scale parameter  $a$  and the shape parameter  $b$ . We point out that the new distribution is closely related to a more general Weibull-distribution. The new distribution has been applied to maximum backscatter, ice mass density, ice radius and ice number density data from the ALOMAR data set. As a result all data distributions are described with a high accuracy by  $\mathcal{Z}$ . We discuss that the exponential distribution (g-function) is a special case of the more general  $\mathcal{Z}$ -function with shape parameter  $b=1$ . We present two numerically stable methods (method of mean and median, method of maximum likeliness) that allow to derive the values of free constants  $a$  and  $b$  describing the actual  $\mathcal{Z}$ -function shape for a given data sample.

Perhaps the most important application of the new method is the possibility to construct unknown data sets for different ice parameters which approximate true data to a high degree. We show in Sect. 6.1 that a linear regression analysis in a logarithmic data frame offers a good opportunity to approximate data provided that a pair of data samples exists that allows the calculation of power law coefficients  $c$  and  $d$  from regression methods. The  $\mathcal{Z}$ -distribution approach offers a more general possibility to derive artificial data samples without any knowledge of correlation and regression coefficients. This allows the connection of different observational PMC distributions of lidar, and satellite data, and also with distributions resulting from ice model studies. In particular, the statistical distributions of different measured ice parameter can be compared with each other on the basis of a common assessment that again should be helpful in combining trend analysis of PMC/NLC long term time series from different observational data sets

### Appendix A: Properties of the exponential distribution (g-function)

When considering a threshold ( $x_{th}$ ) the exponential pdf  $\mathcal{E}(x)$  is normalized according to  $A \int_{x_{th}}^{\infty} \mathcal{E}(x) dx = 1$  with a scaling factor  $A = \exp(\alpha x_{th})$ . It follows that the mean  $\mu$  is then given by

$$\begin{aligned} \mu &= \int_{x_{th}}^{\infty} x \cdot A \mathcal{E}(x) dx' = A \int_{x_{th}}^{\infty} x \cdot \alpha e^{-\alpha x} dx' = -A \frac{(\alpha x + 1) e^{-\alpha x}}{\alpha} \Big|_{x_{th}}^{\infty} \\ &= 0 - (-) e^{\alpha x_{th}} \frac{(\alpha x_{th} + 1) e^{-\alpha x_{th}}}{\alpha} . \end{aligned}$$

This yields for the mean

$$\mu = x_{th} + 1/\alpha. \tag{A1}$$

The median  $\nu$  denotes the boundary of separating the higher half from the lower half of the distribution with

$$\begin{aligned} 0.5 &= \int_{\nu}^{\infty} A \cdot \mathcal{E}(x) dx' = A \int_{\nu}^{\infty} \alpha \exp(-\alpha x) dx' = -A e^{-\alpha x} \Big|_{\nu}^{\infty} \\ &= 0 - (-) e^{\alpha x_{th}} \cdot e^{-\alpha \nu} . \end{aligned}$$

The equation is solved for the median with

$$\nu = x_{th} + \ln(2)/\alpha. \tag{A2}$$

The mode is the value  $\eta$  at which  $A\mathcal{E}(x)$  takes its maximum value

$$\eta = x_{th} . \quad (\text{A3})$$

The variance  $\sigma^2$  of an exponential distribution considering a threshold is calculated with

$$\begin{aligned} \sigma^2 &= \int_{x_{th}}^{\infty} (x - \mu)^2 \cdot A\mathcal{E}(x) dx' = A \int_{x_{th}}^{\infty} (x - \mu)^2 \cdot \alpha e^{-\alpha x} dx' \\ 5 \quad &= \left. \frac{A(\alpha(x - \mu)(\alpha(x - \mu) + 2) + 2) e^{-\alpha x}}{\alpha^2} \right|_{x_{th}}^{\infty} \\ &= 0 - (-) e^{\alpha x_{th}} \frac{(\alpha(x_{th} - \mu)(\alpha(x_{th} - \mu) + 2) + 2) e^{-\alpha x_{th}}}{\alpha^2} . \end{aligned}$$

Inserting  $\mu = x_{th} + 1/\alpha$  simplifies the algebraic expression and shows that the variance  $\sigma^2$  (standard deviation  $\sigma$ ) is independently from a given threshold:

$$\sigma^2 = 1/\alpha^2 . \quad (\text{A4})$$

## 10 Appendix B: Properties of $\mathcal{Z}$ -distribution

In the following all quantities take into account a threshold  $z_{th}$ . We introduce a scaling factor  $A = \exp(az_{th}^b)$ . Setting the threshold to zero means a scaling factor  $A = 1$  and gives the regular expressions for cumulative pdf, median, mode, mean, and variance, see Eq. (12a–d).

Probability density function  $\mathcal{Z}(z \geq z_{th}, a > 0, b \neq 0)$ :

$$15 \quad \mathcal{Z}(z) = A \cdot a|b|z^{b-1}e^{-az^b} , \quad 1 = \int_{z_{th}}^{\infty} e^{az_{th}^b} \cdot a|b|z^{b-1}e^{-az^b} dz . \quad (\text{B1})$$

Cumulative form of  $\mathcal{Z}_{cum}$ :

$$\mathcal{Z}_{cum}(z) = A \int_z^{\infty} a|b|z^{b-1}e^{-az^b} dz = -Ae^{-az^b} \Big|_z^{\infty} = A \cdot e^{-az^b} , \quad z \geq z_{th} . \quad (\text{B2})$$

Median  $\nu$ :

$$\begin{aligned} 20 \quad 0.5 &= \int_{\nu}^{\infty} \mathcal{Z} dz = \int_{\nu}^{\infty} Aa|b|z^{b-1}e^{-az^b} dz = -Ae^{-a\nu^b} \Big|_{\nu}^{\infty} = Ae^{-a\nu^b} \\ \rightarrow \nu &= \left( \frac{\ln(2A)}{a} \right)^{1/b} = \left( \frac{\ln 2 + \ln(e^{az_{th}^b})}{a} \right)^{1/b} = \left( \frac{\ln 2}{a} + z_{th}^b \right)^{1/b} . \end{aligned} \quad (\text{B3})$$

Mode  $\eta$ :

$$\frac{\partial \mathcal{Z}}{\partial z} = 0 = -A \cdot a|b|z^{b-2} (abz^b - b + 1) e^{-az^b} \rightarrow \eta = \left( \frac{b-1}{ab} \right)^{1/b} \quad (b > 1, b < 0) . \quad (\text{B4})$$

Mean  $\mu$ :

$$\mu = \int_{z_{th}}^{\infty} z \mathcal{Z} dz = A \int_{z_{th}}^{\infty} a|b|z^b e^{-az^b} dz = -\frac{A|b|\Gamma\left(\frac{b+1}{b}, az_{th}^b\right)}{ba^{\frac{1}{b}}}. \quad (\text{B5})$$

Details of calculation:

Substitute:  $u = a^{\frac{b+1}{b}} z^{b+1} \rightarrow dz = \frac{1}{(b+1)a^{\frac{b+1}{b}} z^b} du$

5  $\int Aa|b|z^b e^{-az^b} dz = \frac{Aa|b|}{ba^{\frac{1}{b}+1} + a^{\frac{1}{b}+1}} \cdot \int e^{-u^{\frac{b}{b+1}}} du$

We solve:  $\int e^{-u^{\frac{b}{b+1}}} du = -\frac{(b+1)\Gamma\left(\frac{b+1}{b}, u^{\frac{b+1}{b}}\right)}{b}$

Inserting:  $\frac{Aa|b|}{ba^{\frac{1}{b}+1} + a^{\frac{1}{b}+1}} \cdot \int e^{-u^{\frac{b}{b+1}}} du = -\frac{Aa|b|(b+1)\Gamma\left(\frac{b+1}{b}, u^{\frac{b+1}{b}}\right)}{b(ba^{\frac{1}{b}+1} + a^{\frac{1}{b}+1})}$

Resubstitute:  $= -\frac{Aa|b|(b+1)\Gamma\left(\frac{b+1}{b}, az^b\right)}{b(ba^{\frac{1}{b}+1} + a^{\frac{1}{b}+1})} = -\frac{A|b|\Gamma\left(\frac{b+1}{b}, az^b\right)}{ba^{\frac{1}{b}}}$ .

10 Here we use the Gamma-function  $\Gamma(a) = \int_0^{\infty} t^{a-1} e^{-t} dt$  and the incomplete Gamma-function  $\Gamma(a, x) = \int_x^{\infty} t^{a-1} e^{-t} dt$ . Notice that the Gamma-function is defined for all real values of  $a$  except  $a=0$  and all negative integer values of  $a$ . The same applies to  $\Gamma(a, x)$  with  $x \geq 0$ .

Variance  $\sigma^2$ :

$$\begin{aligned} \sigma^2 &= \int_{z_{th}}^{\infty} (z - \mu)^2 \mathcal{Z} dz = A \int_{z_{th}}^{\infty} ab(z - \mu)^2 z^{b-1} e^{-az^b} dz \\ &= -A\mu^2 e^{-az^b} - \frac{A \left[ \Gamma\left(\frac{b+2}{b}, az^b\right) - 2a^{\frac{1}{b}} \mu \Gamma\left(\frac{b+1}{b}, az^b\right) \right]}{a^{\frac{2}{b}}} \Bigg|_{z_{th}}^{\infty} \\ 15 &= \frac{A \left[ \Gamma\left(\frac{b+2}{b}, az_{th}^b\right) - 2a^{\frac{1}{b}} \mu \Gamma\left(\frac{b+1}{b}, az_{th}^b\right) \right]}{a^{\frac{2}{b}}} - \mu^2, \end{aligned}$$

$$\text{for } A = 1, z_{th} = 0: \sigma^2 = \frac{\Gamma\left(\frac{b+2}{b}\right)}{a^{\frac{2}{b}}} - \mu^2 = \frac{\Gamma\left(\frac{b+2}{b}\right) - \Gamma^2\left(\frac{b+1}{b}\right)}{a^{\frac{2}{b}}} = \frac{2\Gamma\left(\frac{2}{b}\right) - \frac{1}{b}\Gamma^2\left(\frac{1}{b}\right)}{ba^{\frac{2}{b}}}. \quad (\text{B6})$$

### Appendix C: Estimation of parameters (a,b) using the maximum log-likelihood method

For a single observation, the likelihood function  $l$  of  $Z$  is calculated from Eq. (B1). Given a sample of  $N$  observations with threshold  $z_{th}$ , the likelihood function  $l(a, b) = \prod_{i=1}^N \mathcal{Z}(z_i)$  is

$$l(a, b) = e^{Naz_{th}^b} (a|b|)^N \prod_{i=1}^N z_i^{b-1} e^{-az_i^b}. \quad (\text{C1})$$

Taking the logarithm of  $l$  yields the log-likelihood function  $L(a, b) = \ln(l) = \sum_{i=1}^N \ln(\mathcal{Z}(z_i))$

$$L(a, b) = N a z_{th}^b + N(\ln a + \ln |b|) + (b-1) \sum_{i=1}^N \ln(z_i) - a \sum_{i=1}^N z_i^b. \quad (\text{C2})$$

The derivative with respect to parameter  $a$  is

$$\frac{\partial L(a, b)}{\partial a} = N \cdot z_{th}^b + \frac{N}{a} - \sum_{i=1}^N z_i^b, \quad (\text{C3})$$

5 and for parameter  $b$

$$\frac{\partial L(a, b)}{\partial b} = N \cdot a \cdot \ln z_{th} \cdot z_{th}^b + \frac{N}{b} + \sum_{i=1}^N \ln z_i - a \sum_{i=1}^N z_i^b \ln z_i. \quad (\text{C4})$$

Setting each of the derivatives equal to zero yields for  $a$  and  $b$

$$\frac{1}{a} = -z_{th}^b + \frac{\sum z_i^b}{N}, \quad 0 = \frac{1}{b} + a \cdot \ln z_{th} \cdot z_{th}^b + \frac{\sum \ln z_i}{N} - a \cdot \frac{\sum \ln z_i \cdot z_i^b}{N}. \quad (\text{C5})$$

These are the maximum-likelihood estimators for scale parameter  $a$  and shape parameter  $b$ .

10 *Data availability.* The ALOMAR lidar data are available upon request from Gerd Baumgarten.

*Author contributions.* Uwe Berger drafted the paper. All authors reviewed the paper and interpreted the data. Jens Fiedler and Gerd Baumgarten provided the lidar data from ALOMAR.

*Competing interests.* The authors declare that they have no conflict of interest.

*Acknowledgements.* We appreciate the financial support from the German BMBF for the ROMIC/TIMA project. We thank Gary E. Thomas  
15 for very helpful and **stimulus stimulating** contributions, discussions and reviewing.

## References

- Bailey, S. M., Merkel, A. W., Thomas G. E., and Rusch, D. W.: Hemispheric differences in Polar Mesospheric Cloud morphology observed by the Student Nitric Oxide Explorer, *J. Atmos. Sol. Terr. Phys.*, *69*, 1407–1418, <https://doi.org/10.1016/j.jastp.2007.02.008>, 2007.
- Bailey, S. M., Thomas, G. E., Hervig, M. E., Lumpe, J. D., Randall, C. E., Carstens, J. N., Thurairajah, B. T., Rusch, D. W., Russell III, J. M., and Gordley, L. L.: Comparing nadir and limb observations of polar mesospheric clouds: The effect of the assumed particle size distribution, *J. Atmos. Sol. Terr. Phys.*, *127*, 51–65, <https://doi.org/10.1016/j.jastp.2015.02.007>, 2015.
- Baumgarten, G., Fiedler, J., and G. von Cossart: The size of noctilucent cloud particles above ALOMAR (69°N): Optical modeling and method description, *Adv. in Sp. Res.*, *40*, 772–784, <https://doi.org/10.1016/j.asr.2007.01.018>, 2007.
- Baumgarten, G. and Fiedler, J.: Vertical structure of particle properties and water content in noctilucent clouds, *J. Geophys. Res. Lett.*, *35*, L10811, <https://doi.org/10.1029/2007GL033084>, 2008.
- Baumgarten, G., Fiedler, J., Lübken, F.-J., and von Cossart, G.: Particle properties and water content of noctilucent clouds and their interannual variation, *J. Geophys. Res. Atmos.*, *113*, D06203, 2008.
- Baumgarten, G., Fiedler, J., and M. Rapp: On microphysical processes of noctilucent clouds(NLC):observations and modeling of mean and width of the particle size-distribution, *Atmospheric Chemistry and Physics*, *10*, 6661–6668, <https://doi.org/10.5194/acp-10-6661-2010>, 2010.
- Berger, U. and Lübken, F.-J.: Trends in mesospheric ice layers in the Northern Hemisphere during 1961–2013, *J. Geophys. Res. Atmos.*, *120*, <https://doi.org/10.1002/2015JD023355>, 2015.
- Berger, U. and von Zahn, U.: Icy particles in the summer mesopause region: Three-dimensional modeling of their environment and two-dimensional modeling of their transport, *J. Geophys. Res.*, *107(A11)*, 1366, <https://doi.org/10.1029/2001JA000316>, 2002.
- DeLand, M. T. and Thomas, G. E.: Updated PMC Trends Derived from SBUV Data, *J. Geophys. Res. Atmos.*, *120*, 2140–2166, <https://doi.org/10.1002/2014JD022253>, 2015.
- DeLand, M. T., Shettle, E. P., Thomas, G. E., and Olivero, J. J.: Solar backscattered ultraviolet (SBUV) observations of polar mesospheric clouds (PMCs) over two solar cycles, *J. Geophys. Res.*, *108(D8)*, 8445, <https://doi.org/10.1029/2002JD002398>, 2003.
- Fiedler, J., Baumgarten, G., Berger, U., and Lübken, F.-J.: Long-Term Variations of Noctilucent Clouds at ALOMAR, *J. Atmos. Sol. Terr. Phys.*, *62*, 79–89, <https://doi.org/10.1016/j.jastp.2016.08.006>, 2017.
- Hervig, M. E. and Stevens, M. H.: Interpreting the 35 year SBUV PMC record with SOFIE observations, *J. Geophys. Res. Atmos.*, *119*, 12,689–12,705, <https://doi.org/10.1002/2014JD021923>, 2014.
- Hervig, M. E., Gordley, L. L., Stevens, M., Russell, J. M., Bailey, S., and Baumgarten, G.: Interpretation of SOFIE PMC measurements: cloud identification and derivation of mass density, particle shape, and particle size, *J. Atmos. Sol. Terr. Phys.*, *71*, 316–330, <https://doi.org/10.1016/j.jastp.2008.07.009>, 2009.
- Lumpe, J. D., S. M. Bailey, J. N. Carstens, C. E. Randall, D. W. Rusch, G. E. Thomas, K. Nielsen, Jeppesen, C., McClintock, W. E., Merkel, A. W., Riesberg, L., Temple, B., Baumgarten, G., and Russell III, J. M.: Retrieval of polar mesospheric cloud properties from CIPS: algorithm description, error analysis and cloud detection sensitivity, *J. Atmos. Sol. Terr. Phys.*, *104*, 167–196, <https://doi.org/10.1016/j.jastp.2013.06.007>, 2013.
- Lübken, F.-J., Berger, U., Kiliani, J., Baumgarten, G., and Fiedler, J.: Solar variability and trend effects in mesospheric ice layers, chapter 18, in *Climate and Weather of the Sun-Earth-System (CAWSES): Highlights from a priority program*, Springer Publ. Dordrecht, The Netherlands, 2013.

- Press, W. H., Teukolsky, S. A., Vetterling, W. T., and Flannery, B. P.: Numerical Recipes in Fortran: The Art of Scientific Computing, Second Edition, ISBN 0-521-43064-X, page 214, Cambridge University Press, 1992.
- Rapp, M. and Thomas, G. E.: Modeling the microphysics of mesospheric ice particles: Assessment of current capabilities and basic sensitivities, *J. Atmos. Solar-Terr. Phys.*, 68, 715–744, <https://doi.org/10.1016/j.jastp.2005.10.015>, 2006.
- 5 Shettle, E. P., Thomas, G. E., Olivero, J. J., Evans, W. F. J., Debrestian, D. J., and Hardon, L.: Three satellite comparison of polar mesospheric clouds: Evidence for long-term change, *J. Geophys. Res.*, 107(D12), 4134, <https://doi.org/10.1029/2001JD000668>, 2002.
- Thomas, G. E.: Climatology of polar mesospheric clouds: Interannual variability and implications for long-term trends, in The Upper Mesosphere and Lower Thermosphere: A Review of Experiment and Theory, edited by R. M. Johnson and T. L. Killeen, *Geophys. Monogr. Ser.*, Vol. 87, pp. 185–200, 1995. AGU, Washington, D. C.
- 10 von Cossart, G., Fiedler, J., and von Zahn, U.: Size distributions of NLC particles as determined from 3-color observations of NLC by ground-based lidar, *J. Geophys. Res.*, 26, 1513–1516, 1999.
- Wilks, D. S.: Statistical Methods in the Atmospheric Sciences, edited by R. Dmowska and J. R. Holton, *International Geophysics Series*, Vol. 59, pp. 1–467, ISBN 0-12-751965-3, Academic Press, Inc., San Diego, California, 1995.