

# Response to the Referee's Comments 1

December 30, 2018

## 1 General comment

*The authors have responded to my queries, but in some cases the response is not quite correct and needs further revision (see below). The paper is difficult to follow in many parts the language is in poor English, there are some very long sentences, and some sentences that seem to be out of place. The simulations need to be better described I could not find anywhere what the various bits of senC2rep26 stood for 26, presumably RCP 2.6. The simulations need to be listed and explained in one of the tables. UV is inconsistently used as UV, UVR, UV radiation it should be consistent. Also, on page 6 TSO2 is defined then, TSO2 used.*

We would like to thank the referee for his/her thorough review. The comments have been very beneficial. We hope that the new version has improved the paper. With the help of the co-authors, an effort has been made on improving the language. In order to better describe the different simulations, a new table has been added (Table 3). UV is now only used as an acronym for ultraviolet. For example, ultraviolet radiation is now written as "UV radiation".

## 2 Specific comments

### 2.1 Introduction

1. 1. Page 3, Line 8. Sentence starting *Overexposure* should be a new para. This section on health risks is not quite right and the detail given about the exposures is not necessary (and due to sunburns during childhood years is not correct there is an increased risk associated with sunburns during childhood years, but sunburn and higher sun exposure at all ages are important to melanoma risk). I would suggest replacing lines 8-14 with the following: *Exposure to UV radiation has both adverse and beneficial effects on human health. Overexposure increases the risk of skin cancers, e.g. cutaneous malignant melanoma and keratinocyte cancers, and a range of eye diseases. Underexposure increases the risk of vitamin D deficiency; vitamin D is critical to healthy bones. It is common in health research and public health messaging to use the UV Index (UVI) as a measure of erythemally (sunburn) weighted UV irradiance.*

We agree with the referee, his suggestion has been implemented. P3, L6

2. Page 3. The sentence starting *Dhomse et al* on line 22 seems to be an add-on that is not in the correct place.

Corrected.

3. Page 3, Line 33: *why is it Consequently* this seems to be the wrong word, since the rest of the sentence does not seem to relate to the sentences that precede it.

Corrected, it is now replaced with "In addition". P3, L29.

4. *Page 4, Line 1 stratospheric ozone absorbs UV-B radiation (not UV)*

Corrected, P3, L32.

5. *Page 4. Typographical error line 6 scatterring*

Corrected. P4, L3.

6. *Page 4. Line 19 this is a very long sentence with a large number of acronyms, it is very difficult to read.*

The sentence has been cut in half. Nonetheless, we kept the numerous acronyms in order to correctly describe and identify the different partners of the CCMI project.

7. *Page 5: the information about RCPs could probably go in the Introduction.*

The information about RCPs could go in the introduction but we preferred to kept them in this section which also introduce the A1 scenario and the CCMI simulations. (Section 2 and Table 3 2)

## 2.2 Data and Methodology

1. *The A1 scenario is not explained*

Informations about the A1 scenario has been provided in the newly added Table 3.

2. *The simulations are not explained (see general comments). I dont think it is enough to say they are described in a different paper. In addition, this last paragraph on page 5 seems very disordered. It is difficult to follow.*

Corrected. A new table (3) summarized the simulations and scenarios. It is also referred in the manuscript (P6,L5).

3. *Page 6: line 5-7. This is already in the list on page 5. Could be deleted in one location.*

Corrected, the fullname were deleted, only a short list remain (P6, L6).

4. *Page 6, line 28 two sensitivity simulations is this C2fODS & C2Fghg? If you call these sensitivity simulations at the first mention, this will be clearer to the reader.*

Corrected. (P6, L1)

## 2.3 4.3 Effects of greenhouse gases

1. *Page 12: these are simulations based on refC2 this has already been noted earlier and should be deleted here.*

Corrected.

2. *Page 12, last line. Change decent increase to a moderate increase something more scientific than decent*

Corrected. (P13, L19)

## 2.4 4.4 Other effects affecting UVI

1. *Page 13. Sentence at line 18-19 seems to be out of place.*

We are not sure which sentence the referee are referring. If it is referring to this passage: "Both TOZ and AOD drive [...] strong effect on UVI", we do not think that the sentence are out of place.

## 2.5 Conclusion

1. *This seems quite well written and provides a nice summary of the results although it is more a summary of the results than a conclusion.*

Corrected. This section is now renamed as "Summary".

2. *Page 15, line 7-8. Not clear what this sentence means: This study focused on UVI which does not directly impact human health. UVI is erythemally weighted UV irradiance so is weighted for a human health effect. The following sentence about further investigation is very nave and should be deleted behaviour is a very important moderator of any link between UV irradiance and human health impact. It would be impossible just to change UV irradiance and look for human health impacts, without taking a lot of other parameters into account. Maybe best just to say it is complicated by human behaviour and not recommend further investigations.*

The reviewer is correct, the sentence was not very clear. The reviewer's suggestion was implemented. (P15, L29-31)

## 2.6 Tables

1. *Table 2 needs a much better description of what it is showing.*

Corrected, more details have been added in the caption of this table.

# Response to the Referee's Comments 2

December 30, 2018

## 1 General comment

*The revised manuscript has been improved but there are still weaknesses that must be taken into consideration before it is accepted for publication. See specific comments below. The language of the manuscript needs further attention, as well as the flow of the text in some cases. Apart from the corrections suggested in the first review, there has been no attempt to improve it. I am sure that one of the co-authors could help in this context.*

We would like to thank the referee for his/her constructive comments. The comments have been very beneficial, we hope that this revised manuscript will answer the referee's interrogation. As suggested by the reviewer, the language has been improved with the help of the co-authors and some paragraph have also been reworked in order to improve the flow of the text.

## 2 Specific comments

1. *(General Comment). I still believe that the use of average ozone columns in RTD simulations does not allow assessing the uncertainty of the presented UVI simulations. I understand however, that repeating the calculations is not possible at this stage of the study.*

We thanks the referee for his understanding of the limitations of our study. We fully agree that a UVI computed for each ozone columns from each models would give us a better understanding of the uncertainty associated with the UVI simulations. It is a perspective that could be applied for future studies.

2. *Comment (4): P6, L6: The authors response in my comment on the spectral characteristics of the albedo used in the UV calculations has not been reflected in the text. Please add.*

It is now reflected in the text. P6, L7.

3. *Comment (8): P6, L24: Another case of responding to a comment without passing the explanation in the text. Please explain for the sake of the readers, why using zonally averaged ozone and temperature profiles does not introduce important uncertainties.*

It is now explained in the text. P6, L26-30.

4. *Comment (14) was not taken into account, nor was a response from the authors. See below: P7, L32- P8, L10: Please check this section and make the discussion clearer. I suggest focusing the discussion on differences between model and GB data and not on differences between GB and OMI because this is not the main subject of this paper. The changes reported in the abstract and the conclusions (-4 to 11%) are not discussed at all in this section. Furthermore it would be good to report in Table 3 the spread of the model differences to GB for each station (e.g. the standard deviation).*

Comment (14) was indeed not addressed in the previous review. We are sorry for this oversight. As suggested by the reviewer, the discussion is now centred on the difference between modelled UVI and GB. The changes reported in the abstract are now coherent with the changes discussed in this section. Spread of the model differences to GB for each station is now reported in Table 4.

5. *I havent identified in the text any Specifications on the averaging process and on the limitation of this sensitivity analyses have been added., as quoted by the authors.*

Specifications on the averaging process has been added in the caption below Figure 2. Limitation of this sensitivity analyses have now been added in the text (P9, L11-16 ).

6. *Comment (18): I insist on my previous comment that you cannot compare changes between two studies that are based on different periods, without mentioning that explicitly in the text. If you see Figure 3 of the Dhomse 2018 paper, it is obvious that total ozone was much higher in 1960 than in 1980 almost everywhere except in the tropics. Taking these differences into consideration you could estimate the additional change in UVI that is induced by the ozone difference. For example, in SH midlatitudes ozone is about 2.5% higher in 1960 meaning that UVI would be at least 3% lower in 1960 than in 1980. This change is comparable to the changes that Bais 2011 and the present study have reported.*

We agree with the reviewer on this point. Nonetheless, instead of estimating UVI additional changes due to ozone difference between 1960 and 1980 from (Dhomse, 2018) paper and by using the radiative amplification factor. (I suppose this is how you proposed 3% UVI change from 2.5% TOZ change, for a radiative amplification factor of about 1.2?). We choose here to simply estimate graphically UVI changes between 2100 and 1960 from Figure 2 of Bais et al (2011) paper. Both values are now reported in the Table 5 of our study; Computed values by Bais et al (2011) (Table 2) for the difference between 2100s and 1975s and estimated value from Bais et al (2011) (Figure 2) for the difference between 2100 and 1960.

7. *Comment (21): The first sentence of the conclusions should indicate how good the UVI is reproduced by the model. Here is a suggestion: We have shown that the use of CCMI model data with a radiative transfer model (TUV) can reproduce the current climatological values of clear-sky UVI derived from measurements, in most cases, to within 5%. This is my take on message from the results of Table 3.*

We agree with the reviewer, his suggestion is now placed at the beginning of the conclusion. (P14, L27)

### 3 New comments

1. *P4, L8: (Mayer et al., 1998) is not a good reference for cloud enhancement. This paper discusses the apparent large increases of total ozone under optically thick clouds. Possible alternatives:*

Both alternatives references for cloud enhancement are now used in the manuscript. (P4, L6)

1. *P8, L9-10: It is now clear what you mean with Here, a similar conclusion can be drawn,. What is the compulsion and to what it refers? The previous conclusion was about OMI being higher than GB observations. Please revise the text. Moreover, an overestimation of 10% was found for Palmer but there is not discussion on what could cause this discrepancy.*

A discussion has been added for Palmer. This part of manuscript have been reworked. (P8, L11-33)

1. P8, L15: *The altitude effect of UVI is the order of 7-8% increase per km altitude (McKenzie et al., 2001). This means that, for Mauna Loa, the relative difference between modeled for sea-level and measured UVI should be at least -25% while in Table 3 the difference is about 5% and of opposite sign. In Figure 1 both the median and mean based model results are higher than the measurements with one exception in June where the difference is in the right direction but much smaller than it should be. Therefore, the statement in line 17: Nonetheless, at low and mid-latitudes the UVI differences observed are fully compatible... , is invalid, and of course the comparison is not good for unidentified reasons.*

We agree with the reviewer, the comparison is not good for Mauna Loa for unidentified reasons. Clear-sky filtering could be responsible for the discrepancy. Mauna Loa is located on a tropical island, where cloud cover vary rapidly. At the other tropical station (Saint-Denis), the clear-sky filtering was investigated and validated in Lamy et al. (2018). For Mauna Loa, we used the data as provided by NDACC. This has been developed in the manuscript. (P8, L26-33)

1. P9, L5: *The newly added sentence refers to latitudinal differences, but these are already taken into account in Figure 3. Consider revising to: Due to seasonal and inter-model differences, this approach has limitations*

Corrected (P9, L26)

1. P14, L11-12: *These sentences belong to the introduction (already referenced). They are not conclusions of this paper, and as they are written create some confusion as to what means reproduced UVI.*

The sentence has been reworked. It is still in this section which is now called Summary.

1. P14, L23: *According to Fig. 4, UVI does not return to 1960 levels at high southern latitudes when TOZ returns. It stays 5-8% above except for RCP 8.5 when TOZ exceed the 1960 levels. Please rephrase.*

Corrected P15,L8-10

1. P14, L27: *The statement: In mid-latitudes, TOZ should increase between 1960 and 2100 in both hemispheres for all RCPs except RCP 8.5., is not correct: a) TOZ must be replaced with UVI. b) UVI increases between 1980 (not 1960) and 2100 only in the NH midlatitudes. In the SH midlatitudes the pattern is completely different, as it appears from Figure.*

Corrected. This sentence now address correctly UVI differences between 2100 and 1960 in the mid-latitudes, this sentence refers explicitly to Table 5. (P15,L13) For the SH midlatitudes, you mentioned a different pattern observed from Figure (not numbered) , i suppose it's referring to Figure 5. From this figure, there is indeed a different pattern of changes depending on the scenarios. This is now mentioned in the manuscript (P15, L15)

1. P15, L3-5: *Please state to which time frame refers the quoted variability 0-3%. Surprisingly, in the next sentence the variability reaches 10%, without saying to which latitude or period it refers. Please clarify.*

Precision has been added on the time frame and figure. The variability reaches 10% only during the summer months, as demonstrated by Figure 5, this is now specified in the manuscript. P15 L25-27.

1. Table 3 caption: *In the last line it is stated For Barrow and Palmer station we selected the six months of their respective summer. Since summer has only 3 months. It is better to explicitly name the months that were used.*

This precision has been added in the corresponding Table (now Table 4).

## 4 Technical

1. *P2, L12: I suggest rephrasing to: Higher increases in UV index are projected*

Corrected, P2, L12.

2. *P2, L19: I suggest rephrasing to: of ozone to 1960 values, with a corresponding pattern of change observed on UVI,*

Corrected. P2,L19.

3. *P7, L7-8: As there is no other second-level heading, heading 3.1 Model Validation should be deleted. I suggest to stop heading 3 at the colon to become: 3 Model Validation.*

Corrected. P7, L12.

4. *P14, L14: Replace "ranges" with "ranging"*

Corrected, P14, L27.

5. *P15, L4: The word "Logically" does not make sense. Please remove. Also, replace hemisphere; with hemispheres*

Corrected. P15, L264.

6. *Figure 4: I suggest to maintain consistency in the vertical axes labels; some of them are drawn with one decimal, some without. Include a note in the caption, that the scale of the vertical axes is not the same for all panels. Same for Figure 6.*

Figure 4 and 6 have been remade with attention to the label of the vertical axe. A comment has been added in the caption regarding the different vertical scales used.

7. *Caption Figure 6: The last sentence has been copied form Figure 4. But this figure does not show the four RCPs, but the three experiments. Please correct.*

Corrected.

8. *Caption Figure 8: The word "modelized" does not exist in English. Please replace with modelled (three occurrences). Please change also from 2000-2010 values to from 2000 to 2010. Same for Figure 9.*

Corrected.

9. *Axes titles in Figures 4,6,8,9: Remove the word "percent" since there is already a [%] sign.*

The word "percent" has been removed from Figures 4,6,8 and 9.

# Ultraviolet radiation modelling using output from the Chemistry Climate Model Initiative

Kévin Lamy<sup>1</sup>, Thierry Portafaix<sup>1</sup>, Béatrice Josse<sup>2</sup>, Colette Brogniez<sup>3</sup>, Sophie Godin-Beekmann<sup>4</sup>, Hassan Bencherif<sup>1,5</sup>, Laura Revell<sup>6,7,8</sup>, Hideharu Akiyoshi<sup>9</sup>, Slimane Bekki<sup>4</sup>, Michaela I. Hegglin<sup>10</sup>, Patrick Jöckel<sup>11</sup>, Oliver Kirner<sup>12</sup>, Virginie Marecal<sup>2</sup>, Olaf Morgenstern<sup>13</sup>, Andrea Stenke<sup>6</sup>, Guang Zeng<sup>13</sup>, N. Luke Abraham<sup>14,15</sup>, Alexander T. Archibald<sup>14</sup>, Neil Butchart<sup>16</sup>, Martyn P. Chipperfield<sup>17</sup>, Glauco Di Genova<sup>18</sup>, Makoto Deushi<sup>19</sup>, Sandip S. Dhomse<sup>17</sup>, Rong-Ming Hu<sup>4</sup>, Douglas Kinnison<sup>20</sup>, Martine Michou<sup>2</sup>, Fiona M. O'Connor<sup>16</sup>, Luke D. Oman<sup>21</sup>, Giovanni Pitari<sup>18</sup>, David A. Plummer<sup>22</sup>, John A. Pyle<sup>14</sup>, Eugene Rozanov<sup>6,23</sup>, David Saint-Martin<sup>2</sup>, Kengo Sudo<sup>24</sup>, Taichu Y. Tanaka<sup>19</sup>, Daniele Visioni<sup>25</sup>, and Kohei Yoshida<sup>19</sup>

<sup>1</sup>LACy, Laboratoire de l'Atmosphère et des Cyclones (UMR 8105 CNRS, Université de La Réunion, Météo-France), Saint-Denis de La Réunion, France

<sup>2</sup>Centre National de Recherches Météorologiques (CNRM) UMR 3589, Météo-France/CNRS, Toulouse, France

<sup>3</sup>Laboratoire d'Optique Atmosphérique (LOA), Université de Lille, Faculté des Sciences et Technologies, Villeneuve d'Ascq, France

<sup>4</sup>Laboratoire Atmosphères, Milieux, Observations Spatiales, Service d'Aéronomie (LATMOS), CNRS, Institut Pierre Simon Laplace, Pierre et Marie Curie University, Paris, France

<sup>5</sup>School of Chemistry and Physics, University of KwaZulu Natal, Durban, South Africa

<sup>6</sup>Institute for Atmospheric and Climate Science, ETH Zürich (ETHZ), Zürich, Switzerland

<sup>7</sup>Bodeker Scientific, Christchurch, New Zealand

<sup>8</sup>School of Physical and Chemical Sciences, University of Canterbury, Christchurch, New Zealand

<sup>9</sup>National Institute of Environmental Studies (NIES), Tsukuba, Japan

<sup>10</sup>Department of Meteorology, University of Reading, Reading, UK

<sup>11</sup>Institut für Physik der Atmosphäre, Deutsches Zentrum für Luft- und Raumfahrt (DLR), Oberpfaffenhofen, Germany

<sup>12</sup>Steinbuch Centre for Computing, Karlsruhe Institute of Technology, Karlsruhe, Germany

<sup>13</sup>National Institute of Water and Atmospheric Research (NIWA), Wellington, New Zealand

<sup>14</sup>Department of Chemistry, University of Cambridge, Cambridge, UK

<sup>15</sup>National Centre for Atmospheric Science, U.K.

<sup>16</sup>Met Office Hadley Centre (MOHC), Exeter, UK

<sup>17</sup>School of Earth and Environment, University of Leeds, Leeds, UK

<sup>18</sup>Department of Physical and Chemical Sciences, Università dell'Aquila, L'Aquila, Italy

<sup>19</sup>Meteorological Research Institute (MRI), Tsukuba, Japan

<sup>20</sup>National Center for Atmospheric Research (NCAR), Boulder, Colorado, USA

<sup>21</sup>National Aeronautics and Space Administration Goddard Space Flight Center (NASA GSFC), Greenbelt, Maryland, USA

<sup>22</sup>Environment and Climate Change Canada, Montréal, Canada

<sup>23</sup>Physikalisch-Meteorologisches Observatorium Davos World Radiation Centre, Davos Dorf, Switzerland

<sup>24</sup>Graduate School of Environmental Studies, Nagoya University, Nagoya, Japan

<sup>25</sup>Sibley School of Mechanical and Aerospace Engineering, Cornell University, Ithaca, NY, USA

*Correspondence to:* K. Lamy (kevin.lamy@univ-reunion.fr)



## Abstract.

We have derived values of the Ultraviolet Index (UVI) at solar noon using the Tropospheric Ultraviolet Model (TUV) driven by ozone, temperature and aerosol fields from climate simulations of the first phase of the Chemistry-Climate Model Initiative (CCMI-1). Since clouds remain one of the largest uncertainties in climate projections, we simulated only the clear-sky UVI. We compared the modelled UVI climatologies against present-day climatological values of UVI derived from both satellite data (the OMI-Aura OMUVBd product) and ground-based measurements (from the NDACC network). Depending on the region, relative differences between the UVI obtained from CCMI/TUV calculations and the ground-based measurements ranged between -5.9% and 10.6%.

We then calculated the UVI evolution throughout the 21st century for the four Representative Concentration Pathways (RCPs 2.6, 4.5, 6.0 and 8.5). Compared to 1960s values, we found an average increase in the UVI in 2100 (of 2-4%) in the tropical belt (30°N-30°S). For the mid-latitudes, we observed a 1.8 to 3.4 % increase in the Southern Hemisphere for RCP 2.6, 4.5 and 6.0, and found a 2.3% decrease in RCP 8.5. Higher increases in UVI are projected in the Northern Hemisphere except for RCP 8.5. At high latitudes, ozone recovery is well identified and induces a complete return of mean UVI levels to 1960 values for RCP 8.5 in the Southern Hemisphere. In the Northern Hemisphere, UVI levels in 2100 are higher by 0.5 to 5.5% for RCP 2.6, 4.5 and 6.0 and they are lower by 7.9% for RCP 8.5.

We analysed the impacts of greenhouse gases (GHGs) and ozone-depleting substances (ODSs) on UVI from 1960 by comparing CCMI sensitivity simulations (1960-2100) with fixed GHGs or ODSs at their respective 1960 levels. As expected with ODS fixed at their 1960 levels, there is no large decrease in ozone levels and consequently no sudden increase in UVI levels. With fixed GHG, we observed a delayed return of ozone to 1960 values, with a corresponding pattern of change observed on UVI, and looking at the UVI difference between 2090s values and 1960s values, we found an 8 % increase in the tropical belt during the summer of each hemisphere.

Finally we show that, while in the Southern Hemisphere the UVI is mainly driven by total ozone column, in the Northern Hemisphere both total ozone column and aerosol optical depth drive UVI levels, with aerosol optical depth having twice as much influence on the UVI as total ozone column does.

## 1 Introduction

After the implementation of the Montreal Protocol, emissions of chlorine and bromine-containing ozone depleting substances (ODSs) have started to decrease and the ozone layer is showing signs of recovery (Morgenstern et al., 2008; Solomon et al., 2016). Nonetheless, greenhouse gas (GHG) emissions are generally still increasing and are expected to affect future ozone levels (Fleming et al., 2011; Revell et al., 2012). Global circulation model simulations project that the Brewer Dobson circulation will accelerate over the next century (Butchart, 2014), which would lead to a decrease of ozone levels in the tropics and an enhancement at higher latitudes (Hegglin and Shepherd, 2009). Ozone is one of the major factors affecting surface ultraviolet (UV) radiation.

Exposure to UV radiation has both adverse and beneficial effects on human health. Overexposure increases the risk of skin cancers, e.g. cutaneous malignant melanoma and keratinocyte cancers, and a range of eye diseases. Underexposure increases the risk of vitamin D deficiency; vitamin D is critical to healthy bones. It is common in health research and public health communication to use the UV Index (UVI) (Mc Kinlay and Diffey, 1987) as a measure of erythemally (sunburn) weighted UV irradiance. UV also impacts the biosphere (Erickson III et al., 2015) including aquatic ecosystems, which play a central part in biogeochemical cycles (Hader et al., 2007). Phytoplankton productivity is strongly affected by UV radiation (Smith and Cullen, 1995), which can result in either a positive or negative feedback on climate (Zepp et al., 2007).

The implementation of the Montreal Protocol on ozone depleting substances (ODSs) imposed reductions on emissions of man-made substances that increase stratospheric chlorine and bromine levels (i.e., halocarbons), thereby alleviating concerns about increases in future surface UV (Morgenstern et al., 2008). While this protocol and its amendments drastically reduced the emissions of ODSs, recent studies on the evolution of ozone in a changing climate (Butchart, 2014) raised questions about future surface UV levels (Hegglin and Shepherd, 2009; Bais et al., 2011; Correa et al., 2013; Bais et al., 2015).

Numerous chemistry-climate model (CCM) studies found an acceleration of the Brewer-Dobson circulation (BDC) (Butchart, 2014) due to the increase in atmospheric GHG concentrations. The BDC circulation was proposed by Brewer (1949) and Dobson (1956) to explain the latitudinal distribution of ozone and the amount of water vapor in the stratosphere. The BDC corresponds to a meridional transport in the stratosphere, with ascending air in the tropics and subsidence in the polar latitudes. The mechanism that drives this circulation is the dissipation of Rossby and gravity waves (Holton et al., 1995). Therefore, the strength of the BDC depends on the propagation and breaking of planetary waves. Rind et al. (1990) found that a doubling of carbon dioxide (CO<sub>2</sub>) would lead to an increase in the residual-mean circulation due to the response from planetary waves, where the residual-mean circulation (Andrews et al., 1987) can be seen as a proxy for the BDC. From the doubled CO<sub>2</sub> experiment, Rind et al. (2001) found a 30% increase of the troposphere to stratosphere mass exchange. In addition, an accelerated loss of CFCs will reduce the timescale for ozone to recover (Shepherd, 2008). A strengthening of the BDC and an accelerated recovery of ozone will modify the distribution of ozone in the stratosphere and impact UV radiation at the surface.

While the ozone layer in the stratosphere absorbs UV-B (UV radiation with wavelengths in the range 280-315nm), it is not the only factor affecting surface levels of UV. The distance between the Sun and Earth is responsible for about  $\approx 7\%$  of the UV radiation variability on the ground (Frederick et al., 1989). The 11-year solar cycle accounts for about 6% of the UV variability

in the stratosphere (Gray et al., 2010). The solar cycle affects UV radiation through changes in stratospheric ozone, while its direct influence is negligible. Solar zenith angle (SZA) plays a key role for the intensity of surface UV. For higher SZA the path travelled through the atmosphere is longer, hence absorption and scattering increase, affecting the UV radiation response to changes in total ozone column (TOZ) (Brühl and Crutzen, 1989). Clouds and aerosols also cause variability (Bais et al., 1993).

5 In most cases, clouds attenuate the UV signal at the surface by about 15 to 45% (Calbó et al., 2005). Broken cloud cover can also enhance the surface UV radiation (Lovengreen et al., 2005; Marín et al., 2017). Krzyścin and Puchalski (1998) found a 1.5% increase in erythemal UV for a 10% decrease of aerosol optical depth (AOD) and up to a 30% decreases of UV erythemal can be observed due to biomass burning emissions (Lamy et al., 2018). In the UVA region, a mean reduction of irradiance of 15.2% per unit of AOD slant column has been observed by Kazadzis et al. (2009). Nitrogen dioxide and sulphur dioxide have

10 also a small effect on UV irradiance (Solomon et al., 1999; Vaida et al., 2003).

In the context of a changing climate and with the use of stratospheric CCM simulations, Hegglin and Shepherd (2009) found a 3.8% increase of UVI in the tropics between the 1960s and 2090s. In the Northern Hemisphere, they found a 9% decrease in the UVI due to increased transport of ozone. As part of the precursor multi-model activity to CCMI, CCMVal-2, Bais et al. (2011) also calculated the UVI evolution between 1960 and 2100 and reported a small increase in the tropics of 0.9%, a 7.5%

15 and 9.8% decrease in northern and southern high latitudes, and a 4.1% decrease in mid latitudes. In both these studies, the largest UV radiation reduction was found over Antarctica. This is consistent with the expected recovery of the ozone layer.

Following from these studies, we investigate here the evolution of surface UV radiation using the latest simulations from the first phase of the Chemistry-Climate Model Initiative (CCMI-1). CCMI is a project initiated by Future Earth's IGAC (International Global Atmospheric Chemistry) and the World Climate Research Programme's (WCRP) SPARC (Stratosphere-

20 troposphere Processes and their Role in Climate) as a successor to and in continuation of the Chemistry-Climate Model Validation Activity (CCMVal) and Atmospheric Chemistry and Climate Model Intercomparison Project (ACCMIP) (Eyring et al., 2013). We use CCMI data and the Tropospheric Ultraviolet Model (TUV) (Madronich et al., 1998) to calculate surface irradiance over the globe.

In Section 2, we will explain the methodology used to calculate ground surface irradiance from CCMI data and TUV, and

25 describe the TUV model. We will briefly present the CCMI models along with the different experiments performed for CCMI. A validation of UVI, calculated with CCMI data and TUV, against satellite and ground-based measurements will be presented in Section 3. A discussion of the spread between CCMI models and on the resulting sensitivity of TUV will also be conducted in this section. In Section 4, we examine the possible evolution of UVI at different latitudinal bands following the representative concentration pathways (RCPs) Meinshausen et al. (2011)). We also analyse the difference between monthly values of UVI in

30 the 1960s and 2090s. Sensitivity simulations using concentrations of ODSs and GHGs fixed at constant 1960 levels were also performed for the CCMI exercise. These allow us to assess the impact of GHGs and ODSs on UVI individually. An analysis of the impact of AOD on UVI is presented in Section 4.4. The last section will discuss and conclude the findings of the present study.

## 2 Data and methodology

### 2.1 Ultraviolet Modelling

UV irradiance at the Earth's surface is calculated with the TUV radiative transfer model (version 5.3) for the entire globe on a 2° by 2° grid. The spectral solar irradiance simulated at the Earth's surface ranges from 280 to 450 nm with a 1 nm step. The spectral irradiance is weighted according to the erythral action spectrum (Mc Kinlay and Diffey, 1987) and then integrated to obtain the UVI. For the extra-terrestrial spectrum we used the Dobber et al. (2008) spectrum, for the ozone cross section absorption we used the one from (Gorshchev et al., 2014) and (Serdyuchenko et al., 2014). The required inputs for the UV radiation calculation are:

- Total Ozone Column (TOZ)
- 10 – Total Nitrogen Dioxide (TNO<sub>2</sub>)
- Ozone Profile (OP)
- Temperature Profile (TP)
- Aerosol Optical Depth (AOD)
- Aerosol Ångström exponent ( $\alpha$ )
- 15 – Single Scattering Albedo (SSA)
- Ground Surface Albedo (ALB)
- Altitude (z)

As input for TUV we used data from the latest CCMi simulations (Hegglin and Lamarque, 2015). A brief description of the CTMs or CCMs used in this study is provided in Table 1 and Table 2, while more details are available in Morgenstern et al. (2017). From these models the monthly output from the refC2, senC2rcp26, senC2rcp45, senC2rcp85, senC2fODS and senC2fGHG simulations were retrieved. RefC2 is a transient "future reference" simulation covering the period 1960-2100 with a 10 year spin-up that starts in 1950. The aim of this simulation is to investigate the future evolution of the atmosphere. From 1960 to 2005 concentrations are prescribed from observations. After 2005, projections of GHGs from the RCP 6.0 scenario are used (Masui et al., 2011). The RCPs are scenarios used to study future Earth's climate. They are composed of four pathways representative of the GHG concentrations along the 21st century that lead to a radiative forcing of 2.6, 4.5, 6.0 or 8.5  $W.m^{-2}$  in 2100. While RCP 2.6 suppose strong effort to reduce GHG emissions. RCP 8.5 is based on large GHG emissions, with CH<sub>4</sub> concentration particularly high in this scenario compared to others.

ODS concentrations are prescribed according to the A1 scenario for halogens (WMO, 2011). senC2rcp26, senC2rcp45 and senC2rcp85 are similar to refC2 but instead of following RCP 6.0 for GHGs, they follow RCP 2.6, 4.5 and 8.5 (Meinshausen

et al., 2011) respectively. The senC2fODS and senC2fGHG are sensitivity simulations, they are similar to refC2 but with ODSs or GHGs fixed at their respective 1960 levels. The senC2 simulations were optional for the intercomparison exercise. Therefore only a few models provided results for both senC2fGHG and senC2fODS experiments (Table 2). A complete description of all CCMI-1 simulations is given by Eyring et al. (2013) and Morgenstern et al. (2017). A summaries of these simulations and scenarios along with references is presented in Table 3.

From these CCMI simulations, we used the following monthly global fields to calculate UVI: TOZ, OP, TP and NO<sub>2</sub>, ALB and altitude or pressure. Due to the lack of UV albedo in the model output, broadband albedo is used instead. For TNO<sub>2</sub> we vertically integrated the volume mixing ratio of NO<sub>2</sub>. As single scattering albedo (SSA) is not available, we choose here to use the latest global aerosol monthly climatology from Kinne et al. (2013) as input for the TUV model. We used the median AOD and the Ångström exponent (440-870 nm) from three models that provided these variables: CHASER MIROC-ESM, MRI-ESM1r1 and GEOSCCM. While the mean value may be more representative in general, the median was used to avoid eventually local erroneous values. Due to the lack of reliable data, total column sulphur-dioxide (TSO<sub>2</sub>) was set to zero. Nonetheless TSO<sub>2</sub> could be an important factor of UVI variability (Zerefos et al., 1986).

Radiative transfer modelling in cloudy conditions is still a challenging task. Bais et al. (2011) used cloud modification factor along with UV irradiance projections in order to simulate future UV changes due to clouds. Here, our focus is on the UV radiation evolution for distinct RCP scenarios and on the influence of GHGs and ODSs. In addition, clouds and aerosols remain the main sources of uncertainties in climate projections (IPCC, 2013), and the accuracy of UV radiation modelling depends strongly on the accuracy of the input parameters. For these reasons, we choose here to analyse only clear-sky conditions. Furthermore, there is also the uncertainty on the absolute mean value of the extra-terrestrial solar UV spectrum used at the top of the atmosphere in TUV. Differences between proposed solar UV spectra can reach 5% (Meftah et al., 2016).

The horizontal and vertical grids vary between the CCMI models. All of the required CCMI data are therefore interpolated to a 2° by 2° grid with 86 pressure levels, the highest pressure level being 0.001 hPa. There were 18 models participating in the CCMI simulations. It was thus not possible to perform the same number of UV radiation projections for the entire 21st century due to computational limitations. We choose to only consider the ensemble model median. The error associated with this simplification on the UV radiation projections is discussed in Section 4.1. A few other simplifications were made to reduce computational time. OP and TP are averaged zonally but still vary through the 21st century. The distribution of ozone is mainly zonal, and in particular the altitude of the maximum concentration or the maximum concentration has a mainly zonal distribution. On the other hand, the vertical distribution of ozone has a very small effect on surface UVI compared to TOZ or AOD. Therefore we conclude that the use of a zonal mean introduces only a minor effect on UV radiation calculations. It is reasonable to neglect this compared to other uncertainties associated with the method. For each CCMI monthly output, we simulated UV irradiance at local solar noon and for the 15th of each month.

## 2.2 UVI modelling cases.

As stated above, we used four RCP scenarios and two sensitivity simulations, but not all models provided these specific runs (Table 2). To ensure that the resulting TUV simulations would be directly comparable with each other, we defined two

experiments from two sets of models. These are summarized in Table 2. The first set is composed of models that provided the refC2, senC2rcp26, senC2rcp45 and senC2rcp85 simulations (see Table 2). From this set of models, we can study the impact on UVI from different RCP scenarios (experiment 1, EXP1). Each model in this set provided simulations that cover 2000-2100 at minimum. The second set is composed of models that provided refC2, senC2fODS and senC2fGHG simulations. This set allows us to investigate the impact of fixing GHGs or ODSs on UV irradiance from 1960 to 2100 (experiment 2, EXP2). We also designed a third experiment (EXP3), based on the models used in EXP1. We performed three simulations; the first one with transient TOZ and AOD (hereafter EXP3A), a second with TOZ fixed at its 2000s decadal mean value and transient AOD (EXP3FTOZ), and the last one with AOD fixed at present-days climatological values (Kinne et al., 2013) and transient TOZ (EXP3FAOD). For these experiments we calculated the mean and median of the various input parameters for the selected models, such as ozone, temperature or ground albedo, and used it as input for the radiative transfer model to obtain  $UVI_{MEAN}$  and  $UVI_{MEDIAN}$ .

### 3 Model Validation

In this section, we first investigate the usage of CCMI model data as input for the TUV radiative transfer model. The results are compared against present-day climatological values of UV irradiance obtained from ground-based and satellite measurements. According to Koepke et al. (1998), the UVI modelling error is about 5 % for a coverage factor of 2 standard deviation.

We gathered UVI data spanning at least the period from 2000 to 2017 for six stations representing six latitudinal bands. The various stations and their characteristics are presented in Table 4. They are all part of the Network for the Detection of Atmospheric Composition Change (NDACC) (De Mazière et al., 2018). UV measurements at these stations are made by a spectroradiometer. Just like UVI obtained by the model, UVI is obtained from the spectral irradiance. These types of measurements have an uncertainty of about 5%. All of these stations began measuring UV in the early 2000s, except for Reunion Island where observations started in 2009. In order to compare the ground-based measurements to our modelling results, we filter cloudy conditions with the clear-sky flag provided with each station's measurements. We also select data with a SZA as close as possible to the SZA at local noon, with no more than 2.5° difference. A 10 day average around the 15th of each month was made in order to be consistent with satellite data and avoid numerous missing values. From this we derive a monthly climatology for the 2005-2017 period ( $UVI_{GB}$ ). From the closest grid point of the  $UVI_{MEAN}$  and  $UVI_{MEDIAN}$  simulation, we derive the same UVI monthly climatology. We do this only for the refC2 simulation. TUV calculations are made at sea level, stations measurements are made at an altitude ranging between 8m for Barrows up to 370m for Lauder. Mauna Loa is an exception with measurements made at 3397m above sea level.

We also derive a climatology for each station from the OMI OMUVBd product (Krotkov et al., 2002), which is represented by the orange curve in Figure 1 and it will be called hereafter  $UVI_{OMI}$ . OMUVBd is a level-3 daily global gridded UV-B irradiance product derived from the Ozone Monitoring Instrument (OMI), which is a nadir-viewing spectrometer. Measurements started in 2004. The instrument covers the spectral region 264-504 nm. The algorithm used to compute surface spectral UV irradiance is the TOMS Surface UV-B flux algorithm (Tanskanen et al., 2007). OMUVBd has previously been evaluated against ground

based stations. Tanskanen et al. (2007) found a median overestimation of 0 to 10% of the erythemal doses calculated by OMI. Jégou et al. (2011) found a  $12.8 \pm 3.6$  % mean relative difference between OMI clear-sky UV measurements and ground-based measurements made at the SIRTa observatory (Palaiseau, France) in 2008 and 2009. Brogniez et al. (2016) also analysed this product against three ground-based stations located at Villeneuve d'Ascq and the Observatoire de Haute-Provence, both in metropolitan France, and at Saint-Denis in Reunion island. They observed a systematic overestimation of UVI in the range of 4 to 8% at solar noon. Once more we select UVI only at local solar noon, which is provided in the OMUVBbd product. In order to be as close as possible to our simulation and since OMUVBdd has sometimes missing values over the ground based stations at the 15th of each month, we also always selected 10 days per month centred around the 15th of each month for ground based and satellite data. The results are presented in Figure 1. We also calculate the mean absolute and relative difference between these monthly climatological UVI and  $UVI_{GB}$  ground-based observations. Table 4 summarizes these statistics.

Figure 1 shows that for every station, the average modelled UVI;  $UVI_{MEAN}$  (red curve) and  $UVI_{MEDIAN}$  (green curve), are close to the observed climatological UVI ( $UVI_{GB}$  black curve). UVI calculated from the single models (light blue curves) are spread around the observations.  $UVI_{OMI}$  tends to be a slightly higher than the observations. Again, absolute and relative difference (Table 4) shows that  $UVI_{MEAN}$  and  $UVI_{MEDIAN}$  are always closer to ground-based observations than  $UVI_{OMI}$ , except for the Palmer station. The differences between modelled UVI ( $UVI_{MEAN}$  and  $UVI_{MEDIAN}$ ) and  $UVI_{GB}$  are homogeneous. For  $UVI_{MEDIAN}$ , they ranges between -5.9% and up to 10.3% at Lauder and Palmer station respectively. For  $UVI_{MEAN}$ , they ranges between -3.9% and up to 10.6% at Lauder and Palmer station respectively. While the relative difference is large at high latitude stations, the absolute difference in UVI is small. For instance, the 10.6 % relative difference in  $UVI_{MEAN}$  at the Palmer station, translates into an absolute difference of about 0.3 UVI units. In the tropics, at Mauna Loa, a relative difference of 5.4% for  $UVI_{MEAN}$  is equivalent to a similar absolute difference of UVI (0.3 UVI units). We have to be careful when we interpret UVI at high latitude stations, as the magnitude of UVI is quite small most of the time due to large solar zenith angles. Between  $UVI_{MEAN}$ ,  $UVI_{MEDIAN}$  and  $UVI_{GB}$ , standard deviation of the absolute difference are the highest for Mauna Loa, at about 0.8 UVI unit. This is probably due to the significant difference observed in summer. For the other stations, the standard deviation ranges between 0.2 and 0.4 UVI unit.  $UVI_{OMI}$  tends to overestimate UVI by a range that goes from 6.8% at Lauder, and up to 29.3% at Barrow.

Palmer station presents the highest differences between  $UVI_{MEAN}$ , or  $UVI_{MEDIAN}$ , and  $UVI_{GB}$  at about 10%. As presented by Figure 1, there is a large spread between individual models during the beginning of summer (september to december). In addition, we do not observe the same differences in the same season and at the same latitude in the northern hemisphere (Barrow). The large difference at Palmer station could be linked to the temporal and geographical representation of the ozone hole. The high standard deviation (Table 4) and differences (Figure 1) observed at Mauna Loa are not clearly understood. This discrepancy could be due to the clear-sky filtering used. Saint-Denis and Mauna Loa are both tropical station where cloud cover vary rapidly and presents specific seasonal and diurnal pattern. For Saint-Denis, this was investigated and a specific filter was designed (Lamy et al., 2018), it not the case for Mauna Loa.

Another factor could explained the difference at Mauna Loa and Palmer station. For short time scales of about 10 years, a part of the TOZ variability observed at ground-based stations is due to the stratospheric circulation above the station (Poullain

et al., 2016). In the refC2 runs, models produce their own wind and temperature fields. In a separate simulation, which we do not analyse here, the refC1SD simulation, the model is forced by boundary conditions obtained from reanalyses (Eyring et al., 2013). Unlike refC1SD, refC2 simulations are not designed to reproduce the interannual variability and trends in stratospheric dynamics (and hence ozone) that are observed over individual stations between 2000-2017. Differences between observed and simulated dynamical variability is thus possibly a significant source of the discrepancies between observed and modelled UVI, but it is difficult to estimate. The differences in the dynamics of the models (Eichinger et al., 2018) certainly contribute to the spread in the model results. Although by using simulations with specified dynamics, such as refC1SD, a better agreement may be expected for the validation of CCMI models, the main objective of this study is to study the UVI evolution during the 21st century, which is not possible using refC1SD simulation; therefore we decided it was better to only validate the result from the refC2 simulations.

Simulated UVI has also been compared to  $UVI_{OMI}$  satellite measurements. The relative differences between each model and  $UVI_{OMI}$  are represented in Figure 2. To compute the relative differences, we considered the differences between months and then averaged over the entire period and over the globe. We recognize that this is not the best approach, due to latitudinal and seasonal differences, it will indicate the global differences in the behaviour between the different models. It is not intended to compare the results against  $UVI_{OMI}$ , but rather to estimate the overall behaviour of the models towards OMI measurements in order to infer their homogeneity. Over the globe,  $UVI_{MEAN}$  and  $UVI_{MEDIAN}$  deviate from OMUVBd observations by respectively  $-16.8 \pm 12.9 \%$  and  $-17.3 \pm 12.5 \%$ , showing that the response is quite different amongst the individual models. While the closest mean relative difference is observed for the MOCAGE model, that is also the model one with the highest variability. In all cases, UVI computed from CCMI models are lower than  $UVI_{OMI}$ . As stated before previous studies on  $UVI_{OMI}$  validation against ground-based spectral measurements found a systematic overestimation. Therefore, in the present study, it is coherent to find lower values of simulated UVI compared to the  $UVI_{OMI}$ .

As a last test, we took the TOZ fields from the 18 models that performed a refC2 simulation from 2000 to 2010 and used them as input for TUV. From there we obtained 18 UVI fields covering the same period and calculated the median, hereafter  $UVI_{ALLM}$ . The average (over the period 2000 to 2010) of the relative difference between these two data sets ( $UVI_{ALLM}$  and  $UVI_{MEDIAN}$ ) is presented in Fig. 3. This result allows us to assess the sensitivity of the radiative transfer model to different ozone inputs. Due to seasonal and inter-model differences, this approach has limitations but the goal of this test was simply to have a first idea of the global difference of behaviour between models. Between both UVI fields there is a mean relative difference of  $0.2 \pm 1.9 \%$ . Around the globe, the differences range from  $-2\%$  up to  $2\%$ . In the end, we can say that averaging the CCMI TOZ fields prior to using them as input for TUV induce only a small difference in the resulting average UVI.

Due to computational constraints, it was not possible to compute UVI for each scenario and for all models throughout the 21st century.  $UVI_{MEDIAN}$  and  $UVI_{MEAN}$  compare well to the ground-based observations (Figure 1) and have the lowest dispersion among the different models (Figure 2). We therefore concluded that it was reasonable to calculate the UVI from the different simulations based on the median input fields derived from the available models. For this reason, in the next section we will only discuss the  $UVI_{MEDIAN}$  field.



## 4 UV Projection throughout the 21st century

In the following subsection (4.1), we will discuss the evolution of UVI and TOZ over the 21st century for six latitudinal bands and for the four RCP scenarios by analysing the results of EXP1. We will then (section 4.2) look at the zonal monthly difference in UVI and TOZ between the 2000s and 2090s. In Section 4.3 we evaluate the impact of GHGs and ODSs on the evolution of UVI and TOZ in EXP2. Again, we will start by looking at the percent change of UVI and TOZ from 1960 to 2100. We then investigate the differences between the 1960s and 2090s.

### 4.1 Temporal evolution of UVI during the 21st century according to different RCPs

To investigate the evolution of UVI and TOZ throughout the 21st century, we choose the following latitudinal bands. Southern and northern high latitudes are defined from  $90^\circ$  to  $60^\circ$  S and  $60^\circ$  to  $90^\circ$  N, respectively. Southern and northern mid-latitudes are defined from  $60^\circ$  to  $30^\circ$  S and  $30^\circ$  to  $60^\circ$  N, respectively. Finally, southern and northern tropical latitudes are defined from  $30^\circ$  to  $0^\circ$  S and  $0^\circ$  to  $30^\circ$  N, respectively. We then calculate the zonal mean percent change in the 2090s compared with the 1960s for the four RCP scenarios. These results are presented in Figure 4. Relative percent changes between the 1960s and 2090s are summarised in Table 5 for all latitudinal bands. In order to compare our results to previous studies we also reported results from Bais et al. (2011) and Hegglin and Shepherd (2009).

Figure 4 shows, as expected, that negative changes in UVI are usually correlated with positive changes in TOZ, and vice versa, except in the northern mid and tropical latitudes where both TOZ and AOD drives UVI variability at the end of the 21st century (section 4.4).

In the southern polar region (Fig 4f), we observe the well known decrease of TOZ that is due to ODS. The ozone layer starts to recover around 2000. Between 2000 and 2100 there is a 10 % increase of TOZ for RCP 2.6 and a 16% increase for RCP 8.5. Consequently, there is a significant decrease of UVI, between 16 to 26 % for these scenarios between 2000 and 2100. Generally, the higher the radiative forcing, the more pronounced is the TOZ increase and UVI decrease. Compared to the 1960s, UVI will still be higher in 2100 by approximately 6.7%, 5.7% and 3.9% for RCP 2.6, 4.5 and 6.0, respectively. Only RCP 8.5 allows a complete return of UVI values in this region. Most of the UVI variability can in theory be explained by the recovery of the ozone layer, this will be verified in Section 4.4.

The same behaviour is observed in the northern high latitudes, however, the magnitude is weaker. Compared to 1960s values, UVI will be 5.5%, 1.7% and 0.5% higher for RCP 2.6, 4.5 and 6.0 respectively. For RCP 8.5, there is a strong decrease of UVI (7.9%). The same observation is made for the southern mid-latitudes with a maximal increase of TOZ of  $\sim 9\%$  along with a maximum decrease of UVI of  $\sim 12\%$  (Fig 4d) between 2000 and 2100. Compared to 1960 values, UVI percent changes in 2100 are within 0 and 3% depending on the RCP scenarios. In 2100 for RCP 2.6, while TOZ is slightly lower than its 1960 values ( $\sim 1\%$ ), UVI is higher by  $\sim 3\%$ . Again, the maximum change occur for the strongest radiative forcing increase (RCP 8.5). Here, GHG effects are stronger, and consequently there is more ozone in this region and UVI is weaker compared to 1960 values. In the Northern Hemisphere, while TOZ does not vary more than 1% between 1960 and 2000, we observe a significant growth between 2000 and 2100,  $\sim 8\%$  for RCP 8.5. As expected UVI percent changes appear to be anticorrelated with TOZ

percent changes between 2000 and 2050, but after 2050 while TOZ still increases, UVI is almost constant. A similar situation can be observed in the northern tropical band, where TOZ appears to change by no more than 1% between 2000 and 2100, while we observe a 2% to 4% increase in UVI during this period. The largest UVI percent change is observed for the lowest change of radiative forcing (RCP 2.6) (Fig 4a). At the northern mid- and tropical latitudes TOZ is not the principal driver of UVI changes (Section 4.4). For the southern tropics, TOZ and UVI are well anti-correlated, changes during the 21st century are very small and are confined within 0-3% for the period 2000 to 2100 (Fig 4b). Nonetheless, in this region, at the end of the 21st century, UVI will still be about 3% higher compared to the 1960s. In the tropics, we observe a decreasing UVI from 2000 to 2050, then UVI increases from 2050 to 2100.

RCP 8.5 presents either negative changes or modest increase of UVI and it is also correlated with increase of TOZ. Methane emissions are large in RCP 8.5: Morgenstern et al. (2018) found that TOZ increase with increasing methane in CCMi models.

A similar study was carried out by Bais et al. (2011) within the CCMVal-2 activity, they used the refB2 experiment that used the SRES A1B scenario for GHGs (a scenario close to RCP 6.0). Annual-mean surface UVI percent changes were computed against the 1975-1984 mean. Here we computed changes between 1960-1970 and 2090-2100 (Table 4). We can roughly estimate the UVI percent changes between 1960 and 1980 by looking at Figure 2 of Bais et al. (2011). Between 1960 and 2100 they observe a  $\sim 8\%$  and 1% UVI percent change decrease in the northern and southern high latitudes respectively. Here, for the same period, we only observed a similar decrease ( $\sim 7.9\%$ ) in the northern high latitudes for RCP 8.5. For the other scenarios, in this region, we find UVI percent changes between 0.5 to 5.5%. In the southern high latitudes, UVI values are higher than the 1960 baseline for RCP 2.6, 4.5 and 6.0 by 6.7%, 5.7% and 3.9% respectively. For RCP 8.5, there is a complete return of UVI to its 1960 values. In this region, RCP 8.5 also presents the result closest to the one found by Bais et al. (2011). In the southern mid-latitudes, while Bais et al. (2011) also noted a decrease of UVI ( $\sim 1\%$ ) between 1960 and 2100, we found an UVI increases by 3.4, 2.6, 1.8 % for RCP 2.6, 4.5, 6.0, respectively. For RCP 8.5, we found a 2.3% decrease in UVI. And, while Bais et al. (2011) found a decrease in the Northern Hemisphere for these latitudes, here we show that UVI increases in all scenarios except RCP 8.5. Again, for these two regions, RCP 8.5 shows close result to those by Bais et al. (2011) study. In the tropical belt ( $30^\circ$  North to  $30^\circ$  South), between 2000 and 2100, Bais et al. (2011) found changes in UVI of about 1-2%. We found similar results with smaller values, between 0 to 3%.

Hegglin and Shepherd (2009) conducted a study on UVI changes due to stratospheric circulation-driven changes in the ozone distribution using the Canadian Middle Atmosphere Model (CMAM) simulation performed for the CCMVal intercomparison. By comparing UVI between 1960-1970 and 2090-2100, they observed an evolution at all latitudes close to the one found by Bais et al. (2011). Likewise, they found an increase of UVI in the tropics of about 4%. This was also shown by Butler et al. (2016). To conclude, the CCMVal-2 results from Bais et al. (2011), Hegglin and Shepherd (2009), and our results show similar conclusions for the UVI evolution in the tropics, but our results differ in the northern tropical and mid-latitudes depending on the RCP scenario. As stated before, UVI is influenced mainly by TOZ but also by AOD, ALB, TNO<sub>2</sub>, OP, and TP. Hegglin and Shepherd (2009) used the analytical formula by Madronich (2007) to determine UVI, which only considers relative changes in TOZ. Bais et al. (2011) used a radiative transfer calculations, but aerosol properties were fixed to present climatological values.

This could explain the different conclusion obtained in the present study for the Northern Hemisphere. To better understand the evolution of UVI in the northern mid and tropical latitudes, we will look at the other parameters in section 4.4.

While this section looked at the evolution of UVI throughout the 21st century. In the next section, we will quantify in more detail the difference between the 2000s and the 2090s and between different climate scenarios.

## 5 4.2 Global UVI levels at the end of the 21st century.

UVI and TOZ zonal monthly differences between the 2000s and 2090s are presented in Fig. 5, for four RCPs for both UVI (left column) and TOZ (right column). There are some missing values during the winter months, because we chose a threshold for the SZA of less than 60 °to calculate the UVI.

First, we note that the strongest mean relative difference (MRD) of UVI or TOZ over the globe is associated with the strongest radiative forcing change. For RCP 8.5, UVI MRD over the globe is -7.9% and TOZ MRD is 6.74%. For RCP 2.6 we calculate a UVI MRD of -1.4 % and a TOZ MRD of 2.1%.

During the months of September, October and November and in each RCP, there is a strong decrease of UVI (more than 24%) associated with a strong increase of TOZ in the southern polar region between July and up to November. This is due to the strong recovery of the ozone layer in this region.

We calculate a decline of UVI in southern mid-latitudes associated with a rise in TOZ for all scenarios. In northern mid-latitudes, while TOZ levels increase with increasing radiative forcing, we do not observe a corresponding decrease of the UVI. This is due to decreasing AOD (Section 4.4).

The zero line separating a decrease of UVI at high latitudes from an increase at low latitudes appears to shift towards the equator as the radiative forcing increases. Thus, the regions where UVI increases (up to 4 to 6 %) are concentrated around the equator with the increase in radiative forcing that is related to GHG concentrations. This could be explained by the larger GHG concentrations in the RCPs with higher radiative forcing, which are expected to play an important role for the BDC (Butchart, 2014).

In the following sections we will investigate the impact of GHG, ODS and AOD on the UVI separately.

## 4.3 Effects of greenhouse gases and ozone depleting substances on future UVI.

To investigate the effects of GHGs and ODSs on UVI variability between 1960-2100, we analysed the CCMi sensitivity experiments senC2fGHG and senC2fODS. The CCMi models used in this section are those that provided data for the refC2, senC2fGHG and senC2fODS simulations. For the previous experiment (EXP1), we used the median AOD provided by three CCMi models (CHASER-MIROC-ESM, GEOSCCM and MRI) as input for the radiative transfer model. Here, we fixed the AOD by taking the climatological values provided by Kinne et al. (2013). The UVI and TOZ evolution for these two sensitivity experiments and refC2 are presented in Fig. 6.

As expected, TOZ shows the smallest trends in the simulations with fixed ODS; the same conclusion can be drawn for UVI. Since the senC2fGHG and refC2 simulations are in close agreement in the Antarctic region, we infer that climate change has the smallest influence on TOZ variation (Dhomse et al., 2018) and therefore on UVI variation in this region.

From these two experiments, we note that the return of TOZ to 1960 levels will happen later under the fixed GHG scenario, at both northern and southern high latitudes (Fig. 6e,f).

In the southern mid-latitudes (Fig 6d), we observe a similar behaviour, with TOZ and UVI percent changes that increase or decrease more rapidly with transient GHG concentrations. This is comparable to what happens in the Northern Hemisphere (Fig 6c), where GHGs induce a rapid increase of TOZ and a rapid decrease of UVI, which are expected to reach  $\sim 3\%$  and  $\sim -3\%$  in 2100, respectively.

In the tropics (Fig 6a,b), ODS account for about 2% of UVI and TOZ variability. Variations in GHG concentrations appear to have almost no effect on UVI and TOZ until the middle of the 21st century. There is a 2% increase of UVI, which appears around 2070. This can be observed for the fixed GHG and fixed ODS simulations. The percent change in UVI for the refC2 simulation stabilizes around 2070. In this region GHGs are responsible for the acceleration of the BDC, which then induces a decrease of ozone in the lower stratosphere. But they are also responsible for the cooling in the upper stratosphere, which induces an increase of ozone. Therefore, the small magnitude of changes in this region could be explained by the compensating GHGs effects in the simulations (Kirner et al., 2015; Morgenstern et al., 2018).

Global monthly relative differences between the 2090s and 1960s are also plotted in Figure 7 for both, UVI (left column), and TOZ (right column) for the refC2, senC2fODS and senC2fGHG simulations.

With fixed ODS, there is a 3.75% mean relative difference of UVI over the globe, driven by increasing GHGs that affect the circulation. In the tropical belt changes are  $\sim 2\%$  higher compared to the standard refC2 run especially in the summer for both hemispheres. Nonetheless, the tropical region is also the place where UVI has the highest absolute values, therefore even a small relative increase means a moderate increase of absolute values. With fixed GHG, the effects of ODSs are minimal when considering the difference between 2100 and 1960.

#### 4.4 Other effects affecting UVI.

In Sections 4.1 and 4.2, we found an UVI increases in the northern mid and tropical latitudes, which were not correlated with TOZ changes. Figure 8 shows the percentage change of UVI, TOZ, and AOD in the northern high, mid, and low latitudes for the EXP3A, EXP3FTOZ, and EXP3FAOD experiments. This is also done for the southern latitudes (Figure 9). In Table 6, we summarize the UVI percent changes between 2100 and 2000 for three EXP3 experiments. We also report the TOZ and AOD changes. All results discussed here refer to zonal averages. Since AOD exhibits large spatial variability, these results should not be generalized.

At the mid-latitudes in EXP3FAOD, UVI decreases and is clearly anticorrelated with TOZ changes (blue curve, Fig.8b). For the same region in EXP3FTOZ, there is a 6% UVI percent change in this region in 2100 (green curve, Fig.8b). On the same figure, in EXP3A, UVI (orange curve) also increases, but by a smaller amount (up to  $\sim 4\%$  at the end of the 21st century). Both TOZ and AOD drive the UVI variability in this region. As the RCPs project a decline in aerosols precursor emissions (van Vuuren et al., 2011), AOD decreases especially in the Northern Hemisphere and this has a strong effect on UVI. This is also true in the northern tropics (Fig. 8c,f and i), where AOD decreases by  $\sim 16\%$  and TOZ only changes slightly ( $<1\%$ ). The experiments with transient AOD and either fixed or variable TOZ exhibit almost the same percent change in UVI. This would

indicate that AOD changes drive the UVI at these latitudes where TOZ variations are small. At northern high latitudes, AOD decreases by  $\sim 80\%$  and TOZ increases by  $\sim 4\%$  at the end of the century. With transient AOD and TOZ, UVI decreases by  $\sim 3\%$  (orange curve, Fig. 8a) and appears to follow the TOZ variability during the 21st century. In this region both TOZ and AOD drive UVI levels. For a medium decrease of AOD and very small changes of TOZ, AOD appears to be the main driver of UVI levels in the tropics.

In the Southern Hemisphere, the situation is different, as shown in Fig. 9. UVI percent changes are driven by the TOZ percent changes, which are consistent due to the recovery of the ozone layer. In addition AOD percent changes are very small in this region. In the southern high, mid and tropical latitudes, where there are small AOD percent changes compared to northern middle and tropical latitudes, UVI variability is driven by TOZ changes. The simulations with transient TOZ and either fixed AOD (blue curve) or transient AOD (orange curve) are almost identical and there is almost no UVI change if TOZ is fixed (green curve).

In summary, the UVI evolution observed in the Northern Hemisphere (Section 4.1) can be explained by both TOZ and AOD changes (Figure 8). In the Southern Hemisphere TOZ is still the main driver of UVI variability.

Bais et al. (2015) also investigated the impact of AOD and TOZ, along with clouds and surface reflectivity, on UVI. Due to ozone changes, between 2010-2020 and 2085-2095, they found a  $\pm 2\text{-}4\%$  UVI changes in the tropics, a 5-10 % decrease in middle latitudes and a 40% decrease in Antarctica. We found close results, with a  $\pm 1\%$  changes in the tropics, a 3 to 6 % decrease in middle latitudes and a 25 % decrease in the southern high latitudes. Due to aerosols changes, Bais et al. (2015) also found a strong effect of AOD (10-50%) in the northern hemisphere, especially over south east Asia where a  $\approx 50\%$  UVI increase is reported. It should be noted that UVI changes due to AOD presents strong longitudinal variability (Bais et al., 2015) which are not considered in the zonally average results presented here. Therefore the present results can not be generalised.

This last result shows that UVI evolution in the future will not only depends on TOZ but also on AOD. Bais et al. (2015) also addressed this subject and expressed valid concerns on the uncertainties associated with the aerosol effect. In general AOD remains, together with clouds, one of the biggest sources of uncertainty in climate projections (IPCC, 2013). Additionally, single scattering albedo (SSA), which in this study was fixed at present-day climatological values, has a strong effect on AOD absorption of UVI (Correa et al., 2013). For all these reasons, to obtain more precise results, future studies should be conducted considering the impacts of clouds, AOD and SSA on future UVI levels.

## 5 Summary

We have shown that the use of CCMI model data, together with a radiative transfer model (TUV) can reproduce the current climatological values of clear-sky UVI derived from measurements, in most cases, to within a  $\pm 5\%$  margin of error. UVI simulated in this way over the globe presents a negative median relative difference compared to satellite observations ranging between 0 to 20%. While the mean relative difference ranges from -5.9% to 10.6% compared to ground-based observations. In order to compare against the above-mentioned ground-based observations, we have reproduced, using our data, the monthly climatological variability at six stations spread across latitudes.

We also investigated the impact of ODS and GHG on UVI. We have confirmed the role of GHGs in accelerating the return of UVI to 1960 levels via accelerating the ozone recovery. We estimated that GHGs account for approximately 3.8% of the UVI changes between 1960 and 2100. While ODS have an effect on UVI between 1960 to 2050 due to the increased ozone depletion, fixed GHG simulation show small changes of UVI due to ODS changes alone.

5 In the context of a changing climate, we have considered surface UV irradiance changes in clear sky conditions is projected globally over the 21st century. However, clouds effects may alter significantly the predicted changes. In this study we investigated the changes for different RCP scenarios (Fig 4).

In almost all scenarios at high southern latitudes, as TOZ return to 1960 levels, UVI stays 5 to 8% above 1960 levels. Only in RCP 8.5 UVI returns to 1960s values, since it has been shown (Dhomse et al., 2018; WMO, 2014) that ozone return dates will arrive sooner under RCP 8.5. We have found here that UVI levels are mainly driven by TOZ changes at these latitudes, therefore UVI will also return to 1960 levels sooner for RCP 8.5.

At mid-latitudes, UVI presents in general higher values in 2100 compared to 1960 in both hemispheres, with RCP 8.5 showing the smallest differences (Table 5). UVI changes in this region are not homogeneous; in the northern hemisphere, increases are higher during the summer months, in the southern hemisphere, between 20° and 30°, there is months without increase (Figure 5). In general, the higher emissions of GHGs assumed in RCP 8.5 cause significant differences compared to other scenarios. In the Southern Hemisphere, UVI levels are mainly driven by TOZ, but in the Northern Hemisphere, the declining AOD (considering the median of three chosen CCMI models) opposes the effect of the TOZ increase. AOD and TOZ are the main drivers of UVI variability in this hemisphere with AOD being approximately twice as important as TOZ. Further studies are however needed to investigate this more in-depth. In our present work, only AOD and the Ångström exponent are considered to be evolving during the 21st century, while SSA was fixed to present-day climatological values. Higher values of SSA would increase the absorption effectiveness of AOD and thus impact UV radiation (Correa et al., 2013). Regionally varying SSA changes are expected globally (Takemura, 2012). The upcoming Aerosol and Chemistry Intercomparison Project (AerChemMIP) (Collins et al., 2017) will provide an opportunity to examine this subject.

Zonal mean UVI percent changes from 1960 levels are limited to 0-3% over both tropical bands (0°-30°S and 0°-30°N) during the period 1960 to 2100 (Figure 4). This result is similar to the one found by Bais et al. (2015), Bais et al. (2011) and Hegglin and Shepherd (2009). Increases in the tropical band are higher in the summer of both hemispheres when comparing the decade 2000-2010 against the decade 2090-2100; in this instance local maxima of 8 to 10% were found (Figure 5). An increase of 10% in the tropical UVI would be a matter of concern, since the tropics are already the region with the highest values of UVI, therefore even a small percent increase could have a strong effect on the biosphere. Regarding human health, considering how important human behaviour can be when assessing human health impact, it might be hard to deduce it only from UVI changes.

The impact of these types of increase on human health, the biosphere and consequently on biogeochemical cycles should be the subject of future studies. Furthermore we recognize that numerous simplifications were used in the present work, and therefore further analysis on seasonal and longitudinal variabilities along with differences between models should be

conducted in order to precisely assess the impact and uncertainties due to AOD, zonal differences and surface reflectivity on UVI calculations.

Model	Institution	PIs	References
ACCESS-CCM	U. Melbourne, AAD, NIWA	K. Stone, R. Schofield, A. Klelociuk, D. Karoly, O. Morgenstern	Morgenstern et al. (2009), Stone et al. (2016)
CCSRNIES MIROC3.2	NIES, Tsukuba, Japan	H. Akiyoshi, Y. Yamashita	Imai et al. (2013), Akiyoshi et al. (2016)
CHASER (MIROC-ESM)	U. Nagoya, JAMSTEC, NIES	K. Sudo, T. Nagashima	Sudo et al. (2002), Sekiya and Sudo (2012), Watanabe et al. (2011)
CMAM	CCCma, Canada	D. Plummer, J. Scinocca	Jonsson et al. (2004), Scinocca et al. (2008)
CNRM-CM5-3	CNRM, Toulouse, France	M. Michou, D. Saint-Martin	Michou et al. (2011), Voldoire et al. (2013)
EMAC-L90	DLR, Oberpfaffenhofen, Germany	P. Jöckel, H. Tost, A. Pozzer, M. Kunze, O. Kirner,	Jöckel et al. (2010), Jöckel et al. (2016)
GEOSCCM	NASA GSFC, Greenbelt, USA	L. D. Oman, S. E. Strahan	Molod et al. (2015), Oman et al. (2011)
HadGEM3-ES	MOHC, UK	F. M. O'Connor, N. Butchart, S. C. Hardiman, S. T. Rumbold	Hardiman et al. (2017), Walters et al. (2014), O'Connor et al. (2014), Madec et al. (2015), Hunke et al. (2010)
LMDZrepro	LMD, IPSL, Paris, France	S. Bekki, M. Marchand, F. Lott, D. Cugnet, L. Guez, F. Lefevre, S. Szopa, R.M Hu	Dufresne et al. (2013), Marchand et al. (2012), Szopa et al. (2013)
MOCAGE	CNRM, Toulouse, France	B. Josse, V. Marecal	Josse et al. (2004), Guth et al. (2016)
MRI-ESM1r1	MRI JMA, Tsukuba, Japan	M. Deushi, T. Y. Tanaka, K. Yoshida	Yukimoto et al. (2012), Deushi and Shibata (2011)
NIWA-UKCA	NIWA, Wellington, NZ	O. Morgenstern, G. Zeng	Morgenstern et al. (2009), Morgenstern et al. (2017)
SOCOL	PMOD/WRC, IAC/ETHZ	E. Rozanov, A. Stenke, L. Revell	Revell et al. (2015), Stenke et al. (2013)
ULAQ	U. L'Aquila, Italy	G. Pitari, G. Di Genova, D. Vioni	Pitari et al. (2014)
UMSLIMCAT	U. Leeds, UK	S. Dhomse, M. P. Chipperfield	Tian and Chipperfield (2005)
UMUKCA	U. Cambridge, UK	N. L. Abraham, A. T. Archibald, R. Currie, J. A. Pyle	Morgenstern et al. (2009), Bednarz et al. (2016)
WACCM (CESM1)	NCAR	D. Kinisson, R. R. Garcia, A. K. Smith, A. Gettelman, D. Marsh, C. Bardeen, M. Mills	Marsh et al. (2013), Solomon et al. (2015), Garcia et al. (2017)

**Table 1.** CCMI Model with Principal Investigator (PIs) and institutions.



Scenario or Simulation	Details	References
A1 scenario	A scenario describing a rapid economic growth with a demographic peak in the mid-century. Projections of ODS mixing ratios used in refC2.	WMO (2011)
RCP2.6/4.5/6.0/8.5 scenarios	Scenarios that describe possible trajectories of the main factors affecting the climate. 2.6, 4.5, 6.0 and 8.5 stand the radiative forcing expected in 2100. Projections of GHG used in refC2.	Meinshausen et al. (2011)
refC2	CCMI simulation spanning the 1960-2100 period. For ODS, refC2 follows the A1 scenario. For GHG, it uses observations until 2005 then RCP 6.0.	Eyring et al. (2013) Morgenstern et al. (2017)
senC2rep26/45/85	Same as the refC2 simulation but with GHG changed to either the 2.6, 4.5 or 8.5 RCP scenario.	
senC2fGHG	Same as the refC2 simulation but with GHG fixed at their 1960 levels.	Morgenstern et al. (2017)
senC2fODS	Same as the refC2 simulation but with ODS fixed at their 1960 levels.	

**Table 3.** Summary of scenarios and simulations.

Characteristics	EXP1	EXP2	EXP3		
			EXP3A	EXP3FTOZ	EXP3FAOD
Simulation	refC2 (RCP 6.0) RCP 2.6 RCP 4.5 RCP 8.5	refC2 (RCP 6.0) senC2fODS senC2fGHG	refC2 (RCP 6.0)		
TOZ AOD	Transient Transient	Transient Fixed (Kinne et al., 2013)	Transient Transient	Fixed (2000-2010 values) Transient	Transient Fixed (Kinne et al., 2013)
MultiModelMedian from	CCSRNIES MIROC3.2 CMAM LMDZrepro SOCOL ULAQ	ACCESS-CCM CCSRNIES MIROC 3.2 CHASER (MIROC-ESM) CMAM LMDZrepro NIWA-UKCA UMSLIMCAT WACCM	same as EXP1		

**Table 2.** Characteristics of the experiment conducted in this study:

Simulation: CCMI simulations used in the experiment.

TOZ: TOZ evolution throughout the experiment.

AOD: AOD evolution throughout the experiment.

MultiModelMedian: CCMI Model outputs used for the computation of the median.

Station	Latitude	Longitude	Relative Difference [%]			Absolute Difference		
			MEAN	MEDIAN	OMI	MEAN	MEDIAN	OMI
Mauna Loa	19.54° N	155.58° W	5.4 ± 9.3	4.4 ± 9.0	16.0 ± 15.8	0.3 ± 0.8	0.2 ± 0.8	1.1 ± 1.1
Saint-Denis	20.09° S	55.5° W	-3.5 ± 2.8	-5.3 ± 2.8	13.6 ± 5.0	-0.3 ± 0.2	-0.5 ± 0.2	1.5 ± 0.7
Villeneuve d'Ascq	50.61° N	3.14° E	2.5 ± 6.3	2.8 ± 7.1	24.5 ± 6.1	0.2 ± 0.2	0.01 ± 0.2	0.8 ± 0.6
Lauder	45.04° S	169.68° E	-3.9 ± 2.9	-5.9 ± 3.0	6.9 ± 5.2	-0.2 ± 0.3	-0.4 ± 0.4	0.3 ± 0.3
Barrow	71.32° N	156.68° W	2.9 ± 9.5	2.0 ± 9.3	29.3 ± 5.4	0.04 ± 0.2	0.02 ± 0.2	0.6 ± 0.2
Palmer	64.77° S	64.05° W	10.6 ± 3.6	10.3 ± 3.2	8.1 ± 10.1	0.3 ± 0.2	0.3 ± 0.2	0.2 ± 0.4

**Table 4.** Mean UVI relative and absolute difference of the monthly climatology between  $UVI_{MEAN}$ ,  $UVI_{MEDIAN}$ ,  $UVI_{OMI}$  to the ground-based measurements ( $UVI_{GB}$ ).

If we define the UVI from ground-based measurements as  $UVI_{GB}$ , the differences are calculated as:

Relative Difference is defined as:  $RD = 100 \frac{UVI_{MEAN} - UVI_{GB}}{UVI_{GB}}$ .

Absolute Difference is defined as:  $RD = UVI_{MEAN} - UVI_{GB}$ .

The same calculation applies to  $UVI_{MEDIAN}$  and  $UVI_{OMI}$ . For Barrow and Palmer station we selected the summer months of June, July and August and December, January and February respectively.

Region	RCP				RCP 6.0 with fixed AOD	senC2fODS	senC2fGHG	Bais et al. (2011)		Hegglin and Shepherd (2009)
	2.6	4.5	6.0	8.5				Table 2	Figure 2	
60°- 90 °N	5.5	1.7	0.5	-7.9	-4.8	-0.6	1.4	-7.48	~ -8	-9.1
30°- 60 °N	8.3	5.2	5.0	-1.4	-1.9	2.3	0.7	-4.10	~ -4	-3.6
0°- 30 °N	2.8	2.7	2.7	0.9	2.9	6.5	0.1	0.89	1-2	3.8
0°- 30 °S	2.6	2.9	2.9	1.5	3.0	6.6	0.5			
30°- 60 °S	3.4	2.6	1.8	-2.28	0.3	3.7	1.7	-4.16	~ -1	0.
60°- 90 °S	6.7	5.7	3.9	0.	-2	-0.1	2.7	-9.8	~ -2	3.2

**Table 5.** Percent changes in UVI between 2100 and 1960.

Results for RCP 2.6, 4.5, 6.0 and 8.5 are obtained from EXP1 experiment.

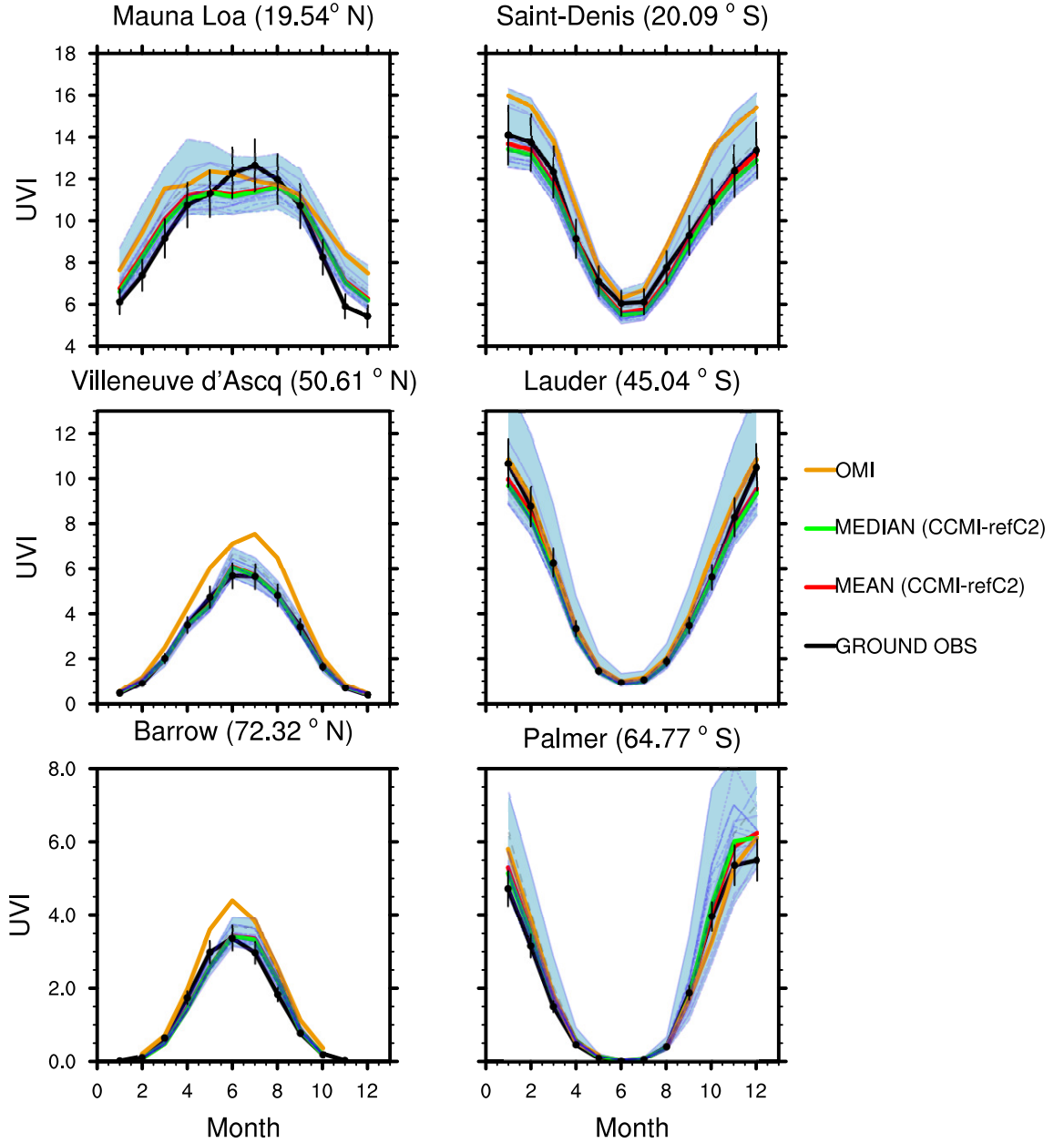
Results for RCP 6.0 with fixed AOD, senC2fODS and senC2fGHG are obtained from EXP2 experiment.

Bais et al. (2011) first column result are obtained from Table 2 of the corresponding study, these are percent changes between 2090-2099 and 1975-1984.

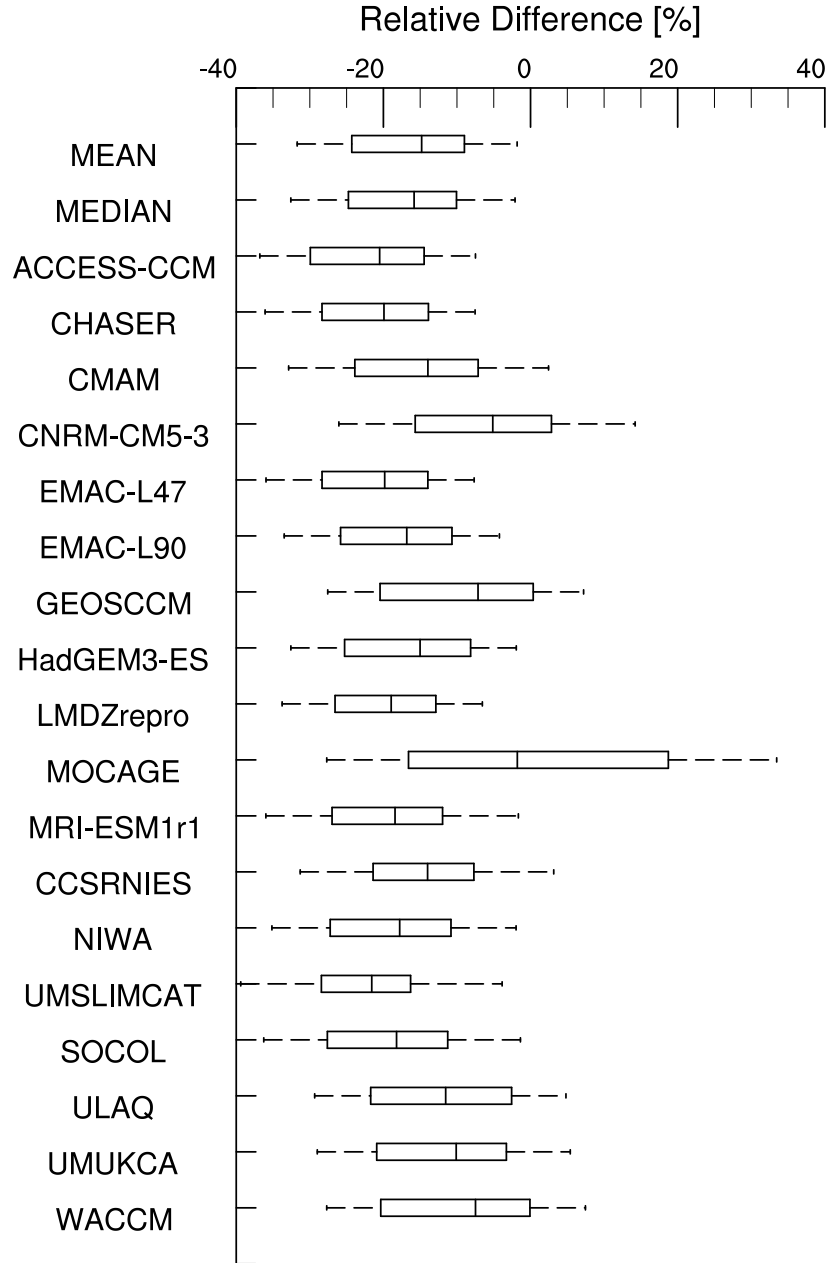
Bais et al. (2011) second column result are obtained by a rough estimate of percent changes between 2100 and 1960 from Figure 2 of the corresponding study.

Region	UVI			TOZ	AOD	Comments
	EXP3A	EXP3FTOZ	EXP3FAOD			
90 - 60 N	-2.1	2.1	-5.5	4.5	-78	TOZ and AOD drive UVI levels
30 - 60 N	3.8	6.2	-2.8	3.0	-77	TOZ and AOD drive UVI levels
0 - 30 N	3.5	2.3	1.2	-0.5	-15	TOZ and AOD drive UVI levels
0 - 30 S	0.6	0.0	0.5	0.2	-0.3	TOZ drives UVI levels
30 - 60 S	-6.1	0.1	-6.0	5.6	-4.16	TOZ drives UVI levels
60 - 90 S	-26.8	-3.2	-26.7	11.8	-1.5	TOZ drives UVI levels

**Table 6.** Percent Changes in UVI, TOZ and AOD between 2100 and 2000 for the EXP3A, EXP3FTOZ and EXP3FAOD experiments.



**Figure 1.**  $UVI_{GB}$  (2000-2010) for six NDACC stations along with the respective closest grid point from CCMI&TUV UVI simulation ( $UVI_{MEAN}$  and  $UVI_{MEDIAN}$ ). Station measurements are represented in the black curve with a  $2\sigma$  dispersion bar.  $UVI_{MEAN}$  and  $UVI_{MEDIAN}$  are represented in green and red. Each CCMI models are represented in light blue, the shaded blue area represents the spread of the models.  $UVI_{OMI}$  from the OMUVBd product are in orange.



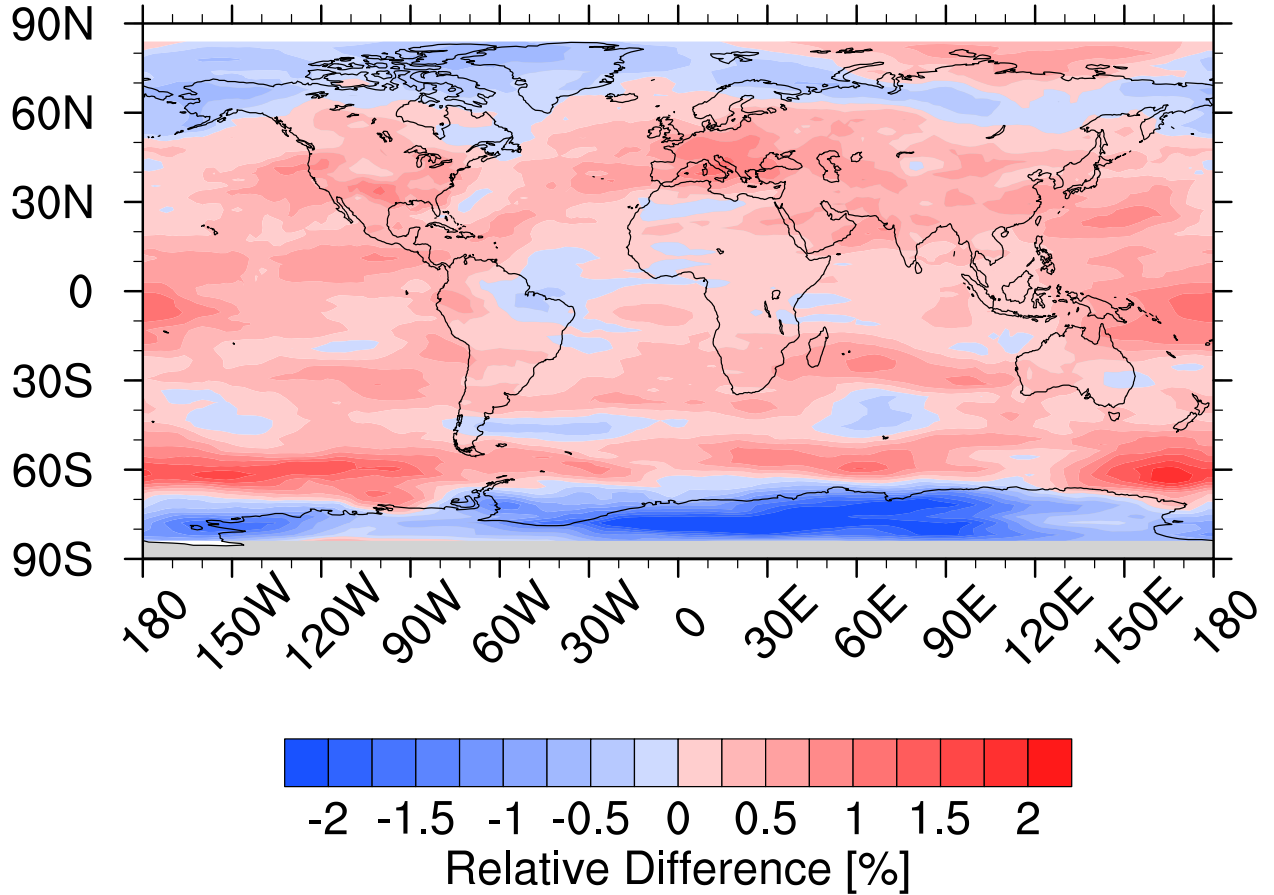
**Figure 2.** Boxplots summaries of the relative differences between the monthly UVI from CCMI models (refC2) and the monthly mean OMUVBd product for the period 2000-2010. Left and right end of the box are the first and third quartile respectively. The line inside the box is the median or second quartile. Left and right end of the whiskers are the mean  $\pm$  1-standard deviation.

For a model M, (M being Mean, Median, ACCESS-CCM, CHASER, ...) from which we obtained  $UVI_M$ , we compute:

$$UVI_{RD}[\%] = 100 \frac{UVI_M - UVI_{OMI}}{UVI_{OMI}}$$

We then compute the average value of  $UVI_{RD}$  over the entire globe and the period 2000-2010.

**MRD: 0.19+- 1.91 %**

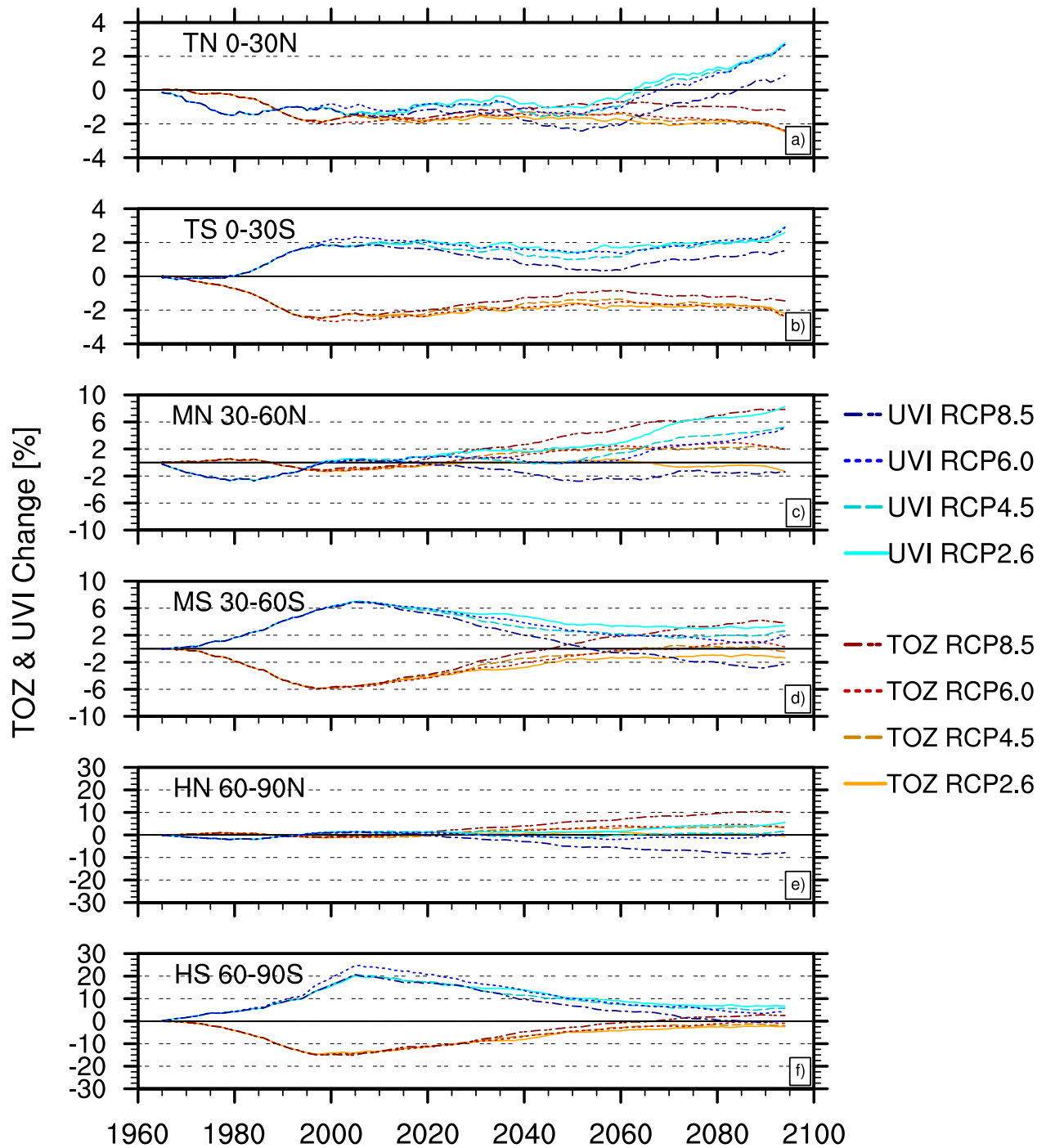


**Figure 3.** UVI annual mean relative difference between the median UVI obtained from the 18 CCMI model data used and TUV and the UVI obtained from the CCMI median TOZ used with TUV for the period 2000-2010.

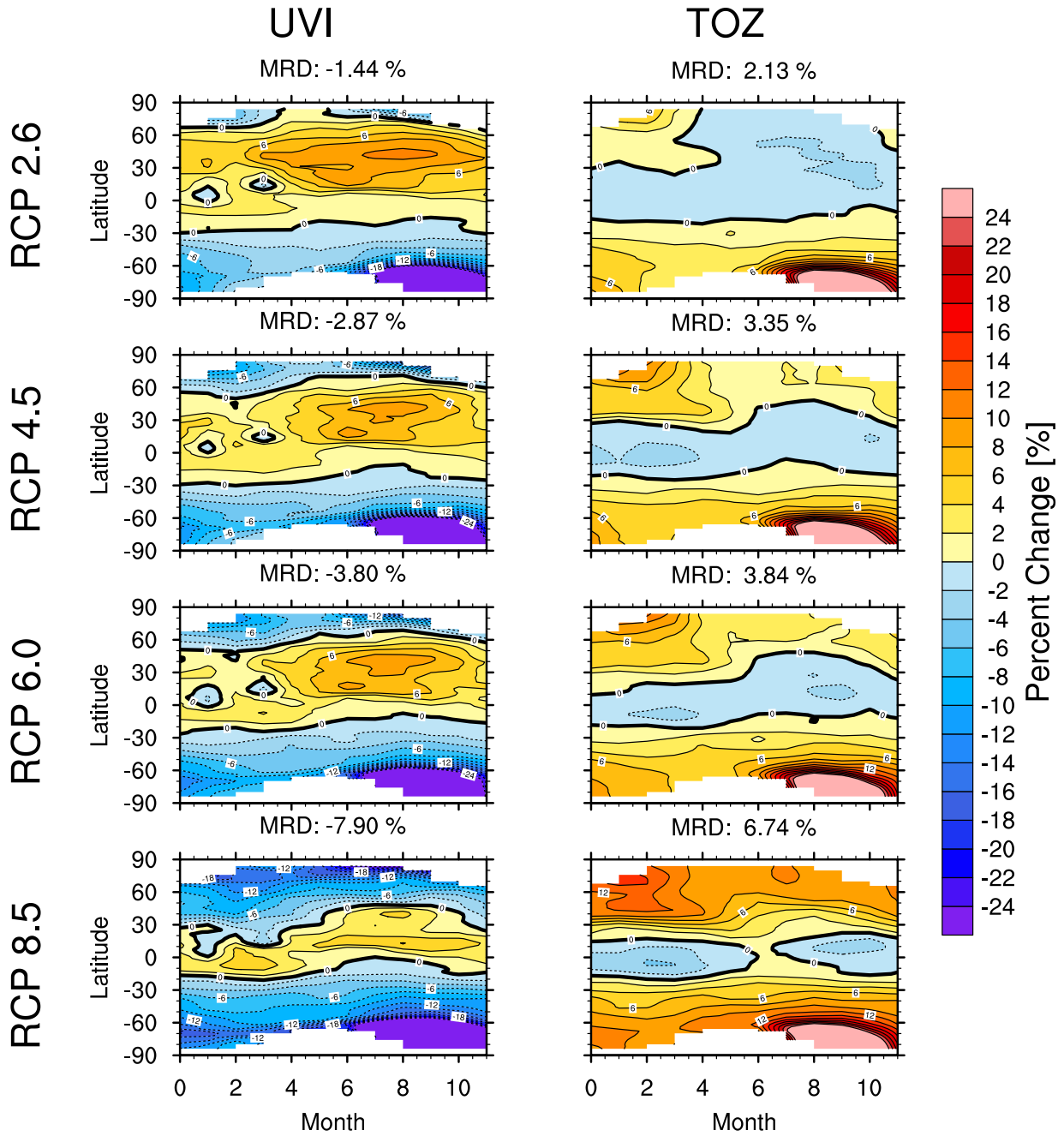
First, we compute the relative difference:

$$UVI_{RD}[\%] = 200 \frac{UVI_{ALLM} - UVI_{MEDIAN}}{UVI_{ALLM} + UVI_{MEDIAN}}$$

Then we compute the average of  $UVI_{RD}$  over the period 2000-2010 for each point.

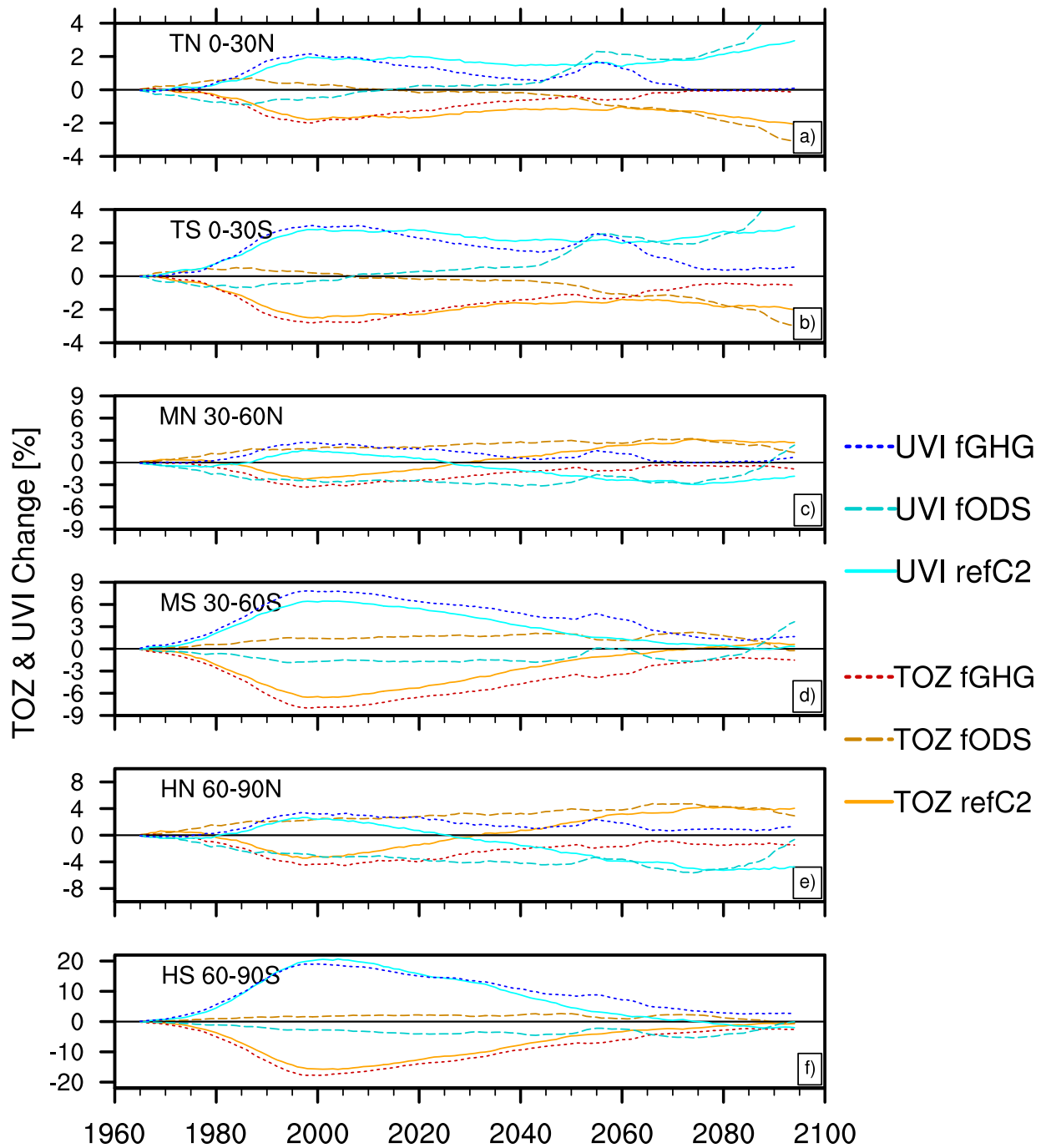


**Figure 4.** UVI and TOZ percent change in 2090-2100 relative to 1960-1970 values for six latitudinal bands; Northern Tropical band (0°- 30 °N), Southern Tropical band (0°- 30 °S), Northern Mid Latitude band (30°- 60 °N), Southern Mid Latitude band (30°- 60 °S), Northern High Latitude band (60°- 90 °N), Southern High Latitude band (60°- 90 °S). UVI changes are represented in different shades of blue for the four RCPs scenarios. TOZ changes are represented in different shades of red. Scale of the vertical axis are not the same for each subplot.

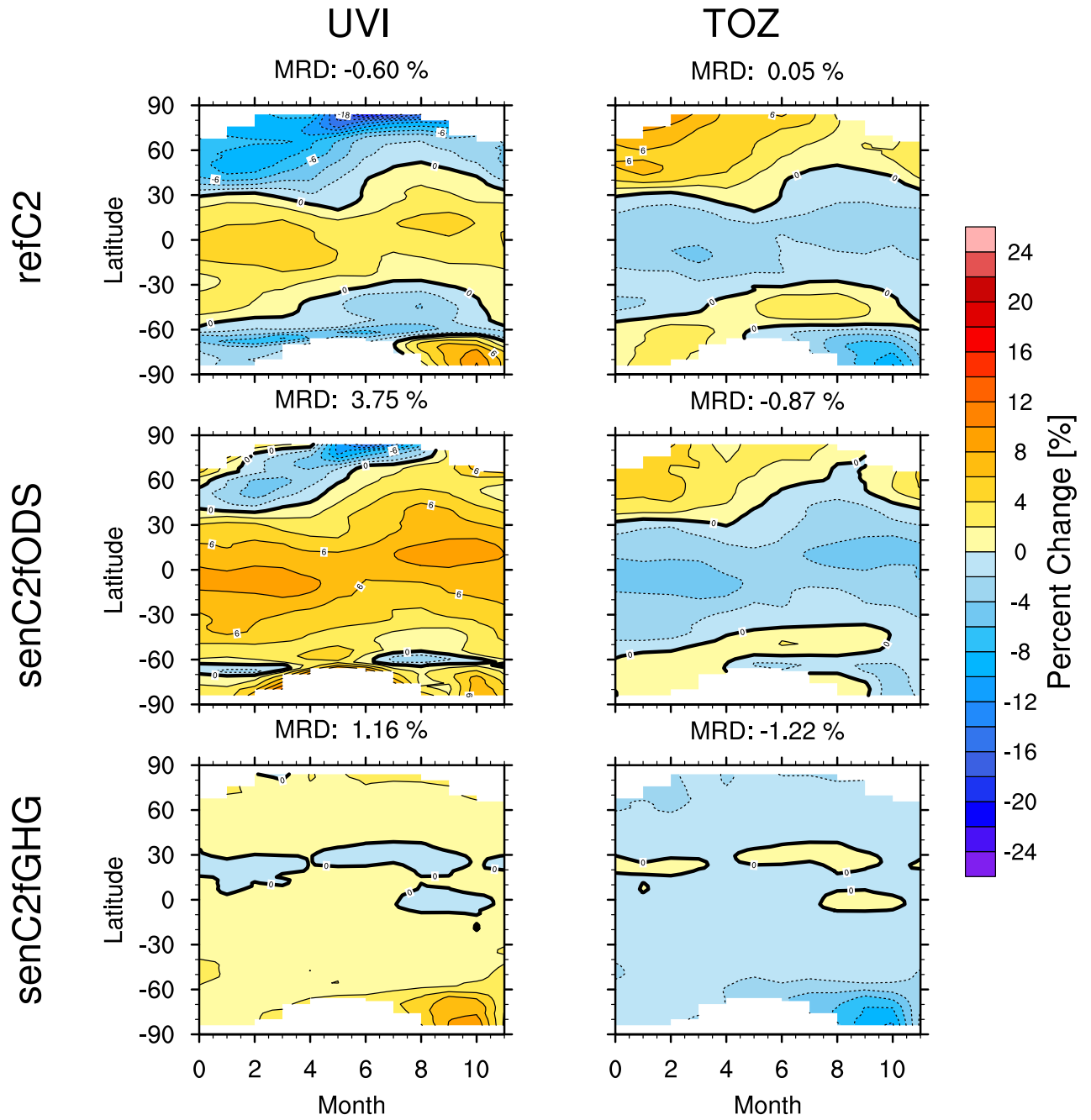


**Figure 5.** Latitudinal and monthly variation of UVI and TOZ percent change in 2090-2100 relative to 2000-2010 for the four RCP scenarios



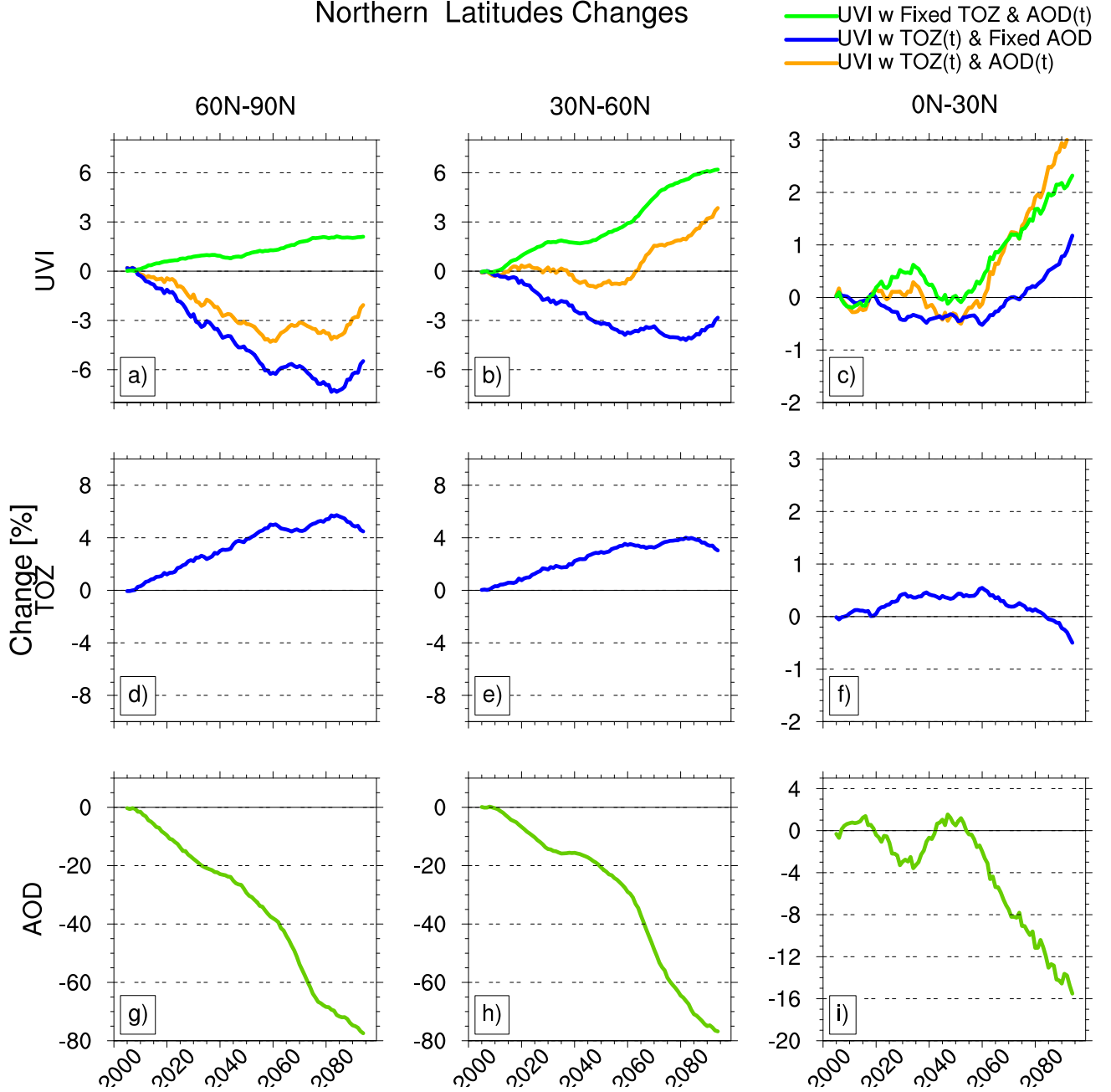


**Figure 6.** UVI and TOZ percent changes (relative to 1960s values) for six latitudinal bands; Northern Tropical band (0°- 30° N), Southern Tropical band (0°- 30° S), Northern Mid Latitude band (30°- 60° N), Southern Mid Latitude band (30°- 60° S), Northern High Latitude band (60°- 90° N), Southern High Latitude band (60°- 90° S). UVI changes are represented in different shades of blue for the three EXP2 scenarios. TOZ changes are represented in different shades of red.



**Figure 7.** Latitudinal and monthly variation of UVI and TOZ percent change between 2090-2100 and 1960-1970 values for refC2, senC2fODS, senC2fGHG.

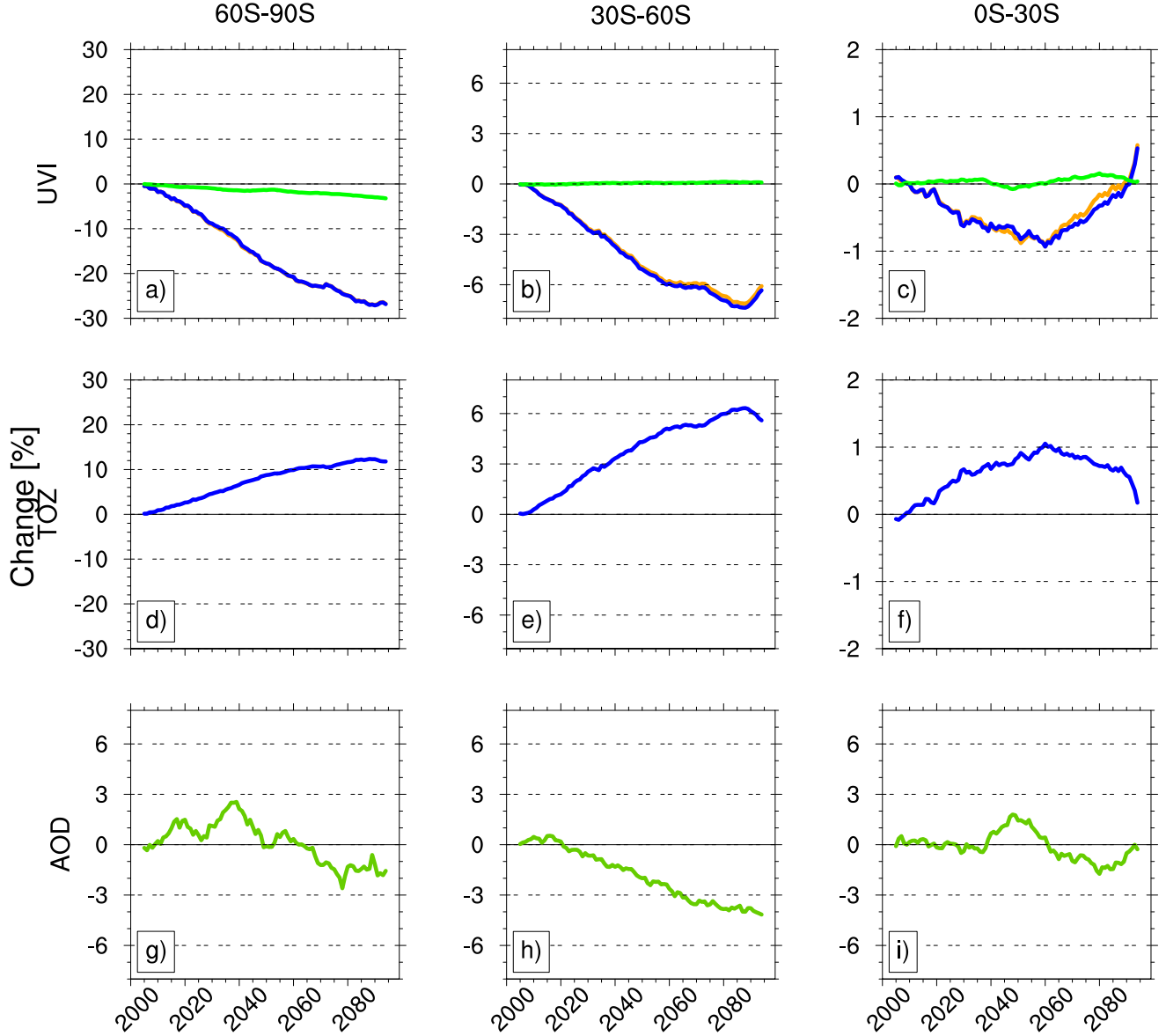
## Northern Latitudes Changes



**Figure 8.** UVI, TOZ and AOD percent change from 2000 to 2100 values in the northern high, mid, and low latitudes for the EXP3 experiment. UVI modelled with transient TOZ and and AOD fixed at present-day climatological values are in blue. UVI modelled with TOZ fixed at present-day climatological values and AOD variable through the 21st century are in green. UVI modelled with transient TOZ and AOD are in orange. TOZ and AOD are respectively in blue and green.

## Southern Latitudes Changes

— UVI w Fixed TOZ & AOD(t)  
— UVI w TOZ(t) & Fixed AOD  
— UVI w TOZ(t) & AOD(t)



**Figure 9.** UVI, TOZ and AOD percent change from 2000 to 2100 values in the southern high, mid, and low latitudes for the EXP3 experiment. UVI calculated with transient TOZ and and AOD fixed at present-day climatological values are in blue. UVI calculated with TOZ fixed at present-day climatological values and AOD variable through the 21st century are in green. UVI calculated with transient TOZ and AOD are in orange. TOZ and AOD are in blue and green respectively.

*Acknowledgements.* The authors acknowledge the Région Réunion, CNRS and Université de la Réunion for support and contribution within the research infrastructure OPAR (Observatoire de Physique de l'Atmosphère à la Réunion). OPAR is presently funded by CNRS (INSU) and Université de la Réunion and managed by OSU-R (Observatoires des Sciences de l'Univers à la Réunion, UMS 3365).

5 The data used in this publication were obtained as part of the Network for the Detection of Atmospheric Composition Change (NDACC) and are publicly available (see <http://www.ndacc.org>).

We acknowledge the modelling groups for making their simulations available for this analysis, the joint IGBP-IGAC/WCRP-SPARC Chemistry-Climate Model Initiative (CCMI) for organizing and coordinating the model data analysis activity, and the British Atmospheric  
10 Data Center (BADC) for collecting and archiving the CCMI model output.

This project was supported by the European Project StratoClim (7th Framework Programme, grant agreement 603557) and the grant "SOLSPEC" from the Centre d'Etude Spatiale (CNES).

15 The SOCOL team acknowledges support from the Swiss National Science Foundation under grant agreement CRSII2\_147659 (FUPSOL II). E.R. acknowledges support from the Swiss National Science Foundation under grants 169241 (VEC) and 163206 (SIMA).

CCSRNIES research was supported by the Environment Research and Technology Development Fund (2-1303 and 2-1709) of the Ministry of the Environment, Japan, and computations were performed on NEC-SX9/A(ECO) computers at the CGER, NIES.

20

The EMAC simulations have been performed at the German Climate Computing Centre (DKRZ) through support from the Bundesministerium für Bildung und Forschung (BMBF). DKRZ and its scientific steering committee are gratefully acknowledged for providing the HPC and data archiving resources for the consortial project ESCiMo (Earth System Chemistry integrated Modelling).

25 N.B., and F.M.O'C. were supported by the Joint UK BEIS/Defra Met Office Hadley Centre Climate Programme (GA01101). N.B. also acknowledges the European Commission's 7th Framework Programme, under grant agreement no. 603557, StratoClim project.

Olaf Morgenstern and Guang Zeng wish to acknowledge the contribution of NeSI high-performance computing facilities to the results of this research. New Zealand's national facilities are provided by the New Zealand eScience Infrastructure (NeSI) and funded jointly by  
30 NeSI's collaborator institutions and through the Ministry of Business, Innovation & Employment's Research Infrastructure programme (<https://www.nesi.org.nz>). Olaf Morgenstern acknowledges support from the Royal Society Marsden Fund, grant 12-NIW-006, and under the Deep South National Science Challenge.

UMUKCA-UCAM model integrations have been performed using the ARCHER UK National Supercomputing Service and MONSooN  
35 system, a collaborative facility supplied under the Joint Weather and Climate Research Programme, which is a strategic partnership between the UK Met Office and the Natural Environment Research Council.

## References

- Akiyoshi, H., Nakamura, T., Miyasaka, T., Shiotani, M., and Suzuki, M.: A nudged chemistry-climate model simulation of chemical constituent distribution at northern high-latitude stratosphere observed by SMILES and MLS during the 2009/2010 stratospheric sudden warming, *Journal of Geophysical Research: Atmospheres*, 121, 1361–1380, 2016.
- 5 Andrews, D. G., Holton, J. R., and Leovy, C. B.: *Middle atmosphere dynamics*, 40, Academic press, 1987.
- Bais, A., McKenzie, R., Bernhard, G., Aucamp, P., Ilyas, M., Madronich, S., and Tourpali, K.: Ozone depletion and climate change: impacts on UV radiation, *Photochemical & Photobiological Sciences*, 14, 19–52, 2015.
- Bais, A. F., Zerefos, C. S., Meleti, C., Ziomas, I. C., and Tourpali, K.: Spectral measurements of solar UVB radiation and its relations to total ozone, SO<sub>2</sub>, and clouds, *Journal of Geophysical Research: Atmospheres*, 98, 5199–5204, <https://doi.org/10.1029/92JD02904>,  
10 <http://dx.doi.org/10.1029/92JD02904>, 1993.
- Bais, A. F., Tourpali, K., Kazantzidis, A., Akiyoshi, H., Bekki, S., Braesicke, P., Chipperfield, M. P., Dameris, M., Eyring, V., Garny, H., and et al.: Projections of UV radiation changes in the 21st century: impact of ozone recovery and cloud effects, *Atmospheric Chemistry and Physics*, 11, 7533–7545, <https://doi.org/10.5194/acp-11-7533-2011>, 2011.
- Bednarz, E. M., Maycock, A. C., Abraham, N. L., Braesicke, P., Dessens, O., and Pyle, J. A.: Future Arctic ozone recovery: the importance  
15 of chemistry and dynamics, *Atmospheric Chemistry and Physics*, 16, 12 159–12 176, 2016.
- Brewer, A. W.: Evidence for a world circulation provided by the measurements of helium and water vapour distribution in the stratosphere, *Quarterly Journal of the Royal Meteorological Society*, 75, 351–363, <https://doi.org/10.1002/qj.49707532603>, <http://dx.doi.org/10.1002/qj.49707532603>, 1949.
- Brognez, C., Auriol, F., Deroo, C., Arola, A., Kujanpää, J., Sauvage, B., Kalakoski, N., Pitkänen, M. R. A., Catalfamo, M., Metzger, J.-M.,  
20 and et al.: Validation of satellite-based noontime UVI with NDACC ground-based instruments: influence of topography, environment and satellite overpass time, *Atmospheric Chemistry and Physics*, 16, 15 049–15 074, <https://doi.org/10.5194/acp-16-15049-2016>, <http://dx.doi.org/10.5194/acp-16-15049-2016>, 2016.
- Brühl, C. and Crutzen, P. J.: On the disproportionate role of tropospheric ozone as a filter against solar UV-B radiation, *Geophysical Research Letters*, 16, 703–706, <https://doi.org/10.1029/GL016i007p00703>, <http://dx.doi.org/10.1029/GL016i007p00703>, 1989.
- 25 Butchart, N.: The Brewer-Dobson circulation, *Reviews of Geophysics*, 52, 157–184, <https://doi.org/10.1002/2013rg000448>, 2014.
- Butler, A. H., Daniel, J. S., Portmann, R. W., Ravishankara, A. R., Young, P. J., Fahey, D. W., and Rosenlof, K. H.: Diverse policy implications for future ozone and surface UV in a changing climate, *Environmental Research Letters*, 11, 064 017, <http://stacks.iop.org/1748-9326/11/i=6/a=064017>, 2016.
- Calbó, J., Pagès, D., and González, J.-A.: Empirical studies of cloud effects on UV radiation: A review, *Reviews of Geophysics*, 43, n/a–n/a,  
30 <https://doi.org/10.1029/2004RG000155>, <http://dx.doi.org/10.1029/2004RG000155>, rG2002, 2005.
- Collins, W. J., Lamarque, J.-F., Schulz, M., Boucher, O., Eyring, V., Hegglin, M. I., Maycock, A., Myhre, G., Prather, M., Shindell, D., and Smith, S. J.: AerChemMIP: quantifying the effects of chemistry and aerosols in CMIP6, *Geoscientific Model Development*, 10, 585–607, <https://doi.org/10.5194/gmd-10-585-2017>, <https://www.geosci-model-dev.net/10/585/2017/>, 2017.
- Correa, M. d. P., Godin-Beekmann, S., Haeffelin, M., Bekki, S., Saiag, P., Badosa, J., Jegou, F., Pazmino, A., and Mahe, E.: Projected  
35 changes in clear-sky erythema and vitamin D effective UV doses for Europe over the period 2006 to 2100, *Photochem. Photobiol. Sci.*, 12, 1053–1064, <https://doi.org/10.1039/C3PP50024A>, 2013.

- De Mazière, M., Thompson, A. M., Kurylo, M. J., Wild, J. D., Bernhard, G., Blumenstock, T., Braathen, G. O., Hannigan, J. W., Lambert, J.-C., Leblanc, T., McGee, T. J., Nedoluha, G., Petropavlovskikh, I., Seckmeyer, G., Simon, P. C., Steinbrecht, W., and Strahan, S. E.: The Network for the Detection of Atmospheric Composition Change (NDACC): history, status and perspectives, *Atmospheric Chemistry and Physics*, 18, 4935–4964, <https://doi.org/10.5194/acp-18-4935-2018>, <https://www.atmos-chem-phys.net/18/4935/2018/>, 2018.
- 5 Deushi, M. and Shibata, K.: Development of a Meteorological Research Institute chemistry-climate model version 2 for the study of tropospheric and stratospheric chemistry, *Papers in Meteorology and Geophysics*, 62, 1–46, 2011.
- Dhomse, S., Kinnison, D., Chipperfield, M. P., Cionni, I., Hegglin, M., Abraham, N. L., Akiyoshi, H., Archibald, A. T., Bednarz, E. M., Bekki, S., Braesicke, P., Butchart, N., Dameris, M., Deushi, M., Frith, S., Hardiman, S. C., Hassler, B., Horowitz, L. W., Hu, R.-M., Jöckel, P., Josse, B., Kirner, O., Kremser, S., Langematz, U., Lewis, J., Marchand, M., Lin, M., Mancini, E., Marécal, V., Michou, M., Morgenstern, O., O'Connor, F. M., Oman, L., Pitari, G., Plummer, D. A., Pyle, J. A., Revell, L. E., Rozanov, E., Schofield, R., Stenke, A., Stone, K., Sudo, K., Tilmes, S., Visioni, D., Yamashita, Y., and Zeng, G.: Estimates of Ozone Return Dates from Chemistry-Climate Model Initiative Simulations, *Atmospheric Chemistry and Physics Discussions*, 2018, 1–40, <https://doi.org/10.5194/acp-2018-87>, <https://www.atmos-chem-phys-discuss.net/acp-2018-87/>, 2018.
- 10 Dobber, M., Voors, R., Dirksen, R., Kleipool, Q., and Levelt, P.: The high-resolution solar reference spectrum between 250 and 550 nm and its application to measurements with the Ozone Monitoring Instrument, *Solar Physics*, 249, 281–291, 2008.
- Dobson, G.: Origin and distribution of the polyatomic molecules in the atmosphere, *Proceedings of the Royal Society of London A: Mathematical, Physical and Engineering Sciences*, 236, 187–193, <https://doi.org/10.1098/rspa.1956.0127>, <http://rspa.royalsocietypublishing.org/content/236/1205/187>, 1956.
- Dufresne, J.-L., Foujols, M.-A., Denvil, S., Caubel, A., Marti, O., Aumont, O., Balkanski, Y., Bekki, S., Bellenger, H., Benshila, R., et al.: Climate change projections using the IPSL-CM5 Earth System Model: from CMIP3 to CMIP5, *Climate Dynamics*, 40, 2123–2165, 2013.
- 20 Eichinger, R., Dietmüller, S., Garny, H., Sacha, P., Birner, T., Böhnisch, H., Pitari, G., Visioni, D., Stenke, A., Rozanov, E., Revell, L., Plummer, D. A., Jöckel, P., Oman, L., Deushi, M., Kinnison, D. E., Garcia, R., Morgenstern, O., Zeng, G., Stone, K. A., and Schofield, R.: The influence of mixing on stratospheric circulation changes in the 21st century, *Atmospheric Chemistry and Physics Discussions*, 2018, 1–31, <https://doi.org/10.5194/acp-2018-1110>, <https://www.atmos-chem-phys-discuss.net/acp-2018-1110/>, 2018.
- 25 Erickson III, D. J., Sulzberger, B., Zepp, R. G., and Austin, A. T.: Effects of stratospheric ozone depletion, solar UV radiation, and climate change on biogeochemical cycling: interactions and feedbacks, *Photochem. Photobiol. Sci.*, 14, 127–148, <https://doi.org/10.1039/C4PP90036G>, 2015.
- Eyring, V., Lamarque, J.-F., Hess, P., Arfeuille, F., Bowman, K., Chipperfield, M., Duncan, B., Fiore, A., Gettelman, A., Giorgetta, M., Granier, C., Hegglin, M., Kinnison, D., Kunze, M., Langematz, U., Luo, B., Martin, R., Matthes, K., Newman, P., Peter, T., Peter, T., Robock, A., Ryerson, T., Saiz-Lopez, A., Salawitch, R., Schultz, M., Shepherd, T., Shindell, D., Staehelin, J., Tegtmeier, S., Thomason, L., Tilmes, S., Vernier, J.-P., Waugh, D., and Young, P.: Overview of IGAC/SPARC Chemistry-Climate Model Initiative (CCMI) Community Simulations in Support of Upcoming Ozone and Climate Assessments, Eyring et al. (2013), Overview of IGAC/SPARC Chemistry-Climate Model Initiative (CCMI) Community Simulations in Support of Upcoming Ozone and Climate Assessments, SPARC Newsletter no. 40, WMO-WRCP, Geneva, Switzerland, 48–66., 2013.
- 30 Fleming, E. L., Jackman, C. H., Stolarski, R. S., and Douglass, A. R.: A model study of the impact of source gas changes on the stratosphere for 1850–2100, *Atmospheric Chemistry and Physics*, 11, 8515–8541, <https://doi.org/10.5194/acp-11-8515-2011>, <https://www.atmos-chem-phys.net/11/8515/2011/>, 2011.

- Frederick, J. E., Snell, H. E., and Haywood, E. K.: SOLAR ULTRAVIOLET RADIATION AT THE EARTH'S SURFACE, *Photochemistry and Photobiology*, 50, 443–450, <https://doi.org/10.1111/j.1751-1097.1989.tb05548.x>, <http://dx.doi.org/10.1111/j.1751-1097.1989.tb05548.x>, 1989.
- Garcia, R. R., Smith, A. K., Kinnison, D. E., Cámara, Á. d. I., and Murphy, D. J.: Modification of the gravity wave parameterization in the  
5 Whole Atmosphere Community Climate Model: Motivation and results, *Journal of the Atmospheric Sciences*, 74, 275–291, 2017.
- Gorshelev, V., Serdyuchenko, A., Weber, M., Chehade, W., and Burrows, J. P.: High spectral resolution ozone absorption cross-sections  
&ndash; Part 1: Measurements, data analysis and comparison with previous measurements around 293 K, *Atmospheric Measurement  
Techniques*, 7, 609–624, <https://doi.org/10.5194/amt-7-609-2014>, 2014.
- Gray, L. J., Beer, J., Geller, M., Haigh, J. D., Lockwood, M., Matthes, K., Cubasch, U., Fleitmann, D., Harrison, G., Hood, L., et al.: Solar  
10 influences on climate, *Reviews of Geophysics*, 48, 2010.
- Guth, J., Josse, B., Marécal, V., Joly, M., and Hamer, P.: First implementation of secondary inorganic aerosols in the MOCAGE version R2.  
15.0 chemistry transport model, *Geoscientific Model Development*, 9, 137, 2016.
- Hader, D.-P., Kumar, H. D., Smith, R. C., and Worrest, R. C.: Effects of solar UV radiation on aquatic ecosystems and interactions with  
climate change, *Photochem. Photobiol. Sci.*, 6, 267–285, <https://doi.org/10.1039/B700020K>, 2007.
- 15 Hardiman, S. C., Butchart, N., O'Connor, F. M., and Rumbold, S. T.: The Met Office HadGEM3-ES chemistry-climate model: evaluation of  
stratospheric dynamics and its impact on ozone, *Geoscientific Model Development*, 10, 1209, 2017.
- Hegglin, M. and Lamarque, J.: The IGAC/SPARC Chemistry-Climate Model Initiative Phase-I (CCMI-I) model data output, NCAS British  
Atmospheric Data Centre <http://catalogue.ceda.ac.uk/uuid/9cc6b94df0f4469d8066d69b5df879d5>, 2015.
- Hegglin, M. I. and Shepherd, T. G.: Large climate-induced changes in ultraviolet index and stratosphere-to-troposphere ozone flux, *Nature  
20 Geoscience*, 2, 687–691, <https://doi.org/10.1038/ngeo604>, 2009.
- Holton, J. R., Haynes, P. H., McIntyre, M. E., Douglass, A. R., Rood, R. B., and Pfister, L.: Stratosphere-troposphere exchange, *Reviews of  
Geophysics*, 33, 403–439, <https://doi.org/10.1029/95RG02097>, <http://dx.doi.org/10.1029/95RG02097>, 1995.
- Hunke, E. C., Lipscomb, W. H., Turner, A. K., Jeffery, N., and Elliott, S.: CICE: the Los Alamos Sea Ice Model Documentation and Software  
User's Manual Version 4.1 LA-CC-06-012, T-3 Fluid Dynamics Group, Los Alamos National Laboratory, 675, 2010.
- 25 Imai, K., Manago, N., Mitsuda, C., Naito, Y., Nishimoto, E., Sakazaki, T., Fujiwara, M., Froidevaux, L., Clarmann, T., Stiller, G. P., et al.:  
Validation of ozone data from the Superconducting Submillimeter-Wave Limb-Emission Sounder (SMILES), *Journal of Geophysical  
Research: Atmospheres*, 118, 5750–5769, 2013.
- IPCC: Climate Change 2013: The Physical Science Basis. Contribution of Working Group I to the Fifth Assessment Report of the  
Intergovernmental Panel on Climate Change, Cambridge University Press, Cambridge, United Kingdom and New York, NY, USA,  
30 <https://doi.org/10.1017/CBO9781107415324>, [www.climatechange2013.org](http://www.climatechange2013.org), 2013.
- Jégou, F., Godin-Beekmann, S., Corrêa, M., Brogniez, C., Auriol, F., Peuch, V., Haeffelin, M., Pazmino, A., Saiag, P., Goutail, F., et al.:  
Validity of satellite measurements used for the monitoring of UV radiation risk on health, *Atmospheric Chemistry and Physics*, 11,  
13 377–13 394, 2011.
- Jöckel, P., Kerkweg, A., Pozzer, A., Sander, R., Tost, H., Riede, H., Baumgaertner, A., Gromov, S., and Kern, B.: Development cycle 2 of the  
35 modular earth submodel system (MESSy2), *Geoscientific Model Development*, 3, 717, 2010.
- Jöckel, P., Tost, H., Pozzer, A., Kunze, M., Kirner, O., Brenninkmeijer, C. A. M., Brinkop, S., Cai, D. S., Dyroff, C., Eckstein, J., Frank, F.,  
Garny, H., Gottschaldt, K.-D., Graf, P., Grewe, V., Kerkweg, A., Kern, B., Matthes, S., Mertens, M., Meul, S., Neumaier, M., Nützel,  
M., Oberländer-Hayn, S., Ruhnke, R., Runde, T., Sander, R., Scharffe, D., and Zahn, A.: Earth System Chemistry integrated Mod-



- elling (ESCiMo) with the Modular Earth Submodel System (MESSy) version 2.51, *Geoscientific Model Development*, 9, 1153–1200, <https://doi.org/10.5194/gmd-9-1153-2016>, <https://www.geosci-model-dev.net/9/1153/2016/>, 2016.
- Jonsson, A., De Grandpre, J., Fomichev, V., McConnell, J., and Beagley, S.: Doubled CO<sub>2</sub>-induced cooling in the middle atmosphere: Photochemical analysis of the ozone radiative feedback, *Journal of Geophysical Research: Atmospheres*, 109, 2004.
- 5 Josse, B., Simon, P., and Peuch, V.-H.: Radon global simulations with the multiscale chemistry and transport model MOCAGE, *Tellus B*, 56, 339–356, 2004.
- Kazadzis, S., Kouremeti, N., Bais, A., Kazantzidis, A., and Meleti, C.: Aerosol forcing efficiency in the UVA region from spectral solar irradiance measurements at an urban environment, *Annales Geophysicae*, 27, 2515–2522, <https://doi.org/10.5194/angeo-27-2515-2009>, <https://www.ann-geophys.net/27/2515/2009/>, 2009.
- 10 Kinne, S., O'Donnell, D., Stier, P., Kloster, S., Zhang, K., Schmidt, H., Rast, S., Giorgetta, M., Eck, T. F., and Stevens, B.: MAC-v1: A new global aerosol climatology for climate studies, *Journal of Advances in Modeling Earth Systems*, 5, 704–740, <https://doi.org/10.1002/jame.20035>, <http://dx.doi.org/10.1002/jame.20035>, 2013.
- Kirner, O., Ruhnke, R., and Sinnhuber, B.-M.: Chemistry–Climate Interactions of Stratospheric and Mesospheric Ozone in EMAC Long-Term Simulations with Different Boundary Conditions for CO<sub>2</sub>, CH<sub>4</sub>, N<sub>2</sub>O, and ODS, *Atmosphere-Ocean*, 53, 140–152, <https://doi.org/10.1080/07055900.2014.980718>, 2015.
- 15 Koepke, P., Bais, A., Balis, D., Buchwitz, M., Backer, H., Cabo, X., Eckert, P., Eriksen, P., Gillotay, D., Heikkilä, A., et al.: Comparison of models used for UV index calculations, *Photochemistry and Photobiology*, 67, 657–662, 1998.
- Krotkov, N. A., Herman, J., Bhartia, P. K., Seftor, C., Arola, A., Kaurola, J., Taalas, P., and Vasilkov, A.: OMI Surface UV Irradiance Algorithm, in *OMI Algorithm Theoretical Basis Document, Volume III: Clouds, Aerosols, and Surface UV Irradiance*, ATBD-OMI-03, 2002.
- 20 Krzyścin, J. W. and Puchalski, S.: Aerosol impact on the surface UV radiation from the ground-based measurements taken at Belsk, Poland, 1980–1996, *Journal of Geophysical Research: Atmospheres*, 103, 16 175–16 181, <https://doi.org/10.1029/98JD00899>, <http://dx.doi.org/10.1029/98JD00899>, 1998.
- Lamy, K., Portafaix, T., Brogniez, C., Godin-Beekmann, S., Bencherif, H., Morel, B., Pazmino, A., Metzger, J. M., Auriol, F., Deroo, C., Dufлот, V., Goloub, P., and Long, C. N.: Ultraviolet radiation modelling from ground-based and satellite measurements on Reunion Island, southern tropics, *Atmospheric Chemistry and Physics*, 18, 227–246, <https://doi.org/10.5194/acp-18-227-2018>, <https://www.atmos-chem-phys.net/18/227/2018/>, 2018.
- 25 Lovengreen, C., Fuenzalida, H. A., and Videla, L.: On the spectral dependency of UV radiation enhancements due to clouds in Valdivia, Chile (39.8°S), *Journal of Geophysical Research: Atmospheres*, 110, <https://doi.org/10.1029/2004JD005372>, 2005.
- 30 Madec, G. et al.: NEMO ocean engine, 2015.
- Madronich, S.: Analytic Formula for the Clear sky UV Index, *Photochemistry and Photobiology*, 83, 1537–1538, <https://doi.org/10.1111/j.1751-1097.2007.00200.x>, 2007.
- Madronich, S., McKenzie, R. L., Björn, L. O., and Caldwell, M. M.: Changes in biologically active ultraviolet radiation reaching the Earth's surface, *Journal of Photochemistry and Photobiology B: Biology*, 46, 5 – 19, 1998.
- 35 Marchand, M., Keckhut, P., Lefebvre, S., Claud, C., Cugnet, D., Hauchecorne, A., Lefebvre, F., Lefebvre, M.-P., Jumelet, J., Lott, F., et al.: Dynamical amplification of the stratospheric solar response simulated with the Chemistry-Climate model LMDz-Reprobus, *Journal of Atmospheric and Solar-Terrestrial Physics*, 75, 147–160, 2012.

- Marsh, D. R., Mills, M. J., Kinnison, D. E., Lamarque, J.-F., Calvo, N., and Polvani, L. M.: Climate change from 1850 to 2005 simulated in CESM1 (WACCM), *Journal of climate*, 26, 7372–7391, 2013.
- Marín, M., Serrano, D., Utrillas, M., Núñez, M., and Martínez-Lozano, J.: Effective cloud optical depth and enhancement effects for broken liquid water clouds in Valencia (Spain), *Atmospheric Research*, 195, 1 – 8, <https://doi.org/https://doi.org/10.1016/j.atmosres.2017.05.008>,  
5 <http://www.sciencedirect.com/science/article/pii/S0169809516303374>, 2017.
- Masui, T., Matsumoto, K., Hijioka, Y., Kinoshita, T., Nozawa, T., Ishiwatari, S., Kato, E., Shukla, P. R., Yamagata, Y., and Kainuma, M.: An emission pathway for stabilization at 6 Wm<sup>2</sup> radiative forcing, *Climatic Change*, 109, 59, <https://doi.org/10.1007/s10584-011-0150-5>, 2011.
- Mc Kinlay, A. F. and Diffey, B. L.: A reference action spectrum for ultraviolet induced erythema in human skin, *CIE J*, 6, 17–22, 1987.
- 10 Meftah, M., Bolsée, D., Damé, L., Hauchecorne, A., Pereira, N., Irbah, A., Bekki, S., Cessateur, G., Foujols, T., and Thiéblemont, R.: Solar Irradiance from 165 to 400 nm in 2008 and UV Variations in Three Spectral Bands During Solar Cycle 24, *Solar Physics*, 291, 3527–3547, <https://doi.org/10.1007/s11207-016-0997-8>, <https://doi.org/10.1007/s11207-016-0997-8>, 2016.
- Meinshausen, M., Smith, S. J., Calvin, K., Daniel, J. S., Kainuma, M. L. T., Lamarque, J.-F., Matsumoto, K., Montzka, S. A., Raper, S. C. B., Riahi, K., Thomson, A., Velders, G. J. M., and van Vuuren, D. P.: The RCP greenhouse gas concentrations and their extensions from 1765  
15 to 2300, *Climatic Change*, 109, 213, <https://doi.org/10.1007/s10584-011-0156-z>, 2011.
- Michou, M., Saint-Martin, D., Teyssedre, H., Alias, A., Karcher, F., Olivie, D., Voldoire, A., Josse, B., Peuch, V.-H., Clark, H., et al.: A new version of the CNRM Chemistry-Climate Model, CNRM-CCM: description and improvements from the CCMVal-2 simulations, *Geoscientific Model Development*, 4, 873–900, 2011.
- Molod, A., Takacs, L., Suarez, M., and Bacmeister, J.: Development of the GEOS-5 atmospheric general circulation model: Evolution from  
20 MERRA to MERRA2, *Geoscientific Model Development*, 8, 1339, 2015.
- Morgenstern, O., Braesicke, P., Hurwitz, M. M., O'Connor, F. M., Bushell, A. C., Johnson, C. E., and Pyle, J. A.: The World Avoided by the Montreal Protocol, *Geophysical Research Letters*, 35, n/a–n/a, <https://doi.org/10.1029/2008GL034590>, <http://dx.doi.org/10.1029/2008GL034590>, 116811, 2008.
- Morgenstern, O., Braesicke, P., O'Connor, F. M., Bushell, A. C., Johnson, C. E., Osprey, S. M., and Pyle, J. A.: Evaluation of the new UKCA  
25 climate-composition model – Part 1: The stratosphere, *Geoscientific Model Development*, 2, 43–57, <https://doi.org/10.5194/gmd-2-43-2009>, <https://www.geosci-model-dev.net/2/43/2009/>, 2009.
- Morgenstern, O., Hegglin, M. I., Rozanov, E., O'Connor, F. M., Abraham, N. L., Akiyoshi, H., Archibald, A. T., Bekki, S., Butchart, N., Chipperfield, M. P., Deushi, M., Dhomse, S. S., Garcia, R. R., Hardiman, S. C., Horowitz, L. W., Jöckel, P., Josse, B., Kinnison, D., Lin, M., Mancini, E., Manyin, M. E., Marchand, M., Marécal, V., Michou, M., Oman, L. D., Pitari, G., Plummer, D. A., Revell, L. E.,  
30 Saint-Martin, D., Schofield, R., Stenke, A., Stone, K., Sudo, K., Tanaka, T. Y., Tilmes, S., Yamashita, Y., Yoshida, K., and Zeng, G.: Review of the global models used within phase 1 of the Chemistry–Climate Model Initiative (CCMI), *Geoscientific Model Development*, 10, 639–671, <https://doi.org/10.5194/gmd-10-639-2017>, <https://www.geosci-model-dev.net/10/639/2017/>, 2017.
- Morgenstern, O., Stone, K. A., Schofield, R., Akiyoshi, H., Yamashita, Y., Kinnison, D. E., Garcia, R. R., Sudo, K., Plummer, D. A., Scinocca, J., Oman, L. D., Manyin, M. E., Zeng, G., Rozanov, E., Stenke, A., Revell, L. E., Pitari, G., Mancini, E., Di Gen-  
35 ova, G., Visioni, D., Dhomse, S. S., and Chipperfield, M. P.: Ozone sensitivity to varying greenhouse gases and ozone-depleting substances in CCMI-1 simulations, *Atmospheric Chemistry and Physics*, 18, 1091–1114, <https://doi.org/10.5194/acp-18-1091-2018>, <https://www.atmos-chem-phys.net/18/1091/2018/>, 2018.

- O'Connor, F., Johnson, C., Morgenstern, O., Abraham, N., Braesicke, P., Dalvi, M., Folberth, G., Sanderson, M., Telford, P., Voulgarakis, A., et al.: Evaluation of the new UKCA climate-composition model–Part 2: The Troposphere, *Geoscientific Model Development*, 7, 41–91, 2014.
- Oman, L., Ziemke, J., Douglass, A., Waugh, D., Lang, C., Rodriguez, J., and Nielsen, J.: The response of tropical tropospheric ozone to ENSO, *Geophysical Research Letters*, 38, 2011.
- Pitari, G., Aquila, V., Kravitz, B., Robock, A., Watanabe, S., Cionni, I., Luca, N. D., Genova, G. D., Mancini, E., and Tilmes, S.: Stratospheric ozone response to sulfate geoengineering: Results from the Geoengineering Model Intercomparison Project (GeoMIP), *Journal of Geophysical Research: Atmospheres*, 119, 2629–2653, 2014.
- Poulain, V., Bekki, S., Marchand, M., Chipperfield, M., Khodri, M., Lefèvre, F., Dhomse, S., Bodeker, G., Toumi, R., Maziere, M. D., Pommereau, J.-P., Pazmino, A., Goutail, F., Plummer, D., Rozanov, E., Mancini, E., Akiyoshi, H., Lamarque, J.-F., and Austin, J.: Evaluation of the inter-annual variability of stratospheric chemical composition in chemistry-climate models using ground-based multi species time series, *Journal of Atmospheric and Solar-Terrestrial Physics*, 145, 61 – 84, <https://doi.org/https://doi.org/10.1016/j.jastp.2016.03.010>, <http://www.sciencedirect.com/science/article/pii/S136468261630092X>, 2016.
- Revell, L., Tummon, F., Stenke, A., Sukhodolov, T., Coulon, A., Rozanov, E., Garny, H., Grewe, V., and Peter, T.: Drivers of the tropospheric ozone budget throughout the 21st century under the medium-high climate scenario RCP 6.0, *Atmospheric Chemistry and Physics*, 15, 5887–5902, 2015.
- Revell, L. E., Bodeker, G. E., Huck, P. E., Williamson, B. E., and Rozanov, E.: The sensitivity of stratospheric ozone changes through the 21st century to N<sub>2</sub>O and CH<sub>4</sub>, *Atmospheric Chemistry and Physics*, 12, 11 309–11 317, <https://doi.org/10.5194/acp-12-11309-2012>, <https://www.atmos-chem-phys.net/12/11309/2012/>, 2012.
- Rind, D., Suozzo, R., Balachandran, N. K., and Prather, M. J.: Climate Change and the Middle Atmosphere. Part I: The Doubled CO<sub>2</sub> Climate, *Journal of the Atmospheric Sciences*, 47, 475–494, [https://doi.org/10.1175/1520-0469\(1990\)047<0475:CCATMA>2.0.CO;2](https://doi.org/10.1175/1520-0469(1990)047<0475:CCATMA>2.0.CO;2), 1990.
- Rind, D., Lerner, J., Prather, M., and McLinden, C.: Stratospheric Circulation and Tracer/Ozone Changes in Response to Alternative Doubled CO<sub>2</sub> Climate Depictions, in: *AGU Fall Meeting Abstracts*, 2001.
- Scinocca, J., McFarlane, N., Lazare, M., Li, J., and Plummer, D.: The CCCma third generation AGCM and its extension into the middle atmosphere, *Atmospheric Chemistry and Physics*, 8, 7055–7074, 2008.
- Sekiya, T. and Sudo, K.: Role of meteorological variability in global tropospheric ozone during 1970–2008, *Journal of Geophysical Research: Atmospheres*, 117, 2012.
- Serdyuchenko, A., Gorshchev, V., Weber, M., Chehade, W., and Burrows, J.: High spectral resolution ozone absorption cross-sections–Part 2: Temperature dependence., *Atmospheric Measurement Techniques Discussions*, 6, 2014.
- Shepherd, T. G.: Dynamics, stratospheric ozone, and climate change, *Atmosphere-Ocean*, 46, 117–138, <https://doi.org/10.3137/ao.460106>, 2008.
- Smith, R. C. and Cullen, J. J.: Effects of UV radiation on phytoplankton, *Reviews of Geophysics*, 33, 1211–1223, <https://doi.org/10.1029/95RG00801>, <http://dx.doi.org/10.1029/95RG00801>, 1995.
- Solomon, S., Portmann, R., Sanders, R., Daniel, J., Madsen, W., Bartram, B., and Dutton, E.: On the role of nitrogen dioxide in the absorption of solar radiation, *Journal of Geophysical Research: Atmospheres*, 104, 12 047–12 058, 1999.
- Solomon, S., Kinnison, D., Bandoro, J., and Garcia, R.: Simulation of polar ozone depletion: An update, *Journal of Geophysical Research: Atmospheres*, 120, 7958–7974, 2015.

- Solomon, S., Ivy, D. J., Kinnison, D., Mills, M. J., Neely, R. R., and Schmidt, A.: Emergence of healing in the Antarctic ozone layer, *Science*, <https://doi.org/10.1126/science.aae0061>, 2016.
- Stenke, A., Schraner, M., Rozanov, E., Egorova, T., Luo, B., and Peter, T.: The SOCOL version 3.0 chemistry–climate model: description, evaluation, and implications from an advanced transport algorithm, *Geoscientific Model Development*, 6, 1407–1427, 2013.
- 5 Stone, K. A., Morgenstern, O., Karoly, D. J., Klekociuk, A. R., French, W. J., Abraham, N. L., and Schofield, R.: Evaluation of the ACCESS – chemistry–climate model for the Southern Hemisphere, *Atmospheric Chemistry and Physics*, 16, 2401–2415, <https://doi.org/10.5194/acp-16-2401-2016>, <https://www.atmos-chem-phys.net/16/2401/2016/>, 2016.
- Sudo, K., Takahashi, M., Kurokawa, J.-i., and Akimoto, H.: CHASER: A global chemical model of the troposphere 1. Model description, *Journal of Geophysical Research: Atmospheres*, 107, 2002.
- 10 Szopa, S., Balkanski, Y., Schulz, M., Bekki, S., Cugnet, D., Fortems-Cheiney, A., Turquety, S., Cozic, A., Déandreis, C., Hauglustaine, D., et al.: Aerosol and ozone changes as forcing for climate evolution between 1850 and 2100, *Climate dynamics*, 40, 2223–2250, 2013.
- Takemura, T.: Distributions and climate effects of atmospheric aerosols from the preindustrial era to 2100 along Representative Concentration Pathways (RCPs) simulated using the global aerosol model SPRINTARS, *Atmospheric Chemistry and Physics*, 12, 11 555–11 572, <https://doi.org/10.5194/acp-12-11555-2012>, <https://www.atmos-chem-phys.net/12/11555/2012/>, 2012.
- 15 Tanskanen, A., Lindfors, A., Määttä, A., Krotkov, N., Herman, J., Kaurola, J., Koskela, T., Lakkala, K., Fioletov, V., Bernhard, G., and et al.: Validation of daily erythemal doses from Ozone Monitoring Instrument with ground-based UV measurement data, *Journal of Geophysical Research*, 112, <https://doi.org/10.1029/2007jd008830>, <http://dx.doi.org/10.1029/2007JD008830>, 2007.
- Tian, W. and Chipperfield, M. P.: A new coupled chemistry–climate model for the stratosphere: The importance of coupling for future O<sub>3</sub>-climate predictions, *Quarterly Journal of the Royal Meteorological Society*, 131, 281–303, 2005.
- 20 Vaida, V., Kjaergaard, H. G., Hintze, P. E., and Donaldson, D. J.: Photolysis of Sulfuric Acid Vapor by Visible Solar Radiation, *Science*, 299, 1566–1568, <https://doi.org/10.1126/science.1079297>, <http://science.sciencemag.org/content/299/5612/1566>, 2003.
- van Vuuren, D. P., Edmonds, J., Kainuma, M., Riahi, K., Thomson, A., Hibbard, K., Hurtt, G. C., Kram, T., Krey, V., Lamarque, J.-F., Masui, T., Meinshausen, M., Nakicenovic, N., Smith, S. J., and Rose, S. K.: The representative concentration pathways: an overview, *Climatic Change*, 109, 5, <https://doi.org/10.1007/s10584-011-0148-z>, <https://doi.org/10.1007/s10584-011-0148-z>, 2011.
- 25 Voldoire, A., Sanchez-Gomez, E., y Méliá, D. S., Decharme, B., Cassou, C., Sénési, S., Valcke, S., Beau, I., Alias, A., Chevallier, M., et al.: The CNRM-CM5. 1 global climate model: description and basic evaluation, *Climate Dynamics*, 40, 2091–2121, 2013.
- Walters, D., Williams, K., Boutle, I., Bushell, A., Edwards, J., Field, P., Lock, A., Morcrette, C., Stratton, R., Wilkinson, J., et al.: The Met Office unified model global atmosphere 4.0 and JULES global land 4.0 configurations, *Geoscientific Model Development*, 7, 361–386, 2014.
- 30 Watanabe, S., Hajima, T., Sudo, K., Nagashima, T., Takemura, T., Okajima, H., Nozawa, T., Kawase, H., Abe, M., Yokohata, T., et al.: MIROC-ESM 2010: Model description and basic results of CMIP5-20c3m experiments, *Geoscientific Model Development*, 4, 845, 2011.
- WMO, W. M. O.: Scientific assessment of ozone depletion: 2014, Global Ozone Research and Monitoring Project-Report No. 55, 2011.
- WMO, W. M. O.: Scientific Assessment of Ozone Depletion: 2014, in: Scientific Assessment of Ozone Depletion: 2014, 55, p. 416, Geneva, Switzerland, 2014.
- 35 Yukimoto, S., Adachi, Y., Hosaka, M., Sakami, T., Yoshimura, H., Hirabara, M., Tanaka, T. Y., Shindo, E., Tsujino, H., Deushi, M., et al.: A new global climate model of the Meteorological Research Institute: MRI-CGCM3—model description and basic performance—, *Journal of the Meteorological Society of Japan. Ser. II*, 90, 23–64, 2012.

Zepp, R. G., Erickson III, D. J., Paul, N. D., and Sulzberger, B.: Interactive effects of solar UV radiation and climate change on biogeochemical cycling, *Photochem. Photobiol. Sci.*, 6, 286–300, <https://doi.org/10.1039/B700021A>, <http://dx.doi.org/10.1039/B700021A>, 2007.

Zerefos, C., Mantis, H., Bais, A., Ziomas, I., and Zoumakis, N.: Solar ultraviolet absorption by sulphur dioxide in Thessaloniki, Greece, *Atmosphere-Ocean*, 24, 292–300, 1986.