

# Long-term trends in the ambient PM<sub>2.5</sub>- and O<sub>3</sub>-related mortality burdens in the United States under emission reductions from 1990 to 2010

Yuqiang Zhang<sup>1,\*</sup>, J. Jason West<sup>2</sup>, Rohit Mathur<sup>3</sup>, Jia Xing<sup>4</sup>, Christian Hogrefe<sup>3</sup>, Shawn J. Roselle<sup>3</sup>, Jesse  
5 O. Bash<sup>3</sup>, Jonathan E. Pleim<sup>3</sup>, Chuen-Meei Gan<sup>5</sup>, David C. Wong<sup>3</sup>

<sup>1</sup>Oak Ridge Institute for Science and Education (ORISE) Fellowship Participant at US Environmental Protection Agency, Research Triangle Park, NC 27711, USA

<sup>2</sup>Department of Environmental Sciences and Engineering, University of North Carolina at Chapel Hill, Chapel Hill, NC 27599, USA

10 <sup>3</sup>Computational Exposure Division, National Exposure Research Laboratory, Office of Research and Development, US Environmental Protection Agency, Research Triangle Park, NC 27711, USA

<sup>4</sup>State Key Joint Laboratory of Environmental Simulation and Pollution Control, School of Environment, Tsinghua University, Beijing 100084, China

<sup>5</sup>CSC Government Solutions LLC, A CSRA Company, Research Triangle Park, NC, 27709, USA

15 \*now at: Nicholas School of the Environment, Duke University, Durham, NC 27710, USA

*Correspondence to:* Yuqiang Zhang ([yuqiangzhang.thu@gmail.com](mailto:yuqiangzhang.thu@gmail.com); [yuqiang.zhang@duke.edu](mailto:yuqiang.zhang@duke.edu))

**Abstract.** Concentrations of both fine particulate matter (PM<sub>2.5</sub>) and ozone (O<sub>3</sub>) in the United States (US) have decreased significantly since 1990, mainly because of air quality regulations. Exposure to these air pollutants is associated with premature  
20 death. Here we quantify the annual mortality burdens from PM<sub>2.5</sub> and O<sub>3</sub> in the US from 1990 to 2010, estimate trends and inter-annual variability, and evaluate the contributions to those trends from changes in pollutant concentrations, population, and baseline mortality rates. We use a fine-resolution (36 km) self-consistent 21-year simulation of air pollutant concentrations in the US from 1990 to 2010, a health impact function, and annual county-level population and baseline mortality rate estimates. From 1990 to 2010, the modeled population-weighted annual PM<sub>2.5</sub> decreased by 39%, and summertime (April to  
25 September) 1hr average daily maximum O<sub>3</sub> decreased by 9% from 1990 to 2010. The PM<sub>2.5</sub>-related mortality burden from ischemic heart disease, chronic obstructive pulmonary disease, lung cancer, and stroke, steadily decreased by 53% from 123,700 deaths yr<sup>-1</sup> (95% confidence interval, 70,800-178,100) in 1990 to 58,600 deaths yr<sup>-1</sup> (24,900-98,500) in 2010. The PM<sub>2.5</sub>-related mortality burden would have decreased by only 24% from 1990 to 2010 if the PM<sub>2.5</sub> concentrations had stayed at the 1990 level, due to decreases in baseline mortality rates for major diseases affected by PM<sub>2.5</sub>. The mortality burden  
30 associated with O<sub>3</sub> from chronic respiratory disease increased by 13% from 10,900 deaths yr<sup>-1</sup> (3,700-17,500) in 1990 to 12,300 deaths yr<sup>-1</sup> (4,100-19,800) in 2010, mainly caused by increases in the baseline mortality rates and population, despite decreases in O<sub>3</sub> concentration. The O<sub>3</sub>-related mortality burden would have increased by 55% from 1990 to 2010 if the O<sub>3</sub> concentrations

had stayed at the 1990 level. The detrended annual O<sub>3</sub> mortality burden has larger inter-annual variability (coefficient of variation of 12%) than the PM<sub>2.5</sub>-related burden (4%), mainly from the inter-annual variation of O<sub>3</sub> concentration. We conclude that air quality improvements have significantly decreased the mortality burden, avoiding roughly 35,800 (38%) PM<sub>2.5</sub>-related deaths and 4,600 (27%) O<sub>3</sub>-related deaths in 2010, compared to the case if air quality had stayed at 1990 levels ( at 2010 baseline mortality rates and population).

## 1 Introduction

The 2015 Global Burden of Disease (GBD) study lists air pollution as the fourth-highest ranking global mortality risk factor (GBD 2016). The most recent GBD estimates that exposure to ambient particulate matter (particulate size less than 2.5 μm, PM<sub>2.5</sub>) causes 4.2 million (95% confidence interval (CI), 3.7-4.8 million) deaths globally, with an additional 254,000 (97,000-422,000) deaths globally caused by exposure to ozone (O<sub>3</sub>) (Cohen et al., 2017). For the United States (US), the same study estimated a mortality burden attributable to ambient PM<sub>2.5</sub> of 88,400 (66,800-115,000) deaths, and 11,700 (4,400–19,600) deaths attributable to O<sub>3</sub> in 2015 (Cohen et al., 2017). Adopting similar methods, the US burden of disease study lists ambient PM<sub>2.5</sub> and O<sub>3</sub> pollution as the 8<sup>th</sup> and 15<sup>th</sup> leading risk factors in the US in 2010 (Murray et al., 2013). Over recent decades, emissions of air pollutants within the US have significantly decreased and air quality has improved. For example, between 1990 and 2010, total US anthropogenic emissions are estimated to have declined by 48%, 49%, 67%, 60% and 34%, for NO<sub>x</sub> (=NO + NO<sub>2</sub>), non-methane volatile organic compounds (NMVOC), SO<sub>2</sub>, CO and PM<sub>2.5</sub> respectively (Xing et al., 2013). EPA observations showed that the US average annual PM<sub>2.5</sub> concentration declined by 42% from 2000 to 2016, and maximum daily 8-h average (MDA8) O<sub>3</sub> declined by 22% from 1990 to 2016 (US EPA, 2017). These air quality improvements were likely mainly driven by ambient air quality standards, and federal and state implementation of stationary and mobile source regulations, especially the 1990 Clean Air Act (CAA) Amendments, the 2002 NO<sub>x</sub> State Implementation Plans (SIP) Call, and the Cross-State Air Pollution Rule (Chestnut and Mills, 2005; US EPA, 2011), together with other rules to reduce anthropogenic emissions from light duty, heavy duty, and nonroad vehicles (Fann et al., 2012b; U.S. EPA 2014). Other changes in energy and emission control technology occurred concurrently with air quality regulations also helped to improve air quality. These decreased concentrations are expected to have brought substantial benefits for public health in the US, but assessing the health benefits requires quantification of changes in human exposure relating where air quality has improved with how population and baseline mortality are distributed. Several recent studies have assessed the global (GBD 2015, 2016; Lelieveld et al., 2015; Silva et al., 2013, 2016b) or national (Fann et al., 2012a; Pungler and West, 2013) burdens of disease attributable to air pollution. However, less effort has been made to understand how these burdens evolve over time. Cohen et al. (2017) used estimates of air pollutant concentrations from a combination of air quality model simulations, satellite and surface observations to study the global and national temporal trends of the burdens of disease attributable to ambient PM<sub>2.5</sub> and O<sub>3</sub> (only model results were used for O<sub>3</sub>), at 5-yr intervals from 1990 to 2015. Two other studies (Butt et al., 2017; Wang et al., 2017) used coarse resolution model

simulations to study the global/ hemispheric PM<sub>2.5</sub> mortality burdens for the past few decades. Fann et al. (2017) estimated the annual mean PM<sub>2.5</sub> concentration in the US from monitoring data and its all-cause mortality burden in 1980, 1990, 2000 and 2010. Epidemiological studies have also inferred how health effects have changed through time in the US (Correia, et al., 2013; Pope et al., 2009). However, previous studies have not estimated mortality burdens for both PM<sub>2.5</sub> and O<sub>3</sub> in the US for several years in succession, investigated the different drivers for mortality trends, or the inter-annual variability of the mortality burdens. The interannual variability analysis indicate whether the mortality burden at a given year, such as the results from Cohen et al. (2017) and Fann et al. (2017), is representative of years around it. In the US, such changes in the air pollution mortality burdens can support decision making on air pollution control policies. For the public, analyzing trends can effectively illustrate the benefits of past air pollution controls, as well as the challenges for future policy efforts.

Here we aim to quantify air pollution-related mortality in the continental US in each year from 1990 to 2010, mainly to understand the trends over this time period. We also analyze the contributions of changes in air pollutant concentrations, population, and baseline mortality rates to the overall trend, and analyze the inter-annual variability in mortality burdens estimates. To achieve this, we use a 21-year (1990-2010) model simulation of PM<sub>2.5</sub> and O<sub>3</sub> concentrations over the Continental US (CONUS) from 1990 to 2010. We also use annual county-level baseline mortality rates and population archived by the US Centers for Disease Control (CDC WONDER, <https://wonder.cdc.gov/mortSQL.html>).

## 2 Methodology

### 2.1 Air quality simulations

We use simulations of air quality over the CONUS from 1990 to 2010 by Gan et al. (2015, 2016). These simulations used the WRF-CMAQ model which coupled the Weather Research and Forecasting (WRF, v3.4) model and the Community Multiscale Air Quality (CMAQ, v5.02) model (Wong et al., 2012), covering the CONUS at 36km×36km. These simulations used an internally-consistent emission inventory from 1990 to 2010 for the US developed by Xing et al. (2013), three-dimensional meteorological fields constrained by reanalysis of available surface and aloft measurements of the atmospheric state, and time-varying lateral boundary conditions provided by the hemispheric CMAQ (Mathur et al., 2017; Xing et al., 2015). The model system used the CB05 chemical mechanism with the AERO6 module for aerosols.

Gan et al. (2015, 2016) showed that the modeled trends of total PM<sub>2.5</sub> and its components generally matched both the CASTNET (Clean Air Status and Trend Network) and IMPROVE (Interagency Monitoring of Protection Visual) observational data from 1995 to 2010, with correlation coefficients usually larger than 0.87 for total PM<sub>2.5</sub> and its components. Moreover, the trends for PM<sub>2.5</sub> and its species were similar in direction and magnitude (Gan et al., 2015). There was a small or nearly no trend for PM<sub>2.5</sub> in western US for both the model and observations, while a dramatic decreasing trend in the eastern US, with a larger decreasing trend from the model ( $-0.44 \mu\text{g m}^{-3} \text{yr}^{-1}$ ) than from the IMPROVE observations ( $-0.30 \mu\text{g m}^{-3} \text{yr}^{-1}$ ).

For O<sub>3</sub>, Astitha et al. (2017) used dynamical evaluation methods, and showed that the simulated O<sub>3</sub> trends generally agreed very well with the observed downward trends, especially for the period from 2000 to 2010, albeit underestimating trends over

some regions, for both the May to September average of daily maximum 8-hr (MDA8) and annual 4<sup>th</sup> highest O<sub>3</sub>. From 2000 to 2010, the regional trends for the 4<sup>th</sup> highest O<sub>3</sub> from the model (observations) were -0.80 ppbv yr<sup>-1</sup> (-0.73 ppbv yr<sup>-1</sup>) for the Southwest, -1.14 (-1.53) for Southcentral, -1.31 (-1.66) for Southeast, -1.46 (-1.61) for Midwest, -1.35 (-1.79) for Northeast, and -1.11 (-1.40) for CONUS.

## 5 2.2 Mortality burden attributable to ambient air pollution

The mortality burdens attributable to ambient PM<sub>2.5</sub> and O<sub>3</sub> ( $\Delta Mort$ ) are estimated using the health impact function (HIF) following Eq. (1):

$$\Delta Mort = y_0 \times AF \times Pop \quad (1)$$

where  $y_0$  is the baseline mortality rate for specific diseases,  $AF$  is the attributable fraction calculated as  $1 - 1/RR$ , with  $RR$  as the relative risk of death from a specific disease, and  $Pop$  is exposed population age 25 years and greater.

For PM<sub>2.5</sub>,  $RR$  is calculated using the integrated exposure–response (IER) model (Burnett et al., 2014), which has been extensively used by recent studies, including Liu et al. (2017), Silva et al. (2016a, b), Wang et al. (2017), and World Health Organization (2016). The  $RR$  is calculated as a function of PM<sub>2.5</sub> concentration following Eq. (2):

$$\text{for } C < C_0, RR(C) = 1$$

$$\text{for } C \geq C_0, RR(C) = 1 + \alpha \times (1 - \exp(-\gamma \times (C - C_0)^\delta)) \quad (2)$$

where  $C$  is the annual average ambient PM<sub>2.5</sub> concentration,  $C_0$  is the PM<sub>2.5</sub> threshold concentration (5.8-8.0  $\mu\text{g}/\text{m}^3$ ), below which no additional risk is assumed, and the parameter values of  $\alpha$ ,  $\gamma$ , and  $\delta$  are given by distributions (Burnett et al., 2014).

For this study, the RRs are downloaded from GBD website (Global Health Data Exchange (GHDx) 2013).

For the O<sub>3</sub>-related mortality burden,  $RR = \exp^{\beta \Delta X}$ , where  $\beta$  is the concentration response factor, and  $\Delta X$  is the difference in O<sub>3</sub> concentration (summertime 1hr daily maximum O<sub>3</sub>) between the current year (1990 to 2010) and the low-concentration threshold. For  $RR$ , we use the value of 1.040 (with 95% CI: 1.013, 1.067) from Jerrett et al. (2009) following recent studies (e.g, Cohen et al., 2017; GBD 2015, 2016; Lim et al., 2012). Turner et al. (2016) found a larger  $RR$  for respiratory mortality ( $RR$ , 1.12; 95% CI, 1.08-1.16) associated with the annual average of MDA8 O<sub>3</sub>, and using these results would likely lead to a larger O<sub>3</sub> mortality burden (Malley et al., 2017). We account for all chronic respiratory disease (RESP), to be consistent with Jerrett et al. (2009). The counterfactual concentration of 37.6 ppbv (Lim et al., 2012; Lelieveld et al., 2015) is used in our study, to be comparable with Cohen et al. (2017). We use adults above 25 years, to be comparable with other calculations of PM<sub>2.5</sub> mortality burden following Silva et al. (2016a,b), even though the estimated  $RR$  from Jerrett et al. (2009) were for adults above 30 old only. Uncertainties in air pollution-related mortality burden calculations are based on the uncertainty in RRs only, ignoring those in modeled air pollutant concentrations, and population and baseline mortality rates, which may be larger than that from the RRs but not in the scope of our study.

We use baseline mortality rates from each year to calculate deaths from air pollution in each year, as changes in baseline mortality rates from other socioeconomic determinants are likely more important than changes in deaths from air pollution.

To estimate the annual baseline mortality rates ( $y_0$ ) for each disease associated with  $PM_{2.5}$  (chronic obstructive pulmonary disease, COPD; ischemic heart disease, IHD; lung cancer, LC; cerebrovascular disease and ischemic stroke, STROKE) and  $O_3$  (chronic respiratory disease, RESP), we acquire US county-level specific causes of mortality data for each year from the National Center for Health Statistics (NCHS) (CDC, 2017). We then aggregate the county-level mortality data to each model grid cell at 36km×36km. The specific causes of mortality data for some counties are sometimes suppressed when the total deaths are lower than 10 per year to protect privacy (Jian et al., 2016), missing or considered as “unreliable” when the total deaths are less than 20 per year, and are corrected following established procedures (BenMAP, 2017; Fann et al., 2017; also see Supporting Information).

Definitions of each disease follow the Global Burden of Disease (GBD) study (Lim et al., 2012; supporting Table S1). Note that the CDC changed the disease codes from the International Classification of Diseases 9th Revision (ICD 9) in 1998 to ICD10 in 1999, and there were discontinuities in the death counts of specific diseases (Anderson et al., 2001; Anderson & Rosenberg, 2003). To account for the discontinuities, we group the total deaths for each of the five diseases for ICD9 and ICD10 using the results of Anderson et al., (2001) and Anderson & Rosenberg (2003) who reported deaths for 135 specific causes in 1996 for both the ICD9 and ICD10 codes, and calculate comparability ratios (supporting Table S1). We then recalculate comparability ratios for the 5 diseases (RESP, COPD, IHD, LC and STROKE) as the ratios of deaths for ICD9 and ICD10 (supporting Table S2). Finally, we apply these ratios to the ICD9 baseline mortality rates from 1990 to 1998.

Annual population in the US at county level was taken from the US Bureau of Census, which reported populations associated with the 1990, 2000, and 2010 censuses and estimated population for each year in between (CDC 2017; [https://www.cdc.gov/nchs/data/nvss/bridged\\_race/Documentation\\_bridge\\_postcenv2017.pdf](https://www.cdc.gov/nchs/data/nvss/bridged_race/Documentation_bridge_postcenv2017.pdf), accessed 5 September 2018). The adult population above 25 yrs in the US has steadily grown between 1990 and 2010, with an average 1.23% yr<sup>-1</sup> rate of increase (supporting Fig. S1).

### 2.3 The contribution of different factors to mortality trends

The overall trends in  $PM_{2.5}$ - and  $O_3$ -related mortality between 1990 and 2010 are a combination of contributions from trends in population, baseline mortality rates, and concentration. Here we separate the contributions of each factor by assuming that only a single factor was changing from 1990 to 2010, with the other two constant at 1990 levels. For example, the mortality burden change associated with air pollution changes in year  $y$  ( $\Delta Mort_p^y$ ), relative to 1990, is calculated following Eq. (3):

$$\Delta Mort_p^y = y_0^{1990} \times AF^y \times Pop^{1990} - y_0^{1990} \times AF^{1990} \times Pop^{1990} \quad (3)$$

Similarly, we also calculate the mortality burden change without accounting for ambient air pollution changes ( $\Delta Mort_{nop}^y$ ) following Eq. (4):

$$\Delta Mort_{nop}^y = y_0^y \times AF^{1990} \times Pop^y - y_0^{1990} \times AF^{1990} \times Pop^{1990} \quad (4)$$

## 3 Results

### 3.1 Air quality trends

From 1990 to 2010, annual average  $PM_{2.5}$  in the model decreases significantly in the eastern US (Fig. 1-c), but slightly decreases or even increases in the northwest, southwest and west (supporting Fig. S2 and Table S3; also see supporting Fig. S3 for the US 9 regions defined by National Oceanic and Atmospheric Administration, Zhang et al., 2016). The dramatic decreasing trends of  $PM_{2.5}$  in the eastern US were also reported in previous studies (Gan et al., 2015; Xing et al., 2015) due to emission reductions. The increasing trend in the west central is due in part to frequent wildfires (Dennison et al., 2014; Hand et al., 2013, 2014; Jaffe et al., 2008; Murphy et al., 2011; Spracklen et al., 2007). In general, the decadal decreasing trends in the east are larger than  $2 \mu\text{g m}^{-3} \text{ da}^{-1}$  (decade<sup>-1</sup>) from 1990 to 2010, especially in the central ( $-3.48 \mu\text{g m}^{-3} \text{ da}^{-1}$ ) and northeast ( $-3.14 \mu\text{g m}^{-3} \text{ da}^{-1}$ ). The summertime average of 1hr daily maximum  $O_3$  decrease significantly in the central and eastern US, generally at a rate greater than  $4 \text{ ppbv da}^{-1}$ . It also decreases in the western US, but at a much smaller rate than in the east, generally less than  $1 \text{ ppbv da}^{-1}$  (Fig. 1-f; supporting Table S3).

In Fig.2, both the spatial average and population-weighted average (PWA) annual  $PM_{2.5}$  exhibit smooth decreasing trends (Fig. 2, top): the spatial average of annual  $PM_{2.5}$  has decreased by 29%, from  $9.07 \mu\text{g m}^{-3}$  in 1990 to  $6.45 \mu\text{g m}^{-3}$  in 2010, with a decadal rate of decrease of  $1.1 \mu\text{g m}^{-3} \text{ da}^{-1}$ . The corresponding PWA  $PM_{2.5}$  decreases by 39%, from  $17.61 \mu\text{g m}^{-3}$  in 1990 to  $10.73 \mu\text{g m}^{-3}$  in 2010, with a decadal decreasing rate of  $3.2 \mu\text{g m}^{-3} \text{ da}^{-1}$ . Years with high  $PM_{2.5}$ , such as in 1994, 1996, and 2000, are mainly caused by increases in organic carbon due to large wildfires in the western US (Spracklen et al., 2007). Both the spatial average and PWA  $O_3$  also exhibit decreasing trends over the past 2 decades, with greater inter-annual variability resulting from meteorological variability (Porter et al., 2017). The spatial average  $O_3$  concentration decreases by 9%, from  $55.02 \text{ ppbv}$  in 1990 to  $49.99 \text{ ppbv}$  in 2010, decreasing at a rate of  $2.4 \text{ ppbv da}^{-1}$ . The PWA  $O_3$  also decrease by 9%, from  $58.96 \text{ ppbv}$  in 1990 to  $53.57 \text{ ppbv}$  in 2010, decreasing at a rate of  $3.0 \text{ ppbv da}^{-1}$ . We also calculate the air quality and mortality burden trends separately for two 11-yr periods, 1990 to 2000 and 2000 to 2010, following Astitha et al. (2017). Both  $PM_{2.5}$  and  $O_3$  decrease more strongly in the second decade than in the first decade for both spatial average and PWA (supporting Table S5), consistent with previous findings (Astitha et al., 2017; Gan et al., 2015; Porter et al., 2017; Xing et al., 2015).

We then calculate trends in the number of days annually that exceed the daily  $PM_{2.5}$  standard ( $35 \mu\text{g m}^{-3}$ ), and the daily MDA8  $O_3$  standard ( $70 \text{ ppbv}$ ) (supporting Fig. S4). The exceedance days decrease for both  $PM_{2.5}$  and  $O_3$ , especially in the eastern US. In 2010, fewer than 5 days exceed the air quality standard for the majority of the US (supporting Fig. S4, b,e). We also calculate the population exposure exceedances by multiplying the population (adults > 25 yrs old) by the number of air quality exceedance days in each grid cell. The  $PM_{2.5}$  population exposure exceedances have decreased from 5340 million people-days in 1990 to 1042 million people-days in 2010, and the  $O_3$  population exposure exceedances has decreased from 4691 million people-days in 1990 to 2236 million people-days in 2010 (supporting Fig. S1). These decreases in population exposure exceedances occur despite population growth over this period.

### 3.2 Mortality burdens trends and contributing factors

The mortality burdens associated with exposure to ambient PM<sub>2.5</sub> in the US steadily decrease by 54%, from 123,700 (95% confidence interval considering the uncertainty in relative risk only, 70,800-178,100) deaths yr<sup>-1</sup> in 1990 to 58,600 (24,900-98,500) deaths yr<sup>-1</sup> in 2010 (Fig. 3). The leading cause for PM<sub>2.5</sub>-related mortality is IHD, which decreases by 55%, from 96,500 (62,600-132,500) deaths yr<sup>-1</sup> in 1990 to 43,600 (21,500-68,700) deaths yr<sup>-1</sup>, followed by LC which has decreased by 44%, from 12,500 (2,500-21,000) deaths yr<sup>-1</sup> in 1990 to 7,000 (900-13,400) deaths yr<sup>-1</sup> in 2010 (supporting Table. S4). The PM<sub>2.5</sub> mortality burden per 100,000 adults is much higher in the east than the west for both 1990 and 2010 (Fig. 4), due to the higher PM<sub>2.5</sub> concentrations (Fig. 1).

Table 1 shows the mortality burdens for PM<sub>2.5</sub> and O<sub>3</sub> in 2010, and also the burden changes since 1990 from different contributing factors. From the table, we see that the PM<sub>2.5</sub>-related mortality burden in 2010 would have decreased by only 24% (94,400 deaths yr<sup>-1</sup> in 2010, 95%CI, 50,300-139,800) compared with that in 1990, if the PM<sub>2.5</sub> concentrations had stayed constant over the period 1990-2010, due to decreases in the baseline mortality rates for the specific causes of death that PM<sub>2.5</sub> influences (Fig. 3), especially IHD (Fig. 5), despite the population increase. Therefore, the reduction in PM<sub>2.5</sub> concentrations from 1990 to 2010 significantly accelerates the decrease in the mortality burden. The decreased PM<sub>2.5</sub> concentration avoided roughly 35,800 (38%) PM<sub>2.5</sub>-related deaths in 2010, compared to the case if current air quality stays at level in 1990 (estimated as the 2010 mortality burden minus the “concentration change excluded” case in 2010). The benefit of the decreased PM<sub>2.5</sub> concentration could also be estimated as the “concentration change only” case in Figure 3, yielding 78,900 (35,700-129,200) deaths yr<sup>-1</sup> in 2010, decreasing by 36% (-44,800 deaths yr<sup>-1</sup>) compared with 1990. The population increases from 1991 to 2010 would lead to increases in the PM<sub>2.5</sub> mortality burden, but that increase is smaller than the combined reduction from decreasing PM<sub>2.5</sub> concentrations and baseline mortality rates (supporting Figs. S5 and S6).

When separating the two 11-yr periods, the PM<sub>2.5</sub>-related mortality burden has decreased 45% from 2000 to 2010 (decreasing trend of -4400 deaths yr<sup>-1</sup>), much higher than the 15% decrease from 1990 to 2000 (decreasing trend of -2100 deaths yr<sup>-1</sup>) (supporting Table S5). The detrended annual PM<sub>2.5</sub>-related mortality burden has a coefficient of variation (CV, standard deviation divided by average) of 4%, mainly caused by inter-annual variation in PM<sub>2.5</sub> concentrations (supporting Table S6 and Fig. S6).

We also calculate burdens and trends for each state individually (Table 2). The three states with the highest PM<sub>2.5</sub> mortality burden in 1990 are New York (NY, 13,700 deaths yr<sup>-1</sup>), California (CA, 9,500 deaths yr<sup>-1</sup>) and Pennsylvania (PA, 9,200 deaths yr<sup>-1</sup>); and in 2010, NY (5,100 deaths yr<sup>-1</sup>), Texas (TX, 4,200 deaths yr<sup>-1</sup>) and Ohio (OH, 3,900 deaths yr<sup>-1</sup>). NY has seen the largest benefits of mortality burden decreases (-8,500 deaths yr<sup>-1</sup>), followed by CA (-6,100 deaths yr<sup>-1</sup>) and PA (-5,500 deaths yr<sup>-1</sup>). For the relative mortality burden changes, generally large percent decreases in PM<sub>2.5</sub>-related mortality are seen in western, northern, and northeastern states (including Nevada, Utah, Colorado, Montana, Maine and Vermont) (Fig. 6), because the PM<sub>2.5</sub> concentrations in 2010 are very low or even fall below the low-concentration threshold in these states (Fig. 1), as confirmed by the mortality burden changes from concentration changes alone (supporting Table S7). For other states in the

eastern US with large relative mortality burden changes, the contributing factors are different. For example, for Connecticut, the relative mortality burden changes from the decrease of PM<sub>2.5</sub> concentration are larger than that from the decrease of the baseline mortality rates. However, for Massachusetts, NY and PA, the decreases of baseline mortality rates have a slightly larger effect than that from the decrease of PM<sub>2.5</sub> concentration. For CA, the effects from the decrease of baseline mortality rates and PM<sub>2.5</sub> concentration are comparable (supporting Table S7).

The mortality burden associated with exposure to O<sub>3</sub> from chronic respiratory disease (RESP) has increased by 13%, from 10,900 (3,700-17,500) deaths yr<sup>-1</sup> in 1990 to 12,300 (4,100-19,800) deaths yr<sup>-1</sup> in 2010 (Fig.3). The O<sub>3</sub> mortality burden per 100,000 adults is highest in the midwest and southwest (Fig. 4). The O<sub>3</sub>-related mortality burden in 2010 would have increased by 55% (10,600 deaths yr<sup>-1</sup> in 2010, 95%CI, 3,600-17,100) compared with that in 1990, if the O<sub>3</sub> concentration had stayed constant over the period 1990-2010 (Fig. 3), due to increases in both population and baseline mortality rates (supporting Fig. S5). The decreased O<sub>3</sub> concentration would have avoided roughly 4,600 (27%) O<sub>3</sub>-related deaths in 2010, compared to the case if ozone concentrations stay at level in 1990 (estimated as the 2010 mortality burden minus the “concentration change excluded” case in 2010). The benefit of the decreased O<sub>3</sub> concentration could also be estimated as the “concentration change only” case in Figure 3, yielding 8,100 (2,700-13,100) deaths yr<sup>-1</sup> in 2010, decreasing by 25% (-2800 deaths yr<sup>-1</sup>) compared with 1990. The change in O<sub>3</sub> generally reduces the mortality burden relative to 1990 with some inter-annual variation (supporting Fig. S6) due to meteorology and wildfires (Porter et al., 2017), while the increases of population and baseline mortality rates generally increase the mortality burden, with a larger contribution from the population change (supporting Fig. S6).

When separating the O<sub>3</sub> mortality trends into two decades, we find that the burdens decrease slightly (-70 deaths yr<sup>-1</sup>) from 2000 to 2010, compared with the increasing trend from 1990 to 2000 (240 deaths yr<sup>-1</sup>) (supporting Table S5). The increasing trend in the first decade is caused by the combined effect of increases in baseline mortality rates and population, while the decreasing trend in the second decade is dominated by decreases in O<sub>3</sub> concentration (supporting Fig. S6). The inter-annual variability for the detrended annual O<sub>3</sub> mortality burden from 1990 to 2010 (CV of 12%) is larger than PM<sub>2.5</sub> (CV of 4%), caused mainly by variations in O<sub>3</sub> concentrations from 1990 to 2010 (supporting Table S6).

The three states with the highest O<sub>3</sub> mortality burden in 1990 are CA (910 deaths yr<sup>-1</sup>), Florida (FL, 740 deaths yr<sup>-1</sup>) and NY (700 deaths yr<sup>-1</sup>); and in 2010, CA (1270 deaths yr<sup>-1</sup>), TX (900 deaths yr<sup>-1</sup>) and FL (770 deaths yr<sup>-1</sup>) (Table 2). CA has seen the largest O<sub>3</sub> mortality burden increases (360 deaths yr<sup>-1</sup>), followed by TX (230 deaths yr<sup>-1</sup>) and Arizona (AZ, 140 deaths yr<sup>-1</sup>), with the greatest decrease in NY (-90 deaths yr<sup>-1</sup>). For the relative mortality burden changes, large percent decreases in O<sub>3</sub>-related mortality are seen in the northwest (Washington and Oregon) and northeast US (Fig. 6), mainly caused by significant O<sub>3</sub> decreases (supporting Table S7), while the greatest percent increases occur in the southwest US driven mainly by large population increases, and also the baseline mortality rate increases.

Previous health impact assessments have used national baseline mortality rates (Cohen et al., 2017; Silva et al., 2016a, 2016b, etc.), but baseline mortality rates can vary strongly within individual counties (Fig. 5; Dwyer-Lindgren et al., 2016). We performed sensitivity analyses by applying the national average baseline mortality rates for each disease to every county in the



mortality burden calculations. We find that the PM<sub>2.5</sub> mortality burden calculated from the national average baseline mortality rates are lower than those calculated from the county-level baseline mortality rates, ranging among individual years from -2.2% to -1.3% (supporting Table S8). For the O<sub>3</sub> mortality burden, the difference between using the national average baseline mortality rates and our best estimates range from -1.1% to 2.0% (supporting Table S8). However, using the national average baseline mortality rates fails to capture regional mortality burden hotspots for both PM<sub>2.5</sub> and O<sub>3</sub> (supporting Figs. S7-S8), demonstrating the value of using county-level baseline mortality rates where possible.

### 3.3 Comparison with previous studies

The mortality burden associated with PM<sub>2.5</sub> calculated in our study generally aligns with several previous findings (Fig. 7; also supporting Table S9). Our PM<sub>2.5</sub> mortality burden is higher than that reported by Cohen et al. (2017) in 1990 (17% higher) and 1995 (4% higher), and lower in 2000 (-0.5%), 2005 (-17%) and 2010 (-30%) (Fig. 7). The overestimation of PM<sub>2.5</sub> mortality burdens in the early 2000s are likely due to the higher population-weighted PM<sub>2.5</sub> concentration simulated by WRF-CMAQ (Fig. 2), compared with Cohen et al. (2017), in which they estimated the PM<sub>2.5</sub> concentration based on data-fusion of air quality model outputs, satellite retrievals and ground observations. The lower mortality burdens in the second decade (from 2000 to 2010) in our study likely reflect that Cohen et al. (2017) included hemorrhagic stroke and lower respiratory infections in the PM<sub>2.5</sub> related mortality burden, in addition to COPD, LC, IHD and STROKE, and used an updated integrated exposure-response function. While the absolute value is similar, our results show a stronger decreasing trend (-3000 deaths yr<sup>-1</sup>) than Cohen et al. (2017) (-1000 deaths yr<sup>-1</sup>), which may result from the overestimation of PM<sub>2.5</sub> decreasing trends in our model relative to ground observations (Gan et al., 2016). The PM<sub>2.5</sub> mortality burdens estimated in our study are much lower than those from Fann et al. (2017), but the temporal patterns are similar, mainly because Fann et al. (2017) estimated the total all-cause mortality with a different HIF.

To compare with Cohen et al. (2017), who reported the O<sub>3</sub> mortality burden from COPD, which is a subset of RESP, we recalculate O<sub>3</sub> mortality burden from COPD (supporting Table S4). The newly calculated O<sub>3</sub> mortality burden from the COPD is generally lower than the estimate of Cohen et al. (2017) by 8%-30% (Fig. 7). This could be caused by the fact that for the O<sub>3</sub> changes, we use the summertime (April to September) average of 1-hr daily maximum, while Cohen et al. (2017) used the three-month average, which will be higher. The temporal trend for the O<sub>3</sub> mortality burdens from our study is similar with that from Cohen et al. (2017), except that the burden decreases after 2005 in our study, but increases in Cohen et al. (2017). The O<sub>3</sub> mortality burden from the RESP disease in 2005 estimated from our study is much lower than two previous studies (Fann et al., 2012a; Pungler and West, 2013; supporting Table S10). As discussed in the methods, the lower US background O<sub>3</sub> concentration used in these two studies (22ppb in the eastern US and 30ppb in the western US) could lead to higher O<sub>3</sub> mortality burden. We then did sensitivity analysis by using the pre-industrial O<sub>3</sub> concentration simulated by an ensemble of model outputs (supporting Fig. S9) as the counterfactual risk exposure factor, and recalculated the O<sub>3</sub> mortality burden with the RESP. The new calculated O<sub>3</sub> mortality burdens are estimated to be 64%-100% higher than current estimation from RESP using the

low-concentration threshold (supporting Table S10). In Fig. 7, we see that the new estimated O<sub>3</sub> mortality burden from RESP in 2005 (dashed line) is now comparable with the two previous studies.

#### 4 Conclusions

Significant improvements in air quality occurred in the US from 1990 to 2010, which we estimate to have decreased the population-weighted annual average PM<sub>2.5</sub> by 39%, and summertime (April to September) 1-hr daily maximum O<sub>3</sub> by 9%. However, both PM<sub>2.5</sub> and O<sub>3</sub> are still a great threat to the public health in US, with estimated mortality burdens of 58,600 (24,900-98,500) deaths yr<sup>-1</sup> and 12,300 (4,100-19,800) deaths yr<sup>-1</sup> in 2010, respectively. The mortality burdens associated with exposure to ambient PM<sub>2.5</sub> have decreased by 54% over the past two decades. However, if the annual PM<sub>2.5</sub> concentration levels had remained constant during 1990-2010, the associated mortality burden would have only decreased by 24%, due to decreases in the baseline mortality rates of causes of death affected by PM<sub>2.5</sub> and despite population growth. The air quality improvements have significantly decreased the mortality burden, avoiding roughly 35,800 (38%) PM<sub>2.5</sub>-related deaths in 2010, compared to the case if air quality had stayed at 1990 levels.

The mortality burdens attributable to O<sub>3</sub> are estimated to have increased by 13% during the same period. However, without the emission reductions associated with implementation of measures under the CAA and the NO<sub>x</sub> SIP Call, the O<sub>3</sub> mortality burden would have increased by 55% during 1990-2010. In calculating the O<sub>3</sub> mortality burdens, we use the average of 1hr-daily maximum O<sub>3</sub>, and the RR from Jerrett et al. (2009), but higher O<sub>3</sub> mortality burdens would likely have resulted had we used RRs from Turner et al. (2016). We estimate that the air quality improvements have avoided 4,600 (27%) O<sub>3</sub>-related deaths in 2010, compared to the case if air quality had stayed at 1990 levels.

We also estimate the inter-annual variability in mortality burdens considering air pollutant concentrations in individual years and annual county-level baseline mortality rates, and find that the O<sub>3</sub> mortality burdens are more variable (CV of 12%) than for PM<sub>2.5</sub> (CV of 4%), mainly because of inter-annual variability in concentrations. We found that the interannual variability is small for PM<sub>2.5</sub>, but larger for ozone, which we are not aware has been shown previously.

The uncertainties in air pollution-related mortality estimates presented in this study are based on the uncertainty in relative risks for the specific causes of death only, and do not account for uncertainties in population and baseline mortality rates (which are likely small), nor for uncertainty in the modeled air pollutant concentration. Previous studies have shown that the uncertainties from the modeled air pollutants concentrations may be greater than uncertainties in baseline mortality or relative risk, so the use of model ensembles is suggested to better quantify the uncertainty (Silva et al., 2016a; Liang et al., 2018). Uncertainties also exist due to the assumption of equal toxicity for different components of PM<sub>2.5</sub> (Li et al., 2015). For our analysis, we use modeled air pollutant concentration without any bias-correction based on either in-situ observation or satellite data (Brauer et al., 2015; Hogrefe et al., 2009; van Donkelaar et al., 2015; Xu et al., 2016). In our study, the PM<sub>2.5</sub> mortality burdens trend may be overestimated, and O<sub>3</sub> mortality burdens underestimated, based on comparing the modeled air pollution

trends with the observations. Despite these uncertainties, this study illustrates the importance of past air pollutant reductions for public health in the US, and of continued air pollution controls to reduce air pollution-related mortality.

**Data availability:** The 21-yr model outputs for the coupled WRF-CMAQ model, as well as the annual county level  
5 baseline mortality rates can be obtained by contacting the corresponding author (Y. Zhang, [yuqiangzhang.thu@gmail.com](mailto:yuqiangzhang.thu@gmail.com),  
[Yuqiang.zhang@duke.edu](mailto:Yuqiang.zhang@duke.edu)).

**Author contributions:** YZ designed the study, JX, CG and DW performed the model simulations, and YZ performed the  
data analysis and prepared the figures and tables. YZ wrote the paper with comments from all the coauthors.

10  
**Competing interests.** The authors declare that they have no conflicts of interest.

**Acknowledgement:** This research was supported in part by an appointment to the Research Participation Program at the  
U.S. EPA, Office of Research and Development (ORD), administered by the Oak Ridge Institute for Science and Education  
15 (ORISE) through an interagency agreement between the U.S. Department of Energy and the U.S. EPA, and also in part by  
National Aeronautics and Space Administration Health and Air Quality Applied Science Team #NNX16AQ80G. This work  
was also supported in part by China Ministry of Science and Technology National Key R & D program (2016YFC0207601).  
We thank Raquel Silva and Neal Fann from U.S. EPA for useful discussions. We greatly acknowledge Ana Rappold and  
Geoffrey Peterson from the U.S. EPA for their comments and suggestions on the initial version of this manuscript. We also  
20 appreciate the free usage of the county level baseline mortality and population data from US Centers for Disease Control and  
Prevention (CDC).

**Disclaimer:** Although this work has been reviewed and approved for publication by the U.S. EPA, the views expressed in this  
paper are those of the authors and do not necessarily represent the views or policies of the U.S. EPA.

## 25 **References**

Anderson, R. N., Miniño, A. M., Hoyert, D. L. and Rosenberg, H. M.: Comparability of cause of death between ICD-9 and  
ICD-10: preliminary estimates., *Natl. Vital Stat. Rep.*, 49(2), 1–32, 2001.

Anderson, R. N. and Rosenberg, H. M.: Disease classification: Measuring the effect of the Tenth Revision of the International  
Classification of Diseases on cause-of-death data in the United States, *Stat. Med.*, 22(9), 1551–1570, doi:10.1002/sim.1511,  
30 2003.

- Anenberg, S. C., Horowitz, L. W., Tong, D. Q. and West, J. J.: An Estimate of the Global Burden of Anthropogenic Ozone and Fine Particulate Matter on Premature Human Mortality Using Atmospheric Modeling, *Environ. Health Perspect.*, 118(9), 1189–1195, doi:10.1289/ehp.0901220, 2010.
- Astitha, M., Luo, H., Rao, S. T., Hogrefe, C., Mathur, R. and Kumar, N.: Dynamic evaluation of two decades of WRF-CMAQ ozone simulations over the contiguous United States, *Atmos. Environ.*, 164, 102–116, doi:10.1016/j.atmosenv.2017.05.020, 2017.
- Brauer, M., Amann, M., Burnett, R. T., Cohen, A., Dentener, F., Ezzati, M., Henderson, S. B., Krzyzanowski, M., Martin, R. V., Van Dingenen, R., van Donkelaar, A. and Thurston, G. D.: Exposure assessment for estimation of the global burden of disease attributable to outdoor air pollution., *Environ. Sci. Technol.*, 46(2), 652–60, doi:10.1021/es2025752, 2012.
- 10 Burnett, R. T., Arden Pope, C., Ezzati, M., Olives, C., Lim, S. S., Mehta, S., Shin, H. H., Singh, G., Hubbell, B., Brauer, M., Ross Anderson, H., Smith, K. R., Balmes, J. R., Bruce, N. G., Kan, H., Laden, F., Prüss-Ustün, A., Turner, M. C., Gapstur, S. M., Diver, W. R. and Cohen, A.: An integrated risk function for estimating the global burden of disease attributable to ambient fine particulate matter exposure, *Environ. Health Perspect.*, 122(4), 397–403, doi:10.1289/ehp.1307049, 2014.
- Butt, E. W., Turnock, S. T., Rigby, R., Reddington, C. L., Yoshioka, M., Johnson, J. S., Regayre, L. A., Pringle, K. J., Mann, 15 G. W. and Spracklen, D. V: Global and regional trends in particulate air pollution and attributable health burden over the past 50 years, *Environ. Res. Lett.*, 12(10), 104017, 2017.
- Centers for Disease Control and Prevention (CDC) 2017. National Center for Health Statistics, <https://wonder.cdc.gov/mortSQL.html>, [accessed in 02/28/2017].
- Chestnut, L. G. and Mills, D. M.: A fresh look at the benefits and costs of the US acid rain program, *J. Environ. Manage.*, 20 77(3), 252–266, doi:10.1016/j.jenvman.2005.05.014, 2005.
- Cohen, A. J., Brauer, M. and Burnett, R. T.: Estimates and 25-year trends of the global burden of disease attributable to ambient air pollution: An analysis of data from the Global burden of Diseases Study 2015, *Lancet*, 389(10082), 1907–1918, doi:10.1016/S0140-6736(17)30505-6, 2017.
- Correia, A. W., Arden Pope, C., Dockery, D. W., Wang, Y., Ezzati, M. and Dominici, F.: Effect of air pollution control on life 25 expectancy in the United States: An analysis of 545 U.S. Counties for the period from 2000 to 2007, *Epidemiology*, 24(1), 23–31, doi:10.1097/EDE.0b013e3182770237, 2013.
- Dwyer-Lindgren, L., Bertozzi-Villa, A., Stubbs, R. W., Morozoff, C., Kutz, M. J., Huynh, C., Barber, R. M., Shackelford, K. A., Mackenbach, J. P., van Lenthe, F. J., Flaxman, A. D., Naghavi, M., Mokdad, A. H. and Murray, C. J. L.: US county-level trends in mortality rates for major causes of death, 1980–2014, *JAMA*, 316(22), 2385–2401, doi:10.1001/jama.2016.13645, 30 2016.

- Dennison, P. E., Brewer, S. C., Arnold, J. D. and Moritz, M. A.: Large wildfire trends in the western United States, 1984–2011, *Geophys. Res. Lett.*, 41(8), 2928–2933, doi:10.1002/2014GL059712. Received, 2014.
- Environmental Benefits Mapping and Analysis Program – Community Edition, User’s Manual, Appendices, 2017 (BenMAP 2017), [https://www.epa.gov/sites/production/files/2017-04/documents/benmap\\_ce\\_um\\_appendices\\_april\\_2017.pdf](https://www.epa.gov/sites/production/files/2017-04/documents/benmap_ce_um_appendices_april_2017.pdf), [accessed 5 in 04/25/2017].
- Fang, Y., Naik, V., Horowitz, L. W. and Mauzerall, D. L.: Air pollution and associated human mortality: The role of air pollutant emissions, climate change and methane concentration increases from the preindustrial period to present, *Atmos. Chem. Phys.*, 13, 1377–1394, doi:10.5194/acp-13-1377-2013, 2013.
- Fann, N., Lamson, A. D., Anenberg, S. C., Wesson, K., Risley, D. and Hubbell, B. J.: Estimating the national public health 10 burden associated with exposure to ambient PM<sub>2.5</sub> and ozone., *Risk Anal.*, 32(1), 81–95, doi:10.1111/j.1539-6924.2011.01630.x, 2012a.
- Fann, N., Baker, K. R. and Fulcher, C. M.: Characterizing the PM<sub>2.5</sub>-related health benefits of emission reductions for 17 industrial, area and mobile emission sectors across the U.S., *Environ. Int.*, 49(2012), 141–151, doi:10.1016/j.envint.2012.08.017, 2012b.
- 15 Fann, N., Kim, S. Y., Olives, C. and Sheppard, L.: Estimated Changes in Life Expectancy and Adult Mortality Resulting from Declining PM<sub>2.5</sub> Exposures in the Contiguous United States: 1980-2010, *Environ. Health Perspect.*, 125(9), 097003, doi:10.1289/EHP507, 2017.
- Gan, C. M., Pleim, J., Mathur, R., Hogrefe, C., Long, C. N., Xing, J., Wong, D., Gilliam, R. and Wei, C.: Assessment of long-term WRF-CMAQ simulations for understanding direct aerosol effects on radiation “brightening” in the United States, *Atmos. Chem. Phys.*, 15(21), 12193–12209, doi:10.5194/acp-15-12193-2015, 2015.
- 20 Gan, C. M., Hogrefe, C., Mathur, R., Pleim, J., Xing, J., Wong, D., Gilliam, R., Pouliot, G. and Wei, C.: Assessment of the effects of horizontal grid resolution on long-term air quality trends using coupled WRF-CMAQ simulations, *Atmos. Environ.*, 132, 207–216, doi:10.1016/j.atmosenv.2016.02.036, 2016.
- Hand, J. L., Schichtel, B. A., Malm, W. C. and Frank, N. H.: Spatial and temporal trends in PM<sub>2.5</sub> organic and elemental carbon 25 across the United States, *Adv. Meteorol.*, 2013, doi:http://dx.doi.org/10.1155/2013/367674, 2013..
- Hand, J. L., Schichtel, B. A., Malm, W. C., Copeland, S., Molenaar, J. V., Frank, N. and Pitchford, M.: Widespread reductions in haze across the United States from the early 1990s through 2011, *Atmos. Environ.*, 94, 671–679, doi:10.1016/j.atmosenv.2014.05.062, 2014.
- GBD 2013 Risk Factors Collaborators: Global, regional, and national comparative risk assessment of 79 behavioural, 30 environmental and occupational, and metabolic risks or clusters of risks in 188 countries, 1990–2013: a systematic analysis

- for the Global Burden of Disease Study 2013, *Lancet.*, 386(10010), 2287–2323, [https://doi.org/10.1016/s0140-6736\(15\)00128-2](https://doi.org/10.1016/s0140-6736(15)00128-2), 2015.
- GBD 2015 Risk Factors Collaborators: Global, regional, and national comparative risk assessment of 79 behavioural, environmental and occupational, and metabolic risks or clusters of risks, 1990–2015: a systematic analysis for the Global Burden of Disease Study 2015, *Lancet.*, 388(10053), 1659–1724, [https://doi.org/10.1016/S0140-6736\(16\)31679-8](https://doi.org/10.1016/S0140-6736(16)31679-8), 2016.
- GHDx (Global Health Data Exchange). 2013. Global Burden of Disease Study 2010 – Ambient Air Pollution Risk Model 1990–2010. <http://ghdx.healthmetricsandevaluation.org/record/global-burden-disease-study-2010-gbd-2010-ambient-air-pollution-risk-model-1990-2010>, (accessed 8 November 2016).
- Giannadaki, D., Lelieveld, J. and Pozzer, A.: Implementing the US air quality standard for PM<sub>2.5</sub> worldwide can prevent millions of premature deaths per year, *Environ. Heal.*, 15(1), 88, doi:10.1186/s12940-016-0170-8, 2016.
- Hogrefe, C., Lynn, B., Goldberg, R., Rosenzweig, C., Zalewsky, E., Hao, W., Doraiswamy, P., Civerolo, K., Ku, J. Y., Sistla, G. and Kinney, P. L.: A combined model-observation approach to estimate historic gridded fields of PM<sub>2.5</sub> mass and species concentrations, *Atmos. Environ.*, 43(16), 2561–2570, doi:10.1016/j.atmosenv.2009.02.031, 2009.
- Jaffe, D., Chand, D., Hafner, W., Westerling, A. and Spracklen, D.: Influence of Fires on O<sub>3</sub> Concentrations in the Western U.S., *Environ. Sci. Technol.*, 42(16), 5885–5891, doi:10.1021/es800084k, 2008.
- Jerrett, M., Burnett, R. T., Pope, C. A., Ito, K., Thurston, G., Krewski, D., Shi, Y., Calle, E. and Thun, M.: Long-term ozone exposure and mortality., *N. Engl. J. Med.*, 360, 1085–1095, doi:10.1056/NEJMoa0803894, 2009.
- Jian, Y., Messer, L. C., Jagai, J. S., Rappazzo, K. M., Gray, C. L., Grabich, S. C. and Lobdell, D. T.: The Associations between Environmental Quality and Mortality in the Contiguous United States, 2000-2005., *Environ. Health Perspect.*, 125(3), 2000–2005, doi:10.1289/EHP119, 2016.
- Lamarque, J. F., Shindell, D. T., Josse, B., Young, P. J., Cionni, I., Eyring, V., Bergmann, D., Cameron-Smith, P., Collins, W. J., Doherty, R., Dalsoren, S., Faluvegi, G., Folberth, G., Ghan, S. J., Horowitz, L. W., Lee, Y. H., MacKenzie, I. A., Nagashima, T., Naik, V., Plummer, D., Righi, M., Rumbold, S. T., Schulz, M., Skeie, R. B., Stevenson, D. S., Strode, S., Sudo, K., Szopa, S., Voulgarakis, A. and Zeng, G.: The atmospheric chemistry and climate model intercomparison Project (ACCMIP): Overview and description of models, simulations and climate diagnostics, *Geosci. Model Dev.*, 6(1), 179–206, doi:10.5194/gmd-6-179-2013, 2013.
- Lelieveld, J., Barlas, C., Giannadaki, D. and Pozzer, A.: Model calculated global, regional and megacity premature mortality due to air pollution, *Atmos. Chem. Phys.*, 13(14), 7023–7037, doi:10.5194/acp-13-7023-2013, 2013.
- Lelieveld, J., Evans, J. S., Fnais, M., Giannadaki, D. and Pozzer, A.: The contribution of outdoor air pollution sources to premature mortality on a global scale, *Nature*, 525(7569), 367–71, doi:10.1038/nature15371, 2015.

- Li, Y., Henze, D. K., Jack, D., Henderson, B. H. and Kinney, P. L.: Assessing public health burden associated with exposure to ambient black carbon in the United States, *Sci. Total Environ.*, 539(2016), 515–525, doi:10.1016/j.scitotenv.2015.08.129, 2016.
- Liang, C. K., West, J. J., Silva, R. A., Bian, H., Chin, M., Davila, Y., Dentener, F. J., Emmons, L., Flemming, J., Folberth, G.,  
5 Henze, D., Im, U., Jonson, J. E., Keating, T. J., Kucsera, T., Lenzen, A., Lin, M., Tronstad Lund, M., Pan, X., Park, R. J.,  
Pierce, R. B., Sekiya, T., Sudo, K. and Takemura, T.: HTAP2 multi-model estimates of premature human mortality due to  
intercontinental transport of air pollution and emission sectors, *Atmos. Chem. Phys.*, 18(14), 10497–10520, doi:10.5194/acp-  
18-10497-2018, 2018.
- Lim, S. S., Vos, T., Flaxman, A. D., Danaei, G., Shibuya, K., Adair-Rohani, H., Amann, M., Anderson, H. R., Andrews, K.  
10 G., Aryee, M., Atkinson, C., Bacchus, L. J., Bahalim, A. N., Balakrishnan, K., Balmes, J., Barker-Collo, S., Baxter, A., Bell,  
M. L., Blore, J. D., Blyth, F., Bonner, C., Borges, G., Bourne, R., Boussinesq, M., Brauer, M., Brooks, P., Bruce, N. G.,  
Brunekreef, B., Bryan-Hancock, C., Bucello, C., Buchbinder, R., Bull, F., Burnett, R. T., Byers, T. E., Calabria, B., Carapetis,  
J., Carnahan, E., Chafe, Z., Charlson, F., Chen, H., Chen, J. S., Cheng, A. T.-A., Child, J. C., Cohen, A., Colson, K. E., Cowie,  
B. C., Darby, S., Darling, S., Davis, A., Degenhardt, L., Dentener, F., Des Jarlais, D. C., Devries, K., Dherani, M., Ding, E.  
15 L., Dorsey, E. R., Driscoll, T., Edmond, K., Ali, S. E., Engell, R. E., Erwin, P. J., Fahimi, S., Falder, G., Farzadfar, F., Ferrari,  
A., Finucane, M. M., Flaxman, S., Fowkes, F. G. R., Freedman, G., Freeman, M. K., Gakidou, E., Ghosh, S., Giovannucci, E.,  
Gmel, G., Graham, K., Grainger, R., Grant, B., Gunnell, D., Gutierrez, H. R., Hall, W., Hoek, H. W., Hogan, A., Hosgood, H.  
D., Hoy, D., Hu, H., Hubbell, B. J., Hutchings, S. J., Ibeanusi, S. E., Jacklyn, G. L., Jasrasaria, R., Jonas, J. B., Kan, H., Kanis,  
J. a, Kassebaum, N., Kawakami, N., Khang, Y.-H., Khatibzadeh, S., Khoo, J.-P., Kok, C., et al.: A comparative risk assessment  
20 of burden of disease and injury attributable to 67 risk factors and risk factor clusters in 21 regions, 1990-2010: a systematic  
analysis for the Global Burden of Disease Study 2010., *Lancet*, 380(9859), 2224–60, doi:10.1016/S0140-6736(12)61766-8,  
2012.
- Liu, M., Huang, Y., Ma, Z., Jin, Z., Liu, X., Wang, H., Liu, Y., Wang, J., Jantunen, M., Bi, J. and Kinney, P. L.: Spatial and  
temporal trends in the mortality burden of air pollution in China: 2004–2012, *Environ. Int.*, 98, 75–81,  
25 doi:10.1016/j.envint.2016.10.003, 2017.
- Malley, C. S., Henze, D. K., Kuynlenstierna, J. C. I., Vallack, H. W., Davila, Y., Anenberg, S. C., Turner, M. C. and Ashmore,  
M. R.: Updated global estimates of respiratory mortality in adults  $\geq 30$  years of age attributable to long-term ozone exposure,  
*Environ. Health Perspect.*, 125(8), 1–9, doi:10.1289/EHP1390, 2017.
- Mathur, R., Xing, J., Gilliam, R., Sarwar, G., Hogrefe, C., Pleim, J., Pouliot, G., Roselle, S., Spero, T. L., Wong, D. C. and  
30 Young, J.: Extending the Community Multiscale Air Quality (CMAQ) modeling system to hemispheric scales: Overview of  
process considerations and initial applications, *Atmos. Chem. Phys.*, 17(20), 12449–12474, doi:10.5194/acp-17-12449-2017,  
2017.

- Murphy, D. M., Chow, J. C., Leibensperger, E. M., Malm, W. C., Pitchford, M., Schichtel, B. A., Watson, J. G. and White, W. H.: Decreases in elemental carbon and fine particle mass in the United States, *Atmos. Chem. Phys.*, 11(10), 4679–4686, doi:10.5194/acp-11-4679-2011, 2011.
- Murray, C. J. L., Collaborators US Burden of Disease: The State of US Health, 1990-2010, *JAMA*, 310(6), 591,  
5 doi:10.1001/jama.2013.13805, 2013.
- Pope, C. A., Ezzati, M. and Dockery, D. W.: Fine-Particulate Air Pollution and Life Expectancy in the United States, *N. Engl. J. Med.*, 360(4), 376–386, doi:10.1056/NEJMs0805646, 2009.
- Porter, P. S., Rao, S. T., Hogrefe, C. and Mathur, R.: A reduced form model for ozone based on two decades of CMAQ simulations for the continental United States, *Atmos. Pollut. Res.*, 8(2), 275–284, doi:10.1016/j.apr.2016.09.005, 2017.
- 10 Pungler, E. M. and West, J. J.: The effect of grid resolution on estimates of the burden of ozone and fine particulate matter on premature mortality in the USA, *Air Qual., Atmos. Heal.*, 6(3), 563–573, doi:10.1007/s11869-013-0197-8, 2013.
- Silva, R. A., West, J. J., Zhang, Y., Anenberg, S. C., Lamarque, J.-F., Shindell, D. T., Collins, W. J., Dalsoren, S., Faluvegi, G., Folberth, G., Horowitz, L. W., Nagashima, T., Naik, V., Rumbold, S., Skeie, R., Sudo, K., Takemura, T., Bergmann, D., Cameron-Smith, P., Cionni, I., Doherty, R. M., Eyring, V., Josse, B., MacKenzie, I. A., Plummer, D., Righi, M., Stevenson, D.  
15 S., Strode, S., Szopa, S. and Zeng, G.: Global premature mortality due to anthropogenic outdoor air pollution and the contribution of past climate change, *Environ. Res. Lett.*, 8, 034005, doi:10.1088/1748-9326/8/3/034005, 2013.
- Silva, R. A., West, J. J., Lamarque, J. F., Shindell, D. T., Collins, W. J., Dalsoren, S., Faluvegi, G., Folberth, G., Horowitz, L. W., Nagashima, T., Naik, V., Rumbold, S. T., Sudo, K., Takemura, T., Bergmann, D., Cameron-Smith, P., Cionni, I., Doherty, R. M., Eyring, V., Josse, B., MacKenzie, I. A., Plummer, D., Righi, M., Stevenson, D. S., Strode, S., Szopa, S. and Zengast,  
20 G.: The effect of future ambient air pollution on human premature mortality to 2100 using output from the ACCMIP model ensemble, *Atmos. Chem. Phys.*, 16(15), 9847–9862, doi:10.5194/acp-16-9847-2016, 2016a.
- Silva, R. A., Adelman, Z., Fry, M. M. and West, J. J.: The impact of individual anthropogenic emissions sectors on the global burden of human mortality due to ambient air pollution, *Environ. Health Perspect.*, 124(11), 1776–1784, doi:10.1289/EHP177, 2016b.
- 25 Spracklen, D. V., Logan, J. A., Mickley, L. J., Park, R. J., Yevich, R., Westerling, A. L. and Jaffe, D. A.: Wildfires drive interannual variability of organic carbon aerosol in the western U.S. in summer, *Geophys. Res. Lett.*, 34(16), 2–5, doi:10.1029/2007GL030037, 2007.
- Thompson, T. M., Saari, R. K. and Selin, N. E.: Air quality resolution for health impact assessment: influence of regional characteristics, *Atmos. Chem. Phys.*, 14(2), 969–978, doi:10.5194/acp-14-969-2014, 2014.



- Turner, M. C., Jerrett, M., Pope, C. A., Krewski, D., Gapstur, S. M., Diver, W. R., Beckerman, B. S., Marshall, J. D., Su, J., Crouse, D. L. and Burnett, R. T.: Long-Term Ozone Exposure and Mortality in a Large Prospective Study, *Am. J. Respir. Crit. Care Med.*, 193(10), 1134–1142, doi:10.1164/rccm.201508-1633OC, 2016.
- US Burden of Disease Collaborators: The state of us health, 1990-2010: Burden of diseases, injuries, and risk factors, *J. Am. Med. Assoc.*, 310(6), 591–606, <http://dx.doi.org/10.1001/jama.2013.13805>, 2013.
- US EPA. 2011. “Benefits and Costs of the Clean Air Act 1990-2020, the Second Prospective Study.” <https://www.epa.gov/clean-air-act-overview/benefits-andcosts-clean-air-act-1990-2020-second-prospective-study> (accessed 24 November 2017).
- US EPA. 2014. “Control of Air Pollution from Motor Vehicles: Tier3 Motor Vehicle Emission and Fuel Standards Final Rule.” <https://www.epa.gov/regulations-emissions-vehicles-and-engines/final-rule-control-air-pollution-motor-vehicles-tier-3> (accessed 5 September 2018).
- US EPA. 2017. “<https://gispub.epa.gov/air/trendsreport/2017/>” (accessed 2 August 2017).
- van Donkelaar, A., Martin, R., Brauer, M. and Boys, B. L.: Use of Satellite Observations for Long-Term Exposure Assessment of Global Concentrations of Fine Particulate Matter Concentrations of Fine Particulate Matter, *Environ. Health Perspect.*, 123(February), 135–143, doi:10.1289/ehp.1408646, 2015.
- Wang, J., Xing, J., Mathur, R., Pleim, J. E., Wang, S., Hogrefe, C., Gan, C.-M., Wong, D. C. and Hao, J.: Historical Trends in PM<sub>2.5</sub>-Related Premature Mortality during 1990-2010 across the Northern Hemisphere, *Environ. Health Perspect.*, 125(3), 400–408, doi:10.1289/EHP298, 2017.
- World Health Organization (WHO). 2016. *Ambient air pollution: A global assessment of exposure and burden of disease*, ISBN:9789241511353.
- Wong, D. C., Pleim, J., Mathur, R., Binkowski, F., Otte, T., Gilliam, R., Pouliot, G., Xiu, A., Young, J. O. and Kang, D.: WRF-CMAQ two-way coupled system with aerosol feedback: Software development and preliminary results, *Geosci. Model Dev.*, 5(2), 299–312, doi:10.5194/gmd-5-299-2012, 2012.
- Xing, J., Pleim, J., Mathur, R., Pouliot, G., Hogrefe, C., Gan, C. M. and Wei, C.: Historical gaseous and primary aerosol emissions in the United States from 1990 to 2010, *Atmos. Chem. Phys.*, 13(15), 7531–7549, doi:10.5194/acp-13-7531-2013, 2013.
- Xing, J., Mathur, R., Pleim, J., Hogrefe, C., Gan, C. M., Wong, D. C., Wei, C., Gilliam, R. and Pouliot, G.: Observations and modeling of air quality trends over 1990-2010 across the Northern Hemisphere: China, the United States and Europe, *Atmos. Chem. Phys.*, 15(5), 2723–2747, doi:10.5194/acp-15-2723-2015, 2015.

Xu, Y., Serre, M. L., Reyes, J. and Vizuete, W.: Bayesian Maximum Entropy Integration of Ozone Observations and Model Predictions: A National Application, *Environ. Sci. Technol.*, 50(8), 4393–4400, doi:10.1021/acs.est.6b00096, 2016.

Zhang, Y., Bowden, J. H., Adelman, Z., Naik, V., Horowitz, L. W., Smith, S. J., and West, J. J.: Co-benefits of global and regional greenhouse gas mitigation for US air quality in 2050, *Atmos. Chem. Phys.*, 16, 9533-9548,  
5 <https://doi.org/10.5194/acp-16-9533-2016>, 2016.

## Tables and Figures

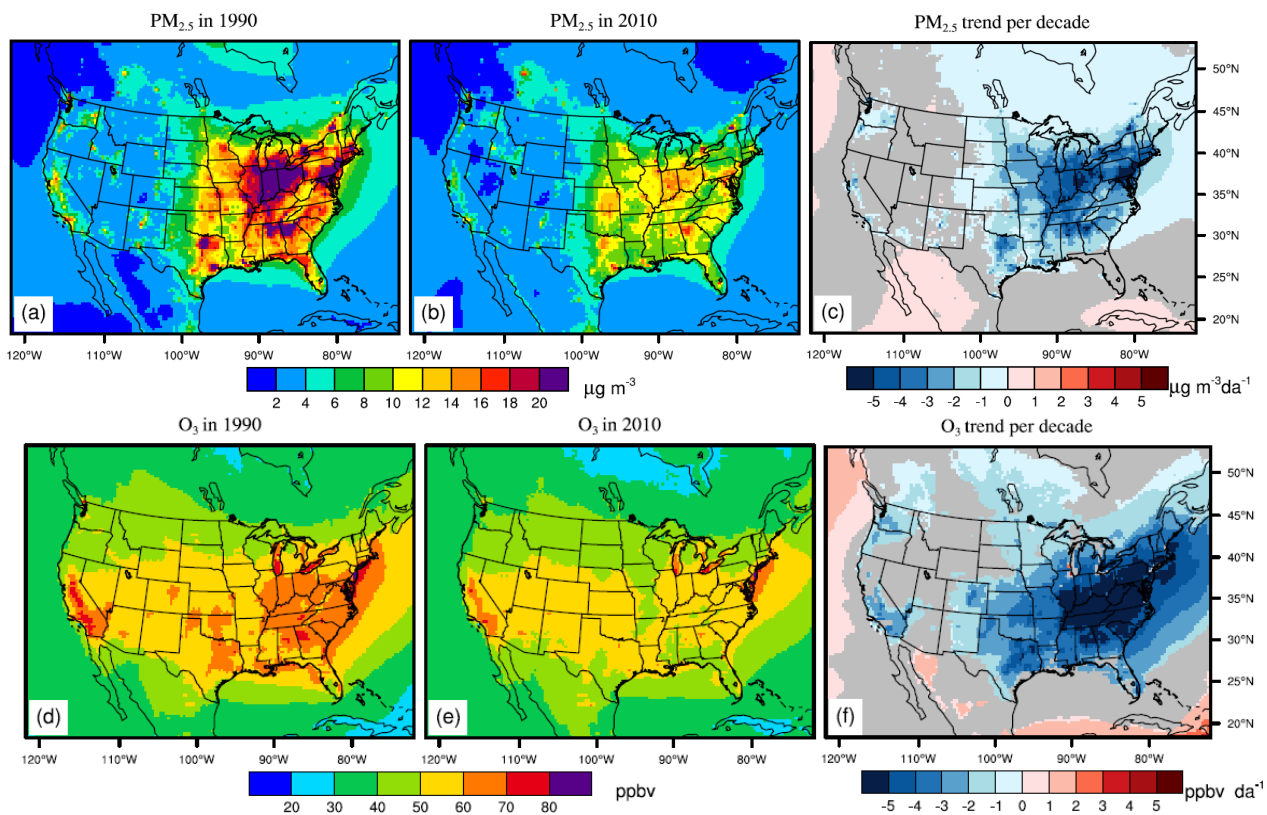
5 **Table 1. The total mortality burdens in 2010 and the burdens in 2010 due to changes since 1990 in each of three factors (concentration, baseline mortality rates and population) and where the concentration change is excluded, for PM<sub>2.5</sub> and O<sub>3</sub>, and the relative changes between 2010 and 1990. The relative changes are calculated as the (2010-1990)/1990. The mortality burdens in the US for PM<sub>2.5</sub> and O<sub>3</sub> in 1990 are 123,700 deaths yr<sup>-1</sup> (70,800-178,100) and 10,900 deaths yr<sup>-1</sup> (3,700-17,500).**

	2010 (deaths yr <sup>-1</sup> )	Relative Changes
<b>PM<sub>2.5</sub></b>	Mortality burden (24,900-98,500)	-54%
	Concentration change only (35,700-129,200)	-36%
	MortalityRates change only (35,800-101,300)	-45%
	Population change only (99,900-250,000)	40%
	Concentration change excluded (50,300-140,000)	-24%
<b>O<sub>3</sub></b>	Mortality burden (4,100-19,800)	13%
	Concentration change only (2,700-13,100)	-25%
	MortalityRates change only (4,400-21,000)	20%
	Population change only (4,800-22,700)	30%
	Concentration change excluded (5,700-27,000)	55%

**Table 2. The mortality burden for 48 US states and the District of Columbia in 1990 and 2010, and the absolute changes from 1990 to 2010. Units are deaths yr<sup>-1</sup>.**

States	PM <sub>2.5</sub> -related mortality			O <sub>3</sub> -related mortality		
	1990	2010	Diff	1990	2010	Diff
AL	2135	1166	-969	159	238	-12
AR	1127	752	-375	74	133	22
AZ	554	196	-358	125	329	138
CA	9515	3420	-6095	567	1272	359
CO	222	35	-187	115	230	64
CT	1795	458	-1337	93	129	-22
DC	250	157	-92	12	21	-6
DE	492	264	-227	26	54	14
FL	4688	2441	-2246	483	774	34
GA	3149	1954	-1195	221	413	51
IA	1500	756	-743	74	102	1
ID	174	120	-54	18	39	14
IL	7770	3547	-4223	280	500	38
IN	3821	2067	-1754	198	360	71
KS	1064	697	-367	84	147	26
KY	2420	1388	-1032	160	257	23
LA	1752	855	-898	109	195	4
MA	3417	1107	-2310	153	197	-57
MD	2893	1713	-1180	155	261	1
ME	347	5	-341	28	21	-19
MI	5894	2590	-3304	220	407	46
MN	1626	699	-927	61	107	16
MO	3135	1906	-1229	175	286	31
MS	1352	608	-743	75	124	6
MT	9	2	-7	12	19	1
NC	3321	1961	-1361	208	430	70
ND	75	23	-52	8	12	-1
NE	535	257	-278	55	81	7
NH	453	73	-380	24	25	-13
NJ	5332	2196	-3137	223	404	28
NM	245	180	-65	37	109	42
NV	10	0	-10	52	138	60
NY	13712	5239	-8473	406	613	-88
OH	7876	3932	-3944	400	690	103
OK	1499	1058	-441	120	248	77
OR	633	219	-413	39	42	-15
PA	9238	3727	-5511	393	584	-70
RI	630	172	-457	32	44	-5
SC	1673	974	-699	109	218	30
SD	140	68	-72	14	23	3
TN	3097	1895	-1202	199	317	13
TX	6499	4178	-2321	417	896	228
UT	107	10	-96	25	72	29

VA	2806	1592	-1214	183	336	29
VT	196	14	-182	11	8	-9
WA	917	394	-522	71	75	-27
WI	2479	977	-1503	75	148	35
WV	1161	534	-627	84	122	-9
WY	1.2	0.4	-0.8	12	25	8



**Figure 1:** Annual mean PM<sub>2.5</sub> ( $\mu\text{g m}^{-3}$ ) in 1990 (a), 2010 (b), and the 21-yr trends (c,  $\mu\text{g m}^{-3} \text{ da}^{-1}$  ( $\mu\text{g m}^{-3}$  per decade)), and summertime average of 1hr daily maximum O<sub>3</sub> in 1990 (ppbv) (d), 2010 (e) and the trend (f, ppbv da<sup>-1</sup> (ppbv per decade)). The grey shaded areas in panels c and f indicate trends that are insignificant with p-values for the standard Student-t test larger than 0.05.

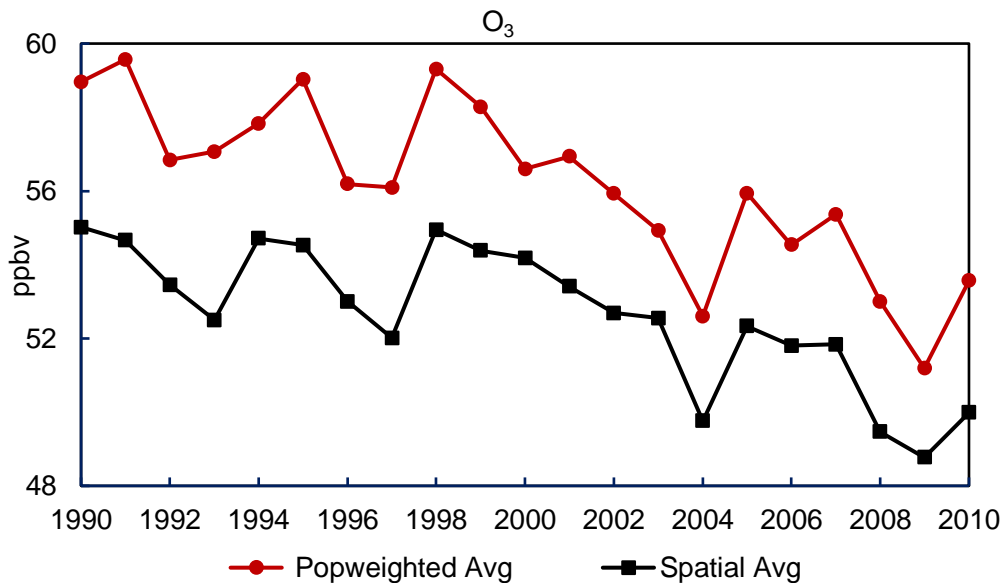
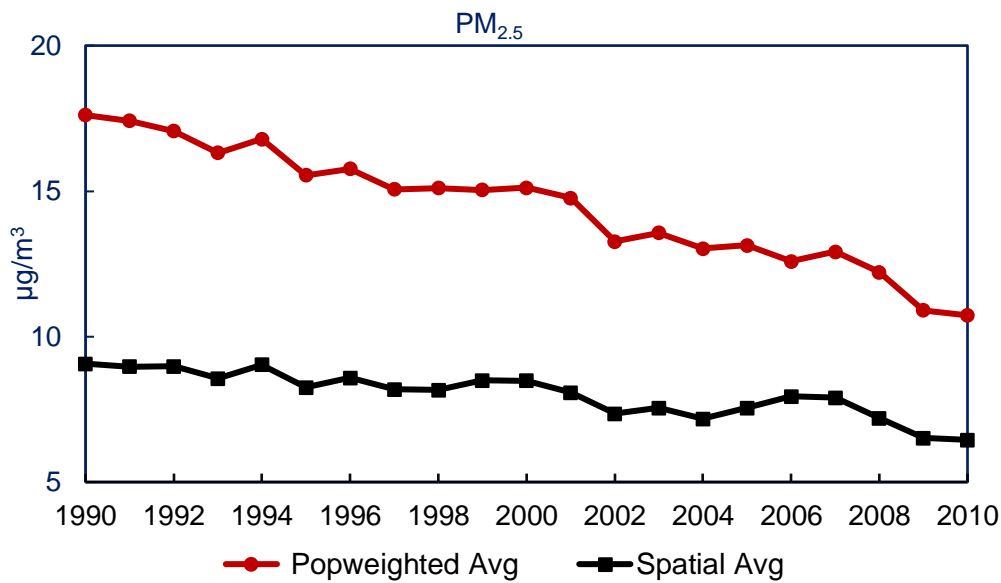


Figure 2: Population-weighted average (Popweighted-Avg) and spatial average over CONUS land areas of annual average PM<sub>2.5</sub> (top) and summertime average of 1hr daily maximum O<sub>3</sub> (bottom) concentration from 1990 to 2010. Population-weighted average concentrations are based on population in each year. Using the same population in each year yields estimates of population-weighted concentrations that are only slightly different (not shown).

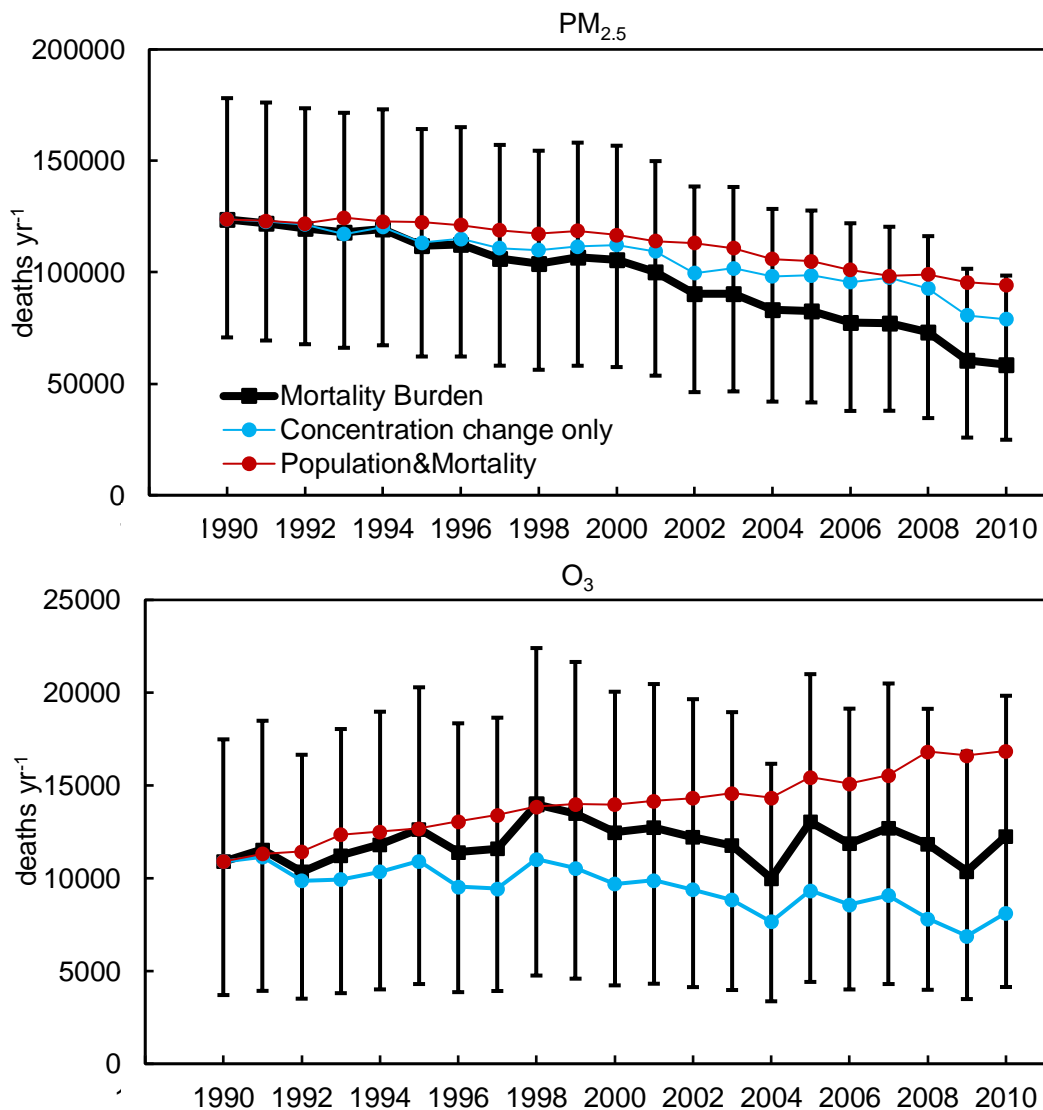
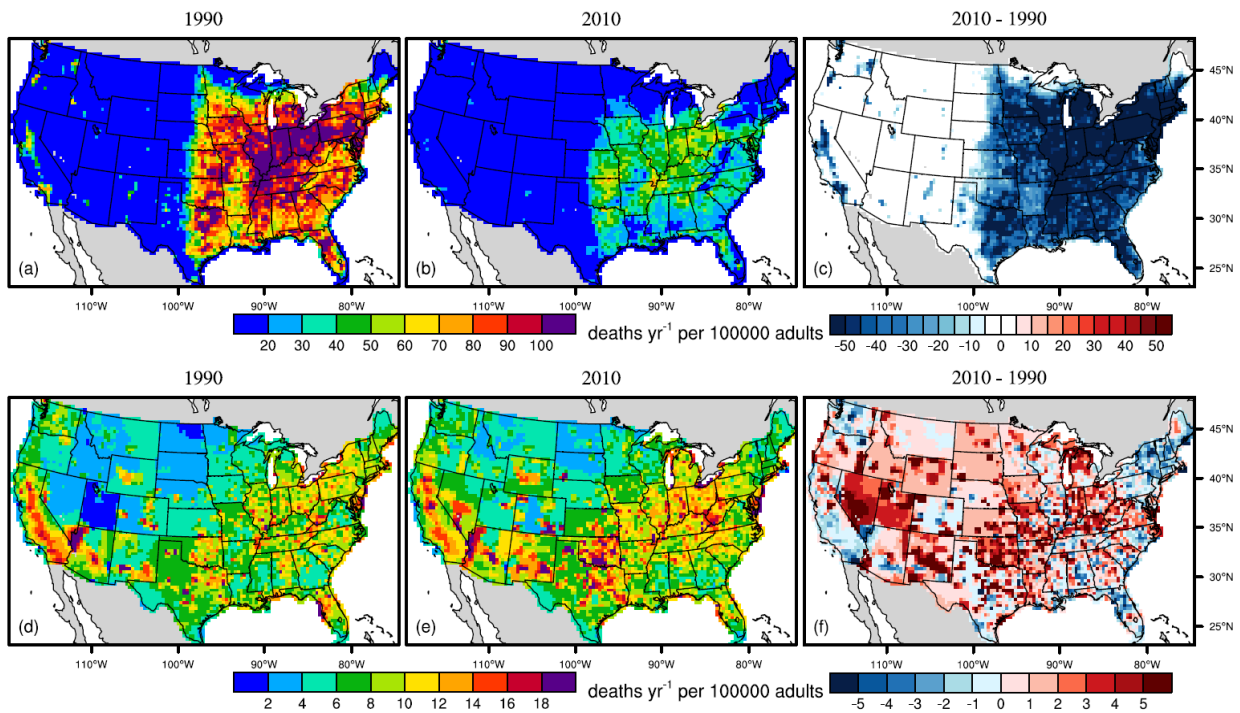
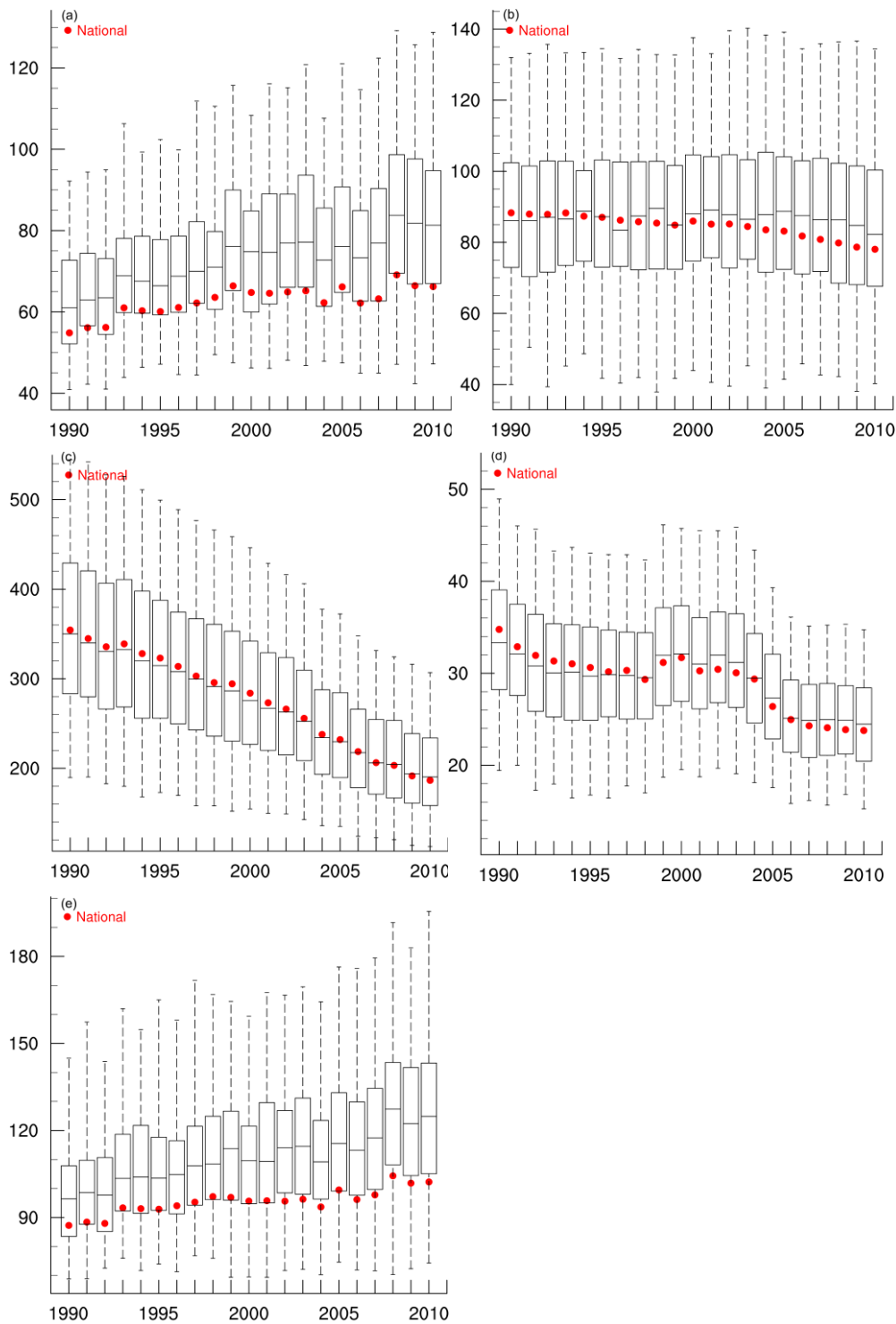


Figure 3: Trends in the total mortality burden (black) for PM<sub>2.5</sub> (top, as a total of ischemic heart disease (IHD) + stroke (STROKE) + chronic obstructive pulmonary disease (COPD) + lung cancer (LC)) and O<sub>3</sub> (bottom, chronic respiratory disease (RESP)), and mortality burdens considering the air quality change only (blue), and with air quality changes excluded (red). Units are deaths yr<sup>-1</sup>. The error bars are the 95% CI for the total mortality burden (black).





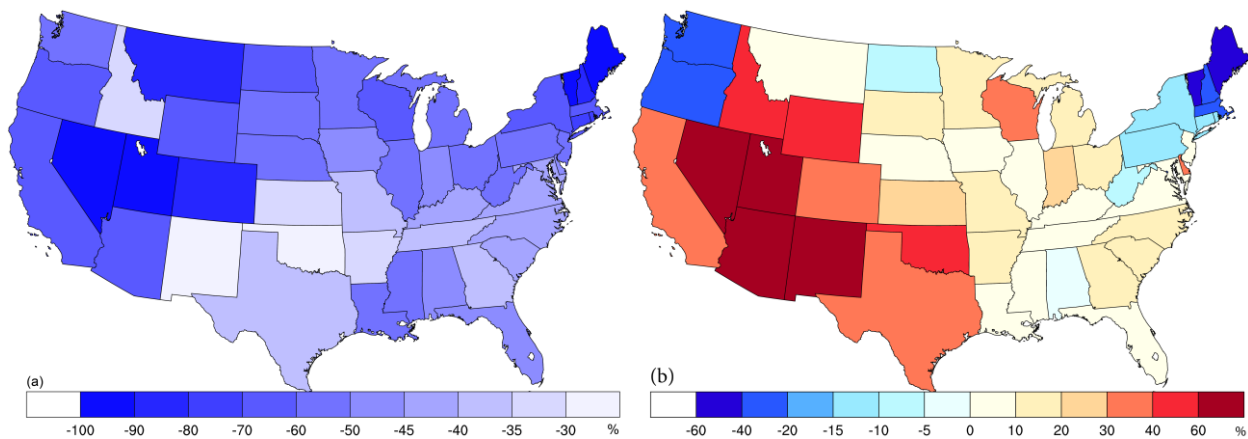
**Figure 4: The mortality burdens associated with  $PM_{2.5}$  (a, b),  $O_3$  (d, e) in 1990 (a, c) and 2010 (b, d), and the differences (2010 minus 1990) (c, f) for each 36km×36km grid cell. Units are deaths yr<sup>-1</sup> per 100,000 adults (above 25 yrs old).**



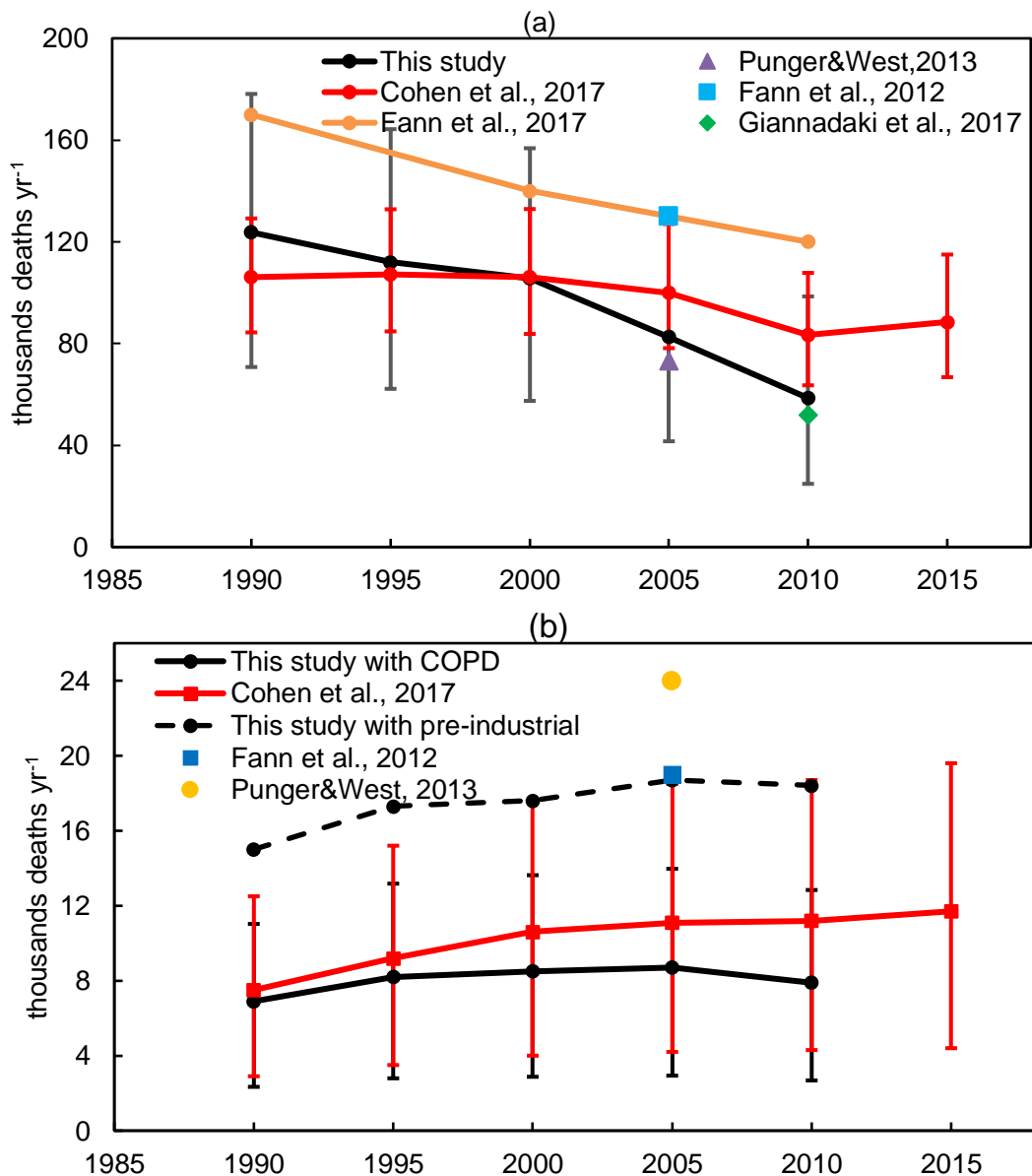
**Figure 5: The baseline mortality rates for specific causes of death related with  $PM_{2.5}$ , including chronic obstructive pulmonary disease (a), lung cancer (b), ischemic heart disease (c) and stroke (d), and respiratory diseases related with  $O_3$  (e). The bottom**

whiskers, bottom border, middle line, top border and the top whiskers of the boxes, indicate the 5th, 25th, 50th, and 75th, 95th percentiles, respectively, across all counties; the red circles are the national average rate. Baseline mortality rates are shown for 1990-1998 after they are corrected to ensure comparability between ICD9 and ICD10 codes. The units in y axis are per 100,000 people.

5



**Figure 6: Relative mortality burden changes from 1990 to 2010 for the 48 states and the District of Columbia for PM<sub>2.5</sub> (a) and O<sub>3</sub> (b). The relative changes are calculated as  $(2010-1990)/1990 \times 100\%$ . Note the different color scales for the two plots. The values for the District of Columbia are -37% for PM<sub>2.5</sub> and -23% for O<sub>3</sub>.**



5 **Figure 7: Comparisons of the U.S. mortality burdens attributed to PM<sub>2.5</sub> (a), and O<sub>3</sub> (b) in this study, with Cohen et al., (2017), Fann et al., (2017), Fann et al., (2012a), Pungner and West (2013), and Giannadaki et al., (2017). The black line for O<sub>3</sub> is the recalculated O<sub>3</sub> mortality burden from COPD, and the black dashed line is the recalculated O<sub>3</sub> mortality burden from RESP using the pre-industrial O<sub>3</sub> concentration as the counterfactual risk exposure factor. The error bars show the 95% CI from the RRs, shown for this study and Cohen et al., (2017).**