

***Interactive comment on “Characterisation of
ozone deposition to a mixed oak-hornbeam forest.
Flux measurements at 5 levels above and inside
the canopy and their interactions with nitric oxide”
by Angelo Finco et al.***

G. A. Gerosa

giacomo.gerosa@unicatt.it

Received and published: 12 July 2018

Dear referee we would like to draw your attention on another case (you can find it in the attached file) where error bars can be misleading. best regards

Interactive comment on Atmos. Chem. Phys. Discuss., <https://doi.org/10.5194/acp-2018-454>, 2018.

Printer-friendly version

Discussion paper



Dear referees,

we would like to draw your attention to another example, even more evident than the one that we have already published, where the error bars can be misleading of the diel average course of the plotted parameters. In this case the error bars hide the course of the ozone concentrations at the different heights when the lines are close. For example, it is nearly impossible to understand the course of the ozone concentrations at 41 m. So we would suggest to add some indicative values of the confidence intervals in the caption

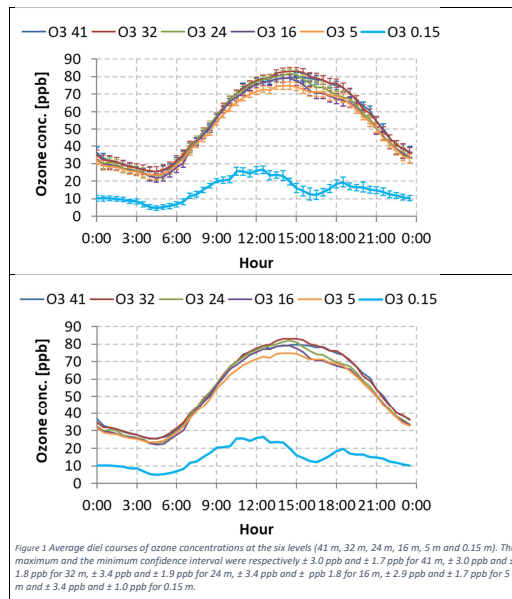


Fig. 1.