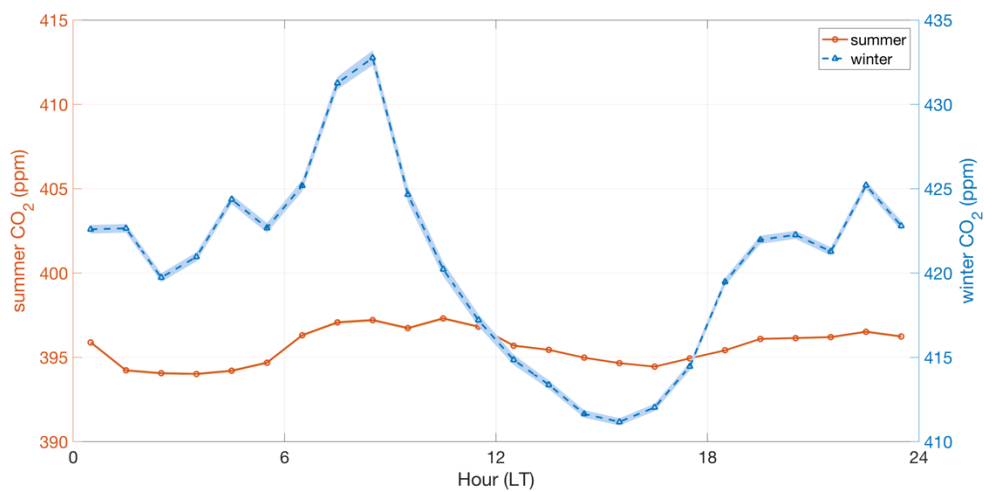


Supplement of

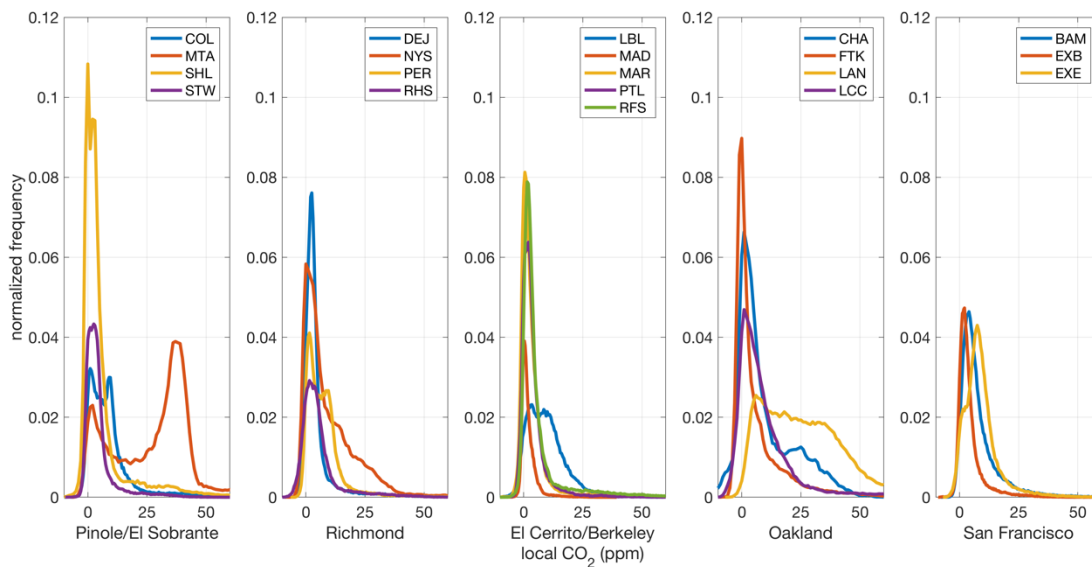
Observing local CO₂ sources using low-cost, near-surface urban monitors

5 Alexis A. Shusterman et al.

Correspondence to: Ronald C. Cohen (rccohen@berkeley.edu)



5 **Figure S1: Hourly median values of the network-wide, regional CO₂ signals calculated for summer (orange) and winter (blue) periods in 2013. Lighter colored curves indicate the standard error; note the difference in y-scale.**



5 **Figure S2: Normalized distributions of local CO₂ concentrations observed during summer 2017.**

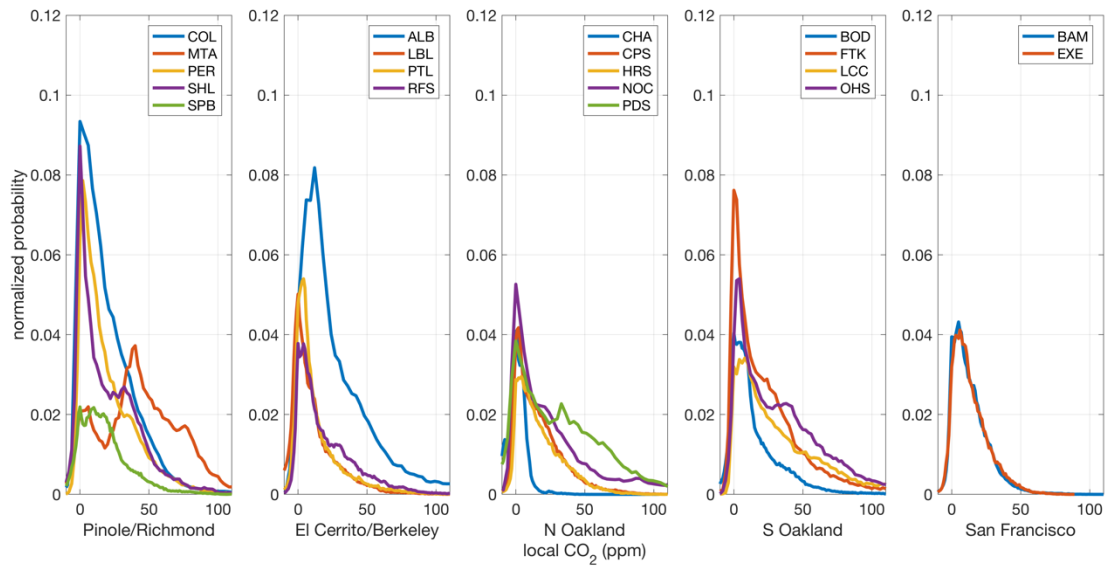
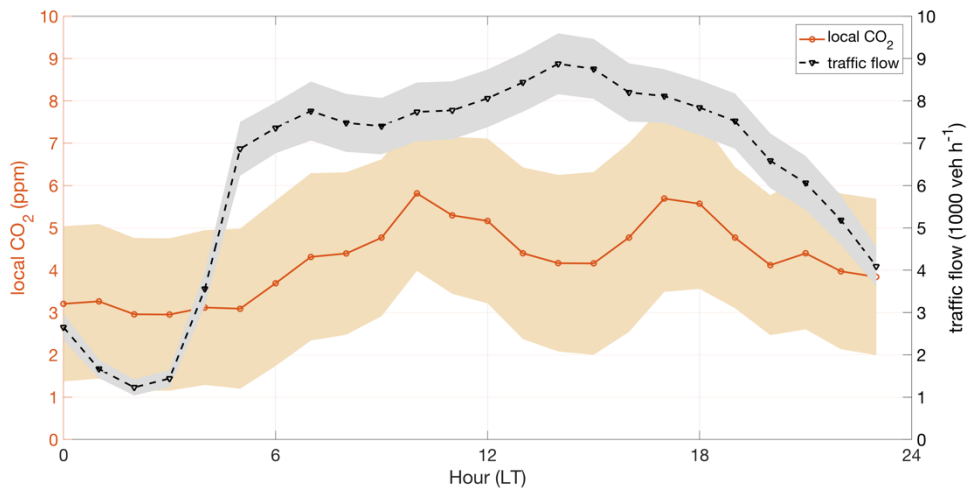
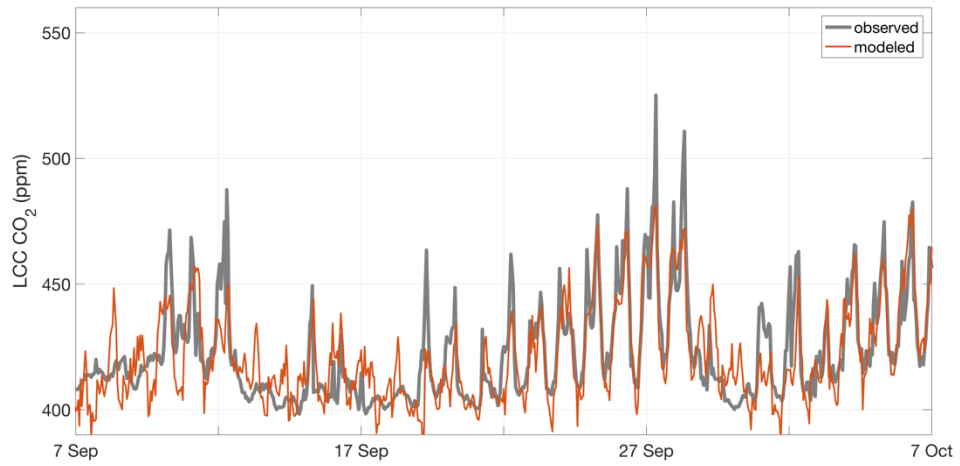


Figure S3: Normalized distributions of local CO₂ concentrations observed during winter 2017.

5



5 Figure S4: Hourly network-wide median local CO₂ and traffic flows observed during summer 2017. Lighter colored curves indicate standard error.



5 **Figure S5: Representative month of total CO₂ concentrations observed (thick gray curve) and modeled (thin orange curve) at LCC site using a multiple linear regression approach based on de Foy (2018).**