

# Long-range transport of volcanic aerosol from the 2010 Merapi tropical eruption to Antarctica

Xue Wu<sup>1,2</sup>, Sabine Griessbach<sup>1</sup>, Lars Hoffmann<sup>1</sup>

<sup>1</sup>Jülich Supercomputing Centre, Forschungszentrum Jülich, Jülich, Germany

<sup>2</sup>Key Laboratory of Middle Atmosphere and Global Environment Observation, Institute of Atmospheric Physics, Chinese Academy of Sciences, Beijing, China

*Correspondence to:* Xue Wu (xu.wu@fz-juelich.de)

## Abstract

Volcanic sulfate aerosol is an important source of sulfur for Antarctica where other local sources of sulfur are rare. Mid- and high latitude volcanic eruptions can directly influence the aerosol budget of the polar stratosphere. However, tropical eruptions can also enhance polar aerosol load following long-range transport. In the present work, we analyze the volcanic plume of a tropical eruption, Mount Merapi in 2010, and investigate the transport pathway of the volcanic aerosol from the tropical tropopause layer (TTL) to the lower stratosphere over Antarctica. We use the Lagrangian particle dispersion model Massive-Parallel Trajectory Calculations (MPTRAC) and Atmospheric Infrared Sounder (AIRS) SO<sub>2</sub> measurements to reconstruct the altitude-resolved SO<sub>2</sub> injection time series during the explosive eruption period and simulate the transport of the volcanic plume using the MPTRAC model. AIRS SO<sub>2</sub> and aerosol measurements, the aerosol-cloud-index values provided by Michelson Interferometer for Passive Atmospheric Sounding (MIPAS) are used to verify and complement the simulations. The Lagrangian transport simulation of the volcanic plume is compared with MIPAS aerosol measurements and shows good agreement. Both the simulations and the observations presented in this study suggest that volcanic plumes from the Merapi eruption were transported to the south of 60°S one month after the eruption and even further to Antarctica in the following months. This relatively fast meridional transport of volcanic aerosol was mainly driven by quasi-horizontal mixing from the TTL to the extratropical lower stratosphere and the most of the quasi-horizontal mixing occurred between the isentropic surfaces of 360 to 430 K. When the plume went to Southern Hemisphere high latitudes, the polar vortex was displaced from the South Pole, so that the volcanic plume was carried to the South Pole without penetrating the polar vortex. Although only 4% of the sulfur injected by the Merapi eruption was transported into the lower stratosphere south of 60°S, the Merapi eruption contributed up to 8800 tons of sulfur to the Antarctic lower stratosphere. This indicates

31 that the long-range transport under favorable meteorological conditions enables a moderate tropical  
32 volcanic eruption to be an important remote source of sulfur for the Antarctic stratosphere.

## 33 **1 Introduction**

34 Over the past two decades, multiple volcanic eruptions injected sulfur into the upper troposphere and  
35 lower stratosphere, which has been the dominant source of the stratospheric sulfate aerosol load  
36 (Vernier et al., 2011), preventing the background level from other sources ever being seen (Solomon et  
37 al., 2011). Stratospheric sulfate aerosol mainly reflects solar radiation and absorbs infrared radiation,  
38 causing cooling of the troposphere and heating of the stratosphere. Stratospheric sulfate aerosol also has  
39 an impact on chemical processes in the lower stratosphere (Jäger and Wege, 1990; Solomon et al.,  
40 1993), in particular on polar ozone depletion (e.g. McCormick et al., 1982; Solomon et al., 1986, 1999,  
41 2016; Portmann et al., 1996; Tilmes et al., 2008; Drdla and Müller, 2012). The presence of H<sub>2</sub>SO<sub>4</sub> in the  
42 polar stratosphere in combination with cold temperatures facilitates the formation of polar stratospheric  
43 clouds (PSCs), which increase heterogeneous ozone depletion chemistry (Solomon et al., 1999; Zuev et  
44 al., 2015). Recent healing of Antarctic ozone depletion was constantly disturbed by moderate volcanic  
45 eruptions (Solomon et al., 2016). Mid- and high latitude explosive volcanic eruptions may directly  
46 influence the polar stratosphere and may have an effect on ozone depletion in the next austral spring.  
47 For example, the aerosol plume from the Calbuco eruption in 2015, including various volcanic gases,  
48 strongly enhanced heterogeneous ozone depletion at the vortex edge and caused an Antarctic ozone hole  
49 with the largest daily averaged size on record in October 2015 (Solomon et al., 2016; Ivy et al., 2017;  
50 Stone et al., 2017).

51 Usually, Antarctica is relatively free of local aerosol sources, but aerosol from low latitudes can reach  
52 Antarctica through long-range transport (Sand et al., 2017). Part of the sulfate found in ice cores can be  
53 attributed to tropical volcanic eruptions (Gao et al., 2007). Measurements of enhanced aerosol in the  
54 lower Antarctic stratosphere right above the tropopause were made in October/November 1983, 1984  
55 and 1985. These enhanced aerosol number concentrations were attributed to aerosol transported to  
56 Antarctica from the eruption of the tropical volcano El Chichón in 1982 (Hofman and Rosen, 1985;  
57 Hofmann et al., 1988). Model results indicated that numerous moderate eruptions affected ozone  
58 distributions over Antarctica, including the Merapi tropical eruption in 2010 (Solomon et al., 2016).  
59 However, due to the limit of spatial and temporal resolution of satellite data and in-situ observations, it  
60 is difficult to investigate transport process as well as the influence of the location of the eruption, the

61 plume height and the background meteorological conditions. And the transport mechanism is not well  
62 represented in present global climate models and the uncertainties of the modeled AOD in polar regions  
63 are large (Sand et al., 2017).

64 Mount Merapi (7.5 °S, 110.4 °E, elevation: 2930 m) is an active stratovolcano located in Central Java,  
65 Indonesia. Merapi has a long record of eruptive activities. The most recent large eruption with a  
66 volcanic explosivity index of 4 occurred between 26 October and 7 November 2010 (Pallister et al.,  
67 2013), with SO<sub>2</sub> emission rates being a few orders of magnitude higher than previous eruptions.  
68 Following the Merapi eruption in 2010, evidence of poleward transport of sulfate aerosol towards the  
69 Southern Hemisphere high latitudes was found in time series of aerosol measurements by the Michelson  
70 Interferometer for Passive Atmospheric Sounding (MIPAS) (Günther et al., 2018) and Cloud-Aerosol  
71 Lidar with Orthogonal Polarization (CALIOP) (Khaykin et al., 2017; Friberg et al., 2018) .

72 There are three main ways for transport out of the tropical tropopause layer (TTL): the deep and shallow  
73 branches of the Brewer-Dobson circulation (BDC) and horizontal mixing (Vogel et al., 2011). There is  
74 considerable year-to-year seasonal variability in the amount of irreversible transport from the tropics to  
75 high latitudes, which is related to the phase of the quasi-biennial oscillation (QBO) and the state of the  
76 polar vortex (Olsen et al., 2010). The BDC plays a large role in determining the distributions of many  
77 constituents in the extratropical lower stratosphere. The faster quasi-horizontal transport between the  
78 tropics and polar regions also significantly contributes to determining these distributions. The efficiency  
79 of transporting constituents quasi-horizontally depends on wave breaking patterns and varies with the  
80 time of the year (Toohey et al., 2011; Wu et al., 2017). Better knowledge of the transport pathways and  
81 an accurate representation of volcanic sulfur injections into the upper troposphere and lower  
82 stratosphere (UTLS) are key elements for estimating the global stratospheric aerosol budget, the cooling  
83 effects and the ozone loss linked to volcanic activity.

84 The aim of the present study is to reveal the transport process and the influence of meteorological  
85 conditions by combining satellite observations with model simulations in a case study. We investigate  
86 the quasi-horizontal transport by tracing the volcanic plume of the Merapi eruption from the tropics to  
87 Antarctica and quantifying its contribution to the sulfur load in the Antarctic lower stratosphere. In Sect.  
88 2, the new Atmospheric Infrared Sounder (AIRS) SO<sub>2</sub> measurements (Hoffmann et al., 2014), the new  
89 MIPAS aerosol measurements (Höpfner et al., 2015; Griessbach et al., 2016) and the method for  
90 reconstructing the SO<sub>2</sub> injection time series of the Merapi eruption are introduced. In Sect. 3 the results  
91 are presented: first, the reconstructed time series of the Merapi eruption is discussed; second, the  
92 dispersion of the Merapi plume is investigated using long Lagrangian forward trajectories initialized

93 with the reconstructed SO<sub>2</sub> time series; third, the simulation results are compared with MIPAS aerosol  
94 measurements and the plume dispersion is investigated using MIPAS aerosol detections. In Sect.4 the  
95 results are discussed and the conclusions are given in Sect. 5.

## 96 **2 Satellite data, model and method**

### 97 **2.1 MIPAS aerosol measurements**

98 MIPAS (Fischer et al., 2008) is an infrared limb emission spectrometer aboard the European Space  
99 Agency's (ESA's) Envisat, which provided nearly 10 years of measurements from July 2002 to April  
100 2012. MIPAS spectral measurements cover the wavelength range from 4.15 to 14.6 microns. The  
101 vertical coverage of MIPAS nominal measurement mode during the optimized resolution phase from  
102 January 2005 to April 2012 was 7–72 km. The field of view of MIPAS was about 3 km×30 km  
103 (vertically×horizontally) at the tangent point. The extent of the measurement volume along the line of  
104 sight was about 300 km, and the horizontal distance between two adjacent limb scans was about 500 km.  
105 On each day, ~14 orbits with ~90 profiles per orbit were measured. From January 2005 to April 2012,  
106 the vertical sampling grid spacing between the tangent altitudes was 1.5 km in the UTLS and 3 km at  
107 altitudes above. In 2010 and 2011, MIPAS measured for 4 days in nominal mode followed alternately  
108 by one day in middle atmosphere mode or upper atmosphere mode. In this study, we focussed on  
109 measurements in the nominal mode.

110 For the aerosol detection, we used the MIPAS altitude-resolved aerosol-cloud-index (ACI) as  
111 introduced by Griessbach et al. (2016) to compare with the model simulations and to analyze the  
112 poleward transport of the Merapi volcanic plume.

113 ACI is the maximum value of the cloud index (CI) and aerosol index (AI):

$$ACI = \max(CI; AI), \quad (1)$$

114 The CI is an established method to detect clouds and aerosol with MIPAS. The CI is the ratio between  
115 the mean radiances around the 792 cm<sup>-1</sup>, where a CO<sub>2</sub> line is located and the atmospheric window  
116 region around 833 cm<sup>-1</sup> (Spang et al., 2001):

$$CI = \frac{\bar{I}_1([788.25, 796.25 \text{ cm}^{-1}])}{\bar{I}_2([832.31, 834.37 \text{ cm}^{-1}])}, \quad (2)$$

117 where  $\bar{I}_1$  and  $\bar{I}_2$  are the mean radiances of each window. The AI is defined as the ratio between the mean  
118 radiance around the 792 cm<sup>-1</sup> CO<sub>2</sub> band and the atmospheric window region between 960 and 961 cm<sup>-1</sup>:

$$AI = \frac{\bar{I}_1([788.25, 796.25 \text{ cm}^{-1}])}{\bar{I}_3([960.00, 961.00 \text{ cm}^{-1}])}, \quad (3)$$

where  $\bar{I}_1$  and  $\bar{I}_3$  are the mean radiance of each window.

The ACI is a continuous unitless value. Small ACI values indicate a high cloud or aerosol particle load and large values indicate a smaller cloud or aerosol particle load. For the CI, Sembhi et al. (2012) defined a set of variable (latitude, altitude and season) thresholds to discriminate between clear and cloudy air. The most advanced set of altitude and latitude dependent thresholds allows for the detection of aerosol and clouds with infrared extinction coefficients larger than  $10^{-5} \text{ km}^{-1}$ . For the ACI, a comparable sensitivity is achieved when using a fixed threshold value of 7 (Griessbach et al. 2016). Variations in the background aerosol are also visible with larger ACI values.

To remove ice clouds and volcanic ash from the MIPAS aerosol measurements, we first separated the data into clear air ( $ACI > 7$ ) and cloudy air ( $ACI \leq 7$ ). Then we applied the ice cloud filter (Griessbach et al., 2016) and the volcanic ash and mineral dust filter (Griessbach et al., 2014) to the cloudy part and removed all ice or ash detections. This ACI-based ice and ash cloud filter have been successfully used in studies of volcanic sulfate aerosol, e.g. Wu et al. (2017) and Günther et al. (2018). However, since the ice and ash cloud filters are not sensitive to non-ice PSCs, the resulting aerosol retrieval results still contain non-ice PSCs. We keep the non-ice PSCs in the MIPAS retrieval results in this study to show the temporal and spatial extent of the PSCs, when and where the identification of volcanic aerosol is not possible.

## 2.2 AIRS

AIRS (Aumann et al., 2003) is an infrared nadir sounder with across-track scanning capabilities aboard the National Aeronautics and Space Administration's (NASA's) Aqua satellite. Aqua was launched in 2002 and operates in a nearly polar Sun-synchronous orbit at about 710 km with a period of 98 min. AIRS provides nearly continuous measurement coverage with 14.5 orbits per day and with a swath width of 1780 km it covers the globe almost twice a day. The AIRS footprint size is  $13.5 \text{ km} \times 13.5 \text{ km}$  at nadir and  $41 \text{ km} \times 21.4 \text{ km}$  for the outermost scan angles respectively. The along-track distance between two adjacent scans is 18 km. The AIRS measurements provide good horizontal resolution and make it ideal for observing the fine filamentary structures of volcanic  $\text{SO}_2$  plumes.

In this study, we use an optimized  $\text{SO}_2$  index (SI, unit: K) to estimate the amount of  $\text{SO}_2$  injected into the atmosphere by the Merapi eruption in 2010. The SI is defined as the brightness temperature differences in the  $7.3 \text{ } \mu\text{m}$   $\text{SO}_2$  waveband.

$$SI = BT \left( 1412.87 \text{ cm}^{-1} \right) - BT \left( 1371.52 \text{ cm}^{-1} \right), \quad (4)$$

where BT is the brightness temperature measured at wavenumber  $\nu$ . This SI is more sensitive to low concentrations and performs better on suppressing background interfering signals than the SI provided in the AIRS operational data products. It is an improvement of the SI definition given by Hoffmann et al. (2014) by means of a better choice of the background channel (selecting  $1412.87 \text{ cm}^{-1}$  rather than  $1407.2 \text{ cm}^{-1}$ ). The SI increases with increasing  $\text{SO}_2$  column density and it is most sensitive to  $\text{SO}_2$  at altitudes above 3-5 km.  $\text{SO}_2$  injections into the lower troposphere are usually not detectable in the infrared spectral region because the atmosphere gets opaque due to the water vapor continuum. A detection threshold of 1 K was used in this study to identify the Merapi  $\text{SO}_2$  injections. The SI was converted into  $\text{SO}_2$  column density using a correlation function described in Hoffmann et al. (2014), which was obtained by radiative transfer calculations. AIRS detected the Merapi  $\text{SO}_2$  cloud from 3 November to 15 November 2010.

### 2.3 MPTRAC model and reconstruction of the volcanic $\text{SO}_2$ injection time series of the Merapi eruption

In this study, we use the highly scalable Massive-Parallel Trajectory Calculations (MPTRAC) to investigate the volcanic eruption event. In the MPTRAC model, air parcel trajectories are calculated based on numerical integration using wind fields from global meteorological reanalyses (Hoffmann et al., 2016; Rößler et al., 2018). The MPTRAC model can be driven by reanalyses, e.g., ERA-Interim, Modern-Era Retrospective Analysis for Research and Applications (MERRA) and National Centers for Environmental Prediction (NCEP)/National Center for Atmospheric Research (NCAR). Hoffmann et al. (2016) showed that ERA-interim data provides the best trade-off between accuracy and computing time. So in this study, our calculations are based on ERA-interim data.

Diffusion is modeled by uncorrelated Gaussian random displacements of the air parcels with zero mean and standard deviations  $\sigma_x = \sqrt{D_x \Delta t}$  (horizontally) and  $\sigma_z = \sqrt{D_z \Delta t}$  (vertically).  $D_x$  and  $D_z$  are the horizontal and vertical diffusivities respectively, and  $\Delta t$  is the time step for the trajectory calculations. For the Merapi simulation,  $D_x$  and  $D_z$  were set to  $50 \text{ m}^2 \text{ s}^{-1}$  and  $0 \text{ m}^2 \text{ s}^{-1}$  in the troposphere and  $0 \text{ m}^2 \text{ s}^{-1}$  and  $0.1 \text{ m}^2 \text{ s}^{-1}$  in the stratosphere, respectively. In addition, sub-grid scale wind fluctuations, which are particularly important for long-range simulations, are simulated by a Markov model (Stohl et al., 2005; Hoffmann et al., 2016). Loss processes of chemical species,  $\text{SO}_2$  in our case, are simulated based on an exponential decay of the mass assigned to each air parcel. In the stratosphere, a constant half lifetime of

7 days was assumed for SO<sub>2</sub>. Considering that the Merapi eruption occurred in the humid tropics with a high concentration of hydroxyl radical, a half lifetime of 2.5 days was assumed for the troposphere. To estimate the time- and altitude-resolved SO<sub>2</sub> injections, we follow the approach of Hoffmann et al. (2016) and Wu et al. (2017) and use backward trajectories calculated with the MPTRAC model together with AIRS SO<sub>2</sub> measurements. Measurements from 3 to 7 November 2010 were used to estimate the SO<sub>2</sub> injection during the explosive eruption. Since the AIRS measurements do not provide altitude information, we established a column of air parcels at each AIRS SO<sub>2</sub> detection. The vertical range of the column was set to 0–25 km, covering the possible vertical dispersion range of the SO<sub>2</sub> plume in the first few days. The AIRS footprint size varies between 14 and 41 km, hence in the horizontal direction, we chose an average of 30 km as the full width at half maximum for the Gaussian scatter of the air parcels. In our simulations, a fixed total number of 100,000 air parcels was assigned to all air columns and the number of air parcels in each column was scaled linearly proportional to the SO<sub>2</sub> index. Then backward trajectories were calculated for all air parcels, and trajectories that were at least 2 days but no more than 5 days long and that passed the volcano domain were recorded as emissions of Merapi. The volcano domain was defined by means of a search radius of 75 km around the location of the Merapi and 0–20 km in the vertical direction, covering all possible injection heights. Sensitivity experiments have been conducted to optimize these pre-assigned parameters to obtain the best simulation results. Our estimates of the Merapi SO<sub>2</sub> injection are shown in Sect. 3.

Starting with the reconstructed altitude-resolved SO<sub>2</sub> injection time series, the transport of the Merapi plume is simulated for 6 months. The trajectory calculations are driven by the ERA–Interim data (Dee et al., 2011) interpolated on a 1° × 1° horizontal grid on 60 model levels with the vertical range extending from the surface to 0.1 hPa. The ERA–Interim data are provided at 00, 06, 12 and 18 UTC. Outputs of model simulations are given every 3 hours at 00, 03, 06, 09, 12, 15, 18 and 21 UTC. The impact of different meteorological analyses on MPTRAC simulations was assessed by Hoffmann et al. (2016, 2017). In both studies the ERA–Interim data showed good performance.

## 203 **3 Results**

### 204 **3.1 Meteorological background conditions in Antarctica**

205 The Merapi eruption in 2010 occurred during the seasonal transition from austral spring to summer  
 206 when the polar vortex typically weakens and the ozone hole shrinks. Figure 1 depicts the meteorological  
 207 conditions at the polar lower stratosphere (150hPa, ~12km) after the eruption. The minimum

208 temperature south of 50 °S (Fig. 1a) was much lower than the climatological mean during  
 209 mid-November to mid-December but still higher than the low temperature necessary for the existence of  
 210 PSCs. The polar mean temperature in Fig. 1b, defined as the temperature averaged over latitudes south  
 211 of 60 °S, stayed lower than the climatological mean from November 2010 until February 2011.  
 212 Corresponding to the low temperatures, the average zonal wind speed at 60 °S (Fig. 1c) was significantly  
 213 larger than the climatological mean value from November 2010 to mid-January 2011. The eddy heat  
 214 flux in Fig. 1d is the product of meridional wind departures and temperature departures from the  
 215 respective zonal mean values. A more negative value of the eddy heat flux indicates that wave systems  
 216 are propagating into the stratosphere and are warming the polar region (Edmon et al., 1980; Newman  
 217 and Nash, 2000; Newman et al., 2001). There is a strong anticorrelation between temperature and the  
 218 45-day average of the eddy heat flux lagged prior to the temperature. Compared with the climatological  
 219 mean state, the polar vortex was more disturbed during mid-July to end of August, but from  
 220 mid-October to late November, the heat flux was much smaller than the long-term average, which  
 221 meant a reduction in dynamical disturbances. Considering the temperature, the subpolar wind speed and  
 222 the heat flux, the polar vortex was colder and stronger in November and early December 2010 than it  
 223 was at the same time in other years (see Fig. 1e). Consistent with the large wind speed and low  
 224 temperature, the polar vortex was stable after the Merapi eruption until early December 2010.  
 225 Afterwards, it shrunk abruptly and was destructed in by mid-January 2011. In accordance with the  
 226 strength of the polar vortex, in November and early December 2010 the ozone hole area in Fig. 1f,  
 227 defined as the region of ozone values below 220 Dobson Units (DU) located south of 40 °S, was larger  
 228 than the climatological mean. Meanwhile, the low polar mean temperature and stable polar vortex  
 229 resulted in a long-lasting ozone hole, which disappeared in the last week of December. The polar vortex  
 230 broke down by mid-January 2011 when the subpolar wind speed decreased below 15 m/s (Fig. 1c).

### 231 **3.2 Merapi eruption and SO<sub>2</sub> injection time series**

232 According to the chronology of the Merapi eruption that combined satellite observations from AIRS, the  
 233 Infrared Atmospheric Sounding Interferometer (IASI), the Ozone Monitoring Instrument (OMI) and a  
 234 limited number of Ground-based ultra-violet Differential Optical Absorption Spectroscopy (DOAS)  
 235 measurements (Surono et al., 2012), the explosive eruption first occurred between 10:00 and 12:00 UTC  
 236 on 26 October and this eruption generated an ash plume that reached 12 km altitude. A period of  
 237 relatively small explosive eruptions continued from 26 October to 31 October. On 3 November, the  
 238 eruptive intensity increased again accompanied by much stronger degassing and a series of explosions.



239 The intermittent explosive eruptions occurred during 4–5 November with the climactic eruption on 4  
 240 November, producing an ash column that reached up to 17 km altitude. From 6 November, explosive  
 241 activity decreased slowly and the degassing declined.

242 Figure 2 shows the time- and altitude-resolved SO<sub>2</sub> injections of the Merapi eruption retrieved using the  
 243 AIRS SO<sub>2</sub> index data and the backward-trajectory approach. It agrees well with the chronology of the  
 244 Merapi eruption as outlined by Surono et al. (2012). SO<sub>2</sub> was injected into altitudes below 8 km during  
 245 the initial explosive eruptions on 26–30 October. Starting from 31 October the plume reached up to 12  
 246 km. During 1–2 November the SO<sub>2</sub> injections into altitudes below 12 km continued but the mass was  
 247 less than the mass at the initial phase. On 3 November the intensity increased again and peaked on 4  
 248 November. Before 3 November the reconstruction indicates a minor fraction of SO<sub>2</sub> right above the  
 249 tropopause. The SO<sub>2</sub> above the tropopause is not reported in the study Surono et al. (2012), but is quite  
 250 robust in our simulations. Further, CALIOP profiles from show that some dust appeared at the height  
 251 from about 14 to 18 km around Mount Merapi on 2, 3, 5 November 2010, and between 3 and 17 km on  
 252 6 November 2010. It could be a fraction of volcanic plume elevated by the updraft in the convection  
 253 associated with the tropical storm Anggrek. The center of the tropical storm Anggrek was on the Indian  
 254 ocean about 1000 km southwest of the Mount Merapi. The SO<sub>2</sub> mass above the tropopause is very small  
 255 compared with the total SO<sub>2</sub> mass.

256 To study the long-range transport of the Merapi plume, we initialized 100,000 air parcels as the SO<sub>2</sub>  
 257 injection time series shown in Fig. 2. A total SO<sub>2</sub> mass of 0.44 Tg is assigned to these air parcels as  
 258 provided in Surono et al. (2012). Then the trajectories are calculated forward for 6 months. Here, we  
 259 only considered the plume in the upper troposphere and stratosphere where the lifetime of both SO<sub>2</sub> and  
 260 sulfate aerosol is longer than their lifetime in the lower troposphere. Further, the SO<sub>2</sub> was converted into  
 261 sulfate aerosol within a few weeks (von Glasow et al., 2009; also confirmed by the AIRS SO<sub>2</sub> and  
 262 MIPAS aerosol data), and we assumed that the sulfate aerosol remained collocated with the SO<sub>2</sub> plume.

263 Figure 3 shows the evolution of the simulated Merapi plume and compares the plume altitudes to the  
 264 aerosol top altitudes measured by MIPAS between 7 and 23 November. Immediately after the eruption,  
 265 the majority of the plume moved towards the southwest and was entrained by the circulation of the  
 266 tropical storm Anggrek. After Anggrek weakened and dissipated, the majority of the plume parcels in  
 267 the upper troposphere moved eastward and those in the lower stratosphere moved westward. In general,  
 268 the altitudes of the simulated plume agree with the MIPAS measurements. The remaining discrepancies  
 269 of air parcel altitudes being higher than the altitudes of MIPAS aerosol detections can be attributed to  
 270 the fact that the MIPAS tends to underestimate aerosol top cloud altitudes, which is about 0.9 km in

case of low extinction aerosol layers and can reach down to 4.5 km in case of broken cloud conditions (Höpfner et al., 2009).

### 3.3 Lagrangian simulation and satellite observation of the transport of the Merapi plume

The early plume evolution until about one month after the initial eruption is shown on the maps in Fig. 3 together with MIPAS measurements of volcanic aerosol (only aerosol detections with  $ACI < 7$  are shown). Within about one month after the initial eruption, the plume is nearly entirely transported around the globe in the tropics, moving west at altitudes of about 17 km. The lower part of the plume, below about 17 km is transported south-eastward and reaches latitudes south of 30 °S by mid-November. The simulated long-term transport of the Merapi plume is illustrated in Fig. 4, showing the proportion of air parcels reaching a latitude-altitude bin every half a month.

The simulation results show that during the first month after the eruption (Fig. 4a–b), the majority of the plume was transported southward roughly along the isentropic surfaces. The significant pathways are above and under the core of the subtropical jet in the Southern Hemisphere. However, because of the transport barrier of the polar jet during austral spring, the plume was confined to the north of 60 °S. In December 2010 (Fig. 4c–d), a larger fraction of the plume was transported southward above the subtropical jet core and deep into the polar region south of 60 °S as the polar jet broke down. Until the end of January 2011, the majority of the plume entered the mid- and high latitudes in the Southern Hemisphere. Substantial quasi-horizontal poleward transport from the TTL towards the extratropical lowermost stratosphere (LMS) in Antarctica was found from November 2010 to February 2011 (Fig. 4a–h), approximately between 350 and 480 K (~10–20 km). In March 2011 (Fig. 4i–j), the proportion of the plume that went across 60 °S stopped increasing and the maxima of the proportion descended below 380 K. Besides this transport towards Antarctica, a slow upward transport could also be seen. The top of the simulated plume was below the 480 K isentropic surface at around 18 km in Fig. 4a and then the top of the plume went up to 25 km five months later in Fig. 4j. This slow upward transport was mainly located in the tropics and can be attributed to the tropical upwelling.

MIPAS ACI values are used to study the plume dispersion and compare with the simulations. Figure 5 displays the time-latitude section of the median value of the MIPAS ACI within the vertical range of 12 and 18 km from January 2005 to April 2012, covering the TTL and the LMS. Only ACI values from 4 to 8 are shown in Fig. 5. The MIPAS data show all the key events that contributed to the aerosol load in the UTLS, i.e., moderate volcanic eruptions from 2005 to 2012 and one large bushfire in 2009, as well as the subsequent dispersion and change of aerosol load over time. The poleward transport of aerosol

302 from the Merapi eruption in 2010, marked by the red triangle in Fig. 5, caused the most long-lasting  
 303 aerosol signals in the Southern Hemisphere mid- and high latitudes. The small ACI values in the winter  
 304 months of both hemispheres are attributed to the non-ice PSCs.

305 While individual aerosol detections can be shown using an  $ACI < 7$  (Fig. 3), we used zonal ACI averages  
 306 to compare with the simulations. To show the change of aerosol load in the Southern Hemisphere due to  
 307 the Merapi eruption, we first removed the seasonal cycle from the MIPAS aerosol data. Therefore, we  
 308 selected a time period from November 2007 to March 2008 with no major  $SO_2$  emission in the Southern  
 309 Hemisphere UTLS (as shown in Fig. 5) as a “reference state”. We calculated the biweekly median ACI  
 310 between November 2010 and March 2011 and subtracted it from the biweekly ACI median of the  
 311 “reference state”. The results are shown in Fig. 6. Small MIPAS ACI values represent large aerosol load  
 312 and large ACI values represent small aerosol load, so in Fig. 6, the positive values indicate an increase  
 313 of the aerosol load and negative values indicate a decrease of the aerosol load. Reference time periods  
 314 from November 2003 to March 2004 and November 2005 to March 2006 were also tested and they all  
 315 showed qualitatively comparable results.

316 In the first half of November, the zonal median (Fig. 6a) does not show a signal of the Merapi eruption,  
 317 because during the initial time period, the plume was confined to longitudes around the volcano (see Fig.  
 318 3), and the MIPAS tracks did not always sample the maximum concentration, so the median ACI values  
 319 are large (low concentration or clear air). In the second half of November, the plume was transported  
 320 zonally around the globe, and hence the largest aerosol increase appeared in the upper troposphere at the  
 321 latitude of the Mount Merapi (Fig. 6b) and then moved quasi-horizontally southward into the UTLS  
 322 region at  $\sim 30\text{--}40^\circ\text{S}$  (Figs. 6c–d), consistent with the simulation result in Fig. 4c–d. The increase of the  
 323 aerosol load south of  $60^\circ\text{S}$  started to become prominent after December 2010, and the poleward  
 324 movement is most obvious above the 350 K isentropic surface (Figs. 6e–h). The observations confirm  
 325 the temporal and spatial characteristics of the poleward movement of the aerosol in the simulation in  
 326 Fig. 4. Later in March 2011, the enhanced aerosol load in the tropics phased out and the aerosol load  
 327 maxima descended to around the 350 K isentropic surface.

328 However, the background aerosol level in the tropical upper troposphere and stratosphere is constantly  
 329 disturbed by tropical and extratropical volcanic eruptions. The reference time period we chose  
 330 (November 2007 to March 2008) is relatively free of large aerosol sources in the Southern Hemisphere,  
 331 but the aerosol load in the tropical stratosphere is already elevated by previous volcanic eruptions, e.g.,  
 332 Soufriere Hills (May 2006), Tavurvur (October 2006), Piton de la Fournaise (April 2007), Jebel at Tair  
 333 (September 2007). So the change of the aerosol load in Fig. 6 underestimates the increase of aerosol load

334 in the tropical stratosphere after the Merapi eruption. The slow upward transport in the tropics shown in  
335 Fig. 4 is about 7 km in five months. It is not visible in Fig. 6, but the time series of the MIPAS  
336 measurements in the tropical stratosphere reveals a similar upward transport trend (see Fig. A1 in the  
337 appendix).

### 338 **3.4 Quasi-horizontal transport from the tropics to Antarctica**

339 The MPTRAC simulations and the MIPAS measurements show the transport in the “surf zone” that  
340 reaches from the subtropics to high latitudes (Holton et al., 1995), where air masses are affected by both  
341 fast meridional transport and the slow BDC. The reconstructed emission time series in Fig. 2 and the  
342 MIPAS aerosol measurements in Figs. 3 and 6 show that the volcanic plume was injected into the TTL.  
343 Hence, the main transport pathway towards Antarctica is the quasi-horizontal mixing in the lower  
344 extratropical stratosphere between 350 and 480 K (see Fig. 4 and Fig. 6). Figure 7 illustrates how the  
345 volcanic plume between 350 and 480 K approached Antarctica over time. Kunz et al. (2015) derived a  
346 climatology of potential vorticity (PV) streamer boundaries on isentropic surfaces between 320 and  
347 500K using ERA-Interim reanalyses for the time period from 1979 to 2011. This boundary is derived  
348 from the maximum product of the meridional PV gradient and zonal wind speed on isentropic surfaces,  
349 which identifies a PV contour that best represents the dynamical discontinuity on each isentropic  
350 surface. It can be used as an isentropic transport barrier and to determine the isentropic cross-barrier  
351 transport related to Rossby wave breaking (Haynes and Shuckburgh, 2000; Kunz et al., 2011a,b). In Fig.  
352 7, gray dashed lines mark PV boundaries on the 350 K isentropic surface. On isentropic surfaces below  
353 380 K, the PV boundaries represent the dynamical discontinuity near the core of the subtropical jet  
354 stream. Isentropic transport of air masses across these boundaries indicates exchange between the  
355 tropics and extratropics due to Rossby wave breaking. On isentropic surfaces above 400 K, PV  
356 boundaries represent a transport barrier in the lower stratosphere, in particular, due to the polar vortices  
357 in winter (Kunz et al., 2015). For comparison, we also show the 220 DU contour lines of ozone column  
358 density (black isolines in Fig. 7), obtained from OMI on satellite Aura, indicating the boundary and size  
359 of the ozone hole. The PV boundary on 480 K is in most cases collocated with the area of the ozone  
360 hole, showing that both quantities provide a consistent representation of the area of the polar vortex.  
361 The Merapi volcanic plume first reached the transport barrier on the 350 K isentropic surface in  
362 mid-November and went close to the transport barrier on the 480 K isentropic surface in December. The  
363 long-lasting polar vortex prevented the volcanic plume from crossing the transport barrier at 480 K in  
364 early December. But from mid-December, the polar vortex became more disturbed and displaced from

the South Pole, resulting in a shrinking ozone hole. As mentioned in Sect.3.1, the ozone hole broke down at the end of December 2010 and the polar vortex broke down by mid-January 2011.

The fraction of the volcanic plume that crosses the individual transport barrier or the latitude of 60°S on each isentropic surface are shown in Fig. 8. In both cases, the proportion increased from November 2010 to January 2011. In November and December 2010 the largest plume transport across the transport barriers occurred between the 360 and 430 K isentropic surface (Fig. 8a), with a peak at 380–390 K. In January and February 2011 the peak was slightly elevated to 390–400 K. In November 2010, the volcanic plume did not cross the 480 K transport barrier of the polar vortex at high altitudes, especially above about 450 K. The high-latitude fraction increased from December 2010 to February 2011 as the weakening of the polar vortex made the transport barrier more permeable. In March and April 2011, the total proportion decreased and the peak descended to 370 K in March and further to 360 K in April. The proportion of the volcanic plume south of 60°S (Fig. 8b) increased slightly from November to December 2010, and then increased significantly from December 2010 to January and February 2011 at all altitudes as the polar vortex displaced and broke down. Finally, the transport to the south of 60°S started to decrease in March 2011. From November 2010 to February 2011 the peak was around 370–400 K, but in March and April 2011 the peak resided around 350–370 K.

Figure 9a summarizes the simulated poleward transport of the volcanic plume between the isentropic surfaces of 350 and 480 K from November 2010 to March 2011 and the percentage of air parcels south of 60°S. The percentage was calculated by dividing the number of SO<sub>2</sub> parcels between 350 and 480 K south of 60°S by the total number of SO<sub>2</sub> parcels released for the forward trajectory simulation. Figure 9b demonstrates the change of aerosol load in the same vertical range for MIPAS aerosol detections. As in Sect. 3.3, we calculated the median ACI between November 2010 and March 2011 and subtracted it from the ACI median of the “reference state” between November 2007 and March 2008. Positive values indicate an increase of the aerosol load and negative values indicate a decrease of the aerosol load. The simulations show that the plume reached 60°S in December 2010. Correspondingly, the aerosol load south of 60°S was elevated. The percentage fluctuated, but increased until the end of February 2011, with a maximum percentage of about 4%. A steep increase occurred from mid-December 2010 to end of January 2011, following the displacement and breakdown of the polar vortex. The elevated aerosol load south of 60°S decreased from March 2011, and part of the plume descended to altitudes below 350 K as shown by Fig. 8b. The MIPAS aerosol measurements in Fig. 9b where a positive ACI difference indicates an increase in the aerosol load, confirm the simulated transport pattern in Fig. 9a. Overall, simulations and observations indicate the largest increase of the aerosol load in the tropics and

mid-latitudes, but also show a significant enhancement over the south polar region after December 2010.

## 4 Discussion

The results presented in Sect. 3 show that the main transport pathway for the poleward transport of the Merapi volcanic plume to Antarctica was between the isentropic surfaces of 350 and 480 K (about 10 to 20 km), covering the TTL and the lower stratosphere at mid- and high latitudes. Our findings using the MPTRAC model and MIPAS ACI are supported by the sulfate aerosol volume density retrievals by Günther et al. (2018). The aerosol enhancement due to volcanic eruptions between 12 and 18 km revealed in Fig. 5 agrees with the sulfate aerosol enhancement shown in the Fig. 5 in Günther et al. (2018). The Fig. 5 in Günther et al. (2018) shows that after the eruption of Merapi 2010, clear poleward dispersion of sulfate aerosol can be seen between 12 and 18 km, and the most prominent signal appears on 14 and 16 km. The sulfate aerosol mole fraction south of 60 °S increased also from the end of December 2010 as shown in our Fig. 9, although the specific date is not clear because of the seasonal cycle in the data. The enhanced sulfate aerosol lasted until middle of March 2011 on 12 and 14 km, and until early April on 16 km, which also generally agrees with our results.

There are some differences in the MIPAS ACI data used in this study and the sulfate aerosol retrievals in Günther et al. (2018), which may result in some minor discrepancies regarding the spatial distribution of aerosols. The MIPAS ACI data in this study are given on 1.5 km vertical sampling grid in the UTLS region, but the sulfate aerosol retrieval in Günther et al. (2018) had a vertical resolution of 3–4 km. And comparing with the MIPAS ACI, there are further steps in Günther et al. (2018) to deal with ice cloud and filter out PSCs. Due to the vertical resolution of 3–4 km, once ice cloud is detected, Günther et al. (2018) removed all retrieved data up to 4 km above the ice cloud. And they filtered out PSCs based on latitude, time, and temperature criteria, i.e., if the temperature between 17–23 km dropped below the NAT existence temperature (195 K) poleward of 40 ° in NH winter (15 November to 15 April) and SH winter (1 April to 30 November) the retrieval results were discarded. Filtering out PSCs based on time, latitude, and temperature criteria may lead to a loss of clear air profiles, e.g., when the synoptic temperature is sufficiently low but no PSCs are present. Usually the PSCs signals are much stronger than the aerosol signals, so we keep the non-ice PSC data to give an impression on the time and region, when and where the identification of volcanic aerosol is not possible.

Based on the simulation results in Sect. 3.4, up to 4% of the volcanic plume air parcels was transported from the TTL to the lower stratosphere in the south polar region till the end of February 2011. We assigned a total mass of 0.44 Tg to all SO<sub>2</sub> parcel released, which means the Merapi eruption contributed about 8800 tons of sulfur to the polar lower stratosphere within 4 months after the eruption, assuming that the sulfate aerosol converted from the SO<sub>2</sub> remained in the plume. Although the MPTRAC model we used to simulate the three-dimensional movement of air parcels in the volcanic plumes can estimate the conversion of SO<sub>2</sub> to sulfate aerosol during the transport process, however, it does not resolve the chemical processes of aerosol formation. Hence, the estimated 8800 tons of sulfur are the maximum value since processes as e.g. wet deposition remove sulfur from the atmosphere. But in the lower stratosphere, the atmosphere is relatively dry and clean compared with the lower troposphere, so the sulfate aerosol has a lower possibility to interact with clouds or to be washed out. In fact, in the polar lower stratosphere usually sedimentation and downward transport by the BDC are the main removal processes. Clouds and washout processes usually cannot be expected in the lower stratosphere. However, the amount of sulfate aerosol in the plume could also be affected by other mechanisms that speed up the loss of sulfur, for example, coagulation in the volcanic plume, or the absorption of sulfur onto fine ash particles. But for the moderate eruption Merapi in 2010, sulfuric particle growth may not be as significant as it is in a large volcanic eruption, so the scavenging efficiency of sulfur will be low. So generally, our estimation may be larger than the actual value, but this number may be considered as the upper limit of the contribution of the Merapi eruption.

Besides, a kinematic trajectory model like MPTRAC, in which reanalysis vertical wind is used as vertical velocity, typically shows higher vertical dispersion in the equatorial lower stratosphere compared with a diabatic trajectory model (Schoeberl et al., 2003; Wohltmann and Rex, 2008; Liu et al., 2010; Ploeger et al., 2010, 2011). However, the ERA–Interim reanalysis data used in this study to drive the model may constrain the vertical dispersion much better than older reanalyses (Liu et al., 2010; Hoffmann et al., 2017). The meridional transport in this study was mainly quasi-horizontal transport in the mid- and high latitude UTLS region, so the effect of the vertical speed scheme is limited.

The aerosol transported to the polar lower stratosphere will finally descend with the downward flow and have a chance to become a nonlocal source of sulfur for Antarctica by dry and wet deposition, following the general precipitation patterns. Quantifying the sulfur deposition flux onto Antarctica is beyond the scope of this study, though. Model results of Solomon et al. (2016) suggest that the Merapi eruption made a small but significant contribution to the ozone depletion in the following year over Antarctica in the vertical range of 100–200 hPa, roughly between 10 and 14 km. This altitude range is in agreement

with our results, where we found transport into the Antarctic stratosphere between 10 and 20 km. When the volcanic plume was transported to Antarctica in December 2010, the polar synoptic temperature at these low height levels was already too high for the formation of PSCs. The additional ozone depletion found by Solomon et al. (2016) together with the fact that sulfate aerosol was transported from the Merapi into the Antarctic stratosphere between November and February where no PSCs are present during polar summer, may support the study that suggested that significant ozone depletion can also occur on cold binary aerosol (Drdla and Müller, 2012). The Merapi eruption in 2010 could be an interesting case study for more sophisticated geophysical models to study the aftermath of volcanic eruptions on polar processes.

## 5 Summary

In this study, we analyzed the poleward transport of volcanic aerosol released by the Merapi eruption in 2010 from the tropics to the Antarctic lower stratosphere. The analysis was based on AIRS SO<sub>2</sub> measurements, MIPAS sulfate aerosol detections and MPTRAC transport simulations. First, we estimated altitude-resolved SO<sub>2</sub> injection time series during the explosive eruption period using AIRS data together with a backward trajectory approach. Second, the long-range transport of the volcanic plume from the initial eruption to April 2011 was simulated based on the derived SO<sub>2</sub> injection time series. Then the evolution and the poleward migration of the volcanic plume were analyzed using the forward trajectory simulations and MIPAS aerosol measurements. The simulations are compared with and verified by the MIPAS aerosol measurements.

Results of this study suggest that the volcanic plume from the Merapi eruption was transported from the tropics to the south of 60 °S within a time scale of one month. Later on, in the UTLS region a fraction of the volcanic plume (~4%) crossed 60 °S, even further to Antarctica until the end of February 2011. As a result, the aerosol load in the Antarctic lower stratosphere was significantly elevated. This relatively fast meridional transport of volcanic aerosol was mainly carried out by quasi-horizontal mixing from the TTL to the extratropical lower stratosphere. Based on the simulations, most of the quasi-horizontal mixing occurred between the isentropic surfaces of 360 to 430 K. This transport was in turn facilitated by the weakening of the subtropical jet and the breakdown of the polar vortex in the seasonal transition from austral spring to summer. The polar vortex in late austral spring 2010 was relatively strong compared to the climatological mean state. However, in December 2010 the polar vortex was displaced off the South Pole and later on broke down when the plume went to the high latitudes, so the volcanic



488 plume did not penetrate the polar vortex but entered the South Pole with the breakdown of the polar  
489 vortex.

490 Overall, after the Merapi eruption, the largest increase of aerosol load occurred in the Southern  
491 Hemisphere midlatitudes and a relatively small but significant fraction of the volcanic plume (4%) was  
492 further transported to the Antarctic lower stratosphere within 4 months after the eruption. As a  
493 maximum estimation, it contributed up to 8800 tons of sulfur to the Antarctic stratosphere, which  
494 indicates that long-range transport under favorable meteorological conditions can make moderate  
495 tropical volcanic eruptions an important remote source of sulfur to Antarctica.

496

497 *Code and data availability.* AIRS data are distributed by the NASA Goddard Earth Sciences Data  
498 Information and Services Center. The SO<sub>2</sub> index data used in this study (Hoffmann et al., 2014) are  
499 available for download at <https://datapub.fz-juelich.de/slcs/airs/volcanoes/> (last access: 19 October  
500 2018). Envisat MIPAS Level-1B data are distributed by the European Space Agency. The ERA–Interim  
501 reanalysis data (Dee et al., 2011) were obtained from the European Centre for Medium-Range Weather  
502 Forecasts. The code of the Massive-Parallel Trajectory Calculations (MPTRAC) model is available  
503 under the terms and conditions of the GNU General Public License, Version 3 from the repository at  
504 <https://github.com/slcs-jsc/mptrac> (last access: 19 October 2018).

505

## 506 *Appendix*

507 Figure A1 shows the 9-day running median values of the MIPAS ACI between 10 °N and 10 °S. During  
508 the time period of the reference state (November 2007 to March 2008), the aerosol load in the tropical  
509 stratosphere from 20 to 25 km is elevated by a couple of previous volcanic eruptions. The aerosol load  
510 at this vertical range after the Merapi eruption in 2010 is apparently smaller compared with the  
511 reference state.

512 It should be noted that there are semiannual data oscillations in the MIPAS ACI aerosol detections. This  
513 periodic pattern is caused by the aerosol index that uses the atmospheric window region between 960  
514 and 961 cm<sup>-1</sup>. Around this window region, there are CO<sub>2</sub> laser bands. Due to the semiannual  
515 temperature changes at about 50 km (semiannual oscillation), the CO<sub>2</sub> radiance contribution to this  
516 window region also oscillates. As this window is generally very clear of other trace gases, this  
517 oscillation is not only visible at higher altitudes but also in the lower stratosphere, because the satellite  
518 line of sight looks through the whole layer (Wu et al., 2017). But even though with the semiannual data  
519 oscillations, the upward transport of the aerosol from the Merapi eruption in the tropical stratosphere is

520 still visible and the vertical speed is estimated to about 7–8 km in five months (November 2010 to  
521 March 2011).

522

523 *Competing interests.* The authors declare that they have no conflict of interest.

524

525 *Acknowledgments.* This work was supported by National Natural Science Foundation of China under  
526 grant no. 41605023, China Postdoctoral Science Foundation under grant no. 2018T110131 and  
527 International Postdoctoral Exchange Fellowship Program 2015 under grant no. 20151006.

## 528 **Reference**

- 529 Aumann, H. H., Chahine, M. T., Gautier, C., Goldberg, M. D., Kalnay, E., McMillin, L. M., Revercomb,  
530 H., Rosenkranz, P. W., Smith, W. L., Staelin, D. H., Strow, L. L., and Susskind, J.: AIRS/AMSU/HSB  
531 on the Aqua mission: design, science objectives, data products, and processing systems, *IEEE Trans.*  
532 *Geosci. Remote Sens.*, 41, 253-264, doi: 10.1109/TGRS.2002.808356, 2003.
- 533 Bosilovich, M., Akella, S., Coy, L., Cullather, R., Draper, C., Gelaro, R., Kovach, R., Liu, Q., Molod,  
534 A., Norris, P., Wargan, K., Chao, W., Reichle, R., Takacs, L., Vikhliayev, Y., Bloom, S., Collow, A.,  
535 Firth, S., Labow, G., Partyka, G., Pawson, S., Reale, O., Schubert, S. D., and Suarez, M.: MERRA-2:  
536 Initial evaluation of the climate, Tech. rep., NASA, series on Global Modeling and Data  
537 Assimilation, NASA/TM–2015-104606, Vol. 43, 2015.
- 538 Dee, D. P., Uppala, S. M., Simmons, A. J., Berrisford, P., Poli, P., Kobayashi, S., Andrae, U.,  
539 Balmaseda, M. A., Balsamo, G., Bauer, P., Bechtold, P., Beljaars, A. C. M., van de Berg, L., Bidlot,  
540 J., Bormann, N., Delsol, C., Dragani, R., Fuentes, M., Geer, A. J., Haimberger, L., Healy, S. B.,  
541 Hersbach, H., Holm, E. V., Isaksen, I., Kallberg, P., Kohler, M., Matricardi, M., McNally, A. P.,  
542 Monge-Sanz, B. M., Morcrette, J. J., Park, B. K., Peubey, C., de Rosnay, P., Tavolato, C., Thepaut, J.  
543 N., and Vitart, F.: The ERA-Interim reanalysis: configuration and performance of the data  
544 assimilation system, *Q. J. R. Meteorol. Soc.*, 137, 553-597, doi: 10.1002/qj.828, 2011.
- 545 Drdla, K., and Müller, R.: Temperature thresholds for chlorine activation and ozone loss in the polar  
546 stratosphere, *Ann. Geophys.*, 30, 1055-1073, doi: 10.5194/angeo-30-1055-2012, 2012.
- 547 Edmon, H. J. J., Hoskins, B. J., and McIntyre, M. E.: Eliassen-Palm Cross Sections for the Troposphere,  
548 *J. Atmos. Sci.*, 37, 2600-2616, doi: 10.1175/1520-0469(1980)037<2600:epcsft>2.0.co;2, 1980.
- 549 Fischer, H., Birk, M., Blom, C., Carli, B., Carlotti, M., von Clarmann, T., Delbouille, L., Dudhia, A.,  
550 Ehhalt, D., Endemann, M., Flaud, J. M., Gessner, R., Kleinert, A., Koopman, R., Langen, J.,  
551 López-Puertas, M., Mosner, P., Nett, H., Oelhaf, H., Perron, G., Remedios, J., Ridolfi, M., Stiller, G.,  
552 and Zander, R.: MIPAS: an instrument for atmospheric and climate research, *Atmos. Chem. Phys.*, 8,  
553 2151-2188, doi: 10.5194/acp-8-2151-2008, 2008.
- 554 Friberg, J., Martinsson, B. G., Andersson, S. M., and Sandvik, O. S.: Volcanic impact on the climate –  
555 the stratospheric aerosol load in the period 2006–2015, *Atmos. Chem. Phys.*, 18, 11149-11169, doi:  
556 10.5194/acp-18-11149-2018, 2018.
- 557 Gao, C., Oman, L., Robock, A., and Stenchikov, G. L.: Atmospheric volcanic loading derived from  
558 bipolar ice cores: Accounting for the spatial distribution of volcanic deposition, *J. Geophys. Res.*  
559 *Atmos.*, 112, D09109, doi: 10.1029/2006JD007461, 2007.

Griessbach, S., L. Hoffmann, R. Spang and M. Riese: Volcanic ash detection with infrared limb sounding: MIPAS observations and radiative transfer simulations, *Atmos. Meas. Tech.* 7, 1487-1507, doi: 10.5194/amt-7-1487-2014, 2014.

Griessbach, S., Hoffmann, L., Spang, R., von Hobe, M., Müller, R., and Riese, M.: Infrared limb emission measurements of aerosol in the troposphere and stratosphere, *Atmos. Meas. Tech.*, 9, 4399-4423, doi:10.5194/amt-9-4399-2016, 2016.

Günther, A., Höpfner, M., Sinnhuber, B. M., Griessbach, S., Deshler, T., von Clarmann, T., and Stiller, G.: MIPAS observations of volcanic sulphate aerosol and sulphur dioxide in the stratosphere, *Atmos. Chem. Phys.*, 2017, 1-32, doi: 10.5194/acp-18-1217-2018, 2018.

Haynes, P., and Shuckburgh, E.: Effective diffusivity as a diagnostic of atmospheric transport: 2. Troposphere and lower stratosphere, *J. Geophys. Res. Atmos.*, 105, 22795-22810, doi: 10.1029/2000JD900092, 2000.

Heng, Y., Hoffmann, L., Griessbach, S., Röfler, T., and Stein, O.: Inverse transport modeling of volcanic sulfur dioxide emissions using large-scale simulations, *Geosci. Model Dev.*, 9, 1627-1645, doi:10.5194/gmd-9-1627-2016, 2016.

Hoffmann, L., Griessbach, S., and Meyer, C. I.: Volcanic emissions from AIRS observations: detection methods, case study, and statistical analysis, in: *Remote Sensing of Clouds and the Atmosphere XIX and Optics in Atmospheric Propagation and Adaptive Systems XVII*, edited by: Comeron, A., Kassianov, E. I., Schafer, K., Picard, R. H., Stein, K., and Gonglewski, J. D., *Proceedings of SPIE, Spie-Int Soc Optical Engineering*, Bellingham, doi: 92421410.1117/12.2066326, 2014.

Hoffmann, L., Hertzog, A., Röfler, T., Stein, O., and Wu, X.: Intercomparison of meteorological analyses and trajectories in the Antarctic lower stratosphere with Concordiasi superpressure balloon observations, *Atmos. Chem. Phys.*, 17, 8045-8061, doi: 10.5194/acp-17-8045-2017, 2017.

Hoffmann, L., Röfler, T., Griessbach, S., Heng, Y., and Stein, O.: Lagrangian transport simulations of volcanic sulfur dioxide emissions: Impact of meteorological data products, *J. Geophys. Res. Atmos.*, 121, 4651-4673, doi: 10.1002/2015JD023749, 2016.

Hofmann, D. J., Rosen, J. M., and Gringel, W.: Delayed production of sulfuric acid condensation nuclei in the polar stratosphere from El Chichon volcanic vapors, *J. Geophys. Res. Atmos.*, 90, 2341-2354, doi:10.1029/JD090iD01p02341, 1985.

Hofmann, D. J., Rosen, J. M., and Harder, J. W.: Aerosol measurements in the winter/spring Antarctic stratosphere: 1. Correlative measurements with ozone, *J. Geophys. Res. Atmos.*, 93, 665-676, doi:10.1029/JD093iD01p00665, 1988.

Holton, J. R., Haynes, P. H., McIntyre, M. E., Douglass, A. R., Rood, R. B., and Pfister, L.: Stratosphere-troposphere exchange, *Rev. Geophys.*, 33, 403-439, doi: 10.1029/95RG02097, 1995.

Höpfner, M., Boone, C. D., Funke, B., Glatthor, N., Grabowski, U., Günther, A., Kellmann, S., Kiefer, M., Linden, A., Lossow, S., Pumphrey, H. C., Read, W. G., Roiger, A., Stiller, G., Schlager, H., von Clarmann, T., and Wissmüller, K.: Sulfur dioxide (SO<sub>2</sub>) from MIPAS in the upper troposphere and lower stratosphere 2002–2012, *Atmos. Chem. Phys.*, 15, 7017-7037, doi: 10.5194/acp-15-7017-2015, 2015.

Höpfner, M., Pitts, M. C., and Poole, L. R.: Comparison between CALIPSO and MIPAS observations of polar stratospheric clouds, *J. Geophys. Res. Atmos.*, 114, doi:10.1029/2009JD012114, 2009.

Ivy, D. J., Solomon, S., Kinnison, D., Mills, M. J., Schmidt, A., and Neely, R. R.: The influence of the Calbuco eruption on the 2015 Antarctic ozone hole in a fully coupled chemistry-climate model, *Geophys. Res. Lett.*, 44, 2556-2561, doi: 10.1002/2016GL071925, 2017.

Jäger, H., and Wege, K.: Stratospheric ozone depletion at northern midlatitudes after major volcanic eruptions, *J. Atmos. Chem.*, 10, 273-287, doi: 10.1007/bf00053863, 1990.

606 Kalnay, E., Kanamitsu, M., Kistler, R., Collins, W., Deaven, D., Gandin, L., Iredell, M., Saha, S., White,  
 607 G., Woollen, J., Zhu, Y., Chelliah, M., Ebisuzaki, W., Higgins, W., Janowiak, J., Mo, K. C.,  
 608 Ropelewski, C., Wang, J., Leetmaa, A., Reynolds, R., Jenne, R., and Joseph, D.: The NCEP/NCAR  
 609 40-Year Reanalysis Project, *Bull. Am. Meteorol. Soc.* 77, 437-472, doi:  
 610 10.1175/1520-0477(1996)077<0437:tnyrp>2.0.co;2, 1996.

611 Khaykin, S. M., Godin-Beekmann, S., Keckhut, P., Hauchecorne, A., Jumelet, J., Vernier, J. P.,  
 612 Bourassa, A., Degenstein, D. A., Rieger, L. A., Bingen, C., Vanhellemont, F., Robert, C., DeLand,  
 613 M., and Bhartia, P. K.: Variability and evolution of the midlatitude stratospheric aerosol budget from  
 614 22 years of ground-based lidar and satellite observations, *Atmos. Chem. Phys.*, 17, 1829-1845, doi:  
 615 10.5194/acp-17-1829-2017, 2017.

616 Kunz, A., Konopka, P., Müller, R., and Pan, L. L.: Dynamical tropopause based on isentropic potential  
 617 vorticity gradients, *J. Geophys. Res. Atmos.*, 116, D01110, doi: 10.1029/2010JD014343, 2011a.

618 Kunz, A., Pan, L. L., Konopka, P., Kinnison, D. E., and Tilmes, S.: Chemical and dynamical  
 619 discontinuity at the extratropical tropopause based on START08 and WACCM analyses, *J. Geophys.*  
 620 *Res. Atmos.*, 116, D24302, doi: 10.1029/2011JD016686, 2011b.

621 Kunz, A., Sprenger, M., and Wernli, H.: Climatology of potential vorticity streamers and associated  
 622 isentropic transport pathways across PV gradient barriers, *J. Geophys. Res. Atmos.*, 120, 3802-3821,  
 623 doi: 10.1002/2014jd022615, 2015.

624 Levelt, P. F., Oord, G. H. J. v. d., Dobber, M. R., Malkki, A., Huib, V., Johan de, V., Stammes, P.,  
 625 Lundell, J. O. V., and Saari, H.: The ozone monitoring instrument, *IEEE Trans. Geosci. Remote*  
 626 *Sens.*, 44, 1093-1101, doi: 10.1109/TGRS.2006.872333, 2006.

627 Liu, Y. S., Fueglistaler, S., and Haynes, P. H.: Advection-condensation paradigm for stratospheric water  
 628 vapor, *J. Geophys. Res. Atmos.*, 115, D24307, doi: 10.1029/2010JD014352, 2010.

629 McCormick, M. P., Steele, H. M., Hamill, P., Chu, W. P., and Swissler, T. J.: Polar Stratospheric Cloud  
 630 Sightings by SAM II, *J. Atmos. Sci.*, 39, 1387-1397, doi:  
 631 10.1175/1520-0469(1982)039<1387:pscsbs>2.0.co;2, 1982.

632 Newman, P. A., and Nash, E. R.: Quantifying the wave driving of the stratosphere, *J. Geophys. Res.*  
 633 *Atmos.*, 105, 12485-12497, doi: 10.1029/1999JD901191, 2000.

634 Newman, P. A., Nash, E. R., and Rosenfield, J. E.: What controls the temperature of the Arctic  
 635 stratosphere during the spring?, *Journal of Geophysical Research: Atmospheres*, 106, 19999-20010,  
 636 doi:10.1029/2000JD000061, 2001.

637 Olsen, M. A., Douglass, A. R., Schoeberl, M. R., Rodriguez, J. M., and Yoshida, Y.: Interannual  
 638 variability of ozone in the winter lower stratosphere and the relationship to lamina and irreversible  
 639 transport, *J. Geophys. Res. Atmos.*, 115, 10.1029/2009jd013004, 2010.

640 Pallister, J. S., Schneider, D. J., Griswold, J. P., Keeler, R. H., Burton, W. C., Noyles, C., Newhall, C.  
 641 G., and Ratdomopurbo, A.: Merapi 2010 eruption—Chronology and extrusion rates monitored with  
 642 satellite radar and used in eruption forecasting, *J. Volcanol. Geotherm. Res.*, 261, 144-152, doi:  
 643 <http://dx.doi.org/10.1016/j.jvolgeores.2012.07.012>, 2013.

644 Ploeger, F., Konopka, P., Gunther, G., Grooss, J. U., and Muller, R.: Impact of the vertical velocity  
 645 scheme on modeling transport in the tropical tropopause layer, *J. Geophys. Res. Atmos.*, 115, 14, doi:  
 646 10.1029/2009jd012023, 2010.

647 Ploeger, F., Fueglistaler, S., Grooss, J. U., Gunther, G., Konopka, P., Liu, Y. S., Muller, R., Ravegnani,  
 648 F., Schiller, C., Ulanovski, A., and Riese, M.: Insight from ozone and water vapour on transport in  
 649 the tropical tropopause layer (TTL), *Atmos. Chem. Phys.*, 11, 407-419, doi:  
 650 10.5194/acp-11-407-2011, 2011.

Portmann, R. W., Solomon, S., Garcia, R. R., Thomason, L. W., Poole, L. R., and McCormick, M. P.: Role of aerosol variations in anthropogenic ozone depletion in the polar regions, *J. Geophys. Res. Atmos.*, doi: 10.1029/96JD02608, 1996.

Rößler, T., Stein, O., Heng, Y., Baumeister, P., and Hoffmann, L.: Trajectory errors of different numerical integration schemes diagnosed with the MPTRAC advection module driven by ECMWF operational analyses, *Geosci. Model Dev.*, 11, 575-592, doi: 10.5194/gmd-11-575-2018, 2018.

Sand, M., Samset, B. H., Balkanski, Y., Bauer, S., Bellouin, N., Bernsten, T. K., Bian, H., Chin, M., Diehl, T., Easter, R., Ghan, S. J., Iversen, T., Kirkevåg, A., Lamarque, J. F., Lin, G., Liu, X., Luo, G., Myhre, G., Noije, T. V., Penner, J. E., Schulz, M., Seland, Ø., Skeie, R. B., Stier, P., Takemura, T., Tsigaridis, K., Yu, F., Zhang, K., and Zhang, H.: Aerosols at the poles: an AeroCom Phase II multi-model evaluation, *Atmos. Chem. Phys.*, 17, 12197-12218, doi: 10.5194/acp-17-12197-2017, 2017.

Schoeberl, M. R., Douglass, A. R., Zhu, Z. X., and Pawson, S.: A comparison of the lower stratospheric age spectra derived from a general circulation model and two data assimilation systems, *J. Geophys. Res. Atmos.*, 108, 16, doi: 10.1029/2002jd002652, 2003.

Sembhi, H., Remedios, J., Trent, T., Moore, D. P., Spang, R., Massie, S., and Vernier, J. P.: MIPAS detection of cloud and aerosol particle occurrence in the UTLS with comparison to HIRDLS and CALIOP, *Atmos. Meas. Tech.*, 5, 2537-2553, doi: 10.5194/amt-5-2537-2012, 2012.

Solomon, S.: Stratospheric ozone depletion: A review of concepts and history, *Rev. Geophys.*, 37, 275-316, doi: 10.1029/1999RG900008, 1999.

Solomon, S., Daniel, J. S., Neely, R. R., Vernier, J.-P., Dutton, E. G., and Thomason, L. W.: The Persistently Variable “Background” Stratospheric Aerosol Layer and Global Climate Change, *Science*, 333, 866-870, doi: 10.1126/science.1206027, 2011.

Solomon, S., Garcia, R. R., Rowland, F. S., and Wuebbles, D. J.: On the depletion of Antarctic ozone, *Nature*, 321, 755, doi: 10.1038/321755a0, 1986.

Solomon, S., Ivy, D. J., Kinnison, D., Mills, M. J., Neely, R. R., and Schmidt, A.: Emergence of healing in the Antarctic ozone layer, *Science*, doi: 10.1126/science.aae0061, 2016.

Solomon, S., Sanders, R. W., Garcia, R. R., and Keys, J. G.: Increased chlorine dioxide over Antarctica caused by volcanic aerosols from Mount-Pinatubo, *Nature*, 363, 245-248, doi: <https://doi.org/10.1038/363245a0>, 1993.

Spang, R., Riese, M., and Offermann, D.: CRISTA-2 observations of the south polar vortex in winter 1997: A new dataset for polar process studies, *Geophys. Res. Lett.*, 28, 3159-3162, doi: 10.1029/2000GL012374, 2001.

Stohl, A., Forster, C., Frank, A., Seibert, P., and Wotawa, G.: Technical note: The Lagrangian particle dispersion model FLEXPART version 6.2, *Atmos. Chem. Phys.*, 5, 2461-2474, doi:10.5194/acp-5-2461-2005, 2005.

Stone, K. A., Solomon, S., Kinnison, D. E., Pitts, M. C., Poole, L. R., Mills, M. J., Schmidt, A., Neely, R. R., Ivy, D., Schwartz, M. J., Vernier, J.-P., Johnson, B. J., Tully, M. B., Klekociuk, A. R., König-Langlo, G., and Hagiya, S.: Observing the Impact of Calbuco Volcanic Aerosols on South Polar Ozone Depletion in 2015, *J. Geophys. Res. Atmos.*, 122, 11,862-811,879, doi: 10.1002/2017JD026987, 2017.

Surono, Jousset, P., Pallister, J., Boichu, M., Buongiorno, M. F., Budisantoso, A., Costa, F., Andreastuti, S., Prata, F., Schneider, D., Clarisse, L., Humaida, H., Sumarti, S., Bignami, C., Griswold, J., Carn, S., Oppenheimer, C., and Lavigne, F.: The 2010 explosive eruption of Java's Merapi volcano—A ‘100-year’ event, *J. Volcanol. Geotherm. Res.*, 241, 121-135, doi: <http://dx.doi.org/10.1016/j.jvolgeores.2012.06.018>, 2012.

697 Tilmes, S., Muller, R., and Salawitch, R.: The sensitivity of polar ozone depletion to proposed  
698 geoengineering schemes, *Science*, 320, 1201-1204, doi: 10.1126/science.1153966, 2008.

699 Toohey, M., Krüger, K., Niemeier, U., and Timmreck, C.: The influence of eruption season on the  
700 global aerosol evolution and radiative impact of tropical volcanic eruptions, *Atmos. Chem. Phys.*, 11,  
701 doi: 12351-12367, 10.5194/acp-11-12351-2011, 2011.

702 Vernier, J. P., Thomason, L. W., Pommereau, J. P., Bourassa, A., Pelon, J., Garnier, A., Hauchecorne,  
703 A., Blanot, L., Trepte, C., Degenstein, D., and Vargas, F.: Major influence of tropical volcanic  
704 eruptions on the stratospheric aerosol layer during the last decade, *Geophys. Res. Lett.*, 38, L12807,  
705 doi: 10.1029/2011GL047563, 2011.

706 Vogel, B., Pan, L. L., Konopka, P., Gunther, G., Muller, R., Hall, W., Campos, T., Pollack, I.,  
707 Weinheimer, A., Wei, J., Atlas, E. L., and Bowman, K. P.: Transport pathways and signatures of  
708 mixing in the extratropical tropopause region derived from Lagrangian model simulations, *J.*  
709 *Geophys. Res. Atmos.*, 116, 16, doi: 10.1029/2010jd014876, 2011.

710 von Glasow, R., Bobrowski, N., and Kern, C.: The effects of volcanic eruptions on atmospheric  
711 chemistry, *Chem. Geol.*, 263, 131-142, doi: <http://dx.doi.org/10.1016/j.chemgeo.2008.08.020>, 2009.

712 Wohltmann, I., and Rex, M.: Improvement of vertical and residual velocities in pressure or hybrid  
713 sigma-pressure coordinates in analysis data in the stratosphere, *Atmos. Chem. Phys.*, 8, 265-272, doi:  
714 10.5194/acp-8-265-2008, 2008.

715 Wu, X., Griessbach, S., and Hoffmann, L.: Equatorward dispersion of a high-latitude volcanic plume  
716 and its relation to the Asian summer monsoon: a case study of the Sarychev eruption in 2009, *Atmos.*  
717 *Chem. Phys.*, 17, 13439-13455, doi: 10.5194/acp-17-13439-2017, 2017.

718 Zuev, V. V., Zueva, N. E., Savelieva, E. S., and Gerasimov, V. V.: The Antarctic ozone depletion  
719 caused by Erebus volcano gas emissions, *Atmos. Environ.*, 122, 393-399, doi:  
720 <https://doi.org/10.1016/j.atmosenv.2015.10.005>, 2015.

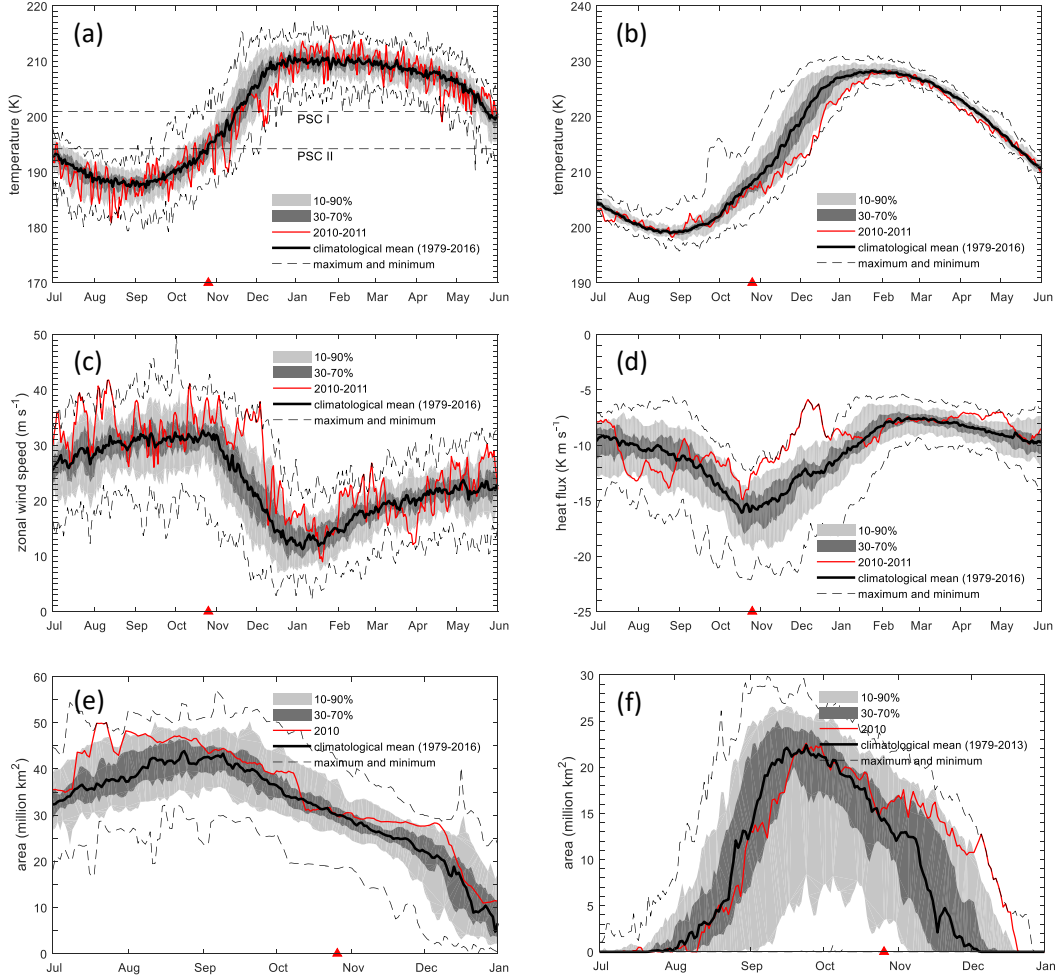


Figure 1: (a) Minimum temperature south of 50°S at 150 hPa; (b) temperature averaged over the polar cap for latitudes south of 60°S at 150 hPa; (c) zonal wind speed at 60°S at 150 hPa; (d) eddy heat flux averaged between 45°S and 75°S for the 45-day period prior to the date indicated at 150 hPa; (e) the area of the polar vortex for 1 July–31 December 2010 on the 460 K isentropic surface; (f) ozone hole area for 1 July 2010–31 December 2010. Temperatures for PSC existence in (a) are determined by assuming a nitric acid concentration of 6 ppbv and a water vapor concentration of 4.5 ppmv. (a)–(f) are based on Modern-Era Retrospective analysis for Research and Applications reanalysis version 2 (MERRA2) data (Bosilovich et al., 2015). The ozone hole area in (f) is determined from OMI ozone satellite measurements (Levelt et al., 2006). The red triangles indicate the time of the Merapi eruption.

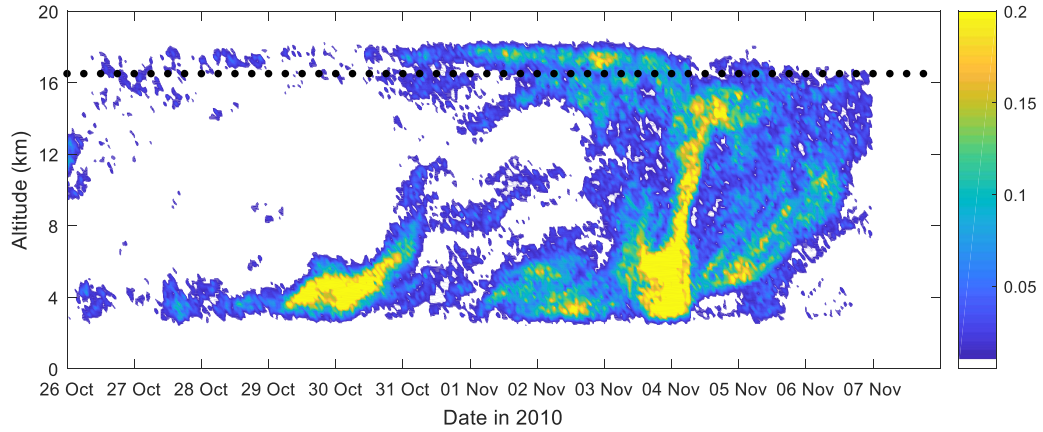


Figure 2: Merapi SO<sub>2</sub> emission time series (unit:  $\text{kg m}^{-1} \text{s}^{-1}$ ) derived from AIRS measurements using a backward trajectory approach (see text for details). The emission data are binned every 1 h and 0.2 km. The ticks for the horizontal axis mark 0 UTC on each day. Black dots denote the height of the thermal tropopause (based on the ERA–Interim reanalysis).



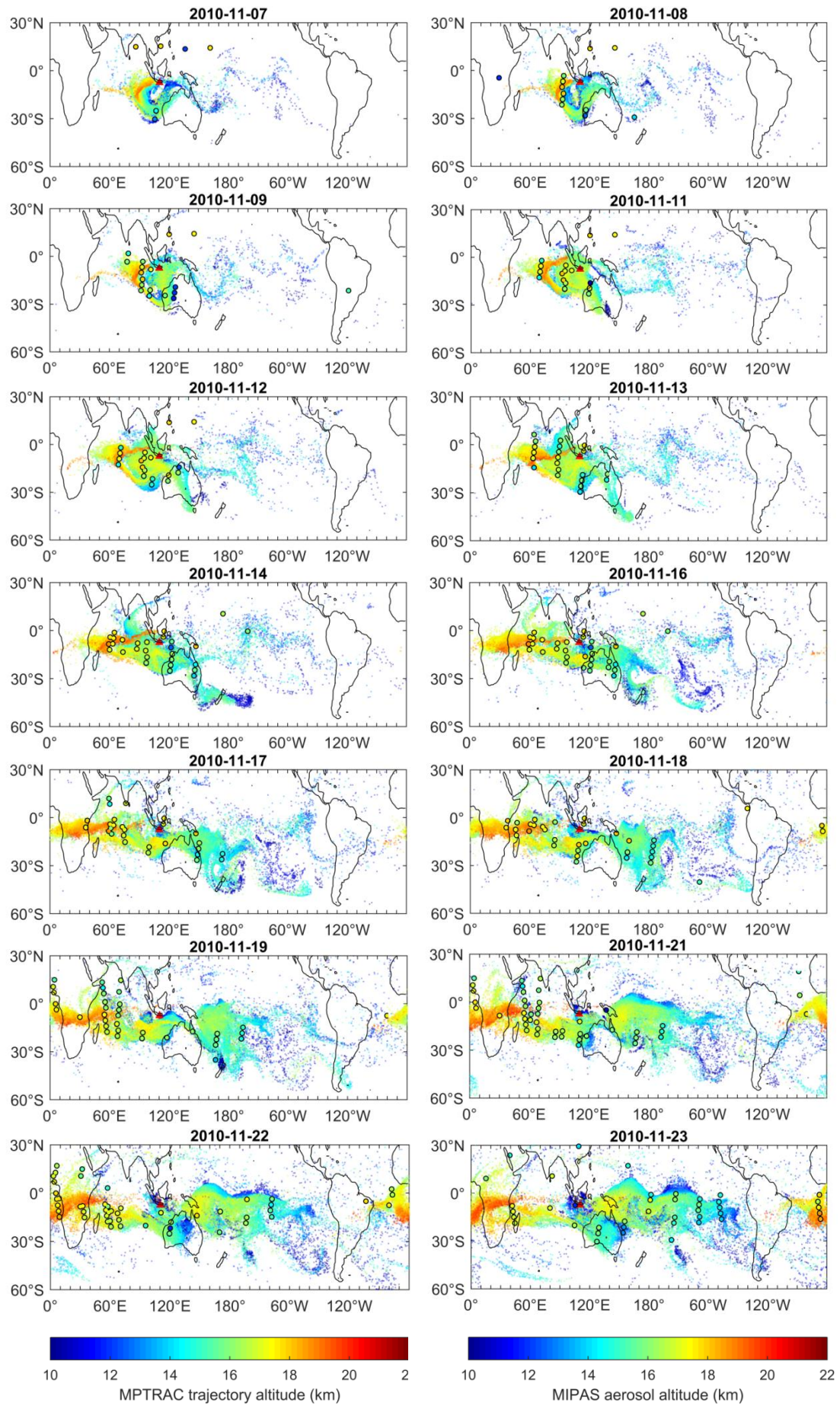


Figure 3: Distribution of the volcanic plume (showing only air parcels higher than 10 km, shading) from MPTRAC simulations (shown for 00:00UTC on selected days) and MIPAS aerosol detections ( $ACI < 7$ ) within  $\pm 6$  h (color-filled circles). The altitudes of all

air parcels, regardless of their SO<sub>2</sub> values, are shown. The red triangle denotes the location of Mount Merapi.

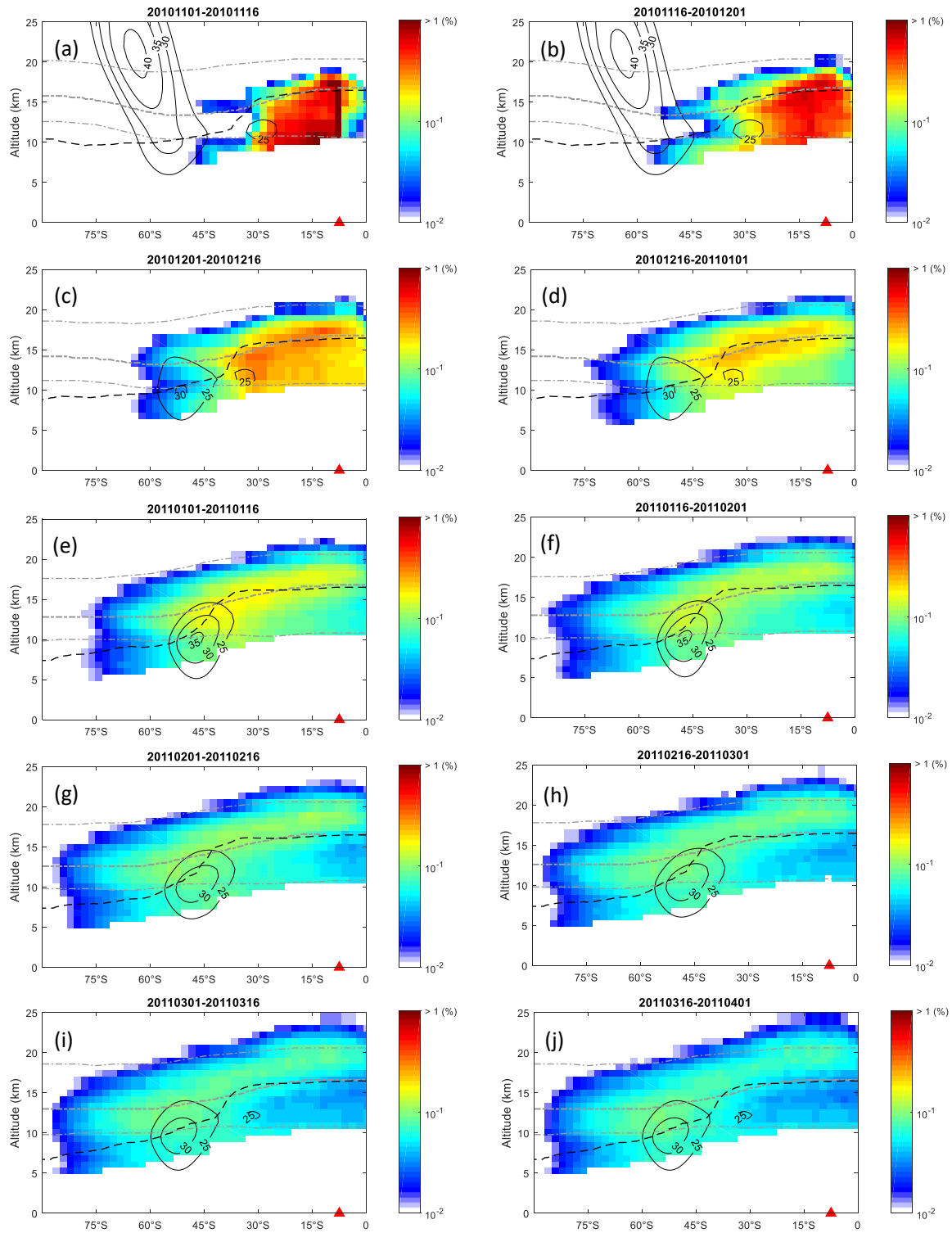


Figure 4: Percentage (%) of air parcels in proportion to the total number of air parcels released in the Lagrangian forward simulation, overlaid with monthly mean zonal winds (black contours), the thermal tropopause (black dashed line), the 380 K potential temperature isline (thick gray dashed line) and 350 and 480 K potential temperature isolines (thin gray dashed lines). Results are binned every  $2^\circ$  in latitude and 1 km in altitude. The red triangle denotes the latitude of the Mount Merapi. Please see title of each figure for the time period covered.

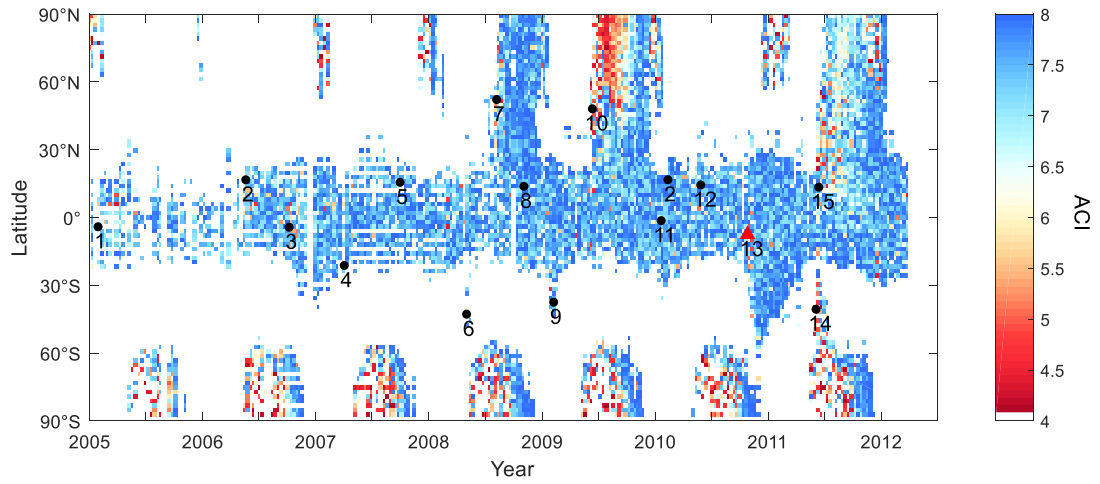


Figure 5: Median of MIPAS ACI values between 12–18 km (bin size 10 days and  $2^\circ$  in latitude) from January 2005 to April 2012. Only ACI values from 4 to 8 are shown. The red triangle indicates the eruption of Mount Merapi (No. 13). The black filled circles indicate 1 Manam, 2 Soufriere Hills, 3 Tavurvur (Rabaul), 4 Piton de la Fournaise, 5 Jebel at Tair, 6 Chaitén, 7 Kasatochi, 8 Dalaffilla, 9 Australian bushfire, 10 Sarychev Peak, 11 Nyamuragira, 12 Pacaya, 14 Puyehue-Cordón Caulle, 15 Nabro.

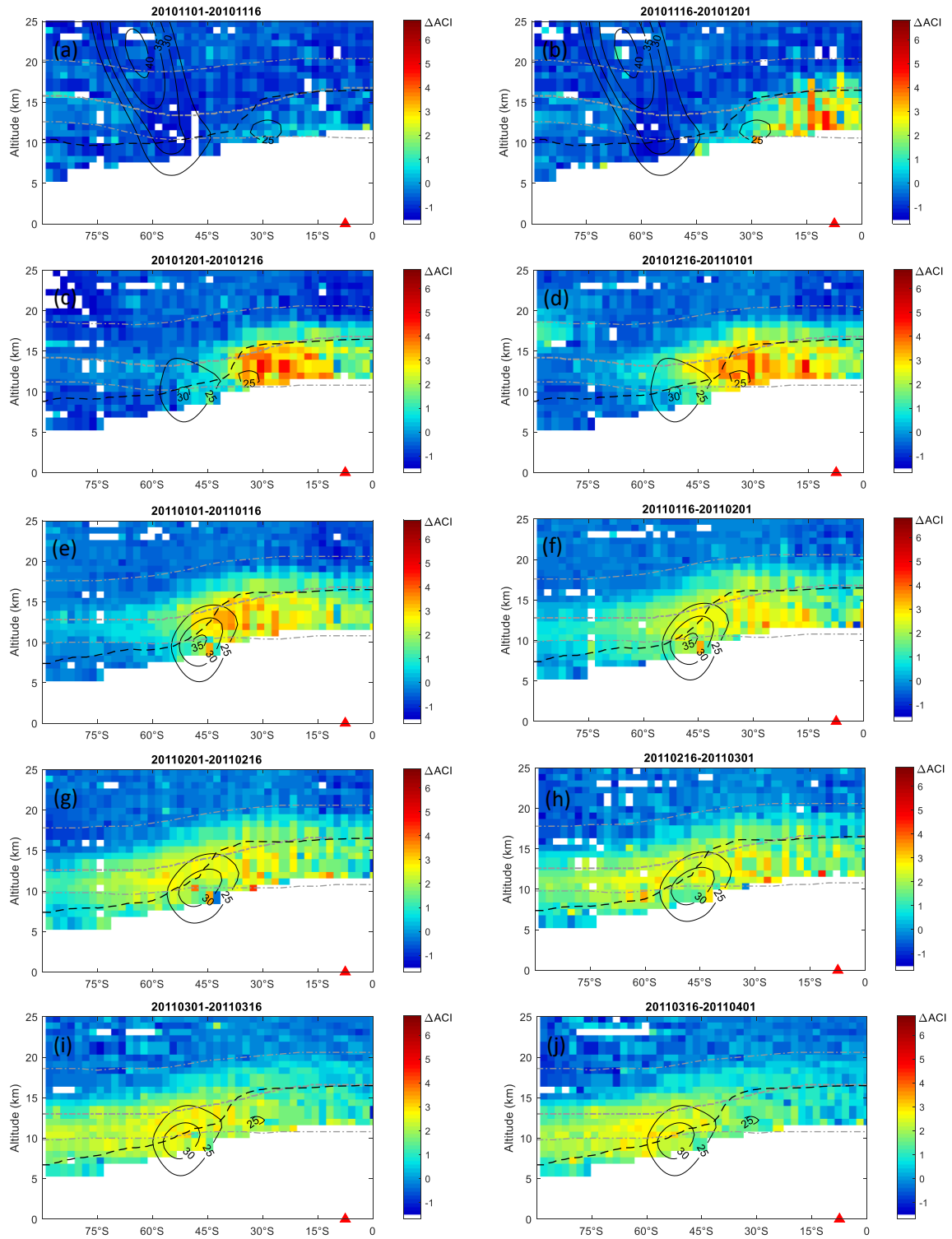


Figure 6: The change of MIPAS ACI values ( $\Delta\text{ACI}$ ) after the eruption of Merapi in 2010, overlaid with monthly mean zonal winds (black contours), the thermal tropopause (black dashed line), the 380 K potential temperature isoline (thick gray dashed line) and 350 and 480 K potential temperature isolines (thin gray dashed lines).  $\Delta\text{ACI}$  are derived by subtracting the biweekly median ACI between November 2010 and March 2011 from the biweekly median ACI of the reference period between November 2007 and March 2008. Positive values indicate an increase of the aerosol load and negative values indicate a decrease of the aerosol load. Please see the texts for details. Results are binned every  $2^\circ$  in latitude and 1 km in altitude. The red triangle denotes the latitude of the Mount Merapi. Please see title of each figure for the time period covered.



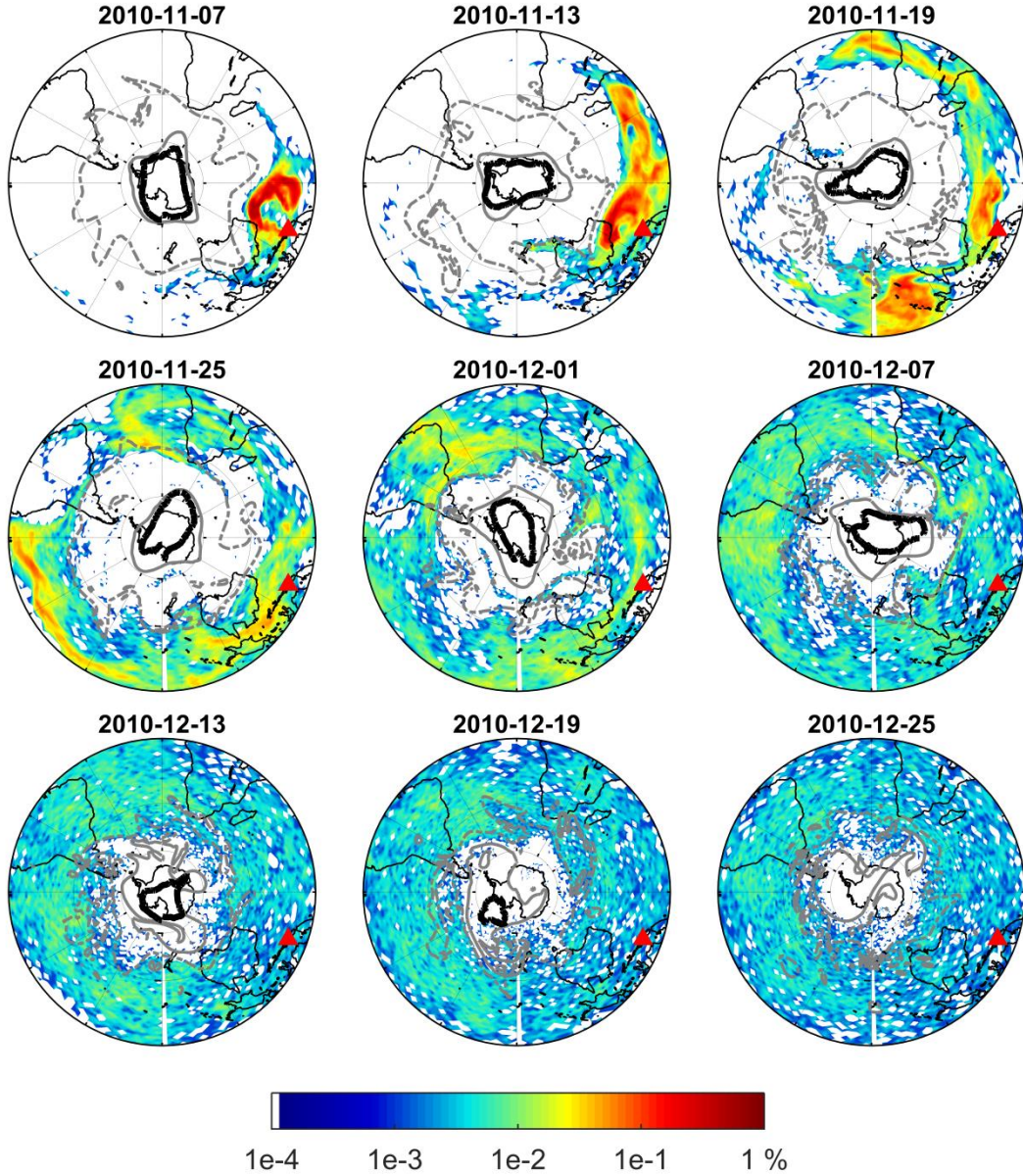


Figure 7: Percentage (%) of air parcels between the isentropic surfaces of 350 and 480 K in proportion to the total number of air parcels released in the Lagrangian forward simulation. All results are at 12:00 UTC on selected dates and binned every  $2^\circ$  in longitude and  $1^\circ$  in latitude. The black contours indicate the 220 DU contour lines of daily mean ozone column density provided by OMI. PV contours marked with gray dashed and solid lines show PV boundaries on the 350 and 480 K isentropic surfaces respectively (Kunz et al., 2015). The red triangle denotes the location of Mount Merapi.

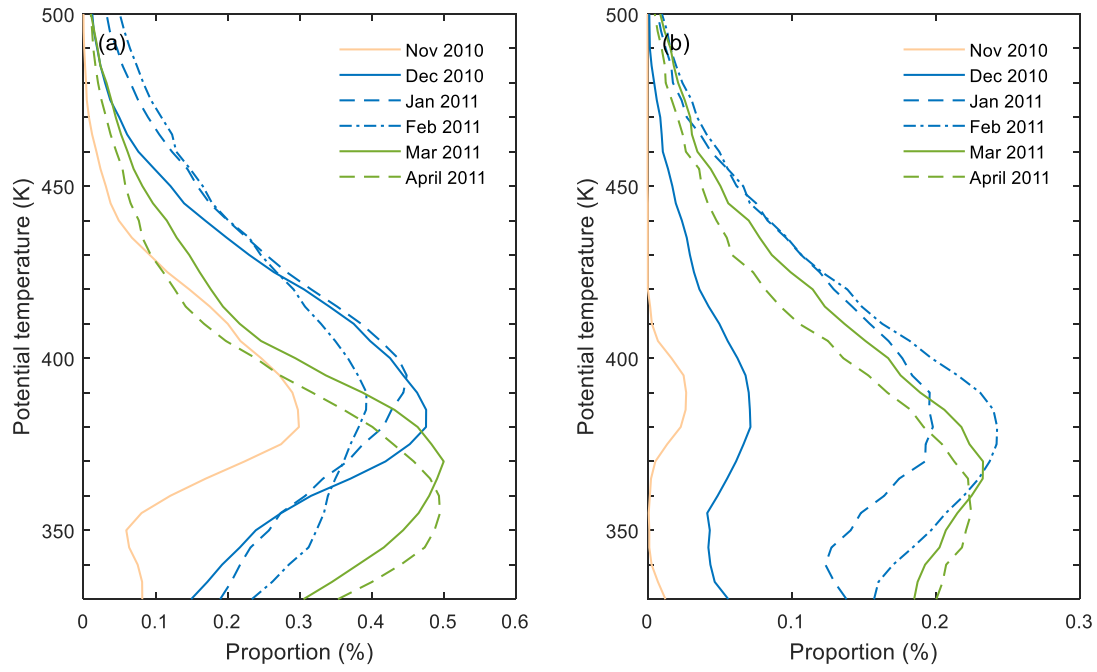


Figure 8: (a) Proportion (%) of the air parcels poleward of the PV-based transport boundaries at the end of each month; (b) proportion (%) of the air parcels south of the geographic latitude of 60°S.

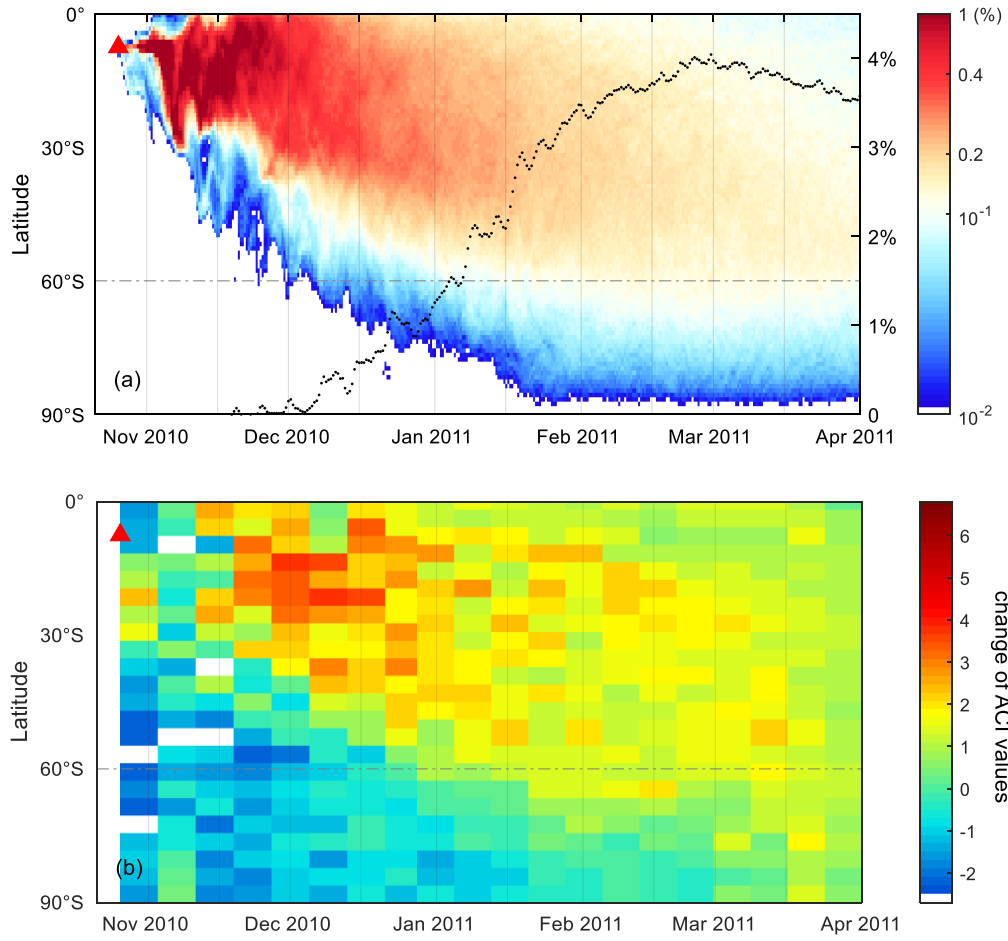


Figure 9: Time and latitude evolution of the (a) percentage (%) of air parcels between the isentropic surfaces of 350 and 480 K from the Lagrangian simulations (shading, only percentages larger than 0.05% are shown; bin size: 12h and 1° in latitude) and the proportion (%) of air parcels south of 60°S (black dots); (b) the change of MIPAS ACI values ( $\Delta$ ACI) after the eruption of Merapi in 2010 between 350 and 480 K.  $\Delta$ ACI are derived by subtracting the biweekly median ACI between November 2010 and March 2011 from the biweekly median ACI of the reference period between November 2007 and March 2008. Positive values indicate an increase and negative values indicate a decrease of the aerosol load (bin size: 8 days and 4° in latitude). Please see the texts for details. The red triangle denotes the time and latitude of the Merapi eruption.



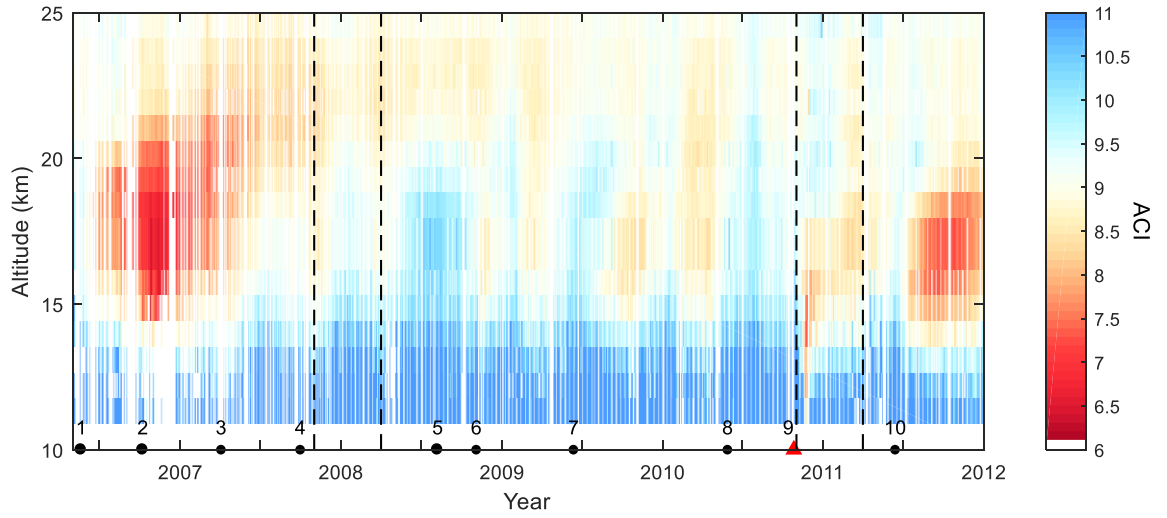


Figure A1: MIPAS 9-day running median of ACI between 10°N and 10°S from May 2006 to December 2011. The dashed vertical lines indicate the reference state from November 2007 to March 2008, and the investigation period for the Merapi eruption from November 2010 to March 2011. The red triangle indicates the time of the Merapi eruption (No. 9). The black dots indicate 1 Soufriere Hills, 2 Tavurvur (Rabaul), 3 Piton de la Fournaise, 4 Jebel at Tair, 5 Kasatochi, 6 Dalaffilla, 7 Sarychev, 8 Pacaya, 10 Nabro.