

Dear Editor,

thank you very much for your corrections and suggestions.

We made the necessary changes in the abstract. We also added a small paragraph in the introduction to explain the aerodynamical model of the flow around a sphere. We also corrected some sentences throughout the manuscript. These corrections should increase the readability and do not change the scientific content.

We added the new manuscript as well as a tracked-change manuscript.

# The influence of transformed Reynolds number suppression on gas transfer parameterizations and global DMS and CO<sub>2</sub> fluxes

Alexander Zavarsky<sup>1</sup> and Christa A. Marandino<sup>2</sup>

<sup>1</sup>Researcher, Kiel, Germany

<sup>2</sup>GEOMAR Helmholtz Centre for Ocean Research, Kiel, Germany

**Correspondence:** Alexander Zavarsky (alexz@mailbox.org)

**Abstract.** Eddy covariance measurements show gas transfer velocity suppression at medium to high wind speed. A wind-wave interaction described by the transformed Reynolds number is used to characterize environmental conditions favoring this suppression. We take the transformed Reynolds number parameterization to review the two most cited wind speed gas transfer velocity parameterizations, Nightingale 2000 and Wanninkhof 1992/2014. We propose an algorithm to adjust k values for the effect of gas transfer suppression and validate it with two directly measured DMS gas transfer velocity data sets that experienced gas transfer suppression. ~~An unsuppressed~~ We also show that the data set used in the Nightingale 2000 parameterization experienced gas transfer suppression. A compensation of the suppression effect leads leads to an average increase of 22 % of ~~its predicted gas transfer velocity. The increase for Wanninkhof~~ the k vs u relationship. Performing the same correction for Wanninkhoff 2014 is leads to an increase of 9.85 %. Additionally, we applied our gas transfer suppression algorithm to global air-sea flux climatologies of CO<sub>2</sub> and DMS. ~~For CO<sub>2</sub> we estimated the magnitude of suppression for the DMS the magnitude and the global reduction of DMS efflux.~~ The global application of gas transfer suppression leads to a decrease of 11 % ~~of oceanic outgassing of DMS in DMS outgassing~~. We expect the magnitude of Reynolds suppression on any global air-sea gas exchange to be about 10 %.

## 1 Introduction

Gas flux F between the ocean and the atmosphere is commonly described as the product of the concentration difference  $\Delta C$  between the liquid phase (seawater) and the gas phase (atmosphere) and the total gas transfer velocity  $k_{total}$ .  $\Delta C$  acts as the forcing potential difference and k as the conductance, which includes all processes promoting and suppressing gas transfer.  $c_{air}$  and  $c_{water}$  are the respective air-side and water-side concentrations. H is the dimensionless form of Henry's law constant.

$$F = k_{total} \cdot \Delta C = k_{total} \cdot (c_{water} - c_{air} \cdot H) \quad (1)$$

$\Delta C$  is typically measured with established techniques, although the distance of the measurements from the interface ~~introduce~~ introduces uncertainties in the flux calculation. Parameterizations of k are another source of uncertainty in calculating fluxes. The flux F can be directly measured, for example with the eddy covariance technique, together with  $\Delta C$  in order to derive k

and estimate a k parameterization (Eq. (2)).

$$k_{total} = \frac{F}{\Delta C} = \frac{F}{c_{water} - c_{air} \cdot H} \quad (2)$$

It is very common that  $k_{total}$  is parameterized with wind speed and all wind speed parameterizations have in common that  $k_{total}$  increases monotonically with increasing wind speed. This assumption is sensible, as higher wind speed increases turbulence both on the air and the water side and hence the flux. Additional processes like bubble generation can additionally enhance gas transfer. The total gas transfer velocity  $k_{total}$ , which is measured by eddy covariance or other direct flux methods, ~~is~~ can split up into the water side gas transfer velocity  $k_{water}$  and the air side gas transfer velocity  $k_{air}$  (Eq. (3)).

$$\frac{1}{k_{total}} = \frac{1}{k_{water}} + \frac{H}{k_{air}} \quad (3)$$

We focus, in this work, on  $k_{water}$ , which is the sum of the interfacial gas transfer  $k_o$  and the bubble mediated gas transfer  $k_b$  (Eq. (4)).

$$k_{water} = k_o + k_b \quad (4)$$

~~To make gas transfer velocities of different gases comparable,~~ Schmidt number (Sc) scaling (Eq. (5)) ~~scaling has been introduced~~ is used to compare gas transfer velocities of different gases. Sc scaling only applies to  $k_o$  and  $k_{air}$ . Sc is the ratio of the viscosity  $\nu$  to the diffusivity D of the respective gas in seawater.

$$Sc = \frac{\nu}{D} \quad (5)$$

$$\frac{k_{o,Sc}}{k_{o,660}} = \left( \frac{Sc}{660} \right)^n \quad (6)$$

The exponent n is chosen depending on the surface properties. For smooth surfaces  $n = -\frac{2}{3}$  and rough wavy surfaces  $n = -\frac{1}{2}$  (Komori et al., 2011). In this study  $n = -\frac{1}{2}$  is used.

In contrast to commonly accepted gas transfer velocity parameterizations, parameterizations based on direct flux measurements by eddy covariance systems have shown a decrease or flattening of k with increasing wind speed at medium to high wind speed (Bell et al., 2013, 2015; Yang et al., 2016; Blomquist et al., 2017). We use the transformed Reynolds number  $Re_{tr}$  (Zavarsky et al., 2018) to identify instances of gas transfer suppression.

$$Re_{tr} = \frac{u_{tr} \cdot H_s}{\nu_{air}} \cdot \cos(\theta) \quad (7)$$

$Re_{tr}$  is the Reynolds number transformed into the reference system of the moving wave.  $u_{tr}$  is the wind speed transformed into the wave's reference system,  $H_s$ , the significant wave height,  $\nu_{air}$  the kinematic viscosity of air and  $\theta$  the angle between the wave direction and direction of  $u_{tr}$  in the wave's reference system. This parameterization is based on the model of air flowing around a sphere (Singh and Mittal, 2004). The flow is laminar and attached all around the sphere at low Re ( $Re_{tr} < 10$ ).

However, this condition does not occur in the oceanic environment as  $u_{tr}$  would have to be around  $3 \cdot 10^{-5} \text{ ms}^{-1}$  (using  $H_s=3 \text{ m}$  and  $\nu_{air} = 1^{-5} \text{ m}^2\text{s}^{-1}$ ). At  $10^1 < Re_{tr} < 10^5$ , vortices form at the lee side of the sphere and the flow separates. This is the state of gas transfer suppression and occurs approximately at  $u_{tr}$  from  $3 \cdot 10^{-5} \text{ ms}^{-1}$  to  $3 \text{ ms}^{-1}$ . When  $u_{tr}$  and as a consequence  $Re_{tr}$  is further increased ( $Re_{tr} > 10^5$ ), turbulence in the boundary layer between the air and the sphere counteracts the flow separation and reduces the surface area on which the separation acts. This means that an increased relative wind speed  $u_{tr}$  favors unsuppressed conditions.

A flux measurement at values of  $|Re_{tr}| \leq 6.96 \cdot 10^5$  is gas transfer suppressed (Zavarsky et al., 2018). ~~It is a binary view, but in aerodynamics~~ The threshold presents a binary treatment of the problem. We adopt this treatment, since stall conditions, flow detachment and reattachment are binary as well, so we adopted this view, and reattachment in aerodynamics are also binary.

Describing transition conditions is beyond the scope of the first introduction of this model. ~~This parameterization by~~ The  $Re_{tr}$  parameterization shows that the suppression is primarily dependent on wind speed, wave speed, wave height and a directional component.

It is noteworthy that, so far, only eddy covariance deduced gas transfer velocities have shown a gas transfer suppression. This may be due to the spatial (1 km) and temporal (30 min) resolution of EC measurements, or to the types of gases measured (e.g. CO<sub>2</sub>, DMS, OVOCs). The use of rather soluble gases (DMS, acetone, methanol) makes the gas transfer velocity not greatly influenced by bubble mediated gas transfer. Gas transfer suppression only affects  $k_o$  (Zavarsky et al., 2018). Another direct flux measurement technique, the dual tracer method, utilizes sulfur hexafluoride (SF<sub>6</sub>) or <sup>3</sup>He. The dual tracer measurement usually lasts over a few days but could have a similar spatial resolution as eddy covariance. SF<sub>6</sub> and <sup>3</sup>He are both very insoluble and heavily influenced by the bubble effect. Hence, if the gas transfer suppression only affects  $k_o$ ,  $k_b$  could be the dominant process and, masking the gas transfer suppression. Additionally, the long measurement period could decrease the likelihood of detection of gas transfer suppression as the conditions for suppression might not be persistent over a few days.

There are two main goals of this study: [1] develop and use a simplistic algorithm to adjust for gas transfer suppression; [2] illustrate that gas transfer suppression is ubiquitous, showing up in our most used gas transfer parameterizations. To address goal 1, we develop a gas transfer suppression model and apply it to two DMS EC data sets. To address goal 2, we investigate the two most commonly used gas parameterizations (both cited more than 1000 times each) for the occurrence of gas transfer suppression. The Nightingale 2000 parameterization (N00) (Nightingale et al., 2000) contains data from the North Sea, Florida Strait and the Georges Bank between 1989-1996. The N00 parameterization is derived from changes in the ratio of SF<sub>6</sub> and <sup>3</sup>He (dual tracer method). We also investigate the Wanninkhof 2014 gas transfer parameterization (W14) (Wanninkhof, 2014) which is an update to Wanninkhof (1992). ~~Using a global <sup>14</sup>C inventory of the ocean they~~ They calculate the amount of CO<sub>2</sub> exchanged between the ~~atmosphere and the ocean~~ ocean and atmosphere using a global ocean <sup>14</sup>C inventory. This <sup>14</sup>C inventory is already influenced by gas transfer suppression, as it is globally averaged. They deduce a quadratic  $k$  vs wind speed parameterization using a wind speed climatology. Both  $k$  parameterizations (N00, W14) are monotonically increasing with wind speed.

In addition, we use wind wave data for the year 2014, calculate  $Re_{tr}$  and perform an analysis of the impact of gas transfer suppression on the yearly global air sea exchange of DMS and CO<sub>2</sub>. So far global estimates of air-sea exchange of DMS

have been based on k ~~parameterization~~ parameterizations which have not included a mechanism for gas transfer suppression. We provide an iterative calculation of the effect of gas transfer suppression ~~and adjusts to~~ on existing DMS climatologies. For global CO<sub>2</sub> budgets, the widely used W14 and Tak09 (Takahashi et al., 2009) parameterizations already include a global average gas transfer suppression. There, we calculate an estimate for the magnitude of gas transfer suppression on a monthly  
5 local basis.

## 2 Methods

### 2.1 Wave Watch Model III

We use wave data from the WWIII model hindcast run by the Marine Modeling and Analysis Branch of the Environmental  
~~Modelling~~ Modeling Center of the National Center for Environmental Prediction (NCEP)(Tolman, 1997, 1999, 2009). The  
10 model is calculated for the global ocean surface excluding ice covered areas with a temporal resolution of 3 h and a spatial  
resolution of 0.5° x 0.5°. The data for the specific analysis of the N00, W14 parameterizations and the Knorr11 cruise (Sections  
4.1, 4.2, 4.3) was obtained from the model for the specific locations and times of the measurements. The data for the global  
analysis, Section 4.4, was obtained for the total year 2014. The model also provides the u (meridional) and v (zonal) wind  
vectors, assimilated from the Global Forecast System, used in the model. We retrieved wind speed, wind direction, bathymetry,  
15 wave direction, wave period and significant wave height. We converted the wave period  $T_p$  to phase speed  $c_p$ , assuming deep  
water waves, using Eq. (8) (Hanley et al., 2010).

$$c_p = \frac{g \cdot T_p}{2\pi} \quad (8)$$

### 2.2 Auxiliary variables

Surface air temperature T, air pressure p, sea surface temperature SST and sea ice concentration were retrieved from the ERA-  
20 Interim reanalysis of the European Center for Meridional Weather Forecast(Dee et al., 2011). It provides a six hourly resolution  
and a global 0.125° x 0.125° spatial resolution. Sea surface salinity (SSS) was extracted from the Takahashi climatology (Ta-  
kahashi et al., 2009).

Air-sea partial pressure difference ( $\Delta p\text{CO}_2$ ) was obtained from the Takahashi climatology.  $\Delta p\text{CO}_2$ , in the Takahashi climato-  
logy, is calculated for the year 2000 CO<sub>2</sub> air concentrations. Assuming an increase in both the air concentration and the partial  
25 pressure in the water side, the partial pressure difference remains constant. The data set has a monthly temporal resolution, a  
4° latitudinal resolution and a 5° longitudinal resolution.

DMS water concentrations were taken from the Lana DMS climatology (Lana et al., 2011). These are provided with a monthly  
resolution and a 1° x 1° spatial resolution. The air mixing ratio of DMS was set to zero  $c_{air,DMS} = 0$ . Taking air mixing ratios  
into account, the global air sea flux of DMS reduces by 17 % (Lennartz et al., 2015). We ~~still think that our~~ think this approach  
30 is reasonable, as we ~~are looking at the change of flux~~ look at the relative flux change due to gas transfer suppression only.

We linearly interpolated all data sets to the grid and times of the WWIII model.

### 2.3 Kinematic viscosity

The kinematic viscosity  $\nu$  of air is dependent on air density  $\rho$  and the dynamic viscosity  $\mu$  of air, Eq. (9).

$$\nu(T, p) = \frac{\mu(T)}{\rho(T, p)} \quad (9)$$

The dynamic viscosity is dependent on temperature T and can be calculated using Sutherland's law(White, 1991) (Eq. (10)).

$$5 \quad \mu = \mu_0 \cdot \left( \frac{T}{T_0} \right)^{\frac{2}{3}} \quad (10)$$

$\mu_0 = 1.716 \cdot 10^{-5} \text{ N s m}^{-2}$  at  $T_0 = 273 \text{ K}$ (White, 1991). Air density is dependent on temperature T and air pressure p and was calculated using the ideal gas law.

### 2.4 Transformed Reynolds number

The Reynolds number describes the balance of inertial forces and viscous forces. It is the ratio of the typical length and velocity scale over the kinematic viscosity. The transformed Reynolds number, in Eq. (11), uses the wind speed  $u_{tr}$ , transformed into the wave's reference system. The significant wave height  $H_s$  is used as the typical length scale. The difference between wind direction and wave direction is given by the angle  $\theta$ . Between  $\theta = 0^\circ$  and  $\theta = 90^\circ$  the air flowing over the wave experiences, due to the angle of attack, a differently shaped and streamlined wave. The factor  $\cos(\theta)$  is multiplied to  $H_s$  to account for directional dependencies and shape influences (Fig. (A1)).

$$15 \quad Re_{tr} = \frac{u_{tr} \cdot H_s}{\nu} \cdot \cos(\theta) \quad (11)$$

## 3 Gas transfer suppression model

Below  $|Re_{tr}| \leq 6.96 \cdot 10^5$  flow separation between the wind flowing above the wave and the flow entering the trough suppresses gas transfer (Zavarsky et al., 2018). As a result, common wind speed parameterizations of k are not applicable (Eq. (1)). To provide a magnitude of this suppression we propose an alternative wind speed  $u_{alt}$ , which is lower than  $u_{10}$ . This decrease accounts for the effect of gas transfer suppression.  $u_{alt}$  represents the wind speed with the maximum possible k in these conditions, hence an increase of u beyond  $u_{alt}$  does not result in an increase of k.  $u_{alt}$  can then be used with k parameterizations to calculate the gas flux.

Given a set wave field (constant  $H_s$ , wave direction and speed), if the relative wind speed in the reference system of the wave  $u_{tr}$  is big enough that  $|Re_{tr}| > 6.96 \cdot 10^5$ , no suppression occurs. In the 'no-suppression' case, k can be estimated by common gas transfer parameterizations. If the wind speed  $u_{10}$ , in the earth's reference system, is getting close to the wave's phase speed,  $u_{tr}$  in the wave's reference system gets smaller and  $|Re_{tr}|$  drops below the threshold, flow separation happens, and suppression occurs. We propose a stepwise ( $\Delta s$ ) reduction of  $u_{10}$  to calculate when the wind-wave system changes from the flow separation regime ( $|Re_{tr}| < 6.96 \cdot 10^5$ ) into a normal flow regime ( $|Re_{tr}| > 6.96 \cdot 10^5$ ). This can be used to estimate the magnitude of the suppression. We recalculate  $Re_{tr}$  with a lower  $u_{alt} = u_{10} - i \cdot \Delta s$  and iterate  $i=0,1,2,3\dots$  as long as  $Re_{tr}$  is

below the threshold (flow separation). If  $Re_{tr}$  crosses to the non-suppressing regime, the iteration is stopped and the actual  $u_{alt}$  can be used as an alternative wind speed. The iteration steps are: [1] Calculate  $Re_{tr}$ , using  $u_{alt} = u_{10} - i \cdot \Delta s$ . [2] Determine if  $|Re_{tr}| \leq 6.96 \cdot 10^5$  [3] If yes,  $i=i+1$  and continue with step [1]. If no, break the loop. The step size in this model was  $0.3 \text{ m s}^{-1}$ . We think this step size allows a good balance between computing time and velocity resolution. The minimum velocity for  $u_{alt}$  is  $0 \text{ m s}^{-1}$ . Figure 1 shows a flowchart of the algorithm. This algorithm is applied to every box at every time step.

A change in the parameters of the wave field is, in our opinion, not feasible as the wave field is influenced to a certain extent by swell which is externally prescribed. Swell travels long distances and does not necessarily have a direct relation to the wind conditions at the location of the gas transfer and measurement. Therefore, we change the wind speed only.

### 10 3.1 Gas transfer

The difference between  $u_{alt}$  and  $u_{10}$  directly relates to the magnitude of gas transfer suppression.  $u_{alt}$  can be used in two ways: [1]  $u_{10}$  can be directly replaced by  $u_{alt}$ . This is only possible for parameterizations with a negligible bubble contribution (like DMS), as we assume that the gas transfer suppression only affects  $k_o$ . As a result, one gets a  $k$  estimation using the lower wind speed  $u_{alt}$ . This is an estimate of the reduction of  $k$  by gas transfer suppression. [2] For parameterizations of rather insoluble gases, like  $\text{CO}_2$ ,  $\text{SF}_6$ ,  $^3\text{He}$ , one needs to subtract  $\Delta k$  from the unsuppressed  $k$  parameterization. This adjustment is done by inserting  $u_{10} - u_{alt}$  into a  $k_o$  parameterization (Eq. 12) and subtracting  $\Delta k$ . In this manuscript ZA18 from Zavarisky et al. (2018) is used as the parameterization of  $k_o$ . The magnitude of gas transfer suppression is given by Eq. 12.

$$\Delta k = k_o(u_{10}) - k_o(u_{alt}) = (3.1 \cdot u_{10} - 5.7) - (3.1 \cdot u_{alt} - 5.7) = 3.1 \cdot (u_{10} - u_{alt}) \quad (12)$$

For the global flux of DMS we use the bulk gas transfer formula (Eq. (1)). The global DMS gas flux calculations are based on the following  $k$  parameterizations: ZA18 and the quadratic ~~parameterizations~~ parameterization, N00. For every grid box and every time step we calculate  $u_{alt}$  according to the description in Sect. 3. If  $u_{alt}$  is lower than  $u_{10}$  from the global reanalysis then gas transfer suppression occurs. Subsequently,  $u_{alt}$  together with Eq. 12 is used in the specific bulk gas transfer formulas (Eq. (13-14)). For ZA18  $u_{alt}$  can be directly inserted into ~~this the ZA18~~ parameterization (Eq. (13)). However, other parameterizations, e.g. N00, which are based on measurements with rather insoluble gases have a significant bubble mediated gas transfer contribution. As a consequence we subtract the ~~linear dependency~~ linearly dependent  $\Delta k$  using the ZA18 ~~parameterization~~ parameterization, to account for the gas transfer suppression in  $k_o$  (Eq. (14)).

$$F_{lim,ZA18} = [k_{ZA18}(u_{10}) - \Delta k] \cdot \Delta C = (3.1 \cdot u_{alt} - 5.37) \cdot \Delta C \quad (13)$$

$$F_{lim,N00\&other} = [k_{N00\&other}(u_{10}) - \Delta k] \cdot \Delta C = [k_{N00\&other}(u_{10}) - 3.1 \cdot (u_{10} - u_{alt})] \cdot \Delta C \quad (14)$$

~~For the global DMS transfer, we use the ZA18 and N00 parameterizations, as Lana et al. (2011) also uses N00.~~ Sea ice concentration from the ERA-Interim reanalysis was included as a linear factor in the calculation. A sea ice concentration of 90 %, for

example, results in a 90 % reduction of the flux. Each time step (3 h) of the WVIII model provided a global grid of air-sea fluxes with and without gas transfer suppression. These single time steps were summed up to get a yearly flux result.

## 4 Results

We test the adjustment of  $u_{10} \rightarrow u_{alt}$  with two data sets of DMS gas transfer velocities, Knorr11 (Bell et al., 2017) and SO234-2/235 (Zavarsky et al., 2018). Both data sets experienced gas transfer suppression at high wind speed. Using this proof of concept, we quantify the influence of gas transfer suppression on N00 and W14 and provide unsuppressed estimates. Finally, we apply the wind speed adjustment to global flux estimates of DMS. For  $CO_2$ , we estimate the magnitude of gas transfer suppression.

### 4.1 Adjustment of the interfacial gas transfer

Fig. 2 and 3 show the unsuppressed DMS gas transfer velocities for the SO234-2/235 and the Knorr11 cruises. We shift the measured data points, which are gas transfer suppressed, along the x-axis by replacing  $u_{10}$  with  $u_{alt}$ . The shift along the x-axis is equivalent to an addition of  $\Delta k$ , for a given  $k$  vs  $u$  relationship, to balance gas transfer suppression (see appendix). The black circles indicate the original data set at  $u_{10}$ . The colored circles are  $k$  values plotted at the adjusted wind speed  $u_{alt}$ . If a black circle and a colored circle are concentric, the data point was not suppressed and therefore no adjustment was applied. For comparison, the parameterization ZA18 is plotted in both figures. Both figures show the significant wave height with the color bar.

Fig. 2 illustrates the linear fits to the data set before (dotted) and after (dashed) the adjustment. The suppressed data points from  $14-16 \text{ m s}^{-1}$  moved closer to the linear fit after an adjustment with  $u_{alt}$ . The large gas transfer velocity values at around  $13 \text{ m s}^{-1}$  and above  $35 \text{ cm h}^{-1}$  were moved to  $11 \text{ m}^{-1}$ . This means a worsening of the the  $k$  estimate by the linear fit. These data points have very low  $\Delta C$  values (Zavarsky et al., 2018), therefore, we expect large scatter as a result from Eq. (2).

Fig. 3 also shows an improvement of the linear fit estimates. The gas transfer suppressed data points were assigned the new wind speed  $u_{alt}$ , resulting in better agreement to ZA18. The change of the linear fit to the unsuppressed and suppressed data set can be seen in the dotted (before) and dashed (after) line. The adjusted data points at  $12-16 \text{ m s}^{-1}$  are still, relative to the linear estimates, heavily gas transfer suppressed. A reason could be that the significant wave height of these points is larger than  $3.5 \text{ m}$  and they experienced high wind speed. A shielding of wind by the large wave or an influence of water droplets on the momentum transfer is suggested as reason (Yang et al., 2016; Bell et al., 2013). In principle, we agree that these processes may be occurring, but only during exceptional cases of high winds and wave heights. The Reynolds gas transfer suppression (Zavarsky et al., 2018) occurs over a larger range of wind speeds and wave heights, but obviously does not capture all the flux suppression. Therefore, it appears that several processes, including shielding and influence of droplets, may be responsible for gas transfer suppression and they are not all considered in our model. This marks the upper boundary for environmental conditions for our model.

Tab. 1 shows the average offset between every data point and the linear fit ZA18. A reduction of the average offset can be seen



for all data combinations. The last two columns of Tab. 1 show the mean absolute error. The absolute error also decreases with the application of our adjustments. The linear fits to the two data sets, before and after the adjustments, are given in Tab. (2). The slopes for the two altered data sets show a good agreement. However, we do not account for the suppression entirely. The adjusted slopes are both in the range of the linear function ZA18  $k_{660} = 3.1 \pm 0.37 \cdot u_{10} - 5.37 \pm 2.35$  (Zavarsky et al., 2018),  
5 but the slopes barely overlap within the 95 % confidence interval.

## 4.2 Nightingale parameterization

The N00 parameterization is a quadratic wind speed dependent parameterization of  $k$ . It is widely used, especially for regional bulk CO<sub>2</sub> gas flux calculations as well as for DMS flux calculations in Lana et al. (2011). The parameterization is based upon dual tracer measurements in the water performed in the North Sea (Watson et al., 1991; Nightingale et al., 2000) as well as  
10 data from the Florida Strait (FS) (Wanninkhof et al., 1997) and Georges Bank (GB) (Wanninkhof, 1992).

We analyzed each individual measurement that was used in the parameterization to assess the amount of gas transfer suppressing instances that are within the N00 parameterization. The single measurements, which are used for fitting the quadratic function of the N00 parametrization, are shown together with N00 in the left panel of Fig. 4. As the measurement time of the dual tracer technique is on the order of days, we interpolated the wind and wave data, obtained from the WWIII model for the specific  
15 time and location, to 1 h time steps and calculated the number of gas transfer suppressing and gas transfer non-suppressing instances. The right panel of Fig. 4 shows the suppression index,  $s_x$ , which is the ratio of gas suppressing instances to the number of data points ( $x$ -axis). The value 1 indicates that all of the interpolated one hour steps were gas transfer suppressed. The  $y$ -axis of Fig. 4 depicts the relation of the individual measurement to the N00 parameterization. A ratio ( $y$ -axis) of 1 indicates that the measurement point is exactly the same as the N00 parameterization. A value of 1.1 would indicate that the value was 10 %  
20 higher than predicted by the N00 parameterization.

We expect a negative correlation between the suppression index and the relation of the individual measurement vs the N00 parameterization. The higher the suppression index, the higher the gas transfer suppression and the lower the gas transfer velocity  $k$  with respect to the average parameterization. The correlation (Spearman's rank) is -0.43 with a significance level (p-value) of 0.11. This is not significant. However, we ~~have to~~ must take a closer look at two specific points: [1] Point 11, GB11  
25 that shows low measurement percentage despite a low suppression index, and [2] point 14, FS14 that shows high measurement percentage despite a high suppression index. GB11 at the Georges Bank showed an average significant wave height of 3.5 m, with a maximum of 6 m and wind speed between 9-13 m s<sup>-1</sup>. Transformed wind speeds  $u_{tr}$  are between 4-20 m s<sup>-1</sup>. As already discussed in Sect. 4.1 using the Knorr11 data set, wave heights above 3.5 m could lead to gas transfer suppression without being captured by Reynolds gas transfer suppression model (Zavarsky et al., 2018). High waves together with the  
30 strong winds could mark an upper limit of the gas transfer suppression model (Zavarsky et al., 2018). On the other hand the FS14 data point showed an average wave height of 0.6 m and wind speed of 4.7 m s<sup>-1</sup>. It is questionable if a flow separation and a substantial wind wave interaction can be established at this small wave height. This could mark the lower boundary for the Reynolds gas transfer suppression model (Zavarsky et al., 2018). Taking out either or both of these measurements (GB11 or FS14) changes the correlation (Spearman's rank) to -0.62 p=0.0233 (no GB11), -0.59 p=0.033 (no FS14) and -0.79 p=0.0025

(no GB11, no FS14). All three are significant. The black solid line in the right panel of Fig. 4 is a fit ~~-, which is based on the to~~  
~~all points except GB11 and FS14, based on~~ Eq. (15), ~~to all points but GB11 and FS14.~~

$$y(x) = a_1 + a_2 \cdot \frac{1}{x - a_3} \quad (15)$$

We choose this functional form, ~~because we follow the finding that the effect of~~ hypothesize that gas transfer suppression is  
 5 not linear, but rather has a threshold (Zavarsky et al., 2018). This means that the influence of suppression on gas transfer is  
 relatively low with a small suppression ratio, but increases strongly. The fit coefficients are:  $a_1 = 1.52$ ,  $a_2 = 0.14$  and  $a_3 = 1.18$ .

Fig. 5 shows the unsuppressed data points, according to the gas transfer suppression model (Section 3), unsuppressed data  
 points. We do not adjust the individual data points along the wind speed axis (x-axis), as the parameterization has a significant  
 bubble contribution, but add  $\Delta k$  (Eq. 12) to make up for the suppressed part of total k.

10 A new quadratic fit was applied to the adjusted data points ((Eq. 16), Fig. 5).

$$k_{660} = 0.359 \cdot u^2 \quad (16)$$

On average the new parameterization is 22 % higher than the original N00 parameterization. This increase is caused by the  
 heavy gas transfer suppression of the individual measurements. As we believe that this suppression only affects the interfacial  
 $k_o$  gas exchange, it might not be easily visible (decreasing k vs u relationship) in parameterizations based on dual tracer gas  
 15 transfer measurements, because of the potential of a large bubble influence.

The calculation of the unsuppressed N00 parameterization is an example application for this adjustment algorithm. We ad-  
 vise using the unsuppressed parameterization (N00+22 %) for flux calculations with very insoluble gases like  $\text{SF}_6$ / $^3\text{He}$ . We  
 hypothesize that the original N00 contains a large bubble component, as it is based on  $\text{SF}_6$  and  $^3\text{He}$  measurements, which  
 is compensated by the gas transfer suppression. Therefore, the original N00 has been widely used for regional  $\text{CO}_2$  gas flux  
 20 calculations.

### 4.3 Wanninkhof parameterization

The W14 parameterization estimates the gas transfer velocity using the natural disequilibrium between ocean and atmosphere  
 of  $^{14}\text{C}$  and the bomb  $^{14}\text{C}$  inventories. The total global gas transfer over several years is estimated by the influx of the  $^{14}\text{C}$   
 in the ocean (Naegler, 2009) and the global wind speed distribution over several years. The parameterization from W14 is  
 25 for winds averaged over several hours. The WWIII model winds, used here, are 3 hourly and therefore in the proposed range  
 (Wanninkhof, 2014). The W14 parameterization is given in Eq. (17).

$$k_{660, W14} = 0.251 \cdot (u_{10})^2 \quad (17)$$

The interesting point about this parameterization is that it should already include a global average gas transfer suppressing  
 factor. The parametrization is independent of local gas transfer suppression events. It utilizes a global, annual averaged, gas  
 30 transfer velocity of  $^{14}\text{C}$  and relates it to remotely sensed wind speed. This means that the average gas transfer velocity has

experienced the average global occurrence of gas transfer suppression and therefore is incorporated in the  $k$  vs  $u$  parameterization.

The quadratic coefficient  $a$  is calculated by dividing the averaged gas transfer velocity  $k_{glob}$  by  $u^2$  and the wind distribution  $distu$  of  $u$ .

$$5 \quad a = \frac{k_{glob}}{\sum u^2 \cdot distu} \quad (18)$$

The quadratic coefficient then defines the wind speed dependent gas transfer velocity  $k$  (Eq. (19)).

$$k = a \cdot u^2 \quad (19)$$

The left panel of Fig. 6 shows the global wind speed distribution of the year 2014 taken from the WWIII model, which is based on the NCEP reanalysis. Additionally, we added the distribution taking our wind speed adjustment into account. At  
 10 the occurrence of gas transfer suppression we calculated ~~as described in Sect. 3~~,  $u_{alt}$  as the representative wind speed for the unsuppressed transfer ~~as described in Sect. 3~~. The distribution of  $u_{alt}$  shifts higher wind speed (10-17 m s<sup>-1</sup>) to lower wind speed regimes (0-7 m s<sup>-1</sup>). This alters the coefficient for the quadratic wind speed parametrization. A global average gas transfer velocity of  $k_{glob}=16.5$  cm h<sup>-1</sup> (Naegler, 2009) results in a coefficient  $a=0.2269$ , using the NCEP wind speed distribution. With The value for  $a$  becomes 0.2439 with the  $u_{alt}$  distribution  ~~$a$  becomes 0.2439~~. This is an 9.85 % increase. Our  
 15 calculated value of  $a=0.2269$  differs from the W14 value of  $a=0.251$ , because we use a different wind speed distribution. The W14 uses a Rayleigh distribution with  $\sigma = 5.83$ , our NCEP derived  $\sigma = 6.04$  and the adjusted NCEP  $\sigma = 5.78$ . This means that the W14 uses a wind speed distribution with a lower global average speed. However, for the estimation of a suppression effect we calculate the difference between using the NCEP wind speed and the adjusted wind speed distribution. For the calculation of  $a$ , we did not use a fitted Rayleigh function but the adjusted wind speed distribution from Fig. 6.

20 A comparison of W14, N00 and the unsuppressed parameterizations is shown in the right panel of Fig. 6. N00 shows the lowest relationship between  $u$  and  $k$ . W14 shows a parameterization with a global averaged gas transfer suppression influence and is therefore slightly higher than N00. It appears that the gas transfer suppression is overcompensating the smaller bubble mediated gas transfer of CO<sub>2</sub> (W14). The unsuppressed N00 is significantly higher than the W14+9.85 %. We hypothesize that this difference is based on the different bubble mediated gas transfer of He, SF<sub>6</sub>, and CO<sub>2</sub>.

#### 25 4.4 Global Analysis

We used the native global grid (0.5° x 0.5°) from the WWIII for the global analysis. The data points from the DMS and CO<sub>2</sub> climatologies as well as all auxiliary variables were interpolated to this grid.

Fig. 7 shows the percentage of gas transfer suppressed data points with respect to the total data points for every month in the year 2014. The average yearly global percentage is 18.6 %. The minimum is 15 % in March and April and the maximum is  
 30 22 % in June, July and August. Coastal areas and marginal seas seem to be more influenced than open oceans. The reason could be that gas transfer suppression is likely to occur at developed wind seas when the wind speed is in the same direction and magnitude as the wave's phase speed. At coastal areas and marginal seas, the sea state is less influenced by swell and waves that

were generated at a remote location. Landmasses block swell from the open ocean to marginal seas. The intra-annual variability of gas transfer suppression is shown in Fig. 8. Additionally, we plotted the occurrences split into ocean basins and Northern and Southern Hemisphere. Two trends are visible. There is a higher percentage of gas transfer suppression in the Northern Hemisphere and, on the time axis, the peak is in the respective (boreal and austral) summer season. The Southern Hemisphere has a water-landmass ratio of 81 %, the northern Hemisphere's ratio is 61 %. The area of free open water is therefore greater in the ~~southern part.~~ Fully Southern Hemisphere. Gas transfer suppression is favored by fully developed seas without remote swell influence ~~favor gas transfer suppression~~. In the Southern Hemisphere, the large open ocean areas, where swell can travel longer distances, provide an environment with less gas transfer suppression. The peak in summer and minimum in winter can be associated with the respective sea ice extent on the Northern and Southern Hemisphere. Fig. 7 shows that seas, which are usually ice covered in winter, show a high ratio of gas transfer suppression.

The global reduction of the CO<sub>2</sub> and DMS flux is calculated using Eq. (13)-(14) and shown for every month in Fig. 9 and 10. These magnitudes represent the reduction of interfacial gas transfer due to gas transfer suppression. Most areas with a reduced influx of CO<sub>2</sub> into the ocean are in the northern Hemisphere. The only reduced CO<sub>2</sub> influx areas of the Southern Hemisphere are in the south Atlantic and west of Australia and New Zealand. Significantly reduced CO<sub>2</sub> efflux areas are found in the northern tropical Atlantic, especially in the boreal summer months, the northern Indian Ocean and the Southern Ocean. The maximum monthly reduction of influx (oceanic uptake) is 18.7 mmol m<sup>-2</sup> d<sup>-1</sup>. The maximum monthly reduction of efflux (oceanic outgassing) is 12.9 mmol m<sup>-2</sup> d<sup>-1</sup>.

~~For DMS flux~~ The absolute values of DMS flux reduction (Fig. 9) ~~the absolute values of reduction~~, due to gas transfer suppression, coincide with the summer maximum of DMS concentration and therefore large air-sea fluxes (Lana et al., 2011; Simó and Pedrós-Alió, 1999). ~~In the boreal winter the~~ The northern Indian Ocean during boreal winter also shows a high level (10 μmol m<sup>2</sup> d<sup>-1</sup>) of reduction. The highest water concentrations and fluxes in the Indian Ocean are found in boreal summer (Lana et al., 2011), which ~~does not seem to be greatly~~ is less influenced by gas transfer suppression.

The DMS emissions from the ocean to the atmosphere are shown in Tab. 3. The calculated total emission from the original N00 parameterization is 50.72 Tg DMS yr<sup>-1</sup> for the year 2014. ~~Then we~~ We use our estimations of  $u_{alt}$  and Eq. 14 to subtract gas transfer suppression from the original N00 parameterization. The resulting reduced total emission is 45.47 Tg DMS yr<sup>-1</sup>, which is a reduction of 11 %. The linear parameterization ZA18 estimates an emission of 56.22 Tg DMS yr<sup>-1</sup>. Using the gas transfer suppression algorithm and Eq. 13 the global amount is reduced to 51.07 Tg DMS yr<sup>-1</sup>, which is a reduction of 11 %. Global estimates are 54.39 Tg DMS yr<sup>-1</sup> (Lana et al., 2011) and 45.5 Tg DMS yr<sup>-1</sup> (Lennartz et al., 2015). As stated above, a difference in wind speed or sea ice coverage could be the reason for the difference in the global emission estimated between the Lana climatology and our calculations with the N00 parameterization. Lennartz et al. (2015) uses the water concentrations from the Lana climatology, but includes air-side DMS concentrations, which reduces the flux by 17 %. We do not include air-side DMS concentrations but gas transfer suppression, which reduces the flux by 11 %. ~~Including both processes we~~ We can expect a reduction of 20-30 % when including both processes.

## 5 Conclusions

We provide a first approach to adjust  $k$  values for the gas transfer suppression due to wind-wave interaction (Zavarsky et al., 2018) and therefore to account for the effect of this suppression.  $Re_{tr}$  and the resulting alternative wind speed  $u_{alt}$  can be calculated from standard meteorological and oceanographic variables. Additionally the condition (period, height, direction) of the ocean waves have to be known or retrieved from wave models. The calculation is iterative and can be easily implemented. The effect of this adjustment is shown with two data sets from the Knorr11 (Bell et al., 2017) and the SO234-2/235 cruise (Zavarsky et al., 2018). Both data sets show, after the adjustment, a better agreement with the linear ZA18 parameterizations (Tab. 1 and Tab. 2), which only contains non suppressed gas transfer velocity measurements from the SO 234-2/235 cruise. Generally, the adjustments may be only applied to the interfacial gas transfer velocity  $k_o$ .

We investigated the individual measurements leading to the N00 gas transfer parameterization for the influence of gas transfer suppression. We think that the overall parameterization is heavily influenced by gas transfer suppression ~~but, due to the measurement method (dual tracer measurements), the suppression is~~, but the suppression is likely masked by bubble mediated gas transfer, due to the solubility of the dual tracer measurement gases. We show a significant negative correlation between the occurrence of gas transfer suppression and the ratio of the individual measurement to the N00 parameterization. We applied an adjustment due to gas transfer suppression and fitted a new quadratic function to the adjusted data set. The new parameterization is on average 22 % higher than the original N00 parameterization. This leads to the conclusion that gas transfer suppression influences gas transfer parameterizations, even if it is not directly visible, via a smaller slope. Asher and Wanninkhof (1998) state that  $SF_6/{}^3He$  gas transfer measurements could lead to a 23 % overestimation of  $CO_2$  gas transfer velocities. After adjusting of N00 for gas transfer suppression, the difference between gas transfer velocities of the original N00 and the adjusted version closely matches this estimation.

For the W14 parameterization we used a global wind speed climatology for the year 2014 and applied the gas transfer suppression model  $u_{10} \rightarrow u_{alt}$ . Using the distribution function of  $u_{alt}$  we calculated an unsuppressed gas transfer parameterization. The coefficient of the unsuppressed parameterization is 9.85 % higher than the original one. W14 already includes the global average of gas transfer suppression. Therefore the increase, due to the adjustment, is expected to be less than the one for N00, which is strongly suppressed. The original N00 is lower than W14, but after adjustment N00 is larger than the unsuppressed W14, which is expected due to the larger bubble mediated gas transfer of He and  $SF_6$  over  $CO_2$ .

We think that gas transfer suppression has a global influence on air-sea gas exchange of 10-11 %. These numbers are supported by the adjustment of the W14 parametrization as well a global DMS gas transfer calculation. Local conditions may lead to much higher influences. Gas transfer velocity parameterizations from regional data sets might be heavily influenced by gas transfer suppression. We have shown this for the N00 parameterization. This should be considered with their use.

Using the  $Re_{tr}$  parameter one can evaluate if a flux measurement or flux calculation is influenced by gas transfer suppression. For unsuppressed conditions and rather soluble gases, such as DMS, we recommend the use of a linear parameterization (e.g. ZA18). For gases with a similar solubility as  $CO_2$  we recommend the use of the adjusted W14+9.85 % parameterization. The adjusted N00 (N00+22 %) parameterization is recommended for very insoluble gases. In case of gas transfer suppression, we

recommend the previous parameterizations together with our iterative approach to adjust  $u$  to  $u_{alt}$  (Fig. 1) with the use of Eq. 13-14. For global calculations we recommend the use of the Wanninkhof parameterizations W14 (Wanninkhof, 2014), as it already has an average global gas transfer suppression included.

5 *Data availability.* The wave data is available at the website of the NOAA Environmental Modeling Center. The ERA-Interim data is available at the website of the ECMWF. The data is stored at the data portal of GEOMAR Kiel.

## Appendix A: Directional dependencies

Figure A1 shows the shape of the wave (half sphere) as experienced by the wind flowing over it with a certain angle  $\theta$ . The larger  $\theta$  the more streamlined the wave (half sphere). The more streamlined the more difficult it is to generate turbulence, which counteracts the flow detachment and as a consequence gas transfer suppression occurs.

10 Wind at an angle of  $\theta = 90^\circ$  does not experience a wave crest or trough, but rather an along-wind corrugated surface. In this case there should be no gas transfer suppression. Zavarisky et al. (2018) predicts a non suppressed condition around  $Re_{tr} = 0$ , which coincides with  $\theta \approx 90^\circ$  or  $u_{tr} \rightarrow 0$ . Both conditions rarely occur and must be investigated in the future.

## Appendix B: Adjustment of wind speed or Adjustment of k

15 A shift on the x-axis from  $u_{10}$  to  $u_{alt}$  is ~~when related to a linear relationship,~~ equivalent to an increase of k by  $\Delta k$ . ~~As gas transfer suppression only affects interfacial gas transfer we,~~ when related to a linear relationship. We use the ZA18 parameterization as a reference (Eq. 12), which is a linear relationship describing  $k_o$ , as ~~a reference (Eq. 12).~~ gas transfer suppression only affects interfacial gas transfer. Figure A2 illustrates the two different possibilities of adjusting suppressed gas transfer values.

20 The adjustments of the two DMS data sets (SO234-2/235 and Knorr11) is done by shifting  $u_{10}$  along the x-axis to  $u_{alt}$ . We want to test whether  $u_{10}$  can be directly replaced by  $u_{alt}$  for  $k_o$  parameterizations. Gas transfer suppression adjustments for bubble influenced parameterizations are done by adding  $\Delta k$ , which is directly related to the difference  $\Delta u = u_{10} - u_{alt}$ .

*Competing interests.* The authors declare no competing interests.

25 *Acknowledgements.* The authors thank Kirstin Krüger, the chief scientist of the RV Sonne cruise (SO234-2/235), as well as the captain and crew. We thank the Environmental Modeling Center at the NOAA/National Weather Service for providing the WaveWatch III data. We thank the European Centre for Medium-Range Weather Forecasts for providing the ERA-Interim data. This work was carried out under the

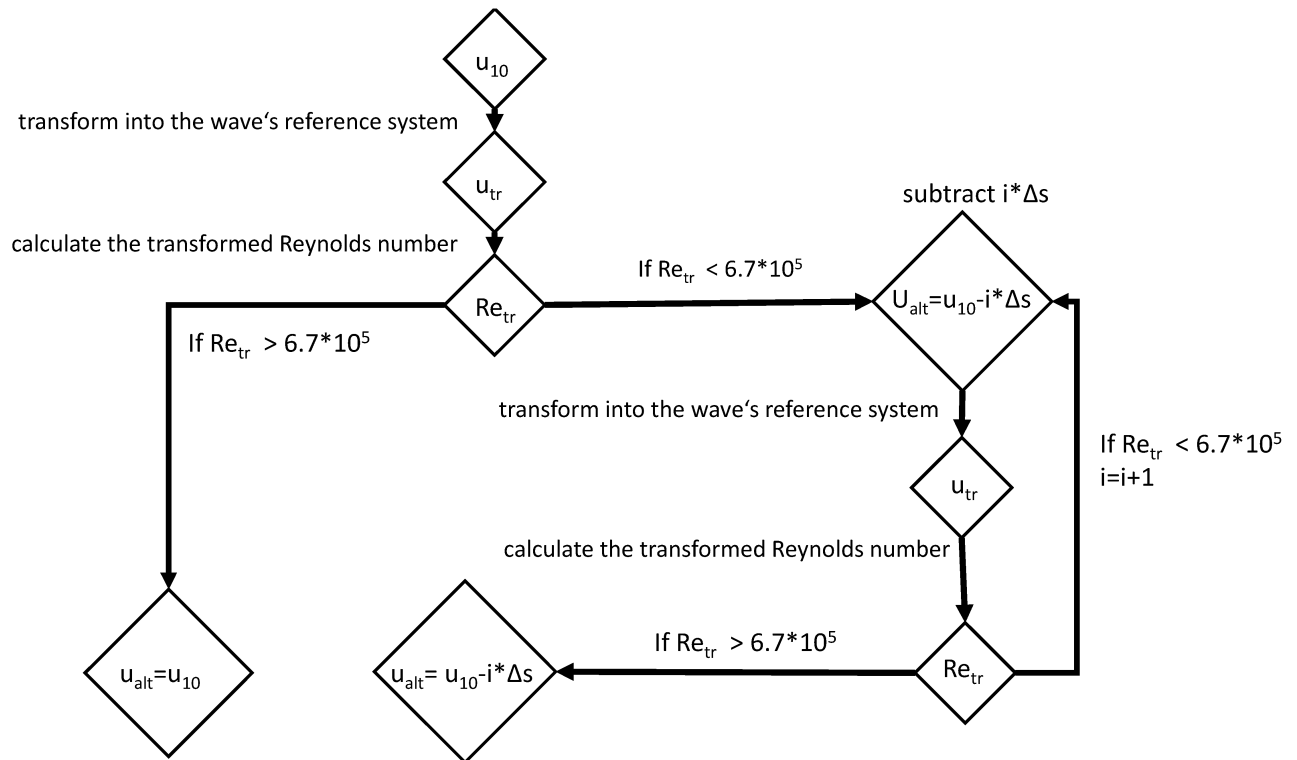
Helmholtz Young Investigator Group of C. Marandino, TRASE-EC (VH-NG-819), from the Helmholtz Association. The cruise 234-2/235 was financed by the BMBF, 03G0235A.

## References

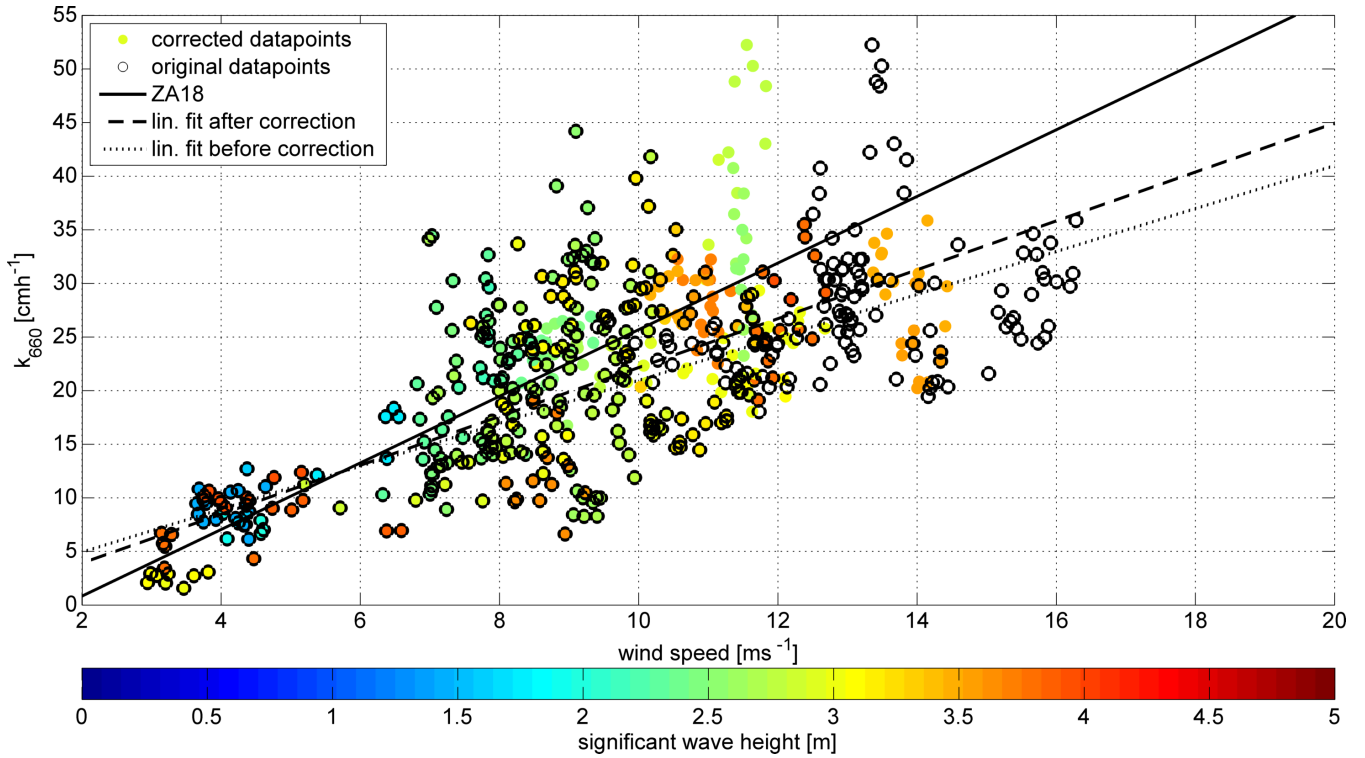
- Asher, W. E. and Wanninkhof, R.: The effect of bubble-mediated gas transfer on purposeful dual-gaseous tracer experiments, *Journal of Geophysical Research: Oceans*, 103, 10 555–10 560, <https://doi.org/10.1029/98jc00245>, <http://dx.doi.org/10.1029/98JC00245>, 1998.
- Bell, T. G., De Bruyn, W., Miller, S. D., Ward, B., Christensen, K. H., and Saltzman, E. S.: Air-sea dimethylsulfide (DMS) gas transfer in the North Atlantic: evidence for limited interfacial gas exchange at high wind speed, *Atmos. Chem. Phys.*, 13, 11 073–11 087, <https://doi.org/10.5194/acp-13-11073-2013>, <http://www.atmos-chem-phys.net/13/11073/2013/>, 2013.
- Bell, T. G., De Bruyn, W., Marandino, C. A., Miller, S. D., Law, C. S., Smith, M. J., and Saltzman, E. S.: Dimethylsulfide gas transfer coefficients from algal blooms in the Southern Ocean, *Atmos. Chem. Phys.*, 15, 1783–1794, <https://doi.org/10.5194/acp-15-1783-2015>, <http://www.atmos-chem-phys.net/15/1783/2015/>, 2015.
- 10 Bell, T. G., Landwehr, S., Miller, S. D., de Bruyn, W. J., Callaghan, A. H., Scanlon, B., Ward, B., Yang, M., and Saltzman, E. S.: Estimation of bubble-mediated air–sea gas exchange from concurrent DMS and CO<sub>2</sub> transfer velocities at intermediate-high wind speeds; Discussion paper, *Atmospheric Chemistry and Physics*, 17, 9019–9033, <https://doi.org/10.5194/acp-17-9019-2017>, <https://www.atmos-chem-phys.net/17/9019/2017/acp-17-9019-2017-discussion.html>, 2017.
- 15 Blomquist, B. W., Brumer, S. E., Fairall, C. W., Huebert, B. J., Zappa, C. J., Brooks, I. M., Yang, M., Bariteau, L., Prytherch, J., Hare, J. E., Czerski, H., Matei, A., and Pascal, R. W.: Wind Speed and Sea State Dependencies of Air-Sea Gas Transfer: Results From the High Wind Speed Gas Exchange Study (HiWinGS), *Journal of Geophysical Research: Oceans*, pp. n/a–n/a, <https://doi.org/10.1002/2017JC013181>, <http://dx.doi.org/10.1002/2017JC013181>, 2017.
- 20 Dee, D. P., Uppala, S. M., Simmons, A. J., Berrisford, P., Poli, P., Kobayashi, S., Andrae, U., Balmaseda, M. A., Balsamo, G., Bauer, P., Bechtold, P., Beljaars, A. C. M., van de Berg, L., Bidlot, J., Bormann, N., Delsol, C., Dragani, R., Fuentes, M., Geer, A. J., Haimberger, L., Healy, S. B., Hersbach, H., Holm, E. V., Isaksen, L., Kållberg, P., Köhler, M., Matricardi, M., McNally, A. P., Monge-Sanz, B. M., Morcrette, J. J., Park, B. K., Peubey, C., de Rosnay, P., Tavolato, C., Thepaut, J. N., and Vitart, F.: The ERA-Interim reanalysis: configuration and performance of the data assimilation system, *Quarterly Journal of the Royal Meteorological Society*, 137, 553–597, <https://doi.org/10.1002/qj.828>, <http://dx.doi.org/10.1002/qj.828>, 2011.
- 25 Hanley, K. E., Belcher, S. E., and Sullivan, P. P.: A Global Climatology of Wind-Wave Interaction, *Journal of Physical Oceanography*, 40, 1263–1282, <https://doi.org/10.1175/2010JPO4377.1>, <http://dx.doi.org/10.1175/2010JPO4377.1>, 2010.
- Komori, S., McGillis, W., and Kurose, R.: *Gas Transfer at Water Surfaces*, 2010, Kyoto University, <http://hdl.handle.net/2433/156156>, 2011.
- Lana, A., Bell, T. G., Simo, R., Vallina, S. M., Ballabrera-Poy, J., Kettle, A. J., Dachs, J., Bopp, L., Saltzman, E. S., Stefels, J., Johnson, J. E., and Liss, P. S.: An updated climatology of surface dimethylsulfide concentrations and emission fluxes in the global ocean, *Global Biogeochemical Cycles*, 25, n/a–n/a, <https://doi.org/10.1029/2010GB003850>, <http://dx.doi.org/10.1029/2010GB003850>, 2011.
- 30 Lennartz, S. T., Kryzstofiak, G., Marandino, C. A., Sinnhuber, B.-M., Tegtmeier, S., Ziska, F., Hossaini, R., Krüger, K., Montzka, S. A., Atlas, E., Oram, D. E., Keber, T., Bönisch, H., and Quack, B.: Modelling marine emissions and atmospheric distributions of halocarbons and dimethyl sulfide: the influence of prescribed water concentration vs. prescribed emissions, *Atmospheric Chemistry and Physics*, 15, 11 753–11 772, <https://doi.org/10.5194/acp-15-11753-2015>, <https://www.atmos-chem-phys.net/15/11753/2015/>, 2015.
- Naegler, T.: Reconciliation of excess <sup>14</sup>C-constrained global CO<sub>2</sub> piston velocity estimates, *Tellus B: Chemical and Physical Meteorology*, 35, 372–384, <https://doi.org/10.1111/j.1600-0889.2008.00408.x>, <https://doi.org/10.1111/j.1600-0889.2008.00408.x>, 2009.



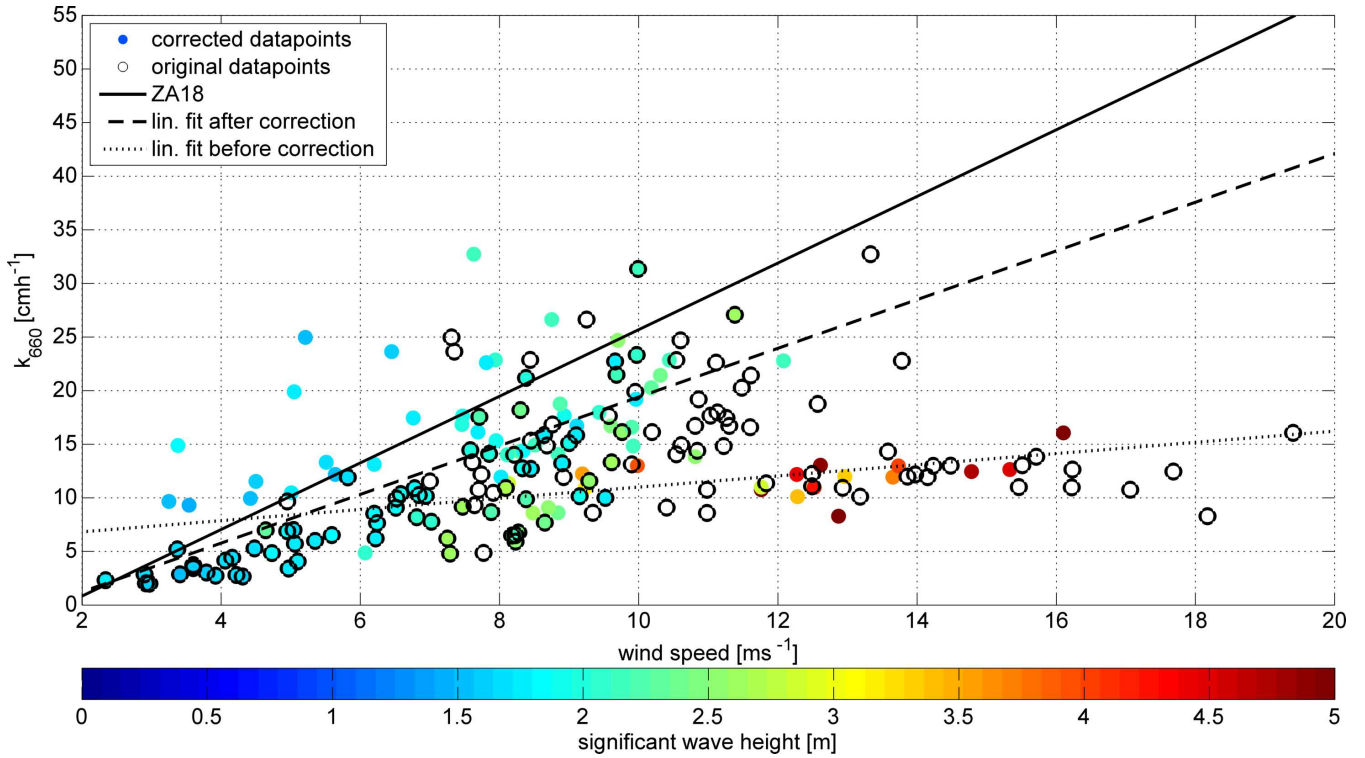
- Nightingale, P. D., Malin, G., Law, C. S., Watson, A. J., Liss, P. S., Liddicoat, M. I., Boutin, J., and Upstill-Goddard, R. C.: In situ evaluation of air-sea gas exchange parameterizations using novel conservative and volatile tracers, *Global Biogeochemical Cycles*, 14, 373–387, <https://doi.org/10.1029/1999GB900091>, <http://dx.doi.org/10.1029/1999GB900091>, 2000.
- 5 Simó, R. and Pedrós-Alió, C.: Role of vertical mixing in controlling the oceanic production of dimethyl sulphide, *Nature*, 402, 396–399, <https://doi.org/10.1038/46516>, 1999.
- Singh, S. P. and Mittal, S.: Flow past a cylinder: shear layer instability and drag crisis, *International Journal for Numerical Methods in Fluids*, 47, 75–98, <https://doi.org/https://doi.org/10.1002/flid.807>, 2004.
- Takahashi, T., Sutherland, S. C., Wanninkhof, R., Sweeney, C., Feely, R. A., Chipman, D. W., Hales, B., Friederich, G., Chavez, F., Sabine, C., Watson, A., Bakker, D. C., Schuster, U., Metzl, N., Yoshikawa-Inoue, H., Ishii, M., Midorikawa, T., Nojiri, Y., Körtzinger, A., Steinhoff, T., Hoppema, M., Olafsson, J., Arnarson, T. S., Tilbrook, B., Johannessen, T., Olsen, A., Bellerby, R., Wong, C., Delille, B., Bates, N., and de Baar, H. J.: Climatological mean and decadal change in surface ocean pCO<sub>2</sub>, and net sea–air CO<sub>2</sub> flux over the global oceans, *Deep Sea Research Part II: Topical Studies in Oceanography*, 56, 554 – 577, <https://doi.org/http://dx.doi.org/10.1016/j.dsr2.2008.12.009>, <http://www.sciencedirect.com/science/article/pii/S0967064508004311>, surface Ocean CO<sub>2</sub> Variability and Vulnerabilities, 2009.
- 10 Tolman, H. L.: User manual and system documentation of WAVEWATCH-III version 1.15, NOAA / NWS / NCEP / OMB Technical Note, 151, 97, 1997.
- Tolman, H. L.: User manual and system documentation of WAVEWATCH-III version 1.18, NOAA / NWS / NCEP / OMB Technical Note, 166, 110, 1999.
- Tolman, H. L.: User manual and system documentation of WAVEWATCH III TM version 3.14, NOAA / NWS / NCEP / MMAB Technical Note, 276, 220, 2009.
- 20 Wanninkhof, R.: Relationship between wind speed and gas exchange over the ocean, *Journal of Geophysical Research: Oceans*, 97, 7373–7382, <https://doi.org/10.1029/92JC00188>, <http://dx.doi.org/10.1029/92JC00188>, 1992.
- Wanninkhof, R.: Relationship between wind speed and gas exchange over the ocean revisited, *Limnology and Oceanography: Methods*, 12, 351–362, <https://doi.org/10.4319/lom.2014.12.351>, <http://dx.doi.org/10.4319/lom.2014.12.351>, 2014.
- Wanninkhof, R., Hitchcock, G., Wiseman, W. J., Vargo, G., Ortner, P. B., Asher, W., Ho, D. T., Schlosser, P., Dickson, M.-L., Masserini, R., Fanning, K., and Zhang, J.-Z.: Gas exchange, dispersion, and biological productivity on the West Florida Shelf: Results from a Lagrangian Tracer Study, *Geophysical Research Letters*, 24, 1767–1770, <https://doi.org/10.1029/97GL01757>, <http://dx.doi.org/10.1029/97GL01757>, 1997.
- 25 Watson, A. J., Upstill-Goddard, R. C., and Liss, P. S.: Air-sea gas exchange in rough and stormy seas measured by a dual-tracer technique, *Nature*, 349, 145, <http://dx.doi.org/10.1038/349145a0>, 1991.
- 30 White, F.: *Viscous Fluid Flow*, McGraw-Hill series in mechanical engineering, McGraw-Hill, <https://books.google.de/books?id=G6IeAQAAIAAJ>, 1991.
- Yang, M., Bell, T. G., Blomquist, B. W., Fairall, C. W., Brooks, I. M., and Nightingale, P. D.: Air-sea transfer of gas phase controlled compounds, *IOP Conference Series: Earth and Environmental Science*, 35, 012 011, <http://stacks.iop.org/1755-1315/35/i=1/a=012011>, 2016.
- 35 Zavarsky, A., Goddijn-Murphy, L., Steinhoff, T., and Marandino, C. A.: Bubble mediated gas transfer and gas transfer suppression of DMS and CO<sub>2</sub>, *Journal of Geophysical Research: Atmospheres*, 123, 6624–6647, <https://doi.org/10.1029/2017jd028071>, <https://agupubs.onlinelibrary.wiley.com/doi/abs/10.1029/2017JD028071>, 2018.



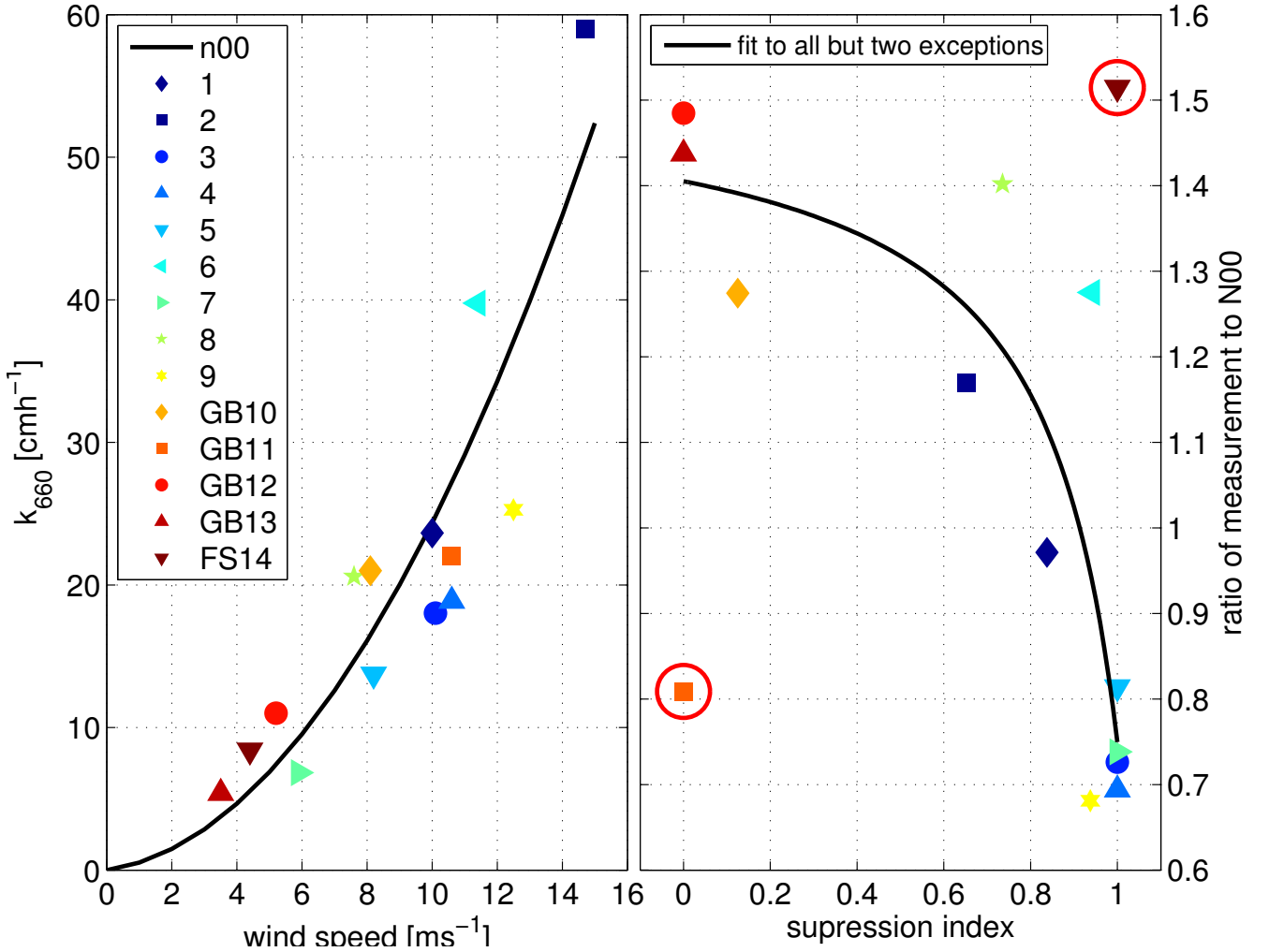
**Figure 1.** Work flow of the gas transfer suppression model. In the case of suppressed gas transfer, the output is the adjusted wind speed  $u_{alt}$ , which then can be used in gas transfer parameterizations. The step size  $\Delta s$  can be adapted freely, but considerations of resolution and computing power have to be made. ~~For this manuscript we~~ We set  $\Delta s = 0.3 \text{ m s}^{-1}$  ~~for this manuscript.~~



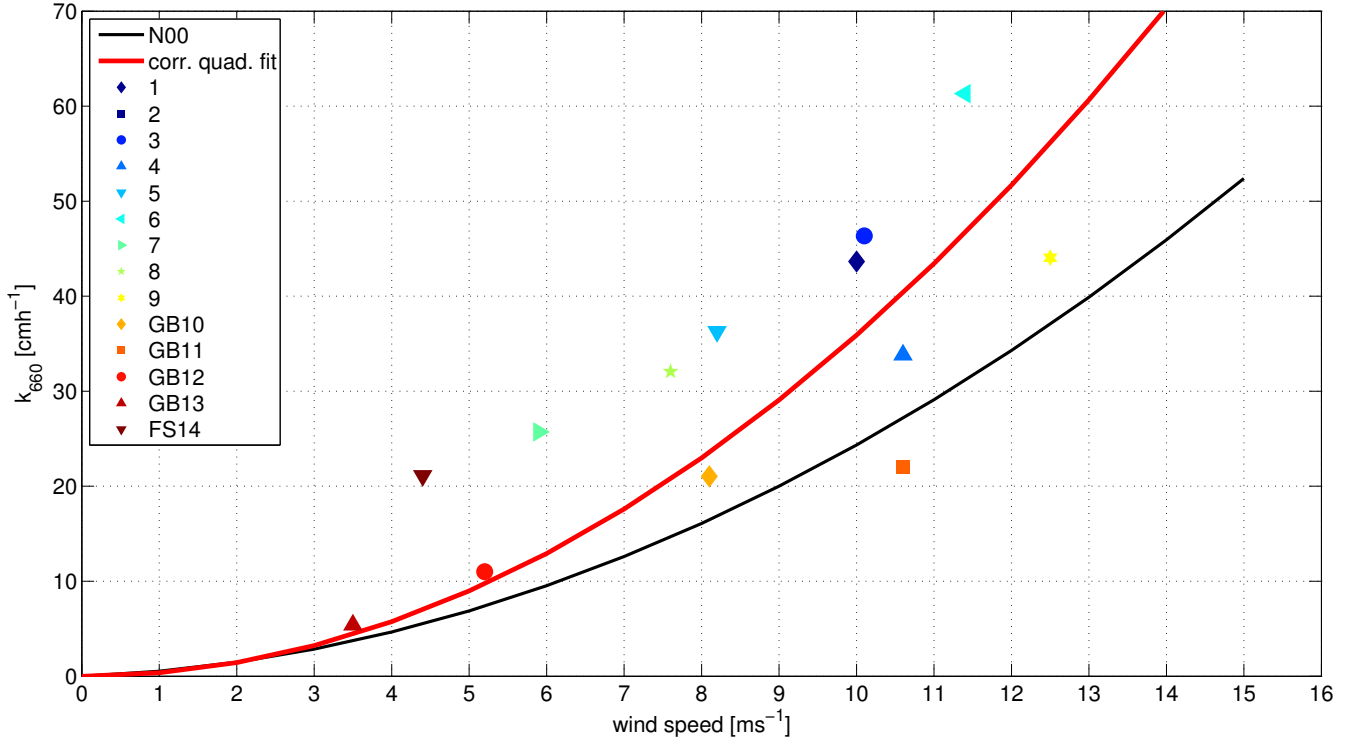
**Figure 2.** ~~Adjustments~~-Adjustments to the SO234-2/235 DMS  $k$  vs  $u$  relationship. The data points with  $|Re_{tr}| < 6.96 \cdot 10^5$  were adjusted using the gas transfer suppression model. Black circles denote  $k$  values at the original wind speed  $u_{10}$ . Colored filled circles denote the  $k$  value at wind speed= $u_{alt}$ . The color shows the significant wave height. If a data point has a concentric black and filled circle, it was not adjusted, as it was not subject to gas transfer suppression. The black solid line is the ZA18 parameterization. The dotted line is the linear fit to the data points before the adjustment; the dashed line is the linear fit after the ~~adjustment~~adjustment.



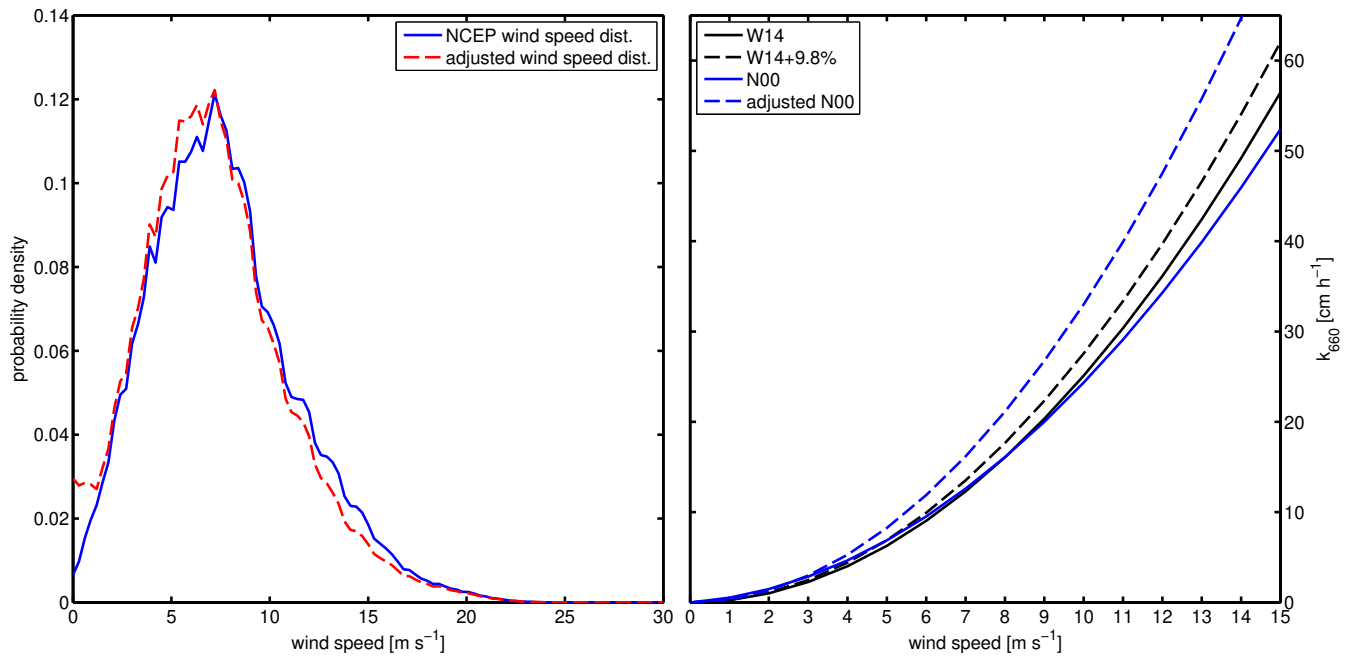
**Figure 3.** Adjustments to the Knorr11 DMS  $k$  vs  $u$  relationship. The data points with  $|Re_{tr}| < 6.96 \cdot 10^5$  were adjusted using the gas transfer suppression model. Black circles denote  $k$  values at the original wind speed  $u_{10}$ . Colored filled circles denote the  $k$  value at wind speed  $=u_{alt}$ . The color shows the significant wave height. If a data point has a concentric black and filled circle, it was not adjusted, as it was not subject to gas transfer suppression. The black solid line is the ZA18 parameterization. The dotted line is the linear fit to the data points before the adjustment; the dashed line is the linear fit after the adjustment.



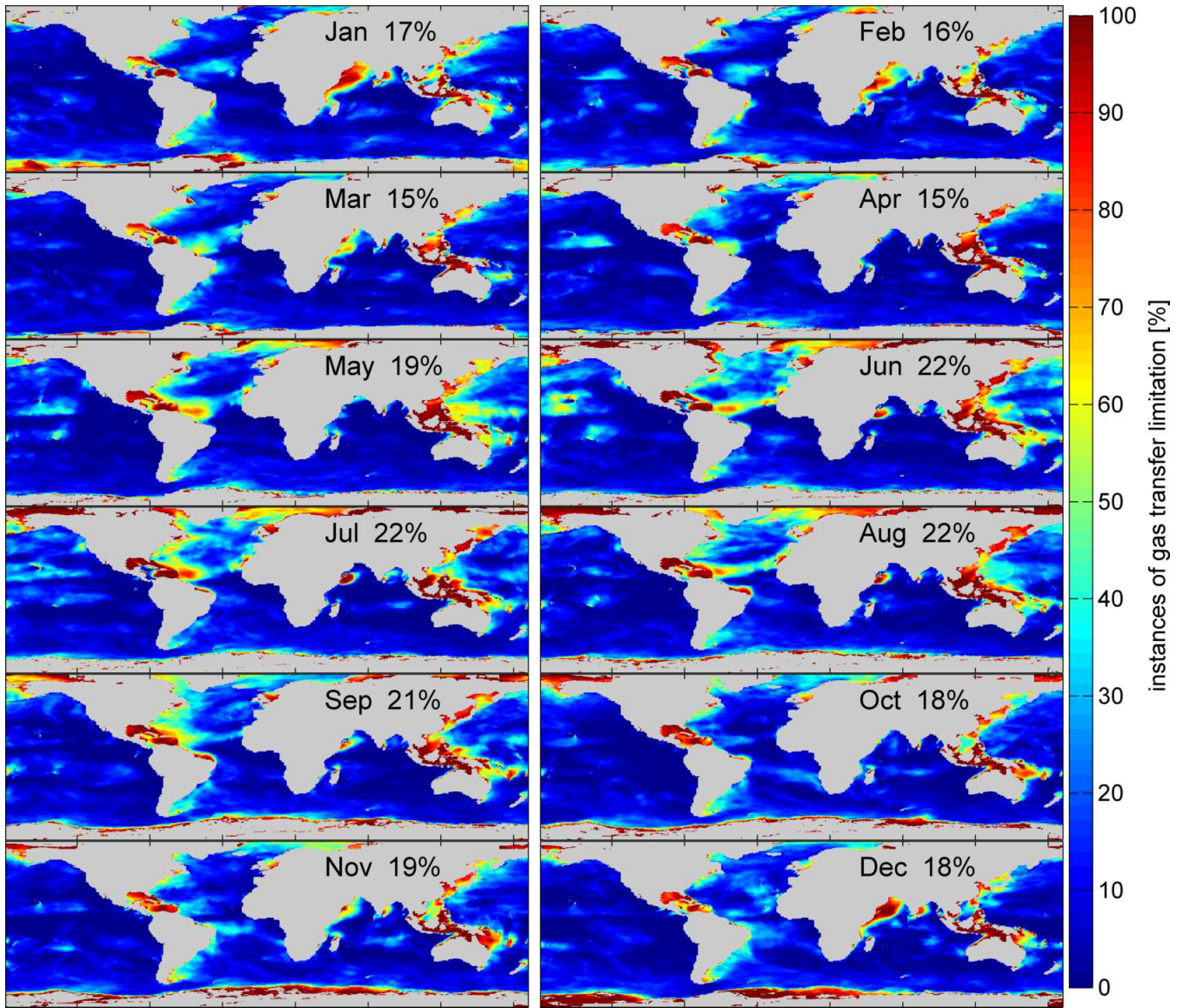
**Figure 4.** Individual dual tracer measurements which contribute to the N00 (solid line) parameterization [left panel]. The relationship of the gas suppression ratio to the measurement/N00 ratio [right panel]. The solid line in the right panel is a fit to the suppression to measurement/N00 relationship. A higher suppression ratio indicates a longer influence of gas transfer suppression on the data point. The two red circles denote the outlier points which are discussed in the text. The black solid line is a fit using the function  $y(x) = a_1 + a_2 \cdot \frac{1}{x-a_3}$ . The fit coefficients are:  $a_1 = 1.52$ ,  $a_2 = 0.14$  and  $a_3 = 1.18$ .



**Figure 5.** Adjusted individual measurements, comprising the N00 parameterization, resulting from the algorithm described in Sect. 3. The difference between  $u_{alt}$  and the original  $u_{10}$  was added to  $k$  using the linear parameterization ZA18, which accounts for the suppression of  $k_o$  due to wind-wave interaction. The black solid line is the original N00 parameterization. The red line is a new quadratic fit to the adjusted data points  $k=0.359*u^2$ .

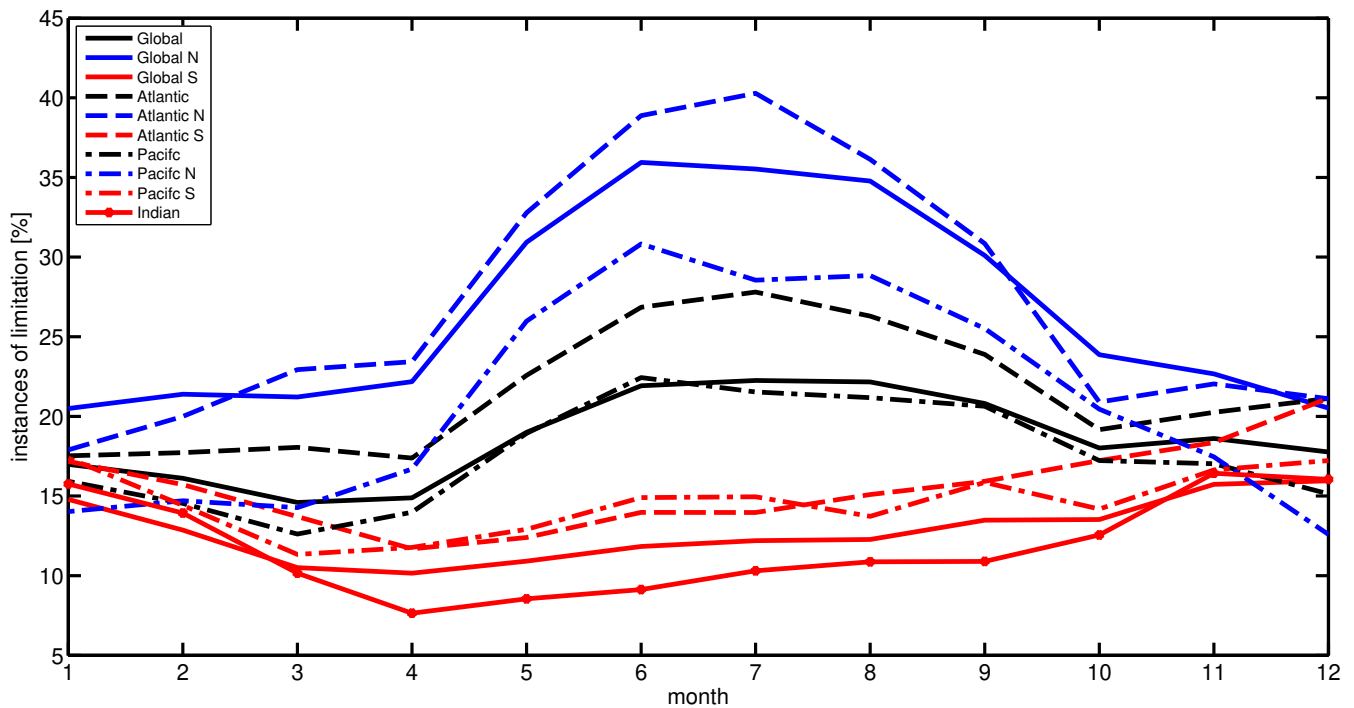


**Figure 6.** Wind speed distributions for the year 2014 [left panel]. The solid line is NCEP derived wind speed distribution, the dashed line the wind speed distribution of the adjusted wind speed  $u_{alt}$ . Comparison of original and adjusted  $k$  vs wind speed parameterizations [right panel].

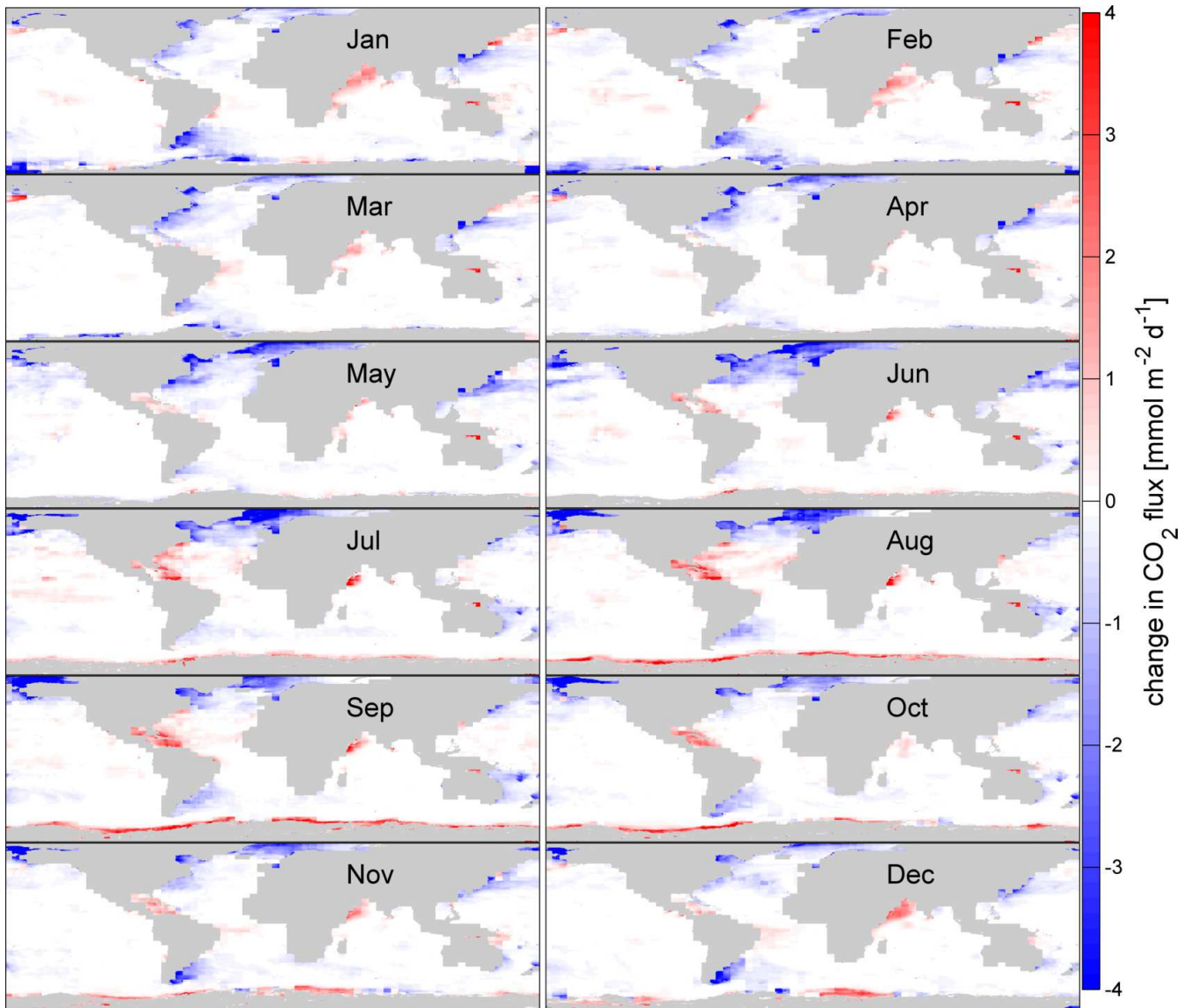


**Figure 7.** The global probability of experiencing gas transfer suppression during the respective month (2014). The percentage is the number of gas transfer suppressed occurrences with respect to the total data points with a 3 h resolution.

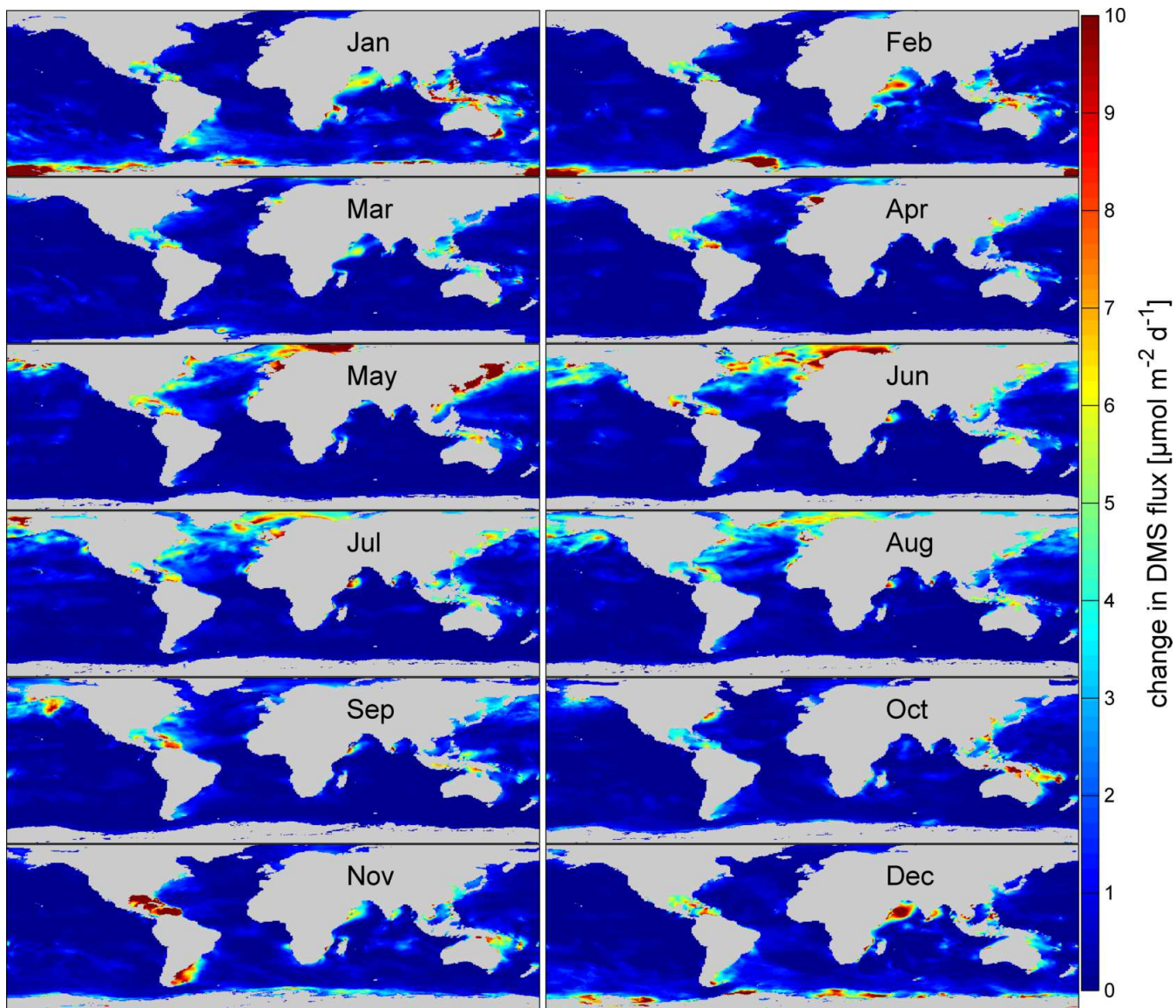




**Figure 8.** The probability of experiencing gas transfer suppression during the respective month (2014) divided into ocean basins and hemisphere. The Southern Ocean was added to the southern part of the respective ocean basin. The percentage is the number of gas transfer suppressed instances with respect to the total data points with a 3 h resolution.



**Figure 9.** The absolute change of CO<sub>2</sub> gas transfer due to suppression for each month of 2014. Negative values (blue) denote areas where a flux into the ocean is reduced by the shown value. Positive values denote areas where flux out of the ocean is reduced by the shown value. The change is calculated using the bulk flux formula (Eq. 1) and  $\Delta k$  (Eq. 12).



**Figure 10.** The absolute change of DMS gas transfer due to suppression for each month of 2014. The shown magnitudes denote the reduction by gas transfer suppression. The change is calculated using the bulk flux formula (Eq. 1) and  $\Delta k$  (Eq. 12).

| reference fit<br>all [ $\text{cm h}^{-1}$ ] | SO234-2/235<br>mean diff. | Knorr11<br>mean diff. | SO234-2/235<br>mean(  ) | Knorr11<br>mean(  ) |
|---|---------------------------|-----------------------|-------------------------|---------------------|
| lin. fit SO234-2/235 to adjusted            | -1.2                      | -6.96                 | 5.5                     | 8.1                 |
| lin. fit SO234-2/235 to unaltered           | -2.8                      | -10.3                 | 6.4                     | 10.7                |

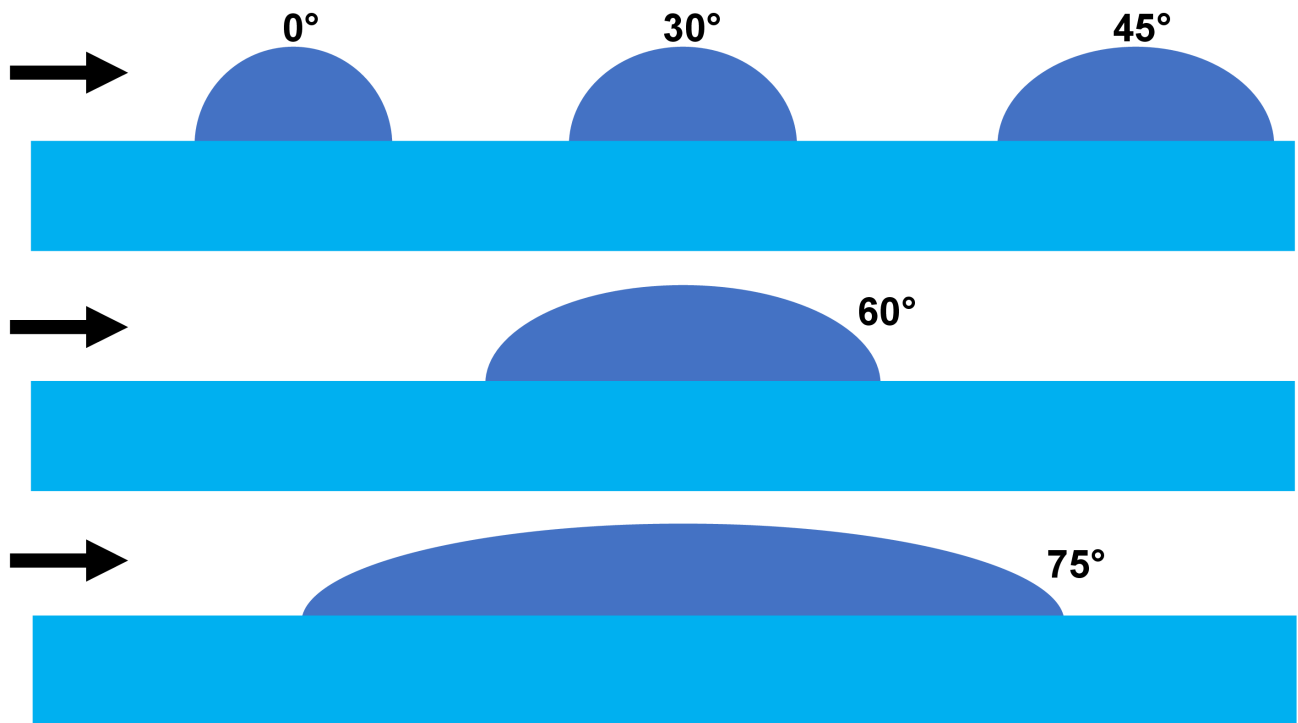
**Table 1.** Mean differences between the reference fits (column one) and the adjusted and ~~unadjusted~~ unadjusted k data sets. A negative value describes that the fit, on average, overestimates the actual measured data. The mean of the absolute value is presented in the last two columns.

|            | Knorr11  | SO234-2/235                                       |
|------------|--|---|
| unadjusted | $k_{660} = 0.52 \pm 0.4 \cdot u + 5.79 \pm 4.82$ | $k_{660} = 2 \pm 0.42 \cdot u + 0.94 \pm 2.48$    |
| adjusted   | $k_{660} = 2.27 \pm 0.5 \cdot u - 3.29 \pm 4.08$ | $k_{660} = 2.28 \pm 0.45 \cdot u - 0.63 \pm 4.14$ |

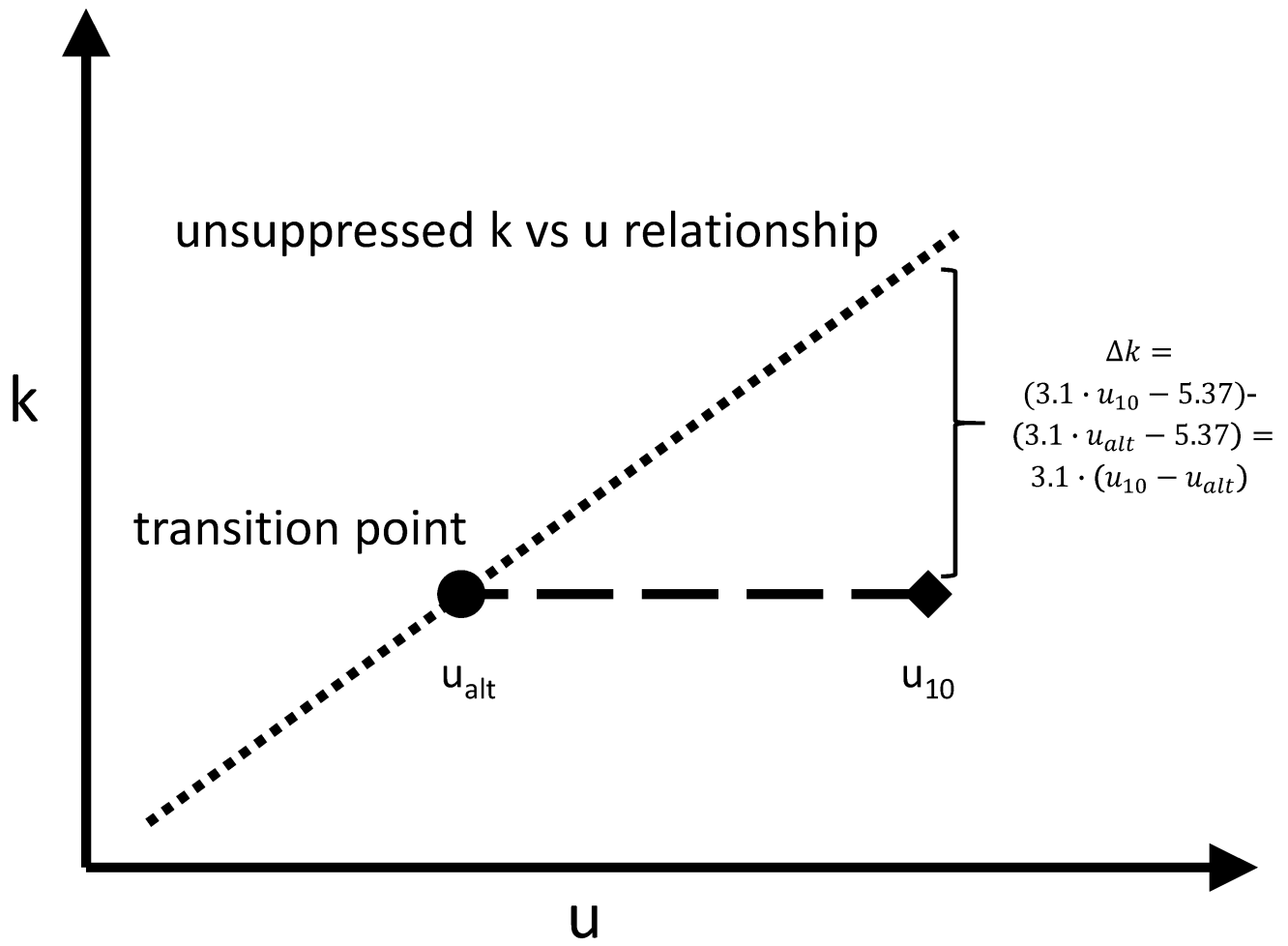
**Table 2.** Linear fits to the adjusted and unadjusted data sets of Knorr11 and SO234-2/235. The error estimates correspond to a 95 % confidence interval.

| parameterization       | flux [Tg DMS yr <sup>-1</sup> ] |
|------------------------|---------------------------------|
| N00                    | 50.72                           |
| N00 $Re_{tr}$          | 45.47                           |
| ZA18                   | 56.22                           |
| ZA18 $Re_{tr}$         | 51.07                           |
| Lana et al. (2011)     | 54.39 Tg DMS yr <sup>-1</sup>   |
| Lennartz et al. (2015) | 45.5 Tg DMS yr <sup>-1</sup>    |

**Table 3.** 2014 DMS flux in Tg.  $Re_{tr}$  indicates an application of the gas transfer suppression model. The last two lines are estimated from global climatologies



**Figure A1.** The streamlined shape of a wave (cylindrical half sphere) that experiences wind flowing over it from various angles,  $\theta$ .



**Figure A2.** Illustration of the gas transfer suppression adjustments along either the wind speed or gas transfer velocity axis.