

Editor comments on Manuscript. No: ACP-2018-310

Thölix et al., Linking uncertainty on simulated Arctic ozone loss to uncertainties in modelled tropical stratospheric water vapour

P1, L2: Since you are referring here to simulations I would suggest to write either at the begin of the sentence “The simulated amount of water vapour” or at the end of the sentence “between simulations from chemistry-climate models.

OK "between simulations from chemistry-climate models."

P1, L6: Similar here. Since you refer to model simulations “amount” should be replaced by “simulated amount”. OK

P1, L14: add “stratospheric winter” so that it reads “in cold stratospheric winters”

We didn't find the right place, but we changed the text as follows:

"The strongest effect was in intermediately cold stratospheric winters, such as 2013/14 winter, when added water vapour resulted in 2-7 % more ozone loss due to the additional formation of polar stratospheric clouds (PSC) and associated chlorine activation on their surface, leading to ozone loss.

P1, L14: add “winter” after 2013/14. OK

P1, L15: add “formation of”, so that it reads “due to the additional formation of polar stratospheric clouds”. OK

P1, L16: be more precise, thus change “such as 2010/11” to “such as the 2010/11 winter”. OK

P1, L17: Be more precise, thus change with observed water vapour to without changing the prescribed water vapour amount

Corrected as follows:

“The effect was less pronounced in cold winters such as the 2010/11 winter because cold conditions persisted long enough for a nearly complete chlorine activation even in simulations with prescribed stratospheric water vapour amount corresponding to the observed values.”

P1, L18: it should read either “an area” or “areas”. OK

P1, L18: could not → did not. OK

P1, L22: Rephrase “of ozone layer recovery” either to ”ozone recovery” or “of the recovery of the ozone layer”. OK

P2, L5-6: This sentence is not clear. Do you mean that there will be an additional warming of the troposphere due to higher water vapour? Does this not rather come from a future cooling of the stratosphere? Please clarify and rephrase the sentence.

Yes, this is what we mean here and this statement is based on the results by Desler et al. We rephrased the sentence as follows to make the point clearer:

"Dessler et al., (2013) suggested that, as a result of global warming, tropopause temperature will increase leading to an increase in stratospheric water vapour (SWV). Since water vapour is a greenhouse gas, future increases in SWV will provide a positive feedback further warming the troposphere below."

P2, L8: Add comma after “However”. OK

P2, L12: The references of Solomon et al., 1999 and Khosrawi et al. (2016) are not adequate in this context. I would suggest to cite here the paper by Hamill et al. (1997) or Peter (1997). If you prefer a newer reference you alternatively could cite the book chapter of Peter and Grooss (2012).
[We changed the reference to Hamill et al. \(1997\)](#)

P2, L15: add “that are rarely reached in the Arctic” after (below about 195 K) and add “there” after place and remove “in the Arctic” at the end of the sentence, so that it reads: “Since the formation of PSCs requires very low temperatures (below about 195 K) that are rarely reached in the Arctic, significant polar ozone depletion takes place there only occasionally.” [OK](#)

P2, L24-25: Change sentence as follows: “Kuttipurath and Nair (1997) showed based on ozone balloon soundings and total ozone data from satellite instruments that ozone has begun to recover.
[Corrected as follows:](#)

["Kuttipurath and Nair \(1997\) showed based on ozone balloon soundings and total ozone data from satellite instruments that Antarctic ozone has begun to recover."](#)

P2, L25: remove “profile”, so that it just reads “data”. [OK](#)

P2, L26: showed → could show [OK](#)

P3, L14: “of the increase due to the increases”? Is here one of the “increases” obsolete? [OK](#)

P3, L20: Also Revell et al. (2016) → Revell et al. (2016) also [OK](#)

P3, L26: smallest → smallest was [OK](#)

P3, L28: skip “atmospheric”. [OK](#)

P3, L33: early → in early [OK](#)

P4, L8-9: Rephrase sentence as follows: “One may wonder what the implications of these discrepancies for stratospheric ozone losses simulated by CCMs are.” [OK](#)

P4, L9: Do you refer here to simulated transport or the real transport? Please be more precise and rephrase sentence accordingly.

[Yes, we refer to simulated transport. This is specified in the revised text:](#)

["This question is difficult to address by analyzing CCM outputs because there are other differences between the models which affect simulated ozone losses, such as differences in simulated transport."](#)

P4, L18: “as the” appears twice, thus one is obsolete. [OK](#)

P4, L32: remove “chemistry” and add “are used” or “applied” after Atkinson et al. (2007b). [OK](#)

P5, L3: What exactly is meant with composition? The amount of H₂SO₄, H₂O or HNO₃ in the droplets or do you mean the kind of PSC/strat aerosol particles as binary, STS etc?

[We meant the composition of the liquid phase, i.e. the concentration of H₂SO₄, H₂O or HNO₃.](#)

[“Water vapour and HNO₃ condenses onto the binary aerosol and STS droplets making them more dilute, which increases the uptake coefficients of some reactions, i.e the hydrolysis reactions of ClONO₂, BrONO₂ and N₂O₅, as well as the reaction of HCl between ClONO₂ and HOCl \(Sander et al., 2011\).”](#)

P5, L24: Reference of Thölix et al. should be given here in parantheses. OK

P6, L2: The reference of Gettelmann et al. 2010 should be given without parantheses. OK

P6, L5: considered spinup → considered as spin-up. OK

P6, L6: add “amount” or “concentration” after “water vapour”. OK

P6, L19: minimum of what? Be more precise.

We mean minimum temperature. This is specified in the revised text:

"The temperature shows the typical annual cycle with minimum temperature in northern hemisphere (NH) winter and maximum temperature in NH summer."

P6, L21: occur → occurs OK

P6, L26: What do you mean with lead? Is ahead, thus happening earlier? IN that case I would replace “leads” by “is ahead”. OK

P7, L5: correspond → corresponds OK

P7, L7: sufficient for → sufficient for the OK

P7, L7: though → throughout OK

P7, L13: inside → inside the OK

P7; L13: close to → close to the OK

P7, L20: due to → due to an OK

P7, L23: Change sentence as follows: Typically, there is a stronger increase in water vapour towards spring in the MLS observations compared to the FinRose simulations. OK

P7, L32: as seen → as can be seen OK

P8; L7: corresponded to formation → corresponds to the formation OK

P8; L16: Corresponding to how much HNO₃ in weight percent would that be?

It is not possible to give a single corresponding weight percent limit, the exact weight percent depends on the composition of the aerosol, i.e. the fractions of sulphuric acid and water. The limit of 0.6 pptv liquid HNO₃ means that 0.6 pptv has dissolved from the gas phase to the liquid phase in a given gridpoint. The text was altered to give a more detailed description of the assumption.

“There is no formation temperature for STS, but they are formed gradually as water and HNO₃ dissolves into binary aerosols with decreasing temperature. Here we have defined STS based on how much HNO₃ has dissolved into the liquid phase, we set the limit at 0.6 pptv liquid HNO₃ for any given gridpoint. The limit approximately corresponds to a formation threshold temperature of 202 K for STS.”

P9, L2: PSC → ICE PSC ? I guess you mean here specifically ice PSCs or am I wrong?

We didn't find the place from line 2, but we changed the text as follows:

"The observed ICE PSC areas are comparable to the FinROSE modelled ICE PSC areas (Thölix et al., 2016)"

P9, L3: Add “being present” so that it reads: “Also the duration of the ICE clouds being present is comparable”. OK

P9, L4: add “the EMAC” so that it reads “with the EMAC model” OK

P9, L4: are → were OK

P9, L4. Change “than the observed ones” to “the ones observed with MIPAS.” OK

Note: In Khosrawi et al., the comparison was performed for the total PSC volume. Thus, this does not mean that ice is not correctly simulated with the EMAC model. The STS PSCs have the largest volume and our conclusion was that STS is significantly underestimated, but the other PSCs may be correct or (in case of NAT) be rather overestimated.

P9, L7: as very cold → as being very cold OK

P9, L8: Through → throughout OK

P9, L12: had → has OK

P9, L13: in Max → in the Max OK

P9, L17: PSC starts → PSCs start OK

P9, L28: in Interim simulation → in the Interim simulations OK

P9, L28: add “the” so that it reads “between the Max and.....” OK

P9, L29: add also here simulation, so that it reads Interim simulations OK

P9, L31: add “the” before 2012/13 and change were to was OK

P9, L32: as the decrease → decrease of what. Please clarify and rephrase accordingly.

The text now reads:

"The increase of water vapour in the Max simulation did not change the PSC area as much as the decrease of water vapour in the Min simulation. "

P9, L35: add “the”, so that it reads “the Min and Interim simulations” OK

P10, L2: persist → persisted OK

P10, L3: add “winter” after 2015/16 OK

P10, L3: area → areas OK

P10, L6: remove “altitude”, so that it reads “at 55 hPa”.OK

P10, L18: comma obsolete OK

P10, L20: goes back → is transformed back OK

P10, L29: reservoir → reservoir species OK

P10, L33: to → to the OK

P11, Table 2 caption: change → changes OK

P11, L1: remove “it” OK

P11, L3: add “the” before “chlorine activation” OK

P11, L4: warmed → temperature increased OK

P12, L3: “warmed up” should be rephrased

The text now reads:

"In the end of February the vortex temperature increased and chlorine transformed back to reservoir species."

P12, L6: add “the” so that it reads “the Arctic winter”. OK

P12, L8: an STS → and STS OK

P12, L12: what exactly do you mean with effective processing on PSCs? Please clarify and rephrase accordingly.

The text now reads:

"The difference in concentration of active chlorine and reservoir species between the Min and Max simulations are smallest during the cold periods, due to heterogeneous chemistry on the PSCs (Fig. 6)."

P12, L21: only few percent → only a few percent OK

P12, L27: replace “has” by “provides” or “contains” OK

P12, L29: remove “the” before smallest. OK

P12, L34: increase of what? ClO_x? OK

P13, L1: change of what? Of ClO_x? OK

P13, L9: add distribution so that it reads “ozone distribution”. It would also be worth to add “on that day” to be more precise. OK

P13, L16-17: delete “value” at the end of the sentence and add “value given by” before Sinnhuber et al. (2011). OK

P13, L20: “mid April” or “by the mid of April”. OK

P13, L29: replace “warmed early” by “was ended early by a SSW”. OK

P13, L32: was about same → was about the same OK

P13, L32: add “the” before 2010/11 OK

P13, L34: change sentence to “with a water vapour increase of about the same magnitude as considered here”. OK

P14, L5: is → are and change sentence as follows: The changes in the amount of water vapour are in the range that was tested here and are not very important for ozone loss in cold years.” OK

P14, L7: change sentence as follows: “and thus did not increase the ozone depletion.” OK

P14, L8: Strengthen → strengthens OK

P14, L8: at least → at least by OK

P14, L8: at → for OK

P14, L8: for 2011 → for the 2011 winter OK

P14, L8: is → was OK

P14, Table 3 caption: seperately → separately by OK

P14, L15: rephrase to “...ozone depletion was reduced by 6 DU.” OK

P14, L18: seperately → separately by OK

P14, L19: in Interim → in the Interim OK

P15, L2: rephrase “depletion of 56DU.” OK

P15, L14: So → Thus OK

P15, L15:role than in colder years? What do you mean exactly? Have larger role in warmer years than in colder years? Please rephrase.

The text now reads:

"Thus, water vapour changes have a larger effect on ozone loss in moderately cold years than in cold ones."

P15, L17: “part”? Do you mean contribution? OK

P15, L21: through → due to OK

P15, L25: is → was OK

P15, L25: “part”? Do you mean contribution? OK

P15, L27: eater → water OK

P15, L31: is → was OK

P15, L31: occur → occurred OK

P15, L35: to → into OK

P16, L6: clear → pronounced OK

P16, L10 and 11: is → was OK

P16, L13: the same as we found → the same as what we found OK

P16, L15: What exactly do you mean here with warmer climate? An increase in temperatures? This sentence is not clear and thus should be rephrased.

This statement has already been made in the introduction. Therefore we decided not to repeat it here and just remove.

P16, L17: change to “enhance each other, so that the area of PSCs increases and that these can last longer in the vortex.” OK

P16, L23: Results → “The results” or “Our results” OK

P16, L23: in both occasions “a” should be added, so that it reads “a wetter/drier” OK

P16, L24: along → when OK

P17, L1-35: Here in case of a specific winter it should be written “the Arctic winter”. When you refer to the stratosphere in general it should be explicitly written “polar stratosphere”.

Corrected

P17, L23: arrived to → came to a OK

P18, L1: Change sentence as follows: “Also in the Arctic winter 2010/11 chlorine activation in the vortex was nearly.....” OK

P18, L1: what do you mean exactly with “complete”? This should be rephrased.

The text now reads:

"Also in the Arctic winter 2010/11 nearly all chlorine in the polar vortex was activated, and additional water vapour did not lead to additional activation, nor to additional ozone depletion."

P18, L4: change to “the impact of water vapour on ozone loss”. OK

P27, Figure 4 caption: ares → areas OK

Figures: Why are there different pressure levels used which are almost the same (55 and 54 hPa)? It should be 55 everywhere, and is now corrected

Text: Why are mixing ratios given in ppm? Shouldn't it be ppmv?

Yes, it should be ppmv, and is now corrected to the text and figures.

References:

Hamill, P., E.J. Jensen, P. B. Russell and J. J. Bauman, The life cycle of stratospheric aerosols, Bulletin of the American Meteorological Society, 78, 1395-1410, 1997.

Peter, T., Microphysics and heterogeneous chemistry of polar stratospheric clouds, Annu. Rev. Phys. Chem., 48, 785–822, 1997.

Peter, T. and Grooss, J.-U., Chapter 4: Polar stratospheric clouds and sulfate aerosol particles: Microphysics, denitrification and heterogeneous chemistry, in: Stratospheric Ozone Depletion and Climate Change, edited by: Müller, R., RSC Publishing, Cambridge, 108–144, 2012.

Linking uncertainty in simulated Arctic ozone loss to uncertainties in modelled tropical stratospheric water vapour

Laura Thölix¹, Alexey Karpechko², Leif Backman¹, and Rigel Kivi³

¹Climate Research, Finnish Meteorological Institute, Helsinki, Finland

²Arctic Research, Finnish Meteorological Institute, Helsinki, Finland

³Arctic Research, Finnish Meteorological Institute, Sodankylä, Finland

Correspondence to: L. Thölix (laura.tholix@fmi.fi)

Abstract. Stratospheric water vapour influences the chemical ozone loss in the polar stratosphere via controlling the polar stratospheric cloud formation. The amount of water vapour entering the stratosphere through the tropical tropopause differs substantially between simulations from chemistry–climate models (CCM). This is because the present-day models, e.g. CCMs, have difficulties in capturing the whole complexity of processes that control the water transport across the tropopause. As a result there are large differences in the stratospheric water vapour between the models.

In this study we investigate the sensitivity of simulated Arctic ozone loss to the simulated amount of water vapour that enters the stratosphere through the tropical tropopause. We used a chemical transport model, FinROSE-CTM, forced by ERA-Interim meteorology. The water vapour concentration in the tropical tropopause was varied between 0.5 and 1.6 times the concentration in ERA-Interim, which is similar to the range seen in chemistry climate models. The water vapour changes in the tropical tropopause led to about 1.5 ppmv less and 2 ppmv more water vapour in the Arctic polar vortex compared to the ERA-Interim, respectively. The change induced in the water vapour concentration in the tropical tropopause region was seen as a nearly one-to-one change in the Arctic polar vortex.

We found that the impact of water vapour changes on ozone loss in the Arctic polar vortex depends on the meteorological conditions. The strongest effect was in intermediately cold conditions stratospheric winters, such as 2013/14 winter, when added water vapour resulted in 2–7 % more ozone loss due to the additional formation of polar stratospheric clouds (PSC) and associated chlorine activation on their surface, leading to ozone loss. The effect was less pronounced in cold winters such as the 2010/11 winter because cold conditions persisted long enough for a nearly complete chlorine activation even in simulations with ~~observed water vapour~~ prescribed stratospheric water vapour amount corresponding to the observed values. In this case addition of water vapour to the stratosphere led to increased area-areas of ICE PSC but it could-did not increase the chlorine activation and ozone destruction significantly. In the warm winter 2012/13 the impact of water vapour concentration on ozone loss was small, because the ozone loss was mainly NO_x induced. The results show that the simulated water vapour concentration in the tropical tropopause has a significant impact on the Arctic ozone loss and ~~and~~ therefore needs to be well simulated in order to improve future projections of ~~ozone layer recovery~~ the recovery of the ozone layer.

1 Introduction

Water vapour in the stratosphere is a minor constituent with typical mixing ratios of 3–6 ppmv (e.g., Randel et al., 2004). It plays, however, an important role in radiative and chemical processes, especially in the upper troposphere/lower stratosphere (UTLS) where changes in the water vapour concentration result in significant changes in radiative forcing of the troposphere (Riese et al., 2012). ~~A warmer climate in the troposphere is suggested to increase~~ Dessler et al. (2013) suggested that, as a result of global warming, tropopause temperature will increase leading to an increase in stratospheric water vapour (SWV) ~~through increases in the water vapour entering through the tropopause, which would further warm~~. Since water vapour is a greenhouse gas, future increases in SWV will provide a positive feedback further warming the troposphere below ~~(Dessler et al., 2013)~~. ~~However~~. However, tropospheric warming may also lead to a significant cooling near the tropopause in connection with deep convection (Kim et al., 2018), so that the link between warming climate and tropopause temperature is not straightforward. Photodissociation of water vapour is an important source of odd hydrogen HO_x (H+OH+HO₂). Catalytic cycles involving HO_x contribute to chemical ozone loss in the stratosphere (Dvortsov and Solomon, 2001). Water vapour contributes to the formation of stratospheric aerosols including polar stratospheric clouds (PSCs), i.e. liquid and solid particles in combination with H₂SO₄ and HNO₃, or ice particles (e.g., Solomon, 1999; Khosrawi et al., 2016) (e.g., Hamill et al., 1997).

Heterogeneous reactions in or on PSC particles can lead to massive ozone depletion inside the polar vortices when atmospheric concentration of halogens is sufficiently high (Solomon et al., 1986; Wohltmann et al., 2013). Since the formation of PSCs requires very low temperatures (below about 195 K) that are rarely reached in the Arctic, significant polar ozone depletion takes place ~~only occasionally in the Arctic~~ there only occasionally (Rex et al., 2006; Manney et al., 2011; Müller et al., 2008; Chipperfield et al., 2015), while it has been a yearly phenomenon in the Antarctic since about the mid 1980s (e.g., Dameris et al., 2014). The stratospheric abundance of chlorine will remain elevated for decades, and polar ozone losses will therefore be seen also in the future. Equivalent effective stratospheric chlorine (EESC) is a proxy that is frequently used to describe the combined effect of chlorine and bromine on stratospheric ozone. The level of EESC in 1980 is commonly taken as a level that needs to be reached to achieve a recovery of stratospheric ozone. According to a recent study by Engel et al. (2018) the EESC would return to the 1980 level in 2077 for a mean age of 5.5 years, which is representative for polar winter conditions. Several studies have discussed Antarctic ozone depletion and its recovery (see e.g. Eyring et al. (2010); Dameris et al. (2014); Solomon et al. (2016); Chipperfield et al. (2017); Kuttippurath and Nair (2017); Strahan and Douglass (2018)). Kuttippurath and Nair (2017) ~~recently showed that Antarctic ozone has begun to recover~~ showed based on ozone balloon soundings and total ozone data from satellite instruments that Antarctic ozone has begun to recover. Based on ~~profile~~-data from the Aura Microwave Limb Sounder (MLS) of HCl and ozone Strahan and Douglass (2018) ~~showed~~ could show a decline in lower stratosphere chlorine and a corresponding decline in ozone depletion for the period 2013–2016 compared to the period 2004–2007. However, a recovery of ozone to 1980 ozone levels is projected not to occur until around 2025–2043 in the Arctic and 2055–2066 in the Antarctic (Dhomse et al., 2018). Both colder air and increased SWV can increase the formation of PSCs, which could release more active chlorine and cause severe ozone depletion although future chlorine loadings will be smaller. All these suggest that SWV is a critical factor affecting ozone chemistry.

The majority of the previous studies addressing impacts of SWV on Arctic ozone depletion considered the effects of observed and projected increases in SWV concentrations (Eyring et al., 2007; Kirk-Davidoff et al., 1999; Dvortsov and Solomon, 2001; MacKenzie and Harwood, 2004; Stenke and Grewe, 2005; Feck et al., 2008; Vogel et al., 2011). For example Vogel et al. (2011) used a chemistry–transport model (CTM) and studied the effect of increased SWV on Arctic ozone loss for meteorological conditions from the cold Arctic winter 2004/05. They found that increasing SWV by 0.58 ppmv, which is a typical amount simulated by chemistry climate models (CCMs) by the mid-21 century (Eyring et al., 2007), would lead to an additional 6 DU of ozone loss under cold winter conditions. Sinnhuber et al. (2011) used a CTM driven by meteorological conditions for the cold Arctic winter 2010/11 and assumed a uniform increase of SWV of 1 ppmv. For such conditions they reported a 25 DU increase in ozone loss, i.e. about 20 % of their simulated total ozone loss for that winter.

Smalley et al. (2017) studied future trends in the tropical lower stratospheric water vapour and provided a regression model for analysing the factors driving the trends and variability in the 21st-century. They found that warming of the troposphere causes a long term increasing trend in the water vapour entering the stratosphere, which can be partially offset by an increase of the Brewer–Dobson circulation with accompanied cooling of the tropical tropopause. MacKenzie and Harwood (2004) studied the effect of increasing SWV due to future increase in tropospheric methane on ozone. They simulated the year 2060 under the Intergovernmental Panel on Climate Change Special Report on Emission Scenarios (SRES) B2 scenario, where CH₄ lies approximately midway between the extremes of the SRES scenarios. They found an increase in the occurrence of PSCs, with about 20 to 25 % ~~of the increase due to increases~~ due to increase in the water vapour. The rest is from radiative cooling of the middle atmosphere due to changes in the concentration of several trace gases. In the simulations by MacKenzie and Harwood (2004) the increased SWV due to projected methane increases caused a 15 % (about 0.5 ppmv at 465 K level) deeper Arctic ozone loss in 2060. However, cooling of the stratosphere could at least partially offset the effect of the increased PSCs by slowing down the second-order reactions in ozone loss cycles (Rosenfield et al., 2002; Revell et al., 2012). This effect is mainly seen in NO_x and HO_x induced loss outside the polar vortex, while the effect on PSCs from temperature is seen within the vortex.

~~Also Revell et al. (2016)~~ Revell et al. (2016) also studied the effect of future methane changes on SWV under different RCP-scenarios. The contribution of methane to the SWV was found to be highly dependent on the projected methane concentration, altitude and latitude. Under RCP 6.0 between 1960 and 2100 the SWV was projected to increase by approximately 1 ppmv throughout most of the stratosphere, excluding the Antarctic lower stratosphere. The largest increase was seen following the RCP 8.5, with 60 % additional water vapour in the extratropical upper stratosphere, and ca. 35 % in the Arctic lower stratosphere. The largest contribution from methane to the SWV change was about 50 % under RCP 8.5, which assumes a rather extreme methane increase scenario, and the smallest was about 4 % under RCP 2.6.

Recently Sagi et al. (2017) studied Arctic ozone losses between years 2002 and 2013 using data assimilation of Odin/Sub-Millimetre Radiometer (SMR) ~~atmospheric~~ observations. They found that the largest ozone losses were caused either by halogens or by the NO_x-family, and the dominating process for ozone destruction is determined mostly by the temperatures inside the polar vortex. The very stable and cold polar vortex in the Arctic winter 2010/11 led to remarkable halogen driven ozone loss with 2.1 ppmv ozone destroyed at the 450 K level. In the winter 2012/13 the polar vortex was more unstable and a vortex split

occurred in early January due to a sudden stratospheric warming (SSW), and NO_x rich air from the mesosphere descended to the upper stratosphere and led to ozone loss there. Thus the effect on Arctic ozone depletion from changes in SWV depend on the meteorological conditions, and the dynamical stability in a given winter.

The main source of SWV is the upward transport from the troposphere through the tropical tropopause in the upwelling
5 branch of the Brewer–Dobson circulation. The concentration of SWV is controlled by the coldest temperature met by the ascending air parcels (i.e. cold point temperature). Gettleman et al. (2010) analysed 16 state-of-the-art CCMs and demonstrated large discrepancies between simulated SWV in these models, which were closely related to the simulated cold point temperatures. The "entry" value of SWV in these models ranged between 2 and 6 ppmv, compared to the observed value of 3–4 ppmv. These intermodel differences by far exceed the magnitude of the projected water vapour increases in the 21 century used so
10 far in the studies of ozone loss sensitivities to SWV. One may wonder what ~~are~~ the implications of these discrepancies for stratospheric ozone losses simulated by ~~the CCMs?~~ CCMs are. This question is difficult to address by analyzing CCM outputs because there are other differences between the models which affect simulated ozone losses, such as differences in simulated transport. Therefore a more controlled experiment is needed in order to assess impact of these SWV changes on ozone loss.

In this study we address the question of what the implications of the differences in simulated tropical stratospheric water
15 vapour between chemistry–climate models are for the simulated Arctic ozone loss. Similar to Vogel et al. (2011) and Sinnhuber et al. (2011) we address this question by performing CTM simulations using different SWV concentrations. The principal differences in our methodology from the previous studies are (1) the boundary conditions of perturbed water vapour experiments resulting in a different spatial pattern of SWV anomalies and (2) the magnitude of SWV perturbation, which is larger than in the Vogel et al. (2011) and Sinnhuber et al. (2011) studies, but in the range of Revell et al. (2016) and MacKenzie and
20 Harwood (2004). We also analysed seven different winters, whose dynamical circumstances such as the ~~as the~~ evolution of the temperature and polar vortex were different (see Section 3 for more details).

2 Modelling and data

A global off-line chemistry–transport model for the middle-atmosphere, FinROSE-CTM, was used for simulating the effect of the SWV on Arctic ozone depletion. The FinROSE-CTM is described in detail in Damski et al. (2007b). In this study, the
25 model has a horizontal resolution of 3° × 6° (latitude × longitude). It has 40 hybrid-sigma levels up to 0.1 hPa (about 65 km). The temperature, winds and surface pressure are from the European Centre for Medium-range Weather Forecasts (ECMWF) ERA-Interim reanalyses (Dee et al., 2011).

The model transport is computed using a flux-form semi-Lagrangian transport code (Lin and Rood, 1996). The chemistry scheme of the model comprises 36 species and includes about 150 reactions. In addition to gas-phase chemistry, the model
30 includes a PSC scheme with liquid binary aerosols (LBA), supercooled ternary solution of sulfuric acid, nitric acid and water (STS, type Ib), solid nitric acid trihydrate (NAT, type Ia) and ice (ICE, type II) PSCs. The heterogeneous chemistry includes altogether 30 reactions and is based on the calculation of the composition and volume of sulphate aerosols and PSCs, as well as the partitioning of species between gas phase and condensed phase. The number density profile is prescribed for each PSC

type (Damski et al., 2007b) and the sulphuric acid distribution is based on 2-D model data (Bekki and Pyle, 1992). Absorption cross-sections and rate coefficients follow the recommendations by Sander et al. (2011) and for some heterogeneous chemistry reactions the recommendations by Atkinson et al. (2007) are used, see details in Damski et al. (2007b). The reaction rates on NAT and ICE PSCs are not directly affected by the water vapour concentration except through the available surface area, i.e. the uptake coefficients are constant. ~~In the case of binary aerosols and STS PSCs~~ Water vapour and HNO₃ condenses onto the binary aerosol and STS droplets making them more dilute, which increases the uptake coefficients of some reactions ~~depend on the composition of the droplets~~, i.e. the hydrolysis reactions of ClONO₂, BrONO₂ and N₂O₅, as well as the reaction of HCl between ClONO₂ and HOCl (Sander et al., 2011). The sedimentation of PSC particles, which can lead to denitrification and dehydration, is calculated based on the settling velocity, which takes into account the PSC particle size.

Look-up-tables of photodissociation coefficients were pre-calculated using the PHODIS model (Kylling et al., 1995). Within PHODIS the radiative transfer equation is solved by the discrete ordinate algorithm (Stamnes et al., 1988). This algorithm has been modified to account for the spherical shape of the atmosphere using the pseudo-spherical approximation (Dahlback et al., 1991).

The tropospheric concentrations of the chemical species are prescribed via model boundary conditions. The boundary conditions of water vapour and ozone are taken from the ECMWF ERA-Interim reanalysis (Dee et al., 2011) except for the water vapour boundary conditions in the sensitivity experiments which are described below. The concentration of tropospheric methane (CH₄) is from Global view-data (<http://www.esrl.noaa.gov/gmd/ccgg/globalview/ch4>), nitrous oxide (N₂O) concentration is from Agage data (Prinn et al., 2000), and halogens concentrations in the troposphere (Cly and Bry) are from Montzka et al. (1999) updated data. The carbon dioxide (CO₂) concentration is based on global annual mean trend data (<ftp://aftp.cmdl.noaa.gov/products/trends/co2>). At the upper boundary (0.1 hPa) climatological values of water vapour and ozone averaged over 2005–2013 from MLS data were used.

The FinROSE-CTM has previously been used to study the impact of meteorological conditions on water vapour trends (Thölix et al., 2016), ozone and NO_x chemistry in the mesosphere (Salmi et al., 2011), Arctic polar ozone loss (Karpechko et al., 2013) and the impact of the driver data on the model transport (Thölix et al., 2010). Long term trends of Arctic and Antarctic ozone losses, past and future, have been investigated by using driving data from a chemistry–climate model (Damski et al., 2007a). The model results showed good agreement with satellite and ground based observations. The FinROSE water vapour was compared to observations of water vapour profiles from the Microwave Limb Sounder (MLS) and frost point hygrometer soundings from Sodankylä ~~Thölix et al. (2016)~~ (Thölix et al., 2016). The extent of ICE PSCs simulated by FinROSE was compared to Cloud-Aerosol Lidar and Infrared Path finder Satellite Observation (CALIPSO) data in Thölix et al. (2016). The total ozone distribution was compared to data from Total Ozone Mapping Spectrometer (TOMS) and the Ozone Monitoring Instrument (OMI) satellite instruments in Damski et al. (2007a), Thölix et al. (2010) and Karpechko et al. (2013). Salmi et al. (2011) compared the NO_x and ozone profiles in FinROSE to data from the atmospheric Chemistry Experiment Fourier Transform Spectrometer (ACE-FTS) instrument.

For this study, three simulations covering the Arctic winters between 2009/2010 and 2015/2016 were performed. The simulations differed from each other by the prescribed water vapour concentration in the tropical tropopause region (stratosphere

between 21° S–21° N, below 80 hPa), where it was prescribed as follows: (1) water vapour taken from ERA-Interim (Interim simulation), (2) increased water vapour (Max simulation), and (3) decreased water vapour (Min simulation). Specifically, the SWV lower boundary conditions for Min and Max simulations were obtained by multiplying values from ERA-Interim between tropopause and 80 hPa, and between 21° S–21° N by monthly coefficients ranging between 1.46–1.7 (Max) and between 5 0.5–0.63 (min), so that they approximately correspond to the driest and wettest CCM, as determined by SWV values at the tropical tropopause, across models ~~analyzed by (Gettleman et al., 2010)~~ analysed by Gettleman et al. (2010). This construction allows us to isolate the influence of the tropical water vapour on stratospheric chemistry while keeping all other factors fixed, and thus to estimate the contribution of processes controlling tropical water vapour entry values to Arctic ozone loss. Eight simulated years before 2009 are considered ~~spinup as spin-up~~ and were not analysed. Ozone was initialised with ERA-Interim 10 ozone in every year, in the beginning of December. The water vapour concentration was not adjusted and allowed to evolve freely through the whole period of integrations. Ozone and water vapour observations from MLS (Lambert et al., 2007) were used to validate the reference simulation. MLS data is shown as 5 day averages because of the small amount of data covering the polar vortex in some cases.

3 Results

15 Model simulations were made for seven winters (2009–2016), but only four of them are discussed here. The four selected Arctic winters, 2010/11, 2012/13, 2013/14 and 2015/16 differ from each other with respect to the stratospheric temperatures and polar vortex strength. They provide examples of different role of SWV in ozone loss in mild (2012/13) cold (2010/11, 2015/16) and intermediate (2013/14) stratospheric winter conditions.

3.1 Temperature and water vapour

20 The boundary condition at the tropical tropopause for the reference simulation was evaluated by comparing simulated water vapour concentrations with observed ones from MLS. The top panels in Fig. 1 show daily mean water vapour at 80 hPa averaged between 21° S and 21° N for two representative years 2013 and 2014. The temperature for the same region is shown in the lower panels. The cold point, where SWV boundary conditions were prescribed, is just below the 80 hPa level. The temperature shows the typical annual cycle ~~in the TTL with minimum~~ with minimum temperature in northern hemisphere 25 (NH) winter and maximum temperature in NH summer. The temperature in the TTL controls how much water vapour enters the stratosphere by freeze drying the upwelling air (e.g., Fueglistaler et al., 2005). As a result the maximum water vapour concentration ~~occurs~~ occurs in the NH autumn and minimum in early NH spring. The effect of interannual variability and shorter term variations in the temperature on stratospheric water vapour can also be seen, e.g. the low temperature in early 2013 results in 0.5–1 ppmv less water vapour than during the same time in 2014.

30 The Interim simulation produces water vapour concentrations comparable to the amount seen by MLS (Fig. 1), which shows that the boundary condition is reasonable. However, Interim variability ~~leads is ahead~~ that of MLS by 3–4 weeks. The reason for the time lag between Interim and MLS is not clear although it could at least partly be associated with a too fast Brewer–Dobson

circulation in ERA-Interim which is responsible for upward transport of the water vapour anomalies in the tropics (Schoeberl et al., 2012). The Max simulation has 2–3 ppmv more water vapour in the tropics than the Interim simulation, while the Min simulation is about 1.5 ppmv drier than the Interim simulation. These differences correspond to the ratio between Max/Interim of approximately 1.55–1.6 and about 0.55–0.6 between Min/Interim, i.e. they are consistent with the prescribed boundary conditions.

We next describe the meteorological condition in the Arctic stratosphere during the analysed winters. Figure 2 shows the daily average temperature in the Arctic polar vortex in winters 2010/11, 2012/13, 2013/14 and 2015/16. The polar vortex was identified using the modified potential vorticity (mPV) (Lait, 1994), with the 475K potential temperature as reference level. Here the polar vortex is defined as the area enclosed by the 36 PVU isoline separately for every model level. The 36 PVU contour approximately ~~correspond~~ corresponds to the region of maximum PV gradient, i.e the polar vortex edge (Rex et al., 1999; Streibel et al., 2006). The winter 2010/11 represents a cold winter with vortex average temperatures below 200 K and minimum temperatures below 195 K, sufficient for the formation of NAT/STS PSCs, ~~through~~ throughout most of the winter, from December to the beginning of April with only a brief interruption by a warming in early January. Minimum temperatures in the vortex were record cold and below 190 K even in the end of March (Manney et al., 2011). The winter 2012/13 is an example of a warm Arctic stratospheric winter. Vortex average temperatures below 195 K were seen for only a few days in December in the ERA-Interim data, and the minimum temperature was below 195 K until mid January. A SSW occurred in early January followed by a weakening and a break up of the polar vortex in the lower stratosphere already in February. The winter 2013/14 was intermediate with average temperatures inside the polar vortex being close to the long-term climatological mean through most of the winter, until late March when a final SSW occurred. There were only a few days in late December when the average temperature was below 195 K. The 2015/16 winter was as cold, or even colder, as the 2010/11 winter during December–February with minimum vortex average temperatures below 195 K. However, a minor SSW occurred in early February and the final warming came in early March, ending the cold period and reducing ozone depletion potential much earlier than in the 2010/11 winter.

Figure 3 shows the five day running mean concentration of water vapour at 5455 hPa averaged over the Arctic polar vortex for winters 2010/11, 2012/13, 2013/14 and 2015/16. The gaps in the 2012/13 MLS curve are due to an undefined vortex (or a too small vortex with only few observations) after the SSW. The water vapour concentration in the Interim simulation is comparable to the MLS data. However, the variability in water vapour is smaller in FinROSE than in the MLS data. Typically, there is a stronger increase in ~~the~~ water vapour towards ~~the spring in MLS than in the simulations~~ spring in the MLS observations compared to the FinRose simulations. This is most evident in winter 2013/14 when MLS concentrations increased by more than 1 ppmv between November and April while the simulated increase was only 0.3 ppmv. Although an increase by spring is expected due to downward transport of air with higher SWV concentration by the Brewer–Dobson-circulation the increase seen in MLS observations in 2014 is unusual. For example the observed increase in January 2013 after the SSW associated with downward transport of water-rich air from above was about 0.3 ppmv and that increase was reasonably well reproduced by FinROSE. Note that the MLS observations within the polar vortex are sparse, which adds some noise to the MLS vortex average. Also note that FinROSE vortex-mean values are calculated using all data points inside the vortex even if MLS data

are not available for each point. This approach increases the robustness of model estimates but at the same time complicates direct comparison with MLS. Interestingly, when looking at the 60–90° N average, which includes also air from outside the polar vortex, there is no similar spring increase in MLS data as [can be](#) seen in Fig. 3, and the agreement between FinROSE and MLS improves (not shown). In all winters, the Max simulation has about 2 ppmv more water vapour in the Arctic polar vortex than the Interim simulation, and the Min simulation is about 1.5 ppmv drier than the Interim simulation. This indicates that the simulated differences in the polar vortex water vapour are about the same as the differences in the boundary conditions for the tropical tropopause (Fig. 1), despite the average increase in SSW between the TTL and the polar vortex of about 1.5 ppmv in each run.

There are also several SWV decreases seen in Fig. 3 which are due to the formation of ICE PSCs and possibly also to dehydration due to sedimentation of ICE particles. The most pronounced one is in the winter 2015/16 when, during a very cold period (Fig. 2), the observed concentrations decreased from 5.2 ppmv to 4.7 ppmv and remained low until late February. A relatively small decrease of only about 0.2 ppmv was simulated in the Interim run. This decrease ~~corresponded to~~ [corresponds to the](#) formation of ICE PSCs in the model (see Section 3.2 for discussion of PSC results) and therefore at least a part of the decrease could be explained by sedimentation. A much larger decrease of about 1 ppmv was seen in the Max simulation starting from late December, which is consistent with larger amounts of ICE PSCs simulated in this run. Another, much smaller, decrease of about 0.2 ppmv can be seen in the MLS observations during mid-January 2011 corresponding to a cold period. The decrease is almost undistinguishable in the Interim simulation, but is pronounced in the Max simulation, which is a result of a larger amount of ICE PSCs.

3.2 Polar stratospheric clouds

Table 1. Sum of the ICE, NAT and STS PSC areas ($10^6 \text{ km}^2 \cdot \text{day}$) at 55 hPa.

Year		2010/11	2012/13	2013/14	2015/16
ICE	Interim	24	3	9	100
	Min	1	0	0	23
	Max	78	33	47	183
NAT	Interim	680	280	590	760
	Min	490	210	400	630
	Max	730	310	670	810
STS	Interim	1830	946	2110	2030
	Min	1770	850	1900	1890
	Max	2010	990	2230	2110

Figure 4 and 5 show PSC type 2 (ICE) and PSC type 1 a (STS) and b (NAT) areas at 55 hPa (about 20 km) in the Arctic polar vortex for winters 2010/11, 2012/13, 2013/14 and 2015/16. The area was calculated by summing the areas of model grid boxes containing PSCs. ~~STS is assumed to exist in the gridbox if there is more than~~ There is no formation temperature for STS, but they are formed gradually as water and HNO₃ dissolves into binary aerosols with decreasing temperature. Here we have
5 defined STS based on how much HNO₃ has dissolved into the liquid phase, we set the limit at 0.6 pptv liquid HNO₃ -for any given gridpoint. The limit approximately corresponds to a formation threshold temperature of 202K for STS.

In the winter 2010/11 the polar vortex was stable and cold, but not extremely cold. The ICE PSC area (Fig. 4) in the Interim simulation was mostly moderate except for a period in late January with cold temperatures and large ICE PSC areas. The ICE PSCs lasted longer in the spring than in other winters. It is unusual that ICE PSC:s occur after January, but in 2011 ICE PSCs
10 were seen through February even in the Interim simulation. In the Max simulation the ICE PSCs lasted until mid March. Also CALIPSO (Pitts et al., 2007, 2018; Spang et al., 2018) observed PSCs in the 2010/11 winter. The observed ICE PSC areas are comparable to the FinROSE modelled ICE PSC areas (Thölix et al., 2016). Also the duration of ICE clouds being present is comparable. However, Khosrawi et al. (2018) reported that the comparison between the PSC volume densities simulated with
~~model are the EMAC model were~~ several orders of magnitude smaller than the ~~observed ones~~ ones observed with MIPAS.

15 In the winter 2012/13 the polar vortex was very cold in December, and some ICE PSCs were simulated. However, after the SSW in early January no ICE PSCs were simulated, not even in the Max simulation. The 2013/14 winter was moderately cold with some ICE PSC occurrence in late January. The winter 2015/16 started as being very cold in December and January, and the ICE PSC area was large ~~through~~ throughout January. The maximum ICE PSC areas in the Interim simulation were about 70 % larger compared to the other cold winter 2010/11. Dörnbrack et al. (2017) and Khosrawi et al. (2017) also reported
20 unprecedented and widespread ICE PSC formation seen in CALIPSO observations in 2015/16. This was also the only winter with a significant ICE PSC area in the Min simulation, with a water vapour concentration of less than 4 ppmv.

The water vapour concentration ~~had~~ has a strong effect on the ICE PSC formation: in the Max simulations the ICE PSC area increases significantly in all winters. For instance in 2010/11 the largest PSC area is more than twice as large in the Max as in the Interim simulation. In the warm winters (2012/13 and 2013/14) the relative increase in the ICE PSC area due to additional
25 water vapour was even larger than in the cold winters (2010/11 and 2015/16). The amount of water vapour was an important factor for the extent of ICE PSC occurrence also in winter 2015/16, however, the relative increase between the Interim and Max simulation was smaller than in other studied winters, that were warmer. ~~PSC starts~~ PSCs start to form about two weeks earlier in the Max simulation compared to the Interim simulation. In the Min simulation the stratosphere is too dry for ICE PSC formation in nearly all years.

30 Figure 5 shows the area of NAT and STS PSCs in the Arctic vortex. Both NAT and STS areas are always significantly larger than the ICE areas because type 1 PSCs form at warmer temperatures than ICE PSCs. Type 1 PSCs typically start to form in early November and ICE PSCs in mid to late December. The simulated peak values in the STS area range from 18 to 24 million km², NAT area range from 11 to 16 million km² while the ICE area peaks range from 1.5 to 5.5 million km² in the Interim simulation. As expected the type 1 PSCs occur later in the spring than ICE PSCs, e.g. in the winter 2010/11 both NAT
35 and STS PSCs were simulated until late April, more than a month later than the ICE PSCs.

In the cold winter 2010/11 STS PSCs persisted for more than five months, and NAT almost five months, from December to mid April. An increase in moisture (Max simulation) had only a minor effect on the NAT and STS areas. In the Min simulation the maximum STS (and NAT) area was about 2 million km² smaller than in the Interim simulation, while the difference between the Max and Interim simulations was much smaller. In the 2012/13 winter both NAT and STS PSCs were simulated
5 only in the beginning of the winter and by early January all the NAT PSCs disappeared due to warm conditions. The maximum value of STS area in the 2012/13 winter ~~were~~ was the largest among the simulated years, 24 million km². The maximum NAT area was also the largest, about 13 million km². The increase of water vapour in the Max simulation did not change the PSC area as much as the decrease of water vapour in the Min simulation. In the early 2012/13 winter the NAT and STS areas were even larger than in 2010/11, but warmer temperatures in the vortex in February caused the PSCs to diminish more rapidly. The
10 effect of water vapour in 2012/13 was the largest among the simulated years, the increase in NAT and STS areas between the Min and Interim simulations were about 3 million km². In winter 2013/14 both NAT and STS maximum areas were nearly as high as in 2012/13 (about 23 million km² and 11 million km², respectively), but large areas of PSCs persist much longer than in winter 2012/13. The maximum difference between Interim and Min simulation was about 2 million km². Also in the 2015/16 winter the NAT and STS ~~area~~ areas were larger than in 2010/11, but the PSCs did not ~~persist~~ persisted as late as in
15 2010/11. The increase in type 1 PSC area due to increased water vapour was smaller than in 2013/14, about 1.5 million km².

Table 1 shows cumulative ICE, NAT and STS PSC areas at ~~altitude~~ 55 hPa. The largest cumulative ICE areas are always seen in the Max simulations. In the Min simulations there are only very small or no ICE PSC areas, with the exception of the winter 2015/16, when considerable ICE PSC area was present in all runs. However, in 2015/16 the ICE PSCs occurred mainly in December and January, while in 2010/11 the ICE PSCs occurred from January until the end of February. The timing of the
20 PSCs is important for chlorine activation and ozone loss as discussed later. The effect of water vapour on the cumulative ICE PSC area is larger in warm years than in cold years. The NAT and STS areas also strongly depend on winter temperatures – the maximum NAT and STS areas are simulated in the coldest winter 2015/16 in every simulation, while the smallest areas are simulated during the warmest winter 2012/13. However, unlike ICE PSC, the NAT and STS clouds are formed in every winter. The formation of type 1 PSCs is less sensitive to changes in water vapour concentration than the ICE PSCs. The relatively large
25 changes in water vapour between different simulations results in relatively small changes in the cumulative NAT and STS area.

3.3 Chlorine activation

In early winter chlorine is present as reservoir compounds (HCl and ClONO₂), which do not destroy ozone. In the cold conditions within the polar vortex the chlorine species are transformed ~~;~~ through heterogeneous reactions, into intermediate species such as Cl₂. When sunlight reaches the polar vortex these species are easily dissociated to form active chlorine species
30 that participate in the catalytic ozone depletion cycles, i.e. ClO_x (ClO, Cl₂O₂ and Cl). Active chlorine ~~goes~~ is transformed back to reservoir species through reactions with NO₂ and CH₄, however if PSCs are present the regeneration of ClO_x is sustained.

Figure 6 shows the fraction of reservoir, intermediate and active chlorine species at 55 hPa in the Min and Max simulations. The results from the Max simulation are represented by the upper limit for the intermediate (magenta) and active species

Table 2. Vortex-mean mixing ratio of ClO_x integrated over the whole winter (ppbv*day) and as monthly mean concentration (ppbv) in the Min, Max and Interim simulations. Percentage in parentheses indicate the effect of SWV concentration [change changes](#) compared to the Interim simulation.

		Year	2010/11	2012/13	2013/14	2015/16
			(Cold)	(Warm)	(Intermediate)	(Cold)
Winter	Interim		152	73	113	119
	Min		145 (-5 %)	72 (-1 %)	101 (-11 %)	117 (-2 %)
	Max		161 (+6 %)	76 (+4 %)	120 (+6 %)	123 (+3 %)
November	Interim		0.12	0.12	0.11	0.12
	Min		0.14	0.13	0.12	0.14
	Max		0.13	0.13	0.12	0.13
December	Interim		0.35	0.74	0.28	0.43
	Min		0.41	0.79	0.38	0.48
	Max		0.36	0.72	0.34	0.43
January	Interim		1.4	0.94	1.28	1.59
	Min		1.49	1	1.43	1.61
	Max		1.36	0.98	1.34	1.55
February	Interim		1.5	0.22	1.03	1.23
	Min		1.59	0.23	1.22	1.28
	Max		1.56	0.23	1.17	1.25
March	Interim		1.21	0.17	0.52	0.41
	Min		1.35	0.18	0.71	0.48
	Max		1.31	0.18	0.66	0.46
April	Interim		0.26	0.14	0.14	0.052
	Min		0.38	0.15	0.14	0.054
	Max		0.34	0.14	0.14	0.053

(green), and by the lower limit for the reservoir species (black). The chlorine fractions from the Interim simulation always fit within the range from the Min and Max simulations. The timing of the changes in the partitioning of the chlorine species correlates well with the occurrence of PSCs, e.g. the chlorine reservoir species start to transform into intermediate species when the STS PSCs appear (Fig. 5).

5 In the 2010/11 winter chlorine activation starts in the latter half of December and the fraction of ClO_x is large through the January–March period, reaching a maximum of about 85 %. The active chlorine starts to transform back to [reservoirs reservoir](#)

species (mainly ClONO₂) in the beginning of March. In early April when the PSCs disappear the active chlorine rapidly decreases to background values.

In the 2012/13 winter chlorine activation starts slightly earlier than in the other years, but already in the beginning of February most of the chlorine has converted back to the reservoir species due to a SSW. The maximum fraction of ClO_x is about 75 %, and ~~it~~ is reached already in the end of December. The active chlorine decreased during January, and in the beginning of February the concentration reached nearly background values.

The beginning of the winter 2013/14 winter was very cold, the chlorine activation started in mid December, and the maximum chlorine activation was reached already in the end of January. After that the vortex ~~warmed~~ temperature increased and chlorine transformed back to reservoir species. The maximum fraction of ClO_x was slightly lower than in cold winters, about 70 %.

10 The 2015/16 winter started similar to the cold winter 2010/11 and nearly all of the chlorine was activated at the beginning of January, but the deactivation started already in the end of January making the period with high ClO_x shorter than in winter 2010/11. In the end of February the vortex ~~warmed-up~~ temperature increased and chlorine transformed back to reservoir species. The maximum fraction of the activated chlorine of about 80 % was reached by the beginning of January.

The water vapour concentration seems to strongly affect the transformation of chlorine from the reservoir species to the intermediate ones in the beginning of the Arctic winter. The fractions of intermediate and reservoir chlorine species change significantly with water vapour concentration during November and December. The water vapour concentration affects the composition of binary aerosols ~~an~~ and STS. When more water condenses to the particles the uptake coefficients for the heterogeneous reactions and the surface area increase, i.e. the reaction rates increase. The difference between Min and Max simulations can be up to 30 % when about half of the reservoir chlorine have transformed to intermediate species, just before the concentration of active chlorine species starts to increase. The difference in concentration of active chlorine and reservoir species between the Min and Max simulations are smallest during the cold periods, due to ~~the effective processing~~ heterogeneous chemistry on the PSCs (Fig. 6). The cold winter 2015/16 shows a very small range, and the intermediately cold winter 2013/14 a wider range in concentrations. The water vapour content has less effect on the chlorine partitioning in cold winters. In the cold spring 2011 the difference in chlorine activation between Min and Max simulations was about 5 % on average, it reached nearly 20 % in the beginning of April, when the chlorine deactivation was fast. In the warm winter 2012/13 the change was less significant, about 5 % during the winter. In the 2013/14 winter the difference in chlorine activation between Min and Max simulations reached 10 % in the latter half of January, from mid February to mid March the difference was 15–18 %. The chlorine activation in 2015/16 winter seemed to be less dependent on water vapour content, probably due to the ICE PSCs that appear in all simulations. Therefore, the conditions were favourable for high chlorine activation in all simulations.

20
25
30 The difference in the fraction of activated chlorine between simulations is only a few percents, only when the deactivation starts (in the end of February) the difference is more than 5 %.

The effect of increased water vapour seems to be large in moderately cold years, i.e. when the chlorine activation is not so complete. The start and end of chlorine activation correlate with the appearance of STS and NAT. The ICE PSCs did not significantly increase the chlorine activation. For example in 2012/13 and 2013/14 winters there were no ICE PSC in the Min simulation, but the chlorine activation was nearly as high as in the Max simulation, which had ICE PSCs.

35

Table 2 shows the vortex averaged ClO_x as a cumulative sum over the whole winter, and as monthly mean concentration. The sums are integrated from November to April. The cumulative sum ~~has~~ provides information about both the duration of the chlorine activation period and the concentration of ClO_x , while the monthly average concentration shows the timing of chlorine activation. The cumulative chlorine activation was largest in winter 2010/11 and ~~the~~ smallest in 2012/13. The activation started in November every year, but remained small until December. The winter 2010/11 differs from the others, with high chlorine activation from January to March, giving the largest cumulative sum of the studied winters. Even in April the ClO_x concentration remains elevated. The warm winter 2012/13 had the smallest cumulative chlorine activation, significant chlorine activation was seen only in December and January. The changes in water vapour between the Min/Interim/Max simulations had the largest effect on the cumulative ClO_x in moderately cold winters (2010/11 and 2013/14), where the increase of ClO_x from Interim to Max was 3 to 6 % and change of ClO_x from Interim to Min was -1 to -11 %. In the cold winter 2015/16 the respective changes were only 3 and -2 %, and in the warm winter 2012/13 the changes were 4 and -1 %.

3.4 Ozone loss

Figure 7 shows the mean chemical total ozone loss within the polar vortex for all the studied winters 2010/11, 2012/13, 2013/14 and 2015/16. The total column chemical ozone loss was calculated by subtracting the passive transported total ozone from the modelled total ozone. In Fig. 7 the polar vortex is defined using the potential vorticity limit 36 PVU only at the 475 K level. The figure shows the chemical ozone depletion in the Interim, Min and Max simulations as well as the difference in the loss between the Min and Max simulations. The passive ozone tracer was initialized every year on December 1st, when it was set equal to the ozone distribution in the model on that day. Chemical processes start to reduce ozone already in December, but they have minor effect on the total wintertime ozone loss. In January the chemical processes become more intensive, when the chlorine activation increases (see Fig. 6).

In general the ozone loss is larger in cold years. The largest ozone loss was simulated in the beginning of April 2011 when about 90 DU ozone had been destroyed according to our model. FinROSE seems to underestimate the ozone loss; for example Sinnhuber et al. (2011) and Manney et al. (2011) simulated 120 DU ozone loss and Pommereau et al. (2013) even 170 DU in winter 2010/11. If we look at maximum ozone losses instead of the polar vortex mean losses, then the numbers are larger. The maximum ozone loss in 2010/11 within the polar vortex was 128 DU, which is comparable to the ~~Sinnhuber et al. (2011) value~~ value given by Sinnhuber et al. (2011).

The ozone loss in the warm winter 2012/13 differs from the loss in colder winters (2010/11 and 2015/16). The maximum average ozone loss in the polar vortex in the 2012/13 winter was only 23 DU, because the polar vortex was unstable and small. By the mid of April 2014 the simulated vortex mean ozone loss was 79 DU in the Interim simulation. Before mid February, i.e. during the coldest period, there was very little effect from the changes in SWV. A relatively small ozone loss of 56 DU was simulated in 2015/16, which was due to the unstable polar vortex, which split and warmed, stopping the catalytic ozone cycles and ozone loss in the beginning of March, i.e. earlier than in 2010/11 and 2013/14.

Figure 7 also shows the difference of polar vortex averaged chemical ozone loss between Min and Max simulation. It tells how much the water vapour concentration change affects the ozone loss. The difference is largest (about 15 DU) in 2013/14, a

moderately cold winter, with significant ozone depletion. Another winter, 2010/11, with significant ozone loss and cold, but not extremely cold conditions showed the second largest effect from addition of water vapour, about 10 DU. In 2012/13, when the ozone loss stopped very early, the difference between Min and Max simulations was about 5 DU. The 2015/16 winter started as very cold, but ~~warmed early~~ was ended early by a SSW. The difference in ozone loss between the simulations remained very small up to mid February, by mid March the difference was about 7.5 DU. A reduction in the water vapour decreased ozone loss in every winter. In the Interim simulation the deepest ozone losses were about 2–9 DU (6–11 %) deeper than in the Min-simulation. The effect from an increase in water vapour from Interim to Max was about the same. In the 2010/11 winter the loss increased by about 7 %, while Sinnhuber et al. (2011) and Vogel et al. (2011) reported an increase of ozone loss by 20 % and 10 % (respectively) with a water vapour increase ~~being~~-of about the same magnitude as considered here. Thus, our estimates are slightly smaller than those by Vogel et al. (2011). An additional sensitivity experiment showed that the difference compared to other studies can be, at least partly, due to the coarse horizontal resolution in FinROSE ($3^\circ \times 6^\circ$), which is not sufficient to fully capture the deepest ozone loss. Specifically, repeating Interim simulation for winter 2010/11 with higher resolution ($1.5^\circ \times 3^\circ$) than in the original simulation showed larger ozone loss by 15 DU.

The changes in the amount of water vapour ~~is~~ are in the range that was tested here and are not very important for ozone loss in cold years, ~~within the range that was tested here~~. In the 2010/11 winter the chlorine activation was nearly complete in the Arctic polar vortex, and additional water vapour did not increase chlorine activation and ~~thus not and thus did not increase~~ the ozone depletion. Increasing water vapour concentration (compared the Interim simulation) ~~strengthen~~ strengthens ozone loss at least by 4 DU ~~at for~~ other winters except for the 2011 winter when the increase ~~is was~~ not significant.

Table 3. Maximum polar vortex-mean ozone loss produced by full chemistry, heterogeneous chemistry and separately by the STS, NAT and ICE part in Min, Max and Interim simulations (DU). Percentages show the fraction due to each part relative to the full chemistry.

Year		2010/11 (Cold)	2012/13 (Warm)	2013/14 (Intermediate)	2015/16 (Cold)
Min	Full chemistry	84	21	70	53
	Heterogeneous part	50 (60 %)	13 (62 %)	32 (45 %)	33 (62 %)
	STS, NAT and ICE	20 (24 %)	3 (15 %)	13 (19 %)	11 (21 %)
Interim	Full chemistry	90	23	79	56
	Heterogeneous part	56 (62 %)	14 (63 %)	40 (51 %)	35 (63 %)
	STS, NAT and ICE	30 (33 %)	5 (24 %)	23 (30 %)	17 (30 %)
Max	Full chemistry	91	25	85	59
	Heterogeneous part	56 (62 %)	15 (62 %)	45 (53 %)	37 (63 %)
	STS, NAT and ICE	34 (37 %)	7 (28 %)	30 (35 %)	19 (33 %)

To better understand the mechanism of SWV influence on ozone loss, simulations without heterogeneous chemistry were performed. From those simulations ozone loss caused by heterogeneous chemistry can be separated by subtracting the total

ozone simulated without heterogeneous chemistry from that simulated in the full chemistry run. Two different set-ups were used for testing the effect of the heterogeneous chemistry. In the first gas-phase chemistry simulation the heterogeneous chemistry was not included at all. In the second simulation the formation of PSCs was limited by setting the air temperature passed to the heterogeneous chemistry module to 200 K, similarly to what was done in Karpechko et al. (2013). The increase of water vapour (Max simulation) did not increase the ozone loss, but in the Min simulation ~~there was ozone depletion was reduced by 6 DU~~ less ozone depletion. This setting allows some heterogeneous processing on binary aerosols and some STS that are very dilute in HNO₃, and due to the temperature limit the surface area densities will remain quite small. Table 3 summarises ozone loss characteristics during the studied years and shows the loss produced by full chemistry, heterogeneous chemistry and separately by the NAT, STS and ICE PSCs in the Interim, Min and Max simulations.

In the Interim simulation with full chemistry in 2010/11 about 90 DU ozone was depleted, of which the heterogeneous chemistry caused depletion of 56 DU ~~depletion~~, i.e. about 62 % of the total ozone loss. Heterogeneous chemistry due to PSCs destroyed 30 DU ozone, which was about 33 % of the total loss. The result indicates that chlorine activation on the binary aerosols has a significant role in ozone depletion. Some studies suggest that binary aerosols are more important for chlorine activation than PSCs (e.g., Drdla and Müller, 2012; Wohltmann et al., 2013; Kirner et al., 2015). The increase of water vapour (Max simulation) did not increase the ozone loss, but in the Min simulation there was 6 DU less ozone depletion. This is consistent with the results by Kirner et al. (2015), who argue that the contribution of ICE PSCs to the ozone loss is always less than 5 % in the Antarctic spring, where the chlorine activation is nearly complete.

In the warm 2012/13 winter the ozone loss is only 23 DU, and the heterogeneous part is 63 % of it. NAT, STS and ICE PSCs caused only a small part of the total heterogeneous chemistry driven ozone loss (24 %). The loss caused by heterogeneous chemistry increased with increasing water vapour, but remained small even in the Max simulation. In 2013/14 the heterogeneous chemistry caused about 40 DU ozone destruction, which is about 51 % of the ozone loss and NAT, STS and ICE about 23 DU (30 %), when the total ozone loss was 79 DU in the Interim run. The increase in SWV from Interim to Max increased the ozone loss by about 6 DU and the decrease in SWV from Min to Interim decreased the ozone loss by 9 DU. ~~So~~ Thus, water vapour changes have ~~larger role than in colder year~~ a larger effect on ozone loss in moderately cold years than in cold ones. The ozone depletion due to heterogeneous chemistry increased with water vapour, even though the fraction due to heterogeneous chemistry was smaller than in 2010/11 and 2015/16.

In the 2015/16 winter the heterogeneous ~~part~~ contribution was largest when compared to other simulated years, reaching even 63 % of the ozone loss, and also the STS, NAT and ICE part was large, 30 %. The total ozone loss is however only 56 DU. When the water vapour content was increased from Interim to Max simulation, the fraction due to the heterogeneous chemistry remained the same, but the fraction due to STS, NAT and ICE PSCs increased.

Based on the results in Table 3 it can be concluded that nearly all SWV impact on ozone loss is ~~through~~ due to heterogeneous chemistry. For example in 2010/11 the ozone loss without heterogeneous chemistry was 34 DU in Interim, 34 DU in Min and 35 DU in Max simulation and only the heterogeneous part changed from model run to model run. In 2013/14 the non-heterogeneous contribution is about 39 DU, and in 2015/16 about 21 DU, i.e. in warm years it is larger than in cold years. In 2012/13 the non-heterogeneous contribution ~~is~~ was only 9 DU, but also the total ozone loss is very small. However, the

heterogeneous ~~part-contribution~~ is about 62 % of the total ozone loss in all other winters than 2013/14 and also with both increased and decreased water vapour. The fraction of STS, NAT and ICE driven chemistry changes with ~~eater-water~~ vapour concentration.

Finally we analyse the vertical distribution of the ozone loss and the effect of SWV on ozone loss, which is shown in Fig. 8.

5 The largest ozone loss was simulated in 2010/11, when the ozone destruction in the Interim run with normal SWV was about 1.4 ppmv between 60–30 hPa. The ozone depletion increased by 0.2 ppmv between the Min and Max simulations. In 2012/13 the maximum ozone reduction ~~is-was~~ almost the same as in 2010/11, but it ~~oeeurs-occurred~~ at higher altitude and lasts for shorter period than in 2011. The effect of the increase in water vapour from Min to Max simulation had only a minor effect on the ozone depletion in 2012/13. The heterogeneous chemistry and chlorine activation did not have an important role in the warm

10 conditions and the ozone loss between 60–30 hPa remains very weak. In winters when the polar vortex is unstable and small or disturbed the Brewer–Dobson circulation brings more NO_x-rich air ~~to-into~~ the polar vortex than usual. Hence the ozone loss in the 2012/13 winter was produced mostly by NO_x chemistry as shown previously by e.g., Sagi et al. (2017), and can be seen from FinROSE results by comparing the simulations with and without the heterogeneous chemistry. The total ozone column loss in this winter remained smaller than in cold years, when the ozone depletion is driven by halogens. In the 2014 spring the

15 conditions in the polar vortex remained favourable, but the temperature was not as low as in 2011. The ozone loss developed steadily, but remained moderate. The two winters 2010/11 and 2013/14 with the most favourable conditions for halogen driven ozone depletion showed the largest increase in ozone loss with water vapour. The effect was more ~~clear-pronounced~~ in 2013/14, which was the warmer of the two winters. The winters 2010/11 and 2015/16 look similar during January–February, but the ozone loss became much more severe in 2010/11 due to favourable conditions in March–April. In 2015/16 there was a very

20 cold period, but it occurred too early to have a large impact on the ozone depletion, and therefore the water vapour increase had only a moderate effect later in the spring. In 2013/14 the largest ozone loss ~~is-was~~ about 1.1 ppmv between 60 and 30 hPa while in 2015/16 it ~~is-was~~ about 1 ppmv at the same altitude. Livesey et al. (2015) and Sagi et al. (2017) showed results from 450 K level, and their ozone losses were about 2 ppmv in winter 2011. In winter 2013 Sagi et al. (2017) had about 1.5 ppmv ozone loss, which is about the same ~~as-what~~ we found.

25 4 Discussion and conclusions

~~Warmer climate in the troposphere in the future leads to increasing water vapour concentrations in the stratosphere (Dessler et al., 2013), which further warms the troposphere due to water vapour feedback.~~ Khosrawi et al. (2016) showed that an increase in SWV and a cooling of the stratospheric temperature enhance each other, ~~so that~~ the area of PSCs increases and ~~they-that these can~~ last longer in the vortex. The ozone loss can thus increase although the halogen loading has been decreased. In this study,

30 rather than artificially changing the temperature we used meteorological fields from seven winters during the period 2010–2016 with different temperatures and dynamical conditions in the stratosphere. We changed the water vapour content in the tropical tropopause region according to the CCMVal-2 simulations. The water vapour entry concentration is controlled by the cold point in the TTL, and the distribution of SWV is largely determined by this entry concentration together with the transport

and the contribution from methane oxidation. ~~Results~~Our results show that, as expected, a wetter/drier tropical tropopause leads to a wetter/drier Arctic polar vortex and also the size of polar ozone depletion changes ~~along~~when the water vapour changes, which affects also the Arctic ozone loss.

A reduction in SWV decreases the ozone loss due to heterogeneous processes by decreasing the PSC formation. An increase
5 in SWV instead makes the heterogeneous chemistry more important. As expected, heterogeneous chemistry is less important in warm winters. I.e. in 2012/13 only 14 DU ozone depletion was initiated by heterogeneous chemistry in the Interim simulation. The corresponding loss in the winter 2010/11, with persistent cold conditions, was 56 DU. The increase in loss with water vapour was small, i.e. the loss increased from 50 to 56 DU from the Min to the Max simulation. In the winter 2012/13 the corresponding losses were 32 and 45 DU, i.e. the water vapour concentration had the largest impact in moderately cold winters.
10 If the winter is cold enough, the increase is less important, because the PSCs may form even at low water vapour concentrations, and the chlorine activation is already nearly complete in Arctic vortex, therefore the water vapour increase is less important.

Winters in the polar stratosphere are often divided into cold, or dynamically inactive, and warm, or dynamically active. In the cold Arctic winters the polar vortex is stable and more PSCs are formed and halogens can destroy ozone. Warm conditions in the polar winter stratosphere are often due to SSW, which allows NO_x-rich air masses from the mesosphere to enter the
15 vortex and take part in the ozone depletion (Sagi et al., 2017). Cold polar stratospheric winters differ from the warm winters regarding the ozone loss and the fraction of ozone loss initiated by heterogeneous chemistry, during cold stratospheric winters the PSC areas are larger and thus chlorine activation within the polar vortex is more complete. A lack of water leads to less ICE PSCs, and therefore to less ClO_x. However, the ICE PSC area is not the only explaining factor for ozone loss. The type 1
20 PSCs that form at higher temperatures are responsible for a large fraction of the chlorine activation. The formation of STS and NAT is limited by the partial pressure of nitric acid, sulfuric acid and water and hence the concentration of water vapour is not the only thing affecting the NAT and STS areas. However, the dry conditions in the Min simulations have some limiting effect on the peak NAT and STS areas.

The cold Arctic winter 2010/11 differs from the others by an especially long chlorine activation period, which lead to large ozone depletion. In the warm Arctic winter 2012/13 the polar vortex was weak; however it was shifted to south where it was
25 exposed to sun-light earlier than usually, and thus ozone loss could start earlier. The ozone loss was however weak because chlorine activation remained very low. The ozone depletion in 2012/13 occurred at higher altitudes than in the other years, because of the NO_x induced ozone loss. The 2013/14 Arctic winter was moderately cold, and the ozone depletion was second largest among the considered winters. In this winter the effect of water vapour changes on ozone loss was the largest across the studied winters. ~~Winter~~The Arctic winter 2015/16 started as ~~extreme~~extremely cold (Matthias et al., 2016; Manney et al.,
30 2016), but the polar stratosphere warmed early terminating chlorine activation and leaving ozone loss relatively low, despite the fact that the cumulative ICE areas were extremely large.

Chemical ozone destruction inside the Arctic vortex varied between 23 and 90 DU in the Interim-simulations, 25 and 91 DU in the Max-simulations and 21 and 84 DU in the Min simulations. We find that the meteorological conditions are more important for the ozone depletion than the concentration of water vapour. Also the fraction of heterogeneous chemistry in the

ozone loss is more dependent on the temperature than on the water content. Livesey et al. (2015) ~~arrived to~~ came to a similar conclusion, when investigating ozone loss based on the MLS observations.

MacKenzie and Harwood (2004) showed from their chemistry–climate model simulations, that the increase of water vapour increases the area of PSCs both by microphysical effects and due to lowering the stratospheric temperatures. The microphysical processes cover about 20 % of the increase and the rest is due to cooling of the polar stratosphere. In our study we only changed the water vapour concentration. However, the temperature effect can be seen by investigating different years. The cumulative ICE areas between studied years varied by a factor of 30, and in cumulative NAT and STS by 2.7 and 2.2, respectively. MacKenzie and Harwood (2004) got about 15 % more ozone loss at 465 K level with less than 1 ppmv additional water vapour without changing temperature. In our study the ozone loss increased by 1 DU (1 %) in 2010/2011, 2 DU (9 %) in 2012/2013, 6 DU (8 %) in 2013/2014 and 3 DU (5 %) in 2015/2016 when the water vapour concentration was increased by about 2 ppmv. When the water vapour was instead decreased by about 1.5 ppmv, the ozone loss decreased by 6 DU (7 %), 2 DU (9 %), 9 DU (11 %) and 3 DU (5 %), respectively. The small contribution due to water vapour increase in The Arctic winter 2010/11 can be compared to the results of MacKenzie and Harwood (2004) in the Antarctic vortex. There the chlorine activation is nearly complete in every winter. ~~In Also in the Arctic winter 2010/11 also in Arctic vortex the chlorine activation was nearly~~ completely nearly all chlorine in the polar vortex was activated, and additional water vapour did not change the activation and, thus not either the ozone depletion.

Note that effects of changing water vapour concentration on air temperature, not accounted for here, would probably have increased the ~~water vapour impact~~ the impact of water vapour on ozone loss. The indirect impact comes through water vapour radiative impact on stratospheric temperatures. Tian et al. (2016) estimates that a 2 ppmv increase of water vapour would cool the polar stratosphere by approximately 2 K, while Rex et al. (2004) estimates that a 1 K cooling could increase ozone loss in the Arctic by 15 DU. Thus based on these estimates a water vapour increase of 2 ppmv, similar to the difference between Interim and Max runs, could result in up to 30 DU additional ozone loss. This estimate suggests that the direct water vapour impact on ozone loss quantified in our experiments may account for only about one fifth of the total ozone loss, but in order to confirm this estimation a designed experiment with a chemistry–climate model would be needed.

In summary, we find that variability of stratospheric water vapour of 3.5 ppmv, comparable in magnitude to uncertainty in simulated water vapour concentration near the tropical tropopause, results in differences in simulated Arctic ozone loss up to 15 DU, i.e. more than 15 % of the total chemical ozone loss in the Arctic vortex. Better understanding of tropical processes contributing to the stratospheric water vapour concentration, and thus constraining stratospheric water vapour, would therefore reduce the uncertainty in Arctic ozone loss and improve future projections of ozone layer recovery.

30 *Competing interests.* The authors declare that they have no conflict of interest.

Data availability. Data from the FinROSE simulations is available from the authors upon request. MLS data is available at <https://mls.jpl.nasa.gov>.

Acknowledgements. We acknowledge ECMWF for providing us the ERA-Interim reanalysis data. We also want to thank the UARS reference atmosphere project and MLS/Aura teams for water vapour data. The MLS data were obtained through the Aura MLS website (<http://mirador.gsfc.nasa.gov/>). Funding by the Academy of Finland through the UTLS project (140408) and by the EU through the project GAIA-CLIM is gratefully acknowledged.

References

- Atkinson, R., Baulch, D. L., Cox, R. A., Crowley, J. N., Hampson, R. F., Hynes, R. G., Jenkin, M. E., Rossi, M. J., and Troe, J.: Evaluated kinetic and photochemical data for atmospheric chemistry: Volume III – gas phase reactions of inorganic halogens, *Atmos. Chem. Phys.*, 7, 981–1191, doi:10.5194/acp-7-981-2007, 2007.
- 5 Bekki, S. and Pyle, J.: Two-dimensional assessment of the impact of aircraft sulphur emissions on the stratospheric sulphate aerosol layer, *J. Geophys. Res.*, 9, 15839–15847, 1992.
- Chipperfield, M. P., Dhomse, S. S., Feng, W., McKenzie, R. L., Velders, G. J. M., and Pyle, J. A.: Quantifying the ozone and ultraviolet benefits already achieved by the Montreal Protocol, *Nat. Commun.*, 6, 7233, doi:10.1038/ncomms8233, 2015.
- Chipperfield, M., Bekki, S., Dhomse, S., Harris, N., Hassler, B., Hossaini, R., Steinbrecht, W., Thiéblemont, R., and Weber, M.: Detecting
10 recovery of the stratospheric ozone layer, *Nature* 549, 211–218, doi:10.1038/nature23681, 2017.
- Dahlback, A. and Stamnes, K.: A new spherical model for computing the radiation field available for photolysis and heating at twilight, *Planet. Space Sci.*, 39, 671–683, 1991.
- Dameris, M., and Godin-Beekmann, S. (Lead Authors), Alexander, S., Braesicke, P., Chipperfield, M., de Laat, A.T.J., Orsolini, Y., Rex, M., and Santee, M.L.: Update on Polar ozone: Past, present, and future, Chapter 3 in *Scientific Assessment of Ozone Depletion: 2014*, Global
15 Ozone Research and Monitoring Project – Report No. 55, World Meteorological Organization, Geneva, Switzerland, 2014.
- Damski, J., Thölix, L., Backman, L., Taalas, P., and Kulmala, M.: FinROSE – middle atmospheric chemistry and transport model, *Boreal Environ. Res.*, 12, 535–550, 2007b.
- Damski, J., Thölix, L., Backman, L., Kaurola, J., Taalas, P., Austin, J., Butchart, N., Kulmala, M.: A chemistry-transport model simulation of
20 middle atmospheric ozone from 1980 to 2019 using coupled chemistry GCM winds and temperatures, *Atmos. Chem. Phys.*, 7, 2165–2181, 2007a.
- Dee, D. P., Uppala, S. M., Simmons, A. J., Berrisford, P., Poli, P., Kobayashi, S., Andrae, U., Balmaseda, M. A., Balsamo, G., Bauer, P., Bechtold, P., Beljaars, A. C. M., van de Berg, L., Bidlot, J., Bormann, N., Delsol, C., Dragani, R., Fuentes, M., Geer, A. J., Haimberger, L., Healy, S. B., Hersbach, H., Holm, E. V., Isaksen, I., Kallberg, P., Kohler, M., Matricardi, M., McNally, A. P., Monge-Sanz, B. M., Morcrette, J.-J., Park, B.-K., Peubey, C., de Rosnay, P., Tavolato, C., Thepaut, J.-N., and Vitart, F.: The ERA-Interim reanalysis:
25 configuration and performance of the data assimilation system, *Q. J. Roy. Meteorol. Soc.*, 137, 553–597, 2011.
- Dessler, A. E., Schoeberl, M. R., Wang, T., Davis, S. M., and Rosenlof, K. H.: Stratospheric water vapor feedback, *P. Natl. Acad. Sci. USA*, 110, 18087–18091, doi:10.1073/pnas.1310344110, 2013.
- Dhomse, S. S., Kinnison, D., Chipperfield, M. P., Salawitch, R. J., Cionni, I., Hegglin, M. I., Abraham, N. L., Akiyoshi, H., Archibald, A. T., Bednarz, E. M., Bekki, S., Braesicke, P., Butchart, N., Dameris, M., Deushi, M., Frith, S., Hardiman, S. C., Hassler, B., Horowitz, L.
30 W., Hu, R.-M., Jöckel, P., Josse, B., Kirner, O., Kremser, S., Langematz, U., Lewis, J., Marchand, M., Lin, M., Mancini, E., Marécal, V., Michou, M., Morgenstern, O., O'Connor, F. M., Oman, L., Pitari, G., Plummer, D. A., Pyle, J. A., Revell, L. E., Rozanov, E., Schofield, R., Stenke, A., Stone, K., Sudo, K., Tilmes, S., Visionsi, D., Yamashita, Y., and Zeng, G.: Estimates of ozone return dates from Chemistry-Climate Model Initiative simulations, *Atmos. Chem. Phys.*, 18, 8409–8438, <https://doi.org/10.5194/acp-18-8409-2018>, 2018.
- Drdla, K. and Müller, R.: Temperature thresholds for chlorine activation and ozone loss in the polar stratosphere, *Ann. Geophys.*, 30, 1055–
35 1073, doi:10.5194/angeo-30-1-2012, 2012.
- Dvortsov, V. L., and S. Solomon: Response of the stratospheric temperatures and ozone to past and future increases in stratospheric humidity, *J. Geophys. Res.*, 106, 7505–7514, 2001.

- Dörnbrack, A., Gisinger, S., Pitts, M. C., Poole, L. R., and Maturilli, M.: Multilevel cloud structures over Svalbard, *Mon. Weather. Rev.*, 145, 1149–1159, <https://doi.org/10.1175/mwr-d-16-0214.1>, 2017.
- Engel, A., Bönisch, H., Ostermüller, J., Chipperfield, M. P., Dhomse, S., and Jöckel, P.: A refined method for calculating equivalent effective stratospheric chlorine, *Atmos. Chem. Phys.*, 18, 601–619, <https://doi.org/10.5194/acp-18-601-2018>, 2018.
- 5 Eyring, V., et al.: Multimodel projections of stratospheric ozone in the 21st century, *J. Geophys. Res.*, 112, D16303, <https://doi.org/10.1029/2006JD008332>, 2007.
- Eyring, V., Cionni, I., Bodeker, G. E., Charlton-Perez, A. J., Kinnison, D. E., Scinocca, J. F., Waugh, D. W., Akiyoshi, H., Bekki, S., Chipperfield, M. P., Dameris, M., Dhomse, S., Frith, S. M., Garny, H., Gettelman, A., Kubin, A., Langematz, U., Mancini, E., Marchand, M., Nakamura, T., Oman, L. D., Pawson, S., Pitari, G., Plummer, D. A., Rozanov, E., Shepherd, T. G., Shibata, K., Tian, W., Braesicke, P., Hardiman, S. C., Lamarque, J. F., Morgenstern, O., Pyle, J. A., Smale, D., and Yamashita, Y.: Multi-model assessment of stratospheric ozone return dates and ozone recovery in CCMVal-2 models, *Atmos. Chem. Phys.*, 10, 9451–9472, <https://doi.org/10.5194/acp-10-9451-2010>, 2010.
- 10 Feck, T., J.-U. Groöß, and M. Riese: Sensitivity of Arctic ozone loss to stratospheric H_2O , *Geophys. Res. Lett.*, 35, L01803, doi:10.1029/2007GL031334, 2008.
- 15 Fueglistaler, S. and Haynes, P. H.: Control of interannual and longer-term variability of stratospheric water vapor, *J. Geophys. Res.*, 110, 1–14, doi:10.1029/2005JD006019, 2005.
- Gettelman, A., Hegglin, M. I., Son, S. W., Kim, J., Fujiwara, M., Birner, T., Kremser, S., Rex, M., Añel, J. A., Akiyoshi, H., Austin, J., Bekki, S., Braesicke, P., Brühl, C., Butchart, N., Chipperfield, M., Dameris, M., Dhomse, S., Garny, H., Hardiman, S. C., Jöckel, P., Kinnison, D. E., Lamarque, J. F., Mancini, E., Marchand, M., Michou, M., Morgenstern, O., Pawson, S., Pitari, G., Plummer, D., Pyle, J. A., Rozanov, E., Scinocca, J., Shepherd, T. G., Shibata, K., Smale, D., Teyssède, H., and Tian, W.: Multimodel assessment of the upper troposphere and lower stratosphere: Tropics and global trends, *J. Geophys. Res.*, 115, D00M08, doi:10.1029/2009JD013638, 2010.
- 20 [Hamill, P., E.J. Jensen, P. B. Russell and J. J. Bauman, The life cycle of stratospheric aerosols, *Bulletin of the American Meteorological Society*, 78, 1395-1410, 1997.](#)
- Karpechko, A. Yu., Backman, L., Thölix, L., Ialongo, I., Andersson, M., Fioletov, V., Heikkilä, A., Johnsen, B., Koskela, T., Kyrölä, E., Lakkala, K., Myhre, C. L., Rex, M., Sofieva, V.F., Tamminen, J. and Wohltmann, I.: The link between springtime total ozone and summer UV radiation in Northern Hemisphere extratropics, *J. Geophys. Res.*, 118, 8649–8661, doi:10.1002/jgrd.50601, 2013.
- Khosrawi, F., Urban, J., Lossow, S., Stiller, G., Weigel, K., Braesicke, P., Pitts, M. C., Rozanov, A., Burrows, J. P., and Murtagh, D.: Sensitivity of polar stratospheric cloud formation to changes in water vapour and temperature, *Atmos. Chem. Phys.*, 16, 101–121, doi:10.5194/acp-16-101-2016, 2016.
- 30 Khosrawi, F., Kirner, O., Sinnhuber, B.-M., Johansson, S., Höpfner, M., Santee, M. L., Froidevaux, L., Ungermann, J., Ruhnke, R., Woiwode, W., Oelhaf, H., and Braesicke, P.: Denitrification, dehydration and ozone loss during the 2015/2016 Arctic winter, *Atmos. Chem. Phys.*, 17, 12893–12910, <https://doi.org/10.5194/acp-17-12893-2017>, 2017.
- Khosrawi, F., Kirner, O., Stiller, G., Höpfner, M., Santee, M. L., Kellmann, S., and Braesicke, P.: Comparison of ECHAM5/MESy Atmospheric Chemistry (EMAC) simulations of the Arctic winter 2009/2010 and 2010/2011 with Envisat/MIPAS and Aura/MLS observations, *Atmos. Chem. Phys.*, 18, 8873–8892, <https://doi.org/10.5194/acp-18-8873-2018>, 2018.
- 35 Kim, J., Randel, W. J., and Birner, T.: Convectively Driven Tropopause-Level Cooling and Its Influences on Stratospheric Moisture, *J. Geophys. Res.*, 123, 590–606, doi:10.1002/2017JD027080, 2018.

- Kirk-Davidoff, D. B., Anderson, J. G., Hints, E. J., and Keith, D. W.: The effect of climate change on ozone depletion through changes in stratospheric water vapour, *Nature*, 402, 399–401, 1999.
- Kirner, O., Müller, R., Ruhnke, R., and Fischer, H.: Contribution of liquid, NAT and ice particles to chlorine activation and ozone depletion in Antarctic winter and spring, *Atmos. Chem. Phys.*, 15, 2019–2030, doi:10.5194/acp-15-2019-2015, 2015.
- 5 Kuttippurath, J. and Nair, P. J.: The signs of Antarctic ozone hole recovery, *Sci. Rep.*, 7, 585, doi:10.1038/s41598-017-00722-7, 2017.
- Kylling, A., Stamnes, K., and Tsay, S.-C.: A reliable and efficient two-stream algorithm for radiative transfer; Documentation of accuracy in realistic layered media, *J. Atmos. Chem.*, 21, 115–150, 1995.
- Lait, L. R.: An alternative form for potential vorticity, *J. Atmos. Sci.*, 51, 1754–1759, doi:10.1175/1520-0469(1994)051, 1994.
- Lambert, A., Read, W. G., Livesey, N. J., Santee, M. L., Manney, G. L., Froidevaux, L., Wu, D. L., Schwartz, M. J., Pumphrey, H. C.,
 10 Jimenez, C., Nedoluha, G. E., Cofield, R. E., Cuddy, D. T., Daffer, W. H., Drouin, B. J., Fuller, R. A., Jarnot, R. F., Knosp, B. W., Pickert, H. M., Perun, V. S., Snyder, W. V., Stek, P. C., Thurstans, R. P., Wagner, P. A., Waters, J. W., Jucks, K. W., Toon, G. C., Stachnik, R. A., Bernath, P. F., Boone, C. D., Walker, K. A., Urban, J., Murtagh, D., Elkins, J. W., and Atlas, E.: Validation of the Aura Microwave Limb Sounder middle atmosphere water vapor and nitrous oxide measurements, *J. Geophys. Res.*, 112, D24S36, doi:10.1029/2007JD008724, 2007.
- 15 Lin, S.-J. and Rood, R. B.: Multidimensional flux-form semi-lagrangian transport schemes, *Mon. Weather Rev.*, 124, 2046–2070, 1996.
- Livesey, N. J., Santee, M. L., and Manney, G. L.: A Match-based approach to the estimation of polar stratospheric ozone loss using Aura Microwave Limb Sounder observations, *Atmos. Chem. Phys.*, 15, 9945–9963, doi:10.5194/acp-15-9945-2015, 2015.
- MacKenzie, I. A., and Harwood, R. S.: Middle-atmospheric response to a future increase in humidity arising from increased methane abundance, *J. Geophys. Res.*, 109, D02107, doi:10.1029/2003JD003590, 2004.
- 20 Manney, G. L., Santee, M. L., Rex, M., Livesey, N. L., Pitts, M. C., Veefkind, P., Nash, E. R., Woltmann, I., Lehmann, R., Froidevaux, L., Poole, L. R., Schoeberl, M. R., Haffner, D. P., Davies, J., Dorokhov, V., Gernandt, H., Johnson, B., Kivi, R., Kyrö, E., Larsen, N., Levelt, P. F., Makshtas, A., McElroy, C. T., Nakajima, H., Concepcion Parrondo, M., Tarasick, D. W., von der Gathen, P., Walker, K. A., and Zinoviev, N. S.: Unprecedented Arctic ozone loss in 2011, *Nature*, 478, 469–475, doi:, 2011.
- Manney, G. L. and Lawrence, Z. D.: The major stratospheric final warming in 2016: dispersal of vortex air and termination of Arctic chemical
 25 ozone loss, *Atmos. Chem. Phys.*, 16, 15371–15396, https://doi.org/10.5194/acp-16-15371-2016, 2016.
- Matthias, V., Dörnbrack, A., and Stober, G.: The extraordinarily strong and cold polar vortex in the early northern winter 2015/2016. *Geophys. Res. Lett.*, 43, 12287–12294, doi:10.1002/2016GL071676, 2016.
- Montzka, S. A., Butler, J. H., Elkins, J. W., Thompson, T. M., Clarke, A. D., and Lock, L. T.: Present and future trends in the atmospheric burden of ozone-depleting halogens, *Nature*, 398, 690–694, 1999.
- 30 Müller, R., Grooß, J.-U., Lemmen, C., Heinze, D., Dameris, M., and Bodeker, G.: Simple measures of ozone depletion in the polar stratosphere, *Atmos. Chem. Phys.*, 8, 251–264, https://doi.org/10.5194/acp-8-251-2008, 2008.
- Pitts, M. C., Thomason, L. W., Poole, L. R., and Winker, D. M.: Characterization of Polar Stratospheric Clouds with spaceborne lidar: CALIPSO and the 2006 Antarctic season, *Atmos. Chem. Phys.*, 7, 5207–5228, doi:10.5194/acp-7-5207-2007, 2007.
- Pitts, M. C., Poole, L. R., and Gonzalez, R.: Polar stratospheric cloud climatology based on CALIPSO spaceborne lidar measurements from
 35 2006 to 2017, *Atmos. Chem. Phys.*, 18, 10881-10913, doi:10.5194/acp-18-10881-2018, 2018.
- Pommereau, J.-P., Goutail, F., Lefèvre, F., Pazmino, A., Adams, C., Dorokhov, V., Eriksen, P., Kivi, R., Stebel, K., Zhao, X., and van Roozendaal, M.: Why unprecedented ozone loss in the Arctic in 2011? Is it related to climate change?, *Atmos. Chem. Phys.*, 13, 5299–5308, https://doi.org/10.5194/acp-13-5299-2013, 2013.

- Prinn, R. G., Weiss, R. F., Fraser, P. J., Simmonds, P. G., Cunnold, D. M., Alyea, F. N., O'Doherty, S., Salameh, P., Miller, B. R., Huang, J., Wang, R. H. J., Hartley, D. E., Harth, C., Steele, L. P., Sturrock, G., Midgley, P. M., and McCulloch, A.: A history of chemically and radiatively important gases in air deduced from ALE/GAGE/AGAGE, *J. Geophys. Res.*, 105, 17751–17792, 2000.
- Randel, W., Wu, F., Oltmans, S., Rosenlof, K., and Nedoluha, G.: Interannual changes in stratospheric water vapor and correlations with tropical tropopause temperatures, *J. Atmos. Sci.*, 61, 2133–2148, 2004.
- Revell, L. E., Bodeker, G. E., Huck, P. E., Williamson, B. E., and Rozanov, E.: The sensitivity of stratospheric ozone changes through the 21st century to N_2O and CH_4 , *Atmos. Chem. Phys.*, 12, 11309–11317, <https://doi.org/10.5194/acp-12-11309-2012>, 2012.
- Revell, L. E., Stenke, A., Rozanov, E., Ball, W., Lossow, S., and Peter, T.: The role of methane in projections of 21st century stratospheric water vapour, *Atmos. Chem. Phys.*, 16, 13067–13080, doi:10.5194/acp-16-13067-2016, 2016.
- 10 Rex, M., Von Der Gathen, P., Braathen, G. et al. *Journal of Atmospheric Chemistry*, 32, 35, <https://doi.org/10.1023/A:1006093826861>, 1999.
- Rex, M., Salawitch, R. J., von der Gathen, P., Harris, N. R. P., Chipperfield, M. and Naujokat, B.: Arctic ozone loss and climate change, *Geophys. Res. Lett.*, 31, L04116, doi:10.1029/2003GL018844, 2004.
- Rex, M., Salawitch, R. J., Deckelmann, H., von der Gathen, P., Harris, N. R. P., Chipperfield, M. P., Naujokat, B., Reimer, E., Allaart, M., Andersen, S. B., Bevilacqua, R., Braathen, G. O., Claude, H., Davies, J., De Backer, H., Dier, H., Dorokhov, V., Fast, H., Gerding, M., 15 Godin-Beekmann, S., Hoppel, K., Johnson, B., Kyrö, E., Litynska, Z., Moore, D., Nakane, H., Parrondo, M. C., Risley, A. D., Skrivankova, P., Stübi, R., Viatte, P., Yushkov, V., and Zerefos, C.: Arctic winter 2005: Implications for stratospheric ozone loss and climate change, *Geophys. Res. Lett.*, 33, L23808, 2006.
- Riese, M., Ploeger, F., Rap, A., Vogel, B., Konopka, P., Dameris, M., and Forster, P.: Impact of uncertainties in atmospheric mixing on simulated UTLS composition and related radiative effects, *J. Geophys. Res.*, 117, D16305, doi:10.1029/2012JD017751, 2012.
- 20 Rosenfield, J. E., Douglass, A. R., and Considine, D. B.: The impact of increasing carbon dioxide on ozone recovery, *J. Geophys. Res.*, 107, 4049, doi:10.1029/2001JD000824, 2002.
- Sagi, K., Pérot, K., Murtagh, D., and Orsolini, Y.: Two mechanisms of stratospheric ozone loss in the Northern Hemisphere, studied using data assimilation of Odin/SMR atmospheric observations, *Atmos. Chem. Phys.*, 17, 1791–1803, doi:10.5194/acp-17-1791-2017, 2017.
- Salmi, S.-M., Verronen, P. T., Thölix, L., Kyrölä, E., Backman, L., Karpechko, A. Yu., and Seppälä, A.: Mesosphere-to-stratosphere descent 25 of odd nitrogen in February–March 2009 after sudden stratospheric warming event, *Atmos. Chem. Phys.*, 11, 4645–4655, 2011.
- Sander, S. P., Abbatt, J., Barker, J. R., Burkholder, J. B., Friedl, R. R., Golden, D. M., Huie, R. E., Kolb, C. E., Kurylo, M. J., Moortgat, G. K., Orkin, V. L., and Wine, P. H.: *Chemical Kinetics and Photochemical Data for Use in Atmospheric Studies*, Evaluation No. 17, JPL Publication 10-6, Jet Propulsion Laboratory, Pasadena, USA, 2011.
- Schoeberl, M. R., Dessler, A. E., and Wang, T.: Simulation of stratospheric water vapor and trends using three reanalyses, *Atmos. Chem. Phys.*, 12, 6475–6487, doi:10.5194/acp-12-6475-2012, 2012.
- 30 Sinnhuber, B.-M., G. Stiller, R. Ruhnke, T. von Clarmann, S. Kellmann, and J. Aschmann: Arctic winter 2010/2011 at the brink of an ozone hole, *Geophys. Res. Lett.*, 38, L24814, doi:10.1029/2011GL049784, 2011.
- Smalley, K. M., Dessler, A. E., Bekki, S., Deushi, M., Marchand, M., Morgenstern, O., Plummer, D. A., Shibata, K., Yamashita, Y., and Zeng, G.: Contribution of different processes to changes in tropical lower-stratospheric water vapor in chemistry–climate models, *Atmos. Chem. Phys.*, 17, 8031–8044, <https://doi.org/10.5194/acp-17-8031-2017>, 2017.
- 35 Spang, R., Hoffmann, L., Müller, R., Groöß, J.-U., Tritscher, I., Hüöpfner, M., Pitts, M., Orr, A., and Riese, M.: A climatology of polar stratospheric cloud composition between 2002 and 2012 based on MIPAS/Envisat observations, *Atmos. Chem. Phys.*, 18, 5089–5113, <https://doi.org/10.5194/acp-18-5089-2018>, 2018.

- Solomon, S.: Stratospheric ozone depletion: a review of concepts and history, *Rev. Geophys.*, 37, 275–316, 1999.
- Solomon, S., Garcia, R. R., Rowland, F. S., and Wuebbles, D. J.: On the depletion of Antarctic ozone, *Nature*, 321, 755–758, 1986.
- Solomon, S., Ivy, D. J., Kinnison, D., Mills, M. J., Neely, R. R., and Schmidt, A.: Emergence of healing in the Antarctic ozone layer, *Science*, 353, 269–274, <https://doi.org/10.1126/science.aae0061>, 2016.
- 5 Stannnes, K., Tsay, S.-C., Wiscombe, W., and Jayaweera, K.: Numerically stable algorithm for discrete-ordinate-method radiative transfer in multiple scattering and emitting layered media, *Appl. Opt.*, 27, 2502–2509, 1988.
- Stenke, A., and V. Grewe: Simulation of stratospheric water vapor trends: impact on stratospheric ozone chemistry, *Atmos. Chem. Phys.*, 5, 1257–1272, 2005.
- Strahan, S. E., and Douglass, A. R.: Decline in Antarctic ozone depletion and lower stratospheric chlorine determined from Aura Microwave
 10 Limb Sounder observations. *Geophys. Res. Lett.*, 45, 382–390. <https://doi.org/10.1002/2017GL074830>, 2018.
- Streibel, M., Rex, M., von der Gathen, P., Lehmann, R., Harris, N. R. P., Braathen, G. O., Reimer, E., Deckelmann, H., Chipperfield, M., Millard, G., Allaart, M., Andersen, S. B., Claude, H., Davies, J., De Backer, H., Dier, H., Dorokov, V., Fast, H., Gerding, M., Kyrö, E., Litynska, Z., Moore, D., Moran, E., Nagai, T., Nakane, H., Parrondo, C., Skrivankova, P., Stübi, R., Vaughan, G., Viatte, P., and Yushkov, V.: Chemical ozone loss in the Arctic winter 2002/2003 determined with Match, *Atmos. Chem. Phys.*, 6, 2783–2792,
 15 <https://doi.org/10.5194/acp-6-2783-2006>, 2006.
- Thölix, L., Backman, L., Ojanen, S.-M.: The effects of driver data on the performance of the FinROSE chemistry transport model, *IJRS*, 31, 6401–6408, 2010.
- Thölix, L., Backman, L., Kivi, R., and Karpechko, A. Yu.: Variability of water vapour in the Arctic stratosphere, *Atmos. Chem. Phys.*, 16, 4307–4321, [doi:10.5194/acp-16-4307-2016](https://doi.org/10.5194/acp-16-4307-2016), 2016.
- 20 Tian, W. S., Chipperfield, M. P., and Lü, D. R.: Impact of increasing stratospheric water vapor on ozone depletion and temperature change. *Adv. Atmos. Sci.*, 26(3), 423–437, [doi:10.1007/s00376-009-0423-3](https://doi.org/10.1007/s00376-009-0423-3), 2009.
- Vogel, B., Feck, T. and Groß, J.U.: Impact of stratospheric water vapor enhancements caused by CH_4 and H_2O increase on polar ozone loss, *J. Geophys. Res.*, 116, D05301, [doi:10.1029/2010JD014234](https://doi.org/10.1029/2010JD014234), 2011.
- Wohltmann, I., Wegner, T., Müller, R., Lehmann, R., Rex, M., Manney, G. L., Santee, M. L., Bernath, P., Sumińska-Ebersoldt, O., Stroh, F.,
 25 von Hobe, M., Volk, C. M., Hösen, E., Ravegnani, F., Ulanovsky, A., and Yushkov, V.: Uncertainties in modelling heterogeneous chemistry and Arctic ozone depletion in the winter 2009/2010, *Atmos. Chem. Phys.*, 13, 3909–3929, [doi:10.5194/acp-13-3909-2013](https://doi.org/10.5194/acp-13-3909-2013), 2013.

21°S–21°N, 80 hPa

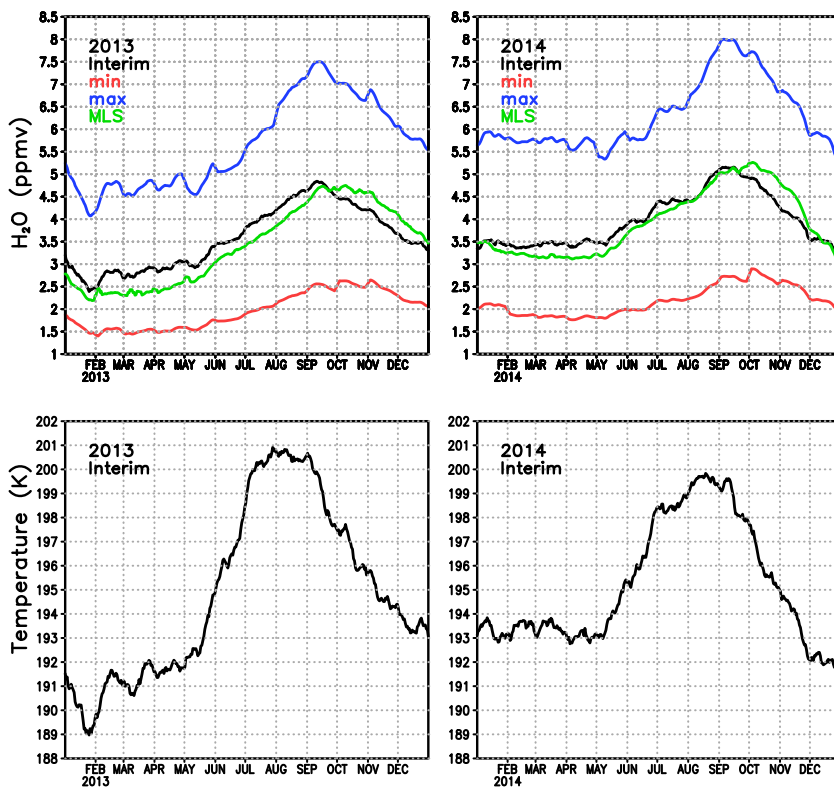


Figure 1. Water vapour and temperature around the tropical tropopause between 21° S and 21° N at level 80 hPa in 2013 and 2014. Green line is Interim, blue Max, red Min simulation and black is MLS.

Temperature (K) in vortex

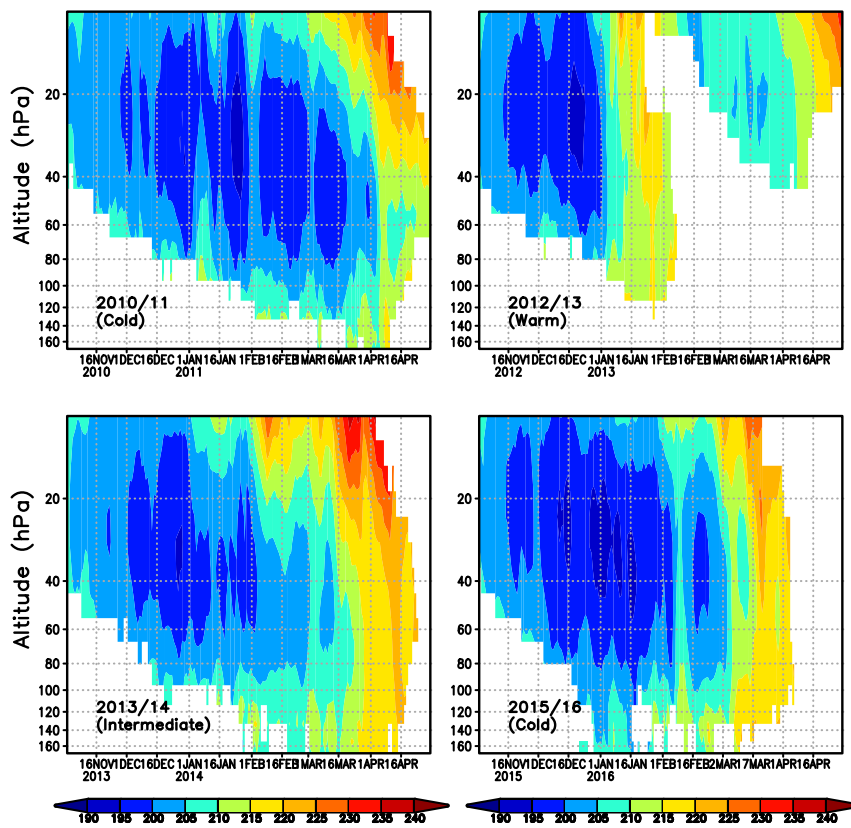


Figure 2. Vortex average temperature within the Arctic polar vortex between altitudes 170 and 10 hPa.

H₂O (ppmv) in vortex, 55 hPa

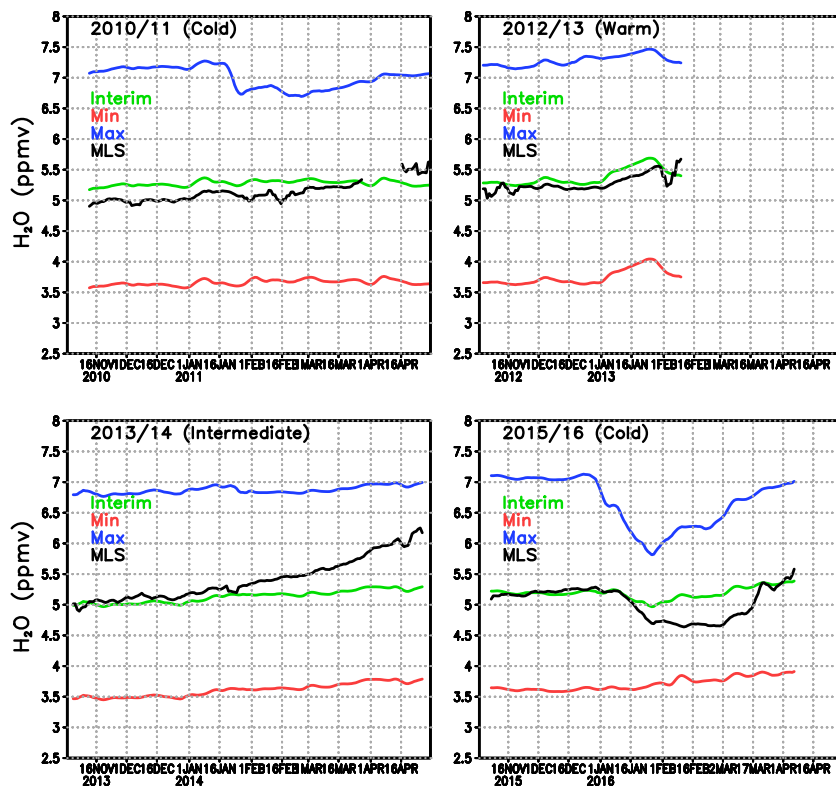


Figure 3. Water vapour concentration (ppmv) at 55 hPa within the Arctic polar vortex. Green line is Interim, blue Max, red Min simulation and black is MLS.

ICE PSC area (1E6 km²), 55 hPa

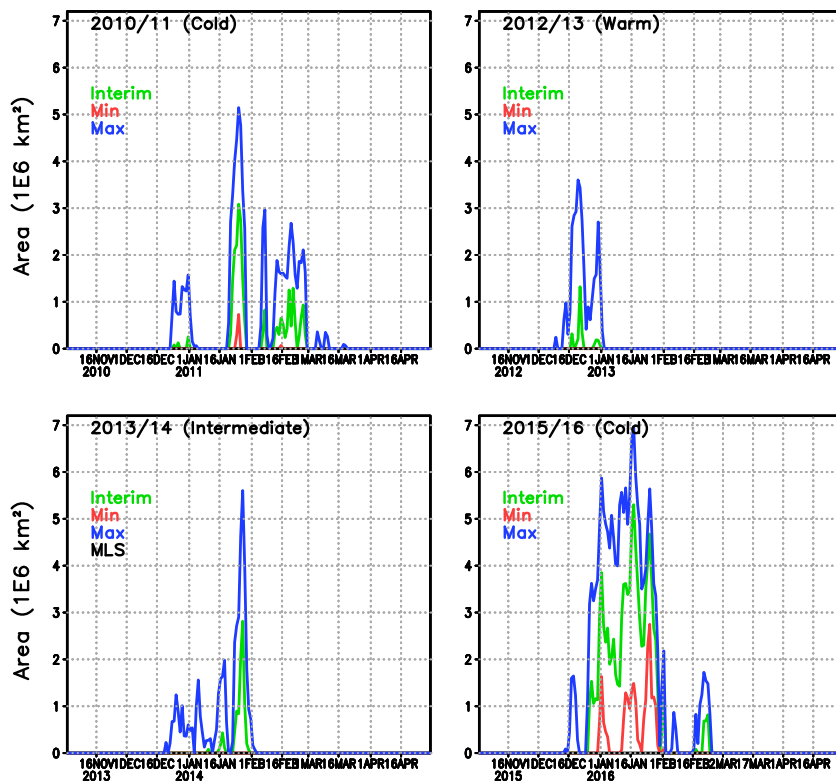


Figure 4. The [ares-areas](#) of ICE PSCs (10⁶km²) within the Arctic polar vortex in the FinROSE simulations at 55 hPa. Green line is Interim, blue Max and red Min simulation.

NAT and STS PSCs area (1E6 km²), 55 hPa

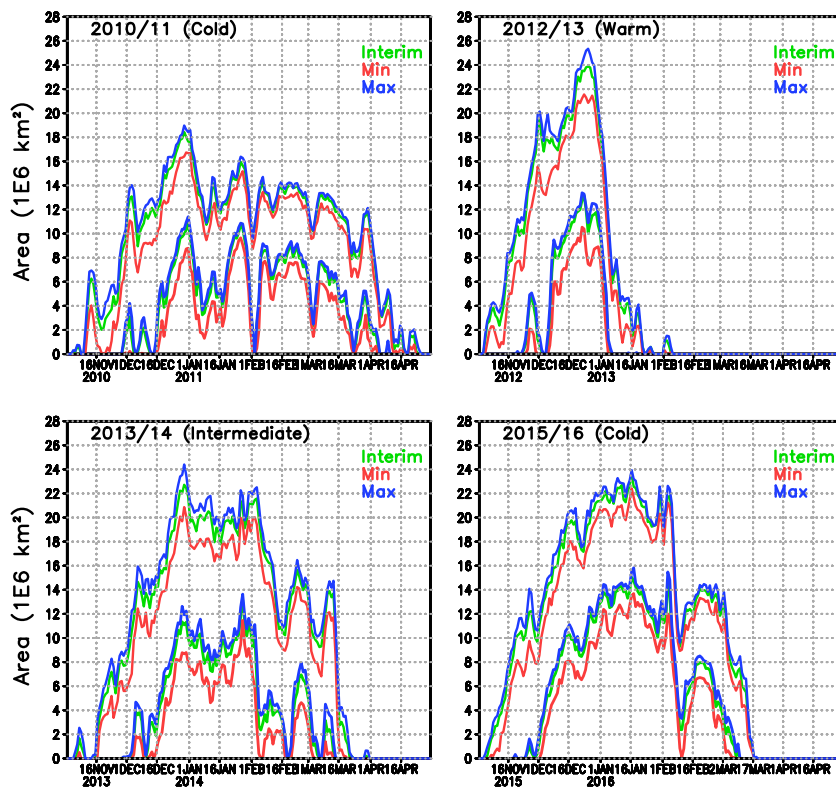


Figure 5. The area of NAT (thick lines) and STS PSCs (thin lines) (10^6 km^2) within the Arctic polar vortex in the simulations at 55 hPa. Green line is Interim, blue Max and red Min simulation.

Chlorine partitioning at 55 hPa

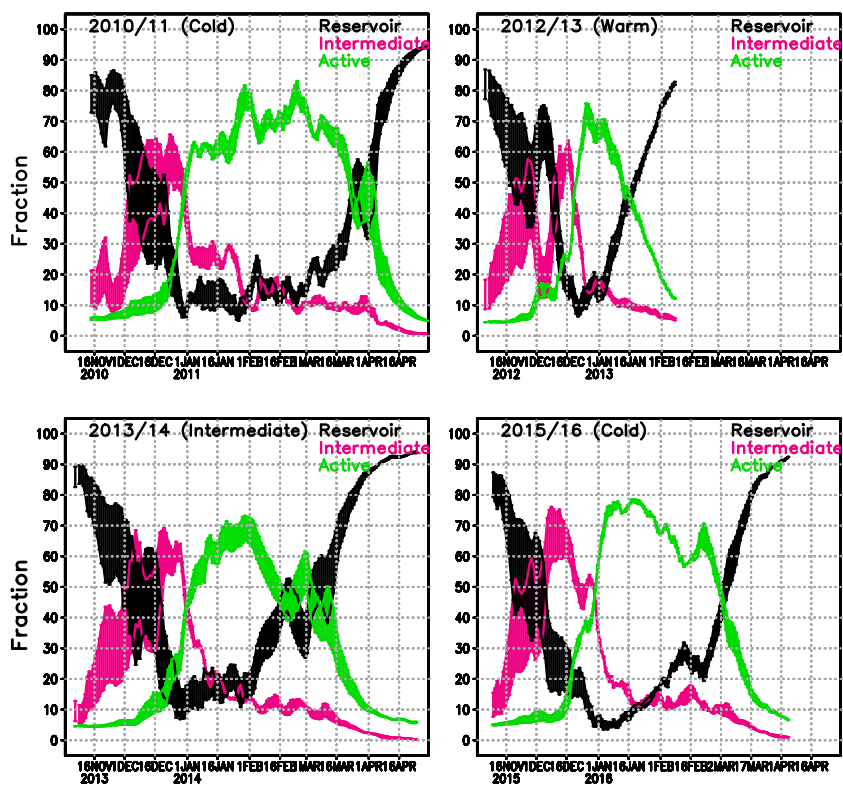


Figure 6. Chlorine partitioning (%) within the Arctic polar vortex at 5455 hPa in the Min and Max simulations. Active form (green) is $\text{Cl} + \text{ClO} + 2 * \text{Cl}_2\text{O}_2$. Intermediate (magenta) contains $2 * \text{Cl}_2 + \text{HOCl} + \text{OCIO} + \text{BrCl} + \text{ClNO}_2$ and reservoir chlorine (black) $\text{HCl} + \text{ClONO}_2$.

ChemO₃t (DU) in vortex

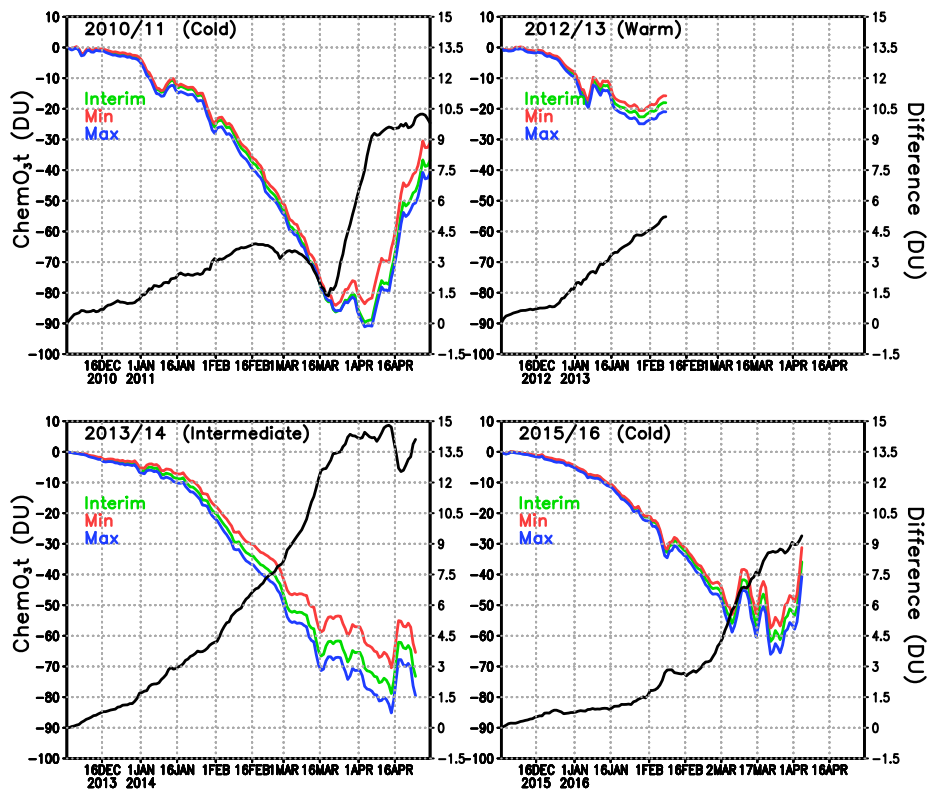


Figure 7. Chemical total ozone loss (DU) and difference between ozone loss in the Min and Max simulations within the Arctic polar vortex. Green line is Interim, blue Max and red Min simulation. The difference is in black.

O³ loss (ppmv) in vortex

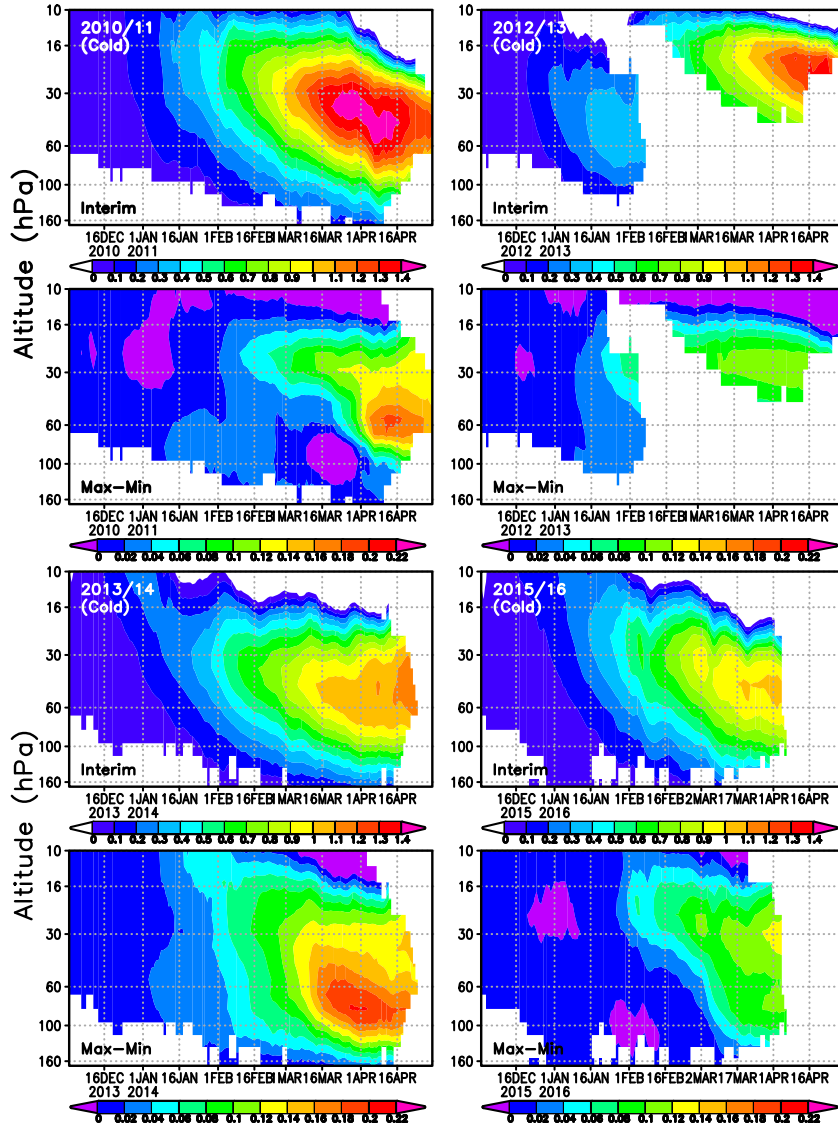


Figure 8. Averaged chemical ozone loss (ppmppmv) in the Interim simulation (upper panels) and the difference between Max and Min simulations (lower panels) within the Arctic polar vortex.