

# Review replies to Large simulated radiative effects of smoke in the south-east Atlantic

Hamish Gordon<sup>1</sup>, Paul R. Field<sup>1,2</sup>, Steven J. Abel<sup>2</sup>, Mohit Dalvi<sup>2</sup>, Daniel P. Grosvenor<sup>1</sup>, Adrian A. Hill<sup>2</sup>, Ben T. Johnson<sup>2</sup>, Annette K. Miltenberger<sup>1</sup>, Masaru Yoshioka<sup>1</sup>, and Ken S. Carslaw<sup>1</sup>

<sup>1</sup>School of Earth and Environment, University of Leeds, LS2 9JT, United Kingdom

<sup>2</sup>Met Office, Fitzroy Road, Exeter, EX1 3PB, United Kingdom

Correspondence to: Hamish Gordon hamish.gordon@cern.ch

We thank both reviewers for their thoughtful reading of the manuscript and helpful comments. We feel that through their suggestions we have been able to significantly improve our paper.

## 1 Reviewer 1

### 1.1 General comments

5 **As for regional-to-global scale modeling study, 10-day period seems to be too short for estimating radiative effects of smoke. As shown in Figure 1a of Zuidema et al. (2018, GRL), during the fire season over this region, the fire activity fluctuates widely from day to day. By the end of the simulation period (i.e. Aug. 8), the smoke concentration as measured over Ascension Island was much higher than any other days (except Aug. 13) in 2016. Therefore, -22.0Wm<sup>-2</sup> cooling sounds very dramatic but the authors failed to emphasize that this value is calculated for the most polluted period during the fire season in many places. The authors can either run model (global model only if regional model is too expensive) for longer period, or emphasize the period and region, over which the model simulation is conducted in text, especially in the abstract.**

15 We only became aware of the 2018 Zuidema paper during our review process, and indeed this paper shows that we picked (more or less by accident) the start of the period with the most smoke over Ascension Island of any episode in the 2016 fire season. Rather than running longer simulations, which would entail a great deal more analysis, we prefer to emphasise in the text that the period we have chosen is not representative of the whole fire season.

20 We added a sentence to the abstract: *At Ascension Island, this smoke episode was the strongest of the 2016 fire season.* To the introduction, we add *Our test case runs from 1 to 10 August 2016. The first five days of this period were approximately representative of clean conditions in the mid-Atlantic, while the second five days cover the first half of the largest smoke plume to reach Ascension Island in the 2016 fire season. The single-particle soot photometer on Ascension recorded a peak in refractory black carbon concentration of 1.5µgm<sup>-3</sup> on 9 August, while the monthly mean for August is 0.5µgm<sup>-3</sup> (Zuidema et al., 2018).* When we compare to other studies, we say, with respect to Lu et al (2018), *They also average over pristine periods without much smoke aerosol, while we quote results only in a very polluted period.* We also added a note to the caption of

the table presenting our results on radiation balance: *We emphasise that the results are averaged over one of the most polluted periods in the 2016 fire season.* Finally, we added a qualifier in the conclusions as follows: *resultant large radiative effects sum to  $-27.6 \text{ W m}^{-2}$ , in an especially strong smoke episode.*

5 **Although the results in the paper are thoroughly discussed with many details, the reviewer suggests the authors to include some additional results for the interests of the scientific community. Firstly, in addition to show the time series of modeled and observed AODs in Figure 8, please include the spatial patterns of modeled AOD in comparison with MODIS observations (averaged over study period or during Aug. 2 and Aug. 7) in main text or supplementary. By doing so, the authors can further justify the performance of HadGEM/UK Met Office Unified models.**

10 We are happy to provide the spatial patterns of AOD (and, in response to reviewer 2, aerosol index) and compare the AOD to the model. We added a new supplementary figure showing AOD and AI on 1,3,5,7,9 August. We added the following to the text: *Despite the better correlation of aerosol number concentration expected with AI than AOD, the AI increases before the AOD while the CCN at Ascension Island increases after. This is likely due to the vertical mixing of the aerosol layer. The layer is initially at high altitude, which leads to a higher AI than lower-lying aerosol layers would (Herman et al, 1997) but does not affect AOD. Then, as the layer thickens, the AOD increases more quickly than the AI. The spatial patterns of AI, retrieved AOD*  
15 *and simulated AOD are shown in Supplementary Figure S8.*

**Secondly, many previous modeling and observational studies disagree on the effect of smoke on cloud- top height. The reviewer strongly suggests the authors to examine smoke-induced changes in cloud-top heights by comparing three cases after the discussion of Figure 13.** Indeed, in our short simulation we find smoke tends to suppress cloud top height, in line with observations, while Lu et al (2018) and Sakaeda et al (2011) find the opposite. The effect we see is mainly nocturnal.  
20 Sakaeda et al attribute their findings to reductions in near-surface temperature (which we, and Lu et al, are not sensitive to, with fixed SST), increases in free-tropospheric temperature, and reduced large-scale subsidence. We commented on this in the text that was published in ACPD - but this was an update from the originally submitted version, and we don't think the reviewer saw it: *As observed by Wilcox (2010), the cloud also gets thicker, as the cloud top rises while the cloud base height decreases. However, the WRF model of Lu et al (2018) produces an increase in cloud top height in the presence of biomass*  
25 *burning aerosol, and the authors attribute the observed reductions to co-variability of aerosols and meteorology.* Lu et al state in their supplementary that 50% of the cloud top height difference they see is due to enhanced entrainment and 50% due to reduced subsidence. On average, we also find smoke reduces subsidence (by a mean of 6.8% in the polluted period in the first 9km of altitude), but in our simulations it also reduces entrainment. We added some numbers to the text in our previous iteration. There are reasons why our simulations might differ to Lu et al: they can simulate faster evaporation of smaller water  
30 droplets at cloud top, but we can't, because our cloud microphysics scheme only sees cloud droplet number concentrations in its autoconversion and accretion parameterizations. It seems unlikely that this effect could be strong enough to reverse changes in cloud top height, but it may contribute. It is also likely that these effects depend strongly on the height of the aerosol layer. We added to the text *The reduction in entrainment rates due to smoke we observe is in contrast to the increased entrainment rate seen by Lu et al (2018), and may help to explain why on average we see a reduction in cloud top height due to smoke while*  
35 *they see an increase.*

In our simulations, unsurprisingly, changes in potential temperature and liquid water content we see are entirely due to the absorption effect of smoke, rather than any microphysical effect. To demonstrate this we added the profiles of potential temperature and liquid water content in the simulation without aerosol absorption to Figure 13. We now also provide the same plot for the global model as a Supplementary Figure. The results from the global model are qualitatively consistent, but more structures are seen, probably because there are fewer grid boxes to average over. We added some more discussion of the figure. *The simulation without aerosol absorption tracks the simulation without smoke, so the changes observed are due to the absorbing properties of the smoke. The regional model is qualitatively consistent with the global model (Supplementary Figure S12).*

## 1.2 Specific comments

- 10 – **The abstract seems to be way too long – almost close to 500 words. Please condense the abstract, if possible around 300 words.** We shortened the abstract to below 350 words.
- **Page 2, line 12 ‘Once entrained, smoke can have very different effects to cloud aloft’.** We did mean ‘smoke’ here. In other words, the altitude of the heating effect due to smoke is important - if smoke is above the boundary layer we expect it to reduce the inversion height, while if smoke is in the boundary layer we expect it to increase the inversion height.
- 15 – **Page 2, line 15: This hypothesis may be true, but please explain why this is the case. (For example, maybe cite Figure 3 in Chand et al., 2009, Nature geoscience?)** We now mention Figure 2 in Chand et al: *This is broadly consistent with Figure 2 in Chand et al (2009). Smoke tends to lie above clouds east of this line, while large scale subsidence usually leads to more frequent mixing of smoke into clouds to the west.*
- **Page 3, Figure 1: It may be better to label Ascension Island in the figure instead of saying it in the caption.** Done
- 20 – **Page 4, line 5 to line 8: I am not familiar with the models used in this study. To drive a model with 4km resolution with a model with 65 km resolution, is this the downscaling or nesting technique? For regional models like MM5 and WRF, the ratio between the resolutions of the outer domain and inner domain is usually 3:1 or 5:1. As in this study, the ratio is 16:1, which is quite large. With such large ratio, can signature of smoke plumes in meso-scale be properly simulated?** We have no technical problems with using a 16:1 ratio for the regional to global models. This is commonly used in regional modelling with the UM, and we could go to even higher ratios, for example Grosvenor et al (2017) use a 25 km-resolution global model and a 1 km resolution regional model. Close to the boundaries of the domain, there is not much difference from one 4km grid-box to the next, while in the interior this is not the case. In our analysis we provide means from the 200x200 grid boxes in the centre of the domain, rather than the 300x300 grid boxes of the full domain, in order to account for the transition to regional resolution. A smaller ratio of resolutions would
- 25
- 30 reduce the distance into the regional model that is needed for this transition to the regional resolution, so it might be a bit more efficient for large domains.

- **Page 5, line 5 to line 7: please rewrite this sentence, using the phrase like “the vertical resolution of model grid boxes”** We added *with the spacing increasing as the altitude increases* to clarify this.
- **Page 6, line 4 and line 14: 120nm is typical size of freshly emitted size of smoke particles; however, it should be in accumulation mode. Why put smoke particles into insoluble Aitken mode?** The insoluble Aitken mode is named as in the model code. We have only one insoluble mode, but it does not have a fixed radius and mass within it is not transferred to other modes if its radius gets too large (as happens in the soluble modes). Instead mass is transferred to the soluble modes as the aerosol ages, and by the time the smoke aerosol reaches our regional model domain, it is almost entirely in the soluble accumulation mode.
- 5
- So we could have called this Aitken insoluble mode an accumulation mode, but for the sake of readers accustomed to our model we prefer to stick to the convention of calling it an Aitken mode. The reason for the convention is that the mode radius can be influenced by fossil fuel and biofuel emissions (which are assigned a diameter of 60nm, in accordance with AeroCom recommendations) as well as biomass burning emissions at 120nm.
- 10
- **Page 6, line 4: “...highest at the surface...reach zero at 3km above ground.” Is this based on any observation or modeling studies? If so, please cite the reference** We did not distinguish between grassland fires, which are best simulated with emissions at the surface, and tropical forest fires, which are best simulated in our model with uniform emissions from the surface to 3km altitude, according to Johnson et al (2016). The FEER inventory is based on satellite data so has no vertical emissions information. Therefore we compromised and assumed a tapering profile from the surface to 3km. We added an explanation of this to the manuscript text. We tried several choices and found it made very little difference to aerosol concentrations in our remote region. The advantage of the FEER inventory compared to the GFED climatology is the higher spatial and temporal resolution, which is likely to make more difference than the vertical emissions profiles.
- 15
- 20
- **Page 6, line 10:”In any case,..rather than emission” Is this the case? Is this based on any studies? If so, please cite the reference.** For “In any case,..” we fixed the citation Gunnar et al to read Myhre et al 2003.
- **Page 6, line17: The authors only mentioned BC, how about POM emissions? What is the mass ratio between BC/POM in this study?** We agree this is valuable information to add. We now state that *After ageing, in our simulation domain we find a ratio of black carbon to organic carbon of approximately 1:11, which is within the range of observations in the literature, e.g. in Table 1 and Table 2 of Formenti et al (2003).*
- 25
- **Page 8, line 26: Since the second aerosol indirect effect is considered in the case with Kogan (2013) scheme, does that mean this case is more realistic compared to the case with default scheme?** The second indirect effect of aerosols is considered in both Khairoutdinov & Kogan and Kogan schemes, it is just stronger in the case of the Kogan scheme.
- 30
- **Page 10, line 10: Change “8th August” to “8 August ” to be consistent with the text.** Done



- **Page 13, line 18: Change “height of the aerosol layer” to “the height of the aerosol layer bottom”** We changed to “the height of the peak of the aerosol layer”.
- **Page 17, line 2: Any reason such large box is used?** We changed the large box to be instead our usual average over the centre of the simulation domain.
- 5 – **Page 19, line 17: If I remember correctly, high humidity associated with smoke plume as mentioned in (Adebiyi et al., 2015) is due to water vapor emissions from fires. Are water vapor emissions considered in the study?** Water vapor emissions from fires are not considered, and we added a clause to the text to specify this. Based on other analysis we have done outside the scope of this paper, we don’t think water vapor emissions from fires are as important as convective transport of water to higher altitudes close to the coastline of Africa. See also the comment of reviewer 2.
- 10 – **Page 28, line 2: By “table” you mean table 2?** Yes, we do mean table 2. Thanks!
- **Page 28, line2-line5: It is very confusing when the authors say “compare line x to line y”. In addition, I believe that the line numbers are not correct according to Table 2. Please rewrite the text in parentheses.** We had corrected the references to lines in the table in the version uploaded to ACPD after our first initial submission. Sorry for the confusion.
- 15 – **Page 33, section 9.3: It would be better to compare modeled semi-direct effect to Sakaeda et al. (2011) in this section.** We agree the Sakaeda et al study is valuable, as there the semi-direct and direct effects are separated (unlike in the study of Lu et al, which we already cite). However, there is no separation between coastal and remote areas as in Lu et al., and the non-monotonic nature of the changes to the temperature profile we see (Figure 13) preclude a straightforward comparison of the LTS between simulations with and without smoke as Sakaeda et al do. We added *The study of Sakaeda et al (2011) does separate the semi-direct and direct effects (but does not consider the indirect effect). They find a small negative semi-direct effect, averaging  $-2.6\text{Wm}^{-2}$  at the top of the atmosphere, and a small positive direct effect, averaging  $+0.9\text{Wm}^{-2}$ . This seems broadly consistent with Lu et al (2018). We note that both Lu et al (2018) and Sakaeda et al (2011) also average over pristine periods without much smoke aerosol, while we quote results only in a very polluted period.*
- 20
- We were also inspired by this comment to compare the direct radiative effect more quantitatively to the radiative forcing efficiency found by Chand et al (2009), as Sakaeda et al do, and we modified the text in the previous subsection appropriately. We included a new supplementary figure showing the radiative forcing efficiency as a function of the cloud fraction.
- 25

## 2 Reviewer 2

1. **Page 5: if winds are being nudged, would that not diminish any dynamic response of large-scale vertical motion to a heating perturbation?** The nudging of the horizontal winds probably does diminish dynamic responses to heating, yes. Without any nudging, on the other hand, the comparison with observations gets much more difficult. The alternative
- 30

is the approach of Lu et al (2018), who run simulations in forecast mode, reinitialised every three days. However, like nudging, this may also lead to a reduction in the overall simulated effect of the aerosols. To study this further we are planning a follow-up paper where we will compare nudged simulations to simulations in forecast-mode as done by Lu et al (2018). For now, we added a note to remind the readers of this possible source of bias in our conclusions: *Nudging our global model to horizontal winds may also artificially affect the vertical transport of, and dynamical responses to, the smoke aerosol.*

We thank the reviewer for the various comments on model configuration. For the current manuscript, we prefer not to re-run the simulations with a new tuning, but we try to make clear in the manuscript that the choices are sometimes quite arbitrary and should be updated in future. We will advertise our manuscript and your helpful comments to climate modellers in the UK research community.

2. **Surprising that changing  $\sigma_w$  from eqn. 1 to just fixing it at 0.12m/s would have much of an effect in increasing CDNC, given that eqn. 1 already includes a floor of 0.10m/s. Also, why not just increase the floor to 0.12m/s in the original expression?** We initially fixed the vertical velocity in the activation scheme, instead to using a function of TKE, in order to make the model more similar to the cloud microphysics scheme CASIM that we are developing in parallel to this work. It made the vertical velocity easier to tune. With hindsight, we should indeed have just tuned the floor instead. All of these options are rather artificial, and we hope to study this more properly in future work, perhaps drawing on Malavelle et al, GRL 2014, which provides a better motivated approach to vertical velocity in low resolution models.
3. **The kappa value for sulphate seems quite large. Typical values for ammonium bisulphate are more like 0.6, maybe 0.7 at the extreme (cf. Petters and Kreidenweiss 2007). Using a value of effectively unity seems worth an explanation.** The kappa value for sulphate is carried over from the version of the Unified Model we inherited, and dates back to the time when so-called van t'Hoff factors were more commonly used than kappa values. It is based on the assumption that 3 ions per sulphuric acid molecule are formed on activation, which is indeed wrong, it is more like 2 ions per molecule. For our study, since the vertical velocity is tuned, the most important thing is the ratio of the hygroscopicity of sulphate to that of OC, which determines the ratio of CDNC in the pristine and polluted periods. The absolute values are not so important. If we had used a lower hygroscopicity for sulphate, we could also have used a lower hygroscopicity for OC, which would also be more realistic. When we improve the treatment of activation in our model, we will be able to make this more physical. At this point we will probably also need to think more carefully in general about the aerosol composition, for example including biomass burning sulphate emissions. We think it is fairly clear from the text as it stands that additional work is needed here, but we now explicitly point out that the hygroscopicity for sulphate is unrealistically high, as well as that of OC.
4. **What is basis for fraction of each grid box that is raining being 0.3 on the 65 km mesh?** The global rain fraction of 0.3 follows the assumption by Mann et al (2010). We added the citation. We don't know whether there are any calculations to justify the number.

5. **Interquartile range is a scalar, and what is shaded in fig. 3 is the inner half of the distribution.** We fixed the description of the shaded region in Figure 3.
6. **Might point out in the last paragraph of section 6.1 that while the moisture aloft is indeed associated with BBA aloft over the region, they are associated with a common factor, namely outflow from the deep continental boundary layer, and surely the moisture would be there even in the absence of aerosol sources.** We agree we should emphasise the origin of the moisture, and we added a comment to clarify the origin of the water vapor, *Like the smoke, the water vapor originates from the continental boundary layer. This is not to say that it is co-emitted with the biomass burning emissions: we do not simulate such emissions of water vapour in our model.*
7. **The generally good agreement between aerosol index AI and aerosol optical depth AOD described in the first full paragraph of page 19 does not get so much support from fig. 8, which instead shows that 2 of the 5 so-called clean days have quite large values of AI but not AOD. Not sure I'd characterize the relationship as generally good and wonder how robustly they are correlated.** Indeed, while there is some correlation between AI and AOD, maybe 'generally good' was a bit optimistic. AOD doubles between 4 and 7 August while AI is already high on 4 August and only increases by about 50% between 4 and 7. We plotted the spatial variability of AI and of simulated and observed AOD in a supplementary figure. It shows how we sampled the observed AI and AOD, which, due to the nature of the satellite retrievals, is not always uniformly across our domain. It also shows more clearly that AI increases before AOD, as the reviewer suggests. We think the high altitude of the aerosol layer (3 km on 2nd August, from our CALIPSO feature mask, figure 4) means AI may be more sensitive to it than AOD. AOD should be roughly independent of height, while the reflectivity residue, from which AI is calculated, increases linearly with height (for reasonably low single scattering albedo, as per Figure 1 of Herman et al, JGR 1997). We removed the comment about generally good correlation and replaced it with *Despite the better correlation of aerosol number concentration expected with AI than AOD, the AI increases before the AOD while the CCN at Ascension Island increases after. This is likely due to the vertical mixing of the aerosol layer. The layer is initially at high altitude, which leads to a higher AI than lower-lying aerosol layers would (Herman et al, 1997) but does not affect AOD. Then, as the layer thickens, the AOD increases more quickly than the AI. The spatial patterns of AI, retrieved AOD and simulated AOD are shown in Supplementary Figure S8.*
8. **MODIS platforms pass overhead not far from local noon. Do the comparisons with model result in fig. 10 use the same, quite limited sampling of the diurnal cycle?** Yes, the sampling of the diurnal cycle is rather limited in the end. For liquid water path we are able to add AMSR but for CDNC we just use MODIS. We explain in Section 4 and the SI that we also tried to use SEVIRI data. As the community of satellite specialists looking at SEVIRI data is now growing thanks to CLARIFY and ORACLES, there are good prospects for exploiting this data more fully in subsequent modelling studies.
9. **The positive LW semi-direct forcing is confusing, given that lower cloud tops for polluted clouds should emit more LW. Less emission from even warmer surface through more overcast deck, perhaps?** The positive long-wave

semi-direct forcing happens mainly on 6, 7 and 8 August, except for a brief reversal on the evening of the 6th. On these days the difference in cloud fraction between simulations with and without smoke is highest, at around 20%. We agree with the assessment of the reviewer that the extra long-wave that makes it through the clouds from the sea surface means the overall long-wave cooling is higher in the simulation without smoke. This presumably more than cancels out the effect of the clouds being higher and thinner without smoke, and emitting less longwave. The difference between outgoing longwave from clouds and the surface is about  $15 \text{ Wm}^{-2}$ , for an average outgoing LW around  $290 \text{ Wm}^{-2}$ . If the cloud fraction changes from 0.5 to 0.7 due to aerosol absorption, this would change the outgoing LW by  $3 \text{ Wm}^{-2}$ . This number is quite close to the observed semi-direct effect, so the explanation is not unreasonable. We replaced our previous suggestion of an aerosol effect with *The semi-direct effect may well be due to a reduction in the long-wave radiation from the surface reaching the top of the atmosphere, as the cloud fraction increases when smoke aerosol is present.*

10. **The entrainment rates discussed on page 33 seem higher than expected, with values of around 2 to 5 cm/s. Not hard to find literature reporting typical rates for nocturnal stratocumulus 5 if not 10 times smaller, even smaller during the day. Is mean entrainment rate computed from the mean of column-wise  $d(z_i)/dt - w(z_i)$ ? The plausible simulation of PBL depth does not obviously square with the reported rates.** The entrainment rates we present are domain means. In cloud-free or cumulus areas of our domain, we find that they are substantially higher than in stratocumulus areas. We now show plots of the spatial distribution of entrainment rates together with the spatial distribution of cloud fraction in our supplementary materials.

We are able to dig a bit deeper into this. We have a ‘boundary layer type’ diagnostic in our model, which allows us to stratify the entrainment rate by the boundary layer type. Boundary layer type 3 is a well-mixed boundary layer, 4 is decoupled stratocumulus not over cumulus, 5 is decoupled stratocumulus over cumulus, and 6 is for cumulus. As shown in the figures below, type 5 is the most common, followed by type 6 (especially in daytime) and then types 3 and 4. The entrainment rates for cumulus (type 6) are around  $8 \text{ cm/s}$ , while for our most common stratocumulus-topped boundary layer type (type 5) the entrainment rates are down at or below around  $1 \text{ cm/s}$ . There is the expected diurnal cycle, though it is quite weak.

We added to the text *In our simulation the entrainment rates for cumulus or clear skies substantially exceed those for stratocumulus, which are around  $1 \text{ cms}^{-1}$  in the regional model and  $0.5 \text{ cms}^{-1}$  in the global model.*

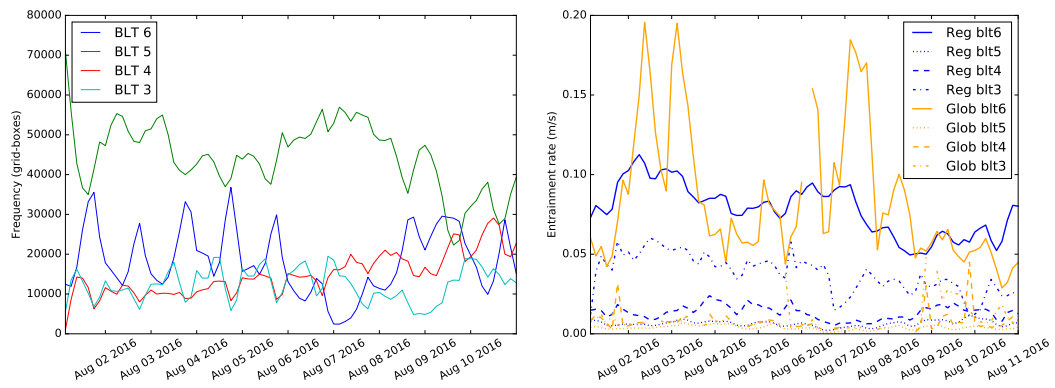
## Typesetting issues

1. Line 6 of page 3 should use `\citet` instead of `\citep`.

2. Year for Gunnar et al. citation is missing on line 12 of page 6.

3. The citation D. Holdridge...2016a appears in multiple places but is missing from the references.

We fixed the three typesetting issues, thank you for spotting these errors.



**Figure 1.** Left, frequency of occurrence of the different boundary layer type variables in our regional model domain, and right, entrainment rates of the different boundary layer type in our regional and global models. The fluctuations in the global model reflect the small number of grid boxes with a given boundary layer type in the regional model domain.

**Abstract.** A 1200 km-square area of the tropical south Atlantic Ocean near Ascension Island is studied with the HadGEM climate model at convection-permitting and global resolutions for a ten-day case study period in August 2016. During the simulation period, a plume of biomass burning smoke from Africa moves into the area and mixes into the clouds. **At Ascension Island, this smoke episode was the strongest of the 2016 fire season.** We examine the interaction of the smoke with clouds and find it has substantial instantaneous direct, indirect and semi-direct radiative effects, which vary in magnitude between model configurations.

The region of interest is simulated at 4 km resolution, with no parameterised convection scheme. The simulations are driven by, and compared to, the HadGEM global model, running at approximately 65 km resolution. For the first time, the UK Chemistry and Aerosol model UKCA is included in a regional model with prognostic aerosol number concentrations advecting in from the global model at the boundaries of the region.

The smoke aerosol is simulated realistically, and is found to affect dynamical, microphysical and radiative properties of the atmosphere across the region. The model captures the large-scale horizontal transport of the aerosol adequately, approximately reproducing a transition from pristine to polluted conditions. However, for some of the simulation, the smoke is around 1 km too low in altitude and therefore, although the smoke mixes into the clouds earlier than observed. Fire emissions increase the total aerosol burden by a factor 3.7 and cloud droplet number concentrations by a factor of 3, which is consistent with MODIS observations. Strong localised perturbations to heating and cooling rates due to the smoke affect the dynamics. In the regional model, the inversion height is reduced by up to 200 m when smoke is included. The smoke also affects precipitation, to an extent which depends on the model microphysics. The microphysical and dynamical changes lead to an increase in liquid water path of  $60 \text{ g m}^{-2}$  relative to a simulation without smoke aerosol, when averaged over the polluted period. This increase is uncertain, and smaller in the global model. It is mostly due to radiatively driven dynamical changes: the reduced entrainment of dry air from above the cloud layer, rather than precipitation suppression by aerosol.

Over the 5-day polluted period, the smoke has substantial direct radiative effects of  $+11.4 \text{ W m}^{-2}$  in the regional model, when averaged over the polluted five days of our case study. The, a semi-direct radiative effect of the smoke, a semi-direct effect of  $-30.5 \text{ W m}^{-2}$ , and an indirect effect of  $-10.1 \text{ W m}^{-2}$ . **Our results show that** However, the radiative effects are sensitive to the structure of the model (global versus regional) and the parameterization of rain autoconversion. are sensitive to the model set-up: the semi-direct effect is smaller in the global model, and also in a simulation with the Kogan (2013) parameterisation of autoconversion and accretion instead of the default, from Khairoutdinov & Kogan (2002). Furthermore, we simulate a liquid water path that is biased high compared to satellite observations by 22% on average, and this leads to high estimates of the domain-averaged aerosol direct effect and the effect of the aerosol on cloud albedo. With these caveats, we simulate a large net cooling across the region, of  $-27.6 \text{ W m}^{-2}$ .

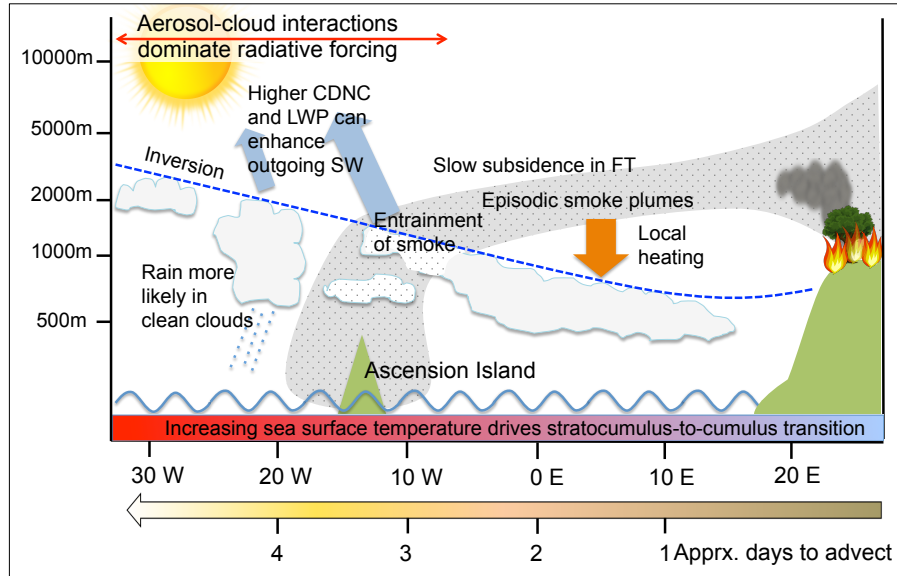
### 3 Introduction

Marine boundary layer clouds are a substantial source of uncertainty in climate models (Bony and Dufresne, 2005; Wood, 2012; Schneider et al., 2017). In the tropical Atlantic Ocean south of the Equator, a broad region of subsidence leads to one of Earth's

largest stratocumulus decks, off the coast of Africa. During the biomass burning season, especially in August and September, emissions from the African plateau form a layer of smoke. Depending on meteorological conditions, the smoke can advect out over the marine boundary layer, and above these clouds, at least as far as Ascension Island (Haywood et al., 2003; Adebisi et al., 2015; Das et al., 2017). When above clouds, the absorbing smoke layer leads to a direct and a semi-direct radiative effect (Hansen et al., 1997; Johnson et al., 2004; Wilcox, 2010). The smoke layer slowly subsides and meets the gradually deepening marine boundary layer in the neighbourhood of Ascension Island and St Helena (Adebisi et al., 2015). Generally, the smoke is entrained into the clouds during, or before, the transition from stratocumulus to trade cumulus. This transition is driven by increasing sea surface temperatures (e.g. Sandu and Stevens, 2011) and can be modulated both by entrainment of dry air (e.g. Wyant et al., 1997) and by precipitation (Yamaguchi et al., 2017). Once entrained, smoke in the boundary layer can have very different effects to smoke aloft (Hill et al., 2008; Koch and Del Genio, 2010). The region of mixing and transition, shown schematically in Figure 2, covers huge swathes of ocean and may be very sensitive to anthropogenic aerosols. As indicated in the figure, we hypothesise that indirect or semi-direct radiative effects dominate the direct effect of smoke aerosols west of about 5°W. **This is broadly consistent with Figure 2 in Chand et al. (2009). Smoke tends to lie above clouds east of this line, while large scale subsidence usually leads to more frequent mixing of smoke into clouds to the west.** However, Many climate models respond differently to smoke aerosols (Das et al., 2017) and have difficulty representing smoke episodes in this region (Peers et al., 2016). Therefore the area is a focus of current fieldwork and simulation activity.

Long-term field observations both in Africa and over the ocean are still sparse. To start to remedy these difficulties, four major campaigns in 2016-7 may yield greatly improved understanding of this complex environment (Zuidema et al., 2016). The LASIC (Layered Smoke Interacting with Clouds) deployment of the Atmospheric Radiation Measurement (ARM) mobile research facility to Ascension Island over 2016 and 2017 has provided sorely needed long term measurements in a particularly critical location. The NASA Observations of Aerosols above Clouds and their Interactions (ORACLES) flights from Walvis Bay (Namibia) in 2016 and Sao Tomé in 2017 have characterised the aerosol-radiation interactions close to the African coast and, on several flights, further out to the mid-Atlantic area. The AEROSOL RADIATION AND CLOUDS IN SOUTHERN AFRICA (AEROCLO-SA) aircraft measurements and field station in Namibia cover a similar region. Finally the CLOUDS AND AEROSOL RADIATIVE IMPACTS AND FORCING (CLARIFY) aircraft campaign from Ascension Island has focused on the region where the aerosols and clouds mix directly.

Modelling the stratocumulus-to-cumulus transition (SCT) is challenging because the structure of the aerosols and clouds is often complex, with multiple thin layers of aerosol and cloud which may or may not be coupled together. This also complicates the interpretation of satellite retrievals commonly used in model evaluation (Haywood et al., 2004). Many earlier modelling studies focused on the semi-direct effects of smoke on clouds (e.g. Johnson et al., 2004; Sakaeda et al., 2011), and regional modelling of marine boundary layer cloud fields (e.g. Wang et al., 1993; Sandu and Stevens, 2011) as well as general circulation modelling (Randles and Ramaswamy, 2010; Sakaeda et al., 2011; Das et al., 2017). More recently, large eddy simulations of the SCT in the presence of smoke aerosol (Yamaguchi et al., 2015; Zhou et al., 2017) have produced interestingly varied results. In brief, Yamaguchi et al. (2015) find that smoke aerosol delays the SCT and increases the liquid water path, while Zhou et al. (2017) find the reverse. The agreement of the models with observation-based analysis is similarly mixed: the study



**Figure 2.** Schematic showing the large-scale situation in the south-east Atlantic, approximately along the pathway of the smoke aerosol. The green triangular island represents Ascension Island. We focus here on a case in which the entrainment of smoke is simultaneous with the stratocumulus-to-cumulus transition, but smoke may also mix into the cloud deck closer to the African continent.

of Costantino and Bréon (2013) suggests aerosol decreases liquid water path on one hand, but enhances cloud cover, thus delaying the SCT, on the other. The correlation of absorbing aerosol optical depth with fractional cloud cover, however, was recently confirmed by Adebisi and Zuidema (2018).

A noteworthy regional modelling study of the south-east Atlantic by Lu et al. (2018) using the WRF model was published as this manuscript was being prepared for submission. The authors studied a  $16 \times 20^\circ$  area of ocean; our regional domain covers a similar area to their ‘remote’ sub-region. They focused more on the large-scale radiative effects of smoke than did the LES studies of the SCT. The main conclusion, which we discuss in more detail later, was that the indirect radiative effect is larger, by around a factor of two in the remote region, than the sum of the direct and semi-direct radiative effects.

Our study aims to establish the HadGEM climate model (Walters et al., 2017b) as a tool to represent aerosol-cloud-climate interactions at convection-permitting resolution in the tropical South Atlantic. As the HadGEM climate model is also the UK Met Office numerical weather prediction model (sometimes referred to as the ‘Unified Model’ or UM), it is also expected to perform well when run regionally for short periods of time at higher resolution. In this paper, we test a high-resolution configuration and see what information it can add to global model simulations. The increased resolution is expected to allow us to better represent rapidly varying cloud properties, while the driving global model provides a realistic treatment of the more slowly varying aerosol and dynamics: aerosol emissions from continents can be propagated and processed as they move across



the ocean, before they enter the regional domain. Once evaluated, the regional model can be developed to treat aerosol-cloud interactions across the stratocumulus-to-cumulus transition in more detail in subsequent studies. The first such development for the regional model we have planned is to use the aerosol from the UM to drive the CASIM two-moment cloud microphysics scheme (Shipway and Hill, 2012; Grosvenor et al., 2017).

5 In Section 4, we introduce our  $\sim 65$  km-resolution (N216) version of the global climate model with two-moment aerosol microphysics (prognostic mass and number concentrations). This model is used to drive a simulation of a roughly square domain of length approximately 1200 km (strictly  $10.8^\circ$  of latitude and longitude) surrounding Ascension Island with a grid spacing of 4 km, intended to allow us to turn off the convection parameterisation in the model. This is the first time prognostic aerosol number concentrations are included in a regional UM configuration with realistic meteorology, except for the idealised  
10 demonstration case study of Planche et al. (2017). Therefore we give particular emphasis to the evaluation of the cloud droplet number concentration (CDNC) in our model. We made some adjustments to the model to improve its representation of CCN and CDNC in the region of interest, and describe these in Section 5.

Our test case runs from 1 to 10 August 2016. The first five days of this period were approximately representative of clean conditions in the mid-Atlantic, while the second five days cover the first half of the largest smoke plume to reach Ascension  
15 Island in the 2016 fire season. The single-particle soot photometer on Ascension recorded a peak in refractory black carbon concentration on 9 August of  $1.5 \mu\text{g m}^{-3}$ , while the monthly mean for August is just under  $0.5 \mu\text{g m}^{-3}$  (Zuidema et al., 2018).  
In Section 6, we introduce the satellite retrievals we use. In Section 7, we examine the large-scale transport of aerosol with a trajectory analysis. In Section 8, we compare the model quantitatively to these satellite observations and to data from the ARM facility on Ascension Island and find the model and observations to be generally in agreement. Therefore, we present a  
20 comparison of our realistic simulation with a simulation in which biomass burning emissions are switched off, and examine the effect of the aerosol on temperature, precipitation and radiation balance in Sections 9, 10 and 11. We consider the sensitivity of the radiative effects we find to the cloud microphysics by changing the parameterisation of autoconversion and accretion rates, and compare the higher-resolution regional model with the global model. We highlight some areas where further work is needed in our conclusions.

## 25 4 The regional climate configuration of the Unified Model with UKCA aerosol

### 4.1 Model structure and spin-up

The global model version used in this study is a hybrid of the regional configuration of the UK Met Office Unified Model, hitherto used mostly for numerical weather prediction, and the HadGEM-UKCA configuration for climate modelling. It is based on the GA6.1 configuration (Walters et al., 2017b) of version 10.3 of the Unified Model. The horizontal resolution is  
30 around 65 km, and there are 70 vertical levels from the surface to 70 km altitude, spaced such that the vertical resolution is 50 m at the surface and approximately 200 m at the level of low clouds. The model version includes the ENDGAME dynamical core (Wood et al., 2014) and the UKCA chemistry and aerosols package (Morgenstern et al., 2009; O'Connor et al., 2014). In UKCA, prognostic aerosol number concentrations are represented with GLOMAP (Mann et al., 2010), which contains five log-

normal aerosol size modes and includes sulphate, sea-salt, black carbon and organic carbon chemical components. To maintain computational efficiency while incorporating the GLOMAP-mode aerosol scheme, we use a reduced version of the UKCA chemistry scheme in which the sulphur cycle and the production of secondary organic aerosol are represented prognostically but the oxidants OH, ozone, HO<sub>2</sub> and H<sub>2</sub>O<sub>2</sub> are provided as monthly mean climatologies derived from a simulation with online chemistry (Walters et al., 2017a).

Roughly the same configuration is applied to the 4 km-resolution regional simulation centred at 10°S, 12°W, with a few differences in the parameters used, for example in the boundary layer scheme. This regional model has a slightly higher vertical resolution: it also has 70 vertical levels, but they are spread over the first 40 km, **with the spacing increasing as the altitude increases**. The model grid boxes at the boundary layer top altitude, which is quite variable but usually around 1800 m in this period, are around 200 m deep in the regional model and 300 m in the global model. The horizontal and vertical resolution is chosen to allow us to represent a large area of ocean, covering a substantial area of the stratocumulus-to-cumulus transition regime, without the simulations becoming too expensive. The major difference in the regional model compared to the global model is that the parameterised convection scheme is switched off. At the edges of the model, a transition from the global model to the regional model is made over nine 4 km-grid boxes. The regional model cannot be expected to resolve processes at the scale of its own 4 km grid boxes in the spatial spin-up region close to its boundaries, because the inputs from the lower-resolution driving model will reduce the variability between grid boxes close to the edges of the regional domain. Therefore grid boxes within 200 km of this boundary are excluded from calculations of the regional mean results we present later.

The surface of Earth is not represented interactively in our model set-up. Sea surface temperatures (SSTs) are fixed from the OSTIA temperature record (Donlon et al., 2012) via the UM start-dumps. They are initialised from the SST on 20 July for the spin-up phase and then re-initialised at the start of the model run on 1 August from the SST on 1 August. Emissions of gases and particles from the sea and, in the global model, the land surfaces, are read in from inventories (described below) rather than calculated online, except for emissions of sea spray and DMS, which are parameterised online. There is no land in our regional simulation, as Ascension Island (7.9°S, 14.3°W) is not included in the Unified Model when the orography is reconfigured from the global 65 km resolution. While the peak of Green Mountain is 800 m high and thus some localised orographical effects are likely, the area of the island is of order 50 km<sup>2</sup> and the domain is 1.4 × 10<sup>6</sup> km<sup>2</sup> so we assume the island has negligible effects on domain-averaged quantities.

The global model is initialised from the UM global operational meteorology and climatological aerosol fields at 0000 UTC on 20 July 2016. It is then run for 12 days, until 2400 UTC on 31 July, to allow the biomass burning aerosol from Africa to advect out to the domain around Ascension Island. This spin-up time also allows the model to pick up more appropriate natural and anthropogenic aerosol emissions from the climatological emissions files, which include the seasonal cycle. The global model is nudged every six hours by ERA-interim horizontal wind fields above 1800 m (the 15<sup>th</sup> model level from the surface). As we do not nudge to temperature, following the recommendations of Zhang et al. (2014), the global model is sensitive to semi-direct radiative effects of aerosol. On 1 August at 0000 UTC, the regional model is started, and both models are then run until 2359 UTC on 10 August. The regional model is not nudged, to allow dynamical effects full freedom to manifest themselves, but it is forced at the boundaries. This leads to a slow deviation of the wind fields in the regional model from those

in the global model over the 10-day simulation. This is visible in Supplementary Figure S7, but the effect is relatively small and not expected to have a large impact on regional mean results.

## 4.2 Aerosol emissions and transport

We use biomass burning emissions from the MODIS-based Fire Energetics and Emissions Research (FEER) inventory (Ichoku and Ellison, 2014) for 2016. These have daily time resolution and  $0.1^\circ$  spatial resolution. We assume the diameter of the emitted particles is 120 nm and the emissions are highest at the surface, then taper down to reach zero at 3 km above ground level. **Guided by the dedicated study of Johnson et al. (2016), this choice is a compromise between surface emissions (recommended for savannah) and vertically uniform emissions in the first 3 km altitude (recommended for tropical forest). Water vapor emissions are not included.** These emissions replace the monthly-mean climatological emissions (from GFED version 3) that are appropriate for the climate model. The resulting change in the mass of smoke aerosol found in our region of interest is small compared to the uncertainty in the overall biomass emitted (around 25%). The FEER inventory has higher emissions, but, in the Global Atmosphere configurations of HadGEM, emissions in the GFED inventory in the UKCA model are scaled up by a factor 2. Compared to the scaled GFED emissions, the FEER emissions are roughly 25% lower, although this also depends on time, as the FEER inventory has a higher time resolution than the version of the GFED emissions usually used in the model. In any case, the main factor that determines how much aerosol is found over the ocean is advection rather than emission (Myhre et al., 2003). For all other anthropogenic and natural emissions, the CMIP5 climatologies (Taylor et al., 2012) used in the standard model configurations are retained.

The biomass burning emissions, **which comprise black and organic carbon**, are placed initially into the insoluble Aitken mode, which precludes them from activating to form cloud droplets. However, if they become coated with at least one monolayer of condensable material during any model timestep, they ‘age’ into the Aitken soluble mode. In our simulations, by the time the particles have advected into our regional domain, between 86% and 96% of black carbon mass is found in the soluble modes due to condensation of sulphuric acid and secondary organics, and coagulation with other particles. **After ageing, in our simulation domain we find a ratio of black carbon to organic carbon of approximately 1:11, which is within the range of observations in the literature, e.g. in Table 1 and Table 2 of Formenti et al. (2003).**

## 4.3 Cloud microphysics

Aerosol activation to cloud droplets is calculated explicitly in the UKCA-Activate scheme (West et al., 2014) which implements the parameterisation of Abdul-Razzak and Ghan (2000). The activation scheme in both global and regional models is calculated for a probability distribution function (PDF) of updraft velocities in each grid box centred around the large-scale vertical velocity: this means the scheme is run twenty times per grid box per timestep with an increasing updraft velocity. The number of aerosol that activate is the expectation value of the PDF of cloud droplet number concentration over the twenty bins of updraft velocity. Cloud droplet numbers are calculated diagnostically by running the activation scheme on each model timestep from scratch, without consideration of how many cloud droplets were present before. The cloud droplet number concentration is then passed to the radiation and microphysics schemes.

The cloud microphysics in our model is single-moment, in that the mass of liquid water, but not the cloud droplet number, is advected by the model and retained in memory between model timesteps. The scheme is based on Wilson and Ballard (1999) but we use improved warm rain parameterisations following Boutle et al. (2014) with their suggested modified versions to the autoconversion and accretion rates. These rates are used everywhere in the regional model, but only where the convection  
5 scheme is not triggered in the global model. In the region of interest in the global model, the convection scheme fires rarely but not so rarely that its effects can be neglected: it is responsible for around 20% of the rain.

In our model, two potentially important ‘second indirect’ effects of cloud droplet number concentration on radiative transfer are not simulated, because the CDNC is not treated prognostically. This means that sedimentation of cloud water is assumed to be independent of the droplet size. In reality, smaller droplets fall more slowly, which leads to increased water content at the  
10 top of clouds, and this is more susceptible to evaporation when dry air is entrained into the clouds from above (Bretherton et al., 2007; Zhou et al., 2017). Furthermore, in our simulation, evaporation of cloud droplets is also independent of their size. Smaller droplets resulting from higher aerosol concentrations tend to evaporate more quickly. This leads to greater turbulence in the boundary layer, hence increased entrainment of dry air, and a positive feedback that further increases evaporation and reduces the liquid water path (Wang et al., 2003; Hill et al., 2008). Further studies with two-moment cloud microphysics will enable  
15 these effects to be quantified.

As neither 4 km nor global resolution can represent individual clouds, we employ the Smith (1990) scheme for sub-grid cloud in our regional model and the ‘pc2’ scheme (Wilson et al., 2008) in the global model. The result is a fraction of cloud coverage in each model grid-box. To calculate this fraction, the Smith (1990) scheme assumes the probability density function of liquid water mass mixing ratio is triangular and that cloud may begin to form in a grid-box when a critical relative humidity  
20 (less than 100%) is exceeded. The ‘pc2’ scheme, standing for ‘prognostic cloud, prognostic condensate’, extends the Smith (1990) scheme to keep the cloud fraction in memory between model timesteps, and this allows the responses to sharp humidity gradients, for example in frontal systems, to be smoothed out. As in other convection-permitting UM simulations, we retain the older Smith (1990) scheme in our regional model as the pc2 scheme has not been extensively tested for resolutions higher than 12 km (Kendon et al., 2012).

## 25 **5 Model tuning**

We classify the parameters we changed in the model as aerosol tuning parameters (the hygroscopicity of organic carbon, the fraction of a raining grid box for aerosol removal and the dry deposition velocity) and cloud microphysical parameters (the autoconversion and accretion rates and critical relative humidity) and note them in Table 1.

First, we upgrade the refractive index of black carbon from the value set by the World Climate Research Programme (Deepak  
30 et al., 1983) to use the recommendation of Bond and Bergstrom (2006). This matches the latest GA7.1 configuration of the Unified Model (Walters et al., 2017a), and leads to increased aerosol optical depth in better agreement with observations (Stier et al., 2007).

The uncertainty analysis of Regayre et al. (2018) shows that the main driver of uncertainties in CCN concentrations in this region is the dry deposition velocity of the accumulation mode. The uncertainty in the parameter is deemed to be a factor 10 in either direction in their simulations. We find the global and regional model performance is slightly improved by increasing the dry deposition velocity by a factor of three, which gives a small (around 10%) reduction in background aerosol concentrations in the boundary layer.

While we found reasonably good agreement of CCN concentrations with observations after this modification to the dry deposition velocity, too little aerosol activated to reproduce MODIS cloud droplet number concentrations during the smoke episode. Therefore, we tuned the width of the updraft velocity PDF and the hygroscopicity of the smoke aerosol to approximately reproduce the mean CDNC observed by MODIS. Initially, the updraft PDF width  $\sigma_w$  was set to

$$\sigma_w = \max\left(0.1, \frac{2}{3}\sqrt{TKE}\right) \quad (1)$$

where  $TKE$  is the boundary layer turbulent kinetic energy. We fixed it to  $0.12 \text{ m s}^{-1}$ .

Aerosol hygroscopicity in the model is calculated on an average basis using Köhler theory assuming the aerosols are internally mixed. We used a kappa value (Petters and Kreidenweis, 2007) for organic carbon aerosol (OC) of 0.88, compared to 0.97 for sulphate, 0.0 for black carbon, and 0.99 for sea spray. **The hygroscopicities for sulphate and especially for OC are unrealistically high, if OC is considered in isolation,** even for very aged biomass burning aerosol. Measured values of kappa in biomass burning aerosol tracers such as levoglucosan are generally around 0.1 or 0.2 (e.g. Mochida and Kawamura, 2004; Petters and Kreidenweis, 2007). This probably means our smoke aerosol particles are too small, or too low in concentration. However, the hygroscopicity of aerosol in the model could well be quite reasonable overall, since there are no sulphur emissions associated with biomass burning aerosol in the UKCA model, and in reality a moderate sulphate content due to co-emitted sulphur dioxide will make biomass burning aerosol more hygroscopic than our model would suggest. Global emissions of around  $2 \text{ Tg yr}^{-1}$  of sulphur dioxide due to biomass burning are reported by, for example, Schultz et al. (2008). Furthermore, our biomass burning aerosol will become coated with sulphate (e.g. Khalizov et al., 2009) via condensation in the free troposphere or, once entrained into the boundary layer, also by aqueous processing in cloud droplets. These processes are included in our model, but they increase sulphur content throughout the bulk volume of the aerosols. In reality, processing and condensation coat the aerosol surface, and it is presumably the sulphate surface that controls activation, rather than the volume average of BC, OC and sulphate.

The hygroscopicity needed to get reasonable closure between CCN and CDNC also depends on the aerosol size distribution and on the updraft velocity. The lack of knowledge of the updraft velocity, and of how to scale it to get reasonable activation in a large-scale model with a parameterisation like that of Abdul-Razzak and Ghan (2000) makes it difficult to get the right answer for the right reasons. A dedicated study is beyond the scope of this paper, but some limitations of Abdul-Razzak and Ghan (2000) are discussed by Ghan et al. (2011), where it is compared with more sophisticated but much slower schemes, for example by Nenes and Seinfeld (2003).

We test two possible parameterisations for autoconversion and accretion in the warm rain scheme: that of Khairoutdinov and Kogan (2000) (the default in our simulations) and that of Kogan (2013). Insofar as it is represented in our model, this is a

**Table 1.** Adjusted parameters in our simulations compared to the usual climate model. In the table, K & K refers to Khairoutdinov and Kogan (2000), and the change to the cloud scheme critical relative humidity and other parameters are defined in the text. GA6 is a standard configuration of the Unified Model described by Walters et al. (2017b). IMRI refers to the imaginary part of the refractive index of black carbon (BC); organic carbon is abbreviated by OC, and B & B refers to Bond and Bergstrom (2006).

Parameter	GA6	Global model	Regional model
Dry deposition velocity	1	Factor 3 higher	Factor 3 higher
Biomass burning emissions	GFED	FEER	FEER
Biomass burning diameter	150	120	120
Biomass burning emissions scaling	2	1	1
Rain fraction	0.3	0.3	1
BC IMRI	WCRP 1983	B & B (2006)	B & B (2006)
Kappa value for OC	0	0.88	0.88
Updraft width ( $\text{ms}^{-1}$ )	TKE based/0.1	0.12	0.12
Autoconversion and accretion rates	K & K	K & K	K & K or Kogan (2013)

test of the ‘second aerosol indirect effect’ since it is via these parameterisations that rain rates are sensitive to aerosol. In the regional model, to ensure that aerosol particles are appropriately depleted by rain, we also change the value of the fraction of each grid box that is precipitating from 0.3 to 1.0. The factor 0.3 (Mann et al., 2010) is appropriate in the 65-km grid boxes of the climate model but not for the 4 km resolution model. This affects only the scavenging of aerosol, not the rain rate.

## 5 6 Satellite retrievals

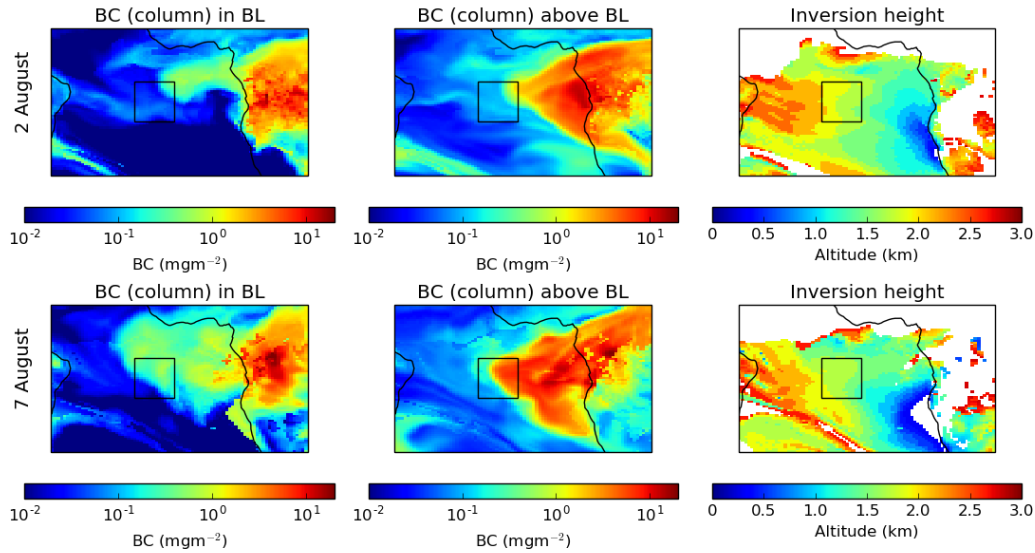
We use cloud droplet number concentrations (CDNC) calculated from Moderate Resolution Imaging Spectroradiometer (MODIS) retrievals, and from the Spinning Enhanced Visible and Infrared Imager (SEVIRI) Cloud Physical Properties algorithm. The calculation of CDNC from cloud effective radius, optical depth, and cloud top temperature from MODIS Collection 6 (Platnick et al., 2015) level 2 data is outlined in Supplementary Section 13. We use liquid water path (LWP) from MODIS and the Advanced Microwave Scanning Radiometer (AMSR-2) (Wentz et al., 2014) (level 2). MODIS retrievals with pixels identified as partly cloudy are removed using the ‘clear sky restoral’ logic (Platnick et al., 2015). We use aerosol optical depth for cloud-free scenes from MODIS, also collection 6 and level 2 (dark target) (Levy et al., 2015), and aerosol index from the Ozone Mapping Profiler Suite (OMPS) (Seftor and McPeters, 2017; Flynn et al., 2014). Precipitation fields are obtained from gauge-calibrated Global Precipitation Measurement (GPM) Level 3 data (Huffman et al., 2014) at half-hourly time resolution and  $0.1^\circ$  spatial resolution. We also show feature masks from CALIOP Liu et al. (2005). It is not the purpose of this study to evaluate the accuracy of the satellite retrievals: we compare the most critical retrievals to get an idea of probable uncertainties, and assume the model is unlikely to be closer to reality than the retrievals. Nevertheless, it should be emphasised that the cloud retrievals

are potentially unreliable in this area, because there is frequently aerosol overlying the clouds (e.g. Haywood et al., 2004) and the cloud structure can be heterogenous at scales smaller than the 1-km MODIS grid.

To help reduce effects due to cloud heterogeneity (e.g. Zhang et al., 2012), we use the 3.7 $\mu\text{m}$  wavelength effective radius retrieval from MODIS to calculate CDNC and LWP. We also examine the effective radius, optical thickness and cloud top temperature retrievals that we use to calculate CDNC, and remove retrievals if the cloud top temperature is below 275 K, as such temperatures indicate that the satellite is seeing a high cloud rather than the stratocumulus deck of interest here.

The comparison of the CDNC and its component variables (cloud optical thickness, cloud top temperature and droplet effective radius) retrieved by MODIS and SEVIRI CPP (Deneke et al., 2018; Roebeling et al., 2008b) is shown in Supplementary Figures S2, S3 and S4 on 2 and 7 August. The formulae used to calculate cloud droplet number concentration are presented in Supplementary Section 13, and summary statistics for the whole period are given in Supplementary Table S1. The SEVIRI effective radius and optical depth are both low compared to MODIS, leading to a lower cloud droplet number concentration (where the differences compared to MODIS tend to cancel, but effective radius is more important than optical depth) and a substantially lower liquid water path (where the biases in the two retrievals add). This may be partly due to the different wavelength used for the retrievals (1.6 $\mu\text{m}$  for SEVIRI, 3.7 $\mu\text{m}$  for MODIS). The algorithms used to calculate CDNC also play a role, since the SEVIRI CDNC is significantly lower than the MODIS CDNC even when the systematic differences between the effective radii and optical depths are small, as on 8 August (Table S1). The SEVIRI retrievals may be more strongly affected by broken cloud fields than MODIS retrievals as the SEVIRI pixel size is usually larger (a minimum of 3.5 km compared to a minimum of 1 km in MODIS, but the MODIS pixel size varies more across the domain due to the small swath width). However, biases in the two retrievals are still quite likely to be correlated because the basic technology is the same in the two cases. Since the spatial trends are broadly consistent and the quantitative agreement of the CDNC retrievals is within a factor 2, and the spatial coverage is much larger than that of MODIS, we use the SEVIRI CDNC for a qualitative comparison with the global model in Section 7.

For liquid water path we can also compare MODIS and SEVIRI with AMSR-2, in pixels defined as cloudy (here, LWP > 10 g m<sup>-2</sup>), on the coarser AMSR-2 grid. These retrievals are less likely to have correlated biases as MODIS uses visible and AMSR-2 microwave radiation. In particular, AMSR retrievals are less likely to be affected by overlying absorbing aerosol (Bennartz, 2007; Bennartz and Harshvardhan, 2007). The normalised mean biases for each day are shown for both MODIS and SEVIRI with respect to AMSR-2 in Supplementary Table S2. We find that the MODIS retrievals are usually biased low compared to AMSR by around 10% (though occasionally up to 30%). This may be due to overlying aerosol, or it may be due to the inclusion of the rain water path in the AMSR retrieval. The SEVIRI retrievals are mostly biased low by 20-40%; as this is significantly larger than the value for MODIS, and larger than the uncertainty that would be estimated from individual sensors, we do not use the SEVIRI retrieval for comparisons with the model.



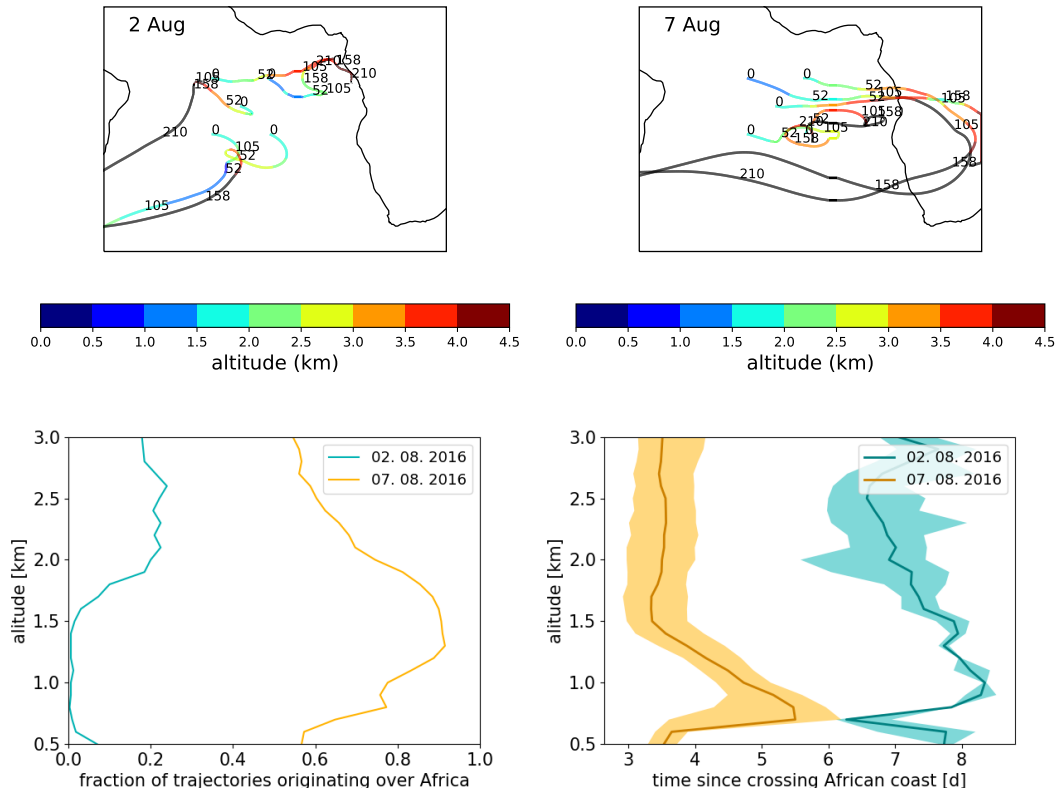
**Figure 3.** Black carbon (BC) column mass above and below the inversion (or above and below 1300 m altitude, if a clear inversion could not be diagnosed) in the global model on 2 August and 7 August, and the inversion height on these days. Where 1300 m altitude is used because there is no inversion, or where the inversion height is over 2800 m above the surface, the right hand plots are white. The marked square is the domain of the regional model.

## 7 Smoke transport in the global model

Smoke aerosol in our model can be traced by the mass mixing ratio of black carbon. This is shown above and below the stratocumulus inversion height (the highest altitude for which the relative humidity is above 60%, or 1300 m if there is no clear inversion) for the global model at midday on 2 and 7 August in Figure 3. The inversion height itself is also shown, but only where a clear inversion is present. The figures show that the majority of the smoke is advected across the ocean above the boundary layer, and that much more of it mixes down into the boundary layer on 7 August than on 2 August. The right hand plots show how the height of the inversion increases as the sea surface temperature increases from east to west. Based on the timeseries we present later, we now define 1-5 August as the ‘pristine period’ and 6-10 August as the ‘polluted period’ for our simulation.

We used the horizontal and vertical wind fields from our global model in the LAGRANTO software package (Sprenger and Wernli, 2015) to produce back trajectories to track the smoke plume as it makes its way out to Ascension Island. Example 10-day trajectories ending at the corners and centre of our regional model domain at 1500 m altitude are shown at the top of Figure 4, for 2 and 7 August. This altitude is just below the top of the boundary layer in the domain of our regional model. On 7 August, the air masses cross the African continent, where they pick up smoke, while on 2 August most of them do not. The lower plots show the fraction of 8500 back-trajectories from points distributed evenly within the regional model domain that





**Figure 4.** Trajectories (top) from the global model for 10 days prior to 2 August (left) and 7 August (right) calculated backwards from at the center and the four corners of the regional model domain at 1500 m altitude. The numbers along each path correspond to the number of hours backwards along the air mass trajectory. Below, the fraction of back-trajectories on 2 August (blue) and 7 August (orange) that pass over the African continent in the ten days before they reach the regional model domain are shown. The right hand plot shows the time taken for the trajectories that do cross the continent to reach the region on the two dates. The shaded bands show the **interquartile range inner half of the distribution**. At each of 25 different altitudes, 330 sample trajectories were calculated, spaced evenly across the model domain. This is a large sample, but the **interquartile range width of the distribution** for the case of 2 August is limited by the sample size below 1.5 km altitude because so few trajectories come from Africa.

pass over the African continent, as a function of altitude. Around 20% of free-tropospheric trajectories that end on 2 August do pass over the continent, but almost none in the boundary layer. The majority of trajectories at all altitudes that end on 7 August pass over Africa. During smoke episodes, it takes around four days for smoke aerosol to reach our regional domain (centred at 10°S, 12°W) from the African coast. The more detailed study of Adebisi and Zuidema (2016) found that it took 7-9 days for smoke to reach 20°W. Our analysis is consistent with this if we consider that 20°W is around 3° further into the ocean than the right hand edge of our domain, and the smoke is emitted inland rather than at the coastline.

The large-scale behaviour of the global model is compared qualitatively with observations from SEVIRI and CALIOP to evaluate its ability to deliver the right aerosol concentrations to the regional model in Figure 5. More quantitative evaluation

of the microphysics in the global model using MODIS retrievals in the region of interest is described later, in comparison with the regional model. Figure 5 shows, at the top, the CDNC observed by SEVIRI and that in the global model, on 2 August (left) and 7 August (right). The global model values are calculated for the grid box at cloud top: the highest grid box in the model below 3 km altitude with a liquid water mixing ratio above  $1 \times 10^{-5}$  kg/kg. The model appears to overestimate CDNC compared to SEVIRI on 2 August in the mid-Atlantic and near Gabon, and underestimate them close to the Namibian and southern Angolan coasts. However, the large-scale trends (lower CDNC in the south-east corner, higher in the north-east, and variability in between depending on the weather systems) are well captured. On 7 August, elevated CDNC are seen by SEVIRI in a large region centred on the western edge of the stratocumulus deck. This is replicated in the model, although the cloud fraction in the model is higher than in the observations north-east of the centre of the sub-figure. Also, the area of high CDNC extends further west in the model than in the observations. This suggests the model either simulates faster advection of the plume across the ocean than reality, or more mixing of the plume into the clouds.

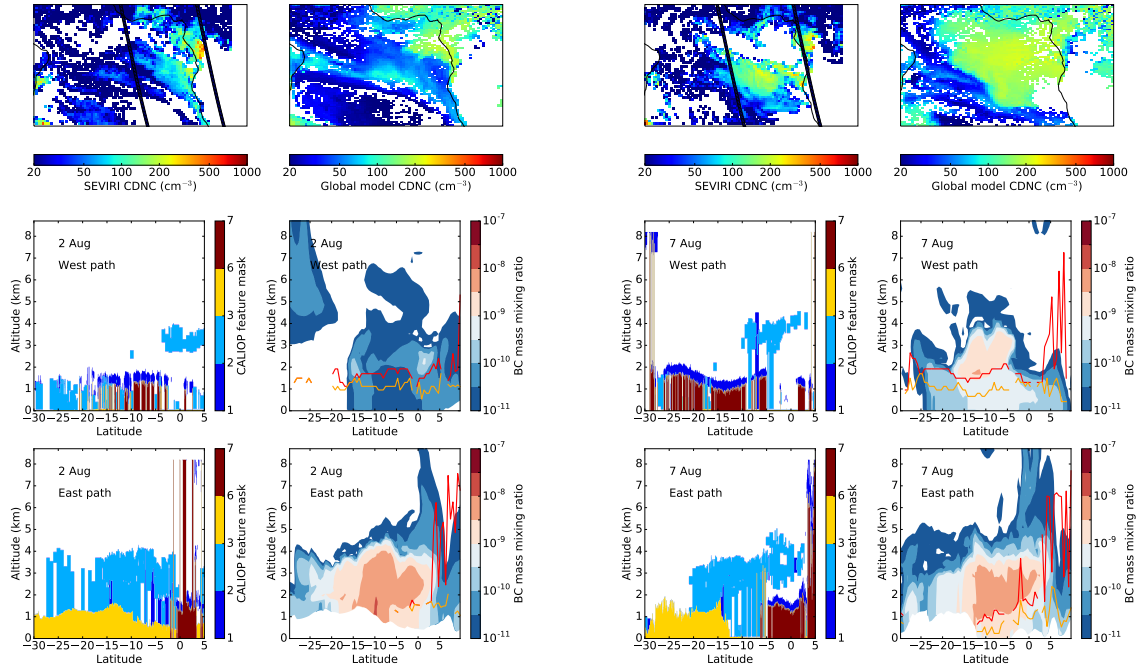
The CALIOP feature masks are used to evaluate the vertical distribution of clouds and aerosols. The masks show land in yellow, aerosol in light blue and cloud in dark blue. Only the cloud-aerosol mask is shown. Supplementary Figure S1 shows that, over this region of the Atlantic Ocean on one of our simulation days, the feature mask will detect an aerosol layer if the AOD measured by CALIOP is above around 0.03. This is comparable to the mean background AOD in the simulations (see Figure 9, discussed later). In Figure 5, the black carbon mass mixing ratio in the model is shown next to the feature masks for the same cross-section. The simulated cloud top height is shown on these plots as a red line, and the cloud base is in orange.

The comparison in Figure 5 shows that mixing of the aerosol down into the boundary layer is clearly reproduced by the model, and the observed and modelled cloud height are in good agreement, to within one vertical grid level of the global model, or about 200 m. The height of the peak of the aerosol layer in the model is reasonable but appears rather too low compared to the feature mask, usually by 1 – 1.5 km. The reason for this is not currently understood in detail: it may be due to the overestimation of the height of the aerosol layer in CALIOP noted by Painemal et al. (2014) and Rajapakshie et al. (2017), or to too much subsidence, a common feature among general circulation models (Das et al., 2017), or some other reason, perhaps atmospheric circulation patterns (Adebiyi and Zuidema, 2016). It is noted by Das et al. (2017) and Adebiyi and Zuidema (2016) that ERA-interim, which we use to nudge our model, performs better than other reanalyses.

## 8 Regional model evaluation and comparison of regional and global models

### 8.1 Meteorology and dynamics

The basic dynamics of the regional and global models are evaluated by comparison to Vaisala radiosondes launched from Ascension Island as part of the LASIC campaign (D. Holdridge, J. Kyrouac and R. Coulter, 2016b). The model grid box closest to the sonde in the horizontal is chosen, then as the sonde takes a large number of readings at each vertical level in the model, vertical interpolation is performed to obtain the temperature in the model at the location of every 20<sup>th</sup> sonde reading. The colour plots in Figure 6 show that when the whole timeseries of soundings is considered, the variability in temperature and RH in the observations at the level of the clouds is represented better in the regional model. This is simply because the smaller



**Figure 5.** Evaluation of aerosol and cloud in the global model. Cloud droplet number concentrations from the SEVIRI satellite instrument and from the model are shown on the top row. In both the model and the observations, grid boxes with liquid water path less than  $10 \text{ g m}^{-2}$  are assumed to be cloud-free and are excluded, after degrading the resolution of the satellite to be comparable to the model. The left column shows SEVIRI CDNC, and below this, the CALIOP feature mask for the marked easterly and westerly overpasses on 2nd August (as for the trajectory plots). The second column shows the model CDNC and, below this, the simulated black carbon mass mixing ratio, used here as a proxy for smoke aerosol. The red line denotes the altitude of the cloud top and the orange line that of cloud base. The right two columns show the same, but for 7 August. In the feature mask, 1-2 (dark blue) indicates cloud, 2-3 (light blue) aerosol, 3-6 (yellow) land above sea level, and 6-7 (dark red) indicates that the signal is fully attenuated.

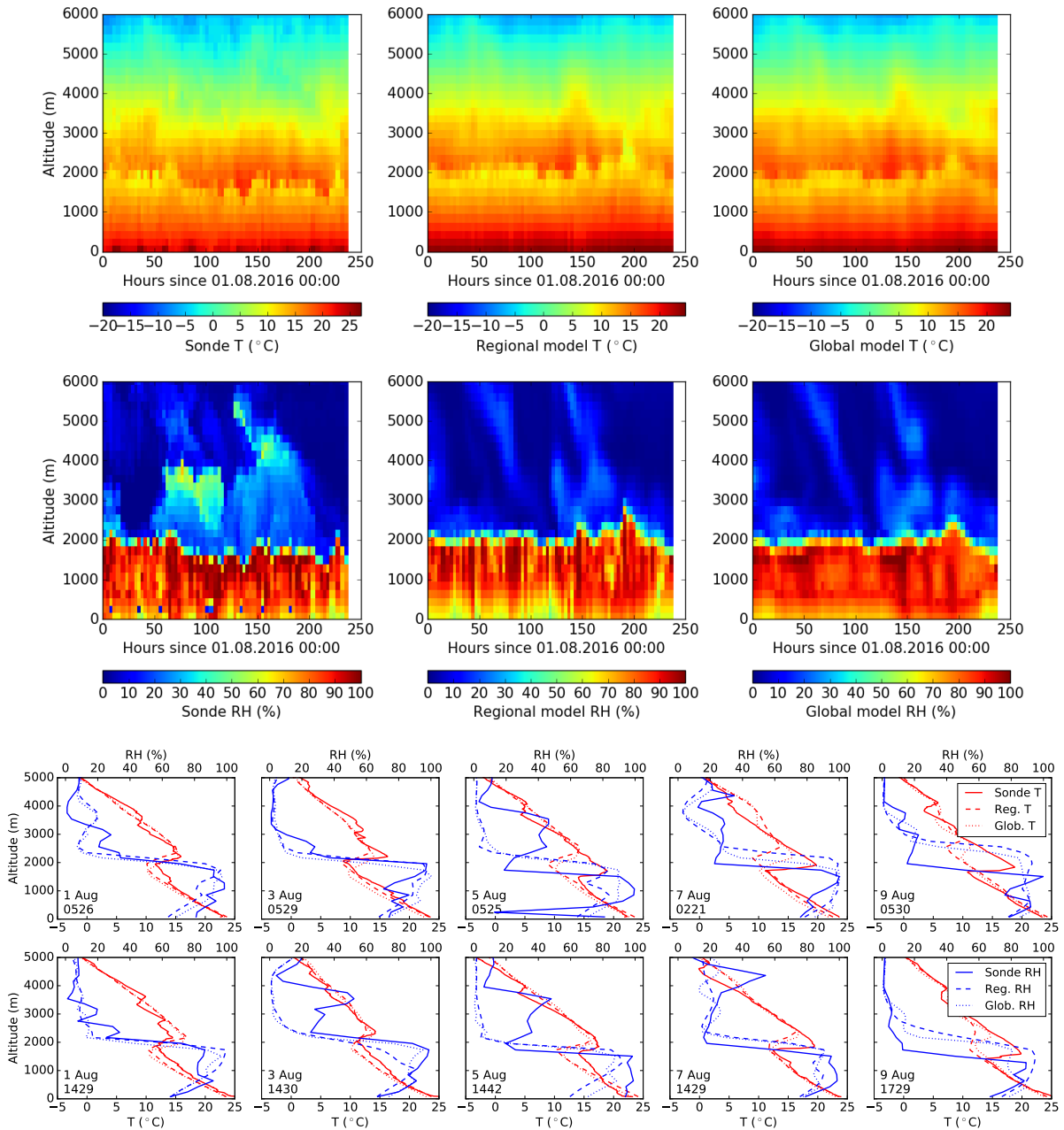
grid boxes resolve more fluctuations in the cloud field. However, the skill of the regional and global models is very similar. The bottom subplots of Figure 6 show ten example profiles for 1, 3, 5, 7, and 9 August 2016.

The temperature profiles show the strong inversion characteristic of this region. The inversion strength varies from 5 to 9 K. The height of the inversion is generally captured by the model to within about 300 m, though it is significantly overpredicted on 8 and 9 August, especially at night, and smeared out by the model resolution as expected. On 10 August (not shown) good agreement with the observations is recovered. The temperature gradient within the inversion averages  $0.027 \text{ K m}^{-1}$  in the radiosonde data,  $0.013 \text{ K m}^{-1}$  in a representative sample of the regional model output, and around  $0.010 \text{ K m}^{-1}$  in the global model (see Supplementary Figure S6). Below the inversion, the temperature profile in the model is very close (usually within 3 K) to the observations. However, above the inversion, some of the structure in the observations, in particular many of the small inversions at higher altitude, are not always captured by the model. These inversions may separate layers of air that have followed different trajectories, and due to the limited number of observations the ERA-interim reanalysis can draw on, and its relatively low vertical resolution, these different trajectories may not always be simulated accurately.

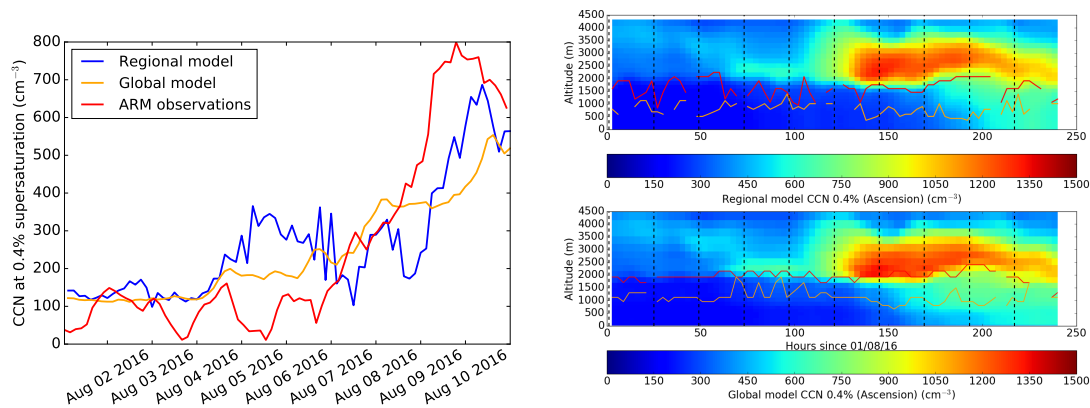
The relative humidity in the model matches the observations quite well, within 20% almost everywhere in the atmospheric column, at the beginning of the simulations when air masses are mostly of marine origin. However, between 2 and 5 August, the humidity above the boundary layer is consistently higher in the observations than in the model, sometimes by as much as 40%. As suggested by Adebisi et al. (2015), this is associated with elevated aerosol concentrations at this altitude (see Section 8.2). At the end of the simulation period, the height of the boundary layer differs more between the model and the radiosondes, and therefore the discrepancy in relative humidity is larger.

## 8.2 Aerosols: cloud condensation nuclei and optical depth

The CCN concentrations in the global and regional model are compared to observations from the ARM site at Ascension Island (D. Holdridge, J. Kyrouac and R. Coulter, 2016a) on the left side of Figure 7. A reasonable level of agreement between the model and observations of both CCN and CDNC would provide some confidence in our treatment of activation. While the mean concentration in the pristine part of the simulation matches the observations well, there is some structure that is not fully captured by the model. The occasional extremely low CCN concentrations recorded at Ascension are likely due to wet scavenging of aerosol. Neither the regional model nor the global model can capture this fully, though the regional model does have some more modest fluctuations that are also probably the result of wet scavenging. In our setup, the *cloud microphysics* code simulates liquid water and precipitation, and receives as an input the cloud droplet number concentration from the *aerosol microphysics* code. In the aerosol microphysics code, the fraction of aerosol that remains after a time step of length  $\Delta t$  in which wet scavenging is occurring is equal to  $e^{-\Delta t A/L}$  where, for warm clouds,  $A$  is the sum of the autoconversion and accretion rates and  $L$  is the liquid water content, all fed in as inputs from the cloud microphysics code. This is something of a simplification: it performs adequately on average but not when high spatial and time resolution are needed. It could be improved in future by simulating the removal of aerosol entirely in the cloud microphysics scheme: aerosol mass and number concentrations would be given to the cloud microphysics code, activated to (prognostic) cloud droplets, depleted by wet scavenging or transported via sedimentation of rain droplets, and then passed back to the aerosol microphysics.



**Figure 6.** Temperature and relative humidity at Ascension Island compared with ARM radiosondes (D. Holdridge, J. Kyrouac and R. Coulter, 2016b). The top six plots show the observed (left), and the regional (centre) and global (right) model time-series of temperature (above) and relative humidity (below). The next five profile plots are representative of night-time, and the bottom five of the afternoon, on 1,3,5,7,9 August. The date and time of the sonde release is shown bottom-left.

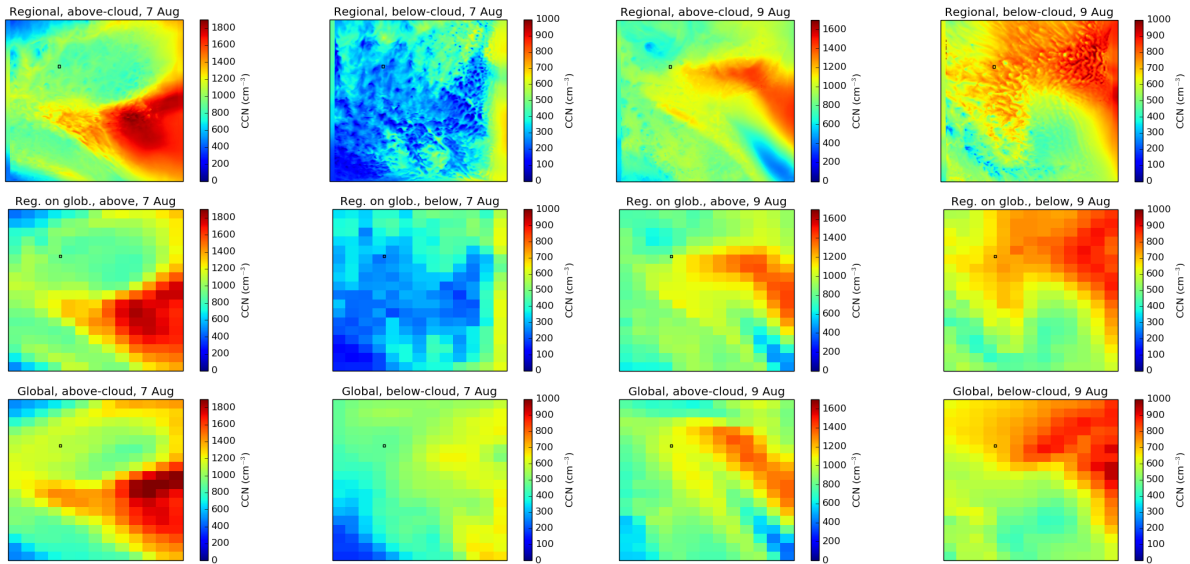


**Figure 7.** Left, CCN at 0.4% at Ascension at the surface measured with the ARM CCN counter (D. Holdridge, J. Kyrouac and R. Coulter, 2016a) and compared to our simulations, and right, the vertical profiles of CCN in the global and regional models, averaged over the domain. The cloud top and cloud base heights at Ascension Island itself are marked in red and orange respectively. The black dotted lines indicate midnight, local time.

Across the first four days, the mean and standard deviation of the CCN concentration at 0.4% is  $90 \pm 42 \text{ cm}^{-3}$  in the observations,  $148 \pm 40 \text{ cm}^{-3}$  in the regional model and  $132 \pm 28 \text{ cm}^{-3}$  in the global model. The modelled and observed values are samples of three-hourly means. The onset of smoke mixing down into the boundary layer is approximately correct compared to observations, but around half a day later on 7 August in the regional model than the global model. The peak CCN concentration is underestimated, but correct to within around 50%.

The right-hand side of Figure 7 shows the vertical profile of CCN at 0.4% supersaturation in the regional and global models, averaged over the domain. The particle concentrations are in good agreement between models. Between cloud top and 3500 m altitude, which covers the smoke plume (Figure 7), the mean and standard deviation of the CCN 0.4% concentration in the last three days of the period is  $1032 \pm 353 \text{ cm}^{-3}$  in the global model and  $992 \pm 352 \text{ cm}^{-3}$  the regional model irrespective of the cloud. Likewise, between the surface and the top of the clouds, the regional model mean is  $506 \pm 197 \text{ cm}^{-3}$  while the global model mean is  $584 \pm 169 \text{ cm}^{-3}$ . The small differences in concentration are likely due to differences in the boundary layer scheme and vertical resolution between models, and to advection. The wind fields in the regional model are only nudged to ERA-interim at the boundaries of the domain, so they start to deviate from the reanalysis towards the end of our simulation period.

The differences in the mean and standard deviation of the CCN concentration between the regional and global models are small. The model resolution clearly has some effect on the scavenging of aerosol by precipitation. This is illustrated by the snapshots of CCN at 0.4%, shown for the whole domain but corresponding to the same altitude ranges (surface to domain mean cloud top, and mean cloud top to 3500 m) in Figure 8. The left hand plots correspond to the time of the AQUA overpass on 7 August and the right-hand plots to 00:01 UTC on 10 August. On 9 August, the spatial pattern of CCN concentration



**Figure 8.** Snapshots of CCN at 0.4% supersaturation across the regional model domain, in the regional and global models. The left six plots show the time of the AQUA overpass on 7 August, also shown for the regional model in Figure 11. The right six plots show 00:01 UTC on 9 August, when the aerosol plume covers different parts of the domain. Within each group, the top plots are for the regional model and the bottom for the global model, left between the domain mean cloud top height and 3500 m altitude, and right, below the domain mean cloud top height. Note that clouds extend slightly above the domain mean cloud top height in the western half of the domain. The centre plots are for the regional model, regridded to the same resolution as the global model. The small black square represents Ascension Island.

again suggests that the wind fields in the regional model are deviating from those in the nudged global model. The effect of precipitation is to deplete large areas of the global model quite uniformly, but to deplete small pockets in the regional model. The small differences in the mean concentrations of CCN between models may be due to deposition, transport across the domain, or different boundary layer mixing. Both the boundary layer scheme and the sub-grid cloud scheme differ between models (contributing to different cloud fractions, described later). The global model can also transport aerosol in the convection

5 To clarify exactly what is responsible for the different mixing, future studies will investigate aerosol scavenging in identical regional setups with different resolutions, to see whether the higher horizontal resolution makes a difference to the mean aerosol concentrations independently of the model configuration.

Figure 9 shows a comparison of the aerosol optical depth (AOD) in the model with MODIS 10-km retrievals, averaged

10 across the regional domain. The mean aerosol optical depth in our regional model over the last five days of the simulation is 0.35, and in the global model it is 0.45, while in the observations it is 0.40. The aerosol optical depth is a factor 3.2 higher in the observations than in the regional model in the first half of the simulation period; this discrepancy is already expected from the relative humidity profiles on the assumption that elevated aerosol and elevated moisture occur together. The smoke plume seems to arrive slightly earlier in reality than in the simulations, too, perhaps because the model places the smoke slightly

too low in altitude compared to the CALIOP observations. The profiles in Supplementary Figure S7 show the wind is usually stronger at 3000 m, the level of the aerosol layers seen by CALIOP, than at 2000 m, where much of the aerosol appears in the model.

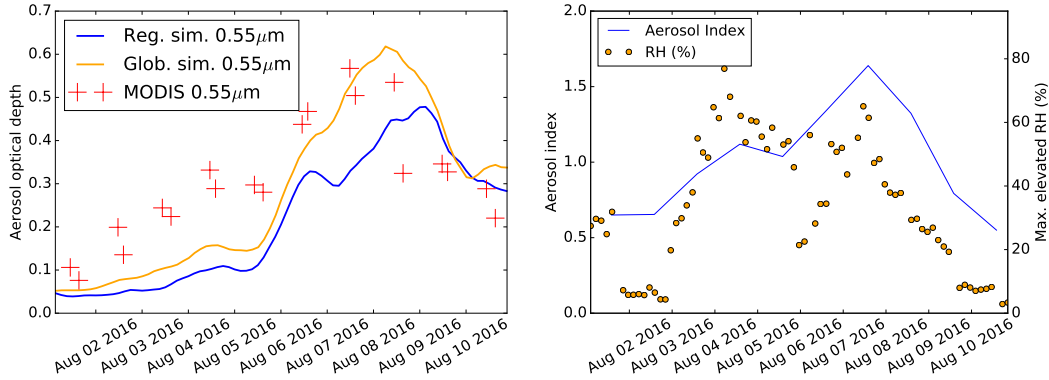
On the right of Figure 9, we show the aerosol index from OMPS, a complementary satellite retrieval of aerosols. This is averaged over a  $7^\circ \times 7^\circ$  box centred on Ascension Island. Aerosol index (AI) has been combined with MODIS retrievals to derive AOD above clouds (e.g. Torres et al., 2012). We do not repeat this here, but the raw UV AI still yields complementary information to the AOD (Wilcox, 2010): first, clouds are screened out of the AOD retrieval but not the AI retrieval, and second, the AI is better correlated with aerosol number concentrations (Nakajima et al., 2001; Costantino and Bréon, 2013). Our timeseries (Figure 9) shows the average of all valid aerosol index retrievals in our domain on a given day; the main criteria for excluding data is if the sun-glint angle is less than  $20^\circ$ , the solar zenith angle is above  $70^\circ$ , or the aerosol index is below 0.5 (Seftor and McPeters, 2017). This last threshold will preferentially select absorbing aerosol, as this tends to have positive aerosol index (Hammer et al., 2016). ~~Qualitatively, it is in generally good agreement with the aerosol optical depth.~~ **Despite the better correlation of aerosol number concentration expected with AI than AOD, the AI increases before the AOD while the CCN at Ascension Island increases after. This is likely due to the vertical mixing of the aerosol layer. The layer is initially at high altitude, which leads to a higher AI than lower-lying aerosol layers would (Herman et al., 1997) but does not affect AOD. Then, as the layer thickens, the AOD increases more quickly than the AI. The spatial patterns of AI, retrieved AOD and simulated AOD are shown in Supplementary Figure S8.**

Both the timeseries of aerosol index and aerosol optical depth reinforce our conclusion that the smoke aerosol arrives earlier over Ascension Island in reality than in our simulations, but at high altitude so it is not immediately entrained into the boundary layer. The aerosol then mixes down into the boundary layer a day later in the observations than in the simulation, so that the CCN concentrations in the observations at Ascension Island rise later than they do in the model. The peak relative humidity above the boundary layer is superposed on the right hand plot in Figure 9, and it is clear that high aerosol is strongly correlated to high humidity (Adebisi et al., 2015). In Supplementary Figure S5, we show that this is also true in the model, at least well above the boundary layer: high humidity, coincident with aerosol, can be seen above the inversion in Figure 6 on 5, 7, and 9 August. **Like the smoke, the water vapor originates from the continental boundary layer. This is not to say that it is co-emitted with the biomass burning emissions: we do not simulate such emissions of water vapour in our model.**

### 8.3 Cloud droplet number concentration and liquid water path

Figure 10 shows the time series of domain-median cloud top droplet number concentration (CDNC) and in-cloud liquid water path (LWP) in the regional and global models, compared to means from MODIS and, for LWP, AMSR. In the case of MODIS, the satellite data are regridded to the coarser regional model grid, while in the case of AMSR the regional model data are regridded to the coarser AMSR grid. The global model data are not regridded. In both models and observations, a pristine period and a polluted period can be identified, but the CDNC rises in the regional model before it rises in the observations, again indicating too-early mixing into the boundary layer. However, from 1-4 August and 7-10 August, good agreement (to within  $50 \text{ cm}^{-3}$ ) between modelled and observed CDNC is apparent. The normalised mean bias of the timeseries of regional





**Figure 9.** Left: aerosol optical depth, averaged over the regional domain. We did not attempt to correct sampling biases: retrievals in the MODIS aerosol optical depth domain average are not given greater weight when they are further away from other retrievals, so cloudy areas where there are few AOD retrievals do not contribute as much to the domain average as areas where the skies are clear and there are many retrievals. As large areas of the regional domain have no retrievals because they are cloudy, at the edge of swaths, or in the glint regions, this bias is probably significant, but it is likely to explain some of the scatter, rather than the trend, shown in the figure. Right: OMPS aerosol index in a  $7 \times 7^\circ$  latitude/longitude box centred on Ascension Island and maximum relative humidity above the boundary layer, measured by the ARM site sondes (D. Holdridge, J. Kyrouac and R. Coulter, 2016b).

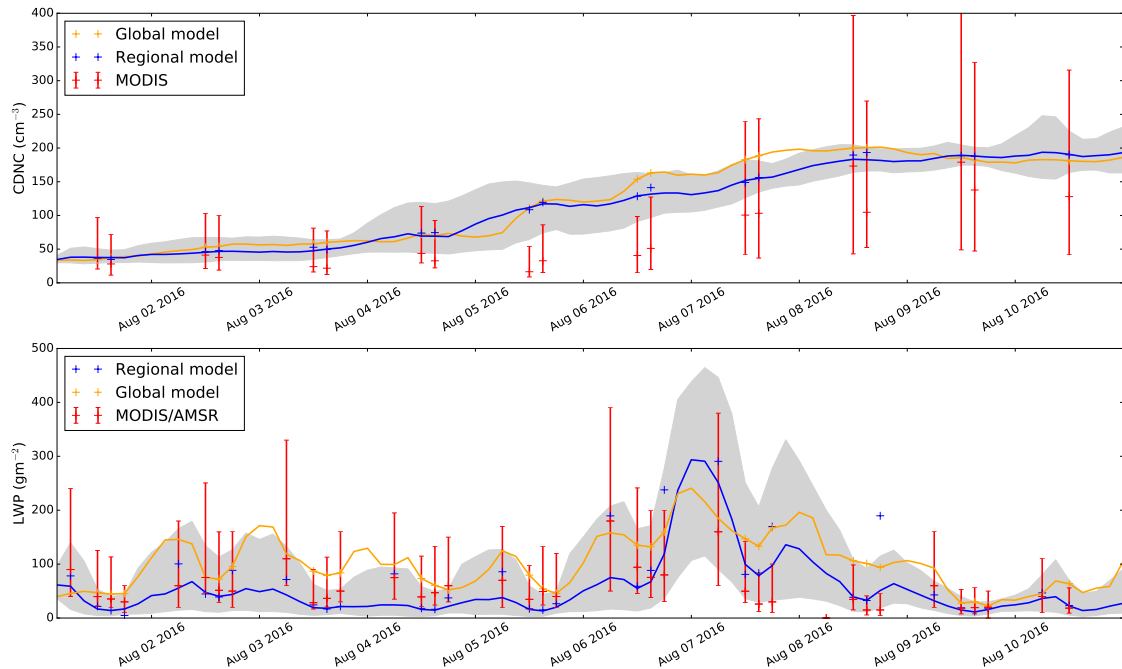
mean (not median) LWP is given by

$$100\% \times \frac{\sum(LW P_m - LW P_o)}{\sum LW P_o} \quad (2)$$

where the sum is over the data in the time-series and the subscript  $o$  refers to observed values and  $m$  to simulated values. It is 22% in the regional model and 66% in the global model. The overestimate of liquid water path in the global model is quite uniform over the simulation period while in the regional model it is particular to the 6-8 August period. In the regional model, it may be related to the overestimate of the boundary layer height at this time (Figure 6). The Pearson correlation coefficient between the domain mean simulated and observed timeseries is 0.60 for the regional model and 0.56 for the global model.

The characteristics of the cloud field are shown in Figure 11. On the left, we present histograms of CDNC and LWP in the regional domain, for the regional model, the global model (normalised to the number of regional model grid boxes) and MODIS AQUA observations. Pixels with liquid water path below  $10 \text{ g m}^{-2}$  are screened out. On the right, the cloud-top CDNC and LWP fields are compared between MODIS and the regional model. There is a small area of cirrus on 2 August visible in the MODIS retrievals in the bottom-left of the regional domain (screened out of the CDNC but not the LWP). On 7 August, the MODIS cloud top temperature sometimes corresponds to heights well above the boundary layer (around 240 K - see Supplementary Figure S2) due to high cloud or possibly the aerosol layer, and so some of the CDNC retrievals in the lower half of the regional domain had to be screened out.

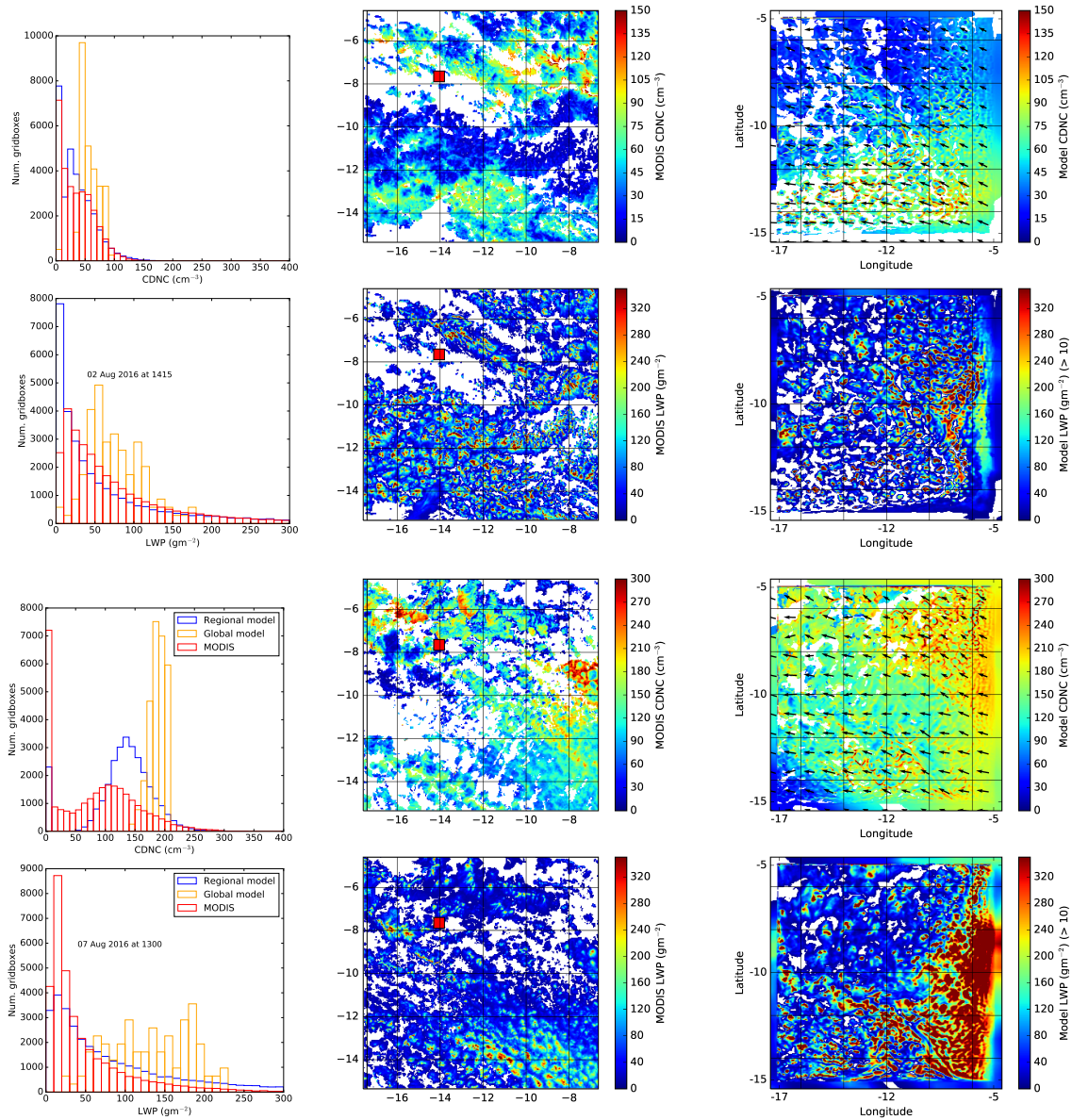
During the pristine period (1-5 August), the features of the CDNC distribution, including structures that appear to be cellular convection, are reasonably well captured by the model. The slightly more polluted region to the south of Ascension is mirrored



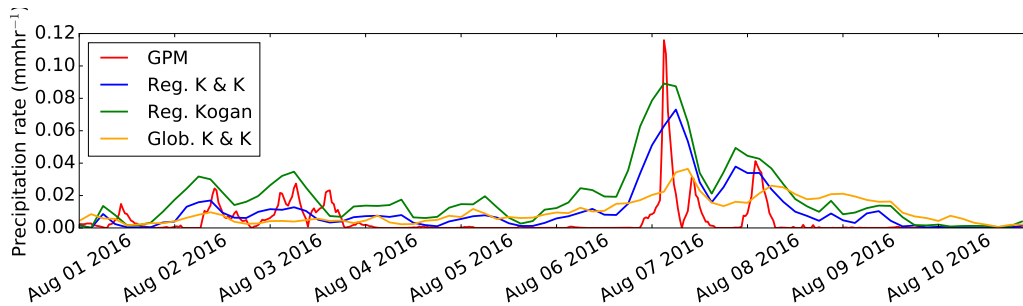
**Figure 10.** Time series of cloud droplet number concentration at cloud top and in-cloud liquid water path in the model (a median within approximately 800 km of the centre of the domain) compared to corresponding AMSR and MODIS observations across the same area at matched times. The MODIS data were regridded to the resolution of the regional model. Cloudy grid boxes are defined as those with LWP above  $10 \text{ g m}^{-2}$ . The interquartile ranges in the satellite data are shown as error bars, and the range (inner half of the distribution) in the regional model as a grey band. Where the blue crosses deviate from the overall domain median indicated by the blue lines, the regional model data were regridded to the AMSR resolution and averaged only inside the AMSR swaths, or calculated only inside the MODIS swaths. Thus the blue and red crosses are directly comparable. No correction for swaths was made in the lower resolution global model data, hence the orange crosses lie on the orange lines and the blue and red crosses are only approximately comparable with the orange crosses. The effects of smoke aerosol on these quantities are presented and discussed later, in Figure 16.

in the model data, but not the higher CDNC in the broken clouds to the east of the island. In the polluted period on 7 August, as well as a 50% overestimate of CDNC by the model compared to MODIS due to too early mixing, the CDNC (Figure 11) also seem less homogenous in the observations than in the model. This may be due to rain events outside the model domain that depleted the aerosol on its way out to Ascension Island.

- 5 The histograms in Figure 11 show that overall the distribution of LWP is well represented in the regional model, and the 2D plot shows that most clouds extend over similar spatial scales in the model and observations. We also calculated Moran's I autocorrelation metric (Moran, 1950) for the model and the MODIS AQUA observations (on the model grid) of liquid water path (where the regional domain is entirely within one satellite swath). This metric would be zero when liquid water is randomly distributed through the domain, and one when it is uniformly distributed across half of the domain with none elsewhere. On



**Figure 11.** CDNC and LWP from MODIS AQUA and the model on 2 August (top) and 7 August (below). Wind vectors at 1260 m altitude are shown on the CDNC plot. On 7 August, the lower half of the MODIS CDNC retrieval is compromised by high cloud or aerosol, and the white areas in the CDNC plot that are not present in the LWP plot have been screened out because the cloud top temperature indicates cloud top heights are above the boundary layer.



**Figure 12.** Domain mean precipitation rate in the regional and global models, in mm/hr, compared with the GPM dataset (Huffman et al., 2014). The effect of the biomass burning aerosol on rain is shown later, in Figure 15.

2 August, it is 0.82 in the MODIS observations and 0.86 in the model, while on 7 August it is 0.87 in the satellite data and 0.90 in the model. In general the model tends to have fewer, larger, clouds (or cloud decks) than the satellite observes. We clustered adjacent pixels with liquid water paths above  $50 \text{ g m}^{-2}$ , also on the model grid in both cases. The median size of these high-water-content clusters in the MODIS observations is usually 3 or 4 model grid boxes (12 or 16 square kilometers), while in the model, the median number of grid boxes in these clusters at the time of the MODIS overpasses averages 15.6 over the simulation period, or nearly  $70 \text{ km}^2$ . Despite these differences in the distribution of cloudiness, the figures show that there is some hope of encapsulating the most important area of the stratocumulus-to-cumulus region, where the clouds break up, inside the model domain. More detailed studies of this transition will follow in a subsequent paper.

The cloud fraction in the model is defined by the sub-grid cloud scheme, which differs between regional and global models. A qualitative comparison to the cloud fraction from the cloud scheme to the MODIS 1-km cloud mask (when this is regridded onto the model grid) would be possible, but the criterion for determining the cloud fraction (broadly, whether the retrieved cloud optical depth in a pixel is greater or less than 0.4), is not directly comparable to the model cloud fraction, and may also be sensitive to above-cloud aerosol (Platnick et al., 2015). We adopt the simpler approach of comparing the outgoing shortwave radiation to observations from the CERES instrument instead, in Section 11. The regional and global model cloud fractions can be compared more directly by coarse-graining the regional model to the resolution of the global model and assuming the overall cloud fraction is the maximum cloud fraction in any given vertical column (as the vertical resolution is not the same in the two setups). The average cloud fraction in the global model is 0.60 during the first, clean, five days of the simulation period, while the regional model average cloud fraction is 0.54. During the second, polluted half of the simulation period, the mean cloud fractions in the two models are 0.62 in the global model and 0.63 in the regional model. The spatial distributions of cloud fraction are shown in Supplementary Figure S9 and the timeseries in Supplementary Figure S15. When the cloud fractions are all averaged to the global model grid, the global model fraction is more likely to be at the extrema of 0 or 1 than the regional model. Histograms demonstrating this difference are shown in Supplementary Figure S9.

## 8.4 Precipitation

Figure 12 shows that the rain rates in the model are similar to retrieved rain rates from the gauge-calibrated GPM dataset. Good agreement of the model and observations is important as rain is associated with the transition from stratocumulus to cumulus clouds (Paluch and Lenschow, 1991; Yamaguchi et al., 2017). The model captures the patterns in the observational timeseries well, but overestimates the total precipitation amount and seems to precipitate for longer than is observed.

We tested two parameterisations of autoconversion and accretion rates, that of Kogan (2013), and that of Khairoutdinov and Kogan (2000), which is the default in our model. The two schemes yield significantly different rain rates (Figure 12). The Kogan (2013) parameterisation is more sensitive to aerosol: the autoconversion rate is proportional to

$$q^{4.22} N_d^{-3.01} \quad (3)$$

where  $q$  is liquid water content and  $N_d$  is cloud droplet number concentration, compared to

$$q^{2.47} N_d^{-1.79} \quad (4)$$

in Khairoutdinov and Kogan (2000). The normalised mean bias of the timeseries of the simulated rain rates with respect to the GPM dataset, calculated using Eq. 2, is +121% for Khairoutdinov and Kogan (2000) compared to +288% for Kogan (2013). In the case of the Kogan (2013) scheme, the increased rain rate acts to eliminate, on average, the bias of +22% in the liquid water path observed with Khairoutdinov and Kogan (2000), which is reduced to -2%. Hill et al. (2015) also found that the Kogan (2013) parameterisation produced more rain than the Khairoutdinov and Kogan (2000) parameterisation. It is likely that the Khairoutdinov and Kogan (2000) accretion rates are more appropriate for this study, but the overall rain rates do not suggest which dependence on  $N_d$  is the better. Within the domain (not shown), the distribution of rain is very similar in the two cases: the histogram of non-zero rainfall rates across the domain at any given time is simply scaled up with the Kogan (2013) compared to the Khairoutdinov and Kogan (2000) parameterisation. The correlation of the observed domain-mean timeseries with the modelled timeseries is 0.56 for Kogan (2013), 0.56 for Khairoutdinov and Kogan (2000) and 0.25 for the global model (where the normalised mean bias is +105%).

Comparing to another regional modelling study, we simulate similar precipitation rates to Lu et al. (2018) at midday UTC: their model produces an average of 0.015 mm hr<sup>-1</sup> of rain at this time, while ours produces 0.014 mm hr<sup>-1</sup> with the Khairoutdinov and Kogan (2000) scheme but 0.022 mm hr<sup>-1</sup> with the Kogan (2013) scheme. The spatial domain and averaging periods are not the same so this good agreement could be coincidental: we expect that in our spatial domain Lu et al. (2018) would predict a higher rain rate than their domain average, because their domain includes much more of the mainly non-precipitating stratocumulus deck than ours.

At the ARM site on Ascension Island, a total of 6.7 mm of rain fell during the first five days of this period, and 3.8 mm during the second five days. This is substantially higher than both the GPM and model domain mean results, but within 20 km of Ascension Island, GPM is in very good agreement with the rain gauge: the dataset indicates 7 mm of rain in the first five days and 3.9 mm in the second. The regional model with the Khairoutdinov and Kogan (2000) parameterisation has 1.5 mm in the first five days and 3.0 mm in the second, and the Kogan (2013) parameterisation has 3.2 mm in the first five days and

4.0mm in the second. One possible explanation for the higher rainfall observed at the island compared to the domain mean is that Ascension Island is situated to the north-west of the centre of our regional domain, so the stratocumulus-to-cumulus transition may lead to more rain there than on the domain average. The local orography may also lead to more rain, as the site of the gauge is about 300 m above sea level; this will not be represented in the model.

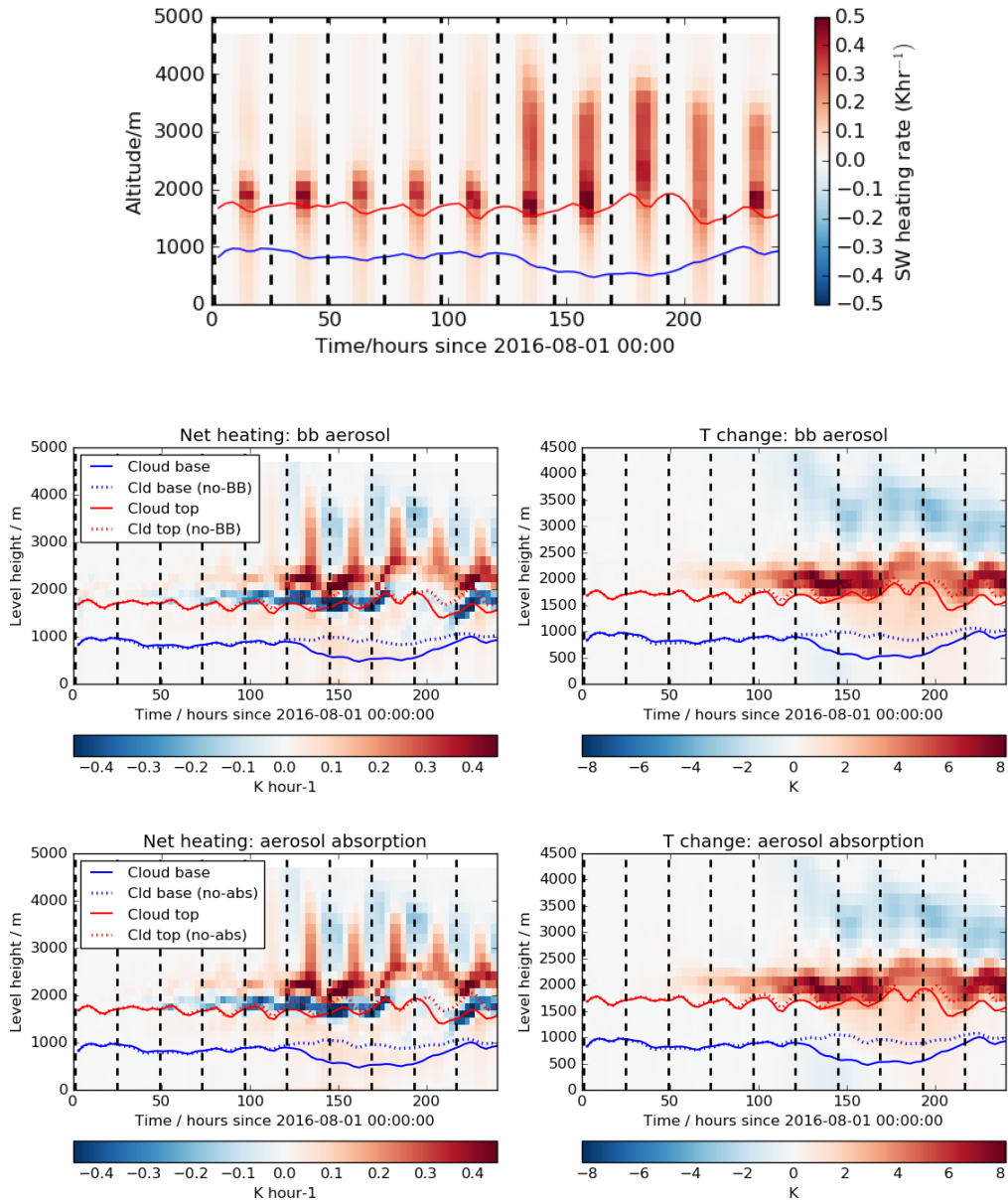
## 5 9 Effects of biomass burning aerosol on heating and temperature

In our simulations, we find biomass burning aerosol close to or just above the inversion causes short-wave heating and long-wave cooling close to the temperature inversion in the Ascension Island region, and the aerosol may thus affect the dynamics of the boundary layer. In the following section we compare three simulations: our default, a simulation with aerosol absorption due to black carbon switched off so only the direct microphysical effects of the aerosol on the clouds are simulated, and a  
10 simulation without biomass burning aerosol. Aerosol absorption is switched off by setting the imaginary part of the refractive index of black carbon to zero (organic carbon does not absorb in the Unified Model). The sea surface temperatures in our simulations are fixed. Each regional simulation is driven by a different, paired global simulation: for example, the global simulation without absorption drives the regional simulation without absorption. The cloud response to the aerosol in the regional model is therefore influenced by the response of the global model to the same aerosol on its way across the ocean  
15 towards the regional domain. We calculate heating rates from the divergence of the upwelling and downwelling radiative fluxes, and show them for our default regional model in Figure 13 and Supplementary Figure S11.

Substantial short-wave heating can be seen above the cloud layer during daytime towards the end of the simulation. This is mostly, but not entirely, offset by long-wave cooling, which has very little diurnal cycle, as shown in the middle plots of Supplementary Figure S11. The result is a net cooling above the clouds during the night and early morning, and then a brief  
20 warming period at midday and early afternoon above the clouds. The daytime warming below the cloud layer, and night-time cooling at the top of the cloud layer (Supplementary Figure S11) is typical of this kind of cloud.

The heating rates due to the biomass burning aerosol are isolated by subtracting the heating rates in the simulations without biomass burning from those in simulations with biomass burning, in the central subfigures of Figure 13. The figure shows that biomass burning aerosol causes strong heating at and above cloud top, and night-time cooling further aloft. A key effect of  
25 the biomass burning aerosol is to reduce the height of the cloud top (the red solid line in Figure 13 is below the red dashed line). This has been noted in satellite observations from CALIPSO by Wilcox (2010), who found the altitude of the peak of the cloud feature distribution is lower by up to 200 m in the presence of smoke. The reduction in the cloud top height causes increased long-wave cooling at the new cloud top height, and reduced long-wave cooling at the old cloud top height. As observed by Wilcox (2010), the cloud also gets thicker, as the cloud top rises while the cloud base height decreases. However,  
30 the WRF model of Lu et al. (2018) produces an increase in cloud top height in the presence of biomass burning aerosol, and the authors attribute the observed reductions to co-variability of aerosols and meteorology.

The short-wave heating effect of the aerosol layer, averaged between 2200 m and 3500 m over the last five days of the simulation, is  $0.08 \text{ K hr}^{-1}$ , for a mean AOD of 0.35. This range of altitudes is chosen to avoid the area just above the cloud top



**Figure 13.** Regional average shortwave heating rate (top) and changes to heating rate and temperatures when biomass burning aerosol is introduced to the regional model (centre) and when aerosol absorption of radiation is switched on (bottom). The domain mean cloud top and cloud base heights in the simulations used are marked on the plots. On each day, midnight local time is indicated by a black dotted line.



where the short-wave effect of changing cloud top height also contributes to the overall short-wave effect. As this corresponds to  $1.9\text{K day}^{-1}$ , the rate is very similar to the  $2\text{K day}^{-1}$  found in aerosol layers with AOD 0.4 in the Namibian stratocumulus deck by Wilcox (2010).

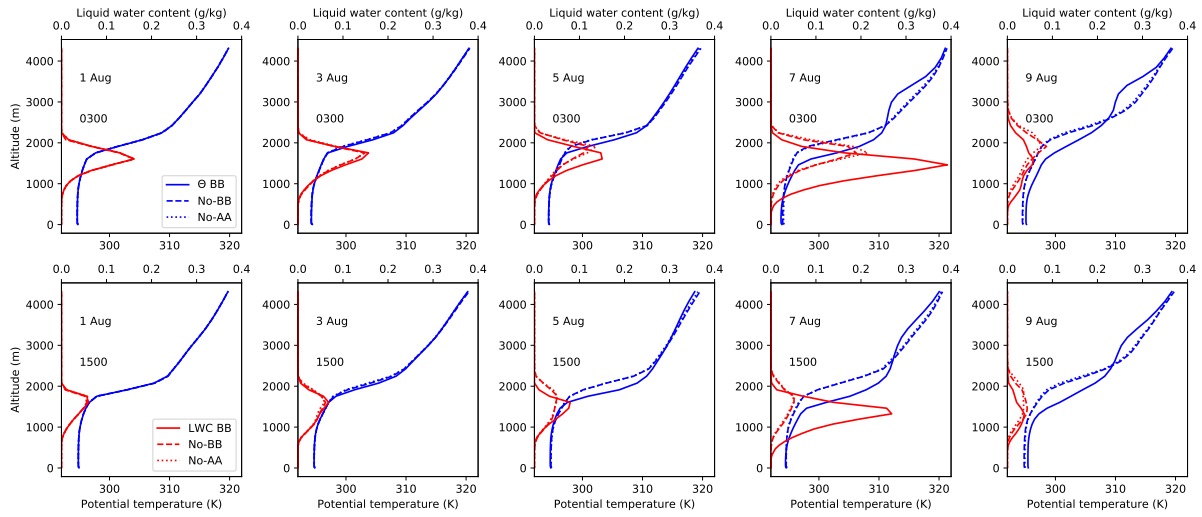
When we average instead over all altitudes up to 4700 m, the net heating rate (short-wave and long-wave) due to biomass burning aerosol is  $+0.33\text{K day}^{-1}$ , and this leads to an overall temperature increase in this part of the atmosphere of  $+0.41\text{K}$  over the last five days. A complex distribution of local temperature changes is shown on the right of Figure 13. The large ( $\sim 6\text{K}$ ) localised changes at or just above the cloud level broadly match the heating rate differences. There is a small warming (at most  $1.5\text{K}$ ) of the boundary layer, and overall cooling well above the inversion. However, the main effect of the aerosol is the heating above cloud top, which increases the stability of the system.

Comparing our default simulation with our simulation in which aerosol absorption is switched off, we obtain the bottom subfigures of Fig. 13. The indirect effects of the aerosol on the clouds are the same in both simulations. We infer that the heating rate due to aerosol absorption is  $0.34\text{K day}^{-1}$  and the net temperature change over the last five days of the simulation due to absorbing aerosol is  $+0.52\text{K}$  in the first 4700 m of altitude. The heating effect of the aerosol absorption is clearly visible just above the clouds. The effect of biomass burning aerosol and the effect of switching on aerosol absorption are very similar: the central and bottom subfigures of Fig. 13 are almost identical. This confirms that the absorbing effects of the smoke aerosol are responsible for the heating rates, and that the smoke aerosol is the only absorbing aerosol present in the simulation.

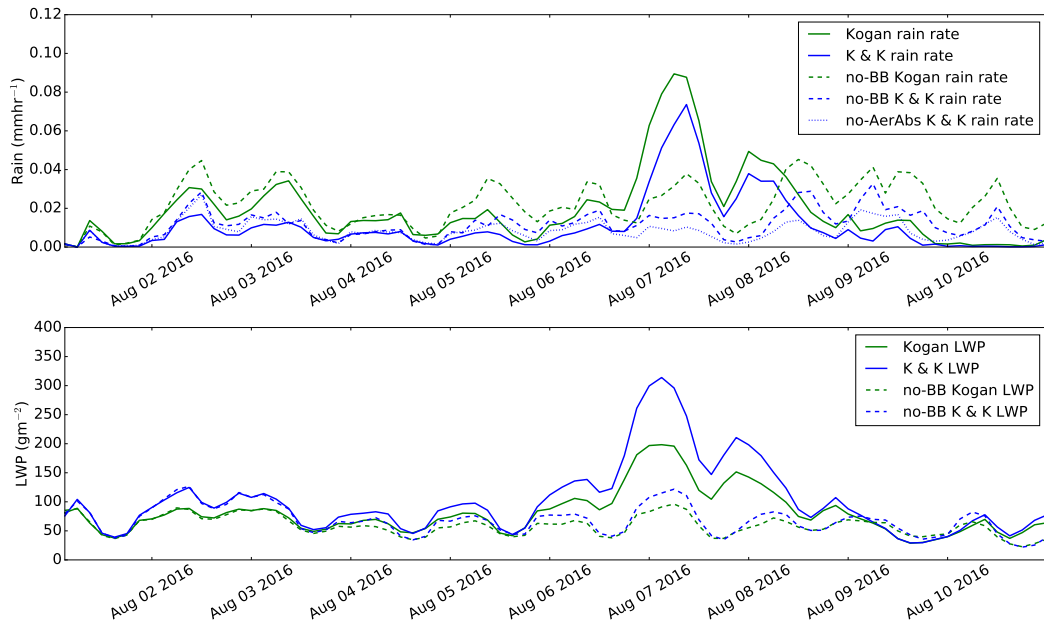
Our simulated heating rates are unlikely to match the heating rates that actually occurred during this period, because the aerosol in our simulations is somewhat lower in altitude. This may mean the effect of the aerosol on the inversion for a given optical depth is exaggerated.

The vertical profiles of potential temperature shown in Figure 14 also show that the inversion is consistently lowered by the biomass burning aerosol on 7 and 9 August. The figure also shows large increases in liquid water content, and a thickening of the cloud layer, when biomass burning aerosol is present, and we discuss these in the following sections. **Thickening of the cloud layer is consistent with the observations of Wilcox (2012). The simulation without aerosol absorption tracks the simulation without smoke, so the changes observed are due to the absorbing properties of the smoke. The regional model is qualitatively consistent with the global model (Supplementary Figure S12).** Concerning the dynamical effects, Johnson et al. (2004) found (experiment 2-FT) that the absorbing effect of the aerosol above the clouds also tends to reduce the inversion height: the depth of the boundary layer changed by 50 m in their LES models. Locally, the picture is more complicated, and the domain mean may hide significant north-south or east-west trends in inversion strength that may shed light on the stratocumulus-to-cumulus transition. For example Bretherton and Wyant (1997) found “that decoupling is mainly driven by an increasing ratio of the surface latent heat flux to the net radiative cooling in the cloud”, so some, probably weak, influence of the heating on the transition is expected. This will be explored in more detail in a future paper.





**Figure 14.** Domain-mean vertical profiles of potential temperature  $\Theta$  and liquid water content (LWC) in the regional model with and without biomass burning aerosol on odd numbered days at the times of day marked.



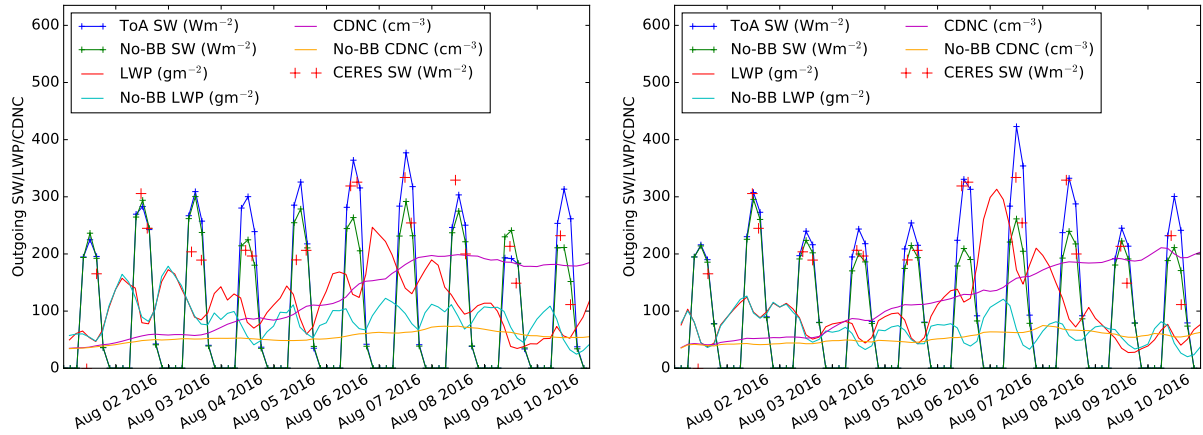
**Figure 15.** Domain mean precipitation rates (top) and liquid water path (bottom) in the regional model with and without biomass burning emissions, with the alternative parameterisations of autoconversion and accretion from Kogan (2013) and from Khairoutdinov and Kogan (2000) (labelled K & K).

**Table 2.** Selected mean rain rates, liquid water paths and fractional cloud cover over the clean and polluted periods of the simulation. The values tabulated are for the global model and then for the regional model with the alternative parameterisations of autoconversion and accretion from Kogan (2013) and from Khairoutdinov and Kogan (2000) (labelled K & K). We present simulations with and without biomass burning emissions ('BB' vs. 'no-BB'), and without aerosol absorption ('no-abs') for both microphysical parameterisations.

Simulation	Glob	Glob	Glob	K & K	K & K	K & K	Kogan	Kogan	Kogan
	no-BB	no-abs	default	no-BB	no-abs	default	no-BB	no-abs	default
1-5 Aug: Rain ( $\text{mm hr}^{-1}$ )	0.007	0.006	0.005	0.09	0.008	0.006	0.019	0.016	0.014
1-5 Aug: LWP ( $\text{g m}^{-2}$ )	92.4	96.4	106	73.9	73.9	81.1	61.9	63.0	67.8
1-5 Aug: CF (%)	54	56	60	51	51	54	50	50	52
6-10 Aug: Rain ( $\text{mm hr}^{-1}$ )	0.016	0.015	0.015	0.014	0.009	0.016	0.025	0.016	0.024
6-10 Aug: LWP ( $\text{g m}^{-2}$ )	84.9	89.3	120	63.1	62.3	123	55.9	56.3	93.7
6-10 Aug: CF (%)	44	43	62	44	43	63	44	43	60

## 10 Effects of biomass burning aerosol on precipitation

In our simulations, there is a clear mechanism in the autoconversion parameterisation for increased cloud droplet number concentrations to suppress precipitation, discussed earlier. Figure 15 shows the difference in rain rates and liquid water path between simulations with and without biomass burning aerosol. At the beginning of the polluted period, with both microphysics parameterisations we observe a large increase in LWP when smoke is present. This is interpreted in the next sections as mainly due to a suppression of entrainment of dry air from above the inversion. When smoke is added, the increased LWP makes more difference than the increased CDNC, and so smoke aerosol increases the rain rate. The relative increase is slightly larger (over a factor of two on 7 August) for the Khairoutdinov and Kogan (2000) scheme than the Kogan (2013) scheme, presumably because the compensating effect of higher CDNC is more important in the Kogan (2013) scheme. Towards the end of the smoke episode, when the smoke is more completely mixed into the boundary layer, as shown in Figure 7, the liquid water path is less strongly affected by the smoke (Figure 15) and the suppression of precipitation due to the increased CDNC is more important. The role of the two compensating effects is separated using the simulation with aerosol absorption switched off. For both microphysics schemes, Table 2 shows that in the polluted period the rain rates are reduced when non-absorbing smoke is introduced, then they increase again when the absorption is switched on and increases the LWP. The differences in the cloud fraction between simulations are also summarised in this table, for discussion in Section 11. In the text that follows we first quote results from the more commonly used Khairoutdinov and Kogan (2000) scheme, but we also show that the choice of microphysical parameterisation affects the radiative effect of the aerosol.



**Figure 16.** Outgoing shortwave flux at top of atmosphere (‘ToA SW’) in the baseline model and a model version without biomass burning emissions (‘No-BB’), for the regional domain in the global model on the left and the regional model on the right. CERES domain-mean observations are shown on the figures in red crosses. The changes to CDNC and LWP across the 10 days are also shown.

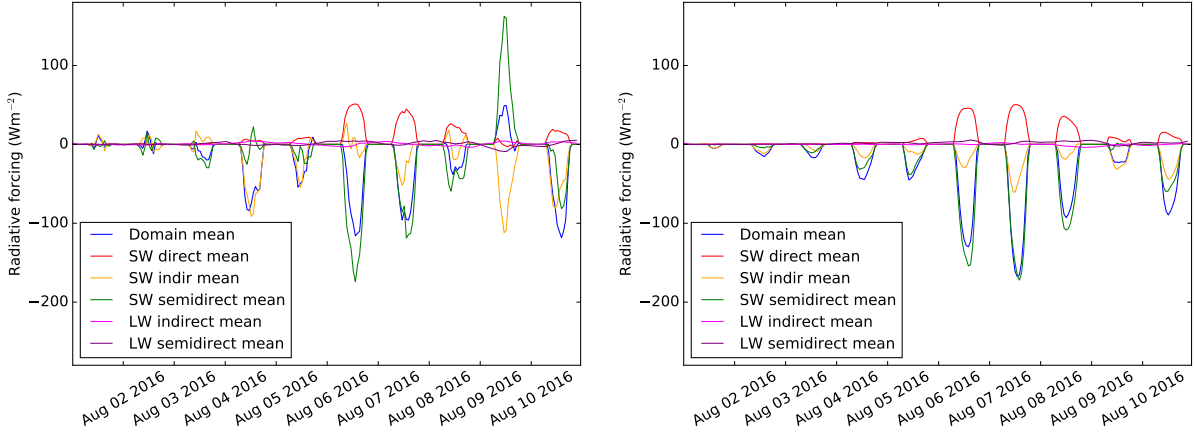
## 11 Effects of biomass burning aerosol on radiation balance

### 11.1 Model results

The modelled outgoing shortwave radiation at the top of the atmosphere is compared to the CERES satellite on a domain mean basis in Figure 16. The trends in outgoing flux observed by the satellite are generally well captured by both regional and global models, but the outgoing flux is overestimated (by 23% on average in the regional model) compared to the satellite, mostly on 4, 7, 9, and 10 August. This suggests that the average cloud fraction and liquid water path (shown on the same plots as a red line, and discussed in Section 8 and Supplementary Figures S9 and S15) in the models is too high.

When biomass burning aerosol is added to a simulation without smoke emissions, the domain mean cloud droplet number and liquid water path both increase. The increase in liquid water path averages  $60 \text{ g m}^{-2}$  in the last five days of the regional simulation, and  $35 \text{ g m}^{-2}$  in the global model. This is larger than the  $20 \text{ g m}^{-2}$  difference found in satellite data between low and high smoke cloud features by Wilcox (2010). The comparison may not be entirely fair because, for example, our aerosols are less separated from the cloud than is typical in the sample of Wilcox (2010) (from their Figure 1). The mean radiative effect of the biomass burning aerosol over the second five days of the regional simulation is  $-27.6 \text{ W m}^{-2}$  (a cooling); this compares to  $-6.9 \text{ W m}^{-2}$  over the first five days. The corresponding increase in the aerosol burden compared to the simulation with no smoke emissions is 3.7. In the same area in the global model, the total radiative effect of the biomass burning aerosol is smaller than in the regional model:  $-17.2 \text{ W m}^{-2}$  over the second five days of the simulation. To explain the difference, we separate out the direct, indirect and semi-direct effects as follows.

The method of Ghan et al. (2012) is used to isolate direct, semidirect and indirect radiative effects in Fig. 17. The same three simulations are compared as in Section 9: the default simulation, the simulation without biomass burning aerosol and the



**Figure 17.** Decomposition of the radiative effects of biomass burning smoke in the regional model domain in the global model (left) and the regional model (right) into the direct, indirect and semidirect components in the short- and long-wave bands according to the recommendations by Ghan et al. (2012).

simulation without aerosol absorption. The short-wave direct effect is diagnosed as

$$\Delta S_{out,direct} = (S_{out} - S_{out,clean}) - (S_{out} - S_{out,clean})_{no-bb}, \quad (5)$$

the indirect effect (which is mainly due to changes in cloud droplet number and in liquid water path via precipitation suppression) as

$$5 \quad \Delta S_{out,indirect} = S_{out,clean,no-aer-abs} - S_{out,clean,no-bb} \quad (6)$$

and the semi-direct effect (which is via changes in liquid water path due to heating effects) as

$$\Delta S_{out,semi} = (S_{out} - S_{out,no-bb}) - \Delta S_{out,direct} - \Delta S_{out,indirect} \quad (7)$$

In these equations,  $S_{out}$  is the outgoing shortwave flux at the top of the atmosphere,  $S_{out,clean}$  the outgoing shortwave flux without aerosols included in the calculation, and the other subscripts describe which simulation is used in each case. Strictly,

10 Eq. 6 should read

$$\Delta S_{out,indirect} = S_{out,clean,no-aer-abs} - S_{out,no-bb,clean,no-aer-abs} \quad (8)$$

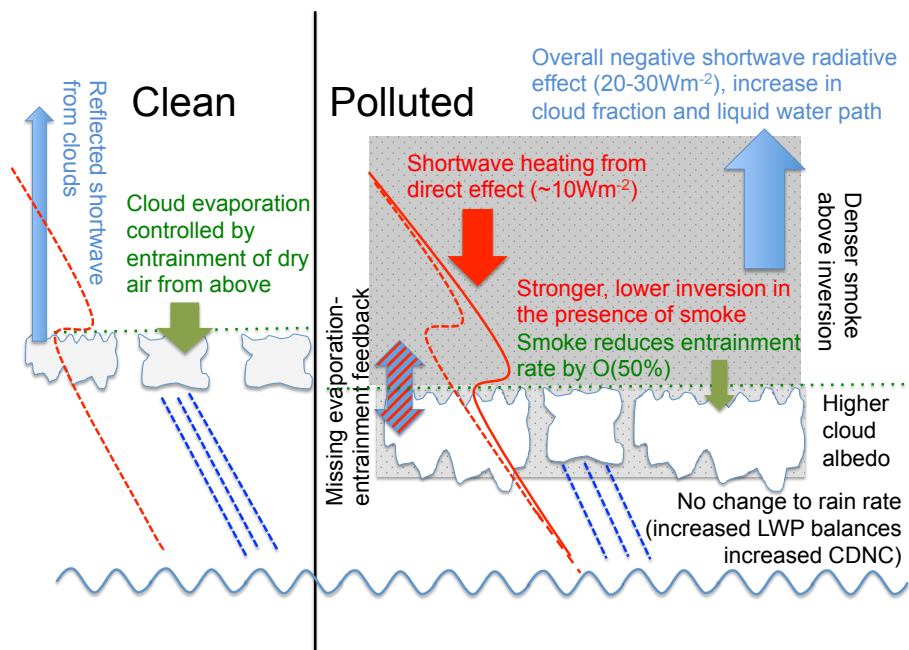
but we did not perform a separate simulation without either biomass burning or aerosol absorption, so we use the approximation that  $S_{out,clean,no-bb} = S_{out,no-bb,clean,no-aer-abs}$ . This is an assumption that the semi-direct effect from absorbing aerosol that is not from biomass burning is negligible. The radiative effects we find in our global and regional simulations are

15 summarised in Table 3, and illustrated in Figure 18.

In the regional model, the direct effect is  $+11.3 \text{ W m}^{-2}$  over the polluted period, the indirect effect is  $-10.1 \text{ W m}^{-2}$ , and the semi-direct effect is  $-30.5 \text{ W m}^{-2}$ . The most striking result is the substantial semi-direct effect, driven by large increases

**Table 3.** Radiative effects of biomass burning aerosol, in units  $\text{W m}^{-2}$ . The values shown are averaged over the polluted period of the simulations, 6-10 August 2016. **We emphasise that the results are averaged over one of the most polluted periods in the 2016 fire season.** As in Table 2, we present values from the global model, and then from the regional models with the alternative parameterisations of autoconversion and accretion from Kogan (2013) and from Khairoutdinov and Kogan (2000) (labelled K & K).

Radiative effect	Global	Regional	Regional
	K & K	K & K	Kogan
Direct SW	10.3	11.4	9.67
Indirect SW	-11.9	-10.1	-11.8
Semi-direct SW	-17.0	-30.5	-23.0
Indirect LW	0.5	-0.4	-0.3
Semi-direct LW	0.9	2.3	1.8
Total	-17.2	-27.6	-23.6



**Figure 18.** Diagram illustrating the different radiative effects of the smoke in our simulations

in liquid water path and fractional cloud cover. Qualitatively, this is expected from the observational studies of Wilcox (2012) and (Adebiyi and Zuidema, 2018) and we interpret it (below) in terms of changes to entrainment rates. The direct effect is also large, but it is only about a third of the magnitude of the total cloud forcing. This is not surprising in the middle of the Atlantic Ocean where the aerosol is mixing with the clouds and starting to be reduced by deposition. The long-wave indirect effect is  $-0.4\text{W m}^{-2}$  and the long-wave semi-direct effect is  $+2.3\text{W m}^{-2}$ , which we interpret as a small reduction in long-wave cooling at cloud top due to the biomass burning aerosol. The semi-direct effect may well be due to a reduction in the long-wave radiation from the surface reaching the top of the atmosphere, as the cloud fraction increases when smoke aerosol is present.

The direct effect is positive because the aerosol layer absorbs radiation that would otherwise be reflected by the clouds below it. Chand et al. (2009) present a simple recipe to calculate the direct effect given cloud fraction and AOD. With our daytime cloud fraction of 0.61 and AOD of 0.35, this recipe gives a direct effect of  $6.5\text{W m}^{-2}$ , which is lower than the  $11.4\text{W m}^{-2}$  we simulate. The difference is mostly because our cloud albedo, which is between 0.65 and 0.7, is higher than the 0.5 assumed by Chand et al. (2009), and closer to the albedo used in similar calculations by Podgorny and Ramanathan (2001). This brief comparison highlights the high sensitivity of the direct effect to the cloud fraction and liquid water path, which our model overestimates. The direct effect we simulate is likely to be several  $\text{W m}^{-2}$  higher than the real direct effect during our case study period. The overestimated cloud fraction presumably also leads us to overestimate the indirect and semi-direct effects.

Supplementary Figure S16 shows the radiative forcing efficiency (Chand et al., 2009) calculated from the means of the direct radiative effect, the AOD and the cloud fraction  $f_c$  over the polluted period. These are all taken from the regional model but are coarse-grained to the global model grid. We find the critical cloud fraction at which the direct radiative effect changes sign is 0.43, very similar to the 0.44 found by Sakaeda et al. (2011). However, due to our higher cloud albedo, we calculate a steeper slope for the radiative forcing efficiency RFE:

$$RFE = 125.4f_c - 53.7, \quad (9)$$

compared to  $76f_c - 33$  found by Sakaeda et al. (2011) and  $86f_c - 34$  found by Chand et al. (2009). This slope is also uncertain, as the dependence of RFE on  $f_c$  in our simulations is not linear. The non-linearity is because the cloud albedo, which unlike Chand et al. (2009) we do not hold constant, is positively correlated to the cloud fraction.

With the microphysical parameterisation of Kogan (2013) is used instead of that of Khairoutdinov and Kogan (2000), the overall forcing is smaller, at  $-23.6\text{W m}^{-2}$  when averaged over the domain and the last five days of the simulation. While the mean LWP is in good agreement with observations during this period, the outgoing shortwave flux is still biased high by 15% over the ten days, compared to 23% with the default microphysics scheme. The components of the aerosol radiative effect are plotted in Supplementary Figure S14. The long-wave radiative effects are similar to those with Khairoutdinov and Kogan (2000) scheme. The direct effect is slightly reduced to  $+9.7\text{W m}^{-2}$ , due to the lower cloud cover. However, the indirect effect increases slightly to  $-11.8\text{W m}^{-2}$ , despite the lower cloud liquid water path, and the magnitude of the semi-direct effect decreases strongly to  $-23.0\text{W m}^{-2}$ . From Table 2, aerosol absorption increases LWP by  $61\text{g m}^{-2}$  with the Khairoutdinov and Kogan (2000) scheme but  $37\text{g m}^{-2}$  with the Kogan (2013) scheme. A possible reason for this lower semi-direct effect with the Kogan (2013) scheme is that the entrainment rates across the boundary layer are slightly higher with the Kogan (2013)

scheme. The domain mean entrainment rate across the inversion over the polluted period with the Khairoutdinov and Kogan (2000) microphysics scheme in the regional model is  $0.019\text{ m s}^{-1}$  with biomass burning aerosol and  $0.042\text{ m s}^{-1}$  without. With the Kogan (2013) scheme, the entrainment rate is  $0.022\text{ m s}^{-1}$  with biomass burning aerosol and  $0.047\text{ m s}^{-1}$  without. In the absence of aerosol absorption, the cloud droplet number concentration is slightly higher than when absorption is switched on (Supplementary Figure S13). With a reduced entrainment rate due to the heating effect of the aerosol layer, fewer cloud condensation nuclei are entrained into the clouds, or the mean updraft speed is reduced.

In the global model, the instantaneous short-wave direct and indirect effects were also calculated for the regional domain. Averaged over the polluted period, the direct effect is  $+10.3\text{ W m}^{-2}$ , the semi-direct effect is  $-17.0\text{ W m}^{-2}$  and the indirect effect is  $-11.9\text{ W m}^{-2}$ . On average, the direct and indirect effects are in good agreement with the regional model with the same Khairoutdinov and Kogan (2000) microphysics scheme. However, the instantaneous radiative effects in the global model tend to fluctuate more than in the regional model. This is probably mostly because the cloud fraction (Supplementary Figure S9) tends to more extreme values than in the regional model. Because the sub-grid cloud fraction is prognostic in the global model, the cloud fraction is more correlated between model grid-boxes, and therefore small fluctuations are less likely to be averaged out. In particular, the differences in cloud fraction between the simulation without smoke and the simulation without aerosol absorption are larger in the global model than the regional model. On 9 August, this leads to large opposing indirect and semi-direct effects, which mostly cancel overall (Figure 17) but still lead to a positive radiative effect not observed in the regional model. This appears to be responsible for the difference in aerosol radiative effects between regional and global models when averaged over the polluted period (Table 3), and highlights the sensitivity of aerosol radiative effects to the representation of sub-grid cloud in models.

The different average semi-direct radiative effects of the smoke in the two models can be at least partly explained by different entrainment rates. In the global model, the domain mean entrainment rate is reduced from  $0.023\text{ m s}^{-1}$  to  $0.013\text{ m s}^{-1}$  when smoke is added, while in the regional model the reduction is from  $0.042\text{ m s}^{-1}$  to  $0.019\text{ m s}^{-1}$ . **In our simulation, the entrainment rates for cumulus or clear skies substantially exceed those for stratocumulus, which are around  $0.01\text{ m s}^{-1}$  in the regional model and  $0.005\text{ m s}^{-1}$  in the global model.** The smaller entrainment rate, and smaller effect of smoke on entrainment, in the global model compared to the regional model is presumably due to the different vertical or horizontal resolution. **The reduction in entrainment rates due to smoke we observe is in contrast to the increased entrainment rate seen by Lu et al. (2018), and may help to explain why on average we see a reduction in cloud top height due to smoke while they see an increase.**

## 11.2 Comparison of cloud radiative effects with other studies

The increase in LWP in the presence of smoke in our regional model with the Khairoutdinov and Kogan (2000) microphysics parameterisation seems to be mostly due to a strengthened inversion. The stronger inversion reduces entrainment of dry air from the free troposphere into the clouds, leading to reduced evaporation. There is a consensus in the literature that aerosol mostly above stratocumulus clouds, as in our case study, tends to make inversions stronger, but aerosol within clouds tends to weaken them (Johnson et al., 2004; Koch and Del Genio, 2010; Zhou et al., 2017).

The widely varying changes in cloud liquid water path observed by other studies in the presence of smoke aerosol can be at least partly explained by the degree with which the smoke mixes into the clouds. The LES simulations of Yamaguchi et al. (2015) suggested the LWP should increase in the presence of partly entrained smoke aerosol, while those of Zhou et al. (2017) found a decrease. Zhou et al. (2017) presented evidence that their decreasing LWP is controlled by sedimentation-evaporation-entrainment feedbacks (see Section 4), which are not represented in our model. In their default simulation, the smoke layer descends into the clouds almost in its entirety, with much higher concentrations of absorbing aerosol below than above the boundary layer by 60 hours into their simulation (their Figure 3). The authors also performed a simulation with the base of the smoke layer initially located 400 m higher. This leads to less complete mixing, which may be more similar to our case study and to that of Yamaguchi et al. (2015) (see our Figure 7). In this second study with higher-altitude smoke, Zhou et al. (2017) found the LWP increased relative to the simulation with more complete mixing, but still decreased relative to the simulation without smoke aerosol. We aim to include the sedimentation-evaporation-entrainment feedback in subsequent studies to see if we can reproduce this LES result.

While Lu et al. (2018) do not separate direct and semi-direct radiative effects in their regional WRF simulations, and the effects have opposite signs so are not constrained to be small, we can speculate, based on the very small changes in LWP between their ‘M’ and ‘P’ (default) simulations, that their time-averaged semi-direct effect must be substantially smaller than that in our regional model for the last five days of August 2016. This is confirmed by the increase in cloud top height and cloud top entrainment found by Lu et al. (2018) in the presence of biomass burning, opposite to our result. **The study of Sakaeda et al. (2011) does separate the semi-direct and direct effects (but does not consider the indirect effect). They find a small negative semi-direct effect, averaging  $-2.6 \text{ W m}^{-2}$  at the top of the atmosphere, and a small positive direct effect, averaging  $+0.9 \text{ W m}^{-2}$ . This seems broadly consistent with Lu et al. (2018). We note that both Lu et al. (2018) and Sakaeda et al. (2011) also average over pristine periods without much smoke aerosol, while we quote results only in a very polluted period.**

Similar to the LES study of Zhou et al. (2017), the analysis of satellite observations by Costantino and Bréon (2013) found a negative correlation of liquid water path with AI when aerosol is mixed into clouds in this region. However, they also found a (weak) positive correlation of cloud fraction with AI. As in the LES studies, the authors interpret their results in terms of entrainment of dry air: well-mixed aerosol leads to a weaker inversion with more entrainment, and this leads to more evaporation of clouds.

Our indirect radiative effects can also be compared to the ‘remote’ results in the WRF regional modelling study of Lu et al. (2018). When averaging over a two-month period, the authors find a time-averaged indirect effect of  $-6.12 \text{ W m}^{-2}$  in their remote region, compared to our estimate of around  $-10 \text{ W m}^{-2}$  using the Khairoutdinov and Kogan (2000) microphysics parameterisation. Lu et al. (2018) simulate a mean increase in CDNC of a factor of two from around the same background level as in our simulations ( $50 \text{ cm}^{-3}$ ), while we simulate an increase of a factor 3. The mean increase in LWP they find is 9% (where these figures are presented for the whole SE Atlantic region in daytime, and we assume they are similar to those for the remote region). Without absorbing aerosol in their simulations (their ‘M’ case) they find a similar increase in LWP, implying that the increase they observe is mainly due to precipitation suppression by aerosol, hence the indirect effect, rather than to the semi-direct effect. Comparing our simulations without smoke and without aerosol absorption, we find no significant change in



LWP due to precipitation suppression with the Khairoutdinov and Kogan (2000) microphysics parameterisation, but a small increase of 5% using the Kogan (2013) scheme, from Table 2. The comparison would be fairer if the cloud fraction was the same, but in the last five days of our simulations for August 2016 it appears the cloud fraction is higher, based on a visual inspection of Figure S2 in Lu et al. (2018).

## 5 12 Conclusions

The region in which biomass burning aerosol interacts with South Atlantic clouds is studied in the HadGEM climate model with prognostic aerosol number concentration from the UKCA aerosol microphysics module, in regional and global configurations. Biomass burning aerosol increases the total aerosol burden by a factor of four and the cloud droplet numbers by a factor of three to a few hundred per cubic centimetre, and has substantial effects on the cloud properties. In our regional simulation, a square  
10 of length 1200 km centred near Ascension Island, resultant large radiative effects sum to  $-27.6 \text{ W m}^{-2}$ , **in an especially strong smoke episode**. The aerosol also has quite large effects on dynamics and microphysics, reducing the height of the inversion by up to 200 m. Increased cloud droplet number concentration suppresses rain, though in our simulations this is offset by dynamically induced increases to the cloud liquid water path. The large increases in liquid water path we observe result from a strong suppression of the entrainment rate when smoke aerosol is added. The aerosol plume we studied had substantial  
15 direct radiative effects, averaging  $+11 \text{ W m}^{-2}$  in the regional simulation, and these partly offset the cloud forcing of around  $-40 \text{ W m}^{-2}$ . In our simulations, increased CCN concentrations lead to strong cooling. Less intuitively, increased absorption of solar radiation can also cool this marine region via cloud adjustments, as noted by Koch and Del Genio (2010) and Sakaeda et al. (2011). **We note that our model overestimates the albedo of our domain because both cloud fraction and liquid water path are higher than in observations. The high albedo leads to high estimates of all three types of radiative effect.**

20 Our simulations highlight some **other** areas where further work is needed to ensure good agreement between the model and observations, which will be facilitated by recent field measurements in this region. First, the transport of aerosol at large scales is imperfect: the aerosol layers are too low. This also leads to discrepancies in the relative humidity at high altitude, and this may affect the boundary-layer clouds via entrainment. If more aerosol mixes into the boundary layer because it is lower in altitude in our simulations than in reality, the effects on clouds may be exaggerated. **Nudging our global model to**  
25 **horizontal winds may also artificially affect the vertical transport of, and dynamical responses to, the smoke aerosol.** Second, our treatment of aerosol activation reproduces the observations of CDNC we have used here reasonably well, but it might be right for the wrong reasons (as the hygroscopicity of the aerosol and the updraft speed are tuned), and should be studied further. Third, we showed that the means by which aerosol is depleted, in rain, is sensitive to the parameterisation of autoconversion and accretion in the microphysics scheme. The choice of parameterisation also strongly influences the components of the  
30 radiative effect of aerosol. Further work might indicate more conclusively which scheme is most appropriate. Fourth, we do not simulate the dependences of entrainment on cloud droplet number concentration via sedimentation and evaporation. Last, the depletion of aerosol by wet scavenging was recently shown to be important to the stratocumulus-to-cumulus transition, at least in some situations (Yamaguchi et al., 2017). Removal of aerosol by drizzle hastens the onset of more drizzle by increasing

the collision-coalescence rate, and the drizzle reduces the liquid water path, hence the cloud cover. Both these last issues, but in particular the sedimentation feedback, which is not represented in our model, highlight the need for fully prognostic cloud droplet number concentrations. Once these are included and the coupling between aerosol and cloud microphysics is improved, we should be better able to reproduce the short-lived depletions of CCN seen in the surface observations (Figure 7).

5 As the simulations are improved and examined in more detail, the benefits of model resolutions intermediate between those of general circulation models and those of large eddy models will either become more apparent, or it will become clearer that they don't help. We showed here that a 4 km model produces more realistic variability in the boundary-layer CCN concentrations than the global model, but still not as much variability as in observations. This might be improved by better coupling of the aerosol and cloud microphysics schemes in our model, or by higher resolution simulations. If the total aerosol concentration  
10 depends on the model resolution in these subsequent studies, this would indicate that non-linear processes are important and higher resolution is needed in general circulation models to resolve them. If, on the other hand, the regional averages are consistent between simulations at different resolutions, then higher resolution may not be as important.

Despite its shortcomings, the performance of our model is in many respects very good. The global and regional models are more-or-less consistent in terms of the mean and spatio-temporal changes in aerosol number concentrations, CDNC, and  
15 LWP, giving confidence in the treatment of the boundary conditions. The cloud top and inversion heights are generally in good agreement with observations both for regional and global models, although the high sensitivity of radiative effects to these dynamical properties suggests further work is warranted. Trends in the cloud fraction and LWP match the observations well, although the LWP is overestimated, and since the outgoing SW fluxes also track the CERES satellite, there is a successful closure that gives confidence in the model physics. Despite an overestimate of the absolute magnitude, the timeseries of  
20 precipitation appears to be relatively well represented too. The regional model captures spatial variation in CDNC and temporal variation in liquid water path better than the global model.

The good performance of the regional model suggests it is ready for a second level of evaluation, using the detailed in-situ measurements from the CLARIFY campaign. It also motivates the study of the stratocumulus to cumulus transition in this region with the model, especially once fully double-moment cloud microphysics is incorporated and compared with the  
25 current setup. We hope that this first model evaluation study, and future simulation efforts that build on it, will facilitate continued efforts to fully exploit the plethora of new observation data in this area.

### 13 Acknowledgements

This research was funded by the NERC CLARIFY project NE/L013479/1. AMSR data are produced by Remote Sensing Systems and were sponsored by the NASA AMSR-E Science Team and the NASA Earth Science MEaSUREs Program. Data  
30 are available at [www.remss.com](http://www.remss.com). The development of the CPP algorithm was done by Hartwig Deneke, Jan Fokke Meirink, Rob Roebeling, and Erwin Wolters (KNMI). Cloud condensation nuclei and radiosonde data were obtained from the Atmospheric Radiation Measurement (ARM) Climate Research Facility, a U.S. Department of Energy Office of Science user facility sponsored by the Office of Biological and Environmental Research. The GPM precipitation data were provided by the NASA

Goddard Space Flight Center's GPM team and PPS, which develop and compute the IMERG dataset as a contribution to GPM, and archived at the NASA EarthData archive. We also thank Jim Haywood and the ARM site team for providing rainfall rates at Ascension Island. We acknowledge use of the Monsoon2 system, a collaborative facility supplied under the Joint Weather and Climate Research Programme, a strategic partnership between the UK Met Office and the Natural Environment Research Council (NERC). We also used the JASMIN facility ([www.jasmin.ac.uk/](http://www.jasmin.ac.uk/)) via the Centre for Environmental Data Analysis, funded by NERC and the UK Space Agency and delivered by the Science and Technology Facilities Council. Simulation data are available from this facility upon reasonable request.

## References

- Abdul-Razzak, H. and Ghan, S. J.: A parameterization of aerosol activation: 2. Multiple aerosol types, *Journal of Geophysical Research: Atmospheres*, 105, 6837–6844, doi:10.1029/1999JD901161, <http://dx.doi.org/10.1029/1999JD901161>, 2000.
- Adebiyi, A. A. and Zuidema, P.: The role of the southern African easterly jet in modifying the southeast Atlantic aerosol and cloud environments, *Quarterly Journal of the Royal Meteorological Society*, 142, 1574–1589, doi:10.1002/qj.2765, <http://dx.doi.org/10.1002/qj.2765>, 2016.
- Adebiyi, A. A. and Zuidema, P.: Low Cloud Cover Sensitivity to Biomass-Burning Aerosols and Meteorology over the Southeast Atlantic, *Journal of Climate*, 31, 4329–4346, doi:10.1175/JCLI-D-17-0406.1, <https://doi.org/10.1175/JCLI-D-17-0406.1>, 2018.
- Adebiyi, A. A., Zuidema, P., and Abel, S. J.: The Convolution of Dynamics and Moisture with the Presence of Shortwave Absorbing Aerosols over the Southeast Atlantic, *Journal of Climate*, 28, 1997–2024, doi:10.1175/JCLI-D-14-00352.1, <https://doi.org/10.1175/JCLI-D-14-00352.1>, 2015.
- Bennartz, R.: Global assessment of marine boundary layer cloud droplet number concentration from satellite, *Journal of Geophysical Research: Atmospheres*, 112, n/a–n/a, doi:10.1029/2006JD007547, <http://dx.doi.org/10.1029/2006JD007547>, d02201, 2007.
- Bennartz, R. and Harshvardhan: Correction to “Global assessment of marine boundary layer cloud droplet number concentration from satellite”, *Journal of Geophysical Research: Atmospheres*, 112, n/a–n/a, doi:10.1029/2007JD008841, <http://dx.doi.org/10.1029/2007JD008841>, d16302, 2007.
- Boers, R., Acarreta, J. R., and Gras, J. L.: Satellite monitoring of the first indirect aerosol effect: Retrieval of the droplet concentration of water clouds, *Journal of Geophysical Research: Atmospheres*, 111, n/a–n/a, doi:10.1029/2005JD006838, <http://dx.doi.org/10.1029/2005JD006838>, d22208, 2006.
- Bond, T. C. and Bergstrom, R. W.: Light Absorption by Carbonaceous Particles: An Investigative Review, *Aerosol Science and Technology*, 40, 27–67, doi:10.1080/02786820500421521, <https://doi.org/10.1080/02786820500421521>, 2006.
- Bony, S. and Dufresne, J.-L.: Marine boundary layer clouds at the heart of tropical cloud feedback uncertainties in climate models, *Geophysical Research Letters*, 32, L20 806, doi:10.1029/2005GL023851, <http://dx.doi.org/10.1029/2005GL023851>, 2005.
- Boutle, I. A., Eyre, J. E. J., and Lock, A. P.: Seamless Stratocumulus Simulation across the Turbulent Gray Zone, *Monthly Weather Review*, 142, 1655–1668, doi:10.1175/MWR-D-13-00229.1, <https://doi.org/10.1175/MWR-D-13-00229.1>, 2014.
- Bretherton, C. S. and Wyant, M. C.: Moisture Transport, Lower-Tropospheric Stability, and Decoupling of Cloud-Topped Boundary Layers, *Journal of the Atmospheric Sciences*, 54, 148–167, doi:10.1175/1520-0469(1997)054<0148:MTL TSA>2.0.CO;2, [https://doi.org/10.1175/1520-0469\(1997\)054<0148:MTL TSA>2.0.CO;2](https://doi.org/10.1175/1520-0469(1997)054<0148:MTL TSA>2.0.CO;2), 1997.
- Bretherton, C. S., Blossey, P. N., and Uchida, J.: Cloud droplet sedimentation, entrainment efficiency, and subtropical stratocumulus albedo, *Geophysical Research Letters*, 34, n/a–n/a, doi:10.1029/2006GL027648, <http://dx.doi.org/10.1029/2006GL027648>, i03813, 2007.
- Chand, D., Wood, R., Anderson, T. L., Satheesh, S. K., and Charlson, R. J.: Satellite-derived direct radiative effect of aerosols dependent on cloud cover, *Nature Geoscience*, 2, 181 EP –, <http://dx.doi.org/10.1038/ngeo437>, 2009.
- Costantino, L. and Bréon, F.-M.: Aerosol indirect effect on warm clouds over South-East Atlantic, from co-located MODIS and CALIPSO observations, *Atmospheric Chemistry and Physics*, 13, 69–88, doi:10.5194/acp-13-69-2013, <https://www.atmos-chem-phys.net/13/69/2013/>, 2013.

- D. Holdridge, J. Kyrouac and R. Coulter: Cloud condensation nuclei Particle Counter AOSCCN200M1, 1-10 August 2016, Ascension Island (LASIC), Atmospheric Radiation Measurement (ARM) Climate Research Facility AMF1 Data Archive: Oak Ridge, Tennessee, USA, updated hourly, doi:<http://dx.doi.org/10.5439/1046182>, 2016a.
- D. Holdridge, J. Kyrouac and R. Coulter: Balloon-borne sounding system SONDEDEWNPN, 1-10 August 2016, Ascension Island Airport Site (LASIC), Atmospheric Radiation Measurement (ARM) Climate Research Facility AMF1 Data Archive: Oak Ridge, Tennessee, USA, updated hourly, doi:<http://dx.doi.org/10.5439/1021460>, 2016b.
- Das, S., Harshvardhan, H., Bian, H., Chin, M., Curci, G., Protonotariou, A. P., Mielonen, T., Zhang, K., Wang, H., and Liu, X.: Biomass burning aerosol transport and vertical distribution over the South African-Atlantic region, *Journal of Geophysical Research: Atmospheres*, 122, 6391–6415, doi:10.1002/2016JD026421, <http://dx.doi.org/10.1002/2016JD026421>, 2017.
- 10 Deepak, A., Gerber, H., Programme, W. C. R., for Atmospheric Sciences, W. M. O. C., of Meteorology, I. A., Commission, A. P. R., (U.S.), N. R. L., Center, L. R., and for Atmospheric Optics & Remote Sensing, I.: Report of the Experts Meeting on Aerosols and Their Climatic Effects, (Williamsburg, Virginia, 28-30 March 1983), Report, WMO/ICSU, [https://books.google.co.uk/books?id=\\_vkJuwAACAAJ](https://books.google.co.uk/books?id=_vkJuwAACAAJ), 1983.
- Deneke, H., Meirink, J. F., Roebeling, R., and Wolters, E.: MSG Cloud Physical Properties (CPP) algorithm, version 4.0, [http://msgcpp.knmi.nl/mediawiki/index.php/MSGCPP\\_product\\_description](http://msgcpp.knmi.nl/mediawiki/index.php/MSGCPP_product_description), 2018.
- 15 Donlon, C. J., Martin, M., Stark, J., Roberts-Jones, J., Fiedler, E., and Wimmer, W.: The Operational Sea Surface Temperature and Sea Ice Analysis (OSTIA) system, *Remote Sensing of Environment*, 116, 140 – 158, doi:<https://doi.org/10.1016/j.rse.2010.10.017>, <http://www.sciencedirect.com/science/article/pii/S0034425711002197>, advanced Along Track Scanning Radiometer(AATSR) Special Issue, 2012.
- Flynn, L., Long, C., Wu, X., Evans, R., Beck, C., Petropavlovskikh, I., McConville, G., Yu, W., Zhang, Z., Niu, J., et al.: Performance of the ozone mapping and profiler suite (OMPS) products, *Journal of Geophysical Research: Atmospheres*, 119, 6181–6195, 2014.
- 20 Formenti, P., Elbert, W., Maenhaut, W., Haywood, J., Osborne, S., and Andreae, M. O.: Inorganic and carbonaceous aerosols during the Southern African Regional Science Initiative (SAFARI 2000) experiment: Chemical characteristics, physical properties, and emission data for smoke from African biomass burning, *Journal of Geophysical Research: Atmospheres*, 108, doi:10.1029/2002JD002408, <https://agupubs.onlinelibrary.wiley.com/doi/abs/10.1029/2002JD002408>, 2003.
- Ghan, S. J., Abdul-Razzak, H., Nenes, A., Ming, Y., Liu, X., Ovchinnikov, M., Shipway, B., Meskhidze, N., Xu, J., and Shi, X.: Droplet nucleation: Physically-based parameterizations and comparative evaluation, *Journal of Advances in Modeling Earth Systems*, 3, n/a–n/a, doi:10.1029/2011MS000074, <http://dx.doi.org/10.1029/2011MS000074>, m10001, 2011.
- Ghan, S. J., Liu, X., Easter, R. C., Zaveri, R., Rasch, P. J., Yoon, J.-H., and Eaton, B.: Toward a minimal representation of aerosols in climate models: Comparative decomposition of aerosol direct, semidirect, and indirect radiative forcing, *Journal of Climate*, 25, 6461–6476, 2012.
- Grosvenor, D. P. and Wood, R.: The effect of solar zenith angle on MODIS cloud optical and microphysical retrievals within marine liquid water clouds, *Atmospheric Chemistry and Physics*, 14, 7291–7321, doi:10.5194/acp-14-7291-2014, <https://www.atmos-chem-phys.net/14/7291/2014/>, 2014.
- Grosvenor, D. P., Field, P. R., Hill, A. A., and Shipway, B. J.: The relative importance of macrophysical and cloud albedo changes for aerosol-induced radiative effects in closed-cell stratocumulus: insight from the modelling of a case study, *Atmospheric Chemistry and Physics*, 17, 5155–5183, doi:10.5194/acp-17-5155-2017, <https://www.atmos-chem-phys.net/17/5155/2017/>, 2017.
- 35 Hammer, M. S., Martin, R. V., van Donkelaar, A., Buchard, V., Torres, O., Ridley, D. A., and Spurr, R. J. D.: Interpreting the ultraviolet aerosol index observed with the OMI satellite instrument to understand absorption by organic aerosols: implications for atmospheric oxidation and direct radiative effects, *Atmospheric Chemistry and Physics*, 16, 2507–2523, doi:10.5194/acp-16-2507-2016, <https://www.atmos-chem-phys.net/16/2507/2016/>, 2016.

- Hansen, J., Sato, M., and Ruedy, R.: Radiative forcing and climate response, *Journal of Geophysical Research: Atmospheres*, 102, 6831–6864, doi:10.1029/96JD03436, <http://dx.doi.org/10.1029/96JD03436>, 1997.
- Haywood, J. M., Osborne, S. R., Francis, P. N., Keil, A., Formenti, P., Andreae, M. O., and Kaye, P. H.: The mean physical and optical properties of regional haze dominated by biomass burning aerosol measured from the C-130 aircraft during SAFARI 2000, *Journal of Geophysical Research: Atmospheres*, 108, n/a–n/a, doi:10.1029/2002JD002226, <http://dx.doi.org/10.1029/2002JD002226>, 8473, 2003.
- Haywood, J. M., Osborne, S. R., and Abel, S. J.: The effect of overlying absorbing aerosol layers on remote sensing retrievals of cloud effective radius and cloud optical depth, *Quarterly Journal of the Royal Meteorological Society*, 130, 779–800, doi:10.1256/qj.03.100, <http://dx.doi.org/10.1256/qj.03.100>, 2004.
- Herman, J. R., Bhartia, P. K., Torres, O., Hsu, C., Seftor, C., and Celarier, E.: Global distribution of UV-absorbing aerosols from Nimbus 7/TOMS data, *Journal of Geophysical Research: Atmospheres*, 102, 16 911–16 922, doi:10.1029/96JD03680, <https://agupubs.onlinelibrary.wiley.com/doi/abs/10.1029/96JD03680>, 1997.
- Hill, A., Dobbie, S., and Yin, Y.: The impact of aerosols on non-precipitating marine stratocumulus. I: Model description and prediction of the indirect effect, *Quarterly Journal of the Royal Meteorological Society*, 134, 1143–1154, 2008.
- Hill, A. A., Shipway, B. J., and Boutle, I. A.: How sensitive are aerosol-precipitation interactions to the warm rain representation?, *Journal of Advances in Modeling Earth Systems*, 7, 987–1004, doi:10.1002/2014MS000422, <http://dx.doi.org/10.1002/2014MS000422>, 2015.
- Huffman, G., Bolvin, D., Braithwaite, D., Hsu, K., Joyce, R., and Xie, P.: Integrated Multi-satellitE Retrievals for GPM (IMERG), version 4.4, NASA's Precipitation Processing Center, doi:10.5067/GPM/IMERG/3B-HH/05, 2014.
- Ichoku, C. and Ellison, L.: Global top-down smoke-aerosol emissions estimation using satellite fire radiative power measurements, *Atmospheric Chemistry and Physics*, 14, 6643–6667, doi:10.5194/acp-14-6643-2014, <https://www.atmos-chem-phys.net/14/6643/2014/>, 2014.
- Johnson, B. T., Shine, K. P., and Forster, P. M.: The semi-direct aerosol effect: Impact of absorbing aerosols on marine stratocumulus, *Quarterly Journal of the Royal Meteorological Society*, 130, 1407–1422, doi:10.1256/qj.03.61, <http://dx.doi.org/10.1256/qj.03.61>, 2004.
- Johnson, B. T., Haywood, J. M., Langridge, J. M., Darbyshire, E., Morgan, W. T., Szpek, K., Brooke, J. K., Marengo, F., Coe, H., Artaxo, P., Longo, K. M., Mulcahy, J. P., Mann, G. W., Dalvi, M., and Bellouin, N.: Evaluation of biomass burning aerosols in the HadGEM3 climate model with observations from the SAMBBA field campaign, *Atmospheric Chemistry and Physics*, 16, 14 657–14 685, doi:10.5194/acp-16-14657-2016, <https://www.atmos-chem-phys.net/16/14657/2016/>, 2016.
- Kendon, E. J., Roberts, N. M., Senior, C. A., and Roberts, M. J.: Realism of Rainfall in a Very High-Resolution Regional Climate Model, *Journal of Climate*, 25, 5791–5806, doi:10.1175/JCLI-D-11-00562.1, <https://doi.org/10.1175/JCLI-D-11-00562.1>, 2012.
- Khairoutdinov, M. and Kogan, Y.: A New Cloud Physics Parameterization in a Large-Eddy Simulation Model of Marine Stratocumulus, *Monthly Weather Review*, 128, 229–243, doi:10.1175/1520-0493(2000)128<0229:ANCPPI>2.0.CO;2, [https://doi.org/10.1175/1520-0493\(2000\)128<0229:ANCPPI>2.0.CO;2](https://doi.org/10.1175/1520-0493(2000)128<0229:ANCPPI>2.0.CO;2), 2000.
- Khalizov, A. F., Zhang, R., Zhang, D., Xue, H., Pagels, J., and McMurry, P. H.: Formation of highly hygroscopic soot aerosols upon internal mixing with sulfuric acid vapor, *Journal of Geophysical Research: Atmospheres*, 114, n/a–n/a, doi:10.1029/2008JD010595, <http://dx.doi.org/10.1029/2008JD010595>, d05208, 2009.
- King, N. J., Bower, K. N., Crosier, J., and Crawford, I.: Evaluating MODIS cloud retrievals with in situ observations from VOCALS-REX, *Atmospheric Chemistry and Physics*, 13, 191–209, doi:10.5194/acp-13-191-2013, <https://www.atmos-chem-phys.net/13/191/2013/>, 2013.
- Koch, D. and Del Genio, A. D.: Black carbon semi-direct effects on cloud cover: review and synthesis, *Atmospheric Chemistry and Physics*, 10, 7685–7696, doi:10.5194/acp-10-7685-2010, <https://www.atmos-chem-phys.net/10/7685/2010/>, 2010.

- Kogan, Y.: A Cumulus Cloud Microphysics Parameterization for Cloud-Resolving Models, *Journal of the Atmospheric Sciences*, 70, 1423–1436, doi:10.1175/JAS-D-12-0183.1, <https://doi.org/10.1175/JAS-D-12-0183.1>, 2013.
- Levy, R., Hsu, C., et al.: MODIS Atmosphere L2 Aerosol Product, NASA MODIS Adaptive Processing System, Goddard Space Flight Center, USA, doi:[http://dx.doi.org/10.5067/MODIS/MYD04\\_L2.006](http://dx.doi.org/10.5067/MODIS/MYD04_L2.006), 2015.
- 5 Liu, Z., Omar, A. H., Hu, Y., Vaughan, M. A., Winker, D. M., Poole, L. R., and Kovacs, T. A.: CALIOP algorithm theoretical basis document, Part 3: Scene classification algorithms, NASA-CNES document PC-SCI-203, 2005.
- Lu, Z., Liu, X., Zhang, Z., Zhao, C., Meyer, K., Rajapakshe, C., Wu, C., Yang, Z., and Penner, J. E.: Biomass smoke from southern Africa can significantly enhance the brightness of stratocumulus over the southeastern Atlantic Ocean, *Proceedings of the National Academy of Sciences*, doi:10.1073/pnas.1713703115, <http://www.pnas.org/content/early/2018/02/27/1713703115>, 2018.
- 10 Mann, G. W., Carslaw, K. S., Spracklen, D. V., Ridley, D. A., Manktelow, P. T., Chipperfield, M. P., Pickering, S. J., and Johnson, C. E.: Description and evaluation of GLOMAP-mode: a modal global aerosol microphysics model for the UKCA composition-climate model, *Geoscientific Model Development*, 3, 519–551, doi:10.5194/gmd-3-519-2010, <http://www.geosci-model-dev.net/3/519/2010/gmd-3-519-2010.html>, 2010.
- Mochida, M. and Kawamura, K.: Hygroscopic properties of levoglucosan and related organic compounds characteristic to biomass burning aerosol particles, *Journal of Geophysical Research: Atmospheres*, 109, 2004.
- 15 Moran, P. A. P.: Notes on Continuous Stochastic Phenomena, *Biometrika*, 37, 17–23, <http://www.jstor.org/stable/2332142>, 1950.
- Morgenstern, O., Braesicke, P., O'Connor, F. M., Bushell, A. C., Johnson, C. E., Osprey, S. M., and Pyle, J. A.: Evaluation of the new UKCA climate-composition model – Part 1: The stratosphere, *Geoscientific Model Development*, 2, 43–57, doi:10.5194/gmd-2-43-2009, <https://www.geosci-model-dev.net/2/43/2009/>, 2009.
- 20 Myhre, G., K., B. T., M., H. J., K., S. J., N., H. B., Mona, J., and Frode, S.: Modeling the solar radiative impact of aerosols from biomass burning during the Southern African Regional Science Initiative (SAFARI-2000) experiment, *Journal of Geophysical Research: Atmospheres*, 108, doi:10.1029/2002JD002313, <https://agupubs.onlinelibrary.wiley.com/doi/abs/10.1029/2002JD002313>, 2003.
- Nakajima, T., Higurashi, A., Kawamoto, K., and Penner, J. E.: A possible correlation between satellite-derived cloud and aerosol microphysical parameters, *Geophysical Research Letters*, 28, 1171–1174, doi:10.1029/2000GL012186, <http://dx.doi.org/10.1029/2000GL012186>,
- 25 2001.
- Nenes, A. and Seinfeld, J. H.: Parameterization of cloud droplet formation in global climate models, *Journal of Geophysical Research: Atmospheres*, 108, n/a–n/a, doi:10.1029/2002JD002911, <http://dx.doi.org/10.1029/2002JD002911>, 4415, 2003.
- O'Connor, F. M., Johnson, C. E., Morgenstern, O., Abraham, N. L., Braesicke, P., Dalvi, M., Folberth, G. A., Sanderson, M. G., Telford, P. J., Voulgarakis, A., Young, P. J., Zeng, G., Collins, W. J., and Pyle, J. A.: Evaluation of the new UKCA climate-composition model –
- 30 Part 2: The Troposphere, *Geoscientific Model Development*, 7, 41–91, doi:10.5194/gmd-7-41-2014, <https://www.geosci-model-dev.net/7/41/2014/>, 2014.
- Painemal, D., Kato, S., and Minnis, P.: Boundary layer regulation in the southeast Atlantic cloud microphysics during the biomass burning season as seen by the A-train satellite constellation, *Journal of Geophysical Research: Atmospheres*, 119, 11,288–11,302, doi:10.1002/2014JD022182, <http://dx.doi.org/10.1002/2014JD022182>, 2014JD022182, 2014.
- 35 Paluch, I. R. and Lenschow, D. H.: Stratiform Cloud Formation in the Marine Boundary Layer, *Journal of the Atmospheric Sciences*, 48, 2141–2158, doi:10.1175/1520-0469(1991)048<2141:SCFITM>2.0.CO;2, [https://doi.org/10.1175/1520-0469\(1991\)048<2141:SCFITM>2.0.CO;2](https://doi.org/10.1175/1520-0469(1991)048<2141:SCFITM>2.0.CO;2), 1991.

- Peers, F., Bellouin, N., Waquet, F., Ducos, F., Goloub, P., Mollard, J., Myhre, G., Skeie, R. B., Takemura, T., Tanré, D., Thieuleux, F., and Zhang, K.: Comparison of aerosol optical properties above clouds between POLDER and AeroCom models over the South East Atlantic Ocean during the fire season, *Geophysical Research Letters*, 43, 3991–4000, doi:10.1002/2016GL068222, <http://dx.doi.org/10.1002/2016GL068222>, 2016GL068222, 2016.
- 5 Petters, M. D. and Kreidenweis, S. M.: A single parameter representation of hygroscopic growth and cloud condensation nucleus activity, *Atmospheric Chemistry and Physics*, 7, 1961–1971, doi:10.5194/acp-7-1961-2007, <https://www.atmos-chem-phys.net/7/1961/2007/>, 2007.
- Planche, C., Mann, G. W., Carslaw, K. S., Dalvi, M., Marsham, J. H., and Field, P. R.: Spatial and temporal CCN variations in convection-permitting aerosol microphysics simulations in an idealised marine tropical domain, *Atmospheric Chemistry and Physics*, 17, 3371–3384, doi:10.5194/acp-17-3371-2017, <https://www.atmos-chem-phys.net/17/3371/2017/>, 2017.
- 10 Platnick, S., Ackerman, S., King, M., et al.: MODIS Atmosphere L2 Cloud Product (06\_L2), NASA MODIS Adaptive Processing System, Goddard Space Flight Center, USA, doi:[http://dx.doi.org/10.5067/MODIS/MYD06\\_L2.006](http://dx.doi.org/10.5067/MODIS/MYD06_L2.006), 2015.
- Podgorny, I. A. and Ramanathan, V.: A modeling study of the direct effect of aerosols over the tropical Indian Ocean, *Journal of Geophysical Research: Atmospheres*, 106, 24 097–24 105, doi:10.1029/2001JD900214, [https://agupubs.onlinelibrary.wiley.com/doi/abs/10.1029/](https://agupubs.onlinelibrary.wiley.com/doi/abs/10.1029/2001JD900214)  
15 2001JD900214, 2001.
- Rajapakshe, C., Zhang, Z., Yorks, J. E., Yu, H., Tan, Q., Meyer, K., Platnick, S., and Winker, D. M.: Seasonally transported aerosol layers over southeast Atlantic are closer to underlying clouds than previously reported, *Geophysical Research Letters*, 44, 5818–5825, doi:10.1002/2017GL073559, <http://dx.doi.org/10.1002/2017GL073559>, 2017GL073559, 2017.
- Randles, C. A. and Ramaswamy, V.: Direct and semi-direct impacts of absorbing biomass burning aerosol on the climate of southern Africa: a Geophysical Fluid Dynamics Laboratory GCM sensitivity study, *Atmospheric Chemistry and Physics*, 10, 9819–9831, doi:10.5194/acp-10-9819-2010, <https://www.atmos-chem-phys.net/10/9819/2010/>, 2010.
- 20 Regayre, L., Johnson, J., Yoshioka, M., Pringle, K., Sexton, D., Booth, B., Lee, L., Bellouin, N., and Carslaw, K.: Aerosol and physical atmosphere model parameters are both important sources of uncertainty in aerosol ERF, *Atmospheric Chemistry and Physics Discussions*, 2018, 1–54, doi:10.5194/acp-2018-175, <https://www.atmos-chem-phys-discuss.net/acp-2018-175/>, 2018.
- 25 Roebeling, R. A., Deneke, H. M., and Feijt, A. J.: Validation of Cloud Liquid Water Path Retrievals from SEVIRI Using One Year of CloudNET Observations, *Journal of Applied Meteorology and Climatology*, 47, 206–222, doi:10.1175/2007JAMC1661.1, <https://doi.org/10.1175/2007JAMC1661.1>, 2008a.
- Roebeling, R. A., Placidi, S., Donovan, D. P., Russchenberg, H. W. J., and Feijt, A. J.: Validation of liquid cloud property retrievals from SEVIRI using ground-based observations, *Geophysical Research Letters*, 35, n/a–n/a, doi:10.1029/2007GL032115, <http://dx.doi.org/10.1029/2007GL032115>, 105814, 2008b.
- 30 Sakaeda, N., Wood, R., and Rasch, P. J.: Direct and semidirect aerosol effects of southern African biomass burning aerosol, *Journal of Geophysical Research: Atmospheres*, 116, n/a–n/a, doi:10.1029/2010JD015540, <http://dx.doi.org/10.1029/2010JD015540>, d12205, 2011.
- Sandu, I. and Stevens, B.: On the Factors Modulating the Stratocumulus to Cumulus Transitions, *Journal of the Atmospheric Sciences*, 68, 1865–1881, doi:10.1175/2011JAS3614.1, <https://doi.org/10.1175/2011JAS3614.1>, 2011.
- 35 Schneider, T., Teixeira, J., Bretherton, C. S., Brient, F., Pressel, K. G., Schär, C., and Siebesma, A. P.: Climate goals and computing the future of clouds, *Nature Climate Change*, 7, 3 EP –, <http://dx.doi.org/10.1038/nclimate3190>, 2017.



- Schultz, M. G., Heil, A., Hoelzemann, J. J., Spessa, A., Thonicke, K., Goldammer, J. G., Held, A. C., Pereira, J. M. C., and van het Bolscher, M.: Global wildland fire emissions from 1960 to 2000, *Global Biogeochemical Cycles*, 22, n/a–n/a, doi:10.1029/2007GB003031, <http://dx.doi.org/10.1029/2007GB003031>, gB2002, 2008.
- Seftor, C. and McPeters, R.: NMTO3-L3 –Data Release Notes. OMPS LP Version 2 aerosol extinction coefficient data are produced by the LP processing team, LANCE: NASA near real-time data and imagery (NPP Ozone Science Team), doi:10.5067/suomi-npp/omps-limb/l2-dailyaero/data22, [https://ozoneaq.gsfc.nasa.gov/media/docs/NMTO3-L3\\_Product\\_Descriptions.pdf](https://ozoneaq.gsfc.nasa.gov/media/docs/NMTO3-L3_Product_Descriptions.pdf), accessed 14-06-2017, 2017.
- Shipway, B. J. and Hill, A. A.: Diagnosis of systematic differences between multiple parametrizations of warm rain microphysics using a kinematic framework, *Quarterly Journal of the Royal Meteorological Society*, 138, 2196–2211, doi:10.1002/qj.1913, <http://dx.doi.org/10.1002/qj.1913>, 2012.
- 10 Smith, R. N. B.: A scheme for predicting layer clouds and their water content in a general circulation model, *Quarterly Journal of the Royal Meteorological Society*, 116, 435–460, doi:10.1002/qj.49711649210, <https://rmets.onlinelibrary.wiley.com/doi/abs/10.1002/qj.49711649210>, 1990.
- Sprenger, M. and Wernli, H.: The LAGRANTO Lagrangian analysis tool – version 2.0, *Geoscientific Model Development*, 8, 2569–2586, doi:10.5194/gmd-8-2569-2015, <https://www.geosci-model-dev.net/8/2569/2015/>, 2015.
- 15 Stier, P., Seinfeld, J. H., Kinne, S., and Boucher, O.: Aerosol absorption and radiative forcing, *Atmospheric Chemistry and Physics*, 7, 5237–5261, doi:10.5194/acp-7-5237-2007, <https://www.atmos-chem-phys.net/7/5237/2007/>, 2007.
- Taylor, K. E., Stouffer, R. J., and Meehl, G. A.: An Overview of CMIP5 and the Experiment Design, *Bulletin of the American Meteorological Society*, 93, 485–498, doi:10.1175/BAMS-D-11-00094.1, <https://doi.org/10.1175/BAMS-D-11-00094.1>, 2012.
- Torres, O., Jethva, H., and Bhartia, P. K.: Retrieval of Aerosol Optical Depth above Clouds from OMI Observations: Sensitivity Analysis and Case Studies, *Journal of the Atmospheric Sciences*, 69, 1037–1053, doi:10.1175/JAS-D-11-0130.1, <https://doi.org/10.1175/JAS-D-11-0130.1>, 2012.
- 20 Walters, D., Baran, A., Boutle, I., Brooks, M., Earnshaw, P., Edwards, J., Furtado, K., Hill, P., Lock, A., Manners, J., Morcrette, C., Mulcahy, J., Sanchez, C., Smith, C., Stratton, R., Tennant, W., Tomassini, L., Van Weverberg, K., Vosper, S., Willett, M., Browse, J., Bushell, A., Dalvi, M., Essery, R., Gedney, N., Hardiman, S., Johnson, B., Johnson, C., Jones, A., Mann, G., Milton, S., Rumbold, H., Sellar, A., Ujji, M., Whittall, M., Williams, K., and Zerroukat, M.: The Met Office Unified Model Global Atmosphere 7.0/7.1 and JULES Global Land 7.0 configurations, *Geoscientific Model Development Discussions*, 2017, 1–78, doi:10.5194/gmd-2017-291, <https://www.geosci-model-dev-discuss.net/gmd-2017-291/>, 2017a.
- 25 Walters, D., Boutle, I., Brooks, M., Melvin, T., Stratton, R., Vosper, S., Wells, H., Williams, K., Wood, N., Allen, T., Bushell, A., Copsey, D., Earnshaw, P., Edwards, J., Gross, M., Hardiman, S., Harris, C., Heming, J., Klingaman, N., Levine, R., Manners, J., Martin, G., Milton, S., Mittermaier, M., Morcrette, C., Riddick, T., Roberts, M., Sanchez, C., Selwood, P., Stirling, A., Smith, C., Suri, D., Tennant, W., Vidale, P. L., Wilkinson, J., Willett, M., Woolnough, S., and Xavier, P.: The Met Office Unified Model Global Atmosphere 6.0/6.1 and JULES Global Land 6.0/6.1 configurations, *Geoscientific Model Development*, 10, 1487–1520, doi:10.5194/gmd-10-1487-2017, <https://www.geosci-model-dev.net/10/1487/2017/>, 2017b.
- 30 Wang, S., Albrecht, B. A., and Minnis, P.: A Regional Simulation of Marine Boundary-Layer Clouds, *Journal of the Atmospheric Sciences*, 50, 4022–4043, doi:10.1175/1520-0469(1993)050<4022:ARSOMB>2.0.CO;2, [https://doi.org/10.1175/1520-0469\(1993\)050<4022:ARSOMB>2.0.CO;2](https://doi.org/10.1175/1520-0469(1993)050<4022:ARSOMB>2.0.CO;2), 1993.

- Wang, S., Wang, Q., and Feingold, G.: Turbulence, Condensation, and Liquid Water Transport in Numerically Simulated Nonprecipitating Stratocumulus Clouds, *Journal of the Atmospheric Sciences*, 60, 262–278, doi:10.1175/1520-0469(2003)060<0262:TCALWT>2.0.CO;2, [https://doi.org/10.1175/1520-0469\(2003\)060<0262:TCALWT>2.0.CO;2](https://doi.org/10.1175/1520-0469(2003)060<0262:TCALWT>2.0.CO;2), 2003.
- Wentz, F., Meissner, T., Gentemann, C., Hilburn, K., and Scott, J.: Remote Sensing Systems GCOM-W1 AMSR2 daily Environmental Suite on 0.25 deg grid, Version 7.2., Remote Sensing Systems, Santa Rosa, CA., available online at [www.remss.com/missions/amr](http://www.remss.com/missions/amr). Accessed 14-06-2017., 2014.
- West, R. E. L., Stier, P., Jones, A., Johnson, C. E., Mann, G. W., Bellouin, N., Partridge, D. G., and Kipling, Z.: The importance of vertical velocity variability for estimates of the indirect aerosol effects, *Atmospheric Chemistry and Physics*, 14, 6369–6393, doi:10.5194/acp-14-6369-2014, <https://www.atmos-chem-phys.net/14/6369/2014/>, 2014.
- 10 Wilcox, E. M.: Stratocumulus cloud thickening beneath layers of absorbing smoke aerosol, *Atmospheric Chemistry and Physics*, 10, 11 769–11 777, doi:10.5194/acp-10-11769-2010, <https://www.atmos-chem-phys.net/10/11769/2010/>, 2010.
- Wilcox, E. M.: Direct and semi-direct radiative forcing of smoke aerosols over clouds, *Atmospheric Chemistry and Physics*, 12, 139–149, doi:10.5194/acp-12-139-2012, <https://www.atmos-chem-phys.net/12/139/2012/>, 2012.
- Wilson, D. R. and Ballard, S. P.: A microphysically based precipitation scheme for the UK meteorological office unified model, *Quarterly Journal of the Royal Meteorological Society*, 125, 1607–1636, doi:10.1002/qj.49712555707, <http://dx.doi.org/10.1002/qj.49712555707>, 1999.
- 15 Wilson, D. R., Bushell, A. C., Kerr-Munslow, A. M., Price, J. D., and Morcrette, C. J.: PC2: A prognostic cloud fraction and condensation scheme. I: Scheme description, *Quarterly Journal of the Royal Meteorological Society*, 134, 2093–2107, doi:10.1002/qj.333, <http://dx.doi.org/10.1002/qj.333>, 2008.
- 20 Wood, N., Staniforth, A., White, A., Allen, T., Diamantakis, M., Gross, M., Melvin, T., Smith, C., Vosper, S., Zerroukat, M., and Thuburn, J.: An inherently mass-conserving semi-implicit semi-Lagrangian discretization of the deep-atmosphere global non-hydrostatic equations, *Quarterly Journal of the Royal Meteorological Society*, 140, 1505–1520, doi:10.1002/qj.2235, <http://dx.doi.org/10.1002/qj.2235>, 2014.
- Wood, R.: Stratocumulus Clouds, *Monthly Weather Review*, 140, 2373–2423, doi:10.1175/MWR-D-11-00121.1, <https://doi.org/10.1175/MWR-D-11-00121.1>, 2012.
- 25 Wyant, M. C., Bretherton, C. S., Rand, H. A., and Stevens, D. E.: Numerical Simulations and a Conceptual Model of the Stratocumulus to Trade Cumulus Transition, *Journal of the Atmospheric Sciences*, 54, 168–192, doi:10.1175/1520-0469(1997)054<0168:NSAACM>2.0.CO;2, [https://doi.org/10.1175/1520-0469\(1997\)054<0168:NSAACM>2.0.CO;2](https://doi.org/10.1175/1520-0469(1997)054<0168:NSAACM>2.0.CO;2), 1997.
- Yamaguchi, T., Feingold, G., Kazil, J., and McComiskey, A.: Stratocumulus to cumulus transition in the presence of elevated smoke layers, *Geophysical Research Letters*, 42, 10,478–10,485, doi:10.1002/2015GL066544, <http://dx.doi.org/10.1002/2015GL066544>, 30 2015GL066544, 2015.
- Yamaguchi, T., Feingold, G., and Kazil, J.: Stratocumulus to Cumulus Transition by Drizzle, *Journal of Advances in Modeling Earth Systems*, 9, 2333–2349, doi:10.1002/2017MS001104, <http://dx.doi.org/10.1002/2017MS001104>, 2017.
- Zhang, K., Wan, H., Liu, X., Ghan, S. J., Kooperman, G. J., Ma, P.-L., Rasch, P. J., Neubauer, D., and Lohmann, U.: Technical Note: On the use of nudging for aerosol–climate model intercomparison studies, *Atmospheric Chemistry and Physics*, 14, 8631–8645, doi:10.5194/acp-14-8631-2014, <https://www.atmos-chem-phys.net/14/8631/2014/>, 2014.
- 35 Zhang, Z., Ackerman, A. S., Feingold, G., Platnick, S., Pincus, R., and Xue, H.: Effects of cloud horizontal inhomogeneity and drizzle on remote sensing of cloud droplet effective radius: Case studies based on large-eddy simulations, *Journal of Geophysical Research: Atmospheres*, 117, n/a–n/a, doi:10.1029/2012JD017655, <http://dx.doi.org/10.1029/2012JD017655>, d19208, 2012.

Zhou, X., Ackerman, A. S., Fridlind, A. M., Wood, R., and Kollias, P.: Impacts of solar-absorbing aerosol layers on the transition of stratocumulus to trade cumulus clouds, *Atmospheric Chemistry and Physics*, 17, 12725–12742, doi:10.5194/acp-17-12725-2017, <https://www.atmos-chem-phys.net/17/12725/2017/>, 2017.

5 Zuidema, P., Redemann, J., Haywood, J., Wood, R., Piketh, S., Hipondoka, M., and Formenti, P.: Smoke and Clouds above the Southeast Atlantic: Upcoming Field Campaigns Probe Absorbing Aerosol's Impact on Climate, *Bulletin of the American Meteorological Society*, 97, 1131–1135, doi:10.1175/BAMS-D-15-00082.1, <https://doi.org/10.1175/BAMS-D-15-00082.1>, 2016.

Zuidema, P., Sedlacek, A. J., Flynn, C., Springston, S., Delgadillo, R., Zhang, J., Aiken, A. C., Koontz, A., and Muradyan, P.: The Ascension Island Boundary Layer in the Remote Southeast Atlantic is Often Smoky, *Geophysical Research Letters*, 45, 4456–4465, doi:10.1002/2017GL076926, <https://agupubs.onlinelibrary.wiley.com/doi/abs/10.1002/2017GL076926>, 2018.

## Supplementary materials for: Large simulated radiative effects of smoke in the south-east Atlantic

Hamish Gordon<sup>1</sup>, Paul R. Field<sup>1,2</sup>, Steven J. Abel<sup>2</sup>, Ben T. Johnson<sup>2</sup>, Mohit Dalvi<sup>2</sup>, Daniel P. Grosvenor<sup>1</sup>, Adrian A. Hill<sup>2</sup>, Annette K. Miltenberger<sup>1</sup>, Masaru Yoshioka<sup>1</sup>, and Ken S. Carslaw<sup>1</sup>

1. School of Earth and Environment, University of Leeds, LS2 9JT, United Kingdom

5 2. Met Office, Fitzroy Road, Exeter, EX1 3PB, United Kingdom

### Supplementary 1: satellite intercomparison

The LWP from SEVIRI is calculated using the formula

$$\frac{2}{3} \tau_{vis} r_e \rho_l \quad (S1)$$

where the cloud optical thickness  $\tau_{vis}$  is retrieved at  $1.6 \mu\text{m}$ ;  $r_e$  is the effective radius, also retrieved at  $1.6 \mu\text{m}$ , and  $\rho_l$  is the density of liquid water (Roebeling et al., 2008a). For MODIS the same equation is used except for multiplication by a factor  $2/Q_e$ , where  $Q_e \sim 2$  is the extinction efficiency (King et al., 2013).

The cloud droplet number  $N_d$  is calculated from MODIS data using the equation

$$N_d = \frac{\sqrt{5}}{2k\pi} \frac{(f * C_w * \tau_{vis})^{1/2}}{Q \rho_l r_e^{5/2}} \quad (S2)$$

where  $k = 0.8$ ,  $Q = 2$ ,  $f = 0.7$ , and  $C_w$  is the rate of increase of liquid water content with height (Boers et al., 2006; Grosvenor and Wood, 2014),

$$C_w = \frac{C_p}{L_v} (\Gamma_d - \Gamma_m) \rho_a \quad (S3)$$

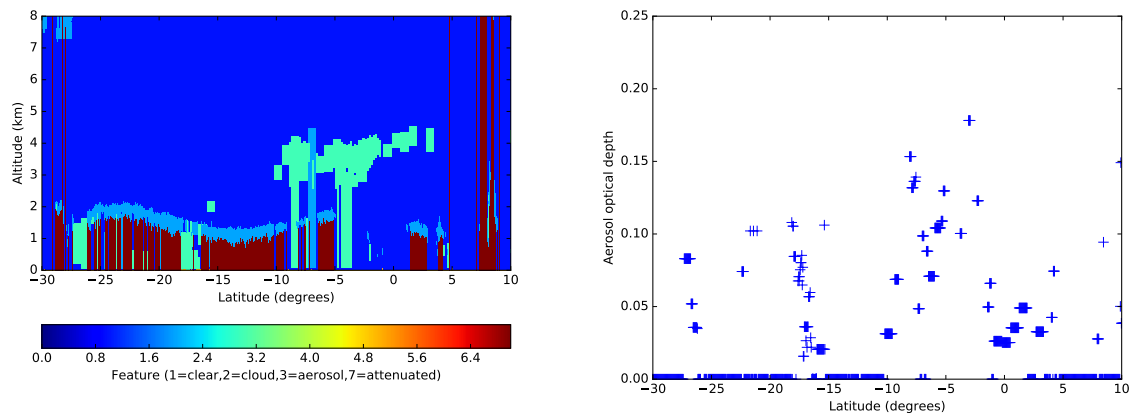
. In this last equation,  $\Gamma_d$  and  $\Gamma_m$  are the dry and moist adiabatic lapse rates,  $C_p$  the heat capacity of dry air,  $\rho_a$  its density, and  $L_v$  the latent heat of condensation of water. The SEVIRI calculation is similar (Roebeling et al., 2008b).

**Table S1.** Comparison of optical retrievals: normalized mean bias (b) and Pearson correlation coefficient (r) of SEVIRI relative to MODIS AQUA. The data are all regridded to the coarser AMSR resolution, to avoid artefacts from slight mis-alignment of the model grids.

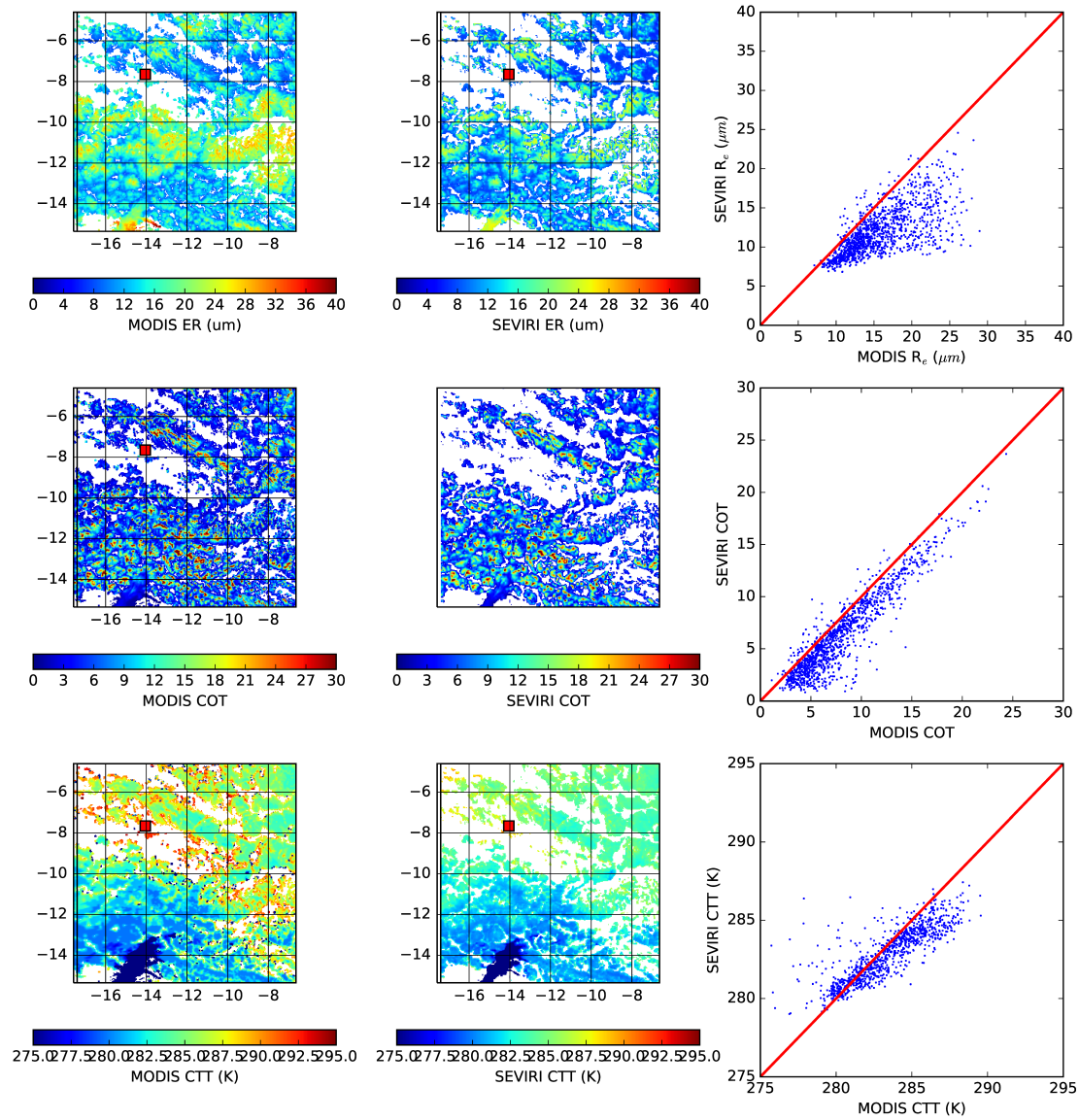
Day	R <sub>e</sub> b	R <sub>e</sub> r	COT b	COT r	N <sub>d</sub> b	N <sub>d</sub> r
1	-0.20	0.53	-0.29	0.59	-0.34	0.64
2	-0.24	0.68	-0.20	0.93	-0.28	0.63
3	-0.22	0.71	-0.18	0.82	-0.31	0.83
4	-0.40	0.71	-0.34	0.90	+0.08	0.77
5	-0.34	0.64	-0.16	0.79	+0.41	0.53
6	-0.37	0.83	-0.19	0.93	+0.33	0.54
7	-0.25	0.59	-0.15	0.95	-0.07	0.55
8	-0.12	0.24	+0.01	0.66	-0.46	0.35
9	-0.13	0.60	-0.29	0.86	-0.47	0.71
10	-0.06	0.82	-0.28	0.68	-0.47	0.77

**Table S2.** Comparison of liquid water path retrievals: normalized mean bias (b) and Pearson correlation coefficient (r) of MODIS AQUA and SEVIRI relative to AMSR, on the AMSR resolution.

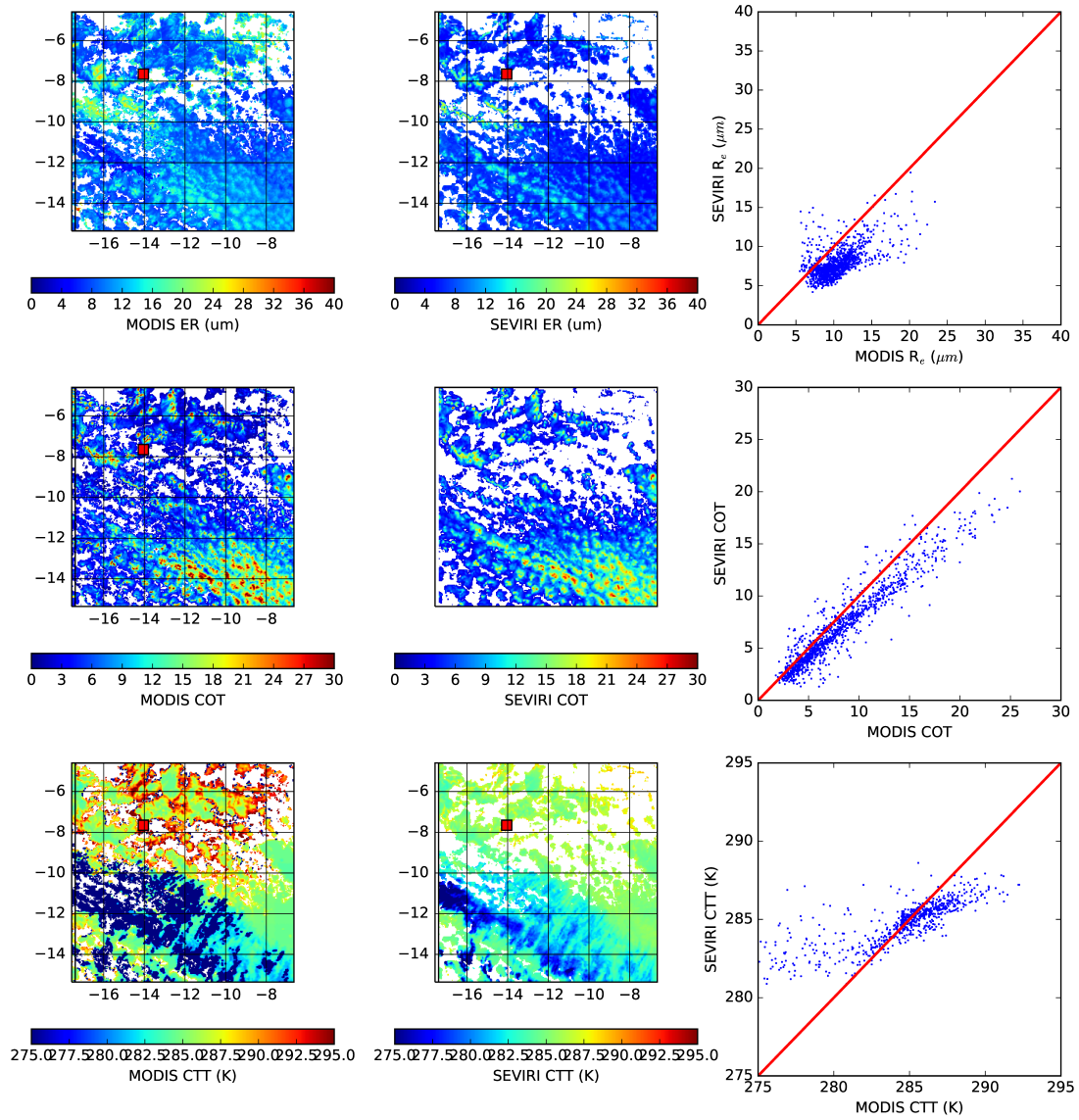
Day	AQUA b	AQUA r	SEV b	SEV r
1	-0.23	0.48	-0.37	0.16
2	-0.12	0.69	-0.32	0.63
3	-0.31	0.64	-0.41	0.58
4	-0.11	0.61	-0.46	0.48
5	-0.15	0.49	-0.42	0.43
6	-0.02	0.77	-0.48	0.74
7	-0.14	0.65	-0.37	0.65
8	-0.23	0.49	-0.21	0.38
9	-0.15	0.67	-0.21	0.61
10	-0.12	0.32	-0.11	0.47



**Figure S1.** CALIOP vertical feature mask and aerosol optical depth (filtered such that the AOD uncertainty is below 0.05) for 7 August (the left plot is identical to the bottom subplot of Figure 5).

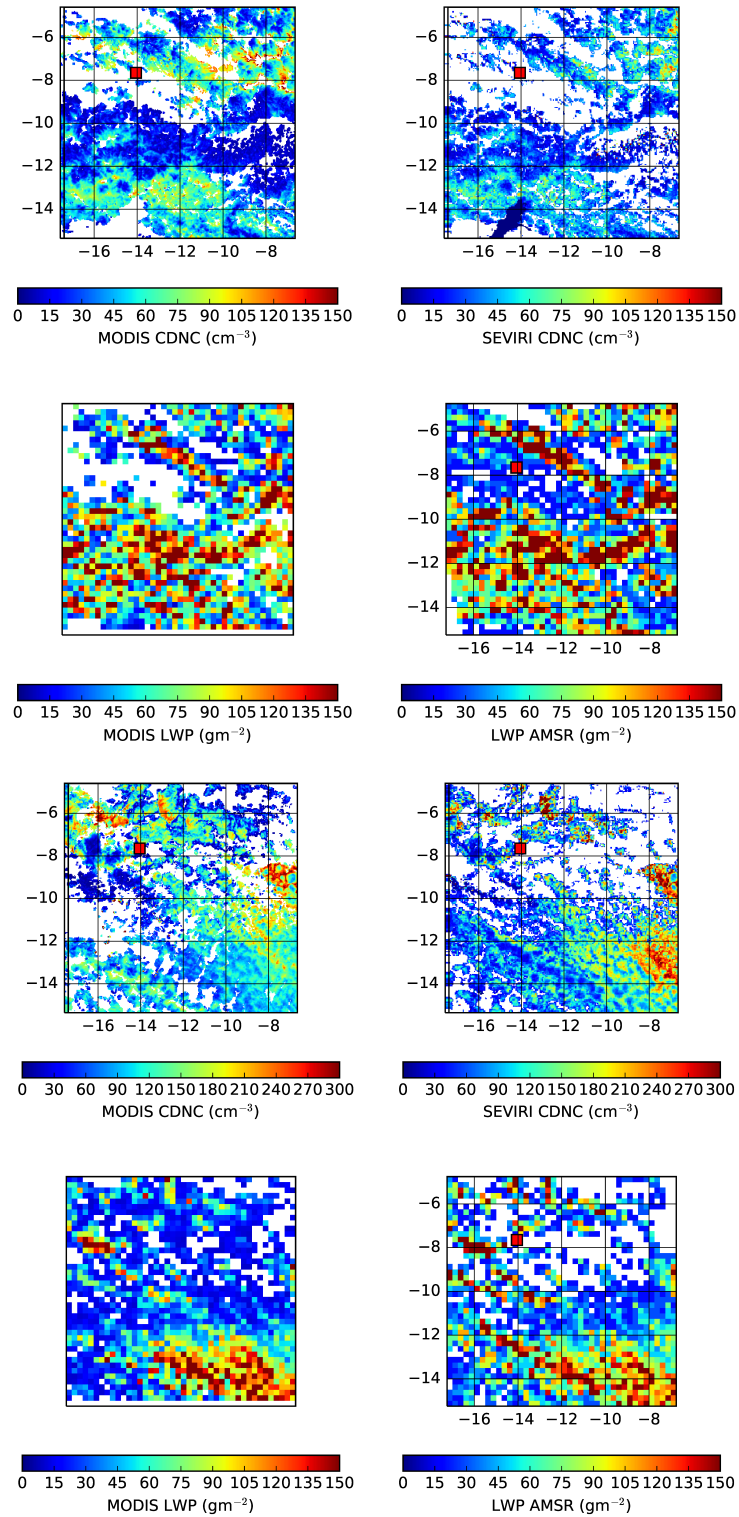


**Figure S2.** MODIS (left) and SEVIRI (centre) cloud droplet effective radius (at  $3.7\ \mu\text{m}$ , cloud optical thickness, and cloud top temperature, on 2nd August 2016, and the correlation of coarse-grained values (in AMSR  $14\ \text{km}$  grid boxes), right. Liquid water paths below  $10\ \text{g m}^{-2}$  are screened out, for clarity. Summary statistics for all ten days of the study period are given in Table S1 below.



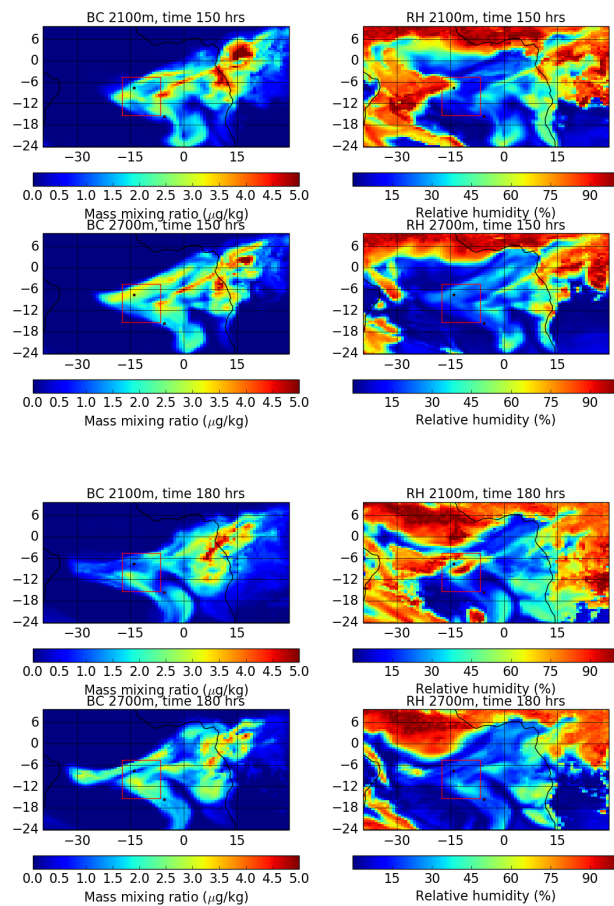
**Figure S3.** MODIS (left) and SEVIRI (centre) cloud droplet effective radius, cloud optical thickness, and cloud top temperature, on 7th August 2016, and the correlation of coarse-grained values (in AMSR 14km grid boxes), right. Liquid water paths below  $10\text{gm}^{-2}$  are screened out, for clarity.



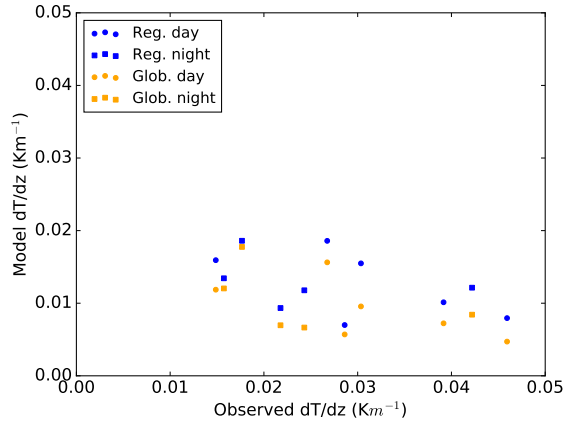


**Figure S4.** MODIS cloud droplet number concentration and liquid water path (left) on 2nd and 7th August 2016, and, right, SEVIRI cloud droplet number concentration and AMSR liquid water path.

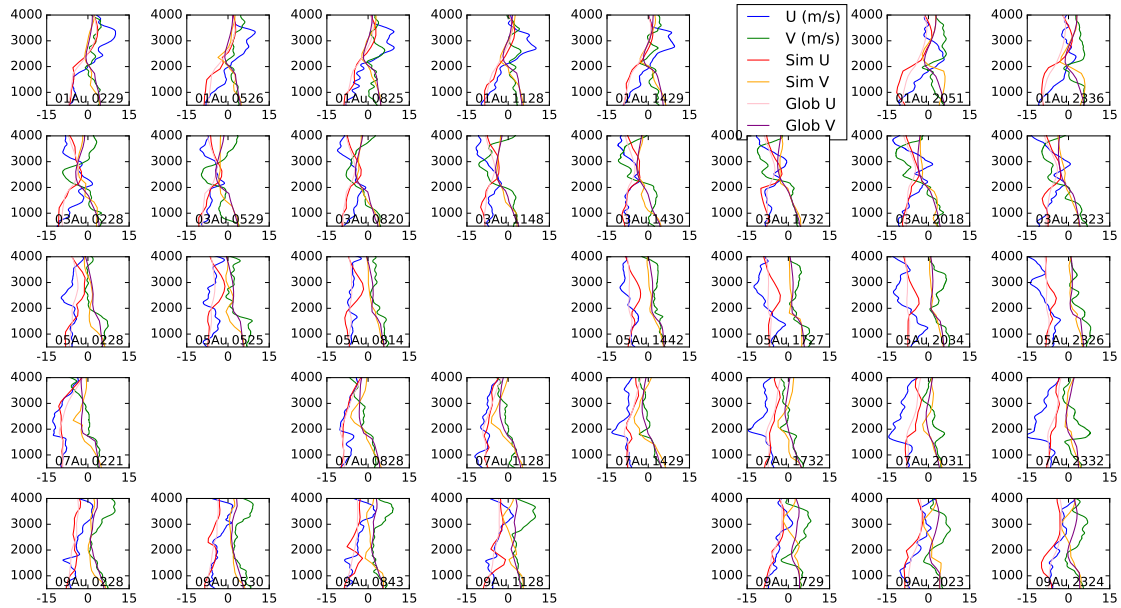
## Supplementary 2: additional simulation output



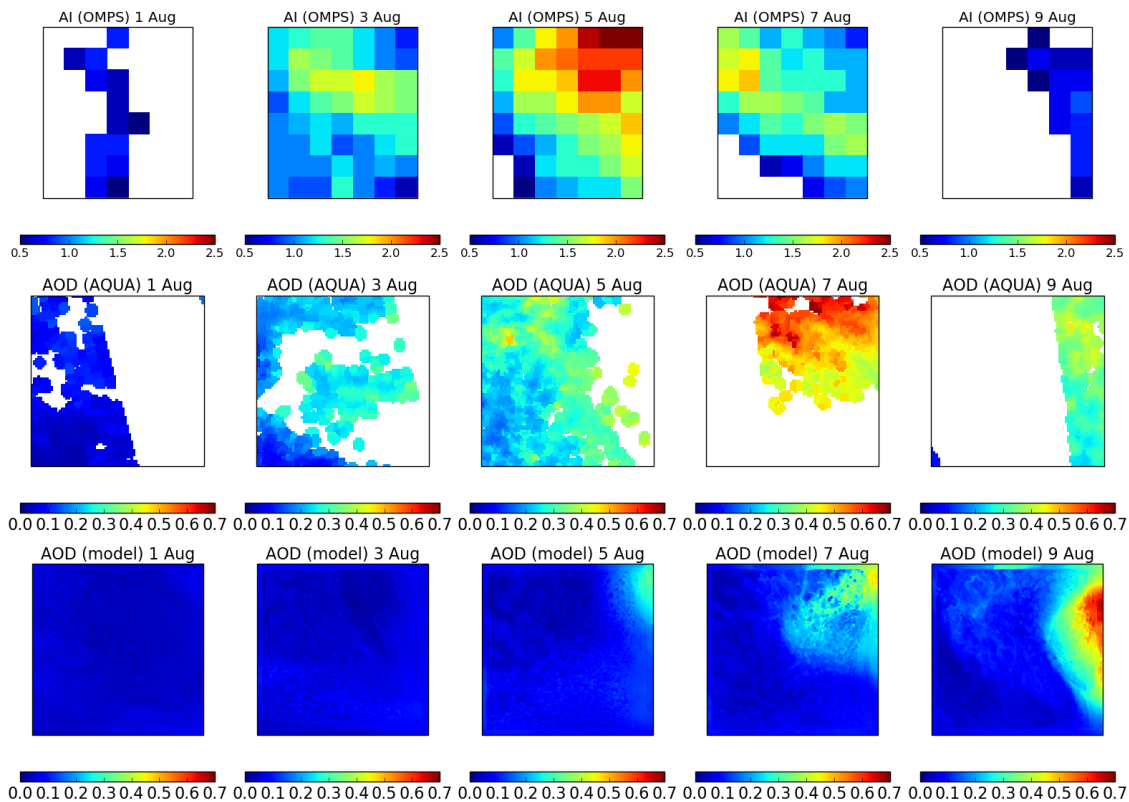
**Figure S5.** Black carbon mass loading (left) and relative humidity (right) at the specified altitudes, 150 (top) and 180 (bottom) hours into the simulation.



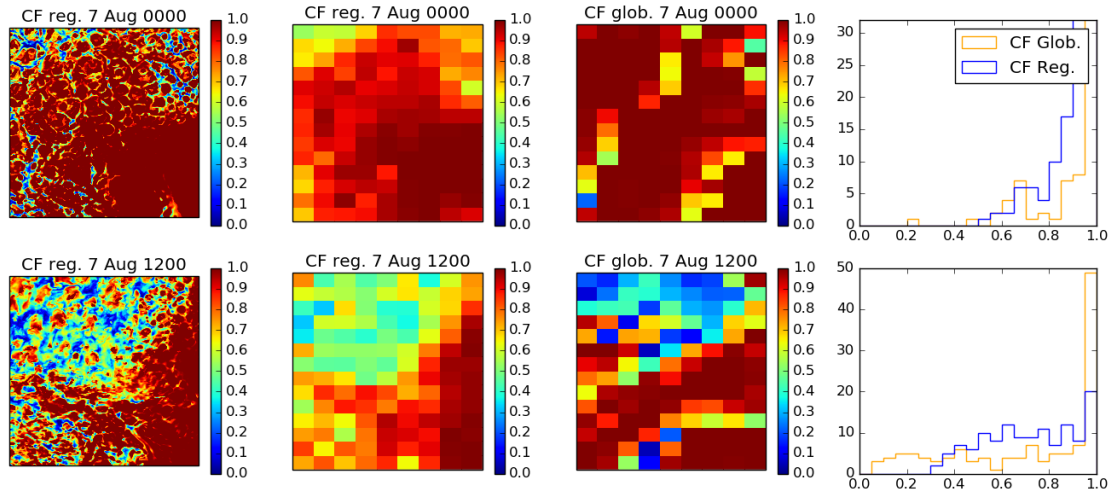
**Figure S6.** Temperature gradient across the inversion at Ascension Island in the radiosonde observations from the ARM site (D. Holdridge, J. Kyrrouac and R. Coulter, 2016b), plotted against the values from the model. The difference between the maximum and minimum temperatures around the inversion is divided by the difference in height between these extrema.



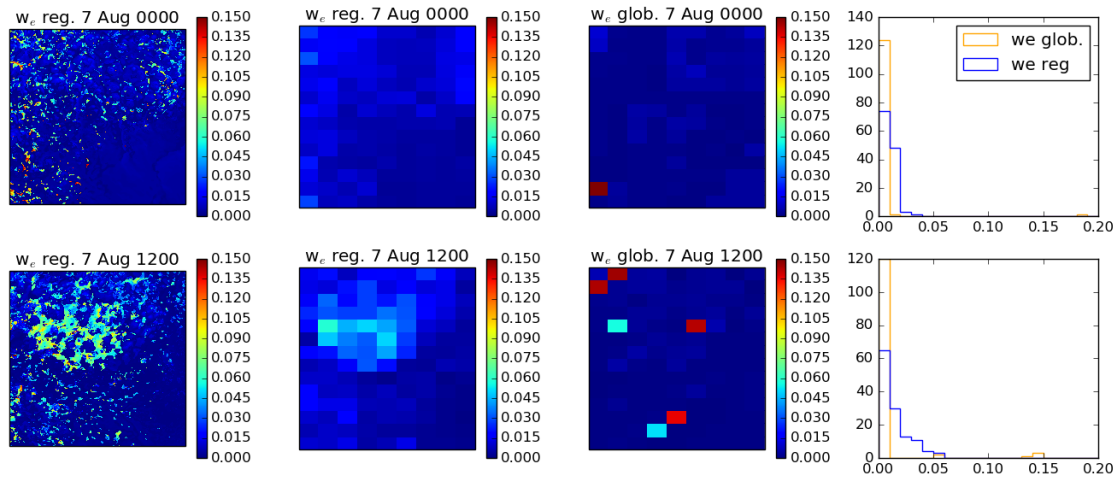
**Figure S7.** Observed and modelled wind speed profiles at Ascension Island, from soundings on 1,3,5,7,9 August (D. Holdridge, J. Kyrrouac and R. Coulter, 2016b). Wind speed is plotted on the  $x$  axis and altitude in metres on the  $y$  axis of each sub-plot. The soundings are compared to the regional simulation, marked as 'Sim U' and 'Sim V'.



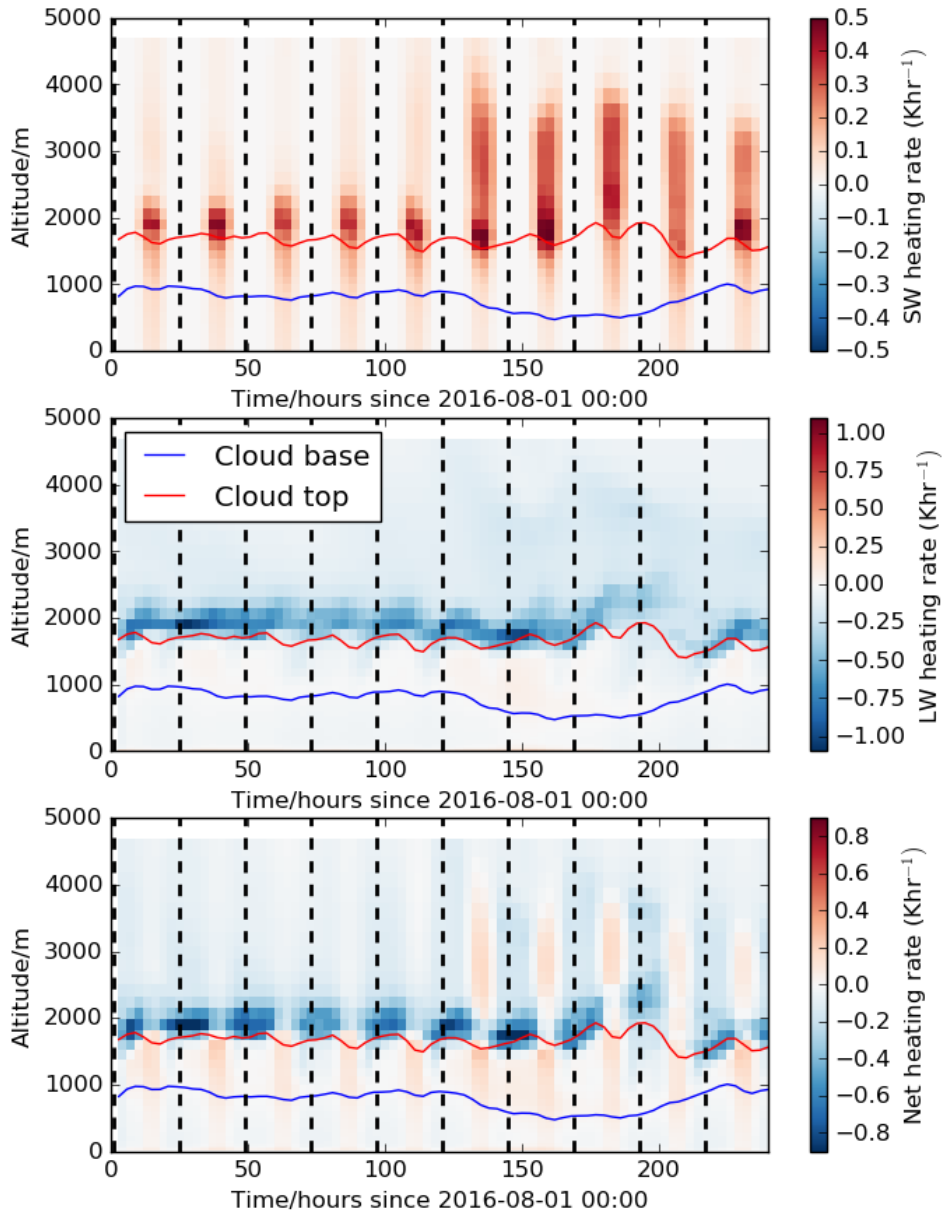
**Figure S8.** Aerosol index (top) from OMPS, aerosol optical depth (AOD) from MODIS AQUA (middle) and AOD from the regional model (bottom) on 1,3,5,7,9 August. The MODIS AOD is filtered to exclude regions above cloud, before being regridded to the model grid. The regridding algorithm excludes cloudy regions, white on the plots, where valid pixels are greater than  $0.25^\circ$  (28 km) apart (we assume that AOD is slowly varying on lengthscales smaller than this, so a retrieval will be representative of neighbouring areas where cloud is beneath the aerosol). The aerosol index is only retrieved from OMPS if it is greater than around 0.5.



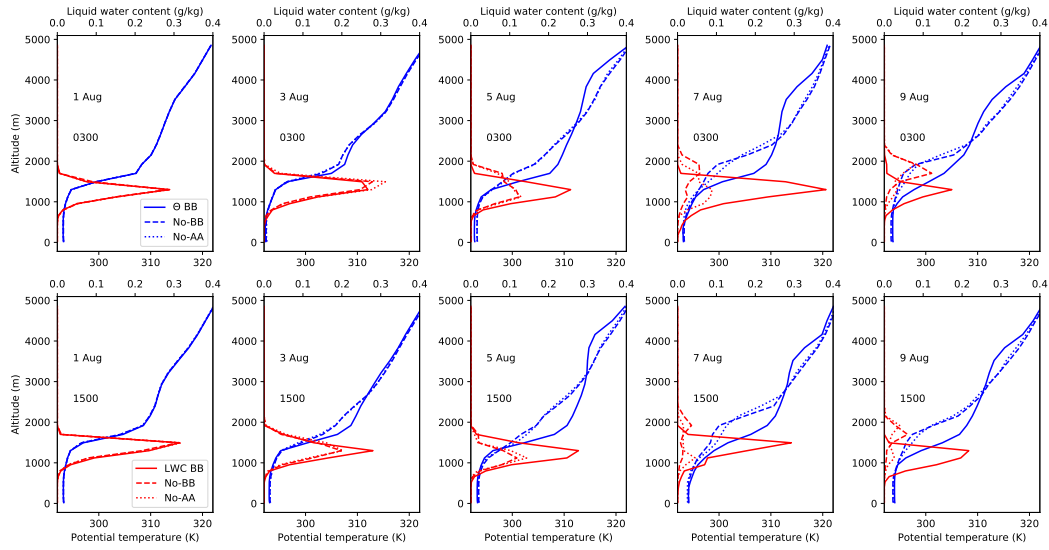
**Figure S9.** Cloud fractions from the Unified Model cloud schemes at 0130 UTC (top) and 1330 UTC (bottom) on 7 August. The times of the AQUA overpasses on 2 August (top) and 7 August (bottom). The left plot shows the regional model, then the regional model regridded onto the global grid, then the global model, and finally the histogram of cloud fractions in model grid boxes. In all plots the maximum cloud fraction in an atmospheric column is shown.



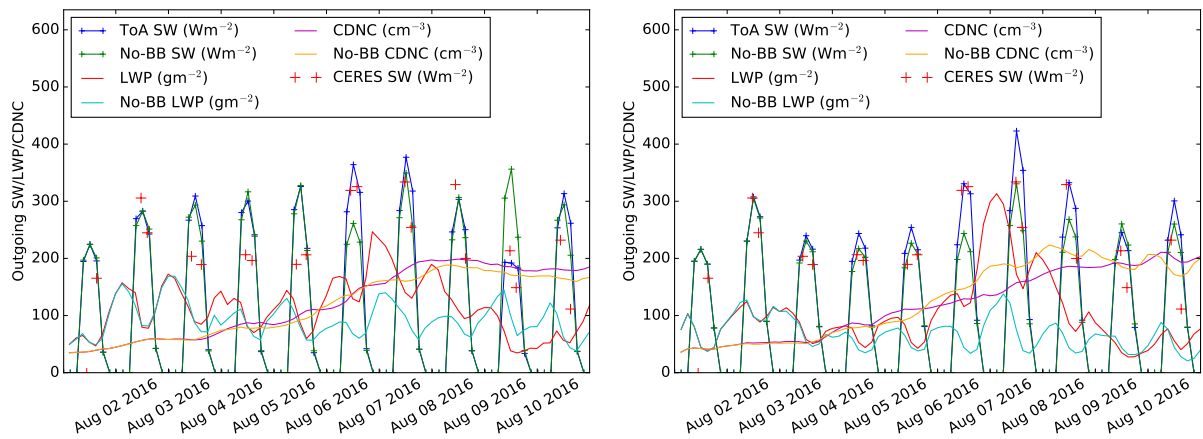
**Figure S10.** Entrainment rates at the top of the boundary layer at 0130 UTC (top) and 1330 UTC (bottom) on 7 August. The left plot shows the regional model, then the regional model regridded onto the global grid, then the global model, and finally the histogram of entrainment rates in model grid boxes.



**Figure S11.** Shortwave, longwave and net domain mean heating rates during the ten-day model simulation in the regional model. The dotted vertical lines indicate midnight, local time. Cloud base and cloud top are also marked.

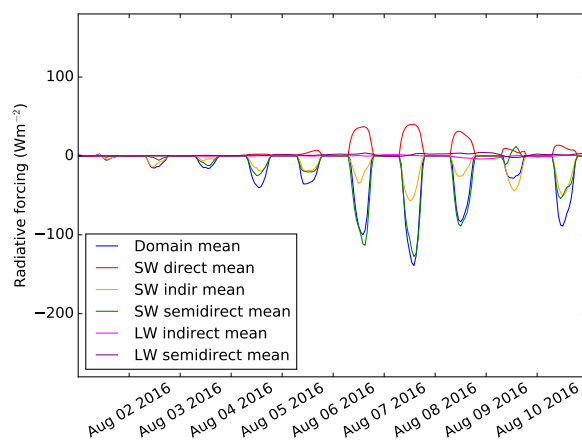


**Figure S12.** Domain-mean vertical profiles of potential temperature  $\Theta$  and liquid water content (LWC) with and without biomass burning aerosol on odd numbered days at the times of day marked, from the global model.

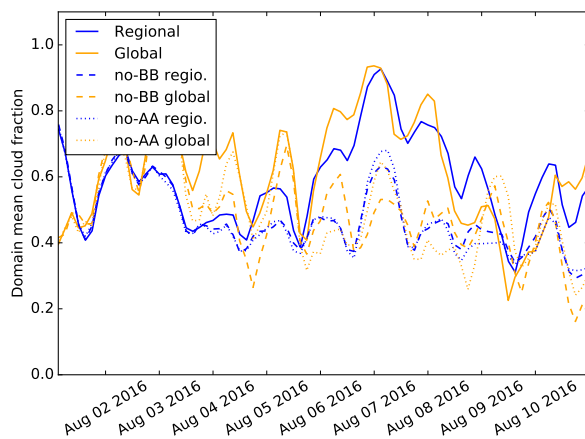


**Figure S13.** Outgoing shortwave flux at top of atmosphere for the baseline model and a model version with aerosol absorption set to zero, for the regional domain in the global model CDNC on the left and the regional model on the right. CERES domain-mean observations are shown in the same figure in red crosses (some of these may be biased due to the gaps between swaths). The changes to CDNC and liquid water path across the 10 days are also shown.

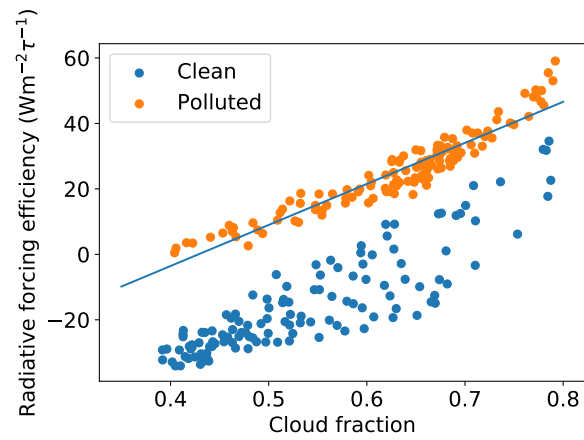




**Figure S14.** Decomposition of the short-wave and long-wave radiative effects of biomass burning aerosol using simulations with the micro-physical parameterisation of Kogan (2013) instead of the default, from Khairoutdinov and Kogan (2000).



**Figure S15.** Cloud fraction with and without biomass burning emissions in the regional model, and in the same domain in the global model. The simulations without aerosol absorption are also shown.



**Figure S16.** Radiative forcing efficiency (Chand et al., 2009), defined as the direct effect divided by the aerosol optical depth, as a function of cloud fraction  $f_c$  in the clean and polluted periods of our regional model simulation. The linear fit shown for the polluted period has equation  $125.4f_c - 53.7$ .