

Supplement materials to:

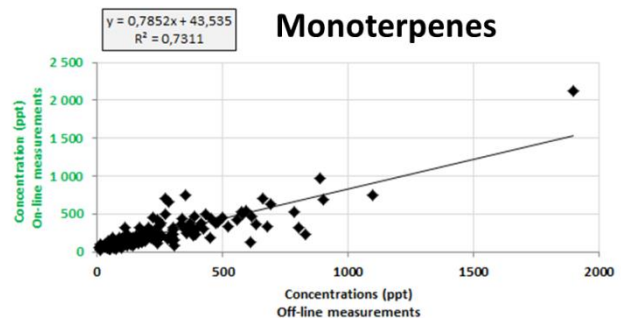
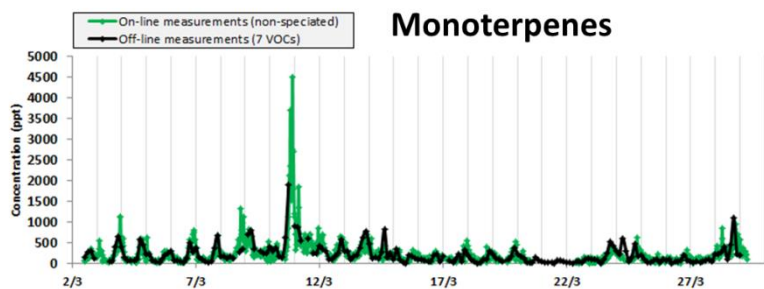
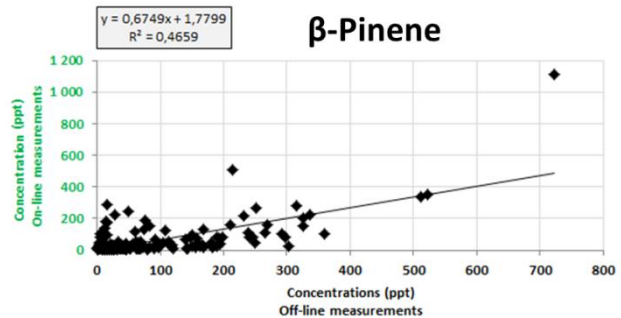
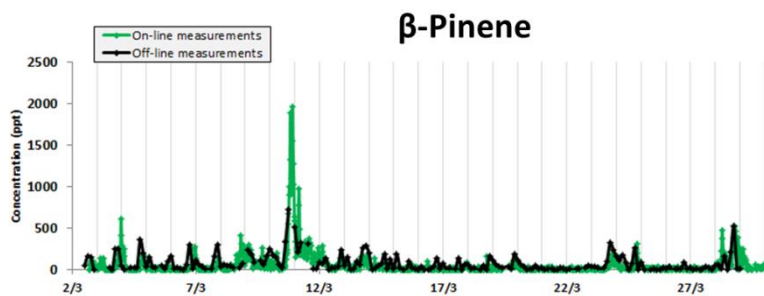
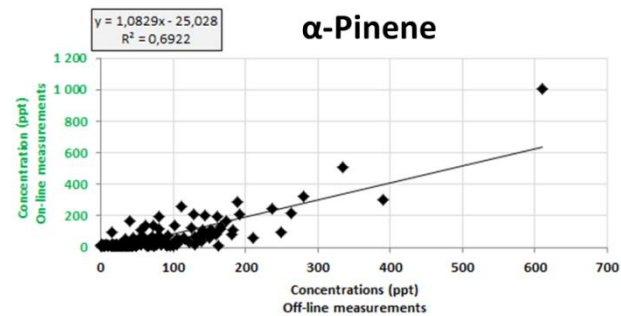
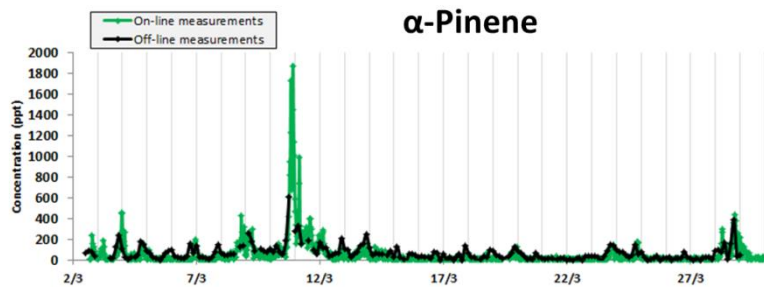
## Driving parameters of biogenic volatile organic compounds and consequences on new particle formation observed at an Eastern Mediterranean background site

Cécile Debevec<sup>1</sup>, Stéphane Sauvage<sup>1</sup>, Valérie Gros<sup>2</sup>, Karine Sellegri<sup>3</sup>, Jean Sciare<sup>4,2</sup>, Michael Pikridas<sup>4</sup>, Iasonas Stavroulas<sup>4</sup>, Thierry Leonardis<sup>1</sup>, Vincent Gaudion<sup>1</sup>, Laurence Depelchin<sup>1</sup>, Isabelle Fronval<sup>1</sup>, Roland Sarda-Esteve<sup>2</sup>, Dominique Baisnée<sup>2</sup>, Bernard Bonsang<sup>2</sup>, Chrysanthos Savvides<sup>5</sup>, Mihalis Vrekoussis<sup>4,6</sup>, Nadine Locoge<sup>1</sup>.

- 10 <sup>1</sup>Lille Douai, Univ. Lille, SAGE - Département Sciences de l'Atmosphère et Génie de l'Environnement, 59000 Lille, France  
<sup>2</sup>Equipe CAE, Laboratoire des Sciences du Climat et de l'Environnement (LSCE), Unité Mixte CEA-CNRS-UVSQ, Gif sur Yvette, 91190, France  
<sup>3</sup>Laboratoire de Météorologie Physique (LaMP), CNRS UMR 6016, Université Blaise Pascal, Aubière, 60026, France  
<sup>4</sup>Energy, Environment and Water Research Centre, the Cyprus Institute (CyI), Nicosia, 2121, Cyprus  
15 <sup>5</sup>Department of Labour Inspection (DLI), Ministry of Labour, Welfare and Social Insurance, Nicosia, 1493, Cyprus  
<sup>6</sup>Institute of Environmental Physics (IUP), University of Bremen, Bremen, 28359, Germany

*Correspondence to:* Stéphane Sauvage ([stephane.sauvage@imt-lille-douai.fr](mailto:stephane.sauvage@imt-lille-douai.fr)) – Cecile Debevec ([cecile.debevec@imt-lille-douai.fr](mailto:cecile.debevec@imt-lille-douai.fr))

SI-1 Agreement between on-line and off-line measurements of  $\alpha$ -pinene,  $\beta$ -pinene and the sum of monoterpenes



SI-2 Agreement between on-line and off-line measurements of acetaldehyde, acetone and MEK

