

Supplement of

Concentration, temporal variation and sources of black carbon in the Mount Everest region retrieved by real-time observation and simulation

Xintong Chen ^{1,4}, Shichang Kang ^{1,2,4}, Zhiyuan Cong^{2,3}, Junhua Yang ¹, Yaoming Ma ³

5 ¹State Key Laboratory of Cryospheric Science, Northwest Institute of Eco-Environment and Resources, Chinese Academy of Sciences, Lanzhou 730000, China

²CAS Center for Excellence in Tibetan Plateau Earth Sciences, Chinese Academy of Sciences, Beijing, 100101, China

³Key Laboratory of Tibetan Environment Changes and Land Surface Processes, Institute of Tibetan Plateau Research, Chinese Academy of Sciences, Beijing 100101, China

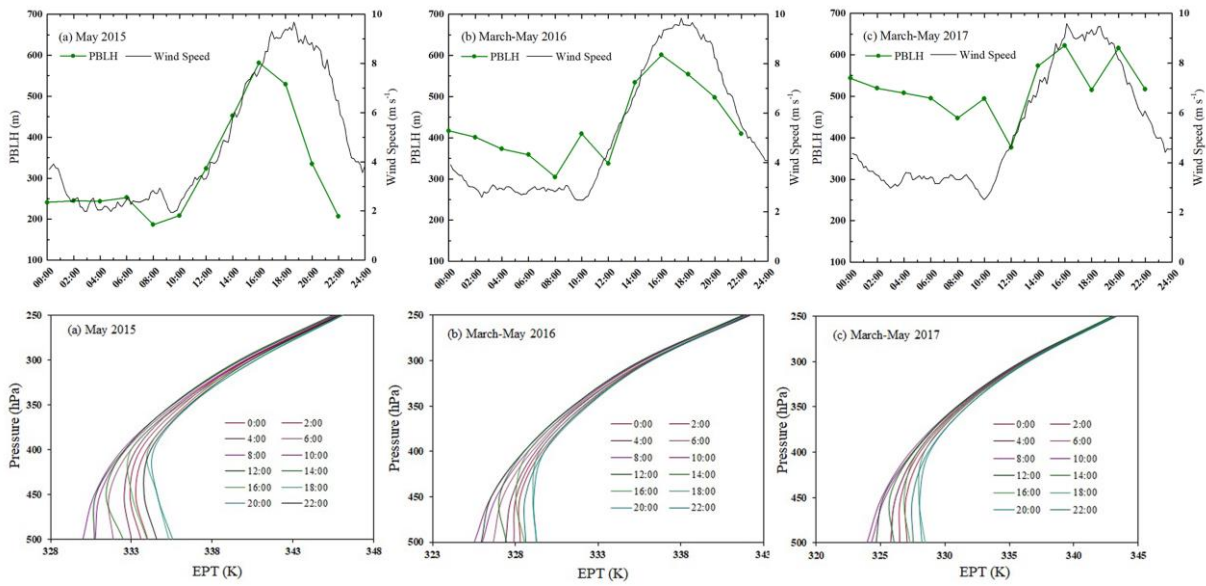
10 ⁴University of Chinese Academy of Sciences, Beijing 100049, China.

Correspondence to: Shichang Kang (shichang.kang@lzb.ac.cn)

Figure Captions

Figure S1. Diurnal variation of planetary boundary layer height (the first row) and the vertical profile of distribution of equivalent potential temperature (the second row) at QOMS in the pre-monsoon season.

15 Figure S2. Vertical profile of mean wind at QOMS and its vicinities in the daytime and at night: event B (the first row), event C (the second row) and event D (the last row).



20 **Figure S1. Diurnal variation of planetary boundary layer height (the first row) and the vertical profile of distribution of equivalent potential temperature (the second row) at QOMS in the pre-monsoon season.**

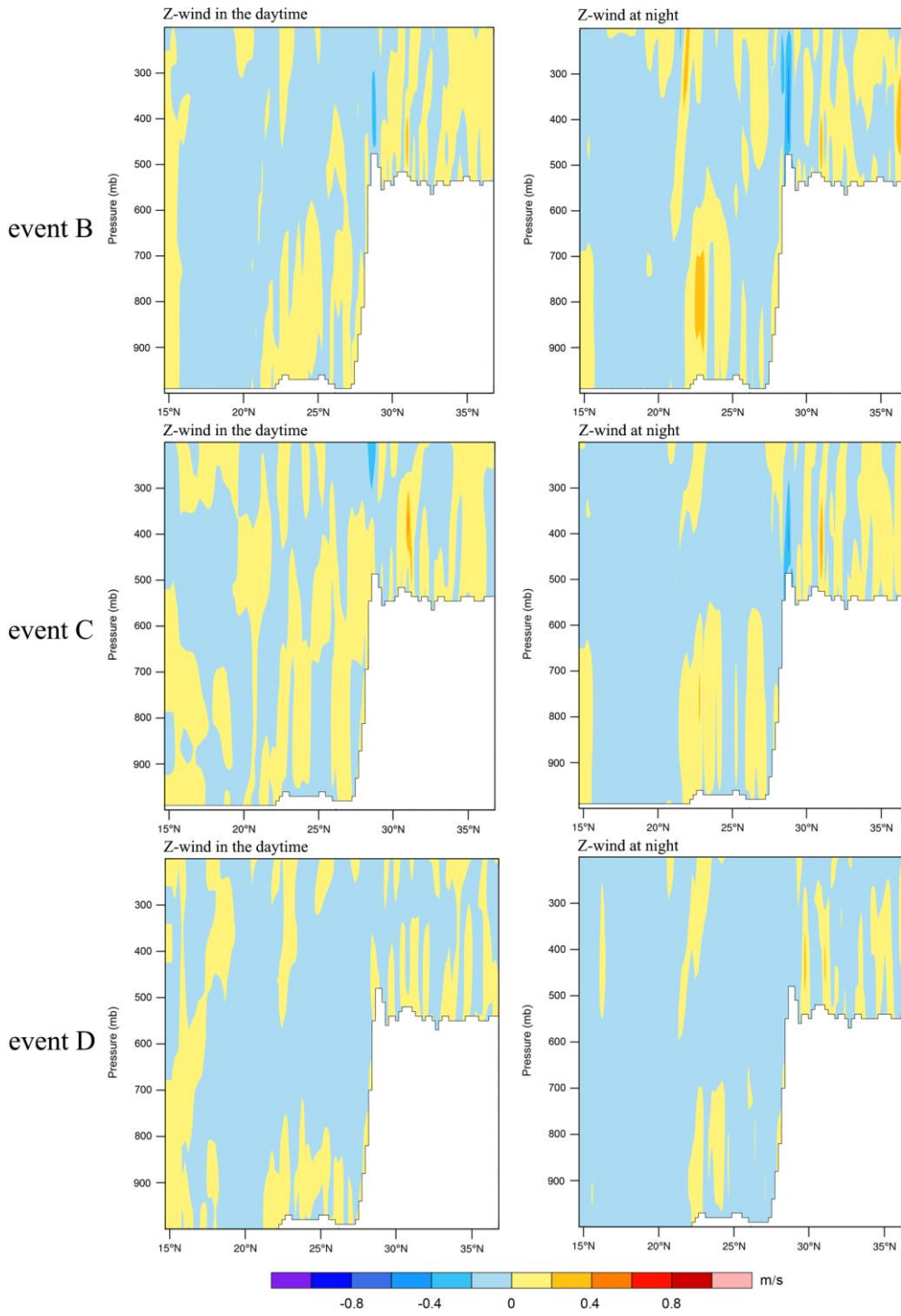


Figure S2. Vertical profile of mean wind at QOMS and its vicinities in the daytime and at night: event B (the first row), event C (the second row) and event D (the last row).