

Concentration, temporal variation and sources of black carbon in the Mount Everest region retrieved by real-time observation and simulation

Xintong Chen^{1,4}, Shichang Kang^{1,2,4}, Zhiyuan Cong^{2,3}, Junhua Yang¹, Yaoming Ma³

¹State Key Laboratory of Cryospheric Science, Northwest Institute of Eco-Environment and Resources, Chinese Academy of Sciences, Lanzhou 730000, China

²CAS Center for Excellence in Tibetan Plateau Earth Sciences, Chinese Academy of Sciences, Beijing 100101, China

³Key Laboratory of Tibetan Environment Changes and Land Surface Processes, Institute of Tibetan Plateau Research, Chinese Academy of Sciences, Beijing 100101, China

⁴University of Chinese Academy of Sciences, Beijing 100049, China

Correspondence to: Shichang Kang (shichang.kang@lzb.ac.cn)

Abstract. Based on the high-resolution measurement of black carbon (BC) at Qomolangma (Mt. Everest) Station (QOMS, 28.36°N, 86.95°E, 4276 m a.s.l.) from 15 May 2015 to 31 May 2017, we investigated the seasonal and diurnal variations in BC and its potential source regions. Monthly and daily mean BC concentrations reached the highest values in the pre-monsoon season, which were at least one magnitude higher than the lowest values in the monsoon season. For the diurnal variation, the BC concentrations remained significantly high from midnight to noon in the pre-monsoon season. Meanwhile, the westerly winds prevailed during this period, implying the potential for pollutants to be transported across the Himalayas from long-distance sources to QOMS along the valley. In the monsoon season, the BC concentrations remained low but peaked in the morning and in the afternoon, which might be caused by local emissions from cooking. By analyzing the simulation results from the backward trajectories of air masses and the fire spot distribution from the MODIS data, we found that the seasonal cycle of BC was significantly influenced by the atmospheric circulation and combustion intensity in the Mt. Everest region. The transport mechanisms of BC were further revealed using a WRF-Chem simulation during severe pollution episodes. For the pollution event in the monsoon season, BC aerosols in South Asia were uplifted and transported to the Mt. Everest region by the southerly winds in the upper atmosphere. However, for the events in the pre-monsoon season, BC from northern India was transported and concentrated on the southern slope of the Himalayas by the northwesterly winds in the lower atmosphere and then transported across the Himalayas by the mountain-valley wind. Relatively less BC from northwestern India and Central Asia was transported to the Mt. Everest region by the westerly winds in the upper atmosphere.

1 Introduction

Black Carbon (BC), mainly from the incomplete combustion of fossil fuels or biomass, has drawn much attention due to its influences on the environment and human health (Bond, 2004; Ramanathan et al., 2005; Anenberg et al., 2012) and is seen as an important factor that may lead to global warming, in addition to greenhouse gases (Hansen et al., 2000; Jacobson, 2002; Bond et al., 2013; Ramanathan and Carmichael, 2008). BC can substantially absorb solar radiation and causes atmospheric

32 heating (Jacobson, 2001; Ramanathan et al., 2005; Ji et al., 2015). Moreover, BC can be suspended as fine particles in the
33 atmosphere for approximately one week, be transported far away from its emission sources, and then be removed by dry and
34 wet deposition (Oshima et al., 2012; Cooke et al., 2002; Jurado et al., 2008). When BC is deposited on snow and ice, it can
35 significantly reduce surface albedo (Flanner et al., 2007; He et al., 2017) and accelerate glacier and snow cover melting,
36 causing an impact on the regional climate, hydrology, and water resources (Li et al., 2018; Ming et al., 2008; Ramanathan and
37 Carmichael, 2008).

38 The Tibetan Plateau (TP), generally known as the “Third Pole”, is the highest plateau with a large number of glaciers and
39 snow cover (Kang et al., 2010; Lu et al., 2010; Yao et al., 2012). Even though the TP is a remote region with few affects from
40 anthropogenic activities, previous observations have indicated that BC is an important contributor to the rapid shrinking of
41 glaciers over the TP via decreasing surface albedo and atmospheric warming (Xu et al., 2009; Yang et al., 2015; Li et al., 2017b;
42 Zhang et al., 2017b; Qu et al., 2014; Ji, 2016; Xu et al., 2016; Lee et al., 2017). Moreover, previous studies have also suggested
43 that the emissions from South Asia and East Asia are the major sources of BC on the TP (Li et al., 2016a; Lu et al., 2012; He
44 et al., 2014b; Zhang et al., 2015; Yang et al., 2018), and the high emissions from South Asia can be transported across the
45 Himalayas and further to the inland TP (Luthi et al., 2015; Xu et al., 2014; Cong et al., 2015a; Kang et al., 2016; Wan et al.,
46 2015). Meanwhile, the seasonality of BC aerosols is closely related to atmospheric circulation that helps to bring the BC
47 aerosols across the Himalayas (Cong et al., 2015a; Cong et al., 2015b; Yang et al., 2018). Additionally, a large number of
48 studies have demonstrated that the BC and dust from Central Asia and northern Africa could also be transported to the TP
49 (Wang et al., 2016; Lu et al., 2012; Zhao et al., 2012; Wu et al., 2010; Zhang et al., 2015).

50 Mt. Everest could be regarded as a very sensitive area under the influence of BC aerosols. Previous research on
51 atmospheric BC in the Mt. Everest region was mainly based on the thermal/optical analytical method, using quartz filter
52 samples (Cong et al., 2015a). However, there is still a lack of investigations on the diurnal and seasonal variations in BC in
53 this region. Therefore, to fill such gaps and understand the variations in and sources of BC in the pristine region, there is a
54 need for an efficient approach and additional studies. The aethalometer can provide real-time high-resolution observation data
55 on the BC concentration, which is very important and necessary to better depict the characteristics of BC and its effects on the
56 environmental change.

57 In comparison with the observations, numerical models can better represent the atmospheric physical and chemical
58 processes. Many studies have used global climate models (GCMs) and chemical transport models (CTMs) to investigate the
59 origin and transportation of BC over the TP (Lu et al., 2012; Zhang et al., 2015; Menon et al., 2010; Kopacz et al., 2011; He
60 et al., 2014a). However, due to the coarse resolution, it is difficult for the CTMs and GCMs to capture the surface details of
61 the TP (Ji et al., 2015; Gao et al., 2008). Regional climate models (RCMs) can compensate for the shortcomings of coarser
62 global model grids by high-resolution simulations. In recent decades, RCMs have been developed to include multiple modules
63 and atmospheric chemistry processes. In addition, the advanced regional climate-chemistry model, Weather Research and

64 Forecasting (WRF) model (Skamarock et al., 2005) coupled with chemistry (WRF-Chem) has been successfully applied for
65 air quality research on the TP (Yang et al., 2017; Yang et al., 2018).

66 Here, we present real-time data of the BC concentration measured by the new Aethalometer model AE-33 from 15 May
67 2015 to 31 May 2017. The observed results are used to characterize the temporal variation and provide important information
68 on the possible sources and transport mechanisms of BC. By combining high-resolution measurements of the BC concentration
69 and the WRF-Chem model, we investigated the concentration level, temporal variation, and sources of BC in the Mt. Everest
70 region. The purpose of this study is to understand the impact of trans-boundary atmospheric BC on the Mt. Everest region and
71 depict the transport pathways of BC at different spatiotemporal scales.

72 2 Materials and methods

73 2.1 Sampling site and meteorological conditions

74 Mt. Everest (27.98°N, 86.92°E, 8844 m a.s.l.), the summit of the world, is located in the central Himalayas. The southern
75 slope of Mt. Everest is adjacent to the Indian continent, and the climate is warm and humid under the influence of the Indian
76 summer monsoon. Conversely, the northern side is cold and dry since the warm and humid airflow cannot reach it.
77 Qomolangma (Mt. Everest) Station for Atmospheric and Environmental Observation and Research, Chinese Academy of
78 Sciences (QOMS, 28.36°N, 86.95°E, 4276 m a.s.l.) (Fig. 1) is located on the northern slope of Mt. Everest, which was
79 established for continuous monitoring of the atmospheric environment (Cong et al., 2015a; Ma et al., 2011).

80 The meteorological parameters, i.e., air temperature, air pressure, humidity, wind speeds and wind direction, were
81 recorded by an automatic weather station at QOMS with 10 min time intervals. Meanwhile, the precipitation data were
82 collected by artificial measurement, as shown in Fig. S1. The entire year was divided into four seasons according to the Indian
83 monsoon transition characteristics, which includes pre-monsoon (March to May), monsoon (June to September), post-
84 monsoon (October to November), and winter (December to February) (Praveen et al., 2012; Zhang et al., 2017a). A clear
85 seasonal cycle of temperature and humidity can be observed in Fig. S1. Specifically, the temperature was high during the
86 monsoon season and low during winter, with a maximum in July and a minimum in January. Humidity followed a similar trend,
87 with high values from late July to early August and low values from December to February. During the observation period, the
88 wind speed increased significantly from November to April. The wind direction at QOMS is affected by the local topography,
89 which consists of a series of small valleys. During the pre-monsoon season (dry period), the westerly and southerly winds
90 begin to develop and play an important role in atmospheric pollution circulation. However, during the monsoon season, the
91 southwesterly winds prevail and bring much moisture from the Indian Ocean to the Mt. Everest region, increasing the humidity
92 and precipitation. With the retreat of the monsoon, the southwesterly winds decrease and the prevailing wind direction changes
93 to westerly and northeasterly in winter with limited moisture (Fig. S1).

94 2.2 BC measurements

95 There are several available methods capable of measuring BC concentrations, and these methods can be classified into
96 three categories. First is the thermal/optical method, which uses a quartz filter to collect aerosols, and they are thermally
97 volatilized in several temperature steps (Schauer et al., 2003). The signals of evolving carbon measured by thermal/optical
98 transmission (TOT) or thermal/optical reflectance (TOR) can be converted to the concentration of BC (Chow et al., 1993;
99 Chow et al., 2001). However, the time difference between sampling and detection, the impact of mineral dust, and the
100 determination of the split between organic carbon (OC) and elemental carbon (EC, the same as BC) can cause deviations (Li
101 et al., 2017a; Schauer et al., 2003). The second category is the technique of the single particle soot photometer (SP2), which
102 can quantify BC by laser-induced incandescence because BC is the predominant refractory absorbing aerosol, which can be
103 heated by an intense laser beam and emit significant thermal radiation (Stephens et al., 2003). This method measures the mass
104 of BC in individual particles, but the accuracy depends on the selected calibration material (Schwarz et al., 2010; Laborde et
105 al., 2012). Finally, the optical method measures the reduction in light intensity induced by BC aerosols collected on the
106 sampling medium (Hansen et al., 1984; Petzold and Schonlinner, 2004). The Aethalometer is a widely used instrument based
107 on the optical method that can provide real-time BC concentration measurements, but all filter-based optical methods exhibit
108 loading effects that can lead to the underestimation of BC concentrations (Bond et al., 1999; Virkkula et al., 2007; Park et al.,
109 2010; Hyvarinen et al., 2013; Drinovec et al., 2015). However, the newly developed Aethalometer model AE-33 uses a real-
110 time loading effect compensation algorithm that can provide high-quality data, which is very helpful for the accurate
111 determination of BC concentrations and source apportionment (Drinovec et al., 2015).

112 Therefore, the airborne BC concentrations at QOMS were monitored by the new Aethalometer model AE-33 (Magee
113 Scientific Corporation, USA). The instrument was set in an indoor room with an inlet installed at approximately 3 m above
114 the ground level and was operated at an airflow rate of 4 LPM with a 1 min time resolution. AE-33 has seven fixed wavelengths
115 (i.e., 370, 470, 520, 590, 660, 880 and 950 nm), which can acquire the BC concentration according to the light absorption and
116 attenuation characteristics from the different wavelengths (Hansen et al., 1984; Drinovec et al., 2015). Generally, the BC
117 concentration measured at 880 nm is used as the actual BC concentration in the atmosphere, as the absorption of other species
118 of aerosols is greatly reduced in this wavelength (Sandradewi et al., 2008a; Sandradewi et al., 2008b; Fialho et al., 2005; Yang
119 et al., 2009; Drinovec et al., 2015). Compared to previous Aethalometer models, AE-33 uses dual-spot measurement and a
120 real-time calculation of the “loading compensation parameter”, which can compensate for the “spot loading effect” and obtain
121 high-quality BC concentration (Drinovec et al., 2015). The main structure of this algorithm is as follows:

$$122 \text{ BC (reported)} = \text{BC}(\text{zero loading}) \times (1 - k\text{ATN}) \quad (1)$$

$$123 \text{ ATN} = -100 \ln(I/I_0) \quad (2)$$

$$124 \text{ BC1} = \text{BC} \times (1 - k\text{ATN1}) \quad (3)$$

$$BC_2 = BC \times (1 - k \cdot ATN_2) \quad (4)$$

where BC (reported) is the uncompensated BC concentration; BC (zero loading) is the desired ambient BC value that would be obtained in the absence of any loading effect; k is the loading effect compensation parameter; I and I_0 are the light intensity of the measurement spot and reference spot; and ATN is the attenuation of light through filter tape. The BC component of the aerosols is analyzed on two parallel spots drawn from the same input stream in AE-33 but collected at different rates of accumulation. This means that we can obtain different ATN but the same loading parameter k (Drinovec et al., 2015). Combining Eq. (3) and Eq. (4), the compensation parameter k and the desired value of BC compensated back to zero loading can be calculated. Based on the dual-spot technology, the new real-time compensation algorithm allows extrapolation to zero loading and obtains the accurate BC concentration (Drinovec et al., 2015; Crenn et al., 2015; Zhu et al., 2017). Previous studies have evaluated the real-time compensation algorithm of dual-spot Aethalometer model AE-33 and indicated that AE-33 agrees well with the post-processed loading effect compensated data obtained using earlier Aethalometer models and other filter-based absorption photometers, implying the good performance of this new algorithm (Drinovec et al., 2015; Rajesh and Ramachandran, 2018).

2.3 Model simulation and datasets

WRF-Chem version 3.6 was used to analyze the spatial distribution, transport mechanism, and source apportionment of BC during the four observed pollution episodes. The WRF-Chem model is an expansion of the WRF meteorological model and considers complex physical and chemical processes such as emission and deposition, advection and diffusion, gaseous and aqueous chemical transformation, and aerosol chemistry and dynamics (Grell et al., 2005). Here, the numerical experiments were performed at a 25 km horizontal resolution with 122 and 101 grid cells in the west-east and north-south directions, respectively. The simulated domain was centered at 25°N, 82.5°E and had a 30-layer structure with the top pressure of 50 hPa. The key physical and chemical parameterization options for the WRF-Chem model were based on a previous study on the TP (Yang et al., 2018). The initial meteorological fields were taken from the National Centers for Environmental Prediction (NCEP) reanalysis data with a horizontal resolution of $1^\circ \times 1^\circ$ at 6 h time intervals. The anthropogenic emission inventory was obtained from the Intercontinental Chemical Transport Experiment-Phase B (INTEX-B) (Zhang et al., 2009) with a resolution of $0.5^\circ \times 0.5^\circ$. The biogenic emissions were obtained from the Model of Emission of Gases and Aerosol from Nature (MEGAN) (Guenther et al., 2006), and the fire emissions inventory was based on the fire inventory from NCAR (FINN) (Wiedinmyer et al., 2011). Additionally, the Model for Ozone and Related chemical Tracers (MOZART, <http://www.acom.ucar.edu/wrf-chem/mozart.shtml>) (Emmons et al., 2010) dataset was used to create improved initial and boundary conditions for the BC simulations during these pollution episodes.

Furthermore, to predict the source region of BC, we used the Hybrid Single-Particle Lagrangian Integrated Trajectory (HYSPPLIT-4) model to calculate the backward trajectories of the air masses (Stein et al., 2015), and the calculation data was

156 obtained from the National Centers for Environmental Prediction/National Center for Atmospheric Research (NCEP/NCAR)
157 reanalysis data ($2.5^{\circ} \times 2.5^{\circ}$). The parameter settings for the backward trajectory calculation in the HYSPLIT model were
158 chosen according to a previous study in this area (Xu et al., 2014). The active fire product provided by the Fire Information
159 for Resource Management System (FIRMS, <https://firms.modaps.eosdis.nasa.gov/firemap/>) was chosen to investigate the
160 biomass burning emissions over the region in different seasons.

161 3. Results and discussion

162 3.1 Temporal variations in BC

163 3.1.1 Monthly variation in BC

164 The monthly mean BC concentrations at QOMS are shown in Fig. 2a. There was a significant increase in the BC
165 concentrations in winter, and the highest value occurred during the pre-monsoon season ($923.1 \pm 685.8 \text{ ng/m}^3$ in April).
166 Meanwhile, during the monsoon, lower BC concentrations were recorded, and the lowest value was observed in July ($88.5 \pm$
167 29.8 ng/m^3). This seasonal change was consistent with the previous studies of elemental carbon (EC or BC) at Nepal Climate
168 Observatory-Pyramid station (NCO-P, 27.95°N , 86.82°E , 5079 m a.s.l.) from March 2006 to February 2008 (Fig. 2b) (Marinoni
169 et al., 2010) and at QOMS from August 2009 to July 2010 (Fig. 2c) (Cong et al., 2015a), indicating a similar BC source
170 between the southern and northern sides of the Himalayas. As EC was sampled by quartz filters and detected using the
171 thermal/optical analytical method in previous studies, there may be some differences in the values of EC compared to those of
172 BC, for instance, the overestimation of EC due to the potential effect of carbonates in mineral dust of the samples when using
173 the thermal/optical method (Li et al., 2017a). The monthly variation in EC at Nam Co Monitoring and Research Station for
174 Multisphere Interactions (Nam Co station, 30.46°N , 90.59°E , 4730 m a.s.l.) from January to December during 2012 (Fig. 2d)
175 (Wan et al., 2015) also showed a similar variation, but the peak value of EC occurred in winter. Additionally, the monthly mean
176 EC concentrations at Nam Co station were generally lower than those at QOMS, suggesting that the impact of the
177 anthropogenic activities on the inland TP was weaker than that on the south edge of the TP. Previous studies have demonstrated
178 that the influence of polluted air masses from the “Atmospheric Brown Clouds” over South Asia could reach the southern
179 foothills of the Himalayas and that the mountain-valley breeze circulation carried the polluted air masses onto the TP (Luthi
180 et al., 2015; Cong et al., 2015a; Bonasoni et al., 2008; Yang et al., 2018). Therefore, the seasonal cycle of BC concentrations
181 at QOMS was likely affected by the atmospheric circulation and the emissions from South Asia, which will be further explained
182 in Section 3.3.

183 3.1.2 Daily variation in BC

184 Fig. 3 shows the daily mean BC concentrations at QOMS, which present a significant seasonal pattern, with a maximum

185 during the pre-monsoon season (2772.3 ng/m^3) and a minimum during the monsoon season (36.4 ng/m^3). During the monsoon
186 season, the BC concentration was observed to be lower than 150 ng/m^3 , but it gradually increased during the post-monsoon
187 and winter. The mean concentration of daily BC at QOMS was $298.8 \pm 341.3 \text{ ng/m}^3$, which was close to the previous result
188 ($250 \pm 220 \text{ ng/m}^3$) (Cong et al., 2015a).

189 The comparison between daily mean BC concentrations (Fig. 3) and the meteorological parameters (Fig. S1) suggested
190 that the increasing precipitation during the monsoon led to the washout of atmospheric particles, promoting the wet deposition
191 of BC. This process caused a decrease in BC concentrations during the monsoon, representing the background level during the
192 period. The prevailing wind direction was southwesterly during the monsoon period and westerly during the non-monsoon
193 periods. Therefore, the variations in BC might be linked to the influence of meteorological conditions and the contribution of
194 long-distance transport from urbanized areas to QOMS. Moreover, it cannot be ignored that there were continuous high
195 concentrations of BC above 1000 ng/m^3 during 8-10 June 2015, 19-22 March 2016, 9-30 April 2016, and 11-14 April 2017,
196 indicating that the heavy pollution episodes happened at QOMS during those days. A detailed analysis of these pollution events
197 is presented in Section 3.4.

198 3.1.3 Diurnal variation in BC

199 Diurnal variation characteristics can be used to analyze the impact of local meteorological processes and anthropogenic
200 activities on the BC concentrations at QOMS. The half-hourly mean BC concentrations are presented in Fig. 4. In the pre-
201 monsoon season, the diurnal BC concentrations remained significantly high from midnight to noon and increased gradually
202 after the lowest value at approximately 15:00. Elevated BC concentrations were also observed in the afternoon during the post-
203 monsoon and winter periods, and high BC concentrations occurred from midnight to noon. The BC concentrations during the
204 monsoon season were significantly lower than those during the other seasons but peaked in the morning and in the afternoon.
205 Previous studies have demonstrated that the local wind system on the northern slope of Mt. Everest is composed of a morning
206 “valley wind”, a late morning-afternoon “glacier wind” weakened by “valley wind”, and an evening-early night “mountain
207 wind” (Zou et al., 2008). The QOMS is located in the s-shape valley north of Mt. Everest (Ma et al., 2011). The glacier wind
208 and down mountain wind from the south developed in the afternoon and at night, which provided the potential possibility for
209 pollutants from long-distance sources transported to QOMS along the valley and increased the BC concentrations in the non-
210 monsoon periods. The valley wind from the north in the morning could bring the short-distance emissions from cooking or
211 heating in several villages that are located north (approximately 5 km away) of QOMS. The BC concentrations were
212 remarkably low in the monsoon season but peaked in the morning and in the afternoon, which might be due to the local
213 emissions carried by the valley wind from the north.

214 To explain the significant high values from midnight to noon in the pre-monsoon season, the wind direction frequency at
215 QOMS during 0:00-12:00 and 12:00-24:00 are presented in Fig. 5. During the sampling period in the pre-monsoon season, W

(west) winds prevailed from midnight to noon (Fig. 5a), accounting for 18.1% of the total wind directions, followed by ENE (east-northeast) winds (16.4%). This is consistent with the discussion above that there are potential impacts on the BC concentrations at QOMS from long-distance human activity emissions, which can be carried by the westerly winds, i.e., down mountain winds (Cong et al., 2015b). Moreover, the WRF-Chem simulation results showed that the profile of equivalent potential temperature (EPT) increased with altitude and the planetary boundary layer height (PBLH) and wind speed were much lower from midnight to noon (Fig. S2), indicating a more stable atmosphere that obstructs the diffusion of BC aerosols. ESE (east-southeast) and NE (northeast) winds prevailed from noon to midnight (Fig. 5b), accounting for 17.6% and 15.3% of the total wind directions, respectively, implying a strengthened glacier wind or mountain wind (from the south), which caused the increase in BC contributed by long-distance sources. During the pre-monsoon season, the strong down-valley wind could transport large amounts of trans-Himalayan pollution from heavily polluted areas of South Asia to QOMS; therefore, the long-distance sources play a major role in the diurnal variation in the BC concentrations at QOMS during this period.

3.2 Comparison of the BC concentrations with other sites on the TP

A previous study has revealed that low BC concentrations in China can be found on the TP, with values of approximately 200-1000 ng/m³ in PM_{2.1} and 300-1500 ng/m³ in PM_{9.0} (Xin et al., 2015). To better understand the BC loading level, we compared our results with previous studies from other locations over the TP. As shown in Fig. 1, the BC concentrations at Muztagh Ata and Qilian Shan presented low values, which can be regarded as the background concentration level for inland Asia (Cao et al., 2009; Zhao et al., 2012). In contrast, the BC concentration at Lhasa city was higher than that at other sites on the TP, which was mainly contributed by local fossil fuel combustion (Li et al., 2016b). In addition, under the impact of the long-range transport of anthropogenic emissions from the east and significant dust input from the west, the BC concentration at Qinghai Lake also showed a relatively high value (Li et al., 2013). The BC concentration at Beiluhe was slightly higher than that at Qinghai Lake, mainly from the arid regions in northwestern China in spring and from the southern slope of the Himalayas in winter (Wang et al., 2016). Therefore, the long-range transportation from Central Asia and East Asia contributed greatly to the BC aerosols in the northern TP. For the sites in the central and southeastern regions on the TP (e.g., Nam Co and Ranwu), which are isolated from anthropogenic activities with relatively clean atmospheric environments, the BC concentrations at these two sites were above 130 ng/m³, likely due to the influence of long-range transport from South Asia (Wan et al., 2015; Wang et al., 2016). Compared with the locations on the southern slope of the Himalayas (e.g., NCO-P and Manora Peak), the BC concentration at QOMS was close to that at NCO-P but much lower than that at Manora Peak, which is near the polluted areas in South Asia and largely affected by anthropogenic emissions (Marinoni et al., 2010; Ram et al., 2010). This implies that the combustion emissions from South Asia affect not only the lower latitudes in the vicinity but also the higher latitudes in the Himalayas and the interior of the TP due to long-range transport.

3.3 Potential sources and transport mechanisms of BC in different seasons

247 The seasonal variation in the BC concentrations was correlated with the combustion intensity of sources and atmospheric
248 circulation. The “Atmospheric Brown Clouds” over South Asia contain large amounts of aerosol components such as the high
249 loading emissions of BC from biomass burning, which can reach the TP within a few days (Ramanathan et al., 2005;
250 Ramanathan and Ramana, 2005; Luthi et al., 2015). A previous study has quantified biomass burning sources contributing to
251 BC aerosols from the Himalayan region of Nepal and India and showed that the major fires were concentrated from March to
252 June; additionally, most fires occurred in the low elevation areas dominated by forests and croplands (Vadrevu et al., 2012).
253 Therefore, we further checked the biomass burning emissions in the Mt. Everest region and its vicinities using the active fire
254 product from the MODIS data during four seasons (August 2015 to April 2016) provided by the FIRMS (Fig. 6). It is clearly
255 shown that there were large numbers of active fire spots in northern and central India, Pakistan and Nepal in winter and in the
256 pre-monsoon season. Moreover, referring to Cong et al. (2015a), the active fire spots represent agricultural combustion and
257 forest fires in this region, which might substantially contribute to BC aerosols. During the monsoon season, insignificant fire
258 spots appeared in South Asia, representing less biomass burning in that period.

259 To further explore the sources and the long-range transport mechanism of BC aerosols at QOMS, we calculated the
260 frequency plots for 5-day backward trajectories arriving 1 km above ground level (Fig. 7). During the non-monsoon seasons,
261 the air masses were affected by the westerly winds. The air masses reaching the Mt. Everest region were mostly from the
262 northwest, indicating that the biomass burning emissions in Pakistan, northern India and Nepal could be transported to the Mt.
263 Everest region. However, for the difference in the combustion intensity, high concentrations of BC were found only during the
264 pre-monsoon season. During the monsoon season, the southerly winds dominated in the Mt. Everest region, and the air masses
265 were mainly from the Arabian Sea and the Bay of Bengal with substantial moisture. At this period, the precipitation on the
266 southern side of the Himalayas was above 1200 mm (Xu et al., 2014), which can improve the wet removal efficiency of BC.
267 Moreover, the biomass combustion emissions in South Asia in this period were very low. Therefore, the BC concentrations at
268 QOMS were close to the background level during the monsoon season. Meanwhile, the local meteorological conditions also
269 play a very important role in the transport of pollutants across the Himalayas from South Asia. Previous studies have shown
270 that the local wind system was mainly composed of up-valley wind on the southern slope and down-valley wind on the northern
271 slope, which facilitates the exchange of air between the bottom and upside of the atmosphere, and facilitates the coupling of
272 air flow between the southern and northern slopes, which allows the pollutants from South Asia to easily cross the Himalayas
273 and be transported to the TP from the valley (Zou et al., 2008; Chen et al., 2012; Cong et al., 2015b; Tripathi et al., 2017;
274 Dhungel et al., 2018).

275 3.4 Pollution episodes analysis by WRF-Chem modeling

276 In this section, we analyzed four pollution events with BC concentrations above 1000 ng/m³ in detail, including event A
277 during 8-10 June 2015, event B during 19-22 March 2016, event C during 9-30 April 2016, and event D during 11-14 April

278 2017. Fig. 8 shows the spatial characteristics of the WRF-Chem modeled surface BC concentrations during the four pollution
 279 episodes. It can be seen that the high values of surface BC concentrations always appeared in South Asia, although the high-
 280 value centers changed in different pollution events. For event A, the most serious pollution appeared in Nepal and northern
 281 India. There was relatively less BC near Mt. Everest in event B than in the other events. However, for event C, the high BC
 282 concentration areas were mainly along the southern slope of the Himalayas in Nepal and eastern India, which can highly impact
 283 the BC concentrations in the Mt. Everest region. In event D, the high BC concentrations occurred in Nepal and some parts of
 284 India. To evaluate the model performance, the temporal variation in measured and simulated BC concentrations at QOMS
 285 during these four pollution episodes are displayed in Fig. S3. As shown in Fig. S3, for the four pollution episodes, the WRF-
 286 Chem model captured the variation trends of the observed BC concentrations, with correlation coefficients all above 0.8. This
 287 implies that the model could reproduce the distribution of BC concentrations in this region. Additionally, comparisons between
 288 the modeled wind and precipitation and the wind and precipitation from reanalysis data and in-situ observations indicated that
 289 the WRF-Chem model could capture the spatiotemporal variations in the meteorological elements (Fig. S4 and Fig. S5).

290 The sources and transport mechanisms of BC aerosols during these pollution episodes can be indicated by analyzing the
 291 air flow. Fig. 9 shows the variation in the BC concentrations and wind fields at different altitudes in the atmosphere (850 hPa,
 292 500 hPa, and 200 hPa). For event A during the monsoon season, there was a cyclone in northern India at 850 hPa that moved
 293 near-surface BC aerosols upward, and then, the southerly winds at 500 hPa and 200 hPa transported the BC aerosols to the Mt.
 294 Everest region. For events B-D in the pre-monsoon season, the northwesterly winds prevailed in South Asia at 850 hPa and
 295 brought BC from northern India to the southern slope of the Himalayas, and the westerly winds at 500 hPa and 200 hPa
 296 transported relatively less BC from northwestern India and Central Asia to the Mt. Everest region. Previous studies also pointed
 297 out that BC can be transported across the Himalayas to the Mt. Everest region by the mountain-valley wind system (Zou et al.,
 298 2008; Cong et al., 2015b; Dhungel et al., 2018). Thus, we needed to further analyze the impact of the mountain-valley wind
 299 on the transportation of BC. Fig. 10 shows the vertical profile of the BC concentration along the QOMS's longitude of 86.95°E.
 300 During event A, high concentrations of BC appeared in the upper atmosphere of South Asia, and many BC aerosols were
 301 transported to most parts of the TP (Fig. 10a) due to the large-scale transport process. However, for events B-D, high
 302 concentrations of BC occurred along the southern slope of the Himalayas, and BC aerosols were only transported to a few
 303 areas on the northern slope of the Himalayas such as the Mt. Everest region (Fig. 10b-d) due to the local mountain-valley wind.
 304 As shown in Fig. S6, for events B-D, the up-valley wind on the southern side of the Himalayas can move BC aerosols up in
 305 the daytime, and the down-valley wind can cause the aerosols to descend in the Mt. Everest region at night.

306 To sum up, we found that the transport processes of BC aerosols from South Asia to the QOMS were different as the
 307 seasons changed. In the monsoon season such as event A, BC aerosols were moved upward by the cyclone in the lower
 308 atmosphere and were transported to QOMS by the southerly winds in the upper atmosphere. However, in the pre-monsoon
 309 season such as events B-D, the mountain-valley wind played an important role in transporting the BC aerosols from the

southern slope of the Himalayas to the Mt. Everest region.

4. Conclusions

In this study, BC concentrations were measured from 15 May 2015 to 31 May 2017 at QOMS on the south edge of the TP. Monthly, daily, and diurnal variations in BC concentrations were calculated to investigate the temporal characteristics and potential sources of BC at QOMS. The results showed that the monthly mean BC concentrations reached the highest value in the pre-monsoon season ($923.1 \pm 685.8 \text{ ng/m}^3$) and the lowest value in the monsoon season ($88.5 \pm 29.8 \text{ ng/m}^3$). The average daily BC concentration was equal to $298.8 \pm 341.3 \text{ ng/m}^3$, with a maximum in the pre-monsoon season (2772.3 ng/m^3) and a minimum in the monsoon season (36.4 ng/m^3). For the diurnal variation in BC, there was an increase in the afternoon during the non-monsoon periods, and high BC concentrations occurred from midnight to noon, implying that the potential origin of BC was from long-range transport. The BC concentrations remained low but peaked in the morning and in the afternoon during the monsoon period, which might be due to local anthropogenic activities. In addition, the substantially high values of diurnal variation in the BC concentrations in the pre-monsoon season suggest the high contributions of long-distance emissions carried by down-valley wind.

The seasonal cycle of BC concentrations at QOMS was closely correlated with the variation in the atmospheric circulation and combustion emissions in South Asia. In the non-monsoon seasons, affected by the westerly winds, the air masses in the Mt. Everest region were largely from Pakistan, northern Indian, and Nepal due to the high loading emissions from vegetation fires. In the monsoon season, the southerly winds prevailed in the Mt. Everest region, and the air masses were mainly from the Arabian Sea and the Bay of Bengal. Under intense precipitation scavenging of BC and extremely low levels of combustion emissions in South Asia, the BC concentrations at QOMS were close to the background level in the monsoon season.

For the four heavy pollution episodes that occurred at QOMS with BC concentrations above 1000 ng/m^3 , we found that the transport processes of the BC aerosols from South Asia to the Mt. Everest region were different as the seasons changed. In the monsoon season (using the pollution event during 8-10 June 2015 as an example), BC aerosols were efficiently driven upward by the cyclone in the lower atmosphere in South Asia and transported to the Mt. Everest region by the southerly winds in the upper atmosphere. However, during the pre-monsoon season (using the other three pollution events as examples), the mountain-valley wind played an important role in transporting the BC aerosols across the Himalayas to the Mt. Everest region.

Data availability. All data are available upon requests made to the corresponding author.

Competing interests. The authors declare that they have no conflict of interest.

Special issue statement. This article is part of the special issue “Study of ozone, aerosols and radiation over the Tibetan Plateau

338 (SOAR-TP) (ACP/AMT inter-journal SI)". It is not associated with a conference.

339 *Acknowledgments.* This study was supported by the National Nature Science Foundation of China (41630754, 41675130,
340 41721091), Chinese Academy of Sciences (QYZDJ-SSW-DQC039), and State Key Laboratory of Cryospheric Science
341 (SKLCS-ZZ-2017). The authors thank the staff of the Qomolangma Atmospheric and Environmental Observation and
342 Research Station of Chinese Academy of Sciences for collecting data and the support of meteorological dataset. We also give
343 thanks to Tony Hansen for his suggestion on data processing and Xin Wan, Lekhendra Tripathy, and Yajun Liu for their help
344 to improve the quality of this paper.

345 **References**

- 346 Anenberg, S. C., Schwartz, J., Shindell, D., Amann, M., Faluvegi, G., Klimont, Z., Janssens-Maenhout, G., Pozzoli, L., Van
347 Dingenen, R., Vignati, E., Emberson, L., Muller, N. Z., West, J. J., Williams, M., Demkine, V., Hicks, W. K., Kuylensstierna,
348 J., Raes, F., and Ramanathan, V.: Global air quality and health co-benefits of mitigating near-term climate change through
349 methane and black carbon emission controls, *Environ. Health Perspect.*, 120, 831-839,
350 <https://doi.org/10.1289/ehp.1104301>, 2012.
- 351 Bonasoni, P., Laj, P., Angelini, F., Arduini, J., Bonafe, U., Calzolari, F., Cristofanelli, P., Decesari, S., Facchini, M. C., Fuzzi,
352 S., Gobbi, G. P., Maione, M., Marinoni, A., Petzold, A., Roccato, F., Roger, J. C., Sellegri, K., Sprenger, M., Venzac, H.,
353 Verza, G. P., Villani, P., and Vuillermoz, E.: The ABC-Pyramid Atmospheric Research Observatory in Himalaya for aerosol,
354 ozone and halocarbon measurements, *Sci. Total Environ.*, 391, 252-261, <https://doi.org/10.1016/j.scitotenv.2007.10.024>,
355 2008.
- 356 Bond, T. C., Anderson, T. L., and Campbell, D.: Calibration and intercomparison of filter-based measurements of visible light
357 absorption by aerosols, *Aerosol Sci. Technol.*, 30, 582-600, <https://doi.org/10.1080/027868299304435>, 1999.
- 358 Bond, T. C.: A technology-based global inventory of black and organic carbon emissions from combustion, *J. Geophys. Res.*,
359 109, <https://doi.org/10.1029/2003jd003697>, 2004.
- 360 Bond, T. C., Doherty, S. J., Fahey, D. W., Forster, P. M., Berntsen, T., DeAngelo, B. J., Flanner, M. G., Ghan, S., Kärcher, B.,
361 Koch, D., Kinne, S., Kondo, Y., Quinn, P. K., Sarofim, M. C., Schultz, M. G., Schulz, M., Venkataraman, C., Zhang, H.,
362 Zhang, S., Bellouin, N., Guttikunda, S. K., Hopke, P. K., Jacobson, M. Z., Kaiser, J. W., Klimont, Z., Lohmann, U., Schwarz,
363 J. P., Shindell, D., Storelvmo, T., Warren, S. G., and Zender, C. S.: Bounding the role of black carbon in the climate system:
364 A scientific assessment, *J. Geophys. Res.: Atmos.*, 118, 5380-5552, <https://doi.org/10.1002/jgrd.50171>, 2013.
- 365 Cao, J., Xu, B., He, J., Liu, X., Han, Y., Wang, G., and Zhu, C.: Concentrations, seasonal variations, and transport of
366 carbonaceous aerosols at a remote Mountainous region in western China, *Atmos. Environ.*, 43, 4444-4452,
367 <https://doi.org/10.1016/j.atmosenv.2009.06.023>, 2009.
- 368 Chen, X., Su, Z., Ma, Y., and Sun, F.: Analysis of Land-Atmosphere Interactions over the North Region of Mt. Qomolangma
369 (Mt. Everest), *Arct. Antarct. Alp. Res.*, 44, 412-4222012.
- 370 Chow, J. C., Watson, J. G., Pritchett, L. C., Pierson, W. R., Frazier, C. A., and Purcell, R. G.: The DRI thermal/optical
371 reflectance carbon analysis system: description, evaluation and applications in U.S. air quality studies, *Atmos. Environ.*,
372 27, 1185-1201, [https://doi.org/10.1016/0960-1686\(93\)90245-T](https://doi.org/10.1016/0960-1686(93)90245-T), 1993.
- 373 Chow, J. C., Watson, J. G., Crow, D., Lowenthal, D. H., and Merrifield, T.: Comparison of IMPROVE and NIOSH carbon
374 measurements, *Aerosol Sci. Technol.*, 34, 23-34, <https://doi.org/10.1080/027868201300081923>, 2001.
- 375 Cong, Z., Kang, S., Kawamura, K., Liu, B., Wan, X., Wang, Z., Gao, S., and Fu, P.: Carbonaceous aerosols on the south edge

of the Tibetan Plateau: concentrations, seasonality and sources, *Atmos. Chem. Phys.*, 15, 1573-1584,
<https://doi.org/10.5194/acp-15-1573-2015>, 2015a.

Cong, Z., Kawamura, K., Kang, S., and Fu, P.: Penetration of biomass-burning emissions from South Asia through the
Himalayas: new insights from atmospheric organic acids, *Sci. Rep.*, 5, 9580, <https://doi.org/10.1038/srep09580>, 2015b.

Cooke, W. F., Ramaswamy, V., and Kasibhatla, P.: A general circulation model study of the global carbonaceous aerosol
distribution, *J. Geophys. Res.: Atmos.*, 107, ACH 2-1-ACH 2-32, <https://doi.org/10.1029/2001JD001274>, 2002.

Crenn, V., Sciare, J., Croteau, P. L., Verlhac, S., Froehlich, R., Belis, C. A., Aas, W., Aijala, M., Alastuey, A., Artinano, B.,
Baisnee, D., Bonnaire, N., Bressi, M., Canagaratna, M., Canonaco, F., Carbone, C., Cavalli, F., Coz, E., Cubison, M. J.,
Esser-Gietl, J. K., Green, D. C., Gros, V., Heikkinen, L., Herrmann, H., Lunder, C., Minguillon, M. C., Mocnik, G., O'Dowd,
C. D., Ovadnevaite, J., Petit, J. E., Petralia, E., Poulain, L., Priestman, M., Riffault, V., Ripoll, A., Sarda-Esteve, R., Slowik,
J. G., Setyan, A., Wiedensohler, A., Baltensperger, U., Prevot, A. S. H., Jayne, J. T., and Favez, O.: ACTRIS ACSM
intercomparison - Part 1: Reproducibility of concentration and fragment results from 13 individual Quadrupole Aerosol
Chemical Speciation Monitors (Q-ACSM) and consistency with co-located instruments, *Atmos. Meas. Tech.*, 8, 5063-
5087, <https://doi.org/10.5194/amt-8-5063-2015>, 2015.

Dhungel, S., Kathayat, B., Mahata, K., and Panday, A.: Transport of regional pollutants through a remote trans-Himalayan
valley in Nepal, *Atmos. Chem. Phys.*, 18, 1203-1216, <https://doi.org/10.5194/acp-18-1203-2018>, 2018.

Drinovec, L., Mocnik, G., Zotter, P., Prevot, A. S. H., Ruckstuhl, C., Coz, E., Rupakheti, M., Sciare, J., Mueller, T.,
Wiedensohler, A., and Hansen, A. D. A.: The "dual-spot" Aethalometer: an improved measurement of aerosol black carbon
with real-time loading compensation, *Atmos. Meas. Tech.*, 8, 1965-1979, <https://doi.org/10.5194/amt-8-1965-2015>, 2015.

Emmons, L. K., Walters, S., Hess, P. G., Lamarque, J. F., Pfister, G. G., Fillmore, D., Granier, C., Guenther, A., Kinnison, D.,
Laepple, T., Orlando, J., Tie, X., Tyndall, G., Wiedinmyer, C., Baughcum, S. L., and Kloster, S.: Description and evaluation
of the Model for Ozone and Related chemical Tracers, version 4 (MOZART-4), *Geosci. Model Dev.*, 3, 43-67,
<https://doi.org/10.5194/gmd-3-43-2010>, 2010.

Fialho, P., Hansen, A. D. A., and Honrath, R. E.: Absorption coefficients by aerosols in remote areas: a new approach to
decouple dust and black carbon absorption coefficients using seven-wavelength Aethalometer data, *J. Aerosol Sci.*, 36,
267-282, <https://doi.org/10.1016/j.jaerosci.2004.09.004>, 2005.

Flanner, M. G., Zender, C. S., Randerson, J. T., and Rasch, P. J.: Present-day climate forcing and response from black carbon
in snow, *J. Geophys. Res.*, 112, <https://doi.org/10.1029/2006jd008003>, 2007.

Gao, X., Shi, Y., Song, R., Giorgi, F., Wang, Y., and Zhang, D.: Reduction of future monsoon precipitation over China:
comparison between a high resolution RCM simulation and the driving GCM, *Meteorol. Atmos. Phys.*, 100, 73-86,
<https://doi.org/10.1007/s00703-008-0296-5>, 2008.

Grell, G. A., Peckham, S. E., Schmitz, R., McKeen, S. A., Frost, G., Skamarock, W. C., and Eder, B.: Fully coupled "online"

chemistry within the WRF model, *Atmos. Environ.*, 39, 6957-6975, <https://doi.org/10.1016/j.atmosenv.2005.04.027>, 2005.

Guenther, A., Karl, T., Harley, P., Wiedinmyer, C., Palmer, P. I., and Geron, C.: Estimates of global terrestrial isoprene emissions using MEGAN (Model of Emissions of Gases and Aerosols from Nature), *Atmos. Chem. Phys.*, 6, 3181-3210, <https://doi.org/10.5194/acp-6-3181-2006>, 2006.

Hansen, A. D. A., Rosen, H., and Novakov, T.: The aethalometer — An instrument for the real-time measurement of optical absorption by aerosol particles, *Sci. Total Environ.*, 36, 191-196, [https://doi.org/10.1016/0048-9697\(84\)90265-1](https://doi.org/10.1016/0048-9697(84)90265-1), 1984.

Hansen, J., Sato, M., Ruedy, R., Lacis, A., and Oinas, V.: Global warming in the twenty-first century: An alternative scenario, *Proc. Natl. Acad. Sci. U. S. A.*, 97, 9875-9880, <https://doi.org/10.1073/pnas.170278997>, 2000.

He, C., Li, Q., Liou, K. N., Takano, Y., Gu, Y., Qi, L., Mao, Y., and Leung, L. R.: Black carbon radiative forcing over the Tibetan Plateau, *Geophys. Res. Lett.*, 41, 7806-7813, <https://doi.org/doi:10.1002/2014GL062191>, 2014a.

He, C., Li, Q., Liou, K. N., Zhang, J., Qi, L., Mao, Y., Gao, M., Lu, Z., Streets, D. G., Zhang, Q., Sarin, M. M., and Ram, K.: A global 3-D CTM evaluation of black carbon in the Tibetan Plateau, *Atmos. Chem. Phys.*, 14, 7091-7112, <https://doi.org/10.5194/acp-14-7091-2014>, 2014b.

He, C., Takano, Y., Liou, K.-N., Yang, P., Li, Q., and Chen, F.: Impact of Snow Grain Shape and Black Carbon–Snow Internal Mixing on Snow Optical Properties: Parameterizations for Climate Models, *J. Clim.*, 30, 10019-10036, <https://doi.org/10.1175/jcli-d-17-0300.1>, 2017.

Hyvarinen, A. P., Vakkari, V., Laakso, L., Hooda, R. K., Sharma, V. P., Panwar, T. S., Beukes, J. P., van Zyl, P. G., Josipovic, M., Garland, R. M., Andreae, M. O., Poeschl, U., and Petzold, A.: Correction for a measurement artifact of the Multi-Angle Absorption Photometer (MAAP) at high black carbon mass concentration levels, *Atmos. Meas. Tech.*, 6, 81-90, <https://doi.org/10.5194/amt-6-81-2013>, 2013.

Jacobson, M. Z.: Strong radiative heating due to the mixing state of black carbon in atmospheric aerosols, *Nature*, 409, 695-697, <https://doi.org/10.1038/35055518>, 2001.

Jacobson, M. Z.: Control of fossil-fuel particulate black carbon and organic matter, possibly the most effective method of slowing global warming, *J. Geophys. Res.*, 107, <https://doi.org/10.1029/2001JD001376>, 2002.

Ji, Z., Kang, S., Cong, Z., Zhang, Q., and Yao, T.: Simulation of carbonaceous aerosols over the Third Pole and adjacent regions: distribution, transportation, deposition, and climatic effects, *Clim. Dyn.*, 45, 2831-2846, <https://doi.org/10.1007/s00382-015-2509-1>, 2015.

Ji, Z.: Modeling black carbon and its potential radiative effects over the Tibetan Plateau, *Adv. Clim. Change. Res.*, 7, 139-144, <https://doi.org/10.1016/j.accre.2016.10.002>, 2016.

Jurado, E., Dachs, J., Duarte, C. M., and Simó, R.: Atmospheric deposition of organic and black carbon to the global oceans, *Atmos. Environ.*, 42, 7931-7939, <https://doi.org/10.1016/j.atmosenv.2008.07.029>, 2008.

Kang, S., Xu, Y., You, Q., Fluegel, W.-A., Pepin, N., and Yao, T.: Review of climate and cryospheric change in the Tibetan

440 Plateau, *Environ. Res. Lett.*, 5, 015101, <https://doi.org/10.1088/1748-9326/5/1/015101>, 2010.

441 Kang, S., Chen, P., Li, C., Liu, B., and Cong, Z.: Atmospheric Aerosol Elements over the Inland Tibetan Plateau: Concentration,
 442 Seasonality, and Transport, *Aerosol Air Qual. Res.*, 16, 789-800, <https://doi.org/10.4209/aaqr.2015.05.0307>, 2016.

443 Kopacz, M., Mauzerall, D. L., Wang, J., Leibensperger, E. M., Henze, D. K., and Singh, K.: Origin and radiative forcing of
 444 black carbon transported to the Himalayas and Tibetan Plateau, *Atmos. Chem. Phys.*, 11, 2837-2852,
 445 <https://doi.org/10.5194/acp-11-2837-2011>, 2011.

446 Laborde, M., Schnaiter, M., Linke, C., Saathoff, H., Naumann, K. H., Mohler, O., Berlenz, S., Wagner, U., Taylor, J. W., Liu,
 447 D., Flynn, M., Allan, J. D., Coe, H., Heimerl, K., Dahlkötter, F., Weinzierl, B., Wollny, A. G., Zannata, M., Cozic, J., Laj,
 448 P., Hittenberger, R., Schwarz, J. P., and Gysel, M.: Single Particle Soot Photometer intercomparison at the AIDA chamber,
 449 *Atmos. Meas. Tech.*, 5, 3077-3097, <https://doi.org/10.5194/amt-5-3077-2012>, 2012.

450 Lee, W. L., Liou, K. N., He, C. L., Liang, H. C., Wang, T. C., Li, Q. B., Liu, Z. X., and Yue, Q.: Impact of absorbing aerosol
 451 deposition on snow albedo reduction over the southern Tibetan plateau based on satellite observations, *Theor. Appl.*
 452 *Climatol.*, 129, 1373-1382, <https://doi.org/10.1007/s00704-016-1860-4>, 2017.

453 Li, C., Bosch, C., Kang, S., Andersson, A., Chen, P., Zhang, Q., Cong, Z., Chen, B., Qin, D., and Gustafsson, O.: Sources of
 454 black carbon to the Himalayan-Tibetan Plateau glaciers, *Nat. Commun.*, 7, 12574, <https://doi.org/10.1038/ncomms12574>,
 455 2016a.

456 Li, C., Chen, P., Kang, S., Yan, F., Hu, Z., Qu, B., and Sillanpää, M.: Concentrations and light absorption characteristics of
 457 carbonaceous aerosol in PM_{2.5} and PM₁₀ of Lhasa city, the Tibetan Plateau, *Atmos. Environ.*, 127, 340-346,
 458 <https://doi.org/10.1016/j.atmosenv.2015.12.059>, 2016b.

459 Li, C., Yan, F., Kang, S., Chen, P., Han, X., Hu, Z., Zhang, G., Hong, Y., Gao, S., Qu, B., Zhu, Z., Li, J., Chen, B., and Sillanpää,
 460 M.: Re-evaluating black carbon in the Himalayas and the Tibetan Plateau: concentrations and deposition, *Atmos. Chem.*
 461 *Phys.*, 17, 11899-11912, <https://doi.org/10.5194/acp-17-11899-2017>, 2017a.

462 Li, J., Wang, G., Wang, X., Cao, J., Sun, T., Cheng, C., Meng, J., Hu, T., and Liu, S.: Abundance, composition and source of
 463 atmospheric PM_{2.5} at a remote site in the Tibetan Plateau, China, *Tellus B*, 65, 20281,
 464 <https://doi.org/10.3402/tellusb.v65i0.20281>, 2013.

465 Li, X., Kang, S., He, X., Qu, B., Tripathi, L., Jing, Z., Paudyal, R., Li, Y., Zhang, Y., Yan, F., Li, G., and Li, C.: Light-
 466 absorbing impurities accelerate glacier melt in the Central Tibetan Plateau, *Sci. Total Environ.*, 587, 482-490,
 467 <https://doi.org/10.1016/j.scitotenv.2017.02.169>, 2017b.

468 Li, X., Kang, S., Zhang, G., Qu, B., Tripathi, L., Paudyal, R., Jing, Z., Zhang, Y., Yan, F., Li, G., Cui, X., Xu, R., Hu, Z., and
 469 Li, C.: Light-absorbing impurities in a southern Tibetan Plateau glacier: Variations and potential impact on snow albedo
 470 and radiative forcing, *Atmos. Res.*, 200, 77-87, <https://doi.org/10.1016/j.atmosres.2017.10.002>, 2018.

471 Lu, A., Kang, S., Li, Z., and Theakstone, W. H.: Altitude effects of climatic variation on Tibetan Plateau and its vicinities, *J.*

Earth Sci., 21, 189-198, <https://doi.org/10.1007/s12583-010-0017-0>, 2010.

Lu, Z., Streets, D. G., Zhang, Q., and Wang, S.: A novel back-trajectory analysis of the origin of black carbon transported to the Himalayas and Tibetan Plateau during 1996-2010, *Geophys. Res. Lett.*, 39, L01809, <https://doi.org/10.1029/2011gl049903>, 2012.

Luthi, Z. L., Skerlak, B., Kim, S. W., Lauer, A., Mues, A., Rupakheti, M., and Kang, S.: Atmospheric brown clouds reach the Tibetan Plateau by crossing the Himalayas, *Atmos. Chem. Phys.*, 15, 6007-6021, <https://doi.org/10.5194/acp-15-6007-2015>, 2015.

Ma, Y., Wang, Y., Zhong, L., Wu, R., Wang, S., and Li, M.: The Characteristics of Atmospheric Turbulence and Radiation Energy Transfer and the Structure of Atmospheric Boundary Layer over the Northern Slope Area of Himalaya, *J. Meteorol. Soc. Jpn.*, 89A, 345-353, <https://doi.org/10.2151/jmsj.2011-A24>, 2011.

Marinoni, A., Cristofanelli, P., Laj, P., Duchi, R., Calzolari, F., Decesari, S., Sellegri, K., Vuillermoz, E., Verza, G. P., Villani, P., and Bonasoni, P.: Aerosol mass and black carbon concentrations, a two year record at NCO-P (5079 m, Southern Himalayas), *Atmos. Chem. Phys.*, 10, 8551-8562, <https://doi.org/10.5194/acp-10-8551-2010>, 2010.

Menon, S., Koch, D., Beig, G., Sahu, S., Fasullo, J., and Orlikowski, D.: Black carbon aerosols and the third polar ice cap, *Atmos. Chem. Phys.*, 10, 4559-4571, <https://doi.org/10.5194/acp-10-4559-2010>, 2010.

Ming, J., Cachier, H., Xiao, C., Qin, D., Kang, S., Hou, S., and Xu, J.: Black carbon record based on a shallow Himalayan ice core and its climatic implications, *Atmos. Chem. Phys.*, 8, 1343-1352, <https://doi.org/10.5194/acp-8-1343-2008>, 2008.

Oshima, N., Kondo, Y., Moteki, N., Takegawa, N., Koike, M., Kita, K., Matsui, H., Kajino, M., Nakamura, H., Jung, J. S., and Kim, Y. J.: Wet removal of black carbon in Asian outflow: Aerosol Radiative Forcing in East Asia (A-FORCE) aircraft campaign, *J. Geophys. Res.*, 117, D03204, <https://doi.org/10.1029/2011jd016552>, 2012.

Park, S. S., Hansen, A. D. A., and Cho, S. Y.: Measurement of real time black carbon for investigating spot loading effects of Aethalometer data, *Atmos. Environ.*, 44, 1449-1455, <https://doi.org/10.1016/j.atmosenv.2010.01.025>, 2010.

Petzold, A., and Schonlinner, M.: Multi-angle absorption photometry - a new method for the measurement of aerosol light absorption and atmospheric black carbon, *J. Aerosol Sci.*, 35, 421-441, <https://doi.org/10.1016/j.jaerosci.2003.09.005>, 2004.

Praveen, P. S., Ahmed, T., Kar, A., Rehman, I. H., and Ramanathan, V.: Link between local scale BC emissions and large scale atmospheric solar absorption, *Atmos. Chem. Phys.*, 12, 1173-1187, <https://doi.org/10.5194/acp-12-1173-2012>, 2012.

Qu, B., Ming, J., Kang, S.-C., Zhang, G.-S., Li, Y.-W., Li, C.-D., Zhao, S.-Y., Ji, Z.-M., and Cao, J.-J.: The decreasing albedo of Zhadang glacier on western Nyainqentanglha and the role of light-absorbing impurities, *Atmos. Chem. Phys.*, 14, 11117-11128, <https://doi.org/10.5194/acp-14-11117-2014>, 2014.

Rajesh, T. A., and Ramachandran, S.: Black carbon aerosol mass concentration, absorption and single scattering albedo from single and dual spot aethalometers: Radiative implications, *J. Aerosol Sci.*, 119, 77-90,

504 <https://doi.org/10.1016/j.jaerosci.2018.02.001>, 2018.

505 Ram, K., Sarin, M. M., and Hegde, P.: Long-term record of aerosol optical properties and chemical composition from a high-
506 altitude site (Manora Peak) in Central Himalaya, *Atmos. Chem. Phys.*, 10, 11791-11803, [https://doi.org/10.5194/acp-10-](https://doi.org/10.5194/acp-10-11791-2010)
507 11791-2010, 2010.

508 Ramanathan, V., Chung, C., Kim, D., Bettge, T., Buja, L., Kiehl, J. T., Washington, W. M., Fu, Q., Sikka, D. R., and Wild, M.:
509 Atmospheric brown clouds: impacts on South Asian climate and hydrological cycle, *P. Natl. Acad. Sci. USA*, 102, 5326-
510 5333, <https://doi.org/10.1073/pnas.0500656102>, 2005.

511 Ramanathan, V., and Ramana, M. V.: Persistent, Widespread, and Strongly Absorbing Haze Over the Himalayan Foothills and
512 the Indo-Gangetic Plains, *Pure appl. geophys.*, 162, 1609-1626, <https://doi.org/10.1007/s00024-005-2685-8>, 2005.

513 Ramanathan, V., and Carmichael, G.: Global and Regional Climate Changes Due to Black Carbon, *Nature Geosci.*, 1, 221-227,
514 <https://doi.org/10.1038/ngeo156>, 2008.

515 Sandradewi, J., Prevot, A., Szidat, S., Perron, N., Alfarra, M., A Lanz, V., Weingartner, E., and Baltensperger, U.: Using aerosol
516 light absorption measurements for the quantitative determination of wood burning and traffic emission contributions to
517 particulate matter, *Environ. Sci. Technol.*, 42, 3316-3323, <https://doi.org/10.1021/es702253m>, 2008a.

518 Sandradewi, J., Prevot, A., Weingartner, E., Schmidhauser, R., Gysel, M., and Baltensperger, U.: A study of wood burning and
519 traffic aerosols in an Alpine valley using a multi-wavelength Aethalometer, *Atmos. Environ.*, 42, 101-112,
520 <https://doi.org/10.1016/j.atmosenv.2007.09.034>, 2008b.

521 Schauer, J. J., Mader, B. T., Deminter, J. T., Heidemann, G., Bae, M. S., Seinfeld, J. H., Flagan, R. C., Cary, R. A., Smith, D.,
522 Huebert, B. J., Bertram, T., Howell, S., Kline, J. T., Quinn, P., Bates, T., Turpin, B., Lim, H. J., Yu, J. Z., Yang, H., and
523 Keywood, M. D.: ACE-Asia intercomparison of a thermal-optical method for the determination of particle-phase organic
524 and elemental carbon, *Environ. Sci. Technol.*, 37, 993-1001, <https://doi.org/10.1021/es020622f>, 2003.

525 Schwarz, J. P., Spackman, J. R., Gao, R. S., Perring, A. E., Cross, E., Onasch, T. B., Ahern, A., Wrobel, W., Davidovits, P.,
526 Olfert, J., Dubey, M. K., Mazzoleni, C., and Fahey, D. W.: The Detection Efficiency of the Single Particle Soot Photometer,
527 *Aerosol Sci. Technol.*, 44, 612-628, <https://doi.org/10.1080/02786826.2010.481298>, 2010.

528 Skamarock, W. C., Klemp, J. B., Dudhia, J., Gill, D. O., Barker, D. M., Wang, W., and Powers, J. G.: A Description of the
529 Advanced Research WRF Version 2, NCAR Technical Note NCAR/TN-468+STR, <https://doi.org/doi:10.5065/D6DZ069T>,
530 2005.

531 Stein, A. F., Draxler, R. R., Rolph, G. D., Stunder, B. J. B., Cohen, M. D., and Ngan, F.: NOAA'S HYSPLIT ATMOSPHERIC
532 TRANSPORT AND DISPERSION MODELING SYSTEM, *Bull. Am. Meteorol. Soc.*, 96, 2059-2077,
533 <https://doi.org/10.1175/bams-d-14-00110.1>, 2015.

534 Stephens, M., Turner, N., and Sandberg, J.: Particle identification by laser-induced incandescence in a solid-state laser cavity,
535 *Appl. Opt.*, 42, 3726-3736, <https://doi.org/10.1364/ao.42.003726>, 2003.

536 Tripathee, L., Kang, S., Rupakheti, D., Cong, Z., Zhang, Q., and Huang, J.: Chemical characteristics of soluble aerosols over
 537 the central Himalayas: insights into spatiotemporal variations and sources, *Environ. Sci. Pollut. Res.*, 24, 24454-24472,
 538 <https://doi.org/10.1007/s11356-017-0077-0>, 2017.

539 Vadrevu, K. P., Ellicott, E., Giglio, L., Badarinath, K. V. S., Vermote, E., Justice, C., and Lau, W. K. M.: Vegetation fires in the
 540 himalayan region – Aerosol load, black carbon emissions and smoke plume heights, *Atmos. Environ.*, 47, 241-251,
 541 <https://doi.org/10.1016/j.atmosenv.2011.11.009>, 2012.

542 Virkkula, A., Makela, T., Hillamo, R., Yli-Tuomi, T., Hirsikko, A., Hameri, K., and Koponen, I. K.: A simple procedure for
 543 correcting loading effects of aethalometer data, *J. Air Waste Manage. Assoc.*, 57, 1214-1222, [https://doi.org/10.3155/1047-](https://doi.org/10.3155/1047-3289.57.10.1214)
 544 3289.57.10.1214, 2007.

545 Wan, X., Kang, S., Wang, Y., Xin, J., Liu, B., Guo, Y., Wen, T., Zhang, G., and Cong, Z.: Size distribution of carbonaceous
 546 aerosols at a high-altitude site on the central Tibetan Plateau (Nam Co Station, 4730ma.s.l.), *Atmos. Res.*, 153, 155-164,
 547 <https://doi.org/10.1016/j.atmosres.2014.08.008>, 2015.

548 Wang, M., Xu, B., Wang, N., Cao, J., Tie, X., Wang, H., Zhu, C., and Yang, W.: Two distinct patterns of seasonal variation of
 549 airborne black carbon over Tibetan Plateau, *Sci. Total Environ.*, 573, 1041-1052,
 550 <https://doi.org/10.1016/j.scitotenv.2016.08.184>, 2016.

551 Wiedinmyer, C., Akagi, S. K., Yokelson, R. J., Emmons, L. K., Al-Saadi, J. A., Orlando, J. J., and Soja, A. J.: The Fire
 552 INventory from NCAR (FINN): a high resolution global model to estimate the emissions from open burning, *Geosci.*
 553 *Model Dev.*, 4, 625-641, <https://doi.org/10.5194/gmd-4-625-2011>, 2011.

554 Wu, G., Xu, B., Zhang, C., and Gao, S.: Atmospheric dust aerosols over the Eastern Pamirs: major element concentrations and
 555 composition, *Environ. Earth Sci.*, 61, 1227-1237, <https://doi.org/10.1007/s12665-009-0446-1>, 2010.

556 Xin, J. Y., Wang, Y. S., Pan, Y. P., Ji, D. S., Liu, Z. R., Wen, T. X., Wang, Y. H., Li, X. R., Sun, Y., Sun, J., Wang, P. C., Wang,
 557 G. H., Wang, X. M., Cong, Z. Y., Song, T., Hu, B., Wang, L. L., Tang, G. Q., Gao, W. K., Guo, Y. H., Miao, H. Y., Tian, S.
 558 L., and Wang, L.: The Campaign on Atmospheric Aerosol Research Network of China: CARE-China, *Bull. Am. Meteorol.*
 559 *Soc.*, 96, 1137-1155, <https://doi.org/10.1175/bams-d-14-00039.1>, 2015.

560 Xu, B., Wang, M., Joswiak, D. R., Cao, J., Yao, T., Wu, G., Yang, W., and Zhao, H.: Deposition of anthropogenic aerosols in
 561 a southeastern Tibetan glacier, *J. Geophys. Res.*, 114, D17209, <https://doi.org/10.1029/2008JD011510>, 2009.

562 Xu, C., Ma, Y. M., Panday, A., Cong, Z. Y., Yang, K., Zhu, Z. K., Wang, J. M., Amaty, P. M., and Zhao, L.: Similarities and
 563 differences of aerosol optical properties between southern and northern sides of the Himalayas, *Atmos. Chem. Phys.*, 14,
 564 3133-3149, <https://doi.org/10.5194/acp-14-3133-2014>, 2014.

565 Xu, Y., Ramanathan, V., and Washington, W. M.: Observed high-altitude warming and snow cover retreat over Tibet and the
 566 Himalayas enhanced by black carbon aerosols, *Atmos. Chem. Phys.*, 16, 1303-1315, [https://doi.org/10.5194/acp-16-1303-](https://doi.org/10.5194/acp-16-1303-2016)
 567 2016, 2016.

568 Yang, J., Duan, K., Kang, S., Shi, P., and Ji, Z.: Potential feedback between aerosols and meteorological conditions in a heavy
569 pollution event over the Tibetan Plateau and Indo-Gangetic Plain, *Clim. Dyn.*, 48, 2901-2917,
570 <https://doi.org/10.1007/s00382-016-3240-2>, 2017.

571 Yang, J., Kang, S., Ji, Z., and Chen, D.: Modeling the Origin of Anthropogenic Black Carbon and Its Climatic Effect Over the
572 Tibetan Plateau and Surrounding Regions, *J. Geophys. Res.: Atmos.*, n/a-n/a, <https://doi.org/10.1002/2017JD027282>, 2018.

573 Yang, M., Howell, S. G., Zhuang, J., and Huebert, B. J.: Attribution of aerosol light absorption to black carbon, brown carbon,
574 and dust in China - interpretations of atmospheric measurements during EAST-AIRE, *Atmos. Chem. Phys.*, 9, 2035-2050,
575 <https://doi.org/10.5194/acp-9-2035-2009>, 2009.

576 Yang, S., Xu, B., Cao, J., Zender, C. S., and Wang, M.: Climate effect of black carbon aerosol in a Tibetan Plateau glacier,
577 *Atmos. Environ.*, 111, 71-78, <https://doi.org/10.1016/j.atmosenv.2015.03.016>, 2015.

578 Yao, T., Thompson, L. G., Mosbrugger, V., Zhang, F., Ma, Y., Luo, T., Xu, B., Yang, X., Joswiak, D. R., Wang, W., Joswiak,
579 M. E., Devkota, L. P., Tayal, S., Jilani, R., and Fayziev, R.: Third Pole Environment (TPE), *Environ. Dev.*, 3, 52-64,
580 <https://doi.org/10.1016/j.envdev.2012.04.002>, 2012.

581 Zhang, Q., Streets, D. G., Carmichael, G. R., He, K. B., Huo, H., Kannari, A., Klimont, Z., Park, I. S., Reddy, S., Fu, J. S.,
582 Chen, D., Duan, L., Lei, Y., Wang, L. T., and Yao, Z. L.: Asian emissions in 2006 for the NASA INTEX-B mission, *Atmos.*
583 *Chem. Phys.*, 9, 5131-5153, <https://doi.org/10.5194/acp-9-5131-2009>, 2009.

584 Zhang, R., Wang, H., Qian, Y., Rasch, P. J., Easter, R. C., Ma, P. L., Singh, B., Huang, J., and Fu, Q.: Quantifying sources,
585 transport, deposition, and radiative forcing of black carbon over the Himalayas and Tibetan Plateau, *Atmos. Chem. Phys.*,
586 15, 6205-6223, <https://doi.org/10.5194/acp-15-6205-2015>, 2015.

587 Zhang, X., Ming, J., Li, Z., Wang, F., and Zhang, G.: The online measured black carbon aerosol and source orientations in the
588 Nam Co region, Tibet, *Environ. Sci. Pollut. Res.*, 24, 25021-25033, <https://doi.org/10.1007/s11356-017-0165-1>, 2017a.

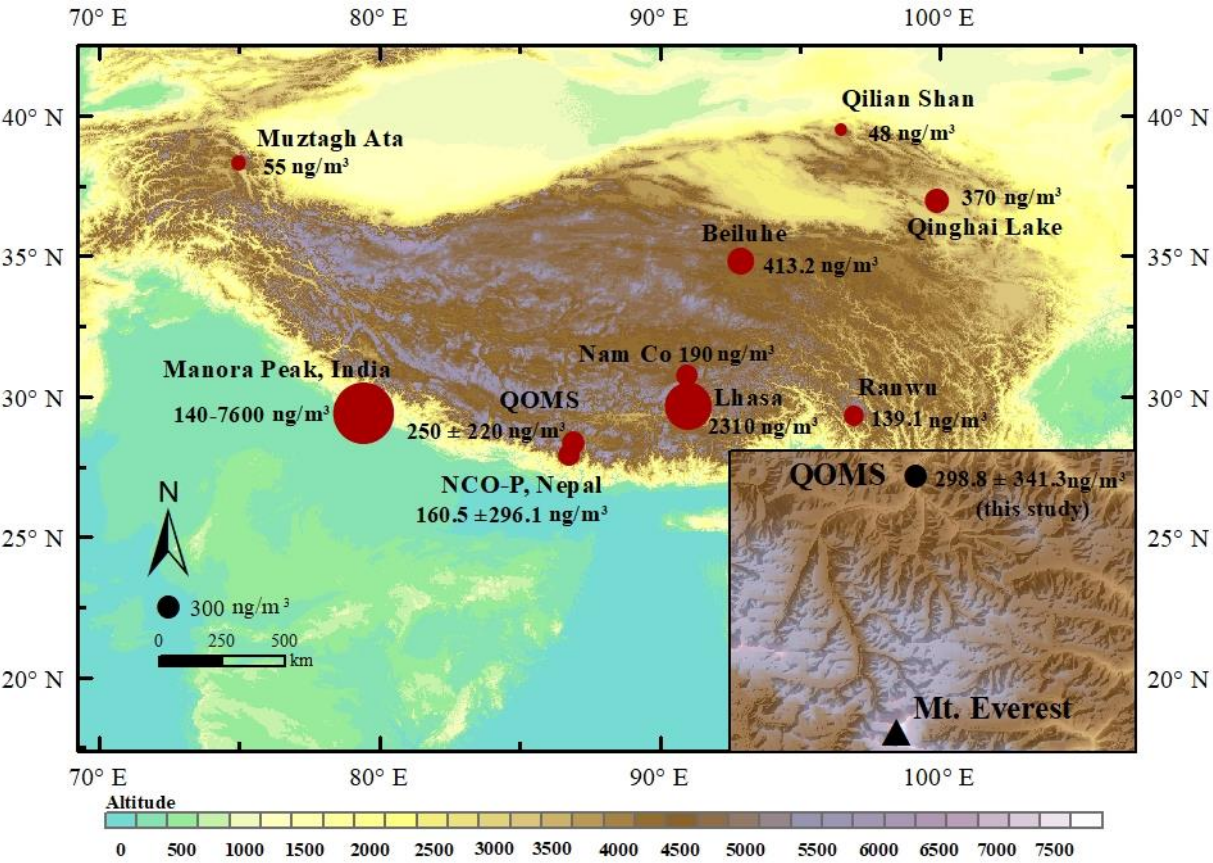
589 Zhang, Y., Kang, S., Cong, Z., Schmale, J., Sprenger, M., Li, C., Yang, W., Gao, T., Sillanpää, M., Li, X., Liu, Y., Chen, P., and
590 Zhang, X.: Light-absorbing impurities enhance glacier albedo reduction in the southeastern Tibetan plateau, *J. Geophys.*
591 *Res.: Atmos.*, 122, 6915-6933, <https://doi.org/10.1002/2016JD026397>, 2017b.

592 Zhao, S., Ming, J., Xiao, C., Sun, W., and Qin, X.: A preliminary study on measurements of black carbon in the atmosphere of
593 northwest Qilian Shan, *J. Environ. Sci.*, 24, 152-159, [https://doi.org/10.1016/s1001-0742\(11\)60739-0](https://doi.org/10.1016/s1001-0742(11)60739-0), 2012.

594 Zhu, C.-S., Cao, J.-J., Hu, T.-F., Shen, Z.-X., Tie, X.-X., Huang, H., Wang, Q.-Y., Huang, R.-J., Zhao, Z.-Z., Mocnik, G., and
595 Hansen, A. D. A.: Spectral dependence of aerosol light absorption at an urban and a remote site over the Tibetan Plateau,
596 *Sci. Total Environ.*, 590, 14-21, <https://doi.org/10.1016/j.scitotenv.2017.03.057>, 2017.

597 Zou, H., Zhou, L., Ma, S., Li, P., Wang, W., Li, A., Jia, J., and Gao, D.: Local wind system in the Rongbuk Valley on the
598 northern slope of Mt. Everest, *Geophys. Res. Lett.*, 35, L13813, <https://doi.org/10.1029/2008gl033466>, 2008.

599



601

602

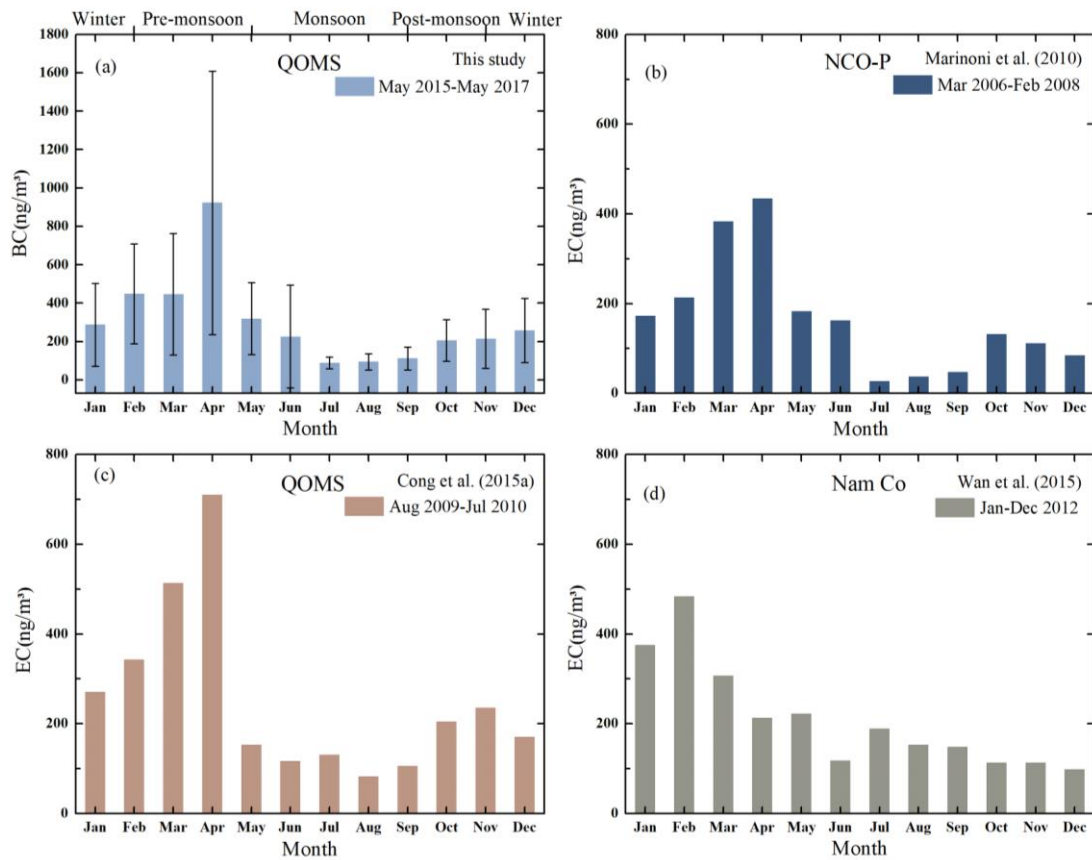
603

604

605

606

Figure 1. Distribution of BC concentrations over the TP based on the observed values at QOMS in this study (black circle) and from previous studies (red circles), i.e., at QOMS (Cong et al., 2015a), Nam Co (Wan et al., 2015), Lhasa (Li et al., 2016b), Ranwu (Wang et al., 2016), Qilian Shan (Zhao et al., 2012), Beiluhe (Wang et al., 2016), Qinghai Lake (Li et al., 2013), Muztagh Ata (Cao et al., 2009), Manora Peak, India (Ram et al., 2010), and NCO-P, Nepal (Marinoni et al., 2010).



607

608 **Figure 2.** (a) Monthly mean BC concentrations at QOMS from May 2015 to May 2017 in this study; (b) Monthly mean EC at NCO-
 609 P from March 2006 to February 2008 from Marinoni et al. (2010); (c) Monthly mean EC at QOMS from August 2009 to July 2010
 610 from Cong et al. (2015a); (d) Monthly mean EC at Nam Co station from January to December during 2012 from Wan et al. (2015).

611

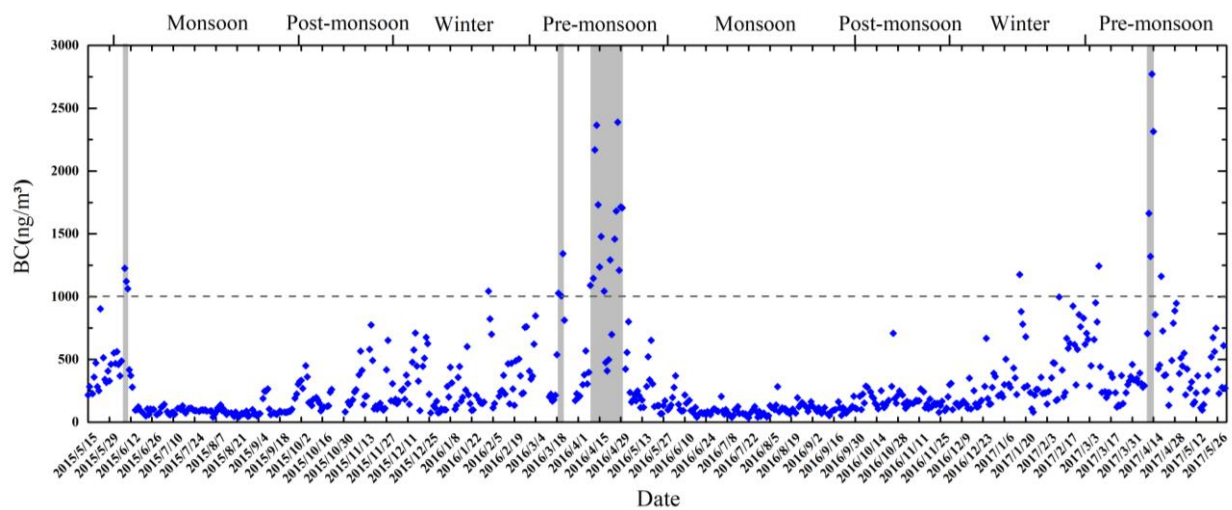
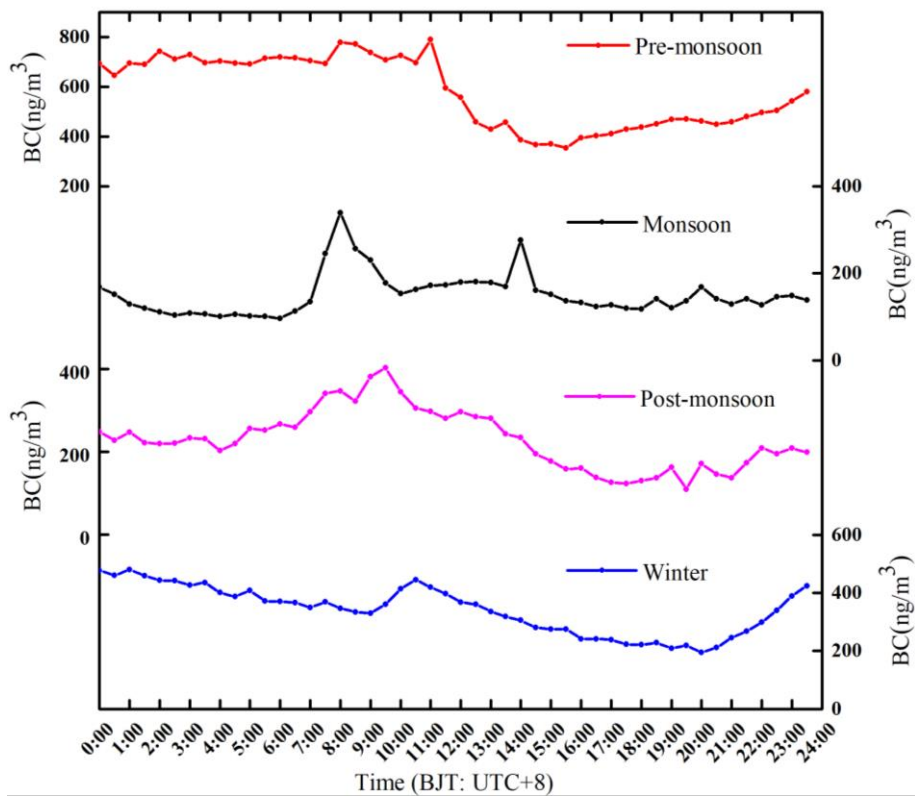


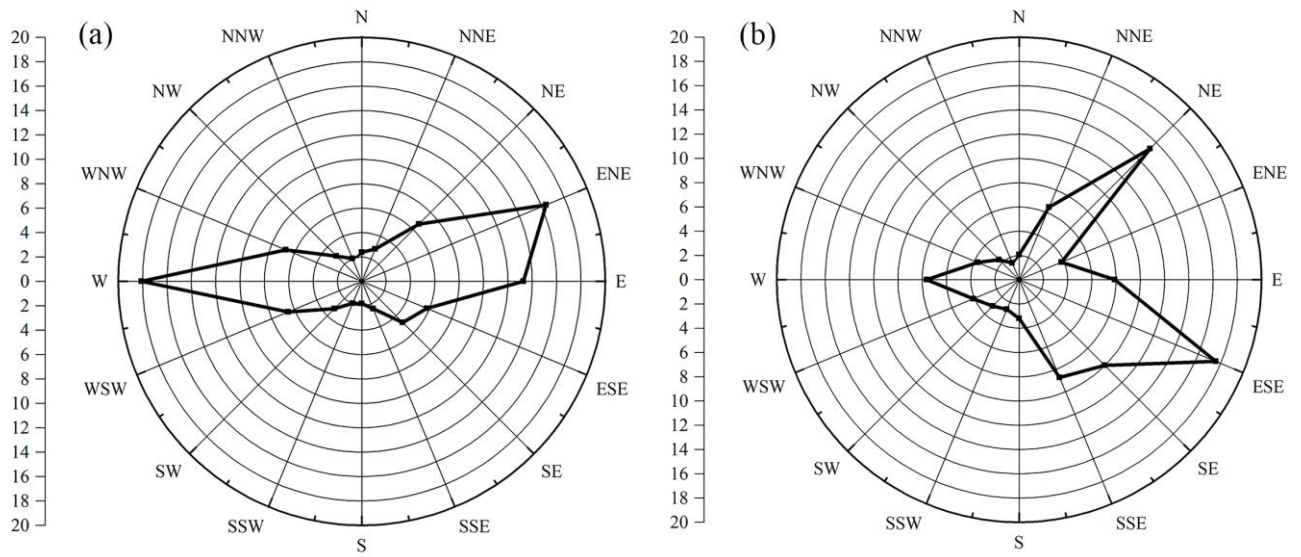
Figure 3. Daily mean BC concentrations at QOMS during study period (the gray bars represent the continuous high values more than 1000 ng/m^3).



616

617 **Figure 4.** Diurnal variation in BC concentrations (every half an hour) at QOMS during study period.

618



619

620 **Figure 5.** Wind direction frequency at QOMS in the pre-monsoon season (a) 0:00-12:00; (b) 12:00-24:00.

621

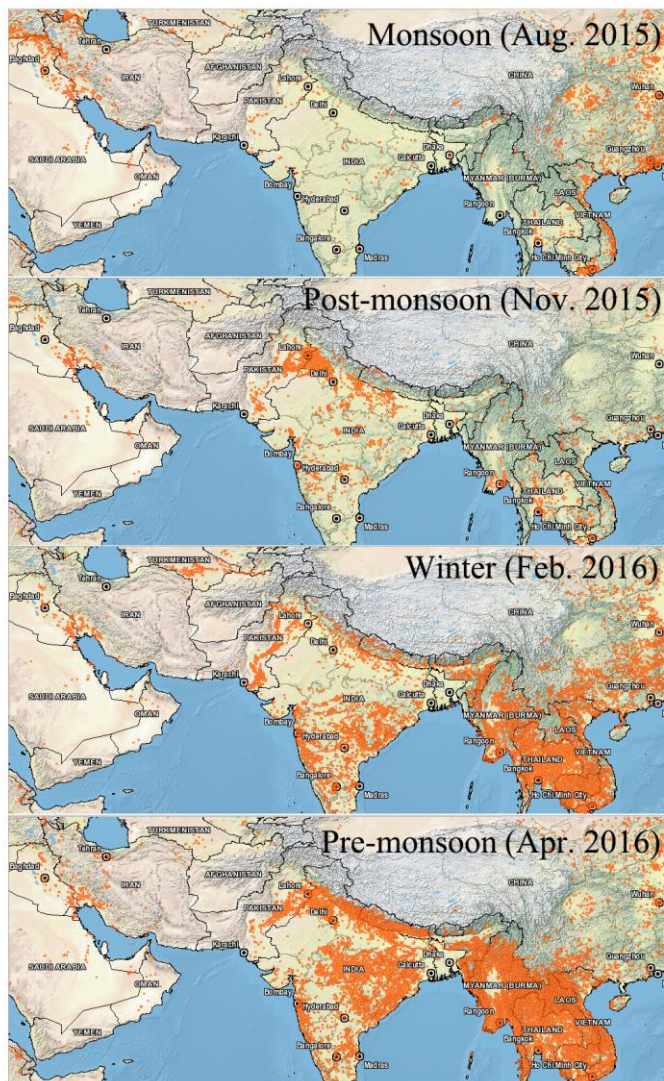


Figure 6. Distribution of fire spots in different seasons from August 2015 to April 2016.

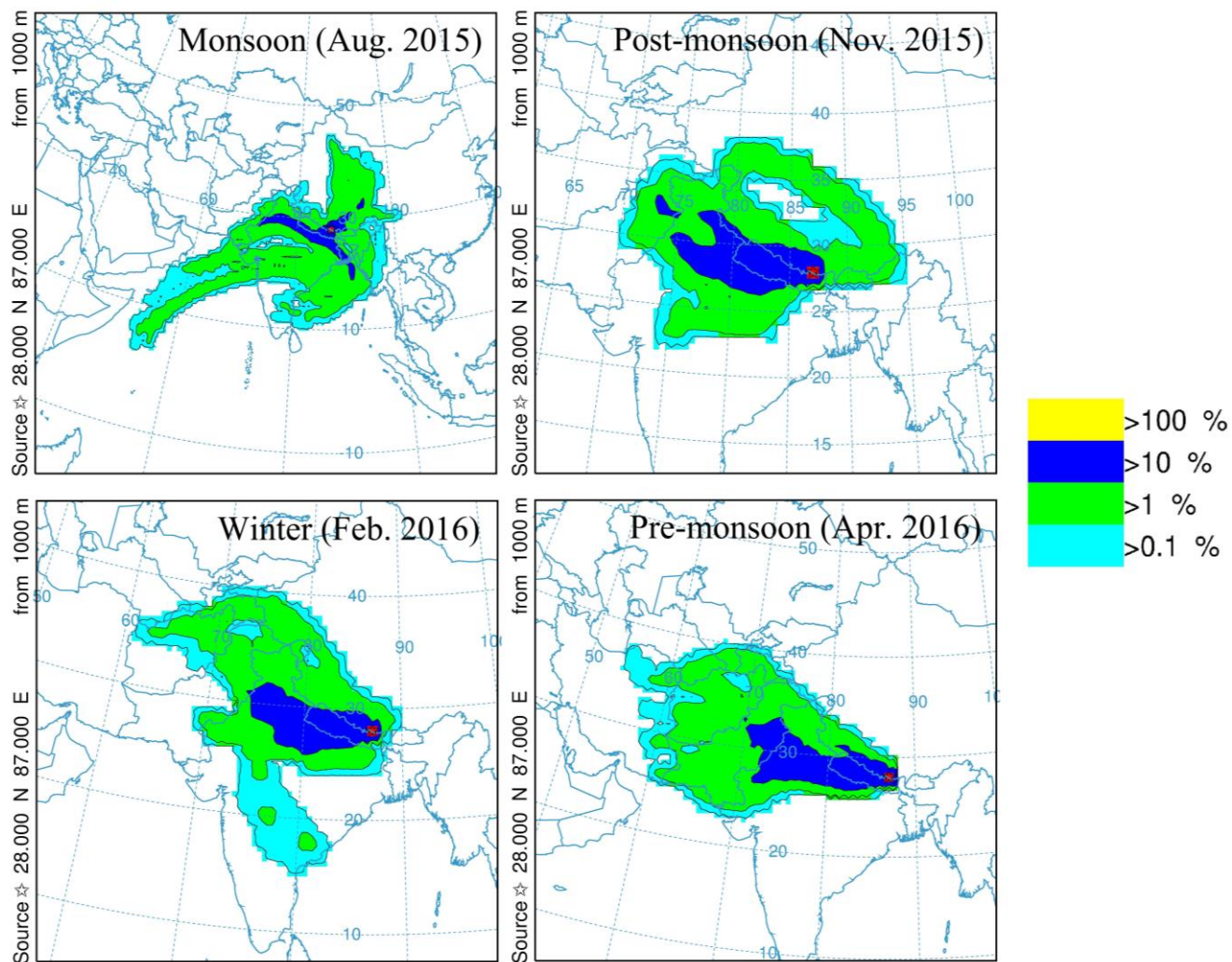
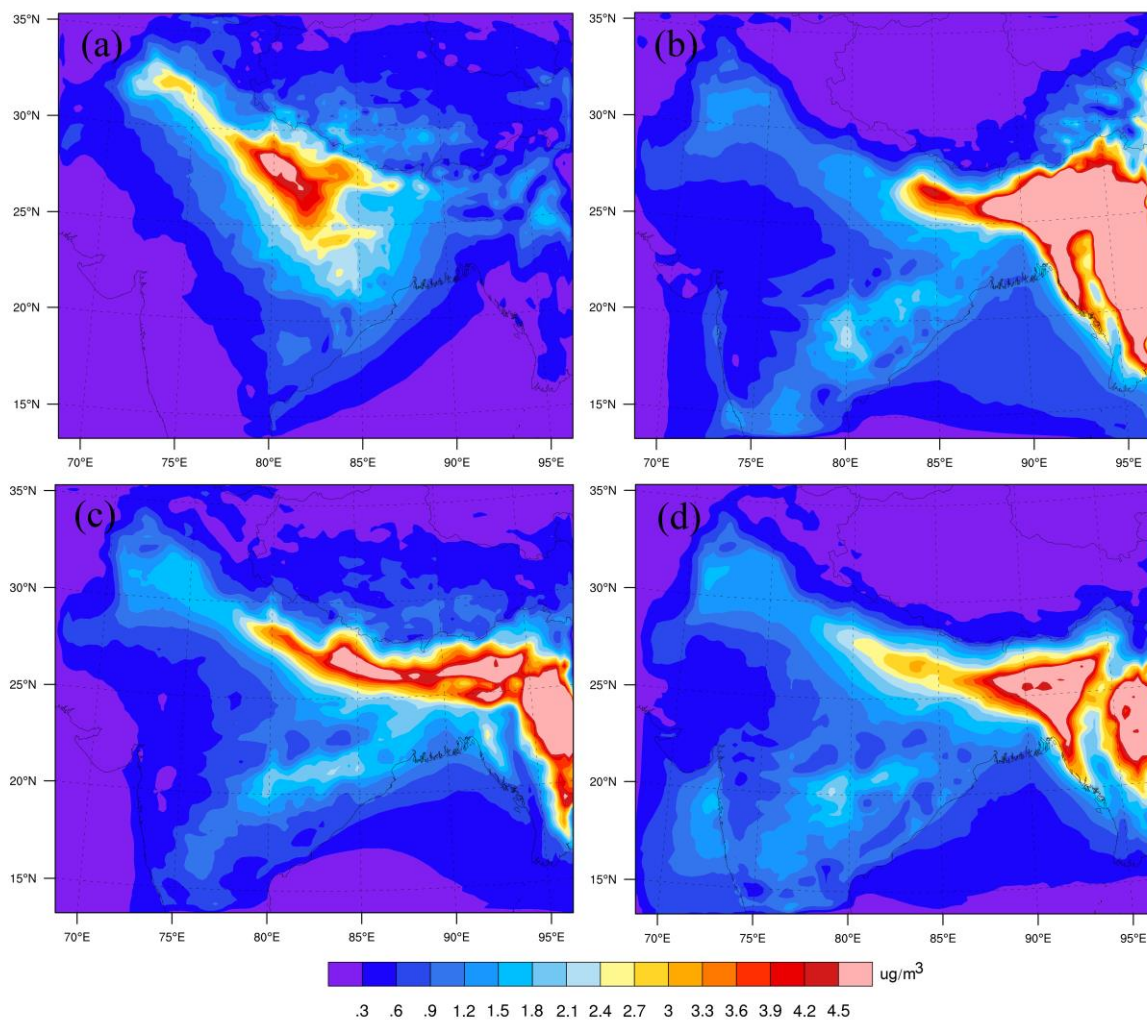


Figure 7. Frequency plots for 5-day backward trajectories calculated by HYSPLIT model at QOMS in different seasons from August 2015 to April 2016.



629

630 **Figure 8.** Mean BC concentration simulated by WRF-Chem model at QOMS and its vicinities: (a) event A; (b) event B; (c) event C;
 631 (d) event D.

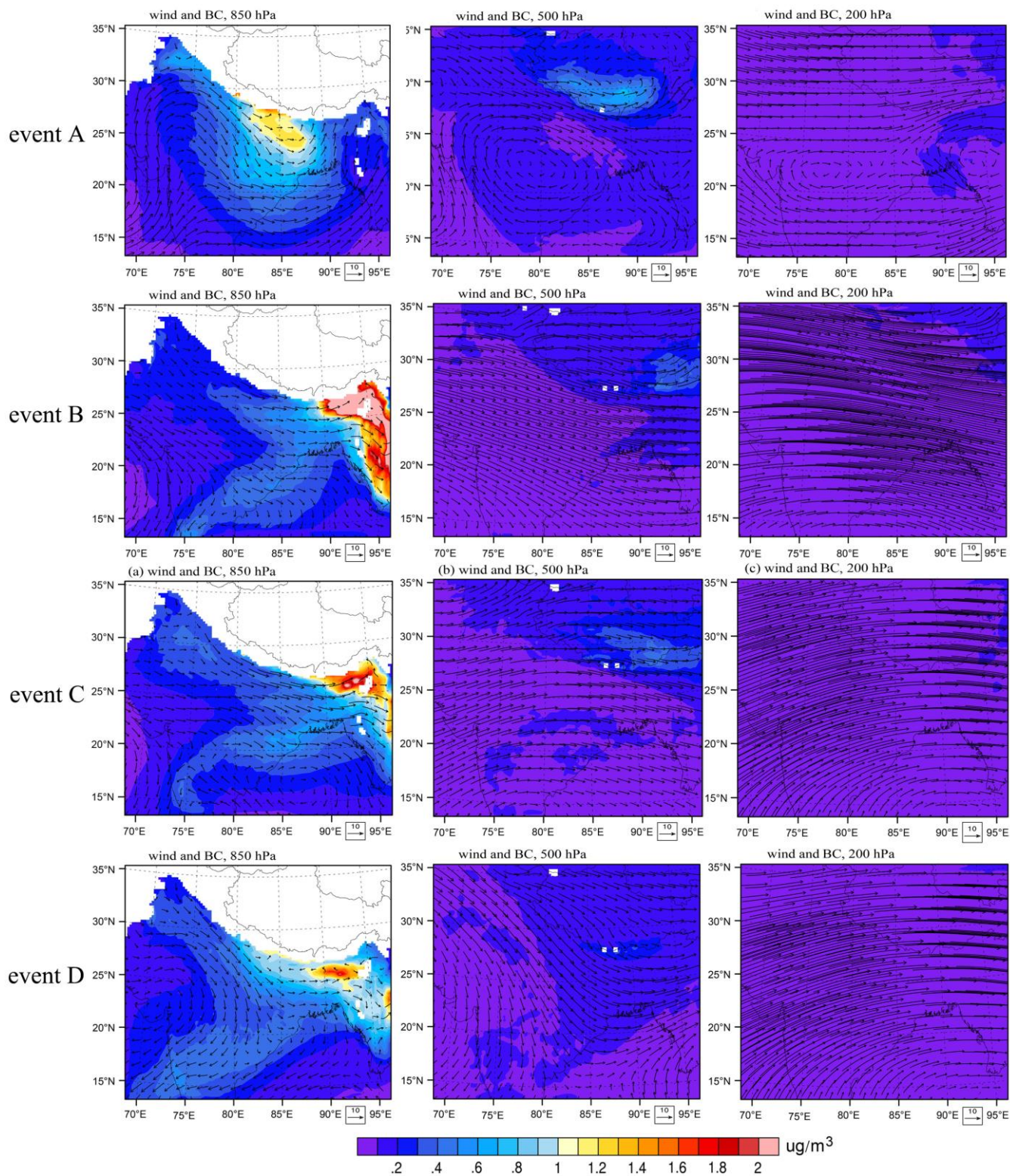
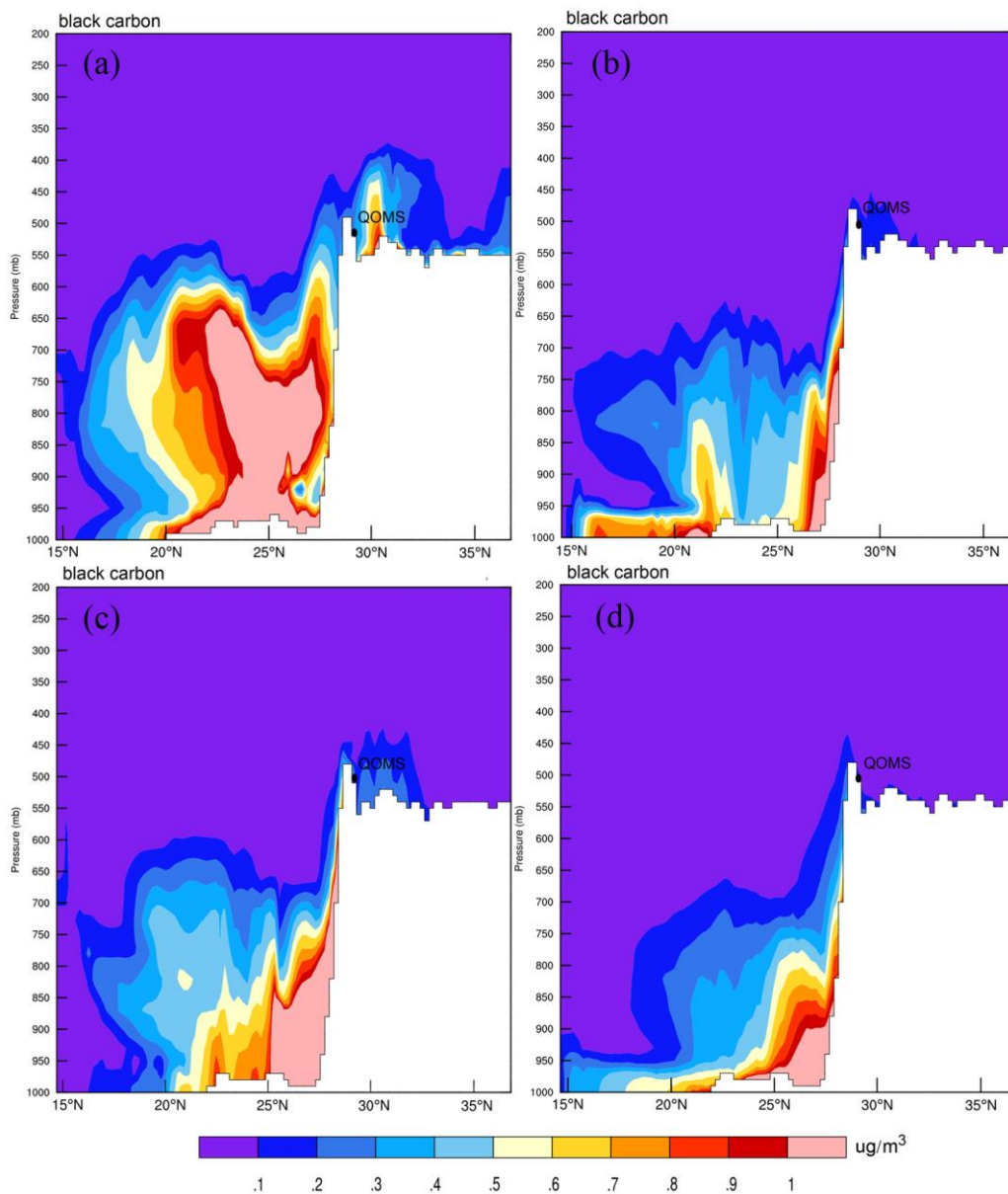


Figure 9. Mean BC concentration and wind at 850 hPa, 500 hPa, and 200 hPa simulated by WRF-Chem model at QOMS and its vicinities: event A (the first row); event B (the second row); event C (the third row); event D (the last row).



636

637 **Figure 10.** Vertical profiles of mean BC concentration along the QOMS's longitude of 86.95°E: (a) event A; (b) event B; (c) event C;
 638 (d) event D.

639

640