

Chemical Characterisation of Water-soluble Ions in Atmospheric Particulate Matter on the East Coast of Peninsular Malaysia

Naomi J. Farren¹, Rachel E. Dunmore¹, Mohammed Iqbal Mead², Mohd Shahrul Mohd Nadzir^{3,4}, Azizan Abu Samah⁵, Siew-Moi Phang⁵, Brian J. Bandy⁶, William T. Sturges⁶, Jacqueline F. Hamilton¹.

5

¹Wolfson Atmospheric Chemistry Laboratories, Department of Chemistry, University of York, York, YO10 5DD, UK.

²Centre for Atmospheric Informatics and Emissions Technology, School of Energy, Environment and Agrifood/Environmental Technology, Cranfield University, Cranfield, UK.

³Centre for Tropical Climate Change System (IKLIM), Institute of Climate Change, Universiti Kebangsaan Malaysia, 43600 Bangi, Selangor, Malaysia.

⁴School of Environmental Science and Natural Resources, Faculty of Science and Technology, Universiti Kebangsaan Malaysia, 43600 Bangi, Selangor Darul Ehsan, Malaysia.

⁵Institute of Ocean and Earth Sciences, University of Malaya, Kuala Lumpur, Malaysia.

⁶Centre for Ocean and Atmospheric Sciences, School of Environmental Sciences, University of East Anglia, Norwich, UK.

15

Correspondence to: Jacqueline F. Hamilton (jacqui.hamilton@york.ac.uk)

Abstract.

Air quality on the east coast of Peninsular Malaysia is influenced by local anthropogenic and biogenic emissions, as well as marine air masses from the South China Sea and aged emissions transported from highly polluted East Asian regions during the winter monsoon season. An atmospheric observation tower has been constructed on this coastline at the Bachok Marine and Atmospheric Research Station. Daily PM_{2.5} samples were collected from the top of the observation tower over a 3-week period and ion chromatography was used to make time-resolved measurements of major atmospheric ions present in aerosol. SO₄²⁻ was found to be the most dominant ion present and on average made up 66% of the total ion content. Predictions of aerosol pH were made using the ISOROPPIA-II thermodynamic model and it was estimated that the aerosol was highly acidic, with pH values ranging from -0.97 to 1.12. A clear difference in aerosol composition was found between continental air masses originating from industrialised regions of East Asia and marine air masses predominantly influenced by the South China Sea. For example, elevated SO₄²⁻ concentrations and increased Cl⁻ depletion was observed when continental air masses that had passed over highly industrialised regions of East Asia arrived at the measurement site. Correlation analyses of the ionic species and assessment of ratios between different ions provided an insight into common sources and formation pathways of key atmospheric ions, such as SO₄²⁻, NH₄⁺ and C₂O₄²⁻. To our knowledge, time-resolved measurements of water-soluble ions in PM_{2.5} are virtually non-existent in rural locations on the east coast of Peninsular Malaysia; overall this dataset contributes towards a better understanding of atmospheric composition in the Maritime Continent, a region of the tropics that is vulnerable to the effects of poor air quality, largely as a result of rapid industrialisation in East Asia.

1 Introduction

35 The tropical Maritime Continent, a region in Southeast Asia between 10° S – 20 °N and 90° - 150° E, is a complex distribution of islands and peninsulas and incorporates countries such as Malaysia, Indonesia, the Philippines and Papua New Guinea (Neale and Slingo, 2003). It lies within a tropical warm pool that extends eastwards from the Indian Ocean to the Western Pacific, and is home to some of the warmest ocean temperatures in the world. Tropical regions such as the Maritime Continent are of central importance for the chemistry-climate system (Carpenter et al., 2010). For example, high photochemical activity

40 in these regions means that global atmospheric lifetimes of key atmospheric species, such as methane and ozone, are controlled by destruction rates in the tropics (Lawrence et al., 2001; Bloss et al., 2005). In terms of ocean productivity, the observed decrease in primary productivity in low-latitude oceans has been linked to a reduced availability of nutrients for phytoplankton growth, caused by changes in upper-ocean temperature and stratification (Behrenfeld et al., 2006). Furthermore, the wind circulation system in the Maritime Continent is influenced by seasonal Asian monsoons, which are controlled by the natural

45 oscillation of the intertropical convergence zone (ITCZ). During the northern hemisphere winter, a large anticyclone forms over Siberia each year, creating strong north-easterly monsoon winds in the South China Sea (Northeast Monsoon). These strong north-easterlies can transport air masses from rapidly developing East Asian countries (*e.g.* China, Japan, Vietnam, North and South Korea) across the South China Sea to the Maritime Continent (Zhang et al., 1997; Garreaud, 2001; Oram et al., 2017). In addition, cold surge events occur regularly throughout the winter monsoon season and last several days. Cold

50 surges occur as a result of a south-easterly movement of the anticyclone, and are characterised by cold air masses over Southern China and strengthening of the north-easterly monsoon winds in the South China Sea (Zhang et al., 1997). The transport of pollution from East Asia to the tropics during the monsoon season, particularly during cold surges, means that rural areas such as the east coast of Peninsular Malaysia are potentially at an elevated risk of the detrimental effects of poor air quality.

55 Tropical regions are highly important for atmospheric research, and whilst long-term atmospheric observations exist (Robinson et al., 2014; Pyle et al., 2011), there are fewer measurements than in the mid and high-latitudes. The Bachok Marine and Atmospheric Research Station (6.00892° N, 102.42504° E) has been set up on the east coast of Peninsular Malaysia and is ideally located for studying the outflow of these highly industrialised regions, and for investigating the interaction with cleaner air in the Southern hemisphere. The research station, located approximately 30 km away from Kota Bharu, forms part of the

60 Institute of Ocean and Earth Sciences at the University of Malaya (UM). An atmospheric observation tower facing the South China Sea has been constructed at the research station; this has been built for the specific purpose of monitoring long-range transported pollution, air sea exchange and coastal meteorology. The research station is working towards designation as a regional Global Atmospheric Watch (GAW) centre, which will be a valuable addition to the network of other global and regional GAW sites in the Maritime Continent, as shown in Fig. 1 (gawsis.ch, 2017).

65

Figure 1: Location of the Bachok research station (BRT) and the global and regional GAW sites in the Maritime Continent; Danum Valley in Malaysia (DMV), Bukit Kototabang in Indonesia (BKT), Manila in Philippines (MNI), Songkhla in Thailand (SKH), Tanah Rata in Malaysia (TAR), Petaling Jaya in Malaysia (PJM) and Singapore (SIN) (gawsis.ch, 2017).

70 In January and February 2014, an instrument demonstration campaign was carried out to assess the capabilities of the new
research station. This was funded by the Natural Environment Research Council (NERC) and UM and involved several UK
universities, as well as the National Centre for Atmospheric Science (NCAS), UM and the Malaysia Meteorological
Department (MMD). As part of this study, Dunmore et al. (2016) used a specialised multi-dimensional gas chromatography
75 of functionalities. Furthermore, Dominick et al. (2015) characterised the particulate matter in Bachok by studying the influence
of north-easterly winds on the patterns of particle mass and particle number concentration size distributions. Both studies
highlighted the fact that the site is influenced by a mixture of local anthropogenic and biogenic emissions, clean marine air
masses and aged emissions transported from East Asia.

80 To extend upon these studies, it is important to investigate atmospheric aerosol composition in the Bachok region. A better
understanding of aerosol chemical composition is essential as aerosols play an important role in atmospheric processes and
climate change. For example, aerosols can modify the global radiation budget both directly, by scattering and absorbing solar
radiation, and indirectly, by altering cloud properties and lifetime (Charlson et al., 1991). The strength of these direct and
indirect effects depends partly on the particle concentration and size distribution, but also on the chemical composition.

85 There are a limited number of studies that focus on particulate matter composition on the east coast of Peninsular Malaysia,
and to our knowledge the composition of ionic species has not been determined at any rural locations along this coastline. For
example, Tahir et al. (2013) studied the composition of major elements and water-soluble ionic species in PM_{2.5} and PM₁₀
samples on the east coast of Peninsular Malaysia, but the samples were collected at an urban coastal city, Kuala Terengganu.
90 This study used principal component analysis to determine the main sources of both fine and coarse particles, which were
found to be soil dust, marine aerosol, vehicle exhaust, secondary aerosol, road dust and biomass burning. In addition, Ismail
et al. (2016) studied PM₁₀ concentrations in three major cities (Kota Bahru, Kuala Terengganu and Kuantan) on the east coast
of Peninsular Malaysia between 2006 and 2012. The study showed that during the Northeast Monsoon, the air arriving at the
sites had originated from China and the Philippines and travelled over the South China Sea. During the South west Monsoon,
95 the air came from Indonesia *via* the Straits of Malacca. Over the 6-year period, it was found that the atmospheric PM₁₀ mass
was directly proportional to the rate of urbanization in each of the three cities.

In this study, measurements of water-soluble ions in atmospheric aerosol at a rural coastal location on the east coast of
Peninsular Malaysia are presented. Analysis of temporal variation of different ionic species has been carried out and backward

100 air mass trajectories have been used to determine the influence of air mass origin on aerosol composition. Correlation analyses of the ionic species and assessment of ratios between different ions has provided an insight into common sources and formation pathways of key atmospheric ions. This study contributes towards a better understanding of atmospheric composition in the rural Bachok region, which is vulnerable to the effects of poor air quality, largely as a result of rapid industrialisation in East Asia.

105 **2 Experimental**

2.1 Sample collection and extraction

Thirty PM_{2.5} samples were collected at the Bachok Marine and Atmospheric Research Station (6.00892° N, 102.42504° E) between 18-01-2014 and 07-02-2014. The samples were collected at the top of an atmospheric observation tower (18 m height) using a high volume air sampler (Ecotech HiVol 3000, Victoria, Australia) operating at 1.13 m³ min⁻¹ over 24 h sampling
110 intervals. The tower is located on the coastline of the South China Sea and is within 100 m of the shore. A 3-day intensive measurement period was in operation between midday (local time) on 30-01-2014 and midday on 02-02-2014, in which filters were collected every 4-8 hours. The quartz fibre filters (20.3 × 25.4 cm) supplied by Whatman (Maidstone, UK) were prebaked at 550 °C for a minimum of 12 h prior to sample collection. After sample collection, the filters were wrapped in aluminium foil and stored at -18 °C until analysis. To prepare the samples for analysis, 5.7 cm² of each sample was dissolved in 2 mL
115 milli-Q water and sonicated for 30 min at room temperature. The extract was filtered using a Millex-GP 33 mm diameter hydrophilic syringe filter with a pore size of 0.22 µm (Millipore UK Limited, Watford, UK) and made up to a final volume of 2.5 mL.

2.2 Eluents and analytical standards

Ultrapure milli-Q water (18 MΩ cm⁻¹) from an ELGA LabWater purification system was used to prepare all the required
120 eluents and analytical standards. A 20 mM solution of methanesulfonic acid was used as the eluent for cation exchange chromatography and for anion exchange chromatography, a solution of 8 mM Na₂CO₃/1 mM NaHCO₃ was prepared. Using a variety of salts and organic acids, individual analytical standards containing 500 ppm of each target ion (Cl⁻, NO₂⁻, NO₃⁻, PO₄³⁻, SO₄²⁻, CH₃SO₃⁻, C₂O₄²⁻, Na⁺, NH₄⁺, K⁺, Mg²⁺ and Ca²⁺) were prepared in milli-Q water. The salts and organic acids were purchased from either Sigma-Aldrich Ltd. (Dorset, UK) or Fisher Scientific Ltd. (Loughborough, UK).

125

2.3 Chromatographic analysis

Chromatographic analysis was carried out using a Thermo Scientific Dionex ICS-1100 ion chromatography system equipped with an AS-DV autosampler. The column configuration used for anion exchange consisted of an IonPac AG14A guard column (4 × 50 mm) and an IonPac AS14A analytical column (4 × 250 mm). Cation exchange chromatography was performed using

130 an IonPac CG12A guard column (4 × 50 mm) and an IonPac CS12A analytical column (4 × 250 mm). ASRS 300 and CSRS 300 self-regenerating suppressors (4 mm) were used for anion and cation exchange respectively. All columns and suppressors were supplied from Thermo Scientific Dionex. The run times for the anion and cation separations were 18 and 15 min respectively. The suppressor current was 45 mA for anion exchange mode and 59 mA for cation exchange mode. For all separations, the instrument was operated in isocratic mode at a flow rate of 1 mL min⁻¹ and a column oven temperature of 135 30 °C. The injection volume was 100 µL and the data collection rate was 5 Hz. The system relied on a DS6 heated conductivity cell for ion detection and all data was analysed using Thermo Scientific Chromeleon 7.1 Chromatography Data System software.

2.4 Method validation

Using isocratic elution methods for both cation and anion exchange chromatography, the target ions were successfully separated. Recovery tests were performed by spiking 5.7 cm² of quartz fibre filters (Whatman, Maidstone, UK) with 1 µg of each target ion (20 µL of a 50 ppm mixed ion solution). Prior to spiking, the filters were prebaked at 550 °C for 6 hours and wrapped in aluminium foil and stored at -18 °C until required. The spiked filters were dissolved in 2 mL of milli-Q water and sonicated for 30 min at room temperature. The extract was filtered using a Millex-GP 33 mm diameter hydrophilic syringe filter with a pore size of 0.22 µm (Millipore UK Limited, Watford, UK) and made up to a final volume of 2.5 mL. The recovery 145 of the target ions from the filter papers ranged from 74.5% to 98.2% for the target anions, and 78.3% to 87.3% for the target cations, with the exception of Ca²⁺ for which a recovery level of 123.3% was calculated. Recovery tests were carried out in triplicate and %RSD_{rec} remained below 8% for all the ions. The recovery of Ca²⁺ should not have exceeded 100% and the result may be attributed to inconsistencies in the amount of Ca²⁺ present on the blank filter, or due to Ca²⁺ contamination during sample collection or storage. 100% recovery was assumed for Ca²⁺ during the data analysis process. Further details of the 150 individual recovery levels and associated errors can be found in the Supplement (Table S1). Procedural blanks were also carried out using quartz fibre filters (5.7 cm²) and blank subtractions were applied to any target ions found in detectable amounts. The blank peak areas for each ion and average blank contribution to field samples over the entire sampling period are provided in the Supplement, Table S1. The main instrumental parameters of the IC system were evaluated and are also detailed in the Supplement (Table S2). Instrumental limits of detection (LODs) and limits of quantification (LOQs) were 155 calculated according to the EPA protocol 40 CFR 136; multiplying the standard deviation (N = 10, 5 ng for cations, 25 ng for anions) by the t-value (N = 10, 95% confidence interval) gave the LOD, and multiplying the standard deviation by 10 gave the LOQ (EPA, 2017; Ripp, 1996). For anion exchange chromatography, LODs and LOQs were in the range 5.5 – 21.0 ng and 25.3 – 144.2 ng respectively. For cation exchange chromatography, the LODs ranged from 0.5 to 2.1 ng and the LOQs ranged from 2.5 to 6.1 ng. On average, the instrument precision (%RSD_{ins}, n = 10) was 4.2% for the target cations and 12.8% for the 160 target anions. Total errors were estimated by combining errors with the instrument and the recovery process and remained below 15.4% for all ions except NO₃⁻ (22.6%).

2.5 Additional measurements

Individual volatile organic compounds (VOCs) were measured using a combined heart-cut and comprehensive two-dimensional gas chromatography system (GC-GC×GC); a detailed description of the instrument design is provided in a separate study (Dunmore et al., 2016). Measurements of NO and NO₂ were performed using a two channel TE42i commercial gas analyser (Thermo Scientific, MA, USA), and SO₂ measurements were made using a Thermo Scientific 43i SO₂ analyser. Meteorological data from the nearest meteorological station, the Sultan Ismail Petra Airport (6.17208° N, 102.29288° E), was accessed from the Integrated Surface Database (NOAA, 2003). Hourly measurements of wind direction, wind speed, air temperature, dew point, atmospheric pressure and relative humidity were obtained. 10-day backward air mass trajectories arriving at the sampling site were run every 3 hours throughout the entire measurement period. A receptor height of 10 m was chosen to represent the measurements made on the sampling tower. The trajectories were computed using the Hybrid Single-Particle Lagrangian Integrated Trajectory (HYSPPLIT) model (Stein et al., 2015; Draxler, 1999; Draxler and Hess, 1998, 1997), and the data was analysed using the openair package in RStudio (Carslaw and Ropkins, 2012; Carslaw, 2015).

2.6 ISORROPIA-II model

Predictions of aerosol pH were made using the ISORROPIA-II thermodynamic equilibrium model. Although these models produce better results when gas phase measurements such as NH₃ and HNO₃ are available, it is possible to use the ion measurements obtained in this study to make a prediction of aerosol pH (Fountoukis and Nenes, 2007). Calculations were made in 'reverse mode', in which known quantities are temperature, relative humidity, and particle phase concentrations of NH₄⁺, SO₄²⁻, Na⁺, Cl⁻, NO₃⁻, Ca²⁺, K⁺ and Mg²⁺. ISORROPIA-II assumes that the particles are internally mixed; this is a reasonable assumption for this study, as relative humidity was high (average = 77%) and the aerosol arriving at the measurement site is often aged. The aerosol was assumed to be thermodynamically stable *i.e.* the aerosol can exist as both solid and liquid, and salts are able to precipitate if the aqueous phase becomes saturated with respect to them. The ambient temperature and relative humidity data were taken from the measurements made nearby at the Sultan Ismail Petra airport. It is likely that these measurements are representative of the Bachok research station, as further investigation of data from two other meteorological stations showed that temperature and relative humidity remain consistent along the coastline.

3 Results and discussion

3.1 Bachok demonstration campaign

The filter samples were collected at the Bachok atmospheric observation tower. The Bachok district, located in the state of Kelantan, is a rural area and the primary economic activity comes from tobacco and kenaf plantations. Other agrarian activities in the wider Kelantan region include the production of rice and rubber, as well as additional economic activities such as livestock rearing and fishing. Fig. 2 shows the 7-day backward air mass trajectories arriving at the measurement site during

the demonstration campaign, with each trajectory coloured by the mean altitude (m). For comparison with pollutant trends later in this study, the trajectories have been separated into two plots according to their mean height. As expected during the winter months, the strong anticyclone system known as the Siberian High led to the arrival of north-easterly onshore winds along the east coast of Peninsular Malaysia. Some of the air masses experienced a significant continental influence from highly industrialised countries such as China, Japan, North and South Korea and the island of Taiwan, whilst other air masses had a stronger marine influence from both the East China Sea and the South China Sea.

Figure 2: 7-day HYSPLIT backward air mass trajectories centred on the Bachok Marine and Atmospheric Research Station between 18-01-2014 and 07-02-2014. Each trajectory is coloured by the mean altitude (m). Trajectories with a mean height of 80 m or below are shown in the left panel and trajectories with a mean height greater than 80 m are shown in the right panel.

Although there was no reliable meteorological data recorded at the measurement site during the demonstration campaign, data from a nearby meteorological station was available. The station is located approximately 23 km away at the Sultan Ismail Petra airport in Kota Bharu, as shown in Fig. S1 (Supplement). Whilst the meteorological data from the airport will not be exactly representative of the measurement site, the patterns in wind direction are consistent with observations made by the field scientists during the campaign. In addition, during a study of the influence of Northeast Monsoon cold surges on air quality in Southeast Asia, Ashfold et al. (2017) used meteorological data from three locations that they believed to lie in the path of cold surges during the Northeast Monsoon, offering the best possibility of observing a cold surge influence on air pollution. These sites were in Kota Bharu (102.247° E, 6.141° N), Kuala Terengganu (103.118° E, 5.308° N) and Kemaman (103.428° E, 4.271° N); this provides further confirmation that data from the Sultan Ismail Petra airport site is suitable for evaluating broad scale transport at the Bachok measurement site. Fig. S2 in the Supplement shows average hourly wind speed and wind direction conditions across the entire duration of the measurement campaign (18-01-2014 to 06-02-2014). On most days, gentle south westerlies from the land (Peninsular Malaysia) were observed in the early hours of the morning, through to around 11 am. At this stage, a dramatic shift in wind direction occurred, and until around 19:00 a strong onshore breeze from the north east (South China Sea) was observed. From 20:00 to the early hours of each morning, a calmer sea breeze predominantly from the east was seen. Hourly VOC measurements were conducted at the measurement site, and the development of a sea breeze at approximately 11:00 dramatically influenced the diurnal profiles of the measured species (Fig. S3, Supplement). In the morning, when the air being sampled was coming over the land, high levels of NO, NO₂ and anthropogenic VOCs such as toluene and C₁₀ aliphatics were observed; the main source of these species was local burning of waste (Dunmore et al., 2016). When the sea breeze developed the concentration of these species dropped significantly.

3.3 Composition of water-soluble ions in atmospheric aerosol

3.3.1 Aerosol composition and determination of non-sea salt and sea salt components

225 The total concentration of measured water-soluble ions in the PM_{2.5} during the campaign ranged from 8.06 to 27.0 µg m⁻³, with an average concentration of 16.2 µg m⁻³. Table 1 shows the mean and maximum water-soluble ion concentrations measured throughout the campaign, and Fig. 3 shows time series for all the ions measured in the aerosol.

Table 1: Mean and maximum ion concentrations measured throughout the measurement period. The average % mass contribution of each ion to the total measured ions is included, as well as the % of samples in which each target ion is found (%Qt).

230

Figure 3: Time series of water-soluble ions(µg m⁻³) measured during the Bachok demonstration campaign (18-01-2014 to 07-02-2014).

235 As the composition of the water-soluble ions present in aerosol collected at the Bachok site was influenced by both marine and continental sources, it is useful to make an estimation of non-sea salt (*nss*) and sea salt (*ss*) components, using Eq. (1) – Eq. (4). Total Na⁺ and Ca²⁺ concentrations have been measured in this study, and the mean Ca²⁺/Na⁺ ratio in the crust and mean Ca²⁺/Na⁺ ratio in seawater have been estimated as 1.78 w/w and 0.038 w/w respectively (Bowen, 1979). Therefore it is possible to solve Eq. (1) – Eq. (4) simultaneously for *ss*Na⁺, *nss*Na⁺, *ss*Ca²⁺ and *nss*Ca²⁺ (Boreddy and Kawamura, 2015). Furthermore, the resulting estimate of *ss*Na⁺, which can be used as a sea spray marker, can also be used to predict the contribution of *nss*SO₄²⁻ and *nss*K⁺ in the aerosol, as shown in Eq. (5) and Eq. (6) respectively. Whilst there may be some uncertainty in the mean Ca²⁺/Na⁺ crustal ratio, due to challenges associated with predicting the composition of the crust (Bowen, 1979), this approach provides more accuracy than simply using total Na⁺ as a sea spray marker.

240

$$ssNa^+ = Na^+ - nssNa^+ \quad (1)$$

$$nssNa^+ = nssCa^{2+} \cdot \left(\frac{Ca^{2+}}{Na^+}\right)_{crust} \quad (2)$$

245 $nssCa^{2+} = Ca^{2+} - ssCa^{2+} \quad (3)$

$$ssCa^{2+} = ssNa^+ \cdot \left(\frac{Ca^{2+}}{Na^+}\right)_{sea\ water} \quad (4)$$

$$nssSO_4^{2-} = SO_4^{2-} - 0.253 \cdot ssNa^+ \quad (5)$$

$$nssK^+ = K^+ - 0.037 \cdot ssNa^+ \quad (6)$$

250 Fig. 4 shows a series of stacked bar charts to summarise the average mass composition of water-soluble ions in atmospheric aerosol, and the distribution of non-sea salt and sea salt components. The results show that the water-soluble ion fraction of the aerosol is dominated by SO₄²⁻, which on average made up 65.6% of the total ion content by mass. NH₄⁺ and NO₃⁻ concentrations were significantly lower, with mean concentrations of 1.69 and 0.61 µg m⁻³ respectively. Na⁺ and Cl⁻ made up

11.1% of the total ion content, and 72% of the measured Na^+ was attributed to ssNa^+ . The average concentrations of nssK^+ and nssCa^{2+} were 0.30 and 0.09 $\mu\text{g m}^{-3}$ respectively; these ions can be used as tracers for biomass burning (nssK^+) and atmospheric dust (nssCa^{2+}). NO_2^- and CH_3SO_3^- were the least abundant ions, with average concentrations of 0.05 and 0.08 $\mu\text{g m}^{-3}$. The two ions were only observed in a subset of samples; CH_3SO_3^- was quantified in 67% of samples and quantification of NO_2^- was only achieved in 23% of samples.

260 **Figure 4: Stacked bar chart to show the average composition of water-soluble ions in aerosol collected at the Bachok research station (left panel) and stacked bar charts to show the percentage of non-sea salt and sea salt fractions of Ca^{2+} , K^+ , Na^+ , SO_4^{2-} (right panel, left to right).**

3.3.2 Sources and formation of sulfate (SO_4^{2-})

The average SO_4^{2-} concentration during the measurement campaign was 10.7 $\mu\text{g m}^{-3}$, with a maximum concentration of 20.8 $\mu\text{g m}^{-3}$ recorded. The formation of SO_4^{2-} in the particle phase occurs when emitted SO_2 is oxidised by OH in the gas phase, or by O_3 or H_2O_2 in the aqueous phase (Fisher et al., 2011). The most dominant anthropogenic sources of SO_2 include fuel and industrial emissions, as well as open biomass burning.

By using ssNa^+ as a sea spray marker to determine non-sea salt and sea salt components of the aerosol, it was found that on average 96% of the measured SO_4^{2-} was nssSO_4^{2-} , and only 4% of the SO_4^{2-} was from sea salt. As a potential biogenic source of nssSO_4^{2-} is DMS emissions from marine biota, and the main atmospheric source of MSA is the oxidation of DMS, it is possible to use the $\text{MSA}^-/\text{nssSO}_4^{2-}$ ratio as a tracer to assess the contribution of biogenic sources to nssSO_4^{2-} in the atmosphere (Legrand and Pasteur, 1998). In this study, MSA^- concentrations ranged from 0.02 to 0.22 $\mu\text{g m}^{-3}$, with an average concentration of 0.08 $\mu\text{g m}^{-3}$. As a result, the $\text{MSA}^-/\text{nssSO}_4^{2-}$ ratio ranged from 1.6×10^{-3} to 2.2×10^{-2} , with an average value of 8.0×10^{-3} . These values are low compared to $\text{MSA}^-/\text{nssSO}_4^{2-}$ ratios recorded at remote sites; for example, a $\text{MSA}^-/\text{nssSO}_4^{2-}$ mean mass ratio of 7×10^{-2} has been measured on Fanning Island and American Samoa (Savoie and Prospero, 1989). The lower ratios recorded in Bachok suggest the majority of nssSO_4^{2-} at the site originates from anthropogenic sources.

As previously discussed, a study by Dunmore et al. (2016) revealed that levels of NO_x and anthropogenic VOCs at the Bachok measurement site were significantly higher when the air being sampled had passed over nearby land, and dropped significantly at around 11 am when a sea breeze developed. This indicated that air quality in Bachok is influenced by local sources of pollution, such as vehicle emissions and burning domestic waste. Pollution rose plots (Fig. 5) show the relationship between wind direction/speed and SO_2 concentration at the Bachok measurement site. The left panel shows recorded SO_2 concentrations ≥ 5 ppb and for comparison, the right panel shows all SO_2 data recorded during the measurement period. SO_2 concentrations < 5 ppb have been excluded from the left panel plot to further investigate the meteorological conditions when the spikes in SO_2 concentration occur. In the lower right corner of each pollution rose, 'mean' represents the mean SO_2 concentration and

'calm' represents the fraction of data that cannot be attributed to a specific wind direction. During the elevated SO₂ periods (≥ 5 ppb), weak south westerlies dominated and the average wind speed was 1.1 m s⁻¹. The mean SO₂ concentration was 24.7 ppb during these events. Over the entire measurement campaign however, average wind speed was considerably higher, 2.8 m s⁻¹, and the air arrived predominantly from the east. In summary, the majority of higher SO₂ events were observed in calmer conditions when the air arriving at the site had passed over nearby land; these observations provide further evidence for the influence of local sources of pollution.

Figure 5: Pollution rose plots to show the relationship between wind direction and SO₂ concentration at the Bachok measurement site. The left panel represents recorded SO₂ concentrations ≥ 5 ppb and the right panel represents all SO₂ data recorded during the measurement period. Plot constructed using the openair package in RStudio (Carslaw and Ropkins, 2012; Carslaw, 2015).

At the Bachok measurement site, no obvious relationship was observed between SO₂ and particulate SO₄²⁻ concentration, or between SO₄²⁻ concentration and wind direction. This is likely to be because it takes time for SO₂ to oxidise to SO₄²⁻, and that the SO₄²⁻ fraction of the aerosol is more heavily influenced by long-range transport of aged emissions from East Asia. To investigate this further, the backward air mass trajectories were coloured by the concentration of SO₄²⁻, as shown in Fig. 6. To allow for comparison with Fig. 1, trajectories with a mean height of 80 m or below are shown on the left panel and trajectories with a mean height greater than 80 m are shown on the right panel. At the lower altitudes (≤ 80 m), it is clear that the SO₄²⁻ content of the aerosol is highest (*ca.* 15 – 20 μg m⁻³) when the site is influenced by continental air masses from industrialized regions of East Asia, and lower when the air masses have a more significant marine influence. This trend is less clear at higher altitudes (right panel, mean height > 80 m), but nevertheless some of the lowest SO₄²⁻ levels are observed (~ 5 μg m⁻³) when marine air that has passed over the East and South China Sea arrives at the site. With this information available, it is useful to perform cluster analysis on the back trajectories; this type of analysis groups air masses of similar geographic origin together, which provides more information on pollutant species with similar chemical histories. A distance matrix is used to create a specified number of clusters with the most different air mass pathways. Fig. 7 shows the 5-cluster solution to back trajectories calculated for the Bachok site during the measurement campaign.

Figure 6: 7-day HYSPLIT backward air mass trajectories centred on the Bachok research station between 18-01-2014 and 07-02-2014. The back trajectories are coloured by the concentration of SO₄²⁻ (μg m⁻³). Trajectories with a mean height of 80 m or below are shown in the left panel and trajectories with a mean height greater than 80 m are shown in the right panel.

Figure 7: 5-cluster solution to backward air mass trajectories centred on the Bachok research station between 18-01-2014 and 07-02-2014.

Clusters 1 and 3 were associated with mean SO₄²⁻ concentrations of 14.4 and 13.8 μg m⁻³ respectively. The mean altitude of cluster 1 was 72 m and the mean altitude of cluster 3 was 501 m. Full details of the air mass trajectories within each cluster

are detailed in the Supplement (Table S3). These clusters contained air masses that had passed over several highly industrialised regions en route to Bachok, including cities such as Guangzhou (China) and Ho Chi Minh City (Vietnam). Average SO_4^{2-} concentrations for clusters 2 and 4 were 8.4 and 8.3 $\mu\text{g m}^{-3}$, with mean altitudes of 169 and 37 m respectively. These air masses are likely to have experienced some continental influence from the east coast of China and the island of Taiwan, but have a much more significant marine influence from passing over the South China Sea before arriving at Bachok. For air masses within cluster 1 – 4, the concentration of SO_4^{2-} increases with decreasing altitude and increasing influence from industrialised regions. The mean altitude of air masses within cluster 5 was 1027 m, *i.e.* significantly higher than air masses in clusters 1 – 4. Furthermore, the air masses in cluster 5 arriving at the site were not a result of north-easterly monsoon winds from East Asian countries travelling across the South China Sea. Instead, there is evidence of a cyclonic weather system off the coast of the island of Borneo over the South China Sea. The air masses in cluster 5 arrived during the final 24-hour period of the measurement campaign and only one SO_4^{2-} measurement is available (18.1 $\mu\text{g m}^{-3}$). It is not possible to fully understand the nature of air masses from this different region without further measurements.

Despite potential differences in atmospheric lifetimes and behaviour, other pollutants aside from SO_4^{2-} can provide further evidence that substantial amounts of industrial pollution from East Asia are undergoing atmospheric transport to tropical regions of the western Pacific. For example, Oram et al. (2017) measured chlorine-containing very short-lived substances (Cl-VSLs) at the Bachok research station during the winter monsoon season in late January/early February 2014. Cl-VSLs are ozone depleting species with short atmospheric lifetimes, typically less than 6 months. Species include dichloromethane (CH_2Cl_2) and 1,2-dichloroethane ($\text{CH}_2\text{ClCH}_2\text{Cl}$). A 7-day pollution or cold-surge event was reported between 19-01-2014 and 26-01-2014, when significantly enhanced concentrations of Cl-VSLs were observed. During this pollution episode, the measured samples were heavily impacted by emissions from the East Asian mainland, whilst this influence was less significant during the cleaner, non-polluted periods. In fact, the total median concentration of the four measured Cl-VSLs was 546 ppt between 20 and 26 Jan, and 243 ppt during the less polluted period (27-01-2014 to 05-02-2014). Oram et al. (2017) noted that even after the cold surge event, the levels of Cl-VSLs were still significantly higher than expected, indicating that this region of the South China Sea is widely impacted by emissions from East Asia. Many other chemical pollutants, aside from short-lived chlorinated gases, will be present in these air masses from East Asia and will have a large impact on regional air quality. Oram et al. (2017) performed a Numerical Atmospheric Dispersion Modelling Environment (NAME) trajectory analysis using carbon monoxide (CO) as a tracer of industrial emissions from regions north of 20° N for 6 winter seasons (2009/2010 – 2014/2015). A strong correlation between CO and CH_2Cl_2 (a measured Cl-VSL) was observed during the pollution episode in late January 2014. Analysis of CO time series over the 6 winter seasons revealed that cold surge events are likely to be repeated regularly each winter, demonstrating that pollution rapidly undergoes long-range transport across the South China Sea on a regular basis during the Northeast Monsoon.

3.3.3 Correlation of SO₄²⁻ with NH₄⁺ and implications for aerosol acidity

Ammonium (NH₄⁺) was the second most abundant ion in the aerosol; on average it made up 10.4% of the total ion content, and mean and maximum concentrations were 1.69 and 4.73 μg m⁻³ respectively. Strong positive correlation between SO₄²⁻ and NH₄⁺ was observed (R = 0.77, p < 0.001). A similar observation was reported by Keywood et al. (2003) during an investigation of the sources of particles contributing to haze in the Klang Valley, Malaysia. The strong relationship between these species is due to neutralisation of SO₄²⁻ by NH₄⁺. Local sources of NH₃ in the rural Bachok region are likely to come from agricultural practices such as animal husbandry, fertilizer use and agricultural waste burning. The average NH₄⁺/SO₄²⁻ molar ratio was 0.81, which indicated that there was insufficient gaseous NH₃ in the atmosphere to neutralise SO₄²⁻. Under an ammonia-poor regime, the uptake of SO₄²⁻ is preferential to the uptake of NO₃⁻ because sulfuric acid has a lower vapour pressure than nitric acid (Seinfeld and Pandis, 2006). Although measurements of the total amounts of ammonia and sulfate in the gas, aqueous and solid phase would provide a better prediction of the aerosol acidity, the results presented in this study indicated that an ammonia-poor regime exists, and that the aerosol is likely to be acidic. In these scenarios, the NH₃ partial pressure is low, and therefore the NH₃-HNO₃ partial pressure product is also low, meaning that the concentrations of ammonium nitrate are low or zero (Seinfeld and Pandis, 2006). This hypothesis can be supported by the fact that NO₃⁻ concentrations in this study were very low, ranging from 0.005 to 1.52 μg m⁻³. As a result, NO₃⁻ made up a significantly smaller fraction of the total ion content compared to SO₄²⁻; average percentage mass composition of the total ion content was 3.8% for NO₃⁻ and 65.6% for SO₄²⁻.

To estimate proton loading in atmospheric particles, the strong acidity approach can be used, as shown in Eq. (7). This approach assumes that any deficit in measured cation charge compared to measured anion charge can be attributed to H⁺. Total anion and total cation equivalents can be estimated using Eq. (8) and Eq. (9).

$$\text{strong acidity } (\mu\text{eq. m}^{-3}) = \sum \text{anion equivs. } (\mu\text{eq. m}^{-3}) - \sum \text{cation equivs. } (\mu\text{eq. m}^{-3}) \quad (7)$$

$$\sum \text{anion equivs. } (\mu\text{eq. m}^{-3}) = \frac{SO_4^{2-}}{48} + \frac{NO_3^-}{62} + \frac{Cl^-}{35.5} + \frac{PO_4^{3-}}{31.6} + \frac{C_2O_4^{2-}}{44} + \frac{NO_2^-}{46} + \frac{CH_3SO_3^-}{95} \quad (8)$$

$$\sum \text{cation equivs. } (\mu\text{eq. m}^{-3}) = \frac{Na^+}{23} + \frac{NH_4^+}{18} + \frac{K^+}{39} + \frac{Mg^{2+}}{12} + \frac{Ca^{2+}}{20} \quad (9)$$

As shown in Fig. 8, strong acidity values ranged from 0.03 to 0.19 μeq. m⁻³, with an average value of 0.11 μeq. m⁻³. The positive strong acidity values provide an initial indication that the aerosol is acidic and allows an estimate of the proton loading to be made (average H⁺ = 0.11 μg m⁻³).

Figure 8: Predictions of particle strong acidity for the aerosol collected during the Bachok measurement campaign. Dashed lines represent predictions of minimum and maximum limits of strong acidity.

385 To obtain error bars for the strong acidity predictions (Fig. 8), H^+_{max} and H^+_{min} were calculated according to Eq. (10) and Eq. (11) respectively. For H^+_{max} the anions were adjusted up to within their uncertainties (*i.e.* +%RSD_{tot}) and the cations were adjusted down to within their uncertainties (*i.e.* -%RSD_{tot}). For H^+_{min} the anions were adjusted down and the cations were adjusted up (Murphy et al., 2017). %RSD_{tot} was estimated by combining the error of the recovery process for each ion (%RSD_{rec}, Table S1) and the error of the instrument for each ion (%RSD_{ins}, Table S2).

390

$$H^+_{max} = \sum \text{max. anion equivalents} - \sum \text{min. cation equivalents} \quad (10)$$

$$H^+_{min} = \sum \text{min. anion equivalents} - \sum \text{max. cation equivalents} \quad (11)$$

In most cases, H^+_{min} remains above zero. However, between 02-02-2014 and 06-02-2014, slightly negative H^+_{min} values
395 between -1×10^{-3} and -2×10^{-2} $\mu\text{eq. m}^{-3}$ were calculated, which are physically implausible (Murphy et al., 2017). These results highlight the possible sources of error associated with the strong acidity approach for estimating aerosol acidity. For example, Hennigan et al. (2015) report that organic acids (which are mostly excluded from this study, except for MSA and oxalic acid) can have an important influence on aerosol acidity, especially at relatively low acidities where organic acids dissociate and contribute to the ion balance. Furthermore, they can form salt complexes with inorganic species *e.g.* ammonium oxalate.
400 Neglecting organic acids, as well as other atmospheric species such as HCO_3^- and basic amines, will lead to inaccuracies in the calculated H^+ .

Thermodynamic equilibrium models such as ISOROPPIA-II can also be used to predict aerosol pH (Fountoukis and Nenes, 2007). The ambient temperature and relative humidity data recorded nearby at the Sultan Ismail Petra airport were assumed
405 representative of the Bachok research station, as further investigation of data from two other meteorological stations revealed that temperature and relative humidity remained consistent. A map to show the location of the three meteorological stations along the east coast, as well as the Bachok research station, can be found in the Supplement (Fig. S1). The two other stations are Narathiwat airport (6.520° N, 101.743° E) and Sultan Mahmud airport (5.383° N, 103.103° E). Average relative humidity between 18-01-2014 and 07-02-2014 was 77.7% at Sultan Petra Ismail airport, 75.4% at Narathiwat airport and 77.0% at
410 Sultan Mahmud airport. Average temperatures recorded at the stations during this time were 24.8, 25.6 and 25.4 °C for Sultan Petra Ismail, Sultan Mahmud and Narathiwat airport respectively.

The ISOROPPIA-II thermodynamic model predictions of PM_{2.5} pH are shown in Fig. 9. Particle pH was estimated with ISOROPPIA-II run in the reverse mode without gas phase species input, and ranged from -0.97 to 1.12 during the measurement
415 period, implying that the aerosol was highly acidic. The pH prediction for the aerosol collected between midday on 03-02-2014 and 04-02-2014 was 7.06 and has been excluded from Fig. 9. The particle concentrations input on this day correspond to negative values of strong acidity and therefore the model balances charge by assuming $[\text{OH}^-] > [\text{H}^+]$; this leads to a calculated pH of greater than 7. Murphy et al. (2017) have reported that pH prediction is sensitive to strong acidity in the limit of strong

acidity approaching zero and that the model can be drastically improved if gas phase NH_3 and HNO_3 measurements are included. The gas-to-particle partitioning of these species is sensitive to pH under conditions commonly encountered in the atmosphere, therefore gaseous NH_3 and HNO_3 measurements provide better constraint on the thermodynamic model.

Figure 9: Predicted $\text{PM}_{2.5}$ pH at the Bachok measurement site using ISOROPPIA-II (Fountoukis and Nenes, 2007). Dashed lines represent predictions of minimum and maximum limits of pH.

425

Acidic particles can have detrimental effects on human health, air quality, and the health of aquatic and terrestrial ecosystems (Hennigan et al., 2015). For example, Gwynn et al. (2000) performed a time-series analysis of acidic PM and daily mortality and morbidity in the Buffalo, New York region; several significant pollutant-health effect associations were identified, the strongest being the correlation between atmospheric SO_4^{2-} concentration and respiratory hospital admissions. Furthermore, particle acidity can influence various atmospheric chemical processes, including SO_2 oxidation, halogen chemistry, and the partitioning of ammonia, nitric acid, organic acids and isomeric epoxy diols from isoprene photooxidation (IEPOX) (Hennigan et al., 2015; Surratt et al., 2010; Lin et al., 2012). In summary, whilst some of the risks associated with aerosol acidity in Bachok originate from local sources of pollution, it is possible that people living in these rural areas are also exposed to an additional risk, as the region appears to be sensitive to the effects of industrialisation further afield in East Asia.

435 3.3.4 Sources and formation of oxalate, $\text{C}_2\text{O}_4^{2-}$

Oxalic acid is the most abundant dicarboxylic acid in tropospheric aerosol (Sareen et al., 2016). This major water-soluble organic component can alter the hygroscopicity of aerosols, and can either act as cloud condensation nuclei (CCN), or reduce the surface tension of particles to form CCN (Saxena and Hildemann, 1996; Novakov and Penner, 1993; Facchini et al., 1999; Kerminen, 2001). In this study, oxalate made up 2.6% of the total measured water-soluble ion content. The average concentration was $0.42 \mu\text{g m}^{-3}$, and throughout the measurement period the concentration ranged from 0.15 to $0.65 \mu\text{g m}^{-3}$. Interestingly, such levels of oxalate in atmospheric aerosol are typical of urban environments, despite the fact that the Bachok research station is located in a rural coastal region. For example, Freitas et al. (2012) report average oxalate concentrations in TSP at an urban site and a rural site in Londrina City, Brazil of 0.57 and $0.03 \mu\text{g m}^{-3}$ respectively. Other reported oxalate concentrations in urban TSP include measurements of $0.10 - 0.48 \mu\text{g m}^{-3}$ in Shanghai (Jiang et al., 2011) and $0.27 \mu\text{g m}^{-3}$ in Tokyo (Sempere and Kawamura, 1994).

To investigate possible oxalate sources and formation pathways, it is necessary to consider the correlation of oxalate with different atmospheric species. Jiang et al. (2011) report using NO_2^- as an indicator for vehicle emissions, SO_4^{2-} and NO_3^- for secondary formation through different pathways, and K^+ for biomass burning. A study carried out by Huang et al. (2006) in the urban area of Shenzhen (Southern China) reported that whilst good correlation of droplet oxalate with K^+ was observed ($R^2 = 0.75$, average diameter = $1.0 \mu\text{m}$), there was poor correlation between oxalate and K^+ in the condensation mode ($R^2 =$

450

0.10, average diameter = 0.4 μm). This implied that whilst biomass burning was probably not an important primary source of condensation mode oxalate, it is likely that biomass burning particles act as effective CCN, promoting in-cloud sulfate and oxalate formation. In this study, $nssK^+$ levels remained below 0.7 $\mu\text{g m}^{-3}$; this likely represents background biomass burning emissions over the region during the measurement period, as evidenced by fire hotspots from satellite data shown in Fig. S4 (Giglio et al., 2003). Strong correlation was observed between oxalate and $nssK^+$ ($R = 0.78$, $p < 0.001$) and the oxalate/ $nssK^+$ ratio ranged from 0.68 to 4.64 during the Bachok measurement campaign. These ratios are significantly higher than those found in aerosol directly emitted from vegetation fires in the Amazon Basin (Yamasoe et al., 2000), suggesting that biomass burning in the wider region influenced the secondary formation of oxalate, rather than acting as a primary source. A similar hypothesis was proposed by Huang and Yu (2007), who measured ambient $\text{PM}_{2.5}$ in an urban environment in the Pearl River Delta Region of China, and reported oxalate/ K^+ ratios of 0.57 and 0.33 in summer and winter respectively. It is worth noting that whilst the higher ratios reported in both studies indicate that biomass burning is not a major primary source of oxalate, measurements of oxalate and K^+ in local biomass burning aerosols (rather than aerosol in the Amazon Basin) would provide a better indication of the source contribution by biomass burning.

There was no significant correlation observed between oxalate and NO_3^- , or between oxalate and NO_2^- . The lack of correlation with NO_3^- suggests that the two species do not have similar formation pathways, and that vehicle emissions are not an important secondary source of oxalate. It is also unlikely that vehicle emissions contribute to the primary sources of oxalate, due to the lack of correlation between oxalate and NO_2^- . However, NO_2^- was only detected in 7 out of the 30 samples collected, so it is difficult to ascertain whether there is a relationship between these two species or not. Strong correlation between oxalate and $nss\text{SO}_4^{2-}$ ($R = 0.69$, $p < 0.001$) was observed, suggesting a common formation pathway of the two species. It is well known that SO_4^{2-} forms *via* aqueous oxidation (Seinfeld and Pandis, 2006), and modelling studies also suggest that aqueous chemistry is a large contributor of oxalate formation globally (Myriokefalitakis et al., 2011). Furthermore, Carlton et al. (2006) report that whilst there are likely to be many sources of oxalate, oxidation of pyruvate in the aqueous phase is known to form oxalate at dilute (cloud-relevant) concentrations. Tan et al. (2012) also state that aqueous acetate oxidation is a key source of oxalate. A positive correlation between oxalate and NH_4^+ was also observed ($R = 0.73$, $p < 0.001$). A similar observation was reported by Jiang et al. (2011) in a study of aerosol oxalate in Shanghai. Using size distribution data, they were able to propose that the correlation was due to the presence of ammonium oxalate in the aerosol. In this study there is no size distribution data available, and so it is important to consider the fact that the correlation may be linked to the influence of sulfate on both NH_4^+ and oxalate in aerosol; NH_4^+ partitions to the aerosol from gaseous NH_3 in an attempt to neutralise acidic sulfate particles, whilst oxalate exhibits similar formation pathways to SO_4^{2-} .

3.3.5 Sea salt aerosol and factors affecting chloride depletion

On average, Na^+ and Cl^- contributed 7.0% and 4.1% to the total measured water-soluble ion content respectively, and 72% of the measured Na^+ was attributed to $ss\text{Na}^+$. The concentration of $ss\text{Na}^+$ ranged from 0.24 to 2.35 $\mu\text{g m}^{-3}$, whilst the concentration

485 of Cl^- ranged from 0.003 to 2.38 $\mu\text{g m}^{-3}$. There was no correlation between n_{ssNa^+} and Cl^- ($R = -0.01$), but a strong positive correlation between ssNa^+ and Cl^- was observed ($R = 0.84$, $p < 0.001$). During the measurement period, the $\text{Cl}^-/\text{ssNa}^+$ molar ratio ranged from 0.003 to 1.10 with an average value of 0.40. A time series of $\text{Cl}^-/\text{ssNa}^+$ molar ratio can be found in the Supplement (Fig. S5). Significant Cl^- depletion was observed, as all of the ratios recorded were lower than that of bulk seawater, 1.18 (Boreddy and Kawamura, 2015). Fig. 10 shows backward air mass trajectories arriving at the Bachok research station, 490 coloured by the $\text{Cl}^-/\text{ssNa}^+$ molar ratio.

Figure 10: 7-day HYSPLIT back trajectories centred on the Bachok research station, between 18-01-2014 and 07-02-2014. The back trajectories are coloured by the $\text{Cl}^-/\text{ssNa}^+$ molar ratio. Trajectories with a mean height of 80 m or below are shown in the left panel and trajectories with a mean height greater than 80 m are shown in the right panel.

495 A study of marine aerosol at remote Chichijima Island in the western North Pacific during 2001 and 2002 reported that mean Cl^-/Na^+ molar ratios were highest (1.34) in September 2001 and lowest (0.30) in May 2002, and the mean ratio across the 2-year period was 1.10 (Boreddy et al., 2014). Boreddy et al. (2014) reported that the observed chloride depletion was likely due to acid displacement occurring as a result of atmospheric mixing of anthropogenic pollutants such as SO_x and NO_x . Acid 500 displacement can occur when sea salt particles react with acids such as H_2SO_4 , HNO_3 , oxalic acid ($\text{C}_2\text{H}_2\text{O}_4$) and methanesulfonic acid ($\text{CH}_3\text{SO}_3\text{H}$) in the atmosphere. Such processes are of atmospheric importance as they lead to the formation of gaseous HCl and potentially affect acid deposition conditions in the region. It is widely accepted that Cl^- depletion through the volatilization of HCl *via* acid displacement occurs particularly in polluted marine air masses (Newberg et al., 2005; Sturges and Shaw, 1993). In this study, the lowest $\text{Cl}^-/\text{ssNa}^+$ ratios were observed when air masses arriving at the site had 505 previously passed over highly industrialised countries such as China and Vietnam (Fig. 10). Higher $\text{Cl}^-/\text{ssNa}^+$ ratios are found in marine air masses from less polluted regions. It is possible that aerosol, particularly in northern China, may be rich in chloride in the winter due to coal burning. However, this study suggests that the influence of other anthropogenic pollutants, such as HNO_3 and H_2SO_4 , means that as the air is transported over the South China Sea to the Bachok region, significant Cl^- depletion can occur prior to arrival at the measurement site. In a more recent study, Boreddy and Kawamura performed 510 regression analysis between the Cl^-/Na^+ mass ratio and various acidic species, including $n_{\text{ssSO}_4^{2-}}$, NO_3^- , MSA^- and oxalic acid. They found a moderate negative correlation between Cl^-/Na^+ mass ratio and $n_{\text{ssSO}_4^{2-}}$, and a moderate to weak negative correlation with NO_3^- ; this suggested that sulfate had a higher influence on chloride depletion than nitrate. Furthermore, whilst MSA^- moderately correlated with the Cl^-/Na^+ mass ratio in the summer, there was significant negative correlation between oxalic acid and the mass ratio in the other three seasons, providing confirmation that oxalic acid plays an important role in 515 chloride loss at Chichijima Island. A similar regression analysis was carried out on the measurements obtained during the Bachok measurement campaign, and whilst a weak negative correlation was found between SO_4^{2-} and the $\text{Cl}^-/\text{ssNa}^+$ mass ratio ($R = -0.41$, $p < 0.001$), there was no correlation of the $\text{Cl}^-/\text{ssNa}^+$ mass ratio with oxalate or MSA^- . These results imply that whilst H_2SO_4 played an important role in chloride depletion, methanesulfonic acid and oxalic acid may not have done.

520 Interestingly, a strong positive correlation was observed between NO_3^- and $\text{Cl}^-/\text{ssNa}^+$ mass ratio ($R = 0.82$, $p < 0.001$). These measurements may be linked to each other through the important role of H_2SO_4 in the atmosphere. Acid displacement, when sea salt reacts with H_2SO_4 , leads to the removal of Cl^- from the aerosol as gaseous HCl , and a partitioning of SO_4^{2-} to the aerosol as Na_2SO_4 . Furthermore, under an ammonia-poor regime (as observed in this study), H_2SO_4 has a lower vapour pressure than HNO_3 , leading to the preferential formation of ammonium sulfate over ammonium nitrate when there is insufficient NH_3 available to fully neutralize sulfate and nitrate (Seinfeld and Pandis, 2006).

525 3.3.6 Using nssCa^{2+} as a potential tracer for dust episodes

nssCa^{2+} can be used as a tracer for atmospheric dust (Boreddy and Kawamura, 2015). The average concentration of nssCa^{2+} during the measurement campaign was $0.07 \mu\text{g m}^{-3}$ and the maximum concentration recorded was $0.28 \mu\text{g m}^{-3}$. On most days, the nssCa^{2+} concentration was below $0.10 \mu\text{g m}^{-3}$, but between midday on 30-01-2014 and midnight on 31-01-2014 (local times), elevated nssCa^{2+} levels were observed and the average concentration during this period was $0.22 \mu\text{g m}^{-3}$. The same trend was observed for PO_4^{3-} ; the average concentration across the entire measurement period was $0.34 \mu\text{g m}^{-3}$, but during this 530 12-hour episode the PO_4^{3-} concentration increased to $1.88 \mu\text{g m}^{-3}$. The increase in ion concentration was less pronounced for nssNa^+ and Mg^{2+} , but the concentrations were still 0.26 and $0.88 \mu\text{g m}^{-3}$ above the average for the whole measurement period respectively. Time series plots for nssCa^{2+} , PO_4^{3-} , Mg^{2+} and nssNa^+ can be found in the Supplement (Fig. S6).

535 Between midday on 30-01-2014 and midnight on 31-01-2014, the contribution of nssCa^{2+} to the total measured water-soluble ion content was more significant (1.26%) than the average contribution during the remainder of the measurement period (0.35%). The Bachok research station is located in the outflow region of Asian dusts, and these measurements suggest that long-range transport of Asian dusts over the measurement site has occurred during this time. In fact, during this episode, the back trajectories arriving at the site can be traced back to the North China Plains and the Horqin Sandy Land in East China; 540 source attribution studies by Ginoux et al. (2012) have revealed that large anthropogenic dust sources are found in these regions. In the future, it is important that longer term measurements are carried out at the Bachok research station, to provide confirmation that dust episodes in these regions of Asia are responsible for the elevated levels of nssCa^{2+} and other associated ions. Dust is one of the most abundant types of aerosol in the atmosphere and can have important impacts on both air quality and climate, therefore it is important that seasonal and annual trends in water-soluble ions are studied in more detail at the 545 Bachok research station.

4 Conclusions

An accurate and reliable technique relying on ion chromatography has been used to make time-resolved measurements of water-soluble ions in atmospheric aerosol at the Bachok Marine and Atmospheric research station. Using meteorological data from the nearby airport, and HYSPLIT backward air mass trajectories centred on the Bachok research station, it was possible

550 to observe the diurnal wind pattern behaviour and assess where the air masses arriving at the site originated from. Air quality at this remote location is influenced by local anthropogenic and biogenic emissions, as well as marine air masses from the South China Sea and aged emissions transported from highly polluted East Asian regions during the winter monsoon season. In general, the site was influenced by south westerlies coming from the land from the early hours of the morning until approximately 11 am, and then a dramatic shift in wind direction occurred and a sea breeze was present for the remainder of
555 the day. This shift was accompanied by a drop in the concentrations of NO_x and anthropogenic VOCs (Dunmore et al., 2016).

Twelve atmospheric water-soluble ions were measured in this study and SO_4^{2-} was found to be the most dominant ion present, making up 66% of the total measured ion content on average. The non-sea salt and sea salt components of SO_4^{2-} , Na^+ , K^+ and Ca^{2+} were determined, and it was found that 96% of the measured SO_4^{2-} was non-sea salt SO_4^{2-} . Predictions of aerosol pH were
560 made using the ISOROPPIA-II thermodynamic model and it was estimated that the aerosol was highly acidic, with pH values ranging from -0.97 to 1.12; such levels of acidity are likely to have a detrimental impact on human health and the health of ecosystems at this remote coastal location. A clear difference in aerosol composition was found between continental air masses originating from industrialised regions of East Asia and marine air masses predominantly influenced by the South China Sea. For example, elevated SO_4^{2-} concentrations were observed when continental air masses that had passed over highly
565 industrialised regions of East Asia arrived at the measurement site.

Correlation analyses amongst ionic species and assessment of ratios between different ions provided an insight into common sources and formation pathways of key atmospheric ions. Oxalate concentrations were recorded and found to be more comparable to measurements made at urban locations rather than rural ones. A strong correlation of $\text{C}_2\text{O}_4^{2-}$ with SO_4^{2-} suggested
570 a common aqueous oxidation formation pathway. Strong correlation between $\text{C}_2\text{O}_4^{2-}$ and K^+ coupled with high $\text{C}_2\text{O}_4^{2-}/nss\text{K}^+$ ratios indicated that biomass burning was an important secondary source of oxalate in the Bachok region, whereas lack of correlation with NO_2^- and NO_3^- suggested that vehicular emissions were not an important source. The average $\text{Cl}^-/ss\text{Na}^+$ molar ratio during the measurement campaign was 0.40, significantly lower than that of bulk seawater (1.18). Analysis of back trajectories revealed that chloride depletion was greater when the aerosol was more influenced by anthropogenic sources of
575 pollution. Elevated levels of $nss\text{Ca}^{2+}$ and other ions such as PO_4^{3-} , Mg^{2+} and $nss\text{Na}^+$ were observed between midday on 30-01-2014 and midnight on 31-01-2014. Assuming that $nss\text{Ca}^{2+}$ can be used as a tracer for atmospheric dust, it was proposed that the increased concentrations were a result of air masses arriving at the site from the North China Plains and Horqin Sandy Lands. Longer term measurements are required to fully investigate the influence of Asian dusts at this remote coastal location.

580 To our knowledge, time-resolved measurements of water-soluble ions in $\text{PM}_{2.5}$ are virtually non-existent in rural locations on the east coast of Peninsular Malaysia. The data presented in this study has demonstrated the capabilities of the new atmospheric tower at the Bachok research station and has provided an initial insight into factors affecting aerosol composition on this coastline. In the future, it is important that longer term measurements are carried out, with increased time-resolved sampling

and particle size fractionation, to provide a better understanding of the factors affecting aerosol composition at this measurement site. This remote location is susceptible to the effects of local, regional and international air pollution, and rapid industrialisation in East Asia is influencing air quality along the east coast of Peninsular Malaysia.

Data availability. Raw data is available on PURE (DOI: 10.15124/bd4a9045-832b-4ff8-aecc-ef1653603f1d).

590 *Author contribution.* All authors contributed to the final version of this article. Naomi J Farren analysed the aerosol samples and wrote the paper under the supervision of Jacqueline F Hamilton. Rachel E Dunmore collected the aerosol samples. M Iqbal Mead, Mohd Shahrul Mohd Nadzir, Azizan Abu Samah and Siew-Moi Phang coordinate and manage the University of Malaya BMRS. William T Sturges coordinated the Bachok demonstration ‘International Opportunities Fund’ campaign.

595 *Competing interests.* The authors declare that they have no conflict of interest.

Acknowledgements. The financial support of the Natural Environment Research Council (N. Farren, PhD studentship NE/L501751/1) is gratefully acknowledged. N. Farren would like to thank D. Carslaw and W. Drysdale for their assistance using R. All authors would like to acknowledge NERC (NE/J016012/1 and NE/J016047/1) for funding the Bachok demonstration ‘International Opportunities Fund’ campaign and HICoE-MoHE IOES-2014 (Air-Ocean-Land Interactions) for supporting the Bachok Marine Research Station facilities.

References

- Ashfold, M. J., Latif, M. T., Samah, A. A., Mead, M. I., and Harris, N. R. P.: Influence of Northeast Monsoon cold surges on air quality in Southeast Asia, *Atmos. Environ.*, 166, 498-509, 10.1016/j.atmosenv.2017.07.047, 2017.
- 605 Behrenfeld, M. J., O'Malley, R. T., Siegel, D. A., McClain, C. R., Sarmiento, J. L., Feldman, G. C., Milligan, A. J., Falkowski, P. G., Letelier, R. M., and Boss, E. S.: Climate-driven trends in contemporary ocean productivity, *Nature*, 444, 752-755, 10.1038/nature05317, 2006.
- Bloss, W. J., Evans, M. J., Lee, J. D., Sommariva, R., Heard, D. E., and Pilling, M. J.: The oxidative capacity of the troposphere: Coupling of field measurements of OH and a global chemistry transport model, *Faraday Discuss*, 130, 425-436, 610 10.1039/b419090d, 2005.
- Boreddy, S. K. R., Kawamura, K., and Jung, J. S.: Hygroscopic properties of particles nebulized from water extracts of aerosols collected at Chichijima Island in the western North Pacific: An outflow region of Asian dust, *J Geophys Res-Atmos*, 119, 167-178, 10.1002/2013JD020626, 2014.

- Boreddy, S. K. R., and Kawamura, K.: A 12-year observation of water-soluble ions in TSP aerosols collected at a remote marine location in the western North Pacific: an outflow region of Asian dust, *Atmos Chem Phys*, 15, 6437-6453, 10.5194/acp-15-6437-2015, 2015.
- Bowen, H. J. M.: *Environmental chemistry of the elements*, Academic Press, London, 1979.
- Carlton, A. G., Turpin, B. J., Lim, H. J., Altieri, K. E., and Seitzinger, S.: Link between isoprene and secondary organic aerosol (SOA): Pyruvic acid oxidation yields low volatility organic acids in clouds, *Geophys Res Lett*, 33, Artn L06822
10.1029/2005gl025374, 2006.
- Carpenter, L. J., Fleming, Z. L., Read, K. A., Lee, J. D., Moller, S. J., Hopkins, J. R., Purvis, R. M., Lewis, A. C., Muller, K., Heinold, B., Herrmann, H., Fomba, K. W., van Pinxteren, D., Muller, C., Tegen, I., Wiedensohler, A., Muller, T., Niedermeier, N., Achterberg, E. P., Patey, M. D., Kozlova, E. A., Heimann, M., Heard, D. E., Plane, J. M. C., Mahajan, A., Oetjen, H., Ingham, T., Stone, D., Whalley, L. K., Evans, M. J., Pilling, M. J., Leigh, R. J., Monks, P. S., Karunaharan, A., Vaughan, S., Arnold, S. R., Tschritter, J., Pöhler, D., Friess, U., Holla, R., Mendes, L. M., Lopez, H., Faria, B., Manning, A. J., and Wallace, D. W. R.: Seasonal characteristics of tropical marine boundary layer air measured at the Cape Verde Atmospheric Observatory, *J Atmos Chem*, 67, 87-140, 10.1007/s10874-011-9206-1, 2010.
- Carslaw, D. C., and Ropkins, K.: openair - An R package for air quality data analysis, *Environ Modell Softw*, 27-28, 52-61, 10.1016/j.envsoft.2011.09.008, 2012.
- Carslaw, D. C.: *The openair manual - open-source tools for analysing air pollution data. Manual for version 1.1-4.*, King's College London, 2015.
- Charlson, R. J., Langner, J., Rodhe, H., Leovy, C. B., and Warren, S. G.: Perturbation of the Northern-Hemisphere Radiative Balance by Backscattering from Anthropogenic Sulfate Aerosols, *Tellus A*, 43, 152-163, DOI 10.1034/j.1600-0870.1991.00013.x, 1991.
- Dominick, D., Latif, M. T., Juneng, L., Khan, M. F., Amil, N., Mead, M. I., Nadzir, M. S. M., Moi, P. S., Abu Samah, A., Ashfold, M. J., Sturges, W. T., Harris, N. R. P., Robinson, A. D., and Pyle, J. A.: Characterisation of particle mass and number concentration on the east coast of the Malaysian Peninsula during the northeast monsoon, *Atmos. Environ.*, 117, 187-199, 10.1016/j.atmosenv.2015.07.018, 2015.
- Draxler, R. R., and Hess, G. D.: *Description of the HYSPLIT_4 modeling system*, NOAA Air Resources Laboratory, Silver Spring, MD, NOAA Tech. Memo. ERL ARL-224, 24, 1997.
- Draxler, R. R., and Hess, G. D.: An overview of the HYSPLIT_4 modeling system of trajectories, dispersion, and deposition, *Aust. Meteor. Mag.*, 47, 295-308, 1998.
- Draxler, R. R.: *HYSPLIT4 user's guide*, NOAA Air Resources Laboratory, Silver Spring, MD, NOAA Tech. Memo. ERL ARL-230, 1999.
- Dunmore, R. E., Hopkins, J. R., Lidster, R. T., Mead, M. I., Bandy, B. J., Forster, G., Oram, D. E., Sturges, W. T., Phang, S. M., Abu Samah, A., and Hamilton, J. F.: Development of a Combined Heart-Cut and Comprehensive Two-Dimensional Gas

Chromatography System to Extend the Carbon Range of Volatile Organic Compounds Analysis in a Single Instrument, Separations, 3, ARTN 21

10.3390/separations3030021, 2016.

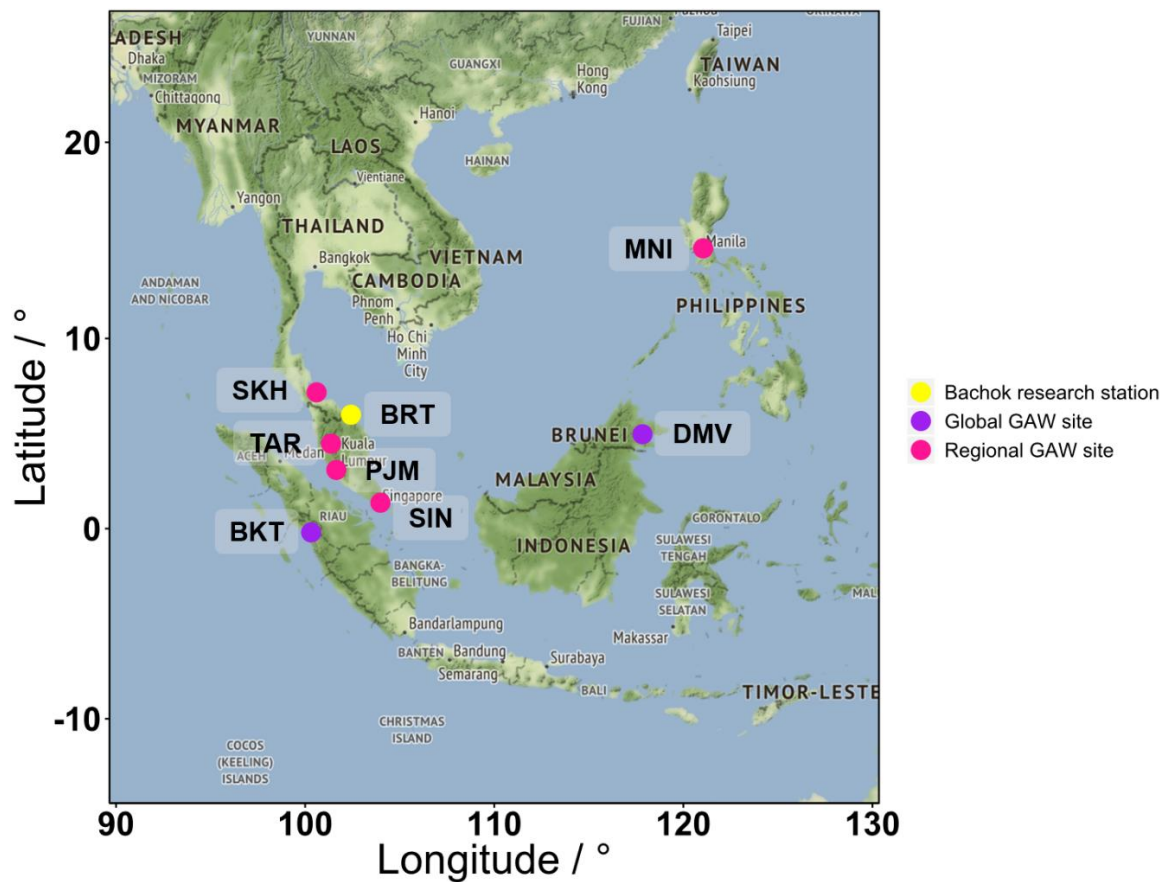
- 650 EPA, Title 40 Protection of Environment Part 136 Guidelines Establishing Test Procedures for the Analysis of Pollutants. In *Electronic Code of Federal Regulations* [Online] U.S. Government Publishing Office: Washington, DC, 2017. https://www.ecfr.gov/cgi-bin/text-idx?SID=57d5771415f8a36cb8c0e2ca2a1583a2&mc=true&node=pt40.25.136&rgn=div5#ap40.25.136_17.b (accessed 20-07-2017).
- 655 Facchini, M. C., Mircea, M., Fuzzi, S., and Charlson, R. J.: Cloud albedo enhancement by surface-active organic solutes in growing droplets, *Nature*, 401, 257-259, Doi 10.1038/45758, 1999.
- Fisher, J. A., Jacob, D. J., Wang, Q. Q., Bahreini, R., Carouge, C. C., Cubison, M. J., Dibb, J. E., Diehl, T., Jimenez, J. L., Leibensperger, E. M., Lu, Z. F., Meinders, M. B. J., Pye, H. O. T., Quinn, P. K., Sharma, S., Streets, D. G., van Donkelaar, A., and Yantosca, R. M.: Sources, distribution, and acidity of sulfate-ammonium aerosol in the Arctic in winter-spring, *Atmos. Environ.*, 45, 7301-7318, 10.1016/j.atmosenv.2011.08.030, 2011.
- 660 Fountoukis, C., and Nenes, A.: ISORROPIA II: a computationally efficient thermodynamic equilibrium model for K⁺-Ca²⁺-Mg²⁺-NH₄⁺-Na⁺-SO₄²⁻-NO₃⁻-Cl⁻-H₂O aerosols, *Atmos Chem Phys*, 7, 4639-4659, 2007.
- Freitas, A. D., Martins, L. D., and Solci, M. C.: Size-Segregated Particulate Matter and Carboxylic Acids over Urban and Rural Sites in Londrina City, Brazil, *J Brazil Chem Soc*, 23, 921-930, 2012.
- 665 Garreaud, R. D.: Subtropical cold surges: Regional aspects and global distribution, *Int J Climatol*, 21, 1181-1197, Doi 10.1002/Joc.687, 2001.
- Global Atmospheric Watch Station Information System (GAWSIS): <https://gawsis.meteoswiss.ch/GAWSIS//index.html#/>, access: 12-04-2017, 2017.
- Giglio, L., Descloitres, J., Justice, C. O., and Kaufman, Y. J.: An enhanced contextual fire detection algorithm for MODIS, *Remote Sens Environ*, 87, 273-282, 10.1016/S0034-4257(03)00184-6, 2003.
- 670 Ginoux, P., Prospero, J. M., Gill, T. E., Hsu, N. C., and Zhao, M.: Global-Scale Attribution of Anthropogenic and Natural Dust Sources and Their Emission Rates Based on Modis Deep Blue Aerosol Products, *Rev Geophys*, 50, Artn Rg3005 10.1029/2012rg000388, 2012.
- Gwynn, R. C., Burnett, R. T., and Thurston, G. D.: A time-series analysis of acidic particulate matter and daily mortality and morbidity in the Buffalo, New York, region, *Environ Health Persp*, 108, 125-133, Doi 10.2307/3454510, 2000.
- 675 Hennigan, C. J., Izumi, J., Sullivan, A. P., Weber, R. J., and Nenes, A.: A critical evaluation of proxy methods used to estimate the acidity of atmospheric particles, *Atmos Chem Phys*, 15, 2775-2790, 10.5194/acp-15-2775-2015, 2015.
- Huang, X. F., Yu, J. Z., He, L. Y., and Yuan, Z. B.: Water-soluble organic carbon and oxalate in aerosols at a coastal urban site in China: Size distribution characteristics, sources, and formation mechanisms, *J Geophys Res -Atmos*, 111, Artn D22212

- 680 10.1029/2006jd007408, 2006.
Huang, X. F., and Yu, J. Z.: Is vehicle exhaust a significant primary source of oxalic acid in ambient aerosols?, *Geophys Res Lett*, 34, Artn L02808
- 10.1029/2006g1028457, 2007.
Ismail, M., Yuen, F. S., and Abdullah, S. S.: Particulate Matter Status and its Relationship with Meteorological Factors in the
685 East Coast of Peninsular Malaysia, *Journal of Engineering and Applied Sciences*, 11, 2588-2593, 2016.
- Jiang, Y., Zhuang, G., Wang, Q., Liu, T., Huang, K., Fu, J. S., Li, J., Lin, Y., Zhang, R., and Deng, C.: Characteristics, sources and formation of aerosol oxalate in an Eastern Asia megacity and its implication to haze pollution, *Atmos Chem Phys Discuss*, 11, 22075-22112, 10.5194/acpd-11-22075-2011, 2011.
- Kerminen, V. M.: Relative roles of secondary sulfate and organics in atmospheric cloud condensation nuclei production, *J
690 Geophys Res-Atmos*, 106, 17321-17333, Doi 10.1029/2001jd900204, 2001.
- Keyword, M. D., Ayers, G. P., Gras, J. L., Boers, R., and Leong, C. P.: Haze in the Klang Valley of Malaysia, *Atmos Chem Phys*, 3, 591-605, 2003.
- Lawrence, M. G., Jockel, P., and von Kuhlmann, R.: What does the global mean OH concentration tell us?, *Atmos Chem Phys*, 1, 37-49, 2001.
- 695 Legrand, M., and Pasteur, E. C.: Methane sulfonic acid to non-sea-salt sulfate ratio in coastal Antarctic aerosol and surface snow, *J Geophys Res-Atmos*, 103, 10991-11006, Doi 10.1029/98jd00929, 1998.
- Lin, Y. H., Zhang, Z. F., Docherty, K. S., Zhang, H. F., Budisulistiorini, S. H., Rubitschun, C. L., Shaw, S. L., Knipping, E. M., Edgerton, E. S., Kleindienst, T. E., Gold, A., and Surratt, J. D.: Isoprene Epoxydiols as Precursors to Secondary Organic Aerosol Formation: Acid-Catalyzed Reactive Uptake Studies with Authentic Compounds, *Environ. Sci. Technol.*, 46, 250-
700 258, 10.1021/es202554c, 2012.
- Murphy, J. G., Gregoire, P. K., Tevlin, A. G., Wentworth, G. R., Ellis, R. A., Markovic, M. Z., and Vandenboer, T. C.: Observational constraints on particle acidity using measurements and modelling of particles and gases, *Faraday Discuss*, xx, 1-17, 2017.
- Myriokefalitakis, S., Tsigaridis, K., Mihalopoulos, N., Sciare, J., Nenes, A., Kawamura, K., Segers, A., and Kanakidou, M.:
705 In-cloud oxalate formation in the global troposphere: a 3-D modeling study, *Atmos Chem Phys*, 11, 5761-5782, 10.5194/acp-11-5761-2011, 2011.
- Neale, R., and Slingo, J.: The maritime continent and its role in the global climate: A GCM study, *J Climate*, 16, 834-848, Doi 10.1175/1520-0442(2003)016<0834:Tmcair>2.0.Co;2, 2003.
- Newberg, J. T., Matthew, B. M., and Anastasio, C.: Chloride and bromide depletions in sea-salt particles over the northeastern
710 Pacific Ocean, *J Geophys Res-Atmos*, 110, Artn D06209
- 10.1029/2004jd005446, 2005.

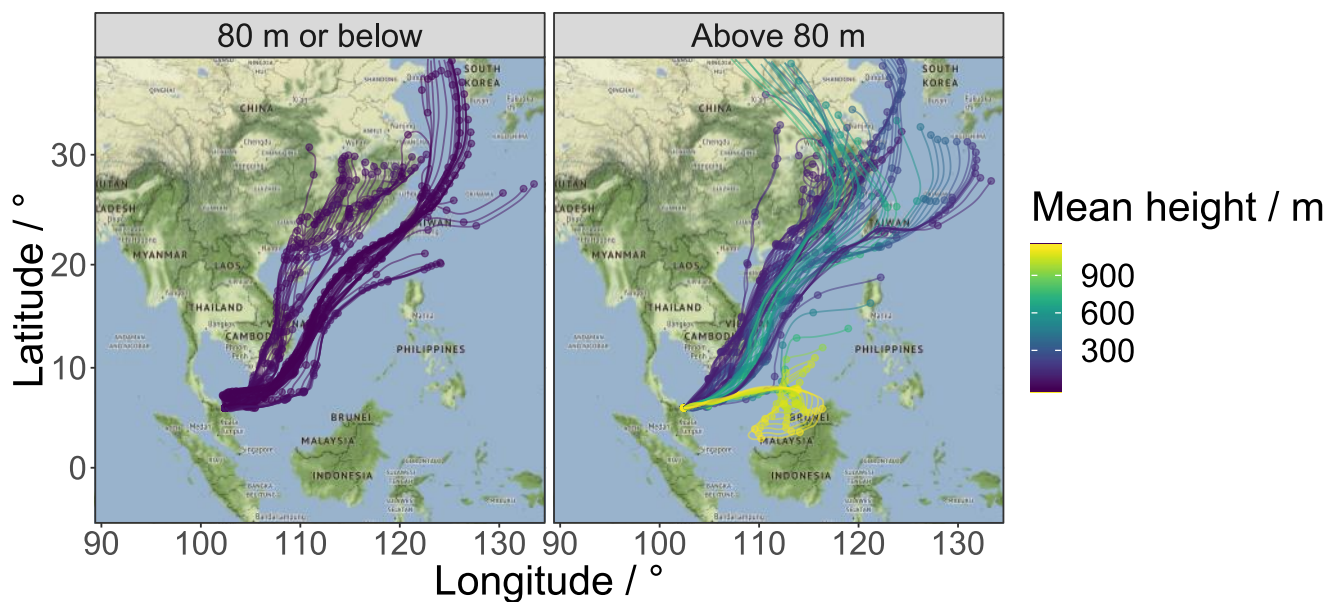
- National Oceanic and Atmospheric Administration Integrated Surface Database <https://www.ncdc.noaa.gov/isd>, access: 20-07-2017, 2003.
- Novakov, T., and Penner, J. E.: Large Contribution of Organic Aerosols to Cloud-Condensation-Nuclei Concentrations, *Nature*, 365, 823-826, Doi 10.1038/365823a0, 1993.
- 715 Oram, D. E., Ashfold, M. J., Laube, J. C., Gooch, L. J., Humphrey, S., Sturges, W. T., Leedham-Elvidge, E., Forster, G. L., Harris, N. R. P., Mead, M. I., Abu Samah, A., Phang, S. M., Ou-Yang, C. F., Lin, N. H., Wang, J. L., Baker, A. K., Brenninkmeijer, C. A. M., and Sherry, D.: A growing threat to the ozone layer from short-lived anthropogenic chlorocarbons, *Atmos Chem Phys*, 17, 11929-11941, 10.5194/acp-17-11929-2017, 2017.
- 720 Pyle, J. A., Ashfold, M. J., Harris, N. R. P., Robinson, A. D., Warwick, N. J., Carver, G. D., Gostlow, B., O'Brien, L. M., Manning, A. J., Phang, S. M., Yong, S. E., Leong, K. P., Ung, E. H., and Ong, S.: Bromoform in the tropical boundary layer of the Maritime Continent during OP3, *Atmos Chem Phys*, 11, 529-542, 10.5194/acp-11-529-2011, 2011.
- Ripp, J.: Analytical Detection Limit Guidance and Laboratory Guide for Determining Method Detection Limits, Wisconsin Department of Natural Resources, Madison, WI, PUBL-TS-056-96, 1996.
- 725 Robinson, A. D., Harris, N. R. P., Ashfold, M. J., Gostlow, B., Warwick, N. J., O'Brien, L. M., Beardmore, E. J., Nadzir, M. S. M., Phang, S. M., Samah, A. A., Ong, S., Ung, H. E., Peng, L. K., Yong, S. E., Mohamad, M., and Pyle, J. A.: Long-term halocarbon observations from a coastal and an inland site in Sabah, Malaysian Borneo, *Atmos Chem Phys*, 14, 8369-8388, 10.5194/acp-14-8369-2014, 2014.
- Sareen, N., Carlton, A. G., Surratt, J. D., Gold, A., Lee, B., Lopez-Hilfiker, F. D., Mohr, C., Thornton, J. A., Zhang, Z. F.,
730 Lim, Y. B., and Turpin, B. J.: Identifying precursors and aqueous organic aerosol formation pathways during the SOAS campaign, *Atmos Chem Phys*, 16, 14409-14420, 10.5194/acp-16-14409-2016, 2016.
- Savoie, D. L., and Prospero, J. M.: Comparison of Oceanic and Continental Sources of Non-Sea-Salt Sulfate over the Pacific-Ocean, *Nature*, 339, 685-687, Doi 10.1038/339685a0, 1989.
- Saxena, P., and Hildemann, L. M.: Water-soluble organics in atmospheric particles: A critical review of the literature and
735 application of thermodynamics to identify candidate compounds, *J Atmos Chem*, 24, 57-109, Doi 10.1007/Bf00053823, 1996.
- Seinfeld, J. H., and Pandis, S. N.: Atmospheric chemistry and physics : from air pollution to climate change, 2nd ed., J. Wiley, Hoboken, N.J., 1-1203 pp., 2006.
- Sempere, R., and Kawamura, K.: Comparative Distributions of Dicarboxylic-Acids and Related Polar Compounds in Snow
Rain and Aerosols from Urban Atmosphere, *Atmos. Environ.*, 28, 449-459, Doi 10.1016/1352-2310(94)90123-6, 1994.
- 740 Stein, A. F., Draxler, R. R., Rolph, G. D., Stunder, B. J. B., Cohen, M. D., and Ngan, F.: NOAA's Hysplit Atmospheric Transport and Dispersion Modeling System, *Bulletin of the American Meteorological Society*, 96, 2059-2077, 10.1175/Bams-D-14-00110.1, 2015.
- Sturges, W. T., and Shaw, G. E.: Halogens in Aerosols in Central Alaska, *Atmos Environ a-Gen*, 27, 2969-2977, Doi 10.1016/0960-1686(93)90329-W, 1993.

- 745 Surratt, J. D., Chan, A. W. H., Eddingsaas, N. C., Chan, M. N., Loza, C. L., Kwan, A. J., Hersey, S. P., Flagan, R. C., Wennberg, P. O., and Seinfeld, J. H.: Reactive intermediates revealed in secondary organic aerosol formation from isoprene, *PNAS*, 107, 6640-6645, 10.1073/pnas.0911114107, 2010.
- Tahir, N. M., Suratman, S., Fong, F. T., Hamzah, M. S., and Latif, M. T.: Temporal Distribution and Chemical Characterization of Atmospheric Particulate Matter in the Eastern Coast of Peninsular Malaysia, *Aerosol Air Qual Res*, 13, 584-595, 750 10.4209/aaqr.2012.08.0216, 2013.
- Tan, Y., Lim, Y. B., Altieri, K. E., Seitzinger, S. P., and Turpin, B. J.: Mechanisms leading to oligomers and SOA through aqueous photooxidation: insights from OH radical oxidation of acetic acid and methylglyoxal, *Atmos Chem Phys*, 12, 801-813, 10.5194/acp-12-801-2012, 2012.
- Yamasoe, M. A., Artaxo, P., Miguel, A. H., and Allen, A. G.: Chemical composition of aerosol particles from direct emissions 755 of vegetation fires in the Amazon Basin: water-soluble species and trace elements, *Atmos. Environ.*, 34, 1641-1653, Doi 10.1016/S1352-2310(99)00329-5, 2000.
- Zhang, Y., Sperber, K. R., and Boyle, J. S.: Climatology and interannual variation of the East Asian winter monsoon: Results from the 1979-95 NCEP/NCAR reanalysis, *Mon Weather Rev*, 125, 2605-2619, Doi 10.1175/1520-0493(1997)125<2605:Caivot>2.0.Co;2, 1997.

760



765 **Figure 1: Location of the Bachok research station (BRT) and the global and regional GAW sites in the Maritime Continent; Danum Valley in Malaysia (DMV), Bukit Kototabang in Indonesia (BKT), Manila in Philippines (MNI), Songkhla in Thailand (SKH), Tanah Rata in Malaysia (TAR), Petaling Jaya in Malaysia (PJM) and Singapore (SIN) (gawsis.ch, 2017).**



770 **Figure 2: 7-day HYSPLIT backward air mass trajectories centred on the Bachok Marine and Atmospheric Research Station between 18-01-2014 and 07-02-2014. Each trajectory is coloured by the mean altitude (m). Trajectories with a mean height of 80 m or below are shown in the left panel and trajectories with a mean height greater than 80 m are shown in the right panel.**

Table 1: Mean and maximum ion concentrations measured throughout the measurement period. The average % mass contribution of each ion to the total measured ions is included, as well as the % of samples in which each target ion is found (%Qt).

Ion	Mean [ion] / $\mu\text{g m}^{-3}$	Maximum [ion] / $\mu\text{g m}^{-3}$	Mean % mass of total measured ion content	% Qt ^a	% RSD _{total} ^b
SO ₄ ²⁻	10.7	20.8	65.6	100	11.2
NH ₄ ⁺	1.69	4.73	10.4	100	6.38
Na ⁺	1.13	2.60	6.95	100	6.88
Cl ⁻	0.67	2.38	4.14	100	8.49
NO ₃ ⁻	0.61	1.52	3.76	100	22.6
C ₂ O ₄ ²⁻	0.42	0.65	2.57	97	13.9
PO ₄ ³⁻	0.36	2.34	2.22	93	15.4
K ⁺	0.38	0.67	0.67	100	6.35
Ca ²⁺	0.10	0.35	0.64	100	9.26
Mg ²⁺	0.10	0.21	0.61	100	6.72
CH ₃ SO ₃ ⁻	0.08	0.22	0.47	67	10.6
NO ₂ ⁻	0.05	0.16	0.33	23	14.3
Total	16.2	27.0	--	--	--

^aPercentage of samples in which the target ion was above the LOQ. ^bTotal error associated with each ion.

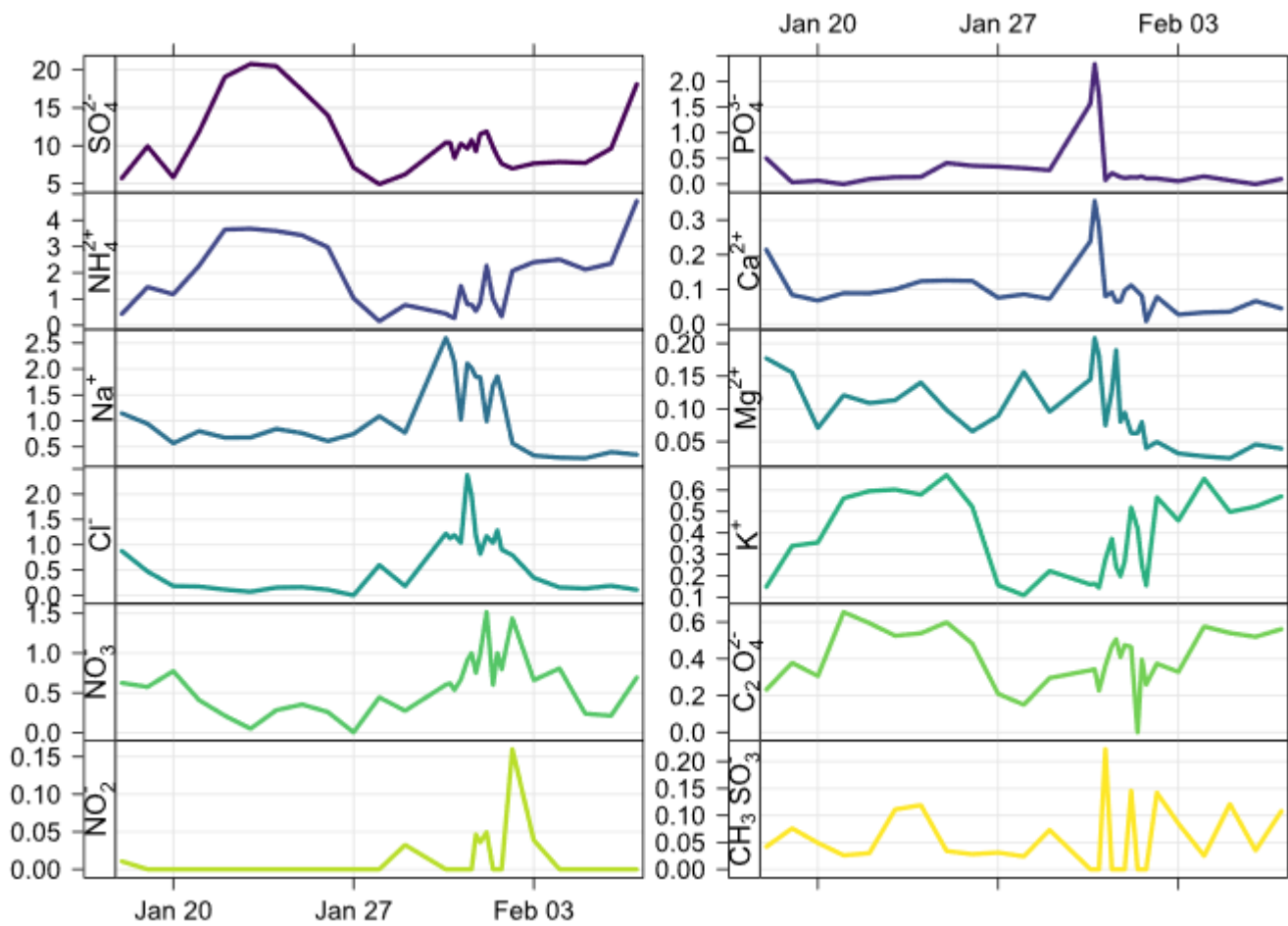
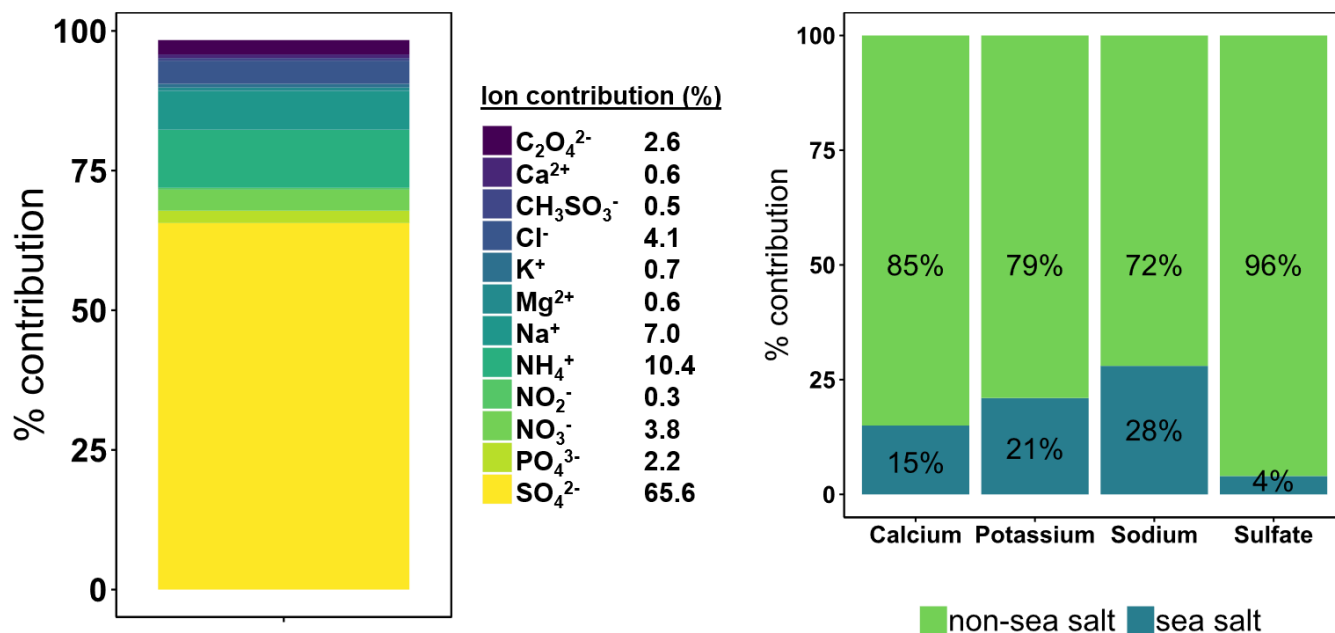
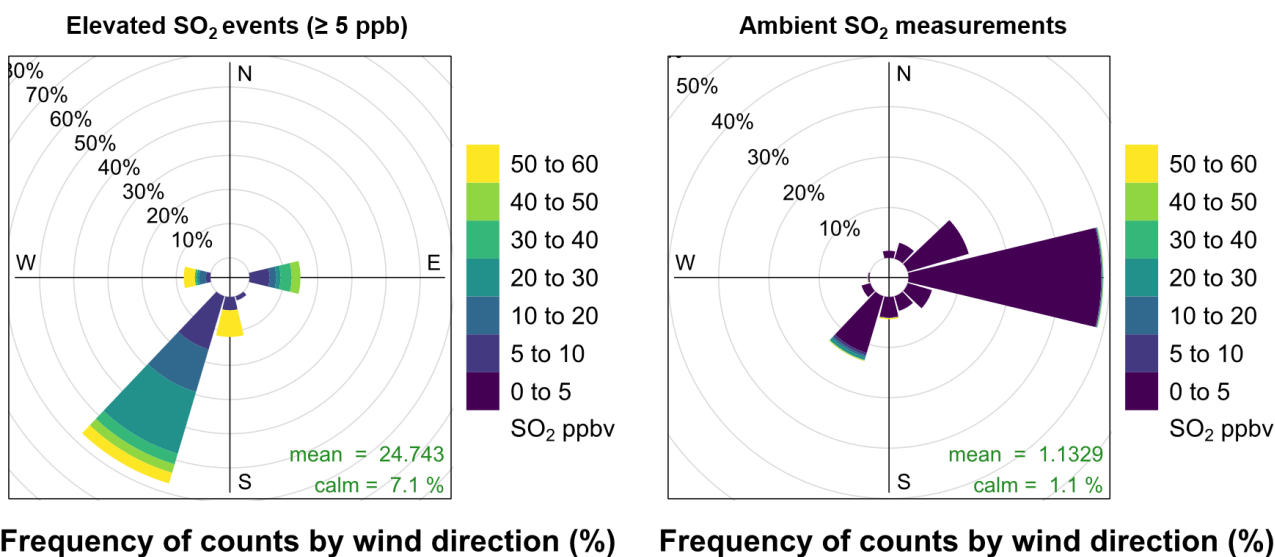


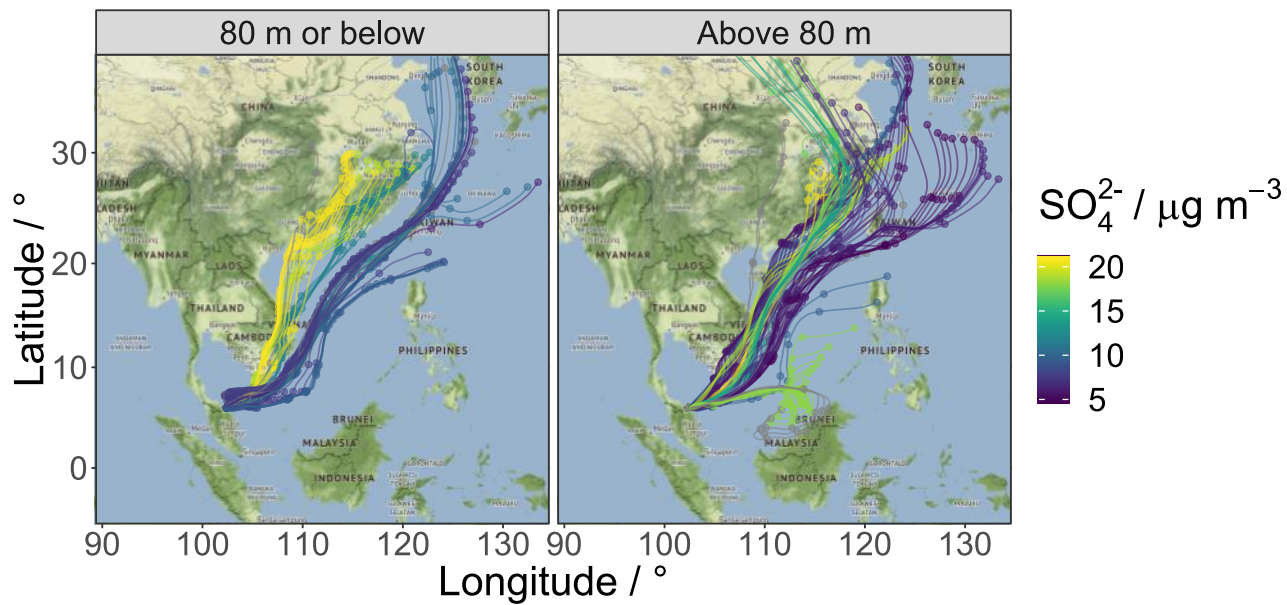
Figure 3: Time series of water-soluble ions ($\mu\text{g m}^{-3}$) measured during the Bachok demonstration campaign (18-01-2014 to 07-02-2014).



790 **Figure 4:** Stacked bar chart to show the average mass composition of water-soluble ions in aerosol collected at the Bachok research station (left panel) and stacked bar charts to show the percentage of non-sea salt and sea salt fractions of Ca^{2+} , K^+ , Na^+ , SO_4^{2-} (right panel, left to right).



795 **Figure 5:** Pollution rose plots to show the relationship between wind direction and SO_2 concentration at the Bachok measurement site. The left panel represents recorded SO_2 concentrations ≥ 5 ppb and the right panel represents all SO_2 data recorded during the measurement period. Plot constructed using the openair package in RStudio (Carslaw and Ropkins, 2012; Carslaw, 2015).



800 **Figure 6:** 7-day HYSPLIT backward air mass trajectories centred on the Bachok research station between 18-01-2014 and 07-02-2014. The back trajectories are coloured by the concentration of SO_4^{2-} ($\mu\text{g m}^{-3}$). Trajectories with a mean height of 80 m or below are shown in the left panel and trajectories with a mean height greater than 80 m are shown in the right panel.

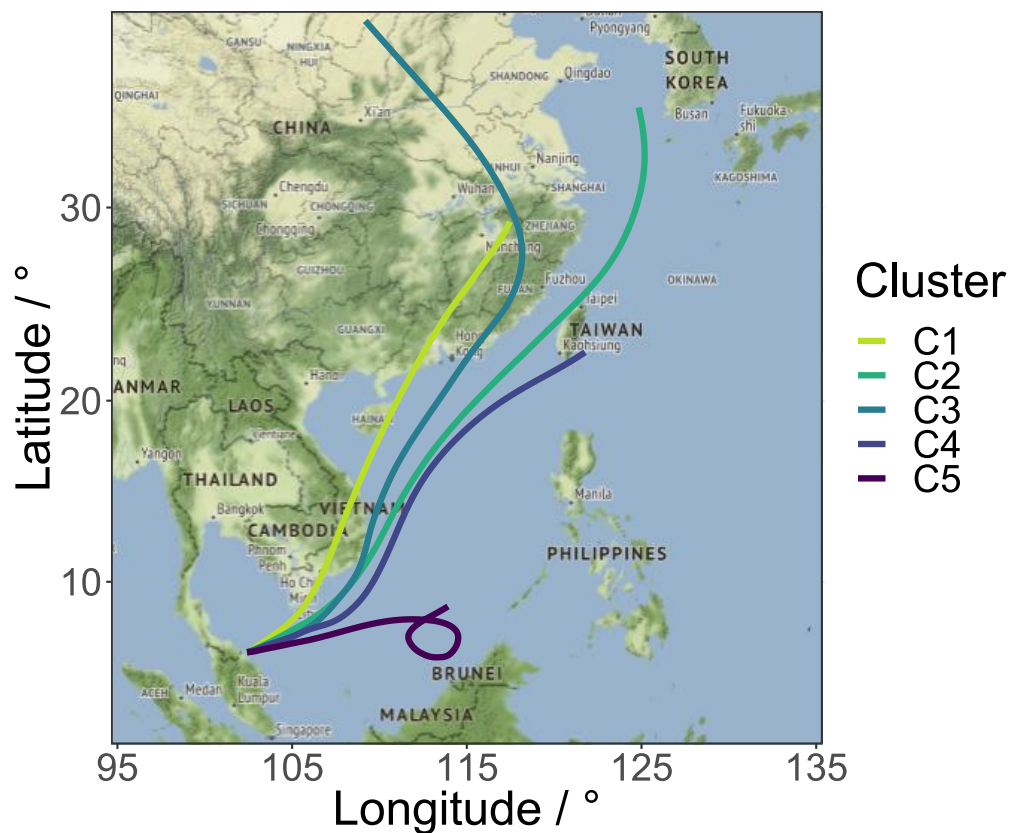


Figure 7: 5-cluster solution to backward air mass trajectories centred on the Bachok research station between 18-01-2014 and 07-02-2014.

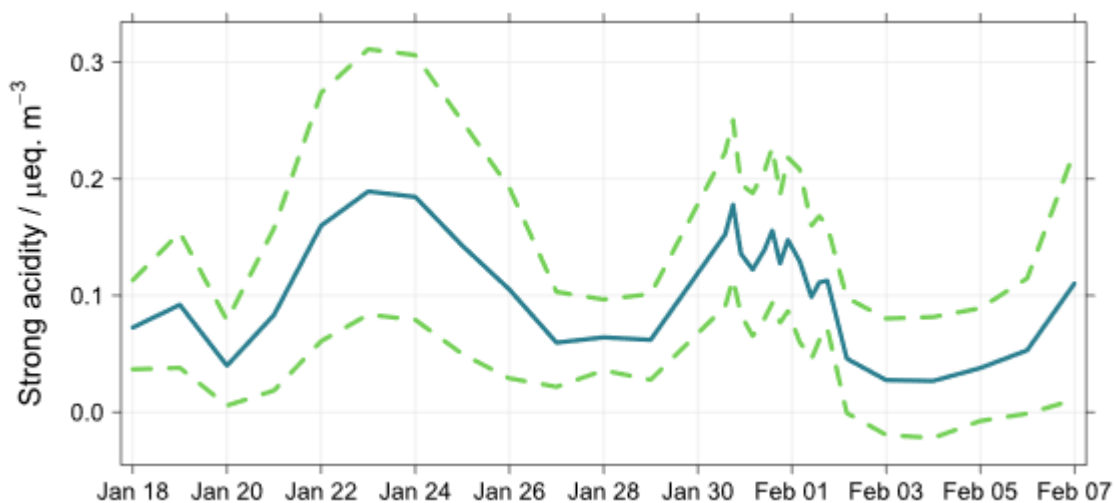
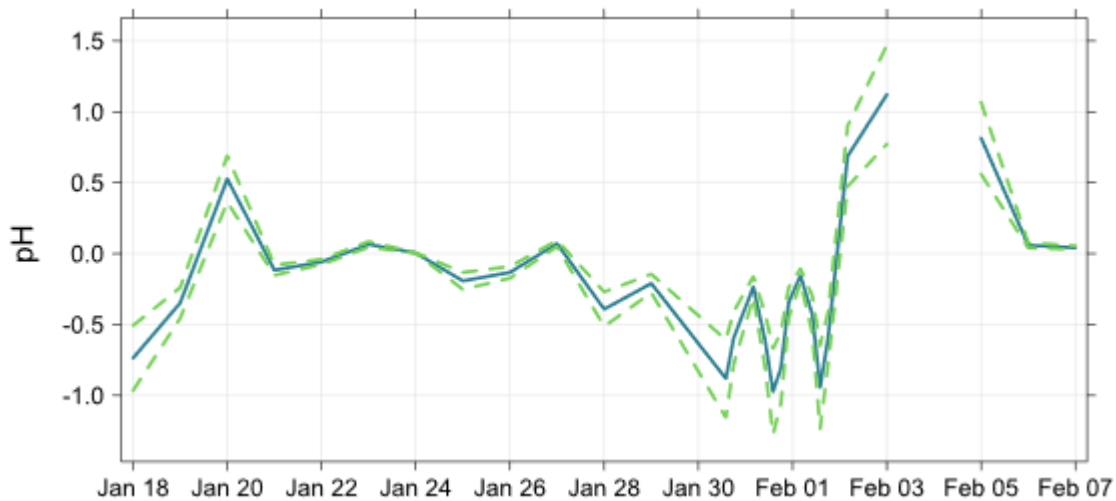
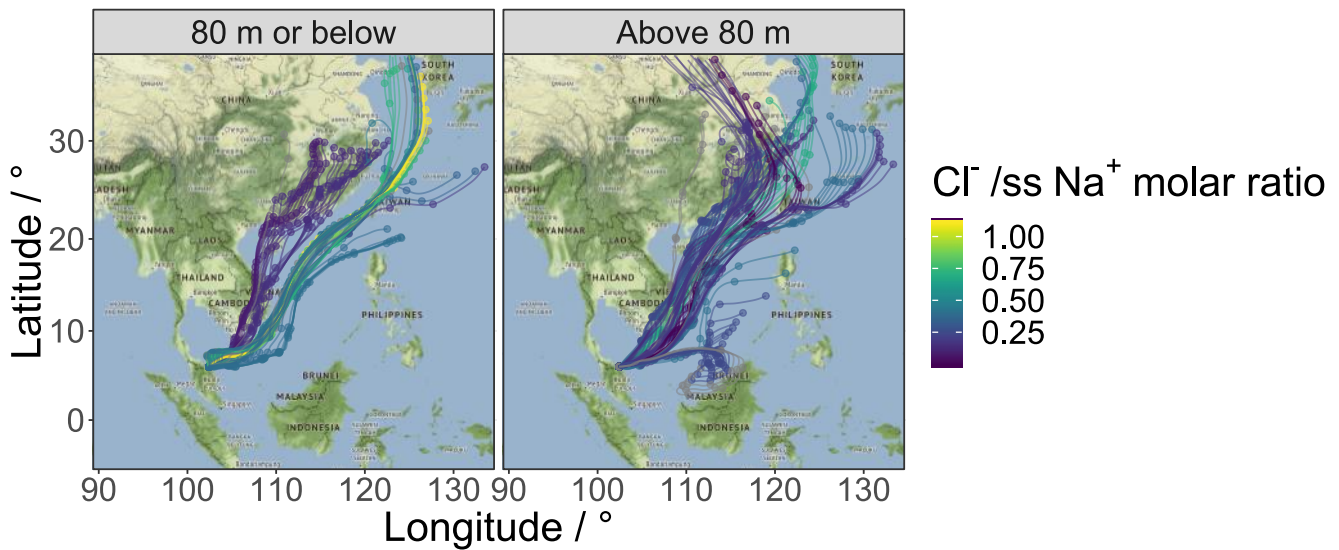


Figure 8: Predictions of particle strong acidity for the aerosol collected during the Bachok measurement campaign. Dashed lines represent predictions of minimum and maximum limits of strong acidity.

805



810 **Figure 9:** Predicted $PM_{2.5}$ pH at the Bachok measurement site using ISOROPPIA-II (Fountoukis and Nenes, 2007). Dashed lines represent predictions of minimum and maximum limits of pH.



815 **Figure 10:** 7-day HYSPLIT back trajectories centred on the Bachok research station, between 18-01-2014 and 07-02-2014. The back trajectories are coloured by the $Cl^-/ssNa^+$ molar ratio. Trajectories with a mean height of 80 m or below are shown in the left panel and trajectories with a mean height greater than 80 m are shown in the right panel.