



The monsoon effect on energy and carbon exchange processes over a highland lake in southwest of China

Qun Du¹, Huizhi Liu^{1,2}, Lujun Xu¹, Yang Liu^{1,2}, and Lei Wang¹

¹ State Key Laboratory of Atmospheric Boundary Layer Physics and Atmospheric Chemistry, Institute of Atmospheric Physics, Chinese Academy of Sciences, Beijing 100029, China

² University of Chinese Academy of Sciences, Beijing 100029, China.

Correspondence to: HuiZhi Liu (huizhil@mail.iap.ac.cn)

Abstract. Lake Erhai is a subtropical highland shallow lake on southeast margin of Tibetan Plateau, which is influenced by both South Asian and East Asian summer monsoon. Based on four years continuous eddy covariance (EC) data over Lake Erhai, the monsoon effect on water-atmosphere exchange process is investigated by comparing the energy and CO₂ fluxes patterns and their main drivers during pre-monsoon (March-April), monsoon (May-October) and post-monsoon (November-December) periods. The results show the atmospheric properties display a large difference for during three different periods. There is a negative difference between water surface and air temperature (ΔT) during pre-monsoon period, while a positive ΔT during post-monsoon period. The diurnal sensible heat flux (Hs) is larger during post-monsoon period, while the latent heat flux (LE) is larger during monsoon period. The monthly average Hs and heat storage (ΔQ) in the lake remain negative during pre-monsoon period and the early monsoon period, and they become positive in the middle monsoon period, which indicates that the lake absorbs heat at first and releases it subsequently. LE plays a dominating role in the energy partitioning of the lake. The Bowen ratio is higher during post-monsoon period. An uptake of CO₂ flux is observed in middle of a day during monsoon and post-monsoon period. The ΔT is the main drivers for Hs and the effect of ΔT is increased as time scales are extended from half-hourly to monthly. The wind speed has a weak effect on Hs but a strong effect on LE and CO₂ fluxes. Similar main drivers for Hs are found during pre-monsoon period and post-monsoon period, which is also found for CO₂ flux, indicating a large impact of monsoon on the heat and carbon exchange process over Lake Erhai.



1 Introduction

There are 304 million lakes globally and they are of significant importance in determining local weather and climate through complex physical, biochemical and biological interactions (Cole et al., 2001; Downing et al., 2006; Shao et al., 2015). Because of the substantial differences in underlying surface characteristics between lake surface and its surrounding land surface (i.e., albedo, roughness, heat capacity) (O'Donnell et al., 2010), the carbon and energy exchange processes over lakes are expected to produce a different way in responding to climate change. Lakes react rapidly to a change in the atmospheric parameters and are able to modify the surrounding atmospheric circulation (Marie-Noële et al., 2012). Plenty of studies on water-atmosphere carbon and energy exchange process have been reported over high-latitude water bodies (Nordbo et al., 2010; Huotari et al., 2011; Mammarella et al., 2015). However, the characteristics of water-atmosphere exchange process differ in lake size, water depth, regional climate and geographical location (Liu et al., 2009). The high-altitude lakes are exposed to more extreme meteorological conditions and more sensitive to variations in meteorological forcing (Rueda et al., 2007). The shallow lakes respond more quickly to changes in the atmospheric forcing due to smaller heat capacity (Liu et al., 2012; Zhang and Liu, 2013). Understanding the turbulent exchange process between the lake surface and atmosphere and its response to atmospheric properties is essential for improving numerical weather prediction and climate models (Dutra et al., 2010; Nordbo et al., 2010).

The change of atmospheric properties over water surface can cause large fluctuations in atmospheric forcing for lake-atmosphere interactions, and subsequently influence the turbulent exchange process (Lenters et al., 2005; Liu et al., 2011; Huotari et al., 2011; Li et al., 2015). The southeasterly wind with warm moist air masses reduced and inverted the vertical temperature difference between water surface and atmosphere to be negative over a large high-latitude saline lake (Qinghai Lake) on the northeastern Qinghai-Tibetan Plateau (QTP) in China (Li et al., 2016). The cold fronts and the meteorological properties of the air masses behind cold fronts (e.g., windy, cold and dry) significantly promoted turbulent exchange of sensible heat (Hs) and latent heat (LE) through enhanced turbulent mixing thermally and mechanically, whereas southerly winds with warm and humid air masses generally suppressed turbulent exchanges of Hs and LE over a mid-latitude large reservoir in Mississippi (Liu et al., 2009; Liu et al., 2012). In response to the changes in the weather conditions, the heat balance over a large tropical reservoir in Brazil is substantially altered, and the heat loss can be twice or threefold greater during cold front days than that during the non-cold-front days (Curtarelli et al., 2014). Consistent diurnal peaks in latent heat flux during the afternoon were observed as a result of strong dry winds coinciding with peak water surface temperatures over a small subtropical reservoir in Australia (McGloin et al., 2015). An increasing sensible heat flux over the lake retarded the cooling of lower atmosphere (below 500 m) and weaken the vertical potential temperature gradient over the lake,



while increasing wind speed and vertical wind shear further facilitated the buoyancy flux to exert higher heat convection efficiency when cold air arrived over Ngoring Lake in the Tibetan Plateau (TP) (Li et al., 2017). The response of carbon exchange process to changes in atmospheric properties is also reported. The CO₂ efflux was enhanced under persistent extra-tropical cyclone activities over high-latitude and mid-latitude water bodies (Huotari et al., 2011; Liu et al., 2016).

Lake Erhai is a subtropical highland shallow lake on the southeast margin of Tibetan Plateau, which is influenced by both South Asian and East Asian summer monsoon. The summer monsoon induces an abrupt change in large-scale atmospheric circulation and convective activity over Asia, and carries in air mass with distinct atmospheric properties (i.e., air temperature, wind direction, relative humidity) (Li and Yanai, 1996; Lau and Yang, 1997; Zhou et al., 2012). The seasonal reversals of atmospheric properties caused by summer monsoon circulation play an important role in regulating land-atmosphere heat and water exchange process (Flohn, 1957; Hsu et al., 1999). The land-atmosphere exchange process is found closely related to the onset and retreat of summer monsoon (Zhang et al., 2012). It's reported that most of available energy was transformed into Hs before the arrival of monsoonal winds, whereas LE increased and exceeded Hs after the onset of monsoonal wind (Xu et al., 2009; Mauder et al. 2006; Li et al., 2014). Considering the substantial difference in atmospheric properties during monsoon and non-monsoon periods, the water-atmosphere carbon and energy exchange processes are expected to display large differences. However, few studies have reported the variation of heat and carbon fluxes over lakes during different monsoonal periods, and the effect of monsoon on water-atmosphere heat and carbon is not clear.

Four years continuous measurements with eddy covariance technique (EC) from 2012 to 2015 have been obtained over Lake Erhai. The summer monsoon generally bursts in May and retreats in October. According to the activity of summer monsoon, three monsoon periods are defined, including pre-monsoon (March-April), monsoon (May-October) and post-monsoon (November-December) period. We hypothesize that the contrasting atmospheric properties during three different monsoon periods play an important role in modulating the turbulent exchange process over Lake Erhai. The objectives of this study are to investigate the energy and CO₂ exchange processes and their response to changes in atmospheric properties during different monsoon periods.

2 Observation site and data process

2.1 Site description

The Lake Erhai (25° 46' N, 100° 10' E) is located on southeast margin of Tibetan Plateau, the southwest of China (Fig. 1). The altitude of the region is about 1972 m. The lake has a length of 42.6 km from south to north, and a width ranging from 3.1 to 8.8 km from east to west, with a total area of 256.5 km². The water depth of the lake varies from 10 and 20.7 m. The water depth around the tower is



about 10 m. The land surface of its surrounding area mainly consists of cropland and town. Because of the subtropical climate, no ice period occurs throughout the whole year. More than 100 rivers and streams drain into the lake, with only one outlet in the southwest (Xier River). The water level is artificially regulated, ranging between 1971.1 and 1974.1 m. Due to the fully mixing of the water, only a short stratification period occurs in the middle time of the year (Feng et al., 2015).

Lake Erhai has a subtropical highland monsoon climate, characterized by a distinct wet and dry season. During monsoon period (May-September), the area is mainly controlled by both the southwest flow from tropical depression in the bay of Bengal and southeast flow from subtropical Pacific high. The moist marine air mass brings in abundant water vapor and intensive precipitation. More than 80% of annual total precipitation falls during this period. During non-monsoon period (November-April), as a result of the southward movement of the westerlies, the area is dominated by continental air mass mainly from desert and arid area of Arab countries, and characterized by a warm and dry season.

2.2 Observation

The eddy covariance instrument is mounted on a concrete platform at a height of 2.5 m. The turbulent fluxes (Hs and LE) and CO₂ flux are simultaneously measured with an ultrasonic anemometer (CSAT3, Campbell Scientific, Logan, UT, USA) and an open-path infrared gas analyzer (LI-7500, Licor Inc., Lincoln, NE, USA). The three components of wind and virtual air temperature are measured with an ultrasonic anemometer. The H₂O and CO₂ concentrations are acquired by the infrared gas analyzer. A CR500 data logger (CR500, Campbell Scientific) is applied to record the measurements with a 10 Hz sampling frequency. Water temperature at eight depths (0.05, 0.2, 0.5, 1, 2, 4, 6, and 8 m below water surface) are measured with temperature probes (CS616, Campbell Scientific, inc., United States) to obtain the water temperature profile, which are tied to a buoy and can change with the water level. The water surface temperature (Ts) is calculated from longwave radiation. Moreover, different micro-meteorological elements are also measured at a height of 1.5 m above the platform. Air temperature and relative humidity are also measured (HMP45C, Vaisala, Vantaa, Finland). The radiation balance components, including upward and downward shortwave radiation, as well as upward and downward longwave radiation, are respectively measured with CNR1 (CNR1, Kipp & Zonen B.V., Delft, The Netherlands). Meanwhile, the photosynthetic active radiation (PAR) is also measured with an LI-190SB quantum sensor (Campbell Scientific inc., United States). The wind speed and wind direction is measured with a wind sentry unit (034B, Met One Instruments Inc., Grants Pass, OR, USA). The Dali National Climatic Observatory, with a distance of 15 km from the flux tower, has provided the data of precipitation.

2.3 Data process



The raw data is checked and spikes are discarded as a result of physical noise and instrument malfunction according to the procedures suggested by Vickers and Mahrt (1997). The data measured with the AGC (active gain control) value more than 40, which is recorded by LI-7500, is also filtered. The abnormal data points with a magnitude exceeding 3.5 times of average standard deviations are needed to remove. The collected raw 10 Hz data are processed with EddyPro software, version 4.2 (Licor Inc., 2013, United States). The double rotation method is applied to adjust the coordinate system and tilt the vertical wind speed to be zero (Kaimal and Finnigan, 1994). The turbulent measurements are detrended with the application of block average. The circular correlation procedure is applied to eliminate time lags between wind velocity and turbulent fluxes. Density corrections for LE and CO₂ flux are also applied with webb-Pearman-Leuning (WPL) correction procedure (Webb et al., 1980). The high-pass filtering effect is also corrected to compensate the flux losses at a high frequency. Quality checks for stability test and integral turbulent characteristic test are applied to remove the low quality fluxes (Foken et al., 2004). Data quality is marked following the schemes of Mauder and Foken (2004), and the high/moderate data are retained. More detailed information about measurements and post-processing procedures could be found in our previous studies (Liu et al., 2015).

The heat storage (ΔQ) in the lake is also calculated:

$$\Delta Q = \rho_w c_{pw} \overline{\frac{\Delta T_w}{\Delta T}} z \quad (1)$$

where T_w is water temperature ($^{\circ}\text{C}$), ρ_w is the density of water (kg m^{-3}), C_{pw} is the specific heat of water at constant pressure ($4192 \text{ J kg}^{-1} \text{ K}^{-1}$), $\overline{\frac{\Delta T_w}{\Delta T}}$ is the depth-weighted time derivative of the water column temperature (K s^{-1}), and z is maximum depth of measured water temperature profile (m). The ΔQ is defined as positive when it is absorbed by the lake surface (heat is stored by the lake).

Because the flux site is close to the west bank of the lake, a footprint model (Kormann and Meixner, 2001) is applied to analyse the distribution of source area contributing to the flux. The 95% of source area contributing to flux ranges from 600 in southeast direction and 400 in west direction during different periods (Fig. 1). Because the flux in the west direction mainly originates from the land surface, the flux in the wind direction (225° to 315°) is excluded. The flux during pre-monsoon period is more affected by land surface compared to the other two periods. Nearly 80% flux originates from the lake



surface during monsoon and post-monsoon Period. Approximately 22%, 15% and 8% of flux data is filtered on basis of footprint analysis.

The data recorded during rainfall is also discarded. According to the quality control procedure presented above, around 34% of the Hs, 46% of LE and 45% of CO₂ fluxes are removed and the retained data are analyzed in our study. Although the gap ratio is large, it's similar to other studies over lakes (Nordbo et al., 2012; Goldbach and Kuttler, 2015; Shao et al., 2015). A long large gap between August and November of exists in 2014 due to malfunction. The time of the study is Beijing local Time (UTC+8).

3 Results and discussion

3.1 Atmospheric properties during different monsoon periods

The atmospheric properties show large differences during different monsoon periods (Fig. 2; Table 1). There is a similar diurnal course for air temperature (T_a) during different monsoon periods, but with a large difference for the magnitudes. The diurnal mean T_a is the highest during Monsoon period, the next pre-monsoon period and the lowest post-monsoon period. The difference for diurnal mean T_a between monsoon period and pre-monsoon period is smaller (3.4°C) than that between monsoon period and post-monsoon period (8.1°C). There is large difference for diurnal mean water surface temperature (T_s) between monsoon period and the other two periods (around 6°C), but small difference between pre-monsoon and post-monsoon period (around 0.2°C). The difference between water surface and air temperature (ΔT) remains negative during most of pre-monsoon period but positive during post-monsoon period, with an average value of -1.94°C and 2.65°C , respectively. The ΔT has the maximum around 8:00 and minimum around 18:00, which is opposite with the diurnal pattern of T_a and T_s . The ΔT has a fairly small diurnal variation during monsoon period compared to the other two periods. The water-air vapor pressure difference (Δe) has an opposite diurnal pattern with ΔT , which has the maximum around 18:00 and the minimum around 8:00. Overall, Δe is relatively high during pre-monsoon period and low during post-monsoon period, with an average value of 1.10 and 0.79 kPa, respectively. There is a larger difference for Δe between pre-monsoon period and monsoon period during 2012 and 2013, but a larger difference between post-monsoon period and monsoon period during 2014 and 2015, attributed to the annual variation of timing distribution of precipitation. The wind speed (U) has a larger difference in daytime than nighttime during different periods. The diurnal mean U is slightly higher during pre-monsoon period than the other two periods. In general, The pre-monsoon is characterized by a higher U and Δe , while the post-monsoon period is characterized by a lower U and T_a . The T_a and T_s is the highest during monsoon period. There is a large difference for average T_s (around 6°C) between Monsoon period and the other two periods, but a slight difference between pre-monsoon and post-monsoon periods. The diurnal ΔT remains negative during pre-monsoon period



but positive during post-monsoon period. A weak diurnal variation of ΔT is observed during monsoon period.

The wind direction over Lake Erhai displays a typical diurnal pattern during three study periods (Fig. 3). Overall, the southeast wind and west wind is dominant in daytime and nighttime, respectively, which represents as the lake breeze and land breeze. Generally, the wind direction shifts from west to southeast in the morning (around 9:00), indicating the onset of lake breeze. The lake breeze lasts until the afternoon. Then the wind direction shifts abruptly from southeast to west around 17:00, which indicates that the lake breeze transfers into land breeze. The wind direction switches at the time of ΔT reaching the maximum or minimum. The alternation between lake breeze and land breeze is more obvious during pre-monsoon and post-monsoon period, attributed to a larger thermal difference between land and lake surface, compared to monsoon period. Because the region is mainly dominated by westerly belt during non-monsoon season, a strong west wind is observed in nighttime during pre-monsoon and post-monsoon periods. During monsoon period, due to the northward motion of westerly belt, the west wind becomes weak in nighttime, while the southwest and southeast flow, respectively from tropical depression in the bay of Bengal and subtropical Pacific high, dominate the region of Dali area. However, the Mountain Cang, which is located close to the western side of Lake Erhai, has obstructed the passing of southwest wind and makes the southeast wind the prevailing wind over Lake Erhai during this period. Because of the continuous southeast wind in nighttime, a weak circulation of lake-land breeze occurs during monsoon period.

The characteristic of air mass from different wind directions is examined by the bin-averaged wind speed (U), air temperature and relative humidity against wind directions (Fig. 4). The U shows a large variability against wind direction. The wind speed from southeast is the highest than that from other directions, which indicates that the lake breeze is stronger than land breeze. The southeast wind is stronger during monsoon period, whereas the land breeze, which is from the west direction, is stronger during pre-monsoon period.

As a result of the control of the maritime atmospheric mass, the air mass during monsoon period is the warmest and wettest, which has a higher air temperature (T_a) and relative humidity (R_h) than that during the other two periods. The characteristic of air mass also shows variability in different wind directions. The air mass from the southeast direction is warmer than that from the west direction during both monsoon and post-monsoon period, while it's opposite during pre-monsoon period. The land surface is warmed faster during the early period and cooled faster during the latter period of the whole year compared to the lake surface, which results in a warmer air mass from the land surface during pre-monsoon period while colder one during the other two periods. The difference for R_h from between pre-monsoon and post-monsoon Period is small in southeast direction but large in west direction. The R_h of air mass from west direction is higher during post-monsoon period than pre-monsoon period,



which is attributed to the intensive precipitation during monsoon period.

3.2 Atmospheric Stability during different monsoon periods

The atmospheric surface layer is near neutral stratification most of the time, which occupies the major proportion during the three study periods (Fig. 5). As Lake Erhai is located in a subtropical highland area, the seasonal uniformly air temperature and the plenty of cloud have contributed to the occurrence of neutral stratification. During pre-monsoon period, the near neutral stratification accounts for as much as 85% in daytime and 92% in nighttime, respectively. Compared to pre-monsoon period, the near neutral stratification declined about 20% in daytime and 10% in nighttime during the other two periods, as a result of the increase of weakly unstable and unstable stratification. The weakly unstable stratification accounts for about 12% during monsoon period and post-monsoon period, whereas only 3% during pre-monsoon period. Most of the unstable stratification occurs during monsoon and post-monsoon periods, and the percentage is much higher in daytime (20%) than nighttime (about 5%), while it's scarcely observed during pre-monsoon period. On the contrary, the stable stratification is hardly observed during post-monsoon period. The difference for the atmospheric stability during three periods is primarily caused by the variation of ΔT , which can be roughly used as an indicator of atmosphere stability (Derecki, 1981; Croley, 1989). An unstable stratification typically associates with an positive ΔT ($T_s > T_a$). On diurnal scale, the T_s is higher than T_a in most of the time during post-monsoon period while it's opposite during pre-monsoon period (Fig. 2), which results in the occurrence of unstable stratification during post-monsoon period and stable stratification during pre-monsoon period, respectively. The stable stratification was also observed in the spring and summer in high-latitude lakes since the T_s increases much more slowly than the overlying T_a (Oswald and Rouse, 2004). While in the fall and winter, the air temperature decreases faster than the water surface, resulting in a positive ΔT .

3.3 Diurnal pattern of Radiation balance components during different monsoon periods

The components of radiation balance display similar diurnal pattern during three different periods, while the magnitudes of radiation fluxes between them are different (Fig. 6). The downward shortwave radiation (R_{s_down}) is largest during pre-monsoon period, the next monsoon period, and lowest during post-monsoon period, with an average value of 225, 210 and 165 $W\ m^{-2}$, respectively. The R_{s_down} is larger during monsoon period than post-monsoon period, due to the seasonal variation of solar elevation angle. However, the R_{s_down} during monsoon period is slightly lower than pre-monsoon period, which might be attributed to the effect of cloud. There are more cloudy days during monsoon period, which has reduced the R_{s_down} . The upward shortwave radiation (R_{s_up}) is much lower than R_{s_down} , with an average value ranging from 12 to 20 $W\ m^{-2}$ during the whole study periods. The lower R_{s_up} and



larger R_{s_down} have resulted in a lower albedo. The average albedo during pre-monsoon, monsoon and post-monsoon periods is 0.07 0.06 and 0.11, respectively. The higher albedo occurs during post-monsoon period due to the relatively low solar elevation angle. Although the difference of solar elevation angle also exists between pre-monsoon period and monsoon period, small difference of albedo is observed during these two periods, which might be attributed to the effect of wind. It has been reported that the wind could promote the movement of waves over the lake, which further changed the incident angle of solar radiation (Katsaros et al., 1985). The higher wind speed during pre-monsoon Period has altered the albedo and offset the difference between it and the monsoon period. The diurnal pattern of downward longwave radiation (R_{l_down}) and upward longwave radiation (R_{l_up}) during three study periods is respectively consistent with T_a and T_s . Both the R_{l_down} and R_{l_down} are largest during monsoon period, the next during pre-monsoon period, and lowest during post-monsoon Period.

3.4 Diurnal pattern of energy balance components and CO_2 flux during different monsoon periods

The diurnal pattern of net radiation (R_n) is consistent with R_{s_down} , which is larger during pre-monsoon period, and lower during post-monsoon period (Fig. 7). The difference for maximum diurnal R_n is around 60 Wm^{-2} between pre-monsoon period and monsoon period, and around 76 Wm^{-2} between Monsoon period and post-monsoon period, respectively. The diurnal pattern of sensible heat flux (H_s) is consistent with ΔT , which reaches the maximum in the morning and the minimum in the afternoon. The diurnal H_s is largest during post-monsoon period, with the maximum value of 28 Wm^{-2} in 2013. The fluctuation of diurnal H_s is very small during Monsoon period, with a difference between the maximum and the minimum of about 10 Wm^{-2} , attributed to the weak diurnal variation of ΔT . The diurnal H_s remains positive during monsoon and post-monsoon Period. The diurnal H_s has a greater amplitude during pre-monsoon period, with its magnitudes ranging from -24 to 5 Wm^{-2} . The diurnal H_s during pre-monsoon period remains negative in most time of a whole day, and changes to be positive for a short time in the morning.

The latent heat flux (LE) has an opposite diurnal pattern with H_s , which reaches the maximum in the afternoon and the minimum in the morning. The maximum diurnal LE during three study periods is close to each other, with a value around 130 Wm^{-2} . Diurnal LE remains at a relatively high level in most time of a whole day during monsoon period compared to the other two periods. The difference of LE between three periods is more evident in nighttime than daytime. The larger LE during monsoon period than the other two periods, is not consistent with the variation of Δe , which is larger during pre-monsoon period, indicating a weak relation between Δe and LE. Since there is a higher H_s and lower LE during post-monsoon period, the Bowen ratio is higher during this period than the other two periods, with an average value of 0.16. There is a relatively small difference for Bowen ratio between



post-monsoon and monsoon periods in nighttime, and between pre-monsoon period and monsoon period in daytime.

The diurnal pattern of storage heat in the lake (ΔQ) is similar with R_n , with the maximum value occurring at the noon. The diurnal ΔQ remains negative in nighttime and changes to be positive after sunrise, indicating the heat is released to the atmosphere in nighttime and absorbed to the lake in daytime. The diurnal mean ΔQ during pre-monsoon, monsoon and post-monsoon period is 28.9, 5.2 and -14.5 Wm^{-2} , respectively. The lake absorbs more heat flux in daytime and releases less in nighttime during pre-monsoon period in most years compared to the other two periods.

The diurnal pattern of LE and H_s are not in the same phase with R_n , which was also reported in highlatitude and midlatitude water bodies, and they were more closely related with other meteorological variables (i.e., Δe , ΔT , U) (Assouline et al., 2008; Nordbo te al., 2001). There is a smaller difference for diurnal LE during three different periods, whereas there is a larger difference for diurnal H_s , indicating a larger effect of monsoon on heat exchange process over Lake Erhai. The LE over Lake Erhai has a large diurnal variation compared to the midlatitude reservoir (Liu et al., 2012).

Two peaks are observed for diurnal variation of CO_2 fluxes during the whole study periods, one occurs in the early morning and the other one in the evening. The CO_2 fluxes could switch to be negative around the noon time during monsoon and post-monsoon period, indicating the CO_2 flux is uptake by the lake in the middle of a day during these two periods. No obvious CO_2 uptake is observed in daytime during pre-monsoon period. The uptake of CO_2 flux may be caused by the phytoplankton due to the eutrophication of Lake Erhai. It has also been reported that the shallow lake is more affected by the rich phytoplankton (Huotari et al., 2011; Shao et al., 2015).

3.5 Monthly average energy balance components during different monsoon periods

The monthly average energy balance components (R_n , ΔQ , LE, and H_s) show clear variations during three different periods from 2012 to 2015 (Fig. 8). R_n gradually increases from pre-monsoon period to the early monsoon period and then decreases until post-monsoon Period. The monthly average R_n during post-monsoon period is lower than 40% of the other two periods. LE remains at a higher level during three periods, with an average monthly value of 89.1, 103.9 and 82.2 Wm^{-2} during pre-monsoon, Monsoon and post-monsoon periods, respectively. The average monthly LE/ R_n has a smaller annual variation during pre-monsoon period, which ranges from 0.50 to 0.82 for four-year study period. LE/ R_n has a larger fluctuation during monsoon period, which varies from 0.53 to 1 from 2012 to 2015. As a result of the decrease of R_n , LE/ R_n exceeds 1 rapidly during post-monsoon period, with an average value of 1.68. LE plays a dominating role in energy partitioning of the lake, while H_s dominated the major proportion of R_n in the terrestrial land surface (Roth et al., 2017). The monthly average H_s remains negative during pre-monsoon period and the early monsoon period, and switches to



be positive in the middle monsoon period. The magnitude of monthly average H_s remains at a very low level, with a value of less than 14 Wm^{-2} during three periods. There is a negative monthly average H_s/R_n during pre-monsoon due to the negative monthly H_s , indicating the R_n is consumed by heating the water body. During the monsoon period, the H_s/R_n is still very low with an average value of 0.06, and the R_n is primarily used for evaporation. Correspondingly, a positive monthly average ΔQ is observed during pre-monsoon and early monsoon period, and a negative monthly average ΔQ during the other periods, indicating the lake absorbs heat at first and releases it subsequently. The average monthly ΔQ during pre-monsoon and post-monsoon period is 28 and -14 Wm^{-2} , respectively. The H_s/R_n increases to 0.20 and $(H_s+LE)/R_n$ reaches as high as 1.72 during post-monsoon period. The excessive portion of the energy released from the heat storage in the lake is transferred through the turbulent exchanges, which is similar with other lakes (Rouse et al., 2005). A lower H_s/R_n with an annual average of 0.16 and a higher LE/R_n with an annual average of 0.81 was also observed in a midlatitude reservoir (Liu et al., 2012). However, other lakes have been reported to have a positive H_s on monthly scale over a whole year (Liu et al., 2012; Li et al., 2015). The difference between them with Lake Erhai is likely to be attributed to the positive ΔT and unstable stratification throughout the year in this midlatitude reservoir whereas a negative ΔT during pre-monsoon period and the majority portion of near neutral stratification over Lake Erhai.

3.6 Main drivers for H_s during different monsoon periods

The correlation coefficients between H_s and meteorological variables (ΔT , U , T_a , T_s , R_n , and Rain) on half-hourly, daily and monthly scales are investigated during three different periods (Table 2). On half-hourly scale, the product of U and ΔT ($U \cdot \Delta T$) is the main controlling factor for H_s , which could explain 44% and 30% variance of H_s during monsoon and post-monsoon period, respectively. However, during pre-monsoon period, both ΔT and the product of U and ΔT are found to have a major effect on half-hourly H_s . A close relationship between half-hourly ΔT and H_s is also observed during monsoon period, with a Pearson correlation coefficient between them of 0.56. On daily scale, the ΔT is found to be most closely related with H_s during all three different periods, with a correlation coefficient ranging from 0.55 during post-monsoon period to 0.78 during monsoon period. Besides, R_n is also one of the major drivers for H_s during monsoon period, as the rain mainly falling during monsoon period, the role of R_n on H_s becomes noticeable. The product of U and ΔT is observed to have a main effect on R_n only during pre-monsoon period. The T_a is also responsible for the variation of daily H_s during pre-monsoon and monsoon periods, which explain about 30% variance of daily H_s . The factors controlling H_s during monsoon period are similar with that during post-monsoon period on monthly scale. The ΔT remains as the most significant factor controlling monthly H_s , which could explain 85% and 89% variance of H_s during monsoon period and post-monsoon period, respectively. The product of U and ΔT also shows



close relationship with monthly Hs during monsoon and post-monsoon periods. The similar relationship between meteorological variables and monthly Hs is not observed during pre-monsoon period. Only the rain and Rn are found to be closely correlated with monthly Hs during pre-monsoon period. The correlation between rain and Rn is also observed during monsoon period, indicating the large effect of Rn during these two periods.

In general, no significant relationship between U and Hs is observed from half-hourly to monthly scales during all three study periods. The ΔT remains as the main factor controlling Hs on all temporal scales during three periods, and the effect of ΔT is increased as the correlation coefficients between them rises when time scales are extended from half-hourly to monthly. During monsoon period, the role of Rn on Hs becomes more important. The relationship between meteorological factors and Hs is more complicated during monsoon period, while there are similar main drivers for Hs during pre-monsoon period and post-monsoon period.

3.7 Main drivers for LE during different monsoon periods

The relationship between LE and meteorological variables during pre-monsoon, monsoon and post-monsoon periods from half-hourly, daily and monthly scales from 2012 to 2015 are also analyzed (Table 3). Unlike the relationship between U and Hs, a significant relationship between U and LE is observed on all temporal scales during three different periods, with a higher correlation coefficient ranging from 0.51 to 0.80. However, the range of the correlation coefficients between U and LE is similar on different time scales, indicating that the effect of U doesn't increase as time scale changes. The product of U and Δe is the second major factor controlling LE during three periods, especially on half-hourly and daily scales, with a correlation coefficient ranging from 0.48 to 0.71. On monthly scale, the significant effect of the product of U and Δe on LE is only observed during pre-monsoon period, which could explain 60% variance of monthly LE. During monsoon period, both Ta and Rn show a close relationship with LE on monthly scale. The effect of Rn on LE has also been reported in other studies. Because the variation of monthly Ta is mainly determined by the magnitude of the available energy, the close relationship between Ta and monthly LE reflects the effect of Rn on LE during monsoon period.

Overall, the factors controlling LE are more consistent from half-hourly to monthly scales compared to Hs, and the difference for main drivers of LE during three different periods is relatively small. The U remains as the most significant factor controlling LE on all temporal scales during all three periods. However, the effect of U doesn't increase when temporal scale changes from half-hourly to monthly scales. The product of U and Δe also shows a large impact on LE especially on half-hourly and daily scale. While Δe is found to have a minor effect on LE on all temporal scales during three different periods. During monsoon period, Rn is also found to be responsible for variation of LE on



monthly scale, which is similar with monthly Hs. The close relationship between Rn and LE was also observed in a small boreal lake (Nordbo et al., 2001).

3.8 Main drivers for CO₂ flux during different monsoon periods

5 The correlation coefficients between CO₂ flux and meteorological variables during three different periods from half-hourly to monthly scales are shown in Table 4. On half-hourly scale, there is a similar relationship between meteorological variables and CO₂ flux during pre-monsoon and post-monsoon period. Both Rn and photosynthetic active radiation (PAR) are found to have a slight higher correlation coefficient with CO₂ flux than other meteorological variables, which indicates that the carbon exchange process over Lake Erhai is both affected by physical and biological process. The U is found to have a significant relationship with CO₂ flux during monsoon period. There is a relatively high correlation coefficient between U and CO₂ flux on all temporal scales during monsoon period, which increases from half-hourly (0.23) to monthly scales (0.81). During post-monsoon period, the U also has a large impact on CO₂ flux mainly on longer temporal scale. The correlation coefficient between them is also the highest on daily and monthly scales during post-monsoon period. The U could mediate the vertical transport of gases by producing turbulent eddies across the air-water interface (Eugster et al., 2003).

10 On monthly scale, the major drivers of CO₂ flux vary greatly during different periods. PAR is found to be the most significant driver for monthly CO₂ flux during pre-monsoon period. During monsoon period, the main drivers for monthly CO₂ flux (i.e., Rn, Ta and U) are in good accordance with LE. The relationship between Ts and CO₂ flux is likely to be attributed to that the variation of Ts could influence the solubility in the water (Shao et al., 2015). The Δe also has a large effect on monthly CO₂ flux during both pre-monsoon and post-monsoon periods. The rain is also observed to be closely correlated with CO₂ flux on daily scale during pre-monsoon period and on monthly scale during post-monsoon period. It has been reported that the more rain could bring more nutrients in to the water body, which will promote the photosynthesis of the phytoplankton (Shao *et al.*, 2015). As only minor rain falls during these two periods, the role of rain becomes more important.

15 Overall, because the correlation coefficients between meteorological variables and CO₂ flux are comparatively lower on half-hourly scale, large uncertainties exist for the main drivers controlling half-hourly CO₂ flux. The main drivers of CO₂ flux are more complicated on monthly scale during three periods, indicating multiple factors may govern CO₂ exchange process, including biological and physical process (Vesala et al., 2006). More similar controlling factors for CO₂ flux are observed during pre-monsoon and post-monsoon periods, compared with monsoon period, indicating the large impact of monsoon on carbon exchange process.

35 4 Conclusions



Lake Erhai is a subtropical shallow lake located in the key regions of water-vapor transportation passages, which is influenced by both South Asian and East Asian summer monsoon. The contrasting atmospheric properties during monsoon and non-monsoon periods provide an excellent opportunity to examine the effect of monsoon on turbulent exchange process over the lake surface. The pre-monsoon period is characterized by a higher U and Δe , with a negative ΔT , while the post-monsoon period is characterized by a lower U and T_a , with a positive ΔT . The air mass during monsoon period is the warmest and wettest. The monsoon period has a much higher T_s than the other two periods. The southeastly wind and westly wind is dominant in daytime and nighttime, respectively. The lake and land breeze circulation is stronger during pre-monsoon and post-monsoon period. The near neutral stratification occupies the major proportion during the three study periods. The negative diurnal ΔT during pre-monsoon period has contributed to the occurrence of stable stratification, while the positive ΔT has contributed to the occurrence of unstable stratification during monsoon and post-monsoon periods.

Due to the effect of cloud, the R_n during monsoon period is lower than pre-monsoon period. The albedo is higher during post-monsoon period but similar between pre-monsoon and monsoon periods. The diurnal pattern of ΔQ is consistent with R_n , while diurnal H_s and LE are out phase of R_n , which are consistent with ΔT and Δe , respectively. The diurnal H_s during pre-monsoon period remains negative in most time of a whole day, and changes to be positive for a short time in the morning. Diurnal LE remains relatively high most time of a whole day during monsoon period. The higher H_s and lower LE has resulted in a higher Bowen ratio during post-monsoon period. LE dominates the energy partitioning of the lake, and LE/R_n exceeds 1 during post-monsoon period due to the rapid decrease of R_n . The monthly average ΔQ is positive during pre-monsoon and early monsoon period, and becomes negative during the other periods, indicating the lake absorbs heat at first and then releases it.

The ΔT remains as the main factor controlling H_s on all temporal scales during three periods, and the effect of ΔT is increased when time scales are extended from half-hourly to monthly. The factors controlling LE are more consistent from half-hourly to monthly scales compared to H_s . Significant relationship between U and LE is observed on all temporal scales, and the product of U and Δe is the second major factor controlling LE during three periods. The U is also found to have a strong relationship with CO_2 flux during monsoon period. The high wind is expected to cause variations in the mechanical mixing and thus modulate the water surface turbulent and CO_2 exchange process (Zhang and Liu, 2013). During monsoon period, the R_n plays an important role on monthly variation of H_s and LE . Compared with monsoon period, similar main drivers for H_s are found during pre-monsoon period and post-monsoon period, which is also found for CO_2 flux, indicating the large impact of monsoon on heat and carbon exchange process over Lake Erhai. On monthly scale, the main drivers of CO_2 flux are



more complicated during three periods. In future, more studies are needed to investigate the combining effect of biological and physical process on carbon exchange process over highland shallow lake.

Acknowledgements. This work was supported by National Natural Science Foundation of China (No. 91537212, No. 41661144018 and No. 41505007) and the National Key Research and Development Program of China (2017YFC1502101). We thank the related persons in Yunnan Provincial Institute of Meteorology and Dali National Climatic Observatory for their maintaining the site and providing historical data.

10 **References**

- Assouline, S., Tyler, S. W., Tanny, J., Cohen, S., Bou-Zeid, E., Parlange, M. B., and Katul, G. G.: Evaporation from three water bodies of different sizes and climates: Measurements and scaling analysis, *Adv. Water. Resour.*, 31, 160-172, 2008.
- Cole, J. J., Cole, J. J., Caraco, N. F., and Caraco, N. F.: Carbon in catchments: connecting terrestrial carbon losses with aquatic metabolism, *Mar. Freshwat. Res.*, 52, 101-110, 2001.
- 15 Croley, T. E.: Verifiable evaporation modeling on the Laurentian great-lakes, *Water Resour. Res.*, 25, 781-792, doi: 10.1029/WR025i005p00781, 1989.
- Curtarelli, M. P., Alcantara, E. H., Renno, C. D., and Stech, J. L.: Physical changes within a large tropical hydroelectric reservoir induced by wintertime cold front activity, *Hydrol. Earth. Syst. Sc.*, 18, 3079-3093, doi: 20 10.5194/hess-18-3079-2014, 2014.
- Derecki, J. A.: Stability Effects on Great Lakes Evaporation, *J. Great Lakes Res.*, 7, 357-362, 1981.
- Downing, J. A., Prairie, Y. T., Cole, J. J., Duarte, C. M., Tranvik, L. J., Striegl, R. G., McDowell, W. H., Kortelainen, P., Caraco, N. F., Melack, J. M., and Middelburg, J. J.: The global abundance and size distribution of lakes, ponds, and impoundments, *Limnol. Oceanogr.*, 51, 2388-2397, doi: 10.4319/lo.2006.51.5.2388, 2006.
- 25 Dutra, E., Stepanenko, V. M., Balsamo, G., Viterbo, P., Miranda, P. M. A., Mironov, D., and Schaer, C.: An offline study of the impact of lakes on the performance of the ECMWF surface scheme, *Boreal Environ. Res.*, 15, 100-112, 2010.
- Eugster, W., Kling, G., Jonas, T., McFadden, J. P., Wuest, A., MacIntyre, S., and Chapin, F. S.: CO₂ exchange between air and water in an Arctic Alaskan and midlatitude Swiss lake: Importance of convective mixing, *J. Geophys. Res.-Atmos.*, 108, 20, doi: 10.1029/2002jd002653, 2003.
- 30 Goldbach, A., and Kuttler, W.: Turbulent Heat Fluxes above a Suburban Reservoir: A Case Study from Germany, *J. Hydrometeorol.*, 16, 244-260, doi: 10.1175/JHM-D-13-0159.1, 2015.
- Feng, J. W., Liu, H. Z., Sun, J. H., and Wang, L.: The surface energy budget and interannual variation of the annual total evaporation over a highland lake in Southwest China, *Theor. Appl. Climatol.*, 1-10, doi: 35 10.1007/s00704-015-1585-9, 2015.



- Flohn, H.: Large-scale aspects of the "summer monsoon" in South and East Asia, *J.meteor.soc.japan*, 75, 180-186, 1957.
- Hsu, H. H., Terng, C. T., and Chen, C. T.: Evolution of large-scale circulation and heating during the first transition of Asian summer monsoon, *J. Clim.*, 12, 793-810, doi: 10.1175/1520-0442(1999)012<0793:eolsca>2.0.co;2, 1999.
- 5 Huotari, J., Ojala, A., Peltomaa, E., Nordbo, A., Launiainen, S., Pumpanen, J., Rasilo, T., Hari, P., and Vesala, T.: Long-term direct CO₂ flux measurements over a boreal lake: Five years of eddy covariance data, *Geophys. Res. Lett.*, 38, 113-120, doi: 10.1029/2011GL048753, 2011.
- Kaimal, J. C., and Finnigan, J. J.: *Atmospheric Boundary Layer Flows: Their Structure and Measurement.*, Oxford University Press, Oxford, UK., 1994.
- 10 Katsaros, C., and Galatis, B.: Ultrastructural studies on thallus development in *Dictyota dichotoma* (Phaeophyta, Dictyotales), *British Phycological Bulletin*, 20, 263-276, 1985.
- Kormann, R., and Meixner, F. X.: An analytical footprint model for non-neutral stratification, *Boundary-Layer Meteorology*, 99, 207-224, doi: 10.1023/a:1018991015119, 2001.
- Lau, K. M., and Yang, S.: Climatology and interannual variability of the southeast Asian summer monsoon, *Adv.*
15 *Atmos. Sci.*, 14, 18-26, 1997.
- Lenters, J. D., Kratz, T. K., and Bowser, C. J.: Effects of climate variability on lake evaporation: Results from a long-term energy budget study of Sparkling Lake, northern Wisconsin (USA), *J. Hydrol.*, 308, 168-195, doi: 10.1016/j.jhydrol.2004.10.028, 2005.
- Li, C. F., and Yanai, M.: The onset and interannual variability of the Asian summer monsoon in relation to land sea
20 thermal contrast, *J. Clim.*, 9, 358-375, doi: 10.1175/1520-0442(1996)009<0358:toaivo>2.0.co;2, 1996.
- Li, M., Babel, W., Chen, X., Zhang, L., Sun, F., Wang, B., Ma, Y., Hu, Z., and Foken, T.: A 3-year dataset of sensible and latent heat fluxes from the Tibetan Plateau, derived using eddy covariance measurements, *Theor. Appl. Climatol.*, 122, 457-469, 2015a.
- Li, X.-Y., Ma, Y.-J., Huang, Y.-M., Hu, X., Wu, X.-C., Wang, P., Li, G.-Y., Zhang, S.-Y., Wu, H.-W., Jiang, Z.-Y., Cui,
25 B.-L., and Liu, L.: Evaporation and surface energy budget over the largest high-altitude saline lake on the Qinghai-Tibet Plateau, *J. Geophys. Res-Atmos.*, 121, 10470-10485, doi: 10.1002/2016jd025027, 2016.
- Li, Z., Lyu, S., Ao, Y., Wen, L., Zhao, L., and Wang, S.: Long-term energy flux and radiation balance observations over Lake Ngoring, Tibetan Plateau, *Atmos. Res.*, 155, 13-25, doi: 10.1016/j.atmosres.2014.11.019, 2015b.
- Li, Z., Lyu, S., Wen, L., Zhao, L., Ao, Y., and Wang, S.: Effect of a cold, dry air incursion on atmospheric boundary
30 layer processes over a high-altitude lake in the Tibetan Plateau, *Atmos. Res.*, 185, 32-43, doi: 10.1016/j.atmosres.2016.10.024, 2017.
- Liu, H., Zhang, Y., Liu, S., Jiang, H., Sheng, L., and Williams, Q. L.: Eddy covariance measurements of surface energy budget and evaporation in a cool season over southern open water in Mississippi, *J. Geophys. Res-Atmos.*, 114, 83-84, doi: 10.1029/2008JD010891, 2009.
- 35 Liu, H., Blanken, P. D., Weidinger, T., Nordbo, A., and Vesala, T.: Variability in cold front activities modulating



- cool-season evaporation from a southern inland water in the USA, *Environ. Res. Lett.*, 6, 024022, 2011.
- Liu, H., Zhang, Q., and Dowler, G.: Environmental Controls on the Surface Energy Budget over a Large Southern Inland Water in the United States: An Analysis of One-Year Eddy Covariance Flux Data, *J. Hydrometeorol.*, 13, 1893-1910, doi: 10.1175/jhm-d-12-020.1, 2012.
- 5 Liu, H., Zhang, Q., Katul, G. G., Cole, J. J., Iii, F. S. C., and Macintyre, S.: Large CO₂ effluxes at night and during synoptic weather events significantly contribute to CO₂ emissions from a reservoir, *Environ. Res. Lett.*, 11, 064001, doi: 10.1088/1748-9326/11/6/064001, 2016.
- Liu, H. Z., Feng, J. W., Sun, J. H., Wang, L., and Xu, A. L.: Eddy covariance measurements of water vapor and CO₂ fluxes above the Erhai Lake, *Sci. China. Earth. Sci.*, 58, 317-328, doi: 10.1007/s11430-014-4828-1, 2015.
- 10 Mammarella, I., Nordbo, A., Rannik, Ü., Haapanala, S., Levula, J., Laakso, H., Ojala, A., Peltola, O., Heiskanen, J., and Pumpanen, J.: Carbon dioxide and energy fluxes over a small boreal lake in Southern Finland, *J. Geophys. Res-Bioge.*, 120, 1296-1314, doi: 10.1002/2014JG002873, 2015.
- Marie - Noële, B., Guy, C., Olivier, T., Dominique, L., and Le, M. P.: Long-term heat exchanges over a Mediterranean lagoon, *J. Geophys. Res-Atmos.*, 117, 2012.
- 15 Mauder, M., Jegede, O. O., Okogbue, E. C., Wimmer, F., and Foken, T.: Surface energy balance measurements at a tropical site in West Africa during the transition from dry to wet season, *Theor. Appl. Climatol.*, 89, 171-183, doi: 10.1007/s00704-006-0252-6, 2007.
- McGloin, R., McGowan, H., and McJannet, D.: Effects of diurnal, intra-seasonal and seasonal climate variability on the energy balance of a small subtropical reservoir, *Int. J. Climatol.*, 35, 2308-2325, doi: 10.1002/joc.4147, 2015.
- 20 Nordbo, A., Launiainen, S., Mammarella, I., Lepparanta, M., Huotari, J., Ojala, A., and Vesala, T.: Long-term energy flux measurements and energy balance over a small boreal lake using eddy covariance technique, *J. Geophys. Res-Atmos.*, 116, doi: 10.1029/2010jd014542, 2011.
- O'Donnell, D. M., Effler, S. W., Strait, C. M., and Leshkevich, G. A.: Optical characterizations and pursuit of optical closure for the western basin of Lake Erie through in situ measurements, *J. Great Lakes Res.*, 36, 736-746, 2010.
- 25 Roth, M., Jansson, C., and Velasco, E.: Multi - year energy balance and carbon dioxide fluxes over a residential neighbourhood in a tropical city, *Int. J. Climatol.*, 2016.
- Rouse, W. R., Oswald, C. J., Binyamin, J., Spence, C. R., Schertzer, W. M., Blanken, P. D., Bussieres, N., and Duguay, C. R.: The role of northern lakes in a regional energy balance, *J. Hydrometeorol.*, 6, 291-305, doi: 10.1175/jhm421.1, 2005.
- 30 Rueda, F., Moreno-Ostos, E., and Cruz-Pizarro, L.: Spatial and temporal scales of transport during the cooling phase of the ice-free period in a small high-mountain lake, *Aquat. Sci.*, 69, 115-128, 2007.
- Shao, C., Chen, J., Stepien, C. A., Chu, H., Ouyang, Z., Bridgeman, T. B., Czajkowski, K. P., Becker, R. H., and John, R.: Diurnal to annual changes in latent, sensible heat, and CO₂ fluxes over a Laurentian Great Lake: A case study in Western Lake Erie, *J. Geophys. Res-Bioge.*, 120, 1587-1604, doi: 10.1002/2015JG003025, 2015.
- 35 Vesala, T., Huotari, J., Rannik, U., Suni, T., Smolander, S., Sogachev, A., Launiainen, S., and Ojala, A.: Eddy



- covariance measurements of carbon exchange and latent and sensible heat fluxes over a boreal lake for a full open-water period, *J. Geophys. Res-Atmos.*, 111, doi: 10.1029/2005jd006365, 2006.
- Vickers, D., and Mahrt, L.: Quality control and flux sampling problems for tower and aircraft data, *J. Atmos. Ocean. Tech.*, 14, 512-526, doi: 10.1175/1520-0426(1997)014<0512:qcafsp>2.0.co;2, 1997.
- 5 Webb, E. K., Pearman, G. I., and Leuning, R.: Correction of flux measurements for density effects due to heat and water-vapor transfer, *Q. J. Roy. Meteor. Soc.*, 106, 85-100, doi: 10.1002/qj.49710644707, 1980.
- Xu, J., Yu, S., Liu, J., Haginoya, S., Ishigooka, Y., Kuwagata, T., Hara, M., and Yasunari, T.: The Implication of Heat and Water Balance Changes in a Lake Basin on the Tibetan Plateau, *Hydrol. Res.Lett.*, 3, 1-5, 2009.
- 10 Zhang, Q., Zeng, J., and Zhang, L. Y.: Characteristics of land surface thermal-hydrologic processes for different regions over North China during prevailing summer monsoon period, *Sci. China. Earth. Sci.*, 55, 1872-1880, 2012.
- Zhang, Q., and Liu, H.: Interannual variability in the surface energy budget and evaporation over a large southern inland water in the United States, *J. Geophys. Res-Atmos.*, 118, 4290-4302, doi: 10.1002/jgrd.50435, 2013.
- Zhou, L., Zou, H., Ma, S., and Li, P.: Observed Impact of the South Asian Summer Monsoon on the Local Meteorology in the Himalayas, *Acta. Meteorol. Sin.*, 26, 205-215, doi: 10.1007/s13351-012-0206-0, 2012.

15



5

Table 1. Daily average air temperature (T_a), water surface temperature (T_s), difference between water surface temperature and air temperature (ΔT), vapor pressure difference (Δe) between water surface (e_s) and the air (e_a), wind speed (U), the downward and upward shortwave radiation flux (R_{s_down} and R_{s_up}), the downward and upward long wave radiation flux (R_{l_down} and R_{l_up}), and albedo during pre-monsoon, monsoon and post-monsoon period from 2012 to 2015.

Period	Year	T_a	T_s	ΔT	Δe	U	R_{s_down}	R_{s_up}	R_{l_down}	R_{l_up}	Albedo
pre-monsoon	2012	16.02	14.24	-2.42	1.07	3.20	202.40	13.43	319.94	384.92	0.07
	2013	16.92	15.36	-1.56	1.20	2.89	230.60	14.83	313.91	390.47	0.07
	2014	17.14	15.04	-2.09	1.21	2.93	239.03	14.37	310.49	388.87	0.06
	2015	16.95	15.29	-1.70	0.94	3.13	228.29	15.12	316.93	390.30	0.07
	Average	16.76	14.98	-1.94	1.10	3.04	225.08	14.44	315.32	388.64	0.07
monsoon	2012	19.81	20.92	1.09	0.75	2.81	201.62	12.55	366.44	420.68	0.06
	2013	19.52	20.93	1.41	0.74	2.67	201.90	12.42	368.08	421.01	0.06
	2014	21.06	21.19	0.12	0.94	2.81	223.74	11.88	374.06	424.08	0.06
	2015	20.23	21.13	1.22	0.98	3.16	212.20	13.45	365.82	422.05	0.07
	Average	20.15	21.04	0.96	0.85	2.86	209.87	12.57	368.60	421.95	0.06
post-monsoon	2012	13.04	15.17	2.13	0.82	3.01	179.32	22.12	281.80	383.17	0.13
	2013	12.09	14.81	3.06	0.65	2.28	174.10	19.58	280.38	380.79	0.11
	2014	10.91	14.39	2.68	0.79	2.52	152.96	20.96	277.79	370.92	0.09
	2015	12.13	14.73	2.74	0.90	2.83	154.19	18.65	294.35	381.96	0.12
	Average	12.04	14.78	2.65	0.79	2.66	165.14	20.33	283.58	379.21	0.11



Table 2. The Pearson correlation coefficients between 30Min, Daily and Monthly sensible heat flux (Hs) and difference between water surface and air temperature (ΔT), wind speed (U), the product of wind speed and difference between water surface and air temperature ($U \cdot \Delta T$), air temperature (Ta), water surface temperature (Ts), net radiation (Rn), and rain, during pre-monsoon, monsoon and post-monsoon periods for the whole study period (2012 to 2015). The significant level of 0.01 and 0.05 are marked with ** and * respectively. The correlation coefficients between rain and Hs are estimated only at daily and monthly scales.

variable	30Min			Daily			Monthly		
	pre-monsoon	monsoon	post-monsoon	pre-monsoon	monsoon	post-monsoon	pre-monsoon	monsoon	post-monsoon
ΔT	0.422**	0.564**	0.397**	0.613**	0.775**	0.548**	0.281	0.922**	0.945**
U	-0.144**	-0.017**	-0.003	-0.125	-0.248*	-0.166*	-0.162	-0.594**	-0.511
$U \cdot \Delta T$	0.394**	0.666**	0.541**	0.571**	0.571**	0.349**	0.324	0.903**	0.711
Ta	-0.375**	-0.401**	-0.309**	-0.552**	-0.528**	-0.308**	-0.244	-0.579**	-0.614
Ts	-0.177**	-0.070**	-0.130**	-0.199**	0.035	-0.170*	-0.013	0.264	-0.382
Rn	0.178**	-0.052**	0.187**	-0.246**	-0.546**	-0.233**	-0.472	-0.750**	-0.348
rain				0.242**	0.105*	0.062	0.602	0.564**	-0.298



5

Table 3. The Pearson correlation coefficients between 30Min, Daily and Monthly latent heat flux (LE) and vapor pressure difference (Δe) between water surface (e_s) and the air (e_a), wind speed (U), the product of wind speed and vapor pressure difference (Δe) between water surface and the air ($U \cdot \Delta e$), air temperature (T_a), water surface temperature (T_s), relative humidity (Rh), net radiation (Rn), and rain, during pre-monsoon, monsoon and post-monsoon periods for the whole study period (2012 to 2015). The significant level of 0.01 and 0.05 are marked with ** and * respectively. The correlation coefficients between rain and LE are estimated only at daily and monthly scales.

variable	30Min			Daily			Monthly		
	pre-monsoon	monsoon	post-monsoon	pre-monsoon	monsoon	post-monsoon	pre-monsoon	monsoon	post-monsoon
Δe	0.292**	0.215**	0.407**	0.214**	0.108*	0.288**	0.118	0.024	-0.021
U	0.502**	0.741**	0.723**	0.634**	0.798**	0.687**	0.791*	0.765**	0.568
$U \cdot \Delta e$	0.477**	0.649**	0.709**	0.544**	0.598**	0.682**	0.777*	0.400	0.293
T_a	0.326**	0.374**	0.488**	0.239**	0.423**	0.633**	0.016	0.627**	0.066
T_s	0.254**	0.301**	0.379**	0.097	0.304**	0.341**	-0.019	0.419	0.000
Rh	-0.238**	-0.202**	-0.490**	-0.310**	-0.105*	-0.421**	0.137	-0.042	-0.375
Rn	0.244**	0.243**	0.315**	0.111	0.221**	0.301**	-0.088	0.503*	-0.014
rain				-0.052	-0.080	0.088	-0.089	-0.352	0.282



Table 4. The Pearson correlation coefficients between 30Min, Daily and Monthly CO₂ flux and difference between water surface and air temperature (ΔT), vapor pressure difference (Δe) between water surface and the air, wind speed (U), air temperature (Ta), relative humidity (Rh), water surface temperature (Ts), photosynthetic active radiation (RAR), net radiation (Rn), and rain, during pre-monsoon, monsoon and post-monsoon periods for the whole study period (2012 to 2015). The significant level of 0.01 and 0.05 are marked with ** and * respectively. The correlation coefficients between rain and CO₂ flux are estimated only at daily and monthly scales.

variable	30Min			Daily			Monthly		
	pre-monsoon	monsoon	post-monsoon	pre-monsoon	monsoon	post-monsoon	pre-monsoon	monsoon	post-monsoon
ΔT	0.035**	0.115**	0.078**	-0.006	0.252**	0.253**	-0.598	0.519*	-0.386
Δe	-0.049**	-0.093**	-0.026	0.178**	-0.006	0.003	0.546	-0.391	0.470
U	-0.140**	-0.231**	-0.171**	-0.313**	-0.558**	-0.335**	-0.557	-0.810**	0.610
Ta	-0.141**	-0.179**	-0.099**	-0.091	-0.248**	-0.118	0.055	-0.578**	0.072
Rh	0.007	0.084**	0.022	-0.148*	0.022	0.074	-0.681	0.309	-0.211
Ts	-0.198**	-0.146**	-0.086**	-0.135*	-0.084	0.006	-0.166	-0.202	-0.037
PAR	-0.227**	-0.129**	-0.231**	0.320**	0.204**	0.022	0.755*	0.273	-0.088
Rn	-0.262**	-0.152**	-0.281**	-0.002	-0.057	0.084	0.171	-0.591**	0.003
rain				-0.342**	0.028	-0.138	0.755	0.220	0.422

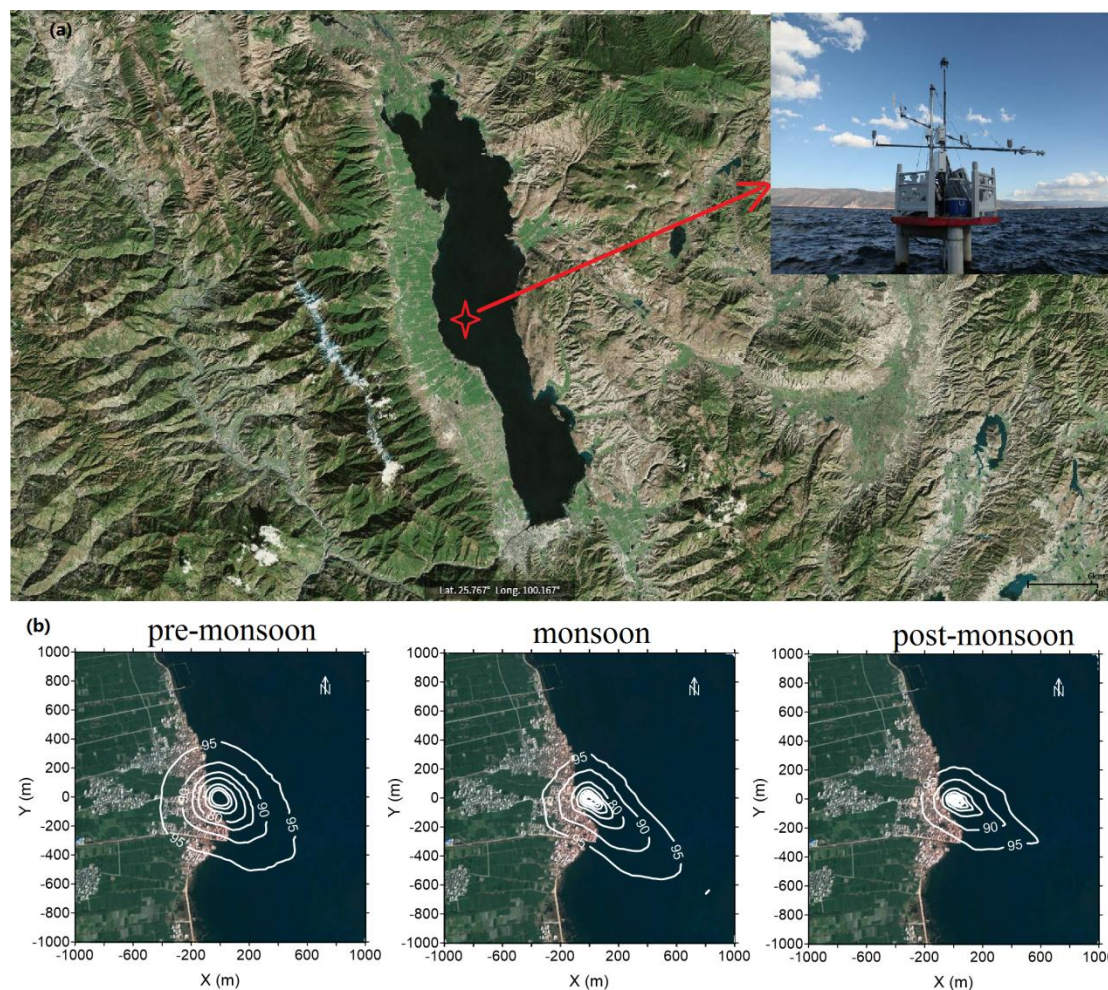


Figure 1. (a) The location of Lake Erhai (Google) and the eddy covariance measurement system (the red star denotes the flux tower); (b) Average footprint source over Lake Erhai flux tower during three different monsoon periods (pre-monsoon period, monsoon period and post-monsoon period) from 2012 to 2015. The maximum radius length of contour line shows the source area contributing to 95% of flux.

5

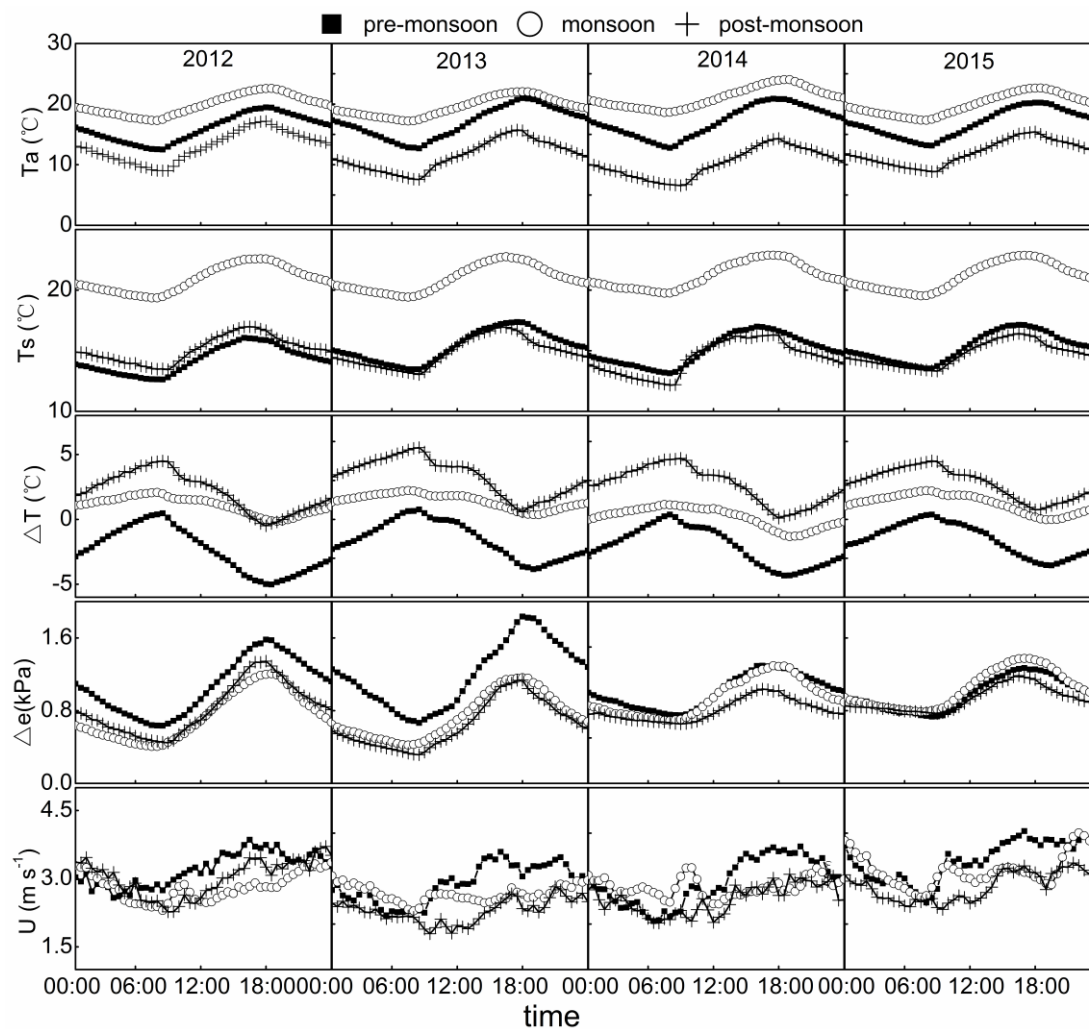


Figure 2. The average diurnal pattern of air temperature (T_a), water surface temperature (T_s), difference between water surface temperature and air temperature (ΔT), water-air vapor pressure deficit (Δe), and wind speed (U), during pre-monsoon, monsoon and post-monsoon periods from 2012 to 2015

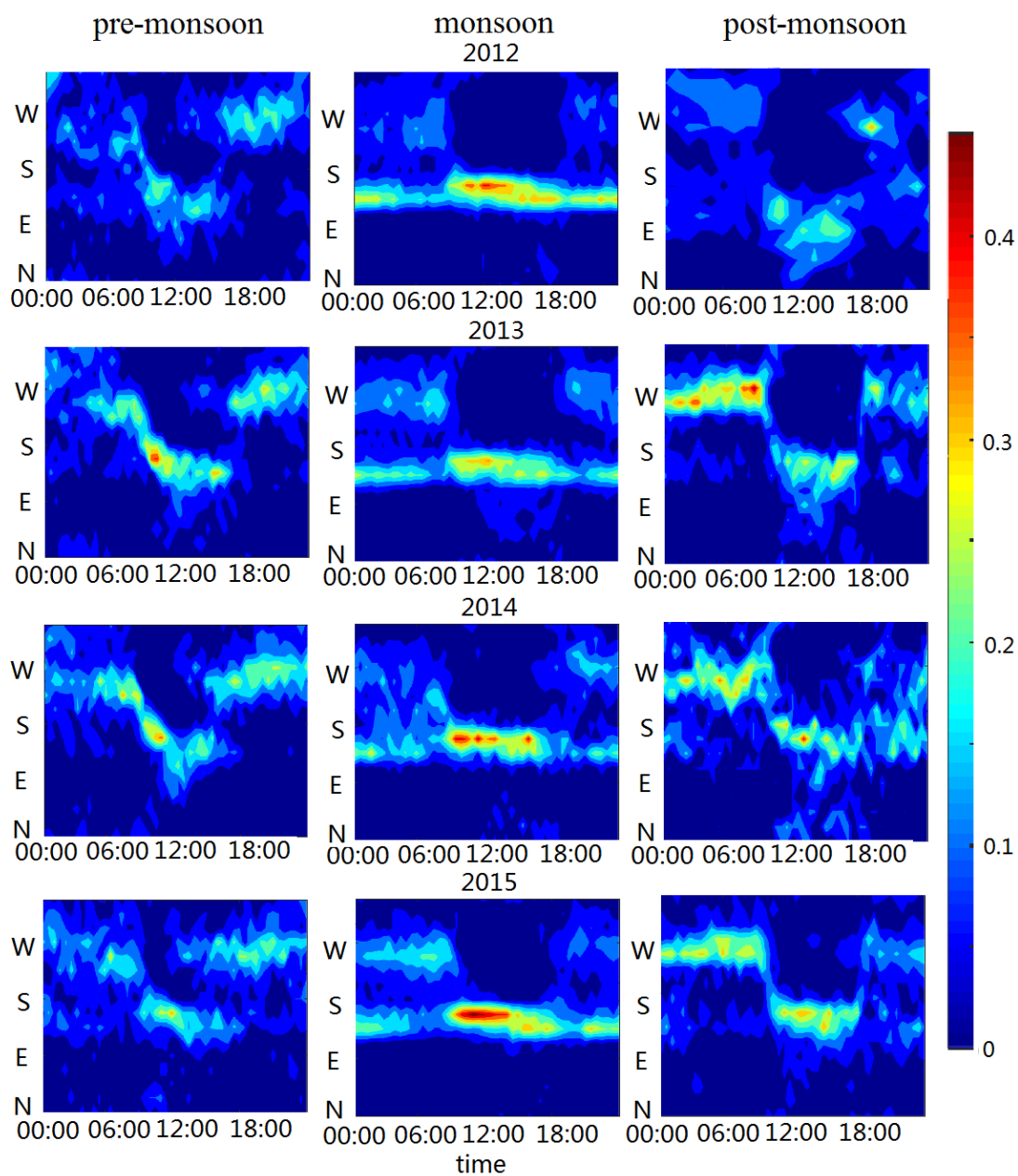


Figure 3. The average diurnal pattern of frequency distribution of wind direction during pre-monsoon, monsoon and post-monsoon periods from 2012 to 2015

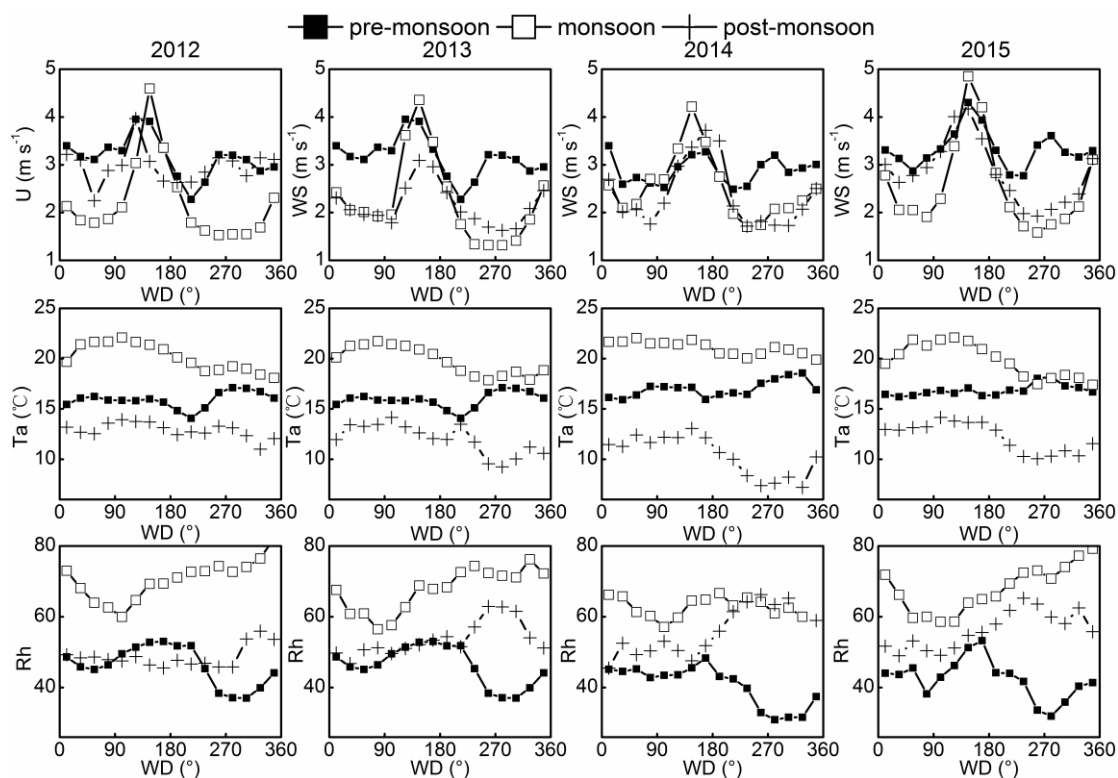


Figure 4. The bin-averaged wind speed (U), air temperature (T_a) and relative humidity (R_h) along with wind direction (WD) during pre-monsoon, monsoon and post-monsoon periods from 2012 to 2015. Every 22.5° was bin averaged.

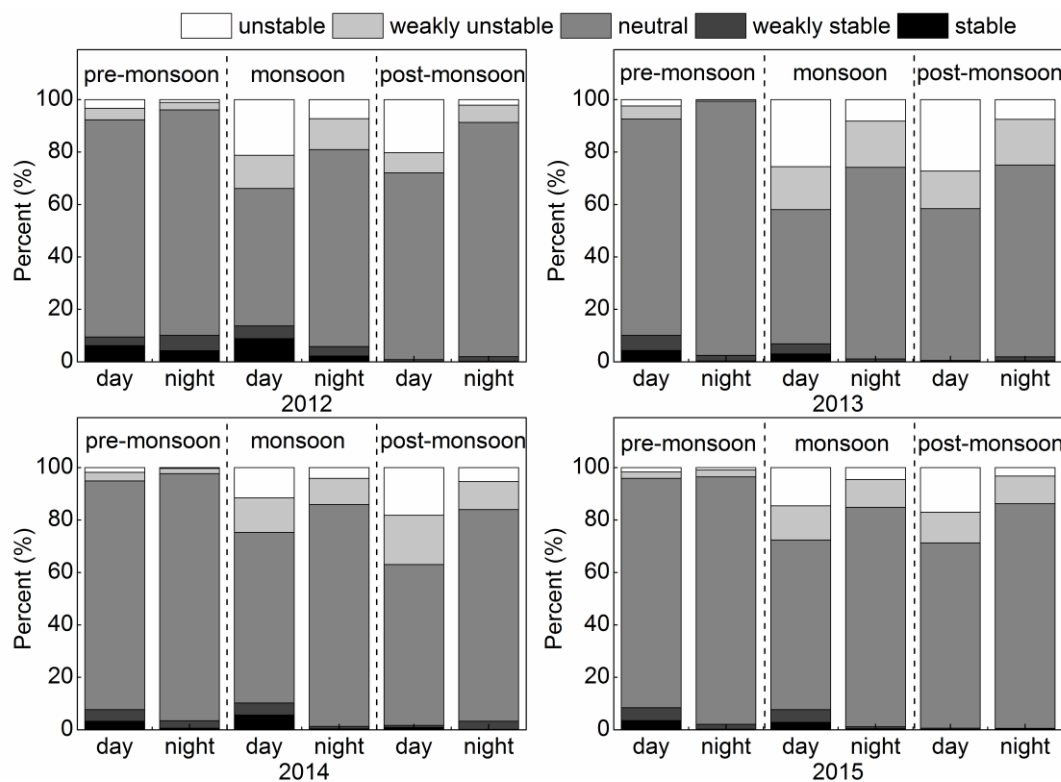


Figure 5. Frequency percent of stability classes in day (when the shortwave radiation $> 20 \text{ W m}^{-2}$) and night (when the shortwave radiation $\leq 20 \text{ W m}^{-2}$) during pre-monsoon, monsoon and post-monsoon periods from 2012 to 2015. The stable classes are defined as atmosphere stability ($\zeta = z/L$, where z is the measurement height, L is the Monin-Obukhov length): stable ($\zeta > 0.1$), weakly stable ($0.05 < \zeta < 0.1$), near neutral ($-0.05 < \zeta < 0.05$), weakly unstable ($-0.1 < \zeta < -0.05$) and unstable ($\zeta < -0.1$).

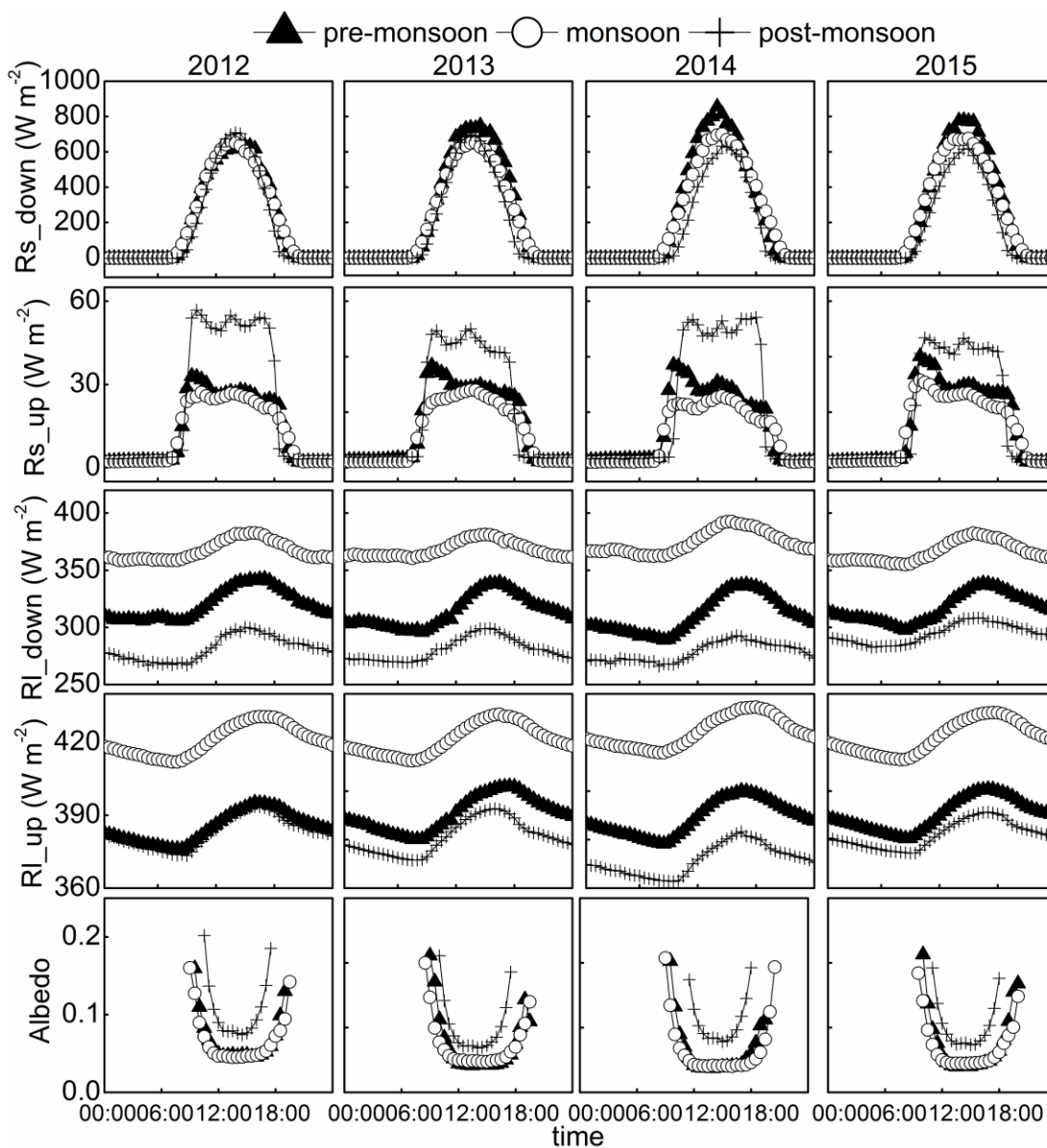


Figure 6. The average diurnal pattern of radiation balance components during pre-monsoon, monsoon and post-monsoon periods from 2012 to 2015. Rs and RI represents the shortwave and longwave radiation, down and up represents the downward and upward radiation respectively.

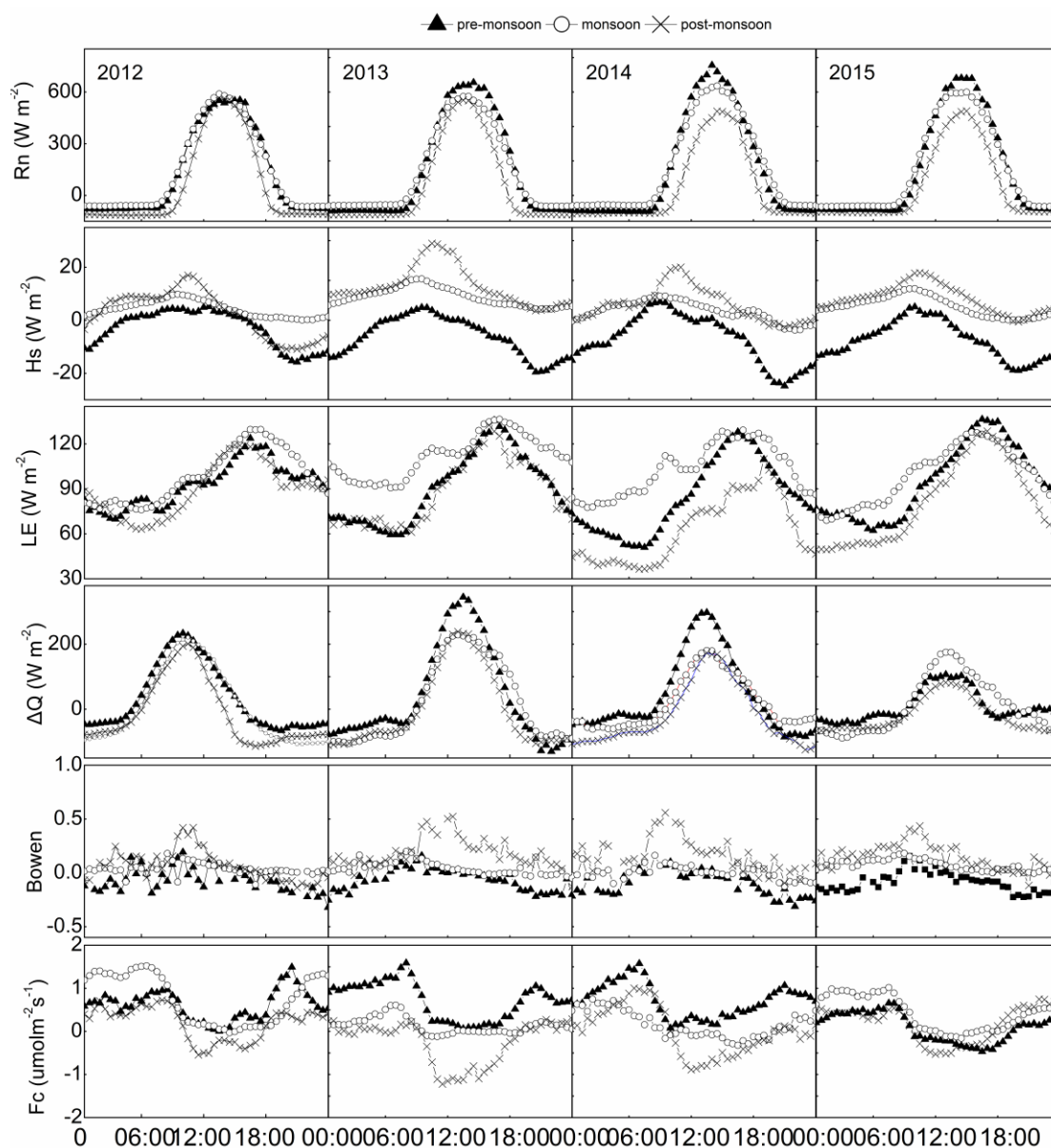


Figure 7. The average diurnal patterns of energy balance components (the net radiation flux, R_n ; the sensible heat flux, H_s ; the latent heat flux, LE ; and the storage heat flux in the lake, ΔQ), Bowen ratio (Bowen) and CO_2 flux (F_c) during pre-monsoon, monsoon and post-monsoon periods from 2012 to 2015.

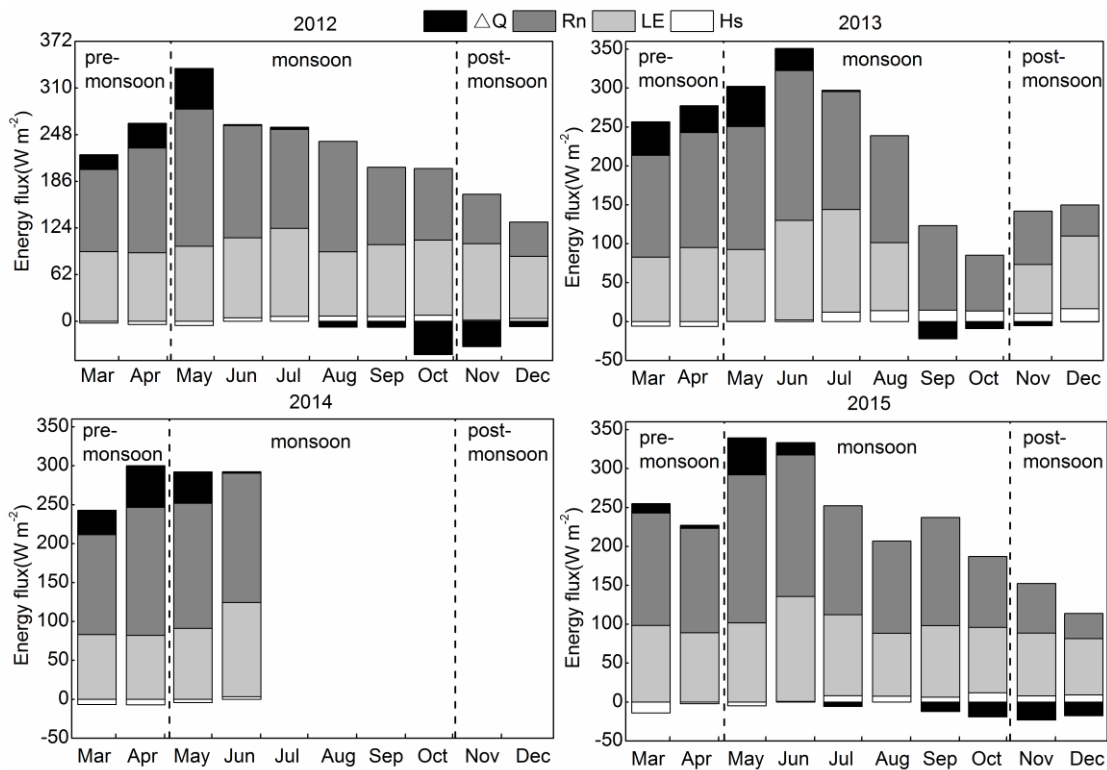


Figure 8. The monthly average energy fluxes (the storage heat flux in the lake, ΔQ ; the net radiation flux, Rn; the latent heat flux, LE; and the sensible heat flux, Hs) during pre-monsoon, monsoon and post-monsoon periods from 2012 to 2015.

5