

Dear Editor,

Many Thanks for two nonymous reviewer's valuable comments and suggestions, which help a lot to improve our manuscript. All the revisions have been marked with red color in the manuscript. The responses point by point are as following:

5 **Anonymous Referee #1**

The study presents several years of energy and carbon dioxide fluxes measured at Lake Erhai. The focus is to investigate the different dynamics of fluxes and their drivers in three sub-periods, e.g. pre-monsoon, monsoon and post-monsoon. The dataset is interesting, the framework analysis and results/discussion comprehensive and well written. I can recommend the final publication in ACP after the following comments are properly addressed:

10 1) I suggest to re-structured the Results chapter. In my opinion subchapters 3.1, 3.2 and 3.3 could be merged and shortened in one sub-chapter related to environmental/atmospheric conditions. So many details on diurnal and
15 seasonal variation of each radiation components is not so interesting and they could also be omitted. Instead, the focus could be more on net radiation, heat storage and turbulent fluxes (H and LE).

Answer: We agree with your point. Details about diurnal patters of meteorological variables are too many to be interesting for readers. Subchapter 3.3 about the diurnal variation of radiation components
20 has been removed. The results about the atmospheric conditions have been shortened.

2) The CO₂ (and LE) flux data are measured with an open-path (OP) sensor. Generally, I think the use of OP should be avoid over ecosystem where fluxes are expected to be quite small. The authors should add some discussion on this
25 point, and also try to acknowledge the uncertainty due to WPL correction and the potential sign change in CO₂ fluxes.

Answer: In the open-path analyzers, temperature and pressure vary with ambient conditions, so the Webb-Pearman-Leuning (WPL) density corrections (Webb et al. 1980) is necessary to correct for the fluctuations. However, through the standard data processing and quality control, the data measured by
30 open and closed path systems are in quite good agreement. So the open path system is widely used to study the turbulent exchange process between the lake surface and the atmosphere, e.g., an open-path EC system containing LI-7500A was installed to measure LE, Hs, and CO₂ flux in Western Lake Erie (Shao et al., 2015), the turbulent exchange process is studied over a small lake in the Nam Co basin on the Tibetan Plateau based on the measurement with an open-path infrared gas analyzer (LI 7550,

LI-COR,Inc.) (Wang et al., 2017), Goldbach and Kuttler (2015) also measured the turbulent fluxes over a suburban reservoir in Germany with an infrared open-path analyzer (LI-7500, LI-COR,Inc.).

The WPL correction has a large effect on CO₂ fluxes because it could cause sign change in CO₂ fluxes. We evaluate the uncertainty of WPL correction on CO₂ flux based on the raw data from October of 2015. The daily average CO₂ flux with and without WPL correction is $0.91 \pm 1.95 \text{ g C m}^{-2} \text{ d}^{-1}$ and $-0.25 \pm 2.69 \text{ g C m}^{-2} \text{ d}^{-1}$, respectively. This information has been supplemented in the manuscript.

References:

Goldbach, A., and Kuttler, W.: Turbulent Heat Fluxes above a Suburban Reservoir: A Case Study from Germany, *J. Hydrometeorol.*, 16, 244-260, doi: 10.1175/JHM-D-13-0159.1, 2015.

Shao, C., Chen, J., Stepien, C. A., Chu, H., Ouyang, Z., Bridgeman, T. B., Czajkowski, K. P., Becker, R. H., and John, R.: Diurnal to annual changes in latent, sensible heat, and CO₂ fluxes over a Laurentian Great Lake: A case study in Western Lake Erie, *J. Geophys. Res-Bioge.*, 120, 1587-1604, doi: 10.1002/2015JG003025, 2015.

Wang, B., Ma, Y., Ma, W., and Su, Z., Physical controls on half-hourly, daily, and monthly turbulent flux and energy budget over a high-altitude small lake on the Tibetan Plateau, *J. Geophys. Res. Atmos.*, 122, 2289–2303, doi:10.1002/2016JD026109, 2017.

3) Related to the previous point, Have the authors made some independent measurements supporting the net uptake of CO₂ for certain periods. Did the authors measure, for example, pCO₂ in the water?

Answer: Sorry, the measurements on pCO₂ are still absent now. However, some researchers have conducted biochemical measurements in Lake Erhai, and the seasonal variation of of Chl a and phytoplankton concentration has been reported (Yu et al., 2014). This could be seen as a support for the CO₂ uptake at some periods. This information has been added in the manuscript. In future, measurements of CO₂ partial pressure will be supplemented to improve understanding on CO₂ exchange rate over Lake Erhai.

Yu, G., Jiang, Y., Song, G., Tan, W., Zhu, M., and Li, R.: Variation of Microcystis and microcystins coupling nitrogen and phosphorus nutrients in Lake Erhai, a drinking-water source in Southwest Plateau, China, *Environ. Sci & Poll. R. Int.*, 21, 9887-9898, 2014.

Minor comments:

- P1L24. "...is the main driver for Hs..." and not "drivers".

Answer: It has been corrected.

- P2L20. Replace "influence" with "affects".

Answer: It has been replaced.

- P5L10. “Webb-Pearman-Leuning”.

Answer: The “webb” has been capitalized as “Webb”.

5 - P5L9. Please explain what is the circular correlation procedure” or give the reference.

Answer: The circular correlation procedure is one of the methods EddyPro provided to compensate the time lags between anemometric variables and gas analyzer measurements, which determines the time lag that maximizes the covariance of two variables, within a window of plausible time lags (Fan et al.,
10 1990). This has been supplemented in the manuscript.

- Eq. 1. Use Dt to indicate the time difference.

Answer: The equation has been corrected.

15 - P5.L26. I guess 600 meters and 400 meters.

Answer: Sorry for the missing of the units, which have been supplemented.

- P6L1. “...post-monsoon period...”

Answer: The “Period” has been revised as “period”.

20

- P6L2. I would rephrase as “...filtered based on the footprint analysis.”

Answer: Thanks, the sentence has been revised according to the suggestion.

- P6L14-15. The sentence “The diurnal.....period.” is not clear, please rephrase
25 it.

Answer: This sentence has been revised as “The diurnal mean Ta is the largest during monsoon period, second during pre-monsoon period and smallest during post-monsoon period”.

- P6L34. Monsoon is sometime written with capital letters and sometimes not.

30 Please write it consistently trough the text.

Answer: This word has been written uniformly as “monsoon” throughout the manuscript.

- P7L27). Ta was already defined above.

Answer: Thanks for your remind. The definition has been removed from here.

35

- P8L4-5. I would rephrase it as “The atmospheric surface layer is mainly near neutral stratified during the three study periods..”

Answer: Thanks for your suggestion. The sentence has been revised accordingly.

5 - Sect 3.3. My suggestion is to remove this section.

Answer: We accept this suggestion and remove section 3.3. We agree that the seasonal variation of radiation components is not so interesting as it’s mainly caused by solar elevation angle. Our study also shows slight difference between pre-monsoon period and post-monsoon period, so it’s not much meaningful.

10

- P10L15-20. Would the authors expect that there is no phytoplankton during the pre-monsoon period? What is the uncertainty associated with the CO₂ fluxes? Could the authors show the error bars or the confidence intervals in Figure 7? Are the around midday CO₂ fluxes significantly different than zero?

15

Answer: The seasonal fluctuation of phytoplankton in Lake Erhai has been reported by some researchers. Yu et al. (2014) observed that the concentration of Chl *a* and phytoplankton in Lake Erhai were higher in mid-summer and autumn and fell down from winter until April. This reference has been added in the manuscript.

20

The error bars have been added in Figure 7, which could show the uncertainty range for CO₂ fluxes. The significant carbon uptake could be observed at midday time, but the peak rate varied from year to year. The peak diurnal average CO₂ uptake ranged from $0.05 \pm 0.73 \mu\text{mol m}^{-2} \text{s}^{-1}$ to $0.53 \pm 1.66 \mu\text{mol m}^{-2} \text{s}^{-1}$ during monsoon period, and from $0.74 \pm 0.89 \mu\text{mol m}^{-2} \text{s}^{-1}$ to $1.62 \pm 1.52 \mu\text{mol m}^{-2} \text{s}^{-1}$ during post-monsoon period from 2012 to 2015. This has been added in the manuscript too.

25

- P11L5. Please correct “period”.

Answer: The mistake has been corrected.

- P11L30. The sentence is not clear. From where do the authors see a correlation between R_n and UDT?

30

Answer: Sorry. The “R_n” in the sentence should be “H_s”. It has been corrected in the manuscript.

- P12L29-34. The text in this paragraph is somehow a repetition of what has been said above. Please remove/merge the text.

Answer: The text has been merged into the last paragraph.

35

- P13L21-26. The rain is also enhancing the transport of carbon from land/catchment areas to the water system (lateral fluxes) enhancing DOC in the water (see for example Pumpanen et al., 2014) and potentially the pCO₂.

References:

- 5 Pumpanen, J., Linden, A., Miettinen, H., Kolari, P., Ilvesniemi, H., Mammarella, I., Hari, P., Nikinmaa, E., Heinonsalo, J., Back, J., Ojala, A., Berninger, F., and Vesala, T., 2014. Precipitation and net ecosystem exchange are the most important drivers of DOC flux in upland boreal catchments, *J. Geophys. Res. Biogeosci.*, 119, 1861–1878, doi:10.1002/2014JG002705

- 10 **Answer:** Thanks for sharing the opinion with us. The rain not only could promote CO₂ uptake by enhancing the nutrients but also promote CO₂ emission by enhancing pCO₂ in the water, which could explain both the negative and positive correlation coefficients between rain and CO₂ flux during different periods in our study. This has been added in our manuscript.

15 **Anonymous Referee #2**

General comments

The paper presents interesting measurements of lake energy and CO₂ fluxes from a high altitude monsoon site. The site location adds novelty to the study and further advances our understanding of regional differences and similarities in terms of lake-air interaction.

- 20 The comparison of temporal patterns during, after and before monsoon is novel and interesting to see. The reasoning and explanation of the behavior is physically sound. However, my main concerns is the analysis regarding the fluxes. In my opinion the correlation analysis does not add anything to our physical understanding of the forcing mechanisms for the energy and CO₂ fluxes. It is for instance well established that both U and the gradient controls H and E. This does not need further investigation. For
- 25 CO₂ the situation is slightly more complicated, but to say anything meaningful about the flux variation the CO₂ concentration of the water would have to be measured. The gradient is thermodynamic forcing and the efficiency of the exchange is determined by the transfer velocity.

- In term of H, the variation in U is very small so there is no surprise that the variation in sensible heat flux is due to variations in the temperature gradient. E is determined by both dq and U, here dq and U
- 30 seem to be well correlated (you can calculate the correlation coefficient) which then explains your results.

- My suggestion is, instead of the correlation analysis, compute the Stanton and Dalton numbers for the different cases, and analyze these results. You also need to add more references on the CO₂ lake fluxes in the introduction/background and discuss your results in terms of these previous findings. Also, add
- 35 background on e.g. transfer velocity, surface renewal etc. to at least conceptually put your results in this

context.

In general, I also think that the figures showing results for all years should be combined into one single plot as they mostly are very similar. Are there any statistical significant difference between the years? Some measure of variation would also be interesting to include.

5

Answer: Thanks for your valuable comments and suggestions. Although it is well understood that latent heat fluxes and sensible heat fluxes are primarily controlled by wind speed and water vapor or temperature gradients, the factors controlling turbulent fluxes vary among lakes and lake-air interaction could be affected by the lake characteristics, including lake sizes, lake depths, lake dimensions, as well as geographic location (Liu et al., 2009). A weak correlation between U and latent heat flux was found over Ross Barnett Reservoir (Liu et al., 2012) and a small lake in Finland (Nordbo et al., 2011) but a positive correlation was observed for the Great Slave Lake for wind speeds larger than a particular threshold value (Blanken et al., 2003). Water vapor gradient was found to play a dominant role in determining energy fluxes under conditions involving large water vapor gradients, while atmospheric stability becomes significant under small water vapor gradients (Zhang and Liu, 2014). A close correlation was found between net radiation and evaporation (Yao, 2009) but a weak correlation was also found in some lakes (Liu et al., 2012). Lakes with different characteristics may respond differently to various physical forcing. Therefore, more deep study is needed to improve understanding of process controlling lake-air turbulent fluxes. For CO₂ fluxes, EC technique could provide long-term continuous measurement compared to traditional methods, e.g., floating chamber and boundary layer techniques. EC measurements have been used also to develop new empirical models of gas transfer velocity k using simultaneous measurements of CO₂ partial pressure at the water surface (Mammarella et al., 2014). However, due to the lack of measurements of CO₂ partial pressure in our present observation, we didn't study the gas exchange rate. In future, measurements of CO₂ partial pressure will be supplemented to develop further study on the variation of gas exchange rate and its controlling meteorological variables.

We don't think the poor correlation between U and Hs is attributed to the variation of U is small. Although U is found to have a weak effect on Hs, a strong effect of U on LE is observed. We have calculated the correlation coefficient between U and Deltae and the results show large variation, which is not in agreement with the correlation coefficient between U and LE (Table). Therefore, so we don't think the close correlation between U and LE could be explained by the correlation between U and Deltae. Some studies have reported the large effect of U on LE especially in some small lakes (Assouline et al., 2008; Wang et al., 2017). This has been added in the manuscript.

Table The correlation between U and Δe , and LE are listed as following:

| Correlation coefficients | 30Min | | | Daily | | | Monthly | | |
|--------------------------|-------|---------|-------|-------|---------|-------|---------|---------|-------|
| | pre- | monsoon | post- | pre- | monsoon | post- | pre- | monsoon | post- |

| | monsoon | | monsoon | monsoon | monsoon | monsoon | monsoon | monsoon | |
|------------------|---------|---------|---------|---------|---------|---------|---------|---------|-------|
| U and Δe | 0.149** | 0.090** | 0.244** | 0.006 | 0.442** | 0.390** | -0.482 | 0.505* | 0.183 |
| U and LE | 0.502** | 0.741** | 0.723** | 0.634** | 0.798** | 0.687** | 0.791* | 0.765** | 0.568 |

Correlation analysis is a widely used statistical method. Plenty of scientists have applied this method to investigate the relationship between lake-atmosphere turbulent fluxes and meteorological variables (Nordbo et al., 2011; Liu et al., 2012; Zhang and Liu, 2014; Goldbach and Kuttler, 2015). In order to compare with other studies on lake and atmosphere interaction, we retain the results analysis with the use of this method. Besides, the Stanton and Dalton numbers have been estimated and the analyzed in the manuscript (Figure 8). More references on lake CO₂ fluxes have been added in the introduction and compared with our results in discussion. Meantime, the introduction on transfer velocity has been added in background too.

All figures have been changed by combining four years into a single plot. The average and the standard error of meteorological variables and fluxes for four years period have been calculated and shown in individual figures. A boxplot is also added to show the variation of turbulent fluxes in different years (Figure 9), and the results have been analyzed in the manuscript.

References:

Assouline, S., S. W. Tyler, J. Tanny, S. Cohen, E. Bou-Zeid, M. B. Parlange, and G. G. Katul (2008), Evaporation from three water bodies of different sizes and climates: Measurements and scaling analysis, *Adv. Water Resour.*, 31(1), 160–172, doi:10.1016/j.advwatres.2007.07.003.

Blanken, P. D., W. R. Rouse, and W. M. Schertzer (2003), Enhancement of evaporation from a large northern lake by the entrainment of warm, dry air, *J. Hydrometeorol.*, 4(4), 680–693, doi:10.1175/1525-7541(2003)004<0680:eoefal>2.0.co;2.

Goldbach, A., and Kuttler, W.: Turbulent Heat Fluxes above a Suburban Reservoir: A Case Study from Germany, *J. Hydrometeorol.*, 16, 244-260, doi: 10.1175/JHM-D-13-0159.1, 2015.

Liu, H., Y. Zhang, S. Liu, H. Jiang, L. Sheng, and Q. L. Williams (2009), Eddy covariance measurements of surface energy budget and evaporation in a cool season over southern open water in Mississippi, *J. Geophys. Res.*, 114, D04110, doi:10.1029/2008JD010891.

Liu, H., Q. Zhang, and G. Dowler (2012), Environmental controls on the surface energy budget over a large southern inland water in the United States: An analysis of one-year eddy covariance flux data, *J. Hydrometeorol.*, 13(6),

1893–1910, doi:10.1175/JHM-D-12-020.1.

Mammarella, I., et al. (2015), Carbon dioxide and energy fluxes over a small boreal lake in Southern Finland, *J. Geophys. Res. Biogeosci.*, 120, 1296–1314, doi:10.1002/2014JG002873.

5

Nordbo, A., S. Launiainen, I. Mammarella, M. Leppäranta, J. Huotari, A. Ojala, and T. Vesala (2011), Long-term energy flux measurements and energy balance over a small boreal lake using eddy covariance technique, *J. Geophys. Res.*, 116, D02119, doi:10.1029/2010JD014542.

10 Wang, B., Y. Ma, W. Ma, and Z. Su (2017), Physical controls on half-hourly, daily, and monthly turbulent flux and energy budget over a high-altitude small lake on the Tibetan Plateau, *J. Geophys. Res. Atmos.*, 122, 2289–2303, doi:10.1002/2016JD026109.

15 Yao, H. X. (2009), Long-term study of lake evaporation and evaluation of seven estimation methods: Results from Dickie Lake, South-Central Ontario, Canada, *J. Water Resour. Prot.*, 1(2), 59–77.

Zhang, Q., and H. Liu (2014), Seasonal changes in physical processes controlling evaporation over inland water, *J. Geophys. Res. Atmos.*, 119, 9779–9792, doi:10.1002/2014JD021797.

20 Specific comments

Page 4, Line 4: water level should be stated as water depth, not height above sea level as is stated now (?)

25 **Answer:** The water depth of Lake Erhai has been introduced in the last paragraph “The water depth of the lake varies from 10 and 20.7 m”. “Water level” here indeed means the height above sea level.

P4, L 10, how large is the annual precipitation, and in average how much during the different periods (pre, during, after monsoon)?

30 **Answer:** The average precipitation of the whole year and three different periods has been added in the manuscript.

P4 L15: How are the booms oriented on which you placed the eddy covariance sensors? Did you consider any flow distortion effects from the platform (it is a quite solid construction)?

35

Answer: The EC sensors are mounted on a pipe orienting to the prevailing wind direction (southeast) at the height of 2 m above the platform. This has been added in the manuscript. The platform is about 1 m above the water surface with a radius of 1 m. The platform is supported by three piers distributing in triangle shape in order to make the air flow pass conveniently (Figure 1). As the air flow could pass the platform easily due to the structure of the platform, the effect of flow distortion is minor and could be neglected. These measurement details could also be referred to our previous studies (Liu et al., 2015).

P4, L 22: CS616 cannot be correct, this is a water content reflectometer

Answer: The temperature probes should be “model 109-L (Campbell Scientific, Inc)”. The mistake has been corrected.

P4 L24 : Ts seem to be defines as skin temperature. How does this compare with the standard bulk water temperature at 0.5 m depth?

15

Answer: We compared Ts and the water temperature at 0.5 m ($T_{0.5}$) depth for the year of 2012. The result shows Ts and $T_{0.5}$ have similar temporal variation and $T_{0.5}$ is slightly higher than Ts. the average of 30-min Ts and $T_{0.5}$ in 2012 are $17.2 \pm 4.5^\circ\text{C}$ and $17.6 \pm 4.6^\circ\text{C}$ respectively.

P 4, L26: Was the entire field of view located over water for the net radiation sensor?

You can estimate this with the measurement height and the length of the boom. It appears from the photo in Fig 1 that the sensor might include also some parts of the platform which would affect your Ts values.

Answer: A figure is uploaded in the attachment which could show the position of the radiation sensors more clearly. The sensors are marked with red circle in the figure. The radiation sensors are entirely over the water surface.

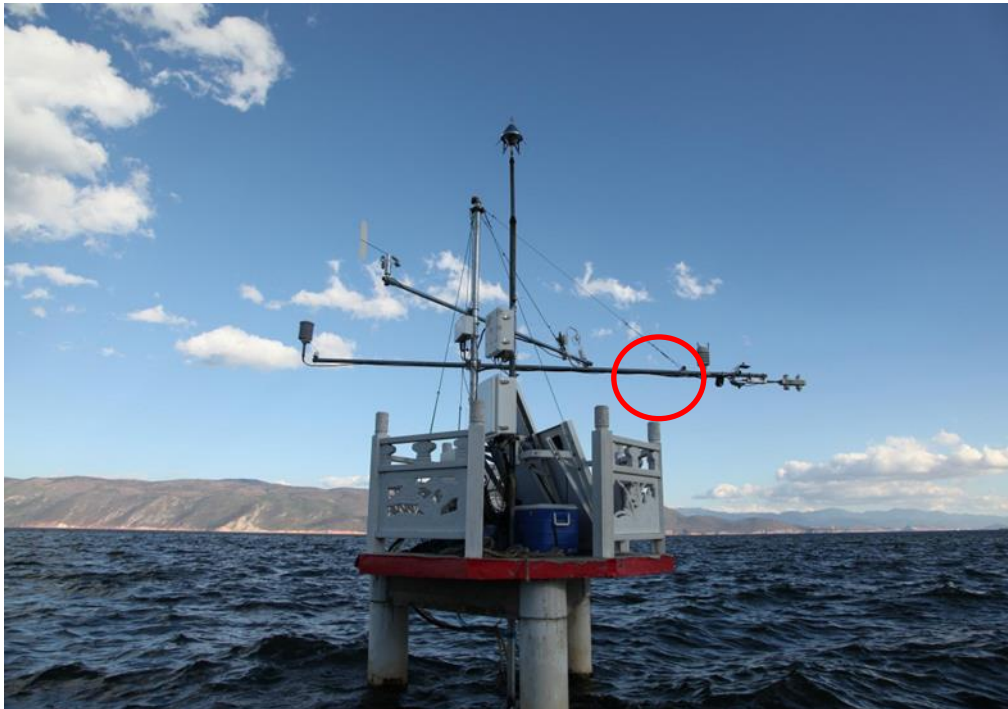


Figure The observation system over Erhai Lake

P4 L31, specify that it is cup anemometer.

5

Answer: Thanks for your suggestion. This information has been supplemented.

P5 L 4: what do you mean by “also filtered”? AGC 40 is quite low limit, why not set a higher limit?

10 **Answer:** It means not only the data points outside the normal range but also those flagged with AGC larger than 40 are filtered. The threshold of AGC is determined by analyzing the relationship between AGC and precipitation. The results show the AGC is usually more than 40 when there is precipitation, indicating the lower data quality in this case.

15 P5, L6, what is the averaging time?

Answer: The averaging time is 30 minutes, which has been added in the manuscript.

P5, L8: if you are using block average you are not detrending. What do you mean by “circular correlation procedure”?

5 **Answer:** Sorry for the mistake about detrending, it has been corrected . The circular correlation procedure is selected to compensate time lags between anemometric variables and gas analyzer measurements. This method determines the time lag that maximizes the covariance of two variables, within a window of plausible time lags (Fan et al., 1990). This has been added in the manuscript.

10 P5 L11: Add reference for the high frequency correction method. Was this a severe problem?

15 **Answer:** The high frequency correction method is referred from Moncrieff et al. (2004), which has been added. The cospectrum analysis shows a rapid decline for the turbulent fluxes at high frequency, indicating the minor effect of small eddy vortex.

P5 L24: It would be useful with a wind rose to illustrate the prevailing wind direction.

20 **Answer:** Thanks for your suggestion. The wind rose during daytime and nighttime has been added (Figure 2).

P6 L4: how many data is included in the final data set? How are the data distributed over the different years? Is there any season that has significantly less data than the others?

25 **Answer:** After the data quality control, about 66%, 54% and 55% of the Hs, LE and CO₂ fluxes are remained. There is a 3 months data gap (from September to November) in 2014, which is caused by the instrument failure. This information has been added in the manuscript.

P6 Section 3: This text is very compact, please separate into paragraphs.

30 **Answer:** It has been separated into two paragraphs.

35 P7, L6: Do you have any more supporting evidence that it is a sea/land breeze circulation? Any land site in the vicinity? Is there any previous studies on this for this site? A single surface observation is in my opinion not enough to support this, it is indicative but not complete shown. As you state on line 11 that

strong synoptic (?) west wind during night, this might be explanation for the night wind direction and not land breeze.

5 **Answer:** Yes, there is a local meteorological observation site (Dali National Climatic Observatory) near the lake site, with a distance about 4 km between them. The local circulation over Lake Erhai has been analyzed by our another study, which mainly focused on the comparison of atmospheric boundary layer characteristics between pre-monsoon (30 March to 30 April, 2012) and monsoon period (30 June to 31 July, 2012) by conducting sensitivity experiments with the lake-atmosphere coupled model WRF v3.7.1 (Xu et al., 2018). The study has observed the lake breeze circulation during daytime and land breeze circulation during nighttime respectively by analyzing the spatial distribution of horizontal wind. This has been supplemented in the manuscript.

15 Xu, L., Liu, H., Du, Q., Wang, L., Yang, L., and Sun, J.: Differences of atmospheric boundary layer characteristics between pre-monsoon and monsoon period over the erhai lake. *Theor. Appl. Climatol.*, <https://doi.org/10.1007/s00704-018-2386-8>, 2018.

P9 L1, “resulted in a lower abledo” compared to what?

20 **Answer:** The albedo of Lake Erhai is lower compared to terrestrial land surfaces. This paragraph (the diurnal pattern of radiation components) has been deleted according to another reviewer’s opinion.

P9 L8 The Katsaros reference in the reference list is wrong, please use the correct one.

25 **Answer:** Sorry for the mistake. This paragraph has been deleted as it’s not so interesting to authors according to another reviewer’s opinion.

Sections 3.4 to 3.8 please see the general comments

30 **Answer:** Thanks for your valuable suggestion. The detailed replies see above.

Figure 8: No data for monsoon and post monsoon for 2014?

35 **Answer:** Yes, The instrument failure has resulted in a long data gap for 3 months in this year. This information has been added in the manuscript.

The monsoon effect on energy and carbon exchange processes over a highland lake in southwest of China

Qun Du¹, Huizhi Liu^{1,2}, Lujun Xu¹, Yang Liu^{1,2}, and Lei Wang¹

¹ State Key Laboratory of Atmospheric Boundary Layer Physics and Atmospheric Chemistry, Institute of Atmospheric Physics, Chinese Academy of Sciences, Beijing 100029, China

² University of Chinese Academy of Sciences, Beijing 100029, China.

Correspondence to: HuiZhi Liu (huizhil@mail.iap.ac.cn)

Abstract. Lake Erhai is a subtropical highland shallow lake on southeast margin of Tibetan Plateau, which is influenced by both South Asian and East Asian summer monsoon. Based on four years continuous eddy covariance (EC) data over Lake Erhai, the monsoon effect on water-atmosphere exchange process is investigated by comparing the energy and CO₂ fluxes patterns and their main drivers during pre-monsoon (March-April), monsoon (May-October) and post-monsoon (November-December) periods. The results show the atmospheric properties display a large difference for during three different periods. There is a negative difference between water surface and air temperature (ΔT) during pre-monsoon period, while a positive ΔT during post-monsoon period. The diurnal sensible heat flux (Hs) is larger during post-monsoon period, while the latent heat flux (LE) is larger during monsoon period. The monthly average Hs and heat storage (ΔQ) in the lake remain negative during pre-monsoon period and the early monsoon period, and they become positive in the middle monsoon period, which indicates that the lake absorbs heat at first and releases it subsequently. LE plays a dominating role in the energy partitioning of the lake. The Bowen ratio is higher during post-monsoon period. An uptake of CO₂ flux is observed in middle of a day during monsoon and post-monsoon period. The ΔT is the main **driver** for Hs and the effect of ΔT is increased as time scales are extended from half-hourly to monthly. The wind speed has a weak effect on Hs but a strong effect on LE and CO₂ fluxes. Similar main drivers for Hs are found during pre-monsoon period and post-monsoon period, which is also found for CO₂ flux, indicating a large impact of monsoon on the heat and carbon exchange process over Lake Erhai.

30

1 Introduction

There are 304 million lakes globally and they are of significant importance in determining local weather and climate through complex physical, biochemical and biological interactions (Cole et al., 2001; Downing et al., 2006; Shao et al., 2015). Because of the substantial differences in underlying surface characteristics between lake surface and its surrounding land surface (i.e., albedo, roughness, heat capacity) (O'Donnell et al., 2010), the carbon and energy exchange processes over lakes are expected to produce a different way in responding to climate change. Lakes react rapidly to a change in the atmospheric parameters and are able to modify the surrounding atmospheric circulation (Marie-Noëlle et al., 2012). Plenty of studies on water-atmosphere carbon and energy exchange process have been reported over high-latitude water bodies (Nordbo et al., 2010; Huotari et al., 2011; Mammarella et al., 2015). However, the characteristics of water-atmosphere exchange process differ in lake size, water depth, regional climate and geographical location (Liu et al., 2009). The high-altitude lakes are exposed to more extreme meteorological conditions and more sensitive to variations in meteorological forcing (Rueda et al., 2007). The shallow lakes respond more quickly to changes in the atmospheric forcing due to smaller heat capacity (Liu et al., 2012; Zhang and Liu, 2013). Understanding the turbulent exchange process between the lake surface and atmosphere and its response to atmospheric properties is essential for improving numerical weather prediction and climate models (Dutra et al., 2010; Nordbo et al., 2010).

The change of atmospheric properties over water surface can cause large fluctuations in atmospheric forcing for lake-atmosphere interactions, and subsequently **affects** the turbulent exchange process (Lenters et al., 2005; Liu et al., 2011; Huotari et al., 2011; Li et al., 2015). The southeasterly wind with warm moist air masses reduced and inverted the vertical temperature difference between water surface and atmosphere to be negative over a large high-latitude saline lake (Qinghai Lake) on the northeastern Qinghai-Tibetan Plateau (QTP) in China (Li et al., 2016). The cold fronts and the meteorological properties of the air masses behind cold fronts (e.g., windy, cold and dry) significantly promoted turbulent exchange of sensible heat (Hs) and latent heat (LE) through enhanced turbulent mixing thermally and mechanically, whereas southerly winds with warm and humid air masses generally suppressed turbulent exchanges of Hs and LE over a mid-latitude large reservoir in Mississippi (Liu et al., 2009; Liu et al., 2012). In response to the changes in the weather conditions, the heat balance over a large tropical reservoir in Brazil is substantially altered, and the heat loss can be twice or threefold greater during cold front days than that during the non-cold-front days (Curtarelli et al., 2014). Consistent diurnal peaks in latent heat flux during the afternoon were observed as a result of strong dry winds coinciding with peak water surface temperatures over a small subtropical reservoir in Australia (McGloin et al., 2015). An increasing sensible heat flux over the lake retarded the cooling of lower atmosphere (below 500 m) and weaken the vertical potential temperature gradient over the lake,

while increasing wind speed and vertical wind shear further facilitated the buoyancy flux to exert higher heat convection efficiency when cold air arrived over Ngoring Lake in the Tibetan Plateau (TP) (Li et al., 2017).

The CO₂ emissions from lakes are traditionally measured by non-continuous or indirect methods, e.g., floating chamber (Riera et al., 1999) and boundary layer transfer techniques (Cole and Caraco, 1998). The uncertainty of floating chamber method is that the flux it measures only represents a very small area and it produces biases because the disturbances in the water-air surface (Vachon et al., 2010). The boundary layer method estimates CO₂ flux by the difference of CO₂ concentration between the water and atmosphere and the gas transfer velocity, which is traditionally parameterized only by wind speed (Cole and Caraco, 1998). However, it has been reported that different processes including convection, microwave breaking and stratification could influence the gas transfer velocity (Zappa et al., 2001; Eugster et al., 2003; Podgrajsek et al., 2014). The eddy covariance technique (EC) could provide long-term continuous measurements and the high resolution data allows examining the relation between gas exchange velocity and other meteorological variables besides wind speed (Mammarella et al., 2015). The changes in atmospheric properties could affect lake-air CO₂ flux. Huotari et al. (2011) reported that the CO₂ efflux was enhanced under persistent extra-tropical cyclone activities over high-latitude water bodies. The synoptic weather events associating with extra-tropical cyclones produced larger CO₂ effluxes by bringing the bottom rich CO₂ water to the surface through upwelling, internal wave induced mixing, and mixing by convection (Liu et al., 2016). The windy and stormy days increased 16% of the annual CO₂ effluxes over Ross Barnett reservoir in central Mississippi, USA (Liu et al., 2016). A 15 year long time period study found that the amount of precipitation had a large effect on dissolved organic carbon (DOC) concentrations in rivers (Pumpanen et al., 2014). The waterside convection was believed to cause the higher CO₂ fluxes during night compared to day (Podgrajsek et al., 2014).

Lake Erhai is a subtropical highland shallow lake on the southeast margin of Tibetan Plateau, which is influenced by both South Asian and East Asian summer monsoon. The summer monsoon induces an abrupt change in large-scale atmospheric circulation and convective activity over Asia, and carries in air mass with distinct atmospheric properties (i.e., air temperature, wind direction, relative humidity) (Li and Yanai, 1996; Lau and Yang, 1997; Zhou et al., 2012). The seasonal reversals of atmospheric properties caused by summer monsoon circulation play an important role in regulating land-atmosphere heat and water exchange process (Flohn, 1957; Hsu et al., 1999). The land-atmosphere exchange process is found closely related to the onset and retreat of summer monsoon (Zhang et al., 2012). It's reported that most of available energy was transformed into Hs before the arrival of monsoonal winds, whereas LE increased and exceeded Hs after the onset of monsoonal wind (Xu et al., 2009; Mauder et al. 2006; Li et al., 2014). Considering the substantial difference in atmospheric properties during monsoon and non-monsoon periods, the water-atmosphere carbon and energy

exchange processes are expected to display large differences. However, few studies have reported the variation of heat and carbon fluxes over lakes during different monsoonal periods, and the effect of monsoon on water-atmosphere heat and carbon is not clear.

Four years continuous EC measurements with from 2012 to 2015 have been obtained over Lake Erhai. The summer monsoon generally bursts in May and retreats in October. According to the activity of summer monsoon, three monsoon periods are defined, including pre-monsoon (March-April), monsoon (May-October) and post-monsoon (November-December) period. We hypothesize that the contrasting atmospheric properties during three different monsoon periods play an important role in modulating the turbulent exchange process over Lake Erhai. The objectives of this study are to investigate the energy and CO₂ exchange processes and their response to changes in atmospheric properties during different monsoon periods.

2 Observation site and data process

2.1 Site description

The Lake Erhai (25° 46' N, 100° 10' E) is located on southeast margin of Tibetan Plateau, the southwest of China (Fig. 1). The altitude of the region is about 1972 m. The lake has a length of 42.6 km from south to north, and a width ranging from 3.1 to 8.8 km from east to west, with a total area of 256.5 km². The water depth of the lake varies from 10 and 20.7 m. The water depth around the tower is about 10 m. The land surface of its surrounding area mainly consists of cropland and town. Because of the subtropical climate, no ice period occurs throughout the whole year. More than 100 rivers and streams drain into the lake, with only one outlet in the southwest (Xier River). The water level is artificially regulated, ranging between 1971.1 and 1974.1 m. Due to the fully mixing of the water, only a short stratification period occurs in the middle time of the year (Feng et al., 2015).

Lake Erhai has a subtropical highland monsoon climate, characterized by a distinct wet and dry season. During monsoon period (May-October), the area is mainly controlled by both the southwest flow from tropical depression in the bay of Bengal and southeast flow from subtropical Pacific high. The moist marine air mass brings in abundant water vapor and intensive precipitation. During non-monsoon period (November-April), as a result of the southward movement of the westerlies, the area is dominated by continental air mass mainly from desert and arid area of Arab countries, and characterized by a warm and dry season. **The average annual precipitation from 1981 to 2010 is 1055 mm. Majority of the precipitation concentrates in monsoon period, with an average of 895 mm. The average precipitation is only 64 mm during pre-monsoon period, and 42 mm during post-monsoon period respectively.**

2.2 Observation

The eddy covariance instrument is mounted on a concrete platform at a height of 2.5 m (Fig. 1). The turbulent fluxes (Hs and LE) and CO₂ flux are simultaneously measured with an ultrasonic anemometer (CSAT3, Campbell Scientific, Logan, UT, USA) and an open-path infrared gas analyzer (LI-7500, Licor Inc., Lincoln, NE, USA). The three components of wind and virtual air temperature are measured with an ultrasonic anemometer. The H₂O and CO₂ concentrations are acquired by the infrared gas analyzer. **The EC sensors are mounted on a pipe orienting to the prevailing wind direction (southeast), which is shown in Fig. 2.** A CR500 data logger (CR500, Campbell Scientific) is applied to record the measurements with a 10 Hz sampling frequency. Water temperature at eight depths (0.05, 0.2, 0.5, 1, 2, 4, 6, and 8 m below water surface) are measured with temperature probes (**model 109-L**, Campbell Scientific, inc., United States) to obtain the water temperature profile, which are tied to a buoy and can change with the water level. The water surface temperature (Ts) is calculated from longwave radiation. Moreover, different micro-meteorological elements are also measured at a height of 1.5 m above the platform. Air temperature and relative humidity are also measured (HMP45C, Vaisala, Vantaa, Finland). The radiation balance components, including upward and downward shortwave radiation, as well as upward and downward longwave radiation, are respectively measured with CNR1 (CNR1, Kipp & Zonen B.V., Delft, The Netherlands). Meanwhile, the photosynthetic active radiation (PAR) is also measured with an LI-190SB quantum sensor (Campbell Scientific inc., United States). The wind speed and wind direction is measured with **a cup anemometer** (034B, Met One Instruments Inc., Grants Pass, OR, USA). The Dali National Climatic Observatory, with a distance of 15 km from the flux tower, has provided the data of precipitation.

2.3 Data process

The raw data is checked and spikes are discarded as a result of physical noise and instrument malfunction according to the procedures suggested by Vickers and Mahrt (1997). The data measured with the AGC (active gain control) value more than 40, which is recorded by LI-7500, is also filtered. The abnormal data points with a magnitude exceeding 3.5 times of average standard deviations are needed to remove. The collected raw 10 Hz data are processed with EddyPro software, version 4.2 (Licor Inc., 2013, United States). The double rotation method is applied to adjust the coordinate system and tilt the vertical wind speed to be zero (Kaimal and Finnigan, 1994). **The 30 minutes average turbulent fluxes are calculated with block average method. The time lags between anemometric variables and gas analyzer measurements are compensated by the circular correlation procedure, which determines the time lag that maximizes the covariance of two variables, within a window of plausible time lags (Fan et al., 1990).** Density corrections for LE and CO₂ flux are also applied with **Webb-Pearman-Leuning (WPL) correction procedure (Webb et al., 1980).** **We evaluate the uncertainty of WPL correction on CO₂ flux based on the raw data from October of 2015. The daily average CO₂**

flux with and without WPL correction is $0.91 \pm 1.95 \text{ g C m}^{-2} \text{ d}^{-1}$ and $-0.25 \pm 2.69 \text{ g C m}^{-2} \text{ d}^{-1}$, respectively, indicating the large effect of WPL correction. The high-pass filtering effect is also corrected to compensate the flux losses at a high frequency (Moncrieff et al., 2004). Quality checks for stability test and integral turbulent characteristic test are applied to remove the low quality fluxes (Foken et al., 2004). Data quality is marked following the schemes of Mauder and Foken (2004), and the high/moderate data are retained. After data quality control, the available data for LE, Hs and CO₂ flux account for 54% , 66% and 55%, respectively. A 3 months data gap from September to November occurs in 2014 due to the instrument failure. More detailed information about measurements and post-processing procedures could be found in our previous studies (Liu et al., 2015).

The sublayer Dalton numbers (Da) and Stanton numbers (St) are determined by a semi-empirical equation (Brutsaert, 1975):

$$Da^{-1} = 7.3R_0^{1/4} + S_c^{1/2} - 5 \quad (1)$$

$$St^{-1} = 7.3R_0^{1/4} + P_r^{1/2} - 5 \quad (2)$$

Where R_0 is the atmospheric roughness Reynolds number, S_c ($S_c=0.66$) is the molecular Schmidt number for water in air, P_r ($P_r=0.71$) is the molecular Prandtl number for air.

$$R_0 = \frac{z_{0m} u_*}{\nu} \quad (3)$$

Where z_{0m} is the momentum roughness length (m), u_* is the friction velocity in the atmospheric surface layer (m s^{-1}), ν is the kinematic viscosity of air ($\text{m}^2 \text{ s}^{-1}$).

$$\nu = \nu_0 \left(\frac{T_g}{T_0} \right)^{1.5} \frac{P_0}{P} \quad (4)$$

Where $\nu_0 = 1.51 \times 10^{-5} \text{ m}^2 \text{ s}^{-1}$, T_g is the water surface temperature, T_0 is the standard temperature (293.15 K), P_0 is the standard pressure ($1.013 \times 10^5 \text{ Pa}$), and P is the atmospheric pressure at the reference height.

The heat storage (ΔQ) in the lake is also calculated:

$$\Delta Q = \rho_w c_{pw} \frac{\overline{\Delta T_w}}{\Delta t} z \quad (5)$$

where T_w is water temperature ($^{\circ}\text{C}$), ρ_w is the density of water (kg m^{-3}), C_{pw} is the specific heat

of water at constant pressure ($4192 \text{ J kg}^{-1}\text{K}^{-1}$), $\frac{\overline{\Delta T_w}}{\Delta t}$ is the depth-weighted time derivative of the water column temperature (K s^{-1}), and z is maximum depth of measured water temperature profile (m). The ΔQ is defined as positive when it is absorbed by the lake surface (heat is stored by the lake).

5 Because the flux site is close to the west bank of the lake, a footprint model (Kormann and Meixner, 2001) is applied to analyse the distribution of source area contributing to the flux. The 95% of source area contributing to flux ranges from 600 m in southeast direction and 400 m in west direction during different periods (Fig. 1). Because the flux in the west direction mainly originates from the land surface, the flux in the wind direction (225° to 315°) is excluded. The flux during pre-monsoon period is more affected by land surface compared to the other two periods. Nearly 80% flux originates from the lake surface during monsoon and post-monsoon period. Approximately 22%, 15% and 8% of flux data is filtered based on the footprint analysis.

10 The data recorded during rainfall is also discarded. According to the quality control procedure presented above, around 34% of the Hs, 46% of LE and 45% of CO_2 fluxes are removed and the retained data are analyzed in our study. Although the gap ratio is large, it's similar to other studies over lakes (Nordbo et al., 2012; Goldbach and Kuttler, 2015; Shao et al., 2015). A long large gap between August and November of exists in 2014 due to malfunction. The time of the study is Beijing local Time (UTC+8).

20 3 Results and discussion

3.1 Atmospheric properties during different monsoon periods

The atmospheric properties show large differences during different monsoon periods (Fig. 3; Table 1). There is a similar diurnal course for air temperature (T_a) during different monsoon periods, but with a large difference for the magnitudes. The diurnal mean T_a is the largest during monsoon period, second during pre-monsoon period and smallest during post-monsoon period. The difference for diurnal mean T_a between monsoon period and pre-monsoon period is smaller (3.4°C) than that between monsoon period and post-monsoon period (8.1°C). There is large difference for diurnal mean water surface temperature (T_s) between monsoon period and the other two periods (around 6°C), but small difference between pre-monsoon and post-monsoon period (around 0.2°C). The difference between water surface and air temperature (ΔT) remains negative during most of pre-monsoon period but positive during post-monsoon period, with an average value of -1.94°C and 2.65°C , respectively. The ΔT has the maximum around 8:00 and minimum around 18:00, which is opposite with the diurnal pattern of T_a and T_s .

The water-air vapor pressure difference (Δe) has an opposite diurnal pattern with ΔT , which has the maximum around 18:00 and the minimum around 8:00. Overall, Δe is relatively high during pre-monsoon period and low during post-monsoon period, with an average value of 1.10 and 0.79 kPa, respectively. There is a larger difference for Δe between pre-monsoon period and monsoon period during 2012 and 2013, but a larger difference between post-monsoon period and monsoon period during 2014 and 2015, attributed to the annual variation of timing distribution of precipitation. The wind speed (U) has a larger difference in daytime than nighttime during different periods. The diurnal mean U is slightly higher during pre-monsoon period than the other two periods. In general, The pre-monsoon is characterized by a higher U and Δe , while the post-monsoon period is characterized by a lower U and T_a . The T_a and T_s is the highest during monsoon period. There is a large difference for average T_s (around 6°C) between monsoon period and the other two periods, but a slight difference between pre-monsoon and post-monsoon periods. The diurnal ΔT remains negative during pre-monsoon period but positive during post-monsoon period. A weak diurnal variation of ΔT is observed during monsoon period.

The wind direction over Lake Erhai displays a typical diurnal pattern during three study periods (Fig. 4). Overall, the southeast wind and west wind is dominant in daytime and nighttime, respectively, which represents as the lake breeze and land breeze. Generally, the wind direction shifts from west to southeast in the morning (around 9:00), indicating the onset of lake breeze. The lake breeze lasts until the afternoon. Then the wind direction shifts abruptly from southeast to west around 17:00, which indicates that the lake breeze transfers into land breeze. The numerical simulation of local circulation over Lake Erhai also proved the development of lake breeze circulation during daytime and land breeze circulation during nighttime (Xu et al., 2018). The wind direction switches at the time of ΔT reaching the maximum or minimum. The alternation between lake breeze and land breeze is more obvious during pre-monsoon and post-monsoon period, attributed to a larger thermal difference between land and lake surface, compared to monsoon period. Because the region is mainly dominated by westerly belt during non-monsoon season, a strong west wind is observed in nighttime during pre-monsoon and post-monsoon periods. During monsoon period, due to the northward motion of westerly belt, the west wind becomes weak in nighttime, while the southwest and southeast flow, respectively from tropical depression in the bay of Bengal and subtropical Pacific high, dominate the region of Dali area. However, the Mountain Cang, which is located close to the western side of Lake Erhai, has obstructed the passing of southwest wind and makes the southeast wind the prevailing wind over Lake Erhai during this period. Because of the continuous southeast wind in nighttime, a weak circulation of lake-land breeze occurs during monsoon period.

The characteristic of air mass from different wind directions is examined by the bin-averaged wind speed (U), air temperature and relative humidity against wind directions (Fig. 5). The U shows a large

variability against wind direction. The wind speed from southeast is the highest than that from other directions, which indicates that the lake breeze is stronger than land breeze. The southeast wind is stronger during monsoon period, whereas the land breeze, which is from the west direction, is stronger during pre-monsoon period.

5 As a result of the control of the maritime atmospheric mass, the air mass during monsoon period is the warmest and wettest, which has a higher T_a and relative humidity (Rh) than that during the other two periods. The characteristic of air mass also shows variability in different wind directions. The air mass from the southeast direction is warmer than that from the west direction during both monsoon and post-monsoon period, while it's opposite during pre-monsoon period. The land surface is warmed faster during the early period and cooled faster during the latter period of the whole year compared to the lake surface, which results in a warmer air mass from the land surface during pre-monsoon period while colder one during the other two periods. The difference for Rh from between pre-monsoon and post-monsoon Period is small in southeast direction but large in west direction. The Rh of air mass from west direction is higher during post-monsoon period than pre-monsoon period, which is attributed to the intensive precipitation during monsoon period.

10 **The atmospheric surface layer is mainly near neutral stratification during the three study periods (Fig. 6).** As Lake Erhai is located in a subtropical highland area, the seasonal uniformly air temperature and the plenty of cloud have contributed to the occurrence of neutral stratification. During pre-monsoon period, the near neutral stratification accounts for as much as 85% in daytime and 92% in nighttime, respectively. Compared to pre-monsoon period, the near neutral stratification declined about 20% in daytime and 10% in nighttime during the other two periods, as a result of the increase of weakly unstable and unstable stratification. The weakly unstable stratification accounts for about 12% during monsoon period and post-monsoon period, whereas only 3% during pre-monsoon period. Most of the unstable stratification occurs during monsoon and post-monsoon periods, and the percentage is much higher in daytime (20%) than nighttime (about 5%), while it's scarcely observed during pre-monsoon period. On the contrary, the stable stratification is hardly observed during post-monsoon period. The difference for the atmospheric stability during three periods is primarily caused by the variation of ΔT , which can be roughly used as an indicator of atmosphere stability (Derecki, 1981; Croley, 1989). An unstable stratification typically associates with an positive ΔT ($T_s > T_a$). On diurnal scale, the T_s is higher than T_a in most of the time during post-monsoon period while it's opposite during pre-monsoon period (Fig. 3), which results in the occurrence of unstable stratification during post-monsoon period and stable stratification during pre-monsoon period, respectively. The stable stratification was also observed in the spring and summer in high-latitude lakes since the T_s increases much more slowly than the overlying T_a (Oswald and Rouse, 2004). While in the fall and winter, the air temperature decreases faster than the water surface, resulting in a positive ΔT .

3.2 Diurnal pattern of energy balance components and CO₂ flux during different monsoon periods

The diurnal pattern of net radiation (Rn) is larger during pre-monsoon period, and lower during post-monsoon period (Fig. 7). The difference for maximum diurnal Rn is around 60 Wm⁻² between pre-monsoon period and monsoon period, and around 76 Wm⁻² between Monsoon period and post-monsoon period, respectively. The diurnal pattern of sensible heat flux (Hs) is consistent with ΔT , which reaches the maximum in the morning and the minimum in the afternoon. The diurnal Hs is largest during post-monsoon period, with the maximum value of 28 Wm⁻² in 2013. The fluctuation of diurnal Hs is very small during Monsoon period, with a difference between the maximum and the minimum of about 10 Wm⁻², attributed to the weak diurnal variation of ΔT . The diurnal Hs remains positive during monsoon and post-monsoon Period. The diurnal Hs has a greater amplitude during pre-monsoon period, with its magnitudes ranging from -24 to 5 Wm⁻². The diurnal Hs during pre-monsoon period remains negative in most time of a whole day, and changes to be positive for a short time in the morning.

The latent heat flux (LE) has an opposite diurnal pattern with Hs, which reaches the maximum in the afternoon and the minimum in the morning. The maximum diurnal LE during three study periods is close to each other, with a value around 130 Wm⁻². Diurnal LE remains at a relatively high level in most time of a whole day during monsoon period compared to the other two periods. The difference of LE between three periods is more evident in nighttime than daytime. The larger LE during monsoon period than the other two periods, is not consistent with the variation of Δe , which is larger during pre-monsoon period, indicating a weak relation between Δe and LE. Since there is a higher Hs and lower LE during post-monsoon period, the Bowen ratio is higher during this period than the other two periods, with an average value of 0.16. There is a relatively small difference for Bowen ratio between post-monsoon and monsoon periods in nighttime, and between pre-monsoon period and monsoon period in daytime.

The diurnal pattern of storage heat in the lake (ΔQ) is similar with Rn, with the maximum value occurring at the noon. The diurnal ΔQ remains negative in nighttime and changes to be positive after sunrise, indicating the heat is released to the atmosphere in nighttime and absorbed to the lake in daytime. The diurnal mean ΔQ during pre-monsoon, monsoon and post-monsoon period is 28.9, 5.2 and -14.5 Wm⁻², respectively. The lake absorbs more heat flux in daytime and releases less in nighttime during pre-monsoon period in most years compared to the other two periods.

The diurnal pattern of LE and Hs are not in the same phase with Rn, which was also reported in highlatitude and midlatitude water bodies, and they were more closely related with other meteorological variables (i.e., Δe , ΔT , U) (Assouline et al., 2008; Nordbo te al., 2001). There is a smaller difference for diurnal LE during three different periods, whereas there is a larger difference for diurnal Hs,

indicating a larger effect of monsoon on heat exchange process over Lake Erhai. The LE over Lake Erhai has a large diurnal variation compared to the midlatitude reservoir (Liu et al., 2012).

It's generally acquired that the transfer way of momentum and heat are different, because the former one is dependent on the pressure gradients and the other one could transfer by molecular diffusion. In order to compare the difference between momentum and heat/water vapor roughness lengths, the Dalton numbers (Da) and Stanton numbers (St) are also calculated based on a semi-empirical relationship with the roughness Reynolds number (Brutsaert, 1975). A clear diurnal variation of Da^{-1} and St^{-1} is observed (Fig. 8) during three different periods. The minimum is observed at midday time and the maximum is observed at before the sunrise and after the sunset. The Da^{-1} and St^{-1} is lower during monsoon period, with an average of 28.8 ± 2.5 , and 28.7 ± 2.6 . The Da^{-1} and St^{-1} during pre-monsoon period has a larger amplitude and magnitude.

Two peaks are observed for diurnal variation of CO_2 fluxes during the whole study periods, one occurs in the early morning and the other one in the evening. The CO_2 fluxes could switch to be negative around the noon time during monsoon and post-monsoon period, indicating the CO_2 flux uptake in the middle of a day during these two periods. The observed maximum diurnal average CO_2 flux was $-0.53 \pm 1.66 \mu mol m^{-2} s^{-1}$ during monsoon period (2014) and $-1.62 \pm 1.52 \mu mol m^{-2} s^{-1}$ during post-monsoon period (2013), respectively. The CO_2 flux uptake is believed to be caused by the phytoplankton due to the eutrophication of Lake Erhai. It has been reported that the shallow lake is more affected by the rich phytoplankton (Huotari et al., 2011; Shao et al., 2015). However, the CO_2 uptake is weaker in daytime during pre-monsoon period compared to other periods. The seasonal fluctuation of phytoplankton in Lake Erhai has been reported by some researchers. Yu et al. (2014) observed that the concentration of Chl a and phytoplankton in Lake Erhai were higher in mid-summer and autumn and fell down from winter until April.

3.3 Daily and Monthly average of turbulent fluxes during different monsoon periods

The daily average H_s during pre-monsoon is lower than that during other two periods (Fig. 9). The average daily H_s during post-monsoon period has a larger annual variation compared to other two periods. The difference of daily average H_s among four years could be as large as $11 W m^{-2}$ during post-monsoon period. The LE has a small variation among different years compared to H_s . The daily average LE is larger during monsoon period, ranging from $102.5 \pm 39.2 W m^{-2}$ to $114.8 \pm 29.6 W m^{-2}$. The ΔQ is observed to have a larger annual variation. The daily average ΔQ remain positive during pre-monsoon period and negative during post-monsoon period. The daily average heat absorption during pre-monsoon period is $29.8 \pm 13.4 W m^{-2}$ and heat emission during post-monsoon period is $-13.8 \pm 7.8 W m^{-2}$. Although the CO_2 uptake is observed during midday time, the daily average CO_2 fluxes remain positive during different periods. The daily average CO_2 flux is larger during pre-monsoon

period compared to other two periods. The daily average CO₂ flux is $0.55 \pm 0.23 \text{ g C m}^{-2} \text{ d}^{-1}$ and $0.19 \pm 0.08 \text{ g C m}^{-2} \text{ d}^{-1}$ during pre-monsoon and post-monsoon period respectively.

The monthly average energy balance components (Rn, ΔQ , LE, and Hs) show clear variations during three different periods from 2012 to 2015 (Fig. 10). Rn gradually increases from pre-monsoon period to the early monsoon period and then decreases until post-monsoon Period. The monthly average Rn during post-monsoon period is lower than 40% of the other two periods. LE remains at a higher level during three periods, with an average monthly value of 89.1, 103.9 and 82.2 Wm^{-2} during pre-monsoon, Monsoon and post-monsoon periods, respectively. The average monthly LE/Rn has a smaller annual variation during pre-monsoon period, which ranges from 0.50 to 0.82 for four-year study period. LE/Rn has a larger fluctuation during monsoon period, which varies from 0.53 to 1 from 2012 to 2015. As a result of the decrease of Rn, LE/Rn exceeds 1 rapidly during post-monsoon period, with an average value of 1.68. LE plays a dominating role in energy partitioning of the lake, while Hs dominated the major proportion of Rn in the terrestrial land surface (Roth et al., 2017). The monthly average Hs remains negative during pre-monsoon period and the early monsoon period, and switches to be positive in the middle monsoon period. The magnitude of monthly average Hs remains at a very low level, with a value of less than 14 Wm^{-2} during three periods. There is a negative monthly average Hs/Rn during pre-monsoon due to the negative monthly Hs, indicating the Rn is consumed by heating the water body. During the monsoon period, the Hs/Rn is still very low with an average value of 0.06, and the Rn is primarily used for evaporation. Correspondingly, a positive monthly average ΔQ is observed during pre-monsoon and early monsoon period, and a negative monthly average ΔQ during the other periods, indicating the lake absorbs heat at first and releases it subsequently. The average monthly ΔQ during pre-monsoon and post-monsoon period is 28 and -14 Wm^{-2} , respectively. The Hs/Rn increases to 0.20 and (Hs+LE)/Rn reaches as high as 1.72 during post-monsoon period. The excessive portion of the energy released from the heat storage in the lake is transferred through the turbulent exchanges, which is similar with other lakes (Rouse et al., 2005). A lower Hs/Rn with an annual average of 0.16 and a higher LE/Rn with an annual average of 0.81 was also observed in a midlatitude reservoir (Liu et al., 2012). However, other lakes have been reported to have a positive Hs on monthly scale over a whole year (Liu et al., 2012; Li et al., 2015). The difference between them and Lake Erhai is likely to be attributed to the positive ΔT and unstable stratification throughout the year in this midlatitude reservoir whereas a negative ΔT during pre-monsoon Period and the majority portion of near neutral stratification over Lake Erhai.

3.4 Main drivers for Hs during different monsoon periods

The correlation coefficients between Hs and meteorological variables (ΔT , U, Ta, Ts, Rn, and Rain) on half-hourly, daily and monthly scales are investigated during three different periods (Table 2). On

half-hourly scale, the product of U and ΔT ($U \cdot \Delta T$) is the main controlling factor for Hs, which could explain 44% and 30% variance of Hs during monsoon and post-monsoon period, respectively. However, during pre-monsoon period, both ΔT and the product of U and ΔT are found to have a major effect on half-hourly Hs. A close relationship between half-hourly ΔT and Hs is also observed during monsoon
5 period, with a Pearson correlation coefficient between them of 0.56. On daily scale, the ΔT is found to be most closely related with Hs during all three different periods, with a correlation coefficient ranging from 0.55 during post-monsoon period to 0.78 during monsoon period. Besides, Rn is also one of the major drivers for Hs during monsoon period, as the rain mainly falling during monsoon period, the role of Rn on Hs becomes noticeable. The product of U and ΔT is observed to have a main effect on Hs only
10 during pre-monsoon period. The Ta is also responsible for the variation of daily Hs during pre-monsoon and monsoon periods, which explain about 30% variance of daily Hs. The factors controlling Hs during monsoon period are similar with that during post-monsoon period on monthly scale. The ΔT remains as the most significant factor controlling monthly Hs, which could explain 85% and 89% variance of Hs during monsoon period and post-monsoon period, respectively. The product of U and ΔT also shows
15 close relationship with monthly Hs during monsoon and post-monsoon periods. The similar relationship between meteorological variables and monthly Hs is not observed during pre-monsoon period. Only the rain and Rn are found to be closely correlated with monthly Hs during pre-monsoon period. The correlation between rain and Rn is also observed during monsoon period, indicating the large effect of Rn during these two periods.

20 In general, no significant relationship between U and Hs is observed from half-hourly to monthly scales during all three study periods. The ΔT remains as the main factor controlling Hs on all temporal scales during three periods, and the effect of ΔT is increased as the correlation coefficients between them rises when time scales are extended from half-hourly to monthly. During monsoon period, the role of Rn on Hs becomes more important. The relationship between meteorological factors and Hs is more
25 complicated during monsoon period, while there are similar main drivers for Hs during pre-monsoon period and post-monsoon period.

3.5 Main drivers for LE during different monsoon periods

30 The relationship between LE and meteorological variables during pre-monsoon, monsoon and post-monsoon periods from half-hourly, daily and monthly scales from 2012 to 2015 are also analyzed (Table 3). Unlike the relationship between U and Hs, a significant relationship between U and LE is observed on all temporal scales during three different periods, with a higher correlation coefficient ranging from 0.51 to 0.80. However, the range of the correlation coefficients between U and LE is similar on different time scales, indicating that the effect of U doesn't increase as time scale changes.
35 The large effect of U on LE has been reported in small lakes. The product of U and Δe is the second

major factor controlling LE during three periods, especially on half-hourly and daily scales, with a correlation coefficient ranging from 0.48 to 0.71. On monthly scale, the significant effect of the product of U and Δe on LE is only observed during pre-monsoon period, which could explain 60% variance of monthly LE. During monsoon period, both Ta and Rn show a close relationship with LE on monthly scale. The effect of Rn on LE has also been reported in other studies. Because the variation of monthly Ta is mainly determined by the magnitude of the available energy, the close relationship between Ta and monthly LE reflects the effect of Rn on LE during monsoon period. During monsoon period, Rn is also found to be responsible for variation of LE on monthly scale, which is similar with monthly Hs. The close relationship between Rn and LE was also observed in a small boreal lake (Nordbo et al., 2001; Goldbach and Kuttler, 2015).

3.6 Main drivers for CO₂ flux during different monsoon periods

The correlation coefficients between CO₂ flux and meteorological variables during three different periods from half-hourly to monthly scales are shown in Table 4. On half-hourly scale, there is a similar relationship between meteorological variables and CO₂ flux during pre-monsoon and post-monsoon period. Both Rn and photosynthetic active radiation (PAR) are found to have a slight higher correlation coefficient with CO₂ flux than other meteorological variables, which indicates that the carbon exchange process over Lake Erhai is both affected by physical and biological process. The U is found to have a significant relationship with CO₂ flux during monsoon period. There is a relatively high correlation coefficient between U and CO₂ flux on all temporal scales during monsoon period, which increases from half-hourly (0.23) to monthly scales (0.81). During post-monsoon period, the U also has a large impact on CO₂ flux mainly on longer temporal scale. The correlation coefficient between them is also the highest on daily and monthly scales during post-monsoon period. The U could mediate the vertical transport of gases by producing turbulent eddies across the air-water interface (Eugster et al., 2003).

On monthly scale, the major drivers of CO₂ flux vary greatly during different periods. PAR is found to be the most significant driver for monthly CO₂ flux during pre-monsoon period. During monsoon period, the main drivers for monthly CO₂ flux (i.e., Rn, Ta and U) are in good accordance with LE. The relationship between Ts and CO₂ flux is likely to be attributed to that the variation of Ts could influence the solubility in the water (Shao et al., 2015). The Δe also has a large effect on monthly CO₂ flux during both pre-monsoon and post-monsoon periods. A negative correlation coefficient between rain and CO₂ flux is observed on daily and monthly scale during pre-monsoon period. It has been reported that the more rain could bring more nutrients in to the water body, which ultimately promoted the photosynthesis of the phytoplankton (Shao *et al.*, 2015). However, a positive correlation coefficient between rain and CO₂ flux is also observed on monthly scale during post-monsoon period. The rain could also promote CO₂ emission by enhancing the transport of carbon from land/catchment areas to the

water system (lateral fluxes), which enhanced the DOC and potentially the $p\text{CO}_2$ in the water (Pumpanen et al., 2014).

Overall, because the correlation coefficients between meteorological variables and CO_2 flux are comparatively lower on half-hourly scale, large uncertainties exist for the main drivers controlling half-hourly CO_2 flux. The main drivers of CO_2 flux are more complicated on monthly scale during three periods, indicating multiple factors may govern CO_2 exchange process, including biological and physical process (Vesala et al., 2006). More similar controlling factors for CO_2 flux are observed during pre-monsoon and post-monsoon periods, compared with monsoon period, indicating the large impact of monsoon on carbon exchange process.

4 Conclusions

Lake Erhai is a subtropical shallow lake located in the key regions of water-vapor transportation passages, which is influenced by both South Asian and East Asian summer monsoon. The contrasting atmospheric properties during monsoon and non-monsoon periods provide an excellent opportunity to examine the effect of monsoon on turbulent exchange process over the lake surface. The pre-monsoon period is characterized by a higher U and Δe , with a negative ΔT , while the post-monsoon period is characterized by a lower U and T_a , with a positive ΔT . The air mass during monsoon period is the warmest and wettest. The monsoon period has a much higher T_s than the other two periods. The southeastly wind and westly wind is dominant in daytime and nighttime, respectively. The lake and land breeze circulation is stronger during pre-monsoon and post-monsoon period. The near neutral stratification occupies the major proportion during the three study periods. The negative diurnal ΔT during pre-monsoon period has contributed to the occurrence of stable stratification, while the positive ΔT has contributed to the occurrence of unstable stratification during monsoon and post-monsoon periods.

Due to the effect of cloud, the R_n during monsoon period is lower than pre-monsoon period. The albedo is higher during post-monsoon period but similar between pre-monsoon and monsoon periods. The diurnal pattern of ΔQ is consistent with R_n , while diurnal H_s and LE are out phase of R_n , which are consistent with ΔT and Δe , respectively. The diurnal H_s during pre-monsoon period remains negative in most time of a whole day, and changes to be positive for a short time in the morning. Diurnal LE remains relatively high most time of a whole day during monsoon period. The higher H_s and lower LE has resulted in a higher Bowen ratio during post-monsoon period. LE dominates the energy partitioning of the lake, and LE/R_n exceeds 1 during post-monsoon period due to the rapid decrease of R_n . The monthly average ΔQ is positive during pre-monsoon and early monsoon period, and becomes negative during the other periods, indicating the lake absorbs heat at first and then releases it.

The ΔT remains as the main factor controlling Hs on all temporal scales during three periods, and the effect of ΔT is increased when time scales are extended from half-hourly to monthly. The factors controlling LE are more consistent from half-hourly to monthly scales compared to Hs. Significant relationship between U and LE is observed on all temporal scales, and the product of U and Δe is the second major factor controlling LE during three periods. The U is also found to have a strong relationship with CO₂ flux during monsoon period. The high wind is expected to cause variations in the mechanical mixing and thus modulate the water surface turbulent and CO₂ exchange process (Zhang and Liu, 2013). During monsoon period, the Rn plays an important role on monthly variation of Hs and LE. Compared with monsoon period, similar main drivers for Hs are found during pre-monsoon period and post-monsoon period, which is also found for CO₂ flux, indicating the large impact of monsoon on heat and carbon exchange process over Lake Erhai. On monthly scale, the main drivers of CO₂ flux are more complicated during three periods. In future, more studies are needed to investigate the combining effect of biological and physical process on carbon exchange process over highland shallow lake.

Acknowledgements. This work was supported by National Natural Science Foundation of China (No. 91537212, No. 41661144018 and No. 41505007) and the National Key Research and Development Program of China (2017YFC1502101). We thank the related persons in Yunnan Provincial Institute of Meteorology and Dali National Climatic Observatory for their maintaining the site and providing historical data.

References

- Assouline, S., Tyler, S. W., Tanny, J., Cohen, S., Bou-Zeid, E., Parlange, M. B., and Katul, G. G.: Evaporation from three water bodies of different sizes and climates: Measurements and scaling analysis, *Adv. Water. Resour.*, 31, 160-172, 2008.
- Brutsaert, W.: The roughness length for water vapor sensible heat, and other scalars. *J. Atmos. Sci.*, 32, 2029-2031, doi: 10.1175/1520-0469(1975)032<2029:TRLFWV>2.0.CO;2, 1975.
- Cole, J. J., and Caraco, N. F.: Atmospheric exchange of carbon dioxide in a low-wind oligotrophic lake measured by the addition of SF₆, *Limnol. Oceanogr.*, 43, 647-656, doi: 10.4319/lo.1998.43.4.0647, 1998.
- Cole, J. J., Cole, J. J., Caraco, N. F., and Caraco, N. F.: Carbon in catchments: connecting terrestrial carbon losses with aquatic metabolism, *Mar. Freshwat. Res.*, 52, 101-110, 2001.
- Croley, T. E.: Verifiable evaporation modeling on the Laurentian great-lakes, *Water Resour. Res.*, 25, 781-792, doi: 10.1029/WR025i005p00781, 1989.
- Curtarelli, M. P., Alcantara, E. H., Renno, C. D., and Stech, J. L.: Physical changes within a large tropical hydroelectric reservoir induced by wintertime cold front activity, *Hydrol. Earth. Syst. Sc.*, 18, 3079-3093, doi: 10.5194/hess-18-3079-2014, 2014.

- Derecki, J. A.: Stability Effects on Great Lakes Evaporation, *J. Great Lakes Res.*, 7, 357-362, 1981.
- Downing, J. A., Prairie, Y. T., Cole, J. J., Duarte, C. M., Tranvik, L. J., Striegl, R. G., McDowell, W. H., Kortelainen, P., Caraco, N. F., Melack, J. M., and Middelburg, J. J.: The global abundance and size distribution of lakes, ponds, and impoundments, *Limnol. Oceanogr.*, 51, 2388-2397, doi: 10.4319/lo.2006.51.5.2388, 2006.
- 5 Dutra, E., Stepanenko, V. M., Balsamo, G., Viterbo, P., Miranda, P. M. A., Mironov, D., and Schaer, C.: An offline study of the impact of lakes on the performance of the ECMWF surface scheme, *Boreal Environ. Res.*, 15, 100-112, 2010.
- Eugster, W., Kling, G., Jonas, T., McFadden, J. P., Wuest, A., MacIntyre, S., and Chapin, F. S.: CO₂ exchange between air and water in an Arctic Alaskan and midlatitude Swiss lake: Importance of convective mixing, *J. Geophys. Res-Atmos.*, 108, 20, doi: 10.1029/2002jd002653, 2003.
- 10 Goldbach, A., and Kuttler, W.: Turbulent Heat Fluxes above a Suburban Reservoir: A Case Study from Germany, *J. Hydrometeorol.*, 16, 244-260, doi: 10.1175/JHM-D-13-0159.1, 2015.
- Fan, S. M., Wofsy, S. C., Bakwin, P. S., Jacob, D. J. and Fitzjarrald, D. R.: Atmosphere-biosphere exchange of CO₂ and O₃ in the Central Amazon Forest, *J. Geophys. Res.*, 95, 16851-16864, doi: 10.1029/JD095iD10p16851, 1990.
- 15 Feng, J. W., Liu, H. Z., Sun, J. H., and Wang, L.: The surface energy budget and interannual variation of the annual total evaporation over a highland lake in Southwest China, *Theor. Appl. Climatol.*, 1-10, doi: 10.1007/s00704-015-1585-9, 2015.
- Flohn, H.: Large-scale aspects of the "summer monsoon" in South and East Asia, *J.meteor.soc.japan*, 75, 180-186, 1957.
- 20 Goldbach, A., and Kuttler, W.: Turbulent Heat Fluxes above a Suburban Reservoir: A Case Study from Germany, *J. Hydrometeorol.*, 16, 244-260, doi: 10.1175/JHM-D-13-0159.1, 2015.
- Hsu, H. H., Terng, C. T., and Chen, C. T.: Evolution of large-scale circulation and heating during the first transition of Asian summer monsoon, *J. Clim.*, 12, 793-810, doi: 10.1175/1520-0442(1999)012<0793:eolsca>2.0.co;2, 1999.
- Huotari, J., Ojala, A., Peltomaa, E., Nordbo, A., Launiainen, S., Pumpanen, J., Rasilo, T., Hari, P., and Vesala, T.: Long-term direct CO₂ flux measurements over a boreal lake: Five years of eddy covariance data, *Geophys. Res. Lett.*, 38, 113-120, doi: 10.1029/2011GL048753, 2011.
- 25 Kaimal, J. C., and Finnigan, J. J.: Atmospheric Boundary Layer Flows: Their Structure and Measurement., Oxford University Press, Oxford, UK., 1994.
- Kormann, R., and Meixner, F. X.: An analytical footprint model for non-neutral stratification, *Boundary-Layer Meteorology*, 99, 207-224, doi: 10.1023/a:1018991015119, 2001.
- 30 Lau, K. M., and Yang, S.: Climatology and interannual variability of the southeast Asian summer monsoon, *Adv. Atmos. Sci.*, 14, 18-26, 1997.
- Lenters, J. D., Kratz, T. K., and Bowser, C. J.: Effects of climate variability on lake evaporation: Results from a long-term energy budget study of Sparkling Lake, northern Wisconsin (USA), *J. Hydrol.*, 308, 168-195, doi: 10.1016/j.jhydrol.2004.10.028, 2005.
- 35

- Li, C. F., and Yanai, M.: The onset and interannual variability of the Asian summer monsoon in relation to land sea thermal contrast, *J. Clim.*, 9, 358-375, doi: 10.1175/1520-0442(1996)009<0358:toaivo>2.0.co;2, 1996.
- Li, M., Babel, W., Chen, X., Zhang, L., Sun, F., Wang, B., Ma, Y., Hu, Z., and Foken, T.: A 3-year dataset of sensible and latent heat fluxes from the Tibetan Plateau, derived using eddy covariance measurements, *Theor. Appl. Climatol.*, 122, 457-469, 2015a.
- Li, X.-Y., Ma, Y.-J., Huang, Y.-M., Hu, X., Wu, X.-C., Wang, P., Li, G.-Y., Zhang, S.-Y., Wu, H.-W., Jiang, Z.-Y., Cui, B.-L., and Liu, L.: Evaporation and surface energy budget over the largest high-altitude saline lake on the Qinghai-Tibet Plateau, *J. Geophys. Res-Atmos.*, 121, 10470-10485, doi: 10.1002/2016jd025027, 2016.
- Li, Z., Lyu, S., Ao, Y., Wen, L., Zhao, L., and Wang, S.: Long-term energy flux and radiation balance observations over Lake Ngoring, Tibetan Plateau, *Atmos. Res.*, 155, 13-25, doi: 10.1016/j.atmosres.2014.11.019, 2015b.
- Li, Z., Lyu, S., Wen, L., Zhao, L., Ao, Y., and Wang, S.: Effect of a cold, dry air incursion on atmospheric boundary layer processes over a high-altitude lake in the Tibetan Plateau, *Atmos. Res.*, 185, 32-43, doi: 10.1016/j.atmosres.2016.10.024, 2017.
- Liu, H., Zhang, Y., Liu, S., Jiang, H., Sheng, L., and Williams, Q. L.: Eddy covariance measurements of surface energy budget and evaporation in a cool season over southern open water in Mississippi, *J. Geophys. Res-Atmos.*, 114, 83-84, doi: 10.1029/2008JD010891, 2009.
- Liu, H., Blanken, P. D., Weidinger, T., Nordbo, A., and Vesala, T.: Variability in cold front activities modulating cool-season evaporation from a southern inland water in the USA, *Environ. Res. Lett.*, 6, 024022, 2011.
- Liu, H., Zhang, Q., and Dowler, G.: Environmental Controls on the Surface Energy Budget over a Large Southern Inland Water in the United States: An Analysis of One-Year Eddy Covariance Flux Data, *J. Hydrometeorol.*, 13, 1893-1910, doi: 10.1175/jhm-d-12-020.1, 2012.
- Liu, H., Zhang, Q., Katul, G. G., Cole, J. J., Iii, F. S. C., and Macintyre, S.: Large CO₂ effluxes at night and during synoptic weather events significantly contribute to CO₂ emissions from a reservoir, *Environ. Res. Lett.*, 11, 064001, doi: 10.1088/1748-9326/11/6/064001, 2016.
- Liu, H. Z., Feng, J. W., Sun, J. H., Wang, L., and Xu, A. L.: Eddy covariance measurements of water vapor and CO₂ fluxes above the Erhai Lake, *Sci. China. Earth. Sci.*, 58, 317-328, doi: 10.1007/s11430-014-4828-1, 2015.
- Mammarella, I., Nordbo, A., Rannik, Ü., Haapanala, S., Levula, J., Laakso, H., Ojala, A., Peltola, O., Heiskanen, J., and Pumpanen, J.: Carbon dioxide and energy fluxes over a small boreal lake in Southern Finland, *J. Geophys. Res-Biogeo.*, 120, 1296-1314, doi: 10.1002/2014JG002873, 2015.
- Marie - Noële, B., Guy, C., Olivier, T., Dominique, L., and Le, M. P.: Long-term heat exchanges over a Mediterranean lagoon, *J. Geophys. Res-Atmos.*, 117, 2012.
- Mauder, M., Jegede, O. O., Okogbue, E. C., Wimmer, F., and Foken, T.: Surface energy balance measurements at a tropical site in West Africa during the transition from dry to wet season, *Theor. Appl. Climatol.*, 89, 171-183, doi: 10.1007/s00704-006-0252-6, 2007.
- McGloin, R., McGowan, H., and McJannet, D.: Effects of diurnal, intra-seasonal and seasonal climate variability on

- the energy balance of a small subtropical reservoir, *Int. J. Climatol.*, 35, 2308-2325, doi: 10.1002/joc.4147, 2015.
- Moncrieff, J., Clement, R., Finnigan, J., and Meyers, T.: *Averaging, Detrending, and Filtering of Eddy Covariance Time Series. Handbook of Micrometeorology*, 2004.
- 5 Nordbo, A., Launiainen, S., Mammarella, I., Lepparanta, M., Huotari, J., Ojala, A., and Vesala, T.: Long-term energy flux measurements and energy balance over a small boreal lake using eddy covariance technique, *J. Geophys. Res-Atmos.*, 116, doi: 10.1029/2010jd014542, 2011.
- O'Donnell, D. M., Effler, S. W., Strait, C. M., and Leshkevich, G. A.: Optical characterizations and pursuit of optical closure for the western basin of Lake Erie through in situ measurements, *J. Great Lakes Res.*, 36, 736-746, 2010.
- 10 Podgrajsek, E., Sahl e, E., Bastviken, D., Holst, J., Lindroth, A., Tranvik, L., and Rutgersson, A.: Comparison of floating chamber and eddy covariance measurements of lake greenhouse gas fluxes, *Biogeosciences*, 10, 4225-4233, doi: 10.5194/bg-11-4225-2014, 2014.
- Pumpanen, J., Linden, A., Miettinen, H., Kolari, P., Ilvesniemi, H., Mammarella, I., Hari, P., Nikinmaa, E., Heinonsalo, J., Back, J., Ojala, A., Berninger, F., and Vesala, T.: Precipitation and net ecosystem exchange are the most important drivers of DOC flux in upland boreal catchments, *J. Geophys. Res-Biogeoe.*, 119, 1861-1878, doi: 15 10.1002/2014jg002705, 2014.
- Riera, J. L., Schindler, J. E., and Kratz, T. K.: Seasonal dynamics of carbon dioxide and methane in two clear-water lakes and two bog lakes in northern Wisconsin, USA, *Can. J. Fish. Aquat. Sci.*, 56, 265-274, doi: 10.1139/cjfas-56-2-265, 1999.
- Roth, M., Jansson, C., and Velasco, E.: Multi - year energy balance and carbon dioxide fluxes over a residential 20 neighbourhood in a tropical city, *Int. J. Climatol.*, 2016.
- Rouse, W. R., Oswald, C. J., Binyamin, J., Spence, C. R., Schertzer, W. M., Blanken, P. D., Bussieres, N., and Duguay, C. R.: The role of northern lakes in a regional energy balance, *J. Hydrometeorol.*, 6, 291-305, doi: 10.1175/jhm421.1, 2005.
- Rueda, F., Moreno-Ostos, E., and Cruz-Pizarro, L.: Spatial and temporal scales of transport during the cooling phase of 25 the ice-free period in a small high-mountain lake, *Aquat. Sci.*, 69, 115-128, 2007.
- Shao, C., Chen, J., Stepien, C. A., Chu, H., Ouyang, Z., Bridgeman, T. B., Czajkowski, K. P., Becker, R. H., and John, R.: Diurnal to annual changes in latent, sensible heat, and CO₂ fluxes over a Laurentian Great Lake: A case study in Western Lake Erie, *J. Geophys. Res-Biogeoe.*, 120, 1587-1604, doi: 10.1002/2015JG003025, 2015.
- 30 Vachon, D., Prairie, Y. T., and Cole, J. J.: The relationship between near-surface turbulence and gas transfer velocity in freshwater systems and its implications for floating chamber measurements of gas exchange, *Limnol. Oceanogr.*, 55, 1723-1732, doi: 10.4319/lo.2010.55.4.1723, 2010.
- Vesala, T., Huotari, J., Rannik, U., Suni, T., Smolander, S., Sogachev, A., Launiainen, S., and Ojala, A.: Eddy covariance measurements of carbon exchange and latent and sensible heat fluxes over a boreal lake for a full open-water period, *J. Geophys. Res-Atmos.*, 111, doi: 10.1029/2005jd006365, 2006.
- 35 Vickers, D., and Mahrt, L.: Quality control and flux sampling problems for tower and aircraft data, *J. Atmos. Ocean.*

- Tech., 14, 512-526, doi: 10.1175/1520-0426(1997)014<0512:qcafsp>2.0.co;2, 1997.
- Wang, B., Ma, Y., Ma, W., and Su, Z.: Physical controls on half-hourly, daily, and monthly turbulent flux and energy budget over a high-altitude small lake on the Tibetan Plateau, *J. Geophys. Res. Atmos.*, 122, 2289–2303, doi:10.1002/2016JD026109, 2017.
- 5 Webb, E. K., Pearman, G. I., and Leuning, R.: Correction of flux measurements for density effects due to heat and water-vapor transfer, *Q. J. Roy. Meteor. Soc.*, 106, 85-100, doi: 10.1002/qj.49710644707, 1980.
- Xu, L., Liu, H., Du, Q., Wang, L., Yang, L., and Sun, J.: Differences of atmospheric boundary layer characteristics between pre-monsoon and monsoon period over the erhai lake. *Theor. Appl. Climatol.*, <https://doi.org/10.1007/s00704-018-2386-8>, 2018.
- 10 Xu, J., Yu, S., Liu, J., Haginoya, S., Ishigooka, Y., Kuwagata, T., Hara, M., and Yasunari, T.: The Implication of Heat and Water Balance Changes in a Lake Basin on the Tibetan Plateau, *Hydrol. Res.Lett.*, 3, 1-5, 2009.
- Yu, G., Jiang, Y., Song, G., Tan, W., Zhu, M., and Li, R.: Variation of Microcystis and microcystins coupling nitrogen and phosphorus nutrients in Lake Erhai, a drinking-water source in Southwest Plateau, China, *Environ. Sci & Poll. R. Int.*, 21, 9887-9898, 2014.
- 15 Zappa, C. J., Asher, W. E., and Jessup, A. T.: Microscale wave breaking and air-water gas transfer, *Journal Of Geophysical Research-Oceans*, 106, 9385-9391, doi: 10.1029/2000jc000262, 2001.
- Zhang, Q., Zeng, J., and Zhang, L. Y.: Characteristics of land surface thermal-hydrologic processes for different regions over North China during prevailing summer monsoon period, *Sci. China. Earth. Sci.*, 55, 1872-1880, 2012.
- Zhang, Q., and Liu, H.: Interannual variability in the surface energy budget and evaporation over a large southern inland water in the United States, *J. Geophys. Res-Atmos.*, 118, 4290-4302, doi: 10.1002/jgrd.50435, 2013.
- 20 Zhou, L., Zou, H., Ma, S., and Li, P.: Observed Impact of the South Asian Summer Monsoon on the Local Meteorology in the Himalayas, *Acta. Meteorol. Sin.*, 26, 205-215, doi: 10.1007/s13351-012-0206-0, 2012.

5

Table 1. Daily average air temperature (T_a), water surface temperature (T_s), difference between water surface temperature and air temperature (ΔT), vapor pressure difference (Δe) between water surface (e_s) and the air (e_a), wind speed (U), the downward and upward shortwave radiation flux (R_{s_down} and R_{s_up}), the downward and upward long wave radiation flux (R_{l_down} and R_{l_up}), and albedo during pre-monsoon, monsoon and post-monsoon period from 2012 to 2015.

| Period | Year | T_a | T_s | ΔT | Δe | U | R_{s_down} | R_{s_up} | R_{l_down} | R_{l_up} | Albedo |
|--------------|---------|-------|-------|------------|------------|------|---------------|-------------|---------------|-------------|--------|
| pre-monsoon | 2012 | 16.02 | 14.24 | -2.42 | 1.07 | 3.20 | 202.40 | 13.43 | 319.94 | 384.92 | 0.07 |
| | 2013 | 16.92 | 15.36 | -1.56 | 1.20 | 2.89 | 230.60 | 14.83 | 313.91 | 390.47 | 0.07 |
| | 2014 | 17.14 | 15.04 | -2.09 | 1.21 | 2.93 | 239.03 | 14.37 | 310.49 | 388.87 | 0.06 |
| | 2015 | 16.95 | 15.29 | -1.70 | 0.94 | 3.13 | 228.29 | 15.12 | 316.93 | 390.30 | 0.07 |
| | Average | 16.76 | 14.98 | -1.94 | 1.10 | 3.04 | 225.08 | 14.44 | 315.32 | 388.64 | 0.07 |
| monsoon | 2012 | 19.81 | 20.92 | 1.09 | 0.75 | 2.81 | 201.62 | 12.55 | 366.44 | 420.68 | 0.06 |
| | 2013 | 19.52 | 20.93 | 1.41 | 0.74 | 2.67 | 201.90 | 12.42 | 368.08 | 421.01 | 0.06 |
| | 2014 | 21.06 | 21.19 | 0.12 | 0.94 | 2.81 | 223.74 | 11.88 | 374.06 | 424.08 | 0.06 |
| | 2015 | 20.23 | 21.13 | 1.22 | 0.98 | 3.16 | 212.20 | 13.45 | 365.82 | 422.05 | 0.07 |
| | Average | 20.15 | 21.04 | 0.96 | 0.85 | 2.86 | 209.87 | 12.57 | 368.60 | 421.95 | 0.06 |
| post-monsoon | 2012 | 13.04 | 15.17 | 2.13 | 0.82 | 3.01 | 179.32 | 22.12 | 281.80 | 383.17 | 0.13 |
| | 2013 | 12.09 | 14.81 | 3.06 | 0.65 | 2.28 | 174.10 | 19.58 | 280.38 | 380.79 | 0.11 |
| | 2014 | 10.91 | 14.39 | 2.68 | 0.79 | 2.52 | 152.96 | 20.96 | 277.79 | 370.92 | 0.09 |
| | 2015 | 12.13 | 14.73 | 2.74 | 0.90 | 2.83 | 154.19 | 18.65 | 294.35 | 381.96 | 0.12 |
| | Average | 12.04 | 14.78 | 2.65 | 0.79 | 2.66 | 165.14 | 20.33 | 283.58 | 379.21 | 0.11 |

Table 2. The Pearson correlation coefficients between 30Min, Daily and Monthly sensible heat flux (Hs) and difference between water surface and air temperature (ΔT), wind speed (U), the product of wind speed and difference between water surface and air temperature ($U \cdot \Delta T$), air temperature (Ta), water surface temperature (Ts), net radiation (Rn), and rain, during pre-monsoon, monsoon and post-monsoon periods for the whole study period (2012 to 2015). The significant level of 0.01 and 0.05 are marked with ** and * respectively. The correlation coefficients between rain and Hs are estimated only at daily and monthly scales.

| variable | 30Min | | | Daily | | | Monthly | | |
|--------------------|-------------|----------|--------------|-------------|----------|--------------|-------------|----------|--------------|
| | pre-monsoon | monsoon | post-monsoon | pre-monsoon | monsoon | post-monsoon | pre-monsoon | monsoon | post-monsoon |
| ΔT | 0.422** | 0.564** | 0.397** | 0.613** | 0.775** | 0.548** | 0.281 | 0.922** | 0.945** |
| U | -0.144** | -0.017** | -0.003 | -0.125 | -0.248** | -0.166* | -0.162 | -0.594** | -0.511 |
| $U \cdot \Delta T$ | 0.394** | 0.666** | 0.541** | 0.571** | 0.235** | 0.349** | 0.324 | 0.903** | 0.711 |
| Ta | -0.375** | -0.401** | -0.309** | -0.552** | -0.528** | -0.308** | -0.244 | -0.579** | -0.614 |
| Ts | -0.177** | -0.070** | -0.130** | -0.199** | 0.035 | -0.170* | -0.013 | 0.264 | -0.382 |
| Rn | 0.178** | -0.052** | 0.187** | -0.246** | -0.546** | -0.233** | -0.472 | -0.750** | -0.348 |
| rain | | | | 0.242** | 0.105* | 0.062 | 0.602 | 0.564** | -0.298 |

Table 3. The Pearson correlation coefficients between 30Min, Daily and Monthly latent heat flux (LE) and vapor pressure difference (Δe) between water surface (es) and the air (ea), wind speed (U), the product of wind speed and vapor pressure difference ($U \cdot \Delta e$) between water surface and the air ($U \cdot \Delta e$), air temperature (Ta), water surface temperature (Ts), relative humidity (Rh), net radiation (Rn), and rain, during pre-monsoon, monsoon and post-monsoon periods for the whole study period (2012 to 2015). The significant level of 0.01 and 0.05 are marked with ** and * respectively. The correlation coefficients between rain and LE are estimated only at daily and monthly scales.

| variable | 30Min | | | Daily | | | Monthly | | |
|--------------------|-------------|----------|--------------|-------------|---------|--------------|-------------|---------|--------------|
| | pre-monsoon | monsoon | post-monsoon | pre-monsoon | monsoon | post-monsoon | pre-monsoon | monsoon | post-monsoon |
| Δe | 0.292** | 0.215** | 0.407** | 0.214** | 0.108* | 0.288** | 0.118 | 0.024 | -0.021 |
| U | 0.502** | 0.741** | 0.723** | 0.634** | 0.798** | 0.687** | 0.791* | 0.765** | 0.568 |
| $U \cdot \Delta e$ | 0.477** | 0.649** | 0.709** | 0.544** | 0.598** | 0.682** | 0.777* | 0.400 | 0.293 |
| Ta | 0.326** | 0.374** | 0.488** | 0.239** | 0.423** | 0.633** | 0.016 | 0.627** | 0.066 |
| Ts | 0.254** | 0.301** | 0.379** | 0.097 | 0.304** | 0.341** | -0.019 | 0.419 | 0.000 |
| Rh | -0.238** | -0.202** | -0.490** | -0.310** | -0.105* | -0.421** | 0.137 | -0.042 | -0.375 |
| Rn | 0.244** | 0.243** | 0.315** | 0.111 | 0.221** | 0.301** | -0.088 | 0.503* | -0.014 |
| rain | | | | -0.052 | -0.080 | 0.088 | -0.089 | -0.352 | 0.282 |

Table 4. The Pearson correlation coefficients between 30Min, Daily and Monthly CO₂ flux and difference between water surface and air temperature (ΔT), vapor pressure difference (Δe) between water surface and the air, wind speed (U), air temperature (Ta), relative humidity (Rh), water surface temperature (Ts), photosynthetic active radiation (RAR), net radiation (Rn), and rain, during pre-monsoon, monsoon and post-monsoon periods for the whole study period (2012 to 2015). The significant level of 0.01 and 0.05 are marked with ** and * respectively. The correlation coefficients between rain and CO₂ flux are estimated only at daily and monthly scales.

| variable | 30Min | | | Daily | | | Monthly | | |
|------------|-------------|----------|--------------|-------------|----------|--------------|-------------|----------|--------------|
| | pre-monsoon | monsoon | post-monsoon | pre-monsoon | monsoon | post-monsoon | pre-monsoon | monsoon | post-monsoon |
| ΔT | 0.035** | 0.115** | 0.078** | -0.006 | 0.252** | 0.253** | -0.598 | 0.519* | -0.386 |
| Δe | -0.049** | -0.093** | -0.026 | 0.178** | -0.006 | 0.003 | 0.546 | -0.391 | 0.470 |
| U | -0.140** | -0.231** | -0.171** | -0.313** | -0.558** | -0.335** | -0.557 | -0.810** | 0.610 |
| Ta | -0.141** | -0.179** | -0.099** | -0.091 | -0.248** | -0.118 | 0.055 | -0.578** | 0.072 |
| Rh | 0.007 | 0.084** | 0.022 | -0.148* | 0.022 | 0.074 | -0.681 | 0.309 | -0.211 |
| Ts | -0.198** | -0.146** | -0.086** | -0.135* | -0.084 | 0.006 | -0.166 | -0.202 | -0.037 |
| PAR | -0.227** | -0.129** | -0.231** | 0.320** | 0.204** | 0.022 | 0.755* | 0.273 | -0.088 |
| Rn | -0.262** | -0.152** | -0.281** | -0.002 | -0.057 | 0.084 | 0.171 | -0.591** | 0.003 |
| rain | | | | -0.342** | 0.028 | -0.138 | -0.414 | 0.220 | 0.422 |

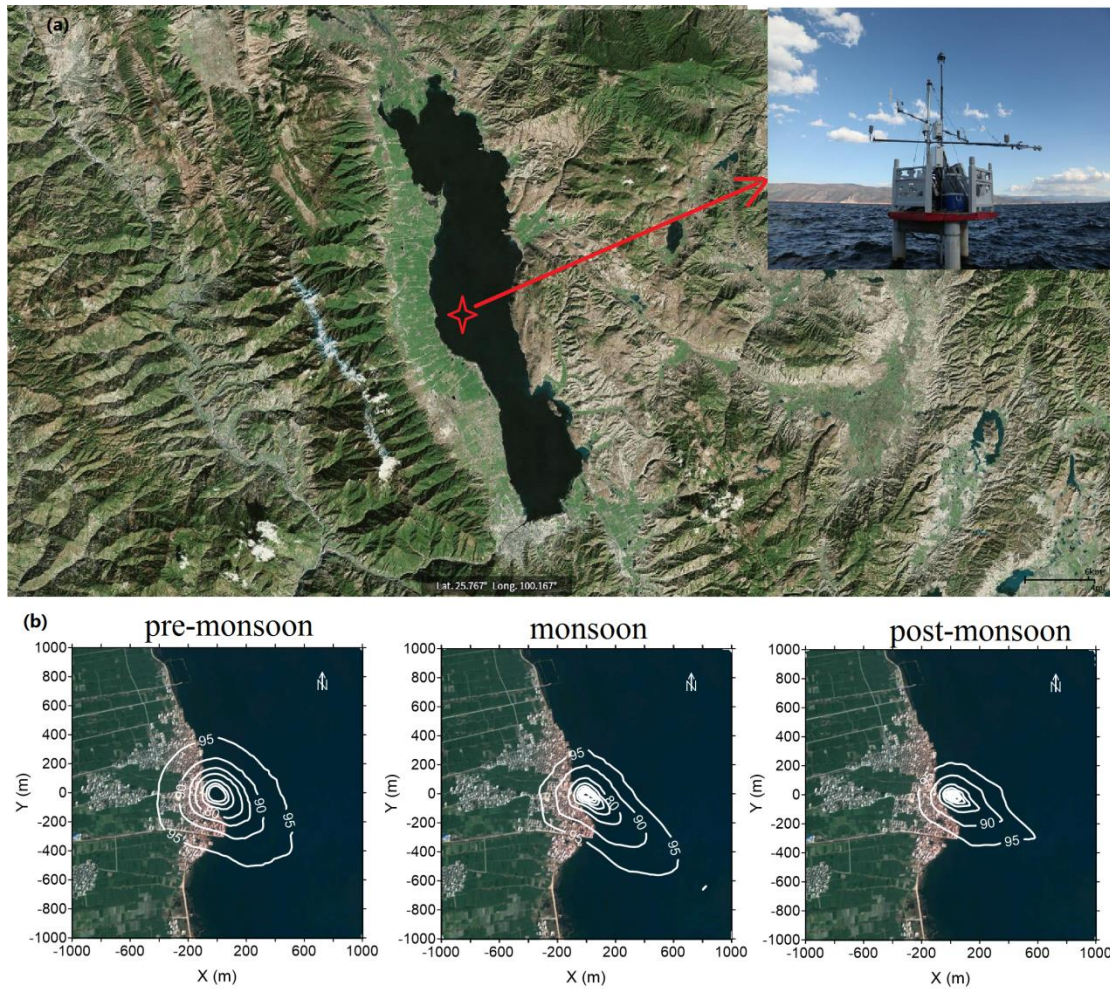


Figure 1. (a) The location of Lake Erhai (Google) and the eddy covariance measurement system (the red star denotes the flux tower); (b) Average footprint source over Lake Erhai flux tower during three different monsoon periods (pre-monsoon period, monsoon period and post-monsoon period) from 2012 to 2015. The maximum radius length of contour line shows the source area contributing to 95% of flux.

5

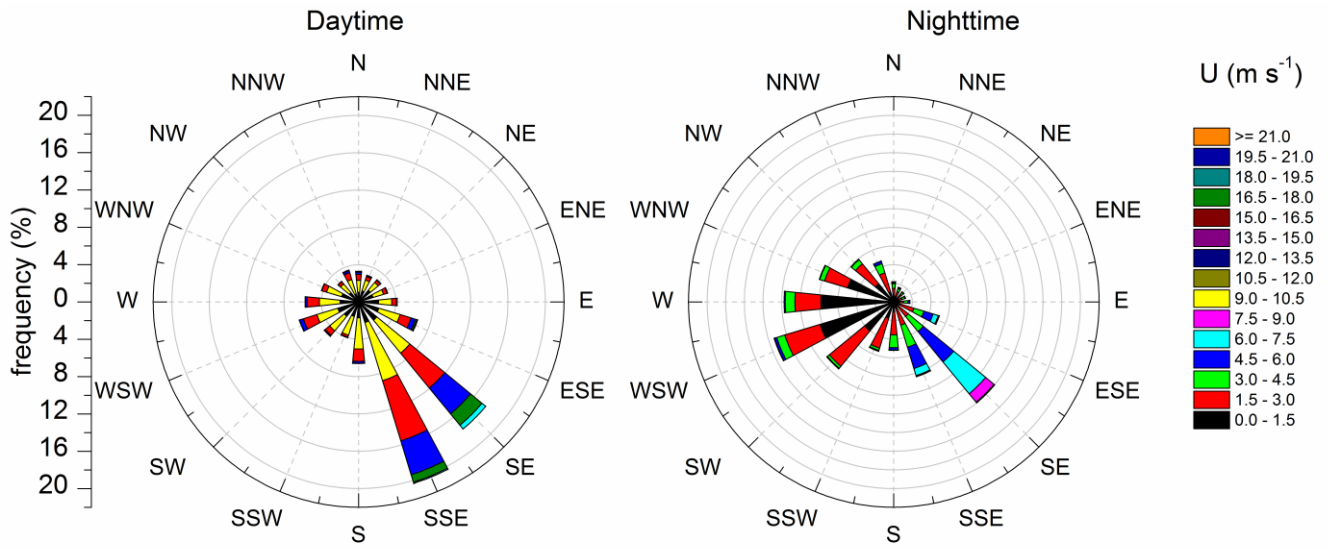


Figure 2. The wind rose of Erhai lake during daytime (when downward short radiation larger than 20W m^{-2}) and nighttime (when downward short radiation less than 20W m^{-2}) from 2012 to 2015.

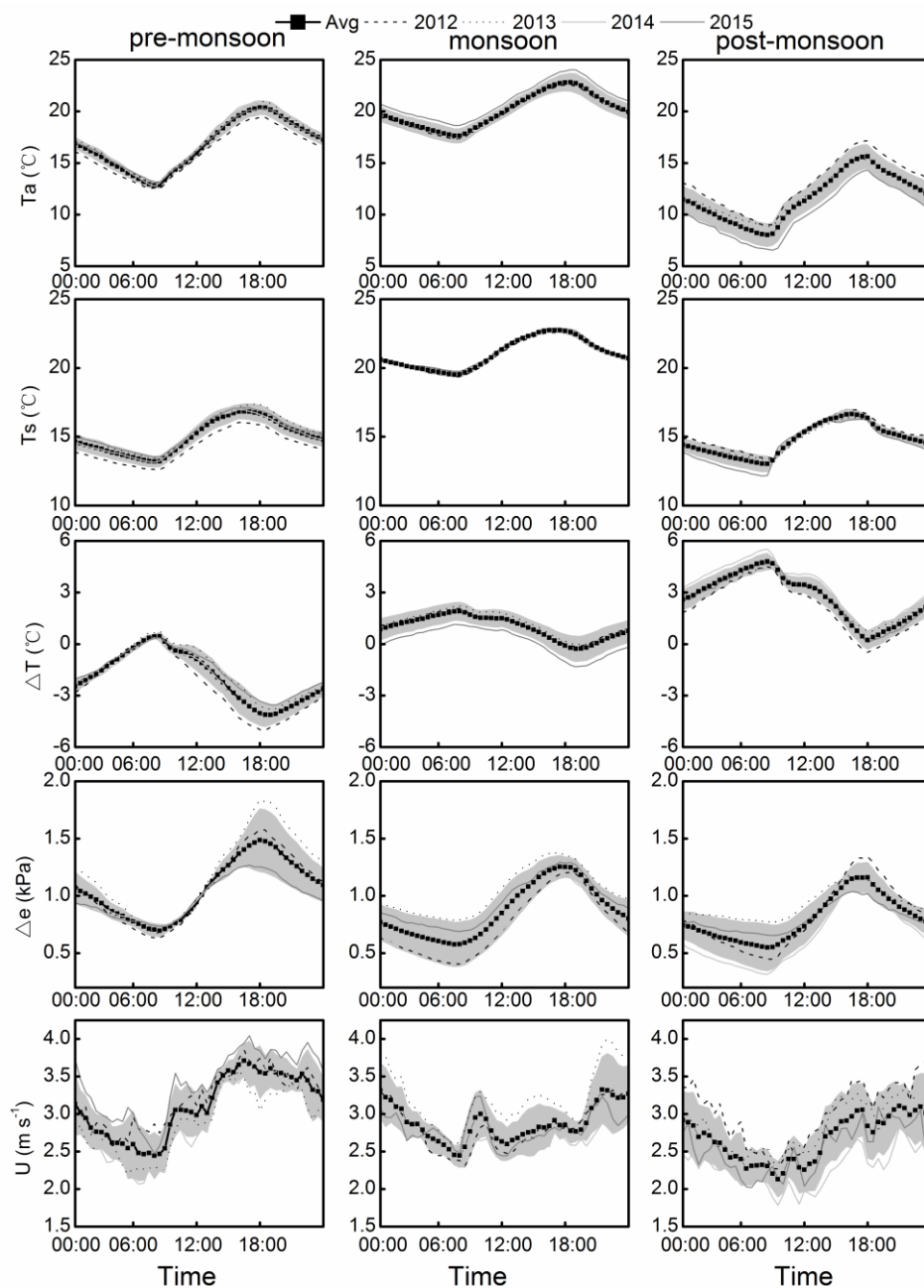
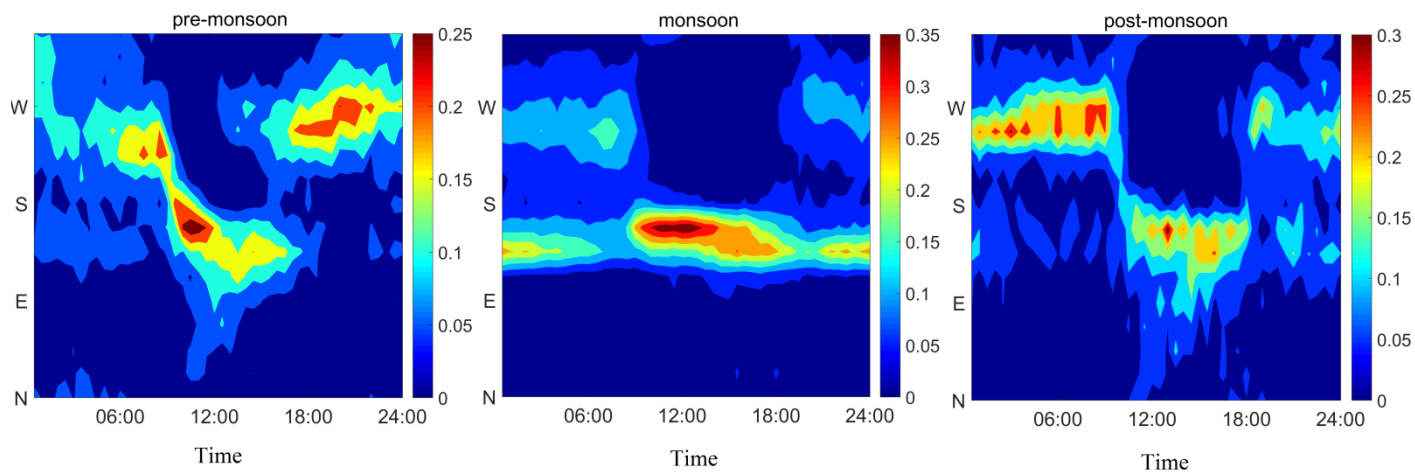


Figure 3. The average diurnal pattern of air temperature (T_a), water surface temperature (T_s), difference between water surface temperature and air temperature (ΔT), water-air vapor pressure deficit (Δe), and wind speed (U), during

pre-monsoon, monsoon and post-monsoon periods from 2012 to 2015



5 **Figure 4.** The average diurnal pattern of frequency distribution of wind direction during pre-monsoon, monsoon and post-monsoon periods from 2012 to 2015

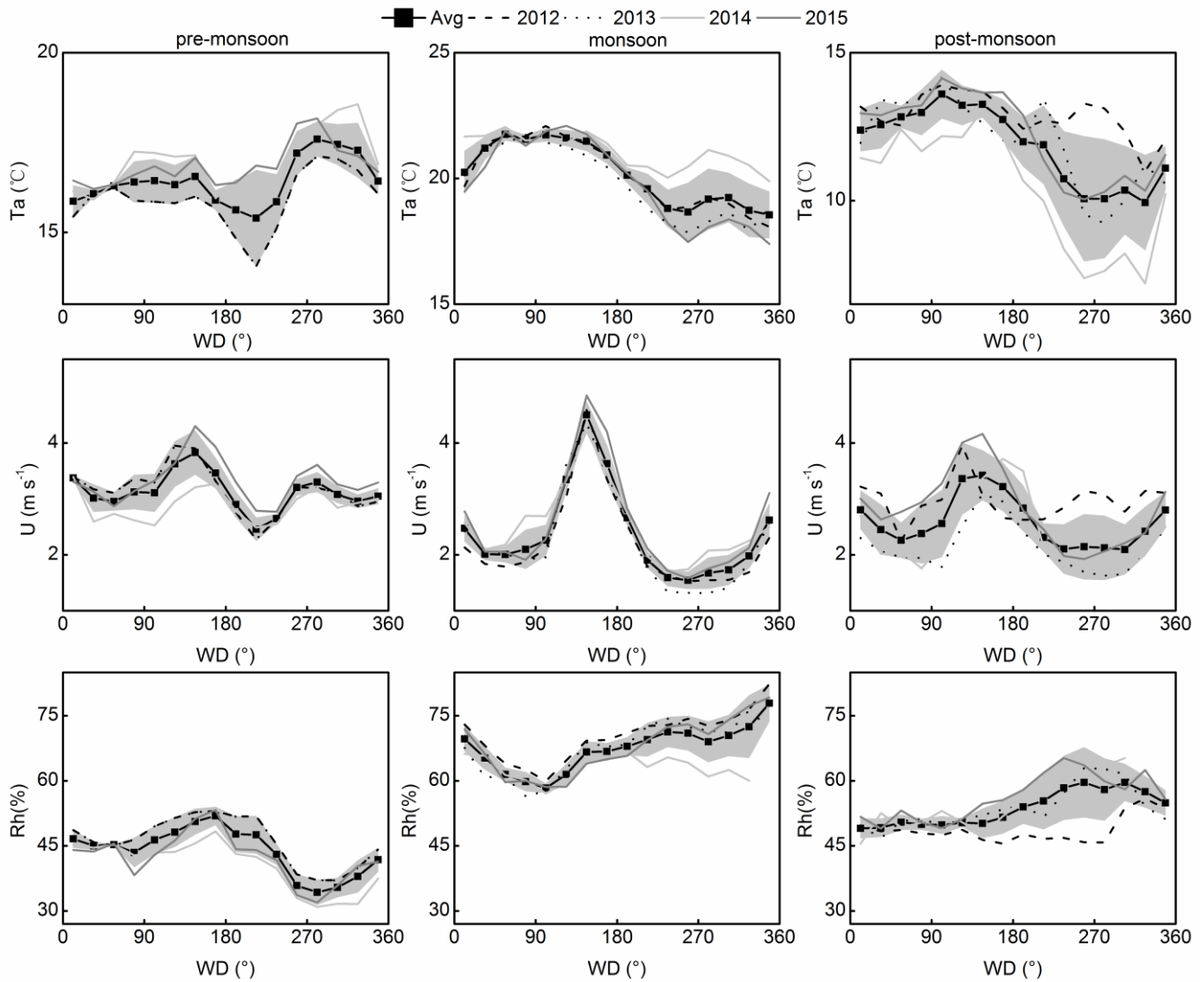


Figure 5. The bin-averaged wind speed (U), air temperature (T_a) and relative humidity (R_h) along with wind direction (WD) during pre-monsoon, monsoon and post-monsoon periods from 2012 to 2015. Every 22.5° was bin averaged.

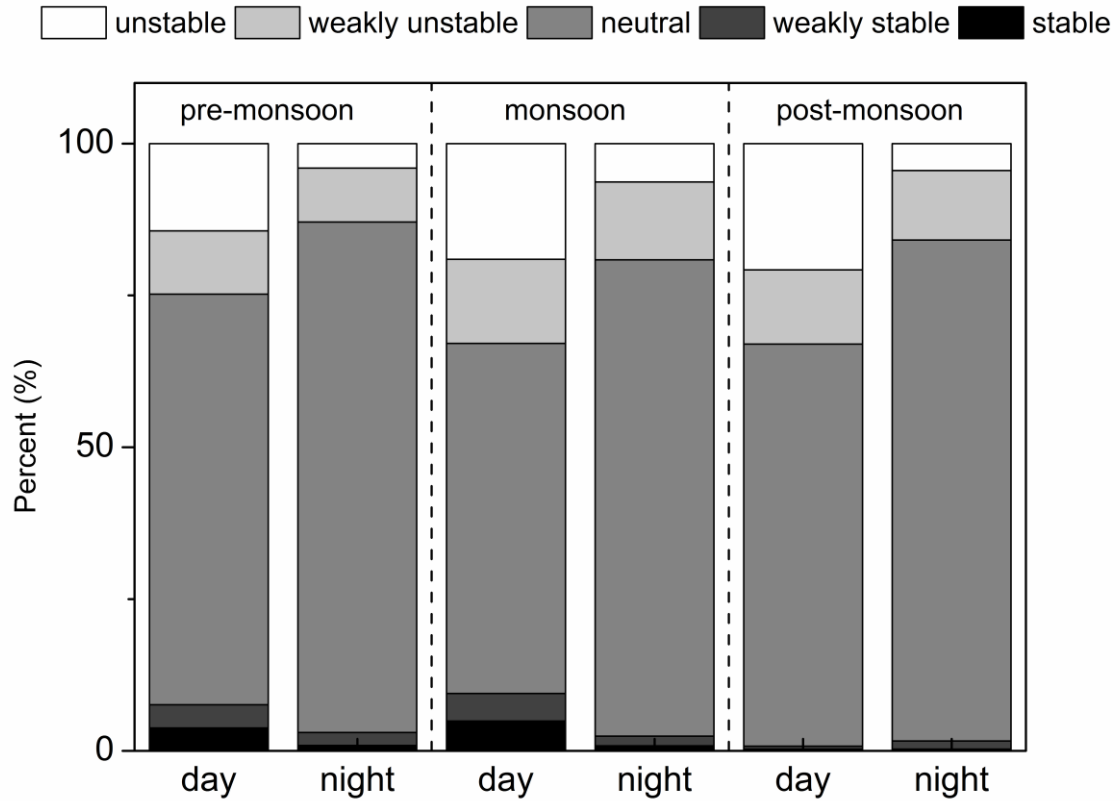


Figure 6. Frequency percent of stability classes in day (when the shortwave radiation $> 20 \text{ W m}^{-2}$) and night (when the shortwave radiation $\leq 20 \text{ W m}^{-2}$) during pre-monsoon, monsoon and post-monsoon periods from 2012 to 2015. The stable classes are defined as atmosphere stability ($\zeta = z/L$, where z is the measurement height, L is the Monin-Obukhov length): stable ($\zeta > 0.1$), weakly stable ($0.05 < \zeta < 0.1$), near neutral ($-0.05 < \zeta < 0.05$), weakly unstable ($-0.1 < \zeta < 0.05$) and unstable ($\zeta < -0.1$).

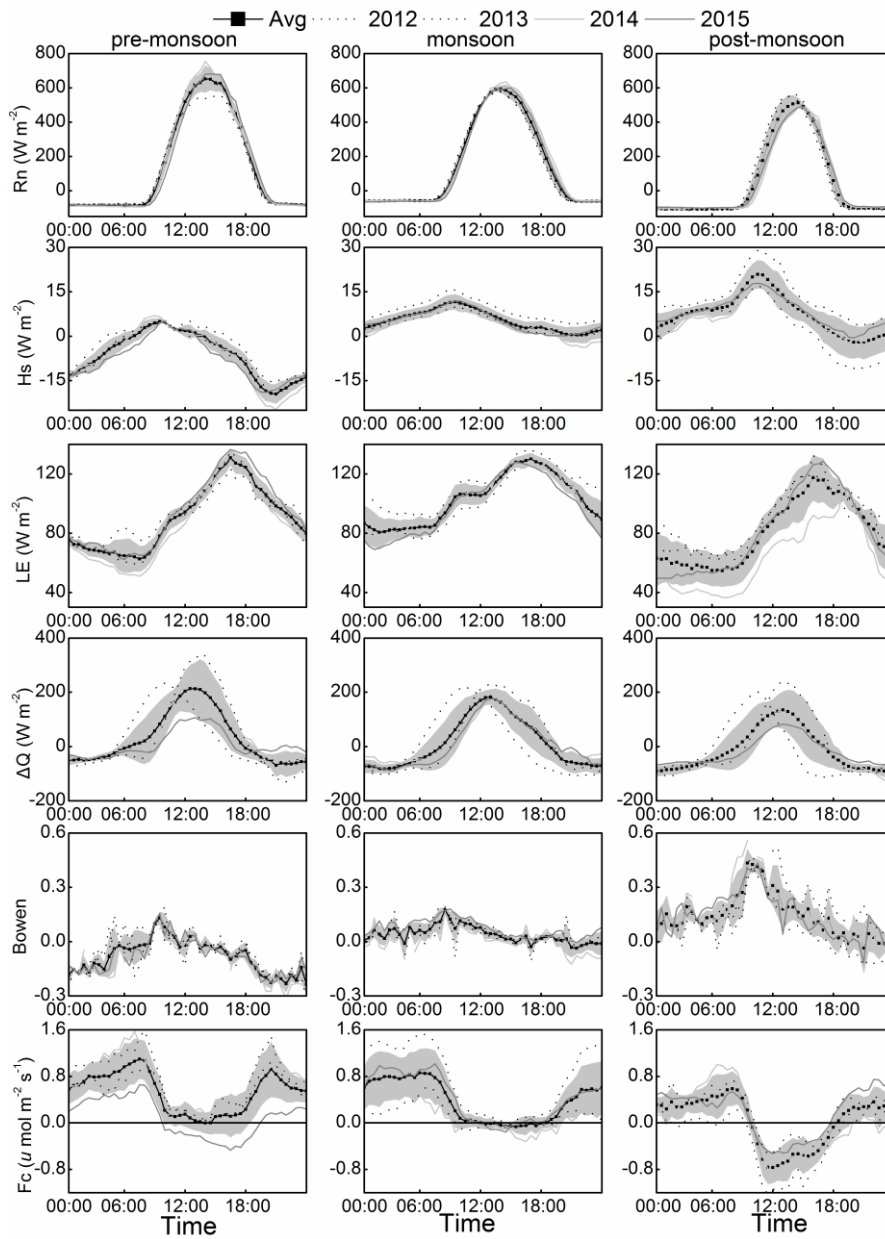


Figure 7. The average diurnal patterns of energy balance components (the net radiation flux, Rn; the sensible heat flux, Hs; the latent heat flux, LE; and the storage heat flux in the lake, ΔQ), Bowen ratio (Bowen) and CO₂ flux (Fc) during pre-monsoon, monsoon and post-monsoon periods from 2012 to 2015.

5

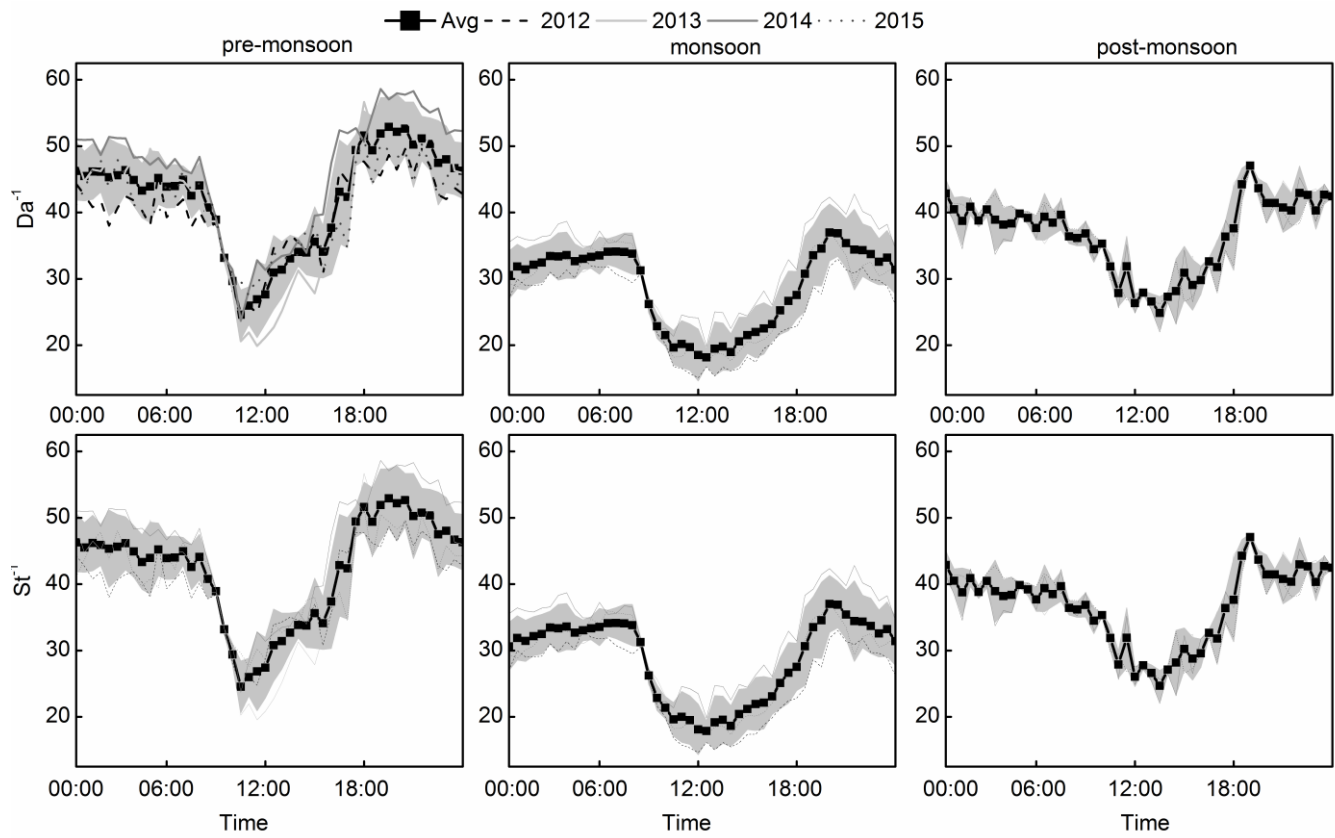


Figure 8. The average diurnal patterns of the reciprocals of the Dalton numbers (Da^{-1}) and Stanton numbers (St^{-1}) during pre-monsoon, monsoon and post-monsoon periods from 2012 to 2015.

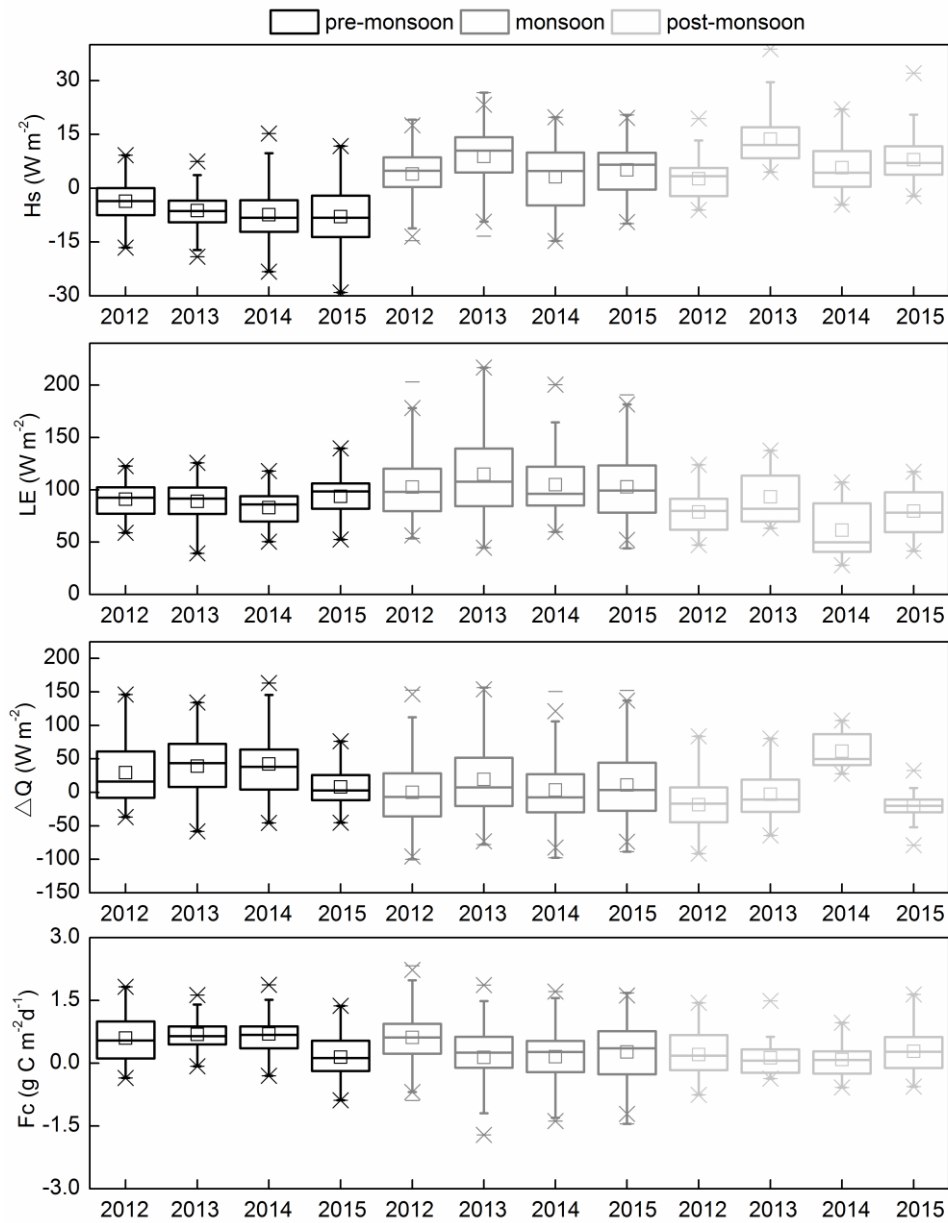


Figure 9. The boxplot of daily average sensible heat flux (Hs), latent heat flux (LE), the storage heat flux in the lake (ΔQ) and CO₂ flux (Fc) during pre-monsoon, monsoon and post-monsoon periods from 2012 to 2015. The short dash represents the maximum and minimum value; the star represents the 1% and 99% percentiles; the square represents the average value.

5

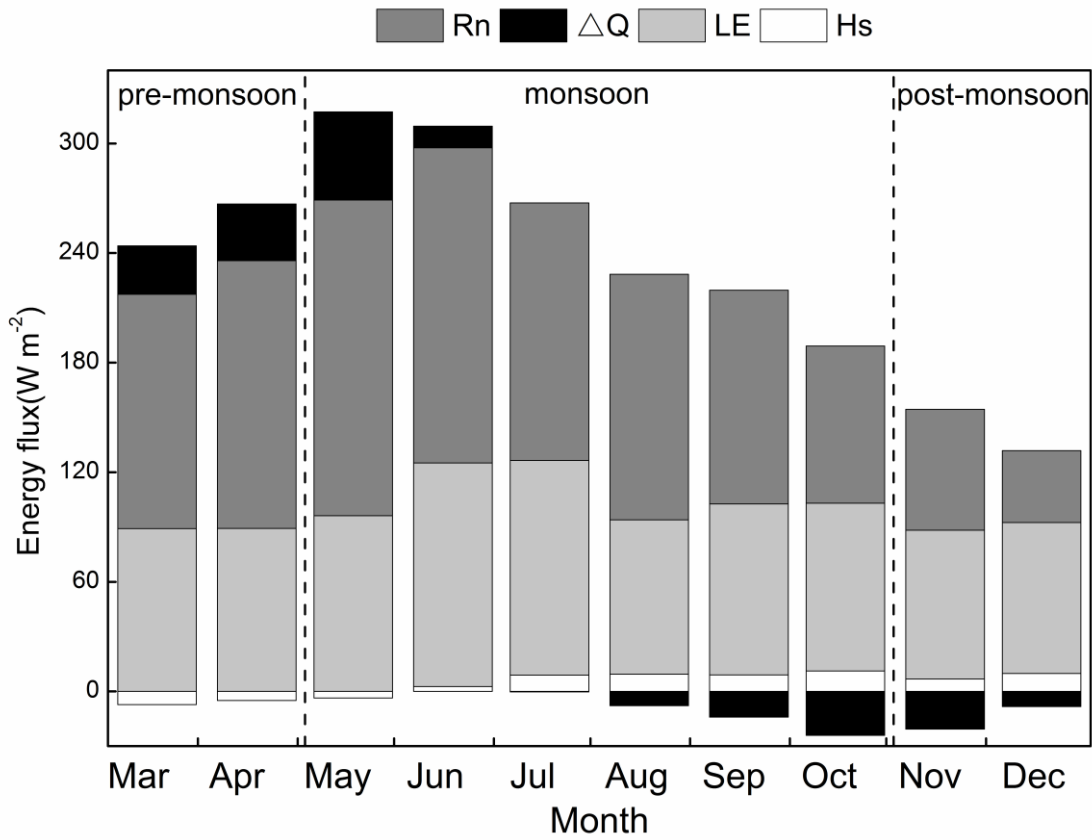


Figure 10. The monthly average energy fluxes (the storage heat flux in the lake, ΔQ ; the net radiation flux, Rn; the latent heat flux, LE; and the sensible heat flux, Hs) during pre-monsoon, monsoon and post-monsoon periods from 2012 to 2015.