

# MICS-Asia III: Multi-model comparison and evaluation of aerosol over East Asia

Lei Chen<sup>1,2,6</sup>, Yi Gao<sup>1</sup>, Meigen Zhang<sup>1,3,4</sup>, Joshua S. Fu<sup>5</sup>, Jia Zhu<sup>2,6,7</sup>, Hong Liao<sup>2,6</sup>, Jialin Li<sup>1</sup>, Kan Huang<sup>5</sup>, Baozhu Ge<sup>1</sup>, Xuemei Wang<sup>8</sup>, Yun Fat LAM<sup>9</sup>, Chuan-Yao Lin<sup>10</sup>, Syuichi Itahashi<sup>11,12</sup>, Tatsuya Nagashima<sup>13</sup>, Mizuo Kajino<sup>14,15</sup>, Kazuyo Yamaji<sup>16</sup>, Zifa Wang<sup>1,3</sup>, and Jun-ichi Kurokawa<sup>17</sup>

<sup>1</sup>State Key Laboratory of Atmospheric Boundary Layer Physics and Atmospheric Chemistry, Institute of Atmospheric Physics, Chinese Academy of Sciences, Beijing, China

<sup>2</sup>School of Environmental Science and Engineering, Nanjing University of Information Science & Technology, Nanjing 210044, China

<sup>3</sup>University of Chinese Academy of Sciences, Beijing, China

<sup>4</sup>Center for Excellence in Regional Atmospheric Environment, Institute of Urban Environment, Chinese Academy of Sciences, Xiamen, China

<sup>5</sup>Department of Civil and Environmental Engineering, University of Tennessee, Knoxville, TN 37996, USA

<sup>6</sup>Jiangsu Key Laboratory of Atmospheric Environment Monitoring and Pollution Control, Jiangsu Collaborative Innovation Center of Atmospheric Environment and Equipment Technology, Nanjing University of Information Science & Technology, Nanjing 210044, China

<sup>7</sup>Research Institute of Climatic and Environmental Governance, Nanjing University of Information Science & Technology, Nanjing 210044, China

<sup>8</sup>Institute for Environment and Climate Research, Jinan University, Guangzhou, China

<sup>9</sup>School of Energy and Environment, City University of Hong Kong, Hong Kong

<sup>10</sup>Research Center for Environmental Changes, Academia Sinica, Taiwan

<sup>11</sup>Central Research Institute of Electric Power Industry, Abiko, Chiba 270-1194, Japan;

<sup>12</sup>Department of Marine, Earth, and Atmospheric Sciences, North Carolina State University, Raleigh, NC 27607, USA

<sup>13</sup>National Institute for Environmental Studies, Tsukuba, Japan

<sup>14</sup>Meteorological Research Institute, Japan Meteorological Agency, Tsukuba, 305-0052, Japan

<sup>15</sup>Faculty of Life and Environmental Sciences, University of Tsukuba, Tsukuba, 305-8577, Japan

<sup>16</sup>Graduate School of Maritime Sciences, Kobe University, Kobe, Hyogo 658-0022, Japan

<sup>17</sup>Asia Center for Air Pollution Research, 1182 Sowa, Nishi-ku, Niigata, Niigata, 950-2144, Japan

*Correspondence to:* M.G. Zhang ([mgzhang@mail.iap.ac.cn](mailto:mgzhang@mail.iap.ac.cn))

**Abstract.** Fourteen chemical transport models (CTMs) participate in the first topic of the Model Inter-Comparison Study for Asia (MICS-Asia) Phase III. These model results are compared with each other and an extensive set of measurements, aiming to evaluate the current CTMs' ability in simulating aerosol concentrations, to document the similarities and differences among model performances, and to reveal the characteristics of aerosol components in large cities over East Asia. In general, these CTMs can well reproduce the spatial-temporal distributions of aerosols in East Asia during the year 2010. The multi-model ensemble mean (MMEM) shows better performance than most single-model predictions, with correlation coefficients (between MMEM and measurements) ranging from 0.65 (nitrate,  $\text{NO}_3^-$ ) to 0.83 ( $\text{PM}_{2.5}$ ). The concentrations of black carbon (BC), sulfate ( $\text{SO}_4^{2-}$ ), and  $\text{PM}_{10}$  are underestimated by MMEM, with normalized mean biases (NMBs) of

–17.0%, –19.1%, and –32.6%, respectively. Positive biases are simulated for  $\text{NO}_3^-$  (NMB=4.9%), ammonium ( $\text{NH}_4^+$ ) (NMB=14.0%), and  $\text{PM}_{2.5}$  (NMB=4.4%). In comparison with the statistics calculated from MICS–Asia Phase II, frequent updates of chemical mechanisms in CTMs during recent years make the inter–model variability of simulated aerosol concentrations smaller, and better performance can be found in reproducing the temporal variations of observations.

5 However, a large variation (about a factor of 2) in the ratios of SNA (sulfate, nitrate and ammonium) to  $\text{PM}_{2.5}$  is calculated among participant models. A more intense secondary formation of  $\text{SO}_4^{2-}$  is simulated by CMAQ models, because of the higher SOR (sulfur oxidation ration) than other models (0.51 vs. 0.39). The NOR (nitric oxidation ratio) calculated by all CTMs has larger values (~0.20) than the observations, indicating that overmuch  $\text{NO}_3^-$  is simulated by current models.

10  $\text{NH}_3$ –limited condition (the mole ratio of ammonium to sulfate and nitrate is smaller than 1) can be successfully reproduced by all participant models, which indicates that a small reduction in ammonia may improve the air quality. A large coefficient of variation ( $\text{CV}>1.0$ ) is calculated for simulated coarse particles, especially over arid and semi–arid regions, which means that current CTMs have difficulty in producing similar dust emissions by using different dust schemes. According to the simulation results of MMEM in six large Asian cities, different air–pollution control plans should be taken owing to their different major air pollutants in different seasons. MICS–Asia project gives an opportunity to discuss the similarities and

15 differences of simulation results among CTMs in East Asia applications. In order to acquire a better understanding of aerosol properties and their impacts, more experiments should be designed to reduce the diversities among air quality models.

## 1 Introduction

Urbanization and industrialization have stimulated economic growth and population expansion during the last several decades in East Asia (Spence et al., 2008; Yan et al., 2016; Chen et al., 2016), but also bring about noticeable degradation of ecological environment at the same time (Hall 2002; Han et al., 2014; Yue et al., 2017). Significant increase in atmospheric aerosol loading, especially from anthropogenic emissions, can exert adverse effects on weather (Cowan et al., 2013), climate (Wang et al., 2016a), air quality (Gao et al., 2016a), and human health (Carmichael et al., 2009). For example, aerosols can modify the thermodynamic structure of the atmospheric boundary layer by absorbing and scattering solar radiation (Ding et al., 2016; Petaja et al., 2016), alter cloud properties and precipitation by acting as cloud condensation nuclei and ice nuclei (Lohmann and Diehl, 2006; Wang, 2013a), deteriorate visibility and cause haze events (Singh and Dey, 2012; Li et al., 2014). In addition, fine particulate matter with aerodynamic diameters smaller than 2.5  $\mu\text{m}$  ( $\text{PM}_{2.5}$ ) may enter into the alveoli and cause severe cardiovascular diseases, respiratory diseases, and even lung cancer (Pope and Dockery, 2006; Gao et al., 2015a). The impacts have attracted considerable attentions from the public and policy makers in East Asia, and therefore the research on aerosol has become a hot topic during recent years.

In order to better understand the properties of atmospheric aerosols and their impacts, chemical transport models (CTMs) can be a critical tool, and they have been applied to study various air pollution issues all over the world. For example, a fully coupled online Weather Research and Forecasting/Chemistry (WRF/Chem) model was developed by Grell et al. (2005), and it has been widely used to study the aerosol–radiation–cloud feedbacks on meteorology and air quality (Gao et al., 2014; Zhang et al., 2015a; Qiu et al., 2017); a Models–3 Community Multi–scale Air Quality (CMAQ) modeling system was designed by the US Environmental Protection Agency (Byun and Ching, 1999), and it has been applied to address acid deposition, visibility and haze pollution issues (Zhang et al., 2006; Han et al., 2014; Fan et al., 2015); a nested air quality prediction model system (NAQPMS) was developed by the Institute of Atmospheric Physics, Chinese Academy of Science (IAP/CAS) (Wang et al., 2001) to reproduce the mechanism of transport and evolution of atmospheric pollutants in Asia (Li et al., 2012a; Wang et al., 2013c; Li et al., 2017a); a global three–dimensional chemical transport model (GEOS–Chem) was first presented by Bey et al. (2001), and researchers use the GEOS–Chem model to study the source sector contribution, long–range transport and the prediction of future change in ozone and aerosol concentrations (Liao et al., 2006; Li et al., 2016b; Zhu et al., 2017).

Although significant advantages can be found in CTMs, how to accurately reproduce or predict the concentrations and the distributions of atmospheric pollutants is still a challenge, with the problems of inaccurate emission inventories, poorly represented initial and boundary conditions, and imperfect physical, dynamical and chemical parameterizations (Carmichael et al., 2008). Meanwhile, most CTMs are designed to focus on the air quality over developed countries, such as Europe and America, rather than Asia. The assumptions or look–up tables used in CTMs may not be suitable for the simulations of the East Asian environment (Gao et al., 2018). Therefore, before providing meaningful results and answering “what–if” questions for policy makers, model performances must be carefully evaluated. Hayami et al. (2008) and Mann et al. (2014)

pointed out that different parameterizations used in CTMs can cause large variations in simulation results, and multi-model ensemble mean (MMEM) tends to show better performance than most single-model predictions when comparing with observations (Carmichael et al., 2002; Hayami et al., 2008; Wang et al., 2008; Holloway et al., 2008). In order to develop a better common understanding of the performance and uncertainties of CTMs in East Asia applications, and to acquire a more mature comprehension of the properties of atmospheric aerosols and their impacts, a model inter-comparison study should be initiated, and Model Inter-Comparison Study for Asia (MICS-Asia) gives an opportunity to investigate these questions. Meanwhile, model inter-comparison study in East Asia is very limited (Phadnis et al., 1998; Kiley et al., 2003; Han et al., 2008), and far more efforts are needed in future.

The MICS-Asia project was initiated in 1998. In the first phase of MICS-Asia (MICS-Asia Phase I), the primary target was to study the long-range transport and deposition of  $\text{SO}_4^{2-}$  in East Asia by analyzing the submitted simulation results from eight CTMs. Source-receptor relationships, contributions from removal processes, and the influences of model structures and parameterizations on simulation results were also estimated. More details can be found in Carmichael et al. (2002). As an extension of Phase I, MICS-Asia Phase II included more chemical species of concern, such as sulfur, nitrogen and ozone. This broader collaborative study examined four different periods, encompassing two different years and three different seasons (March, July, and December in 2001, and March in 2002). Simulation results from nine different regional modeling groups were analyzed. Detailed information about this project can be found in the overview paper of Carmichael et al. (2008). In 2010, the MICS-Asia III project was launched. As a part of EANET additional research activity and a continuing research of MICS-Asia series, three topics were discussed, including comparison and evaluation of current multi-scale air quality models (Topic 1), development of reliable emission inventories for CTMs in Asia (Topic 2), and interactions between air quality and climate changes (Topic 3).

This manuscript focuses on the first topic of the MICS-Asia Phase III, and intends to present and summarize the following three objectives, specializing in the topic of aerosols. Firstly, comprehensive evaluations of the strengths and weaknesses of current CTMs for simulating particulate matter (PM) are provided against extensive measurements from in-situ and satellites, aiming to show the capability of participant models. Secondly, diversities of simulated aerosol concentrations among participant models are analyzed, including possible reasons for the inconsistency. Thirdly, characteristics of aerosol compositions in six metropolitans in East Asia are analyzed, which may be helpful to take measures to prevent and control air pollutions in future.

The description of model configurations, model inputs and observations are presented in Section 2. The evaluation for model performance and the inter-comparison between participant models are shown in Section 3. The conclusions and discussions are presented in Section 4.

## 2 Inter-comparison framework

Fourteen regional models (M1-M14) participated in MICS-Asia phase III Topic 1. All models were required to run for

the whole year of 2010, and provide gridded monthly simulation results of aerosols in the first model layer. These CTMs include the Weather Research and Forecasting model coupled with Community Multiscale Air Quality (WRF–CMAQ), the Weather Research and Forecasting Model coupled with Chemistry (WRF–Chem), the nested air quality prediction model system (NAQPMS), the non–hydrostatic mesoscale model coupled with chemistry transport model (NHM–Chem), the global three–dimensional chemical transport model (GEOS–Chem), and the Regional Atmospheric Modeling System coupled with Community Multiscale Air Quality (RAMS–CMAQ). Among these models, there are three different versions of WRF–CMAQ (v5.0.2 is used by M1 and M2, v5.0.1 is used by M3, and v4.7.1 is used by M4, M5 and M6), four different versions of WRF–Chem (v3.7.1 is used by M7, v3.6.1 is used by M8, v3.6 is used by M9, and v3.5.1 is used by M10), one version of NAQPMS (M11), NHM–Chem (M12), GEOS–Chem (v9.1.3 is used by M13) and RAMS–CMAQ (v4.6 is used by M14). Basic information about the configurations of each model is summarized in Table 1.

## **2.1 Model configurations**

### **2.1.1 Simulation domain**

A unified simulation domain was designed by MICS–Asia organizers, which covers the region of (15.4 °S–58.3 °N, 48.5 °E–160.2 °E) with 180×170 grid points at 45 km horizontal resolution, but participant models employed different modeling domains (Fig. 1) with different grid resolutions (e.g. 0.5 ° of latitude × 0.667 ° of longitude in M13, 64 km × 64 km in M14, others are 45 km × 45 km). In order to minimize the influence from lateral boundary conditions and to cover most areas of interest in East Asia, an analyzed region was chosen in this manuscript (Fig. 1). For M13 and M14, missing values were used to fill the grids outside their simulation domains. Meanwhile, the analyzed region was divided into five different areas (Region\_1 to Region\_5). Region\_1 contains Korean Peninsula and Japan. Region\_2 only contains China. Region\_3 contains Mongolia and parts of Russia. Region\_4 covers most countries in Southeast Asia. Region\_5 contains most countries in South Asia. Therefore, simulation results in each sub–region can be analyzed and compared to show the performance of current CTMs.

### **2.1.2 Gas and aerosol modules**

Gas phase chemistry and aerosol chemistry are important parameterizations in CTMs. Luecken et al. (2008) and Balzarini et al. (2015) pointed out that different settings of chemical mechanisms could influence the simulation results significantly.

#### **2.1.2.1 Gas phase chemistry**

(1) The gas chemistry of SAPRC99 (Statewide Air Pollution Research Center 99) was used in M1, M2, M4, M5, M6, M12 and M14. It is a detailed mechanism for the gas–phase atmospheric reactions of VOCs and NO<sub>x</sub> in urban and regional atmosphere (Carter, 2000). The SAPRC99 mechanism has already been incorporated into CMAQ v4.6 with about 72 species

and 214 reactions. Meanwhile, another three heterogeneous chemistry reactions of  $\text{N}_2\text{O}_5$ ,  $\text{HO}_2$  and  $\text{NO}_2$  are also considered in the SAPRC99 gas phase chemistry in M12 (Kajino et al., 2018).

(2) The Carbon Bond mechanism (CB05) was used in M3. It describes tropospheric oxidant chemistry and provides a basis for computer modeling studies of ozone, particulate matter, visibility, acid deposition and air toxics issues, with 51 species and 156 reactions (Yarwood et al., 2005).

(3) The second generation Regional Acid Deposition Model (RADM2) gas phase chemical mechanism was used in M9 and M10. The inorganic species considered in RADM2 include 14 stable species, 4 reactive intermediates and 3 abundant stable species. The organic chemistry is represented by 26 stable species and 16 peroxy radicals (Stockwell et al., 1990). This module can simulate the concentrations of PAN,  $\text{HNO}_3$  and  $\text{H}_2\text{O}_2$  under different environmental conditions (Stockwell et al., 1990).

(4) Based on RADM2, the Regional Atmospheric Chemistry Mechanism (RACM) was developed with updated reaction rate constants and product yields according to more recent laboratory measurements. It is capable of simulating the troposphere from the Earth's surface through the upper troposphere, and is valid for simulating remote to polluted urban conditions (Stockwell et al., 1997). M7 and M8 selected the RACM module. The rate coefficients were further updated in M7 (Kim et al., 2009). However, heterogeneous hydrolysis of  $\text{N}_2\text{O}_5$  is not considered in M7 and M8.

(5) The gas chemistry of Carbon-Bond Mechanism version Z (CBMZ) was used in M11. This lumped-structure mechanism extends the original framework of CBM-IV to function properly at larger spatial and longer timescales, with revised inorganic chemistry, isoprene chemistry, and many other related parameterizations (Zaveri and Peters, 1999).

(6) In M13, the  $\text{NO}_x\text{-O}_x\text{-HC-Br}$  tropospheric gas chemistry mechanism was used. It includes about 80 species and 300 chemical reactions (Bey et al., 2001; Zhu et al., 2017).

Jimenez et al. (2003), Luecken et al. (2008) and Yang et al. (2018) summarized that different gas-phase chemistry mechanisms could predict large variations in reactive species, such as  $\text{HO}_2$  and  $\text{NO}_3$ , making the production of OH and  $\text{H}_2\text{O}_2$  different. In addition to the different number of species and reactions considered in each gas module, the reaction rates of the oxidation of  $\text{SO}_2$ ,  $\text{NO}_x$  and some VOCs to condensable  $\text{SO}_4^{2-}$ ,  $\text{NO}_3^-$  and organic species are also largely different (Pan and Zhang, 2008). All these would affect the simulated aerosol concentrations, especially under the urban condition.

### 2.1.2.2 Aerosol chemistry

(1) AERO with ISORROPIA: Aerosol modules (AERO5 and AERO6) with thermodynamic equilibrium models (ISORROPIA v1.7 and v2) were used in M1, M2, M3, M4, M5, M6, M11, M12 and M14. Aerosols in AERO were divided into three modes: Aitken, accumulation and coarse modes. Gas-liquid-solid equilibrium in inorganic aerosol was predicted by the ISORROPIA model. The AERO5 ISORROPIA (v1.7) was mainly used in CMAQ v4, and the updated AERO6 ISORROPIA (v2) has been implemented since CMAQ v5. Nine new PM species (e.g.  $\text{Ca}^{2+}$ ,  $\text{K}^+$  and  $\text{Mg}^{2+}$ ) were added in the new aerosol module of AERO6. In order to support the additional crustal ion emissions introduced in AERO6, ISORROPIA (v1.7) was replaced by ISORROPIA (v2) (Nenes et al, 1998; Fountoukis and Nenes, 2007), and the

corresponding modifications could affect the gas–particle partitioning of  $\text{NO}_3^-$  and  $\text{NH}_4^+$ . The rate constants for the S (IV) to S (VI) conversion through in–cloud oxidation pathways were also modified, including the catalysis effects through aqueous chemistry from Fe and Mn (Appel et al., 2013). In order to solve the over–predictions of the unspiciated  $\text{PM}_{2.5}$  (also called  $\text{PM}_{\text{other}}$ ) in CMAQ v4, detailed speciation profiles derived from Reff et al. (2009) were adopted in CMAQ v5 to  
5 subdivide the emissions of  $\text{PM}_{\text{other}}$  into primary  $\text{NO}_4^+$ ,  $\text{Na}^+$ ,  $\text{Cl}^-$  and other selected trace elements. Comparing with CMAQ v4.6, a new parameterization of heterogeneous  $\text{N}_2\text{O}_5$  hydrolysis was included in CMAQ v4.7 to improve the simulation results of  $\text{NO}_3^-$ . Comparing with CMAQ v5.0.1, a mass balance correction of  $\text{NO}_3^-$  aerosol under cold conditions was adopted in CMAQ v5.0.2. This adjustment would reduce the concentration of  $\text{NO}_3$  and  $\text{HNO}_3$  at the surface level.

(2) MADE/SORGAM and MADE/VBS: Detailed treatments of inorganic aerosol effects in M7, M8 and M9 were  
10 simulated by Modal Aerosol Dynamics Model for Europe (MADE). Three log–normal modes (Aitken, accumulation and coarse modes) were used in this module to present the particle size distribution of submicrometer aerosol, such as  $\text{SO}_4^{2-}$ ,  $\text{NO}_3^-$ ,  $\text{NH}_4^+$ , BC, OC and aerosol water (Ackermann et al., 1998). Aerosols were assumed to be internally mixed in the same mode but externally mixed among different modes (Zhao et al., 2010). The organic chemistry used in M7 and M9 was based on SORGAM (Secondary Organic Aerosol Model). This model was capable of simulating SOA formation including the  
15 production of low–volatility products and their subsequent gas–particle partitioning (Schell et al., 2001), but all activity coefficients were assumed to be 1 due to insufficient information. However, when it was coupled with MADE, the biogenic precursors and their resulting particle concentrations were set to be zero. The organic chemistry used in M8 was based on the Volatility Basis Set (VBS) approach (Ahmadov et al., 2012). This module used the volatility basis set framework to simulate primary organic aerosol partitioning between the gas and particulate phases and the gas–phase oxidation of the  
20 corresponding vapors (Murphy and Pandis, 2009).

(3) GOCART: The Goddard Chemistry Aerosol Radiation and Transport (GOCART) model was used in M10 to simulate tropospheric aerosol components, such as  $\text{SO}_4^{2-}$ , dust, BC, OC and sea–salt aerosols ( $\text{NO}_3^-$  and  $\text{NH}_4^+$  are not considered), and all these aerosol species were assumed to be log–normal size distributions (Chin et al., 2000).  $\text{SO}_4^{2-}$  was formed by the oxidation of  $\text{SO}_2$  in the atmosphere, but the impacts from in–cloud oxidation pathways were not included  
25 (Chin et al., 2002). The source emission of BC and OC was mainly from biomass burning. Dust emission was following Ginoux et al. (2001). Sea–salt emission was highly dependent on wind speed. More details about the simulations of dust and sea–salt aerosols in GOCART will be described in Section 2.1.3 and 2.1.4.

Different chemical species are considered in numerous aerosol equilibrium models, resulting in different equilibrium partitioning and water uptake during the simulation processes, which can affect the predicted aerosol concentrations  
30 (Fountoukis and Nenes, 2007). As Moya et al. (2002) and Wang et al. (2012b) classified that the treatment of crustal material in aerosol chemistry could considerably improve model results in predicting the partitioning of  $\text{NO}_3^-$  and  $\text{NH}_4^+$ . Different heterogeneous reactions and their activity coefficients used in the thermodynamic equilibrium would also be a major source of uncertainty in simulated aerosol concentrations (Li et al., 2012a; Kim et al., 2011; Chen et al., 2016a).

### 2.1.3 Dust scheme

Natural emissions of windblown dust have been explicitly parameterized since CMAQ v5 (Foroutan et al., 2017), but all the participated WRF–CMAQ models did not turn this option on, which means dust aerosols were not considered in M1–M6. Meanwhile, the dust scheme in M7 and M8 was also turned off.

Dust particles in M10 and M13 were simulated by the GOCART model (Ginoux et al., 2001). This model includes eight size groups of mineral dust ranging from 0.1 to 10  $\mu\text{m}$ . The emission flux for a size group can be expressed as follows:  $F = C \times S \times s_p \times u_{10}^2 \times (u_{10} - u_t)$ , if  $u_{10} > u_t$ , where  $C$  is a constant with the value of  $1 \mu\text{g s}^2 \text{m}^{-5}$ .  $S$  means the probability source function, representing the fraction of alluvium available for wind erosion.  $s_p$  is the fraction of each size group within the soil.  $u_{10}$  and  $u_t$  are the wind speed at 10 m and threshold velocity of wind erosion, respectively.

A simplified dust emission parameterization proposed by Shao (2001) was used in M9 (Shao, 2004). Dust emission in Shao\_2004 is proportional to streamwise saltation flux, and the proportionality depends on soil texture and soil plastic pressure. The size-resolved dust flux goes into four size bins, with diameters ranging from 1.95 to 20  $\mu\text{m}$  (Kang et al., 2011). More detail about the dust emission rate and the total dust flux can be found in Shao (2004).

A size-segregated dust deflation module proposed by Wang et al. (2000) was used in M11. It was developed based on three major predictors (friction velocity, surface humidity and dominant weather system), and has been successfully applied in many dust-related simulations (Wang et al., 2002; Yue et al., 2010). The dust flux  $F$  is calculated as follows:  $F = C \times \frac{\rho_a}{g} \times E \times u^{*3} \times \left(1 + \frac{u_0^*}{u^*}\right) \times \left(1 - \frac{u_0^{*2}}{u^{*2}}\right) \times \left(1 - \frac{RH}{RH_0}\right)$ , where  $C$  equals to  $10^{-5}$ ,  $\rho_a$  means air density,  $g$  is gravitational acceleration.  $E$  is the weighting factor, representing the uplifting capability of land surface.  $u_0^*$  and  $u^*$  are the fraction and threshold friction velocities, respectively.  $RH$  and  $RH_0$  are relative humidity and threshold relative humidity, respectively. According to soil categories and vegetation coverage, the dust emission intensity was further modified by Luo and Wang (2006). Four size bins of dust particles ranging from 0.43 to 10  $\mu\text{m}$  were considered in this emission module. Meanwhile, several heterogeneous reactions on dust particles were also considered (Li et al., 2012a).

An empirical dust emission mechanism based on the approach of Gillette and Passi (1988) was used in M12 and M14 (Han et al., 2004). Dust flux can be calculated through the following formula:  $F = C \times u_*^4 \times \left(1 - \frac{u_*}{u}\right) \times (1 - f \times R)$ , if  $u > u_*$ , where  $u$  and  $u_*$  are the friction and the threshold friction velocities, respectively.  $C$  is the correction coefficient ( $1.4 \times 10^{-15}$ ).  $f$  and  $R$  represent the fractional coverage of vegetation and the reduction factor in a model grid. Dust particles with diameters ranging from 0.43 to 42  $\mu\text{m}$  were grouped into 11 bins, with the first eight bins below 11  $\mu\text{m}$  for aerosol sampler, and the additional three bins above 11  $\mu\text{m}$  for larger particles (Han et al., 2004).

Different dust schemes will produce different dust emission fluxes over arid and semi-arid regions (Zhao et al., 2010; Su and Fung, 2015). Several factors, such as potential source regions, threshold friction velocity, size distribution, and other surface and soil-related parameters used in equations can be the primary causes for the inconsistency, and the differences in simulated dust emissions will affect the characteristics of spatial–temporal variations of atmospheric aerosol particles.



## 2.1.4 Sea-salt scheme

As one of the major components of primary aerosols, sea-salt aerosols contributes to 20–40% of secondary inorganic aerosols (SIAs) over coastal regions (Liu et al., 2015; Yang et al., 2016). These particles can provide surface areas for condensation and reaction of nitrogen and sulfur, making the simulated concentrations of SIAs more accurate (Kelly et al., 2010; Im, 2013).

In M12, the method of Clarke et al. (2006) was used to simulate the sea-salt emissions as follows:  $S_{100} = \frac{C_s \times k \times V_{wind} \times h}{A_{avg} \times L + 0.5 \times w_0}$ . The sea-salt source function ( $S_{100}$ ) is defined as the number of sea-salt aerosols generated per unit area of ocean surface completely covered by bubbles (100% coverage) per unit time.  $C_s$  is the differences of condensation nuclei concentrations collected at 5 m (impacted by breaking waves) and 20 m (background values).  $k$  is the multiplier for tower  $C_s$  compared to mean profile.  $V_{wind}$  means surf zone wind speed.  $h$  is the height of plume layer for beach profile.  $A_{avg}$  represent mean bubble fractional coverage area between waves.  $L$  is the distance wave travels to shore, and  $w_0$  is the initial width of breaking wave bubble front.

In other participating models (sea-salt emission is not considered in M7 and M8), sea-salt emissions were simulated online by using the algorithm proposed by Gong et al. (2003). The density function  $\frac{dF}{dr}$  ( $\text{m}^{-2} \text{s}^{-2} \mu\text{m}^{-1}$ ) is calculated as follows:

$\frac{dF}{dr} = 1.373 \times u_{10m}^{3.41} \times r^{-A} \times (1 + 0.057 \times r^{3.45}) \times 10^{1.607e^{-B^2}}$ , where  $u_{10m}$  is the 10 m wind speed,  $r$  is the particle radius at RH=80%.  $A$  represents an adjustment parameter, which control the shape of submicron size distribution.  $B = (0.433 - \log_{10}(r))/0.433$ , meaning a parameter related to particle radius. In CMAQ model, the sea-salt scheme was updated by Kelly et al. (2010) to enhance the emission of sea-salt from coastal surf zone, and to allow dynamic transfer of  $\text{HNO}_3$ ,  $\text{H}_2\text{SO}_4$ ,  $\text{HCl}$ , and  $\text{NH}_3$  between coarse particles and gas phase. In GEOS-Chem model, it was updated by Jaegle et al. (2011) to improve the simulation of sea-salt with dry radii smaller than 0.1  $\mu\text{m}$ .

## 2.2 Model inputs

Based on the experience concluded from Phase I and Phase II, all the fourteen models in Phase III Topic 1, in principle, were required to use the “standard” meteorological fields, emission inventories and boundary conditions in order to reduce the potential diversities caused by model inputs. But different data were selected by participant models. In this section, some basic information about the model inputs are described.

### 2.2.1 Meteorological fields

The “standard” hourly meteorological fields were simulated by the Weather Research and Forecasting Model (WRF v3.4.1) with the initial and lateral boundary conditions taken from the National Center for Environmental Prediction (NCEP) Final Analysis (FNL) data. Four-dimensional data assimilation nudging toward the NCEP FNL data was also adopted to increase the accuracy of simulated meteorological variables. The reference meteorological fields were only used in M1–M6

and M11. For M7, M8 and M9, the standard meteorological simulation was run by the same model (WRF), but feedbacks between meteorological variables and pollutants were also considered in these WRF–Chem models. For M10, the Modern Era Retrospective–analysis for Research and Applications (MERRA) reanalysis were used to driven the WRF (v3.5.1) model. The outputs from the Japan Meteorological Agency (JMA) non–hydrostatic mesoscale model (NHM) were used to initialize M12 (Kajino et al., 2012). M13 was driven by assimilated meteorological data from the Goddard Earth Observing System (GEOS) of NASA’s Global Modeling and Assimilation Office (Chen et al., 2009; Li et al., 2016c). Although the meteorological initial and lateral boundary conditions were taken from the same NCEP FNL data, three dimensional meteorological fields used in M14 were simulated by Regional Atmospheric Modeling System (RAMS) (Zhang et al., 2002, 2007; Han et al., 2009, 2013). Consequently, different meteorological fields used in the fourteen participant models will cause different atmospheric circulation characteristics, which can further influence the spatial–temporal variation of air pollutants (Gao et al., 2018ACP).

### 2.2.2 Emission inventories

All participant models utilized the “standard” emission inventory, including anthropogenic, biogenic, biomass burning, air and ship, and volcano emissions, which was prepared by the emission group in MICS–Asia phase III. The anthropogenic emission dataset over Asia, named MIX, was developed by harmonizing five regional and national emission inventories with a mosaic approach. These five inventories are REAS2 (REAS inventory version 2.1 for the whole of Asia, Kurokawa et al., 2013), MEIC (the Multi-resolution Emission Inventory for China developed by Tsinghua University), PKU–NH<sub>3</sub> (a high–resolution NH<sub>3</sub> emission inventory by Peking University, Huang et al., 2012), ANL–India (an Indian emission inventory developed by Argonne National Laboratory, Lu et al., 2011), and CAPSS (the official Korean emission inventory form the Clean Air Policy Support System, Lee et al., 2011). The MIX inventory includes ten species (SO<sub>2</sub>, NO<sub>x</sub>, CO, CO<sub>2</sub>, NMVOC (non–methane volatile organic compounds), NH<sub>3</sub> (ammonia), BC (black carbon), OC (organic carbon), PM<sub>2.5</sub> and PM<sub>10</sub>) in each sector (power, industry, residential, transportation, and agriculture), and is developed for the year 2010 with monthly temporal resolution and 0.25 degree spatial resolution. More details can be found in Li et al. (2017b). Weekly and diurnal profiles of the anthropogenic emissions provided by the emission group were used in model simulations, including the emission factors for the first seven vertical levels (Fig. S1). Biogenic emissions were calculated by the Model of Emissions of Gases and Aerosols from Nature (MEGAN) version 2.04 (Guenther et al., 2006). In MEGAN v2.04, meteorological variables (e.g. solar radiation, air temperature, soil moisture) and land cover information (e.g. leaf area index and plant functional types) were necessary inputs, and these data were obtained from the WRF v3.4.1 simulation results and MODIS (Moderate Resolution Imaging Spectroradiometer) products, respectively. Biomass burning emissions were processed by re–gridding the Global Fire Emissions Database (GFED) version 3 (van der Werf et al., 2010), and the diurnal profile was also provided. The aircraft and shipping emissions were based on the 2010 HTAPv2 (Hemispheric Transport of Air Pollution) emission inventory (0.1 by 0.1 degree) (Janssens–Maenhout et al., 2015). Daily volcanic SO<sub>2</sub> emissions were collected from the AEROCOM program (<http://www-lscedods.cea.fr/aerocom/AEROCOM\HC\volc/>, Diehl et al., 2012;

Stuefer et al., 2013). The spatial distribution of the merged emissions of SO<sub>2</sub>, NO<sub>x</sub>, NH<sub>3</sub> and PM<sub>2.5</sub> from anthropogenic, biogenic, biomass burning, air and ship, and volcano emissions are shown in Fig. S2. Similar spatial patterns can be found among the four species, with high values in eastern China and northern India.

### 2.2.3 Boundary conditions

5 Two sets of the chemical initial and boundary conditions (CHASER and GEOS–Chem) were provided by MICS–Asia phase III. The 3–hourly global CTM outputs of CHASER (prepared by Nagoya University, Sudo et al., 2002a; Sudo et al., 2002b) was run with 2.8 °×2.8 °horizontal resolution and 32 vertical layers. The hourly outputs from GEOS–Chem (prepared by University of Tennessee, <http://acmg.seas.harvard.edu/geos/>) was run with 2.5 °×2 °horizontal resolution and 47 vertical layers. All participant models, except M2, M7 and M10, chose between them. For M2 and M7, the default chemical  
10 boundary condition provided by CMAQ and WRF–Chem were used, respectively. For M10, the global GOCART simulations were used for atmospheric aerosols.

### 2.3 Coupled meteorology and chemistry modelling methods

As is known to all that meteorological fields have significant influences on air quality. Meanwhile, atmospheric compositions can also affect weather and climate. As Gao et al. (2018ACP) pointed out that different coupling methods  
15 between aerosols and meteorological variables can cause different simulation results.

In order to simulate the concentrations of air pollutants, meteorological models and chemistry transport models should be implemented either offline or online (Kong et al., 2015). Offline modeling implies that CTM is run after the meteorological simulation is completed, which means the chemical impacts on meteorology are not considered. Online modeling allows coupling and integration of some of the physical and chemical components (Baklanov et al., 2014).  
20 According to the extent of online coupling, there are two ways of coupling: (1) online integrated coupling (meteorology and chemistry are simulated simultaneously in the same grid) and (2) online access coupling (meteorology and chemistry are independent, but information can be exchanged between meteorology and chemistry) (Baklanov et al., 2014). Among these participating models, M4, M5, M6, M12, M13 and M14 are offline models. M1, M2, M3 and M11 are online access models. M7, M8, M9 and M10 are online integrated models.

25 More details about the model configurations can be found in Table 1 and the other MICS–Asia Phase III companion papers (Kong et al., 2019; Li et al., 2019).

### 2.4 Observation data

Monthly observations of SO<sub>4</sub><sup>2-</sup>, NO<sub>3</sub><sup>-</sup>, NH<sub>4</sub><sup>+</sup>, PM<sub>2.5</sub> and PM<sub>10</sub> collected from 39 stations of the Acid Deposition Monitoring Network in East Asia (EANET) were used to evaluate the simulations. Common quality assurance and quality  
30 control standards promoted by the ADORC (Acid Deposition and Oxidant Research Center) were adopted among these EANET stations to guarantee high quality dataset. More information about the EANET dataset can be found at

<http://www.eanet.asia/index.html>. In addition to the EANET data, monthly mean concentrations of air pollutants (e.g. SO<sub>2</sub>, NO<sub>2</sub>, PM<sub>2.5</sub> and PM<sub>10</sub>) over the Beijing–Tianjin–Hebei (BTH) region (19 sites) and the Pearl River Delta (PRD) region (13 sites) provided by the China National Environmental Monitoring Center (CNEMC) were also used to compare with the simulation results from participating models.

As is known to all, China has been experiencing heavy air pollution with high concentrations of fine particles. Recent studies highlighted the importance of secondary aerosols in the formation of haze episodes (Liu et al., 2013; Sun et al., 2016a; Chen et al., 2018). However, observations (e.g. SO<sub>4</sub><sup>2-</sup>, NO<sub>3</sub><sup>-</sup> and NH<sub>4</sub><sup>+</sup>) in China were only available at one EANET site (the Hongwen site). In order to make the model evaluation more credible, observed monthly/seasonal/yearly concentrations of BC, SO<sub>4</sub><sup>2-</sup>, NO<sub>3</sub><sup>-</sup>, NH<sub>4</sub><sup>+</sup> and PM<sub>2.5</sub> in China were also collected from published literatures.

Aerosol Robotic Network (AERONET), a ground-based remote-sensing aerosol network consisting of worldwide automatic sun- and sky-scanning spectral radiometers (Holben et al., 1998), provides the aerosol optical depth (AOD) products at 440 nm and 675 nm, which can be used to calculate the AOD at 550 nm according to the Angström exponent. The AERONET Level 2.0 monthly AOD data (cloud-screened and quality-assured data) at 33 sites were utilized in this study. Meanwhile, satellite-retrieved 550 nm AOD products from the Moderate Resolution Imaging Spectroradiometer (MODIS) were also used to compare with simulations.

Figure 2 and Figure S3 show the geographical locations of all the observation sites. Most SO<sub>4</sub><sup>2-</sup>, NO<sub>3</sub><sup>-</sup> and NH<sub>4</sub><sup>+</sup> monitoring sites are located in China, Japan and the Southeast Asia. Three PM<sub>10</sub> sites are located in the Southeast Asia, while others are in China and Japan. Detailed information about these stations is listed in Table S1 and Table S2.

In general, the wide variety of measurements from in-situ and satellites used in this manuscript can allow for a rigorous and comprehensive evaluation of model performance.

### 3 Results

#### 3.1 Model evaluation

According to the objective of MICS–Asia Phase III Topic 1, comparisons of aerosol concentrations between observations and simulations are presented to evaluate the performance of current multi-scale air quality models in East Asia, including analyzing the similarities and differences between participant models. Simulation results of BC, OC, SO<sub>4</sub><sup>2-</sup>, NO<sub>3</sub><sup>-</sup>, NH<sub>4</sub><sup>+</sup>, PM<sub>2.5</sub>, PM<sub>10</sub> and AOD are requested to submit for the project, but no data can be acquired from M10, and extremely large values are predicted by M3. Therefore, only twelve models are actually considered in this manuscript. Among the twelve models, AOD is missing in M5, M6 and M8, PM<sub>10</sub> is missing in M13, OC is missing in M7, BC and OC are missing in M9 (Table S3).

### 3.1.1 Evaluation for aerosol compositions

Figure 3 illustrates the observed and simulated ground level annual mean concentrations of BC,  $\text{SO}_4^{2-}$ ,  $\text{NO}_3^-$ ,  $\text{NH}_4^+$ ,  $\text{PM}_{2.5}$  and  $\text{PM}_{10}$ . Multi-model ensemble mean (MMEM), defined as the average of all available participating models (except M3 and M10), is presented to exhibit a composite of model performance. Normalized mean biases (NMBs) between observations and MMEM in each defined sub-region (Region\_1 to Region\_5) and the whole analyzed region (Region\_All) are also calculated.

Analyzing Fig. 3(a), we can find that most models show good skills in simulating the BC concentrations and their spatial distribution characteristics, with relative high values over large emission areas (e.g. North China) (Li et al., 2016c). But the NMB for MMEM is -15.8%. This underestimation may be attributed to the large negative bias at the Gucheng site (site 24) (NMB for MMEM is -38.3%). This station locates in the industrial province of Hebei, where air pollution is serious and BC emission is large (Wang et al., 2016c). Due to the low reactivity of BC in the atmosphere, the high uncertainty of BC in current emission inputs (Hong et al., 2017; Li et al., 2017b) may cause this underestimation.

For  $\text{SO}_4^{2-}$ , observations are relative low in Region\_1 (mean value is  $3.8 \mu\text{g m}^{-3}$ ), Region\_3 (mean value is  $2.5 \mu\text{g m}^{-3}$ ) and Region\_4 (mean value is  $3.5 \mu\text{g m}^{-3}$ ), and most models (except M7, M9 and M14) perform well over these areas (NMBs range from -26.3% to 30.0%). In Region\_2, all the observed concentrations of  $\text{SO}_4^{2-}$  are larger than  $10 \mu\text{g m}^{-3}$  (mean value is  $16.9 \mu\text{g m}^{-3}$ ), but models fail to reproduce the high magnitude. As Zheng et al. (2015) and Shao et al. (2019) pointed out that missing sulfate formation mechanisms (e.g. heterogeneous sulfate chemistry) on aerosol in current air quality models may result in this underestimation, especially in China where significant increase of secondary aerosols (such as sulfate) can be observed during polluted periods (Liu et al. 2015). A large variance is also simulated among models, e.g. M14 overpredicts the ground-level  $\text{SO}_4^{2-}$  concentrations, especially in Region\_1 (NMB=118.6%). This significant overestimation in coastal stations may be caused by its high concentrations of sea salt aerosols (Fig. 10), which makes the sea-salt sulfate higher. Meanwhile, M7 and M9 obviously underpredict  $\text{SO}_4^{2-}$  at nearly all sites (NMB=-73.5% and -71.7%, respectively.). Generally, MMEM can well reproduce the spatial variation of  $\text{SO}_4^{2-}$ , but the predicted concentration is underestimated, especially in Region\_2 (NMB=-43.5%) and Region\_3 (NMB=-35.3%).

For  $\text{NO}_3^-$ , low concentrations are observed in Region\_1 ( $1.5 \mu\text{g m}^{-3}$ ), Region\_3 ( $0.6 \mu\text{g m}^{-3}$ ) and Region\_4 ( $1.8 \mu\text{g m}^{-3}$ ), but high values are presented in Region\_2 ( $13.4 \mu\text{g m}^{-3}$ ), showing the similar spatial distribution characteristics as the observed  $\text{SO}_4^{2-}$ . In CTMs, there are two pathways about the nitrate formation. The dominant pathway is the homogeneous gas-phase reaction between  $\text{HNO}_3$  ( $\text{NO}_2$  oxidation by OH during the daytime) and  $\text{NH}_3$  under ammonia-rich conditions, and the second pathway is the heterogeneous hydrolysis of  $\text{N}_2\text{O}_5$  on aerosol surface at night in ammonia-poor environment (Seinfeld and Pandis, 2006; Archer-Nicholls et al., 2014). As  $\text{NH}_4\text{NO}_3$  is semi-volatile species, and the equilibrium surface concentration of  $\text{H}_2\text{SO}_4$  is set to be zero in CTMs, so  $(\text{NH}_4)_2\text{SO}_4$  is the preferential species in the completion when  $\text{H}_2\text{SO}_4$  and  $\text{HNO}_3$  are both present. Only if  $\text{NH}_3$  is excess, then  $\text{NH}_4\text{NO}_3$  will be formed. Analyzing the performance of each participant model,  $\text{NO}_3^-$  concentration is overpredicted by most models, and the underestimation of  $\text{SO}_4^{2-}$  can be used to

explain this overestimation (Chen et al., 2017). Meanwhile, the biases from model calculated gas-phase oxidation (e.g.  $\text{NO}_2 + \text{OH} \rightarrow \text{HNO}_3$ ) and/or gas-aerosol phase partitioning (e.g.  $\text{HNO}_{3(g)} + \text{NH}_{3(g)} \leftrightarrow \text{NH}_4\text{NO}_{3(s, aq)}$ ) may also result in the overestimation (Brunner et al., 2014; Gao et al., 2014). However, M7 and M8 significantly underestimate the observed  $\text{NO}_3^-$  concentrations (NMB $\sim$ -93.4%). One reason for the extremely low values may result from the incorrect concentrations of  $\text{NH}_3$  simulated by M7 and M8 (Fig. S4). As Chen et al. (2016) pointed out that the amount of  $\text{NH}_3$  in the atmosphere is a key factor in determining the  $\text{NO}_3^-$  concentration. Another reason for this underestimation is that M7 and M8 did not consider the impacts of  $\text{N}_2\text{O}_5$  heterogeneous reaction ( $\text{N}_2\text{O}_{5(g)} + \text{H}_2\text{O}_{(aq)} \rightarrow 2\text{HNO}_{3(aq)}$ ). Su et al. (2017) pointed out that the hydrolysis of  $\text{N}_2\text{O}_5$  can led up to 21.0% enhancement of  $\text{NO}_3^-$ , especially over polluted regions. Although the NMB calculated in Region\_All for MMEM is only -1.1%, MMEM systematically overpredicts observations in Region\_1 (NMB=45.2%) and Region\_3 (NMB=38.2%), but underpredicts in Region\_2 (NMB=-0.7%) and Region\_4 (NMB=-44.9%).

Simulated  $\text{NH}_4^+$  concentrations are influenced by the partitioning between gaseous  $\text{NH}_3$  and aerosol  $\text{NH}_4^+$ , and are also associated with the  $\text{SO}_4^{2-}$  and  $\text{NO}_3^-$  concentrations (Gao et al., 2018). Model predictions (except M7, M8 and M14) can reproduce the measurements relatively well in each defined sub-region. But significant overestimation is shown by M14, while significant underestimation is simulated by M7 and M8, especially in Region\_2 with NMBs of 72.2% for M14, -94.9% for M7, and -81.0% for M8, respectively. For M14, overestimated  $\text{SO}_4^{2-}$  and  $\text{NO}_3^-$  make the concentrations of  $\text{NH}_4^+$  higher, since more ammonium is required to neutralize particle-phase acid. For M7 and M8, extremely low concentrations of  $\text{NH}_3$  are simulated, which means fewer gaseous  $\text{NH}_3$  can be converted to aerosol  $\text{NH}_4^+$ . In general, the calculated NMB in Region\_All by MMEM is 4.0%.

On average, the observed  $\text{PM}_{2.5}$  concentration in Region\_2 is larger than  $50 \mu\text{g m}^{-3}$ , but the mean value in Region\_1 is only about  $10 \mu\text{g m}^{-3}$ . All participating models can generally capture this spatial distribution pattern. However, significant underestimation is simulated at the three remote stations (site 1, 2 and 7) in Region\_1 with the NMB of -39.0% for MMEM. Similar negative bias can also be found in Ikeda et al. (2013), who compared CMAQ (v4.7.1) simulation results against observations from the same remote monitoring stations (Rishiri and Oki) in 2010. Ikeda et al. (2013) pointed that the underestimated concentrations of organic aerosols may cause this bias. In Region\_2, the NMB for MMEM is -10.0%.

For  $\text{PM}_{10}$ , the mean observed concentrations in each region are  $26.6 \mu\text{g m}^{-3}$  (Region\_1),  $114.4 \mu\text{g m}^{-3}$  (Region\_2) and  $38.1 \mu\text{g m}^{-3}$  (Region\_4), respectively. But nearly all participant models (except M14) underestimate the  $\text{PM}_{10}$  concentrations. M14 predicts higher concentrations in Region\_1, especially at coastal sites, such as site 1 (Rishiri), site 2 (Ochiishi), site 4 (Sadoseki), site 7 (Oki) and site 14 (Cheju). The high-value anomalies in M14 at coastal stations can also be found in Fig. 10, and the positive bias may be caused by the emission and gravitational settling of sea salt. As Monahan and Muircheartaigh (1980) pointed out that sea salt emissions can be enhanced in the surf zone due to the increased number of wave breaking events, and the degree of the enhancement highly depends on the 10 m wind speed used in the whitecap coverage parameterization. According to the simulation results from published literatures, higher wind speed is simulated by M14

(RAMSCMAQ) when comparing with observations, especially at coastal stations (Han et al., 2013; Han et al., 2018). Meanwhile, a gravitational settling mechanism of coarse aerosols from upper to lower layers was added in M14, and the net effect of this update could make an increase in the concentrations of coarse particles, especially near coastal areas impacted by sea spray (Nolte et al., 2015). Generally, the NMB for MMEM in Region\_All is -31.0%.

Time series of the monthly observed and simulated aerosol compositions, including BC,  $\text{SO}_4^{2-}$ ,  $\text{NO}_3^-$ ,  $\text{NH}_4^+$ ,  $\text{PM}_{2.5}$  and  $\text{PM}_{10}$ , are shown in Fig. 4 and Fig. 5. According to the pre-defined sub-regions as illustrated in Fig. 2, all simulations and observations are grouped into the five regions, with the modeling results sampled at the corresponding observation stations before averaging together.

The measured BC concentrations in Region\_2 exhibit an obvious seasonal variation, with the minimum ( $\sim 3.5 \mu\text{g m}^{-3}$ ) in spring and summer, and the maximum ( $\sim 8 \mu\text{g m}^{-3}$ ) during late autumn and winter. Participant models can capture this seasonality quite well, and nearly all simulation results are within the standard deviation of the observations, but a large inter-model variation is also simulated, especially in winter when BC concentration is high. Due to its low reactivity in the atmosphere, this variation may be caused by their simulated meteorological conditions, including the impacts of different coupling ways between meteorological and chemical modules (Gao et al., 2015b). As Briant et al. (2017) and Huang et al. (2018) concluded that the online integrated models can simulate higher BC concentrations than offline models, especially during polluted periods. The correlation coefficient in MMEM is 0.73.

For  $\text{PM}_{2.5}$ , the observed monthly concentrations in Region\_2 are higher than those in Region\_1. This is because the emissions in China are larger than that in Japan and Korean Peninsula (Fig. S2). But nearly all models tend to underpredict the concentrations of  $\text{PM}_{2.5}$  in Region\_1, with NMBs ranging from -44.3% (in winter) to -22.7% (in summer) for MMEM. Comparing with the correlation coefficient ( $R=0.40$ ) in Region\_1, CTMs can better reproduce the seasonality of the observed  $\text{PM}_{2.5}$  in Region\_2, with the  $R$  of 0.69 for MMEM. Generally, the  $R$  for MMEM in Region\_All is 0.83 and the NMB ranges from -2.2% (in autumn) to 13.9% (in winter).

Similar temporal-variation characteristics of  $\text{PM}_{10}$  concentrations are observed in Region\_1, Region\_2 and Region\_4, with the maximum occurred in March and November, and the minimum occurred during summer. Most models fall within the standard deviation of the observations. The simulated  $\text{PM}_{10}$  concentrations in Region\_2 show less diversity, but nearly all models peak 2 months later. A distinctive seasonality can be found in Region\_4, with the highest value (nearly  $80 \mu\text{g m}^{-3}$ ) observed in March, but most models cannot reproduce this characteristic. This is because the GFED substantially underestimate the biomass burning emissions over Southeast Asia (Fu et al., 2012), especially during March–April when most intense biomass burning occurred in Myanmar, Thailand and other Southeast Asian countries (Huang et al., 2012), and the emission bias is mainly due to the lack of agricultural fires (Nam et al., 2010). Finally, a weak seasonality in  $\text{PM}_{10}$  is simulated by MMEM with  $R$  of 0.58 in Region\_4. In Region\_all, although consistent underestimation is simulated during the whole period, with NMB ranging from -40.8% to -25.2% for MMEM, the seasonal cycle can be well reproduced by MMEM with  $R$  of 0.78.

The seasonal variation characteristics of observed  $\text{SO}_4^{2-}$ ,  $\text{NO}_3^-$  and  $\text{NH}_4^+$  in Region\_1 are not obvious, with the annual

mean of  $\sim 4 \mu\text{g m}^{-3}$  for  $\text{SO}_4^{2-}$ ,  $1.5 \mu\text{g m}^{-3}$  for  $\text{NO}_3^-$  and  $1.0 \mu\text{g m}^{-3}$  for  $\text{NH}_4^+$ , respectively. A large inter-model spread of simulated  $\text{SO}_4^{2-}$  is shown in Fig. 5(a1), with the maximum variation range in June. Most models significantly overpredict the observed  $\text{NO}_3^-$  concentrations, especially in summer with the NMB of 164.3% for MMEN. Simulated monthly  $\text{NH}_4^+$  concentrations from most models are within the standard deviation of observations, and the R for MMEM is as high as 0.74.

5 In Region\_2, the observations are only available at one EANET site (the Hongwen site, located in the eastern coastal area of China), and the seasonality of observed  $\text{SO}_4^{2-}$ ,  $\text{NO}_3^-$  and  $\text{NH}_4^+$  from this station is obvious with the maximum in spring and winter, and the minimum in later summer and early autumn. Nearly all models tend to underpredict these concentrations, but the MMEM captures the seasonal cycle relative well with Rs of 0.57 for  $\text{SO}_4^{2-}$ , 0.85 for  $\text{NO}_3^-$  and 0.86 for  $\text{NH}_4^+$ , respectively. In Region\_3, the observed maximum concentrations of  $\text{SO}_4^{2-}$  and  $\text{NH}_4^+$  are in winter, but most models cannot  
10 reproduce the increasing tendency during the late autumn and the early winter, which means participant models fail to capture the seasonality (Rs of 0.20 for  $\text{SO}_4^{2-}$ , 0.34 for  $\text{NO}_3^-$  and 0.18 for  $\text{NH}_4^+$ , respectively). This may due to the low emission of primary aerosols and their precursors in Region\_3. Meanwhile, the Regional Emission Inventory in Asia (REAS v2.1) is used in Region\_3, which is calculated based on the emissions from 2000 to 2008 (Li et al., 2017b), not extended to the simulation year of 2010. The updated emissions with localized data may increase the accuracy of simulation results. In  
15 Region\_4, the simulated concentrations of  $\text{SO}_4^{2-}$ ,  $\text{NO}_3^-$  and  $\text{NH}_4^+$  are fairly good when compared with the measurements. The Rs of MMEM are 0.73 for  $\text{SO}_4^{2-}$ , 0.63 for  $\text{NO}_3^-$  and 0.73 for  $\text{NH}_4^+$ . Meanwhile, the model diversities are small. Generally, in Region\_All, MMEM can well reproduce the magnitudes of observed  $\text{SO}_4^{2-}$ ,  $\text{NO}_3^-$  and  $\text{NH}_4^+$  during the whole simulation period, as well as the seasonal variation characteristics.

As mentioned above, the observed monthly mean concentrations of aerosol compositions in China are only available at  
20 one EANET station (site 17, the Hongwen station), with missing values in June and October. In order to make the evaluation more comprehensive, observed seasonal mean concentrations of  $\text{SO}_4^{2-}$ ,  $\text{NO}_3^-$  and  $\text{NH}_4^+$  collected from published literatures are also used to compare with simulation results (Fig. S5). M2, M12 and M14 reasonably reproduce the  $\text{SO}_4^{2-}$  concentrations in the four seasons, while others fail to simulate the high observed  $\text{SO}_4^{2-}$  concentrations. The NMBs of  $\text{SO}_4^{2-}$  range from -79.4% (M7) to 12.8% (M14). On the contrary, nearly all participant models overestimate the concentrations of  
25  $\text{NO}_3^-$  (except M4, M7 and M8), with NMBs ranging from 1.7% (M5) to 50.2% (M9). The underestimation of  $\text{SO}_4^{2-}$  and the overestimation of  $\text{NO}_3^-$  may be the general performance in current CTMs (Wang et al., 2013b; Gao et al., 2014; Huang et al., 2014; Zheng et al., 2015), and some hypotheses should be deeply tested in future to reduce these deviations, such as (1) missing oxidation mechanisms of  $\text{SO}_2$  may lead to low concentrations of  $\text{SO}_4^{2-}$ , which allows for excess  $\text{NO}_3^-$  in the presence of ammonia, (2) there is an issue with  $\text{NO}_x$  partitioning and/or missing  $\text{NO}_x$  sink. Meanwhile, Seinfeld and Pandis  
30 (2006) pointed out that the chemical productions of  $\text{SO}_4^{2-}$  and  $\text{NO}_3^-$  are mainly from the gas-phase and/or liquid-phase oxidation of  $\text{SO}_2$  and  $\text{NO}_2$ . Therefore, further comparisons of observed and simulated  $\text{SO}_2$  and  $\text{NO}_2$  are shown in Fig. S6 and Fig. S7. From Fig. S6, participant models can generally reproduce the seasonality of the two gases, with Rs of 0.61 for  $\text{SO}_2$  and 0.65 for  $\text{NO}_2$ , respectively. But overestimations (underestimations) of  $\text{SO}_2$  ( $\text{NO}_2$ ) are found during most simulation



periods, not only in China, but also in other defined sub-regions (Fig. S7). The overestimated (underestimated) concentrations of  $\text{SO}_2$  ( $\text{NO}_2$ ) can be used to explain the underestimation (overestimation) of simulated  $\text{SO}_4^{2-}$  ( $\text{NO}_3^-$ ). However, significant underestimation of  $\text{NO}_3^-$  is also simulated by M7 and M8. As mentioned above, the extremely low concentrations of  $\text{NH}_3$  in M7 and M8 may be the main reason for this negative bias. Analyzing the results from ensemble mean, MMEM shows better performance than participating models, with NMBs of  $-46.0\%$  for  $\text{SO}_4^{2-}$ ,  $1.9\%$  for  $\text{NO}_3^-$  and  $13.1\%$  for  $\text{NH}_4^+$ , respectively.

### 3.1.2 Evaluation for aerosol optical depth

Simulated aerosol optical depth (AOD) at 550 nm from the nine participant models (M1, M2, M4, M7, M9, M11, M12, M13 and M14) are compared with the measurements from AERONET. From Fig. 6 we can find that most models tend to overpredict AOD values during the whole simulation period in Region\_1, Region\_2 and Region\_3 with NMBs of  $74.0\%$ ,  $38.8\%$  and  $107.0\%$  for MMEM, respectively. In Region\_4, an obvious seasonality is observed with the maximum in spring and the minimum in summer. Models can capture this seasonality well, although underestimation is found in spring. The R for MMEM is 0.65 and the NMB is  $-8.7\%$  in Region\_4. Smaller NMB ( $-4.2\%$ ) is calculated in Region\_5 by MMEM, but a quite weak seasonality is shown with underestimated AOD in spring and summer, and overestimated AOD in autumn and winter. Generally, simulated AOD values are within a standard deviation of the observations in Region\_All with a slight overestimation in autumn and winter. The MMEM can reproduce the seasonal cycle with R of 0.68, and the NMB for MMEM is  $18.7\%$ .

Figure 7 presents the spatial distributions of the observed and simulated AOD at 550 nm. MODIS AOD is collected from the Terra and Aqua satellites during the year 2010. The observed AOD from AERONET are also shown. In order to quantify the ability of each model in simulating the spatial distribution of aerosol particles, spatial correlation coefficients are also given in the bottom left corner of each panel. Analyzing the observations from MODIS, we can conclude that AOD values are higher in central and eastern China, including the Sichuan province, with the maximum over 1.0. High values can also be observed in the north India. Due to dust events happened in arid and semi-arid regions, AOD values over the Taklimakan are also large ( $\sim 0.5$ ). Comparing with MODIS AOD, most models can reproduce the spatial distribution characteristics, with high values in China and India, and low values in other countries. The Rs range from 0.78 (M12) to 0.86 (M1, M11 and M13). But most models tend to underestimate the AOD in the eastern coastal regions of China and the north regions of India (Fig. S8), where anthropogenic emissions are large. Meanwhile and dust particles can be frequently observed. Generally, MMEM captures the AOD spatial variation better with R of 0.87, and the mean bias is  $-0.08$ .

### 3.1.3 Statistics for aerosol particles and aerosol optical depth

Table 2 shows the statistics of correlation coefficient (R), normalized mean bias (NMB) and root-mean squared error (RMSE) for BC,  $\text{SO}_4^{2-}$ ,  $\text{NO}_3^-$ ,  $\text{NH}_4^+$ ,  $\text{PM}_{2.5}$ ,  $\text{PM}_{10}$  and AOD. Simulation results from participant models and MMEM are compared with available observations. Best results are set to be bold with underline.

It can be found that participant models are able to capture the variability of BC in China, with Rs ranging from 0.65 (M5) to 0.80 (M8), but nearly all models tend to underestimate the BC concentration, except M1 and M2. The maximum negative deviation is simulated by M5 (NMB=−54.9%), while the maximum positive deviation is from M2 with NMB of 12.7%. All the RMSEs are less than the observed mean concentration of BC ( $5.0 \mu\text{g m}^{-3}$ ). Comparing to the observed  $\text{SO}_4^{2-}$ , most models fail to reproduce the high values, and the NMB for MMEM is −19.1%, meaning the underestimation of the simulated  $\text{SO}_4^{2-}$  concentration is a general phenomenon in current CMTs. Implementing more detailed sulfate aerosol formation mechanisms (e.g. heterogeneous reaction and catalytic oxidation) into air quality models may improve the accuracy of simulation results (Huang et al., 2014, Zheng et al., 2015; Fu et al., 2016). But most models can capture the variation of  $\text{SO}_4^{2-}$  with Rs ranging from 0.46 (M14) to 0.76 (M13). For  $\text{NO}_3^-$ , Rs vary from 0.29 (M8) to as high as 0.65 (MMEM). M5 shows the largest correlation (0.65) and the smallest NMB (−1.7%) among models. Although a high value of R (0.64) is calculated by M9, the NMB is the largest (125.7%). All RMSEs are larger than the measured  $\text{NO}_3^-$  ( $1.7 \mu\text{g m}^{-3}$ ), meaning a relative poor performance for current CTMs to simulate the  $\text{NO}_3^-$  concentrations in East Asia. For  $\text{NH}_4^+$ , underestimation can be found in M4, M7 and M8, while the others tend to overestimate the  $\text{NH}_4^+$  concentration. Although all RMSEs are larger than the observed  $\text{NH}_4^+$  (mean value is  $1.1 \mu\text{g m}^{-3}$ ), most models can capture the variability, with Rs ranging from 0.34 (M8) to 0.75 (M9). Generally, MMEM matches the observations with R of 0.71, NMB of 14.0% and RMSE of  $1.11 \mu\text{g m}^{-3}$ , respectively. Although significant underprediction is found in  $\text{PM}_{10}$  (NMBs range from −55.7% in M5 to −16.9% in M9, except M14) and the inter-model spread is large in  $\text{PM}_{2.5}$  (NMBs range from −26.5% in M13 to 46.0% in M14), the variations of simulated  $\text{PM}_{2.5}$  and  $\text{PM}_{10}$  are well correlated with measurements ( $R_s > 0.60$ ) and the RMSEs are all smaller than the averaged concentrations ( $51.4 \mu\text{g m}^{-3}$  for  $\text{PM}_{2.5}$ ,  $80.7 \mu\text{g m}^{-3}$  for  $\text{PM}_{10}$ ). For AOD, large positive deviations are simulated by M2, M9, M11, M13 and M14, but these models can reproduce the spatial-temporal variation characteristics relative well with Rs larger than 0.5. M4 and M7 show the large negative deviation with NMBs of −28.5% and −21.8%, respectively. But their RMSEs are relative small (0.16 for M4 and 0.18 for M7). Generally, the R, NMB and RMSE for MMEM are 0.68, 18.7% and 0.14, respectively.

### 3.2 Inter-comparison between MICS–Asia Phase II and Phase III

The main purpose of MICS–Asia Phase III Topic 1 is to assess the ability of current multi-scale air quality models to reproduce the air pollutant concentrations in East Asia. In order to reveal the improvements of the simulation ability in current CTMs, statistics (e.g. RMSE and R) for observed and simulated  $\text{SO}_4^{2-}$ ,  $\text{NO}_3^-$  and  $\text{NH}_4^+$  from MICS–Asia Phase II and Phase III are compared in Fig. 8.

The statistics of MICS–Asia Phase II are taken from Hayami et al. (2008). The observed monthly mean concentrations are monitored with high completeness at the fourteen EANET stations in March, July and December 2001 and March 2002, and the model-predicted monthly surface concentrations are from eight regional CTMs. Notably,  $\text{NO}_3^-$  and  $\text{NH}_4^+$  used in Hayami et al. (2008) are total  $\text{NO}_3^-$  (= gaseous  $\text{HNO}_3$  + particulate  $\text{NO}_3^-$ ) and total  $\text{NH}_4^+$  (= gaseous  $\text{NH}_3$  + particulate

$\text{NH}_4^+$ ), respectively. More detailed information can be found in Hayami et al. (2008).

Analyzing the RMSEs in Fig. 8, we can conclude that the medians (the 25<sup>th</sup> percentile, the 75<sup>th</sup> percentile) for  $\text{SO}_4^{2-}$ ,  $\text{NO}_3^-$  and  $\text{NH}_4^+$  are  $3.60 \mu\text{g m}^{-3}$  ( $3.24 \mu\text{g m}^{-3}$ ,  $4.01 \mu\text{g m}^{-3}$ ),  $2.76 \mu\text{g m}^{-3}$  ( $2.49 \mu\text{g m}^{-3}$ ,  $2.96 \mu\text{g m}^{-3}$ ) and  $1.28 \mu\text{g m}^{-3}$  ( $1.21 \mu\text{g m}^{-3}$ ,  $1.47 \mu\text{g m}^{-3}$ ) in Phase III, respectively. Although the medians (except  $\text{NH}_4^+$ ) are a little larger than that in Phase II, the interquartile ranges are quite smaller, indicating similar concentrations can be simulated by current CTMs. Meanwhile, the medians of the correlations of  $\text{SO}_4^{2-}$ ,  $\text{NO}_3^-$ , and  $\text{NH}_4^+$  in Phase III, including the upper and lower quartiles, are all larger than that in Phase II, which means current CTMs show better performance in reproducing the spatial–temporal variations of observations.

Although the participating models (8 verses 12 CTMs), observation sites (14 verses 31 EANET stations), and simulation periods (4 months verses 1 year) are different between Phase II and Phase III, more reasonable statistics are calculated by current CTMs, reflecting better performance in simulating the concentrations of aerosols and their spatial–temporal variations.

### 3.3 Inter–comparison between participant models

Figure 9 shows the spatial distributions of simulated  $\text{PM}_{2.5}$  concentrations from each participant model and the MMEM. The coefficient of variation (hereinafter, CV), defined as the standard deviation of the models divided by their mean, is also calculated. The larger the value of CV, the lower the consistency among the participating models (Han et al., 2008; Gao et al., 2018). All simulation results can reproduce the high  $\text{PM}_{2.5}$  in the northern India and the eastern China, including the Sichuan province in China. The areas with high  $\text{PM}_{2.5}$  concentrations ( $> 40 \mu\text{g m}^{-3}$ ) are consistent with the regions where CV is low ( $< 0.3$ ), indicating similar performance of the CTMs in simulating the air pollutants over haze–polluted areas.

Previous studies have revealed that sulfate, nitrate and ammonium (denoted as SNA) are the predominant inorganic aerosols in PM, and SNA can contribute to nearly half of the total  $\text{PM}_{2.5}$  mass (about 20%–60%) (Wang et al., 2014c; Sun et al., 2016b; Lin et al., 2018). All these show the necessity to exactly simulate the concentrations of SNA. Analyzing the mean ratio of SNA to  $\text{PM}_{2.5}$  averaged over the five defined sub–regions (Fig. 9), large variations are simulated by participant models, with values ranging from 31.1% (M7) to 75.1% (M5). Different gas–phase and aerosol chemistry mechanisms used in these CTMs can explain this inconsistency. The calculated SOR (sulfur oxidation ratio,  $\text{SOR} = n\text{SO}_4^{2-} / (n\text{SO}_4^{2-} + n\text{SO}_2)$ , n refers to the molar concentration), NOR (nitric oxidation ratio,  $\text{NOR} = n\text{NO}_3^- / (n\text{NO}_3^- + n\text{NO}_2)$ ) and PNR (particle neutralization ratio,  $\text{PNR} = n\text{NH}_4^+ / (2 \times n\text{SO}_4^{2-} + n\text{NO}_3^-)$ ) are also obviously different.

SOR and NOR can be used to estimate the degree of secondary formation of  $\text{SO}_4^{2-}$  and  $\text{NO}_3^-$  (Sun et al., 2006; Zhao et al., 2013). When SOR and NOR are less than 0.1,  $\text{SO}_4^{2-}$  and  $\text{NO}_3^-$  mainly come from the primary source emissions; otherwise, high oxidation rates of SOR and NOR can result in large fractions of  $\text{SO}_4^{2-}$  and  $\text{NO}_3^-$  in  $\text{PM}_{2.5}$  (Fu et al., 2008b). Generally, CMAQ models (M1, M2, M4, M5, M6 and M14) produce 30.7% higher SOR than others (except M8), which means more intense secondary formation of  $\text{SO}_4^{2-}$  is simulated by CMAQ. Similar NOR is predicted by participant models

(~0.24), except M7 and M8. The extremely low value of NOR (~0.02) from M7 and M8 is due to the unreasonable low  $\text{NO}_3^-$  concentrations. Previous measurements show that the mean value of NOR is about 0.15 (Du et al., 2011; Zhang et al., 2018), which is lower than the predicted one from MMEM (0.20) in this study, indicating more  $\text{NO}_3^-$  is produced by secondary formation in current CTMs.

PNR is defined as the mole ratio of ammonium to sulfate and nitrate. When PNR is larger than unity, sufficient ammonia can be used to neutralize the acidic sulfate and nitrate; otherwise, there is an incomplete neutralization of acidic species. Analyzing the calculated PNRs from participant models, all values are smaller than 1, which means atmospheric conditions are considered to be ammonia deficient. But the mole ratios of  $n\text{NH}_4^+/(2 \times n\text{SO}_4^{2-})$  are all larger than 1 (~1.6, except M7 and M8). All these indicate that acidic sulfate is fully neutralized to form  $(\text{NH}_4)_2\text{SO}_4$  or  $\text{NH}_4\text{HSO}_4$ , and parts of acidic nitrate is changed to  $\text{NH}_4\text{NO}_3$ . Meanwhile, under  $\text{NH}_3$ -limited conditions, small reductions in ammonia may cause significant reductions in particulate matter (Makar et al., 2009).

However, large CV ( $> 1.0$ ) is simulated over arid and semi-arid regions (Fig. 9), such as the Taklimakan Desert and the Gobi Desert, where dust events are often observed, which means current CTMs have difficulty in processing dust aerosols, especially in producing a similar amount of dust emissions and in identifying the same potential dust source regions, by using different dust schemes. Large CV are also shown in simulated coarse particles (subtract  $\text{PM}_{2.5}$  from  $\text{PM}_{10}$ ) in Fig. 10. High concentrations of coarse particles simulated by M9 over arid and semi-arid regions may be caused by the inaccurate physicochemical parameters (e.g. plastic pressure of the soil surface) used in the Shao dust scheme (Kang et al., 2011). Large values ( $> 20 \mu\text{g m}^{-3}$ ) over coastal regions from M14 may result from the inadequate simulation results of sea salt aerosols.

From Table 3 we can conclude that the low consistency (or the large CV) of simulated coarse particles in each defined sub-region is mainly caused by the dust particles. Without the impacts of dust aerosols and sea salts (only simulation results from M7 and M8 are considered), the calculated CVs for Region\_1 to Reiong\_5 are 0.29, 0.30, 0.33, 0.19 and 0.10, respectively. Without the impacts of dust aerosols (only simulation results from M1, M2, M4, M5 and M6 are considered), similar spatial distributions are found in Fig. 10, and the CVs averaged over each sub-region are 0.37 (Region\_1), 0.65 (Region\_2), 0.48 (Region\_3), 0.59 (Region\_4), and 0.65 (Region\_5), respectively. But when the influences of dust aerosols and sea salts are both considered (simulation results from M9, M11, M12 and M14 are used), larger CVs are obtained with values of 0.97 for Region\_1, 1.04 for Region\_2, 1.27 for Region\_3, 0.95 for Region\_4, and 0.88 for Region\_5.

Aerosol chemical compositions simulated by each participant model and the MMEM in the six metropolitans (Beijing, Shanghai, Guangzhou, Delhi, Seoul and Tokyo) are shown in Fig. 11.  $\text{PM}_{2.5}$  is composed of SNA ( $\text{SO}_4^{2-} + \text{NO}_3^- + \text{NH}_4^+$ ) and OTHER1 (BC + OC + OTHER2).  $\text{PM}_{10}$  includes  $\text{PM}_{2.5}$  and  $\text{PM}_{\text{coarse}}$  (coarse particles). Notably,  $\text{PM}_{\text{coarse}}$  cannot be calculated by M13 because  $\text{PM}_{10}$  is missing in M13.

High values of  $\text{PM}_{2.5}$  and  $\text{PM}_{10}$  in Beijing, Shanghai, Guangzhou and Delhi are simulated by nearly all models, and the annual mean concentrations of  $\text{PM}_{2.5}$  and  $\text{PM}_{10}$  from MMEM are all larger than the IT-1 (Interim target-1,  $35 \mu\text{g m}^{-3}$  for  $\text{PM}_{2.5}$ ,  $70 \mu\text{g m}^{-3}$  for  $\text{PM}_{10}$ ) proposed by WHO. But relative small concentrations are presented in Tokyo ( $15.5$  and  $21.3 \mu\text{g m}^{-3}$  for  $\text{PM}_{2.5}$  and  $\text{PM}_{10}$ , respectively) and Seoul ( $21.7$  and  $27.6 \mu\text{g m}^{-3}$  for  $\text{PM}_{2.5}$  and  $\text{PM}_{10}$ , respectively). For each city, a

large spread of concentrations of aerosol compositions can be found among participant models (a factor of ~10 for SNA, a factor of ~2 for PM<sub>2.5</sub> and PM<sub>10</sub>). This is partly caused by the differences in gas–aerosol partitioning and dust emissions, including the removal processes (e.g. dry and wet depositions).

Analyzing the ratios of aerosol compositions to PM<sub>2.5</sub> in MMEM (Fig. 11(b1–b6)), the sums of the contributions of BC, OC, SO<sub>4</sub><sup>2-</sup>, NO<sub>3</sub><sup>-</sup> and NH<sub>4</sub><sup>+</sup> in Beijing (63.8%), Shanghai (60.4%), Guangzhou (63.1%) and Delhi (65.1%) are all less than those in Tokyo (87.2%) and Seoul (75.2%). Among these components, NO<sub>3</sub><sup>-</sup> is the major species in Beijing (20.7%) and Delhi (23.6%), while SO<sub>4</sub><sup>2-</sup> is the major species in Guangzhou (22.2%). Similar contributions of SO<sub>4</sub><sup>2-</sup> and NO<sub>3</sub><sup>-</sup> can be found in Shanghai, Seoul and Tokyo. All these suggest that different air–pollution control plans should be taken in different metropolitans.

For seasonal variations of PM<sub>2.5</sub> concentrations (Fig. 11(c1–c6)), the highest values in Beijing (107.6 µg m<sup>-3</sup>), Shanghai (87.5 µg m<sup>-3</sup>), Guangzhou (59.9 µg m<sup>-3</sup>) and Delhi (108.7 µg m<sup>-3</sup>) are all simulated in winter. This can be explained by their high emissions during this season. However, in Tokyo, the highest PM<sub>2.5</sub> concentration is in summer (21.8 µg m<sup>-3</sup>) and the lowest value is in winter (10.3 µg m<sup>-3</sup>). In Seoul, PM<sub>2.5</sub> concentrations are comparable during the four seasons.

#### 4 Conclusion and Discussion

This manuscript mainly focuses on the first topic of the MICS–Asia Phase III, and intends to analyze the following objectives: (1) provide a comprehensive evaluation of current air quality models against observations, (2) analyze the diversity of simulated aerosols among participant models, and (3) reveal the characteristics of aerosol components in large cities over East Asia.

Comparisons against monthly observations from EANET and CNEMC demonstrate that all participant models can well reproduce the spatial–temporal distributions of aerosols. The multi–model ensemble mean (MMEM) shows better performance than most single–model predictions, with correlation coefficients (Rs, between MMEN and measurements) ranging from 0.65 (nitrate, NO<sub>3</sub><sup>-</sup>) to 0.83 (PM<sub>2.5</sub>). Differences between predictions and observations are also simulated, such as sulfate (SO<sub>4</sub><sup>2-</sup>) is underestimated by participant models (except M12 and M14), with NMBs ranging from –67.7% (M7) to –1.6% (M8). The concentrations of nitrate (NO<sub>3</sub><sup>-</sup>) and ammonium (NH<sub>4</sub><sup>+</sup>) are overestimated by most models, with NMBs of 4.9% for NO<sub>3</sub><sup>-</sup> and 14.0% for NH<sub>4</sub><sup>+</sup> in MMEM. The absence of sulfate formation mechanisms (e.g. heterogeneous chemistry) in chemical transport models (CTMs) can be used to explain the underestimation of SO<sub>4</sub><sup>2-</sup>, and the underestimated SO<sub>4</sub><sup>2-</sup> will result in the overestimation of NO<sub>3</sub><sup>-</sup>. However, significant underestimations of NO<sub>3</sub><sup>-</sup> and NH<sub>4</sub><sup>+</sup> are shown in M7 and M8. This is because extremely low values of NH<sub>3</sub> are simulated by these models. The inter–model spread of simulated PM<sub>2.5</sub> is large, with NMBs ranging from –26.5% (M13) to 46.0% (M14), and nearly all models underestimate the PM<sub>2.5</sub> concentrations in Region\_1. The underestimation may be the insufficient precursors and formation pathways of organic aerosols in current CTMs. Underestimations of PM<sub>10</sub> are also simulated in each sub–region, and the NMB is –32.6% in MMEM. This may due to the inaccurate emission inventories (e.g. anthropogenic emissions, biomass

burning emissions, and natural emissions) considered in CMTs.

In order to reveal the improvements of the simulation ability in current CTMs, statistics for observed and simulated  $\text{SO}_4^{2-}$ ,  $\text{NO}_3^-$  and  $\text{NH}_4^+$  from MICS–Asia Phase II and Phase III are compared. Results obviously show that the spread of root–mean squared errors (RMSEs) for each species in Phase III is smaller, meaning similar concentrations can be simulated by current CTMs. Meanwhile, the medians of the correlations, including the upper and lower quartiles, are larger, which means current CTMs show better performance in reproducing the temporal variations of observations.

Analyzing the ratio of SNA (sulfate, nitrate and ammonium) to  $\text{PM}_{2.5}$ , large variations are simulated by participant models, with values ranging from 31.1% (M7) to 75.1% (M5). Different gas phase and aerosol schemes used in CTMs can explain this inconsistency. Higher SOR (sulfur oxidation ratio) is calculated by CMAQ models, indicating that CMAQ has a more intense secondary formation of  $\text{SO}_4^{2-}$  than other participant models. Similar NOR (nitric oxidation ration) is predicted by CTMs, but the value ( $\sim 0.20$ ) is larger than the observed one ( $\sim 0.15$ ), which means overmuch  $\text{NO}_3^-$  is simulated by current CTMs. According to the mole ratio of ammonium to sulfate and nitrate,  $\text{NH}_3$ –limited condition can be successfully simulated by all participant models, which indicates that a small reduction in ammonia may improve the air quality significantly.

The coefficient of variation (CV) can be used to quantify the inter–model deviation, and a large CV is shown in simulated coarse particles (subtract  $\text{PM}_{2.5}$  from  $\text{PM}_{10}$ ). The poor consistency, especially over the arid and semi–arid regions, is mainly caused by the dust aerosols, which means current CTMs have difficulty in reproducing similar dust emissions by using different dust schemes. But the simulated fine particles are in good agreement, especially over the haze–polluted areas.

According to the MMEM simulation results, the highest  $\text{PM}_{2.5}$  concentrations in Beijing, Shanghai, Guangzhou and Delhi are shown in winter, mainly due to the high emissions and unfavorable weather conditions. But the highest value in Tokyo appears in summer.  $\text{PM}_{2.5}$  concentrations are comparable in the four seasons in Seoul. Analyzing the ratios of each composition to  $\text{PM}_{2.5}$ ,  $\text{NO}_3^-$  is the major component in Beijing and Delhi,  $\text{SO}_4^{2-}$  is the major one in Guangzhou, similar contributions of  $\text{SO}_4^{2-}$  and  $\text{NO}_3^-$  are calculated in Shanghai, Seoul and Tokyo. All these suggest that different air–pollution control plans should be taken in different cities.

MICS–Asia project gives an opportunity to understand the performance of CTMs in East Asia applications, including the similarities and differences among air quality models. In order to quantify the impacts of different model inputs and model configurations, and to reduce the diversities among simulation results, more detailed sensitivity experiments should be discussed. For example, simulation results from M1 and M2 can be used to assess the impacts of boundary conditions (BCs), since the configurations in these two models are similar except the BCs. M1 adopts the downscale results from GEOS–Chem, while M2 uses the default values from CMAQ. From Fig. S9 we can find that positive biases are simulated ( $((M1 - M2)/M2 * 100\% > 0)$ ), especially around the edges of the simulation domain, and the maximum deviation can be over 100%. This is because the boundary conditions from GEOS–Chem consider the impacts of aerosols outside the domain. All these demonstrate that the impacts of BCs should not be neglected when analyzing the spatial distribution characteristic of simulated aerosols around the edge of the domain. But in most inland regions, differences between M1 and M2 are

smaller ( $< \pm 10\%$ ). Meanwhile, process analysis techniques (i.e. integrated process rate (IPR) analysis) should be developed and implemented in air quality models. This is because IPR can be used to calculate the contributions of each physical/chemical process to variations in aerosol concentrations (Chen et al., 2019), then it will be easier to draw conclusions about the fundamental problems that cause the differences between model predictions (Carmichael et al., 2008).

- 5 Fully understanding of the source–receptor relationship in each process for a given aerosol species can also be helpful to revise parameterization schemes for better simulation capability. What’s more, extensive observations should be collected and used in the next MICS–Asia project.

## **Data availability**

Monthly pollution concentrations at EANET stations can be collected from <http://www.eanet.asia>. The AERONET Level 2.0 AOD data is downloaded from <https://aeronet.gsfc.nasa.gov/>. The MODIS AOD data are available at <https://ladsweb.modaps.eosdis.nasa.gov/>. Simulation results from the fourteen participating models to generate figures and tables in this manuscript have been archived by corresponding authors, and are available at <https://pan.baidu.com/s/1IaaCDhrAR-z2tO6yQNz2cg>.

## **Author contribution**

LC, YG and MZ conducted the study design. LC, JZ, HL, JL, KH, BG, XW, YL, CL, SI, TN, MK and KY contributed to modeling data. JF, ZW and JK provided the emission data and observation data. YG and JZ helped with data processing. MZ, JF and JZ were involved in the scientific interpretation and discussion. LC prepared the manuscript with contributions from all co-authors.

## **Competing interests**

The authors declare that they have no conflict of interest.

## **Special issue statement**

This study is part of the special issue “Regional assessment of air pollution and climate change over East and Southeast Asia: results from MICS-Asia Phase III”. It is not associated with a conference.

## **Acknowledgements**

Many thanks to the anonymous reviewers for their helpful comments that improved our paper.

## **Financial support**

This study was supported by the National Key R&D Programs of China (2017YFB0503901 & 2016YFA0600203), the National Natural Science Foundation of China (41830109, 91544221 & 91644215), the University Natural Science Research Foundation of Jiangsu Province (18KJB170012), the Environment Research and Technology Development Fund (S12-1) of the Ministry of the Environment, Japan, the Startup Foundation for Introducing Talent of NUIST (2018r007), and the Decision-making Consultation Research Foundation of RICEG, NUIST (2018B33).



## References

- Ackermann, I. J., Hass, H., Memmesheimer, M., Ebel, A., Binkowski, F. S., and Shankar, U. M. A.: Modal aerosol dynamics model for Europe: Development and first applications. *Atmospheric environment*, 32(17), 2981-2999, 10.1016/S1352-2310(98)00006-5, 1998.
- 5 Ahmadov, R., McKeen, S. A., Robinson, A., Bahreini, R., Mid-dlebrook, A., de Gouw, J., Meagher, J., Hsie, E., Edgerton, E., Shaw, S., and Trainer, M.: A volatility basis set model for summertime secondary organic aerosols over the east-ern United States in 2006, *J. Geophys. Res.*, 117, D06301, 10.1029/2011JD016831, 2012.
- Appel, K. W., Pouliot, G. A., Simon, H., Sarwar, G., Pye, H. O. T., Napelenok, S. L., Akhtar, F., and Roselle, S. J.: Evaluation of dust and trace metal estimates from the Community Multiscale Air Quality (CMAQ) model version 5.0, *Geoscientific Model Development*, 6, 883-899, 10.5194/gmd-6-883-2013, 2013.
- 10 Archer-Nicholls, S., Lowe, D., Utembe, S., Allan, J., Zaveri, R. A., Fast, J. D., Hodnebrog, Ø., Denier van der Gon, H., and Mc-Figgans, G.: Gaseous chemistry and aerosol mechanism developments for version 3.5.1 of the online regional model, *WRFChem, Geosci. Model Dev.*, 7, 2557-2579, 10.5194/gmd-7-2557-2014, 2014.
- 15 Baklanov, A., Schlözen, K., Suppan, P., Baldasano, J., Brunner, D., Aksoyoglu, S., Carmichael, G., Douros, J., Flemming, J., Forkel, R., Galmarini, S., Gauss, M., Grell, G., Hirtl, M., Joffre, S., Jorba, O., Kaas, E., Kaasik, M., Kallos, G., Kong, X., Korsholm, U., Kurganskiy, A., Kushta, J., Lohmann, U., Mahura, A., Manders-Groot, A., Maurizi, A., Moussiopoulos, N., Rao, S. T., Savage, N., Seigneur, C., Sokhi, R. S., Solazzo, E., Solomos, S., Sørensen, B., Tsegas, G., Vignati, E., Vogel, B., and Zhang, Y.: Online coupled regional meteorology chemistry models in Europe: current status and prospects, *Atmos. Chem. Phys.*, 14, 317-398, 10.5194/acp-14-317-2014, 2014.
- 20 Balzarini, A., Pirovano, G., Honzak, L., Žabkar, R., Curci, G., Forkel, R., Hirtl, M., San José, R., Tuccella, P., and Grell, G. A.: WRF-Chem model sensitivity to chemical mechanisms choice in reconstructing aerosol optical properties, *Atmos. Environ.*, 115, 604-619, 10.1016/j.atmosenv.2014.12.033, 2014.
- Bey, I., Jacob, D. J., Yantosca, R. M., Logan, J. A., Field, B. D., Fiore, A. M., Li, Q., Liu, H. Y., Mickley, L. J., and Schultz, M. G.: Global modeling of tropospheric chemistry with assimilated meteorology: Model description and evaluation, *Journal of Geophysical Research: Atmospheres*, 106, 23073-23095, 10.1029/2001jd000807, 2001.
- 25 Briant, R., Tuccella, P., Deroubaix, A., Khvorostyanov, D., Menut, L., Mailler, S., and Turquety, S.: Aerosol-radiation interaction modelling using online coupling between the WRF 3.7.1 meteorological model and the CHIMERE 2016 chemistry-transport model, through the OASIS3-MCT coupler, *Geoscientific Model Development*, 10, 927-944, 10.5194/gmd-10-927-2017, 2017.
- 30 Brunner, D., Savage, N., Jorba, O., Eder, B., Giordano, L., Badia, A., Balzarini, A., Baró R., Bianconi, R., Chemel, C., Curci, G., Forkel, R., Jiménez-Guerrero, P., Hirtl, M., Hodzic, A., Honzak, L., Im, U., Knote, C., Makar, P., Manders-Groot, A., van Meijgaard, E., Neal, L., Pérez, J. L., Pirovano, G., San Jose, R., Schröder, W., Sokhi, R. S., Syrakov, D., Torian, A., Tuccella, P., Werhahn, J., Wolke, R., Yahya, K., Zabkar, R., Zhang, Y., Hogrefe, C., and Galmarini, S.: Comparative analysis of meteorological performance of coupled chemistry-meteorology models in the context of AQMEII phase 2, *Atmospheric Environment*, 115, 470-498, 10.1016/j.atmosenv.2014.12.032, 2015.
- 35 Byun, D. W. and Ching, J. K. S.: Science algorithms of the EPA Models-3 Community Multiscale Air Quality (CMAQ) modeling system, US Environmental Protection Agency Report EPA/600/R-99/030, Research Triangle Park, NC, 1999.
- Carmichael, G. R., Calori, G., Hayami, H., Uno, I., Cho, S. Y., Engardt, M., Kim, S., Ichikawa, Y., Ikeda, Y., Ueda, H., Amann, M.: The MICS-Asia study: model intercomparison of long-range transport and sulfur deposition in East Asia. *Atmospheric Environment*, 36(2), 175-199, 10.1023/A:1012291200633, 2002.
- 40 Carmichael, G., Sakurai, T., Streets, D., Hozumi, Y., Ueda, H., Park, S., Fung, C., Han, Z., Kajino, M., and Engardt, M.: MICS-Asia II: The model intercomparison study for Asia Phase II methodology and overview of findings, *Atmospheric Environment*, 42, 3468-3490, 10.1016/j.atmosenv.2007.04.007, 2008.
- Carmichael, G. R., Adhikary, B., Kulkarni, S., D'Allura, A., Tang, Y., Streets, D., Zhang, Q., Bond, T. C., Ramanathan, V., Jamroensan, A., and Marrapu, P.: Asian Aerosols: Current and Year 2030 Distributions and Implications to Human Health and Regional Climate Change, *Environmental Science & Technology*, 43, 5811-5817, 10.1021/es8036803, 2009.
- 45 Carter, W. P. L.: Documentation of the SAPRC-99 chemical mechanism for VOC reactivity assessment. Final Report to California Air Resources Board Contract 92-329 and Contract 95-308, Air Pollution Research Center and College of Engineering Center for Environmental Research and Technology, University of California Riverside, California, 2000

- Chen, D., Wang, Y., McElroy, M. B., He, K., Yantosca, R. M., and Sager, P. L.: Regional CO pollution and export in China simulated by the high-resolution nested-grid GEOS-Chem model. *Atmospheric Chemistry and Physics*, 9(11), 3825-3839, 10.5194/acp-9-3825-2009, 2009.
- 5 Chen, D., Liu, Z., Fast, J., and Ban, J.: Simulations of sulfate–nitrate–ammonium (SNA) aerosols during the extreme haze events over northern China in October 2014, *Atmos. Chem. Phys.*, 16, 10707-10724, <https://doi.org/10.5194/acp-16-10707-2016>, 2016a.
- Chen, L., Zhang, L., Zhang, L., Cao, X., Huang, J., Zhang, W., and Zhang, B.: Characteristics of black carbon aerosol and carbonaceous gases and their emission sources in semi-arid region, *China Environmental Science*, 32(8), 1345-1352, 2012.
- 10 Chen, L., Zhang, M., and Wang, Y.: Model analysis of urbanization impacts on boundary layer meteorology under hot weather conditions: a case study of Nanjing, China, *Theoretical and Applied Climatology*, 125, 713-728, 10.1007/s00704-015-1535-6, 2016b.
- Chen, L., Zhang, M., Zhu, J., and Skorokhod, A.: Model analysis of soil dust impacts on the boundary layer meteorology and air quality over East Asia in April 2015, *Atmospheric Research*, 187, 42-56, 10.1016/j.atmosres.2016.12.008, 2017.
- 15 Chen, L., Zhang, M. G., Zhu, J., Wang, Y. W., Skorokhod, A.: Modeling impacts of urbanization and urban heat island mitigation on boundary layer meteorology and air quality in Beijing under different weather conditions, *Journal of Geophysical Research: Atmospheres*, 123, doi: 10.1002/2017JD027501, 2018.
- Chen, L., Zhu, J., Liao, H., Gao, Y., Qiu, Y., Zhang, M., and Li, N.: Assessing the formation and evolution mechanisms of severe haze pollution in Beijing–Tianjin–Hebei region by using process analysis, *Atmos. Chem. Phys. Discuss.*, 10.5194/acp-2019-245, in review, 2019.
- 20 Chin, M., Rood, R. B., Lin, S.-J., Müller, J.-F., and Thompson, A. M.: Atmospheric sulfur cycle simulated in the global model GOCART: Model description and global properties, *Journal of Geophysical Research: Atmospheres*, 105, 24671-24687, 10.1029/2000jd900384, 2000.
- Chin, M., Ginoux, P., Kinne, S., Torres, O., Holben, B. N., Duncan, B. N., Martin, R. V., Logan, J. A., Higurashi, A., and Nakajima, T.: Tropospheric aerosol optical thickness from the GOCART model and comparisons with satellite and Sun photometer measurements, *Journal of the Atmospheric Sciences*, 59, 461-483, 2002.
- 25 Clarke, A. D., Owens, S. R., and Zhou, J. C.: An ultrafine sea-salt flux from breaking waves: Implications for cloud condensation nuclei in the remote marine atmosphere, *J. Geophys. Res. Atmos.*, 111, 2006.
- Cowan, T., Cai, W., Purich, A., Rotstayn, L., and England, M. H.: Forcing of anthropogenic aerosols on temperature trends of the sub-thermocline southern Indian Ocean, *Sci Rep*, 3, 2245, 10.1038/srep02245, 2013.
- 30 Deng, X. L., Shi, C. E., Wu, B. W., Yang, Y. J., Jin, Q., Wang, H. L., Zhu, S., and Yu, C.: Characteristics of the water-soluble components of aerosol particles in Hefei, China, *Journal of environmental sciences*, 42, 32-40, 10.1016/j.jes.2015.07.010, 2016.
- Diehl, T., Heil, A., Chin, M., Pan, X., Streets, D., Schultz, M., and Kinne, S.: Anthropogenic, biomass burning, and volcanic emissions of black carbon, organic carbon, and SO<sub>2</sub> from 1980 to 2010 for hindcast model experiments, *Atmospheric Chemistry and Physics Discussions*, 12, 24895-24954, 10.5194/acpd-12-24895-2012, 2012.
- 35 Ding, A. J., Huang, X., Nie, W., Sun, J. N., Kerminen, V. M., Petäjä T., Su, H., Cheng, Y. F., Yang, X. Q., Wang, M. H., Chi, X. G., Wang, J. P., Virkkula, A., Guo, W. D., Yuan, J., Wang, S. Y., Zhang, R. J., Wu, Y. F., Song, Y., Zhu, T., Zilitinkevich, S., Kulmala, M., and Fu, C. B.: Enhanced haze pollution by black carbon in megacities in China, *Geophysical Research Letters*, 43, 2873-2879, 10.1002/2016gl067745, 2016.
- 40 Du, H., Kong, L., Cheng, T., Chen, J., Du, J., Li, L., Xia, X., Leng, C., Huang, G.: Insights into summertime haze pollution events over Shanghai based on online water-soluble ionic composition of aerosols. *Atmos. Environ.* 45, 5131–5137, 2011.
- Fan, Q., Lan, J., Liu, Y., Wang, X., Chan, P., Hong, Y., Feng, Y., Liu, Y., Zeng, Y., and Liang, G.: Process analysis of regional aerosol pollution during spring in the Pearl River Delta region, China, *Atmospheric Environment*, 122, 829-838, 10.1016/j.atmosenv.2015.09.013, 2015.
- 45 Foroutan, H., Young, J., Napelenok, S., Ran, L., Appel, K. W., Gilliam, R. C., and Pleim, J. E.: Development and evaluation of a physics-based windblown dust emission scheme implemented in the CMAQ modeling system, *Journal of Advances in Modeling Earth Systems*, 9, 585-608, 10.1002/2016ms000823, 2017.
- 50 Fountoukis, C. and Nenes, A.: ISORROPIA II: a computationally efficient thermodynamic equilibrium model for

- $\text{K}^+ - \text{Ca}^{2+} - \text{Mg}^{2+} - \text{NH}_4^+ - \text{Na}^+ - \text{SO}_4^{2-} - \text{NO}_3^- - \text{Cl}^- - \text{H}_2\text{O}$  aerosols, *Atmos. Chem. Physics*, 7, 4639–4659, doi:10.5194/acp-7-4639-2007, <http://www.atmos-chem-phys.net/7/4639/2007/>, 2007.
- Fu, J., Jang, C., Streets, D., Li, Z., Kwok, R., Park, R., and Han, Z.: MICS-Asia II: Modeling gaseous pollutants and evaluating an advanced modeling system over East Asia, *Atmospheric Environment*, 42, 3571–3583, 10.1016/j.atmosenv.2007.07.058, 2008a.
- Fu, Q., Zhuang, G., Wang, J., Xu, C., Huang, K., Li, J., Hou, B., Lu, T., Streets, D.G.: Mechanism of formation of the heaviest pollution episode ever recorded in the Yangtze River Delta, China. *Atmos. Environ.* 42, 2023–2036, 2008b.
- Fu, J. S., Hsu, N. C., Gao, Y., Huang, K., Li, C., Lin, N. H., and Tsay, S. C.: Evaluating the influences of biomass burning during 2006 BASE-ASIA: a regional chemical transport modeling, *Atmospheric Chemistry and Physics*, 12, 3837–3855, 10.5194/acp-12-3837-2012, 2012.
- Gao, M., Guttikunda, S. K., Carmichael, G. R., Wang, Y., Liu, Z., Stanier, C. O., Saide, P. E., and Yu, M.: Health impacts and economic losses assessment of the 2013 severe haze event in Beijing area, *Sci Total Environ*, 511, 553–561, 10.1016/j.scitotenv.2015.01.005, 2015a.
- Gao, M., Carmichael, G. R., Wang, Y., Saide, P. E., Yu, M., Xin, J., Liu, Z., and Wang, Z.: Modeling study of the 2010 regional haze event in the North China Plain, *Atmospheric Chemistry and Physics*, 16, 1673–1691, 10.5194/acp-16-1673-2016, 2016b.
- Gao, M., Han, Z., Liu, Z., Li, M., Xin, J., Tao, Z., Li, J., Kang, J.-E., Huang, K., Dong, X., Zhuang, B., Li, S., Ge, B., Wu, Q., Cheng, Y., Wang, Y., Lee, H.-J., Kim, C.-H., Fu, J. S., Wang, T., Chin, M., Woo, J.-H., Zhang, Q., Wang, Z., and Carmichael, G. R.: Air Quality and Climate Change, Topic 3 of the Model Inter-Comparison Study for Asia Phase III (MICS-Asia III), Part I: overview and model evaluation, *Atmospheric Chemistry and Physics*, 18, 4859–4884, doi:10.5194/acp-18-4859-2018, 2018.
- Gao, Y., Zhao, C., Liu, X., Zhang, M., and Leung, L. R.: WRF-Chem simulations of aerosols and anthropogenic aerosol radiative forcing in East Asia, *Atmospheric Environment*, 92, 250–266, 10.1016/j.atmosenv.2014.04.038, 2014.
- Gao, Y., Zhang, M., Liu, Z., Wang, L., Wang, P., Xia, X., Tao, M., and Zhu, L.: Modeling the feedback between aerosol and meteorological variables in the atmospheric boundary layer during a severe fog–haze event over the North China Plain, *Atmospheric Chemistry and Physics*, 15, 4279–4295, 10.5194/acp-15-4279-2015, 2015b.
- Gao, Y., Zhang, M., Liu, X., and Wang, L.: Change in diurnal variations of meteorological variables induced by anthropogenic aerosols over the North China Plain in summer 2008, *Theoretical and applied climatology*, 124(1–2), 103–118, 10.1007/s00704-015-1403-4, 2016a.
- Gillette, D. A., and Passi, R.: Modeling Dust Emission Caused by Wind Erosion, *J Geophys Res-Atmos*, 93, 14233–14242, 1988.
- Ginoux, P., Chin, M., Tegen, I., Prospero, J. M., Holben, B., Dubovik, O., and Lin, S. J.: Sources and distributions of dust aerosols simulated with the GOCART model, *J. Geophys. Res.-Atmos.*, 106, 20255–20273, 2001.
- Grell, G. A., Peckham, S. E., Schmitz, R., McKeen, S. A., Frost, G., Skamarock, W. C., and Eder, B.: Fully coupled “online” chemistry within the WRF model, *Atmospheric Environment*, 39, 6957–6975, 10.1016/j.atmosenv.2005.04.027, 2005.
- Guenther, C. C.: Estimates of global terrestrial isoprene emissions using MEGAN (Model of Emissions of Gases and Aerosols from Nature). *Atmospheric Chemistry and Physics*, 6, [www.atmos-chem-phys.net/6/3181/2006/](http://www.atmos-chem-phys.net/6/3181/2006/), 2006.
- Gong, S. L.: A parameterization of sea-salt aerosol source function for sub- and super-micron particles, *Global Biogeochem Cy*, 17, 2003.
- Hall, D.: Environmental change, protest, and havens of environmental degradation: Evidence from Asia. *Global Environmental Politics*, 2(2), 20–28, 10.1162/15263800260047808, 2002.
- Han, X., Zhang, M., Liu, X., Steven, G., Xin, J., Wang, L.: Development of RAMS-CMAQ to simulate aerosol optical depth and aerosol direct radiative forcing and its application to East Asia. *Atmospheric and Oceanic Science Letters*, 2(6), 368–375, 10.1080/16742834.2009.11446831, 2009.
- Han, X., Zhang, M., Tao, J., Wang, L., Gao, J., Wang, S., and Chai, F.: Modeling aerosol impacts on atmospheric visibility in Beijing with RAMS-CMAQ, *Atmospheric Environment*, 72, 177–191, 10.1016/j.atmosenv.2013.02.030, 2013.
- Han, X., Zhang, M., Gao, J., Wang, S., and Chai, F.: Modeling analysis of the seasonal characteristics of haze formation in Beijing, *Atmospheric Chemistry and Physics*, 14, 10231–10248, 10.5194/acp-14-10231-2014, 2014.
- Han, X., Zhu, L., Wang, S., Meng, X., Zhang, M., and Hu, J.: Modeling study of impacts on surface ozone of regional transport and emissions reductions over North China Plain in summer 2015, *Atmospheric Chemistry and Physics*, 18,

12207-12221, 10.5194/acp-18-12207-2018, 2018.

- Han, Z. W., Ueda, H., Matsuda, K., Zhang, R. J., Arao, K., Kanai, Y., and Hasome, H.: Model study on particle size segregation and deposition during Asian dust events in March 2002, *J Geophys Res-Atmos*, 109, 2004.
- 5 Han, Z., Sakurai, T., Ueda, H., Carmichael, G., Streets, D., Hayami, H., Wang, Z., Holloway, T., Engardt, M., and Hozumi, Y.: MICS-Asia II: Model intercomparison and evaluation of ozone and relevant species, *Atmospheric Environment*, 42, 3491-3509, 10.1016/j.atmosenv.2007.07.031, 2008.
- Hayami, H., Sakurai, T., Han, Z., Ueda, H., Carmichael, G., Streets, D., Holloway, T., Wang, Z., Thongboonchoo, N., and Engardt, M.: MICS-Asia II: Model intercomparison and evaluation of particulate sulfate, nitrate and ammonium, *Atmospheric Environment*, 42, 3510-3527, 10.1016/j.atmosenv.2007.08.057, 2008.
- 10 Holben, B. N., Eck, T. F., Slutsker, I., Tanre, D., Buis, J. P., Setzer, A., Vermote, E., Reagan, J. A., Kaufman, Y. J., Nakajima, T., Lavenu, F., Jankowiak, I., Smirnov, A.: AERONET—A federated instrument network and data archive for aerosol characterization. *Remote sensing of environment*, 66(1), 1-16, 10.1016/S0034-4257(98)00031-5, 1998.
- Holloway, T., Sakurai, T., Han, Z., Ehlers, S., Spak, S., Horowitz, L., Carmichael, G., Streets, D., Hozumi, Y., and Ueda, H.: MICS-Asia II: Impact of global emissions on regional air quality in Asia, *Atmospheric Environment*, 42, 3543-3561, 10.1016/j.atmosenv.2007.10.022, 2008.
- 15 Hong, C., Zhang, Q., He, K., Guan, D., Li, M., Liu, F., and Zheng, B.: Variations of China's emission estimates: response to uncertainties in energy statistics, *Atmospheric Chemistry and Physics*, 17, 1227-1239, 10.5194/acp-17-1227-2017, 2017.
- Huang, K., Fu, J. S., Hsu, N. C., Gao, Y., Dong, X., Tsay, S.-C., and Lam, Y. F.: Impact assessment of biomass burning on air quality in Southeast and East Asia during BASE-ASIA, *Atmospheric Environment*, 78, 291-302, 10.1016/j.atmosenv.2012.03.048, 2013.
- 20 Huang, X., Song, Y., Li, M., Li, J., Huo, Q., Cai, X., Zhu, T., Hu, M., and Zhang, H.: A high-resolution ammonia emission inventory in China, *Global Biogeochem. Cy.*, 26, GB1030, doi:10.1029/2011GB004161, 2012.
- Huang, X., Song, Y., Zhao, C., Li, M., Zhu, T., Zhang, Q., and Zhang, X.: Pathways of sulfate enhancement by natural and anthropogenic mineral aerosols in China, *J. Geophys. Res.-Atmos.*, 119, <https://doi.org/10.1002/2014JD022301>, 2014.
- 25 Huang, X., Wang, Z., and Ding, A.: Impact of Aerosol-PBL Interaction on Haze Pollution: Multiyear Observational Evidences in North China, *Geophysical Research Letters*, 10.1029/2018gl079239, 2018.
- Ikeda, K., Yamaji, K., Kanaya, Y., Taketani, F., Pan, X., Komazaki, Y., Kurokawa, J.-i., and Ohara, T.: Sensitivity analysis of source regions to PM<sub>2.5</sub> concentration at Fukue Island, Japan, *Journal of the Air & Waste Management Association*, 64, 445-452, 10.1080/10962247.2013.845618, 2013.
- 30 Itahashi, S., Uno, I., Irie, H., Kurokawa, J. I., and Ohara, T.: Regional modeling of tropospheric NO<sub>2</sub> vertical column density over East Asia during the period 2000–2010: comparison with multisatellite observations, *Atmospheric Chemistry and Physics*, 14, 3623-3635, 10.5194/acp-14-3623-2014, 2014.
- Im, U.: Impact of sea-salt emissions on the model performance and aerosol chemical composition and deposition in the East Mediterranean coastal regions, *Atmospheric Environment*, 75, 329-340, 2013.
- 35 Jaeglé L., Quinn, P. K., Bates, T. S., Alexander, B., and Lin, J.-T.: Global distribution of sea salt aerosols: new constraints from in situ and remote sensing observations, *Atmos. Chem. Phys.*, 11, 3137-3157, <https://doi.org/10.5194/acp-11-3137-2011>, 2011.
- Janssens-Maenhout, G., Crippa, M., Guizzardi, D., Dentener, F., Muntean, M., Pouliot, G., Keating, T., Zhang, Q., Kurokawa, J., Wankmüller, R., Denier van der Gon, H., Kuenen, J. J. P., Klimont, Z., Frost, G., Darras, S., Koffi, B., and Li, M.: HTAP\_v2.2: a mosaic of regional and global emission grid maps for 2008 and 2010 to study hemispheric transport of air pollution, *Atmospheric Chemistry and Physics*, 15, 11411-11432, 10.5194/acp-15-11411-2015, 2015.
- 40 Jimenez, P., Baldasano, J. M., and Dabdub, D.: Comparison of photochemical mechanisms for air quality modeling, *Atmos. Environ.*, 37, 4179–4194, 10.1016/S1352-2310(03)00567-3, 2003.
- 45 Kajino, M., Inomata, Y., Sato, K., Ueda, H., Han, Z., An, J., Katata, G., Deushi, M., Maki, T., Oshima, N., Kurokawa, J., Ohara, T., Takami, A., and Hatakeyama, S.: Development of the RAQM2 aerosol chemical transport model and predictions of the Northeast Asian aerosol mass, size, chemistry, and mixing type. *Atmospheric Chemistry and Physics*, 12(24), 11833, 10.5194/acp-12-11833-2012, 2012.
- Kajino, M., Deushi, M., Sekiyama, T. T., Oshima, N., Yumimoto, K., Tanaka, T. Y., Ching, J., Hashimoto, A., Yamamoto, T., 50 Ikegami, M., Kamada, A., Miyashita, M., Inomata, Y., Shima, S.-I., Adachi, K., Zaizen, Y., Igarashi, Y., Ueda, H., Maki,

- T., and Mikami, M.: NHM-Chem, the Japan Meteorological Agency's regional meteorology – chemistry model (v1.0): model description and aerosol representations, *Geosci. Model Dev. Discuss.*, 10.5194/gmd-2018-128, 2018.
- Kang, J.Y., Yoon, S.C., Shao, Y., and Kim, S.W.: Comparison of vertical dust flux by implementing three dust emission schemes in WRF/Chem, *J. Geophys. Res.*, 116, D09202, 10.1029/2010JD014649, 2011.
- 5 Kelly, J. T., Bhawe, P. V., Nolte, C. G., Shankar, U., and Foley, K. M.: Simulating emission and chemical evolution of coarse sea-salt particles in the Community Multiscale Air Quality (CMAQ) model, *Geoscientific Model Development*, 3, 257-273, 2010.
- 10 Kiley, C. M., Fuelberg, H. E., Palmer, P. I., Allen, D. J., Carmichael, G. R., Jacob, D. J., Mari, C., Pierce, R. B., Pickering, K. E., Tang, Y., Wild, O., Fairlie, T. D., Logan, J. A., Sachse, G. W., Shaack, T. K., and Streets, D. G.: An intercomparison and evaluation of aircraft-derived and simulated CO from seven chemical transport models during the TRACE-P experiment, *Journal of Geophysical Research: Atmospheres*, 108, 10.1029/2002jd003089, 2003.
- Kim, S. W., Heckel, A., Frost, G. J., Richter, A., Gleason, J., Burrows, J. P., McKeen, S., Hsie, E. Y., Granier, C., and Trainer, M.: NO<sub>2</sub> columns in the western United States observed from space and simulated by a regional chemistry model and their implications for NO<sub>x</sub> emissions, *J. Geophys. Res.-Atmos.*, 114, D11301, 10.1029/2008JD011343, 2009.
- 15 Kim, Y., Couvidat, F., Sartelet, K., and Seigneur, C.: Comparison of different gas-phase mechanisms and aerosol modules for simulating particulate matter formation, *J. Air Waste Manage. Assoc.*, 61, 1218–1226, 10.1080/10473289.2011.603999, 2011
- Kong, X., Forkel, R., Sokhi, R. S., Suppan, P., Baklanov, A., Gauss, M., Brunner, D., Baro, R., Balzarini, A., Chemel, C., Curci, G., Jimenez-Guerrero, P., Hirtl, M., Honzak, L., Im, U., Perez, J. L., Pirovano, G., Jose, R. S., Schlunzen, K. H., Tsegas, G., Tuccella, P., Werhahn, J., Zabkar, R., and Galmarini, S.: Analysis of meteorology-chemistry interactions during air pollution episodes using online coupled models within AQMEII phase-2, 115, 527-540, doi: 10.1016/j.atmosenv.2014.09.020, 2015.
- 20 Kong, L., Tang, X., Zhu, J., Wang, Z., Fu, J. S., Wang, X., Itahashi, S., Yamaji, K., Nagashima, T., Lee, H.-J., Kim, C.-H., Lin, C.-Y., Chen, L., Zhang, M., Tao, Z., Li, J., Kajino, M., Liao, H., Sudo, K., Wang, Y., Pan, Y., Tang, G., Li, M., Wu, Q., Ge, B., and Carmichael, G. R.: Evaluation and uncertainty investigation of the NO<sub>2</sub>, CO and NH<sub>3</sub> modeling over China under the framework of MICS-Asia III, *Atmos. Chem. Phys. Discuss.*, 10.5194/acp-2018-1158, in review, 2019.
- 25 Kurokawa, J., Ohara, T., Morikawa, T., Hanayama, S., Janssens-Maenhout, G., Fukui, T., Kawashima, K., and Akimoto, H.: Emissions of air pollutants and greenhouse gases over Asian regions during 2000–2008: Regional Emission inventory in Asia (REAS) version 2, *Atmos. Chem. Phys.*, 13, 11019–11058, doi:10.5194/acp-13-11019-2013, 2013.
- 30 Lai, S., Zhao, Y., Ding, A., Zhang, Y., Song, T., Zheng, J., Ho, K. F., Lee, S.-c., and Zhong, L.: Characterization of PM 2.5 and the major chemical components during a 1-year campaign in rural Guangzhou, Southern China, *Atmospheric Research*, 167, 208-215, 10.1016/j.atmosres.2015.08.007, 2016.
- Lam, Y. F., Fu, J. S., Wu, S., and Mickley, L. J.: Impacts of future climate change and effects of biogenic emissions on surface ozone and particulate matter concentrations in the United States, *Atmospheric Chemistry and Physics*, 11, 4789-4806, 10.5194/acp-11-4789-2011, 2011.
- 35 Lee, D. G., Lee, Y. M., Jang, K. W., Yoo, C., Kang, K. H., Lee, J. H., Jung, S. W., Park, J. M., Lee, S. B., Han, J. S., Hong, J. H., and Lee, S. J.: Korean national emissions inventory system and 2007 air pollutant emissions, *Asian J. Atmos. Environ.*, 5, 278–291, 2011.
- Lee, H.-J., Jo, H.-Y., Nam, K.-P., Lee, K.-H., Kim, C.-H.: Measurement, simulation, and meteorological interpretation of medium-range transport of radionuclides to Korea during the Fukushima Dai-ichi nuclear accident, *Annals of Nuclear Energy*, 103, 412-423, doi: 10.1016/j.anucene.2017.01.037, 2017.
- 40 Li, J., Wang, Z., Zhuang, G., Luo, G., Sun, Y., and Wang, Q.: Mixing of Asian mineral dust with anthropogenic pollutants over East Asia: a model case study of a super-duststorm in March 2010, *Atmospheric Chemistry and Physics*, 12, 7591-7607, 10.5194/acp-12-7591-2012, 2012a.
- Li, J.: Research on pollution characteristics of PM<sub>10</sub> in Jinan and inversion of aerosol optical thickness, M.S. thesis, Shandong Normal University, China, 64 pp., 2012b.
- 45 Li, J.: Seasonal characteristics of air pollution and weekend effect in Shanghai, M.S. thesis, the University of Chinese Academy of Sciences, China, 77 pp., 2015.
- Li, J., Du, H., Wang, Z., Sun, Y., Yang, W., Li, J., Tang, X., and Fu, P.: Rapid formation of a severe regional winter haze episode over a mega-city cluster on the North China Plain, *Environ Pollut*, 223, 605-615, 10.1016/j.envpol.2017.01.063, 2017a.
- 50

- Li, J., Nagashima, T., Kong, L., Ge, B., Yamaji, K., Fu, J. S., Wang, X., Fan, Q., Itahashi, S., Lee, H.-J., Kim, C.-H., Lin, C.-Y., Zhang, M., Tao, Z., Kajino, M., Liao, H., Li, M., Woo, J.-H., Kurokawa, J.-I., Wu, Q., Akimoto, H., Carmichael, G. R., and Wang, Z.: Model evaluation and inter-comparison of surface-level ozone and relevant species in East Asia in the context of MICS-Asia phase III Part I: overview, *Atmos. Chem. Phys. Discuss.*, 10.5194/acp-2018-1283, in review, 2019.
- Li, K., Liao, H., Zhu, J., and Moch, J. M.: Implications of RCP emissions on future PM<sub>2.5</sub> air quality and direct radiative forcing over China, *Journal of Geophysical Research: Atmospheres*, 121, 12,985-913,008, 10.1002/2016jd025623, 2016b.
- Li, K., Liao, H., Mao, Y., and Ridley, D. A.: Source sector and region contributions to concentration and direct radiative forcing of black carbon in China, *Atmospheric Environment*, 124, 351-366, 10.1016/j.atmosenv.2015.06.014, 2016c.
- Li, M., Zhang, Q., Kurokawa, J.-i., Woo, J.-H., He, K., Lu, Z., Ohara, T., Song, Y., Streets, D. G., Carmichael, G. R., Cheng, Y., Hong, C., Huo, H., Jiang, X., Kang, S., Liu, F., Su, H., and Zheng, B.: MIX: a mosaic Asian anthropogenic emission inventory under the international collaboration framework of the MICS-Asia and HTAP, *Atmospheric Chemistry and Physics*, 17, 935-963, 10.5194/acp-17-935-2017, 2017b.
- Li, Y., An, J., and Gultepe, I.: Effects of additional HONO sources on visibility over the North China Plain, *Advances in Atmospheric Sciences*, 31, 1221-1232, 10.1007/s00376-014-4019-1, 2014.
- Li, Y., Tao, J., Zhang, L., Jia, X., and Wu, Y.: High Contributions of Secondary Inorganic Aerosols to PM<sub>2.5</sub> under Polluted Levels at a Regional Station in Northern China, *International journal of environmental research and public health*, 13, 10.3390/ijerph13121202, 2016a.
- Liao, H., Chen, W.-T., and Seinfeld, J. H.: Role of climate change in global predictions of future tropospheric ozone and aerosols, *Journal of Geophysical Research*, 111, 10.1029/2005jd006852, 2006.
- Lin, C. Y., Zhao, C., Liu, X., Lin, N. H., and Chen, W. N.: Modelling of long-range transport of Southeast Asia biomass-burning aerosols to Taiwan and their radiative forcings over East Asia. *Tellus B: Chemical and Physical Meteorology*, 66(1), 23733, 10.3402/tellusb.v66.23733, 2014.
- Lin, Y., Zou, J., Yang, W., and Li, C.Q.: A review of recent advances in research on PM<sub>2.5</sub> in China. *International journal of environmental research and public health*, 15(3), 438, 10.3390/ijerph15030438, 2018.
- Liu, S.: Research of observations of haze and precursors in Tangshan industrial zone, M.S. thesis, Nanjing University of Information Science & Technology, China, 71 pp., 2012.
- Liu, X. G., Li, J., Qu, Y., Han, T., Hou, L., Gu, J., Chen, C., Yang, Y., Liu, X., Yang, T., Zhang, Y., Tian, H., and Hu, M.: Formation and evolution mechanism of regional haze: a case study in the megacity Beijing, China, *Atmos. Chem. Phys.*, 13, 4501-4514, doi:10.5194/acp-13-4501-2013, 2013.
- Liu, Y. M., Zhang, S. T., Fan, Q., Wu, D., Chan, P. W., Wang, X. M., Fan, S. J., Feng, Y. R., and Hong, Y. Y.: Accessing the Impact of Sea-Salt Emissions on Aerosol Chemical Formation and Deposition over Pearl River Delta, China, *Aerosol Air Qual Res*, 15, 2232-2245, 2015.
- Lohmann, U., and Diehl, K.: Sensitivity studies of the importance of dust ice nuclei for the indirect aerosol effect on stratiform mixed-phase clouds. *Journal of the Atmospheric Sciences*, 63(3), 968-982, 10.1175/JAS3662.1, 2006.
- Lu, Z., Zhang, Q., and Streets, D. G.: Sulfur dioxide and primary carbonaceous aerosol emissions in China and India, 1996-2010, *Atmos. Chem. Phys.*, 11, 9839-9864, 10.5194/acp-11-9839-2011, 2011.
- Luecken, D. J., Phillips, S., Sarwar, G., and Jang, C.: Effects of using the CB05 vs. SAPRC99 vs. CB4 chemical mechanism on model predictions: ozone and gas-phase photochemical precursor concentrations, *Atmos. Environ.*, 42, 5805-5820, 10.1016/j.atmosenv.2007.08.056, 2008.
- Luo, G. and Wang, Z. F.: A global environmental atmospheric transport model (GEATM): Model Description and validation (in Chinese), *Chinese Journal of Atmospheric Sciences*, 30, 504-518, doi:10.3878/j.issn.1006-9895.2006.03.13, 2006.
- Makar, P. A., Moran, M. D., Zheng, Q., Cousineau, S., Sassi, M., Duhamel, A., Besner, M., Davignon, D., Crevier, L.-P., and Bouchet, V. S.: Modelling the impacts of ammonia emissions reductions on North American air quality, *Atmos. Chem. Phys.*, 9, 7183-7212, <https://doi.org/10.5194/acp-9-7183-2009>, 2009.
- Meng, Z., Jia, X., Zhang, R., Yu, X., and Ma, Q.: Characteristics of PM<sub>2.5</sub> at Lin'an regional background station in the Yangtze River Delta Region, *Journal of Applied Meteorological Science*, 23(4), 424-432, 2012.
- Monahan, E. C. and Muircheartaigh, I. O.: Optimal Power-Law Description of Oceanic Whitecap Coverage Dependence on Wind Speed, *J. Phys. Oceanogr.*, 10, 2094-2099, doi:10.1175/1520-0485(1980)010<2094:OPLDOO>2.0.CO;2, 1980.
- Murphy, B. N., and Pandis, S. N.: Simulating the Formation of Semivolatile Primary and Secondary Organic Aerosol in a

- Regional Chemical Transport Model, *Environmental science & technology*, 43, 4722-4728, 2009.
- Nagashima, T., Sudo, K., Akimoto, H., Kurokawa, J., and Ohara T.: Long-term change in the source contribution to surface ozone over Japan, *Atmos. Chem. Phys.*, 17, 8231-8246, doi: 10.5194/acp-17-8231-2017, 2017.
- 5 Nenes, A., Pandis, S. N., and Pilinis, C.: ISORROPIA: A new thermodynamic equilibrium model for multiphase multicomponent inorganic aerosols. *Aquatic geochemistry*, 4(1), 123-152, 10.1023/A:1009604003981, 1998.
- Nolte, C. G., Gilliland, A. B., Hogrefe, C., and Mickley, L. J.: Linking global to regional models to assess future climate impacts on surface ozone levels in the United States, *Journal of Geophysical Research*, 113, 10.1029/2007jd008497, 2008.
- 10 Pan, Y., Zhang, Y., and Sarwar, G.: Impact of gas-phase chemistry on WRF/CHEM predictions of O<sub>3</sub> and PM<sub>2.5</sub>: Mechanism implementation and comparative evaluation, 7th annual CMAS conference, Chapel Hill, North Carolina, 2008.
- Park, S.Y., Lee, H.J., Kang, J.E., Lee T. and Kim, C.H.: Aerosol radiative effects on mesoscale cloud precipitation variables over Northeast Asia during the MAPS-Seoul 2015 campaign, *Atmos. Environ.*, 172, 109–123, 10.1016/j.atmosenv.2017.10.044, 2018.
- 15 Petaja, T., Jarvi, L., Kerminen, V. M., Ding, A. J., Sun, J. N., Nie, W., Kujansuu, J., Virkkula, A., Yang, X. Q., Fu, C. B., Zilitinkevich, S., and Kulmala, M.: Enhanced air pollution via aerosol-boundary layer feedback in China, *Sci Rep*, 6, 18998, 10.1038/srep18998, 2016.
- Phadnis, M. J., Carmichael, G. R., Ichikawa, Y., and Hayami, H.: Evaluation of long-range transport models for acidic deposition in East Asia. *Journal of Applied Meteorology*, 37(10), 1127-1142, 10.1175/1520-0450(1998)037<1127:EOLRTM>2.0.CO;2, 1998.
- 20 Pope, C. A., and Dockery, D. W.: Health Effects of Fine Particulate Air Pollution: Lines that Connect, *Journal of the Air & Waste Management Association*, 56, 709-742, 10.1080/10473289.2006.10464485, 2006.
- Qiu, Y., Liao, H., Zhang, R., and Hu, J.: Simulated impacts of direct radiative effects of scattering and absorbing aerosols on surface layer aerosol concentrations in China during a heavily polluted event in February 2014, *Journal of Geophysical Research: Atmospheres*, 122, 5955-5975, 10.1002/2016jd026309, 2017.
- 25 Tao, J., Zhang, L., Ho, K., Zhang, R., Lin, Z., Zhang, Z., Lin, M., Cao, J., Liu, S., and Wang, G.: Impact of PM<sub>2.5</sub> chemical compositions on aerosol light scattering in Guangzhou — the largest megacity in South China, *Atmospheric Research*, 135-136, 48-58, 10.1016/j.atmosres.2013.08.015, 2014.
- Reams, M. A., Lam, N. S., and Baker, A.: Measuring Capacity for Resilience among Coastal Counties of the US Northern Gulf of Mexico Region, *Am J Clim Change*, 1, 194-204, 10.4236/ajcc.2012.14016, 2012.
- 30 Reff, A., Bhawe, P. V., Simon, H., Pace, T. G., Pouliot, G. A., Mobley, J. D., and Houyoux, M.: Emissions inventory of PM<sub>2.5</sub> trace elements across the United States, *Environ. Sci. Technol.*, 43, 5790–5796, 10.1021/es802930x, 2009.
- Schell, B., Ackermann, I. J., Hass, H., Binkowski, F. S., and Ebel, A.: Modeling the formation of secondary organic aerosol within a comprehensive air quality model system, *Journal of Geophysical Research: Atmospheres*, 106, 28275-28293, 10.1029/2001jd000384, 2001.
- 35 Seinfeld, J.H. and Pandis, S.N.: *Atmospheric Chemistry and Physics: From Air Pollution to Climate Change*, second ed. John Wiley & Sons, Inc., New York, 2006.
- Shao, Y.: A model for mineral dust emission, *J. Geophys. Res.*, 106(D17), 20,239–20,254, 10.1029/2001JD900171, 2001.
- Shao, Y.: Simplification of a dust emission scheme and comparison with data, *J. Geophys. Res.*, 109, D10202, 10.1029/2003JD004372, 2004.
- 40 Shao, P.: The network observation and research on air pollution in Zhangjiakou, Beijing and Langfang, M.S. thesis, Nanjing University of Information Science & Technology, China, 66 pp., 2012.
- Shao, J., Chen, Q., Wang, Y., Lu, X., He, P., Sun, Y., Shah, V., Martin, R. V., Philip, S., Song, S., Zhao, Y., Xie, Z., Zhang, L., and Alexander, B.: Heterogeneous sulfate aerosol formation mechanisms during wintertime Chinese haze events: air quality model assessment using observations of sulfate oxygen isotopes in Beijing, *Atmos. Chem. Phys.*, 19, 6107-6123, <https://doi.org/10.5194/acp-19-6107-2019>, 2019.
- 45 Singh, A., and Dey, S.: Influence of aerosol composition on visibility in megacity Delhi, *Atmospheric Environment*, 62, 367-373, 10.1016/j.atmosenv.2012.08.048, 2012.
- Spence, M., Clarke, A., Buckley, R.M.: *Urbanization and Growth; Commission on Growth and Development*, World Bank Publications: Washington, DC, USA, 2008.
- 50

- Stockwell, W. R., Middleton, P., Chang, J. S., and Tang, X.: The second generation regional acid deposition model chemical mechanism for regional air quality modeling. *Journal of Geophysical Research: Atmospheres*, 95(D10), 16343-16367, 10.1029/JD095iD10p16343, 1990.
- 5 Stockwell, W. R., Kirchner, F., Kuhn, M., and Seefeld, S.: A new mechanism for regional atmospheric chemistry modeling, *Journal of Geophysical Research: Atmospheres*, 102, 25847-25879, 10.1029/97jd00849, 1997.
- Stuefer, M., Freitas, S. R., Grell, G., Webley, P., Peckham, S., McKeen, S. A., and Egan, S. D.: Inclusion of ash and SO<sub>2</sub> emissions from volcanic eruptions in WRF-Chem: development and some applications. *Geoscientific Model Development*, 6(2), 457-468, 10.5194/gmd-6-457-2013, 2013.
- 10 Su, L., and Fung, J.C.H.: Sensitivities of WRF-Chem to dust emission schemes and land surface properties in simulating dust cycles during springtime over East Asia, *J. Geophys. Res. Atmos.*, 120, 11,215–11,230, 10.1002/2015JD023446, 2015.
- Su, X., Tie, X., Li, G., Cao, J., Huang, R., Feng, T., Long, X., and Xu, R.: Effect of hydrolysis of N<sub>2</sub>O<sub>5</sub> on nitrate and ammonium formation in Beijing China: WRF-Chem model simulation, *The Science of the total environment*, 579, 221-229, 10.1016/j.scitotenv.2016.11.125, 2017.
- 15 Sudo, K., Takahashi, M., Kurokawa, J., and Akimoto, H.: CHASER: A global chemical model of the troposphere-1. Model description, *J. Geophys. Res.-Atmos.*, 107, 20, 10.1029/2001jd001113, 2002a.
- Sudo, K., Takahashi, M., and Akimoto, H.: CHASER: A global chemical model of the troposphere-2. Model results and evaluation, *J. Geophys. Res.-Atmos.*, 107, 39, 10.1029/2001jd001114, 2002b.
- Sun, Y. L., Zhuang, G. S., Tang, A. H., Wang, Y., and An, Z. S.: Chemical characteristics of PM<sub>2.5</sub> and PM<sub>10</sub> in haze-fog episodes in Beijing, *Environ. Sci. Technol.*, 40, 3148–3155, 10.1021/es051533g, 2006.
- 20 Sun, Y. L., Wang, Z. F., Du, W., Zhang, Q., Wang, Q. Q., Fu, P. Q., Pan, X. L., Li, J., Jayne, J., and Worsnop, D. R.: Long-term real-time measurements of aerosol particle composition in Beijing, China: seasonal variations, meteorological effects, and source analysis, *Atmospheric Chemistry and Physics*, 15, 10149-10165, 10.5194/acp-15-10149-2015, 2015.
- Sun, Y. L., Du, W., Fu, P., Wang, Q., Li, J., Ge, X., Zhang, Q., Zhu, C., Ren, L., Xu, W., Zhao, J., Han, T., Worsnop, D. R., and Wang, Z.: Primary and secondary aerosols in Beijing in winter: sources, variations and process, *Atmos. Chem. Phys.*, 16,8309-8329, 10.5194/acp-16-8309-2016, 2016a.
- 25 Sun, Y. L., Wang, Z., Wild, O., Xu, W., Chen, C., Fu, P., Du, W., Zhou, L., Zhang, Q., Han, T., Wang, Q., Pan, X., Zheng, H., Li, J., Guo, X., Liu, J., and Worsnop, D. R.: “APEC Blue”: Secondary Aerosol Reductions from Emission Controls in Beijing, *Sci. Rep.*, 6, 20668, 10.1038/srep20668, 2016b.
- 30 Tao, Z., Santanello, J. A., Chin, M., Zhou, S., Tan, Q., Kemp, E. M., and Peters-Lidard, C. D.: Effect of land cover on atmospheric processes and air quality over the continental United States – a NASA Unified WRF (NU-WRF) model study, *Atmos. Chem. Phys.*, 13, 6207–6226, 10.5194/acp-13-6207-2013, 2013.
- van der Werf, G. R., Randerson, J. T., Giglio, L., Collatz, G. J., Mu, M., Kasibhatla, P. S., Morton, D. C., DeFries, R. S., Jin, Y., and van Leeuwen, T. T.: Global fire emissions and the contribution of deforestation, savanna, forest, agricultural, and peat fires (1997-2009). *Atmos. Chem. Phys.*, 10, 11707-11753, 10.5194/acp-10-11707-2010, 2010.
- 35 Walcek, C. J., and Taylor, G. R.: A theoretical method for computing vertical distributions of acidity and sulfate production within cumulus clouds. *Journal of the Atmospheric Sciences*, 43(4), 339-355, 10.1175/1520-0469(1986)043<0339:ATMFCV>2.0.CO;2, 1986.
- Wang, C.: Impact of anthropogenic absorbing aerosols on clouds and precipitation: A review of recent progresses, *Atmospheric Research*, 122, 237-249, 10.1016/j.atmosres.2012.11.005, 2013a.
- 40 Wang, H., He, Q., Chen, Y., and Kang, Y.: Analysis of Characteristics of Black Carbon Concentration in Shanghai from 2008 to 2012, *Environmental Science*, 35(4), 1215-1222, 2014a.
- Wang, H., Xie, S.-P., and Liu, Q.: Comparison of Climate Response to Anthropogenic Aerosol versus Greenhouse Gas Forcing: Distinct Patterns, *Journal of Climate*, 29, 5175-5188, 10.1175/jcli-d-16-0106.1, 2016a.
- 45 Wang, H. L., Qiao, L. P., Lou, S. R., Zhou, M., Ding, A. J., Huang, H. Y., Chen, J. M., Wang, Q., Tao, S. K., Chen, C. H., Li, L., and Huang, C.: Chemical composition of PM<sub>2.5</sub> and meteorological impact among three years in urban Shanghai, China, *Journal of Cleaner Production*, 112, 1302-1311, 10.1016/j.jclepro.2015.04.099, 2016b.
- Wang, J., Wang, X., Zhang, H., Lu, F., and Hou, P.: Comparison of PM<sub>2.5</sub> concentration and elemental compositions in two typical sites in Beijing urban area, *Acta Scientiae Circumstantiae*, 32(1), 74-80, 2012a.
- 50 Wang, P., Cao, J.-j., Shen, Z.-x., Han, Y.-m., Lee, S.-c., Huang, Y., Zhu, C.-s., Wang, Q.-y., Xu, H.-m., and Huang, R.-j.:



- Spatial and seasonal variations of PM 2.5 mass and species during 2010 in Xi'an, China, *Science of The Total Environment*, 508, 477-487, 10.1016/j.scitotenv.2014.11.007, 2015.
- Wang, P., Wang, H., Wang, Y. Q., Zhang, X. Y., Gong, S. L., Xue, M., Zhou, C. H., Liu, H. L., An, X. Q., Niu, T., and Cheng, Y. L.: Inverse modeling of black carbon emissions over China using ensemble data assimilation, *Atmospheric Chemistry and Physics*, 16, 989-1002, 10.5194/acp-16-989-2016, 2016c.
- Wang, X., Liao, J.B., Zhang, J., Shen, C., Chen, W.H., Xia, B.C. and Wang, T.J.: A Numeric Study of Regional Climate Change Induced by Urban Expansion in the Pearl River Delta, China, *J. Appl. Meteor. Climatol.*, 53, 346-362, doi: 10.1175/JAMC-D-13-054.1, 2014b.
- Wang, Y., Zhang, Q., He, K., Zhang, Q., and Chai, L.: Sulfate-nitrate-ammonium aerosols over China: response to 2000-2015 emission changes of sulfate dioxide, nitrogen oxides, and ammonia, *Atmos. Chem. Phys.*, 13, 2635-2652, doi: 10.5194/acp-13-2635-2013, 2013b.
- Wang, Y. S., Yao, L., Wang, L. L., Liu, Z. R., Ji, D. S., Tang, G. Q., Zhang, J. K., Sun, Y., Hu, B., and Xin, J. Y.: Mechanism for the formation of the January 2013 heavy haze pollution episode over central and eastern China, *Sci. China Earth Sci.*, 57, 14-25, doi:10.1007/s11430-013-4773-4, 2014c.
- Wang, Z. F., Ueda, H., and Huang, M. Y.: A deflation module for use in modeling long-range transport of yellow sand over East Asia, *J. Geophys. Res.-Atmos.*, 105, 26947-26959, 2000.
- Wang, Z., Maeda, T., Hayashi, M., Hsiao, L. F., and Liu, K. Y.: A nested air quality prediction modeling system for urban and regional scales: Application for high-ozone episode in Taiwan. *Water, Air, & Soil Pollution*, 130(1), 391-396, 10.1023/A:1013833217916, 2001.
- Wang, Z. F., Akimoto, H., and Uno, I.: Neutralization of soil aerosol and its impact on the distribution of acid rain over east Asia: Observations and model results, *J. Geophys. Res.-Atmos.*, 107, 4389, 10.1029/2001JD001040, 2002.
- Wang, Z., Xie, F., Sakurai, T., Ueda, H., Han, Z., Carmichael, G., Streets, D., Engardt, M., Holloway, T., and Hayami, H.: MICS-Asia II: Model inter-comparison and evaluation of acid deposition, *Atmospheric Environment*, 42, 3528-3542, 10.1016/j.atmosenv.2007.12.071, 2008.
- Wang, Z., Li, J., Wang, Z., Yang, W., Tang, X., Ge, B., Yan, P., Zhu, L., Chen, X., Chen, H., Wand, W., Li, J., Liu, B., Wang, X., Wand, W., Zhao, Y., Lu, N., and Su, D.: Modeling study of regional severe hazes over mid-eastern China in January 2013 and its implications on pollution prevention and control, *Science China Earth Sciences*, 57, 3-13, 10.1007/s11430-013-4793-0, 2013c.
- Xie, H., Wu, D., Zhang, G., Li, M., Fang, H., Chen, Q., Li, X., and Zhai, G.: Characteristic analysis of fine particles PM2.5 in the ambient air in Dongguan, *Air Pollution Control*, doi:10.13205/j.hjgc.201406016, 2013.
- Xu, Y.: The level of haze and PM2.5 in Zhengzhou and heat power plants' atmospheric environmental impact assessment, M.S. thesis, Zhengzhou University, China, 77 pp., 2012.
- Yamaji, K., Ohara, T., Uno, I., Kurokawa, J.-i., Pochanart, P., and Akimoto, H.: Future prediction of surface ozone over east Asia using Models-3 Community Multiscale Air Quality Modeling System and Regional Emission Inventory in Asia, *Journal of Geophysical Research*, 113, 10.1029/2007jd008663, 2008.
- Yan, Z.-W., Wang, J., Xia, J.-J., and Feng, J.-M.: Review of recent studies of the climatic effects of urbanization in China, *Advances in Climate Change Research*, 7, 154-168, 10.1016/j.accre.2016.09.003, 2016.
- Yang, J.H., Kang, S.C., Ji, Z.M., and Chen, D.L.: Modeling the origin of anthropogenic black carbon and its climatic effect over the Tibetan Plateau and surrounding regions, *J. Geophys. Res.-Atmos.*, 123, 671-692, 10.4209/aaqr.2017.05.0156, 2018.
- Yang, Y., Russell, L. M., Lou, S., Lamjiri, M. A., Liu, Y., Singh, B., and Ghan, S. J.: Changes in Sea Salt Emissions Enhance ENSO Variability, *J. Climate*, 29, 8575-8588, 10.1175/JCLI-D-16-0237.1, 2016.
- Yao, L., Yang, L., Yuan, Q., Yan, C., Dong, C., Meng, C., Sui, X., Yang, F., Lu, Y., and Wang, W.: Sources apportionment of PM2.5 in a background site in the North China Plain, *The Science of the total environment*, 541, 590-598, 10.1016/j.scitotenv.2015.09.123, 2016.
- Yarwood, G., Rao, S., Yocke, M., and Whitten, G. Z.: Updates to the Carbon Bond Chemical Mechanism: CB05. Final Report to the US EPA, RT-0400675, 2005.
- Yu, Y., Hu, B., and Wang, Y.: Changing characteristics of the main air pollutants of the Dongling Mountain in Beijing, *Environmental Science*, 34(7), doi:10.13227/j.hjlx.2013.07.021, 2013.
- Yue, X., Wang, H. J., Liao, H., and Fan, K.: Simulation of dust aerosol radiative feedback using the GMOD: 2. Dust climate

interactions, *J. Geophys. Res.-Atmos.*, 115, D10202, 10.1029/2008JD010995, 2010.

Yue, X., Unger, N., Harper, K., Xia, X., Liao, H., Zhu, T., Xiao, J., Feng, Z., and Li, J.: Ozone and haze pollution weakens net primary productivity in China, *Atmospheric Chemistry and Physics*, 17, 6073-6089, 10.5194/acp-17-6073-2017, 2017.

5 Zaveri, R. A., and Peters, L. K.: A new lumped structure photochemical mechanism for large-scale applications, *Journal of Geophysical Research: Atmospheres*, 104, 30387-30415, 10.1029/1999jd900876, 1999.

Zhang, B., Wang, Y., and Hao, J.: Simulating aerosol–radiation–cloud feedbacks on meteorology and air quality over eastern China under severe haze condition in winter, *Atmospheric Chemistry and Physics*, 15, 2387-2404, 10.5194/acp-15-2387-2015, 2015a.

10 Zhang, M.: Numerical study of boundary layer ozone transport and photochemical production in east Asia in the wintertime, *Geophysical Research Letters*, 29, 10.1029/2001gl014368, 2002.

Zhang, M., Uno, I., Zhang, R., Han, Z., Wang, Z., and Pu, Y.: Evaluation of the Models-3 Community Multi-scale Air Quality (CMAQ) modeling system with observations obtained during the TRACE-P experiment: Comparison of ozone and its related species, *Atmospheric Environment*, 40, 4874-4882, 10.1016/j.atmosenv.2005.06.063, 2006.

15 Zhang, M., Han, Z., and Zhu, L.: Simulation of atmospheric aerosols in East Asia using modeling system RAMS-CMAQ: Model evaluation, *China Particuology*, 5, 321-327, 10.1016/j.cpart.2007.07.002, 2007.

Zhang, R., Sun, X. S., Shi, A. J., Huang, Y. H., Yan, J., Nie, T., Yan, X., and Li, X.: Secondary inorganic aerosols formation during haze episodes at an urban site in Beijing, China, *Atmos. Environ.*, 177, 275–282, 10.1016/j.atmosenv.2017.12.031, 2018.

20 Zhang, X.: Study on long-term variation of Black Carbon aerosol over Peking and Hebei province during 2006-2012, M.S. thesis, Yunnan University, China, 116 pp., 2015b.

Zhao, C., Liu, X., Leung, L. R., Johnson, B., McFarlane, S. A., Gustafson Jr., W. I., Fast, J. D., and Easter, R.: The spatial distribution of mineral dust and its shortwave radiative forcing over North Africa: modeling sensitivities to dust emissions and aerosol size treatments, *Atmos. Chem. Phys.*, 10, 8821-8838, <https://doi.org/10.5194/acp-10-8821-2010>, 2010.

25 Zhao, X. J., Zhao, P. S., Xu, J., Meng, W., Pu, W. W., Dong, F., He, D., and Shi, Q. F.: Analysis of a winter regional haze event and its formation mechanism in the North China Plain, *Atmos. Chem. Phys.*, 13, 5685-5696, <https://doi.org/10.5194/acp-13-5685-2013>, 2013.

30 Zheng, B., Zhang, Q., Zhang, Y., He, K. B., Wang, K., Zheng, G. J., Duan, F. K., Ma, Y. L., and Kimoto, T.: Heterogeneous chemistry: a mechanism missing in current models to explain secondary inorganic aerosol formation during the January 2013 haze episode in North China, *Atmos. Chem. Phys.*, 15, 2031–2049, <https://doi.org/10.5194/acp-15-2031-2015>, 2015.

Zhu, J., Liao, H., Mao, Y., Yang, Y., and Jiang, H.: Interannual variation, decadal trend, and future change in ozone outflow from East Asia, *Atmospheric Chemistry and Physics*, 17, 3729-3747, 10.5194/acp-17-3729-2017, 2017.

35

Table 1. Basic configurations of participant models in MICS–Asia Phase III.

Model Index	Model Version	Vertical Layers (1 <sup>st</sup> height)	Horizontal advection	Vertical diffusion	Gas phase chemistry	Aerosol chemistry	Dry deposition	Wet scavenging	Dust scheme	Sea-salt scheme	Meteorology	Boundary Condition	Online/Offline	References
M1	WRFDMAQ5.0.2	40 (57 m)	Yamo	ACM2	SAPRC99	Aero6 ISORROPIA(v2)	Wesely	Henry's law	NA	Gong, Kelly	Standard <sup>a</sup>	GEOS-Chem	Online access	Fu et al., (2008a)
M2	WRFDMAQ5.0.2	40 (57 m)	Yamo	ACM2	SAPRC99	Aero6 ISORROPIA(v2)	Wesely	Henry's law	NA	Gong, Kelly	Standard <sup>a</sup>	Default	Online access	Wang et al., (2014b)
M3	WRFDMAQ5.0.1	40 (57 m)	Yamo	ACM2	CB05	Aero6 ISORROPIA(v2)	Wesely	Henry's law	NA	Gong, Kelly	Standard <sup>a</sup>	GEOS-Chem	Online access	Lam et al., (2011)
M4	WRFDMAQ4.7.1	40 (57 m)	Yamo	ACM2	SAPRC99	Aero5 ISORROPIA(v1.7)	Wesely	Henry's law	NA	Gong, Kelly	Standard <sup>a</sup>	CHASER	Offline	Itahashi et al., (2014)
M5	WRFDMAQ4.7.1	40 (57 m)	Yamo	ACM2	SAPRC99	Aero5 ISORROPIA(v1.7)	M3DRY	Henry's law	NA	Gong, Kelly	Standard <sup>a</sup>	CHASER	Offline	Yamaji et al., (2008)
M6	WRFDMAQ4.7.1	40 (57 m)	Yamo	ACM2	SAPRC99	Aero5 ISORROPIA(v1.7)	M3DRY	Henry's law	NA	Gong, Kelly	Standard <sup>a</sup>	CHASER	Offline	Nagashima et al., (2017)
M7	WRFChem3.7.1	40 (29 m)	5 <sup>th</sup> order Monotonic	–	RACM–ESRL with KPP	MADE/SORGAM	Wesely	Henry's law	NA	NA	WRF/NCEP	Default	Online integrated	Park et al., (2018)
M8	WRFChem3.6.1	40 (57 m)	5 <sup>th</sup> order Monotonic	MYJ	RACM with KPP	MADE/VBS	Wesely	Henry's law	NA	NA	WRF/NCEP	CHASER	Online integrated	Lin et al., (2014)
M9	WRFChem3.6	40 (16 m)	5 <sup>th</sup> order Monotonic	YSU	RADM2	MADE/SORGAM	Wesely	Henry's law	Shao (2004)	Gong	WRF/NCEP	CHASER	Online integrated	Chen et al., (2017)
M10	NU-WRF v7lis7-3.5.1-p3	60 (44 m)	5 <sup>th</sup> order Monotonic	YSU	RADM2	GOCART	Wesely	Grell	GOCART	Gong	WRF/MERRA2	MOZART+GOCART	Online integrated	Tao et al., (2013)
M11	NAQPMs	20 (50 m)	Walcek and Aleksic (1998)	K–theory	CBMZ	Aero5 ISORROPIA(v1.7)	Wesely	Henry's law	Wang (2000)	Gong	Standard <sup>a</sup>	CHASER	Online access	Wang et al., (2008)
M12	NHMChem	40 (54 m)	Walcek and Aleksic (1998)	FTCS	SAPRC99	ISORROPIA(v2)	Kajino	Kajino	Han (2004)	Clarke	JMA NHM	CHASER	Offline	Kajino et al., (2012)
M13	GEOS-Chem9.1.3	47 (60 m)	ppm	Lin and McElroy (2010)	Nox-Ox-HC-Br mechanism	ISORROPIA(v2)	Wesely	Liu	GOCART	Gong, Jaegle	Geos-5	NA	Offline	Zhu et al., (2017)
M14	RAMSCMAQ4.6	15 (100 m)	Yamo	ACM2	SAPRC99	Aero5 ISORROPIA(v1.7)	Wesely	Henry's law	Han (2004)	Gong	RAMS/NCEP	CHASER	Offline	Zhang et al., (2002)

<sup>a</sup>‘Standard’ represents the reference meteorological field provided by MICS–Asia III project.

**Table 2. Statistics of BC, SO<sub>4</sub><sup>2-</sup>, NO<sub>3</sub><sup>-</sup>, NH<sub>4</sub><sup>+</sup>, PM<sub>2.5</sub>, PM<sub>10</sub>, and AOD. Best results are set to be bold with underline. Monthly mean observations and the number of stations (nstd) are listed with italic. In this table, monthly measurements except BC are taken from EANET, CNEMC, and AERONET. Monthly BC concentrations are collected from published literatures.**

Species	Statistics	M1	M2	M4	M5	M6	M7	M8	M9	M11	M12	M13	M14	EM
<b>BC</b> (5.0 $\mu\text{g m}^{-3}$ ) (nstd=5)	R	0.70	0.73	0.71	0.65	0.70	0.73	<b><u>0.80</u></b>	–	0.69	0.68	0.75	0.72	0.73
	NMB(%)	<b><u>1.0</u></b>	12.7	–24.7	–54.9	–17.8	–11.7	–34.2	–	–17.5	–2.2	–26.8	–11.6	–17.0
	RMSE	4.10	4.30	2.95	4.06	2.99	2.69	2.84	–	2.91	3.52	2.80	<b><u>2.64</u></b>	2.77
<b>SO<sub>4</sub><sup>2-</sup></b> (3.8 $\mu\text{g m}^{-3}$ ) (nstd=31)	R	0.69	0.71	0.64	0.58	0.66	0.48	0.53	0.65	0.55	0.50	<b><u>0.76</u></b>	0.46	0.69
	NMB(%)	–23.1	–13.0	–31.0	–26.4	–26.9	–67.7	<b><u>–1.6</u></b>	–67.0	–34.5	23.2	–31.9	69.3	–19.1
	RMSE	3.21	<b><u>3.00</u></b>	3.46	3.57	3.35	4.64	3.62	4.45	3.78	4.01	3.24	5.51	3.22
<b>NO<sub>3</sub><sup>-</sup></b> (1.7 $\mu\text{g m}^{-3}$ ) (nstd=31)	R	0.55	0.51	0.62	<b><u>0.65</u></b>	0.58	0.45	0.29	0.64	0.59	0.60	0.43	0.58	<b><u>0.65</u></b>
	NMB(%)	9.0	–7.2	–42.7	<b><u>–1.7</u></b>	–11.8	–81.2	–80.6	125.7	46.5	54.0	22.7	35.4	4.9
	RMSE	2.70	2.71	2.48	2.29	2.46	3.37	3.18	4.37	2.89	2.80	2.96	2.62	<b><u>2.27</u></b>
<b>NH<sub>4</sub><sup>+</sup></b> (1.1 $\mu\text{g m}^{-3}$ ) (nstd=31)	R	0.67	0.64	0.68	0.66	0.69	0.55	0.34	<b><u>0.75</u></b>	0.66	0.62	0.64	0.68	0.71
	NMB(%)	23.2	33.7	–10.6	<b><u>7.4</u></b>	14.6	–93.5	–34.2	45.3	35.0	49.9	34.9	56.3	14.0
	RMSE	1.24	1.42	1.15	1.21	1.16	1.83	1.53	1.26	1.27	1.54	1.29	1.47	<b><u>1.11</u></b>
<b>PM<sub>2.5</sub></b> (51.4 $\mu\text{g m}^{-3}$ ) (nstd=14)	R	0.80	0.78	0.80	0.71	0.80	0.80	0.77	0.82	0.80	0.78	0.75	0.81	<b><u>0.83</u></b>
	NMB(%)	10.0	13.6	<b><u>–1.3</u></b>	–25.3	–5.8	–5.7	–15.3	26.2	5.2	31.4	–26.5	46.0	4.4
	RMSE	27.56	34.88	23.03	28.00	21.80	23.54	24.83	28.52	22.06	34.87	27.10	35.85	<b><u>21.23</u></b>
<b>PM<sub>10</sub></b> (80.7 $\mu\text{g m}^{-3}$ ) (nstd=51)	R	0.75	0.74	0.74	0.65	0.75	0.70	0.70	0.66	0.78	<b><u>0.82</u></b>	–	0.63	0.78
	NMB(%)	–40.7	–38.7	–35.7	–55.7	–46.6	–43.7	–43.4	–16.9	–25.4	–18.8	–	<b><u>7.1</u></b>	–32.6
	RMSE	51.31	50.88	49.10	64.55	55.31	55.07	55.11	50.67	42.91	<b><u>37.28</u></b>	–	47.26	45.81
<b>AOD</b> (0.2) (nstd=38)	R	0.64	0.55	0.56	–	–	0.54	–	0.60	0.69	0.66	<b><u>0.71</u></b>	0.57	0.68
	NMB(%)	<b><u>–2.0</u></b>	63.7	–28.5	–	–	–21.8	–	11.1	73.1	–6.2	47.1	36.7	18.7
	RMSE	0.15	0.22	0.16	–	–	0.18	–	0.19	0.22	<b><u>0.13</u></b>	0.25	0.22	0.14

**Table 3. The coefficient of variation (CV, standard deviation divided by the mean) of simulated coarse particles (subtract PM<sub>2.5</sub> from PM<sub>10</sub>) in each defined sub-region.**

CV	Normal <sup>a</sup>	Without_SS_Dust <sup>b</sup>	Without_Dust <sup>c</sup>	With_SS_Dust <sup>d</sup>
<b>Region_1</b>	1.3	0.29	0.37	0.97
<b>Region_2</b>	1.39	0.3	0.65	1.04
<b>Region_3</b>	1.43	0.33	0.48	1.27
<b>Region_4</b>	1.21	0.19	0.59	0.95
<b>Region_5</b>	0.85	0.09	0.65	0.88

- 5
- <sup>a</sup>“Normal” means that simulation results from all participant models are considered.
- <sup>b</sup>“Without\_SS\_Dust” means that the impacts of sea salt and dust aerosols are not considered, i.e., only simulation results from M7 and M8 are used to calculate the CV.
- <sup>c</sup>“Without\_Dust” means that the impacts of dust aerosols are not considered, i.e., only simulation results from M1, M2, M4, M5 and M6 are used to calculate the CV.
- 10
- <sup>d</sup>“With\_SS\_Dust” means that both the impacts of sea salt and dust aerosols are considered, i.e., simulation results from M9, M11, M12 and M14 are used to calculate the CV.

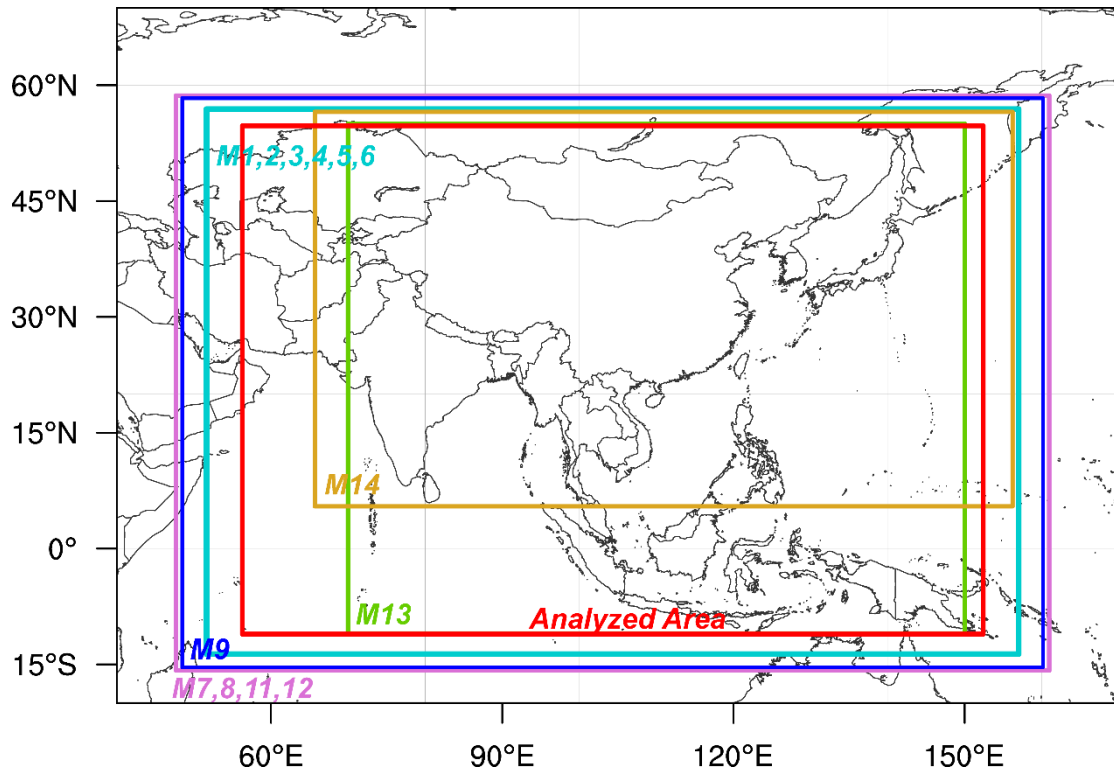


Figure 1. Simulation domain for each participant model. The final analyzed region is also shown.

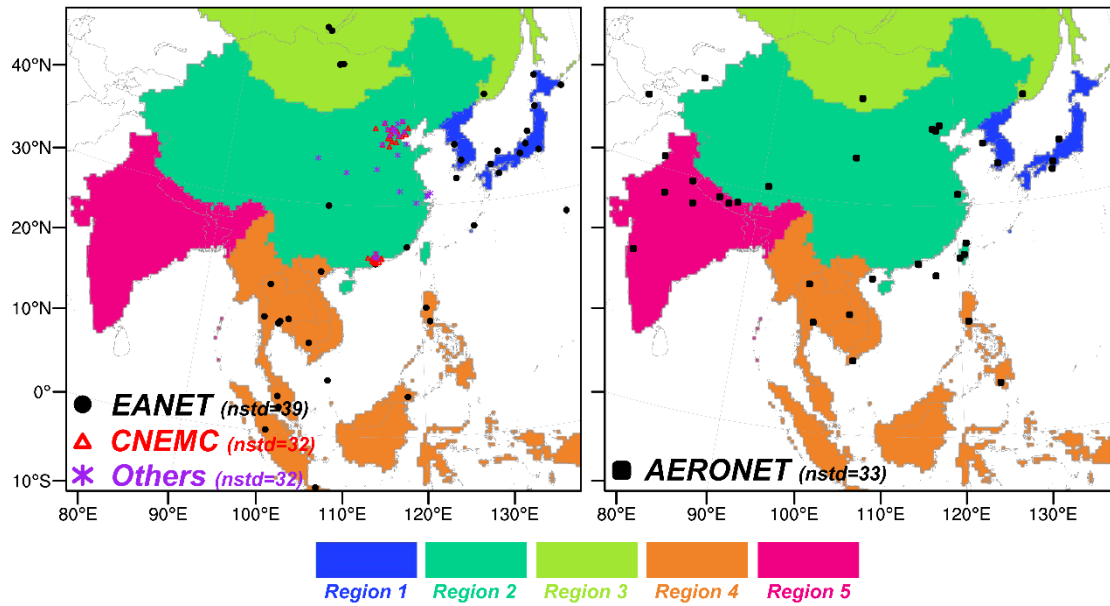


Figure 2. The geographical locations of observation stations: EANET (shown in black circles, the number of stations is 39), CNEMC (shown in red triangles, the number of stations is 32), Others (observations collected from published literatures, shown in purple stars, the number of stations is 32), and AERONET (shown in black boxes, the number of stations is 33). Five defined sub-regions (Region\_1 to Region\_5) are also shown.

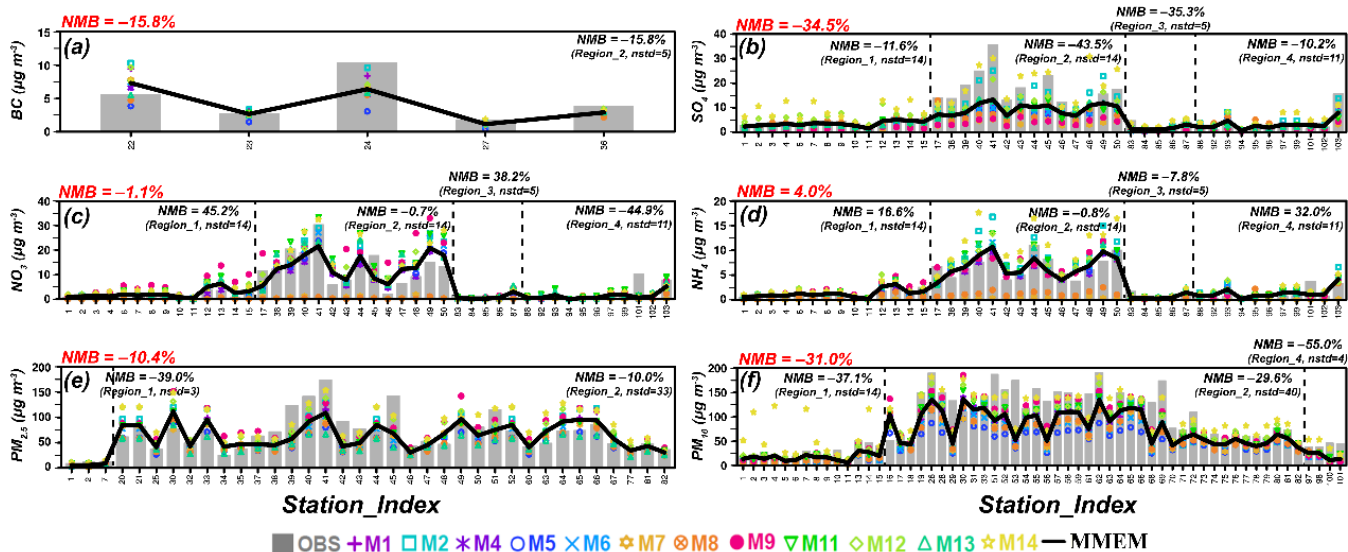


Figure 3. Comparison of observed and simulated concentrations of (a) BC, (b)  $\text{SO}_4^{2-}$ , (c)  $\text{NO}_3^-$ , (d)  $\text{NH}_4^+$ , (e)  $\text{PM}_{2.5}$ , and (f)  $\text{PM}_{10}$ . In each panel, the grey bars represent observations, the colored dots represent simulations, and the black solid lines represent the MMEM (multi-model ensemble mean). The x axis presents the monitoring sites (the information of these sites is listed in Table S1). Normalized mean biases (NMBs) between observations and MMEM in each defined sub-region (shown in black) and the entire analyzed region (shown in red) are also shown. In this figure, the annual mean observations are taken from EANET, CNEMC, and published literatures.



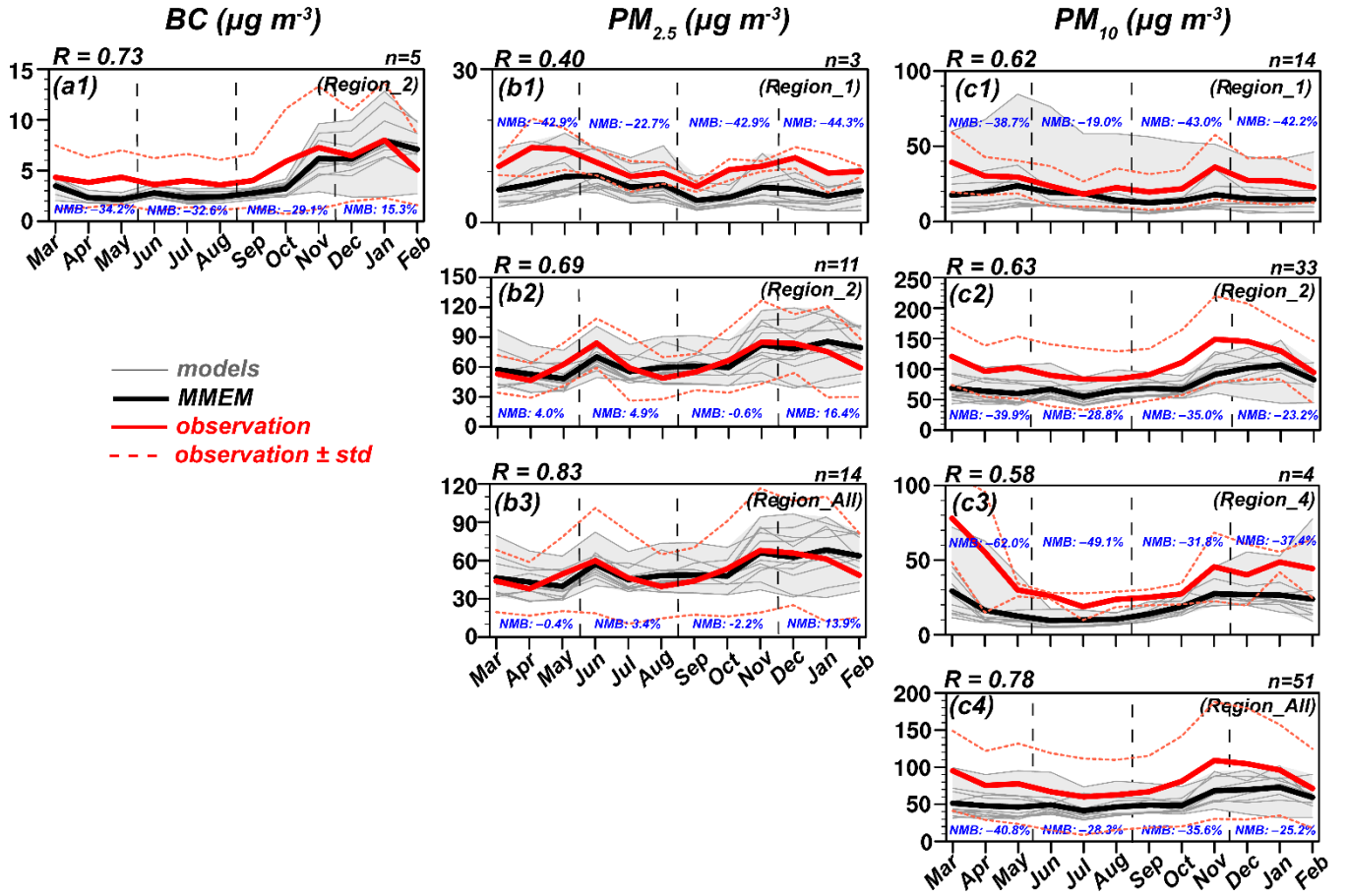


Figure 4. Time series of the monthly observed and simulated aerosol compositions: (a1) BC, (b1)-(b3) PM<sub>2.5</sub>, (c1)-(c4) PM<sub>10</sub>. The thin grey lines represent simulation results, and the grey shaded areas indicate the spread. The thick black lines are the ensemble mean. The red solid lines mean the observations, and the dashed red lines represent one standard deviation. Correlation coefficients (Rs, shown in black) for the whole year and normalized mean biases (NMBs, shown in blue) for each season between observations and MMEM are shown in each panel. The number of monitoring sites used to calculate the statistics in each sub-region is also listed above each panel. In this figure, the monthly observations except BC are taken from EANET and CNEMC; the monthly BC concentrations are collected from published literatures.

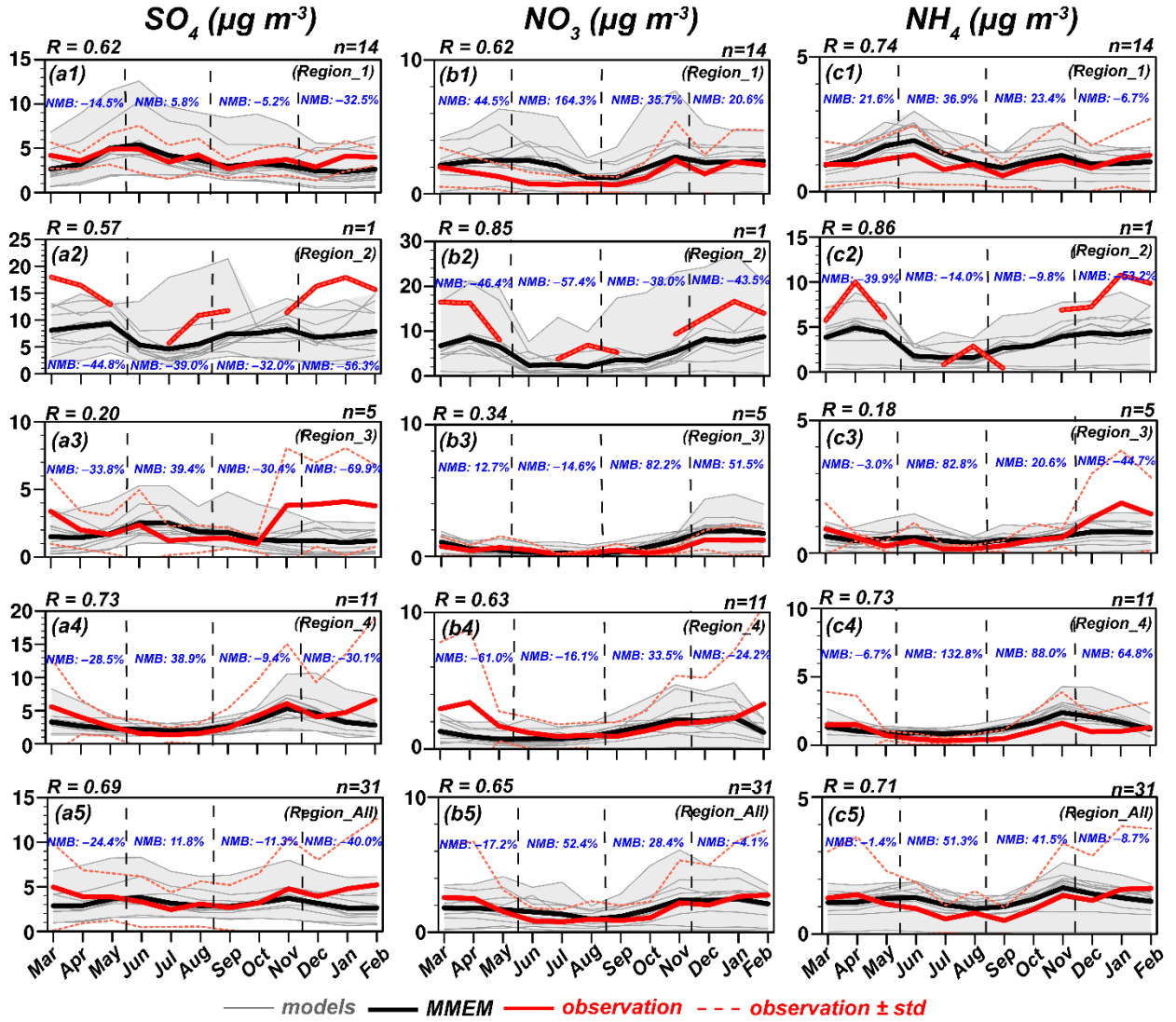


Figure 5. The same as Fig. 4, but for (a1-a5)  $\text{SO}_4^{2-}$ , (b1-b5)  $\text{NO}_3^-$ , and (c1-c5)  $\text{NH}_4^+$ . In this figure, the monthly measurements are taken from EANET.

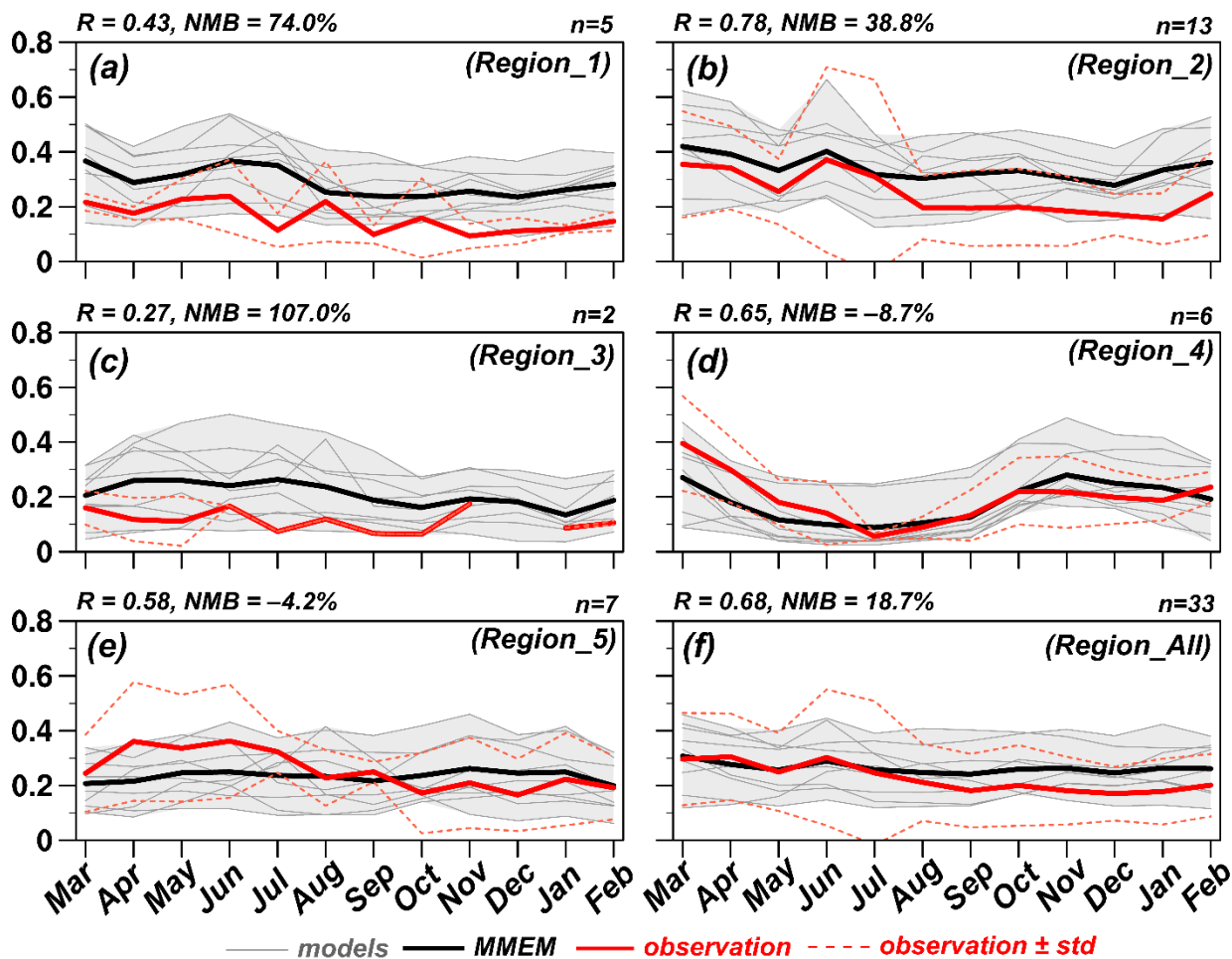


Figure 6. Similar as Fig. 4, but for seasonal cycles of aerosol optical depth (AOD) at 550 nm. In this figure, the monthly measurements are taken from AERONET.

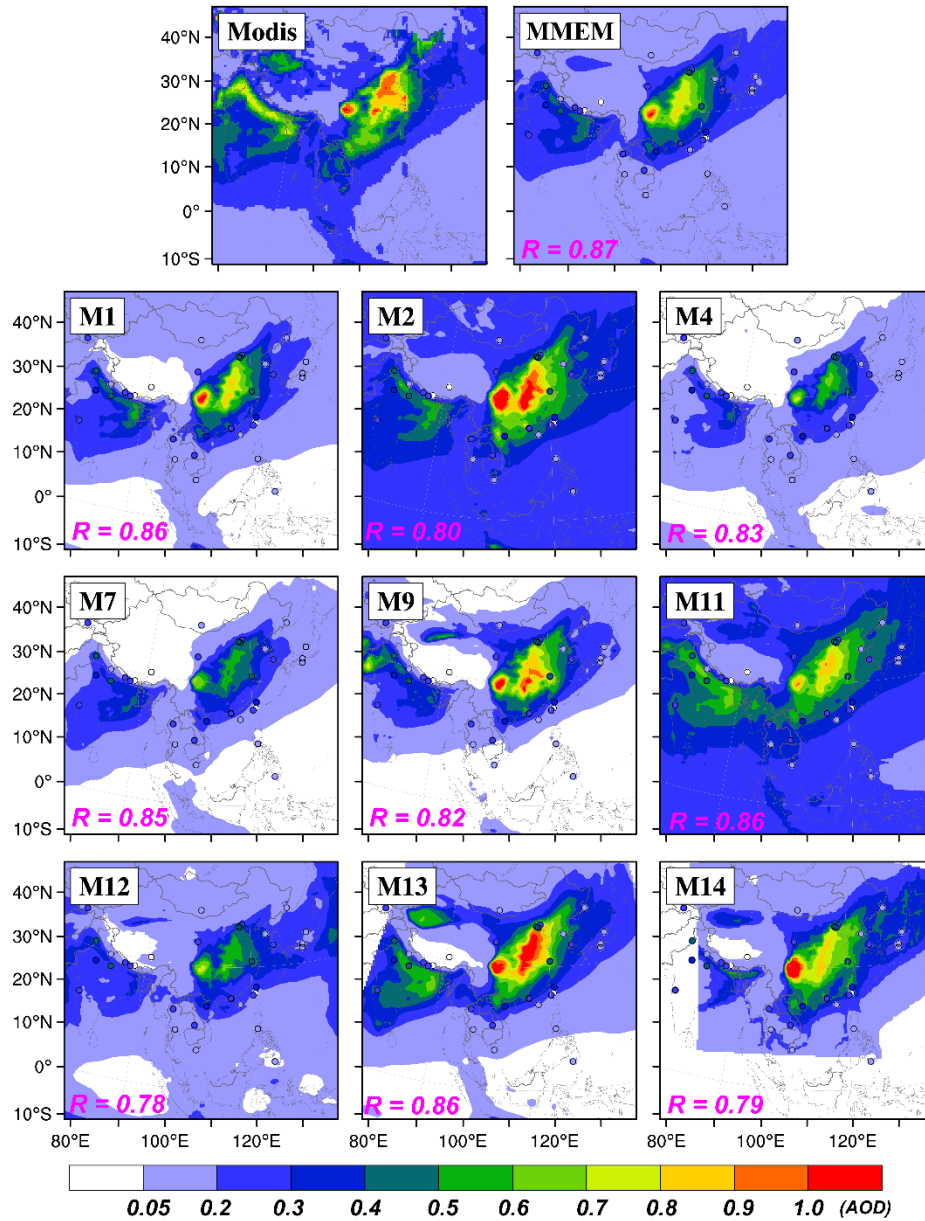


Figure 7. Spatial distributions of observed and simulated aerosol optical depth (AOD) at 550 nm. The observed AOD values are retrieved from MODIS. Spatial correlation coefficients are given in the bottom left corner of each panel. Observed AOD from AERONET are also shown in circles.

5

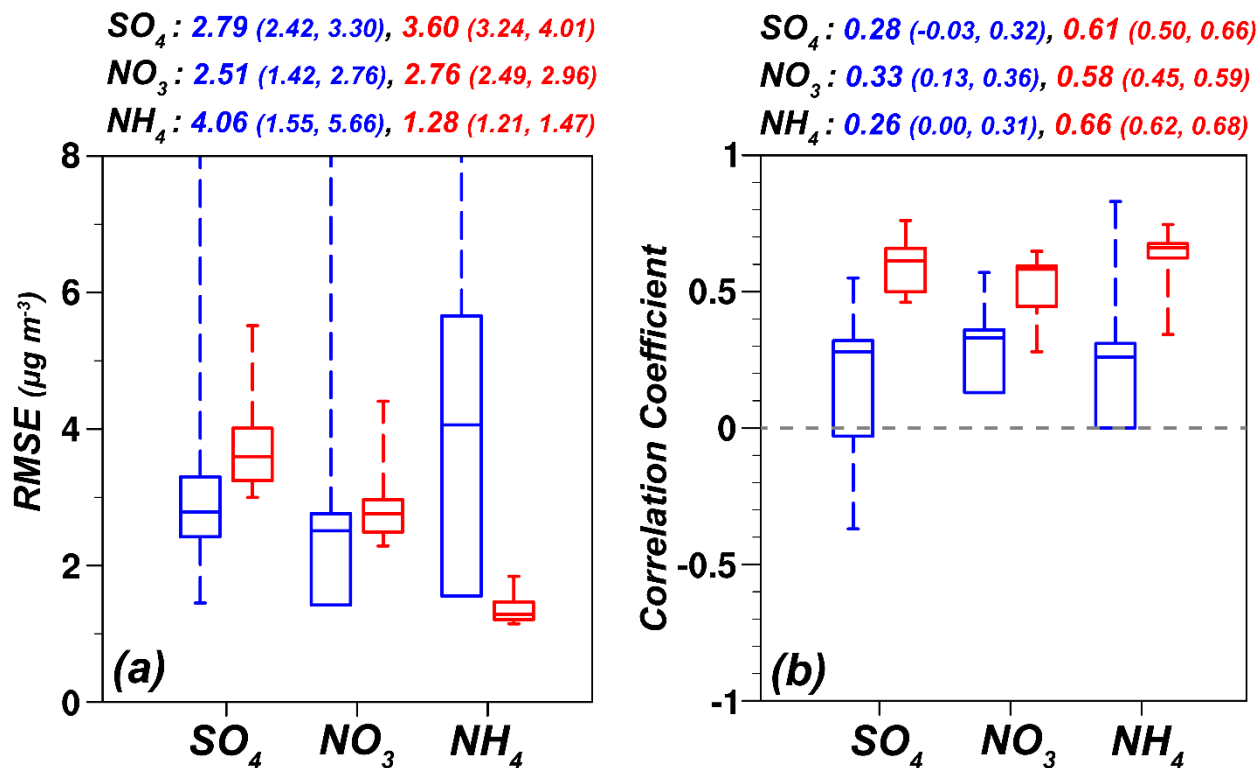


Figure 8. Inter-comparison of model performance between MICS-Asia Phase II (blue) and Phase III (red) for  $SO_4^{2-}$ ,  $NO_3^-$ , and  $NH_4^+$ . Detailed information about the observations and simulations used in Phase II can be obtained from Hayami et al. (2008). Each boxplot exhibits the full range, the interquartile, and the median for (a) RMSE and (b) correlation coefficient. Detailed values of the median (the 25<sup>th</sup> percentile, the 75<sup>th</sup> percentile) are also listed above each panel.

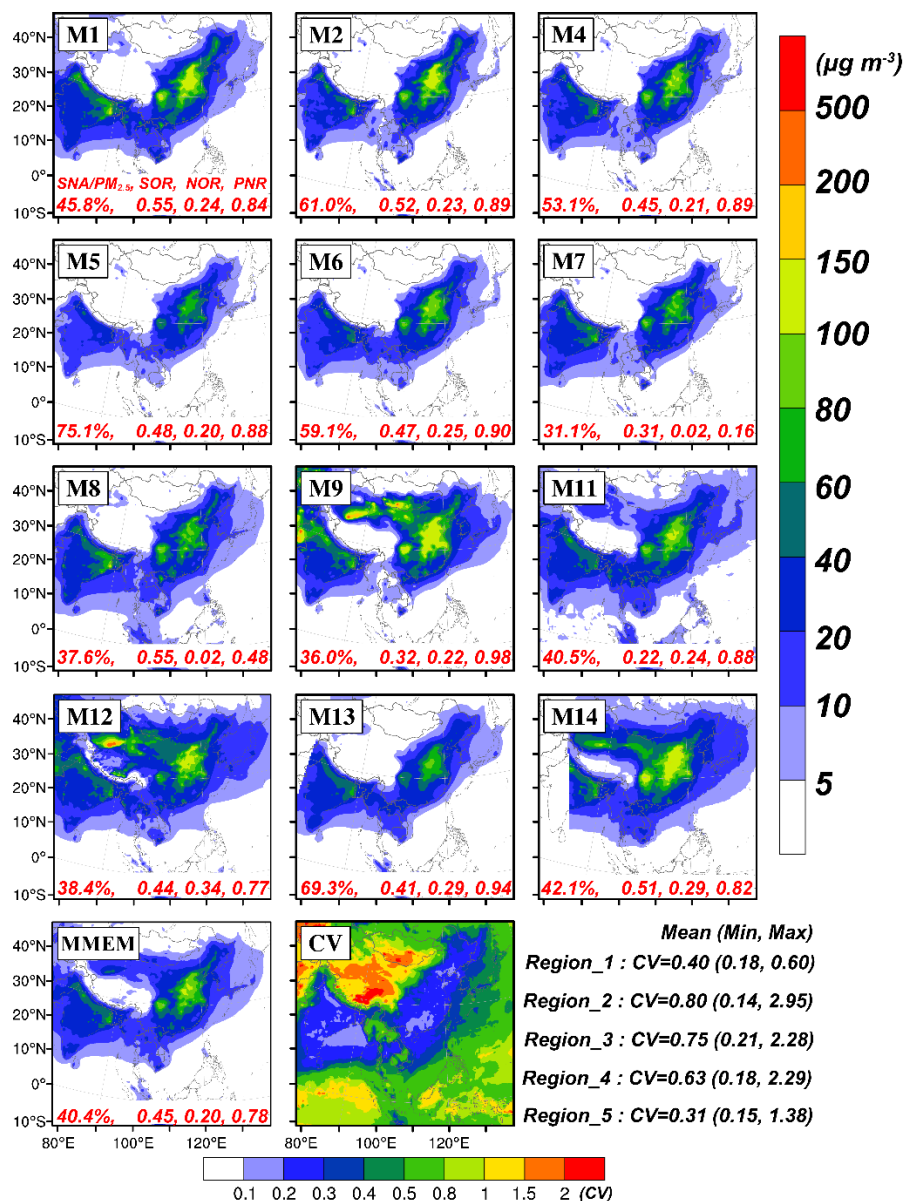


Figure 9. Spatial distributions of simulated  $PM_{2.5}$  concentrations from each participant model and the MMEM. The calculated coefficient of variation (CV, standard deviation divided by the mean) is also shown. The values listed in the bottom right corner of the figure represent the averaged CV (the minimum CV, the maximum CV) in each defined sub-region. The ratio of SNA (sulfate, nitrate, and ammonium) to  $PM_{2.5}$ , the SOR (sulfur oxidation ratio), the NOR (nitric oxidation ratio), and the PNR (particle neutralization ratio) are also given at the bottom of each panel.



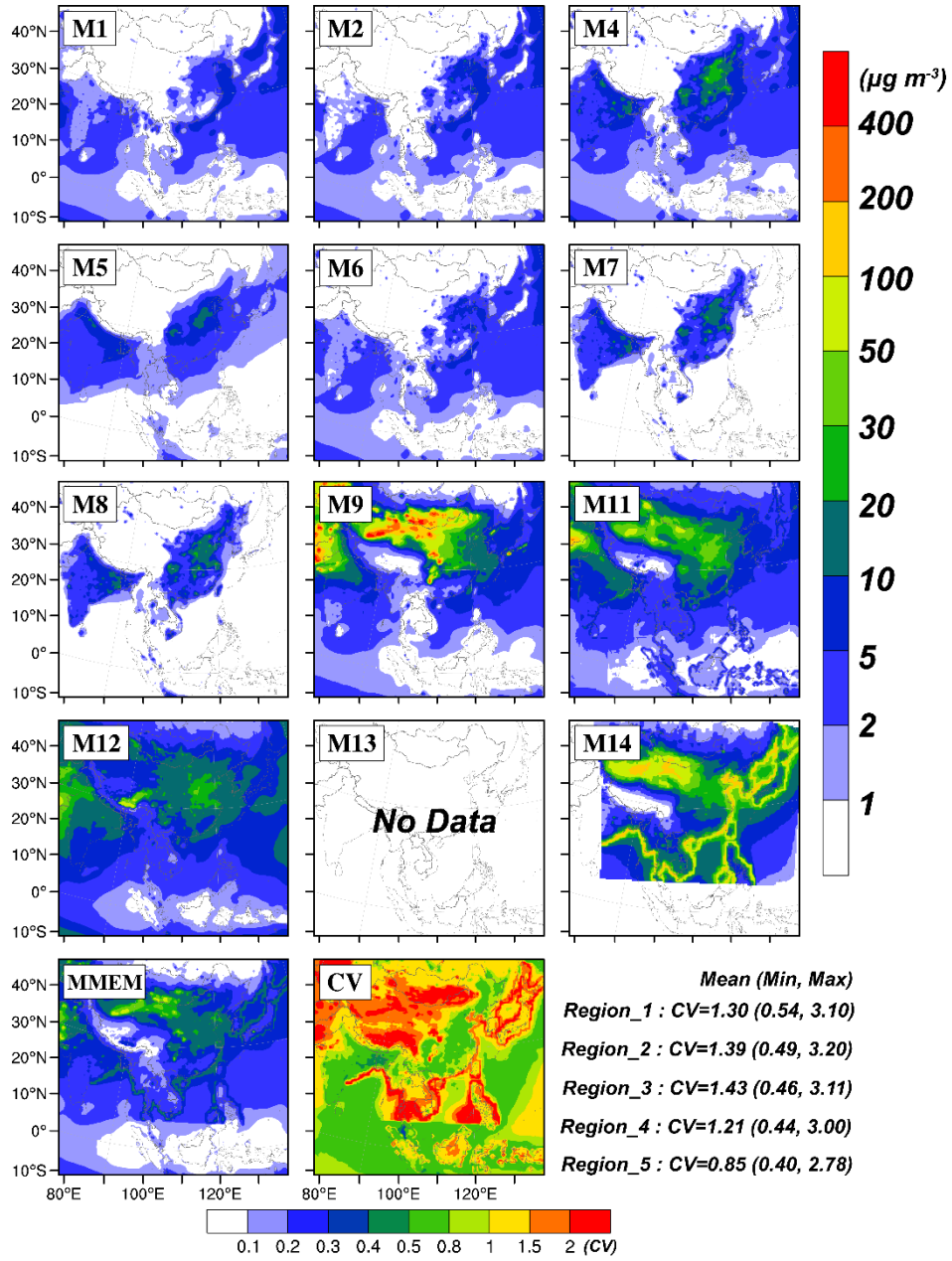


Figure 10. The same as Fig. 9, but for PM<sub>coarse</sub> (coarse particles, subtract PM<sub>2.5</sub> from PM<sub>10</sub>).

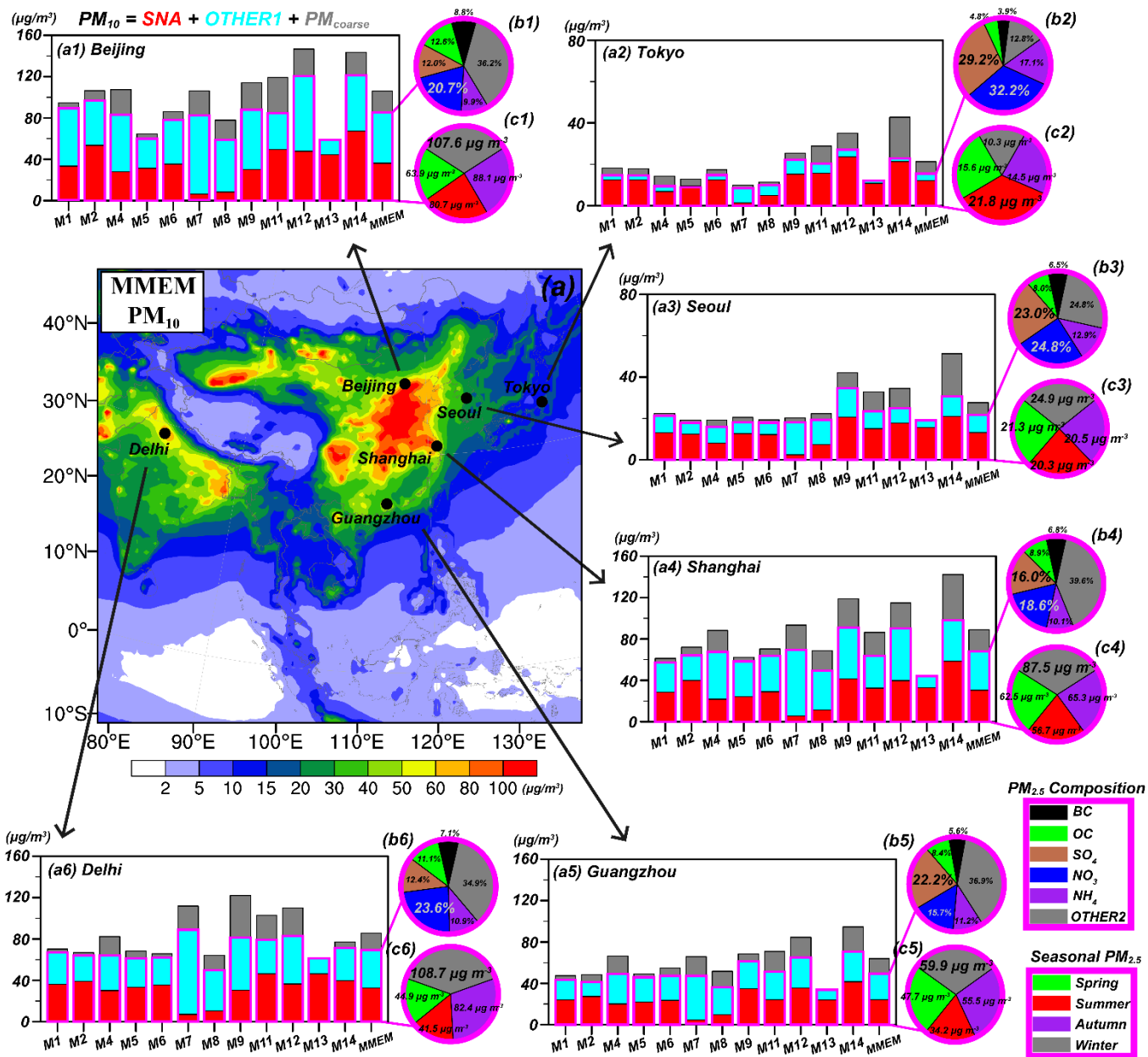


Figure 11. (a) The spatial distributions of PM<sub>10</sub> concentrations for MMEM. (a1-a6) Simulated aerosol chemical compositions for participant models and the MMEM in the six metropolises (Beijing, Tokyo, Seoul, Shanghai, Guangzhou, and Delhi). (b1-b6) The ratios of each composition to PM<sub>2.5</sub> for MMEM. (c1-c6) The seasonal PM<sub>2.5</sub> concentrations for MMEM. It is noted that  $\text{PM}_{10} = \text{SNA} + \text{OTHER1} + \text{PM}_{\text{coarse}}$ ,  $\text{SNA} = \text{SO}_4^{2-} + \text{NO}_3^- + \text{NH}_4^+$ , and  $\text{OTHER1} = \text{BC} + \text{OC} + \text{OTHER2}$ .