

Aerosol indirect effects on temperature-precipitation scaling

By N. Da Silva, S. Mailler and Ph. Drobinski

Dear ACP Editor,

Thank you for your careful reading of our manuscript and for pointing out that a discussion of other aerosol indirect effects on convective clouds was missing in our manuscript. We have taken into account all of your suggestions and modified the text accordingly. In the text below, your comments are in italics, our answers in straight black fonts, and the text in blue describes (and generally reproduces) the changes that have been brought to the manuscript.

We hope that with these changes our study will be retained for publication in ACP.

Kind Regards,

The Authors.

Comments to the Author:

Dear Authors

Thank you for providing the revised manuscript "Aerosol indirect effects on temperature-precipitation scaling" in response to the request for revisions.

Previous marks given by the reviewers were not sufficient to reach the standard required for publication in ACP. Having re-assessed the reviewers' comments and conducted my own assessment, I have now concluded that a number of outstanding issues need to be addressed before reaching the required standard. Most importantly, it is insufficient to frame the complexity of potential aerosol effects on convection modulated via microphysics as "indirect effects" in the simplistic Albrecht framework. There exists a whole body of research and literature on these effects that cannot simply be ignored.

Please consider each of the items below in your response.

Kind regards,

Philip Stier

Co-Editor

Atmospheric Chemistry and Physics

Response P1:

“The first sentence of the abstract has been modified in order to be explicit: «Convective precipitation are known to be negatively affected by aerosol indirect effects through reduced precipitable water and convective instability, as stated in the previous literature.» “

The verdict on aerosol effects on convective precipitation through modulation of cloud microphysics is still open and very likely to be regime dependent. There exists no clear consensus in the literature so this statement will need to be either more general and inclusive or omitted.

The first sentence of the abstract has been decomposed in the 2 following sentences:

Aerosols may impact precipitation in a complex way involving their direct and indirect effects. In a previous numerical study, the overall microphysical effect of aerosols was to weaken precipitation through reduced precipitable water and convective instability.

Response P2:

“The following sentence has been added in the ‘simulation experiment’ section: « It is however important to keep in mind that the ranges that will be found in this study should be interpreted as an upper bound of aerosol indirect effects. »”

Given the significant structural uncertainties involved it is not appropriate to conclude on upper or lower bounds of the total effect from a single modelling study. Even if structural errors were negligible there exist a large number of parametric uncertainties that have not been sampled. The only dimension you sample is the perturbation strength so this need so be clear. However, given the extreme range of values chosen, these perturbations are likely to act as on/off switch for some processes, such as autoconversion. The implications should be discussed.

The previous sentence were removed and replaced by the following text indicating the parameterization uncertainties at extreme values. A discussion has also been added in the last paragraph of the conclusion (see next point).

On the flip side, extreme values of aerosol concentrations reach the bounds of permitted values in the microphysical scheme, suggesting that for these ranges of concentrations, the microphysical parameterizations may lead to more uncertainties.

Response P4:

“This entire study is performed within WRF. That’s OK, but I find little discussion of any possible limitations of that particular model. How broadly applicable do the authors think their results are? Are crucial elements still missing, even for WRF at such high resolution? (There is some discussion in the conclusions, but I would encourage expanding a bit on it.)

We expanded a bit the conclusion in order to reveal the main limitations of our model setting. A deeper discussion is made on the previous companion paper (Da Silva et al., 2018). “

Extensive work has been performed to understand uncertainties in cloud (resolving) modelling that should be acknowledged.

The following paragraph has been added in the conclusion and acknowledges previous studies on understanding uncertainties in cloud modelling.

Due to the poor comprehension of aerosol indirect effects (Fan et al., 2016) and the known uncertainties associated with numerical modeling (Crétat et al., 2012 ; Diaconescu et al., 2007; Flaounas et al. 2011 ; Foley, 2010 ; Ramarohetra et al., 2015 ; Seth 1998), aerosol indirect effects have been found to be sensitive to the model configuration (Seifert and Beheng, 2006; Lebo and Seinfeld, 2011, Lebo et al., 2012; Fan et al., 2012; Morrison, 2012; ; Lebo and Morrison, 2014; Hill et al., 2015; Johnson et al., 2015; White et al., 2017; Heikenfeld et al., 2019). The results found with our specific model configuration are uncertain in this sense and need to be confirmed by further numerical and observational studies. It is also worth noting that these results were obtained using extremely low and extremely high aerosol concentrations. While this approach permits to effectively retrieve the precipitation response to a drastic change in aerosol concentrations, it is uncertain that the magnitude of the involved processes does not change under less extreme aerosol conditions, as stated in other studies (Rosenfeld et al., 2008; Dagan et al., 2015; Miltenberger et al., 2018). Despite these limitations, our configuration highlights the importance of the cloud albedo effect on convective precipitation, often underestimated in case studies simulations. It is suggested in this study that this effect might be higher than the convective invigoration, as predicted in Fan et al. (2013) using shorter simulations on a smaller domain. A more realistic estimation of the aerosol indirect effects on convective precipitation could be carried out with the use of online-coupled models in which aerosol concentrations are evaluated with precise emission and transport schemes (Tucella et al. 2019).

Response P9:

“Precipitation extremes are supposed to wring out all of the moisture from an ascending parcel and are therefore expected to scale with the CC law. However many departures from the CC-scaling”

Statements as “supposed to” needs to be backed up by reference. “Wring out” does not correspond to a physical process. Language needs to refer to physical processes.

The following correction has been made in the manuscript:

It has been suggested that precipitation extremes correspond to events where the whole column of moisture is precipitated and are therefore expected to scale with the CC law (Pall et al. 2007, Muller et al., 2013).

Response P10:

“The CC scaling is less expected for mean precipitation which are more constrained by an energetic budget than extreme precipitation (Allen and Ingram, 2002; Held and Soden, 2006;

Muller et al., 2011; Muller, 2013). “

Please discuss the scales on which these constraints hold.

A brief discussion has been added in the introduction.

While this constraint is theoretically more relevant at the global scale, it has also been observed by regional climate models (Raisanen et al., 2004). The study of Hardwick et al. (2010) suggests that this constraint also acts in a specific location over a long time record. Indeed, they have systematically found lower slopes for median precipitation than for extreme precipitation in their 4 selected in-situ measurement stations in Australia.

Response P11 / Introduction:

You discuss “indirect effects” on precipitation in the framework of Abrecht etc. However, your results include the influence of convection for which a wide range of hypothesis exist regarding aerosol effects on precipitation due to potential interactions with the cloud dynamics, including the convective invigoration hypothesis. This needs to be reflected in the introduction and discussed later on as appropriate.

Thank you for pointing out this point. Modifications has been added in the introduction, the results and the conclusion of the paper to discuss the potential effects that may hold in our simulations. However the added comments in the results and conclusion mostly consists in evocating hypotheses, a deeper analysis was considered beyond the scope of this paper.

Please see the differences between the previous version and new version of the manuscript at the end of the present document.

Response P13:

You need to discuss which processes you may resolve in convection permitting simulation that you do not capture in parameterised convection. Presumably you now capture aerosol effects on convection? This then needs to be linked to the mechanism referred to in the last comment..

The following sentence has been added in this part of the paper. Some reminders were also added in the result part when appropriate.

While the microphysical effects of aerosol on convective clouds were not taken into account due to the use of a convection scheme insensitive to aerosol concentrations, the whole set of indirect effects are represented in the HR simulations, including small scale and large scale processes.

Response P13:

“at first vertical grid level” -> at lowest vertical grid level (the ordering in models is arbitrary)

The text has been modified accordingly.

Response P14:

Figure 2 and caption: it is unclear if results are all from same simulations/resolutions or not? How do they differ?

We are not sure of the point but the figure was done using convective precipitation of the LR simulations (50 km of resolution), even inside subdomain boxes.

It has been specified in the caption.

Response P16:

Figure 3: consider adding visual legend

Visual legends have been added in figure 3 and 4 of the manuscript.

Response P17:

“It confirms the weaker occurrence of clouds at high temperatures in our simulations, which results”

This sentence is confusing and needs to be clarified. What is “weaker occurrence”?

This sentence has been replaced by the following sentence below. We hope that this sentence and the following added paragraph (see next comment), help in clarifying the text.

It shows a decrease of COD with temperatures in all of the simulations.

Response P17

COD is not well defined here. Are we seeing a shift in cloud regimes or a change in cloud radiative properties within regimes? The shape is not obvious.

Precisions have been added in the new version of the manuscript:

When averaging over hours with strictly positive COD, we found that the thickness of clouds is relatively constant over the temperature range (not shown), confirming that the decrease of COD with temperature is mostly due to a decrease of the occurrence of clouds with temperature. This tendency maximizes the indirect effects of aerosols at low temperatures and minimizes them at high temperatures.

Response P17:

“We believe that the inhibition of convective precipitation is mainly due to the processes described in Da Silva et al. (2018), i.e. a stabilisation of the atmosphere and a reduction of precipitable water in the polluted simulations.”

“Believe” is not appropriate in results section. Such statements need to be backed up by analysis / facts.

The end of this paragraph has been rewritten with a starting discussion of precipitation efficiency, while the main analysis is delayed to the next section. This statement does not appear anymore in the new version of the manuscript.

[Please see the differences between the previous version and new version of the manuscript at the end of the present document.](#)

Response P18:

“To analyse the reduction of convective precipitation at low temperatures we consider that precipitation can be approximately described by the following equation:”

The origin of this equation is not entirely obvious. Needs to be backed up by primary references.

“This description is mostly valid for convective precipitation which result from a parcel that raises from the surface.”

Same here: such statements need to be referenced.

These statements are founded on the work of Drobinski et al. (2016) and Da Silva (2018).

[The references have been added in the manuscript.](#)

Response P18:

You discuss maximal vertical velocity in parameterised convection. Where does this come from? Not clear from the model description. Is this prognostic (unlikely)? How is it diagnosed?

Maximal vertical velocities of the parameterised simulations were calculated using the square root of the CAPE, as precised in the method section of the manuscript.

Response P21 :

“In this set of simulations with explicit convection, changes in aerosol concentrations may have an impact on precipitation efficiency through a change in autoconversion rate (second indirect effect). “

As discussed above, this is too simplistic for potential effects of aerosols on convective precipitation and ignores a wide body of research and literature.

A new discussion is proposed and evocates some hypotheses of previous studies. Such simplistic statements were modified accordingly.

Response P27 / conclusions:

“Figure 14 summarizes the various involved processes and their qualitative contribution (size of the arrows).”

It summarises the investigated processes but does not discuss other relevant processes (see above).

The figure was slightly modified in order to account for a potential convective invigoration effect in our HR simulations, which was discussed in the result section.

Response P29 / conclusions:

“These results should be interpreted as an upper bound of the aerosol climatological indirect effect on convective precipitation, since extremely and high aerosol concentrations were used in this study. A more realistic estimation of the aerosol indirect effect on convective precipitation could be carried out with the use of online-coupled models in which aerosol concentrations are evaluated with precise emission and transport schemes. Although taken into account in our simulations with explicit convection, our study suggests that the second aerosol indirect effect may not affect convective precipitation efficiency in a significant way compared to the stabilisation effect. It is however likely that the second indirect effect plays a role in stabilising the atmosphere and hence in reducing convective precipitation, a result that remains to be established.”

These statements are too simplistic and will need to be modified based on the points raised above.

The last paragraph of the conclusion has been rewritten according to the previous remarks.

Aerosol indirect effects on the temperature-precipitation scaling

Nicolas Da Silva¹, Sylvain Mailler^{1,2}, and Philippe Drobinski¹

¹LMD/IPSL, École polytechnique, Université Paris Saclay, ENS, PSL Research University, Sorbonne Universités, UPMC Univ Paris 06, CNRS, Palaiseau, France

²ENPC, Champs-sur-Marne, France

Correspondence: Nicolas Da Silva (nicolas.da-silva@lmd.polytechnique.fr)

Abstract.

~~Convective precipitation are known to be negatively affected by aerosol indirect effects~~ Aerosols may impact precipitation in a complex way involving their direct and indirect effects. In a previous numerical study, the overall microphysical effect of aerosols was to weaken precipitation through reduced precipitable water and convective instability, ~~as stated in the previous~~

5 ~~literature~~. The present study aims at quantifying the relative importance of these two processes in the reduction of summer precipitation using the temperature-precipitation scaling. Based on a numerical sensitivity experiment conducted over central Europe aiming to isolate indirect effects, all others effects being equal, the results show that the scaling of hourly convective precipitation with temperature follows the Clausius-Clapeyron (CC) relationship whereas the decrease of convective precipita-
10 tion does not scale with the CC law since it is mostly attributable to increased stability with increased aerosols concentrations rather than to decreased precipitable water content. This effect is larger at low surface temperatures for which clouds are statistically more frequent and optically thicker. At these temperatures, the increase of stability is mostly linked to the stronger reduction of temperature in the lower troposphere compared to the upper troposphere which results in lower lapse rates.

1 Introduction

The temperature-precipitation relationship has often been studied because it has been hypothesised to give an insight of the
15 change of precipitation in a warming climate. In this context, one may distinguish extreme precipitation studies from mean precipitation studies. The Clausius-Clapeyron (CC) law relates changes in temperature to changes in water vapor content assuming constant relative humidity:

$$\frac{\partial e_s}{\partial T} = \frac{L_v e_s}{R_v T^2} \quad (1)$$

where e_s is the water vapor saturation pressure, T is the temperature, L_v is the latent heat of vaporization and R_v is the gas
20 constant for air. ~~Precipitation extremes are supposed to wring out all of the moisture from an ascending parcel~~ It has been suggested that precipitation extremes correspond to events where the whole column of moisture is precipitated out and are therefore expected to scale with the CC law (Pall et al., 2007; Muller, 2013). However many departures from the CC-scaling have been observed. Literature has described a peaklike shape for the temperature-precipitation extremes relationship with CC-scaling for the cold season and negative scaling for the warm season (Drobinski et al., 2016). Sub-CC scaling for warm

temperatures can be explained by either the decrease of relative humidity (Hardwick et al., 2010; Panthou et al., 2014), the decrease of precipitation duration (Utsumi et al., 2011; Singleton and Toumi, 2013; Panthou et al., 2014), the decrease of precipitation efficiency or changes in dynamics (Drobinski et al., 2016). Conversely, Lenderink and van Meijgaard (2008) has found an increase of precipitation extremes (their 99.9th and 99th percentiles) beyond the CC-scaling for temperatures between 5 12°C and 23°C at de Bilt in Netherlands. It has been argued that this "super-CC" scaling is due to the transition between stratiform and convective precipitation (Haerter and Berg, 2009; Berg and Haerter, 2013; Molnar et al., 2015) and enhanced dynamics in convective clouds at higher temperatures (Lenderink et al., 2017). Although less documented than extremes, a "hook shape" of the temperature-precipitation relationship, that is a positive slope at low temperatures and a negative slope at high temperatures, is also suggested for mean precipitation (Zhao and Khalil, 1993; Madden and Williams, 1978; Crhová and 10 Holtanová, 2017; Rodrigo, 2018) as well as differences between land and sea areas (Adler et al., 2008; Trenberth and Shea, 2005). The CC scaling is less expected for mean precipitation which are more constrained by an energetic budget than extreme precipitation (Allen and Ingram, 2002; Held and Soden, 2006; Muller et al., 2011; Muller, 2013). ~~Hardwick et al. (2010)~~ While this constraint is theoretically more relevant at the global scale, it has also been observed by regional climate models (Räisänen et al., 2004). The study of Hardwick et al. (2010) suggests that this constraint also acts at a specific location over a 15 long time record. Indeed, they have systematically found lower slopes for median precipitation than for extreme precipitation in their 4 ~~studied-areas~~ selected in-situ measurement stations in Australia.

The fact that the CC law is not always adequate for describing the temperature-precipitation relationship in a given climate does not mean that if one would perturb the climate, the change in precipitation would not follow a CC-scaling. Indeed, using Regional Climate Models (RCM) in the Mediterranean region and within the frame of the HyMeX program (Drobinski et al., 20 2014), Drobinski et al. (2018) found a CC-scaling between past and future climate while observing hook shapes for both past and future climate temperature-precipitation relationships. It has often been shown that extreme precipitation would increase at a rate similar to the CC law whereas mean precipitation would increase at a lower rate in a warming climate (Allen and Ingram, 2002; Boer, 1993; Trenberth, 1998; Held and Soden, 2006).

Apart from the greenhouse gases forcing, the forcing of aerosols is another feature that can modify climate and there- 25 fore temperature-precipitation relationship. Aerosols affect climate through their direct and semi-direct effects as well as through their effects on cloud microphysics (indirect effects). While their direct effect is rather well understood, many uncertainties remain for the indirect effects. Stevens and Feingold (2009) described aerosol cloud interactions as a buffered system in which many processes seem to partly compensate each other. Among these effects, the Twomey (1977) effect, also called "first indirect effect", is an increase of the Cloud Optical Depth (COD) through reduced cloud droplet radius for constant liquid water content with increased aerosol concentrations. Aerosols indirect effects may also increase cloud lifetime 30 (Albrecht, 1989) but as of today no consensus exists on the reality of this effect (Small et al., 2009; Seifert et al., 2015; Malavelle et al., 2017), and its representation in climate models is highly dependent on the model's microphysical formulation (Zhou and Penner, 2017). ~~An invigoration effect has been diagnosed for convective precipitation (Fan et al., 2013) through~~ Many hypotheses have been suggested for the effect of aerosols in convective clouds such as the convective invigoration 35 (Khain et al., 2004, 2005; Rosenfeld et al., 2008; Lebo and Seinfeld, 2011; Fan et al., 2013) which would be the consequence

of an increased release of latent heat due to ice formation associated with a decrease of warm rain formation with increased aerosol loads. Miltenberger et al. (2018) has however observed an invigoration of deep convective clouds below the freezing level, indicating that the previous theory may not hold under certain conditions. Instead, they proposed that the observed enhancement of precipitation once convection is organized, is caused by reduced dry air entrainment in the convective core of polluted clouds. Aerosols were also hypothesised to affect precipitation through changes in cloud evaporation (Xue and Feingold, 2006; Dagan et al., 2015; Miltenberger et al., 2018)

A common feature of both direct and indirect effects of aerosols is a global decrease of precipitation through a decrease of evaporation from the surface due to the reduction of shortwave downwelling fluxes at the surface (Ramanathan et al., 2001; Lelieveld et al., 2002; Bollasina et al., 2011; Salzmman et al., 2014). ~~In their study of aerosol indirect effects over~~ Many modeling case studies may underestimate this longer-term feedback performing short-time simulations or simulations in a small domain (Khain et al., 2004, 2005; Khain and Lynn, 2009; Lebo and Seinfeld, 2011; Lebo and Morrison, 2014; Lebo, 2014; Miltenberger et al., 2018). Conversely, long-term simulations are often performed at a coarse resolution using convective parameterizations that do not implement the microphysical effect of aerosols on convective clouds (Bollasina et al., 2011; Salzmman et al., 2014). A few studies fairly represented the overall indirect effects of aerosol by realising high resolution simulations over few months (Morrison and Grabowski, 2011; Fan et al., 2013). The study of Da Silva et al. (2018) over the Euro-Mediterranean area, ~~Da Silva et al. (2018) diagnosed the same path for their simulated decrease of precipitation is one them in which the decrease of surface precipitation was related to the radiative path previously described~~ (see Figure 1). ~~They~~ The authors have shown that the consecutive surface cooling not only reduces the water content but also stabilizes the atmosphere as suggested by Fan et al. (2013); Morrison and Grabowski (2011); Stjern et al. (2017), and hence acts in reducing precipitation with increased aerosol concentrations. A third path is possible as a combination of these two paths since the reduction of water vapor mixing ratio at the surface would also contribute to increase the stability of the atmosphere through less latent heat released with increased aerosol concentrations. To our knowledge, an evaluation of the relative contribution of these paths to precipitation reduction due to aerosol indirect effects has not been proposed yet. This study aims at determining these contributions and therefore can be seen as a natural follow-up of Da Silva et al. (2018). For that purpose, we use the temperature-precipitation relationship which appears to be a natural framework since both effects are a consequence of the decrease of surface temperature.

Section 2 details the configuration of the WRF model used, the simulations, and the method that have been performed for this sensitivity analysis. Section 3 analyses the temperature-precipitation scaling and quantifies each contribution to the reduction of central Europe summertime precipitation under the effect of a massive concentration of cloud condensation nuclei. Section 4 concludes the study.

30 2 Methods

2.1 Model configuration

The version 3.7.1 of the Weather Research and Forecasting Model (WRF, Skamarock et al., 2008) is used in this study. The model was run with a 50 km (LR), a 16.6 km (MR), and a 3.3 km (HR) horizontal resolution on a domain displayed in Fig. 2. It is

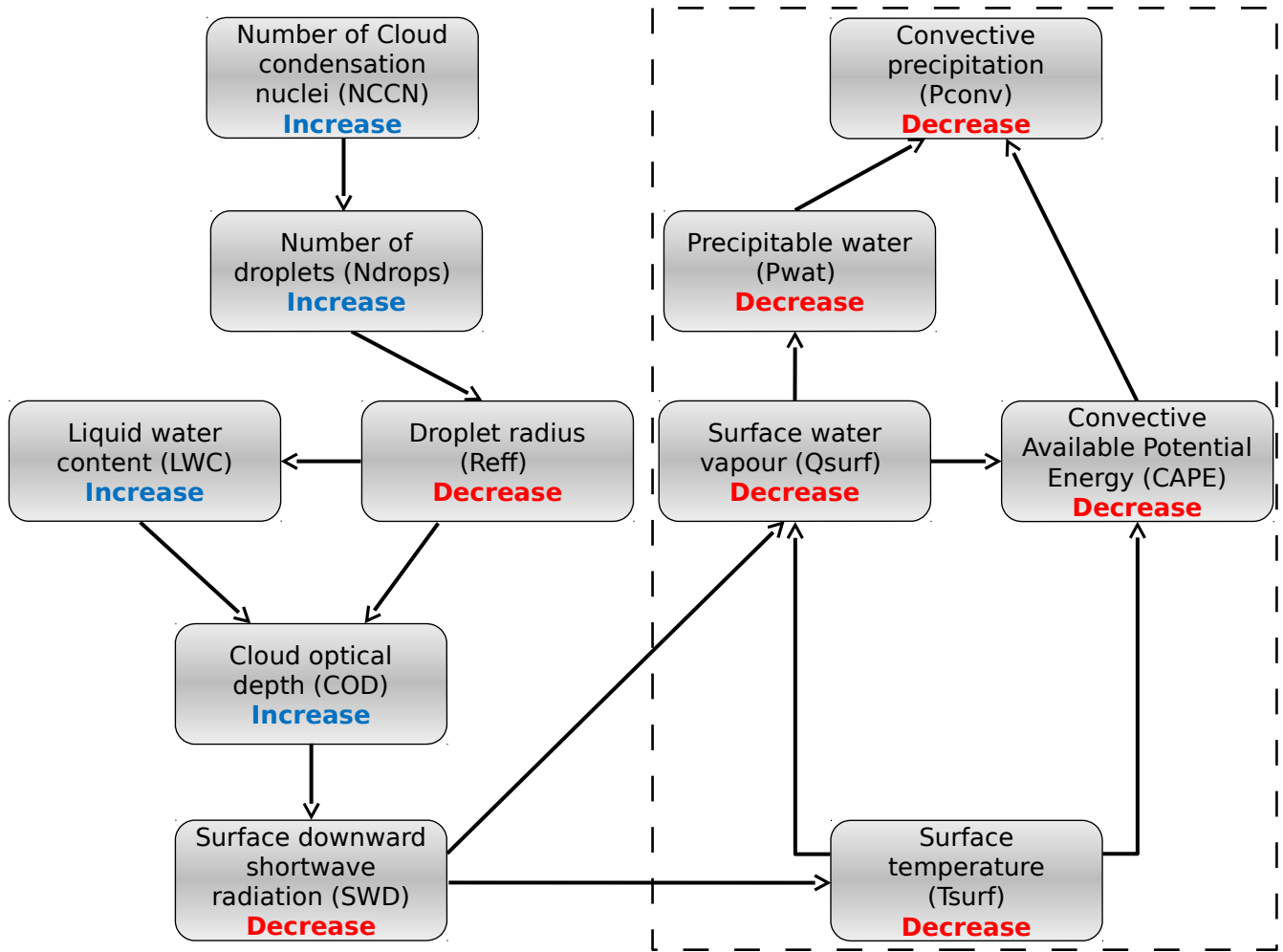


Figure 1. Schematic summary of the aerosol causal sequence for the indirect effects of aerosols on convective precipitation (from Da Silva et al. (2018)). The dotted rectangle indicates the part of the scheme which is detailed in the present study.

forced by the Global Forecast System (GFS) model (National Centers for Environmental Prediction National Weather Service, 2000) as initial and boundary conditions. Temperature, humidity, geopotential and velocity components are nudged towards GFS analysis data with a Newtonian-type method using a relaxation coefficient of $5 \times 10^{-5} \text{s}^{-1}$ as recommended by, e.g., Salameh et al. (2010); Omrani et al. (2013, 2015).

- 5 The microphysical scheme used is the Thompson and Eidhammer (2014) scheme which explicitly calculates the number concentrations of aerosols. The latter are represented in a simplified way according to their capacity to nucleate cloud water ("water friendly", WFA) or ice water ("ice friendly", IFA). Aerosol number concentrations are initialized and forced at domain boundaries by a climatology based on Goddard Chemistry Aerosol Radiation and Transport (GOCART) model (Ginoux et al.,

2001) simulations. While no surface emissions are applied to IFA, surface emission fluxes are applied to WFA in order to approximately equilibrate the loss of WFA due to scavenging and nucleation. The radiation scheme is RRTMG (Rapid Radiative Transfer Model for General circulation models, Iacono et al., 2008) and uses the cloud water droplets, ice and snow effective radii of the Thompson and Eidhammer (2014) microphysical scheme to resolve the radiative transfer equations. Another climatology of aerosols from Tegen et al. (1997) is used in this radiative scheme and therefore is not affected by any changes in the microphysical aerosol climatology, which enables us to perform sensitivity experiments of the indirect effects of aerosols with fixed aerosol direct effect. The Kain (2004) scheme is used to parameterize convection. The microphysical effects of aerosols are not taken into account explicitly in this parameterization although they can affect convection indirectly through modifications in the temperature or moisture profiles.

10 This configuration is the same as in Da Silva et al. (2018) to which the reader is referred for additional detail.

2.2 Simulation experiments

The model was run to make two extreme simulations in terms of WFA and IFA microphysical concentrations. Both simulations start on April 1st, 2013 (after one month of spin-up) and end on September 17, 2013. A very high aerosol emission level ($1.75 \times 10^7 \text{ kg s}^{-1}$ for the whole domain) is applied in the first simulation, referred as MAX or polluted simulation and a very low aerosol emission level ($1.75 \times 10^{-4} \text{ kg s}^{-1}$ for the whole domain) is applied for the other simulation, referred as MIN or pristine simulation. Although these emission rates are extreme, maximal and minimal value permitted by the microphysics scheme reduce the range of variation of the number of WFA (NWFA) between $\sim 10 \text{ cm}^{-3}$ and $\sim 10,000 \text{ cm}^{-3}$ and of the number of IFA (NIFA) between 0.005 cm^{-3} and $10,000 \text{ cm}^{-3}$. Therefore these latter extreme emission rates ensure that both NIFA and NWFA in the MIN (resp. MAX) simulation remain close to their minimal (resp. maximal) permitted values, which corresponds to a 2×10^6 factor for NIFA and a 10^3 factor for NWFA between the MAX and the MIN simulations. Such high differences of aerosol concentrations between the two simulations ensure that aerosol indirect effects are strong enough to emerge from the potential noise between the MAX and the MIN simulations. ~~It is however important to keep in mind that the ranges that will be found in this study should be interpreted as an upper bound of aerosol indirect effects~~ On the flip side, extreme values of aerosol concentrations reach the bounds of permitted values in the microphysical scheme, suggesting that for these ranges of concentrations, the microphysical parameterizations may lead to more uncertainties.

Another set of MIN and MAX simulations has been performed at a resolution where convection is resolved (3.3 km) and on a smaller domain (HR domain) as seen in Figure 2. An intermediate set of simulations was used to perform one-way nesting between the LR and the HR simulations, ensuring that the LR simulations force the HR simulations at their boundaries. These intermediate simulations were done at 16.6 km of resolution in an intermediate domain (MR, see Fig.2) and with the same configuration as the LR simulations. In these conditions, each grid cell of the LR domain corresponds to exactly 15×15 grid cells of the HR domain. The HR simulations have been performed without activating any convection scheme, since horizontal resolution (3.3 km) is sufficient to resolve convection processes, which is the only difference in model configuration between the LR simulations and the HR simulations. While the microphysical effects of aerosol on convective clouds were not taken

Apr.-Sep. conv. precipitation difference (MAX-MIN)

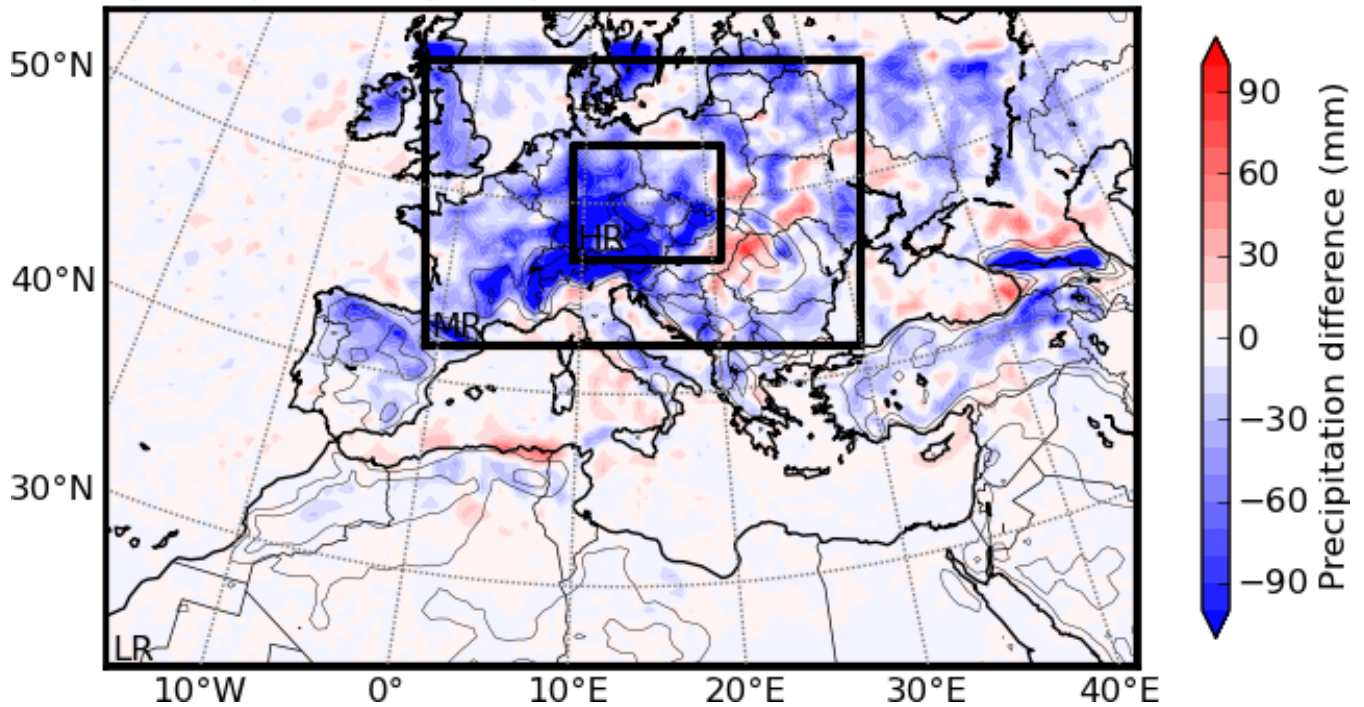


Figure 2. Differences of convective precipitation between the MAX and the MIN simulations. The whole map is the LR simulation domain, the medium black box is the intermediate domain MR, and the small box is the HR domain.

[into account due to the use of a convection scheme insensitive to aerosol concentrations, the whole set of indirect effects are represented in the HR simulations, including small scale and large scale processes.](#)

2.3 Temperature-precipitation bin method

The simulation domain covers the Euro-Mediterranean region as displayed in Figure 2. This figure also shows the difference of accumulated convective precipitation over the period of study between the MAX and the MIN simulations. It shows that most of the negative signal is concentrated over land regions where precipitation are more intense in this period of the year (Da Silva et al., 2018). The following analysis of convective precipitation reduction in the MAX simulation is conducted over the HR domain. Indeed, location of the HR domain was chosen because of the high negative values of convective precipitation differences between the MAX and the MIN simulations in this area and because it is far away from oceanic areas where flux imbalance with the non-coupled oceanic surface may hinder interpretation as discussed in Da Silva et al. (2018). Because of the short duration of our simulations, temperature at first vertical grid level (centered around 28 m above the ground, hereafter referred to as surface) and convective precipitation hourly time series were collected for all grid points of the WRF model that

were inside the HR domain and then concatenated. To avoid snow precipitation we selected only the events with daily mean temperatures warmer than 5°C.

The method used to scale precipitation with temperature is similar to the one used by Hardwick et al. (2010). Temperature has a diurnal variation and may be impacted by precipitation events. Since for each precipitation event we want the corresponding temperature that represents the air mass, the daily averaged temperature is used. We select hours with strictly positive precipitation amount in both the MIN and MAX time series and place the pairs of daily mean temperatures and hourly precipitation into 8 bins of 5896 samples according to the daily temperatures. In each bin the 50th percentile of daily mean temperature, the 50th percentile of precipitation and the 95th percentile of precipitation are used for our analysis.

We focus on the contributions of precipitation efficiency, surface water vapor mixing ratio, and maximum vertical wind speed to the difference of convective precipitation scaling with temperature between the MAX and the MIN simulations. ~~Precipitation efficiency~~ We define precipitation efficiency as the ratio between the total mass of condensate of a column and the effective precipitation rate that reach the surface. For the LR simulations, it is calculated using hourly output variables of WRF, and following the parameterization of Kain (2004) implemented in the model in which precipitation efficiency is a decreasing function of cloud base height and vertical wind shear. Because model output frequency is lower than the typical convective characteristic time, we expect large uncertainties. Precipitation efficiency is not explicitly calculated in the HR simulations, we therefore estimated it using the ratio of precipitation divided by the product of maximum vertical wind speed and surface water mixing ratio. For the LR simulations, the maximum vertical wind speed is calculated using the square root of surface based Convective Available Potential Energy (CAPE) which is more representative of convective vertical motions than the resolved vertical velocity. These three variables are computed one hour before the convective precipitation occurrence to better represent the air inside the updraft of the convective cell rather than the air inside its downdraft.

The contribution of each variable to the change of precipitation between the MAX and MIN simulations is computed for both median and extreme precipitation events which are defined as following. Median events are all events where precipitation is between the 40th and the 60th percentile in at least one of the simulations (MIN or MAX). Extreme events are all events beyond the 90th percentile in at least one of the simulations (MIN or MAX). Median and extreme events are sorted as a function of the corresponding daily mean temperature and placed in 8 bins with the same number of events per bin. For median or extreme precipitation, the median of daily mean temperature is paired with each of the 4 variables (precipitation, precipitation efficiency, surface water vapor mixing ratio and maximum vertical wind speed along the atmospheric column) in the MIN and the MAX simulations.

3 Results

3.1 Sensitivity of temperature-precipitation scaling to change in aerosol loads

Figure 3 displays the 50th (a, c) and 95th (b, d) percentiles of hourly convective (a, b) and total (c, d) precipitation as a function of daily mean temperature at the surface for both the LR MIN (magenta) and the LR MAX (blue) simulations. Median total precipitation displays a negative scaling with surface temperature for both LR and HR simulations (figure 4a). Since the

temperature range is spread over 2 seasons, it is likely that changes in large scale forcings between spring and summer events may explain the decrease of median precipitation with surface temperature. Sub-CC scaling for median total precipitation are consistent with the study of Hardwick et al. (2010) in Australia. On the other hand, median convective precipitation follow a nearly CC-scaling in our LR simulations indicating that, unlike median total precipitation events, convective precipitation events seem to be mostly affected by changes in surface temperatures rather than changes in large scale dynamics.

Regarding convective precipitation extremes, a nearly CC-scaling appears in the LR simulation. Using in-situ measurements in Switzerland, Molnar et al. (2015) found a scaling of $8.9\%.\text{°C}^{-1}$ of hourly convective precipitation as a function of daily mean temperature. Lower but similar slopes are obtained in our study with a value of $6.1\%.\text{°C}^{-1}$ for the LR MIN simulation and a value of $8.6\%.\text{°C}^{-1}$ in the LR MAX simulation. Berg and Haerter (2013) and Loriaux et al. (2013) showed that the scaling between total extreme precipitation and daily mean temperature could be super-CC because of the distribution of convective and stratiform precipitation with respect to daily mean temperature. Convective precipitation are generally more intense and occur at higher temperatures. Supposing that both convective and stratiform precipitation follow a CC-scaling, they argued that total precipitation will display a super-CC scaling for temperatures corresponding to the transition between stratiform and convective precipitation. Such an effect does not appear in our study since we can observe a slight sub-CC scaling for total extreme precipitation. The scaling of total extreme precipitation is therefore different from the hook shape found in the Drobinski et al. (2018) study in the Mediterranean area. As expected (Li et al., 2011), precipitation extremes are increased in the HR simulations with respect to the LR simulations. However the slopes of the HR simulations are rather similar to the slopes of total precipitation in the LR simulations.

Differences between the MAX and the MIN simulations are similar for both extremes and medians in HR and LR simulations. We find that convective precipitation are reduced in the MAX simulation but only at low temperatures. This temperature dependency slightly changes the scaling between the MAX and the MIN simulations, with higher slopes in the MAX simulation (around $8.5\%.\text{°C}^{-1}$ in LR) compared to the MIN simulation (around $6.2\%.\text{°C}^{-1}$ in LR). The fact that indirect effects of aerosols are weaker at high temperatures is probably due to the lower occurrence of clouds in these conditions. Figure 5 shows mean COD calculated as in Da Silva et al. (2018), as a function of daily mean temperature for both the MIN and MAX simulations for low and high resolutions. It ~~confirms the weaker occurrence of clouds at high temperatures in our simulations, which results in weak differences in COD between the MAX and the MIN simulations for low and high resolution. On the contrary, clouds are numerous at low temperatures and create important differences of COD between the MAX and the MIN simulations which maximize~~ shows a decrease of COD with temperatures in all of the simulations. When averaging over hours with strictly positive COD, we found that the optical thickness of clouds is relatively constant over the temperature range (not shown), confirming that the decrease of COD with temperature is mostly due to a decrease of the occurrence of clouds with temperature. This tendency maximizes the indirect effects of aerosols at low temperatures and minimizes them at high temperatures. In their study of the impact of the microphysical scheme on the scaling of precipitation extremes with temperature, Singh and O’Gorman (2014) have also shown that the main effect occurs at low temperatures. They attributed the change of slope at low temperatures to a ~~change~~ difference in the parameterization of hydrometeor fall speed, ~~parameterized differently depending on the microphysical scheme.~~ They argued that slower hydrometeor fall speed

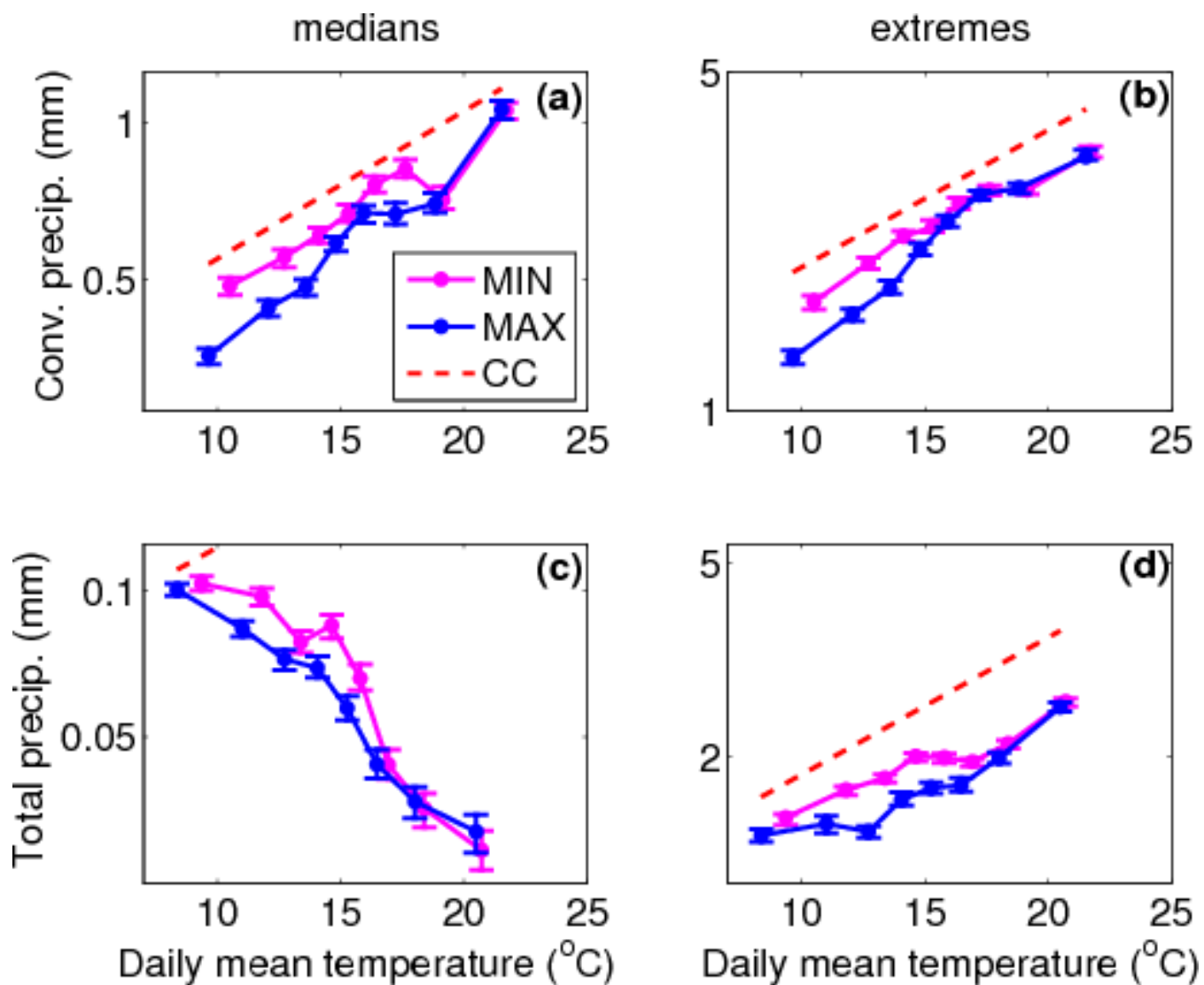


Figure 3. Hourly convective (a, b) and total (c, d) precipitation as a function of daily mean temperature at the surface for median (a, c) and extreme (95th percentile, b, d) precipitation and for both the LR MIN (magenta) and LR MAX (blue) simulations. The dashed red line indicates the CC-slope calculated using the August-Magnus-Roche approximation for saturated vapor pressure (Alduchov and Eskridge, 1996). Errorbars represent the 95 % confidence interval of the precipitation percentiles.

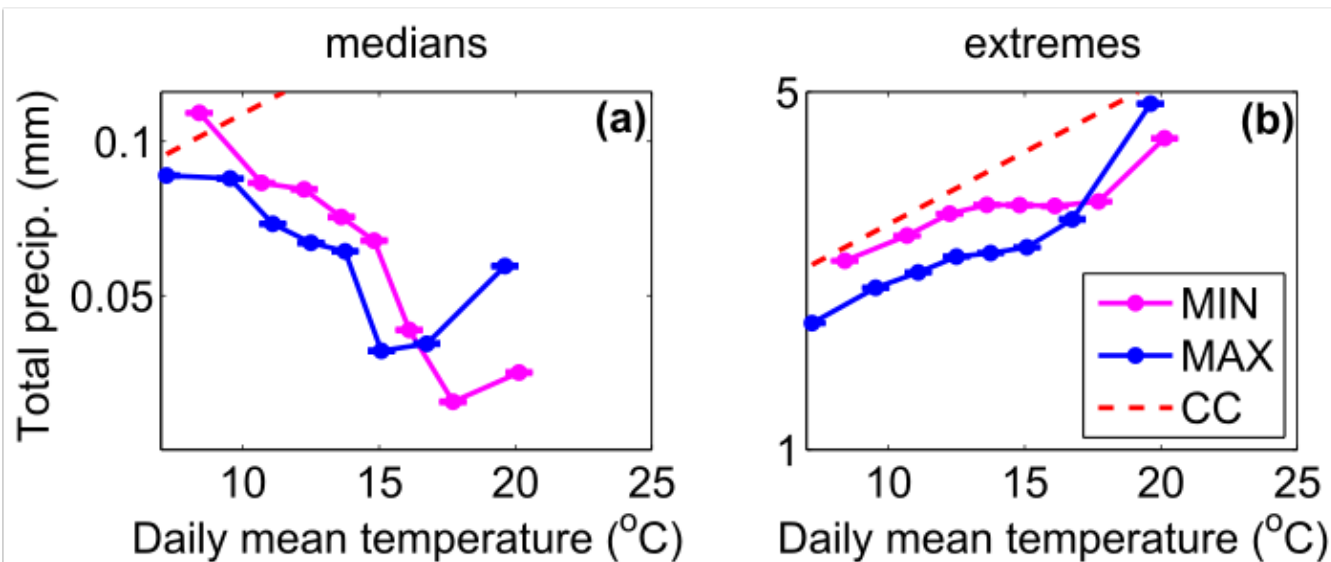


Figure 4. Hourly total precipitation as a function of daily mean temperature at the surface for median (a) and extreme (95th percentile, b) precipitation and for both the HR MIN (magenta) and HR MAX (blue) simulations. The dashed red line indicates the CC-slope calculated using the August-Magnus-Roche approximation for saturated vapor pressure. Errorbars represent the 95 % confidence interval of the precipitation percentiles.

decreases precipitation efficiency through enhanced evaporation and detrainment and reduced precipitation rate. In our case, convective precipitation are diagnosed with the same convective scheme in the ~~MAX and LR MAX and LR MIN~~ simulations, which neither takes into account aerosol concentrations nor rain fall speed. Such microphysical effect is therefore impossible ~~in our configuration. We believe that the inhibition of convective precipitation is mainly due to the processes described~~ in Da Silva et al. (2018), i. e. ~~a stabilisation of the atmosphere and a reduction of precipitable water in the polluted~~ for the LR simulations. In the HR simulations however, convective precipitation are diagnosed by the microphysical scheme which does represent the terminal fall speed of hydrometeors that may be different depending on the aerosol concentrations, as found in other studies (Koren et al., 2015; Dagan et al., 2018). This effect is one among other that possibly acts in changing the precipitation efficiency between the HR MAX and the HR MIN simulations. The next section is dedicated to evaluate how strong are these changes in precipitation efficiency relatively to the background radiative effect between the MIN and the MAX simulations.

3.2 Process analysis

To analyse the reduction of convective precipitation at low temperatures we consider that precipitation can be approximately described by the following equation ~~:(Drobinski et al., 2016; Da Silva, 2018):~~

$$Pr \propto \epsilon \times Q \times W \quad (2)$$

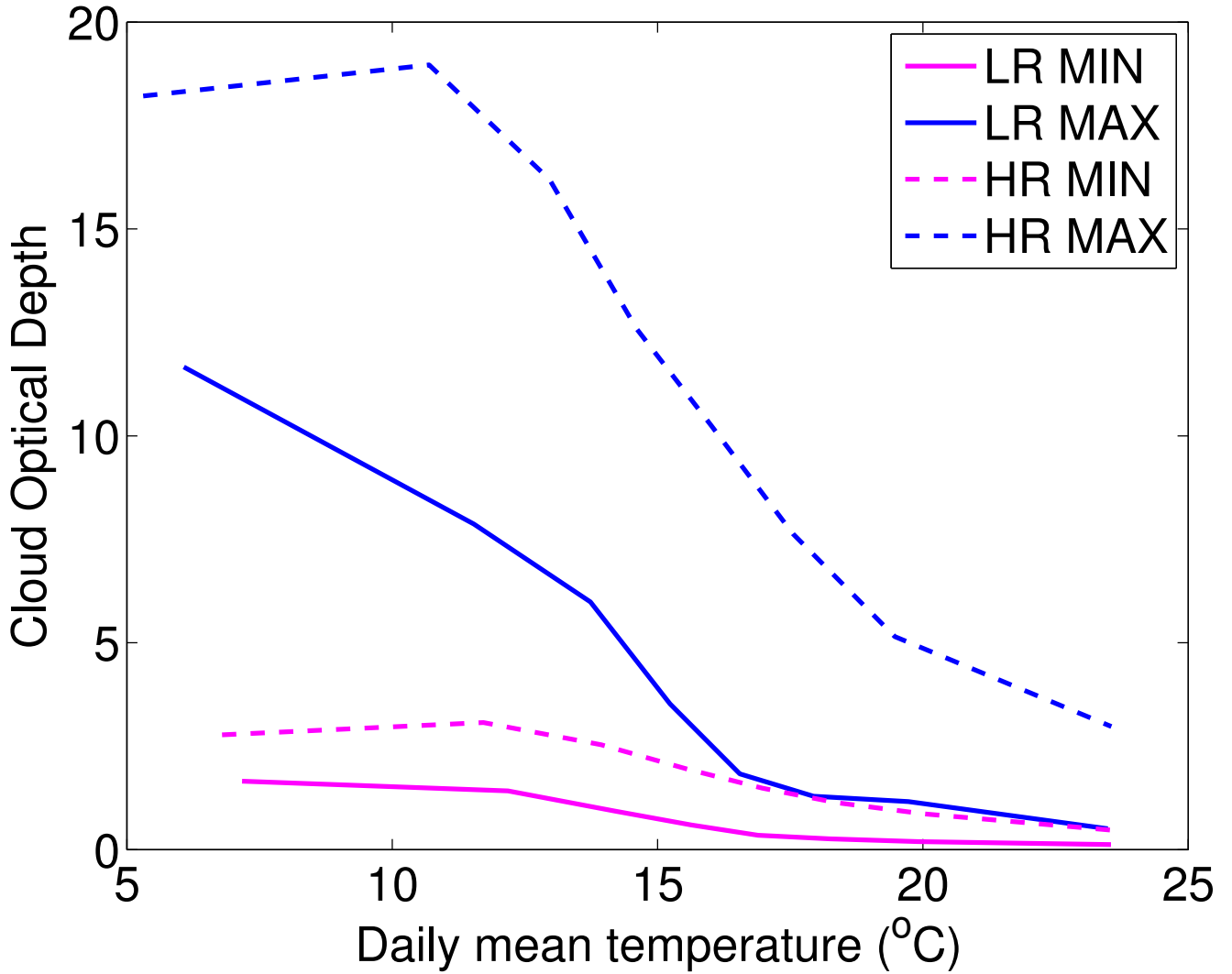


Figure 5. Hourly COD as a function of daily mean temperature for the LR MIN (full magenta line), LR MAX (dashed blue line), HR MIN (dashed magenta line) and HR MAX (dashed blue line) simulations.

with ϵ corresponding to the precipitation efficiency, Q the water vapor mixing ratio at the surface and W the maximum vertical wind speed. This description is mostly valid for convective precipitation which result from a parcel that raises from the surface ([Da Silva et al., 2018](#)). Assuming the small changes of precipitation that we observe between the MAX and the MIN simulations, one can write :

$$5 \frac{Pr_{MAX} - Pr_{MIN}}{Pr_{MIN}} \approx \frac{\epsilon_{MAX} - \epsilon_{MIN}}{\epsilon_{MIN}} + \frac{Q_{MAX} - Q_{MIN}}{Q_{MIN}} + \frac{W_{MAX} - W_{MIN}}{W_{MIN}} \quad (3)$$

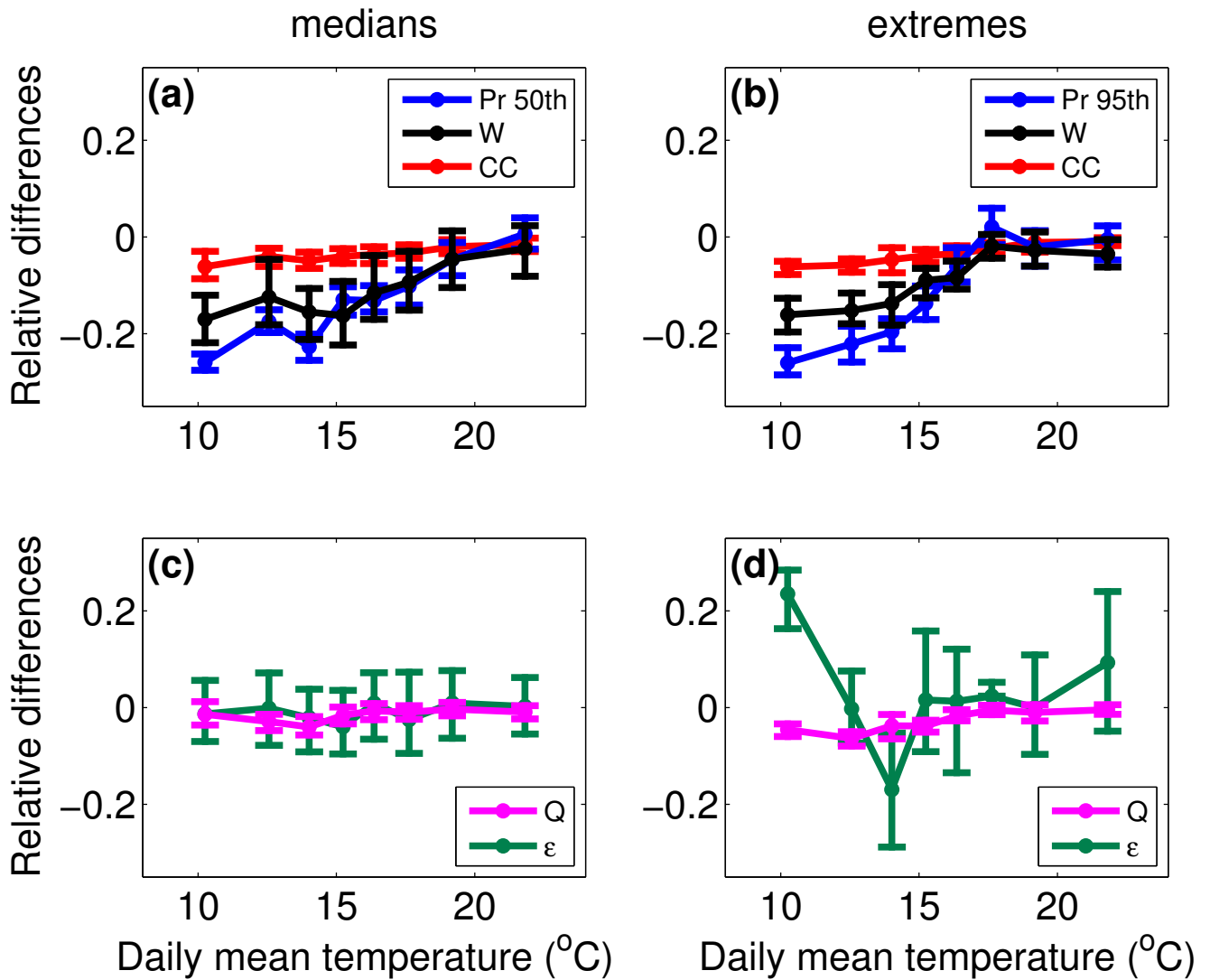


Figure 6. Relative differences between LR MAX and LR MIN simulations of convective precipitation (blue, a and b), vertical velocity (black, a and b), surface water vapor mixing ratio (magenta, c and d), precipitation efficiency (green, c and d) for median (a and c) and extreme (b and d) convective precipitation events as a function of the mean between the MIN and MAX daily mean temperature. The change expected according to the Clausius-Clapeyron law is displayed in red (a and b). Errorbars represent the 95 % confidence interval of the precipitation percentiles.

Figure 6 displays relative changes in convective precipitation vertical wind speed, precipitation efficiency, and surface water vapor mixing ratio between the LR MAX and LR MIN simulations for median and extreme precipitation. As expected from figure 5, the decrease of convective precipitation in the MAX simulation with respect to the MIN simulation tends to be weaker with increasing temperatures, from -25% at 10°C until almost 0% at 22°C . Among the three factors that may impact the precipitation intensity, the vertical velocity seems to explain much of the reduction of convective precipitation. Indeed, among the 25% of precipitation reduction at low temperatures, around 15% are attributable to the weakening of vertical velocity in the MAX simulation. It is also striking in Fig. 6 that the variations of the difference of vertical velocity and of convective precipitation with temperature are perfectly similar, with stronger reductions for low temperature than for higher ones, while both precipitation efficiency and surface water vapor mixing ratio display insignificant or erratic variations with temperature. Indeed, the high variations of precipitation efficiency differences with temperature for precipitation extremes may not reflect a physical process but only the difficulty in retrieving precipitation efficiency from hourly outputs.

The fact that vertical velocity drives the changes in convective precipitation explains why the CC-scaling is completely inaccurate for predicting changes in convective precipitation by indirect effects. In fact, even the differences of surface water vapor mixing ratio between the MAX and MIN simulations do not exactly follow a CC-scaling due to increased relative humidity in the MAX simulation: while the CC law prediction is around -4% , the reduction of surface water vapor mixing ratio in the MAX simulation is often less important. One would expect that the sub-CC scaling of surface water vapor mixing ratio differences would result in a sub-CC scaling of convective precipitation differences but it is actually the reverse (super-CC scaling) because of stronger changes in vertical velocity. Results are similar for both extreme and median precipitation except for precipitation efficiency differences which displays small variations for median precipitation and erratic variations for extreme precipitation which may not have a physical meaning. Indeed, differences in precipitation efficiency are constrained by the scaling of precipitation (eq. 3) and thus are expected to be negligible compared to the changes in vertical velocity. In our LR simulations, precipitation efficiency is calculated as a decreasing function of cloud base height and vertical wind shear. The increased surface relative humidity in the LR MAX simulation compared to the LR MIN simulation therefore would act in increasing the precipitation efficiency of the polluted simulation. The contribution of the change in the vertical wind shear is less evident and its high temporal and spatial variability (Markowski and Richardson, 2007) may explain errors in retrieving precipitation efficiency from hourly outputs.

Figure 7 is the same as figure 6 but for the HR total precipitation. ~~We did not evaluate precipitation efficiency, since it is not parameterized for explicitly resolved precipitation.~~ Although the differences of vertical velocity and surface water vapor mixing ratio for median precipitation events have approximately the same behavior with temperature in the HR simulation with respect to the LR simulation, MAX-MIN differences of the median of total HR precipitation are stronger than the differences of the median of LR convective precipitation. Such positive bias compared to LR convective precipitation differences may be expected since Da Silva et al. (2018) showed that stratiform precipitation are increased in the MAX simulation. On the contrary it was found that hourly extreme precipitation are dominated by convective events at high temperatures (Loriaux et al., 2013). The decomposition of precipitation as a product of a thermodynamics, dynamics and a microphysics term made in the present study is theoretically better adapted to convective precipitation than to stratiform precipitation (Da Silva, 2018) and thus is not

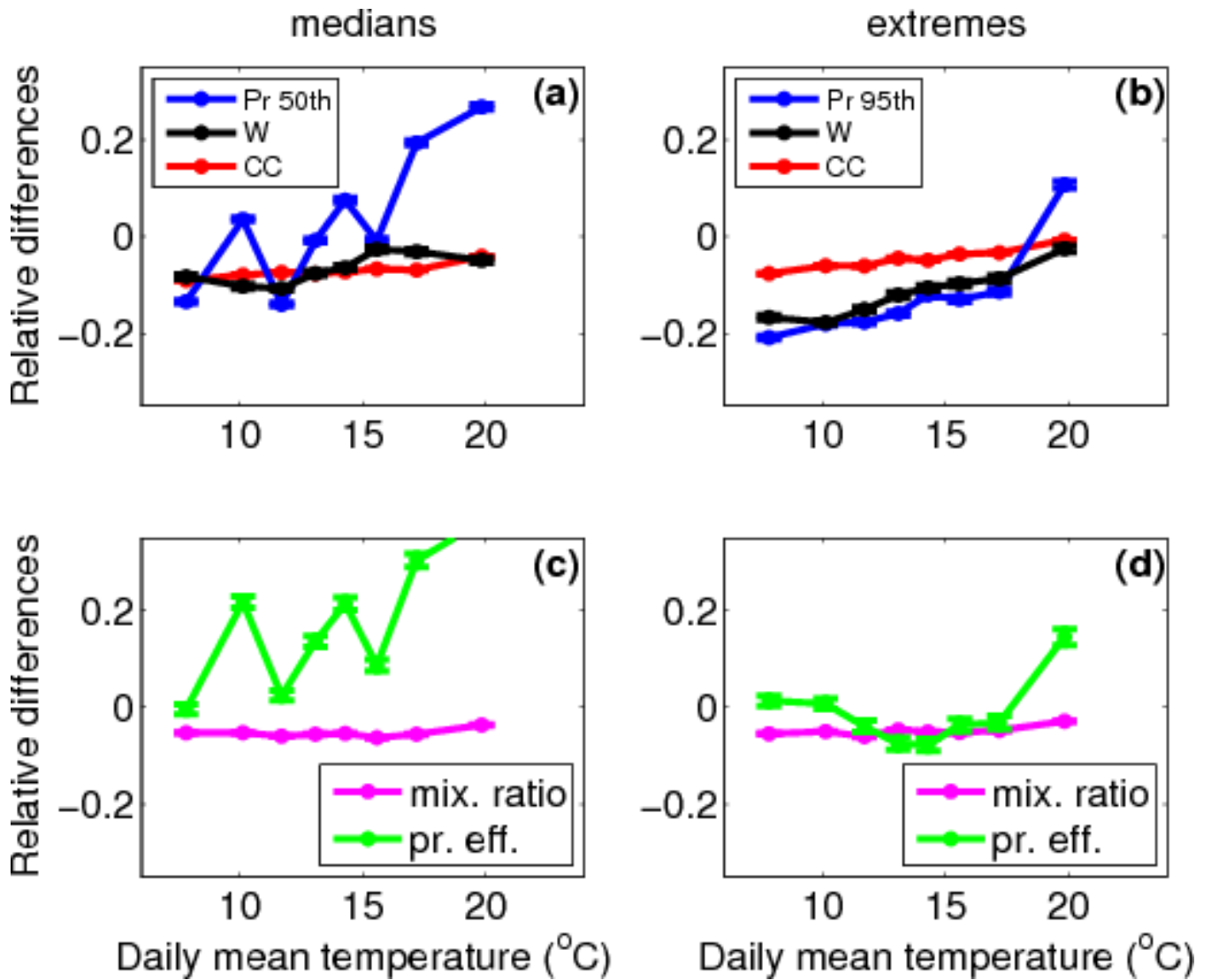


Figure 7. Relative differences between HR MAX and HR MIN simulations of total precipitation (blue) and vertical velocity (black, a and b), [precipitation efficiency](#) (green, c and d) and [surface water vapor mixing ratio](#) (Q , magenta, c and d) for median (a and c) and extreme (b and d) precipitation events as a function of the mean between the MIN and MAX daily mean temperature. The change expected according to the Clausius-Clapeyron law is displayed in red (a and b). Errorbars represent the 95 % confidence interval of the precipitation percentiles.

efficient in explaining differences of total median precipitation. In our LR simulations, we found that convective precipitation dominates extreme total precipitation from 10°C (not shown), thus for most of our temperature bins. Therefore ~~differences of the scaling of precipitation used in the present study (eq. 2) can be used for~~ extreme total precipitation in the HR simulation ~~are similar to the convective ones~~. Differences of extreme total precipitation in the HR simulation are similar with the differences of extreme convective precipitation in the LR simulation and scale well with the differences of maximum vertical velocities.

In this set of simulations with explicit convection, changes in aerosol concentrations may have ~~an impact on precipitation efficiency through a change in autoconversion rate (second indirect effect)~~ larger effects on convective precipitation efficiency, since aerosols directly interact with convective clouds. Such impact has moreover been stated in many previous studies (Fan et al., 2009; Lebo and Seinfeld, 2011; Lebo and Morrison, 2014; Koren et al., 2015; Dagan et al., 2018; Miltenberger et al., 2018; Li

~~. The similarity of the precipitation differences~~ ~~differences~~ ~~with and without parameterized convection~~ ~~suggest that the second aerosol indirect effect may not have an important impact in changing the precipitation efficiency of convective precipitation in our configuration.~~ suggests that the changes of convective precipitation efficiency relatively small in the HR simulation. Precipitation efficiency was calculated only indirectly since it is not parameterized for explicitly resolved precipitation, by using the ratio of precipitation by the product of maximum vertical velocity and surface water vapor mixing ratio. Changes of precipitation efficiency between the MAX and the MIN simulations remain small in most of the temperature ranges. However, one can note a more significant increase of precipitation efficiency (around 15%) in the warmest temperature bin, associated with increased precipitation extremes in the MAX simulation. The exact nature of increased precipitation efficiency only at the highest temperatures is not obvious and remains further investigations which are beyond the scope of the present study. The use of hourly outputs may also not be adapted to analyse these particular extreme events at high temperatures which were shown to be shorter than extreme precipitation events at lower temperatures (Utsumi et al., 2011; Drobinski et al., 2016; Gao et al., 2018)

3.3 Contributions of humidity and temperature to stability changes

As mentioned in section 2.3, vertical velocity is calculated as the square root of CAPE. As seen in Fig.1, CAPE may be affected by both surface temperature and surface humidity. CAPE is calculated using the entire profile of temperature and relative humidity (RH). In this line, we want to quantify the contribution of both the temperature and RH profile changes in the decrease of CAPE in the MAX simulation. For that purpose we have substituted the vertical profile of temperature in the MIN simulation, by the vertical profile of temperature from the MAX simulation, and we have calculated two additional CAPEs, i.e. $CAPE_T$ (resp. $CAPE_{RH}$) calculated with the temperature profile from the MAX (resp. MIN) simulation and the relative humidity from the MIN (resp. MAX) simulation, as represented in Figure 8. Using the 4 CAPEs ($CAPE_{MIN}$, $CAPE_{MAX}$, $CAPE_{RH}$ and $CAPE_T$) we can compute relative differences ($\Delta CAPE_{RH,1}$, $\Delta CAPE_{RH,2}$, $\Delta CAPE_{T,1}$, $\Delta CAPE_{T,2}$, and $\Delta CAPE$, see Fig. 8) and thus infer the contribution of temperature and RH vertical profiles in the change of CAPE between the MAX and the MIN simulations.

Figure 9 shows the total change of CAPE between the MAX and MIN simulations ($\Delta CAPE$), the RH contribution ($\Delta CAPE_{RH} = \frac{\Delta CAPE_{RH,1} + \Delta CAPE_{RH,2}}{2}$), and the temperature contribution ($\Delta CAPE_T = \frac{\Delta CAPE_{T,1} + \Delta CAPE_{T,2}}{2}$) as a func-

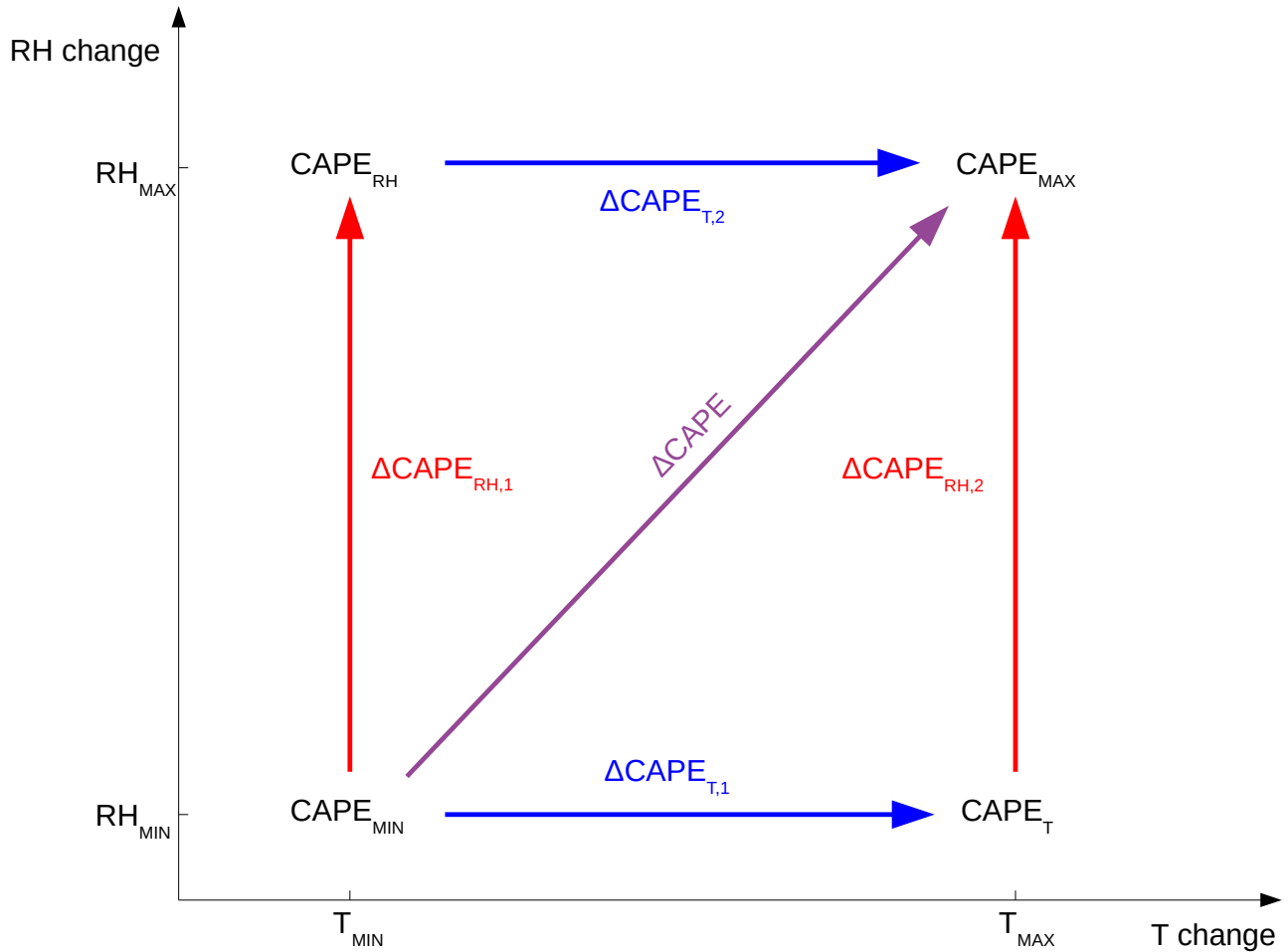


Figure 8. Schematic of the 2 possible CAPE differences that permit to evaluate the contribution of the vertical profile of temperature ($\Delta\text{CAPE}_{T,1}$ and $\Delta\text{CAPE}_{T,2}$) and the contribution of the vertical humidity profile ($\Delta\text{CAPE}_{RH,1}$ and $\Delta\text{CAPE}_{RH,2}$) to the change of total CAPE between the MAX and the MIN simulations (ΔCAPE).

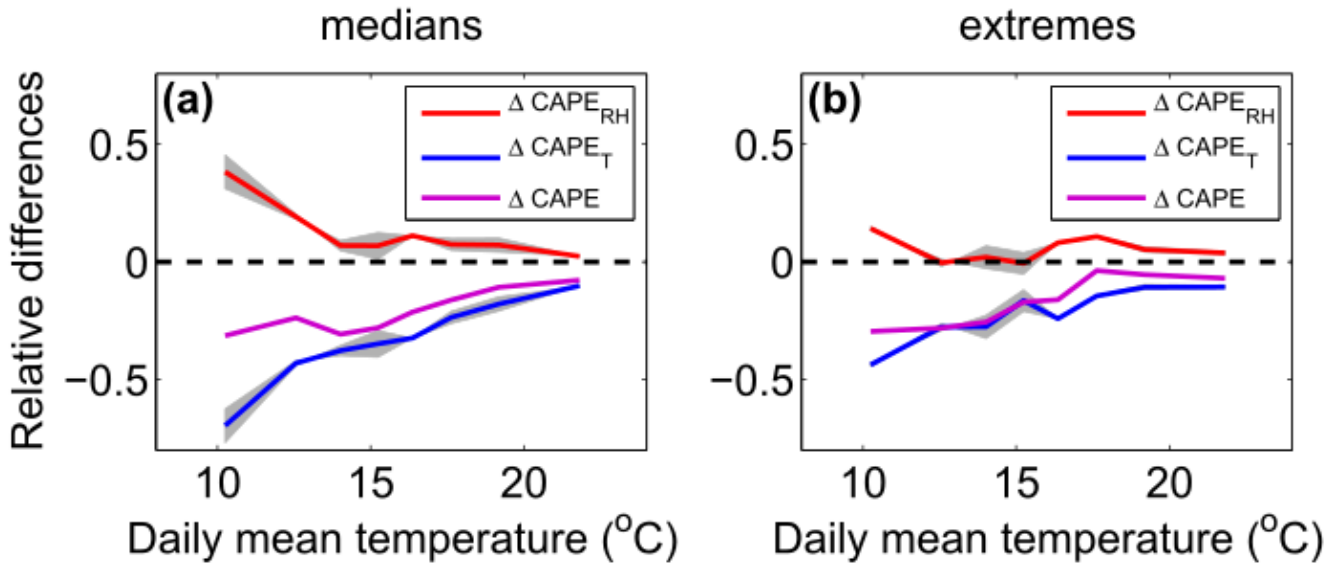


Figure 9. Relative differences of CAPEs for median (a) and extreme (b) convective precipitation events of the relative difference between the LR MAX and the LR MIN simulations (magenta, ΔCAPE). The temperature contribution (ΔCAPE_T) is displayed in blue and the relative humidity contribution (ΔCAPE_{RH}) in red.

tion of daily mean temperature for median and extreme precipitation events. The quantity CAPE is lower in the MAX simulation with respect to the MIN simulation, and ΔCAPE is more negative at low temperatures (-30%) than at high temperatures (almost 0%). However one can see that ΔCAPE_T and ΔCAPE_{RH} have opposite signs. Indeed, the RH contribution is positive and decreases from about +40% at 10°C to about 0% at 22°C for median precipitation events. The fact that this contribution is positive is not a surprise since we have seen in Fig. 6 that the surface RH is higher in the MAX simulation. We can see that this apparently weak increase of RH in the MAX simulation has a strong effect on the CAPE at low temperatures. However the main contribution is negative and comes from the differences of vertical temperature profiles: values are ranging between -70% at low temperatures and -15% at high temperatures. Moreover, one can see similar variations of ΔCAPE and ΔCAPE_T with temperature.

Figure 10 is the same as figure 9 but for the HR simulations and total precipitation. The quantity ΔCAPE is larger in the HR simulation with values that exceed -50% for a wide range of low temperatures in both median and extreme precipitation. These large values of ΔCAPE result in small negative differences of maximum vertical wind speed that do not exceed -10% and are not correlated with total precipitation differences for median total precipitation events (see figure 7) because of the coexistence of convective and stratiform events. For extreme events, which mostly consists of convective events, the discrepancy between the strong changes of CAPE and the weaker changes of vertical velocities between the HR MAX and the HR MIN simulation may be explained by the convective invigoration effect, which is linked to enhanced release of latent heat at the freezing level caused by increased vertical mass transport of water droplets in polluted

conditions (Khain et al., 2004, 2005; Rosenfeld et al., 2008; Lebo and Seinfeld, 2011; Fan et al., 2013). Indeed, in the present study, CAPE was calculated using a simple formula that does not account for differences in loads of rising parcels as long as temperature and humidity vertical profile remain unchanged. According to the theory described in Rosenfeld et al. (2008), the aerosol concentrations of our MAX simulation may however be too high for invigorating updrafts and would instead weaken them. The reduced change of vertical velocity between our HR MAX and HR MIN simulations may therefore have another origin. It is also expected that the diffusion efficiency increases when increasing aerosol loading since the resulting increase in cloud drop number would lead to an increase of the total surface area of cloud droplets, enhancing condensation and latent heat release (Pinsky et al., 2012). However, our simulations were done using a saturation adjustment scheme, which excludes the possibility of an increased cloud condensation (and its resulting stronger updraft) in the HR MAX simulation due to this process. Miltenberger et al. (2018) observed a strong increase of latent heating in the warm phase of the cloud, thus not related with the theory of convective invigoration exposed in Rosenfeld et al. (2008). They attributed this change to more organized cloud structures that limits dry air intrusions in the core of convective cells. Such an effect may also hold in our simulations since cloud cover and surface relative humidity are increased in the HR MAX simulation compared to the HR MIN simulation (not shown). According to the differences between the variation of CAPE and the variation of vertical velocities, this effect would limit the decrease of precipitation by about 10 % in the HR MAX simulation.

Otherwise contributions are similar to those of the LR simulations with mainly a positive contribution of RH and a strongly negative contribution from the temperature vertical profile.

The quantity CAPE is a non-linear function of the temperature and humidity profiles. Therefore, the change $\Delta CAPE_{T,1}$ is different from the change $\Delta CAPE_{T,2}$. Similarly, the change $\Delta CAPE_{RH,1}$ is different from the change $\Delta CAPE_{RH,2}$. The quantities $\Delta CAPE_{T,1}$ and $\Delta CAPE_{T,2}$ (resp. $\Delta CAPE_{RH,1}$ and $\Delta CAPE_{RH,2}$) delimit a grey area in Fig. 9 that represents the uncertainty (relative to the non-linearity of CAPE) of the temperature (resp. RH) contribution. One can see that the effects of CAPE non-linearity are generally lower than the difference between each contribution. Where the grey areas do not intersect, i.e. in almost the entire temperature range for median precipitation, and for the cooler part of the distribution for extreme precipitation, comparison of $\Delta CAPE_T$, $\Delta CAPE_{RH}$ and $\Delta CAPE$ strengthen the interpretation presented above: the negative value of $\Delta CAPE$ can be attributed to temperature changes, pently buffered by RH changes.

However the vertical temperature profile can be changed in several ways, e.g. one can only change the vertical gradient of temperature or uniformly reduce the temperature on the vertical. In the first configuration the decrease of CAPE would be purely due to the increase of stability of the environment whereas in the second configuration the decrease of CAPE would be due to the surface air parcel temperature, more precisely to its reduced release of latent heat due to reduction of its initial water vapor content.

In this part, the temperature contribution is decomposed into two contributions, one from the vertical gradient of temperature and one from the surface temperature. The quantity CAPE can now be viewed as a function of three variables: the RH profile, the vertical temperature gradient and the surface temperature. As displayed in Fig. 11, for a given RH profile (from the MIN or the MAX simulation), we have substituted the vertical temperature gradient (resp. surface temperature) from the MIN simulation, by the vertical temperature gradient (resp. surface temperature) from the MAX simulation, and we have cal-

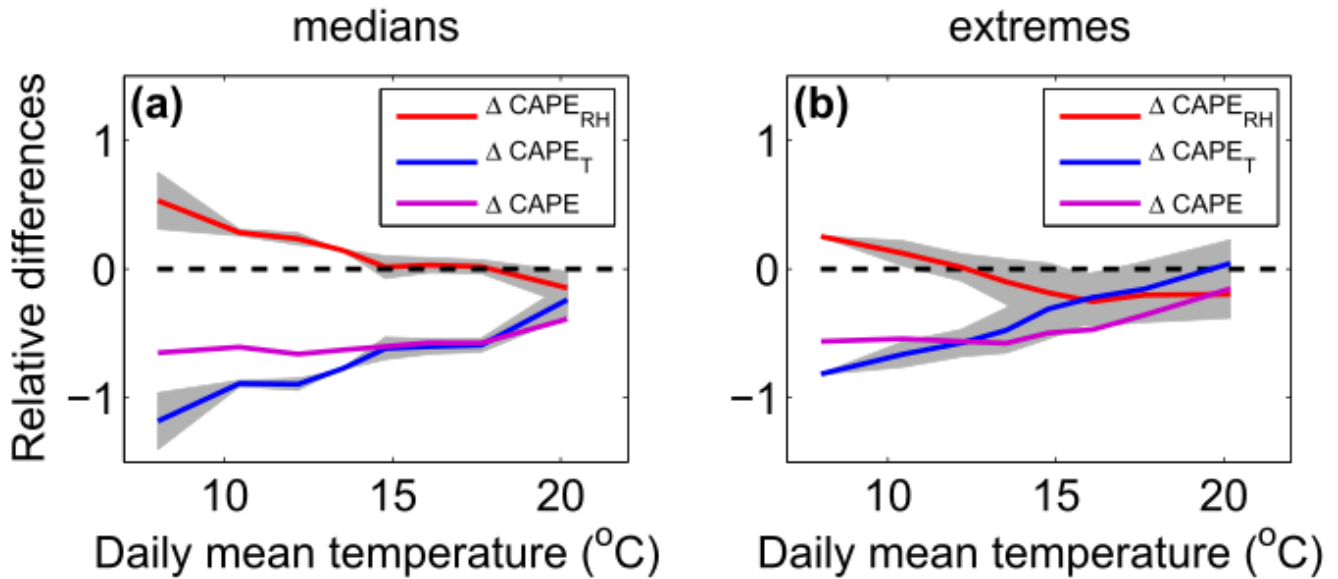


Figure 10. Relative differences of CAPEs for median (on the left) and extreme (on the right) precipitation events of the relative difference between the HR MAX and the HR MIN simulations (magenta, ΔCAPE). The temperature vertical profile contribution (ΔCAPE_T) is displayed in blue and the relative humidity vertical profile contribution (ΔCAPE_{RH}) in red.

culated 4 additional CAPEs using the 4 new mixed profiles. By calculating relative differences of CAPE, one can evaluate the contribution of the surface temperature ($\Delta\text{CAPE}_{T_s} = \frac{1}{4} \sum_{i=1}^{i=4} \Delta\text{CAPE}_{T_s,i}$) and of the vertical gradient of temperature ($\Delta\text{CAPE}_{\nabla_z T} = \frac{1}{4} \sum_{i=1}^{i=4} \Delta\text{CAPE}_{\nabla_z T,i}$).

Figure 12 shows $\Delta\text{CAPE}_{\nabla_z T}$, ΔCAPE_{T_s} and ΔCAPE_T (as in Fig. 8) as a function of daily mean temperature for the LR simulations. The contribution of the vertical gradient of temperature and the contribution of the surface temperature are both negative, indicating not only that the surface temperature is lower in the MAX simulation but also that this cooling is less important in the higher layers of the troposphere. Both processes tend to reduce the CAPE in the MAX simulation with respect to the MIN simulation. For median precipitation, the reduction of CAPE due to the vertical gradient of temperature (-10% at high temperatures to -50% at low temperatures) is more important than the reduction of CAPE due to the surface temperature (-10% at high temperatures to -20% at low temperatures). For extreme precipitation, contributions are similar and range between -20% at low temperatures to -5% at high temperatures.

A similar analysis in the HR simulations is displayed in figure 13. The results are very similar to those from the LR simulations with the exception that for extreme precipitation with low temperatures, the temperature gradient contribution is significantly larger than the surface temperature contribution.

The maximum and the minimum values of $\Delta\text{CAPE}_{T_s,i}$ (resp. $\Delta\text{CAPE}_{\nabla_z T,i}$) delimit a grey area in Figures 12 and 13 that represent the uncertainty related to the CAPE non-linearity. It shows that for both HR and LR simulations, contributions are clearly different at low temperatures for median precipitation events whereas the uncertainty ranges tend to overlap at high

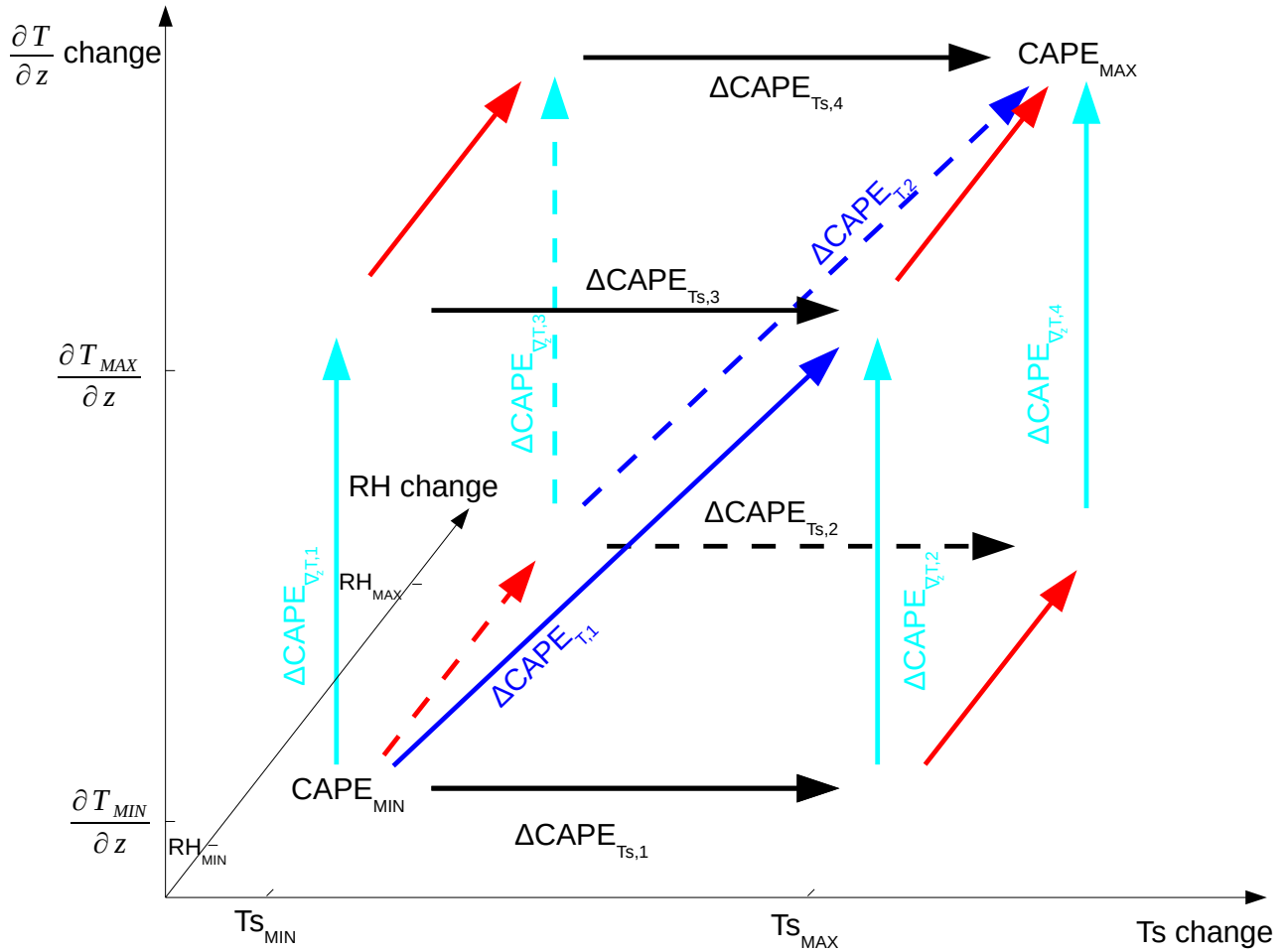


Figure 11. Schematic of the 4 possible CAPE differences that permit to evaluate the contribution of the vertical gradient of temperature ($\Delta CAPE_{\nabla_z T,1}$, $\Delta CAPE_{\nabla_z T,2}$, $\Delta CAPE_{\nabla_z T,3}$, and $\Delta CAPE_{\nabla_z T,4}$) and the contribution of the surface temperature ($\Delta CAPE_{Ts,1}$, $\Delta CAPE_{Ts,2}$, $\Delta CAPE_{Ts,3}$, and $\Delta CAPE_{Ts,4}$) to $\Delta CAPE$.

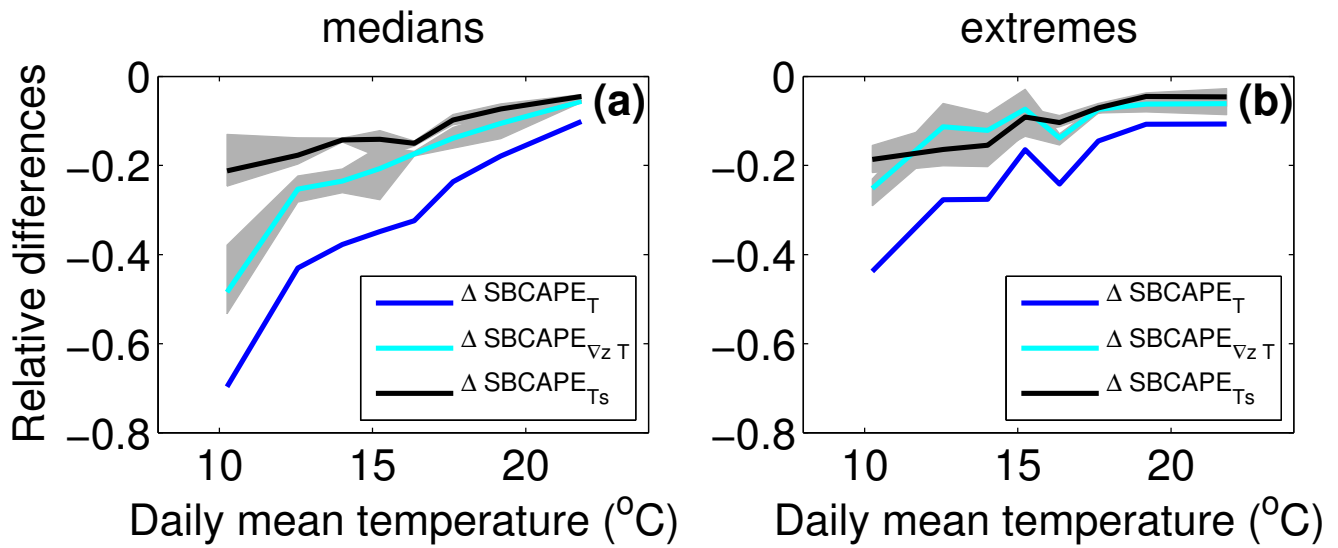


Figure 12. Relative differences of CAPEs for median (a) and extreme (b) convective precipitation events of the temperature contribution to the relative difference between the LR MAX and the LR MIN simulations (blue, ΔCAPE_T). The surface temperature contribution (ΔCAPE_{T_s}) is displayed in black and the temperature vertical gradient contribution ($\Delta \text{CAPE}_{\nabla_z T}$) in cyan.

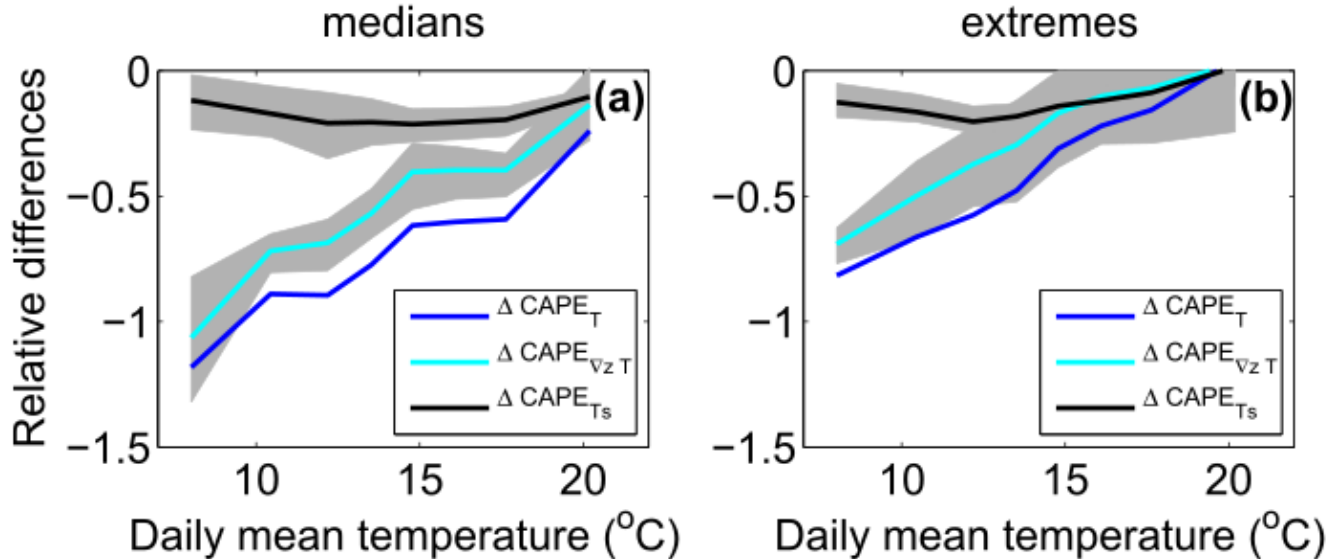


Figure 13. Relative differences of CAPEs for median (a) and extreme (b) precipitation events of the temperature contribution to the relative differences between the HR MAX and the HR MIN simulations (blue, ΔCAPE_T). The surface temperature contribution (ΔCAPE_{T_s}) is displayed in red and the temperature vertical gradient contribution ($\Delta \text{CAPE}_{\nabla_z T}$) in blue.

temperatures. For extreme events, the non-linearity of SBCAPE does not permit to distinguish the two contributions for the entire range of temperatures of the LR simulations. In the HR simulations, the non-linearity uncertainty is also too large at high temperatures to differentiate the two contributions. However the contribution of the vertical gradient of temperature is significantly weaker than the contribution of the surface temperature at the lowest temperatures of the HR simulations.

5 4 Conclusions

An evaluation of the processes involved in the reduction of convective precipitation by aerosol indirect effects is performed in the present study in the frame of the temperature-precipitation relationship. Figure 14 summarizes the various involved processes and their qualitative contribution (size of the arrows). The temperature-precipitation approach permits to show that aerosol indirect effects on convective precipitation are larger at low temperatures than at high temperatures because clouds are statically more frequent and optically thicker at cool temperatures in our area of interest. Da Silva et al. (2018) found that convective precipitation are weakened in polluted environment through reduced atmospheric instability and water availability. With a simple decomposition of the decrease of convective precipitation in the polluted simulation, we show that this decrease is dominated by differences in atmospheric stability rather than differences in the moisture content of air parcels (Fig. 14). Therefore, the reduction of convective precipitation in the polluted simulation does not follow the Clausius-Clapeyron law: the simulated reduction in convective precipitation in a polluted environment compared to a pristine environment as determined in our simulations is actually stronger than the Clausius-Clapeyron scaling. Although taken into account in our simulations with explicit convection, the remaining aerosol indirect effects have only a relatively small impact on the precipitation efficiency of most of the extreme events in our simulations compared to the stability effect on convective updrafts. A noticeable increase in precipitation efficiency was however detected at the highest temperatures in the polluted simulation. The exact nature of the associated increase of precipitation extreme is beyond the scope of this study and remains further investigations.

Using the CAPE parameter as a measure of the atmospheric stability, we perform an in-depth analysis that estimates the contribution of each variable to the weakening of convective updrafts in the polluted simulation. Quantifying uncertainties related to the non-linearity of the CAPE is essential to correctly attribute the contribution of each variable to the stability modifications. Our method gives a first estimation of these uncertainties and shows that they are small enough to assess the following conclusions. The weakening of vertical velocity in convective updrafts is essentially explained by the stabilisation of the vertical profile of temperature, which is partly compensated by an increase of relative humidity in the polluted simulation (Fig. 14). The Our study also suggests the existence of a convective invigoration effect that also acts in compensating the stabilisation in the HR simulations. The origin of the invigoration could be linked to reduced dry air intrusions in the convective cores of our polluted simulation, as hypothesised in the study of Miltenberger et al. (2018). The modification of the vertical temperature gradient, due to a stronger cooling in the boundary layer than in the free troposphere in the polluted simulation, is the most important contribution for median precipitation events whereas for extreme precipitation it is of similar magnitude as the contribution of the surface temperature decrease. Our simulations performed at high resolution are consistent with these

results even though their interpretation is made more difficult by the fact that convective and stratiform precipitation are melted together while having opposite responses to aerosol indirect effects (as seen in Da Silva et al., 2018).

~~These results should be interpreted as an upper bound of the aerosol climatological indirect~~ Due to the poor understanding of aerosol indirect effects (Fan et al., 2016) and the known uncertainties associated with numerical modeling (Crétat et al., 2012; Diaconescu et al., 2015), aerosol indirect effects have been found to be sensitive to the model configuration (Seifert and Beheng, 2006; Lebo and Seinfeld, 2011; Lebo et al., 2015). The results found with our specific model configuration are uncertain in this sense and need to be confirmed by further numerical and observational studies. It is also worth noting that these results were obtained using extremely low and extremely high aerosol concentrations. While this approach permits to effectively retrieve the precipitation response to a drastic change in aerosol concentrations, it is uncertain that the magnitude of the involved processes does not change under less extreme aerosol conditions, as stated in other studies (Rosenfeld et al., 2008; Dagan et al., 2015; Miltenberger et al., 2018). Despite these limitations, our configuration highlights the importance of the cloud albedo effect on convective precipitation, since extremely and high aerosol concentrations were used in this study often underestimated in case studies simulations. It is suggested in this study that this effect might be higher than the convective invigoration, as predicted in Fan et al. (2013) using shorter simulations on a smaller domain. A more realistic estimation of the aerosol indirect effect effects on convective precipitation could be carried out with the use of online-coupled models in which aerosol concentrations are evaluated with precise emission and transport schemes. ~~Although taken into account in our simulations with explicit convection, our study suggests that the second aerosol indirect effect may not affect convective precipitation efficiency in a significant way compared to the stabilisation effect. It is however likely that the second indirect effect plays a role in stabilising the atmosphere and hence in reducing convective precipitation, a result that remains to be established.~~ (Tuccella et al., 2019).

20 *Data availability.* The WRF simulations used in this study can be obtained in the MISTRAL database website (registration required) at <http://mistrals.sedoo.fr/?editDatsId=1503> or upon request to the authors.

Author contributions. The authors designed the numerical experiments. Nicolas Da Silva and Sylvain Mailler performed the simulations. Nicolas Da Silva prepared the manuscript with contributions from all co-authors.

Competing interests. The authors declare that they have no conflict of interest.

25 *Acknowledgements.* This work is a contribution to the HyMeX program (HYdrological cycle in the Mediterranean EXperiment) through INSU-MISTRALS support.

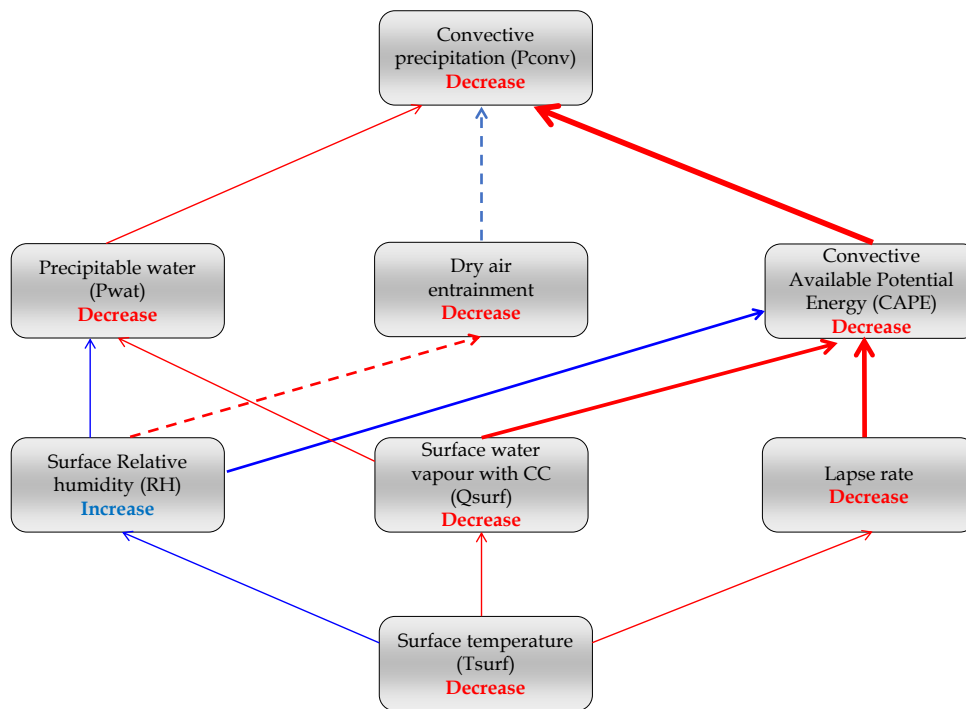


Figure 14. Detailed schematic summary of the causal sequence that links the decrease of surface temperature to the decrease of convective precipitation in [a-our polluted environment simulation](#). The size of arrows gives a qualitative estimation of the contributions of each processes. [Dashed arrows indicates uncertain paths.](#)

References

- Adler, R. F., Gu, G., Wang, J., Huffman, G. J., Curtis, S., and Bolvin, D.: Relationships between global precipitation and surface temperature on interannual and longer timescales (1979–2006), *Journal of Geophysical Research: Atmospheres*, 113, <https://doi.org/10.1029/2008JD010536>, 2008.
- 5 Albrecht, B.: Aerosols, cloud microphysics, and fractional cloudiness, *Science*, 245, 1227–1230, <https://doi.org/10.1126/science.245.4923.1227>, 1989.
- Alduchov, O. A. and Eskridge, R. E.: Improved Magnus Form Approximation of Saturation Vapor Pressure, *Journal of Applied Meteorology*, 35, 601–609, [https://doi.org/10.1175/1520-0450\(1996\)035<0601:IMFAOS>2.0.CO;2](https://doi.org/10.1175/1520-0450(1996)035<0601:IMFAOS>2.0.CO;2), 1996.
- Allen, M. R. and Ingram, W. J.: Constraints on future changes in climate and the hydrologic cycle, *Nature*, 419, 224, <https://doi.org/10.1038/nature01092>, 2002.
- 10 Berg, P. and Haerter, J.: Unexpected increase in precipitation intensity with temperature — A result of mixing of precipitation types?, *Atmospheric Research*, 119, 56 – 61, <https://doi.org/https://doi.org/10.1016/j.atmosres.2011.05.012>, 2013.
- Boer, G. J.: Climate change and the regulation of the surface moisture and energy budgets, *Climate Dynamics*, 8, 225–239, <https://doi.org/10.1007/BF00198617>, 1993.

- Bollasina, M. A., Ming, Y., and Ramaswamy, V.: Anthropogenic Aerosols and the Weakening of the South Asian Summer Monsoon, *Science*, 334, 502–505, <https://doi.org/10.1126, 2011>.
- Crétat, J., Pohl, B., Richard, Y., and Drobinski, P.: Uncertainties in simulating regional climate of Southern Africa: sensitivity to physical parameterizations using WRF, *Climate Dynamics*, 38, 613–634, <https://doi.org/10.1007/s00382-011-1055-8>, <https://doi.org/10.1007/s00382-011-1055-8>, 2012.
- 5 Crhová, L. and Holtanová, E.: Simulated relationship between air temperature and precipitation over Europe: sensitivity to the choice of RCM and GCM, *International Journal of Climatology*, 38, 1595–1604, <https://doi.org/10.1002/joc.5256>, 2017.
- Da Silva, N.: Around the temperature-precipitation relationship in the Euro-Mediterranean region, Theses, Université Paris-Saclay, <https://pastel.archives-ouvertes.fr/tel-02059296>, 2018.
- 10 Da Silva, N., Mailler, S., and Drobinski, P.: Aerosol indirect effects on summer precipitation in a regional climate model for the Euro-Mediterranean region, *Annales Geophysicae*, 36, 321–335, <https://doi.org/10.5194/angeo-36-321-2018>, 2018.
- Dagan, G., Koren, I., and Altaratz, O.: Competition between core and periphery-based processes in warm convective clouds—from invigoration to suppression, *Atmospheric Chemistry and Physics*, 15, 2749–2760, 2015.
- Dagan, G., Koren, I., and Altaratz, O.: Quantifying the effect of aerosol on vertical velocity and effective terminal velocity in warm convective clouds, *Atmospheric Chemistry and Physics*, 18, 6761–6769, <https://doi.org/10.5194/acp-18-6761-2018>, 2018.
- 15 Diaconescu, E. P., Laprise, R., and Sushama, L.: The impact of lateral boundary data errors on the simulated climate of a nested regional climate model, *Climate Dynamics*, 28, 333–350, <https://doi.org/10.1007/s00382-006-0189-6>, 2007.
- Drobinski, P., Ducrocq, V., Alpert, P., Anagnostou, E., Béranger, K., Borga, M., Braud, I., Chanzy, A., Davolio, S., Delrieu, G., Estournel, C., Boubrahmi, N. F., Font, J., Grubišić, V., Gualdi, S., Homar, V., Ivančan-Picek, B., Kottmeier, C., Kotroni, V., Lagouvardos, K., Lionello, P., Llasat, M. C., Ludwig, W., Lutoff, C., Mariotti, A., Richard, E., Romero, R., Rotunno, R., Roussot, O., Ruin, I., Somot, S., Taupier-Letage, I., Tintore, J., Uijlenhoet, R., and Wernli, H.: HyMeX: A 10-Year Multidisciplinary Program on the Mediterranean Water Cycle, *Bulletin of the American Meteorological Society*, 95, 1063–1082, <https://doi.org/10.1175/BAMS-D-12-00242.1>, 2014.
- 20 Drobinski, P., Alonzo, B., Bastin, S., Da Silva, N., and Muller, C.: Scaling of precipitation extremes with temperature in the French Mediterranean region: What explains the hook shape?, *Journal of Geophysical Research: Atmospheres*, 121, 3100–3119, <https://doi.org/10.1002/2015JD023497>, 2016.
- 25 Drobinski, P., Da Silva, N., Panthou, G., Bastin, S., Muller, C., Ahrens, B., Borga, M., Conte, D., Fossier, G., Giorgi, F., Güttler, I., Kotroni, V., Li, L., Morin, E., Öno, B., Quintana-Segui, P., Romera, R., and Torma, C. Z.: Scaling precipitation extremes with temperature in the Mediterranean: past climate assessment and projection in anthropogenic scenarios, *Climate Dynamics*, 51, 1237–1257, <https://doi.org/10.1007/s00382-016-3083-x>, 2018.
- 30 Fan, J., Yuan, T., Comstock, J. M., Ghan, S., Khain, A., Leung, L. R., Li, Z., Martins, V. J., and Ovchinnikov, M.: Dominant role by vertical wind shear in regulating aerosol effects on deep convective clouds, *Journal of Geophysical Research: Atmospheres*, 114, n/a–n/a, <https://doi.org/10.1029/2009JD012352>, <http://dx.doi.org/10.1029/2009JD012352>, d22206, 2009.
- Fan, J., Rosenfeld, D., Ding, Y., Leung, L. R., and Li, Z.: Potential aerosol indirect effects on atmospheric circulation and radiative forcing through deep convection, *Geophysical Research Letters*, 39, n/a–n/a, <https://doi.org/10.1029/2012GL051851>, 109806, 2012.
- 35 Fan, J., Leung, L. R., Rosenfeld, D., Chen, Q., Li, Z., Zhang, J., and Yan, H.: Microphysical effects determine macrophysical response for aerosol impacts on deep convective clouds, *Proceedings of the National Academy of Sciences*, 110, E4581–E4590, <https://doi.org/10.1073/pnas.1316830110>, <http://www.pnas.org/content/110/48/E4581.abstract>, 2013.

- Fan, J., Wang, Y., Rosenfeld, D., and Liu, X.: Review of Aerosol–Cloud Interactions: Mechanisms, Significance, and Challenges, *Journal of the Atmospheric Sciences*, 73, 4221–4252, <https://doi.org/10.1175/JAS-D-16-0037.1>, <https://doi.org/10.1175/JAS-D-16-0037.1>, 2016.
- Flaounas, E., Bastin, S., and Janicot, S.: Regional climate modelling of the 2006 West African monsoon: Sensitivity to convection and planetary boundary layer parameterisation using WRF, *Climate Dynamics*, 36, <https://doi.org/10.1007/s00382-010-0785-3>, 2011.
- 5 Foley, A.: Uncertainty in regional climate modelling: A review, *Progress in Physical Geography*, 34, 647–670, <https://doi.org/10.1177/0309133310375654>, 2010.
- Gao, X., Zhu, Q., Yang, Z., Liu, J., Wang, H., Shao, W., and Huang, G.: Temperature Dependence of Hourly, Daily, and Event-based Precipitation Extremes Over China, *Scientific reports*, 8, 17 564–17 564, <https://doi.org/10.1038/s41598-018-35405-4>, 30510162[pmid], 2018.
- 10 Ginoux, P., Chin, M., Tegen, I., Prospero, J. M., Holben, B., Dubovik, O., and Lin, S.-J.: Sources and distributions of dust aerosols simulated with the GOCART model, *Journal of Geophysical Research: Atmospheres*, 106, 20 255–20 273, <https://doi.org/10.1029/2000JD000053>, 2001.
- Haerter, J. O. and Berg, P.: Unexpected rise in extreme precipitation caused by a shift in rain type?, *Nature Geoscience*, 2, 372, <https://doi.org/10.1038/ngeo523>, correspondence, 2009.
- 15 Hardwick, J. R., Westra, S., and Sharma, A.: Observed relationships between extreme sub-daily precipitation, surface temperature, and relative humidity, *Geophysical Research Letters*, 37, <https://doi.org/10.1029/2010GL045081>, 2010.
- Heikenfeld, M., White, B., Labbouz, L., and Stier, P.: Aerosol effects on deep convection: the propagation of aerosol perturbations through convective cloud microphysics, *Atmospheric Chemistry and Physics*, 19, 2601–2627, <https://doi.org/10.5194/acp-19-2601-2019>, 2019.
- Held, I. M. and Soden, B. J.: Robust Responses of the Hydrological Cycle to Global Warming, *Journal of Climate*, 19, 5686–5699, <https://doi.org/10.1175/JCLI3990.1>, 2006.
- 20 Hill, A. A., Shipway, B. J., and Boutle, I. A.: How sensitive are aerosol-precipitation interactions to the warm rain representation?, *Journal of Advances in Modeling Earth Systems*, 7, 987–1004, <https://doi.org/10.1002/2014MS000422>, 2015.
- Iacono, M. J., Delamere, J. S., Mlawer, E. J., Shephard, M. W., Clough, S. A., and Collins, W. D.: Radiative forcing by long-lived greenhouse gases: Calculations with the AER radiative transfer models, *Journal of Geophysical Research: Atmospheres*, 113, n/a–n/a, <https://doi.org/10.1029/2008JD009944>, d13103, 2008.
- 25 Johnson, J. S., Cui, Z., Lee, L. A., Gosling, J. P., Blyth, A. M., and Carslaw, K. S.: Evaluating uncertainty in convective cloud microphysics using statistical emulation, *Journal of Advances in Modeling Earth Systems*, 7, 162–187, <https://doi.org/10.1002/2014MS000383>, 2015.
- Kain, J. S.: The Kain–Fritsch Convective Parameterization: An Update, *Journal of Applied Meteorology*, 43, 170–181, [https://doi.org/10.1175/1520-0450\(2004\)043<0170:TKCPAU>2.0.CO;2](https://doi.org/10.1175/1520-0450(2004)043<0170:TKCPAU>2.0.CO;2), 2004.
- 30 Khain, A. and Lynn, B.: Simulation of a supercell storm in clean and dirty atmosphere using weather research and forecast model with spectral bin microphysics, *Journal of Geophysical Research: Atmospheres*, 114, <https://doi.org/10.1029/2009JD011827>, 2009.
- Khain, A., Pokrovsky, A., Pinsky, M., Seifert, A., and Phillips, V.: Simulation of Effects of Atmospheric Aerosols on Deep Turbulent Convective Clouds Using a Spectral Microphysics Mixed-Phase Cumulus Cloud Model. Part I: Model Description and Possible Applications, *Journal of the Atmospheric Sciences*, 61, 2963–2982, <https://doi.org/10.1175/JAS-3350.1>, 2004.
- 35 Khain, A., Rosenfeld, D., and Pokrovsky, A.: Aerosol impact on the dynamics and microphysics of deep convective clouds, *Quarterly Journal of the Royal Meteorological Society*, 131, 2639–2663, <https://doi.org/10.1256/qj.04.62>, 2005.
- Koren, I., Altaratz, O., and Dagan, G.: Aerosol effect on the mobility of cloud droplets, *Environmental Research Letters*, 10, 104 011, <https://doi.org/10.1088/1748-9326/10/10/104011>, 2015.

- Lebo, Z. J.: The Sensitivity of a Numerically Simulated Idealized Squall Line to the Vertical Distribution of Aerosols, *Journal of the Atmospheric Sciences*, 71, 4581–4596, <https://doi.org/10.1175/JAS-D-14-0068.1>, 2014.
- Lebo, Z. J. and Morrison, H.: Dynamical Effects of Aerosol Perturbations on Simulated Idealized Squall Lines, *Monthly Weather Review*, 142, 991–1009, <https://doi.org/10.1175/MWR-D-13-00156.1>, 2014.
- 5 Lebo, Z. J. and Seinfeld, J. H.: Theoretical basis for convective invigoration due to increased aerosol concentration, *Atmospheric Chemistry and Physics*, 11, 5407–5429, <https://doi.org/10.5194/acp-11-5407-2011>, 2011.
- Lebo, Z. J., Morrison, H., and Seinfeld, J. H.: Are simulated aerosol-induced effects on deep convective clouds strongly dependent on saturation adjustment?, *Atmospheric Chemistry and Physics*, 12, 9941–9964, <https://doi.org/10.5194/acp-12-9941-2012>, 2012.
- Lelieveld, J., Berresheim, H., and Borrmann, S.: Global air pollution crossroads over the Mediterranean., *Science*, 298, 794–799, <https://doi.org/10.1126/science.1075457>, 2002.
- 10 Lenderink, G. and van Meijgaard, E.: Increase in hourly precipitation extremes beyond expectations from temperature changes, *Nature Geoscience*, 1, 511, 2008.
- Lenderink, G., Barbero, R., Loriaux, J. M., and Fowler, H. J.: Super-Clausius—Clapeyron Scaling of Extreme Hourly Convective Precipitation and Its Relation to Large-Scale Atmospheric Conditions, *Journal of Climate*, 30, 6037–6052, <https://doi.org/10.1175/JCLI-D-16-0808.1>, <https://doi.org/10.1175/JCLI-D-16-0808.1>, 2017.
- 15 Li, F., Collins, W. D., Wehner, M. F., Williamson, D. L., Olson, J. G., and Algieri, C.: Impact of horizontal resolution on simulation of precipitation extremes in an aqua-planet version of Community Atmospheric Model (CAM3), *Tellus A: Dynamic Meteorology and Oceanography*, 63, 884–892, 2011.
- Liu, H., Guo, J., Koren, I., Altaratz, O., Dagan, G., Wang, Y., Jiang, J. H., Zhai, P., and Yung, Y. L.: Non-Monotonic Aerosol Effect on Precipitation in Convective Clouds over Tropical Oceans, *Scientific reports*, 9, 7809–7809, <https://doi.org/10.1038/s41598-019-44284-2>, 31127137[pmid], 2019.
- 20 Loriaux, J. M., Lenderink, G., De Roode, S. R., and Siebesma, A. P.: Understanding Convective Extreme Precipitation Scaling Using Observations and an Entraining Plume Model, *Journal of the Atmospheric Sciences*, 70, 3641–3655, <https://doi.org/10.1175/JAS-D-12-0317.1>, 2013.
- 25 Madden, R. A. and Williams, J.: The correlation between temperature and precipitation in the United States and Europe, *Monthly Weather Review*, 106, 142–147, [https://doi.org/10.1175/1520-0493\(1978\)106<0142:TCBTAP>2.0.CO;2](https://doi.org/10.1175/1520-0493(1978)106<0142:TCBTAP>2.0.CO;2), 1978.
- Malavelle, F. F., Haywood, J. M., Jones, A., Gettelman, A., Clarisse, L., Bauduin, S., Allan, R. P., Karset, I. H. H., Kristjánsson, J. E., Oreopoulos, L., Cho, N., Lee, D., Bellouin, N., Boucher, O., Grosvenor, D. P., Carslaw, K. S., Dhomse, S., Mann, G. W., Schmidt, A., Coe, H., Hartley, M. E., Dalvi, M., Hill, A. A., Johnson, B. T., Johnson, C. E., Knight, J. R., O'Connor, F. M., Partridge, D. G., Stier, P., Myhre, G., Platnick, S., Stephens, G. L., Takahashi, H., and Thordarson, T.: Strong constraints on aerosol-cloud interactions from volcanic eruptions, *Nature*, 546, 485, <https://doi.org/10.1038/nature229744>, article, 2017.
- 30 Markowski, P. and Richardson, Y.: Observations of Vertical Wind Shear Heterogeneity in Convective Boundary Layers, *Monthly Weather Review*, 135, 843–861, <https://doi.org/10.1175/MWR3334.1>, 2007.
- Miltenberger, A. K., Field, P. R., Hill, A. A., Rosenberg, P., Shipway, B. J., Wilkinson, J. M., Scovell, R., and Blyth, A. M.: Aerosol–cloud interactions in mixed-phase convective clouds – Part 1: Aerosol perturbations, *Atmospheric Chemistry and Physics*, 18, 3119–3145, <https://doi.org/10.5194/acp-18-3119-2018>, 2018.

- Molnar, P., Fatichi, S., Gaál, L., Szolgay, J., and Burlando, P.: Storm type effects on super Clausius-Clapeyron scaling of intense rainstorm properties with air temperature, *Hydrology and Earth System Sciences*, 19, 1753–1766, <https://doi.org/10.5194/hess-19-1753-2015>, 2015.
- Morrison, H.: On the robustness of aerosol effects on an idealized supercell storm simulated with a cloud system-resolving model, *Atmospheric Chemistry and Physics*, 12, 7689–7705, <https://doi.org/10.5194/acp-12-7689-2012>, 2012.
- 5 Morrison, H. and Grabowski, W. W.: Cloud-system resolving model simulations of aerosol indirect effects on tropical deep convection and its thermodynamic environment, *Atmospheric Chemistry and Physics*, 11, 10 503–10 523, <https://doi.org/10.5194/acp-11-10503-2011>, 2011.
- Muller, C.: Impact of Convective Organization on the Response of Tropical Precipitation Extremes to Warming, *Journal of Climate*, 26, 5028–5043, <https://doi.org/10.1175/JCLI-D-12-00655.1>, <https://doi.org/10.1175/JCLI-D-12-00655.1>, 2013.
- Muller, C. J., O’Gorman, P. A., and Back, L. E.: Intensification of Precipitation Extremes with Warming in a Cloud-Resolving Model, *Journal of Climate*, 24, 2784–2800, <https://doi.org/10.1175/2011JCLI3876.1>, <https://doi.org/10.1175/2011JCLI3876.1>, 2011.
- 10 National Centers for Environmental Prediction National Weather Service, NOAA, U. S. o. C.: NCEP FNL Operational Model Global Tropospheric Analyses, continuing from July 1999, <https://doi.org/10.5065/D6M043C6>, 2000.
- Omrani, H., Drobinski, P., and Dubos, T.: Optimal nudging strategies in regional climate modelling: investigation in a Big-Brother experiment over the European and Mediterranean regions, *Climate Dynamics*, 41, 2451–2470, <https://doi.org/10.1007/s00382-012-1615-6>, 2013.
- 15 Omrani, H., Drobinski, P., and Dubos, T.: Using nudging to improve global-regional dynamic consistency in limited-area climate modeling: What should we nudge?, *Climate Dynamics*, 44, 1627–1644, <https://doi.org/10.1007/s00382-014-2453-5>, 2015.
- Pall, P., Allen, M. R., and Stone, D. A.: Testing the Clausius–Clapeyron constraint on changes in extreme precipitation under CO2 warming, *Climate Dynamics*, 28, 351–363, <https://doi.org/10.1007/s00382-006-0180-2>, <https://doi.org/10.1007/s00382-006-0180-2>, 2007.
- Panthou, G., Mailhot, A., Laurence, E., and Talbot, G.: Relationship between Surface Temperature and Extreme Rainfalls: A Multi-Time-Scale and Event-Based Analysis, *Journal of Hydrometeorology*, 15, 1999–2011, <https://doi.org/10.1175/JHM-D-14-0020.1>, 2014.
- 20 Pinsky, M., Khain, A., Mazin, I., and Korolev, A.: Analytical estimation of droplet concentration at cloud base, *Journal of Geophysical Research: Atmospheres*, 117, <https://doi.org/10.1029/2012JD017753>, 2012.
- Räisänen, J., Hansson, U., Ullerstig, A., Döscher, R., Graham, L. P., Jones, C., Meier, H. E. M., Samuelsson, P., and Willén, U.: European climate in the late twenty-first century: regional simulations with two driving global models and two forcing scenarios, *Climate Dynamics*, 22, 13–31, <https://doi.org/10.1007/s00382-003-0365-x>, 2004.
- 25 Ramanathan, V., Crutzen, P. J., Kiehl, J. T., and Rosenfeld, D.: Aerosols, Climate, and the Hydrological Cycle, *Science*, 294, 2119–2124, <https://doi.org/10.1126/science.1064034>, 2001.
- Ramarohetra, J., Pohl, B., and Sultan, B.: Errors and uncertainties introduced by a regional climate model in climate impact assessments: example of crop yield simulations in West Africa, *Environmental Research Letters*, 10, 124 014, <https://doi.org/10.1088/1748-9326/10/12/124014>, <https://doi.org/10.1088>, 2015.
- 30 Rodrigo, F. S.: Coherent variability between seasonal temperatures and rainfalls in the Iberian Peninsula, 1951–2016, *Theoretical and Applied Climatology*, <https://doi.org/10.1007/s00704-018-2400-1>, 2018.
- Rosenfeld, D., Lohmann, U., Raga, G. B., D. O’Dowd, C., Kulmala, M., Fuzzi, S., Reissell, A., and Meinrat O., A.: Flood or Drought: How Do Aerosols Affect Precipitation?, *Science*, 321, 1309–1313, <https://doi.org/10.1126/science.1160606>, <http://dx.doi.org/10.1126/science.1160606>, 2008.
- 35 Salameh, T., Drobinski, P., and Dubos, T.: The effect of indiscriminate nudging time on large and small scales in regional climate modelling: Application to the Mediterranean basin, *Quarterly Journal of the Royal Meteorological Society*, 136, 170–182, <https://doi.org/10.1002/qj.518>, 2010.

- Salzmann, M., Weser, H., and Cherian, R.: Robust response of Asian summer monsoon to anthropogenic aerosols in CMIP5 models, *Journal of Geophysical Research: Atmospheres*, 119, 11,321–11,337, <https://doi.org/10.1002/2014JD021783>, 2014.
- Seifert, A. and Beheng, K. D.: A two-moment cloud microphysics parameterization for mixed-phase clouds. Part 2: Maritime vs. continental deep convective storms, *Meteorology and Atmospheric Physics*, 92, 67–82, <https://doi.org/10.1007/s00703-005-0113-3>, <http://dx.doi.org/10.1007/s00703-005-0113-3>, 2006.
- Seifert, A., Heus, T., Pincus, R., and Stevens, B.: Large-eddy simulation of the transient and near-equilibrium behavior of precipitating shallow convection, *Journal of Advances in Modeling Earth Systems*, 7, 1918–1937, <https://doi.org/10.1002/2015MS000489>, 2015.
- Seth, A. and Giorgi, F.: The effects of domain choice on summer precipitation simulation and sensitivity in a regional climate model, *Journal of Climate*, 11, 2698–2712, 1998.
- 10 Singh, M. S. and O’Gorman, P. A.: Influence of microphysics on the scaling of precipitation extremes with temperature, *Geophysical Research Letters*, 41, 6037–6044, <https://doi.org/10.1002/2014GL061222>, 2014.
- Singleton, A. and Toumi, R.: Super-Clausius–Clapeyron scaling of rainfall in a model squall line, *Quarterly Journal of the Royal Meteorological Society*, 139, 334–339, <https://doi.org/10.1002/qj.1919>, 2013.
- Skamarock, W., Klemp, J., Dudhia, J., Gill, D., Barker, D., Wang, W., Huang, X.-y., Duda, M., and Powers, J.: A Description of the Advanced Research WRF Version 3, NCAR Tech. Note NCAR/TN-475+STR, <https://doi.org/10.5065/D68S4MVH>, 113 pp., 2008.
- 15 Small, J. D., Chuang, P. Y., Feingold, G., and Jiang, H.: Can aerosol decrease cloud lifetime?, *Geophysical Research Letters*, 36, n/a–n/a, <https://doi.org/10.1029/2009GL038888>, 116806, 2009.
- Stevens, B. and Feingold, G.: Untangling aerosol effects on clouds and precipitation in a buffered system, *Nature*, 461, 607–613, <https://doi.org/10.1038/nature08281>, 2009.
- 20 Stjern, C. W., Samset, B. H., Myhre, G., Forster, P. M., Hodnebrog, ., Andrews, T., Boucher, O., Faluvegi, G., Iversen, T., Kassoar, M., Kharin, V., Kirkevåg, A., Lamarque, J.-F., Olivie, D., Richardson, T., Shawki, D., Shindell, D., Smith, C. J., Takemura, T., and Voulgarakis, A.: Rapid adjustments cause weak surface temperature response to increased black carbon concentrations, *J. Geophys. Res. Atmos.*, 122, 11 462–11 481, <https://doi.org/10.1002/2017JD027326>, 2017.
- Tegen, I., Hollrig, P., Chin, M., Fung, I., Jacob, D., and Penner, J.: Contribution of different aerosol species to the global aerosol extinction optical thickness: Estimates from model results, *Journal of Geophysical Research: Atmospheres*, 102, 23 895–23 915, <https://doi.org/10.1029/97JD01864>, 1997.
- 25 Thompson, G. and Eidhammer, T.: A Study of Aerosol Impacts on Clouds and Precipitation Development in a Large Winter Cyclone, *Journal of the Atmospheric Sciences*, 71, 3636–3658, <https://doi.org/10.1175/JAS-D-13-0305.1>, 2014.
- Trenberth, K. E.: Atmospheric Moisture Residence Times and Cycling: Implications for Rainfall Rates and Climate Change, *Climatic Change*, 39, 667–694, <https://doi.org/10.1023/A:1005319109110>, 1998.
- 30 Trenberth, K. E. and Shea, D. J.: Relationships between precipitation and surface temperature, *Geophysical Research Letters*, 32, <https://doi.org/10.1029/2005GL022760>, 2005.
- Tuccella, P., Menut, L., Briant, R., Deroubaix, A., Khvorostyanov, D., Mailler, S., Siour, G., and Turquety, S.: Implementation of Aerosol-Cloud Interaction within WRF-CHIMERE Online Coupled Model: Evaluation and Investigation of the Indirect Radiative Effect from Anthropogenic Emission Reduction on the Benelux Union, *Atmosphere*, 10, <https://doi.org/10.3390/atmos10010020>, 2019.
- 35 Twomey, S.: The Influence of Pollution on the Shortwave Albedo of Clouds, *Journal of the Atmospheric Sciences*, 34, 1149–1152, [https://doi.org/10.1175/1520-0469\(1977\)034<1149:TIOPOT>2.0.CO;2](https://doi.org/10.1175/1520-0469(1977)034<1149:TIOPOT>2.0.CO;2), 1977.

- Utsumi, N., Seto, S., Kanae, S., Maeda, E. E., and Oki, T.: Does higher surface temperature intensify extreme precipitation?, *Geophysical Research Letters*, 38, <https://doi.org/10.1029/2011GL048426>, 2011.
- White, B., Gryspeerdt, E., Stier, P., Morrison, H., Thompson, G., and Kipling, Z.: Uncertainty from the choice of microphysics scheme in convection-permitting models significantly exceeds aerosol effects, *Atmospheric Chemistry and Physics*, 17, 12 145–12 175, <https://doi.org/10.5194/acp-17-12145-2017>, <https://www.atmos-chem-phys.net/17/12145/2017/>, 2017.
- 5 <https://doi.org/10.5194/acp-17-12145-2017>, <https://www.atmos-chem-phys.net/17/12145/2017/>, 2017.
- Xue, H. and Feingold, G.: Large-Eddy Simulations of Trade Wind Cumuli: Investigation of Aerosol Indirect Effects, *Journal of the Atmospheric Sciences*, 63, 1605–1622, <https://doi.org/10.1175/JAS3706.1>, 2006.
- Zhao, W. and Khalil, M. A. K.: The Relationship between Precipitation and Temperature over the Contiguous United States, *Journal of Climate*, 6, 1232–1236, [https://doi.org/10.1175/1520-0442\(1993\)006<1232:TRBPAT>2.0.CO;2](https://doi.org/10.1175/1520-0442(1993)006<1232:TRBPAT>2.0.CO;2), 1993.
- 10 Zhou, C. and Penner, J. E.: Why do general circulation models overestimate the aerosol cloud lifetime effect? A case study comparing CAM5 and a CRM, *Atmospheric Chemistry and Physics*, 17, 21–29, <https://doi.org/10.5194/acp-17-21-2017>, 2017.