

1 Spatiotemporal dynamics of fog and low clouds in
2 the Namib unveiled with ground and space-based
3 observations

4 — EDITOR RESPONSES —

5 Hendrik Andersen, Jan Cermak, Irina Solodovnik, Luca Lelli and Roland Vogt

6 contact: hendrik.andersen@kit.edu

7 We thank the co-editor Dr. Frank Eckardt for his detailed comments on the
8 manuscript. In the following response, comments by the co-editor are colored
9 in blue, our replies or comments are colored in black.

10 **Response to the Co-Editor**

11 These comments are not technical but minor and are mainly concerned with
12 clarification of figures etc.

13 1)Appendix A

14 Which of these stations are considered coastal and which are inland?

15 This attribution should also be clarified in Figure 3 a and b as well as Figure 1
16 b as well as section 2.4

17 Referring to colors alone might be sufficient but could again be spelled out.

18 A legend has been included in Fig. 1 b) and the mentioned text passages now
19 state the attribution of the stations more clearly or better reference to the
20 relevant Figure.

21

22 Figure 2 a and b, Are these annual averages without any diurnal bias? It
23 might be useful to learn more about how this previous work, as cited, relates
24 to this study. 2 c is an excellent figure.

25 Thank you for the feedback on Fig. 2. The caption now includes information
26 on temporal sampling so that the reader does not have to look this up in Sec.
27 2.1 and 2.2, where the two referenced studies are described.

28

29 Figure 4) Upper and Lower Limit of Northern and Southern Boundary are
30 still not clear. Does the dashed line represent the 22.5 degrees? If so please
31 label it.

32 Having 2 circle symbols there is confusing.

33 Please clearly indicate the latitude from which each of the 3 lines was obtained.

34 Thank you for the valuable comments on Fig. 4. We have changed the way
35 the panels are linked in a) and now state the northern and southern boundaries
36 of the regions more clearly in the legend of b). We feel that this has markedly
37 improved the clarity of the figure.

38

39 The interpretation in Section 4 does at no point take into account topogra-
40 phy in relation to

41 1) River valleys

42 2) Escarpment v Coastal Plains

43 3) The surface roughness (i.e. dune fields)

44 The data here seems to suggest that these play a role in the fog distribution
45 patterns as observed in Figure 4 and 5.

46 A paragraph to that effect might be useful.

47 We agree that these aspects play an important role for FLC patterns in the
48 region, albeit partially on smaller scales. While our analysis is focused on the
49 large-scale patterns and their seasonal and diurnal characteristics, we have now
50 included these aspects in the discussion of the results on pages 6, 8, 9 and 11
51 of the updated version of the manuscript.

52

53 Figure 1 could be improved in this regard too. The topography of the
54 coastal plain plays an important role and the lack of integration and illustration
55 via a DEM as in the Andersen and Cermak paper is an omission here. Places
56 are mentioned without being depicted in the map. Where is Alexander Bay?

57 Yes, we agree that the topography along the coastline plays an important role
58 for fog and low clouds in the Namib. So far, the topography was only considered
59 for the central Namib (isolines in Fig. 1 b)). Now, an isoline at 1000 m above

60 sea level is included in Fig. 1 a) to approximate the Great Escarpment and the
61 eastern boundary of the Namib desert. For a better reference, Walvis Bay and
62 Alexander Bay are now pointed out in the map as well.

63

64 **Minor points**

65 **Page 2 line 5 – formation/type is ambiguous**

66 This is now corrected in the current version of the manuscript.

67

68 **Page 2 line 9 Uncertainties also exist related to the ... is clumsy phrasing
69 and wording**

70 The sentence has been rephrased for clarity.

71

72 **Page 3 line 7 it has shown good skill... is clumsy phrasing and wording**

73 The sentence is modified in the updated version of the manuscript.

74

75 **Page 6 line 6 However, in accordance to the comparison.... is clumsy
76 phrasing and wording**

77 The sentence has been modified for clarity.

78

79 **Page 8 line 5 perhaps insert the “here “ after results, referring to this study**

80 Yes, this is now corrected in the current version of the manuscript.

81

82 **Non-public comments to the Author:**

83 **Overall this is a very important paper with a wealth of analyses at its core.**

84 **Deciphering it takes a bit of time since figures appear small and a little cryptic.**

85 **I find the spatial handling of the data and observed patterns superficial and**

86 **rushed. There is also little integration and consideration for synoptic and wind**

87 patterns. As such the paper remains quiet descriptive rather than explanatory.
88 Thank you for the detailed comments and constructive criticism on the
89 manuscript. The aim of this paper is to combine ground-based and space-based
90 observations of fog and low clouds in the Namib and use these to characterize it
91 in 4-dimensions. We are currently working on a follow-up manuscript that will
92 focus, and lay out in much greater detail, the (thermo)dynamical patterns and
93 mechanisms that are associated with FLC occurrence.

Spatiotemporal dynamics of fog and low clouds in the Namib unveiled with ground and space-based observations

Hendrik Andersen^{1,2}, Jan Cermak^{1,2}, Irina Solodovnik^{1,2}, Luca Lelli³, and Roland Vogt⁴

¹Karlsruhe Institute of Technology (KIT), Institute of Meteorology and Climate Research

²Karlsruhe Institute of Technology (KIT), Institute of Photogrammetry and Remote Sensing

³University of Bremen, Institute of Environmental Physics and Remote Sensing

⁴University of Basel, Department of Environmental Sciences

Correspondence: Hendrik Andersen (hendrik.andersen@kit.edu)

Abstract. Fog is an essential component of Namib-region ecosystems. Current knowledge on Namib-region fog patterns and processes is limited by a lack of coherent observations in space and time. In this study, data from multiple satellite platforms and station measurements paint a coherent picture of the spatiotemporal dynamics of fog and low cloud (FLC) distribution. It is found that observed seasonal FLC patterns derived from satellite observations differ from fog measurements at coastal station locations, whereas they agree further inland. This is linked to an observed seasonal cycle in the vertical structure of FLC that determines the probability of low-level clouds touching the ground. For the first time, these observations are complemented by spatially coherent statistics concerning the diurnal cycle of FLC using geostationary satellite data. The average timing of the start of the diurnal FLC cycle is found to strongly depend on the distance to the coastline (correlation ≈ 0.85 north of 25°S), a clear indication of dominant advective processes. In the central Namib, FLC typically occurs 2–4 hours later than in other coastal regions, possibly due to local advection patterns. The findings lead to a new conceptual model of the spatiotemporal dynamics of fog and low clouds in the Namib.

Copyright statement. TEXT

1 Introduction

In arid environments like the Namib, fog can be a crucial source of water for many species and ecosystems (e.g. Seely et al., 1977; Seely, 1979; Shanyengana, 2002; Ebner et al., 2011; Azúa-Bustos et al., 2011; Roth-Nebelsick et al., 2012; Eckardt et al., 2013; McHugh et al., 2015). However, only little is known about its spatial and temporal patterns, as well as the environmental drivers of fog in the Namib.

While meteorological measurements are generally sparse in this region, historical station observations of fog in the central Namib between the 1940s and the 1980s have shown contrasting seasonal patterns of fog occurrence at coastal and inland locations (Nagel, 1959; Lancaster et al., 1984). These studies find that at inland locations, fog tends to occur less frequently between April and August, while fog occurrence at coastal locations peaks during this time. More recently, satellite data have

been used to study the patterns of fog and low clouds (FLCs) in the Namib (e.g. Olivier, 1995; Cermak, 2012; Andersen and Cermak, 2018). The only satellite-based study that comprises a multi-year seasonal cycle of FLCs is presented in Cermak (2012), and while the observed patterns compare well to station measurements of fog presented in (Lancaster et al., 1984) at the inland station in Gobabeb, observed seasonal cycles from satellite data and station measurements of fog differ at the
5 coastal location in Walvis Bay. This could be related to seasonally varying mechanisms responsible for fog formation /type- or due to a seasonal cycle in vertical characteristics of FLCs in this region, i.e. the fact that all low clouds are treated summar- ily by the satellite technique, whereas only the ones with the lowest cloud bases manifest themselves as fog as reported by ground-based observations. However, a spatially coherent detailed characterization of FLCs, including vertical characteristics, as well as seasonal and diurnal patterns is still missing. ~~Uncertainties also exist related to the mechanisms that~~ Additionally,
10 the importance of the different mechanisms that can lead to fog formation is still uncertain. While most studies (e.g. Lancaster et al., 1984; Olivier and Stockton, 1989; Olivier, 1992, 1995; Cermak, 2012; Andersen and Cermak, 2018) relate Namib-region fog mostly to the advection of low clouds formed over the cool waters of the Benguela current, recent analyses of stable iso- 15 topes have pointed to mixed or sweet water sources, which has been interpreted as an indication for radiation fog (Kaseke et al., 2017, 2018). However, the labor-intensive field work needed for isotope analyses has limited these studies in spatial and 15 temporal extent, underscoring the need for a spatiotemporally complete and coherent characterization of FLC mechanisms. In this study, active-sensor and passive-sensor satellite data are used in conjunction with ground-based meteorological measure- 20 ments to better understand fog and low-cloud patterns at different scales. The goal of this study is to provide climatological, spatiotemporally complete patterns that help understand the processes driving Namib-region fog and low clouds.

The guiding hypotheses are that

- 20 1. FLC patterns in time and space differ distinctly between the coastline and regions further inland.
2. Apparent differences between the seasonal cycle of fog as observed from the ground and satellite perspectives are explained by a seasonal cycle in the vertical structure of FLCs.

2 Data and methods

In this study, multiple data sets from various space-based sensors are used to characterize FLCs and analyze its spatiotemporal
25 occurrence patterns. The general spatial domain investigated in this study is the western coastline of southern Africa (13.5°S– 34°S and 5°E–20°E, Fig. 1 a)), with a specific focus on patterns over land and a core region of FLC occurrence in the central Namib near Walvis Bay (22.5°S–24°S and \approx 14°E–15.5°E, Fig. 1 b)). In the central Namib, the FogNet station network (Kaspar et al., 2015) is located, providing a ground-based perspective on fog patterns. Detailed descriptions of the different sensors, techniques and data sets used in this study are given in sections 2.1–2.4.

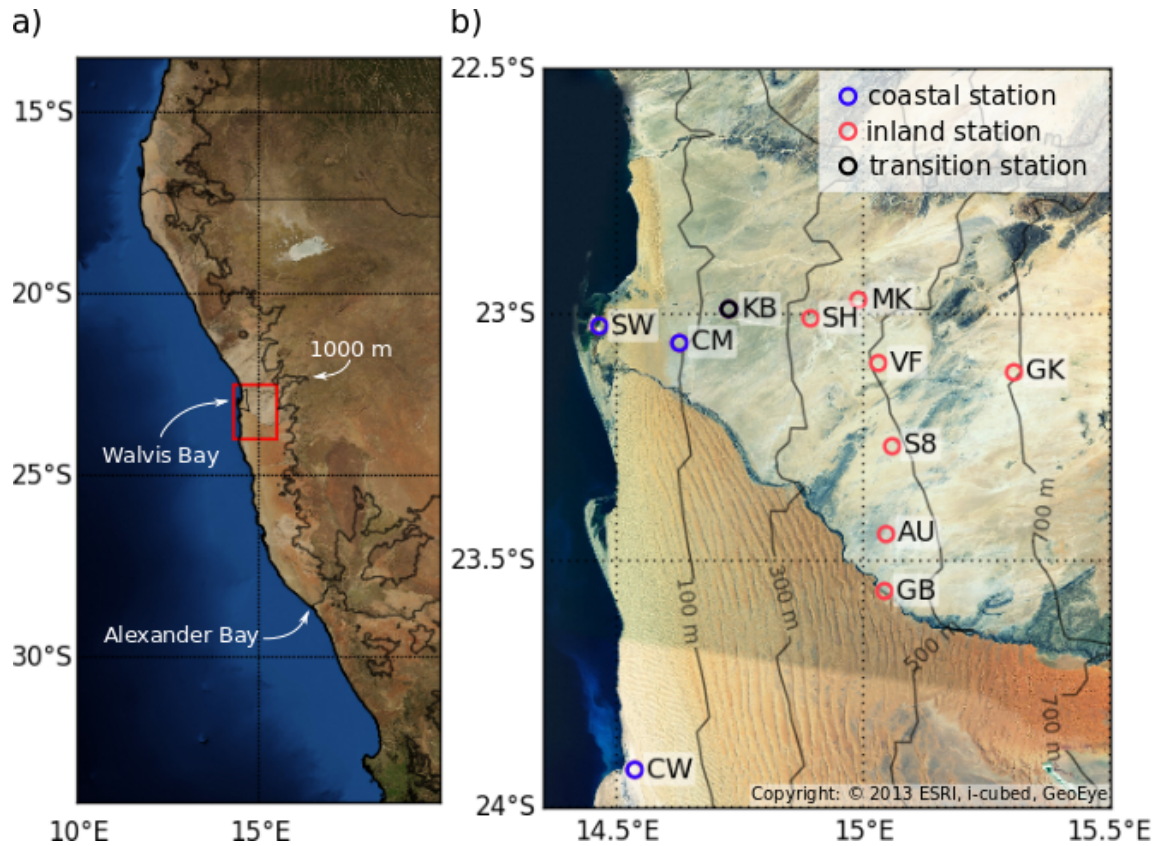


Figure 1. a) An overview of the study area. The [gray line represents 1000 m above sea level and approximates the transition from the low-lying coastal plains to the Great Escarpment that represents the eastern limit of the Namib desert.](#) The red box in the Walvis Bay area highlights the central Namib, which is shown in more detail in b): FogNet stations are illustrated by circles and are annotated with their respective IDs (full station names are given in the appendix). Blue circles represent coastal, and red circles inland stations as defined in this study (section 2.4). The station Kleinberg (KB) is colored in black, as it is viewed to be at a transitional location not clearly belonging to either category.

2.1 SEVIRI

Coherent spatiotemporal patterns of FLC occurrence are created using data from the Spinning-Enhanced Visible and Infrared Imager (SEVIRI) aboard the Meteosat Second Generation (MSG) satellites. The sensor has a nadir spatial resolution of 3 km and provides 96 hemispheric scans per day (repeat rate of 15 minutes) (Schmetz et al., 2002). The novel FLC-detection technique by Andersen and Cermak (2018) is applied to data of nearly the entire operational period of MSG satellites (2004–2017). The technique uses only observations in the thermal infrared, enabling a fully-diurnal detection of FLCs in the region. It has ~~shown good skill in a validation~~ been validated against surface net radiation measurements with a probability of detection of 94 %, a false alarm rate of 12 % and a general correctness of all classifications of 97 % (Andersen and Cermak, 2018).

2.2 CALIPSO

SEVIRI observations are complemented by retrieved layer heights from the active-sensor platform from Cloud-Aerosol LiDAR and Pathfinder Satellite Observations (CALIPSO). Mounted onboard the satellite is the Cloud-Aerosol Lidar with Orthogonal Polarization (CALIOP) that samples with 30 m vertical and 333 m horizontal resolutions. Here, the CALIPSO level 2 5 km cloud-layer product (version 4.10) is used to detect FLCs with the algorithm developed by Cermak (2018) for the period of June 13, 2006 – December 31, 2017 (daytime and night-time). The algorithm essentially detects low clouds with a cloud-top altitude of ≤ 2000 m and a cloud-base altitude ≤ 500 m above ground level. Additionally, spatial and temporal patterns of cloud-top height (CTH) are generated using the same data. Results are then aggregated to $2.5^\circ \times 2.5^\circ$ regions to increase the sample size as in Cermak (2018).

2.3 SCIAMACHY

The SCanning Imaging Absorption spectroMeter of Atmospheric CHartographyY (SCIAMACHY) sensor (Bovensmann et al., 1999), on board of the Envisat platform, is used to infer cloud bottom altitudes. This is done using the fit of sunlight absorption by the strongest molecular band of oxygen (the A-band), located in the near-infrared (NIR) between 750-770 nm (nominal spectral resolution 0.4 nm). The deployed algorithm Semi-Analytical CloUd Retrieval Algorithm (SACURA) (Rozanov and Kokhanovsky, 2004; Lelli et al., 2012) exploits the constant vertical abundance of columnar oxygen so that any cloud intervening in the field-of-view of the sensor shields the gas column below, thus changing the depth of the A-band. Concurrently, the increase of absorption by oxygen within a cloud due to multiple scattering is accounted for by calculating the single-scattering albedo of the atmospheric volume at 760 nm. In this way, with the knowledge of the cloud optical thickness (COT) computed at the non-absorbing channel 758 nm, the inversion of the measurement delivers the cloud geometrical extent. As long as the sensed cloud is single-layered and has a constant liquid water content, the reported model error in CBH amounts to -200/350 m (Lelli et al., 2011), which is paired to a CTH absolute error of ± 250 m (Lelli et al., 2012, 2014). These errors are irrespective of COT, given CTH values < 10 km. However, the coarse footprint size of SCIAMACHY (60 x 40 km at nadir) can degrade this assumption due to a likely heterogeneous cloud field sensed by the instrument. In this case, a set of filters ensures the extraction of a representative cloud sample from the unfiltered data record, discarding cirrus and multi-layer clouds. The procedure

employed here is extensively described in Lelli and Vountas (2018) and 7 years (2003–2009) of retrievals at the SCIAMACHY overpass local time of $\approx 10:15$ AM are monthly aggregated at a grid resolution of 0.5° .

2.4 Ground-based measurements

Three years (2014–2017) of station measurements from the FogNet station network in the central Namib are used to gain insights into fog occurrence at the ground. As illustrated in Fig. 1 b), the FogNet network consists of 11 automated meteorological stations that are aligned in two transects (N-S from 22.97°S – 23.92°S and W-E from 14.46°E – 15.31°E). FogNet was created as part of the Southern African Science Service Centre for Climate Change and Adaptive Land Management (SASSCAL) initiative to study fog occurrence and processes in this region (Kaspar et al., 2015). The stations can be broadly classified by their geographic location into low-lying coastal stations (blue [circles in Fig. 1 b\)](#): all stations located $< 100\text{m}$ above sea level (ASL)) and inland stations (red [circles in Fig. 1 b\)](#): all stations located $> 300\text{m}$ ASL), as well as a transition station (Kleinberg: KB).

Measurements of fog precipitation and relative humidity are combined to create a binary data set of fog occurrence. Fog precipitation measurements describe advected cloud water collected by a Juvik fog collector (Juvik and Nullet, 1995). The Juvik fog collector is an omnidirectional, cylindrical aluminium fog gauge, positioned at 1.5 m above ground. Measured fog precipitation depends on the near-ground liquid water content of fog, fog droplet size, and also scales with near-surface wind speed, as this determines the volume of air that perfuses the gauge (Frumau et al., 2011). There can be a time lag between fog occurrence and measured fog precipitation, due to the build-up time until the runoff of fog water occurs. Also, the instrument might not be sensitive in instances of very thin fog, as there is a lower limit of water needed for runoff. To reduce measurement-related uncertainties in the fog occurrence estimates, fog precipitation measurements are supplemented by observations of 2 m relative humidity (Campbell CS215) to create a binary fog product. The station measurements have a one-minute temporal resolution but are averaged in 15-minute intervals for comparison with SEVIRI observations. Fog is counted whenever the average relative humidity during a 15-minute interval exceeds 95 % or any amount of fog precipitation is measured during this time.

A ceilometer (Vaisala CL31, instrument "CL31-2" in Wiegner et al. (2018)) complemented the measurements at the station Coastal Met (CM) from September 2017 to June 2018 to observe patterns in cloud-base height. In July, the ceilometer was repositioned closer to the coastline (Swakopmund). The CL31 emits a laser beam at 905 nm and provides a profile of attenuated light backscatter with a vertical resolution of up to 5 m (Martucci et al., 2010; Kotthaus et al., 2016). It emits 2^{14} laser pulses with a frequency of 10 kHz every 2 seconds, after which it takes about 0.36 seconds of idle time to compute the cloud base height (Vaisala CL31 firmware) (Kotthaus et al., 2016). CBH retrievals are then averaged to a temporal resolution of one minute. This CL31 has a minimum detection altitude of ≈ 40 m and was located at ≈ 95 m above sea level (ASL) at CM and is currently situated at ≈ 19 m ASL at Swakopmund. As such, the ceilometer cannot give an accurate estimate for CBH < 135 m ASL or 59 m, respectively. Here, data from one year (September 2017 to August 2018) are used. Due to data collection difficulties, no data is available during February 2018. To focus on fog and low-level clouds, only CBH < 2000 m AGL are considered.

3 Results and discussion

3.1 Fog and low cloud spatial patterns and seasonality

Figure 2 shows climatological patterns of FLC occurrence as seen by CALIPSO (Fig. 2 a)) and SEVIRI (Fig. 2 b)) using the algorithms developed by Cermak (2018) (land and ocean) and Andersen and Cermak (2018) (land only), respectively.

5 The spatial patterns of FLC occurrence correspond well with those derived in earlier satellite-based studies (Olivier, 1995; Cermak, 2012; Andersen and Cermak, 2018), where FLCs occur frequently over the ocean and ~~along the coastline in the~~ low-lying coastal plains, with three separate core regions over land: the southern parts of the Angolan coastline (15°S–17°S), the Namibian coastline from Walvis Bay ($\approx 23^\circ\text{S}$) northwards to 18°S, and to a lesser extent at Alexander Bay at the Namibian-South African border ($\approx 28^\circ\text{S}$). ~~The~~ While not studied here in detail, smaller spatial structures of FLC occurrence may be

10 influenced by local topography, e.g., by river valleys that can lead to a channeling of the inland flow and locally higher humidity levels (Olivier, 1995). The general spatial patterns of FLC occurrence (Fig. 2 a) and b)) indicate a connection between the stratocumulus cloud field off the southwestern African coastline and FLC occurrence in the Namib, even though the CALIPSO data is not able to capture some of the finer spatial features in FLC distribution (e.g., the low-FLC region between 17°S and 18°S) due to the coarse averaging resolution. The occurrence of FLCs along the western coast of southern Africa features a

15 distinct seasonal cycle that varies with latitude (Fig. 2 c)), and agrees with findings from Cermak (2012). The observed seasonal pattern of the Angolan Namib agrees well with that of the southeastern Atlantic stratocumulus cloud field (Klein and Hartmann, 1993) and underscores a likely link of stratocumulus clouds over the ocean and FLCs over land. The latitudinal dependence of the seasonal patterns of FLCs may be an indication of a seasonal shift of the large-scale dynamical systems responsible for a landward advection of low clouds formed over the ocean. It is likely that the position and strength of the Atlantic and

20 mid-continental high pressure systems as well as the Intertropical Convergence Zone combine to drive the observed seasonal patterns of FLCs.

The satellite-derived seasonal cycle of FLC occurrence agrees well qualitatively and quantitatively with the seasonality of fog observed at inland stations (Fig. 3 b)). However, ~~in accordance to the comparison of results from Lancaster et al. (1984) and Cermak (2012),~~ the observations do not show similar patterns at the coastal stations (Fig. 3 a)). Here, satellite observations

25 show a seasonality that resembles that found at inland stations, with a minimum during May and a maximum in September. In contrast, ground-based fog observations at the coastal stations peak in winter between April and August. This mismatch between ground-based fog measurements and space-based FLC observations is also apparent when comparing earlier studies by Lancaster et al. (1984) and Cermak (2012). It should be noted that while the seasonal patterns disagree, during the period from April to July, observed fog/FLC occurrence frequencies agree quantitatively (Fig. 3 b)). Both - similarities and discrepancies

30 of the observed seasonal cycles - are likely explained in large parts by the seasonality in the vertical structure of FLCs in the central Namib (Fig. 3 b)). Cloud-vertical properties are investigated using ground-based and space-based active sensoric. A distinct seasonal pattern in cloud-top height (CTH) is observed using CALIPSO, with 183 m lower cloud-top altitudes between April and June compared to the rest of the year (significant at the 99 % confidence level: independent t test). This seasonal pattern is also found in observations of cloud-base height (CBH) of the CL31 ceilometer located in CM. Here, cloud bases are

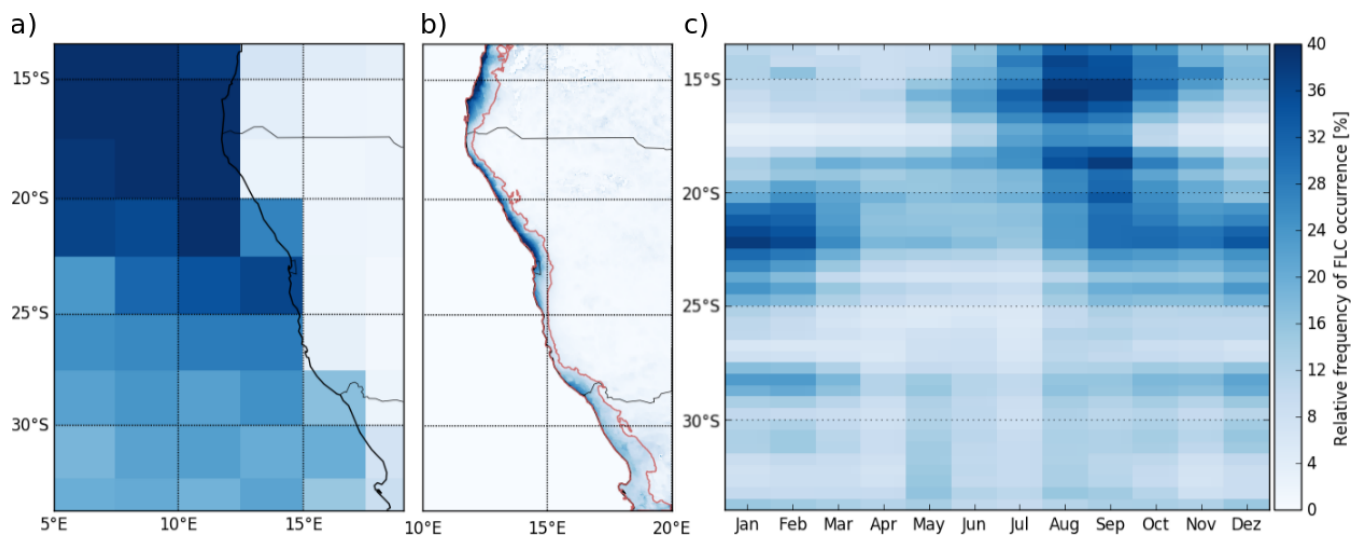


Figure 2. A satellite-based climatology of relative fog and low cloud occurrence frequency derived by using the algorithms presented in Cermak (2018) (a) and Andersen and Cermak (2018) (b), based on the nearly complete data records of CALIPSO (2006–2017) and SEVIRI (2004–2017). Daytime and night-time overpasses (approximately 13:00 UTC and 01:00 UTC, respectively) are averaged to produce a), all SEVIRI time slots are used for b). The seasonality (c) is computed by averaging pixels from (b) in coastal regions (maximum 100 km distance to coastline) with frequent FLC occurrence (minimum of 5 % relative FLC occurrence in the 14-year climatology shown in b)). The regions used for averaging in c) lie within the orange-red contours in b).

found to be on average 130 m lower between April and June than during the rest of the year. As the ceilometer measurements are only available for one (incomplete) year, 7-year monthly averaged CBH estimates from SCIAMACHY are considered in addition. While the SCIAMACHY-derived CBH are especially low later in the year (June and July), the seasonal pattern agrees in the sense that it features lower CBH during the southern-hemispheric winter (CBH 173 m lower in June, July, August than during all other months, significant at the 95 % confidence level: independent t test). It is likely that during this time, FLCs touch the ground even at the low-lying coastal stations (located on average $\approx 40\text{m}$ above sea level) frequently, leading to the observed agreement between ground fog and satellite-based FLCs during this time (Fig. 3 a)). Between August and March, cloud-base height is significantly higher on average and displays a higher variability, more frequently leading to situations where clouds are disconnected from the surface at the coast, but still might touch the ground further inland, leading to fog occurrences at stations located there (locations on average $\approx 490\text{m}$ above sea level).

3.2 Diurnal cycle of fog and low clouds

Based on the diurnally-stable FLC detection by Andersen and Cermak (2018), spatial information on the statistical properties of the diurnal cycle of FLCs can be analyzed. Figure 4 a) shows the average time of day when the FLC diurnal cycle typically starts. The start of the diurnal cycle is defined here as the first occasion after the diurnal FLC minimum during noon, when

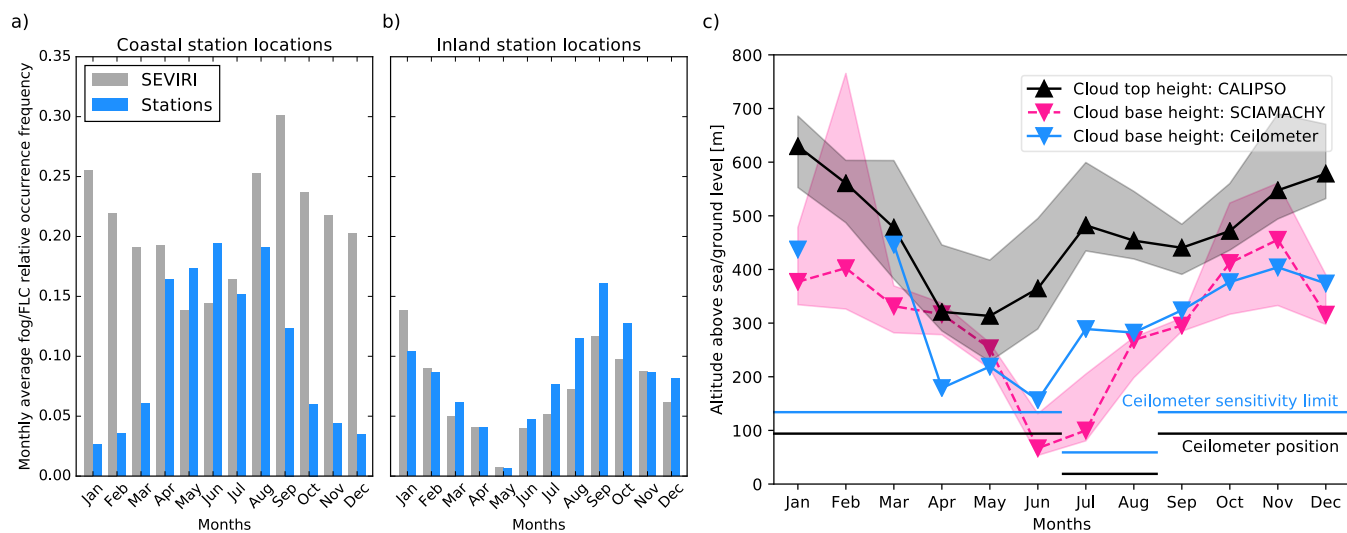


Figure 3. Monthly averaged relative fog/FLC occurrence frequency at locations of coastal (a) and inland stations (b) [as defined in Fig. 1 b](#)). SEVIRI observations (2004–2017) are illustrated by grey bars, station measurements of ground fog (2015–2017) in blue. c) Medians, 25th and 75th percentiles of monthly averaged CBH and CTH in the central Namib based on SCIAMACHY (above ground level; 22.5°S–24.0°S and 14.25°E–15.5°E, 2003–2009) and CALIPSO (above sea level; 22.5°S–24.0°S and 14.0°E–15.5°E, 2006–2017) observations, respectively. Ceilometer CBH observations (above sea level) are only available since September 2017. Ceilometer positions (CoastalMet from September–June and Swakopmund July and August) and sensitivity limits are illustrated by thin horizontal lines and described in Sec. 2.4.

the relative FLC occurrence frequency reaches 10 % of the total range of its diurnal cycle at this location and is derived from 14 years of SEVIRI observations. To focus on the regions where FLCs frequently occur, pixels are only considered if they are located within 100 km to the coastline and feature a relative frequency of FLC occurrence of at least 5 %. It is apparent from Fig. 4 a) that the start of the diurnal FLC cycle is closely related to the distance from the coastline, at least north of 25°S ($r = 0.86$ between 22.5°S and 25°S and $r = 0.85$ north of 22.5°S). As Andersen and Cermak (2018) argue, this is a clear indication of a region dominated by advective processes rather than radiation fog, contrasting findings from Kaseke et al. (2017). It should be noted that while the results [here](#) are of statistical nature and thus reflect the dominant patterns, incidences of radiation fog are also likely to occur, at least in some locations. The apparent discrepancy between these findings might be related to the limited sampling of the isotope analyses or due to a mixing of water from marine and continental sources as water vapor from local sources is additionally condensed at the front of the advected cold marine stratus.

More distinct spatial characteristics in the start time of the diurnal FLC cycle can be identified, as in the region between 22.5°S and 25°S (circles in Fig. 4 b)), FLCs typically start to occur more than two hours later than in other regions along the southwestern African coastline. [This temporal offset may be due to local advection patterns, as fog at the inland station Gobabeb \(GB\) has been found to be associated with northwesterly wind \(Seely and Henschel, 1998\), as opposed to a direct westerly advection from the coast. The timing of FLC occurrence may also be locally modified by surface characteristics, e.g. increased](#)

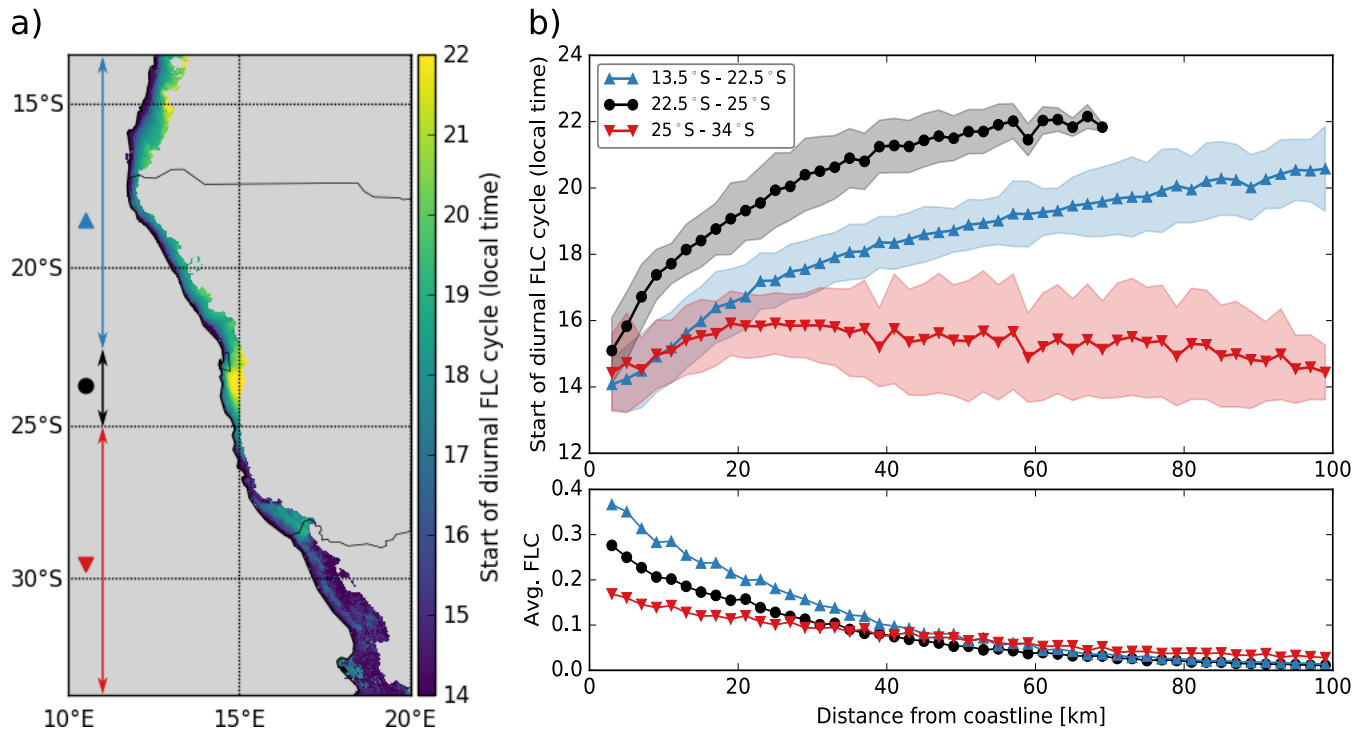


Figure 4. a) The time of the start of the diurnal FLC cycle on pixel level. Pixels are not considered which either are more than 100 km removed from the coastline or that feature a relative frequency of FLC occurrence of less than 5%. The dashed horizontal lines-north-south oriented arrows indicate the northern/southern boundaries extent of the three regions considered in b), with colored markers illustrating their respective association. b) Upper panel: The average timing of start of the diurnal FLC cycle as a function of average distance to the coastline. Shaded area illustrates mean +/- one standard deviation. Lower panel: Average relative FLC occurrence frequency in the three subregions. The same pixels are considered as in panel a) and are averaged in 2 km distance bins (x axis).

surface roughness due to the coast-parallel linear dunes of the Namib sand sea (≈ 100 m high (Vermeesch et al., 2010)) that may decelerate the inland advection of FLCs.

The differences in timing between the three subregions in Fig. 4 are highly significant (significant at the 99% confidence level, two-sided t test). South of 25°S, the diurnal cycle of FLCs seems to start earlier and to only depend on the distance to the coastline up to a distance of ≈ 20 km ($r = 0.42$) and seems decoupled from the coast further inland ($r = -0.20$). The region at Alexander Bay seems to be an exception, where the diurnal cycle of FLCs is similar to that of the northern regions. This may be seen as a suggestion of subregional differences in the mechanisms leading to FLC formation. The lower panel of Fig. 4 b) shows the average FLC occurrence frequency in the three subregions as a function of the distance to the coastline that features a strong relationship, especially north of 25°S. While this is a typical feature of coastal fog (e.g., Olivier, 1992), it serves as an additional indication that the region south of 25°S is not influenced by marine airmasses to the same extent as regions further north.

Figure 5 (upper panel) shows the time of the start of the diurnal FLC cycle between 22.5°S and 25°S in two different time periods with contrasting vertical FLC characteristics. During the season of systematically higher-level FLCs (September–November: high-FLC season), a distinct relationship between distance from coastline and the timing of FLC occurrence is apparent up to about 60 km inland. During the time of lower-level FLCs (April, May, June: low-FLC season), this relationship is only apparent within ≈ 30 km of the coastline. It should be noted that the overall FLC occurrence frequency is also dependent on the distance from coastline (lower panel), and in inland regions, where no relationship between distance from coastline and time of FLC occurrence is apparent, FLC occurrence is below 5%. In these regions, assessments of the statistics of the diurnal cycle are limited by the overall accuracy of the detection algorithm (97% - (Andersen and Cermak, 2018)), and the statistics of the diurnal cycle may be more susceptible to the influence of random misclassifications. In general, the slope of the relationship illustrated in the upper panel of Fig. 5 can be affected by the average advection speed, the fraction of advective FLCs, and the partial contribution of random misclassifications.

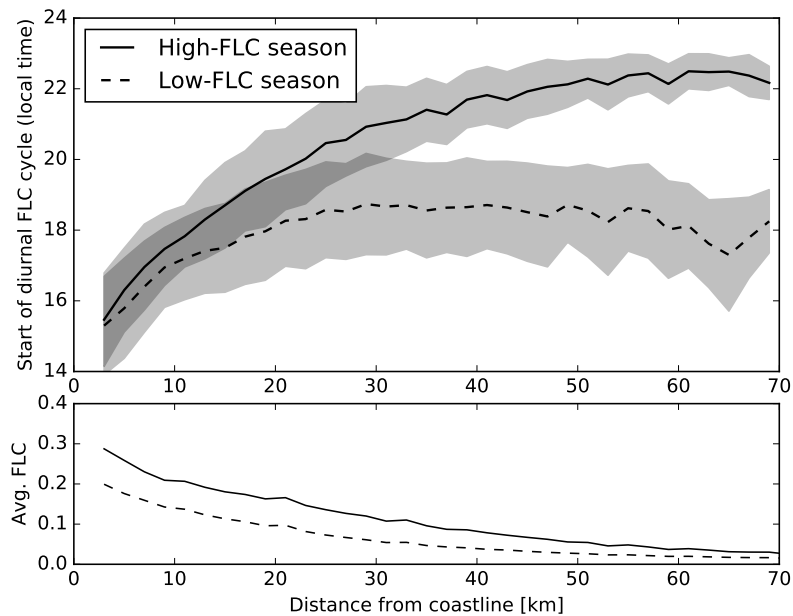


Figure 5. Upper panel: Start of diurnal FLC cycle in the central Namib as a function of distance from the coastline. Two different seasons are shown: high-FLC season (September, October, November) and low-FLC season (April, May, June). Shaded area illustrates mean \pm one standard deviation. Lower panel: Average relative FLC occurrence frequency in the two seasons. The same pixels are considered as in the upper panel and averaged in 2 km distance bins (x axis).

4 Conclusions and outlook

In this study, Namib-region fog and low-cloud patterns are analysed based on data from multiple satellite sensors as well as station measurements.

FLC occurrence along the southwestern African coastline is found to be highest close to the coastline, and in general confined to the low-lying coastal plains. The seasonal cycle of satellite-derived FLC occurrence is found to have a distinct latitudinal dependence. In the Angolan regions north of $\approx 17.5^\circ\text{S}$, FLC occurrence peaks between July and October, whereas in Namibia between 20°S and 25°S , FLCs occur mostly between August and February. This pattern may be explained by a seasonal shift in the dynamic conditions that lead to the inland-advection of marine low clouds. On seasonal scales, the spatiotemporal FLC occurrence indicates a connection to the southeastern Atlantic stratocumulus cloud deck. As such, process knowledge from studies on the heavily investigated stratocumulus clouds in this region (e.g., Adebisi and Zuidema, 2018; Andersen and Cermak, 2015; Diamond et al., 2018; Fuchs et al., 2017, 2018; Gordon et al., 2018; Painemal et al., 2014; Yuter et al., 2018) may be applicable to Namib-region FLCs, and vice versa.

Satellite-derived seasonal patterns of FLCs are compared to ground-based measurements of fog occurrence from the FogNet stations in the central Namib. While the seasonal patterns agree qualitatively and quantitatively for inland stations, they feature contrasting patterns at coastal stations. This can likely be explained by seasonal patterns in cloud-base altitude that determines whether a low-level cloud touches the ground (fog) or not. Observations from CALIPSO and SCIAMACHY suggest that on average, clouds in coastal regions seem to be disconnected from the surface more frequently between August and February, where the satellite observations strongly overestimate station measured ground-fog occurrence.

Coherent spatial patterns of the diurnal cycle of FLC occurrence in the Namib could be observed for the first time using the algorithm developed by Andersen and Cermak (2018). Generally, the timing of FLC occurrence seems to be tightly connected to the proximity of the coastline, where the diurnal cycle of FLCs starts systematically earlier at the coast than further inland. This is a strong indication for a dominant role of advection for the climatological patterns of FLCs in the region, contrasting the interpretation of findings from isotope analyses by Kaseke et al. (2017). In the central Namib, the diurnal cycle of FLCs is found to start more than 2 hours later than in most regions along the coastline. This may be caused by local advection patterns of FLCs, or could be due changes in surface roughness associated with the coast-parallel dunes of the Namib sand sea. The key findings regarding the seasonal and diurnal patterns of FLCs are summarized schematically in Fig. 6 and lead to a more complete view on Namib-region FLCs. The results of this study highlight the advantages of combining ground and space-based (active and passive sensoric) measurements.

The interplay of large-scale dynamics with thermally and topographically induced local winds (Tyson and Seely, 1980; Olivier, 1992, and sources therein), (sea) surface characteristics (Olivier, 1995), radiative transfer and aerosols is likely to explain fog and low cloud occurrence and variability in the Namib desert. The exact manner, however, by which the various processes determine this complex system and its observed spatiotemporal dynamics is still unclear. Future research is thus needed to more fully understand the processes that lead to the variability in spatial patterns, overall coverage, vertical structure and life cycle of FLCs, as well its capacity to serve as a water source for ecosystems. Within the ongoing research project

Namib Fog Life Cycle Analysis (NaFoLiCA), these aspects will be currently studied using a combination of satellite data, ground-based measurements and numerical models.

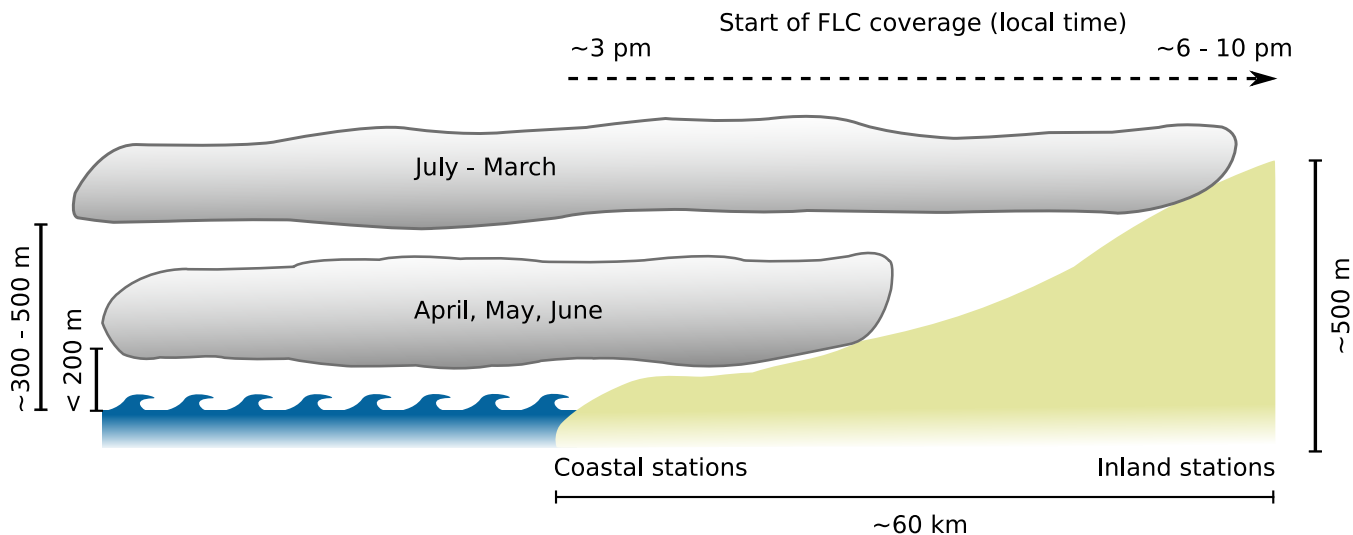


Figure 6. Schematic illustrating the observed seasonal cycle in cloud vertical characteristics and the dependence of the diurnal FLC cycle on the distance to the coastline.

Appendix A: List of acronyms

Station abbreviations

- 5 Aussinanis: AU ([inland station](#))
- Coastal Met: CM ([coastal station](#))
- Conception Water: CW ([coastal station](#))
- Garnet Koppie: GK ([inland station](#))
- Gobabeb Met: GB ([inland station](#))
- 10 Kleinberg: KB ([transition station](#))
- Marble Koppie: MK ([inland station](#))
- Saltworks: SW ([coastal station](#))
- Sophies Hoogte: SH ([inland station](#))
- Station 8: S8 ([inland station](#))
- 15 Vogelfederberg: VF ([inland station](#))

General acronyms

AGL above ground level

- ASL above sea level
- CALIOP Cloud-Aerosol Lidar with Orthogonal Polarization
- CALIPSO Cloud-Aerosol LiDAR and Pathfinder Satellite Observations
- CBH cloud base height
- 5 COT cloud optical thickness
- CTH cloud top height
- FLCs fog and low clouds
- MSG Meteosat Second Generation
- SACURA Semi-Analytical CloUd Retrieval Algorithm
- 10 SCIAMACHY SCanning Imaging Absorption spectroMeter of Atmospheric CHartography
- SEVIRI Spinning-Enhanced Visible and Infrared Imager
- SASSCAL Southern African Science Service Centre for Climate Change and Adaptive Land Management

Code and data availability. Code and data are available

- 15 *Author contributions.* HA and JC had the idea for the analysis, HA obtained and analyzed most of the data sets, conducted the original research and wrote the manuscript. IS and LL contributed to data analysis, and RV provided the quality controlled FogNet data. JC, IS, LL and RV contributed manuscript preparation and the interpretation of findings.

Competing interests. The authors declare that they have no conflict of interest.

- Acknowledgements.* Funding for this study was provided by Deutsche Forschungsgemeinschaft (DFG) in the project Namib Fog Life Cycle Analysis (NaFoLiCA), CE 163/7-1. L. Lelli has been financially supported by the European Space Agency (ESA) via the Living Planet Fellowship for the STARCLINT (STatistics of AeRosol and CLoUd INteractions) project and by the German Science Foundation (DFG) in the framework of the Transregional Collaborative Project TR 172 AC3 (ArctiC Amplification: Climate relevant Atmospheric and surfaCe processes and feedback mechanisms). The authors would like to thank the Gobabeb Research and Training Centre for access to the station measurements and gratefully acknowledge the Gobabeb maintenance team for their efforts in the field. We thank Mary Seely for her
- 25 contributions in the development of FogNet.

References

- Adebiyi, A. A. and Zuidema, P.: Low cloud cover sensitivity to biomass-burning aerosols and meteorology over the southeast Atlantic, *Journal of Climate*, 2, <https://doi.org/10.1175/JCLI-D-17-0406.1>, 2018.
- Andersen, H. and Cermak, J.: How thermodynamic environments control stratocumulus microphysics and interactions with aerosols, *Environmental Research Letters*, 10, 24 004, <https://doi.org/10.1088/1748-9326/10/2/024004>, <http://dx.doi.org/10.1088/1748-9326/10/2/024004>, 2015.
- Andersen, H. and Cermak, J.: First fully diurnal fog and low cloud satellite detection reveals life cycle in the Namib, *Atmospheric Measurement Techniques*, 11, 5461–5470, <https://doi.org/10.5194/amt-11-5461-2018>, <https://www.atmos-meas-tech-discuss.net/amt-2018-213/>, 2018.
- 10 Azúa-Bustos, A., González-Silva, C., Mancilla, R. A., Salas, L., Gómez-Silva, B., McKay, C. P., and Vicuña, R.: Hypolithic Cyanobacteria Supported Mainly by Fog in the Coastal Range of the Atacama Desert, *Microbial Ecology*, 61, 568–581, <https://doi.org/10.1007/s00248-010-9784-5>, 2011.
- Bovensmann, H., Burrows, J. P., Buchwitz, M., Frerick, J., Noël, S., Rozanov, V. V., Chance, K. V., and Goede, A. P. H.: SCIAMACHY: Mission objectives and measurement modes, *J. Atmos. Sci.*, 56, 127–150, [https://doi.org/10.1175/1520-0469\(1999\)056<0127:SMOAMM>2.0.CO;2](https://doi.org/10.1175/1520-0469(1999)056<0127:SMOAMM>2.0.CO;2), 1999.
- 15 Cermak, J.: Low clouds and fog along the South-Western African coast - Satellite-based retrieval and spatial patterns, *Atmospheric Research*, 116, 15–21, <https://doi.org/10.1016/j.atmosres.2011.02.012>, <http://linkinghub.elsevier.com/retrieve/pii/S0169809511000615>, 2012.
- Cermak, J.: Fog and low cloud frequency and properties from active-sensor satellite data, *Remote Sensing*, 10, 1–7, <https://doi.org/10.3390/rs10081209>, 2018.
- 20 Diamond, M. S., Dobracki, A., Freitag, S., Griswold, J. D. S., Heikkila, A., Howell, S. G., Kacarab, M. E., Podolske, J. R., Saide, P. E., and Wood, R.: Time-dependent entrainment of smoke presents an observational challenge for assessing aerosol – cloud interactions over the southeast Atlantic Ocean, *Atmospheric Chemistry and Physics*, 18, 14 623–14 636, <https://doi.org/10.5194/acp-18-14623-2018>, 2018.
- Ebner, M., Miranda, T., and Roth-Nebelsick, A.: Efficient fog harvesting by *Stipagrostis sabulicola* (Namib dune bushman grass), *Journal of Arid Environments*, 75, 524–531, <https://doi.org/10.1016/j.jaridenv.2011.01.004>, <http://www.sciencedirect.com/science/article/pii/S0140196311000061>, 2011.
- 25 Eckardt, F., Soderberg, K., Coop, L., Muller, A., Vickery, K., Grandin, R., Jack, C., Kapalanga, T., and Henschel, J.: The nature of moisture at Gobabeb, in the central Namib Desert, *Journal of Arid Environments*, 93, 7–19, <https://doi.org/10.1016/j.jaridenv.2012.01.011>, <http://www.sciencedirect.com/science/article/pii/S0140196312000432>, 2013.
- Frumau, K. F., Burkard, R., Schmid, S., Bruijnzeel, L. A., Tobón, C., and Calvo-Alvarado, J. C.: A comparison of the performance of three types of passive fog gauges under conditions of wind-driven fog and precipitation, *Hydrological Processes*, 25, 374–383, <https://doi.org/10.1002/hyp.7884>, 2011.
- 30 Fuchs, J., Cermak, J., Andersen, H., Hollmann, R., and Schwarz, K.: On the Influence of Air Mass Origin on Low-Cloud Properties in the Southeast Atlantic, *Journal of Geophysical Research: Atmospheres*, 122, 11,076–11,091, <https://doi.org/10.1002/2017JD027184>, 2017.
- Fuchs, J., Cermak, J., and Andersen, H.: Building a cloud in the Southeast Atlantic: Understanding low-cloud controls based on satellite observations with machine learning, *Atmospheric Chemistry and Physics Discussions*, 2, 1–23, <https://doi.org/10.5194/acp-2018-593>, 2018.
- 35

- Gordon, H., Field, P. R., Abel, S. J., Johnson, B. T., Dalvi, M., Grosvenor, D. P., Hill, A. A., Miltenberger, A. K., Yoshioka, M., and Carslaw, K. S.: Large simulated radiative effects of smoke in the south-east Atlantic, *Atmospheric Chemistry and Physics*, 18, 15 261–15 289, <https://doi.org/10.5194/acp-18-15261-2018>, <https://www.atmos-chem-phys-discuss.net/acp-2018-305/>, 2018.
- Juvik, J. O. and Nullet, D.: Comments on "A Proposed Standard Fog Collector for Use in High-Elevation Regions", *Journal of Applied Meteorology*, 34, 2108–2110, [https://doi.org/10.1175/1520-0450\(1995\)034<2108:COPSF>2.0.CO;2](https://doi.org/10.1175/1520-0450(1995)034<2108:COPSF>2.0.CO;2), 1995.
- Kaseke, K. F., Wang, L., and Seely, M. K.: Nonrainfall water origins and formation mechanisms, *Science Advances*, 3, e1603 131, <https://doi.org/10.1126/sciadv.1603131>, <http://advances.sciencemag.org/lookup/doi/10.1126/sciadv.1603131>, 2017.
- Kaseke, K. F., Tian, C., Wang, L., Seely, M., Vogt, R., Wassenaar, T., and Mushi, R.: Fog spatial distributions over the central namib desert - An isotope approach, *Aerosol and Air Quality Research*, 18, 49–61, <https://doi.org/10.4209/aaqr.2017.01.0062>, 2018.
- 10 Kaspar, F., Helmschrot, J., Mhanda, A., Butale, M., de Clercq, W., Kanyanga, J. K., Neto, F. O. S., Kruger, S., Castro Matsheka, M., Muche, G., Hillmann, T., Josenhans, K., Posada, R., Riede, J., Seely, M., Ribeiro, C., Kenabatho, P., Vogt, R., and Jürgens, N.: The SASSCAL contribution to climate observation, climate data management and data rescue in Southern Africa, *Advances in Science and Research*, 12, 171–177, <https://doi.org/10.5194/asr-12-171-2015>, <http://www.adv-sci-res.net/12/171/2015/>, 2015.
- Klein, S. A. and Hartmann, D. L.: The Seasonal Cycle of Low Stratiform Clouds, *Journal of Climate*, 6, 1587–1606, 15 [https://doi.org/10.1175/1520-0442\(1993\)006<1587:TSCOLS>2.0.CO;2](https://doi.org/10.1175/1520-0442(1993)006<1587:TSCOLS>2.0.CO;2), 1993.
- Kotthaus, S., & Connor, E., Munkel, C., Charlton-Perez, C., Gabey, A. M., and Grimmond, C. S. B.: Recommendations for processing atmospheric attenuated backscatter profiles from Vaisala CL31 Ceilometers, *Atmospheric Measurement Techniques Discussions*, pp. 1–32, <https://doi.org/10.5194/amt-2016-87>, 2016.
- Lancaster, J., Lancaster, N., and Seely, M. K.: Climate of the central Namib desert, *Madoqua*, 14, 5–61, 1984.
- 20 Lelli, L. and Vountas, M.: Chapter 5 - Aerosol and Cloud Bottom Altitude Covariations From Multisensor Spaceborne Measurements, in: *Remote Sensing of Aerosols, Clouds, and Precipitation*, edited by Islam, T., Hu, Y., Kokhanovsky, A., and Wang, J., pp. 109 – 127, Elsevier, <https://doi.org/https://doi.org/10.1016/B978-0-12-810437-8.00005-0>, <http://www.sciencedirect.com/science/article/pii/B9780128104378000050>, 2018.
- Lelli, L., Kokhanovsky, A. A., Rozanov, V. V., and Burrows, J. P.: Radiative transfer in the oxygen A-band and its application to cloud remote 25 sensing, *Atti Acc. Pel. Per. (AAPP)*, 89, C1V89S1P056–1–C1V89S1P056–4, <https://doi.org/10.1478/C1V89S1P056>, 2011.
- Lelli, L., Kokhanovsky, A. A., Rozanov, V. V., Vountas, M., Sayer, A. M., and Burrows, J. P.: Seven years of global retrieval of cloud properties using space-borne data of GOME, *Atmospheric Measurement Techniques*, 5, 1551–1570, <https://doi.org/10.5194/amt-5-1551-2012>, 2012.
- Lelli, L., Kokhanovsky, A. A., Rozanov, V. V., Vountas, M., and Burrows, J. P.: Linear trends in cloud top height from passive observations 30 in the oxygen A-band, *Atmospheric Chemistry and Physics*, 14, 5679–5692, <https://doi.org/10.5194/acp-14-5679-2014>, <https://www.atmos-chem-phys.net/14/5679/2014/>, 2014.
- Martucci, G., Milroy, C., and O’Dowd, C. D.: Detection of cloud-base height using Jenoptik CHM15K and Vaisala CL31 ceilometers, *Journal of Atmospheric and Oceanic Technology*, 27, 305–318, <https://doi.org/10.1175/2009JTECHA1326.1>, 2010.
- McHugh, T. A., Morrissey, E. M., Reed, S. C., Hungate, B. A., and Schwartz, E.: Water from air: An overlooked source of moisture in arid 35 and semiarid regions, *Scientific Reports*, 5, 1–6, <https://doi.org/10.1038/srep13767>, <http://dx.doi.org/10.1038/srep13767>, 2015.
- Nagel, J. F.: Fog Precipitation at Swakopmund, *South African Weather Bureau Newsletter*, 125, 1—9, 1959.
- Olivier, J.: Some spatial and temporal aspects of fog in the Namib, *South African Geographer*, 19, 106–126, 1992.

- Olivier, J.: Spatial distribution of fog in the Namib, *Journal of Arid Environments*, 29, 129–138, [https://doi.org/10.1016/S0140-1963\(05\)80084-9](https://doi.org/10.1016/S0140-1963(05)80084-9), <http://linkinghub.elsevier.com/retrieve/pii/S0140196305800849>, 1995.
- Olivier, J. and Stockton, P. L.: The influence of upwelling extent upon fog incidence at Lüderitz, southern Africa, *International Journal of Climatology*, 9, 69–75, <https://doi.org/10.1002/joc.3370090106>, 1989.
- 5 Painemal, D., Kato, S., and Minnis, P.: Boundary layer regulation in the southeast Atlantic cloud microphysics during the biomass burning season as seen by the A-train satellite constellation, *Journal of Geophysical Research: Atmospheres*, 119, 11 288–11 302, <https://doi.org/10.1002/2014JD022182>, <http://doi.wiley.com/10.1002/2014JD022182>, 2014.
- Roth-Nebelsick, A., Ebner, M., Miranda, T., Gottschalk, V., Voigt, D., Gorb, S., Stegmaier, T., Sarsour, J., Linke, M., and Konrad, W.: Leaf surface structures enable the endemic Namib desert grass *Stipagrostis sabulicola* to irrigate itself with fog water., *Journal of the Royal Society, Interface / the Royal Society*, 9, 1965–74, <https://doi.org/10.1098/rsif.2011.0847>, <http://www.pubmedcentral.nih.gov/articlerender.fcgi?artid=3385753&tool=pmcentrez&rendertype=abstract>, 2012.
- 10 Rozanov, V. V. and Kokhanovsky, A. A.: Semianalytical cloud retrieval algorithm as applied to the cloud top altitude and the cloud geometrical thickness determination from top-of-atmosphere reflectance measurements in the oxygen A band, *J. Geophys. Res.*, 109, 4070, <https://doi.org/10.1029/2003JD004104>, 2004.
- 15 Schmetz, J., Pili, P., Tjemkes, S., Just, D., Kerkmann, J., Rota, S., and Ratier, A.: An Introduction to Meteosat Second Generation (MSG), *Bulletin of the American Meteorological Society*, 83, 977–992, <https://doi.org/10.1175/BAMS-83-7-Schmetz-1>, 2002.
- Seely, M. K.: Irregular fog as a water source for desert dune beetles, *Oecologia*, 42, 213–227, <https://doi.org/10.1007/BF00344858>, <http://www.springerlink.com/content/x34r526hn5075653>, 1979.
- Seely, M. K. and Henschel, J. R.: The Climatology of Namib Fog, *Proceedings, First International Conference on Fog and Fog Collection*, 20 Vancouver, Canada, pp. 353–356, 1998.
- Seely, M. K., De-Vos, M. P., and Louw, G. N.: Fog imbibition satellite fauna and unusual leaf structure in a namib desert dune plant *trianthema hereroensis*, *South African Journal of Science*, 73, 169–172, 1977.
- Shanyengana, E.: Exploring fog as a supplementary water source in Namibia, *Atmospheric Research*, 64, 251–259, [https://doi.org/10.1016/S0169-8095\(02\)00096-0](https://doi.org/10.1016/S0169-8095(02)00096-0), 2002.
- 25 Tyson, P. D. and Seely, M. K.: Local winds over the central Namib, *South African Geographical Journal*, 62, 135–150, <https://doi.org/10.1080/03736245.1980.10559630>, 1980.
- Vermeesch, P., Fenton, C. R., Kober, F., Wiggs, G. F., Bristow, C. S., and Xu, S.: Sand residence times of one million years in the Namib Sand Sea from cosmogenic nuclides, *Nature Geoscience*, 3, 862–865, <https://doi.org/10.1038/ngeo985>, 2010.
- Wiegner, M., Mattis, I., Bravo-aranda, J. A., Poltera, Y., Haeffele, A., Hervo, M., Leinweber, R., Gasteiger, J., Haeffelin, M., Wagner, F., 30 Cermak, J., and Brettle, M.: Aerosol backscatter profiles from ceilometers: validation of water vapor correction in the framework of CeiLinEx2015, *Atmospheric Measurement Techniques Discussions*, pp. 1–37, <https://doi.org/10.5194/amt-2018-307>, 2018.
- Yuter, S. E., Hader, J. D., Miller, M. A., and Mechem, D. B.: Abrupt cloud clearing of marine stratocumulus in the subtropical southeast Atlantic, *Science*, 361, 697–701, <https://doi.org/10.1126/science.aar5836>, 2018.