

High-time Resolution Source Apportionment of PM_{2.5} in Beijing with Multiple Models

Yue Liu¹, Mei Zheng^{1,*}, Mingyuan Yu¹, Xuhui Cai¹, Huiyun Du^{2,3}, Jie Li², Tian Zhou¹, Caiqing Yan¹, Xuesong Wang¹, Zongbo Shi^{4,5}, Roy M. Harrison^{4,6}, Qiang Zhang⁷, Kebin He⁷

¹ SKL-ESPC and BIC-ESAT, College of Environmental Sciences and Engineering, Peking University, Beijing 100871, China

² State Key Laboratory of Atmospheric Boundary Layer Physics and Atmospheric Chemistry, Institute of Atmospheric Physics, Chinese Academy of Sciences, Beijing 100029, China

³ Center for Excellence in Urban Atmospheric Environment, Institute of Urban Environment, Chinese Academy of Sciences, Xiamen, China

⁴ Division of Environmental Health and Risk Management, School of Geography, Earth and Environmental Sciences, University of Birmingham, Edgbaston, Birmingham, B15 2TT, UK

⁵ Institute of Surface Earth System Science, Tianjin University, Tianjin, 300072, China

⁶ Department of Environmental Sciences / Center of Excellence in Environmental Studies, King Abdulaziz University, PO Box 80203, Jeddah, 21589, Saudi Arabia

⁷ State Key Joint Laboratory of Environment Simulation and Pollution Control, School of Environment, Tsinghua University, Beijing 100084, China

*Corresponding author

Mei Zheng, Ph.D

Tel: +86-10-62751285

Email: mzheng@pku.edu.cn

Table S1 Average local contribution in four types of footprint

| Types of footprint | Average local contribution |
|--------------------|----------------------------|
| Local | 0.85 ± 0.14 |
| South | 0.68 ± 0.11 |
| North | 0.63 ± 0.13 |
| East | 0.66 ± 0.13 |

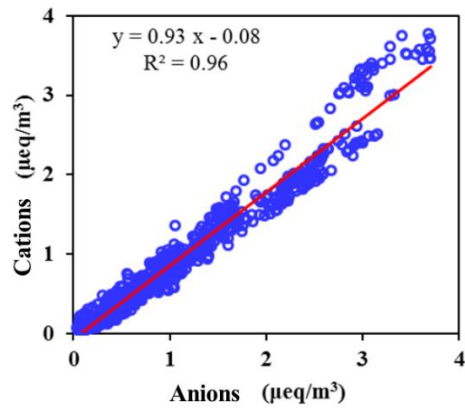


Figure S1. Anion-cation balance of IGAC during the sampling period

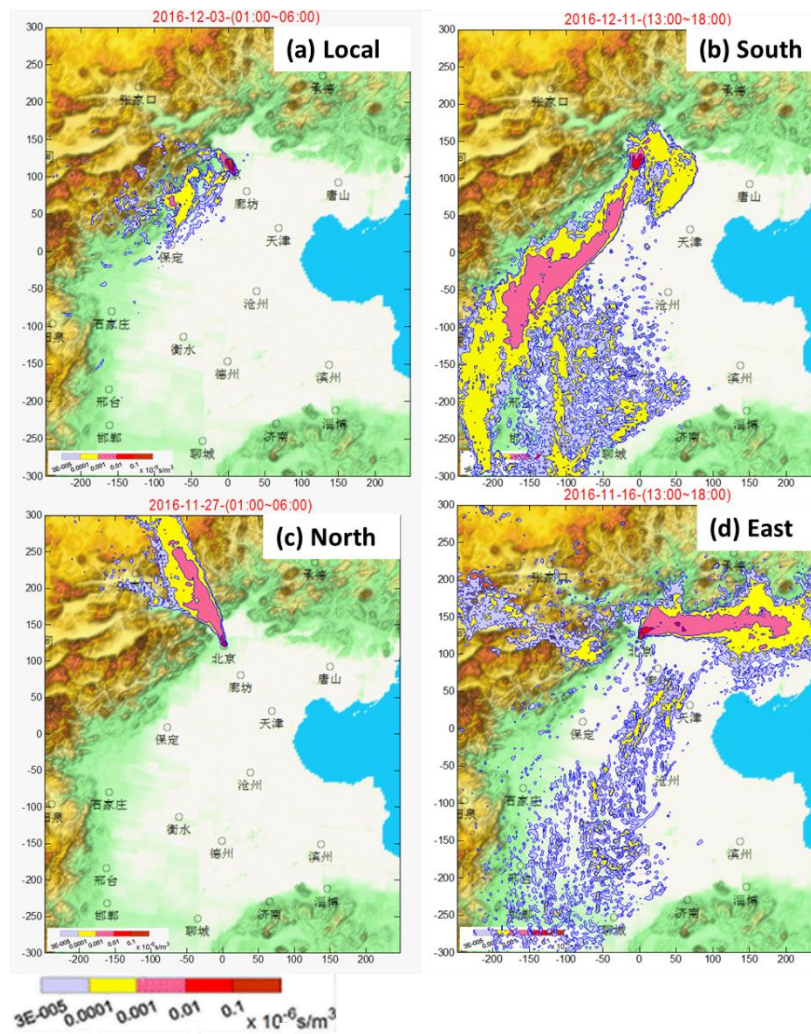


Figure S2. Typical example of different types of footprint (N represents for number of cases. Local: N=79; South: N=45; North: N=51; East: N=30)

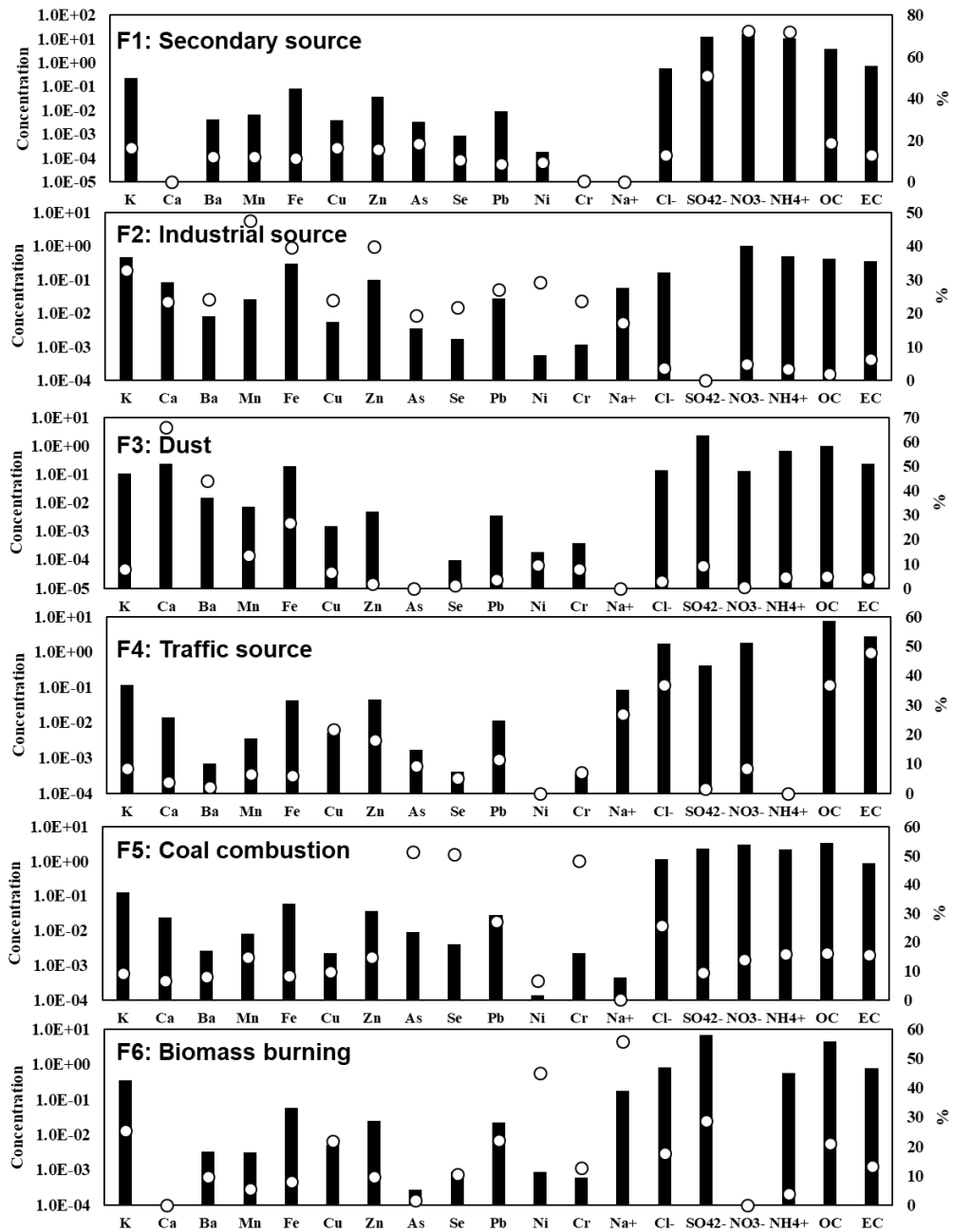


Fig S3. Source profiles of six factors by PMF

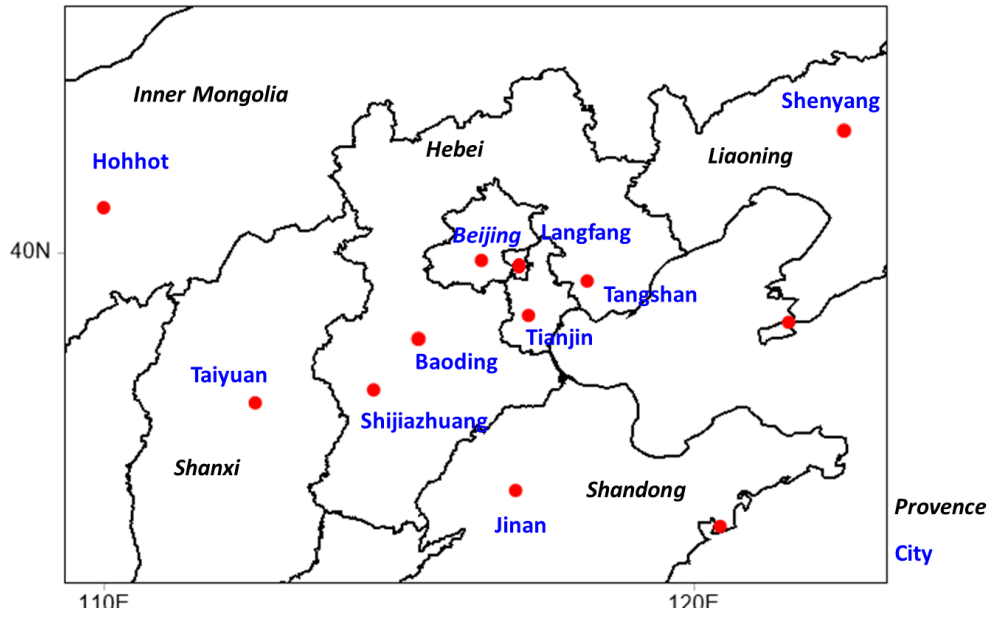


Fig S4. Surrounding provinces and cities of Beijing