

Response to reviewers' comments

Dear reviewers,

Thank you for the comments to help improve the quality of the paper. We have revised the manuscript to address your comments and a detailed response to each comment is provided in this file. The comments are in regular font and the responses are in blue.

Referee 1:

The manuscript by Qiao et al. is a follow up to their previous paper on model evaluation. Here the model is applied for source apportionment of PM_{2.5} in the Sichuan Basin. The tools and analysis seem reasonable. The manuscript is legible and the figures are clear. In fact they do a very good job of compressing a lot of source-oriented modeling results into some very interesting tables and figures. They consider the roles of different regions, and also the roles of different species, in impacting local and nonlocal PM_{2.5} concentrations. I appreciated as well that they considered different spatial responses (regional vs city-scale) and temporal responses (also considering just the max daily contributions). I have a few questions that authors might consider to make the article a little more clear or interesting in places, and some editorial corrections, which constitute only minor revisions. Overall, I would say this paper is quite near ready for publication in ACP.

Response: Thanks for the positive comments.

Comments:

The abstract reads very well.

71: The description of what type of results are produced from lagrangian back trajectory models is rather vague and not very accurate. These models can be quantitative, but not for chemically active species. They will mostly just reflect the atmospheric dynamics and are not a great method for source apportionment of secondary species. This could be explained more clearly.

Response: Thanks for the clarification. We added modified in the third paragraph of the introduction to: “and the Hybrid Single Particle Lagrangian Integrated Trajectory Model (HYSPLIT) can just reflect the atmospheric dynamics so they are not quantitative for source apportionment of secondary species”.

Section 2.1: Could the authors briefly describe how the source-oriented model addresses the formation of secondary species when precursors come from different regions? For example, formation of ammonium nitrate when the nitric acid comes for region 1 but the ammonia from region 2? Is it assigned based on the chemically limiting reagent, or is the source attribution based on total mass (i.e. ammonium nitrate would be ascribed to regions 1 and 2 according to the mass percent of nitrate vs

ammonium)?

Response: The reactions are expanded so the gases with different regions are allowed for reactions between each other. The contributions are based on the mass of the components directly, not by limiting reagents or total mass.

We have added the information to section 2.1 as: “For example, NO₂_S1 and NH₃_S2 can be used to represent NO₂ from region 1 and NH₃ from region 2, respectively. After the photochemical mechanism is expanded, the source-tagged species are allowed to go through all processed to form (NH₄_S2)(NO₃_S1) based on additional reactions of NO₂ + OH → HNO₃ and NH₃+ HNO₃ →NH₄NO₃. Thus, the contributions of region 1 to NO₃⁻ and region 2 to NH₄⁺ are quantified.”

132: It would probably be worth clarifying here that although SOA source contributions are not included, that SOA itself is included in the model.

Response: Thanks for the suggestion. We have added a sentence to describe this at the end of section 2.1: “SOA is included in the current model but its source contributions are not resolved.”

Section 2.1: Is anthropogenic fugitive dust included (e.g. Philip et al., ERL, 2018, <https://doi.org/10.1088/1748-9326/aa65a4>).

Response: The anthropogenic fugitive dust is included in the EDGAR inventory. Only windblown dust is considered separately.

General: Another interesting metric related to source contributions is the Response to Extra-Regional Emission Reduction (RERER) metric, which ranges from 0 to 1 and can readily be evaluated in a table, fig, etc. See for example: <http://publications.jrc.ec.europa.eu/repository/bitstream/JRC102552/lbna28255enn.pdf>

Response: Thanks for the suggestion. RERER is calculated by using the Equation 1. In our manuscript, the data of non-local contributions shown in Tables 1 and 2 provide information the same as the RERER, except that non-local contributions in this paper use the unit of % and do not include secondary organic aerosols (SOA), as the source contributions to SOA are not tracked in this study (Equation 2).

$$\text{RERER} = \frac{R(\text{Total PM}_{2.5}) - R(\text{PM}_{2.5} \text{ due to local region})}{R(\text{total PM}_{2.5})} \quad (1)$$

$$\text{Non-local contribution} = \frac{\text{Total PM}_{2.5} - \text{PM}_{2.5} \text{ due to local region} - \text{SOA}}{\text{Total PM}_{2.5}} \times 100\% \quad (2)$$

Thus, no changes was made.

Section 3.3: This was nice to see, but I felt the motivation for including this was a bit absent from the paper. Are the authors interested in MDC because of the acute

impacts on human health? Or because of a policy reason such as the exceedence of an air quality standard? Maybe a bit more could be added in the introduction motivating this section.

Response: In section 3.2, the percentage contributions from different regions to particulate matter are presented but the absolute concentrations due to each region are not shown. In order to better understand the greatest extent of each region's impact on PM_{2.5} concentration in other regions, MDCs are presented in section 3.3. In the revised manuscript, we have clarified the motivation of this analysis in the last paragraph of the introduction section: "In this study, the percentage contributions and maximum mass contributions from each region to PM_{2.5} in each city are both presented to better understand the extent of air pollutant transport."

333 and general: Here and elsewhere the authors refer to "transport of SO₄" however for secondary species like this they have not really determined if the transport is occurring in the form of the particulate species (SO₄) or the gas-phase precursor (SO₂). In the winter in particular, the lifetime of the latter can be several days, so precursor transport is a factor. Thus, I would suggest the authors review their language throughout the paper and are careful to describe their results in terms of transport of aerosol or aerosol precursor species, rather than just the former.

Response: Thanks. We have modified this throughout the manuscript.

Editorial:

50: of such areas → such area

Response: Done

51: home for → home to

Response: Done

57: times of → times

Response: Done

68: receptor-based models. Air → air

Response: Done

213: is in → is located

Response: Done

228: In summary, the → The

Response: Done

Referee 2:

This is an interesting study about the relative PM_{2.5} contributions from local and nonlocal emissions. It is well written and provides valuable information for understanding the air pollution over Sichuan Basin. I recommend its acceptance for publication after minor revisions.

Response: Thanks.

General Comments

(1) For study reviews regarding the relative contributions from local and non-local emissions, a recent paper by Zhao et al. (2019, DOI: 10.1029/2018JD028888) could be cited, which showed the significant local emission contributions in an industry city over North China Plain region. In this study, they proposed an observation-based method: they determine the local primary emission contribution based on network observations of PM_{2.5} in a city. Moreover, Zhao et al. (2018) also estimated the contributions of local primary emission, transport, and secondary formation based on a dispersion model. It could be also cited in Lines 58-60, 63- 66, 216-218.

Response: We have cited these references in the introduction section.

(2)The reasons for your source region classification should be provided. Moreover, uncertainties in the analysis results caused by potential errors in the a priori emission maps should be investigated, or at least briefly discussed.

Response:

The reasons for source region classification are presented in the first paragraph of section 2.2: “The geographical regions of emissions are classified into nine source-regions. As Chengdu and Chongqing are the two largest cities in western China and within the SCB, we classified Chengdu, eastern Chongqing, and western Chongqing into three individual regions (R4, R5, and R1, respectively). Western Chongqing is well urbanized and eastern Chongqing is mostly rural areas. The five cities in the northeastern SCB (Bazhong, Dazhou, Guangyuan, Guang’an, and Nanchong) are grouped into R2, as they have relatively lower anthropogenic emission densities compared to most of the other SCB cities and they are located in the upwind areas within the SCB (Qiao et al., 2019). The rest SCB cities are grouped into R3. Sichuan Province excluding those cities within the SCB is R8, most of which remote rural areas. R6 includes three provinces to the south of the SCB and R7 has the Chinese provinces to the east and northeast of the SCB. R9 includes the other jurisdictions to the west of the SCB, including Xinjiang, Qinghai, Gansu, Tibet, and other countries.”

We do not have uncertainty data of emission inventories, so we cannot analyze the potential errors due to the uncertainties from emission data. We added a sentence to note the readers regarding this at the end of second paragraph in section 2.2: “It should

be noted that the uncertainties in emission inventories potentially lead to uncertainties in the contributions.”

(3) If possible, comparisons with observation-based results will be very helpful and necessary.

Response: To date, there is no observation-based results to quantify source-region contributions to PM_{2.5} for the Sichuan Basin. The HYSPLIT and PSCF models were used to understand the potential source regions only for some pollution events in the cities of Sichuan Basin, and the source-apportionment results of the HYSPLIT and PSCF modeling were not quantitative. Thus, no changes were made.

(4) The paper is well written. However, a few writing issues could be solved with a careful revision. For example, blank space is needed between references in the context.

Response: We went through the manuscript carefully for a few times and modified where needed.

Detailed comments:

Line 46-48, Before diving into aerosol transport, the potential sources for aerosols should be introduced, such as local emission, transport, and secondary formation. Actually, Zhao et al. (2018, Growth rates of fine aerosol particles at a site near Beijing in June 2013) have shown strong fine aerosol growth rates, which could contribute a lot to measured aerosols. Zhao et al. (2018) mentioned earlier also showed strong local emission contributions in an industrial city.

Response: We have added a paragraph in the beginning of this manuscript: “Particulate matter (PM) is one of the major air pollutants in China, including primary and secondary components. Primary PM (PPM) is directly released from emission sources, while secondary PM is formed from their precursors, such as sulfur dioxides (SO₂), nitrogen oxides (NO_x), and ammonia (NH₃). All of them are released from local sources or transported for a long distance (Ying et al., 2014; Zhao et al., 2018). The relative contributions of secondary components to total PM_{2.5} (PM with an aerodynamic diameter less than 2.5 μm) usually increases as PM_{2.5} concentration elevates in megacities (Huang et al., 2014; Qiao et al., 2018).”

Line 63-65, Qiu et al. (2019, DOI: 10.1021/acsearthspacechem.8b00155) could be cited, which made the source appointment analysis based on PMF method.

Response: Cited.

Line 67-68, This is not a complete sentence.

Response: We have modified this sentence: “There are many types of source apportionment methods, such as receptor-based models, air parcel trajectory models, remote sensing, and chemical transport models (CTMs)”

Line 100-104: Shi et al. (2017, Spatial Representativeness of PM_{2.5} Concentrations Obtained Using Observations From Network Stations) indicated the spatial representativeness of local PM_{2.5} observations using observations from network stations, which shows that PM_{2.5} varies a lot with space and the spatial representation of surface site PM_{2.5} observations are generally small (0.25-16 km²), which could be used to support the point proposed here - the spatial resolutions of meteorology are too coarse to meet the study goal.

Response: Cited. Thanks.

Section 2: How did you set up the 9 source regions? What are your basis, climate basins?

Response: In the revised manuscript, we have clarified this in the first paragraph of section 2.2.

Line 137, “domains” -> “domain”

Response: Done.

Line 174, “CMAQ default profiles”

Response: Done.

Line 183-186, “were downloaded” -> “downloaded” or “that were downloaded”

Response: Done.

Line 191, unit should be provided for 2.0.

Response: Done.

Referee 3:

General Comments: The manuscript presents a good example of using CMAQ model to study sources contribution of air pollutants, specifically fine particulate matter, in Sichuan basin, one of China's economic development zones. The authors carried out modelling studies with updated photochemical mechanism and aerosol module. The modelling results are well-organized with clear conclusions, which provide potential policy guidance for Chinese government agencies in terms of measures in pollution control.

Two of the highlights are:

1, "All the above suggest that it would be more efficient to control the SIA (particularly SO₄²⁻) and its precursors than PPM in order to reduce the transport of air pollutants within and into the basin" in lines 293 – 295

2, "All the above suggest that joint effect (it should be joint measures in reviewer's mind) should be made by neighbor cities and provinces to reduce PM_{2.5} pollution for the entire SCB" in Line 314 and 315.

Maybe the author can also strengthen how much/little Sichuan or Chongqing governments can achieve by just reducing the pollution sources alone based on the modelling results. Overall, the manuscript deserves publication in ACP after handling reviewers' comments and making some minor revisions/corrections.

Response: Thanks for the suggestions and positive comments! In this study, we obtained the source contributions from different regions. In a coming paper, we simulated air quality of the Sichuan Basin (including Sichuan and Chongqing) under different emission reduction scenarios, which exactly shows the point here.

Specific Comments:

1, This paper is designed to be published in "Special Issue: Regional transport and transformation of air pollution in eastern China". Could the authors address the relevance of this manuscript to the special topic, since SCB is in not in eastern China? Air pollutants generated in eastern China can be transported to SCB, as the modelling results have shown, which could be used to elegantly linking two distinct areas.

Response: Yes, this submission was intended to show the contribution of eastern China to the SCB. The results do show that air pollutants generated in central and eastern China can transport to the SCB and may have considerable contributions to PM_{2.5} concentrations for the cities located in the eastern and northern SCB. In the revised manuscript, we have added sentences to address the relevance of this manuscript to the special topic in the second paragraph of the introduction section.

“In addition, east and central China, which are to the east of the SCB, have considerable contributions to PM_{2.5} for the SCB. For example, Ying (2014) predicted that central and east China had a combined contribution of 29.6% to the total mass of NO₃⁻ and SO₄²⁻ for Chongqing in January 2009”.

2, There seems to be too much educational material in the second paragraph of the introduction section. The authors explained some other models that the current study did not use in long words. Although it is important to compare the advantage of CMAQ model to these models mentioned, it seems to be slightly distracting. On the other hand, Sichuan Basin is surrounded by mountains in all directions, as the authors have mentioned. There is little discussion or explanation about how the topography will prevent the transport of air pollutants between SCB and other areas. This may deserve some words in the manuscript as one of the reviewers has criticized the manuscript as “quite short”.

Response: Thanks for the suggestions.

(1) We made the summary of source apportionment methods more concise in the introduction section (third paragraph).

(2) We added sentences in the introduction and a new section 3.4 to discuss about the impacts of topography on air quality in the SCB.

- In the introduction, we mention: “They are the Qinghai-Tibetan Plateau (QTP), Yunnan-Guizhou Plateau (YGP), Wushan Mountains (WUM), and Dabashan Mountains (DBM) to the west, south, east, and north of the SCB, respectively. As a result of the basin topography, emissions released from the SCB tend to accumulate in the basin, causing severe air pollution”
- In section 3.4, we summarized the results from all figures and tables to show the impacts of topography.

3, The modeling study is for the period between November of 2014 to August 2015, which include two winter seasons and one summer season, in addition to one spring season. Can the authors address the following questions: a) Why this period? Is the length of period the longest that CMAQ model or the supercomputing resources can handle? b) Why the spring season was not discussed? Is there a lacking of spring data or the results in spring are not as interesting as summer and winter? c) Is statistical significance the same to include two winter seasons but only one summer season? How biased it could be when averaging the trend?

Response:

The modeling period is winter (December 2014 to February 2015) and summer (June to August 2015). One of the major objectives of this study is to understand the extent of transport of air pollutant within the SCB and from outside SCB into SCB. Based on measurements at the national air quality stations in the SCB, PM_{2.5} concentrations are highest in the winter and lowest in summer. In addition, wind speed is highest and

lowest in summer and winter, respectively. Spring is much more windy and wet compared to winter. Thus, we assumed that the transport of air pollutants within the SCB and from outside SCB into SCB might be least significant in winter and might be greatest in summer. However, the simulation results show that transport of PM_{2.5} and its precursors are also significant in winter. For example, Chengdu, which is located in the western SCB and is one of the largest cities in western China, has 37.2% of PM_{2.5} due to emissions from other cities in winter. Suining in central SCB has 75.3% of PM_{2.5} due to emissions from other cities in winter.

Computing power is not a concern here.

We have added some sentences to explain this in the introduction section.

4, Part (b) of Figure 1 seems to be very crowded. Can the font of these city names be smaller but still readable? Can the size of dots representing those cities with SCB corresponds to its population of economic activity? Can the dots representing cities outside of SCB or beyond of the discussion be limited to several large industrial cities? Disregard this comment if this figure is directly generated by CMAQ model and not easy to achieve these visual advantages.

Response: This figure was generated by using GIS. We have revised the figure.

5, In the end of the first paragraph in the introduction section, the authors mentioned the average measured PM_{2.5} concentration is six times of WHO guideline. If there are available data, can the authors present the data of the national average or somewhere else (which is suitable to serve as a benchmark comparison parameter) so that readers can understand the relative magnitude of SCB to the whole country or another region?

Response: Thanks for the suggestions. In the revised manuscript, we have added a figure (Figure S1) to compare annual average PM_{2.5} concentrations between the SCB cities and other Chinese cities.

6, There are a lot of exceptions for Suining, can authors generally address the reason with slightly more details? Is it the least developed area or some other reasons?

Response: In the revised manuscript, we added few information to address this in section 3.3.1: “The low local contribution in Suining might be because it is less economically developed compared to other cities, except for Bazhong, Guangyuan, and Ya’an, as suggested by the 2015 gross domestic production (GDP; Table S1)”. Table S1 was added in the supporting material.

7, Why there are no space separating multiple citations in the parenthesis throughout the manuscript?

Response: We have corrected this.

Technical corrections:

1, Part of line 34 of Abstract should be corrected to: . . .(SIA, including ammonium (NH₄⁺), nitrate (NO₃⁻), and Sulfate (SO₄²⁻)). . ., similarly, part of line 124 should be corrected to: . . . (SIA, including NH₄⁺, NO₃⁻, and SO₄²⁻). . ., there is no reason to explain only one of the three items/ions for the second time and do it incorrectly. Authors are courteously reminded here that ammonia = NH₃ and ammonium = NH₄⁺. It is better not to challenge the long established chemical nomenclature, as the authors seem to get it right in line 163.

Response: Sorry we missed the word “ions”. We have corrected this throughout the manuscript.

2, The manuscript describe the resolution as $0.1 \times 0.1^\circ$. Is it more accurate to use it as $0.1^\circ \times 0.1^\circ$ as used in the companion paper?

Response: Modified accordingly.

3, Line 50, recommend changing to “. . . but fewer studies have been conducted compared with other developed regions. . .” Or “. . .but insufficient studies have been conducted. . .”

Response: Thanks. We have revised this.

4, Line 53, recommend changing “16 other cities” to “16 less populated cities” or something similar.

Response: Done.

5, Line 185, please get rid of the first word “were” or change it to “that were”, otherwise the whole sentence doesn’t make sense in grammar.

Response: Done. Thanks.

6, Line 192, can “statistical measures” be replaced by “statistical metrics”, as used in the companion paper?

Response: Done. Thanks.

7, Line 226, can authors define “city center”? Is it the most populated place in the city or the central point (modeling domain) of that city?

Response: In the beginning of section 3.2.1., we explained this. In the SCB, almost all the national air quality stations (NAQs) are located in the central urban areas of the 18 cities. For example, there are eight NAQs in the Chengdu, including seven located in the central urban areas and one located in the background site. In this study, we average the coordinates of the NAQs in the central urban area of each city in order to analyze PM_{2.5} and its source contributions in the most populated region of each city.

8, Line 331, can authors specify “severe events”? Should it only mean severe air pollution events?

Response: We changed to “severe PM pollution events”.

9, Table 2, the width of the second and fifth columns, “Number of grid cells” can be optimized to read better. For example, it can be changed to “No. of grid cells” to make it fit the space better without sacrificing the unambiguity.

Response: Done. Thanks!

10, Table S2 and S3 do not fit to a letter paper after print out. Please check if this would be resolved automatically during publication.

Response: The orientation of the two pages were changed into landscape view, so the two tables can fit into a letter or A4 paper.

1 **Local and regional contributions to fine particulate matter in the 18 cities of**
2 **Sichuan Basin, southwestern China**

3
4 Xue Qiao^{1,2}, Hao Guo², Ya Tang³, Pengfei Wang², Wenye Deng⁴, Xing Zhao⁵, Jianlin Hu⁶, Qi
5 Ying^{7,*}, Hongliang Zhang^{2,*}
6

7 ¹Institute of New Energy and Low-carbon Technology & Healthy Food Evaluation Research
8 Center, Sichuan University, No. 24, South Section One, First Ring Road, Chengdu, Sichuan
9 610065, China

10 ²Department of Civil and Environmental Engineering, Louisiana State University, Baton Rouge
11 LA 70803, USA

12 ³College of Architecture and Environment & Healthy Food Evaluation Research Center, Sichuan
13 University, Chengdu 610065, China

14 ⁴Xinjiang Academy of Environmental Protection Science, Urumqi 830011, China

15 ⁵Department of Epidemiology and Biostatistics, West China School of Public Health, Sichuan
16 University, No. 17, Section 3, South Renmin Road, Chengdu, Sichuan 610041, China

17 ⁶Jiangsu Key Laboratory of Atmospheric Environment Monitoring and Pollution Control,
18 Jiangsu Engineering Technology Research Center of Environmental Cleaning Materials,
19 Nanjing University of Information Science & Technology, Nanjing 210044, China

20 ⁷Zachry Department of Civil Engineering, Texas A&M University, College Station, TX 77843,
21 USA

22 *Corresponding authors: Qi Ying, qying@civil.tamu.edu; Hongliang Zhang, hlzhang@lsu.edu.

23 **Abstract**

24 The Sichuan Basin (SCB) is one of the regions suffering from severe air pollution in China, but
25 fewer studies have been conducted for this region than for the more developed regions in East and
26 North China. In this study, a source-oriented version of the Community Multi-scale Air Quality
27 (CMAQ) model was used to quantify contributions from nine regions to PM_{2.5} (i.e., particulate
28 matter (PM) with an aerodynamic diameter less than 2.5 μm) and its components in the 18 cities
29 within the SCB in the winter (December 2014 to February 2015) and summer (June to August,
30 2015). In the winter, citywide average PM_{2.5} concentrations are 45~126 μg m⁻³, with 21~51% and
31 39~66% due to local and non-local emissions, respectively. In the summer, 15~45% and 25~52%
32 of citywide average PM_{2.5} (14~31 μg m⁻³) are due to local and non-local emissions, respectively.
33 Compared to primary PM (PPM), the inter-region transport of secondary inorganic aerosols (SIA,
34 including ammonia, nitrate, and sulfate ions (NH₄⁺, NO₃⁻, and SO₄²⁻, respectively)) and their gas-
35 phase precursors are greater. The region to the east of SCB (R7, including the central and eastern
36 China and others) is the largest contributor outside the SCB, and it can contribute approximately
37 80% of PM_{2.5} in the eastern, northeastern, and southeastern rims of the SCB, but only 10% in other
38 SCB regions in both seasons. Under favorable transport conditions, regional transport of air
39 pollutants from R7 could account for up to 35~100 μg m⁻³ of PM_{2.5} in each of the SCB cities in
40 the winter. This study demonstrates that it is important to have joint emission control efforts among
41 cities within the SCB and regions to the east in order to reduce PM_{2.5} concentrations and prevent
42 high PM_{2.5} days for the entire basin.

43 **Keywords:** Sichuan Basin, local emission, regional transport, PM_{2.5}, source apportionment

44 1. Introduction

45 Particulate matter (PM) is one of the major air pollutants in China, including primary and
46 secondary components. Primary PM (PPM) is directly released from emission sources, while
47 secondary PM is formed from their precursors, such as sulfur dioxides (SO₂), nitrogen oxides
48 (NO_x), and ammonia (NH₃). All of them are released from local sources or transported for a long
49 distance (Ying et al., 2014; Zhao et al., 2018). The relative contributions of secondary components
50 to total PM_{2.5} (PM with an aerodynamic diameter less than 2.5 μm) usually increases as PM_{2.5}
51 concentration elevates in megacities (Huang et al., 2014; Qiao et al., 2018).

52 Air pollution in major economic centers in China, including the North China Plain (NCP),
53 Yangtze River Delta (YRD), and Pearl River Delta (PRD), has been extensively studied in recent
54 years. Regional transport of air pollutants has been identified an important source of PM in the
55 three regions, particularly the precursors of secondary PM (Zhang et al., 2013; Zhao et al., 2013a;
56 Ying et al., 2014; Jiang et al., 2015; Li et al., 2015; Wang et al., 2015; Zheng et al., 2015; Tang et
57 al., 2016; Yang et al., 2018). Several urbanized areas in western China also have been suffering
58 from air pollution due to rapid industrial and urban development, but fewer studies have been
59 conducted compared with the NCP, YRD, and PRD. One such area is the Sichuan Basin (SCB),
60 which covers an area about 0.22 million km² and is home to more than 100 million residents in 18
61 cities, among which Chengdu and Chongqing are the largest two cities in western China (National
62 Bureau of Statistics of China (NBSC), 2015; Table S1). The SCB is topographically isolated, with
63 mountains or plateaus on all sides. They are the Qinghai-Tibetan Plateau (QTP), Yunnan-Guizhou
64 Plateau (YGP), Wushan Mountains (WUM), and Dabashan Mountains (DBM) to the west, south,
65 east, and north of the SCB, respectively. As a result of the basin topography, emissions released
66 from the SCB tend to accumulate in the basin, causing severe air pollution (Ning et al., 2018a;
67 Zhao et al., 2018). In addition, east and central China, which are to the east of the SCB, have
68 considerable contributions to PM_{2.5} for the SCB. For example, Ying (2014) predicted that central
69 and east China had a combined contribution of 29.6% to the total mass of NO₃⁻ and SO₄²⁻ for
70 Chongqing in January 2009. Due to high emissions within the basin and deep basin landform,
71 annual average concentrations of PM_{2.5} in the SCB were similar to that of NCP and Central China
72 (Figure S1). Annual PM_{2.5} measured in Chengdu and Chongqing in 2015 were 64 and 57 μg m⁻³,
73 respectively, about six times the World Health Organization (WHO) guideline (10 μg m⁻³) (WHO,
74 2006; NBSC, 2015).

75 To design effective PM_{2.5} control strategies for the SCB, it is necessary to quantify the source
76 contributions and inter-/intra-region transport of PM_{2.5} and its precursors within the SCB and its
77 surrounding regions. There are many types of source apportionment methods, such as receptor-
78 based models, air parcel trajectory models, remote sensing, and chemical transport models (CTMs).
79 Receptor-based models, such as the Positive Matrix Factorization (PMF) (Paatero and Tapper,
80 1994; Qiu et al., 2019), the Chemical Mass Balance (CMB) (Watson et al., 1990) and a local
81 contribution model proposed by Zhao et. al. (2019), are semi-quantitative and cannot quantitatively
82 determine the source contributions from an exact emission sector or a specific location. They also

83 require a large number of monitoring data and can only resolve source contributions at the
84 monitoring sites (Hopke, 2016). Remote sensing and air parcel trajectory models, such as the
85 Potential Source Contribution Function (PSCF) and the Hybrid Single Particle Lagrangian
86 Integrated Trajectory Model (HYSPLIT) can just reflect the atmospheric dynamics so they are not
87 quantitative for source apportionment of secondary species (Begum et al., 2005; Uno et al., 2009;
88 Stein et al., 2015; Liu et al., 2018; Wu et al., 2018). Compared to above methods, CTMs are more
89 quantitative, as they can be track the source contributions to both primary and secondary air
90 pollutants from a specific region or sectorial source for studies at the local, regional, or global
91 scales (Bove et al., 2014; Kim et al., 2015; Lelieveld et al., 2015; Itahashi et al., 2017; Shi et al.,
92 2017). In CTMs, source contributions are quantified through two methods, namely, sensitivity
93 analysis and tagged-tracer methods (Burr and Zhang, 2011). Sensitivity analysis such as the brute-
94 force method is more suitable to estimate air quality changes due to emission perturbations, as
95 emissions from certain sources would be eliminated or reduced in each simulation of sensitivity
96 analysis (Burr and Zhang, 2011; Han et al., 2018; Huang et al., 2018). In the tagged-tracer method,
97 source-tagged-species are used to track air pollutants from specific emission regions and sectors
98 and they would go through all the non-linear chemical and physical processes in the model, thus
99 this method is considered to provide more realistic evaluations of the contributions of different
100 source sectors or source regions to the current level of air pollution under the current emission
101 intensities (Wang et al., 2009; Burr and Zhang, 2011; Chen et al., 2017).

102 Transport of PM_{2.5} and its precursors has been studied for Chengdu, Chongqing, and the entire
103 SCB region (Zhu et al., 2018). Based on in-situ observations and the HYSPLIT model, studies
104 have found that dust storms from northwestern China and biomass burning activities would cause
105 high PM days in the two cities, particularly in spring (Zhao et al., 2010; Tao et al., 2013; Chen and
106 Xie, 2014; Chen et al., 2015). Using the PSCF model, a study reported that the main potential
107 sources of PM_{2.5} for Chengdu were from southeastern cities and the western margin of the SCB in
108 addition to local emissions from December 2013 to February 2014 (Liao et al., 2017). Based on
109 the HYSPLIT and PSCF analyses, air pollution was determined mainly from the south during
110 persistent extreme haze days in Chengdu from 6th to 16th January 2015 (Li et al., 2017). However,
111 the aforementioned studies based on the HYSPLIT and PSCF models are not quantitative in terms
112 of emission contributions. Their accuracy is also limited by the meteorological inputs to drive these
113 models, which are often in very coarse resolutions (0.5 to 1.0 degree) that are not enough to
114 accurately predict air pollutant transport within the SCB, as meteorological conditions and
115 pollutant concentrations may vary greatly within short distance (Shi et al., 2017). Also, previous
116 country-level modeling study did not have sufficient spatial resolution to properly quantify the
117 transport among cities within the SCB.

118 Since both inter-regional transport within the cities in the basin and from outside the region
119 can greatly affect PM_{2.5} concentrations in the 18 SCB cities, systematically quantifying
120 contributions from different regions to PM_{2.5} for all the 18 cities in the SCB is urgently needed as
121 emission controls are further tightened to improve air quality in this region. In this study, an

122 improved source-oriented community multi-scale air quality (CMAQ) model was used to quantify
123 the contributions from nine regions (five within the SCB and four outside) to PM_{2.5} and its
124 components for the 18 SCB cities. The assumption is that the transport of air pollutants is evident
125 among the SCB cities and some cities in the rims of the SCB are greatly affected by emissions
126 outside SCB. Therefore, the objectives of this study are to quantitatively determine (1) the inter-
127 region transport of air pollutants emitted in the SCB and its contributions to PM_{2.5} in the 18 SCB
128 cities and (2) the contributions of emissions outside the basin to PM_{2.5} in the SCB. In this study,
129 the percentage contributions and maximum mass contributions from each region to PM_{2.5} in each
130 city are both presented to better understand the extent of air pollutant transport. We modeled PM_{2.5}
131 and its source contributions only for two seasons, as PM_{2.5} concentrations in the SCB are highest
132 in winter and summer, respectively (Ning et al., 2018a).

133 2. Methods and materials

134 2.1. Model description

135 The source-oriented CMAQ model used in this study is based on the CMAQ model version
136 5.0.1. The gas phase and aerosol mechanisms are extended from the standard SAPRC-99
137 photochemical mechanism and aerosol module version 6 (AERO6). This version of the source-
138 oriented CMAQ is capable of simultaneously tracking both primary particulate matter (PPM) and
139 secondary inorganic aerosols (SIA, including NH₄⁺, NO₃⁻, and SO₄²⁻) from multiple source sectors
140 and regions. It unifies the two previous models individually developed for PPM (Hu et al., 2015)
141 and SIA (Ying et al., 2014; Shi et al., 2017) into a single consistent model framework. For SIA,
142 multiple source-tagged reactive species are introduced in both gas and particle phases to represent
143 the same species originated from different source sectors or regions. The corresponding
144 photochemical mechanisms, aerosol and cloud modules are expanded so that SIA and their
145 precursors from different regions can be tracked separately throughout the model calculations. For
146 example, NO₂_S1 and NH₃_S2 can be used to represent NO₂ from region 1 and NH₃ from region
147 2, respectively. After the photochemical mechanism is expanded, the source-tagged species are
148 allowed to go through all processed to form (NH₄_S2)(NO₃_S1) based on additional reactions of
149 NO₂ + OH → HNO₃ and NH₃+ HNO₃ →NH₄NO₃. Thus, the contributions of region 1 to NO₃⁻
150 and region 2 to NH₄⁺ are quantified. For PPM, source-tagged non-reactive tracers are added to
151 track the total amount of PPM emitted from different source sectors and regions. SOA is included
152 in the current model but its source contributions are not resolved.

153 2.2. Model application

154 The source-oriented CMAQ model was applied to quantify nine source-region contributions
155 to PM_{2.5} and its components (PPM and SIA) for the 18 cities in the winter (from December 2014
156 to February 2015) and summer (June to August 2015) using nested domain settings. The locations
157 of domains, nine source-regions, and the 18 cities of the SCB are shown in Figure 1. The horizontal
158 resolutions of the parent and nested domains are 36-km and 12-km, respectively. There are 18

159 vertical layers with an overall height of 20 km and the layer closest to the land surface is up to 35
160 m. The geographical regions of emissions are classified into nine source-regions. As Chengdu and
161 Chongqing are the two largest cities in western China and within the SCB, we classified Chengdu,
162 eastern Chongqing, and western Chongqing into three individual regions (R4, R5, and R1,
163 respectively). Western Chongqing is well urbanized and eastern Chongqing is mostly rural areas.
164 The five cities in the northeastern SCB (Bazhong, Dazhou, Guangyuan, Guang'an, and Nanchong)
165 are grouped into R2, as they have relatively lower anthropogenic emission densities compared to
166 most of the other SCB cities and they are located in the upwind areas within the SCB (Qiao et al.,
167 2019). The rest SCB cities are grouped into R3. Sichuan Province excluding those cities within
168 the SCB is R8, most of which remote rural areas. R6 includes three provinces to the south of the
169 SCB and R7 has the Chinese provinces to the east and northeast of the SCB. R9 includes the other
170 jurisdictions to the west of the SCB, including Xinjiang, Qinghai, Gansu, Tibet, and other countries.

171 Meteorological inputs were generated using the Weather Research and Forecasting (WRF)
172 model version 3.9 based on the 6-hourly FNL (Final) Operational Global Analysis data from the
173 National Center for Atmospheric Research (NCAR) with a spatial resolution of $1.0 \times 1.0^\circ$
174 (<http://dss.ucar.edu/datasets/ds083.2/>). The anthropogenic emission inventory used was the
175 Emission Database for Global Atmospheric Research (EDGAR) version 4.3.1 for the year of 2012
176 (Crippa et al., 2018). The inventory was directly used for the model year of 2014-2015 as no
177 reliable sources for emission changes in the SCB are available. The monthly EDGAR inventories
178 have a spatial resolution of $0.1^\circ \times 0.1^\circ$ ($\sim 10 \text{ km} \times 10 \text{ km}$) and were re-projected to the model domains
179 using the Spatial Allocator (<https://www.emascenter.org/sa-tools/>). Temporal profiles specific to
180 sources were used to allocate the monthly emission rates to hourly values for CMAQ modeling
181 (Olivier et al., 2003; Streets et al., 2003; Wang et al., 2010). The EDGAR inventory includes
182 carbon monoxide (CO), NO_x, SO₂, NH₃, non-methane volatile organic compounds (NMVOCs),
183 PM_{2.5}, PM₁₀ (PM with an aerodynamic diameter less than 10 μm), elemental carbon (EC), and
184 organic carbon (OC) from various sources. Emission sources are grouped into six categories:
185 energy, industries, residential activities, on-road transportation, off-road transportation, and
186 agriculture. In addition to these six anthropogenic sources, contributions of biogenic sources were
187 also determined using emissions generated by the Emissions of Gases and Aerosols from Nature
188 (MEGAN) model version 2.1 (Guenther et al., 2012). The emissions from open burning were
189 estimated based on the Fire Inventory from the National Center for Atmospheric Research (NCAR
190 FINN) (Wiedinmyer et al., 2010). Contributions of windblown dust and sea salt emissions were
191 determined based on in-line generated emissions during CMAQ simulations. It should be noted
192 that the uncertainties in emission inventories potentially lead to uncertainties in the contributions.

193 The initial and boundary conditions (ICs and BCs, respectively) for the 36-km domain were
194 based on CMAQ default profiles, and those for the 12-km domain were generated using the CMAQ
195 outputs from the 36-km simulations. More details about the setup and configurations of the
196 WRF/CMAQ modeling system can be found in a previous publication for China (Kang et al.,
197 2016).

198 3. Results and discussion

199 3.1. Model performance

200 The model performance on meteorological parameters and 24-hr PM_{2.5} in the 12-km domain
201 for the two seasons has been evaluated in a companion paper (Qiao et al., 2019) and is briefly
202 summarized here (Figure S2). As the predictions on wind speed (WS) and wind direction (WD)
203 are important in modeling air pollutant transport (Zhao et al., 2009), the WRF model performance
204 on WS, WD, ambient air temperature (T), and relative humidity (RH) were evaluated by using
205 hourly observations at China's national meteorological stations and the observation data that were
206 downloaded from the National Climate Data Center (NCDC;
207 ftp://ftp.ncdc.noaa.gov/pub/data/noaa/, last accessed on June 20, 2018). The mean biases (MBs)
208 of predicted RH (-10.8% to -1.1%) and T (-0.9 to -0.1°C) in each month are comparable to other
209 studies in China (Wang et al., 2010; Zhao et al., 2013b; Wang et al., 2013). The MB of WD in
210 each month (-5° to 6°) meet the benchmark of $<\pm 10^\circ$ suggested by Emery et al. (2001). Although
211 the MB of WS in each month (0.5 to 1.1 m s⁻¹) does not meet the benchmark of $<\pm 0.5$ m s⁻¹, the
212 gross errors (GEs: 1.4-1.9 m s⁻¹) are within the benchmark of 2.0 m s⁻¹. For 24-hr PM_{2.5}
213 concentrations, the statistical metrics of model performance are generally within the criteria
214 recommended by Emery et al. (2017) for regulatory applications, with only a few cities exceeding
215 the normalized mean bias (NMB) criteria of $<\pm 30\%$ in the winter (Chongqing 42%; Guangyuan
216 41%; Mianyang 37%; Meishan 31%; Ziyang 48%) and in the summer (Dazhou -39%) (Figure S2).
217 The 24-hr PM_{2.5} predictions meet the goals of normalized mean error (NME $<\pm 35\%$), fractional
218 bias (FB $<\pm 30\%$), and fractional error (FE $<\pm 50\%$) in all the cities in both seasons, except for the
219 NME of Ziyang (58%) in the winter. The predictions of major PM_{2.5} components (including OC,
220 EC, NH₄⁺, NO₃⁻, and SO₄²⁻) in Chengdu and Chongqing are comparable with observations, and
221 both predictions and observations suggest that OC and SIA are the largest contributors to PM_{2.5} in
222 summer and winter, with combined contributions about 70% (Qiao et al., 2019).

223

224 3.2. Seasonal average contributions

225 3.2.1. Source contributions at the city centers

226 In each city, there are 4 to 17 national air quality stations (NAQs), and almost all the NAQs
227 are located in the urban areas, where population densities are higher. Thus, coordinates of the
228 NAQs in the urban area of a given city were averaged to define the city center in order to
229 understand PM_{2.5} concentrations and its sources for the most-populated region of each city. The
230 predicted PM_{2.5} concentrations and source-region contributions at the 18 SCB city centers are
231 presented in Table 1 for winter and Table S2 for summer. In all the city centers, the predicted
232 PM_{2.5} concentrations are much higher in the winter (60~191 µg m⁻³) than in the summer (14~64
233 µg m⁻³). The city centers are considerably affected by both local and regional emissions in both
234 seasons. Emissions within the SCB are the major contributor to PM_{2.5} in Chengdu and Chongqing
235 in both seasons (~80%) and emissions outside the SCB contribute approximately 7~15%. Among

236 the regions within the SCB, local emissions (i.e., emissions from the region where the city center
237 is **located**) are the largest contributor to PM_{2.5} in Chongqing and Chengdu in both seasons (about
238 70% and 58%, respectively). However, emissions from R3 (i.e., the 11 cities in the northwestern,
239 western, and southwestern SCB) also have considerable contributions in Chengdu (~20% and 14%
240 in the winter and summer, respectively). For the R3 cities, the contributions of emissions within
241 the SCB (64~83%) are also larger than that from outside the SCB (8~26%) in both seasons. Local
242 emissions are the largest contributor for R3 cities (40~60%), except that Suining has only ~13%
243 due to its local region. **The low local contribution in Suining might be because it is less**
244 **economically developed compared to other cities, except for Bazhong, Guangyuan, and Ya'an, as**
245 **suggested by the 2015 gross domestic production (GDP; Table S1).** For the five cities in the
246 northern SCB (R2), emissions within the SCB account for 40~70% in both seasons, including
247 37~57% from local emissions. Emissions outside the SCB also have large contributions to the R2
248 cities (21~36% and 17~28% in the winter and summer, respectively), as R2 is located in one of
249 the regions where winds from R7 intrude the basin (Figure 2a). In the winter, contributions from
250 SOA and others (including IC, BC, windblown dust, and sea salt) are less than 8% each. In the
251 summer, SOA and others each contribute 9~28% and less than 10%, respectively, but the SOA
252 contributions larger than 15% are found only in the city centers where summer PM_{2.5}
253 concentrations are less than 30 µg m⁻³. In summary, local emissions are the largest contributor for
254 all the city centers in both seasons, except for Suining. **The** non-local contributions for the city
255 centers are in the ranges of 25~52% in the winter (except for 75% in Suining) and of 14~40% in
256 the summer (except for 61% in Suining), and emissions outside the SCB account for 7~36% in the
257 seasons.

258

259 **3.2.2. Spatial variations and citywide area-weighted averages**

260 The spatial variations of source-region contributions to PM_{2.5} in the winter and summer are
261 presented in Figures 2 and 3, respectively. In both seasons, local emissions are generally the largest
262 contributor in each city, except that R7 has contributions similar to or larger than that of local
263 emissions for most regions in eastern Chongqing (R5) and R2. Specifically, the contributions from
264 R7 to PM_{2.5} in R2 and R5 are approximately 20~80% in the winter and 20~60% in the summer.
265 R7 also has contributions larger than 20% for a few areas in R3. The regions of R6, R8, and R9
266 outside the SCB each has contributions of <5% across the basin, except for some very limited
267 areas in the western and southern rims of the SCB. The contributions from R6, R8, and R9 are low
268 because these areas are less urbanized and industrialized. In addition, the mountains to the west
269 and south of the SCB also prevent the transport of air pollutants from these regions into the SCB
270 (Figures 1c, 2a, and 3a). In summary, R7 is the sole non-SCB region that can have >20%
271 contributions to PM_{2.5} in the SCB, and its impact decreases from the northeast, east, and southeast
272 to others in the basin.

273 As shown in Figures 2 and 3, PM_{2.5} concentrations and its source contributions from a given
274 region may vary greatly within a city in both seasons. For example, about 20~80% of PM_{2.5} across

275 Chengdu (R4) and western Chongqing (R1) are due to local emissions in each season, and higher
276 PM_{2.5} concentrations are generally related to higher local contributions. For the downwind regions
277 of Chengdu and western Chongqing, they receive considerable contributions from the two mega-
278 cities. For example, over half areas of Meishan and Ya'an, which are downwind of Chengdu, have
279 20~40% and 20~60% of PM_{2.5} concentrations due to Chengdu in the winter, respectively. In the
280 two seasons, western Chongqing contributes to about 10~40% of PM_{2.5} concentrations in its
281 neighboring cities, except that most area of eastern Chongqing (R5) is not affected by emissions
282 from western Chongqing, as R5 is upwind of western Chongqing (Figure 2a). Because of the large
283 spatial variations of PM_{2.5} and its source contributions in the basin, we further calculated their
284 citywide area-weighted averages (Table 2). In the winter, the citywide average PM_{2.5}
285 concentrations in Chengdu and urban Chongqing are 99 and 110 $\mu\text{g m}^{-3}$, with only 38% and 47%
286 due to local emissions, respectively. Non-local emissions also have high contributions in other
287 SCB cities, with citywide averages of 39~66% and 25~52% in the winter and summer, respectively.
288 The above suggests the importance of regional emission control to reduce PM_{2.5} concentrations
289 for the entire basin.

290

291 **3.2.3. Differences in PPM and SIA**

292 The transport distances of PPM, NH₄⁺, NO₃⁻, and SO₄²⁻ might be different, because of the
293 differences in chemical and physical processes that affect their concentrations in the atmosphere
294 (Ying et al., 2014; Hu et al., 2015). This leads to significant differences in their regional
295 distributions and thus requires different control strategies. From the source-region contributions to
296 PPM and SIA for each city center shown in Figure 4, it is obvious that the regional transport of
297 SIA is more significant than that of PPM. In the city centers of Chengdu and Chongqing, 55~65%
298 of PPM and 25~45% of SIA are due to local emissions in the two seasons. In the city centers of
299 R2, PPM is also more from local emissions (65~80%) than SIA is (25~45%) in both seasons.
300 Similarly, local emissions have larger contributions to PPM (50~85%) than to SIA (34~50%) in
301 all the city centers of R3 except for Suining, which is not significantly affected by local emissions.
302 The spatial distributions of source-region contributions to PPM and SIA also indicate more
303 significant transport of SIA (Figures S3-6) than PPM. For example, R3 contributes to >20% of
304 SIA across entire Chengdu, but only half areas of Chengdu are about equally affected (>20%) by
305 R3 for PPM. From the north to south in R2, the contributions from R7 to PPM decrease from ~55%
306 to ~10%, while the contributions of R7 to SIA decrease from ~75% to ~20%. The contributions to
307 NH₄⁺, NO₃⁻, and SO₄²⁻ in each city center from local emissions and emissions within and outside
308 SCB are further analyzed (Tables S3 and S4). In each city center, concentrations of SO₄²⁻
309 (3.8~12.6 and 12~41 $\mu\text{g m}^{-3}$) are much higher than that of NH₄⁺ (1.4~4.0 and 6.0~17.0 $\mu\text{g m}^{-3}$) and
310 NO₃⁻ (0.3~2.4 and 6~20 $\mu\text{g m}^{-3}$) in the summer and winter, respectively. Also, the transport of
311 SO₄²⁻ and its precursor is greater than the other two ions, as the percentage contributions from
312 emissions outside the SCB to SO₄²⁻ is higher than that to NH₄⁺ and NO₃⁻ in each city center. In
313 both seasons, emissions outside SCB contribute <25% of NH₄⁺ in the city centers, except for

314 Chongqing (26%) in the summer and Bazhong (36%) and Guangyuan (33%) in the winter. As for
315 NO_3^- , emissions outside SCB also contribute <25% in the city centers in both seasons, except for
316 Bazhong (49%), Dazhou (34%), and Guangyuan (25%) in the summer and all the cities of R2
317 (27~57%) in the winter. In the two seasons, emissions outside SCB account for 22~33% of SO_4^{2-}
318 in Chengdu and Chongqing, while they contribute 52~70% of SO_4^{2-} for the R2 cities. For the R3
319 cities, emissions outside SCB account for 25~53% of SO_4^{2-} in the city centers in the seasons,
320 except for Meishan (21%) in the winter. All the above suggest that it would be more efficient to
321 control the SIA (particularly SO_4^{2-}) and its precursors than PPM in order to reduce the transport
322 of air pollutants within and into the basin.

323

324 **3.3. Maximum daily contributions from a given region**

325 The maximum daily contribution from a given region to $\text{PM}_{2.5}$ (MDC, $\mu\text{g m}^{-3}$) in each city
326 center is shown in Table 3 for winter and Table S5 for summer. The largest MDC for each city
327 center (79~291 and 13~147 $\mu\text{g m}^{-3}$ in the winter and summer, respectively) are found associated
328 with local emissions, except for Guangyuan and Suining. In Guangyuan and Suining, the largest
329 MDCs in the winter are from R7 (62 $\mu\text{g m}^{-3}$) and R2 (110 $\mu\text{g m}^{-3}$), both are slightly higher than
330 that from the local region of 60 and 105 $\mu\text{g m}^{-3}$, respectively. Table 3 also shows that the inter-
331 basin transport of air pollutants can have large contributions (>50 $\mu\text{g m}^{-3}$) on high $\text{PM}_{2.5}$ days
332 (>150 $\mu\text{g m}^{-3}$). For example, R7 contributes 99 $\mu\text{g m}^{-3}$ to total $\text{PM}_{2.5}$ (200 $\mu\text{g m}^{-3}$) in Chongqing
333 on a winter day. In Nanchong, the MDC due to western Chongqing (R1) is 58 $\mu\text{g m}^{-3}$, when daily
334 $\text{PM}_{2.5}$ is 180 $\mu\text{g m}^{-3}$ on that day. In Chengdu, R3 and R7 can contribute up to 86 and 63 $\mu\text{g m}^{-3}$ on
335 the days with daily $\text{PM}_{2.5}$ of 267 and 151 $\mu\text{g m}^{-3}$, respectively. In Deyang and Meishan, the MDCs
336 from Chengdu are 147 and 138 $\mu\text{g m}^{-3}$ on the days having daily $\text{PM}_{2.5}$ of 288 and 235 $\mu\text{g m}^{-3}$,
337 respectively. Table S4 shows that air pollutant regional transport is also significant on certain days
338 in the summer. For example, the highest summer MDC from R7 among the 18 central cities is
339 found for Bazhong (36 $\mu\text{g m}^{-3}$), when daily $\text{PM}_{2.5}$ is 63 $\mu\text{g m}^{-3}$. Chengdu contributes about 44, 16,
340 55, 13, 7, and 21 $\mu\text{g m}^{-3}$ to Deyang, Leshan, Meishan, Ya'an, and Mianyang on the summer days,
341 when daily $\text{PM}_{2.5}$ are 89, 56, 100, 85, 22, and 54 $\mu\text{g m}^{-3}$, respectively. All the above suggest that
342 joint effects should be made by neighboring cities and the provinces to the east of the SCB in order
343 to prevent high $\text{PM}_{2.5}$ episodes for the SCB.

344

345 **3.4. Impacts of topography on $\text{PM}_{2.5}$ concentrations**

346 While air pollutant emissions are the root of air pollution, topography and meteorological
347 conditions play a very important role on determining the fate of pollutants including dispersion,
348 accumulation, and transformation (Arya, 1999; Zhang et al., 2015; He et al., 2017). It has been
349 widely noticed that heavy air pollution often occurs in well urbanized and/or industrialized cities
350 associated with mountains and basins, such as Beijing, Chengdu, Xi'an, and Lanzhou in China

351 (Chambers et al., 2015; Bei et al., 2017; Bei et al., 2018; Ning et al. 2018), Mexico City, Salt Lake
352 City, and Los Angeles in the North America (Langford et al., 2010; Witeman et al., 2014;
353 Calderón-Garcidueñas et al., 2015), and megacities in the Mediterranean Basin of the Europe
354 (Kanakidou et al., 2011). The SCB is surrounded by the QTP to the west, YGP to the south, WUM
355 to the east, and DBM to the northeast. Mainly affected by the high elevations of the QTP and YGP,
356 near-surface winds mainly intrude the basin from the north, east, and southeast in the summer and
357 winter, as shown in Figures 2(a) and 3(a). Consequently, R7 is the largest contributor outside the
358 basin, contributing 20~60% of $PM_{2.5}$ in the eastern, northeastern, and southeastern parts of the
359 SCB (Figures 2(h) and 3(h)), where $PM_{2.5}$ concentrations are relatively lower in the SCB (<75 and
360 $25 \mu g m^{-3}$ in the winter and summer, respectively). The contributions from R6 (including YGP)
361 and R8 (including QTP) are $<10\%$ along the western and southern rims of the SCB. Within the
362 basin, near-surface winds travel anti-clockwise wind and form a cyclone near Yibin, Zigong,
363 Neijiang, and Luzhou in the south (Figures 1(b), 2(a), and 3(a)) (Lin, 2015), causing air pollutants
364 transported to and accumulated at the cyclone. $PM_{2.5}$ concentrations in the cyclone-affected region
365 (mostly 100-150 and 30~50 $\mu g m^{-3}$ in the winter and summer, respectively) are generally lower
366 than that of Chengdu and Chongqing but are higher than that of most of other regions. In Yibin,
367 Zigong, Neijiang, and Luzhou, at least 39~53% and 25~44% of citywide average $PM_{2.5}$
368 concentrations are not due to their own emissions in the winter and summer, respectively (Tables
369 2 and S2). R7 only contributes about 10% to $PM_{2.5}$ in the cyclone-affected region. In order to
370 reduce seasonal and annual concentrations of $PM_{2.5}$ within the SCB, the emissions and inter-city
371 transport of air pollutants within the basin should receive the priorities to be controlled.

372

373 4. Conclusion

374 In this study, a source-oriented CMAQ model was applied to quantify contributions of nine
375 regions to $PM_{2.5}$ for the 18 cities in the SCB. The simulations were carried out for winter
376 (December 2014 to February 2015) and summer (June to August 2015). Predicted citywide area-
377 weighted average $PM_{2.5}$ concentrations are much higher in the winter ($60\sim 191 \mu g m^{-3}$) than in the
378 summer ($14\sim 64 \mu g m^{-3}$). In the winter, the citywide average $PM_{2.5}$ concentrations in Chengdu and
379 western Chongqing are 99 and 110 $\mu g m^{-3}$, with 44% and 52% due to non-local emissions,
380 respectively. Non-local emissions also have high contributions in other SCB cities, with citywide
381 averages of 39~66% and 25~52% in the winter and summer, respectively. Among the four regions
382 outside the SCB, only the one to the northeast, east, and southeast of the SCB (R7) has large
383 contributions to $PM_{2.5}$ concentrations for the SCB in both seasons (10~80%), and the contributions
384 decrease from the rims of the northeastern, eastern, and southeastern SCB to other regions.
385 However, the MDCs from R7 are large ($35\sim 99 \mu g m^{-3}$) for all the city centers in the winter. On
386 high $PM_{2.5}$ days in the winter, emissions outside SCB can contribute up to 99 $\mu g m^{-3}$ in a city
387 center, suggesting the importance of regional emission control in not just reducing averaged $PM_{2.5}$
388 but also preventing severe PM pollution events. The transport of SIA is greater than that of PPM,
389 suggested by that local emissions have higher contributions to PPM ($>55\%$) than to SIA ($<45\%$)

390 in the city centers in both seasons. Among the three ions of SIA, the transport of SO_4^{2-} and its gas-
391 phase precursor (SO_2) is the greatest in general, as >50% of it in all the city centers is associated
392 with non-local emissions in both seasons, except that the contributions are 37~44% in Chongqing
393 and Chengdu in the summer and Chongqing in the winter. In conclusion, in order to reduce $\text{PM}_{2.5}$
394 concentrations and prevent high $\text{PM}_{2.5}$ days for the entire SCB, local emissions and the transport
395 of air pollutants within and across SCB should be controlled simultaneously.

396

397 **Author contributions.** XQ, YT, and HZ designed research. HG, JH, QY, and HZ contributed to
398 model development and configuration. XQ, HG, PW, WD, and XZ analyzed the data. XQ prepared
399 the manuscript and all co-authors helped improve the manuscript.

400 **Competing interests.** The authors declare that they have no conflict of interest.

401 **Acknowledgment.** Portions of this research were conducted with high-performance computing
402 resources provided by the Louisiana State University (<http://www.hpc.lsu.edu>). This study is
403 sponsored by the International Collaboration Project of the Science & Technology Department of
404 Sichuan Province [2017HH0048], the National Natural Science Foundation of China [41628102],
405 the Program of Introducing Talents of Discipline to Universities [B08037], and $\text{PM}_{2.5}$ monitoring
406 in the campuses of Sichuan University [SCU2015CC0001], and the Chinese Scholarship Council
407 [201706245007].

408 **References**

- 409 Arya, S. Pal: Air pollution meteorology and dispersion, Oxford University Press, New York, United States,
410 1999.
- 411 Begum, B. A., Kim, E., Jeong, C.-H., Lee, D. W., and Hopke, P. K.: Evaluation of the potential source
412 contribution function using the 2002 Quebec forest fire episode, *Atmos. Environ.*, 39, 3719-3724, 2005.
- 413 Bei, N. F., Zhao, L. N., Wu, J. R., Li, X., Feng, T., and Li, G. H.: Impacts of sea-land and mountain-valley
414 circulations on the air pollution in Beijing-Tianjin-Hebei (BTH): A case study, *Environ. Pollut.*, 234, 429-
415 438, 2018.
- 416 Bei, N. F., Zhao, L. N., Xiao, B., Meng, N., and Feng, T.: Impacts of local circulations on the wintertime air
417 pollution in the Guanzhong Basin, China, *Sci. Total Environ.*, 592, 373-390, 2017.
- 418 Bove, M., Broto, P., Cassola, F., Cuccia, E., Massabò, D., Mazzino, A., Piazzalunga, A., and Prati, P.: An
419 integrated PM_{2.5} source apportionment study: positive matrix factorisation vs. the chemical transport
420 model CAMx, *Atmos. Environ.*, 94, 274-286, 2014.
- 421 Burr, M. J., and Zhang, Y.: Source apportionment of fine particulate matter over the Eastern U.S. Part I: source
422 sensitivity simulations using CMAQ with the Brute Force method, *Atmos. Pollut. Res.*, 2, 300-317,
423 <https://doi.org/10.5094/APR.2011.036>, 2011.
- 424 Calderón-Garcidueñas, L., Kulesza, R. J., Doty, R. L., D'Angiulli, A., and Torres-Jardón, R.: Megacities air
425 pollution problems: Mexico City Metropolitan Area critical issues on the central nervous system pediatric
426 impact, *Environ. Res.*, 137, 157-169, 2015.
- 427 Chambers, S. D., Wang, F., Williams, A. G., Deng, X. D., Zhang, H., Lonati, G., Crawford, J., Griffiths, A. D.,
428 Lanniello, A., and Allegrini, I.: Quantifying the influences of atmospheric stability on air pollution in
429 Lanzhou, China, using a radon-based stability monitor, *Atmos. Environ.*, 107, 233-243, 2015.
- 430 Chen, D., Liu, X., Lang, J., Zhou, Y., Wei, L., Wang, X., and Guo, X.: Estimating the contribution of regional
431 transport to PM_{2.5} air pollution in a rural area on the North China Plain, *Sci. Total Environ.*, 583, 280-291,
432 <https://doi.org/10.1016/j.scitotenv.2017.01.066>, 2017.
- 433 Chen, Y., and Xie, S.: Characteristics and formation mechanism of a heavy air pollution episode caused by
434 biomass burning in Chengdu, Southwest China, *Sci. Total Environ.*, 473-474, 507-517,
435 <https://doi.org/10.1016/j.scitotenv.2013.12.069>, 2014.
- 436 Chen, Y., Luo, B., and Xie, S.: Characteristics of the long-range transport dust events in Chengdu, Southwest
437 China, *Atmos. Environ.*, 122, 713-722, 2015.
- 438 Crippa, M., Guizzardi, D., Muntean, M., Schaaf, E., Dentener, F., van Aardenne, J. A., Monni, S., Doering, U.,
439 Olivier, J. G. J., Pagliari, V., and Janssens-Maenhout, G.: Gridded Emissions of Air Pollutants for the
440 period 1970-2012 within EDGAR v4.3.2, *Earth Sys. Sci. Data*, 2018, 1-40, 2018.
- 441 Emery, C., Tai, E., and Yarwood, G.: Enhanced meteorological modeling and performance evaluation for two
442 Texas ozone episodes. Final report submitted to Texas natural resources conservation commission,
443 prepared by ENVIRON, International Corp., Novato., 2001.
- 444 Emery, C., Liu, Z., Russell, A. G., Odman, M. T., Yarwood, G., and Kumar, N.: Recommendations on
445 statistics and benchmarks to assess photochemical model performance, *J. Air Waste Manage.*, 67, 582-
446 598, 2017.

- 447 Guenther, A., Jiang, X., Heald, C., Sakulyanontvittaya, T., Duhl, T., Emmons, L., and Wang, X.: The Model of
448 Emissions of Gases and Aerosols from Nature version 2.1 (MEGAN2. 1): an extended and updated
449 framework for modeling biogenic emissions, *Geosci. Model Dev.*, 5, 1471-1492, 2012.
- 450 Han, X., Zhu, L., Wang, S., Meng, X., Zhang, M., and Hu, J. L.: Modeling study of impacts on surface ozone
451 of regional transport and emissions reductions over North China Plain in summer 2015, *Atmos. Chem.*
452 *Phys.*, 18, 12207-12221, 2018.
- 453 He, J., Gong, S., Yu, Y., Yu, L. J., Wu, L., Mao, H. J., Song, C. B., Zhao, S. P., Liu, H. L., Li, X. Y., and Li,
454 R. P.: Air pollution characteristics and their relation to meteorological conditions during 2014–2015 in
455 major Chinese cities, *Environ. Pollut.*, 223, 484-496, 2017.
- 456 Hopke, P. K.: Review of receptor modeling methods for source apportionment, *J. Air Waste Manage.*, 66, 237-
457 259, 2016.
- 458 Hu, J., Wu, L., Zheng, B., Zhang, Q., He, K., Chang, Q., Li, X., Yang, F., Ying, Q., and Zhang, H.: Source
459 contributions and regional transport of primary particulate matter in China, *Environ. Pollut.*, 207, 31-42,
460 2015.
- 461 Huang, Y., Deng, T., Li, Z., Wang, N., Yin, C., Wang, S., and Fan, S.: Numerical simulations for the sources
462 apportionment and control strategies of PM_{2.5} over Pearl River Delta, China, part I: Inventory and PM_{2.5}
463 sources apportionment, *Sci. Total Environ.*, 634, 1631-1644,
464 <https://doi.org/10.1016/j.scitotenv.2018.04.208>, 2018.
- 465 Huang, R. J., Zhang, Y. L., Bozzetti, C., Ho, K. F. Cao, J. J., Han, Y. M., Daellenbach, K. R., Slowik, J. G.,
466 Platt, S. M., Canonaco, F., Zotter, P., Wolf, R., Pieber, S. M., Bruns, E. A., Crippa, M., Ciarelli, G.,
467 Pizaazlunga, A., Schwikowski, M., Abbaszade, G., Schnelle-Kreis, J., Zimmermann, R., An, Z. S., Szidat,
468 S., Baltensperger, U., Haddad, I. E., Prévôt, A. H.: High secondary aerosol contribution to particulate
469 pollution during haze events in China, *Nature*, 514, 218-222, 2014.
- 470 Itahashi, S., Hayami, H., Yumimoto, K., and Uno, I.: Chinese province-scale source apportionments for sulfate
471 aerosol in 2005 evaluated by the tagged tracer method, *Environ. Pollut.*, 220, 1366-1375, 2017.
- 472 Jiang, C., Wang, H., Zhao, T., Li, T., and Che, H.: Modeling study of PM_{2.5} pollutant transport across cities in
473 China's Jing–Jin–Ji region during a severe haze episode in December 2013, *Atmos. Chem. Phys.*, 15,
474 5803-5814, 2015.
- 475 Kanakidou, M., Mihalopoulos, N., Kindap, T., Im, U., Vrekoussis, M., and Gerasopoulos, E. et al.: Megacities
476 as hot spots of air pollution in the East Mediterranean, *Atmos. Environ.*, 45(6), 1223-1235, 2011.
- 477 Kang, Y., Liu, M., Song, Y., Huang, X., Yao, H., Cai, X., Zhang, H., Kang, L., Liu, X., and Yan, X.: High-
478 resolution ammonia emissions inventories in China from 1980-2012, *Atmos. Chem. Phys.*, 15, 26959-
479 26995 2016.
- 480 Kim, P. S., Jacob, D. J., Fisher, J. A., Travis, K., Yu, K., Zhu, L., Yantosca, R. M., Sulprizio, M., Jimenez, J.
481 L., and Campuzano-Jost, P.: Sources, seasonality, and trends of southeast US aerosol: an integrated
482 analysis of surface, aircraft, and satellite observations with the GEOS-Chem chemical transport model,
483 *Atmos. Chem. Phys.*, 15, 10411-10433, 2015.
- 484 Langford, A. O., Senff, C. J., Alvarez, R. J., Banta, R. M., and Hardesty, R. M.: Long-range transport of ozone
485 from the Los Angeles Basin: A case study, *Geophys. Res. Lett.*, 37, L06807, 2010.

486 Lelieveld, J., Evans, J. S., Fnais, M., Giannadaki, D., and Pozzer, A.: The contribution of outdoor air pollution
487 sources to premature mortality on a global scale, *Nature*, 525, 367-371, 2015.

488 Li, L., Tan, Q., Zhang, Y., Feng, M., Qu, Y., An, J., and Liu, X.: Characteristics and source apportionment of
489 PM_{2.5} during persistent extreme haze events in Chengdu, southwest China, *Environ. Pollut.*, 230, 718-
490 729, 2017.

491 Li, P., Yan, R., Yu, S., Wang, S., Liu, W., and Bao, H.: Reinstate regional transport of PM_{2.5} as a major cause
492 of severe haze in Beijing, *PNAS*, 112, E2739-E2740, 2015.

493 Lin, N.: The research on transport law of atmospheric pollutant and joint prevention and control of air
494 pollution technology in Sichuan Province, Southwest Jiaotong University, Chengdu, China, 2015.

495 Liao, T., Wang, S., Ai, J., Gui, K., Duan, B., Zhao, Q., Zhang, X., Jiang, W., and Sun, Y.: Heavy pollution
496 episodes, transport pathways and potential sources of PM_{2.5} during the winter of 2013 in Chengdu
497 (China), *Sci. Total Environ.*, 584, 1056-1065, 2017.

498 Liu, S., Hua, S., Wang, K., Qiu, P., Liu, H., Wu, B., Shao, P., Liu, X., Wu, Y., and Xue, Y.: Spatial-temporal
499 variation characteristics of air pollution in Henan of China: Localized emission inventory, WRF/Chem
500 simulations and potential source contribution analysis, *Sci. Total Environ.*, 624, 396-406, 2018.

501 National Bureau of Statistics (NSBC): China Statistics Yearbook.
502 <http://www.stats.gov.cn/tjsj/ndsj/2016/indexch.htm>, 2015.

503 Ning, G., Wang, S., Ma, M., Ni, C., Shang, Z., Wang, J., and Li, J.: Characteristics of air pollution in different
504 zones of Sichuan Basin, China, *Sci. Total Environ.*, 612, 975-984, 2018a.

505 Ning, G., Wang, S., Yim, S. H. L., Li, J. X., Hu, Y. L., Shang, Z. W., Wang, J. Y., and Wang, J. X.: Impact of
506 low-pressure systems on winter heavy air pollution in the northwest Sichuan Basin, China, *Atmos. Chem.*
507 *Phys.*, 18(18), 13601-13615, 2018b.

508 Paatero, P., and Tapper, U.: Positive matrix factorization: A non-negative factor model with optimal utilization
509 of error estimates of data values, *Environmetrics*, 5, 111-126, 1994.

510 Qiao, X., Guo, H., Wang, P. F., Tang, Y., Ying, Q., Zhao, X., Deng, W. Y., and Zhang, H. L.: Modeling Fine
511 Particulate Matter and Ozone in the 18 Cities of Sichuan Basin, Southwestern China, *Aerosol*
512 *Air Qual. Res.*, submitted.

513 Qiao, X., Ying, Q., Li, X. H., Zhang, H. L., Hu, J. L., Tang, Y., and Chen X.: Source apportionment of PM_{2.5}
514 for 25 Chinese provincial capitals and municipalities using a source-oriented community multiscale air
515 quality model, *Sci. Total Environ.*, 612, 462-471, 2018.

516 Qiu, Y.M., Xie, Q. R., Wang, J. F., Xu, W. Q., Li, L. J., Wang, Q. Q., Zhao, J., and Chen, Y. T. et al.: Vertical
517 characterization and source apportionment of water-soluble organic aerosol with high-resolution aerosol
518 mass spectrometry in Beijing, China, *ACS Earth Space Chem.*, 3, 273–284, 2019.

519 Shi, Z., Li, J., Huang, L., Wang, P., Wu, L., Ying, Q., Zhang, H., Lu, L., Liu, X., Liao, H., and Hu, J.: Source
520 apportionment of fine particulate matter in China in 2013 using a source-oriented chemical transport
521 model, *Sci. Total Environ.*, 601-602, 1476-1487, <https://doi.org/10.1016/j.scitotenv.2017.06.019>, 2017.

522 Shi, X. Q., Zhao, C. F., Jiang, J. H., Wang, C. Y., Yang, X., and Yung, Y. L.: Spatial representativeness of
523 PM_{2.5} concentrations obtained using observations from network stations, *J. Geophys. Res-Atm.*, 123,
524 2018.

525 Stein, A., Draxler, R. R., Rolph, G. D., Stunder, B. J., Cohen, M., and Ngan, F.: NOAA's HYSPLIT
526 atmospheric transport and dispersion modeling system, *Bull. Amer. Meteor. Soc.*, 96, 2059-2077, 2015.

527 Tang, L., Yu, H., Ding, A., Zhang, Y., Qin, W., Wang, Z., Chen, W., Hua, Y., and Yang, X.: Regional
528 contribution to PM₁ pollution during winter haze in Yangtze River Delta, China, *Sci. Total Environ.*, 541,
529 161-166, 2016.

530 Tao, J., Zhang, L., Engling, G., Zhang, R., Yang, Y., Cao, J., Zhu, C., Wang, Q., and Luo, L.: Chemical
531 composition of PM_{2.5} in an urban environment in Chengdu, China: Importance of springtime dust storms
532 and biomass burning, *Atmos. Res.*, 122, 270-283, 2013.

533 Uno, I., Eguchi, K., Yumimoto, K., Takemura, T., Shimizu, A., Uematsu, M., Liu, Z., Wang, Z., Hara, Y., and
534 Sugimoto, N.: Asian dust transported one full circuit around the globe, *Nat. Geosci.*, 2, 557-560, 2009.

535 Wang, L., Jang, C., Zhang, Y., Wang, K., Zhang, Q., Streets, D., Fu, J., Lei, Y., Schreifels, J., He, K., Hao, J.,
536 Lam, Y. F., Lin, J., Meskhidze, N., Voorhees, S., Evarts, D., and Phillips, S.: Assessment of air quality
537 benefits from national air pollution control policies in China. Part I: Background, emission scenarios and
538 evaluation of meteorological predictions, *Atmos. Environ.*, 44, 3442-3448,
539 <https://doi.org/10.1016/j.atmosenv.2010.05.051>, 2010.

540 Wang, L., Wei, Z., Yang, J., Zhang, Y., Zhang, F., Su, J., Meng, C., and Zhang, Q.: The 2013 severe haze over
541 the southern Hebei, China: model evaluation, source apportionment, and policy implications, *Atmos.*
542 *Chem. Phys.*, 13, 3151-3173, 2013.

543 Wang, M., Cao, C., Li, G., and Singh, R.: Analysis of a severe prolonged regional haze episode in the Yangtze
544 River Delta, China, *Atmos. Environ.*, 102, 112-121, 2015.

545 Wang, Z. S., Chao-Jung, C., and Tonnesen, G. S.: Development of a tagged species source apportionment
546 algorithm to characterize three-dimensional transport and transformation of precursors and secondary
547 pollutants, *J. Geophys. Res. Atmos.*, 114, 2009.

548 Watson, J. G., Robinson, N. F., Chow, J. C., Henry, R. C., Kim, B., Pace, T., Meyer, E. L., and Nguyen, Q.:
549 The USEPA/DRI chemical mass balance receptor model, CMB 7.0, *Environ. Softw.*, 5, 38-49, 1990.

550 Whiteman, C. D., Hoch, S. W., Horel, J. D., and Charland, A.: Relationship between particulate air pollution
551 and meteorological variables in Utah's Salt Lake Valley, *Atmos. Environ.*, 94, 742-753, 2014.

552 WHO: WHO air quality guidelines for particulate matter, ozone, nitrogen dioxide and sulfur dioxide.
553 [http://apps.who.int/iris/bitstream/handle/10665/69477/WHO_SDE_PHE_OEH_06.02_eng.pdf;sequence=](http://apps.who.int/iris/bitstream/handle/10665/69477/WHO_SDE_PHE_OEH_06.02_eng.pdf;sequence=1)
554 [1](http://apps.who.int/iris/bitstream/handle/10665/69477/WHO_SDE_PHE_OEH_06.02_eng.pdf;sequence=1), 2006.

555 Wiedinmyer, C., Akagi, S., Yokelson, R., Emmons, L., Al-Saadi, J., Orlando, J., and Soja, A.: The Fire
556 INventory from NCAR (FINN)—a high resolution global model to estimate the emissions from open
557 burning, *Geosci. Model Dev.*, 3, 2439-2476, 2010.

558 Wu, Y., Arapi, A., Huang, J., Gross, B., and Moshary, F.: Intra-continental wildfire smoke transport and
559 impact on local air quality observed by ground-based and satellite remote sensing in New York City,
560 *Atmos. Environ.*, 187, 266-281, 2018.

561 Yang, X., Zhao, C., Zhou, L., Li, Z., Cribb, M., and Yang, S.: Wintertime cooling and a potential connection
562 with transported aerosols in Hong Kong during recent decades, *Atmos. Res.*, 211, 52-61, 2018.

563 Ying, Q., Wu, L., and Zhang, H.: Local and inter-regional contributions to PM_{2.5} nitrate and sulfate in China,
564 *Atmos. Environ.*, 94, 582-592, <https://doi.org/10.1016/j.atmosenv.2014.05.078>, 2014.

- 565 Zhang, H. L., Wang, Y., Hu, J. L., Ying, Q., and Hu, X. M.: Relationships between meteorological parameters
566 and criteria air pollutants in three megacities in China, *Environ. Res.*, 140, 242-254, 2015.
- 567 Zhang, R., Jing, J., Tao, J., Hsu, S. C., Wang, G., Cao, J., Lee, C. S. L., Zhu, L., Chen, Z., and Zhao, Y.:
568 Chemical characterization and source apportionment of PM_{2.5} in Beijing: seasonal perspective, *Atmos.*
569 *Chem. Phys.*, 13, 7053-7074, 2013.
- 570 Zhao, B., Wang, S., Dong, X., Wang, J., Duan, L., Fu, X., Hao, J., and Fu, J.: Environmental effects of the
571 recent emission changes in China: implications for particulate matter pollution and soil acidification,
572 *Environ. Res. Lett.*, 8, 024031, 2013b.
- 573 Zhao, C., Andrews, A. E., Bianco, L., Eluszkiewicz, J., Hirsch, A., MacDonald, C., Nehr Korn, T., and Fischer,
574 M. L.: Atmospheric inverse estimates of methane emissions from Central California, *J. Geophys. Res-*
575 *Atm.*, 114, 2009.
- 576 Zhao, Q., He, K., Rahn, K., Ma, Y., Jia, Y., Yang, F., Duan, F., Lei, Y., Cheng, Y., and Wang, S.: Dust storms
577 come to Central and Southwestern China, too: implications from a major dust event in Chongqing, *Atmos.*
578 *Chem. Phys.*, 10, 2615-2630, 2010.
- 579 Zhao, C. F., Li, Y. N., Zhang, F., Sun, Y. L., and Wang, P. C.: Growth rates of fine aerosol particles at a site
580 near Beijing in June 2013, *Adv. Atmos. SCI.*, 35, 209-217, 2018.
- 581 Zhao, C. F., Wang, Y., Shi, X. Q., Zhang, D. Z., Wang, C. Y., Jiang, J. H., Zhang, Q., and Fan, H.: Estimating
582 the contribution of local primary emissions to particulate pollution using high-density station
583 observations, *J. Geophys. Res-Atm.*, 124, 2019.
- 584 Zhao, S., Yu, Y., Yin, D., Qin, D., He, J., and Dong, L.: Spatial patterns and temporal variations of six criteria
585 air pollutants during 2015 to 2017 in the city clusters of Sichuan Basin, China, *Sci. Total Environ.*, 624,
586 540-557, 2018.
- 587 Zhao, X., Zhao, P., Xu, J., Meng, W., Pu, W., Dong, F., He, D., and Shi, Q.: Analysis of a winter regional haze
588 event and its formation mechanism in the North China Plain, *Atmos. Chem. Phys.*, 13, 5685-5696, 2013a.
- 589 Zheng, G., Duan, F., Su, H., Ma, Y., Cheng, Y., Zheng, B., Zhang, Q., Huang, T., Kimoto, T., and Chang, D.:
590 Exploring the severe winter haze in Beijing: the impact of synoptic weather, regional transport and
591 heterogeneous reactions, *Atmos. Chem. Phys.*, 15, 2969-2983, 2015.
- 592 Zhu, Y., Huang, L., Li, J., Ying, Q., Zhang, H., Liu, X., Liao, H., Li, N., Liu, Z., and Mao, Y.: Sources of
593 particulate matter in China: Insights from source apportionment studies published in 1987–2017, *Environ.*
594 *Int.*, 115, 343-357, 2018.

595 Table 1. Predicted source-region contributions to PM_{2.5} in the 18 SCB city centers in the winter.

Region ID	City	PM _{2.5} ($\mu\text{g m}^{-3}$)	Contributions from each region, SOA, and others* (%)													
			R1	R2	R3	R4	R5	Within SCB	R6	R7	R8	R9	Outside SCB	SOA	Others	Non-local [#]
R1	Chongqing ^{\$}	191	67.7	4.5	3.7	0.4	1.8	78.1	2.7	11.1	0.1	0.9	14.8	3.9	3.3	25.2
R2	Bazhong	65	2.0	42.6	2.8	1.2	2.9	51.5	1.7	31.9	0.1	2.7	36.4	6.9	5.1	45.3
	Dazhou	89	2.4	47.3	1.7	0.5	7.5	59.4	1.5	27	0.1	1.6	30.2	6.0	4.3	42.3
	Guangan	109	8.9	50.4	2.0	0.5	5.4	67.2	2.3	19.6	0.1	1.4	23.4	5.8	3.5	40.2
	Guangyuan	60	2.3	45.5	5.2	1.8	1.7	56.5	1.3	25.5	0.1	4.2	31.1	6.5	5.8	42.1
	Nanchong	120	6.1	56.5	3.2	0.6	3.1	69.5	1.8	18.1	0.1	1.3	21.3	5.7	3.4	34.3
R3	Deyang	143	2.7	4.6	58.0	14.5	0.8	80.6	0.8	9.4	0.1	1.6	11.9	4.2	3.4	34.5
	Leshan	125	2.9	3.1	58.7	15.1	0.6	80.4	1.2	8.2	0.1	1.2	10.7	5.7	3.0	32.4
	Luzhou	149	13.9	4.8	53.9	1.8	1.2	75.6	3.8	11.2	0.1	1.0	16.1	5.4	2.9	37.8
	Meishan	153	2.5	3.1	40.2	36.3	0.6	82.7	0.9	7.7	0.1	1.1	9.8	4.6	2.9	52.3
	Mianyang	114	2.7	6.8	60.3	4.8	1.1	75.7	0.9	12.4	0.1	2.2	15.6	4.9	3.8	31.0
	Neijiang	140	11.3	7.6	51.9	2.8	1.3	74.9	2.4	12.7	0.1	1.1	16.3	5.6	3.1	39.3
	Suining	100	11.7	33.5	14.4	1.1	3.2	63.9	2.6	21.4	0.1	1.7	25.8	6.8	3.6	75.3
	Ya'an	79	3.2	3.6	45.9	20.1	0.7	73.5	1.4	11.0	0.3	2.3	15.0	7.6	3.8	42.6
	Yibin	134	6.8	4.1	60.1	5.5	0.9	77.4	2.8	9.7	0.1	1.1	13.7	6.0	3.0	31.0
	Zigong	145	8.9	6.0	57.1	3.2	1.1	76.3	2.4	11.4	0.1	1.1	15.0	5.5	3.3	34.2
	Ziyang	131	5.8	7.3	54.0	7.1	1.2	75.4	1.7	12.6	0.1	1.4	15.8	5.6	3.2	37.2
R4	Chengdu	144	2.2	3.5	20.4	55.2	0.6	81.9	0.8	8.2	0.1	1.4	10.5	4.2	3.5	37.2

596 * Others include initial and boundary conditions, windblown dust, and sea salt.

597 # Non-local=Within SCB + Outside SCB – Local.

598 \$ the city center of Chongqing.

599 Table 2. Predicted citywide area-weighted average PM_{2.5} concentrations and source-region contributions in the 18 SCB cities in the
600 winter and summer.

Region ID	No. of grid cells	Total area (km ²)	City	No. of grid cells	Total area (km ²)	Winter			Summer		
						PM _{2.5} (μg m ⁻³)	Contributions (%)		PM _{2.5} (μg m ⁻³)	Contributions (%)	
							Local	Non-local [#]		Local	Non-local [#]
R1	248	28011	Western Chongqing	248	28011	99	37.8	52.1	27	36.8	36.0
R2	543	56265	Bazhong	106	10734	51	27.9	58.2	14	19.3	43.6
			Dazhou	139	14689	64	29.1	58.6	16	21.6	45.7
			Guangan	60	5618	100	40.6	49.5	23	32.3	40.3
			Guangyuan	133	14182	50	28.3	57.1	13	23.4	40.5
			Nanchong	105	11042	89	47.9	41.4	20	36.3	34.1
R3	998	98185	Deyang	59	5346	101	49.9	40.2	25	44.5	32.8
			Leshan	107	11599	81	42.5	44.4	14	35.0	29.7
			Luzhou	112	10758	92	35.3	53.8	20	25.6	43.7
			Meishan	74	6570	120	42.6	47.7	26	36.7	35.8
			Mianyang	171	18012	59	36.8	49.2	15	32.9	36.7
			Neijiang	58	4859	122	45.8	44.8	29	40.8	34.7
			Suining	50	4743	104	30.3	59.7	23	25.4	48.4
			Ya'an	131	13493	45	34.5	49.2	6	27.9	35.1
			Yibin	117	11827	101	50.1	39.1	21	43.3	24.9
			Zigong	45	3935	126	51.3	39.4	30	47.3	26.9
Ziyang	74	7042	115	40.3	50.2	25	32.6	41.9			
R4	105	10753	Chengdu	105	10753	110	46.5	44.1	31	44.6	33.0
R5	390	44371	Eastern Chongqing	390	44371	54	21.0	66.0	15	14.7	52.1

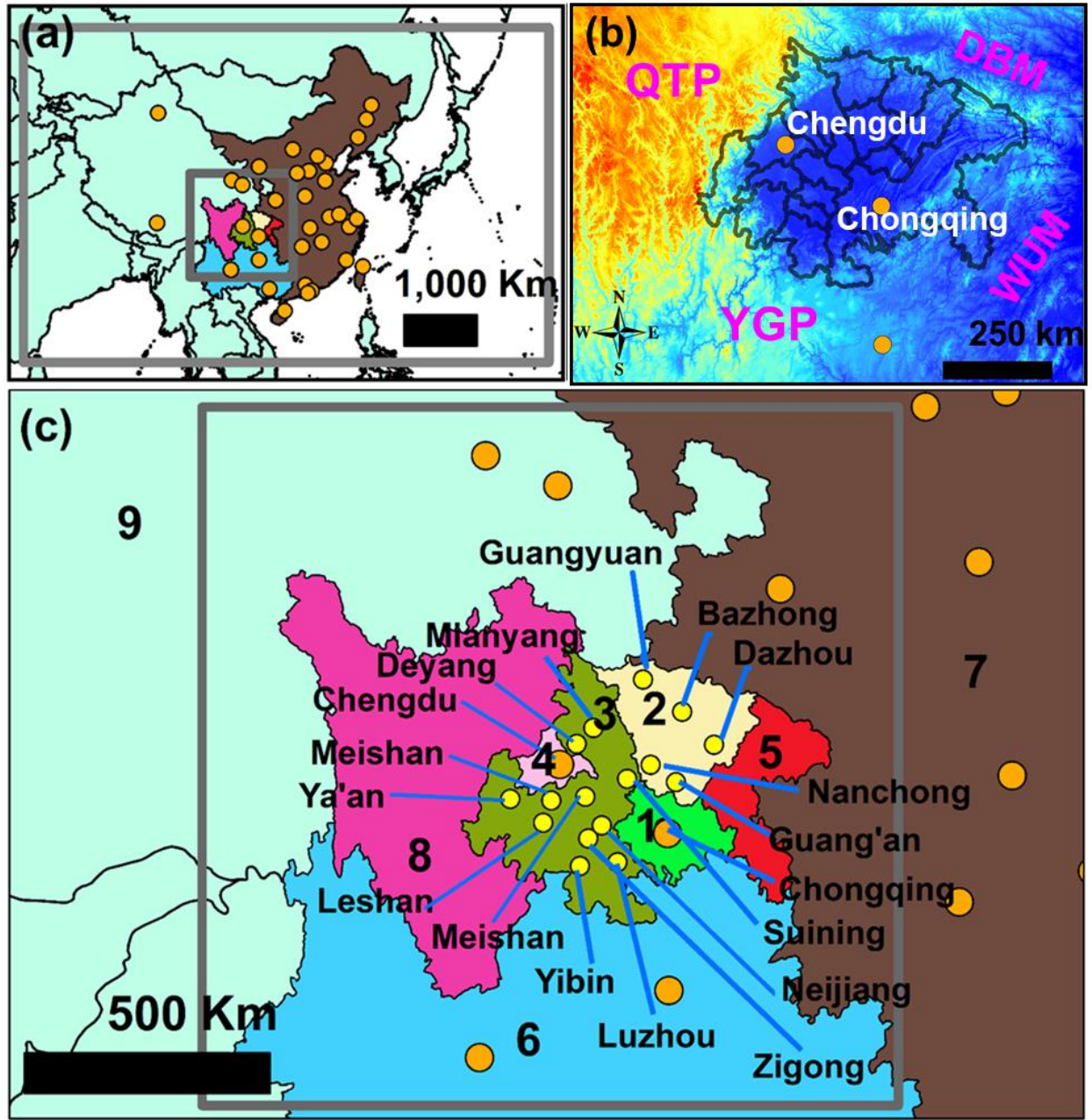
601 [#] Non-local =100%-Local-SOA-Others; Others include initial and boundary conditions, windblown dust, and sea salt.

602 Table 3. Predicted maximum daily contribution from a given region (MDCs) in the SCB city center and the corresponding PM_{2.5}
 603 concentrations in the city center on the same day. Only winter data are included in this table. The units are $\mu\text{g m}^{-3}$. The numbers in the
 604 bold present the contributions due to local emissions or that from R7.

Region ID	Cities	MDCs (total PM _{2.5} concentrations)										
		Within SCB					Outside SCB					SOA
		R1	R2	R3	R4	R5	R6	R7	R8	R9		
R1	Chongqing ^{\$}	291 (353)	54 (414)	48 (294)	16 (302)	15 (143)	22 (290)	99 (200)	1 (182)	8 (212)	12 (160)	12 (294)
	Bazhong	8 (160)	83 (139)	23 (160)	18 (160)	7 (64)	14 (68)	73 (109)	0 (140)	6 (90)	14 (327)	11 (34)
	Dazhou	46 (219)	123 (216)	16 (171)	6 (171)	34 (219)	12 (77)	79 (190)	0 (173)	5 (54)	18 (367)	8 (54)
R2	Guangan	72 (159)	129 (205)	31 (180)	10 (180)	22 (225)	14 (102)	76 (165)	0 (234)	5 (129)	16 (219)	7 (75)
	Guangyuan	11 (122)	60 (107)	35 (122)	15 (122)	4 (56)	10 (86)	62 (100)	0 (91)	11 (46)	16 (226)	10 (25)
	Nanchong	58 (180)	152 (242)	50 (200)	12 (243)	18 (238)	13 (141)	78 (166)	0 (177)	5 (136)	17 (178)	10 (71)
	Deyang	32 (226)	30 (257)	170 (296)	147 (288)	4 (257)	14 (215)	70 (132)	0 (215)	9 (137)	13 (91)	10 (67)
	Leshan	15 (270)	15 (166)	163 (270)	57 (222)	4 (166)	10 (222)	47 (122)	1 (108)	5 (118)	15 (222)	9 (105)
	Luzhou	115 (245)	33 (207)	211 (261)	21 (240)	10 (207)	18 (259)	71 (272)	1 (192)	6 (90)	17 (307)	10 (182)
	Meishan	17 (189)	22 (379)	155 (379)	138 (235)	4 (176)	11 (263)	54 (263)	1 (379)	5 (80)	15 (164)	9 (100)
	Mianyang	24 (209)	30 (170)	219 (294)	67 (305)	6 (168)	11 (144)	70 (112)	0 (337)	9 (86)	16 (294)	11 (46)
R3	Neijiang	93 (214)	39 (168)	161 (205)	49 (309)	6 (168)	17 (165)	79 (198)	1 (192)	5 (198)	19 (181)	9 (164)
	Suining	75 (183)	110 (242)	105 (186)	25 (225)	14 (210)	17 (151)	83 (167)	0 (154)	5 (79)	17 (198)	10 (41)
	Ya'an	14 (126)	17 (205)	79 (170)	88 (234)	3 (205)	8 (170)	35 (205)	1 (123)	6 (40)	15 (189)	9 (43)
	Yibin	74 (283)	21 (162)	160 (217)	45 (164)	5 (236)	16 (188)	58 (166)	1 (122)	4 (147)	14 (170)	9 (127)
	Zigong	64 (281)	34 (171)	162 (214)	51 (291)	6 (171)	17 (192)	71 (195)	1 (195)	5 (199)	16 (283)	10 (162)
	Ziyang	39 (192)	33 (137)	164 (298)	63 (176)	7 (120)	19 (181)	73 (155)	1 (298)	6 (176)	18 (203)	9 (126)
R4	Chengdu	16 (232)	23 (225)	86 (267)	250 (327)	4 (139)	11 (267)	63 (151)	1 (166)	7 (132)	16 (228)	9 (101)

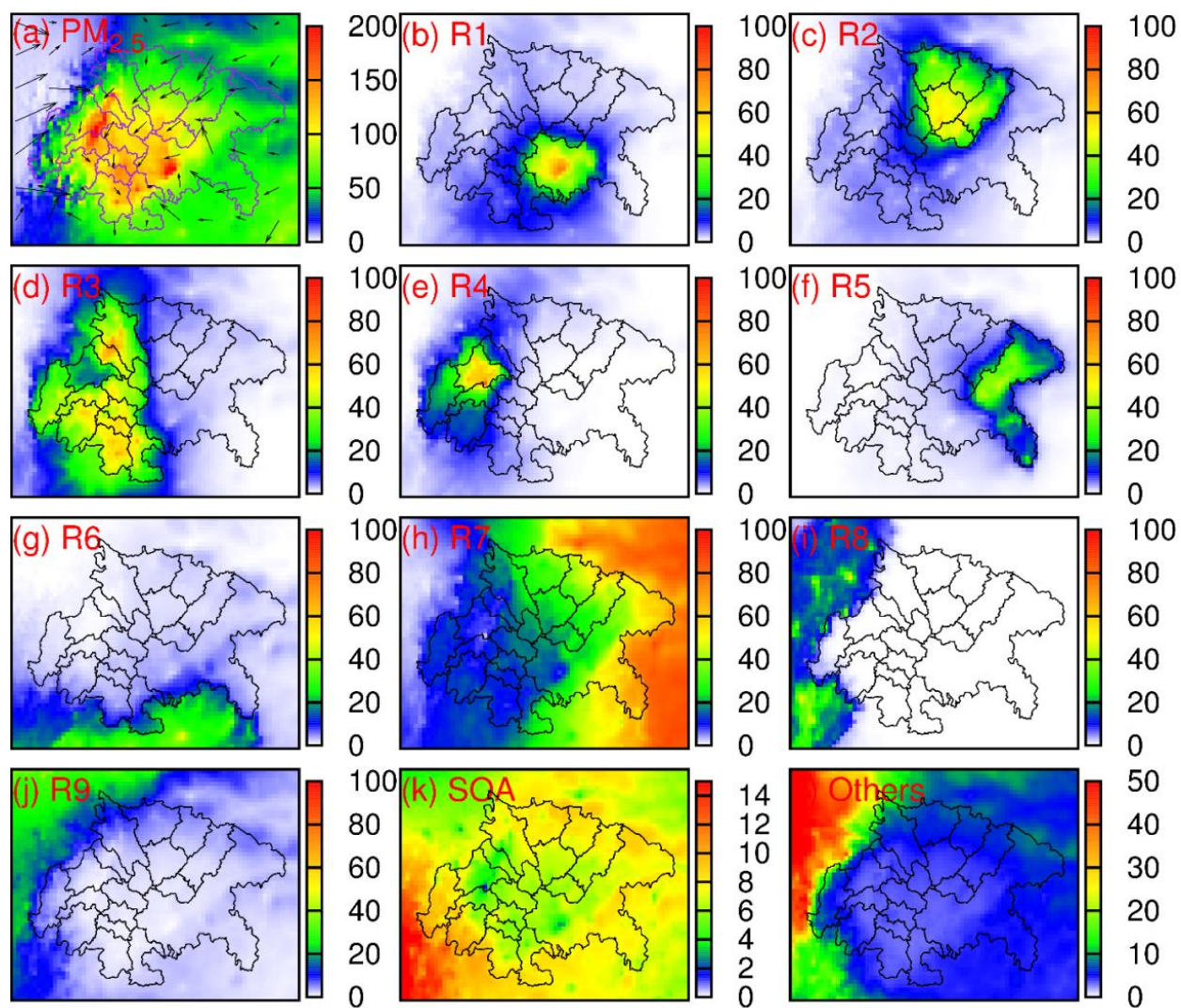
605 [#] Others include initial and boundary conditions, windblown dust, and sea salt.

606 ^{\$} includes the city center of Chongqing.

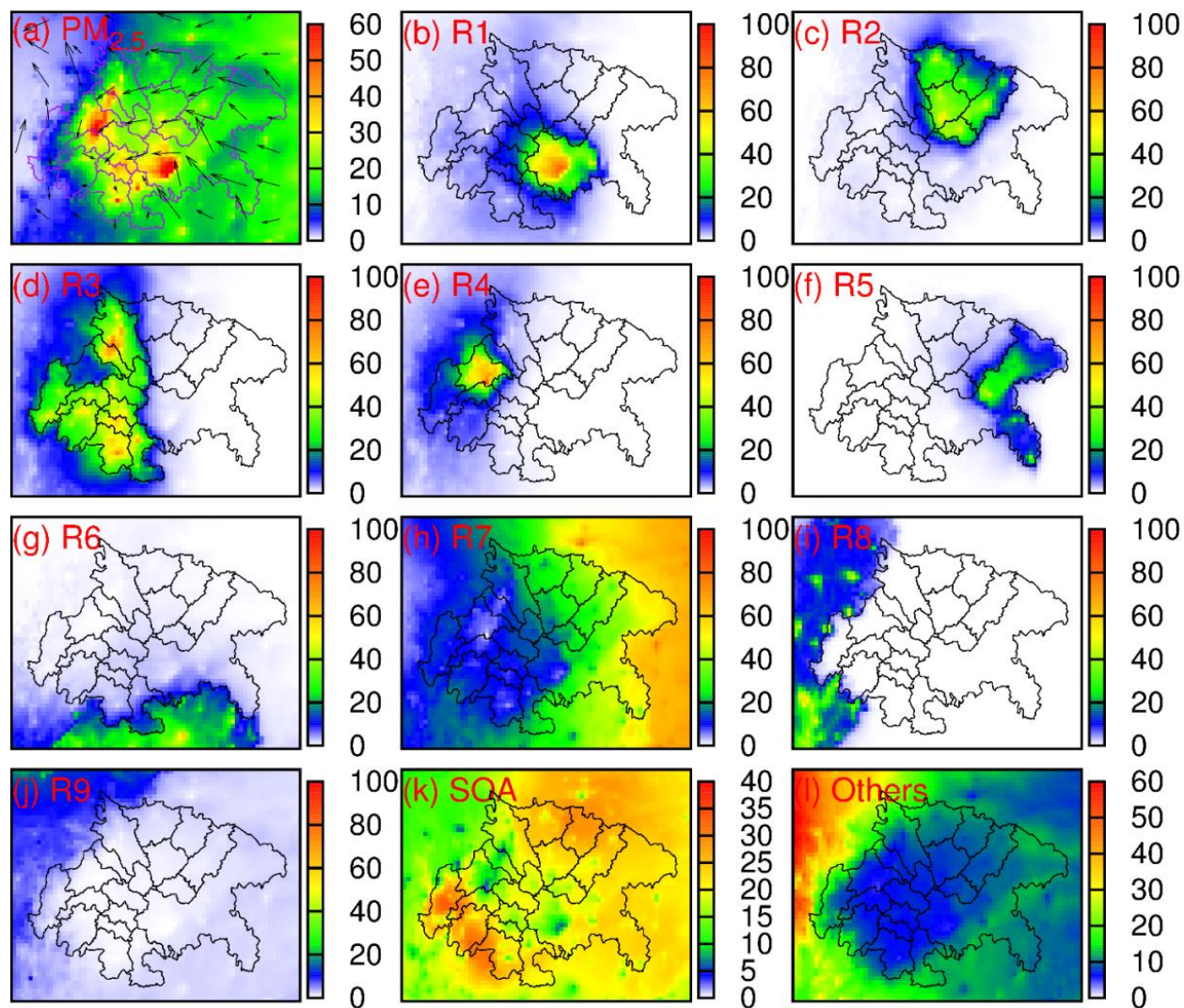


608

609 Figure 1. (a) Locations of the 12-km and 36-km domains (grey rectangles) and the locations of
 610 provincial capitals and municipalities (orange circles), (b) terrain within and surrounding the 18
 611 cities of the SCB (black line), and (c) locations of region categories 1~9 and the prefecture-level
 612 cities (yellow circles). Regions 1~5 are the cities within the SCB. Regions 1, 4, and 5 are western
 613 Chongqing, Chengdu, and eastern Chongqing, respectively. The city center of Chongqing is
 614 located in western Chongqing. Region 8 is the area of Sichuan Province excluding those cities in
 615 the SCB. QTP, Qinghai-Tibetan Plateau; YGP, Yunnan-Guizhou Plateau; DBM, Dabashan
 616 Mountains; WUM, Wushan Mountains.

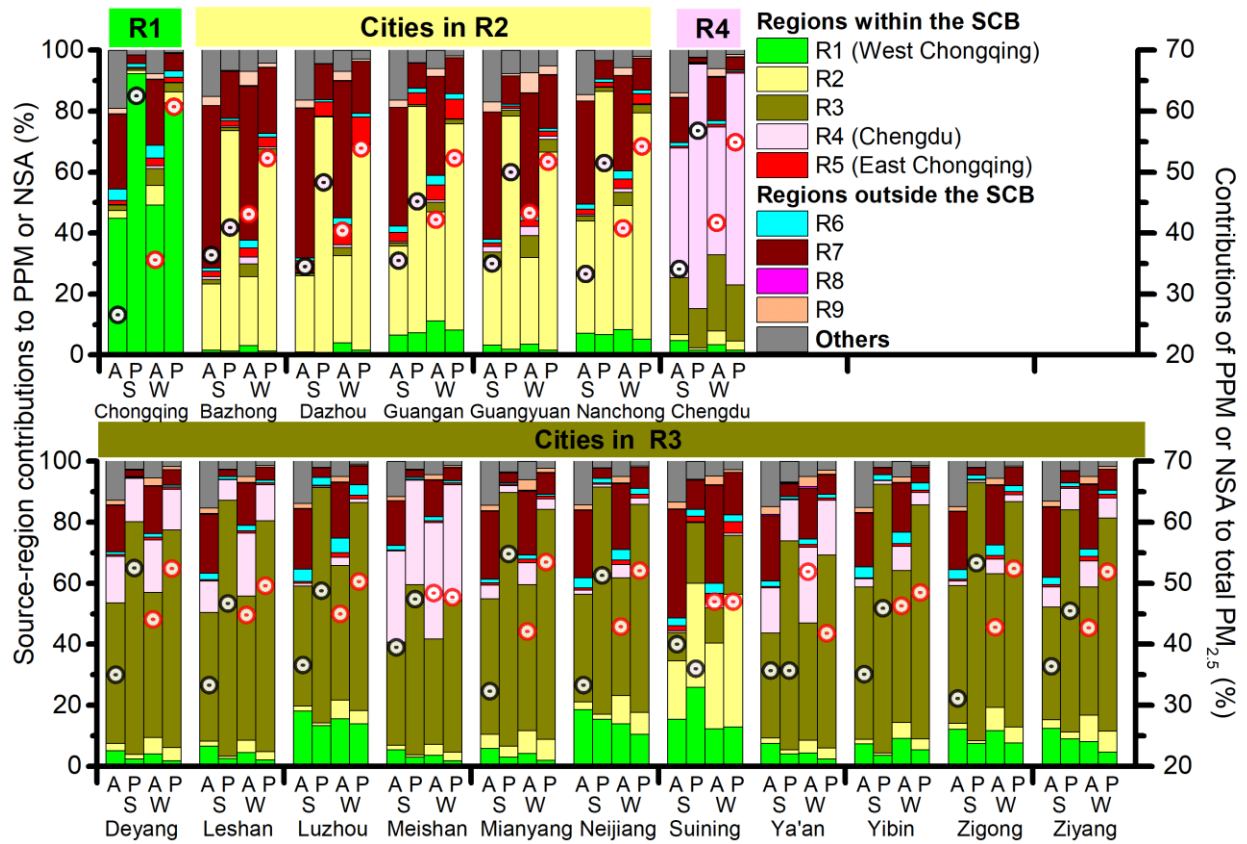


617
 618 Figure 2. (a) Spatial distributions of predicted PM_{2.5} concentrations ($\mu\text{g m}^{-3}$) and (b-l) source-
 619 region contributions to PM_{2.5} (%) in the winter. Others include IC, BC, windblown dust, and sea
 620 salt. Black arrows in (a) are wind vectors.



621
 622 Figure 3. (a) Spatial distributions of predicted PM_{2.5} concentrations ($\mu\text{g m}^{-3}$) and (b-l) the source-
 623 region contributions to PM_{2.5} (%) in the summer. Others include IC, BC, windblown dust, and sea
 624 salt.

625



626

627 Figure 4. Predicted source-region contributions to SIA (A) and PPM (P) (bars, left y-axis) and the
 628 predicted proportions of SIA and PPM in $PM_{2.5}$ (circles, right y-axis) for the 18 city centers of the
 629 SCB in the summer (S) and winter (W). Others include IC, BC, windblown dust, and sea salt.

630