

Response to acp-2018-1192-RC1

We really appreciate your constructive comments and suggestions on our manuscript. Your positive advice help improve our manuscript. We have considered every comment carefully, and responded on a point to point and marked every change in red in the revised version.

1. The authors use HCHO from satellite and primary tracer CO and secondary tracer O₃ from ground in-situ measurements to explore the primary and secondary source of HCHO. HCHO data is column density while O₃ and CO are concentrations at the surface. How the authors link the two different data to determine the source of HCHO. Why not use O₃ and CO data from satellite?

Responses: Thank you very much for this suggestion. HCHO column was converted to the mixing ratio at the surface using the formula (3) in the manuscript, and detailed information was described in sec 3.1. CO can also be observed by Atmospheric InfraRed Sounder (AIRS) on board satellite EOS-Aqua and Tropospheric Emission Spectrometer (TES) on board satellite EOS-Aura, close in time to OMPS observation. However, the global coverage of TES is significantly lower and the AIRS instrument is degrading (Worden et al., 2013). O₃ and CO concentrations at the surface were measured simultaneously from China National Environmental Monitoring Center (CNEMC) Network in long time series from 2014. So we use O₃ and CO data at the surface from CNEMC Network instead of data from satellite to explore the sources of HCHO.

Changes in manuscript: L33-34, P3 to L1-3, P4 in the revised version: “Due to low global coverage of Tropospheric Emission Spectrometer (Aura-TES) (Luo et al., 2002; Luo et al., 2007) and increasing noise after 2004 of Atmospheric InfraRed Sounder (Aqua-AIRS) (Pagano et al., 2012) which measure tropospheric CO closely in time to OMPS observation, obtaining precise CO concentration in the YRD after 2013 from satellite was limited. Therefore, CO and O₃ concentrations at the surface monitored by the China National Environmental Monitoring Center (CNEMC) Network simultaneously were used in this study.”

2. Section 3.1: The authors compared the OMPS data with FTS data, but did not illustrate why to compare the two different dataset.

Responses: Thank you very much for this suggestion. The global Network for Detection of Atmospheric Composition Change (NDACC) provides high quality, consistent, and standardized measurements of trace gases using FTS instruments, and its retrieval results were widely used for satellite observation. The ground-based FTS instrument used in this study is a candidate site for NDACC, and long-term measurements of HCHO by FTS were performed. So HCHO concentration measured by FTS was used to validate OMPS HCHO observation.

Changes in manuscript: L6, P6 in the revised version: “In order to validate the OMPS observation with FTS measurement”.

3. The authors discussed whether primary emission or secondary formation contributed significantly to the variations of HCHO, e.g. L15-20, P9, L5-10, P10, but did not tell the reader how they determine the contribution of primary and secondary sources to the variations

of HCHO. The authors need a standard to quantify the contribution to the variations of HCHO.

Responses: Thank you very much for this suggestion. Primary emission and secondary formation were fitted linearly with total HCHO, separately. And larger correlation coefficient means more contribution to the variations of HCHO.

Changes in manuscript: L27-28, P9, in the revised version: “and larger correlation coefficient means more contribution to the variations of HCHO”.

4. The author discussed the primary and secondary sources of HCHO in the three megacity Shanghai, Nanjing and Hangzhou, e.g. the spatial and seasonal variations. They should also discuss the commonness and difference of HCHO in the three cities.

Responses: Thank you very much for this suggestion. The secondary source of HCHO in the three megacity have similar seasonal variation, ranking in the order of summer > autumn > spring > winter, similar to seasonal variation of HCHO concentration. And HCHO concentration from secondary formation in summer in Shanghai was larger than that in Nanjing and Hangzhou.

Changes in manuscript: L10-12, P11, in the revised version: “The secondary source of HCHO in the three megacity has similar seasonal variation, ranking in the order of summer > autumn > spring > winter, similar to seasonal variation of HCHO concentration. While HCHO concentration from secondary formation in summer in Shanghai was larger than that in Nanjing and Hangzhou.”

5. Sec. 4.2: The discussion of HCHO control measures should use more results from this study instead of just citing the references.

Responses: Thank you very much for this suggestion.

Changes in manuscript: L18-20, P12, in the revised version: “In the Nanjing industrial zone, secondary source of HCHO was about four times larger than primary source in 2017. So at industrial sites, decreasing VOC emissions from related-chemical activities is an efficient way to control ambient HCHO concentration.”; L21-27, P12, in the revised version: “Secondary HCHO in the eastern suburbs of Hangzhou was the largest from 2016 to 2017 (Table 1), corresponding to the previous study indicating that the largest amount of VOCs emissions were measured in the eastern suburbs of Hangzhou and VOCs emissions from furniture manufacturing is the largest sources (Lu et al., 2018a). Secondary HCHO contributed most to ambient HCHO, while was not controlled effectively from 2015 to 2017. Considering that industrial manufacturing is developing well and VOCs emissions occur in many types of industries i.e., textile industry, printing, Leather manufacturing and shoemaking (Liu et al., 2008; Khan and Malik, 2014), controlling VOCs emissions in Hangzhou will be a huge challenge.”; L29-32, P12, in the revised version: “However, HCHO concentration from secondary source was not controlled effectively. Decreasing private cars on road and developing evaporative control regulations and improving traffic management suited for local conditions help reduce not only VOCs emissions but also HCHO emissions, especially in downtown (Wang and Zhao, 2008; Liu et al., 2015; Liu et al., 2017).”

6. In sec. 5 summary: The authors declare “only secondary HCHO can be used as the proxy

for VOCs reactivity”, however, in sec. 4.1, the authors pointed out “Total HCHO can be regarded as the proxy for VOCs reactivity over a three-year study period”. It seems paradoxical. The authors should make it explicit.

Responses: Thank you very much for this suggestion. It is corrected in the revised version.

Changes in manuscript: L23-26, P13, in the revised version: “Besides, the usability of total HCHO as the proxy of VOCs reactivity depends on time scale. Total HCHO can be regarded as the proxy for VOCs reactivity over a three-year study period, while only secondary HCHO can be used as the proxy for VOCs reactivity over a short study period, e.g. in winter.”

7. So separating HCHO from different sources is full of great significance in sensitivity studies of O₃ production.

Responses: Thanks. It was corrected.

Changes in manuscript: L26-27, P13, in the revised version: “So separating HCHO from different sources is of great significance insensitivity studies of O₃ production.”

8. Line 12 in Page 2: “causing” should be “cause”.

Responses: Thanks. It was corrected. Please see L12, P2 in the revised version.

9. Line 13 in Page 2: “favor to” should be “be in favor of”.

Responses: Thanks. It was corrected. Please see L13, P2 in the revised version.

10. Line 21 in Page 5: “Surface air pollutants monitored by CNEMC was provided” should be “Surface air pollutants monitored by CNEMC were provided”.

Responses: Thanks. It was corrected. Please see L25, P5 in the revised version.

11. Line 10 in Page 7: “the distribution of HCHO VCDs were homogenous “should be “the distribution of HCHO VCDs was homogenous “.

Responses: Thanks. It was corrected. Please see L18, P7 in the revised version.

12. Line 28 in Page 8: “The distribution of the three station selected to explore the primary and secondary sources of HCHO are shown” should be “The distribution of the three station selected to explore the primary and secondary sources of HCHO is shown”.

Responses: Thanks. It was corrected. Please see L7, P9 in the revised version.

13. Line 4 in Page 11: The year “2015” should be “2005”. The paper published in 2010 cannot research O₃ pollution in 2015.

Responses: Thanks. It was corrected. Please see L16, P11 in the revised version.

14. Figure 3, the label of Yellow Sea and Bohai Sea goes against each other.

Responses: Thanks, we have fixed it in the revised version.

15. Figure 7: what are the P-value from the significance tests?

Responses: Thanks. The P-value from the significance tests were added in the Figure 7 captions.

Response to acp-2018-1192-RC2

We really appreciate your constructive comments and suggestions on our manuscript. Your positive advice help improve our manuscript. We have considered every comment carefully, and responded on a point to point and marked every change in red in the revised version.

Specific comments:

Page 6, section 3.2: the author estimated the total national cancer risk of 33500 people and 439 cancer cases per year using OMPS HCHO observation. Please explain how to convert?

Responses: Thank you very much for this suggestion. The total number of people who may develop cancer due to outdoor HCHO exposure in China is the sum of average cancer risk multiplied by the population in each provincial level administrative region. The total cancer cases per year are calculated through dividing the total number of people by life expectancy. And detailed formula and parameters are added in the revised version.

Changes in manuscript: L8-13, P7, in the revised version; L15, P7, in the revised version: “(Eq. (5))”

Page 6, Line 10-11: HCHO concentrations from OMPS measurement were generally lower than those from FTS, and the underestimation from OMPS was attributed to errors of spectral fitting and AMF calculation. The authors should explain the detailed reasons of errors instead of simply attributing spectral fitting and AMF calculation.

Responses: Thank you very much for this suggestion. Errors from spectral fitting affect the accuracy of SCD, and the uncertainties from the scattering weights calculated by the radiative transfer model and HCHO vertical profiles modeled by WRF-Chem affect AMF calculation. Spatial average from satellite observations and errors from SCD fitting and AMF calculation may causing the underestimation.

Changes in manuscript: L13-15, P6, in the revised version: “The underestimation from OMPS was attributed to spatial average from satellite observations and errors from HCHO SCDs affected by spectral fitting and AMF calculation affected by scattering weights calculated by the radiative transfer model and HCHO vertical profiles modeled by WRF-Chem.”

Page 10, section 3.3.3 line 28-30: The authors conclude that primary emission influenced the variation of ambient HCHO more significantly than secondary formation in winter. This conclusion should be supported by quantitative analysis.

Responses: Thank you very much for this suggestion. At PDNA site, the correlation coefficient between total HCHO and primary HCHO ($R=0.61$) is larger than that between total HCHO and secondary HCHO ($R=-0.42$). So primary emission influenced more significantly than secondary formation on variation of ambient HCHO in winter.

Changes in manuscript: L7-9, P11, in the revised version: “While at PDNA site, primary emission ($R=0.61$, Table 4) influenced more significantly than secondary formation ($R=-0.42$, Table 4) on variation of ambient HCHO in winter and became the most important source to ambient HCHO in spring and winter of 2016.”

Page 11, section 4.1: The author discussed whether total HCHO can be regarded as the proxy

for VOCs reactivity depending on the correlation between total HCHO with secondary HCHO. Why the relationship between them can be used to judge the representation of HCHO as the proxy for VOC reactivity?

Responses: Thank you very much for this suggestion. Secondary HCHO is an oxidation product of most VOCs and is produced with the formation of peroxy radicals (RO₂), positively correlating with RO₂ (*valin et al, 2015, ACP, wolfe et al, 2016, ACP*). So only HCHO from secondary formation can be identified as the proxy for total VOCs reactivity. If total HCHO shows a good correlation with secondary HCHO, and then total HCHO will positively correlate with RO₂ and can be identified as the proxy for total VOCs reactivity.

Changes in manuscript: L22-23, P11, in the revised version: “The good correlation between total HCHO with secondary HCHO means a good correlation between total HCHO with RO₂, representing total HCHO as the proxy for VOCs reactivity.”

Page 11, section 4.2: When discussing the HCHO control measures, it should be focused on HCHO pollution, i.e., HCHO concentrations beyond the air quality standard. When HCHO concentration is low, it is not necessary to discuss whether paying more attention to primary emission or secondary formation

Responses: Thank you very much for this suggestion. Here we define HCHO pollution with HCHO concentration reached the threshold value of 10 ppbv, the 95th percentile of all the observation data. HCHO pollution events occurred mostly in summer accounting for 81.0%, 81.3%, and 95.2% in Nanjing, Hangzhou and Shanghai. In summer, HCHO pollution occurred mostly during the periods from 24 to 27 July 2016 and 22 to 27 July 2017 in Nanjing, and from 23 to 27 July 2016 and from 20 to 27 July 2017 in Hangzhou. HCHO pollution in Shanghai lasts longer than Nanjing and Hangzhou, from 10 to 27 July of 2016 and 2017. Besides, HCHO pollution events were also observed during the period from 23 to 27 August 2015 and from 5 to 24 August 2017 in north of Shanghai center. In Shanghai suburb, three HCHO pollution periods were also observed, including: (1) from 19 June to 5 July 2015, (2) from 19 to 23 August 2016, (3) from 4 to 7 August 2017. During HCHO pollution events, the secondary formation contributed most to ambient HCHO and increased more largely than primary HCHO. Compared to the concentrations before pollution days, secondary HCHO and primary HCHO increased 0.90 ppbv and -0.12 ppbv in average, respectively, in Nanjing; increased 1.33 ppbv and 0.21 ppbv, respectively, in Hangzhou; and increased 1.26 ppbv and 0.14 ppbv, respectively, in Shanghai. So decreasing VOCs emissions, the source of secondary HCHO, has a more sensitive effect on controlling HCHO pollution in Nanjing, Hangzhou and Shanghai.

Changes in manuscript: L5-17, P12, in the revised version: “Here we define HCHO pollution with HCHO concentration reached the threshold value of 10 ppbv, the 95th percentile of all the observation data. HCHO pollution events occurred mostly in summer accounting for 81.0%, 81.3%, and 95.2% in Nanjing, Hangzhou and Shanghai. In summer, HCHO pollution occurred mostly during the periods from 24 to 27 July 2016 and 22 to 27 July 2017 in Nanjing, and from 23 to 27 July 2016 and from 20 to 27 July 2017 in Hangzhou. HCHO pollution in Shanghai lasts longer than Nanjing and Hangzhou, from 10 to 27 July of 2016 and 2017. Besides, HCHO pollution events were also observed during the period from 23 to 27 August 2015 and from 5 to 24 August 2017 in north of Shanghai center. In Shanghai

suburb, three HCHO pollution periods were also observed, including: (1) from 19 June to 5 July 2015, (2) from 19 to 23 August 2016, (3) from 4 to 7 August 2017. During HCHO pollution events, the secondary formation contributed most to ambient HCHO and increased more largely than primary HCHO. Compared to the concentrations before pollution days, secondary HCHO and primary HCHO increased 0.90 ppbv and -0.12 ppbv in average, respectively, in Nanjing; increased 1.33 ppbv and 0.21 ppbv, respectively, in Hangzhou; and increased 1.26 ppbv and 0.14 ppbv, respectively, in Shanghai. So decreasing VOCs emissions, the source of secondary HCHO, has a more sensitive effect on controlling HCHO pollution in Nanjing, Hangzhou and Shanghai.”

Technical corrections:

Page2, Line4: change “become increasing serious” to “become increasingly serious”

Responses: Thanks. It was corrected. Please see L4, P2 in the revised version.

Page5, Line20: change “Surface air pollutants monitored by CNEMC was” to “Surface air pollutants monitored by CNEMC were”

Responses: Thanks. It was corrected. Please see L25, P5 in the revised version.

Page5, Line27: change “one of the condition” to “one of the conditions”

Responses: Thanks. It was corrected. Please see L1, P6 in the revised version.

Page8, Line11: change “industrial zoon” to “industrial zone”

Responses: Thanks. It was corrected. Please see L22, P8 in the revised version.

Primary and secondary sources of ambient formaldehyde in the Yangtze River Delta based on OMPS observation

Wenjing Su¹, Cheng Liu^{1, 2, 3, 4}, Qihou Hu², Shaohua Zhao⁵, Youwen Sun², Wei Wang², Yizhi Zhu², Jianguo Liu^{2, 3}, Jhoon Kim⁶

¹School of Earth and Space Sciences, University of Science and Technology of China, Hefei, 230026, China

²Key Lab of Environmental Optics & Technology, Anhui Institute of Optics and Fine Mechanics, Chinese Academy of Sciences, Hefei, 230031, China

³Center for Excellence in Regional Atmospheric Environment, Institute of Urban Environment, Chinese Academy of Sciences, Xiamen, 361021, China

⁴Anhui Province Key Laboratory of Polar Environment and Global Change, USTC, Hefei, 230026, China

⁵Satellite Environment Center, State Environmental Protection Key Laboratory of Satellite Remote Sensing, Ministry of Ecology and Environment, Beijing, 100094, China

⁶Department of Atmospheric Sciences, Yonsei University, Seoul, 03722, Korea

Correspondence to: Cheng Liu (chliu81@ustc.edu.cn), Qihou Hu (qhhu@aiofm.ac.cn)

Abstract. Formaldehyde (HCHO) in the ambient air not only causes cancer but also is an ideal indicator for volatile organic compounds (VOCs) which are major precursors of ozone (O₃) and secondary organic aerosol (SOA) near the surface. It is meaningful to differentiate between direct emission and secondary formation for HCHO pollution control and sensitivity study of O₃ production. However, the understanding of the sources of HCHO is still poor in China, due to limited measurements of HCHO in the field, both spatially and temporally. In this study, tropospheric HCHO vertical column densities (VCDs) in the Yangtze River Delta (YRD), East China where HCHO pollution is serious were retrieved from Ozone Mapping and Profiler Suite (OMPS) onboard the Suomi National Polar-orbiting Partnership (Suomi-NPP) satellite from 2014 to 2017, and kept good agreement with the tropospheric HCHO columns measured by ground-based high resolution Fourier transform infrared spectrometry (FTS) with the correlation coefficient (R) of 0.78. Based on this, the cancer risk was estimated nationwide and in the YRD region. At least, 7840 people in the YRD region would develop cancer in their lives due to outdoor HCHO exposure, which occupied 23.4 % of total national cancer risk. Besides, the contributions of primary and secondary sources were apportioned, combining with primary and secondary tracers from surface observation. Overall, HCHO from secondary formation contributed most to ambient HCHO and can be regarded as the indication of the VOCs reactivity in Hangzhou and urban areas of Nanjing and Shanghai from 2015 to 2017, due to strong correlation between total HCHO and secondary HCHO. At industrial sites in Nanjing, primary emission influenced most to ambient HCHO in 2015 and showed an obvious decreasing trend. Seasonally, HCHO from secondary formation reached the maximum in summer and minimum in winter. In the spring, summer, and autumn, secondary formation played a curial effect on variation of ambient HCHO in urban regions of Nanjing, Hangzhou, and Shanghai; while in the winter the contribution from secondary formation became less significant. The understanding of the variation of the primary and secondary contributions to ambient HCHO is in favor for a better

understanding the role of HCHO in atmospheric chemistry and formulating effective control measures to decrease HCHO pollution and cancer risk.

1 Introduction

5 In recent years, air pollution has become increasingly serious in China (Tang et al., 2012; Shi et al., 2014; Rohde and Muller, 2015) and caused grievous risks for human health (Wang and Mauzerall, 2006). Previous studies indicated that air pollution killed more people worldwide than tuberculosis, AIDS, breast cancer and malaria (Yang et al., 2013; World Health Organization, 2014a, b). According to the U.S. Environmental Protection Agency (EPA), HCHO is identified as the most major carcinogen among the 187 hazardous air pollutants (HAPs), and exposure to as low as $1 \mu\text{g m}^{-3}$ (about 0.7 ppb at STP) of HCHO in one's life will cause up to 13-in-a-million lung and nasopharyngeal cancer risk (Zhu et al., 2017a). HCHO not only
10 affects public health directly but also plays a significant role in atmospheric photochemistry (Levy, 1971). Photolysis of HCHO leads to the producing of HO_x radical ($\text{OH}+\text{HO}_2$) and affects the oxidative capacity of the atmosphere (Volkamer et al., 2010). Besides, HCHO may contribute to cause O_3 pollution through the photochemical reaction (Haagen-Smit, 1950; Carter, 1994; Russell et al., 1995) and be in favor of the formation of secondary organic aerosol (SOA) through providing OH radical (Yang et al., 2018). So monitoring and controlling ambient HCHO concentration are of great significance for public health.

15 HCHO can be emitted into the atmosphere directly from biogenic sources, such as biomass burning and vegetation (Lee et al., 1997; Finlayson-Pitts and Pitts Jr, 1999; Holzinger et al., 1999; Andreae and Merlet, 2001) and anthropogenic activities, such as vehicles emissions, industrial emissions and coal combustion (Carlier et al., 1986; Williams et al., 1990; Hoekman, 1992; Carter, 1995; Anderson et al., 1996; Kean et al., 2001; Klimont et al., 2002; Reyes et al., 2006; Wei et al., 2008; Wang et al., 2013; Dong et al., 2014; Liu et al., 2017). Direct emission of HCHO is mainly from the incomplete combustion process
20 and is closely related to the emission of CO. Besides, HCHO can also be formed from the atmospheric oxidation of volatile organic compounds (VOCs) (Altshuller, 1993; Carter, 1995; Seinfeld and Pandis, 2016) which leads to the formation of O_3 in the meantime (Rasool, 1970; Crutzen, 1979; Warneke et al., 2004; Duan et al., 2008). In order to control HCHO concentrations effectively and improve air quality, it is necessary to determine the primary emission and secondary formation of ambient HCHO.

25 In previous studies, the ratio of the Ozone Monitoring Instrument (OMI) tropospheric column of HCHO and NO_2 was used as the indicator of sensitivity regime of O_3 formation (Duncan et al., 2010; Witte et al., 2011; Liu et al., 2016; Su et al., 2017), on the assumption that HCHO is regarded as the proxy for the reactivity of VOCs. Secondary HCHO is produced with the formation of peroxy radicals (RO_2), and thus positively correlated with RO_2 and can be identified as the proxy for total VOC reactivity (Carter, 1994). So, strictly speaking, only HCHO concentration that is from secondary formation can be used
30 to analyze the sensitivity regime of O_3 production, combined with the NO_2 concentration. As secondary formation is the dominate source of HCHO on a global scale (Smedt et al., 2008), total HCHO was usually adopted to replace secondary HCHO as the indicator of total VOCs reactivity. However, in some regions with strong human activities, the contribution of primary

emission to ambient HCHO cannot be ignored (Ma et al., 2016). Separation of secondary HCHO from primary HCHO will be in favor for a better understanding of ozone formation sensitivity, especially in urban areas.

Previous studies attempted to identify contributions to ambient HCHO from direct emission and secondary formation through the linear multiple regression analysis. Because of the strong relation of primary HCHO and CO emission and formation of HCHO and O₃ from the oxidation of VOCs, CO and O₃ can be used as the tracer for primary emission and secondary formation of HCHO, respectively. There were several studies on primary and secondary sources of HCHO using the CO-O₃ tracer pair. For instance, contributions from primary and secondary sources to ambient HCHO were characterized by statistical analogy to CO and O₃ in Houston, TX in the summer of 2000, in Beijing during the 2008 Olympic Games, and in Hong Kong from winter of 2012 to autumn of 2013 (Friedfeld et al., 2002; Li et al., 2010; Lui et al., 2017). Hong et al. (2018) estimated contributions from primary emission and secondary formation to HCHO measured by MAX-DOAS using CO-O_x (O₃+NO₂) tracer pair which were measured by Sensor Networks for Air Quality (SNAQ) in the winter of 2015 in Yangtze River Delta. Garcia et al. (2006) indicated that using CO-CHOCHO tracer pair to separate different sources of HCHO is more reasonable than that using CO-O₃ because CHOCHO has the similar lifetime in the atmosphere to HCHO. However, it is not accessible to continuous observation of CHOCHO.

Previous studies often concentrated on contributions from different sources just at one site and within a short time, due to the constraints from the meantime measurements of HCHO and its tracers for primary emission and secondary formation. In China, CO and O₃ can be obtained from the China National Environmental Monitoring Center (CNEMC) Network. However, HCHO is not measured at these stations. There are various analytical methods to measured HCHO concentration, such as Fourier transform infrared spectroscopy (FTIR) (Lawson et al., 1990), differential optical absorption spectroscopy (DOAS) (Platt and Perner, 1980), tunable diode laser absorption spectroscopy (TDLAS), 2,4-dinitrophenylhydrazine (DNPH) method which HCHO was captured by DNPH and then analyzed by high-performance liquid chromatograph (HPLC) (Fung and Grosjean, 1981), and proton transfer reaction mass spectrometry (PTR-MS) (Karl et al., 2003). Nevertheless, it is difficult to perform long-term observations of HCHO concentration in a wide range using ground-based measurements. Long-term information of ambient HCHO on a global scale can be obtained accessibly from space-based remote sensor like Global Ozone Monitoring Experiment (GOME) (Martin et al., 2004), Scanning Imaging Absorption Spectrometer for Atmospheric Chartography (SCIAMACHY) (Bovensmann et al., 1999), GOME-2 instruments (De Smedt et al., 2012; De Smedt et al., 2015), Ozone Monitoring Instrument (OMI) (Abad et al., 2015), Ozone Mapping and Profiler Suite (OMPS) (Li et al., 2015a; González Abad et al., 2016) and TROPOspheric Monitoring Instrument (TROPOMI) (De Smedt et al., 2018). While HCHO observations from SCIAMACHY and TROPOMI are only available until 2011 (Shah et al., 2018) and after Oct 2017, respectively. GOME-2A instrument suffers degradation issues (De Smedt et al., 2012) and OMI observations are easily affected by the instrumental “row anomaly” (Abad et al., 2015). And the spatial (80×40 km²) and temporal (within 1.5 days) resolution of GOME-2B is even lower than OMPS (Munro et al., 2016). Overall considering for long-term record and data quality, HCHO observation from OMPS was adopted in this study. **Due to low global coverage of Tropospheric Emission Spectrometer (Aura-TES) (Luo et al., 2002; Luo et al., 2007) and increasing noise after 2004 of Atmospheric InfraRed Sounder (Aqua-AIRS)**

(Pagano et al., 2012) which measure tropospheric CO closely in time to OMPS observation, obtaining precise CO concentration in the YRD after 2013 from satellite was limited. Therefore, CO and O₃ concentrations at the surface monitored by the China National Environmental Monitoring Center (CNEMC) Network simultaneously were used in this study.

In this paper, we focus on contributions from primary and secondary sources to ambient HCHO from 2015 to 2017 in Nanjing (capital of Jiangsu province), Hangzhou (capital of Zhejiang province) and Shanghai, which are megacities and have population more than 8 million in the YRD region. The YRD region is located in the alluvial plains where the Yangtze River drains into the East China Sea, consisting Jiangsu and Zhejiang provinces and Shanghai municipality. The YRD region is one of the most important economic and a rapidly developing industry region in China. Along with the very rapid development of economy and industry, the YRD region is suffering from serious air pollution (Li et al., 2015b; Gao et al., 2016; Wang et al., 2017a; Wang et al., 2018). Details of the measurements are described in Sect. 2. Spatiotemporal distribution of HCHO VCDs in the YRD region, as well as contributions from primary and secondary sources to ambient HCHO are shown in Sect. 3.

2 Measurements and methodology

2.1 OMPS HCHO observation

Ozone Mapping and Profiling Suite Nadir Mapper (OMPS-NM) which was one of the OMPS suite of instruments was launched on 28 October 2011 onboard the Suomi National Polar-orbiting Partnership (Suomi-NPP) satellite. Suomi-NPP was a polar Sun-synchronous satellite with an average altitude of 824 km (Flynn et al., 2014). It crosses the equator each afternoon at about 13:30 local time (LT) on the ascending node. The OMPS-NM combines a single grating and a 340×740 pixel charge-coupled device (CCD) detector to measure UV radiation every 0.42 nm from 300 to 380 nm with 1.0nm full width at half maximum (FWHM) resolution. A recent analysis shows that the OMPS-NM sensor has a signal-to-noise ratio of 2000:1 or better at the wavelength range from 320 to 370 nm (Seftor et al., 2014). It has a 110° cross-track field of view (FOV) providing high temporal (daily global coverage) resolution and measurements were combined into 35 cross-track bins giving spatial resolution of 50 ×50 km² in OMPS-NM standard Earth science mode. OMPS-NPP Nadir Mapper Earth View Level 1B data available at <https://ozoneaq.gsfc.nasa.gov/data/omps/> was downloaded to retrieve HCHO Slant Column Density (SCD). Details of fitting settings for HCHO SCD retrieval was studied in (González Abad et al., 2016). In this study, the vertical profiles of HCHO from WRF-Chem modelling were used to calculate Air Mass Factor (AMF). The configuration of the modelling was described in detail in our previous study (Su et al., 2017). Finally, HCHO VCD is calculated using AMF as follows:

$$\text{VCD} = \frac{\text{SCD}}{\text{AMF}} \quad (1)$$

2.2 FTS tropospheric HCHO column measurement

The ground-based FTS instrument, located in the west of Hefei (117.17° E, 31.9° N), is a candidate site for Network for Detection of Atmospheric Composition Change (NDACC, <http://www.ndacc.org/>). The global NDACC can perform simultaneous retrieval of mixing ratio profiles for trace gases, such as O₃, CO, CH₄, NO₂, and HCHO, using FTS (Kurylo, 1991; Notholt et al., 1995; Vigouroux et al., 2009), and the retrieval results were widely used for atmospheric chemistry study and the validation for satellite observation (Yuan et al., 2015; Sun et al., 2017; Wang et al., 2017c; Tian et al., 2018; Sun et al., 2018). The observation system consists of a high resolution Fourier transform spectrometer (IFS125HR), a solar tracker (Tracker-A solar 547), and a weather station (ZENO-3200). The FTS solar spectra measurements are performed over a broad spectral range of 600-4500 cm⁻¹ with a spectral resolution of 0.005 cm⁻¹, and the HCHO spectra is recorded in the range of 2400-3310 cm⁻¹. The vertical profile of HCHO was retrieved using SFIT4 algorithm (version 0.9.4.4). Detailed retrieval settings for HCHO are listed in Sun et al. (2018). Daily priori profiles of pressure, temperature and H₂O are obtained from the National Centers for Environmental Protection and National Center for Atmospheric Research (NCEP/NCAR) reanalysis. And priori profiles of HCHO and its interfering gases have been taken from a dedicated Whole Atmosphere Community Climate Model (WACCM). For HCHO observation, the four micro windows (MW) which are centered at around 2770 cm⁻¹ are selected for satellite validation. And a de-weighting signal to noise ratio (SNR) of 600 was used. The instrument line shape (ILS) is described by analyzing HBr cell spectra using LINEFIT14.5 software. Finally the tropospheric HCHO partial column was calculated by integrating the retrieved profiles with the air-mass profile within 15 km as Eq. (2).

$$PC_{trop} = \int_0^{15} X_r * A_m \quad (2)$$

Where X_r is the retrieved profile of HCHO; A_m is the air-mass profile; and PC_{trop} is the tropospheric HCHO Column. The FTS total systematic error of the HCHO retrieval is less than 3.3 % and total random error is less than 9.6 (Sun et al., 2018). Due to the high accuracy, the trace gases concentrations measured by FTS were widely used to validate corresponding satellite products (Yamamori et al., 2006; Jones et al., 2009; Yurganov et al., 2010; Reuter et al., 2011). Here we used the FTS HCHO measurement to validate OMPS HCHO product.

2.3 The China National Environmental Monitoring Center (CNEMC) Network

Surface air pollutants monitored by CNEMC were provided by Ministry of Environment Protection of the People's Republic of China hourly (<http://106.37.208.233:20035/>). The national air quality monitoring network consisted of about 950 sites in 2013, extending to 1597 sites in 454 major cities in 2017. Three trace gas, including CO, O₃, and SO₂, inhalable particles (PM₁₀), and fine particulate matter (PM_{2.5}) are measured simultaneously by all sites which have been used widely used (Wang et al., 2017b; Li et al., 2018; Liu et al., 2018; Lu et al., 2018b). In this study, CO and O₃ data from 2104 to 2017 was used. Data quality controls similar to previous studies (Barrero et al., 2015; He et al., 2017; Li et al., 2018) have been applied to remove data outliers. Firstly, all hourly data at a specific monitoring site were transformed into z scores, and then

the transformed data (Z_i) were removed if they meet one of the **conditions** (1) the absolute Z_i larger than 4 ($|Z_i|>4$) (2) the increment of Z_i from the previous hourly value larger than 9 ($|Z_i-Z_{i-1}|>9$) and (3) the ratio of the z score to its centered moving average of order 3 larger than 2 ($\frac{3 Z_i}{Z_{i-1}+Z_i+Z_{i+1}}>2$).

3 Results

5 3.1 Comparison with FTS tropospheric HCHO

In order to **validate** the OMPS observation with FTS measurement, the HCHO tropospheric column measured by FTS was averaged around the OMPS satellite overpass time. The OMPS tropospheric HCHO column selected for satellite pixels within 50 km around the Hefei site and with cloud fraction less than 20 % were averaged to minimize the random noise (Wang et al., 2017d). Fig. 1a shows that tropospheric HCHO VCDs observed by OMPS and FTS are in good agreement ($R=0.78$).
 10 The coincident time series of both data indicate that OMPS HCHO observation successfully captures maximum HCHO concentration in summer and minimum HCHO concentration in winter (Fig. 1b). However, it is important to note that OMPS HCHO observation underestimates tropospheric HCHO column by 0 % to up 60 % compared with FTS results, especially in summer, which is consistent with the previous study (De Smedt et al., 2015). **The underestimation from OMPS was attributed to spatial average from satellite observations and errors from HCHO SCDs affected by spectral fitting and AMF calculation affected by scattering weights calculated by the radiative transfer model and HCHO vertical profiles modeled by WRF-Chem**
 15 (Zhu et al., 2016).

Most of the atmosphere HCHO was concentrated in the troposphere. The monthly averaged vertical profiles of HCHO showed in Fig. 2a indicate that the structure of the HCHO vertical profiles in different months was consistent. HCHO concentration decreased by 70 % with an increase of the height from 0.7 to 2 km and continued to decrease slowly in the
 20 troposphere. The ratio of HCHO column below 1 km in tropospheric HCHO column keeps at ~67 % without seasonal variation (Fig. 2b). HCHO column below 1 km measured by FTS and OMPS tropospheric HCHO column also kept good agreement ($R=0.78$, Fig. S1 in the Supplementary Information). And the slope of 0.83 for the linear regression between each other was higher than the slope of 0.51 for the regression between OMPS data and the tropospheric HCHO VCD from FTS indicating that OMPS tropospheric HCHO column could represent HCHO column below 1km better. Besides, the mean of the relative
 25 differences between HCHO column below 1 km measured by FTS and Tropospheric HCHO column measured by OMPS is zero. In previous studies, a uniform and constant correction factor was applied to account for the bias between the tropospheric HCHO column observed by satellite and that measured by aircraft (Anderson et al., 2016). In this study, we regard tropospheric HCHO column observed by OMPS as that below 1 km measured by FTS in terms of their numerical value. Assuming that HCHO mixes well within 1 km height, the mixing ratio of HCHO can be calculated as:

$$30 \quad M(\text{ppbv}) = \frac{1.25 \times \text{VCD}(\text{molecules cm}^{-2})}{B \times \Delta p(\text{atm})} \quad (3)$$

where M is the mixing ratio of HCHO; B is unit conversion factor of DU to $molecules\ cm^{-2}$ with the value of 2.688×10^{16} ; VCD is OMPS tropospheric HCHO VCDs; Δp is the pressure difference between surface and 1km height. (Ziemke et al., 2001; Lee et al., 2008).

3.2 Spatiotemporal distribution of HCHO VCDs throughout The Yangtze River Delta

5 The average HCHO VCD over China in August, 2017 was 6.50×10^{15} molecules cm^{-2} which would lead up to 50 in a million to develop cancer. Total national cancer risk was estimated through combining averaged HCHO VCDs with population and at least 33500 people in China would develop lung and nasopharyngeal cancer in their lives due to outdoor HCHO exposure following the Eq. (4):

$$T = \sum_i P_i \times C_i \quad (4)$$

10
$$Y = \frac{T}{L} \quad (5)$$

where T is the total number of people in China who may develop cancer due to outdoor HCHO exposure, P_i and C_i represent the population and average cancer risk of provincial level administrative region i separately, Y is cancer case per year, and L is life expectancy. Considering the life expectancy of 76.4 years (2015) in China (<http://data.stats.gov.cn/easyquery.htm?cn=C01&zb=A0304&sj=2016>, in Chinese), 439 cancer cases per year in China are caused by high outdoor HCHO concentration (Eq. (5)). HCHO VCDs in most of western China, e.g. Yunnan province, Tibet, Gansu Province, Qinghai province, Xinjiang Uyghur Autonomous Region, Ningxia province, and Inner Mongolia Autonomous Region, were lower than the national average (Fig. 3). HCHO VCDs in central China were higher than the national average and the distribution of HCHO VCDs was homogenous. The Highest HCHO VCDs occurred in eastern China, especially in the Beijing-Tianjin-Hebei region, northern Henan province, western Shandong Province, the YRD region, and the Pearl River Delta (PRD) region, and the most severe HCHO pollution occurred in the YRD. Living in the YRD with high outdoor HCHO concentration has a big risk of up to 155 in million to suffer cancer, which is about four times than that in United States (Zhu et al., 2017a). Total cancer risk in the YRD occupied 23.4 % of total national cancer risk and about 7840 people in the YRD may develop cancer in their lives due to severe HCHO pollution. It is urgent to control ambient HCHO concentration in the YRD effectively. Besides, the YRD has been identified as the highest VOCs emissions region (Qiu et al., 2014; Wu et al., 2015). So determination of contributions from primary source and secondary formation to ambient HCHO is needed to formulate appropriate control measures.

In the YRD region, the highest HCHO VCDs occurred in southwestern Jiangsu province, e.g. Nanjing, Changzhou, Wuxi and Suzhou cities and northern Zhejiang province, e.g. Hangzhou, Jiaxing, Huzhou and Ningbo cities, and Shanghai in 2015 (Fig. 4a). The spatial distribution of annual mean HCHO VCDs in 2016 and 2017 were similar to that in 2015. HCHO VCDs in the YRD region showed a fluctuating trend from 2015 to 2017 (Fig. 4b, c). HCHO concentration in Jiangsu province rose

from 2015 to 2016, while only HCHO VCDs in southwestern Jiangsu province showed a decreasing trend from 2016 to 2017. HCHO concentration in Shanghai and Hangzhou showed a similar trend and decreased clearly from 2015 to 2016 and then increased from 2016 to 2017. An opposite trend of HCHO VCDs was observed in other cities of Zhejiang province.

3.3 Determination of primary and secondary contributions to ambient HCHO

5 The statistical analysis of simultaneous real-time measurements of HCHO, CO, and O₃ can be described by a multiple linear regression model:

$$C_{\text{HCHO}} = \beta_0 + \beta_1 \times C_{\text{CO}} + \beta_2 \times C_{\text{O}_3} \quad (6)$$

where β_0 , β_1 , β_2 are the coefficients fitted by the model (Garcia et al., 2006), and C_{CO} and C_{O_3} represent the concentration of CO and O₃, respectively.

10 The relative contributions of background concentration, primary emission, and secondary formation to the ambient HCHO can be calculated through the following equations:

$$R_{\text{Primary}} = \frac{\beta_1 \times C_{\text{CO}}}{\beta_0 + \beta_1 \times C_{\text{CO}} + \beta_2 \times C_{\text{O}_3}} \times 100 \% \quad (7)$$

$$R_{\text{Secondary}} = \frac{\beta_2 \times C_{\text{O}_3}}{\beta_0 + \beta_1 \times C_{\text{CO}} + \beta_2 \times C_{\text{O}_3}} \times 100 \% \quad (8)$$

$$R_{\text{Background}} = \frac{\beta_0}{\beta_0 + \beta_1 \times C_{\text{CO}} + \beta_2 \times C_{\text{O}_3}} \times 100 \% \quad (9)$$

15 where R_{Primary} represents the contribution to ambient HCHO from primary sources, e.g. industrial and vehicle emissions; $R_{\text{Secondary}}$ represents the contribution to ambient HCHO from secondary sources, i.e. photochemical VOC oxidation); $R_{\text{Background}}$ represents background contributions to the ambient HCHO which can neither be classified to primary or secondary contribution. In previous studies in YRD (Wang et al., 2015; Ma et al., 2016), the background HCHO concentration of 1 ppbv was selected to represent the HCHO concentration in regional conditions. So the β_0 coefficient is fixed at 1 ppbv in the
20 multiple linear regression.

 In a previous study, Ma et al. (2016) analyzed the primary emission and secondary formation of HCHO from Apr 15th to May 1st, 2015 at an industrial **zone** in Nanjing which is located less than 15 km away from one of our research site, Maigaoqiao (abbr. MGQ) station, using in-situ measurement of primary tracers, i.e., benzene, toluene and CO and secondary tracer, i.e., O₃. Ma et al. (2016) found that the average relative contributions of industry-related emission and secondary formation and
25 background were 59.2 %, 13.8 %, and 27 %, respectively. In this study, the average relative contributions from primary source, secondary formation and background to HCHO at MGQ station during the same period were 50.5 %, 30.8 % and 18.7 % respectively. We can see the relative contribution of primary emission was similar to that in Ma et al. (2016)'s study with the difference of 8.7 %. However, the relative contribution of secondary formation was 17 % larger than that in Ma et al. (2016)'s study and the relative contribution of background was 8.3 % smaller than that in Ma et al. (2016)'s study. It should be noted
30 that the contribution of secondary formation we calculate is the maximum of a day because the overpass time of the OMPS is

13:30 (LT) every day. So it is reasonable that the contribution of secondary formation we calculate is larger due to more photochemical reaction at noon (Hong et al., 2018). In conclusion, tropospheric HCHO column observed by OMPS can be used to analyze primary and secondary contributions to ambient HCHO through multiple linear regression fit, and CO and O₃ concentrations measured by CNEMC Network can be used as the indicator of primary emission source and secondary formation source respectively.

3.3.1 Primary and secondary sources of ambient HCHO in Nanjing

The distribution of the three stations selected to explore the primary and secondary sources of HCHO is shown in Fig. 5a, and the heavy industry zone is circled by red lines (Zheng et al., 2015). In order to ensure the representativeness of regression model, only data fulfilling the criteria in the analysis which correlation coefficient (R) is larger than 0.6 and significance value is lower than 0.05 was kept, and the analysis for Hangzhou and Shanghai hereinafter is same. We finally select MGQ site located in the southwest of industrial zone, Ruijin road site (abbr. RJR) located in the center of Nanjing, and site in Xianlin university town (abbr. XLUT) located in southeast of industrial zone to analyze HCHO concentration from different sources in Nanjing. As presented in Table 1, the annual average HCHO concentrations at industrial sites were larger than that at urban site in 2015 and 2017. The seasonal average HCHO concentration ranked in the order of summer > autumn > spring > winter, whether in industrial zone or center of Nanjing (Fig. 6 and Table 3).

On average, the secondary formation was the dominant source of ambient HCHO at all the three sites in Nanjing (Table 1). While primary emission may turn to be the most significant source in winter at RJR site (Fig. 6a, b), in winter of 2015 at MGQ site (Fig. 6c, d), and from Aug to Dec, 2015 at XLUT site (Fig. 6e, f). At industrial sites MGQ and XLUT, the annual average HCHO concentration from primary emission decreased by 64 % and 63.44 % from 2015 to 2017, respectively. Because coal combustion is an important primary source of ambient HCHO (Wang et al., 2013; Liu et al., 2017), energy savings and energy consumption reducing, especially less consumption of coal, according to Nanjing Municipal government (http://www.nanjing.gov.cn/xxgk/szf/201403/t20140321_2544036.html, in Chinese), caused the diminishing of primary HCHO emission. The variation of HCHO concentration from different sources at MGQ was similar to that at XLUT, because of the short distance between the two sites. However, the annual average HCHO concentration from primary emission at XLUT was larger than that at MGQ. Primary emission of HCHO at urban site was smaller than that at industrial sites in 2015 and larger than that at suburban sites in 2016 and 2017. The correlation coefficients between primary HCHO or secondary HCHO and total HCHO can be used to compare the contribution to the variation of HCHO from the two sources, **and larger correlation coefficient means more contribution to the variations of HCHO**. At urban site, compared with primary emission (R=0.35, Fig. S2a), secondary formation contributed more to the variation of HCHO concentration from 2015 to 2017 (R=0.76, Fig. 7a). While at industrial sites, contribution from secondary formation to variation of HCHO concentration was less evident (R<=0.67, Fig. 7b, c). At XLUT site, primary HCHO emission was more significant to variation of HCHO concentration than secondary formation in 2015 (Table 2). On the seasonal average, secondary formation contributed most to ambient HCHO concentration,

and reached maximum in summer due to improvement of photochemical reaction (Wang et al., 2016) and reached minimum in winter (Table 3). In spring, summer and autumn, variation of ambient HCHO was affected more by secondary formation while in winter, it was influenced more by primary emission in urban region (Table 4).

3.3.2 Primary and secondary sources of ambient HCHO in Hangzhou

5 Three sites, including Xiasha (abbr. XS), Chengxiang Town (abbr. CXT), and The Fifth District of Chaohui (abbr. FDCH) which are located in the northeast suburbs, the eastern suburbs and the center of Hangzhou, respectively, were selected to explore the sources of HCHO in Hangzhou as shown in Fig. 5b. There was no significant difference between HCHO concentrations at suburban sites (Table 1). HCHO concentration at these three sites reached the maximum in summer and reached the minimum in winter, which kept agreement with previous study (De Smedt et al., 2015). The average HCHO
10 concentration in 2016 was larger than those in 2015 and 2017 at all these three sites.

As shown in Table 1, the secondary formation, on annual average, contributed more to ambient HCHO than primary emission from 2015 to 2017 in Hangzhou. It is interesting that primary emission of HCHO showed a small increasing trend from 2015 to 2017 at suburban sites (Fig. 8a, c, and Table 1). It may be caused by the significant increase of number of vehicles and less effective control measures for ambient HCHO, according to the environment bulletin released by Hangzhou
15 government. Secondary HCHO also kept an important growing tendency from 2015 to 2016 and turned to decrease in 2017. And variation of HCHO concentration was mainly affected by secondary formation from 2015 to 2017, due to the strong correlation ($R > 0.7$) (Fig. 7d, e and f). In all seasons, seasonal average of secondary formation from 2015 to 2017 was larger than primary emission in Hangzhou (Table 3). While in winter of 2016 and in summer of 2017 at XS site (Fig. 8a, b), in winter of 2016 at CXT site (Fig. 8c, d), and in winter of 2016 and 2017 at urban site (Fig. 8e, f), primary emission may exceed
20 secondary formation and become the main source in individual days. In winter, the impact of primary emission on variation of HCHO was more significant, compared with secondary formation. While in spring, summer and autumn, secondary formation became more important to variation of ambient HCHO, except in the northeast suburbs in autumn (Table 4).

3.3.3 Primary and secondary sources of ambient HCHO in Shanghai

Site of Pudong New Area (abbr. PDNA), Hongkou site (abbr. HK), Dianshan Lake in Qingpu (abbr. DSL) were selected
25 to represent east of the city center, north of the city center, and suburb, respectively (Fig. 5c). The annual average HCHO concentration decreased by 0.342 ppbv from 2015 to 2016 and increased by 0.529 ppbv from 2016 to 2017 at HK site (Table 1). And HCHO concentration at PDNA site increased by 0.15 ppbv in 2016 and decreased by 0.056 ppbv in 2017, compared to that in previous year. At DSL sites, HCHO concentration was less than that at HK, except in 2016. And HCHO concentration firstly increased by 0.179 ppbv from 2015 to 2016, and then decreased by 0.143 ppbv from 2016 to 2017. We can conclude
30 that ambient HCHO concentration was not controlled strictly in recent years. On the seasonal average, HCHO concentration reached its maximum in summer and minimum in winter in Shanghai which is same to that in Nanjing and Hangzhou (Table

3). Besides, HCHO concentration in summer in Shanghai was larger than that in Nanjing and Hangzhou.

On average, secondary formation was the most significant contribution to ambient HCHO in Shanghai, except at PDNA site in 2016 (Table 1 and Fig. 9). The contribution from secondary formation developed with a rising trend and primary HCHO emission showed a decreasing trend from 2015 to 2017, at suburban site (Fig. 9e, f and Table 1). Variation of HCHO concentration was affected more largely by secondary formation ($R > 0.70$, Fig. 7g, h and i) than primary emission ($R < 0.43$, Fig. S2g, h, and i) from 2015 to 2017. In summer and autumn, secondary formation was the largest source to ambient HCHO (Fig. 9a, b, c, and d) and was the main factor of variation of HCHO concentration in urban regions of Shanghai. **While at PDNA site, primary emission ($R = 0.61$, Table 4) influenced more significantly than secondary formation ($R = -0.42$, Table 4) on variation of ambient HCHO in winter and became the most important source to ambient HCHO in spring and winter of 2016. The secondary source of HCHO in the three megacity has similar seasonal variation, ranking in the order of summer > autumn > spring > winter, similar to seasonal variation of HCHO concentration. While HCHO concentration from secondary formation in summer in Shanghai was larger than that in Nanjing and Hangzhou.**

4 Discussions

4.1 Reconsidering of the proxy for VOCs reactivity using HCHO concentration

Duncan et al. (2010) determined the indicator of VOCs and NO_x controls on surface O₃ formation using HCHO VCDs observed by OMI as the proxy for VOCs reactivity in August between 2005 and 2007 in the United States. It is reasonable because ambient HCHO concentration is mainly from the atmospheric oxidation of isoprene in summer over North America (Palmer et al., 2003; Zhu et al., 2017b; Marvin et al., 2017) and HCHO concentration from secondary formation contributed 87 percent during daytime in Los Angeles in 1980s (Kawamura et al., 2000) and over 80 percent ambient HCHO concentration is from secondary formation over the Eastern American (Luecken et al., 2006). However, contribution from secondary formation in the YRD is smaller than that in America, accounting for about 70 percent in summer and 40-54 percent in winter in the YRD. **The good correlation between total HCHO with secondary HCHO means a good correlation between total HCHO with RO₂, representing total HCHO as the proxy for VOCs reactivity.** Total HCHO can be regarded as the proxy for VOCs reactivity over a three-year study period from 2015 to 2017 because of the good correlation between total HCHO with secondary HCHO in Nanjing, Hangzhou, and Shanghai ($R \geq 0.59$). If the study period is only in 2015, using ambient HCHO concentration to indicate VOCs reactivity would cause significant errors because ambient HCHO showed a stronger correlation with primary emission than secondary formation, for example, in the industrial zone of Nanjing and in the suburb of Shanghai. Besides, the correlation between total HCHO and secondary HCHO depends on seasons. In winter, ambient HCHO concentration cannot be represented by that from secondary formation due to the poor correlation ($R < 0.12$, $P > 0.05$). In spring, at RJR and DSL sites, and in summer, at RJR, CXT, HK, and PDNA sites, and in autumn, at RJR and MGQ sites, total HCHO can be used as the proxy for VOCs reactivity ($R > 0.59$, $P < 0.01$).

4.2 HCHO control measures adapted to local conditions

Sources of ambient HCHO at different sites varied largely and it is closely related to different industrial structure (Zheng et al., 2016). In order to make HCHO control measures adapted to local conditions better, it is meaningful to estimate different sources of ambient HCHO. Results in Sect. 3.3 indicate that the main influencing factor of ambient HCHO concentration depends to seasons. Here we define HCHO pollution with HCHO concentration reached the threshold value of 10 ppbv, the 95th percentile of all the observation data. HCHO pollution events occurred mostly in summer accounting for 81.0%, 81.3%, and 95.2% in Nanjing, Hangzhou and Shanghai. In summer, HCHO pollution occurred mostly during the periods from 24 to 27 July 2016 and 22 to 27 July 2017 in Nanjing, and from 23 to 27 July 2016 and from 20 to 27 July 2017 in Hangzhou. HCHO pollution in Shanghai lasts longer than Nanjing and Hangzhou, from 10 to 27 July of 2016 and 2017. Besides, HCHO pollution events were also observed during the period from 23 to 27 August 2015 and from 5 to 24 August 2017 in north of Shanghai center. In Shanghai suburb, three HCHO pollution periods were also observed, including: (1) from 19 June to 5 July 2015, (2) from 19 to 23 August 2016, (3) from 4 to 7 August 2017. During HCHO pollution events, the secondary formation contributed most to ambient HCHO and increased more largely than primary HCHO. Compared to the concentrations before pollution days, secondary HCHO and primary HCHO increased 0.90 ppbv and -0.12 ppbv in average, respectively, in Nanjing; increased 1.33 ppbv and 0.21 ppbv, respectively, in Hangzhou; and increased 1.26 ppbv and 0.14 ppbv, respectively, in Shanghai. So decreasing VOCs emissions, the source of secondary HCHO, has a more sensitive effect on controlling HCHO pollution in Nanjing, Hangzhou and Shanghai.

The industries of Nanjing include chemical industry, steel plant, and cement industry (Zheng et al., 2016). In the Nanjing industrial zone, secondary source of HCHO was about four times larger than primary source in 2017. So at industrial sites, decreasing VOC emissions from related-chemical activities is an efficient way to control ambient HCHO concentration. In Hangzhou, labor-intensive industries are most important parts of industry economics (Zheng et al., 2016). Secondary HCHO in the eastern suburbs of Hangzhou was the largest from 2016 to 2017 (Table 1), corresponding to the previous study indicating that the largest amount of VOCs emissions were measured in the eastern suburbs of Hangzhou and VOCs emissions from furniture manufacturing is the largest sources (Lu et al., 2018a). Secondary HCHO contributed most to ambient HCHO, while was not controlled effectively from 2015 to 2017. Considering that industrial manufacturing is developing well and VOCs emissions occur in many types of industries i.e., textile industry, printing, Leather manufacturing and shoemaking (Liu et al., 2008; Khan and Malik, 2014), and controlling VOCs emissions in Hangzhou will be a huge challenge. Unlike Nanjing and Hangzhou, tertiary industry has played a leading roles in Shanghai's economic since 2013 and primary and secondary industries have decreased since 1999 (Chen et al., 2016). However, HCHO concentration from secondary source was not controlled effectively. Decreasing private cars on road and developing evaporative control regulations and improving traffic management suited for local conditions help reduce not only VOCs emissions but also HCHO emissions, especially in downtown (Wang and Zhao, 2008; Liu et al., 2015; Liu et al., 2017).

5 Summary

Tropospheric HCHO VCDs derived from OMPS observations were validated using ground-based FTS measurements in Hefei, from 2015 to 2017. HCHO VCDs observed by OMPS and FTS are in good agreement ($R=0.78$). Serious HCHO pollution was observed in the YRD region, especially in southwestern Jiangsu province, e.g. Nanjing, Changzhou, Wuxi and Suzhou cities and northern Zhejiang province, e.g. Hangzhou, Jiaxing, Huzhou and Ningbo cities, and Shanghai. Estimating different sources of ambient HCHO and then formulating control measures adapted to local conditions are effective ways to control HCHO pollution. However, measurements of HCHO are scarce, both spatially and temporally. In this study, we analyzed primary and secondary contributions to ambient HCHO using multiple linear regression based on HCHO observed by OMPS. At MGQ site in Nanjing, the average relative contributions from primary emission, secondary formation and background to HCHO from Apr. 15th to May. 1th, 2015 were 50.5 %, 30.8 % and 18.7 %, respectively, which kept good agreement with previous study. So tropospheric HCHO columns observed by OMPS can be used to estimate different sources of ambient HCHO.

Primary and secondary contributions to ambient HCHO in Nanjing, Hangzhou, and Shanghai from 2015 to 2017 were determined. Overall, HCHO concentration from secondary formation contributed most to ambient HCHO in the megacities in the YRD region and influenced variation of ambient HCHO concentration in Hangzhou, Shanghai, and urban region of Nanjing. While at industrial sites of Nanjing, the annual average HCHO concentration from primary emission decreased largely from 2015 to 2016 due to energy savings and energy consumption reducing and contribution from secondary formation to variation of HCHO concentration was less significant. At suburban regions of Hangzhou, primary emission showed a small increasing trend from 2015 to 2017. And at urban sites, primary emission of HCHO in Shanghai was larger than that in Hangzhou. Seasonally, secondary HCHO reached the maximum in summer and minimum in winter. In spring, summer, and autumn, secondary formation played a crucial role in variation of HCHO concentration in urban areas of Nanjing, Hangzhou and Shanghai. While in winter, primary emission contributed more to variation of ambient HCHO in Nanjing, Shanghai, and urban areas of Hangzhou. These findings contribute to formulating effective HCHO pollution control measures. Besides, the usability of total HCHO as the proxy of VOCs reactivity depends on time scale. Total HCHO can be regarded as the proxy for VOCs reactivity over a three-year study period, while only secondary HCHO can be used as the proxy for VOCs reactivity over a short study period, e.g. in winter. So separating HCHO from different sources is of great significance in sensitivity studies of O₃ production.

Author contributions. The first two authors contributed equally. CL and QH designed and supervised the study and CL also help retrieve the satellite data and WS wrote the manuscript. SZ, YS, and WW retrieved the FTS data, and YZ ran the WRF-Chem model. JL supported the project and JK contributed to discuss the results.

Acknowledgments. This work was supported by National Key Research and Development Program of China (no. 2017YFC0210002, 2018YFC0213104, 2018YFC0213100, 2016YFC0203302), and National Natural Science Foundation of China (no. 41722501, 91544212, 51778596, 41575021), and the National High-Resolution Earth Observation Project of China

(grant no 05-Y20A16-9001-15/17-2). The authors acknowledge OMPS project for making OMPS-NPP Nadir Mapper Earth View Level 1B data product available on the Internet. We also thank Ministry of Environment Protection of the People's Republic of China for making data measured by atmospheric environment automatic monitoring stations available on the internet.

5 References

- Abad, G. G., Liu, X., Chance, K., Wang, H., Kurosu, T. P., and Suleiman, R.: Updated Smithsonian Astrophysical Observatory Ozone Monitoring Instrument (SAO OMI) formaldehyde retrieval, *Atmospheric Measurement Techniques*, 8, 19-32, doi:10.5194/amt-8-19-2015, 2015.
- Altshuller, A.: Production of aldehydes as primary emissions and from secondary atmospheric reactions of alkenes and alkanes during the night and early morning hours, *Atmospheric Environment. Part A. General Topics*, 27, 21-32, doi:10.1016/0960-1686(93)90067-9, 1993.
- Anderson, D., Nicely, J., Salawitch, R., Wolfe, G., Hanisco, T., Dickerson, R., Canty, T., and Li, C.: Evaluation of satellite HCHO retrievals over the tropical western Pacific and United States, 2016 AGU Fall Meeting, San Francisco, Calif, 12-15 December 2016, 3-7, 2016.
- Anderson, L. G., Lanning, J. A., Barrell, R., Miyagishima, J., Jones, R. H., and Wolfe, P.: Sources and sinks of formaldehyde and acetaldehyde: An analysis of Denver's ambient concentration data, *Atmos Environ*, 30, 2113-2123, doi:10.1016/1352-2310(95)00175-1, 1996.
- Andreae, M. O., and Merlet, P.: Emission of trace gases and aerosols from biomass burning, *Global Biogeochem Cy*, 15, 955-966, doi:10.1029/2000GB001382, 2001.
- Barrero, M., Orza, J., Cabello, M., and Cantón, L.: Categorisation of air quality monitoring stations by evaluation of PM10 variability, *Science of The Total Environment*, 524, 225-236, doi:10.1016/j.scitotenv.2015.03.138, 2015.
- Bovensmann, H., Burrows, J., Buchwitz, M., Frerick, J., Noël, S., Rozanov, V., Chance, K., and Goede, A.: SCIAMACHY: Mission objectives and measurement modes, *J Atmos Sci*, 56, 127-150, doi:10.1175/1520-0469(1999)056<0127:SMOAMM>2.0.CO;2, 1999.
- Carlier, P., Hannachi, H., and Mouvier, G.: The chemistry of carbonyl compounds in the atmosphere—a review, *Atmospheric Environment (1967)*, 20, 2079-2099, doi:10.1016/0004-6981(86)90304-5, 1986.
- Carter, W. P.: Development of ozone reactivity scales for volatile organic compounds, *Air & waste*, 44, 881-899, doi:10.1080/1073161X.1994.10467290, 1994.
- Carter, W. P.: Computer modeling of environmental chamber measurements of maximum incremental reactivities of volatile organic compounds, *Atmos Environ*, 29, 2513-2527, doi:10.1016/1352-2310(95)00150-W, 1995.
- Chen, J., Judd, B., and Hawken, S.: Adaptive reuse of industrial heritage for cultural purposes in Beijing, Shanghai and Chongqing, *Structural Survey*, 34, 331-350, doi:10.1108/SS-11-2015-0052, 2016.

- Crutzen, P. J.: The role of NO and NO₂ in the chemistry of the troposphere and stratosphere, *Annual review of earth and planetary sciences*, 7, 443-472, doi:10.1146/annurev.ea.07.050179.002303, 1979.
- De Smedt, I., Van Roozendael, M., Stavrou, T., Müller, J., Lerot, C., Theys, N., Valks, P., Hao, N., and Van Der A, R.: Improved retrieval of global tropospheric formaldehyde columns from GOME-2/MetOp-A addressing noise reduction and instrumental degradation issues, *Atmospheric Measurement Techniques*, 5, 2933-2949, doi:10.5194/amt-5-2933-2012, 2012.
- De Smedt, I., Stavrou, T., Hendrick, F., Danckaert, T., Vlemmix, T., Pinardi, G., Theys, N., Lerot, C., Gielen, C., Vigouroux, C., Hermans, C., Fayt, C., Veefkind, P., Müller, J. F., and Van Roozendael, M.: Diurnal, seasonal and long-term variations of global formaldehyde columns inferred from combined OMI and GOME-2 observations, *Atmospheric Chemistry and Physics*, 15, 12519-12545, doi:10.5194/acp-15-12519-2015, 2015.
- De Smedt, I., Theys, N., Yu, H., Danckaert, T., Lerot, C., Compernelle, S., Van Roozendael, M., Richter, A., Hilboll, A., Peters, E., Pedernana, M., Loyola, D., Beirle, S., Wagner, T., Eskes, H., van Geffen, J., Boersma, K. F., and Veefkind, P.: Algorithm theoretical baseline for formaldehyde retrievals from S5P TROPOMI and from the QA4ECV project, *Atmospheric Measurement Techniques*, 11, 2395-2426, doi:10.5194/amt-11-2395-2018, 2018.
- Dong, D., Shao, M., Li, Y., Lu, S., Wang, Y., Ji, Z., and Tang, D.: Carbonyl emissions from heavy-duty diesel vehicle exhaust in China and the contribution to ozone formation potential, *Journal of environmental sciences*, 26, 122-128, doi:10.1016/S1001-0742(13)60387-3, 2014.
- Duan, J., Tan, J., Yang, L., Wu, S., and Hao, J.: Concentration, sources and ozone formation potential of volatile organic compounds (VOCs) during ozone episode in Beijing, *Atmos Res*, 88, 25-35, doi:10.1016/j.atmosres.2007.09.004, 2008.
- Duncan, B. N., Yoshida, Y., Olson, J. R., Sillman, S., Martin, R. V., Lamsal, L., Hu, Y., Pickering, K. E., Retscher, C., Allen, D. J., and Crawford, J. H.: Application of OMI observations to a space-based indicator of NO_x and VOC controls on surface ozone formation, *Atmos Environ*, 44, 2213-2223, doi:10.1016/j.atmosenv.2010.03.010, 2010.
- Finlayson-Pitts, B. J., and Pitts Jr, J. N.: *Chemistry of the upper and lower atmosphere: theory, experiments, and applications*, Elsevier, 1999.
- Flynn, L., Long, C., Wu, X., Evans, R., Beck, C., Petropavlovskikh, I., McConville, G., Yu, W., Zhang, Z., and Niu, J.: Performance of the ozone mapping and profiler suite (OMPS) products, *Journal of Geophysical Research: Atmospheres*, 119, 6181-6195, doi:10.1002/2013JD020467, 2014.
- Friedfeld, S., Fraser, M., Ensor, K., Tribble, S., Rehle, D., Leleux, D., and Tittel, F.: Statistical analysis of primary and secondary atmospheric formaldehyde, *Atmos Environ*, 36, 4767-4775, doi:10.1016/S1352-2310(02)00558-7, 2002.
- Fung, K., and Grosjean, D.: Determination of nanogram amounts of carbonyls as 2, 4-dinitrophenylhydrazones by high-performance liquid chromatography, *Anal Chem*, 53, 168-171, doi:10.1021/ac00225a009, 1981.
- Gao, J., Zhu, B., Xiao, H., Kang, H., Hou, X., and Shao, P.: A case study of surface ozone source apportionment during a high concentration episode, under frequent shifting wind conditions over the Yangtze River Delta, China, *Science of the Total Environment*, 544, 853-863, doi:10.1016/j.scitotenv.2015.12.039, 2016.
- Garcia, A., Volkamer, R., Molina, L., Molina, M., Samuelson, J., Mellqvist, J., Galle, B., Herndon, S., and Kolb, C.: Separation

- of emitted and photochemical formaldehyde in Mexico City using a statistical analysis and a new pair of gas-phase tracers, *Atmospheric Chemistry and Physics*, 6, 4545-4557, doi:10.5194/acp-6-4545-2006, 2006.
- González Abad, G., Vasilkov, A., Seftor, C., Liu, X., and Chance, K.: Smithsonian Astrophysical Observatory Ozone Mapping and Profiler Suite (SAO OMPS) formaldehyde retrieval, *Atmos. Meas. Tech.*, 9, 2797-2812, doi:10.5194/amt-9-2797-2016, 2016.
- Haagen-Smit, A. J.: The air pollution problem in Los Angeles, *Engineering and Science*, 14, 7-13, 1950.
- He, J., Gong, S., Yu, Y., Yu, L., Wu, L., Mao, H., Song, C., Zhao, S., Liu, H., and Li, X.: Air pollution characteristics and their relation to meteorological conditions during 2014–2015 in major Chinese cities, *Environ Pollut*, 223, 484-496, doi:10.1016/j.envpol.2017.01.050, 2017.
- Hoekman, S. K.: Speciated measurements and calculated reactivities of vehicle exhaust emissions from conventional and reformulated gasolines, *Environ Sci Technol*, 26, 1206-1216, doi:10.1021/es50002a610, 1992.
- Holzinger, R., Warneke, C., Hansel, A., Jordan, A., Lindinger, W., Scharffe, D. H., Schade, G., and Crutzen, P. J.: Biomass burning as a source of formaldehyde, acetaldehyde, methanol, acetone, acetonitrile, and hydrogen cyanide, *Geophys Res Lett*, 26, 1161-1164, doi:10.1029/1999GL900156, 1999.
- Hong, Q., Liu, C., Chan, K. L., Hu, Q., Xie, Z., Liu, H., Si, F., and Liu, J.: Ship-based MAX-DOAS measurements of tropospheric NO₂, SO₂, and HCHO distribution along the Yangtze River, *Atmospheric Chemistry and Physics*, 18, 5931-5951, doi:10.5194/acp-18-5931-2018, 2018.
- Jones, N., Riedel, K., Allan, W., Wood, S., Palmer, P., Chance, K., and Notholt, J.: Long-term tropospheric formaldehyde concentrations deduced from ground-based fourier transform solar infrared measurements, *Atmospheric Chemistry and Physics*, 9, 7131-7142, doi:10.5194/acp-9-7131-2009, 2009.
- Karl, T., Jobson, T., Kuster, W. C., Williams, E., Stutz, J., Shetter, R., Hall, S. R., Goldan, P., Fehsenfeld, F., and Lindinger, W.: Use of proton-transfer-reaction mass spectrometry to characterize volatile organic compound sources at the La Porte super site during the Texas Air Quality Study 2000, *Journal of Geophysical Research: Atmospheres*, 108, doi:10.1029/2002JD003333 2003.
- Kawamura, K., Steinberg, S., and Kaplan, I. R.: Homologous series of C₁–C₁₀ monocarboxylic acids and C₁–C₆ carbonyls in Los Angeles air and motor vehicle exhausts, *Atmos Environ*, 34, 4175-4191, doi:10.1016/S1352-2310(00)00212-0, 2000.
- Kean, A. J., Grosjean, E., Grosjean, D., and Harley, R. A.: On-road measurement of carbonyls in California light-duty vehicle emissions, *Environ Sci Technol*, 35, 4198-4204, doi:10.1021/es010814v, 2001.
- Khan, S., and Malik, A.: Environmental and health effects of textile industry wastewater, in: *Environmental deterioration and human health*, Springer, 55-71, 2014.
- Klimont, Z., Streets, D. G., Gupta, S., Cofala, J., Lixin, F., and Ichikawa, Y.: Anthropogenic emissions of non-methane volatile organic compounds in China, *Atmos Environ*, 36, 1309-1322, doi:10.1016/S1352-2310(01)00529-5, 2002.
- Kurylo, M. J.: Network for the detection of stratospheric change, *Remote Sensing of Atmospheric Chemistry*, 168-175, doi:10.1117/12.46658, 1991

- Lawson, D., Biermann, H., Tuazon, E., Winer, A., Mackay, G., Schiff, H., Kok, G., Dasgupta, P., and Fung, K.: Formaldehyde measurement methods evaluation and ambient concentrations during the carbonaceous species methods comparison study, *Aerosol Sci Tech*, 12, 64-76, doi:10.1080/02786829008959326, 1990.
- 5 Lee, C., Richter, A., Lee, H., Kim, Y. J., Burrows, J. P., Lee, Y. G., and Choi, B. C.: Impact of transport of sulfur dioxide from the Asian continent on the air quality over Korea during May 2005, *Atmos Environ*, 42, 1461-1475, doi:10.1016/j.atmosenv.2007.11.006, 2008.
- Lee, M., Heikes, B. G., Jacob, D. J., Sachse, G., and Anderson, B.: Hydrogen peroxide, organic hydroperoxide, and formaldehyde as primary pollutants from biomass burning, *Journal of Geophysical Research: Atmospheres*, 102, 1301-1309, doi:10.1029/96JD01709, 1997.
- 10 Levy, H.: Normal atmosphere: Large radical and formaldehyde concentrations predicted, *Science*, 173, 141-143, doi:10.1126/science.173.3992.141 Article, 1971.
- Li, C., Joiner, J., Krotkov, N. A., and Dunlap, L.: A new method for global retrievals of HCHO total columns from the Suomi National Polar-orbiting Partnership Ozone Mapping and Profiler Suite, *Geophys Res Lett*, 42, 2515-2522, doi:10.1002/2015GL063204, 2015a.
- 15 Li, H., Li, L., Huang, C., An, J.-y., Yan, R.-s., Huang, H.-y., Wang, Y.-j., Lu, Q., Wang, Q., Lou, S.-r., Wang, H.-l., Zhou, M., Tao, S.-k., Qiao, L.-p., and Chen, M.-h.: Ozone source apportionment at urban area during a typical photochemical pollution episode in the summer of 2013 in the Yangtze River Delta, *Huan Jing Ke Xue*, 36, 1-10, doi:10.13227/j.hjhx.2015.01.001, 2015b.
- 20 Li, P., De Marco, A., Feng, Z., Anav, A., Zhou, D., and Paoletti, E.: Nationwide ground-level ozone measurements in China suggest serious risks to forests, *Environ Pollut*, 237, 803-813, doi:10.1016/j.envpol.2017.11.002, 2018.
- Li, Y., Shao, M., Lu, S., Chang, C.-C., and Dasgupta, P. K.: Variations and sources of ambient formaldehyde for the 2008 Beijing Olympic games, *Atmos Environ*, 44, 2632-2639, doi:10.1016/j.atmosenv.2010.03.045, 2010.
- Liu, C., Zhang, C., Mu, Y., Liu, J., and Zhang, Y.: Emission of volatile organic compounds from domestic coal stove with the actual alternation of flaming and smoldering combustion processes, *Environ Pollut*, 221, 385-391, doi:10.1016/j.envpol.2016.11.089, 2017.
- 25 Liu, H., Man, H., Tschantz, M., Wu, Y., He, K., and Hao, J.: VOC from vehicular evaporation emissions: status and control strategy, *Environ Sci Technol*, 49, 14424-14431, doi:10.1021/acs.est.5b04064, 2015.
- Liu, H., Liu, C., Xie, Z., Li, Y., Huang, X., Wang, S., Xu, J., and Xie, P.: A paradox for air pollution controlling in China revealed by "APEC Blue" and "Parade Blue", *Sci Rep*, 6, 34408, doi:10.1038/srep34408, 2016.
- 30 Liu, H., Liu, S., Xue, B., Lv, Z., Meng, Z., Yang, X., Xue, T., Yu, Q., and He, K.: Ground-level ozone pollution and its health impacts in China, *Atmos Environ*, 173, 223-230, doi:10.1016/j.atmosenv.2017.11.014, 2018.
- Liu, Y., Shao, M., Lu, S., Chang, C.-c., Wang, J.-L., and Chen, G.: Volatile organic compound (VOC) measurements in the Pearl River Delta (PRD) region, China, *Atmospheric Chemistry and Physics*, 8, 1531-1545, doi:10.1021/acs.est.5b04064,

- 2008.
- Lu, B., Huang, C., Lu, Q., Yang, Q., Jing, B., Xia, Y., Tang, W., and Gu, Z.: Emission Inventory and Pollution Characteristics of Industrial VOCs in Hangzhou, China, *Huan Jing Ke Xue*, 39, 533-542, doi:10.13227/j.hj.kx.201706062, 2018a.
- Lu, X., Hong, J., Zhang, L., Cooper, O. R., Schultz, M. G., Xu, X., Wang, T., Gao, M., Zhao, Y., and Zhang, Y.: Severe surface ozone pollution in China: a global perspective, *Environmental Science & Technology Letters*, 5, 487-494, doi:10.1021/acs.estlett.8b00366, 2018b.
- Luecken, D., Hutzell, W., and Gipsen, G.: Development and analysis of air quality modeling simulations for hazardous air pollutants, *Atmos Environ*, 40, 5087-5096, doi:10.1016/j.atmosenv.2005.12.044, 2006.
- Lui, K. H., Ho, S. S. H., Louie, P. K. K., Chan, C. S., Lee, S. C., Hu, D., Chan, P. W., Lee, J. C. W., and Ho, K. F.: Seasonal behavior of carbonyls and source characterization of formaldehyde (HCHO) in ambient air, *Atmos Environ*, 152, 51-60, doi:10.1016/j.atmosenv.2016.12.004, 2017.
- Luo, M., Beer, R., Jacob, D. J., Logan, J. A., and Rodgers, C.: Simulated observation of tropospheric ozone and CO with the Tropospheric Emission Spectrometer (TES) satellite instrument, *Journal of Geophysical Research: Atmospheres*, 107, doi:10.1029/2001JD000804, 2002.
- Luo, M., Rinsland, C., Fisher, B., Sachse, G., Diskin, G., Logan, J., Worden, H., Kulawik, S., Osterman, G., and Eldering, A.: TES carbon monoxide validation with DACOM aircraft measurements during INTEX-B 2006, *Journal of Geophysical Research: Atmospheres*, 112, doi:10.1029/2007JD008803, 2007.
- Ma, Y., Diao, Y., Zhang, B., Wang, W., Ren, X., Yang, D., Wang, M., Shi, X., and Zheng, J.: Detection of formaldehyde emissions from an industrial zone in the Yangtze River Delta region of China using a proton transfer reaction ion-drift chemical ionization mass spectrometer, *Atmospheric Measurement Techniques*, 9, 6101-6116, doi:10.5194/amt-9-6101-2016, 2016.
- Martin, R., Parrish, D., Ryerson, T., Nicks, D., Chance, K., Kurosu, T., Jacob, D. J., Sturges, E., Fried, A., and Wert, B.: Evaluation of GOME satellite measurements of tropospheric NO₂ and HCHO using regional data from aircraft campaigns in the southeastern United States, *Journal of Geophysical Research: Atmospheres*, 109, doi:10.1029/2004jd004869, 2004.
- Marvin, M. R., Wolfe, G. M., Salawitch, R. J., Carty, T. P., Roberts, S. J., Travis, K. R., Aikin, K. C., de Gouw, J. A., Graus, M., and Hanisco, T. F.: Impact of evolving isoprene mechanisms on simulated formaldehyde: An inter-comparison supported by in situ observations from SENEX, *Atmos Environ*, 164, 325-336, doi:10.1016/j.atmosenv.2017.05.049, 2017.
- Munro, R., Lang, R., Klaes, D., Poli, G., Retscher, C., Lindstrot, R., Huckle, R., Lacan, A., Grzegorski, M., and Holdak, A.: The GOME-2 instrument on the Metop series of satellites: instrument design, calibration, and level 1 data processing—an overview, *Atmospheric Measurement Techniques*, 9, 1279-1301, doi:10.5194/amt-9-1279-2016, 2016.
- Notholt, J., Meier, A., and Peil, S.: Total column densities of tropospheric and stratospheric trace gases in the undisturbed Arctic summer atmosphere, *J Atmos Chem*, 20, 311-332, doi:10.1007/BF00694500, 1995.
- Pagano, T. S., Broberg, S., Aumann, H. H., Elliott, D., Manning, E., and Strow, L.: Performance status of the Atmospheric Infrared Sounder ten years after launch, *Multispectral, Hyperspectral, and Ultraspectral Remote Sensing Technology*,

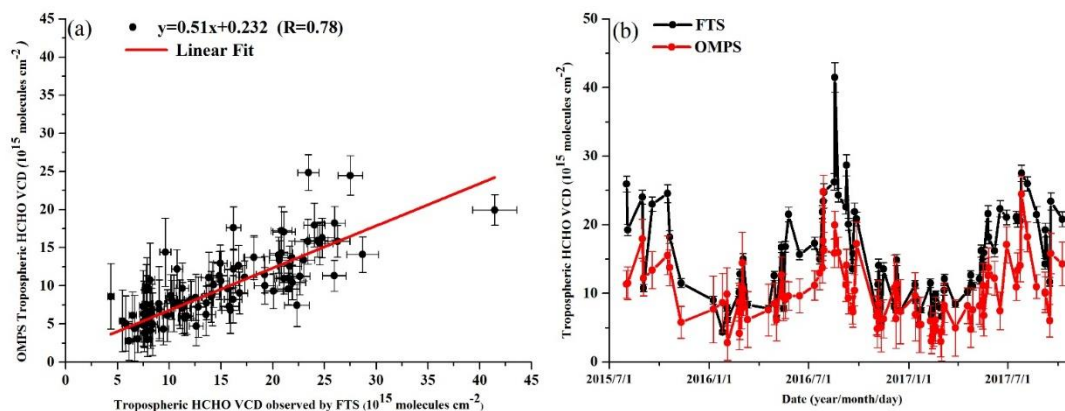
Techniques and Applications IV, 852703, 2012.

- Palmer, P. I., Jacob, D. J., Fiore, A. M., Martin, R. V., Chance, K., and Kurosu, T. P.: Mapping isoprene emissions over North America using formaldehyde column observations from space, *Journal of Geophysical Research: Atmospheres*, 108, doi:10.1029/2002JD002153, 2003.
- 5 Platt, U., and Perner, D.: Direct measurements of atmospheric CH₂O, HNO₂, O₃, NO₂, and SO₂ by differential optical absorption in the near UV, *Journal of Geophysical Research: Oceans*, 85, 7453-7458, doi:10.1029/JC085iC12p07453, 1980.
- Qiu, K., Yang, L., Lin, J., Wang, P., Yang, Y., Ye, D., and Wang, L.: Historical industrial emissions of non-methane volatile organic compounds in China for the period of 1980–2010, *Atmos Environ*, 86, 102-112, doi:10.1016/j.atmosenv.2013.12.026, 2014.
- 10 Rasool, S.: Normal Atmosphere: Large Radical and Formaldehyde Concentrations Predicted, *Science*, 170, 315, doi:10.1126/science.173.3992.141, 1970.
- Reuter, M., Bovensmann, H., Buchwitz, M., Burrows, J., Connor, B., Deutscher, N. M., Griffith, D., Heymann, J., Keppel-Aleks, G., and Messerschmidt, J.: Retrieval of atmospheric CO₂ with enhanced accuracy and precision from SCIAMACHY: Validation with FTS measurements and comparison with model results, *Journal of Geophysical Research: Atmospheres*, 116, doi:10.1029/2010JD015047, 2011.
- 15 Reyes, F., Grutter, M., Jazcilevich, A., and González-Oropeza, R.: Analysis of non-regulated vehicular emissions by extractive FTIR spectrometry: tests on a hybrid car in Mexico City, *Atmospheric Chemistry and Physics Discussions*, 6, 5773-5796, doi:10.5194/acpd-6-5773-2006, 2006.
- Rohde, R. A., and Muller, R. A.: Air pollution in China: mapping of concentrations and sources, *Plos One*, 10, e0135749, doi:10.1371/journal.pone.0135749, 2015.
- 20 Russell, A., Milford, J., Bergin, M., McBride, S., McNair, L., Yang, Y., Stockwell, W., and Croes, B.: Urban ozone control and atmospheric reactivity of organic gases, *Science*, 269, 491-495, doi:10.1126/science.269.5223.491, 1995.
- Seftor, C., Jaross, G., Kowitz, M., Haken, M., Li, J., and Flynn, L.: Postlaunch performance of the Suomi National Polar-orbiting Partnership Ozone Mapping and Profiler Suite (OMPS) nadir sensors, *Journal of Geophysical Research: Atmospheres*, 119, 4413-4428, doi:10.1002/2013JD020472, 2014.
- 25 Seinfeld, J. H., and Pandis, S. N.: *Atmospheric chemistry and physics: from air pollution to climate change*, John Wiley & Sons, 2016.
- Shah, S., Tuinder, O. N., van Peet, J. C., de Laat, A. T., and Stammes, P.: Evaluation of SCIAMACHY Level-1 data versions using nadir ozone profile retrievals in the period 2003–2011, *Atmospheric Measurement Techniques*, 11, 2345-2360, doi:10.5194/amt-11-2345-2018, 2018.
- 30 Shi, M., Wu, H., Zhang, S., Li, H., Yang, T., Liu, W., and Liu, H.: Weekly cycle of magnetic characteristics of the daily PM_{2.5} and PM_{2.5–10} in Beijing, China, *Atmos Environ*, 98, 357-367, doi:10.1016/j.atmosenv.2014.08.079, 2014.
- Smedt, I. D., Müller, J.-F., Stavrou, T., Eskes, H., and Roozendaal, M. V.: Twelve years of global observations of formaldehyde in the troposphere using GOME and SCIAMACHY sensors, *Atmospheric Chemistry and Physics*, 8, 4947-

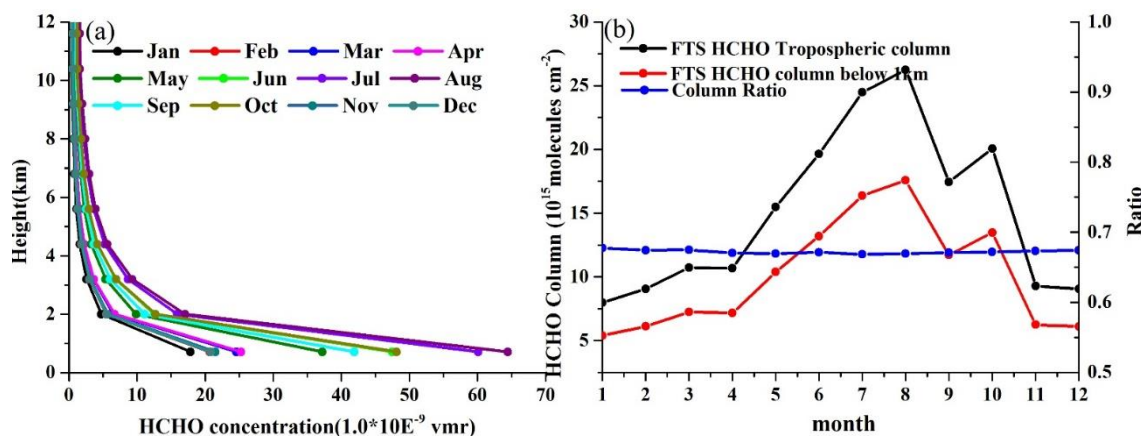
- 4963, doi:10.5194/acp-8-4947-2008, 2008.
- Su, W., Liu, C., Hu, Q., Fan, G., Xie, Z., Huang, X., Zhang, T., Chen, Z., Dong, Y., Ji, X., Liu, H., Wang, Z., and Liu, J.: Characterization of ozone in the lower troposphere during the 2016 G20 conference in Hangzhou, *Sci Rep*, 7, 17368, doi:10.1038/s41598-017-17646-x, 2017.
- 5 Sun, Y., Palm, M., Weinzierl, C., Petri, C., Notholt, J., Wang, Y., and Liu, C.: Sensitivity of instrumental line shape monitoring for the ground-based high-resolution FTIR spectrometer with respect to different optical attenuators, *Atmospheric Measurement Techniques*, 10, 989, doi:10.5194/amt-10-989-2017, 2017.
- Sun, Y., Liu, C., Palm, M., Vigouroux, C., Notholt, J., Hu, Q., Jones, N., Wang, W., Su, W., and Zhang, W.: Ozone seasonal evolution and photochemical production regime in the polluted troposphere in eastern China derived from high-resolution Fourier transform spectrometry (FTS) observations, *Atmospheric Chemistry and Physics*, 18, 14569-14583, doi:10.5194/acp-18-14569-2018, 2018.
- 10 Tang, G., Wang, Y., Li, X., Ji, D., Hsu, S., and Gao, X.: Spatial-temporal variations in surface ozone in Northern China as observed during 2009–2010 and possible implications for future air quality control strategies, *Atmospheric Chemistry and Physics*, 12, 2757-2776, doi:10.5194/acp-12-2757-2012, 2012.
- 15 Tian, Y., Sun, Y., Liu, C., Wang, W., Shan, C., Xu, X., and Hu, Q.: Characterisation of methane variability and trends from near-infrared solar spectra over Hefei, China, *Atmos Environ*, 173, 198-209, doi:10.1016/j.atmosenv.2017.11.001, 2018.
- Vigouroux, C., Hendrick, F., Stavrou, T., Dils, B., Smedt, I. D., Hermans, C., Merlaud, A., Scolas, F., Senten, C., and Vanhaelewyn, G.: Ground-based FTIR and MAX-DOAS observations of formaldehyde at Réunion Island and comparisons with satellite and model data, *Atmospheric Chemistry and Physics*, 9, 9523-9544, doi:10.5194/acp-9-9523-2009, 2009.
- 20 Volkamer, R., Sheehy, P., Molina, L., and Molina, M.: Oxidative capacity of the Mexico City atmosphere–Part 1: A radical source perspective, *Atmospheric Chemistry and Physics*, 10, 6969-6991, doi:10.5194/acp-10-6969-2010, 2010.
- Wang, D., Zhou, B., Fu, Q., Zhao, Q., Zhang, Q., Chen, J., Yang, X., Duan, Y., and Li, J.: Intense secondary aerosol formation due to strong atmospheric photochemical reactions in summer: observations at a rural site in eastern Yangtze River Delta of China, *Science of the Total Environment*, 571, 1454-1466, doi:10.1016/j.scitotenv.2016.06.212, 2016.
- 25 Wang, M., Chen, W., Shao, M., Lu, S., Zeng, L., and Hu, M.: Investigation of carbonyl compound sources at a rural site in the Yangtze River Delta region of China, *Journal of environmental sciences*, 28, 128-136, doi:10.1016/j.jes.2014.12.001, 2015.
- Wang, P., and Zhao, W.: Assessment of ambient volatile organic compounds (VOCs) near major roads in urban Nanjing, China, *Atmos Res*, 89, 289-297, doi:10.1016/j.atmosres.2008.03.013, 2008.
- Wang, Q., Geng, C., Lu, S., Chen, W., and Shao, M.: Emission factors of gaseous carbonaceous species from residential combustion of coal and crop residue briquettes, *Frontiers of Environmental Science & Engineering*, 7, 66-76, doi:10.1007/s11783-012-0428-5, 2013.
- 30 Wang, T., Xue, L., Brimblecombe, P., Lam, Y. F., Li, L., and Zhang, L.: Ozone pollution in China: A review of concentrations, meteorological influences, chemical precursors, and effects, *Science of the Total Environment*, 575, 1582-1596, doi:10.1016/j.scitotenv.2016.10.081, 2017a.

- Wang, W.-N., Cheng, T.-H., Gu, X.-F., Chen, H., Guo, H., Wang, Y., Bao, F.-W., Shi, S.-Y., Xu, B.-R., and Zuo, X.: Assessing spatial and temporal patterns of observed ground-level ozone in China, *Sci Rep-Uk*, 7, 3651, doi:10.1038/s41598-017-03929-w, 2017b.
- Wang, W., Tian, Y., Liu, C., Sun, Y., Liu, W., Xie, P., Liu, J., Xu, J., Morino, I., and Velazco, V. A.: Investigating the performance of a greenhouse gas observatory in Hefei, China, *Atmospheric Measurement Techniques*, 10, 2627, doi:10.5194/amt-10-2627-2017, 2017c.
- Wang, X., and Mauzerall, D. L.: Evaluating impacts of air pollution in China on public health: implications for future air pollution and energy policies, *Atmos Environ*, 40, 1706-1721, doi:10.1016/j.atmosenv.2005.10.066, 2006.
- Wang, Y., Beirle, S., Lampel, J., Koukouli, M., De Smedt, I., Theys, N., Ang, L., Wu, D., Xie, P., and Liu, C.: Validation of OMI, GOME-2A and GOME-2B tropospheric NO₂, SO₂ and HCHO products using MAX-DOAS observations from 2011 to 2014 in Wuxi, China: investigation of the effects of priori profiles and aerosols on the satellite products, *Atmospheric Chemistry and Physics*, 17, 5007, doi:10.5194/acp-17-5007-2017, 2017d.
- Wang, Y., Du, H., Xu, Y., Lu, D., Wang, X., and Guo, Z.: Temporal and spatial variation relationship and influence factors on surface urban heat island and ozone pollution in the Yangtze River Delta, China, *Science of the Total Environment*, 631, 921-933, doi:10.1016/j.scitotenv.2018.03.050, 2018.
- Warneke, C., De Gouw, J., Goldan, P., Kuster, W., Williams, E., Lerner, B., Jakoubek, R., Brown, S., Stark, H., and Aldener, M.: Comparison of daytime and nighttime oxidation of biogenic and anthropogenic VOCs along the New England coast in summer during New England Air Quality Study 2002, *Journal of Geophysical Research: Atmospheres*, 109, doi:10.1029/2003JD004424, 2004.
- Wei, W., Wang, S., Chatani, S., Klimont, Z., Cofala, J., and Hao, J.: Emission and speciation of non-methane volatile organic compounds from anthropogenic sources in China, *Atmos Environ*, 42, 4976-4988, doi:10.1016/j.atmosenv.2008.02.044, 2008.
- Williams, R. L., Lipari, F., and Potter, R. A.: Formaldehyde, methanol and hydrocarbon emissions from methanol-fueled cars, *J Air Waste Manage*, 40, 747-756, doi:10.1080/10473289.1990.10466720, 1990.
- Witte, J., Duncan, B., Douglass, A., Kurosu, T., Chance, K., and Retscher, C.: The unique OMI HCHO/NO₂ feature during the 2008 Beijing Olympics: Implications for ozone production sensitivity, *Atmos Environ*, 45, 3103-3111, doi:10.1016/j.atmosenv.2011.03.015, 2011.
- World Health Organization, Burden of disease from the joint effects of Household and Ambient Air Pollution for 2012: http://www.who.int/phe/health_topics/outdoorair/databases/AP_jointeffect_BoD_results_March2014.pdf, October 2018, 2014a.
- World Health Organization, WHO methods and data sources for country-level causes of death 2000–2012: http://www.who.int/healthinfo/statistics/GlobalCOD_method.pdf, October 2018, 2014b.
- Wu, X., Huang, W., Zhang, Y., Zheng, C., Jiang, X., Gao, X., and Cen, K.: Characteristics and uncertainty of industrial VOCs emissions in China, *Aerosol Air Qual. Res*, 15, 1045-1058, doi:10.4209/aaqr.2014.10.0236, 2015.

- Yamamori, M., Kagawa, A., Kasai, Y., Mizutani, K., Murayama, Y., Sugita, T., Irie, H., and Nakajima, H.: Validation of ILAS-II version 1.4 O₃, HNO₃, and temperature data through comparison with ozonesonde, ground-based FTS, and lidar measurements in Alaska, *Journal of Geophysical Research: Atmospheres*, 111, doi:10.1029/2005JD006438, 2006.
- Yang, G., Wang, Y., Zeng, Y., Gao, G. F., Liang, X., Zhou, M., Wan, X., Yu, S., Jiang, Y., and Naghavi, M.: Rapid health transition in China, 1990-2010: findings from the Global Burden of Disease Study 2010, *The Lancet*, 381, 1987-2015, doi:10.1016/S0140-6736(13)61097-1, 2013.
- Yang, W., Li, J., Wang, M., Sun, Y., and Wang, Z.: A Case Study of Investigating Secondary Organic Aerosol Formation Pathways in Beijing using an Observation-based SOA Box Model, *Aerosol Air Qual Res*, 18, 1606-1616, doi:10.4209/aaqr.2017.10.0415, 2018.
- Yuan, T., Cheng, L., You Wen, S., Hua, X. P., Wei, W., Qing, L. W., Guo, L. J., Ang, L., Zhi, H. R., and Yi, Z.: Retrieval of Atmospheric CO₂ and CH₄ Variations Using Ground-Based High Resolution Fourier Transform Infrared Spectra, *J Spectrosc*, 2015, doi:10.1155/2015/736382, 2015.
- Yurganov, L., McMillan, W., Grechko, E., and Dzhola, A.: Analysis of global and regional CO burdens measured from space between 2000 and 2009 and validated by ground-based solar tracking spectrometers, *Atmos. Chem. Phys.*, 10, 3479-3494, doi:10.5194/acp-10-3479-2010, 2010.
- Zheng, J., Ma, Y., Chen, M., Zhang, Q., Wang, L., Khalizov, A. F., Yao, L., Wang, Z., Wang, X., and Chen, L.: Measurement of atmospheric amines and ammonia using the high resolution time-of-flight chemical ionization mass spectrometry, *Atmos Environ*, 102, 249-259, doi:10.1016/j.atmosenv.2014.12.002, 2015.
- Zheng, J., Jiang, P., Qiao, W., Zhu, Y., and Kennedy, E.: Analysis of air pollution reduction and climate change mitigation in the industry sector of Yangtze River Delta in China, *Journal of Cleaner Production*, 114, 314-322, doi:10.1016/j.jclepro.2015.07.011, 2016.
- Zhu, L., Jacob, D. J., Kim, P. S., Fisher, J. A., Yu, K., Travis, K. R., Mickley, L. J., Yantosca, R. M., Sulprizio, M. P., De Smedt, I., González Abad, G., Chance, K., Li, C., Ferrare, R., Fried, A., Hair, J. W., Hanisco, T. F., Richter, D., Jo Scarino, A., Walega, J., Weibring, P., and Wolfe, G. M.: Observing atmospheric formaldehyde (HCHO) from space: validation and intercomparison of six retrievals from four satellites (OMI, GOME2A, GOME2B, OMPS) with SEAC⁴RS aircraft observations over the southeast US, *Atmospheric Chemistry and Physics*, 16, 13477-13490, doi:10.5194/acp-16-13477-2016, 2016.
- Zhu, L., Jacob, D. J., Keutsch, F. N., Mickley, L. J., Scheffe, R., Strum, M., Gonzalez Abad, G., Chance, K., Yang, K., Rappengluck, B., Millet, D. B., Baasandorj, M., Jaegle, L., and Shah, V.: Formaldehyde (HCHO) As a Hazardous Air Pollutant: Mapping Surface Air Concentrations from Satellite and Inferring Cancer Risks in the United States, *Environ Sci Technol*, 51, 5650-5657, doi:10.1021/acs.est.7b01356, 2017a.
- Zhu, L., Mickley, L. J., Jacob, D. J., Marais, E. A., Sheng, J., Hu, L., González Abad, G., and Chance, K.: Long-term (2005–2014) trends in formaldehyde (HCHO) columns across North America as seen by the OMI satellite instrument: Evidence of changing emissions of volatile organic compounds, *Geophys Res Lett*, doi:DOI:10.1002/2017GL073859, 2017b.



5 **Figure 1. (a) Correlation analysis and (b) time series of tropospheric HCHO VCDs measured by OMPS and FTS from Jul.1st, 2015 to Nov.20th, 2017.**



10 **Figure 2. (a) The monthly averaged HCHO vertical profiles in the troposphere measured by FTS, and (b) the monthly averaged tropospheric HCHO column (dark line) and HCHO column below 1 km (red line) measured by FTS and the ratio of HCHO column below 1km in the tropospheric HCHO column (blue line).**

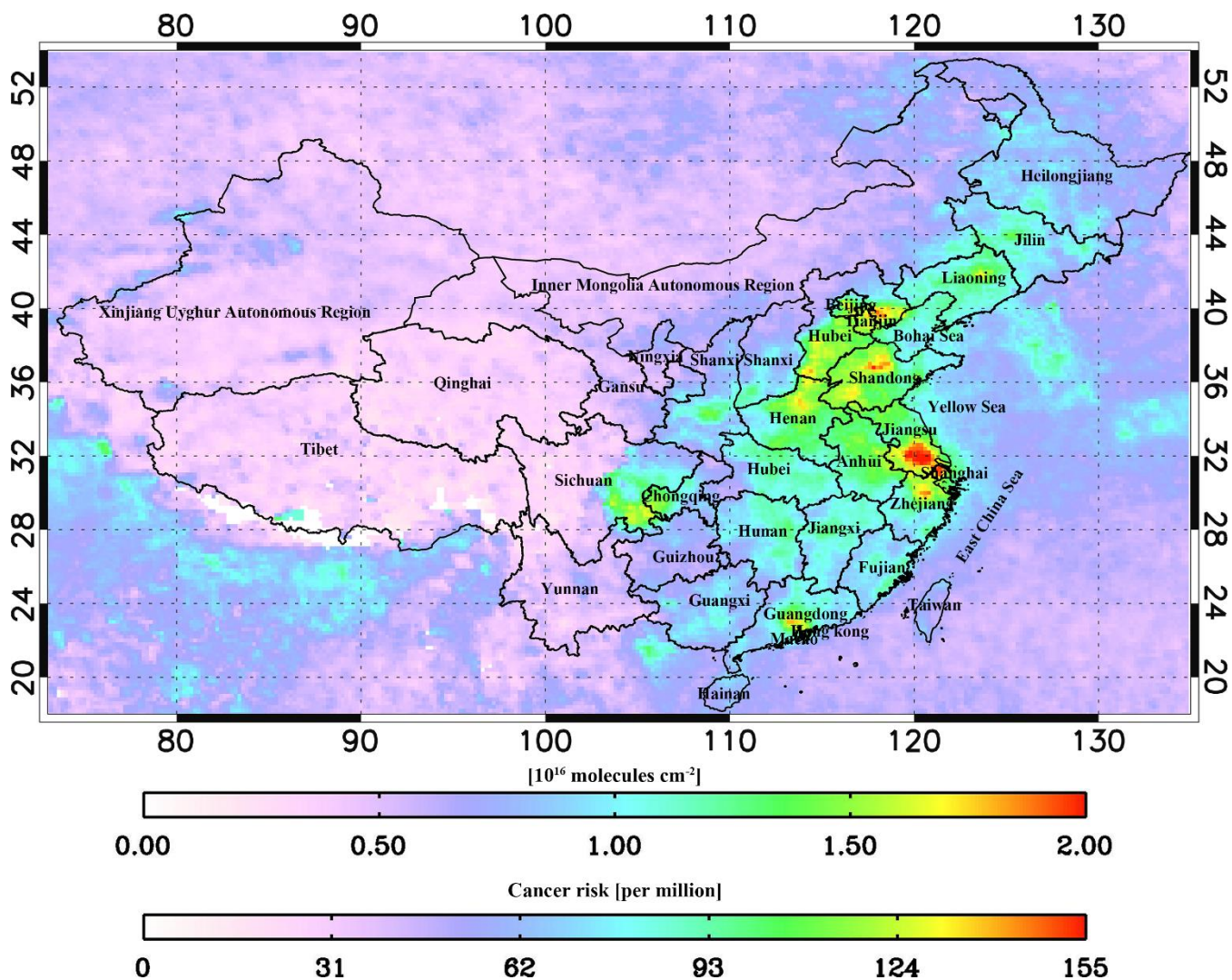


Figure 3. The spatial distribution of monthly averaged tropospheric HCHO VCDs observed by OMPS and cancer risks in August, 2017.

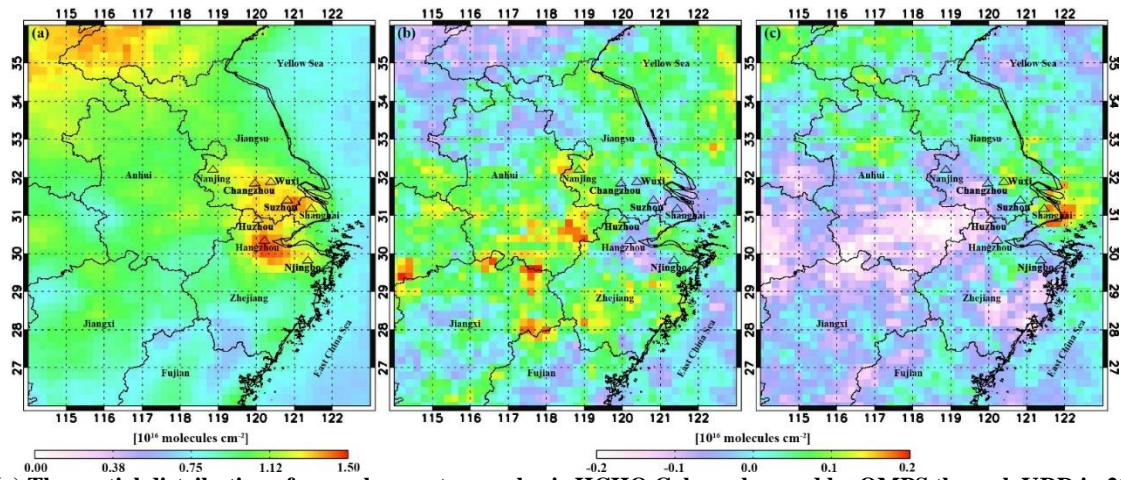


Figure 4. (a) The spatial distribution of annual mean tropospheric HCHO Column observed by OMPS through YRD in 2015 and (b) changes in the HCHO VCDs between 2016 and 2015 and (c) between 2017 and 2016.

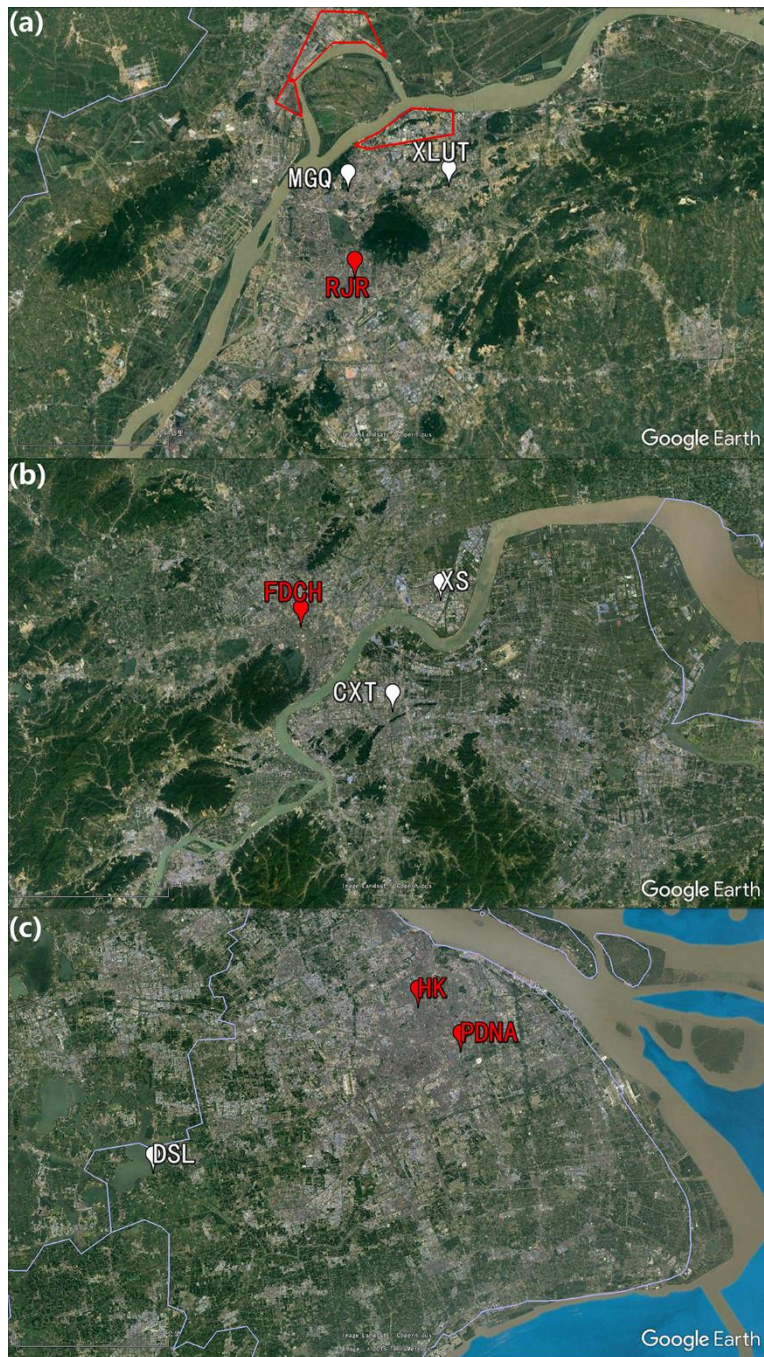


Figure 5. The maps of Nanjing (a), Hangzhou (b), and Shanghai (c). The suburb sites are marked with white, and the downtown sites are marked with red. And the industrial zones are circled by red lines.

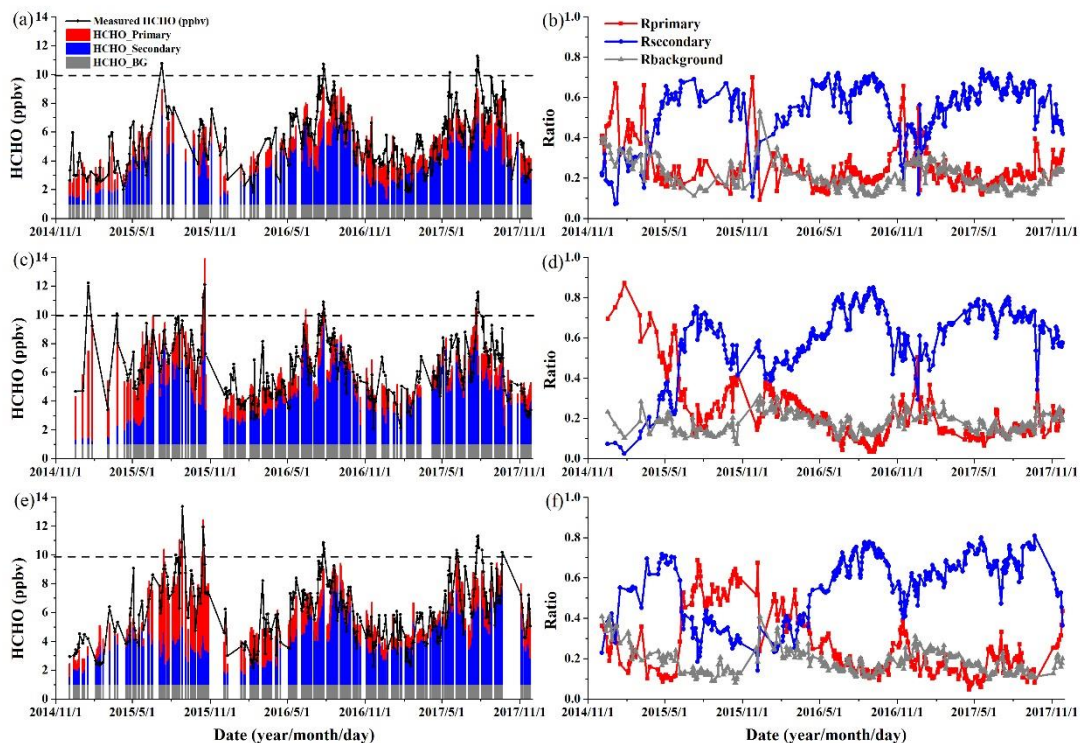


Figure 6. The time series of absolute and relative contributions of primary and secondary sources and background to HCHO concentration from Dec 2014 to Nov 2017 at RJR site (a, b), MGQ site (c, d), and XLUT site (e, f) in Nanjing. Black dash lines represent the threshold value for HCHO pollution.

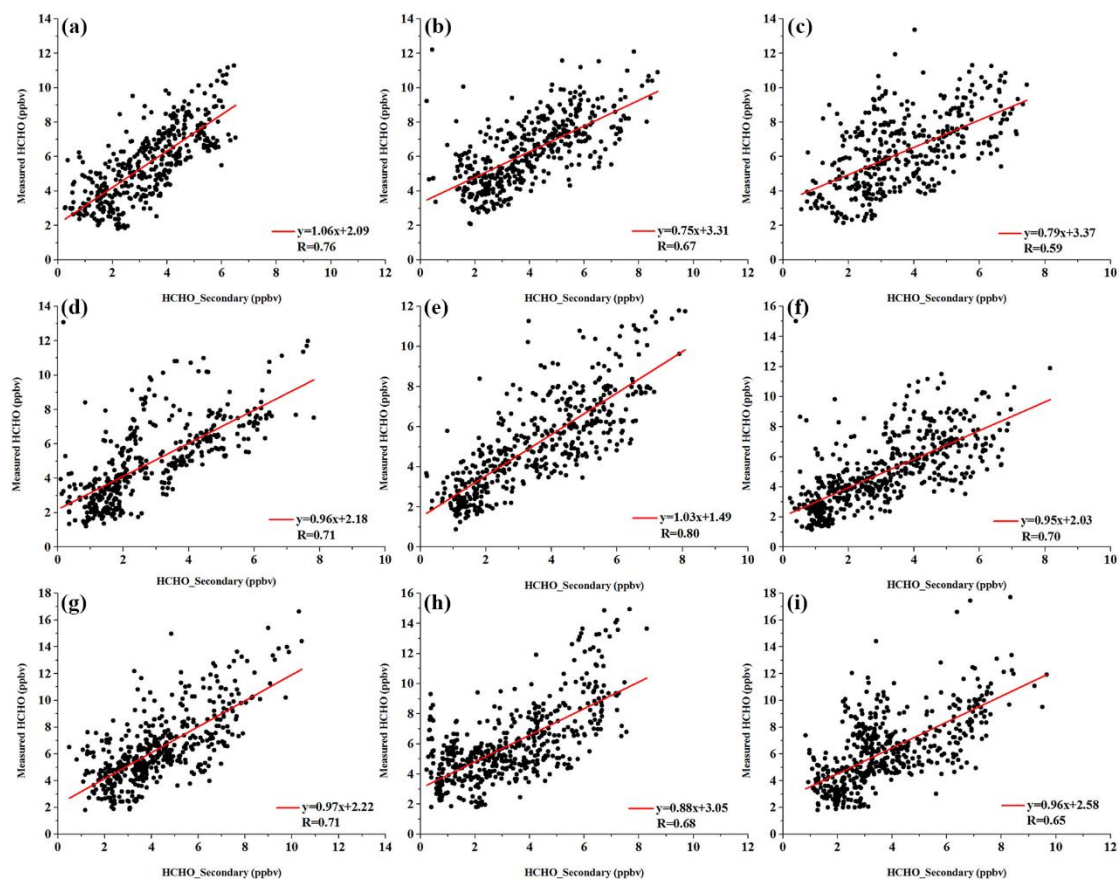


Figure 7. Correlation analysis of total HCHO and secondary HCHO from 2015 to 2017 at RJR site (a), MGQ site (b), and XLUT site (c) in Nanjing, at XS site (d), CXT site (e), and FDCH site (f) in Hangzhou, and at HK site (g), PDNA site (h), and DSL site (i) in Shanghai (significance values are equal zero).

5

10

15

20

Table 1. Annual average of measured HCHO concentrations (ppbv) and absolute and relative contributions from different sources in Nanjing, Hangzhou, and Shanghai.

year	Nanjing			Hangzhou			Shanghai			
	MGQ (industry zone)	RJR (urban area)	XLUT (industry zone)	XS (suburb)	CXT (suburb)	FDCH (urban area)	HK (urban area)	PDNA (urban area)	DSL (suburb)	
2015	HCHO primary	2.528 (36.86 %)	1.288 (18.16 %)	2.853 (14.63 %)	0.523 (11.26 %)	0.333 (8.76 %)	0.295 (7.23 %)	1.956 (31.08 %)	1.155 (20.24 %)	2.602 (37.15 %)
	HCHO Secondary	3.556 (48.13 %)	2.342 (46.41 %)	2.601 (42.80 %)	2.892 (62.20 %)	3.258 (65.40 %)	3.483 (68.13 %)	3.497 (52.66 %)	3.681 (61.68 %)	2.535 (43.71 %)
	HCHO	7.205	4.68	6.506	4.434	4.656	4.817	6.422	5.822	6.145
2016	HCHO Primary	0.933 (17.75 %)	1.411 (11.49 %)	1.328 (23.87 %)	1.154 (27.57 %)	0.768 (14.55 %)	1.981 (37.22 %)	0.792 (13.08 %)	2.348 (42.52 %)	1.015 (17.10 %)
	HCHO Secondary	3.948 (63.88 %)	3.804 (59.26 %)	3.776 (58.58 %)	3.053 (50.84 %)	4.033 (66.03 %)	2.418 (41.56 %)	4.275 (68.51 %)	3.688 (39.15 %)	4.309 (65.40 %)
	HCHO	5.945	6.249	6.14	5.137	5.356	5.294	6.08	5.972	6.324
2017	HCHO Primary	0.910 (15.39 %)	1.209 (10.19 %)	1.043 (16.48 %)	2.233 (25.84 %)	0.687 (14.53 %)	0.511 (12.03 %)	0.816 (13.19 %)	1.408 (25.72 %)	0.945 (15.21 %)
	HCHO Secondary	4.264 (67.50 %)	3.303 (57.76 %)	4.209 (66.18 %)	1.823 (50.66 %)	3.276 (62.36 %)	3.112 (62.74 %)	4.823 (70.14 %)	3.591 (56.16 %)	4.259 (66.55 %)
	HCHO	6.205	5.461	6.289	5.022	4.926	4.626	6.609	5.916	6.181

Table 2. The Pearson correlation coefficient (R) between the measured HCHO and primary HCHO emission and secondary HCHO in Nanjing, Hangzhou, and Shanghai from 2015 to 2017.

year	Nanjing			Hangzhou			Shanghai			
	MGQ (industry zone)	RJR (urban area)	XLUT (industry zone)	XS (suburb)	CXT (suburb)	FDCH (urban area)	HK (urban area)	PDNA (urban area)	DSL (suburb)	
2015	HCHO primary	0.14	0.21	0.84	0.69	-0.1	0.06	0.18	0.2	0.83
	HCHO Secondary	0.58	0.75	0.47	0.9	0.82	0.81	0.55	0.65	0.61
2016	HCHO Primary	-0.43	0.27	-0.3	-0.4	0.31	0.51	0.42	0.06	0.28
	HCHO Secondary	0.82	0.71	0.73	0.77	0.84	0.68	0.77	0.69	0.81
2017	HCHO Primary	0.07	0.5	0.51	0.84	0.42	0.38	0.26	0.06	0.58
	HCHO Secondary	0.7	0.77	0.74	0.68	0.76	0.79	0.77	0.75	0.74

5

10

15

Table 3. Seasonal average of measured HCHO concentrations (ppbv) and absolute and relative contributions from different sources from 2015 to 2017 in Nanjing, Hangzhou, and Shanghai.

season	Nanjing			Hangzhou			Shanghai			
	MGQ (industry zone)	RJR (urban area)	XLUT (industry zone)	XS (suburb)	CXT (suburb)	FDCH (urban area)	HK (urban area)	PDNA (urban area)	DSL (suburb)	
winter	HCHO primary	1.398 (29.45%)	1.151 (32.01%)	1.013 (25.15%)	0.866 (25.58%)	0.46 (16.50%)	0.876 (25.77%)	1.032 (22.25%)	2.383 (50.13%)	0.741 (20.72%)
	HCHO Secondary	2.011 (47.15%)	1.469 (39.54%)	1.993 (48.73%)	1.209 (40.75%)	1.332 (46.82%)	1.061 (38.48%)	2.197 (53.13%)	1.212 (27.54%)	1.874 (51.17%)
	HCHO	4.403	3.394	3.694	2.627	2.342	2.491	3.841	4.098	3.338
spring	HCHO Primary	1.51 (27.04%)	0.981 (20.00%)	0.922 (18.14%)	0.606 (15.89%)	0.44 (10.71%)	0.645 (16.59)	0.728 (14.30%)	1.598 (35.00%)	0.589 (12.70%)
	HCHO Secondary	3.017 (54.37%)	2.996 (59.04%)	3.365 (62.45%)	2.352 (57.94%)	2.744 (64.27%)	2.288 (57.21%)	3.399 (65.71%)	2.043 (42.88%)	3.166 (65.83%)
	HCHO	5.619	5.161	5.575	4.259	4.473	4.193	5.334	4.946	4.975
summer	HCHO Primary	1.047 (13.89%)	1.414 (20.64%)	1.964 (25.53%)	1.878 (25.59%)	0.695 (10.26%)	1.139 (16.86%)	1.051 (13.75%)	1.526 (19.98%)	2.013 (24.31%)
	HCHO Secondary	5.503 (72.46%)	4.484 (64.54%)	4.542 (60.70%)	4.389 (60.45%)	5.143 (74.66%)	4.512 (67.79%)	5.875 (72.97%)	5.273 (66.66%)	5.361 (63.41%)
	HCHO	7.764	7.277	7.919	7.451	7.189	6.936	8.36	8.196	8.602
autumn	HCHO Primary	1.103 (18.36%)	1.537 (26.40%)	1.99 (28.31%)	1.485 (20.11%)	0.775 (14.86%)	0.982 (17.48%)	1.538 (23.46%)	1.529 (22.93%)	2.231 (30.91%)
	HCHO Secondary	3.905 (63.95%)	3.462 (55.73%)	3.921 (56.39%)	4.478 (64.87%)	4.163 (66.62%)	3.876 (64.08%)	4.241 (61.15%)	4.163 (61.65%)	3.87 (54.57%)
	HCHO	5.851	5.463	6.352	6.654	5.496	5.477	6.183	5.937	6.789

Table 4. The Pearson correlation coefficient (R) between the measured HCHO and primary HCHO emission and secondary HCHO in Nanjing, Hangzhou, and Shanghai in winter, spring, summer, and autumn.

season	Nanjing			Hangzhou			Shanghai			
	MGQ (industry zone)	RJR (urban area)	XLUT (industry zone)	XS (suburb)	CXT (suburb)	FDCH (urban area)	HK (urban area)	PDNA (urban area)	DSL (suburb)	
winter	HCHO primary	0.67	0.24	-0.05	0.42	0.01	0.47	0.61	0.61	0.5
	HCHO Secondary	-0.41	-0.23	0.12	-0.24	0.03	-0.25	-0.42	-0.42	-0.44
spring	HCHO Primary	0.11	0.21	0.17	0.04	0.29	0.13	0.12	0.16	-0.21
	HCHO Secondary	0.25	0.6	0.43	0.43	0.47	0.26	0.56	0.39	0.62
summer	HCHO Primary	0.17	0.54	0.22	0.08	-0.02	0.2	0.1	0.34	0.08
	HCHO Secondary	0.45	0.59	0.26	0.33	0.69	0.35	0.6	0.62	0.35
autumn	HCHO Primary	0.42	0.26	0.54	0.71	0.05	-0.03	0.26	0.36	0.31
	HCHO Secondary	0.71	0.68	0.37	0.12	0.48	0.55	0.41	0.48	0.19

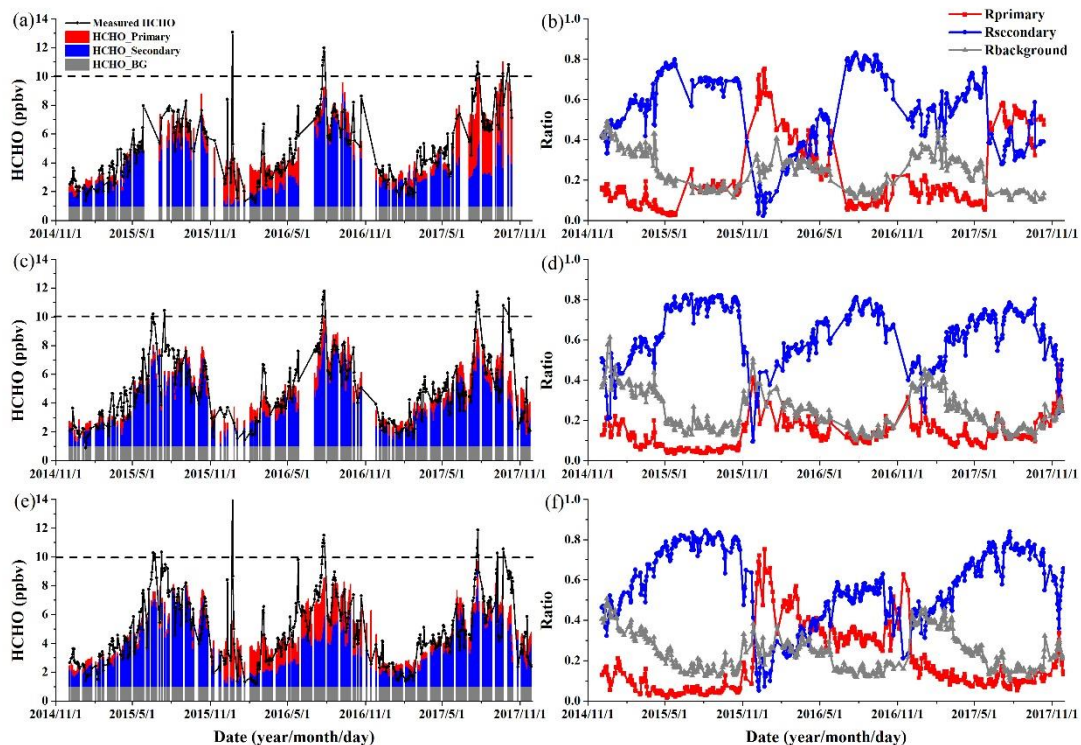


Figure 8. The time series of absolute and relative contributions of primary and secondary sources and background to HCHO concentration from Dec 2014 to Nov 2017 at XS (a, b), CXT (c, d), and FDCH (e, f) sites in Hangzhou. **Black dash lines represent the threshold value for HCHO pollution.**

5

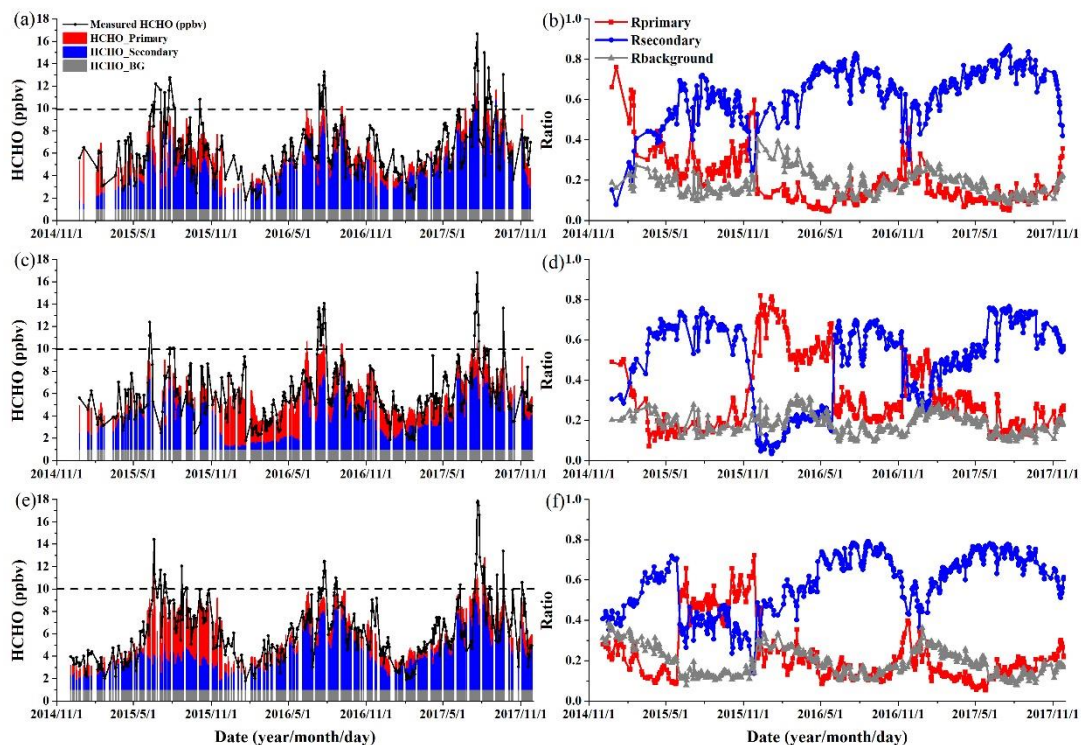


Figure 9. The time series of absolute and relative contributions of primary and secondary sources and background to HCHO concentration from Dec 2014 to Nov 2017 at HK (a, b), PDNA (c, d), and DSL (e, f) sites in Shanghai. **Black dash lines represent the threshold value for HCHO pollution.**

5