

author comments on the manuscript acp-2018-1185, reviewer 1

We would like to thank the reviewer for the constructive comments that aided us to improve our manuscript. In this document we provide our replies to the reviewer's comments, where the original comments made by the reviewer are numbered and typeset in italic and bold face font. Here line numbers, page numbers and figure numbers refer to the original version of the manuscript, if not stated differently. Additionally, the revised version of the manuscript is added.

1. ***On Page 5, line 5, the authors address the importance of a more realistic spatial distribution of pollution sources within the hot spot. Could the authors elaborate some more about this issue?***

adjusted We changed the paragraph (p5,l2) from:

“The remaining differences show that overall the simulation and the TROPOMI data agree well but with significant differences across the city. Although the model has a high CO sensitivity at the centre of Tehran (lower right panel) a trustworthy emission estimate would only be possible if the emission inventory gave a more realistic spatial distribution of pollution sources within the hot spot.”

to

“ Overall, the simulation and the TROPOMI data agree well, however still significant differences between the model and TROPOMI remain at the city of Tehran (lower left panel). This suggests that TROPOMI can sense pollution hot spots on sub-city scales that are not well reflected by the model. Even though the fit shows a high sensitivity for CO at the center of Tehran (lower right panel) a trustworthy emission estimate is only possible when those differences are reduced. To this end, the model calculation needs emission inventories that more realistically reflect the spatial distribution of the pollution sources within the hot spot including temporal resolution, which is not provided by the used EDGAR inventory. ”

2. ***As this study is a highly valuable example for air pollution studies, the authors could provide further considerations while conducting a similar experiment in other cities, areas or countries and at different scales (city and sub-city).***

not adjusted

The reviewer is right. We are planning to apply this method to other cities and regions world wide. An extension of this study to including more regions and cities will require new WRF simulations that are computational demanding and a detailed study of the emission inventories available for the new regions. Hence, this goes beyond the scope of this publication which is intended to be an initial study. We will address emission estimates from TROPOMI CO measurements at other regions in follow up studies. This is also added to the conclusions of the revised manuscript.

3. ***Page 5, line 33: difference***

adjusted “differences” is changed to “difference”

4. ***Page 6, line 20: remove column***

adjusted “column averaging column” is changed to “column averaging kernel”

author comments on the manuscript acp-2018-1185, reviewer 2

We would like to thank the reviewer for the constructive comments that aided us to improve our manuscript. In this document we provide our replies to the reviewer's comments. The original comments made by the reviewer are numbered and typeset in italic and bold face font. Following every comment we give our reply. Here line numbers, page numbers and figure numbers refer to the original version of the manuscript, if not stated differently. Additionally, the revised version of the manuscript is added.

1. ***The paper presents a nice example of an application of the use of TROPOMI data for model evaluation. However, it suffers from a somewhat too brief description of the research and the lack of details. Adding a more in-depth description of the applied methods and some more discussion would make the paper much more useful and also better readable.***

adjusted Most of the methods is already published and we try to reduce the repetition of it. However, we hope that we can satisfy the reviewer by your changes to the manuscript below.

2. ***P 1, l 8: At larger scales = For background conditions?***

adjusted

We changed the sentence (p1,18) from:

“At large scales, TROPOMI CO agrees well with the WRF simulation with a mean difference of 5.7%.” to
“ For background conditions, the WRF simulation agree well with TROPOMI CO, with a mean difference of 5.7%. ”

3. ***P 1, l 15: since 13 October = on 13 October?***

corrected

4. ***P 2, l 10: Please explain TCCON and NDACC.***

adjusted We changed the sentence (p2,110) from:

“ Already in the early phase of the mission a validation with TCCON and NDACC ground-based measurements showed compliance with the mission objectives on precision and accuracy (Borsdorff et al., 2018b). ”

to

“ Already in the early phase of the mission a validation with TCCON (Total Carbon Column Observing Network) and NDACC-IRWG (Network for the Detection of Atmospheric Composition Change - The Infrared Working Group) ground-based measurements showed compliance with the mission objectives on precision ($< 10\%$) and accuracy ($< 15\%$) (Borsdorff et al., 2018b). ”

5. ***P 3, l 1: What is the true vertical profile in the context of this paper?***

adjusted To clarify this we add the following sentence at p3, 17:

“ The data filtering is described in more detail by Borsdorff et al. (2018a). For the comparison of the TROPOMI CO data product with WRF model simulations, we apply the averaging kernel to the CO model profile $\vec{\rho}_{\text{mod}}$ and compare $\mathbf{A}_{\text{col}}\vec{\rho}_{\text{mod}}$ directly to the TROPOMI CO column measurement c_{ret} , where the averaging kernel accounts for the vertical sensitivity of the satellite measurement. ”

6. ***P3, l 11-20: Please give some more details of the model setup. For example, which chemistry and/or tracer option is applied? How many tracers are considered? Which model resolution is applied? Why does the model domain extend that far towards the South?***

not adjusted Model details are already given in the submitted manuscript. The chemistry options chosen for WRF are described and referenced on p3,110-11. The considered tracer runs are described in detail from p3, 121 - p4, 14. The spatial and vertical model resolution is stated on p3, 114-16.

Indeed, the domain extends more to the South than actually needed for this study. This was only to keep the possibility to study further sources that were finally not relevant.

7. *P 3, l 13: This particular topography is certainly not applied for the model simulations. So, for which purpose is it shown here?*

adjusted We changed the sentence at p3, 112:

“ Figure 1 shows the topography of the area based on the 2000 Shuttle Radar Topography Mission (SRTM) data with an resolution of 15 arcsec (Farr et al., 2007). ”

to

“ The model domain includes regions of complex terrain of mountains and vales as illustrated in Fig. 1, which affects regional weather processes. ”

Additionally we changed the figure caption of Fig.2 to:

“ Topological map of the model domain taken from the 2000 Shuttle Radar Topography Mission (SRTM) data with an resolution of 15 arcsec (Farr et al., 2007). An analogous terrain height is used for the WRF simulation. The cities of Yerevan, Urmia, Tabriz, and Tehran with CO hot spots are marked in the map. ”

8. *P 3, l 21: Please add some more information about the EDGAR emissions and how they are applied here.*

adjust We changed the sentence at p3,121 from:

“ Anthropogenic surface emissions of CO for 2010 are from the EDGARv4.2 emission inventory (Crippa et al., 2016). ”

to

“ Anthropogenic surface emissions of CO for 2010 are from the Emission Database for Global Atmospheric Research (EDGAR) version 4.2 (Crippa et al., 2016). The EDGAR inventory comprises global anthropogenic emissions based on publicly available data that can be used as input for atmospheric models. The emission used in this study are time invariant. ”

9. *P 3, l22-32: The first line of the paragraph seems to be misplaced (or the second and third sentence should be part of the part of the description of the EDGAR emissions).*

adjusted see our changes regarding the following point.

10. *P 3, l 27-32: At this point it is not clear why this is part of the description of WRF. Please explain this in the context with the WRF tracers.*

adjusted We moved the description (p3, 122- p4,14) to (p4,119)

11. *P 4, l 1-2: Something seems to be missing in this sentence, please reword.*

adjusted please see the following point

12. *P4, l 1: Please explain the meaning of prior CO sources.*

adjusted We change the sentence p4,11-2 from:

“ where the different coefficients of vector $\vec{\alpha}$ correspond to a scaling of the prior CO sources. The CO fields from the individual hot spots, CO_{bkg} denotes the background field originating from the ECMWF-CAMS boundary conditions and CO_{rest} summarises the contribution of the remaining EDGAR sources. ”

to

“ where the CO fields from the individual hot spots are named by the corresponding cities, CO_{bkg} denotes the background field originating from the ECMWF-CAMS boundary conditions and CO_{rest} summarises

the contribution of the remaining EDGAR sources. The different coefficients of vector $\vec{\alpha}$ describe a scaling of the corresponding CO fields and thus can be adjusted to fit the TROPOMI CO observations in the spatial domain of interest. ”

13. *P 4, l 7-8: Does the interpolation of the WRF output in time and space mean that e.g. the top right of Figure 4 is a combination of outputs at different output times. If so, please mention this and/or give a description how this interpolation was made.*

adjusted We changed the sentence at p4,17-8 from: “ To compare the simulated CO fields with the TROPOMI CO column, we first interpolated the WRF data to the TROPOMI observation in time and space. ”

to

“ To compare the simulated CO fields with the TROPOMI CO columns, we first selected the CO field from the hourly WRF data, which is closest to the overpass time of TROPOMI and subsequently interpolate the model data to the geolocation of the individual TROPOMI ground pixels. ”

14. *P 4, l 11 and l 31: at which time(s)?*

adjusted We changed the sentence (p4,111) from:

“ ... for an overpass on 18 December 2017 ”

to

“ ... for an overpass on 18 December 2017 9:37 UTC ”

further we changed the sentence (p4,131) from:

“ ... WRF simulation over Tehran for 18 December 2017. ”

to

“ ... WRF simulation over Tehran for 18 December 2017 9:37 UTC ”

For consistency we added the overpass times for the remaining orbits shown in this manuscript at p5,118.

15. *P 4, l 17-18: This could be determined easily by inspection of the EMWF-CAMS fields.*

adjusted We changed the sentence on p4,118 from:

“ Furthermore, large scale deviations occur in the North-East of the model domain that are most probably caused by the ECMWF-CAMS side constraints.

” to

“ Furthermore, large scale deviations occur in the North-East of the model domain that are caused by the ECMWF-CAMS side constraints since the same can be seen in the background CO tracer of WRF for the day shown in Fig. 2.

”

16. *P 4, l 24: Which ensemble?*

adjusted We changed the sentence (p4,124) from:

“ The statistics of the results are shown in Table 1 where we report the mean and the standard deviation of the ensemble as a robust error estimate. ”

to

“ The statistics of the results are shown in Table 1, which reports the mean and the standard deviation calculated from the emission estimates of the 1000 data samples as a robust error estimate. ”

17. *P 4, l 13: Since emissions are usually higher during the daytime than during the night, the error due to temporally invariant emissions may depend on the time of the day. Therefore, information on the considered time of the day may be interesting.*

adjusted We added the time of the overpass following the previous comments of the reviewer. Furthermore, we addressed the time dependency of the emission source as an additional error source when we discussed the Tehran case.

18. *P 5, l 15: This should also be mentioned already in section 2.2.*

adjusted We changed the sentence section 2.2 at (p3,l21) from:

“ Anthropogenic surface emissions of CO for 2010 are from the EDGARv4.2 emission inventory (Crippa et al., 2016). ”

to

“ Anthropogenic surface emissions of CO for 2010 are from the Emission Database for Global Atmospheric Research (EDGAR) version 4.2 (Crippa et al., 2016). The EDGAR inventory comprises global anthropogenic emissions based on publicly available data that can be used as input for atmospheric models. The emission used in this study are time invariant. ”

19. *P 5, l 18-19: To what extent did these pollution events show up in the WRF simulations when the original emissions were applied?*

adjusted We changed the sentence p5, l23-26 from:

“ Using the EDGAR emissions, the large differences indicate that the enhancement cannot be explained by atmospheric transport as simulated by WRF and indicates an underestimation of the CO emissions in the EDGAR data. ”

to

“ Using the original EDGAR emissions without scaling, the large differences indicate that the enhancement cannot be explained by atmospheric transport as simulated by WRF and indicates an underestimation of the CO emissions in the EDGAR data. ”

20. *P 5, l 31: Does the WRF simulation really explain the observed CO enhancement?*

adjusted We change the sentence (p5,l31) from: “ ... the WRF simulation can explain to a major extent the observed ... ”

to

“ the WRF simulation can reproduce to a major extent the observed ”

21. *P 6, l 29: The sentence The poor capability . . . is incomprehensible. Why is WRF not able to simulate at city scale. Is it due to the resolution, due to the emissions, or due to something else?*

adjusted We were not stating “poor capability” in the manuscript. In the contradiction we are impressed how good the agreement between WRF and TROPOMI already is. But of course there are always limitations that we addressed.

We changed the sentence from:

“ Also, the capability of the WRF model to simulate CO on sub-city scales might be an additional source of uncertainty. ”

to

“ An additional source of uncertainty might be the capability of the WRF model to simulate CO on sub-city scales which is further limited by the availability of appropriate emission inventories but also the challenging task to model wind fields on this scale. ”

22. *P 7, l 2: What happens if the adapted emissions are applied for the entire episode? Is CO overestimated during observed episodes with moderate CO, or are the results still ok?*

not adjusted

We understand the question of the referee to test if the derived emission estimates are in agreement with all observations of TROPOMI in this episode. However, we use all observations that are sensitive to the enhanced CO already in this study. Hence, consistency can only be checked by comparing the different emission estimates. This is done in this study. To answer this question it is necessary to extend the study for longer time periods of TROPOMI data. This will be done in a follow up study.

23. *P 7, l 5: Please add some sentences on the potential of the method for other regions of the world.*

adjusted We add the following sentence at p7, l6:

“ An interesting topic for follow up studies is to apply the method presented in this publication to other region world wide. For this it is important to restrict the analysis to clear-sky only scenes to ensure that the TROPOMI CO retrieval is sensitive for boundary layer pollution. Moreover, for bigger cities pollution on sub-city scales becomes more important and may need adjustment of the inversion approach. ”

24. *Data availability: The first link does not work and the second one is not really helpful in its current form. Please correct the links and add some explanation (if necessary, add supplementary material).*

todo create link We corrected the links and changed the data availability section from: “

The TROPOMI CO data set and the WRF simulations of this study are available for download at ftp://ftp.sron.nl/pub/pub/DataProducts/TROPOMI_CO/. The underlying data of the figures presented in this publication can be found at <ftp://ftp.sron.nl/open-access-data/>.

”

to

“ The TROPOMI CO data set and the WRF simulations of this study are available for download at ftp://ftp.sron.nl/pub/pub/DataProducts/TROPOMI_CO/. The underlying data of the figures presented in this publication can be found at <ftp://ftp.sron.nl/open-access-data-2/TROPOMI/tropomi/co/>.

” The WRF simulation will be provided after publication of the manuscript.

25. *Figure 3 includes numerous details, which are not necessary or enlarge the figure. Please mention the hour or time interval of the shown orbit.*

adjusted We added the time of the overpass in the figure caption. Furthermore, we enlarged the figure.

26. *Figure 4 and Figure 5: Please mention the hour, time interval or orbit(s) in the figure caption.*

adjusted We added the time of the overpass in the figure caption.

27. *Caption of Fig. 6: Please mention the region shown in this figure also in the caption.*

adjusted We changed the figure caption from:

“ Sequence of high CO pollution events measured by TROPOMI on the 27th (top panel) November, 12th (middle panel), and 17th December 2017 (lower panel).

”

to

“ Sequence of high CO pollution events measured by TROPOMI on the 27th (top panel) November 9:31 UTC, 12th November 9:50 UTC (middle panel), and 17th December 2017 9:56 UTC (lower panel) above Armenia.

”

28. *Figures 6: Does this figure display the same region as the lower part of Fig. 2? If not: why? Please mention the time interval in the figure caption.*

adjusted Yes it is the same region as the lower part of Fig. 2. Furthermore, we added the overpass times. We added the following sentence to the figure caption:

“ The figures show the same region as in the lower part of Fig. 2. ”

29. *Caption of Fig. 7: Please mention the date and the time (interval).*

adjusted We changed changed the figure caption from: “ Comparison of TROPOMI CO and WRF (top row: WRF simulation, lower row difference TROPOMI - WRF). Left column: WRF run with EDGAR emissions. Middle column: WRF run with adjusted emissions for Yerevan, Tabriz and Urmia. Right column: WRF run with adjusted emission of Yerevan, Tabriz and Urmia and the traffic route near Yerevan.

”

to

“ Comparison of TROPOMI CO and WRF (top row: WRF simulation, lower row difference TROPOMI - WRF) on the 17 December 2017 9:56 UTC above Armenia . Left column: WRF run with EDGAR emissions. Middle column: WRF run with adjusted emissions for Yerevan, Tabriz and Urmia. Right column: WRF run with adjusted emission of Yerevan, Tabriz and Urmia and the traffic route near Yerevan.

”

References

- Borsdorff, T., aan de Brugh, J., Hu, H., Hasekamp, O., Sussmann, R., Rettinger, M., Hase, F., Gross, J., Schneider, M., Garcia, O., Stremme, W., Grutter, M., Feist, D. G., Arnold, S. G., De Mazière, M., Kumar Sha, M., Pollard, D. F., Kiel, M., Roehl, C., Wennberg, P. O., Toon, G. C., and Landgraf, J.: Mapping carbon monoxide pollution from space down to city scales with daily global coverage, *Atmospheric Measurement Techniques Discussions*, 2018, 1–19, <https://doi.org/10.5194/amt-2018-132>, URL <https://www.atmos-meas-tech-discuss.net/amt-2018-132/>, 2018a.
- Borsdorff, T., de Brugh, J. A., Hu, H., Aben, I., Hasekamp, O., and Landgraf, J.: Measuring Carbon Monoxide With TROPOMI: First Results and a Comparison With ECMWFIFS Analysis Data, *Geophysical Research Letters*, 45, 2826–2832, <https://doi.org/10.1002/2018GL077045>, URL <https://agupubs.onlinelibrary.wiley.com/doi/abs/10.1002/2018GL077045>, 2018b.
- Crippa, M., Janssens-Maenhout, G., Dentener, F., Guizzardi, D., Sindelarova, K., Muntean, M., Van Dingenen, R., and Granier, C.: Forty years of improvements in European air quality: regional policy-industry interactions with global impacts, *Atmospheric Chemistry and Physics*, 16, 3825–3841, <https://doi.org/10.5194/acp-16-3825-2016>, URL <http://dx.doi.org/10.5194/acp-16-3825-2016>, 2016.
- Farr, T. G., Rosen, P. A., Caro, E., Crippen, R., Duren, R., Hensley, S., Kobrick, M., Paller, M., Rodriguez, E., Roth, L., Seal, D., Shaffer, S., Shimada, J., Umland, J., Werner, M., Oskin, M., Burbank, D., and Alsdorf, D.: The Shuttle Radar Topography Mission, *Reviews of Geophysics*, 45, <https://doi.org/10.1029/2005rg000183>, URL <https://doi.org/10.1029/2005rg000183>, 2007.

author comments on the manuscript acp-2018-1185, reviewer 3

We would like to thank the reviewer for the constructive comments that aided us to improve our manuscript. In this document we provide our replies to the reviewer's comments. The original comments made by the reviewer are numbered and typeset in italic and bold face font. Following every comment we give our reply. Here line numbers, page numbers and figure numbers refer to the original version of the manuscript, if not stated differently. Additionally, the revised version of the manuscript is added.

1. *It would be useful to see what the background CO fields look like across the region. How much do they contribute to the total columns shown in Figure 3, for example? How much does the background contribute to the variability in the model simulations of the observations on 27 November, 12 December, and 17 December? Knowing how the background is changing on these days will help interpret the variations in the estimated emissions (shown in Table 2) on these days for Yerevan, Urmia, and Tabriz.*

adjusted

We included an additional figure to the manuscript and a second one to this response. The figure included in the manuscript is supplementary to Fig. 3 showing the contribution of WRF's background CO tracer to the simulated total column. The same is shown in the left column of the figure attached to this response for the region over Armenia on the 27 November, 12 December, and 17 December.

We add the following sentence at p4,l12: " The WRF simulation and the contribution of the background tracer field to the simulated total column is shown in Fig. 4. The discussion of the Fig. is given in the paper as well as in the following replies to the comments of the referee.

"

2. *The analysis produced negative emissions of -4.17 kg/s, with an uncertainty of 2.31 kg/s, for Tabriz on December 17th. How do the emissions go from 2.64 kg/s on Dec 12 to -4.17 kg/s on Dec 17th? I realize that the authors stated, concerning future work, that follow-up studies must show if this variability can be attributed to a variation of the emission sources or to biases of the inversion approach used, but how does one explain this sink of CO on Dec 17th in the context of urban sources of CO? It would be helpful to learn more about the fitting process for the emissions. Also, could discrepancies in accounting for the background contribute to this negative estimate for the emissions?*

adjusted We added the following sentence at p6,l9:

" For 17 December, we found negative emissions for Tabriz that are slightly higher than the estimated error. Moreover, looking at the result for individual cities, in this area, we recognize remaining differences after optimisation of the emissions. As discussed for Tehran in the previous subsection, we assume that TROPOMI is sensitive to pollution patterns at sub-city scale which are not well reflected by the EDGAR data set, which may lead to these biases. "

3. *How is the sensitivity that is shown in Figures 4 and 5 calculated? Also, how does the sensitivity for Yerevan, Urmia, and Tabriz vary between Nov 27th, Dec 12th, and Dec 17th?*

adjusted We added the following sentence at p4,l19:

" Here, the sensitivity of the scaling factors to changes in the measured CO field $\text{CO}_{\text{TROPOMI}}$ is described by the partial derivative $\frac{\partial \bar{\alpha}}{\partial \text{CO}_{\text{TROPOMI}}}$ as a result of the least-squares fitting. Hence, the optimisation of the CO fields ... "

4. *Is the sensitivity to emissions from Urmia and Tabriz as localized as that for Tehran? I ask because Table 2 shows that including the road emissions produces large changes in the emissions for Urmia and Tabriz, even though these two cities are to the south of the region of the road emissions (as shown in Figure 2). If the fitting sensitivity for these cities is also localized, why are the emissions changing so much when the road emissions are included?*

adjusted We included a figure to this response. The left column of Figure 1 shows the sensitivity of the scaling factors for the road near Yerevan, Urmia, and Tabriz for 27 November, 12 December, and 17 December over Armenia.

We add the following sentence to the manuscript on p5,l23:

“ The CO enhancement cannot be explained by the background signal and the sensitivity of the different hot spots can be clearly separated in this region. ”

5. *Page 1, lines 7-8: Since the WRF simulation is not being used to evaluate the TROPOMI data, I would suggest changing the order of this sentence to: The WRF simulation agree well with TROPOMI CO, with a mean difference of 5.7%.*

adjusted We changed the sentence from:

“ At large scales, TROPOMI CO agrees well with the WRF simulation with a mean difference of 5.7% ”

to

“ For background conditions, the WRF simulation agree well with TROPOMI CO, with a mean difference of 5.7% ”

”

6. *Page 1, lines 15-16: Please change since 13 October 2017 to on 13 October 2017.*

corrected

7. *Page 1, line 23: Please change at the Northern Hemisphere to in the Northern Hemisphere.*

corrected

8. *Page 2, line 10: Please define TCCON and NDACC.*

adjusted We changed the sentence (p2,l10) from:

“ Already in the early phase of the mission a validation with TCCON and NDACC ground-based measurements showed compliance with the mission objectives on precision and accuracy (Borsdorff et al., 2018b). ”

to

“ Already in the early phase of the mission a validation with TCCON (Total Carbon Column Observing Network) and NDACC-IRWG (Network for the Detection of Atmospheric Composition Change - The Infrared Working Group) ground-based measurements showed compliance with the mission objectives on precision (< 10%) and accuracy (< 15%) (Borsdorff et al., 2018b). ”

9. *Page 2, line 11: Can you please state what are the precision and accuracy requirements? It would help the reader with interpreting the results of the analysis.*

adjusted We changed the sentence from:

“ ... showed compliance with the mission objectives on precision and accuracy ... ”

to

“ ... showed compliance with the mission objectives on precision (< 10%) and accuracy (< 15%) ... ”

10. *Page 3, line 5: What do you mean by good sensitivity? Can you give a quantitative measure of what you mean by this?*

adjusted The sensitivity is discussed in detail Borsdorff et al. (2018a). We change the sentence on p3, l7 from:

“ ... with good sensitivity to CO in the tropospheric boundary layer close to the emission sources. ”

to

“ ... with good sensitivity to CO in the tropospheric boundary layer close to the emission sources as shown in Fig. 1 of Borsdorff et al. (2018a). Here, the averaging kernel varies between 0.9 and 1 in the altitude range from the surface to 15 km. ”

11. *Page 5, line 4: See Main Comment 3 above. How is the sensitivity calculated?*

adjusted Please see our changed to main comment 3.

12. *Page 5, lines 21-22: It is not easy to tell where Urmia and Tabriz are located. It would be good to label the locations of Yerevan, Urmia, and Tabriz on this map. Similarly, it would be good to have these labels on Figure 7.*

adjusted we added labels of Yerevan, Urmia, and Tabriz in figure 6 and 7.

13. *Page 6, line 3: Can you please give a quantitative estimate for the improvement in the agreement?*

adjusted We add the following sentence at p5,l26:

“ In this case the root-mean-square rms difference between the WRF simulation and TROPOMI is 3.38 ppb. ” further we add the following sentence at p5, l33:

“ The rms difference between WRF and TROPOMI is reduced to 2.52 ppb. ”

and we added another sentence at p6,l3: “. . . with a rms difference of 2.29 ppb.”

14. *Figure 3: It is difficult to see the details in this figure. Can you please enlarge the figure?*

adjusted We removed the middle subplot from Fig.3 because there is some redundancy with the right subplot. However the subfigure is shifted the additional figure we added to the the manuscript. Fig. 3 is now enlarged and we changed the caption from:

“ TROPOMI CO retrieval of one orbit on 18th December 2017 9:37 UTC (left panel), the collocated WRF simulation scaled to the TROPOMI data (middle panel), and the difference (TROPOMI - WRF, right panel). ”

to “ WRF simulation for the 18th December 2017 9:37 UTC collocated and scaled to the TROPOMI data (left panel), and the contribution of WRF’s background CO tracer to the simulated total column (WRF-background)/background). ”

15. *Figure 7: Please add the date of the observations to the figure caption.*

adjusted We added the date of the observation to the figure caption.

References

- Borsdorff, T., aan de Brugh, J., Hu, H., Hasekamp, O., Sussmann, R., Rettinger, M., Hase, F., Gross, J., Schneider, M., Garcia, O., Stremme, W., Grutter, M., Feist, D. G., Arnold, S. G., De Mazière, M., Kumar Sha, M., Pollard, D. F., Kiel, M., Roehl, C., Wennberg, P. O., Toon, G. C., and Landgraf, J.: Mapping carbon monoxide pollution from space down to city scales with daily global coverage, *Atmospheric Measurement Techniques Discussions*, 2018, 1–19, <https://doi.org/10.5194/amt-2018-132>, URL <https://www.atmos-meas-tech-discuss.net/amt-2018-132/>, 2018a.
- Borsdorff, T., de Brugh, J. A., Hu, H., Aben, I., Hasekamp, O., and Landgraf, J.: Measuring Carbon Monoxide With TROPOMI: First Results and a Comparison With ECMWFIFS Analysis Data, *Geophysical Research Letters*, 45, 2826–2832, <https://doi.org/10.1002/2018GL077045>, URL <https://agupubs.onlinelibrary.wiley.com/doi/abs/10.1002/2018GL077045>, 2018b.

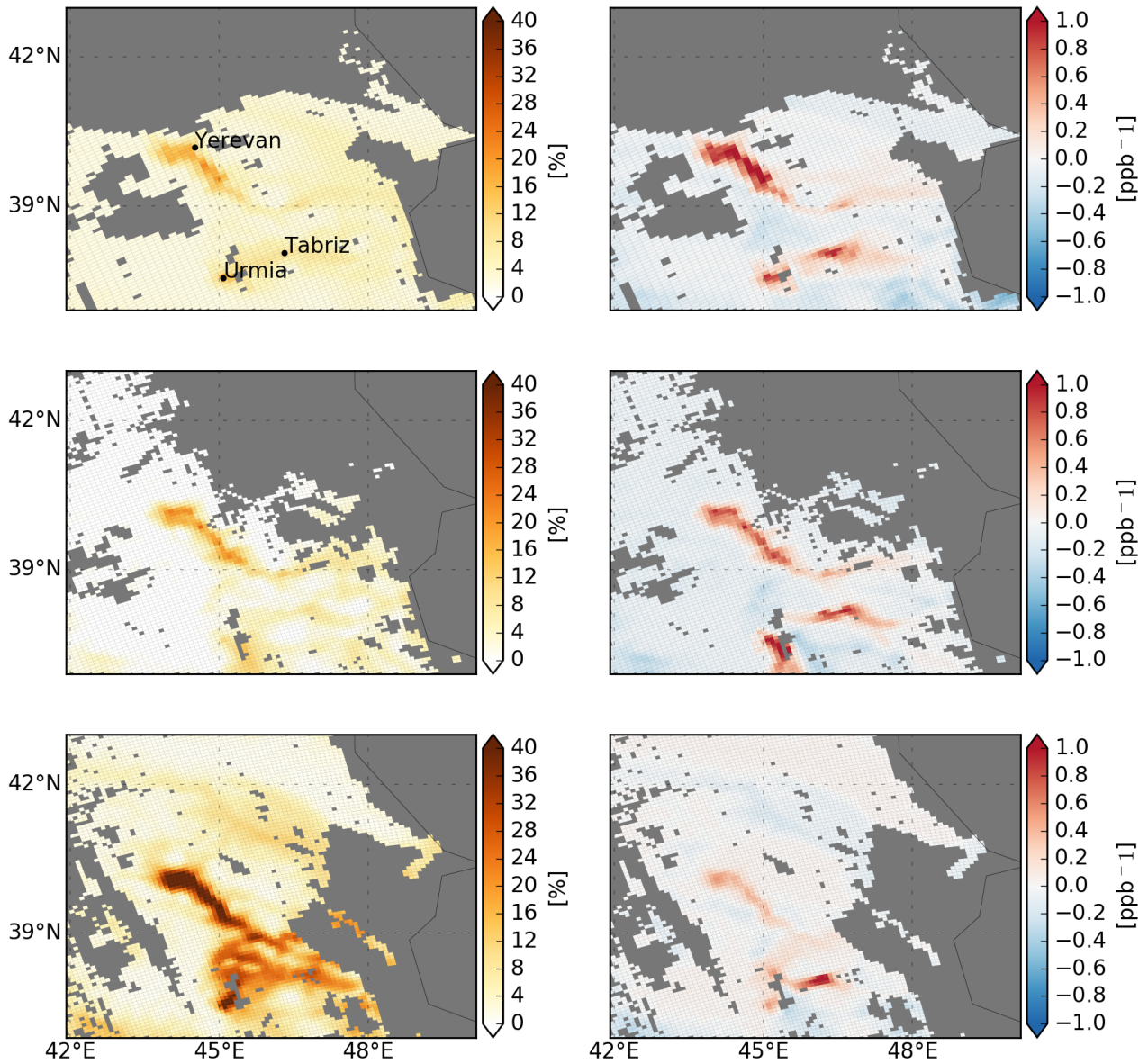


Figure 1: Relative difference between the WRF total column and the background CO tracer column (WRF-background)/background (left column) and total sensitivity of the WRF simulation to CO emissions along the road near Yerevan, and the cities Urmia and Tabriz for the 27th November 9:31 UTC (top row), 12th November 9:50 UTC (middle row), and 17th December 2017 9:56 UTC (lower row). For clearer presentation, we scaled the sensitivity fields of the road near Yerevan by 0.05, Urmia by 0.5, and Tabriz by 0.1.

Carbon monoxide air-pollution on sub-city scales and along arterial roads detected by the Tropospheric Monitoring Instrument

Tobias Borsdorff¹, Joost aan de Brugh¹, Sudhanshu Pandey¹, Otto Hasekamp¹, Ilse Aben¹, Sander Houweling^{1,2}, and Jochen Landgraf¹

¹SRON Netherlands Institute for Space Research, Utrecht, the Netherlands

²Department of Earth Sciences, Vrije Universiteit, Amsterdam, the Netherlands

Correspondence: Tobias Borsdorff (t.borsdorff@sron.nl)

Abstract. The Tropospheric Monitoring Instrument (TROPOMI) on the Sentinel-5 Precursor satellite provides measurements of carbon monoxide (CO) total column concentrations based on Earthshine radiance measurements in the $2.3 \mu\text{m}$ spectral range with a spatial resolution of $7 \times 7 \text{ km}^2$ and daily global coverage. Due to the high accuracy of the observations, CO pollution can be detected over cities and industrial areas using single orbit overpasses. In this study, we analysed local CO enhancements in an area around Iran from 1 November to 20 December 2017. We employed the Weather Research and Forecasting (WRF) model v3.8.1 using the EDGAR v4.2 emission inventory and evaluated CO emissions from the cities of Tehran, Yerevan, Urmia, and Tabriz on a spatial resolution comparable to that of TROPOMI. ~~At large scales, TROPOMI CO agrees well with~~ For background conditions, the WRF simulation agree well with TROPOMI CO, with a mean difference of 5.7%. However, the emissions for the city area had to be significantly increased in order to match the observations. Moreover, significant differences at sub-city scale remain. To match the TROPOMI CO observations around the Armenian city of Yerevan, it is necessary to introduce CO emissions along a southeast arterial road of Yerevan. Overall, this hints at deficits in the EDGAR inventory in the region around Iran and indicates TROPOMI's capability to identify localised CO pollution on sub-city scales, which at the same time challenges current atmospheric modelling at high spatial and temporal resolution.

1 Introduction

The Tropospheric Monitoring Instrument (TROPOMI) was launched on the Copernicus Sentinel-5 Precursor satellite ~~since on~~ 13 October 2017. The instrument is a nadir looking pushbroom grating spectrometer, that performs measurements of the solar light reflected by the Earth's atmosphere in the UV-VIS (270-495 nm), NIR (710-775 nm), and SWIR (2305-2385 nm) spectral domain. The novelty of the mission is the combination of high spatial resolution of the measurements ($7 \times 7 \text{ km}^2$, SWIR) in nadir observation geometry, the daily global coverage and a high signal-to-noise ratio (Veeffkind et al., 2012).

One of the primary objectives of the mission is to measure the total column concentration of carbon monoxide (CO), which is an atmospheric trace gas emitted to the atmosphere mainly by incomplete combustion. The major sink of CO is its reaction with the hydroxyl radical OH (Spivakovsky et al., 2000). With its low background concentration (ca. 80 parts per billion (ppb) ~~at in~~ the Northern Hemisphere) and the moderately long atmospheric residence time of weeks to months (Holloway et al.,

2000), CO is a good tracer to monitor atmospheric transport processes (Gloudemans et al., 2009) as well as to detect pollution sources of natural (e.g. biomass burning, wild fires; Yurganov et al. (2004, 2005)) and anthropogenic origin (e.g. mega cities; Pommier et al. (2013); Stremme et al. (2013)).

Landgraf et al. (2016a, b) developed the operational code for the TROPOMI mission to retrieve the total column concentration of CO from the SWIR measurements of the instrument. The high spatial resolution in combination with a high signal-to-noise ratio of the measurements allows the detection of CO pollution from large cities (e.g. Mexico, Tehran, Isfahan) and industrial areas (e.g. Po valley in Italy) from single orbit overpasses and to track the transport of pollution on regional (e.g. India) to global scales (e.g. biomass burning in Africa) with daily global coverage (Borsdorff et al., 2018b). Borsdorff et al. (2018a) reported a good agreement between the TROPOMI CO dataset and the simulations of the ECMWF-IFS model. Already in the early phase of the mission a validation with TCCON ~~and NDACC~~ ([Total Carbon Column Observing Network](#)) and [NDACC-IRWG \(Network for the Detection of Atmospheric Composition Change - The Infrared Working Group\)](#) ground-based measurements showed compliance with the mission objectives on precision ~~and accuracy~~ ($< 10\%$) and accuracy ($< 15\%$) (Borsdorff et al., 2018b). In July 2018, the dataset was released to the public (ESA, 2018).

For this study, we analyse TROPOMI observations using CO tracer simulations for the period 1 November - 20 December 2017 using the Weather Research and Forecasting model (WRF) (Skamarock et al., 2008). The model domain is centred over Iran with a spatial resolution comparable to that of TROPOMI. During this period frequent clear sky observations are possible over this region, which makes it particularly suited to study localised hot spots of CO emissions from urban areas. Considering the CO emissions from the cities of Yerevan, Urmia, Tabriz, and Tehran as independent atmospheric tracers, we compared the modelled CO columns with spatio-temporally coincident TROPOMI measurements to evaluate TROPOMI's monitoring capability of CO emissions on city and sub-city scales.

The paper is structured as follows: Section 2 introduces the TROPOMI CO dataset and the WRF model simulations. Section 3 presents our approach to estimate emissions from the TROPOMI data for the example of the city of Tehran and a selected domain over Armenia. Finally, Sec. 4 summarises and concludes our study.

2 Data sets

2.1 TROPOMI CO total column densities

The TROPOMI CO dataset is inferred from the $2.3 \mu\text{m}$ measurements of the instrument by deploying the shortwave infrared retrieval algorithm SICOR, which was developed for the operational processing of TROPOMI data. The algorithm is based on the profile scaling approach, whereby a prior vertical distribution of CO is scaled to fit the observation (Borsdorff et al., 2014). The implementation and retrieval settings are presented in detail by Landgraf et al. (2016a), where the CO profile, to be scaled by the retrieval, is taken from monthly averaged simulations of the global chemical transport model TM5 (Krol et al., 2005) with a latitude/longitude resolution of $3^\circ \times 2^\circ$. The retrieval accounts for atmospheric light scattering by clouds and aerosols and estimates the trace gas columns together with surface albedo and effective cloud parameters (cloud height (z) and cloud optical thickness (τ)) to account for the cloud contamination of the measurements (Landgraf et al., 2016b).

Borsdorff et al. (2018b, a) showed the validity of the CO data product for both clear sky and cloudy measurement conditions.

An essential element of the TROPOMI CO data product is the column averaging kernel A_{col} , which describes the sensitivity of the retrieved CO column c_{ret} to changes in the true vertical profile ρ_{true} of CO (Rodgers, 2000), namely

$$c_{\text{ret}} = A_{\text{col}}\rho_{\text{true}} + \epsilon_{\text{CO}}, \quad (1)$$

5 where ϵ_{CO} represents the error of the retrieved CO column.

~~Borsdorff et al. (2018b, a) showed the validity of the CO data product for both clear sky and cloudy measurement conditions.~~

This study considers only TROPOMI clear sky observations ($\tau < 0.5$ and $z < 5$ km, over land) with good sensitivity to CO in the tropospheric boundary layer close to the emission sources. ~~This as shown in Fig. 1 of Borsdorff et al. (2018a). Here, the~~

~~averaging kernel varies between 0.9 and 1 in the altitude range from the surface to 15 km. The data filtering is described in~~

10 more detail by Borsdorff et al. (2018a). For the comparison of the TROPOMI CO data product with WRF model simulations,

we apply the averaging kernel to the CO model profile ρ_{mod} and compare $A_{\text{col}}\rho_{\text{mod}}$ directly to the TROPOMI CO column measurement c_{ret} , where the averaging kernel accounts for the vertical sensitivity of the satellite measurement.

2.2 WRF model simulations

For a domain of 2408 x 2674 km² around Iran centred at 50.2°E and 33.5°N, we simulated the atmospheric CO field using

15 WRF v3.8.1 (Skamarock et al., 2008) and its CHEM module by Grell et al. (2005) for tracer transport. Photochemical oxidation

and secondary production of CO in the atmosphere have been ignored, justified by the long lifetime of CO compared with the size of the model domain (Dekker et al., 2017, 2018). ~~Figure 1 shows the topography of the area based on the 2000 Shuttle~~

~~Radar Topography Mission (SRTM) data with an resolution of 15 arcsec (Farr et al., 2007). The model domain includes regions~~

20 ~~of complex terrain of mountains and vales as illustrated in Fig. 1, which affects regional weather processes.~~ For the cities of

Yerevan, Urmia, Tabriz, and Tehran, we have identified pollution hot spots in the TROPOMI data, as will be discussed in the

next section. The CO simulations were performed for the period 1 November to 20 December 2017 at a resolution of 7 x 7 km²

25 and at 29 pressure levels from the Earth's surface up to 50 hPa. The WRF settings were the same as used in Dekker et al. (2017),

including the Yonsei University (YSU) boundary layer scheme (Hu et al., 2013), and the convection parameterisation by Grell and Freitas (2014). The initial and boundary conditions of CO are adapted from ECMWF-CAMS near real-time analysis data

(George et al., 2015). The WRF simulation has been nudged to NCEP final analysis meteorological fields (ds083.2, NCEP

30 (2000)) at 1°x1° and 6 hourly resolution at the model's initial and domain boundaries. Anthropogenic surface emissions of CO

for 2010 are from the ~~EDGARv4.2 emission inventory (Crippa et al., 2016).~~

~~To disentangle the CO emissions from different urban areas, we isolated the EDGARCO emissions of several cities from the remaining emissions and treated them as individual tracers. Figure 2 shows the selected city emissions from the EDGAR~~

~~inventory in a 70 km radius around Tehran and a 30 km radius around the cities of Yerevan, Tabriz and Urmia. Alternatively, the Yerevan emissions can be replaced by a spatially extended emission source covering the city including an arterial road. The strengths of all these city emission sources in our spatial domain are summarised in Table 1.~~

Assuming the linearity of the simulated CO concentration with respect to the source strength of a tracer, we can express the total CO columns of the WRF simulation by a superposition of the individual tracers, namely

$$CO_{total} = \alpha^T C$$

with

$$\alpha = (\alpha_{bkg}, \alpha_{Tehran}, \alpha_{Urmia}, \alpha_{Tabriz}, \alpha_{Yerevan/road}, \alpha_{rest})$$
$$C = (CO_{bkg}, CO_{Tehran}, CO_{Urmia}, CO_{Tabriz}, CO_{Yerevan/road}, CO_{rest})$$

where the different coefficients of vector α correspond to a scaling of the prior CO sources. The CO fields from the individual hot spots, CO_{bkg} denotes the background field originating from the ECMWF-CAMS boundary conditions and CO_{rest} summarises the contribution of the remaining EDGAR sources. Thus, the coefficients α in Eq. (2) can be adjusted to fit the TROPOMI CO observations in the spatial domain of interest [Emission Database for Global Atmospheric Research \(EDGAR\) version 4.2 \(Crippa et al., 2016\)](#). The EDGAR inventory comprises global anthropogenic emissions based on publicly available data that can be used as input for atmospheric models. The emission used in this study are time invariant.

3 Data analysis

3.1 Scaling of the EDGAR emissions

To compare the simulated CO fields with the TROPOMI CO [column columns](#), we first ~~interpolated the WRF data to the TROPOMI observation in time and space~~ [selected the CO field from the hourly WRF data, which is closest to the overpass time of TROPOMI and subsequently interpolate the model data to the geolocation of the individual TROPOMI ground pixels](#). Subsequently, by analogy with Eq. (1), we applied the total column averaging kernel A_{col} of the TROPOMI CO product to the corresponding model profile. In this way, we account for the CO column sensitivity of the retrieval in our comparison (Borsdorff et al., 2014).

We start with a WRF model run using the EDGAR emission without any adjustments. Figure 3 shows the comparison of the TROPOMI CO data with the collocated CO field of the WRF simulation for an overpass on 18 December ~~2017-2017~~ [9:37 UTC](#). [The WRF simulation and the contribution of the background tracer field to the simulated total column is shown in Fig. 4](#). The overall agreement is good with a mean difference of 5.7 %, which agrees well with the finding of Borsdorff et al. (2018b); who compared the TROPOMI CO data with ECMWF-CAMS near-real-time analysis data. This is expected because the WRF simulation is constrained by the same data at the domain boundaries. However, a closer look reveals that the model underestimates the CO enhancements sensed by TROPOMI above pollution hot spots, hinting at an inconsistency between the observations and the EDGAR emissions over urban areas. Furthermore, large scale deviations occur in the North-East of the model domain that are ~~most probably~~ [caused by the ECMWF-CAMS side constraints since the same can be seen in the background CO tracer of WRF for the day shown in Fig. 4](#).

To disentangle the CO emissions from different urban areas, we isolated the EDGAR CO emissions of several cities from the remaining emissions and treated them as individual tracers. Figure 2 shows the selected city emissions from the EDGAR inventory within a 70 km radius around Tehran and with 30 km around the cities of Yerevan, Tabriz and Urmia. Alternatively, the Yerevan emissions can be replaced by a spatially extended emission source covering the city including an arterial road. The strengths of the city emission sources are summarised in Table 1.

Assuming the linearity of the simulated CO concentration with respect to the source strength of a tracer, we can express the total CO columns of the WRF simulation by a superposition of the individual tracers, namely

$$CO_{total} = \alpha^T C \quad (2)$$

with

$$\begin{aligned} \alpha &= (\alpha_{bkg}, \alpha_{Tehran}, \alpha_{Urmia}, \alpha_{Tabriz}, \alpha_{Yerevan/road}, \alpha_{rest}) \\ C &= (CO_{bkg}, CO_{Tehran}, CO_{Urmia}, CO_{Tabriz}, CO_{Yerevan/road}, CO_{rest}) \end{aligned} \quad (3)$$

where the CO fields from the individual hot spots are named by the corresponding cities, CO_{bkg} denotes the background field originating from the ECMWF-CAMS boundary conditions and CO_{rest} summarises the contribution of the remaining EDGAR sources. The different coefficients of vector α describe a scaling of the corresponding CO fields and thus can be adjusted to fit the TROPOMI CO observations in the spatial domain of interest. Having the different tracer fields available,

we fitted the coefficients α shown in Eq. 2 with a standard least squares method to improve the match between the simulated CO fields and the TROPOMI observations. Thus, this optimisation Here, the sensitivity of the scaling factors to changes in the measured CO field $CO_{TROPOMI}$ is described by the partial derivative $\frac{\partial \alpha}{\partial CO_{TROPOMI}}$ as a result of the least-squares fitting.

Hence, the optimisation of the CO fields yields the relative change of the emission for the different tracer sources, where we estimate the corresponding uncertainties by bootstrapping. In this To this end, we created 1000 data samples by repeatedly reducing the TROPOMI data to 50% of the original data volume. Subsequently for each of those samples we estimated the emission sources with the approach described above. The statistics of the results are shown in Table 1 were we report, which reports the mean and the standard deviation of the ensemble calculated from the emission estimates of the 1000 data samples as a robust error estimate. The fitting of the tracer fields improves the agreement between TROPOMI and WRF; however we still see significant differences on sub-city scales, and missing emissions in the EDGAR inventory hamper the interpretation of

the TROPOMI data. These points will be discussed in the following sections.

3.2 Sensing pollution on sub-city scales in Tehran

The city of Tehran shows clearly enhanced CO concentrations well isolated from the low surrounding background concentration of about 80 ppb that is pronounced in many TROPOMI overpasses over Tehran. Figure 5 compares the TROPOMI CO measurements with the WRF simulation over Tehran for 18 December 2017. 2017 9:37 UTC. The WRF data (top right panel) were fitted to the TROPOMI measurements (top left panel) by scaling WRF's background CO field with $\alpha_{bkg} = 0.91 \pm 0.016$ and the Tehran emissions with $\alpha_{Tehran} = 2.24 \pm 0.24$. The other CO tracer fields of WRF were kept unchanged. The remaining

differences show that overall Overall, the simulation and the TROPOMI data agree well ~~but with significant differences across the city~~. Although the model has a high CO sensitivity at the centre, however still significant differences between the model and TROPOMI remain at the city of Tehran (lower left panel). This suggests that TROPOMI can sense pollution hot spots on sub-city scales that are not well reflected by the model. Even though the fit shows a high sensitivity for CO at the center
5 of Tehran (lower right panel) a trustworthy emission estimate ~~would only be possible if the emission inventory gave a more realistic~~ is only possible when those differences are reduced. To this end, the model calculation needs emission inventories that more realistically reflect the spatial distribution of the pollution sources within the hot spot including temporal resolution, which is not provided by the used EDGAR inventory. Modelling CO on sub-city scales is challenging for the WRF model and the doubling of the EDGAR emissions for the city of Tehran that is inferred from the TROPOMI measurements must be
10 considered with cautiousness.

On 18 December 2017 the pollution of Tehran was transported up to 600 km eastwards and the corresponding CO plume is nicely reflected in both the TROPOMI data and the WRF simulation; as shown in Figure 6. Fitting the model to the TROPOMI data over the entire plume domain results in a scaling of the EDGAR Tehran emissions by $\alpha_{\text{bkg}} = 0.97 \pm 0.006$ and $\alpha_{\text{Tehran}} = 1.48 \pm 0.14$ but when leaving out the urban area of Tehran, the source inversion results in a scaling of $\alpha_{\text{bkg}} =$
15 0.99 ± 0.001 , $\alpha_{\text{Tehran}} = 0.86 \pm 0.03$ of the EDGAR emissions. The inconsistency of the emission estimates may come from an inappropriate simulation of the hot spot as mentioned above but may also be caused by temporal variability of the emission at Tehran or small errors in the wind fields thereby causing shifts in the downwind area. Based on the EDGAR inventory, the WRF simulations assume time invariant emissions. However, the transport of 600 km needs about 33 hours assuming a wind speed of about 5 ms^{-1} . Hence, the plume could reflect a different source strength that changed through time.

20 3.3 Sensing pollution along main traffic roads

On 27 November ~~and 9:31 UTC~~, 12 November 9:50 UTC and 17 December 2017 9:56 UTC, TROPOMI detected a sequence of strong CO pollution events near to the city of Yerevan in Armenia, which are depicted in Fig. 7. The enhancements in CO show a clear time dependency, probably due to varying local meteorology. The high CO concentration follows the orographic pattern of the region in Fig. 3 and indicate an accumulation of pollution in the mountainous region. Furthermore, CO pollution
25 hot spots at the cities of Urmia and Tabriz are clearly visible. Here, the WRF tracer transport simulations of CO are used to conclude on the strength of the emission sources and how local winds impact the strong CO enhancement sensed by TROPOMI. The CO enhancement cannot be explained by the background signal and the sensitivity of the different hot spots can be clearly separated in this region. Figure 8 compares the 17 December pollution event measured by TROPOMI with corresponding WRF simulation. Using the ~~EDGAR emissions~~ original EDGAR emissions without scaling, the large differences indicate that
30 the enhancement cannot be explained by atmospheric transport as simulated by WRF and indicates an underestimation of the CO emissions in the EDGAR data. In this case the root-mean-square (rms) difference between the WRF simulation and TROPOMI is 3.38 ppb.

The two middle panels of Fig. 8 show the situation after adjusting the urban emission strengths by the optimized scaling factors α_{Yerevan} , α_{Tabriz} , and α_{Urmia} , and these emissions are summarised in the first three rows of Table 2. Here, the emissions

of the remaining tracers $\text{CO}_{\text{Tehran}}$ and CO_{rest} were not adjusted. The results indicate that the prior assumed emissions are too low for Tabriz and far too low for Yerevan and Urmia. After adjusting the emission sources, the WRF simulation can ~~explain~~ reproduce to a major extent the observed regional CO enhancement. It is remarkable how well the WRF model describes the pollution at Tabriz and Urmia and the nearby valley. Also, the accumulation of CO pollution from Yerevan westwards of the city is well reproduced by the model, but still a large ~~differences-difference~~ remains south-east of the city. The rms difference between WRF and TROPOMI is reduced to 2.52 ppb.

To account for the residuals, we extended the emission pattern of Yerevan along a main traffic roadway of the city, as indicated in Fig. 2. After fitting the emissions, the agreement between the TROPOMI observations and WRF simulations is ~~clearly-further~~ improved (see right panels of Fig. 8) with a rms difference of 2.29 ppb. The estimated emissions are shown in the last three rows of Table 2. The improved fit convincingly shows the need for a more extended emission source along the arterial road of the city, which is not represented in the current EDGAR inventory but could be identified with TROPOMI CO measurements. Obviously, the CO measurements cannot attribute missing emissions to specific processes. So both high traffic load and/or other activities e.g. industrial, along the road may explain our findings. Table 2 also summarises the emission estimates for the other days, 27 November and 12 December, which indicates emission of similar magnitude but with some temporal variability. Follow-up studies must show if this variability can be attributed to a variation of the emission sources or to biases of the inversion approach used. ~~Furthermore~~ For 17 December, we found negative emissions for Tabriz that are slightly higher than the estimated error. Moreover, looking at the result for individual cities, in this area, we recognize remaining differences after optimisation of the emissions. As discussed for Tehran in the previous subsection, we assume that TROPOMI is sensitive to pollution patterns at sub-city scale which are not well reflected by the EDGAR data set, which may lead to these biases.

4 Conclusions

In this study, we compared TROPOMI CO total column densities with CO tracer simulations of the WRF model v3.8.1 for a regional domain centred over Iran from 1 November to 20 December 2017 with a spatial resolution comparable to that of TROPOMI ($7 \times 7 \text{ km}^2$). Anthropogenic surface emissions of the simulations are based on the EDGARv4.2 emission inventory. Considering the CO emissions from the cities of Yerevan, Tehran, Urmia, and Tabriz as independent atmospheric tracers allowed us to infer the strength of CO surface emissions from the observed CO enhancements in the TROPOMI data. For comparing TROPOMI CO data with model simulations, it was necessary to bring both data sets to the same spatio-temporal sampling and to apply column averaging ~~column~~ kernels of the TROPOMI product to the model data even though this introduces computationally expensive operations.

When looking over the full domain, we found the WRF simulations using EDGAR emissions are in good agreement with the TROPOMI measurements with a mean difference of 5.7 percent. Both TROPOMI and WRF show the same large scale variation of CO over the region considered. A CO pollution plume seen by TROPOMI with an extension of 600 km and its origin at Tehran could be simulated well by the WRF model considering synoptic transport of CO emissions from the city. On

city scales we identified significant differences between model simulation and TROPOMI observations, which we attribute to shortcomings in the EDGAR inventory due to time invariant emissions, underestimation of existing emission sources and lack of sufficient emission sources in Armenia. ~~Also, An additional source of uncertainty might be~~ the capability of the WRF model to simulate CO on sub-city scales ~~might be an additional source of uncertainty~~ which is further limited by the availability of appropriate emission inventories but also the challenging task to model wind fields on this scale.

For Tehran, we show that the spatial emission patterns of the data set are not consistent with the TROPOMI observations, hinting at problems of the emission inventory at sub-city scales. The strong CO enhancements over Yerevan, Urmia and Tabriz seen by TROPOMI are only reflected by the model after substantially adjusting the emission strength of the city emissions. Additionally, a series of pollution events near Yerevan can only be reproduced by WRF simulations when CO emissions along an arterial road are introduced in addition to the EDGARv4.2 inventory.

In this study, we showed that the TROPOMI CO dataset is capable of distinguishing CO pollution on city and sub-city scales and even can detect CO pollution along an arterial road. We demonstrated that TROPOMI can identify new emission sources and can thereby help to fill gaps in emission inventories, which at the same time challenges atmospheric modelling on the spatial and temporal scales observed by TROPOMI. An interesting topic for follow up studies is to apply the method presented in this publication to other region world wide. For this it is important to restrict the analysis to clear-sky only scenes to ensure that the TROPOMI CO retrieval is sensitive for boundary layer pollution. Moreover, for bigger cities pollution on sub-city scales becomes more imporant and may need adjustment of the inversion approach.

Data availability. The TROPOMI CO data set and the WRF simulations of this study are available for download at ftp://ftp.sron.nl/pub/pub/DataProducts/TROPOMI_CO/. The underlying data of the figures presented in this publication can be found at <ftp://ftp.sron.nl/open-access-data-2/TROPOMI/tropomi/co/>.

Author contributions. Tobias Borsdorff, Joost aan de Brugh, Otto Hasekamp and Jochen Landgraf provided the TROPOMI CO retrieval and data analysis. Sudhanshu Pandey, Ilse Aben and Sander Houweling are responsible for the WRF simulation. Jochen Landgraf supervised the study. All authors discussed the results and commented on the manuscript.

Competing interests. The authors declare no competing interests.

Disclaimer. The presented work has been performed in the frame of the Sentinel-5 Precursor Validation Team (S5PVT) or Level 1/Level 2 Product Working Group activities. Results are based on preliminary (not fully calibrated/validated) Sentinel-5 Precursor data that might change in the future.

Acknowledgements. We would like to thank the team that has realised the TROPOMI instrument, consisting of the partnership between Airbus Defense and Space, KNMI, SRON and TNO, and commissioned by the Netherlands Space Office (NSO) and the European Space Agency (ESA). Sentinel-5 Precursor is a ESA mission on behalf of the European Commission (EC). The TROPOMI payload is a joint development by ESA and the NSO. The Sentinel-5 Precursor ground-segment development has been funded by ESA and with national contributions from The Netherlands, Germany, and Belgium. This research has been funded in part by the TROPOMI national program from the NSO. The TROPOMI data processing was carried out on the Dutch national e-infrastructure with the support of the SURF Cooperative. The work contains modified Copernicus Atmosphere Monitoring Service Information [2017]. Neither the European Commission nor ECMWF is responsible for any use that may be made of the information it contains.

References

- Borsdorff, T., Hasekamp, O. P., Wassmann, A., and Landgraf, J.: Insights into Tikhonov regularization: application to trace gas column retrieval and the efficient calculation of total column averaging kernels, *Atmospheric Measurement Techniques*, 7, 523–535, <https://doi.org/10.5194/amt-7-523-2014>, <https://doi.org/10.5194%2Famt-7-523-2014>, 2014.
- 5 Borsdorff, T., aan de Brugh, J., Hu, H., Hasekamp, O., Sussmann, R., Rettinger, M., Hase, F., Gross, J., Schneider, M., Garcia, O., Stremme, W., Grutter, M., Feist, D. G., Arnold, S. G., De Mazière, M., Kumar Sha, M., Pollard, D. F., Kiel, M., Roehl, C., Wennberg, P. O., Toon, G. C., and Landgraf, J.: Mapping carbon monoxide pollution from space down to city scales with daily global coverage, *Atmospheric Measurement Techniques Discussions*, 2018, 1–19, <https://doi.org/10.5194/amt-2018-132>, <https://www.atmos-meas-tech-discuss.net/amt-2018-132/>, 2018a.
- 10 Borsdorff, T., de Brugh, J. A., Hu, H., Aben, I., Hasekamp, O., and Landgraf, J.: Measuring Carbon Monoxide With TROPOMI: First Results and a Comparison With ECMWF-IFS Analysis Data, *Geophysical Research Letters*, 45, 2826–2832, <https://doi.org/10.1002/2018GL077045>, <https://agupubs.onlinelibrary.wiley.com/doi/abs/10.1002/2018GL077045>, 2018b.
- Crippa, M., Janssens-Maenhout, G., Dentener, F., Guizzardi, D., Sindelarova, K., Muntean, M., Van Dingenen, R., and Granier, C.: Forty years of improvements in European air quality: regional policy-industry interactions with global impacts, *Atmospheric Chemistry and Physics*, 16, 3825–3841, <https://doi.org/10.5194/acp-16-3825-2016>, <http://dx.doi.org/10.5194/acp-16-3825-2016>, 2016.
- 15 Dekker, I. N., Houweling, S., Aben, I., Röckmann, T., Krol, M., Martínez-Alonso, S., Deeter, M. N., and Worden, H. M.: Quantification of CO emissions from the city of Madrid using MOPITT satellite retrievals and WRF simulations, *Atmospheric Chemistry and Physics*, 17, 14 675–14 694, <https://doi.org/10.5194/acp-17-14675-2017>, <http://dx.doi.org/10.5194/acp-17-14675-2017>, 2017.
- Dekker, I. N., Houweling, S., Pandey, S., Krol, M., Röckmann, T., Borsdorff, T., Landgraf, J., and Aben, I.: The origin of CO sources during the 2017 high pollution episode in India determined with TROPOMI and WRF data, manuscript in prep., 2018.
- 20 ESA: Sentinel-5P Pre-Operations Data Hub, <https://s5phub.copernicus.eu/dhus/>, 2018.
- Farr, T. G., Rosen, P. A., Caro, E., Crippen, R., Duren, R., Hensley, S., Kobrick, M., Paller, M., Rodriguez, E., Roth, L., Seal, D., Shaffer, S., Shimada, J., Umland, J., Werner, M., Oskin, M., Burbank, D., and Alsdorf, D.: The Shuttle Radar Topography Mission, *Reviews of Geophysics*, 45, <https://doi.org/10.1029/2005rg000183>, <https://doi.org/10.1029%2F2005rg000183>, 2007.
- 25 George, M., Clerbaux, C., Bouarar, I., Coheur, P.-F., Deeter, M. N., Edwards, D. P., Francis, G., Gille, J. C., Hadji-Lazaro, J., Hurtmans, D., and et al.: An examination of the long-term CO records from MOPITT and IASI: comparison of retrieval methodology, *Atmospheric Measurement Techniques*, 8, 4313–4328, <https://doi.org/10.5194/amt-8-4313-2015>, <http://dx.doi.org/10.5194/amt-8-4313-2015>, 2015.
- Gloudemans, A. M. S., de Laat, A. T. J., Schrijver, H., Aben, I., Meirink, J. F., and van der Werf, G. R.: SCIAMACHY CO over land and oceans: 2003–2007 interannual variability, *Atmospheric Chemistry and Physics*, 9, 3799–3813, <https://doi.org/10.5194/acp-9-3799-2009>, <https://doi.org/10.5194%2FACP-9-3799-2009>, 2009.
- 30 Grell, G. A. and Freitas, S. R.: A scale and aerosol aware stochastic convective parameterization for weather and air quality modeling, *Atmospheric Chemistry and Physics*, 14, 5233–5250, <https://doi.org/10.5194/acp-14-5233-2014>, <http://dx.doi.org/10.5194/acp-14-5233-2014>, 2014.
- Grell, G. A., Peckham, S. E., Schmitz, R., McKeen, S. A., Frost, G., Skamarock, W. C., and Eder, B.: Fully coupled “online” chemistry within the WRF model, *Atmospheric Environment*, 39, 6957–6975, <https://doi.org/10.1016/j.atmosenv.2005.04.027>, <http://dx.doi.org/10.1016/j.atmosenv.2005.04.027>, 2005.
- 35

- Holloway, T., Levy, H., and Kasibhatla, P.: Global distribution of carbon monoxide, *Journal of Geophysical Research: Atmospheres*, 105, 12 123–12 147, <https://doi.org/10.1029/1999jd901173>, <https://doi.org/10.1029%2F1999jd901173>, 2000.
- Hu, X.-M., Klein, P. M., and Xue, M.: Evaluation of the updated YSU planetary boundary layer scheme within WRF for wind resource and air quality assessments, *Journal of Geophysical Research: Atmospheres*, 118, 10,490–10,505, <https://doi.org/10.1002/jgrd.50823>, <http://dx.doi.org/10.1002/jgrd.50823>, 2013.
- 5 Krol, M., Houweling, S., Bregman, B., van den Broek, M., Segers, A., van Velthoven, P., Peters, W., Dentener, F., and Bergamaschi, P.: The two-way nested global chemistry-transport zoom model TM5: algorithm and applications, *Atmospheric Chemistry and Physics*, 5, 417–432, <https://doi.org/10.5194/acp-5-417-2005>, <https://www.atmos-chem-phys.net/5/417/2005/>, 2005.
- Landgraf, J., aan de Brugh, J., Borsdorff, T., Houweling, S., and O., H.: Algorithm Theoretical Baseline Document for Sentinel-5 Precursor: Carbon Monoxide Total Column Retrieval, Atbd, SRON, Sorbonnelaan 2, 3584 CA Utrecht, The Netherlands, 2016a.
- 10 Landgraf, J., aan de Brugh, J., Scheepmaker, R., Borsdorff, T., Hu, H., Houweling, S., Butz, A., Aben, I., and Hasekamp, O.: Carbon monoxide total column retrievals from TROPOMI shortwave infrared measurements, *Atmospheric Measurement Techniques*, 9, 4955–4975, <https://doi.org/10.5194/amt-9-4955-2016>, <https://doi.org/10.5194%2Famt-9-4955-2016>, 2016b.
- NCEP: NCEP FNL Operational Model Global Tropospheric Analyses, continuing from July 1999, 2000.
- 15 Pommier, M., McLinden, C. A., and Deeter, M.: Relative changes in CO emissions over megacities based on observations from space, *Geophysical Research Letters*, 40, 3766–3771, <https://doi.org/10.1002/grl.50704>, <http://dx.doi.org/10.1002/grl.50704>, 2013.
- Rodgers, C. D.: Inverse methods for atmospheric sounding: theory and practice, vol. 2 of *Series on atmospheric, oceanic and planetary physics*, World Scientific, Singapore, River Edge, N.J., reprinted : 2004, 2008, 2000.
- Skamarock, W. C., Klemp, J. B., Dudhia, J., Gill, D. O., Barker, M., Duda, K. G., Huang, X. Y., Wang, W., and Powers, J. G.: A description 20 of the Advanced Research WRF Version 3, Tech. rep., National Center for Atmospheric Research, 2008.
- Spivakovsky, C. M., Logan, J. A., Montzka, S. A., Balkanski, Y. J., Foreman-Fowler, M., Jones, D. B. A., Horowitz, L. W., Fusco, A. C., Brenninkmeijer, C. A. M., Prather, M. J., Wofsy, S. C., and McElroy, M. B.: Three-dimensional climatological distribution of tropospheric OH: Update and evaluation, *Journal of Geophysical Research: Atmospheres*, 105, 8931–8980, <https://doi.org/10.1029/1999jd901006>, <https://doi.org/10.1029%2F1999jd901006>, 2000.
- 25 Stremme, W., Grutter, M., Rivera, C., Bezanilla, A., Garcia, A. R., Ortega, I., George, M., Clerbaux, C., Coheur, P.-F., Hurtmans, D., Hannigan, J. W., and Coffey, M. T.: Top-down estimation of carbon monoxide emissions from the Mexico Megacity based on FTIR measurements from ground and space, *Atmospheric Chemistry and Physics*, 13, 1357–1376, <https://doi.org/10.5194/acp-13-1357-2013>, <https://www.atmos-chem-phys.net/13/1357/2013/>, 2013.
- Veefkind, J., Aben, I., McMullan, K., Förster, H., de Vries, J., Otter, G., Claas, J., Eskes, H., de Haan, J., Kleipool, Q., van Weele, M., 30 Hasekamp, O., Hoogeveen, R., Landgraf, J., Snel, R., Tol, P., Ingmann, P., Voors, R., Kruizinga, B., Vink, R., Visser, H., and Levelt, P.: TROPOMI on the ESA Sentinel-5 Precursor: A GMES mission for global observations of the atmospheric composition for climate, air quality and ozone layer applications, *Remote Sensing of Environment*, 120, 70–83, <https://doi.org/10.1016/j.rse.2011.09.027>, <https://doi.org/10.1016%2Fj.rse.2011.09.027>, 2012.
- Yurganov, L. N., Blumenstock, T., Grechko, E. I., Hase, F., Hyer, E. J., Kasischke, E. S., Koike, M., Kondo, Y., Kramer, I., Leung, F.-Y., 35 Mahieu, E., Mellqvist, J., Notholt, J., Novelli, P. C., Rinsland, C. P., Scheel, H. E., Schulz, A., Strandberg, A., Sussmann, R., Tanimoto, H., Velasco, V., Zander, R., and Zhao, Y.: A quantitative assessment of the 1998 carbon monoxide emission anomaly in the Northern Hemisphere based on total column and surface concentration measurements, *Journal of Geophysical Research: Atmospheres*, 109, n/a–n/a, <https://doi.org/10.1029/2004JD004559>, <http://dx.doi.org/10.1029/2004JD004559>, d15305, 2004.

Yurganov, L. N., Duchatelet, P., Dzhola, A. V., Edwards, D. P., Hase, F., Kramer, I., Mahieu, E., Mellqvist, J., Notholt, J., Novelli, P. C., Rockmann, A., Scheel, H. E., Schneider, M., Schulz, A., Strandberg, A., Sussmann, R., Tanimoto, H., Velazco, V., Drummond, J. R., and Gille, J. C.: Increased Northern Hemispheric carbon monoxide burden in the troposphere in 2002 and 2003 detected from the ground and from space, *Atmospheric Chemistry and Physics*, 5, 563–573, <https://doi.org/10.5194/acp-5-563-2005>, 2005.

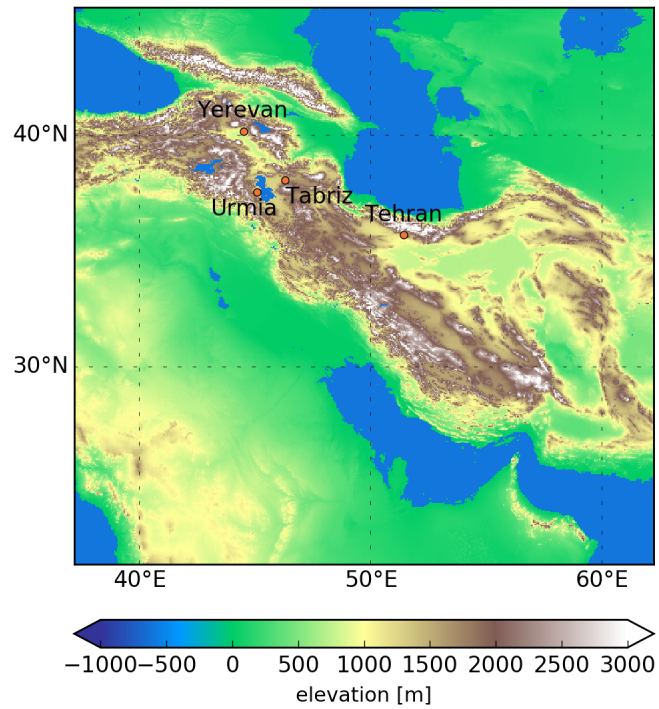


Figure 1. Topological map of the model domain taken from the 2000 Shuttle Radar Topography Mission (SRTM) data with an resolution of 15 arcsec (Farr et al., 2007). An analogueous terrain height is used for the WRF simulation with the. The cities of Yerevan, Urmia, Tabriz, and Tehran with CO hot spots are marked in the map.

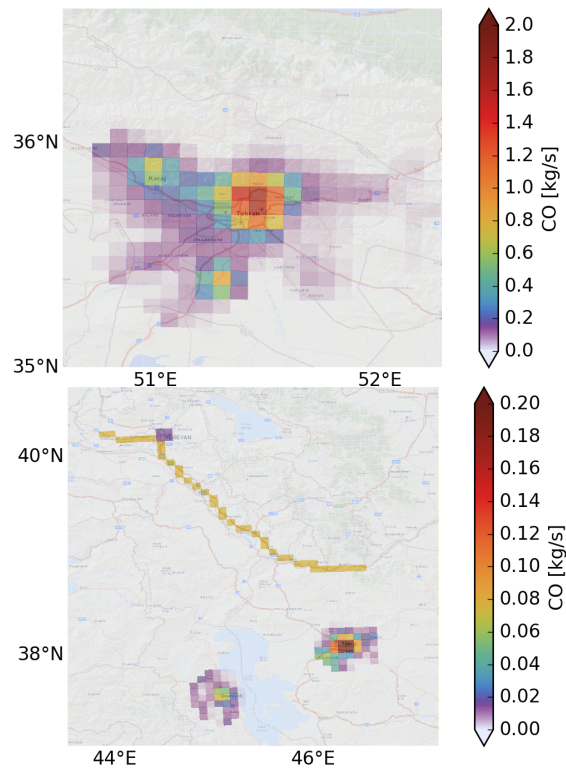


Figure 2. Emission used for the WRF tracer runs. Emission 70 km around Tehran (upper panel) extracted from EDGAR. (lower panel) The emissions of Yerevan, Tabriz, and Urmia extracted from EDGAR 30 km around the cities, and the additionally introduced emission along a main traffic road in Armenia not present in EDGAR.

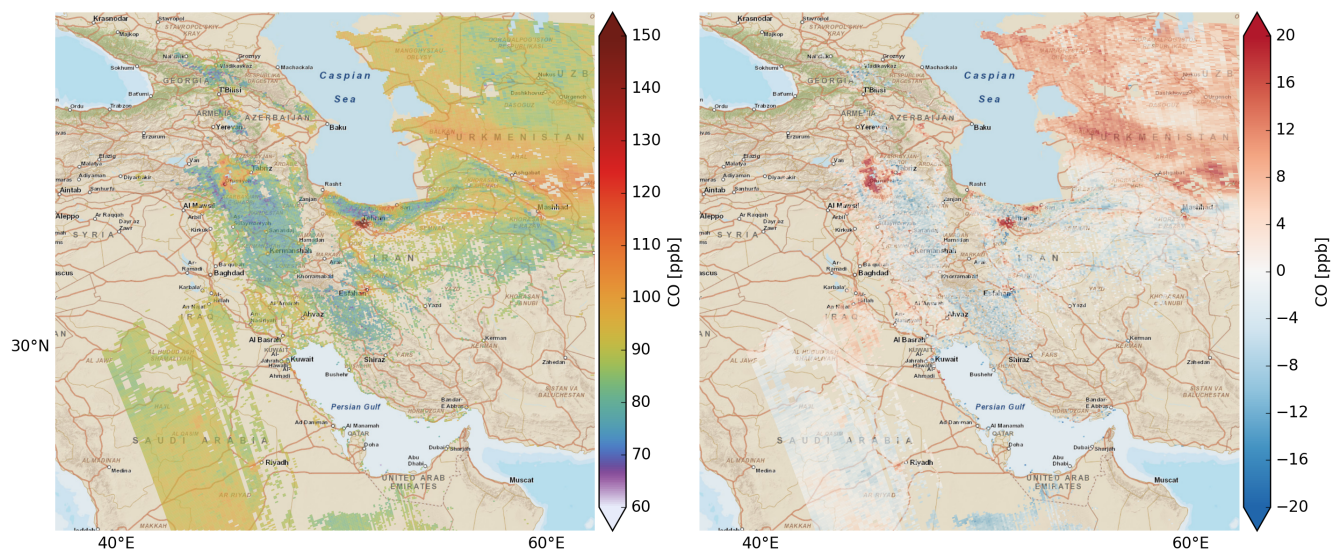


Figure 3. TROPOMI CO retrieval of one orbit on 18th December 2017 9:37 UTC (left panel), the collocated WRF simulation scaled to the TROPOMI data (middle panel), and the difference (TROPOMI - WRF, right panel).

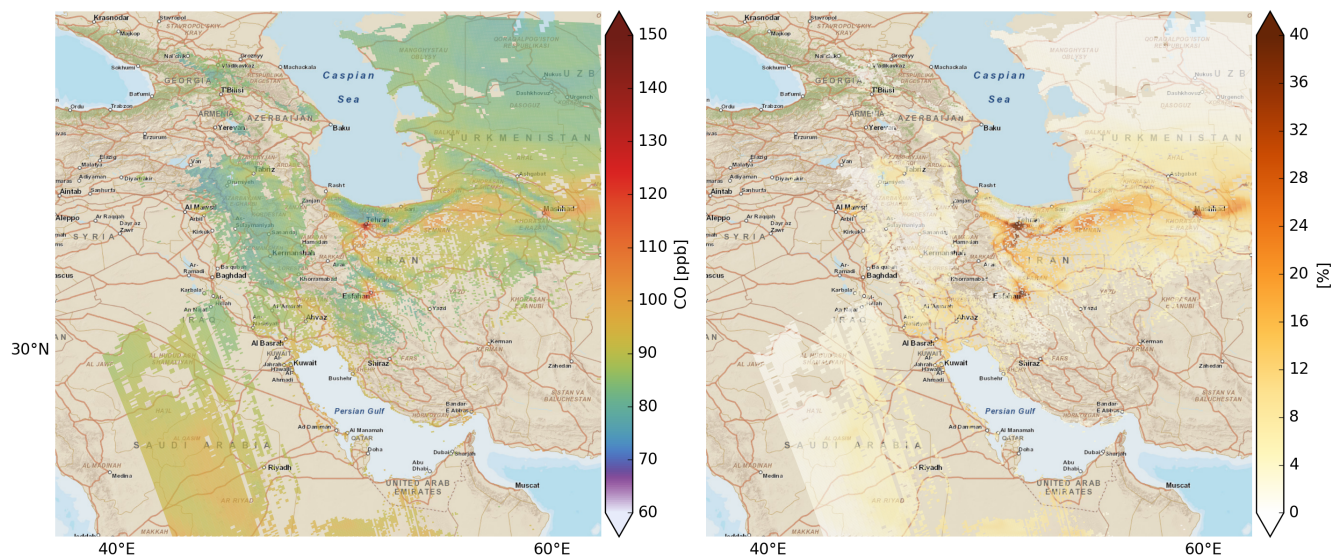


Figure 4. WRF simulation for 18 December 2017 9:37 UTC collocated and fitted to the TROPOMI data (left panel), and the relative difference of the WRF simulated total column to the background CO tracer column ($(\text{WRF} - \text{background}) / \text{background}$).

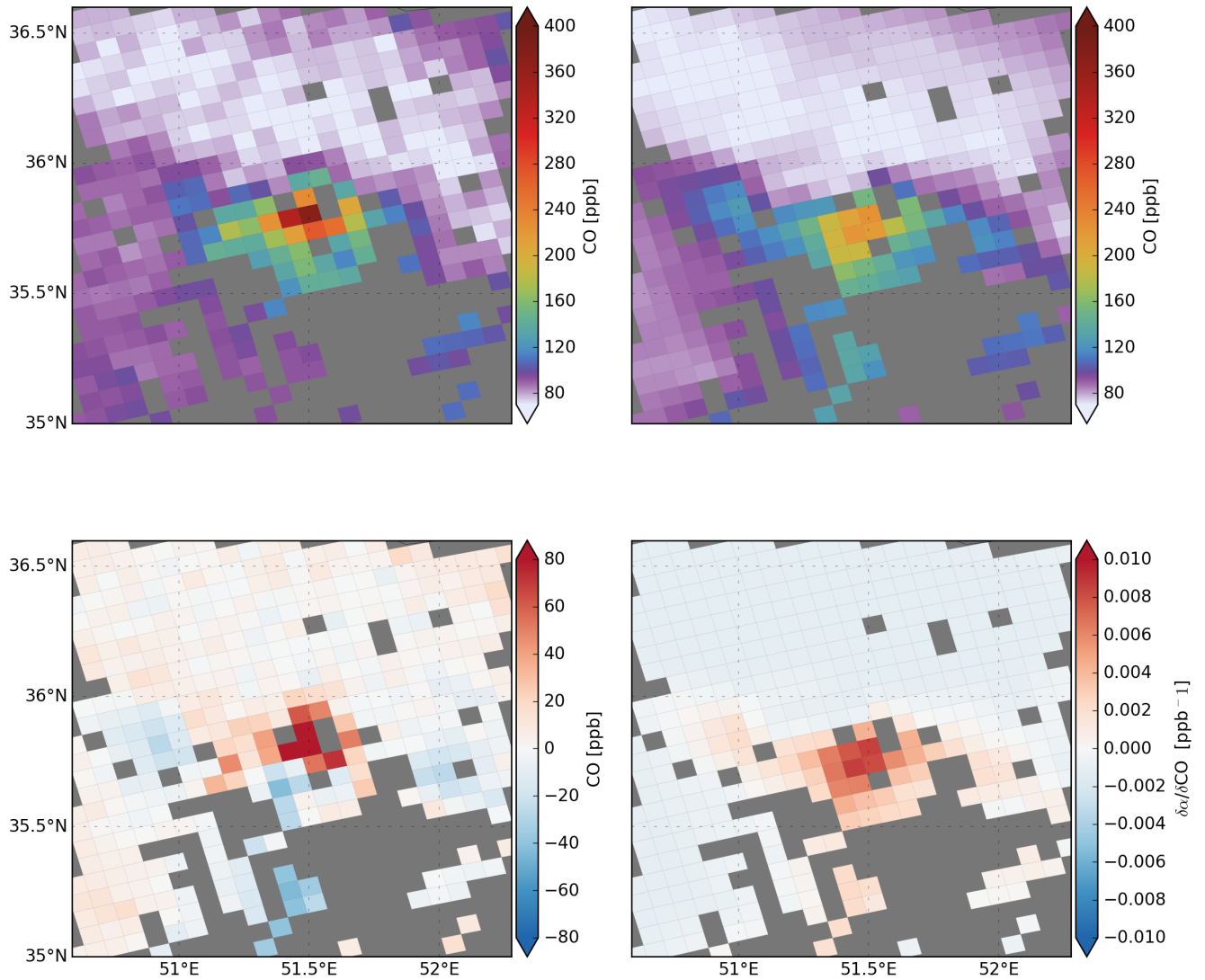


Figure 5. TROPOMI CO retrieval above Tehran on the 18th December 2017 (top left panel), The collocated WRF simulation scaled to the TROPOMI data (top right panel), the difference between the TROPOMI and scaled WRF data (TROPOMI - WRF, lower left panel), and the sensitivity of fitting the WRF data to the TROPOMI retrieval (lower right panel).

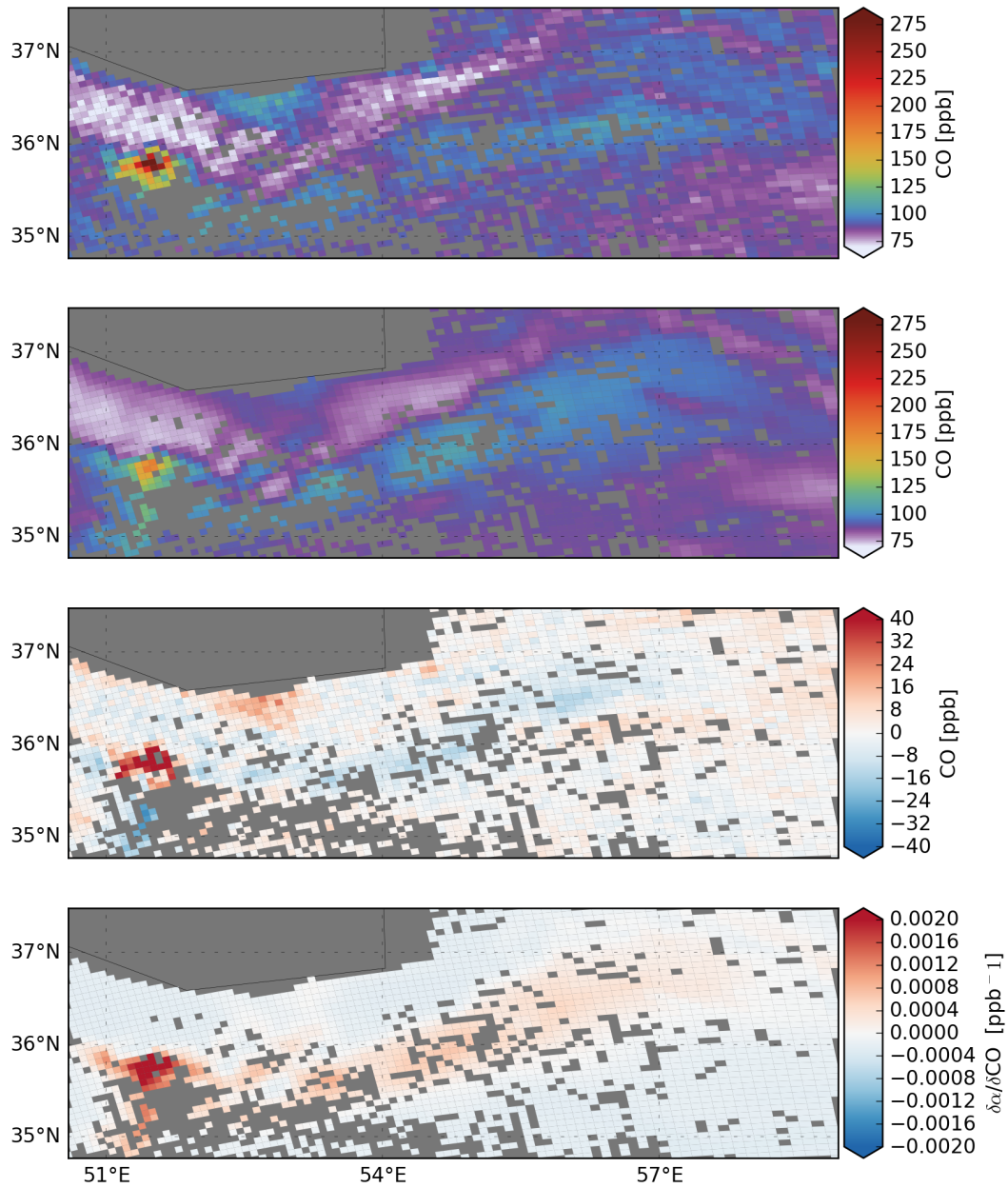


Figure 6. Same as Fig. 5 but a larger domain was used to include the pollution plume of Tehran in eastward direction. From top to bottom: TROPOMI, WRF, (TROPOMI-WRF), and sensitivity of fitting the WRF data to the TROPOMI retrieval.

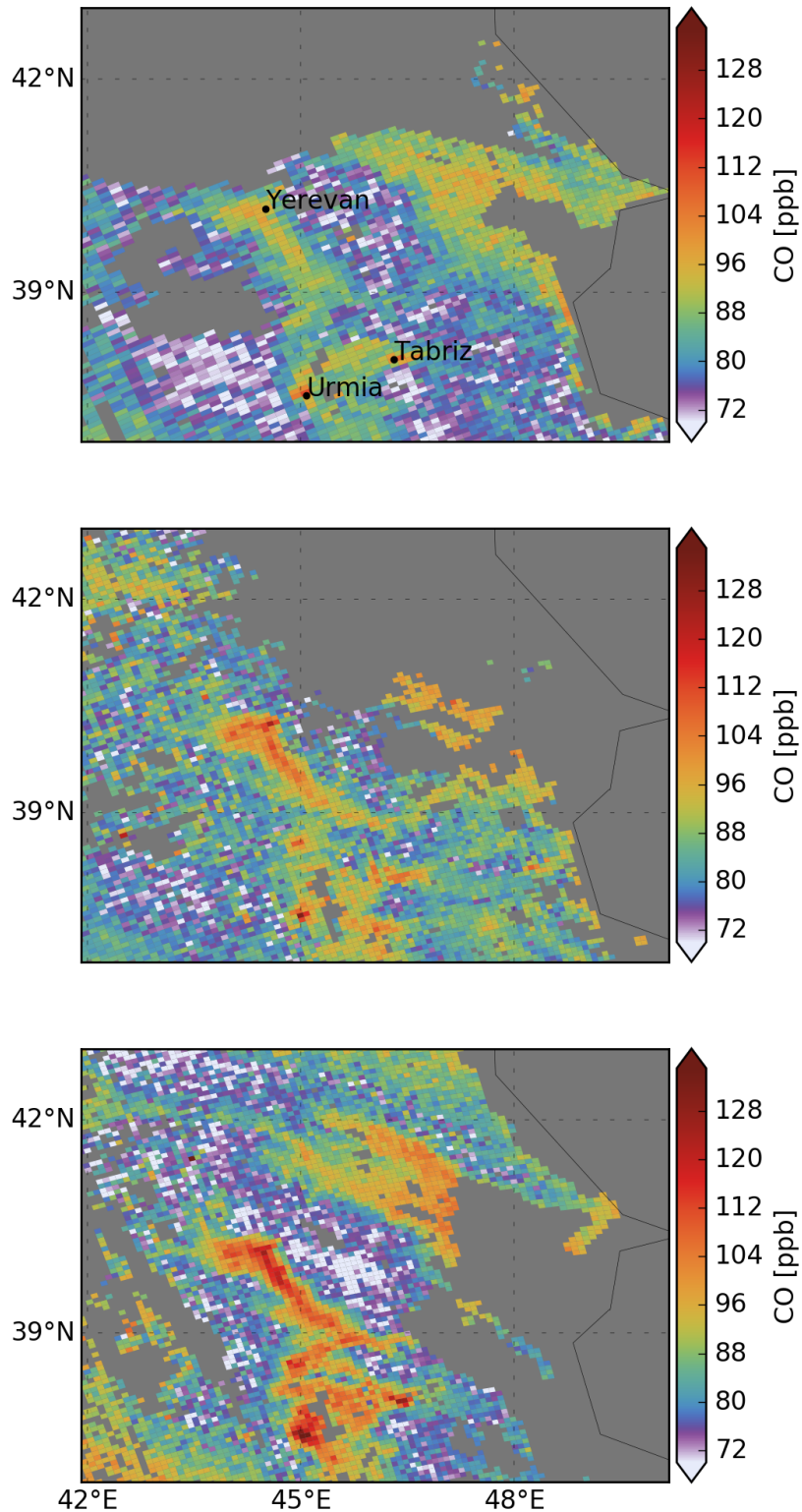


Figure 7. Sequence of high CO pollution events measured by TROPOMI on the 27th (top panel) November [9:31 UTC](#), 12th [November 9:50 UTC](#) (middle panel), and 17th December 2017 [9:56 UTC](#) (lower panel) [above Armenia](#). The figures show the same region as in the lower part of [Fig. 2](#).

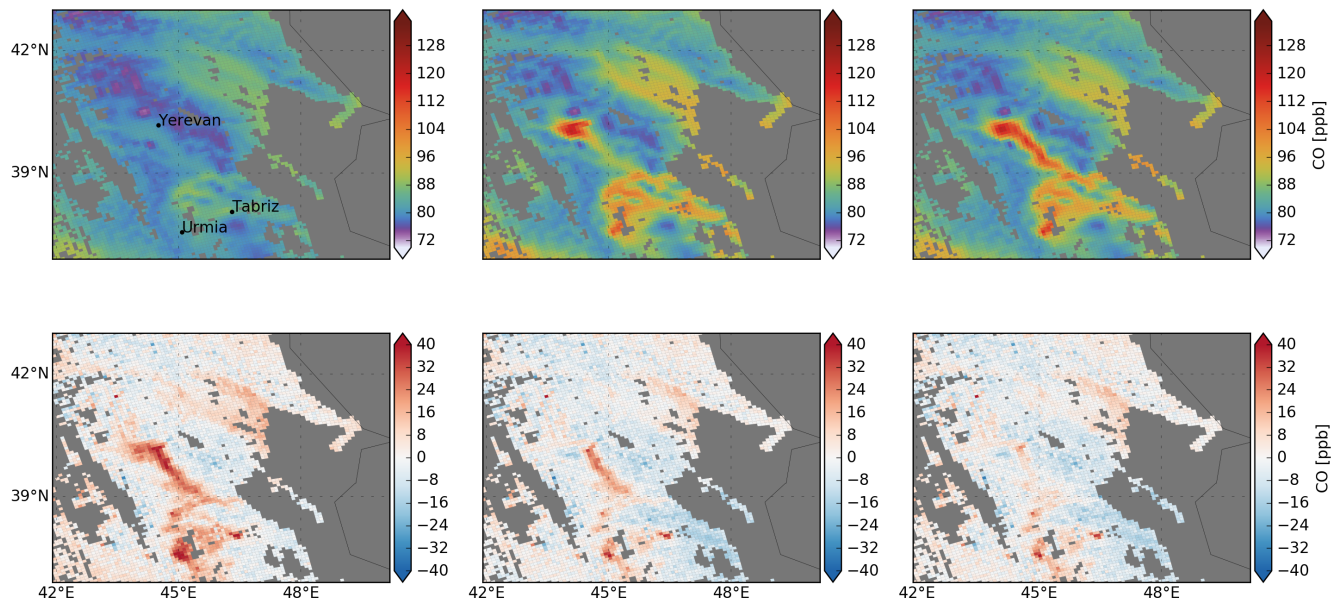


Figure 8. Comparison of TROPOMI CO and WRF (top row: WRF simulation, lower row difference TROPOMI - WRF) [on the 17 December 2017 9:56 UTC above Armenia](#) . Left column: WRF run with EDGAR emissions. Middle column: WRF run with adjusted emissions for Yerevan, Tabriz and Urmia. Right column: WRF run with adjusted emission of Yerevan, Tabriz and Urmia and the traffic route near Yerevan.

Table 1. CO emissions extracted from the EDGAR inventory in a radius around the indicated cities and inverted from the TROPOMI CO retrievals shown in Fig. 3. on 18th December 2017

name	radius [km]	latitude [degree]	longitude [degree]	EDGAR CO emission [kg/s]	inverted CO emission [kg/s]
Yerevan	30	40.18	44.51	0.07	31.24 ± 2.04
Urmia	30	37.55	45.08	0.64	11.73 ± 2.10
Tabriz	30	38.06	46.31	2.29	10.73 ± 1.49
Tehran	70	35.70	51.42	33.72	50.58 ± 3.14

Table 2. Emissions [kg/s] estimated from the TROPOMI measurements shown in Fig. 7. First three rows when fitting the emission of Yerevan, Tabriz and Urmia, and last three rows when fitting the emission of Tabriz, Urmia, and an assumed pollution along a traffic route near to Yerevan.

name	27 Nov. 2017	12 Dec. 2017	17 Dec. 2017
Yerevan	10.42 ± 1.34	13.56 ± 0.93	7.75 ± 0.50
Urmia	7.90 ± 2.60	4.93 ± 1.65	11.23 ± 2.58
Tabriz	0.05 ± 2.06	2.64 ± 1.40	-4.17 ± 2.31
Yerevan/road	16.57 ± 0.81	25.46 ± 1.03	22.50 ± 0.74
Urmia	9.30 ± 2.60	6.77 ± 1.61	14.31 ± 2.25
Tabriz	0.36 ± 2.09	3.31 ± 1.38	0.62 ± 1.95