

Response to interactive comments on “*Effective radiative forcing in the aerosol–climate model CAM5.3-MARC-ARG*”

B. S. Grandey et al., June–August 2018

We would like to thank the two anonymous referees for their helpful comments. We respond to the comments from the two referees below. Comments from the referees are quoted in *green italics*. Text from the revised manuscript is quoted in *blue italics*. In addition to responding to the comments from the referees, we also summarise some major changes to the revised manuscript.

Summary of major changes

When preparing the revised manuscript, we have made the following major changes:

1. A year-1850 MAM7 simulation has now been performed. 2000–1850 MAM7 zonal means are now included in the figures, and the global mean radiative effect components for MAM7 have been added to revised Table 5.
2. The MARC simulations have been re-run following a correction to the organic carbon and black carbon aerosol emissions, for consistency with the MAM simulations. (Previously, these emissions were lower than they should have been.)
3. Global mass budgets and lifetimes have been quantified for MARC, resulting in eight new tables (Tables 1–4, S1–S4) and a new results section (Section 3.1).
4. For MAM, the secondary organic aerosol burden has been included in the organic matter burden. It has also been clarified that MAM’s “organic matter” aerosol burden is not a direct equivalent of MARC’s “organic carbon” aerosol burden.
5. For MARC, all aerosol burdens are now calculated using the diagnosed mass-mixing ratios.

Other changes have also been made in response to the referee comments, as outlined below.

Response to Anonymous Referee #1

This manuscript runs two different aerosol models in a General Circulation Model and analyzes the results with respect to aerosols and their radiative effects, specifically the anthropogenic radiative effects. The manuscript is well written and like suitable for publication in ACP with some important revisions.

Thank you for your overall assessment.

There is also zero comment on which of the treatments might be more realistic, and zero justification against observations. The CCN and CDNC differences are large enough to comment on perhaps with respect to observations?

Thank you for the suggestion. However, available observations are still insufficient to constrain the CCN_{conc} and $CDNC_{column}$ fields. In the case of CCN_{conc} , satellite estimates are highly unreliable, and in situ measurements are limited in terms of spatial and temporal sampling. In the case of $CDNC_{column}$, satellite estimates are not available – although cloud-top CNDC can be estimated using the adiabatic assumption, this does not reveal $CDNC_{column}$. Nevertheless, your comment is well received. Hence we have added the following sentences to the CDNC results section:

“No global observations of $CDNC_{column}$ exist. However, satellite-based estimates of cloud-top cloud droplet number concentration ($CDNC_{top}$) can be derived using the adiabatic assumption, although the uncertainties are large. MARC tends to underestimate $CDNC_{top}$ compared to MODIS-derived estimates (Rothenberg et al., 2018).”

It is also disconcerting that of the two aerosol models analyzed, the ‘more complete’ MAM7 treatment does not have a pre-industrial simulation. At the very least, 2000 emissions could be used for 1850 in that simulation where they did not exist, or they could be appropriately scaled. I think this limits some of the utility of the paper.

We have addressed this limitation by performing a year-1850 MAM7 simulation. The new simulation allows calculation of 2000–1850 differences for MAM7. The zonal mean results are included in the revised manuscript.

Specific comments are contained below. The conclusions are that there are different resulting cloud effects starting with Cloud Condensation Nuclei from the different aerosol models. But I think this needs to be analyzed in a bit more depth. It seems to me as if the externally mixed or ‘pure’ modes for aerosols are increasing lifetime but decreasing interactions with clouds: with lower CCN and lower drop numbers, contributing to larger percentage changes due to anthropogenic sources. I think this needs to be explored a bit more.

In short, I think there needs to be a bit more analysis of the results along the lines above.

Thank you for your helpful suggestions. We have carefully considered them when revising the manuscript, including further analysis of aerosol lifetimes.

Specific Comments:

Abstract: I think more should be devoted to differences in AOD, CCN and CDNC than radiative effects. The radiative effects are the least interesting part.

Thank you for the suggestion. However, we prefer to maintain the focus on the radiative effects. Hence, in order to keep the abstract brief and focused, we have decided not to include other results – although we mention that *“We compare the aerosol lifetimes, aerosol column burdens, cloud properties, and radiative effects...”*

Page 4, L10: so how many modes/bins in total? Are sea salt and dust only externally mixed in their sectional size bins? Please clarify. Maybe a table?

We have included further description of MARC in the revised manuscript, including a diagram summarizing the physical and chemical processes represented by MARC (new Fig. 1).

Page 5, L8: if no MAM7 emissions files, then do you have everything for MARC? What is missing for MAM7? Nitrate? Ammonia? Couldn't you find this information?

You correctly identify ammonia emissions as the reason why we did not previously perform a year-1850 MAM7 simulation. We have addressed this limitation by preparing appropriate emissions in order to perform a year-1850 simulation.

Page 6, L3: does this follow Ghan 2013? I think it does. Please state that, or where you have deviated.

Yes, you are correct. We have made this clearer in the revised manuscript.

Page 12, L15: but this is a key point: the different aerosol representations lead to different CCN activation spectra. Can you focus in on this a bit? This seems to be a key difference.

We have expanded this section as follows:

“Differences in the representation of aerosol mixing state and hygroscopicity may lead to large differences in aerosol activation spectra. In an aerosol model such as MAM that includes only internally-mixed modes, the hygroscopicity of a given mode is derived by volume weighting through all the included aerosol species and is therefore not very sensitive to changes in the chemical composition of the mode. In contrast, MARC explicitly handles mixing state and thus hygroscopicity of each individual type of aerosol: for example, the hygroscopicity of the pure OC and pure BC modes is very low, the hygroscopicity of the MOS mode depends on the internal mixing state of organic carbon and sulfate (assuming homogeneous mixing), and the hygroscopicity of the MBS mode is as high as that of pure sulfate (assuming a core-shell model) (Rothenberg et al., 2018).”

Page 12, L15: Marc seems to have a larger percentage change in CCN than MAM3. That probably leads to larger CDNC change (in percent) and hence the difference in LWP and SW radiative effects

That is a good point – thank you for pointing it out. We have added (or modified) the following sentences:

“However, the percentage increase is larger for MARC than for MAM” (in the CCN results section);

“However, the percentage increase is similar between MARC and MAM” (in the CDNC results section);

“For MARC, in comparison with MAM3, the relatively strong ΔWP_{liquid} response is consistent with the relatively strong ΔCCN_{conc} percentage change” (in the LWP results section); and

“The stronger ΔCRE_{SW} response for MARC is consistent with the larger ΔCCN_{conc} percentage change for MARC compared with MAM” (in the CRE SW results section).

Page 12, L26: I think this is a key point that needs a bit more definition. Please elaborate on what parts of MARC are leading to different activation? Can you test whether MARC or MAM is right with observations?

We have added the following sentences to the CDNC results section:

“No global observations of $CDNC_{column}$ exist. However, satellite-based estimates of cloud-top cloud droplet number concentration ($CDNC_{top}$) can be derived using the adiabatic assumption, although the uncertainties are large. MARC tends to underestimate $CDNC_{top}$ compared to MODIS-derived estimates (Rothenberg et al., 2018).”; and

“However, the percentage increase is comparable between MARC and MAM. As was the case for ΔCCN_{conc} for MAM3, the regional distribution of $\Delta CDNC_{column}$ appears to be associated with both $\Delta Burden_{SO_4}$ and $\Delta Burden_{OC}$ whereas for MARC, the regional distribution of $\Delta CDNC_{column}$ is associated with $\Delta Burden_{SO_4}$ but is not closely associated with $\Delta Burden_{OC}$ ”

Page 13, L11: are there any differences in tunable parameters between MARC and MAM simulations for CAM?

Although minor modifications have been made when coupling the ice nucleation scheme to MARC, the tuneable parameters still follow those used by MAM (Gettelman et al., 2010; Liu et al., 2007). Your question has helped us to realize that the sentence in question is misleading. We have shortened and simplified the sentence: *“The uncertainties associated with ice nucleation are very large (Garimella et al., 2017).”*

Page 14, L8: can you relate regional differences back to specific aerosol modes?

This is a challenging question. Having considered this question, we have added an additional sentence to the CRE_{SW} section:

“In particular, MARC produces a weaker ΔCRE_{SW} response over the stratocumulus decks near South America and southern Africa, likely because organic carbon aerosol is not an efficient source of CCN in MARC.”

Page 14, L14: how different is the global LW (and SW) CRE between MAM and MARC?

We have added two sentences, summarizing global mean year-2000 CRE_{SW} and CRE_{LW} for MAM and MARC:

“Globally, year-2000 CRE_{SW} is -53.9 W m^{-2} for MAM3 and -52.2 W m^{-2} for MARC”;

and

“Globally, year-2000 CRE_{LW} is $+24.1 \text{ W m}^{-2}$ for MAM3 and $+22.2 \text{ W m}^{-2}$ for MARC.”

Page 15, L11: why is BC in snow less? Lower BC mass generally? MARC seems to have more BC?

This is *“likely due to differences in dry deposition of black carbon: the rate of dry deposition of black carbon aerosol is $0.42 \text{ Tg year}^{-1}$ in MARC (Table 3), much lower than the rate of $1.27 \text{ Tg year}^{-1}$ in MAM3 (Liu et al., 2012)”*.

Page 16, L12: yet with longer lifetime there is less CCN? Is this because unmixed aerosol are not CCN? Does MARC match observations better?

The pure OC and pure BC modes do indeed not act as effective CCN (as can be seen in new Tables 2–3, where nucleation scavenging by stratiform clouds is close to zero for the pure modes). Regarding observations, please see our response to your next comment below.

Page 17, L13: can you take this farther? Which specific formulation compares better to observations?

Liu et al. (2012) and Rothenberg et al. (2018) compare simulated aerosol fields with observations. However, we are of the opinion that currently available observations are insufficient for distinguishing between MAM and MARC, especially in the context of aerosol radiative effects and aerosol-cloud interactions. In situ measurements are limited in terms of spatial and temporal sampling; and global satellite retrievals of relevant fields (e.g. CCN) are either unavailable or unreliable.

Thank you again for your helpful comments.

Response to Anonymous Referee #2

In this study, the authors compare components of the aerosol effective radiative forcing and other relevant variables simulated by the CAM model using two (or three for some variables) different aerosol schemes, MAM3 (and MAM7 for some variables) and MARC. Differences depend on the component and whether one takes a regional or global view.

The paper is well written and richly illustrated. I like the decomposition by forcing components following Ghan (2013). I also like the way relevant aerosol physical distributions are compared before moving to comparing each forcing component. But the paper has three major flaws. First, the description of effective radiative forcing needs to be sharper and refer to recent results on adjustments. Second, the paper is very diagnostic and lacks the deep explanation of causes of differences that the reader would like to see. Finally, the authors interpret differences between the two aerosol models by guessing they may be due to differences in lifetime / hygroscopicity etc. when they should instead rely on quantifying those differences in lifetime etc. The authors have chosen to make no comparisons to observations, which can only be acceptable if they provide deep understanding of the differences between the different aerosol schemes.

To address those flaws, I recommend major revisions.

Thank you for your overall assessment and suggestions. When revising the manuscript, we have addressed the flaws you identify. Further details are provided in our responses to your specific comments below.

1 Main comments

The paragraph starting on Page 2 Line 7 should be sharper and reflect the precise definition of effective radiative forcing. That means introducing the concept of instantaneous radiative forcing and rapid adjustments. For more information, see Sherwood et al. doi:10.1175/BAMS-D-13-00167.1 . The results of the PDRMIP project would also be useful to frame the analysis of the paper, see for example Stjern et al. doi:10.1002/2017JD027326 - that is particularly true in section 3.2.2, where rapid adjustments (semi-direct effects) are not discussed at all for the moment.

We have added the following sentence to the Introduction: *“In contrast to instantaneous radiative forcing, ERF allows rapid adjustments – including changes to clouds – to occur (Sherwood et al., 2015).”*

In the Results section, we have added the following sentences: *“The absorption of shortwave radiation by aerosols can drive rapid adjustments of the atmosphere, such as changes to atmospheric stability and humidity, influencing clouds (Stjern et al., 2017). Such “semidirect” effects may contribute to the cloud radiative effects discussed below. However, Ghan et al. (2012) found both the shortwave and longwave semidirect radiative effects to be statistically insignificant for MAM3 and*

MAM7; we expect the same to apply for MARC, because the default CAM5.3 cloud microphysics scheme is also used. Cloud microphysical effects dominate the cloud radiative effects.”

The paper is a list of differences and similarities between MAM3 and MARC, but the causes for those differences and similarities are never identified in a convincing way. Why are sulphate burdens different in the subtropics and mid-latitudes? What justifies the low hygroscopicity in externally-mixed OC in MARC (Page 7 line 30)? Why the area of positive DRE_{sw} by biomass-burning aerosols over the Sc deck of southeastern Atlantic disappears in MARC? (Figure 7) What are the changes in single-scattering albedo or absorption aerosol optical depth that would help explain differences seen in sections 3.2.2 and 3.2.3? In section 3.3.4 (Page 14 lines 6-8), the authors need to go beyond being surprised at the agreement between globally-averaged DeltaCRE_{sw}. The pre-industrial baseline is important for DeltaCRE_{sw}. So the explanation of the “surprising” agreement must lie in differences in both DeltaCDNC and DeltaLWP and year-1850 CDNC and LWP.

We have addressed these questions in the revised manuscript.

In the sulfate burden results section, we have added the following sentences: *“The differences between MARC, MAM3, and MAM7 may be due to differences in sulfate aerosol lifetime. However, it is not possible to test this conclusively: as pointed out in Section 3.1, the sulfate aerosol lifetimes diagnosed for MARC should not be directly compared to those diagnosed for MAM, because cloud-cycling contributes to the sources and sinks of sulfate aerosol in MARC.”*

Regarding the hygroscopicity of the aerosol modes in MARC, in the Introduction we now refer readers to Rothenberg et al. (2018) and Petters and Kreidenweis (2007): *“Table 1 of Rothenberg et al. (2018) contains details of the size distribution, density, and hygroscopicity of each mode. It is assumed that the pure OC and pure BC modes are hydrophobic (Petters and Kreidenweis, 2007; Rothenberg et al., 2018).”*

In the DRE results section, we have added the following sentence: *“The impact of black carbon aerosol on year-2000 DRE_{sw} also differs between MAM3 and MARC: for MAM3, absorption by black carbon aerosol drives positive values of DRE_{sw} over the South Atlantic stratocumulus deck near southern Africa; for MARC, negative values of DRE_{sw} are found over the stratocumulus deck, suggesting weaker absorption by black carbon aerosol compared with MAM3. The differing absorption is likely due to the differing representations of aerosol mixing state and associated optical properties: the majority of MARC’s black carbon aerosol is found in the pure BC mode, whereas MAM’s black carbon aerosol is internally mixed with other species, likely leading to stronger absorption for MAM compared with MARC.”*

In the AAA results section, we have clarified that there is *“weaker absorption for MARC”*.

In the CRE SW results section, we have modified the discussion to correspond to our updated MARC results: *“When globally averaged, the global mean Δ CRE_{sw} for*

MARC ($-2.17 \pm 0.04 \text{ W m}^{-2}$) is stronger than that for MAM3 ($-2.09 \pm 0.04 \text{ W m}^{-2}$) and MAM7 ($-2.05 \pm 0.04 \text{ W m}^{-2}$). For MARC compared with MAM, the stronger ΔCRE_{SW} response for MARC is consistent with the larger ΔCCN_{conc} percentage change."

In addition, it is important to remember when discussing differences in sea salt (3.1.4), mineral dust (3.1.5), and surface albedo (3.4) that 2000-1850 differences are caused by feedbacks from changes in aerosol emissions, not changes in climate. So we are really looking at the impact of internal variability on wind speeds and precipitation. In that context, statistical significance is important. It would be useful to run the model several times with different initial conditions to ascertain which of the changes are noise and which are signal. That would also answer the authors' question about the causes of mineral dust changes (Page 9 line 15).

Thank you for highlighting the potential for confusion in the interpretation of "2000-1850". In the Section 2.3, we have clarified that *"The "2000-1850" differences should be interpreted as aerosol-induced differences, arising due to changes in aerosol emissions alone: the only difference between the year-2000 simulations and the year-1850 simulations is the aerosol (including aerosol precursor) emissions."* In order to remind readers of this, we now use the term *"aerosol-induced"* in some of the sentences in the results section and captions.

The 30-year analysis period gives us an "ensemble" of 30 annual means that we use to assess significance and calculate standard errors. When discussing the sea salt burden results, we point out that *"the aerosol-induced 2000-1850 differences in $Burden_{salt}$, surface wind speed, and precipitation rate are both relatively small and often statistically insignificant across most of the world. Hence these 2000-1850 differences may be due primarily to internal variability."*

Section 3.1 (and all aerosol modelling papers really!) should open with a Table showing the mass budget of each aerosol component (sources: emissions and chemical production; burdens; sinks: dry and wet deposition; lifetimes). This is important because it provides clear explanations for the differences that are discussed later in the paper. Too often the authors resort to guessing what the differences are (for example: Page 7 line 27; Page 8 line 14; Page 9 lines 9-10; Page 11 line 5; Page 16 line 8) when they should be able to put hard numbers on them. In addition, publishing mass budgets allows the reader to check that the schemes are balanced!

Thank you for this very helpful suggestion. We have diagnosed the budgets for MARC, and have included these as new Tables 1–4 and S1–S4. We have also included a new section (Section 3.1) discussing these results.

2 Other comments

Page 1, lines 15-16: The first "default" is not needed.

We have removed "default" before "ARG".

Page 1, line 20: The abstract should also mention the comparison to MAM7.

We now mention MAM7 in the abstract.

Page 2, line 4: Ghan (2013) is not the best reference for aerosol-surface interactions. More relevant would be Jiao et al doi:10.5194/acp-14-2399-2014

Thank you for pointing out the relevant reference. We have followed your suggestion.

Page 2, line 15: “of particular importance”. The pre-industrial aerosol state has also been cited as an important driver of ERF uncertainty, see Carslaw et al. doi:10.1038/nature12674

Following your suggestion, we have added the following sentences: *“Much of the uncertainty [in the anthropogenic aerosol ERF] can be attributed to uncertainty in pre-industrial aerosol emissions (Carslaw et al., 2013). Model parameterizations constitute another large source of uncertainty.”*

Page 3, line 12: “Within each of these modes” That is not strictly correct, since not all species can be present in all modes. See Figure 1 of Liu et al. 2012. I suggest rephrasing to “Depending on the mode, ...”

We have adopted your suggestion.

Page 4, line 3: The description of MARC in the Rothenberg paper is incomplete. Is there a paper that describes the current version of the scheme in more details, including a diagram like Plate 2 of Wilson et al. doi:10.1029/2000JD000198? If not, the present paper might be a good opportunity to do it. What are the mixing assumptions for emissions? I count 7 modes for MARC, excluding mineral dust and seasalt bins. Is that correct?

Thank you for the suggestion to include a diagram summarizing the modes and processes. Our updated manuscript includes such a diagram (new Figure 1).

Yes, MARC contains seven modes, excluding mineral dust and sea salt bins. As mentioned in Section 2.2, *“In the MOS mode, it is assumed that the organic carbon and sulfate are mixed homogeneously within each particle; in the MBS mode, it is assumed that each particle contains a black carbon core surrounded by a sulfate shell.”*

Page 4, line 18: What is the mixing state of resuspended aerosols?

We have modified the sentence to make this clearer: *“Evaporation of cloud and rain drops results in resuspension of sulfate aerosol in the accumulation-mode.”*

Page 5, line 8: “due to a lack of year-1850 emissions files for MAM7” That is a poor excuse. Couldn’t the authors make those files?

We have addressed this limitation by performing a year-1850 MAM7 simulation with appropriate emissions. We have included analysis of this year-1850 MAM7 simulation in the revised manuscript.

Page 5, line 18: "from some sources". Be more specific.

We now mention the specific sectors.

Page 5, line 31: Could also cite Lohmann and Feichter doi:10.5194/acp-5-715-2005 where ERF calculations methods originated. See their section 7.2.

We have added the reference, as you suggest.

Page 6, line 6: Should reference Ghan (2013) again here for the formulas.

We have adopted your suggestion.

Page 7, line 4: "reveals": Aerosol column burden does not "reveal" total mass, it is by definition the column-integrated aerosol mass.

We have replaced "reveals" with "is".

Page 9, line 30: And MODIS collection 6 is also different from MODIS collection 5.1, making comparisons to satellite retrievals a moving target...

We have added that *"satellite-based retrievals of AOD are not error-free"*.

Page 9, line 31: "insufficient to explain the differences". How can the authors tell? It could be useful to compute the ratio aerosol optical depth to total burden to see if mean aerosol optical properties have changed.

This is an intriguing suggestion. However, we do not think that looking at total burden – summed across all species – would provide much further insight.

We have modified the sentence as follows: *"The differences between the aerosol burdens for MAM and MARC, discussed above, are insufficient to explain the differences in year-2000 AOD, especially the large difference in the Southern Hemisphere subtropics (where the burdens are similar between MAM and MARC). Hence it is likely that differences in the aerosol optical properties between MARC and MAM are responsible for the fact that MARC generally produces lower values of AOD. In particular, the large difference in year-2000 AOD between MAM3 and MARC over the subtropical ocean, where Burden_{salt} is large, is likely due to differences in the optical properties of sea salt aerosol."*

Page 10, line 24 and Figure 7: It is surprising to see DRE_{sw} peak over the Mediterranean, but it is possible that adjustments compensate instantaneous radiative forcing over the European continent.

Page 11, line 30 and Figure 9: The peak in CCN_{conc} over the Middle East in MARC is also surprising. Why is it there?

For MARC, the DRE and CCN_{conc} results follow a similar pattern to the sulfate burden results. The year-2000 and 2000-1850 sulfate burdens are also high over the Mediterranean and Middle East.

Section 3.4, Page 14 line 21: Why give up on the logic of looking at relevant distributions before looking at the forcing? It would make sense to discuss Figures S11-12-13 within that section before discussing DeltaSREsw.

Thank you for the suggestion to rearrange this section in order to discuss the relevant distributions prior to discussing ΔSRE_{SW} . However, having considered your suggestion, we prefer to keep the order of this section in its current form: due to fact that we include a paragraph introducing what ΔSRE_{SW} does and does not include at the beginning over this section, we think it makes sense to then immediately discuss the ΔSRE_{SW} results before considering the reasons for the differences.

Page 14, line 27: Wouldn't aerosol-induced changes in precipitation be captured in DeltaCREsw?

ΔCRE quantifies the radiative impacts of aerosols via clouds. Although ΔCRE and aerosol-induced changes in precipitation may be related, neither are they synonymous nor can one be subsumed under the other.

Thank you again for your helpful comments.

Effective radiative forcing in the aerosol–climate model CAM5.3-MARC-ARG

Benjamin S. Grandey¹, Daniel Rothenberg², Alexander Avramov^{2,3}, Qinjian Jin², Hsiang-He Lee¹, Xiaohong Liu⁴, Zheng Lu⁴, Samuel Albani^{5,6}, and Chien Wang^{2,1}

5 ¹Center for Environmental Sensing and Modeling, Singapore-MIT Alliance for Research and Technology, Singapore

²Center for Global Change Science, Massachusetts Institute of Technology, Cambridge, Massachusetts, USA

³Department of Environmental Sciences, Emory University, Atlanta, Georgia, USA

⁴Department of Atmospheric Science, University of Wyoming, Laramie, Wyoming, USA

⁵Department of Earth and Atmospheric Sciences, Cornell University, Ithaca, New York, USA

10 ⁶Laboratoire des Sciences du Climat et de l'Environnement, LSCE/IPSL, CEA-CNRS-UVSQ, Gif-sur-Yvette, France

Correspondence to: Benjamin S. Grandey (benjamin@smart.mit.edu)

Abstract. We quantify the effective radiative forcing (ERF) of anthropogenic aerosols modelled by the aerosol–climate model CAM5.3-MARC-ARG. CAM5.3-MARC-ARG is a new configuration of the Community Atmosphere Model version 5.3 (CAM5.3) in which the default aerosol module has been replaced by the two-Moment, Multi-Modal, Mixing-state-resolving Aerosol model for Research of Climate (MARC). CAM5.3-MARC-ARG uses the ARG aerosol activation scheme, consistent with the default configuration of CAM5.3. We compute differences between simulations using year-1850 aerosol emissions and simulations using year-2000 aerosol emissions in order to assess the radiative effects of anthropogenic aerosols. We compare the aerosol lifetimes, aerosol column burdens, cloud properties, and radiative effects produced by CAM5.3-MARC-ARG with those produced by the default configuration of CAM5.3, which uses the modal aerosol module with three lognormal modes (MAM3), and a configuration using the modal aerosol module with seven lognormal modes (MAM7). Compared with MAM3 and MAM7, we find that MARC produces stronger cooling via the direct radiative effect, the cloud shortwave radiative effect, and the surface albedo radiative effect; similarly, MARC produces stronger warming via the cloud longwave radiative effect. Overall, MARC produces a global mean net ERF of $-1.79 \pm 0.03 \text{ W m}^{-2}$, which is stronger than the global mean net ERF of $-1.57 \pm 0.04 \text{ W m}^{-2}$ produced by MAM3 and $-1.53 \pm 0.04 \text{ W m}^{-2}$ produced by MAM7. The regional distribution of ERF also differs between MARC and MAM3, largely due to differences in the regional distribution of the cloud shortwave radiative effect. We conclude that the specific representation of aerosols in global climate models, including aerosol mixing state, has important implications for climate modelling.

1 Introduction

30 Aerosol particles influence the earth's climate system by perturbing its radiation budget. There are three primary mechanisms by which aerosols interact with radiation. First, aerosols interact directly with radiation by scattering and

absorbing solar and thermal infrared radiation (Haywood and Boucher, 2000). Second, aerosols interact indirectly with radiation by perturbing clouds, by acting as the cloud condensation nuclei on which cloud droplets form and the ice nuclei that facilitate freezing of cloud droplets (Fan et al., 2016; Rosenfeld et al., 2014): for example, an aerosol-induced increase in cloud cover would lead to increased scattering of “shortwave” solar radiation and increased absorption of “longwave” thermal infrared radiation. Third, aerosols can influence the albedo of the earth’s surface: for example, deposition of absorbing aerosol on snow reduces the albedo of the snow, causing more solar radiation to be absorbed at the earth’s surface (Jiao et al., 2014).

The “effective radiative forcing” (ERF) of anthropogenic aerosols, defined as the top-of-atmosphere radiative effect caused by anthropogenic emissions of aerosols and aerosol precursors, is often used to quantify the radiative effects of aerosols (Boucher et al., 2013). In contrast to instantaneous radiative forcing, ERF allows rapid adjustments – including changes to clouds – to occur (Sherwood et al., 2015). The anthropogenic aerosol ERF is approximately equivalent to “the radiative flux perturbation associated with a change from preindustrial to present-day [aerosol emissions], calculated in a global climate model using fixed sea surface temperature” (Haywood et al., 2009). This approach “allows clouds to respond to the aerosol while [sea] surface temperature is prescribed” (Ghan, 2013).

The primary tools available for investigating the anthropogenic aerosol ERF are state-of-the-art global climate models. However, there is widespread disagreement among these models, especially regarding the magnitude of anthropogenic aerosol ERF (Quaas et al., 2009; Shindell et al., 2013). The magnitude of the ERF of anthropogenic aerosols is highly uncertain: estimates of the global mean anthropogenic aerosol ERF range from -1.9 to -0.1 W m^{-2} (Boucher et al., 2013). Much of this uncertainty can be attributed to uncertainty in pre-industrial aerosol emissions (Carslaw et al., 2013). Model parameterizations constitute another large source of uncertainty. Of particular importance are model parameterizations relating to aerosol–cloud interactions, such as the aerosol activation scheme (Rothenberg et al., 2018), the choice of autoconversion threshold radius (Golaz et al., 2011), and constraints on the minimum cloud droplet number concentration (Hoose et al., 2009). The detailed representation of aerosols also likely plays an important role, because the aerosol particle size and chemical composition determine hygroscopicity and hence influence aerosol activation (Petters and Kreidenweis, 2007).

The present-day anthropogenic aerosol ERF partially masks the warming effects of anthropogenic greenhouse gases. Therefore, the large uncertainty in the anthropogenic aerosol ERF is a major source of uncertainty in estimates of equilibrium climate sensitivity and projections of future climate (Andreae et al., 2005). Furthermore, the anthropogenic aerosol ERF is regionally inhomogeneous, adding another source of uncertainty in climate projections (Shindell, 2014). The regional inhomogeneity of the anthropogenic aerosol ERF has likely also influenced rainfall patterns during the 20th century (Wang, 2015). In order to improve understanding of current and future climate, including rainfall patterns, it is necessary to improve understanding of the magnitude and regional distribution of the anthropogenic aerosol ERF.

In this manuscript, we investigate the uncertainty in anthropogenic aerosol ERF associated with the representation of aerosols in global climate models. In particular, we assess the aerosol radiative effects produced by a new configuration

of the Community Atmosphere Model version 5.3 (CAM5.3). In this new configuration – CAM5.3-MARC-ARG – the default modal aerosol module has been replaced with the two-Moment, Multi-Modal, Mixing-state-resolving Aerosol model for Research of Climate (MARC). We compare the aerosol fields and aerosol radiative effects produced by CAM5.3-MARC-ARG with those produced by the default modal aerosol module in CAM5.3.

5 2 Methodology

2.1 Modal aerosol modules (MAM3 and MAM7)

The Community Earth System Model version 1.2.2 (CESM 1.2.2) contains the Community Atmosphere Model version 5.3 (CAM5.3). Within CAM5.3, the default aerosol module is a modal aerosol module which parameterizes the aerosol size distribution using three lognormal modes (MAM3), each assuming a total internal mixture of a set of fixed chemical species (Liu et al., 2012). Optionally, a more detailed modal aerosol module with seven lognormal modes (MAM7) (Liu et al., 2012) can be used instead of MAM3. More recently, a version containing four modes (MAM4) (Liu et al., 2016) has also been coupled to CAM5.3, but we do not consider MAM4 in this study.

The seven modes included in MAM7 are Aitken, accumulation, primary carbon, fine soil dust, fine sea salt, coarse soil dust, and coarse sea salt. Depending on the mode, MAM7 simulates the mass mixing ratios of internally-mixed sulfate, ammonium, primary organic matter, secondary organic matter, black carbon, soil dust, and sea salt (Liu et al., 2012).

In MAM3, four simplifications are made: first, the primary carbon mode is merged into the accumulation mode; second, the fine soil dust and fine sea salt modes are also merged into the accumulation mode; third, the coarse soil dust and coarse sea salt modes are merged to form a single coarse mode; and fourth, ammonium is implicitly included via sulfate and is no longer explicitly simulated. As a result, MAM3 simulates just three modes: Aitken, accumulation, and coarse. This reduces the computational expense of the model.

In this manuscript, we often refer to MAM3 and MAM7 collectively as “MAM”. The MAM-simulated aerosols interact with radiation, allowing aerosol direct and semi-direct effects to be represented. The aerosols can act as cloud condensation nuclei via the ARG aerosol activation scheme (Abdul-Razzak and Ghan, 2000); sulfate and dust also act as ice nuclei. Via such activation, the aerosols are coupled to the stratiform cloud microphysics (Gettelman et al., 2010; Morrison and Gettelman, 2008), allowing aerosol indirect effects on stratiform clouds to be represented. These indirect effects dominate the anthropogenic aerosol ERF in CAM version 5.1 (CAM5.1) (Ghan et al., 2012). In comparison with many other global climate models, the anthropogenic aerosol ERF in CAM5.1 is relatively strong (Shindell et al., 2013).

2.2 The two-Moment, Multi-Modal, Mixing-state-resolving Aerosol model for Research of Climate (MARC)

The two-Moment, Multi-Modal, Mixing-state-resolving Aerosol model for Research of Climate (MARC), which is based on the aerosol microphysical scheme developed by Ekman et al. (2004, 2006) and Kim et al. (2008), simulates the evolution of mixtures of aerosol species. Previous versions of MARC have been used both in cloud-resolving model simulations (Ekman

et al., 2004, 2006, 2007; Engström et al., 2008; Wang, 2005a, 2005b) and in global climate model simulations (Kim et al., 2008, 2014; Ekman et al., 2012). Recently, an updated version of MARC has been coupled to CAM5.3 within CESM1.2.2 (Rothenberg et al., 2018).

In contrast to MAM, MARC tracks the number concentrations and mass concentrations of both externally-mixed and internally-mixed aerosol modes with assumed lognormal size distributions. The externally-mixed modes include three pure sulfate modes (nucleation, Aitken, and accumulation), pure organic carbon (OC), and pure black carbon (BC). The internally-mixed modes include mixed organic carbon plus sulfate (MOS) and mixed black carbon plus sulfate (MBS). In the MOS mode, it is assumed that the organic carbon and sulfate are mixed homogeneously within each particle; in the MBS mode, it is assumed that each particle contains a black carbon core surrounded by a sulfate shell. Sea salt and mineral dust are represented using sectional single-moment schemes, each with four size bins (Albani et al., 2014; Mahowald et al., 2006; Scanza et al., 2015). Table 1 of Rothenberg et al. (2018) contains details of the size distribution, density, and hygroscopicity of each mode. It is assumed that the pure OC and pure BC modes are hydrophobic (Petters and Kreidenweis, 2007; Rothenberg et al., 2018).

Sea salt emissions follow the default scheme used by MAM (Liu et al., 2012), based on simulated wind speed and sea surface temperature. Dust emissions follow the tuning of Albani et al. (Albani et al., 2014), based on simulated wind speed and soil properties, including soil moisture and vegetation cover. Emissions of sulfur dioxide, dimethyl sulfide, sulfate (as gas-phase sulfuric acid), organic carbon aerosol, black carbon aerosol, and volatile organic compounds (such as isoprene and monoterpene) are prescribed. The volatile organic compounds are converted upon emission into pure OC.

The aerosol removal processes represented by MARC – including nucleation scavenging by both stratiform and convective clouds, impaction scavenging by precipitation, and dry deposition – are based on aerosol size and mixing state. Evaporation of cloud and rain drops results in resuspension of sulfate aerosol in the accumulation-mode.

Figure 1 summarises the physical and chemical processes represented by MARC. Further details about the formulation of MARC, as well as validation of its simulated aerosol fields compared with observations, can be found in the body and Supplement of Rothenberg et al. (2018).

Whereas previous versions of MARC represented only direct interactions between aerosols and radiation (Kim et al., 2008), an important feature of the new version of MARC is that the aerosols also interact indirectly with radiation via clouds. The MARC-simulated aerosols interact with stratiform cloud microphysics via the default stratiform cloud microphysics scheme (Gettelman et al., 2010; Morrison and Gettelman, 2008), as would be the case for the default MAM3 configuration of CAM5.3. Various aerosol activation schemes can be used with MARC (Rothenberg et al., 2018), including versions of a recently-developed scheme based on polynomial chaos expansion (Rothenberg and Wang, 2016, 2017). The choice of activation scheme can substantially influence the ERF (Rothenberg et al., 2018). In order to facilitate comparison between the MAM and MARC aerosol modules, we have chosen to keep the activation scheme constant in this study: as is the case for the MAM simulations, the ARG activation scheme (Abdul-Razzak and Ghan, 2000) is also used for the MARC simulations. We refer to this configuration as “CAM5.3-MARC-ARG”.

2.3 Simulations

In order to compare results from MAM3, MAM7, and MARC, six CAM5.3 simulations are performed:

1. “MAM3_2000”, which uses MAM3 with year-2000 aerosol (including aerosol precursor) emissions;
2. “MAM7_2000”, which uses MAM7 with year-2000 aerosol emissions;
3. “MARC_2000”, which uses MARC with year-2000 aerosol emissions;
4. “MAM3_1850”, which uses MAM3 with year-1850 aerosol emissions;
5. “MAM7_1850”, which uses MAM7 with year-1850 aerosol emissions; and
6. “MARC_1850”, which uses MARC with year-1850 aerosol emissions.

The three simulations using year-2000 emissions, referred to as the “year-2000 simulations”, facilitate comparison of aerosol fields and cloud fields; the three simulations using year-1850 emissions, referred to as the “year-1850 simulations”, further facilitate analysis of the aerosol radiative effects produced by MAM and MARC. In the figures and discussion of results, “2000-1850” and “ Δ ” both refer to differences between the year-2000 simulation and the year-1850 simulation for a given aerosol module (e.g. MARC_2000-MARC_1850). The “2000-1850” differences should be interpreted as aerosol-induced differences, arising due to changes in aerosol emissions alone: the only difference between the year-2000 simulations and the year-1850 simulations is the aerosol (including aerosol precursor) emissions.

In this study, we deliberately use identical emissions for MAM and MARC so that the influence of emissions inventories can be minimised when the results are compared. The prescribed emissions for both MAM and MARC follow the default MAM emissions files, described in the Supplement of Liu et al. (2012), based on Lamarque et al. (2010). (The ammonia emissions for the year-1850 MAM7 simulation are an exception, being based on the year-1850 ammonia emissions for the Coupled Model Intercomparison Project Phase 6.) This differs from Rothenberg et al. (2018), who used different emissions of organic carbon aerosol, black carbon aerosol, and volatile organic compounds.

For the MAM simulations, the emissions from forest fires and grass fires follow a vertical profile, as do sulfur emissions from the energy and industry sectors (Liu et al., 2012). For the MARC simulations, sulfur emissions follow the same vertical profile as for MAM; but all organic carbon, black carbon, and volatile organic compounds are emitted at the surface. 2.5% of the sulfur dioxide is emitted as primary sulfate. The yield coefficients for conversion of volatile organic compounds to organic carbon follow Liu et al. (2012). For the MAM simulations, the organic carbon aerosol emissions are converted to primary organic matter emissions using a scale factor of 1.4; for the MARC simulations, no such scale factor is applied. Mineral dust and sea salt emissions are not prescribed, being calculated “online”.

CESM 1.2.2, with CAM5.3, is used for all simulations. Greenhouse gas concentrations and sea surface temperatures (SSTs) are prescribed using year-2000 climatological values, based on the “F_2000_CAM5” component set. CAM5.3 is run at a horizontal resolution of $1.9^\circ \times 2.5^\circ$ with 30 levels in the vertical direction. Clean-sky radiation diagnostics are included, facilitating diagnosis of the direct radiative effect. The Cloud Feedback Model Intercomparison

Project (CFMIP) Observational Simulator Package (COSIP) (Bodas-Salcedo et al., 2011) is switched on, although the COSIP diagnostics are not analysed in this manuscript.

Each simulation is run for 32 years, and the first two years are excluded as spin-up. Hence, a period of 30 years is analysed. The ensemble of 30 annual means can be used to assess significance and calculate standard errors.

5 2.4 Diagnosis of radiative effects

Pairs of prescribed-SST simulations, with differing aerosol emissions, facilitate diagnosis of anthropogenic aerosol ERF via the “radiative flux perturbation” approach (Haywood et al., 2009; Lohmann and Feichter, 2005). When “clean-sky” radiation diagnostics are available, the ERF can be decomposed into contributions from different radiative effects (Ghan, 2013). (We use the term “radiative forcing” only when referring to ERF, defined as the radiative flux perturbation between a simulation using year-1850 emissions and a simulation using year-2000 emissions; we use the term “radiative effect” more generally.)

Following Ghan (2013), the shortwave effective radiative forcing (ERF_{SW}) can be decomposed as follows:

$$ERF_{SW} = \Delta DRE_{SW} + \Delta CRE_{SW} + \Delta SRE_{SW} \quad (1)$$

where Δ refers to the 2000-1850 difference, DRE_{SW} is the direct radiative effect, CRE_{SW} is the clean-sky shortwave cloud radiative effect, and ΔSRE_{SW} is the 2000-1850 surface albedo radiative effect. These components are defined as follows:

$$ERF_{SW} = \Delta F \quad (2)$$

$$DRE_{SW} = (F - F_{clean}) \quad (3)$$

$$CRE_{SW} = (F_{clean} - F_{clean,clear}) \quad (4)$$

$$\Delta SRE_{SW} = \Delta F_{clean,clear} \quad (5)$$

where F is the net shortwave flux at top-of-atmosphere (TOA), F_{clean} is the clean-sky net shortwave flux at TOA, and $F_{clean,clear}$ is the clean-sky clear-sky net shortwave flux at TOA. (“Clear-sky” refers to a hypothetical situation where clouds do not interact with radiation; “clean-sky” refers to a hypothetical situation where aerosols do not directly interact with radiation.)

The longwave effective radiative forcing (ERF_{LW}) is calculated as follows:

$$ERF_{LW} = \Delta L \approx \Delta(L - L_{clear}) = \Delta CRE_{LW} \quad (6)$$

where L is the net longwave flux at TOA, L_{clear} is the clear-sky net longwave flux at TOA, and CRE_{LW} is the longwave cloud radiative effect. Eq. (6) assumes that aerosols and surface albedo changes do not influence the longwave flux at TOA, so that $\Delta L_{clear} \approx 0$.

The net effective radiative forcing (ERF_{SW+LW}) is simply the sum of ERF_{SW} and ERF_{LW} :

$$ERF_{SW+LW} = \Delta(F + L) = ERF_{SW} + ERF_{LW} \approx ERF_{SW} + \Delta CRE_{LW}. \quad (7)$$

All the quantities mentioned in Eqs. (1)–(7) are calculated at TOA.

We also consider absorption by aerosols in the atmosphere (AAA_{SW}), defined as follows:

$$AAA_{SW} = (F - F_{\text{clean}}) - (F^{\text{surface}} - F_{\text{clean}}^{\text{surface}}) \quad (8)$$

where F^{surface} is the net shortwave flux at the earth's surface, and $F_{\text{clean}}^{\text{surface}}$ is the clean-sky net shortwave flux at the earth's surface.

3 Results

5 To provide context for the discussion of the radiative effects, we first examine the aerosol mass budgets, lifetimes, and column burdens. We then focus on model output fields relating to different components of the ERF, taking each component in turn: the direct radiative effect, the cloud radiative effect, and the surface albedo radiative effect. When discussing each of these components, we also discuss related model fields; for example, in the section discussing the direct radiative effect we also consider other fields related to direct aerosol–radiation interactions.

10 3.1 Aerosol mass budgets and lifetimes

Tables 1–4 summarise the aerosol mass budgets for the year-2000 MARC simulation; Tables S1–S4 summarise the mass budgets for the year-1850 MARC simulation. Tables 4–8 of Liu et al. (2012) contain mass budgets for year-2000 MAM3 and MAM7 simulations. In this section, we focus primarily on the MARC mass budgets; Liu et al. (2012) discuss the MAM mass budgets.

15 For the MARC simulations, the majority of the sulfate aerosol mass exists in the accumulation-mode, with smaller amounts in MOS and MBS; very little exists in the nucleation and Aitken modes (Tables 1 and S1). Hydrometeors – both cloud droplets and precipitation – also contain dissolved sulfate, due to aqueous-phase oxidation of sulfur dioxide and scavenging of sulfate. In fact, evaporation of hydrometeors, which adds sulfate to the accumulation-mode, is by far the largest source of sulfate aerosol. The largest sinks of sulfate aerosol are nucleation scavenging by stratiform clouds and
20 impaction scavenging. Scavenging does not necessarily imply permanent removal from the atmosphere: due to hydrometeor evaporation, the wet deposition rate (not diagnosed) is less than the sum of the scavenging rates. This rapid cloud-cycling of sulfate aerosol contributes to a short sulfate aerosol lifetime of 0.9 days, with accumulation-mode sulfate having an even shorter lifetime of 0.7 days. Due to the inclusion of cloud-cycling in the sources and sinks, the sulfate aerosol lifetime for MARC is not directly comparable to MAM: Liu et al. (2012), who reported a sulfate aerosol lifetime of approximately 4
25 days for MAM3 and MAM7, excluded cloud-cycling from the calculation. In the year-2000 MARC simulation, the lifetime of sulfate in MOS and MBS is approximately 4 days, a much longer lifetime than that of the rapidly cycled accumulation-mode sulfate. Interestingly, the lifetime of sulfate in MOS and MBS decreases from 6 days in the year-1850 simulation to 4 days in the year-2000 simulation. The increased availability of accumulation-mode sulfate aerosol in year-2000 appears to drive a large increase in the rate of coagulation on MOS and MBS, accelerating the growth of the MOS and MBS particles,
30 likely decreasing the lifetime of the particles because larger particles are more likely to be removed through nucleation scavenging.

Organic carbon aerosol, including a large contribution from volatile organic compounds, is emitted into the pure OC mode in MARC (Tables 2 and S2). The majority of the pure OC mode aerosol is removed from the atmosphere by impaction scavenging. (Hydrometeor evaporation replenishes only sulfate aerosol in MARC, so scavenging acts as a permanent sink for the carbonaceous, dust, and sea salt aerosols.) However, some of the organic carbon aerosol in the pure OC mode is transferred to the MOS mode by aging and coagulation. In contrast to the pure OC mode, which has a very low hygroscopicity, the largest sink for the MOS mode is nucleation scavenging by stratiform clouds: mixing the organic carbon aerosol with sulfate increases the hygroscopicity, allowing many of the MOS particles to be activated. However, despite the higher hygroscopicity, the organic carbon aerosol in the MOS mode has a slightly longer lifetime than the pure OC mode. As was the case for sulfate, the lifetime of organic carbon in the MOS mode decreases from approximately 6 days in the year-1850 simulation to 4 days in the year-2000 simulation – as discussed above, this is likely due to increased availability of sulfate accelerating the growth of the MOS particles. When total organic carbon is considered, the organic carbon aerosol lifetime is approximately 5 days for both the year-1850 and year-2000 simulations. For MAM3 and MAM7, the primary organic matter aerosol lifetime is less than 5 days, while the secondary organic aerosol lifetime is 4 days (Liu et al., 2012). MARC's inclusion of a pure organic carbon mode with very low hygroscopicity likely contributes to the longer lifetime of MARC's organic carbon aerosol compared with MAM's organic matter aerosol.

Black carbon aerosol is emitted into the pure BC mode in MARC (Tables 3 and S3). The majority of pure BC is removed from the atmosphere by impaction scavenging, although some is transferred to the MBS mode by aging. Based on the assumption of a core-shell model, MBS has the same hygroscopicity as sulfate, enabling nucleation scavenging by convective clouds to become the largest sink of black carbon aerosol in MBS, although impaction scavenging also remains a major sink. BC in MBS has a slightly shorter lifetime than pure BC. The pure BC lifetime decreases from approximately 6 days in the year-1850 simulation to 4 days in the year-2000 simulation, primarily due to a substantially increased rate of aging. When total black carbon is considered, the black carbon aerosol lifetime is approximately 6 days in the year-1850 simulation and 5 days in the year-2000 simulation. The black carbon aerosol lifetime for MAM3 and MAM7 is approximately 4 days (Liu et al., 2012). MARC's inclusion of a pure black carbon mode with very low hygroscopicity likely contributes to the longer lifetime of black carbon aerosol for MARC compared with MAM.

Sea salt aerosol emissions, which are dependent on simulated wind speed and sea surface temperature, are approximately 5.5 Pg yr^{-1} in the MARC simulations (Tables 4 and S4); Liu et al. (2012) report slightly lower emissions of 5.0 Pg yr^{-1} for MAM. For MARC and MAM7, dry deposition is the largest sink of sea salt aerosol; for MAM3, wet deposition and dry deposition are approximately equal sinks. The sea salt aerosol lifetime is approximately 0.6 days for MARC and MAM7, and 0.8 days for MAM3.

Dust aerosol emissions, which are dependent on simulated wind speed and soil properties, are approximately 3.7 Pg yr^{-1} in the year-2000 MARC simulation (Table 4); Liu et al. (2012) report lower emissions of 3.1 Pg yr^{-1} for MAM3 and 2.9 Pg yr^{-1} for MAM7. For MARC, impaction scavenging and dry deposition play approximately equal roles in removing dust aerosol from the atmosphere; for MAM, dry deposition dominates. The dust aerosol lifetime is approximately 4 days for

MARC and 3 days for MAM. The lifetime of dust in the year-1850 MARC simulation (Table S4) is very similar to that in the year-2000 simulation. However, dust emissions are slightly lower for the year-2000 simulation compared to the year-1850 simulation.

3.2 Aerosol column burdens

5 An aerosol column burden, also referred to as a loading, is the total mass of a given aerosol species in an atmospheric column. The advantage of column burdens is that they are relatively simple to understand, facilitating comparison between the different aerosol modules. However, when comparing the column burdens, it is important to remember that information about aerosol size distribution and aerosol mixing state is hidden. Information about the vertical distribution is also hidden, because the burdens are integrated throughout the atmospheric column.

10 3.2.1 Total sulfate aerosol burden

Figure 2a–c shows the total sulfate aerosol burden ($Burden_{SO_4}$) for the year-2000 simulations. For all three aerosol modules, year-2000 $Burden_{SO_4}$ is highest in the Northern Hemisphere subtropics and mid-latitudes, especially near source regions with high anthropogenic emissions of sulfur dioxide. Year-2000 $Burden_{SO_4}$ is much lower in the Southern Hemisphere, especially over the remote Southern Ocean and Antarctica. In general, there is close agreement between MAM and MARC over the Northern Hemisphere tropics and the Southern Hemisphere. However, over the Northern Hemisphere subtropics, mid-latitudes, and high-latitudes, year-2000 $Burden_{SO_4}$ is generally lower for MARC compared with MAM3. Interestingly, over the Northern Hemisphere subtropics, the zonal means are very similar between MAM7 and MARC. The differences between MARC, MAM3, and MAM7 may be due to differences in sulfate aerosol lifetime. However, it is not possible to test this conclusively: as pointed out in Section 3.1, the sulfate aerosol lifetimes diagnosed for MARC should not be directly compared to those diagnosed for MAM, because cloud-cycling contributes to the sources and sinks of sulfate aerosol in MARC.

Figure 2d–f shows $\Delta Burden_{SO_4}$, the 2000-1850 difference in $Burden_{SO_4}$. Both MAM3 and MARC produce widespread positive values of $\Delta Burden_{SO_4}$ across the Northern Hemisphere and also across South America, Africa, and Oceania. For both MAM and MARC, global mean $\Delta Burden_{SO_4}$ accounts for more than half of global mean year-2000 $Burden_{SO_4}$, indicating that anthropogenic sulfur emissions are responsible for more than half of the global burden of sulfate aerosol.

3.2.2 Total organic matter and total organic carbon aerosol burdens

Figure 3a–c shows the total organic matter aerosol burden ($Burden_{OM}$) for MAM and the total organic carbon aerosol burden ($Burden_{OC}$) for MARC for the year-2000 simulations. Due to different handling of organic carbon aerosol, MAM's $Burden_{OM}$ is not directly equivalent to MARC's $Burden_{OC}$.

For both MAM3 and MARC, year-2000 $Burden_{OM}$ and $Burden_{OC}$ peak in the tropics, especially sub-Saharan Africa and South America, due to emissions from wildfires. The impact of anthropogenic emissions of organic carbon aerosol is evident over South Asia and East Asia. Biogenic emissions of isoprene and monoterpene also contribute to $Burden_{OM}$ and $Burden_{OC}$. Although the fields are not directly equivalent, it is interesting to note that MARC's $Burden_{OC}$ is less than MAM's $Burden_{OM}$ at latitudes with substantial emissions sources but greater than MAM's $Burden_{OM}$ at high-latitudes far from substantial emissions sources: this is consistent with the longer lifetime of MARC's organic carbon aerosol compared with MAM's organic matter and secondary organic aerosol.

Over the major emissions regions of organic carbon aerosol, MAM3 and MARC generally produce positive values of $\Delta Burden_{OM}$ and $\Delta Burden_{OC}$, the 2000-1850 differences in $Burden_{OM}$ and $Burden_{OC}$ (Fig. 3d-f). However, negative values of $\Delta Burden_{OM}$ and $\Delta Burden_{OC}$ are found over North America. These 2000-1850 differences arise due to changes in both wildfire emissions and anthropogenic emissions of organic carbon aerosol between year-1850 and year-2000. Although emissions of some volatile organic compounds do change between year-1850 and year-2000, emissions of isoprene and monoterpene remain unchanged so these species are unlikely to contribute to $\Delta Burden_{OM}$ and $\Delta Burden_{OC}$.

3.2.3 Total black carbon aerosol burden

Figure 4a-c shows the total black carbon aerosol burden ($Burden_{BC}$) for the year-2000 simulations. For both MAM3 and MARC, year-2000 $Burden_{BC}$ is high over sub-Saharan Africa and South America due to large emissions of black carbon aerosol from wildfires. However, the peak in zonal mean year-2000 $Burden_{BC}$ occurs in the Northern Hemisphere subtropics and mid-latitudes, due to anthropogenic emissions of black carbon aerosol over East Asia, South Asia, and Europe. Year-2000 $Burden_{BC}$ for MARC is generally higher than that for MAM, especially over remote regions far away from sources. This is consistent with the longer lifetime of black carbon aerosol lifetime for MARC compared with MAM, likely due to the low hygroscopicity of MARC's pure black carbon aerosol mode.

MAM3 and MARC produce similar increases in $Burden_{BC}$ between year-1850 and year-2000, as indicated by positive values of $\Delta Burden_{BC}$ (Fig. 4d-f). For MARC, positive values of $\Delta Burden_{BC}$ are found over even remote ocean regions, consistent with a longer black carbon lifetime for MARC compared with MAM3. Were it not for the decrease in MARC's black carbon aerosol lifetime between year-1850 (Table S3) and year-2000 (Table 3), $\Delta Burden_{BC}$ would be even larger.

3.2.4 Total sea salt aerosol burden

Figure 5a-c shows the total sea salt aerosol burden ($Burden_{salt}$) for the year-2000 simulations. For both MAM3 and MARC, year-2000 $Burden_{salt}$ is highest over ocean areas with strong surface wind speeds (Fig. S9b, c). Over land, year-2000 $Burden_{salt}$ is very low, due to the short lifetime of sea salt aerosol. Year-2000 $Burden_{salt}$ is very similar between

MAM3 and MARC. However, sea salt emissions and lifetime do vary slightly between MARC, MAM3, and MAM7, as noted in Section 3.1.

For both MAM3 and MARC, $\Delta Burden_{\text{salt}}$, the 2000-1850 difference in $Burden_{\text{salt}}$ (Fig. 5e, f), appears to be positively correlated with the aerosol-induced 2000-1850 difference in surface wind speeds (Fig. S9e, f). Changes in precipitation rate (Fig. S8e, f) likely also influence $Burden_{\text{salt}}$, because precipitation efficiently removes sea salt aerosol from the atmosphere. However, it should be noted that the aerosol-induced 2000-1850 differences in $Burden_{\text{salt}}$, surface wind speed, and precipitation rate are both relatively small and often statistically insignificant across most of the world. Hence these 2000-1850 differences may be due primarily to internal variability. If an interactive dynamical ocean were to be used, allowing SSTs to respond to the anthropogenic aerosol ERF, it is likely that we would find much larger aerosol-induced 2000-1850 differences in surface wind speed, precipitation rate, and $Burden_{\text{salt}}$.

3.2.5 Total dust aerosol burden

Figure 6a–c shows the total dust aerosol burden ($Burden_{\text{dust}}$) for the year-2000 simulations. Dust emission primarily occurs over desert areas, especially the Sahara Desert, so year-2000 $Burden_{\text{dust}}$ is highest directly over and downwind of these desert source regions. Year-2000 $Burden_{\text{dust}}$ is much larger for MARC, which follows Albani et al., (2014), compared with MAM. The largest differences between MAM3 and MARC appear to occur directly over the desert source regions, suggesting that differences in dust emission drive the differences in year-2000 $Burden_{\text{dust}}$ – if this is the case, dust emission is far higher for MARC compared with MAM over the Sahara, Middle East, and East Asian deserts, while the opposite may be true over southern Africa and Australia. As mentioned in Section 3.1, global dust emissions are indeed higher for MARC compared with MAM. Differences in the lifetime of dust aerosol also contribute to the differences in year-2000 $Burden_{\text{dust}}$ between MAM and MARC: the dust aerosol lifetime is 3 days for MAM and 4 days for MARC.

$\Delta Burden_{\text{dust}}$, the aerosol-induced 2000-1850 difference in $Burden_{\text{dust}}$ (Fig. 6d–f), reveals that $Burden_{\text{dust}}$ decreases between the year-1850 and year-2000 simulations, especially over the Sahara Desert. Both MAM3 and MARC produce a similar zonal mean decrease in $Burden_{\text{dust}}$. The reasons for the aerosol-induced 2000-1850 changes in $Burden_{\text{dust}}$ are unclear, although changes in surface wind speed (Fig. S9d–f), influencing emission, likely contribute: for MARC, global dust emissions are slightly lower in the year-2000 simulation (Table 4) compared to the year-1850 simulation (Table S4). As we noted above when discussing the sea salt burden, if an interactive dynamical ocean were to be used, it is likely that we would find much larger aerosol-induced 2000-1850 differences in surface wind speed, precipitation rate, and $Burden_{\text{dust}}$.

3.3 Aerosol–radiation interactions and the direct radiative effect

3.3.1 Aerosol optical depth

Aerosols scatter and absorb shortwave radiation, leading to extinction of incoming solar radiation. Before considering the direct radiative effect, we first look at aerosol optical depth (AOD), a measure of the total extinction due to aerosols in an atmospheric column.

Figure 7a–c shows AOD for the year-2000 simulations. For both MAM and MARC, zonal mean year-2000 AOD peaks in the Northern Hemisphere subtropics, driven by emission of dust from deserts, especially the Sahara Desert. Over other regions, both anthropogenic aerosol emissions and natural aerosol emissions, including emissions of sea salt, contribute to year-2000 AOD . The year-2000 AOD values for MARC are often much lower than those for MAM3, especially over subtropical ocean regions. Rothenberg et al. (2018) have also previously noted that the AOD for MARC is generally lower than that retrieved from the MODerate Resolution Imaging Spectroradiometer (MODIS; Collection 5.1); but it should be noted that differences in spatial-temporal sampling (Schutgens et al., 2017, 2016) have not been accounted for, and satellite-based retrievals of AOD are not error-free.

The differences between the aerosol burdens for MAM and MARC, discussed above, are insufficient to explain the differences in year-2000 AOD , especially the large difference in the Southern Hemisphere subtropics (where the burdens are similar between MAM and MARC). Hence it is likely that differences in the aerosol optical properties between MARC and MAM are responsible for the fact that MARC generally produces lower values of AOD . In particular, the large difference in year-2000 AOD between MAM3 and MARC over the subtropical ocean, where $Burden_{salt}$ is large, is likely due to differences in the optical properties of sea salt aerosol.

Positive 2000-1850 differences in $Burden_{SO_4}$, $Burden_{OM}/Burden_{OC}$, and $Burden_{BC}$, discussed above, drive positive values of ΔAOD , the 2000-1850 difference in AOD (Fig. 7d–f). As was the case for year-2000 AOD , ΔAOD produced by MARC is generally much lower than ΔAOD produced by MAM3.

3.3.2 Direct radiative effect

Figure 8a–c shows the direct radiative effect (DRE_{SW}) for the year-2000 simulations. DRE_{SW} reveals the influence of direct interactions between radiation and aerosols on the net shortwave flux at TOA (Eq. (3)). Aerosols that scatter shortwave radiation efficiently, such as sulfate, generally contribute to negative values of DRE_{SW} , indicating a cooling effect on the climate system; aerosols that absorb shortwave radiation, such as black carbon, generally contribute to positive values of DRE_{SW} , indicating a warming effect on the climate system. Other factors, such as the presence of clouds, the vertical distribution of aerosols relative to clouds, and the albedo of the earth’s surface, also play a role in determining DRE_{SW} (Stier et al., 2007). Due to these factors – especially the differing impact of scattering and absorbing aerosols and variations in the albedo of the earth’s surface – large values of AOD may not necessarily correspond to large values of DRE_{SW} . Having said that, for both MAM3 and MARC, the regional distribution of year-2000 DRE_{SW} shares some similarities with that of year-

2000 AOD . Over dark ocean surfaces in the subtropics, scattering by aerosols drives negative values of year-2000 DRE_{SW} . The impact of dust on year-2000 DRE_{SW} differs between MAM3 and MARC, likely due to differing optical properties: for MAM3, absorption by dust drives positive values over the bright surface of the Sahara Desert, while little radiative impact is evident downwind over the dark surface of the tropical Atlantic Ocean; for MARC, scattering by dust drives negative values over the tropical Atlantic Ocean, while little radiative impact is evident over the Sahara Desert. The impact of black carbon aerosol on year-2000 DRE_{SW} also differs between MAM3 and MARC: for MAM3, absorption by black carbon aerosol drives positive values of DRE_{SW} over the South Atlantic stratocumulus deck near southern Africa; for MARC, negative values of DRE_{SW} are found over the stratocumulus deck, suggesting weaker absorption by black carbon aerosol compared with MAM3. The differing absorption is likely due to the differing representations of aerosol mixing state and associated optical properties: the majority of MARC's black carbon aerosol is found in the pure BC mode, whereas MAM's black carbon aerosol is internally mixed with other species, likely leading to stronger absorption for MAM compared with MARC.

For MAM, ΔDRE_{SW} , the 2000-1850 difference in DRE_{SW} , is relatively weak at all latitudes (Fig. 8d, e), with a global mean of only $-0.02 \pm 0.01 \text{ W m}^{-2}$ for MAM3 and $-0.00 \pm 0.01 \text{ W m}^{-2}$ for MAM7 (Table 5), due to the cooling effect of anthropogenic sulfur emissions being offset by the warming effect of increased black carbon aerosol emissions (Ghan et al., 2012). In contrast, for MARC, ΔDRE_{SW} reveals a relatively strong cooling effect across much of the Northern Hemisphere (Fig. 8d, f), especially near anthropogenic sources of sulfur emissions, leading to a global mean ΔDRE_{SW} of $-0.17 \pm 0.01 \text{ W m}^{-2}$.

3.3.3 Absorption by aerosols in the atmosphere

Figure 9a-c shows the absorption of shortwave radiation by aerosols in the atmosphere (AAA_{SW} ; Eq. (8)) for the year-2000 simulations. Consideration of AAA_{SW} , which reveals heating of the atmosphere by aerosols, complements consideration of DRE_{SW} . For example, over the Sahara Desert, we noted above that the dust aerosol in MARC exerts only a weak direct radiative effect at TOA (Fig. 8c); however, Fig. 9c reveals that the dust aerosol in MARC leads to strong heating of the atmosphere. For both MAM and MARC, year-2000 AAA_{SW} is largest near emission sources of dust, especially over the Sahara Desert where year-2000 $Burden_{dust}$ is particularly high, showing that dust is the primary driver of year-2000 AAA_{SW} . Further away from the dust emission source regions, year-2000 AAA_{SW} is spatially correlated with year-2000 $Burden_{BC}$, showing that black carbon aerosol also contributes to year-2000 AAA_{SW} . Despite the fact that year-2000 $Burden_{dust}$ and $Burden_{BC}$ are larger for MARC compared with MAM, year-2000 AAA_{SW} is generally weaker for MARC compared with MAM: the weaker absorption for MARC is likely due to differences in the aerosol optical properties, associated with different handling of dust and black carbon aerosol mixing state between MAM and MARC.

ΔAAA_{SW} , the 2000-1850 difference in AAA_{SW} (Fig. 9d-f), generally follows the same regional distribution as $\Delta Burden_{BC}$, showing that changes in emissions of black carbon aerosol dominate ΔAAA_{SW} . Although dust dominates year-

2000 AAA_{SW} , changes in dust emission exert only a relatively small influence on ΔAAA_{SW} . As with year-2000 AAA_{SW} , ΔAAA_{SW} is generally weaker for MARC compared with MAM3.

The absorption of shortwave radiation by aerosols can drive rapid adjustments of the atmosphere, such as changes to atmospheric stability and humidity, influencing clouds (Stjern et al., 2017). Such “semidirect” effects may contribute to the cloud radiative effects discussed below. However, Ghan et al. (2012) found both the shortwave and longwave semidirect radiative effects to be statistically insignificant for MAM3 and MAM7; we expect the same to apply for MARC, because the default CAM5.3 cloud microphysics scheme is also used. Cloud microphysical effects dominate the cloud radiative effects.

3.4 Aerosol–cloud interactions and the cloud radiative effects

3.4.1 Cloud condensation nuclei concentration

Many aerosol particles have the potential to become the cloud condensation nuclei (CCN) on which water vapour condenses to form cloud droplets. Figure 10a–c shows the CCN concentration at a fixed supersaturation of 0.1% (CCN_{conc}) in the lower troposphere for the year-2000 simulations. Corresponding results showing year-2000 CCN_{conc} near the surface and in the mid-troposphere are shown in Figs. S1a–c and S2a–c of the Supplement. Looking at year-2000 CCN_{conc} across these different vertical levels, we make two initial observations: first, for both MAM and MARC, year-2000 CCN_{conc} is generally higher in the Northern Hemisphere; second, year-2000 CCN_{conc} is generally much lower for MARC compared with MAM.

When we look in more detail at the regional distribution of year-2000 CCN_{conc} for MAM3, and compare this to the column burden results, we notice that locations with high CCN_{conc} have either high $Burden_{SO_4}$ or high $Burden_{OM}$. This suggests that, for MAM3, the organic matter aerosol – internally-mixed with other species with high hygroscopicity – contributes to efficient CCN, consistent with two previous MAM3-based studies that found that organic carbon emissions from wildfires can exert a strong influence on clouds (Grandey et al., 2016a; Jiang et al., 2016).

In contrast, for MARC, the regional distribution of year-2000 CCN_{conc} closely resembles that of $Burden_{SO_4}$ but does not resemble that of $Burden_{OC}$. This suggests that, for MARC, the organic carbon aerosol – much of which remains in a pure organic carbon aerosol mode with very low hygroscopicity – is not an efficient source of CCN.

If we look at the results for ΔCCN_{conc} , the 2000-1850 difference in CCN_{conc} (Figs. 10d–f, S1d–f, and S2d–f), similar deductions about sulfate aerosol and organic carbon aerosol can be made as were made above. For MAM3, the regional distribution of ΔCCN_{conc} reveals that changes in the availability of CCN are associated with both $\Delta Burden_{SO_4}$ and $\Delta Burden_{OM}$. For MARC, the regional distribution of ΔCCN_{conc} is associated with $\Delta Burden_{SO_4}$, but is not closely associated with $\Delta Burden_{OC}$.

For both MAM and MARC, ΔCCN_{conc} is generally positive, revealing increasing availability of CCN between year-1850 and year-2000. The absolute increase is smaller for MARC than for MAM. However, the percentage increase is larger for MARC than for MAM.

It is important to note that these CCN_{conc} results are for a fixed supersaturation of 0.1%; but as pointed out by Rothenberg et al. “all aerosol [particles] are potentially CCN, given an updraft sufficient enough in strength to drive a high-enough supersaturation such that they grow large enough to activate” (Rothenberg et al., 2018). Furthermore, the number of CCN that are actually activated is influenced by competition for water vapour among various types of aerosol particles, which depends on the details of the aerosol population including size distribution and mixing state. When aerosol particles with a lower hygroscopicity rise alongside aerosol particles with a higher hygroscopicity in a rising air parcel, the latter would normally be activated first at a supersaturation that is much lower than the one required for the former to become activated; the consequent condensation of water vapour to support the diffusive growth of the newly formed cloud particles would effectively lower the saturation level of the air parcel and further reduce the chance for the lower hygroscopicity aerosol particles to be activated (Rothenberg and Wang, 2016, 2017). In other words, CCN_{conc} at a fixed supersaturation is not necessarily a good indicator of the number of CCN that are actually activated, because activation depends on specific environmental conditions and the details of the aerosol population present.

Differences in the representation of aerosol mixing state and hygroscopicity may lead to large differences in aerosol activation spectra. In an aerosol model such as MAM that includes only internally-mixed modes, the hygroscopicity of a given mode is derived by volume weighting through all the included aerosol species and is therefore not very sensitive to changes in the chemical composition of the mode. In contrast, MARC explicitly handles mixing state and thus hygroscopicity of each individual type of aerosol: for example, the hygroscopicity of the pure OC and pure BC modes is very low, the hygroscopicity of the MOS mode depends on the internal mixing state of organic carbon and sulfate (assuming homogeneous mixing), and the hygroscopicity of the MBS mode is as high as that of pure sulfate (assuming a core-shell model) (Rothenberg et al., 2018).

3.4.2 Column-integrated cloud droplet number concentration

The availability of CCN influences cloud microphysics via the formation of cloud droplets. Figure 11a–c shows column-integrated cloud droplet number concentration ($CDNC_{column}$) for the year-2000 simulations. For MAM, year-2000 $CDNC_{column}$ is generally higher in the Northern Hemisphere, with very high values occurring over regions with abundant sulfate aerosol or organic carbon aerosol providing abundant CCN. In contrast, for MARC there is no strong inter-hemispheric asymmetry in year-2000 $CDNC_{column}$: there appears to be no influence from organic carbon aerosol, consistent with the CCN_{conc} results discussed above; and the influence of sulfate aerosol appears weaker than for MAM.

No global observations of $CDNC_{column}$ exist. However, satellite-based estimates of cloud-top cloud droplet number concentration ($CDNC_{top}$) can be derived using the adiabatic assumption, although the uncertainties are large. MARC tends to underestimate $CDNC_{top}$ compared to MODIS-derived estimates (Rothenberg et al., 2018).

When we look at $\Delta CDNC_{column}$, the 2000-1850 difference in $CDNC_{column}$ (Fig. 11d–f), we see that anthropogenic emissions generally drive increases in $CDNC_{column}$, as expected. The absolute increase is smaller for MARC than for MAM.

However, the percentage increase is comparable between MARC and MAM. As was the case for ΔCCN_{conc} , for MAM3, the regional distribution of $\Delta CDNC_{column}$ appears to be associated with both $\Delta Burden_{SO_4}$ and $\Delta Burden_{OM}$, whereas for MARC, the regional distribution of $\Delta CDNC_{column}$ is associated with $\Delta Burden_{SO_4}$ but is not closely associated with $\Delta Burden_{OC}$.

3.4.3 Grid-box cloud liquid and cloud ice water paths

5 In addition to influencing cloud microphysical properties (such as cloud droplet number concentration), the availability of CCN and ice nuclei influence cloud macrophysical properties (such as cloud water path). Figure 12a–c shows grid-box cloud liquid water path (WP_{liquid}) for the year-2000 simulations. Year-2000 WP_{liquid} is highest in the tropics and mid-latitudes. The regional distribution of year-2000 WP_{liquid} is similar to that of total cloud fractional coverage (Fig. S4a–c). The regional distribution of year-2000 WP_{liquid} for MARC is very similar to that for MAM. However, compared with
10 MAM, MARC produces slightly higher year-2000 WP_{liquid} in the Southern Hemisphere mid-latitudes, the Southern Hemisphere subtropics, and the Arctic.

Figure 13a–c shows grid-box cloud ice water path (WP_{ice}) for the year-2000 simulations. As with WP_{liquid} , year-2000 WP_{ice} is highest in the tropics and mid-latitudes. The regional distribution of year-2000 WP_{ice} is similar to that of high-level cloud fractional coverage (Fig. S7a–c), and is similar between MAM and MARC. However, year-2000 WP_{ice} is
15 consistently lower for MARC than for MAM. Although MARC and MAM3 are coupled to the same ice and mixed-phase cloud microphysics scheme (Gettelman et al., 2010; Liu et al., 2007), differences in the availability of ice nuclei can arise due to differences in dust and sulfate number concentrations and size distributions. The uncertainties associated with ice nucleation are very large (Garimella et al., 2018).

The 2000-1850 differences in WP_{liquid} and WP_{ice} are shown in Figs. 12d–f and 13d–f. MAM3 produces large
20 increases in WP_{liquid} over Europe, East Asia, Southeast Asia, South Asia, parts of Africa, and northern South America – the regional distribution of ΔWP_{liquid} is similar to the regional distributions of ΔCCN_{conc} and $\Delta CDNC_{column}$. MARC produces large increases in WP_{liquid} over the same regions, and additionally over Australia and North America. ΔWP_{liquid} is often larger for MARC than for MAM3, especially over the Northern Hemisphere mid-latitudes. For MARC, in comparison with MAM3, the relatively strong ΔWP_{liquid} response is consistent with the relatively strong ΔCCN_{conc} percentage change.

25 Globally, for both MAM3 and MARC, the ΔWP_{ice} response is relatively weak (Fig. 13d–f). However, relatively large values of ΔWP_{ice} , both positive and negative, are found regionally. This regional response differs between MAM3 and MARC. For both MAM3 and MARC, it appears that decreases in WP_{ice} correspond to increases in $Burden_{OM}$ and $Burden_{OC}$ (Fig. 3e, f); but this relationship is likely spurious, because organic carbon aerosol does not directly influence ice processes in either aerosol module.

3.4.4 Shortwave cloud radiative effect

Figure 14a–c shows the clean-sky shortwave cloud radiative effect (CRE_{SW} ; Eq. (4)) for the year-2000 simulations. Clouds scatter much of the incoming solar radiation, exerting a strong cooling effect on the climate system. Globally, year-2000 CRE_{SW} is -53.9 W m^{-2} for MAM3 and -52.2 W m^{-2} for MARC. For both MAM and MARC, CRE_{SW} is strongest in the tropics and mid-latitudes. The regional distribution of year-2000 CRE_{SW} is negatively correlated with WP_{liquid} and WP_{total} (the total cloud water path; Fig. S3): large values of WP_{liquid} and WP_{total} correspond to a strong cooling effect.

The same applies to ΔCRE_{SW} , the 2000-1850 difference in CRE_{SW} (Fig. 14d–f), which is negatively correlated with ΔWP_{liquid} and ΔWP_{total} : increases in WP_{liquid} and WP_{total} drive a stronger shortwave cloud cooling effect. For both MAM3 and MARC, the cooling effect of ΔCRE_{SW} is strongest in the Northern Hemisphere, particularly regions with high anthropogenic sulfur emissions, especially East Asia, Southeast Asia, and South Asia. Compared with MAM, MARC produces a slightly stronger ΔCRE_{SW} response in the Northern Hemisphere mid-latitudes and a slightly weaker ΔCRE_{SW} response in the Northern Hemisphere sub-tropics. Another difference between MAM3 and MARC is the land-ocean contrast: compared with MAM3, MARC often produces a slightly stronger ΔCRE_{SW} response over land but a weaker ΔCRE_{SW} response over ocean. In particular, MARC produces a weaker ΔCRE_{SW} response over the stratocumulus decks near South America and southern Africa, likely because organic carbon aerosol is not an efficient source of CCN in MARC.

When globally averaged, the global mean ΔCRE_{SW} for MARC ($-2.17 \pm 0.04 \text{ W m}^{-2}$) is stronger than that for MAM3 ($-2.09 \pm 0.04 \text{ W m}^{-2}$) and MAM7 ($-2.05 \pm 0.04 \text{ W m}^{-2}$). The stronger ΔCRE_{SW} response for MARC is consistent with the larger ΔCCN_{conc} percentage change for MARC compared with MAM.

3.4.5 Longwave cloud radiative effect

The cooling effect of CRE_{SW} is partially offset by the warming effect of CRE_{LW} , the longwave cloud radiative effect that arises due to absorption of longwave thermal infrared radiation (Eq. (6)). Figure 15a–c shows CRE_{LW} for the year-2000 simulations. Globally, year-2000 CRE_{LW} is $+24.1 \text{ W m}^{-2}$ for MAM3 and $+22.2 \text{ W m}^{-2}$ for MARC. As with the shortwave cooling effect, the longwave warming effect is strongest in the tropics and mid-latitudes, for both MAM and MARC. The regional distribution of year-2000 CRE_{LW} is positively correlated with WP_{ice} (Fig. 13a–c) and high-level cloud fraction (Fig. S7a–c) – high-level ice cloud drives the longwave warming effect.

The same is true for ΔCRE_{LW} , the 2000-1850 difference in CRE_{LW} (Fig. 15d–f): changes in high-level ice cloud cover drive changes in the longwave cloud warming effect. For both MAM3 and MARC, ΔCRE_{LW} is positive over much of Southeast Asia, South Asia, the Indian Ocean, the Atlantic Ocean, and the Pacific Ocean; ΔCRE_{LW} is negative over much of Africa and parts of South America. MAM3 produces a global mean ΔCRE_{LW} of $+0.54 \pm 0.02 \text{ W m}^{-2}$ and MAM7 produces a global mean ΔCRE_{LW} of $+0.53 \pm 0.02 \text{ W m}^{-2}$, while MARC produces a stronger global mean of $+0.66 \pm 0.01 \text{ W m}^{-2}$. Hence ΔCRE_{LW} offsets approximately one quarter to one third of the ΔCRE_{SW} cooling effect.

3.5 The surface albedo radiative effect

In addition to interacting with radiation both directly and indirectly via clouds, aerosols can influence the earth’s radiative energy balance via changes to the surface albedo. The surface albedo radiative effect (ΔSRE_{SW} ; Eq. (5)), “includes effects of both changes in snow albedo due to deposition of absorbing aerosol, and changes in snow cover induced by deposition and by the other aerosol forcing mechanisms” (Ghan, 2013). For both MAM and MARC, deposition of absorbing aerosol is enabled via the coupling between CAM5 and the land scheme in CESM; and “other aerosol forcing mechanisms” include aerosol-induced changes in precipitation rate. Aerosol-induced changes in column water vapor can also influence the calculation of ΔSRE_{SW} , because $F_{clean,clear}$ is sensitive to near-infrared absorption by water vapour; but the contribution from such changes in column water vapour is small. (ΔSRE_{SW} does not include changes in land use, because the only difference between the year-1850 and year-2000 simulations is the aerosol emissions.)

Figure 16 shows ΔSRE_{SW} , the aerosol-induced 2000-1850 surface albedo radiative effect. In the Arctic and high-latitude land regions of the Northern Hemisphere, ΔSRE_{SW} can be relatively large. MAM3 produces a mixture of positive and negative ΔSRE_{SW} values, averaging out to zero globally ($+0.00 \pm 0.02 \text{ W m}^{-2}$). However, MARC tends to produce mainly negative ΔSRE_{SW} values, averaging out to a global mean of $-0.10 \pm 0.02 \text{ W m}^{-2}$.

The ΔSRE_{SW} response is associated with aerosol-induced 2000-1850 changes in snow cover over both land and sea-ice (Fig. S10d–f): increases in snow cover lead to negative ΔSRE_{SW} values, while decreases in snow cover lead to positive ΔSRE_{SW} values. Changes in snow rate (Fig. S11d–f) likely play a major role, explaining much of the snow cover response. Changes in black carbon deposition (Fig. S12d–f), contributing to changes in the mass of black carbon in the top layer of snow (Fig. S13d–f), may also play a role. The mass of black carbon in the top layer of snow is much lower for MARC compared with MAM3 (Fig. S13a–c), likely due to differences in dry deposition of black carbon: the rate of dry deposition of black carbon aerosol is $0.42 \text{ Tg year}^{-1}$ in MARC (Table 3), much lower than the rate of $1.27 \text{ Tg year}^{-1}$ in MAM3 (Liu et al., 2012). The aerosol-induced 2000-1850 difference in the mass of black carbon in the top layer of snow is also much lower for MARC compared with MAM3 (Fig. S13d–f).

3.6 Net effective radiative forcing

The net effective radiative forcing (ERF_{SW+LW}) – the 2000-1850 difference in the net radiative flux at TOA (Eq. (7)) – is effectively the sum of the radiative effect components we discussed above. Figure 17 shows ERF_{SW+LW} ; Table 5 summarises the global mean contribution from the different radiative effect components.

In general, the cloud shortwave component, ΔCRE_{SW} , dominates, resulting in negative values of ERF_{SW+LW} across much of the world. In particular, strongly negative values of ERF_{SW+LW} , indicating a large cooling effect, are found near regions with substantial anthropogenic sulfur emissions. The cooling effect is far stronger in the Northern Hemisphere than it is in the Southern Hemisphere. If coupled atmosphere–ocean simulations were to be performed, allowing SSTs to

respond, the large inter-hemispheric difference in ERF_{SW+LW} would likely impact inter-hemispheric temperature gradients and hence rainfall patterns (Chiang and Friedman, 2012; Grandey et al., 2016b; Wang, 2015).

5 Across much of the globe, the net cooling effect of ERF_{SW+LW} produced by MARC is similar to that produced by MAM. However, in the mid-latitudes, MARC produces a stronger net cooling effect, especially over North America, Europe, and northern Asia. Another difference is that MARC appears to exert more widespread cooling over land than MAM3 does, while the opposite appears to be the case over ocean. These differences in the regional distribution of ERF_{SW+LW} are largely due to differences in the regional distribution of ΔCRE_{SW} . As mentioned in the previous paragraph, rainfall patterns are sensitive to changes in surface temperature gradients. Therefore, if SSTs were allowed to respond to the forcing, the differences in the regional distribution of ERF_{SW+LW} between MARC and MAM may drive differences in rainfall patterns.

10 When averaged globally, MAM3 produces a global mean ERF_{SW+LW} of $-1.57 \pm 0.04 \text{ W m}^{-2}$ and MAM7 produces a global mean ERF_{SW+LW} of $-1.53 \pm 0.04 \text{ W m}^{-2}$; MARC produces a stronger global mean ERF_{SW+LW} of $-1.79 \pm 0.03 \text{ W m}^{-2}$. The ERF_{SW+LW} produced by CAM5.3-MARC-ARG is particularly strong compared with many other global climate models (Shindell et al., 2013).

15 4 Summary and conclusions

The specific representation of aerosols in global climate models, especially the representation of aerosol mixing state, has important implications for aerosol hygroscopicity, aerosol lifetime, aerosol column burdens, aerosol optical properties, and cloud condensation nuclei (CCN) availability. For example, in addition to internally-mixed modes, MARC also includes a pure organic carbon aerosol mode and a pure black carbon aerosol mode both of which have very low hygroscopicity. The low hygroscopicity of these pure organic carbon and pure black carbon modes leads to increased lifetimes of total organic carbon aerosol and total black carbon aerosol, influencing aerosol column burdens. Furthermore, the representation of aerosol mixing state, and the associated implications for hygroscopicity, strongly influences the ability of the aerosol particles to act as CCN. For example, MARC's organic carbon aerosol is not an efficient source of CCN, but MAM's organic matter aerosol – internally-mixed with other species with high hygroscopicity – is an efficient source of CCN.

25 We have demonstrated that changing the aerosol module in CAM5.3 influences both the direct and indirect radiative effects of aerosols. Standard CAM5.3, which uses the MAM3 aerosol module, produces a global mean net ERF of $-1.57 \pm 0.04 \text{ W m}^{-2}$ associated with the 2000-1850 difference in aerosol (including aerosol precursor) emissions; CAM5.3-MARC-ARG, which uses the MARC aerosol module, produces a stronger global mean net ERF of $-1.79 \pm 0.03 \text{ W m}^{-2}$, a particularly strong cooling effect compared with other climate models (Shindell et al., 2013). For MARC compared with MAM, the stronger global mean net ERF can be attributed to stronger cooling via the direct radiative effect, the shortwave cloud radiative effect, and the surface albedo radiative effect, as summarised below. Furthermore, differences in the regional distribution of the cloud shortwave radiative effect drives differences in the regional distribution of net ERF.

By analysing the individual components of the net ERF, we have demonstrated that:

1. The global mean 2000-1850 direct radiative effect produced by MAM ($-0.02 \pm 0.01 \text{ W m}^{-2}$ for MAM3; $-0.00 \pm 0.01 \text{ W m}^{-2}$ for MAM7) is close to zero due to the warming effect of black carbon aerosol opposing the cooling effect of sulfate aerosol and organic carbon aerosol. In contrast, the 2000-1850 direct radiative effect produced by MARC is $-0.17 \pm 0.01 \text{ W m}^{-2}$, with the cooling effect of sulfate aerosol being larger than the warming effect of black carbon aerosol.
2. The global mean 2000-1850 shortwave cloud radiative effect produced by MARC ($-2.17 \pm 0.04 \text{ W m}^{-2}$) is stronger than that produced by MAM ($-2.09 \pm 0.04 \text{ W m}^{-2}$ for MAM3; $-2.05 \pm 0.04 \text{ W m}^{-2}$ for MAM7). Furthermore, the regional distribution differs: for MAM3, the cooling peaks in the Northern Hemisphere subtropics; while for MARC, the cooling peaks in the Northern Hemisphere mid-latitudes. The land-ocean contrast also differs: compared with MAM3, MARC often produces stronger cooling over land but weaker cooling over ocean. For both MAM3 and MARC, the 2000-1850 shortwave cloud radiative effect is closely associated with changes in liquid water path.
3. The global mean 2000-1850 longwave cloud radiative effect produced by MARC ($+0.66 \pm 0.01 \text{ W m}^{-2}$) is stronger than that produced by MAM ($+0.54 \pm 0.02 \text{ W m}^{-2}$ for MAM3; $+0.53 \pm 0.02 \text{ W m}^{-2}$ for MAM7). For both MAM3 and MARC, the 2000-1850 longwave cloud radiative effect is closely associated with changes in ice water path and high cloud cover.
4. The global mean 2000-1850 surface albedo radiative effect produced by MARC ($-0.10 \pm 0.02 \text{ W m}^{-2}$) is also stronger than that produced by MAM ($+0.00 \pm 0.02 \text{ W m}^{-2}$ for MAM3; $-0.02 \pm 0.02 \text{ W m}^{-2}$ for MAM7). The 2000-1850 surface albedo radiative effect is associated with changes in snow cover.

If climate simulations were to be performed using a coupled atmosphere-ocean configuration of CESM, these differences in the radiative effects produced by MAM3 and MARC would likely lead to differences in the climate response. In particular, the differences in the regional distribution of the radiative effects would likely impact rainfall patterns (Wang, 2015).

In light of these results, we conclude that the specific representation of aerosols in global climate models has important implications for climate modelling. Important interrelated factors include the representation of aerosol mixing state, size distribution, and optical properties.

Appendix A: Computational performance

In order to assess the computational performance of MARC, in comparison with MAM, we have performed six timing simulations. The configuration of these simulations is described in the caption of Table S5.

Before looking at the results, it is worth noting that the default radiation diagnostics differ between MARC and MAM. As highlighted by Ghan (Ghan, 2013), in order to calculate the direct radiative effect of aerosols, a second radiation

call is required in order to diagnose “clean-sky” fluxes – in this diagnostic clean-sky radiation call, interactions between aerosols and radiation are switched off. In MARC, these clean-sky fluxes are diagnosed by default. However, in MAM, these clean-sky fluxes are not diagnosed by default, although simulations can be configured to include the necessary diagnostics. The inclusion of the clean-sky diagnostics increases computational expense. Hence, in order to facilitate a fair comparison between MARC and MAM, we have performed two simulations for each aerosol module: one with clean-sky diagnostics switched on, and one with clean-sky diagnostics switched off.

The results from the timing simulations are shown in Table S5. When clean-sky diagnostics are switched off, as would ordinarily be the case for long climate-scale simulations, using MARC increases the computational cost by only 6% compared with a default configuration using MAM3. MAM7 is considerably more expensive. When clean-sky diagnostics are switched on – as is the case for the simulations analysed in this manuscript – the computational cost of MARC is very similar to that of MAM3.

Code and data availability

CESM 1.2.2 is available via <http://www.cesm.ucar.edu/models/cesm1.2/>. The version of MARC used in this study is MARC v1.0.4, archived at <https://doi.org/10.5281/zenodo.1117370> (Avramov et al., 2017). Model namelist files, configuration scripts, and analysis code are available via <https://github.com/grandey/p17c-marc-comparison/>, archived at <https://doi.org/10.5281/zenodo.1346707>. The MARC input data and the model output data analysed in this paper are archived at <https://doi.org/10.6084/m9.figshare.5687812>.

Author contributions

AA and DR coupled MARC to CAM5.3 in CESM1.2.2, under the supervision of CW. AA, DR, QJ, and CW contributed to further development of CAM5.3-MARC-ARG, with DR being the primary software maintainer. HHL and BSG contributed to testing of CAM5.3-MARC-ARG. SA contributed dust model code, optical tables, the soil erodibility map, and advice about model configuration. XL led development of MAM3 and MAM7. ZL and XL provided advice about model configuration, especially MAM7. BSG and DR designed the experiment, with contributions from QJ and CW. BSG configured and performed the simulations. BSG, DR, and HHL analysed the results. BSG produced the figures shown in this manuscript. BSG wrote the manuscript, with contributions from all other co-authors. CW provided supervisory guidance throughout the project.

Acknowledgements

This research is supported by the National Research Foundation of Singapore under its Campus for Research Excellence and Technological Enterprise programme. The Center for Environmental Sensing and Modeling is an interdisciplinary research group of the Singapore-MIT Alliance for Research and Technology. This research is also supported by the U.S. National Science Foundation (AGS-1339264) and the U.S. Department of Energy, Office of Science (DE-FG02-94ER61937). The CESM project is supported by the National Science Foundation and the Office of Science (BER) of the U.S. Department of Energy. We acknowledge high-performance computing support from Cheyenne (doi:10.5065/D6RX99HX) provided by NCAR's Computational and Information Systems Laboratory, sponsored by the National Science Foundation. We thank Natalie Mahowald for contributing dust model code, optical tables, a soil erodibility map, and advice, all of which have aided the development of CAM5.3-MARC-ARG.

References

- Abdul-Razzak, H. and Ghan, S. J.: A parameterization of aerosol activation: 2. Multiple aerosol types, *J. Geophys. Res.*, 105(D5), 6837–6844, doi:10.1029/1999JD901161, 2000.
- Albani, S., Mahowald, N. M., Perry, A. T., Scanza, R. A., Zender, C. S., Heavens, N. G., Maggi, V., Kok, J. F. and Otto-
5 Bliesner, B. L.: Improved dust representation in the Community Atmosphere Model, *J. Adv. Model. Earth Syst.*, 6(3), 541–
570, doi:10.1002/2013MS000279, 2014.
- Andreae, M. O., Jones, C. D. and Cox, P. M.: Strong present-day aerosol cooling implies a hot future, *Nature*, 435(7046),
1187–1190, doi:10.1038/nature03671, 2005.
- Avramov, A., Rothenberg, D., Jin, Q., Garimella, S., Grandey, B. and Wang, C.: MARC - Model for Research of Aerosols
10 and Climate (version 1.0.4), Zenodo, doi:10.5281/zenodo.1117370, 2017.
- Benjamini, Y. and Hochberg, Y.: Controlling the False Discovery Rate: A Practical and Powerful Approach to Multiple
Testing, *J. R. Stat. Soc. B*, 57(1), 289–300, 1995.
- Bodas-Salcedo, A., Webb, M. J., Bony, S., Chepfer, H., Dufresne, J.-L., Klein, S. A., Zhang, Y., Marchand, R., Haynes, J.
M., Pincus, R. and John, V. O.: COSP: Satellite simulation software for model assessment, *Bull. Am. Meteorol. Soc.*, 92(8),
15 1023–1043, doi:10.1175/2011BAMS2856.1, 2011.
- Boucher, O., Randall, D., Artaxo, P., Bretherton, C., Feingold, G., Forster, P., Kerminen, V.-M., Kondo, Y., Liao, H.,
Lohmann, U., Rasch, P., Satheesh, S. K., Sherwood, S., Stevens, B. and Zhang, X. Y.: Clouds and Aerosols, in *Climate
Change 2013: The Physical Science Basis. Contribution of Working Group I to the Fifth Assessment Report of the
Intergovernmental Panel on Climate Change*, edited by T. F. Stocker, D. Qin, G.-K. Plattner, M. Tignor, S. K. Allen, J.
20 Boschung, A. Nauels, Y. Xia, V. Bex, and P. M. Midgley, Cambridge University Press, Cambridge, United Kingdom and
New York, NY, USA., 2013.
- Carslaw, K. S., Lee, L. A., Reddington, C. L., Pringle, K. J., Rap, A., Forster, P. M., Mann, G. W., Spracklen, D. V.,
Woodhouse, M. T., Regayre, L. A. and Pierce, J. R.: Large contribution of natural aerosols to uncertainty in indirect forcing,
Nature, 503(7474), 67–71, doi:10.1038/nature12674, 2013.
- 25 Chiang, J. C. H. and Friedman, A. R.: Extratropical Cooling, Interhemispheric Thermal Gradients, and Tropical Climate
Change, *Annu. Rev. Earth Planet. Sci.*, 40(1), 383–412, doi:10.1146/annurev-earth-042711-105545, 2012.
- Ekman, A. M. L., Wang, C., Wilson, J. and Ström, J.: Explicit simulations of aerosol physics in a cloud-resolving model: a
sensitivity study based on an observed convective cloud, *Atmos. Chem. Phys.*, 4(3), 773–791, doi:10.5194/acp-4-773-2004,
2004.
- 30 Ekman, A. M. L., Wang, C., Ström, J. and Krejci, R.: Explicit Simulation of Aerosol Physics in a Cloud-Resolving Model:
Aerosol Transport and Processing in the Free Troposphere, *J. Atmos. Sci.*, 63(2), 682–696, doi:10.1175/JAS3645.1, 2006.
- Ekman, A. M. L., Engström, A. and Wang, C.: The effect of aerosol composition and concentration on the development and

- anvil properties of a continental deep convective cloud, *Q. J. R. Meteorol. Soc.*, 133(October), 937–948, doi:10.1002/qj.108, 2007.
- Ekman, A. M. L., Hermann, M., Groß, P., Heintzenberg, J., Kim, D. and Wang, C.: Sub-micrometer aerosol particles in the upper troposphere/lowermost stratosphere as measured by CARIBIC and modeled using the MIT-CAM3 global climate model, *J. Geophys. Res. Atmos.*, 117(D11), n/a-n/a, doi:10.1029/2011JD016777, 2012.
- Engström, A., Ekman, A. M. L., Krejci, R., Ström, J., de Reus, M. and Wang, C.: Observational and modelling evidence of tropical deep convective clouds as a source of mid-tropospheric accumulation mode aerosols, *Geophys. Res. Lett.*, 35(23), L23813, doi:10.1029/2008GL035817, 2008.
- Fan, J., Wang, Y., Rosenfeld, D. and Liu, X.: Review of Aerosol–Cloud Interactions: Mechanisms, Significance, and Challenges, *J. Atmos. Sci.*, 73(11), 4221–4252, doi:10.1175/JAS-D-16-0037.1, 2016.
- Garimella, S., Rothenberg, D. A., Wolf, M. J., Wang, C. and Cziczo, D. J.: How Uncertainty in Field Measurements of Ice Nucleating Particles Influences Modeled Cloud Forcing, *J. Atmos. Sci.*, 75(1), 179–187, doi:10.1175/JAS-D-17-0089.1, 2018.
- Gottelman, A., Liu, X., Ghan, S. J., Morrison, H., Park, S., Conley, A. J., Klein, S. A., Boyle, J., Mitchell, D. L. and Li, J.-L. F.: Global simulations of ice nucleation and ice supersaturation with an improved cloud scheme in the Community Atmosphere Model, *J. Geophys. Res.*, 115(D18), D18216, doi:10.1029/2009JD013797, 2010.
- Ghan, S. J.: Technical Note: Estimating aerosol effects on cloud radiative forcing, *Atmos. Chem. Phys.*, 13(19), 9971–9974, doi:10.5194/acp-13-9971-2013, 2013.
- Ghan, S. J., Liu, X., Easter, R. C., Zaveri, R., Rasch, P. J., Yoon, J.-H. and Eaton, B.: Toward a Minimal Representation of Aerosols in Climate Models: Comparative Decomposition of Aerosol Direct, Semidirect, and Indirect Radiative Forcing, *J. Clim.*, 25(19), 6461–6476, doi:10.1175/JCLI-D-11-00650.1, 2012.
- Golaz, J.-C., Salzmann, M., Donner, L. J., Horowitz, L. W., Ming, Y. and Zhao, M.: Sensitivity of the Aerosol Indirect Effect to Subgrid Variability in the Cloud Parameterization of the GFDL Atmosphere General Circulation Model AM3, *J. Clim.*, 24(13), 3145–3160, doi:10.1175/2010JCLI3945.1, 2011.
- Grandey, B. S., Lee, H.-H. and Wang, C.: Radiative effects of interannually varying vs. interannually invariant aerosol emissions from fires, *Atmos. Chem. Phys.*, 16(22), 14495–14513, doi:10.5194/acp-16-14495-2016, 2016a.
- Grandey, B. S., Cheng, H. and Wang, C.: Transient Climate Impacts for Scenarios of Aerosol Emissions from Asia: A Story of Coal versus Gas, *J. Clim.*, 29(8), 2849–2867, doi:10.1175/JCLI-D-15-0555.1, 2016b.
- Haywood, J. and Boucher, O.: Estimates of the direct and indirect radiative forcing due to tropospheric aerosols: A review, *Rev. Geophys.*, 38(4), 513–543, doi:10.1029/1999RG000078, 2000.
- Haywood, J., Donner, L., Jones, A. and Golaz, J.-C.: Global Indirect Radiative Forcing Caused by Aerosols: IPCC (2007) and Beyond, in *Clouds in the Perturbed Climate System: Their Relationship to Energy Balance, Atmospheric Dynamics, and Precipitation*, edited by J. Heintzenberg and R. Charlson, MIT Press., 2009.
- Hogan, R.: How to combine errors. [online] Available from: http://www.met.rdg.ac.uk/~swrhgnrj/combining_errors.pdf,

2006.

Hoose, C., Kristjánsson, J. E., Iversen, T., Kirkevåg, A., Seland and Gettelman, A.: Constraining cloud droplet number concentration in GCMs suppresses the aerosol indirect effect, *Geophys. Res. Lett.*, 36(12), 1–5, doi:10.1029/2009GL038568, 2009.

- 5 Jiang, Y., Lu, Z., Liu, X., Qian, Y., Zhang, K., Wang, Y. and Yang, X.-Q.: Impacts of global open-fire aerosols on direct radiative, cloud and surface-albedo effects simulated with CAM5, *Atmos. Chem. Phys.*, 16(23), 14805–14824, doi:10.5194/acp-16-14805-2016, 2016.

Jiao, C., Flanner, M. G., Balkanski, Y., Bauer, S. E., Bellouin, N., Bernsten, T. K., Bian, H., Carslaw, K. S., Chin, M., De Luca, N., Diehl, T., Ghan, S. J., Iversen, T., Kirkevåg, A., Koch, D., Liu, X., Mann, G. W., Penner, J. E., Pitari, G., Schulz,

- 10 M., Seland, Ø., Skeie, R. B., Steenrod, S. D., Stier, P., Takemura, T., Tsigaridis, K., van Noije, T., Yun, Y. and Zhang, K.: An AeroCom assessment of black carbon in Arctic snow and sea ice, *Atmos. Chem. Phys.*, 14(5), 2399–2417, doi:10.5194/acp-14-2399-2014, 2014.

Kim, D., Wang, C., Ekman, A. M. L., Barth, M. C. and Rasch, P. J.: Distribution and direct radiative forcing of carbonaceous and sulfate aerosols in an interactive size-resolving aerosol–climate model, *J. Geophys. Res.*, 113(D16), D16309, doi:10.1029/2007JD009756, 2008.

- 15 Kim, D., Wang, C., Ekman, A. M. L., Barth, M. C. and Lee, D.-I.: The responses of cloudiness to the direct radiative effect of sulfate and carbonaceous aerosols, *J. Geophys. Res. Atmos.*, 119(3), 1172–1185, doi:10.1002/2013JD020529, 2014.

Lamarque, J.-F., Bond, T. C., Eyring, V., Granier, C., Heil, A., Klimont, Z., Lee, D., Liousse, C., Mieville, A., Owen, B., Schultz, M. G., Shindell, D., Smith, S. J., Stehfest, E., Van Aardenne, J., Cooper, O. R., Kainuma, M., Mahowald, N.,

- 20 McConnell, J. R., Naik, V., Riahi, K. and van Vuuren, D. P.: Historical (1850–2000) gridded anthropogenic and biomass burning emissions of reactive gases and aerosols: methodology and application, *Atmos. Chem. Phys.*, 10(15), 7017–7039, doi:10.5194/acp-10-7017-2010, 2010.

Liu, X., Penner, J. E., Ghan, S. J. and Wang, M.: Inclusion of Ice Microphysics in the NCAR Community Atmospheric Model Version 3 (CAM3), *J. Clim.*, 20(18), 4526–4547, doi:10.1175/JCLI4264.1, 2007.

- 25 Liu, X., Easter, R. C., Ghan, S. J., Zaveri, R., Rasch, P., Shi, X., Lamarque, J.-F., Gettelman, A., Morrison, H., Vitt, F., Conley, A., Park, S., Neale, R., Hannay, C., Ekman, A. M. L., Hess, P., Mahowald, N., Collins, W., Iacono, M. J., Bretherton, C. S., Flanner, M. G. and Mitchell, D.: Toward a minimal representation of aerosols in climate models: description and evaluation in the Community Atmosphere Model CAM5, *Geosci. Model Dev.*, 5(3), 709–739, doi:10.5194/gmd-5-709-2012, 2012.

- 30 Liu, X., Ma, P.-L., Wang, H., Tilmes, S., Singh, B., Easter, R. C., Ghan, S. J. and Rasch, P. J.: Description and evaluation of a new four-mode version of the Modal Aerosol Module (MAM4) within version 5.3 of the Community Atmosphere Model, *Geosci. Model Dev.*, 9(2), 505–522, doi:10.5194/gmd-9-505-2016, 2016.

Lohmann, U. and Feichter, J.: Global indirect aerosol effects: a review, *Atmos. Chem. Phys.*, 5, 715–737, doi:10.5194/acp-5-715-2005, 2005.

- Mahowald, N. M., Lamarque, J.-F., Tie, X. X. and Wolff, E.: Sea-salt aerosol response to climate change: Last Glacial Maximum, preindustrial, and doubled carbon dioxide climates, *J. Geophys. Res.*, 111(D5), D05303, doi:10.1029/2005JD006459, 2006.
- Morrison, H. and Gettelman, A.: A New Two-Moment Bulk Stratiform Cloud Microphysics Scheme in the Community Atmosphere Model, Version 3 (CAM3). Part I: Description and Numerical Tests, *J. Clim.*, 21(15), 3642–3659, doi:10.1175/2008JCLI2105.1, 2008.
- Petters, M. D. and Kreidenweis, S. M.: A single parameter representation of hygroscopic growth and cloud condensation nucleus activity, *Atmos. Chem. Phys.*, 7(8), 1961–1971, doi:10.5194/acp-7-1961-2007, 2007.
- Quaas, J., Ming, Y., Menon, S., Takemura, T., Wang, M., Penner, J. E., Gettelman, A., Lohmann, U., Bellouin, N., Boucher, O., Sayer, A. M., Thomas, G. E., McComiskey, A., Feingold, G., Hoose, C., Kristjánsson, J. E., Liu, X., Balkanski, Y., Donner, L. J., Ginoux, P. A., Stier, P., Grandey, B., Feichter, J., Sednev, I., Bauer, S. E., Koch, D., Grainger, R. G., Kirkevåg, A., Iversen, T., Seland, Ø., Easter, R., Ghan, S. J., Rasch, P. J., Morrison, H., Lamarque, J.-F., Iacono, M. J., Kinne, S. and Schulz, M.: Aerosol indirect effects – general circulation model intercomparison and evaluation with satellite data, *Atmos. Chem. Phys.*, 9(22), 8697–8717, doi:10.5194/acp-9-8697-2009, 2009.
- Rosenfeld, D., Andreae, M. O., Asmi, A., Chin, M., de Leeuw, G., Donovan, D. P., Kahn, R., Kinne, S., Kivekäs, N., Kulmala, M., Lau, W., Schmidt, K. S., Suni, T., Wagner, T., Wild, M. and Quaas, J.: Global observations of aerosol-cloud-precipitation-climate interactions, *Rev. Geophys.*, 52(4), 750–808, doi:10.1002/2013RG000441, 2014.
- Rothenberg, D. and Wang, C.: Metamodeling of Droplet Activation for Global Climate Models, *J. Atmos. Sci.*, 73(3), 1255–1272, doi:10.1175/JAS-D-15-0223.1, 2016.
- Rothenberg, D. and Wang, C.: An aerosol activation metamodel of v1.2.0 of the pyrcel cloud parcel model: development and offline assessment for use in an aerosol–climate model, *Geosci. Model Dev.*, 10(4), 1817–1833, doi:10.5194/gmd-10-1817-2017, 2017.
- Rothenberg, D., Avramov, A. and Wang, C.: On the representation of aerosol activation and its influence on model-derived estimates of the aerosol indirect effect, *Atmos. Chem. Phys.*, 18(11), 7961–7983, doi:10.5194/acp-18-7961-2018, 2018.
- Scanza, R. A., Mahowald, N., Ghan, S., Zender, C. S., Kok, J. F., Liu, X., Zhang, Y. and Albani, S.: Modeling dust as component minerals in the Community Atmosphere Model: development of framework and impact on radiative forcing, *Atmos. Chem. Phys.*, 15(1), 537–561, doi:10.5194/acp-15-537-2015, 2015.
- Schutgens, N., Tsyro, S., Gryspeerdt, E., Goto, D., Weigum, N., Schulz, M. and Stier, P.: On the spatio-temporal representativeness of observations, *Atmos. Chem. Phys.*, 17(16), 9761–9780, doi:10.5194/acp-17-9761-2017, 2017.
- Schutgens, N. A. J., Partridge, D. G. and Stier, P.: The importance of temporal collocation for the evaluation of aerosol models with observations, *Atmos. Chem. Phys.*, 16(2), 1065–1079, doi:10.5194/acp-16-1065-2016, 2016.
- Sherwood, S. C., Bony, S., Boucher, O., Bretherton, C., Forster, P. M., Gregory, J. M. and Stevens, B.: Adjustments in the Forcing-Feedback Framework for Understanding Climate Change, *Bull. Am. Meteorol. Soc.*, 96(2), 217–228, doi:10.1175/BAMS-D-13-00167.1, 2015.

Shindell, D. T.: Inhomogeneous forcing and transient climate sensitivity, *Nat. Clim. Chang.*, 4(4), 274–277, doi:10.1038/nclimate2136, 2014.

Shindell, D. T., Lamarque, J.-F., Schulz, M., Flanner, M., Jiao, C., Chin, M., Young, P. J., Lee, Y. H., Rotstayn, L., Mahowald, N., Milly, G., Faluvegi, G., Balkanski, Y., Collins, W. J., Conley, a. J., Dalsoren, S., Easter, R., Ghan, S., 5 Horowitz, L., Liu, X., Myhre, G., Nagashima, T., Naik, V., Rumbold, S. T., Skeie, R., Sudo, K., Szopa, S., Takemura, T., Voulgarakis, A., Yoon, J.-H. and Lo, F.: Radiative forcing in the ACCMIP historical and future climate simulations, *Atmos. Chem. Phys.*, 13(6), 2939–2974, doi:10.5194/acp-13-2939-2013, 2013.

Stier, P., Seinfeld, J. H., Kinne, S. and Boucher, O.: Aerosol absorption and radiative forcing, *Atmos. Chem. Phys.*, 7(19), 5237–5261, doi:10.5194/acp-7-5237-2007, 2007.

10 Stjern, C. W., Samset, B. H., Myhre, G., Forster, P. M., Hodnebrog, Ø., Andrews, T., Boucher, O., Faluvegi, G., Iversen, T., Kassoar, M., Kharin, V., Kirkevåg, A., Lamarque, J.-F., Olivie, D., Richardson, T., Shawki, D., Shindell, D., Smith, C. J., Takemura, T. and Voulgarakis, A.: Rapid Adjustments Cause Weak Surface Temperature Response to Increased Black Carbon Concentrations, *J. Geophys. Res. Atmos.*, 122(21), 11,462-11,481, doi:10.1002/2017JD027326, 2017.

Wang, C.: A modeling study of the response of tropical deep convection to the increase of cloud condensation nuclei concentration: 1. Dynamics and microphysics, *J. Geophys. Res.*, 110(D21), D21211, doi:10.1029/2004JD005720, 2005a.

15 Wang, C.: A modeling study of the response of tropical deep convection to the increase of cloud condensation nuclei concentration: 2. Radiation and tropospheric chemistry, *J. Geophys. Res.*, 110(D22), D22204, doi:10.1029/2005JD005829, 2005b.

Wang, C.: Anthropogenic aerosols and the distribution of past large-scale precipitation change, *Geophys. Res. Lett.*, 42(24), 10,876-10,884, doi:10.1002/2015GL066416, 2015.

20 Wilks, D. S.: “The Stippling Shows Statistically Significant Grid Points”: How Research Results are Routinely Overstated and Overinterpreted, and What to Do about It, *Bull. Am. Meteorol. Soc.*, 97(12), 2263–2273, doi:10.1175/BAMS-D-15-00267.1, 2016.

25

Tables

5 **Table 1: Global mass budgets and lifetimes of sulfate aerosol for the year-2000 MARC simulation, showing values for total sulfate aerosol and sulfate aerosol in each mode. Negative values indicate sinks. Standard errors are calculated using the annual global total for each simulation year; for the each lifetime (calculated as *Burden* divided by *Sinks*), the combined standard error is calculated following Hogan (2006). The processes acting as sources and sinks are summarised in Fig. 1a. Growth and coagulation transfer sulfate between modes, but do not directly influence the total sulfate aerosol mass. Due to hydrometeor evaporation, scavenging does not necessarily result in permanent removal from the atmosphere in the form of wet deposition. Corresponding results for the year-1850 MARC simulation are shown in Table S1.**

	Sulfate aerosol	in NUC	in AIT	in ACC	in MOS	in MBS
Sources, Tg(SO ₄)/yr	+538.70 ± 0.75	+0.01 ± 0.00	+0.09 ± 0.00	+509.28 ± 0.75	+26.45 ± 0.04	+6.46 ± 0.03
Binary nucleation	+0.00 ± 0.00	+0.00 ± 0.00				
Condensation	+11.55 ± 0.05	+0.01 ± 0.00	+0.08 ± 0.00	+4.37 ± 0.01	+3.84 ± 0.02	+3.25 ± 0.02
Aging (source)	+22.33 ± 0.02				+20.59 ± 0.02	+1.75 ± 0.00
Growth (source)			+0.01 ± 0.00	+0.09 ± 0.00		
Coagulation (source)			+0.00 ± 0.00	+0.00 ± 0.00	+2.02 ± 0.01	+1.47 ± 0.01
Hydrometeor evaporation	+504.82 ± 0.75			+504.82 ± 0.75		
Sinks, Tg(SO ₄)/yr	-538.88 ± 0.74	-0.01 ± 0.00	-0.09 ± 0.00	-509.37 ± 0.75	-26.52 ± 0.04	-6.48 ± 0.03
Growth (sink)		-0.01 ± 0.00	-0.09 ± 0.00			
Coagulation (sink)		-0.00 ± 0.00	-0.00 ± 0.00	-3.49 ± 0.02		
Nucleation scavenging by stratiform clouds	-396.60 ± 0.69	-0.00 ± 0.00	-0.00 ± 0.00	-379.23 ± 0.68	-14.19 ± 0.02	-3.17 ± 0.01
Nucleation scavenging by convective clouds	-20.75 ± 0.06	-0.00 ± 0.00	-0.00 ± 0.00	-20.08 ± 0.06	-0.56 ± 0.00	-0.11 ± 0.00
Impaction scavenging	-116.29 ± 0.06	-0.00 ± 0.00	-0.00 ± 0.00	-102.21 ± 0.06	-11.08 ± 0.02	-3.00 ± 0.01
Dry deposition	-5.25 ± 0.01	-0.00 ± 0.00	-0.00 ± 0.00	-4.34 ± 0.01	-0.70 ± 0.00	-0.20 ± 0.00
Burden, Tg(SO ₄)	1.33 ± 0.00	0.00 ± 0.00	0.00 ± 0.00	0.94 ± 0.00	0.32 ± 0.00	0.07 ± 0.00
Lifetime, days	0.90 ± 0.00	0.13 ± 0.00	0.09 ± 0.00	0.67 ± 0.00	4.39 ± 0.02	3.99 ± 0.04

Table 2: Global mass budgets and lifetimes of organic carbon aerosol for the year-2000 MARC simulation, showing values for total organic carbon aerosol and organic carbon aerosol in each mode. The processes acting as sources and sinks are summarised in Fig. 1b. Emissions include volatile organic compounds converted to organic carbon aerosol. Aging and coagulation transfer organic carbon between modes, but do not directly influence the total organic carbon aerosol mass. Corresponding results for the year-1850 MARC simulation are shown in Table S2.

5

	Organic carbon aerosol	in pure OC	in MOS
Sources, Tg/yr	+108.88 ± 0.00	+108.88 ± 0.00	+23.81 ± 0.02
Emission	+108.88 ± 0.00	+108.88 ± 0.00	
Aging (source)			+21.60 ± 0.02
Coagulation (source)			+2.22 ± 0.01
Sinks, Tg/yr	-108.82 ± 0.01	-108.75 ± 0.01	-23.88 ± 0.02
Aging (sink)		-21.60 ± 0.02	
Coagulation (sink)		-2.22 ± 0.01	
Nucleation scavenging by stratiform clouds	-13.14 ± 0.01	-0.00 ± 0.00	-13.14 ± 0.01
Nucleation scavenging by convective clouds	-0.51 ± 0.00	-0.00 ± 0.00	-0.51 ± 0.00
Impaction scavenging	-90.65 ± 0.02	-81.03 ± 0.02	-9.63 ± 0.02
Dry deposition	-4.51 ± 0.00	-3.91 ± 0.00	-0.60 ± 0.00
Burden, Tg	1.49 ± 0.00	1.20 ± 0.00	0.29 ± 0.00
Lifetime, days	5.01 ± 0.01	4.03 ± 0.01	4.46 ± 0.02

Table 3: Global mass budgets and lifetimes of black carbon aerosol for the year-2000 MARC simulation, showing values for total black carbon aerosol and black carbon aerosol in each mode. The processes acting as sources and sinks are summarised in Fig. 1c. Aging transfers black carbon between modes, but does not directly influence the total black carbon aerosol mass. Corresponding results for the year-1850 MARC simulation are shown in Table S3.

	Black carbon aerosol	
	in pure BC	in MBS
Sources, Tg/yr	+7.76 ± 0.00	+7.76 ± 0.00 +1.83 ± 0.00
Emission	+7.76 ± 0.00	+7.76 ± 0.00
Aging (source)		+1.83 ± 0.00
Sinks, Tg/yr	-7.77 ± 0.00	-7.76 ± 0.00 -1.84 ± 0.00
Aging (sink)		-1.83 ± 0.00
Nucleation scavenging by stratiform clouds	-1.02 ± 0.00	-0.00 ± 0.00 -1.02 ± 0.00
Nucleation scavenging by convective clouds	-0.03 ± 0.00	-0.00 ± 0.00 -0.03 ± 0.00
Impaction scavenging	-6.31 ± 0.00	-5.56 ± 0.00 -0.74 ± 0.00
Dry deposition	-0.42 ± 0.00	-0.36 ± 0.00 -0.05 ± 0.00
Burden, Tg	0.11 ± 0.00	0.09 ± 0.00 0.02 ± 0.00
Lifetime, days	5.19 ± 0.01	4.32 ± 0.01 3.69 ± 0.01

5

Table 4: Global mass budgets and lifetimes of total sea salt aerosol and total dust aerosol for the year-2000 MARC simulation, summed across the four dust aerosol modes and four sea salt aerosol modes. The processes acting as sources and sinks are summarised in Figs. 1d and 1e. Corresponding results for the year-1850 MARC simulation are shown in Table S4.

	Sea salt aerosol	Dust aerosol
Sources, Tg/yr	+5484.88 ± 11.18	+3683.19 ± 25.59
Emission	+5484.88 ± 11.18	+3683.19 ± 25.59
Sinks, Tg/yr	-5533.62 ± 11.24	-3705.79 ± 25.88
Impaction scavenging	-2324.42 ± 4.29	-1819.27 ± 11.26
Dry deposition	-3209.19 ± 7.27	-1886.52 ± 16.05
Burden, Tg	9.60 ± 0.02	40.91 ± 0.30
Lifetime, days	0.63 ± 0.00	4.03 ± 0.04

Table 5: Area-weighted global mean radiative effects. Combined standard errors are calculated using the annual global mean for each simulation year. The regional distributions of these radiative effects are shown in Figs. 8, 14, 15, 16, and 17. ERF_{SW+LW} is the sum of the other radiative effect components.

	2000-1850 radiative effect, $W m^{-2}$		
	MAM3	MAM7	MARC
Δ direct radiative effect (ΔDRE_{SW})	- 0.02 \pm 0.01	- 0.00 \pm 0.01	- 0.17 \pm 0.01
Δ shortwave cloud radiative effect (ΔCRE_{SW})	- 2.09 \pm 0.04	- 2.05 \pm 0.04	- 2.17 \pm 0.04
Δ longwave cloud radiative effect (ΔCRE_{LW})	+ 0.54 \pm 0.02	+ 0.53 \pm 0.02	+ 0.66 \pm 0.01
Δ surface albedo radiative effect (ΔSRE_{SW})	+ 0.00 \pm 0.02	- 0.02 \pm 0.02	- 0.10 \pm 0.02
Net effective radiative forcing (ERF_{SW+LW})	- 1.57 \pm 0.04	- 1.53 \pm 0.04	- 1.79 \pm 0.03

Figures

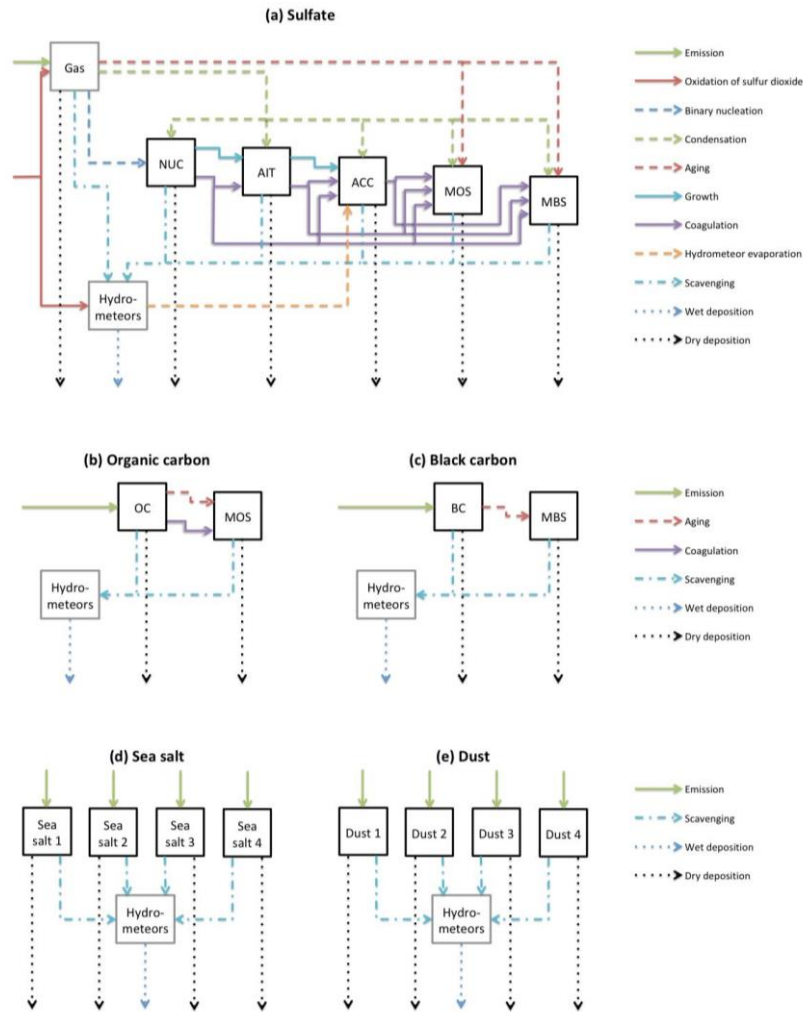


Figure 1: Physical and chemical processes represented by MARC, organised by chemical species: (a) sulfate, (b) organic carbon, (c) black carbon, (d) sea salt, and (e) mineral dust. Black boxes represent aerosol modes: nucleation-mode sulfate (NUC), Aitken-mode sulfate (AIT), accumulation-mode sulfate (ACC), internally-mixed organic carbon plus sulfate (MOS), internally-mixed black carbon plus sulfate (MBS), pure organic carbon (OC), pure black carbon (BC), four sea salt modes, and four mineral dust modes. Grey boxes represent non-aerosol states: sulfate can exist in gas-phase (as sulfuric acid); and all five chemical species can be scavenged by hydrometeors. The arrows illustrating physical and chemical processes are listed in the legend to the right of each row. Emission of sulfate (as gas-phase sulfuric acid) and oxidation of sulfur dioxide (including both gas-phase and aqueous processes) are handled by the sulfur chemistry scheme in CAM5.3. Emission of OC includes a contribution from volatile organic compounds. For sulfate, organic carbon, and black carbon, “scavenging” includes nucleation scavenging by stratiform clouds (handled by the aerosol activation scheme) and nucleation scavenging by convective clouds (assuming a constant supersaturation of 0.1%), in addition to impaction scavenging; for sea salt and dust, “scavenging” refers to impaction scavenging only. “Dry deposition” includes gravitational settling. Further details are provided in Section 2.2 of this manuscript and Section 2.1 of Rothenberg et al. (2018).

Total sulfate aerosol column burden ($Burden_{SO_4}$)

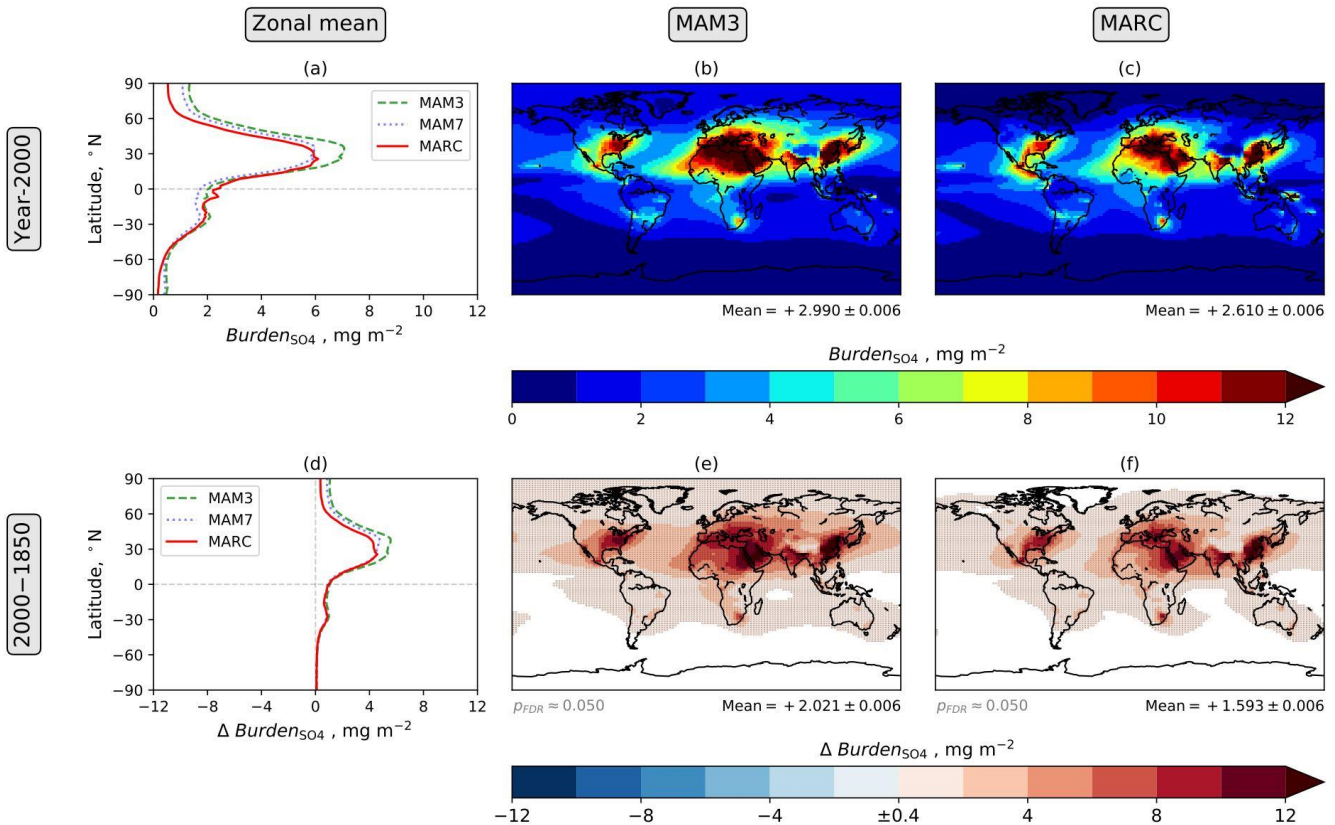


Figure 2: Annual mean total sulfate aerosol burden ($Burden_{SO_4}$). For the zonal means (a, d), the standard errors, calculated using the annual zonal mean for each simulation year, are indicated by shading; but this shading is not visible in Fig. 2, because the standard errors are smaller than the width of the plotted lines. For the maps (b, c, e, f), the area-weighted global mean and associated standard error, calculated using the annual global mean for each simulation year, are shown below each map. For the maps showing aerosol-induced 2000-1850 differences (e, f), white indicates differences with a magnitude less than the threshold value in the centre of the colour bar ($\pm 0.4 \text{ mg m}^{-2}$). For locations where the magnitude is greater than this threshold value, stippling indicates differences that are statistically significant at a significance level of 0.05 after controlling the false discovery rate (Benjamini and Hochberg, 1995; Wilks, 2016); the two-tailed p values are generated by Welch's unequal variances t -test, using annual mean data from each simulation year as the input; the approximate p value threshold, p_{FDR} , which takes the false discovery rate into account, is written underneath each map. The analysis period is 30 years. For MARC, the aerosol burdens (Figs. 2–6) have been calculated using monthly mass-mixing ratios.

Total organic matter/carbon aerosol column burden ($Burden_{OM}$ for MAM; $Burden_{OC}$ for MARC)

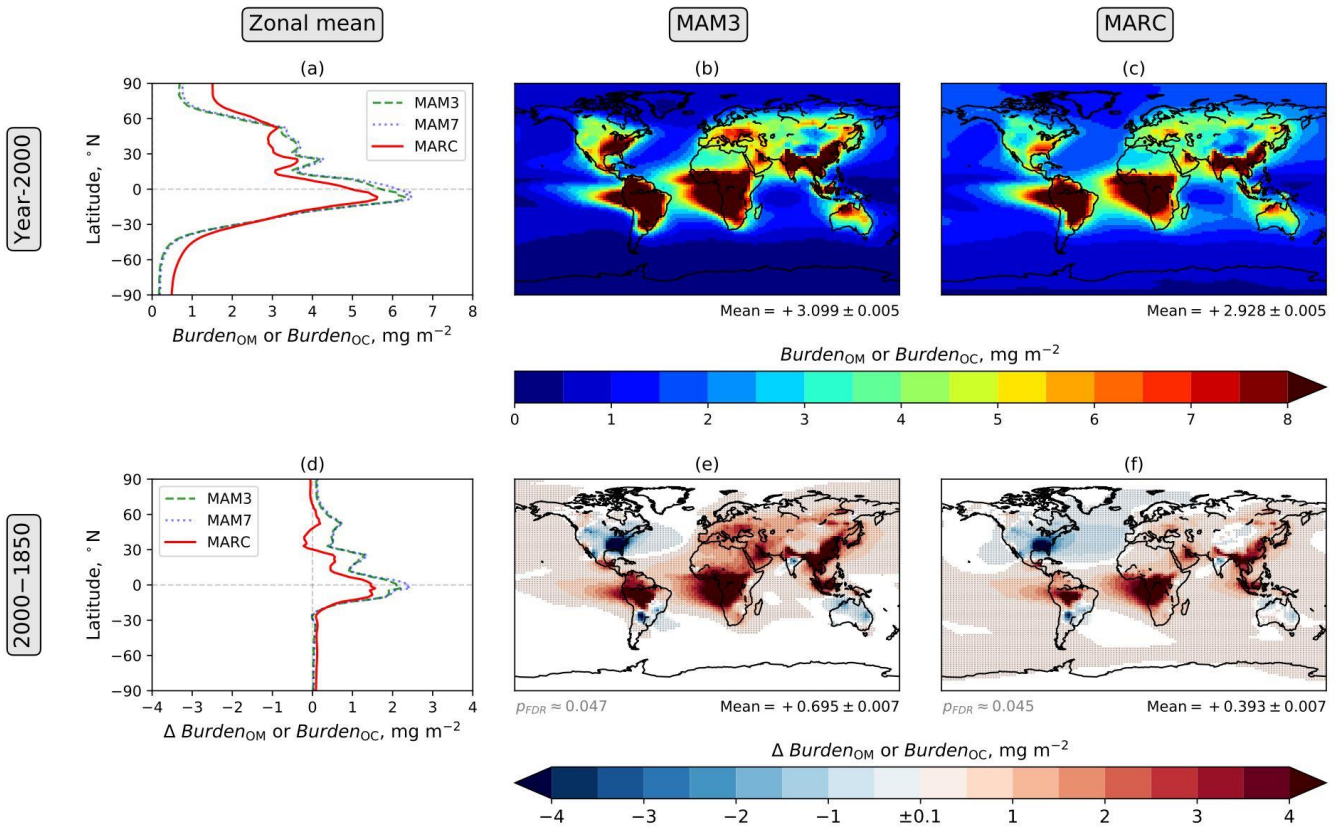


Figure 3: Annual mean total organic matter aerosol burden ($Burden_{OM}$) for MAM and total organic carbon aerosol burden ($Burden_{OC}$) for MARC. Due to different handling of organic carbon, MAM's $Burden_{OM}$ is not directly equivalent to MARC's $Burden_{OC}$. Secondary organic aerosol from volatile organic compounds contributes to both $Burden_{OM}$ and $Burden_{OC}$. The figure components are explained in the Fig. 2 caption.

5

Total black carbon aerosol column burden ($Burden_{BC}$)

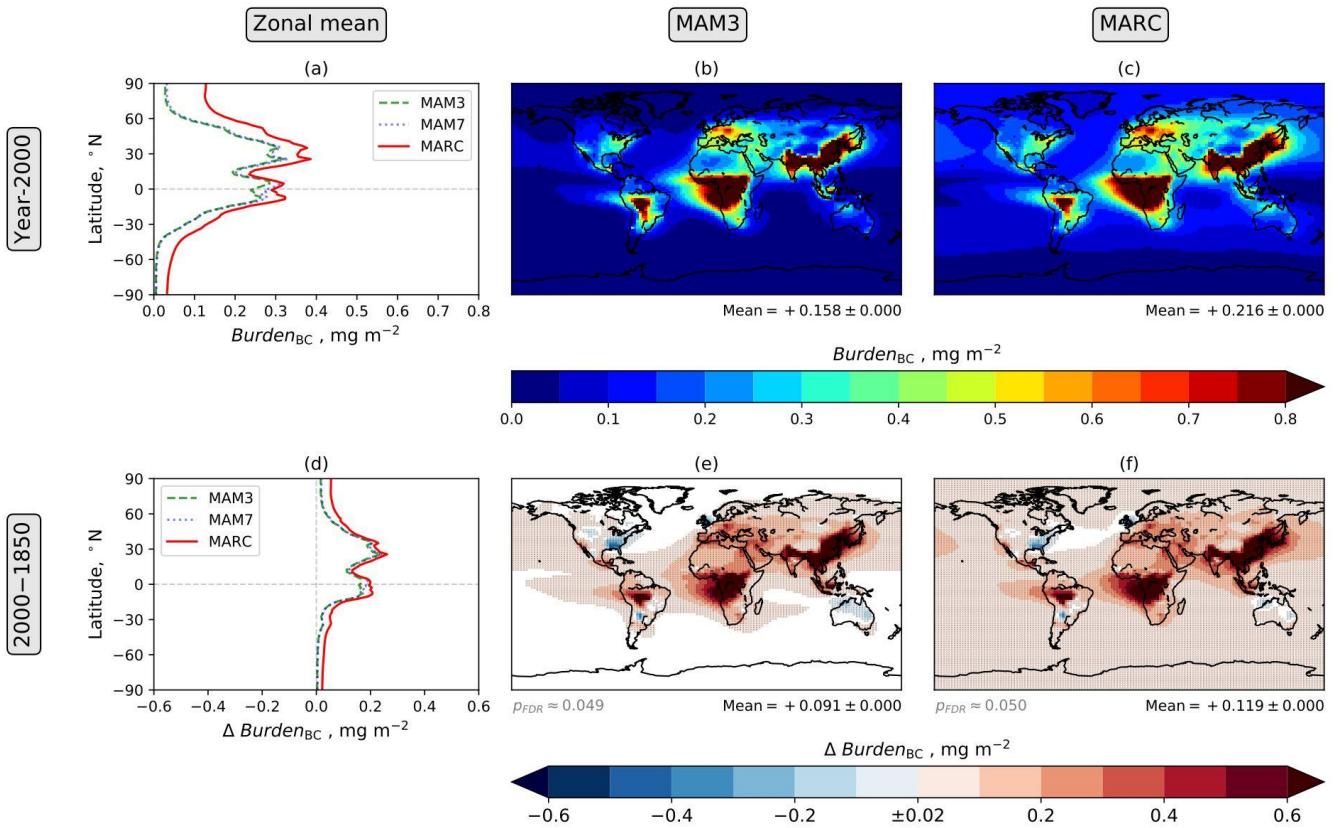


Figure 4: Annual mean total black carbon aerosol burden ($Burden_{BC}$). The figure components are explained in the Fig. 2 caption.

Total sea salt aerosol column burden ($Burden_{\text{salt}}$)

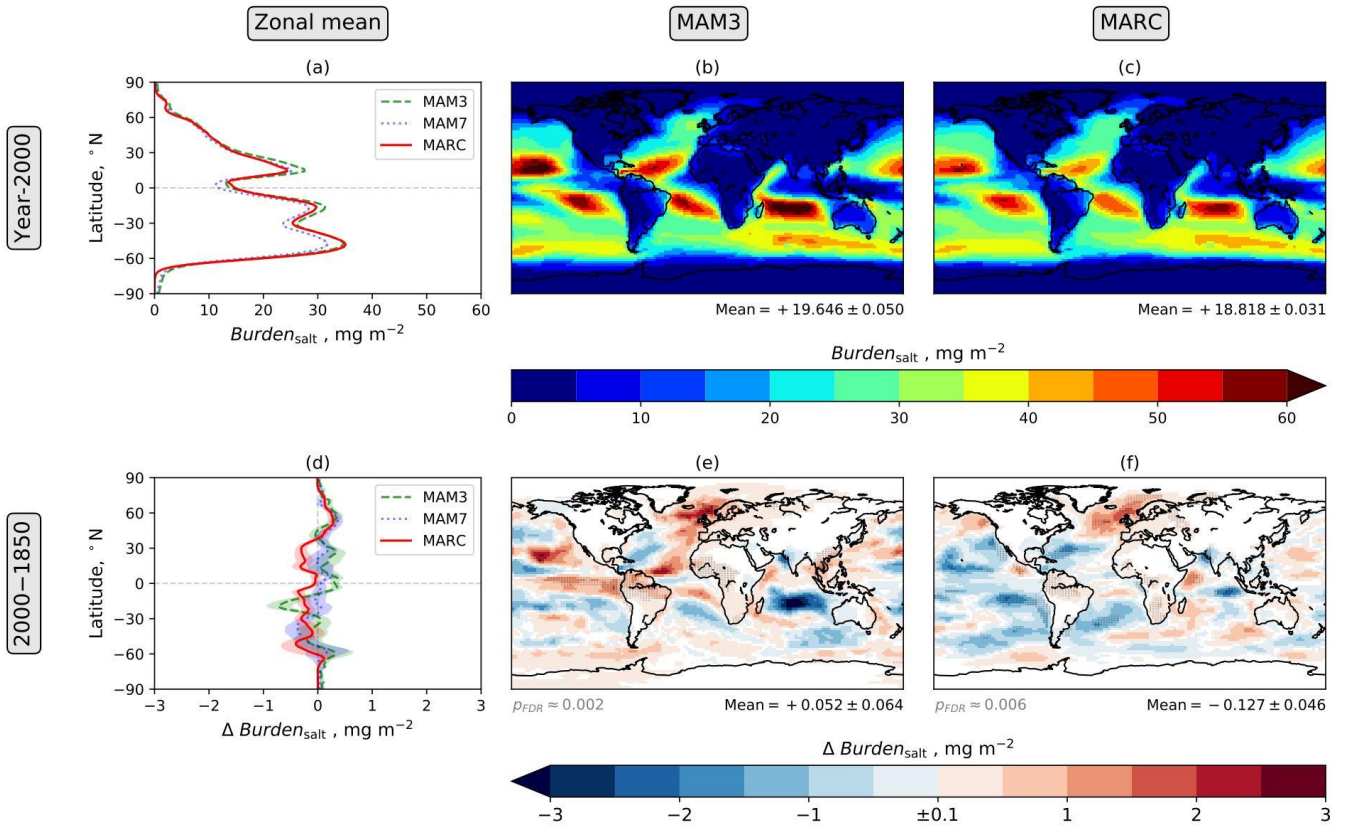


Figure 5: Annual mean total sea salt aerosol burden ($Burden_{\text{salt}}$). The figure components are explained in the Fig. 2 caption.

Total dust aerosol column burden ($Burden_{dust}$)

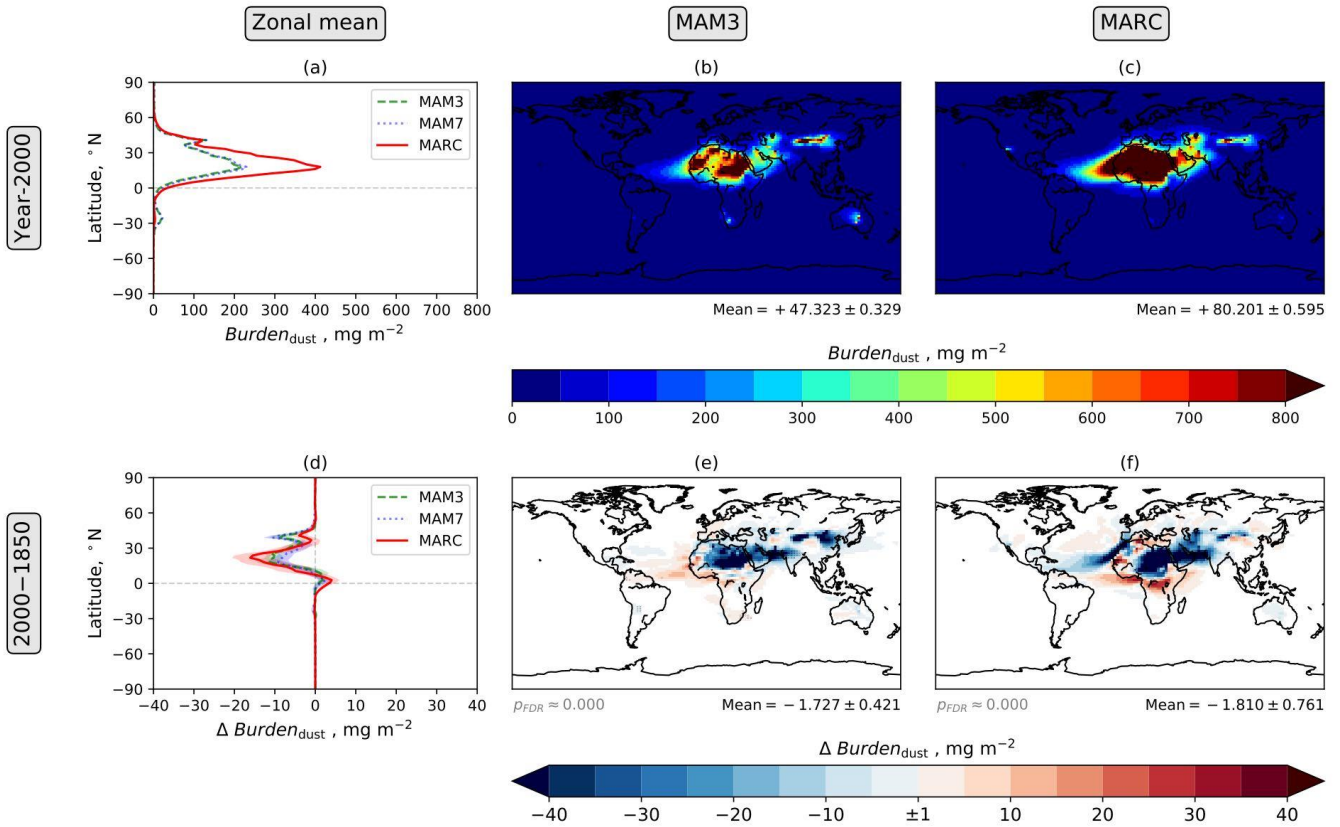


Figure 6: Annual mean dust aerosol burden ($Burden_{dust}$). The figure components are explained in the Fig. 2 caption.

Aerosol optical depth (AOD)

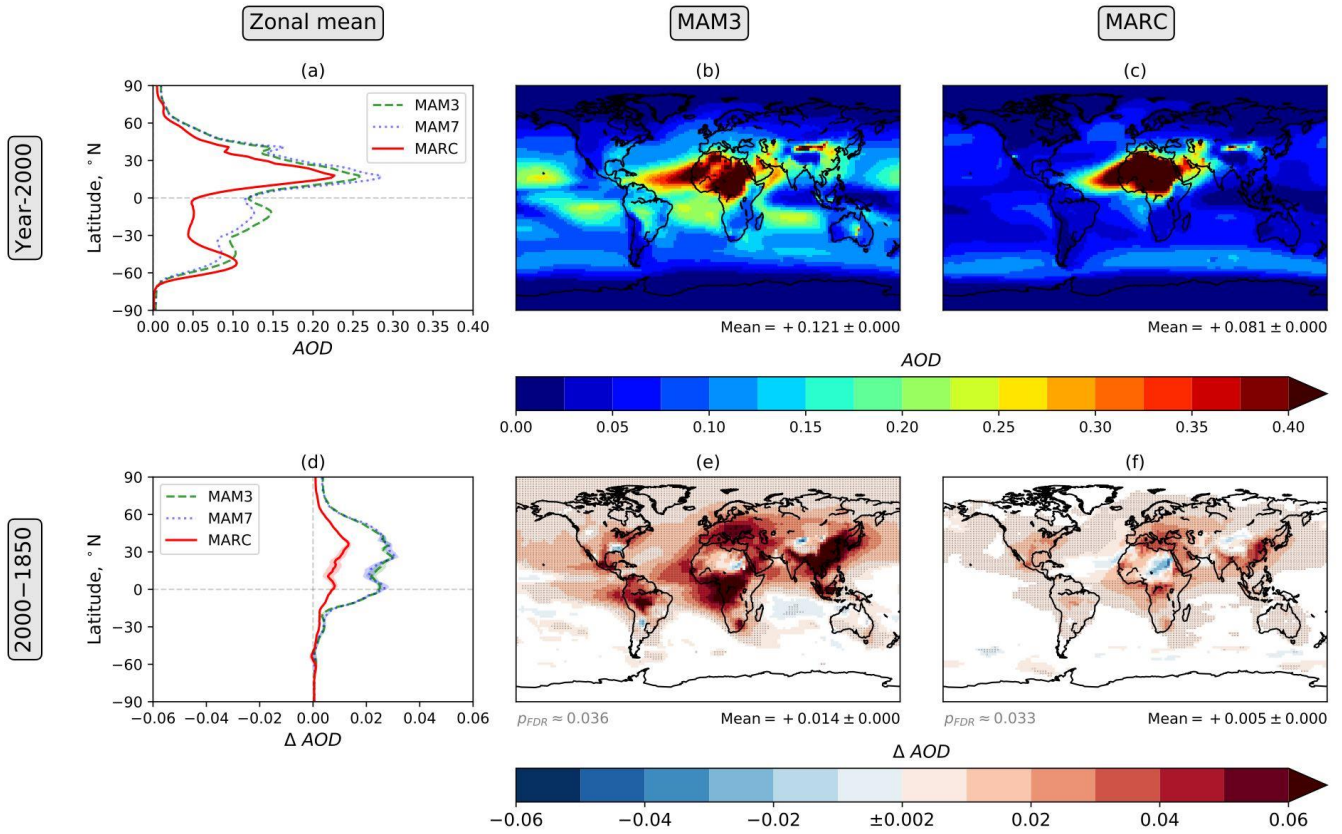


Figure 7: Annual mean aerosol optical depth (AOD). The figure components are explained in the Fig. 2 caption.

Direct radiative effect (DRE_{SW})

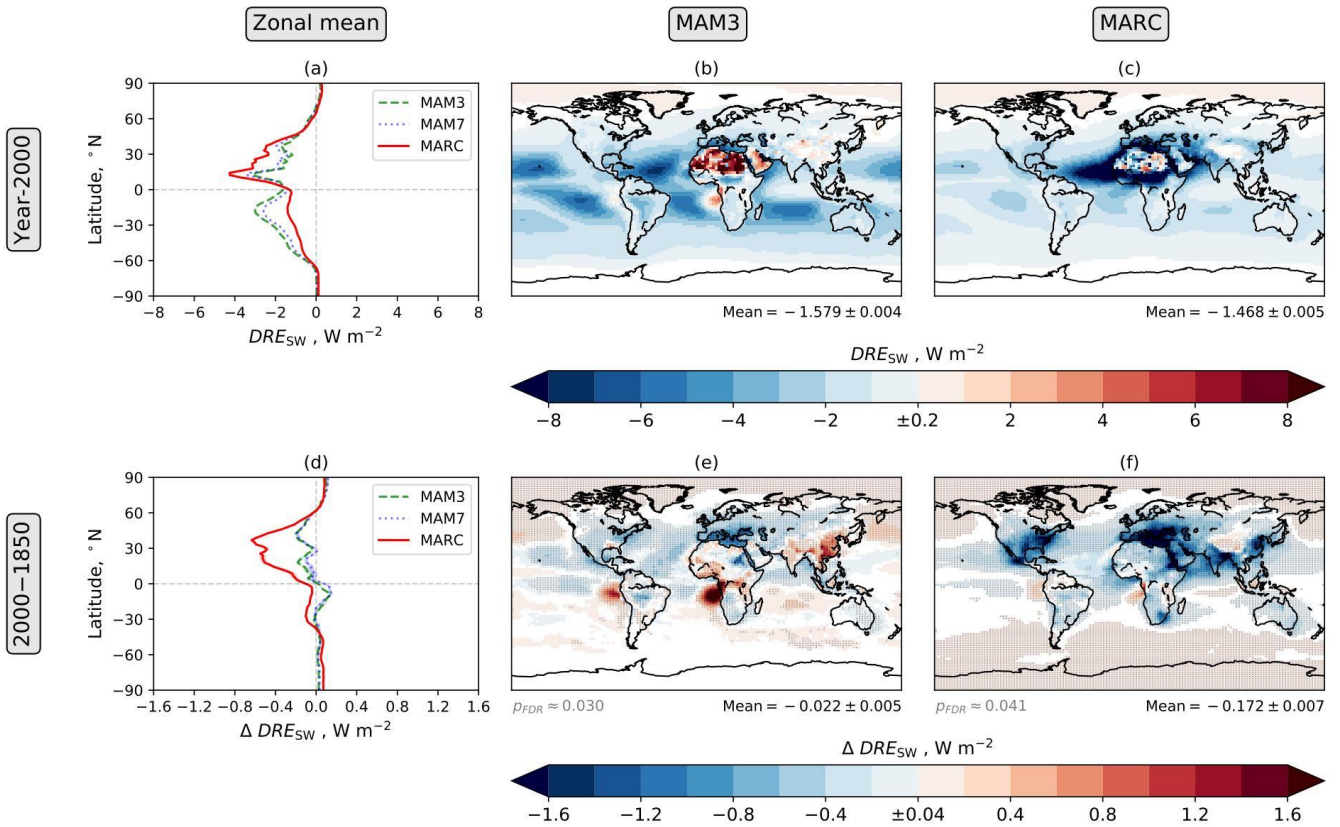


Figure 8: Annual mean direct radiative effect (DRE_{SW} ; Eq. (3)). The figure components are explained in the Fig. 2 caption. For all four maps, white indicates differences with a magnitude less than the threshold value in the centre of the corresponding colour bar.

Absorption by aerosols in the atmosphere (AAA_{SW})

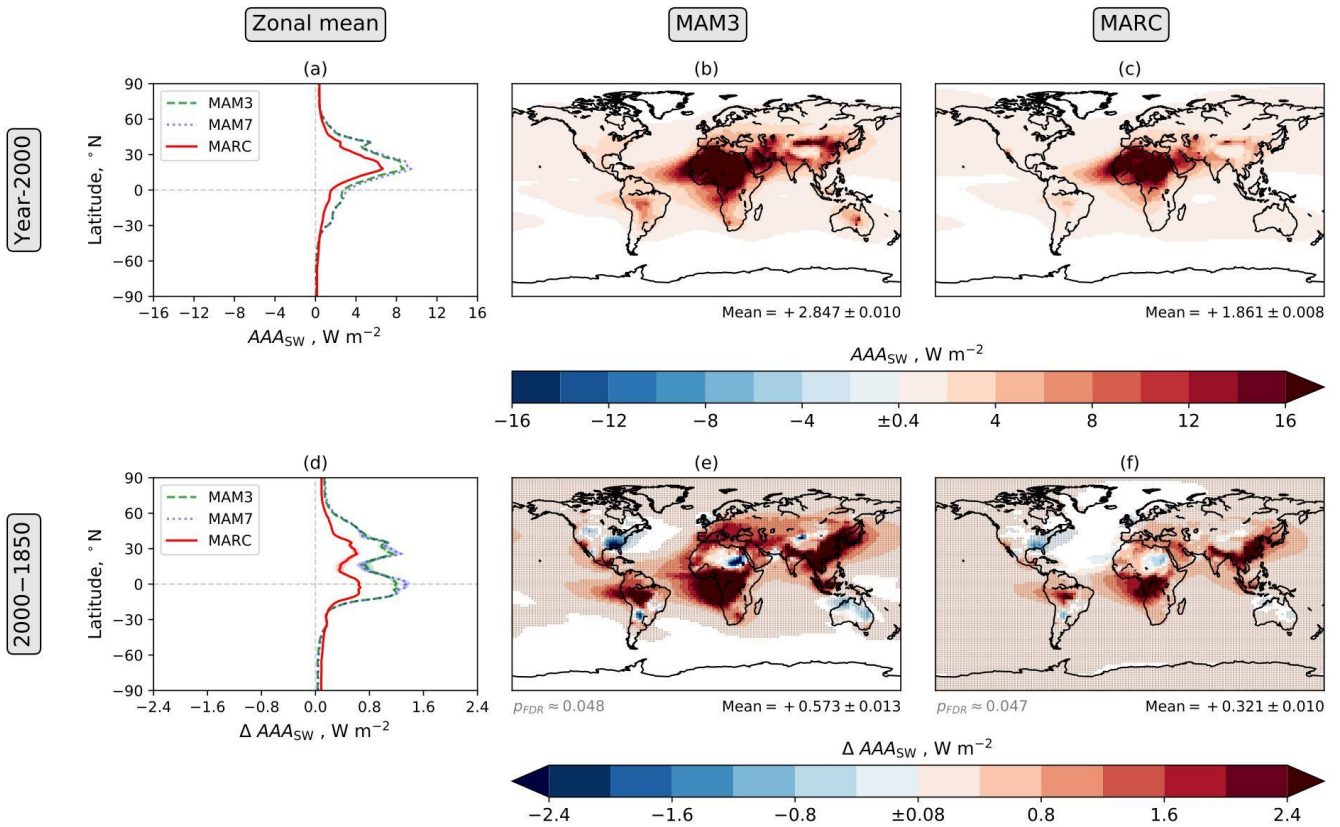


Figure 9: Annual mean absorption by aerosols in the atmosphere (AAA_{SW} ; Eq. (8)). The figure components are explained in the Fig. 2 caption. For all four maps, white indicates differences with a magnitude less than the threshold value in the centre of the corresponding colour bar.

Cloud condensation nuclei concentration at 0.1% supersaturation (CCN_{conc}) in model level 24 (~860hPa)

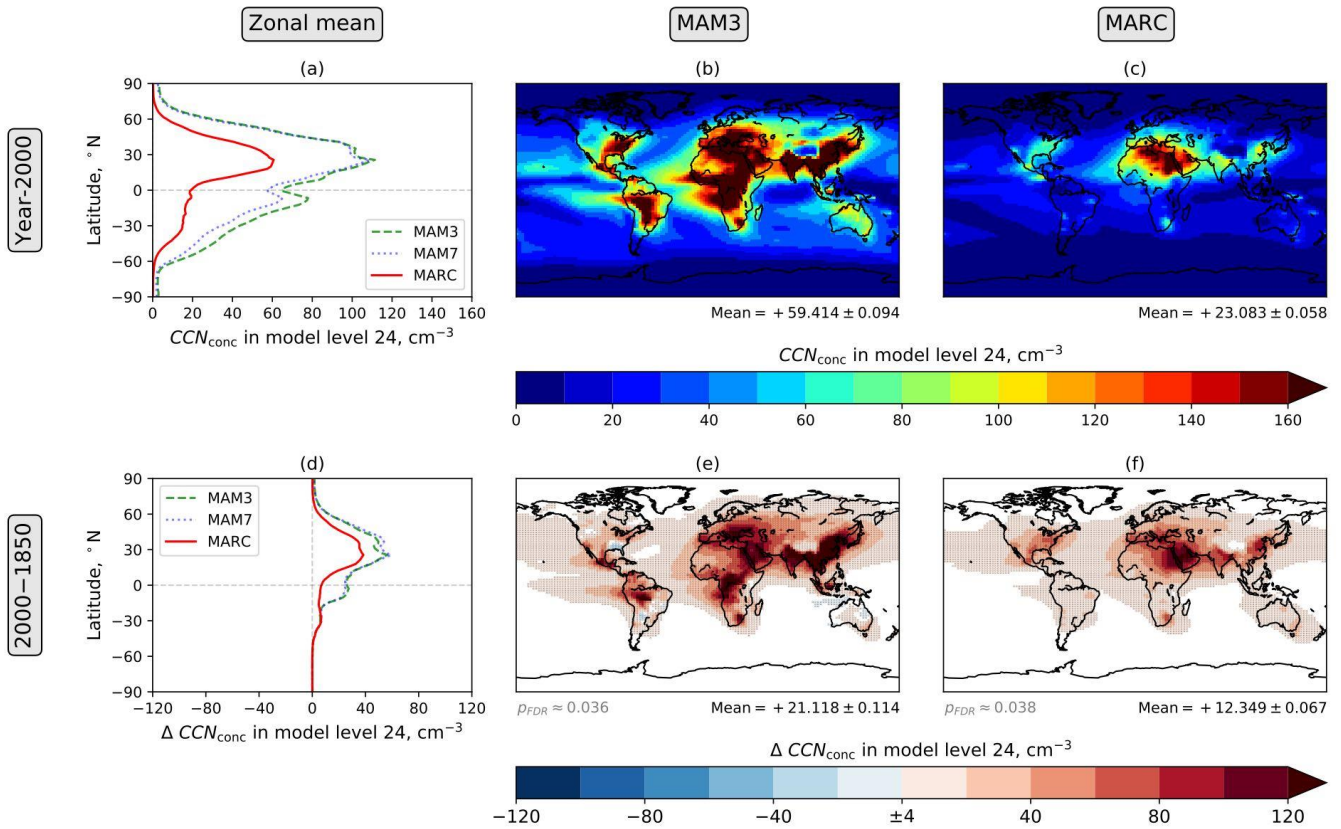


Figure 10: Annual mean cloud condensation nuclei concentration at 0.1% supersaturation (CCN_{conc}) in model level 24 (in the lower troposphere). The figure components are explained in the Fig. 2 caption. Corresponding results showing CCN_{conc} near the surface and in the mid-troposphere are shown in Figs. S1 and S2 of the Supplement.

Column-integrated cloud droplet number concentration ($CDNC_{\text{column}}$)

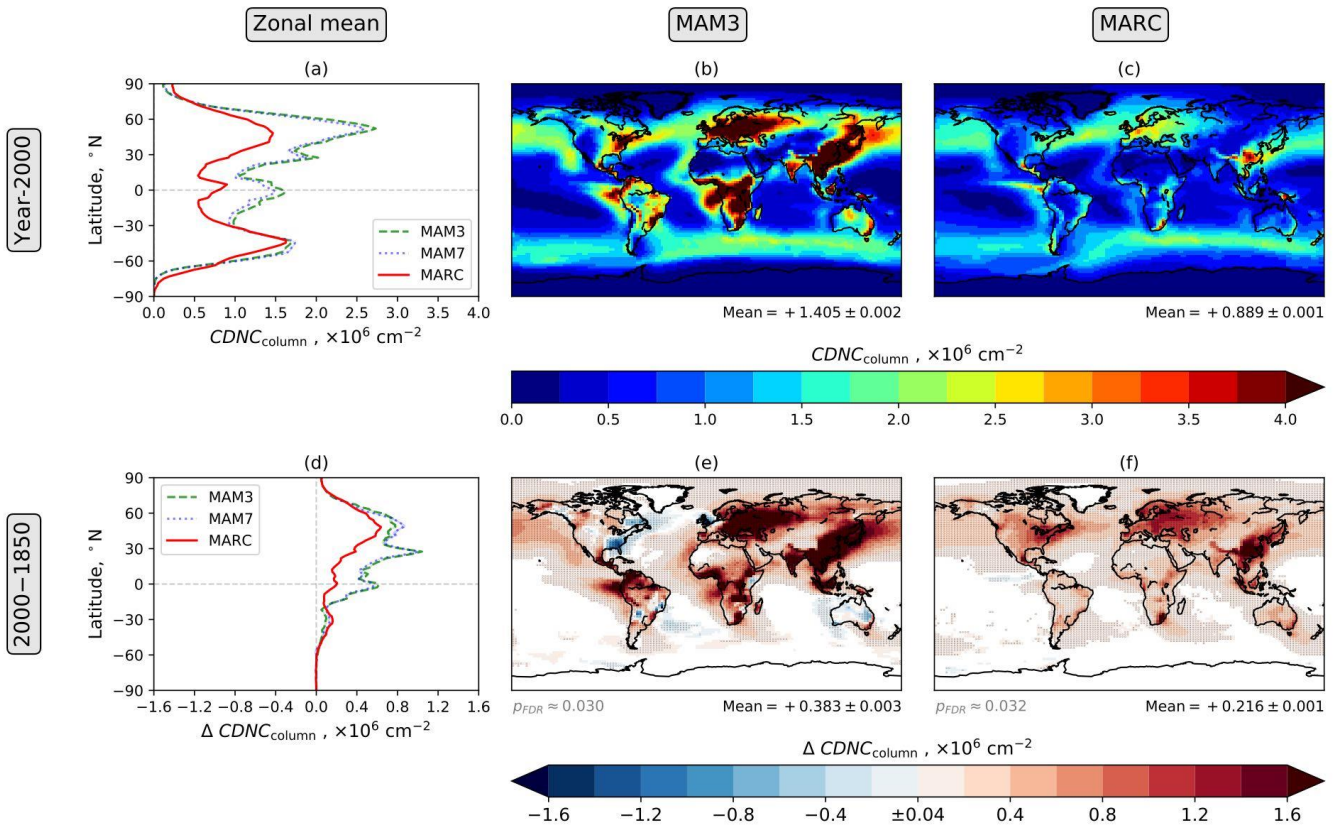


Figure 11: Annual mean column-integrated cloud droplet number concentration ($CDNC_{\text{column}}$). The figure components are explained in the Fig. 2 caption.

Grid-box liquid water path (WP_{liquid})

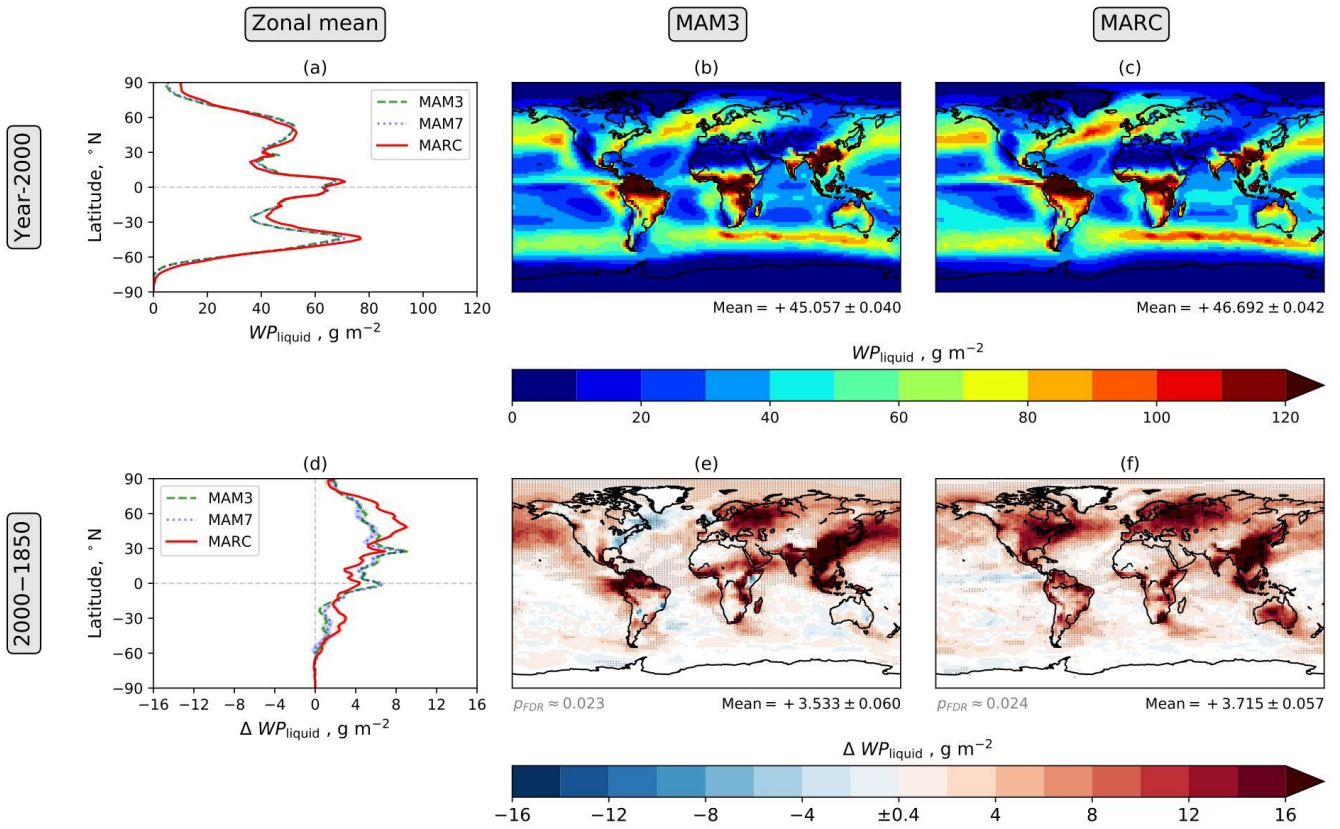


Figure 12: Annual mean grid-box cloud liquid water path (WP_{liquid}). The figure components are explained in the Fig. 2 caption.

Grid-box ice water path (WP_{ice})

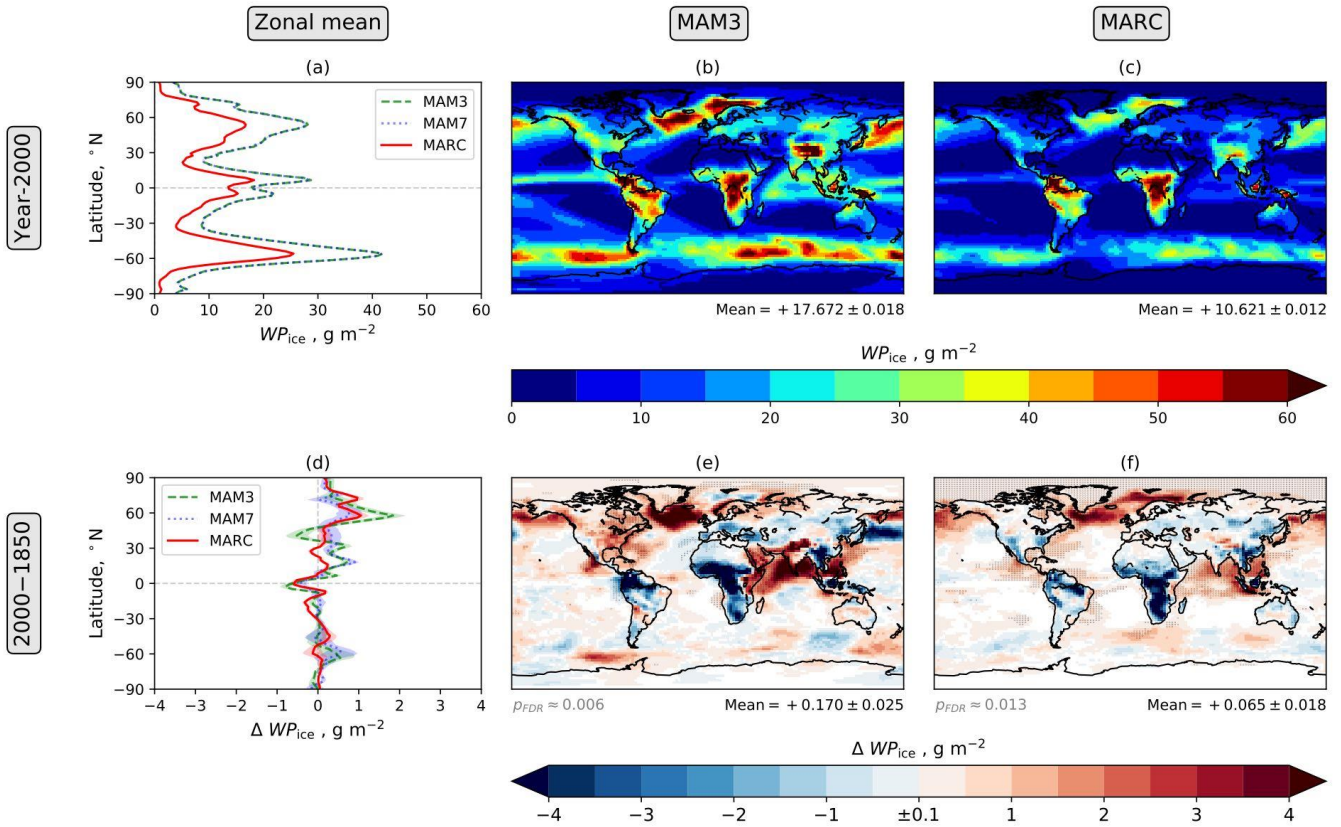


Figure 13: Annual mean grid-box cloud ice water path (WP_{ice}). The figure components are explained in the Fig. 2 caption.

Shortwave cloud radiative effect (CRE_{SW})

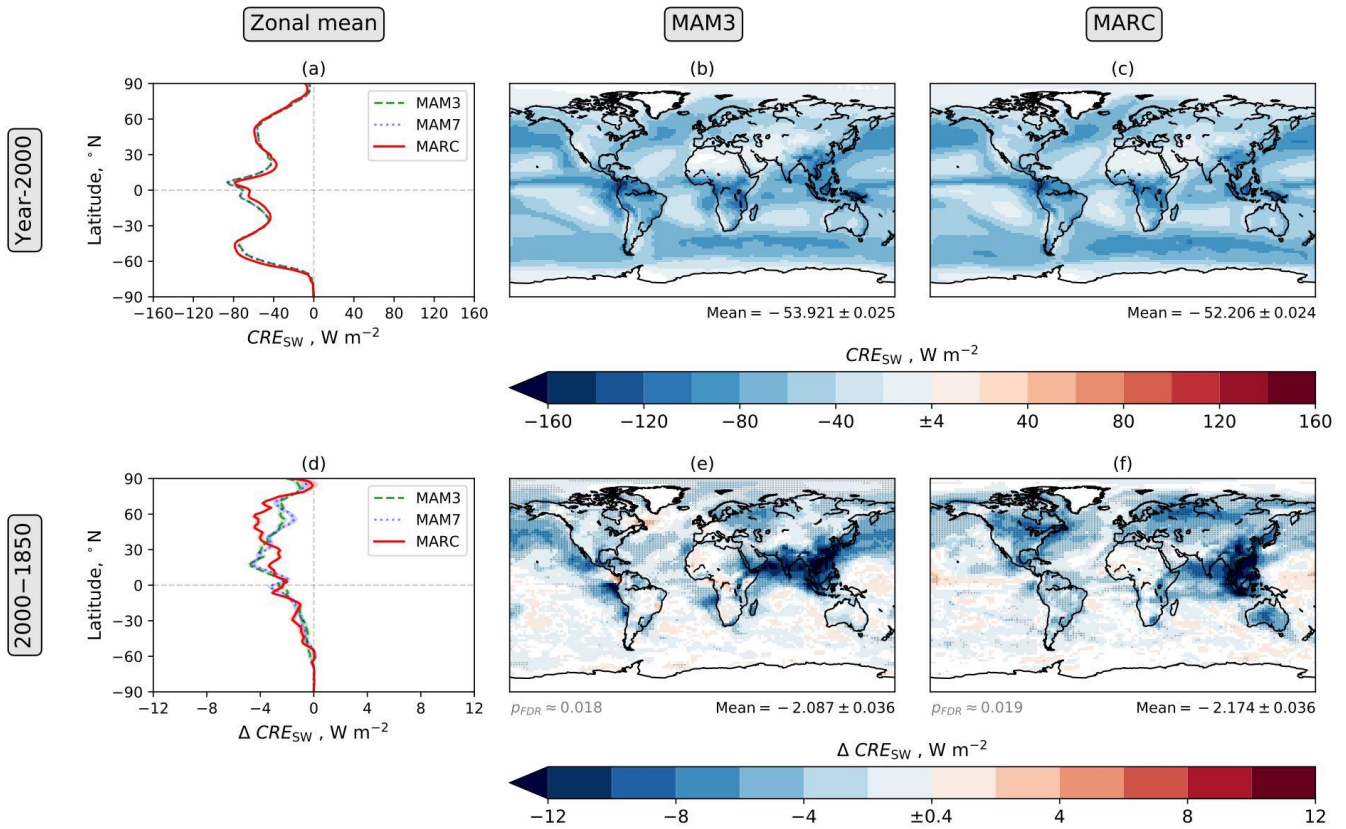


Figure 14: Annual mean clean-sky shortwave cloud radiative effect (CRE_{SW} ; Eq. (4)). The figure components are explained in the Fig. 2 caption. For all four maps, white indicates differences with a magnitude less than the threshold value in the centre of the corresponding colour bar.

Longwave cloud radiative effect (CRE_{LW})

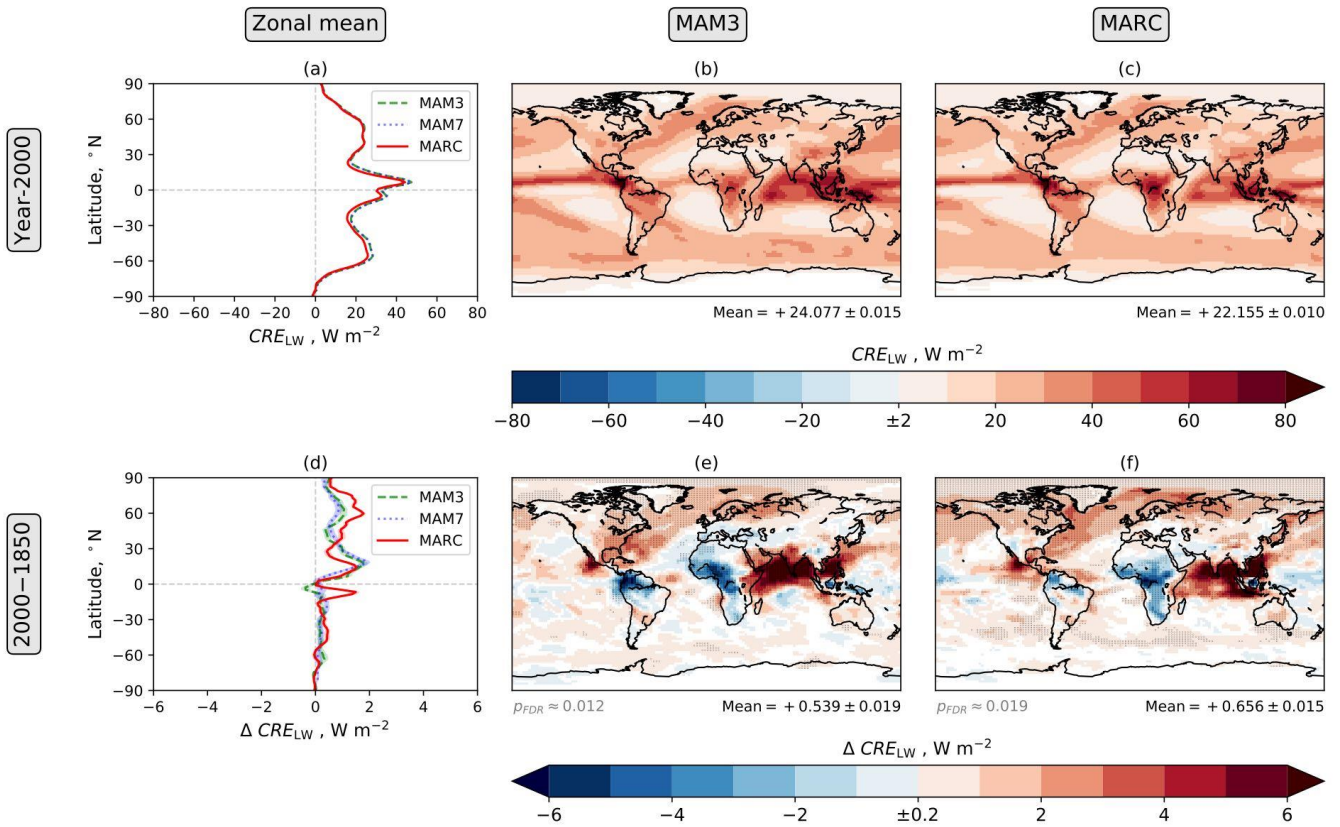


Figure 15: Annual mean longwave cloud radiative effect (CRE_{LW} ; Eq. (6)). The figure components are explained in the Fig. 2 caption. For all four maps, white indicates differences with a magnitude less than the threshold value in the centre of the corresponding colour bar.

5

Δ surface albedo radiative effect (ΔSRE_{SW})

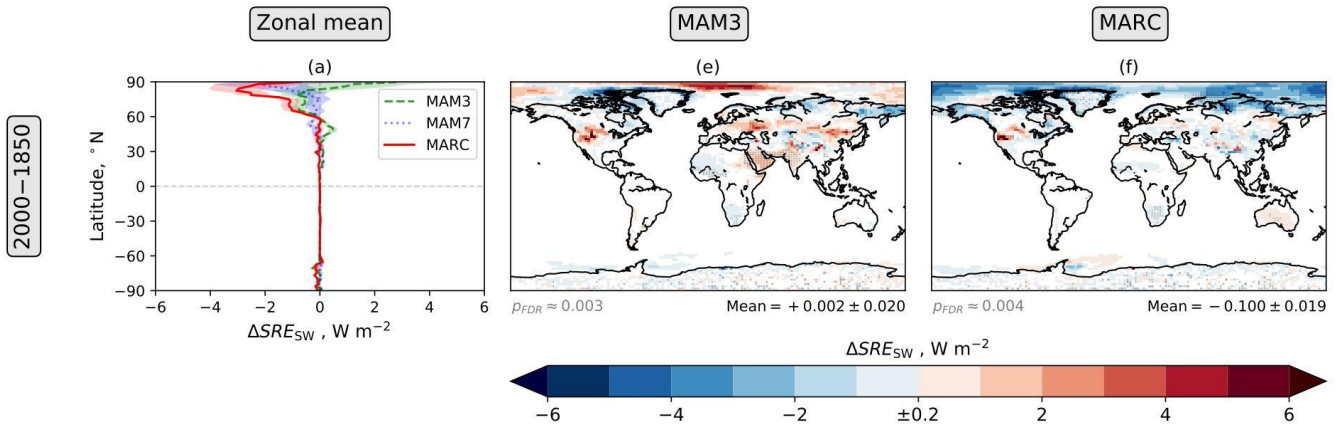


Figure 16: Annual mean aerosol-induced 2000-1850 surface albedo radiative effect (ΔSRE_{SW} ; Eq. (5)). The figure components are explained in the Fig. 2 caption.

Net effective radiative forcing (ERF_{SW+LW})

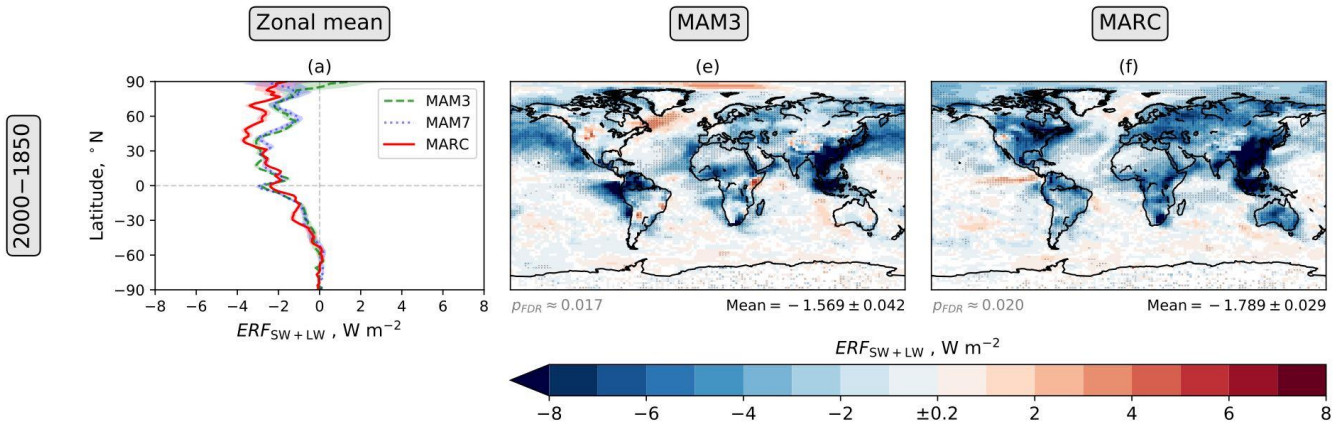


Figure 17: Annual mean 2000-1850 net effective radiative forcing (ERF_{SW+LW} ; Eq. (7)). The figure components are explained in the Fig. 2 caption. When comparing the relative contributions of the different radiative effect components to ERF_{SW+LW} , note that different colour bars are used in Figs. 8, 14, 15, and 16.

5

Introduction

This document contains supplementary tables and supplementary figures for the manuscript titled “*Effective radiative forcing in the aerosol–climate model CAM5.3-MARC-ARG*”. The supplementary figures are grouped thematically: cloud condensation nuclei concentration (Figs. S1 and S2), cloud water path and fraction (Figs. S3–S7), total precipitation rate (Fig. S8), wind speed (Fig. S9), snow cover and rate (Figs. S10 and S11), and black carbon deposition (Figs. S12 and S13).

Supplementary Tables

Table S1: Global mass budgets and lifetimes of sulfate aerosol for the year-1850 MARC simulation. Corresponding results for the year-2000 MARC simulation are shown in Table 1 in the main manuscript.

	Sulfate aerosol	in NUC	in AIT	in ACC	in MOS	in MBS
Sources, Tg(SO ₄)/yr	+211.03 ± 0.29	+0.01 ± 0.00	+0.07 ± 0.00	+204.50 ± 0.29	+6.26 ± 0.02	+0.56 ± 0.01
Binary nucleation	+0.00 ± 0.00	+0.00 ± 0.00				
Condensation	+4.57 ± 0.02	+0.01 ± 0.00	+0.07 ± 0.00	+3.21 ± 0.01	+0.97 ± 0.01	+0.32 ± 0.01
Aging (source)	+5.24 ± 0.01				+5.09 ± 0.01	+0.15 ± 0.00
Growth (source)			+0.01 ± 0.00	+0.07 ± 0.00		
Coagulation (source)			+0.00 ± 0.00	+0.00 ± 0.00	+0.20 ± 0.00	+0.08 ± 0.00
Hydrometeor evaporation	+201.22 ± 0.29			+201.22 ± 0.29		
Sinks, Tg(SO ₄)/yr	-211.13 ± 0.29	-0.01 ± 0.00	-0.07 ± 0.00	-204.57 ± 0.29	-6.29 ± 0.02	-0.56 ± 0.01
Growth (sink)		-0.01 ± 0.00	-0.07 ± 0.00			
Coagulation (sink)		-0.00 ± 0.00	-0.00 ± 0.00	-0.28 ± 0.00		
Nucleation scavenging by stratiform clouds	-149.54 ± 0.27	-0.00 ± 0.00	-0.00 ± 0.00	-146.04 ± 0.27	-3.26 ± 0.01	-0.24 ± 0.00
Nucleation scavenging by convective clouds	-10.57 ± 0.02	-0.00 ± 0.00	-0.00 ± 0.00	-10.32 ± 0.02	-0.24 ± 0.00	-0.01 ± 0.00
Impaction scavenging	-48.98 ± 0.02	-0.00 ± 0.00	-0.00 ± 0.00	-46.04 ± 0.02	-2.67 ± 0.01	-0.28 ± 0.00
Dry deposition	-2.04 ± 0.00	-0.00 ± 0.00	-0.00 ± 0.00	-1.89 ± 0.00	-0.12 ± 0.00	-0.02 ± 0.00
Burden, Tg(SO ₄)	0.52 ± 0.00	0.00 ± 0.00	0.00 ± 0.00	0.40 ± 0.00	0.11 ± 0.00	0.01 ± 0.00
Lifetime, days	0.90 ± 0.00	0.18 ± 0.00	0.09 ± 0.00	0.72 ± 0.00	6.28 ± 0.05	5.78 ± 0.15

Table S2: Global mass budgets and lifetimes of organic carbon aerosol for the year-1850 MARC simulation. Corresponding results for the year-2000 MARC simulation are shown in Table 2 in the main manuscript.

	Organic carbon aerosol	in pure OC	in MOS
Sources, Tg/yr	+87.94 ± 0.00	+87.94 ± 0.00	+6.15 ± 0.01
Emission	+87.94 ± 0.00	+87.94 ± 0.00	
Aging (source)			+5.34 ± 0.01
Coagulation (source)			+0.81 ± 0.00
Sinks, Tg/yr	-87.90 ± 0.01	-87.87 ± 0.01	-6.17 ± 0.01
Aging (sink)		-5.34 ± 0.01	
Coagulation (sink)		-0.81 ± 0.00	
Nucleation scavenging by stratiform clouds	-3.32 ± 0.01	-0.00 ± 0.00	-3.32 ± 0.01
Nucleation scavenging by convective clouds	-0.22 ± 0.00	+0.00 ± 0.00	-0.22 ± 0.00
Impaction scavenging	-80.68 ± 0.01	-78.16 ± 0.01	-2.52 ± 0.01
Dry deposition	-3.67 ± 0.00	-3.56 ± 0.00	-0.11 ± 0.00
Burden, Tg	1.29 ± 0.00	1.19 ± 0.00	0.11 ± 0.00
Lifetime, days	5.37 ± 0.01	4.92 ± 0.01	6.37 ± 0.04

5

Table S3: Global mass budgets and lifetimes of black carbon aerosol for the year-1850 MARC simulation. Corresponding results for the year-2000 MARC simulation are shown in Table 3 in the main manuscript.

	Black carbon aerosol	in pure BC	in MBS
Sources, Tg/yr	+3.08 ± 0.00	+3.08 ± 0.00	+0.16 ± 0.00
Emission	+3.08 ± 0.00	+3.08 ± 0.00	
Aging (source)			+0.16 ± 0.00
Sinks, Tg/yr	-3.09 ± 0.00	-3.09 ± 0.00	-0.16 ± 0.00
Aging (sink)		-0.16 ± 0.00	
Nucleation scavenging by stratiform clouds	-0.08 ± 0.00	-0.00 ± 0.00	-0.08 ± 0.00
Nucleation scavenging by convective clouds	-0.00 ± 0.00	-0.00 ± 0.00	-0.00 ± 0.00
Impaction scavenging	-2.81 ± 0.00	-2.74 ± 0.00	-0.07 ± 0.00
Dry deposition	-0.19 ± 0.00	-0.18 ± 0.00	-0.00 ± 0.00
Burden, Tg	0.05 ± 0.00	0.05 ± 0.00	0.00 ± 0.00
Lifetime, days	5.86 ± 0.01	5.63 ± 0.01	4.42 ± 0.04

Table S4: Global mass budgets and lifetimes of total sea salt aerosol and total dust aerosol for the year-1850 MARC simulation. Corresponding results for the year-2000 MARC simulation are shown in Table 4 in the main manuscript.

	Sea salt aerosol	Dust aerosol
Sources, Tg/yr	+5510.06 ± 14.81	+3789.26 ± 21.87
Emission	+5510.06 ± 14.81	+3789.26 ± 21.87
Sinks, Tg/yr	-5559.09 ± 14.96	-3812.70 ± 21.36
Impaction scavenging	-2327.11 ± 5.73	-1898.77 ± 8.88
Dry deposition	-3231.97 ± 9.45	-1913.94 ± 14.32
Burden, Tg	9.66 ± 0.02	41.83 ± 0.24
Lifetime, days	0.63 ± 0.00	4.00 ± 0.03

5

Table S5: Results from the six timing simulations. Each of these simulations consists of “20-day model runs with restarts and history turned off” (CESM Software Engineering Group, 2015), repeated five times in order to assess variability. The repetition of each simulation allows the standard error to be calculated via calculation of the corrected sample standard deviation. For consistency, all runs have been submitted on the same day. For each run, 720 processors, spread across 20 nodes on Cheyenne (doi:10.5065/D6RX99HX), have been used. As with the year-2000 and year-1850 simulations (Section 2.3 of the main manuscript), a model resolution of $1.9^\circ \times 2.5^\circ$ is used, SSTs and greenhouse gas concentrations have been prescribed using year-2000 climatological values, and aerosol and aerosol precursor emissions follow year-2000 emissions. In contrast to the simulations described in the main manuscript, COSP has not been used in these timing simulations. The simulation costs shown represent the total cost of all model components, including non-atmospheric components such as the land scheme.

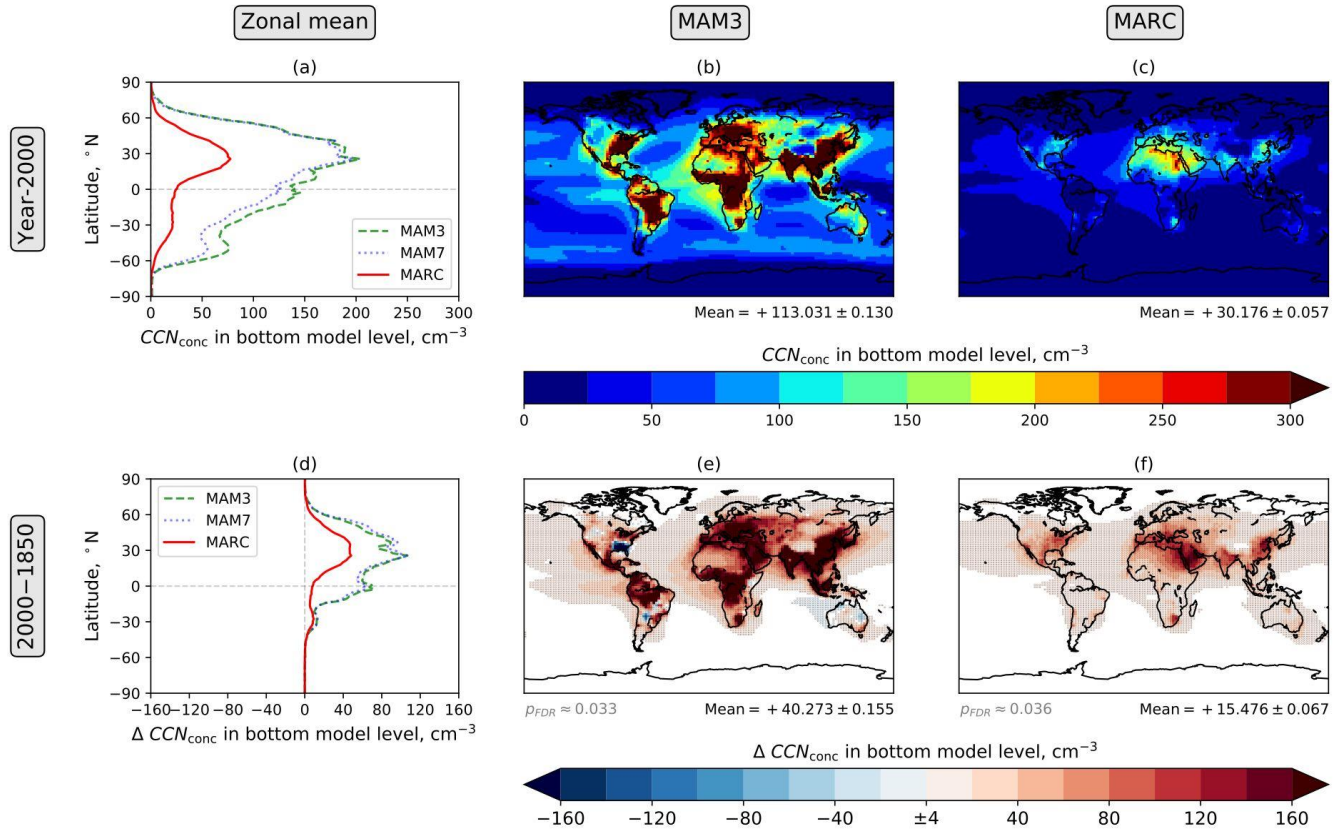
10

Aerosol module	Clean-sky radiation diagnostics	Notes	CESM simulation cost ± standard error (processor hours / model year)	Relative simulation cost (% above MAM3 with clean-sky diagnostics switched OFF)
MAM3	OFF	Standard CAM5.3	325.5 ± 0.8	0.0%
MAM7	OFF	Standard CAM5.3 + MAM7	435.6 ± 1.5	+33.8%
MARC	OFF	Clean-sky diagnostics switched off via modification of source code	344.3 ± 0.7	+5.8%
MAM3	ON	Diagnostic clean-sky radiation call specified in simulation namelist	362.3 ± 0.8	+11.3%
MAM7	ON	Diagnostic clean-sky radiation call specified in simulation namelist	472.2 ± 1.0	+45.1%
MARC	ON	Standard CAM5.3-MARC-ARG	361.1 ± 0.7	+10.9%

15

Supplementary Figures

Cloud condensation nuclei concentration at 0.1% supersaturation (CCN_{conc}) in bottom model level



5 **Figure S1: Annual mean cloud condensation nuclei concentration at 0.1% supersaturation (CCN_{conc}) in the bottom model level. The figure components are explained in the caption of Fig. 2.**

Cloud condensation nuclei concentration at 0.1% supersaturation (CCN_{conc}) in model level 19 (~525hPa)

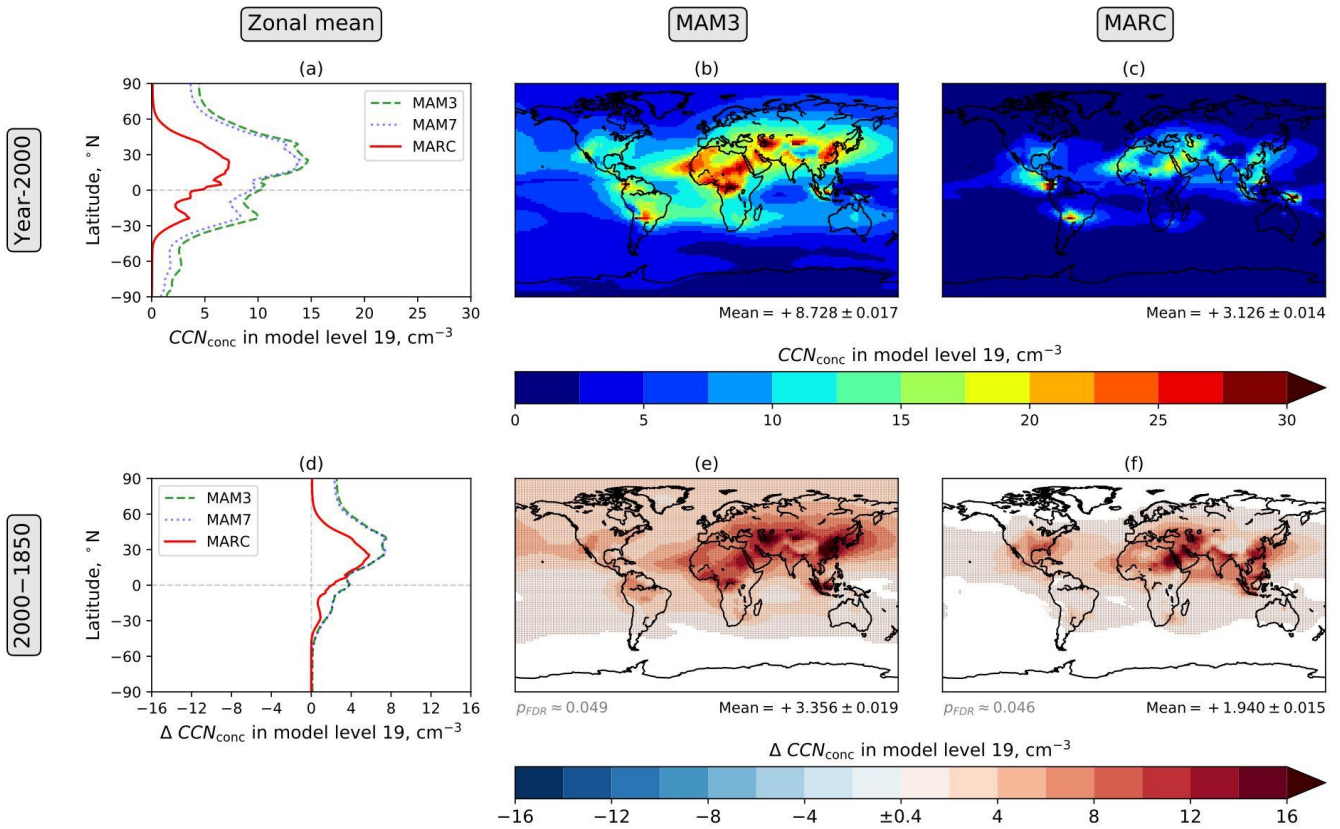


Figure S2: Annual mean cloud condensation nuclei concentration at 0.1% supersaturation (CCN_{conc}) in model level 19 (in the mid-troposphere). The figure components are explained in the caption of Fig. 2.

Grid-box total cloud (liquid + ice) water path (WP_{total})

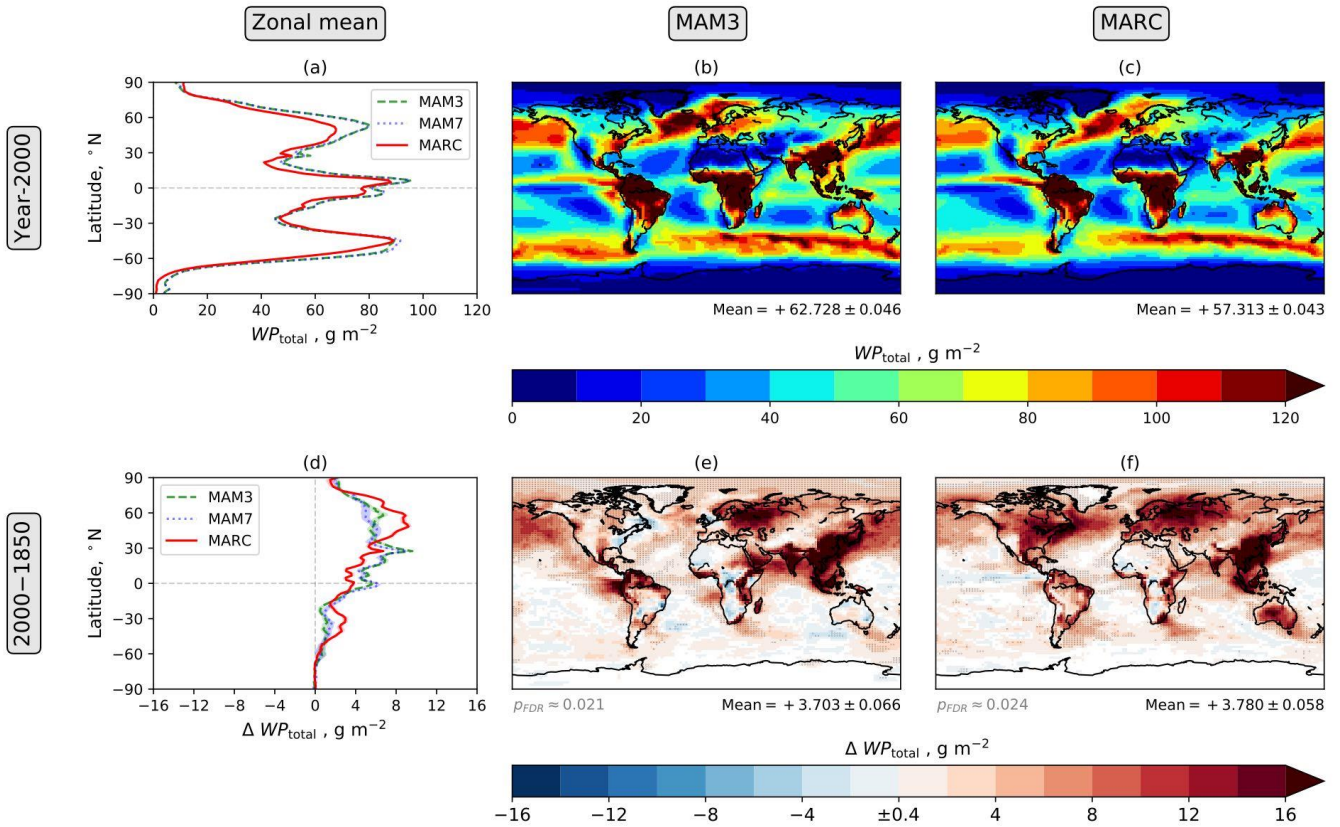


Figure S3: Annual mean grid-box total cloud water path ($WP_{total} = WP_{liquid} + WP_{ice}$). The figure components are explained in the caption of Fig. 2.

Total cloud fraction (CF_{total})

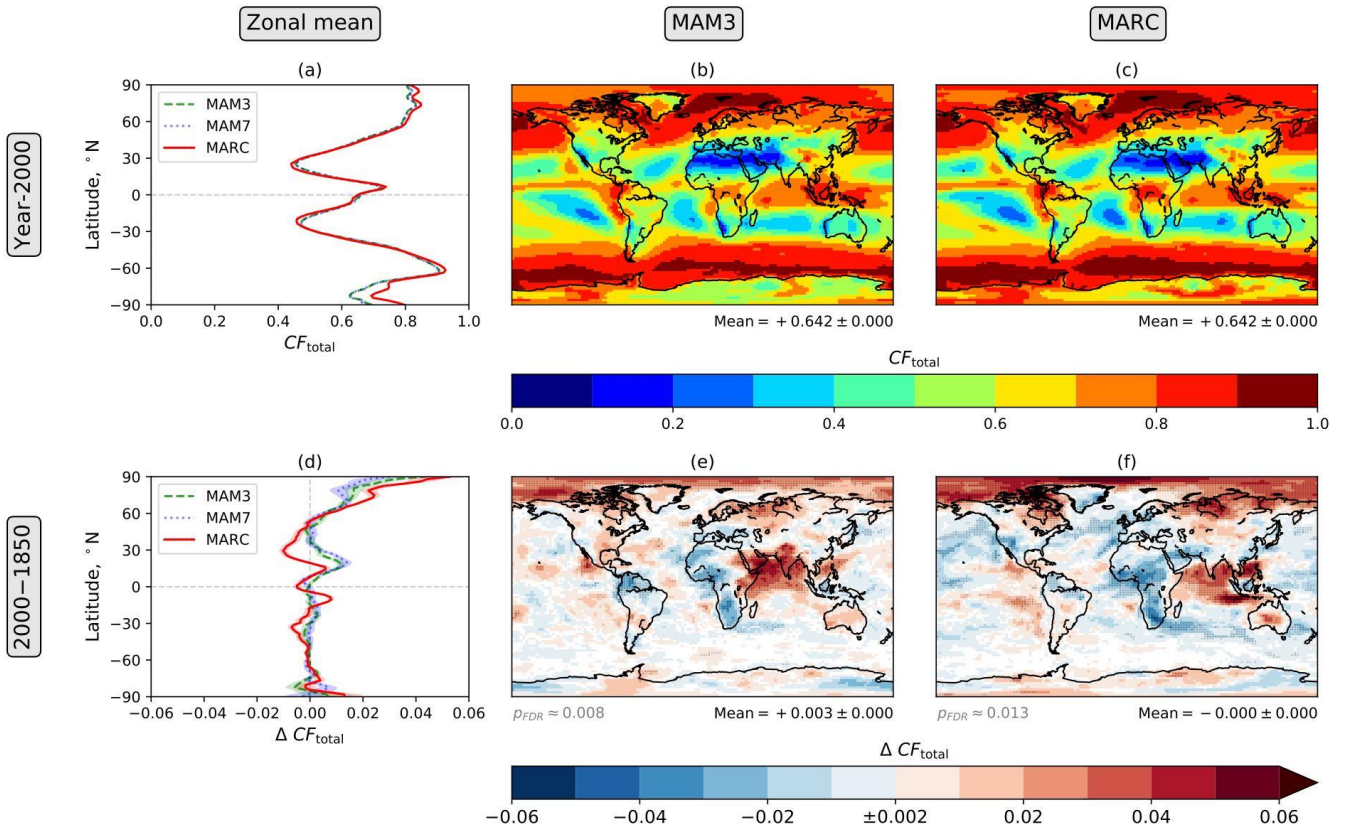


Figure S4: Annual mean total cloud fraction (CF_{total}). The figure components are explained in the caption of Fig. 2.

Low-level cloud fraction (CF_{low})

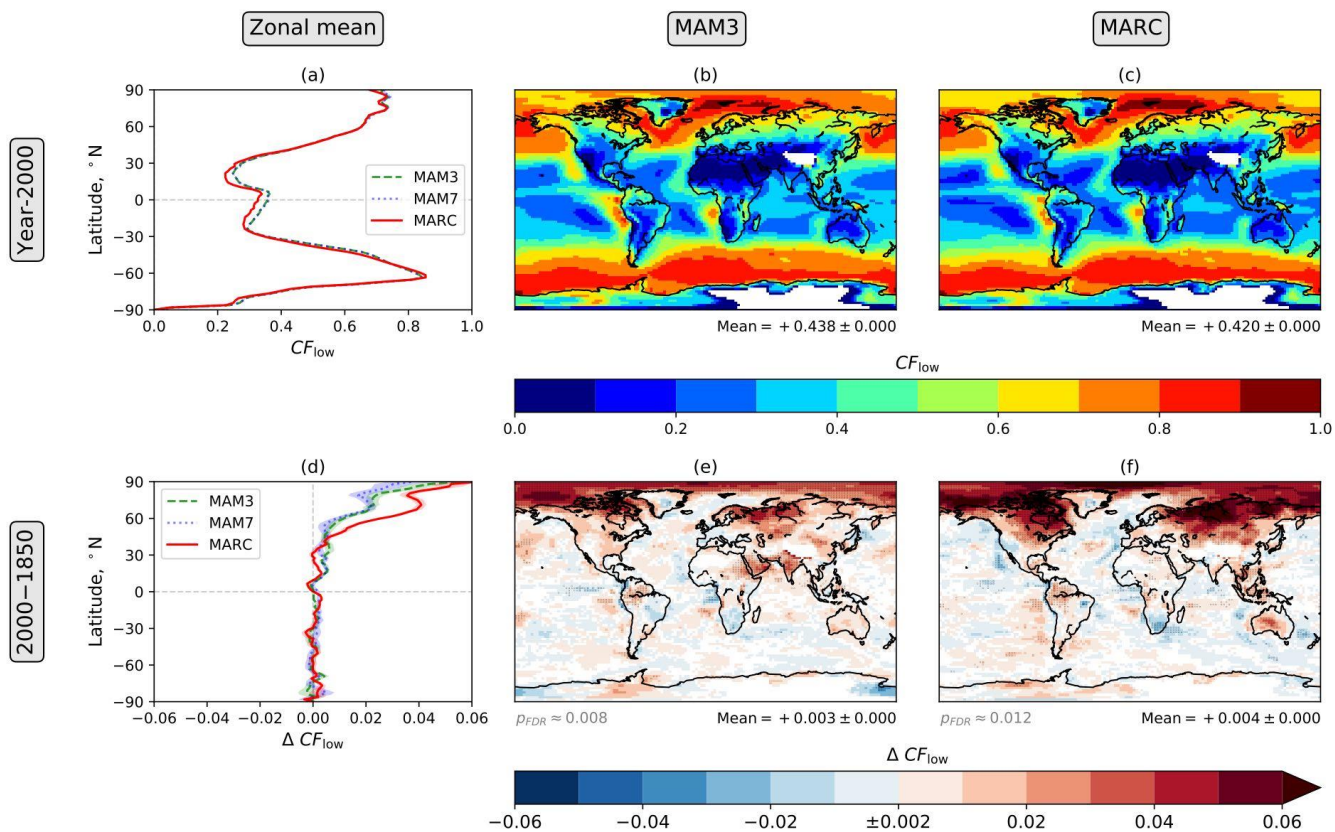


Figure S5: Annual mean low-level cloud fraction (CF_{low}). The figure components are explained in the caption of Fig. 2.

Mid-level cloud fraction (CF_{mid})

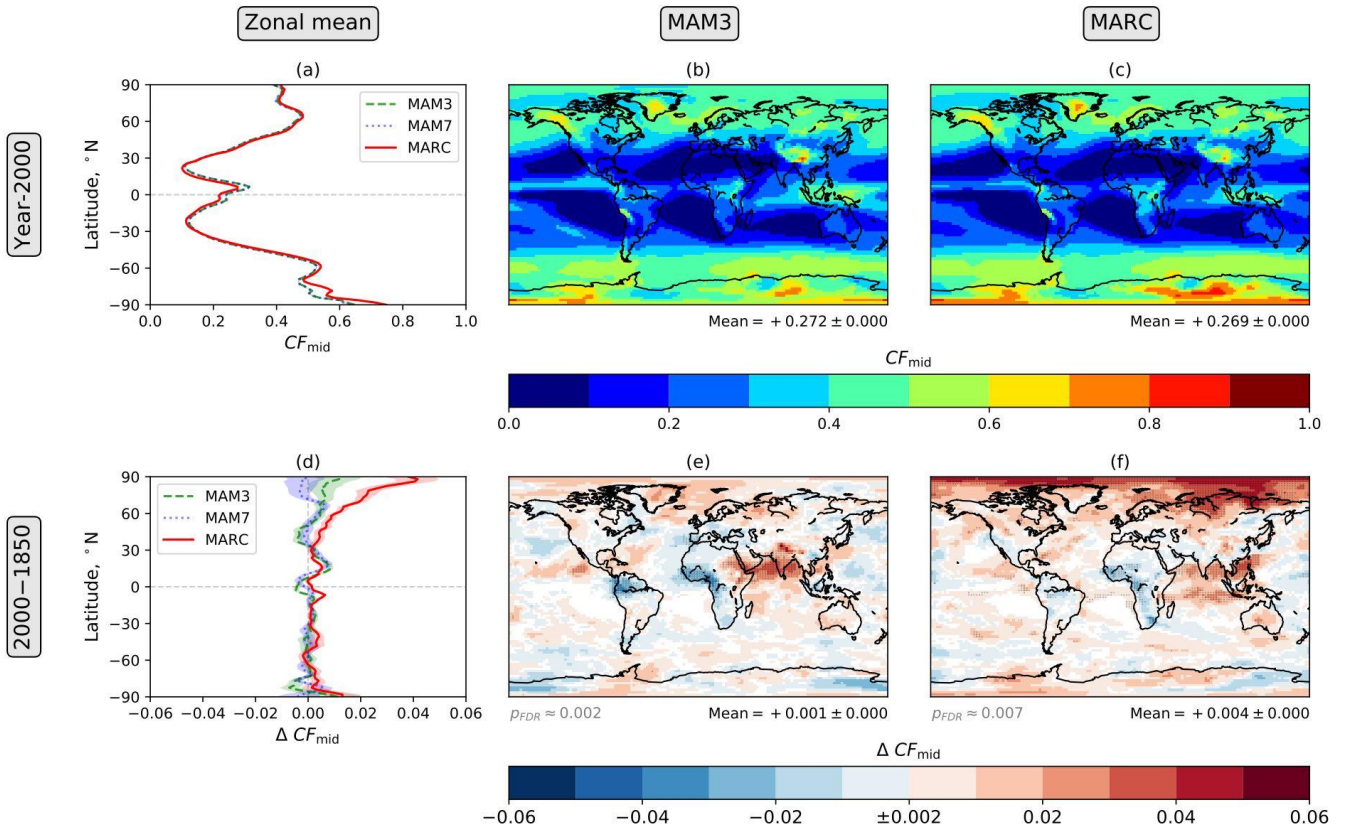


Figure S6: Annual mean mid-level cloud fraction (CF_{mid}). The figure components are explained in the caption of Fig. 2.

High-level cloud fraction (CF_{high})

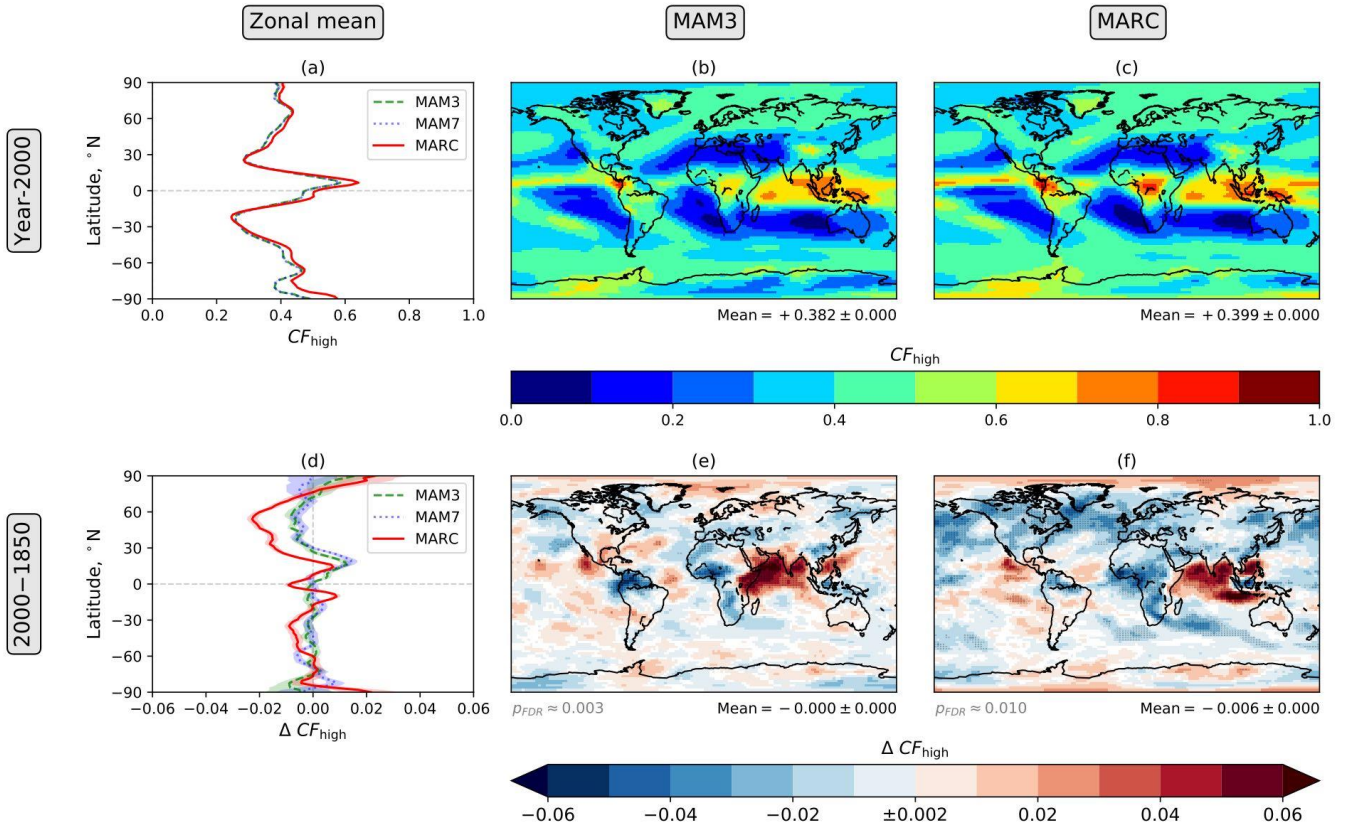


Figure S7: Annual mean high-level cloud fraction (CF_{high}). The figure components are explained in the caption of Fig. 2.

Total precipitation rate

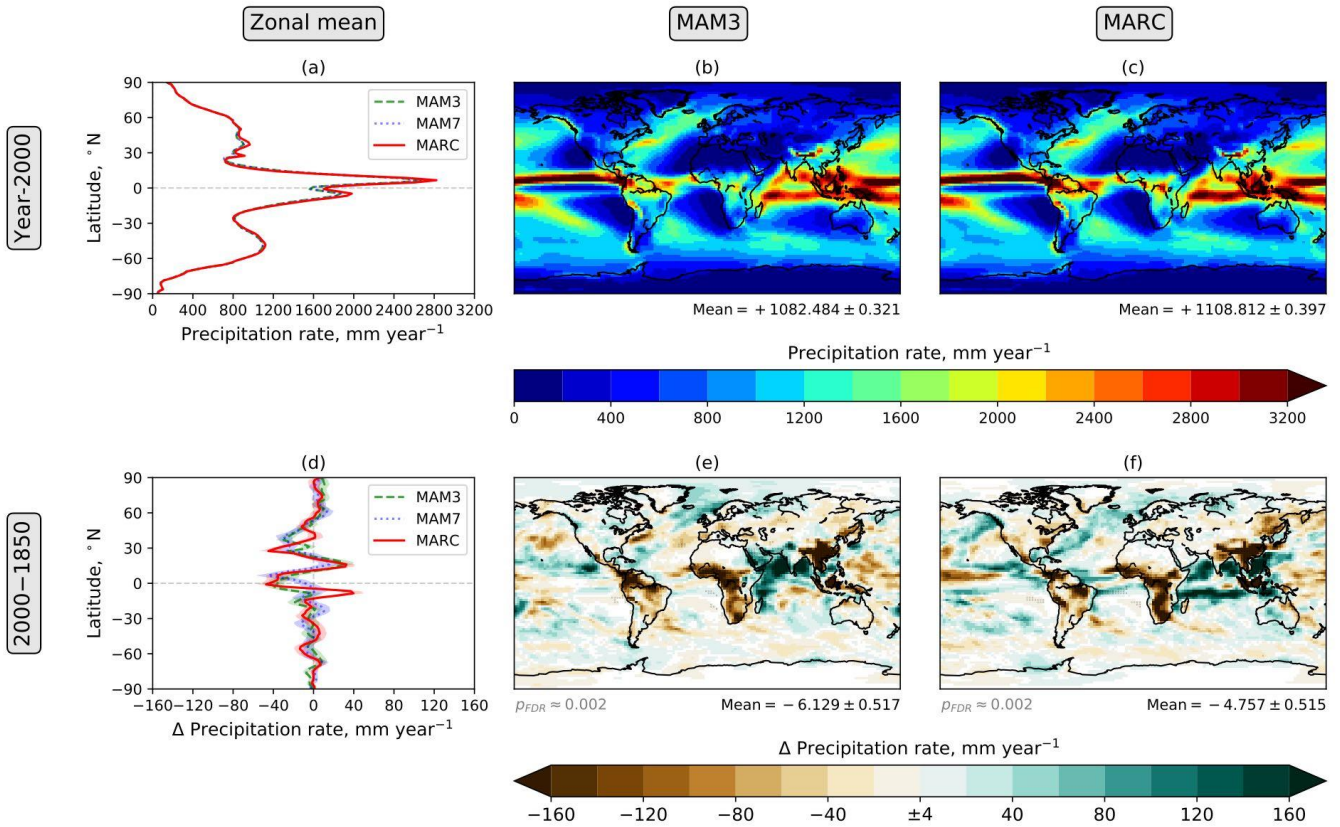


Figure S8: Annual mean total precipitation rate. The figure components are explained in the caption of Fig. 2.

10-m wind speed

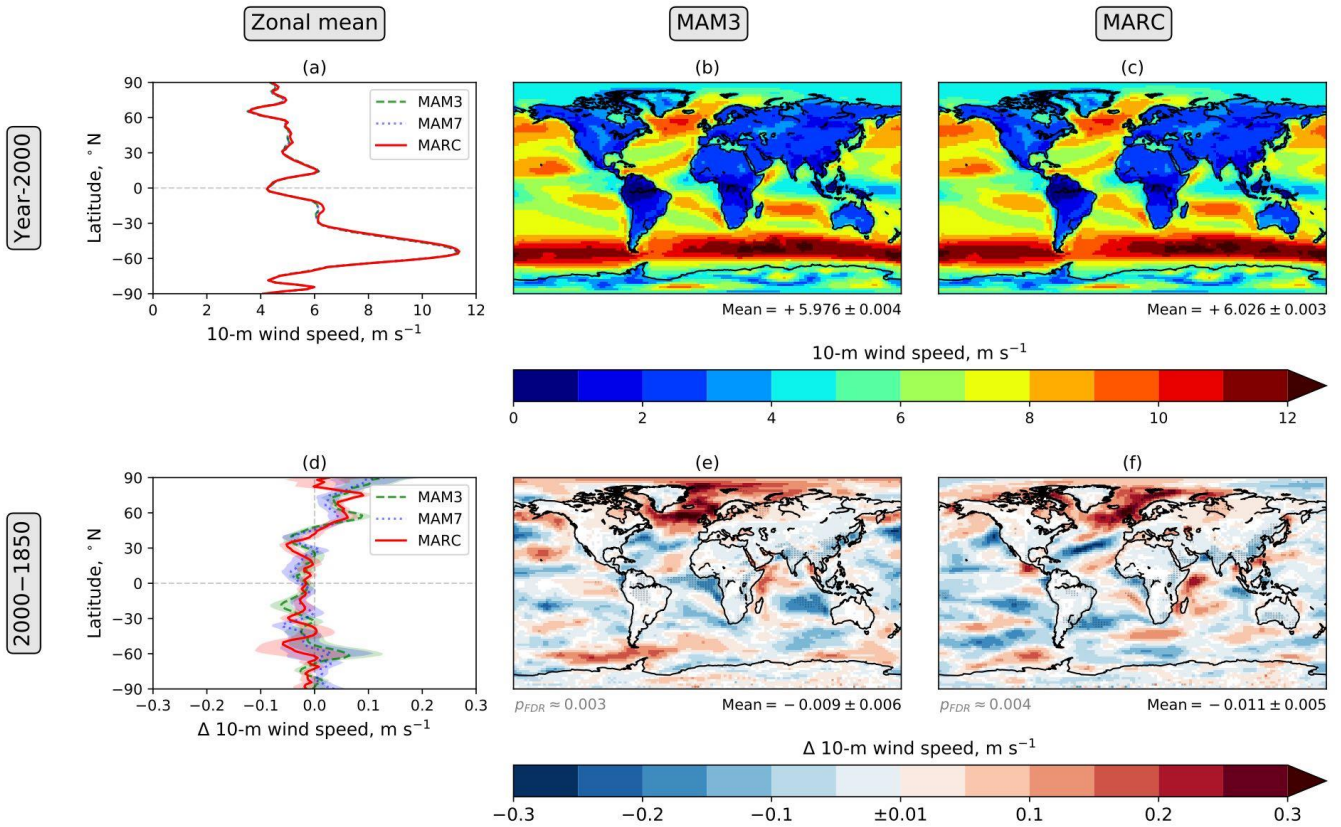


Figure S9: Annual mean 10-m wind speed. The figure components are explained in the caption of Fig. 2.

Fraction of surface covered by snow

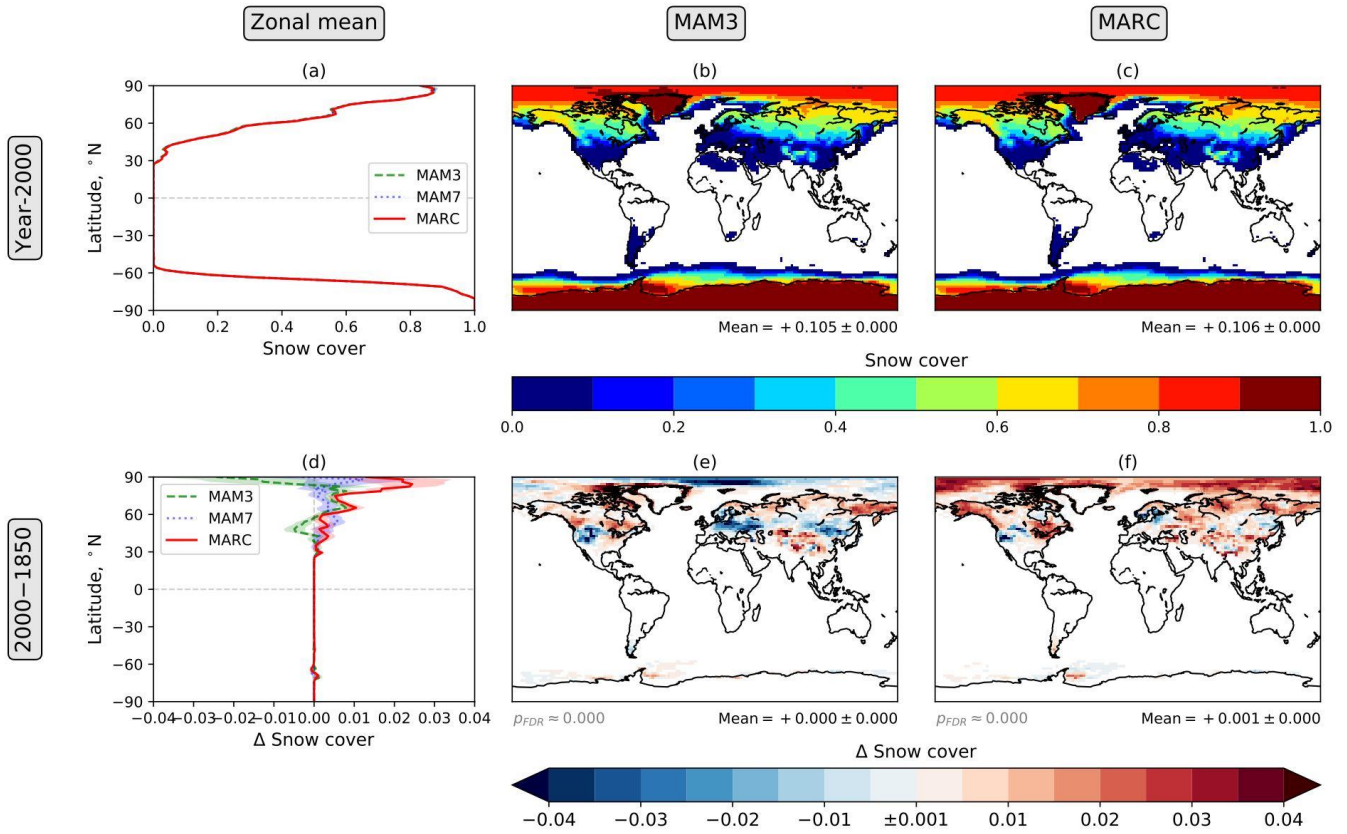


Figure S10: Annual mean fraction of the earth's surface covered by snow. The figure components are explained in the caption of Fig. 2.

Total snow rate

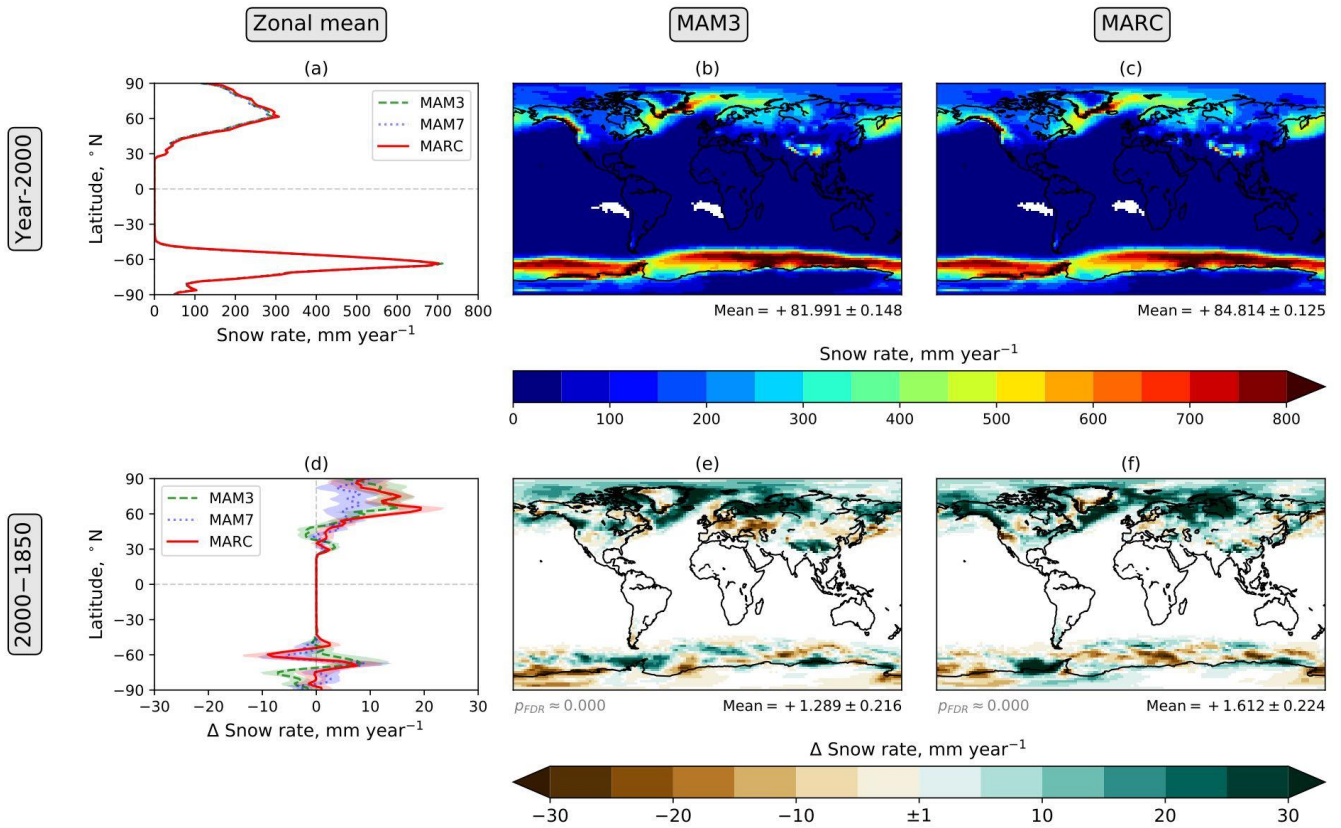


Figure S11: Annual mean total snow rate. The figure components are explained in the caption of Fig. 2.

Total black carbon (BC) deposition (dry + wet) over land

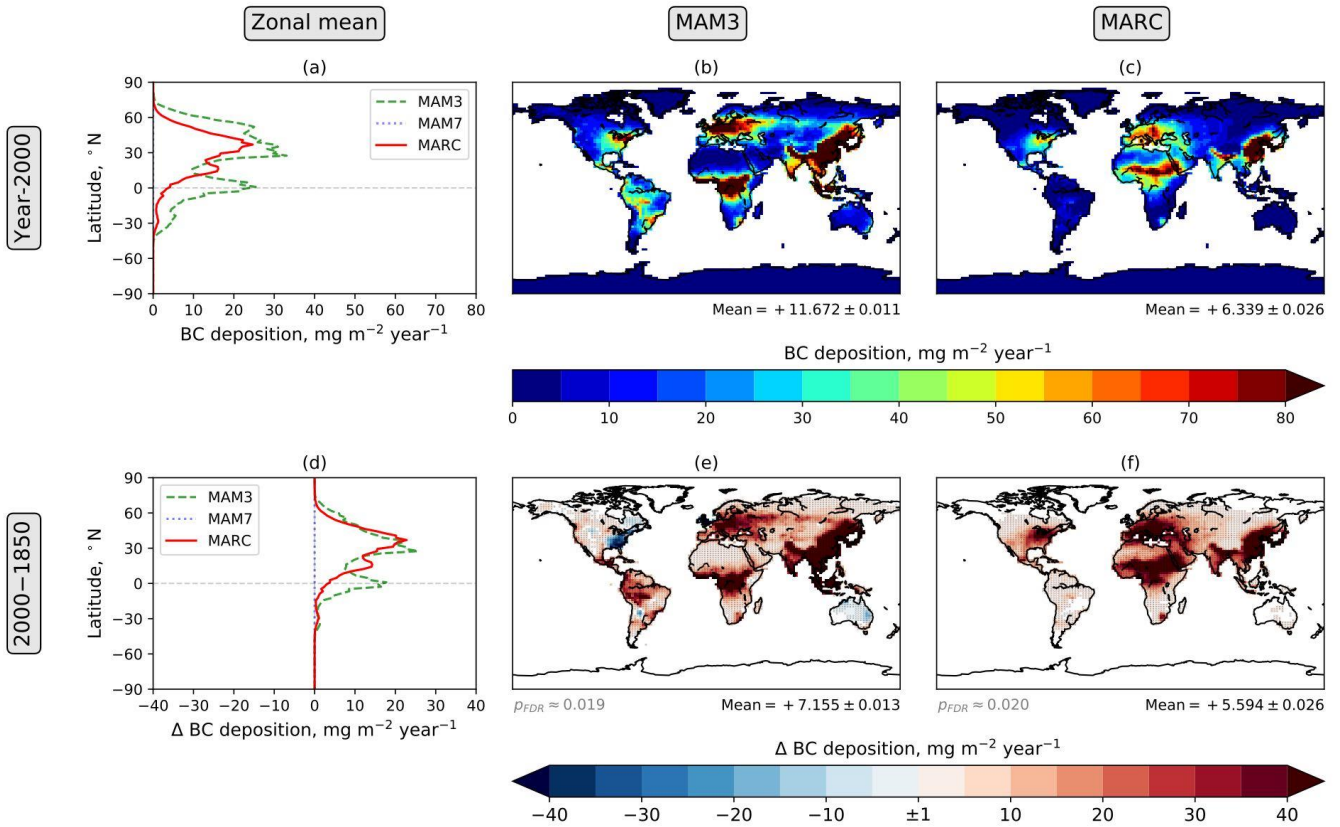


Figure S12: Annual mean total black carbon deposition over land. The figure components are explained in the caption of Fig. 2. The values for MAM7 are zero: in our simulations using CESM 1.2.2, MAM7 apparently fails to pass deposited black carbon to the land scheme.

Mass of black carbon (BC) in top layer of snow over land

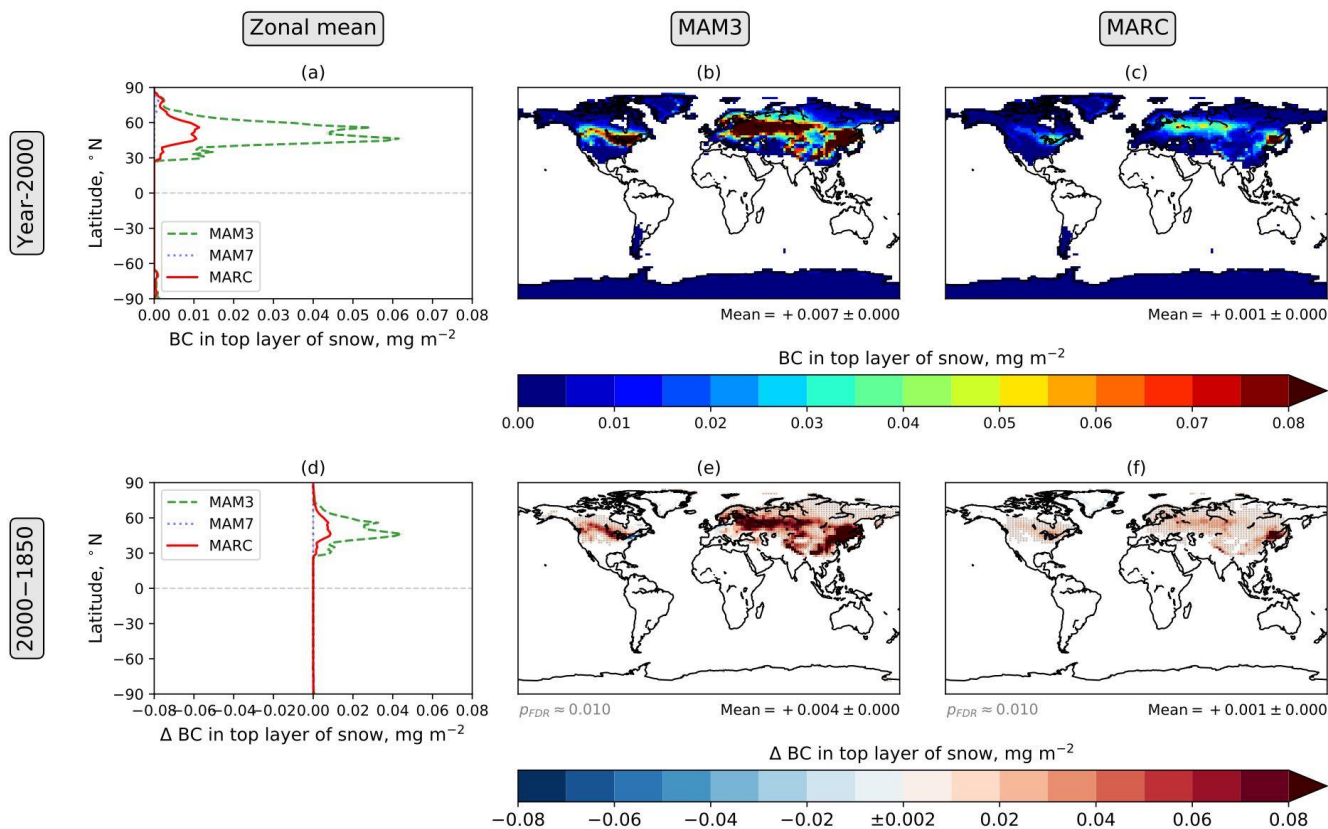


Figure S13: Annual mean mass of black carbon in the the top layer over snow over land. The figure components are explained in the caption of Fig. 2.

5

References

CESM Software Engineering Group: CESM User's Guide (CESM1.2 Release Series User's Guide), [online] Available from: <http://www.cesm.ucar.edu/models/cesm1.2/cesm/doc/usersguide/ug.pdf> [accessed 2017-10-31], 2015.

10