

Chemical composition and radiative properties of nascent particulate matter emitted by an aircraft turbofan burning conventional and alternative fuels

Miriam Elser^{1,2*}, Benjamin T. Brem^{1**}, Lukas Durdina^{1***}, David Schönenberger¹, Frithjof Siegerist³,
5 Andrea Fischer⁴, Jing Wang^{1,2}

¹Laboratory for Advanced Analytical Technologies, Empa, Dübendorf, 8600, Switzerland

²Institute of Environmental Engineering, ETH, Zürich, 8093, Switzerland

³SR Technics AG, Zurich-Airport, 8058, Switzerland

⁴Air pollution/Environmental Technology, Empa, Dübendorf, 8600, Switzerland

*now at Automotive Powertrain Technologies Laboratory, Empa, Dübendorf, 8600, Switzerland

**now at Laboratory of Atmospheric Chemistry, Paul Scherrer Institute, Villigen, 5232, Switzerland

***now at Centre for Aviation, School of Engineering, Zurich University of Applied Sciences, Winterthur, 8401, Switzerland

Correspondence to: Miriam Elser (miriam.elser@empa.ch)

Abstract. Aircraft engines are a unique source of carbonaceous aerosols in the upper troposphere. There, these particles can
15 more efficiently interact with solar radiation than at ground. Due to the lack of measurement data, the radiative forcing from
aircraft exhaust aerosol remains uncertain. To better estimate the global radiative effects of aircraft exhaust aerosol, its optical
properties need to be comprehensively characterized. In this work we present the link between the chemical composition and
the optical properties of the particulate matter (PM) measured at the engine exit plane of a CFM56-7B turbofan. The
measurements covered a wide range of power settings (thrust), ranging from ground idle to take-off, using four different fuel
20 blends of conventional Jet A-1 and Hydro-processed Ester and Fatty Acids (HEFA) biofuel. At the two measurement
wavelengths (532 and 870 nm) and for all tested fuels, the absorption and scattering coefficients increased with thrust, as did
the PM mass. The analysis of elemental carbon (EC) and organic carbon (OC) revealed a significant mass fraction of OC (up
to 90%) at low thrust levels, while EC mass dominated at medium and high thrust. The use of HEFA blends induced a
significant decrease in the PM mass and the optical coefficients at all thrust levels. The HEFA effect was highest at low thrust
25 levels, where the EC mass was reduced by up to 50-60%. The variability in the chemical composition of the particles was the
main reason for the strong thrust dependency of the single scattering albedo (SSA), which followed the same trend as the
OC/TC fraction. Mass absorption coefficients (MAC) were determined from the correlations between aerosol light absorption
and EC mass concentration. The obtained MAC values ($MAC_{532} = 7.5 \pm 0.3 \text{ m}^2 \text{ g}^{-1}$ and $MAC_{870} = 5.2 \pm 0.9 \text{ m}^2 \text{ g}^{-1}$) are in
excellent agreement with previous literature values of absorption cross section for freshly generated soot. While the MAC
30 values were found to be independent of the thrust level and fuel type, the mass scattering coefficients (MSC) significantly
varied with thrust. For cruise conditions we obtained $MSC_{532} = 4.5 \pm 0.4 \text{ m}^2 \text{ g}^{-1}$ and $MSC_{870} = 0.54 \pm 0.04 \text{ m}^2 \text{ g}^{-1}$, which fall
within the higher end of MSCs measured for fresh biomass smoke. However, the latter comparison is limited by the strong

dependency of MSC on the particles size, morphology and chemical composition. The use of the HEFA fuel blends significantly decreased PM emissions, but no changes were observed in terms of EC/OC composition and radiative properties.

1 Introduction

The rapid rise of the aviation industry in the last decades and the continuous growth projected for the next 20 years (Leahy J., 2016), have motivated the study of aircraft engine emissions and their related effects on the environment and human health. Several field and modelling studies have investigated the degradation of air quality near airports and have assessed the related effects on human health (e.g. Arunachalam et al. (2011), Barrett et al. (2013), Carslaw et al. (2006), Hsu et al. (2009), Lee et al. (2013) and Schürmman et al. (2007), among others). Aircraft engines are also a unique source of gases and particles in the upper troposphere and lower stratosphere, where they alter the atmospheric composition and contribute to climate change. In a study on the impacts of emissions from commercial aircraft flights on climate, Jacobson et al. (2013) reported that aircraft emissions were responsible for ~6 % of the Arctic surface global warming and ~1.3 % of total surface global warming. The radiative forcing from aircraft emissions results from the direct release of radiatively active compounds (greenhouse gases and particulate matter (PM)), species that produce or destroy radiatively active substances (e.g. nitrogen oxides (NO_x) as an ozone precursor), and species that trigger the formation of condensation trails and cirrus clouds (Penner et al., 1999). Of special interest are the aerosol-light interactions by strongly absorbing black carbon (BC), which are known to cause positive radiative forcing (i.e. warming). Although aviation BC emissions are very small relative to other anthropogenic sources like road transport, industry or biomass burning (Balkanski et al., 2010; Hendricks et al., 2004; Karagulian et al., 2017), their radiative effects can be enhanced when emitted at high altitude and over high surface albedo such as snow and ice surfaces or clouds. In fact, several model studies have shown that the direct radiation forcing (DRF) of BC strongly increases with altitude (e.g. Samset and Myhre, 2011; Zarzycki and Bond, 2010), and that globally, more than 40 % of the total DRF of BC is exerted at altitudes above 5 km (Samset et al., 2013). The presence of clouds is a major contributor to the altitude dependency of the DRF of BC, but other factors such as surface albedo, water vapor concentrations and background aerosol distributions also contribute (Haywood and Shine, 1997; Samset and Myhre, 2011; Zarzycki and Bond, 2010). A detailed understanding of the optical properties of the carbonaceous particles emitted from aircraft exhaust is therefore essential to estimate the related climate effects.

Atmospheric PM scatters and absorbs solar radiation. Commonly reported optical parameters of PM include the absorption and scattering coefficients (b_{abs} and b_{scat} , respectively), and the single scattering albedo (SSA), defined as the ratio between light scattering and total extinction (absorption + scattering). The optical coefficients are often normalized to the particle' mass to provide the mass absorption and mass scattering cross sections (MAC and MSC, respectively), which are essential parameters in atmospheric radiative transfer models. The MAC, MSC and SSA are key optical properties for the assessment of the aerosols radiative effects, and depend on the particle size, morphology, and chemical composition. In the case of aircraft emissions, the characteristics of the PM emissions are influenced by the engine type, the thrust level (power)

at which the engine is operated, and the fuel properties. The lack of experimental data on the optical properties of aircraft PM emissions has led to the extended use of generalized soot properties as an approximation to model aircraft radiative effects. This can lead to large discrepancies in the results, as the soot characteristics that determine the optical properties significantly vary among different combustion sources and combustion conditions. For example, aircraft soot particles are characterized by a very high degree of crystallinity and low oxidative reactivity (Liati et al., 2016; Parent et al., 2016), which might affect light absorption properties. In their meticulous review work, Bond and Bergstrom (2007) suggested a consistent MAC for fresh light-absorbing carbon ($MAC_{\lambda=550nm} = 7.5 \pm 1.2 \text{ m}^2 \text{ g}^{-1}$), independent of the combustion source or conditions. Higher MAC values were attributed to coating of the particles with negligibly-absorbing carbon. While in the size range of particles emitted from combustion processes the MAC stays nearly constant, the MSC has a strong dependency on the particle size (Hand and Malm, 2007), relative humidity (Khalizov et al., 2009), and coating with non-absorbing carbon (He et al., 2015). Levin et al. (2010) measured MSCs at 532 nm in the range $1.5 - 5.7 \text{ m}^2 \text{ g}^{-1}$ for fresh biomass burning smoke from a variety of fuels. In addition, a previous study of biomass burning emissions from Reid et al. (2005) reported a smaller range of MSC ($3.2\text{-}4.2 \text{ m}^2 \text{ g}^{-1}$) for fresh smoke, and larger MSC values for aged (coated) smoke ($3.5\text{-}4.6 \text{ m}^2 \text{ g}^{-1}$). Thus, while the MAC likely depends on the particles' chemical composition and morphology, the MSC (and SSA) have also a strong dependency on the particles' size. As indicated by our results, both the chemical composition and the particle size of aircraft fresh PM emissions largely vary with engine thrust. Therefore, the study of the thrust and fuel dependency of the radiative properties (MAC, MSC and SSA) of aircraft PM emissions is of key importance to decrease the uncertainty in the modelling of their radiative effects.

Concerns of the limited reserves of fossil fuels and the environmental impacts of their consumption have led to the introduction of aviation biofuels. Compared to the standard Jet A-1 fuel, biofuels can have lower net CO₂ emissions. The use of biofuel blends in airliners is regulated by the ASTM D7566 (Standard specification for aviation turbine fuel containing synthesized hydrocarbons), which limits the maximum content of biofuel in the blend to 50% and sets restrictions to the blend aromatic content (minimum of 8%), lubricity, density, freezing point and viscosity (ASTM D7566-17a, 2017). One of the five ASTM certified blending components is biofuel from hydro-processed esters and fatty acids (HEFA), which can be produced from any form of fat or oil (e.g. waste fats from food industry or vegetable oils and fatty acids from oil/fat refining processes). The main difference between HEFA fuel and conventional Jet A-1 fuel is the absence of sulfur and aromatic species, commonly present in Jet A-1 in the range of 10-1000 ppm of sulfur and around 18% of aromatic content (Hadaller and Johnson, 2006). Previous works have shown that reducing sulfur and aromatics in the fuel decreases the sulfate and BC emissions, respectively (Penner et al., 1999; Beyersdorf et al., 2014; Moore et al., 2015; Brem et al., 2015; Lobo et al., 2016). Moreover, a recent study on in-flight cruise emissions from the NASA DC-8 turbofan engines (CFM56-2-C1) has shown that using a 50:50 blend of Jet A and a Camelina-based HEFA biofuel reduces the particle emissions by 50 - 70% (Moore et al., 2017).

In this work we study the link between the chemical composition and the optical properties of the PM measured at the engine exit plane of a CFM56-7B turbofan for different engine loads and HEFA fuel blends. The measurements were performed using an in-service engine from the Boeing 737 Next Generation, which constitutes around 30% of all commercial airliners, and is therefore representative of the current fleet. The chemical characterization of the exhaust was based on the

quantification of elemental and organic carbon (EC/OC analysis) from filter samples, while the optical properties were measured online at two different wavelengths. The resulting optical properties were then integrated in a simple two stream radiative model to estimate the direct forcing of fresh particle emissions from aircraft turbines during cruise conditions. The Simple Forcing Efficiency (SFE, Chylek and Wong, 1995) was evaluated over the entire solar spectrum for various surface albedos, including sea, grass, soil and snow. Complex models are required to model the atmospheric aging of the particles in the plume and to assess the radiative effects of the aged particles, which might significantly differ from those of the fresh emissions reported here.

2 Methods

2.1 Experimental set-up

The measurements were performed at the engine test cell of SR Technics at Zurich Airport (Switzerland) using an in-service commercial turbofan CFM56-7B burning four different blends of Jet A-1 and HEFA fuel (HEFA vol. percentage of 0, 5, 10, and 32%). A schematic of the experimental set-up is shown in Fig. 1. The exhaust was sampled at the engine exit plane using a single point sampling probe and then split into three sampling lines: the PM line for measurements of the particulate fraction, the GenTox line for the sampling of genotoxic compounds and the Annex 16 line for the measurements of the gaseous emissions and smoke number. The PM line was diluted with dry synthetic air (dilution factor $\sim 1:10$) to prevent water condensation and coagulation of the particles in the sampling line. The non-volatile PM (nvPM) measurement system is compliant with the new ICAO standard (ICAO, 2017). The instruments relevant for this work are shown in blue in Fig. 1. The chemical composition was determined from the analysis of filter samples with a Sunset OC-EC Aerosol Analyzer (Sunset Laboratory Thermal/Optical Carbon Analyzer, Model 4L). The optical properties were monitored online with a Photo-Acoustic Extinctionmeter (PAX, Droplet Measurement Technologies, $\lambda=870$ nm) and a Cavity Attenuated Phase Shift PM single scattering albedo monitor (CAPS PM_{ssa}, Aerodyne, $\lambda=532$ nm). The particle size distribution was measured using a Scanning Mobility Particle Sizer (SMPS, TSI, Model 3938). The BC mass concentration was measured using a Micro-Soot Sensor (MSS, AVL, Model 483). The NO₂ measurement (Eco Physics, CLD844 S hr) was used to perform an online correction of the interference in the optical measurements at 532 nm. The CO₂ analyzers (Thermo Fisher Scientific Model 410i in the PM line and Horiba PG-250 in the Annex 16 line) were used to calculate the dilution factors. Additional details of the measurement set-up are provided in the Supplementary Information (Sect. S1.1).

2.2 Filter samples for EC/OC analysis

Filter samples for EC/OC analysis were collected in the PM sampling line with a dual step stainless steel filter holder (URG, Series 2000-30FVT). Quartz fiber filters (Pall Tissuequartz, 2500QAT-UP) were used in both stages to collect the PM mass (main filter) and to determine the positive sampling artifact (back-up filter) from gaseous OC adsorbing onto the filter surface (Kirchstetter et al., 2000, Subramanian et al., 2004). Prior to sampling, the filters were baked for at least 6 hours at 650 °C to

remove possible contaminations of adsorbed carbon. The sampling flow was 5 l min^{-1} and the duration was adjusted to provide optimal mass surface loadings for the EC/OC analyses (around $7 \mu\text{g cm}^{-2}$). Stainless steel masks were deployed to reduce the sampling area of the filters and, as a result, increase the mass loading per sample area when needed. Overall, 16 sets of filters were collected to cover the full range of thrust levels for the Jet A-1 fuel and the 32% vol. HEFA blend. The larger filter masks (24 mm inner diameter) were used to sample at high thrust levels (100 - 65%), while the smaller masks (16 mm inner diameter) were required for the low thrust levels (50 - 7%).

The thermo-optical analysis for the quantification of EC and OC was performed using a Sunset OC-EC Aerosol Analyzer (Sunset Laboratory Thermal/Optical Carbon Analyzer, Model 4L). A detailed description of the method is reported in the Supplementary Information Sect. S1.2. For the analysis a modified NIOSH 5040 thermal protocol, summarized in Table S1 (Birch and Cary, 1996), with a transmittance optical correction for pyrolysis was used.

2.3 Measurement of the optical properties

The DMT PAX monitor simultaneously measures the aerosol optical absorption and scattering using a modulated diode laser ($\lambda=870 \text{ nm}$). The light absorption is determined using the photo-acoustic technique. The modulated laser beam heats up the absorbing particles, which quickly transfer the heat to the surrounding air, generating a pressure wave that is measured with a sensitive microphone. The light scattering of the bulk aerosol is measured with a wide-angle integrating reciprocal nephelometer. Since there is relatively little absorption from gases and non-BC aerosol species at the 870 nm wavelength, the absorption measurement corresponds to the BC mass. Therefore, using an appropriate mass absorption cross section (MAC), the PAX absorption measurement can be used to determine BC mass (BC_{PAX}). Vice versa, comparing the absorption measurement with the EC mass from filter measurements, we can infer the MAC_{870} for aircraft engine exhaust.

The CAPS PM_{ssa} monitor provides simultaneous measurement of aerosols light extinction and scattering (Onasch et al., 2015). The extinction measurement is based on the cavity attenuated phase shift technique, which evaluates the phase shift of a LED light (532 nm) in a very long optical path (up to 2 km), created with very high reflectivity mirrors in the sampling cell (30 cm). In addition, the CAPS PM_{ssa} includes an integrating sphere (integrated nephelometer) within the optical path for the measurement of particle scattering. A particle size dependent truncation correction is required to take into account the light lost at extreme forward and backward scattering angles due to the apertures of the optical beam.

Laboratory calibrations of both instruments were performed prior to the measurement campaign using size selected ammonium sulfate and nigrosine PM (see Sect. S1.3 in the Supplementary Information). In addition to the standard calibrations, corrections for the CAPS scattering signal outside the instrument linear range and for the interference from gaseous NO_2 at the measurement wavelength were also developed (Fig. S2 and S3). While the measured NO_2 interference in the CAPS extinction is fairly consistent with previously reported values, we also found an unexpected non-linear interference in the CAPS scattering signal. This was initially attributed to a possible light leak in the instrument, but the scattering interference persisted after the light sealing of the instrument was renewed. To further investigate this issue, we compared laboratory calibration data of both optical instruments with results from Mie theory (Figs. S4-S6). Although there are several

assumptions within the Mie model that may not be totally satisfied by the laboratory generated calibration particles (e.g. spherical and homogeneous particles), the agreement with the PAX absorption and scattering measurements is fairly good for both ammonium sulfate and nigrosine. In contrast, the CAPS measurements agree well with Mie theory only for purely scattering particles, i.e. ammonium sulfate. In the case of nigrosine, the CAPS measurements agree with Mie theory in terms of total extinction, but the measured scattering is around 43 % higher than estimated from the model. Despite several experimental efforts, we could not find the origin of the discrepancies in the CAPS scattering measurement or a way to properly correct it. Instead, we derived the CAPS scattering coefficient from the PAX absorption measurement using a thrust dependent absorption Angstrom exponent (AAE) obtained from aircraft engine measurements with a seven-wavelength aethalometer. All the details of this calculation can be found in Sect. S1.5 in the Supplementary Information.

2.4 Fuel specifications

The main differences between the conventional Jet A-1 fuel and the different HEFA blends used in this work are reported in Table 1. Most fuel properties were measured following the standard ASTM (American Society for Testing and Materials) methods, including the concentration of total aromatics, naphthalene and sulfur, the smoke point and the fuel density. In addition, the hydrogen mass concentration was determined by nuclear magnetic resonance, using a method equivalent to ASTM D7171. As expected, increasing the concentration of HEFA fuel in the blend corresponded to a reduction in the concentrations of the aromatic compounds (including naphthalene) and sulfur. Besides, with the addition of the HEFA fuel the hydrogen mass concentration and the smoke point increased while the fuel density slightly decreased.

2.5 Radiative properties

The SSA, MAC and MSC were calculated for the two measurement wavelengths ($\lambda = 532$ and 870 nm) using the following relationships:

$$SSA_{\lambda} = \frac{b_{scat,\lambda}}{b_{ext,\lambda}} \quad (1)$$

$$MAC_{\lambda} = \frac{b_{abs,\lambda}}{EC} \quad (2)$$

$$MSC_{\lambda} = \frac{SSA_{\lambda} * MAC_{\lambda}}{1 - SSA_{\lambda}} \quad (3)$$

In addition, to estimate the instantaneous direct radiative effects of the PM from fresh aircraft engine exhaust, we evaluated the radiative transfer equation introduced by Chylek and Wong (1995), modified as in Bond et al. (2007), to express the wavelength dependent Simple Forcing Efficiency (SFE) in terms of the mass scattering coefficient (MSC) and the mass absorption coefficient (MAC):

$$SFE(\lambda) = -\frac{S_0(\lambda)}{4} T_{atm}^2(\lambda, z) (1 - F_c) \left[2(1 - a_s(\lambda))^2 \beta(\lambda) MSC(\lambda) - 4a_s MAC(\lambda) \right], \quad (4)$$

where S_0 is the top of the atmosphere solar irradiance, T_{atm} is the atmospheric transmission, F_c is the cloud fraction, a_s is the surface albedo, β is the backscatter fraction, λ is the wavelength, and z is the height over sea level.

The MAC and MSC determined for the two measurement wavelengths were fitted over the entire range of the solar radiation spectrum (280-4000 nm) using the power law relationships:

$$MAC(\lambda) = a\lambda^{-AAE} \quad (5)$$

$$MSC(\lambda) = b\lambda^{-SAE}, \quad (6)$$

- 5 where a and b are fitting parameters, and AAE and SAE represent the absorption and scattering Angstrom exponents, respectively. The selection of the parameters in Eq. (4) to (6) are discussed in Sect. S2.4.

3 Results and discussion

- All the results presented in this work were corrected to the engine exit plane taking into account the dilution in the PM line and the losses in the sampling system. The CO₂ measurements in the Annex 16 and the PM sampling lines were used to
 10 determine the dilution factor, and a size dependent correction was developed to estimate the diffusion and thermophoretic losses in the various sampling lines. Some additional considerations are needed regarding the representativeness of the data presented in this work. First, our results characterize the emissions at the engine exit plane from an engine operated at the ground. Thus, a correction to take into account the atmospheric conditions (temperature and pressure) at flight altitude is in principle necessary. However, as shown in Durdina et al. (2017) using data from a turbofan engine representative of modern
 15 commercial engines (Howard et al., 1996), the altitude does not significantly influence the PM size distributions. While ambient conditions will affect the plume evolution, the effect on the PM chemistry at the engine exit plane can be assumed to be minimal. Consequently, also the optical properties, which strongly depend on the particle size and chemical composition, would remain unvaried at the engine exit plane. Hence we assume the altitude correction for the optical properties at the engine exit plane to be negligible. It is important to note however, that most gaseous and particle species measured at the engine exit
 20 plane will rapidly evolve in the atmosphere and their radiative effects can largely vary from those of the direct emissions presented in this work, where the collected data correspond to a time after emission of approximately 0.1 to 0.6 seconds (Brem et al., 2015). Additional measurements are therefore required in order to assess the evolution of the particles' optical properties in the emission plume. In any case, the emissions at the engine exit plane are the basis to consider the evolution of PM properties and are therefore the baseline for diverse atmospheric modelling scenarios.

25 3.1 Chemical composition

- An overview of the main findings from the EC/OC analysis is presented in Figs. 2 and 3. The OC concentrations were corrected to take into account the positive sampling artifact as described in the Supplementary Information (Sect. S2.1). The EC, OC and TC mass concentrations are reported in Table S3. Additionally, in Table S4 we also report the mass emission index of EC (EI_{m,EC}, in mg kg_{fuel}⁻¹), together with the additional parameters required for the calculation of EIs (i.e. carbon dioxide, carbon
 30 monoxide and hydrocarbon concentrations) and the particles' size parameters (geometric mean diameter (GMD) and geometric

standard deviation (GSD)). Representative thermograms illustrating the EC/OC split for samples at low-, medium-, and high-thrust levels are reported in Fig. S9.

Figure 2 displays the mass concentrations of EC, OC and TC as a function of engine thrust and the concentration changes associated to the use of the 32% HEFA blend in comparison to the base Jet A-1 fuel. For the Jet A-1 fuel, the concentrations of all three carbonaceous components increased with engine thrust, from a minimum of 0.1 mgTC m^{-3} at taxi (~6% thrust) to a maximum of 5.6 mgTC m^{-3} at take-off (~95% thrust). As the mass concentration increased with thrust, the geometric mean diameter increased from 8 nm at taxi to 40 nm at take-off (Fig. S10). The slight increase in the mass concentrations between taxi and ground idle (~3% thrust) has been observed in previous works (Durdina et al., 2017) and is associated with a decrease in the combustion efficiency and the air/fuel ratio. As illustrated by the bar plots, the use of the 32% HEFA blend induced a clear reduction in the EC concentrations at all thrust levels, in line with previous findings (Moore et al., 2015; Moore et al., 2017; Schripp et al., 2018). The HEFA effect was strongest at low thrust levels, inducing a decrease in EC mass of 50-60% for thrust levels up to 30%. An explanation for this thrust dependence can be found in Brem et al. (2015). However, very large uncertainties were associated to the EC measurements at ground idle due to low filter loading (down to $0.2 \text{ } \mu\text{g cm}^{-2}$ despite the long sampling times and the use of the small filter mask). For thrust levels of 50% and above, the HEFA effect became less significant, reaching a minimum EC decrease of 14% at take-off. A similar trend was observed for the OC and TC concentrations at high thrust levels. In contrast, the OC, and consequently also the TC, seemed to be enhanced by the HEFA blend at ground idle.

Figure 3 shows the correlations of EC and OC with the BC mass concentrations measured with the MSS (BC_{MSS} , reported as nvPM mass in regulatory measurements of aircraft engine emissions). EC and BC_{MSS} were in excellent agreement for both fuel types, with slope very close to unity (0.96 ± 0.02) and Pearson Coefficient (R^2) of 0.99. Although OC also increased with BC_{MSS} , the correlation was weaker in this case and small differences could be observed between the two fuels.

3.2 Optical properties

The main results from the measurement of the optical properties are reported in Figs. 4 and 5. For clarity, only the measurements with Jet A-1 fuel and the 32% HEFA blend are shown, while the results from the intermediate HEFA blends (5% and 10%) are included in Fig. S11.

Figure 4 presents the thrust dependencies of the absorption, scattering and extinction coefficients, measured at 532 nm (CAPS, green squares) and 870 nm (PAX, blue circles). At both wavelengths, b_{abs} , b_{scat} and b_{ext} showed similar thrust dependencies to those observed for EC, characterized by a large and continuous increase for thrust levels above 40%. In addition, the use of the 32% HEFA blend induced a decrease in the three optical coefficients at most thrust levels.

Figure 5 shows the correlation between b_{abs} at the two measurement wavelengths and the EC mass concentration determined from the thermo-optical measurements. From the linear regressions we derived the MAC values for aircraft exhaust at 532 nm and 870 nm, which appear to be independent of the particle size distribution, thrust or fuel type, and will be further discussed in Section 3.4. The MAC_{870} was used to calculate BC mass from the PAX absorption measurement (BC_{PAX}), which

was strongly correlated with BC_{MSS} (Fig. S12, $R^2=0.99$, slope 0.98) and showed thrust dependent reductions with the HEFA blends (Fig. S13), consistent with the reductions in EC mass.

3.3. Link between chemical composition and optical properties

- 5 To investigate the link between the chemical composition and the optical properties of the aircraft emissions, in Figure 6 we compare the thrust dependencies of the OC/TC fraction and the SSA, calculated at the two measurement wavelengths using Eq. (1). The OC/TC fraction showed a large variability with the thrust level, with OC/TC between 0.75 and 0.90 at low thrust levels (3 - 30%), decreasing to 0.25 at 50% thrust, and down to 0.17 at take-off. Similar trends in the OC/TC ratio with engine thrust have been observed in previous works (Delhaye et al., 2017). Although the use of the HEFA fuel had a strong effect on the EC and OC mass concentrations, it did not have any visible effect on the OC/TC fraction. The high OC content of the particles at low thrust levels resulted in very high SSA, which showed a maximum at ground idle ($SSA_{532,base} = 0.88$ and $SSA_{870,base} = 0.55$). Such high SSA values are common of particle emissions from biomass burning at low combustion efficiency (e.g. $SSA_{532}\sim 0.95$ in wildfire emissions (Liu et al., 2014)). The SSA decreased sharply between 30% and 60% thrust, likely due to decreasing OC fraction, reaching a minimum at the combustor inlet temperatures and air/fuel ratios representative of cruise thrust ($\sim 60\%$ thrust), where $SSA_{532,base} = 0.29$ and $SSA_{870,base} = 0.07$. These low SSA values are characteristic of primary on-road vehicle particle emissions (e.g. $0.22 < SSA_{675} < 0.36$ from tunnel measurements (Strawa et al., 2010)). Above 60% thrust we observed a slight increase in the SSA, which might be related to the increasing mean particle size (as the OC content remained constant in this thrust range). While there was no visible effect from the HEFA blend at the high thrust levels, it seems that slightly higher SSA were associated to the HEFA blend at low thrust levels.
- 20 The similarities observed in the thrust dependencies of the OC/TC and the SSA, as well as the high correlation between BC_{PAX} , BC_{MSS} and EC, indicate that the OC content in these particles strongly enhanced light scattering at both measurement wavelengths, but did not have a substantial effect on the light absorption. The increased OC content of the PM with decreasing engine power is in agreement with the observations of Vander Wal et al. (2016), and could be explained by inefficient and incomplete combustion at the lower thrust levels. The thermograms from the EC/OC analysis show a large OC volatility range for all thrust levels, with a major fraction of OC evaporating between 200 and 310 °C, especially at low thrust (Fig. S9).

3.4 Radiative properties

- The MAC values at the two measurement wavelengths were determined from the linear fits between b_{abs} and EC mass, which yielded $MAC_{532} = 7.5 \pm 0.3 \text{ m}^2 \text{ g}^{-1}$ ($R^2=0.97$) and $MAC_{870} = 5.2 \pm 0.9 \text{ m}^2 \text{ g}^{-1}$ ($R^2=0.94$). As shown in Fig. 5, the MAC values appear to be independent of the thrust level and fuel type. The MAC_{870} is in good agreement with the filter based determined MAC value by Petzold and Schröder (1996) for jet engine aerosol ($MAC_{800} = 6 \text{ m}^2 \text{ g}^{-1}$), which using the inverse wavelength dependency of the cross section leads to $MAC_{870,calc} = 5.5 \text{ m}^2 \text{ g}^{-1}$. Our results are also in line with the MAC value of freshly

generated light absorbing carbon proposed by Bond and Bergstrom (2007) ($MAC_{550} = 7.5 \pm 1.2 \text{ m}^2 \text{ g}^{-1}$), which converted to the wavelengths of interest results in $MAC_{532,calc} = 7.8 \pm 1.2 \text{ m}^2 \text{ g}^{-1}$ and $MAC_{870,calc} = 4.7 \pm 0.8 \text{ m}^2 \text{ g}^{-1}$.

The MSC values were calculated using its relation with the SSA and MAC reported in Eq. (3). In contrast to the MAC, the SSA, and consequently the MSC, were found to be highly thrust dependent. Using the SSA measured at 60% thrust ($SSA_{532} = 0.37 \pm 0.03$; $SSA_{870} = 0.09 \pm 0.01$) and the MAC values reported above, this calculation yielded $MSC_{532} = 4.5 \pm 0.4 \text{ m}^2 \text{ g}^{-1}$ and $MSC_{870} = 0.54 \pm 0.04 \text{ m}^2 \text{ g}^{-1}$. The MSC_{532} falls within the higher end of MSCs measured for fresh biomass smoke by Levin et al. (2010). However, a more detailed comparison with literature values is hindered by the strong dependency of MSC on the particles size, morphology, and chemical composition.

The wavelength dependent MAC and MSC were determined by fitting the measurements with Eqs. (4) and (5), as shown in Fig. S14. The AAE in Eq. (4) was set to 1.0 ± 0.2 , as inferred for the BC emissions at cruise thrust level (60%) from the aethalometer measurements described in the Supplementary Information Sect. S1.5. This is a widely accepted value of AAE, often used in literature for fresh black carbon particles. Lastly, $SAE = 4.5 \pm 0.7$ was calculated for cruise conditions using the scattering coefficients at the two measurement wavelengths, i.e. $SAE = \ln(b_{scat,532}/b_{scat,870})/\ln(532/870)$. To put these results in context, the obtained MAC and MSC spectra were used to estimate the direct radiative effect of fresh aircraft exhaust PM emissions during cruise, using the SFE defined in Eq. (1). A detailed description of the SFE model and its results can be found in the Supplementary Information Sect. S2.4; in the following we shortly discuss the main findings. For high surface albedo surfaces like snow, aircraft fresh PM emissions induced a strong warming effect (integrated $SFE_{450-2000, snow} = 4700 \text{ W g}^{-1}$). Other land surfaces, such as soil and grass, resulted in a more moderate warming ($SFE_{450-2000, soil} = 1500 \text{ W g}^{-1}$, $SFE_{450-2000, grass} = 800 \text{ W g}^{-1}$), while the effect of emissions over dark surfaces such as sea water was very low and with an overall cooling effect ($SFE_{450-2000, sea} = -90 \text{ W g}^{-1}$). However, these results need to be taken with caution, as this simple radiative model does not consider the effect of underlying clouds. Moreover, we only consider the effect of fresh PM emissions, corresponding to an approximate time after emission of less than 0.6 s, where the jet is still conserved and high temperatures prevent the condensation of volatile species. Previous studies have shown that sulfuric acid plays an important role in the formation of secondary PM in near-field aircraft plumes (Kärcher et al., 1996). Thus, plume evolution measurements of the particles' optical properties (if possible in-flight) and more complex models are needed to assess the overall radiative effects of aircraft PM emissions.

4 Conclusions

This work presents the link between the EC/OC content and the optical properties of PM emissions at the engine exit plane of a CFM56-7B operated at a full range of thrust levels from ground idle to take-off. In addition, we examined the effects of using HEFA biofuel blends on the PM emissions, and determined the main radiative properties of the fresh PM emissions, which are of great value for the modelling of their radiative effects.

The EC and OC mass concentrations, as well as the absorption and scattering coefficients, increased with thrust level. While PM at the engine exit plane is thought to mostly contain strongly absorbing EC, we found a significant fraction of OC

at low thrust levels, which was linked to the high scattering and SSA values. In line with previous studies, the 32% vol. HEFA blend significantly lowered the PM mass emissions, especially at low thrust levels, where the EC mass was reduced by 50-60%. The OC mass also decreased at most thrust levels, except at 3% thrust, where it seemed to be enhanced. However, at this thrust level we only had one sample for each fuel type, and the uncertainties attributed to these low thrust measurements with low concentrations were large.

The trends in the OC/TC ratio and the SSA highlighted important differences in the particles formed in the combustion process at different thrust levels. At low thrust levels, representative of ground idle and taxi, the particles were highly scattering ($SSA_{532} = 0.7-0.9$) and contained large fractions of OC ($OC/TC = 0.75-0.9$). In contrast, at the higher thrusts levels, representative of cruise (60% thrust) and take-off (100% thrust), the particles were composed mostly of highly absorbing EC ($SSA_{532} = 0.3-0.4$ and $OC/TC = 0.2$). The high OC fractions observed at low thrust levels are most probably a consequence of the lower efficiency of the combustion at these low engine powers. Regarding the use of HEFA blends, we could not see any significant effect from the different fuel types on the SSA and the OC/TC ratio.

The measurements of absorption and scattering at two different wavelengths, in combination with the measurements of EC mass, allowed us to evaluate the mass absorption and scattering cross sections (MAC and MSC) and to study their wavelength dependence. Together with the SSA, the MAC and MSC are key parameters for the study of the PM radiative effects. The obtained MAC was found to be independent of the thrust level and matched very well the values reported in literature for fresh BC. In contrast, the MSC (and SSA) varied greatly with thrust level, as it strongly depends on particle size, morphology and composition. As for the SSA, no effect was observed on the MAC and MSC from the use of the HEFA blends. Thus, the particles originated from the combustion of both fuel types seem to be equivalent in terms of their normalized optical properties and only their concentrations change. Previous works found significant differences in the morphology of the particles emitted when burning pure alternative fuels compared to standard jet fuels, which would translate into major differences in the particles' optical properties (Huang and Vander Wal, 2013; Huang et al., 2016). However, this does not seem to be the case for blends of alternative fuels at practical ratios for widespread usage in the foreseeable future and with considerable ($> 8\%$ v/v) total aromatics content. In fact, Huang and Vander Wal (2013) found similar trends in the soot nanostructure evolution with thrust for standard jet fuel and its 50:50 blend with an alternative fuel, while the two pure biofuels tested produced distinct and varied types of nanostructures independent of the engine thrust. Huang and Vander Wal (2013) related these differences to the different degrees of turbulent mixing in the combustion chamber prior to soot formation, which is linked to the aromatic content in the fuel. Thus, soot formation from blends with up to 50% of alternative fuel is fairly similar to the one of the unblended base fuel, which results in emissions of soot particles with similar morphology, OC/TC ratios and intensive optical properties.

The wavelength dependent MAC and MSC were used to estimate the instantaneous direct radiative forcing of fresh aircraft PM emissions during cruise conditions using a simple two stream model. Our results showed that in the absence of clouds, when the emissions occurred over dark surfaces like sea water, the forcing efficiency was very small and had a net cooling effect. In contrast, these particles had a strong warming effect when emitted above highly reflective surfaces, such as

snow or ice. However, more accurate and complex climate models that simulate the atmospheric aging of the particles in the emission plume and take into account the effect from variable underlying cloud fields are required for a complete understanding of the impact of aviation particle emissions on the Earth's radiative balance.

Author contribution

- 5 ME designed the study, performed the laboratory calibrations and the data analysis. BTB and FS were in charge of fuel logistics. FS coordinated the test cell availability and engine lease. ME, BTB, LD and DS performed the jet engine measurements. AF performed the EC/OC analysis. ME wrote the manuscript with important contributions from BTB, LD and AF. BTB, LD, AF and JW revised the manuscript.

Data availability

- 10 The numerical data used to make the figures in this manuscript and the corresponding supplementary information is available at <https://doi.org/10.5281/zenodo.1918161> (Elser et al., 2018).

Competing interests

The authors declare that they have no conflict of interest.

Acknowledgements

- 15 Funding was provided by the Swiss Federal Office of Civil Aviation (FOCA) through the project SFLV 2015-113 "EMPAIREX – EMISSIONS of Particulate and gaseous pollutants in AIRcraft engine EXhaust". We thank Mike Weiner and the test cell crew from SR Technics AG for operating the engine testing facility, our EMPA colleagues Regula Haag and Dr. Daniel Rentsch for the fuel hydrogen analysis, Dr. Michael Arndt from AVL GmbH for loaning the PAX instrument, and the group of Dr. André Prévôt from PSI for providing the Aethalometer data.

References

- Arunachalam, S., Wang, B., Davis, N., Baek, B. H., and Levy, J. I.: Effect of chemistry transport model scale and resolution on population exposure to PM_{2.5} from aircraft emissions during landing and takeoff, *Atmos. Environ.*, 45, 3294–3300, doi:10.1016/j.atmosenv.2011.03.029, 2011.
- ASTM D7566-17a: Standard specification for aviation turbine fuel containing synthesized hydrocarbons, ASTM International, West Conshohocken, PA, 2017.
- 25

- Balkanski, Y., Myhre, G., Gauss, M., Radel, G., Highwood, E.J., and Shine, K.P.: Direct radiative effect of aerosols emitted by transport: from road, shipping and aviation, *Atmos. Chem. Phys.*, 10, 4477–4489, doi:10.5194/acp-10-4477-2010, 2010.
- Barrett, S. R. H., Britter, R. E., and Waitz, I. A.: Impact of aircraft plume dynamics on airport local air quality, *Atmos. Environ.*, 74, 247–258, doi:10.1016/j.atmosenv.2013.03.061, 2013.
- 5 Beyersdorf, A. J., Timko, M. T., Ziemba, L. D., Bulzan, D., Corporan, E., Herndon, S. C., Howard, R., Miake-Lye, R., Thornhill, K. L., Winstead, E., Wey, C., Yu, Z., and Anderson, B. E.: Reductions in aircraft particulate emissions due to the use of Fischer–Tropsch fuels, *Atmos. Chem. Phys.*, 14, 11–23, doi:10.5194/acp-14-11-2014, 2014.
- Birch, M. E., and Cary, R. A.: Elemental carbon-based method for monitoring occupational exposures to particulate diesel exhaust, *Aerosol Sci. Technol.*, 25, 221–241, doi:10.1080/02786829608965393, 1996.
- 10 Bond, T. C., and Bergstrom R. W.: Light absorption by carbonaceous particles: An investigative review, *Aerosol Sci. Tech.*, 40, 27–67, doi:10.1080/02786820500421521, 2007.
- Brem, B. T., Durdina, L., Siegerist, F., Beyerle, P., Bruderer, K., Rindlisbacher, T., Rocci-Denis, S., Gurhan Andac, M., Zelina, J., Penanhoat, O., and Wang, J.: Effects of fuel aromatic content on nonvolatile particulate emissions of an in-production aircraft gas turbine, *Environ. Sci. Technol.*, 49, 13149–13157, doi:10.1021/acs.est.5b04167, 2015.
- 15 Carslaw, D. C., Beevers, S. D., Ropkins, K., and Bell, M. K.: Detecting and quantifying aircraft and other on-airport contributions to ambient nitrogen oxides in the vicinity of a large international airport, *Atmos. Environ.*, 40, 5424–5434, doi:10.1016/j.atmosenv.2006.04.062, 2006.
- Chylek, P., and Wong, J.: Effect of absorbing aerosols on global radiation budget, *Geophys. Res. Lett.*, 22, 929–931, doi:10.1029/95GL00800, 1995.
- 20 Delhaye, D., Ouf, F.X., Ferry, D., Ortega, I.K., Penanhoat, O., Peillon, S., Salm, F., Vancassel, X., Focsa, C., Irimiea, C., Harivel, N., Perez, B., Quinton, E., Yon, J., and Gaffie, D.: The MERMOSE project: Characterization of particulate matter emissions of a commercial aircraft engine, *J. Aerosol Sci.*, 105, 48–63, doi:10.1016/j.jaerosci.2016.11.018, 2017.
- Durdina, L., Brem, B.T., Setyan, A., Siegerist, F., Rindlisbacher, T., and Wang, J.: Assessment of Particle Pollution from Jetliners: from Smoke Visibility to Nanoparticle Counting, *Environ. Sci. Technol.*, 51, 3534–3541, doi:10.1021/acs.est.6b05801, 2017.
- 25 Elser, M., Brem, B. T., Durdina, L., Schönenberger, D., Siegerist, F., Fischer, A., and Wang, J.: Zenodo, Empairex 1: Optical properties data archive, doi:10.5281/zenodo.1918161, 2018.
- Hadaller, O. J., and Johnson, J. M.: World Fuel Sampling Program, CRC Report 647, Coordinating Research Council, Inc., Alpharetta, GA, 2006.
- 30 Hand, J. L., and Malm, W. C.: Review of aerosol mass scattering efficiencies from ground-based measurements since 1990, *J. Geophys. Res.*, 112, D16203, doi:10.1029/2007JD008484, 2007.
- Haywood, J. M., and Shine, K. P.: Multi-spectral calculations of the direct radiative forcing of tropospheric sulphate and soot aerosols using a column model, *Q. J. Roy. Meteor. Soc.*, 123, 1907–1930, doi:10.1002/qj.49712354307, 1997.

- He, C., Liou, K.-N., Takano, Y., Zhang, R., Levy Zamora, M., Yang, P., Li, Q., and Leung, L. R.: Variation of the radiative properties during black carbon aging: theoretical and experimental intercomparison, *Atmos. Chem. Phys.*, 15, 11967–11980, doi:10.5194/acp-15-11967-2015, 2015.
- Hendricks, J., Karcher, B., Doppelheuer, A., Feichter, J., Lohmann, U., and Baumgardner, D.: Simulating the global atmospheric black carbon cycle: a revisit to the contribution of aircraft emissions, *Atmos. Chem. Phys.*, 4, 2521–2541, doi:10.5194/acp-4-2521-2004, 2004.
- Howard, R., Hiers, R.S., Whitefield, P. D., Hagen, D. E., Wormhoudt, J. C., Miake-Lye, R. C., and Strange, R.: Experimental characterization of gas turbine emissions at simulated altitude conditions, Arnold Engineering Development Center, AEDC-TR-96-3, 1996.
- 10 Hsu, H. H., Adamkiewicz, G., Houseman, E. A., Zarubiak, D., Spengler, J. D., and Levy, J. I.: Contributions of aircraft arrivals and departures to ultrafine particle counts near Los Angeles international airport, *Sci. Total Environ.*, 444, 347–355, doi:10.1016/j.scitotenv.2012.12.010, 2013.
- Hsu, S., Fruin, S., Kozawa, K., Mara, S., Winer, A. M., and Paulson, S. E.: Aircraft emission impacts in a neighborhood adjacent to a general aviation airport in Southern California, *Environ. Sci. Technol.*, 43, 8039–8045, doi:10.1021/es900975f, 15 2009.
- Huang, C.-H., and Vander Wal, R.L.: Effect of soot structure evolution from commercial jet engine burning petroleum based JP-8 and synthetic HRJ and FT fuels, *Energy Fuels*, 27, 4946–4958, doi: 10.1021/ef400576c, 2013.
- Huang, C.H., Bryg, V.M., and Vander Wal, R.L.: A survey of jet aircraft PM by TEM in APEX III, *Atmos. Environ.*, 140, 614–622, doi:10.1016/j.atmosenv.2016.06.017, 2016.
- 20 ICAO: Annex 16 to the Convention on International Civil Aviation, Environmental Protection, Volume II Aircraft Engine Emissions, Fourth Edition, 2017.
- Jacobson, M. Z., Wilkerson, J. T., Naiman, A. D., and Lele, S. K.: The effects of aircraft on climate and pollution. Part II: 20-year impacts of exhaust from all commercial aircraft worldwide treated individually at the subgrid scale, *Faraday Discuss.*, 165, 369–382, doi:10.1039/C3FD00034F, 2013.
- 25 Karagulian, F., Van Dingenen, R., Belis, C.A., Janssens Maenhout, G., Crippa, M., Guizzardi, D., and Dentener, F.: Attribution of anthropogenic PM_{2.5} to emission sources, JRC Technical Reports, EUR 28510 EN, doi:10.2760/344371, 2017.
- Kärcher, B., Hirschberg, M. M., and Fabian, P.: Small-scale chemical evolution of aircraft exhaust species at cruising altitudes, *J. Geophys. Res.*, 101, 15169–15190, doi:10.1029/96JD01059, 1996.
- Khalizov, A. F., Xue, H., Wang, L., Zheng, J., and Zhang, R.: Enhanced light absorption and scattering by carbon soot aerosol internally mixed with sulfuric acid, *J. Phys. Chem. A.*, 113, 1066–1074, doi:10.1021/jp807531n, 2009.
- 30 Kirchstetter, T. W., Corrigan, C. E., and Novakov, T.: Laboratory and field investigation of the adsorption of gaseous organic compounds onto quartz, *Atmos. Environ.*, 35, 1663–1671, doi:10.1016/S1352-2310(00)00448-9, 2001.
- Leahy, J.: Airbus Global Market Forecast 2016–2035, 2016.

- Lee, H., Olsen, S. C., Wuebbles, D. J., and Youn, D.: Impacts of aircraft emissions on the air quality near the ground, *Atmos. Chem. Phys.*, 13, 5505–5522, doi:10.5194/acp-13-5505-2013, 2013.
- Levin, E. J. T., McMeeking, G. R., Carrico, C. M., Mack, L. E., Kreidenweis, S. M., Wold, C. E., Moosmüller, H., Arnott, W. P., Hao, W. M., Collett Jr., J. L., and Malm, W. C.: Biomass burning smoke aerosol properties measured during Fire Laboratory
5 at Missoula Experiments (FLAME), *J. Geophys. Res.*, 115, D18210, doi:10.1029/2009JD013601, 2010.
- Liu, S., Aiken, A. C., Arata, C., Dubey, M. K., Stockwell, C. E., Yokelson, R. J., Stone, E. A., Jayarathne, T., Robinson, A. L., DeMott, P. J., and Kreidenweis, S. M.: Aerosol single scattering albedo dependence on biomass combustion efficiency: Laboratory and field studies, *Geophys. Res. Lett.*, 41, 742–748, doi:10.1002/2013GL058392, 2014.
- Lobo, P., Condevaux, J., Yu, Z., Kuhlmann, J., Hagen, D.E., Miake-Lye, R.C., Whitefield, P.D., and Raper, D.W.:
10 Demonstration of a Regulatory Method for Aircraft Engine Nonvolatile PM Emissions Measurements with Conventional and Isoparaffinic Kerosene fuels, *Energy Fuels*, 30, 7770–7777, doi: 10.1021/acs.energyfuels.6b01581, 2016.
- Moore, R.H., Shook, M., Beyersdorf, A., Corr, C., Herndon, S., Knighton, W.B., Miake-Lye, R., Thornhill, K.L., Winstead, E.L., Yu, Z., Ziemba, L.D., and Anderson, B.E.: Influence of Jet Fuel Composition on Aircraft Engine Emissions: A Synthesis of Aerosol Emissions Data from the NASA APEX, AAFEX, and ACCESS Missions, *Energy Fuels*, 29, 2591–2600,
15 doi:10.1021/ef502618w, 2015.
- Moore, R. H., Thornhill, K. L., Weinzierl, B., Sauer, D., D’Ascoli, E., Kim, J., Lichtenstern, M., Scheibe, M., Beaton, B., Beyersdorf, A. J., Barrick, J., Bulzan, D., Corr, C. A., Crosbie, E., Jurkat, T., Martin, R., Riddick, D., Shook, M., Slover, G., Voigt, C., White, R., Winstead, E., Yasky, R., Ziemba, L. D., Brown, A., Schlager, H., and Anderson, B. E.: Biofuel blending reduces particle emissions from aircraft engines at cruise conditions, *Nature*, 543, 411–415, doi:10.1038/nature21420, 2017.
- 20 Onasch, T., Massoli, P., Kebabian, P., Hills, F., Bacon, F., and Freedman, A.: Single scattering albedo monitor for airborne particulates, *Aerosol Sci. Technol.*, 49, 267–279, doi:10.1080/02786826.2015.1022248, 2015.
- Penner, J. E., Lister, D. H., Griggs, D. J., Dokken, D. J., and McFarland, M.: Aviation and the global atmosphere. A special report of IPCC working groups I and III, Intergovernmental Panel on Climate Change, 1999.
- Petzold, A., and Schröder, F. P.: Jet Engine Exhaust Aerosol Characterization, *Aerosol Sci Technol.*, 28, 62–76,
25 doi:10.1080/02786829808965512, 1998.
- Reid, J. S., Eck, T. F., Christopher, S. A., Koppmann, R., Dubovik, O., Eleuterio, D. P., Holben, B. N., Reid, E. A., and Zhang, J.: A review of biomass burning emissions part III: Intensive optical properties of biomass burning particles, *Atmos. Chem. Phys.*, 5, 827–849, doi:10.5194/acp-5-827-2005, 2005.
- Samset, B. H., and Myhre, G.: Vertical dependence of black carbon, sulphate and biomass burning aerosol radiative forcing,
30 *Geophys. Res. Lett.*, 38, L24802, doi:10.1029/2011GL049697, 2011.
- Samset, B. H., Myhre, G., Schulz, M., Balkanski, Y., Bauer, S., Berntsen, T. K., Bian, H., Bellouin, N., Diehl, T., Easter, R. C., Ghan, S. J., Iversen, T., Kinne, S., Kirkevåg, A., Lamarque, J.-F., Lin, G., Liu, X., Penner, J. E., Seland, Ø., Skeie, R. B., Stier, P., Takemura, T., Tsigaridis, K., and Zhang, K.: Black carbon vertical profiles strongly affect its radiative forcing uncertainty, *Atmos. Chem. Phys.*, 13, 2423–2434, doi:10.5194/acp-13-2423-2013, 2013.

- Schripp, T., Anderson, B., Crosbie, E.C., Moore, R.H., Herrmann, F., Oßwald, P., Wahl, C., Kapernaum, M., Köhler, M., Le Clercq, P., Rauch, B., Eichler, P., Mikoviny, T., and Wisthaler, A.: Impact of Alternative Jet Fuels on Engine Exhaust Composition During the 2015 ECLIF Ground-Based Measurements Campaign, *Environ. Sci. Technol.*, 52, 4969-4978, doi:10.1021/acs.est.7b06244, 2018.
- 5 Schürmann, G., Schäfer, K., Jahn, C., Hoffmann, H., Bauerfeind, M., Fleuti, E., and Rappenglück, B.: The impact of NO_x, CO and VOC emissions on the air quality of the airport Zurich, *Atmos. Environ.*, 41, 103–18, doi:10.1016/j.atmosenv.2006.07.030, 2007.
- Strawa, A., Kirchstetter, T. W., Hallar, A. G., Ban-Weiss, G. A., McLaughlin, J. R., Harley, R. A., and Lunden, M. M.: Optical and physical properties of primary on-road vehicle particle emissions and their implications for climate change, *J. Aerosol Sci.*, 41, 36-50, doi:10.1016/j.jaerosci.2009.08.010, 2010.
- 10 Subramanian, R., Khlystov, A. Y., Cabada, J. C., and Robinson, A. L.: Positive and negative artifacts in particulate organic carbon measurements with denuded and undenuded sampler configurations, *Aerosol Sci. Technol.*, 38, 27–48, doi: 10.1080/02786820390229354, 2004.
- Vander Wal, R. L., Bryg, V. M., and Huang, C.-H.: Chemistry characterization of jet aircraft engine particulate matter by XPS: Results from APEX III, *Atmos. Environ.*, 140, 623-629, doi:10.1016/j.atmosenv.2016.05.039, 2016.
- 15 Zarzycki, C. M., and Bond, T. C.: How much can the vertical distribution of black carbon affect its global direct radiative forcing?, *Geophys. Res. Lett.*, 37, L20807, doi:10.1029/2010GL044555, 2010.

20

25

30

Property (units)	Method	Jet A-1	HEFA 5%	HEFA 10%	HEFA 32%
Aromatics (% v/v)	ASTM D 1319	18.1	17.1	16.2	11.3
Naphthalenes (% v/v)	ASTM D 1840	0.79	N.A.	N.A.	0.53
Sulfur (ppm)	ASTM D 5453	490	N.A.	N.A.	350
Hydrogen mass (% m/m)	NMR	13.61	13.68	13.75	14.09
Smoke point (mm)	ASTM D 1322	22	N.A.	N.A.	24
Density (kg m ⁻³)	ASTM D 4052	794.8	793.3	791.2	781.8

Table 1. Fuel specifications overview (N.A.: measurement not available)

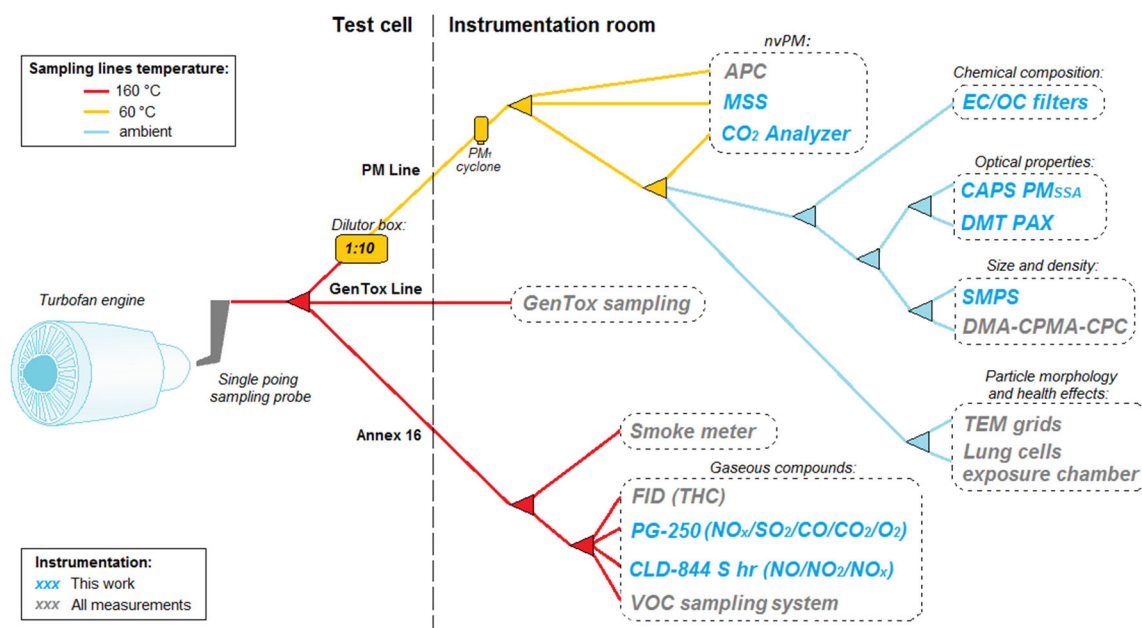


Figure 1: Experimental setup during EMPAIREX 1. Instruments depicted in blue were used in this work, which included: a Micro Soot Sensor (MSS), a Cavity Attenuated Phase-Shift Single Scattering Monitor (CAPS PM_{SSA}), a Photo Acoustic Extinctionmeter (DMT PAX), a Scanning Mobility Particle Sizer (SMPS), a CO₂ analyzer, a Portable Multi Gas Analyzer (PG-250), and a Chemiluminescence Detector (CLD-844). Additional instrumentation that was not used in this work (depicted in grey) is described in the supplementary information (Sect. S1.1).

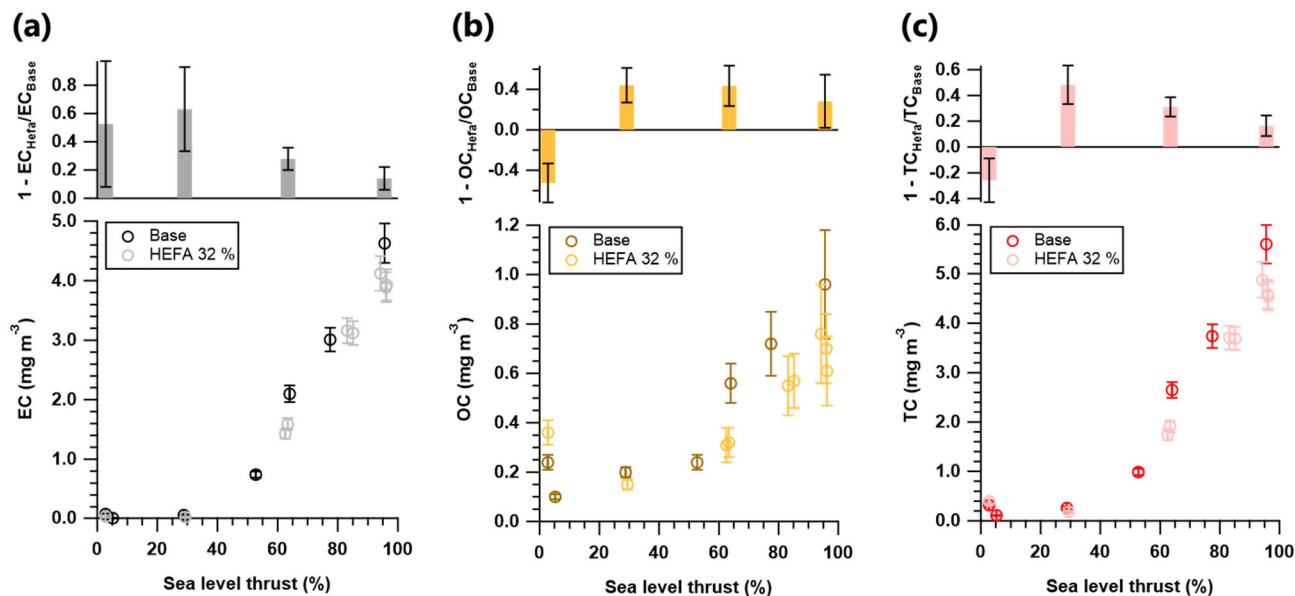


Figure 2. Thrust dependent mass concentration and decrease with the 32% HEFA blend compared to the base Jet A-1 fuel of (a) EC, (b) OC, and (c) TC. Note: Dark colors represent measurements with base fuel (Jet A-1) and light colors represent measurements with the HEFA blend (32% vol.).

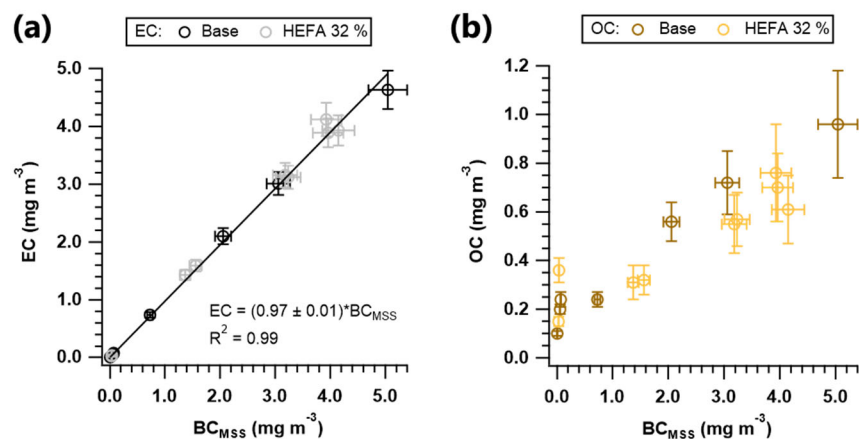


Figure 3. Correlation between the mass concentration of (a) EC, and (b) OC with BC_{MSS} . Note: Dark colors represent measurements with base fuel (Jet A-1) and light colors represent measurements with the HEFA blend (32% vol.).

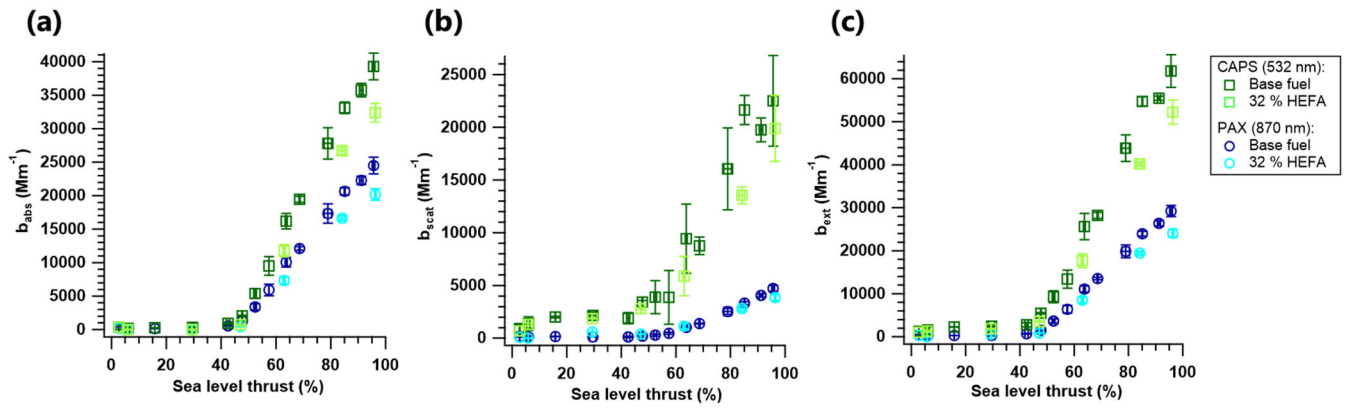


Figure 4. Thrust dependent (a) absorption, (b) scattering, and (c) extinction coefficients measured at 532 nm (green squares) and 870 nm (blue circles). Note: Dark colors represent measurements with base fuel (Jet A-1) and light colors represent measurements with the 32% vol. HEFA blend.

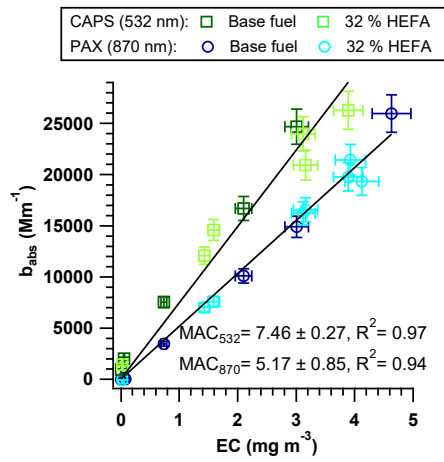


Figure 5. Correlation between the absorption coefficients measured at 532 nm (green squares) and 870 nm (blue circles) and the EC mass concentration; MAC values are retrieved from the slope of the linear fits. Note: Dark colors represent measurements with base fuel (Jet A-1) and light colors represent measurements with the HEFA blend (32% vol.).

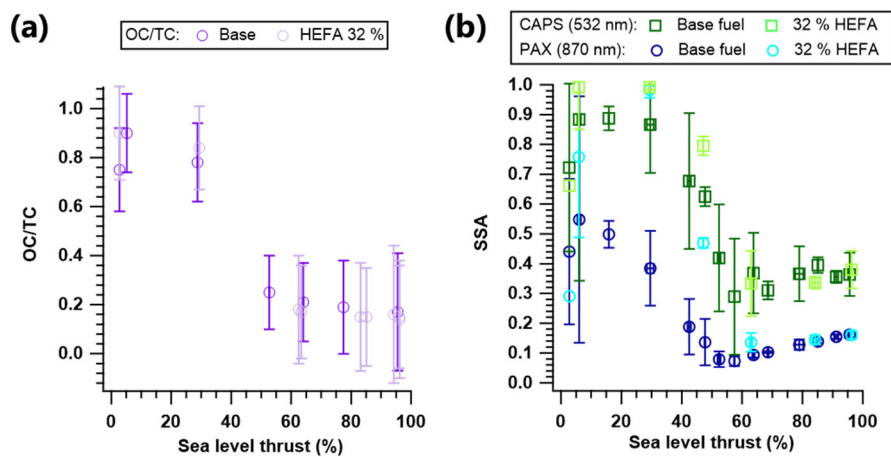


Figure 6. Thrust dependent (a) OC to TC ratio, and (b) SSA measured at 532 nm (green squares) and 870 nm (blue circles). Note: Dark colors represent measurements with base fuel (Jet A-1) and light colors represent measurements with the HEFA blend (32% vol.).