

Supplemental Materials

Characteristics of atmospheric mercury in East China: implication on sources and formation of mercury species over a regional transport intersection zone

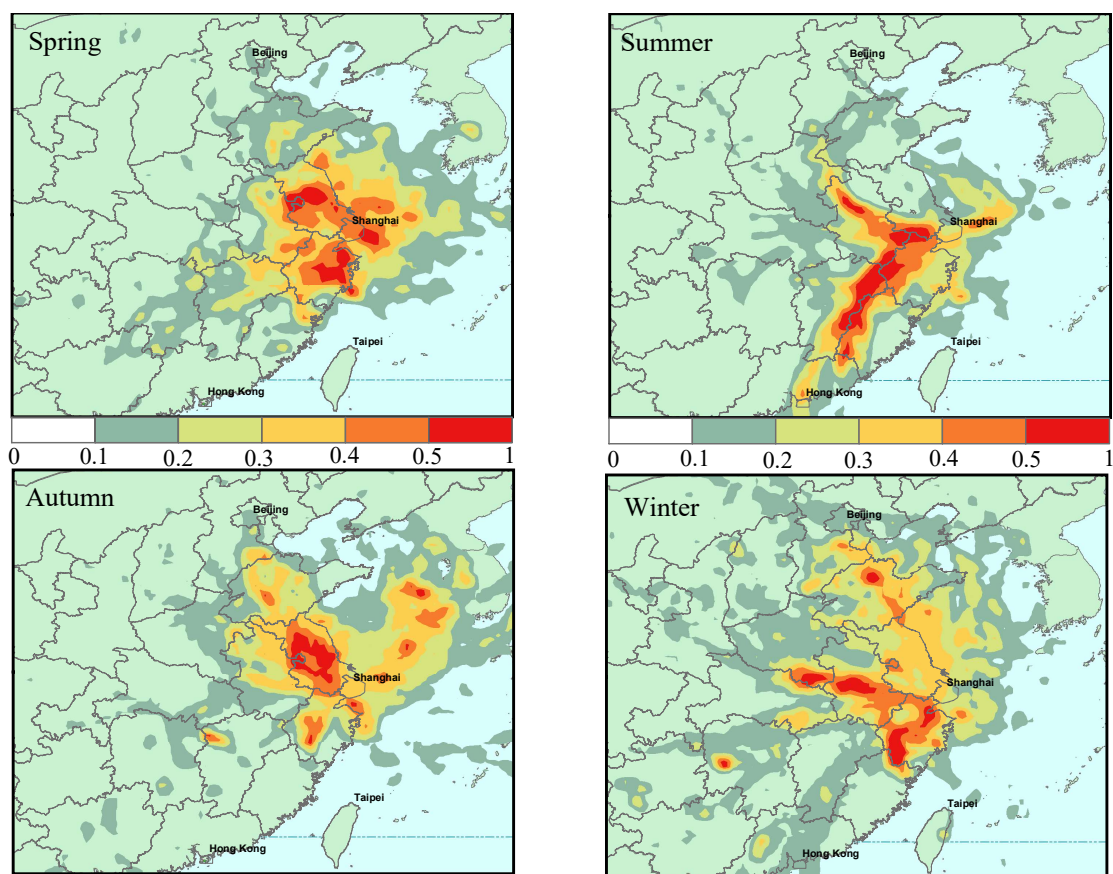
Xiaofei Qin¹, Xiaohao Wang², Yijie Shi¹, Guangyuan Yu¹, Yanfen Lin², Qingyan Fu², Dongfang Wang², Zhouqing Xie³, Congrui Deng^{1,*}, Kan Huang^{1,*}

¹Center for Atmospheric Chemistry Study, Shanghai Key Laboratory of Atmospheric Particle Pollution and Prevention (LAP³), Department of Environmental Science and Engineering, Fudan University, Shanghai, 200433 China

²Shanghai Environmental Monitoring Center, Shanghai, 200030 China

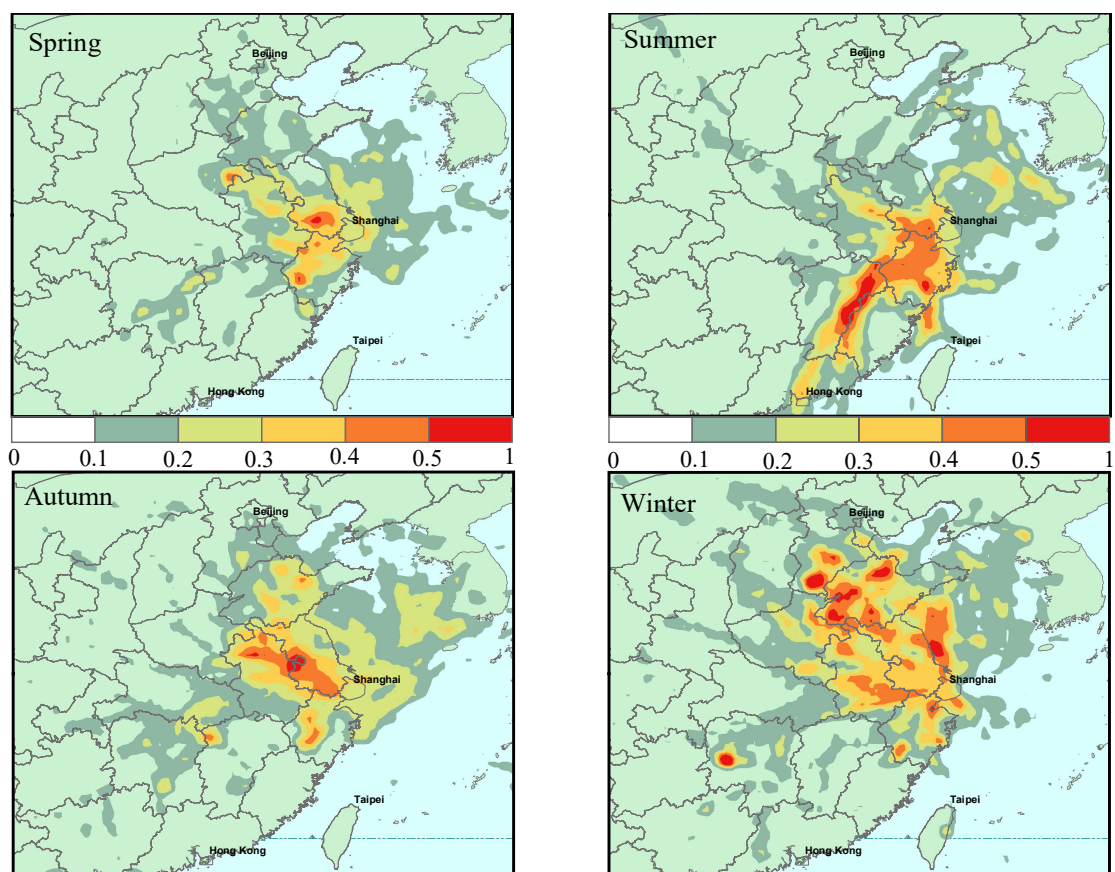
³School of Earth and Space Sciences, University of Science and Technology of China, Hefei, Anhui, 230026 China

Correspondence: congruideng@fudan.edu.cn, huangkan@fudan.edu.cn



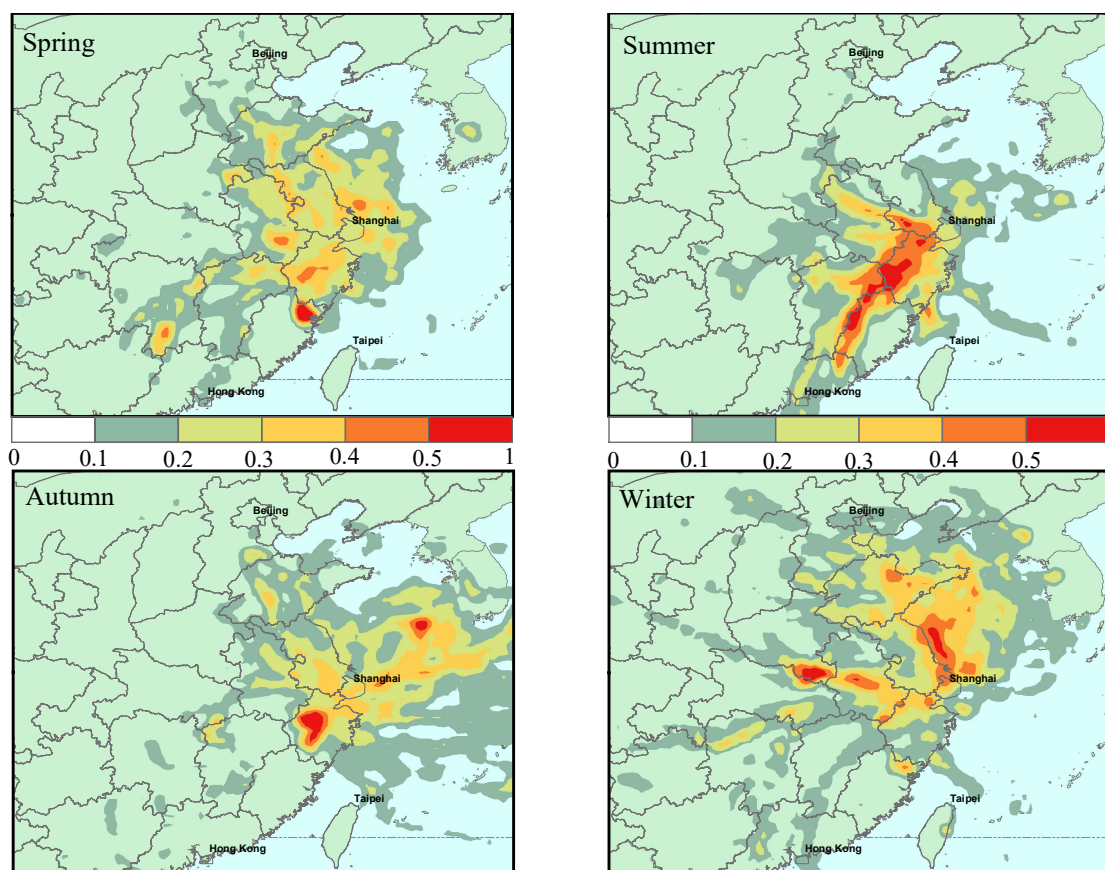
GEM

Figure S1. Potential source regions of seasonal GEM at the sampling site according to PSCF analysis.



PBM

Figure S2. Potential source regions of seasonal PBM at the sampling site according to PSCF analysis.



GOM

Figure S3. Potential source regions of seasonal GOM at the sampling site according to PSCF analysis.