

Reply to referee#1

We would like to thank the referee #1 for the constructive comments, which helped to improve the manuscript. We have considered all the recommendations. In the following reply we repeat the statements of the referee (in red) and the reply to each statement of the referee (in black). Note that in the statements of the referee the line and figure numbers refer to the original manuscript and may have changed in the revised version. In the replies the line and figure numbers correspond to the revised version.

P1,L16: clouds do not conserve LW radiation; “emit” is a better word here

- ✓ Corrected

P2,L3: midsummer SW radiative cooling of the surface is not a general feature across the Arctic.

You might indicate that clouds cool the surface the entire year at a site like Summit Greenland (Miller et al. 2018)

- ✓ We added the following sentence (please, see the page 2, line 5):
“This summer SW radiative cooling of the surface was reported for different Arctic regions except the Summit station in Greenland where the cloud radiative forcing effect is positive the entire year due to high surface albedo of the snow coverage (Miller et al. 2015, Miller et al. 2017).”

P2,L33: sensors cannot “capture low level clouds” –“observe” is a better word

- ✓ Corrected, (please, see the page 3, line 1).

P4,L29: “multi-variable”

- ✓ Corrected, (please, see the page 5, line 3).

P6,L27: I am not sure what these double values (e.g., “+100% / -30%”) mean here. Please clarify

- ✓ The uncertainty here are given with respect to the reference IWC (from in-situ), i.e. for the ratio between retrieved and measured IWC. For instance, “+100% / -50%” means that the retrieved IWC is a factor of two larger or smaller than the measured IWC, respectively. The numbers here were taken from Hogan et al. (2006).
- ✓ There was a typo in the text regarding the uncertainty values. The numbers “+100% / -30%” were corrected to the right ones “+100% / -50%”.
- ✓ Unfortunately, Hogan et al. (2006) do not provide numerical values for the temperature range from -40° to -20°C and it is hard to estimate the precise numbers from the figure they give. Therefore, we also check the uncertainties of the method in Heymsfield et al. 2007.
- ✓ We added the following sentence: “Hogan et al. 2006 found that uncertainties of the IWC retrieval differ for different temperature ranges and are estimated to be from -50% to +100% for temperatures below -40°C and ranging from -33% to +50% for temperatures above -20°C. The numbers here are root mean squared errors given with respect to the reference IWC. Evaluating the method of Hogan et al. 2006, Heymsfield et al. 2007 found similar uncertainties, except that there was a positive bias of about 50 % for temperatures above -30°C. The authors estimated the uncertainties from 0% to +100% and from -50% to +100% at temperatures above and below -30°C, respectively.” (please, see the page 7, lines 12-17).

P7,L3: “US NationalWeather Service’s”

- ✓ Corrected (please, see the page 7, line 27).

P10,L6: I found this minimum in July surprising. I suspect this is just a sampling error due to a relatively small dataset. I would encourage the authors to bring out this point more strongly here and in the conclusions of the paper

- ✓ The Cloudnet algorithm requires both radar and ceilometer measurements to be present, with the ceilometer able to distinguish cloud from warm precipitation. The ceilometer was out of operation for a few days in both July 2016 and July 2017, hence the reduction in Cloudnet data availability. We manually calculated the cloud fraction using only the radar measurements, and the cloud fraction results did not change much. Based on radar-only observations, which give a data availability of 99 %, we found the total cloud fraction to be around 80 %, with 19 % clear sky cases, very close to the Cloudnet (lidar and radar) calculations.

P11,L20-25: Shupe et al. 2015 also had the same challenges in distributing liquid water vertically in mixed-phase clouds. Does the CloudNet algorithm use the same scaled-adiabatic method? Perhaps mention both the Shupe paper and address this question here.

- ✓ Cloudnet also uses the scaled-adiabatic method for distributing liquid water vertically in liquid clouds (including liquid layers in mixed-phase clouds), using cloud boundaries from radar and lidar together with LWP from HATPRO. We added the reference to Shupe et al., (2015) which acknowledges the challenges of using this method in multi-layer situations. Please, note that in the paper we neither analyze LWC profiles nor focus on the detection of multiple liquid layers in mixed-phased clouds. We also do not try to classify multi-layer clouds into any further classes (like ice-ice, mixed-ice). In this paragraph we just explain why we do not take multi-layer cloud for further analysis. We describe the observational capabilities and limitations for liquid and mixed-phase multi-layer clouds.
- ✓ We modified the sentence (please, see the page 12, lines 13-15): “In situations with multiple liquid layers, whether warm or mixed-phase, partitioning the observed LWP from HATPRO among these different layers is particularly challenging and results in larger uncertainties (Shupe et al., 2015).”.

P13,L1: There were not 26 NWP models in the Klein et al. study. Most were very experimental cloud-resolving or LES models.

- ✓ We removed the word “NWP” (please, see the page 13, line 33).

P14,L7: “represented” is a better word than “reprocessed”

- ✓ Corrected, (please, see the page 15, line 9).

P14,L10: What sort of radar reflectivity does this represent, given typical hydrometeor sizes? Perhaps a statement can be made here about the advantage of using an instrument simulator?

- ✓ We added the following sentence (please, see the page 15, lines 16-22): “According to the Z-IWC-T relation from Hogan et al (2006), the chosen threshold in the ice mixing ratio corresponds to the radar reflectivity factor ranging from -55 to -32 dBZ at temperatures from -60 °C to -5 °C. In general, these values are close to the radar sensitivity, although at high altitudes the radar sensitivity is about -40 dBZ (Küchler et al. 2017). Nevertheless, most of the observed hydrometeors are located within 2 km from the surface (see section 4.1) and, therefore, the lack of sensitivity at high altitudes does not significantly affect the results. For more detailed analysis of the uncertainties due to differences between the instrument and the model sensitivity can be done using observation simulators (e.g. Haynes et al. 2007). Such the analysis is out of the scope of the current study.”

P14,L23: you state “: :these ice-related processes are longer in the real cloud than it is specified in ICON model.” Does this mean that you believe that the model has the processes act more rapidly than they do in nature? This sentence needs clarification

- ✓ As we show the highest occurrence of single-layer ice clouds in the ICON model is at relative humidity over ice of up to 110 %. Real clouds are observed at higher ice supersaturation

conditions (125 %). This might be associated with a different number concentration of ice particles or/and depositional growth efficiency. For instance, if the number concentration of ice particles parameterized in the ICON model is higher than the real one, the water vapour deposits faster onto the ice particles due to larger total surface area of particles and the conditions of higher supersaturation (125 %) might be not reached. The number of formed particles depends on the nucleation processes. Therefore, the difference in the concentration might come from the parameterization of ice nuclei in the ICON model.

- ✓ The sentences were modified (please, see the page 15, lines 29-32, page 16, lines 1-2): “The presence of ice particles at lower supersaturation over ice in the ICON model in comparison with observations may be associated with ice nuclei (IN) parameterization in the ICON model, which is known to be still a challenge (Fu et al., 2017). We speculate that a higher concentration of IN and, thus ice particles, leads to faster deposition of water vapour onto the ice particle’s surface. Therefore, a more efficient vapour-to-ice transition in the model could lead to lower relative humidity. Similarly, the parameterization of deposition growth rate and secondary ice processes may also have an impact on the in-cloud relative humidity.”

P15,L19: “categorization”→“classification”

- ✓ Corrected, (please, see the page 16, line 30).

P16,L33:These clouds with LWP values between 30 and 60 g/m² also have the largest radiative contribution to the surface energy budget (Bennartz et al. 2013)

- ✓ Added, (please, see the page 18, lines 11-12).

P18,L3: The L&C paper only talk about higher frequency microwave radiometer measurements. If you want to include the IR here (and you should), then please reference either Marke et al. 2016 or Turner 2007

- ✓ Corrected. Both references were included, (please, see the page 19, lines 12-13).

P18,L6: how would the effective radius be determined?

- ✓ Modified, (please, see the page 19, lines 16-17): “The next step will be to derive cloud microphysical properties such as LWC, IWC and effective radius for different types of clouds using methods by Frisch et al. 1998, Frisch et al. 2002, Hogan et al. 2006, Delanoe et al. 2007.”

Fig 9, panels B and C: the most important clouds from a radiative point of view are the ones with smaller LWP and IWP. However, the linear x-axis sort of hides them. Would you consider plotting these data on a log₁₀ axis from 1 g/m² to 1000 g/m² for LWP? The bins should be equal-sized bins in log₁₀(LWP) space. Ditto for the IWP, but perhaps start the lower range at 0.1 g/m²?

- ✓ Please find the plot below this answer. As mentioned in the section 2.2 the uncertainty of the LWP retrieval based on the MWR observations is 20-25 g/m². Thus, we do not see a need to subdivide the first bin into smaller ones. We also think that it could be a bit confusing for a reader to look at the logarithmic distributions of LWP and IWP. The bins have significantly different width in the linear domain and cannot be compared with each other. This also lead to significant changes of the distribution peaks which may be misleading.

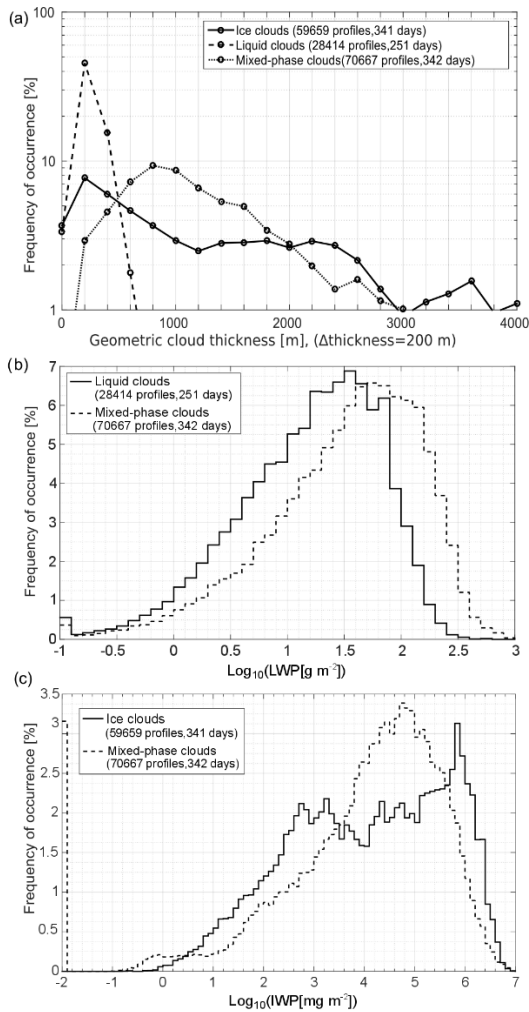


Fig11: I don't see the labels for the individual panels (e.g., "a", "b", etc). Also, there seems to be some weird inset artifact on the lower left-hand panel.

- ✓ Corrected, (please, see the Fig.13).
- ✓ The font size of labels was changed.

Fig12: I would emphasize that the ICON results are not "global", but are from output over the Ny Alesund

- ✓ Corrected, (please, see the captions to the Fig.13 and Fig.14).

Reply to referee#2

We would like to thank the referee #2 for the useful and constructive comments, which helped us significantly improve the manuscript. We have considered all the recommendations. In the following reply we repeat the statements of referee (in red) and the reply on each statement of referee (in black). Note that in the statements of the referee the line and figure numbers refer to the original manuscript and may have changed in the revised version. In the replies the line and figure numbers correspond to the revised version.

1 Major comments:

- The cloudnet algorithm seems to use thermodynamic profiles of a NWP model. Please explain what that exactly means and how that influences the analysis? If the thermodynamic profiles deviate a lot from real conditions (as measured by radiosounding for example) what are the consequences? And could that probably lead to inconsistency when using in a further analysis later on radiosoundings as additional information?
 - ✓ The Cloudnet algorithm uses the vertical profile of temperature, pressure and humidity from a forecast model (e.g. ECMWF or ICON). The temperature profile is used to aid determination of the freezing level, which is then refined in precipitating cases using the step change in the observed vertical velocity. The temperature profile is also used in the derivation of IWC, which uses reflectivity and temperature as inputs. Uncertainty in IWC is obtained by propagating the expected uncertainties in radar reflectivity and the model temperature. The forecast models used will have assimilated radiosoundings if available and are typically within 1.5 °C. Note that a radiosounding profile is not collocated with respect to the radar and lidar observation column as it can drift more than 100 km horizontally by the time it reaches the tropopause.
 - ✓ Thermodynamic profiles are used for an identification of the melting layer (0 °C isotherm). The model uncertainties may lead to the liquid-ice misclassification at temperatures close to 0 °C. The difference of temperature and relative humidity profiles of the column output of the NWP ICON model over Ny-Ålesund and the radiosonde data is shown in Fig.a1. Around 300 radiosonde profiles were included. The comparison reveals that up to 10 km the maximum errors in temperature and relative humidity are -1.5+/-1.5 °C and -5+/-20 %, respectively.

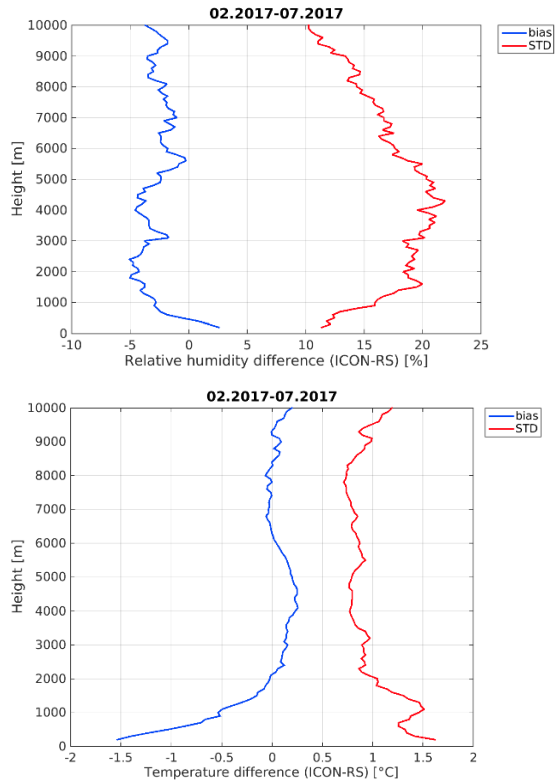


Fig. a1 Difference in temperature (a) and relative humidity (b) between ICON column output over Ny-Ålesund and radiosonde data. Blue and red lines show the bias and the standard deviation, respectively.

In the case of precipitating clouds uncertainties of the model are further mitigated by the Cloudnet algorithm using radar Doppler observations. The algorithm looks for a layer with a significant gradient in the particle vertical velocity. This layer is then classified as melted particles. Below this layer particles are classified as liquid hydrometeors, above depending on what the lidar observes particles are classified as ice, supercooled liquid, or both. For the classification the Cloudnet algorithm identifies the 0 °C isotherm using the wet-bulb temperature calculated from the model data. Therefore, the model uncertainties (Figs.1 and 2) may lead to the liquid-ice misclassification at temperatures close to 0°C. In the case of precipitating clouds uncertainties of the model are mitigated by the Cloudnet algorithm using radar Doppler observations. The algorithm identifies the 0 °C isotherm by a significant gradient in the particles vertical velocity.

- ✓ We have added the information in Sec. 2.5: "For the classification the Cloudnet algorithm identifies the 0 °C isotherm using the wet-bulb temperature calculated from the model data. Therefore, the model uncertainties (Figs.1 and 2) may lead to the liquid-ice misclassification at temperatures close to 0 °C. In the case of precipitating clouds uncertainties of the model are mitigated by the Cloudnet algorithm using radar Doppler observations. The algorithm identifies the 0 °C isotherm by a significant gradient in the particles vertical velocity.", (please see the page 7, lines 5-8).
- ✓ The model output is used for the correction of the gas/liquid absorption of the radar signal. The two-way uncertainty of the gas-attenuation estimated by Hogan and O'Connor (2004) is about 10% (added to sec 2.4). In this particular study this correction may only influence IWP retrievals. Nevertheless, the introduced uncertainties are much smaller than the uncertainties of the IWP retrieval itself.

- ✓ We added the sentence, (please see page 6, lines 12-14): “The Cloudnet algorithm corrects the radar reflectivity for the attenuation by atmospheric gases and liquid water. Temperature, humidity, and pressure profiles from a model are used by the Cloudnet for the corrections. The two-way uncertainty of the gas-attenuation estimated by Hogan and O’Connor (2004) is about 10%.”
- Discuss more the uncertainties of the measurements and their role in terms of interpretation of the results, e.g. the uncertainty range of IWC (which seems to be quite large). This could be of importance especially when it comes to comparisons. Include this discussion also in the conclusions when discussing the comparison of observations with ICON model output.
 - ✓ “The ceilometer is calibrated using the technique by O’Connor et al (2004), which has uncertainties of 10%” (this has been added to sec 2.3). Within this study the ceilometer observations are used for the liquid layer detection. Lidars are very sensitive to liquid particles and therefore the observation uncertainty does not significantly influences the results. Nevertheless, as we mentioned in Sec. 2.3 the optical signal experiences a strong attenuation and, therefore, the ceilometer cannot reliably detect multiple liquid layers. This makes the classification of multiple layer clouds difficult, therefore these clouds are excluded from the analysis.
 - ✓ As discussed in the Sec. 2.2, LWP measured by the MWR has uncertainties of 25 g/m². LWP is not used for the cloud classification. It is used for the correction of the radar reflectivity for the liquid water attenuation. The uncertainty of 25 g/m² causes about +/- 0.2 dB uncertainty in the two-way attenuation at the W-band (Matrosov et al. 2009). The following abstract was added to Sec. 2.4: “The Cloudnet algorithm corrects the radar reflectivity for the attenuation by atmospheric gases and liquid water. Temperature, humidity, and pressure profiles from a model are used by the Cloudnet for the corrections. The two-way uncertainty of the gas-attenuation estimated by (Hogan et al. 2004) is about 10%. The uncertainty of 25 g/m² in LWP from MWR causes about +/-0.2 dB uncertainty in the two-way attenuation at the W-band (Matrosov et al. 2009).”
 - ✓ We added the information on the radar reflectivity uncertainty to Sec. 2.4: “The total radar reflectivity uncertainty consists of the calibration bias which is within +/- 0.5 dB (Kuechler 2017), the random error, and the gas/liquid attenuation uncertainty. The random error depends on a number of independent measurements, which is for the 30 s Cloudnet sampling varies from 72 to 108 for the used radar settings (see Table 1). Taking into account the non-coherent averaging of the independent measurements (Bringi and Chandrasekar 2001, Eq 5.193) the standard deviation of the random error is in the order of 0.5 dB.”
 - ✓ The uncertainty in the radar reflectivity only influences IWC retrieval. The total uncertainty of 2 dB corresponds to about +40/-30% uncertainty. Part of this uncertainty is likely to be included into the uncertainty of the Z-IWC-T relation from Hogan et al (2006) because the relation was found empirically using radar observations. For the IWP calculation a number of range bins is integrated, which reduces the influence of the random error. We added the following abstract to Sec. 2.5: “The uncertainty in the radar reflectivity also influences IWC retrieval. The total uncertainty of 2 dB corresponds to about +40/-30% uncertainty. Part of this uncertainty is likely to be included into the uncertainty of the Z-IWC-T relation from Hogan et al (2006) because the relation was found empirically using radar observations.”
 - ✓ Please note, that the uncertainties mentioned above only affect quantitative retrievals such as IWC. These uncertainties do not affect the classification results. Only the cloud classification from observations and the model was compared. Therefore, the uncertainties do not change the results of comparison.
- In section 5 cloudnet products are used in combination with radiosoundings in comparison to ICON model output. I am missing one essential discussion here: How different are the temperature and humidity profiles from ICON compared to the radiosoundings? If the thermodynamic profiles from ICON deviate considerably from the data from radiosoundings the analysis could be limited by that independent of the cloud information derived by cloudnet or from ICON.

- ✓ We compared temperature and relative humidity profiles of the radiosondes data and column output of the NWP ICON model over Ny-Ålesund (please see answer to the first question). The comparison showed that up to 10 km the maximum errors in temperature and relative humidity are -1.5 ± 1.5 °C and -5 ± 20 %, respectively. The width of bins in temperature and relative humidity in Figs. 11 and 12 are 5 °C and 10 %, respectively. Since the biases of temperature and relative humidity are smaller than width of bins and, therefore, these biases do not change the results of model and observation comparison. For the comparison we use more than 300 radiosondes, therefore possible effects of the random errors are mitigated.
- ✓ The figures added to the Sec. 2.6. We added the sentences in Sec.2.6.1: “The uncertainties of the temperature and relative humidity profiles of GDAS1 are shown in Fig.1. The maximum errors in temperature and relative humidity do not exceed -1 ± 1.5 °C and -15 ± 24 %, respectively.” The following sentences were added in Sec.2.6.2: “The uncertainties of the temperature and relative humidity profiles of the ICON model are shown in Fig.2. The maximum errors in temperature and relative humidity at the altitude up to 10~km are -1.5 ± 1.5 °C and -5 ± 20 %, respectively.”.
- Discuss more what the thermodynamic conditions mean when related to cloud properties. What can be derived from this information and what is still missing? Does not for cloud formation also the stability or layer of the atmosphere (boundary layer, inversion etc.) play a huge role? Could that be analysed with the used dataset as well?
 - ✓ A number of studies show a dependence of particle formation processes on the cloud top temperature. For instance, laboratory studies show that shapes of ice crystals are defined by the environment temperature and humidity. There is also some evidence that similar effects happen in the real atmosphere. Aggregation efficiency and deposition growth rate are also temperature and humidity dependent. In order to improve the parameterization of these processes in models, further studies on particles formation and microphysical properties are needed. We added the following sentences to Sec 4.3: “For instance, laboratory studies show that shapes of ice crystals are defined by the environment temperature and humidity (Fukuta and Takahashi, 1999, Bailey and Hallett, 2009). There is also some evidence that similar effects happen in the real atmosphere (Hogan et al., 2002, Hogan et al., 2003b, Myagkov et al., 2016). Aggregation efficiency and deposition growth rate are also temperature and humidity dependent (Hosler and Hallgren, 1960; Bailey and Hallett, 2004, Connolly et al., 2012).”
 - ✓ In this study we have shown that the model output and the remote observations of clouds show significant differences. In sec. 5 we speculate about the possible reasons, although further studies are needed in order to find an answer. We rephrase the following sentences in Sec.5: “Both, the ICON model and observations, reveal that ice particles typically occur at relative humidities higher than the saturation over ice but lower than the saturation over water. The high occurrence of ice phase in ICON is found at RHi up to 110%, while for the observations reveal RHi of up to 125% (Fig.13b). The presence of ice particles at lower supersaturation over ice in the ICON model in comparison with observations may be associated with ice nuclei (IN) parameterization in the ICON model, which is known to be still a challenge (Fu and Xue, 2017). We speculate that a higher concentration of IN and, thus ice particles, leads to faster deposition of water vapour onto the ice particle’s surface. Therefore, a more efficient vapour-to-ice transition in the model could lead to lower relative humidity. Similarly, the parameterization of deposition growth rate and secondary ice processes may also have an impact on the in-cloud relative humidity.”.
 - ✓ The aerosol concentration and chemical composition also significantly affect the particle formation since not all of them can act as ice nuclei and cloud condensation nuclei. Additional studies using Raman lidar measurements and in-situ observations of aerosols might be useful to understand the nucleation processes. The atmospheric stability and occurrence of inversions also play a huge role in cloud formation. Nevertheless, models often miss inversions, and therefore, we do not analyze them in this study.

- ✓ Within this study we focus on the occurrence of clouds at Ny-Ålesund and try to show at which environmental conditions they occur. We found the relation between the different types of clouds to in-cloud conditions (temperature and humidity). This information is relevant for our further cloud radiative studies. In addition, the information given in this paper can be compared to what have been found at other Arctic sites to see the difference among them.

2 Specific comments:

- Add the vertical range of each instrument (lowest detection, maximum profilig range). Especially the lowest detection could be interesting to know.
 - ✓ The lowest detection for the FMCW 94 GHz cloud radar is 100 m and the maximum is 10 km (the information can be found in Table 1). For ceilometer CL 51 the minimum range is 10 m, the maximum range 15 km.
- Page 6, line 27: What is the IWC uncertainty range between -40 and -20_? Please add that information as well.
 - ✓ The numbers here were taken from Hogan et al. (2006). Hogan et al. 2006 found that uncertainties of the IWC retrieval differ for different temperature ranges and are estimated to be from -50% to +100% for temperatures below -40°C and ranging from -33% to +50% for temperatures above -20°C. The numbers here are root mean squared errors given with respect to the reference IWC.
 - ✓ Unfortunately, Hogan et al. (2006) do not provide numerical values for the temperature range from -40° to -20°C and it is hard to estimate the precise numbers from the figure they give. This method was evaluated in Heymsfield et al. 2007, who found similar who found similar uncertainties, except that there was a positive bias of about 50 % for temperatures above -30°C. The uncertainties for the temperature range from -40° to -20°C appear to be slightly larger than for temperatures above -20°C, but lower than for temperatures below -40°C, hence we will assume the large of these two (i.e. +100%/-50%).
 - ✓ We added the following sentence: “Hogan et al. 2006 found that uncertainties of the IWC retrieval differ for different temperature ranges and are estimated to be from -50% to +100% for temperatures below -40°C and ranging from -33% to +50% for temperatures above -20°C. The numbers here are root mean squared errors given with respect to the reference IWC. Evaluating the method of Hogan et al. 2006, Heymsfield et al. 2007 found similar uncertainties, except that there was a positive bias of about 50 % for temperatures above -30°C. The authors estimated the uncertainties from 0% to +100% and from -50% to +100% at temperatures above and below -30°C, respectively.”
- Page 7, line 5: Is it not a 6 hour dataset if the data is generated at 00, 06... ? Please correct or explain.
 - ✓ The temporal resolution of GDAS1 dataset is 3 hours.
 - ✓ The sentences in Sec. 2.6.1: “The GDAS data are generated at 00, 06, 12 and 18 UTC. The program produces a 3 hour dataset on 23 pressure levels.” were modified to “The GDAS dataset is initialised every 6 hours and outputs an analysis timestep followed by forecasts with a temporal resolution of 3 hours.”
- Page 7, line 19: Why was the ICON output not used consistent for the whole time period of analysis? What is the difference introduced by using ICON compared to GDAS1? Which uncertainty results from using one or the other? Explain more what the influence is of the model data used on the cloudnet products and thus on your analysis.
 - ✓ The ICON model data only became available from the 1st February 2017, when the ICON column output for Ny-Ålesund was added to the extraction process. GDAS1 model data was used prior to this. ICON model data has the advantage of higher vertical, horizontal and temporal resolution. ICON data has a temporal resolution of 1 hour rather than 3 hours for GDAS1. The vertical resolution of ICON column output ranges from 30 m at the lowest height, 255 m at 2 km and up to 400 m at 10 km. The

vertical resolution for GDAS1 is coarser: 233 m at the lowest altitudes, 500 m at 2 km and 1200 m at 10 km. The comparison of ICON and GDAS1 temperature profiles with radiosonde (Fig.a1 in the answer on the first question and Fig.a2) showed that at the lowest 1 km the GDAS1 temperature bias (0.5 °C) is lower than for the ICON model column output (<1.5 °C), but for the highest altitudes up to 10 km ICON has lower bias (0.5 °C) in comparison with GDAS1 (1 °C). The comparison of relative humidity profiles in respect to radiosonde data showed that the bias for both ICON model and GDAS1 is not exceeding 5 % with a standard deviation of 20 % except for the lowest 1 km where the bias for ICON (<5 %) is lower than for GDAS (<15 %). Since the Cloudnet algorithm uses the temperature and humidity profiles as an input it might affect phase partitioning. Nevertheless, the differences between GDAS1 and ICON are not large. In comparison with the previously used GDAS1 data the ICON model column output has a better temporal and vertical range resolution. The biases of temperature and humidity for the ICON model output are in general lower.

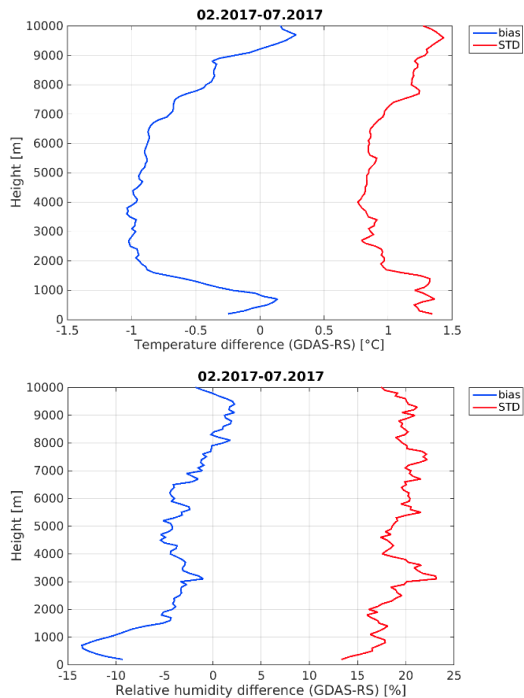


Fig. a2 Difference in temperature (a) and relative humidity (b) between GDAS1 and radiosonde data. Blue and red lines show the bias and the standard deviation, respectively.

- Page 7, line 24: Why was a forecast product used and not nudged simulations using reanalysis data? Would it not be more correct to use nudged simulations or are there technical limitations? Is the vertical profile data the same as used for Cloudnet?
 - ✓ Forecast products are preferred when using model data in Cloudnet since the ultimate goal is evaluation of the model representation of clouds. Clouds are challenging for current data assimilation methods, with any cloud variables in analysis fields rapidly changing in the first few hours as a forecast run progresses - the forecast model 'spin-up' problem. Additionally, analysis fields with 'full' assimilation are usually only available at 00 and 12Z, and the thermodynamic profile may change significantly within this time - forecast output is usually available with a temporal resolution of 1 hour.
- Page 9, line 4: How was the monthly mean IWV estimated? From radiosonde profiles?

- ✓ Yes, the I WV was derived from radiosonde data. The I WV for our period of study was compared with one for previous 23 years defined by the radiosonde availability. The information is given in Sec.2.1 and Table 1.
- Section 3: What is the conclusion from your analysis about the thermodynamic conditions? How much can the results be generalized or what does it mean for the findings of the paper that the year 2017 was different from previous years?
 - ✓ In the Section 3 we have characterized the thermodynamic conditions for our period of study since the temperature and I WV are one of the important parameters that define cloud formation and development. We have compared temperature and I WV to previous years to show how the atmospheric conditions of our period of study differ from previous years. And some months of our study have specific features. We think this is very important for proper comparisons of the results from different time periods. A good example is the 7th comment of the first reviewer, who was surprised by the low occurrence of clouds in July 2016. The reviewer expected a higher frequency based on previous observations. One of the reasons could be different thermodynamic conditions. Therefore, we show how temperature and I WV differ from earlier observations. Another example would be October 2016 has the highest cloud occurrence and this was associated with the warm temperature anomaly. Thus, some of the months of our period of study have high or low cloud occurrence and it might be due to the specific thermodynamic conditions.
 - ✓ In order to understand how exactly thermodynamic conditions influence the cloud occurrence in Ny-Ålesund a multi-year dataset is required. We plan to focus on this topic in the future.
- Page 11, line 29: Please explain how the Cloudnet IWC product is estimated.
 - ✓ The Cloudnet IWC is derived from the radar reflectivity factor and the temperature at the altitude analyzed (Hogan et al. 2006; Heymsfield et al., 2008). We referenced these sources in the Section 2 (page 7, lines 9-11).
- Page 11, line 33/Section 4.3: How does not taking into account cases with liquid precipitation influence the results due to bias for specific cloud types? Or is there no cloud type bias for liquid precipitation?
 - ✓ We focus on single-layer clouds without liquid precipitation since the lidar signal is significantly attenuated in the liquid precipitation, and thus, leading to underestimation of upper liquid layers. Moreover, LWP is not available when the HATPRO radome is wet.
 - ✓ We added the sentence “Thus, all results are relevant for single-layer clouds without liquid precipitation.” (please, see page 12, line 28).
- Page 12, line 8: How is the geometrical thickness of the single-layer clouds estimated?
 - ✓ The geometrical thickness of a cloud is calculated as the cloud top altitude minus cloud bottom altitude. The cloud top/bottom altitude is the upper/lower border of the uppermost/lowermost range bin with the cloud. This is added to Sec. 4.3.
- Page 12, line 27: Specify the model domain/region of the 6 regional models.
 - ✓ The information on the region was added, and the sentence in the Sec. 4.3 was changed to “Tjernstrom et al. (2008) evaluated 6 regional models which were set to a common domain over the western Arctic and found that...”
- Page 13, line 1: Which region/domain was the comparison focused on?
 - ✓ The information was added, and the sentence was replaced by “Klein et al. (2009) compared 26 models with air-borne and ground-based observations over the north Alaska (Barrow and Oliktok Point).”.
- Page 13, line 22: How would correcting for the drift influence the results or how much uncertainty is introduced by not doing so?
 - ✓ According to McGrath et al (2006) the uncertainties in temperature due to the radiosonde drifts in the northern hemisphere do not exceed 0.4 deg C up to 10 km altitude. Uncertainties in relative humidity are about 3 %. The uncertainties are small compared to the uncertainties of the model and do not significantly change the results.

- ✓ We added the sentences to the Sec.4.3: “According to McGrath et al (2006) the uncertainties in temperature due to the radiosonde drifts in the northern hemisphere do not exceed 0.4 °C up to 10 km altitude. Uncertainties in relative humidity are about 3 %.”
- Page 14, line 20: Explain how the ice nuclei information has to be specified in ICON.
 - ✓ Please note that in this paper we just show that the appearance of clouds in the observations and in the model is different. We speculate about possible reasons of the difference, but the exact reason is still not known. We make no recommendations regarding the parameterizations of processes in the ICON model.
- Page 14, line 21: Why is the IN concentration increasing? Explain your argumentation here better.
 - ✓ We agree the formulation is misleading. The sentences were modified: “The presence of ice particles at lower supersaturation over ice in the ICON model in comparison with observations may be associated with ice nuclei (IN) parameterization in the ICON model, which is known to be still a challenge (Fu et al., 2017). We speculate that a higher concentration of IN and, thus ice particles, leads to faster deposition of water vapour onto the ice particle’s surface. Therefore, a more efficient vapour-to-ice transition in the model could lead to lower relative humidity. Similarly, the parameterization of deposition growth rate and secondary ice processes may also have an impact on the in-cloud relative humidity.”
- Section 5: Discuss how the model resolution of ICON could influence the results and your interpretation.
 - ✓ The ICON model vertical and horizontal resolution would influence the results. Most of the clouds occur at the height around 2 km where the vertical resolution of ICON model is about 260 m. More studies are needed to investigate the influence of the model resolution by changing its vertical resolution and looking to the affect. This is out of the scope of the current study. The intention of our paper is not the direct evaluation of the ICON model but rather to show an application of cloud observations for a model evaluation.
- Page 17, line 9: You write that single-layer ice clouds are thicker than mixed-phase clouds. Why is that? Do cloud droplets not increase the cloud thickness?
 - ✓ Please note that often ice particles in mixed-phase clouds are large and reach the 0 °C isotherm (especially in the cases of deep convection). These particles melt and form liquid precipitation. These cases, which are typically thick, are excluded from the analysis. The mixed-phase clouds with no liquid precipitation seem to be thinner.
- Figure 6: It would be interesting to add another subplot of the subfigures b and c showing the profiles for the lower 2 km.
 - ✓ All the main features can be seen from these plots and we think that additional subplots are not needed.
- Figure 8: Why does the liquid precipitation only occur in mixed-phase clouds? Are there no liquid clouds with liquid precipitation?
 - ✓ Liquid precipitation also occurs in liquid clouds. In the Fig.8 two lines for mixed-phase clouds are plotted to show the difference in seasonal variability of mixed-phase clouds with liquid precipitation and without.
 - ✓ We added the line for single-layer liquid clouds with liquid precipitation in figure 8.
 - ✓ Figure 8 shows that the occurrence of single-layer liquid clouds without liquid precipitation is slightly different from the single-layer liquid clouds with liquid precipitation. For the single-layer mixed-phase clouds the difference is larger.
 - ✓ We added the sentence: “This is in agreement with Mülmenstädt et al., 2015 who reported that most of the liquid precipitation is formed including the ice phase.”
- Figure 11: How are single-layer clouds defined in ICON? As one model level cloud free in between model level containing clouds? Please specify.
 - ✓ As mentioned in Sec. 5 the ICON-based classification is made in the same way as for Cloudnet (please see Sec. 4.2). We detected clouds in ICON model output using the threshold of 10^{-7} kg/kg in the

ice/liquid mixing ratio. Each single-layer cloud profile was defined as a continuous set of range bins without any cloud-free areas in between.

- **Figure 11: What is the time resolution of the ICON output used for the analysis compared to the observations? How would the observations look like if not the time period of one hour around the radiosounding would be used but instead the time period of the ICON output? How does the model resolution thus influence the results?**
 - ✓ The time resolution of ICON model output is 1 hour (section 2.6.2). And we look at the same time period (+/- 1 hour from radiosonde launch) in model and observations. Since we look at a long time period of several month the statistic is still robust. Thus, the ICON model temporal resolution should not strongly influence the results. In addition, in this study we focus on the conditions in general under which clouds occur and not a direct model evaluation.
- **Figure 11 and 12: You mention here that the global ICON model is used- how different is the resolution compared to the single-column version mentioned earlier? Which domain size/how many grid cells were analysed?**
 - ✓ For the analysis we used the mentioned earlier column output for the grid box where Ny-Ålesund is located in and we changed the labels to figures 13 and 14.
 - ✓ In the label to figure 13 we replaced the phrase "...for global NWP model ICON (right)." to "... for column output of NWP model ICON over Ny-Ålesund (right)."
 - ✓ In the label to figure 14 we replaced the phrase "...for global NWP ICON model (b)." to "... for column output of NWP ICON model over Ny-Ålesund (b)."
- **Figure 12: There is considerably less profiles analysed from the ICON model compared to the observations- how does that influence the analysis? Is the statistics sufficient for general statements about the clouds?**
 - ✓ Please note, that in Fig. 12 (Fig.14 in revised version) N is not a number of profiles but a number of pixels (range-time bins). Since Cloudnet has significantly higher range resolution than ICON it has larger values of N. We analyzed a time period of several months (same for observations and the model) and got the results consistent with other studies (please see Sec.5). A larger dataset would be of course beneficial for more detailed analysis.

3 Small remarks, typos:

- **Write out abbreviations in the abstract (AWIPEV, LWP, IWP, ICON).**
 - ✓ Corrected
- **The numbering of the subsections is not always correct, e.g. p. 5, l. 12 and p. 5, l. 27 subsection 2.2.5 has to be replaced by subsection 2.5, p.12 l. 20 Sect. 22.2 does not exist, p. 13 l. 19 Sec. 4.4.2 does not exist.**
 - ✓ Corrected
- **The analysed period is not mentioned consistent throughout the manuscript. From the plots etc. it looks like as the analysed period is from middle of June to July 2017. However in the manuscript it is often stated that 14 months are analysed. Also at some place the period is mentioned with different start/end dates, e.g. p. 6 l. 29: August, p. 7 l. 9: 31 January 2017.**
 - ✓ Page 7, line 21: "August" was corrected to "July".
 - ✓ On page 7, line 9 "31 January 2017" is correct since this date is related to the end of using the GDAS1 data as an input for Cloudnet algorithm. Then since the February 1 2017 the ICON model column output was used.
 - ✓ Page 16, line 29: The word "almost" was added to the sentence since the data was available since 10th of June. "We analyzed almost a 14-month..."
- **Leave away the article in front of ICON or add model (in ICON ... or in the ICON modell...).**
 - ✓ Page 8, line 15: the word "model" was added.
 - ✓ The article "the" was added before "ICON model" on page 15, line 28,31 and 32.
- **Some figures (e.g. Fig. 5) seam not to be vectorized and thus have not such a good resolution when zooming in- change if possible.**

- ✓ For us everything looks fine with figure 5 (in revised version Fig.7). Also, the pdf file of figure 5 (in revised version Fig.7) looks fine and is vectorized. Maybe, this technical issue will be checked again in the end.
- Page 1, line 10: delete the (to ICON model output).
 - ✓ Corrected
- Page 1, line 11-13: Rewrite the sentence/split it into two (Distinct ...evident.).
 - ✓ Corrected
- Page 1, line 15: Add "budget" (in the energy budget).
 - ✓ Corrected
 - ✓ The word "budget" was added after "energy".
- Page 4, line 6: Add model data, which is also included in Table 2.
 - ✓ Corrected
 - ✓ We made a separate sentence and added the information in the end of this sentence: "Table 2 gives an overview on the Cloudnet products used for the cloud analysis and provides input parameters and model data for the Cloudnet algorithm."
- Page 4, line 9: Why 21st of May? The analysis starts in June 2006.
 - ✓ Please note that the 21st of May 2006 to 2 May 2017 are in general the period which corresponds to the data availability of radiosonde (type Vaisala RS92). The cloud analysis starts in June 2016. Later we mentioned the period of radiosonde data that we used for our study (please see page 4, line 15).
- Page 4, line 10: Which radiosonde type was used after 2 May 2017?
 - ✓ Since 2 May 2017 the type of radiosonde was changed to the Vaisala RS41.
 - ✓ The following sentences were added on page 4, line 18: "Since 2 May 2017 the type of radiosonde was changed to the new radiosonde type Vaisala RS41. The accuracy of the RS41 radiosonde type reported by manufacturer is 0.1°C for temperature and <2% for humidity."
- Page 5, line 25: There is a "." too much in front of the citation.
 - ✓ Corrected
- Page 6, line 27 and page 15, line 13: Add unit after temperature (C).
 - ✓ Corrected
- Page 7, line 23: Replace compared with compare.
 - ✓ Corrected
- Page 8, line 5: Do you mean less variable instead of milder?
 - ✓ Corrected, changed to "less variable".
- Page 8, line 33: Replace K with _C to be consistent.
 - ✓ Corrected
- Page 11, line 26: Change header to "Single-layer clouds and their relation to thermodynamic conditions".
 - ✓ Corrected
- Page 11, line 31f: Add percentages for all numbers.
 - ✓ Corrected
 - ✓ The percentages for all numbers of profiles were added in brackets.
- Page 14, line 1: Replace Figure11d with Fig. 11d.
 - ✓ Corrected
- Page 16, line 3: Replace "the different time period" with "a different time period".
 - ✓ Corrected
- Page 17, line 12: Replace "cloud models" with NWP or climate models (depending on what you want to say here).
 - ✓ Corrected
 - ✓ "cloud models" replaced by "NWP models".
- Page 17, line 20 and 22: One time you write the liquid phase in ICON is in the temperature range from -10_C and one time from -15_C. Explain the difference between the two statements or be consistent.

- ✓ On page 17, line 20 we write about the liquid phase in ICON which occur in the temperature range from -10 ° to +5°C. Line 22 is about single-layer mixed-phase clouds which occur from -15° to +0°C. Please note that we define mixed-phase clouds as a continuous cloud layer in a vertical profile with ice and liquid phases detected within the cloud boundaries. For example, with a cloud top with -25°C and liquid water layer detected only at -5°C the cloud will be considered as mixed-phase cloud. Therefore, mixed-phase clouds in general may occur at lower temperatures than liquid phase.
- ✓ The definition of mixed-phase clouds is given in section 4.2.
- **Figure 1: Increase size of Figure and or labels.**
 - ✓ Corrected
 - ✓ The size of figure was adjusted to the two-column width.
- **Figure 2: Add in the figure caption that white space means no data availability.**
 - ✓ Corrected
 - ✓ The phrase "..., white space means no Cloudnet data availability." was added to the figure caption.
- **Figure 5: There is not dotted line in the figure (the ice line is dashed instead of dotted).**
 - ✓ Corrected
 - ✓ Page 9, line 32 "dotted black line" was replaced by "densely dashed black line".
- **Figure 7: The plot shows the period from June to July 2017- correct the caption accordingly.**
 - ✓ Corrected
- **Figure 7: Use only one color for each category (now every color has another colorline at the top of the bar).**
 - ✓ This comment is not clear for us. Everything looks fine in our pdf version. Also, the pdf file of figure 7 looks fine for us. Maybe, this is a technical issue and this will be checked again in the end.
- **Figure 9: Explain the Δ information in the x-axis labels in the caption.**
 - ✓ Corrected
 - ✓ We added the sentence in the caption to figure 9: "In x-axes Δ shows the bin width."
 - ✓ Current version of caption: "Frequency of occurrence of cloud thickness for single-layer clouds (a), of the logarithm of LWP for single-layer liquid and mixed-phase clouds (b) and of IWP for single-layer ice and mixed-phase clouds (c) for the period from June 2016 to July 2017. The y-axis is shown in logarithmic scale. In x-axes Δ shows the bin width. The frequency of occurrence is normalized by the total number of corresponding cloud type."
- **Figure 9: Is it not July 2017 instead of August 2017?**
 - ✓ Corrected
 - ✓ The caption to figure 9 was corrected, "August 2017" was replaced by "July 2017".
- **Figure 9: Replace "Frequency" with "The frequency of occurrence" in the caption.**
 - ✓ Corrected
- **Figure 10: The x-axis labels are not formatted the right way (.=?)?**
 - ✓ Corrected
 - ✓ We changed the labels of x-axis.
- **Figure 10: What does the number mean on top of each column?**
 - ✓ Numbers at the top of plot show the number of cases included in the temperature range.
 - ✓ We mentioned the explanation in the caption to Fig.10.
- **Figure 11: Remove profiles in the figure labels for c and g (or add it in all other figures to be consistent).**
 - ✓ Corrected
- **Table 1 and 2: Reformat the text to make the columns better readable.**
 - ✓ Corrected
- **Table 1, 4th column, line 3: Add commas in between the different vertical resolutions.**
 - ✓ Corrected
- **Table 2: Write each column capitalized at the beginning.**
 - ✓ Corrected

- Table 2: Add the temporal resolution, vertical resolution and retrieved parameters for radar, ceilometer and ICON.
 - ✓ The temporal and vertical resolution and retrieved parameters mentioned in Table 2 were given for Cloudnet product.
 - ✓ We change the format of the Table 2.

Additional changes

Note that the line numbers refer to the revised manuscript.

- 1) **Page 4, Line 17:** The units of temperature were replaced from “ K” to “°C” after 0.25 and 0.15.
- 2) **Page 7, Lines 10-11:** We corrected an article and the name of parameter. “... where Z is a radar reflectivity factor and T is a temperature.” Was replaced by “... where Z is the radar reflectivity factor and T the air temperature.”
- 3) **Page 7, Line 12:** There was a typo in the text of the uncertainty values. The numbers “+100% / -30%” were corrected to the right one “+100% / -50%”. Instead of using the symbol “/” we provide the uncertainty range. The units of temperature ranges were corrected by adding the symbol of degree Celsius and the reference to Horgan et al. (2006) was added.
The final version of the sentence is: “Hogan et al. 2006 found that uncertainties of the IWC retrieval differ for different temperature ranges and are estimated to be from -50% to +100% for temperatures below -40°C and ranging from -33% to +50% for temperatures above -20°C. The numbers here are root mean squared errors given with respect to the reference IWC. Evaluating the method of Hogan et al. 2006, Heymsfield et al. 2007 estimated the uncertainties of +100% and from -50% to +100% in the temperature above and below -30°C, respectively.”.
- 4) **Page 7, Line 21:** We removed the repeated word “availability” placed after “... more than 90 %”.
- 5) **Pages 7-8, Lines 33-34:** We added the information on the GDAS1 vertical resolution at 2 km height to the sentence: “The vertical resolution varies from 173 m near the ground to 500 m at the height 2 km and to ~2.5 km at the height of 15 km.”
- 6) **Page 8, Line 9-10:** We added the sentence about the ICON vertical resolution at 2 km height: “The vertical resolution at the 2 km height is about 260 m.”
- 7) **Page 13, Line 19:** There was a mistake of section number. “... (see Sec.22.2).” was changed on “... (see Sec.2.2.2).”
- 8) **Page 14, Line 6:** A needed space before the sentence “The occurrence of the liquid...” was added.
- 9) **Page 14, Line 7:** The name of parameter was corrected. “... cloud temperature” was replaced by “cloud top temperature”.
- 10) We added the units for degree C on **Page 15, Line 3, Page 19, Lines 1-3.**
- 11) **Page 16, Line 11:** “has larger occurrence values” was replaced by “has larger values of occurrence”.
- 12) **Table 2:** The title of the table 2 “Cloudnet product used for this study” was replaced by “Cloudnet characteristics for Ny-Ålesund”.
- 13) We rephrased the acknowledgements: “We gratefully acknowledge the funding by the Deutsche Forschungsgemeinschaft (DFG, German Research Foundation) – Project Number 268020496 – TRR 172, within the Transregional Collaborative Research Center “Arctic Amplification: Climate Relevant Atmospheric and Surface Processes, and Feedback Mechanisms (AC)³ in sub-project E02. We acknowledge the staff of the AWIPEV Research Base in Ny-Ålesund for helping us in operating the cloud radar, launching radiosondes and providing the MWR and ceilometer data. We gratefully acknowledge DWD service for providing the data of the global NWP ICON model for Ny-Ålesund. We also thank Patric Seifert for providing GDAS1 data for Ny-Ålesund and helpful discussions.”

Statistics on clouds and their relation to thermodynamic conditions at Ny-Ålesund using ground-based sensor synergy

Tatiana Nomokonova¹, Kerstin Ebell¹, Ulrich Löhnert¹, Marion Maturilli², Christoph Ritter², and Ewan O'Connor³

¹Institute for Geophysics and Meteorology, University of Cologne, Cologne, Germany

²Alfred Wegener Institute Helmholtz Centre for Polar and Marine Research, Potsdam, Germany

³Finnish Meteorological Institute, Helsinki, Finland, and Meteorology Department, University of Reading, Reading, United Kingdom

Correspondence: Tatiana Nomokonova (tnomokon@uni-koeln.de)

Abstract. The French-German Arctic Research Base AWIPEV ([the Alfred Wegener Institute Helmholtz Centre for Polar and Marine Research \(AWI\) and the French Polar Institute Paul Emile Victor \(PEV\)](#)) at Ny-Ålesund, Svalbard, is an unique station for monitoring cloud related processes in the Arctic. For the first time, data from a set of ground-based instruments at AWIPEV observatory are analyzed to characterize the vertical structure of clouds. For this study, a 14-month dataset from Cloudnet combining observations from a ceilometer, a 94 GHz cloud radar and a microwave radiometer, is used. The total cloud occurrence of $\sim 81\%$, with 44.8% of multi-layer and 36% of single-layer clouds was found. Among single-layer clouds the occurrence of liquid, ice and mixed-phase clouds was 6.4% , 9% and 20.6% , respectively. It was found, that more than 90% of single-layer liquid and mixed-phase clouds have [LWP-liquid water path \(LWP\)](#) values lower than 100 and 200 g m^{-2} , respectively. Mean values of [IWP-ice water path \(IWP\)](#) for ice and mixed-phase clouds were found to be 273 and 164 g m^{-2} , respectively. The different types of single-layer clouds are also related to in-cloud temperature and relative humidity under which they occur. Statistics based on observations are compared to ~~the~~ [ICON-icosahedral Non-hydrostatic \(ICON\)](#) model output. Distinct differences in liquid phase occurrence in observations and the model at different environmental temperatures leading to higher occurrence of pure ice clouds ~~and~~. [And](#) lower occurrence of mixed-phase clouds in the model at temperatures between -20° and -5°C become evident. The analyzed dataset is useful for satellite validation and model evaluation.

15 1 Introduction

Clouds play a crucial role in the energy [budget](#) and in the hydrological cycle. On the one hand, clouds scatter solar radiation back to space leading to a shortwave cooling effect at the surface. On the other hand, clouds ~~conserve~~ [emit](#) longwave radiation and therefore warm the surface in the longwave. The impact of clouds on the energy budget depends on their macrophysical (cloud thickness, cloud top and cloud base altitudes) and microphysical (phase, size, and concentration) properties (Sedlar et al., 2012; Dong et al., 2010).

One of the most important cloud characteristics defining the radiative properties is cloud phase composition (Sun and Shine, 1994; Yoshida and Asano, 2005). In general, liquid containing clouds exhibit a stronger cloud radiative effect than ice clouds

(Shupe and Intrieri, 2004). The phase partitioning is especially essential in the Arctic region, where liquid and mixed-phase clouds can persist for several days (Morrison et al., 2012). Shupe and Intrieri (2004) and Intrieri et al. (2002) showed that during the polar winter liquid-containing clouds significantly influence the net cloud radiative effect and lead to an enhanced warming near the surface. The authors also reported that in midsummer the cloud-driven shortwave radiation cooling dominates
5 over longwave warming. [This summer SW radiative cooling of the surface was reported for different Arctic regions except the Summit station in Greenland where the cloud radiative forcing effect is positive the entire year due to high surface albedo of the snow coverage \(Miller et al., 2015; Miller et al., 2017\).](#)

The net cloud radiative forcing in the Arctic influences sea ice coverage and leads to more open water that in turn affects a heat exchange between ocean and atmosphere (Serreze et al., 2009; Kapsch et al., 2013). Extended periods of open ocean
10 increase the moisture content in the atmosphere and therefore, might enhance cloud coverage (Rinke et al., 2013; Palm et al., 2010; Kay and Gettelman, 2009; Mioche et al., 2015; Bennartz et al., 2013).

Beyond the radiative feedbacks clouds are crucial for precipitation formation that significantly affects the Arctic climate. Precipitated water forms rivers and sustains a glacier flow into the sea, and thus influences the salinity of the Arctic ocean. Being essential for snowmelt (Zhang et al., 1996), sea-ice reduction (Kay et al., 2008; Kay and Gettelman, 2009) and affecting the
15 permafrost stability, Arctic clouds have a significant impact on productivity and variety in marine and terrestrial environments and thus influence the Arctic ecosystem (Vihma et al., 2016).

Formation of Arctic clouds is a complicated process associated with aerosol-cloud interactions, turbulence, phase transitions, heat and moisture exchanges between the surface and the atmosphere (Morrison et al., 2012). The interaction of clouds with radiation and aerosols remains the largest uncertainties in radiative forcing models (Myhre et al., 2013; Walsh et al., 2009).
20 Many of the processes are not well resolved in global climate models (Vihma et al., 2016; Klein et al., 2009) indicating that parameterization of cloud properties still needs improvements (Morrison et al., 2008; Shupe et al., 2011).

Better understanding of Arctic cloud processes and feedbacks requires long-term and accurate observations (Devasthale et al., 2016; Blanchard et al., 2014). In particular, the knowledge of the vertical cloud structure and phase is crucial for an estimation of the cloud radiative impact (Turner et al., 2018; Liu et al., 2012; Shupe and Intrieri, 2004; Curry et al., 1996). In
25 order to retrieve information on the vertical distribution of clouds and their properties active remote sensing instruments such as lidars and cloud radars have to be exploited (Protat et al., 2006). Using ground- and ship-based remote sensing measurements, Shupe et al. (2011), Shupe (2011) and Intrieri et al. (2002) have provided statistics on cloud phase, cloud macrophysical and microphysical properties for several Arctic sites and the Beaufort sea within the SHEBA (Surface Heat Budget of the Arctic Ocean) program (Uttal et al., 2002).

Several studies based on satellite observations analyzed Arctic cloud properties including cloud phase. Liu et al. (2012) and Mioche et al. (2015) characterized the vertical and seasonal variability of Arctic clouds using the CloudSat 94 GHz radar and the Cloud-Aerosol Lidar and Infrared Pathfinder (CALIPSO). Liu et al. (2017) combined active space-borne and ground-based measurements to compare annual cycles of vertical distribution of cloud properties at the Alaskan site Barrow and the Canadian site Eureka. Blanchard et al. (2014) combined the both sets of observations at Eureka station in the high Arctic and showed the
35 seasonal variability of the vertical distribution of clouds and monthly cloud fraction.

Despite of high value of the satellite cloud observations, it is often difficult to ~~capture~~observe low-level clouds, which frequently occur in the Arctic (Shupe et al., 2011), with space-borne instruments (Mioche et al., 2015). Ground-based remote sensing observations can provide more detailed information here. However, there are only a few Arctic sites that provide long-term, continuous information about the vertical cloud structure using the combination of ground-based remote sensing measurements. Such sites are located, for example, in Barrow (Alaska; Verlinde et al., 2016; de Boer et al., 2009), in Atkasuk (Alaska; Doran et al., 2006), in Eureka (Canada; de Boer et al., 2009), and in Summit (Greenland; Shupe et al., 2013). Shupe et al. (2011), for instance, compared the occurrence and cloud macrophysical properties of six observatories in the Arctic.

One of the Arctic cloud observation sites is based in Ny-Ålesund (78.92°N, 11.92°E), which is located on the island of Spitsbergen in Svalbard, Norway and comprises several international research stations. Ny-Ålesund is situated at the coastline of Svalbard close to a fjord, ocean, mountains, and thus, its climate is significantly influenced by diabatic heating from the warm ocean (Serreze et al., 2011; Mioche et al., 2015) and by the surrounding orography (Maturilli and Kayser, 2016a). Maturilli and Kayser (2016a) have already shown a highly pronounced warming and moistening of the tropospheric column in the Svalbard region. Analyzing a 22-year dataset (1993-2014) from radiosondes the authors found that during winter time there has been a significant increase of atmospheric temperature (up to 3 K per decade) and mean integrated water vapor ($+0.83 \pm 1.22 \text{ kg m}^{-2}$ per decade).

Shupe et al. (2011) analyzed cloud statistics at Ny-Ålesund based on data from a micropulse lidar only. Recently, Yeo et al. (2015) have investigated the relation between cloud fraction and surface long-wave and shortwave radiation fluxes at Ny-Ålesund using data from the lidar. Nevertheless, applicability of lidars for cloud profiling is limited by the strong attenuation of the lidar signal by optically thick clouds, which often hampers multi-layer and mixed-phase cloud observations.

In 2016, the instrumentation of the French-German Arctic Research Base AWIPEV at Ny-Ålesund, operated by the Alfred Wegener Institute Helmholtz Centre for Polar and Marine Research (AWI) and the French Polar Institute Paul Emile Victor (PEV), was complemented with a cloud radar and now has state-of-the-art instrumentation for vertically resolved cloud observations. Within the Transregional Collaborative Research Center (TR 172) "Arctic Amplification: Climate Relevant Atmospheric and Surface Processes, and Feedback Mechanisms (AC)³" (Wendisch et al., 2017) comprehensive observations of the atmospheric column have been performed at the AWIPEV station at Ny-Ålesund since June 2016.

In this study the vertical structure of clouds at Ny-Ålesund is characterized for the first time using the lidar-radar synergy. In particular, we used the cloud radar to get information about the cloud structure through the whole atmospheric column. Instrumentation, data products and models used in this study are presented in section 2. Thermodynamic conditions at Ny-Ålesund for the investigated time period are shown in section 3. In section 4 the vertical hydrometeor distribution and occurrence of different cloud types at Ny-Ålesund are analyzed. For single-layer clouds, which can be liquid, ice and mixed-phase, liquid and ice water path (LWP and IWP) are derived and discussed. The cloud occurrence is related to the thermodynamic conditions such as temperature and humidity (section 4). Since environment temperature and humidity are one of the main parameters affecting cloud formation and development characterization in models, in section 5 we compare the observed relations between the cloud occurrence and thermodynamic conditions with those produced by the numerical weather prediction (NWP)

model ICON (Icosahedral Non-hydrostatic; Zängl et al., 2015). Finally, the discussion of results and the summary are given in section 6 and the outlook in section 7.

2 Instrumentation and data products

In this study we use various measurements and products continuously running at the AWIPEV observatory. A set of passive and active remote sensors provides information about the thermodynamic state and, cloud and precipitation profiling. In the following subsections, we give an overview of the instruments, data products and model data as well as a short description of the measurement principles and retrieval methods. Table 1 summarizes the measured quantities and retrieved parameters of the instruments and table 2 gives an overview on the Cloudnet products used for the cloud analysis and provides input parameters and model data for the Cloudnet algorithm.

2.1 Radiosonde observations

Radiosondes have been launched at AWIPEV at least once per day at 11 UTC for more than two decades (Maturilli and Kayser, 2016a). The radiosondes provide vertical profiles of temperature, humidity, wind speed and wind direction. From 21 of May 2006 to 2 May 2017 all radiosondes were of the type Vaisala RS92 and have been processed using the GRUAN version 2 data processing algorithm (Sommer et al., 2012; Maturilli and Kayser, 2016a). The processing corrects for errors in temperature and humidity, for instance, temperature uncertainties due to the heating effect by solar radiation and for humidity errors due to a radiation dry bias (Dirksen et al., 2014). Dirksen et al. (2014) reported that after the GRUAN processing the uncertainties of temperature are $0.25\text{ K}^\circ\text{C}$ and $0.15\text{ K}^\circ\text{C}$ for day and night time, respectively, and 4% for relative humidity at altitudes up to 10 km. Since 2 May 2017 the type of radiosonde was changed to the new radiosonde type Vaisala RS41. The accuracy of the RS41 radiosonde type reported by manufacturer is 0.1°C for temperature and $<2\%$ for humidity.

In the present study we use the radiosonde data to characterize the thermodynamic state at Ny-Ålesund for the period from June 2016 to July 2017. In addition, we compare atmospheric parameters of the analyzed period with a previous 23-year long homogenized radiosonde dataset (Maturilli and Kayser, 2016b, 2017). To relate cloud properties to the thermodynamic conditions under which they occur, we combined the radiosonde data with measurements from ground-based instruments operated by AWIPEV.

2.2 Microwave radiometer

At AWIPEV, passive microwave observations have been performed with the humidity and temperature profiler (HATPRO; Rose et al., 2005) since 2011. HATPRO is a fourteen-channel microwave radiometer that measures atmospheric brightness temperatures (TB) at K-band (22.24-31.40 GHz) and at V-band (51.26-58 GHz) frequencies with a temporal resolution of 1-2 s. The six K-band channels (22.24 GHz, 23.04 GHz, 23.84 GHz, 22.44 GHz, 26.24 GHz, 27.84 GHz) are located close to the water vapor absorption line at 22 GHz. The 31.4 GHz channel is located in the atmospheric window. The TBs measured at K-band are used for integrated water vapor (IWV), LWP and humidity profile retrievals. The seven V-band channels (from

51.26 GHz to 58 GHz) are located along the oxygen absorption complex at 60 GHz and are used for vertical temperature profiling.

A ~~multi-varied~~multi-variable linear regression algorithm (Löhnert and Crewell, 2003) was applied to the TB observations to derive LWP and IWV as well as temperature and humidity profiles. In order to determine the site specific regression coefficients a dataset of almost 3800 Ny-Ålesund radiosondes was used in combination with a radiative transfer model (RTM) to simulate the HATPRO TBs. In addition to GRUAN processing all the radiosonde data were quality controlled according to Nörenberg (2008). To this end, radiosondes that did not reach the 30 km height were extended with climatological profiles.

In order to determine and correct for potential TB offsets, we followed the method by Löhnert and Maier (2012). The assessment of the TB offsets allows reducing systematic errors in TBs originated from instrumental effects as well as from radiative transfer simulations. For this method, only clear sky cases were used. In order to identify clear sky situations, i.e. cases without any liquid, HATPRO zenith measurements were checked within 20 minutes before and after a radiosonde launch. In particular, we checked standard deviations of the retrieved LWP within every 2 minutes. If all the standard deviation values of the LWP within 40 minutes did not exceed 1.2 g m^{-2} , these cases were considered as clear sky. The TBs measured by HATPRO were then compared to the TBs simulated from the radiosonde data and mean TB offsets were determined. In this way, a TB offset correction was performed for each period between two absolute calibrations of the instrument.

For this study, we used the retrieved LWP from HATPRO to get information about the amount of liquid in the atmospheric column. This LWP information is also used in the Cloudnet product, which is presented in subsection 2.2.5. The typical uncertainty for the LWP retrieved from HATPRO measurements is 20-25 g m^{-2} (Rose et al., 2005). HATPRO measures continuously during the whole day but can not provide reliable information during rain conditions when the radome of the instrument is wet. In these cases, data have been flagged and excluded from the analysis.

2.3 Ceilometer

Since 2011 a Vaisala ceilometer CL51 has been operated at the AWIPEV observatory (Maturilli and Ebell, 2018). The ceilometer emits pulses at 905 nm wavelength and measures atmospheric backscatter with a temporal resolution of about 10 s and a vertical resolution of 10 m. The maximum profiling range is 15 km.

The ceilometer is sensitive to the surface area of the scatterers and is thus strongly affected by high concentrations of particles like cloud droplets and aerosols (O'Connor et al., 2005). On the one hand, it is thus well suited to detect liquid layers and cloud base heights. On the other hand, the near-infrared signal is significantly attenuated by liquid layers. Therefore, the ceilometer often cannot detect cloud particles above the lowest liquid layer when optical depth exceed a value of around 3.

Protat et al. (2006) reported that ceilometers are essential for reliable detection of high level ice clouds. However, a lidar system alone is not sensitive enough to detect clouds with low ice water content in the order of less than 10^{-6} g/m^3 (Bühl et al., 2013). In this study, the attenuated backscatter profiles of the ceilometer CL51 are used in the Cloudnet product (see subsection 2.2.5). The ceilometer is calibrated using the technique by O'Connor et al. (2004), which has uncertainties of 10%.

2.4 94 GHz radar

On 10th of June 2016 a new 94 GHz cloud radar (JOYRAD-94) of the University of Cologne was installed at AWIPEW station. JOYRAD-94 is a frequency-modulated continuous wave (FMCW) Doppler W-band radar. The active part of the radar measures at 94 GHz. The radar also has a passive channel at 89 GHz which is well suited for LWP retrievals. K uchler et al. (2017) showed the details on the operational principle and signal processing for JOYRAD-94. At Ny- lesund JOYRAD-94 is operated in a high-vertical resolution mode (K uchler et al., 2017). The temporal resolution of the cloud radar is 2.5 s, the vertical resolution is changing with a height from 4 to 17 m. Minimum detection height was 100 m above ground. Table 1 shows the main settings and parameters for the high-vertical resolution mode. JOYRAD-94 data is available from 10th of June 2016 to 26th of July 2017 when it was replaced by a similar instrument MIRAC-A. In this study, we restrict the analysis to the first year of measurements when JOYRAD-94 was operating. Profiles of the radar reflectivity factor and the mean Doppler velocity were used in the Cloudnet algorithm to provide information on cloud boundaries, cloud phase and microphysics.

The Cloudnet algorithm corrects the radar reflectivity for the attenuation by atmospheric gases and liquid water. Temperature, humidity, and pressure profiles from a model are used by the Cloudnet for the corrections. The two-way uncertainty of the gas-attenuation estimated by Hogan and O'Connor (2004) is about 10%. The uncertainty of 25 g m^{-2} in LWP from MWR causes about $\pm 0.2 \text{ dB}$ uncertainty in the two-way attenuation at the W-band (Matrosov, 2009).

The total radar reflectivity uncertainty consists of the calibration bias which is within $\pm 0.5 \text{ dB}$ (K uchler et al., 2017), the random error, and the gas/liquid attenuation uncertainty. The random error depends on a number of independent measurements, which is for the 30 s Cloudnet sampling varies from 72 to 108 for the used radar settings (see Table 1). Taking into account the non-coherent averaging of the independent measurements (Bringi and Chandrasekar, 2001, Eq. 5.193) the standard deviation of the random error is in the order of 0.5 dB.

2.5 Cloudnet products

The Cloudnet algorithm suite (Illingworth et al., 2007) combines observations from a synergy of ground-based instruments. Cloudnet output includes several products such as a cloud target classification and products with microphysical properties (e.g. ice water content (IWC), liquid water content). In order to provide the full vertical information on clouds, Cloudnet requires measurements of a Doppler cloud radar, a ceilometer/lidar, a microwave radiometer and thermodynamic profiles of a NWP model. For Ny- lesund, measurements are taken from the 94 GHz FMCW cloud radar JOYRAD-94, the ceilometer CL51, and the HATPRO MWR. Model data are taken from GDAS1 (Global Data Assimilation System) or NWP ICON that will be presented in the next subsection. For the first time, data from a FMCW cloud radar with a varying vertical resolution was implemented in the Cloudnet algorithm. Within Cloudnet, the measurements are scaled to a common temporal and vertical grid of 30 s and 20 m, respectively.

For the target classification the lidar backscatter and Doppler radar parameters are analyzed in combination with thermodynamic profiles of a model (Hogan and O'Connor, 2004). As an example, measurements from the radar and the ceilometer, and the Cloudnet target classification on 29 September 2016 are shown in Fig.3. The target classification consists of the categories

such as 1) aerosols and insects, 2) insects, 3) aerosols, 4) melting ice and cloud droplets, 5) melting ice, 6) ice and supercooled droplets, 7) ice, 8) drizzle/rain and cloud droplets, 9) drizzle or rain, 10) cloud droplets only, and 11) clear sky. In this study, the Cloudnet target categorization is used to differentiate cloud phase (liquid, ice and mixed-phase) and to identify different cloud types.

5 For the classification the Cloudnet algorithm identifies the 0°C isotherm using the wet-bulb temperature calculated from the model data. Therefore, the model uncertainties (Figs. 1 and 2) may lead to the liquid-ice misclassification at temperatures close to 0°C. In the case of precipitating clouds uncertainties of the model are mitigated by the Cloudnet algorithm using radar Doppler observations. The algorithm identifies the 0°C isotherm by a significant gradient in the particles vertical velocity.

Based on the target classification, various cloud microphysical retrievals are applied within Cloudnet. The Cloudnet IWC
10 product, which is used in this study, is based on a Z-IWC-T relation (Hogan et al., 2006; Heymsfield et al., 2008), where Z is a radar reflectivity factor and T ~~is a~~ the air temperature. The Cloudnet IWC has a bias error and typical random error of 0.923 dB and 1.76 dB, respectively. ~~Heymsfield et al. (2008)~~ Hogan et al. (2006) found that uncertainties of the IWC retrieval differ for different temperature ranges and are estimated to be from -50% to +100 % ~~+30%~~ for temperatures below -40° ~~and~~
15 about C and ranging from -33% to 50 % ~~+33%~~ for temperatures above -20° ~~C~~. The numbers here are root mean squared errors given with respect to the reference IWC. Evaluating the method of Hogan et al. (2006), Heymsfield et al. (2008) found similar uncertainties, except that there was a positive bias of about 50 % for temperatures above -30°C. The authors estimated the uncertainties from 0% to +100 % and from -50% to +100 % at temperatures above and below -30°C, respectively. The uncertainty in the radar reflectivity also influences the IWC retrieval. The total uncertainty of 2 dB corresponds to about +40/-30% uncertainty in IWC. Part of this uncertainty is to be included into the uncertainty of the Z-IWC-T relation from
20 Hogan et al. (2006) because the relation was found empirically using radar observations. More detailed information on the Cloudnet products can be found in Illingworth et al. (2007).

For the analyzed period (June 2016 - ~~August~~ July 2017), the Cloudnet availability is more than 90 % availability for most of the months (Fig.4). Exceptions are June 2016 (installation of the radar on 10th June), July 2016 and February 2017 (new software installation for cloud radar) with a data coverage of 64 %, 85 % and 81 %, respectively. The total number of analyzed
25 Cloudnet profiles is 1,130,030 that include 216,860 clear sky profiles and 913,170 cloudy profiles.

2.6 Model data

2.6.1 Global data assimilation system GDAS1

The Global Data Assimilation System (GDAS; Kanamitsu, 1989) is operated by the US National Weather Service's National Centers for Environmental Prediction (NCEP). This system analyzes different type of observations and maps the results on a
30 grid used for model initializations. The GDAS ~~data are generated at 00, 06, 12 and 18 UTC. The program produces a dataset is initialised every 6 hours and outputs an analysis timestep followed by forecasts with a temporal resolution of 3 hour dataset hours~~ on 23 pressure levels.

In the present study the GDAS1 data (see <https://www.ready.noaa.gov/gdas1.php> for detailed information), which are available on a 1° by 1° latitude-longitude grid, was used in the Cloudnet algorithm to provide thermodynamic information for the period from 10 June 2016 to 31 January 2017. The vertical resolution varies from 173 m near the ground to 500 m at the height 2 km and to ~ 2.5 km at the height of 15 km. The uncertainties of the temperature and relative humidity profiles of GDAS1 are shown in Fig. 1. The maximum errors in temperature and relative humidity do not exceed $-1\pm 1.5^\circ\text{C}$ and $-15\pm 24\%$, respectively.

2.6.2 NWP ICON model

The ICOSahedral Non-hydrostatic (Zängl et al., 2015) modeling framework for global NWP and climate modeling is developed by the German Weather Service and the Max Planck Institute for Meteorology. The grid structure of ICON is based on an icosahedral (triangular) grid with an average resolution of 13 km. The averaged area of the triangular grid cells is 173 km^2 . In the vertical dimension, the model has 90 atmospheric levels up to the maximum height of 75 km. The vertical resolution ranges from 30 m at the lowest heights to about 500 m at about 15 km height. The vertical resolution at the 2 km height is about 260 m. For this study we used a column output for Ny-Ålesund taken from the operational global ICON model run. In particular, vertical profiles of environment temperature and humidity, specific cloud water content, specific cloud ice content, rain mixing ratio and snow mixing ratio were used in this study. The ICON column output for Ny-Ålesund is available since 1 February 2017 and has been used as an input for the Cloudnet algorithm since then.

In this study, we use ICON data to exemplarily show how such an observational dataset of clouds can be used for a model evaluation (section 5). We relate the occurrence of different types of clouds in the ICON model to temperature and humidity and ~~compared~~ compare the results to the observational statistics. ICON model output for Ny-Ålesund is available twice a day at 00 UTC and 12 UTC with a forecast for 7.5 days (180 hours) and hourly output intervals. The data only from the first 12 hours after the initialization of the model run were used in our analysis. The uncertainties of the temperature and relative humidity profiles of the ICON model are shown in Fig. 2. The maximum errors in temperature and relative humidity at the altitude up to 10 km are $-1.5\pm 1.5^\circ\text{C}$ and $-5\pm 20\%$, respectively.

3 Thermodynamic conditions

It is well known that environmental temperature and humidity strongly influence cloud formation and development. Therefore, we start our analysis with an insight into the thermodynamic conditions during the study period. In this section we also check how representative this time period is in terms of thermodynamic conditions in comparison to the long-term mean.

Figure 5a shows the monthly mean atmospheric temperature based on the radiosonde data for the period from June 2016 to July 2017. The atmospheric temperature follows an annual cycle typical for the Northern hemisphere with higher temperatures during summer and autumn and lower temperatures in winter and spring. The lowest values of the monthly mean temperature in the lowest 50 m were observed in March and January 2017 (-11° and -10°C , respectively). The highest observed monthly mean temperature was $+7^\circ\text{C}$ in July 2016. Looking at the monthly mean temperature at 5 km height, the minimum and

the maximum values of -41° and -17°C were found in January and July, respectively. Despite the fact that Ny-Ålesund is located at the coastline where the climate is supposed to be milder less variable due to the impact of the ocean, the monthly mean temperature changes by 19° and 24°C in the lowest 50 m and 5 km height, respectively. This large amplitude of the temperature change at Ny-Ålesund can be explained by the regular occurrence of polar day and polar night. When a polar night begins in the beginning of October, atmospheric temperature dramatically decreases and it starts to increase again in late March (Fig.5a). Moreover, the smaller temperature variance at lower altitudes might be related to processes between the surface and the atmosphere and the conserved energy near the ground.

Figure 5b provides information on monthly mean absolute humidity from June 2016 to July 2017. In summer the water vapor is mostly concentrated in the lowest 1.5 km with the highest monthly mean values of up to 6 g m^{-3} in July 2016 and July 2017. The water vapor in this altitude range is thus the main contributor to the integrated water vapor (IWV). In winter, the monthly mean absolute humidity is much lower with a minimum value of $\sim 1.5\text{ g m}^{-3}$ (January) in the lowest 1.5 km.

In terms of relative humidity with respect to water (RH_w , Fig.5c), it can be seen that the monthly mean RH_w is highest in the lowest 2 km of the atmosphere. This is in agreement with Maturilli and Kayser (2016a). There is no strong seasonal variability of the monthly mean RH_w at altitudes higher than 4 km. In the lower troposphere, the monthly mean RH_w , following the temperature cycle, is higher in summer and autumn (ranging from 60 to 94 % in the lowest 2 km) and lower in winter and spring (ranging from 52 to 81 % in the lowest 2 km), except for March 2017. In March 2017, the coldest month in the period of this study, the monthly mean absolute humidity was relatively low (1.7 g m^{-3}) in the lowest 1.5 km while monthly mean RH_w was up to 85 % (Fig.5c). In summer and autumn months high values of monthly mean RH_w occur from the surface to 1.7 km. In winter and spring, the atmospheric layer near the surface is drier and high values of RH_w appear from 0.3 to 1.5 km.

In order to determine if and in which way the thermodynamic properties were special for the study period monthly mean tropospheric temperature anomalies are presented in Fig. 6a. These anomalies have been calculated with respect to the previous 23 years (1993-2015). Figure 6a shows that, compared to the long-term mean, temperatures are higher for some particular summer months. For example, July 2016 and June 2017 were warmer throughout the whole troposphere with maximum temperature anomalies of up to 2° and 4°C , respectively. Winter months were slightly warmer, too: the difference in atmospheric temperature was up to 2°C in December 2016 and February 2017. January 2017 was much colder with a temperature difference of down to -5°C . In comparison to the previous 23 years, atmospheric temperatures in March 2017 were higher in the upper troposphere (up to 2°C) and lower (-2°C) in the lowest 1.5 km. The largest positive temperature difference was found for autumn 2016, especially for October 2016 with maximum temperature differences of up to $+8^{\circ}\text{C}$. Johansson et al. (2017) have already shown that moisture intrusions from the North Atlantic can cause significant local warming in some regions of the Arctic that can reach up to $8\text{ K}^{\circ}\text{C}$. In addition, Overland et al. (2017) analyzed the variability of the near-surface air temperature (at 925 mb level) in the Arctic for the period from October 2016 to September 2017. The authors reported that there was an extreme temperature anomaly exceeding 5°C in the autumn 2016 that is in agreement with our results. Moreover, the authors showed that this extremely high temperature anomaly was associated with a persistent and unusual pattern in the geopotential height field that separated the polar vortex in the central Arctic into two parts. This situation lead to southerly winds which transported warm air into the Arctic from the mid-latitude Pacific and Atlantic oceans (Overland et al., 2017).

The observed anomalies in the monthly mean absolute humidity and IWV (Fig. 6b) in principle follow the sign of the discussed temperature anomalies. Fig.6b shows a correlation between the temperature and IWV increase. For instance, months that have a positive temperature difference also have an increase in the absolute humidity and IWV. Negative temperature differences correspond to decreases in the absolute humidity. For example, January 2017 was particularly colder and drier with anomalies in absolute humidity and IWV of $\sim -0.5 \text{ g m}^{-3}$ and $\sim -0.8 \text{ kg m}^{-2}$, respectively.

Higher IWV values in comparison with the previous years were observed in June 2016, autumn 2016, December 2016 and July 2017. The differences in IWV varied from 1 to 5 kg m^{-2} with largest contributions from the lowest 3 km. In October 2016, the absolute humidity anomaly was highest ($\sim 2 \text{ g m}^{-3}$) in the lowest 3 km. This led to a positive change in IWV of more than 5 kg m^{-2} in comparison with previous years.

Thus, it turns out that the period of our study had specific features especially for some months. Maturilli and Kayser (2016a) have shown that in general a significant warming of the atmospheric column at Ny-Ålesund is observed in January and February. The authors reported that this warming in winter is related to the higher frequency of large-scale flow from south-southeast and less from the north. However, in our study January 2017 was much colder in comparison to the previous years. In January 2017, and also in the other winter months, the wind direction occurred more frequently from south-southwest (not shown) in comparison with the earlier period from 1993 to 2014 with wind direction dominated from southeast. However, it is not clear yet what exactly caused the relatively cold January 2017.

4 Results

4.1 Hydrometeor occurrence

From June 2016 to July 2017, cloudy profiles occur around 80 % of the time (Fig.7). The frequency of cloud occurrence is largest in October 2016 and June 2016 (~ 92 %) and lowest in April 2017 (68 %). In order to have a closer look on which types of hydrometeors occur in the atmospheric column, Fig. 7 also gives an overview of the frequency of occurrence of liquid and ice hydrometeors, separately.

For this statistics we check all the range bins in Cloudnet profiles for hydrometeor types. If a Cloudnet bin contains cloud droplets, rain or drizzle we count it as liquid. If ice particles have been detected in a range bin, then we define it as ice. Note that Cloudnet does not distinguish between snow and cloud ice. Mixed-phase range bins are considered as both liquid and ice. Then profiles that contain at least one "liquid" ("ice") bin are counted as liquid (ice) containing. Profiles containing liquid and ice phases are counted in both classes.

Liquid hydrometeors (dashed black line in Fig.7) have the highest frequency of occurrence during summer and autumn (70-80 %) and the lowest in winter (~ 36 %). A pronounced seasonal variability is thus visible. Ice (~~dotted~~densely dashed black line in Fig.7) occurs more often in autumn, winter and early spring with the frequency of occurrence varying from 72 to 88 %. In summer ice occurs typically around 58-78 % of the time. The frequency of ice occurrence does not show a clear seasonal variability as the liquid phase.

Figure 8 shows vertical distributions of hydrometeors. For these statistics we used the above-mentioned bin classification. The frequency of occurrence at a certain altitude was normalized to the total number of Cloudnet profiles in a corresponding month. The highest frequency of occurrence was 60 and 70 % in March 2017 and October 2016, respectively (Fig.8a, left panel). The lowest frequency of occurrence was in July 2016 (<30 %) while for the other months in summer 2016 the frequency of occurrence of all hydrometeors was around 60 %. In January 2017 the occurrence of clouds above 3 km was less than 10 % which correlates with low RH_w (Fig. 5c) at these altitudes and the lowest value of IWV (Fig. 6b).

The total vertical distribution (Fig. 8, right panel, solid black line) shows that hydrometeors occur predominantly in the lowest 2 km with the maximum frequency of occurrence of ~ 53 % at the height of 660 m. Above 2 km, the frequency of occurrence is less than 30 % and monotonically decreases with height. In terms of seasons, the vertical frequency of occurrence of all hydrometeors reveals variations of the maximum within ± 10 % with highest values of frequency of occurrence in autumn 2016 of more than 60 % (~ 1 km height). In summer 2016, the hydrometeor frequency of occurrence is in general higher than in summer 2017 indicating a pronounced year-to-year variability which will be analyzed in future when multi-year datasets will be available.

Liquid hydrometeors (Fig. 8b) occur most of the time in the lowest 2 km. Above 2 km, the frequency of occurrence of liquid is less than 5 % and above 3 km almost no liquid particles are observed. The frequency of occurrence of liquid has a maximum at around 0.7-0.9 km height. Largest values of liquid phase occurrence vary from 40 % to 50 % in summer and autumn 2016. The maximum frequency of occurrence in the winter months does not exceed 15 %. A strong seasonal variability of liquid, with high values in summer (32 %) and lowest values in winter (12 %) can be seen.

The vertical occurrence of ice hydrometeors is shown in Fig.8c. Ice is mostly present at altitudes below 2 km. On average the frequency of occurrence peaks at around 700 m with values of 40 %. In contrast to the ice occurrence anywhere in a column (Fig. 7), which is not showing a strong seasonal variability, the vertical distribution of ice phase shows a pronounced seasonal cycle, in particular in the lowest 2 km. For higher altitudes, the seasonal variability is less pronounced. Above 2 km, the frequency of occurrence of ice decreases from ~ 30 % to less than 10 % at 8 km.

Similar to liquid hydrometeors, the frequency of occurrence of ice is highest in the lowest 2 km with values of 60 and 70 % in October 2016 and March 2017, respectively (Fig.8c, left panel). The lowest ice frequency of occurrence is found for the summer months. In July 2016, which is the warmest month during the observation period, the freezing level often reached altitudes up to 2 km and therefore almost no ice was observed below this height. In January 2017 ice rarely occurred at heights larger than 4 km, which was probably caused by presence of dry air. In the right panel of Fig.8c it can be seen that the highest frequency of occurrence of ice phase is in the lowest 2 km and around 52 % in autumn, winter and spring.

30 4.2 Statistics on different types of clouds

In addition to the occurrence of hydrometeor types, a classification of clouds into single-layer and multi-layer was also made. Single-layer clouds were furthermore separated into liquid, ice and mixed-phase.

For the classification every Cloudnet profile was checked from the top to the bottom for cloud layers. A cloud is defined here as a layer of at least three consecutive cloudy height bins. Based on a number of identified cloud layers we classified

single-layer and multi-layer clouds. We considered cases as multi-layer if two or more cloud layers were separated by one or more clear-sky height bins. Figure 9 gives an overview of the cloud type occurrence at Ny-Ålesund for the whole period of this study. The total occurrence for the whole period (right-most bar) shows 44.8 % (506,253 profiles) of multi-layer and 36 % (406,810 profiles) of single-layer clouds. Among single-layer clouds the most frequent type was mixed-phase, followed by ice and liquid single-layer clouds with the cloud occurrence of 20.6, 9.0 and 6.4 %, respectively. Note that clouds were considered as mixed-phase if ice and liquid phases were both present in the same cloud boundaries regardless whether liquid and ice were in the same range bin or not. This implies that mixed-phase clouds include not only cases with liquid cloud top and ice below but also cases when both phases (ice and liquid) are present anywhere within the detected cloud layer.

Figure 9 also shows the monthly occurrence of different cloud types. The monthly cloud occurrence, i.e. the sum of all different cloud types, corresponds to the frequency of occurrence of all hydrometeors shown by a solid black line in Fig. 7. As seen for liquid and ice hydrometeors (Fig. 7), the occurrence of single-layer liquid and ice clouds also has a seasonal and monthly variability. About 15 % of single-layer liquid clouds were detected in summer but less than 2 % in other seasons. The occurrence of single-layer ice clouds was 15-20 % in winter and spring and less than 5 % in other months. Single-layer mixed-phase clouds and multilayer-clouds were present most of the time with typical values of frequency of occurrence of around 20 % and 45 %, respectively. Thus, during most of the time, cloud systems had a complicated structure and/or consisted of both phases, liquid and ice, indicating that they are related to complex microphysical processes. In turn, the observational capabilities of these types of clouds are limited. In particular, in cases of liquid and situations with multiple liquid layers, whether warm or mixed-phase multi-layer clouds, the partitioning of the HATPRO LWP into different cloud layers is related to larger uncertainties, partitioning the observed LWP from HATPRO among these different layers is particularly challenging and results in larger uncertainties (Shupe et al., 2015). A multi-layer cloud classification requires a reliable profiling of liquid layers, which is limited by significant attenuation of lidar signals in the first liquid layer. Radar signals have better propagation through the whole vertical cloud structure in comparison with a lidar. However, the radar reflectivity is often dominated by the scattering from relatively large particles which mask the presence of small particles, like liquid droplets, being present in the same volume. In the case of multi-layer mixed-phase clouds, liquid phase can thus not be reliably detected based on radar reflectivity alone.

4.3 Focus on single-layer Single-layer clouds and their relation to thermodynamic conditions

Taking into account the above-mentioned limitations of multi-layer clouds observations our further analysis is concentrated only on single-layer cases. For the following analysis of single-layer clouds we also used LWP from HATPRO and the Cloudnet IWC product. We excluded cases when this information was not available. In particular, profiles with the presence of liquid precipitation and flagged data due to wet HATPRO radome were excluded. The resulting dataset (Fig. 10, lines with circles, stars and diamonds) was thus reduced to 149,960 profiles (37 % of all single-layer profiles) with 65,299 profiles (16 %) for single-layer mixed-phase clouds, 59,364 profiles (15 %) for single-layer ice clouds and 25,297 profiles (6 %) for single-layer liquid clouds only. Thus, all results are relevant for single-layer clouds without liquid precipitation. Nevertheless, with this

subset of single-layer clouds we can still capture the monthly variability and thus assume that it is still representative for all single-layer cloud cases.

Comparison of Fig. 10 and Fig. 9 shows that the occurrence variability of liquid and ice single-layer clouds is similar. Occurrence of mixed-phase clouds differs because of the exclusion of liquid precipitation clouds which often contain ice phase and melting layer and thus considered as mixed-phase. This is in agreement with Mülmenstädt et al. (2015) who reported that most of the liquid precipitation is formed including the ice phase. The maximum and minimum occurrence of single-layer mixed-phase clouds of 25 % and 4 % were observed in May 2017 and June 2016 respectively. The annual-averaged top-height of single-layer mixed-phase clouds was 2 km (not shown). Our findings are in a good agreement with space-borne radar-lidar observations of clouds in the Svalbard region in the period from 2007 to 2010 (Mioche et al., 2015). The authors showed that single-layer mixed-phase clouds in the Svalbard region mostly occur in May.

The geometrical thickness of the single-layer clouds is shown in Fig. 11a. The thickness-of-geometrical thickness of a cloud is calculated as the distance between the upper border of the uppermost cloud range bin and the lower border of the lowermost cloud range bin. The thickness of single-layer liquid clouds varies between 60 to 2200 m with mean and median values of 280 and 240 m, respectively. Less than 1 % of observed single-layer liquid clouds have a thickness larger than 800 m. In contrast, single-layer mixed-phase clouds typically have a larger geometrical cloud thickness which varies from 100 to 8500 m with the median and mean values of 1100 and 1500 m, respectively. In comparison with mixed-phase single-layer clouds, the geometrical cloud thickness distribution for single-layer ice clouds is broader ranging from 60 to 9500 m. The median and mean values of the geometrical cloud thickness for single-layer ice clouds are 1500 and 2100 m, respectively. The mode of the thickness distribution of single-layer ice clouds correspond to 800 m. Less than 1 % of single-layer mixed-phase and ice clouds have a geometrical cloud thickness larger than 3 and 4.2 km, respectively.

The frequency of LWP occurrence for liquid and mixed-phase clouds is shown in Fig. 11b. Both types of clouds are characterized by relatively low values of LWP. The median values of LWP for single-layer liquid and mixed-phase clouds are 17 and 37 g m^{-2} , and mean values are 30 and 66 g m^{-2} , respectively. More than 90 % of single-layer liquid and mixed-phase clouds have LWP values lower than 100 and 200 g m^{-2} , respectively. It has to be noted that in particular in these LWP ranges, the relative uncertainty in the retrieved LWP is quite large (see Sec. 2.2.2). Larger LWP values in mixed-phase clouds might be related to their larger geometrical thickness (Fig. 11a).

Median values of IWP for single-layer ice and mixed-phase clouds are 14.6 and 21.4 g m^{-2} , and mean values are 273 and 164 g m^{-2} , respectively (Fig. 11c). IWP values exceeding 400 g m^{-2} are more frequent in single-layer ice clouds than in single-layer mixed-phase clouds. However, for both cloud types the occurrence of IWP values higher than 125 g m^{-2} is less than 3 %.

A number of studies comparing observed and modeled LWP and IWP values for Arctic regions have revealed the challenge for NWP models to accurately simulate LWP and IWP. Tjernström et al. (2008) evaluated 6 regional models which were set to a common domain over the western Arctic and found that one half of the models showed nearly 0 bias in LWP while another half underestimated LWP by $\sim 20 \text{ g m}^{-2}$. The authors reported that some of the models showed -30 to 30 g m^{-2} biases in IWP. In addition a low correlation between the observations and modeled IWP and LWP was found. Most of the models showed

too low variability of IWP. Karlsson and Svensson (2011) compared 9 global climate models in the Arctic region. The authors showed that mean and standard deviations of modeled IWP and LWP can vary by a factor of 2. Forbes and Ahlgrimm (2014) concluded that such discrepancies may be related to an insufficient representation of microphysical processes. Authors note that one of the major challenges are phase partitioning and a parameterization of cloud particle's formation and development.

5 Klein et al. (2009) compared 26 ~~NWP~~ models with air-borne and ground-based observations over the north Alaska (Barrow and Oliktok Point). The authors found that although many models showed an LWP exceeding IWP (as observed), simulated LWP values were significantly underestimated. Since climate and NWP models typically parameterize cloud phase as a function of temperature, we thus analyzed relations between temperature and the phase partitioning for mixed-phase clouds at Ny-Ålesund. Figure ~~??~~ 12 shows the probability of liquid fraction, i.e. $(LWP/(LWP+IWP))$, in mixed-phase clouds for different
10 cloud top temperature ranges based on the Ny-Ålesund radiosonde observations. In general, the liquid fraction increases with cloud top temperature. Thus, high liquid fraction values in single-layer mixed-phase clouds are found at cloud top temperatures ranging from -15° to 0°C . The occurrence of the liquid fraction of 0.4-0.6, implying that both phases are roughly equally present, is relatively high for cloud temperature ranges between -25° and -15°C but is rare for cloud top temperatures below -25°C . Almost no liquid was observed at the cloud top temperatures below -40°C . Non-zero liquid fraction below -40°C is
15 mostly associated with thick clouds having a high cloud tops with a liquid layers detected at lower altitudes.

In-cloud atmospheric temperature and humidity are important for NWP models as these parameters determine the cloud particle's formation and development. For instance, laboratory studies show that shapes of ice crystals are defined by the environment temperature and humidity (Fukuta and Takahashi, 1999; Bailey and Hallett, 2009). There is also some evidence that similar effects happen in the real atmosphere (Hogan et al., 2002, 2003; Myagkov et al., 2016). Aggregation efficiency and
20 deposition growth rate are also temperature and humidity dependent (Hosler and Hallgren, 1960; Bailey and Hallett, 2004; Connolly et al.,
Therefore, in this study we also relate different cloud types to environmental conditions under which they occur. The frequency of occurrence of the different hydrometeors in single-layer clouds as a function of in-cloud temperature and relative humidity observed at Ny-Ålesund is shown in Fig.13 (a-d). Here, temperature and relative humidity were determined for each cloud bin between cloud boundaries. For this analysis we only used single-layer-cloud profiles observed one hour before and after
25 a radiosonde launch. We assumed that the atmospheric conditions did not change too much within this time period. For temperatures lower than 0°C the relative humidity with respect to ice (RH_i) was used. Values of RH_w were used at temperatures exceeding 0°C . For the cloud classification we used the method specified in Sec. 4.4.2.

All single-layer clouds were observed in the temperature range from -60° to $+10^{\circ}\text{C}$ (Fig. 13a). In some cases single-layer clouds appeared at low RH_i and RH_w (Fig. 13 a-d) that might be associated with hydrometeors falling from saturated to
30 subsaturated atmospheric layers. Another reason could be that the radiosondes, which drift, do not provide representative information for the sampling volume of the zenith-pointing ground-based instruments. However, cases with very low relative humidity values occurred in less than 1 % of the analyzed observations. According to McGrath et al. (2006) the uncertainties in temperature due to the radiosonde drifts in the northern hemisphere do not exceed 0.4°C up to 10 km altitude. Uncertainties in relative humidity are about 3%.

Figure 13b shows that ice clouds mostly occur in the temperature range from -45° to -5°C including the temperature range ($<-38^{\circ}\text{C}$) of homogeneous nucleation. The highest occurrence of ice was observed in the temperature range from -25° to -20°C and under conditions that are subsaturated with respect to water but saturated with respect to ice (Fig.13b). Observed ice particles mostly occur at RHs between 100 and 125 %. Presence of ice at positive temperatures might be related to cases of cloud type misclassification, for example, when a cloud was identified as ice instead of mixed-phase. These cases might be also associated to uncertainties in the model temperature profile used in the classification algorithm.

Mixed-phase clouds were observed at supersaturation with respect to ice (Fig.13c). Most of the cases were located at the water saturation line. Frequently, mixed phase occurs at temperatures from -25° to $+5^{\circ}\text{C}$ with two maxima in the range of -15° to 0°C . The temperatures of -15° and -5°C correspond to the highest efficiency of deposition growth of ice crystals at water saturation levels (Fukuta and Takahashi, 1999).

Liquid phase mostly occurs near water saturation at temperatures from -15° to $+5^{\circ}\text{C}$ (FigureFig.13d). Supercooled liquid was observed at temperatures down to -40°C . The lowest temperature limit for liquid clouds only was -30°C (not shown).

5 Application for model evaluation

This observational cloud data set can provide useful information for a model evaluation. As an example, this section presents a comparison of the NWP model ICON with the observations at Ny-Ålesund. Note that the intention here is not to perform a thorough model evaluation but to show the potential of such a dataset to test, for example, if the dependence of the occurrence of clouds on the thermodynamic conditions can be ~~reprocessed~~ represented by the model.

The statistics on different types of clouds, their phases and the relation to atmospheric conditions provide a useful dataset for a comparison with similar statistics based on the model output.

Based on a $10^{-7}\text{ kg kg}^{-1}$ threshold in specific cloud water content, specific cloud ice content, rain mixing ratio and snow mixing ratio we identify clouds in the model. We classify the clouds using the same procedure as for the observations (see Sec. 4.2). The value of the threshold in the hydrometeor contents was found empirically: the usage of a lower threshold leads to the higher occurrence of ice clouds in the ICON model which were not identified in observations. For a higher threshold less ice clouds were present in the ICON model than in observations. According to the Z-IWC-T relation from Hogan et al. (2006), the chosen threshold in the ice mixing ratio corresponds to the radar reflectivity factor ranging from -55 to -32 dBZ at temperatures from -60° to -5°C . In general, these values are close to the radar sensitivity, although at high altitudes the radar sensitivity is about -40 dBZ (Küchler et al., 2017). Nevertheless, most of the observed hydrometeors are located within 2 km from the surface (see Sec. 4.1) and, therefore, the lack of sensitivity at high altitudes does not significantly affect the results. For more detailed analysis of the uncertainties due to differences between the instrument and the model sensitivity can be done using observation simulators (e.g. Haynes et al., 2007). Such the analysis is out of the scope of the current study.

Right panels in Fig. 13 show the frequency of occurrence of different hydrometeors in single-layer clouds as a function of in-cloud temperature and RHw based on the ICON model data.

Figure 13e shows that modeled single-layer clouds occur within the temperature range similar to the temperatures observed in clouds at Ny-Ålesund (Fig. 13a). Figure 13f indicates that ice clouds in the ICON model typically exist at temperatures from -65° to -5°C . Both, the ICON model and observations, reveal that ice particles typically occur at relative humidities higher than the saturation over ice but lower than the saturation over water. The high occurrence of ice phase in ICON is found at RHi up to 110 %, while for the observations reveal RHi of up to 125 % (Fig. 13b). The presence of ice particles at lower supersaturation over ice in the ICON model in comparison with observations may be associated with ice nuclei (IN) ~~information that is specified in ICON~~ parameterization in the ICON model, which is known to be still a challenge (Fu and Xue, 2017). We speculate that a higher concentration of IN and, thus ice particles, leads to faster deposition of water vapour onto the ice particle's surface. Therefore, a more efficient vapour-to-ice transition in the model could lead to lower relative humidity. Similarly, the parameterization of deposition growth rate and secondary ice processes may also have an impact on the in-cloud relative humidity. Since the concentration of ice particles depends on concentration of IN or secondary ice production, the increasing IN concentration results in more ice crystals that deposit IWV to ice. In addition, higher supersaturation in observations could also explain that these ice-related processes are longer in the real cloud than it is specified in ICON model. Thus, the variability of the IN efficiency is still challenging for models (Fu and Xue, 2017). Both, the ICON model and observations, reveal that ice particles typically occur at relative humidities higher than the saturation over ice but lower than the saturation over water.

Mixed-phase clouds in the ICON model appear near the water saturation (Fig. 13g) that is consistent with the observations (Fig. 13c). The model mostly produces mixed-phase clouds within the temperatures range from -10° to $+5^{\circ}\text{C}$, that is narrower in comparison to the observations.

Modelled liquid phase occurs near water saturation at temperatures from -15° to $+5^{\circ}\text{C}$ (Fig.13h), which is in a good agreement with observations. In the ICON model the occurrence of liquid phase at temperatures below -5°C is only 6 %, while in the observations this occurrence is more than 30 %.

Figure 14 summarizes temperature dependencies of hydrometeor occurrences in the ICON model and in observations. The temperature distributions of single-layer liquid clouds (solid red lines, Fig. 14) are narrow (-10° to $+5^{\circ}\text{C}$) for both, model and observations, although, the observed distribution has larger ~~occurrence values~~ values of occurrence. The total distributions of the liquid phase (dashed red lines, Fig. 14) are different. The observed distribution has larger ~~values~~ and occupies a wider temperature range (-25° to $+10^{\circ}\text{C}$). In the model, most of the liquid phase is concentrated in the temperature range from -10° to $+5^{\circ}\text{C}$. This difference leads to a divergence between mixed-phase cloud occurrences (solid green lines, Fig. 14): the observed frequency distribution for mixed-phase clouds shows a broader temperature range than the model. Sandvik et al. (2007) showed a similar difference between observed and modelled single-layer mixed-phase clouds. For the modelling the polar version of the nonhydrostatic mesoscale model from the National Center for Atmospheric Research was used. The authors found that for temperatures below -18° the liquid fraction in single-layer mixed-clouds was completely absent in simulations.

Ice cloud observations (solid blue line in a) show a broad temperature range from -60° to $+5^{\circ}\text{C}$. In comparison to the observations, the model (solid blue line in b) shows a broader temperature range for single-layer ice clouds (-70° to $+5^{\circ}\text{C}$). Due to the low occurrence of the liquid phase at temperatures below -5°C by the model most of the clouds at lower temperatures are classified as pure ice. Therefore, the model shows significantly larger occurrence of ice clouds at temperatures warmer than

-20°C. Also this explains similarities between modelled ice phase in pure ice and ice-containing clouds (dashed blue line). In addition, the occurrence of simulated ice clouds is higher at temperatures below -40°, which corresponds to the homogeneous ice nucleation regime.

6 Summary and discussion of results

- 5 This study provided, for the first time, a statistical analysis of clouds at Ny-Ålesund, Svalbard and their relation to the thermodynamic conditions under which they occur. We analyzed almost a 14-month long measurement period at Ny-Ålesund and presented statistics on vertically resolved cloud properties, hydrometeors and thermodynamic conditions. The Cloudnet ~~ategorization~~-classification scheme, based on observations from a set of ground-based remote-sensing instruments (active and passive), was applied in order to provide vertical profiles of clouds, their macrophysical, microphysical properties and phase.
- 10 In total 1,130,030 Cloudnet profiles are available for the period from June 2016 to July 2017.

The statistics on cloud properties and atmospheric thermodynamic conditions is essential for a better understanding of cloud processes and can also be used for model evaluation. In this study, the relation between cloud properties and thermodynamic conditions from observations was compared to results from the NWP ICON model.

- 15 The thermodynamic conditions were derived from radiosonde data for the period from June 2016 to July 2017 and were compared with previous 23 years. This comparison revealed that the period of our study differs from the previous years. January 2017 was significantly colder with temperature differences down to -5°C while October 2016 was extremely warm with temperature anomalies of more than +5°C. Also, in comparison to the previous 23 years, IWV was lower in January 2017 by 1 kg m⁻² and more than 5 kg m⁻² higher in October 2016.

The main findings and their discussions are listed below.

- 20 (1) The total occurrence of clouds is ~81 %. The highest frequency of occurrence is in October 2016 (92 %). Similar results of high cloud occurrence in summer and autumn at Ny-Ålesund based on micro-pulse lidar measurements were previously found by Shupe et al. (2011). Nevertheless, the observed total occurrence of clouds at Ny-Ålesund for the investigated period is higher than the one from Shupe et al. (2011). The authors showed that the total annual cloud fraction at Ny-Ålesund for the period from March 2002 to May 2009 was 61 %. On the one hand, we analyzed ~~the~~-a different time period. On the other hand,
- 25 the occurrence of clouds in Shupe et al. (2011) might be underestimated when only a lidar is used (Bühl et al., 2013). However, our results are in a good agreement with a previous study by Mioche et al. (2015). The authors used space-borne observations over the Svalbard region for the period from 2007 to 2010. They applied the DARDAR algorithm (Delanoe and Hogan, 2008, 2010) that utilizes measurements from CALIPSO and CLOUDSAT. They showed that the cloud occurrence over the Svalbard region was in the range from 70 % to 90 % having peaks in spring and autumn. Mioche et al. (2015) found the lowest cloud
- 30 occurrence in July, while the statistics in the present study reveal the high cloud occurrence (~80 %) in this month. Also here, this difference might be related to the different periods investigated. Another reason might be that the observed clouds in July are predominantly located at heights below 1.5 km. These low-level clouds are difficult to capture by CloudSat due to its "blind zone" in the lowest 1.2 km (Marchand et al., 2008; Maahn et al., 2014). Mioche et al. (2015), for example, showed that the

Ny-Ålesund ground-based measurements revealed the highest cloud occurrence in summer (between 60 % and 80 %), while satellite observations showed the minimum in that season. The lowest cloud occurrence in the study by Shupe et al. (2011) is around 50 % in March. In our study, the lowest cloud occurrence (~65 %) was also observed in spring. This might be associated with a relatively low atmospheric temperature and less moisture being available in the atmosphere. The increase of cloudiness in summer and autumn is probably due to higher values of relative humidity at the site in comparison with other seasons. Also sea-ice coverage might impact the cloud occurrence. As during summer and autumn sea ice coverage is the lowest, areas of open water are larger and therefore, that can lead to enhanced evaporation and latent heat exchange with the Arctic atmosphere.

(2) We found that multilayer and single-layer clouds occur 44.8 % and 36 % of the time, respectively. The most common type of single-layer clouds is mixed-phase with a frequency of occurrence of 20.6 %. The total occurrences of single-layer ice and liquid clouds are 9 % and 6.4 %, respectively. The cloud occurrence of single-layer liquid and ice clouds has a pronounced month-to-month and seasonal variability.

The analysis of cloud phase shows that liquid is mostly present in the lowest 2 km with the highest occurrence in summer and autumn (especially, in October 2016) and lowest in winter. However, in winter the occurrence of liquid hydrometeors is still significant and reaches 12 % at a height of 1 km. The occurrence of ice phase within the first 2 km is lowest in summer (22 %) and highest in October 2016 and March 2017 with 60 % and 70 %, respectively. The largest frequency of occurrence of ice and liquid in October 2016 (> 50 %) is related to strong temperature and humidity anomalies in this month. According to Overland et al. (2017), the anomalies were associated with warm air transported into the Arctic from mid-latitudes, the Pacific and Atlantic oceans.

(3) We analyzed 149,960 Cloudnet profiles with single-layer clouds only. Single-layer liquid and mixed-phase clouds typically have very low values of LWP with median values of 17 and 37 g m^{-2} and mean values of 30 and 66 g m^{-2} , respectively. It has to be noted that these low values of LWP may significantly affect shortwave and longwave radiation (Turner et al., 2007). [These clouds with LWP values between 30 and 60 \$\text{g m}^{-2}\$ have the largest radiative contribution to the surface energy budget Bennartz et al. \(2013\).](#) The LWP of single-layer mixed-phase clouds is larger than for single-layer liquid clouds. This result is in an agreement with a study by Shupe et al. (2006). The authors reported that the LWP for mixed-phase single-layer clouds is larger than for pure liquid clouds due to thicker liquid layers in mixed-phase clouds.

Turner et al. (2018) showed that in Barrow the occurrence of single-layer mixed-phase clouds is lower than the one of single-layer liquid only cloud at LWP values exceeding 120 g m^{-2} . At LWP values below 120 g m^{-2} liquid only clouds become dominant over mixed-phase clouds. We found a similar behavior at Ny-Ålesund but with the transition at 50 g m^{-2} .

The IWP statistics shows that in general single-layer ice clouds contain more ice than single-layer mixed phase clouds with corresponding mean values of 273 and 164 g m^{-2} , respectively. The median values of IWP for single-layer ice and mixed-phase clouds are 14.6 and 21.4 g m^{-2} , respectively. This difference might be related to the cloud geometrical thickness. On average single-layer ice clouds are thicker than mixed-phase clouds. Single-layer mixed-phase clouds have higher occurrence than ice clouds for IWP values ranging from 25 to 400 g m^{-2} . For IWP values exceeding 400 g m^{-2} ice clouds were more frequent than mixed-phase.

Since phase partitioning in [cloud-NWP](#) models depends on atmospheric conditions, we analyzed relations between cloud top temperature and liquid fraction for mixed-phase clouds. It was found that liquid is present at temperatures down to -40°C . The highest occurrence of liquid phase is at cloud top temperatures ranging from -15° to 0°C .

(4) We analyzed the occurrence of different cloud types at Ny-Ålesund as a function of environment conditions. In addition to observations we also used the ICON model output for these analyses. We found that the temperature distribution of single-layer liquid clouds is narrow with temperatures typically ranging from -10° to $+5^{\circ}\text{C}$. Similar results are also found for the ICON model. However, the distribution of the liquid phase for mixed-phase clouds is one of the major differences between the model and observations. The observed distribution ranges from -25° to $+10^{\circ}\text{C}$ while in the ICON model liquid phase is concentrated in the temperature range from -10° to $+5^{\circ}\text{C}$. This difference results in a significant divergence between observed and modelled single-layer ice and mixed-phase clouds. The observed single-layer mixed-phase clouds occur in a much wider temperature range (from -25° to $+5^{\circ}\text{C}$) than in the ICON model (from -15° to $+0^{\circ}\text{C}$). Such differences have been previously reported by Sandvik et al. (2007). The authors showed that models can completely miss single-layer mixed-phase clouds below -18° . Observed ice clouds occur at temperatures from -60° to $+5^{\circ}\text{C}$ while the model simulate ice clouds down to -70°C . The occurrence of modeled ice clouds is significantly larger than observed at temperatures warmer than -20° . Due to the lower occurrence of liquid phase in the model at temperatures below -5° modeled clouds are often classified as pure ice. Also the model shows the higher occurrence of ice clouds at temperatures below -40° where homogeneous ice nucleation takes place.

7 Outlook

In order to have, more robust statistics and also to account for year-to-year variability long-term observations at Ny-Ålesund are needed. Therefore, the measurements of cloud and thermodynamic profiles are still ongoing at Ny-Ålesund within the (AC)³ project. The aim of this study is to present the results from the first year of observations and to show their potential to provide vertically resolved cloud information.

The statistics on LWP and IWP for single-layer clouds, provided in this study, show that most of the time single-layer clouds at Ny-Ålesund have very low LWP which is within the uncertainty range ($<30\text{ g m}^{-2}$). In future, the retrievals of LWP can be improved by using the infrared and higher frequencies of the MWR ([Löhnert and Crewell, 2003](#)) ([Löhnert and Crewell, 2003](#); [Turner et al., 2003](#)). The information from the 89 GHz passive channel of the FMCW radar and 183, 233 and 340 GHz frequencies of LHUMPRO (low humidity profiler) of the University of Cologne, which are currently measuring at Ny-Ålesund, can be used for reducing the uncertainty of LWP.

The next step will be to derive cloud microphysical properties such as LWC, IWC and effective radius for different types of clouds [using methods by Frisch et al. \(1998, 2002\); Hogan et al. \(2006\); Delanoë et al. \(2007\)](#). This information is essential for cloud-radiation interaction studies. Therefore, the derived profiles of single-layer clouds and their microphysical properties will be used in combination with a radiative transfer model to calculate the cloud radiative forcing at Ny-Ålesund. In addition, to show the representativeness of derived cloud properties at Ny-Ålesund among other Arctic sites with similar ground-based

instrumentation, our results will be compared with other locations in the Arctic. In order to make such a comparison consistent, similar methods have to be used for deriving cloud microphysical properties and the same time period has to be analyzed.

Information on cloud microphysical properties can be used to test the representation of clouds and their dependency on temperature and humidity in models and therefore, for an evaluation of high-resolution models.

- 5 *Data availability.* The radiosonde data were taken from doi: 10.1594/PANGAEA.845373 and doi: 10.1594/PANGAEA.875196. The Cloudnet data are available at the Cloudnet website (<http://devcloudnet.fmi.fi/>).

Author contributions. TN applied the statistical algorithm, performed the analysis, prepared and wrote the manuscript. KE, UL, MM contributed with research supervision, discussions of the results and manuscript review. UL helped to apply retrievals for HATPRO. MM provided long-term radiosonde dataset. CR provided instrumentation data for this study. EO applied the Cloudnet algorithm for Ny-Ålesund.

- 10 *Competing interests.* The authors declare that they have no conflict of interest.

Acknowledgements. We gratefully acknowledge the ~~support by the SFB/TR~~ [funding by the Deutsche Forschungsgemeinschaft \(DFG, German Research Foundation\) – Project Number 268020496 – TRR 172 "Arctic](#), within the Transregional Collaborative Research Center "Arctic Amplification: Climate Relevant Atmospheric and [Surface/Surface](#) Processes, and Feedback Mechanisms (AC)³ "– in sub-project E02 ~~funded by the DFG (Deutsche Forschungsgemeinschaft)~~. We acknowledge the staff of the AWIPEV Research Base in Ny-Ålesund for helping us in

15 operating the cloud radar, launching radiosondes and providing the MWR and ceilometer data. We gratefully acknowledge DWD service for providing the data of the global NWP ICON model for Ny-Ålesund. We also thank Patric Seifert for providing GDAS1 data for Ny-Ålesund and helpful discussions.

References

- Bailey, M. and Hallett, J.: Growth rates and habits of ice crystals between -20° to -70° C, *Journal of Atmospheric Sciences*, 61, 514–544, [https://doi.org/10.1175/1520-0469\(2004\)061<0514:GRAHOI>2.0.CO;2](https://doi.org/10.1175/1520-0469(2004)061<0514:GRAHOI>2.0.CO;2), 2004.
- Bailey, M. P. and Hallett, J.: A comprehensive habit diagram for atmospheric ice crystals: Confirmation from the laboratory, AIRS II, and other field studies, *Journal of Atmospheric Sciences*, 66, 2888–2899, <https://doi.org/10.1175/2009JAS2883.1>, 2009.
- Bennartz, R., Shupe, M. D., Turner, D. D., Walden, V. P., Steffen, K., Cox, C. J., Kulie, M. S., Miller, N. B., and Pettersen, C.: July 2012 Greenland melt extent enhanced by low-level liquid clouds, *Nature*, 496, 83–86, <http://dx.doi.org/10.1038/nature12002>, 2013.
- Blanchard, Y., Pelon, J., Eloranta, E. W., Moran, K. P., Delanoë, J., and Sèze, G.: A Synergistic Analysis of Cloud Cover and Vertical Distribution from A-Train and Ground-Based Sensors over the High Arctic Station Eureka from 2006 to 2010, *Journal of Applied Meteorology and Climatology*, 53, 2553–2570, <https://doi.org/10.1175/JAMC-D-14-0021.1>, 2014.
- Bringi, V. N. and Chandrasekar, V.: *Polarimetric Doppler Weather Radar*, Cambridge University Press, 2001.
- Bühl, J., Ansmann, A., Seifert, P., Baars, H., and Engelmann, R.: Toward a quantitative characterization of heterogeneous ice formation with lidar/radar: Comparison of CALIPSO/CloudSat with ground-based observations, *Geophysical Research Letters*, 40, 4404–4408, <https://doi.org/10.1002/grl.50792>, <http://dx.doi.org/10.1002/grl.50792>, 2013.
- 15 Connolly, P. J., Emersic, C., and Field, P. R.: A laboratory investigation into the aggregation efficiency of small ice crystals, *Atmospheric Chemistry and Physics*, 12, 2055–2076, <https://doi.org/10.5194/acp-12-2055-2012>, <https://www.atmos-chem-phys.net/12/2055/2012/>, 2012.
- Curry, J. A., Schramm, J. L., Rossow, W. B., and Randall, D.: Overview of Arctic Cloud and Radiation Characteristics, *Journal of Climate*, 9, 1731–1764, [https://doi.org/10.1175/1520-0442\(1996\)009<1731:OOACAR>2.0.CO;2](https://doi.org/10.1175/1520-0442(1996)009<1731:OOACAR>2.0.CO;2), [https://doi.org/10.1175/1520-0442\(1996\)](https://doi.org/10.1175/1520-0442(1996)009<1731:OOACAR>2.0.CO;2) 20 [009<1731:OOACAR>2.0.CO;2](https://doi.org/10.1175/1520-0442(1996)009<1731:OOACAR>2.0.CO;2), 1996.
- de Boer, G., Eloranta, E. W., and Shupe, M. D.: Arctic Mixed-Phase Stratiform Cloud Properties from Multiple Years of Surface-Based Measurements at Two High-Latitude Locations, *Journal of Atmospheric Sciences*, 66, 2874, <https://doi.org/10.1175/2009JAS3029.1>, 2009.
- Delanoë, J. and Hogan, R.: Combined CloudSat-CALIPSO-MODIS retrievals of the properties of ice clouds, 115, 2010.
- Delanoë, J. and Hogan, R. J.: A variational scheme for retrieving ice cloud properties from combined radar, lidar, and infrared radiometer, *Journal of Geophysical Research: Atmospheres*, 113, n/a–n/a, <https://doi.org/10.1029/2007JD009000>, <http://dx.doi.org/10.1029/2007JD009000>, d07204, 2008.
- 25 Delanoë, J., Protat, A., Bouniol, D., Heymsfield, A., Bansemmer, A., and Brown, P.: The Characterization of Ice Cloud Properties from Doppler Radar Measurements, *Journal of Applied Meteorology and Climatology*, 46, 1682, <https://doi.org/10.1175/JAM2543.1>, 2007.
- Devasthale, A., Sedlar, J., Kahn, B. H., Tjernström, M., Fetzer, E. J., Tian, B., Teixeira, J., and Pagano, T. S.: A Decade of Spaceborne Observations of the Arctic Atmosphere: Novel Insights from NASA’s AIRS Instrument, *Bulletin of the American Meteorological Society*, 97, 2163–2176, <https://doi.org/10.1175/BAMS-D-14-00202.1>, <http://dx.doi.org/10.1175/BAMS-D-14-00202.1>, 2016.
- 30 Dirksen, R. J., Sommer, M., Immler, F. J., Hurst, D. F., Kivi, R., and Vömel, H.: Reference quality upper-air measurements: GRUAN data processing for the Vaisala RS92 radiosonde, *Atmospheric Measurement Techniques*, 7, 4463–4490, <https://doi.org/10.5194/amt-7-4463-2014>, <https://www.atmos-meas-tech.net/7/4463/2014/>, 2014.
- 35 Dong, X., Xi, B., Crosby, K., Long, C. N., Stone, R. S., and Shupe, M. D.: A 10 year climatology of Arctic cloud fraction and radiative forcing at Barrow, Alaska, *Journal of Geophysical Research (Atmospheres)*, 115, D17212, <https://doi.org/10.1029/2009JD013489>, 2010.

- Doran, J. C., Barnard, J. C., and Shaw, W. J.: Modification of Summertime Arctic Cloud Characteristics between a Coastal and Inland Site, *Journal of Climate*, 19, 3207, <https://doi.org/10.1175/JCLI3782.1>, 2006.
- Forbes, R. M. and Ahlgrimm, M.: On the Representation of High-Latitude Boundary Layer Mixed-Phase Cloud in the ECMWF Global Model, *Monthly Weather Review*, 142, 3425–3445, <https://doi.org/10.1175/MWR-D-13-00325.1>, 2014.
- 5 Frisch, A. S., Feingold, G., Fairall, C. W., Uttal, T., and Snider, J. B.: On cloud radar and microwave radiometer measurements of stratus cloud liquid water profiles, *Journal of Geophysical Research*, 103, 23, <https://doi.org/10.1029/98JD01827>, 1998.
- Frisch, S., Shupe, M., Djalalova, I., Feingold, G., and Poellot, M.: The Retrieval of Stratus Cloud Droplet Effective Radius with Cloud Radars, *Journal of Atmospheric and Oceanic Technology*, 19, 835, [https://doi.org/10.1175/1520-0426\(2002\)019<0835:TROSCD>2.0.CO;2](https://doi.org/10.1175/1520-0426(2002)019<0835:TROSCD>2.0.CO;2), 2002.
- Fu, S. and Xue, H.: The Effect of Ice Nuclei Efficiency on Arctic Mixed-Phase Clouds from Large-Eddy Simulations, *Journal of Atmospheric Sciences*, 74, 3901–3913, <https://doi.org/10.1175/JAS-D-17-0112.1>, 2017.
- 10 Fukuta, N. and Takahashi, T.: The growth of atmospheric ice crystals: A summary of findings in vertical supercooled cloud tunnel studies, *Journal of Atmospheric Sciences*, 56, 1963–1979, [https://doi.org/10.1175/1520-0469\(1999\)056<1963:TGOAIC>2.0.CO;2](https://doi.org/10.1175/1520-0469(1999)056<1963:TGOAIC>2.0.CO;2), 1999.
- Haynes, J. M., Luo, Z., Stephens, G. L., Marchand, R. T., and Bodas-Salcedo, A.: A Multipurpose Radar Simulation Package: QuickBeam, *Bulletin of the American Meteorological Society*, 88, 1723–1727, <https://doi.org/10.1175/BAMS-88-11-1723>, 2007.
- 15 Heymsfield, A. J., Protat, A., Bouniol, D., Austin, R. T., Hogan, R. J., Delanoë, J., Okamoto, H., Sato, K., van Zadelhoff, G.-J., Donovan, D. P., and Wang, Z.: Testing IWC Retrieval Methods Using Radar and Ancillary Measurements with In Situ Data, *Journal of Applied Meteorology and Climatology*, 47, 135–163, <https://doi.org/10.1175/2007JAMC1606.1>, <https://doi.org/10.1175/2007JAMC1606.1>, 2008.
- Hogan, R. J. and O'Connor, E. J.: Facilitating cloud radar and lidar algorithms: the Cloudnet Instrument Synergy/Target Categorization product, <http://www.met.reading.ac.uk/~swrhgnrj/publications/categorization.pdf>, 2004.
- 20 Hogan, R. J., Field, P. R., Illingworth, A. J., Cotton, R. J., and Choullarton, T. W.: Properties of embedded convection in warm-frontal mixed-phase cloud from aircraft and polarimetric radar, *Quarterly Journal of the Royal Meteorological Society*, 128, 451–476, <https://doi.org/10.1256/003590002321042054>, 2002.
- Hogan, R. J., Francis, P. N., Flentje, H., Illingworth, A. J., Quante, M., and Pelon, J.: Characteristics of mixed-phase clouds. I: Lidar, radar and aircraft observations from CLARE'98, *Quarterly Journal of the Royal Meteorological Society*, 129, 2089–2116, <https://doi.org/10.1256/rj.01.208>, 2003.
- 25 Hogan, R. J., Mittermaier, M. P., and Illingworth, A. J.: The Retrieval of Ice Water Content from Radar Reflectivity Factor and Temperature and Its Use in Evaluating a Mesoscale Model, *Journal of Applied Meteorology and Climatology*, 45, 301–317, <https://doi.org/10.1175/JAM2340.1>, 2006.
- Hosler, C. L. and Hallgren, R. E.: The aggregation of small ice crystals, *Discuss. Faraday Soc.*, 30, 200–207, <https://doi.org/10.1039/DF9603000200>, <http://dx.doi.org/10.1039/DF9603000200>, 1960.
- 30 Illingworth, A. J., Hogan, R. J., O'Connor, E., Bouniol, D., Brooks, M. E., Delanoë, J., Donovan, D. P., Eastment, J. D., Gaussiat, N., Goddard, J. W. F., Haefelin, M., Baltink, H. K., Krasnov, O. A., Pelon, J., Piriou, J.-M., Protat, A., Russchenberg, H. W. J., Seifert, A., Tompkins, A. M., van Zadelhoff, G.-J., Vinit, F., Willén, U., Wilson, D. R., and Wrench, C. L.: Cloudnet, *Bulletin of the American Meteorological Society*, 88, 883–898, <https://doi.org/10.1175/BAMS-88-6-883>, <https://doi.org/10.1175/BAMS-88-6-883>, 2007.
- 35 Intrieri, J. M., Shupe, M. D., Uttal, T., and McCarty, B. J.: An annual cycle of Arctic cloud characteristics observed by radar and lidar at SHEBA, *Journal of Geophysical Research (Oceans)*, 107, 8030, <https://doi.org/10.1029/2000JC000423>, 2002.

- Johansson, E., Devasthale, A., Tjernström, M., Ekman, A. M. L., and L'Ecuyer, T.: Response of the lower troposphere to moisture intrusions into the Arctic, *Geophysical Research Letters*, 44, 2527–2536, <https://doi.org/10.1002/2017GL072687>, <http://dx.doi.org/10.1002/2017GL072687>, 2017GL072687, 2017.
- Kanamitsu, M.: Description of the NMC Global Data Assimilation and Forecast System, *Weather and Forecasting*, 4, 335–342, [https://doi.org/10.1175/1520-0434\(1989\)004<0335:DOTNGD>2.0.CO;2](https://doi.org/10.1175/1520-0434(1989)004<0335:DOTNGD>2.0.CO;2), 1989.
- 5 Kapsch, M.-L., Graversen, R. G., and Tjernström, M.: Springtime atmospheric energy transport and the control of Arctic summer sea-ice extent, *Nature Clim. Change*, 3, 744–748, <https://doi.org/doi:10.1038/nclimate1884>, <http://dx.doi.org/10.1038/nclimate1884L3>, 2013.
- Karlsson, J. and Svensson, G.: The simulation of Arctic clouds and their influence on the winter surface temperature in present-day climate in the CMIP3 multi-model dataset, *Climate Dynamics*, 36, 623–635, <https://doi.org/10.1007/s00382-010-0758-6>, 2011.
- 10 Kay, J. E. and Gettelman, A.: Cloud influence on and response to seasonal Arctic sea ice loss, *Journal of Geophysical Research (Atmospheres)*, 114, D18204, <https://doi.org/10.1029/2009JD011773>, 2009.
- Kay, J. E., L'Ecuyer, T., Gettelman, A., Stephens, G., and O'Dell, C.: The contribution of cloud and radiation anomalies to the 2007 Arctic sea ice extent minimum, *Geophysical Research Letters*, 35, L08503, <https://doi.org/10.1029/2008GL033451>, 2008.
- Klein, S. A., McCoy, R. B., Morrison, H., Ackerman, A. S., Avramov, A., Boer, G. D., Chen, M., Cole, J. N. S., Del Genio, A. D., Falk, M., Foster, M. J., Fridlind, A., Golaz, J.-C., Hashino, T., Harrington, J. Y., Hoose, C., Khairoutdinov, M. F., Larson, V. E., Liu, X., Luo, Y., McFarquhar, G. M., Menon, S., Neggers, R. A. J., Park, S., Poellot, M. R., Schmidt, J. M., Sednev, I., Shipway, B. J., Shupe, M. D., Spangenberg, D. A., Sud, Y. C., Turner, D. D., Veron, D. E., Salzen, K. V., Walker, G. K., Wang, Z., Wolf, A. B., Xie, S., Xu, K.-M., Yang, F., and Zhang, G.: Intercomparison of model simulations of mixed-phase clouds observed during the ARM Mixed-Phase Arctic Cloud Experiment. I: single-layer cloud, *Quarterly Journal of the Royal Meteorological Society*, 135, 979–1002, <https://doi.org/10.1002/qj.416>, 2009.
- 15 2009.
- Küchler, N., Kneifel, S., Löhnert, U., Kollias, P., Czekala, H., and Rose, T.: A W-Band Radar-Radiometer System for Accurate and Continuous Monitoring of Clouds and Precipitation, *Journal of Atmospheric and Oceanic Technology*, 34, 2375–2392, <https://doi.org/10.1175/JTECH-D-17-0019.1>, 2017.
- Liu, Y., Key, J. R., Ackerman, S. A., Mace, G. G., and Zhang, Q.: Arctic cloud macrophysical characteristics from CloudSat and CALIPSO, *Remote Sensing of Environment*, 124, 159–173, <https://doi.org/10.1016/j.rse.2012.05.006>, 2012.
- 25 Remote Sensing of Environment, 124, 159–173, <https://doi.org/10.1016/j.rse.2012.05.006>, 2012.
- Liu, Y., Shupe, M. D., Wang, Z., and Mace, G.: Cloud vertical distribution from combined surface and space radar–lidar observations at two Arctic atmospheric observatories, *Atmospheric Chemistry and Physics*, 17, 5973–5989, <https://doi.org/10.5194/acp-17-5973-2017>, <http://www.atmos-chem-phys.net/17/5973/2017/>, 2017.
- Löhnert, U. and Crewell, S.: Accuracy of cloud liquid water path from ground-based microwave radiometry 1. Dependency on cloud model statistics, *Radio Science*, 2003.
- 30 statistics, *Radio Science*, 2003.
- Löhnert, U. and Maier, O.: Operational profiling of temperature using ground-based microwave radiometry at Payerne: prospects and challenges, *Atmospheric Measurement Techniques*, 5, 1121–1134, <https://doi.org/10.5194/amt-5-1121-2012>, <https://www.atmos-meas-tech.net/5/1121/2012/>, 2012.
- Maahn, M., Burgard, C., Crewell, S., Gorodetskaya, I. V., Kneifel, S., Lhermitte, S., Van Tricht, K., and van Lipzig, N. P. M.: How does the spaceborne radar blind zone affect derived surface snowfall statistics in polar regions?, *Journal of Geophysical Research (Atmospheres)*, 119, 13, <https://doi.org/10.1002/2014JD022079>, 2014.
- 35 spaceborne radar blind zone affect derived surface snowfall statistics in polar regions?, *Journal of Geophysical Research (Atmospheres)*, 119, 13, <https://doi.org/10.1002/2014JD022079>, 2014.
- Marchand, R., Mace, G. G., Ackerman, T., and Stephens, G.: Hydrometeor Detection Using Cloudsat – An Earth-Orbiting 94-GHz Cloud Radar, *Journal of Atmospheric and Oceanic Technology*, 25, 519, <https://doi.org/10.1175/2007JTECHA1006.1>, 2008.

- Marke, T., Ebell, K., Löhnert, U., and Turner, D. D.: Statistical retrieval of thin liquid cloud microphysical properties using ground-based infrared and microwave observations, *Journal of Geophysical Research (Atmospheres)*, 121, 14, <https://doi.org/10.1002/2016JD025667>, 2016.
- Matrosov, S. Y.: A Method to Estimate Vertically Integrated Amounts of Cloud Ice and Liquid and Mean Rain Rate in Stratiform Precipitation from Radar and Auxiliary Data, *Journal of Applied Meteorology and Climatology*, 48, 1398, <https://doi.org/10.1175/2009JAMC2106.1>, 2009.
- Maturilli, M. and Ebell, K.: 25 years of Cloud Base Height Measurements by Ceilometer in Ny-Ålesund, Svalbard, pp. 1–13, 2018.
- Maturilli, M. and Kayser, M.: Arctic warming, moisture increase and circulation changes observed in the Ny-Ålesund homogenized radiosonde record, *Theoretical and Applied Climatology*, <https://doi.org/10.1007/s00704-016-1864-0>, 2016a.
- 10 Maturilli, M. and Kayser, M.: Homogenized radiosonde record at station Ny-Ålesund, Spitsbergen, 1993-2014., PANGAEA, <https://doi.org/https://doi.org/10.1594/PANGAEA.845373>, 2016b.
- Maturilli, M. and Kayser, M.: Homogenized radiosonde record at station Ny-Ålesund, Spitsbergen, 2015-2016., PANGAEA, <https://doi.org/https://doi.org/10.1594/PANGAEA.875196>, 2017.
- McGrath, R., Semmler, T., Sweeney, C., and Wang, S.: Impact of Balloon Drift Errors in Radiosonde Data on Climate Statistics, *Journal of Climate*, 19, 3430–3442, <https://doi.org/10.1175/JCLI3804.1>, <https://doi.org/10.1175/JCLI3804.1>, 2006.
- 15 Miller, N. B., Shupe, M. D., Cox, C. J., Walden, V. P., Turner, D. D., and Steffen, K.: Cloud Radiative Forcing at Summit, Greenland, *Journal of Climate*, 28, 6267–6280, <https://doi.org/10.1175/JCLI-D-15-0076.1>, 2015.
- Miller, N. B., Shupe, M. D., Cox, C. J., Noone, D., Persson, P. O. G., and Steffen, K.: Surface energy budget responses to radiative forcing at Summit, Greenland, *The Cryosphere*, 11, 497–516, <https://doi.org/10.5194/tc-11-497-2017>, [https://www.the-cryosphere.net/11/497/](https://www.the-cryosphere.net/11/497/2017/) 2017, 2017.
- 20 Mioche, G., Jourdan, O., Ceccaldi, M., and Delanoë, J.: Variability of mixed-phase clouds in the Arctic with a focus on the Svalbard region: a study based on spaceborne active remote sensing, *Atmospheric Chemistry & Physics*, 15, 2445–2461, <https://doi.org/10.5194/acp-15-2445-2015>, 2015.
- Morrison, H., Pinto, J. O., Curry, J. A., and McFarquhar, G. M.: Sensitivity of modeled arctic mixed-phase stratocumulus to cloud condensation and ice nuclei over regionally varying surface conditions, *Journal of Geophysical Research (Atmospheres)*, 113, D05203, <https://doi.org/10.1029/2007JD008729>, 2008.
- Morrison, H., de Boer, G., Feingold, G., Harrington, J., Shupe, M. D., and Sulia, K.: Resilience of persistent Arctic mixed-phase clouds, *Nature Geoscience*, 5, 11–17, <https://doi.org/10.1038/ngeo1332>, 2012.
- Mülmenstädt, J., Sourdeval, O., Delanoë, J., and Quaas, J.: Frequency of occurrence of rain from liquid-, mixed-, and ice-phase clouds derived from A-Train satellite retrievals, *Geophysical Research Letters*, 42, 6502–6509, <https://doi.org/10.1002/2015GL064604>, 2015.
- 30 Myagkov, A., Seifert, P., Wandinger, U., Bühl, J., and Engelmann, R.: Shape-temperature relationships of pristine ice crystals derived from polarimetric cloud radar observations during the ACCEPT campaign, *Atmospheric Measurement Techniques Discussions*, 2016, 1–37, <https://doi.org/10.5194/amt-2015-365>, <http://www.atmos-meas-tech-discuss.net/amt-2015-365/>, 2016.
- Myhre, G., Shindell, D., Bréon, F.-M., Collins, W., Fuglestad, J., Huang, J., Koch, D., Lamarque, J.-F., Lee, D., Mendoza, B., Nakajima, T., Robock, A., Stephens, G., Takemura, T., and Zhang, H.: Anthropogenic and natural radiative forcing, pp. 659–740, Cambridge University Press, Cambridge, UK, <https://doi.org/10.1017/CBO9781107415324.018>, 2013.
- 35

- Nörenberg, D.: Development of ground equipment for atmospheric propagation conditions assessment from 10 up to 90 GHz frequency bands (ATPROP), Software documentation, Institute for Geophysics and Meteorology, University of Cologne, and Radiometer Physics GmbH, Meckenheim, ESA CONTRACT 19839/06/NL/GLC, 2008.
- O'Connor, E. J., Illingworth, A. J., and Hogan, R. J.: A Technique for Autocalibration of Cloud Lidar, *Journal of Atmospheric and Oceanic Technology*, 21, 777–786, [https://doi.org/10.1175/1520-0426\(2004\)021<0777:ATFAOC>2.0.CO;2](https://doi.org/10.1175/1520-0426(2004)021<0777:ATFAOC>2.0.CO;2), [https://doi.org/10.1175/1520-0426\(2004\)021<0777:ATFAOC>2.0.CO;2](https://doi.org/10.1175/1520-0426(2004)021<0777:ATFAOC>2.0.CO;2), 2004.
- O'Connor, E. J., Hogan, R. J., and J., I. A.: Retrieving Stratocumulus Drizzle Parameters Using Doppler Radar and Lidar, *Journal of Applied Meteorology*, 44, 14–27, <https://doi.org/10.1175/JAM-2181.1>, <https://doi.org/10.1175/JAM-2181.1>, 2005.
- Overland, J. E., Hanna, E., Hanssen-Bauer, I., Kim, S. J., Walsh, J. E., Wang, M., Bhatt, U., and Thoman, R.: Surface Air Temperature, in: Arctic Report Card: Update for 2017, ftp://ftp.oar.noaa.gov/arctic/documents/ArcticReportCard_full_report2017.pdf, 2017.
- Palm, S. P., Strey, S. T., Spinhirne, J., and Markus, T.: Influence of Arctic sea ice extent on polar cloud fraction and vertical structure and implications for regional climate, *Journal of Geophysical Research (Atmospheres)*, 115, D21209, <https://doi.org/10.1029/2010JD013900>, 2010.
- Protat, A., Armstrong, A., Haeffelin, M., Morille, Y., Pelon, J., Delanoë, J., and Bouniol, D.: Impact of conditional sampling and instrumental limitations on the statistics of cloud properties derived from cloud radar and lidar at SIRTa, *Geophysical research letters*, 33, L11805, <https://doi.org/10.1029/2005GL025340>, 2006.
- Rinke, A., Dethloff, K., Dorn, W., Handorf, D., and Moore, J. C.: Simulated Arctic atmospheric feedbacks associated with late summer sea ice anomalies, *Journal of Geophysical Research (Atmospheres)*, 118, 7698–7714, <https://doi.org/10.1002/jgrd.50584>, 2013.
- Rose, T., Crewell, S., Löhnert, U., and Simmer, C.: A network suitable microwave radiometer for operational monitoring of the cloudy atmosphere, *Atmospheric Research*, 75, 183 – 200, <https://doi.org/https://doi.org/10.1016/j.atmosres.2004.12.005>, <http://www.sciencedirect.com/science/article/pii/S0169809505000189>, cLIWA-NET: Observation and Modelling of Liquid Water Clouds, 2005.
- Sandvik, A., Biryulina, M., Kvamstø, N. G., Stamnes, J. J., and Stamnes, K.: Observed and simulated microphysical composition of arctic clouds: Data properties and model validation, *Journal of Geophysical Research (Atmospheres)*, 112, D05205, <https://doi.org/10.1029/2006JD007351>, 2007.
- Sedlar, J., Shupe, M. D., and Tjernström, M.: On the Relationship between Thermodynamic Structure and Cloud Top, and Its Climate Significance in the Arctic, *Journal of Climate*, 25, 2374–2393, <https://doi.org/10.1175/JCLI-D-11-00186.1>, 2012.
- Serreze, M. C., Barrett, A. P., Stroeve, J. C., Kindig, D. N., and Holland, M. M.: The emergence of surface-based Arctic amplification, *The Cryosphere*, 3, 11–19, <https://doi.org/10.5194/tc-3-11-2009>, <https://www.the-cryosphere.net/3/11/2009/>, 2009.
- Serreze, M. C., Barrett, A. P., and Cassano, J. J.: Circulation and surface controls on the lower tropospheric air temperature field of the Arctic, *Journal of Geophysical Research (Atmospheres)*, 116, D07104, <https://doi.org/10.1029/2010JD015127>, 2011.
- Shupe, M. D.: Clouds at Arctic Atmospheric Observatories. Part II: Thermodynamic Phase Characteristics, *Journal of Applied Meteorology and Climatology*, 50, 645–661, <https://doi.org/10.1175/2010JAMC2468.1>, 2011.
- Shupe, M. D. and Intrieri, J. M.: Cloud Radiative Forcing of the Arctic Surface: The Influence of Cloud Properties, Surface Albedo, and Solar Zenith Angle., *Journal of Climate*, 17, 616–628, [https://doi.org/10.1175/1520-0442\(2004\)017<0616:CRFOTA>2.0.CO;2](https://doi.org/10.1175/1520-0442(2004)017<0616:CRFOTA>2.0.CO;2), 2004.
- Shupe, M. D., Matrosov, S. Y., and Uttal, T.: Arctic Mixed-Phase Cloud Properties Derived from Surface-Based Sensors at SHEBA., *Journal of Atmospheric Sciences*, 63, 697–711, <https://doi.org/10.1175/JAS3659.1>, 2006.

- Shupe, M. D., Walden, V. P., Eloranta, E., Uttal, T., Campbell, J. R., Starkweather, S. M., and Shiobara, M.: Clouds at Arctic Atmospheric Observatories. Part I: Occurrence and Macrophysical Properties, *Journal of Applied Meteorology and Climatology*, 50, 626–644, <https://doi.org/10.1175/2010JAMC2467.1>, 2011.
- Shupe, M. D., Turner, D. D., Walden, V. P., Bennartz, R., Cadetdu, M. P., Castellani, B. B., Cox, C. J., Hudak, D. R., Kulie, M. S., Miller, N. B., Neely, III, R. R., Neff, W. D., and Rowe, P. M.: High and Dry: New Observations of Tropospheric and Cloud Properties above the Greenland Ice Sheet, *Bulletin of the American Meteorological Society*, 94, 169–186, <https://doi.org/10.1175/BAMS-D-11-00249.1>, 2013.
- Shupe, M. D., Turner, D. D., Zwink, A., Thieman, M. M., Mlawer, E. J., and Shippert, T.: Deriving Arctic Cloud Microphysics at Barrow, Alaska: Algorithms, Results, and Radiative Closure, *Journal of Applied Meteorology and Climatology*, 54, 1675–1689, <https://doi.org/10.1175/JAMC-D-15-0054.1>, 2015.
- 10 Sommer, M., Dirksen, R., and Immler, F.: RS92 GRUAN Data Product Version 2 (RS92-GDP.2), GRUAN Lead Centre, <https://doi.org/DOI:10.5676/GRUAN/RS92-GDP.2>, 2012.
- Sun, Z. and Shine, K. P.: Studies of the radiative properties of ice and mixed-phase clouds, *Quarterly Journal of the Royal Meteorological Society*, 120, 111–137, <https://doi.org/10.1002/qj.49712051508>, 1994.
- Tjernström, M., Sedlar, J., and Shupe, M. D.: How Well Do Regional Climate Models Reproduce Radiation and Clouds in the Arctic? An Evaluation of ARCMIP Simulations, *Journal of Applied Meteorology and Climatology*, 47, 2405, <https://doi.org/10.1175/2008JAMC1845.1>, 2008.
- 15 Turner, D. D., Vogelmann, A. M., Austin, R. T., Barnard, J. C., Cady-Pereira, K., Chiu, J. C., Clough, S. A., Flynn, C., Khaiyer, M. M., Liljegren, J., Johnson, K., Lin, B., Long, C., Marshak, A., Matrosov, S. Y., McFarlane, S. A., Miller, M., Min, Q., Minnis, P., O’Hirok, W., Wang, Z., and Wiscombe, W.: Thin Liquid Water Clouds: Their Importance and Our Challenge, *Bulletin of the American Meteorological Society*, 88, 177, <https://doi.org/10.1175/BAMS-88-2-177>, 2007.
- 20 Turner, D. D., Shupe, M. D., and Zwink, A. B.: Characteristic Atmospheric Radiative Heating Rate Profiles in Arctic Clouds as Observed at Barrow, Alaska, *Journal of Applied Meteorology and Climatology*, 57, 953–968, <https://doi.org/10.1175/JAMC-D-17-0252.1>, 2018.
- Uttal, T., Curry, J. A., McPhee, M. G., Perovich, D. K., Moritz, R. E., Maslanik, J. A., Guest, P. S., Stern, H. L., Moore, J. A., Turenne, R., Heiberg, A., Serreze, M. C., Wylie, D. P., Persson, O. G., Paulson, C. A., Halle, C., Morison, J. H., Wheeler, P. A., Makshtas, A., Welch, H., Shupe, M. D., Intrieri, J. M., Stamnes, K., Lindsey, R. W., Pinkel, R., Pegau, W. S., Stanton, T. P., and Grenfeld, T. C.: Surface Heat Budget of the Arctic Ocean., *Bulletin of the American Meteorological Society*, 83, 255–276, [https://doi.org/10.1175/1520-0477\(2002\)083<0255:SHBOTA>2.3.CO;2](https://doi.org/10.1175/1520-0477(2002)083<0255:SHBOTA>2.3.CO;2), 2002.
- Verlinde, J., Zak, B. D., Shupe, M. D., Ivey, M. D., and Stamnes, K.: The ARM North Slope of Alaska (NSA) Sites, *Meteorological Monographs*, 57, 8.1–8.13, <https://doi.org/10.1175/AMSMONOGRAPHS-D-15-0023.1>, 2016.
- 30 Vihma, T., Screen, J., Tjernström, M., Newton, B., Zhang, X., Popova, V., Deser, C., Holland, M., and Prowse, T.: The atmospheric role in the Arctic water cycle: A review on processes, past and future changes, and their impacts, *Journal of Geophysical Research (Biogeosciences)*, 121, 586–620, <https://doi.org/10.1002/2015JG003132>, 2016.
- Walsh, J., Chapman, W. L., and Portis, D. H.: Arctic Cloud Fraction and Radiative Fluxes in Atmospheric Reanalyses, *Journal of Climate*, 22, 2316, <https://doi.org/10.1175/2008JCLI2213.1>, 2009.
- 35 Wendisch, M., Brückner, M., Burrows, J. P., Crewell, S., Dethloff, K., Lüpkes, C., Macke, A., Notholt, J., Quaas, J., Rinke, A., and Tegen, I.: Understanding causes and effects of rapid warming in the Arctic., *EOS*, 98, 22–26, <https://doi.org/10.1029/2017EO064803>, 2017.
- Yeo, H., Kim, S. W., Kim, B. M., Kim, J. H., Shiobara, M., Choi, T. J., Son, S. W., Kim, M. H., Jeong, J. H., and Kim, S. J.: 10-Year Observations of Cloud and Surface Longwave Radiation at Ny-Ålesund, Svalbard, AGU Fall Meeting Abstracts, A41H-0154, 2015.

Yoshida, Y. and Asano, S.: Effects of the Vertical Profiles of Cloud Droplets and Ice Particles on the Visible and Near-Infrared Radiative Properties of Mixed-Phase Stratocumulus Clouds, *Journal of the Meteorological Society of Japan. Ser. II*, 83, 471–480, <https://doi.org/10.2151/jmsj.83.471>, 2005.

5 Zängl, G., Reinert, D., Rípodas, P., and Baldauf, M.: The ICON (ICOsahedral Non-hydrostatic) modelling framework of DWD and MPI-M: Description of the non-hydrostatic dynamical core, *Quarterly Journal of the Royal Meteorological Society*, 141, 563–579, <https://doi.org/10.1002/qj.2378>, 2015.

Zhang, T., Stamnes, K., and Bowling, S. A.: Impact of Clouds on Surface Radiative Fluxes and Snowmelt in the Arctic and Subarctic., *Journal of Climate*, 9, 2110–2123, [https://doi.org/10.1175/1520-0442\(1996\)009<2110:IOCOSR>2.0.CO;2](https://doi.org/10.1175/1520-0442(1996)009<2110:IOCOSR>2.0.CO;2), 1996.

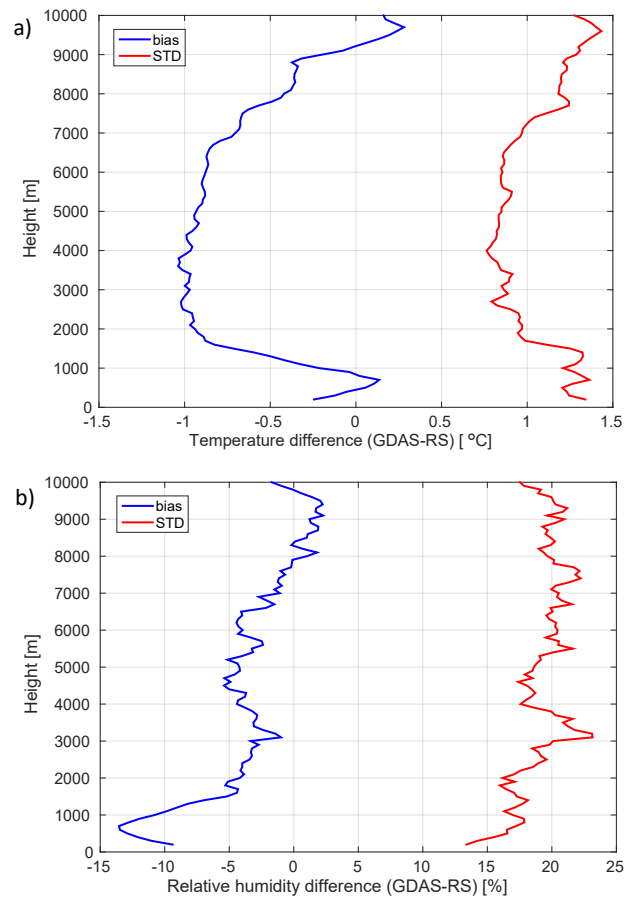


Figure 1. Difference in temperature (a) and relative humidity (b) between GDAS1 and radiosonde data. Radiosondes for the period from February 2017 to July 2017 at Ny-Ålesund are used. Blue and red lines show the bias and the standard deviation, respectively.

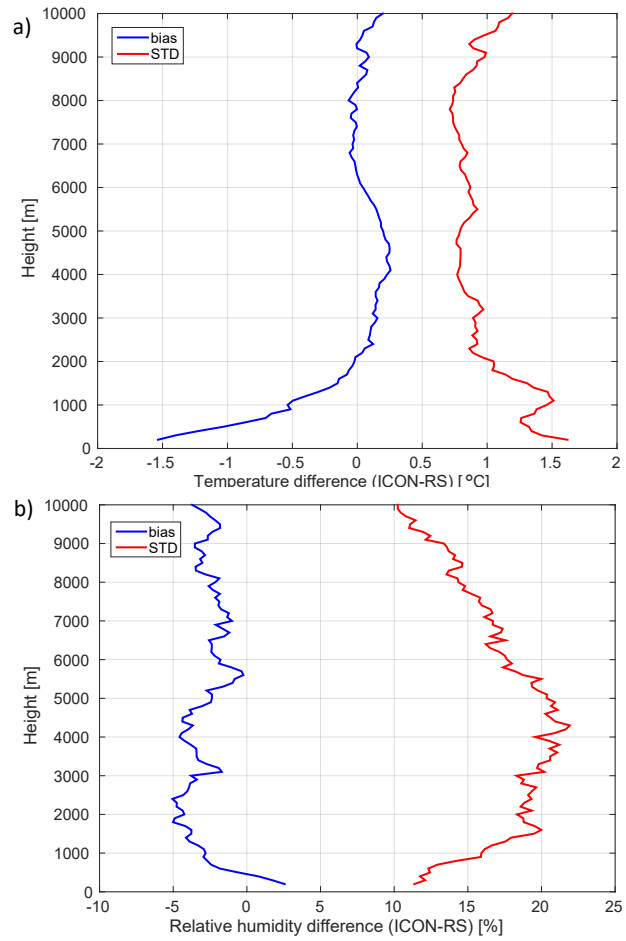


Figure 2. The same as Fig. 1 but for the ICON column output over Ny-Ålesund.

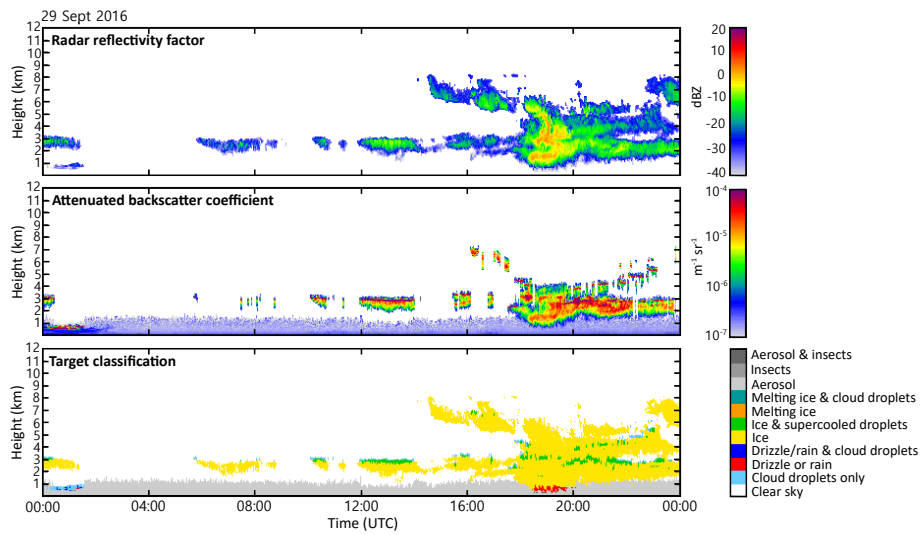


Figure 3. Radar reflectivity factor (top), lidar backscatter coefficient (middle) and Cloudnet target classification on 29 September 2016, AWIPEW observatory at Ny-Ålesund.

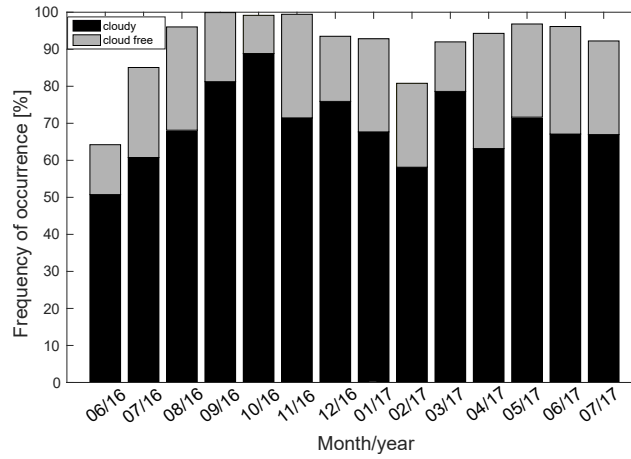


Figure 4. Cloudnet data availability for Ny-Ålesund for June 2016 to July 2017. Grey bars correspond to clear sky profiles, black bars to cloudy profiles, white space means no Cloudnet data availability.

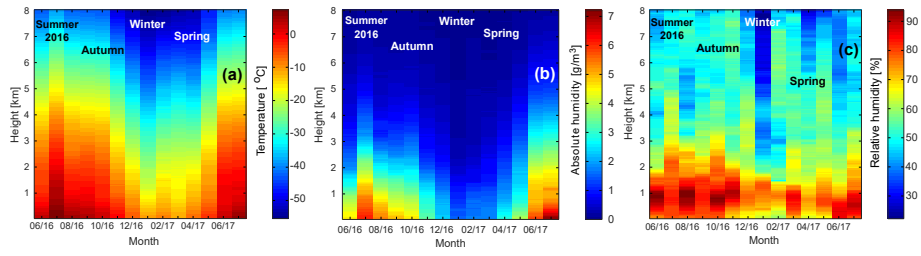


Figure 5. Vertical profiles of monthly mean atmospheric temperature (a), absolute (b) and relative humidity (c) from radiosonde observations at Ny-Ålesund from June 2016 to July 2017.

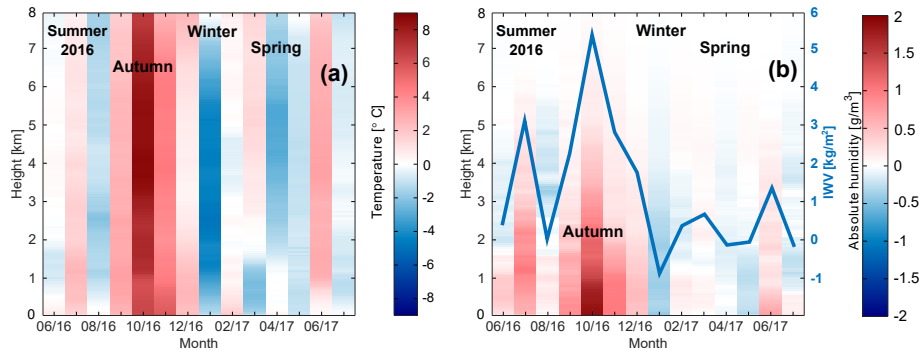


Figure 6. Anomalies of monthly mean atmospheric temperature (a) and absolute humidity (b) from radiosonde observations at Ny-Ålesund from June 2016 to July 2017. Anomalies are calculated with respect to the monthly mean values of the previous 23 years (1993-2015). The blue line corresponds to the IWV anomaly for the same time period.

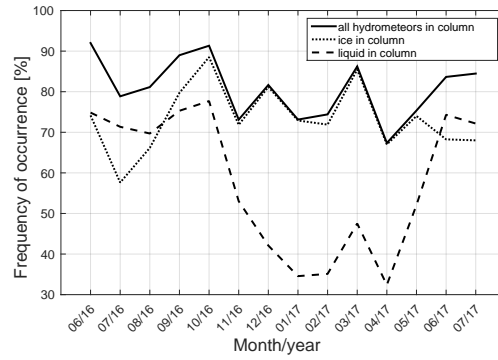


Figure 7. Frequency of occurrence of profiles with ice, liquid and any kind of hydrometeors. The frequency is given in % and normalized to the total number of Cloudnet profiles for each month.

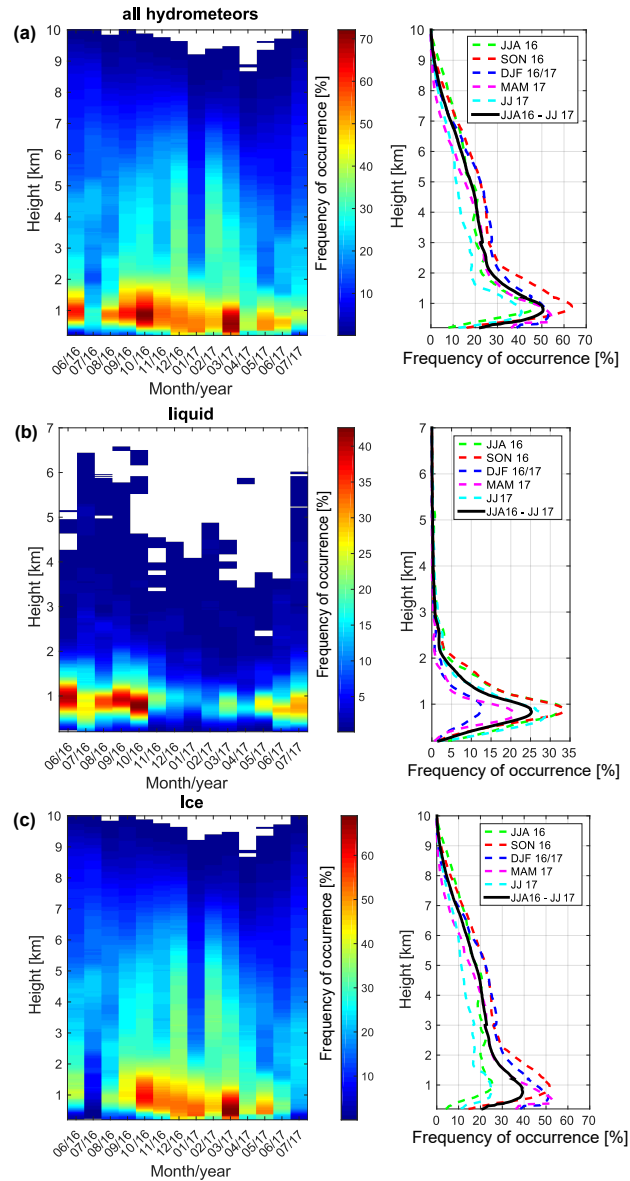


Figure 8. Monthly, seasonal and total (for the whole time period) frequency of occurrence of all hydrometeors (a), liquid (b) and ice (c) as a function of height for the period from June 2016 to August 2017. Frequency of occurrence is given in % and normalized to the total number of Cloudnet profiles for each month.

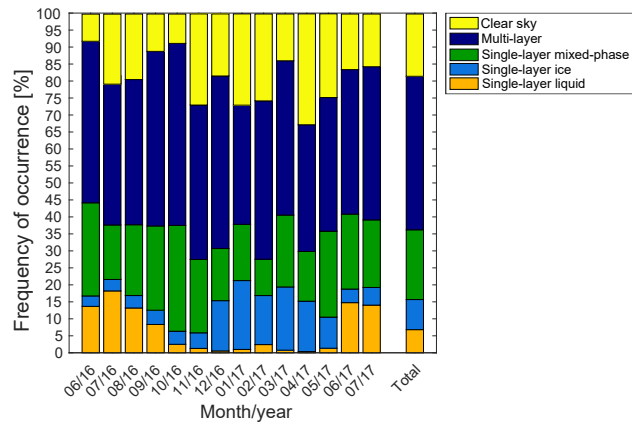


Figure 9. Monthly frequency of occurrence of different types of single-layer clouds (liquid, ice and mixed-phase), multi-layer clouds and clear sky profiles for the period from June 2016 to ~~August~~ July 2017. Last right column showing the total frequency of occurrence.

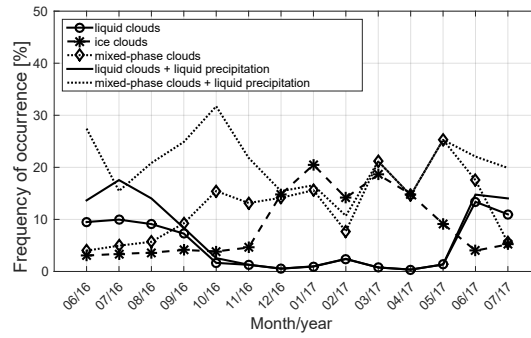


Figure 10. Frequency of occurrence of ice-only, liquid-only, mixed-phase single-layer clouds based on Cloudnet categorization data (for lines with circles, diamonds and stars profiles with liquid precipitation are not included). The frequency is given in % and normalized to the total number of Cloudnet profiles in each month.

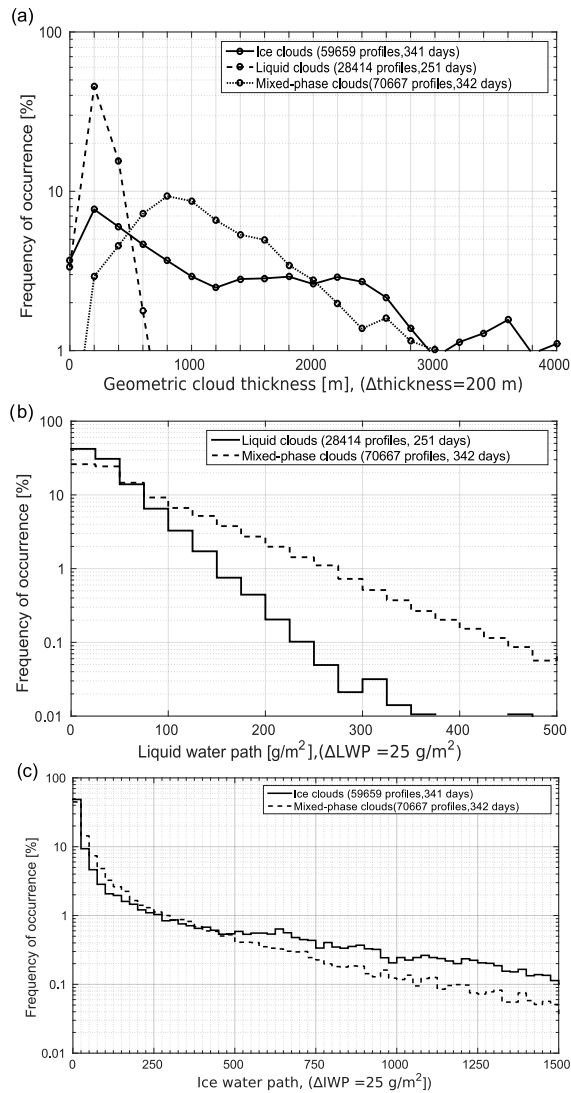


Figure 11. Frequency of occurrence of cloud thickness for single-layer clouds (a), of LWP for single-layer liquid and mixed-phase clouds (b) and of IWP for single-layer ice and mixed-phase clouds (c) for the period from June 2016 to August July 2017. The y-axis is shown in logarithmic scale. Frequency in the x-axis Δ shows the bin width. The frequency of occurrence is normalized by the total number of corresponding cloud type.

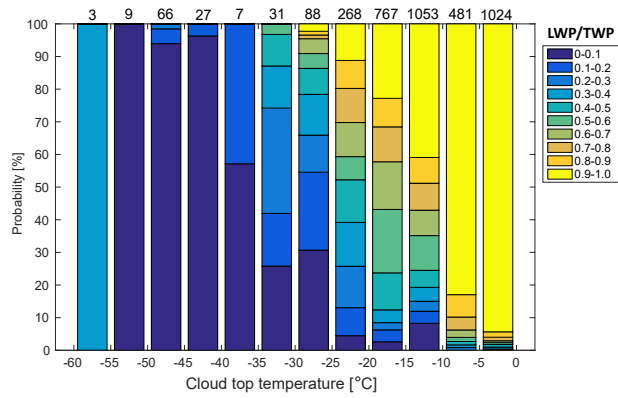


Figure 12. The relative probabilities of different ranges of the liquid fraction LWP/TWP given at various cloud top temperatures of single-layer mixed-phase clouds. The probability is normalized by the total number of profiles for each cloud top temperature range. Numbers at the top of plot show the number of cases included in the temperature range. The total number of all profiles is 3824.

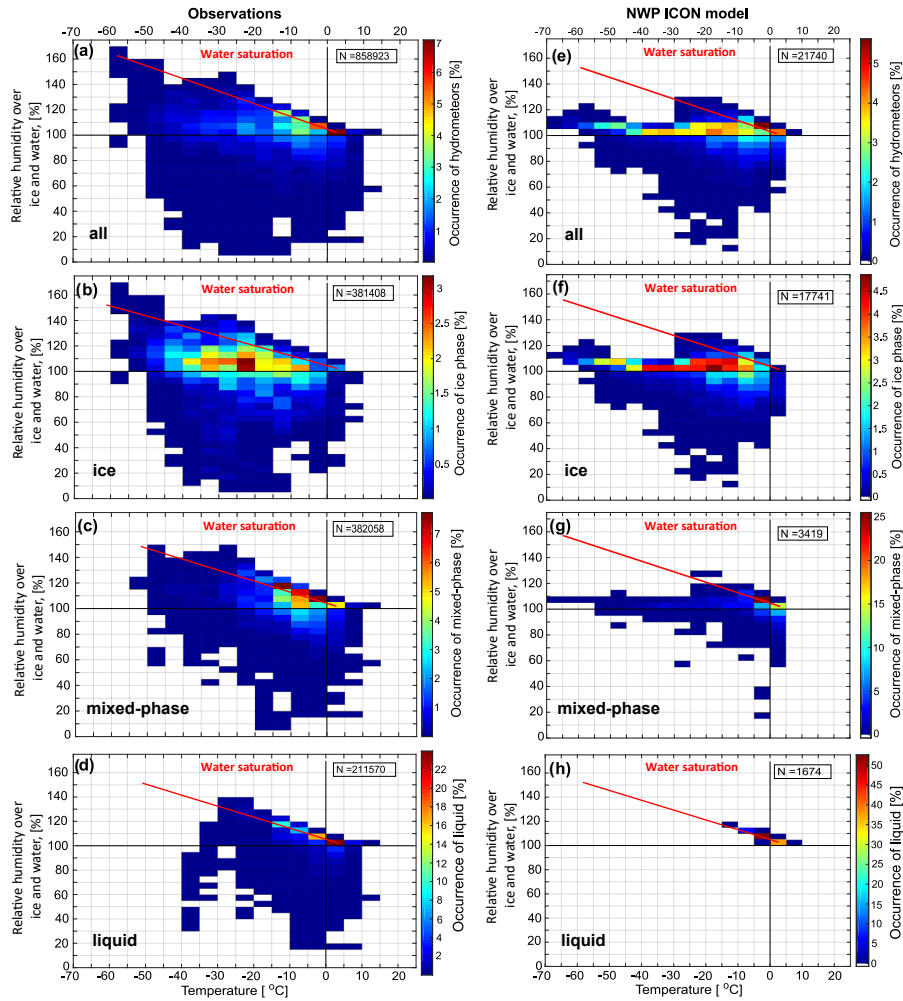


Figure 13. Two-dimensional histograms of in-cloud atmospheric temperature and relative humidity for all clouds (a,e), ice clouds (b,f), mixed-phase clouds (c,g). For a, c, e and g ice and/or liquid phases are present. For b and f only ice phase is present. Liquid phase of liquid-containing clouds is shown in d and h. Only cases of single-layer clouds are included and shown for [observations](#) (left) and for [global column output of NWP model ICON over Ny-Ålesund](#) (right). Frequency of occurrence is normalized by the total number of bins of the correspondent single-layer clouds detected between the period of one hour before and after radiosonde launch.

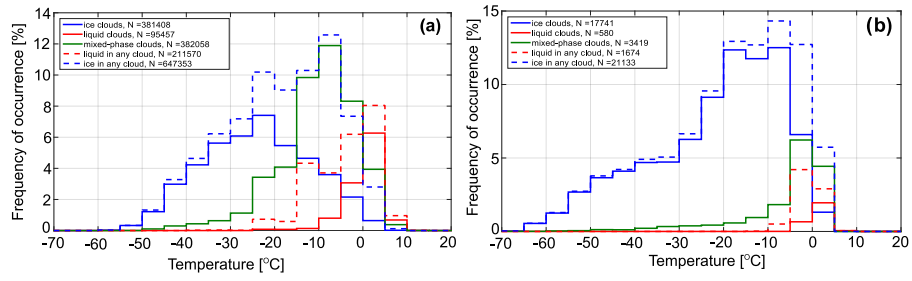


Figure 14. Distribution of in-cloud atmospheric temperature for different types of single-layer clouds, liquid and ice phase for observations (a) and ~~global~~-NWP ICON model over Ny-Ålesund (b).

Table 1. Instruments and data used for this study.

Instrument	Measured quantities	Settings for Ny-Ålesund		
		Temporal resolution	Vertical resolution (range)	Retrieved parameters
MWR HATPRO	Brightness temperatures at 22.24-31.4 GHz (7 frequencies) and at 51.26-58 GHz	1-2 s	<u>Range-integrated measurements</u>	LWP
Ceilometer CL51	Profiles of attenuated backscatter coefficient	12-20 s	30 m <u>10 m, min range</u> <u>10 m, max range</u> <u>15 km</u>	cloud base, liquid layer
FMCW 94 GHz cloud Doppler radar (JOYRAD-94)	Profiles of reflectivity (94 GHz) and Doppler velocity (94 GHz), Doppler spectrum width (94 GHz), brightness temperature (89 GHz, passive)	2.5 s	4 m (100-400 m) ₂ 5.3 m (400-1200 m) ₂ 6.7 m (1.2-3 km) ₂ 17 m (3-10 km)	cloud presence, cloud boundaries
Radiosonde RS92, RS41	Profiles of atmospheric temperature and relative humidity	at least 1 sonde/day, 1 s	5-7 m	IWV

Table 2. Cloudnet ~~product-used characteristics~~ for ~~this study~~ Ny-Ålesund.

<u>Property</u>	eSettings for Ny-Ålesund <u>Value</u>
Input parameters (Instrument/model)	Temporal resolution Vertical resolution (range) Retrieved parameters LWP (MWR) 30 s 20 m Target classification, IWC product , reflectivity factor and Doppler velocity (94 GHz radar), attenuated backscatter coefficient (ceilometer CL51), hourly model analysis and forecasts (GDAS1 or NWP ICON model)
<u>Temporal resolution</u>	<u>30 s</u>
<u>Vertical resolution (range)</u>	<u>20 m</u>
<u>Retrieved parameters</u>	<u>Target classification, IWC</u>