

Supplementary materials for

# Contrasting physical properties of black carbon in urban Beijing between winter and summer

5

Dantong Liu<sup>1,2</sup>, Rutambhara Joshi<sup>2,5</sup>, Junfeng Wang<sup>4</sup>, Chenjie Yu<sup>2</sup>, James D. Allan<sup>2,5</sup>,  
Hugh Coe<sup>2</sup>, Michael J. Flynn<sup>2</sup>, Conghui Xie<sup>3</sup>, James Lee<sup>6</sup>, Freya Squires<sup>6</sup>, Simone  
Kotthaus<sup>7</sup>, Sue Grimmond<sup>7</sup>, Xinlei Ge<sup>4</sup>, Yele Sun<sup>3</sup>, Pingqing Fu<sup>3</sup>

10

<sup>1</sup> Department of Atmospheric Sciences, School of Earth Sciences, Zhejiang University, Hangzhou, Zhejiang, China

<sup>2</sup> Centre for Atmospheric Sciences, School of Earth and Environmental Sciences, University of  
15 Manchester, Manchester, UK

<sup>3</sup> Institute of Atmospheric Physics, Chinese Academy of Sciences, Beijing, China

<sup>4</sup> School of Environmental Science and Engineering, Nanjing University of Information Science and  
Technology, Nanjing, China

<sup>5</sup> National Centre for Atmospheric Science, University of Manchester, Manchester, UK

20 <sup>6</sup> Department of Chemistry & National Centre for Atmospheric Science, University of York, York, UK

<sup>7</sup> Department of Meteorology, University of Reading, UK

Corresponding to: Dantong Liu (dantongliu@zju.edu.cn)

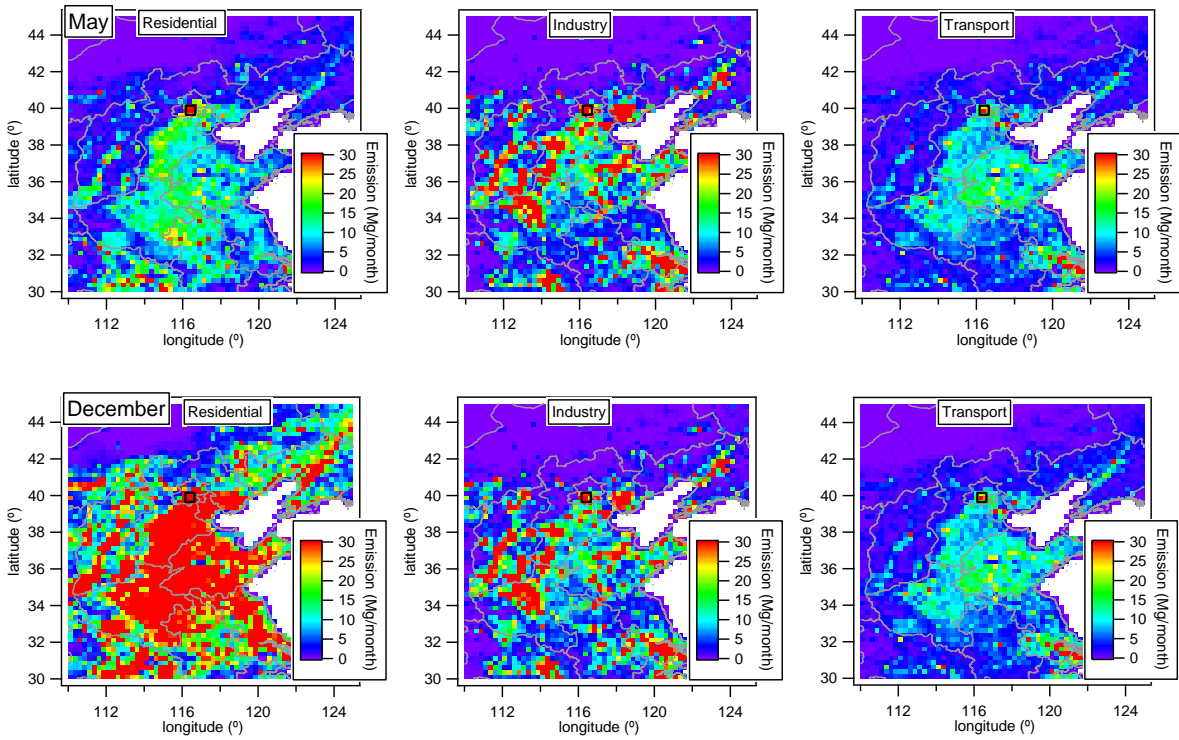


Figure. S1. The 2010  $0.5^\circ \times 0.5^\circ$  BC emission inventories for residential, industry and transportation sectors for May and December. The open square marks the location of central Beijing.

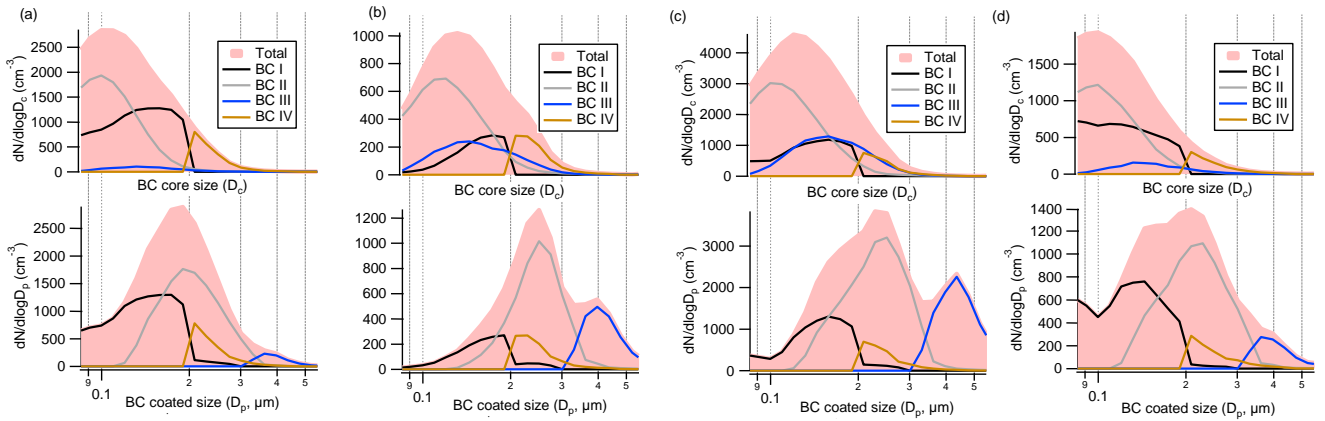


Figure S2. The rBC core size (top panels) and coated BC (bottom panels) number size distribution for separated BC types, and the red shades show the total. Each panel corresponds to the periods shown in panels a) - d) of Fig. 9.

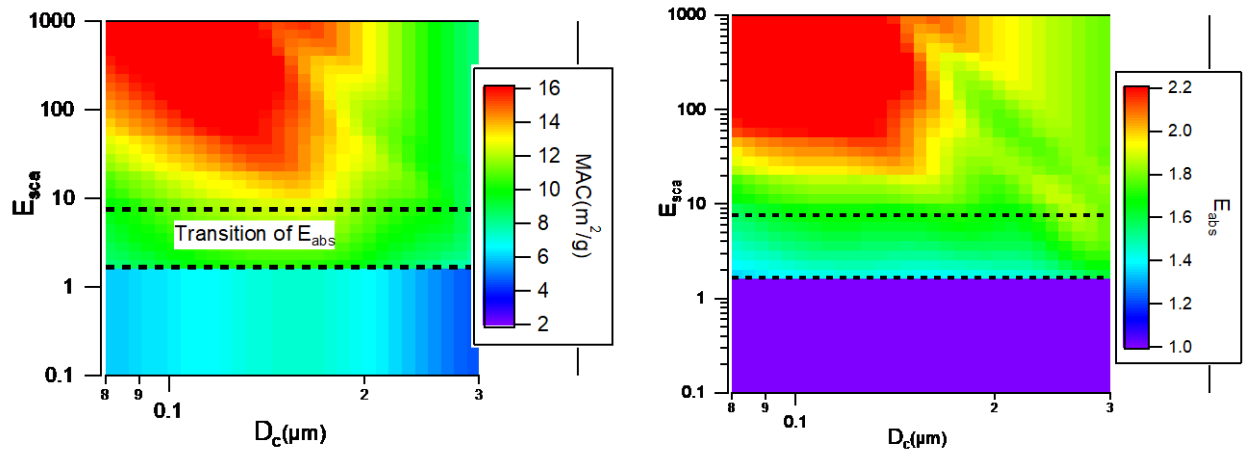
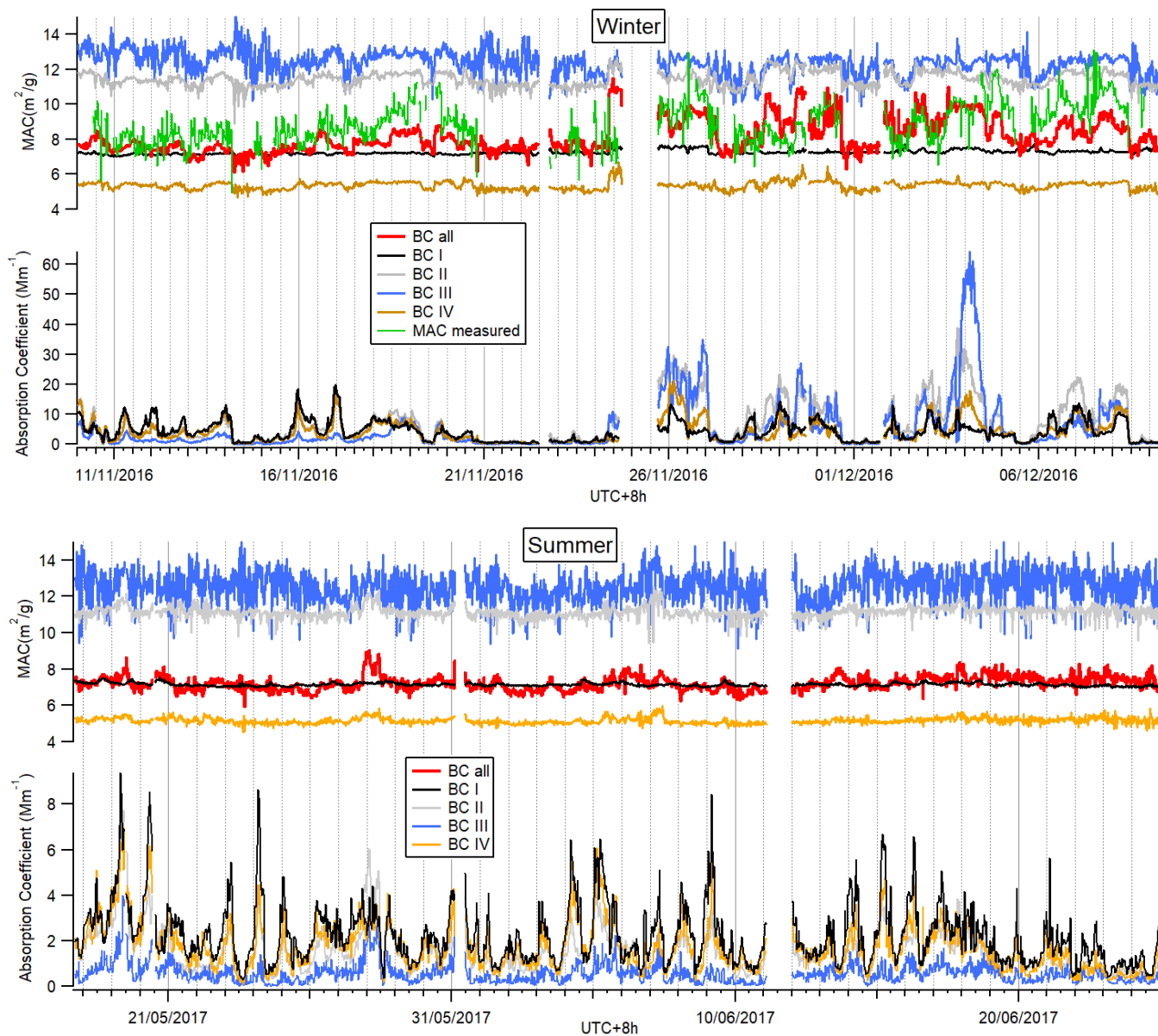


Figure. S3. Modelled MAC and absorption enhancement ( $E_{abs}$ ) mapped on the  $E_{sca}$ - $D_c$  plot according to the scenario proposed in Liu et al., 2017. The area between both dashed lines shows the transition region of  $E_{abs}$ .



40

Fig. S4. The temporal variation of calculated MAC for total and each BC category. The green line indicates the measured MAC by PAX in winter.

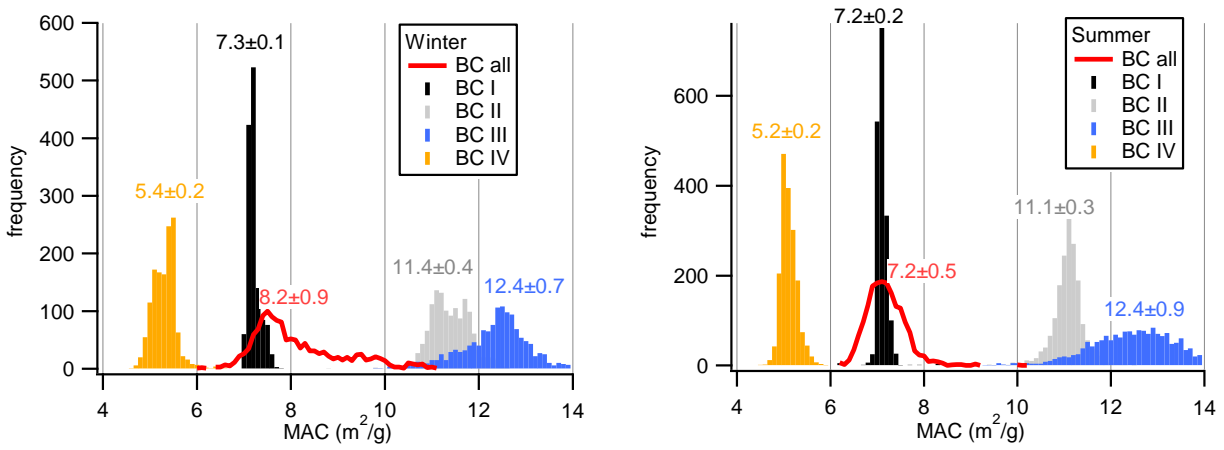


Figure S5. MAC of all BC types. The values on each histogram shows the mean  $\pm 1\sigma$ .