

## RESPONSE to comments from reviewer #3:

We would like to thank reviewer #3 for reading our manuscript and giving specific comments on textual or technical parts in the paper.

**I recommend shortening the method sections and to remove the standard description of regression method.**

We agree with the reviewer that the method section can be shortened.

Following equations have been removed: eq. 7, 8, 9, 11

**The paper uses parameters describing cloud vertical distribution. In my opinion, the binned cloud fraction products (TCF, LCF, and HCF) are the much more robust parameters to show the trends and to support the main message than averaged cloud top height (CTH) due to its strongly non-Gaussian distribution.**

We agree with your comment. Although we mention several times in the manuscript that changes in the averaged CTH are not due to real changes of the cloud top, but are mainly due to more or less high clouds. We propose to emphasize the non-gaussian character of the CTH again.

Text has been adopted accordingly on p. 6, l.23

**Page 1 Line 23: “Low (optically thick) .. High (optically thin)” gives the impression that low clouds are always thick and high always thin. I would add an “often” or similar.**

For clarity this has been adapted (p.2, l. 2-3).

**Section 2.1 MODIS: Which product do you use for the analysis and for the thresholding. The results show later cloud top height products, but the classification seems to make use of cloud top pressure. Please add this to data description for clarity.**

We used the MODIS pixel based cloud height categories flag for the calculation of the vertically resolved cloud fraction. This is based on the CTP and consistent with the ISCCP classification scheme. For our analysis we used the CTH and the computed vertically resolved cloud fraction.

This was clarified in the data description section on p.4, l.24.

**Page 3 Line 22: “much lower sampling of active lidar and radar”: Calipso has footprint size of 70m and Cloudsat of 1km, so this is not much lower. Is DARDAR data set provided with a decreased resolution?**

Calipso and Cloudsat has only nadir view, leading to much lower daily spatial coverage.

**Page 3 Line 31: Define TCWV and SST.**

Defined on p.2, l.26-27.

**Page 3 Line 30 subsection AMSR-e and Figure 8: You could have used AMSR-2 on GCOM-W for the period from 2012. This would be particularly interesting for P2 period.**

Thank you for pointing this out. We will consider this in a follow-up study where the time series will be extended.

**Figure 1: I would skip this image because you use only the two cloud pressure thresholds and not COD classifications.**

We agree, the image has been removed and the classification is described in the text, see lines p.4, l. 22-26.

**Section 3.2: This is for my taste too many details of standard statistical and regression methods. A reference would be sufficient.**

We agree, several equations have been removed, references to the methods are given.

Changes were made in p.4 and 5.

**Section 3.2, page 4 Equation 1: Define variable t.**

Variable t is now defined (p.5, l. 1)

**Figure 2: Do you show here MODIS or DARDAR data?**

We show MODIS data in this figure. It has now been clarified in the figure caption.

**Section 4.1, Figure 3: Why is the MODIS and DARDAR averages that different? You discuss this: “positive bias towards higher CF’s which can be explained with the higher sensibility of lidar for high, optically thin clouds.”: But the difference is also big for low clouds. (0.2 vs 0.45)!**

We agree with your comment. As DARDAR can have both low and high clouds in the same column, the differences can be explained by multi-layer conditions (high + low) that can be up to 25 to 30% of the cloud cover, especially in the tropics.

Has been adapted on p.7, l. 3-4.

**Page 7, line 9: lider should be lidar Page 7**

Has been corrected.

**Line 6: “The LCF and CTH show a negative correlation. This indicates that the mean seasonal variability of the CTH is mainly related to changes in the vertical cloud distribution.”: I think this is a tautology. The cloud top height is directly taken from the vertical cloud distribution.**

We agree with your comment. Phrase has been taken out.

**Figure 7: I cannot see plus signs in the images in my print-out and hardly in the pdf. And they look very similar to the grid lines.**

Has been changed, now dots are used.

Second RESPONSE to comments from reviewer #1:

Regarding the comments of reviewer #1, we changed the title from „*Observation of ENSO linked changes in the tropical Atlantic cloud vertical distribution using 14 years of MODIS observations*“ to „*Analysis and quantification of ENSO linked changes in the tropical Atlantic cloud vertical distribution using 14 years of MODIS observations*“.

Furthermore we made several changes in the Abstract, Introduction and Summary to clearly emphasize that the study is about quantifying changes in the passive satellite-observed vertical cloud fraction and height and linking them to larg-scale dynamics/ENSO events.

Moreover we changed the phrase in p.9 l.9 from "*For the analyzed time period no consistent significant linear trend was found for the domain average (not shown).*" to "*For the analyzed time period significant ( $p$ -value < 0.05) linear changes were found for the domain-averaged CTH (178 m/dec), HCF (0.0006 /dec) and the LCF (0.001 /dec).*"

The caption of Figure 5 has been changed form „*Time series of the tropical Atlantic means...*“ to „*Quantification of linear changes in the tropical Atlantic mean associated with ENSO phase transition.*“

On p.12 l.6 we changed the phrase „*As shown in (Sec. 4.2 & 4.3) a link between ENSO and TOA cloudiness, primarily in high-cloud amount, was observed in our analysis as well.*“ to „*As our analysis of MODIS data shows that the decrease in TCF during El Nino are observed to be mainly caused by less high clouds (Sec. 4.2 & 4.3) , the cloud radiative forcing might be negative and counteract the increase in tropical Atlantic SST.*“

# Observation Analysis and quantification of ENSO linked changes in the tropical Atlantic cloud vertical distribution using 14 years of MODIS observations

Nils Madenach<sup>1</sup>, Cintia Carbajal Henken<sup>1</sup>, René Preusker<sup>1</sup>, Odran Sourdeval<sup>2</sup>, and Jürgen Fischer<sup>1</sup>

<sup>1</sup>Institute for Space Sciences, Freie Universität Berlin, Carl-Heinrich-Becker-Weg 6–10, 12165 Berlin, Germany

<sup>2</sup>Laboratoire d'Optique Atmosphérique, Université de Lille, Villeneuve d'Ascq, France

**Correspondence:** N. Madenach  
(nils.madenach@wew.fu-berlin.de)

**Abstract.** 14 years (September 2002 to September 2016) of Aqua Moderate Resolution Imaging Spectroradiometer (MODIS) monthly mean cloud data is analyzed to identify possible changes of used to quantify possible changes in the cloud vertical distribution over the Tropical Atlantic Ocean (TAO) tropical Atlantic. For the analysis multiple linear regression techniques are used.

5 ~~Within the investigated period, no significant trend~~ For the investigated time period significant linear changes were found in the domain-averaged ~~cloud vertical distribution was found. In terms of linear changes, two major phases (before and after November 2011) in the time-series of the TAO domain-average Cloud Top Height (CTH) ( $-178 \text{ m dec}^{-1}$ ), the High Cloud Fraction (HCF) ( $-0.0006 \text{ dec}^{-1}$ ) and the Low Cloud Fraction (LCF) ( $0.001 \text{ dec}^{-1}$ ). The interannual variability of the time series (especially CTH and HCF can be distinguished. While phase 1 is dominated by a significant linear increase, phase 2 is characterized by a~~ strong, significant linear decrease. The observed trends were mainly caused by) is highly influenced by the El Niño Southern Oscillation (ENSO). ~~The increase in CTH and HCF in phase 1, was attributed to the transition from~~ Separating the time series into two phases, we quantified the linear change associated with the transition from more La Niña like conditions to a phase with El Niño (2002) to La Niña (2011) conditions. ~~The strong decrease in phase 2, was caused by the opposite transition from a La Niña (2011) to a major El Niño event (2016).~~ conditions (Phase 2) and vice versa (Phase 1). The transition from negative to positive ENSO conditions was related to a decrease in Total Cloud Fraction (TCF) ( $-0.018 \text{ dec}^{-1}$ ; not significant) due to a reduction in the high cloud amount ( $-0.024 \text{ dec}^{-1}$ ; significant). Observed anomalies in the mean CTH were found to be mainly caused by changes in HCF rather than by anomalies in the height of cloud tops themselves.

~~A comparison with~~ Using the large scale vertical motion  $\omega$  at 500 hPa obtained (from ERA-Interim ECMWF Re-Analyses and the Niño3.4 Index indicates that the changes in HCF are induced by ENSO linked data), the observed anomalies were linked to ENSO induced changes in the large scale vertical upward movements over atmospheric large scale dynamics. The most significant and largest changes were found in regions with strong large scale ascent. ~~A first comparison with the DARDAR data set, which combines CloudSat radar and CALIPSO lidar measurements, shows qualitatively good agreements for the interannual variability of upward movements near the equator.~~

~~Despite the fact that with passive imagers as MODIS it is not possible to vertically resolve clouds, this study shows the~~

high-cloud amount and its linear decrease in phase 2. great potential for large-scale analysis of possible changes in the cloud vertical distribution due to e.g. the changing climate by using vertically resolved cloud cover and linking those changes to e.g. large-scale dynamics using other observations or model data.

## 1 Introduction

5 One of the major sources of uncertainty in climate projection is the Cloud Radiative Feedback (CRF) (IPCC and Stocker, 2014; Bony et al., 2015), which describes the effect that clouds have on the radiation balance of the Earth. There are two main mechanisms driving cloud interaction with radiation namely the reflection of solar short-wave radiation (cloud albedo forcing) and the absorption and re-emission to space at cloud top temperature of terrestrial long-wave radiation (cloud greenhouse forcing). On global average the surface cooling by the cloud albedo forcing predominates the heating by the cloud greenhouse forcing. The strength of each forcing for a given cloud is a function of its Cloud Top Height (CTH) and its optical properties such as the Cloud Optical Thickness (COT). Low (often optically thick) clouds have a negative CRF due to predominant cloud albedo forcing. High (often optically thin) clouds mostly transmit incoming short-wave and trap outgoing long-wave radiation leading to a positive CRF (e.g., Graham, 1999). For the quantification of possible changes in the net-CRF, information of the cloud vertical distribution on high temporal and spatial resolution are crucial.

15 For this work the focus lies on the ~~Tropical Atlantic Ocean (TAO)~~tropical Atlantic. The tropical Atlantic ocean-atmosphere system is largely influenced by the Hadley-Walker circulation. Large deep convective systems with elevated Cirrus clouds at the convective outflow predominate at the Intertropical convergence zone and shallow cumulus clouds at the trade wind regions. The interannual variability of climate variables at the tropical Atlantic is coupled with the El Niño Southern Oscillation (ENSO). An overview of ENSO linked influences on Earth's climate system can be found in e.g. (~~Timmermann et al., 2018~~) Timmermann et al. (2018). In order to better understand questions as, e.g., how clouds, circulation and climate interact (Bony et al., 2015), this region is of major interest ~~of in~~ recent research efforts. At the Barbados Cloud Observatory long-term ground based measurements are done (e.g., Stevens et al., 2016). In December 2013 and August 2016 the Narval campaigns within the **H**igh **D**efinition **C**louds and **P**recipitation for advancing **C**limate **P**rediction (HD(CP)<sup>2</sup>) project (Klepp et al., 2014) produced a large amount of airborne based measurements for this region. Furthermore, the study area is one simulation domain of the cloud resolving ICON-LEM (**I**COsahedral **N**onhydrostatic-**L**arge **E**ddy **S**imulation) model developed within the HD(CP)<sup>2</sup> project (Dipankar et al., 2015; Heinze et al., 2017).

In this work 14 years of the **M**ODerate-resolution **I**maging **S**pectroradiometer (MODIS) level 2 cloud product (Platnick et al., 2015) were analyzed using Multiple Linear Regression Model (MLRM) techniques in order to get insights ~~of in~~ the long-term variability and possible ~~trends-anomalies~~ within the CTH and cloud vertical distributions due to a warming climate. The influence of the transition from one ENSO phase to another on the tropical Atlantic cloud vertical distribution was analyzed and quantified. The passive imager MODIS aboard the polar orbiting NASA satellites Terra and Aqua provide the possibility to obtain observational information about the cloud vertical distribution on high temporal (on climate scales) and spatial resolution. MODIS aboard Aqua delivers reliably high resolution data of cloud properties since 2002 (Platnick et al., 2015).

Every point on Earth is seen every one to two days. For the evaluation of the MODIS observations, the DARDAR (CloudSat RADAR and CALIPSO LIDAR) data, set which relies on information of active instruments, were used (Delanoë and Hogan, 2010). ~~Further more~~ Furthermore we analyzed the level 3 monthly mean Sea Surface Temperature (SST) and Total Column of Water Vapor (TCWV) (Wentz, 2004) from Advanced Microwave Scanning Radiometer - Earth Observing System (AMSR-E) aboard Aqua (~~Wentz, 2004~~). For the interpretation of the results we examined Era-Interim reanalysis data of the vertical velocity  $\omega$  at 500 hPa (Dee et al., 2011).

In Sec. 2 we will give an overview of the data used for the analysis. Section 3 introduces the methodology used. In Sec. 4 the results are presented and discussed, and in Sec. 5 the work is summarized and ~~some~~ conclusions are drawn.

## 2 Data

10 In this section an overview of the used data and its processing is given. The study area is defined by a latitude-longitude box of 30° S–30° N and 70° W–20° E and is hereinafter referred as tropical Atlantic. The study period ranges from September 2002 to September 2016.

### 2.1 MODIS

MODIS measures reflected shortwave and emitted long-wave radiation in 36 spectral bands. MODIS is aboard the NASA  
15 Earth Observing System (EOS) satellites Aqua (1:30 p.m. LT ascending node) and Terra (10:30 a.m. LT descending node). Both satellites are in a polar sun-synchronous orbit at an altitude of 705 km. In this work solely data from MODIS aboard Aqua (Platnick et al., 2015), which is part of the Afternoon Train (A-train) constellation, is considered. With a swath of 2330 km (cross track) ~~by 10 km (along-track-at-nadir)~~ and a scan rate of 20.3 rpm (cross track) global coverage is acquired almost daily. The level 2 data of collection 6 (Platnick et al., 2015) provides cloud optical and microphysical property data at a  
20 spatial resolution of 1 km and cloud top property data at 5 km as well as at 1 km resolution (Menzel and Strabala, 2015; Platnick et al., 2017). For the analysis only data from overpasses during day time (ascending node) were used. The vertically resolved cloud fractions were calculated using the 1 km cloud mask and the International Satellite Cloud Climatology Project (ISCCP) cloud classification scheme explained in Sec. 3.1.

In order to get daily composites from the MODIS overpasses the segments were regrided on a regular  $0.1^\circ \times 0.1^\circ$  grid. For  
25 every grid cell the mean, minimum, maximum and the variance ~~of the containing pixels~~ were computed. Due to the proximity to the equator of the analyzed region for the majority of the grid cells, the pixels arise from a single overpass. To account for possible miss-classification of the MODIS cloud mask (clear sky conservative) due to e.g. cloud edges, broken clouds, smoke, dust or sun-glint, pixels that were poor retrieval candidates were excluded using the clear sky restoral flag (Hubanks, 2015). After computing the daily composites for every day of the investigated period, grid cell based monthly means were computed  
30 and afterwards regrided to a  $0.2^\circ \times 0.2^\circ$  grid. Based on the monthly means, climatologies were calculated by averaging every month of the year over the 14 years of MODIS data. Monthly anomalies were produced by subtracting the climatology from every single monthly mean.

## 2.2 DARDAR

To compare the results obtained with MODIS, additionally data for Total Cloud Fraction (TCF), High Cloud Fraction (HCF), Middle Cloud Fraction (MCF) and Low Cloud Fraction (LCF) computed from DARDAR data (Delanoë and Hogan, 2010), also using the ISCCP cloud classification scheme, were analyzed. DARDAR is a project from Laboratoire Atmosphères, Milieux, Observations Spatiales and the Cloud Group of the Department of Meteorology at the University of Reading to retrieve cloud properties by combining CloudSat RADAR and CALIPSO LIDAR measurements. Both the CloudSat and CALIPSO satellite fly within the A-train. CloudSat lags Aqua by between 30 seconds and 2 minutes and CALIPSO lags CloudSat by no more than 15 seconds. The data is available for the period from June 2006 to June 2016 with gap from May 2011 to April 2012. Due to the much lower sampling of the active lidar and radar instruments the monthly means were computed on a  $2^\circ \times 2^\circ$  grid.

## 10 2.3 AMSR-E

Furthermore, data from the AMSR-E instrument aboard Aqua was used to acquire information about the SST and TCWV. AMSR-E measures the brightness temperature at 6 different wavelengths in the microwave range between ~~between~~ 0.34 and 4.35 cm. For every wavelength, the horizontal and vertical polarized radiation is measured leading to 12 channels in total. The spatial resolution depends on the the channel and varies from 5.4 km to 56 km. The radiometer has a viewing swath width of 1445 km and an incidence angle of  $55^\circ$ . For the analysis the SST and the TCWV from version 2 of the monthly Level-3 product (AE\_MoOcn) with a spatial resolution of  $0.25^\circ \times 0.25^\circ$  were used (Wentz, 2004). The AMSR-E data is available from June 8th 2002 through October 4th 2011.

## 2.4 ERA-Interim

To get insights about the predominant large scale dynamics, the vertical velocity  $\omega$  at 500 hPa was acquired from the Era-Interim reanalysis (Dee et al., 2011). In order to roughly match the MODIS overflight time, the daily Era-Interim analyses data at 12:00 was used. From the daily data ( $0.2^\circ \times 0.2^\circ$ ), monthly means were computed the same way as explained in Sec. 2.1.

## 3 Methods

Following, the ISCCP cloud classification scheme is introduced. Furthermore, the ~~MLRM~~ Multiple Linear Regression Model (MLRM) used for the time-series analysis is described.

### 25 3.1 Assessment of the cloud vertical distribution

The ISCCP cloud classification scheme is widely used to simply distinguish between different cloud types using remote sensed information. The ISCCP is a project, started 1982 as part of the World Climate Research Programme (WCRP), with the goal to collect and analyze satellite radiance measurements to infer the global distribution of clouds, the cloud properties, and the cloud diurnal, seasonal, and interannual variations. ~~As Fig. ?? illustrates the~~ The clouds are distinguished by its Cloud

Top Pressure (CTP) in  $hPa$  and its [cloud](#) optical thickness. There are three categories for the vertical distribution namely high (CTP < 440  $hPa$  ), middle ( $\leq 440$  CTP < 680  $hPa$  ) and low (CTP  $\geq 680$   $hPa$  ). For the [MODIS data computation of MODIS vertical cloud fractions](#) the cloud height category flag from the MODIS 5  $km$  quality assurance (Hubanks, 2015), that is based on the explained ISCCP thresholds was used to discriminate between the height categories. [ISCCP cloud classification](#)

5 [scheme \(Rossow and Schiffer, 1999\)](#).

### 3.2 Multiple linear regression

To obtain information of linear changes within the data-sets a simple MLRM was developed. For the model development, the time series of the analyzed parameters ( $y$ ) were assumed to be composed of a constant  $\mu$ , a seasonal  $S$ , a trend ([temporal linear change](#))  $\tau$  and a noise  $\eta$  component. These assumptions lead to the following model equation [where  \$t\$  stands for time](#).

$$10 \quad y(t) = \mu + S(t) + \tau \cdot t + \eta(t) \quad (1)$$

Where the seasonal component was specified by the sum of sine and cosine with a period of 12 months.

$$S(t) = \sum_{i=1}^2 \sin\left(\frac{2\pi it}{12}\right) + \cos\left(\frac{2\pi it}{12}\right) \quad (2)$$

Due to bi-annual variations in the time series the first harmonic ( $i=2$ ) of sine and cosine was added to the model.

In a general form Eq. 1 can be written as:

$$15 \quad y(t) = \mathbf{x}_t^T \mathbf{b} + \eta_t \quad (3)$$

Where  $\mathbf{x}_t^T$  represents a vector including all explanatory parameters required to describe the parameter  $y$  at time step  $t$  and  $\mathbf{b}$  a vector containing all regression coefficients. In Eq. 4 all possible [FT](#) linear combinations of the [n-n](#) parameters are summarized in matrix notation.

$$[\mathbf{y}] = [\mathbf{X}][\mathbf{b}] + [\boldsymbol{\eta}] \quad (4)$$

20 Here  $\mathbf{y}$  stands for the  $T \times 1$  vector with the measured parameter for all  $T$  month,  $\mathbf{X}$  for the  $T \times n$  model matrix including all predictor variables for the estimation for all  $T$  months and  $\mathbf{b}$  for the  $n \times 1$  vector containing all the regression coefficients. The variations that are not explained by the model are stored in the  $T \times 1$  noise vector  $\boldsymbol{\eta}$ .

To find the vector, which best fits to the data (denoted as  $\hat{\mathbf{b}}$ ), the ordinary least square method is used. This method tries to predict the expected parameter  $\hat{y}$  by minimizing the sum of squares of the distances between measured and estimated values.

25 The remaining noise between prediction and measurement is termed residual:

$$[\boldsymbol{\eta}] = [\mathbf{y}] - [\hat{\mathbf{y}}] \quad (5)$$

It is important to remember that  $\mathbf{y}$  is the vector with the measured values and  $\hat{\mathbf{y}}$  is the vector containing the values estimated by the model. Consequently, the following expression has to be minimized, in order to minimize the sum of squared residuals:

$$M = \|\boldsymbol{\eta}\|^2 = \|\mathbf{y} - [\hat{\mathbf{y}}]\|^2 = [\boldsymbol{\eta}]^T [\boldsymbol{\eta}] \quad (6)$$



With  $[\hat{y}] = \mathbf{X}\hat{b}$  and some simplifications Eq. 6 results in:-

$$M = \underline{[y]^T [y] - 2[\hat{b}]^T [X]^T [y] + [\hat{b}]^T [X]^T [X] [\hat{b}]}$$

To find the values of the vector  $\hat{b}$ , including all regression coefficients, which minimizes the sum of squared residuals, the Some simplifications and setting the derivation of  $M$  with respect to  $\hat{b}$  must be zero:-

5 
$$\underline{\frac{\partial M}{\partial \hat{b}} = -2[X]^T [y] - 2[X]^T [X] [\hat{b}] = 0}$$

After transposing Eq. ??, the following linear equation system in matrix notation must be solved in order to obtain  $\hat{b}$ :-

$$\underline{[X]^T [y] = [X]^T [X] [\hat{b}]}$$

Multiplying both sides with  $([X]^T [X])^{-1}$  to zero leads to the final equation to be solved:

$$[\hat{b}] = ([X]^T [X])^{-1} [X]^T [y] \tag{7}$$

10 To get an idea of the the linear correlation between two variables  $x$  and  $y$  the Pearson Correlation Coefficient (PCC) was used. It is defined as the ratio of the co-variance of  $x$  and  $y$  and the product of the two standard deviations  $s_x$  and  $s_y$ :-

$$\underline{PCC(x, y) = \frac{cov(x, y)}{s_x s_y}}$$

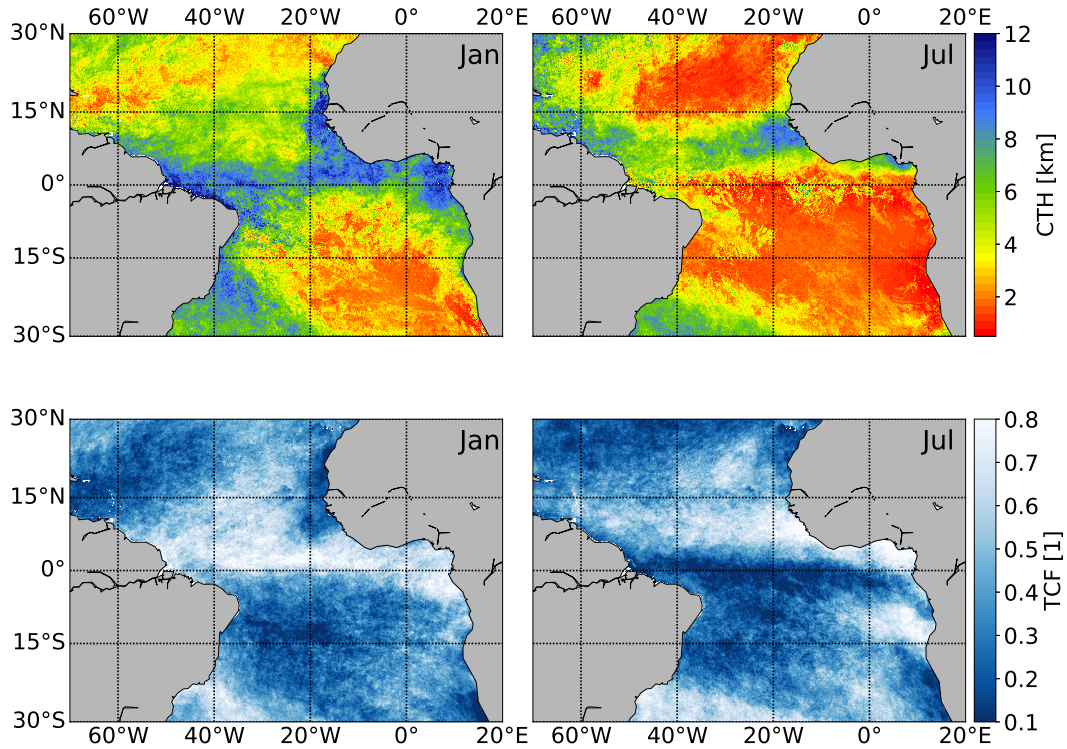
The PCC is bounded by -1 and +1. For PCC = -1 there is a perfect, negative linear association between  $x$  and  $y$  and for PCC = +1 there is a perfect positive linear association between the two variables. For PCC = 0 there is no linear correlation, but there

15 might be non-linear correlations between  $x$  and  $y$ . A more detailed explanation of the used MLRM can be found in e.g. Wilks (2011).

## 4 Results

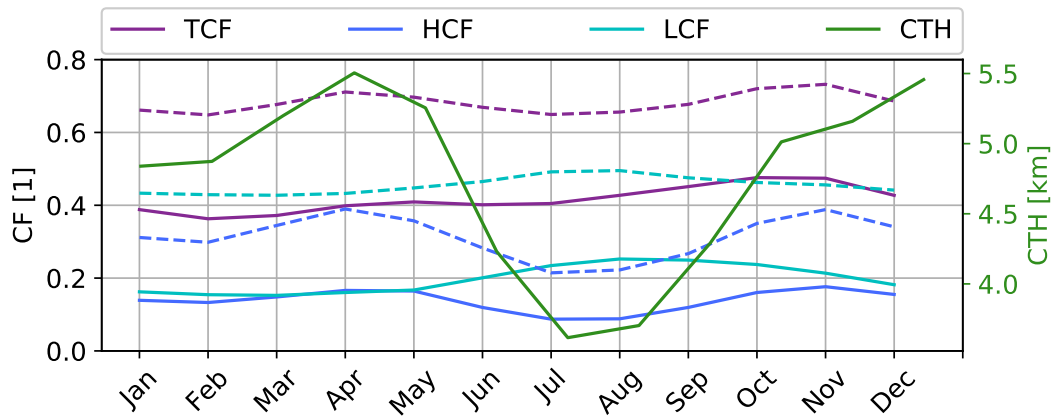
### 4.1 Monthly means and climatologies

20 Monthly means with a resolution of  $0.2 \times 0.2$  based on  $0.1 \times 0.1$  daily composites for CTH (upper) and TCF (lower) from January (left) and July (right) 2009. In Fig. 1 the monthly means for January (left) and July (right) 2009 are displayed for the CTH (upper panels) and the TCF (lower panels) for the investigated spatial domain of the tropical Atlantic. Near the equator the data reveals a band with high cloud tops and high cloud amounts indicating the ITCZ. Furthermore the seasonal shift of the ITCZ is represented. Lower cloud tops due to the well known trade wind inversion are predominant in the trade wind regions. The stratocumulus region near the coast of Angola and Namibia with higher CF and low CTH are illustrated in the data as well. In boreal winter (left) a part of the south Atlantic convergence zone can be identified southeast of Brazil with high cloud tops and high cloud amounts.



**Figure 1.** MODIS monthly means for the tropical Atlantic domain with a resolution of  $0.2^\circ \times 0.2^\circ$  for CTH (upper) and TCF (lower) from January (left) and July (right) 2009.

The tropical Atlantic domain-averaged climatologies (see Sec. 2) of the CTH and the vertically resolved CF's are shown in Fig. 2. ~~Solid lines indicate MODIS and dashed lines DARDAR data.~~ The CTH climatologies vary between 3.6 km in boreal summer and 5.5 km in boreal spring and in December, respectively. The climatologies of the CF's show that the MCF is negligible-very low (not shown) and the TCF is roughly composed for the same portion of LCF and HCF. The HCF is in phase with CTH showing similar seasonal variability. ~~The LCF and CTH show a negative correlation. This indicates that the mean seasonal variability of the CTH is mainly related to changes in the vertical cloud distribution.~~ For any interpretation of averaged CTH its strong non-Gaussian character is important to take into account. The climatologies calculated for the DARDAR data (June 2006- June 2016) reflect the same seasonal variability, indeed they have a positive bias ( $\sim 0.2$ ) towards higher CF's, which can be explained with the higher sensibility of ~~laser lidar~~ lidar for high, optically thin clouds ~~and by multi-layer conditions~~ as DARDAR can observe both high and low clouds in one column.



**Figure 2.** Domain-averaged [FAO-tropical Atlantic](#) climatologies of TCF, HCF, LCF and CTH. The dashed lines indicate climatologies of the DARDAR-Data (2006.06-2016.06) and the solid lines MODIS-Data (2002.09-2017.06).

## 4.2 Anomalies

To get insights [of into](#) the interannual variability and the temporal evolution of the variables, the monthly tropical Atlantic three month running mean anomalies (see Sec. 2) were analyzed. As illustrated in Fig. 3 the mean anomalies of CTH are strongly positive correlated with the HCF anomalies, with a PCC of 0.89 and an  $R^2$ -value [of \(Coefficient of determination\) of](#)

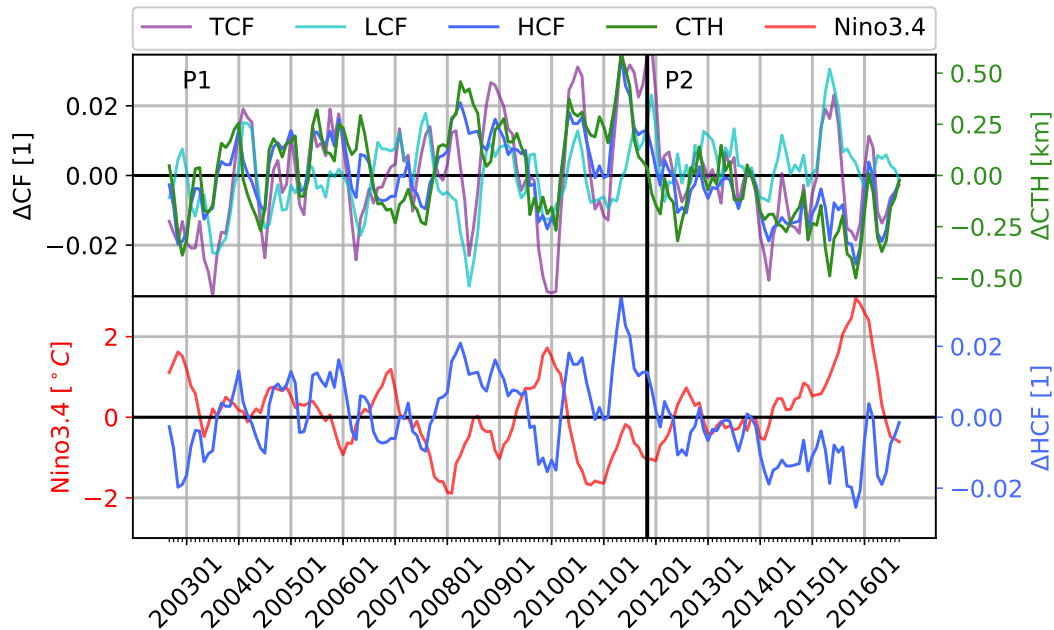
5 0.8. The interannual variability of CTH is mainly driven by the HCF. The time-series of the CTH and the HCF show major phases with negative anomalies around 2002, 2009 and at the end of the period starting in 2015 and major phases with positive anomalies between 2007 and 2008 as well as between 2010 and 2011. Remarkable is the large anomaly of the CTH and HCF at the end of the time-series which is not present in the TCF and LCF. The [times-time periods](#) where the anomalous phases occur indicate a link to the ENSO. An impact of ENSO to the tropical Atlantic ocean-atmosphere system is well known even

10 though the exact mechanism of teleconnection is still not fully understood. Positive ENSO events were found to be associated with higher SSTs in the tropical Atlantic (Klein et al., 1999), a weakening of the Walker circulation and the Atlantic Hadley circulation ([Klein et al., 1999; Wang, 2004, e.g.](#)) [\(e.g., Klein et al., 1999; Wang, 2004\)](#) and a stronger vertical wind shear over the tropical Atlantic (Zhu et al., 2014). The lower panel of Fig. 3 displays the three month running mean of the HCF anomaly and additionally the Nino3.4-Index (obtained from the NOAA climate prediction center). The interannual variability of the

15 mean HCF at the tropical Atlantic and the Nino3.4-Index are negatively [linked-correlated](#) (PCC=-0.53). [Where negative ENSO events are associated with more high-clouds and vice-versa.](#) As shown in ([Marchand, 2013](#)) [Marchand \(2013\)](#) a strong negative correlation between ENSO and high cloud amount is also present in MODIS (and Multi-angle Imaging SpectroRadiometer (MISR)) observations at the Tropical Warm Pool region (ocean between 30° N-30° S and 100° E-160° E), the Indian Ocean as well as the Tropical Western and Central Pacific. Due to the strong ENSO influence, two phases [with temporal linear change](#)

20 can be distinguished within the [time-series, with an overall increase of the high-cloud amount from investigated time period.](#)

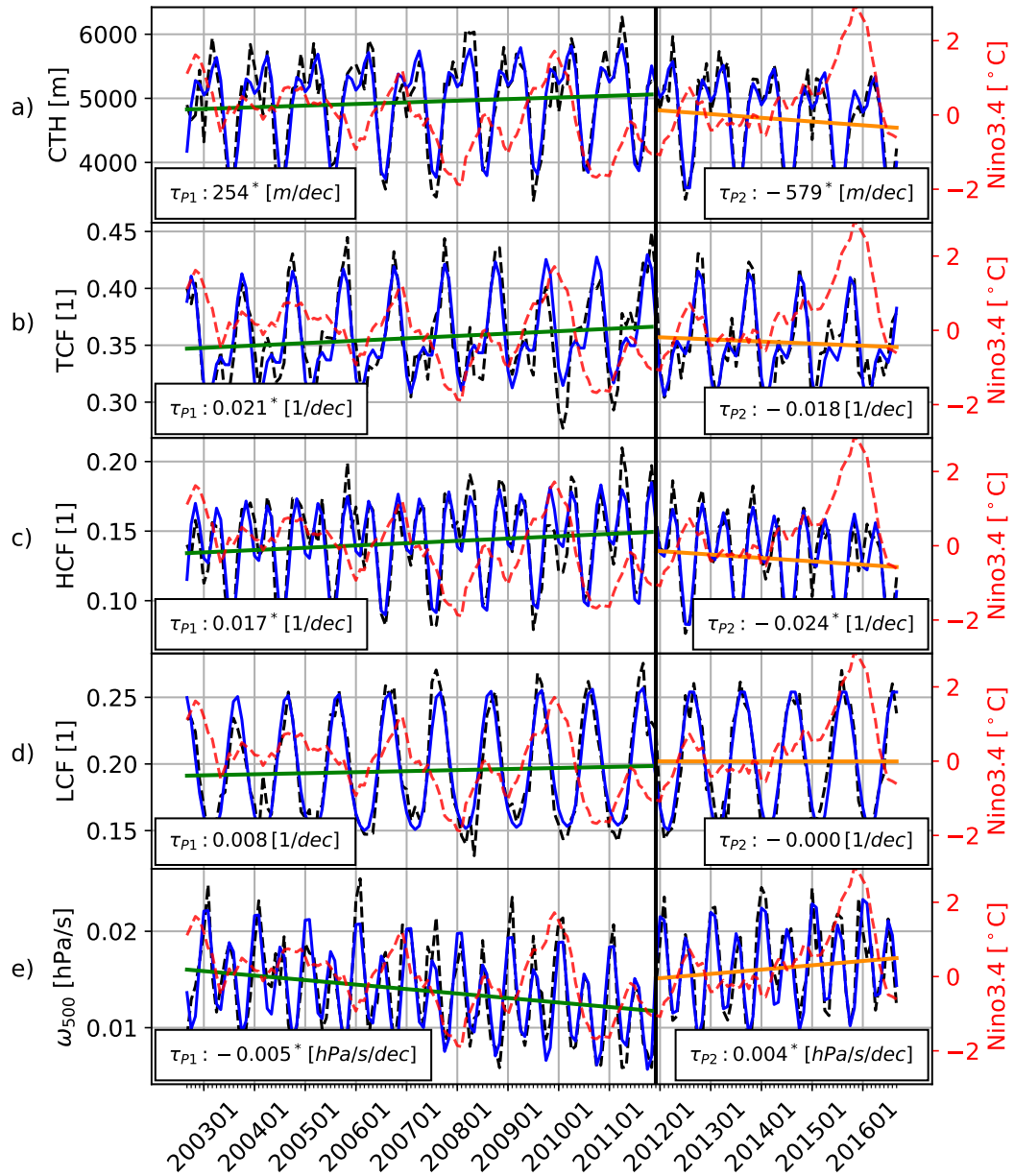
The phases are related to a transition from more El Niño like to more La Niña like conditions (phase 1) and vice versa (phase 2). For phase 1 from September 2002 (El Niña event) to end of 2011 (La Niña event) and a decrease an increase and for phase 2 from end of 2011 to 2016 (strong El Niño event) a decrease of the high cloud amount was found.



**Figure 3.** Upper panel: time-series of the tropical Atlantic three month running mean anomalies of CTH, TCF, HCF and LCF. Lower panel: as upper but comparing the HCF and the Nino 3.4-Index (NOAA climate prediction center). The PCC is found to be -0.53.

### 4.3 Multiple linear regression analysis

- 5 In order to ~~get insights of quantify~~ possible linear changes in the investigated variables associated with a warming ocean and changes in atmospheric dynamics due to climate change, ~~a the~~ multiple linear regression ~~analysis, explained in more detail in model~~ was applied to the domain-averaged variables. ~~In attempting to account for effects caused by the ENSO we included here the Nino3.4 index as explanatory parameter into the MLRM described in~~ Sec. 3.2, ~~was performed~~. For the analyzed time period ~~no consistent significant linear trend was significant (p-value < 0.05) linear changes were~~ found for the
- 10 ~~domain-average (domain-averaged CTH (-178 m dec<sup>-1</sup>), HCF (-0.0006 dec<sup>-1</sup>) and the LCF (0.001 dec<sup>-1</sup>) (not shown). The time series (especially CTH and HCF) are highly influenced by the ENSO. As the time-series showed opposed linear trend at the end of the time-series compared to the beginning, it was separated~~ The main reason for this may be mainly the changes in the atmospheric large-scale dynamics due to the east-ward shift of the Walker circulation during positive ENSO phases (e.g., Philander, 1989; Bayr et al., 2014).



**Figure 4.** Quantification of temporal linear changes in the tropical Atlantic mean associated with ENSO phase transition. a) CTH, b) TCF, c) HCF, d) LCF, e)  $\omega_{500}$ . In black the MODIS data is displayed and in blue the applied MLRM. In red the Nino3.4-Index is displayed.

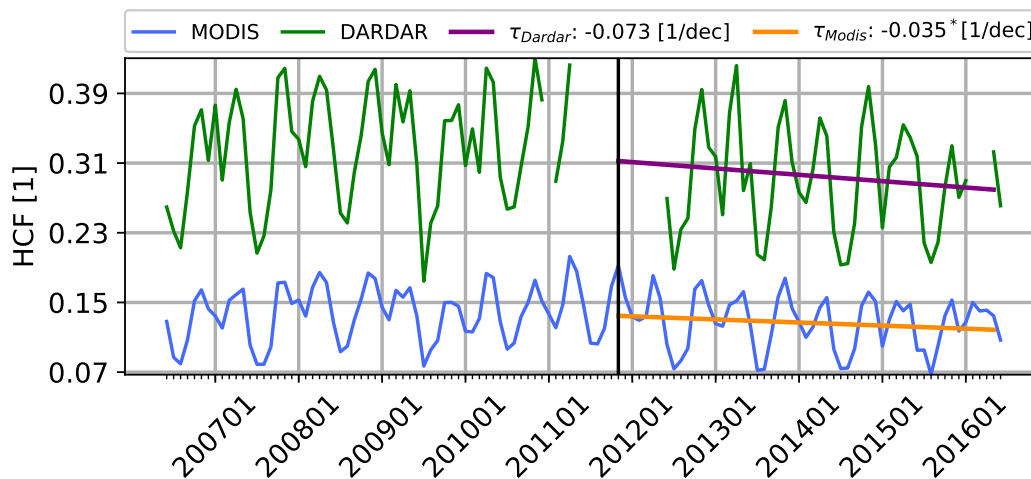
During the investigated time period, the analysis revealed opposed linear changes that are mostly related to transitions between more positive/negative like ENSO conditions (see Fig. 4). Therefore we decided in a next step to make a separation into two

phases and ~~the model was applied~~ apply the model to both phases ~~separately~~. This analysis is thought to be a first step of quantifying the linear changes in the cloud vertical distribution associated with ENSO phase transition, using satellite data. This is especially valid for the second phase were a clear transition from negative to strong positive ENSO conditions occurred (Figure 4). As we look here at effects associated with ENSO, we used the MLRM without Nino3.4 index (see Sec. 3.2). To

5 find the best separation of the phases the maximum of the sum of the explained variances of the two models was calculated for differing phase separations. The best fit was found for the period from September 2002 to November 2011 (P1) and the period from November 2011 to June 2016 (P2). The changes in P1 are mainly associated with a large La Niña event (2010) at the end of P1 and that in P2 with a large El Niño event (2015) at the end of P2. Figure 4 illustrates the results of the regression analysis applied on the tropical Atlantic mean for the different variables. ~~The black line shows the data and the blue line the regression model. The slope  $\tau$  is given per decade (dec) and tagged with an asterisk in case of significance ( $p < 0.05$ ). In addition, the Nino3.4-Index is displayed in red.~~

The CTH in Fig. 4 (a) and the HCF in Fig. 4 (c) show a significant El Niño related CTH decrease in P2 of ~~579-579~~  $m dec^{-1}$  and of ~~0.024-0.024~~  $dec^{-1}$  for HCF, respectively. This indicates that observed changes in the CTH are mainly due to changes in high cloud amount. The LCF (d) shows neither significant changes in P1 nor in P2. The changes of the TCF in P2 are visible, but statistically not significant (b). In P1 all variables (a-d) show a linear increase which are all significant, except for the LCF.

15 To evaluate the anomalies observed with the passive MODIS instrument, DARDAR data (see Sec. 2.2) from active LIDAR



**Figure 5.** ~~Time-series Comparison~~ Comparison of the tropical Atlantic ~~means. a domain-average of the  $2^\circ \times 2^\circ$  DARDAR (green) CTH, band MODIS (blue) TCF, c) HCF, d) LCF, e)  $\omega_{500}$  monthly means.~~ In black the MODIS data is displayed and in blue the applied MLRM. In red the Nino3.4-Index is displayed.

and RADAR instruments was analyzed. Due to the low sampling, monthly means were computed and compared to MODIS with a  $2^\circ \times 2^\circ$  resolution. As Fig. 5 illustrates the seasonal and interannual variability of the HCF, as well as its decrease

**Table 1.** Definition of the  $\omega_{500}$ -bins

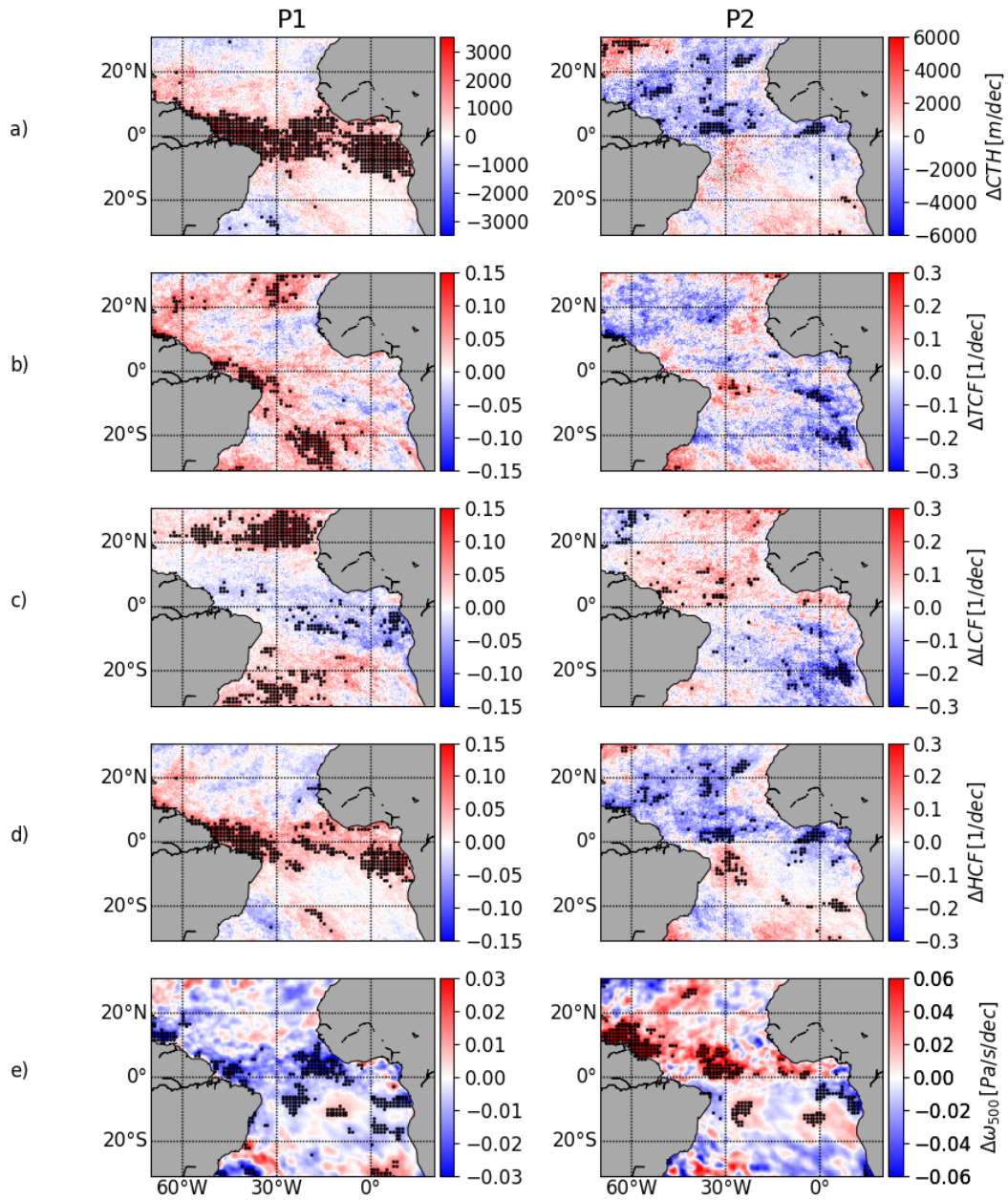
<u>bin #</u>	<u>vertical motion</u>	<u><math>\omega_{500}</math> range [Pa s<sup>-1</sup>]</u>
<u>bin-1</u>	<u>strong subsidence</u>	<u><math>\omega_{500} &gt; 0.15</math></u>
<u>bin-2</u>	<u>moderate subsidence</u>	<u><math>0.05 &lt; \omega_{500} \leq 0.15</math></u>
<u>bin-3</u>	<u>no/weak vertical motion</u>	<u><math>-0.05 &lt; \omega_{500} \leq 0.05</math></u>
<u>bin-4</u>	<u>moderate ascend</u>	<u><math>-0.15 &lt; \omega_{500} \leq -0.05</math></u>
<u>bin-5</u>	<u>strong ascend</u>	<u><math>\omega_{500} \leq -0.15</math></u>

$(-0.073 \text{ dec}^{-1}, \text{not significant})$  in P2, is despite of the low sampling visible in the DARDAR data as well. As already seen in the climatologies (Fig. 2) DARDAR has a positive offset.

**Comparison of the TAO domain-average of the  $2 \times 2$  DARDAR (green) and MODIS (blue) HCF monthly means.** To get spatial information of the anomalies (trendstemporal linear changes) the MLRM was applied to every  $0.2^\circ \times 0.2^\circ$  grid-box. Fig. 6 displays the linear part of the MLRM  $\tau$ . **Black plus signs indicate that within a  $1 \times 1$  grid-box more than 50% of the 25 anomaly values are significant.** The CTH (a) and the HCF (d) show very similar patterns in both phases with significant increases between  $\pm 10^\circ$  N/S in P1 and significant decreases between 0 and  $20^\circ$  N in P2 confirming the strong link between changes in CTH and the HCF. For the TCF (b) a significant decrease in P2 at the stratocumulus region near the coast of Angola and Namibia, which is mainly caused by a decrease in LCF (c) is visible. The HCF and the LCF have opposing patterns that causes most of the signal in TCF to be extinguished. This endorses the idea to look at the cloud vertical distribution rather than just on-at total cloud amount in climate studies.

#### 4.4 Link between **TAO** tropical Atlantic and ENSO

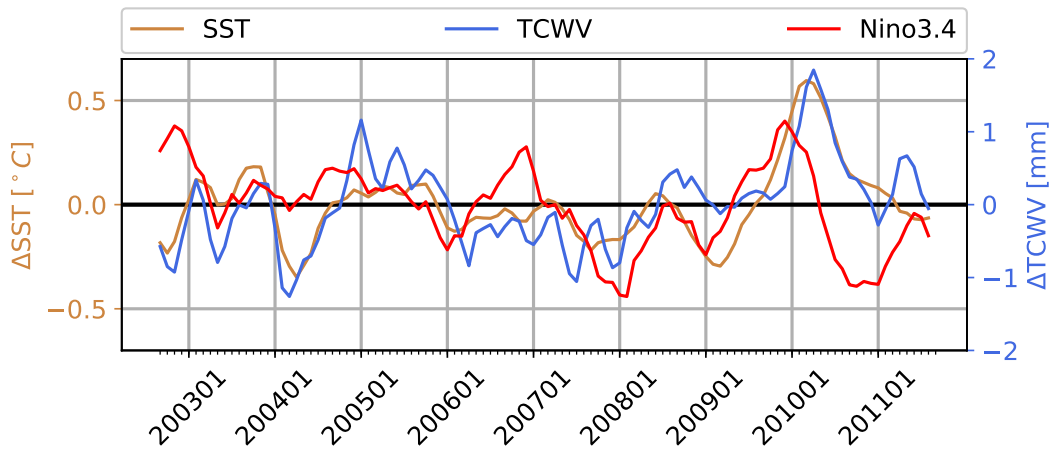
During a positive ENSO phase the anomalous high SST in the Pacific induces an average warming of the tropical Atlantic troposphere, e.g. through Kelvin waves causing an increase in the meridional tropospheric temperature gradient (e.g., Horel and Wallace, 1981; Yulaeva and Wallace, 1994; Chiang and Sobel, 2002; Zhu et al., 2014). This leads to an increase of the vertical wind shear (Aiyyer and Thorncroft, 2006; Shaman et al., 2009; Zhu et al., 2014, e.g.) (e.g., Aiyyer and Thorncroft, 2006; Shaman et al., 2009; Z) and tends to increase the static stability over the tropical Atlantic (e.g., Tang, 2004; Larson et al., 2012). Moreover, a weakening of the Atlantic Hadley and Walker circulation and an east-ward shift of the latter (Klein et al., 1999; Wang, 2006) **has been** (Philander, 1989; Klein et al., 1999; Wang, 2006) is associated with higher Pacific SSTs. Furthermore, a reduction in equatorial Atlantic rainfall (Saravanan and Chang, 2000; Chiang and Sobel, 2002), a lagged SST increase caused by a warmer troposphere and reduced latent and sensible heat losses due to weaker trade winds and a reduction in cloudiness (Curtis and Hastenrath, 1995; Enfield and Mayer, 1997; Klein et al., 1999; Saravanan and Chang, 2000; Huang, 2002) were found during



**Figure 6.** Trends-Temporal linear changes of CTH, TCF, HCF, LCF for every  $0.2^\circ \times 0.2^\circ$  grid box. At the left the trends-temporal linear changes for phase 1 and at the right trends-temporal linear changes for phase 2 are displayed. The plus-signs dots indicate that within a grid box of  $1^\circ \times 1^\circ$ , more than half of the trends-temporal linear changes were statistically significant. The slopes are displayed per decade.



El Niño. The reduction in cloudiness leads to changes in radiation fluxes due to higher absorption of solar radiation by the ocean, which in turn increases the mean tropical Atlantic SST (Curtis and Hastenrath, 1995; Klein et al., 1999) strengthening the positive SST feedback between the Pacific and the Atlantic. In general the described effects are observed to be inverted during La Niña. ~~As shown in~~ As our analysis of MODIS data shows that the decrease in TCF during time periods dominated by El Niño events are observed to be mainly caused by a decrease in high clouds (Sec. 4.2 & Sec. 4.3 a link between ENSO and TAO cloudiness, primarily in high cloud amount, was observed in our analysis as well. In addition, the ), the cloud radiative forcing might be negative, counteracting the increase in tropical Atlantic SST.  
The analysis of AMSR-E retrieved SST and TCWV data show a consistent (Klein et al., 1999, e.g.) (e.g., Klein et al., 1999)



**Figure 7.** Time-series of the tropical Atlantic three month running mean anomalies of SST (orange) and TCWV (blue). In red the qualitative progress of the Nino3.4-Index.

three months delayed ~~TAO-tropical Atlantic~~ SST and TCWV increase after an El Niño event (Fig. 7). Further more, a significant positive trend of  $0.3 \text{ } ^\circ\text{C dec}^{-1}$  was found for the regional mean SST.

To investigate ~~whether to what extent~~ the observed anomalies in HCF are linked to ENSO induced changes in the large scale circulation over the ~~TAO-tropical Atlantic~~, the large scale vertical velocity  $\omega$  at  $500 \text{ hPa}$  acquired from ERA-Interim data was analyzed. The results are illustrated in Fig. 4 (c) for the ~~TAO-tropical Atlantic~~ mean and in Fig. 6 (e) for the grid-box based analysis.  $\omega$  is negatively defined so that negative velocities imply upward movements and vice versa. For the ~~TAO-tropical Atlantic~~ mean a decrease in P1 and an increase in P2 was found. The anomalies are mostly due to strengthening/weakening in upward movement rather than weakening/strengthening in downward movement. This is coherent with the results of the grid-box based analysis displayed in Fig. 6 (e) where in both phases the ~~strongest-largest~~ and most of the significant anomalies are found at the ITCZ region where upward movement predominates. ~~Definition of the  $\omega_{500}$ -bins bin # vertical motion  $\omega_{500}$  range  $\text{Pa s}^{-1}$  bin-1 strong subsidence  $\omega_{500} > 0.15$  bin-2 moderate subsidence  $0.05 < \omega_{500} \leq 0.15$  bin-3 no/weak vertical motion~~

~~$-0.05 < \omega_{500} \leq 0.05$  bin-4 moderate ascend  $-0.15 < \omega_{500} \leq -0.05$  bin-5 strong ascend  $\omega_{500} \leq -0.15$~~  Time-series of the TAO-  
three month running mean anomalies of SST (orange) and TCWV (blue). In red the qualitative progress of the Nino3.4-Index.

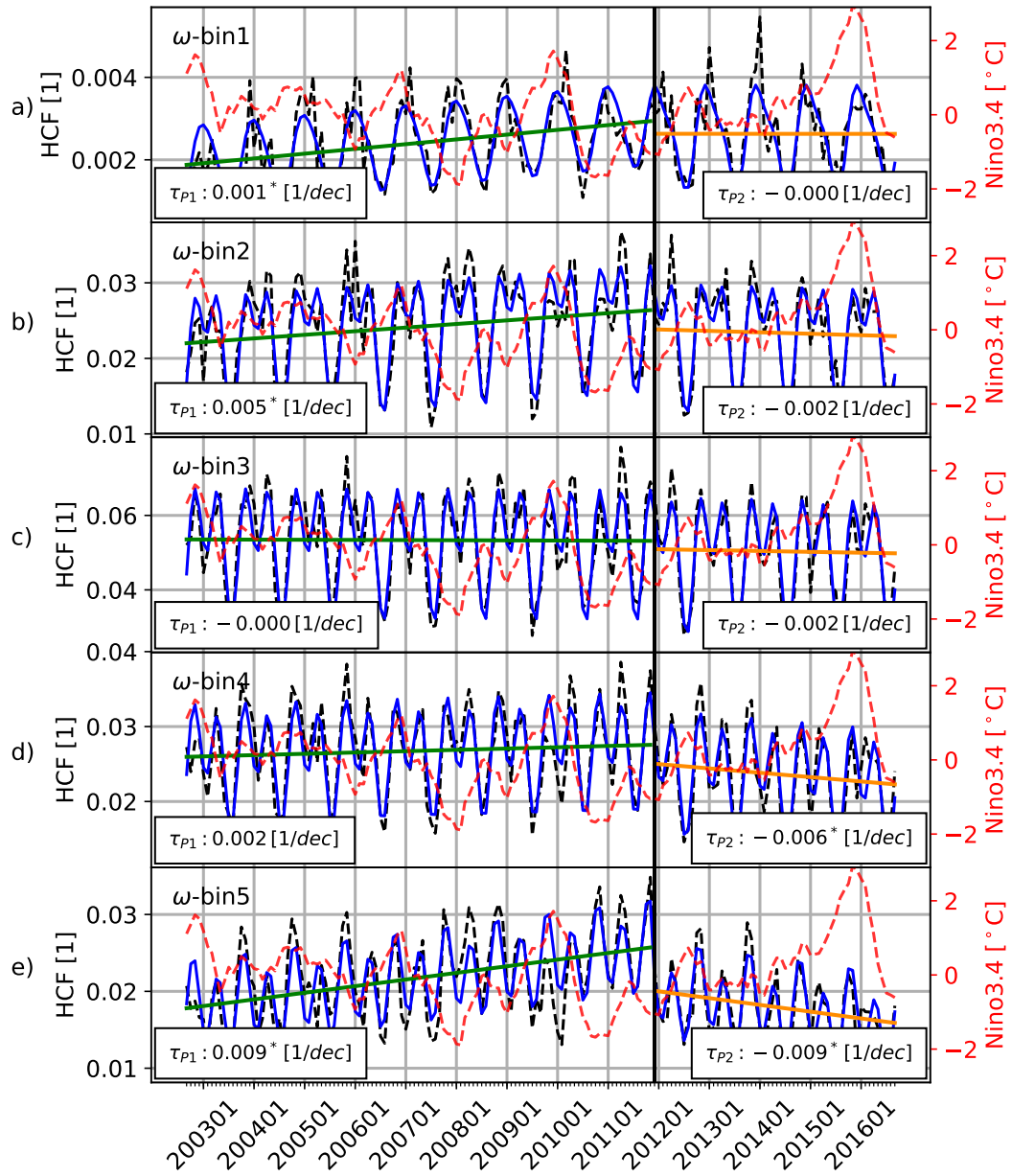
The comparison of ~~the patterns of~~  $\Delta$ HCF (Fig. 6 (d)) and  $\Delta\omega_{500}$  (Fig. 6 (e)) reveal similar patterns for both phases. The increase/decrease in the high cloud amount in P1/P2 seems to be mainly associated with an increase/decrease in large scale  
5 upward motion in equatorial Atlantic ocean. A stratification of the HCF into different  $\omega_{500}$ -bins as listed in Table 1 confirms that the decrease of the high cloud amount in P2 occurs in regions with strong upward movements, see Fig. 8 (d) and Fig. 8 (e). This supports the idea that the observed anomalies, particularly the decrease of CTH/HCF in P2, are caused by an ENSO induced change in large-scale atmospheric motion due to, e.g., an east-ward shift of the Walker circulation and a weakening of the Walker and the Atlantic Hadley Cell and indicate an increased vertical stability and vertical wind shear.

## 10 5 Summary and Conclusion

In this study the MODerate-resolution Imaging Spectroradiometer (MODIS) (aboard Aqua) cloud products were used to analyze the interannual variability of the cloud vertical distribution at the ~~Tropical Atlantic Ocean (TAO)~~ tropical Atlantic for a period of 14 years (2002 to 2016). ~~From the~~ Furthermore, the influence of the transition from one El Niño Southern Oscillation (ENSO) phase to another on the tropical Atlantic cloud vertical distribution was analyzed and quantified. Based on level 2 data, daily  
15 composites on a  $0.1^\circ \times 0.1^\circ$  regular grid were generated. For the analysis,  $0.2^\circ \times 0.2^\circ$  monthly means, calculated on the basis of the daily composites, were used. The data well represented large circulation patterns such as the band with high cloud tops and cloud amount of-in the ITCZ and its seasonal shift. Also the trade wind inversion regions with its characteristic low cloud tops and the broad stratocumulus region at the west coast of Namibia were represented in the data.

~~The~~ Furthermore, Sea Surface Temperature (SST) and Total Column of Water Vapor (TCWV) data from the Advanced Microwave Scanning  
20 (2002-2011) were analyzed. The data showed a significant positive trend in SST of  $0.3^\circ \text{C dec}^{-1}$  and a three month lagged increase in SST and humidity during El Niño, which is consistent with literature (e.g., Curtis and Hastenrath, 1995; Klein et al., 1999)

For the investigated 14 years significant linear changes were found for the domain-averaged Cloud Top Height (CTH) ( $-178 \text{ m dec}^{-1}$ ), High Cloud Fraction (HCF) ( $-0.0006 \text{ dec}^{-1}$ ) and the Low Cloud Fraction (LCF) ( $0.001 \text{ dec}^{-1}$ ). Furthermore, the analysis of  
25 the time-series revealed strong interannual variability of the vertical cloud distribution, which was found to be mainly-caused by well correlated with changes in the large scale ~~circulation~~ atmospheric circulation ( $\omega$  at 500 hPa) due to ENSO associated teleconnective causes. The changes in the large scale circulation might be associated with the east-ward shift and the weakening of the Walker circulation and a weakening of the Hadley cell during El Niño conditions. The largest ENSO linked anomalies were found for the HCF, which also drives the observed anomalies in the mean CTH. ~~With-an~~ For the transition from more La  
30 Niña to more El Niño event-like conditions a decrease in HCF-tropical Atlantic HCF, mainly at the equatorial ITCZ influenced region, was observed and was linked to a decreasing large scale vertical upward movement by including Era-Interim reanalysis data ( $\omega$  at 500 hPa). The HCF and LCF showed opposite behaviour, which might mask much of a possible signal if using solely Total Cloud Fraction (TCF). This supports the efforts to consider the vertically resolved cloud fraction rather than the cloud



**Figure 8.** Time-series of the **TAO** tropical Atlantic domain-averaged HCF for different  $\omega$ -bins. a)  $\omega$ -bin1, b)  $\omega$ -bin2, c)  $\omega$ -bin3, d)  $\omega$ -bin4, e)  $\omega$ -bin5

fraction as a whole. The decrease in cloudiness is consistent with findings from e.g. Klein et al. (1999).

Furthermore, a three-month lagged increase in SST and humidity during El Niño was found examining data from the AMSR-E

~~, which is consistent with literature (e.g., Curtis and Hastenrath, 1995; Klein et al., 1999).~~ Besides other factors as alleviated surface wind speed and a warmer troposphere, the change in cloud cover is associated with positive SST anomalies, e.g., Klein et al. (1999). Subsequently, a sensitivity study of the Cloud Radiative Feedback (CRF) associated with ENSO linked changes could be ~~done~~ performed to quantify the influence of radiation changes. As the anomalies in CF are found to be mainly driven by changes in the high cloud amount, the radiative impact on tropical Atlantic SST might be negative during El Niño conditions.

As ~~climate projection show~~ most of the climate projections show a shift towards more El Niño like conditions and similar changes in the tropical Atlantic circulation ~~in a warming climate~~ (e.g., Vecchi and Soden, 2007; Bayr et al., 2014; Hu et al., 2018), satellite observations of large ENSO events in combination with model data could be furthermore used as large "experiment" for possible effects of the global warming on the ocean-atmosphere dynamics and the CRF ~~in the tropical Atlantic.~~

*Author contributions.* NM performed the scientific study and wrote the paper with support from CCH. OS processed the DARDAR data. RP and JF were involved in planning and supervised the work. All authors provided critical feedback and helped shape the research and analysis.

*Competing interests.* The authors declare that they have no conflict of interest.

*Acknowledgements.* This work was funded by the Federal Ministry of Education and Research in Germany (Bundesministerium für Bildung und Forschung; BMBF) through the research programme *High Definition Clouds and Precipitation for Advancing Climate Prediction – HD(CP)<sup>2</sup>*. We further thank Florian Tornow for giving valuable comments on the draft version. We also thank two anonymous reviews for helpful and critical comments that helped to shape and improve the manuscript.

## References

- Ayyer, A. R. and Thorncroft, C.: Climatology of Vertical Wind Shear over the Tropical Atlantic, *Journal of Climate*, 19, 2969–2983, <https://doi.org/10.1175/jcli3685.1>, doi:10.1175/jcli3685.1, 2006.
- Bayr, T., Dommenges, D., Martin, T., and Power, S. B.: The eastward shift of the Walker Circulation in response to global warming and its relationship to ENSO variability, *Climate Dynamics*, 43, 2747–2763, doi:10.1007/s00382-014-2091-y, 2014.
- Bony, S., Stevens, B., Frierson, D. M. W., Jakob, C., Kageyama, M., Pincus, R., Shepherd, T. G., Sherwood, S. C., Siebesma, A. P., Sobel, A. H., Watanabe, M., and Webb, M. J.: Clouds, circulation and climate sensitivity, *Nature Geoscience*, 8, 261–268, doi:10.1038/ngeo2398, 2015.
- Chiang, J. C. H. and Sobel, A. H.: Tropical Tropospheric Temperature Variations Caused by ENSO and Their Influence on the Remote Tropical Climate, *Journal of Climate*, 15, 2616–2631, doi:10.1175/1520-0442(2002)015<2616:TTVCB>2.0.CO;2, 2002.
- Curtis, S. and Hastenrath, S.: Forcing of anomalous sea surface temperature evolution in the tropical Atlantic during Pacific warm events, *Journal of Geophysical Research: Atmospheres*, 100, 15, doi:10.1029/95JC01502, 1995.
- Dee, D. P., Uppala, S. M., Simmons, A. J., Berrisford, P., Poli, P., Kobayashi, S., Andrae, U., Balmaseda, M. A., Balsamo, G., Bauer, P., Bechtold, P., Beljaars, A. C. M., van de Berg, L., Bidlot, J., Bormann, N., Delsol, C., Dragani, R., Fuentes, M., Geer, A. J., Haimberger, L., Healy, S. B., Hersbach, H., Hólm, E. V., Isaksen, I., Kållberg, P., Köhler, M., Matricardi, M., McNally, A. P., Monge-Sanz, B. M., Morcrette, J.-J., Park, B.-K., Peubey, C., de Rosnay, P., Tavolato, C., Thépaut, J.-N., and Vitart, F.: The ERA-Interim reanalysis: configuration and performance of the data assimilation system, *Quarterly Journal of the Royal Meteorological Society*, 137, 553–597, doi:10.1002/qj.828, 2011.
- Delanoë, J. and Hogan, R. J.: Combined CloudSat-CALIPSO-MODIS retrievals of the properties of ice clouds, *Journal of Geophysical Research: Atmospheres*, 115, n/a–n/a, doi:10.1029/2009JD012346, 2010.
- Dipankar, A., Stevens, B., Heinze, R., Moseley, C., Zängl, G., Giorgetta, M., and Brdar, S.: Large eddy simulation using the general circulation model ICON, *Journal of Advances in Modeling Earth Systems*, 7, 963–986, doi:10.1002/2015ms000431, 2015.
- Enfield, D. B. and Mayer, D. A.: Tropical Atlantic sea surface temperature variability and its relation to El Niño–Southern Oscillation, *Journal of Geophysical Research: Oceans*, 102, 929–945, doi:10.1029/96JC03296, 1997.
- Graham, S.: Clouds & radiation, Earth observatory. NASA. Accessed, 27, 1999.
- Heinze, R., Dipankar, A., Henken, C. C., Moseley, C., Sourdeval, O., Trömel, S., Xie, X., Adamidis, P., Ament, F., Baars, H., Barthlott, C., Behrendt, A., Blahak, U., Bley, S., Brdar, S., Brueck, M., Crewell, S., Deneke, H., Di Girolamo, P., Evaristo, R., Fischer, J., Frank, C., Friederichs, P., Göcke, T., Gorges, K., Hande, L., Hanke, M., Hansen, A., Hege, H.-C., Hoose, C., Jahns, T., Kalthoff, N., Klocke, D., Kneifel, S., Knippertz, P., Kuhn, A., van Laar, T., Macke, A., Maurer, V., Mayer, B., Meyer, C. I., Muppa, S. K., Neggers, R. A. J., Orlandi, E., Pantillon, F., Pospichal, B., Röber, N., Scheck, L., Seifert, A., Seifert, P., Senf, F., Siligam, P., Simmer, C., Steinke, S., Stevens, B., Wapler, K., Weniger, M., Wulfmeyer, V., Zängl, G., Zhang, D., and Quaas, J.: Large-eddy simulations over Germany using ICON: a comprehensive evaluation: Evaluation of ICON in Realistic LES Configuration, *Quarterly Journal of the Royal Meteorological Society*, 143, 69–100, <http://doi.wiley.com/10.1002/qj.2947>, doi:10.1002/qj.2947, 2017.
- Horel, J. D. and Wallace, J. M.: Planetary-Scale Atmospheric Phenomena Associated with the Southern Oscillation, *Monthly Weather Review*, 109, 813–829, doi:10.1175/1520-0493(1981)109<0813:psapaw>2.0.co;2, 1981.
- Hu, Y., Huang, H., and Zhou, C.: Widening and weakening of the Hadley circulation under global warming, *Science Bulletin*, 63, 640–644, doi:10.1016/j.scib.2018.04.020, 2018.

- Huang, B.: The ENSO effect on the tropical Atlantic variability: A regionally coupled model study, *Geophysical Research Letters*, 29, doi:10.1029/2002GL014872, 2002.
- Hubanks, P. A.: MODIS Atmosphere QA Plan for Collection 006, Greenbelt, MD USA, NASA Goddard Space Flight Center, 57, 2015.
- IPCC and Stocker, T., eds.: *Climate change 2013: the physical science basis ; Working Group I contribution to the Fifth Assessment Report*  
5 of the Intergovernmental Panel on Climate Change, Cambridge Univ. Press, New York, NY, oCLC: 871571414, 2014.
- Klein, S. A., Soden, B. J., and Lau, N.-C.: Remote sea surface temperature variations during ENSO: Evidence for a tropical atmospheric bridge, *Journal of Climate*, 12, 917–932, 1999.
- Klepp, C., Ament, F., Bakan, S., Hirsch, L., and Stevens, B.: NARVAL campaign report. Max Planck Institute for Meteorology, p. 218, doi:10.17617/2.2129055, 2014.
- 10 Larson, S., Lee, S.-K., Wang, C., Chung, E.-S., and Enfield, D.: Impacts of non-canonical El Niño patterns on Atlantic hurricane activity: NON-CANONICAL EL NIÑOS AND HURRICANES, *Geophysical Research Letters*, 39, n/a–n/a, doi:10.1029/2012GL052595, 2012.
- Marchand, R.: Trends in ISCCP, MISR, and MODIS cloud-top-height and optical-depth histograms, *Journal of Geophysical Research: Atmospheres*, 118, 1941–1949, doi:10.1002/jgrd.50207, 2013.
- Menzel, P. and Strabala, K.: Cloud top properties and cloud phase algorithm theoretical basis document, University of Wisconsin–Madison,  
15 2015.
- Philander, G. S.: *El Niño, La Niña, and the Southern Oscillation*, vol. 46, Academic Press, 1989.
- Platnick, S., Ackerman, S. A., King, M. D., Meyer, K., Menzel, W. P., Holz, R. E., Baum, B. A., and Yang, P.: MODIS atmosphere L2 cloud product (06\_L2), doi:10.5067/MODIS/MYD06\_L2.006, 2015.
- Platnick, S., Meyer, K. G., King, M. D., Wind, G., Amarasinghe, N., Marchant, B., Arnold, G. T., Zhang, Z., Hubanks, P. A., Holz, R. E.,  
20 Yang, P., Ridgway, W. L., and Riedi, J.: The MODIS Cloud Optical and Microphysical Products: Collection 6 Updates and Examples From Terra and Aqua, *IEEE Transactions on Geoscience and Remote Sensing*, 55, 502–525, doi:10.1109/tgrs.2016.2610522, 2017.
- Rossow, W. B. and Schiffer, R. A.: Advances in Understanding Clouds from ISCCP, *Bulletin of the American Meteorological Society*, 80, 2261–2287, doi:10.1175/1520-0477(1999)080<2261:AIUCFI>2.0.CO;2, 1999.
- Saravanan, R. and Chang, P.: Interaction between Tropical Atlantic Variability and El Niño–Southern Oscillation, *Journal of Climate*, 13,  
25 2177–2194, doi:10.1175/1520-0442(2000)013<2177:IBTAVA>2.0.CO;2, 2000.
- Shaman, J., Esbensen, S. K., and Maloney, E. D.: The Dynamics of the ENSO–Atlantic Hurricane Teleconnection: ENSO-Related Changes to the North African–Asian Jet Affect Atlantic Basin Tropical Cyclogenesis, *Journal of Climate*, 22, 2458–2482, <https://doi.org/10.1175/2008jcli2360.1>, doi:10.1175/2008jcli2360.1, 2009.
- Stevens, B., Farrell, D., Hirsch, L., Jansen, F., Nuijens, L., Serikov, I., Brüggmann, B., Forde, M., Linne, H., Lonitz, K., and Prospero, J. M.:  
30 The Barbados Cloud Observatory: Anchoring Investigations of Clouds and Circulation on the Edge of the ITCZ, *Bulletin of the American Meteorological Society*, 97, 787–801, doi:10.1175/BAMS-D-14-00247.1, 2016.
- Tang, B. H.: ENSO Influence on Atlantic hurricanes via tropospheric warming, *Geophysical Research Letters*, 31, doi:10.1029/2004GL021072, 2004.
- Timmermann, A., An, S.-I., Kug, J.-S., Jin, F.-F., Cai, W., Capotondi, A., Cobb, K., Lengaigne, M., McPhaden, M. J., Stuecker, M. F., Stein,  
35 K., Wittenberg, A. T., Yun, K.-S., Bayr, T., Chen, H.-C., Chikamoto, Y., Dewitte, B., Dommenges, D., Grothe, P., Guilyardi, E., Ham, Y.-G., Hayashi, M., Ineson, S., Kang, D., Kim, S., Kim, W., Lee, J.-Y., Li, T., Luo, J.-J., McGregor, S., Planton, Y., Power, S., Rashid, H., Ren, H.-L., Santoso, A., Takahashi, K., Todd, A., Wang, G., Wang, G., Xie, R., Yang, W.-H., Yeh, S.-W., Yoon, J., Zeller, E., and Zhang, X.: El Niño–Southern Oscillation complexity, *Nature*, 559, 535–545, doi:10.1038/s41586-018-0252-6, 2018.

- Vecchi, G. A. and Soden, B. J.: Increased tropical Atlantic wind shear in model projections of global warming: Atlantic wind shear and global warming, *Geophysical Research Letters*, 34, doi:10.1029/2006GL028905, 2007.
- Wang, C.: ENSO, Atlantic climate variability, and the Walker and Hadley circulations, in: *The Hadley circulation: Present, past and future*, pp. 173–202, Springer, 2004.
- 5 Wang, C.: An overlooked feature of tropical climate: Inter-Pacific-Atlantic variability, *Geophysical Research Letters*, 33, doi:10.1029/2006GL026324, 2006.
- Wentz, F.: AMSR-E/Aqua Monthly L3 Global Ascending/Descending .25x.25 deg Ocean Grids Version 2, doi:10.5067/amrse/ae\_mooen.002, 2004.
- Wilks, D. S.: *Statistical Methods in the Atmospheric Sciences (International Geophysics)*, Academic Press, 2011.
- 10 Yulaeva, E. and Wallace, J. M.: The Signature of ENSO in Global Temperature and Precipitation Fields Derived from the Microwave Sounding Unit, *Journal of Climate*, 7, 1719–1736, doi:10.1175/1520-0442(1994)007<1719:tsoeig>2.0.co;2, 1994.
- Zhu, X., Xu, L., and Stan, C.: Projections of the Tropical Atlantic Vertical Wind Shear and Its Relationship with ENSO in SP-CCSM4, *Journal of Climate*, 27, 8342–8356, doi:10.1175/JCLI-D-14-00002.1, 2014.