

Remarks

We thank the reviewers for thorough reading of the manuscript. In the following, reviewer comments are copied in italic font, our replies are in upright font. Essential changes in the manuscript are printed in red colour.

1 Reply to reviewer 1

1.1 Title of the paper

One issue I have is that the title of the paper needs to be more specific. I think the title should indicate that this is an update to an existing HIRS UTH retrieval which only involves retrievals of infrared observations.

We agree and change the title into “On the interpretation of upper-tropospheric humidity based on a second-order retrieval from infrared radiances”.

1.2 Cloud clearing

I also have concerns that there is no description on the cloud clearing technique used to derive the UTH data in this paper. Cloud contaminated observations will generally reduce brightness temperature and which will likely cause a positive UTH bias in the retrieval should they be introduced. The positive trend in UTH shown in this paper should be clearly identified as a trend derived from clear-sky observations. Furthermore, cloud contaminated satellite observations could contribute to that trend depending on how stable the cloud-cleared technique is for these observations are over the data record.

This question refers only to the detected moistening trend. In fact, cloud influence can in principle feign such a trend if thin, non-detected cirrus clouds (or contrails) have an increasing trend themselves. This is possible, but improbable. We have checked the Aura Microwave Limb Sounder UTRHI data (upper tropospheric relative humidity with respect to ice) and found an increasing trend as well for the northern mid-latitudes (but for a short time period only, 2005-2018). Microwave data are insensitive to thin clouds, hence a trend in UTRHI can hardly be feigned by increasing thin cirrus. Furthermore there are publications (Eleftheratos et al., 2007; Minnis et al., 2004) that show decreasing cirrus trends at many locations of the world except for regions with strong air traffic where contrails balance the decreasing cirrus. Of course, contrail cirrus (old widely spread out contrails) is probably increasing since air traffic increases. But Figure 3 (bottom) of Gierens et al. (2014) shows the largest UTHi increase over Siberia and a decrease over the western part of the north Atlantic. That is, an increase where air traffic is still low and a decrease where air traffic is dense and has strong growth rates. Thus, cloud influence on the increasing UTHi trend is possible, but not supported by other sources of evidence.

Most of these points are now added to section 4.4.

1.3 Diurnal bias

I also think the positive trend in UTH shown in figure 9 and discussed in item 4 in the conclusions needs to include another caveat to the discussion. That issue is the possible effects of diurnal

bias from HIRS observations on the trend in the time series. Diurnal bias is an issue with most NOAA polar orbiting satellites since observation times drift through the diurnal cycle.

Also this question refers to the detected UTHi trends. We find it difficult to imagine how the drift of the satellite overpass times can feign such a trend. A trend can certainly be produced when there is only one satellite combined with a diurnal cycle of upper-tropospheric relative humidity that is stable over the whole observation period. But this is not what we have here. Typically there are two or three NOAA satellites simultaneously in orbit with different overpass times (e.g. one in the morning and one in the afternoon). The drifts of simultaneous satellites already cause a mixture of feigned trends (if there is a stable diurnal humidity cycle), perhaps with a small residual trend. Then, all satellites in the NOAA series drifted and they drifted independently from each other (different directions and with different rates). This implies than that the small residual pseudo-trends mentioned above are sometimes positive and sometimes negative. The overall pseudo-trend should be very small then because single trends get averaged out. Finally, trends differ in different regions (see again Figure 3 in Gierens et al., 2014) and this cannot at all be explained by orbital drifts. Summarising, we deem it very implausible that orbital drifts could feign a decadal trend in any quantity.

There is still another possibility: it might be possible that the influence of the global CO₂ increase on T_6 could perhaps contribute to the trend. Shi et al. (2016) computed that a CO₂ increase from 330 to 410 ppmv would on average lead to a decrease in T_6 by 2 K. Gierens et al. (2014, their Figure 7) also looked at the decadal change in T_6 and found it to not undercut -1 K and to be statistically insignificant. But still it might be physically significant and contribute to the observed UTHi increase. These considerations have now been added to section 4.4 as well.

1.4 Minor points

- We use now the form HIRS/2/3/4 throughout the text.
- We changed to the form NOAA nn (except for labels in figures and the regression equation).
- We followed all additional suggestions by the reviewer.

2 Reply to reviewer 2

... while reading the paper, I didn't clearly catch its added-value. After reading it several times, I am sorry to say that I still don't see it. In my opinion, several aspects have been eluded: from the detection of clouds within the brightness temperature measurements in the water vapour channel, to the retrieval itself and its application. I have then several remarks that will probably show that I despite I believe that such work on the interpretation of "water vapor" channel observation is very interesting, the present work needs to be more clear on its roots, its dataset, and its objectives.

The added value of this study is the formulation and application of the second-order retrieval for UTH, which, to our knowledge, has not been examined until now. Building upon the work of past studies, we have formulated a new method to retrieve upper tropospheric humidity (UTH) from HIRS channel 12 brightness temperatures in an effort to bridge the channel's central wavelength change from $6.7\text{ }\mu\text{m}$ to $6.5\text{ }\mu\text{m}$ between HIRS/2 and HIRS/3 instruments. The new method retains the second-order term in the linearisation of the UTH formulation. The addition of the second-order term and the choice of the spectroscopic constant for the retrievals are shown successfully matching the UTH between HIRS/2 and HIRS/3 observations. We have added this piece of information in the introduction.

In the following we reply to other issues raised in the comments.

2.1 Cloud influence

The retrieval of UTH from $6.3\ \mu\text{m}$ observations is only possible when there is no clouds in the free troposphere. Brogniez and co-authors discussed at length that point in a 2006 study, where they show that clouds below $\sim 700\ \text{hPa}$ are almost “unseen” in that channel. Here the study focuses on the cold range of the $6.3\ \mu\text{m}$ temperatures. Can the authors discuss the cloud screening technique? Can’t the very low brightness temperatures mentioned (230K and below) be reasonably associated to partially cloud-covered pixels? In their 2016 work, Chung et al mention the problem of the cloud detection in the HIRS serie which is done thanks to ISCCP. Therefore, my question here is: would that be possible that the discrepancy in the cold range values would be induced by the cloud screening (and thus ISCCP cloud detection), from HIRS2 to HIRS4?

All HIRS data that we obtained from NOAA and used in this study are cloud-cleared and limb corrected. Shi and Bates (2011) write:

The HIRS data are first processed to remove cloudy pixels for the water vapor field. The cloud clearing procedure follows the method detailed by Jackson et al. (2003). The process is accomplished using a simplified method based on the ISCCP cloud detection approach (Rossow and Garder, 1993). This approach combines spatial and temporal variations in the brightness temperature and applies thresholds to these variations to detect clouds. Limb correction is applied with a linear multivariate regression algorithm using multiple HIRS channels Jackson et al. (2003).

It is now mentioned in the revised version that cloud-clear sky is assumed in the derivations of the radiative transfer equations, it is also mentioned that our applications are performed with cloud-cleared data, and that for instance the detected trends refer to clear-sky. We believe that this suffices. We will not enter into a discussion about the cloud-clearing process since it is not our work.

Of course, one can never be sure that there are overlooked issues in the data, e.g. cloud influence. However, it appears that clouds are probably not the reason for the jump in the occurrence frequency of high UTH cases. In terms of brightness temperatures the jump occurs at the low end of the data, at about 230K . Thus if clouds would explain the jump, it must be clouds at about that low temperature. Now the peak of both the HIRS 2 and HIRS 3 filter response functions is typically at a lower level, that is, an optical thickness of unity is reached below the 230K isotherm. Assume now that an optically thick cloud is at 230K . (Of course, thick clouds will easily be detected by any cloud clearance algorithm; we assume thick clouds here only for the development of the argument.) Then both instruments receive photons only from this layer and from further above. That is, the registered brightness temperatures are both about 230K , which is, they are equal. This shows that a high cloud tends to bring the two brightness temperatures together (thick clouds, but thin clouds as well, only to a lesser extent). Gierens and Eleftheratos (2017) showed, however, that the two brightness temperatures are too far apart at the low end of the T_b distribution, and then we conceived a correction that brings them closer together. From this argument it appears unlikely that clouds would produce the excess of high UTH cases in HIRS 3 data.

Furthermore, a potential effect of clouds is just speculation. On the contrary, it is clear that k_λ cannot be the same for two wavelengths with quite different opacities. As we show, an appropriate choice of the optical constant leads to a satisfying comparison between UTHi from NOAA 14 and from NOAA 15. To our view it is not justified to give up this physically motivated change in favour of speculation about cloud influence.

2.2 Historical papers

When reading UTH-related papers I am always stunned that people don't give credit where credit is due. I agree that B. Soden & co-authors developed the first analytic retrieval of UTH, but the retrieval of UTH from $6.3\,\mu\text{m}$ observations was first developed by J. Schmetz and O. Turpeinen in 1988 and produced operationally at EUMETSAT ever since. I deeply regret such evolution in the referencing. It is obvious that every paper cannot list all the previous work performed on a particular topic, but then when the paper goes back to the roots, then I totally believe that this has to be done.

We now include a new paragraph in the introduction that covers the evolution of UTH retrieval from the beginning of the era of meteorological satellites until Schmetz and Turpeinen (1988), who probably invented the term UTH.

2.3 Weighting function

*... Brogniez et al 2009 and (maybe closer to us) Schröder et al 2014 that have redefined the weighting function by showing that the transmission-derived weighting function of SB93 was the least accurate one, that didn't consider the radiatively-driven information, as the authors underline it. But then the part 5.3 (as well as 5.4...) is, in my opinion, a little bit "reheated"...
 \Rightarrow Can the author go through the definition proposed in Schröder's work for instance and compare to their definition of the weighting function?*

The referee's comments on the use of the weighting function made us rethinking the issue and indeed we found that section 5.3 contained unnecessary considerations. But in this process we found new aspects and thus a) we replaced the title of 5.3, b) changed the text almost completely and c) removed Figures 12 and 13. The last sentence of the abstract and the last item in the enumerated list of the conclusions are deleted accordingly.

Further we want to point at a certain confusion that people seem to have with the notion weighting function (cf. Gierens et al., 2018, supplement to the paper). There are several quantities that can be weighted and the meaning of "weighting function" depends on what is weighted. Let us give some examples:

- The radiative transfer equation involves the integral

$$\int B(x) (d\mathcal{T}(x)/dx) dx$$

where $\mathcal{T}(x)$ is the transmission function. The integrand represents the contribution of each differential layer dx to the flux of photons at the satellite. Our function $\Phi(x; U)/(I/B_0)$ is of this kind. In the old literature we found the expression "contribution function" for it (unfortunately we forgot where).

- Often the term $d\mathcal{T}(x)/dx$ is called weighting function (e.g. Conrath, 1969; Hayden et al., 1981; Harries, 1997). Jackson and Bates (2001) call it transmission function. The generic weighting function $K(\dots)$ is of this type. It weighs the emission (Planck function) itself.
- Jacobians $\partial I/\partial Q(x)$ measure the sensitivity of the radiance to a radiatively important quantity Q at x . Although they are used as weighting functions to determine weighted averages of relative humidity from profiles $r(x)$, they are not weighting functions that result directly from the equation of radiative transfer. They do neither weight the emission nor the flux of photons.

The conceptual difference between the first two and the last example should be noted. Ours and Schröders use of the notion lie on opposite sides of this border and thus there is no sense in a quantitative comparison.

2.4 Non-specified assumptions

Section 2, present the 1st order retrieval, as designed by SB93 and SJW96. \Rightarrow Eq (1) and (2) are from the Malkmus band model, adapted to strong absorbing lines, not specified. Since this section intends to re-discuss the SB93 & SJW96 works, then all the assumptions need to be written. \Rightarrow It is nowhere specified that the developments by SB93 and SJW96 are adapted for tropical and subtropical standard atmospheres: in these regions the temperature profile doesn't change much and that is why the $6.3\mu\text{m}$ observations can be interpreted as UTH. However, the authors have applied it to northern mid-latitudes. I would like to know how the approximations, and more specifically the linearizations, translate from the tropics to the mid-latitudes. For example, the pressure at which $T_0 = 240\text{K}$ varies slightly between the tropics and the mid-latitudes. Is there an impact?

Again we agree that it might be quite interesting to list all the assumptions that were necessary to derive the retrieval, for instance the assumption that the water vapour spectral lines between 6 and $7\mu\text{m}$ are in the square root regime of the growth curve. However, these assumptions are already presented by the authors quoted. In our paper we mention those assumptions that were changed or made more precise; there is no need to mention assumptions that we do not touch upon.

We agree that the original retrieval method was developed for the tropics. But it is also true that Jackson and Bates (2001) introduced their update to the retrieval formula for application outside the tropics. Thus we use it.

Finally, we are not chasing the TRUTH, as should be clear from the discussion section. We seek consistency in the time series for the complete range of UTHi values. Consistency could be achieved as well with slightly different T_0 , for instance, but whether these would result in “better” UTH is not clear at all. We think furthermore that it is not desirable to introduce different retrievals for different latitude zones, which would bear the danger of getting other kinds of inconsistencies. A method like that of Jackson and Bates (2001) that just uses another HIRS brightness temperature to adapt for changing lapse rates, is appropriate, but simple jumps in parameters are not.

3 Reply to reviewer 3

- Page 1: UTHi will be defined in the revised version. It is the upper-tropospheric humidity with respect to ice.
- Page 2: Thanks. Corrected.
- Page 4: Determination of the optical constant was quite tedious. The goal was to achieve a bivariate regression with a slope as close to unity as possible in the N14-N15 comparison (Figure 9). For this we selected a value, made all the calculations described in the paper, including the determination of the fit coefficients and ran the comparison over the 1004 days. Then we selected another constant and looked whether the regression slope was closer to unity. This was done in an iterative way. The slope is sensitive to the choice of the optical constant, but unfortunately, we have not recorded the intermediate results, so we cannot give a quantitative answer without doing all the work again.

- Page 8: Values of the a' and b' coefficients are given in the revised version: $a' = 10.236$, $b' = -0.036$.
- Page 20: We understand the problem. Indeed the sentence “Solving for U ...” is misleading, since the equation cannot be solved for U . What is meant is the following. We compute the radiance and the corresponding brightness temperature for every integer value of U from 1 to 99%, using equations 22 and 25. Thus we arrive at two columns of data, with values of U in one column and values of T_{12} in the other. These columns are plotted against each other in Figure 5. We will change the text after eq. 25 to clarify the issue.
- Page 25: Corrected.

References

- Brogniez, H., Roca, R., and Picon, L.: A study of the free tropospheric humidity interannual variability using Meteosat data and an advection–condensation transport model, *J. Climate*, 22, 6773–6787, 2009.
- Conrath, B.: On the estimation of relative humidity profiles from medium-resolution infrared spectra obtained from a satellite, *JGR*, 74, 3347–3361, 1969.
- Eleftheratos, K., Zerefos, C., Zanis, P., Balis, D., Tselioudis, G., Gierens, K., and Sausen, R.: A study on natural and manmade global interannual fluctuations of cirrus cloud cover for the period 184–2004, *Atmos. Chem. Phys.*, 7, 2631–2642, doi:10.5194/acp-7-2631-2007, 2007.
- Gierens, K. and Eleftheratos, K.: Technical Note: On the intercalibration of HIRS channel 12 brightness temperatures following the transition from HIRS 2 to HIRS 3/4 for ice saturation studies, *Atmos. Meas. Tech.*, 10, 681–693, doi:10.5194/amt-2016-289, 2017.
- Gierens, K., Eleftheratos, K., and Shi, L.: Technical Note: 30 years of HIRS data of upper tropospheric humidity, *Atmos. Chem. Phys.*, 14, 7533–7541, 2014.
- Gierens, K., Eleftheratos, K., and Sausen, R.: Intercalibration between HIRS/2 and HIRS/3 channel 12 based on physical considerations, *Atmos. Meas. Tech.*, 11, 939–948, doi:10.5194/amt-11-939-2018, 2018.
- Harries, J.: Atmospheric radiation and atmospheric humidity, *Quart. J. Roy. Met. Soc.*, 123, 2173–2186, 1997.
- Hayden, C., Smith, W., and Woolf, H.: Determination of moisture from NOAA polar orbiting satellite sounding radiances, *J. Appl. Meteorol.*, 20, 450–466, 1981.
- Jackson, D. and Bates, J.: Upper tropospheric humidity algorithm assessment, *JGR*, 106, 32 259–32 270, 2001.
- Jackson, D., Wylie, D., and Bates, J.: The HIRS pathfinder radiance data set (1979–2001), in: 12th Conference on Satellite Meteorology and Oceanography, February 9–13, Long Beach, CA, pp. P1.8, 1–4, 2003.
- Minnis, P., Ayers, J., Palikonda, R., and Phan, D.: Contrails, cirrus trends, and climate, *J. Climate*, 17, 1671–1685, 2004.

- Rossow, W. and Garder, L.: Cloud detection using satellite measurements of infrared and visible radiances for ISCCP, *JC*, 6, 2341–2369, 1993.
- Schmetz, J. and Turpeinen, O.: Estimation of the upper tropospheric relative humidity field from METEOSAT water vapor image data, *JAM*, 27, 889–899, 1988.
- Schröder, M., Roca, R., Picon, L., Kniffka, A., and Brogniez, H.: Climatology of free-tropospheric humidity: extension into the SEVIRI era, evaluation and exemplary analysis, *Atmos. Chem. Phys.*, 14, 11 129–11 148, 2014.
- Shi, L. and Bates, J.: Three decades of intersatellite-calibrated High-Resolution Infrared Radiation Sounder upper tropospheric water vapor, *J. Geophys. Res.*, 116, D04 108, doi:10.1029/2010JD014 847, 2011.
- Shi, L., Matthews, J., Ho, S., Yang, Q., and Bates, J.: Algorithm development of temperature and humidity profile retrievals for long-term HIRS observations, *Remote Sens.*, 8, 17, doi: 10.3390/rs8040280, 2016.

On the interpretation of upper-tropospheric humidity based on a second-order retrieval from infrared radiances

Klaus Gierens¹ and Kostas Eleftheratos²

¹Deutsches Zentrum für Luft- und Raumfahrt, Institut für Physik der Atmosphäre, Oberpfaffenhofen, Germany

²Department of Geology and Geoenvironment, National and Kapodistrian University of Athens, Athens, Greece

Correspondence to: Klaus Gierens (klaus.gierens@dlr.de)

Abstract. We present a novel retrieval for upper-tropospheric humidity (UTH) from HIRS channel 12 radiances that successfully bridges the wavelength change from 6.7 to 6.5 μm that occurred from HIRS/2 on NOAA 14 to HIRS/3 on NOAA 15.

5 The jump in average brightness temperature (T_{12}) that this change had caused (about -7 K) could be fixed with a statistical intercalibration method (Shi and Bates, 2011). Unfortunately, the retrieval of UTHi (upper-tropospheric humidity with respect to ice) based on the intercalibrated data was not satisfying at the high tail of the distribution of UTHi. Attempts to construct a better intercalibration in the low T_{12} range (equivalent to the high UTHi range) were either not successful (Gierens et al., 2018) or required additional statistically determined corrections to the measured brightness temperatures (Gierens and Eleftheratos,
10 2017).

The new method presented here is based on the original one (Soden and Bretherton, 1993; Stephens et al., 1996; Jackson and Bates, 2001), but it extends linearisations in the formulation of water vapour saturation pressure and in the temperature-dependence of the Planck function to second order. To achieve the second-order formulation we derive the retrieval from the beginning, and we find that the most influential ingredient is the use of different optical constants for the two involved channel wavelengths
15 (6.7 and 6.5 μm). The result of adapting the optical constant is an almost perfect match between UTH data measured by HIRS/2 on NOAA 14 and HIRS/3 on NOAA 15 on 1004 common days of operation. The method is applied to both UTH and UTHi. For each case retrieval coefficients are derived.

We present a number of test applications, e.g. on computed brightness temperatures based on high-resolution radiosonde profiles, on the brightness temperatures measured by the satellites on the mentioned 1004 common days of operation. Further
20 we present time series of the occurrence frequency of high UTHi cases and we show the overall probability distribution of UTHi. The two latter applications expose indications of moistening of the upper troposphere over the last 35 years.

Finally, we discuss the significance of UTH. We state that UTH algorithms cannot be judged for their correctness or incorrectness, since there is no true UTH. Instead, UTH algorithms should fulfill a number of usefulness-postulates, that we suggest and discuss.

1 Introduction

5 Upper tropospheric humidity (UTH) is a climate parameter which is important to monitor and study for determining long-term trends. The effective determination of these trends requires high quality and continuous water vapour measurements in the upper troposphere. Tropospheric and stratospheric water vapour have been measured over the past 50 years by a large number of individuals and institutions using a variety of in situ and remote sensing measurement techniques. Measurement results by different instruments are widely spread in the literature (e.g. Sherwood et al., 2010, and references therein). Instrumentation
10 has evolved from a small number of manually operated in situ instruments to automatic devices deployed on balloon and aircraft platforms, and more recently to high precision sensors on satellites. However, only a limited number of measurements of relative or specific humidity using a single instrument type have records longer than 10 years (Kley et al., 2000).

Polar-orbiting satellite sensors have the advantage of providing measurements at near-global scale. The era of meteorological satellites began in the late 1950s and first concepts of the use of their measurement data, including infrared-radiometer
15 data, appeared at the same time (Greenfield and Kellogg, 1960). Möller (1961) demonstrated with simple arguments and calculations that the brightness temperature in the 6 to 7 μm wavelength band is much more sensitive to relative humidity than to the chosen temperature, so that this brightness temperature can be used as a hygrometer rather than a thermometer. First measurements in the 6.0 – 6.5 μm band have been made onboard TIROS II (Television Infrared Observation Satellite II), which was launched on 23 Nov 1960 (Hawkins, 1964). A few years later Raschke and Bandeen (1967) evaluated infrared radiometer
20 data from TIROS IV to obtain a nearly global view of spatial and temporal variation of the “mean relative humidity” of the upper troposphere for a five-months period in 1962. Meanwhile, numerical algorithms had been developed to solve the radiative transfer equation in inverse mode, that is, to determine profiles of temperature and absorbing gases from measured radiances (see e.g. Smith, 1970, and references therein). Still later, algorithms for operational purposes, e.g. for assimilation of humidity data into numerical forecast models, had been developed. Schmetz and Turpeinen (1988) described the algorithm that was used
25 to determine UTH from Meteosat data. It was based on look-up tables using pre-calculated radiances for fixed values of UTH between 600 and 300 hPa and a linearly decreasing RH profile above that level. According to a quick scan through the old literature it appears that the term UTH was used in that paper for the first time.

For climate variability studies it is important to understand the continuity of long-term measurements in both the stratosphere and upper troposphere. In this respect, satellite missions are planned to provide overlap with existing instruments in orbit. This
30 allows the comparison between different instruments during common periods of observation, which helps scientists to perform inter-satellite calibrations and create continuous long-term data sets. Such a long-term data set comes from the National Oceanic and Atmospheric Administration (NOAA) polar orbiting satellites in which measurements are based on the High-Resolution Infrared Radiation Sounder (HIRS). The first series of the satellites from TIROS-N and NOAA 6 to NOAA 14

carried version 2 of the HIRS instrument (HIRS/2), NOAA 15, NOAA 16 and NOAA 17 carried version 3 of the HIRS instrument (HIRS/3), while later satellites carried a newer version of the HIRS instrument, version 4 (HIRS/4). Ongoing satellite missions NOAA 19 and METOP-A and B (part of European Organisation for the Exploitation of Meteorological Satellites, EUMETSAT) both operate with HIRS/4 instruments.

5 The transition from HIRS/2 to HIRS/3 in the late 1990s, accompanied with a change in the central measurement wavelength of channel 12 from $6.7\ \mu\text{m}$ to $6.5\ \mu\text{m}$, caused a change in the measured brightness temperatures at channel 12 (the water vapour channel; T_{12} for convenience). This technical alteration split the continuous HIRS time series in two parts. The problem of discontinuity in the long-term time series was recently corrected by Shi and Bates inter-satellite calibrations (Shi and Bates, 2011), and indeed results presented by Chung et al. (2016) indicated the success of their inter-calibration method throughout
10 the whole time series. Later on, Gierens and Eleftheratos (2017) noted that the inter-calibration works well for the mean T_{12} but does not account for the low T_{12} values (data found at the low tail of the distribution of T_{12}). The authors came up with a second statistical correction procedure that brings HIRS/3 levels down to HIRS/2 levels, which takes effect at cold temperatures when $T_{12} < 235\ \text{K}$. The method appeared to correct satisfactorily the low T_{12} values, such that jumps in the time series from HIRS/2 to HIRS/3 were no longer apparent at the low T_{12} temperature range.

15 Very recently, Gierens et al. (2018) tested the physics behind the statistical inter-calibration of Shi and Bates (2011), wondering whether it is right from a physical point of view to combine measurements by two instruments which sense different layers of the upper atmosphere. They compared T_{12} data calculated by radiative transfer modelling of large sets of temperature and relative humidity profiles, using the HIRS/2 and HIRS/3 spectral response functions. By applying appropriate corrections to the modelled T_{12} , corrections that take into account variability in mid-tropospheric humidity, they calculated T_{12} data
20 consistent with those found by Shi and Bates' independent inter-calibration method. Nevertheless, the Gierens et al. (2018) physics-based correction method failed to correct the data at the low tail of the T_{12} distribution, indicating the necessity of additional corrections to the low T_{12} values as proposed by Gierens and Eleftheratos (2017).

The study that forms the basis for the new method for retrieving UTH is that of Soden and Bretherton (1993), in the following SB93. Their method was based upon observations of clear sky $6.7\ \mu\text{m}$ radiances by the Visible Infrared Spin Scan Radiometer
25 (VISSR) Atmospheric Sounder (VAS) on board the Geostationary Operational Environmental Satellites (GOES). The $6.7\ \mu\text{m}$ channel is located near the centre of a strong water vapour absorption band, and under clear sky conditions it is primarily sensitive to the relative humidity averaged over a depth of atmosphere extending from 200 to 500 hPa (SB93). The approach of SB93 involved a simplified structure of the atmosphere with linearised profiles of temperature and 1st-order approximations of the Clausius-Clapeyron equation and of the temperature-dependence of the Planck function.

30 Stephens et al. (1996), in the following SJW96, expanded the research of SB93 to make use of similar data available from polar orbiting satellites. They described a method for retrieving UTH based on the use of radiance data collected by the TIROS Operational Vertical Sounder (TOVS), principally channels 4 ($14.2\ \mu\text{m}$), 6 ($13.7\ \mu\text{m}$), and 12 ($6.7\ \mu\text{m}$) of HIRS. The SJW96 UTH retrieval was based on the SB93 linear formula, with the exception that SJW96 used a varying lapse rate parameter instead of a constant one, as SB93 did, which varied linearly with the difference in HIRS temperature channels 4 and 6 (hereafter T_4
35 and T_6 , respectively). Few years later, Jackson and Bates (2001), in the following JB01, worked on the retrieval formula of

SB93 and determined UTH data using both T_{12} and T_6 measurements in the retrieval formula. All these methods regard UTH as a radiance-based quantity, obtained from T_{12} measurements. It is therefore expected that any natural or artificial change in the T_{12} data will be directly depicted and magnified by the exponential function in the UTH retrievals.

Gierens et al. (2018) speculated that the linearisations involved in the derivation of the traditional retrieval formula would lead to the inconsistencies in the low range of T_{12} following the HIRS/2 to HIRS/3 transition. Building upon the work of past studies, we have formulated a new method to retrieve upper tropospheric humidity (UTH) from HIRS channel 12 brightness temperatures in an effort to bridge the channel's central wavelength change from $6.7\text{ }\mu\text{m}$ to $6.5\text{ }\mu\text{m}$ between HIRS/2 and HIRS/3 instruments. The new method retains the second-order term in the linearisation of the UTH formulation. The addition of the second-order term and the choice of the spectroscopic constant for the retrievals are shown successfully matching the UTH between HIRS/2 and HIRS/3 observations. The added value of this study is the formulation and application of the second-order retrieval for UTH, which, to our knowledge, has not been examined until now. Therefore, **we further studied the retrieval formula** for this important atmospheric quantity in order to succeed better coherency between HIRS/2 and HIRS/3 high UTH values.

In section 2 we analyse the simple radiative transfer model to derive the usual 1st-order UTH retrievals from $6.7\text{ }\mu\text{m}$ radiances and introduce the reader to the second-order approximations. Section 3 presents in depth the derivation of the 2nd-order radiative transfer model UTH retrievals and section 4 tests the 2nd-order model retrievals with some applications. Section 5 provides a discussion of the significance of UTH and sets up a few postulates an UTH retrieval should fulfill in order to be useful and intrinsically consistent. The study ends with the conclusions in section 6.

2 Analysis of the first-order retrieval

The relation between the optical thickness between a pressure level p and the top of the atmosphere, $\tau(p)$, and the column density of water vapour above level p , $w(p)$, is fundamental to the desired retrieval. SJW96 use an approximation involving the square root of the column density:

$$\tau(p) = k_\lambda \sqrt{w(p)}, \quad (1)$$

where k_λ is a spectroscopic constant that depends on wavelength λ . SJW96 give $k_\lambda = 1.85\text{ m kg}^{-1/2}$ for HIRS/2 and the same value is used here. For HIRS/3 we need a larger value since the optical thickness in channel 12 of HIRS/3 is larger than that of HIRS/2. **We use an iterative procedure to determine it, starting from an initial guess, working through all the equations that follow, up to the comparison of UTH_i retrieved from T_{12} measured on 1004 common days of NOAA 14 and NOAA 15 operation. The constant is determined such that the bivariate regression between these two data sets has a slope very close to unity (described below in section 4.2). The iteration results in $k_\lambda = 2.85\text{ m kg}^{-1/2}$. That value for k_λ is thus chosen for HIRS/3 and HIRS/4. Note also the assumption that the optical thickness originates from water vapour only, not from clouds. The retrieval is thus for clear-sky only.**

The column density $w(p)$ for nadir direction is

$$w(p) = \int_0^p \epsilon \frac{r(p') e^*[T(p')]}{g p'} dp', \quad (2)$$

where $\epsilon = 0.622$ is the ratio of the molar masses of water vapour and air, $g = 9.81 \text{ m s}^{-2}$ is gravitational acceleration, $r(p)$ is the relative humidity profile and e^* is the saturation pressure of water vapour, which depends on temperature and thus indirectly on pressure.

Now, SB93 and SJW96 introduce two linearisations. The first one is for $e^*(T)$:

$$e^*(T) \approx e^*(T_0) \exp\left(\kappa \frac{T - T_0}{T_0}\right). \quad (3)$$

For $T_0 = 240 \text{ K}$ we have $e^*(T_0) = 37.7 \text{ Pa}$ and $\kappa = 23.1$ (both computed with the vapour pressure formulation of Murphy and Koop, 2005). A similar linearisation is assumed for the relation between pressure and temperature profiles in the upper troposphere with

$$p(T) \approx p(T_0) \exp\left(\frac{T - T_0}{\beta T_0}\right). \quad (4)$$

Here, $\beta = d \ln T / d \ln p \approx 0.22$ is a dimensionless lapse rate.

If we assume a temperature-independent latent heat in the Clausius-Clapeyron equation, the saturation vapour pressure formula can be written as

$$e^*(T) \approx e^*(T_0) \exp\left(\kappa \frac{T - T_0}{T}\right). \quad (5)$$

This is very similar to the linearised form apart from the denominator in the exponential function. Thus, linearisation is achieved simply by replacing T by the constant T_0 which requires that T should be close to T_0 where water vapour contributes significantly to the column density.

Similarly, if $\beta = d \ln T / d \ln p$, as it was introduced by SB93, then the correct expression for $p(T)$ must have T instead of T_0 in the denominator under the exponential function. However, since $1/\beta$ is much smaller than κ , deviations of T from T_0 have a smaller effect for $p(T)$ than for $e^*(T)$.

The factor $(T - T_0)/T$ can be developed into a Taylor series:

$$\frac{T - T_0}{T} = \frac{T - T_0}{T_0} - \left(\frac{T - T_0}{T_0}\right)^2 + \left(\frac{T - T_0}{T_0}\right)^3 \dots \quad (6)$$

Retaining the second order gives already considerable more accuracy to the $e^*(T)$ approximation than the linearised form, that is, we will use now the second-order approximation

$$e^*(T) \approx e^*(T_0) \exp\left\{\kappa \left[\frac{T - T_0}{T_0} - \left(\frac{T - T_0}{T_0}\right)^2\right]\right\}. \quad (7)$$

Figure 1 shows the ratio of the first and second-order approximations to the correct Clausius-Clapeyron formula for the temperature range 220 to 260 K (we remind that $T_0 = 240$ K). It is seen that the first-order approximation leads to overestimation and errors exceeding ten percent when temperatures below 225 K occur in the layer where channel 12 is sensitive to. The second-order approximation has much smaller errors of less than two percent even at $T = 220$ K. The situation is much better for the approximation of $p(T)$, and therefore it is not necessary to extend the approximation of $p(T)$ to its second order then.

Also the first order approximation of the temperature dependence of the Planck function,

$$B_1(T) = B(T_0) \exp \left(\frac{hc}{\lambda k T_0} \frac{T - T_0}{T_0} \right) \quad (8)$$

has relative errors of more than 10 percent at low but not untypical upper tropospheric temperatures, see fig. 2. Thus we introduce a second-order approximation in the same way as above:

$$B_2(T) = B(T_0) \exp \left\{ \frac{hc}{\lambda k T_0} \left[\frac{T - T_0}{T_0} - \left(\frac{T - T_0}{T_0} \right)^2 \right] \right\}. \quad (9)$$

For this approximation the relative error does not exceed 3% in the relevant temperature range, which suggests more accurate calculations of brightness temperature data.

3 Derivation of the second-order retrieval

3.1 Water vapour column density and optical depth

Let us now take the expression for the water vapour column density in eq. 2 and invoke the mean value theorem for integration to draw the profile of relative humidity, $r(p)$, outside the integral and write

$$w(p) = \frac{\epsilon \bar{r}(p)}{g} \int_0^p \frac{e^*[T(p')]}{p'} dp'. \quad (10)$$

$\bar{r}(p)$ is a weighted mean relative humidity between the top of the atmosphere and pressure level p , defined as

$$\bar{r}(p) = \frac{\int_0^p [r(p')/p'] e^*[T(p')] dp'}{\int_0^p [1/p'] e^*[T(p')] dp'}. \quad (11)$$

To proceed with the calculation of column density we need to calculate the integral

$$E^*(p) = \int_0^p \frac{e^*[T(p')]}{p'} dp'. \quad (12)$$

The 2nd-order approximation for the saturation pressure in pressure coordinates is

$$e^*(p) = e^*(p_0) \exp \left[\kappa \beta \ln \left(\frac{p}{p_0} \right) - \kappa \beta^2 \ln^2 \left(\frac{p}{p_0} \right) \right] \quad (13)$$

where we write p_0 for $p(T_0)$. Substitution of x for $\ln(p/p_0)$ gives the integral the following simple form:

$$E^*(p) = e^*(p_0) \int_{-\infty}^{\ln(p/p_0)} \exp(\kappa\beta x - \kappa\beta^2 x^2) dx. \quad (14)$$

The integral is of a form

$$\int \exp[-(ax^2 + 2bx)] dx = \frac{1}{2} \sqrt{\frac{\pi}{a}} \exp\left(\frac{b^2}{a}\right) \operatorname{erf}\left(\sqrt{a}x + \frac{b}{\sqrt{a}}\right) + \text{const} \quad (15)$$

5 (Abramowitz and Stegun, 1972, formula 7.4.32). Inserting the proper expressions for $a := \kappa\beta^2$ and $b := -\kappa\beta/2$, we find

$$\begin{aligned} E^*(p) &= \frac{e^*(p_0)}{2\beta} \sqrt{\frac{\pi}{\kappa}} \exp\left(\frac{\kappa}{4}\right) \left[\operatorname{erf}\left(\sqrt{\kappa}\beta x - \sqrt{\kappa}/2\right)\right]_{-\infty}^{\ln(p/p_0)} \\ &= \frac{e^*(p_0)}{2\beta} \sqrt{\frac{\pi}{\kappa}} \exp\left(\frac{\kappa}{4}\right) \left[\operatorname{erf}\left(\sqrt{\kappa}\beta \ln(p/p_0) - \sqrt{\kappa}/2\right) + 1\right]. \end{aligned} \quad (16)$$

Using this expression, and putting together all constant prefactors, the vapour column density above p is

$$w(p) = 644.8 \cdot \bar{r}(p) \left[1 + \operatorname{erf}\left(\sqrt{\kappa}\beta \ln(p/p_0) - \sqrt{\kappa}/2\right)\right] \quad (17)$$

10 and the corresponding optical depth follows from eq. 1. Note that the corresponding prefactor for the retrieval of UTHi is 847.9.

3.2 Radiance calculation

The radiance measured by the satellite instrument is given as the solution of the following simple form of the radiative transfer equation (see SB93 and SJW96):

$$15 \quad I = \int_0^\infty \exp[-\tau(p)] \frac{dB(p)}{dp} dp. \quad (18)$$

The second-order formulation of the Planck function as a function of pressure is

$$B(p) = B_0 \exp\left[C_\lambda \beta \ln\left(\frac{p}{p_0}\right) - C_\lambda \beta^2 \ln^2\left(\frac{p}{p_0}\right)\right], \quad (19)$$

where we write B_0 for $B(T_0)$ and where $C_\lambda = hc/(\lambda k T_0) = 8.95$ is a constant, computed for a wavelength (λ) of $6.7 \mu\text{m}$ (and $T_0 = 240 \text{ K}$). Further, we have that

$$20 \quad \frac{dB(p)}{dp} = \frac{B(p) C_\lambda \beta}{p} \left[1 - 2\beta \ln\left(\frac{p}{p_0}\right)\right]. \quad (20)$$

We now introduce another abbreviation for use in the expression for the optical depth:

$$A_\lambda = k_\lambda \sqrt{644.8} \quad \text{for UTH and} \quad A_\lambda = k_\lambda \sqrt{847.9} \quad \text{for UTHi} \quad (21)$$

and replace $\bar{r}(p)$ with a constant parameter U (or U_i) (the value of UTH or UTHi whose meaning will be clarified later). Finally we substitute x for $\ln(p/p_0)$. This gives

$$I = B_0 C_\lambda \beta \int_{-\infty}^{\infty} \exp \left\{ -A_\lambda \sqrt{U} [1 + \operatorname{erf}(\sqrt{\kappa} \beta x - \sqrt{\kappa}/2)]^{1/2} \right\} \exp[C_\lambda(\beta x - \beta^2 x^2)] (1 - 2\beta x) dx. \quad (22)$$

The integrand of this equation, which we will abbreviate as $\Phi(x; U)$ for later discussions, measures the contribution of each infinitesimal layer dx of the atmosphere to the flux of photons at the receiver. Dividing it by its integral gives a normalised weighting function, let us call it $\phi(x; U)$, that has all properties of a probability density function in x with a form parameter U . This fact opens some interesting possibilities to compute moments, as for example the mean altitude from which photons emerge, its variance, the skewness of this distribution, etc. In the present paper we will not pursue these possibilities further.

For comparison we show as well the first-order version that can be derived from eq. 18 if we take the first-order formulation of the Planck function:

$$I_1 = B_0 C_\lambda \beta \int_{-\infty}^{\infty} \exp \left(-A'_\lambda \sqrt{U} e^{(\beta\kappa+1)x/2} \right) \exp(C_\lambda \beta x) dx, \quad (23)$$

where A'_λ is an abbreviation for $k_\lambda \{(\epsilon e^*(T_0) p_0) / [g p_* (\beta\kappa + 1)]\}^{1/2}$. Note that the same substitution has been made here as before for the sake of comparison. Using the logarithm is not actually necessary for the 1st order.

Figure 3 shows the two versions of the integrand just derived. The curves depend as expected on U , that is, higher U leads to lower integrals, and thus lower radiances. The variation of the curves is similar in both panels, testifying to the correctness of the second-order calculations. In these integrands, U must be interpreted as that parameter that gives the resulting integral value, the radiance I , the correct (i.e. measured) value. The figure shows that for the same value of U the radiances are higher in the 2nd order version than in 1st order.

The necessary integrations have been performed numerically (Romberg integration) and the results for UTH ranging from 1 to 99% are presented in fig. 4 for the 1st and 2nd order retrievals. As expected, the more humid the upper troposphere is, the lower the radiance at the satellite becomes. There is some radiation from altitudes below the 240 K level when the upper troposphere is quite dry which explains the values above unity. For comparison and test purpose we have included the corresponding result of SB93, directly as given in that paper (labelled “analytically”, circles). This curve is practically identical to the numerically integrated one, which shows that the numerical integration works. The difference between the 1-st and 2nd order formulation turns out to be small but non-negligible.

Finally we need to express the radiances as brightness temperatures, T_{12} , where one can exploit that $6.7 \mu\text{m}$ is on the Wien-wing of the Planck-function at T_0 , that is:

$$\frac{I}{B_0} = \frac{e^{hc/\lambda k T_0} - 1}{e^{hc/\lambda k T_{12}} - 1} \approx \exp \left[\frac{hc}{\lambda k T_0} \left(1 - \frac{T_0}{T_{12}} \right) \right]. \quad (24)$$

This gives for the channel 12 brightness temperature the expression

$$T_{12} = \frac{T_0}{1 - \ln(I/B_0)/C_\lambda}, \quad (25)$$

where I/B_0 is a unique function of U . Four versions of the retrieval function are compared in Fig. 5, viz. the original function derived by SB93 (their eq. 20, constants slightly adapted, that is, $e^*(T_0) = 37.7$ Pa and $\mu = 8.95$, and their eq. 23 which gives a slightly different result), the update of this function by Jackson and Bates (2001) without their correction for a variable lapse rate (i.e. the prefactor $1/P_H$ they introduced is set to unity), and the new second-order retrieval. **For the latter we have computed the integral of eq. 22 for every integer value of U (1 to 99%), the radiance has been expressed as brightness temperature (eq. 25), and the two resulting columns of data have been plotted against each other.** The second-order retrieval gives higher UTH values than the other three retrievals at a given brightness temperature, **except for temperatures below 240 K where it matches the SB93 (their eq. 23) line.**

3.3 The retrieval for different channel central frequencies

10 The transition from HIRS/2 to HIRS/3 was accompanied by a change of the central wavelength of channel 12 from 6.7 to 6.5 μm (Shi and Bates, 2011). The spectroscopic quantities changed in a corresponding way. Furthermore, as we are interested in ice supersaturation, it is important to have the retrieval for UTHi as well, which implies different saturation vapour pressure and different factor κ . All necessary physical constants are given in table 1 and the resulting retrieval functions are presented in Fig. 6.

15 Since the atmosphere is more opaque at the latter wavelength, 6.5 μm , the HIRS/3 sensor is sensitive to a layer that is approximately one kilometre higher than the layer where HIRS/2 is sensitive to. The transition thus implies an average temperature change of -7 K (Gierens et al., 2018). This is reflected in the shift of the retrieval curves (compare the solid with the dotted UTH curves), the mean difference of which is very close to the expected 7 K. The same stands when comparing the solid and dotted UTHi curves. Therefore we expect that with the new second-order retrievals the number of ice-supersaturated cases from
20 HIRS/2 and HIRS/3 and 4 sensors will become more similar than before. This expectation will be tested in the next section.

Table 1 contains three additional columns labelled a, b, c ; these are fit coefficients computed with the Marquart-Levenberg method (Press et al., 1989) that is implemented in `gnuplot` for the retrieval functions. The form of the fit is quite similar to the fit used by SB93 (eq. 23), apart from the addition of a quadratic term that is appropriate for the 2nd-order retrieval. Thus, for practical purpose one can use:

$$25 \quad U/\% = 100 \exp(a + bT_{12} + cT_{12}^2) \quad (26)$$

It is not necessary to show the fits since they are nearly congruent with the retrieval functions.

Finally, we follow JB01 and introduce a prefactor that accounts for variability of the lapse rate factor β . Instead of repeating the derivation of the retrieval *ab initio* with variable β , JB01 introduced a correction that uses the brightness temperature measured with channel 6, T_6 , and the final result is

$$30 \quad U/\% = 100 \frac{\exp(a + bT_{12} + cT_{12}^2)}{a' + b'T_6}. \quad (27)$$

The coefficients $a' = 10.236, b' = -0.036$ have been recomputed by Gierens et al. (2014) in response to the change of the intercalibration basis of the brightness temperatures between JB01 and Shi and Bates (2011).

4 Test applications

4.1 Application to computed brightness temperatures

While the jump in the mean retrieved brightness temperatures of channel 12 following the transition from HIRS/2 to HIRS/3 could be remedied with various methods (Shi and Bates, 2011; Gierens and Eleftheratos, 2017; Gierens et al., 2018), a persistent problem remained for cases with low brightness temperature (around 230 K and below) and corresponding high retrieved values of UTHi. We found that much more supersaturation ($UTHi > 100\%$) and high UTHi in general was retrieved from NOAA 15 than from NOAA 14 brightness temperatures of the same location and the same day (see for instance fig. 1 of Gierens and Eleftheratos, 2017). Here we show that this problem no longer occurs when the 2nd-order retrieval function for $6.7\mu\text{m}$ is used for NOAA 14 and that for $6.5\mu\text{m}$ is used for NOAA 15. Let us begin first with brightness temperatures derived from radiative transfer calculations for a large set of radiosonde profiles (meteorological observatory Lindenberg, see Gierens et al., 2018). Here we have two sets of brightness temperatures, one computed for the channel 12 spectral response function of NOAA 14 and one for NOAA 15. We apply now the UTHi fits of table 1 and compare the resulting values. Figure 7 shows that the UTHi pairs from both retrievals are close to the diagonal line and there is little deviation of the cloud of pairs from the diagonal at the upper end. So it seems that this old problem could be solved with the new retrieval.

4.2 Application to the HIRS/2 to HIRS/3 transition

To check the performance of the 2nd-order retrieval formulae on real brightness temperature data, we have used the clear-sky limb-corrected brightness temperatures measured by HIRS/2 on NOAA 14 and HIRS/3 on NOAA 15 on 1004 common days of operation. These data have been used in recent papers for similar checking purposes, for instance of the cdf-nudging (Gierens and Eleftheratos, 2017) and the superposition methods (Gierens et al., 2018). To perform the check, the brightness temperatures are translated into UTHi according to the new formulation developed in this paper. Then UTHi is gridded on a $2.5^\circ \times 2.5^\circ$ grid and a daily average is formed for each grid point where data are available. A simple plausibility check removes all data where the corresponding $UTH > 100\%$. The valid daily averages are then compared day-by-day and grid-by-grid. This results in more than 700000 data pairs whose distribution is shown in Fig. 8. As the figure demonstrates, the data pairs are grouped along the diagonal line (black) and there is no deviation from this line towards the high UTHi values. The bivariate regression (red line) has the equation

$$U_i(\text{N15})/\% = 1.17 + 0.998 U_i(\text{N14})/\% \quad (28)$$

with a slope of practically unity. The mean difference is -1.3% and the standard deviation is 15.8% .

With this result it can be expected that time series of high UTHi cases can be constructed without the need for statistical corrections for the NOAA 14 and NOAA 15 T_{12} data pairs. This will be considered next.

4.3 Time series of occurrence of high UTHi cases

The above mentioned problem of much higher cases of retrieved supersaturation after the HIRS/2 to HIRS/3 transition was first noticed by the authors when we made figure 9a in GE17. That figure was produced using the intercalibrated data of Shi and Bates (2011) and showed a very steep increase in the occurrence frequency of high UTHi ($> 70\%$) cases and the time when the increase started coincided with the start of NOAA 15 and the corresponding transition to a new channel 12 central frequency. Figure 9 shows the time series of high-UTHi-value occurrences from July 1979 to December 2014 computed from non-intercalibrated HIRS data (monthly frequencies of daily mean values per $2.5^\circ \times 2.5^\circ$ grid box in the midlatitude zone 30° to 70°N) using the 2nd-order retrieval for $6.7\mu\text{m}$ up to NOAA 14 and for $6.5\mu\text{m}$ from NOAA 15 on. The figure shows a tendency for increasing frequencies as well, but it is a **small** increase instead of a nearly exponential one as seen in figure 9a of GE17. One can also notice a minimum after 1985 followed by a quite strong increase just before 1990.

For a more detailed study of these time series it would be better to have the series NOAA 6 to NOAA 14 and the subsequent one NOAA 15 to MetOp 2 intercalibrated **instead of using non-intercalibrated data**. For this it seems possible to use the channel 12 and 6 data intercalibrated to NOAA 12 (Shi and Bates, 2011; Gierens et al., 2014) for NOAA 6 to NOAA 14 and the data that are intercalibrated to Metop-A (Shi and Bates, 2011) for NOAA 15 and later satellites. An intercalibration between NOAA 14 and NOAA 15 should however be replaced by using different retrieval formulae as done here.

4.4 The probability distribution of UTHi

The same daily values as before can be used to determine the probability distribution of UTHi. We have done this for the 2nd-order retrieval with the non-intercalibrated data as above, but for the JB01 retrieval it was necessary to use the intercalibrated data.

Figure 10 shows probability density functions of UTHi in both versions of the retrieval and for different periods of time. Solid curves represent data from 1979–2014, the dashed and dotted curves represent the earliest and latest approximately 10 years in our data set 1979–1989 and 2006–2014, respectively. Recall that in the first of these periods the satellites carried HIRS/2 only and in the last period only HIRS/3 or HIRS/4. There is no qualitative difference between the curves of the different time periods and HIRS versions. All curves have similar shape but with the 2nd-order retrieval the pdf has a longer tail to high and supersaturated values as can be expected from the foregoing discussion. The upper tail is exponentially distributed in all pdfs shown. An exponential distribution of supersaturation values is expected from many other data sets studied (e.g. aircraft in-situ measurements, radiosondes, other satellites: Gierens et al., 1999; Spichtinger et al., 2002, 2003; Haag et al., 2003; Gettelman et al., 2006; Lamquin et al., 2009).

Mean values \pm one standard deviation for the pdfs are as follows for the JB01 data: $37.2 \pm 16.7\%$ for the overall data set, $36.2 \pm 15.8\%$ for the period 1979–1989, and $38.5 \pm 17.6\%$ for 2006–2014. The corresponding values for the 2nd-order retrieval are $56.8 \pm 21.9\%$ for all data, $53.6 \pm 21.2\%$ for 1979–1989 and $59.7 \pm 22.6\%$ for 2006–2014. The data show in both retrievals a tendency to **higher UTHi and fewer low values** over the long observation period which is consistent to the increasing tendency that can also be seen in fig. 9. Also the distributions get slightly broader. **It should be noted that the pdfs and their trends refer**

to clear-sky only, since the data have been cloud-cleared by Shi and Bates (2011) using the cloud-clearing procedure detailed by Jackson et al. (2003).

An obvious question is whether this trend of increasing UTHi is true or an artefact. For instance, an increase of thin high cirrus clouds or contrail cirrus (thin enough to stay undetected by the applied cloud-clearance methods) would lead to lower brightness temperatures and thus higher retrieved UTHi values. However, studies of cirrus occurrence (e.g. by Minnis et al., 2004; Eleftheratos et al., 2007) indicate declining cirrus coverage at many locations of the world and only where air traffic is intense, the declining trend is balanced by increasing contrail cover. Now, there is a decadal increase of UTHi over Siberia and a slight decrease over the western north Atlantic (Gierens et al., 2014, their Figure 3), which is hardly explainable with air traffic patterns in these two regions. It also hardly conceivable that orbital drifts of the satellites could feign any significant trend, which would need a single satellite with a drift and a diurnal cycle of relative humidity in the UT that is stable over the whole observation period. However, there are many satellites, generally with overlapping operation and in morning and afternoon orbits, such that any single pseudo-trend would get averaged out. In addition, recall that the time series presented in Fig. 9 comes from monthly means of daily means averaged over a quite wide latitude zone (30–70°N), and as such, it is hardly possible that any daily orbital drift determines the behaviour of the monthly zonal mean. Another potential contribution to the positive trend can come from the global increase in the concentration of carbon dioxide (CO₂). Shi et al. (2016) showed using radiative transfer calculations that an increase of the CO₂ concentration from 330 to 410 ppmv leads on average to a decrease of T_6 by about 2 K. Gierens et al. (2014, their Fig. 7) found that T_6 was up to 1 K lower in the 1980s than in 2000–2009 (in the northern mid-latitudes). According to eq. 27, a decrease of T_6 contributes to an increase of UTHi, but the contribution is about 5 times smaller than the contribution from changes in T_{12} (Gierens et al., 2014, Appendix A). Finally, we want to mention that global climate models consistently show increases of relative humidity in the extratropical upper troposphere (e.g. Sherwood et al., 2010; Wright et al., 2010; Irvine and Shine, 2015).

5 On the meaning and purpose of UTH

5.1 Simple postulates

When we are talking about upper-tropospheric humidity we must distinguish the substance water vapour in the upper troposphere from the physical quantity UTH. While the substance is clearly defined and can be seen nicely for instance on satellite images in the water vapour channels, the definition of the physical quantity UTH is not necessarily unique. If humidity and temperature profiles are given in high resolution, UTH can be defined as a weighted mean over the humidity profile where the weighting function is given by the transfer of radiation through the atmosphere. Evidently, the definition then depends on radiation details (e.g. wavelength, channel width, filter function, etc.). In practice, however, we don't know the necessary profiles. All that is given is the brightness temperature measured by channel 12, and U is simply a function of T_{12} . That there is no UTH per se and thus no true value implies that there is neither a wrong one. Hence the function that maps T_{12} into U is in principle arbitrary. Is it then possible to validate an UTH algorithm? Now, validation is often mistaken as verification and this makes no sense when there is no truth. Validation, in the sense of Oreskes et al. (1994), means “establishment of legitimacy”,

which has a connotation of usefulness. Certainly there are more or less useful mappings from T_{12} into U when the interest is a typical or “mean” relative humidity in the upper troposphere. To be a useful quantity, UTH as determined from the brightness temperature should obey a number of postulates.

A simple postulate is: UTH should have values on the familiar scale of relative humidity: that is, $0\% < U < 100\%$ and $0\% < U_i$, where the latter can exceed 100% like RHi does. This is usually fulfilled and values $U > 100\%$ are discarded as bad data.

An increase of relative humidity somewhere in the region to which HIRS channel 12 is sensitive should result in increasing UTH. This postulate is fulfilled if the temperature decreases upwards in the layers where the weighting function has non-negligible values. A temperature inversion in that layer would violate the basic assumptions for the retrieval and thus yield bad results (cf. the warning expressed by SB93, after their eq. 16).

Another simple postulate, that is important for consistency, is that in an academic case of a constant relative humidity throughout the atmosphere, say $r(p) = r_0$, U should have the same value, that is, $U = r_0$. This postulate is not generally fulfilled when in the defining integral for $w(p)$ the factor $r(p)/p$ is drawn out, instead of only $r(p)$. The original derivation of SB93 is equivalent to drawing out $r(p)/p$ of the integral. p is replaced by the constant p_* . This leads to

$$\bar{r}(p) = p_* \frac{\int_0^p [r(p')/p'] e^*[T(p')] dp'}{\int_0^p e^*[T(p')] dp'}, \quad (29)$$

and the two integrals do not cancel if $r(p) = r_0$, and in general $\bar{r}(p) \neq r_0$. Thus, the consistency postulate is not fulfilled in that case. In contrast, in the approach by SJW96, only $r(p)$ is drawn out, and the two integrals (eq. 11) cancel if $r(p) = r_0$ such that $\bar{r}(p) = r_0$. We followed their method in our derivation.

Furthermore, the ratio U_i/U should depend on brightness temperature of the water vapour channel in a way similar as the dependence of r_i/r on local temperature. This is considered next in some detail.

5.2 The relation between UTH and UTHi

Between the local quantities $r(p)$ and $r_i(p)$ (relative humidity with respect to supercooled liquid water and ice, respectively) there holds the relation $r e_w^*(T) = r_i e_i^*(T)$. A similar relation should hold between U and U_i . Fig. 11 shows a number of curves. The solid black one is the ratio between the saturation vapour pressures vs. temperature (using the formulas of Murphy and Koop, 2005) that holds locally (at a point). The dashed black curve is the corresponding non-local ratio $E_w^*(T)/E_i^*(T)$. Using the fit coefficients from table 1 and eq. 26, we compute U_i/U for the two wavelengths as functions of temperature (red lines). The blue line is the corresponding ratio using the coefficients from JB01. The black rectangle in the middle represents the range of values we computed from over 1600 radiosonde profiles of Lindenberg (using eq. 10 with the 245 K isotherm as the lower integration limit and eq. 5 for the representation of the vapour pressure). Evidently, the new 2nd-order retrieval leads to U_i/U values that obey the postulation that such ratios should be close to $E_w^*(T)/E_i^*(T)$. U_i/U in the version of JB01 is far below the reference.

This fact explains why in figure 9 the frequency values (y-axis) are much larger than in our previous paper (GE17). In that paper we used the JB01 formulation and this seems to underestimate U_i when it computes U correctly (as fig. 5 shows, the

JB01 retrieval of UTH is consistent with the 2nd-order retrieval). Thus it seems that we have underestimated the frequency of high U_i cases in previous papers and the new formulation will give more reliable results.

We note, however, two subtle issues. First, the retrieved U_i/U ratio depends on the channel wavelength, which is surprising. The source of the difference lies in the non-locality of this ratio and the fact that 6.7 and $6.5\mu\text{m}$ photons originate from different layers. The second issue is that U_i/U is not exactly $E_w^*(T)/E_i^*(T)$. This is because the assumed structure of the atmosphere depends a little on whether it is modelled via the relative humidity over liquid water or via the relative humidity over ice. This small difference arises because of the approximation of the saturation vapour pressure formulation. So, in eq. 22 the optical thickness is differently distributed as a function of pressure altitude when we use r_i and the corresponding quantities instead of r . Fortunately, these differences and issues are small.

10 5.3 Comparison to regression approach

Traditionally the coefficients in the retrieval formula are determined via a regression process, based on a large number of humidity and temperature profiles (e.g. Jackson and Bates, 2001). In order to obtain the needed average over the profile of relative humidity, a weighting function is applied. There is some freedom in choosing the weighting function, thus several possibilities have been tested and the one resulting in the lowest scatter is selected (Jackson and Bates, 2001; Brogniez et al., 2009; Schröder et al., 2014). The relative humidity profile weighted with the optimal weighting function is integrated and then is taken as the upper-tropospheric humidity (or free-tropospheric humidity). It should be noted that the weighting function in this method is computed with full radiative transfer and actual atmospheric profiles, while the retrieval formula to which the regression coefficients are applied are based on the first-order simplifications mentioned above. This is a subtle inconsistency that has to our knowledge not been noticed before.

Our approach does not involve a regression to determine the coefficients. As described in section 3.3, they follow from a numerical fit to the theoretically derived functions shown in Fig. 6. The upper-tropospheric humidity in our case is that value that must be inserted into $\Phi(x; U)$ in order to fulfill eq. 22. It is evident that this approach involves another kind of weighting of the humidity profile than the traditional methods described in the studies mentioned.

Now assume, a profile $r(x)$ of relative humidity is given without accompanying satellite information on T_{12} , but one is interested in the value of UTH, for instance for diagnostic purpose. The result should be consistent with the retrieved UTH that would be determined if the corresponding brightness temperature were available. What can be done? It is possible to run a radiative transfer code to calculate the channel 12 brightness temperature and then to apply one of the retrieval methods to get the UTH. Another possibility from the radiative transfer code is to obtain the weighting functions mentioned above and then to compute the UTH as the correspondingly weighted average of $r(x)$. These two answers will generally differ because of the inconsistency mentioned above.

5.4 The ill-posedness of the problem and interpretation of UTH

Nothing demonstrates the ill-posedness of the problem to determine a typical relative humidity of the upper troposphere from just one datum, the measured brightness temperature, better than eq. 22. On the left side of the equation there is the given

radiance (measured or computed with a radiative transfer model) which one tries to reproduce with an appropriate choice of U in the function Φ . Now, while I (or T_{12}) is the result of a full radiative transfer through the real atmosphere, Φ represents a simplified radiative transfer through a pseudo-atmosphere. One must conclude that U is the mean UTH in such a simple atmosphere with simple radiation physics that would yield the same radiance as the true measured one.

- 5 Furthermore, eq. 22 is not the only possibility for a simplified radiative transfer in a pseudo-atmosphere. Eq. 23 shows an example of the 1st-order approximations. Evidently, using eq. 23 instead of 22 requires a different U to reproduce the measured radiance. But this is still not the end of the story; the operator $\Phi(x; U)$ can represent any model atmosphere and any more or less sophisticated radiative transfer. This combination determines the resulting U . In this spirit it is possible to obtain an optimal U if actual profiles of $r(p)$ and $T(p)$ are given and if $\Phi(x; U)$ represents a full radiative transfer through the actual atmosphere.
- 10 In this case, Φ should be written as $\Phi[p; r(p), T(p)]$ to make the dependencies clear.

It is evident that UTH (and UTHi) does not only represent the humidity in the upper troposphere and the radiation transfer as such. It also represents the kind of model atmosphere and the kind of radiative transfer model that is used to define the operator Φ .

6 Conclusions

- 15 In spite of the largely successful intercalibration of the HIRS channel 12 data (Shi and Bates, 2011), which works well for the bulk of the data, there remained a pertinacious problem in the high range of upper-tropospheric humidities retrieved from the intercalibrated brightness temperatures: the change in channel wavelength from $6.7\mu\text{m}$ to $6.5\mu\text{m}$ where the atmosphere is more opaque resulted in a quite strong increase in the frequency of high and very high values of UTHi. Over the last years we tried different potential remedies (adjustment of low brightness temperatures using so-called cdf nudging, and additional
- 20 use of channel 11 brightness temperatures), but these were not completely satisfying. Gierens et al. (2018) speculated that the linearisations used in the derivation of the original retrievals by SB93 and SJW96 were insufficient for the tails of the UTH and UTHi distributions and we hoped that a retrieval with second-order approximations would yield better results. In reworking the derivation we noticed the necessity to adapt the optical constant k_λ to the changed channel wavelength and it turned out that this adaptation is the key to the desired smooth transition from HIRS/2 to HIRS/3, that is a transition without a jump in the
- 25 frequency of high UTHi values.

The achievements of this paper are:

1. The second-order approximations give a more accurate representation of the variation of water vapour saturation pressure and the Planck function with temperature in the relevant range of T than linearisations.
 2. The change in k_λ reflects the change of wavelength and leads to a smooth HIRS/2 to HIRS/3 transition. Comparing data
- 30 from 1004 days of common operation of NOAA 14 and NOAA 15 leads to a scatter plot of pairs of UTHi values that has a bivariate regression function with a slope of nearly unity and small intercept.

3. For future applications we provide retrieval coefficients for both UTH and UTHi, and for both HIRS/2 and HIRS/3/4. The mathematical form of the retrieval formula is similar to that given by JB01, but including the second order of T_{12} under the exponential function.

4. A first application of the new method indicates a moistening of the upper-troposphere (in northern midlatitudes) over the last decades, consistently with earlier results (Soden et al., 2005; Gierens et al., 2014).

5. We argue that our method fulfills a set of consistency requirements (postulates).

The second-order retrieval has been used to produce UTHi data for the northern mid-latitudes. The same retrieval will be applied to produce UTHi data for the tropics (30°N to 30°S) and the southern mid-latitudes (30°S to 70°S). A near-global UTHi satellite dataset will allow us to investigate the natural variability of UTHi on larger space scales. We need to know whether natural cycles or other events (e.g. seasonal variations, Quasi Biennial Oscillation, El Nino Southern Oscillation, North Atlantic Oscillation, solar cycle) have an imprint on UTHi that can be detected in the data after application of our retrieval, and to understand to what degree these natural fluctuations affect the natural variability of UTHi. With this long-term dataset of 35+ years, we are particularly interested to explore trends in the mean and in high UTHi values, which are important to follow the evolution of cirrus cloudiness in a future warmer climate. The studies are going to be performed using a time series that is composed of two intercalibrated datasets, one for HIRS/2 only, and one for HIRS/3 and 4, as well as one without an intercalibration between NOAA 14 and 15 as has been done here.

7 Code availability

Does not apply.

8 Data availability

HIRS data can be retrieved from NOAA web services.

Author contributions. KG made the calculations, KE checked them. Both authors wrote the text.

Competing interests. The authors declare no competing interests.

Acknowledgements. The authors are grateful for the pioneering work by B. Soden, F. Bretherton, G. Stephens, D. Jackson, I. Wittmeyer, and J. Bates. Without their ideas the present work would not have been possible. We are grateful to NOAA for the many years of collection and furnishing of the data that we urgently need to learn more on climate change and how it impacts the humidity structure of the atmosphere. We thank Margarita Vazquez-Navarro for critical reading of an early version of the manuscript. We thank three anonymous reviewers for their

instructive comments. K. Eleftheratos thanks DAAD (Deutscher Akademischer Austauschdienst) for a scholarship that allowed finishing this work at DLR's Institute of Atmospheric Physics.

References

- Abramowitz, M. and Stegun, I.: Handbook of mathematical functions, Dover, 9th edn., 1972.
- Brogniez, H., Roca, R., and Picon, L.: A study of the free tropospheric humidity interannual variability using Meteosat data and an advection–condensation transport model, *J. Climate*, 22, 6773–6787, 2009.
- 5 Chung, E.-S., Soden, B., Huang, X., Shi, L., and John, V.: An assessment of the consistency between satellite measurements of upper tropospheric water vapor, *J. Geophys. Res.*, 121, 2874–2887, doi:10.1002/2015JD024496, 2016.
- Eleftheratos, K., Zerefos, C., Zanis, P., Balis, D., Tselioudis, G., Gierens, K., and Sausen, R.: A study on natural and manmade global interannual fluctuations of cirrus cloud cover for the period 184–2004, *Atmos. Chem. Phys.*, 7, 2631–2642, doi:10.5194/acp-7-2631-2007, 2007.
- 10 Gettelman, A., Fetzer, E., Elderling, A., and Irion, F.: The global distribution of supersaturation in the upper troposphere from the Atmospheric Infrared Sounder, *J. Climate*, 19, 6089–6103, 2006.
- Gierens, K. and Eleftheratos, K.: Technical Note: On the intercalibration of HIRS channel 12 brightness temperatures following the transition from HIRS 2 to HIRS 3/4 for ice saturation studies, *Atmos. Meas. Tech.*, 10, 681–693, doi:10.5194/amt-2016-289, 2017.
- Gierens, K., Schumann, U., Helten, M., Smit, H., and Marenco, A.: A distribution law for relative humidity in the upper troposphere and
15 lower stratosphere derived from three years of MOZAIC measurements, *Ann. Geophys.*, 17, 1218–1226, 1999.
- Gierens, K., Eleftheratos, K., and Shi, L.: Technical Note: 30 years of HIRS data of upper tropospheric humidity, *Atmos. Chem. Phys.*, 14, 7533–7541, 2014.
- Gierens, K., Eleftheratos, K., and Sausen, R.: Intercalibration between HIRS/2 and HIRS/3 channel 12 based on physical considerations, *Atmos. Meas. Tech.*, 11, 939–948, doi:10.5194/amt-11-939-2018, 2018.
- 20 Greenfield, S. and Kellogg, W.: Calculations of atmospheric infrared radiation as seen from a meteorological satellite, *J. Meteorol.*, 17, 283–290, 1960.
- Haag, W., Kärcher, B., Ström, J., Minikin, A., Lohmann, U., Ovarlez, J., and Stohl, A.: Freezing thresholds and cirrus cloud formation mechanisms inferred from in situ measurements of relative humidity, *Atmos. Chem. Phys.*, 3, 1791–1806, 2003.
- Hawkins, R.: Analysis and interpretation of TIROS II infrared radiation measurements, *JAM*, 3, 564–572, 1964.
- 25 Irvine, E. and Shine, K.: Ice supersaturation and the potential for contrail formation in a changing climate, *Earth Syst. Dynam.*, 6, 555–568, doi:10.5194/esd-6-555-2015, 2015.
- Jackson, D. and Bates, J.: Upper tropospheric humidity algorithm assessment, *JGR*, 106, 32 259–32 270, 2001.
- Jackson, D., Wylie, D., and Bates, J.: The HIRS pathfinder radiance data set (1979–2001), in: 12th Conference on Satellite Meteorology and Oceanography, February 9–13, Long Beach, CA, pp. P1.8, 1–4, 2003.
- 30 Kley, D., III, J. R., and Phillips, C.: SPARC assessment of upper tropospheric and stratospheric water vapour, Tech. Rep. Rep. 113, World Clim. Res. Programme, Geneva, Switzerland, 2000.
- Lamquin, N., Gierens, K., Stubenrauch, C., and Chatterjee, R.: Evaluation of Upper Tropospheric Humidity forecasts from ECMWF using AIRS and CALIPSO data, *Atmos. Chem. Phys.*, 9, 1779–1793, 2009.
- Minnis, P., Ayers, J., Palikonda, R., and Phan, D.: Contrails, cirrus trends, and climate, *J. Climate*, 17, 1671–1685, 2004.
- 35 Möller, F.: Atmospheric water vapor measurements at 6–7 microns from a satellite, *Planet. Space Sci.*, 5, 202–206, 1961.
- Murphy, D. and Koop, T.: Review of the vapour pressures of ice and supercooled water for atmospheric applications, *Quart. J. Roy. Met. Soc.*, 131, 1539–1565, 2005.

- Oreskes, N., Shrader-Frechette, K., and Belitz, K.: Verification, validation, and confirmation of numerical models in the earth sciences, *Science*, 263, 641–646, 1994.
- Press, W., Flannery, B., Teukolsky, S., and Vetterling, W.: *Numerical recipes*, Cambridge University Press, 1989.
- Raschke, E. and Bandeen, W.: A quasi-global analysis of tropospheric water vapor content from TIROS-IV radiation data, *JAM*, 6, 468–481, 1967.
- Schmetz, J. and Turpeinen, O.: Estimation of the upper tropospheric relative humidity field from METEOSAT water vapor image data, *JAM*, 27, 889–899, 1988.
- Schröder, M., Roca, R., Picon, L., Kniffka, A., and Brogniez, H.: Climatology of free-tropospheric humidity: extension into the SEVIRI era, evaluation and exemplary analysis, *Atmos. Chem. Phys.*, 14, 11 129–11 148, 2014.
- 10 Sherwood, S., Roca, R., Weckwerth, T., and Andronova, N.: Tropospheric water vapor, convection, and climate, *Rev. Geophys.*, 48, RG2001, doi:10.1029/2009RG000 301, 2010.
- Shi, L. and Bates, J.: Three decades of intersatellite-calibrated High-Resolution Infrared Radiation Sounder upper tropospheric water vapor, *J. Geophys. Res.*, 116, D04 108, doi:10.1029/2010JD014 847, 2011.
- Shi, L., Matthews, J., Ho, S., Yang, Q., and Bates, J.: Algorithm development of temperature and humidity profile retrievals for long-term 15 HIRS observations, *Remote Sens.*, 8, 17, doi:10.3390/rs8040280, 2016.
- Smith, W.: Iterative solution of the radiative transfer equation for the temperature and absorbing gas profile of the atmosphere, *Appl. Opt.*, 9, 1993–1999, 1970.
- Soden, B. and Bretherton, F.: Upper tropospheric relative humidity from the GOES 6.7 μm channel: Method and climatology for July 1987, *J. Geophys. Res.*, 98, 16 669–16 688, 1993.
- 20 Soden, B., Jackson, D., Ramaswamy, V., Schwarzkopf, M., and Huang, X.: The radiative signature of upper tropospheric moistening, *Science*, 310, 841–844, 2005.
- Spichtinger, P., Gierens, K., and Read, W.: The statistical distribution law of relative humidity in the global tropopause region, *Meteorol. Z.*, 11, 83–88, 2002.
- Spichtinger, P., Gierens, K., and Read, W.: The global distribution of ice-supersaturated regions as seen by the Microwave Limb Sounder, 25 *Quart. J. Roy. Met. Soc.*, 129, 3391–3410, 2003.
- Stephens, G., Jackson, D., and Wittmeyer, I.: Global observations of upper-tropospheric water vapor derived from TOVS radiance data, *J. Climate*, 9, 305–326, 1996.
- Wright, J., Sobel, A., and Galewsky, J.: Diagnosis of zonal mean relative humidity changes in a warmer climate, *JC*, 23, 4556–4569, doi:10.1175/2010JCLI3488.1, 2010.

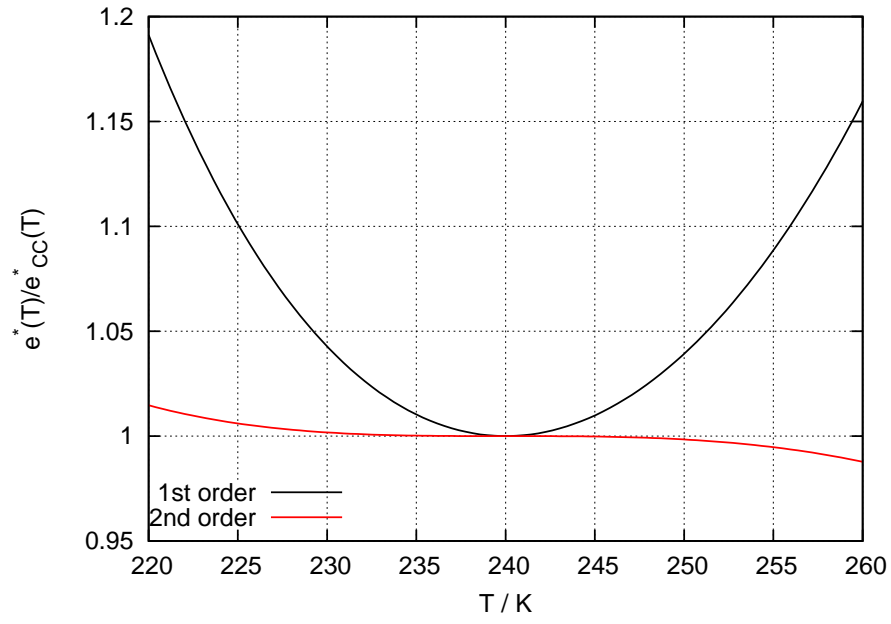


Figure 1. Ratio of the 1st-order (black) and 2nd-order (red) approximations to the correct Clausius-Clapeyron saturation pressure of water vapour.

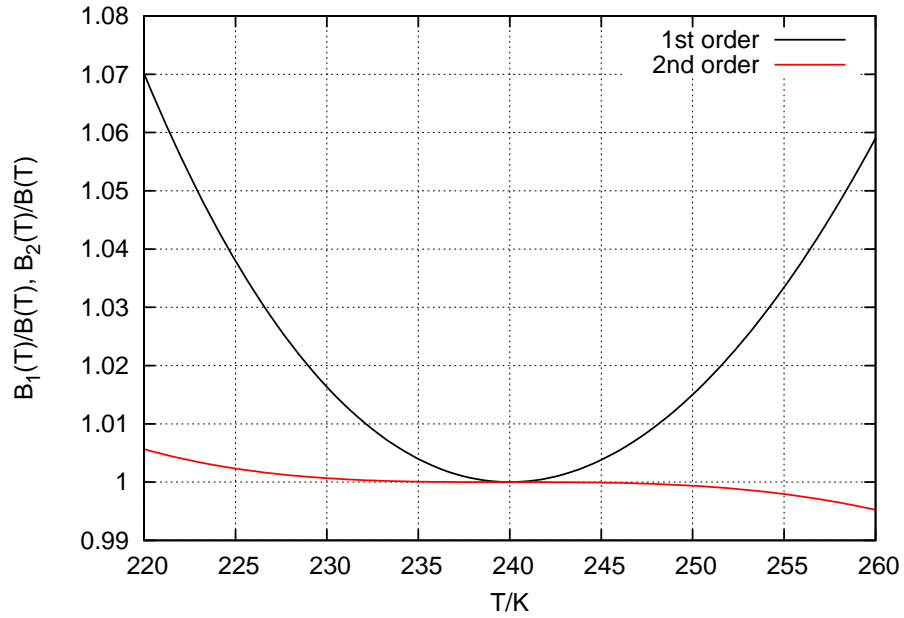


Figure 2. Ratio of first (black) and second order (red) approximations of the Planck function to the true Planck function vs. temperature, T . The wavelength for the calculation of the Planck functions was $6.7 \mu\text{m}$.

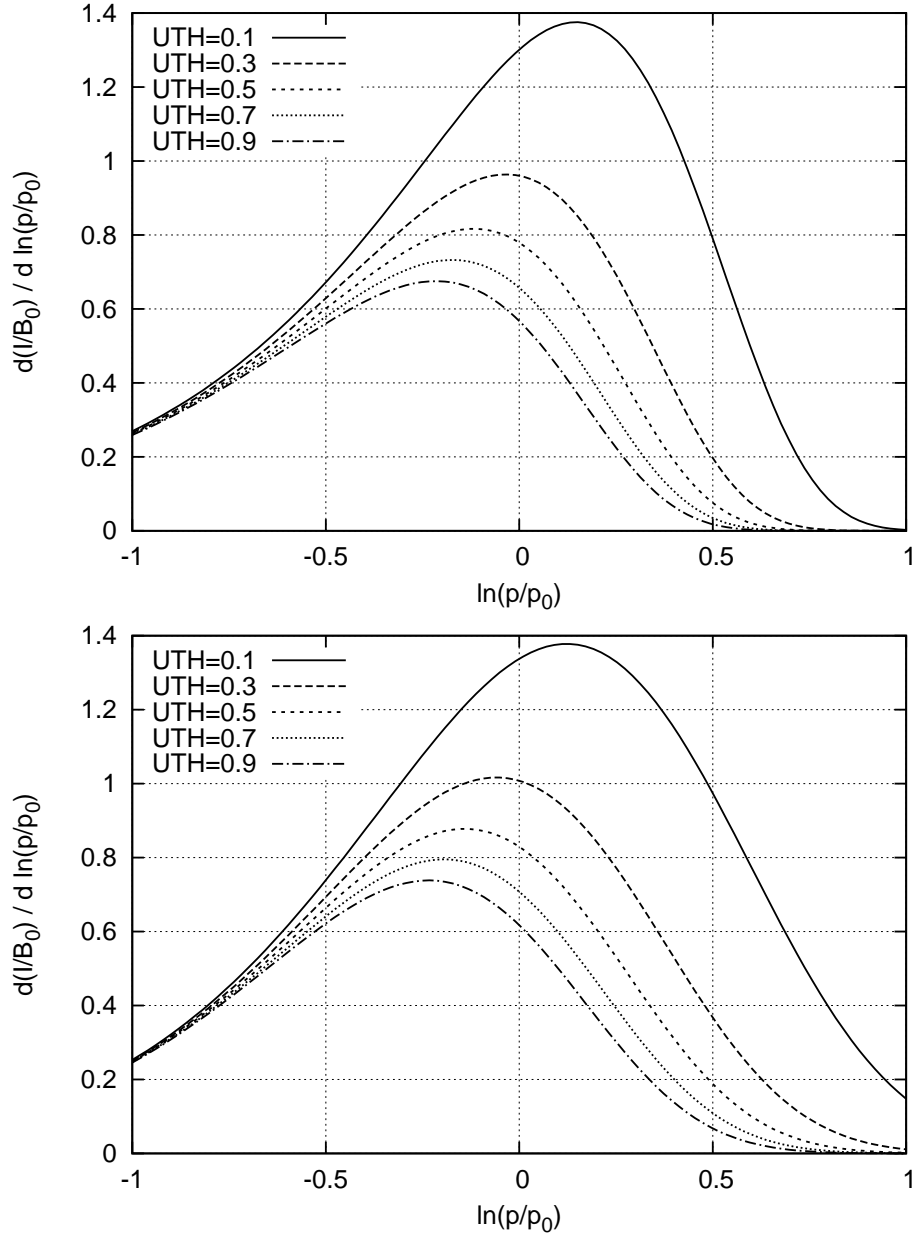


Figure 3. The function (normalised by the Planck function at T_0) to be integrated to get the radiance in channel 12 as a function of $\ln(p/p_0)$ and shown for various values of the UTH. Top: using the first-order approximations of SB93. Bottom: using the second-order approximations (this study). The higher UTH the less radiation is received at the satellite.

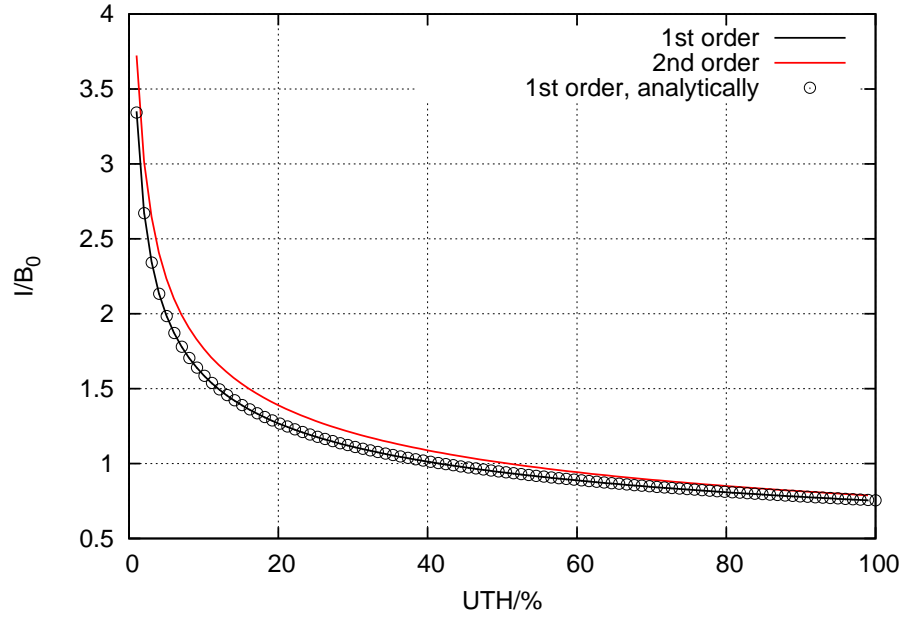


Figure 4. Normalised radiances, I/B_0 , resulting from numerical integration of equations 22 and 23 for the first (black) and second-order (red) retrievals. The circled curve is computed directly from the analytical formula (eq. 18 of SB93).

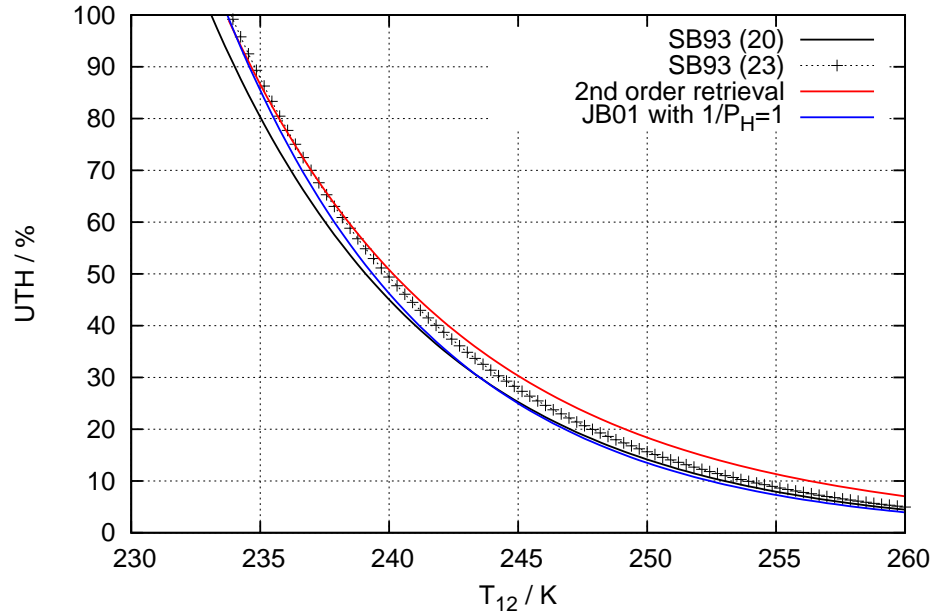


Figure 5. Comparison of retrieval functions UTH vs T_{12} : The simple black line is the original function from SB93 (eq. 20), the black line with crosses is their eq. 23. The blue line is the improved SB93-type retrieval from JB01, shown here without the correction for lapse rate variability (i.e. $1/P_H = 1$), and the red curve represents the second-order retrieval.

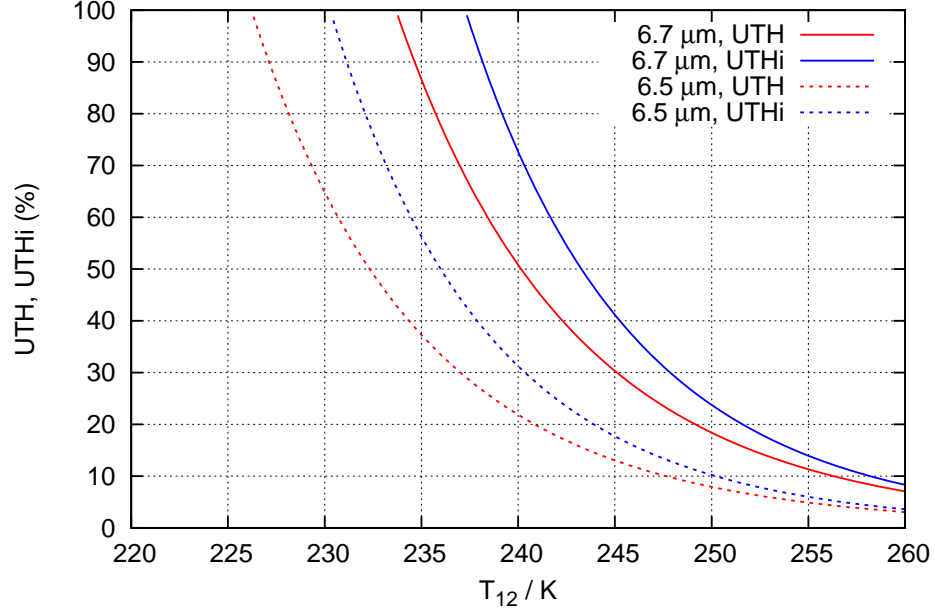


Figure 6. 2nd-order retrieval functions for all cases of table 1.

Table 1. Constants used for the two different central wavelengths of HIRS channel 12 and fit coefficients.

	e^* [Pa]	κ	λ [μm]	A_λ	$hc/\lambda k T_0$	a	b [1/K]	c [1/K ²]
UTH								
	37.7	23.1	6.7	46.98	8.95	43.36	-0.2619	$3.266 \cdot 10^{-4}$
	37.7	23.1	6.5	72.37	9.22	45.50	-0.2868	$3.784 \cdot 10^{-4}$
UTHi								
	27.3	25.7	6.7	53.87	8.95	47.69	-0.2846	$3.522 \cdot 10^{-4}$
	27.3	25.7	6.5	82.99	9.22	50.05	-0.3109	$4.063 \cdot 10^{-4}$

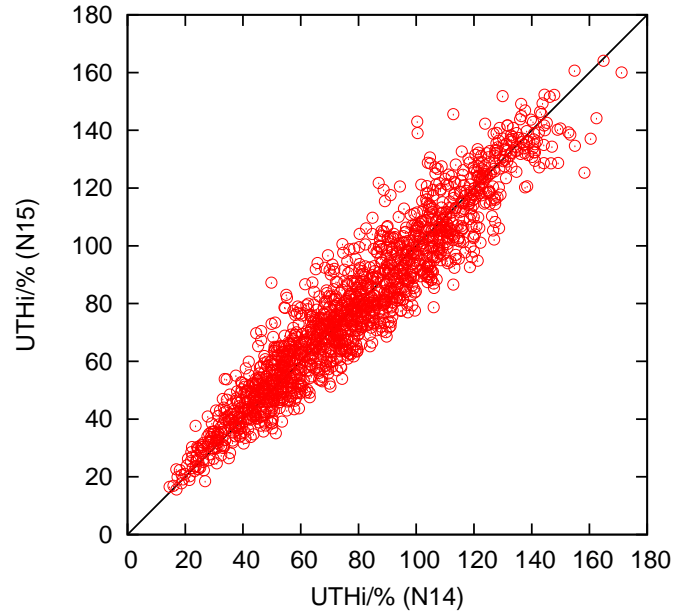


Figure 7. UTHi values from channel 12 brightness temperatures computed with a radiative transfer code using the NOAA 14 and NOAA 15 spectral response functions (Gierens et al., 2018). The UTHi values have been computed with the fit function given in the text using the coefficients from table 1 for the two central wavelengths 6.7 (NOAA 14) and $6.5\,\mu\text{m}$ (NOAA 15). The black line is simply the diagonal and all points would ideally lie above it. Contrary to earlier intercalibration attempts, the problem of having much more supersaturation cases in NOAA 15 than in NOAA 14 data is no longer present.

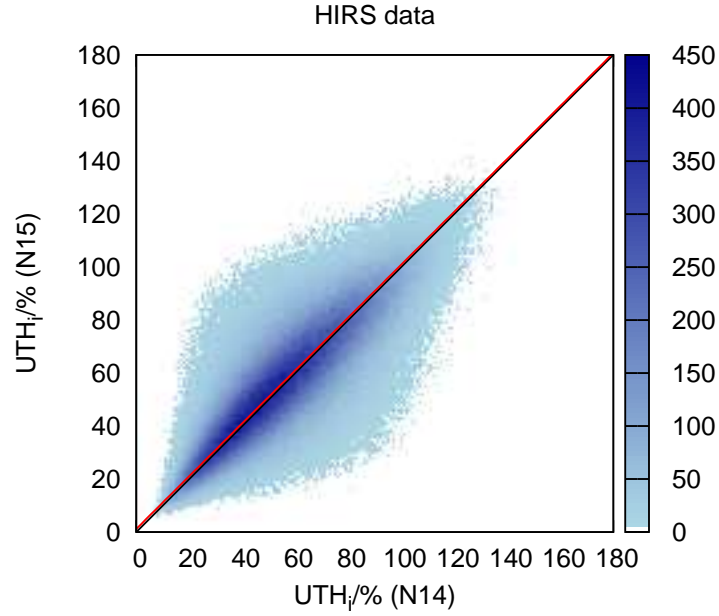


Figure 8. Heatmap of UTH_i from NOAA 15 vs UTH_i from NOAA 14 for 1004 common days of operation. The corresponding brightness temperatures have been transformed into UTH_i using the 2nd-order retrieval formulae derived in this paper. More details are given in the main text. Evidently the data pairs are nicely spread out along the diagonal line and there is not anymore the deviation from the diagonal in the upper UTH_i range as before. The red line represents the bivariate regression between the two data sets. It is almost identical to the black diagonal.

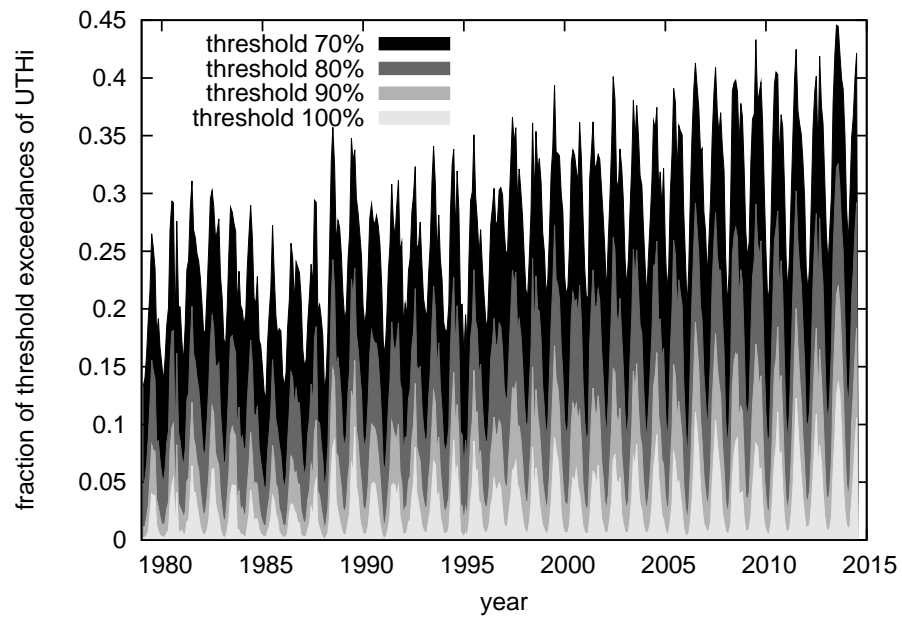


Figure 9. Timeseries of monthly fractional threshold exceedances for UTHi exceeding 70, 80, 90, and 100% (various grey scales) in the northern hemisphere between 30 and 70°N and from July 1979 to December 2014.

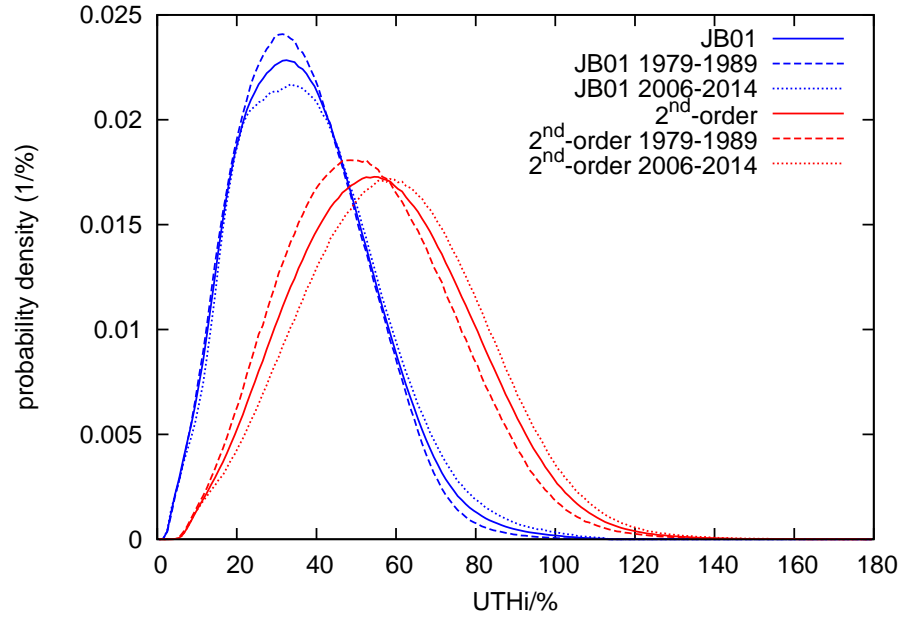


Figure 10. Probability density functions of UTHi retrieved with the formula of JB01 (using intercalibrated brightness temperatures, blue) and with the 2nd-order retrieval (using non-intercalibrated brightness temperatures, red). Solid curves represent data from 1979-2014, dashed: data from 1979-1989, dotted: data from 2006-2014. We note that all curves have similar shape but with the 2nd-order retrieval the pdf has a longer tail to high and supersaturated values. The upper tail is exponentially distributed in all pdfs shown. The data show in both retrievals a tendency to **higher** UTHi values over the long observation period.

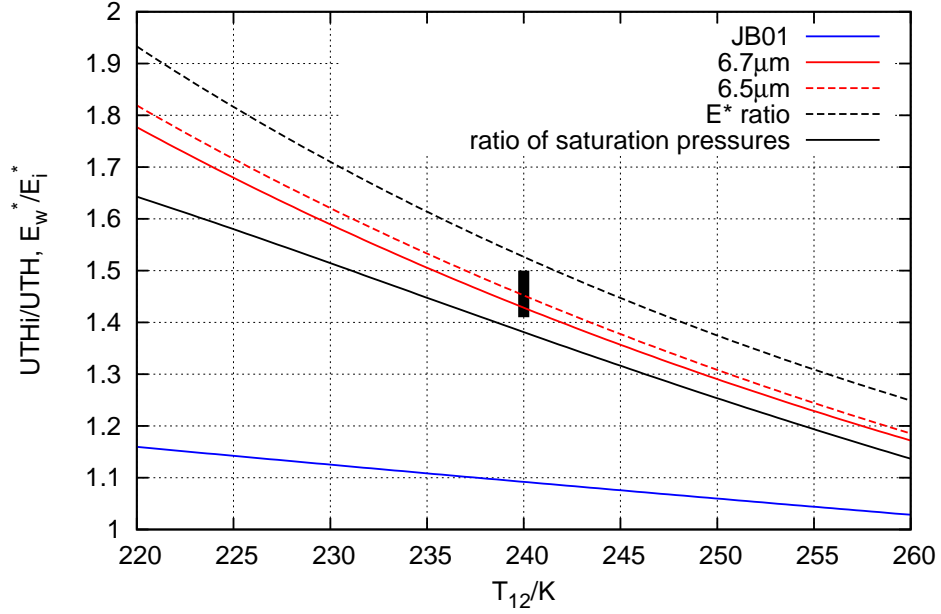


Figure 11. Ratio of UTHi vs UTH retrieval (blue: JB01, red: present paper using the retrieval for $6.7\,\mu\text{m}$ (solid) and the same but for the $6.5\,\mu\text{m}$ retrieval (dashed)) as function of brightness temperature. The other curves are for comparison. The black solid line is the ratio of saturation vapour pressures $e_w^*(T)/e_i^*(T)$ (Murphy and Koop, 2005) and the black dashed line represents the ratio of the corresponding $E_{w/i}^*(T)$ functions (Eq. 16 with the corresponding parameters from table 1). The black bar in the middle represents more than 1600 values computed by integration over the actual RH, RH_i and T -profiles from the Lindenberg radiosoundings, assuming the lower integration limit is 245 K (eq. 10). Obviously, the 2nd-order formula meets the actual data quite well, but the ratio obtained from the JB01 coefficients is way off.