

---

## Support information

High relative humidity enhances the particulate diethylamine in an urban area

Yang Chen<sup>1,\*</sup>, Mi Tian<sup>1</sup>, Rujin Huang<sup>2</sup>, Guangming Shi<sup>4</sup>, Huanbo Wang<sup>1</sup>, Chao Peng<sup>1</sup>, Junji Cao<sup>2</sup>,  
Qiyuan Wang<sup>2</sup>, Dongmei Guo<sup>3</sup>, Leiming Zhang, and Fumo Yang<sup>1,4,\*</sup>

<sup>1</sup>Research Center for Atmospheric Environment, Chongqing Institute of Green and Intelligent Technology, Chinese Academy of Sciences, Chongqing 400714, China.

<sup>2</sup>Key Lab of Aerosol Chemistry & Physics, State Key Laboratory of Loess and Quaternary Geology, Institute of Earth Environment, Chinese Academy of Sciences, Xi'an 710061, China.

<sup>3</sup>School of Basic Medical Sciences, North Sichuan Medical College, Nanchong 637000, Sichuan, China.

<sup>4</sup>College of Architecture and Environment, Sichuan University, Chengdu 610065, China

<sup>5</sup>Air Quality Research Division, Science and Technology Branch, Environment and Climate Change Canada, Toronto M3H 5T4, Canada

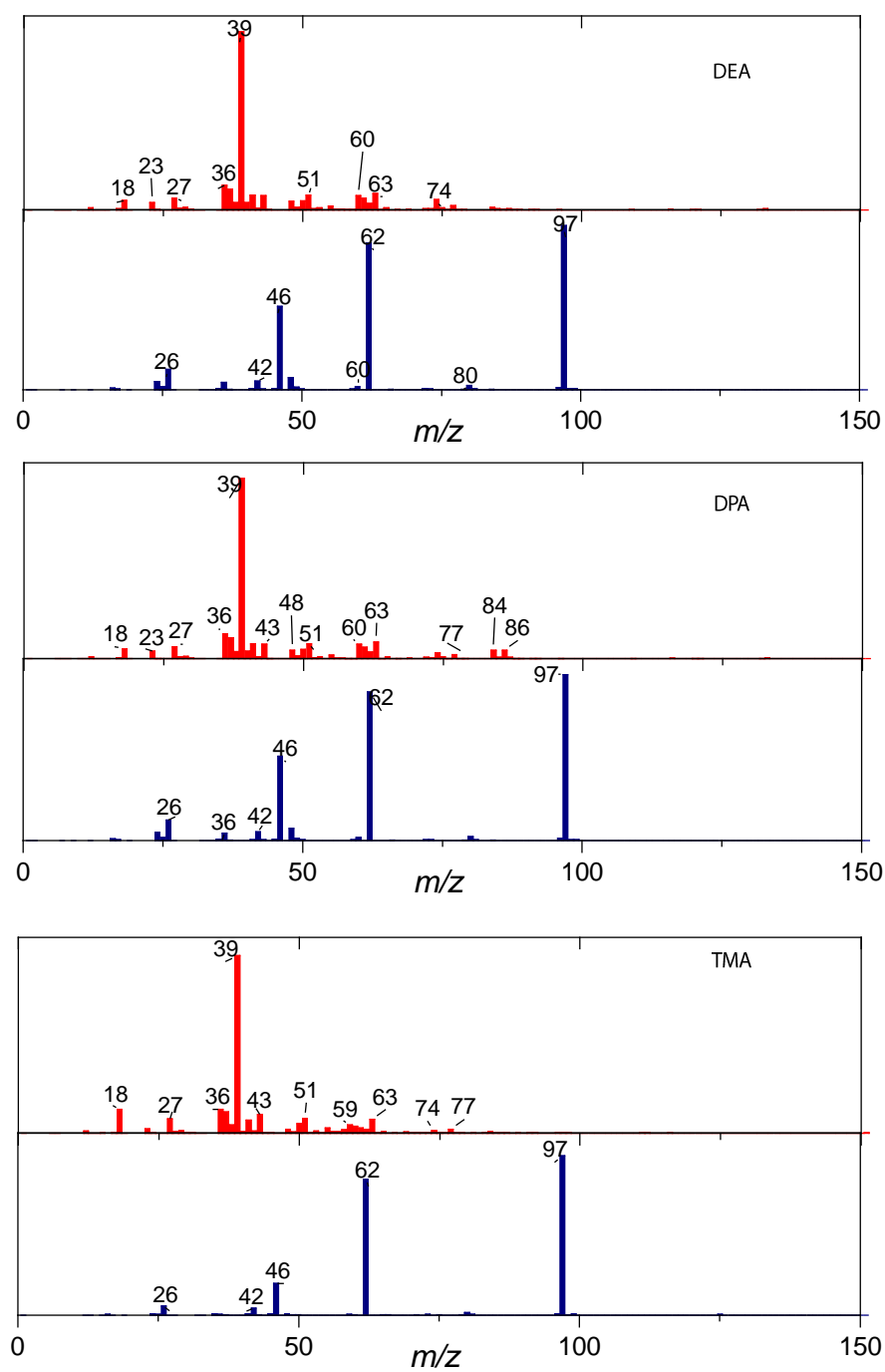


Figure S1. Average mass spectra of DEA-, DPA- and TMA-containing amine particles.

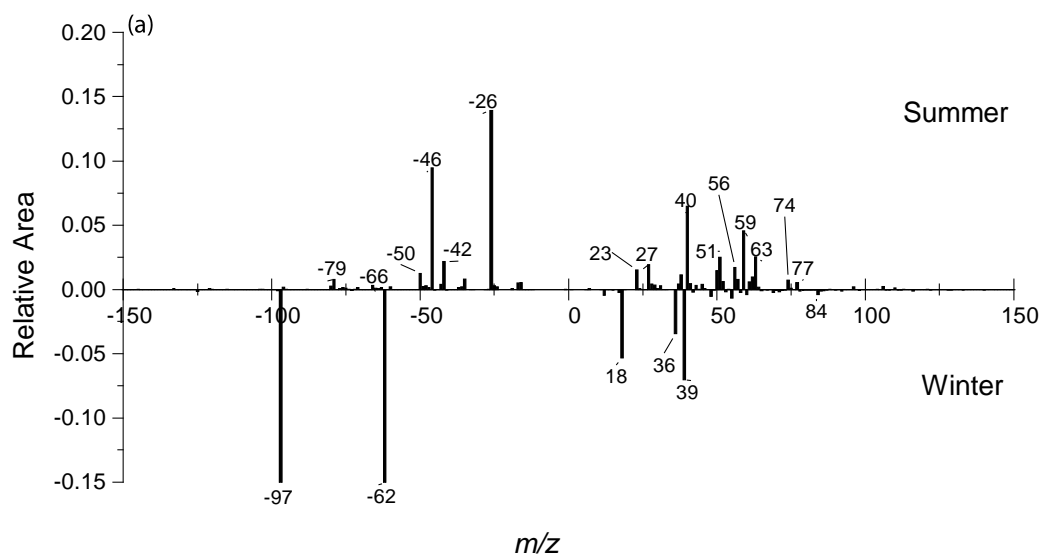


Figure S2. Subtraction plot of average mass spectra of amine-containing particles during summer and winter time

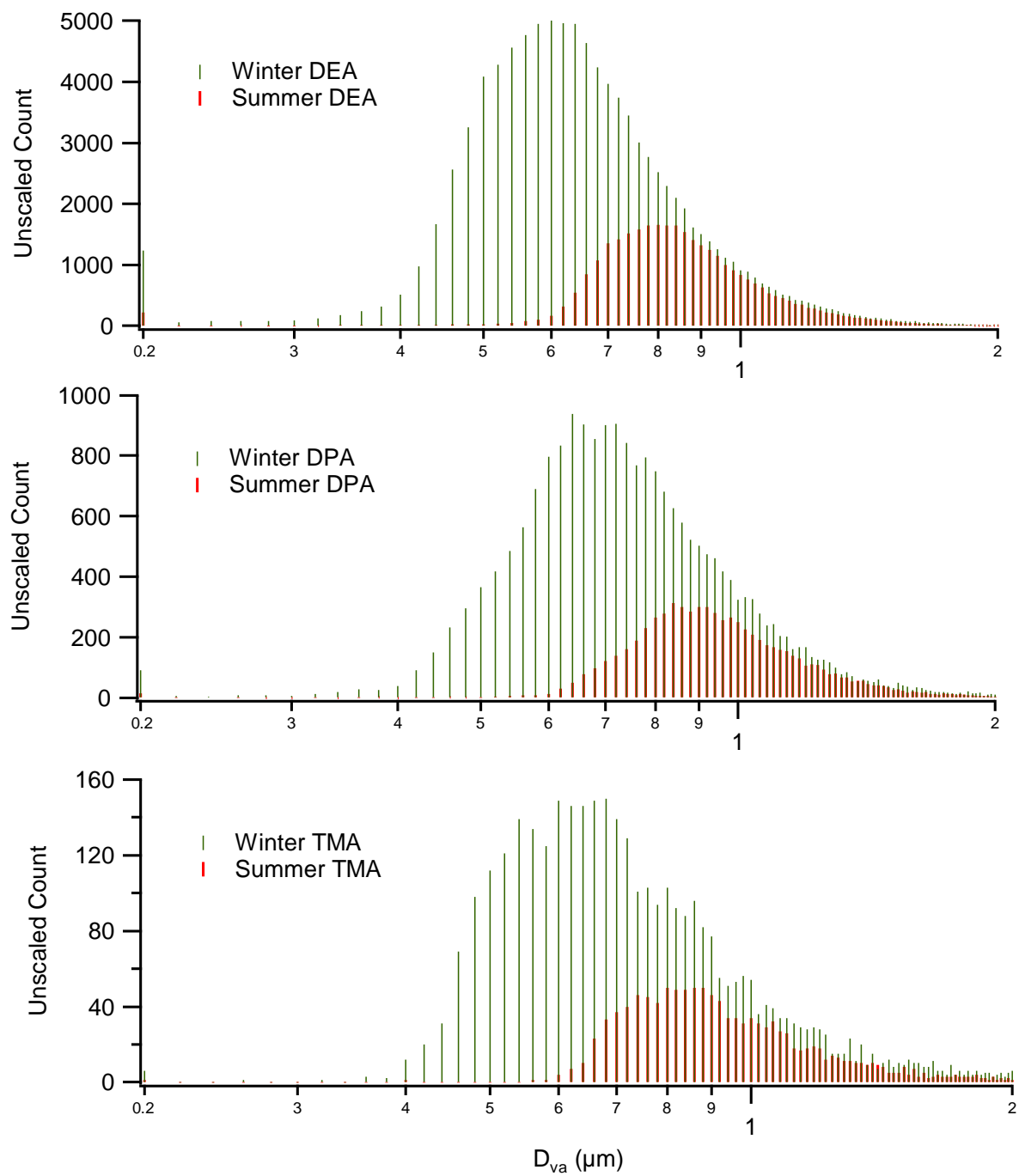


Figure S3. Seasonal variation of raw size distribution of amine (TMA, DEA, and DPA) particles.

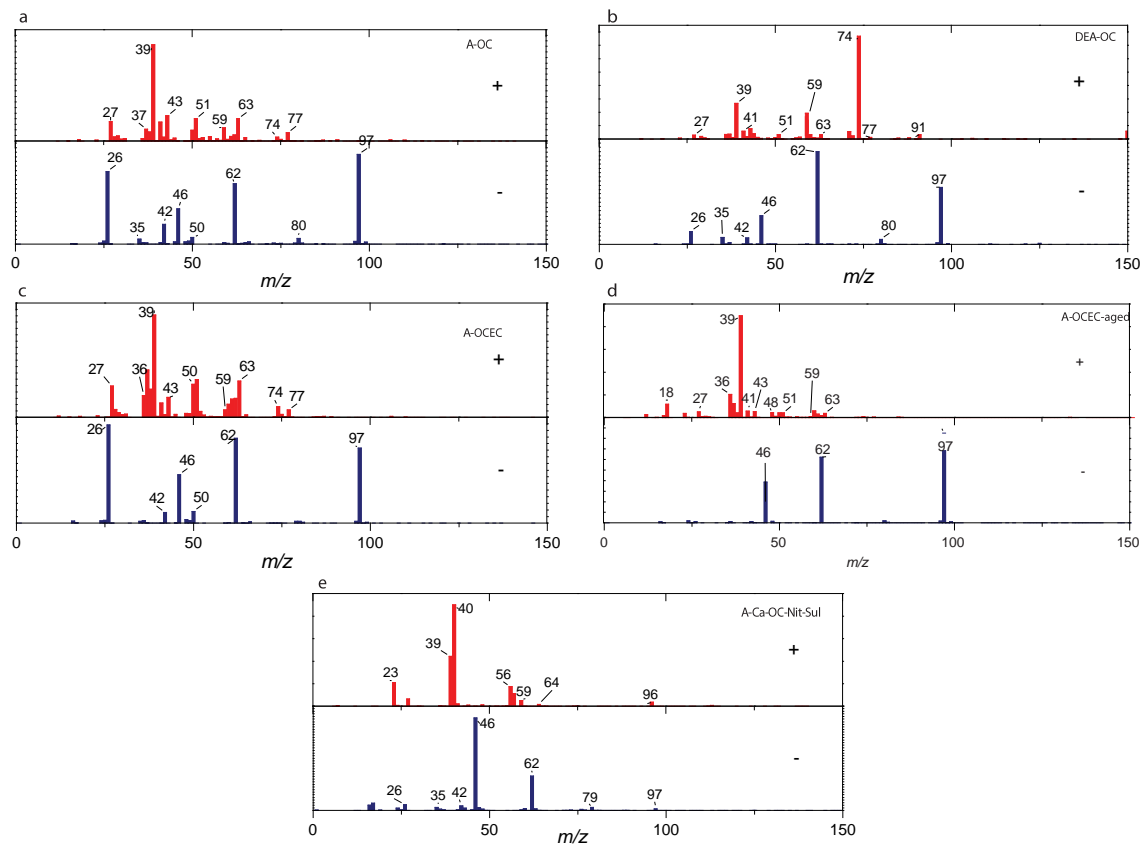


Figure S4. Average mass spectra of ART-2a clustered particle types during summertime.