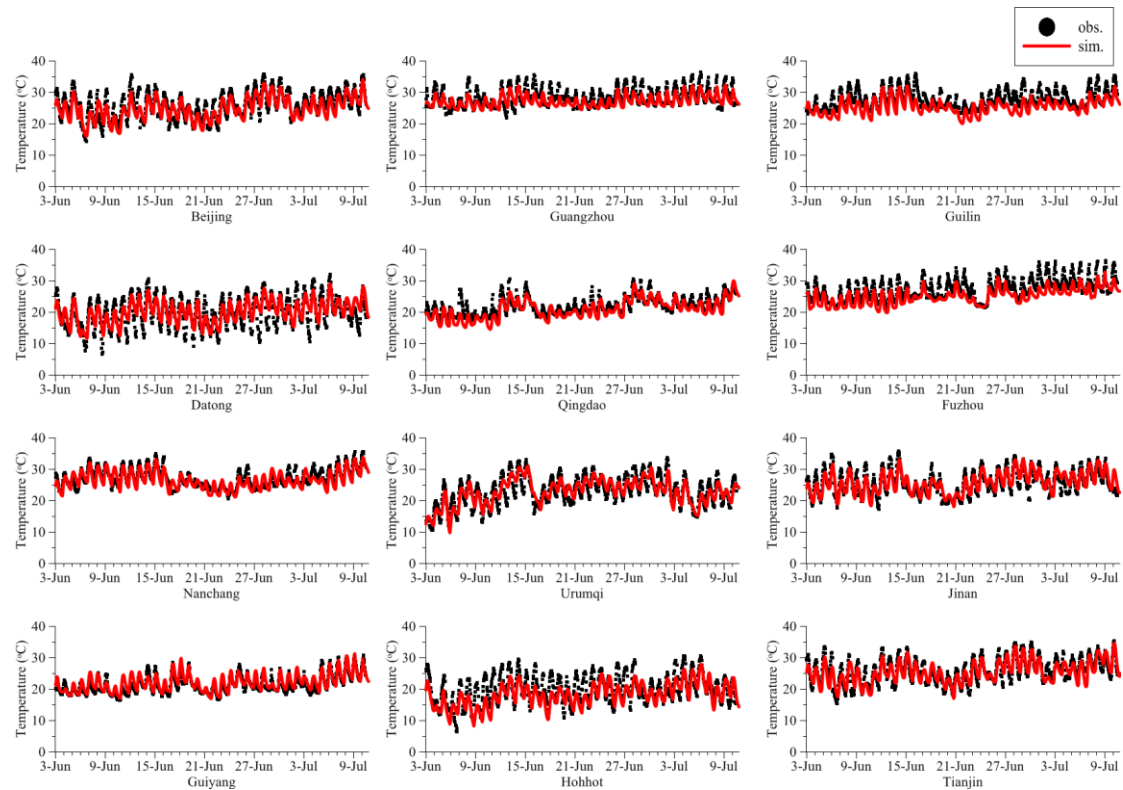


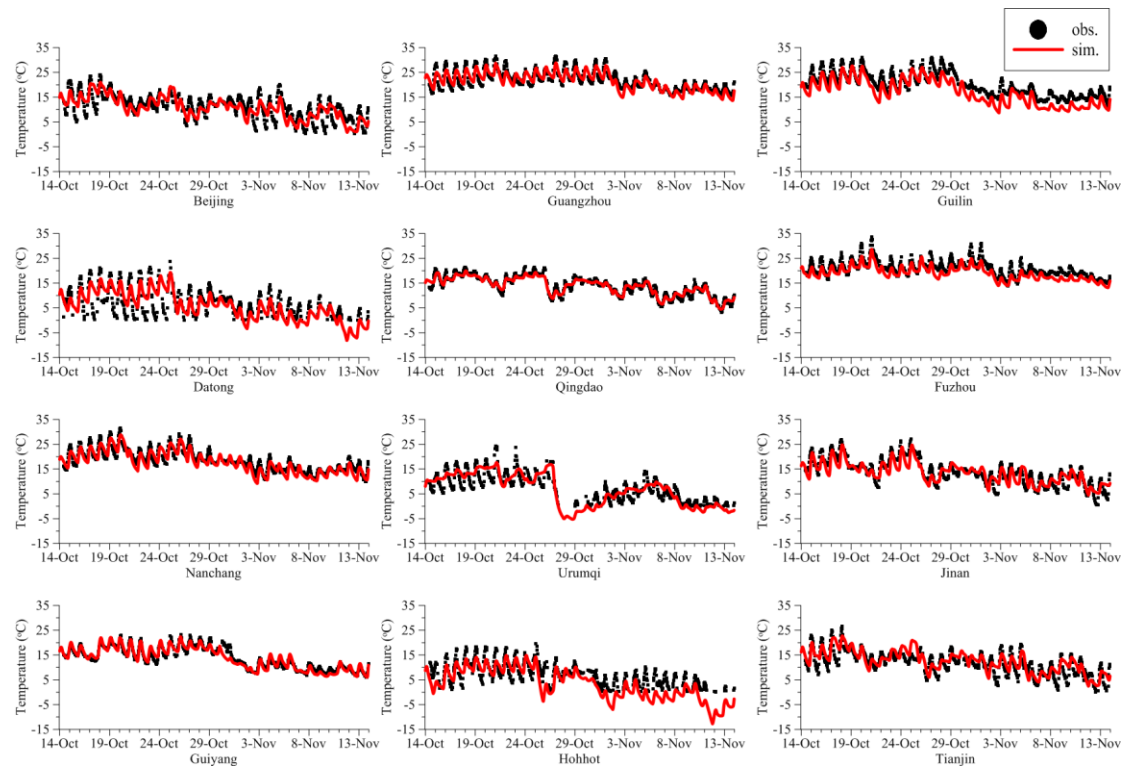
1.The comparasion of temperature, relative humidity, wind speed, wind direction and PM_{2.5} between simulations and observations at 12 stations duiring the two analyzed episodes.

1) Fig. S1 Temperature:

Episode 1:

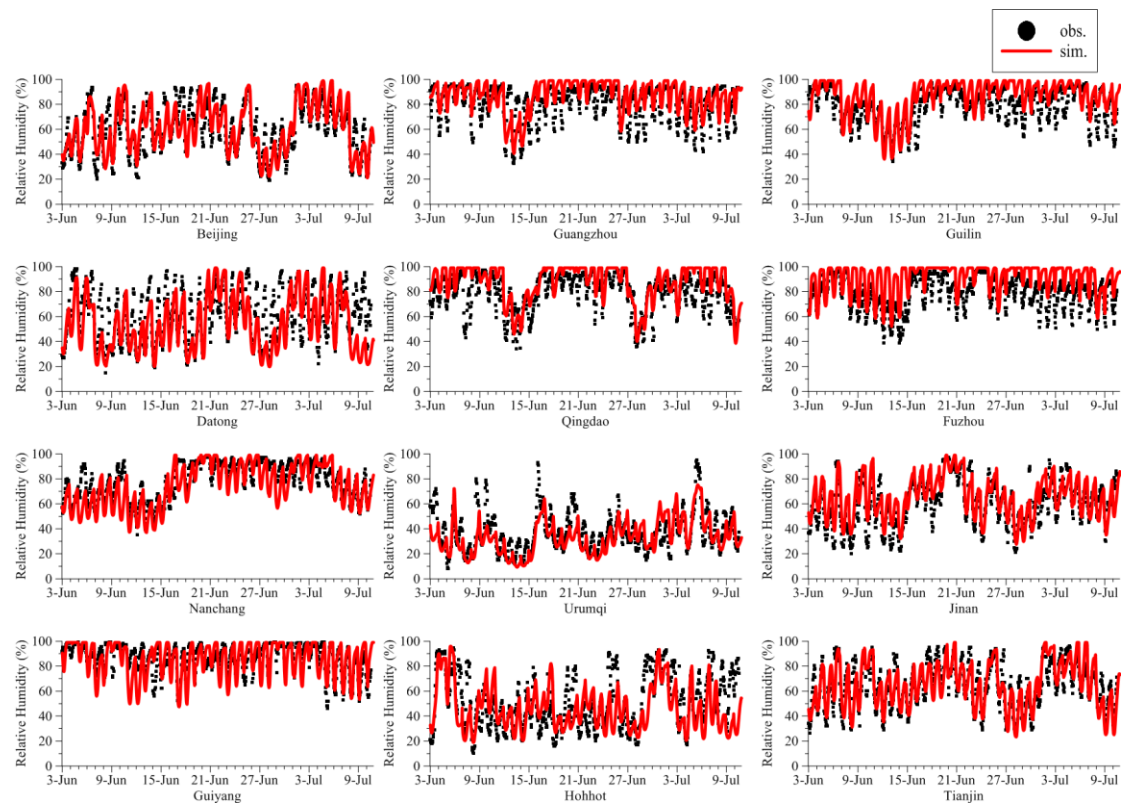


Episode 2:

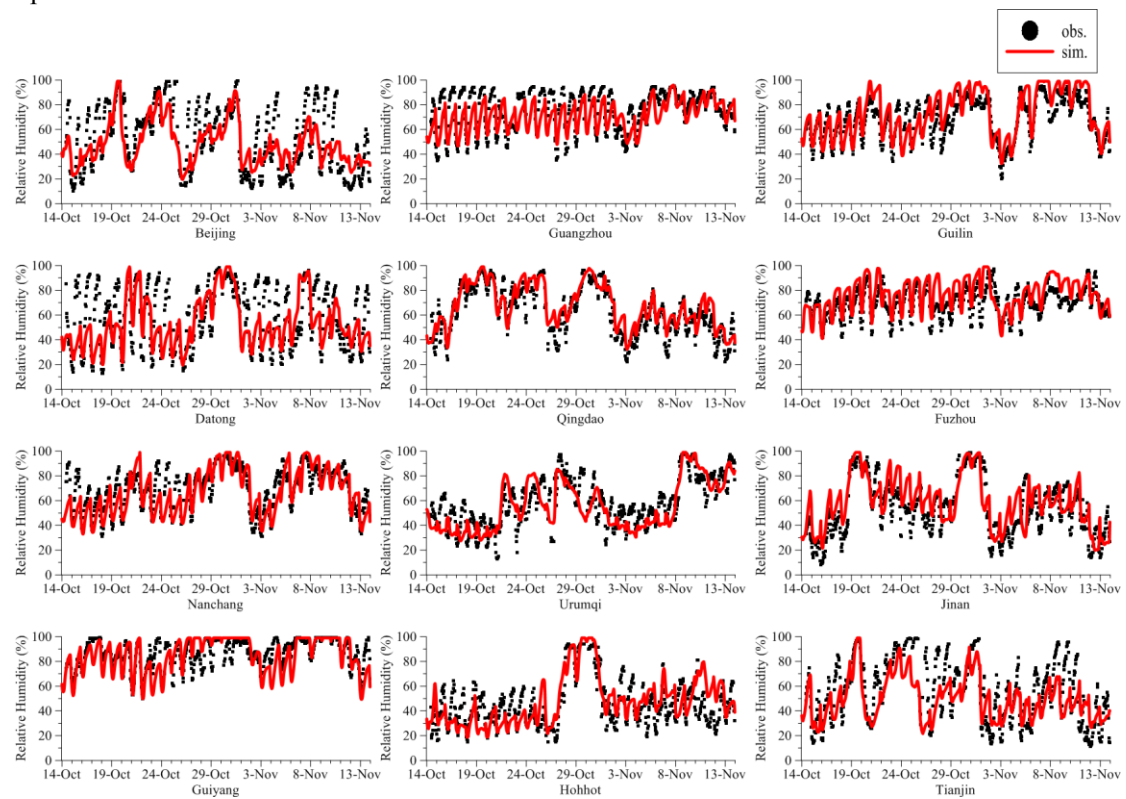


2) Fig. S2 Relative Humidity:

Episode 1:

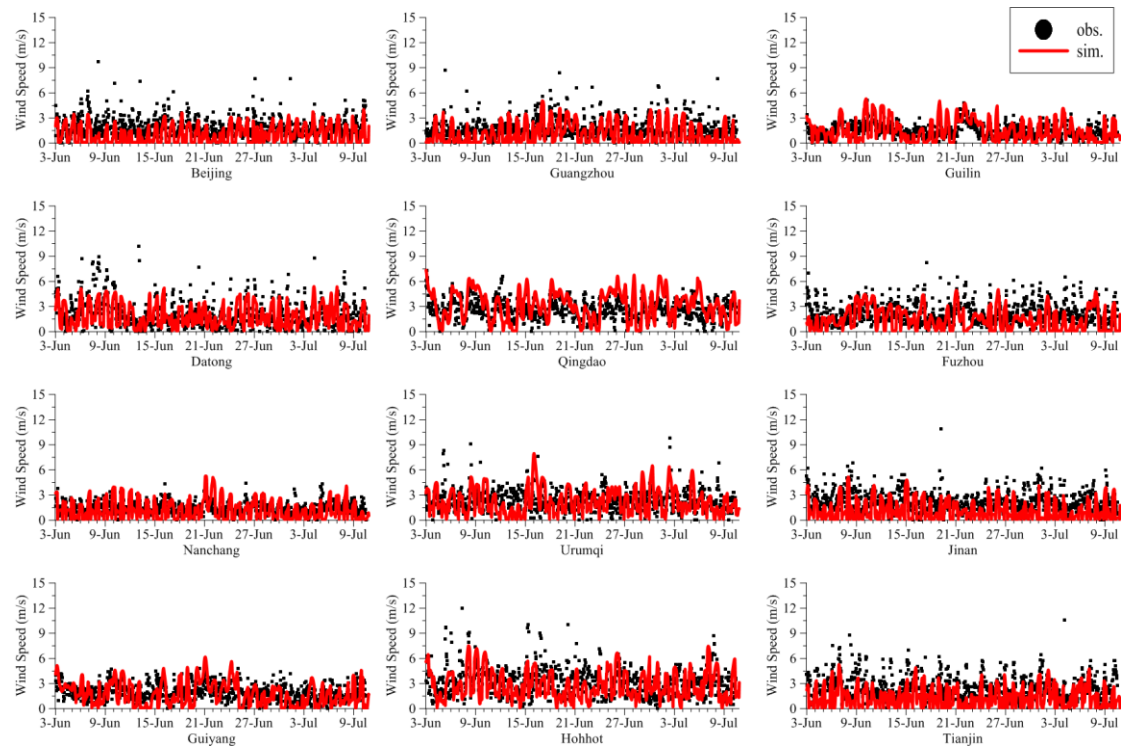


Episode 2:

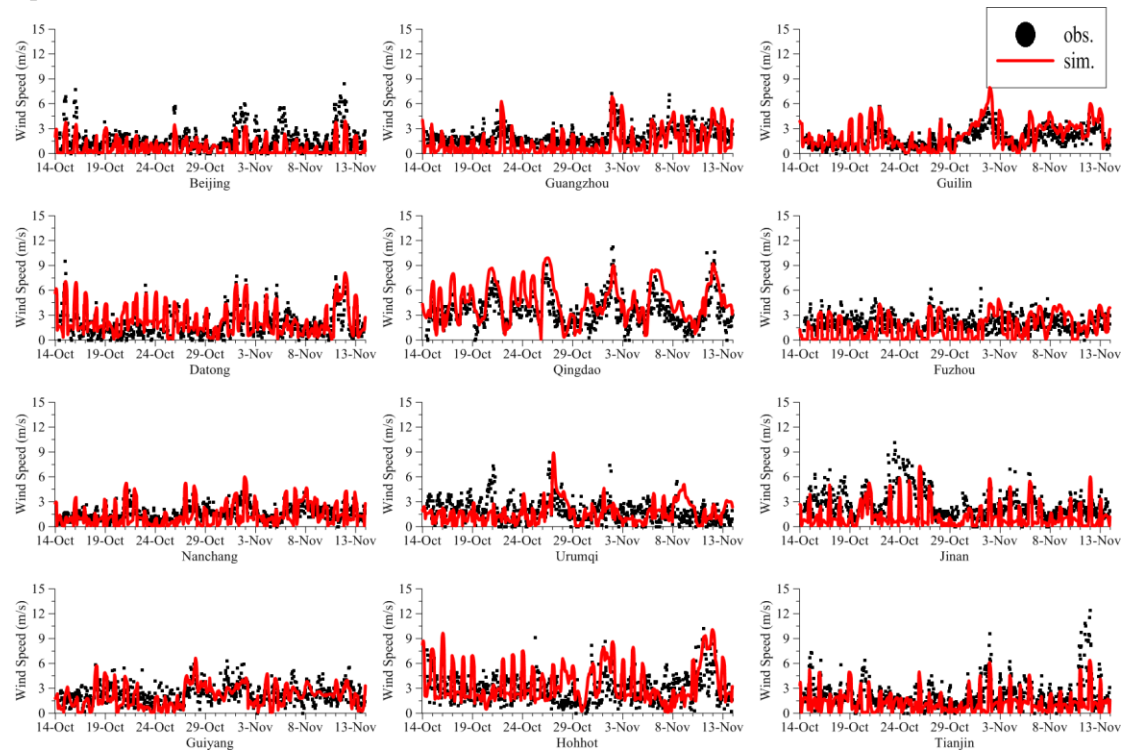


3) Fig. S3 Wind Speed:

Episode 1:

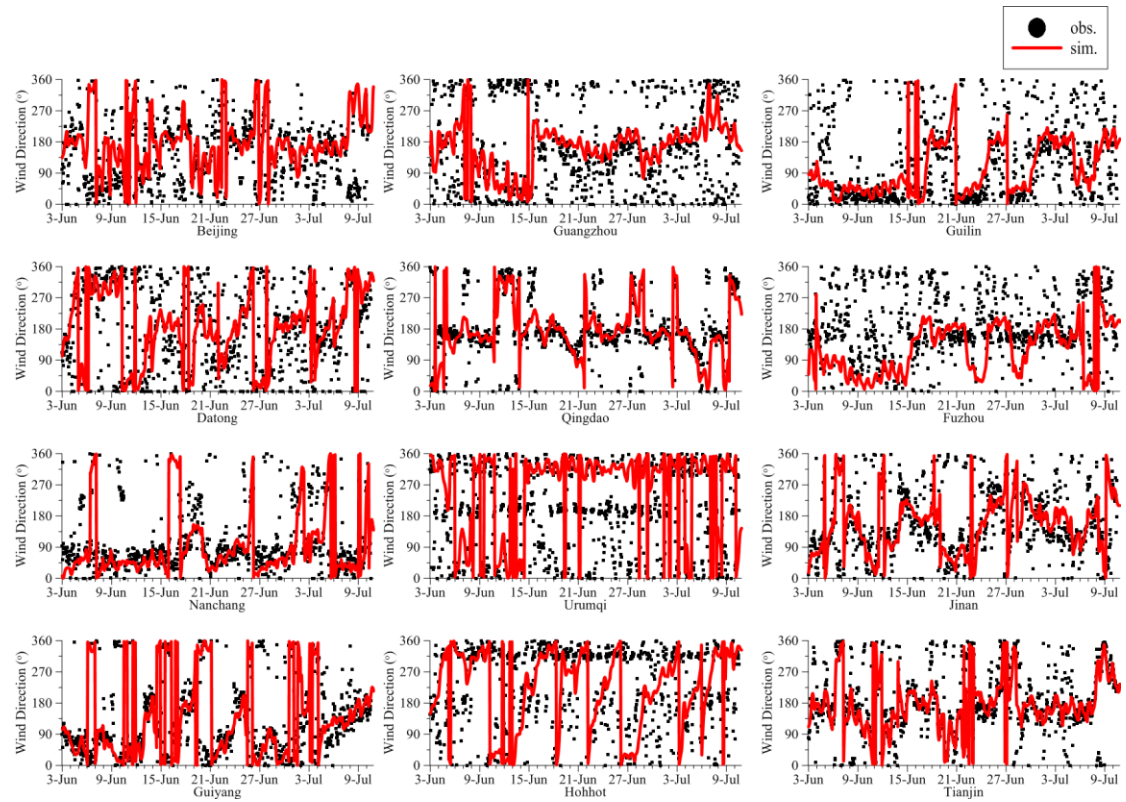


Episode 2:

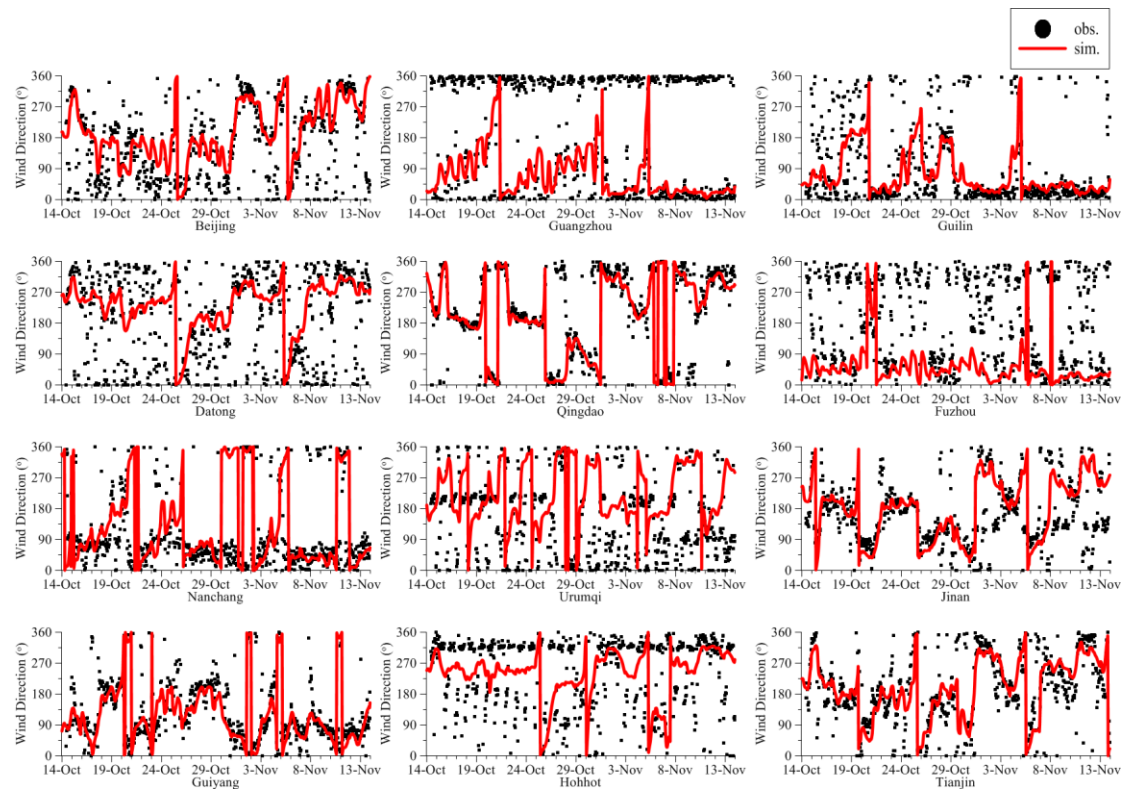


4) Fig. S4 Wind Direction:

Episode 1:

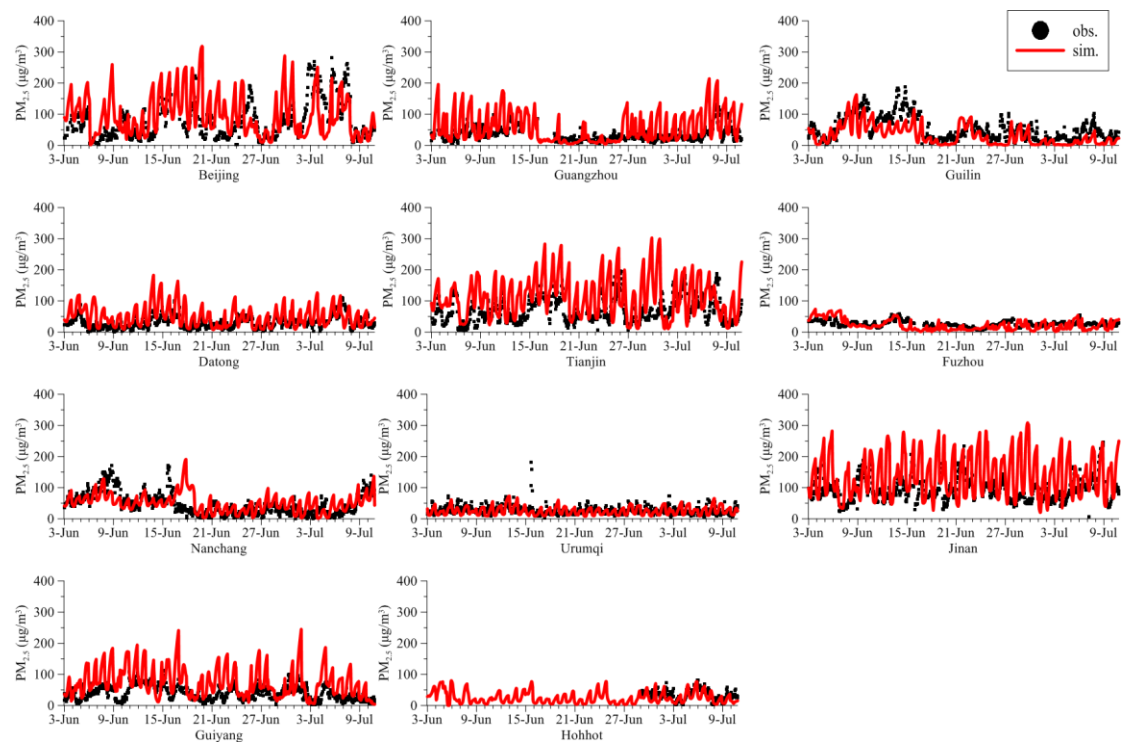


Episode 2:



5) Fig. S5 PM_{2.5}:

Episode 1:



Episode 2:

