

Experimental and model assessment of PM_{2.5} and BC emissions and concentrations in a Brazilian city – the Curitiba case study

Lars Gidhagen^{*1}, Patricia Krecl², Admir Créso Targino², Gabriela Polezer³, Ricardo H. M. Godoi³, Francisco Castelhana⁴, Erika Felix⁵, Yago Alonso Cipoli², Francisco Malucelli⁶, Alyson Wolf⁷, Marcelo Alonso⁸, David Segerström¹, Jorge Humberto Amorim¹, Francisco Mendonça⁴

¹ Swedish Meteorological and Hydrological Institute (SMHI), Norrköping, Sweden

² Federal University of Technology, Graduate Program in Environmental Engineering, Londrina, PR, Brazil

³ Federal University of Paraná, Environmental Engineering Department, Curitiba, PR, Brazil

⁴ Federal University of Paraná, Department of Geography, Curitiba, PR, Brazil

10 ⁵ Federal University of Technology, Department of Chemistry and Biology, Curitiba, PR, Brazil

⁶ Institute for Research and Urban Planning of Curitiba (IPPUC), Curitiba Municipality, Brazil

⁷ Curitiba Urbanization (URBS), Curitiba Municipality, Brazil

⁸ Federal University of Pelotas, Faculty of Meteorology, Pelotas, RS, Brazil

15 *Correspondence to:* Lars Gidhagen (lars.gidhagen@smhi.se)

Abstract. Data on airborne fine particle emissions and concentrations in cities are valuable to traffic and air quality managers, urban planners and landscape architects, health practitioners, researchers, and ultimately to legislators and decision makers. This study aimed at determining the emissions and ambient concentrations of black carbon (BC) and fine particles (PM_{2.5}) in the city of Curitiba, southern Brazil. The applied methodology ~~applied~~ combined a month-long monitoring campaign that included both fixed and mobile instruments, the development of emission inventories, and the ~~dispersion~~ simulation of dispersion from the regional down to the street scale.

The mean urban background PM_{2.5} concentrations during the campaign were below 10 µg m⁻³ in Curitiba city center, but two- to three-fold higher in a residential area in the city outskirts, indicating the presence of unidentified local sources, possibly linked to wood combustion. Mean BC concentrations seemed to be more uniformly distributed over the city, with urban background levels around 2 µg m⁻³, which rose to about 5 µg m⁻³ in heavily trafficked street canyons. The dispersion modeling also showed high PM_{2.5} and BC concentrations along the heavily transited ring road and over the industrial area southwest of Curitiba. However, the lack of in situ data over this area prevented the corroboration of the model outputs. The integrated approach used in this study can be implemented in other Brazilian cities as long as an open data policy and a close cooperation between-among municipal authorities and academia can be achieved.

30 1 Introduction

It is generally accepted that the fast pace of global urbanization is associated with the expansion of modern industries and non-agricultural sectors, especially in low- and middle-income countries (Chen et al., 2014). The urbanization and

industrialization have increased the concentrations of outdoor air pollutants from vehicles and factories, contributing to the global burden of asthma and allergic diseases (Zhang et al., 2015). A recent global model assessment with relatively high spatial resolution (11x11 km²) revealed that the human exposure to ambient PM_{2.5}, i.e., fine particles with an aerodynamic diameter smaller ~~and-or~~ equal to 2.5 μm, ranked fifth as mortality risk factor in 2015 with more than four million deaths (Cohen et al., 2017). The urgent need to take better care of cities' environment has recently been manifested in the Sustainable Development Goal (SDG) 11 addressing urban planning and development. One specific SDG indicator, 11.6.2, ~~for meeting this goal~~ is the annual mean level of PM_{2.5} weighted by population (United Nations Statistics Division, 2018), for which a global database was developed by the World Health Organization (WHO, 2016). Improved information on the spatial distribution of PM_{2.5} exposure in cities will be required to monitor future progress of the SDG 11 air pollution target.

Ongoing research is trying to identify which components of inhalable particulate matter contribute the most to the observed health effects. The Review of Evidence on Health Aspects of Air Pollution (REVIHAAP) assessment (WHO, 2013) could not pinpoint the constituents within the PM_{2.5} matrix that are more related to specific health outcomes. However, strong research outcomes have shown that black carbon (BC) particles –associated to combustion emissions, especially from diesel engines– are a more robust indicator of health effects than solely PM_{2.5} (Janssen, et al., 2011). An additional aspect of BC as a metric for air pollution is its potential to act as a Short-Lived Climate Forcer (SLCF), contributing to warm up the atmosphere (Bond et al., 2013). Hence, curbing BC emissions has the double benefit of reducing the human exposure to PM_{2.5}, while contributing to mitigate climate change.

Global assessments of air pollution have revealed that the highest PM_{2.5} exposure levels are found in Asia, whereas lower exposure occurs in the American continent (WHO, 2016). However, there is no threshold for the PM_{2.5} health effects below which the consequences for human health are negligible. On the contrary, there are indications that a reduction of 1 μg m⁻³ on PM_{2.5} concentrations provides a more significant health benefit in a city with relatively low levels (i.e., in the range of 10-30 μg m⁻³), as compared to cities with much higher mean concentrations, close or above 100 μg m⁻³ (Burnett et al., 2014). Another aspect, illustrating the importance of reducing BC, is exemplified by Janssen et al. (2011), who showed that a 1 μg m⁻³ decrease in PM_{2.5} exposure would lead to an increase in life expectancy of 21 days per person, whereas the same reduction in BC concentration would yield an increase between 3.1 and 4.5 months.

The national ambient air quality standards (NAAQS) in Brazil were implemented in 1990 and legislate particulate matter concentrations as total suspended particles, PM₁₀, and black smoke (another metric for exhaust emissions). However, only 12 of the 27 federal units of Brazil have at least one air quality monitoring station (Instituto de Energia e Meio Ambiente, 2014). Black smoke is regulated with very tolerant thresholds (mean daily value of 150 μg m⁻³ and mean annual value of 60 μg m⁻³), but monitoring occurs in only 11.7% of all stations in the country (Instituto de Energia e Meio Ambiente, 2014). Until November 2018, São Paulo ~~is-was~~ the only state in Brazil where a PM_{2.5} standard ~~has-had~~ been implemented, with limit values of 60 μg m⁻³ and 20 μg m⁻³ for the daily maximum and annual average, respectively. The PM_{2.5} standard was extended to the other units of the federation as of December 2018. However, with no previous ~~no~~ legislation supporting the monitoring of PM_{2.5} and BC, most Brazilian cities lack information on these pollutants, except for a few short-term

campaigns, which have been conducted to address specific aspects of atmospheric processes (Krecl et al., 2018; Polezer et al., 2018; De-Miranda et al., 2012; Targino and Krecl, 2016). The significant health and climate benefits of reducing PM_{2.5} and BC emissions should be an incentive for the Brazilian environmental agencies to assess their concentrations and spatial distribution across cities and to identify their source contributions. However, given financial and infrastructure constraints, uneven spatial distribution of stations, lack of instrument maintenance, spare parts and technical expertise, the operational monitoring of PM_{2.5} and BC concentrations in Brazil is still challenging. ~~A positive note is that there are plans under preparation in some states (e.g., Paraná) to formulate limit values for PM_{2.5} in line with what São Paulo has already implemented. Until the new NAAQS are implemented and stations become operable across the country, in parallel,~~ there is an urgent need to fill the knowledge gap in terms of local emissions of PM_{2.5} and BC.

A set of recommendations has been proposed by the General Assembly of the World Medical Association (WMA) in 2014, including: a) monitoring and limiting the concentrations of nanosize BC particles in urban areas, b) building professional and public awareness of the hazard of BC and the existing methods of eliminating the particles, c) developing strategies to protect people's exposure to BC in motorized transport, homes and in the general environment (World Medical Association, 2014). In line with WMA's guidance, the present work is the result of a two-year project entitled ParCur ("Particles in Curitiba"), conducted in Curitiba, the capital city of the state of Paraná. The ParCur project has formed part of a bilateral cooperation between Brazil and Sweden. In line with the SDG objectives, as well as with SLCF reduction initiatives such as the Climate and Clean Air Coalition (CCAC), Sweden supports bilateral cooperation with specific countries within environmental protection, climate change, and sustainable development.

ParCur gathered experts from Brazil and Sweden, local stakeholders and end users. As far as we know, this is an **innovative pioneering** study in South America with the integration of fixed and mobile high spatio-temporal resolution PM_{2.5} and BC measurements, the development of emission inventories and the implementation of modelling tools at different spatial scales for validating the emissions and to determine the spatial distribution of pollutant concentrations across the city.

2 Method

2.1 Study area

Curitiba is located in Southern Brazil on a plateau at approximately 900 m above sea level and at a distance of 110 km from the Atlantic Ocean. The Curitiba municipality has an estimated population of 1.9 million inhabitants. From the urbanistic standpoint, the Serete Plan, created in 1964 and implemented in the 1970's, was the backbone of the development plan that shaped the city's current structure and morphology (Santos, 2014). This plan organized the municipality using the triad: public transportation, land use, and road system, which led to the creation of the structural axes or transport corridors, some dedicated to the Bus Rapid Transit (BRT) system which was pioneered in Curitiba. An important feature of the city's planning is the separation of the industrial areas from the city center, located in the southwest, downwind of the dominating northeasterly winds.

The official air quality monitoring network is managed by the Environmental Institute of Paraná (IAP) and consists of four automatic stations within the municipality of Curitiba: Boqueirão (BOQ), Cidade Industrial (CIC), Ouvidor Pardiniho (PAR), Santa Cândida (STC) and four in the industrial area of the nearby city of Araucária. An analysis of PM₁₀ and NO₂ data from the official monitoring network was performed for the three year period 2013 to 2015. The objective was to describe the general pollution levels, extreme values and seasonal variability inside the Curitiba municipality, for a period close to the campaign performed as part of this project in 2016, i.e., for conditions with similar urban emissions.

The air quality in Curitiba is affected by emissions generated inside the city and by sources located outside in the Paraná state and in other parts the continent. An observational and modelling study conducted by Rosário et al. (2013) showed that smoke plumes generated during the biomass burning season in northern and central Brazil (August–October with and peak activity in September) reached the southern states, including the Curitiba region.

2.2 Study design

A combination of measurements and dispersion modeling was used to assess and map PM_{2.5} and BC concentrations in Curitiba. ~~The modeling had two purposes: validating the emission inventory through comparisons with measured data at a few stations, and obtaining a spatial distribution of the PM_{2.5} and BC concentrations over the city. The comparison of monitored data and model output can be used for microenvironments impacted by one dominating source to allow an *in situ* determination of the emission factors, in this case for vehicles driven in the city.~~

The full assessment included the following components (see map in Fig. 1):

1. Analysing the NO₂/NO_x and PM₁₀ concentrations collected between 2013 and 2015 at the four IAP official monitoring sites in Curitiba: PAR, BOQ, STC and CIC (the monitoring network also includes stations outside Curitiba, however they were not used for comparisons with model output since the high resolution modelling only covered the Curitiba municipality).
2. Developing an emission inventory for the city and the state of Paraná.
3. Performing field campaign at two fixed sites (Fig. 1 left) aimed at:
 - a) monitoring of NO_x, PM_{2.5} and BC concentrations within a street canyon (Marechal Deodoro, hereafter MD) in the city center at two levels above ground: street (height of 5 m, hereafter ‘MD street’) and rooftop (height of 70 m, hereafter ‘MD roof’).
 - b) monitoring of PM_{2.5}, BC, EC (elemental carbon) and OC (organic carbon) concentrations in a residential area (Sítio Cercado, hereafter SC) located 13 km from the city center, and 750 m from the heavily trafficked road BR-376, which is part of Curitiba’s ring road (‘Contorno’ as local designation).
4. Performing a monitoring campaign with instruments on-board bicycles to measure PM_{2.5} and BC concentrations along different types of roads in the city center (see Fig. 1, right).

5. Implementing dispersion models at the regional, urban and street canyon scales to support the interpretation of the monitored data inside the Curitiba municipality.
6. Consolidating the street canyon data and model output to obtain real-world emission factors for PM_{2.5} and BC for road transport in Curitiba.
7. Using the regional and urban modeling, together with the monitored data, to conduct a source apportionment of PM_{2.5} and BC levels in the Curitiba municipality.

The modeling in a microenvironment – a street canyon – had the purpose to determine the impact on air quality levels by one dominating source, to allow an *in situ* determination of the emission factors, in this case for vehicles circulating in the city center. The comparison between measurements and model output was also extended to the urban background of the Curitiba municipality, comparing model results with the measurements in the city center and in a residential area, this in order to evaluate the emission inventory covering the Curitiba municipality, i.e., the area for which high resolution modelling was performed.

2.3 Emission inventory

The emission inventory developed for Curitiba considered PM_{2.5}, BC and NO_x for two major economic sectors: industries and on-road transport. ~~An attempt was made to collect data on the use of wood or coal by restaurants. However, the database gathered was incomplete in space, impeding the inclusion of this source in the emission inventory. Neither was it possible to obtain data on the residential use of wood stoves for cooking or heating; h~~However, municipal authorities informed that residential wood combustion should be minimal, at least in the city center.

Industrial emission values of NO_x, SO₂ and PM₁₀ from large industrial sources were compiled from the official regional inventory that covers the state of Paraná (IAP, 2013), while the Curitiba municipality provided data for the inner-city small scale industries. ~~Because~~ Since these industrial inventories only included PM₁₀ emissions, we assumed that 70% of the PM₁₀ emitted by the industries in and around Curitiba consisted of PM_{2.5} (Erlich et al., 2007). Information on industrial BC emissions was not available. All industrial emissions were treated as point sources with emissions coming out of a stack with characteristics given by the IAP inventory. The IAP inventory is based on a policy in which the industries are supposed to monitor themselves their own emissions and communicate to the official authorities. The IAP inventory reveals a concentration of sources in the southwest area of Curitiba, and in the neighbor city Araucária. Within the central parts of Curitiba there are just a few point sources, due to the urban planning of the 1970's and the creation of the Curitiba's Industrial Site located in the southwest region, moving almost all industries in the center to this new area downwind of the city according to the predominating winds. The Araucária city includes one of the biggest industrial sites of Brazil with a state-owned oil refinery together with several steel, cellulose/pulp and chemical industries.

Traffic emissions in Paraná state, but outside the city of Curitiba, were also extracted from the official regional inventory (IAP, 2013). Within the city, the emission calculations were split between public transport (buses) and private vehicle

emissions. Public transport emissions were calculated as line sources along the bus network, as facilitated by the municipality. Information on bus size, technology (Table 1), average daily distance travelled and average fuel consumed were obtained for each bus line. Together with the bus timetables, it was possible to describe the number of buses transiting a certain road link on an hourly basis. We used a relation between the Brazilian emission legislation PROCONVE and the European EURO classes (TransportPolicy.net, 2018a; 2018b), enabling the use of emission factors from the European HBEFA database (INFRAS, 2017), as listed in Table 2. We assumed an average bus speed of 50 km h⁻¹ and saturated traffic conditions. The bus types listed in Table 1 were aggregated into HBEFA bus classes with weights <15 ton, 15-18 ton, and >18 ton, respectively. Emission factors for bi-articulated buses were extrapolated using information on fuel consumption provided by the Curitiba municipality. BC emission factors were taken from [the European Environment Agency EEA](#) (EEA, 2016) as BC/PM_{2.5} fractions in the range 65-75%. The [PM and BC emission factors for buses using 100% biofuel lowers the PM and BC emissions were reduced](#) by 50%, according to the [findings published by the](#) U.S. Department of Energy (2018).

[Private vehicle emissions were calculated based on traffic volumes \(number of vehicles\) per road link \(in total 3061 road links, excluding smaller secondary roads\) for the morning and afternoon peak hours, acquired from Curitiba's travel demand model, which was created with the software VISUM. \(PTV GROUP, 2019\). VISUM is a macroscopic demand model which, based on socio-economic data and the transport network characteristics, estimates the number of trips per time period between all the defined origins and destinations within the modeled region and assign those trips to the network, resulting in the traffic volume on each link. The specific model for Curitiba was developed in 2014 and it was calibrated and validated based on traffic counts carried out on 80 different links of the road network. Private vehicle emissions were calculated based on traffic volumes per road link \(excluding smaller secondary roads\), simulated by the VISSIM model \(VISSIM, 2018\) for morning and afternoon peak hours.](#) Hourly variations of traffic volume over the day were taken from 230 speed instruments monitoring the speed of individual vehicles and aggregated to different profiles according to the day of the week: Monday-Thursdays, Fridays, Saturdays and Sundays (Fig. 2). The same daily profiles were used for all streets.

As for the fleet composition, a simplified assumption was made with three different compositions depending on the type of road. The following shares were adopted, as suggested by the traffic engineers at the Curitiba Municipality: for inner-city roads (as limited by the ring road): 93% cars, 5% utility vehicles and 2% trucks; for a few larger thoroughfares open for heavy-duty vehicles: 82% cars, 8% utility and 10% trucks; and for the ring road: 59% cars, 9% utility and 32% trucks. Table 3 shows the assumptions made on size and technology, together with emission factors taken from [EEA's emission inventory guidebook the European Environment Agency](#) (EEA, 2016). Utility vehicles and trucks were assumed to be diesel-fueled, while flex-fuel cars were running on gasoline as drivers' primary fuel choice due to favorable price. Stop-and-go emissions due to congestion or traffic lights were not considered. [It follows from the emission factors displayed in Table 3 that the most critical assumption is the percentages of diesel fueled LDVs and HDVs.](#)

[An attempt was made to collect data on the use of wood or coal by restaurants. However, the database gathered was incomplete in space, impeding the inclusion of this source in the emission inventory. Neither was it possible to obtain data](#)

on the residential use of wood stoves for cooking or heating. However, municipal authorities informed that residential wood combustion should be minimal, at least in the city center.

2.4 Monitoring campaign

Fixed-site measurements were conducted in the winter period July 25-August 24, 2016, when pollution levels are expected to peak (see Section 3.1 for further details). Mobile monitoring was performed on 10 selected days and times (morning and evening rush hours) between August 1 and August 14, 2016. PM_{2.5} monitoring was conducted with three types of instruments: a Harvard Impactor using cut-off 2.5 microns (deployed at street and rooftop levels of the canyon site), a MicroVol low volume air sampler (model 1100, Ecotech, Australia) at SC, and three DustTrak units (model 8520, TSI, USA), one deployed at SC and two units used for mobile measurements.

The Harvard Impactor collected PM_{2.5} samples on 37-mm teflon filters for gravimetric analysis with a 24-hour resolution. Daily integrated samples for gravimetric, EC and OC analysis were collected on 47-mm quartz fiber filters using the Ecotech MicroVol. The gravimetric analyses were performed following the NIOSH Method 5000 (NIOSH, 2003), while the EC and OC analyses were conducted at Stockholm University using the NIOSH temperature protocol (Birch, 2003). The PM_{2.5} output from the DustTrak instruments was calibrated with the gravimetric data from SC, yielding a correction factor of 1.92 ($R^2 = 0.77$), which was subsequently applied to correct all DustTrak outputs. This correction factor is within ranges reported by other studies conducted in urban areas, from 1.70 (McNamara et al., 2011) to 2.78 (Wallace et al., 2011).

Total BC concentrations at street and roof levels were measured with aethalometers (models AE42 and AE33, respectively, Magee Scientific, USA) operating at seven wavelengths (370, 470, 520, 590, 660, 880, and 950 nm) and with five minute time resolution. At SC and for the mobile measurements, BC concentrations were determined with microaethalometers (model AE51, AethLabs, USA) operating at the wavelength of 880 nm. These instruments use the wavelength-dependent absorption cross-section values provided by the instrument manufacturers to convert aerosol absorption coefficient into BC mass concentrations. In this study, a site-specific absorption cross section of $18.39 \text{ m}^2 \text{ g}^{-1}$ was determined at SC by correlating daily mean aerosol absorption coefficients with collocated EC concentrations ($R^2 = 0.96$). The BC data from the AE33 and AE42 instruments were determined using the absorption cross section provided by the manufacturer.

To supplement the datasets and support the modelling activities, high spatio-temporal BC and PM_{2.5} concentrations were collected on selected days and hours along prescribed routes using two retrofitted bicycles as sampling platforms, following the experimental design by Targino et al. (2016).

The passive sampling of NO_x at the roof and street level of the MD site was performed using Ogawa passive samplers (Hagenbjörk-Gustafsson et al., 2010) during two periods of 14 days each. The purpose of this NO_x measurement was to support the determination of local emission factors for vehicle emitted PM_{2.5} and BC.

2.5 Dispersion modeling

Dispersion modeling was performed at three spatial scales with three different models, all giving hourly data for the monitoring period from July 25 to August 24, 2016. The regional scale modeling was performed with the BRAMS 5.2 modeling system (Freitas et al., 2017), which includes an atmospheric chemistry transport model (CCATT) coupled on-line with a limited-area atmospheric model. For this specific experiment, the model was configured to simulate aerosol emission, transport and ~~its effects~~ (dispersion ~~option~~) during the campaign period. The BRAMS physical parameterizations were configured with Mellor–Yamada level-2.5 turbulence scheme (Mellor and Yamada, 1982) and Joint UK Land Environment Simulator (JULES) surface–atmosphere interaction model (Moreira et al., 2013). ~~To~~ For shortwave and longwave radiation schemes ~~was used~~ the Rapid Radiative Transfer Model for General Circulation Models (RRTMG) was used with 1200s frequency update of the radiation trend (Iacono et al., 2008). Finally the Grell and Freitas (2014) ensemble version for deep and shallow convection and the single-moment bulk microphysics parameterization from Walko et al. (1995) were used. The model was ~~used~~ applied over two domains: one covering large parts of South America with a grid ~~spatial~~ resolution of 50x50 km² (G1, Fig. 32, left) and nested down to a 10x10 km² grid resolution over the state of Paraná (G2, Fig. 32, left) with anthropogenic emissions taken from a South American inventory (Alonso et al., 2010). The emissions for the state of Paraná were updated with the vehicular and industrial inventory described earlier (IAP, 2013), except for BC and OC ~~that used for~~ which information from EDGAR-HTAP (Joint Research Centre, 2018) was used. The carbonaceous speciation BC and OC, from the HTAP database, is for South America the same as of Edgar V4.1 database, both at country and region level. Biomass burning sources were taken from the model 3BEM (Longo et al., 2009) and biogenic emissions of gases from MEGAN (Guenther et al., 2012). These emission fields were generated by the preprocessor PREP-CHEM-SRC (Freitas et al., 2011).

For the urban scale modeling, a Gaussian dispersion model was used over a 32x32 km² domain (Fig. 32, right) with a grid spacing ~~spatial resolution~~ of 200x200 m². This model is part of the Airviro system (Airviro, 2018) and incorporates a diagnostic wind model (Danard, 1977) that takes into account surface roughness ~~and~~ calculated over built-up areas as a function of building heights, with a maximum roughness of 0.7 m for the city center areas with the highest buildings. ~~so that the model output over areas with high buildings will reflect only the conditions at roof level (i.e., the urban background).~~ The wind model assumes that small scale winds can be seen as a local adaptation of large scale winds (free winds) due to local fluxes of heat and momentum at the surface. The free wind is estimated from a vertical profile at the location of a meteorological station, using scaled stability variables. For this application, the input meteorological data was measured at one location (MET station in Fig. 1, left) and the building heights are illustrated in Fig. 32, right. The regional model output could be directly added to the urban model without double-counting, since the sources within the Curitiba municipality were excluded in the regional model.

The street canyon simulations at the MD monitoring site were performed with the OSPM model (Berkowicz, 2000), one of the models available in the Airviro system. This street canyon model consists of two components: a plume model that

5 ~~simulates the direct contribution from vehicles and a box model that calculates the contribution from the recirculation part created by the vortex. This street canyon model consists of two parts, one direct plume model, following the estimated wind direction at the bottom of the street canyon. The second model part takes care of the contribution from the vortex like re-circulation created by the surrounded buildings and is calculated by a simple box model. Wind input data are taken from the~~
diagnostic wind model, assuming its output to represent the wind at roof level. Neutral stability is assumed within the street canyon. The OSPM model was only used to determine the air pollution contribution from local traffic inside the MD street canyon, to be compared to the measured increment from the roof to street level. Building heights and the dimensions of the street canyons were determined using 3D Lidar data provided by the Curitiba municipality. Private traffic volumes passing this station were estimated by municipal traffic experts as 24,075 vehicles per day, as an average over the week, composed
10 by 93% of cars, 5% light duty diesel vehicles and 2% heavy duty diesel trucks. The public transport consisted of 469 buses per day.

3 Results

3.1 PM₁₀ and NO₂ concentrations as registered by the official monitoring network

15 The highest PM₁₀ concentrations during the three year period between 2013 and 2015 were recorded at station CIC (Table 4, note the low data capture at this station), located close to the industrial area and the ring road, with both mean and maximum daily values within NAAQS for Brazil (50 and 150 µg m⁻³, respectively). The same applies to the NO₂ annual mean, for which the limit value is 100 µg m⁻³ and the maximum measured annual mean was 26.5 µg m⁻³ at station PAR, located at a square in the city center. Averaginged over the three years, all stations showed the highest values in August, which incentivized the PM_{2.5} and BC monitoring campaign of this study to be performed between July and August 2016.

20 The ratios of the mean PM₁₀ and NO₂ levels monitored at the official network during the monitoring campaign (~~in~~ July 25 - August 24, 2016) to their respective mean values in August of 2013, 2014 and 2015 were 70% for PM₁₀ at PAR, 50% for PM₁₀ at BOQ, and 47% for NO₂ at PAR and 86% for NO₂ at STC.~~;~~ ~~Unfortunately the while there were no PM₁₀ monitor at data reported from~~ station CIC was not in operation during the campaign period, however the NO₂ ratio at CIC was 76%. These listed ratios show considerably lower pollution levels during the field campaign, as compared to the average for this
25 period during the previous three years.

While the number of public buses in operation decreased ~~with~~ by 6% between 2013 and 2016, the official number of registered private vehicles in Curitiba shows an increase ~~by~~ of 4% (<http://www.detran.pr.gov.br>). Although the registered fleet does not necessarily equal the actual number of vehicles in circulation, it gives the best estimate of the private traffic tendency. Relating the industrial emissions, and despite the lack of data that could sustain an analysis of the trend, to the
30 authors' knowledge no significant changes occurred over the reported 4-year period. Therefore local emissions in Curitiba are likely not to have changed significantly from the period 2013-2015 to 2016 and the identified differences in pollution levels can most likely be attributed to variations in meteorological conditions and the long-range transported pollution

arriving to Curitiba. A comparison of meteorological conditions showed considerably more precipitation during August 2016 (163 mm) compared to what is expected at this time of the year based on a 30-year climatology (73 mm), while temperature, wind direction and speed were similar to what ~~has been was~~ registered ~~during in~~ the last 10-20 years (INMET, 20198).

3.2 BC, PM_{2.5} and NO_x concentrations measured during the 2016 campaign

5 On average, BC concentrations were the highest at street level (5.5 $\mu\text{g m}^{-3}$), followed by rooftop level (2.3 $\mu\text{g m}^{-3}$, representing urban background conditions), and 2.2 $\mu\text{g m}^{-3}$ at SC site. The mean street canyon increment, which is defined as the difference between street and roof levels, equaled 3.2 $\mu\text{g m}^{-3}$ and can be attributed to local traffic along the street canyon.

Fig. 34 shows the BC daily cycle in the city center with peak values occurring in ~~the rush hours of~~ the morning (ca. 10 $\mu\text{g m}^{-3}$) and evening (ca. 7 $\mu\text{g m}^{-3}$) ~~rush hours~~.

10 Fig. 54 summarizes the descriptive statistics of BC concentrations measured in the city center (street and rooftop levels in MD) and at the SC site. The urban background concentrations in MD roof were fairly similar to those recorded at the residential site (SC), while BC levels were raised inside the street canyon (MD street). Fig. 65 shows the strong co-variation of BC levels ($r = 0.68$ for hourly data) registered 13 km apart and also the peak values occurring both on weekdays and weekends. Note the high BC levels occurring during the two weekends of 6-7 and 13-14 August, not found during the
15 previous weekend 30-31 July. After analyzing the available air pollutant data for the two high peak weekends, as well as wind direction and speed, it seems ~~as that~~ it was the very low wind speed that made it possible for BC and PM emissions taking place inside or just outside the city, to be advected ~~in high concentrations~~ over the central (MD) and southern (SC) parts of the city. Although the available information does not allow the determination of the source (or the sources) ~~of the~~ ~~observed high concentrations~~, we can rule out the local traffic – which can be assumed to be a major ~~source contributor~~ to
20 BC levels during weekdays, but not during weekend nights - and long-range transport events from remote sources – which should raise the pollution levels in all stations in a more homogeneous way - as the main reason to the high peak values during the two weekends.

Fig. 76 displays boxplots of BC data gathered simultaneously in the city center with mobile monitoring and at street level at MD site. The median BC within the canyon was larger than the one obtained in the mobile samplings (5.5 and 4.0 $\mu\text{g m}^{-3}$,
25 respectively). However, the mobile data showed a larger variability ~~and extreme concentrations~~, with lower 5th percentile and larger 95th percentile, illustrating the heterogeneity of BC concentrations, i.e., the large variations in traffic intensity and street layout (ventilation) characterizing the biking routes across the city center.

Filter sampling of daily PM_{2.5} took place both at MD rooftop and street levels. At rooftop level, the mean PM_{2.5} value over the campaign period was 7.3 $\mu\text{g m}^{-3}$. However, the data measured at street level were affected by a technical failure and
30 could not be used. During the mobile monitoring with the ~~bike bicycles~~, two 15-min records from weekdays' morning and afternoon rush hours were obtained during stops at the MD street level station. Those data indicated a mean PM_{2.5} to BC ratio of 3. Using this scale factor on the BC data obtained at street level (mean concentration of 5.5 $\mu\text{g m}^{-3}$ over the period), a PM_{2.5} concentration of 16.5 $\mu\text{g m}^{-3}$ was estimated for the street level.

At the residential site SC, the gravimetric analysis of 17 filters yielded a mean ~~daily~~ PM_{2.5} concentrations of 36.2 µg m⁻³, of which 11.2 µg m⁻³ was OC and 2.6 µg m⁻³ EC. This means that the total carbon (EC+OC) contributed with 38% to the PM_{2.5} mass, and yielded a mean OC/EC ratio of 4.4. The mean ~~hourly~~ PM_{2.5} concentration as registered hour-by-hour by the DustTrak monitor during 25 days, after calibration against the 17 filter samples, was 25.3 µg m⁻³. The longer time period for the PM_{2.5} mean value obtained for the DustTrak monitor makes it more representative than the filter mean.

The NO_x concentrations at MD street site were 43 and 55 µg m⁻³ at roof level, and 105 and 122 µg m⁻³ at street level, for the two 14-day periods of the passive samplers. From this, the street canyon increment was determined as 62 and 67 µg m⁻³, respectively, for the two time periods.

3.3 Long-range transport as simulated by the regional model

10 The impact of sources outside the Curitiba municipality, including both nearby industrial sources in the Araucária municipality southwest of Curitiba, as well as remote contributions from the state of Paraná and the rest of the continent, was simulated by the regional model BRAMS 5.2 (see Section 2.5). Anthropogenic emissions, including the nearby industries, largely contributed to PM_{2.5} levels, while biomass burning presented a small impact (Table 5). Since the IAP inventory did not include BC emissions, the ~~seey~~ were taken from the coarse resolution global EDGAR-HTAP database. Consequently the
15 BC contribution from the industrial emissions just outside Curitiba is likely underestimated-very poorly described by the model.

3.4 Simulations of local traffic impact inside the street canyon

We ran the street canyon dispersion model OSPM separately for public transport and private vehicles for the period from July 25 to August 24, 2016, with output at the MD site. Table 6 shows the comparison of measured and simulated NO_x,
20 PM_{2.5} and BC impact of local traffic inside the street canyon, using emission factors from the literature (Tables 2 and 3). For NO_x, there was a relatively good agreement, but for both PM_{2.5} and BC the simulated impact-wasconcentrations were much lower than what the measurements indicated. Since uncertainties related to the meteorological data and model assumptions are equal for all three compounds, it is reasonable to assume that the larger uncertainties found for BC and PM_{2.5} are caused by uncertainties in the effective emission factors. In addition, for PM_{2.5}, there is a fraction related to road, tire and break
25 wear, which should be added to the exhaust emission factors used in the model simulation. To some degree the underestimated effective emission factors for ~~the~~ private vehicles may be related to fleet composition (for the public transport the fleet composition was known in detail). However, heavy duty vehicles that do not form part of the public transport are-have restricted circulation in the studied area, thus reducing this source of uncertainty.

Since BC measurements were available as hourly data, it was possible to perform a multiple regression analysis with
30 measured BC increment as dependent variable and the two simulated hourly time series of the contributions from buses and private traffic as independent variables. The regression analysis suggests that the public transport signal (bus impact) should be multiplied by a factor of 1.2 and the private traffic by a factor of 5. The regression, with a forced -demanding-zero

intercept, was based on 696 hourly data points from the monitored increment between roof and street stations, and from model output for the two simulations, yielding an adjusted R^2 of 0.78. Fig. 87 and the mean values of Table 7 show that with these corrected emission factors, the model output matches the measured street increment in the street canyon. With the assumed fleet composition, the effective BC emission factor for the mixed private vehicle fleet was corrected from 4 to 19 mg veh⁻¹ km⁻¹.

There were no hourly PM_{2.5} data to perform a similar regression analysis. However, scaling up the summed model output of the bus and private vehicle contributions to PM_{2.5} by a factor of 5 yielded a local contribution similar to the monitored street canyon increment.

3.5 Urban and regional simulations of PM_{2.5} and BC

The Gaussian urban model was applied with the corrected emission factors for the on-road vehicles, and the results were subsequently added to the regional LRT contributions. Table 8 shows the contributions at the two sites and Fig. 9 displays the mean spatial distribution of the simulated PM_{2.5} and BC concentrations. The emission inventory show local PM_{2.5} emissions from the transport sector (public and private together) within the urban model domain over Curitiba of 643 tons year⁻¹, which can be compared to 329-393 tons year⁻¹ from the smaller industries located inside the city and 1,600 tons year⁻¹ (calculated as 70% of officially reported PM₁₀ emissions) from the industrial Araucária area just southwest of the city. For BC, we estimated 18 tons year⁻¹ from public transport and 375 tons year⁻¹ from private traffic (no information was available on the industrial contribution).

4 Discussion and conclusions

4.1 Pollution levels in Curitiba in general

The information on PM₁₀ and NO₂ levels from the official monitoring network in Curitiba revealed mean annual PM₁₀ concentrations between 15 and 30 µg m⁻³, which are between the values presented in the WHO global assessment for high-income countries and for low- to middle-income countries in the Americas (see Fig. 3 in WHO, 2016). Comparatively, cities of the size of Curitiba in the Eastern Mediterranean and South-East Asia have much higher annual mean concentrations, spanning from 100 to 200 µg m⁻³.

The monitoring campaign was only a month long and planned to be representative of wintertime conditions in the southern hemisphere, when the highest pollution levels are usually observed. However, the meteorological conditions, and likely also a smaller contribution from long-range transport than usual, caused the PM₁₀ and NO₂ levels to be considerably lower during the 2016 field campaign, as compared to average concentrations in previous years. This indicates that monitored PM_{2.5} and BC concentrations reported for the 2016 winter month campaign could also have been lower than what is normally the case for the months of July and August, likely more comparable to annual mean values of full years as given by earlier studies. The urban background PM_{2.5} concentrations registered at the roof top in the city center (7.3 µg m⁻³) agreed reasonably well

with the $10.3 \mu\text{g m}^{-3}$ reported from a year-long measurement in 2014-2015 at the Federal University campus (Polezer et al., 2018), considering the fact that the station was located approximately 100 m from an interstate highway. Measurements conducted in 2007 and 2008 at the same location in the campus showed a slightly higher mean $\text{PM}_{2.5}$ concentration of $14.4 \mu\text{g m}^{-3}$ (De-Miranda et al., 2012; Andrade et al., 2012) possibly reflecting higher vehicular emissions at that time.

4.2 High $\text{PM}_{2.5}$ levels in the residential area (station SC)

At the residential station SC, the mean $\text{PM}_{2.5}$ concentration ($25.3 \mu\text{g m}^{-3}$) was significantly higher than in the urban background of the city center ($7.3 \mu\text{g m}^{-3}$). The existence of an additional local source of $\text{PM}_{2.5}$, not included in the emission inventory, can be deduced from the mapped $\text{PM}_{2.5}$ concentrations of Fig. 89 (left), which does not indicate any levels in the range of $20\text{-}30 \mu\text{g m}^{-3}$ around the SC station. The mean OC/EC ratio of 4.4 (range 3.3-9.0) found in $\text{PM}_{2.5}$ sampled at SC indicates that the dominant local emissions in this area were unlikely to originate from diesel traffic emissions along the nearby ring road, since the EC contribution for diesel vehicles can be expected to be larger than the OC part (Harrison and Yin, 2008). Comparatively, a monitoring campaign performed at four urban sites in São Paulo (Monteiro dos Santos et al., 2016) reported OC levels between 2.65 and $3.437 \mu\text{g m}^{-3}$ and EC levels between 6.14 and $1.50 \mu\text{g m}^{-3}$, yielding OC/EC ratios of 1.57, 1.88, 1.89 and 0.56. The lowest OC/EC was observed within a street canyon, suggesting a large contribution from diesel-fueled vehicles. Thus, the higher OC/EC ratio found at the Curitiba residential station, makes it unlikely that traffic emissions and the closeness to the ring road were the cause to the higher $\text{PM}_{2.5}$ levels. Instead, the high OC levels may indicate the presence of wood burning around the SC station. Curitiba municipality lacks information on such residential biofuel devices, but the staff operating the monitoring station occasionally reported the smell of wood smoke and noted the presence of several houses with small chimneys in the neighborhood.

4.3 BC levels in Curitiba

The simulated BC levels in the urban background, i.e., excluding street canyons and the immediate vicinity of the major roads, were fairly homogenous over the city (Fig. 98, right). Also the few existing measurement data points indicated a spatial homogeneity, with mean values just above $2.0 \mu\text{g m}^{-3}$ at the sites MD roof and SC reported in this paper and also at the university campus, considering the year-long dataset from 2014-2015 (Polezer et al., 2018). Within street canyons, the BC levels were locally raised (Johansson et al., 2017; Krecl et al., 2016) and also close to highways with diesel traffic (Andrade et al., 2012). Even if BC levels show to be spatially homogenous in the urban background, there were large temporal variations due to meteorological conditions, changes in the long-range contribution and likely due to some unidentified BC sources inside or just outside the city. The temporal evolution of BC levels at station MD and SC in Fig. 65 shows high BC levels at both stations during the second and third weekends of the monitoring campaign, however, considerably higher BC peaks were observed at the residential site SC. These enhanced BC peaks at the SC station may have

resulted from wood combustion in the vicinity of the SC station, even if the BC levels were not increased as much as the OC and PM_{2.5} levels.

The mean BC concentration of 5.5 µg m⁻³ observed at MD street level was similar to what was registered during weekdays in a Stockholm street canyon in 2006 (5.1 µg m⁻³). A later comparison in 2013 for the same site in Stockholm showed reduced levels (2.2 µg m⁻³) explained by technologically improved vehicles trafficking this street canyon (Krecl et al., 2017). This gives an indication of what is possible to achieve with regulations on vehicle technology.

4.4 Long-range contributions as assessed by the regional model

The regional model was used to estimate the long-range contributions of PM_{2.5} and BC to the city. The emission inventory of industrial sources in Paraná only included PM₁₀ emissions, which ~~required-motivated thean~~ assumption that 70% of those were in the fine particle size range. Table 5 thus gives the magnitude of the PM_{2.5} impact from industrial sources and also the PM₁₀ impact, which can be seen as an upper limit if all industrial PM emissions are found in the PM_{2.5} fraction. The regional model also indicated a rather small (0.5 µg m⁻³) contribution of biomass burning to PM_{2.5} in Curitiba for the monitoring campaign period. Unfortunately, the regional model did not have access to complete BC emission data, since the Paraná inventory of industrial emissions only covered PM₁₀. With only the large-scale global EDGAR-HTAP emissions, the BC and OC content in the long-range transported air arriving to Curitiba was ~~probably-clearly~~ underestimated by the model (see Section 4.7 for the discussion of measured versus simulated BC levels in the urban background of Curitiba).

4.5 Contribution to BC levels from local traffic

An important aim with the ParCur assessment in Curitiba was to determine the emission of PM_{2.5} and BC from sources inside the city. For that purpose, the street canyon measurements were used to evaluate in situ the emission characteristics of the vehicle fleet in Curitiba. With emission factors taken from the literature as input to the dispersion model, there was good agreement between the model outputs and the measured NO_x concentrations, but the BC increment within the street canyon was underestimated by a factor of 3 (Table 6). The OSPM model has been used and evaluated in many urban environments and an extensive comparison showed good results for NO_x (Ketzler et al., 2012). If assumed that the model gives reasonable results, then the good resemblance between simulated and monitored NO_x values indicates that the NO_x emission factors should be fairly accurate, but also that the BC emission factors are erroneous. With this as motivation, new emission factors for BC were determined through regression analysis. An interesting fact is that the regression analysis confirmed the magnitude of the BC emission factors of the buses, whose ~~fleet composition, age and equivalent Euro class we know in detail. This is a result that can be used in other Brazilian cities where the characteristics of the public bus fleet is equally known-in its details.~~ However, the regression pointed out a large underestimation (factor of 5) of the mixed private vehicle fleet emissions, for which the composition and technical status was much less known. A factor of 5 of difference in an

emission factor may be seen as a too large discrepancy. However, BC emission factors show a large scatter and both the original $4 \text{ mg veh}^{-1} \text{ km}^{-1}$ and the corrected $19 \text{ mg veh}^{-1} \text{ km}^{-1}$ for the mixed private vehicle fleet circulating through the MD street canyon fit into “real-world” emission factors reported in the literature. Through chasing individual vehicles, BC emission factors spanned from 10 to 32 mg BC km^{-1} for gasoline cars (Ježek et al., 2015), while for heavy-duty diesel vehicles they went from 53 mg BC km^{-1} (Park et al., 2011) to values 10-fold higher (Wang et al., 2012). An assessment of real-world BC emission factors performed in a street canyon in Stockholm (Krecl et al., 2017) for the year 2006 (when BC levels within the street canyon were similar to those reported for M. Deodoro in Curitiba) found a BC emission factor for gasoline cars of $11 \text{ mg veh}^{-1} \text{ km}^{-1}$, which is significantly higher than the $0.15 \text{ mg veh}^{-1} \text{ km}^{-1}$ used originally in the present study (Table 3) and can therefore justify the higher emission factor coming out of the regression. A lesson learnt for other

Brazilian cities is thus the necessity to assess local BC emission factors for the private vehicle fleet, using similar experiments as in Curitiba.

The boxplot comparison between mobile measurements of BC along the four biking routes/trajectories in the city center and the measured BC concentrations levels at the fixed MD street canyon station revealed the large heterogeneity in traffic rates and street layouts in the city center when compared to the a fixed site in a busy canyon street. The variability in traffic rates create differences in emission rates at microscale level (individual street canyons), and varying building heights will also influence the immediate dilution of air pollutants emitted by local traffic.

4.6 Contributions to PM_{2.5} levels from local traffic

For PM_{2.5}, which at the MD station was only measured as daily averages, it was only possible to compare the simulated total impact of all vehicles in the street canyon with the measured increment (i.e., the difference between the more polluted air in the bottom of the street canyon and the cleaner atmosphere at the rooftop). Also here the simulated PM_{2.5} contribution of the local traffic was largely underestimated when compared to the measured increment. For PM_{2.5}, contributions from non-exhaust particles generated by the vehicles are also expected, namely those consisting of wear particles from brakes and tires, together with wear of the street pavement itself, which were not included in the emission factors of Tables 2 and 3. However, since the aim was to estimate the total PM_{2.5} emissions, no separation was made between exhaust and non-exhaust PM_{2.5} originating from the traffic in Curitiba. Since it is not possible to perform a regression that can apportion the impact on PM_{2.5} of public transport and private vehicles (lack of hourly data), a general correction with a factor of 5 was applied to both buses and the mixed fleet of private vehicles.

~~The boxplot comparison between mobile measurements of BC along the four biking trajectories in the city center and the measured BC levels at the fixed MD street station revealed the large heterogeneity in traffic rates and street layouts in the city center when compared to a fixed site in a busy canyon street. The variability in traffic rates create differences in emission rates at microscale level (individual street canyons), and varying building heights will also influence the immediate dilution of air pollutants emitted by local traffic.~~

4.7 Spatial distribution of PM_{2.5} and BC over Curitiba (comparison between simulated and measured concentration levels)

A goal of the ParCur project was to map the annual concentrations of PM_{2.5} and BC over the city, identifying the contribution of local sources and the magnitude of the long-range transport. As indicated by Table 8, a complete picture has not been possible to achieve. For PM_{2.5}, the summed model output attained 5.1 µg m⁻³ compared to 7.3 µg m⁻³ measured in the city center. The missing 30% contribution could possibly be attributed to sources not included in the emission inventory (e.g. restaurants and residential sources), and also to underestimated particle mass in the regional model output (which did not include secondary aerosol formation). At the residential site, the simulated PM_{2.5} levels only covered 20-25% of the measured concentrations, indicating a strong local source not being included. As discussed earlier, there are indications of wood combustion taking place in this residential area on the city's outskirts, but not in its center.

For BC, the simulated concentrations constituted 56% of the measured concentrations in the city center and exactly half at the residential location. Most of this difference is likely due to a too low BC concentration in the simulated long-range contribution, since the official emission inventory for Paraná lacked industrial emissions of BC (e.g., those in Araucária just southwest of Curitiba) and the emission input had to be taken from the coarse global database EDGAR-HTAP. For the residential site, the existence of residential wood combustion would also contribute to increased BC levels. However, not as large as for PM_{2.5}, ~~this~~ since high OC/EC ratios are expected in fumes coming from wood combustion.

The few monitoring points and the short sampling period contributed to certain uncertainties in our conclusions concerning the PM_{2.5} and BC emissions and concentrations in Curitiba. For the city's inner core, the information from the fixed MD station and the mobile monitoring, supported by the model results, should together allow a good description of emissions and concentrations. However, the higher air PM_{2.5} and BC concentration indicated in the model output (Fig. 89) along the ring road "Contorno" and around the industrial area southwest of Curitiba, could not be verified by local monitoring and also included various methodological simplifications, such as the vehicle fleet composition, emissions from the industries, that makes the concentrations indicated for this area more uncertain. In connection to this problem, great uncertainty subsists in knowing the actual characteristics of the gross polluters, notably old trucks (Fig. 109) in transit through Curitiba's ring road. Many of them are not registered in the state of Paraná and, consequently, not taken into account in our inventory.

4.8 Lessons learnt from the Curitiba case study and its applicability for other Brazilian cities

The outcome of the monitoring campaign was positive for the BC part, whereas the PM_{2.5} sampling at the central street canyon station implied two difficulties. The major one was the technical problems that impeded the calculation of the increment from roof to street and the necessity of using BC data as a proxy for PM_{2.5}. Also, the fact that PM_{2.5} data had daily resolution made it difficult to separate public transport and private vehicles, which had different temporal variation during

the day. Since the determination of local emissions and their impact rely heavily on monitored data, it is fair to conclude that the BC results, both monitored and simulated, should be seen as more robust than the PM_{2.5} results.

This study highlights the need to develop emission inventories for PM_{2.5} and BC at local, regional and national levels that are currently missing in Brazil. Other local activities such as small combustion from backyard burning and wood burning appliances, and emissions from pizzerias, bakeries and steakhouses should be also considered in the inventories.

Data on airborne fine particle emissions and concentrations in cities are valuable to traffic and air quality managers, urban planners and landscape architects, health practitioners, researchers, and ultimately to legislators and decision makers. Most Brazilian cities lack this kind of information which hinders an accurate assessment of their ambient concentrations, the source apportionment and the potential health outcomes. Air quality monitoring networks with sufficient spatial coverage are unlikely to be available in Brazil in the near future. Hence, methods, instruments and models to identify air pollution hotspots and their sources are an urgent need to safeguard the population exposure to toxic airborne species. This paper, as a result of the Brazil/Sweden cooperation materialized in the ParCur project, addressed this gap taking Curitiba as case study. The integrated approach used in the study can be implemented in other Brazilian cities as long as an open data policy and a close cooperation between municipal authorities and academia can be achieved.

4.9 Summary of most important results from the experimental campaign:

- Local emission factors for BC were determined for on-road vehicles.
- BC emissions from local traffic contributed to about half of total levels in Curitiba, the remainder being predominantly caused by sources outside the Curitiba municipality. Typical urban background levels of BC concentrations were found around 2.0 $\mu\text{g m}^{-3}$, raising to > 5.0 $\mu\text{g m}^{-3}$ close in to central street canyons.
- Urban background PM_{2.5} concentrations levels in central Curitiba were 7.0-8.0 $\mu\text{g m}^{-3}$, doubling inside street canyons. In a residential area, concentrations three- to 3- four-fold4 times higher levels were observed, most likely due to local biomass or waste combustion.

5 Limitations

Some important limitations of this PM_{2.5} and BC assessment in Curitiba have been identified:

- Measurement campaign limited in time (one month) and space (two fixed stations and mobile measurements along four mobile routes covering an area of 4.8 km² measurements on bike): An attempt was made to relate the one month-long campaign data to the wintertime conditions observed during the three preceding preceding years, this in order to assess the representativity of our collected PM_{2.5} and BC data. The two fixed sites were well selected, however there is a need for future monitoring campaigns at additional locations (e.g., in the more polluted areas along the ring- road and towards the industrial zones just southwest of the Curitiba municipality).

- Technical failures during the campaign contributed to increased uncertainties in the PM_{2.5} assessment in the street canyon. Also here a future campaign could give more reliable information on emission factors for the Curitiba vehicle fleet.
- While the model input information for simulating the impact of public transport was very detailed and of high quality, there was a lack of information on fleet composition for the private vehicles circulating the road network.
- Lack of emission information on some local sources of potential importance (e.g. restaurants, residential wood combustion), as well as regional information on PM_{2.5} and BC emissions from the industrial sector.

10 Author contributions

L Gidhagen, P Krecl, A Créso Targino, R Godoi and J H Amorim have outlined the structure and draft texts of this manuscript. All co-authors have contributed with text revisions, technical details within their specific area of responsibility and the discussion of the results. The specific areas were: L Gidhagen (local dispersion models), P Krecl (monitoring fixed station Sítio Cercado), A Créso Targino (mobile monitoring), G Polezer and R Godoi (monitoring fixed station M. Deodoro), F Castelhana and F Mendonça (meteorological data and analysis), E Felix (monitoring passive samplers, filter weighting), Y Cipoli (mobile data collection and data analysis), F Malucelli (private traffic data as model input), A Wolf (public transport data as model input), M Alonso (regional dispersion model), D Segersson (emission inventory as model input), J H Amorim (design and execution monitoring campaign).

Funding sources

This study has been supported on the Swedish side by the Swedish Ministry of Environment and Energy, and from the Brazilian counterpart by the Federal University of Paraná, the Federal University of Technology of Paraná, the Federal University of Pelotas and the Municipality of Curitiba. The instrumentation for the mobile sampling was acquired with funds of grant 404146/2013-9 from the National Council for Scientific and Technological Development of Brazil (CNPq).

References

- AIRVIRO: system provided by Apertum, <https://www.airviro.com/airviro/> (last access 29 June 2018), 2018.
- Alonso, M. F., Longo, K. M., Freitas, S. R., Fonseca, R. M., Marecal, V., Pirre, M., and Gallardo, L.: An urban emissions inventory for South America and its application in numerical modeling of atmospheric chemical composition at local and regional scales, *Atmos. Environ.*, 44, 5072-5083, <https://doi.org/10.1016/j.atmosenv.2010.09.013>, 2010.

- Andrade, M. F., ~~de~~ Miranda, R. M., Fornaro, A., Kerr, A., Oyama, B., de Andre, P. A., and Saldiva, P.: Vehicle emissions and PM_{2.5} mass concentrations in six Brazilian cities, *Air Qual. Atmos. Health*, 5, 79-88, <https://doi.org/10.1007/s11869-010-0104-5>, 2012.
- Berkowicz, R.: OSPM – a parameterised street pollution model, *Environ. Monit. Asses.*, 65, 323-331, <https://doi.org/10.1023/A:10064483>, 2000.
- Birch M.E.: Elemental carbon (diesel exhaust): Method 5040, Issue 3, in: NIOSH manual of analytical methods, National Institute of Occupational Safety and Health, Cincinnati, OH, 2003.
- Bond, T.C., Doherty, S. J., Fahey, D. W., Forster, P. M., Bernsten, T., DeAngelo, B. J.,... Zender, C.S.: Bounding the role of black carbon in the climate system: A scientific assessment. *J. Geophys. Res. –Atmos.*, 118, 5380-5552, <https://doi.org/10.1002/jgrd.50171>, 2013.
- Burnett, R. T., Pope, A., Ezzati, M., Olives, C., Linn, S. S., Mehta, S., Cohen, A.: An integrated risk function for estimating the global burden of disease attributable to ambient fine particulate matter exposure, *Environ. Health Persp.*, 122, 397-403. <http://dx.doi.org/10.1289/ehp.1307049>, 2014.
- Chen, M., Zhang, H., Liu, W., and Zhang, W.: The global pattern of urbanization and economic growth: Evidence from the last three decades, *PLOS ONE*, 9, <https://doi.org/10.1371/journal.pone.0103799>, 2014.
- Cohen, A. J., Brauer, M., Burnett, R., Anderson, H. R., Frostad, J., Estep, K., et al.: ~~(2017)~~: Estimates and 25-year trends of the global burden of disease attributable to ambient air pollution: an analysis of data from the Global Burden of Diseases Study 2015, *Lancet*, 389, 1907-1918, [http://dx.doi.org/10.1016/S0140-6736\(17\)30505-6](http://dx.doi.org/10.1016/S0140-6736(17)30505-6), 2017.
- Danard, M.: A simple model for mesoscale effects of topography on surface winds, *Mon. Weather Rev.*, 99, 831-839, 1977.
- ~~De Miranda, R.M., Andrade, M.F., Fornaro, A., Astolfo, R., Andre, P.A., and Saldiva, P.: Urban air pollution: a representative survey of PM_{2.5} mass concentrations in six Brazilian cities. *Air Quality, Atmosphere and Health*, 5, 63-77, <https://doi.org/10.1007/s11869-010-0124-1>, 2012.~~
- EEA: EMEP/EEA air pollutant emission inventory guidebook 2016 – Category code 1.A.3b Road transport, Update Dec. 2016, <https://www.eea.europa.eu/publications/emep-eea-guidebook-2016/part-b-sectoral-guidance-chapters/1-energy/1-a-combustion/1-a-3-b-i> (accessed September 19, 2018), 2016.
- Ehrlich, C., Noll, G., Kalkoff, W.,-D., Baumbach, G., and Dreiseidler, A.: PM₁₀, PM_{2.5} and PM_{1.0} emissions from industrial plants – Results from measurement programmes in Germany, *Atmos. Environ.*, 41, 6236-6254, <https://doi.org/10.1016/j.atmosenv.2007.03.059>, 2007.
- Freitas, S. R., Alonso, M. F., Longo, K. M., Pirre, M., Marecal, V., Grell, G., Stockler, R., Mello, R. F., and Sanchez G. M.: PREP-CHEM-SRC 1.0: a preprocessor of trace gas and aerosol emission fields for regional and global atmospheric chemistry models, *Geosci. Model Dev.*, 4, 419-433, <https://doi.org/10.5194/gmd-4-419-2011>, 2011.
- Freitas, S. R., Panetta, J., Longo, K. M., Rodrigues, L. F., Moreira, D. S., Rosário, N. E., Silva Dias, P. L., Silva Dias, M. A. F., Souza, E. P., Freitas, E. D., Longo, M., Frassoni, A., Fazenda, A. L., Santos e Silva, C. M., Pavani, C. A. B., Eiras, D., França, D. A., Massaru, D., Silva, F. B., Santos, F. C., Pereira, G., Camponogara, G., Ferrada, G. A., Campos Velho,

- H. F., Menezes, I., Freire, J. L., Alonso, M. F., Gácita, M. S., Zarzur, M., Fonseca, R. M., Lima, R. S., Siqueira, R. A., Braz, R., Tomita, S., Oliveira, V., and Martins, L. D.: The Brazilian developments on the Regional Atmospheric Modeling System (BRAMS 5.2): an integrated environmental model tuned for tropical areas, *Geosci. Model Dev.*, 10, 189-222, <https://doi.org/10.5194/gmd-10-189-2017>, 2017.
- 5 Grell, G. A. and Freitas, S. R.: A scale and aerosol aware stochastic convective parameterization for weather and air quality modeling, *Atmos. Chem. Phys.*, 14, 5233–5250, <https://doi.org/10.5194/acp-14-5233-2014>, 2014.
- Guenther, A. B., Jiang, X., Heald, C. L., Sakulyanontvittaya, T., Duhl, T., Emmons, L. K., and Wang, X.: The Model of Emissions of Gases and Aerosols from Nature version 2.1 (MEGAN2.1): an extended and updated framework for modeling biogenic emissions, *Geosci. Model Dev.*, 5, <https://doi.org/10.5194/gmd-5-1471-2012>, 2012.
- 10 Hagenbjörk-Gustafsson, A., Tornevi, A., Forsberga, B., and Eriksson, K.: Field validation of the Ogawa diffusive sampler for NO₂ and NO_x in a cold climate. *J. Environ. Monit.* 12, 1315–1324, <https://doi.org/10.1039/b924615k>, 2010.
- Harrison, R. M., and Yin, J.: Sources and processes affecting carbonaceous aerosol in central England, *Atmos. Environ.*, 42, 1413-1423, <https://doi.org/10.1016/j.atmosenv.2007.11.004>, 2008.
- Iacono, M. J., Delamere, J. S., Mlawer, E. J., Shephard, M. W., Clough, S. A., and Collins, W. D.: Radiative forcing by long-lived greenhouse gases: Calculations with the AER radiative transfer models, *J. Geophys. Res.*, 113, D13103, <https://doi.org/10.1029/2008JD009944>, 2008.
- 15 IAP: Inventário estadual de emissões atmosféricas de poluentes (MP, CO, NO_x, SO_x) e proposta para revisão e ampliação da rede de monitoramento da qualidade do ar, Report from Instituto Ambiental do Paraná, 2013.
- INMET: Normas Climatológicas do Brasil – 1980-2010, <http://www.inmet.gov.br/portal/index.php?r=clima/normaisclimatologicas>, (last accessed ~~19 October~~ ~~January~~ 2019~~8~~), 2019~~8~~.
- Instituto de Energia e Meio Ambiente: 1º Diagnóstico da rede de monitoramento da qualidade do ar no Brasil, <https://iema-site-staging.s3.amazonaws.com/1-diagnostico-da-rede-de-monitoramento-da-qualidade-do-ar-no-brasil.pdf> (last accessed ~~1602~~ ~~January~~ ~~une~~ 2019~~8~~), 2014.
- 25 INFRAS: HBEFA Version 3.3 – Background documentation, available at: http://www.hbefa.net/e/documents/HBEFA33_Documentation_20170425.pdf (last accessed ~~19 January~~ ~~2019~~ ~~11 October~~ ~~2018~~), 2017.
- Janssen, N.A.H., Hoek, G., Simic-Lawson, M., Fischer, P., van Bree, L., ten Brink, H., ~~Keuken, M., Atkinson, R. W., Anderson, H. R., Brunekreef, B., and ---~~Cassee, F.R.: Black carbon as an additional indicator of the adverse health effects of airborne particles compared with PM₁₀ and PM_{2.5}, *Environ. Health Persp.*, 119, 1691–1699, <https://doi.org/10.1289/ehp.1003369>, 2011.
- 30 Ježek, I., Kutrašnik, T., Westerdahl, D., and Mocnik, G.: Black carbon, particle number concentration and nitrogen oxide emission factors of random in-use vehicles measured with the on-road chasing method, *Atmos. Chem. Phys.*, 15, 11011-11026, <https://doi.org/10.5194/acp-15-11011-2015>, 2015.

- Johansson, C., Lövenheim, B., Schantz, P., Wahlgren, L., Almström, P., Markstedt, A., ~~Ström~~, ~~Strömgren~~, M., Forsberg, B., and Nilsson-Sommar, J. N.: Impacts on air pollution and health by changing commuting from car to bicycle, *Sci. Total Environ.*, 584-585, 55-63, <https://doi.org/10.1016/j.scitotenv.2017.01.145>, 2017.
- Joint Research Centre: EDGAR – Emission database for global atmospheric research, <http://edgar.jrc.ec.europa.eu/htap.php> (last accessed ~~19 January~~ ~~September 19, 2018~~2019), 2018.
- 5 Ketznel, M., Jensen, S. S., Brandt, J., Ellermann, T., Olesen, H.R., Berkowicz, R., and Hertel, O.: Evaluation of the street pollution model OSPM for measurements at 12 streets stations using a newly developed and freely available evaluation tool. *Journal of Civil and Environmental Engineering*, *Civil & Environmental Engineering*, 11 pp. *Atmos. Pollut. Res.*, ~~7, 1022-1036~~, <https://doi.org/10.4172/2165-784X.S1-004>, 2012.
- 10 Krecl, P., Targino, A. C., Wiese, L., Ketznel, M., and ~~de Paula~~Corrêa, M. P.: Screening of short-lived climate pollutants in a street canyon in a mid-sized city in Brazil, *Atmos. Pollut. Res.*, 7, 1022-1036, <https://doi.org/10.1016/j.apr.2016.06.004>, 2016.
- Krecl, P., Johansson, C., Targino, A. C., Ström, J., and Burman, L.: Trends in black carbon and size-resolved particle number concentrations and vehicle emission factors under real-world conditions, *Atmos. Environ.*, 165, 155-168, <https://doi.org/10.1016/j.atmosenv.2017.06.036>, 2017.
- 15 Krecl, P., Targino, A. C., Landi, T.P, and Ketznel, M.: Determination of black carbon, PM_{2.5}, particle number and NO_x emission factors from roadside measurements and their implications for emission inventory development. *Atmos. Environ.*, 186, 229-240, 2018.
- Longo, K. M., Freitas, S. R., Setzer, A., Prins, E., Artaxo, P., and Andreae, M. O.: The Coupled Aerosol and Tracer
- 20 Transport model to the Brazilian developments on the Regional Atmospheric Modeling System (CATTBRAMS) – Part 2: Model sensitivity to the biomass burning inventories, *Atmos. Chem. Phys.*, 9, 2843–286, <https://doi.org/10.5194/acp-9-2843-2009>, 2009.
- McNamara, M.L., Noonan, C.W., and Ward, T.J.: Correction factor for continuous monitoring of wood smoke fine particulate matter, *Aerosol Air. Qual. Res.*, 11, 315-322, <https://doi.org/10.4209/aaqr.2010.08.0072>, 2011.
- 25 Mellor, G. L. and Yamada, T.: Development of a turbulence closure model for geophysical fluid problems, *Rev. Geophys. Space Phys.*, 20, 851–875, <https://doi.org/10.1029/RG020i004p00851>, 1982.
- Miranda, R.M. Andrade, M.F., Fornaro, A., Astolfo, R., Andre, P.A., and Saldiva, P.: Urban air pollution: a representative survey of PM_{2.5} mass concentrations in six Brazilian cities. *Air Quality, Atmosphere and Health*, 5, 63-77. <https://doi.org/10.1007/s11869-010-0124-1>, 2012.
- 30 Moreira, D. S., Freitas, S. R., Bonatti, J. P., Mercado, L. M., Rosário, N. M. É., Longo, K. M., Miller, J. B., Gloor, M., and Gatti, L. V.: Coupling between the JULES land-surface scheme and the CCATT-BRAMS atmospheric chemistry model (JULESCATT-BRAMS1.0): applications to numerical weather forecasting and the CO₂ budget in South America, *Geoscientific- Model Development*, 6, 1243–1259, <https://doi.org/10.5194/gmd-6-1243-2013>, 2013.

- NIOSH: US National Institute for Occupational Safety and Health - Methods 0500 & 5000. 4th. NIOSH, Cincinnati, OH, USA, 2003. NIOSH Manual of Analytical Methods, 2003.
- Park, S.S., Kozawa, K., Fruin, S., Mara, S., Hsu, Y.K., Jakober, C., Winer, A., and Herner, J.: Emission factors for high-emitting vehicles based on on-road measurements of individual vehicle exhaust with a mobile measurement platform, *J. Air Waste Manag. Assoc.*, 61, 1046-1056, <https://doi.org/10.1080/10473289.2011.595981>, 2011.
- Polezer, G., Tadano, Y. S., Siqueira, H. V., Godoi, A. F. L., Yamamoto, C. I., de André, P. A., Pauliquevis, T., Andrade, M. F., Oliveira, A., Saldiva, P. H. N., Taylor, P. E., and Godoi, R. H. M.: Assessing the impact of PM_{2.5} on respiratory disease using artificial neural networks. *Environmental Pollution*, 235, 394-403, <https://doi.org/10.1016/j.envpol.2017.12.111>, 2018.
- PTV GROUP, home page of the PTV GROUP, provider of traffic model VISUM: <http://vision-traffic.ptvgroup.com/en-us/products/ptv-visum/> (last accessed 23 January 2019), 2019.
- Rosário, N. E., Longo, K. M., Freitas, S. R., Yamasoe, M. A., and Fonseca, R. M.: Modeling the South American regional smoke plume: aerosol optical depth variability and Surface shortwave flux perturbation. *Atmospheric Chemistry and Physics*, 13, 2923-2938. <https://doi.org/10.5194/acp-13-2923-2013>, 2013.
- Santos, E.: Curitiba, Brazil: Pioneering in developing Bus Rapid Transit and urban planning solutions, LAP Lambert Academic Publishing, 2014.
- Santos, D. A. M., Brito, J. F., Godoy, J. M., and Artaxo, P.: Ambient concentrations and insights on organic and elemental carbon dynamics in São Paulo, Brazil. *Atmos. Environ.*, 144, 226-233, <https://doi.org/10.1016/j.atmosenv.2016.08.081>, 2016.
- Targino, A. C., Gibson, M. D., Krecl, P., ~~Costa~~ Rodrigues, M. V. C., ~~dos~~ Santos, M. M., & ~~de Paula~~ Corrêa, M. P.: Hotspots of black carbon and PM_{2.5} in an urban area and relationships to traffic characteristics. *Environmental Pollution*, 218, 475-486. <https://doi.org/10.1016/j.envpol.2016.07.027>, 2016.
- Targino, A.C., and Krecl, P.: Local and regional contributions to black carbon aerosols in a mid-sized city in southern Brazil. *Aerosol Air Qual. Res.*, 16, 125-137, <https://doi.org/10.4209/aaqr.2015.06.0388>, 2016.
- TransportPolicy.net: <https://www.transportpolicy.net/standard/brazil-heavy-duty-emissions/> (last accessed ~~19 September 2018~~ ~~January 2019~~), 2018a.
- TransportPolicy.net: <https://www.transportpolicy.net/standard/brazil-light-duty-emissions/> (last accessed ~~19 September 2018~~ ~~January 2019~~), 2018b.
- United Nations Statistics Division: Global indicator framework for the Sustainable Development Goals and targets of the 2030 Agenda for Sustainable Development, 21 pp, https://unstats.un.org/sdgs/indicators/Global%20Indicator%20Framework%20after%20refinement_Eng.pdf, 2018 (accessed ~~19 January -September 18,~~ 20198).
- U. S. Department of Energy: Biodiesel vehicle emissions, https://www.afdc.energy.gov/vehicles/diesels_emissions.html (last ~~accessed~~ 18 September 2018), 2018.

VISSIM: software provided by PTV Group, <http://vision-traffic.ptvgroup.com/en-us/home/> (last accessed 29 January 2019), 2018.

Wallace, L.A., Wheeler, A.J., Kearney, J., van Ryswyk, K., You, H., Kulka, R.H., Rasmussen, P.E., Brook, J.R., and Xu, X.: Validation of continuous particle monitors for personal, indoor, and outdoor exposures, *J. Expo. Sci. Environ.*

5 *Epidemiol.*, 21, 49-64, <https://doi.org/10.1038/jes.2010.15>, 2011.

Walko, R. L., Cotton, W. R., Harrington, J. L., and Meyers, M. P.: New RAMS cloud microphysics parameterization. Part I: The single-moment scheme, *Atmos. Res.*, 38, 29–62, 1995.

Wang, X., Westerdahl, D., Hu, J., Wu, Y., Yin, H., Pan, X., and Zhang, K. M.: On-road diesel vehicle emission factors for nitrogen oxides and black carbon in two Chinese cities, *Atmos. Environ.*, 46, 45–55,

10 <https://doi.org/10.1016/j.atmosenv.2011.10.033>, 2012.

WHO: World Health Organization Review of Evidence on Health Aspects of Air Pollution—REVIHAAP Project, WHO Regional Office for Europe: Copenhagen, Denmark, available at :

http://www.euro.who.int/_data/assets/pdf_file/0004/193108/REVIHAAP-Final-technical-report-final-version.pdf (last
accessed 14 April 2019), 2013.

15 WHO: Ambient air pollution: A global assessment of exposure and burden of disease, WHO Library Cataloguing-in-Publication Data, 121 pp, available at: <http://www.who.int/phe/publications/air-pollution-global-assessment/en/> (last
accessed 19 January 4 April 2018 2019), 2016.

World Medical Association, WMA statement on the prevention of air pollution due to vehicle emissions. <https://pdf-it.dev.acw.website/please-and-thank-you?url=https://www.wma.net/policies-post/wma-statement-on-the-prevention-of-air-pollution-due-to-vehicle-emissions/&pdfName=wma-statement-on-the-prevention-of-air-pollution-due-to-vehicle-emissions> 2014 (last accessed 18 September 2018), 2014.

Zhang, Q., Qiu, Z., Chung, K.F.: Link between environmental air pollution and allergic asthma: East meets West. *J. Thorac. Dis.*, 7, 14–22, <https://doi.org/10.3978/j.issn.2072-1439.2014.12.07->, 2015.

25

Fig. captions

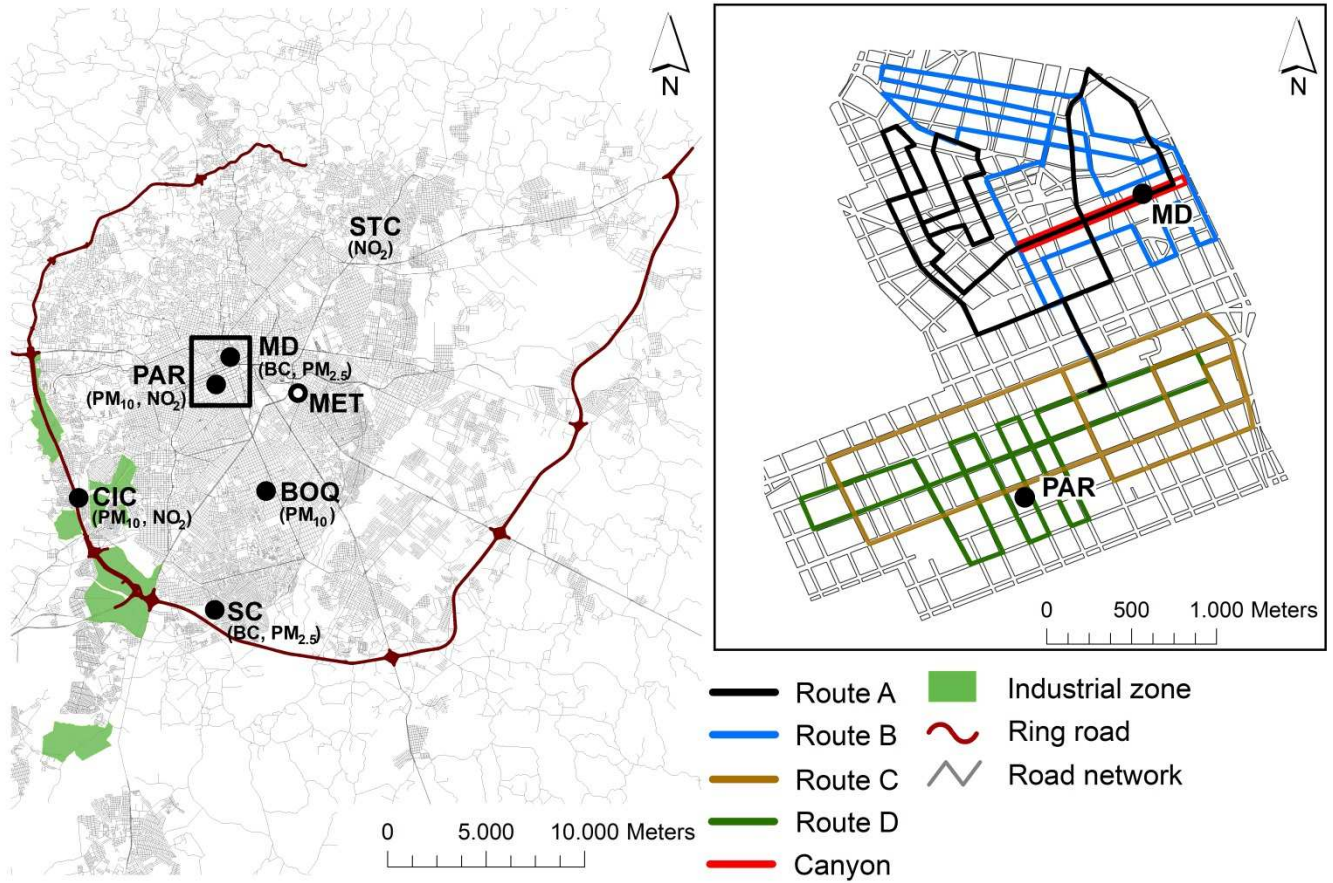


Fig. 1: Maps showing the location of: i) Left: the four official monitoring stations (CIC, PAR, BOQ, STC), the site in the residential area (SC), and the meteorological station (MET), ii) Right: the street canyon site (MD), and the four biking trajectories used for the mobile measurements.

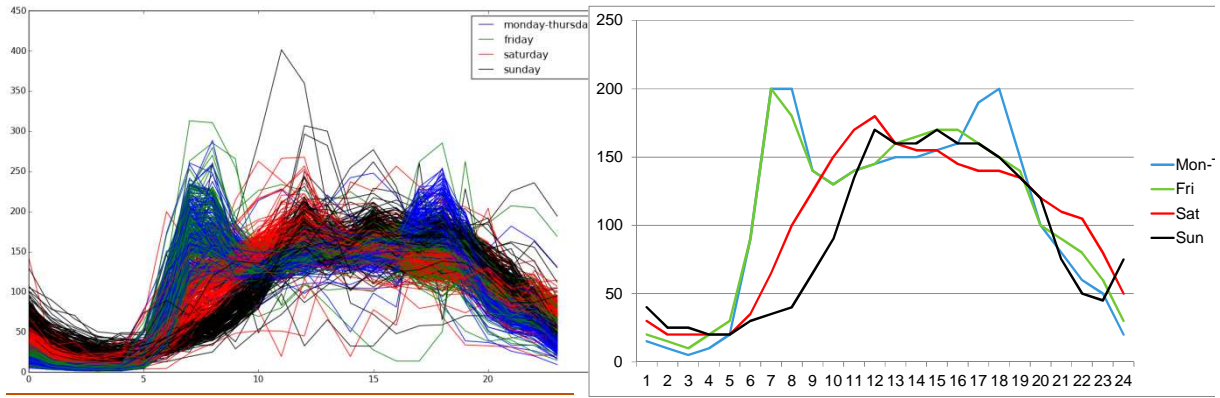


Fig. 2 Measured traffic volumes (veh h^{-1}) from the so called speed traps (speed radar data) at 230 locations in Curitiba. To the left raw data, to the right the aggregated time variations for different days of the week used in the dispersion modelling.

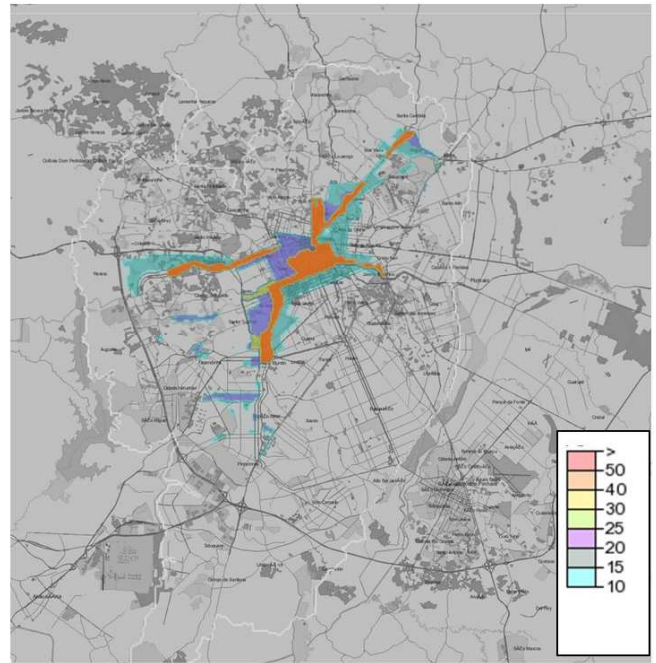
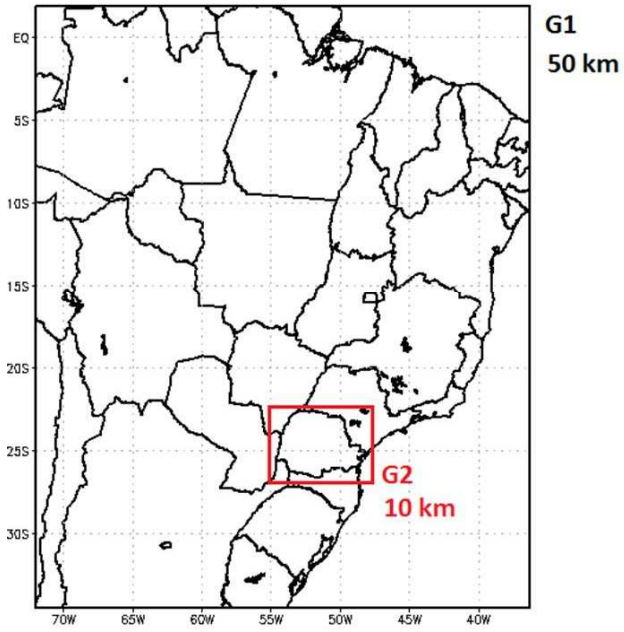


Fig. 23: Domains for the regional model (left) and the urban dispersion model (right). For the latter, building heights above 10 m are marked (right). Over the remaining built-up city areas the building height was set to 6 m.

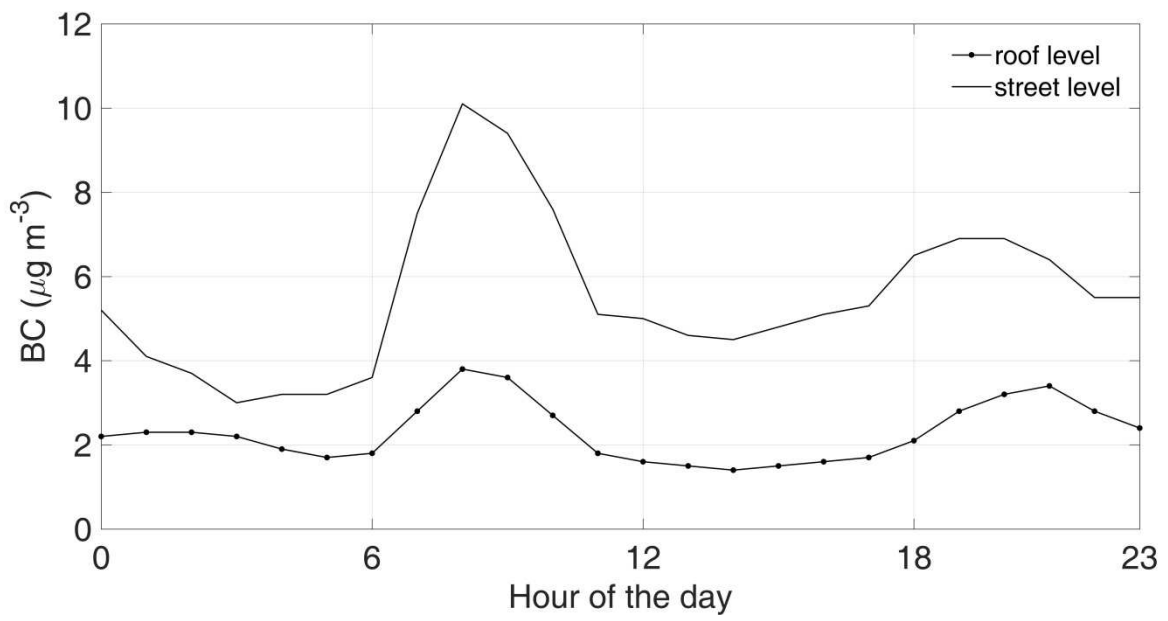
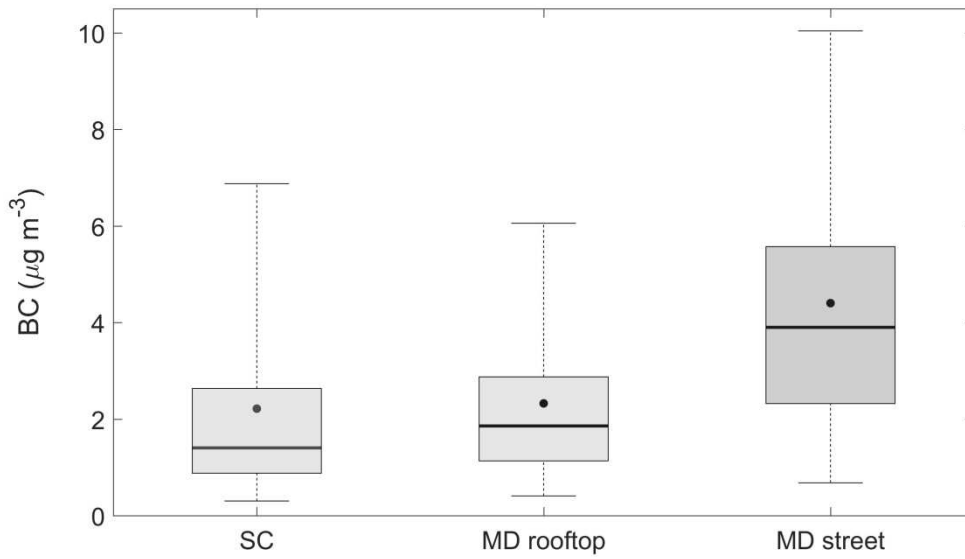


Fig. 34: Mean daily cycle of BC concentrations (at 880 nm wavelength) measured at roof and street levels at MD site. Period: July 25 – August 24, 2016 (all days of the week).

5



5 | **Fig. 45:** Boxplots of hourly BC concentrations measured at MD and SC sites in the period July 25 – August 24, 2016. The midline is the median, the upper and lower limits of the box are the 75th and 25th percentiles, the whiskers are the 5th and 9th percentiles, and the black dot is the mean.

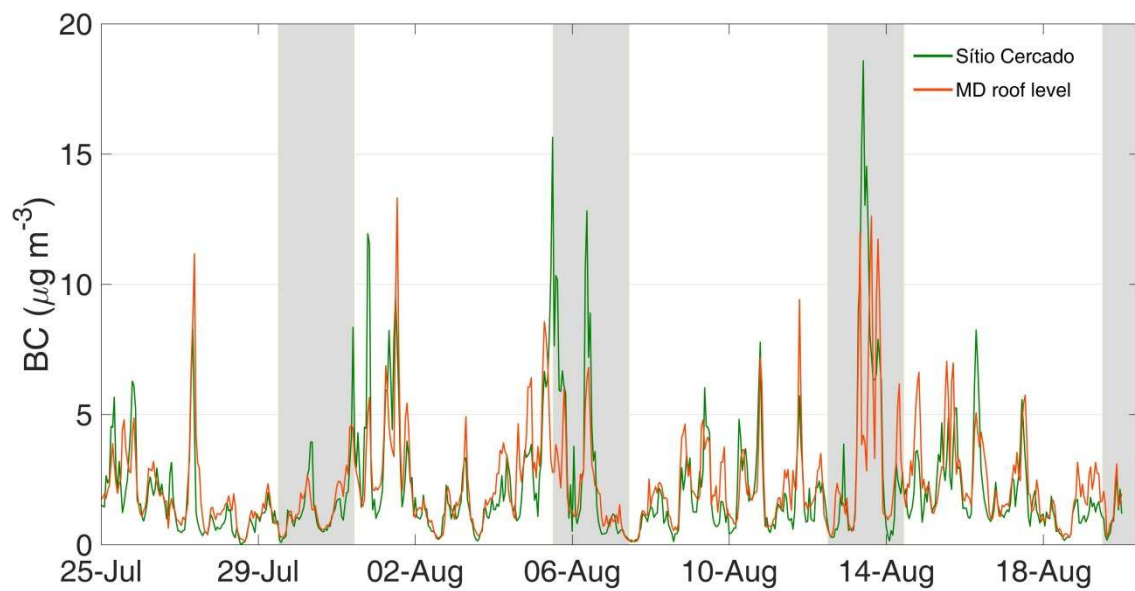


Fig. 56: Time series of hourly BC concentrations registered at MD rooftop and at SC from July 25 to August 20, 2016. The shaded areas represent the weekends.

5

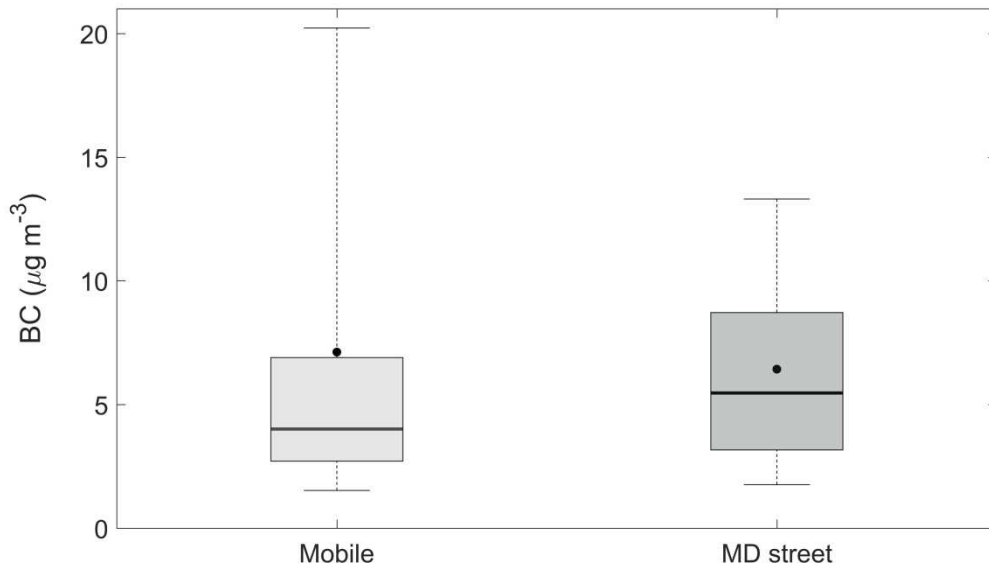


Fig. 67: Boxplot of BC data collected with mobile monitoring (10-s resolution) along the four biking routes and from 5-min concentrations simultaneously measured at MD street site. The midline is the median, the upper and lower limits of the box are the 75th and 25th percentiles, the whiskers are the 5th and 95th percentiles, and the black dot is the mean.

5

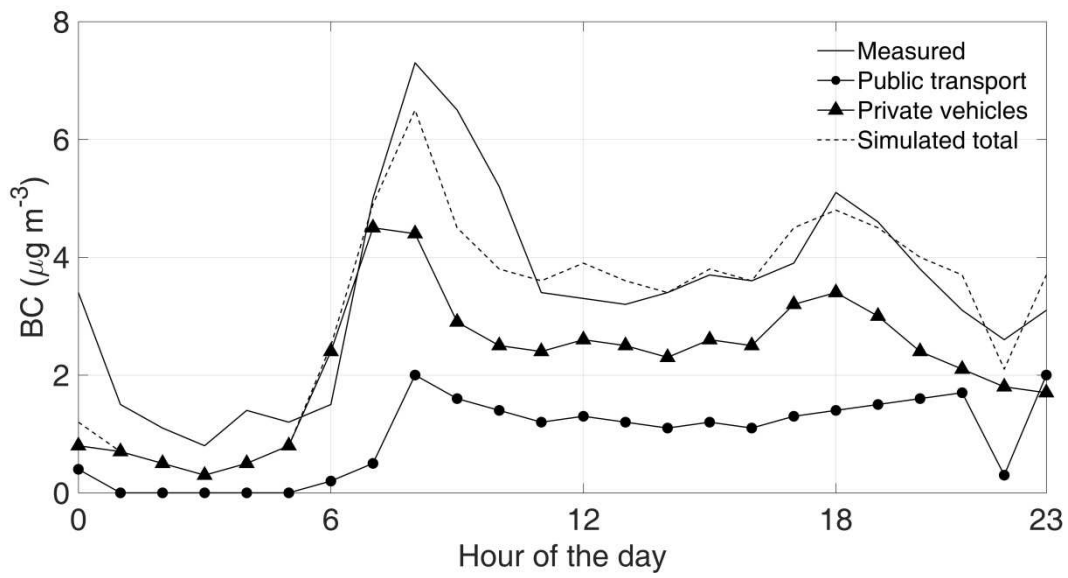
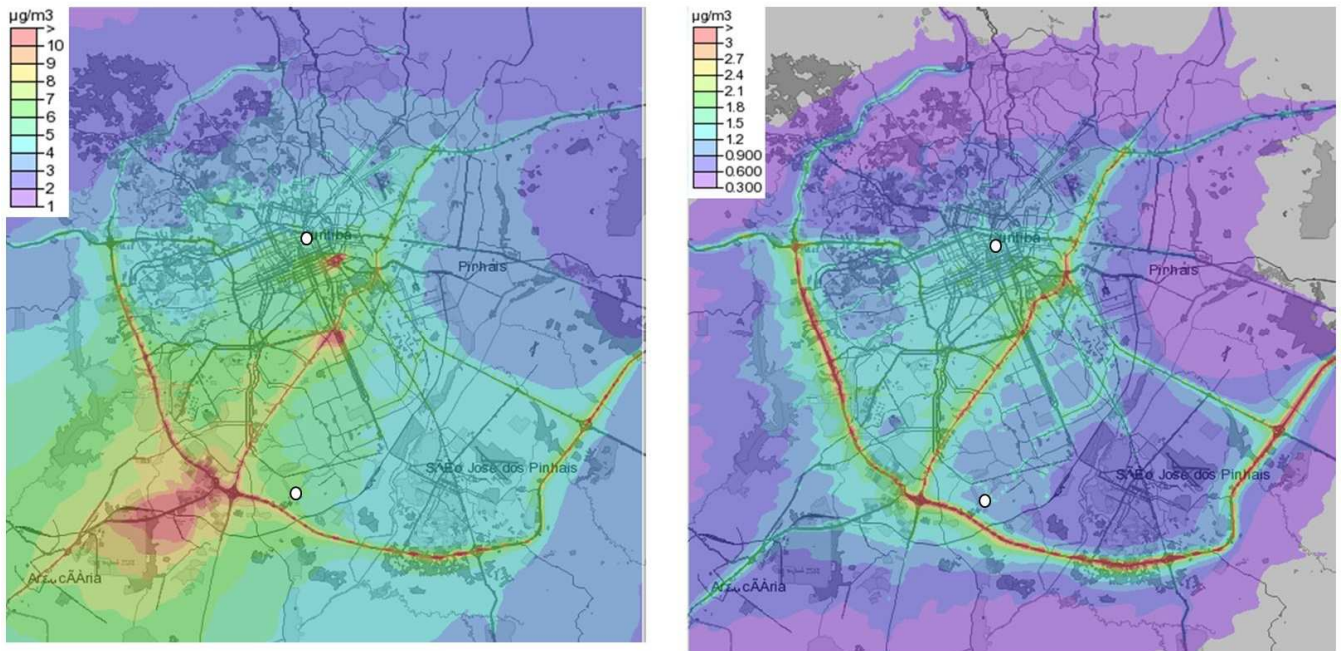


Fig. 78: Daily mean variation of measured and simulated BC contributions from local traffic at MD street site. The simulated impact was corrected with a factor of 1.2 for public transport and a factor of 5.0 for private vehicles.

5



5 | **Fig. 89:** Modelled mean concentrations of $PM_{2.5}$ (left) and BC (right) in the period from the 25th of July to the 24th of August, 2016. Regional (anthropogenic and biomass) and local (industry inside Curitiba, public transport and private vehicle impact) contributions were included. The city center (MD) and the residential (SC) stations marked as white circles.



Fig. 910: Photo of a truck circulating in Curitiba's ring road, illustrating the intense exhaust emissions.

Tables

Table 1. Number of buses in the public transportation system of Curitiba classified by type, technology and fuel type for the year 2016 (source: Municipality).

Bus type and length	Euro II diesel	Euro III diesel	Euro III biodiesel	Euro V Diesel	Euro V biodiesel	Total
Micro (8 m)	18	2	0	0	0	20
Special micro (10 m)	0	172	0	0	0	172
Common (12 m)	52	555	0	3	0	610
Semi-standard (13 m)	0	30	0	0	0	30
Standard (13 m)	9	328	0	0	0	337
Standard hybrid (13 m)	0	0	0	28	2	30
Articulated (18.6 m)	38	198	0	0	0	236
Articulated (20 m)	0	35	6	0	0	41
Bi-articulated (25/28 m)	54	92	26	0	0	172
Total	171	1424	32	31	2	1660

5

Table 2. Emission factors for public transport.

Bus classes	Technology	NO _x	PM exhaust		BC		Fuel cons.
		(mg veh ⁻¹ km ⁻¹)	diesel (mg veh ⁻¹ km ⁻¹)	biodiesel (mg veh ⁻¹ km ⁻¹)	diesel (mg veh ⁻¹ km ⁻¹)	biodiesel (mg veh ⁻¹ km ⁻¹)	(ml veh ⁻¹ km ⁻¹)
Micro	Euro II	9840	184	92	120	60	326
Standard	Euro II	13080	264	132	172	86	444
Articulated	Euro II	16380	373	187	242	121	568
Bi-articulated	Euro II	19438	443	221	288	144	674
Micro	Euro III	9020	171	86	120	60	344
Standard	Euro III	11740	237	119	166	83	463
Articulated	Euro III	14770	285	143	200	100	588
Bi-articulated	Euro III	17527	338	169	237	118	698
Micro	Euro V	6690	52	26	39	20	298
Standard	Euro V	8370	68	34	51	26	410
Articulated	Euro V	7750	81	41	61	30	535
Bi-articulated	Euro V	9197	96	48	72	36	634

5

Table 3. Emission factors for private vehicles were taken from the report by the European Environment Agency (EEA, 2016), where BC emission factors are expressed as percentages of PM_{2.5} emissions (see Table 3-91 in EEA, 2016). Cars had flex-fuel engines running predominantly on gasoline. Heavy duty vehicles (HDV) constitute a mix of emissions standards, here simplified to an intermediate technology of Euro III.

		NO_x (mg veh ⁻¹ km ⁻¹)	PM exhaust (mg veh ⁻¹ km ⁻¹)	BC (mg veh ⁻¹ km ⁻¹)	Fuel cons. (ml veh ⁻¹ km ⁻¹)
Gasoline cars	Euro 4	61	1	0.15	115
Diesel LDV, < 3 tons	Euro 4	831	41	36	95
Diesel HDV, 16-32 tons	Euro III	6270	130	91	250

Table 4. PM₁₀ and NO₂ concentrations from Curitiba's official monitoring network for the period 2013-2015. Unit: µg m⁻³.

Pollutant	Station	Mean	Hourly max	Daily max	Month with highest concentration	Data capture
PM ₁₀	PAR	15.1	180	86	August	91%
	CIC	30.3	326	120	August	43%
	BOQ*	14.5	197	90	August	88%
NO ₂	PAR	26.5	201	89	August	88%
	CIC	22.5	148	57	August	59%
	STC*	13.2	90	43	August	76%

* At BOQ only PM₁₀ was measured and at STC only NO₂.

Table 5. Contribution of long-range transported pollution (LRT) to MD in the city center and at the residential site SC. Period: July 25th to August 24th, 2016.

Emission sources		MD rooftop ($\mu\text{g m}^{-3}$)	SC ($\mu\text{g m}^{-3}$)
Anthropogenic including IAP inventory	PM ₁₀	2.4	4.3
Anthropogenic including IAP inventory	PM _{2.5}	1.7*	3.0*
3BEM biomass burning	PM _{2.5}	0.5	0.5
EDGAR-HTAP	BC	0.06	0.06
EDGAR-HTAP	OC	0.46	0.46

5 *The IAP inventory provided the PM₁₀ emissions, anthropogenic PM_{2.5} emissions were estimated as 70% of PM₁₀ (see Section 2.3).

5 **Table 6.** Comparisons between simulated and measured air pollutants from local traffic inside MD street canyon. Note that the measurements are reported here as street increments (given as the difference between street and roof level concentrations) to be comparable with the model output, which only gives the impact of the road traffic inside the street canyon.

Period		Measurements ($\mu\text{g m}^{-3}$)	Model simulation ($\mu\text{g m}^{-3}$)		
			Buses	Private vehicles	Total
29 th July – 12 th August, 2016*	NO _x	62	43	32	75
15 th July – 29 th August, 2016*	NO _x	66	40	29	69
25 th July – 24 th August, 2016	PM _{2.5}	9.3*	0.9	0.7	1.6
25 th July – 24 th August, 2016	BC	3.2	0.6	0.5	1.1

* PM_{2.5} increment estimated by using a PM_{2.5} to BC ratio of 3 at street level, based on mobile measurements (see previous comment of PM_{2.5} measurements at MD street site).

10

Table 7. Measured street increments and simulations of local traffic impact inside the canyon where the monitor station MD (street level) was located, after correcting the emissions factors.

Period	Measurements ($\mu\text{g m}^{-3}$)		Model simulation ($\mu\text{g m}^{-3}$)		
			Buses	private	Total
25 th July – 24 th August, 2016	PM _{2.5}	9.3			8.0*
25 th July – 24 th August, 2016	BC	3.2	0.8**	2.2**	3.0**

5 * Total simulated PM2.5 output of Table 6 corrected with a factor of 5.

** Bus impact of BC corrected with a factor of 1.2 and private traffic impact of BC corrected by a factor of 5.0, with values given by a regression analysis of hourly data.

Table 8. Simulated contributions of regional and local sources inside Curitiba (urban model output) to ambient concentrations at the MD rooftop and SC sites. Period: 25th July to 24th August, 2016. Unit: $\mu\text{g m}^{-3}$.

Contribution	model	MD roof (PM _{2.5})	SC (PM _{2.5})	MD roof (BC)	SC (BC)
Anthropogenic with IAP	regional	1.7	3.0	-	-
3BEM biomass burning	regional	0.5	0.5	-	-
Anthropogenic + biomass	regional	-	-	0.06	0.07
Industry inside Curitiba	urban	0.6	0.6	-	-
Public transport	urban	2.3*	1.8*	0.13	0.07
Private vehicles	urban			1.07	0.98
Summed model		5.1	5.9	1.27	1.11
Monitored		7.3	25.3	2.29	2.22

5 *The contribution could only be simulated as the sum of public and private traffic since the same correction factor was applied.