

Figure S1. a) Emissions monthly profile for East China from HTAP 2010, in Mt b) emissions monthly profile molar ratio compared to NH₃ emissions, from HTAP 2010.

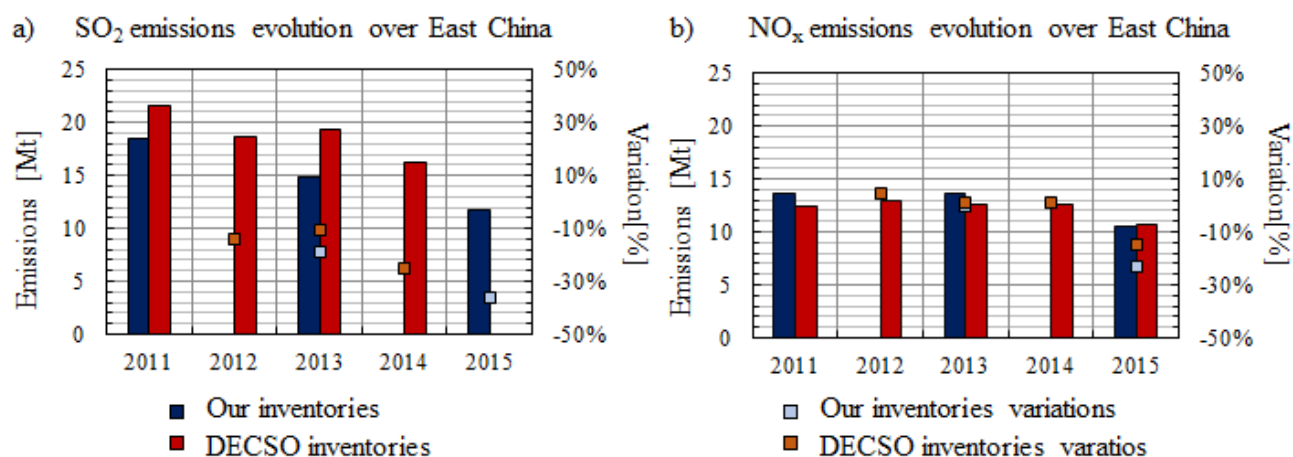


Figure S2. a) SO₂ and b) NO_x emission inventories comparison between our updated inventory and DECSO inventory, Over East China, not including maritime traffic.

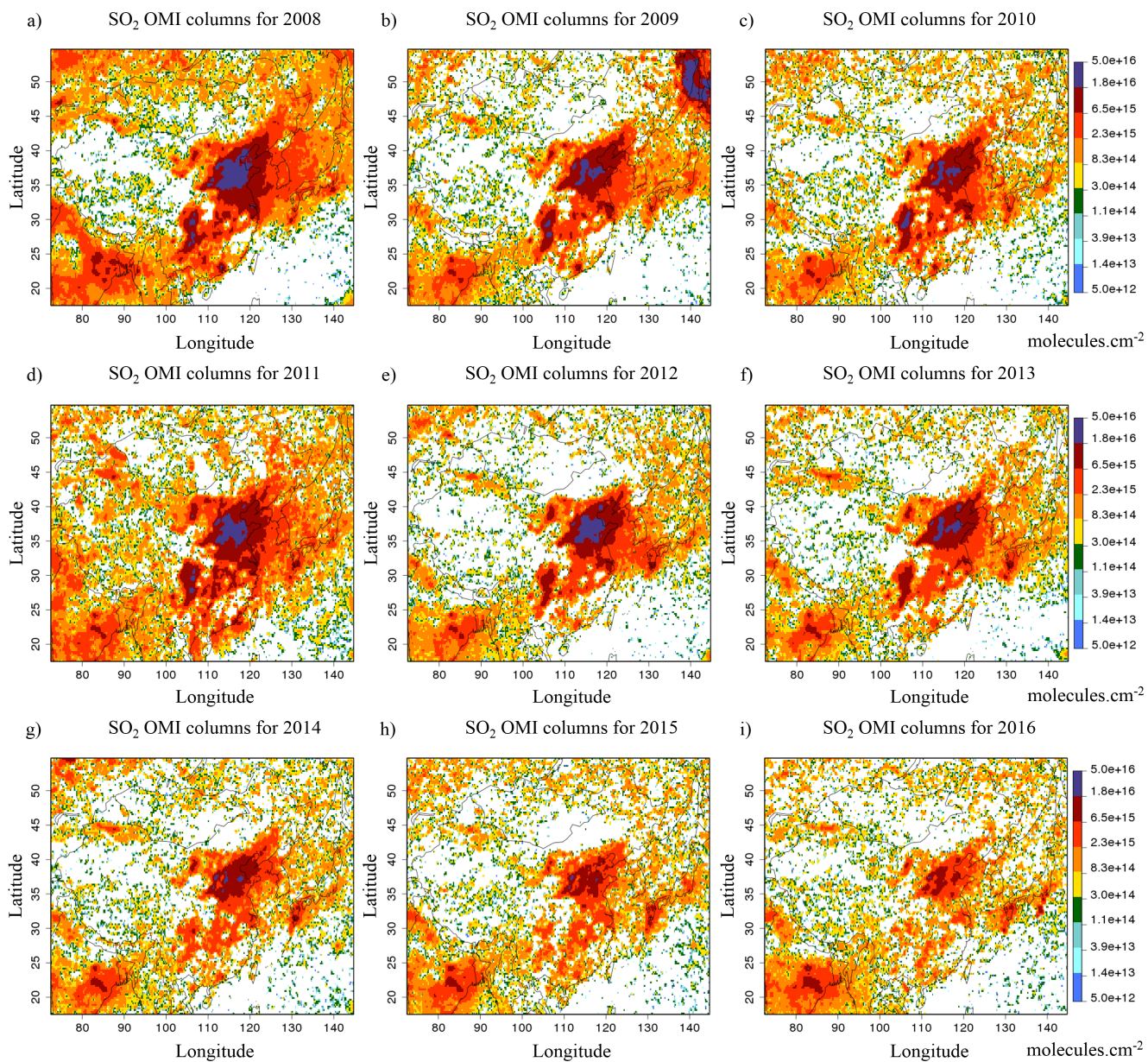


Figure S3. SO₂ columns evolution from OMI satellite, from 2008 to 2016, in molecules.cm⁻².

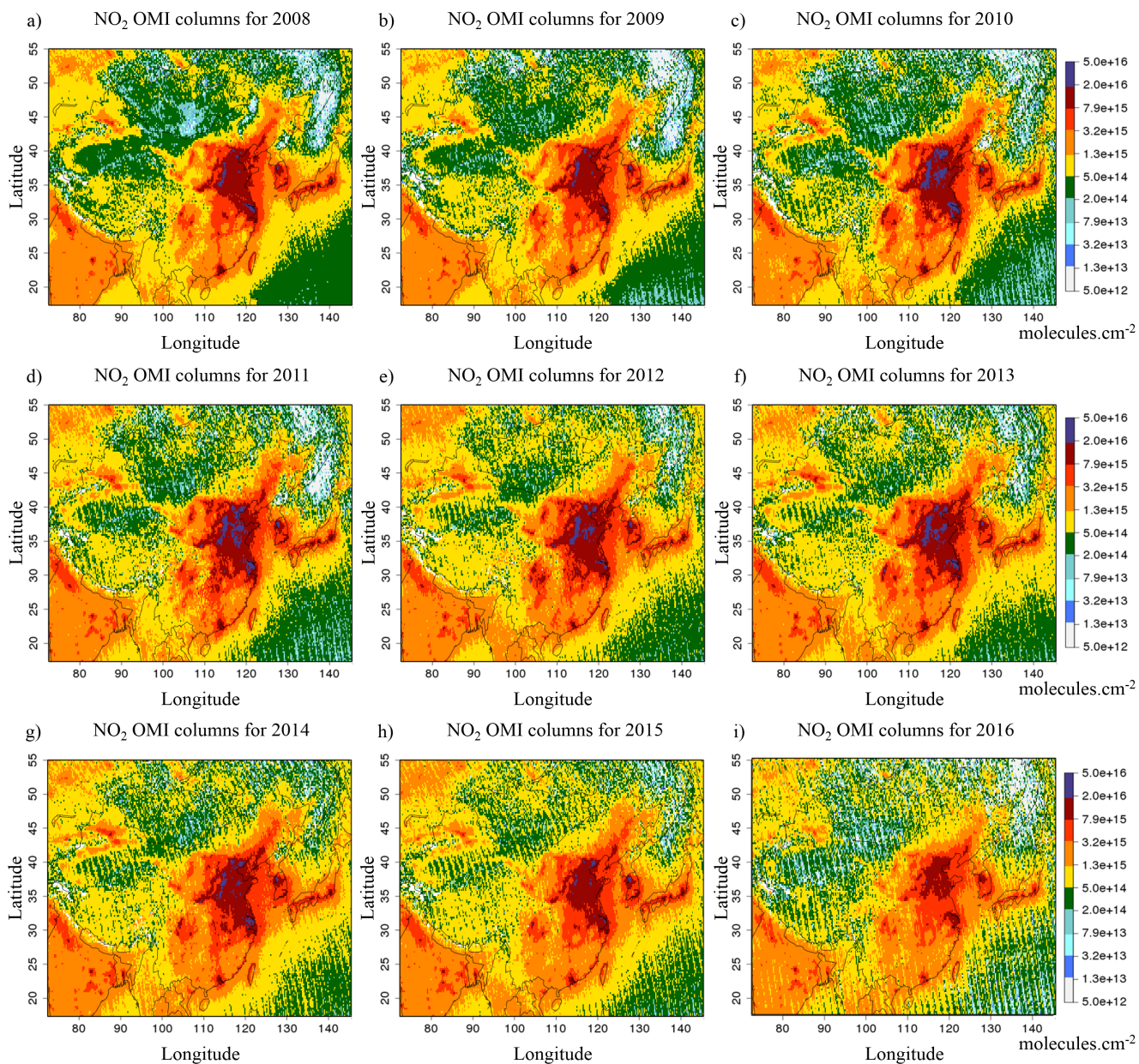


Figure S4. NO₂ columns evolution from OMI satellite, from 2008 to 2016, in molecules.cm⁻².

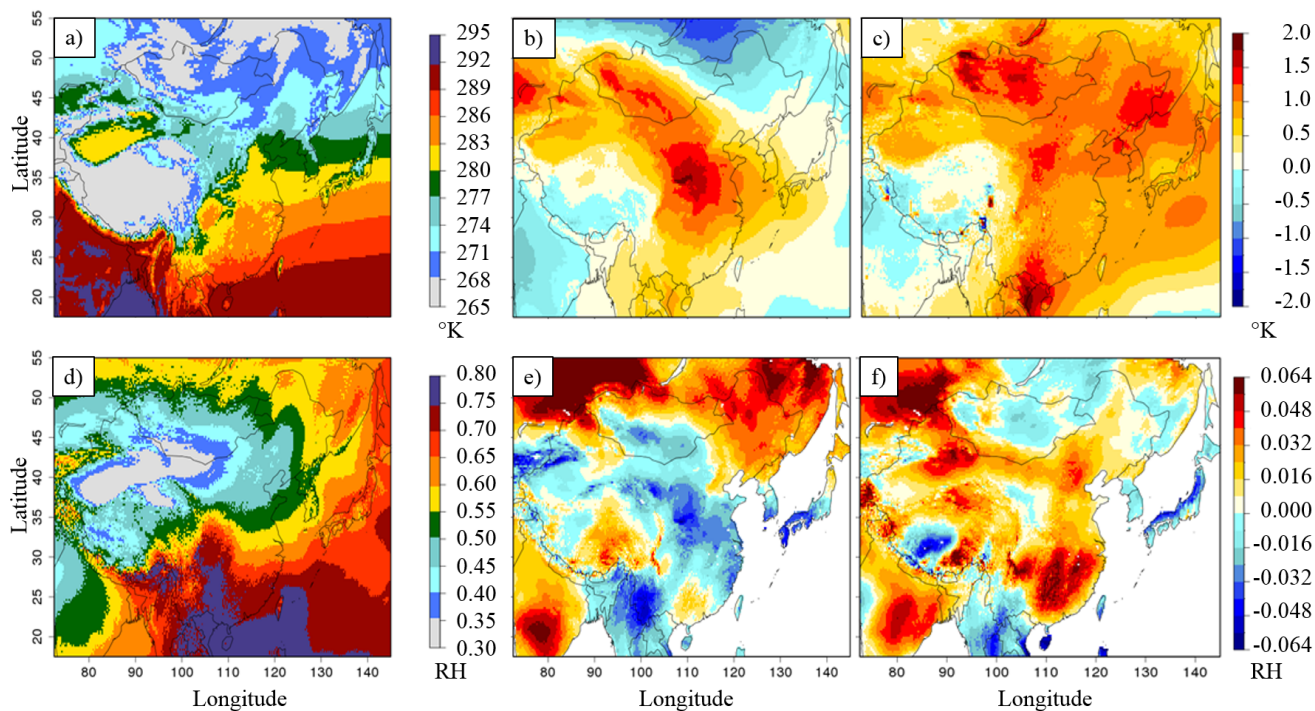


Figure S5. a) Annual mean temperature for 2011, b) annual mean temperature differences (2013-2011), c) annual mean temperature differences (2015-2011), d) annual mean RH for 2011, e) annual mean RH differences (2013-2011), f) annual mean RH differences (2015-2011).

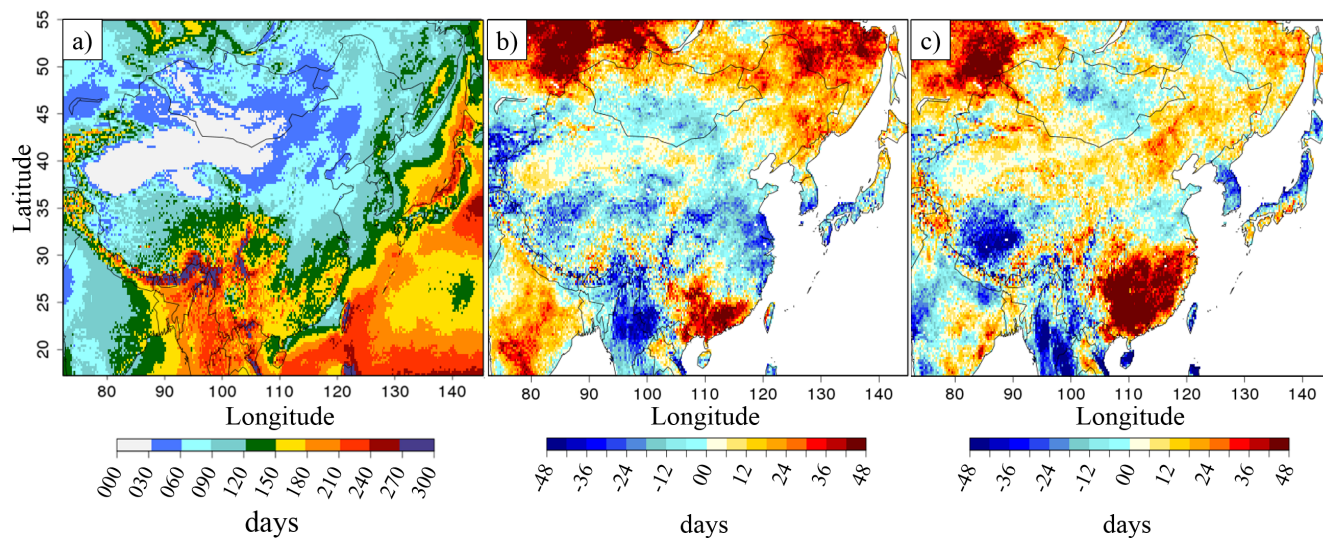


Figure S6. a) Annual rainfall frequencies (Rainfall > 1mm.day⁻¹) for 2011, b) annual rainfall frequencies differences (2013-2011), c) annual rainfall frequencies differences (2015-2011).

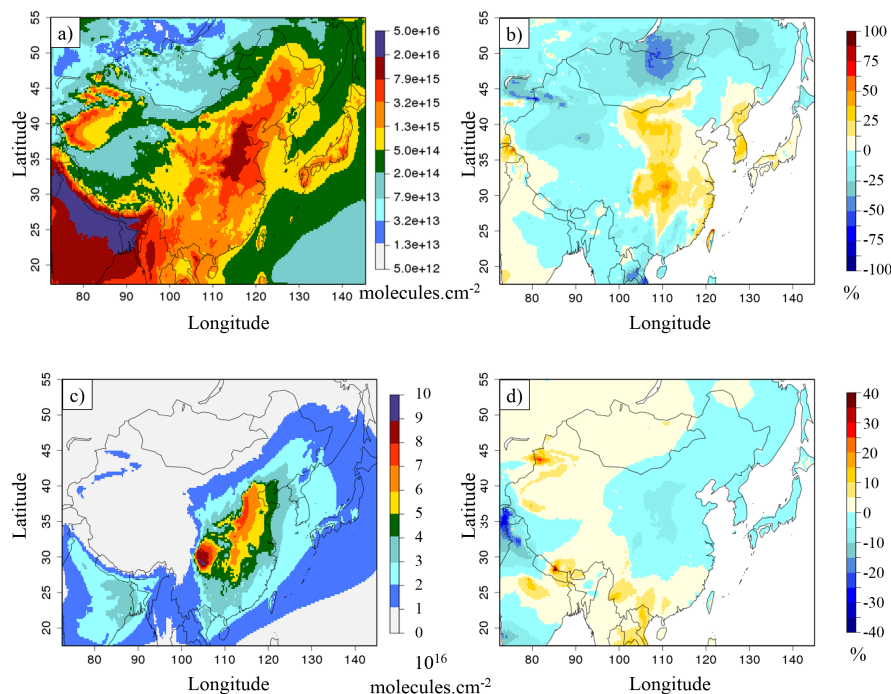


Figure S7. a) Ammonia columns in molecules.cm^{-2} for the simulation 2013A, b) relative differences of ammonium columns between the simulations from 2013C and 2013A, in % c) ammonium columns in molecules.cm^{-2} for the simulation 2013A and d) relative differences of ammonium columns between the simulations from 2013C and 201CA, in %.

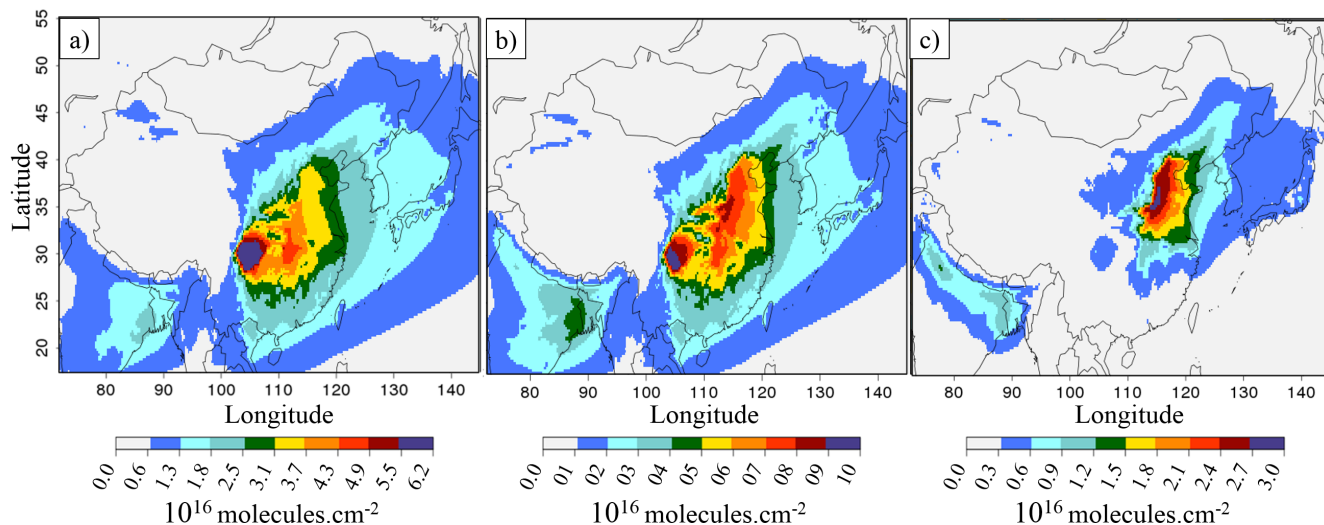


Figure S8. a) 2015A annual mean $\text{SO}_{4(\text{p})}^{2-}$ columns, b) 2015A annual mean $\text{NH}_{4(\text{p})}^{+}$ columns, c) 2015A annual mean $\text{NO}_{3(\text{p})}^{-}$ columns. Units in molecules.cm^{-2} .

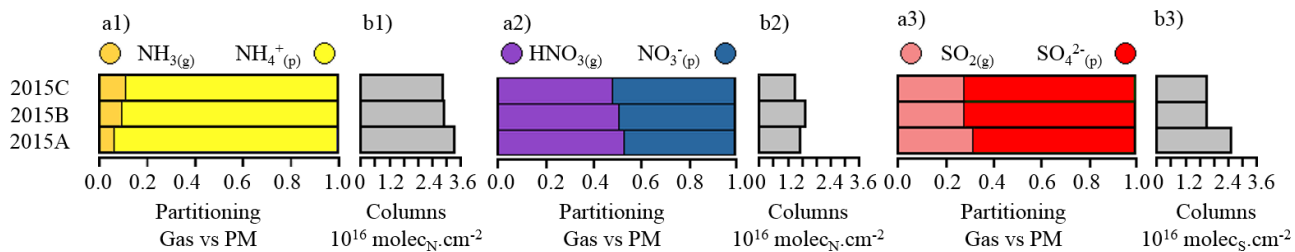


Figure S9. a) Molar partitioning between gas and the particulate phases over East China b) column means over East China in 10^{-9} molecules.cm⁻². 1) TA, 2) TN, 3) TS.

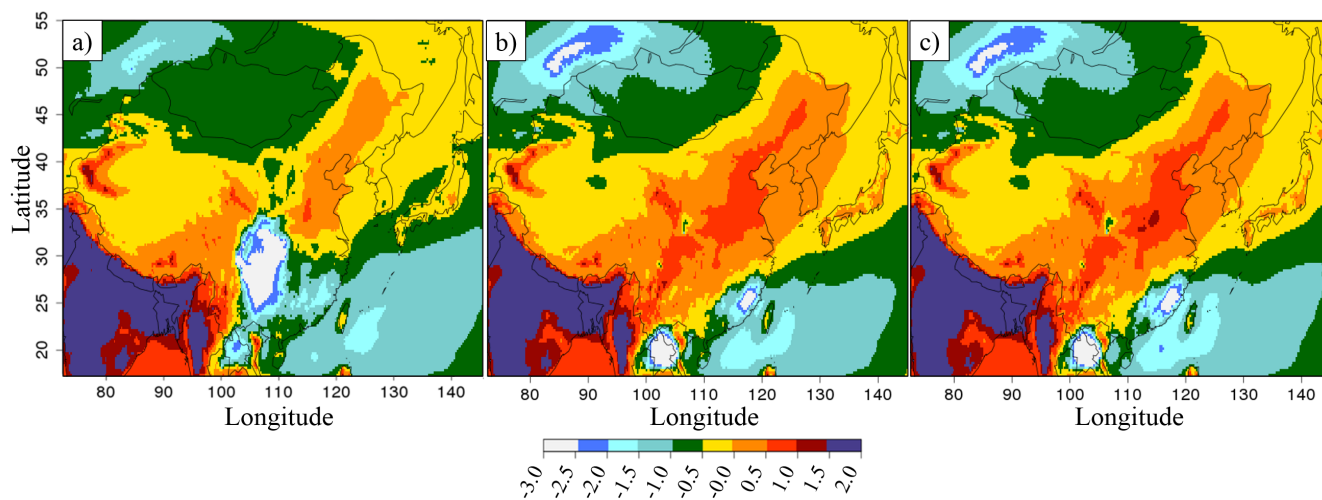


Figure S10. a) Annual G_{ratio} mean for 2015A, b) annual G_{ratio} mean for 2015B, c) annual G_{ratio} mean for 2015C.

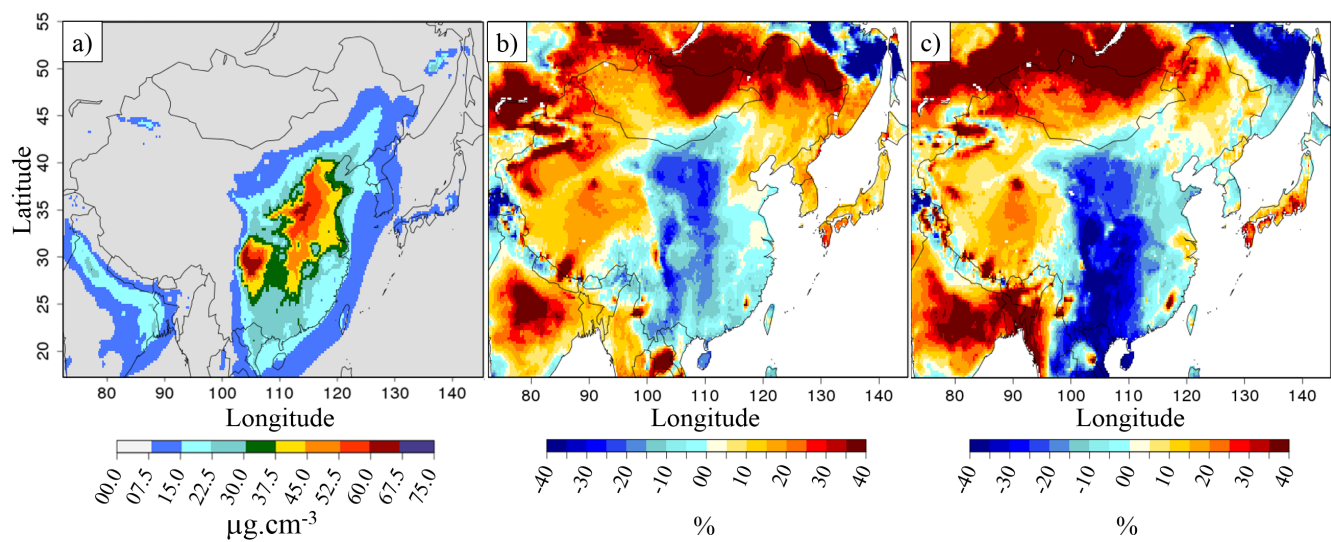


Figure S11. a) PM_{2.5}(pSNA) columns in $\mu\text{g.cm}^{-2}$ for 2011A b) relative differences of PM_{2.5}(pSNA) columns between 2013C and 2011A, in % and c) relative differences of PM_{2.5}(pSNA) columns between 2015C and 2011A, in %.