

Replies to reviewers: “The CAMS reanalysis of atmospheric composition” by A. Inness et al.

Please find our replies to the reviewers' comments in red below. At the end of this document is the difference between the originally submitted and the revised manuscript.

5 **Comment from P. Xian peng.lynch.ctr@nrlmry.navy.mil**

Great to see an up-to-date atmospheric composition reanalysis from ECMWF with temporally more consistent emissions!

To make the list of existing aerosol reanalyses more inclusive on Page 2 line 35-40, the Navy Aerosol Analysis and Prediction System (NAAPS) aerosol reanalysis product (covering 2003-2015) developed by the US Naval Research Laboratory, is suggested to be included.

10 Lynch, P., Reid, J. S., Westphal, D. L., Zhang, J., Hogan, T. F., Hyer, E. J., Curtis, C. A., Hegg, D. A., Shi, Y., Campbell, J. R., Rubin, J. I., Sessions, W. R., Turk, F. J., and Walker, A. L.: An 11-year global gridded aerosol optical thickness reanalysis (v1.0) for atmospheric and climate sciences, *Geosci. Model Dev.*, 9, 1489-1522, <https://doi.org/10.5194/gmd-9-1489-2016>, 2016.

Thanks for this comment. We have included a reference to this reanalysis product.

15

Interactive comment on “The CAMS reanalysis of atmospheric composition” by Antje Inness et al. Anonymous Referee #1

This work details the new Copernicus Atmosphere Monitoring Service (CAMS) reanalysis of atmospheric composition (CAMSR) modeling system and compares results to previous atmospheric composition reanalyses from the European Center for Medium- Range Weather Forecasts (ECMWF) (i.e. MACCRA and CIRA). In addition to comparing the three reanalyses products, the paper shows initial validation using independent (non-reanalyzed) observations of ozone, carbon monoxide, nitrogen dioxide, and aerosols (aerosol optical depth). Along the way, the authors caution the reader on how to use the different datasets (e.g. whether or not they can be concatenated, or must be considered completely separately). This paper will be a useful reference for users of these reanalyses products. I recommend acceptance after a few minor comments are addressed:

* The Table A1 in the Appendix, which details the different model versions, is very useful.

* Page 2, Lines 32-40: Agree with one comment poster that NRL aerosol reanalysis should be mentioned (Lynch et al., 2016)

Done. We have added a sentence: “The US Naval Research Laboratory developed the Navy Aerosol Analysis and Prediction System (NAAPS) aerosol reanalysis product covering the years 2003-2015 (Lynch et al., 2016).”

30 * Page 2, Line 36: “also contained aerosols, assimilated concurrently with the meteorology”

We have added that statement.

* Table 1 greatly helps the reader to understand the differences between the three reanalyses, and is much appreciated.

*Page 7, Line 13: Isn't this still the case in CAMSR? Or did you not look if sulphates are overestimated?

Sulphates are reduced in CAMSR (see Figure 19). We have added a sentence on page 7 at the end of section 2.3: “Sulphates are reduced in CAMSR (see Figure 19 below).”

35

*Page 8, Line 30: How do you deal with any mismatches between DT and DB land MODIS observations? Are DB used over DT if there are any coincidences? Similarly, if there are any coincidences between AATSR and MODIS, how do you deal with these?

We have added this in sections 3.1:

40 *The data preparation stage for the MODIS observations prioritises Dark Target and will only use Deep Blue data if no Dark Target observations are available. The AATSR and MODIS AOD observations may potentially be coincident but this is dealt*

with by the data assimilation system. Solving the cost function balances mismatches to both the model and all observations taking in to account both model and individual observation errors.

*Page 9, Line 35: Appreciate putting the monitoring timeseries in the supplement, as it reduces the text nicely

*Page 10, Line 16 - "reanalyse" -> "reanalyses"

5 *Changed.*

*Page 11, Line 31 and Page 12, Line 12 and elsewhere: Appreciate pointing out where user should be aware of issues. If possible, suggest a table highlighting these issues as a useful addition (or a bulleted summary list at the end or in an appendix or supplement).

We have added a bullet list of known issues in the appendix.

10 *Page 16, Line 41: Do you include nitrate aerosol? If not, what biases may this lead to?

Nitrates are not included in the aerosol scheme used in the CAMS reanalysis. They are now being tested in the current model version for implementation in the near-real time CAMS system. We have added this statement in the document:

“Nitrates are not yet included in the aerosol scheme. The missing nitrate aerosol is likely to cause an underestimation of total aerosol in the forecast model in regions where nitrate would be a significant component. The total aerosol will be corrected by the assimilation of total AOD observations.”

15 *Page 17, Lines 9-20: AERONET is an acronym and should be in all caps

Changed throughout the manuscript.

Interactive comment on “The CAMS reanalysis of atmospheric composition” by Antje Inness et al. Anonymous Referee

20 #2

The manuscript presents the results from the CAMS reanalysis of atmospheric composition for 2003–2016. The improvements in the reanalysis are evaluated by comparing with the previous reanalysis (MACCRA and CIRA). The CAMS reanalysis provides important information on long-term variations in atmospheric composition. Nevertheless, the evaluation of the reanalysis performance is incomplete and should be improved.

25 More quantitative descriptions are required to summarize the relative performance of the three reanalyses. I would advise the authors to revise the manuscript substantially before considering its publication. My general remarks and specific points are presented below.

1. The descriptions in the text are primarily qualitative. More careful descriptions with summary statistics (e.g., by showing mean bias, RMSE, and temporal correlations for the three reanalyses in tables) are required to make robust conclusions for 30 O₃, CO, and NO₂, respectively, throughout the manuscript. I would advise the authors to revise the manuscript substantially by adding more quantitative descriptions and conclusions.

35 *Our paper is an initial overview and reference paper for the CAMS reanalysis. It is not intended to be a thorough validation paper. Such a paper is being prepared separately and will include a lot more statistics for all the field. There are also a lot more validation plots and statistics in the CAMS validation report (Eskes et al., 2018) that we refer to in our paper. However, we have now calculated summary statistics for several of the Figures (Figures 8, 11, 13, 16, 19, 22 in the revised manuscript) and have included tables with the values in the paper.*

2. It is often summarized that CAMS is better than the two older reanalyses. However, many exceptions exist (e.g., CIRA is better, or CAMS and CIRA are similar), and it is unclear if this can be the general conclusions of this study. The conclusions must be supported by summary statistics for each component of the reanalyses, while more careful discussions and conclusions 40 are required to state how much the reanalysis performance has been improved.

See answer to point 1. We have added tables with summary statistics for several figures.

3. A bias correction was applied to the OMI NO₂ data using the SCIAMACHY and GOME-2 NO₂ data as anchors. Because we expect similar biases between the three NO₂ data produced using the same retrieval algorithms, the bias correction could

introduce spurious biases into the OMI NO₂ data, corresponding to inaccurate diurnal NO₂ variations in the model. This could suppress improvements in the afternoon NO₂ and photochemical productions of ozone. More careful discussions are required.

We have not validated the diurnal cycle of NO₂ as we do not have observations available that would allow us to do this. Hopefully this will be included in the validation paper that is under preparation. As the assimilation of NO₂ usually has a small impact in the CAMS system because of its short life time we do not expect this to be a problem.

Specific comments:

- The discontinuity in the assimilated NO₂ products could influence the long-term ozone analysis. This needs to be discussed carefully.

As we do not have an additional experiment where we assimilate O₃ data, but no NO₂ data it is not possible to infer this information from the CAMS reanalysis. We have seen in the past (Inness et al., 2015) that the impact of the NO₂ assimilation is generally small, so we do not expect this to lead to problems in the ozone analysis. We agree that it would make a very interesting case study to investigate this by running a series of additional longer experiments without NO₂ assimilation, but this is not within the scope of this paper.

- Section 2.2: It would be useful to show NO_x emissions in addition to CO emissions

We have added a plot with MACCity NO emissions in Section 2.2 and changed the related text to:

The anthropogenic MACCity emissions for CO are shown in Fig. 2 and for NO in Fig. 3. The CO emissions decrease over Europe and North America in the range of 1 to 5 % per year, but increase over South East Asia by a similar amount. The global trend for CO is close to zero. The MACCity NO emissions decrease with time over Europe and North America, but increase over East Asia until 2015 which is in contrast to satellite derived emission inventories that show a peak over China in 2012 (e.g. Ding et al., 2017).

- Section 2.3: How was the background error covariance (inter-species correlations) constructed? How did the observation information propagate among the species?

There are no inter-species correlations in the CAMS background error covariance matrix. It is univariate. We have added this sentence to section 2.3:

The background errors for the chemical species are univariate; i.e. the error covariance matrix between chemical species or between chemical species and dynamical fields is diagonal. Hence each species is assimilated independently from the others.

- In Fig. 16, it is odd that MACCRA is not shown.

We have changed this Figure (now Fig. 17) and are now showing tropospheric column NO_x from CAMSRA as well as the differences between CAMSRA-CIRA and CAMSRA-MACCRA. We have changed the text accordingly.

The CAMS reanalysis of atmospheric composition

Antje Inness¹, Melanie Ades¹, Anna Agusti-Panareda¹, Jérôme Barré¹, Anna Benedictow², Anne-Marlene Blechschmidt³, Juan Jose Dominguez¹, Richard Engelen¹, Henk Eskes⁴, Johannes Flemming¹, Vincent Huijnen⁴, Luke Jones¹, Zak Kipling¹, Sebastien Massart¹, Mark Parrington¹, Vincent-Henri Peuch¹, Miha Razinger¹, Samuel Remy⁵, Michael Schulz² and Martin Suttie¹

¹ECMWF, Shinfield Park, Reading, RG2 9AX, UK

²Norwegian Meteorological Institute Postboks 43 Blindern, 0313 Oslo, Norway

³Institute of Environmental Physics, University of Bremen, Germany

⁴Royal Netherlands Meteorological Institute, De Bilt, The Netherlands

⁵IPSL, CNRS/UPMC, Paris, France

Correspondence to: Antje Inness (a.inness@ecmwf.int)

Abstract. The Copernicus Atmosphere Monitoring Service (CAMS) reanalysis is the latest global reanalysis data set of atmospheric composition produced by the European Centre for Medium-Range Weather Forecasts (ECMWF), consisting of 3-dimensional time-consistent atmospheric composition fields, including aerosols and chemical species. The dataset currently covers the period 2003-2016 and will be extended in the future by adding one year each year. A reanalysis for greenhouse gases is being produced separately. The CAMS reanalysis builds on the experience gained during the production of the earlier Monitoring Atmospheric Composition and Climate (MACC) reanalysis and CAMS interim reanalysis. Satellite retrievals of total column CO, tropospheric column NO₂, aerosol optical depth and total column, partial column and profile ozone retrievals were assimilated for the CAMS reanalysis with ECMWF's Integrated Forecasting System. The new reanalysis has an increased horizontal resolution of about 80 km and provides more chemical species at a better temporal resolution (3-hourly analysis fields, 3-hourly forecast fields and hourly surface forecast fields) than the previously produced CAMS interim reanalysis. The CAMS reanalysis has smaller biases compared to [most of the independent ozone, carbon monoxide, nitrogen dioxide and aerosol optical depth observations used for validation in this paper](#) than the previous two reanalyses and is much improved and more consistent in time, especially compared to the MACC reanalysis. The CAMS reanalysis is a dataset that can be used to compute climatologies, study trends, evaluate models, benchmark other reanalyses or serve as boundary conditions for regional models for past periods.

1 Introduction

The European Centre for Medium Range Weather Forecasts (ECMWF) has been producing atmospheric composition (AC) forecasts and analyses for over a decade. The model and data assimilation system used for this was developed as a European effort by a consortium of partners funded by several European Union (EU) projects. It began in 2005, with the EU funded Global Monitoring for Environment and Security (GEMS) project (Hollingsworth et al. 2008) that built the capacity for a global and regional forecasting and data assimilation system of AC. In GEMS, ECMWF's Integrated Forecast System (IFS) was extended to allow for the data assimilation and modelling of aerosols, chemically reactive gases and greenhouse gases, and the first daily forecasts of reactive gases such as carbon monoxide (CO) and tropospheric ozone (O₃) were made public in May 2007 (Flemming et al., 2017a). This was followed a year later, in July 2008, by the real-time data assimilation of aerosol optical depth (Benedetti et al., 2009) and selected reactive gases (Inness et al., 2013) in the daily GEMS system. The AC system was further developed in the earlier Monitoring Atmospheric Composition and Climate (MACC) projects (Flemming et al., 2015; Inness et al., 2015; Massart et al., 2014; Agusti-Panareda et al., 2014) between 2009 and 2014 and has been running fully operationally in the Copernicus Atmosphere Monitoring Service (CAMS), operated by ECMWF, since January 2015. In the rest of this paper we will refer to the system built in GEMS/MACC/CAMS as the CAMS system and focus on reactive gases and aerosols.

While the modelling components for aerosols were included directly in the IFS from the beginning of GEMS (Morcrette et al., 2009), the initial approach for the reactive gases was to build a 'coupled system' where the chemical transport model (CTM) Model for Ozone And Related chemical Tracers (MOZART) 3.5 (Kinnison et al., 2007) was coupled to the IFS using the Ocean Atmosphere Sea Ice Soil (OASIS 4) coupling software (Flemming et al., 2009). Later, in the MACC projects, a modified version of the Carbon Bond 2005 chemistry scheme (CB05, Huijnen et al. 2010) derived from the CTM Transport Model 5 (TM5) was integrated in the IFS (referred to as IFS(CB05); Flemming et al., 2015), making the system more computationally efficient and improving the system's ability to represent interactions between meteorology and chemistry. In parallel to the model system, the use of observations in the data assimilation system also evolved with time as new datasets became available and satellite retrievals were improved.

The initial forecasts and analyses in 2007/2008 had a horizontal resolution of T159 (~110 km). This was increased to T255 (~80 km) in July 2012 and to T511 (~40 km) in June 2016. The vertical resolution has so far always consisted of 60 model levels in the vertical, with the top level at 0.1 hPa. Details about the different model versions used over time are given in Table A1 in the Appendix. The continuing upgrades of the CAMS model and data assimilation system and the changes they brought with them made it difficult if not impossible to compare data from a recent period with earlier data in a meaningful way. For example, it was not possible to calculate seasonal anomalies or trends with a system that had changed so much over time. Therefore, so called reanalyses were produced with the CAMS system where a long time period was re-run with a single version of the model and data assimilation system, taking care to minimise changes in the versions of the used emissions or assimilated satellite retrievals. Such a system gives the temporal consistency needed to deduce trends (e.g. Flemming et al., 2017b) or to provide maps of annual or seasonal anomalies (e.g. Flemming and Inness, 2018).

Deleted: ¶
¶

Producing long reanalyses with a single model version is a well-known procedure in Numerical Weather Prediction (NWP), and several weather centres have produced meteorological reanalysis data sets. It has long been an important activity at ECMWF (ERA-40, Uppala et al., 2005; ERA interim, Dee et al., 2011; ERA-5, Hersbach et al., 2018), and other meteorological centres such as National Centers for Environmental Protection (NCEP) (CFSR; Saha et al., 2010), the Japan Meteorological Agency (JRA-55, Kobayashi et al., 2015; JRA-25, Onogi et al., 2007), NASA-GMAO (Modern-Era Retrospective analysis for Research and Applications (MERRA), Rienecker, et al., 2011; MERRA-2, Gelaro et al., 2017) and the China Meteorological Administration (CRA-40) have also produced or are producing reanalyses.

Deleted: in preparation

In addition to these meteorological reanalyses several reanalyses of atmospheric composition have been produced in recent years. The multi-sensor reanalysis of total ozone (van der A et al., 2015) for 1970–2012 used ground-based Brewer observations to inter-calibrate satellite retrievals. The MERRA reanalysis (1980 to 2016) included ozone and was used to drive an offline aerosol reanalysis (MERRAero; Buchard et al. 2014). The MERRA-2 (Gelaro et al., 2017) reanalysis, again from 1980 onwards, also contained aerosols, assimilated concurrently with the meteorology (Randles et al., 2017; Buchard et al., 2017). The US Naval Research Laboratory developed the Navy Aerosol Analysis and Prediction System (NAAPS) aerosol reanalysis product covering the years 2003-2015 (Lynch et al., 2016). Miyazaki et al. (2015) put together a tropospheric chemistry reanalysis for the years 2005–2014 and the Meteorological Research Institute (MRI) of the Japan Meteorological Agency produced a 5-year aerosol reanalysis product (Japanese Reanalysis for Aerosol, JRAero) for the years 2011-2015 (Yumimoto et al., 2017).

ECMWF produced several AC reanalyses in the GEMS/MACC/CAMS projects (see Table A2 in the Appendix). All these reanalyses started in 2003, when a wealth of atmospheric composition retrievals became available after the launch of the European Envisat satellite and the American Aqua and Aura satellites. The so-called ‘GEMS reanalysis’ was a 6-year reanalysis of reactive gases, aerosols and greenhouse gases covering the period from 2003 to April 2009. This was followed by the 10-year ‘MACC reanalysis’ for reactive gases and aerosols covering the period 2003 to 2012 (MACCRA, Inness et al., 2013). The GEMS and MACC reanalyses both used the coupled IFS/MOZART 3.5 system. After the change to the integrated IFS(CB05) system in September 2014, the model as well as the data assimilation configuration changed considerably, and comparing fields from the later years with a climatology based on the MACC reanalysis showed mainly model and configuration differences and not a climatologically meaningful signal. Therefore, a new reanalysis run with IFS(CB05) was needed. To prepare for this, a test reanalysis for reactive gases and aerosols, the ‘CAMS interim reanalysis’ (CIRA, Flemming et al., 2017b), was produced with a version of the IFS(CB05) system from 2003 onwards. CIRA was run at lower horizontal resolution (T159, ~110km) than the MACC reanalysis (T255, ~80 km) and the number of archived fields was slightly reduced

to speed up the throughput. This helped to test aspects of the IFS(CB05) system and paved the way for the production of the 'CAMS reanalysis' (CAMSRA), again from 2003 onwards and with the IFS(CB05) system. CAMSRA includes reactive gases and aerosols at higher horizontal resolution (T255) and with an increased number and time frequency of archived fields. Further improvements of CAMSRA relative to CIRA are the assimilation of NO₂ retrievals in CAMSRA and a better representation of the interannual variability of the biogenic emissions. A reanalysis for the greenhouse gases CO₂ and CH₄ is being produced separately and will be discussed in a different paper.

Figure 1a shows the 'Figure of Merit in space' (FMS; Chang and Hanna, 2004) ozone score at the Antarctic Neumayer Station and Figure 1b the modified normalised mean bias (MNMB) of CO in the lower troposphere from the CAMS daily forecast system and CAMSRA to illustrate the advantage a reanalysis has over a continuously evolving operational model system. The definitions of the scores are given in the Appendix. The FMS score compares the fit of the model ozone profiles to ozonesonde profiles (here calculated from the surface to 3 hPa) and has a score between 1 (perfect fit) and 0. Figure 1 illustrates the improvements in the near real-time (NRT) CAMS system with time. In the earlier years the CAMS system did not adequately reproduce the low values and vertical distribution of the Antarctic ozone hole (Flemming et al., 2011; Inness et al., 2013) which is shown by the low FMS scores in austral spring from 2008-2012 (Fig. 1a). The CAMSRA has much improved FMS scores during those years and a better consistency in performance between earlier and later years. The timeseries of MNMB of CO in the lower troposphere (Fig. 1b) also shows problems of the NRT system in the earlier years in the northern hemisphere (NH) during winter, when CO values were strongly underestimated (Inness et al., 2013). There is still an underestimation of lower tropospheric CO in the CAMSRA, but the MNMB is now considerably smaller, especially during NH winter, and more constant in.

The aim of this paper is to document the new CAMSRA dataset for future reference. The paper gives information about the model and data assimilation setup used to produce CAMSRA, presents initial validation results and intercompares CAMSRA with CIRA and MACCRA. Additional validation of CAMSRA can be found in reanalysis validation reports (Eskes et al., 2018) and in two validation papers that are in preparation (Wagner et al, in preparation; Yang et al., in preparation).

This paper is structured in the following way. Section 2 describes the CAMS model, the data assimilation system and the emission datasets used to produce the CAMS reanalysis. Section 3 lists the assimilated AC observations and bias correction procedure. Section 4 gives validation results for some of the reactive gases and aerosols, and Section 5 presents the conclusions.

2 CAMS model and data assimilation system

An overview of the main differences and commonalities of the three reanalyses MACCRA, CIRA and CAMSRA discussed in this paper is given in Table 1.

2.1 CAMS model system

The IFS aerosol and chemistry modules applied in CAMSRA were similar to those in CIRA and more details about the modules are given in Flemming et al. (2015) and references therein. Major updates relative to CIRA are described in the sections 2.1.1 and 2.1.2 below. The meteorological modelling part of the IFS changed from cycle 40R1 used for CIRA to cycle 42R1 used for CAMSRA (see also Table 1).

2.1.1 Aerosol model updates

The CAMS aerosol model component of the IFS was previously described in Morcrette et al. (2009). It is a hybrid bulk/bin scheme with 12 prognostic tracers, consisting of three bins for sea salt depending on size (0.03-0.5, 0.5-5 and 5-20 μm), three bins for dust (0.030-0.55, 0.55-0.9 and 0.9-20 μm), hydrophilic and hydrophobic organic matter (OM) and black carbon (BC), plus sulphate aerosol and a gas-phase sulphur dioxide (SO_2) precursor. The different aerosol types are treated as externally mixed, i.e. separate particles. Transport by advection, convection and diffusion is handled by the meteorological model component of the IFS. The aerosol scheme includes prescribed and online emissions (as described in Section 2.2), dry and wet deposition, production of sulphate from SO_2 , and ageing of hydrophobic OM and BC to hydrophilic. Nitrates are not yet included in the aerosol scheme. The missing nitrate aerosol is likely to cause an underestimation of total aerosol in the forecast model in regions where nitrate would be a significant component. The total aerosol will be corrected by the assimilation of total AOD observations.

The aerosol model used in the CAMS reanalysis contains these updates relative to CIRA:

- Updated aerosol optical properties, especially for organic matter (as described in Bozzo et al., 2017)
- Bug fixes to sedimentation, which was unreasonably weak for some dust and sea-salt bins, with corresponding re-tuning of sea-salt scavenging
- SO_2 dry deposition velocities updated to use monthly values computed by Météo-France's Surface Module of the MOCAGE model (SUMO, Michou et al., 2004). They now match those used in the chemistry scheme.
- New parameterisation of anthropogenic Secondary Organic Aerosol (SOA) production, proportional to MACCity CO emissions, as suggested in Spracklen et al. (2011)
- More detailed SO_2 to sulphate aerosol conversion with dependence on temperature and relative humidity, and overall decrease in the conversion timescale especially at high latitudes
- Increased sulphate dry deposition velocity over ocean
- Proportional mass fixer used for chemistry (Diamantakis and Flemming, 2014) extended to aerosol species
- In CIRA, emissions from the Global Fire Assimilation System (GFAS) of black carbon (BC) were scaled by a globally constant factor of 3.4, which had been derived by comparing BC from a 6-month assimilation run with a forecast only run. In CAMSRA the same approach was used but comparing 12 years of CIRA data against a control run without data assimilation. This made it possible to derive a geographically varying (but temporally constant) scaling factor for BC GFAS emissions in CAMSRA.
- The SO_2 emissions in CAMSRA are separated between emissions at low level (20% of total emissions, which are emitted as part of the diffusion scheme) and high level emissions (80% of total emissions which are released in the two lowest model levels). In CIRA all SO_2 emissions were released at the surface as part of the diffusion scheme.

2.1.2 Chemistry module updates

The chemical mechanism of the IFS is a modified and extended version of the CB05 (Yaarmond et al. 2005) chemical mechanism for the troposphere, as implemented in CTM TM5 (Huijnen et al., 2010). CB05 describes tropospheric chemistry with 55 species and 126 reactions. Stratospheric ozone chemistry in IFS(CB05) is parameterized by a "Cariolle-scheme" (Cariolle and Déqué, 1986; Cariolle and Teyssère, 2007). Wet deposition is modelled following Jacob (2000), and monthly-mean gridded dry deposition velocities calculated by the SUMO model of Météo-France (Michou et al. 2004) were used to calculate dry deposition. The chemistry module of the IFS is documented in more detail in Flemming et al. (2015) and

Flemming et al. (2017b). The following updates of the chemistry scheme from the configuration used in CIRA were applied to produce CAMSRA:

- Update of heterogeneous rate coefficients for N_2O_5 and HO_2 based on prognostic clouds and aerosol
- Modification of photolysis rates by prognostic aerosol
- Dynamic tropopause definition based on the temperature profile for coupling to the Cariolle scheme in the stratosphere and for tropospheric mass diagnostics
- Bugfixes, in particular for the diurnal cycle of dry deposition whose correction has decreased the ozone dry deposition flux by about 15-20%

Deleted: ,

It should be noted that the schemes for aerosol and chemistry in IFS(CB05) are largely independent, which means in particular that both the aerosol and the chemistry scheme carry their own SO_2 variable. The conversion of the aerosol SO_2 to sulphate aerosol is modelled in the aerosol scheme by prescribed conversion rates (Morcrette et al., 2009), whereas SO_2 in the chemistry scheme is subject to gas-phase and aqueous phase chemistry. The sulphate of the chemistry scheme does not contribute to the aerosol optical properties nor is it corrected by data assimilation. However, the first steps to link chemistry and aerosol schemes have been undertaken and the aerosol model affects the chemical composition by using the aerosol surface area density in the heterogeneous reaction rates of dinitrogen pentoxide (N_2O_5) and hydroperoxyl (HO_2) (Huijnen et al., 2014) as well as by using aerosol optical properties for the modification of photolysis rates.

A major difference between the production of CIRA and CAMSRA is that the prognostic ozone and aerosol fields have been used interactively in the NWP radiation scheme in CAMSRA. For CIRA climatologies of ozone derived from MACCRA (Bozzo et al., 2017) and the Tegen et al. (1997) aerosol climatology were used in the radiation scheme. The evaluation of the meteorological parameters is beyond the scope of this paper. Nevertheless, little differences were found by introducing prognostic ozone and aerosol because the meteorological analysis is well constrained by the assimilated observations. Furthermore, no change in the evaluation of the AC parameters could be identified when using ozone and aerosol interactively in the radiation scheme.

2.2 Emissions

Great care has been taken to ensure that the emission datasets are consistent in time and that consistent anthropogenic, biogenic and biomass burning emissions were used for the aerosol and chemistry fields. The emission datasets are listed in Table 1. The emissions are injected at the surface and distributed over the boundary layer by the model's convection and vertical diffusion scheme. The only exception is the aerosol SO_2 emissions of which 20% are emitted at the surface as part of the diffusion scheme and 80% in the two lowest model levels (see Section 2.1.1). The emissions datasets used in CAMSRA include emissions from anthropogenic, biogenic, natural, and biomass burning sources.

Anthropogenic emissions were from the MACCity inventory (Granier et al., 2011) with modifications to increase winter-time road traffic emissions over North America and Europe following the correction of Stein et al. (2014). These emissions were also used in CIRA while they were used without the Stein et al. (2014) correction in MACCRA. The MACCity inventory covers the period 1960-2010 and is updated for subsequent years using the representative concentration pathway (RCP) version 8.5. The RCP 8.5 (business as usual) scenario was chosen as it includes information on regional emissions after 2000 (Van Vuuren et al., 2010; Riahi et al., 2011). The anthropogenic MACCity emissions for CO are shown in Fig. 2 and for NO in Fig. 3. The CO emissions decrease over Europe and North America in the range of 1 to 5 % per year, but increase over South East Asia by a similar amount. The global trend for CO is close to zero. The MACCity NO emissions decrease with time over Europe and North America, but increase over East Asia until 2015 which is in contrast to satellite derived emission inventories

Deleted: 2. They

that show a peak over China in 2012 (e.g. Ding et al., 2017). Anthropogenic emissions of black carbon, organic carbon and SO₂ were also taken from MACCity. Emissions of anthropogenic SOA were estimated by applying a scaling factor of 0.2 to the MACCity (i.e., non-biomass burning) CO emissions, as suggested in Spracklen et al. (2011).

- 5 Monthly mean biogenic emissions of the chemical species were calculated offline by the MEGAN2.1 model (Guenther et al., 2006) that used meteorological fields from the MERRA-2 reanalysis following Sindelarova et al. (2014) for the full period of CAMSRA. Natural emissions from soils and oceans for NO₂, dimethyl sulphate (DMS) and SO₂ were taken from the Precursors of ozone and their effects in the Troposphere (POET) database for 2000 (Granier et al., 2005; Olivier et al., 2003).
- 10 Daily global biomass burning emissions of reactive gases and aerosols were provided by the Global Fire Assimilation System, version 1.2 (GFASv1.2), based on satellite retrievals of fire radiative power (Kaiser et al., 2012). The archive of GFASv1.2 data covers the period 2003-present and was also used in CIRA. In MACCRA early versions of the Global Fire Emissions Database (GFED 3.1; van der Werf et al., 2010) were used from 2003 until the end of 2008 and daily GFAS v1.0 data from 2009 to 2012. GFED 3.1 is on average 20% lower than GFAS v1.2 (Inness et al., 2013). Figure 4 shows the GFASv1.2
- 15 timeseries of monthly mean total carbon wildfire emissions for each of the main continental regions, excluding Antarctica, between 2003 and 2016. The emissions from GFEDv3.1 and GFASv1.0 are also shown for comparison. The CO biomass burning emissions do not show a significant trend but considerable inter-annual variability. Africa is usually the largest source of CO biomass burning emissions, but under El Niño conditions Asian emissions (and in particular emissions from maritime Southeast Asia) reach similar values. Most notable here are the Asian emissions during the Indonesian fires in September and
- 20 October 2015 that caused by far the highest annual wildfire emissions as well as the highest total monthly CO emissions in the whole period covered by GFAS (Huijnen et al., 2016).

The aerosol model has additional online parameterisations to calculate sea salt (Monahan et al., 1986) and dust surface fluxes based on surface winds and other factors (Ginoux et al., 2001).

25 2.3 CAMS data assimilation system

The IFS uses an incremental 4D-Var data assimilation system (Courtier et al. 1994) for the CAMS reanalysis, with 12-hour assimilation windows from 09 UTC to 21 UTC and 21 UTC to 09 UTC and two minimisations at spectral truncations T95 (~210 km) and T159 (~110 km). In the CAMS 4D-Var a cost function that measures the differences between the model's background fields and the observations is minimized in order to obtain the best possible forecast through the length of the

30 assimilation window by adjusting the initial conditions. Several atmospheric composition fields (i.e. O₃, CO, NO₂ and total aerosol mass mixing ratio) are included in the control vector and minimized together with the meteorological control variables. The background errors for the atmospheric composition fields were either calculated with the National Meteorological Center (NMC) method (Parrish and Derber 1992) or from an ensemble of forecast differences (Inness et al., 2015). Both methods

35 allow us to calculate differences between pairs of background fields which have the statistical characteristics of the background errors. The background errors for the chemical species are univariate; i.e. the error covariance matrix between chemical species or between chemical species and dynamical fields is diagonal. Hence each species is assimilated independently from the others. More information about the data assimilation system and background errors for the chemical fields can be found in Inness et al. (2015). The aerosol assimilation is described in Benedetti et al. (2009) and the background errors used for the aerosol assimilation in Benedetti and Fisher (2007).

40

The aerosol assimilation is less constrained than the assimilation of the chemical species because the model has 12 different aerosol components (see Section 2.1.1), while the assimilated observations are retrievals of total aerosol optical depth (AOD).

Deleted: (

Deleted: 3

Deleted: analyses

Deleted: and

Therefore, the total aerosol mass mixing ratio, defined as the sum of the aerosol species, is used as control variable and the analysis increments are repartitioned into the individual aerosol components (the SO₂ precursor is excluded from this process, as it is not visible in the AOD observations) according to their fractional contribution to the total aerosol mass (Benedetti et al., 2009). Flemming et al. (2017b) have shown that this can lead to problems as the relative fraction of the aerosol components is not conserved during the whole assimilation procedure because of differences in aerosol lifetime associated with differences in their removal processes. Aerosol components with a longer atmospheric lifetime can retain the change imposed by the increments for longer and may thereby change the relative contributions. Also, if the underlying aerosol model has a bias in one aerosol species, e.g. it overestimates the species and thereby contributes a bigger fraction to the total aerosol mass mixing ratio than it should do, the assimilation can exacerbate this by attributing a greater proportion of the increment to this species and enhancing the bias even further. This was the case in CIRA where it led to an unrealistic overestimation of sulphates (Flemming et al., 2017b). [Sulphates are reduced in CAMSRA \(see Figure 20 below\)](#).

2.4 CAMSRA data product

The spatial resolution of the CAMS reanalysis is a reduced gaussian grid at a spectral truncation of T255, which is equivalent to grid spacing of approximately 80 km globally (0.7° x 0.7° grid). The vertical model resolution consists of 60 hybrid sigma/pressure (model) levels with a model top at 0.1 hPa. The data are available as 3-hourly analyses and 48 hour forecasts, initialised daily from analyses at 00 UTC. Three-dimensional model level forecast fields are available every 3 hours from forecast hour 0 to 48, and surface forecast fields are available at hourly intervals. Monthly mean fields are also provided. Atmospheric data are archived on 60 model levels and are also interpolated to 25 pressure, 10 potential temperature and 1 potential vorticity level(s). Surface and total column diagnostics are also available (<https://software.ecmwf.int/wiki/display/CKB/CAMS+Reanalysis+data+documentation#CAMSRanalysisdatadocumentation-Parameterlistings>). An inventory of the available model fields can be found here: <http://apps.ecmwf.int/data-catalogues/cams-reanalysis/?class=mc&expver=eac4>, and more information at <https://atmosphere.copernicus.eu/copernicus-releases-new-global-reanalysis-data-set-atmospheric-composition>. [The data will become available from the Copernicus Atmosphere Data Store](#).

3 Observations and bias correction

3.1 Observations

The atmospheric composition satellite retrievals of O₃, CO, NO₂ and AOD that were assimilated to produce CAMSRA are shown in Fig. 5 and listed in Table 2. The table also shows the blacklist criteria applied to the data, i.e. the criteria that determine when data were not used.

Retrievals from a range of instruments were used for O₃. These included total column O₃ (TCO₃) retrievals from the SCanning Imaging Absorption spectroMeter for Atmospheric CHartographY (SCIAMACHY) instrument, the Ozone Monitoring Instrument (OMI) and the Global Ozone Monitoring Experiment-2 (GOME-2), O₃ profile data from the Michelson Interferometer for Passive Atmospheric Sounding (MIPAS) and Microwave Limb Sounder (MLS, used down to 215 hPa) and O₃ partial columns from Solar Backscatter ULtra-Violet (SBUV/2). For SBUV/2 the v8.6 data record (McPeters et al. 2013) was used until July 2013 and NRT V8 data afterwards. The V8.6 data are available at 21 vertical layers but were converted into a 13-layer product by CAMS to reduce smoothing errors, by combining the layers between 16 hPa and the surface. The NRT SBUV/2 data were the same data used in the CAMS real-time analysis and used at the 21L resolution. Changing to the NRT data was necessary as the reprocessed data were not available after July 2013. We do not notice a change in the ozone

Deleted: 4

analysis field at this time because the analysis is well constrained by the other assimilated O₃ data, in particular the MLS profiles.

Deleted: the time of

Deleted: change

For CO, Measurement of Pollution in the Troposphere (MOPITT) thermal infra-red (TIR) V6 total column CO (TCCO) retrievals were assimilated in CAMSRA. These retrievals are most sensitive to CO in the mid and upper troposphere (Deeter et al, 2013) and are retrieved from the TIR band near 4.7 μm. The main improvements compared to the older MOPITT versions used in CIRA (MOPITT V5) and MACC (MOPITT V4) are a correction of a bias in geolocation, improved meteorological data based on the MERRA reanalysis and updated CO a-priori profiles (Deeter et al., 2014). In contrast to MACCRA no IASI CO retrievals (George et al., 2009; Clerbaux et al., 2009) were assimilated in CAMSRA because using them led to a discontinuity in MACCRA (Inness et al., 2013; Flemming et al., 2017b).

For NO₂, tropospheric column retrievals from SCIAMACHY, OMI and GOME-2 were assimilated in CAMSRA. This is an improvement over CIRA (where no NO₂ data were assimilated) and MACCRA (where only SCIAMACHY NO₂ data were assimilated). Where possible, new reprocessed data sets were used in CAMSRA. However, due to time constraints it was not possible to acquire and process new observations for all the instruments and for NO₂ from SCIAMACHY and OMI the data that were already available had to be used. The SCIAMACHY NO₂ retrievals used in CAMSRA were the same data version assimilated in MACCRA (KNMI, V1p from 2003-2011, V2 2011-April 2012). The OMI NO₂ data were also produced by KNMI (Boersma et al. 2007 and 2011) and consisted of offline DOMINO (V1.0.2) data from October 2004 until 2010, the offline DOMINO (V2) retrieval for 2011-2012 and NRT DOMINO retrievals (V2) from 2013 onwards. The GOME-2 data were the offline GDP4.8 data produced by the ACSAF/DLR (Valks et al., 2011) until the end of 2016. GOME-2 NO₂ retrievals from Metop-A were assimilated from April 2007 onwards and retrievals from Metop-B from January 2013. In previous studies (Inness et al., 2015) the impact of the assimilation was shown to be small for short lived species like NO₂ because at least some of the changes applied to the initial conditions by the analysis were frequently insignificant compared to the prevalent emissions of nitrogen oxides (NO_x=NO₂+NO) and were lost again in the subsequent forecasts. By assimilating NO₂ retrievals from satellites with different overpass times (9:30 local time for GOME-2, 10:00 for SCIAMACHY, 13:30 for OMI) the impact of the assimilation is expected to be increased and the diurnal cycle of NO₂ to be better represented.

For aerosols, Collection 6 retrievals of total AOD at 550 nm from the Moderate Resolution Imaging Spectroradiometers (MODIS, Levy et al., 2018) on board the Aqua and Terra satellites that were produced with the Enhanced Deep Blue (DB) and Dark Target (DT) algorithms over land and a DT over water algorithm over ocean, were used in CAMSRA. The main scientific improvement in the algorithm of Collection 6, compared to the Collection 5 observations used in MACCRA and CIRA, is the introduction of a wind speed dependence over oceans. This addressed the known bias in Collection 5 over mid-latitude oceans, particularly in the Southern Hemisphere. Various minor changes to the processing were also made in Collection 6 for maintenance, giving modest improvements (Levy et al. 2013). The data preparation stage for the MODIS observations prioritises Dark Target and will only use Deep Blue data if no Dark Target observations are available. In addition to MODIS, CAMSRA used retrievals from the Advanced Along-Track Scanning Radiometer (AATSR, Popp et al. 2016) onboard Envisat from 2003 till March 2012. The AATSR and MODIS AOD observations may potentially be coincident but this is dealt with by the data assimilation system. Solving the cost function balances mismatches to both the model and all observations taking into account both model and individual observation errors.

Deleted: ocean

Averaging kernels were used in the observation operator for the calculation of the model's first-guess fields for CO and NO₂ retrievals as described in Inness et al. (2013).

3.2 Bias correction

A variational bias correction (VarBC) scheme (Dee and Uppala, 2009) where biases are estimated during the analysis by including bias parameters in the control vector was used for several of the AC data sets. In this scheme, the bias corrections are continuously adjusted to optimize the consistency with all information used in the analysis. VarBC was applied to TCO₃ retrievals from OMI, SCIAMACHY and GOME-2, with a global constant and solar elevation as predictors, while the partial column SBUV/2, and profile MLS and MIPAS data were used to anchor the bias correction, i.e. were assimilated without correction. Experience from MACCRA had shown that it was important to have an anchor for the O₃ bias correction, to avoid drifts in the fields (Inness et al., 2013). The SBUV/2 data were chosen as anchor because they are a high quality reprocessed dataset that covers the whole period of CAMSRA. The MLS and MIPAS profile data were not bias corrected because experience in MACCRA had shown that the SBUV/2 data could not anchor all the layers of the higher resolved profile data and that drifts in individual layers could lead to problems in the vertical O₃ distribution (Inness et al. 2013). Variational bias correction was also applied to OMI NO₂ retrievals, again with a global constant and solar elevation as predictors, while SCIAMACHY and GOME-2 NO₂ retrievals were used to anchor the bias correction for NO₂. This choice was made because SCIAMACHY and GOME-2 generally agree better with the CAMS NO₂ fields, while OMI has a larger bias (see Figures S5 and S6 in the supplement) and also suffers from a row anomaly (see supplement) that reduces the number of good data with time. For CO, no bias correction was applied in CAMSRA because data from only one instrument were assimilated and it was not possible to anchor the VarBC. For AOD_a experience had shown that it was not necessary to anchor the bias correction for the aerosol data and VarBC was applied to both MODIS retrievals and to AATSR. The predictors for AOD were a global constant and the 2-metre wind speed over sea.

The bias correction helps to ensure good time consistency when blending various datasets and adapts to changing biases of the data. An example is shown in Fig. 6 which shows timeseries of monthly mean analysis departures (i.e. observations minus analysis fields) and first-guess departures (i.e. observations minus model first guess) for the four TCO₃ retrievals (SCIAMACHY, OMI, GOME-2A & GOME-2B) as well as the applied bias correction. For all four TCO₃ data sets the analysis is drawing to the observations and the standard deviations of the analysis departures are reduced compared to those of the first-guess departures. The plots show that the bias correction (black lines) is different for all instruments, successfully adapts to changes in the data and removes the biases between total column data and the model. OMI data (Fig. 6b) between 2009-2011, for example, show a different behaviour than during the rest of the timeseries with larger departures (due to larger observation values, not shown) and the need for larger bias correction. However, the bias correction successfully accounts for this and the bias corrected departures are small and stable. The reason for this change is a deterioration in the OMI row anomalies (Torres et al. 2018, see their Figure 1; Schenkeveld et al. 2017). More information about this can be found in the supplement. Thanks to the bias correction such biases are removed, and the bias corrected departures (dotted lines) are small and stable for all four instruments.

Monitoring timeseries for all the atmospheric composition datasets assimilated in CAMSRA are shown in the supplement. One important feature to note from the supplement is that SCIAMACHY NO₂ (Fig. S5 in the supplement) has much larger positive departures during 2003 than during the rest of the period. This affects the quality of the NO₂ analysis during 2003 (see Figure 18 in section 4.3 below).

4 Results

In this section, analysis fields for O₃, CO, NO₂ and AOD from CAMSRA are compared with fields from CIRA and MACCRA to highlight some of the improvements in CAMSRA and to point out some of the problems potential users should be aware of.

Deleted: 5

Deleted: 5b

Deleted: 4

We concentrate on these four species because they were the ones assimilated in CAMSRA and validation data are available. There are, of course, a lot more species available from CAMSRA that are not covered in this paper. A more thorough validation of the CAMS reanalysis is beyond the scope of this paper and given in validation reports available from the CAMS website (Eskes et al., 2018; available at https://atmosphere.copernicus.eu/sites/default/files/2018-09/CAMS84_2015SC2_D84.7.1.4_Y14_v1.pdf).

4.1 Ozone

We start by looking at TCO₃ which is dominated by stratospheric O₃ and then look at tropospheric and surface O₃ which are more relevant for air quality users. Figure 7 shows the seasonally averaged TCO₃ from CAMSRA and the differences between this data set and CIRA and MACCRA. The TCO₃ differences between CAMSRA and CIRA are very small (below 2DU, <1%) with slightly larger differences (5 DU, <3%) in June, July, August (JJA) over Antarctica. CAMSRA TCO₃ is slightly higher than CIRA over the Tropical Atlantic in all seasons and in NH midlatitudes in JJA, lower over NH midlatitudes during December, January, February (DJF) and March, April, May (MAM), and lower over SH midlatitudes in MAM and JJA. The differences between CAMSRA and MACCRA are larger, with CAMSRA lower than MACCRA everywhere (up to -10 DU, <5%).

To assess if the differences seen between CAMSRA and the older reanalyses are an improvement we compare TCO₃ from the reanalyses with independent, i.e. not used in the analysis, Dobson sun photometer measurements (Fig. 8) obtained from the World Ozone and Ultraviolet Radiation Data Centre (WOUDC). The Dobson data are well calibrated with a precision of 1% (Basher, 1982). The mean biases and their standard deviations for the three reanalyses against the Dobson data are given in Table 3. Figure 8 shows that MACCRA has the largest (positive) biases relative to these data and that CAMSRA agrees better with the independent observations in all areas. CAMSRA has smaller biases than the other two reanalyses in all areas, except in the Tropics after 2013 when CIRA has a smaller bias. CAMSRA and CIRA are very close from 2003-2012, but diverge more from 2013 onwards, when the version of the MLS profiles used in CIRA changed from V2 to NRT V3.4 (Flemming et al., 2017b). In these later years, CAMSRA is generally better than CIRA except in the Tropics. The largest biases for CAMSRA (up to 25 DU) are found over Antarctica during the ozone hole season after 2013. Figure 8 shows that there is no noticeable impact during 2009-2011 when degraded OMI observations were assimilated (Fig. 6), illustrating the success of the variational bias correction (Section 3) for the TCO₃ data. Table 3 confirms that CAMSRA has the smallest mean biases of the three reanalyses when averaged over the period 2003-2012 and also smaller biases than CIRA for the period 2003-2016 in all areas except the Arctic. The average global mean biases for the period 2003-2012 are 2.9 ± 10.2 DU for CAMSRA, 3.2 ± 10.5 DU for CIRA and 7.6 ± 13.0 DU for MACCRA. The biases for the other areas can be found in Table 3. We see that for TCO₃ CAMSRA is clearly a better product than the older reanalyses.

While it is relatively easy to reproduce a good TCO₃ field by assimilating TCO₃ data, reproducing the vertical structure of the O₃ field is more difficult and the CAMS system had problems with this in the past (Flemming et al., 2011). We therefore also carry out a comparison against independent ozone sondes to evaluate the vertical structure of model biases in the troposphere and stratosphere. The ozone sonde data used for the validation were acquired from a variety of data centres: WOUDC, Southern Hemisphere Additional OZonesondes (SHADOZ), Network for the Detection of Atmospheric Composition Change (NDACC), and campaigns for the Determination of Stratospheric Polar Ozone Losses (MATCH). The precision of electrochemical concentration cell (ECC) ozone sondes is on the order of $\pm 5\%$ in the range between 200 and 10 hPa, between -14% and +6% above 10 hPa, and between -7% and +17% below 200 hPa (Komhyr et al., 1995). Larger errors are found in the presence of steep gradients and where the ozone amount is low. The same order of precision was found by Steinbrecht et al. (1998) for Brewer-Mast sondes. Mean relative difference between the three reanalyses and ozone sondes and the standard

Deleted: 6

Deleted: reanalyse

Deleted: 7

Deleted: This comparison

Deleted: The figure

Deleted: 5

Deleted: got

deviations of the biases are shown in Fig. 9 for the Globe, Arctic, NH midlatitudes, Tropics, SH midlatitudes and Antarctic. For MACCRA the average is only for the period 2003-2012. In general, CAMSRA agrees to within 10% with the sondes. The best agreement between the reanalyses and the sondes is found in the stratosphere where the assimilated O₃ data constrain the analyses well. Differences between the reanalyses are larger in the troposphere where the impact of the assimilation is smaller (Inness et al., 2015) and differences in the chemistry schemes, emissions and transport become more important. CAMSRA and CIRA agree well above about 200-100 hPa, while MACCRA overestimates O₃ in all areas above about 15 hPa. While this overestimation of upper stratospheric and mesospheric O₃ in MACCRA will not affect the TCO₃ bias, ozone in this region is important for radiative transfer and the associated heating rates. A smaller bias in this region will make CAMSRA a better dataset to be used as climatology in e.g. radiation schemes or radiance observation operators. CAMSRA has larger O₃ values than CIRA in the troposphere which leads to an increased bias with respect to the sondes in the Tropics, but smaller biases in the other areas. Near the surface, CAMSRA has a positive bias. The largest differences between the reanalyses in the troposphere are found in the Tropics. Here MACCRA underestimates O₃ in the mid and upper troposphere with mean biases up to -30%, but absolute differences are small because O₃ values in the tropical upper troposphere and lower stratosphere are low. MACCRA also has a large negative bias near the surface in the Arctic and Antarctic. Here, improvements to the background error statistics (Inness et al., 2015), in particular to the vertical correlations of the background errors, led to big improvements in CIRA and CAMSRA compared to MACCRA.

Deleted: 8

The profile plots have shown that the largest relative differences between the three reanalyses are found in the troposphere. Therefore, Fig. 10 looks at timeseries of the modified normalized mean bias (MNMB) of reanalysis O₃ minus ozone sondes in the free troposphere (layer between 750-300 hPa) to assess these differences in more detail. Figure 10 confirms that MACCRA has the largest bias with respect to the sondes and shows a different behaviour between mid-2004 and the end of 2007 than during the other years, particularly noticeable in the Arctic, NH midlatitudes and Antarctic. This was documented in Inness et al. (2013) and was the result of using VarBC for MLS data in MACCRA during the period August 2004 till December 2007. CAMSRA is a much improved and temporally more consistent dataset than MACCRA. CAMSRA also has a smaller bias than CIRA in all areas, apart from the NH midlatitudes during 2005-2009. CAMSRA has larger O₃ values than CIRA in the free troposphere, so that CAMSRA shows a small positive bias and CIRA a small negative bias, which was also seen in the O₃ profile plots (Figure 9). CIRA and MACCRA have larger biases than CAMSRA in 2003 which could be the result of assimilating GOME O₃ profiles during the first 5 months of 2003 in CIRA and MACCRA, but not in CAMSRA (because it was found to lead to a degradation in the CAMS O₃ analysis, not shown). It was shown previously (Inness et al., 2013; Flemming et al., 2011; Lefever et al., 2015) that it is important in the CAMS system to assimilate height resolved O₃ data, like MLS profiles, to obtain a good vertical structure of the O₃ analysis and this is confirmed by Fig. 10 as all areas apart from the NH midlatitudes show larger biases from the end of March to the beginning of August 2004 when no O₃ profile data were assimilated (Figure 5). The biases in the Arctic and Antarctic regions are larger during 2003 than during the other years. This seems to be related to the degraded quality of the NRT SCIAMACHY and MIPAS data used during 2003 (Figures 5 and S1 in the supplement). The user should be aware of these problem periods.

Deleted: 9

Deleted: 9

Deleted: 16

Deleted: 9

Deleted: 4

Deleted: has to

There is a change in the bias behaviour from January 2013 onwards in CAMSRA and CIRA, particularly in the Antarctic and Arctic, where biases increase compared to the earlier years and show a seasonally varying behaviour. This must be the result of changes in the observing system, as the model does not change and is currently under investigation. The same seasonally varying biases are also found in the CAMS real-time system (not shown) from 2013 onwards.

Deleted: Tests so far suggest that it is not due to the change from 13L to 21L SBUV/2 data or due to the loss of Envisat in April 2012. It might be related to the use of GOME-2 data, but further tests are necessary to establish this for sure.

To finish the O₃ validation we look at surface ozone data. Figure 11 shows timeseries of MNMB of the reanalyses with respect to ground-based surface observations from the WMO's Global Atmosphere Watch (GAW) programme (e.g., Oltmans and Levy, 1994; Novelli and Masarie, 2014) averaged globally and for Europe. The GAW observations represent the global

Deleted: 10

background away from the main polluted areas. Detailed information on GAW can be found in GAW reports No. 209 (2013) (http://www.wmo.int/pages/prog/arep/gaw/gaw_home_en.html). GAW O₃ data have a precision of ±1 ppbv (Novelli and Masarie; 2014). [Table 4 shows the global and Europe mean biases and their standard deviations from all 3 reanalyses averaged over the periods 2003-2012 and 2003-2016 for CAMSRA and CIRA.](#) In the global mean CAMSRA agrees with the surface data to within 10% for most years. The biases are generally negative during the first half of the year and positive during the second. MACCRA has larger negative biases after 2008, and CIRA larger negative biases from 2003-2012. Surface O₃ in CAMSRA is higher than in CIRA so that the global mean biases during boreal spring are smaller, but the positive global mean biases during boreal summer larger. After spring 2013 CAMSRA and CIRA are very close. During 2003 CIRA and MACCRA have a considerably larger bias than CAMSRA. This is also seen over Europe and North America and was also seen in ozone in the free troposphere (Figure 9). In Europe CAMSRA has biases between -40 and +10%. All three reanalyses show an underestimation of surface O₃ during boreal spring and better agreement with the observations during summer when the bias is positive. The negative spring time bias is a known problem in the CAMS system and is generally smaller in CAMSRA than CIRA. The largest negative bias in CAMSRA is seen during 2004 (when no O₃ profile data were assimilated). [CAMSRA has the smallest global mean bias against GAW data of the three reanalyses averaged over the period 2003-2012 \(0.51 ± 6.95 ppb for CAMSRA, -2.7 ± 8.7 ppb for CIRA, -2.3 ± 9.4 ppb for MACCRA\) and also smaller biases than CIRA for the period 2003-2016 \(see Table 4\). The mean bias for Europe \(2003-2012\) is -1.9 ± 9.3 ppb for MACCRA, -4.4 ± 8.7 ppb for CIRA and -2.3 ± 7.7 ppb for CAMSRA.](#)

Deleted: Overall, CAMSRA is the most consistent data set with time

In summary, it can be said that for O₃ CAMSRA is temporally more consistent than the older reanalyses and has smaller biases compared to independent observations. [\(see Tables 3 and 4\).](#) The comparisons also show that it is not advisable to concatenate the older reanalyses with more recent years from CAMSRA, because the datasets are too different, and that users should use only data from CAMSRA if they are interested in the complete period from 2003-2016. There are some periods with slightly degraded quality (bigger biases) that the user should be aware of. These include the Arctic and Antarctic free troposphere during 2003 because MIPAS and SCIAMACHY data or poorer quality were assimilated, the period between the end of March and the beginning of August 2004 when no profile data were available for assimilation, and a change in bias after 2013 that is still under investigation. The underestimation of surface O₃ seen in the CAMS system in the NH during boreal spring is reduced in CAMSRA compared to the older reanalyses.

Deleted: .

Formatted: Subscript

4.2 Carbon Monoxide

Next, we look at CO fields from the reanalyses and compare them with independent observations. Figure [12](#) shows the seasonally averaged TCCO fields from CAMSRA and the differences between this data set and CIRA and MACCRA. The TCCO differences between CAMSRA and CIRA are small (below 0.1×10^{18} molec/cm², <5%) with CAMSRA generally lower than CIRA, apart from African biomass burning areas south of the equator in JJA and parts of SE Asia in DJF and MAM. The largest relative differences (of up to 15%, not shown) are found over the tropical oceans where background values are small. The differences between CAMSRA and MACCRA are larger. CAMSRA is lower than MACCRA over the oceans ($0.1-0.2 \times 10^{18}$ molec/cm², relative differences mainly < 15%) and much higher over biomass burning areas, e.g. South America, Africa, South-East Asia, Indonesia, Australia in DJF and boreal fires in Siberia in MAM and JJA with differences up to 0.5×10^{18} molec/cm² (corresponding to maximum relative differences of up to 30% over Indonesia). These difference plots show that the choice of fire emissions used in the reanalysis has a large impact on the TCCO field. In MACCRA these came from GFED (van der Werf et al., 2010) for the period 2003-2008 and GFAS v1.0 from 2008-2012 (Kaiser et al., 2012), while in CAMSRA and CIRA GFAS V1.2 was used throughout from 2003-2016 (see Table 1 and Fig. [4](#)). As for O₃, the differences between the

Deleted: 11

Deleted: 3

reanalyses are too large to allow the user to concatenate recent years from CAMSRA with earlier years from the other reanalyses.

To validate CO from the reanalysis with independent observations, in Fig. [J3](#) we first compare our data with observations from
5 Total Carbon Column Observing Network stations (TCCON, GGG2014 data, Wunch et al., 2011, see www.tcon.caltech.edu)
at six sites covering latitudes from the Arctic to Australia (see Table [5](#)). The TCCON stations measure the column-averaged
dry molar fraction CO amount (XCO) and have an absolute accuracy of about 4% (Wunch et al., 2010). Figure [J3](#) shows very
good agreement of CAMSRA with the independent observations, in particular, for the year-to-year variability. The mean bias
and standard deviations of the three reanalyses against the TCCON data are given in Table [5](#) and show that the mean biases of
10 CAMSRA are reduced at all stations compared to MACCRA. CAMSRA is slightly lower than CIRA with smaller biases and
standard deviation at all stations except Bremen and Sodankyla. Particularly in the tropics and SH, the biases and standard
deviations are much reduced in CAMSRA. CAMSRA captures the seasonal cycle well at all stations. Especially the summer
minimum (e.g. boreal summer in NH, austral summer in SH) is better captured in CAMSRA than in CIRA. CAMSRA
underestimates XCO at the NH stations Ny-Ålesund, Sodankyla, Bremen and Park Falls (biases < -2 ppb) and overestimates
15 it in the Tropics (Izaña, < 5 ppb; Darwin, < 2 ppb) and in the SH (Lauder, <1 ppb). CIRA slightly overestimates XCO in the
NH (< 3ppb) and has a larger positive bias than CAMSRA in the Tropics and SH (up to 8 ppb).

To also assess the vertical structure of the CO analysis fields, in Fig. [J4](#) we compare model fields with CO profiles from
20 MOZAIC (Measurements of OZone, water vapour, carbon monoxide and nitrogen oxides by in-service Airbus aircraft) and
IAGOS (In-service Aircraft for a Global Observing System) observations from instruments mounted on commercial aircraft.
The MOZAIC/ IAGOS CO data have an accuracy of ± 5 ppbv, a precision of $\pm 5\%$ and a detection limit of 10 ppbv (Nédélec
et al, 2003). We use CO profiles obtained during take-off and landing to evaluate the CO reanalysis fields. The profiles at the
NH mid latitude airports (Frankfurt, Eastern US, Japan) show that all three reanalyses underestimate CO in the free
troposphere, but agree to within 10% with the aircraft data. A larger underestimation is found in the boundary layer. Here,
25 MACCRA has the largest negative bias. This underestimation in MACCRA was noted previously (Inness et al., 2013) and led
to a modification of increased winter time road traffic emissions over North America and Europe in the MACCcity emissions
(Stein et al., 2014). These modified emissions are used in CAMSRA and CIRA. CAMSRA and CIRA are generally closer to
each other in the lower troposphere than to MACCRA. This area is less impacted by the assimilated MOPITT TIR retrievals
that have the largest sensitivity to CO in the mid troposphere (Deeter et al., 2013) and more by emissions and differences in
30 the chemistry schemes, which are more similar in CAMSRA and CIRA than in MACCRA. In the upper troposphere CAMSRA
has the lowest mean bias while CIRA and MACCRA overestimate CO above about 300 hPa. At Windhoek, all reanalyses
underestimate the aircraft data. Here CAMSRA and MACCRA have a smaller bias than CIRA below 650 hPa, but CIRA has
a smaller bias above 500 hPa. Over SE Asia all reanalyses show a large underestimation in the boundary layer with MACCRA
having the largest bias of up to -35%. In the free troposphere all reanalyses underestimate CO, but have a smaller bias than
35 near the surface. MACCRA has the smallest bias in the free troposphere (biases of less than -5% between 650-400 hPa). This
could be the result of assimilating IASI TCCO data (George et al.; 2009; Clerbaux et al.; 2009) in MACCRA in addition to
MOPITT. Like MOPITT, IASI CO retrievals are most sensitive to CO in the mid troposphere and could add an extra constraint
on CO here when more observations are being assimilated, as IASI has a better coverage than MOPITT (e.g. Barré et al.,
2015). Over Indonesia CAMSRA and CIRA have smaller biases than MACCRA below 700 hPa. This is likely due to
40 differences in the fire emissions. At Windhoek, SE Asia and Indonesia CAMSRA and CIRA overestimate surface CO. This
overestimation is also seen in comparison with GAW surface CO data at Cape Point (not shown).

Deleted: 12

Deleted: 3

Deleted: 12

Deleted: .

Deleted: 3

Deleted: and standard deviation in

Deleted: 13

Next, we look at surface CO data. Figure 15 shows maps of mean biases of surface CO against GAW observation. The data are averaged over the period 2003-2016 for CAMSRA and CIRA and 2003-2012 for MACCRA. The uncertainty of GAW CO data is between 2 ppbv for marine boundary layer sites and 5 ppbv for continental sites that are influenced by regional pollution (WMO, 2010). The biases in CAMSRA and CIRA are less than 10% for many stations, with slightly larger positive biases for some North American and slightly larger negative biases for some European stations. MACCRA has larger negative biases over North America and Europe. CAMSRA shows a larger positive bias than the other two reanalyses at the Indonesian station of Bukit Koto Tabang. Looking at a timeseries at this location (Figure 16d) we see that the station is strongly influenced by high CO events during years with intense biomass burning (2004, 2006, 2014, 2015) with the largest peaks in 2014 and 2015 when CAMSRA is higher than CIRA. This is after the end of MACCRA which only covered the period from 2003-2012. It has to be assessed if this overestimation is the result of too large GFAS emission factors for CO.

Deleted: 14

Deleted: 23d

Deleted: assess

Figure 16 shows timeseries of monthly mean CO surface biases of the reanalyses with respect to GAW observations averaged over the Globe and Europe as well as timeseries of absolute surface CO values at the Arctic Alert station and the Indonesian Bukit Koto Tabang station. Table 6 shows the corresponding mean biases of the three reanalyses and their standard deviations. The agreement of MACCRA with GAW CO data over Europe (Fig. 16ba) is worse than for the other two reanalyses with a large underestimation during boreal winter. This bias was already documented in Inness et al. (2013) and Flemming et al. (2017b). The negative bias of MACCRA increases after April 2008 when the assimilation of IASI CO retrievals started in MACCRA (see Inness et al., 2013) and is particularly pronounced at high northern latitudes (e.g. timeseries at Alert, Fig. 16c) where the mean bias for 2003-2012 is -19.2 ± 17.5 ppb for MACCRA, -6.0 ± 12.5 ppb for CIRA and -6.2 ± 12.2 ppb for CAMSRA. The mean bias for MACCRA over Europe for the period 2003-2012 is -16.6 ± 48.8 ppb, while CAMSRA (10.7 ± 54.0 ppb) and CIRA (7.5 ± 54.7 ppb) both have smaller positive biases. The average global mean bias for the period 2003-2012 is negative for MACCRA (-6.3 ± 38.5 ppb). Larger and positive global mean biases for 2003-2012 are found for CIRA (13.6 ± 52.1 ppb) and CAMSRA (17.9 ± 71.7 ppb). The larger global mean bias for CAMSRA is dominated by the large overestimation of surface CO over Indonesia during years with high biomass burning activity (see Fig. 16d). The differences between MACCRA and the other reanalyses are likely to be the result of using GFED instead of GFAS fire emissions.

Deleted: 15

Deleted: and

Deleted: 23a

Deleted: This

Deleted: 23b.

In summary, CO from CAMSRA has a good seasonal cycle and captures the interannual variability observed by TCCON data well. CAMSRA has smaller biases relative to TCCON data than the older reanalyses at most stations. There is a low bias with respect to IAGOS aircraft data in the lower troposphere over NH midlatitudes, SE Asia and Indonesia. This is a persistent feature of the CAMS system and more work is needed to assess if it is a model problem or due to problems with the emissions. CAMSRA generally agrees better with GAW surface observations than MACCRA over much of the globe (e.g. Europe, North America), but has larger biases relative to GAW over Indonesia which lead to larger global mean biases when averaged over 2003-2012 or 2003-2016. CAMSRA is more similar to CIRA than MACCRA because of differences in the emissions, chemistry schemes and assimilated data. It is therefore not possible to use a climatology based on the MACCRA data and recent years from CCAMSRA to e.g. calculate anomalies.

Deleted: CAMSRA generally agrees better with GAW surface observations than MACCRA, but has larger biases relative to GAW over Indonesia.

Deleted: total

Deleted: NO₂

Deleted: and

Deleted: 16. Because the IFS(CB05) scheme is a tropospheric scheme, the total column NO₂ fields from CAMSRA and CIRA are basically tropospheric columns. MACCRA is not shown in Fig. 16 as it used a chemistry scheme that included the stratosphere and has very different total column NO₂.

Deleted: 16

Deleted: NO₂

Deleted: NO₂

Deleted: NO₂

4.3 Nitrogen Dioxide

The final reactive gases species discussed in this paper is NO₂. Validation of NO₂ with independent observations, especially surface observations, is difficult because of the short lifetime and large, orders of magnitude, variability of the concentrations.

First, we compare the seasonally averaged tropospheric column NO_x (TRCNO_x) fields from CAMSRA, CIRA and MACCRA in Fig. 17. Figure 17 shows that CAMSRA has a realistic TRCNO_x distribution with high NO_x columns in the NH in areas affected by anthropogenic emissions and also in boreal and tropical biomass burning areas. The largest TRCNO_x values are

found in DJF in the **NH** when emissions are largest and the **NO_x** lifetime longest. In Africa, a realistic seasonal cycle is found with a maximum in the Sahel in DJF, and **maximum values** south of the equator in JJA related to the seasonality of biomass burning. **NO_x** columns over South America are smaller than over Africa, with the largest values found in **JJA and SON** because deforestation fires and agricultural fires mainly occur south of 10°S during August-October with peak in September.

Deleted: regions of anthropogenic pollution

Deleted: NO₂

Deleted: .

Deleted: a

Deleted: NO₂

Deleted: Over Indonesia the largest NO₂ columns are also seen in SON and are dominated by contributions from the 2015 fires which show up as the largest spike of the GFAS emissions in Asia (see Fig. 3).

Differences between CAMSRA and CIRA are due to model changes, but also due to the assimilation of the tropospheric column NO₂ retrievals from SCIAMACHY, OMI and GOME-2 in CAMSRA (see Table 2). No NO₂ retrievals were assimilated in CIRA. **Over large parts of the world the differences are small. The largest positive differences are seen over SE Asia, particularly during DJF. Over Europe and the Eastern US, CAMSRA has lower TRCNO_x values than CIRA during DJF. The fact that the largest differences in the NH are seen during DJF,** suggests that this is at least partly due to the impact of the assimilation of the satellite data. While the impact of the NO₂ assimilation is generally small because of the short lifetime of NO₂, it was found to have a larger impact during winter and spring when the lifetime is longer than during summer (see supplement Fig. S5 and S6 and Inness et al., 2015). Furthermore, by assimilating NO₂ retrievals from satellites with different overpass times (9:30 local time for GOME-2, 10:00 for SCIAMACHY, 13:30 for OMI) the impact of the assimilation is likely to be increased. **CAMSRA has much lower values than CIRA over the Arabian Peninsula with the largest differences found in JJA.** This reduction is not due to the assimilated data, but due to model changes, i.e. the coupling with aerosol in the chemistry scheme (see section 2.1) that leads to faster NO_x removal and reduces the positive bias noted before in the CAMS system in this area when evaluating against satellite NO₂ observations (not shown). The differences between CAMSRA and MACCRA are mainly negative over land in the Tropics and positive over areas of anthropogenic emissions apart from the Eastern US and parts of China in DJF. These differences are a result of the different chemistry schemes and biomass burning emissions used in CAMSRA and MACCRA as well as the assimilation of NO₂ retrievals from different instruments (only SCIAMACHY assimilated in MACCRA).

Deleted: CAMSRA generally has larger NO₂ columns than CIRA in areas affected by biomass burning. During JJA and DJF, CAMSRA is higher than CIRA in most of the Tropics, while the differences are negative at high latitudes. Notable exceptions are the much lower values in CAMSRA over the Arabian Peninsula (> -50%).

Moved down [1]: This reduction is not due to the assimilated data, but due to model changes, i.e. the coupling with aerosol in the chemistry scheme (see section 2.1) that leads to faster NO_x removal and reduces the positive bias

Deleted: seen before in this area when evaluating against satellite NO₂ observations (not shown). In midlatitudes of both hemispheres the differences between CAMSRA and CIRA are mainly small and positive in JJA and SON. In DJF and MAM there are again positive differences in the Tropics, but these are more confined to South America, Africa and Indonesia than in JJA and SON. Positive differences are also found over India and SE Asia, while most extratropical areas show negative differences (apart from the areas affected by boreal fires). There are large differences over the poles in relative terms, but these are small in absolute terms as NO₂ columns are small here. The fact that the largest relative differences in the NH (outside the polar regions) are seen during DJF and MAM

Moved (insertion) [1]

It is difficult to find independent NO₂ data for validation which are representative for the grid box size of the CAMSRA global reanalysis. We use the following two datasets for validation. (1) A satellite based tropospheric column NO₂ dataset and (2) surface NO₂ measurements from selected GAW stations in Europe. GAW stations aim to have an uncertainty of about 3% for monthly mean data (Penkett et al., 2011). As the number of GAW stations measuring NO₂ is small and drops considerably with time during the period of interest, it is not meaningful to look at timeseries of area means. We therefore restrict our validation to four European GAW stations that have observations for most of the period from 2003-2016. The dataset (1) is produced by the University of Bremen based on SCIAMACHY/Envisat NO₂ satellite retrievals (IUP-UB v0.7, before April 2012) (Richter et al., 2005) and GOME-2/MetOp-A NO₂ satellite retrievals (IUP-UB v1.0, from April 2012 until the end of 2016) (Richter et al., 2011). The retrieval product used for validation is **different to** the SCIAMACHY and GOME-2 NO₂ retrievals that are assimilated in CAMSRA (**which are** produced by the ACSAF, see Table 2). Despite the retrievals being based on the same level 1 spectral irradiance data, the retrieval procedures are completely independent, from the spectral fit to the assumptions made on the a-priori used for the air mass factor calculations. In the absence of other independent validation data for tropospheric NO₂ columns, they can still provide a critical evaluation of the model performance on a global scale. The satellite data are always taken at the same local time, roughly 10:00 LT for SCIAMACHY and 09:30 LT for GOME-2, and at clear sky only. Model data are vertically integrated, interpolated linearly in time to the observation time of SCIAMACHY (which is expected to lead to minor uncertainties when comparing to GOME-2 observations in Figure **J8 below**) and then sampled spatially to match the satellite data. Model data were treated with the same reference sector subtraction approach as the satellite data. Uncertainties in NO₂ satellite retrievals are large and depend on the region and season. Winter values in mid and high latitudes are usually associated with larger error margins. As a rough estimate, systematic uncertainties in regions with significant pollution are on the order of 20% – 30%.

Deleted: therefore

Deleted: a

Deleted: one than

Deleted: a retrieval product

Deleted: 25

Figure 18 shows timeseries of tropospheric column NO₂ from the Bremen satellite data set (0.5° x 0.5°), CAMSRA, CIRA and MACCRA averaged over Europe and East-Asia for the period from 2003 to 2016. The figure illustrates that, while the seasonality of NO₂ (with low values during summer and high values during winter) is captured in both areas, there is generally an underestimation of the seasonal cycle, mainly due to an underestimation of the winter time maximum. This underestimation could be related to an underestimation of anthropogenic emissions or uncertainties in the photochemistry of the models and is particularly pronounced over East Asia. Over Europe the differences between the three reanalyses are small; over East Asia they are larger. Over East Asia in 2003, the CAMS reanalysis shows a strong variation of values from one month to the next and fails to reproduce the observed seasonality. This is due to assimilating SCIMACHY NO₂ data of degraded quality during 2003 in CAMSRA (see supplement Fig. S5a). The Bremen data set shows an increase of the wintertime maximum NO₂ values over East Asia until 2012-2014 and a decrease in the later years. This behaviour is reproduced better in CAMSRA than in CIRA and MACCRA, though the maximum values are still underestimated. This improvement is the result of assimilating more NO₂ satellite data, in particular data from satellites with different overpass times, in CAMSRA. It is not seen in a control run without data assimilation (not shown). However, the magnitude of the positive trend up to 2012 and of the negative trend in the recent years is still underestimated by CAMSRA and the observed decrease after 2014 is not reproduced by the three reanalyses.

Deleted: 17

Deleted: from

Deleted: 2014

Deleted: between 2013 and

Figure 19 shows timeseries of surface NO₂ from CAMS, CIRA and MACCRA with GAW surface observations at four European stations, and Table 7 lists the corresponding mean biases and their standard deviations. Overall, the reanalyses reproduce the observed mean values and the seasonal variability well. At Leba (at the Baltic coast) all three reanalyses capture the annual cycle well with high NO₂ concentrations during the winter and lower concentrations during the summer. MACCRA underestimates the summertime minimum more than the other two reanalyses. Averaged over the years 2003-2012 CAMSRA has the smallest bias of 0.0 ± 0.6 ppb compared to -0.2 ± 0.6 ppb for MACCRA and 0.1 ± 0.6 ppb for CIRA. At Jarczew (Poland) both CAMSRA and MACCRA capture the low summertime NO₂ values better than CIRA which has a positive bias during summer, while the wintertime NO₂ maxima are more similar in the three reanalyses. Overall, CAMSRA agrees best with the GAW data here, with the smallest mean bias and standard deviation (see Table 7). At Hohenpeissenberg in Southern Germany all reanalyses underestimate the summer minimum and struggle to capture some of the high winter values, between 2008-2012. CIRA underestimates the winter maximum values most while CAMSRA and MACCRA agree better with the observations during winter, especially during the first half of the timeseries. MACCRA has the smallest mean bias (-0.6 ± 0.7 ppb), followed by CAMSRA (-0.7 ± 0.7 ppb) and CIRA (-1.1 ± 0.7 ppb) for the period 2003-2012. At Payerne (Switzerland), MACCRA strongly underestimates the GAW observations (mean bias of -4.7 ± 2.2 ppb), while CAMSRA (mean bias of -1.2 ± 1.4 ppb) and CIRA (mean bias of -1.1 ± 1.6 ppb) capture the annual cycle reasonably well, in particular the summer minimum.

Deleted: 18

Deleted: .

Deleted: , and the three reanalyses are quite similar.

Deleted: .

Deleted: .

Deleted: .

Deleted: and CIRA

In summary, we find that CAMSRA shows some improvements in the tropospheric NO₂ column (relative to a dataset based on SCIMACHY and GOME-2A data) compared to the older two reanalyses, especially over East Asia where the assimilation of (more) NO₂ retrievals reduces the bias between the reanalysis and the data. However, the tropospheric NO₂ columns are still underestimated in CAMSRA over East Asia and Europe, particularly the wintertime maxima. This is a longstanding problem of the CAMS system and it is hoped that work which has started to include an emission inversion capability in the CAMS system will improve this in the future. We find changes in NO₂ compared to CIRA (particularly over the Arabian Peninsula), which are the result of coupling with aerosol in the CAMSRA chemistry scheme that leads to faster NO_x removes and a reduced positive bias in those areas. Compared to GAW surface NO₂ observations at 4 European stations CAMSRA

Deleted: compared

Deleted: relative

Deleted: European

reproduces the monthly mean values and the seasonal variability well with some underestimation of wintertime maximum values.

4.4 Aerosols

5 The final validation section looks at aerosol fields from the [three](#) reanalyses. Several model changes were included in the version of the IFS used to produce CAMSRA to address issues identified in CIRA, and this has a large impact on the aerosol speciation. Figure [20](#) shows the mean AOD over the period from 2003 to 2016 from CAMSRA and the differences between this dataset and CIRA and MACCRA (only for 2003-2012). Also shown are the mean and differences for the individual aerosol components (sea salt, desert dust, sulphate, organic matter and black carbon). There is a considerable change in the aerosol composition in CAMSRA. Relative to CIRA, CAMSRA shows a reduction in desert dust, sulphates and black carbon in the SH, compensated by an increase in sea salt, organic matter and black carbon in the NH. Compared to MACCRA there is a reduction in sea salt, desert dust, sulphate and black carbon in the SH, and an increase in organic matter and black carbon in the NH. Too much sulphate was a known problem of CIRA, where it was the dominant species contributing to AOD in regions away from the main aerosol emissions (Flemming et al., 2017b). This resulted partly from the mis-speciation of analysis increments mentioned in Section 2.3. This is significantly improved in CAMSRA by model changes, accompanied by a large increase in organic matter in polluted regions from the introduction of a representation of anthropogenic SOA as described in Section 2.1.1, which was missing from the earlier reanalyses.

Deleted: 19

20 Total AOD in CAMSRA is reduced over most land areas and the Arctic Ocean (Fig. [20](#)); however, there are increases over most of the tropical [oceans](#) and non-desert tropical land regions, in particular SE-Asia, India, Indonesia and parts of tropical South America and Africa. The largest absolute reduction is found in desert areas (North Africa, Middle East, Gobi) where CAMSRA is up to 0.2 lower than CIRA, where model changes led to a reduction in desert dust. The reduction of AOD seen in the NH comes from the reduction in sulphate. Differences of the total AOD between CAMSRA and MACCRA are larger than between CAMSRA and CIRA with CAMSRA considerably lower than MACCRA everywhere except the Sahara, tropical South America and parts of SE Asia.

Deleted:

Deleted: 19

Deleted: ocean

30 The AOD at 550 nm from the reanalyses is evaluated with observations of the AErosol RObotic NETWORK ([AERONET](#), Figures [21-23](#)) Version 3 Level 2 data. [AERONET](#) is a network of about 400 stations measuring spectral AOD with ground-based sun photometers (Holben et al., 1998). The stations are mostly located over land, with a high number of stations situated in North America and Europe. The global number of stations contributing observations for the evaluation increased from about 60 in 2003 to about 300 in 2016. Figure [21](#) shows maps of the mean biases from the three reanalyses against [AERONET](#). CAMSRA has the smallest mean bias at most locations, while CIRA shows larger positive biases over North America, Australia and desert areas (North Africa, Middle East, Gobi) and a larger underestimation in India and SE Asia. MACCRA has even larger positive biases in North America and larger positive biases in Europe and the Mediterranean. Figure [21](#) shows that in CAMSRA there are some hot spots around outgassing volcanoes (in particular Mauna Loa and Mexico City) with high analysis AOD values that degrade the global average bias. These hotspots are dominated by sulphate, and are a side effect of possibly erroneous model treatment of diffuse volcanic emissions, i.e. the model-resolution orography not resolving the height of the volcanoes and therefore not being representative of the measurement sites with respect to the volcanic plumes. It is also possible that there are errors on how quickly aerosol is formed from diffuse outgassing sources. The volcanic emissions have been unmasked by recent enhancements to the aerosol SO₂ oxidation scheme which improve aerosol on the global scale. When calculating global mean statistics, it is advisable to exclude those two stations as unrepresentative.

Deleted: Aeronet

Deleted: 28-30

Deleted: Aeronet

Deleted: 20

Deleted: Aeronet

Deleted: 20

Figure 22 shows timeseries of monthly mean biases from the three reanalyses against AERONET for several areas and Table 8 the corresponding mean biases and their standard deviations. Figure 23 shows global correlation coefficients with AERONET. As explained above, Mauna Loa and Mexico City were excluded from these statistics. As already seen in Figure 21, CAMSRA has the smallest bias with respect to the AERONET data in most areas (see also Table 8) and the largest correlation coefficient (Figure 23). It shows a good consistency throughout the time period from 2003-2016 while MACCRA shows an increasing positive bias with time in Europe and North America. CIRA also shows increasing positive biases with time in North America, particularly from 2013 onwards, and a change in biases in Europe, from negative at the beginning of the timeseries, to positive at the end. It still has to be assessed if this improvement is due to model changes or a better representation of the emissions in CAMSRA. There is a change to slightly higher AOD in CAMSRA (biases more positive in the global mean and in particular over Europe and North America) that seems to coincide with the loss of AATSR data in April 2012. Over SE-Asia all reanalyses have a negative bias with CAMSRA having the smallest and CIRA the largest, (see Table 8). In the NH, the bias changes with season and is largest (positive) during the summer months.

Deleted: 21

Deleted: Aeronet

Deleted: 22

Deleted: 20

Deleted: generally

Deleted: Aeronet

Deleted: 22

Deleted: .

We do not have observations to validate the individual aerosol components, but the simulated aerosol size distribution and implicitly the aerosol composition may be validated to first order by using the wavelength dependent variation in AOD. It is expressed as Ångström exponent (AE), with higher Ångström exponents indicative of smaller particles and dominance of sulphate and organic aerosols. AE is little dependent on wavelength itself. We compute it here from AOD@440 and AOD@870 nm, except in CIRA, where only AOD@550 and AOD@670 nm were available. Figure 24 shows the temporal evolution of simulated and observed mean AE, as well as the correlation. CAMSRA and CIRA show less variability compared to the observations, overestimating mostly the Ångström exponent (5-20%). Overestimation appears mainly in late spring, indicating possibly too little coarse dust. The bias is, however, considerably smaller than for MACCRA, the latter having a significant low bias. Total AOD is composed of less dust in CAMSRA and CIRA compared to MACCRA. This may explain the higher overall Ångström values in the CAMS reanalysis. Temporal-spatial correlation in Fig. 24 is higher in winter in the CAMSRA and indicates partially better tracing of aerosol size and implicitly composition variability than in both CIRA and MACCRA reanalysis.

Deleted: 23

Deleted: 23

In summary, there has been a large change in aerosol composition in CAMSRA compared to the previous reanalysis, making it impossible to compare aerosol species from CAMSRA with climatologies built from CIRA or MACCRA. There is a pronounced reduction in sulphate in CAMSRA which was too high in CIRA. More work is needed to validate the individual aerosol components against independent observations. CAMSRA total AOD shows reduced biases against AERONET observations and a better temporal consistency, while the older reanalyses show biases that increase with time over North America and Europe. CAMSRA shows too high AOD values around outgassing volcanoes (Mauna Loa, Mexico) and we recommend excluding those locations as unrepresentative when calculating global mean statistics.

Deleted: a

Deleted: bias

Deleted: Aeronet

Deleted: to exclude

5 Conclusions

The Copernicus Atmosphere Monitoring Service (CAMS) has produced a new reanalysis dataset of atmospheric composition, referred to as CAMSRA in this paper. This reanalysis currently covers the years 2003-2016 and will be extended in the future by adding one year each year. It was produced by assimilating satellite retrievals of O₃, CO, NO₂ and AOD from various sensors in ECMWF's Integrated Forecast System (IFS). The new CAMS reanalysis builds on the experience gained during the production of the earlier MACC reanalysis (MACCRA) and CAMS interim reanalysis (CIRA). Great care has been taken to ensure that the emission datasets used in CAMSRA were consistent in time and that consistent anthropogenic, biogenic and biomass burning emissions were used in the aerosol and chemistry modules. Furthermore, a newer (and therefore better)

Deleted: had

version of the IFS was used and new, reprocessed data sets for assimilation were acquired as far as possible. Variational bias correction was applied to some of the O₃, CO, NO₂ and AOD data to ensure good temporal consistency when blending the various datasets. Known problems from earlier reanalyses were avoided, e.g. issues with the bias correction of MLS data in MACCRA that led to drifts in the ozone field, and a better time consistency in the CO field of CAMSRA than of MACCRA was obtained by assimilating data from only one instrument, i.e. MOPITT. CAMSRA therefore shows a more temporally consistent performance than the previous two reanalyses and has mostly smaller biases with respect to independent observations in most areas for O₃, CO, NO₂ and AOD.

The validation results presented in this paper have shown that mean TCO₃ fields from CAMSRA and CIRA are similar and agree to within 1% when averaged over the period 2003-2016. The differences between CAMSRA and MACCRA are larger, but still within 5%. All reanalyses have small positive biases with respect to Dobson TCO₃ observations, with MACCRA having the largest global mean bias and CAMSRA the smallest (see Table 3). Agreement with ozone sondes is within 10% in the long term global mean. The reanalyses agree well in the stratosphere and have larger differences in the troposphere. CAMSRA agrees better with ozone sondes above 15 hPa than MACCRA which overestimates O₃ there. This makes CAMSRA a better dataset to be used as climatology in e.g. radiation schemes or radiance observation operators. CAMSRA and CIRA agree better with ozone sondes in the tropical mid to upper troposphere than MACCRA which shows a large underestimation here (-30%). O₃ from CAMSRA is more consistent in time than MACCRA because the variational bias correction applied to MLS O₃ retrievals during some of MACCRA led to drifts in the O₃ field, particularly noticeable in the troposphere in MACCRA (Inness et al., 2013). CAMSRA shows a smaller underestimation of surface O₃ in the NH during boreal spring than the previous reanalyses. We note, that there is an increased seasonally varying tropospheric ozone bias in CAMSRA after 2013, particularly in the Antarctic and Arctic. The reason for this bias is still being investigated and the same bias is also found in the CAMS real-time ozone analysis. There are larger ozone biases in all three reanalyses between March and August 2004 when no O₃ profile data were available for assimilation than during the rest of the period, and larger biases during 2003 when MIPAS and SCIAMACHY O₃ data of poorer quality were assimilated.

For CO, CAMSRA shows good agreement with TCCON observations with small biases and a good representation of the seasonal cycle and inter-annual variability. CAMSRA has the smallest bias out of the three reanalyses with respect to most of the TCCON stations looked at in this paper, with a small negative bias in the NH and a small positive bias in the Tropics and SH (Table 5). Especially in the Tropics and SH the biases in CAMSRA are much reduced compared to CIRA and MACCRA. Comparisons with IAGOS aircraft data show an underestimation of CO in the free troposphere in the NH (<10%) with larger underestimation in the lower troposphere. This underestimation is similar in CAMSRA and CIRA, while MACCRA has larger negative biases in the NH lower troposphere. CAMSRA also has smaller biases with respect to GAW surface CO than MACCRA, over Europe and North America, but surface CO values are overestimated over Indonesia in CAMSRA leading to larger global mean CO biases relative to GAW (Table 6). The choice of fire emissions has a large impact on the TCCO field, and the largest differences between CAMSRA and MACCRA are seen in biomass burning areas, because different fire emission datasets were used in these reanalyses. CO from CAMSRA is more consistent in time than MACCRA, which showed some changes in the CO field because the assimilation of IASI CO was started in MACCRA in 2008 (Inness et al., 2013), while in CAMSRA and CIRA only TCCO from MOPITT was assimilated.

For NO₂, data from more instruments were assimilated in CAMSRA (SCIAMACHMY, OMI & GOME-2) than in CIRA (none) and MACCRA (SCIAMACHY only). This led to differences between the reanalyses but the limited amount of independent validation observations for NO₂ made it difficult to assess these differences. The seasonal cycle of the tropospheric NO₂ columns is underestimated over East Asia and to a smaller extent over Europe by all three reanalyses compared to a

Deleted: are

Deleted: biases

Deleted: .

Deleted: .

Deleted: .

Deleted: 2AB

Deleted: datasets

5 tropospheric column NO₂ dataset based on SCIAMACHY and GOME-2A data. CAMSRA shows the smallest bias out of the three reanalyses over East Asia, suggesting that the assimilation of several NO₂ satellite retrievals improves the NO₂ analysis. However, the comparison also showed that the quality of the NO₂ analysis in CAMSRA was degraded during 2003 because of the reduced quality of the assimilated SCHIAMACHY NO₂ data (Fig. S5a in the supplement) during that time. Compared to European GAW NO₂ surface observations, the reanalyses reproduced the observed mean values and the seasonal variability well, but again showed an underestimation of high winter time values. CAMSRA generally had the smallest biases (Table 7). More work is needed to validate the NO₂ fields from CAMSRA thoroughly and to assess if the wintertime underestimation is due to shortcomings of the model or the emissions.

10 Total AOD values in CAMSRA are reduced compared to CIRA and MACCRA in many areas, but increased over India and SE Asia and agree better with AERONET total AOD, with reduced biases in most areas (Table 8). AOD in CAMSRA is more consistent in time than in CIRA and MACCRA, especially over Europe and North America where CIRA and MACCRA show an increasingly positive bias with time. There are large differences in aerosol speciation (which is less constrained by the assimilated AOD observations) between CAMSRA, CIRA and MACCRA. Relative to both the earlier reanalyses, CAMSRA shows a reduction in desert dust, sulphates and black carbon in the SH, compensated by an increase in organic matter and black carbon in the NH. The reduction in sulphate globally is particularly strong relative to CIRA, where its contribution was overestimated (Flemming et al., 2017b), suggesting this is a clear improvement of CAMSRA. CAMSRA shares the lower sea salt of CIRA in the SH, but is closer to the higher values of MACCRA in the NH. The larger role played by organic matter in CAMSRA reflects the inclusion of a proxy for anthropogenic SOA added to organic matter, which was missing from the earlier reanalyses. Timeseries and correlation of the Ångström exponent indicate partially better tracing of aerosol size and implicitly of composition variability of CAMSRA than in both CIRA and MACCRA. Validation of AOD with AERONET data shows there are some hot spots around outgassing volcanoes (in particular Mauna Loa and Mexico City) with high analysis AOD values in CAMSRA that degrade the global average bias. This is a side effect of possibly erroneous model treatment of diffuse volcanic emissions, i.e. the model-resolution orography not resolving the height of the volcanoes and therefore not being representative of the measurement sites with respect to the volcanic plumes. When calculating global mean statistics, it is advisable to exclude these two stations as unrepresentative.

30 In addition to being a dataset of better quality and better temporal consistency, CAMSRA has the advantage that it provides more chemical species than CIRA (where only a limited subset was archived) and that data are available at a higher temporal and spatial resolution. In total 56 tropospheric chemical species of the CB05 chemical mechanism, 12 aerosol components and many additional diagnostics such as total columns and extinction coefficients can be obtained from CAMSRA. An inventory of the available model fields can be found at <http://apps.ecmwf.int/data-catalogues/cams-reanalysis/?class=mc&expver=eac4>. Users who previously used the MACCRA or CIRA data should note that because of the differences seen between CAMSRA and the older reanalyses, it is not advisable to concatenate data from the older reanalyses with CAMSRA data from more recent years, but that CAMSRA data should be used for the whole period of interest.

40 The CAMSRA data are freely available (<http://atmosphere.copernicus.eu/copernicus-releases-new-global-reanalysis-data-set-atmospheric-composition>) and will become available from the Copernicus Atmosphere Data Store. The data can serve a multitude of users from application developers to scientists and policy makers. They can be used to analyse the state of the atmosphere or to look at trends that have developed over the past years or decades. Furthermore, the CAMS reanalysis can be used to compute climatologies, evaluate models, benchmark other reanalyses or serve as boundary conditions for regional models for past periods.

Deleted: Aeronet

Deleted: .

Deleted: Aeronet

Deleted: The data

One limitation of CAMSRA is that it does not use a stratospheric chemistry scheme (apart from a Cariolle-type parametrization for stratospheric ozone) and the stratospheric concentrations apart from ozone need to be considered with caution. For any future reanalysis, we plan to implement a full stratospheric chemistry scheme and to increase the vertical resolution to bring it in line with the vertical resolution used in ECMWF's NWP system (currently 137 levels, model top at 0.01 hPa). It might also be beneficial to include the chemistry in the adjoint and tangent linear model of the IFS and to re-calculate the background error statistics for the atmospheric composition variables with the latest version of the model. More time should be spent on acquiring and assessing new observations so that problems like the OMI row anomaly are addressed properly and the quality of the reanalysis is not degraded at times when lower quality data are assimilated (e.g. degraded NO₂ analysis during 2003 because of worse quality SCIAMACHY data). It would also be advisable to explore thoroughly the use of reprocessed datasets, e.g. datasets processed by ESA's CCI and the Seventh Framework Programme (FP7) Quality Assurance for Essential Climate Variables (QA4ECV) project. It could also be investigated if enough atmospheric composition data sets are available prior to 2003 to start a future reanalysis before 2003. Furthermore, work has started to look at emission inversion with the CAMS system and we hope the next reanalysis will include some inversion capability to update the emissions during the assimilation according to the satellite observations.

Author contributions

A. Inness prepared the data assimilation of the chemistry fields, ran the reanalysis experiments, carried out a lot of the validation and wrote the manuscript. M. Ades contributed to the assimilation of aerosol data and produced the ~~AERONET~~, GAW and WOUDC validation plots. A. Agusti-Panareda and S. Massart provided the code for the TCCON validation and Figure 13. J. Barré and S. Massart helped with the assimilation of the reactive gases and greenhouse gases, A. Benedictow and M. Schulz provided Fig. 24 and the corresponding text, A.M. Blechschmidt provided Fig. 18. J. Dominguez, M. Razinger and M. Suttie helped with the acquisition of the data that were assimilated in the CAMS reanalysis, re-archiving of the CAMS reanalysis experiments and data provision to users. R. Engelen and V.-H. Peuch provided useful feedback on the manuscript and help in the coordination of the reanalysis, H.J. Eskes coordinated the CAMS_84 validation activities and provided feedback on the manuscript, J. Flemming and V. Huijnen worked on the chemistry scheme of the IFS and J. Flemming provided Figures 2, 3, 7, 12, 17 & 20. L. Jones provided the software for the validation with ozone sondes, GAW, WOUDC, ~~AERONET~~ and IAGOS data and help with the Figures using those data, Z. Kipling and S. Remy worked on the aerosol model and aerosol validation, M. Parrington worked on the emissions and provided Fig 4.

Deleted: Aeronet

Deleted: 23

Deleted: 17

Deleted: 6,11,16 & 19

Deleted: Aeronet

Deleted: 3

Acknowledgements

Thanks to the data providers of the data assimilated in the CAMS reanalysis and the data used for the validation studies in this paper. The Copernicus Atmosphere Monitoring Service is operated by the European Centre for Medium-Range Weather Forecasts on behalf of the European Commission as part of the Copernicus programme (<http://copernicus.eu>).

Appendix

1 List of GEMS/MACC/CAMS real-time and reanalysis experiments

Period	EXP	CLASS	IFS CYCLE	Resolution	Model
--------	-----	-------	-----------	------------	-------

20080706- 20090901	f1kd	RD	32R3	T159/L60	IFS/MOZART 3.5 coupled system
20090901- 20120705	f93i	RD	CY36R1	T159/L60	IFS/MOZART 3.5 coupled system
20120705- 20131007	fnyp	RD	CY37R3	T255/L60	IFS/MOZART 3.5 coupled system
20131007- 20140224	fnyp	RD	CY38R2	T255/L60	IFS/MOZART 3.5 coupled system
20140224- 20140918	fnyp	RD	CY40R1	T255/L60	IFS/MOZART 3.5 coupled system
20140918- 20150903	g4e2	RD	CY40R2	T255/L60	IFS(CB05)
20150903- 20160621	0001	MC	CY41R1	T255/L60	IFS(CB05)
20160621- 20170124	0001	MC	CY41R1	T511/L60	IFS(CB05)
20170124- 20170926	0001	MC	CY43R1	T511/L60	IFS(CB05)
20170926-	0001	MC	CY43R3	T511/L60	IFS(CB05)

Table A1: List of GEMS/MACC/CAMS model versions showing the time evolution of the real-time CAMS system since July 2008.

Period	Name	EXP	CLASS	IFS CYCLE	Resolution	Model	Production Period
20030101- 20090524	GEMS reanalysis	eac1	MC	32R3	T159/L60	IFS/MOZART 3.5 coupled system	March 2008 – September 2009
20030101- 20121231	MACC reanalysis	rean	MC	CY36R1	T159/L60	IFS/MOZART 3.5 coupled system	March 2010 – February 2012
20030101- NRT	CAMS interim reanalysis	eac3	MC	CY40R2/41R1	T159/L60	IFS(CB05)	December 2014 – December 2016, then continued in NRT
20030101- NRT	CAMS reanalysis	eac4	MC	CY42R1	T255/L60	IFS(CB05)	January 2017 onwards

Table A2: Reanalyses of atmospheric composition produced with the GEMS/MACC/CAMS system.

5 2 Formulae for calculation of Figure of Merit in space score and Modified normalised mean bias

The Figure of Merit in space (FMS; Chang and Hanna, 2004) score compares the fit of the model ozone profiles to observation profiles (e.g. ozone sondes) given in partial pressure (milli Pascal), has a score between 1 (perfect fit) and 0 and is defined as

$$CAF = \frac{\int_{\ln(p_{bot})}^{\ln(p_{top})} \min(M, O)}{\int_{\ln(p_{bot})}^{\ln(p_{top})} \max(M, O)} \quad (1)$$

where M is the model profile, O the observation profile and p_{top} and p_{bot} the top and bottom pressure values of the layer considered. For Fig. 1 we used $p_{top} = 3$ hPa and $p_{bot} = 1000$ hPa.

The Modified Normalized Mean Bias (MNMB) is defined as

$$MNMB = \frac{2}{N} \sum_{i=1}^N \frac{m_i - o_i}{m_i + o_i} \quad (2)$$

5 with N the number of observations, m the model and o the observed values.

Formatted: English (United States)

3 Known issues

We summarize here some issues that might affect the quality of the CAMS reanalysis which were known at the time of publication. This list is also available from

10 <https://confluence.ecmwf.int/display/CKB/CAMS+Reanalysis+data+documentation> where it will be maintained and updated.

Ozone:

- 2003: Degraded quality (bigger biases with respect to observations) in Arctic and Antarctic free troposphere because MIPAS and SCIAMACHY data of poorer quality were assimilated
- March-August 2004: No profile data were available for the assimilation. This affects the vertical structure of the ozone analysis and we see larger biases compared to ozone sondes
- 2013-2016: Larger seasonally varying bias from 2013 onwards in the free troposphere, particularly in the Arctic and Antarctic. This must be due to a change in the observing system and is still under investigation. It is also found in the CAMS NRT analyses.
- Technical comment: CAMS data users please use the 'GEMS Ozone' (grib parameter 210203) and 'Total Column GEMS Ozone' (grib parameter 210206) fields. These are produced specifically for CAMS using the full tropospheric chemistry scheme and are the fields described in this paper.

CO:

- CAMSRA has larger surface CO values than the other two reanalyses over Indonesia, especially during years with high biomass burning activity, leading to increased overestimation relative to GAW CO surface observations.

NO₂:

- During 2003 the seasonal cycle of tropospheric NO₂ is not well represented because of assimilating SCIAMACHY NO₂ retrievals of poorer quality

AOD:

- Validation of AOD with AERONET data has shown that there are some hot spots around outgassing volcanoes (in particular Mauna Loa and Mexico City) with high analysis AOD values that degrade the global average bias. When calculating global mean statistics, it is advisable to exclude those two stations as unrepresentative. This is a side effect of model-resolution orography not resolving the height of the volcanoes that has been unmasked by recent enhancements to the SO₂ oxidation scheme which improve aerosol on the global scale.
- There is a change to slightly higher AOD in CAMSRA (biases more positive in the global mean and in particular over Europe and North America) that seems to coincide with the loss of AATSR data in April 2012.

References

- Agustí-Panareda, A., Massart, S., Chevallier, F., Boussetta, S., Balsamo, G., Beljaars, A., Ciais, P., Deutscher, N. M., Engelen, R., Jones, L., Kivi, R., Paris, J.-D., Peuch, V.-H., Sherlock, V., Vermeulen, A. T., Wennberg, P. O., and Wunch, D.: Forecasting global atmospheric CO₂, *Atmos. Chem. Phys.*, 14, 11959–11983, <https://doi.org/10.5194/acp-14-11959-2014>, 2014
- 5 Barré, J., B. Gaubert, A. F. J. Arellano, H. M. Worden, D. P. Edwards, M. N. Deeter, J. L. Anderson, K. Raeder, N. Collins, and S. Tilmes, Assessing the impacts of assimilating IASI and MOPITT CO retrievals using CESM-CAM-chem and DART, *J. Geophys. Res. Atmos.*, 120, 10,501–10,529, doi: 10.1002/2015JD023467, 2015.
- 10 Basher, R. E.: Review of the Dobson spectrophotometer and its accuracy, *Global Ozone Res. Monit. Proj., Rep. 13*, World Meteor. Organ., Geneva, Switzerland, December, available at: <http://www.esrl.noaa.gov/gmd/ozwv/dobson/papers/report13/report13.html> (last access: 3 February 2017), 1982.
- Benedetti, A., Morcrette, J.-J., Boucher, O., Dethof, A., Engelen, R. J., Fisher, M., Flentje, H., Huneeus, N., Jones, L., Kaiser, J. W., Kinne, S., Mangold, A., Razinger, M., Simmons, A. J., Suttie, M., and the GEMS-AER team: Aerosol analysis and forecast in the European Centre for Medium-Range Weather Forecasts Integrated Forecast System: Data Assimilation. *J. Geophys. Res.*, D13205, 114, doi:10.1020/2008JD011115, 2009.
- 15 Benedetti, A. and Fisher M.: Background error statistics for aerosols. *Q. J. R. Meteorol. Soc.* 133: 391 – 405, 2007.
- 20 Bhartia, P. K., McPeters, R. D., Mateer, C. L., Flynn, L. E., and Wellemeyer, C., Algorithm for the estimation of vertical ozone profiles from the backscattered ultraviolet technique, *J. Geophys. Res.*, 101(D13), 18,793– 18,806, 1996.
- Blumenstock, T., F. Hase, M. Schneider, O.E. García, E. Sepúlveda. TCCON data from Izaña, Tenerife, Spain, Release GGG2014R1. TCCON data archive, hosted by CaltechDATA, California Institute of Technology, Pasadena, CA, U.S.A. <https://doi.org/10.14291/tcon.ggg2014.izana01.R1>, 2017.
- 25 Boersma, K. F., Eskes, H. J., Veefkind, J. P., Brinksma, E. J., van der A, R. J., Sneep, M., van den Oord, G. H. J., Levelt, P. F., Stammes, P., Gleason, J. F., and Bucsela, E. J.: Near-real time retrieval of tropospheric NO₂ from OMI, *Atmos. Chem. Phys.*, 7, 2103–2118, doi:10.5194/acp-7-2103-2007, 2007.
- 30 Boersma, K. F., Eskes, H. J., Dirksen, R. J., van der A, R. J., Veefkind, J. P., Stammes, P., Huijnen, V., Kleipool, Q. L., Sneep, M., Claas, J., Leitão, J., Richter, A., Zhou, Y., and Brunner, D.: An improved tropospheric NO₂ column retrieval algorithm for the Ozone Monitoring Instrument, *Atmos. Meas. Tech.*, 4, 1905– 1928, <https://doi.org/10.5194/amt-4-1905-2011>, 2011.
- 35 Boersma, K.F., H.J. Eskes, J.P. Veefkind, E.J. Brinksma, R.J. van der A, M. Sneep, G.H.J. van den Oord, P.F. Levelt, P. Stammes, J.F. Gleason and E.J. Bucsela. Near-real time retrieval of tropospheric NO₂ from OMI. *Atm. Chem. Phys. Discussions*, 6, 12301-12345, 2006.
- 40 Boersma, K. F., Eskes, H. J., and Brinksma, E. J.: Error analysis for tropospheric NO₂ retrieval from space, *J. Geophys. Res.*, 109, D04311, doi:10.1029/2003JD003962, 2004.

- A. Bozzo; S. Remy; A. Benedetti; J. Flemming; P. Bechtold; M. Rodwell; J.J. Morcrette (2017): Implementation of a CAMS-based aerosol climatology in the IFS. ECMWF Technical Memorandum 801. Available from www.ecmwf.int.
- Buchard, V., da Silva, A. M., Colarco, P. R., Darmenov, A., Randles, C. A., Govindaraju, R., Torres, O., Campbell, J., and Spurr, R.: Using the OMI aerosol index and absorption aerosol optical depth to evaluate the NASA MERRA Aerosol Reanalysis, *Atmos. Chem. Phys.*, 15, 5743-5760, <https://doi.org/10.5194/acp-15-5743-2015>, 2015.
- Buchard, V., Randles, C.A., da Silva, A.M., Darmenov, A., Colarco, P.R., Govindaraju, R., Ferrare, R., Hair, J., Beyersdorf, A.J., Ziemba, L.D. and H. Yu (2017): The MERRA-2 Aerosol Reanalysis, 1980 Onward. Part II: Evaluation and Case Studies, *J. Clim.*, 30, pp. 6851-6872, 10.1175/JCLI-D-16-0613.1
- Cariolle, D. and Teyssède, H.: A revised linear ozone photochemistry parameterization for use in transport and general circulation models: multi-annual simulations. *Atmos. Chem. Phys.*, 7, 2183-2196, 2007.
- Cariolle, D. and Déqué, M.: Southern hemisphere medium-scale waves and total ozone disturbances in a spectral general circulation model, *J. Geophys. Res.*, 91, 10 825–10 846, 1986.
- Chang, J. and Hanna S.: Air quality model performance evaluation. *Meteorology and Atmospheric Physics*. 87. 167-196. 10.1007/s00703-003-0070-7, 2004
- Clerbaux, C., Boynard, A., Clarisse, L., George, M., Hadji-Lazaro, J., Herbin, H., Hurtmans, D., Pommier, M., Razavi, A., Turquety, S., Wespes, C., and Coheur, P.-F.: Monitoring of atmospheric composition using the thermal infrared IASI/MetOp sounder, *Atmos. Chem. Phys.*, 9, 6041-6054, 2009.
- Courtier, P., Thépaut, J.-N. and Hollingsworth, A.: A strategy for operational implementation of 4D-Var, using an incremental approach. *Q. J. R. Meteorol. Soc.*, 120, 1367-1388, 1994.
- Dee, D.P., Uppala, S. M., Simmons, A. J., Berrisford, P., Poli, P., Kobayashi, S., Andrae, U., Balmaseda, M. A., Balsamo, G., Bauer, P., Bechtold, P., Beljaars, A. C. M., van de Berg, L., Bidlot, J., Bormann, N., Delsol, C., Dragani, R., Fuentes, M., Geer, A. J., Haimberger, L., Healy, S. B., Hersbach, H., Hólm, E. V., Isaksen, I., Kållberg, P., Köhler, M., Matricardi, M., McNally, A. P., Monge-Sanz, B. M., Morcrette, J.-J., Park, B.-K., Peubey, C., de Rosnay, P., Tavolato, C., Thépaut, J.-N., and Vitarta, F.: The ERA-Interim reanalysis: Configuration and performance of the data assimilation system. *Quart. J. Roy. Meteor. Soc.*, 137, 553-597, 2011
- Dee, D. P. and Uppala, S.: Variational bias correction of satellite radiance data in the ERA-Interim reanalysis. *Q. J. R. Meteorol. Soc.*, 135, 1830–1841, 2009.
- Deeter, M. N., S. Martínez-Alonso, D. P. Edwards, L. K. Emmons, J. C. Gille, H. M. Worden, J. V. Pittman, B. C. Daube, and S. C. Wofsy: Validation of MOPITT Version 5 thermal-infrared, near-infrared, and multispectral carbon monoxide profile retrievals for 2000–2011, *J. Geophys. Res. Atmos.*, 118, 6710–6725, doi:10.1002/jgrd.50272, 2013.

- Deeter, M. N., Martínez-Alonso, S., Edwards, D. P., Emmons, L. K., Gille, J. C., Worden, H. M., Sweeney, C., Pittman, J. V., Daube, B. C., and Wofsy, S. C.: The MOPITT Version 6 product: algorithm enhancements and validation, *Atmos. Meas. Tech.*, 7, 3623-3632, <https://doi.org/10.5194/amt-7-3623-2014>, 2014.
- 5 Deeter, M. N., H. M. Worden, D. P. Edwards, J. C. Gille, and A. E. Andrews: Evaluation of MOPITT retrievals of lower-tropospheric carbon monoxide over the United States, *J. Geophys. Res.*, 117, D13306, doi:10.1029/2012JD017553, 2012.
- Diamantakis, M. and Flemming, J.: Global mass fixer algorithms for conservative tracer transport in the ECMWF model, *Geosci. Model Dev.*, 7, 965-979, <https://doi.org/10.5194/gmd-7-965-2014>, 2014
- 10 [Ding, J., Miyazaki, K., van der A, R. J., Mijling, B., Kurokawa, J.-I., Cho, S., Janssens-Maenhout, G., Zhang, Q., Liu, F., and Levelt, P. F.: Intercomparison of NOx emission inventories over East Asia, *Atmos. Chem. Phys.*, 17, 10125-10141, <https://doi.org/10.5194/acp-17-10125-2017>, 2017.](https://doi.org/10.5194/acp-17-10125-2017)
- Eskes, H.J., Bennouna, Y., Schulz, M., Christophe, Y., Basart, S., Benedictow, A., Blechschmidt, A.-M., Chabrillat, S., Clark, H., Cuevas, E., Flentje, H., Hansen, K.M., IM, U., Kapsomenakis, J., Langerock, B., Petersen, K., Richter, A., Sudarc Hikova, N., Thouret, V., Wagner, A., Wang, Y., Zeferos, C., Copernicus Atmosphere Monitoring Service (CAMS) report, CAMS84_2015SC2_D84.7.1.4_Y14_v1.pdf, September 2018, available from https://atmosphere.copernicus.eu/sites/default/files/2018-09/CAMS84_2015SC2_D84.7.1.4_Y14_v1.pdf
- 15
- Flemming, J., Benedetti, A., Inness, A., Engelen, R. J., Jones, L., Huijnen, V., Remy, S., Parrington, M., Suttie, M., Bozzo, A., Peuch, V.-H., Akritidis, D., and Katragkou, E.: The CAMS interim Reanalysis of Carbon Monoxide, Ozone and Aerosol for 2003–2015, *Atmos. Chem. Phys.*, 17, 1945-1983, <https://doi.org/10.5194/acp-17-1945-2017>, 2017b.
- 20
- Flemming, J., Peuch, V.-H., and Jones, L. (2017a): Ten years of forecasting atmospheric composition at ECMWF. ECMWF newsletter 152 available from <https://www.ecmwf.int/en/newsletter/152/news/ten-years-forecasting-atmospheric-composition-ecmwf>
- 25
- Flemming, J., Huijnen, V., Arteta, J., Bechtold, P., Beljaars, A., Blechschmidt, A.-M., Diamantakis, M., Engelen, R. J., Gaudel, A., Inness, A., Jones, L., Josse, B., Katragkou, E., Marecal, V., Peuch, V.-H., Richter, A., Schultz, M. G., Stein, O., and Tsikerdekis, A.: Tropospheric chemistry in the Integrated Forecasting System of ECMWF, *Geosci. Model Dev.*, 8, 975-1003, doi:10.5194/gmd-8-975-2015, 2015.
- 30
- Flemming, J., Inness, A., Jones, L., Eskes, H. J., Huijnen, V., Schultz, M. G., Stein, O., Cariolle, D., Kinnison, D., and Brasseur, G.: Forecasts and assimilation experiments of the Antarctic ozone hole 2008, *Atmos. Chem. Phys.*, 11, 1961-1977, doi:10.5194/acp-11-1961-2011, 2011
- 35
- Flemming, J., Inness, A., Flentje, H., Huijen, V., Moinat, P., Schultz, M.G. and Stein O.: Coupling global chemistry transport models to ECMWF's integrated forecast system. *Geosci. Model Dev.*, 2, 253-265. www.geosci-model-dev.net/2/253/2009/, 2009
- 40
- Flemming, J. and Inness, A.: Carbon Monoxide [in "State of the Climate in 2017"]. *Bull. Amer. Meteor. Soc.*, 99 (8), S59-S61, 2018.

Gelaro, R., et al.: The Modern-Era Retrospective Analysis for Research and Applications, Version 2 (MERRA-2), , J. Clim., doi: 10.1175/JCLI-D-16-0758.1, 2017.

5 George, M., Clerbaux, C., Hurtmans, D., Turquety, S., Coheur, P.-F., Pommier, M., Hadji-Lazaro, J., Edwards, D. P., Worden, H., Luo, M., Rinsland, C., and McMillan, W.: Carbon monoxide distributions from the IASI/METOP mission: evaluation with other space-borne remote sensors. Atmos. Chem. Phys., 9, 8317–8330, 2009.

10 Ginoux, P., Chin, M., Tegen, I., Prospero, J.M., Holben, B., Dubovik, O., Lin, S.J.: Sources and distributions of dust aerosols simulated with the GOCART model. J. Geophys. Res. 106, 2001.

15 Granier, C., Bessagnet, B., Bond, T., D’Angiola, A., Denier van der Gon, H., Frost, G. J., Heil, A., Kaiser, J. W., Kinne, S., Klimont, Z., Kloster, S., Lamarque, J.-F., Lioussé, C., Masui, T., Meleux, F., Mieville, A., Ohara, R., Raut, J.-C., Riahi, K., Schultz, M. G., Smith, S. G., Thompson, A., van Aardenne, J., van der Werf, G. R., and van Vuuren, D. P.: Evolution of anthropogenic and biomass burning emissions of air pollutants at global and regional scales during the 1980-2010 period. Climatic Change, 109, 163-190. DOI: 10.1007/s 10584-011-0154-1, 2011

20 Granier, C., A. Guenther, J.F. Lamarque, A. Mieville, J.F. Muller, J. Olivier, J. Orlando, J. Peters, G. Petron, G. Tyndall, S. Wallens, POET, a database of surface emissions of ozone precursors, available on the internet at: <http://www.aero.jussieu.fr/projet/ACCENT/POET.php>, 2005

25 Griffith, D. W. T., N. Deutscher, V. A. Velasco, P. O. Wennberg, Y. Yavin, G. Keppel Aleks, R. Washenfelder, G. C. Toon, J.-F. Blavier, C. Murphy, N. Jones, G. Kettlewell, B. Connor, R. Macatangay, C. Roehl, M. Ryzek, J. Glowacki, T. Culgan, G. Bryant. TCCON data from Darwin, Australia, Release GGG2014R0. TCCON data archive, hosted by CaltechDATA, California Institute of Technology, Pasadena, CA, U.S.A. <http://doi.org/10.14291/tcon.ggg2014.darwin01.R0/1149290>, 2014

30 Hao, N., Koukouli, M. E., Inness, A., Valks, P., Loyola, D. G., Zimmer, W., Balis, D. S., Zyrichidou, I., Van Roozendaal, M., Lerot, C., and Spurr, R. J. D.: GOME-2 total ozone columns from MetOp-A/MetOp-B and assimilation in the MACC system, Atmos. Meas. Tech., 7, 2937-2951, <https://doi.org/10.5194/amt-7-2937-2014>, 2014.

35 [Hersbach, H. de Rosnay, P. Bell, B. Schepers, D. Simmons, A. Soci, C. Abdalla, S. Alonso-Balmaseda, M. Balsamo, G. Bechtold, P. Berrisford, P. Bidlot, J.-R. de Boisséson, E. Bonavita, M. Browne, P. Buizza, R. Dahlgren, P. Dee, D. Dragani, R. Diamantakis, M. Flemming, J. Forbes, R. Geer, A.J. Haiden, T. Hólm, E. Haimberger, L. Hogan, R. Horányi, A. Janiskova, M. Lalouaux, P. Lopez, P. Muñoz-Sabater, J. Peubey, C. Radu, R. Richardson, D. Thépaut, J.-N. Vitart, F. Yang, X. Zsótér, E. Zuo, H.: Operational global reanalysis: progress, future directions and synergies with NWP. ERA Report Series, Number 27. <https://www.ecmwf.int/node/18765>, 2018.](https://www.ecmwf.int/node/18765)

40 Holben, B. N., and Coauthors: AERONET - A federated instrument network and data archive for aerosol characterization. Remote Sens. Environ., 66, 1-16, 1998.

Hollingsworth, A., Engelen, R. J., Textor, C., Benedetti, A., Boucher, O., Chevallier, F., Dethof, A., Elbern, H., Eskes, H., Flemming, J., Granier, C., Kaiser, J. W., Morcrette, J.-J., Rayner, R., Peuch, V.-H., Rouil, L., Schultz, M. G., Simmons, A. J.

Deleted:
Deleted:
Deleted:
Deleted:
Deleted:
Deleted:
Deleted:
Deleted:
Deleted:
Deleted:

and The GEMS Consortium: Toward a Monitoring and Forecasting System For Atmospheric Composition: The GEMS Project. *Bull. Amer. Meteor. Soc.*, 89, 1147–1164, doi:10.1175/2008BAMS2355.1, 2008.

5 Huijnen V., Wooster, M. J., Kaiser, J. W., Gaveau, D.L. A., Flemming, J., Parrington, M., Inness, A., Murdiyarso, D., Main, B., and van Weele, M.: Fire carbon emissions over maritime southeast Asia in 2015 largest since 1997, *Sci. Rep.*, 6, 26886, doi:10.1038/srep26886, 2016.

Huijnen, V., Williams, J. E., and Flemming, J.: Modeling global impacts of heterogeneous loss of HO₂ on cloud droplets, ice particles and aerosols, *Atmos. Chem. Phys. Discuss.*, 14, 8575-8632, <https://doi.org/10.5194/acpd-14-8575-2014>, 2014.

10 Huijnen, V., Williams, J., van Weele, M., van Noije, T., Krol, M., Dentener, F., Segers, A., Houweling, S., Peters, W., de Laat, J., Boersma, F., Bergamaschi, P., van Velthoven, P., Le Sager, P., Eskes, H., Alkemade, F., Scheele, R., Nédélec, P., and Pätz, H.-W.: The global chemistry transport model TM5: description and evaluation of the tropospheric chemistry version 3.0, *Geosci. Model Dev.*, 3, 445-473, doi:10.5194/gmd-3-445-2010.

15 Inness, A., Blechschmidt, A.-M., Bouarar, I., Chabrilat, S., Crepulja, M., Engelen, R. J., Eskes, H., Flemming, J., Gaudel, A., Hendrick, F., Huijnen, V., Jones, L., Kapsomenakis, J., Katragkou, E., Keppens, A., Langerock, B., de Mazière, M., Melas, D., Parrington, M., Peuch, V. H., Razinger, M., Richter, A., Schultz, M. G., Suttie, M., Thouret, V., Vrekoussis, M., Wagner, A., and Zerefos, C.: Data assimilation of satellite-retrieved ozone, carbon monoxide and nitrogen dioxide with ECMWF's Composition-IFS, *Atmos. Chem. Phys.*, 15, 5275-5303, doi:10.5194/acp-15-5275-2015, 2015.

20 Inness, A., Baier, F., Benedetti, A., Bouarar, I., Chabrilat, S., Clark, H., Clerbaux, C., Coheur, P., Engelen, R. J., Errera, Q., Flemming, J., George, M., Granier, C., Hadji-Lazarou, J., Huijnen, V., Hurtmans, D., Jones, L., Kaiser, J. W., Kapsomenakis, J., Lefever, K., Leitão, J., Razinger, M., Richter, A., Schultz, M. G., Simmons, A. J., Suttie, M., Stein, O., Thépaut, J.-N., Thouret, V., Vrekoussis, M., Zerefos, C., and the MACC team: The MACC reanalysis: an 8 yr data set of atmospheric composition, *Atmos. Chem. Phys.*, 13, 4073-4109, doi:10.5194/acp-13-4073-2013, 2013.

Jacob, D.J., Liu, H., Mari, C. and Yantosca, R.M.: Harvard wet deposition scheme for GMI, Harvard University Atmospheric Chemistry Modeling Group, revised March 2000. http://acmg.seas.harvard.edu/geos/wiki_docs/deposition/wetdep.jacob_etal_2000.pdf (last access), 2000.

25 Kaiser, J. W., Heil, A., Andreae, M. O., Benedetti, A., Chubarova, N., Jones, L., Morcrette, J.-J., Razinger, M., Schultz, M. G., Suttie, M., and van der Werf, G. R.: Biomass burning emissions estimated with a global fire assimilation system based on observed fire radiative power. *Biogeosciences*, 9:527–554, 2012.

35 Kinnison, D. E., Brasseur, G. P., Walters, S., Gracia, R. R., Marsh, D. R., Sassi, F., Harvey, V. L., Randall, C.E., Emmons, L., Lamarque, J. F., Hess, P., Orlando, J. J., Tie, X. X., Randel, W., Pan, L. L., Gettelman, A., Granier, C., Diehl, T., Niemeier, U. and Simmons, A. J.: Sensitivity of chemical tracers to meteorological parameters in the MOZART-3 chemical transport model. *J. Geophys. Res.*, 112, D20302, doi:10.1029/2006JD007879, 2007.

40 Kivi, R., P. Heikkinen, E. Kyro.: TCCON data from Sodankyla, Finland, Release GGG2014R0. TCCON data archive, hosted by CaltechDATA, California Institute of Technology, Pasadena, CA, U.S.A. <https://doi.org/10.14291/tcon.ggg2014.sodankyla01.R0/1149280>, 2017.

- Kobayashi, S., Y. Ota, Y. Harada, A. Ebita, M. Moriya, H. Onoda, K. Onogi, H. Kamahori, C. Kobayashi, H. Endo, K. Miyaoka, and K. Takahashi: The JRA-55 Reanalysis: General Specifications and Basic Characteristics. *J. Met. Soc. Jap.*, 93(1), 5-48 (DOI: 10.2151/jmsj.2015-001), 2015.
- 5
- Komhyr, W. D., Barnes, R. A., Borthers, G. B., Lathrop, J. A., Kerr, J. B., and Opperman, D. P.: Electrochemical concentration cell ozonesonde performance evaluation during STOIC 1989, *J. Geo-phys. Res.*, 100, 9231–9244, 1995.
- Lefever, K., van der A, R., Baier, F., Christophe, Y., Errera, Q., Eskes, H., Flemming, J., Inness, A., Jones, L., Lambert, J.-C., Langerock, B., Schultz, M. G., Stein, O., Wagner, A., and Chabrillat, S.: Copernicus stratospheric ozone service, 2009–2012: validation, system intercomparison and roles of input data sets, *Atmos. Chem. Phys.*, 15, 2269-2293, doi:10.5194/acp-15-2269-2015, 2015.
- 10
- Lerot, C., M. Van Roozendaal, J. van Geffen, C. Fayt, R. Spurr, G. Lichtenberg, and A. von Bargaen (2009), Six years of total ozone column measurements from SCIAMACHY nadir observations, *Atmos. Meas. Tech.*, doi:10.5194/amt-2-87-2009.
- 15
- Levy, R. C., Mattoo, S., Sawyer, V., Shi, Y., Colarco, P. R., Lyapustin, A. I., Wang, Y., and Remer, L. A.: Exploring systematic offsets between aerosol products from the two MODIS sensors, *Atmos. Meas. Tech.*, 11, 4073-4092, <https://doi.org/10.5194/amt-11-4073-2018>, 2018.
- 20
- Levy, R. C., Mattoo, S., Munchak, L. A., Remer, L. A., Sayer, A. M., Patadia, F., and Hsu, N. C.: The Collection 6 MODIS aerosol products over land and ocean, *Atmos. Meas. Tech.*, 6, 2989-3034, <https://doi.org/10.5194/amt-6-2989-2013>, 2013.
- Liu, X., Bhartia, P. K., Chance, K., Froidevaux, L., Spurr, R. J. D., and Kurosu, T. P.: Validation of Ozone Monitoring Instrument (OMI) ozone profiles and stratospheric ozone columns with Microwave Limb Sounder (MLS) measurements, *Atmos. Chem. Phys.*, 10, 2539-2549, <https://doi.org/10.5194/acp-10-2539-2010>, 2010.
- 25
- [Lynch, P., Reid, J. S., Westphal, D. L., Zhang, J., Hogan, T. F., Hyer, E. J., Curtis, C. A., Hegg, D. A., Shi, Y., Campbell, J. R., Rubin, J. I., Sessions, W. R., Turk, F. J., and Walker, A. L.: An 11-year global gridded aerosol optical thickness reanalysis \(v1.0\) for atmospheric and climate sciences, *Geosci. Model Dev.*, 9, 1489-1522, <https://doi.org/10.5194/gmd-9-1489-2016>, 2016.](#)
- 30
- Massart, S., Agusti-Panareda, A., Aben, I., Butz, A., Chevallier, F., Crevoisier, C., Engelen, R., Frankenberg, C., and Hasekamp, O.: Assimilation of atmospheric methane products into the MACC-II system: from SCIAMACHY to TANSO and IASI, *Atmos. Chem. Phys.*, 14, 6139-6158, <https://doi.org/10.5194/acp-14-6139-2014>, 2014.
- 35
- McPeters, R. D., P. K. Bhartia, D. Haffner, G. J. Labow, and L. Flynn: The version 8.6 SBUV ozone data record: An overview, *J. Geophys. Res. Atmos.*, 118, 8032–8039, doi:10.1002/jgrd.50597, 2013.
- 40
- Michou, M., Laville, P., Serça, D., Fotiadi, A., Bouchou, P., and Peuch, V.-H.: Measured and modeled dry deposition velocities over the ESCOMPTE area, *Atmos. Res.*, 74, 89–116, 2004.

- Miyazaki, K., Eskes, H. J., and Sudo, K.: A tropospheric chemistry reanalysis for the years 2005–2012 based on an assimilation of OMI, MLS, TES, and MOPITT satellite data, *Atmos. Chem. Phys.*, 15, 8315–8348, <https://doi.org/10.5194/acp-15-8315-2015>, 2015.
- 5 Monahan, E. C., D. E. Spiel, and K. L. Davidson, A model of marine aerosol generation via whitecaps and wave disruption, in *Oceanic Whitecaps*, edited by E. Monahan, and G. M. Niocaill, pp. 167–174, D. Reidel, Norwell, Mass., 1986.
- Moret, J.J. et al.: Aerosol analysis and forecast in the European Centre for Medium-Range Weather Forecasts Integrated Forecast System: Forward modeling, *J. Geophys. Res.*, 114, D06206, doi:10.1029/2008JD011235, 2009.
- 10 Nedelec, P., Cammas, J.-P., Thouret, V., Athier, G., Cousin, J.-M., Legrand, C., Abonne, C., Lecoeur, F., Cayez, G., and Marizy, C.: An improved infrared carbon monoxide analyser for routine measurements aboard commercial aircraft: technical validation and first scientific results for the MOZAIC III programme, *Atmos. Chem. Phys.*, 3, 1551–1564, 2003.
- 15 Notholt, J., Warneke, T., Petri, C., Deutscher, N. M., Weinzierl, C., Palm, M., and Buschmann, M.: TCCON data from Ny Ålesund, Spitsbergen (NO), Release GGG2014.R0, TCCON Data Archive, hosted by CaltechDATA, <https://doi.org/10.14291/tcon.ggg2014.nyalesund01.R0>, 2017a.
- Notholt, J., C. Petri, T. Warneke, N. Deutscher, M. Buschmann, C. Weinzierl, R. Macatangay, P. Grupe. TCCON data from Bremen, Germany, Release GGG2014.R0. TCCON data archive, hosted by CaltechDATA, California Institute of Technology, Pasadena, CA, U.S.A. <https://doi.org/10.14291/tcon.ggg2014.bremen01.R0/1149275>, 2017b
- 20 Novelli, P.C. and Masarie, K.A.: Atmospheric Carbon Monoxide Dry Air Mole Fractions from the NOAA ESRL Carbon Cycle Cooperative Global Air Sampling Network, 1988–2013, Version: 2014-07-02, ftp://aftp.cmdl.noaa.gov/data/trace_gases/co/flask/surface/ (last access December 2014), 2014.
- 25 Olivier J, J. Peters, C. Granier, G. Petron, J.F. Müller and S. Wallens: Present and future surface emissions of atmospheric compounds, POET report #2, EU project EVK2-1999-00011, 2003
- 30 Oltmans, S.J. and Levy II, H.: Surface ozone measurements from a global network, *Atmos. Environ.*, 28, 9–24, 1994.
- Onogi, K., J. Tsutsui, H. Koide, M. Sakamoto, S. Kobayashi, H. Hatsushika, T. Matsumoto, N. Yamazaki, H. Kamahori, K. Takahashi, S. Kadokura, K. Wada, K. Kato, R. Oyama, T. Ose, N. Mannoji, and R. Taira: The JRA-25 Reanalysis. *J. Met. Soc. Jap.*, 85(3), 369–432 (DOI: 10.2151/jmsj.85.369), 2007.
- 35 Parrish, D.F. and Derber, J. C. (1992): The National Meteorological Center's spectral statistical-interpolation analysis scheme. *Mon. Weather Rev.*, 120, 1747–1763.
- 40 Penkett, S., Gilge, S., Plass-Duelmer, C., Galbally, I., Brough, N., Bottenheim, J., Flocke, F., Gerwig, H., Lee, J., Milton, M. J. T., Rohrer, F., Ryerson, T., Steinbacher, M., Torseth, K., Wielgosz, R.: WMO/GAW Expert workshop on global long-term measurements of nitrogen oxides and recommendations for GAW nitrogen oxides network. WMO/GAW Report 195, February 2011.

- Popp, T., deLeeuw, G., Bingen, C., Brühl, C., Capelle, V., Chedin, A., Clarisse, L., Dubovik, O., Grainger, R., Griesfeller, J., Heckel, A., Kinne, S., Klüser, L., Kosmale, M., Kolmonen, P., Lelli, L., Litvinov, P., Mei, L., North, P., Pinnock, S., Povey, A., Robert, C., Schulz, M., Sogacheva, L., Stebel, K., Zwers, D. S., Thomas, G., Gijsbert Tilstra, L., Vandebussche, S., Veeffkind, P., Vountas, M., and Xue, Y.: : Development, production and evaluation of aerosol climate data records from european satellite observations (Aerosol_cci), *Remote Sensing*, 8,421, <https://doi.org/10.3390/rs8050421>, 2016.
- Randles, C.A., da Silva, A.M., Buchard, V., Colarco, P.R., Darmenov, A., Govindaraju, R., Smirnov, A., Holben, B., Ferrare, R., Hair, J., Shinozuka, Y. and C.J. Flynn (2017): The MERRA-2 Aerosol Reanalysis, 1980 Onward. Part I: System Description and Data Assimilation Evaluation, *J. Clim.*, 30 (2017), pp. 6823-6850, 10.1175/JCLI-D-16-0609.1
- Riahi K, Rao, S., Krey, V., Cho, C., Chirkov, V., Fischer, G., Kindermann, G., Nakicenovic, N., Rafaj, P: RCP 8.5—A scenario of comparatively high greenhouse gas emissions. *Climatic Change*. 109:33-57. DOI 10.1007/s10584-011-0149-y, 2011.
- Richter, A., Begoin, M., Hilboll, A., and Burrows, J. P.: An improved NO₂ retrieval for the GOME-2 satellite instrument, *Atmos. Meas. Tech.*, 4, 1147-1159, doi:10.5194/amt-4-1147-2011, 2011.
- Richter, A., Burrows, J. P., Nüß, H., Granier, C, Niemeier, U.: Increase in tropospheric nitrogen dioxide over China observed from space, *Nature*, 437, 129-132, doi: 10.1038/nature04092, 2005.
- Rienecker, M., et al.: MERRA: NASA's Modern-Era Retrospective Analysis for Research and Applications. *J. Climate*, 24, 3624–3648, doi:10.1175/JCLI-D-11-00015.1, 2011.
- Schenkeveld, V. M. E., Jaross, G., Marchenko, S., Haffner, D., Kleipool, Q. L., Rozemeijer, N. C., Veeffkind, J. P., and Levelt, P.F.: In-flight performance of the Ozone Monitoring Instrument, *Atmos. Meas. Tech.*, 10, 1957–1986, <https://doi.org/10.5194/amt-10-1957-2017>, 2017.
- Schwartz, M., Froidevaux, L., Livesey, N. and Read, W. (2015), MLS/Aura Level 2 Ozone (O₃) Mixing Ratio V004, Greenbelt, MD, USA, Goddard Earth Sciences Data and Information Services Center (GES DISC), Accessed: [20180718], 10.5067/Aura/MLS/DATA2017
- Sherlock, V., B. Connor, J. Robinson, H. Shiona, D. Smale, D. Pollard. TCCON data from Lauder, New Zealand, 120HR, Release GGG2014R0. TCCON data archive, hosted by CaltechDATA, California Institute of Technology, Pasadena, CA, U.S.A. <https://doi.org/10.14291/tcon.ggg2014.lauder01.R0/1149293>, 2014.
- Sindelarova, K., Granier, C., Bouarar, I., Guenther, A., Tilmes, S., Stavrakou, T., Müller, J.-F., Kuhn, U., Stefani, P., and Knorr, W.: Global data set of biogenic VOC emissions calculated by the MEGAN model over the last 30 years, *Atmos. Chem. Phys.*, 14, 9317-9341, <https://doi.org/10.5194/acp-14-9317-2014>, 2014.
- Spracklen, D. V., Jimenez, J. L., Carslaw, K. S., Worsnop, D. R., Evans, M. J., Mann, G. W., Zhang, Q., Canagaratna, M. R., Allan, J., Coe, H., McFiggans, G., Rap, A., and Forster, P.: Aerosol mass spectrometer constraint on the global secondary organic aerosol budget, *Atmos. Chem. Phys.*, 11, 12109-12136, <https://doi.org/10.5194/acp-11-12109-2011>, 2011.

Stein, O., Schultz, M. G., Bouarar, I., Clark, H., Huijnen, V., Gaudel, A., George, M., and C. Clerbaux: On the wintertime low bias of Northern Hemisphere carbon monoxide in global model studies. *Atmos. Chem. Phys. Discuss.*, 14, 245-301, 2014
www.atmos-chem-phys-discuss.net/14/245/2014/ doi:10.5194/acpd-14-245-2014, 2014.

5

Steinbrecht, W., Shwartz, R., and Claude, H.: New pump correction for the Brewer-Mast ozonesonde: Determination from experiment and instrument intercomparisons, *J. Atmos. Ocean. Tech.*, 15, 144–156, 1998.

Tegen, I., P. Hollrig, M. Chin, I. Fung, D. Jacob, and J. Penner: Contribution of different aerosol species to the global aerosol extinction optical thickness: Estimates from model results, *J. Geophys. Res.*, 102(D20), 23895–23915, doi: 10.1029/97JD01864, 1997.

10

Torres, O., Bhartia, P. K., Jethva, H., and Ahn, C.: Impact of the ozone monitoring instrument row anomaly on the long-term record of aerosol products, *Atmos. Meas. Tech.*, 11, 2701-2715, <https://doi.org/10.5194/amt-11-2701-2018>, 2018.

15

Uppala, S. M., Kallberg, P. W., Simmons, A. J., Andrae, U., da Costa Bechtold, V., Fiorino, M., Gibson, J. K., Haseler, J., Hernandez, A., Kelly, G. A., Li, X., Onogi, K., Saarinen, S., Sokka, N., Allan, R. P., Andersson, E., Arpe, K., Balmaseda, M. A., Beljaars, A. C. M., van de Berg, L., Bidlot, J., Bormann, N., Caires, S., Chevallier, F., Dethof, A., Dragosavac, M., Fisher, M., Fuentes, M., Hagemann, S., Holm, E., Hoskins, B. J., Isaksen, I., Janssen, P. A. E. M., Jenne, R., McNally, A. P., Mahfouf, J.-F., Morcrette, J.-J., Rayner, N. A., Saunders, R. W., Simon, P., Sterl, A., Trenberth, K. E., Untch, A., Vasiljevic, D., Viterbo, P., and Woollen, J.: The ERA-40 re-analysis. *Quart. J. Roy. Meteor. Soc.*, 131, 2961–3012, 2005.

20

Valks, P., Pinardi, G., Richter, A., Lambert, J.-C., Hao, N., Loyola, D., Van Roozendael, M., and Emmadi, S.: Operational total and tropospheric NO₂ column retrieval for GOME-2, *Atmos. Meas. Tech.*, 4, 1491–1514, doi:10.5194/amt-4-1491-2011, 2011.

25

van der A, R. J., Allaart, M. A. F., and Eskes, H. J.: Extended and refined multi sensor reanalysis of total ozone for the period 1970–2012, *Atmos. Meas. Tech.*, 8, 3021-3035, <https://doi.org/10.5194/amt-8-3021-2015>, 2015

von Clarmann, T., Höpfner, M., Kellmann, S., Linden, A., Chauhan, S., Funke, B., Grabowski, U., Glatthor, N., Kiefer, M., Schieferdecker, T., Stiller, G. P., and Versick, S.: Retrieval of temperature, H₂O, O₃, HNO₃, CH₄, N₂O, ClONO₂ and ClO from MIPAS reduced resolution nominal mode limb emission measurements, *Atmos. Meas. Tech.*, 2, 159-175, <https://doi.org/10.5194/amt-2-159-2009>, 2009.

30

van der Werf, G. R., Randerson, J. T., Giglio, L., Collatz, G. J., Mu, M., Kasibhatla, P. S., Morton, D. C., DeFries, R. S., Jin, Y., and van Leeuwen, T. T.: Global fire emissions and the contribution of deforestation, savanna, forest, agricultural, and peat fires (1997–2009). *Atmos. Chem. Phys.*, 10:11707–11735, 2010.

35

Van Vuuren, D.P., Edmonds, J., Thomson, A., Riahi, K., Kainuma, M., Matsui, T., Hurtt, G.C., Lamarque, J.-F., Meinshausen, M., Smith, S., Granier, C., Rose, S.K., Hibbard, K.A., Representative Concentration Pathways: An overview, *Climatic Change*, 40 2010.

40

von Clarmann, T., Höpfner, M., Kellmann, S., Linden, A., Chauhan, S., Funke, B., Grabowski, U., Glatthor, N., Kiefer, M., Schieferdecker, T., Stiller, G. P., and Versick, S.: Retrieval of temperature, H₂O, O₃, HNO₃, CH₄, N₂O, ClONO₂ and ClO from

MIPAS reduced resolution nominal mode limb emission measurements, *Atmos. Meas. Tech.*, 2, 159–175, doi:10.5194/amt-2-159-2009, 2009.

5 von Clarmann, T., et al., Retrieval of temperature and tangent altitude pointing from limb emission spectra recorded from space by the Michelson Interferometer for Passive Atmospheric Sounding (MIPAS), *J. Geophys. Res.*, 108(D23), 4736, doi:10.1029/2003JD003602, 2003.

Wang, P., Stammes, P., van der A, R., Pinardi, G., and van Roozendael, M.: FRESCO+: an improved O₂ A-band cloud retrieval algorithm for tropospheric trace gas retrievals. *Atmos. Chem. Phys.*, 8, 6565–6576, 2008.

10 Wennberg, P. O., C. Roehl, D. Wunch, G. C. Toon, J.-F. Blavier, R. Washenfelder, G. Keppel-Aleks, N. Allen, J. Ayers. TCCON data from Park Falls, Wisconsin, USA, Release GGG2014R1. TCCON data archive, hosted by CaltechDATA, California Institute of Technology, Pasadena, CA, U.S.A. <http://doi.org/10.14291/tcon.ggg2014.parkfalls01.R1>, 2017.

15 Wunch, D., G. C. Toon, J.-F. L. Blavier, R. A. Washenfelder, J. Notholt, B. J. Connor, D. W. T. Griffith, V. Sherlock, P. O. Wennberg. The Total Carbon Column Observing Network, doi: 10.1098/rsta.2010.0240 *Phil. Trans. R. Soc. A* 28 May 2011 vol. 369 no. 1943 2087–2112, 2011

20 Wunch, D., Toon, G. C., Wennberg, P. O., Wofsy, S. C., Stephens, B. B., Fischer, M. L., Uchino, O., Abshire, J. B., Bernath, P., Biraud, S. C., Blavier, J.-F. L., Boone, C., Bowman, K. P., Browell, E. V., Campos, T., Connor, B. J., Daube, B. C., Deutscher, N. M., Diao, M., Elkins, J. W., Gerbig, C., Gottlieb, E., Griffith, D. W. T., Hurst, D. F., Jiménez, R., Keppel-Aleks, G., Kort, E. A., Macatangay, R., Machida, T., Matsueda, H., Moore, F., Morino, I., Park, S., Robinson, J., Roehl, C. M., Sawa, Y., Sherlock, V., Sweeney, C., Tanaka, T., and Zondlo, M. A.: Calibration of the Total Carbon Column Observing Network using aircraft profile data, *Atmos. Meas. Tech.*, 3, 1351–1362, <https://doi.org/10.5194/amt-3-1351-2010>, 2010.

25 Yarwood, G., Rao, S., Yocke, M., and Whitten, G.: Updates to the carbon bond chemical mechanism: CB05. Final report to the US EPA, EPA Report Number: RT-0400675, available at: www.camx.com, 2005.

30 Yumimoto, K., Tanaka, T. Y., Oshima, N., and Maki, T.: JRAero: the Japanese Reanalysis for Aerosol v1.0, *Geosci. Model Dev.*, 10, 3225–3253, <https://doi.org/10.5194/gmd-10-3225-2017>, 2017.

Deleted: ¶
¶

	MACCRA	CIRA	CAMSRA
Period covered	2003 - 2012	2003 - 2018	2003 - 2016 (will be extended)
Assimilation system	IFS Cycle 36r1 4D-Var	IFS Cycle 40r2 (2003-2015) 4D-Var IFS Cycle 41r1 (2016 - 2018) 4D-Var	IFS Cycle 42r1 4D-Var
Horizontal resolution	80 km globally (T255)	110 km globally (T159)	80 km globally (T255)
Temporal resolution (Output frequency)	6-hourly analysis fields 3-hourly forecast fields from 0 UTC up to 24 hours	6-hourly analysis fields 3-hourly forecast fields from 6 and 18 UTC up to 12 hours	3-hourly analysis fields 3-hourly forecast fields from 0 UTC up to 48 hours 1-hourly surface forecast fields from 0 UTC up to 48 hours
Anthropogenic emissions	Chemistry species: MACCity (trend: ACCMIP + RCP8.5), Aerosols: AEROCOM	MACCity (trend: ACCMIP + RCP8.5) & CO emission upgrade Stein et al. (2014) for chemistry and aerosols	MACCity (trend: ACCMIP + RCP8.5) & CO emission upgrade Stein et al. (2014)
Biomass burning emissions	GFED (2003–2008) and GFAS v0 (2009–2012)	GFAS v 1.2	GFAS v 1.2
Biogenic emissions	Monthly mean VOC emissions for the year 2003 calculated by the MEGAN2.1 model (Guenther et al., 2006) used for the whole period. No interannual variability.	Monthly mean VOC emissions calculated by the MEGAN2.1 model (Guenther et al., 2006) using MERRA reanalysed meteorology (Sindelarova et al., 2014) for the period 2003-2010. For the remaining years 2011–2017 a climatology of the MEGAN-MACC data was used.	Monthly mean VOC emissions calculated by the MEGAN model using MERRA reanalysed meteorology (Sindelarova et al., 2014) for 2003-2016.
Chemistry modules	CTM MOZART3 coupled to the IFS (see Flemming et al. 2009)	IFS(CB05) (Flemming et al. 2015) & Cariolle ozone parametrisation in stratosphere CHEM_VER=ver14wd	IFS(CB05) (Flemming et al. 2015, with updates documented in Section 2.1.2) & Cariolle ozone parametrisation in stratosphere CHEM_VER=ver15
Aerosol modules	Mocrette et al. (2009)	Mocrette et al. (2009) plus changes described in Flemming et al. (2017)	Mocrette et al. (2009) with changes documented in Section 2.1.1.
Input meteorological observations	ECMWF NWP (stream=DA)	ECMWF NWP (stream=DCDA)	As in ERA5 (2003-2016)
Assimilated retrievals	O ₃ GOME, SCIAMACHY, MIPAS, MLS, OMI, SBUV/2	GOME, SCIAMACHY, MIPAS, MLS, OMI, GOME-2, SBUV/2	SCIAMACHY, MIPAS, MLS, OMI, GOME-2, SBUV/2
Assimilated retrievals	CO MOPITT, IASI	MOPITT	MOPITT
Assimilated retrievals	NO ₂ SCIAMACHY	---	SCIAMACHY, OMI, GOME-2
Aerosol used in radiation scheme	Tegen climatology	Tegen climatology	Interactive aerosols, i.e. aerosol fields from CAMSRA used in radiation scheme
Ozone used in radiation scheme	GEMS climatology	GEMS climatology (2003-2015) MACCRA climatology (2016 - 2018)	Interactive ozone, i.e. ozone field from CAMSRA used in radiation scheme
Stratospheric chemistry	Yes	No, but Cariolle ozone parametrisation in stratosphere and stratospheric O ₃ available.	No, but Cariolle ozone parametrisation in stratosphere and stratospheric O ₃ available.

Deleted: present

Deleted: ...)

Deleted: active

Deleted: ...)

Table 1: Important commonalities and differences between CAMSRA, CIRA and MACCRA.

Parameter/ Product	Instrument/ Satellite	Period	Data provider/version	Blacklist criteria	Averaging kernels used	Reference
O ₃ / TC	SCIAMACHY/ Envisat	20020803-20120408	ESA, CCI (BIRA)	QR>0 SOE<6	no	Lerot et al. (2009)
O ₃ / PROF	MIPAS/ Envisat	20030127- 20040326 20050127-20120331	ESA, NRT ESA, CCI (KIT)	 QR> 0	no	Von Clarmann et al. (2003, 2009)
O ₃ / PROF	MLS/ Aura	20040803-20161231	NASA, V4	QR>0	no	Schwartz et al. (2015)
O ₃ / TC	OMI/ Aura	20041001-20150531 20160101-20161231	KNMI/NASA, V003 NRT	QR>0 SOE<10	no	Liu et al. (2010)
O ₃ / TC	GOME-2/ Metop-A	20070123-20121231 201301-201612	ESA, CCI (BIRA) fv0100 ESA, CCI (BIRA) fv0300	QR>0 SOE<10	No	Hao et al. (2014)
O ₃ / TC	GOME-2/ Metop-B	201301-201612	ESA, CCI (BIRA) fv0300	QR>0 SOE<10	no	Hao et al. (2014)
O ₃ / PC 13L	SBUV/2/ NOAA-14	200407-200609	NASA, v8.6	QR>0 SOE<6 (SOE<15 between 200407-200409) MODORO > 1000. & PRESS_RL > 450.	No	Bhartia et al. (1996), McPeters et al. (2013)
O ₃ / PC 13L PC 21L	SBUV/2/ NOAA-16	200301-200706 20111201-20130708	NASA, v8.6 NASA, v8.6	QR>0 SOE<6	No	Bhartia et al. (1996), McPeters et al. (2013)
PC 21L		20130709-20161231	NRT	(SOE<15 between 200404-200409) MODORO > 1000. & PRESS_RL > 450.		
O ₃ / PC 13L	SBUV/2/ NOAA-17	200301-201108	NASA, v8.6	QR>0 SOE<6 MODORO > 1000. & PRESS_RL > 450.	No	Bhartia et al. (1996), McPeters et al. (2013)
O ₃ / PC 13L	SBUV/2/ NOAA-18	200507-201211	NASA, v8.6	QR>0 SOE<6 (SOE<15 from 200404-200409) MODORO > 1000. & PRESS_RL > 450.	No	Bhartia et al. (1996), McPeters et al. (2013)
O ₃ /PC13 L PC 21L	SBUV/2/ NOAA-19	200903-20130708 20130709-20161231	NASA, v8.6 NRT	QR>0 SOE<6 MODORO > 1000. & PRESS_RL > 450.	No	Bhartia et al. (1996); McPeters et al. (2013)
CO/ TC	MOPITT/ Terra	20020101-20161231	NCAR, V6 (TIR)	LAT>-65. LAT< -65 QR>0 Night time data over Greenland	yes	Deeter et al. (2014)
NO ₂ / TRC	SCIAMACHY/ Envisat	20030101-20101231 20110101-20120409	KNMI V1p KNMI V2	QR>0 SOE<6 LAT>60 LAT< -60	yes	Boersma et al. (2004); http://www.temis.nl ; Wang et al. (2008)
NO ₂ / TRC	OMI/ Aura	20041001-20101231 20110101-20121231 20130101 -20161231	KNMI, Domino V1.02 KNMI, Domino V2 KNMI NRT Domino V2	QR>0 SOE<6 LAT>60 LAT< -60	yes	Boersma et al. (2006)
NO ₂ / TRC	GOME-2/ Metop-A	20070418-20161231	AC SAF, GDP4.8	QR>0 SAA	Yes	Valks et al. (2011)
NO ₂ / TRC	GOME-2/ Metop-B	201301-20161231	AC SAF, GDP4.8	QR>0 SAA	yes	Valks et al. (2011)
AOD/ TC	AATSR/ Envisat	20021201-20120331	ESA, CCI (Swansea)	abs(LAT)> 70	no	Popp et al. (2016)
AOD/ TC	MODIS/ Envisat	20021001-20151231	NASA, COI6	abs(LAT)> 70	no	Levy et al. (2018)

TC	Terra	20160101-20161231	NRT			
AOD/TC	MODIS/ Aqua	20021001-20151231 20160101-20161231	NASA, COI6 NRT	abs(LAT)> 70	no	Levy et al. (2018)

Table 2: Satellite retrievals of atmospheric composition that were assimilated in the CAMS reanalysis. TC: Total column, TRC: Tropospheric column, PROF: profiles, PC: Partial columns, QR= quality flag given by data providers, SOE: Solar elevation, MODORO: Model orography, PRESS_RL= pressure at bottom of layer, LAT: Latitude, SAA: area of the South Atlantic Anomaly.

Area	MACCRA	CIRA	CAMSRA
	Bias ± stdv	Bias ± stdv	Bias ± stdv
Globe	7.6 ± 13.0	3.2 ± 10.5 (3.8 ± 10.2) 10.7)	2.9 ± 10.0 (2.4 ± 10.0)
Arctic	2.5 ± 14.7	-1.2 ± 13.7 (0.4 ± 13.4)	-1.0 ± 13.6 (-0.9 ± 13.2)
NH midlatitudes	7.8 ± 13.7	3.4 ± 11.6 (4.5 ± 11.3) 11.8)	3.2 ± 11.3 (3.0 ± 14.7)
Tropics	7.9 ± 11.4	2.6 ± 7.9 (2.2 ± 7.8)	2.5 ± 7.7 (1.2 ± 7.6)
SH midlatitudes	8.0 ± 10.8	5.1 ± 8.0 (5.8 ± 8.4)	4.4 ± 7.4 (4.1 ± 7.1)
Antarctic	7.1 ± 16.6	3.7 ± 14.2 (5.7 ± 14.9)	3.0 ± 13.9 (3.3 ± 13.5)

Table 3: Mean biases and standard deviations from MACCRA, CIRA and CAMSRA relative to WOUDC Dobson data (shown in Figure 8) in DU. The values are calculated for the period 2003-2012, the values in brackets for CIRA and CAMSRA for the period 2003-2016. Red numbers mark where MACCRA or CIRA have larger biases or standard deviation than CAMSRA, green where their values are smaller.

Area	MACCRA	CIRA	CAMSRA
	Bias ± stdv	Bias ± stdv	Bias ± stdv
Globe	-2.3 ± 9.4	-2.7 ± 7.8 (-2.0 ± 7.8)	0.5 ± 7.0 (-0.2 ± 7.0)
Europe	-1.9 ± 9.3	-4.4 ± 8.7 (-4.2 ± 8.8)	-2.3 ± 7.7 (-2.1 ± 7.7)

Table 4: Mean biases and standard deviations from MACCRA, CIRA and CAMSRA relative to GAW surface O₃ data (shown in Figure 11) in ppb. The values are calculated for the period 2003-2012, the values in brackets for CIRA and CAMSRA for the period 2003-2016. Red numbers mark where MACCRA or CIRA have larger biases or standard deviation than CAMSRA, green where their values are smaller.

- Deleted: ¶
- Deleted: Latitude, longitude
- Deleted: Reference
- Formatted Table
- Deleted Cells
- Deleted Cells
- Deleted: Ny-Ålesund
- Formatted Table
- Deleted: 67.37°N, 26.63°E
- Deleted: Kivi et al. (2014)
- Deleted: -1.37 ± 3.10
- Deleted Cells
- Formatted
- Deleted: 71 ±
- Deleted: 0.85 ± 2.66
- Deleted Cells
- Formatted
- Deleted: .19
- Deleted: Bremen
- Deleted: 53.1°N, 8.85°E
- Deleted Cells
- Deleted: Notholt et al. (2017b)
- Deleted Cells
- Formatted
- Deleted: .96 ± 4.91
- Deleted: 0.88 ± 3.30
- Deleted: 77 ± 3.
- Deleted: Parkfalls
- Formatted Table
- Deleted: 28.3°N, 16.5°W
- Deleted: Blumenstock et al. (2014)
- Deleted Cells
- Deleted: 12.92 ± 4.61
- Deleted: 8.33 ± 3.19
- Deleted: 4.48 ± 3.27
- Deleted Cells
- Deleted: Darwin
- Formatted Table
- Deleted: 12.45°S, 130.89°E
- Deleted: Griffith et al. (2014)
- Deleted: 55 ± ... 50
- Deleted: 7.30 ± 4.42
- Deleted Cells
- Deleted: 1.96 ± 5.06
- Deleted Cells
- Deleted: Lauder
- Deleted: 45.04°S, 169.68°E
- Deleted: Sherlock et al. (2014)
- Deleted Cells
- Deleted: 4.29 ± 2.67¶
- Deleted: 5.47 ± 1.75¶
- Deleted: 0.58 ± 1.59¶
- Deleted: Table 3

10

15

Station	Latitude, longitude	Reference	MACCRA Bias ± stdv	CIRA Bias ± stdv	CAMSRA Bias ± stdv
Ny-Ålesund	78.9°N, 11.9°E	Notholt et al. (2017a)	-8.0 ± 8.0	1.5 ± 4.1	-1.2 ± 3.6
Sodankyla	67.37°N, 26.63°E	Kivi et al. (2014)	3.7 ± 7.2	0.9 ± 2.7	-1.4 ± 3.1
Bremen	53.1°N, 8.85°E	Notholt et al. (2017b)	6.0 ± 4.9	0.9 ± 3.3	-1.8 ± 3.1
Parkfalls	45.94°N, 90.27°W	Wennberg et al. (2014)	4.5 ± 5.0	3.0 ± 3.0	-0.5 ± 3.0
Izaña	28.3°N, 16.5°W	Blumenstock et al. (2014)	12.9 ± 4.6	8.3 ± 3.2	4.5 ± 3.3
Darwin	12.45°S, 130.89°E	Griffith et al. (2014)	4.6 ± 4.5	7.3 ± 4.4	2.0 ± 5.1
Lauder	45.04°S, 169.68°E	Sherlock et al. (2014)	4.3 ± 2.7 4.5 ± 2.9	5.5 ± 1.8 3.9 ± 3.0	0.6 ± 1.6 0.7 ± 2.6

Table 5: TCCON stations used in this paper and mean biases and standard deviations from MACCRA, CIRA and CAMSRA (shown in Figure 13) in ppb. The values for CIRA and CAMSRA are calculated for the period 2003-2016, the values for MACCRA for the period 2003-2012. Red numbers mark where MACCRA or CIRA have larger biases or standard deviation than CAMSRA, green where their values are smaller.

Deleted: in ppb

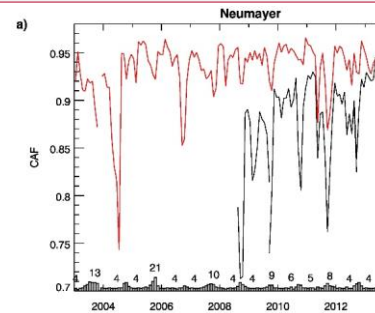
Formatted: Caption

Area	MACCRA Bias ± stdv	CIRA Bias ± stdv	CAMSRA Bias ± stdv
Globe	-6.3 ± 38.5	13.6 ± 52.1 (14.3 ± 57.5)	17.9 ± 58.7 (17.7 ± 71.7)
Europe	-16.6 ± 48.8	7.5 ± 54.7 (10.6 ± 54.4)	10.7 ± 54.1 (11.2 ± 51.2)
Alert	-19.2 ± 17.5	-6.0 ± 12.5 (-4.8 ± 13.1)	-6.2 ± 12.2 (-5.1 ± 12.6)
Bukit Koto Tabang	24.3 ± 62.0	142.5 ± 85.5 (148.5 ± 98.8)	192.3 ± 97.8 (204.2 ± 168.6)

Table 6: Mean biases and standard deviations from MACCRA, CIRA and CAMSRA relative to GAW surface CO data (shown in Figure 16) in ppb. The values are calculated for the period 2003-2012, the values in brackets for CIRA and CAMSRA for the period 2003-2016. Red numbers mark where MACCRA or CIRA have larger biases or standard deviation than CAMSRA, green where their values are smaller.

Area	MACCRA Bias ± stdv	CIRA Bias ± stdv	CAMSRA Bias ± stdv
Leba	-0.2 ± 0.6	0.1 ± 0.6 (0.2 ± 0.6)	0.0 ± 0.6 (0.1 ± 0.6)
Jarczew	-0.5 ± 1.0	0.6 ± 1.0 (0.7 ± 1.0)	-0.4 ± 1.0 (-0.4 ± 1.0)
Hohenpeissenberg	-0.6 ± 0.7	-1.1 ± 0.7 (-1.1 ± 0.7)	-0.7 ± 0.7 (-0.6 ± 0.7)
Payerne	-4.7 ± 2.2	-1.1 ± 1.6 (-1.0 ± 1.7)	-1.2 ± 1.4 (-1.2 ± 1.4)

Table 7: Monthly mean surface NO₂ biases and standard deviations from MACCRA, CIRA and CAMSRA relative to GAW surface NO₂ data (shown in Figure 19) in ppb. The values are calculated for the period 2003-2012, the values in brackets for CIRA and CAMSRA for the period 2003-2016. Red numbers mark where MACCRA or CIRA have larger biases or standard deviation than CAMSRA, green where their values are smaller.



Deleted:

Area	MACCRA Bias ± stdv	CIRA Bias ± stdv	CAMSRA Bias ± stdv
Globe	0.015 ± 0.129	-0.004 ± 0.137 (0.002 ± 0.156)	-0.005 ± 0.106 (-0.003 ± 0.110)
North America	0.043 ± 0.092	0.024 ± 0.092 (0.030 ± 0.099)	0.012 ± 0.075 (0.014 ± 0.070)
Europe	0.011 ± 0.072	-0.011 ± 0.073 (-0.002 ± 0.070)	-0.007 ± 0.064 (-0.003 ± 0.061)
Africa	0.040 ± 0.097	0.030 ± 0.106 (0.028 ± 0.109)	0.005 ± 0.088 (0.006 ± 0.094)
SE Asia	-0.044 ± 0.212	-0.077 ± 0.233 (-0.072 ± 0.257)	-0.013 ± 0.176 (-0.013 ± 0.184)
South America	-0.006 ± 0.128	-0.008 ± 0.104 (0.000 ± 0.091)	-0.019 ± 0.102 (-0.013 ± 0.087)

Table 8: Mean biases and standard deviations from MACCRA, CIRA and CAMSRA relative to AERONET data (shown in Figure 22). The values are calculated for the period 2003-2012, the values in brackets for CIRA and CAMSRA for the period 2003-2016. Red numbers mark where MACCRA or CIRA have larger biases or standard deviation than CAMSRA, green where their values are smaller. AOD is unitless and the values are shown in

5

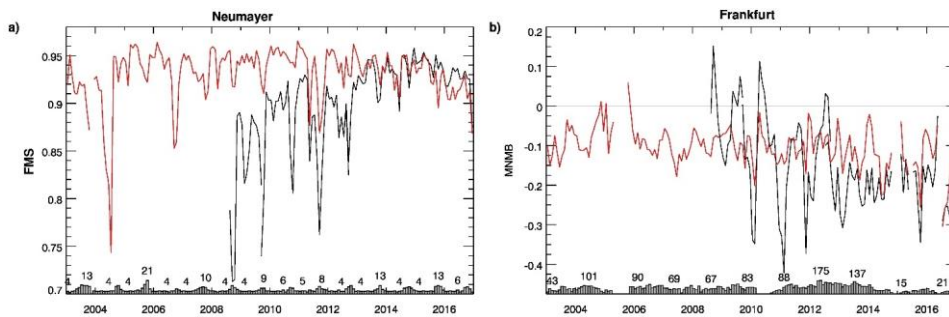


Figure 1: Timeseries from 2003 to 2016 of (a) FMS score of ozone at Neumayer (1000-3 hPa) against ozone sondes (see section 4.1) and (b) MNMB of CO in the lower troposphere (1000-700 hPa) at Frankfurt airport against IAGOS aircraft data (see section 4.2) from the real-time CAMS system (black) and CAMSRA (red).

10

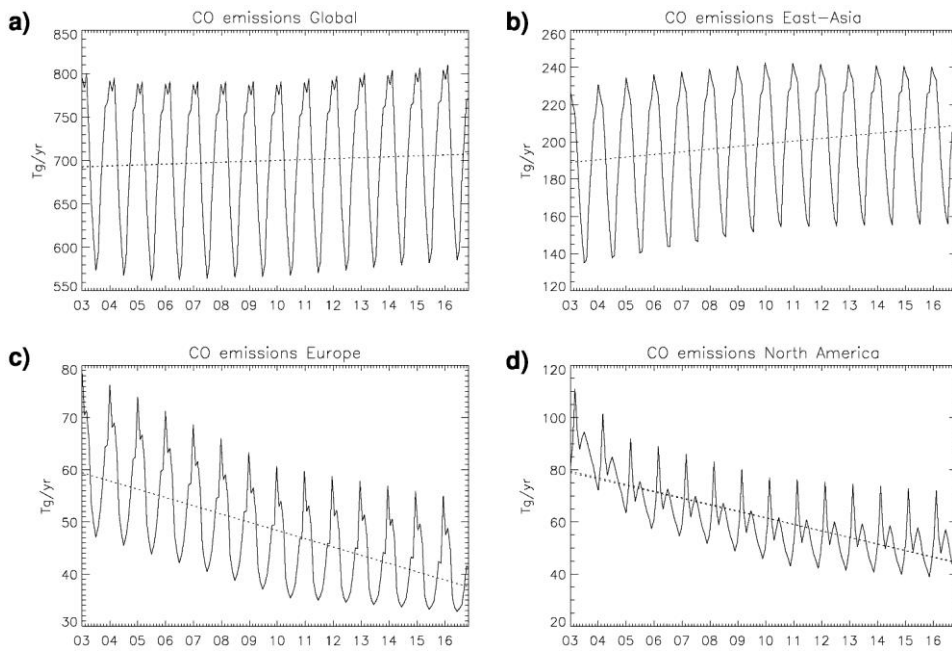
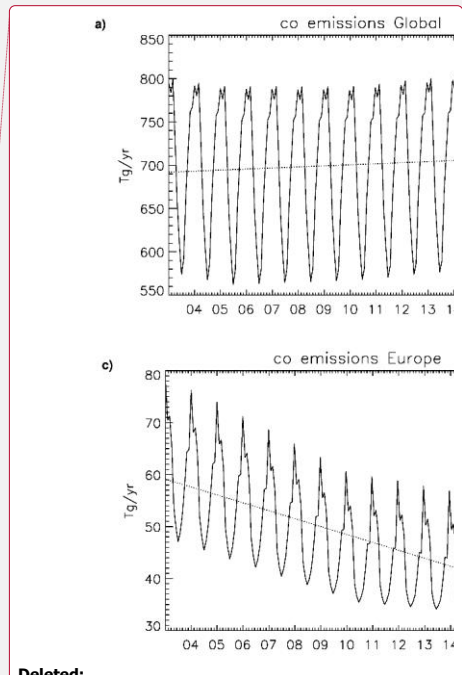
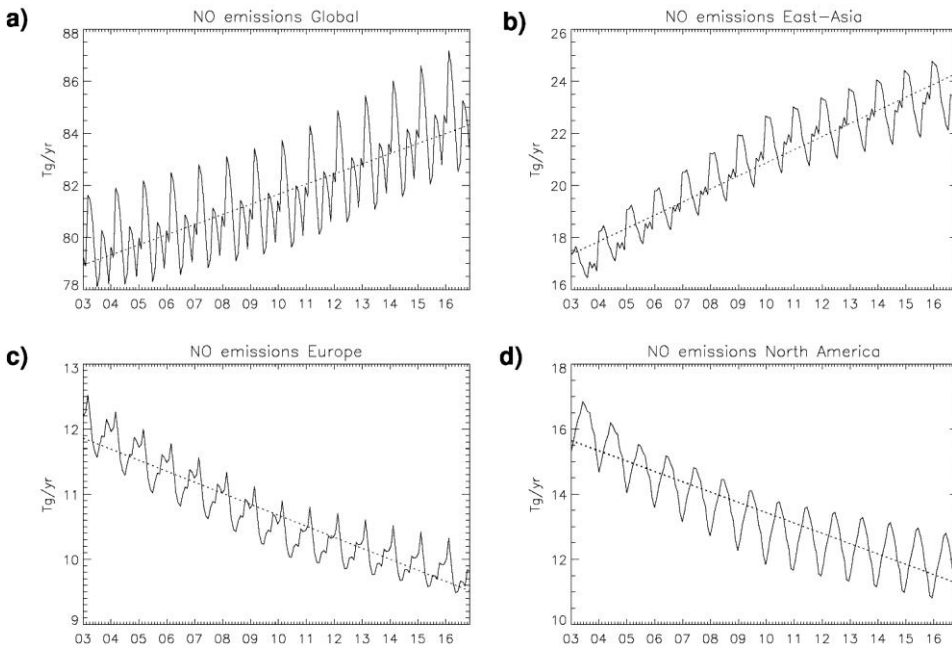


Figure 2: Monthly CO emissions in Tg/year from anthropogenic sources (MACCITY with correction from Stein et al., 2014) for (a) the Globe, (b) East-Asia, (c) Europe and (d) North America for the period 2003-2016.



Deleted:

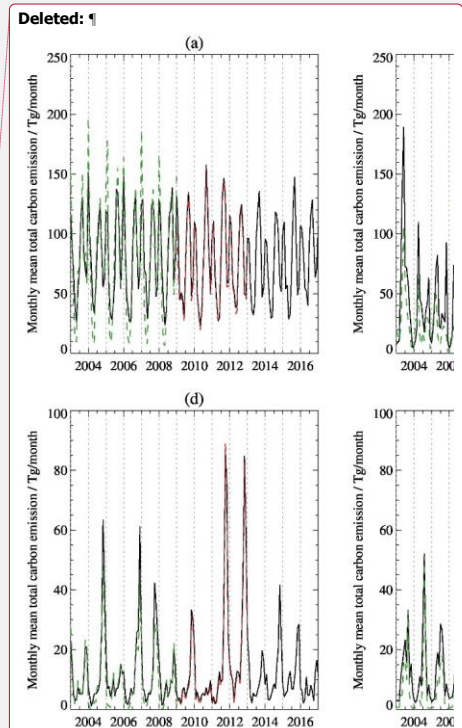


Figure 3

Figure 3: Monthly NO emissions in Tg/year from anthropogenic sources (MACCITY) for (a) the Globe, (b) East-Asia, (c) Europe and (d) North America for the period 2003-2016.

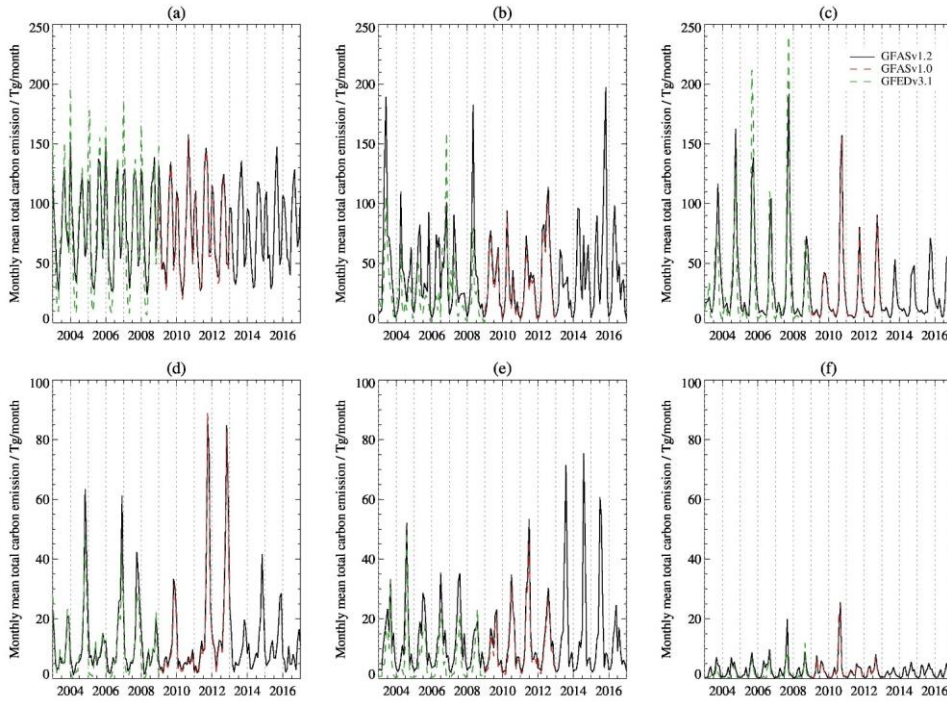


Figure 4: Time series of monthly total carbon wildfire emissions in Tg/month from GFASv1.2 (2003-2016, black solid line), GFASv1.0 (2009-2012, red dashed line) and GFEDv3.1 (2003-2008, green dashed line) for geographical domains covering: (a) Africa, (b) Asia, (c) South America, (d) Australia, (e) North America, and (f) Europe.

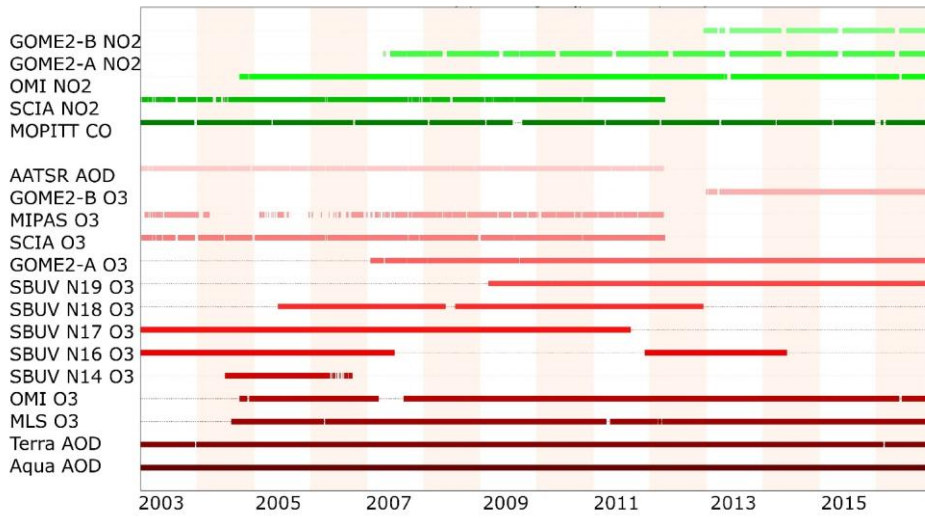


Figure 5: AC data assimilated in the CAMS reanalysis between 2003 and 2016. In red are shown retrievals for which no averaging kernels were used, in green those where averaging kernels were used.

Deleted: 4

Deleted: use

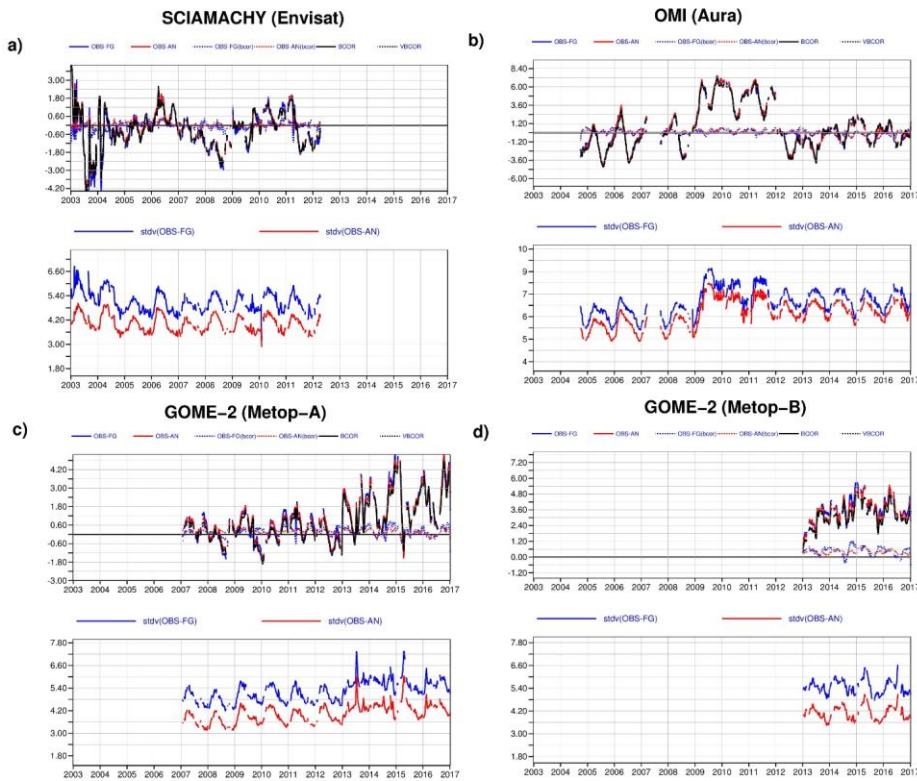


Figure 6: Timeseries of global mean monthly mean TCO3 departures (top plots) and standard deviations of departures (bottom plots) of (a) SCIMACHY, (b) OMI, (c) GOME-2A and (d) GOME-2B. The red lines show analysis departures, the blue lines first-guess departures, black lines bias correction and dotted red and blue lines the bias corrected analysis and first-guess departures, respectively. Values are in DU. [More information about departures can be found in the supplement.](#)

Deleted: 5

5

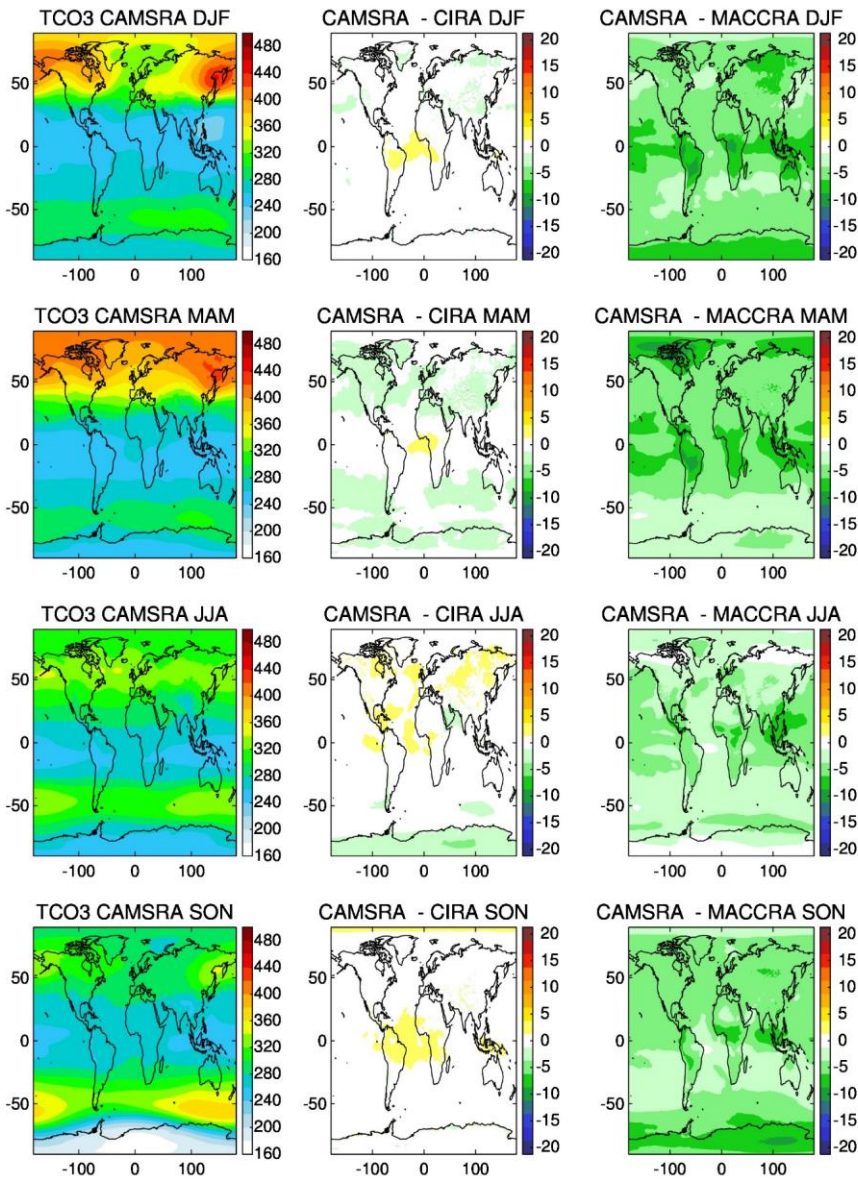


Figure 7: Seasonally averaged TCO3 from CAMSRA (2003-2016, left), difference between CAMSRA and CIRA (middle) and difference between CAMSRA and MACCRA (right, 2003-2012 only) in DU for the seasons DJF (row 1), MAM (row 2), JJA (row 3) and SON (row 4).

Deleted: 6

5

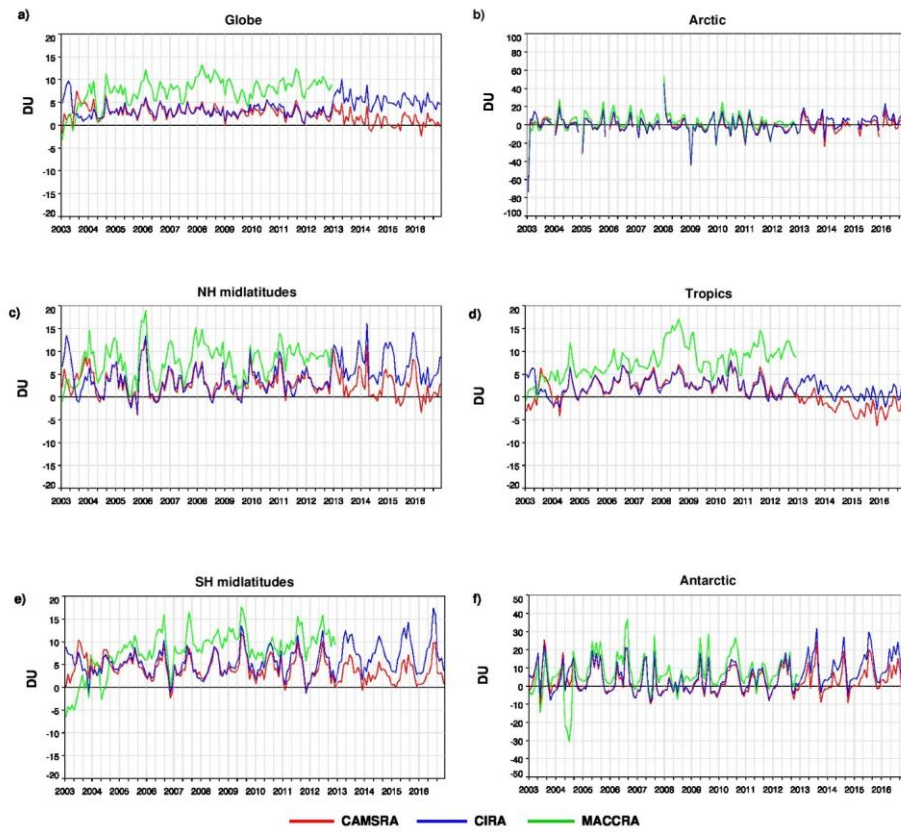


Figure 8: Timeseries of monthly mean TCO3 bias in DU from the three reanalyses compared to Woudc Dobson data for the areas (a) Globe, (b) Arctic, (c) NH midlatitude, (d) Tropics, (e) SH and (f) Antarctic in DU. About 50-60 stations were available from 2003 to 2014, dropping to about 40 stations after 2014. CAMSRA is shown in red, CIRA in blue and MACCRA in red.

Deleted: 7

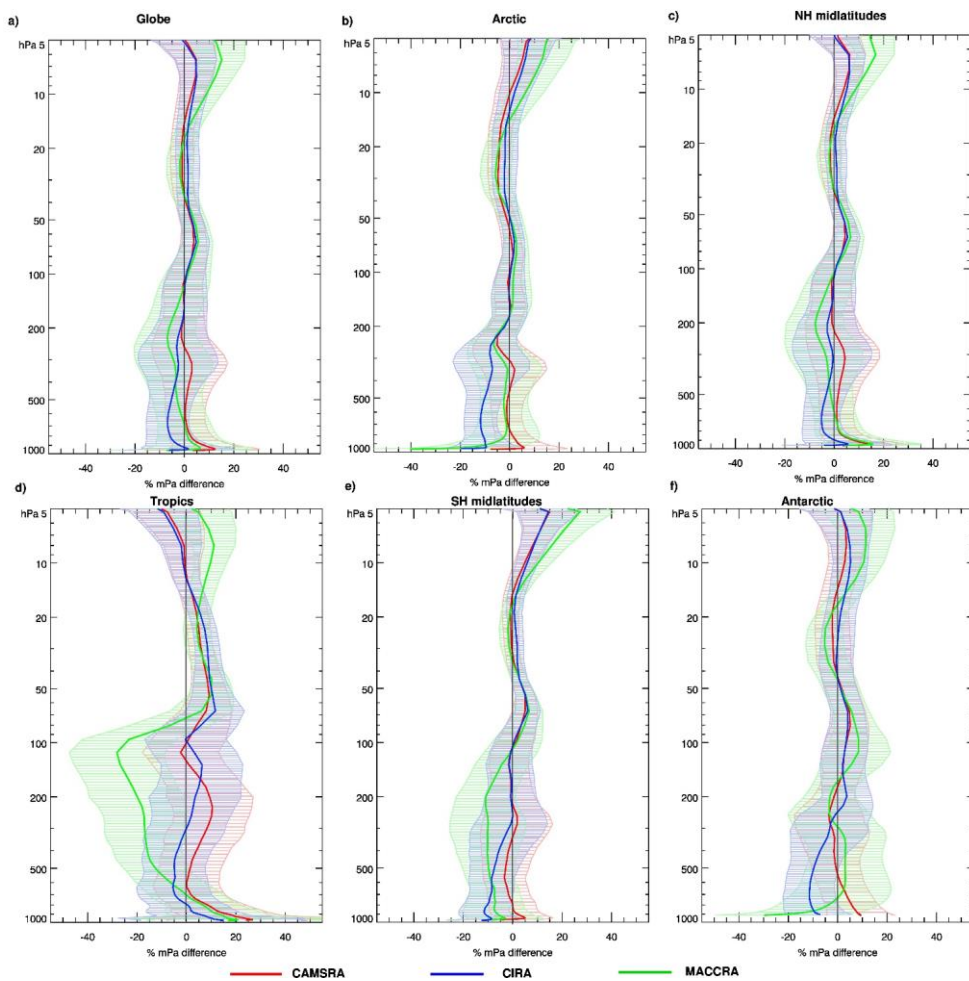


Figure 9: Mean relative O₃ bias in % between CAMSRA (red), CIRA (blue), MACCRA (green) and ozone sondes averaged over (a) the Globe, (b) Arctic, (c) NH midlatitudes, (d) Tropics, (e) SH midlatitudes and (f) Antarctic. The shaded areas show plus/minus one standard deviation. For CAMSRA and CIRA the average is calculated over the period 2003-2016, for MACCRA only for 2003-2012.

Deleted: 8

Deleted: the

Deleted: deviations

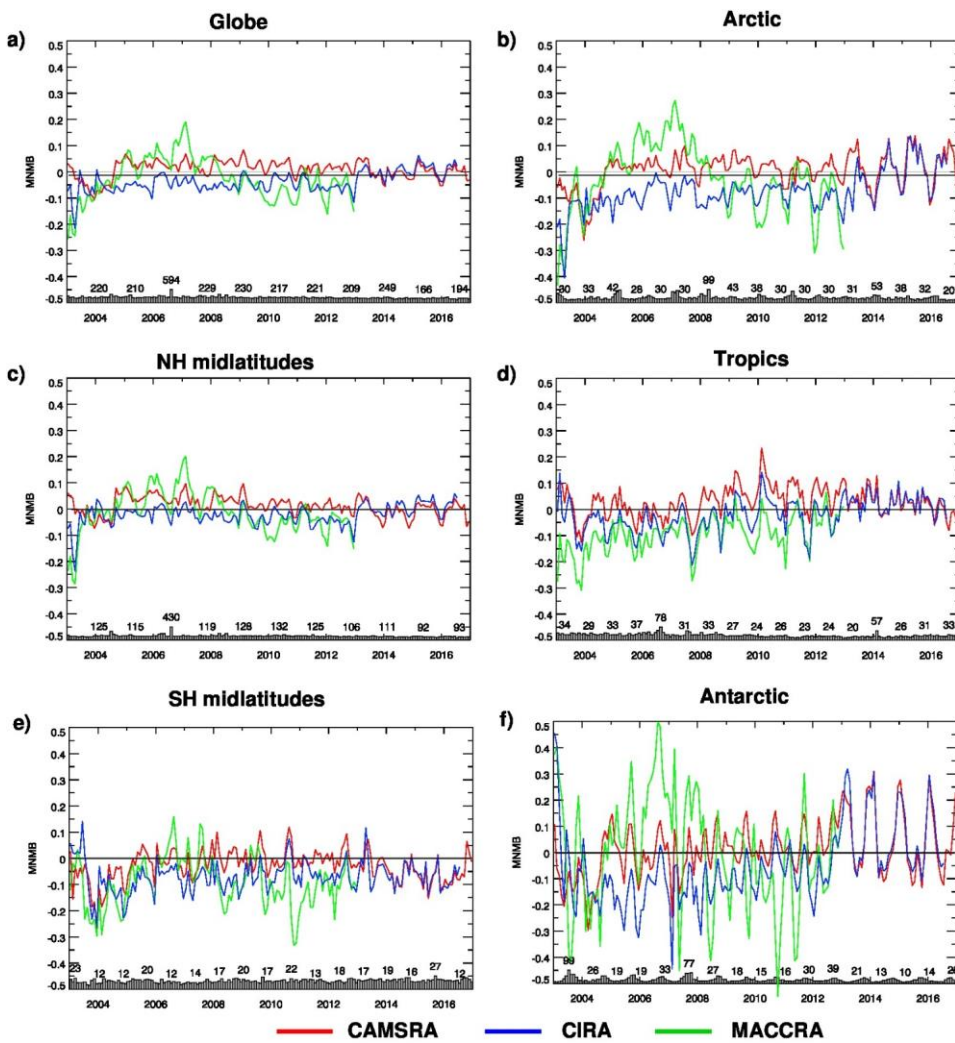


Figure 10: Timeseries of the modified normalized mean bias (MNMB) in the free troposphere (750-300 hPa) of the reanalyses versus ozone sondes for (a) global mean, (b) Arctic, (c) NH midlatitudes, (d) Tropics, (e) SH midlatitudes and (f) Antarctica. CAMSRA is in red, CIRA in blue and MACCRA in green.

Deleted: 9

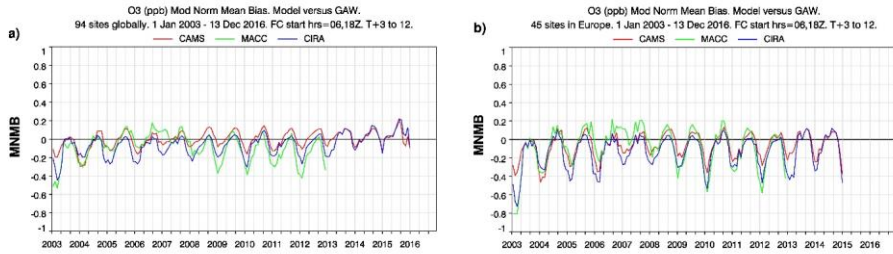


Figure 11: Timeseries of monthly mean surface ozone MNMB between the three reanalyses and GAW O₃ data averaged over (a) the Globe and (b) Europe. Globally about 60-70 stations were available from 2003 to 2014, dropping to about 40-50 in 2015 and then dropping steeply to only a few during 2016. In Europe, the number dropped from 25-35 in 2003-2014 to 17-19 in 2015. CAMSRA is shown in red, CIRA in blue and MACCRA in green.

Deleted: 10

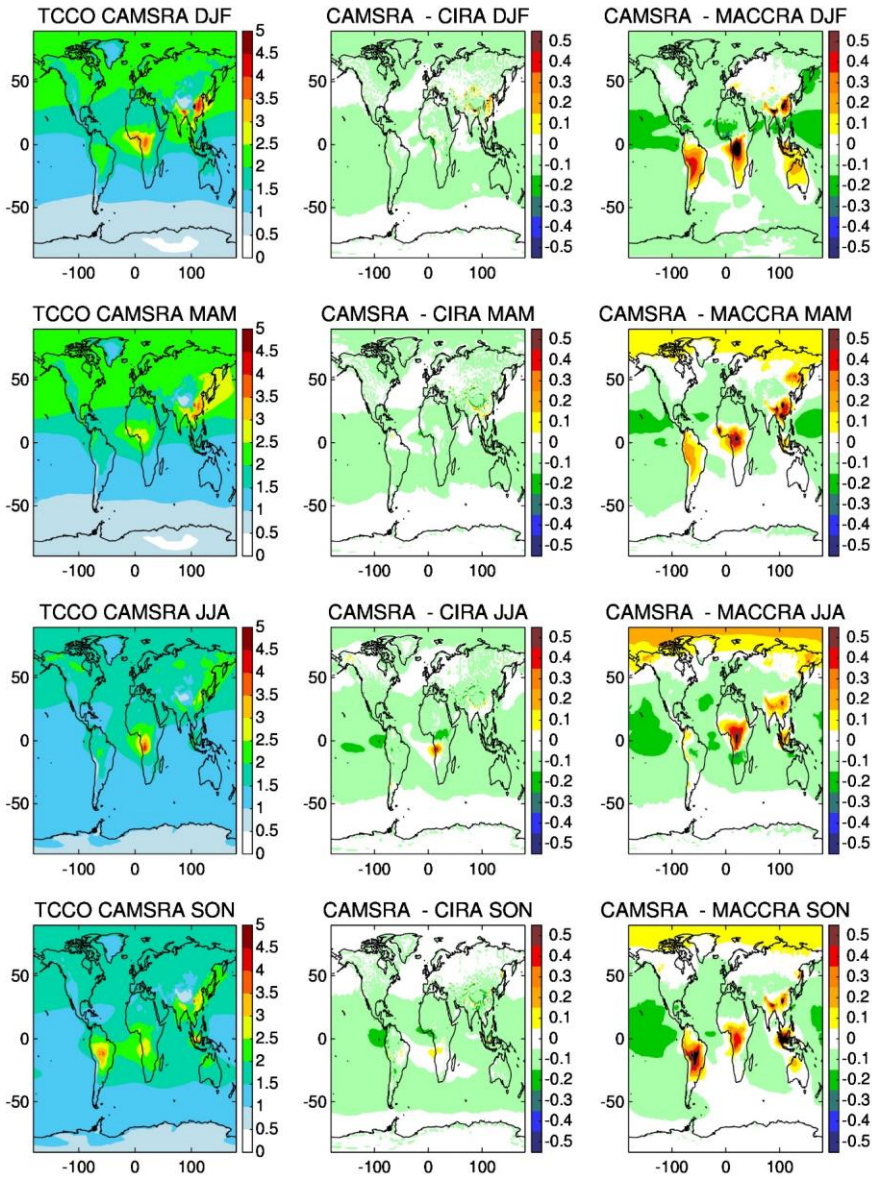


Figure 12: Seasonally averaged TCCO from CAMSRA (2003-2016, left), difference between CAMSRA and CIRA (middle) and difference between CAMSRA and MACCRA (right, 2003-2012 only) in 10^{18} molec/cm² for the seasons DJF (row 1), MAM (row 2), JJA (row 3) and SON (row 4).

Deleted: 11

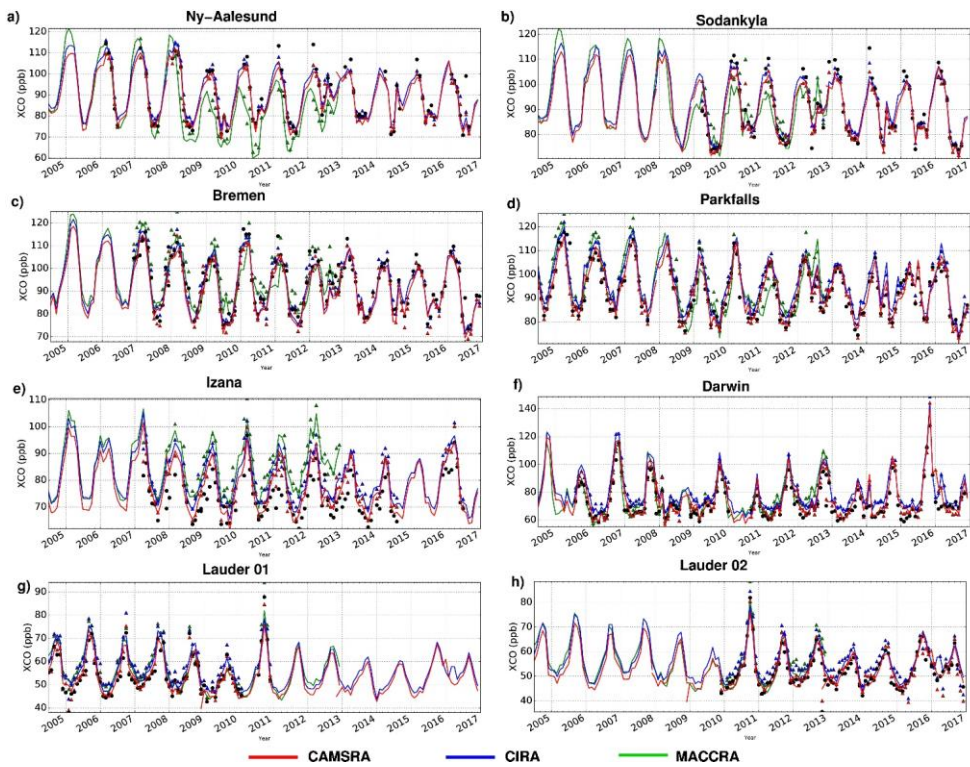


Figure 13: Column averaged CO (XCO) in ppb at several TCCON stations. Monthly mean observations are shown by the black dots, corresponding monthly mean XCO columns calculated using the TCCON averaging kernels are shown by the red (CAMSRA), blue (CIRA) and green (MACCRA) triangles. The continuous lines are the monthly XCO for the 3 reanalyses. Show are data for (a) Ny-Ålesund, (b) Sodankylä, (c) Bremen, (d) Parkfalls, (e) Izaña, (f) Darwin, (g) Lauder 2004-2010 and (h) Lauder 2010-2016.

Deleted: 12

Deleted: average

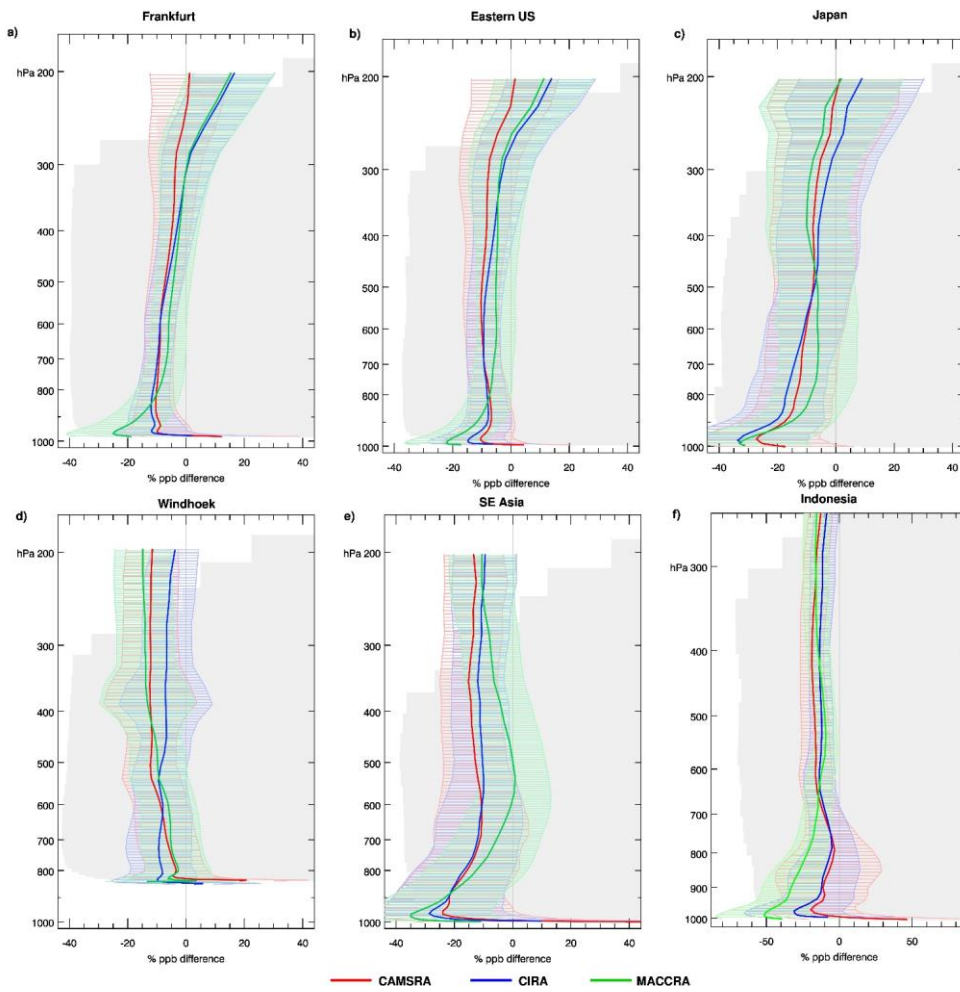


Figure 14: Mean relative CO bias in % between the reanalyses and IAGOS aircraft data for CAMSRA (red), CIRA (blue) and MACCRA (green) at (a) Frankfurt, (b) Eastern US airports, (c) Japanese airports, (d) Windhoek, (e) SE Asian airports and (f) Indonesian airports (note the different scale of the axis for (f)). The shaded areas show plus/minus one standard deviation. For CAMSRA and CIRA the average is calculated over the period 2003-2016, for MACCRA only for 2003-2012.

Deleted: 13

Deleted: Easter

Deleted: the

Deleted: deviations

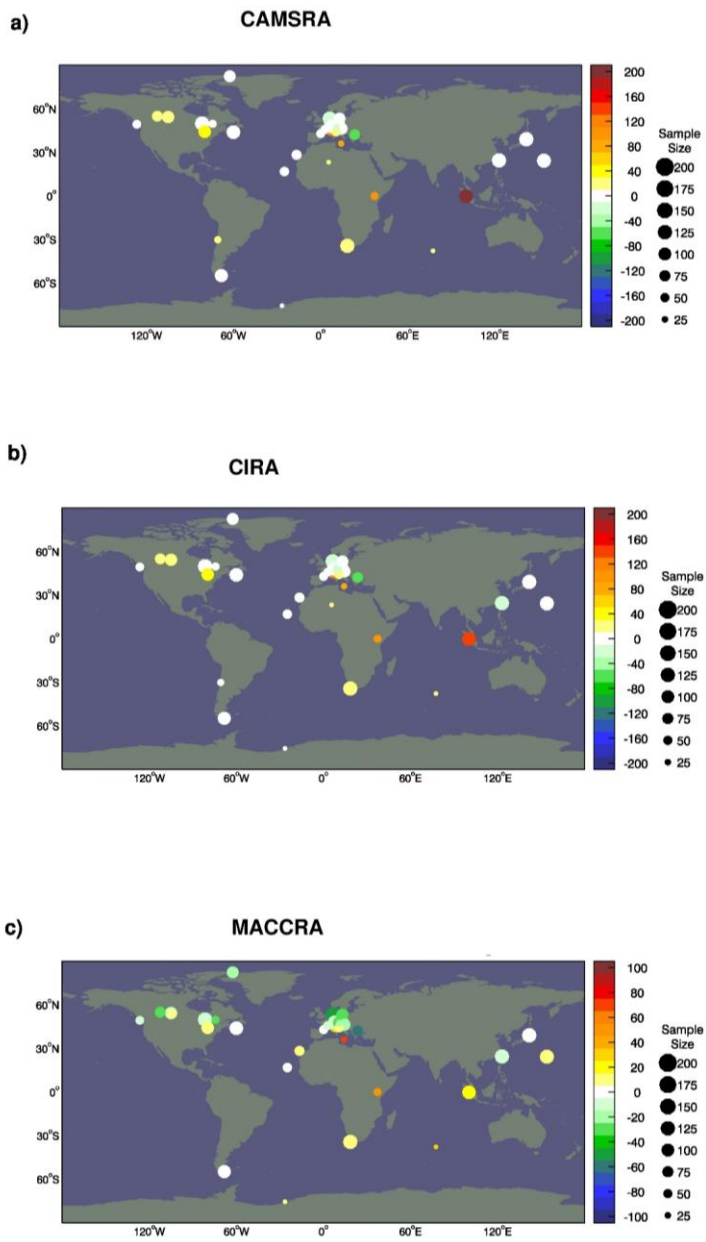


Figure 15: Mean CO bias in ppb between the three reanalyses and GAW surface observations for (a) CAMSRA, (b) CIRA and (c) MACCRA. For CAMSRA and CIRA the average is calculated over the period 2003-2016, for MACCRA only for 2003-2012.

Deleted: 14

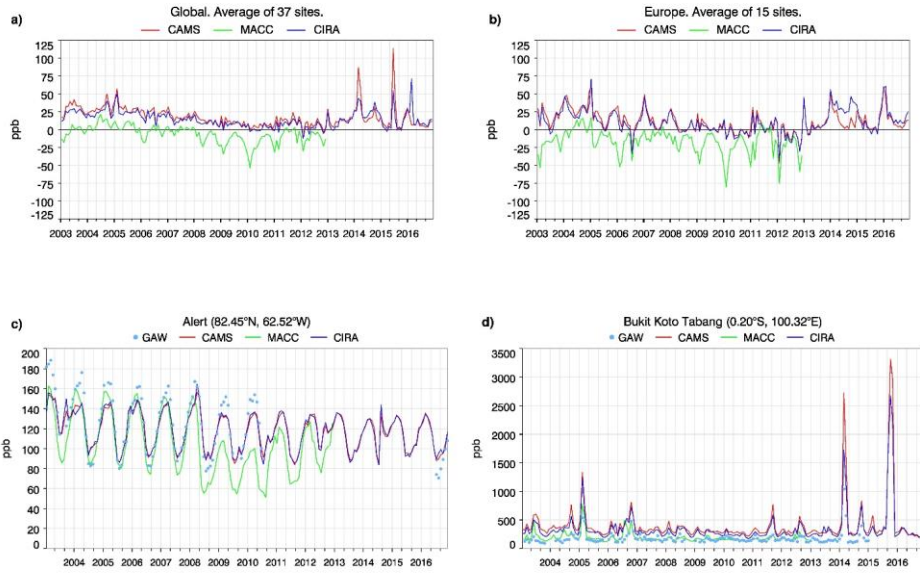


Figure 16: Top panels: Timeseries of monthly mean surface CO bias in ppb between the three reanalyses and GAW CO data averaged over (a) the Globe and (b) Europe. Between 15-30 stations were available between 2003-2016, with largest number between 2008 and 2014 and smaller numbers in the earlier and later years. Bottom panels: Timeseries of monthly mean CO from GAW (blue dots), CAMSRA, CIRA and MACCRA in ppb at (c) Alert and (d) Bukit Koto Tabang. CAMSRA is shown in red, CIRA in blue and MACCRA in green.

Deleted: 15

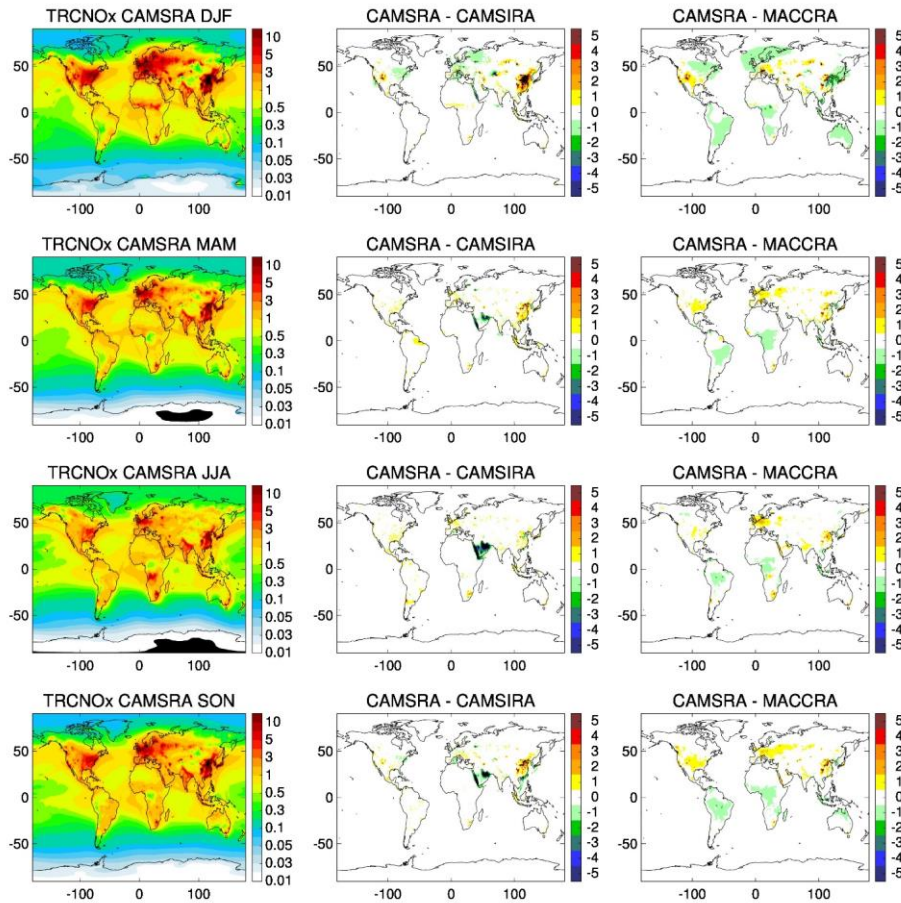
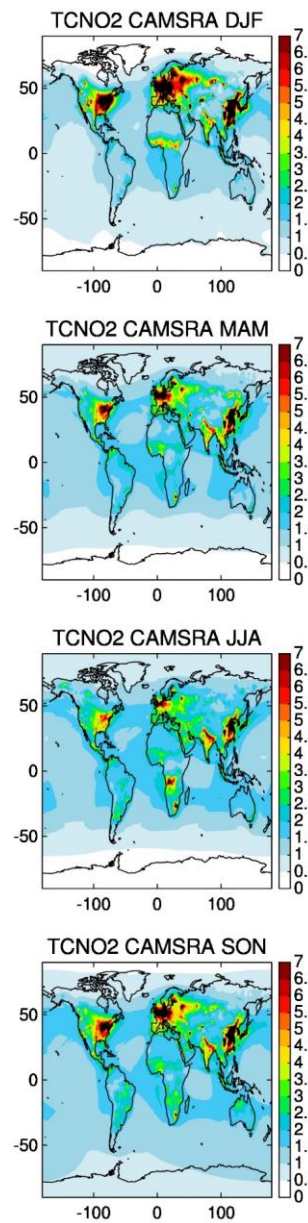


Figure 17: Seasonally averaged TRCNOx in 10^{15} molec/cm² from CAMSRA (2003-2016, left), the differences between CAMSRA and CIRA (middle) and the differences between CAMSRA and MACCRA (right, 2003-2012 only) for the seasons DJF (row 1), MAM (row 2), JJA (row 3) and SON (row 4).



Deleted:

Deleted: 16...7: Seasonally averaged TCNO2...RCNOx in 10^{15} molec/cm² from CAMSRA (2003-2016, left) and... the difference...ifferences between CAMSRA and CIRA in %...middle) and the differences between CAMSRA and MACCRA (right, 2003-2012 only) for the seasons DJF (row 1), MAM (row 2), JJA (row 3) and SON (row 4) for the period 2003-2016.

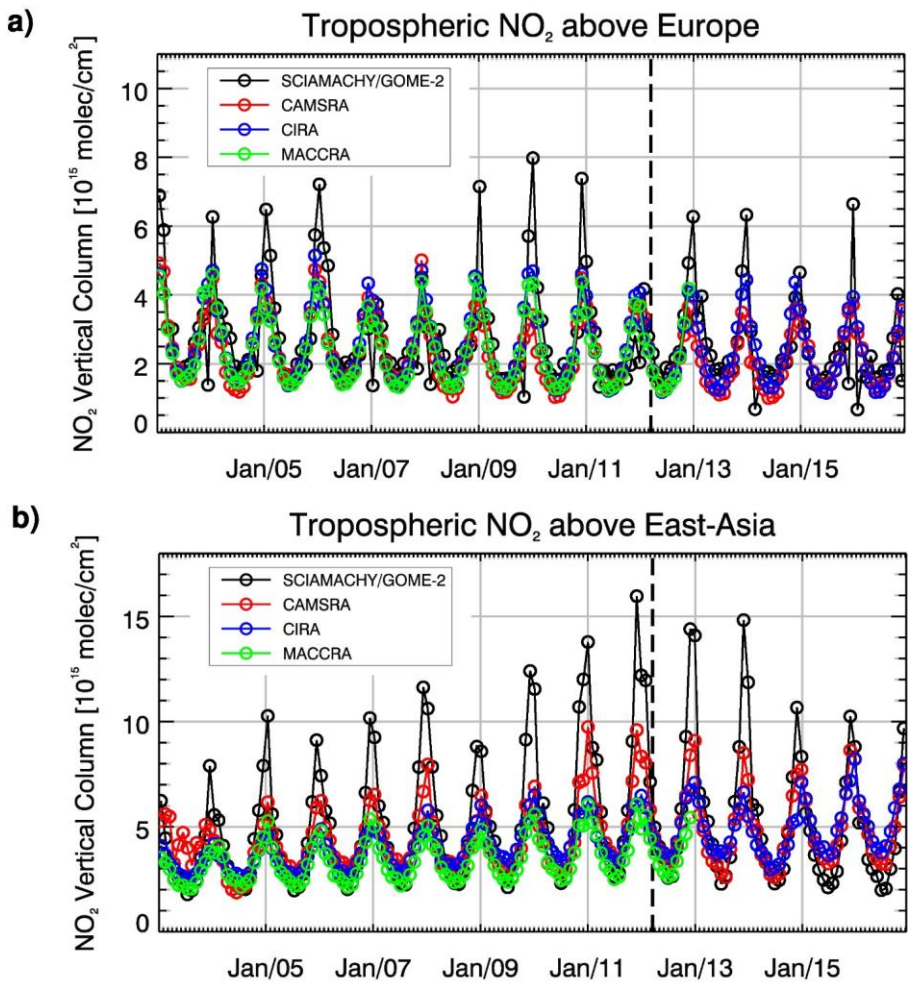


Figure 18: Timeseries of tropospheric column NO₂ from the three reanalyses and IUB tropospheric NO₂ retrievals in 10¹⁵ molec/cm² averaged over (a) Europe and (b) East Asia. CAMSRA is shown in red, CIRA in blue, MACCRA in green and the observations in black.

Deleted: 17

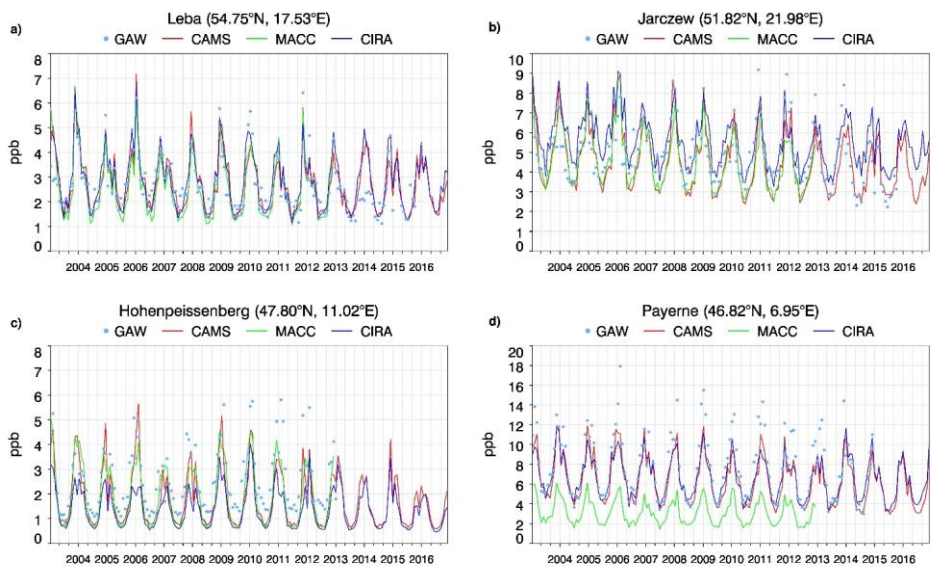


Figure 19: Timeseries of monthly mean surface NO₂ from CAMSRA (red), CIRA (blue), MACCRA (green) and GAW surface observations (blue dots) for (a) Leba, (b) Jarczew, (c) Hohenpeissenberg and (d) Payerne in ppb. The latitude and longitude of the stations are given in the plot titles.

Deleted: 18

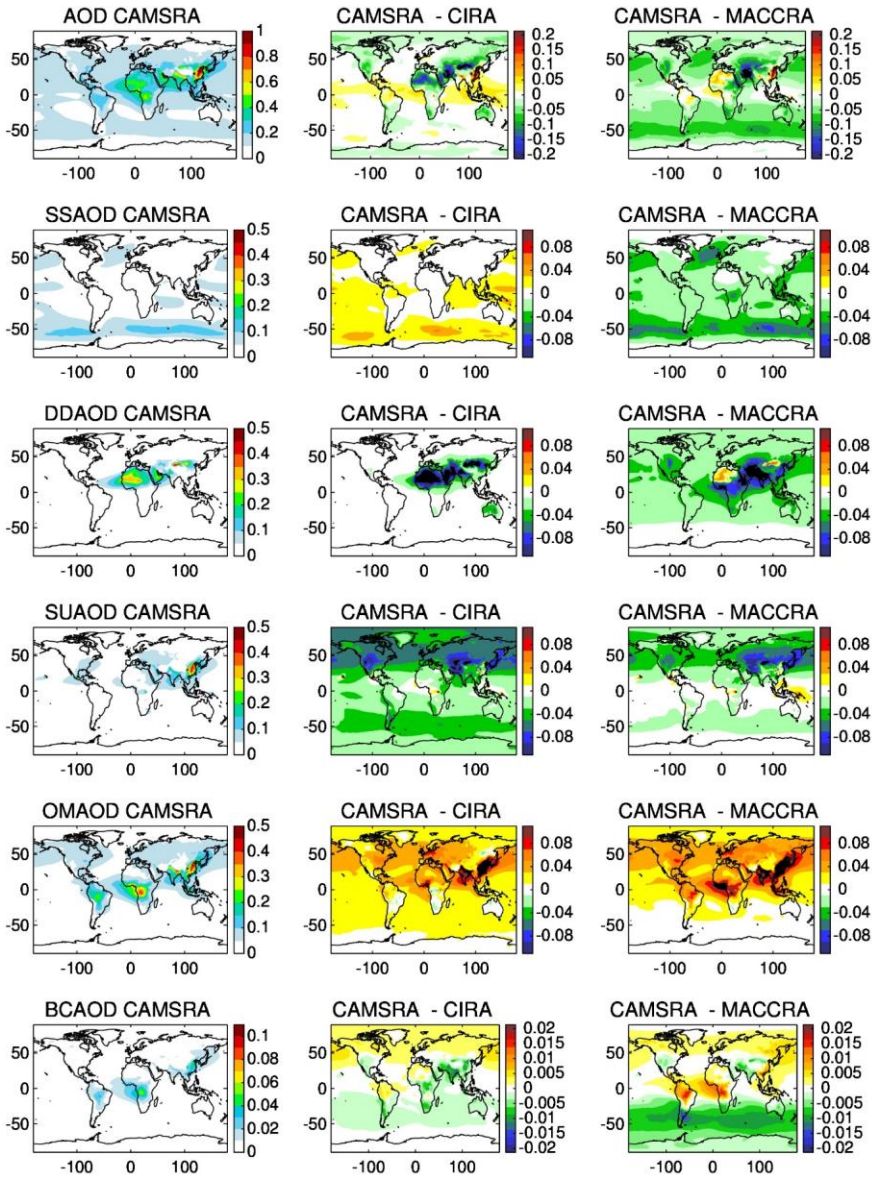


Figure 20: Annually averaged AOD species from CAMSRA (2003-2016, left), difference between CAMSRA and CIRA (middle) and difference between CAMSRA and MACCRA (right, 2003-2012 only) for total AOD (row 1), sea salt (row 2), desert dust (row 3) and sulphates (row 4), organic matter (row 5) and black carbon (row 6). AOD is unitless.

Deleted: 19

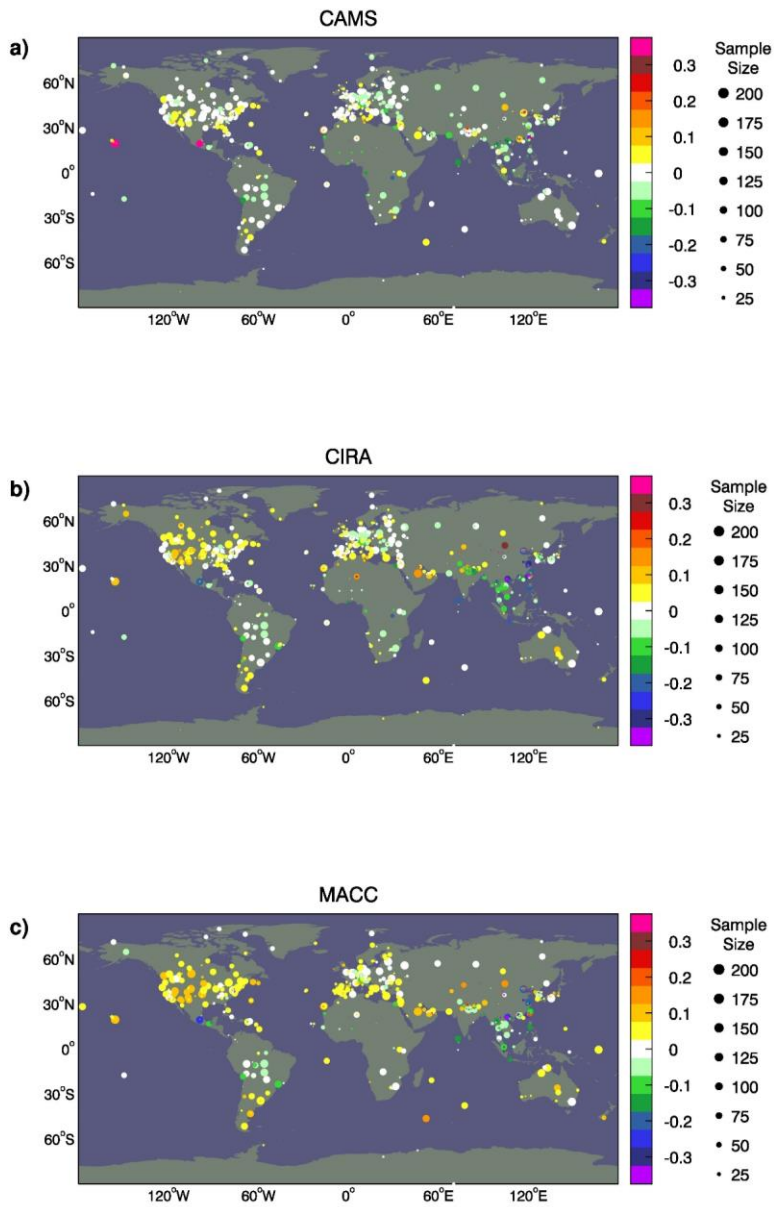


Figure 21: Mean Total AOD bias between the three reanalyses and **AERONET** observations for (a) CAMSRA, (b) CIRA and (c) MACCRA. For CAMSRA and CIRA the average is calculated over the period 2003-2016, for MACCRA only for 2003-2012. **AOD** is unitless.

Deleted: 20

Deleted: Aeronet

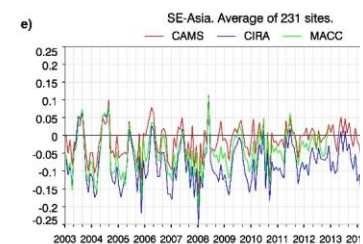
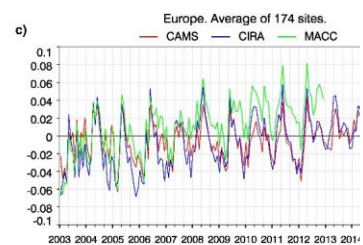
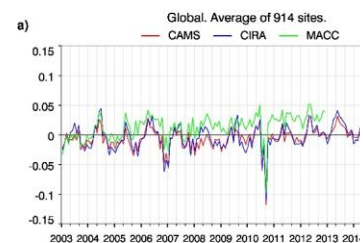
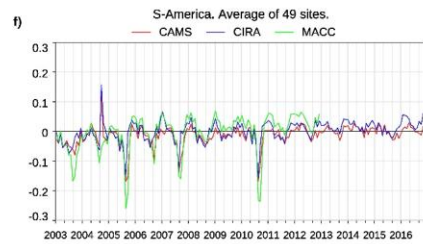
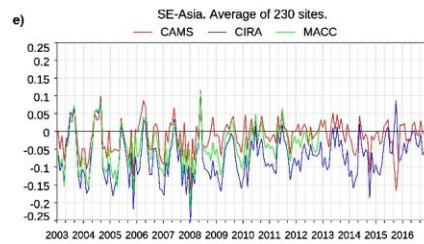
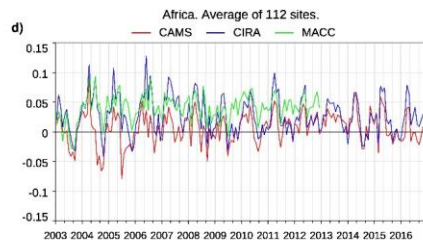
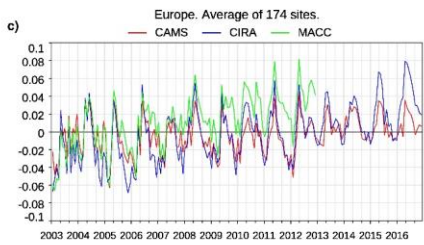
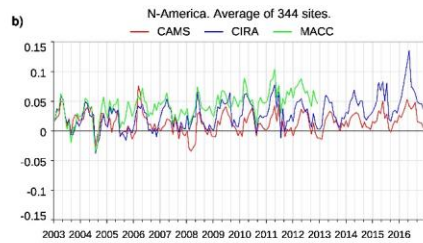
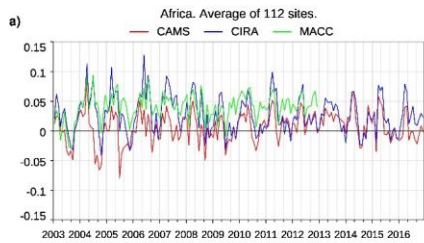


Figure 22: Timeseries of monthly mean bias of total AOD from the reanalyses against AERONET observations for the areas: (a) Globe, (b) north America, (c) Europe, (d) SE Asia, (e) Africa and (f) South America. CAMSRA is shown in red, CIRA in blue and MACCRA in green. Mauna Loa and Mexico City were excluded from these timeseries as they are unrepresentative and skew the statistics. AOD is unitless.

Deleted:

Deleted: 21

Deleted: Aeronet

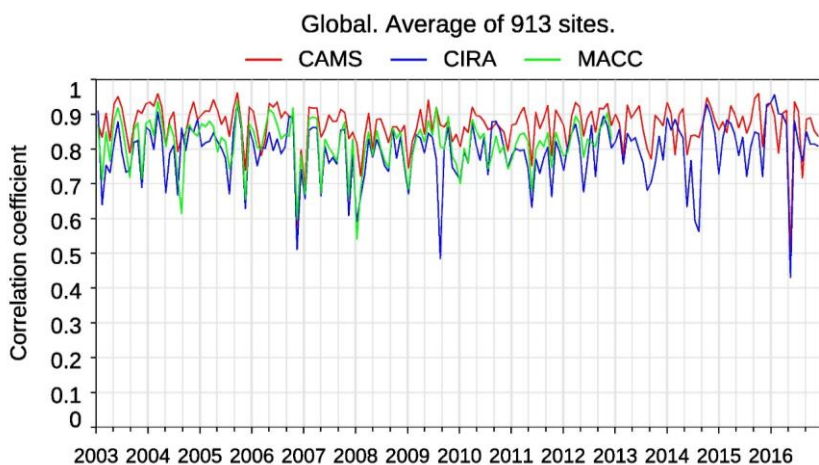
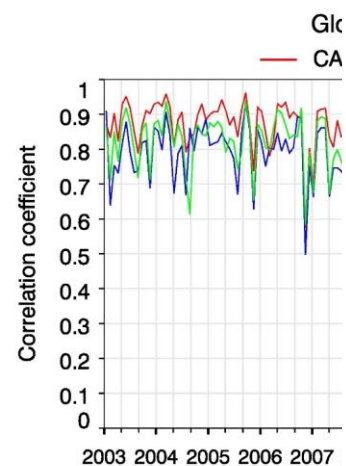


Figure 23: Timeseries of global correlation coefficient with **AERONET** AOD from the three reanalyses. CAMSRA is shown in red, CIRA in blue and MACCRA in green.



Deleted:
Deleted: 22
Deleted: Aeronet

5

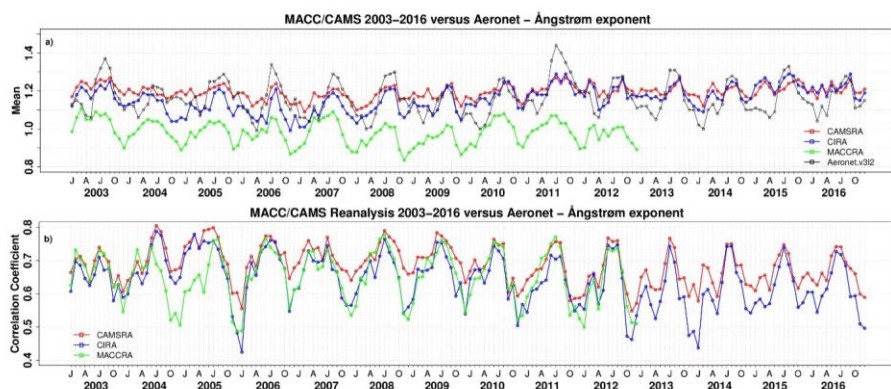


Figure 24: Evolution of (a) global mean Ångström exponent at **AERONET** sites based on matching daily data from model and **AERONET** and (b) correlation using daily matching Ångström exponent from model and **AERONET** (bottom). CAMSRA is shown in red, CIRA in blue, MACCRA in green and **AERONET** V3 level 2.0 observations in black.

Deleted: 23
Deleted: Aeronet
Deleted: Aeronet
Deleted: Aeronet
Deleted: Aeronet

10