

We thank the reviewers for the useful suggestions to improve the paper. These comments are all valuable and very helpful for revising and improving our manuscript, as well as the important guiding significance to our researches. These changes in the revise manuscript have been **marked red** in the track changes version manuscript, as well as the point to point responses have listed as following:

## **Response to reviewer#1**

### **General comments:**

The work is a comprehensive analysis of atmospheric density based on several meteor radar measurements at various latitudes. It is the first study of this kind that provides a near-global view of mesopause density variations based on ground-based instruments. The analysis is thorough and the figures and presentations are very clear. The discrepancies with MSIS and WACCM are especially interesting and should motivate further research to understand them.

### **Response:**

Thank you for your great comments. This will encourage us to improve our manuscript, as well as the important guiding significance to our researches.

### **Major comment:**

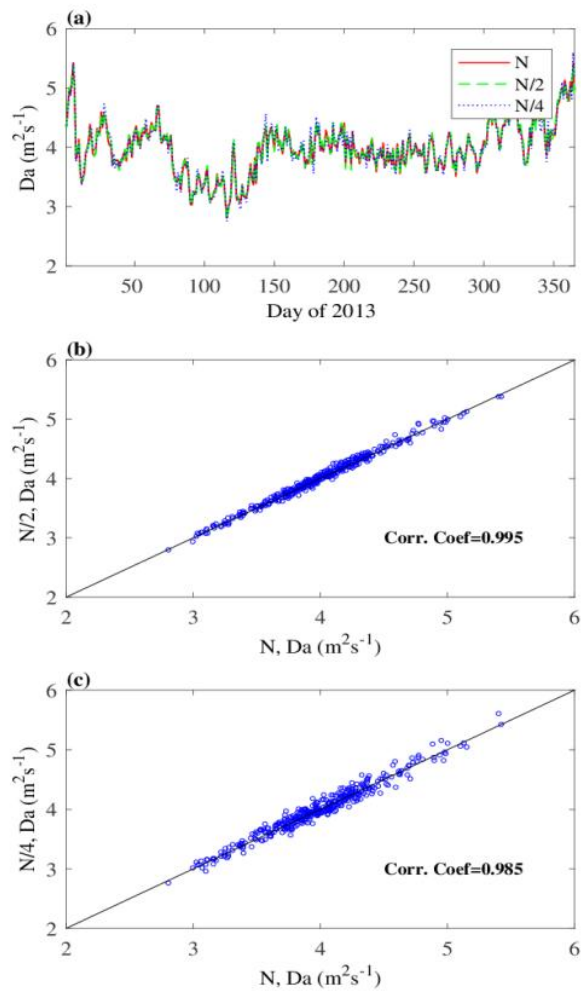
One factor that could cause large seasonal variations is different heights the density is inferred from. Although the meteor radar data used are all from 85-95 km range, there is clearly seasonal variations of the vertical distributions of detected meteors, as shown in Figure 2(a). Thus the derived densities are weighted differently in vertical, which may introduce a 'false' seasonal variation. Please address this issue carefully so the comparison with MSIS and WACCM can be more appropriate.

### **Response:**

The number of meteor echoes in vertical might influence the calculation of the ambipolar diffusion coefficients, but the influence is very small and should not cause a seasonal variation in vertical. First, we actually did compare the estimation of Da

using different meteor detection in this study. As shown in Figure 2 in the manuscript, we have shown the estimation of  $D_a$  by using two meteor detections with different number observed by the Davis 33 MHz and 55 MHz meteor radars. Although the number of 55 MHz meteor echoes is much lower than the 33 MHz meteor radar, it still provides a precise estimation of  $D_a$ . In the manuscript, this indirectly indicates that the seasonal variations of meteor detections should not introduce a 'false' seasonal variation.

In addition, in this response, in order to estimate the bias in daily mean  $D_a$  caused by the meteor with different numbers, we also estimated the  $D_a$  using different meteor detections observed by the Mohe meteor radar. As shown in Figure R1a, the mean values of  $D_a$  at 90 km estimated by using all, 1/2 and 1/4 of meteor detections are quite consistent. The linear correlation coefficients between all and half, and 1/4 meteors are 0.995 and 0.985, respectively. These results in above also indicate that the influence of meteor number is small and should not cause a seasonal variation.



**Figure R1.** (a) Daily mean ambipolar diffusion coefficients at 90 km in 2013 estimated from the Mohe meteor radar. The red solid, green dashed and blue dotted lines indicate the mean values calculated by using all, 1/2 and 1/4 of meteor echoes in 1 km bin from 89.5 to 90.5 km, respectively. (b) Comparison of daily mean ambipolar diffusion coefficients at 90 km estimated from all and 1/2 of meteor echoes. (c) same as (b), but for 1/4 of meteor echoes.

**Minor comments:**

P2 L23: This sentence is confusing. How can a ‘maxima of a yearly variation’ still has ‘temporal variation’? ‘as the latitude decreases’ seems to suggest the variation is with latitude, not time. Please clarify.

**Response:** Thank you for pointing this out. We have changed in the revised

manuscript.

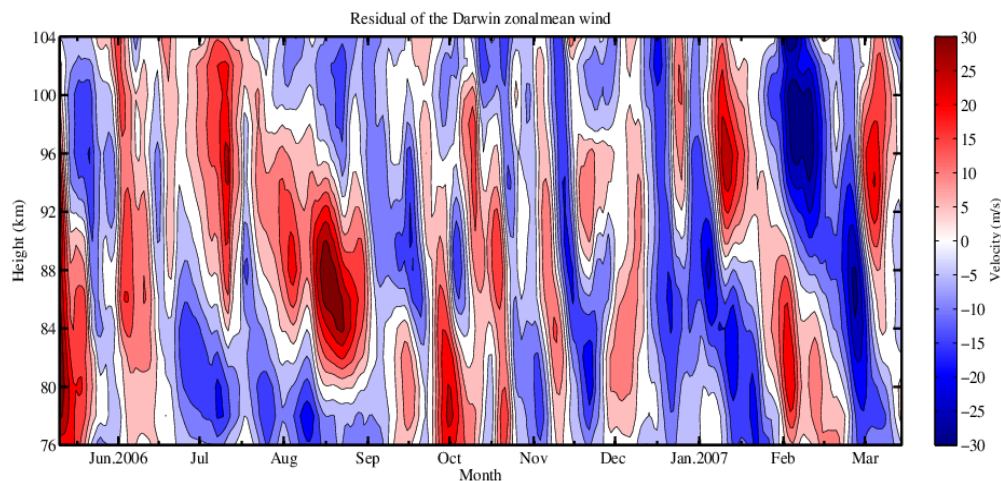
**The sentence is changed as:** The maxima of the yearly variations in mesopause densities have a clear latitudinal variation, across forward the spring equinox, as the latitude decrease; these latitude variation characteristic may relate to the latitudes changes of the gravity wave forcing.

P2 L28 (and other places). The 30-60 days oscillation found is similar to that of MJO, but there is no evidence in this analysis that it is actually due to MJO. It is only speculation so claiming that it is “related to’ MJO is too strong a claim.

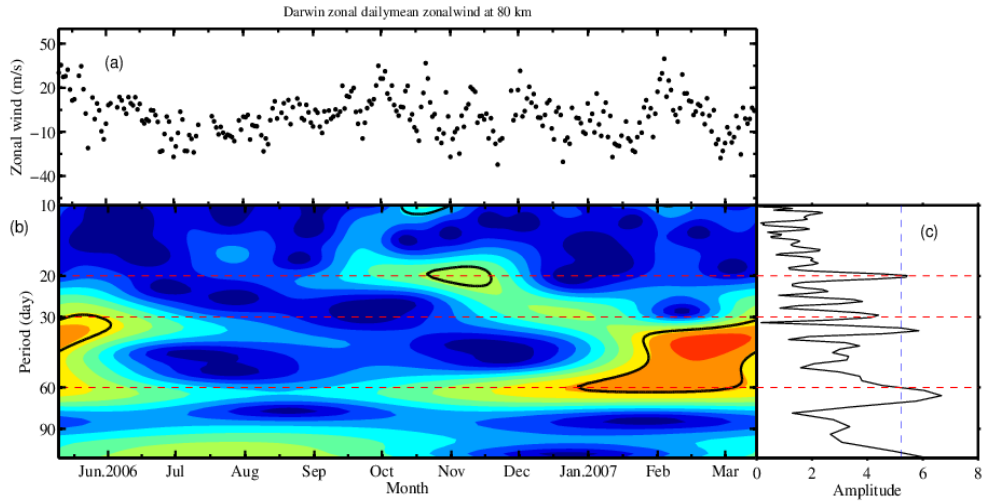
**Response:** Thank you for your suggestion, we have made a change in the abstract.

**The sentence is changed as:** In addition to the AO, the mesopause densities over low latitudes also clearly show an intraseasonal variation with a periodicity of 30-60 days.

In addition to the intraseasonal variations in Darwin density, as shown in Figure R2 and R3, we also find obvious intraseasonal variations in zonal mean wind observed by the Darwin meteor radar and the periodogram in density is consistent with zonal mean wind. However, this is beyond the scope of this paper, and a more detailed discussion of this intercomparison will be described in a forthcoming paper.



**Figure R2.** Residual of zonal mean wind observed from Darwin meteor radar.



**Figure R3.** (a) Residual of zonal mean wind at 80 km observed by the Darwin meteor radar. (b) Wavelet power spectrum of the zonal mean wind. The black solid contours denote the regions of the wavelet spectrum above 95% confidence level. (c) Lomb-Scargle periodogram for the zonal mean wind. The blue dashed line represents the 95% significance level of the Lomb-Scargle periodogram.

## **Response to reviewer#2**

### **General comments:**

The mesosphere and lower thermosphere (MLT) is the boundary between the middle atmosphere and the upper atmosphere. Physical processes in the MLT determine the fluxes of waves and tides that propagate into the thermosphere and so act to influence the coupling of these atmospheric regions. There is thus a need for measurements able to characterise the properties of the MLT. Measurements of winds and temperatures in the MLT have been made for many years by radars, lidars and satellites. However, it is very difficult to measure densities at these heights and such measurements are particularly valuable.

This paper presents observations of MLT densities made by combining radar measurements of ambipolar diffusion coefficient with satellite measurements of temperature. A total of nine radars are used, giving coverage over all latitudinal regimes apart from mid-latitudes in the SH. The key results of the paper are determinations of the seasonal cycle in MLT density over the different radars, which also reveals interesting inter-hemispheric differences and suggestions of MLT perturbations associated with the MJO. Comparisons are made with models which highlight deficiencies in the models.

The paper is exceptionally well written and was a pleasure to read. The analysis is persuasive and is presented in a logical manner. The figures are appropriate, easy to understand and nicely produced. The references are adequate and up to date. The abstract is clear and accessible. Overall, this is scientific work of a high standard which presents interesting and significant results.

**Response:** Thank you for your great comments. This will encourage us to improve our manuscript, as well as the important guiding significance to our researches.

### **Minor comment:**

1. The authors determine ambipolar diffusion coefficient at each height from the radar data. Is there any sorting of data by elevation angle? Meteors recorded at low elevation angle will be at long ranges and so even a small error in elevation angle may

thus correspond to a significant error in height. Conversely, errors in elevation angle will produce smaller errors in height near the zenith. The authors should explain if they used any sorting and comment on this possibility.

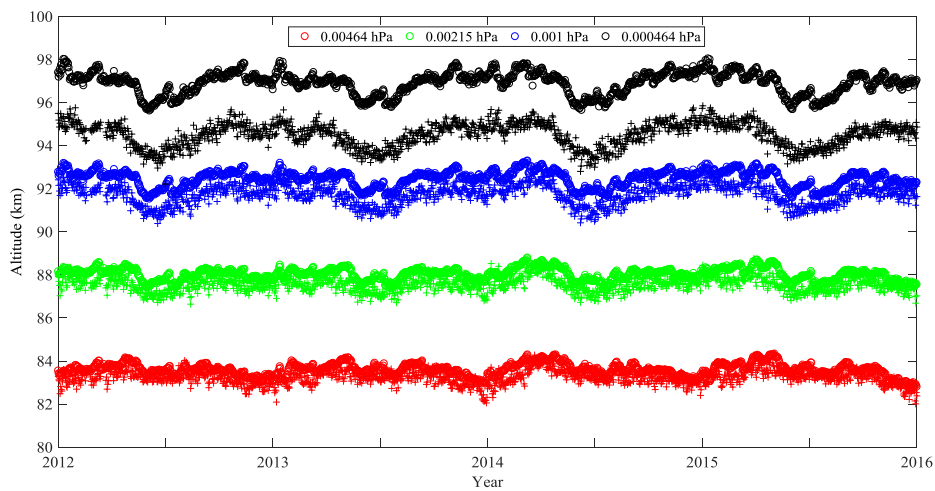
**Response:** Thank you for pointing this out. We apologize that we forgot to refer to data processing in this study. In the data processing, we actually did the zenith selection for the meteor echoes. The data processing is followed by Yi et al. (2017, 2018a). In order to avoid the possibility of excessive error in the height estimates of individual meteors, trail detections for this study were restricted to zenith angles of less than  $60^\circ$ .

**We have added this in the revised manuscript.** In order to avoid the possibility of excessive error in the height estimates of individual meteors, trail detections for this study were restricted to zenith angles of less than  $60^\circ$ .

2. The authors use MLS temperatures in combination with the ambipolar diffusion to estimate density. However, at these heights the vertical resolution of MLS is poor, e.g., at  $z = 81$  km the vertical resolution is  $\sim 14$  km. Given that the atmosphere at these height can have sharp temperature gradients associated with the mesopause, how does this impact the analysis? Is this not a major source of uncertainty in the determination of density given that the actual atmospheric temperature at a particular height may be rather different from the one derived from MLS measurements of low resolution?

**Response:** Thank you for pointing this out. First, we should point out that we chose the MLS temperature measurements because the Aura/MLS has very good temporal continuity in polar region. Schwartz et al. (2008) suggested that the vertical resolution of geopotential height (GPH) is  $\sim 13$  km at 0.001 hPa, however, the precision is  $\pm 100$  m, and the observed bias is -450 m. In addition, in the response, we also compared the geopotential heights from the MLS and SABER measurements. Figure R1 shows the daily geometric heights at pressure level 0.00464 (red), 0.00215 (green), 0.001 (blue) and 0.000464 (black) hPa calculated from the MLS geopotential heights compare to the geometric heights estimated from SABER pressure measurements over Beijing. The Geometric heights,  $z$  for Aura MLS observations were computed from

geopotential heights,  $z_g$  via the equation  $z = z_g R_e(\phi) [R_e(\phi) - z_g]^{-1}$ , where  $R_e(\phi)$  is the radius of Earth at latitude  $\phi$ , based on the WGS84 ellipsoid [Decker, 1986]. As shown in Figure R1, the seasonal variations of the geometric height at each pressure level from the MLS and SABER measurements are consistent. The biases between two geometric heights are less than 1km at pressure level 0.00464, 0.00215, 0.001 hPa and are about 2 km at pressure level 0.000464 hPa. So these results confirm that the geopotential height is precise enough and should not introduce major uncertainty in temperature interpolation.



**Figure R1.** Comparison of the geometric heights at pressure level 0.00464 (red), 0.00215 (green), 0.001 (blue) and 0.000464 (black) hPa from Aura/MLS (plus sign) and TIMED/SABER (circle sign) measurements from 2012 to 2016.

#### TECHNICAL CORRECTIONS

1. Please check all references are present – e.g., Dowdy et al. (2001) is mentioned on p3 but missing from the references.

**Response:** Thank you for pointing this out. We have added the missing reference (i.e., Dowdy et al. 2001) in the revised manuscript.

Reference: Dowdy, A., Vincent, R., Igarashi, K., Murayama, Y., and Murphy, D.: A comparison of mean winds and gravity wave activity in the northern and southern polar MLT. *Geophys Res Lett*, 28, 1475-1478, 2001.



2. The manuscript refers to “densities”, but the measurements are actually “relative densities”. This should be corrected throughout to avoid confusion.

**Response:** Thank you for pointing this out, we have corrected throughout in the revised manuscript.

References in this response:

Decker, B.: World Geodetic System 1984, Def. Mapp. Agency Aerosp. Cent., St. Louis AFS, Mo, 1986.

Schwartz, M., Lambert, A., Manney, G., Read, W., and Livesey, N.: Validation of the Aura Microwave Limb Sounder temperature and geopotential height measurements, *J. Geophys. Res.*, 113, D15S11, doi:10.1029/2007JD008783, 2008.

Yi W., Reid, I., Xue, X., Younger, J., Murphy, D., Chen, T., and Dou, X.: Response of neutral mesospheric density to geomagnetic forcing, *Geophys. Res. Lett.*, doi: 10.1002/2017GL074813, 2017.

Yi, W., Reid, I., Xue, X., Murphy, D., Hall, C., Tsutsumi, M., Ning, B., Li, G., Younger, J., Chen, T., and Dou, X.: High- and middle-latitude neutral mesospheric density response to geomagnetic storms. *Geophysical Research Letters*, 45, 436–444. <https://doi.org/10.1002/2017GL076282>, 2018a.

# Track changes

## **Climatology of the mesopause density using a global distribution of meteor radars**

Wen Yi<sup>1,2</sup>, Xianghui Xue<sup>1,2,5</sup>, Iain M. Reid<sup>3,4</sup>, Damian J. Murphy<sup>6</sup>, Chris M. Hall<sup>7</sup>,  
Masaki Tsutsumi<sup>8</sup>, Baiqi Ning<sup>9</sup>, Guozhu Li<sup>9</sup>, Robert A. Vincent<sup>3,4</sup>, Jinsong Chen<sup>10</sup>,  
Jianfei Wu<sup>1,2</sup>, Tingdi Chen<sup>1,2</sup>, Xiankang Dou<sup>1</sup>

<sup>1</sup>CAS Key Laboratory of Geospace Environment, Department of Geophysics and Planetary Sciences, University of Science and Technology of China, Hefei, China.

<sup>2</sup>Mengcheng National Geophysical Observatory, School of Earth and Space Sciences, University of Science and Technology of China, Hefei, China

<sup>3</sup>ATRAD Pty Ltd., Thebarton, South Australia, Australia,

<sup>4</sup>School of Physical Sciences, University of Adelaide, Adelaide, South Australia, Australia

<sup>5</sup>Synergetic Innovation Center of Quantum Information and Quantum Physics, University of Science and Technology of China, Hefei, China

<sup>6</sup>Australian Antarctic Division, Kingston, Tasmania, Australia

<sup>7</sup>Troms ø Geophysical Observatory, UiT – The Arctic University of Norway, Troms ø, Norway

<sup>8</sup>National Institute of Polar Research, Tachikawa, Japan

<sup>9</sup>Key Laboratory of Earth and Planetary Physics, Institute of Geology and Geophysics, Chinese Academy of Sciences, Beijing, China

<sup>10</sup>National Key Laboratory of Electromagnetic Environment, China Research Institute of Radiowave Propagation, Qingdao, China

Corresponding author: Xianghui Xue and Iain M. Reid (xuexh@ustc.edu.cn, ireid@atrad.com.au)

**Abstract:** The existing distribution of meteor radars located from high- to low-latitude regions provides a favourable temporal and spatial coverage for investigating the climatology of the global mesopause density. In this study, we report the climatology of the mesopause density estimated using multiyear observations from nine meteor radars, namely, the Davis Station (68.6 S, 77.9 E), Svalbard (78.3 N, 16 E) and Tromsø (69.6 N, 19.2 E) meteor radars located at high latitudes, the Mohe (53.5 N, 122.3 E), Beijing (40.3 N, 116.2 E), Mengcheng (33.4 N, 116.6 E) and Wuhan (30.5 N, 114.6 E) meteor radars located in the mid-latitudes, and the Kunming (25.6 N, 103.8 E) and Darwin (12.3 S, 130.8 E) meteor radars located at low latitudes. The daily mean density was estimated using ambipolar diffusion coefficients derived from the meteor radars and temperatures from the Microwave Limb Sounder (MLS) on board the Aura satellite. The seasonal variations in the Davis Station meteor radar densities in the southern polar mesopause are mainly dominated by an annual oscillation (AO). The mesopause densities observed by the Svalbard and Tromsø meteor radars at high latitudes and the Mohe and Beijing meteor radars at high mid-latitudes in the Northern Hemisphere show mainly an AO and a relatively weak semiannual oscillation (SAO). The mesopause densities observed by the Mengcheng and Wuhan meteor radars at lower mid-latitudes and the Kunming and Darwin meteor radars at low latitudes show mainly an AO. The SAO is evident in the Northern Hemisphere, especially at high latitudes, and its largest amplitude, which is detected at the Tromsø meteor radar, is comparable to the AO amplitudes. These observations indicate that the mesopause densities over the southern and northern high latitudes exhibit a clear seasonal asymmetry. The maxima of the yearly variations in the mesopause densities display a clear latitudinaltemporal variation across the spring equinox as the latitude decreases; these latitudinal variation characteristics may be related to latitudinal changes influenced by gravity wave forcing. In addition to an AO, the mesopause densities over low latitudes also clearly

show an intraseasonal variation with a periodicity of 30-60 days, ~~related to the Madden-Julian oscillation in the subtropical troposphere.~~

## 1. Introduction

The temperatures, winds and densities in the mesopause region are essential for studying the dynamics and climate, including both short-term wave motions (e.g., gravity waves, tides, and planetary waves) and long-term climate variations (e.g., interannual variations, seasonal variations and intraseasonal variations), of the middle and upper atmosphere. The climatology of the temperature and wind within the mesopause region has been studied for decades using ground-based instruments such as meteor radars, medium-frequency (MF) radars, lidars (Dowdy et al., 2001; Dou et al., 2009; Li et al., 2008; 2012; 2018; Li et al., 2015) and satellite instruments (Garcia et al., 1997; Remsberg et al., 2002; Xu et al., 2007). It is well established that the semiannual oscillation (SAO) dominates the seasonal variations in both the wind and the temperature in the low-latitude mesosphere (Li et al., 2012), whereas the annual oscillation (AO) dominates the seasonal variations in the mid- and high-latitude mesosphere (Remsberg et al., 2002; Xu et al., 2007; Dou et al., 2009). However, in contrast to temperature and wind observations, long-term continuous measurements of the atmospheric density in the mesopause region are still quite rare; as a result, the seasonal variations in the mesopause, especially with regard to its global structure, are still unclear.

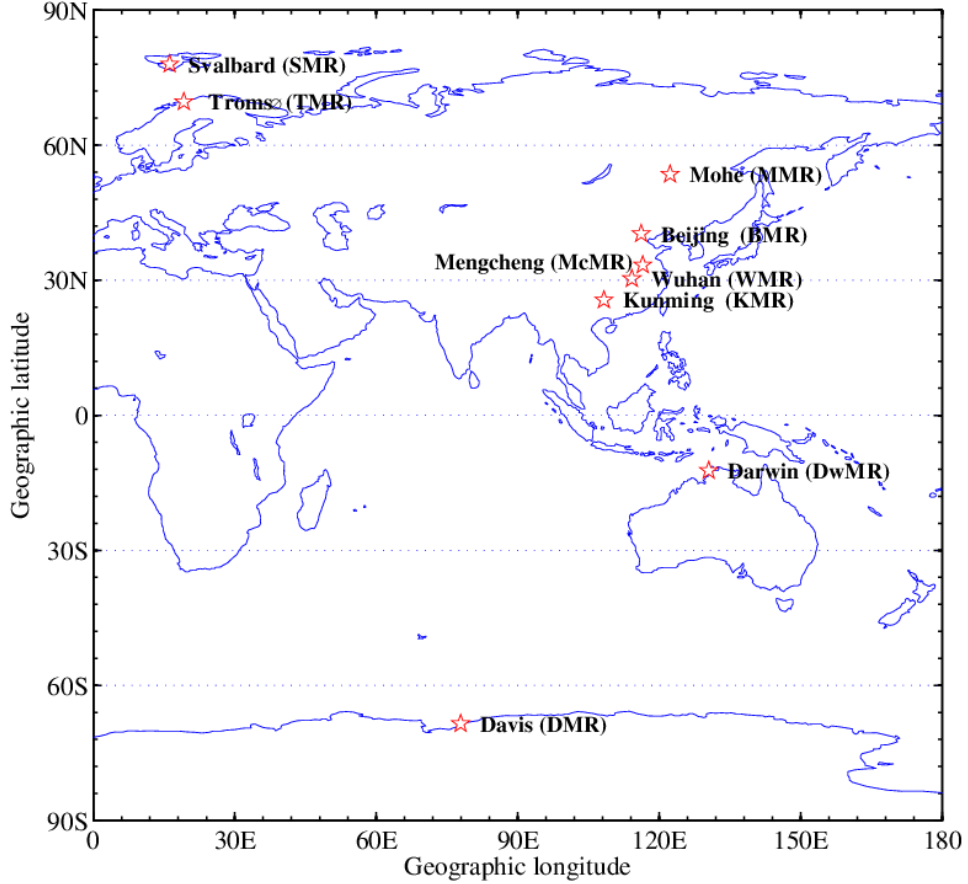
Meteor radar operates both day and night under all kinds of weather and geographical conditions and provides good long-term observations; consequently, meteor radar is a powerful technique for studying the dynamics and climate of the mesopause region, including its wind fields and temperatures (e.g., Hocking et al., 2004; Holdsworth et al., 2006; Hall et al., 2006, 2012; Stober et al., 2008, 2012; Yi et al., 2016; Lee et al., 2016; Holmen et al., 2016; Liu et al., 2017; Lima et al., 2018; Ma et al., 2018). In addition to acquiring wind and temperature measurements, meteor radar has also been applied in recent years to estimate the atmospheric density in the mesopause region.

For instance, the variation in the peak height of meteor radar detections can be used to estimate changes in the mesopause density (e.g., Clemesha and Batista, 2006; Stober et al., 2012, 2014; Lima et al., 2015; Liu et al., 2016). However, the seasonal variations in the peak height are not affected by the atmospheric density alone; they are also significantly influenced by the properties of meteoroids, especially the meteor velocity (Stober et al., 2012; Yi et al., 2018b). Furthermore, the mesospheric densities can also be estimated from meteor radar-derived ambipolar diffusion coefficients, and the mesospheric temperatures can be derived from other measurements (e.g., Takahashi et al., 2002; Yi et al., 2018b). Therefore, in this study, we apply ambipolar diffusion coefficients derived from a global distribution of meteor radars in addition to temperature measurements simultaneously obtained by the Microwave Limb Sounder (MLS) on board the Aura satellite to determine the mesopause density. In addition, long-term observations of global atmospheric densities are used to study the latitudinal and seasonal variations in the mesopause region. Descriptions of the instrument datasets, the method, and the error estimation approach are presented in section 2. Then, the seasonal variations in the mesopause density are presented in section 3, followed by a composite analysis in section 4. Finally, a summary is provided in section 5.

## **2. Data and methods**

In this study, data from nine meteor radars, namely, the Davis Station (68.6 °S, 77.9 °E), Svalbard (78.3 °N, 16 °E), Tromsø (69.6 °N, 19.2 °E), Mohe (53.5 °N, 122.3 °E), Beijing (40.3 °N, 116.2 °E), Mengcheng (33.4 °N, 116.5 °E), Wuhan (30.6 °N, 114.4 °E), Kunming (25.6 °N, 108.3 °E), and Darwin (12.3 °S, 130.5 °E) meteor radars (hereinafter referred to as DMR, SMR, TMR, MMR, BMR, McMR, WMR, KMR and DwMR, respectively), were used. Table 1 summarizes the operational frequencies, geographic locations and observational time periods for the meteor radars used in this study. These meteor radars all belong to the ATRAD meteor detection radar (MDR) series and are similar to the Buckland Park meteor radar system described by Holdsworth et al. (2004). Figure 1 shows the locations of these nine meteor radars. The SMR and

TMR are located in the northern high latitudes, whereas the MMR, BMR, McMR and WMR are positioned in the northern mid-latitudes, and the KMR is situated in the northern low latitudes. In contrast, we have only two meteor radars, namely, the DMR located in the southern high latitudes and the DwMR situated in the southern low latitudes, in the Southern Hemisphere because it is covered primarily by oceans.



**Figure 1.** The locations of the meteor radars used in this study.

The ambipolar diffusion coefficient ( $D_a$ ) observed by a meteor radar describes the rate at which plasma diffuses in a neutral background and is a function of both the atmospheric temperature,  $T$ , and the atmospheric density,  $\rho$ , as given by

$$\rho = 2.23 \times 10^{-4} K_0 \frac{T}{D_a}, \quad (1)$$

where  $K_0$  is the ionic zero-field mobility, which is assumed to be  $2.5 \times 10^{-4} \text{ m}^{-2} \text{ s}^{-1} \text{ V}^{-1}$  (Hocking et al., 1997). Using the relation given by equation

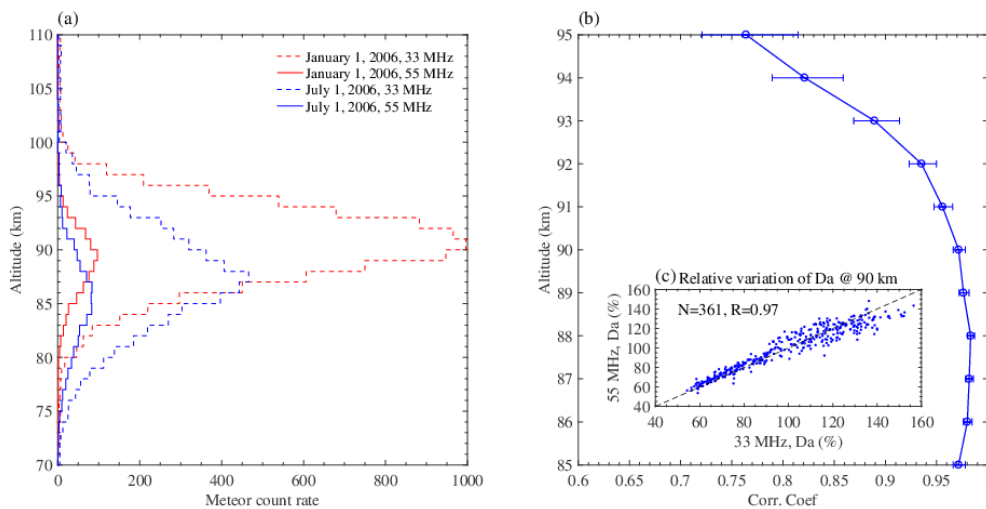
(1), measurements of the temperature and  $D_a$  from meteor radars can be used to retrieve the neutral mesospheric density (see, e.g., Takahashi et al., 2002; Yi et al., 2018b).

**Table 1.** Main operation parameters, geographic coordinates and observational time periods for the meteor radars used in this study.

	Meteor radar	Geographic coordinates	Frequency	Data used in this study
Northern hemisphere	Svalbard (SMR)	78.3 N, 16 E	31 MHz	2005.01-2016.12
	Tromsø (TMR)	69.6 N, 19.2 E	30.3 MHz	2005.01-2016.12
	Mohe (MMR)	53.5 N, 122.3 E	38.9 MHz	2011.08-2018.04
	Beijing (BMR)	40.3 N, 116.2 E	38.9 MHz	2011.01-2018.04
	Mengcheng (McMR)	33.4 N, 116.5 E	38.9 MHz	2014.09-2018.04
	Wuhan (WMR)	30.6 N, 114.4 E	38.9 MHz	2012.10-2017.08
	Kunming (KMR)	25.6 N, 108.3 E	37.5 MHz	2011.04-2014.12
Southern hemisphere	Davis (DMR)	68.6 S, 77.9 E	33.2 MHz	2005.01-2016.12
	Darwin (DwMR)	12.3 S, 130.5 E	33.2 MHz	2006.01-2009.12

The MLS instrument on board the Earth Observing System (EOS) Aura spacecraft was launched in 2004. For this investigation, the Aura MLS temperature (Schwartz et al., 2008) and geopotential height data (version 4) were restricted to data obtained within a  $10^\circ \times 20^\circ$  bounding box centred on each of the abovementioned meteor radar locations. Geometric heights,  $z$  for Aura MLS observations were computed from geopotential heights,  $z_g$  via the equation  $z = z_g R_e(\phi) [R_e(\phi) - z_g]^{-1}$  (Younger et al., 2014), where  $R_e(\phi)$  is the radius of Earth at latitude  $\phi$ , based on the WGS84 ellipsoid (Decker, 1986). The daily averaged MLS temperature and ~~geometric~~geopotential height observations were interpolated into 1 km bins between 85 and 95 km to produce temperature profiles ~~using geometric heights obtained from geopotential heights (Yi et al., 2018b).~~

In this study, in order to avoid the possibility of excessive error in the height estimates of individual meteors, trail detections for this study were restricted to zenith angles of less than 60°. TheIn this study, the daily neutral mesospheric densities from 85 to 95 km were estimated using the daily mean  $D_a$  from the nine meteor radars and the Aura MLS temperatures using equation (1), more details are described by Yi et al. (Yi et al., 2018b). Yi et al. (2018b) showed that the  $\log_{10}D_a$  profiles derived from meteor radars are approximately linear with respect to the altitude in the range from 85 to 95 km, which indicates that mainly ambipolar diffusion governs the evolution of meteor trails in this region. In general, the  $\log_{10}D_a$  profiles measured by meteor radars have larger slopes than those derived from Sounding of the Atmosphere using Broadband Emission Radiometry (SABER) (Yi et al., 2018b) and MLS (Younger et al., 2015) measurements. To avoid the influence of the bias in  $D_a$ , in the present study, we use the relative variation in the density to examine the climatology of the global mesopause density.



**Figure 2.** (a) The height distributions of meteor detections in 1 km bins on January 1 and July 1 in 2006 from the 33 MHz and 55 MHz meteor radars at Davis Station. (b) Height variation in the correlation coefficient between the  $D_a$  observed simultaneously by the 33 MHz and 55 MHz meteor radars at Davis Station in 2006. The error bars indicate the lower and upper bounds of the 95% confidence interval for each coefficient. (c) Comparison of the variations in the daily mean  $D_a$  (blue dots) at



90 km simultaneously observed from the 33 MHz and 55 MHz meteor radars at Davis Station in 2006. The percentage variations in  $D_a$  with respect to the yearly mean  $D_a$  in 2006.  $N$  represents the number of days observed by these two radars in 2006, and  $R$  denotes the linear correlation coefficient.

There is an uncertainty in  $D_a$  caused by the estimation of the decay time of meteor echoes (e.g., Cervera and Reid, 2000; Holdsworth et al., 2004); unfortunately, this uncertainty is quite difficult to estimate from the radar system directly. In addition, the number of precise, simultaneously observed temperature and density measurements in the study region is insufficient to estimate the absolute error in  $D_a$  through a comparison. Yi et al. (2018b) compared simultaneous observations of  $D_a$  acquired by two co-located meteor radars at Kunming and found that the relative errors in the daily mean  $D_a$  and the density at 90 km obtained from the KMR should be less than 5% and 6%, respectively. Here, to estimate the relative errors in  $D_a$  and the density, we conduct a similar approach using simultaneous meteor echoes observed by two co-located meteor radars with different frequencies (33 MHz and 55 MHz) at Davis Station. The 33 MHz and 55 MHz meteor radars at Davis Station are described in related studies (see, e.g., Reid et al., 2006; Younger et al., 2014).

Figure 2a shows the height distributions of meteor detections in 1 km bins on January 1 and July 1 in 2006 for the 33 MHz and 55 MHz meteor radars at Davis Station. The meteor count observed by the 55 MHz meteor radar is much lower than that observed by the 33 MHz meteor radar because the former is a mesosphere-stratosphere-troposphere (MST) radar operating with time-interleaved stratosphere-troposphere (ST), meteor, and polar mesosphere summer echoes (PMSE) modes (see, e.g., Reid et al., 2006). Figure 2b shows the correlation coefficients between the  $D_a$  observed simultaneously by the two co-located meteor radars from 85 to 95 km. The correlation coefficients are higher than 0.96 below 92 km, and they become lower as the altitude increases above 92 km; this occurs mainly because the meteor count (as shown in Figure 2a) obtained by the 55 MHz meteor radar above 92 km is too low to provide a good precision in  $D_a$ . The strong correlation between the

$D_a$  measurements from the two independent meteor radars indicates that the variations in  $D_a$  are dominated by the same geophysical variations (i.e., gravity waves, tides and planetary waves) from below as well as by disturbances by geomagnetic forcing from above (Yi et al., 2017, 2018a) rather than by random systemic errors; therefore, the difference between the two  $D_a$  measurements is considered to be representative of the relative uncertainty in  $D_a$ .

**Table 2. The relative uncertainties in  $D_a$  and the density from 85 to 95 km**

Altitude (km)	85	86	87	88	89	90	91	92	93	94	95
Relative uncertainties in $D_a$ (%)	3	2	2	2	2	3	4	6	11	18	24
Relative uncertainties in the density (%)	3.6	2.8	2.8	2.8	2.8	3.6	4.5	6.3	11.2	18.1	24

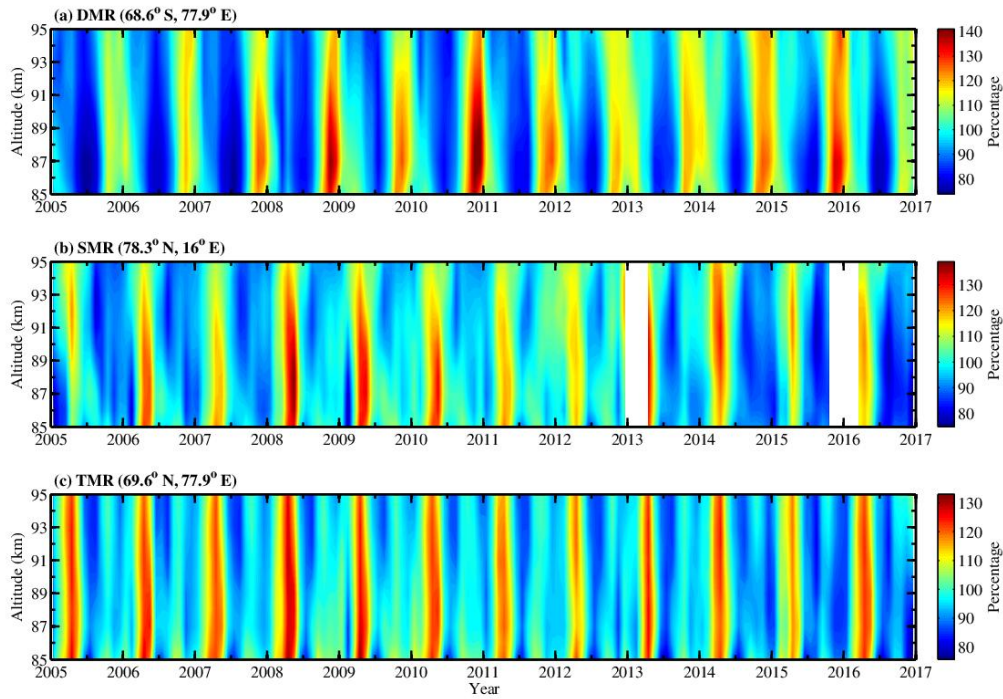
The MLS temperature has an accuracy of 1-3 K from 316 hPa to 0.001 hPa (Schwartz et al., 2008); thus, the uncertainty in the density induced by the MLS temperature uncertainty would be less than 2% based on the present values. Table 2 shows a summary of the relative uncertainties in the density from 85 to 95 km. The density uncertainties are less than 6% below 92 km and become larger as the altitude increases above 92 km. However, under real-world conditions, the meteor counts from the nine meteor radars used in this study are much larger than those from the 55 MHz meteor radar, and hence, it is reasonable to believe that the uncertainties in the density above 92 km would be lower than this estimate of 6%.

### 3. Seasonal variations in the global mesopause density

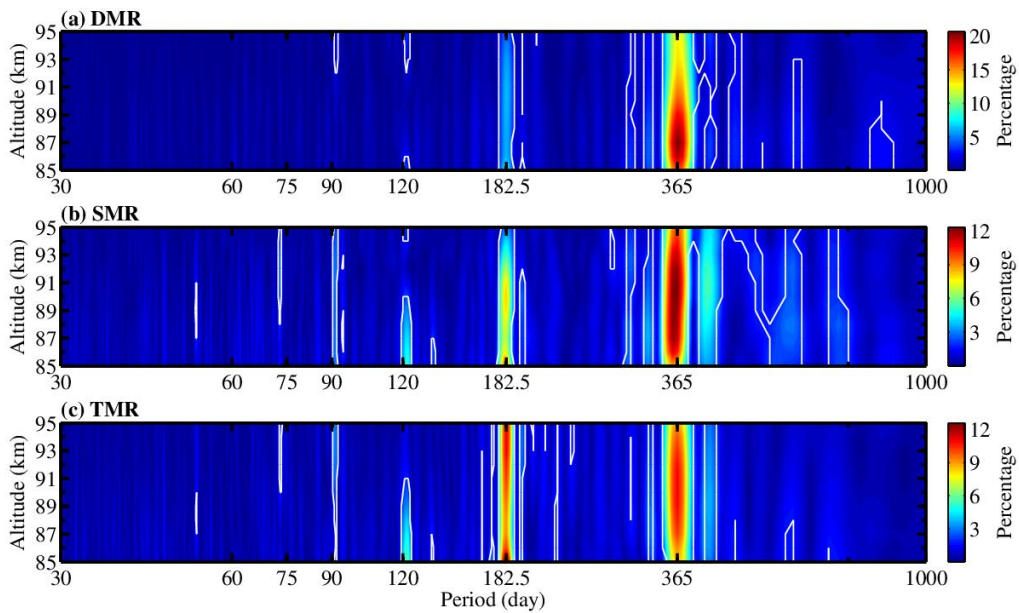
Figure 3 shows the monthly mean mesopause relative densities in the southern polar region derived from the DMR and in the northern polar region derived from the SMR and TMR between 2005 and 2016. As shown in Figure 3a, the DMR densities are dominated by an AO with a maximum during the spring and a minimum during the early winter. The annual variations in the DMR densities are approximately 65% of the mean density. Younger et al. (2015) developed a novel technique using meteor radar echo decay times from the DMR to determine the height of a constant-density surface in the mesopause region and found that the height of the constant-density

surface is also dominated by an AO. In the northern polar region, the SMR densities mainly show an AO and a relatively weak SAO with a clear maximum during the spring. However, the minima of the SMR densities are not as regular as the DMR densities, and they appear approximately during the summer and winter. The TMR densities mainly show an AO and SAO with a clear maximum during the spring and two distinct minima during the summer and winter. As the SMR and TMR are in the northern polar region, the SMR and TMR densities show a similar annual variation; however, the semiannual variations in the TMR densities are more obvious than those of the SMR densities.

To further examine the periodicities present in the mesopause densities derived from the meteor radars, Lomb-Scargle periodograms were calculated for the entire observational period of the densities in each 1 km bin from 85 to 95 km. Figure 4 shows the contours of the Lomb-Scargle periodograms of the mesopause densities obtained from the DMR, SMR and TMR. The periodograms of the DMR densities in Figure 4a are clearly dominated by an AO as well as a relatively weak SAO; the largest amplitude of the AO appears at 87 km, where it is 20% of the mean DMR densities. The periodograms of the SMR densities mainly show an AO and SAO, and the amplitudes of the AO and SAO at 90 km are approximately 12% and 8%, respectively, of the mean SMR densities. The TMR mainly shows an AO and SAO, and the amplitudes of the AO and SAO at 90 km are approximately 11% and 10%, respectively. In addition to an AO and SAO, the northern polar mesospheric densities from the SMR and TMR also exhibit clear seasonal periodicities with quasi-120-day and quasi-90-day oscillations.

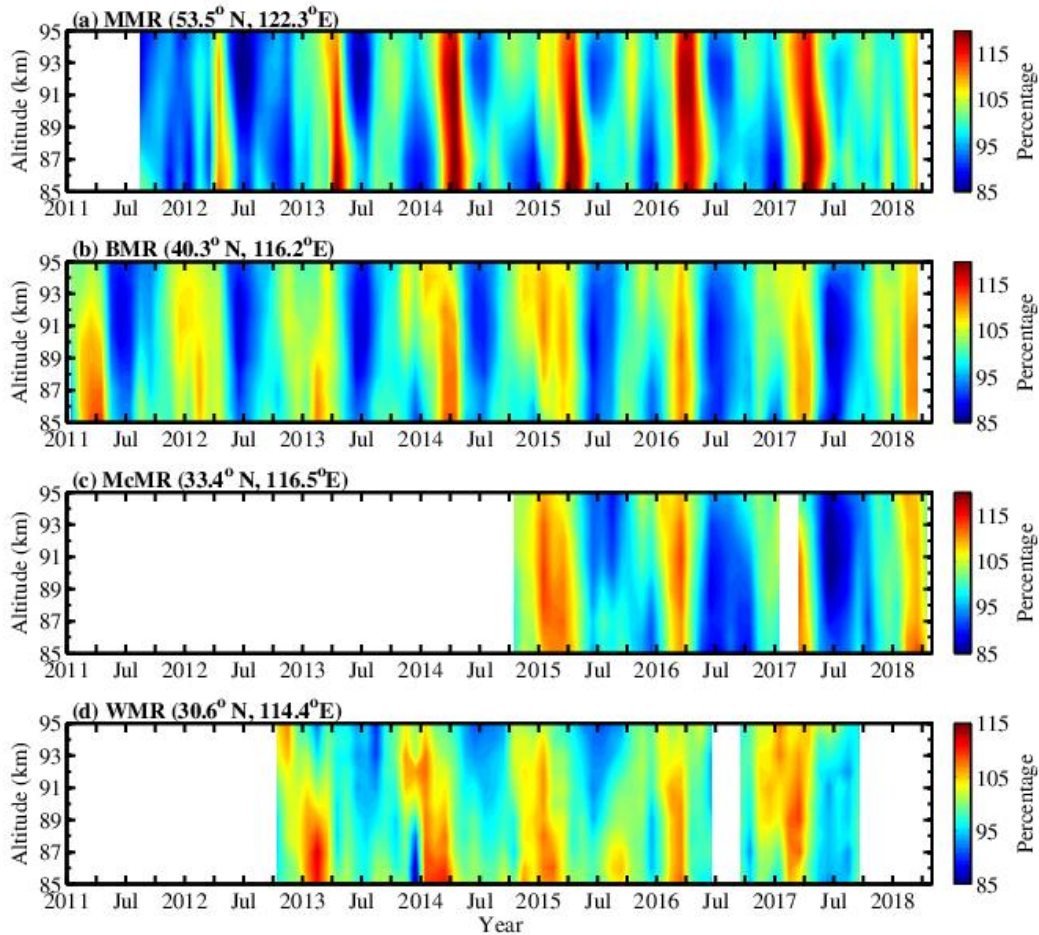


**Figure 3.** Variations in the monthly mean relative densities at altitudes from 85 to 95 km obtained from the DMR, SMR, and TMR between 2005 and 2016. The colour bars indicate the percentage variation in the monthly mean density relative to the mean density from the total observational time period.



**Figure 4.** Contours of the Lomb-Scargle spectral (see, e.g., Lomb, 1976; Scargle,

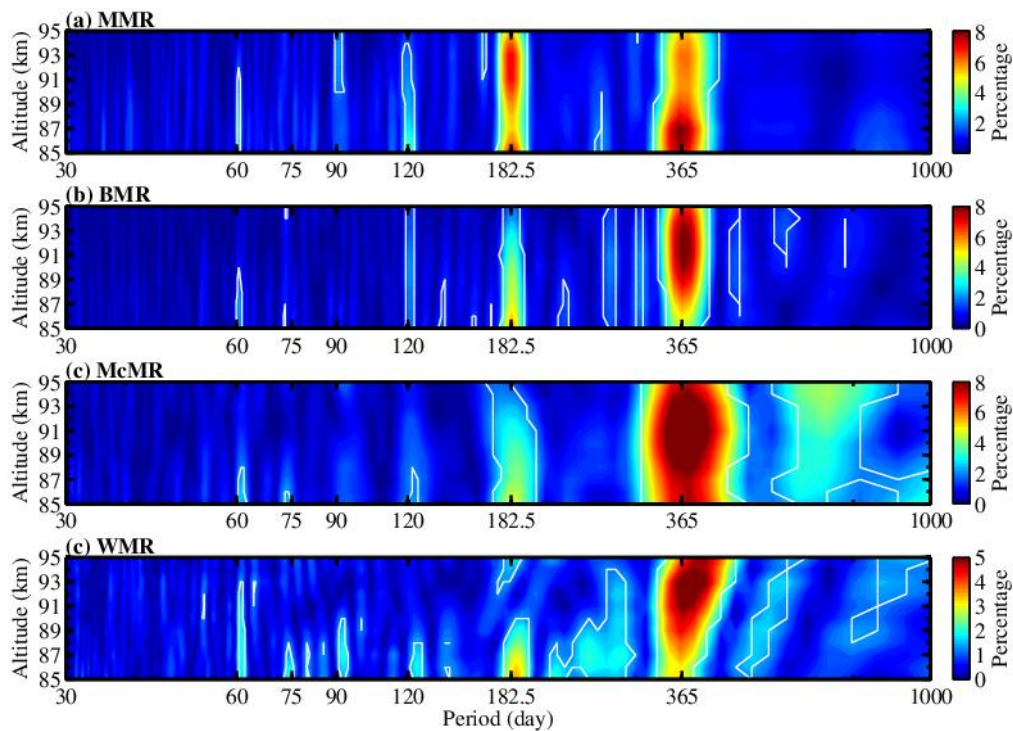
1982) amplitudes of the (a) DMR, (b) SMR and (c) TMR densities. The white lines represent the 99% significance level.



**Figure 5.** Same as Figure 3, but for the MMR, BMR, McMR and WMR monthly mean relative densities.

Figure 5 shows the monthly mean mesospheric relative densities at northern mid-latitudes derived from the MMR, BMR, McMR and WMR. The MMR monthly mean densities (Figure 5a) from August 2012 to April 2018 at higher mid-latitudes clearly show both an AO and an SAO; the AO clearly reaches a maximum in the spring (April), whereas the SAO shows two distinct minima: one clearly appears in the summer above 90 km, and another clearly appears in the winter below 90 km. As shown in Figure 5b, the BMR monthly mean densities from January 2011 to April 2018 show mainly an AO with a maximum during the spring and a minimum during

the summer. The McMR monthly mean densities (Figure 5c) from October 2014 to April 2018 show seasonal variations similar to those exhibited by the BMR densities with a clear minimum during the summer and a maximum during the spring. As shown in Figure 5d, the WMR monthly mean densities from October 2012 to September 2017 show mainly an AO with a maximum during the late winter and a minimum during the summer. As the WMR is located close to the low latitudes, the annual variations in the WMR densities are much smaller than those in the densities observed by meteor radars at high latitudes and higher mid-latitudes.

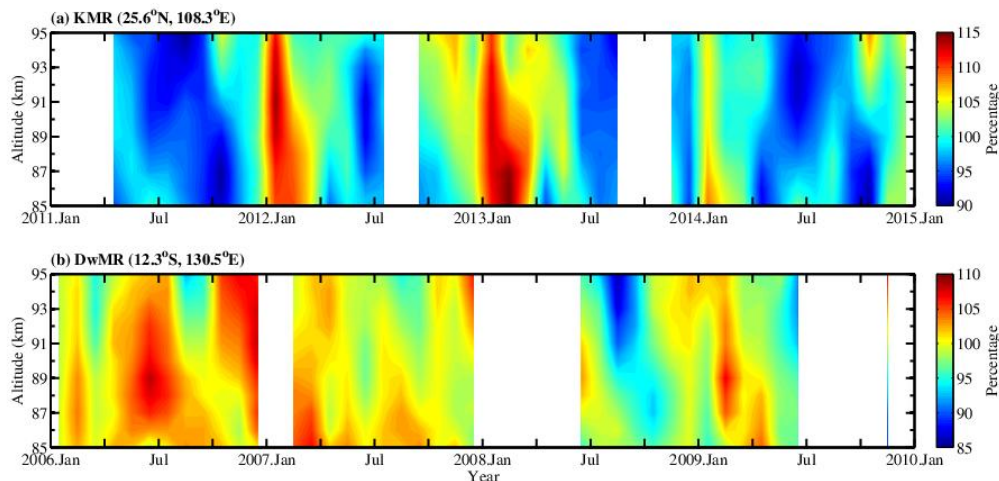


**Figure 6.** Same as Figure 4, but for the MMR, BMR, HMR and WMR daily mean densities in the mid-latitudes.

Figure 6 displays the contours of the Lomb-Scargle periodograms of the mesopause densities from the MMR, BMR, McMR and WMR. The MMR densities (Figure 6a) show mainly an AO and SAO; the amplitudes of the AO reach a maximum at 87 km, where the amplitude is approximately 8% of the MMR mean densities, while the amplitudes of the SAO are larger than those of the AO above 90 km with a maximum that is approximately 7% of the MMR mean densities at 93 km. The BMR and McMR



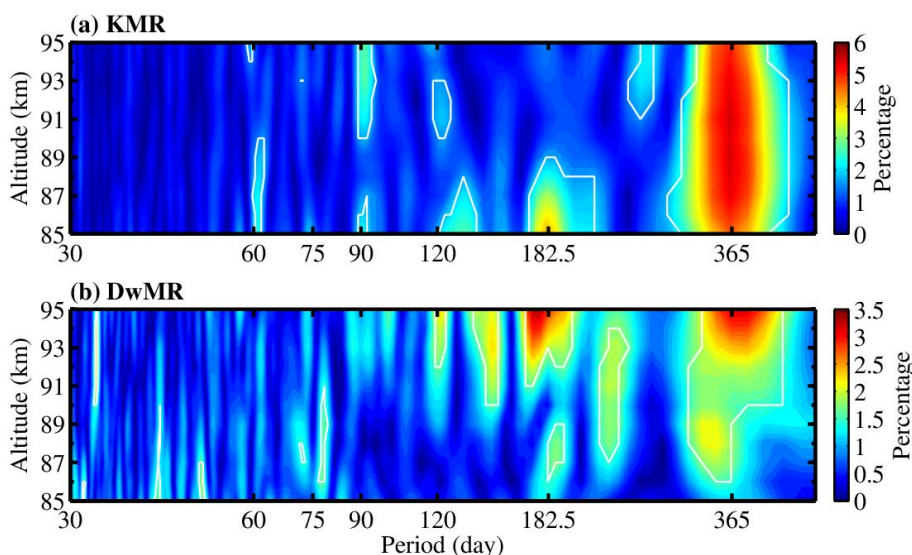
densities (Figure 6b and 6c, respectively) show similar periodograms; they exhibit mainly an AO and a relatively weak SAO. In contrast, the WMR densities are dominated by an AO above 89 km; however, below 89 km, they show both an SAO and an AO.



**Figure 7.** Same as Figure 3, but for the KMR and DwMR monthly mean relative densities at low latitudes.

Figure 7a shows the KMR densities in the northern low latitudes from April 2011 to December 2014. The KMR densities show mainly an AO with a maximum during the winter and a minimum during the summer. Figure 7b shows the DwMR densities at southern low latitudes from January 2006 to June 2009. The DwMR densities exhibit a large data gap; however, the data still provide the opportunity to investigate the climatology of the mesospheric density at southern low latitudes. The seasonal variations in the DwMR densities are more complicated than those in the KMR densities and clearly show intraseasonal (with a periodicity of 30-60 days) oscillations. To more clearly examine the seasonal variations in the mesospheric densities, Figure 8 shows the Lomb-Scargle periodograms of the KMR and DwMR densities. The largest component of the KMR densities is an AO above 87 km, followed by an SAO, a 90-day oscillation and a 60-day oscillation; below 87 km, the SAO becomes more obvious in the KMR densities, which can also be seen in Figure 7a. The DwMR densities show both an AO and an SAO above 92 km. In addition to seasonal

variations, the DwMR densities also exhibit broad oscillations with periodicities ranging from 30 to 60 days; these periodic variations may be similar to intraseasonal oscillations (Eckermann and Vincent, 1994), which are related to the Madden-Julian oscillation (MJO) in the tropical troposphere (please refer to Madden and Julian, 1974). We also examined the zonal mean winds observed by the DwMR and found an oscillation with a similar periodicity (30-60 days) in the zonal mean winds within the mesopause. This observation reveals that the lower and middle atmosphere is coupled; however, a more detailed discussion of this intercomparison will be described in a forthcoming paper.



**Figure 8.** Same as Figure 4, but for the KMR and DwMR, daily mean densities at low latitudes.

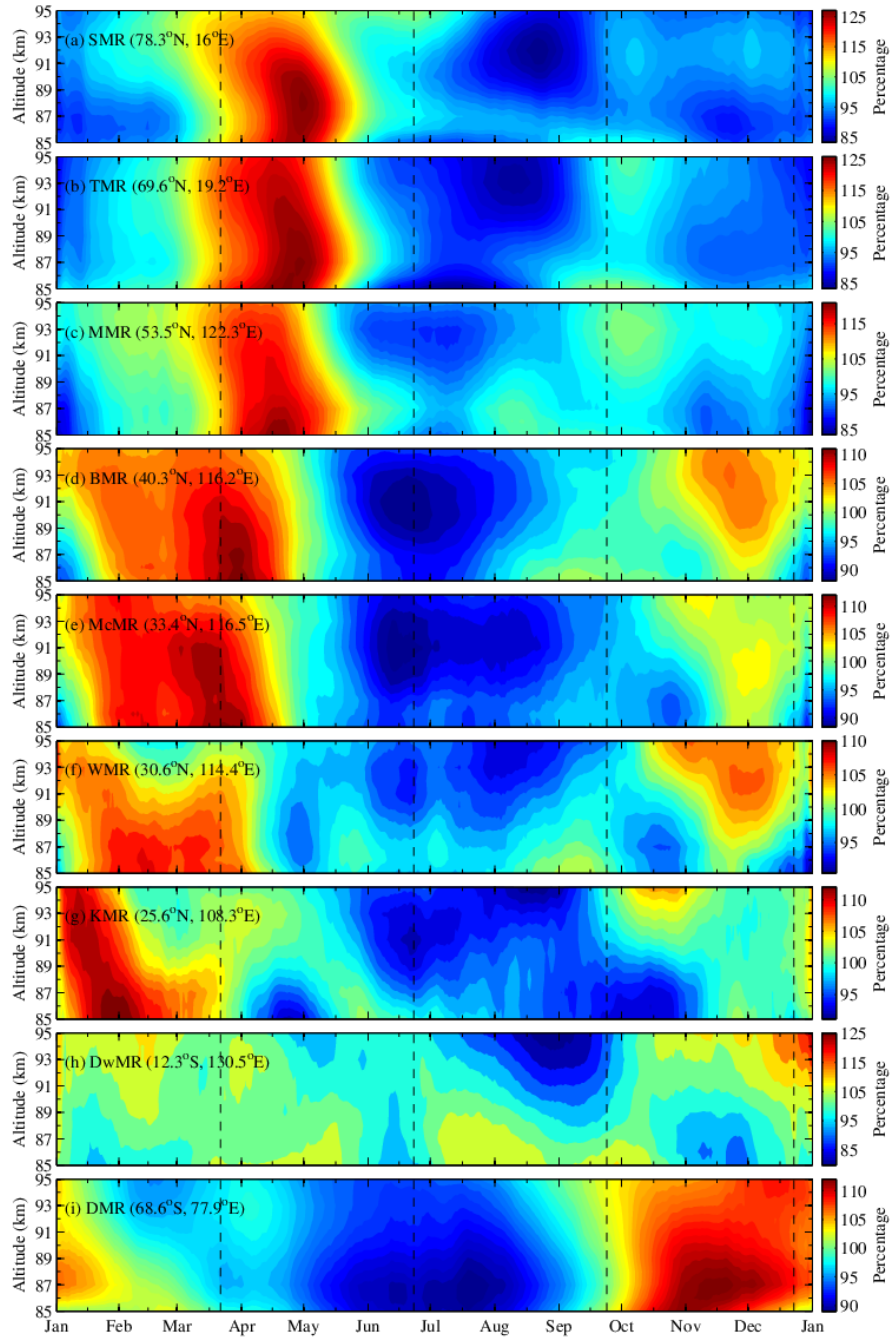
#### 4. Composite analysis for the global mesopause density

In the results described above, we presented the year-to-year variability in the climatology of the global mesopause density. To better appreciate the latitudinal changes of the seasonal variations in the global mesopause density, we show a composite analysis for the nine meteor radar measurements in Figure 9. For this composite analysis, we first combine the nine meteor radar densities into a single year and then use a 30-day running average to obtain the seasonal variations in the global mesopause density. As shown in Figure 9, several distinct features are present in the



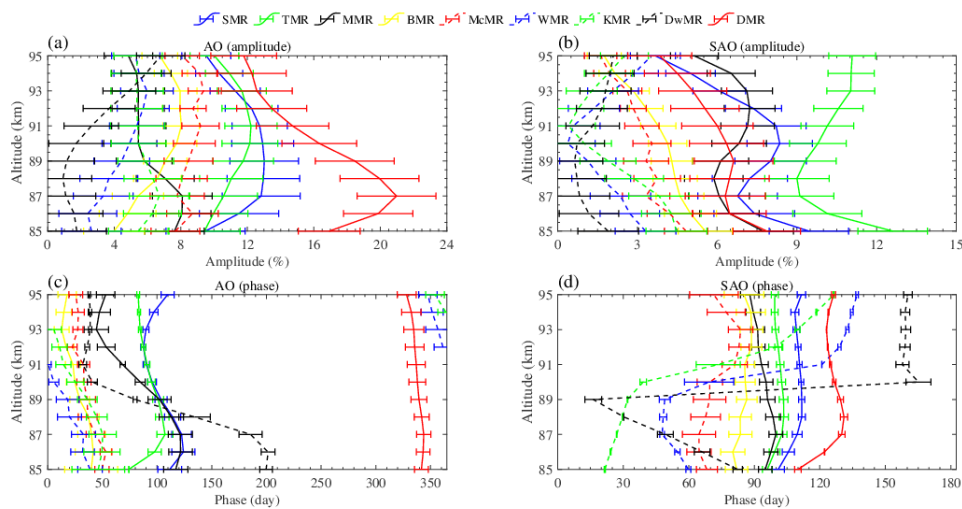
climatology of the global mesopause density.

It is clear that the seasonal variations in the mesopause densities exhibit latitudinal differences. The seasonal variations in the mesopause densities obtained from the SMR and TMR at northern high latitudes and the MMR at higher northern mid-latitudes are similar; they display a primary maximum after the spring equinox and a minimum during the summer. In the northern mid-latitudes, the mesopause densities from the BMR, McMR and WMR exhibit similar seasonal variations with a strong maximum near the spring equinox, a weak maximum before the winter solstice, and a minimum during the summer. As shown in Figure 9, the most noticeable feature is that the temporal evolution of the maximum mesopause density shifts as the latitude changes. For instance, the phase of the maximum shifts from spring (May) to winter (January) across the spring equinox from the high latitudes to the low latitudes in the Northern Hemisphere. Referring to the recent studies by Jia et al. (2018) and Ma et al. (2018), a similar feature was also present in the zonal mean winds simultaneously observed by the MMR, BMR, McMR and WMR at northern mid-latitudes; they reported that the zonal winds above 85 km generally exhibit an annual variation with a maximum during the summer (eastward), and they further demonstrated that the wind shifts (i.e., the zero zonal wind) near the spring equinox. In addition, based on their results, we also find that the phase of the maximum in the zonal wind also shifts as the latitude decreases; meanwhile, the time at which the zonal wind shifts also demonstrates a transition across the spring equinox from the MMR to the WMR, which is similar to the observed mesopause densities shown in Figure 9.



**Figure 9.** Contours of the composite 30-day running mean values of the mesopause densities in the composite year from the north pole to the south pole observed by the (a) SMR, (b) TMR, (c) MMR, (d) BMR, (e) McMR, (f) WMR, (g) KMR, (h) DwMR, and (i) DMR. The dashed lines indicate the spring and autumn equinoxes and the summer and winter solstices. The colour bars indicate the percentage variation in the 30-day running mean density relative to the mean density from the total observational time period.

It is also worth noting that the minima of the global mesopause densities appear during June, July and August. The minima of the northern polar mesopause densities obtained from the SMR and TMR occur during the Northern Hemisphere summer, while the DMR densities also show minima during the Southern Hemisphere winter. The mesopause densities over the northern mid-latitudes obtained from the MMR, BMR, McMR and WMR all appear during the Northern Hemisphere summer. Because no measurements of the mesopause density over the southern mid-latitudes are presented in this study, we cannot provide a comparison for the interhemispheric mid-latitudes. With regard to the low latitudes, the mesopause densities obtained from the KMR clearly show a minimum during the Northern Hemisphere summer above 87 km. In contrast, the DwMR densities in the southern low latitudes show a clear minimum during August and September, which is not during the expected Southern Hemisphere summer. These results reveal a seasonal asymmetry in the mesopause density in both hemispheres. During the Northern Hemisphere summer (the perihelion is on July 4), the distance between the Sun and the Earth is 3.3% longer than that during the Northern Hemisphere winter (the aphelion is on January 3); therefore, the longer distance between the Sun and the Earth during the Northern Hemisphere summer leads to a reduction of 6.7% in the total solar radiation absorbed by the Earth, causing the Earth's atmosphere to shrink. This may explain why the global mesopause densities show a minimum during the Northern Hemisphere summer.



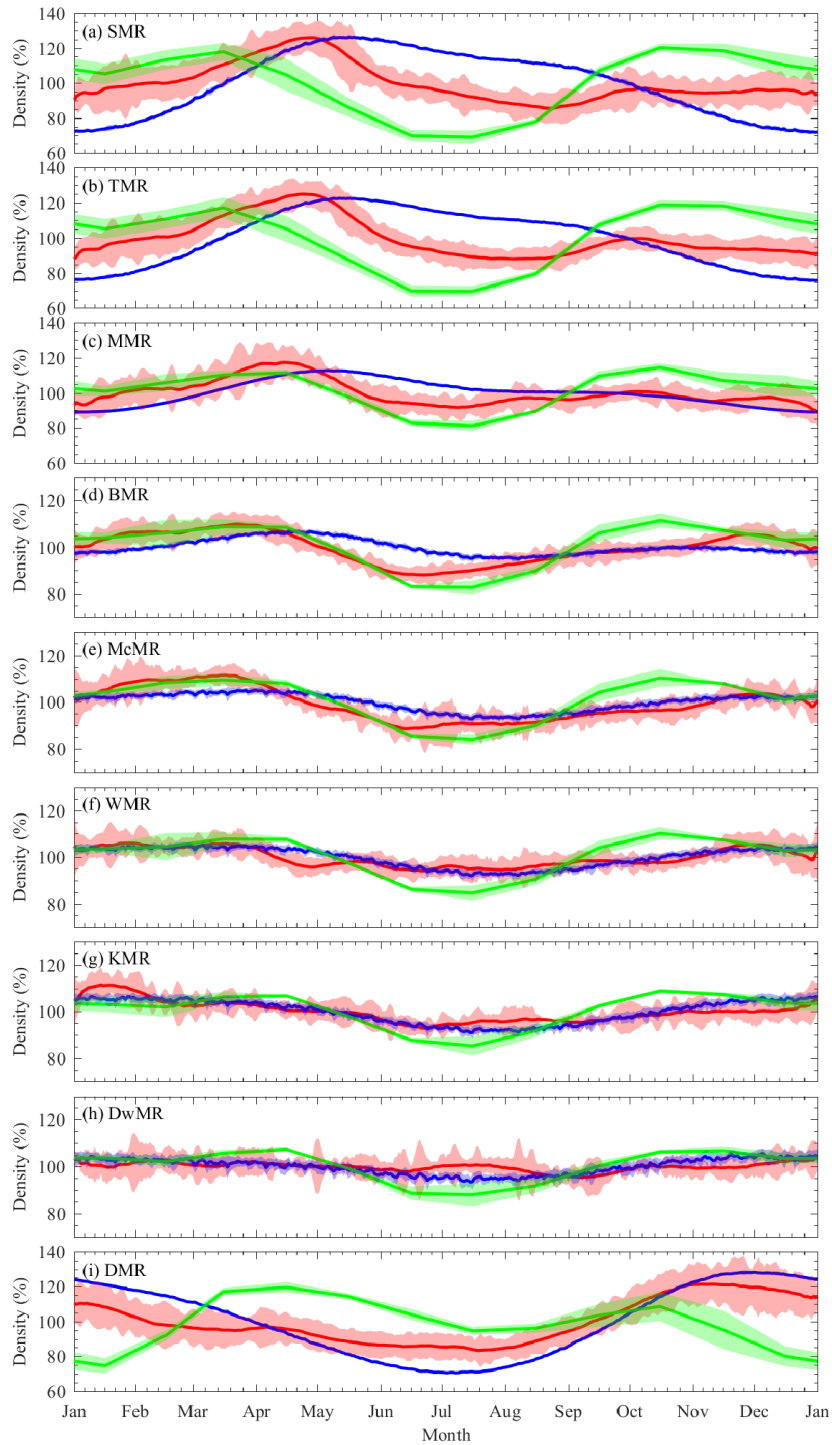
**Figure 10.** Amplitudes (top) and phases (bottom) of the AO and SAO observed by the nine meteor radars. The amplitude values indicate the percentage of the density relative to the mean density from the total observational time period.

Figure 10 shows the harmonic fitting results for the composite global mesopause density (shown in Figure 9). As shown in Figure 10a, it is clear that the AO displays large amplitudes exceeding 10% at high latitudes (DMR, SMR and TMR); the maxima of the AO amplitudes observed by the DMR, SMR and TMR reach 21%, 13% and 12%, respectively. Moreover, the amplitudes of the AO at southern high latitudes (DMR) are much larger than those at northern high latitudes (SMR and TMR). In the mid-latitudes (MMR, MBR, McMR and WMR), the AO amplitudes observed by the McMR are stronger than those observed by the other three stations, especially the MMR and BMR situated in the higher mid-latitudes. At low latitudes, the AO observed by the KMR is stronger than that observed by the DwMR at lower latitudes in the Southern Hemisphere as well as that observed by the WMR at higher latitudes.

Similarly, Figure 10b shows the SAO amplitudes observed by the nine meteor radars; the SAO is much weaker than the AO, as shown in Figure 10a. It is clear that the SAO is strongest at the TMR and that the amplitudes are comparable to those of the AO with a mean of approximately 10%. The SAOs in the northern high latitudes (SMR and TMR) are stronger than those in the southern high latitudes (DMR). In the mid-latitudes (MMR, BMR, McMR and WMR), the amplitudes of the SAOs decrease as the latitude decreases and roughly increase with decreasing altitude. The SAOs are much weaker in the low latitudes (KMR and DwMR), which is different from the temperature and horizontal wind in the low-latitude mesopause. The SAO is clearly the dominant seasonal variation in both the horizontal wind (Li et al., 2012) and the temperature (Xu et al., 2007) in the mesosphere at low latitudes. This might be because the seasonal variations in the mesopause density are influenced by the atmospheric dynamics as well as atmospheric equilibrium; however, this relationship is too complicated to understand at the moment.

Figures 10c and 10d show the phases of the AO and SAO, respectively, observed by

the nine meteor radars. The phases of the AO show an approximately decreasing trend as the latitude decreases and a downward progression as the altitude increases. In addition, the phases of the SAO clearly show a decreasing trend from the high latitudes (SMR) to the low latitudes (KMR); this can also explain the shift in the temporal evolution of the mesopause density maxima as the latitude changes. The times at which the density maxima occur (Figure 9) are consistent with the phases of the SAO shown in Figure 10d. In addition, the phases of the SAO observed by the WMR, KMR and DwMR show a phase shift as the altitude increases; this is also reflected in Figure 9. Placke et al. (2011) and Jia et al. (2018) calculated the gravity wave momentum fluxes in the mesosphere and lower thermosphere using the meteor radars at Collm, Germany (51.3°N, 13.0°E), Mohe and Beijing; they reported that the gravity wave variations exhibit an SAO at an altitude of approximately 90 km with a maximum during the summer and a secondary, weaker maximum during the winter as well as two minima around the equinoxes. Furthermore, Dowdy et al. (2001) suggested that radiative effects are stronger in the Southern Hemisphere and that gravity wave driving effects are more important in the Northern Hemisphere. These results may explain why the SAOs are more obvious at the SMR and TMR at high latitudes and at the MMR and BMR at higher mid-latitudes as well as why the SAO at northern high latitudes is stronger than that at southern high latitudes.



**Figure 11.** Comparisons of the mesopause densities at 90 km in the composite year among the meteor radars (red solid lines), the Mass Spectrometer and Incoherent Scatter (MSIS) model (blue solid lines) and the Whole Atmosphere Community Climate Model (WACCM) (green solid lines). The shaded areas represent the 30-day running averages and standard deviations of the composite density.

Figure 11 shows a comparison of the climatology of the mesopause density at 90 km in the composite year among the meteor radars in addition to the mesopause densities calculated simultaneously by the U.S. Naval Research Laboratory Mass Spectrometer and Incoherent Scatter (NRLMSISE-00) model (Picone et al., 2002) and Whole Atmosphere Community Climate Model version 4 (WACCM4). The WACCM is an atmospheric component of the Community Earth System Model (CESM) version 1.0.4 developed by the National Center for Atmospheric Research; the key features are described in detail in Marsh et al. (2013). In addition, the WACCM is a superset of the Community Atmospheric Model version 4 with 66 vertical hybrid levels from the surface to the lower thermosphere (~145 km); the vertical spacing increases with the altitude from ~1.1 km in the troposphere to 1.1–1.8 km in the lower stratosphere and 3.5 km above ~65 km. The horizontal resolution for the WACCM4 used here is 1.9° latitude by 2.5° longitude.

The comparisons shown in Figure 11 reveal evident differences between the observations and models. The MSIS densities show a dominant AO, the amplitude of which decreases as the latitude decreases. In the southern high latitudes, the MSIS densities generally exhibit an annual variation similar to those displayed by the DMR observations with a maximum during November and December and a minimum during July, but the AO shows a larger variation than do the DMR observations. In the Northern Hemisphere from the SMR to the McMR, the difference between the meteor radar observations and the MSIS model is obvious because the SAOs in the meteor radar observations are strong at these latitudes, while the SAO amplitude is much weaker in the MSIS model. At lower latitudes, the MSIS captures only the annual variations in the WMR, KMR and DwMR observations but fails to reproduce the other seasonal and intraseasonal variations. The WACCM densities show mainly annual and semiannual variations but almost fail to capture the seasonal variations in the mesopause density. However, it is worth noting that the WACCM densities show a minimum during June, July and August; this feature is similar to the meteor radar observations. The comparison between the observations and models demonstrates obvious inconsistencies, which indicate some limitations of the current models, such

as the MSIS model and WACCM, regarding the seasonal behaviour of the mesopause density.

The MSIS model is an empirical atmospheric model based on observations acquired over a decade ago; in particular, mesospheric density data were quite scarce at that time, which is the likely reason that the MSIS model exhibits obvious differences from the meteor radar observations. Moreover, the WACCM cannot directly provide atmospheric density estimates. Hence, in this study, we calculate the WACCM density at 90 km using the WACCM-simulated temperature and the geographic height corresponding to the pressure level. Previous studies indicated that WACCM-simulated temperatures are generally higher than lidar observations, but the WACCM temperatures can reproduce the major features of the climatology of the mesopause temperatures (see, e.g., Li et al., 2018). The accuracy of the pressure level (i.e., geographic height) is quite difficult to estimate because of the lack of corresponding observations. This study constitutes the first time we have compared the mesopause density simulated by the WACCM with meteor radar observations; hence, the remarkable differences in the seasonal variations between them are difficult to understand at the moment and are beyond the scope of this study.

## **5. Summary**

Mesopause densities determined with data from a global distribution of meteor radars are used to investigate the climatology of the global mesopause density. The multiyear observations of the mesopause density involved nine meteor radars, namely, the Davis Station (68.6 °S, 77.9 °E), Svalbard (78.3 °N, 16 °E) and Tromsø (69.6 °N, 19.2 °E) meteor radars located at high latitudes, the Mohe (53.5 °N, 122.3 °E), Beijing (40.3 °N, 116.2 °E), Mengcheng (33.4 °N, 116.6 °E) and Wuhan (30.5 °N, 114.6 °E) meteor radars located in the mid-latitudes, and the Kunming (25.6 °N, 103.8 °E) and Darwin (12.4 °S, 130.8 °E) meteor radars located at low latitudes. The mesopause densities estimated from these nine meteor radars exhibit different seasonal and latitudinal variations. The main points of the latitudinal and seasonal variations in the mesopause density are summarized as follows:



1. In the southern high latitudes, the AO observed by the DMR dominates the seasonal variations with a maximum during the late spring and a minimum during the early winter. In the northern hemisphere from high to low latitudes (from the SMR to the KMR), the AOs dominate the seasonal variations in the mesopause densities, and the amplitudes decrease equatorward. In addition to AOs, SAOs are also evident in the Northern Hemisphere, especially at high latitudes, and their largest amplitude, which is detected at the TMR, is comparable to the AO amplitudes. Near the equator, the mesopause densities observed by the DwMR show an AO and relatively weak intraseasonal oscillations with a periodicity of 30-90 days, which are related to the MJO in the tropical troposphere.

2. Interhemispheric observations indicate that the mesopause densities over the southern and northern polar regions show a clear seasonal asymmetry. The maxima of the yearly variations in the mesopause density exhibit a clear temporal variation across the spring equinox as the latitude decreases; these latitudinal variation characteristics may be related to the latitudinal variation in the global circulation of the mesosphere influenced by gravity wave forcing. In addition, the minima of the global mesopause densities basically appear during June, July and August, rather than a conditioned to think that the seasonal symmetric in interhemispheric temperature and wind. A possible explanation for this phenomenon is that the longer distance between the Sun and the Earth during the Northern Hemisphere summer leads to a reduction in the total solar radiation absorbed by the Earth that then causes the Earth's atmosphere to shrink. However, the actual mechanism cannot be comprehensively proven at the moment and thus remains an open question. Future observations and modelling are needed to more completely characterize and explain these phenomena.

3. Comparisons of the climatology of the mesopause density at 90 km among the observations from meteor radars are provided in addition to the mesopause densities calculated simultaneously by the MSIS model and WACCM. The MSIS model roughly captures the prevailing annual variation in the mesopause density at southern high latitudes and northern low latitudes. The WACCM densities show both annual

and semiannual variations but almost fail to capture the seasonal variations in the mesopause density. The comparison results show the above inconsistencies between the observations and models, thereby indicating some limitations of the current models, such as the MSIS model and WACCM, regarding the seasonal behaviour of the mesopause density.

In this study, we have reported global observations of the climatology of the mesopause density for the first time. Knowledge of the atmospheric density is essential for understanding the relevant physical processes in the mesopause region as well as for providing a usual reference for lidars (e.g., Dou et al., 2009) or an input parameter for the airglow phenomenon (Reid et al., 2017; Takahashi et al., 2002). However, accurately predicting the changes in the neutral atmospheric density over time is crucial for determining the atmospheric drag on low-Earth-orbit satellites and directly governs the orbit cycles of satellites; moreover, safe launches and precise spacecraft landings also require accurate knowledge of the neutral atmospheric density. Despite the differences between the observations and model simulations, the mesopause densities derived from meteor radar observations still have great potential and practical applications because the global distribution of meteor radar instruments and their associated long-term and continuous datasets provide a wide range of aerospace applications and the potential to improve widely used empirical models.

*Data availability.* The Aura/MLS data are available from <http://disc.sci.gsfc.nasa.gov/Aura/data-holdings/MLS>. The Davis meteor radar data are available from the Australian Antarctic Data Centre at [data.aad.gov.au](http://data.aad.gov.au). The Svalbard and Tromsø meteor radar data are available upon request from Chris Hall at Tromsø Geophysical Observatory ([chris.hall@uit.no](mailto:chris.hall@uit.no)). The Mohe, Beijing and Wuhan meteor radar data are available from <http://data.meridianproject.ac.cn/>. The Mengcheng and Kunming meteor radar data are available upon request from Wen Yi ([yiwen@ustc.edu.cn](mailto:yiwen@ustc.edu.cn)).

*Author contributions.* WY designed the study, performed data analysis, prepared the figures and wrote the manuscript. XX initiated the study, and contributed to

supervision and interpretation. IMR contributed to supervision and interpretation, and help for writing-original editing. DJM provided the Davis meteor radar data. CMH and MT provided the Svalbard and Tromsø meteor radar data. NB and LG provided the Mohe, Beijing and Wuhan meteor radar data. RV provided the Darwin meteor radar data. CJ provided the Kunming meteor radar data. WJ are responsible for the WACCM model. CT and DX contributed to interpretation. All authors contributed to discussion and interpretation.

*Competing interests.* The authors declare that they have no conflict of interest.

*Acknowledgments.* This work is supported by the National Natural Science Foundation of China (41774158, 41474129, and 41674150), the Chinese Meridian Project, the Youth Innovation Promotion Association of the Chinese Academy of Sciences (2011324), and the China Scholarship Council. We also acknowledge support provided by the University of Adelaide and ATRAD Pty Ltd, and the provision of Davis meteor radar data by the Australian Antarctic Division, the provision of Nippon/Norway Svalbard and Tromsø meteor radar data by the National Institute of Polar Research and UiT-The Arctic University of Norway, the provision of Mohe, Beijing and Wuhan meteor radar data by the Chinese Meridian Project and STERN (the Solar: Terrestrial Environment Research Network), the provision of Kunming meteor radar data by the China Research Institute of Radiowave Propagation (CRIRP), the provision of Darwin meteor radar data by the University of Adelaide. Operation of the Davis meteor radar was supported under AAS project 2529, 2668, and 4025.

## **References**

Cervera, M., and Reid, I.: Comparison of atmospheric parameters derived from meteor observations with CIRA, *Radio Sci.*, 35, 833-843, 2000.

Clemesha, B., and Batista, X.: The quantification of long-term atmospheric change via meteor ablation height measurements, *J. Atmos. Sol.-Terr. Phys.*, 68, 1934–1939, 2006.

[Decker, B.: World Geodetic System 1984, Def. Mapp. Agency Aerosp. Cent., St.](#)

[Louis AFS, Mo, 1986.](#)

Dou, X., Li, T., Xu, J., Liu, H., Xue, X., Wang, S., Leblanc, T., McDermid, S., Hauchecorne, A., Keckhut, P., Bencherif, H., Heinselman, C., Steinbrecht, W., Mlynczak, M., and Russell III, J.: Seasonal oscillations of middle atmosphere temperature observed by Rayleigh lidars and their comparisons with TIMED/SABER observations, *J. Geophys. Res.*, 114, D20103, doi:10.1029/2008JD011654, 2009.

[Dowdy, A., Vincent, R., Igarashi, K., Murayama, Y., and Murphy, D.: A comparison of mean winds and gravity wave activity in the northern and southern polar MLT. Geophys Res Lett, 28, 1475-1478, 2001.](#)

Hall, C., Aso, T., Tsutsumi, M., Hoffner, J., Sigernes, F., and Holdsworth, D.: Neutral air temperatures at 90 km and 70°N and 78°N, *J. Geophys. Res.*, 111, D14105, doi:10.1029/2005JD006794, 2006.

Hall, C., Dyrland, M., Tsutsumi, M., and Mulligan, F.: Temperature trends at 90 km over Svalbard, Norway (78°N 16°E), seen in one decade of meteor radar observations, *J. Geophys. Res.*, 117, D08104, doi:10.1029/2011JD017028, 2012.

Hocking, W., Thayaparan, T., and Jones, J.: Meteor decay times and their use in determining a diagnostic mesospheric temperature-pressure parameter: methodology and one year of data. *Geophysical Research Letters*, 24, 2977–2980. <https://doi.org/10.1029/97GL03048>, 1997.

Hocking, W., Singer, W., Bremer, J., Mitchell, N., Batista, P., Clemesha, B., and Donner, M.: Meteor radar temperatures at multiple sites derived with SKiYMET radars and compared to OH, rocket and lidar measurements, *J. Atmos. Sol-Terr. Phys.*, 66, 585-593, 2004.

Holdsworth, D., Reid, I., and Cervera, M.: Buckland Park all-sky interferometric meteor radar, *Radio Sci.*, 39, RS5009, 2004.

Holdsworth, D., Morris, R., Murphy, D., Reid, I., Burns, G., and French, W.: Antarctic mesospheric temperature estimation using the Davis mesosphere-stratosphere-troposphere radar, *J. Geophys. Res.*, 111, doi:10.1029/2005JD006589, 2006.

- Holmen, S., Hall, C., and Tsutsumi, M.: Neutral atmosphere temperature trends and variability at 90 km, 70°N, 19°E, 2003–2014. *Atmos. Chem. Phys.*, 16, 7853–7866, 2016.
- Jia, M., Xue, X., Gu, S., Chen, T., Ning, B., Wu, J., Zeng, X., and Dou, X.: Multiyear observations of gravity wave momentum fluxes in the midlatitude mesosphere and lower thermosphere region by meteor radar. *Journal of Geophysical Research: Space Physics*, 123. <https://doi.org/10.1029/2018JA025285>, 2018.
- Lee, C., Kim, J., Jee, G., Lee, W., Song, I., and Kim, Y.: New method of estimating temperatures near the mesopause region using meteor radar observations, *Geophys. Res. Lett.*, 43, 10,580–10,585, doi:10.1002/2016GL071082, 2016.
- Lima, L., Araújo, L., Alves, E., Batista, P., and Clemesha B.: Variations in meteor heights at 22.7°S during solar cycle 23, *J. Atmos. Sol.-Terr. Phys.*, 133, 139–144, 2015.
- Lima, L., Batista, P., and Paulino, A.: Meteor radar temperatures over the Brazilian low-latitude sectors, *Journal of Geophysical Research: Space Physics*, 123. <https://doi.org/10.1029/2018JA025620>, 2018.
- Liu, L., Liu, H., Chen, Y., Le, H., Sun, Y., Ning, B., Hu, L., and Wan W.: Variations of the meteor echo heights at Beijing and Mohe, China, *J. Geophys. Res. Space Physics*, 121, doi:10.1002/2016JA023448, 2016.
- Liu, L., Liu, H., Le, H., Chen, Y., Sun, Y., Ning, B., Hu, L., Wan, W., Li, N., and Xiong, J.: Mesospheric temperatures estimated from the meteor radar observations at Mohe, China, *J. Geophys. Res. Space Physics*, doi:10.1002/2016JA023776, 2017.
- Lomb, N.: Least-squares frequency analysis of unequally spaced data, *Astrophys. Space Sci.*, 39, 447–462, 1976.
- Ma, Z., Gong, Y., Zhang, S., Zhou, Q., Huang, C., Huang, K., Dong, W., Li, G., and Ning, B.: Study of mean wind variations and gravity wave forcing via a meteor radar chain and comparison with HWM-07 results. *Journal of Geophysical Research: Atmospheres*, 123. <https://doi.org/10.1029/2018JD028799>, 2018.
- Marsh, D., Mills, M., Kinnison, D., Lamarque, J., Calvo, N., and Polvani, L.: Climate

- Change from 1850 to 2005 Simulated in CESM1(WACCM). *J. Climate*, 26, 7372–7391, <https://doi.org/10.1175/JCLI-D-12-00558.1>, 2013.
- Picone, J., Hedin, A., Drob, D., and Aikin, A.: NRLMSISE-00 empirical model of the atmosphere: Statistical comparisons and scientific issues, *J. Geophys. Res.*, 107(A12), 1468, doi:10.1029/2002JA009430, 2002.
- Placke, M., Hoffmann, P., Becker, E., Jacobi, C., Singer, W., and Rapp, M.: Gravity wave momentum fluxes in the MLT—Part II: Meteor radar investigations at high and midlatitudes in comparison with modeling studies. *Journal of Atmospheric and Solar-Terrestrial Physics*, 73(9), 911–920. <https://doi.org/10.1016/j.jastp.2010.05.007>, 2011.
- Reid, I., Holdsworth, D., Morris, R., Murphy, D., and Vincent, R.: Meteor observations using the Davis mesosphere-stratosphere-troposphere radar., *J Geophys Res.*, 111, A05305, doi:05310.01029/02005JA011443, 2006.
- Reid, I., Spargo, A., Woithe, J., Klekociuk, A., Younger, J., and Sivjee, G.: Seasonal MLT-region nightglow intensities, temperatures, and emission heights at a Southern Hemisphere midlatitude site, *Ann. Geophys.*, 35, 567-582, doi:10.5194/angeo-35-567-2017, 2017.
- Remsberg, E., Bhatt, P., and Deaver, L.: Seasonal and longer-term variations in middle atmosphere temperature from HALOE on UARS, *J. Geophys. Res.*, 107(D19), 4411, doi:10.1029/2001JD001366, 2002.
- Scargle, J.: Studies in astronomical time series analysis. II. Statistical aspects of spectral analysis of unevenly spaced data, *Astrophys. J.*, 263, 835–853, 1982.
- Schwartz, M., Lambert, A., Manney, G., Read, W., and Livesey, N.: Validation of the Aura Microwave Limb Sounder temperature and geopotential height measurements, *J. Geophys. Res.*, 113, D15S11, doi:10.1029/2007JD008783, 2008.
- Singer, W., Bremer, J., Hocking, W., Weiss, J., Latteck, R., and Zecha, M.: Temperature and wind tides around the summer mesopause at middle and arctic latitudes, *Adv. Space Res.*, 31(9), 2055-2060, 2003.
- Stober, G., Jacobi, C., Frohlich, K., and Oberheide J.: Meteor radar temperatures over

- Collm (51.31 N, 131 E), *Adv. Space Res.*, 42(7), 1253-1258, 2008.
- Stober, G., Jacobi, C., Matthias, V., Hoffmann, P., and Gerding, M.: Neutral air density variations during strong planetary wave activity in the mesopause region derived from meteor radar observations, *J. Atmos. Sol.-Terr. Phys.*, 74, 55-63, 2012.
- Stober, G., Matthias, V., Brown, P., and Chau, J.: Neutral density variation from specular meteor echo observations spanning one solar cycle, *Geophys. Res. Lett.*, 41, 6919–6925, doi:10.1002/2014GL061273, 2014.
- Takahashi, H., Nakamura, T., Tsuda, T., Buriti, R., and Gobbi, D.: First measurement of atmospheric density and pressure by meteor diffusion coefficient and airglow OH temperature in the mesopause region, *Geophys. Res. Lett.*, 29, NO. 8, 1165, 1110.1029/2001GL014101, 2002.
- Xu, J., Smith, A., Yuan, W., Liu, H., Wu, Q., Mlynczak, M., and Russell III, J.: Global structure and long-term variations of zonal mean temperature observed by TIMED/SABER, *J. Geophys. Res.*, 112, D24106, doi:10.1029/2007JD008546, 2007.
- Yi, W., Xue, X., Chen, J., Dou, X., Chen, T., and Li, N.: Estimation of mesopause temperatures at low latitudes using the Kunming meteor radar, *Radio Sci.*, doi: 10.1002/2015RS005722, 2016.
- Yi W., Reid, I., Xue, X., Younger, J., Murphy, D., Chen, T., and Dou, X.: Response of neutral mesospheric density to geomagnetic forcing, *Geophys. Res. Lett.*, doi: 10.1002/2017GL074813, 2017.
- Yi, W., Reid, I., Xue, X., Murphy, D., Hall, C., Tsutsumi, M., Ning, B., Li, G., Younger, J., Chen, T., and Dou, X.: High- and middle-latitude neutral mesospheric density response to geomagnetic storms. *Geophysical Research Letters*, 45, 436–444. <https://doi.org/10.1002/2017GL076282>, 2018a.
- Yi, W., Xue, X., Reid, I., Younger, J., Chen, J., Chen, T., and Li, N.: Estimation of mesospheric densities at low latitudes using the Kunming meteor radar together with SABER temperatures. *Journal of Geophysical Research: Space Physics*, 123. <https://doi.org/10.1002/2017JA025059>, 2018b.

Younger, J., Lee, C., Reid, I., Vincent, R., Kim, Y., and Murphy, D.: The effects of deionization processes on meteor radar diffusion coefficients below 90 km, *J. Geophys. Res.*, 119, 10,027-10,043, doi:10.1002/2014JD021787, 2014.

Younger, J., Reid, I., Vincent, R., and Murphy D.: A method for estimating the height of a mesospheric density level using meteor radar, *Geophys. Res. Lett.*, 42, 6106–6111, doi:10.1002/2015GL065066, 2015.