

Authors response on “Are mean vertical velocities from PMSE a good representation of mean vertical winds?” by Nikoloz Gudadze et al.'

Authors response to the reviewer#1

General Comments

Comment:

“For example, measurements are reported for two summer seasons using the so-called MAARSY radar located in Andoya, Norway. Nowhere, however, is the MAARSY radar described, including the operating frequency.”

Reply:

A paragraph with a general description of the radar (MAARSY) is added in the second section (Measurements and wind analysis)

Comment:

The title of the paper could also be better expressed. Given that the aim of the paper is to show how the true vertical wind can be measured in the presence of the downward motions of the ice particles that dominate the radar backscatter, maybe the title might be better framed as “Can VHF radars at polar latitudes measure mean vertical winds in the presence of PMSE?” In that sense, the first two sentences in the Conclusions best encapsulate the motivations for the paper and it would help the reader if they were repeated up front in the Introduction.

Reply:

We agree to reviewer suggestion and changed the title.

Comment:

The paper starts (p2) with an incorrect discussion of how the zonal wind structure in the MLT reverses sign. It does not occur through the gravity wave momentum deposition causing a direct “drag” on the zonal winds, with the meridional flow arriving as incidental by-product. It is just the opposite. 1. The eastward (westward) momentum deposition in the summer (winter) MLT drives a meridional summer-to-winter pole circulation. 2. This leads to rising (sinking) motions over the summer (winter) pole with consequential adiabatic cooling (heating). 3. Hence, the zonal-mean latitudinal temperature gradient in the MLT is reversed relative to that in the stratosphere and the zonal-mean zonal winds in the mesosphere change sign through the thermal wind relation. This section should either be modified appropriately or deleted entirely to avoid confusion.

Reply:

Regarding the comment on zonal mean zonal wind behaviour according to thermal wind relation, we totally agree to the critics. However, cold summer mesopause and therefore

zonal wind vertical behaviour is a byproduct of the chain process induced gravity wave momentum deposition (or zonal wave drag). It's accepted, that the sentence "Such forcing decelerates the westward zonal wind on the corresponding heights and causes widely observed wind reversal at the lowest thermospheric altitudes" (p.2 l.14) can be understood as a direct effect. We have modified it. The paragraph itself is necessary to explain the existence of the upward motion during summer seasons in the upper mesospheric altitudes.

Comment:

Confusion can also occur through mixing the use of vertical motions and vertical winds. For example, in the caption to Figure 1, the blue and red curves are labelled as "weighted mean vertical wind velocities" when they are actually vertical motions strongly weighted by the sedimentation speeds of the ice particles, i.e. not the vertical velocity of the neutral atmosphere. It is recommended that the terminology throughout the paper be corrected to ensure there is no misunderstanding of what is a vertical motion and what is a wind.

Reply:

We now use the term vertical velocities throughout the manuscript or describe why it can be interpreted as vertical wind.

Specific Comments

Comment:

P1, L12 "Disappearance" not "disappearing"?

Reply: *"disappearance"*

Comment:

P3, L15 Stoke's drift.

Reply: *Accepted*

Comment:

L4, L21 Brackets required around Hoppe and Fritts, 1995b

Reply: *Accepted*

Comment:

P5, L27 I do not understand "vertical shear amplitude of 5 m/s". Should this not be 5 s-1?

Reply: *"Shear amplitude" here indicates a velocity difference between the given bins of the grid. We keep the terminology used in the referenced paper by Stober et al (2018a) and add the remarks in the text of the manuscript.*

Comment:

P8, L22 I do not understand the sentence starting “They found ...” Is “continued’ meant, rather than “preserved”?

Reply: *“continued”. „persisted“ is used in the referenced paper.*

Comment:

P9, L5 “threshold” rather than “point”?

Reply: *“value”. E.g. red circle above $\Delta w=0.4$ represents the average value of the velocity for all data points which uncertainty is lower than 0.4 (given value).*

Comment:

P9, 14 “is” before “available”.

Reply: *Accepted.*

Comment:

P9, L25 “reduced” rather than “slow down”.

Reply: *Accepted.*

Comment:

P9, L26 “sediment due to gravity”

Reply: *Accepted.*

Comment:

P9, L32 “Presenting”, not “pretending”.

Reply: *Accepted.*

Comment:

P10, L5 Remove brackets around Berger and Lübken, 2015.

Reply: *Accepted.*

Comment:

P10, L34 “downward motions” not “the downwelling”?

Reply: *Accepted.*

Comment:

Figs. 2, 3 “Positive wind values correspond to”

Reply: *Definitely.*

Comment:

Fig. 4 Do the 2D histograms represent “vertical wind measurements” or ‘vertical speed measurements?’

Reply: “Vertical velocity measurements”. Please see the last reply in the general comments above.

Comment:

What do the dashed blue lines in Fig 4 represent?

Reply: Blue lines on Fig.4 are direct averages. It is now defined in the description of the figure.

Authors response to the reviewer#2

General Comment

Comment:

The description of the measurements is insufficient for readers not familiar with the topic. More details, and even basics of the MAARSY radar; e.g., the geographic coordinates are only provided in the abstract. More information is necessary here. Few more information on the experiments would also be helpful. Have the experiments been run continuously during both seasons? Which is the grid size for binning (page 2, line 5)? This and more information would improve the paper.

Reply:

We have extended information and description on the instrument and observational details.

Specific issues:

Comment:

P2 I 17: "...considering the Bousinesq approximation..." delete this part of the sentence. Continuity equation does not require incompressible fluid.

Reply: *Done*

Comment:

P3, II 22-24: The mechanism is described later, but should be outlined here.

Reply: *Done.*

Comment:

P3, I 28: This sentence requires information that is only provided below or missing, namely the latitude of the observations, and an explanation what "PMSE 5 beam radial velocity" means.

Reply: *Information is added.*

Comment:

P4, I 2: What does MAARSY stands for? It should not only be provided in the abstract.

Reply: *Explanation of the abbreviation added.*

Comment:

P4, I 22: more homogeneous than what?

Reply: *Than within instantaneous measurements. Sentence is rephrased.*

Comment:

P7 I 17: Jacobi, 2011 shows midlatitude winds, not polar ones. If you want to add more references, you may wish to refer to radar based wind climatologies like Portnyagin et al., 2004.

Reply: Thank you for the suggestion of interesting reference. We agree and changed accordingly.

Comment:

P8, I 16: ".. but not in certain circumstances associated with a target parameter." I do not understand what this means.

Reply: Reworded as ".. but not in certain circumstances associated with a background conditions."

Comment:

P9 I5 /Figures 5 and 6: I did not understand what the red points mean.

Reply: Reworded. Red points indicates mean of those vertical velocities corresponding to uncertainties lower than a given threshold.

Comment:

Figure 1: The blow-up on the right panels is not necessary in my opinion. The vertical resolution is 500 m and the effect is visible on the left panels also.

Reply: The main reason to zoom out the middle part of the right panels is to highlight the error bars given on red curve of the weighted averages. We add a sentences in figure description to point attention of the reader.

Minor comments

Comment:

P2, I 29: admitted -> considered

Reply: Accepted

Comment:

P6, I 7: excluding the -> except for a

Reply: Accepted

Comment:

P6 I 25: "We have also ... " something went wrong with this sentence

Reply: Reworded

Comment:

P8, l 22: downward the -> the downward

Reply: *Done*

Comment:

P9, l 4: remove “relatively”

Reply: *Done*

Comment:

P 16, l 28: Stober et al., 2018: refer to the final revised paper

Reply: *Done*

Are Can VHF radars at polar latitudes measure mean vertical velocities from PMSE a good representation of mean vertical winds in the presence of PMSE?

Nikoloz Gudadze ^{1,2}, Gunter Stober ¹, and Jorge L. Chau ¹

¹Leibniz Institute of Atmospheric Physics at the University of Rostock, Kühlungsborn, Germany

²Abastumani Astrophysical Observatory at Ilia State University, Abastumani, Georgia

Correspondence: Nikoloz Gudadze (gudadze@iap-kborn.de)

Abstract. Mean vertical velocity measurements obtained from Radars at polar latitudes using Polar Mesosphere Summer Echoes (~~PMSE~~PMSEs) as an inert tracer have been considered as non-representative of the mean vertical winds over the last couple of decades. PMSEs observed with the Middle Atmosphere Alomar Radar System (MAARSY) over Andøya, Norway (69.30°N, 16.04°E) during summers of 2016 and 2017 are used to derive mean vertical winds in the upper mesosphere. The 3D vector wind components (zonal, meridional and vertical) are based on a Doppler beam swinging experiment using 5-beam directions (one vertical and four obliques). The 3D wind components are computed using a recently developed wind retrieval technique. The method includes full non-linear error-propagation, spatial and temporal regularization as well as beam pointing corrections and angular pointing uncertainties. Measurement uncertainties are used as weights to obtain seasonal weighted averages and characterize seasonal mean vertical ~~velocity~~velocities. Weighted average values of vertical velocities reveal a weak upward behaviour at altitudes 84-87 km after eliminating the influence of ice falling speed. At the same time, a sharp decrease/~~increase~~(increase) in the mean vertical velocities at the lower/~~upper~~(upper) edges of the summer mean altitude profile ~~prevails~~, which are attributed to the sampling issues of PMSE due to ~~disappearing~~ disappearance of the target corresponding to the certain regions of motions and temperatures, prevails. Thus the mean vertical velocities can be biased with decrease ~~up-/down-ward~~ up(down)-ward velocity measurements at lower/~~upper~~(upper) edges, while at the main central region the obtained mean vertical velocities are consistent with expected upward values of mean vertical winds after considering ice particle sedimentation.

1 Introduction

Knowledge of the neutral wind behaviour (or motion of the air) is one of the main interests in atmospheric sciences from the troposphere up to thermosphere to investigate various dynamical processes. Improving temporal and spatial resolution of wind vector components is an important challenge for different observational techniques and data analysis. Such improvements are of particular importance in the vertical component, since the expected mean vertical velocities are in the range of a few centimeters per second, thus require more sophisticated observations as well as data analysis to obtain a reliable mean climatology. Mean vertical winds are known to be an important contributor to the thermal structure of the middle atmosphere and is related

to the dynamical processes of the global seasonal pole-to-pole circulation (Garcia and Solomon, 1985; Becker, 2012; Smith, 2012). Global Circulation Models show a mean summer upwelling from the lower mesosphere up to the mesopause heights at extra-tropical latitudes (May-August and November-February at Northern and Southern hemispheres respectively). The impact of the mean vertical motion on the mesospheric temperatures is due to the expansion of the uprising air masses causing adiabatic cooling of the upper mesospheric altitudes in summer and vice versa during the winter ~~seasons~~months. The underlying dynamical processes were firstly proposed by Lindzen (1981) and later parametrized by Holton (1982).

The background mechanism of vertical motion in the polar summer mesosphere is the influence on the mean zonal flow caused by breaking of gravity waves (~~GWs~~) in the upper mesosphere. ~~GWs~~Gravity waves are usually generated in the lower atmosphere, and propagate upward carrying momentum and energy. Mainly due to the solar influence and chemical processes, westward zonal winds are dominant in the mesosphere during the summer season (Becker, 2012) below 90 km. As a rule, propagating ~~GWs~~gravity waves are filtered out or reflected by co-directed background winds. Thus mainly eastward propagating ~~GWs~~gravity waves, generated in the lower atmosphere, can reach the upper mesospheric altitudes. Deposition of momentum ~~end and~~ energy after their breaking creates wave forcing as an eastward drag. ~~Such forcing decelerates the westward zonal wind on the corresponding heights and causes widely observed wind reversal at the lowest thermospheric altitudes (Yuan et al., 2008; Jacobi, 2011; Wilhelm et al., 2017). The Coriolis effect from the equatorward meridional winds compensates the strong zonal wave forcing (Holton and Alexander, 2013). Consequently, upwelling of air from lower altitudes is required to satisfy the mass continuity considering the Boussinesq approximation, which holds for an incompressible atmosphere. Such forcing decelerates the westward zonal wind at corresponding heights. The Coriolis effect from the equatorward meridional winds compensates the strong zonal wave forcing (Holton and Alexander, 2013) and consequently, upwelling of air from lower altitudes is required to satisfy the mass continuity.~~

Propagating ~~GWs~~gravity waves and various turbulent processes are known as a source of the common vertical motion field in the mesopause region. One should note that the expected magnitude of the mean upwelling is in the order of a few centimetres per second, thus, very difficult to be observed. Proper statistical analysis and error estimation are needed to ensure significant wind estimates with such an accuracy. In particular, as the short time fluctuations (less than 10 minutes) of the vertical motion usually reach several meters per second.

The main tracer to obtain vertical velocities in the mesosphere during the summer seasons at polar latitudes are Polar Mesospheric Summer Echoes (PMSEs) measured by radars (Balsley and Riddle, 1984; Hoppe and Fritts, 1995; Czechowsky and Rüster, 1997). PMSEs are the very strong echoes from the turbulent atmosphere at 80-90 km altitude region. Charged ice particles are responsible for slowing down the electron diffusivity and enhance the high reflectivity usually observed at VHF-frequencies, as a result of changes in the refractive index mainly at the Bragg scale of ~~the a~~a Radar wavelength (Rapp and Lübken, 2004; Rapp et al., 2008; Kirkwood et al., 2008). PMSEs are ~~admitted~~considered as an inert tracer and used to study the ambient dynamical processes in the summer polar mesosphere (Stober et al., 2013, 2018b). Detailed progress in PMSE physics since their first observations by Czechowsky et al. (1979) and later Ecklund and Balsley (1981) one can find in the following review papers (Cho and Röttger, 1997; Rapp and Lübken, 2004).

Required ice clouds with particle sizes from a few to sometimes 100 nm form under dramatic low temperatures at polar meso-

spheric altitudes (Lübken, 1999). They are known as PMC (polar mesospheric clouds) or NLC (Noctilucent clouds). NLC are observed from the middle latitudes up to the polar regions (Fiedler et al., 2011; Baumgarten and Fritts, 2014; Fritts et al., 2014; Hervig et al., 2016; Gerding et al., 2018). Kiliani et al. (2013) have shown that the westward zonal transport of the NLC is connected to cloud forming under GW-gravity wave influence. The horizontal advection of the PMSE patches has also been

5 recently observed using bi-static radar measurements by Chau et al. (2018). Besides theoretical and model expectations (Lindzen, 1981; Holton, 1982; Garcia and Solomon, 1985), the mean values of the vertical velocities measured by radars have shown contradicting, downward behaviour (Balsley and Riddle, 1984; Fritts et al., 1990; Hoppe and Fritts, 1995).

The first study of monthly mean values of vertical velocities from vertically measured radial (Doppler) velocities were pre-

10 sented in Balsley and Riddle (1984). Various possible influences caused by instrumental as well as geophysical effects were discussed and eliminated in the same study. Thus the main trend in the literature of the later studies attempted to find the explanation of the mean observed downward vertical velocities in the mesosphere from radar measurements. Meanwhile, most of the later reported observed results obtained by radars agreed with this first study. The observational time and correspondingly averaging periods vary from several hours up to several days. The climatological studies on the vertical motion field are rarely

15 available due to experimental costs and limitation of the capable instruments be able to provide convenient measurements. The mean observed downward velocities are close to $20\text{-}25\text{ cm s}^{-1}$ at mesopause altitudes. The first endeavour to explain the results were connected to the possible observation of StoekeStoke's drift, the difference between real Lagrangian and observed Eulerian motion, caused by propagated long-scale GWs-gravity waves in the mesosphere (Coy et al., 1986). Later this argument was discarded by Hall et al. (1992) revising the estimations of possible contribution in the downward effect caused by Stoke's drift

20 in the upper mesosphere. Their estimations revealed values smaller than 4 cm s^{-1} . As the observed mean values of the vertical motion were several times larger, the stated effect was considered deficient for understanding the full picture of dissimilarity in the observed and expected behaviour of the mean vertical motion in the polar summer mesopause.

Hoppe and Fritts (1995) proposed a possible dynamical mechanism that caused biases on the radar measurements of vertical radial velocities. They found a correlation between mean vertical velocities and backscattered echo power, spectral width and

25 the velocity uncertainties. The finding was connected to the influence of the GWs-gravity waves upward phases on the strength of the PMSE. The study argued that the presented mechanism, stated that relatively long-lasting upward motions made PMSE weaker, should lead to biases on any radar measurements of the vertical velocities. A similar effect was also found in the measurements at tropospheric altitudes (Nastrom and VanZandt, 1994).

Besides the direct observations, the estimations of the vertical wind from ground-based (Dowdy et al., 2001; Laskar et al.,

30 2017) or satellite (Fauliot et al., 1997) measurements are also available, and are consistent with expectations. Here we present the climatology of the 3D wind field retrieved from the PMSE 5-beam-radial-Doppler velocities measured from five different directions of the radar beam during two summer seasons of 2016 and 2017 at island Andoya (69.30°N, 16.04°E). The Main focus of the study is on-the estimation of statistically significant vertical wind component, which is rather important for the mesospheric climatology at polar latitudes.

35 The paper is organised as follows: next chapter reviews the wind retrieval algorithm and a short description of the measurement

technique. Main results and their discussion are available in the 3rd and 4th sections correspondingly, and we conclude our main findings at the end.

2 Measurements and wind analysis

5 During the summer months June to July 2016 and 2017 MAARSY ([Middle Atmosphere Alomar Radar System](#)) was operated running a 5 beam experiment with a vertical beam and four oblique beams pointing North, South, East and West with a 10° off-zenith angle. The experiment was designed to obtain reliable 3D wind velocities from polar mesospheric summer echoes assuming that these echoes are an inert tracer.

[MAARSY is an active phase array VHF-radar operating at 53.5 Mhz on the island of Andoya in Northern Norway.](#)

10 [The antenna consists of 433 crossed Yagis, which each is connected to its own transceiver module. The system uses a 16-channel receiver system for interferometric purposes and allows a pulse to pulse beam steering. The system has peak power of 833 kW.](#) A more detailed technical description of [MAARSY the instrument](#) be found in Latteck et al. (2012).

The recorded raw voltages were analyzed with respect to the radial velocity, Signal-to-Noise ratio (SNR) and spectral width using the truncated Gaussian fitting (Kudeki et al., 1999; Sheth et al., 2006; Chau and Kudeki, 2006; Stober et al., 2018a). The fitting routine also includes an estimate of the statistical uncertainties for the radial velocities and spectral width. Further, we perform a χ -square test to ensure that our assumptions of the fitted truncated Gaussian function holds. The optimal choice of the number of incoherent integrations is done by the analysis routine itself, based on several thousands of manually quality controlled fits, and not fixed to avoid issues with potential experiment changes due to different measurement campaigns in both seasons. Thus, the number of incoherent integrations is maximized under the condition that the smallest spectral width within PMSE still can be resolved, which was determined for MAARSY to be in the order of 0.8 m/s.

20 The beam pointing was corrected for possible deviations from the nominal beam pointing direction applying Capon radar imaging (Sommer et al., 2014, 2016). This corrections seem to be necessary to account for layering tilts and small scale structuring in the PMSE itself. Typically, the deviation from the nominal beam pointing is smaller than the MAARSY beam width of 3.6° . Similar to Stober et al. (2018a) we also remove a possible contamination due to specular meteor echoes or meteor head echoes, before we start with the wind analysis.

In the wind analysis we put our focus on the proper assessment of the measurement uncertainties given that we want to determine the 3D vector wind components with the best possible precision and accuracy. In particular, we want to address the long debate about the reliability of vertical wind measurements obtained from PMSE (Hoppe and Fritts, 1995). Sommer et al. (2016) pointed out that PMSE appears to be more homogeneous using 10 minute averaging [than at shorter periods](#). We have used such time averaging to avoid issues related to localized scattering or aspect sensitivity. The vertical resolution of the wind retrieval is set to 500 m to account for the oblique beam sampling of the 300 m range resolution of the analyzed experiments. Vector winds are obtained applying the wind retrieval applied in specular meteors outlined in Stober et al. (2018a). There is only one noticeable difference between the wind retrievals for meteor radars compared to the MAARSY. There is no need to

include a correction for the full Earth geometry, if only small off-zenith angles are used in the observations. Briefly we describe the wind analysis with a particular emphasis of the non-linear error propagation. The start is the radial wind equation~~;~~:

$$v_r(\theta, \phi) = u \cos(\phi) \sin(\theta) + v \sin(\phi) \sin(\theta) + w \cos(\theta) ,$$

here ~~is~~ v_r is the radial velocity, u, v and w are the zonal, meridional and vertical wind components ~~and~~ respectively, ϕ is azimuth angle given in mathematical coordinates (counterclockwise) with reference towards East and θ the off-zenith angle. Further, we determined the statistical uncertainty of the radial velocity from the spectral analysis Δv_{rad} . Assuming a Gaussian process, the total statistical uncertainty of the radial wind equation can be written as;

$$dv_r = \left| \frac{dv_r}{du} \right| \cdot \Delta u + \left| \frac{dv_r}{dv} \right| \cdot \Delta v + \left| \frac{dv_r}{dw} \right| \cdot \Delta w + \left| \frac{dv_r}{d\phi} \right| \cdot \Delta \phi + \left| \frac{dv_r}{d\theta} \right| \cdot \Delta \theta .$$

The Δ terms represent statistical uncertainties, which are a priori not all well-known. In particular, the statistical errors of the 3D winds are unknown and need to be estimated iteratively. The angular statistical uncertainties of ϕ and θ are ~~determined~~ estimated to be 2° ~~based on heuristic arguments~~.

In addition, similar to Stober et al. (2018a), we also apply a regularization in space and time by computing the vertical and temporal wind shear for each vector component . This is done by binning the data in space and time using a reference time and altitude grid. The vertical shear is computed from the bin above and below. A similar procedure is applied in time. If there is no measurement in one bin available due to a vanishing PMSE or at the upper and lower edges of the PMSE layer, we just use the difference between the reference bin and the available neighbors. This regularization can be considered as space-time Laplace filter.

There is another aspect that is worth to be considered related to the vertical and temporal total wind shear. The total wind shear is a good measure to account for the irregular sampling of the data compared to our reference binning. Typically, the measurement of a radial velocity did not occur exactly at our reference time and altitude for each bin. Further, the shear terms provide a physical constraint of how variable the wind field might be for a certain time and altitude, adding valuable information about the geophysical uncertainty of the observations. Each measurement within a time altitude bin is also weighted using the following expressions~~;~~:

$$\Delta_{tshear} = A_{tshear} - A_{tshear} \exp - \frac{(t_m - t_{ref})^2}{(0.5 \cdot dt_{ave})^2} \exp \left(- \frac{(t_m - t_{ref})^2}{(0.5 \cdot dt_{ave})^2} \right)$$

and for the altitude

$$\Delta_{ashear} = A_{ashear} - A_{ashear} \exp - \frac{(alt_m - alt_{ref})^2}{dh_{ave}^2} \exp \left(- \frac{(alt_m - alt_{ref})^2}{dh_{ave}^2} \right) .$$

Here ~~are~~ A_{ashear} and A_{tshear} are the vertical and temporal shear ~~amplitude~~ amplitudes (actually, difference between measured and reference grid-points), alt_m and t_m are the altitude and time of the measurement, alt_{ref} and t_{ref} are the reference time and altitude for a bin and dt_{ave} and dh_{ave} are the averaging kernels provided by the user and should be in the order of the bin widths or if oversampling is applied larger than the bin size. In this study we used an oversampling in time dt_{ave} of 20 min and

a temporal resolution of 10 min. In the vertical coordinate no oversampling is applied.

The described retrieval solves the radial wind equation using all the weights listed above iteratively. The initial guess is obtained using a least square weighted by the statistical uncertainty of the radial velocity measurement and a shear amplitude of 5 ms^{-1} , as a difference between neighbouring bins, for the temporal and vertical shear, respectively. The other weights are set to zero for the initial guess. After each iteration all weights are updated and a new solution is computed until the result doesn't show any significant change compared to the previous one. Typically 3-5 iterations are required. So far we have not set a fixed threshold for convergence.

We validated the described algorithm making use of tropospheric measurements of zonal and meridional winds gathered during a campaign in February and March 2016 with the MAARSY radar and compared these with the ECMWF (European Centre for Medium-range Weather Forecasts) data. The comparison is based on hourly data and a one kilometer vertical resolution. The correlation is as high as 0.987 for the zonal and 0.994 for the meridional wind component using all altitudes. The comparison indicates that the derived wind retrieval should be suitable to obtain reliable winds in the mesosphere as well.

3 Results

The occurrence of PMSE usually increases after mid of May, reaches relatively high visibility at the beginning of June and decreases after the end of July fading out in the second half of August (Rapp and Lübken, 2004; Latteck et al., 2008). We analysed PMSE observations with MAARSY between 1st June and 31st July of the years 2016 and 2017 and considered this time interval as a summer season in this paper. The observations are almost continuous, ~~excluding the~~ except for a gap of several days caused by a change in the radar experiment settings. The total data consists of ~~to~~ 49 days in 2016 and 57 days in 2017.

The aim of this study is mainly connected to vertical ~~motion field~~ motions, the mean climatology of the vertical ~~wind~~-velocities and the relevance of using PMSE as an inert traces to obtain neutral wind velocities. Therefore, further we use term "vertical velocity" for the retrieved vertical component of the measured Doppler velocities and finally discuss how well the observed mean vertical velocities represents the mean vertical wind at the PMSE altitudes. The term wind is used for the horizontal components. Following, we present the mean seasonal vertical velocities as a function of altitude, plotted on the left side of ~~the~~ Figure 1. Considering the velocity axis directed upward, negative values of the vertical velocity represent the downward motion, and positive corresponds to upward motion.

Weighted averages (solid red line) are characterized with different behaviour in three sections for both seasons. ~~The middle,~~ vertically ~~Vertically~~ almost invariable values, in the middle part, between 84-87 kilometre altitudes and the two outer sections with sharp decrease ~~/increase and increase~~ at the lower ~~/and~~ upper edges of the PMSE observable layer respectively.

Weighted averages are presented as $\bar{w} = \Sigma w_i x_i / \Sigma x_i$, where weights are $x_i = 1 / \Delta w^2$ and corresponding uncertainties of the averages will be $\sigma_{avg} = 1 / \sqrt{\Sigma x_i}$.

To ensure a statistical significant results, we filter the velocity measurements by PMSE occurrence. We averaged only those data at heights corresponding to the PMSE occurrence rates more than 20%. The remaining data results in average PMSE-layer

between 81.5-89.5 km altitudes in 2016 and 82-89 km in 2017 considering the indicated threshold. PMSE occurrence rate at a given altitude is a ratio of available data with PMSE, defined by a Signal-to-Noise Ratio (SNR) greater than -8 dB, to the full length of the observation time. We use this definition here and on [the](#) following plots as well. The weighted average values for the whole altitude range are -10 cms^{-1} and -7 cms^{-1} for the summers of 2016 and 2017 respectively. The simple mean values of observed vertical velocities, presented in the previous studies, were close to -20 cms^{-1} (Balsley and Riddle, 1984; Meek and Manson, 1989; Fritts et al., 1990). ~~We have also obtained similar values applying simple averaging -19 cms^{-1} downward for both observed years (dark blue curve on the figures).~~ We have also obtained similar mean values equal to downward 19 cms^{-1} for both observed years.

However, due to the full error propagation, it is possible to weight all measurements with ~~its~~ [their](#) corresponding statistical uncertainties, which is adequate as larger velocities are often associated with larger errors and should be weighted correspondingly. Thus, the further discussion and presented results are weighted averages only. The terms “mean” or “average” regarding the ~~wind-vertical~~ velocities should be understood as weighted averages.

Mean vertical velocities on Figure 1 at altitudes above 87 km are strongly upward, while below 84 km they are downward with relatively high magnitudes, ~~but~~ [with values](#) closer to zero ~~values in-between~~ [between 84 and 87 km](#). Hence, it is more consistent to discuss each of the altitude sections separately. In particular, as different physical processes related to the microphysics of the tracer are involved. We turn back to this in detail in the next section.

In spite of the seasonal mean distribution of the vertical velocities, considering the consistency of short time averages to the seasonal climatology is relevant. Daily distributions of the occurrence rates of the PMSE throughout the summer season and the altitude range between 78 and 92 km shown on the upper panels of Figure 2. The spatial distribution of the observed PMSE, as well as the seasonal occurrence, is in agreement with previous observations from the same location (Hoffmann et al., 1999; Latteck et al., 2008), which shows that the analysed two summer seasons are representative for a mean climatology.

The second panels of the Figure 2 show the colour-coded daily means of the observed vertical velocities corresponding to the occurrence of PMSE greater than 20%. ~~The main~~ [Main](#) trend of the daily mean observed vertical motion below 87 km altitude is downward ~~(negative values) and above — upward (positive values) and is upward above with negative and positive values~~ [respectively](#). However, there are days with predominantly upward (e.g. the day of the year (DoY)=173 in 2016 or DoY=183 in 2017) motion within the discussed altitude range. This contradicts the conclusion in the previous study by Hoppe and Fritts (1995) that any mean vertical velocity observed with PMSE should be biased toward downward behaviour. The tendency of relatively strong downward shape below 84 km (dark blue colours) and weaker, close to zero values between 84-87 km altitudes (indicated as whitish) are also remarkable. In this way, the summer behaviour of the vertical velocity mainly corresponds to the mean seasonal profile shown on Figure 1.

Seasonal distributions of daily mean values of zonal and meridional velocities ~~at a given altitude is over a given range of altitudes are~~ [plotted](#) on the last two panels of Figure 2, ~~correspondingly~~. Shown summer climatology for both horizontal components agree with those observed previously using meteor radars ~~(Dowdy et al., 2007; Jacobi, 2011; Wilhelm et al., 2017)~~ [\(Dowdy et al., 2007; Portnyagin et al., 2004; Wilhelm et al., 2017\)](#). In particular, the zonal wind shows a well-defined westward directed (here, negative values) and increasing in magnitude at the lower altitudes. The meridional wind component

tends to be equator-ward (also negative values) but is weaker in magnitude than the zonal one. An expected tendency of seasonal behaviour is outlined, on the whole; however, the zonal wind reversal at the PMSE upper altitudes is rarely observed.

Figure 3 shows diurnal values of PMSE occurrence (upper panels) and PMSE velocity components – vertical, zonal and meridional respectively, on the second, third and lower panels of the figure, but averaged as a function of universal time (UT) and altitude. The half-hour temporal bins, with 10-minute time-step, are used to average all available velocity components at a given altitude.

We calculate the mean diurnal occurrence of the PMSE in the same way but looking to the ratio of all available PMSE (SNR > 8 dB) within the given 30 minutes of each observed day to the full length of the measurements. The results are plotted on the upper panel on the Figure 3. The black contour line indicates the PMSE occurrence equal to 20%.

A significant increase in PMSE occurrence is observed during UT 12:00 – 16:00 and a secondary peak is also noticeable in the early morning hours for both years. The similar behaviour of the PMSE occurrence was also reported in previous studies and was connected to the semidiurnal tidal variations (Hoffmann et al., 1999) but the diurnal production/reduction of electron densities is important too. Semidiurnal tidal behaviour is also significant in the horizontal wind components shown on the lower two panels of Figure 3. However, the vertical velocity component (second panel) does not show any clear dependence neither on the UT period nor on the PMSE strength as well. There are weak upward behaviour highlighted shortly at 6:00 UT for 2016 and after 9:00 UT for 2017 around 85 km altitude, but the velocity values are mainly in good agreement with the mean seasonal profile.

We examined the mean vertical velocity dependence on PMSE strength as well as on the universal time. The results show that the mean value of the vertical velocity and its altitude behaviour is not dependent on both mentioned parameters. Second and last columns of Figure 4 show 2D histograms as a function of the PMSE/SNR and vertical wind-velocity for years 2016 and 2017 respectively. Typically we observe a symmetric Gaussian-like distribution is symmetrical for most of the PMSE strength values except some extreme cases where they are statistically sparse. The mean vertical profiles of vertical velocities shown on the left panels to the histograms correspond to the three separate intervals of PMSE strength. The lower correspond to PMSE with SNR larger than -8 dB but lower than 5 dB; middle plots are done for velocities corresponding PMSE/SNR between 5 and 20 dB and the upper plots - to PMSE/SNR more than 20 dB. The behaviour of mean vertical velocity profile averaged at high PMSE values for summer 2017 is unlike to all others because of lack of the relatively strong PMSEs during summer 2017. The difference is insignificant for the all other cases. No correlation between mean vertical velocity and PMSE strength is found, unlike previous reports based on several hours of measurements.

4 Discussion

Outcomes from a given tracer indeed depend on its occurrence the occurrence of given tracer. Results obtained from a tracer are acceptable if it appears randomly but not in certain circumstances associated with a target parameter. but not only in the certain circumstances associated with a background conditions. The reason of discrepancy of vertical velocity measure-

ments in PMSE compared to the predictions from global circulation models ~~seemed to have~~ has been explained by Hoppe and Fritts (1995), who argued the influence of background dynamics on appearance of PMSEs resulted in a bias on all measurements of vertical motion with radars. We discuss presented mechanism first and return to our findings later.

Hoppe and Fritts (1995) proposed a mechanism for the observed bias on the mean downward PMSE vertical velocity based on analysis of the five hours PMSE (EISCAT - European Incoherent SCATter) radar measurements of the vertical beam radial velocity. They found that upward velocities ~~preserved~~ continued more than 10 minutes led to increasing the variance of the motion field and tended ~~the weaken PMSESNR to weaken~~ PMSE. They concluded that ~~downward the~~ the downward biases in PMSE mean vertical velocities is due to GW-gravity wave increasing the turbulence after certain (upward) phase of the vertical motion field and made PMSE appearing weaker. The mean downward vertical velocities therefore correlated to the larger measurement uncertainties and variances in the low-pass filtered vertical motion field.

Large spectral width is usually an indicator of the strength of turbulence. The increase of variances of the radar Doppler velocities and measurement uncertainties is expected while observing the stronger turbulent air. The weakening of PMSE at the large spectral width conditions is also known from the literature (Stober et al., 2018b; Chau et al., 2018). Hence, the explained mechanism of downward bias in PMSE vertical velocity is realistic. The question that remains is on how systematic the described process is, and how far it affects the seasonal climatology.

We investigated the correlation of the retrieved mean vertical wind-velocity component on their statistical uncertainties for the summer seasons of both discussed years. The available data allows us to repeat only such correlation because of the difference in time resolution of datasets. The results are shown on the Figure 5. The histograms on the upper panels represent the distribution of measurement uncertainties Δw . The blue circles on the lower plots correspond to the vertical wind-velocity mean values for only those measurements which uncertainties are in the range marked out by horizontal solid lines. ~~Each "sections" of uncertainties corresponds to the relatively same amount of data-points. The red circles show mean vertical values corresponding to all those uncertainties lower than a given point~~ Each "section" of uncertainties corresponds to the same amount of data-points. The red circles show mean of those vertical velocities corresponding to uncertainties lower than a given threshold. Therefore, Figure 5 is the analogy of the Figure 4 in Hoppe and Fritts (1995).

The result ~~shows the~~ is opposite to those found by Hoppe and Fritts (1995). Later we examined the resembling correlations concerning each available 6-hour sections. Only for a few cases, as shown by Hoppe and Fritts (1995), with a positive correlation between mean downward values and uncertainties, were found. Figure 6 shows such examples for both years. Following our results, we can summarise that the comprehensible dynamical process obtained from the relatively short period of observations can represent the localised event, but is might not be representative to explain the climatology of vertical motion observed in PMSE.

The time resolution of our dataset does not allow us to reexamine the mean vertical velocities as a function of variances on short-time scale motions. Nevertheless, to ~~enforce~~ support our argument, we refer to the Figure 4. No clear evidence of ~~the~~ dependence of vertical velocity distribution on PMSE strength ~~available is~~ available from the seasonal 2D histograms. However, the results of the ~~mean~~ vertical profiles of ~~the~~ mean vertical velocity corresponding to different strength range of PMSE are almost equal. The magnitude of mean downward values slightly change at lower altitudes and middle strength of PMSE,

but does not at the ~~centroid-heights-central altitudes~~ (84-87 km) of the PMSE occurrence, except those for SNR>20 dB during the year 2017. This particular case is due to ~~the~~-small amount of the data-points. In general, the PMSE in 2017 characterises weaker occurrence than during 2016 (upper pannels of Figure 2 and Figure 3). We show that the seasonal climatology of the mean vertical velocities retrieved from PMSE is not an evident function of the PMSE ~~Strength~~strength.

5 Figure 1 clearly shows the three well-developed sections of the mean vertical profile of the vertical velocity at PMSE altitudes. The central sections are downward but close to the zero values with mean equal to -7 and -2 cms^{-1} in 2016 and 2017 respectively between 84-87 km altitudes. Thus discussing the influence of sedimentation speed of ice particles on the measurements of PMSE radial velocities become substantial. The appearance of ice crystals with a charge attached to them is determinative to ~~slow-down-reduced~~ electron diffusivity and create radar backscatter in the presence of turbulence. Further, the ice particles are
 10 much heavier than the ambient atmosphere, and they ~~sediment-down-due-to-the-gravity~~sediment due to gravity. Such motion affects the vertical velocity measurements eventually. According to the present knowledge of the mesospheric ice physics, those particles can be created at PMSE altitudes where the atmospheric temperature can reach below the frost point (Lübken and von Zahn, 1991; Lübken, 1999; Rapp and Lübken, 2004) for the typical mixing ratios of the water vapour (Garcia, 1989). Ice particles are sedimenting slowly downward. The sedimentation velocity depends on size and shape of the particles as well
 15 as the ambient atmospheric density. We now discuss the possibility to use PMSE as an inert tracer to obtain realistic vertical velocities in the summer mesosphere but not ~~pretending-presenting~~ the quantitative analysis here. Hence, we take into account the idealised case, when ice crystals have a spherical form. Following Reid (1975) the falling velocity of such ice particles is:

$$v_{ice} = \frac{\rho g r}{2n} \left(\frac{\pi}{2mkT} \right)^{\frac{1}{2}} \quad (1)$$

Where ρ is the density, and r is the radii of the falling sphere, g is the acceleration due to gravity, n is the number density and T
 20 - absolute temperature of the air, k - Boltzmann's constant, m is a mass of the air molecules. Mean summer air number density and temperature profiles are taken from the NRL-MSISE00 model (Picone et al., 2002) for summer 2016 and applied for both discussed years due to the availability of model outputs. The mean mass of the molecule is calculated as a weighted mass based on the densities of main constituents ([O], [O₂], [N₂]) at the mesospheric altitudes. We use 910kgm^{-3} as the ice mass density, ρ . We consider two scenarios of the radii r distribution. One, following Berger and Lübken (2015) who modelled the
 25 ice formation and growing to derive the expected particle sizes at different altitudes. It results from 5 to 35 nm ice spheres from 90 down to 82 km altitude range and a rapid decrease to a few nanometers at the lower altitudes. Observations sometimes show the NLC with the ice particles in 100 nm (von Cossart et al., 1999). Therefore the second scenario considers the extreme size distribution of ice grains from 10 to 100 nm at the above mentioned altitudes.

The results are plotted in light blue colour on the Figure 1 (all panels) as the solid and dashed lines corresponding to the first
 30 and second scenarios. Green solid and dashed lines on the same plots represent the corrected observed mean velocities (red curve) after eliminating the influence by ice falling speed (e.g. $\bar{w} - v_{ice}$). The resulted velocities became upward for both years after excluding the effect from the ice descend with expected magnitudes in range of few cms^{-1} at the discussing altitudes of high PMSE occurrence (84-87 km). We argue that this result can be understood as a clear evidence of direct observation of the mean upwelling in the summer mesosphere. Also PMSE can be discussed as an inert tracer for the vertical neutral wind but

only at the certain altitudes.

~~We should notice that parameters of the ambient atmosphere taken from the NRL-MSISE00 model corresponds to summer 2016 and applied for both discussed years due to the availability of model outputs.~~

In the previous section, we have proposed the relevance of discussing the observed/retrieved vertical velocities separately at the middle and outer altitudes of PMSE occurrence. The evidence of the sharp increase ~~/and~~ decrease of the summer mean vertical velocity at the edges above 87km and below 84 km on the Figure 1 should have a separate explanation.

The vertical motion activity in the region as well as in the atmosphere can be a result of wave propagation, created turbulence due to shear instability ~~or after breaking of GWs,~~ or a result of gravity wave breaking (Hecht et al., 2000). Such disturbances indeed transport air masses on the corresponding scales. Relatively large-scale motions are usually accompanied with short-scale wave processes. The effect of the ambient air motion on the PMSE are widely observed and can be explained as following of ice clouds to the atmospheric behaviour.

A typical day as an example of PMSE temporal behaviour is shown ~~on the in~~ Figure 7. Static ground-based measurements are not capable ~~to observe of observing~~ intrinsic motion but look in the specific fixed volume in the atmosphere. Hence, the horizontal transport of the tracer is also essential to describe the observed vertical fluctuations. The large-scale ~~GWs~~ gravity waves generated and transported from the lower altitudes have a characteristic vertical wavelength of 15-20 km at upper mesospheric altitudes (Mitchell and Howells, 1998; Schmidt et al., 2018). Up- or downwelling phase of such motion exceeds the width of PMSE layer and are capable to transport air masses from lower or upper heights where the ice clouds and PMSE are not present.

We plot the idealised sinusoidal wave sketch ~~on in~~ Figure 7 as the black dashed line. The beginning phase at 01:00 – 05:00 UT corresponds to the ~~downwelling downward motions~~ and PMSE structures follow the air to the lower altitudes. There they disappear due to melting, sublimation, or horizontal advection which moves in air masses without PMSE. The measured Doppler velocities are only available as long as the radar detects ~~an echo. Uprising phase of a the echo. The uprising phase of the~~ vertical component of a propagating wave starts after 05:00 UT (~~on for the~~ given example) ~~and as air is depleted of PMSE at lower altitudes,~~ and, due to the missing PMSE at the lower altitudes, the evidence of upward vertical ~~velocities motions~~ are underrepresented in the measurements. Following the progress ~~in time and space, horizontal transport plays a role again and contributes the PMSE structures in the radar field of view. The vertical velocities are available again on,~~ the temporal evolution shows that horizontal transport is important as later PMSE is advected again into the observed volume. However, at the central altitudes of ~~PMSE layer~~ the PMSE layer it was again possible to obtain vertical velocities.

The similar but opposite picture in respect ~~of to the~~ motion direction is evident at the upper edge (close and after 10:00 UT on Figure 7). Finally, the number of data points with downward motions are dominant at the lower altitudes, and correspondingly there is an excess of upward velocity measurements at the upper/top heights. The effect is more evident when the distance from the PMSE central altitudes is considered. Here we proposed a geophysical explanation of the sharp trends at the edges of the vertical profile of the mean vertical velocity retrieved from five-beam PMSE Doppler velocities.

5 Conclusions

We present a climatology of PMSE (Polar Mesospheric Summer Echo) mean vertical velocities at polar mesospheric altitudes for two summer seasons. The main objective of this study was a detailed analysis and understanding of these velocities, since previous studies have shown that they are not in agreement with the expected upwelling ~~at the MLT in the~~ Mesosphere-Lower-Thermosphere due to the residual circulation.

Our results indicate that continuous 3D wind measurements are necessary to derive a mean vertical motion in the MLT from PMSE observations. PMSE can be considered as an inert, but not as a passive tracer. As a result reliable climatologies are only obtained at altitudes with a 24-hour PMSE coverage. Further, we have to consider, that the charged aerosols inside the PMSE reduce the electron diffusivity and are basically sedimenting with the ice particles. Taking into account such expected sedimentation speeds, the weighted mean vertical velocity in the central ~~altitudinal~~ region of PMSE altitudes (i.e., 84-87 km) shows a small upward motion. Such upward motion is in agreement to what predicted and expected for the polar summer mesosphere.

However, at the upper and lower ~~altitudinal~~ edges of PMSE layer, the weighted mean vertical velocities show unexpected behavior. They tend to be up/down-ward at upper/lower edges. We proposed that this behavior is due to the non-uniform appearance of PMSEs in altitude and time. For example, an upward velocity is not picked up by the measurements at the lower altitudes, since no PMSE can be advected from below the PMSE layer, while during downward motion, PMSE is basically advected from the altitudes above and the tracer disappears merely after melting the remaining ice ~~clouds~~ particles. A reversed effect occurs on the upper edge of the layer. Horizontal advection of PMSE plays an important role at the middle altitudes where's the ratio of up and downward measurements becomes independent on the phase of vertical motion field.

We also examined the possible biases on the PMSE vertical velocity measurements from certain phases of short-period gravity waves ~~earlier~~ previously proposed by Hoppe and Fritts (1995). Based on the statistical analysis of the available long ~~dataset~~ data-set we found that the mean behaviour of PMSE vertical velocity does not depend on the PMSE brightness at altitudes between 84-87 km, where we found a sufficient high occurrence rate. No positive correlation between downward velocities and velocity uncertainties were found as well. We argue that the results of short-time measurements cannot be extrapolated to a climatological behaviour.

Data availability. Contact G. Stober for MAARSY PMSE wind data (stober@iap-kborn.de).

Author contributions. All authors contributed to the editing of the paper. N. Gudadze provided the data analysis. The raw data was processed by G. Stober and is available upon request. The work is supervised by Prof. J.L. Chau.

Competing interests. The authors declare that they have no conflict of interest

Acknowledgements. ~~This~~ Authors acknowledge helpful discussion with Gerd Baumgarten. The work was supported by the WATILA Project (SAW-2015-IAP-1). Authors thank two anonymous reviewers for their help to improve the manuscript.

References

- Balsley, B. B. and Riddle, A. C.: Monthly Mean Values of the Mesospheric Wind Field over Poker Flat, Alaska, *Journal of the Atmospheric Sciences*, 41, 2368–2380, [https://doi.org/10.1175/1520-0469\(1984\)041<2368:MMVOTM>2.0.CO;2](https://doi.org/10.1175/1520-0469(1984)041<2368:MMVOTM>2.0.CO;2), [https://doi.org/10.1175/1520-0469\(1984\)041<2368:MMVOTM>2.0.CO;2](https://doi.org/10.1175/1520-0469(1984)041<2368:MMVOTM>2.0.CO;2), 1984.
- 5 Baumgarten, G. and Fritts, D. C.: Quantifying Kelvin-Helmholtz instability dynamics observed in noctilucent clouds: 1. Methods and observations, *Journal of Geophysical Research: Atmospheres*, 119, 9324–9337, <https://doi.org/10.1002/2014JD021832>, <https://agupubs.onlinelibrary.wiley.com/doi/abs/10.1002/2014JD021832>, 2014.
- Becker, E.: Dynamical Control of the Middle Atmosphere, *Space Science Reviews*, 168, 283–314, <https://doi.org/10.1007/s11214-011-9841-5>, <http://dx.doi.org/10.1007/s11214-011-9841-5>, 2012.
- 10 Berger, U. and Lübken, F.-J.: Trends in mesospheric ice layers in the Northern Hemisphere during 1961 - 2013, *J. Geophys. Res.*, <https://doi.org/10.1002/2015JD023355>, 2015.
- Chau, J. L. and Kudeki, E.: First E- and D-region incoherent scatter spectra observed over Jicamarca, *Annales Geophysicae*, 24, 1295–1303, <https://doi.org/10.5194/angeo-24-1295-2006>, <http://www.ann-geophys.net/24/1295/2006/>, 2006.
- Chau, J. L., McKay, D., Vierinen, J. P., La Hoz, C., Ulich, T., Lehtinen, M., and Latteck, R.: Multi-static spatial and angular studies of polar mesospheric summer echoes combining MAARSY and KAIRA, *Atmospheric Chemistry and Physics*, 18, 9547–9560, <https://doi.org/10.5194/acp-18-9547-2018>, <https://www.atmos-chem-phys.net/18/9547/2018/>, 2018.
- 15 Cho, J. Y. N. and Röttger, J.: An updated review of polar mesosphere summer echoes: Observation, theory, and their relationship to noctilucent clouds and subvisible aerosols, *Journal of Geophysical Research: Atmospheres*, 102, 2001–2020, <https://doi.org/10.1029/96JD02030>, <https://agupubs.onlinelibrary.wiley.com/doi/abs/10.1029/96JD02030>, 1997.
- 20 Coy, L., Fritts, D. C., and Weinstock, J.: The Stokes Drift due to Vertically Propagating Internal Gravity Waves in a Compressible Atmosphere, *Journal of the Atmospheric Sciences*, 43, 2636–2643, [https://doi.org/10.1175/1520-0469\(1986\)043<2636:TSDDTV>2.0.CO;2](https://doi.org/10.1175/1520-0469(1986)043<2636:TSDDTV>2.0.CO;2), [https://doi.org/10.1175/1520-0469\(1986\)043<2636:TSDDTV>2.0.CO;2](https://doi.org/10.1175/1520-0469(1986)043<2636:TSDDTV>2.0.CO;2), 1986.
- Czechowsky, P. and Rüster, R.: VHF radar observations of turbulent structures in the polar mesopause region, *Annales Geophysicae*, 15, 1028–1036, <https://doi.org/10.1007/s00585-997-1028-8>, <https://doi.org/10.1007/s00585-997-1028-8>, 1997.
- 25 Czechowsky, P., Rüster, R., and Schmidt, G.: Variations of mesospheric structures in different seasons, *Geophysical Research Letters*, 6, 459–462, <https://doi.org/10.1029/GL006i006p00459>, 1979.
- Dowdy, A., Vincent, R. A., Igarashi, K., Murayama, Y., and Murphy, D. J.: A comparison of mean winds and gravity wave activity in the northern and southern polar MLT, *Geophysical Research Letters*, 28, 1475–1478, <https://doi.org/10.1029/2000GL012576>, <https://agupubs.onlinelibrary.wiley.com/doi/abs/10.1029/2000GL012576>, 2001.
- 30 Dowdy, A. J., Vincent, R. A., Tsutsumi, M., Igarashi, K., Murayama, Y., Singer, W., and Murphy, D. J.: Polar mesosphere and lower thermosphere dynamics: 1. Mean wind and gravity wave climatologies, *Journal of Geophysical Research: Atmospheres*, 112, <https://doi.org/10.1029/2006JD008126>, 2007.
- Ecklund, W. L. and Balsley, B. B.: Long-term observations of the Arctic mesosphere with the MST radar at Poker Flat, Alaska, *Journal of Geophysical Research: Space Physics*, 86, 7775–7780, <https://doi.org/10.1029/JA086iA09p07775>, <https://agupubs.onlinelibrary.wiley.com/doi/abs/10.1029/JA086iA09p07775>, 1981.
- 35

- Fauliot, V., Thuillier, G., and Vial, F.: Mean vertical wind in the mesosphere-lower thermosphere region (80–120 km) deduced from the WINDII observations on board UARS, *Annales Geophysicae*, 15, 1221–1231, <https://doi.org/10.1007/s00585-997-1221-9>, <https://doi.org/10.1007/s00585-997-1221-9>, 1997.
- Fiedler, J., Baumgarten, G., Berger, U., Hoffmann, P., Kaifler, N., and Lübken, F.-J.: NLC and the background atmosphere above ALOMAR, *Atmospheric Chemistry and Physics*, 11, 5701–5717, <https://doi.org/10.5194/acp-11-5701-2011>, <https://www.atmos-chem-phys.net/11/5701/2011/>, 2011.
- Fritts, D., Hoppe, U.-P., and Inhester, B.: A study of the vertical motion field near the high-latitude summer mesopause during MAC/SINE, *Journal of Atmospheric and Terrestrial Physics*, 52, 927 – 938, [https://doi.org/https://doi.org/10.1016/0021-9169\(90\)90025-I](https://doi.org/https://doi.org/10.1016/0021-9169(90)90025-I), <http://www.sciencedirect.com/science/article/pii/002191699090025I>, middle atmosphere dynamics at high latitudes, 1990.
- 10 Fritts, D. C., Baumgarten, G., Wan, K., Werne, J., and Lund, T.: Quantifying Kelvin-Helmholtz instability dynamics observed in noctilucent clouds: 2. Modeling and interpretation of observations, *Journal of Geophysical Research: Atmospheres*, 119, 9359–9375, <https://doi.org/10.1002/2014JD021833>, <https://agupubs.onlinelibrary.wiley.com/doi/abs/10.1002/2014JD021833>, 2014.
- Garcia, R. R.: Dynamics, Radiation, and Photochemistry in the Mesosphere: Implications for the Formation of Noctilucent Clouds, *J. Geophys. Res.*, 94, 14, 605–14, 615, 1989.
- 15 Garcia, R. R. and Solomon, S.: The effect of breaking gravity waves on the dynamics and chemical composition of the mesosphere and lower thermosphere, *Journal of Geophysical Research: Atmospheres*, 90, 3850–3868, <https://doi.org/10.1029/JD090iD02p03850>, <http://dx.doi.org/10.1029/JD090iD02p03850>, 1985.
- Gerding, M., Zöllner, J., Zecha, M., Baumgarten, K., Höffner, J., Stober, G., and Lübken, F.-J.: Simultaneous observations of NLC and MSE at midlatitudes: Implications for formation and advection of ice particles, *Atmospheric Chemistry and Physics Discussions*, 2018, 1–16, <https://doi.org/10.5194/acp-2018-566>, <https://www.atmos-chem-phys-discuss.net/acp-2018-566/>, 2018.
- 20 Hall, T. M., Cho, J. Y. N., Kelley, M. C., and Hocking, W. K.: A re-evaluation of the Stokes drift in the polar summer mesosphere, *Journal of Geophysical Research: Atmospheres*, 97, 887–897, <https://doi.org/10.1029/91JD02835>, <https://agupubs.onlinelibrary.wiley.com/doi/abs/10.1029/91JD02835>, 1992.
- Hecht, J. H., Fricke-Begemann, C., Walterscheid, R. L., and Höffner, J.: Observations of the breakdown of an atmospheric gravity wave near the cold summer mesopause at 54N, *Geophysical Research Letters*, 27, 879–882, <https://doi.org/10.1029/1999GL010792>, <http://dx.doi.org/10.1029/1999GL010792>, 2000.
- Hervig, M. E., Gerding, M., Stevens, M. H., Stockwell, R., Bailey, S. M., Russell, J. M., and Stober, G.: Mid-latitude mesospheric clouds and their environment from SOFIE observations, *Journal of Atmospheric and Solar-Terrestrial Physics*, 149, 1 – 14, <https://doi.org/https://doi.org/10.1016/j.jastp.2016.09.004>, <http://www.sciencedirect.com/science/article/pii/S1364682616302395>, 2016.
- 30 Hoffmann, P., Singer, W., and Bremer, J.: Mean seasonal and diurnal variations of PMSE and winds from 4 years of radar observations at ALOMAR, *Geophys. Res. Lett.*, 26, 1525–1528, 1999.
- Holton, J. R.: The role of gravity wave induced drag and diffusion in the momentum budget of the mesosphere, *J. Atmos. Sci.*, 39, 791–799, [https://doi.org/10.1175/1520-0469\(1982\)039<0791:TROGWI>2.0.CO;2](https://doi.org/10.1175/1520-0469(1982)039<0791:TROGWI>2.0.CO;2), 1982.
- Holton, J. R. and Alexander, M. J.: The Role of Waves in the Transport Circulation of the Middle Atmosphere, pp. 21–35, *American Geophysical Union (AGU)*, <https://doi.org/10.1029/GM123p0021>, <https://agupubs.onlinelibrary.wiley.com/doi/abs/10.1029/GM123p0021>, 2013.
- 35 Hoppe, U.-P. and Fritts, D. C.: On the downward bias in vertical velocity measurements by VHF radars, *Geophys. Res. Lett.*, 22, 619–622, <https://doi.org/10.1029/95GL00165>, 1995.

- Kiliani, J., Baumgarten, G., Lübken, F.-J., Berger, U., and Hoffmann, P.: Temporal and spatial characteristics of the formation of strong noctilucent clouds, *Journal of Atmospheric and Solar-Terrestrial Physics*, 104, 151 – 166, <https://doi.org/https://doi.org/10.1016/j.jastp.2013.01.005>, <http://www.sciencedirect.com/science/article/pii/S1364682613000291>, 2013.
- 5 Kirkwood, S., Nilsson, H., Morris, R. J., Klekociuk, A. R., Holdsworth, D. A., and Mitchell, N. J.: A new height for the summer mesopause: Antarctica, December 2007, *Geophysical Research Letters*, 35, <https://doi.org/10.1029/2008GL035915>, <https://agupubs.onlinelibrary.wiley.com/doi/abs/10.1029/2008GL035915>, 2008.
- Kudeki, E., Bhattacharyya, S., and Woodman, R. F.: A new approach in incoherent scatter F region $E \times B$ drift measurements at Jicamarca, *Journal of Geophysical Research: Space Physics*, 104, 28 145–28 162, <https://doi.org/10.1029/1998JA900110>, <http://dx.doi.org/10.1029/1998JA900110>, 1999.
- 10 Laskar, F. I., Chau, J. L., St.-Maurice, J. P., Stober, G., Hall, C. M., Tsutsumi, M., Höffner, J., and Hoffmann, P.: Experimental Evidence of Arctic Summer Mesospheric Upwelling and Its Connection to Cold Summer Mesopause, *Geophysical Research Letters*, 44, 9151–9158, <https://doi.org/10.1002/2017GL074759>, <https://agupubs.onlinelibrary.wiley.com/doi/abs/10.1002/2017GL074759>, 2017.
- Latteck, R., Singer, W., Morris, R. J., Hocking, W. K., Murphy, D. J., Holdsworth, D. A., and Swarnalingam, N.: Similarities and differences
15 in polar mesosphere summer echoes observed in the Arctic and Antarctica, *Ann. Geophys.*, 26, 2795–2806, 2008.
- Latteck, R., Singer, W., Rapp, M., Vandeppeer, B., Renkowitz, T., Zecha, M., and Stober, G.: MAARSY: The new MST radar on Andøya - System description and first results, *Radio Science*, 47, <https://doi.org/10.1029/2011RS004775>, <http://dx.doi.org/10.1029/2011RS004775>, 2012.
- Lindzen, R. S.: Turbulence and Stress Owing to Gravity Wave and Tidal Breakdown, *J. Geophys. Res.*, 86, 9707–9714, 1981.
- 20 Lübken, F.-J.: Thermal structure of the Arctic summer mesosphere, *Journal of Geophysical Research: Atmospheres*, 104, 9135–9149, <https://doi.org/10.1029/1999JD900076>, <http://dx.doi.org/10.1029/1999JD900076>, 1999.
- Lübken, F.-J. and von Zahn, U.: Thermal structure of the mesopause region at polar latitudes, *J. Geophys. Res.*, 96, 20, 841–20, 857, 1991.
- Meek, C. E. and Manson, A. H.: Vertical Motions in the Upper Middle Atmosphere from the Saskatoon (52°N, 107°W) M.F. Radar, *Journal of the Atmospheric Sciences*, 46, 849–859, [https://doi.org/10.1175/1520-0469\(1989\)046<0849:VMITUM>2.0.CO;2](https://doi.org/10.1175/1520-0469(1989)046<0849:VMITUM>2.0.CO;2), [https://doi.org/10.1175/1520-0469\(1989\)046<0849:VMITUM>2.0.CO;2](https://doi.org/10.1175/1520-0469(1989)046<0849:VMITUM>2.0.CO;2), 1989.
- 25 Mitchell, N. J. and Howells, V. S. C.: Vertical velocities associated with gravity waves measured in the mesosphere and lower thermosphere with the EISCAT VHF radar, *Annales Geophysicae*, 16, 1367–1379, <https://doi.org/10.1007/s00585-998-1367-0>, <https://doi.org/10.1007/s00585-998-1367-0>, 1998.
- Nastrom, G. D. and VanZandt, T. E.: Mean Vertical Motions Seen by Radar Wind Profilers, *Journal of Applied Meteorology*, 33, 984–995, [https://doi.org/10.1175/1520-0450\(1994\)033<0984:MVMSBR>2.0.CO;2](https://doi.org/10.1175/1520-0450(1994)033<0984:MVMSBR>2.0.CO;2), [https://doi.org/10.1175/1520-0450\(1994\)033<0984:MVMSBR>2.0.CO;2](https://doi.org/10.1175/1520-0450(1994)033<0984:MVMSBR>2.0.CO;2), 1994.
- 30 Picone, J. M., Hedin, A. E., Drob, D. P., and Aikin, A. C.: NRLMSISE-00 empirical model of the atmosphere: Statistical comparisons and scientific issues, *Journal of Geophysical Research: Space Physics*, 107, SIA 15–1–SIA 15–16, <https://doi.org/10.1029/2002JA009430>, <http://dx.doi.org/10.1029/2002JA009430>, 1468, 2002.
- 35 Portnyagin, Y., Solovjova, T., Merzlyakov, E., Forbes, J., Palo, S., Ortland, D., Hocking, W., MacDougall, J., Thayaparan, T., Manson, A., Meek, C., Hoffmann, P., Singer, W., Mitchell, N., Pancheva, D., Igarashi, K., Murayama, Y., Jacobi, C., Kuerschner, D., Fahrutdinova, A., Korotyshkin, D., Clark, R., Taylor, M., Franke, S., Fritts, D., Tsuda, T., Nakamura, T., Gurubaran, S., Rajaram, R., Vincent, R., Kovalam, S., Batista, P., Poole, G., Malinga, S., Fraser, G., Murphy, D., Riggin, D., Aso, T., and Tsutsumi, M.: Mesosphere/lower thermosphere

- prevailing wind model, *Advances in Space Research*, 34, 1755 – 1762, <https://doi.org/https://doi.org/10.1016/j.asr.2003.04.058>, <http://www.sciencedirect.com/science/article/pii/S0273117704001486>, planetary Ionospheres and Atmospheres Including CIRA, 2004.
- Rapp, M. and Lübken, F.-J.: Polar mesosphere summer echoes (PMSE): Review of observations and current understanding, *Atmospheric Chemistry and Physics*, 4, 2601–2633, <https://doi.org/10.5194/acp-4-2601-2004>, <http://www.atmos-chem-phys.net/4/2601/2004/>, 2004.
- 5 Rapp, M., Strelnikova, I., Latteck, R., Hoffmann, P., Hoppe, U.-P., Häggström, I., and Rietveld, M. T.: Polar mesosphere summer echoes (PMSE) studied at Bragg wavelengths of 2.8m, 67cm, and 16cm, *Journal of Atmospheric and Solar-Terrestrial Physics*, 70, 947 – 961, <https://doi.org/https://doi.org/10.1016/j.jastp.2007.11.005>, <http://www.sciencedirect.com/science/article/pii/S1364682607004038>, 2008.
- Reid, G. C.: Ice clouds at the summer polar mesopause, *J. Atmos. Sci.*, 32, 523–535, [https://doi.org/10.1175/1520-0469\(1975\)032<0523:ICATSP>2.0.CO;2](https://doi.org/10.1175/1520-0469(1975)032<0523:ICATSP>2.0.CO;2), 1975.
- 10 Schmidt, C., Dunker, T., Lichtenstern, S., Scheer, J., Wüst, S., Hoppe, U.-P., and Bittner, M.: Derivation of vertical wavelengths of gravity waves in the MLT-region from multispectral airglow observations, *Journal of Atmospheric and Solar-Terrestrial Physics*, 173, 119 – 127, <https://doi.org/https://doi.org/10.1016/j.jastp.2018.03.002>, <http://www.sciencedirect.com/science/article/pii/S1364682617305576>, 2018.
- Sheth, R., Kudeki, E., Lehmacher, G., Sarango, M., Woodman, R., Chau, J., Guo, L., and Reyes, P.: A high-resolution study of mesospheric fine structure with the Jicamarca MST radar, *Annales Geophysicae*, 24, 1281–1293, <https://doi.org/10.5194/angeo-24-1281-2006>, <http://www.ann-geophys.net/24/1281/2006/>, 2006.
- 15 Smith, A.: Global Dynamics of the MLT, *Surveys in Geophysics*, 33, 1177–1230, <https://doi.org/10.1007/s10712-012-9196-9>, <http://dx.doi.org/10.1007/s10712-012-9196-9>, 2012.
- Sommer, S., Stober, G., Chau, J. L., and Latteck, R.: Geometric considerations of polar mesospheric summer echoes in tilted beams using coherent radar imaging, *Advances in Radio Science*, 12, 197–203, <https://doi.org/10.5194/ars-12-197-2014>, <http://www.adv-radio-sci.net/12/197/2014/>, 2014.
- 20 Sommer, S., Stober, G., and Chau, J. L.: On the angular dependence and scattering model of polar mesospheric summer echoes at VHF, *Journal of Geophysical Research: Atmospheres*, 121, 278–288, <https://doi.org/10.1002/2015JD023518>, <http://dx.doi.org/10.1002/2015JD023518>, 2015JD023518, 2016.
- Stober, G., Sommer, S., Rapp, M., and Latteck, R.: Investigation of gravity waves using horizontally resolved radial velocity measurements, *Atmospheric Measurement Techniques*, 6, 2893 – 2905, <https://doi.org/10.5194/amt-6-2893-2013>, <http://www.atmos-meas-tech.net/6/2893/2013/>, 2013.
- 25 Stober, G., Chau, J. L., Vierinen, J., Jacobi, C., and Wilhelm, S.: Retrieving horizontally resolved wind fields using multi-static meteor radar observations, *Atmospheric Measurement Techniques Discussions*, 2018, 1–25, <https://doi.org/10.5194/amt-2018-93>, <https://www.atmos-meas-tech-discuss.net/amt-2018-93/>, 2018a.
- 30 Stober, G., Sommer, S., Schult, C., Latteck, R., and Chau, J. L.: Observation of Kelvin-Helmholtz instabilities and gravity waves in the summer mesopause above Andenes in Northern Norway, *Atmospheric Chemistry and Physics*, 18, 6721–6732, <https://doi.org/10.5194/acp-18-6721-2018>, <https://www.atmos-chem-phys.net/18/6721/2018/>, 2018b.
- von Cossart, G., Fiedler, J., and von Zahn, U.: Size distributions of NLC particles as determined from 3-color observations of NLC by ground-based lidar, *Geophysical Research Letters*, 26, 1513–1516, <https://doi.org/10.1029/1999GL900226>, <https://agupubs.onlinelibrary.wiley.com/doi/abs/10.1029/1999GL900226>, 1999.
- 35 Wilhelm, S., Stober, G., and Chau, J. L.: A comparison of 11-year mesospheric and lower thermospheric winds determined by meteor and MF radar at 69° N, *Annales Geophysicae*, 35, 893–906, <https://doi.org/10.5194/angeo-35-893-2017>, <https://www.ann-geophys.net/35/893/2017/>, 2017.

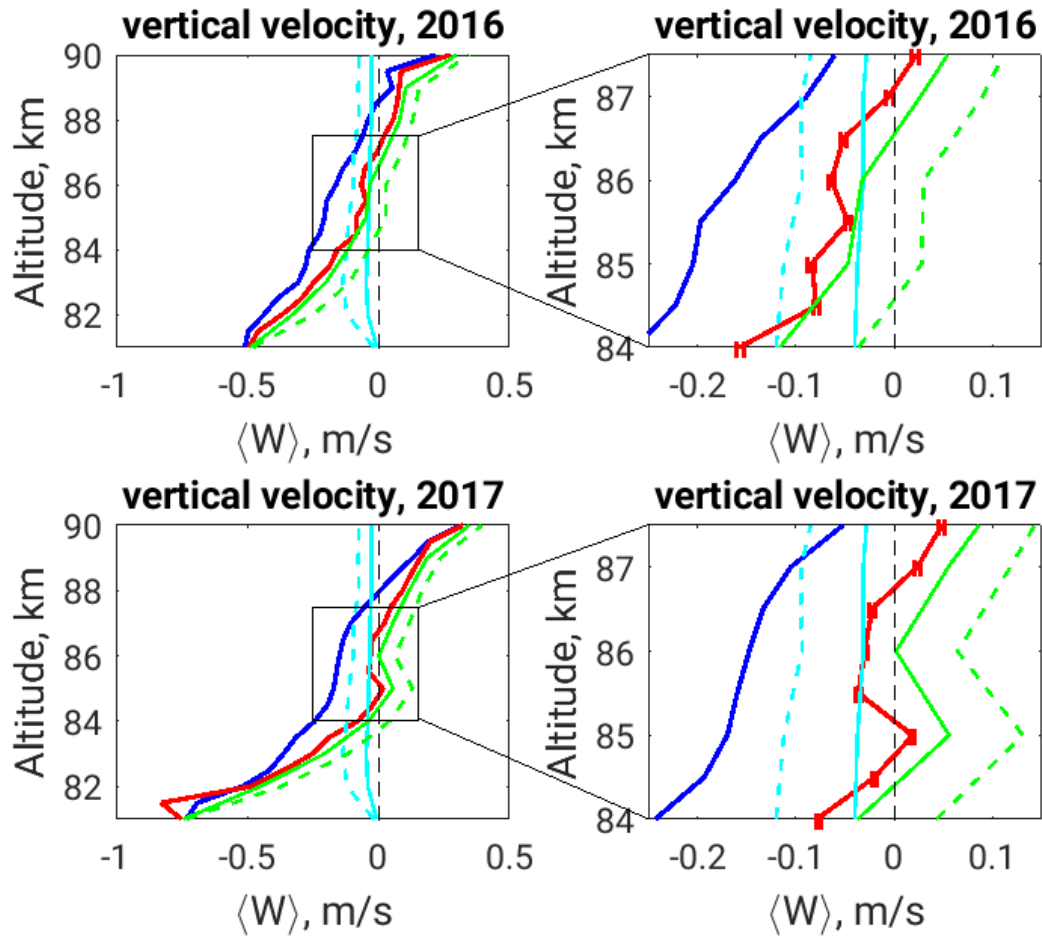


Figure 1. Mean summer profiles for (blue) mean and (red) weighted mean vertical **wind**-velocities; (dashed and full light blue) sedimentation speed of ice spheres for two scenario of their size distribution; (dashed and full green) results after eliminating of ice sedimentation from weighted mean profiles. Right panels show increased version of the altitude range in black squares at the left panels to highlight the error-bars as a uncertainties of the weighted mean values

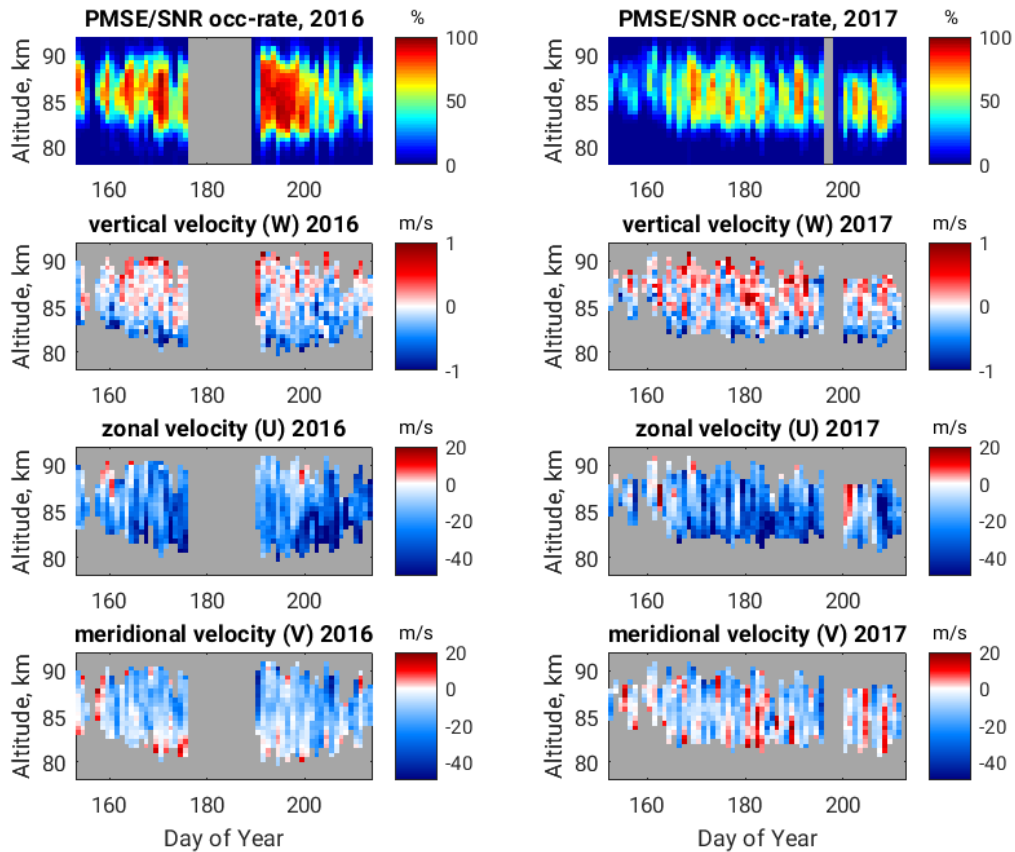


Figure 2. Seasonal distribution of PMSE/SNR diurnal occurrence rates (first row) and weighted mean diurnal profiles of vertical, zonal and meridional velocity vector components given on following rows. ~~Positive wind values corresponds~~ Positive values correspond to up-, east- and north-ward directions respectively. ~~Wind Velocity~~ components correspond to those PMSE occurrence greater than 20%. Grey color indicates no data background.

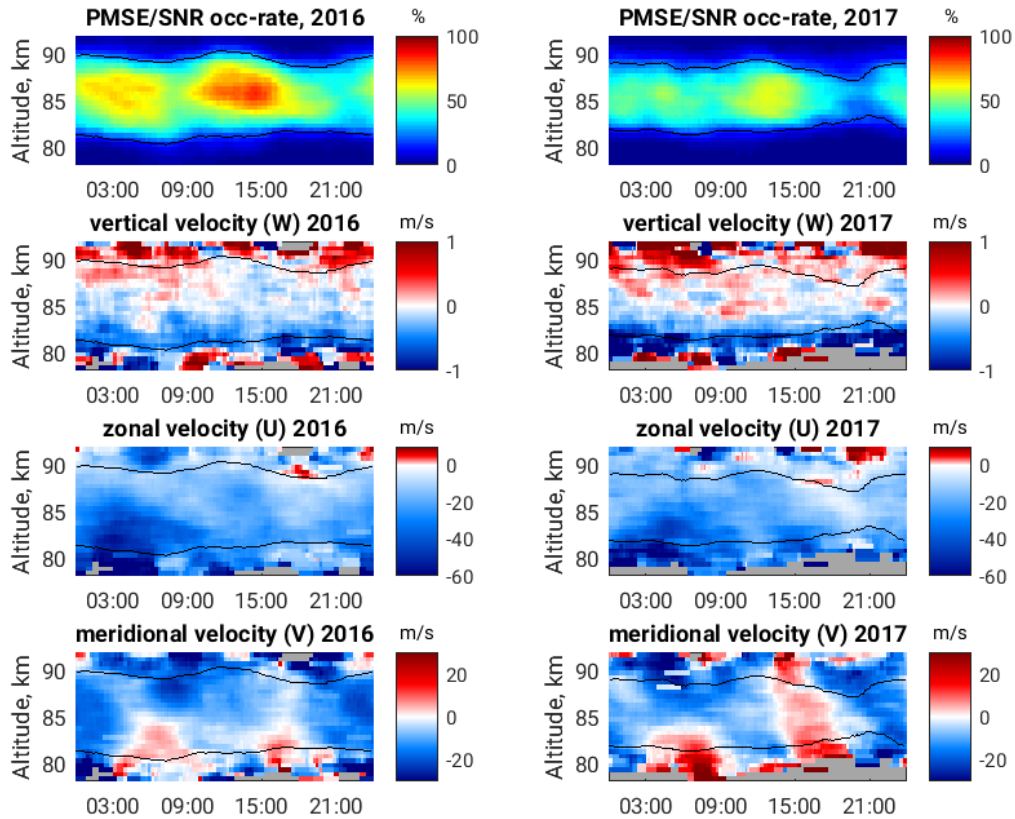


Figure 3. Universal Time (UT) Dependence of PMSE/SNR occurrence rate (first row) and weighted mean diurnal profiles of vertical, zonal and meridional velocity vector components given on following rows. ~~Positive wind values corresponds~~ Positive values correspond to up-, east- and north-ward directions respectively. Black solid contour lines correspond to 20% PMSE/SNR occurrence rate; Grey color indicates no data.

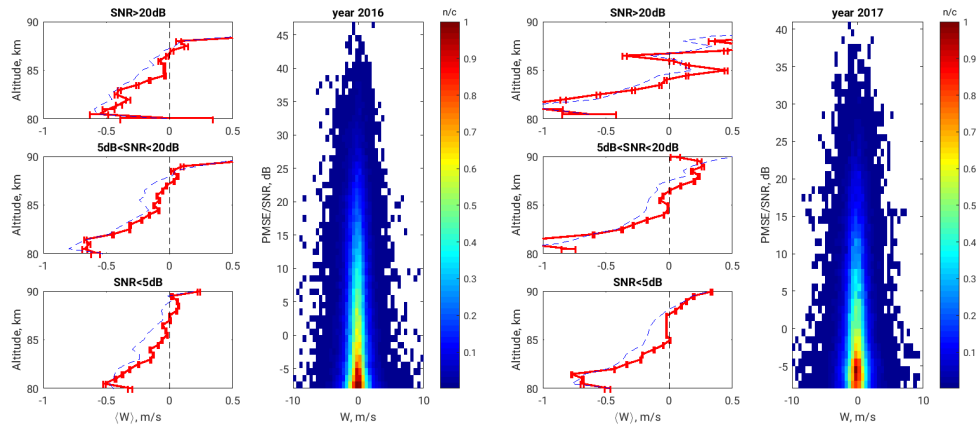


Figure 4. Vertical profiles of weighted (red line) and simple (dashed blue line) mean vertical velocities corresponding to given range of PMSE/SNR (first and third columns for summers of 2016 and 2107 respectively). 2D histogram of vertical wind-velocity measurements as a function of PMSE SNR (colorcoded panels)

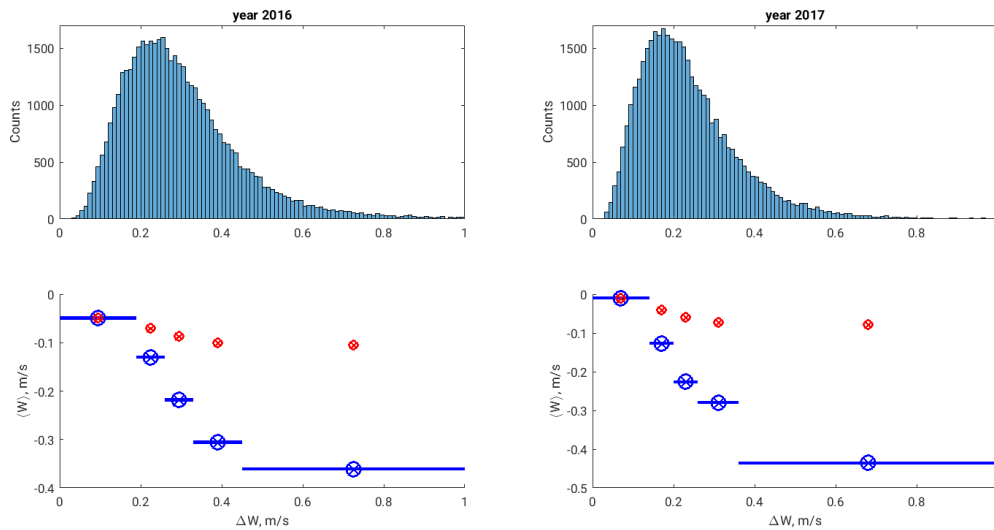


Figure 5. Upper panels - histograms of vertical velocity uncertainties; Lower panels - mean vertical velocity as a function of their uncertainties. Blue circles represent mean velocity values corresponding to velocity uncertainty range indicated with blue horizontal line on them. Ranges are divided equally in respect of similar datapoints for averaging. Red circles are mean vertical velocities for all those uncertainties lower than given point

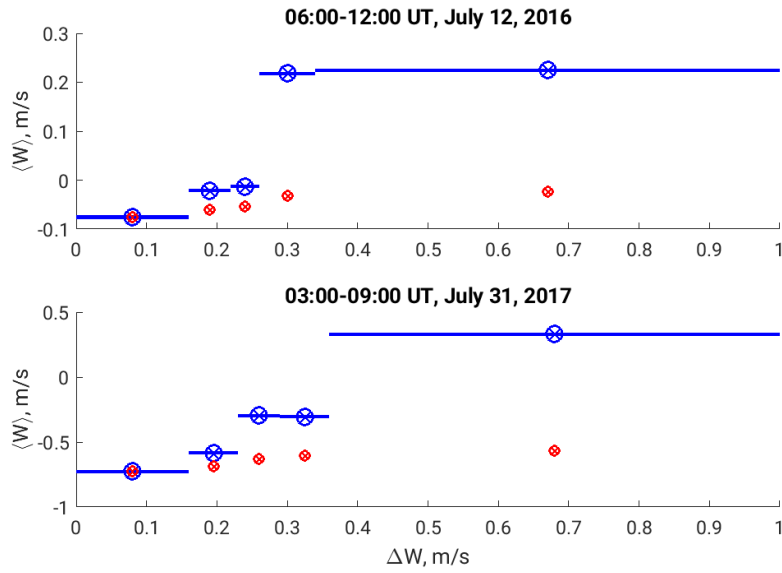


Figure 6. Couple of examples of positive correlation between mean vertical velocities and their uncertainties as shown by Hoppe and Fritts (1995). The exact time intervals are indicated on the plots. Further details can be found in the text.

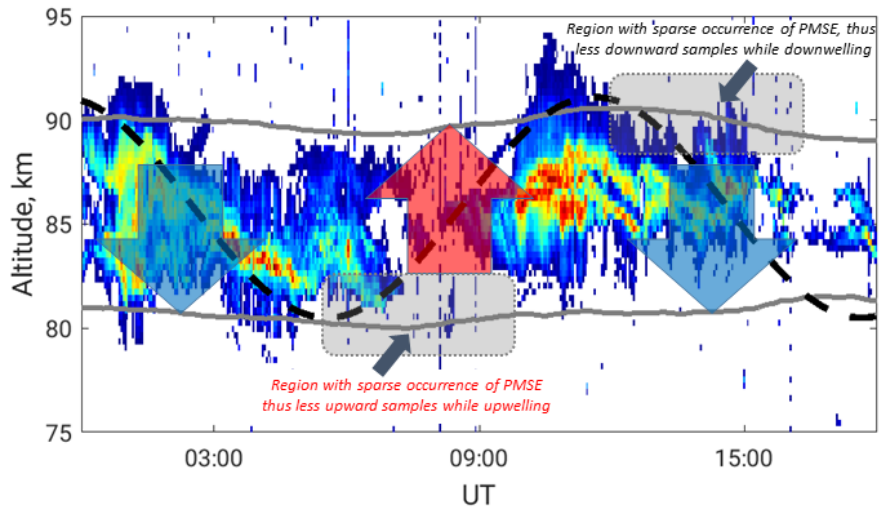


Figure 7. Example of typical PMSE structure observed on 29th of July, 2016 and sketch of idealised propagated sinusoidal wave at PMSE altitudes. Arrows indicate the up or downward phase of the wave. Colour coded PMSE is thresholded by $\text{SNR} = -8$ dB. Thus, white background corresponds to no data. Grey line shows boundaries of seasonal average of diurnal PMSE occurrence more than 20%. The sketch highlights the sampling issues of PMSE and Doppler velocity measurements on the edges respectively.