

Response to comments of the Anonymous Referees 1 and 3 on the manuscript entitled “The impact of solar radiation on polar mesospheric ice particle formation”

We thank the reviewers for the very encouraging review and the thoughtful comments which we address individually below. Page and line numbers in the “Changes made” sections refer to the annotated version of the revised manuscript.

Comments of Referee 1:

General comment: *This is an excellent study on the impact of solar heating of meteoric smoke particles on the formation of NLC/PMC particles. The work is based on a combination of lab work and simulation results and is an important contribution to improve our understanding of the formation of ice particles near the polar summer mesopause. The manuscript is very well written, the results are substantial and appear to be robust. I did not find much to criticize and in my opinion the paper can be published more or less as is. I have a few minor comments that I ask the authors to consider.*

Comment 1: *Is anything known about the shape of MSP particles in the atmosphere and/or the MSP analogues in your experiments? If yes, this should be mentioned. I suggest stating in any case that the particles are most likely not spherical.*

Response: Except indications that MSPs are most likely composed of iron-rich materials (Hervig et al., 2017; Rapp et al., 2012) little is known about the shape of these particles in the atmosphere.

However, the shape of metal oxide nanoparticles produced in similar particle sources as used in our experiment has been shown to be compact and spherical (Nachbar et al., 2018a). We added the information about the sphericity of the particles to the manuscript.

Changes made:

- Page 3, line 7: We produce **spherical**, singly charged...

Comment 2: *Page 1, line 17: I suggest replacing “cold temperatures” by “low temperatures”, similarly on line 2 of the following page: “coldest temperatures” -> “lowest temperatures”*

Response: We conducted the suggested changes.

Changes made:

- Page 1, line 17: The **low** temperatures...
- Page 2, line 2: The **lowest** temperatures...

Comment 3: Page 4, line 5: I would explain “Da”, despite the fact that many readers will know what it stands for.

Response: We added the information to the manuscript.

Changes made:

- Page 4, line 8: ...for the combinations of particle mass ($2 \cdot 10^4 \text{ Da} - 50 \cdot 10^4 \text{ Da}$; **1 Da** \triangleq **1 atomic mass unit = $1.6605 \cdot 10^{-27} \text{ kg}$**),...

Comment 4: Page 6, line 4: Please explain “ad-layer”

Response: With ad-layer we are referring to the layer of adsorbed water molecules in equilibrium as introduced in the previous section. To be clearer we rephrased the term “ad-layer” to “layer of adsorbed water molecules”.

Changes made:

- Page 6, line 15: We assume the **layer of adsorbed water molecules** to be entirely transparent...

Comment 5: Page 7, 17: “show a linear trend with particle radius”. This is not the most precise way to put it. It may be misinterpreted as a linear relationship between absorption efficiencies and radius, which is not the case.

Response: The absorption efficiency is defined as the absorption cross section divided by the geometric cross section. There is a linear relationship between radius and absorption efficiencies in Rayleigh regime (as investigated in this study). See discussion below Eq. (9) (page 7, line 9-11) or Eq. (3) in (Rapp et al., 2010) (doi:10.1029/2009JD012725).

No changes made.

Comment 6: Page 8, line 17: add space between degree sign and “(21”. only a small point, but shouldn't the SZA be about 45.5 deg at 69 N and for summer solstice?

Response: We added the space between the degree sign and (. Yes, the SZA was a typo, it is 45.6° and not 46.5°.

Changes made:

- Page 9, line 8: For the incoming solar irradiation we use the maximum solar zenith angle of **45.6°** (21st June, noon)...

Comment 7: Page 11, lines 4 and 5: It would be good to state, which solar irradiance spectrum was used? Why was $I(\lambda)$ “calculated”?

Response: We assumed black body radiation with a temperature of 5780 K to calculate $I(\lambda)$. The wavelength dependency is needed since the absorption efficiency is wavelength dependent. Thus we have to integrate over $I(\lambda) \cdot Q_{abs}(\lambda)d\lambda$.

Changes made:

- Page 11, line 22: Here, $I(\lambda)$ (**black body radiation assuming T=5780 K**), P_{env}^a , and P_{rad}^e were calculated as presented in Asmus et al. (2014).

Comments of Referee 3:

Comment 1: *This is well written and conclusive study on the effect of solar heating on ice particle formation in the mesopause region. The findings are clearly presented and seem to be sound, although I suggest to include more background information especially when introducing equation (1) to explain the water vapour equilibrium.*

Response: We rewrote the paragraph introducing Eq. (1) to improve readability and include more background information.

Changes made:

- Page 5, line 4-27: Paragraph rewritten.

Comment 2: *Also, I suggest to include a little more discussion of the uncertainty in the assumed thermal accommodation coefficient, which is decreased here to 0.5 in comparison to previous studies, where a factor of 1 was used. Does this lead to the reduced solar heating or is the uptake of water molecules (see discussion on p. 9, l. 17-22) the driving factor?*

Response: In the manuscript, we use two different values for the thermal accommodation coefficients α : (1) In the analysis of our experimental data we use the thermal accommodation coefficient of He (the carrier gas in our experiments) which was determined experimentally to 0.525 ± 0.125 (Fung and Tang, 1988; Ganta et al., 2011) (see page 6, l. 23-25). The error of the thermal accommodation coefficient on the determined absorption efficiencies is considered in the error analysis of our data as discussed in the manuscript (see page 7, l. 2-4).

(2) In Section 4.2 on the impact of solar radiation on ice particle formation in the mesopause we use the thermal accommodation coefficient of air. Here, we assume $\alpha_{\text{air}}=1$. In previous model publications a lower value of $\alpha_{\text{air}}=0.5$ was used (e.g. Asmus et al., 2014; Espy and Jutt, 2002). The choice of $\alpha_{\text{air}}=0.5$ in these studies appears not to be based on actual experimental data but seems to originate from the work of Grams and Fiocco (1977) who simply estimated α_{air} due to a lack of relevant measurements determining α at realistic mesopause conditions. Some years later two independent experimental studies showed that α_{air} is close to unity as detailed in the manuscript in Appendix B, page 11, lines 23-27. A discussion of the consequences of choosing $\alpha_{\text{air}}=1$ instead of 0.5 on the solar heating of the particles is presented in the manuscript on page 10, l. 13-16.

Nevertheless, after re-reading the corresponding paragraphs, we feel that the usage of α may appear ambiguous in the manuscript. We therefore specified the usage of α throughout the manuscript.

Changes made:

- Page 6, line 25-27: **Note that when applying the equilibrium temperature model to the summer mesopause in Section 4.2 we use the thermal accommodation coefficient of air $\alpha_{\text{air}}=1$ (Fung and Tang, 1988; Ganta et al., 2011).**

In addition I have a few minor more specific comments:

Comment 3: *p.2. l. 3. (e.g. Luebken , 1999 ...)*

Response: We added "e.g." to the citation list.

Changes made:

- Page 2, line 3: ...(e.g. Lübken, 1999...)

Comment 4: *p. 2. L. 12.: trends of temperature caused ...*

Response: In this statement we refer to long term trends of temperature and H₂O concentration. We added this information.

Changes made:

- Page 2, line 12: for long-term trends **of temperature and H₂O concentration** caused by...

Comment 5: *p.3. l. 16 -27.: is the water measured in the chamber or is it calculated assuming equilibrium conditions. If measured, how are the measurements done?*

Response: The water vapor concentration in MICE originates from sublimation of water ice covered and temperature controlled surfaces. The saturation vapor pressure of the ice phase on the surfaces was calibrated in one of our previous studies (Nachbar et al., 2018b). We added this information.

Changes made:

- Page 3, line 22-23: In MICE, the particles also interact with a **well calibrated (Nachbar et al., 2018b)** concentration of gas-phase H₂O molecules, **which is maintained by temperature-controlled sublimation of water vapor from ice covered surfaces** (Duft et al., 2015).

Comment 6: *p.5. Top. This section is rather hard to read. I suggest to include an introduction to explain the background and the basic assumptions which went into the formulation of eq. (1).*

Response: See our response to comment 1.

Changes made:

- Page 5, line 4-27: Paragraph rewritten.

Comment 7: *p.5. l. 7: I'm not sure what is meant by the molar volume of a H₂O molecule. Is it molar or per molecule?*

Changes made:

- Page 5, line 19: ... is the volume of **one mole of H₂O** molecules in ASW...

Comment 8: *p.5. l. 8: please explain what ASW means.*

Response: We now introduce the meaning of ASW (amorphous solid water) in the rewritten paragraph on page 5.

No changes made.

Comment 9: *p. 7. L. 12: I suggest writing "the imaginary part k of the refractive index" for more clarity.*

Response: We adapted the passage according to the suggestion.

Changes made:

- Page 8, line 5: ...that the **values of the imaginary part k of the refractive index** of Querry (1985) and...

Comment 10: *p.8. l. 25: Is this represented by the blue line in Fig 5? Please specify.*

Response: We added more explanations to this paragraph in order to express our conclusion more clearly.

Changes made:

- Page 10, line 1-6: The horizontal dotted line at $T=130$ K indicates the measured mean temperatures at 87 km and 69°N during June and July (Lübken, 1999). **This line intersects with the calculations for non-absorbing particles at a dry particle radius of about 1 nm, which means that at the mean temperature of 130 K particles larger than $r_{\text{dry}}=1$ nm will activate ice growth.** The solid red curve in Fig. 5a shows results obtained when including solar heating of the particles ($T_p > T_{\text{env}}$) yielding lower $T_{\text{cr,env}}$ values. **With solar heating no particles will activate at the mean particle temperature of 130 K.** However, typical temperature variations in the summer mesopause are on the order of 10 K (Rapp et al., 2002) **which leads us to** conclude that the atmospheric temperature of the summer mesopause frequently falls below the critical temperature of non-absorbing **as well as of absorbing** MSPs for particle radii above 0.5 nm.

Comment 11: *Fig. 4: I think that legend might help to improve the readability of the Figure.*

Response: We included this suggestion in the revised manuscript.

Changes made:

- Page 8, Figure 4: We added a legend to Figure 4.

The impact of solar radiation on polar mesospheric ice particle formation

Mario Nachbar¹, Henrike Wilms², Denis Duft¹, Tasha Aylett³, Kensei Kitajima⁴, Takuya Majima⁴, John M. C. Plane³, Markus Rapp^{2,5}, and Thomas Leisner^{1,6}

¹Institute of Meteorology and Climate Research, Karlsruhe Institute of Technology – KIT, Hermann-von-Helmholtz-Platz 1, 76344 Eggenstein-Leopoldshafen, Germany

²Deutsches Zentrum für Luft- und Raumfahrt, Institut für Physik der Atmosphäre, Oberpfaffenhofen, Germany

³School of Chemistry, University of Leeds, Leeds, UK, LS2 9JT

⁴Department of Nuclear Engineering, Kyoto University, Kyoto 615-8540, Japan

⁵Meteorologisches Institut München, Ludwig-Maximilians-Universität München, Munich, Germany

⁶Institute of Environmental Physics, University of Heidelberg, Im Neuenheimer Feld 229, 69120 Heidelberg, Germany

Correspondence to: Mario Nachbar (Mario.nachbar@kit.edu)

Abstract

Mean temperatures in the polar summer mesopause can drop to 130 K. The **low** temperatures in combination with water vapor mixing ratios of a few parts per million give rise to the formation of ice particles. These ice particles may be observed as polar mesospheric clouds. Mesospheric ice cloud formation is believed to initiate heterogeneously on small aerosol particles ($r < 2$ nm) composed of re-condensed meteoric material, so called Meteoric Smoke Particles (MSPs). Recently, we investigated the ice activation and growth behavior of MSP analogues under realistic mesopause conditions. Based on these measurements we presented a new activation model which largely reduced the uncertainties in describing ice particle formation. However, this activation model neglected the possibility that MSPs heat up in the low density mesopause due to absorption of solar and terrestrial irradiation. Radiative heating of the particles may severely reduce their ice formation ability. In this study we expose MSP analogues (Fe_2O_3 and $\text{Fe}_x\text{Si}_{1-x}\text{O}_3$) to realistic mesopause temperatures and water vapor concentrations and investigate particle warming under the influence of variable intensities of visible light (405, 488, and 660 nm). We show that Mie theory calculations using refractive indices of bulk material from the literature combined with an equilibrium temperature model presented in this work predict the particle warming very well. Additionally, we confirm that the absorption efficiency increases with the iron content of the MSP material. We apply our findings to mesopause conditions and conclude that the impact of solar and terrestrial radiation on ice particle formation is significantly lower than previously assumed.

1 Introduction

The **lowest** temperatures in the terrestrial atmosphere are encountered in the polar summer mesopause, where mean daily temperatures at high latitudes can fall to below 130 K (e.g. Lübken, 1999; Lübken et al., 2009). These low temperatures in combination with H₂O concentrations of a few parts per million (Hervig et al., 2009; Seele and Hartogh, 1999) lead to highly supersaturated conditions which allow for the formation of ice particles (e.g. Lübken et al., 2009; Rapp and Thomas, 2006). When the ice particle radii reach about 30 nm and their concentration is of the order of 100 cm⁻³ they become optically visible and may be observed as Polar Mesospheric Clouds (PMCs) (e.g. Rapp and Thomas, 2006). When observed from ground, these clouds are often referred to as Noctilucent Clouds (NLCs). Because of their particular wavy appearance and their high elevation of about 83 km, PMCs have received much attention since their first reported observation in 1885 (Leslie, 1885). The current scientific interest in these extraordinary clouds is substantiated in their potential role as tracer for the dynamical structure of the summer mesopause (e.g. Demissie et al., 2014; Kaifler et al., 2013; Rong et al., 2015; Witt, 1962) or for long-term trends **of temperature and H₂O concentration** caused by anthropogenic emissions of CO₂ and CH₄ (e.g. Hervig et al., 2016; Thomas and Olivero, 2001; Thomas et al., 1989). However, in order to use observation of PMCs as a tracer, an in-depth understanding of the processes involved in PMC formation is necessary.

Wilms et al. (2016) found that next to dynamical processes the description of the initial formation of the ice particles significantly affects modeled PMC properties. Ice particle formation is believed to initiate heterogeneously on nanometer sized re-condensed meteoric material, so called Meteoric Smoke Particles (MSPs) (e.g. Gumbel and Megner, 2009; Keesee, 1989; Rapp and Thomas, 2006; Turco et al., 1982). This conjecture is strongly supported by satellite and rocket born observations showing that MSPs are included in PMC ice particles (Antonsen et al., 2017; Havnes et al., 2014; Hervig et al., 2012). The initial ice particle formation has been described in two different ways. Either activation-barrier free growth is assumed to set in for saturations in excess of the equilibrium saturation over the curved particle surface (e.g. Berger and Lübken, 2015; Schmidt et al., 2018), or ice particle formation is described using classical nucleation theory (e.g. Asmus et al., 2014; Bardeen et al., 2010; Rapp and Thomas, 2006; Wilms et al., 2016). Both approaches assume the formation of hexagonal ice and the latter typically requires much higher critical saturations to initiate ice particle growth. In order to reduce the large uncertainties in describing the initial formation of PMC ice particles we designed a laboratory experiment to study ice particle formation under realistic mesopause conditions (Duft et al., 2015). Recently, we investigated the ice activation and growth behavior on SiO₂, Fe₂O₃ and mixed iron silicate nano-particles which serve as analogues for MSPs. We found that the primary ice phase forming on the MSP analogues at the conditions of the summer mesopause is Amorphous Solid Water (ASW) (Nachbar et al., 2018b; Nachbar et al., 2018c). Additionally, we showed that MSPs adsorb up to several layers of water until ice growth activates as soon as the saturation exceeds the saturation vapor pressure of ASW including the Kelvin effect for the ice-covered or “wet” particle radius, and considering the collision radius of water molecules (Duft et al., 2018).

Asmus et al. (2014) pointed out that MSPs may heat up in the low density atmosphere of the mesopause by absorbing solar and terrestrial irradiation. The extent of this effect depends on the MSP composition and has been proposed to increase with increasing iron content. Interestingly, satellite and rocket-born investigations indicate that MSPs are most likely composed of iron rich materials such as magnetite (Fe₃O₄), wüstite (FeO), magnesiowüstite (Mg_xFe_{1-x}O, x=0-0.6), and iron-rich olivine (Mg_{2x}Fe_{2-2x}SiO₄, x=0.4-0.5) (Hervig et al., 2017; Rapp et al., 2012). Using nucleation theory, Asmus et al. (2014) concluded that the warming for such MSP materials significantly impacts the ice-forming ability of the particles, thus rendering them ineffective nuclei. However, up until now this conclusion has not been confirmed experimentally. To this end, we extended our experimental setup with a laser system which allows MSP analogues to be exposed to a known intensity of visible light at three wavelengths (405, 488, and 660 nm). We studied the number of adsorbed H₂O molecules on Fe₂O₃ and Fe_xSi_{1-x}O₃ nanoparticles under the influence of the laser light at controlled gas-phase H₂O concentration and background pressure. In this way, we could determine the offset of the particle temperature from the ambient temperature. The experimental method

is described in more detail in Sect. 2. From the experimentally determined temperature offsets we then deduce absorption efficiencies using a light absorption model, which is introduced in Sect. 3. In Sect. 4, we present our results on the absorption efficiencies and compare them to Mie theory calculations using literature values of the refractive indices. We estimate the maximum temperature offset for MSPs in the summer mesopause and discuss the consequences on ice particle formation. Finally, we summarize our main conclusions in Sect. 5.

2 Experimental Method

We produce **spherical**, singly charged Fe_2O_3 , SiO_2 or $\text{Fe}_x\text{Si}_{1-x}\text{O}_3$ particles with radii smaller than 4 nm in a non-thermal low pressure microwave plasma particle source (Nachbar et al., 2018a). The particles are transferred online into the vacuum system of the experiment (illustrated in Fig. 1) which has been described in detail elsewhere (Duft et al., 2015; Meinen et al., 2010; Nachbar et al., 2018b; Nachbar et al., 2016).

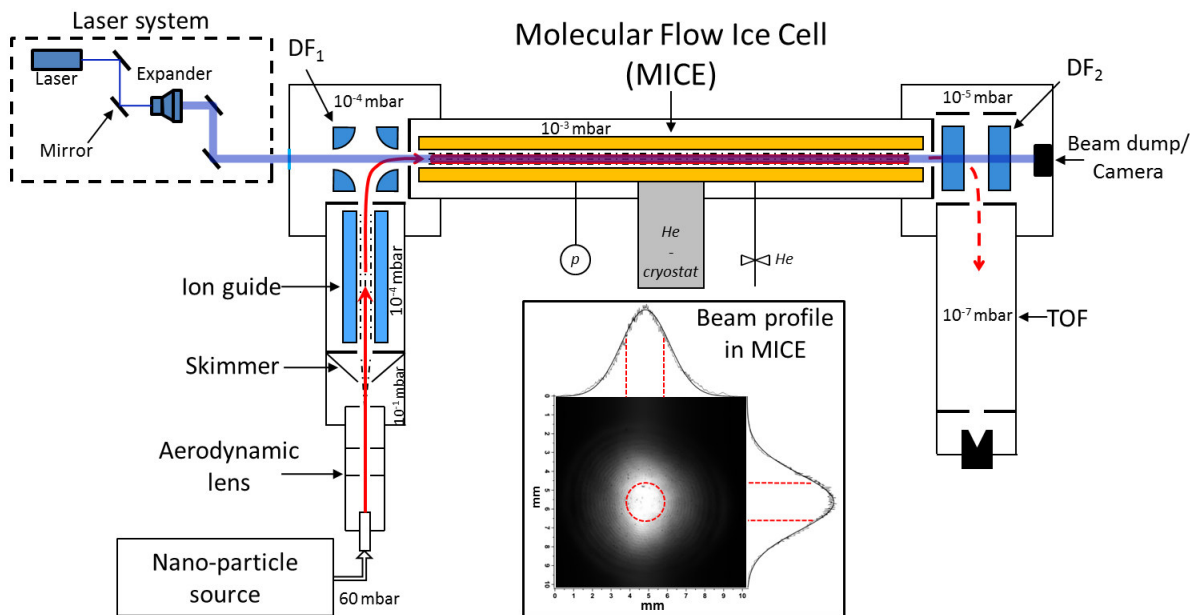
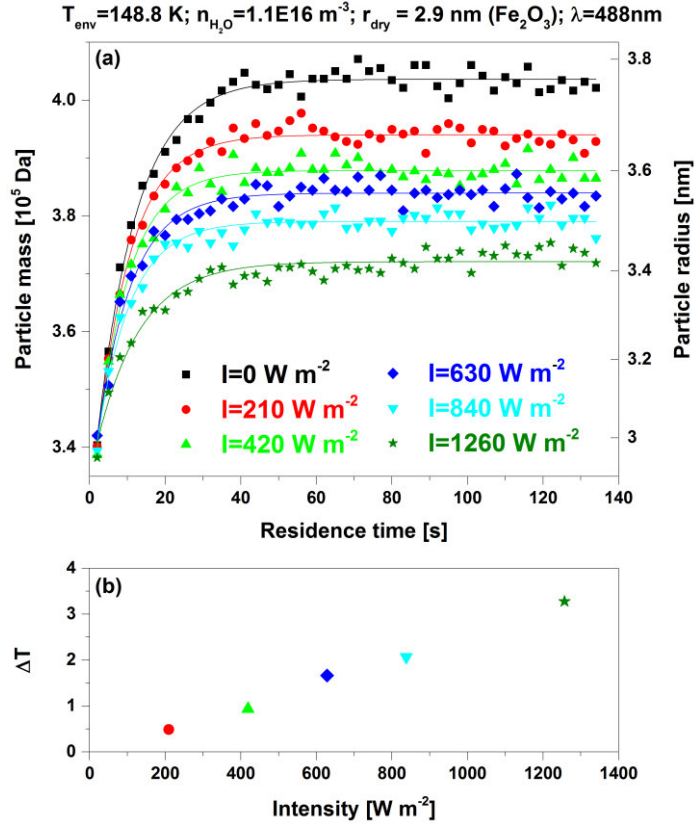


Figure 1. Illustration of the experimental setup. The insert shows a camera image of the laser beam profile ($\lambda=488$ nm) taken at the exit of MICE. Vertical and horizontal cross sections of the laser beam profile are shown above and right of the image, overlaid with fitted Gaussian curves. The red dashed lines indicate the radial extent of the levitated nano-particle cloud. See text for more details.

In brief, singly charged nanometer-sized particles enter the vacuum chamber through an aerodynamic lens and a skimmer. After the skimmer, the particles enter an rf-octupole serving as an ion guide. The particles are mass selected ($\Delta m/m \leq 7\%$) with an electrostatic quadrupole deflector (DF_1) and subsequently enter into the Molecular flow Ice Cell (MICE). MICE is a modified quadrupole ion trap. A temperature-controlled He environment at a pressure of $(1 - 5) \cdot 10^{-3}$ mbar thermalizes the particles under molecular flow conditions. The helium pressure is adjusted with a leak valve attached to a helium cylinder (99.999% purity) and the pressure is measured and corrected (Yasumoto, 1980) using a pressure sensor (Ionivac ITR 90). In MICE, the particles also interact with a **well calibrated** (Nachbar et al., 2018b) concentration of gas-phase H_2O molecules, **which is maintained by temperature-controlled sublimation of water vapor from ice covered surfaces** (Duft et al., 2015). For a typical experiment, MICE is filled with 10^7 particles in about 1 s, followed by storing of the particles for up to several hours. Depending on the conditions applied in MICE, H_2O molecules adsorb on the particles until an equilibrium state is reached, or ice growth initiates on the particles. These processes are monitored by periodically extracting a small portion of the trapped particle population from MICE. After extraction, the particles are accelerated orthogonally into a time-of-flight spectrometer for mass measurement (TOF).

The setup has been extended with a laser system equipped with three lasers of different wavelengths $\lambda=405$ nm (Obis LX 405), $\lambda=488$ nm (Obis LX 488), and $\lambda=660$ nm (Obis LX 660). A combination of a laser beam expander (Edmund Optics 10X VIS broadband beam expander), mirrors, and a quartz glass window guides the expanded laser beam horizontally through the center of MICE pointing onto a beam dump. The light intensity in MICE was calibrated by measuring the power and the beam profile in MICE with a power-meter (Coherent PM USB PS19Q) and a CCD camera (Thorlabs 4070M-GE-TE). A typical beam profile of the expanded 488 nm laser beam is shown in the insert of Fig. 1. The red dashed lines indicate the maximum ion cloud diameter $d = 2$ mm calculated for the combinations of particle mass ($2 \cdot 10^4$ Da – $50 \cdot 10^4$ Da; $1 \text{ Da} \triangleq 1 \text{ atomic mass unit} = 1.6605 \cdot 10^{-27} \text{ kg}$), RF frequency (30 kHz – 1000 kHz), and amplitude (200 V – 1000 V) applied in the present study (Majima et al., 2012). Allowing for a misalignment of the laser beam of up to 0.5 mm from the ion trap center, we conclude that the particles are located within a diameter of 3 mm from the center of the expanded laser beam. We use the mean of the intensity values at $d = 3$ mm and the center of the laser beam to describe the light intensity irradiating the particles. The uncertainty is defined by the difference between the intensity value at the center of the laser beam and the mean value.

In this work, we apply conditions with saturations below the threshold for ice growth, i.e. where only adsorption occurs. Each experiment begins by filling MICE with a fresh charge of nano-particles. The initially dry nano-particles adsorb H_2O molecules until an equilibrium state between adsorbing H_2O flux and desorbing flux is reached. The process of reaching the equilibrium state is illustrated in Fig. 2a which shows the time-evolution of the particle mass for Fe_2O_3 particles with a dry particle radius $r_{dry} = (3m_0/4\pi\rho_p)^{1/3} = 2.9$ nm ($\rho_p = 5.2 \text{ gcm}^{-3}$), a H_2O gas phase concentration $n_{\text{H}_2\text{O}} = 1.1\text{E}16 \text{ m}^{-3}$, and a temperature of the environment surrounding the particles $T_{env} = 148.8$ K.



20 **Figure 2. Panel a:** Mean particle mass as a function of residence time in MICE for 6 different mean light intensities ($\lambda=488$ nm, $r_{dry}=2.9$ nm (Fe_2O_3), $T_{env}=148.8$ K, $n_{\text{H}_2\text{O}}=1.1\text{E}16 \text{ m}^{-3}$). The solid curves represent fits of Eq. (2) to the data. **Panel b:** Particle temperature offsets ΔT (Eq. (4)) as a function of the mean light intensities.

The black squares show the adsorption curve without light irradiation for which T_{env} equals the particle temperature T_p . If the particles are heated by light irradiation ($T_p > T_{env}$), the water molecule flux desorbing from a particle increases which causes a reduction in the number of adsorbed H_2O molecules in equilibrium. This effect is shown by the colored data for illumination

with the 488 nm laser at various mean light intensities. Figure 2b shows the corresponding particle temperature offsets ΔT which were determined by analyzing the steady-state mass of adsorbed water molecules. The method for deriving ΔT is presented below.

We analyze the adsorption data with a parameterization which was originally used to describe the equilibrium concentration of adsorbed water molecules c_{H_2O} on a planar surface with sub-monolayer coverage (Pruppacher and Klett, 2010). In our previous work we have modified this parameterization to account for the curvature of the nanometer sized particles and have proven its functionality for coverages of more than one monolayer (Duft et al., 2018). The parameterization is derived from the assumption that each water molecule which collides with a particle adsorbs on it. In equilibrium, the flux density of water molecules colliding with a particle j_{ads} must equal the flux density desorbing from the particle j_{des} :

$$\underbrace{\frac{n_{H_2O} \cdot v_{th}}{4}}_{j_{ads}} = \underbrace{c_{H_2O} \cdot f \cdot \exp\left(-\frac{E_{des}^0}{RT_p} + \frac{2\sigma v}{RT_p r_{dry}}\right)}_{j_{des}} \quad (1)$$

The flux density in molecular flow regime (left hand side of Eq. (1)) depends on gas phase properties, namely the concentration n_{H_2O} and the mean thermal velocity $v_{th} = \sqrt{8kT_{env}/\pi m_{H_2O}}$ of gas phase H₂O molecules. The desorbing flux density (right hand side of Eq. (1)) on the other hand depends on properties of the particle. The desorbing flux density is the product of the concentration of adsorbed water molecules in equilibrium c_{H_2O} , the vibrational frequency of a water molecule on the particle surface $f=10^{13}$ Hz, and an exponential function which describes the probability that an adsorbed molecule desorbs. This probability depends on the ideal gas constant R , the particle temperature T_p , and the mean desorption energy of a H₂O molecule for a planar surface of the particle material E_{des}^0 . The second term in the exponential function of Eq. (1) describes the curvature dependence of the desorption energy which can be calculated using the properties of amorphous solid water (ASW) (Duft et al., 2018). Here, $v = 6.022 \cdot 10^{23} \cdot m_{H_2O}/\rho_{ice}$ is the volume of one mole of H₂O molecules in ASW. The densities of ASW and crystalline ice are very similar at the temperatures under investigation (Brown et al., 1996; Loerting et al., 2011). We use the parameterization for crystalline ice $\rho_{ice} [g/cm^3] = 0.9167 - 1.75 \cdot 10^{-4} \cdot T_p [^\circ C] - 5 \cdot 10^{-7} \cdot (T_p [^\circ C])^2$ (Pruppacher and Klett, 2010). For the surface tension of ASW we use $\sigma [mN m^{-1}] = (114.81 - 0.144 \cdot T [K])$ which is based on an extrapolation of experimental data for supercooled water (Nachbar et al., 2018c). The equilibrium concentration of adsorbed water molecules c_{H_2O} is the adsorbed mass of H₂O molecules in equilibrium m_{ads} divided by the surface area of a dry nano-particle $A_p = 4\pi r_{dry}^2$ and the mass of a water molecule m_{H_2O} ($c_{H_2O} = m_{ads}/A_p/m_{H_2O}$). We derive the adsorbed mass of H₂O molecules in equilibrium m_{ads} from the experimental data with an exponential fit (represented by the solid curves in Fig. 2a) of the following form:

$$m(t) = m_0 + m_{ads} \cdot \left(1 - \exp\left(\frac{-t_{res}}{\tau}\right)\right) \quad (2)$$

The radius of the wet particle is indicated by the right ordinate in Fig. 2a and follows from the measured particle mass according to:

$$r_{wet} = \left(r_{dry}^3 + \frac{3}{4\pi} \frac{m_{ads}}{\rho_{ice}}\right)^{1/3} \quad (3)$$

The particle temperature offset ΔT is determined by a set of two measurement runs, one without and one with light illumination. The mean desorption energy for a H₂O molecule is determined from the measurement without light illumination ($T_p = T_{env}$) by solving Eq. (1) for E_{des}^0 . For the data shown in Fig. 2, this procedure results in $E_{des}^0 = 42.52$ kJ mol⁻¹. We only analyze data with coverages above 1 mono-layer for which the desorption energy is expected to depend only weakly on H₂O coverage (Mazeina and Navrotsky, 2007; Navrotsky et al., 2008; Sneh et al., 1996). For such coverages we did not observe any significant influence of the H₂O coverage or the particle temperature on the values of E_{des}^0 determined in our previous study (Duft et al., 2018). Therefore, we can determine the particle temperature under light illumination assuming a constant E_{des}^0 -value. Rearranging Eq. (1) yields:

$$T_p = T_{env} + \Delta T = \left(E_{des}^0 - \frac{2\sigma v}{r_{dry}} \right) / \left(R \cdot \ln \left(\frac{m_{ads}(T_p) \cdot f}{m_{H_2O} \pi n_{H_2O} v_{th} r_{dry}^2} \right) \right) \quad (4)$$

Since σ and ρ_{ice} are dependent on the particle temperature, Eq. (4) should be solved numerically. However, a sensitivity analysis has shown that calculating ΔT analytically using constant $\sigma(T_{env})$ and $\rho_{ice}(T_{env})$ deviates less than 1 % from the numerical solution. We therefore analysed our data using $\sigma(T_{env})$ and $\rho_{ice}(T_{env})$. The determined temperature offset ΔT can be used with an equilibrium temperature model to calculate the light absorption efficiency of the particles Q_{abs} . The equilibrium temperature model is introduced in the next section.

3 Equilibrium temperature model

The equilibrium temperature of particles levitated in MICE is described by a balance between power sources and sinks. Sources are absorption of laser light P_λ^a and of infrared radiation emitted by the environment P_{env}^a . Sinks are cooling due to collisions with the He background gas P_{col} and black body radiation of the particle in the infrared P_{rad}^e . Note that in equilibrium, the heat from sublimation and condensation cancels. The balance equation is:

$$P_\lambda^a + P_{env}^a = P_{rad}^e + P_{col} \quad (5)$$

The absorption of laser light with intensity I depends on the material and wavelength-dependent absorption efficiency of the particles Q_{abs} . The absorption efficiency is defined as the absorption cross section divided by the geometrical cross section $A_{geo} = \pi r_{dry}^2$. We assume the layer of adsorbed water molecules to be entirely transparent to visible light so that P_λ^a is the power absorbed by the MSP alone:

$$P_\lambda^a = I \cdot Q_{abs}(\lambda, r_{dry}) \cdot A_{geo} \quad (6)$$

For the cooling due to collisions with the He gas we use the description presented in Asmus et al. (2014):

$$P_{col} = A_{col} \cdot \frac{\alpha \cdot p}{4kT_{env}} v_{th} \cdot k \frac{\gamma+1}{2(\gamma-1)} \cdot \Delta T \quad (7)$$

For particles in the nanometer regime, the collision surface area A_{col} must include the radius of the colliding He atom ($r_{He} = 0.14 \text{ nm}$, Bondi, 1964), so that $A_{col} = 4\pi(r_{wet} + r_{He})^2$. The helium pressure in MICE is represented by p , $v_{th} = \sqrt{8kT_{env}/\pi m_{He}}$ is the mean thermal velocity of He atoms, γ is the heat capacity ratio, $\Delta T = T_p - T_{env}$ is the temperature difference between the particle and the environment, and α is the thermal accommodation coefficient. The particles investigated in this work are water covered metal oxides. The thermal accommodation coefficient of He on comparable surfaces has been measured to be 0.525 ± 0.125 (Fung and Tang, 1988; Ganta et al., 2011). Note that when applying the equilibrium temperature model to the summer mesopause in Section 4.2 we use the thermal accommodation coefficient of air $\alpha_{air} = 1$ (Fung and Tang, 1988; Ganta et al., 2011).

For the conditions applied in MICE, P_{rad}^e and P_{env}^a are several orders of magnitude smaller than P_λ^a and P_{col} and can be neglected in the analysis of the experimental results. For mesospheric conditions, these two terms may be calculated as presented in Asmus et al. (2014). Substituting Eq. (6) and Eq. (7) in Eq. (5) and solving for the absorption efficiency $Q_{abs}(\lambda, r_{dry})$ yields:

$$Q_{abs}(\lambda, r_{dry}) = \frac{A_{col}}{I \cdot A_{geo}} \alpha p v_{th} \frac{(\gamma+1)}{8T_{env}(\gamma-1)} \Delta T \quad (8)$$

4 Results and discussion

4.1 Absorption efficiencies

H₂O adsorption measurements similar to those presented in Fig. 2 were recorded for Fe₂O₃ particles with dry particle radii between 1.3 and 3.2 nm. Particle temperature offsets ΔT were determined from the equilibrium adsorption measurements according to Eq. (4) and converted to absorption efficiencies for each light intensity according to Eq. (8). The absorption

efficiencies for each set of experiments with the same dry particle radius were averaged. The results are shown in Fig. 3 as a function of dry particle radius on a double logarithmic scale. The main measurement uncertainties originate from the inhomogeneous intensity profile of the expanded laser beam and the uncertainty of the thermal accommodation coefficient α , which are systematic error sources. The error bars shown for the particle radius represent the width of the particle size distribution. In order to compare our data to Q_{abs} values derived from literature data of the complex refractive index $m = n + i \cdot k$, Q_{abs} was calculated from the extinction efficiency Q_{ext} and from the scattering efficiency Q_{scat} using Mie theory (Bohren and Huffmann, 2007) according to:

$$Q_{abs}(\lambda, r_{dry}, m) = Q_{ext}(\lambda, r_{dry}, m) - Q_{scat}(\lambda, r_{dry}, m) \quad (9)$$

Note that the size parameter $x = 2\pi r_{dry}/\lambda$ is much smaller than 1 (Rayleigh regime) for all particle sizes investigated in the present study and that the absorption cross section for such size parameters is proportional to the volume of the particle and thus Q_{abs} is proportional to r_{dry} .

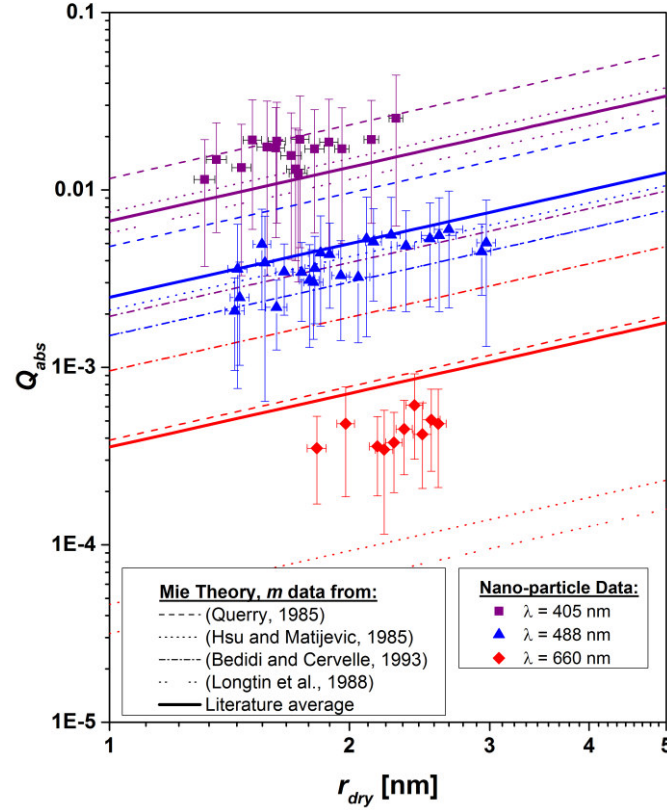


Figure 3. Absorption efficiencies as a function of dry particle radius for Fe_2O_3 nano-particles at $\lambda=405$ nm, $\lambda=488$ nm, and $\lambda=660$ nm. The dotted and dashed curves represent Mie theory calculations using refractive indices from literature with the colors indicating the wavelength.

Large differences exist throughout the literature for the imaginary part of the refractive index for hematite (Fe_2O_3) in the visible and near-infrared (Zhang et al., 2015). These differences increase with increasing wavelength and reach a factor of 40 at $\lambda=660$ nm. In order to compare our results with literature data, we collated all works which determined the real part n and the imaginary part k of the refractive index for Fe_2O_3 between 400 and 700 nm (Bedidi and Cervelle, 1993; Hsu and Matijević, 1985; Longtin et al., 1988; Querry, 1985). Note that the data reported in Longtin et al. (1988) are based on measurements from Kerker et al. (1979). We calculated the absorption efficiencies for all sets of refractive indices as a function of the particle radius. The results are shown by the dashed and dotted curves in Fig. 3 with the colors indicating the wavelength. The solid lines are mean values of the absorption efficiencies calculated from literature data. Note that the data obtained with the refractive indices from Bedidi and Cervelle (1993) and Longtin et al. (1988) are identical at 488 nm. Our data at $\lambda=405$ nm agree well with the Mie theory calculations using the literature refractive indices, except for Bedidi and Cervelle (1993). Our data for 488 nm are also in good agreement with literature, except for the calculations using the

refractive indices from Query (1985). At 660 nm our experimental results lie within the large scatter of the literature values. The absorption efficiencies deduced from the refractive indices of Hsu and Matijević (1985) and Longtin et al. (1988) are smaller than our results, whereas the values deduced from Query (1985) and Bedidi and Cervelle (1993) are larger. The latter is supported by the work of Meland et al. (2011) who concluded from angle-resolved light scattering experiments using hematite particles that the values of the imaginary part k of the refractive index of Query (1985) and Bedidi and Cervelle (1993) are too high.

Overall, the experimentally determined absorption efficiencies show a linear trend with particle radius (compare to Mie theory calculations) and are within the spread of Mie theory calculations using the literature refractive indices. We therefore conclude that our method of determining Q_{abs} from the equilibrium temperature of nano-particles via the amount of adsorbed water is validated. Furthermore, we conclude that the equilibrium temperature model presented in this work can be used with literature values of bulk refractive indices of potential MSP materials to estimate the equilibrium temperature of MSPs in the mesopause.

Asmus et al. (2014) proposed that the temperature increase of MSPs due to absorption of solar irradiation increases linearly with increasing iron content of the particle material. In order to experimentally test this hypothesis, we measured the absorption efficiency at $\lambda=488$ nm (the laser wavelength closest to the maximum of the solar irradiation) for Fe_2O_3 and iron-silicate particles $\text{Fe}_x\text{Si}_{1-x}\text{O}_3$ ($0 < x < 1$) ($r_{dry} = 2$ nm) of varying iron content. The results are shown in Fig. 4 together with Mie theory calculations using the refractive indices for $\text{Mg}_x\text{Fe}_{1-x}\text{SiO}_3$ (Dorschner et al., 1995), FeO (Henning et al., 1995), FeOOH (Bedidi and Cervelle, 1993), and the mean value for Fe_2O_3 from Fig. 3. The data support the assumption that Q_{abs} depends linearly on the iron content. Consequently, the potential MSP material which would heat up the most is FeO with a stoichiometric iron content of 0.5.

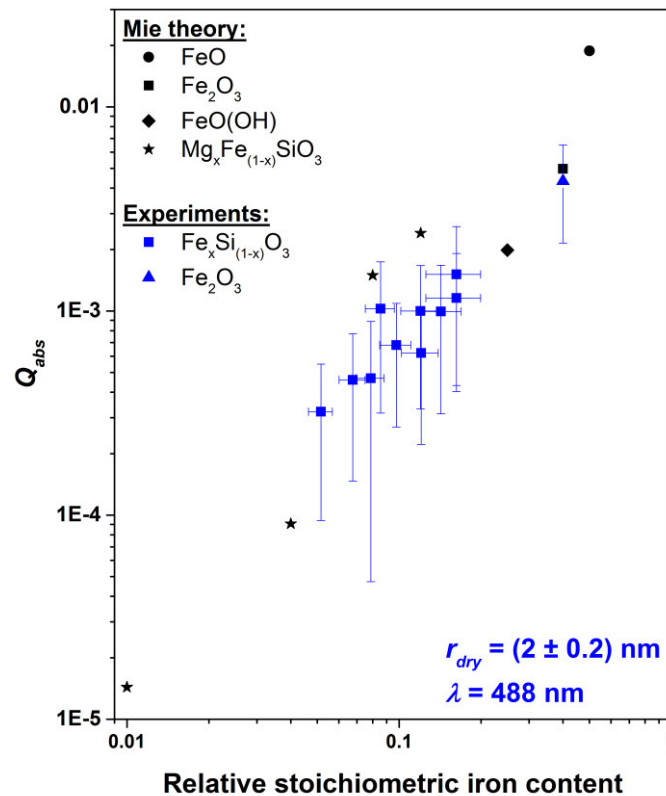


Figure 4. Absorption efficiencies for $r_{dry}=2$ nm particles at $\lambda=488$ nm of various particle materials as a function of the relative stoichiometric iron content. Blue squares and the triangle represent experimental results for $\text{Fe}_x\text{Si}_{1-x}\text{O}_3$ ($0 < x < 1$) and Fe_2O_3 particles, respectively. The black circle, square, diamond, and stars represent Mie theory calculations for FeO, Fe_2O_3 , FeO(OH), and $\text{Mg}_x\text{Fe}_{1-x}\text{SiO}_3$ particles using refractive indices from literature (see text).

4.2 The impact of solar radiation on ice particle formation

In this section we discuss the impact of solar radiation on the critical temperature of the environment $T_{cr,env}$ needed to activate ice growth. To this end we combine our previously presented ice growth activation model (Duft et al., 2018) with the equilibrium temperature model of this work. A description of the method can be found in Appendices A and B. In order to estimate the maximum impact of solar radiation, we assume that the particles are composed of FeO, the potential MSP material with the highest iron content and which is therefore expected to heat up the most. To calculate the water coverage on FeO particles we use an energy of desorption $E_{des}^0 = 42.7$ kJ/mol, which was previously determined for Fe_2O_3 particles (Duft et al., 2018). For the incoming solar irradiation we use the maximum solar zenith angle of 45.6° (21st June, noon) at $69^\circ N$, a typical latitude of MSP observations. In Fig. 5a we compare calculated critical temperatures as a function of the MSP radius with and without particle heating by solar irradiation for an altitude of 87 km (0.27 Pa). Here, we assume a constant H_2O mixing ratio of 3 ppm which is typical for the polar summer mesopause (Hervig et al., 2009).

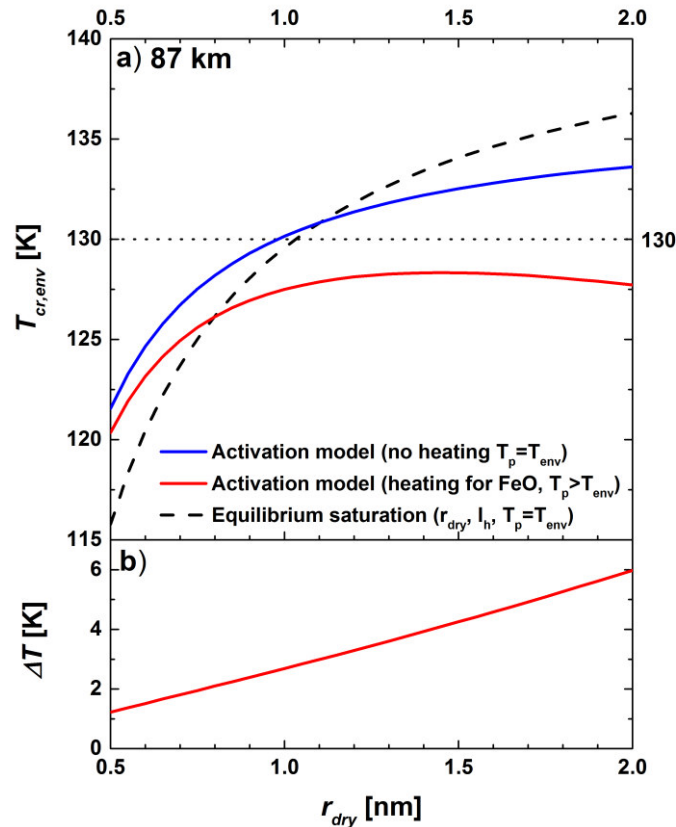


Figure 5. Critical temperature (panel a) and particle temperature offset (panel b) at 87 km altitude for FeO particles as a function of dry particle radius. The blue curve represents critical temperatures calculated with the activation model neglecting solar irradiation and the red curves consider solar irradiation. For comparison, we show the equilibrium saturation calculated using the Kelvin equation for hexagonal ice with the dry particle radius by the dashed black curve.

The solid blue curve in Fig. 5a shows results obtained when neglecting solar heating of the particles ($T_p = T_{env}$), i.e. representing non-absorbing particles. For comparison, the dashed black curve shows calculated critical temperatures using the Kelvin effect of hexagonal ice at the dry particle radius, which represent the highest activation temperatures currently assumed in mesospheric models (e.g. Berger and Lübken, 2015; Schmidt et al., 2018). For $r_{dry} < 1.1$ nm, the size range of most MSPs in the polar summer mesopause (Bardeen et al., 2010; Megner et al., 2008a; Megner et al., 2008b; Plane et al., 2014), the new activation model excluding solar irradiation predicts ice particle formation at higher temperatures than currently assumed in models. This is explained by the uptake of water molecules by the MSPs which increases the particle size and therefore causes a reduction of the Kelvin effect. This effect outweighs the vapor pressure difference between ASW and hexagonal ice for particle radii smaller than 1.1 nm. The horizontal dotted line at $T = 130$ K indicates the measured mean temperatures at 87 km and $69^\circ N$ during June and July (Lübken, 1999). This line intersects with the calculations for non-

absorbing particles at a dry particle radius of about 1 nm, which means that at the mean temperature of 130 K particles larger than $r_{dry}=1$ nm will activate ice growth. The solid red curve in Fig. 5a shows results obtained when including solar heating of the particles ($T_p > T_{env}$) yielding lower $T_{cr,env}$ values. With solar heating no particles will activate at the mean particle temperature of 130 K. However, typical temperature variations in the summer mesopause are on the order of 10 K (Rapp et al., 2002) which leads us to conclude that the atmospheric temperature of the summer mesopause frequently falls below the critical temperature of non-absorbing as well as of absorbing MSPs for particle radii above 0.5 nm.

Figure 5b shows the offset of the particle temperature from the ambient temperature ΔT at critical conditions for particles with the highest absorption efficiency (FeO). These values are almost identical to the difference in critical temperatures between the activation model without and with solar heating. We find that below $r_{dry}=1.5$ nm even the most absorbing particles warm by less than 4 K at 87 km altitude. The particle heating will be much less for other MSP materials and at lower altitudes due to the higher collisional cooling rate at higher pressures. In general, the particle temperature offset reported here is about 5 times less than previous estimates (Asmus et al., 2014) for two main reasons: (1) the uptake of water molecules increases the particle surface area and therefore the collisional cooling rate; and (2) the thermal accommodation coefficient of $\alpha=0.5$ used in previous calculations (see also Espy and Jutt (2002) and Grams and Fiocco (1977)) is very likely an underestimation. We use a value of 1 based on recent results of laboratory experiments which increases the collisional cooling rate by a factor of 2 (see Appendix B for more details).

5 Summary and Conclusions

We have presented H₂O adsorption measurements on MSP analogues (Fe₂O₃ and Fe_xSi_{1-x}O₃ nano-particles) exposed to variable intensities of visible light at 405, 488, and 660 nm. The experiments were performed at particle temperatures and H₂O concentrations representative for the polar summer mesopause and the visible light covers the maximum in the solar irradiance. The reduction in the number of adsorbed water molecules under irradiation allows direct determination of the particle temperature increase caused by light absorption. We used the measured temperature increase in an equilibrium temperature model to determine the absorption efficiency of the particles. The results show that the equilibrium temperature model is applicable and it can be used with literature values of bulk refractive indices to calculate the temperature increase of MSPs in the polar summer mesopause. Additionally, we confirmed that the absorption efficiency increases with increasing iron content of potential MSP materials (Asmus et al., 2014).

We find that the impact of solar radiation on polar mesospheric ice particle formation is lower than previously assumed. Critical temperatures for ice growth activation at 69°N decrease at most by 4 K for typical MSP particle sizes. However, for assessing the significance of solar heating of MSPs on PMC properties, the whole life cycle of mesospheric ice particles has to be considered. Therefore, we propose that the updated ice activation model (Appendix A and B) is used in future model studies with and without solar irradiation for various potential MSP materials, in order to evaluate if absorption of solar irradiation alters properties of polar mesospheric clouds.

Data availability

All data are available on request from the corresponding author.

35 Appendix A: Critical temperatures under the influence of solar radiation

At the conditions of the polar summer mesopause, ice particle formation proceeds via deposition of compact amorphous solid water (ASW) on MSPs (Duft et al., 2018; Nachbar et al., 2018c). Ice growth is activated if the saturation $S(T_p)$ is

larger than the critical saturation $S_{cr}(T_p)$. In the following, we present a method for calculating the temperature at which this condition is fulfilled, the so-called critical temperature.

For a given water vapor mixing ratio MR and atmospheric pressure p_{atm} , the saturation is determined by

$$S(T_p) = \frac{MR \cdot p_{atm}}{p_{s,a}(T_p)} \cdot \sqrt{\frac{T_{env}}{T_p}}, \quad (A1)$$

5 with the saturation vapor pressure of ASW described by (Nachbar et al., 2018c):

$$p_{s,a} = p_{s,h} \cdot \exp\left(\frac{2312 [Jmol^{-1}] - 1.6 [Jmol^{-1}K^{-1}] \cdot T}{RT}\right) \quad (A2)$$

$p_{s,h}$ represents the saturation vapor pressure of hexagonal ice (Murphy and Koop, 2005). The critical saturation S_{cr} needed to activate ice growth depends on the Kelvin effect calculated at the particle radius r_{wet} (including the amount of adsorbed H_2O molecules) and considering the collision radius of a water molecule ($r_{H_2O} = 0.15$ nm (Bickes et al., 1975)) (Duft et al.,
10 2018):

$$S_{cr}(T_p) = \left(\frac{r_{wet}}{r_{wet} + r_{H_2O}}\right)^2 \cdot \exp\left(\frac{2v\sigma}{RT_p r_{wet}}\right) \quad (A3)$$

To determine the critical temperature at which ice growth is activated, the environmental temperature T_{env} is decreased until $S(T_p) \geq S_{cr}(T_p)$. A reasonable starting point for T_{env} is the temperature at which the saturation over a flat surface is 1 (solve for $p_{s,a}(T_{env}) = MR \cdot p_{atm}$). The coupled calculation of T_p and r_{wet} is described in Appendix B and has to be
15 repeated every time T_{env} is decreased. The environmental temperature fulfilling $S(T_p) = S_{cr}(T_p)$ is the critical temperature needed to activate ice growth and $\Delta T = T_p - T_{env}$ is the increase of the particle temperature at conditions of ice particle formation.

Appendix B: Equilibrium particle temperature and wet particle radius

Substituting Eq. (6) and Eq. (7) in Eq. (5) and solving for the increase of the particle temperature ΔT considering the
20 dependency of the solar spectrum and of Q_{abs} on λ yields:

$$\Delta T = T_p - T_{env} = (A_{geo} \cdot \int_0^\infty I(\lambda) \cdot Q_{abs}(\lambda, r_{dry}) d\lambda + P_{env}^a - P_{rad}^e) / \left(A_{col} \alpha p v_{th} \frac{(\gamma+1)}{8T(\gamma-1)} \right) \quad (B1)$$

Here, $I(\lambda)$ (black body radiation assuming $T=5780$ K), P_{env}^a , and P_{rad}^e were calculated as presented in Asmus et al. (2014). The thermal accommodation coefficient α which is typically used in literature to describe the heating of MSPs or NLC particles is 0.5 (e.g. Asmus et al., 2014; Espy and Jutt, 2002). This value seems to originate from the work of Grams and
25 Fiocco (1977), and was chosen due to a lack of relevant measurements determining α at realistic mesopause conditions. More recently, measurements of α for N_2 on water droplets and for air on fused silica have become available which show that α is close to unity (Fung and Tang, 1988; Ganta et al., 2011). We therefore used $\alpha = 1$. The collision surface area of a particle $A_{col} = 4\pi(r_{wet} + r_{N_2})^2$ is described by the collision radius of a nitrogen molecule $r_{N_2} = 0.19$ nm (Hirschfelder et al., 1966) and the wet particle radius r_{wet} (Eq. (3)). The wet particle radius can be calculated with the mass of adsorbed water
30 in equilibrium m_{ads} which can be obtained by rearranging Eq. (1):

$$m_{ads} = A_p \cdot m_{H_2O} \cdot \frac{n_{H_2O} \cdot v_{th}}{4f} \cdot \exp\left(\frac{E_{des}^0}{RT_p} - \frac{2\sigma v}{RT_p r_{dry}}\right) \quad (B2)$$

Note that m_{ads} and P_{rad}^e depend on the particle temperature. Consequently, ΔT (Eq. (B1)) has to be solved numerically. In our approach we alternately calculate T_p and m_{ads} until the relative change of ΔT is less than 0.01 %.

Author contribution

MN, DD, HW, KK and TL designed the experiments. MN, TA, and KK carried out the experiments. MN performed the data analysis. HW performed the calculations of the critical temperature in the mesopause. MN prepared the manuscript with contributions from all co-authors. DD, TM, JP, MR and TL supervised the project.

5 Competing interests

The authors declare that they have no conflict of interest.

Acknowledgements

The authors thank the German Federal Ministry of Education and Research (BMBF, grant number 05K13VH3 and 05K16VHB) and the German Research Foundation (DFG, grant number LE 834/4-1) for financial support of this work. We
10 acknowledge support by the Deutsche Forschungsgemeinschaft and Open Access Publishing Fund of Karlsruhe Institute of Technology. TA is supported by a research studentship from the UK Natural Environment Research Council's SPHERES doctoral training programme.

References

- Antonsen, T., Havnes, O., and Mann, I.: Estimates of the Size Distribution of Meteoric Smoke Particles From Rocket-Borne Impact
15 Probes, *Journal of Geophysical Research: Atmospheres*, 122, 12,353-312,365, 2017.
- Asmus, H., Wilms, H., Strelnikov, B., and Rapp, M.: On the heterogeneous nucleation of mesospheric ice on meteoric smoke particles: Microphysical modeling, *Journal of Atmospheric and Solar-Terrestrial Physics*, 118, 180-189, 2014.
- Bardeen, C. G., Toon, O. B., Jensen, E. J., Hervig, M. E., Randall, C. E., Benze, S., Marsh, D. R., and Merkel, A.: Numerical simulations of the three-dimensional distribution of polar mesospheric clouds and comparisons with Cloud Imaging and Particle Size (CIPS)
20 experiment and the Solar Occultation For Ice Experiment (SOFIE) observations, *Journal of Geophysical Research: Atmospheres*, 115, 2010.
- Bedidi, A. and Cervelle, B.: Light scattering by spherical particles with hematite and goethitelike optical properties: Effect of water impregnation, *Journal of Geophysical Research: Solid Earth*, 98, 11941-11952, 1993.
- Berger, U. and Lübken, F.-J.: Trends in mesospheric ice layers in the Northern Hemisphere during 1961–2013, *Journal of Geophysical
25 Research: Atmospheres*, 120, 11,277-211,298, 2015.
- Bickes, R. W., Duquette, G., van den Meijdenberg, C. J. N., Rulis, A. M., Scoles, G., and Smith, K. M.: Molecular Beam Scattering Experiments with Polar Molecules: Measurement of Differential Collision Cross Sections for H₂O+H₂, He, Ne, Ar, H₂O and NH₃ +H₂, He, NH₃, *Journal of Physics B: Atomic and Molecular Physics*, 8, 3034-3043, 1975.
- Bohren, C. F. and Huffman, D. R.: *Absorption and Scattering of Light by Small Particles*, WILEY-VCH Verlag GmbH & Co. KGaA
30 2007.
- Brown, D. E., George, S. M., Huang, C., Wong, E. K. L., Rider, K. B., Smith, R. S., and Kay, B. D.: H₂O condensation coefficient and refractive index for vapor-deposited ice from molecular beam and optical interference measurements, *Journal of Physical Chemistry*, 100, 4988-4995, 1996.
- Demissie, T. D., Espy, P. J., Kleinknecht, N. H., Hatlen, M., Kaifler, N., and Baumgarten, G.: Characteristics and sources of gravity waves
35 observed in noctilucent cloud over Norway, *Atmos. Chem. Phys.*, 14, 12133-12142, 2014.
- Dorschner, J., Begemann, B., Henning, T., Jäger, C., and Mutschke, H.: *Steps toward interstellar silicate mineralogy. II. Study of Mg-Fe-silicate glasses of variable composition*, 1995.
- Duft, D., Nachbar, M., Eritt, M., and Leisner, T.: A Linear Trap for Studying the Interaction of Nanoparticles with Supersaturated Vapors, *Aerosol Science and Technology*, 49, 682-690, 2015.
- 40 Duft, D., Nachbar, M., and Leisner, T.: Unravelling the microphysics of polar mesospheric cloud formation, *Atmos. Chem. Phys. Discuss.*, 2018, 1-15, 2018.
- Espy, P. J. and Jutt, H.: Equilibrium temperature of water–ice aerosols in the high-latitude summer mesosphere, *Journal of Atmospheric and Solar-Terrestrial Physics*, 64, 1823-1832, 2002.
- Fung, K. H. and Tang, I. N.: Thermal-accommodation measurement of helium on a suspended water droplet, *Physical Review A*, 37,
45 2557-2561, 1988.
- Ganta, D., Dale, E. B., Rezac, J. P., and Rosenberg, A. T.: Optical method for measuring thermal accommodation coefficients using a whispering-gallery microresonator, *The Journal of Chemical Physics*, 135, 084313, 2011.
- Grams, G. and Fiocco, G.: Equilibrium temperatures of spherical ice particles in the upper atmosphere and implications for noctilucent cloud formation, *Journal of Geophysical Research*, 82, 961-966, 1977.
- 50 Gumbel, J. and Megner, L.: Charged meteoric smoke as ice nuclei in the mesosphere: Part 1—A review of basic concepts, *Journal of Atmospheric and Solar-Terrestrial Physics*, 71, 1225-1235, 2009.
- Havnes, O., Gumbel, J., Antonsen, T., Hedin, J., and La Hoz, C.: On the size distribution of collision fragments of NLC dust particles and their relevance to meteoric smoke particles, *Journal of Atmospheric and Solar-Terrestrial Physics*, 118, 190-198, 2014.

- Henning, T., Begemann, B., Mutschke, H., and Dorschner, J.: Optical properties of oxide dust grains, *Astronomy and Astrophysics Supplement*, 112, 143-149, 1995.
- Hervig, M. E., Berger, U., and Siskind, D. E.: Decadal variability in PMCs and implications for changing temperature and water vapor in the upper mesosphere, *Journal of Geophysical Research: Atmospheres*, 121, 2383-2392, 2016.
- 5 Hervig, M. E., Brooke, J. S. A., Feng, W., Bardeen, C. G., and Plane, J. M. C.: Constraints on Meteoric Smoke Composition and Meteoric Influx Using SOFIE Observations With Models, *Journal of Geophysical Research: Atmospheres*, 122, 13,495-413,505, 2017.
- Hervig, M. E., Deaver, L. E., Bardeen, C. G., Russell, J. M., Bailey, S. M., and Gordley, L. L.: The content and composition of meteoric smoke in mesospheric ice particles from SOFIE observations, *Journal of Atmospheric and Solar-Terrestrial Physics*, 84-85, 1-6, 2012.
- 10 Hervig, M. E., Stevens, M. H., Gordley, L. L., Deaver, L. E., Russell, J. M., and Bailey, S. M.: Relationships between polar mesospheric clouds, temperature, and water vapor from Solar Occultation for Ice Experiment (SOFIE) observations, *Journal of Geophysical Research: Atmospheres*, 114, 2009.
- Hirschfelder, J., Curtiss, C. F., and Bird, R. B.: *Molecular Theory of Gases and Liquids*, John Wiley & Sons, 1966.
- Hsu, W. P. and Matijević, E.: Optical properties of monodispersed hematite hydrosols, *Appl. Opt.*, 24, 1623-1630, 1985.
- 15 Kaifler, N., Baumgarten, G., Fiedler, J., and Lübken, F. J.: Quantification of waves in lidar observations of noctilucent clouds at scales from seconds to minutes, *Atmos. Chem. Phys.*, 13, 11757-11768, 2013.
- Keesee, R. G.: Nucleation and particle formation in the upper atmosphere, *Journal of Geophysical Research: Atmospheres*, 94, 14683-14692, 1989.
- Kerker, M., Scheiner, P., Cooke, D. D., and Kratochvil, J. P.: Absorption index and color of colloidal hematite, *Journal of Colloid and Interface Science*, 71, 176-187, 1979.
- 20 Leslie, R. C.: Sky Glows, *Nature*, 32, 245, 1885.
- Loerting, T., Bauer, M., Kohl, I., Watschinger, K., Winkel, K., and Mayer, E.: Cryoflotation: Densities of Amorphous and Crystalline Ices, *Journal of Physical Chemistry B*, 115, 14167-14175, 2011.
- Longtin, D. R., Shettle, E. P., Hummel, J. r., and Pryce, J. D.: A Wind Dependent Desert Aerosol Model: Refractive Properties, Air Force Geophys. Lab., Air Force Syst. Command Hanscom Air Force Base, 115 pp., 1988.
- 25 Lübken, F.-J.: Thermal structure of the Arctic summer mesosphere, *Journal of Geophysical Research: Atmospheres*, 104, 9135-9149, 1999.
- Lübken, F. J., Lautenbach, J., Höffner, J., Rapp, M., and Zecha, M.: First continuous temperature measurements within polar mesosphere summer echoes, *Journal of Atmospheric and Solar-Terrestrial Physics*, 71, 453-463, 2009.
- Majima, T., Santambrogio, G., Bartels, C., Terasaki, A., Kondow, T., Meinen, J., and Leisner, T.: Spatial distribution of ions in a linear octopole radio-frequency ion trap in the space-charge limit, *Physical Review A*, 85, 053414, 2012.
- 30 Mazeina, L. and Navrotsky, A.: Enthalpy of Water Adsorption and Surface Enthalpy of Goethite (α -FeOOH) and Hematite (α -Fe₂O₃), *Chemistry of Materials*, 19, 825-833, 2007.
- Megner, L., Gumbel, J., Rapp, M., and Siskind, D. E.: Reduced meteoric smoke particle density at the summer pole – Implications for mesospheric ice particle nucleation, *Advances in Space Research*, 41, 41-49, 2008a.
- 35 Megner, L., Siskind, D. E., Rapp, M., and Gumbel, J.: Global and temporal distribution of meteoric smoke: A two-dimensional simulation study, *Journal of Geophysical Research: Atmospheres*, 113, 2008b.
- Meinen, J., Khasminskaya, S., Rühl, E., Baumann, W., and Leisner, T.: The TRAPS Apparatus: Enhancing Target Density of Nanoparticle Beams in Vacuum for X-ray and Optical Spectroscopy, *Aerosol Science and Technology*, 44, 316-328, 2010.
- Meland, B., Kleiber, P. D., Grassian, V. H., and Young, M. A.: Visible light scattering study at 470, 550, and 660nm of components of mineral dust aerosol: Hematite and goethite, *Journal of Quantitative Spectroscopy and Radiative Transfer*, 112, 1108-1118, 2011.
- 40 Murphy, D. M. and Koop, T.: Review of the vapour pressures of ice and supercooled water for atmospheric applications, *Quarterly Journal of the Royal Meteorological Society*, 131, 1539-1565, 2005.
- Nachbar, M., Duft, D., Kiselev, A., and Leisner, T.: Composition, Mixing State and Water Affinity of Meteoric Smoke Analogue Nanoparticles Produced in a Non-Thermal Microwave Plasma Source, *Zeitschrift für Physikalische Chemie*, 232, 635-648, 2018a.
- 45 Nachbar, M., Duft, D., and Leisner, T.: The vapor pressure over nano-crystalline ice, *Atmos. Chem. Phys.*, 18, 3419-3431, 2018b.
- Nachbar, M., Duft, D., and Leisner, T.: Volatility of Amorphous Solid Water, *The Journal of Physical Chemistry B*, 122, 10044-10050, 2018c.
- Nachbar, M., Duft, D., Mangan, T. P., Martin, J. C. G., Plane, J. M. C., and Leisner, T.: Laboratory measurements of heterogeneous CO₂ ice nucleation on nanoparticles under conditions relevant to the Martian mesosphere, *Journal of Geophysical Research-Planets*, 121, 753-769, 2016.
- 50 Navrotsky, A., Mazeina, L., and Majzlan, J.: Size-Driven Structural and Thermodynamic Complexity in Iron Oxides, *Science*, 319, 1635-1638, 2008.
- Plane, J. M. C., Saunders, R. W., Hedin, J., Stegman, J., Khaplanov, M., Gumbel, J., Lynch, K. A., Bracikowski, P. J., Gelinas, L. J., Friedrich, M., Blindheim, S., Gausa, M., and Williams, B. P.: A combined rocket-borne and ground-based study of the sodium layer and charged dust in the upper mesosphere, *Journal of Atmospheric and Solar-Terrestrial Physics*, 118, 151-160, 2014.
- 55 Pruppacher, H. R. and Klett, J. D.: *Microphysics of Clouds and Precipitation*, Springer, 2010.
- Querry, M. R.: Optical Constants, Contractor report, US Army Chemical Research, Development and Engineering Center (CRDC), Aberdeen Proving Ground, MD, 415 pp., 1985.
- Rapp, M., Lübken, F. J., Müllemann, A., Thomas, G. E., and Jensen, E. J.: Small-scale temperature variations in the vicinity of NLC: Experimental and model results, *Journal of Geophysical Research-Atmospheres*, 107, 2002.
- 60 Rapp, M., Plane, J. M. C., Strelnikov, B., Stober, G., Ernst, S., Hedin, J., Friedrich, M., and Hoppe, U. P.: In situ observations of meteor smoke particles (MSP) during the Geminids 2010: constraints on MSP size, work function and composition, *Ann. Geophys.*, 30, 1661-1673, 2012.
- Rapp, M. and Thomas, G. E.: Modeling the microphysics of mesospheric ice particles: Assessment of current capabilities and basic sensitivities, *Journal of Atmospheric and Solar-Terrestrial Physics*, 68, 715-744, 2006.
- 65 Rong, P. P., Yue, J., Russell, J. M., Lumpe, J. D., Gong, J., Wu, D. L., and Randall, C. E.: Horizontal winds derived from the polar mesospheric cloud images as observed by the CIPS instrument on the AIM satellite, *Journal of Geophysical Research: Atmospheres*, 120, 5564-5584, 2015.
- Schmidt, F., Baumgarten, G., Berger, U., Fiedler, J., and Lübken, F. J.: Local time dependence of polar mesospheric clouds: a model study, *Atmos. Chem. Phys.*, 18, 8893-8908, 2018.
- 70 Seele, C. and Hartogh, P.: Water vapor of the polar middle atmosphere: Annual variation and summer mesosphere Conditions as observed by ground-based microwave spectroscopy, *Geophysical Research Letters*, 26, 1517-1520, 1999.

- Sneh, O., Cameron, M. A., and George, S. M.: Adsorption and desorption kinetics of H₂O on a fully hydroxylated SiO₂ surface, *Surface Science*, 364, 61-78, 1996.
- Thomas, G. E. and Olivero, J.: Noctilucent clouds as possible indicators of global change in the mesosphere, *Advances in Space Research*, 28, 937-946, 2001.
- 5 Thomas, G. E., Olivero, J. J., Jensen, E. J., Schroeder, W., and Toon, O. B.: Relation between increasing methane and the presence of ice clouds at the mesopause, *Nature*, 338, 490, 1989.
- Turco, R. P., Toon, O. B., Whitten, R. C., Keesee, R. G., and Hollenbach, D.: Noctilucent clouds: Simulation studies of their genesis, properties and global influences, *Planetary and Space Science*, 30, 1147-1181, 1982.
- 10 Wilms, H., Rapp, M., and Kirsch, A.: Nucleation of mesospheric cloud particles: Sensitivities and limits, *Journal of Geophysical Research: Space Physics*, 121, 2621-2644, 2016.
- Witt, G.: Height, structure and displacement of noctilucent clouds, *Tellus*, XIV, 1-18, 1962.
- Yasumoto, I.: Thermal transpiration effects for gases at pressures above 0.1 torr, *The Journal of Physical Chemistry*, 84, 589-593, 1980.
- Zhang, X. L., Wu, G. J., Zhang, C. L., Xu, T. L., and Zhou, Q. Q.: What is the real role of iron oxides in the optical properties of dust aerosols?, *Atmos. Chem. Phys.*, 15, 12159-12177, 2015.
- 15