

Answers to Reviewer#1's comments on **pre-discussion version**

Thanks a lot for your time and comments. Our point-to-point answers are listed below the comments in blue italic.

Review of the paper entitled “Anomalous holiday precipitation over southern China” by Zhang et al.

This manuscript presents follow-up results of the authors' previous study (Gong et al. 2014, JGR), concerning aerosol reduction and weather changes around the Chinese Spring Festival (CSF). It used extensive station data and the ERA-Interim reanalysis data, and revealed that human activities associated with the holiday could cause a precipitation reduction in days following the CSF. The topic is very interesting and worth pursuing, especially when considering the large impact of the CSF on temperature and precipitation as shown in this manuscript and the JGR paper. The approach for identifying changes of aerosols and precipitation around the CSF is sound to me.

[Answer] Thanks for your encouragement.

My main concern is about the relationship between aerosol changes and the precipitation reduction. The authors stated that the aerosol reduction caused by the economic slowdown causes the surface cooling and an anomalous cyclone, which subsequently yields anomalous northerlies to the southern China and reduces the surface precipitation. I don't think the 10% reduction of aerosols can yield a cooling of about 0.8°C to the surface via aerosol-(cloud-)radiation interactions in such a short time period, where feedbacks of the large-scale meteorology are ignorable.

The aerosol reduction and the cooling occur concurrently, but this does not warranty they have cause-effect relationships. The authors stated the reduced downward longwave flux was responsible for the cooling, which I don't agree to. Aerosol effects on the longwave is considered to be small compared with their effects on the shortwave, and the aerosol reduction should increase solar radiation reaching the surface, warming the surface and near-surface air. I think the reduced longwave is caused by the cooling rather than causing the cooling. I suggest the authors either provide more persuading proofs for the cause-effect relationship, or weaken their points on this aspect. By the way, aerosol effects on the shortwave and longwave fluxes can be evaluated using the MERRA2 reanalysis data, which have radiation fluxes over full sky, clear sky and no-aerosol sky separately.

[Answer] We agree that this is a critical question i.e. what factors have caused such cooling of -0.8°C and how. The possible roles played by aerosol direct, indirect, and atmospheric feedback all may be important. When considering the simultaneous temperature changes in association with short period aerosol anomaly, the atmospheric feedback would be ignorable. During a moderate period such as >3 days to one week, the atmospheric feedback is likely discernible. This is evident in Figure 13 where the cyclone-temperature correlation peak lags that for PM10

a couple of days. In addition, we should point out that the gradual economic slowdown and the emission reduction actually begin long before the New Year's Day, though the largest reduction occurs around the holidays. If this is true, the negative minima of PM10 and temperature during days [-3, -1] would not be totally explained as an instant effect of holiday aerosol. In addition, although aerosol itself is less efficient than moisture and cloud in radiating long-waves, the accompanying northerly, as well as the related clear-sky/less moisture atmosphere/less cloud (Figures 4-9) would help strengthen the temperature anomalies through longwave radiation. In a word, the holiday cooling might be partly due to the instant response of the radiation, partly due to short-term circulation response, and partly due to the response of the preceding emissions. Unfortunately, in our observational analysis we can neither quantitatively confirm any or all of their roles, nor rule out any of them, though our diagnostics and correlations are indicative of their links.

As you suggested, we analysed the changes of atmospheric radiative forcing around the holidays by comparing MERRA2 reanalysis productions with/without assimilation aerosols. The top-of-atmosphere (TOA) net radiation anomalies show that significant negative anomalies appear on days [-4, -1] and [+3, +6] in both the MERRA2 products with/without assimilation aerosols (Figure A1). We compared the changes in the net shortwave and longwave radiation, and found that the net radiation anomalies can be largely attributed to the longwave radiations. The means longwave anomalies for these two short periods are respectively -1.77 and -1.57 Wm⁻² in no aerosol MERRA2 dataset. Meanwhile, the means for these two periods are -1.79 and -1.58 Wm⁻² in MERRA2 with aerosols. The differences between with and without aerosol are not evident. ERA-Interim has similar results (Figure A1). The analysed radiation datasets in MERRA2 and ERA-Interim are both under clear sky condition. TOA longwave radiation reflects equivalent temperature of air column, smaller TOA upwelling longwave radiation means a cooler beneath atmosphere. The negative TOA longwave radiation and temperature after the New Year's Day would be related to the cooling in association with the anomalous cyclone, whereas the simultaneous influence of atmospheric circulation on the cooling and negative TOA longwave radiation in days [-4, -1] should be small since there is no significant anomalous circulation. Generally, the TOA net radiation and longwave anomalies seem reasonably consistent with the observed temperature changes.

Note the aerosol type information in MERRA2 is not available. It seems that the assimilation of AOD ignores the daily aerosol type changes, while the pollutants such as SO₂, NO_x changes evidently during holidays (e.g., Lin and McElroy 2011; Gong et al., 2014). Without aerosol type information, it is still hard to understand MERRA2 radiation effects by absorbing or by scattering. In the revised version, following the composites of PM10/AOD we have added the analysis of MERRA2 radiation with a short discussion (Section4.1, the last paragraph).

Finally, as you suggested, we have weakened our statement in the revised version by modifying the text to simply indicate that there are negative temperature anomalies are found around the holidays in observation, and avoid to directly attribute the 0.8°C cooling to the aerosol radiation. Section 4 has been re-organized. In the revision, we first show there is a significant reduction in air pollution during holidays, and then show that the year-to-year variations of atmospheric circulation after the New Year's Day is statistically correlated with the preceding

PM10 concentration with a stable lag time of approximate 6-9 days. Although we avoided to address the cause-and-effect mechanism, these observed correlations and diagnostics should shed lights on their links. This critical issue surely requires further in-depth analysis including modelling in future studies.

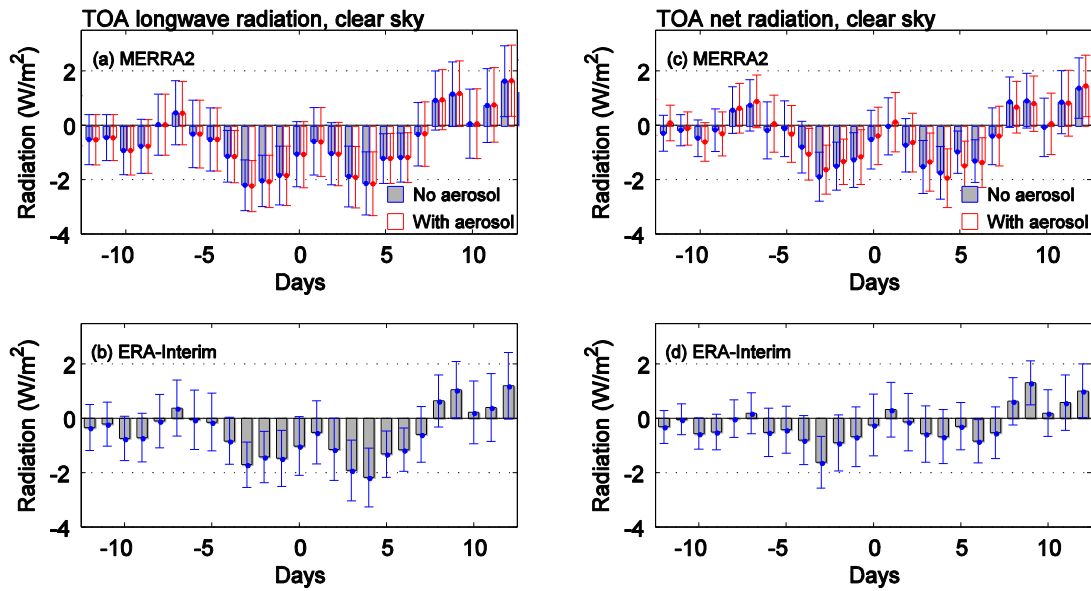


Figure A1. Top-of-atmosphere (TOA) longwave radiation (a, b) and net radiation (c, d) anomalies around holidays from MERRA2 and ERA-Interim.

-THE END-

Anomalous holiday precipitation over southern China

Jiahui Zhang¹, Dao-Yi Gong¹, Rui Mao¹, Jing Yang¹, Ziyin Zhang², Yun Qian³

¹State Key Laboratory of Earth Surface Process and Resource Ecology/Academy of Disaster Reduction and Emergency Management, Beijing Normal University, Beijing, 100875, China

5 ²Environmental Meteorology Forecast Center of Beijing-Tianjin-Hebei, China Meteorological Administration, Beijing, 100081, China

³Pacific Northwest National Laboratory, Climate Physics Group, Washington, 99352, USA

Correspondence to: Dao-Yi Gong (gdy@bnu.edu.cn)

Abstract: The Chinese Spring Festival (CSF) is the most important festival in China. Officially, this holiday lasts approximately one week. Based on the long-term station observations from 1979 to 2012, this manuscript reports that during the holidays, the precipitation over southern China (108°E-123°E and 21°N-33°N, 155 stations) has been significantly reduced. The precipitation frequency anomalies from the fourth day to the sixth day after Lunar New Year's Day (i.e., days [+4, +6]) were found to decrease by -7.4%. At the same time, the daily precipitation amounts experienced a reduction of -0.62 mm d⁻¹ during days +2 to +5. The holiday precipitation anomalies are strongly linked to the relative humidity (ΔRH) and cloud cover. The station observations of the ΔRH showed an evident decrease from day +2 to +7, and a minimum appeared on days [+4, +6], with a mean of -3.9%. The ΔRH vertical profile displays a significant drying below approximately 800 hPa. Between 800 hPa and 1000 hPa, the mean ΔRH is -3.9%. The observed station daytime low cloud cover (LCC) evidently decreased by -6.1% during days [+4, +6]. Meanwhile, the ERA-Interim daily LCC also shows a comparable reduction of -5.0%. The anomalous relative humidity is mainly caused by the ~~decreased~~lower water vapor in the lower-middle troposphere. Evident negative specific humidity anomalies persist from day -3 to day +7 in the station observations. The average specific humidity anomaly for days [+4, +6] is -0.73 g kg⁻¹. When the precipitation days ~~are~~ exclude~~d~~the mean, the anomaly remains significant, being -0.46 g kg⁻¹. A significant deficit of water vapor is observed in the lower troposphere below 700 hPa. Between 800 hPa and 1000 hPa, the mean specific humidity dropped by -0.70 g kg⁻¹. This drier lower-middle troposphere is due to anomalous northerly winds, ~~which are tightly related to the~~ cyclonic circulation anomaly over northwestern Pacific. Authors have ~~analyzed~~ proposed that the concurrent holiday aerosol anomaly and their time-lag correlations with the atmospheric circulation. ~~anomalous atmospheric circulation is likely related to the holiday aerosol anomaly. Station and satellite observations show~~ And it is found that the East Asian aerosol concentrations during the CSF decrease evidently, the largest reduction occurring on days [-3, -1]. At the same time, a concurrent cooling is observed in the lower troposphere, ~~which enhances the cold advection over East Asia. In addition, an anomalous low pressure tilting westward occurs in the troposphere over East Asia. The anomalous cold advection seems to help trigger/strengthen a cyclonic circulation anomaly~~ The strength of the anomalous cyclone on days [+4,+6], which is statistically correlated with PM₁₀ concentration over East China. Their strongest correlations occur when the PM₁₀ leads by -

带格式的: 下标

9 to -6 days, with correlation coefficients varying from +0.52 to +0.57 responsible for the northerly winds and the less precipitation around the holidays. This possible mechanism needs further clarification by elaborate observation analysis and modeling.

5

1 Introduction

Human activity has an important impacts on weather/climate, at diverse spatial/temporal scales, variability by causing changes in Earth's atmosphere in the amounts of greenhouse gases, aerosols and cloudiness. The changes of these factors alter the energy balance of the Earth-atmosphere system. The role aerosols play in weather/climate variability is among the most important. Particularly the large uncertainty involving the clouds, precipitation, and radiation makes it difficult to accurately estimate their contributions to the long-term climate changes (Boucher et al., 2013). Recent estimation indicates that in the fast-developing China, anthropogenic aerosols emissions might have contributed 10% ±4% of the current global radiative forcing (Li et al., 2016a). Recent studies have noted that short-term air pollution associated with intense economical/political/cultural events has discernable influences on local and/or regional weather worldwide, where air pollution caused by regular or occasional anthropogenic emissions significantly impacts atmospheric physics and chemistry (e.g., Zhao et al., 2006; Sanchez-Lorenzo et al., 2012; Williams et al., 2015). Recent estimation indicates that in the fast-developing China, anthropogenic aerosols might have contributed 10% ±4% of the current global radiative forcing (Li et al., 2016a). However, the possible mechanism involving the cloud-precipitation processes and interactions over monsoonal Asia remains among the most challenging topics (Li et al., 2016b).

Alternating weekdays and weekends may be the most apparent regular activities of human beings. The so-called weekly cycle effects of aerosol concentrations and atmospheric parameters, which are strongly related to the aforementioned regular human activity, have been widely reported globally (Gordon, 1994; Cerveny and Balling, 1998; B äumer et al., 2008). At first, these studies of the weekly cycles were focused on cities and industrialized areas. Later, it was reported that the weekly cycles of air pollution and atmospheric variables are not only local phenomena confined within urban areas but are also large-scale phenomena that are closely related to regular anthropogenic aerosol effects human activities (Gordon, 1994). Over developed Europe, for example, B äumer et al. (2008) analyzed the station data from Aerosol Robotic Network over central Europe and reported that the aerosol optical thickness is higher midweek than on the weekend. In the rapidly industrializing Asia, there are also discernible weekly cycles. For example, Gong et al. (2007) found that the meteorological parameters in China experience significant weekly cycles. TPM_{10} (particulate matter with a diameter of less than 10 μm) values in China experience significant weekly cycles with ranges of approximately $2 \mu\text{g m}^{-3}$, where a peak appears on Thursday and a low appears on the weekend. Accompanying the weekly cycles of PM_{10} , there are robust co-variations in the surface solar radiation, total cloud cover, maximum temperature, and relative humidity. During the weekdays, the total cloud cover and

带格式的: 字体: (默认) +西文正文 (Times New Roman)

带格式的: 字体: (默认) +西文正文 (Times New Roman), 10 磅, 非突出显示

带格式的: 字体: (默认) +西文正文 (Times New Roman)

relative humidity are lower, while the surface solar radiation and maximum temperature are higher. In contrast, the higher cloud cover and humidity and the lower radiation and maximum temperature appear on the weekends. Evident weekly cycles are also identified in other parameters, such as the diurnal temperature range (Gong et al., 2006) and thunderstorm frequency (Yang et al., 2016). In South Korea, Choi et al. (2008) found that the summertime cloudiness shows a bell-shaped curve between midweek and weekend. ~~Meanwhile, the aerosol concentrations are higher midweek than on the weekend.~~ The mechanisms of these weekly cycles are not yet fully understood, ~~though their strong co-variations with human activities (e.g., air pollutants) are measured widely.~~ For ~~Gong et al. (2006;2007)~~ supposed that the ~~phases of weekly cycle direct or indirect aerosol effects may play different roles~~ may depending on the different climatological circumstances. ~~Gong et al. (2007)~~ suggested that during the boreal summer, the weekly cycles in eastern China are likely associated with aerosol-atmosphere interactions, ~~where the accumulated aerosol concentrations play a key role in triggering the atmospheric instability on Thursday.~~ Wang et al. (2012) emphasized that during the autumn, the semi-direct aerosol effects likely play a dominant role in the weekly cycle of cloud cover in southeastern China. Yang et al. (2016) proposed the importance of the human emission aerosol types. ~~In central China, aerosol absorption is strong, which suppresses convection more on weekdays, whereas in southeast China, aerosols are more hygroscopic, which helps invigorate thunderstorms on weekdays.~~

In addition, there are occasional intense human activities (e.g., societal and cultural events), which also change atmospheric environments (particularly the air quality), anthropogenic air pollution events (in clean as well as the dirty cases): For example, Xin et al. (2012) found that the concentrations of PM_{2.5} in Beijing-Tianjin-Hebei area were reduced by approximately 50% with the implementation of emission controls ~~(including the reduction of factory emission and vehicle activity) by the government~~ during the Beijing Olympic Games in the summer of 2008. Similar actions were also implemented when China hosted the Asia-Pacific Economic Cooperation meeting in 2014 and held the national military parade in 2015; as a result, the air quality was considerably improved over northern China (Chen et al., 2015; Wang et al., 2015; Xu et al., 2015; Wen et al., 2016; Xu et al., 2017). In contrast, setting off fireworks during holiday celebrations can produce severe air pollution across the world; for example, on the Fourth of July holiday in America (Carranza et al., 2001), the New Year's fireworks in Mainz (Drewnick et al., 2006), during the Diwali festival in India (Singh et al., 2014), during the Chinese Spring Festival (CSF) (Tang et al., 2016), etc. The emission ~~and pollutant components~~ may differ among these events (Wang et al., 2007; Zhang et al., 2010; Tang et al., 2016). Comparing with weekly cycles, the possible meteorological co-variations in association with these occasional intense events are less studied.

Note that the CSF holiday repeatedly occurs every year in January-February across the whole country and is the most important holiday in China. ~~The human emissions Gong et al. (2014) indicated that during the CSF holidays decreases evidently (-the PM₁₀ concentrations were reduced by approximately 9.24% due to the economic slowdown.~~ Lin and McElroy ~~(2011; Gong et al., 2014).~~) also estimated that during the celebration of the CSF there is a notable reduction in anthropogenic emissions. According to their estimations for 2005, 2007, 2008, and 2010, the CSF contributes to an NO_x emission reduction of 12%. ~~In addition, the 2009 CSF contributes to a reduction of 10%.~~ Some studies have tried to identify

带格式的: 字体: (默认) + 西文正文 (Times New Roman), 10 磅, 非倾斜, 字体颜色: 自动设置

带格式的: 字体: (默认) + 西文正文 (Times New Roman), 10 磅, 非倾斜, 字体颜色: 自动设置

the possible ~~co-changes consequences for in~~ atmospheric physics and weather anomalies ~~resulting from accompanying with~~ these local and regional occasional ~~pollution-society/cultural~~ events. As an example, in the United States, the diurnal temperature range increased significantly during the three days after 11 September 2001 when civil aviation planes were grounded (Travis et al., 2002). Gong et al. (2014) analyzed the temperature anomalies during the CSF holidays during 5 2001-2012 and found that there are significant negative anomalies of approximately -0.81°C in eastern China, wherein atmospheric feedbacks likely play ~~important a~~ roles in enhancing the cooling.

The purpose of the present study is to investigate the possible changes of precipitation over ~~southern~~ China during the CSF holidays. The paper is organized as follows. The data and method are presented in Section 2. Results, including the anomalous precipitation frequency and amount, the relevant changes in humidity, cloud cover and temperature, and the 10 anomalous atmospheric water vapor and circulation, are described in Section 3. The possible relevance of these results to the holiday aerosols is discussed in Section 4. In addition, Section 5 presents a summary.

2 Data and methods

2.1 Data and study area

The daily precipitation data analyzed in the present study were obtained from the China Meteorological Administration 15 observation archives. The daily precipitation amounts as well as the precipitation types are recorded. There are six kinds of readings, namely, (a) no precipitation; (b) trace precipitation (daily precipitation readings of less than the measurable 0.1 mm); (c) precipitation from fog, frost and dew; (d) precipitation from pure snow; (e) precipitation from snow and rain; and (f) precipitation from rainfall. Because the frequency of snowfall events is low in the warm area of southern China and the precipitation from fog and dew is considerably small (accounting for 0.14% of our data), in this study, we considered 20 only the precipitation amounts and ignored the precipitation types. This dataset consists of 917 stations, and the earliest observations start in the 1950s. Here, we confine our analysis period to 1979-2012, during which China experienced a rapid development and massive emissions of air pollutants. Since we aim to investigate the precipitation around the Lunar New Year's Day, in this study, only the daily precipitation from January to February is employed. After excluding the 319 stations with missing values, we retained the 598 stations without missing data during 1979-2012.

25 Prior to this analysis, we have to determine the target area based on the precipitation climatology. Because the Chinese Lunar New Year occurs in January or February, here, we investigated the climatological means of the precipitation amounts as well as the precipitation frequencies based on the observations from 598 stations. As shown in Figure 1a, in the boreal winter, the number of precipitation days is much greater in southern China than in the north. A maximum of >35 days occurs between approximately $25\text{-}30^{\circ}\text{N}$ and $102\text{-}115^{\circ}\text{E}$, while the precipitation frequency is less than 15 days north of 35°N . At the 30 same time, the major precipitation belt, with precipitation amounts > 50 mm, also appears over the southeast of mainland China, being generally consistent with the spatial features of the frequency patterns (Figure 1a). Although the number of precipitation days in the Sichuan Basin is high, the precipitation amounts are not such large. In addition, Sichuan Basin has a

unique climate due to its special basin topography. Therefore, we did not include it in our study area. [In addition, for 319 stations north of 33°N the average precipitation days and amount are 12.8 days and 9.9 mm. Too small precipitation frequency and amount in northern China would be difficult to statistically yield a meaningful signal.](#) Finally, we confined our study area to 108°E-123°E and 21°N-33°N (as indicated by the black dashed rectangle in Figure 1). Within this area, there are 155 available meteorological stations. Among these stations, the minimum number of precipitation day (15.7 days) appeared at the Zhumadian station (33°N, 114°E), and the minimum precipitation amount (15.3 mm) appeared at the Ankang station (32°N, 109°E). Meanwhile, the maximum precipitation days (41.6 days) and maximum precipitation amount (214.5 mm) were found at Wugang (26°N, 110°E) and Nanyue (27°N, 112°E), respectively. On average, the precipitation frequencies and amounts during the period of 1979-2012 are 30.3 days and 124 mm. In addition to the daily precipitation, we also analyzed other meteorological variables, including the mean temperature and relative humidity.

The atmospheric circulation and moisture in the troposphere were taken from the ERA-Interim reanalysis datasets (Dee et al., 2011), which have a 1.5° spatial resolution and span the period of 1979-2012. We utilized surface parameters, such as the cloud cover and total column water vapor. In addition, the impacts of the air temperature, relative humidity, and horizontal winds on pressure levels were also investigated. Only the data at step 0 for 00:00, 06:00, 12:00, and 18:00 UTC were obtained and subjected to analysis. Averaging these 4 times yields the daily mean.

2.2 Analysis method

We employed a temporal composite analysis to investigate the possible changes in the daily precipitation and the statistical significance. This was carried out via the following steps. First, we identified all Lunar New Year's Days (LNYD) from 1979 to 2012. As listed in Table 1, the New Year's Days all fall within late January to mid-February. During our analysis period, the earliest New Year's Day is on 22 January, and the latest occurs on 20 February. These LNYDs are denoted as day 0. The days before and the day after the LNYD are denoted as day -1 and day +1, respectively. Accordingly, two days before and after the LNYD are denoted as day -2 and day +2, etc.

Second, we estimated the anomalies from the climate means. When dealing with continuous variables (such as the temperature, humidity, atmospheric circulation, and water vapor), we calculated the long-term means for each calendar day from 1 January to 28 February. Then, the means were subtracted from the daily observations to determine the corresponding anomalies. This process is same as that used in Gong et al. (2014). In contrast to these continuous variables, precipitation occurs quite randomly. For a specific day, say day 0, we counted the number of precipitation days (N) during the whole data period from 1979-2012. Thus, the precipitation frequency (hereafter denoted to as F) is deduced by:

$$F = \frac{N}{34} \times 100\%, \quad (1)$$

~~The climatic means of F were calculated based on Gregorian calendar days. Taking day 0 as an example, after reading all 34 corresponding Gregorian calendar dates we computed their mean precipitation frequencies. Their averages represent the climatic means. Note that when computing the climatic means, we used a 7-day window because the typical synoptic~~

time scale is approximately 7 days. We expect this process to serve as a filter to suppress the random synoptic noise. The departure of F from the climatic mean is the anomalous frequency (ΔF). To determine a more robust signal, we used a 3-day window. In other words, when computing the F for day 0. We used all data from day -1 to day +1. To remove the randomness of precipitation, we used a 3-day window. For example, precipitation occurring on the previous day (day -1) and the day after (day +1) is considered to occur on day 0. Above method was also used to calculate the climatic values of F which are based on Gregorian calendar days. For a station from 1st January to 31st March, everyday has a precipitation frequency. Then to this climatic sequence, we used a 7-day window filter to reserve the changes more than 7 days because the typical synoptic time scale is approximately 7 days. For a station, in a specific day, like day 0, all precipitation frequencies whose lunar date is day 0 were found from the climatic sequence and calculated the average. The departure of F from the average is the anomalous frequency (ΔF). Final result is the average of all stations' anomalies.

3 Results

3.1 Significant reduction of precipitation

We computed the daily anomalies of the precipitation frequencies for each of the stations. To determine how the precipitation might change before and after New Year's Day, we considered days from -12 to +12. This method is similar to that of the work of Gong et al. (2014). We also tried to use a longer time window and found that the conclusions remain the same. To focus on southern China, we computed the means for all 155 stations within the target area (Figure 1). The regional mean ΔF is shown in Figure 2a. Although the ΔF before the LNYD is generally positive, the salient feature is the ΔF reduction after the LNYD. The mean for day +3 to +7 is -5.5%, and a minimum of -9.4% occurs on day +5. Note that the largest reductions occur on days [+4, +6], where the averaged anomalies are as low as -7.4%. Precipitation is a natural phenomenon. Thus, its frequency anomaly should be spatiotemporally random for a certain day from 1979-2012 among all the stations over this large region. The standard deviation of the stations' ΔF would provide information concerning further uncertainties. A smaller standard deviation suggests that similar anomalies tend to be observed, thus indicating a robust signal, whereas a larger standard deviation implies diverse changes. We found that the standard deviation of the days [+3, +7] is approximately $\pm 3.7\%$, being smaller than most days before the LNYD. Note that the means may be biased by outliers or skewness. Thus, to determine the diverseness of these frequency anomalies among the 155 stations, we also computed the medians and the lower and upper percentiles. In Figure 2a, the ranges of the 10th and 90th percentiles are plotted as the error bars and are shown with the medians. The 90th percentiles for the days [+4, +6] are clearly -0.9%, -3.9%, and -1.7% respectively, all being significantly below 0. At the same time, the medians are generally similar to the means; for example, on days [+3, +7], the means (-3.1%, -6.5%, -9.4%, -6.3%, and -2.2%) and medians (-3.6%, -7.0%, -9.8%, -7.0%, and -1.8%) are almost identical, likely suggesting that the majority of the anomalies tend to be negative and that the means are not skewed by large departures or outliers.

We further investigated the statistical significances of the precipitation anomalies by employing a Monte-Carlo approach (e.g., Stjern, 2011; Wang et al., 2012). Here, the Monte-Carlo test was performed by randomly rearranging the sequences of the lunar calendar days. For each experiment, we first generated the random sequence and then estimated the frequencies for ~~each lunara-speeiffe~~ day station by station. In addition, the regional anomaly mean was calculated as
5 described above. We repeated these steps 1000 times and obtained the 10th and 90th percentiles of these experiments. By comparing observations with these Monte-Carlo-yielded percentiles, we might estimate whether the frequency anomalies are beyond those of random chance. If the original observations are lower than the 10th percentile, these measurements are significant at the 0.1 level.

For the regional mean frequency anomalies, there are few cases where the simulated anomaly is smaller than the
10 observations during the holidays. Only 1 of 1000 random Monte-Carlo experiments is below the observation on day +5. On days +4 and +6, there are 10 and 14 cases with values smaller than the observation. On days +3 and +7, there are slightly more (135 and 190, respectively). We found that the 10th percentiles during days +4 to +6 are -3.6%, -3.4% and -3.5%, respectively. Note that the observations (-6.5%, -9.4% and -6.3%) are all below the corresponding 10th percentiles of the Monte-Carlo experiments. Therefore, we may conclude that the observed ΔF is significant at the 0.1 level from days +4 to
15 +6. We also examined the medians of the 155 stations and found a similar result. From day +4 to +6, there are only 9, 1 and 7 cases with values below the observations. The observed medians during days +4 to +6 are -7.0%, -9.8% and -7.0%, which are all below the Monte-Carlo 10th percentiles (-3.7%, -3.6% and -3.6%, respectively).

We further investigated the possible changes of daily precipitation amounts. Here, all trace precipitation records are excluded. The composite method is similar to that for frequency. In other words, for a specific lunar calendar day, the anomalous amount is calculated as the mean daily precipitation amount minus the climate reference, where the climate reference is estimated based on the Gregorian calendar. Then, we averaged the anomalies for all stations to obtain a regional mean. Figure 2b shows the result. ~~Unlike the precipitation frequency, the amount shows no evident departures before the LNYD.~~ Interestingly, from day +2 to day +5, the amounts experience continuously negative anomalies with a mean of -
25 0.62 mm d⁻¹. In particular, a minimum of -1.0 mm d⁻¹ occurs on day +3. During days +2, +4, and +5 the anomalies are similar (being -0.54, 0.52, and -0.48 mm d⁻¹, respectively). Differing from the precipitation frequency, the amount ranges from the 10th-90th percentiles are obviously larger. In addition, during days [+2, +5], the upper bounds all exceed zero and imply larger uncertainties. Thus, the gradual decrease in the amount after the LNYD is likely consistent with the significant reduction in precipitation frequency. Note that the Monte-Carlo test suggests a high confidence of the negative amount anomalies during the holidays. Of 1000 Monte-Carlo experiments, there are 83, 14, 75 and 70 cases with values smaller than
30 the observations during days [+2, +5]. The Monte-Carlo 10th percentiles for days [+2, +5] are -0.47, -0.45, -0.42 and -0.40 mm d⁻¹, respectively, whereas the corresponding observations of -0.54, -0.95, -0.52 and -0.48 mm d⁻¹ are all smaller. We also examined the median of the 155 stations by employing the Monte-Carlo test. The result is similar. There are 70, 16, 66 and 43 experimental values that are smaller than those observed. The medians of the observation for these days (-0.63, -0.97, -0.65 and -0.70 mm d⁻¹, respectively) are all smaller than the corresponding Monte-Carlo 10th percentiles (-0.56, -0.54,

-0.52 and -0.47, respectively). Therefore, the means and medians of the amount anomalies during days [+2, +5] are significant at the 0.1 level. Note that the large error bars in Figure 2b may imply somewhat larger diversities/differences of the daily precipitation amounts among the 155 stations. The Monte-Carlo test likely provides a more reasonable estimation of the significance. With the above analysis, we may conclude that there is a significant reduction in the precipitation frequency and a decrease in the daily precipitation amount after the LNYD.

3.2 Spatial distribution of the holiday precipitation anomalies

Although the precipitation reduction after the LNYD is evident in the composite analysis based on the regional means (Figure 2), this feature might differ among stations. In this subsection, we investigate the spatial distribution of the precipitation anomalies. A significant frequency reduction occurs on days [+4, +6], and a significant amount reduction appears on days [+2, +5]. Here, we computed the mean frequency anomalies during days [+4, +6] and the mean amount anomalies during [+2, +5] for each station. The statistical significance is also estimated using the Monte-Carlo test at each station. The method used is similar to that described in Section 3.1. Here, the Monte-Carlo test was performed for every station by randomly rearranging the lunar calendar, and the simulation was repeated 1000 times. The 10th (90th) and 20th (80th) percentiles were taken as the criteria. For the precipitation frequency, the mean value is regarded as significant at the 0.1 (or the 0.2) level only when the anomalies in all three days (i.e., days +4, +5 and +6) were significant at the 0.1 (or 0.2) level. Similarly, when the daily precipitation amounts on all four individual days (from day +2 to +5) are significant, their mean is regarded as a significant anomaly. The results are shown in Figure 3.

Figure 3a shows that the majority of the ΔF have negative signs. Among the 155 stations, only 7 stations have positive signs, and none of these positive anomalies are significant. Of the 148 stations with ΔF reductions, 57 stations are significant at the 0.1 level, and 108 are significant at the 0.2 level. Most stations located in the north and east of study area have the significant ΔF reduction. The ΔF reduction center is mainly located over the central region (approximately 108°E-115°E and 28°N-32°N). The ΔF minimum reaches -13.5% at the Sansui station (27°N, 108°E). Looking at the anomaly's magnitude, there are 55 stations with ΔF reductions exceeding -9%. Among these 55 stations, the anomalies for 45 stations are significant at the 0.1 level, and those at the other 10 stations are significant at the 0.2 level.

Unlike the frequency, the spatial features of the amount anomalies differ among stations (Figure 3b), which is consistent with the relatively larger span of the 10th-90th percentiles, as shown in Figure 2b. Nevertheless, there are still 117 stations with decreased amounts during days [+2, +5]. Among these, 27 stations showed decreases significant at the 0.2 level, and 8 stations showed those significant at the 0.1 level. The largest reduction is -2.41 mm d⁻¹, which appeared at the Shouxian station (32°N, 116°E).

Based on the above analysis of the temporal composites and spatial distributions, we found that the significant reductions of precipitation frequency and daily precipitation amount occur regionally within an approximate one-week period after the LNYD.

3.3 Relative humidity and cloud anomalies

Relative humidity (RH) is the most important factor that directly controls/influences precipitation. In this subsection, we investigate the possible changes in the relative humidities associated with the holiday precipitation decreases. Here, we examined the station data to analyze the relative humidity by making composites. Note that the method of estimating the anomalies is different from that for precipitation frequencies. The composites of the relative humidity (as well as those of other meteorological parameters analyzed in the following sections) are based on anomalies (Δ RH), which are obtained by subtracting the 1979-2012 long-term mean from the daily relative humidity values.

For each lunar calendar day, all 34 daily anomalies are collected and subjected to a t -test with the null hypothesis of their mean being not significantly different from zero at the 0.05 (or 0.1) level. In Figure 4, we plotted the means during days [-12, +12]. To facilitate a comparison, the range of one standard error estimated from the 34 anomalies is shown via error bars. The Δ RH experiences an evident decrease from day +2 to +7, with a mean value of -2.5%. The driest value is -4.6% at day +5. The mean Δ RH of the lowest anomalies for days [+4, +6] is -3.9%, which is significant at the 0.1 level as estimated from a left-tail t -test. Note that the drying (wetting) may be the result of less (more) precipitation, as demonstrated in the previous sections. For clarity, we also computed the Δ RH using only the data from no-rain days. We found that the Δ RH for no-rain cases shows a similar temporal feature (figure not shown). The lowest values still occur on days [+4, +6], with anomalies of -0.97%, -0.69% and -0.38%, respectively. However, these anomalies are not statistically significant. This result could be caused by the relatively smaller data sample and excluding the precipitation days. The sample numbers of no rain days is 48.9% of that of all days. In any case, the similar drying features on no-rain days may provide support for the theory that the lower Δ RH could be a cause of the precipitation reduction and may even help enhance the drying.

We also examined the spatial distribution of the Δ RH. The station means of the Δ RH during days [+4, +6] are plotted in Figure 5. All 155 stations show negative anomalies, with a maximum and a minimum of -0.6% and -8.1%, respectively. When estimating the statistical significance, we consider the mean for days [+4, +6]. Thus, we did not consider the significance of each of the three days. If the resulting anomaly is significant at the 0.05 (or 0.1) level as calculated by a t -test, this station is regarded as significant during days [+4, +6]. As shown in Figure 5, there are 70 (98) stations that are significant at the 0.05 (0.1) level. Additionally, we investigated the spatial features of no-rain days and found that most Δ RH during days [+4, +6] were also negative (the number of days is 136, accounting for approximately 88% of the total stations), and the lowest anomaly is -7.6% (figure not shown). Again, this result suggests a drying atmosphere near the surface during the New Year's holiday.

For the ~~precipitation stratification~~ of ~~stratus precipitation~~ during the winter season, the relative humidity in the middle-lower troposphere is more important than the surface humidity. The precipitation reduction could occur with a drier and upper higher atmosphere. We then investigated the Δ RH in the low-middle level troposphere using the ERA-Interim reanalysis datasets of the pressure levels from 1979 to 2012. Here, we selected 99 grid points between 21°N-33°N and 108°E-123°E. We examined the Δ RH values at each level from 1000 hPa to 500 hPa. Generally, the results are similar,

showing drying tendencies throughout, as expected. Note that the ΔRH values in the low levels are more evident. At 1000 hPa, the ΔRH has a continuous reduction during days [+3, +6], with a mean decrease of -3.8%. The negative anomalies on these days are significant at the 0.1 level. The largest reduction occurs on day +5, being -5.2% (figure not shown). In Figure 4, we plot the regional mean ΔRH at 850 hPa. A similar reduction is observed during days [+2, +6], where the lowest anomalies are still found on days [+4, +6]. In addition, the values on days +4 and +5 (-4.0% and -5.7%) are both significant at the 0.1 level. In the middle-upper troposphere, the ΔRH during the holidays is not evident.

The spatial distributions of ΔRH at 1000 and 850 hPa during days [+4, +6] were also analyzed. At 1000 hPa, the majority of the significantly negative ΔRH values were located over southern China and the neighboring western Pacific, with a northeast-southwest distribution. The results at 850 hPa are plotted in Figure 5, and only the significant values (above the 0.1 level) are shown. At 850 hPa, the significant region is smaller spatially but has a greater magnitude than that at 1000 hPa. Over the land, the majority of the anomalies are between -4% and -6% at 1000 hPa, whereas the values are between -6% and -10% at 850 hPa. The minimum grid point value at 1000 hPa is -6.5%, while the minimum is as low as -9.7% at 850 hPa.

The drying in the lower troposphere can be more clearly seen in the relative humidity profiles. The vertical profile of the ΔRH during days +4 to +6, as averaged over all 99 grids in southern China, is shown in Figure 6. Because the meaningful changes occurred in the lower troposphere, here we plotted only the ΔRH values below the 500 hPa level. Below 500 hPa, the anomalies all have negative signs. In addition, the significant ΔRH values appear below approximately the 800 hPa level (Figure 6a). The negative anomaly at 850 hPa is -3.9%, and that at 1000 hPa is -4.2%. The mean for these layers (below 800 hPa) is -3.9%. Generally, the significant drying of the relative humidity appears in the low-middle level, which physically agrees with the precipitation reduction.

As the relative humidity at the low-middle level decreases, consistent changes in clouds should occur, particularly in the low-level cloud coverage (LCC). To confirm this, we first analyzed the surface-observed cloud data, which are from the Global Surface Weather Dataset obtained from the China Meteorological Administration. In this dataset, the observations are taken 4 times per day (00:00, 06:00, 12:00, 18:00 UTC) during the years 1980-2012, except for during 2000, which is not available. Only those days with all 4 records are included. Of the 304 stations in our study area, we selected 137 stations with overall data availabilities above 30%. When deriving the anomalies, we applied the same method as that used for ΔRH . The results show that ~~both~~ the total cloud cover ~~showed no evident changes~~ and LCC reduces, especially the LCC experiences a significant decrease during the New Year's holiday. It seems the reduction of total cloud cover is contributed by the decrease of low cloud cover, whereas the LCC experiences a significant decrease during the New Year's holiday. The mean anomaly of LCC during days [+1, +5] is -2.6%. In addition, a minimum of -3.1% appears on day +5, which is significant at the 0.1 level. We should note that sometimes the LCC cannot be completely distinguished from the ~~middle~~ cloud cover in the station observations. Moreover, the cloud cover changes rapidly and might depend on the observer. At nighttime, the uncertainty of the observations is much greater. We would expect more reliable observations during the daytime. The mean LCC of 00:00 and 06:00 UTC is computed and regarded as the daytime observation. As

shown in Figure 4b, the daytime LCC shows an evident reduction during days [+4, +6]. The values of each of three days are all significant at the 0.1 level, as estimated using a left-tail *t*-test. The mean for the three days is -6.1%, and a minimum of -9.7% occurs on day +5. Compared to the climate daytime cloud cover of 78% during January to March in southern China, the LCC reduction during the New Year's holiday has a considerably large magnitude. Figure 5b shows the spatial distribution of the daytime LCC values during days [+4, +6]. For a total of 137 stations, 119 (86.9%) stations showed negative signs. In addition, there are 8 (27) stations with values significant at the 0.05 (0.1) level, as estimated via a both-tail *t*-test. A minimum of -16.8% occurs at the Fuyang station (33°N, 115°E).

To assess the robustness of the cloud cover changes, the cloud cover of the ERA-Interim data was investigated. We found that the high cloud cover and the middle cloud cover showed no significant changes (figure not shown). Interestingly, there is a significant reduction in the LCC during the New Year's holidays. Figure 4d shows the temporal variations of the ERA-Interim LCC. The LCC clearly shows an outstanding reduction during days [+4, +6]. The largest reduction, i.e., -5.9%, appears on day +5. The values from day +4 to day +5 are all significant at the 0.1 level, as calculated by a left-tail *t*-test. Averaging over days [+4, +6], the mean value is -5.0%. This magnitude is comparable to the station-based daytime LCC anomaly (-6.1%). The spatial distribution of the LCC anomalies for the ERA-Interim data during days [+4, +6] is shown in Figure 5d. The LCC reduction center is located in the eastern region and has a magnitude between approximately -8% and -12%. This reduction is almost identical to that of the station observation (c.f., Figure 5b, d). Note that in the ERA-Interim data, the cloud height is defined according to the corresponding sigma level. The low clouds correspond to sigma 0.8-1.0. A significant decrease of the relative humidity occurs below 800 hPa (Figure 6a), which physically agrees with the negative LCC anomalies.

3.4 Temperature and water vapor anomalies

The negative ΔRH during the holidays might be caused by anomalous temperatures, by the water vapor or both, depending on certain conditions. In this subsection, we analyze the changes of the temperature and water vapor associated with the holiday precipitation reduction. First, we examined the temporal changes of the temperature over southern China using the same composite analysis as that used for the relative humidity. We found that there is a continuous cooling of the daily mean temperatures from day -3 to day +6, which are all significant at the 0.1 level, as estimated by a left-tail *t*-test (figure not shown). The mean temperature anomaly of these days is -1.12°C. The maximum and minimum temperature anomalies are -0.70°C and -1.42°C for days +6 and +3, respectively. Precipitation often causes a low temperature. To exclude the possible influence of precipitation on temperature, we also examined the daily temperatures for no-rain days and found a similar temperature anomaly of -1.22°C for days +1 to +6. In addition, there is a similar minimum of -1.48°C. These values for the no-rain days are significant at the 0.05 level.

Note that Gong et al. (2014) have reported negative temperature anomalies over the whole of eastern China around the LNYD when analyzing the shorter data period of 2001-2012. They found that the most significant decrease appears on days -

3 to +2, with a mean value of -0.81°C . The temperature beyond this period over the southern China, however, was not addressed in their analysis. As demonstrated in the previous sections, the most significant reductions of the ΔF and ΔRH are observed on days [+4, +6]. Thus, we further computed the mean of the temperature anomalies (ΔT) for days [+4, +6] and estimated their statistical significances using a *t*-test for each of the stations. The results show that all 155 stations have negative anomalies (figure not shown). The maximum ΔT of -0.28°C occurs at the Fengjie station (31 $^{\circ}\text{N}$, 109 $^{\circ}\text{E}$), and a minimum of -2.14°C appears at the Jiuxian station (25 $^{\circ}\text{N}$, 118 $^{\circ}\text{E}$). The anomalies for 116 stations are statistically significant at the 0.1 level, and those for 95 stations are significant at the 0.05 level. We also investigated the temperature anomalies during days [+4, +6] using no-rain days and found similar results. All stations continue to show negative anomalies, and more stations are significant (134 stations exceed the 0.1 level, 117 stations exceed the 0.05 level).

The above spatial distribution suggests that temperature anomalies are unlikely at the local scale. For clarity, we also investigated the vertical profiles and the spatial distributions of ΔT using the ERA-Interim pressure level data. The mean ΔT values below the 500 hPa level during days [+4, +6] are averaged for all 99 grid points over southern China and plotted in Figure 6b. The significant negative temperature anomalies below 700 hPa are evident, where all values are as low as $< -1^{\circ}\text{C}$. The mean for these layers is -1.37°C . To determine whether the cooling of lower-middle troposphere is a regional-scale phenomenon, we further analyzed the ΔT 's spatial distribution. Note that the minimum of -1.56°C occurs at the 850 hPa level in Figure 6b. Here, we computed the 850 hPa ΔT during days [+4,+6] for each of the grid points (figure not shown), revealing that the majority of the study area experiences a significant cooling (exceeding -1°C) that is almost identical to that from the surface station observations. Based on these analyses, we may conclude that during the holidays (particularly, days [+4, +6]), there is an anomalous temperature cooling over southern China from the surface to the middle troposphere (below 500 hPa).

Cooling favors condensation and precipitation. If the water vapor content remains a constant, a cooler temperature should result in a higher ΔRH . During the period of 1979-2012, over southern China, the climatic mean temperatures for days [+4, +6] at 1000 hPa and 850 hPa are 9.3°C and 3.3°C , respectively. Meanwhile, the specific humidities at 1000 hPa and 850 hPa are 5.5 g kg^{-1} and 4.4 g kg^{-1} . According to the Clausius-Clapeyron equation (Murray, 1967), the climatological relative humidities are, respectively, 75.4% at 1000 hPa and 77.5% at 850 hPa. The observed coolings of -1.15°C at 1000 hPa and -1.56°C at 850 hPa (Figure 6b) could cause corresponding ΔRH increases of +6.0% and +9.1%, respectively. This contradicts the observed negative ΔRH anomalies (c.f., Figure 5). Therefore, the cooling temperature is not a direct factor causing the drier ΔRH and the precipitation reduction.

Alternatively, the water vapor should be responsible for the anomalous ΔRH . We analyzed the station specific humidity (SH). Here, the SH is estimated from the surface pressure, relative humidity and temperature, where the Tetens formula is employed to estimate the saturated vapor pressure over water (Murray, 1967). Figure 7a shows the specific humidity anomalies (ΔSH) before and after the LNYD. Evident negative anomalies persist from days -3 to +7. The lowest values

appear at approximately days [+4, +5]. Note that the negative Δ SHs during days +2 to +6 are significant at the 0.05 level, with a mean of -0.71 g kg^{-1} . A minimum of -0.82 g kg^{-1} occurs on day +4. In addition, the average Δ SH for days [+4, +6] is -0.73 g kg^{-1} . We repeated the composite analyses for no-rain days and found that the Δ SH have similar continuous reductions after New Year's Day (Figure 7b). The Δ SHs of days [+2, +5] are significant at the 0.1 level, and their mean is -0.43 g kg^{-1} .
5 The minimum of -0.54 g kg^{-1} also appears on day +4, while the mean from day +4 to +6 is -0.46 g kg^{-1} , being smaller than the values estimated for all days. At the same time, the spatial distribution of Δ SH during days [+4, +6] reveals a regional-scale reduction over the study area (Figure 8). All stations clearly show negative anomalies, both when all days are analyzed and when only no-rain days are analyzed. In the former instance, the Δ SH values for the 140 stations is statistically significant at the 0.05 level, and in the latter case, the number of stations with statistically significant values is 102.

10 We further investigated the Δ SH values in the low-middle troposphere using the ERA-Interim reanalysis data. The Δ SH at 1000 hPa (850 hPa) during days [+2, +6] are all significant at the 0.05 (0.1) level, with a mean of -0.75 (-0.65) g kg^{-1} . It is clear that the Δ SH at 1000 hPa and 850 hPa display features similar to those of the surface observations in both their temporal variations and the magnitudes of the negative anomalies during the holidays (c.f., Figure 7). Furthermore, we investigated the spatial distributions of Δ SH on days [+4, +6]. The evident Δ SH reduction covers almost the whole of
15 southern China, with minimums extending from southeastern China to the western North Pacific, south of approximately 30°N (Figure 8). The anomaly center lies between 110°E - 130°E and 20°N - 30°N .

The drying of the Δ SH in the low-middle troposphere is more obvious, as seen in the vertical profile (Figure 6c). The significant negative Δ SH values appear in the levels below 700 hPa. Below 800 hPa, the Δ SH values are all below -0.50 g kg^{-1} . The mean for these layers (800 hPa to 1000 hPa) is -0.70 g kg^{-1} . Similarly, we also estimated the variations of the
20 relative humidity corresponding to these Δ SHs. The Δ SHs at 1000 hPa and 850 hPa are -0.78 g kg^{-1} and -0.69 g kg^{-1} , respectively (Figure 6c). If the temperature remains unchanged, these values would reduce the relative humidity by -10.9% and -12.3% , respectively. Obviously, the reduction of the water vapor in the lower-middle troposphere plays the dominant role in causing anomalous relative humidities, low-level clouds and precipitations.

The total column water vapor (TCWV), or the precipitable water, is also a large-scale factor that correlates well with
25 precipitation (e.g., Qian et al., 2009). The drying from the surface to the mid-troposphere is suggestive of the reduction in the TCWV. For clarification, we performed a composite analysis of the ERA-Interim TCWV. Unsurprisingly, the Δ TCWV experiences a continuous reduction from day +1 to day +5 (Figure 9a). The Δ TCWV are significant at the 0.05 level during days [+2, +5], with a mean of -1.93 kg m^{-2} . In addition, the largest negative Δ TCWV values are observed on days +4 and +5 (2.43 kg m^{-2} and 2.36 kg m^{-2} , respectively). The spatial distribution of the Δ TCWV values during days [+4, +6] is shown in
30 Figure 9b. The TCWV decreases by approximately -1.00 kg m^{-2} or more over most of the southern China. The minimum is located over the neighboring western North Pacific, between 120°E - 130°E and 20°N - 30°N . Meanwhile, positive Δ TCWVs with somewhat smaller magnitudes appear to the east (over approximately 150°E - 175°E and 20°N - 30°N). Generally, the reduction in the TCWV over the western North Pacific and eastern China is physically consistent with the negative

anomalies of the SH over southern China. The observed decrease in precipitable water during the holidays is unfavorable for precipitation.

Based on the above analysis, we may conclude that, although the relative humidity (as well as the relevant cloud cover and precipitation) would benefit from the cooling temperatures, its reduction during days [+4, +6] is strongly dominated by the drying water vapor in the lower troposphere. Therefore, the reduction of the SH is likely to contribute to the decrease of precipitation during the New Year's holiday.

3.5 Water vapor budget and atmospheric circulation

Our analysis demonstrates that in association with the significant precipitation reduction over southern China, anomalous negative departure of the SH occurs. One further question is that what causes such water vapor deficits during the New Year's holiday. Here, we discuss the possible factors relevant to the atmospheric column water vapor balance as well as their individual contributions. Regional changes of the column water vapor are essentially related to two components. One is the budget between evaporation and precipitation, the other is the budget of moisture inflow and outflow from the horizontal air motion crossing the four lateral boundaries. We investigate the corresponding anomalies separately during the holidays.

First, we computed the differences between the evaporation and the total precipitation (evaporation minus precipitation, i.e., E-P) using the ERA-Interim data from 00:00 and 12:00 UTC. Note that both evaporation and precipitation are forecasted, and the accumulated variables are collected at step 12. We analyzed the E-P anomaly (mm, equivalent to kg m^{-2}) during the holidays (figure not shown). From days +1 to +5, the E-P anomalies were all positive values with a mean of 0.85 mm. In addition, the anomalies on days +3, +4 and +5 were all significant at the 0.05 level. The maximum of the E-P anomaly (+1.25 mm) appeared on day +4. We also investigated the evaporation independently and found that the evaporation is enhanced during holidays, with the mean of the evaporation anomalies reaching +0.39 mm (figure not shown). We should note that the positive E-P anomalies occur concurrently with precipitation reductions. The E-P anomalies are likely dominated by precipitation changes. Although the positive E-P anomaly implies a net gain, this effect cannot account for the total net loss of the column water vapor.

Second, we investigated the column water vapor budget contributed by horizontal transport. Here, we simply estimated the moisture flux across the borders (i.e., the box in Figure 1). The vertically integrated moisture transport (Q) crossing the border is defined as follows:

$$Q = \int_L \left[\frac{1}{g} \int_{500\text{hPa}}^{1000\text{hPa}} q \cdot V dp \right] dl, \quad (2)$$

where V is the horizontal wind vector, g is the gravitational acceleration, q is the SH and L is the length of the border. Moisture transport above 500 hPa is ignored as its contribution to the total column moisture transport is relatively small, and large winds tend to cause errors in the upper troposphere where the SH is quite small (Qian et al., 2009). Along the northern and southern borders, we computed the meridional transport, while along the eastern and western borders, we computed only the zonal transport. The summation of the meridional and zonal transports yields the net budget. The result shows the net

water budgets are negative from day +1 to day +5 (figure not shown), with a mean of $-2.9 \times 10^7 \text{ kg s}^{-1}$. Note that the anomalies of days +1, +3 and +4 are all significant at the 0.05 level. The lowest water vapor budget is $-4.4 \times 10^7 \text{ kg s}^{-1}$ (about $-1.96 \text{ kg m}^{-2} \text{ day}^{-1}$), occurring on day +4. This simple calculation suggests that the horizontal moisture transport dominates the anomalous variations of the total net water vapor budget.

5 Because the negative anomaly in the water vapor budget may be caused by a reduced inflowing water vapor transport or by an increased outflowing transport, we investigated the transport crossing of each of the boundaries during the holidays. We found that the zonal transports crossing the eastern and western borders are negligible (figure not shown). In contrast, the water vapor transport at the southern boundary has the greatest magnitude (Figure 9). The southern border shows continuous negative anomalies from day +1 to day +5, and the largest departure, of $-5.5 \times 10^7 \text{ kg s}^{-1}$, occurs on day +4. The anomalies
10 during days +2 to +5 are significant at the 0.05 level and have a mean of $-4.4 \times 10^7 \text{ kg s}^{-1}$. Thus, the negative transport crossing the southern border implies an enhanced outflow, and is largely responsible for the net loss of the column water vapor during holidays.

The water vapor transport over this large area should be closely related to the regional atmospheric circulation. Previous studies have emphasized the importance of the anomalous atmospheric circulation over the western Pacific in modulating the precipitation over southern China by influencing the moisture transport and convergence (e.g., He et al. 2007; Li et al., 2013; among others). To elaborate on the details of the regional atmospheric circulation around the New Year's holiday, we investigated the tropospheric horizontal winds over eastern Asia. The vertical mean horizontal winds averaged from 1000 hPa to 700 hPa are plotted in Figure 9b. Over southeastern China, there are clear dominant northerly wind anomalies. The northerly winds flow toward the east over the western Pacific, south of approximate 25°N , and then turn northward.
20 Consistent with this cyclonic circulation anomaly, eastern China and the neighboring western Pacific experience remarkable reductions in the column water vapor. This pattern remains stable when looking at each of the pressure levels in the mid-troposphere. For example, at the 850 hPa level, the anomalous cyclone is more evident and the strong northerly winds over southeastern China are greater than the vertical means (Figure 9c). Interestingly, the precipitation reduction in the southern China is well captured in the ERA-Interim reanalysis, and such a reduction is physically consistent with the large-scale
25 atmospheric circulation change. We repeated the composite analysis of the atmospheric circulation using the NCEP/NCAR Reanalysis I and NCEP-DOE Reanalysis II datasets and found a similar pattern (figures not shown). Employing the same ERA-Interim data but a shorter data length (2001-2012), Gong et al. (2014) also reported a similarly anomalous circulation pattern over East Asia around the Chinese New Year. This anomalous cyclone is likely a robust signal of the holiday weather. Generally, this anomalous cyclone plays a dominant role in bringing stronger northerly wind, causing drier humidities and
30 lower water vapor values, finally resulting in less precipitation over southeastern China.

4 Discussion on co-variations in holiday air pollution of possible aerosol effects

4.1 Air pollution reduction over eastern China

The CSF is a cultural tradition that is directly related to the daily activity of human beings, particularly economic activities. The concurrent phenomena observed in atmospheric physics and weather likely imply links between these systems. We suspect the holiday anthropogenic emission –aerosols may act as an intermediate connection. Aerosol concentrations/Air pollutants were widely reported to considerably decrease during this holiday. For example, Tan et al. (2009) investigated the 1994-2006 observations from 13 monitoring sites around the Taipei metropolitan area and found that the concentrations of NO_x, CO, nonmethane hydrocarbon, SO₂ and PM₁₀ were lower during the New Year period than during the non-New Year periods. Using three different approaches considering the thermal power generation, satellite retrieval products and statistical and modeling attributing, Lin and McElroy (2011) estimated that the economic slowdown during the celebrations of CSF was responsible for a notable reduction in anthropogenic emission. According to their estimations for 2005, 2007 2008 and 2010, the CSF contributes a NO_x emission reduction of 12%. In addition, the 2009 CSF contributed a reduction of 10%. These estimations are comparable to those given in the work of Gong et al., (2014), in which they reported a PM₁₀ reduction derived from 323 surface station measurements over eastern China and estimated the magnitude of the PM₁₀ concentration decrease to be approximately -9.24% for the days -4 to +5 (excluding day 0 to rule out the New Year's Eve firework emissions).

Note that the boreal winter is the season when the air pollution concentration reaches its peak over China. Thus, we investigated the climatic mean and holiday changes of the aerosol optical depth (AOD). Here, the AOD data were obtained from the Moderate Resolution Imaging Spectroradiometer (MODIS) data sets produced by using the AOD 550 Dark Target Deep Blue algorithm and combined by the MOD08_D3 and MYD08_D3 product (Platnick et al., 2015a; Platnick et al., 2015b). These daily level-3 gridded atmospheric data are available from 2002 to 2012 at a 1-degree spatial resolution. As shown in Figure 1, the climatic mean AOD during January and February for eastern China is remarkably greater than those of the surrounding areas and has two maximum centers, one appearing to the north (i.e., the northern plains) and the other appearing to the west (namely, over Sichuan Basin). Concurrently, a considerably high AOD appears over southern China, ranging from 0.4 to 0.8. For comparison, the spatial distribution of PM₁₀ concentrations in January-February is also provided. Generally, the PM₁₀ concentration in the north is higher than that in the south. However, the pollution in southern China is also severe in the winter.

To better understand the aerosol changes during the holidays, we simply investigated the frequency distribution of the AOD for days [+1, +5]. During this period, a significant net water vapor reduction is observed. Because frequent cloudy weather causes a smaller clear-day AOD sample, it is difficult to calculate a meaningful daily AOD anomaly. Alternatively, we randomly selected days [-15, -11] to compute the preholiday period AOD frequency distribution for comparison. We also tested other time period, like days [-12, -8], and the result is robust. The frequencies for the holiday and preholiday periods were both calculated based on the original AOD data using a bin width of 0.2 (Figure 10). The ambient atmosphere during

the holidays is much cleaner than that of the preholiday period. On average, the AOD means for days [-15, -11] and days [+1, +5] are 0.67 and 0.58 for southern China, respectively. During the holidays, the magnitude of AOD reduction is shown to be approximately -13.4%. The improvement of air quality is well demonstrated by the frequency changes shown in Figure 10. The frequencies of the cases in which AOD > 0.6 are 50.4% and 36.6% for days [-15, -11] and days [+1, +5], respectively. This result shows a decrease of 13.8%. Note that the largest frequency reduction (approximately -6.7%) occurs in the bin of 0.6-0.8. Additionally, the daily PM₁₀ data were also analyzed for comparison and were calculated from the daily air pollution index (API) (Gong et al., 2007). There are 113 stations in our study area. Similar to the AOD, the PM₁₀ frequency distribution was calculated with a bin width of 20 µg m⁻³ for both the holidays and pre_holidays. The frequency of PM₁₀ concentrations greater than 100 µg m⁻³ during the holiday period is 19.8%, while the frequency for the same bin during the preholiday period is 41.7%. There is a 21.9% reduction in the high-PM₁₀ concentration cases during the CSF holidays. Not only do the frequencies change but the mean PM₁₀ concentrations also evidently decrease. The mean PM₁₀ concentrations for days [-15, -11] and days [+1, +5] are 98.9 µg m⁻³ and 71.5 µg m⁻³, respectively.

In addition to southern China, eastern Asia shows a marked drop in air pollution concentrations (figure not shown). We investigated the mean AOD and PM₁₀ values of eastern China (108°E-123°E and 21°N -42°N). The AOD values decrease from 0.60 during days [-15, -11] to 0.58 during days [+1, +5]. The frequency of cases with AOD > 0.6 is 33.3% during the holiday period, while the frequency for the preholiday period is 38.1%. Additionally, the mean PM₁₀ concentrations for days [-15, -11] and days [+1, +5] are 112.7 µg m⁻³ and 85.2 µg m⁻³, respectively. The reduction in high-pollution cases is notable. The proportion of PM₁₀ >100 µg m⁻³ records declined from 47.9% to 30.1%. The simultaneous and anomalous variations of the pollution concentrations of PM₁₀ in southern and eastern China can be clearly seen in their temporal composites, as shown in Figure 10c. The significant negative anomalies around the LNYD clearly appear in both eastern and southern China, and their lowest departures both occur a couple of days before New Year's Day. For eastern China, the mean value for days [-4, -1] is -12.26 µg m⁻³, which is approximately 14.71% smaller than the climatic background concentration (83.35 µg m⁻³). In southern China, the mean of the anomalies during days [-4, -1] is -9.07 µg m⁻³, being 12.63% lower than that of the background (71.84 µg m⁻³). These robust AOD and PM₁₀ signals clearly demonstrate that around the LNYD, eastern China experiences a relatively cleaner ambient atmospheric environment although the climatic background air pollution level in January and February is the highest of all seasons.

Note the PM₁₀ composites might be biased by their trends and outliers. To address this question, we repeated the analysis based on yearly normalized data. Here all PM₁₀ data are rescaled according to maximum minus minimum range year by year. The normalized data show that the frequency of PM₁₀ greater than 0.2 during days [-152, -118] is 44.1% while the frequency for the same bin during days [+1, +5] is 23.9%. The mean value for days [-4, -1] is 16% lower than climate mean. This agrees well with above analysis.

We further investigated the radiation from MERRA2. Here we employed two MERRA2 products, one runs with assimilation aerosols and the other without (Gelaro et al., 2017). We analysed the longwave radiation at top-of-atmosphere by making composites same as that for temperature. Results are shown in Figure 11. It is clear that significant negative

带格式的: 下标

带格式的: 下标

anomalies appear on days [-4, -1] and [+3, +6] in both the MERRA2 products with/without assimilation aerosols. The means for these two short periods are respectively -1.77 and -1.57 Wm⁻² in no aerosol MERRA2 dataset. Meanwhile, the mean longwave radiation anomalies are -1.79 and -1.58 Wm⁻² in MERRA2 with aerosols. ERA-Interim has similar results (Figure 11). The analysed radiation datasets in MERRA2 and ERA-Interim are both under clear sky condition. Top-of-atmosphere longwave radiation reflects equivalent temperature of air column, smaller top-of-atmosphere upwelling longwave radiation means a cooler beneath atmosphere. Top-of-atmosphere net radiation anomalies during holidays are also negative due to longwave radiation (figure not shown). The negative longwave and net radiation at top-of-atmosphere and temperature after the New Year's Day would be related to the cooling in association with the anomalous cyclone, whereas the simultaneous influence of atmospheric circulation on the cooling and negative longwave/net radiation in days [-4, -1] should be small since there is no significantly anomalous circulation. Generally, the radiation anomalies seem reasonably consistent with the observed temperature changes.

4.2 Time-lag correlation between PM₁₀ concentration and the anomalous cyclone

Generally, aerosols might influence regional precipitation in two aspects. The first is via the indirect effects. Secondly, aerosols may also influence regional precipitation by altering the thermal features and further modulating the regional atmospheric circulations. The involved aerosol-cloud-precipitation and aerosol-circulation-precipitation interactions/feedbacks make it hard to clearly identify aerosol impacts on precipitation. There are increasing numbers of works addressing [this issue climate consequences and feedbacks of human air pollutions with focus on precipitation](#). For example, Zhao et al. (2006) analyzed 40-years' observations of precipitation, satellite aerosol data and meteorological sounding data over eastern China and suggested a positive feedback mechanism (i.e., more aerosols cause less precipitation, which in turn leads to more aerosols) that will induce an acceleration of the reduction of precipitation in eastern China. Particularly, the observed changes of light rains are likely related to aerosols. Qian et al. (2009) employed long-term observational data from 1956-2005 and found that both the frequency and amount of light rain have decreased over eastern China. Their numerical simulations suggest that the light precipitation tends to be suppressed due to a higher cloud droplet number condensation and smaller droplet sizes under polluted conditions. Some studies suggested that aerosols induce surface cooling and weaken land-sea thermal contrast, thereby weakening monsoon circulations and the resultant precipitation changes (e.g., Wang et al., 2013; Ye et al., 2013; Guo et al., 2013; among others). [The above studies and mechanisms put an emphasis on climatic scale processes](#). Nevertheless, we note [- We note a](#) few studies addressing the synoptic scale circulation anomalies [caused by aerosol radiative effects](#). For example, Jones et al. (2004) suggested the dust aerosol heating in northern Africa plays an important role in changing the amplitudes of the downstream easterly waves over a couple of days. [Based on observational data](#), Ding et al. (2013) reported that the pollution caused by agricultural burning and fossil fuel combustion in some provinces over East China results in significant modification of regional daily temperature and precipitation through pollution-boundary layer dynamics and aerosol-radiation-cloud feedbacks. [In addition to the direct and semi-direct radiation impacts on meteorology, n](#) Numerical experiments with cloud microphysical processes

带格式的: 英语(印度)

show that Asian pollution invigorates weather activities along the North Pacific storm tracks (Zhang et al., 2007; Wang et al., 2014).

Is there physical linkage between the holiday aerosol reduction and anomalous precipitation (as well as the precipitation-relevant variables, such as the humidity, cloud, and temperature)? With respect to the indirect effects, the increases of anthropogenic aerosol concentration may enhance cloud lifetime and delay precipitation (e.g., Albrecht, 1989). Meanwhile, the cloud droplet size might be smaller, which tends to lead to ineffective coagulation precipitation (e.g., Rosenfeld et al., 2008). During the CSF holidays, however, the observed aerosol reduction accompanies a cloud cover reduction, a lower precipitation frequency and smaller precipitation amount. Identifying each role played by these cloud microphysical processes remains difficult. More importantly, note that in the observations, the holiday precipitation reduction is strongly related to the significant dry of the SH, which is caused by anomalous northerly winds. In fact, an anomalous cyclone dominates East Asia and the western Pacific region during the CSF holidays (Figure 9). The anomalous northerly winds over southern China are just located in the rear side of the anomalous cyclonic circulation. We speculate that the anomalous cyclone is likely correlated related to the air pollution/aerosol reduction around the holiday period. With respect to this issues, two facts are likely indicative of their relationship.

Firstly, Note that there is a time lag between the PM₁₀ reduction and the anomalous cyclone. Gong et al. (2014) reported that during days [-4, 0], there is no anomalous cyclone over East Asia, but at the same time, the temperature cools significantly. These phenomena can be observed in both the long-term (1979-2012) and short-term (2001-2012) data periods. The anomalous cyclone appears after New Year's Day in the troposphere, moves eastward, and disappears after approximately 12 days. This result is highly consistent with our analysis, as demonstrated in Figure 9. The largest aerosol reduction occurs on days [-3, -1]. At the same time, the greatest temperature cooling in eastern China was observed (c.f., Gong et al., 2014, figures 2 and 4). As shown in Figure 12, the lower-middle troposphere shows no evident northerly wind anomaly over East Asia and the western Pacific before New Year's Day. However, there is a significant cooling in the lower-middle troposphere, as indicated by the negative 1000-500 hPa thickness anomalies during days [-4, 0]. The cooling center is located between 100°E-130°E and 30°N-40°N. In this case, the negative temperature anomalies can result in anomalous cold advection due to the climatic northerly winds. This The anomalous cyclone is likely triggered/enhanced by the cooling of the low-middle troposphere, which condition is helpful favor/fors constructive baroclinic interaction between the upper and lower troposphere and favouring enhances the development of the midlatitude cyclone system (Hakim et al., 2003). We would expect a mature cyclone anomaly approximate one week later, if it is true that the cyclone develops from days [-3, -1].

The aerosols are likely to cause the circulation anomalies by affecting the atmospheric thermodynamics. We further computed the cross-correlations of the regional mean temperatures with the anomalous cyclone on day +5. In eastern China, there are 394 available meteorological stations. We averaged these stations' daily temperature anomalies to derive a regional mean time series and then computed its correlation with that of the 500 hPa height on day +5. The results show that the

带格式的: 突出显示

cyclone is closely related to the temperature anomalies that occurred approximate 5 days previously. A maximum correlation of 0.52 was observed when temperature leads the pressure by 4 to 5 days. We also computed the cross-correlations using the 31 PM₁₀ collocate stations. The features are almost identical (Figure 4.13). Similar to the PM₁₀ reduction, the holiday temperatures cool over eastern China. Therefore, the regional temperature over southern China experiences a similar cross-correlation with the following cyclone (figure not shown). It should be pointed out that these time-lag correlations should not be explained by the natural 1-2 week processes. Because the natural synoptic system's occurrence and phases are randomly in time. Here we prepared the atmospheric correlation/temperatures time series according to the lunar calendar dates. If there is a natural cyclone around the New Year's Day, its random phase should be offset by other cyclones when put all years together. Anyway. These results demonstrate that a stronger cyclone over the western Pacific on days [+4, +6] is often accompanied by a lower preceding PM₁₀ concentration and cooler temperatures over eastern China that occurred approximate one week previously.

5 Summary

Briefly, the major findings of our analysis are summarized as follows:

The long-term station precipitation data from 1979 to 2012 were analyzed with a focus on the possible changes during the CSF holidays. We found that the precipitation frequency over southern China experiences a significant holiday reduction. The largest reduction occurs on days [+4, +6], with a mean anomaly of -7.4% and a minimum anomaly of -9.4% on day +5. At the same time, the daily precipitation amounts from day +2 to day +5 show continuous negative anomalies, and their mean is -0.62 mm d⁻¹. The Monte-Carlo test implies that the holiday-related frequency and amount anomalies are significantly different from random occurrences. The spatial distributions of the mean frequency anomalies for days [+4, +6] clearly show that a reduction appears across the whole southern China. Among the 155 stations, negative anomalies were observed at 148 stations.

The holiday precipitation anomalies are strongly linked to the relative humidity and cloud cover. The station Δ RH shows an evident decrease from day +2 to +7, and the lowest anomalies appear on days [+4, +6], with a mean of -3.9%. When all precipitation days excluded the Δ RH shows similar decreases, the lowest values also occur on days [+4, +6], with anomalies of -0.97%, -0.69% and -0.38%, respectively. The Δ RH vertical profile demonstrates a significantly drying under approximately 800 hPa. The ERA-Interim reanalysis data revealed that the negative anomaly at 850 hPa is -3.9% and that at 1000 hPa is -4.2%. The mean Δ RH of layers between 850 hPa and 1000 hPa is -3.9%. The negative anomalies in the lower troposphere are consistent with the significant decreases in the LCC. The daytime station LCC shows an evident reduction during days [+4, +6], with a mean of -6.1%. Meanwhile, the daily ERA-Interim LCC also displays a notable reduction during days [+4, +6]. The corresponding mean is -5.0%, and a minimum of -5.9% appears on day +5. This magnitude as well as its spatial distribution are comparable to that of the station-based daytime LCC anomaly.

The anomalous relative humidity is found to be mainly caused by a drying of the water vapor in the lower-mid troposphere over southern China during the holidays. Evident negative SH anomalies persist from days -3 to +7 in the station observations. The lowest values appear on approximately days [+4, +5]. The average ΔSH for days [+4, +6] is -0.73 g kg^{-1} . When the precipitation days are excluded, the ΔSH shows a similar continuous reduction after New Year's Day. A minimum of -0.54 g kg^{-1} appears on day +4, while the mean for days [+4, +6] is -0.46 g kg^{-1} . Significant drying of the water vapor is observed for the whole low troposphere below 700 hPa. Below 800 hPa, the ΔSH values are all below -0.50 g kg^{-1} . The mean value between 800 hPa and 1000 hPa is -0.70 g kg^{-1} . The reduction of the water vapor in the lower-middle troposphere likely plays the dominant role in causing anomalous relative humidities, low-level clouds and precipitation. This water vapor deficit results from the anomalous meridional horizontal moisture transport. During the holidays, a large-scale cyclonic circulation appears over the western Pacific, which brings anomalous northerly winds to East Asia and leads to negative water vapor flux in the troposphere.

We ~~calculated the correlations suppose that between~~ holiday aerosol ~~and is likely to play a role in generating the~~ anomalous cyclones. As the observation PM_{10} and satellite AOD demonstrated, the aerosol concentrations around the CSF decrease evidently. In ~~e~~**Eastern China/Asia**, the largest reduction of PM_{10} occurs on days [-3, -1]. A simultaneous cooling was observed (e.g., Gong et al., 2014). Cross-correlation demonstrates that approximately one week after a lower PM_{10} concentration and a cooler temperature over eastern China, a stronger cyclone is observed over the western Pacific. The cooling is likely to lead to anomalous cold advection, which ~~enforces the constructive baroclinic interactions between the upper and lower troposphere, thus triggering or enhancing provides a favourable condition for the development of a~~ midlatitude cyclone system. The cyclone brings anomalous northerly wind to East Asia, reduces the atmospheric SH, and consequently results in less precipitation over southern China. ~~The mechanisms. To what extent the cooling is contributed by the direct/indirect effects of aerosol and the role played by the atmospheric feedback are still unclear. Whether these physical/chemistry processes depend on the aerosol emission region and the aerosol types, needs~~ further clarification by elaborate observation analysis and modeling.

Acknowledgements. This research was supported by projects NSFC-41621061, and NSFC-40975043. The meteorological data were obtained from the China Meteorological Administration. ERA-Interim reanalysis data used in this study were obtained from ECMWF at <http://www.ecmwf.int/>. The API data were obtained from the Chinese Ministry of Environmental Protection. Satellite data used in this study were obtained from MODIS Web of NASA at <https://modis.gsfc.nasa.gov/>. ~~The MERRA-2 reanalysis dataset is publicly available online through the Goddard Earth Sciences Data and Information Services Center (GES DISC; <http://disc.sci.gsfc.nasa.gov/mdisc/>).~~

带格式的: 英语(美国)

References

- ~~Albrecht, B.A.: Aerosols, cloud microphysics, and fractional cloudiness, Science, 245, 1227-1230, doi: 10.1126/science.245.4923.1227, 1989.~~
- Boucher, O., Randall, D., Artaxo, P., Bretherton, C., Feingold, G., Forster, P., Kerminen, V.-M., Kondo, Y., Liao, H.,
5 Lohmann, U., Rasch, P., Satheesh, S. K., Sherwood, S., Stevens, B., and Zhang, X.-Y., Clouds and Aerosols, in: Climate Change 2013: The Physical Science Basis, Contribution of Working Group I to the Fifth Assessment Report of the Intergovernmental Panel on Climate Change, edited by: Stocker, T. F., Qin, D., Plattner, G.-K., Tignor, M., Allen, S. K., Boschung, J., Nauels, A., Xia, Y., Bex, V., and Midgley, P. M., Cambridge University Press, Cambridge, UK and New York, NY, USA, 571–657, 2013.
- 10 Carranza, J.E., Fisher, B.T., Yoder, G.D., and Hahn, D.W.: On-line analysis of ambient air aerosols using laser-induced breakdown spectroscopy, *Spectrochimica Acta Part B: Atomic Spectroscopy*, 56(6), 851-864, doi: 10.1016/S0584-8547(01)00183-5, 2001.
- Cerverny, R.S. and Balling, R.C.: Weekly cycles of air pollutants, precipitation and tropical cyclones in the coastal NW Atlantic region, *Nature*, 394, 561-563, doi: 10.1038/29043, 1998.
- 15 Chen, C., Sun, Y.L., Xu, W.Q., Du, W., Zhou, L.B., Han, T.T., Wang, Q.Q., Fu, P.Q., Wang, Z.F., Gao, Z.Q., and Worsnop, D. R.: Characteristics and sources of submicron aerosols above the urban canopy (260 m) in Beijing, China, during the 2014 APEC summit, *Atmospheric Chemistry and Physics*, 15(22), 12879-12895, doi:10.5194/acp-15-12879-2015, 2015.
- Choi, Y.-S., Ho, C.-H., Kim, B.-G., and Hur, S.-K.: Long-term variation in midweek/weekend cloudiness difference during summer in Korea, *Atmospheric Environment*, 42(28), 6726-6732, doi: 10.1016/j.atmosenv.2008.05.039, 2008.
- 20 Dee, D. P., Uppala, S. M., Simmons, A. J., Berrisford, P., Poli, P., Kobayashi, S., Andrae, U., Balmaseda, M. A., Balsamo, G., Bauer, P., Bechtold, P., Beljaars, A. C. M., van de Berg, L., Bidlot, J., Bormann, N., Delsol, C., Dragani, R., Fuentes, M., Geer, A. J., Haimberger, L., Healy, S. B., Hersbach, H., Hólm, E. V., Isaksen, I., Kållberg, P., Köhler, M., Matricardi, M., McNally, A. P., Monge-Sanz, B. M., Morcrette, J.-J., Park, B.-K., Peubey, C., de Rosnay, P., Tavolato, C., Thépaut, J.-N., and Vitart, F.: The ERA-Interim reanalysis: configuration and performance of the data assimilation system, *Quarterly Journal of the Royal Meteorological Society*, 137(656), 553-597, doi:10.1002/qj.828, 2011.
- 25 Ding, A. J., Fu, C.B., Yang, X.Q., Sun, J.N., Petäjä T., Kerminen, V.-M., Wang, T., Xie, Y., Herrmann, E., Zheng, L.F., Nie, W., Liu, Q., Wei, X.L., and Kulmala, M.: Intense atmospheric pollution modifies weather: A case of mixed biomass burning with fossil fuel combustion pollution in eastern China, *Atmospheric Chemistry and Physics*, 13, 10545-10554, doi:10.5194/acp-13-10545-2013, 2013.
- 30 Drewnick, F., Hings, S.S., Curtius, J., Eerdekens, G., and Williams, J.: Measurement of fine particulate and gas-phase species during the New Year's fireworks 2005 in Mainz, Germany, *Atmospheric Environment*, 40(23), 4316-4327, doi: 10.1016/j.atmosenv.2006.03.040, 2006.

- Gelaro, R., McCarty, W., Suárez, M. J., Todling, R., Molod, A., Takacs, L., Randles, C. A., Darmenov, A., Bosilovich, M., Reichle, R., Wargan, K., Coy, L., Cullather, R., Draper, C., Akella, S., Buchard, V., Conaty, A., da Silva, A., Gu, W., Kim, G.-K., Koster, R., Luc chesi, R., Merkova, D., Nielsen, J. E., Partyka, G., Pawson, S., Putman, W., Rienecker, M., Schubert, S. D., Sienkiewicz, M. and Zhao, B.: The modern-era retrospective analysis for research and applications, version 2 (MERRA-2), *Journal of Climate*, 14, 5419-5454, doi:10.1175/JCLI-D-16-0758.1, 2017.
- 5 Gong, D.-Y., Guo, D., and Ho, C.-H.: Weekend effect in diurnal temperature range in China: Opposite signals between winter and summer, *Journal of Geophysical Research: Atmospheres*, 111, D18113, doi:10.1029/2006JD007068, 2006.
- Gong, D.-Y., Ho, C.-H., Chen, D., Qian, Y., Choi, Y.-S., and Kim, J.: Weekly cycle of aerosol - meteorology interaction over China, *Journal of Geophysical Research: Atmospheres*, 112, D22202, doi:10.1029/2007JD008888, 2007.
- 10 Gong, D.-Y., Wang, W., Qian, Y., Bai, W., Guo, Y., and Mao, R.: Observed holiday aerosol reduction and temperature cooling over East Asia, *Journal of Geophysical Research: Atmospheres* 119(11), 6306-6324, doi:10.1002/2014JD021464, 2014.
- Gordon, A.H: Weekdays warmer than weekends?, *Nature*, 367, 325-326, doi: 10.1038/367325b0, 1994.
- Guo, L., Highwood, E.J., Shaffrey, L.C., and Turner, A.G.: The effect of regional changes in anthropogenic aerosols on rainfall of the East Asian Summer monsoon, *Atmospheric Chemistry Physics*, 13, 1521-1534, doi:10.5194/acp-13-1521-2013, 2013.
- 15 He, X., Ding, Y., He, R., He, J., and Li, Q.: Analysis on anomalous precipitation in southern China during winter monsoons, *Journal of Meteorological Research*, 21(4), 385-396, 2007.
- Hakim, G., Joly, A., Ayrault, F., Malardel, and S., Cyclone, in: *Encyclopedia of Atmospheric Sciences*, vol. 2, edited by J. R. Holton, J. A. Curry, and J. A. Pyle, Academic Press, London, pp. 589-615, 2003.
- 20 Jones, C., Mahowald, N., and Luo, C.: Observational evidence of African desert dust intensification of easterly waves, *Geophysical Research Letters*, 31, L17208, doi: 10.1029/2004GL020107, 2004.
- Li, B., Gasser, T., Ciais, P., Piao, S., Tao, S., Balkanski, Y., Hauglustaine, D., Boisier, J.-P., Chen, Z., Huang, M., Li, L.Z., Li, Y., Liu, H., Liu, J., Peng, S., Shen, Z., Sun, Z., Wang, R., Wang, T., Yin, G., Yin, Y., Zeng, H., Zeng, Z., and Zhou, F.: The contribution of China's emissions to global climate forcing, *Nature*, 531, 357-361, doi: 10.1038/nature17165, 2016a.
- 25 Li, H., Lin, Z., and Song, Y.: Analysis of the possible factors that influence March precipitation anomalies over South China, *Chinese Journal of Atmospheric Sciences*, 37(3),719-730, doi: 10.3878/j.issn.1006-9895.2012, 2013. (in Chinese)
- Li, Z., Lau, W.K.M., Ramanathan, V., Wu, G., Ding, Y., Manoj, M.G., Liu, J., Qian, Y., Li, J., Zhou, T., Fan, J., Rosenfeld, D., Ming, Y., Wang, Y., Huang, J., Wang, B., Xu, X., Lee, S.S., Cribb, M., Zhang, F., Yang, X., Zhao, C., Takemura, T., Wang, K., Xia, X., Yin, Y., Zhang, H., Guo, J., Zhai, P.M., Sugimoto, N., Babu, S.S., and Brasseur, G.P.: Aerosol and monsoon climate interactions over Asia, *Reviews of Geophysics*, 54, 866-929, doi:10.1002/2015RG000500, 2016b.
- 30

- Lin, J.T. and McElroy, M.B.: Detection from space of a reduction in anthropogenic emissions of nitrogen oxides during the Chinese economic downturn, *Atmospheric Chemistry and Physics*, 11(15), 8171-8188, doi: 10.5194/acp-11-8171-2011, 2011.
- Murray, F.W.: On the Computation of Saturation Vapor Pressure, *Journal of Applied Meteorology*, 6, 203-204, 1967.
- 5 Platnick, S., et al.: MODIS Atmosphere L3 Daily Product, NASA MODIS Adaptive Processing System, Goddard Space Flight Center, USA: http://dx.doi.org/10.5067/MODIS/MOD08_D3.006, 2015a.
- Platnick, S., et al.: MODIS Atmosphere L3 Daily Product, NASA MODIS Adaptive Processing System, Goddard Space Flight Center, USA: http://dx.doi.org/10.5067/MODIS/MYD08_D3.006, 2015b.
- 10 Qian, Y., Gong, D.-Y., Fan, J., Leung, L.R., Bennartz, R., Chen, D., and Wang, W.: Heavy pollution suppresses light rain in China: Observations and modeling, *Journal of Geophysical Research: Atmospheres*, 114(D7), doi: 10.1029/2008JD011575, 2009.
- Rosenfeld, D., Lohmann, U., Raga, G.B., O'Dowd, C.D., Kulmala, M., Fuzzi, S., Reissell, A., and Andreae, M.O.: Flood or drought: How do aerosols affect precipitation?, *Science*, 321, 1309-1313, doi: 10.1126/science.1160606, 2008.
- 15 Singh, B.P., Srivastava, A.K., Tiwari, S., Singh, S., Singh, R.K., Bisht, D.S., Lal, D.M., Singh, A.K., Mall, R.K., and Srivastava, M.K.: Radiative Impact of Fireworks at a Tropical Indian Location: A Case Study, *Advances in Meteorology*, Article ID 197072, 8, doi: 10.1155/2014/197072, 2014.
- Stjern, C.W.: Weekly cycles in precipitation and other meteorological variables in a polluted region of Europe, *Atmospheric Chemistry and Physics*, 11(9), 4095-4104, doi: 10.5194/acp-11-4095-2011, 2011.
- 20 Tan, P.-H., Chou, C., Liang, J.-Y., Chou, C. C.K., and Shiu, C.-J.: Air pollution "holiday effect" resulting from the Chinese New Year, *Atmospheric Environment*, 43(13): 2114-2124, doi: 10.1016/j.atmosenv.2009.01.037, 2009.
- Tang, M., Ji, D.-S., Gao, W.K., Yu, Z.-W., Chen, K., and Cao, W.: Characteristics of air quality in Tianjin during the Spring Festival period of 2015, *Atmospheric and Oceanic Science Letters*, 9(1), 15-21, doi: 10.1080/16742834.2015.1131948, 2016.
- 25 Travis, D.J., Carleton, A.M., and Lauritsen, R.G.: Climatology: Contrails reduce daily temperature range, *Nature*, 418, 601, doi: 10.1038/418601a, 2002.
- Wang, T., Wang, H.J., Otterå O.H., Gao, Y.Q., Suo, L.L., Furevik, T., and Yu, L.: Anthropogenic agent implicated as a prime driver of shift in precipitation in eastern China in the late 1970s, *Atmospheric Chemistry and Physics*, 13, 12,433-12,450, doi: 10.5194/acp-13-12433-2013, 2013.
- Wang, W., Gong, D., Zhou, Z., and Guo, Y.: Robustness of the aerosol weekly cycle over Southeastern China, *Atmospheric Environment*, 61, 409-418, doi: 10.1016/j.atmosenv.2012.07.029, 2012.
- 30 Wang, Y., Wang, M., Zhang, R., Ghan, S.J., Lin, Y., Hu, J., Pan, B., Levy, M., Jiang, J.H., and Molina, M.J.: Assessing the effects of anthropogenic aerosols on Pacific storm track using a multiscale global climate model, *Proceedings of the National Academy of Sciences of the United States of America*, 111, 19, 6894-6899, doi: 10.1073/pnas.1403364111, 2014.

- Wang, Y., Zhuang, G., Xu, C., and An, Z.: The air pollution caused by the burning of fireworks during the lantern festival in Beijing, *Atmospheric Environment*, 41(2), 417-431, doi: 10.1016/j.atmosenv.2006.07.043, 2007.
- Wang, Z., Li, Y., Chen, T., Li, L., Liu, B., Zhang, D., Sun, F., Wei, Q., Jiang, L., and Pan, L.: Changes in atmospheric composition during 2014 APEC conference in Beijing, *Journal of Geophysical Research: Atmospheres*, 120(24), 12695-12707, doi: 10.1002/2015JD023652, 2015.
- 5 Wen, W., Cheng, S., Chen, X., Wang, G., Li, S., Wang, X., and Liu, X.: Impact of emission control on PM_{2.5} and the chemical composition change in Beijing-Tianjin-Hebei during the APEC summit 2014, *Environmental Science and Pollution Research*, 23(5), 4509-4521, doi: 10.1007/s11356-015-5379-5, 2016.
- Williams, A. P., Schwartz, R. E., Iacobellis, S., Seager, R., Cook, B. I., Still, C. J., Husak, G., and Michaelsen, J.: Urbanization causes increased cloud-base height and decreased fog in coastal southern California, *Geophysical Research Letters*, 42, 1527-1536, doi: 10.1002/2015GL063266, 2015.
- Xin, J., Wang, Y., Wang, L., Tang, G., Sun, Y., Pan, Y., and Ji, D.: Reductions of PM_{2.5} in Beijing-Tianjin-Hebei urban agglomerations during the 2008 Olympic Games, *Advances in Atmospheric Sciences*, 29(6), 1330-1342, doi: 10.1007/s00376-012-1227-4, 2012.
- 15 Xu, W., Song, W., Zhang, Y., Liu, X., Zhang, L., Zhao, Y., Liu, D., Tang, A., Yang, D., Wang, D., Wen, Z., Pan, Y., Fowler, D., Collett Jr., J.L., Erisman, J.W., Goulding, K., Li, Y., and Zhang, F.: Air quality improvement in a megacity: implications from 2015 Beijing Parade Blue Pollution control actions, *Atmospheric Chemistry and Physics*, 17(1), 31-46, doi: 10.5194/acp-17-31-2017, 2017.
- Xu, W. Q., Sun, Y. L., Chen, C., Du, W., Han, T. T., Wang, Q. Q., Fu, P. Q., Wang, Z. F., Zhao, X. J., Zhou, L. B., Ji, D. S., Wang, P. C., and Worsnop, D. R.: Aerosol composition, oxidation properties, and sources in Beijing: results from the 2014 Asia-Pacific Economic Cooperation summit study, *Atmospheric Chemistry and Physics*, 15(23), 13681-13698, doi: 10.5194/acp-15-13681-2015, 2015.
- 20 Yang, X., Li, Z., Liu, L., Zhou, L., Cribb, M., and Zhang, F.: Distinct weekly cycles of thunderstorms and a potential connection with aerosol type in China, *Geophysical Research Letters*, 43(16), 8760-8768, doi:10.1002/2016GL070375, 2016.
- 25 Ye, J., Li, W., Li, L., and Zhang, F.: "North drying and south wetting" summer precipitation trend over China and its potential linkage with aerosol loading, *Atmospheric Research*, 125-126, 12-19, doi:10.1016/j.atmosres.2013.01.007, 2013.
- Zhang, M., Wang, X., Chen, J., Cheng, T., Wang, T., Yang, X., Gong, Y., Geng, F., and Chen, C.: Physical characterization of aerosol particles during the Chinese New Year's firework events, *Atmospheric Environment*, 44(39), 5191-5198, doi: 10.1016/j.atmosenv.2010.08.048, 2010.
- 30 Zhang, R., Li, G., Fan, J., Wu, D.L., and Molina, M.J.: Intensification of Pacific storm track linked to Asian pollution, *Proceedings of the National Academy of Sciences*, 104(13), 5295-5299, doi: 10.1073/pnas.0700618104, 2007.

Zhao, C., Tie, X., and Lin, Y.: A possible positive feedback of reduction of precipitation and increase in aerosols over eastern central China, *Geophysical Research Letters*, 33, L11814, doi:10.1029/2006GL025959, 2006.

5

10

15

20

25

30

Table 1: The Lunar New Year's Days from 1979 to 2012

Year	Date	Year	Date
1979	28 January	1996	19 February

1980	16 February	1997	7 February
1981	5 February	1998	28 January
1982	25 January	1999	16 February
1983	13 February	2000	5 February
1984	2 February	2001	24 January
1985	20 February	2002	12 February
1986	9 February	2003	1 February
1987	29 January	2004	22 January
1988	17 February	2005	9 February
1989	6 February	2006	29 January
1990	27 January	2007	18 February
1991	15 February	2008	7 February
1992	4 February	2009	26 January
1993	23 January	2010	14 February
1994	10 February	2011	3 February
1995	31 January	2012	23 January

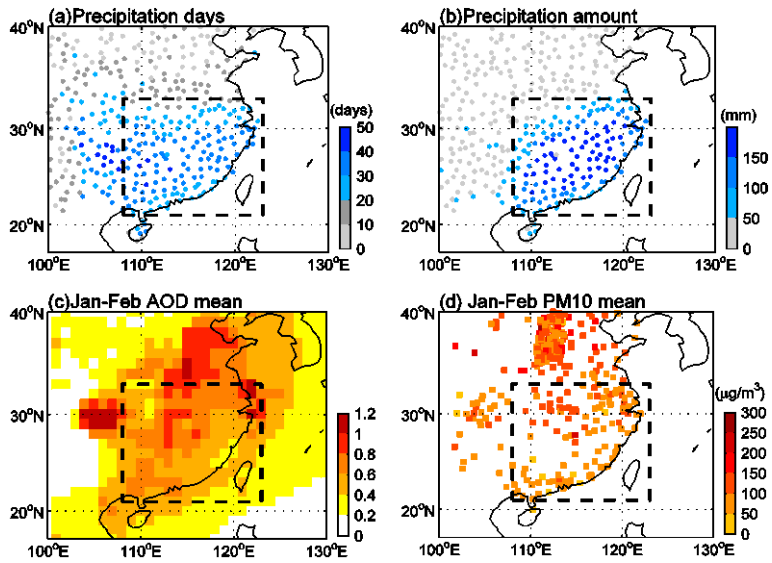


Figure 1: Spatial distribution of January- February precipitation days (a) and precipitation amount (b) for the period of 1979-2012. Spatial distribution of the January- February averaged Aerosol Optical Depth (AOD) for the period of 2002-2012 (c) and PM₁₀ concentration for the period of 2001-2012 (d) over eastern Asia. The study area is shown in a black dashed rectangle.

5

10

15

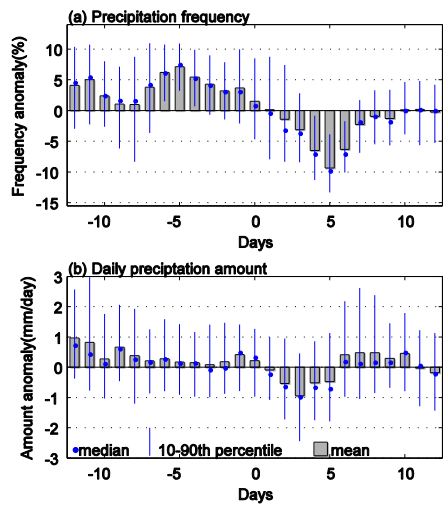


Figure 2: The anomalies of precipitation frequency (a) and amount (b) computed based on 155 stations. The means are shown as gray bars, and the median; and the range of the 10-90th percentiles are also plotted for comparison.

5

10

15

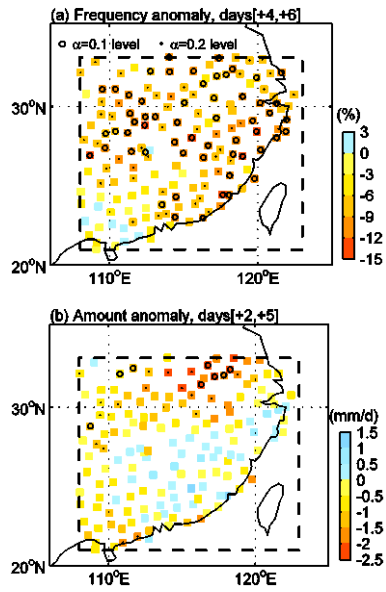


Figure 3: Anomalies of the precipitation frequency (a) and amount (b). The significances are estimated using a Monte-Carlo approach; stations with circles and dots denote that all days have values significant at the 0.1 and 0.2 levels, respectively.

5

10

15

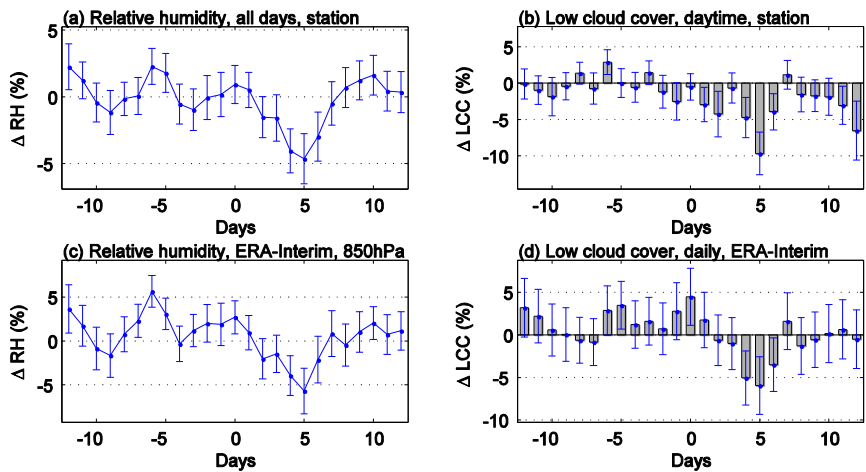


Figure 4: Station observational relative humidity anomalies (ΔRH) estimated from all available days (a) and the daytime low cloud cover (LCC) anomalies (b) during the holidays from 1979-2012. ERA-Interim ΔRH at 850 hPa (c) and the daily LCC anomalies (d) during the holidays. Standard error is shown as error bars.

5

10

15

20

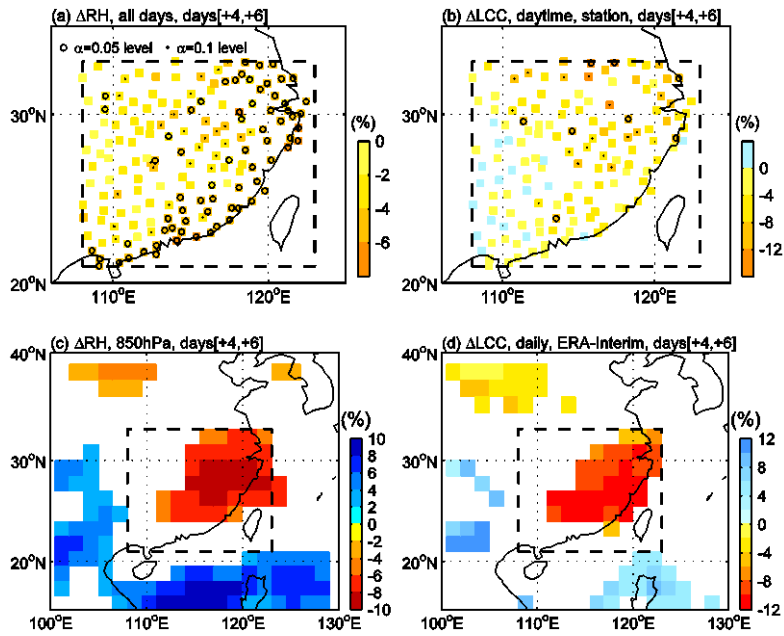


Figure 5: Station anomalies of relative humidity estimated from all available days (a) and daytime low cloud cover (b) during days +4 to +6. The significance is estimated using a *t*-test; stations with circles and dots denote values are significant at the 0.05 and 0.1 level, respectively. Spatial distribution of ERA-Interim ΔRH at 850 hPa (c) and the daily LCC anomalies (d) during days +4 to +6. Only the significant values (at the 0.1 level) are plotted.

5

10

15

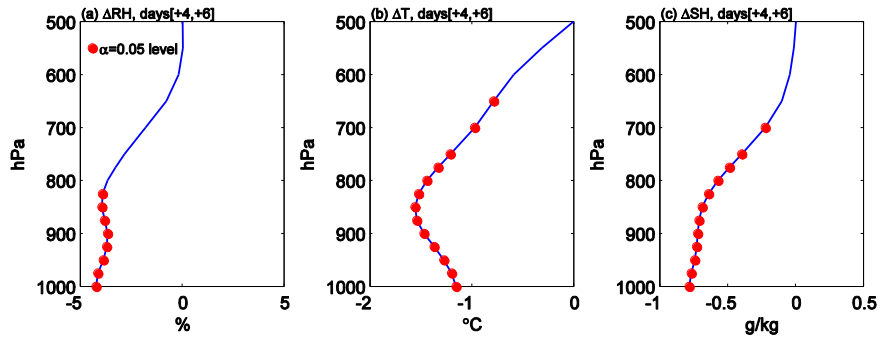


Figure 6: The vertical profiles of the relative humidity (a), temperature (b) and specific humidity (c) anomalies below 500 hPa. The significance level is estimated using a left-tail *t*-test, and the values significant at the 0.05 level are indicated with red dots.

5

10

15

20

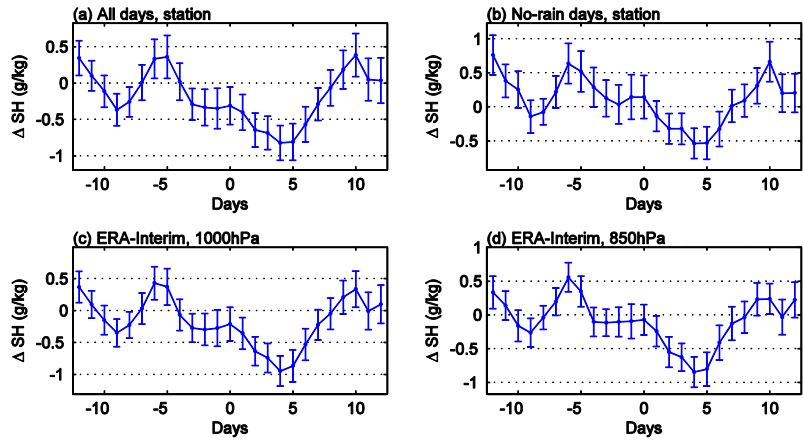


Figure 7: Means of station-specific humidity anomalies (ΔSH) during the holidays from 1979-2012 as estimated from all available days (a) and no-rain days (b). The corresponding ERA-Interim ΔSH at 1000 hPa (c) and 850 hPa (d) are also plotted.

5

10

15

20

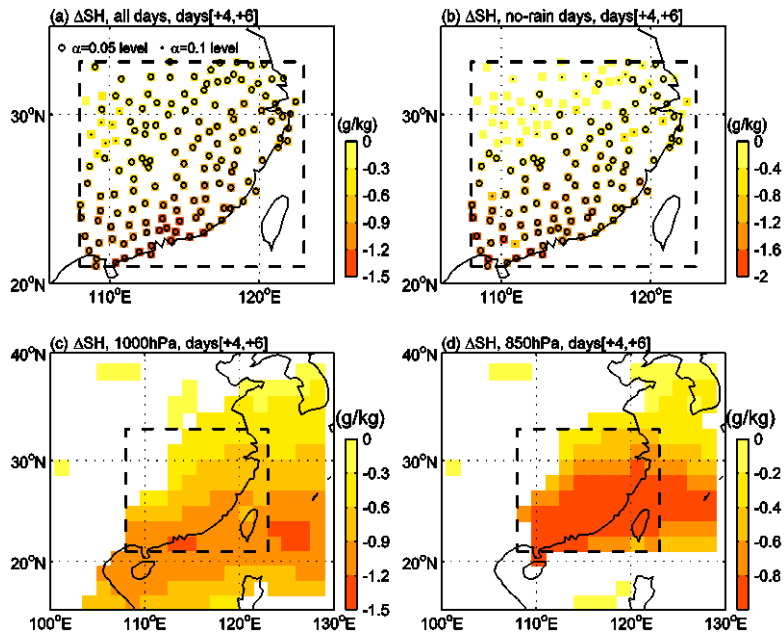


Figure 8: Spatial distribution of the observational specific humidity anomalies (Δ SH) during days [+4, +6] as estimated from all available days (a) and no-rain days (b). The spatial distributions of the ERA-Interim Δ SH at 1000 hPa (c) and 850 hPa (d) during days [+4, +6]. Only the significant values (above the 0.05 level) are plotted.

5

10

15

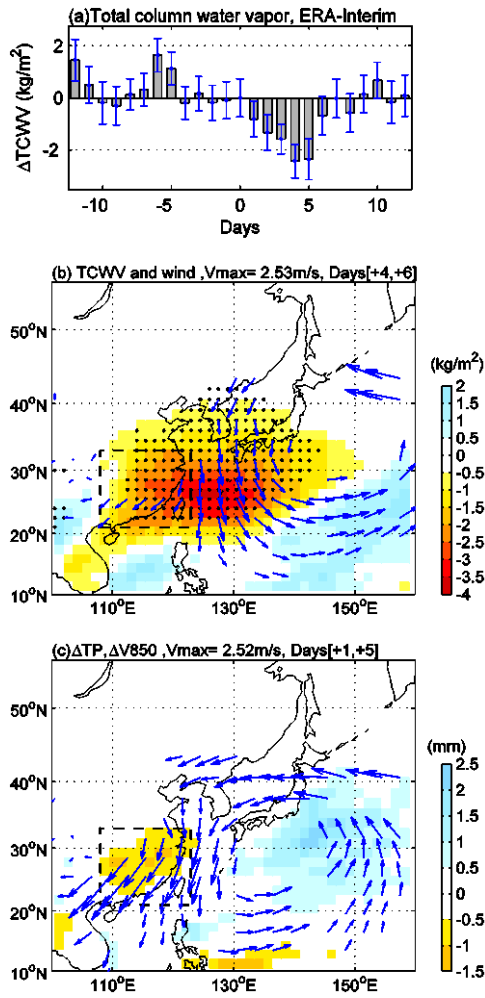


Figure 9: (a) Temporal anomalies of the total column water vapor ($\Delta TCWV$) during the holidays. (b) Spatial distribution of the $\Delta TCWV$ (in color shading with unit of kg m^{-2}) and the 700-1000 hPa mean horizontal wind anomalies (in vectors with unit of m s^{-1}) during days [+4, +6]. Stipples denote significant $\Delta TCWV$ (at the 0.05 level). Only the anomalous wind vectors significant at the 0.05 level are plotted. (c) Spatial distribution of the mean anomalies of the total precipitation (ΔTP) (in color shading with unit of mm) and the significant (at the 0.05 level) 850 hPa mean horizontal wind anomalies (in vectors with unit of m s^{-1}) during days [+1, +5].

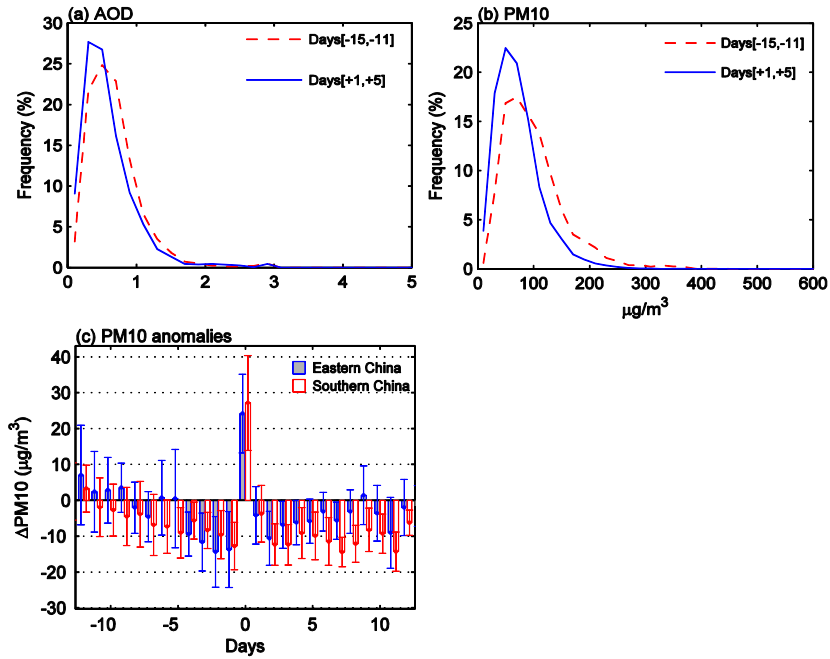


Figure 10: Frequency distributions for the AOD (a) and PM₁₀ concentration (b) during days [-15, -11] (red dashed line) and days [+1, +5] (blue solid line) over southern China. (c) The temporal anomalies of the PM₁₀ concentration in eastern and southern China. Only years with more than 50% PM₁₀ station data available are employed for anomalous composites.

5

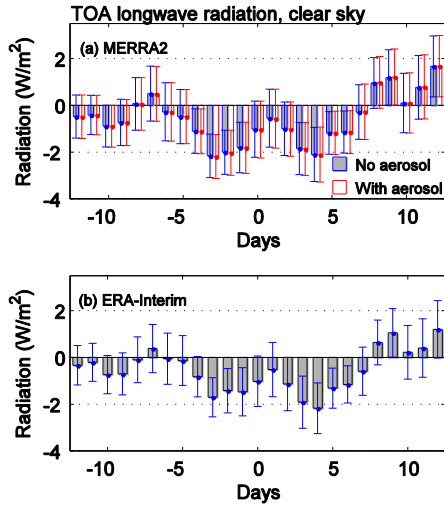


Figure 11: Top-of-atmosphere (TOA) longwave radiation anomalies around holidays from MERRA2 (a) and ERA-Interim (b) under clear sky condition.

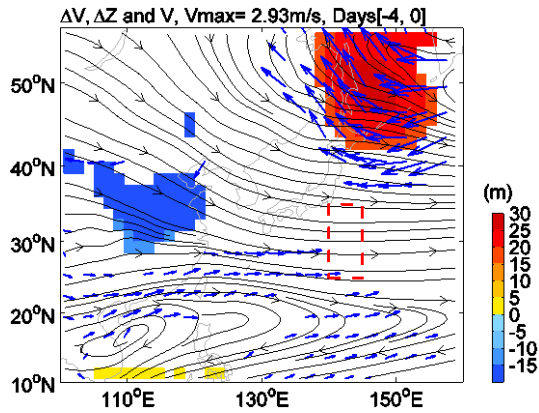


Figure 12: The mean horizontal wind anomalies at 1000-500 hPa (in vectors with unit of $m s^{-1}$) and the 1000-500 hPa thickness anomalies (in color shading) during days [-4, 0]. Only significant (at the 0.1 level) winds and thickness are plotted. The long-term mean horizontal winds between 1000-500 hPa during days [-4, 0] are shown together as the streamlines for comparison. A red dashed rectangle (140°E-145°E and 25°N-35°N) indicates the central location of the anomalous cyclone which is manifest in day+5.

带格式的: 居中

带格式的: 字体: 加粗

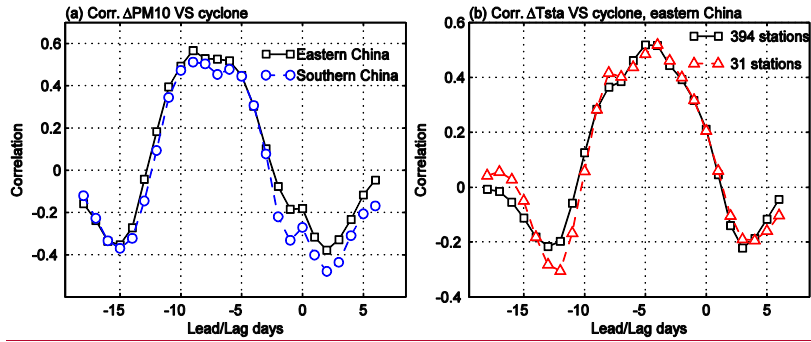


Figure 13: (a) Correlations of the 500 hPa geopotential heights over the anomalous cyclone center (140°E-145°E and 25°N-35°N) on day+5 with the PM₁₀ concentration in varying lead/lag days. PM₁₀ for eastern and southern China are computed separately. (b) Same as in (a) but for the regional mean temperature over eastern China. Temperatures from all available 394 stations and that from 31 PM₁₀ collocated stations are plotted together for comparison.

5

10