

Responses (text in blue) to comments by reviewers (text in black)

Reviewer #1:

This is an interesting study about measurements of nitrated phenols in northern China. Nitrophenols have been analysed and a source apportionment by PMF has been performed identifying five main contributing source factors. The paper is largely correctly written and contains a wealth of valuable information. Nonetheless, the English language of the manuscript should be checked once more, preferably by a native speaker. Unfortunately, the analytical finding for the NPs are not being linked to aerosol optical properties which is a topic currently much discussed but maybe this is foreseen for a follow-up or sister publication.

Overall, I think the paper can be published subject to only minor revision.

Reply: Thanks for the recommendation. The manuscript has been obviously improved after revision by native English speakers. The changes are marked in blue in the revised manuscript.

Comments in detail

Page 5. line 6 :....converter...

Reply: Line 12 on Page 4 and Line 10 on Page 5, change “convertor” to “converter”.

Page 8, line 14 ff: Please discuss if there are other PMF solutions which do explain equal fractions but derive another number of factors. For Jinan and Wangdu the sum of the five factors is not 100 %. Please mention and discuss.

Reply: The PMF solutions with four and six factors (see Fig. R1 and Fig. R2) are less reasonable and less optimal than the solution with five factors, so the PMF results

with five factors are used in this study. For Ji'nan and Wangdu sites, that the sum of the five factors is not 100 % is due to rounding of the decimals.

Page 8, Line 19-24: Based on the results of the PMF model, we evaluated the solutions with four, five, and six factors. The four-factor solution did not distinguish the factor of coal combustion from those of traffic and biomass burning, which failed to provide reasonable separated sources. The six-factor result, however, exhibited two factors with high levels of both SO₂ and O₃, which indicated splitting from one factor. Therefore, five major factors were finally identified and are shown in Fig. 3.

Figure captions, Figure 5: Scatter plots (in two words)

Reply: Fig. 5, Scatter plots of particulate nitrated phenols with fine inorganic nitrate at the rural and mountain sites.

Page10, line 8: Please discuss why coal combustion has not been identified before. This may just be due to the fact that this is not a strong source factor contributor either in Shanghai or in Germany.

Reply: As suggested, some discussion on the coal combustion source has been added.

Page 11, Line 10-14: Though there was evidence that coal combustion served as a primary source of nitrated phenols in atmosphere (Lüttke et al., 1997; Kourtchev et al., 2014), it was not identified as a major contributor in East China and eastern Germany in previous studies (Li et al., 2016; Teich et al., 2017). It is probably due to the fact that coal combustion was not an important source contributor in those regions during the measurement periods.

Page 11, section 3.3.: Maybe this section can be substantiated somewhat by a discussion which chemical mechanisms actually lead to the secondary formation. The

section is a bit unspecific. The occurrence of which compounds can be explained by pure gas phase processes and where are product observed where multiphase processes could probably be involved? Is there any correlation with haze occurrence?

Reply: We have added some discussion concerning the possible chemical mechanisms in the revised manuscript. Note that high concentrations of nitrated phenols were usually observed with high loadings of particles (i.e., haze pollution) and exhibited good correlation particularly with fine particulate nitrate.

Page 13, Line 13-18: With consideration of the better correlations of nitrated phenols with inorganic nitrates than with NO₂, for the selected nocturnal samples mainly from secondary formation, multiphase reactions of precursors on the surfaces of and/or within particles might be the dominant formation pathways of nitrated phenols. Concurrent measurements of gas- and particle-phase nitrated phenols, aromatic precursors, oxidants, and aerosol physical and chemical properties are needed to clarify the major formation processes.

Reviewer #2:

The authors measured several species of nitrated phenols in PM_{2.5} filter samples at several sites in North China. A positive matrix factorization (PMF) receptor model was applied to investigate the sources of nitrated phenols, which were found to be traffic, coal combustion, biomass burning, secondary formation, and aged coal combustion. Discussion of the secondary sources of various nitrated phenols was included. I find that this manuscript includes a nice analysis of diurnal, seasonal, and spatial differences in the measured compounds, which are important constituents of organic aerosol. The strength of the manuscript could be greatly improved by including more detail about nitrated phenol species identification, as well as more detail about how the PMF model was run and how the solutions were chosen. I would recommend this paper for publication after considering the following comments.

Reply: Thanks for the Reviewer's constructive and helpful comments. These comments have been addressed in the revised manuscript.

1) We have added some discussion concerning the identification of nitrated phenol species in Section 2.3 in the revised manuscript and Figure S1 in the supplement.

Page 6, Line 17-24: The mass signals at six mass-to-charge ratios (138, 152, 154, 168, 182, and 228 amu) were monitored under the selective ion mode, and the standards of the target compounds and isomers were applied for identification. As shown in Fig. S1, nine species of nitrated phenols were identified: 4-nitrophenol (4NP), 2-methyl-4-nitrophenol (2M4NP), 3-methyl-4-nitrophenol (3M4NP), 4-nitrocatechol (4NC), 4-methyl-5-nitrocatechol (4M5NC), 3-methyl-5-nitrocatechol (3M5NC), 3-methyl-6-nitrocatechol (3M6NC), 3-nitro-salicylic acid (3NSA), and 5-nitro-salicylic acid (5NSA). With the analysis of gradient concentrations of the standard mixtures, standard curves were applied for quantification of the nine nitrated phenols.

2) We have added some discussion concerning the PMF results in Section 3.2.1 in the revised manuscript. The PMF solutions with four and six factors (see Fig. R1 and Fig. R2) are less reasonable and less optimal than the solution with five factors, so the PMF results with five factors are used in this study.

Page 8, Line 19-24: Based on the results of the PMF model, we evaluated the solutions with four, five, and six factors. The four-factor solution did not distinguish the factor of coal combustion from those of traffic and biomass burning, which failed to provide reasonable separated sources. The six-factor result, however, exhibited two factors with high levels of both SO₂ and O₃, which indicated splitting from one factor. Therefore, five major factors were finally identified and are shown in Fig. 3.

General comments

Title: For clarity, you may want to specify in the title that you measured "particulate

nitrated phenols” instead of just “nitrated phenols”, as you have done in the abstract and other places.

Reply: Title: Observations of fine particulate nitrated phenols in four sites in North China: Concentrations, source apportionment, and secondary formation.

Pg. 3 Ln. 3: Please add citations to support this sentence.

Reply: A reference has been added.

Harrison, M. A. J., Barra, S., Borghesi, D., Vione, D., Arsene, C., and Iulian Olariu, R.: Nitrated phenols in the atmosphere: a review, *Atmos. Environ.*, 39, 231-248, 10.1016/j.atmosenv.2004.09.044, 2005a.

Pg. 3 Ln. 27-Pg. 4 Ln. 2: These last two sentences in the introduction are actually statements of your results, which should not be included in the introduction. Please consider revising these sentences so that they simply state what you did and are about to present, and not what you found.

Reply: Page 3, Line 24-25: PMF model and correlation analysis are then applied to understand the primary sources and secondary formation of the particulate nitrated phenols in this region.

Pg. 6 Ln 1-2: Why did you multiply by 1.8 and 2.0?

Reply: Page 5, Line 22-25: According to the OM/OC ratios reported in previous studies, organic matter concentrations were calculated from the organic carbon concentrations by multiplying by a factor of 1.8 at the urban Ji’nan site and by a factor of 2.0 at the remote sites of Yucheng and Mt. Tai as an estimation (Aiken et al., 2008; Yao et al., 2016).

Pg. 6 Ln. 23: I suggest that you show evidence for how you identified these nitrated phenol species. For example, you could show chromatograms of the standards compared with the filter measurements. Otherwise, the reader has to simply trust your identification, which is not good procedure.

Reply: Page 6, Line 17-24: The mass signals at six mass-to-charge ratios (138, 152, 154, 168, 182, and 228 amu) were monitored under the selective ion mode, and the standards of the compounds and isomers were applied for identification. As shown in Fig. S1, nine species of nitrated phenols were identified: 4-nitrophenol (4NP), 2-methyl-4-nitrophenol (2M4NP), 3-methyl-4-nitrophenol (3M4NP), 4-nitrocatechol (4NC), 4-methyl-5-nitrocatechol (4M5NC), 3-methyl-5-nitrocatechol (3M5NC), 3-methyl-6-nitrocatechol (3M6NC), 3-nitro-salicylic acid (3NSA), and 5-nitro-salicylic acid (5NSA). With the analysis of gradient concentrations of the standard mixtures, standard curves were applied for quantification of the nine nitrated phenols.

Pg. 8 Ln 16-20: It is not clear how you used the PMF receptor model and how you arrived at the solution shown in Fig. 3. Please give more details about the model, including citations for model development. Did you investigate solutions with more/fewer factors? How well does this model capture the trends given the fact that you have only two data points per day?

Reply: We have added a reference (Paatero and Tapper, 1994) for the PMF model deployed in this study. The PMF solutions with four and six factors (see Fig. R1 and Fig. R2) are less reasonable and less optimal than the solution with five factors, so the PMF results with five factors are used in this study. Total ninety-one sets of input data at four different sites in two seasons were used for the PMF model, so in our view the model can substantially capture the variations of the selected air pollutants.

Page 8, Line 18-24: Ninety-one sets of input data were used and the model was run 40 times to choose the optimal solution. Based on the results of the PMF model, we

evaluated the solutions with four, five, and six factors. The four-factor solution did not distinguish the factor of coal combustion from those of traffic and biomass burning, which failed to provide reasonable separated sources. The six-factor result, however, exhibited two factors with high levels of both SO₂ and O₃, which indicating splitting from one factor. Therefore, five major factors were finally identified and are shown in Fig. 3.

Sect. 3.2.1: Typically, PMF factors are identified by, e.g., showing a correlation between factor loading and some external tracer. You seem to have assigned factor identifications based on mostly assumptions, rather than by showing evidence. Can you provide more evidence for the identifications? Particularly, can you provide more evidence for the identification of the coal combustion factor, since this was presented as a ‘surprising’ result? Otherwise, perhaps you could modify the language to reflect that the identifications that you’ve given are hypotheses and have some uncertainty.

Reply: As suggested, more evidences have been provided for the identifications of the major sources of the nitrated phenols observed in North China.

Page 9, Line 5-13: Despite a lack of verification on the direct emission of nitrated phenols from coal combustion at this time, previous field studies provided evidence that coal combustion activities could be an important contributor to the observed elevated levels of particulate nitrated phenols. In field measurements at the summit of Great Dun Fell, UK, coal combustion was considered to be associated with the relatively high levels of nitrated phenols in cloud (Lüttke et al., 1997). In addition, the large proportion of nitroaromatic compounds in PM_{2.5} observed in urban Cork, Ireland was attributed to intensive anthropogenic activities including domestic solid fuel burning (peat, coal, and wood) and vehicle emissions (Kourtchev et al., 2014).

Page 9, Line 17-19: The direct emission of nitrated phenols from biomass burning was confirmed and determined by several previous studies, with emission factors ranging from 0.4–11.1 mg kg⁻¹ (Hoffmann et al., 2007; Inuma et al., 2007; Wang et

al., 2017).

Page 9, Line 23-25: Secondary formation was shown to be an important source of nitrated phenols in atmosphere in recent field and modeling studies (Harrison et al., 2005b; Iinuma et al., 2010; Yuan et al., 2016).

Page 10, Line 1-2: The contribution of aged coal combustion plume to the particulate nitrated phenols requires further confirmation and evaluation via chamber simulation and field measurements.

Pg. 11 Ln. 23: Could it be the case that nitrated phenols and NO₂ are simply emitted by the same sources, rather than higher NO₂ causing higher nitrated phenol concentrations? I have the same question for the comparisons of NO₂ with NSAs and NPs later in this section.

Reply: In Section 3.3, only data of samples largely influenced by secondary formation were included and analyzed, by discarding the samples with high contributions (>40%) from primary emission sources (including biomass burning, traffic, and coal combustion) based on the results of PMF model. The relatively low levels of NO₂ (see Fig. 7 and Fig. 8) and low concentrations of SO₂ (not shown here) also indicate rare influence from primary emission sources to nitrated phenols in the selected samples.

Page 12, Line 14-18: In general, higher concentrations of Σ NPs correlated with higher mixing ratio of NO₂ at all four sites in the summertime, and better correlations were found at the three remote sites than in urban Ji'nan. The relevance of nitrated phenols to NO₂ in the rural and mountain areas suggests that NO₂ played an important role in the secondary formation of nitrated phenols in North China.

Technical details:

Pg. 3 Ln. 4: Please change “secondary formations” to “secondary formation”, here and throughout the manuscript.

Reply: We have changed “secondary formations” to “secondary formation” in the revised manuscript.

Pg. 3 Ln. 14-15: Remove the text “from time to time”.

Reply: Page 3, Line 12-13: Once formed in the gas phase, the phenols and nitrated phenols partition between the gas and particle phases according to their saturated vapor pressure.

Pg. 4 Ln. 14: Please specify what “TEC” stands for, here and elsewhere.

Reply: Page 4, Line 11-12: The NO_x concentration was measured by a chemiluminescence method equipped with a molybdenum oxide converter (Model 42C, Thermo Electronic Corporation (TEC), USA).

Pg. 4 Ln. 22: From this line until the end of Sect. 2.1, you should change from present to past tense in order to be consistent with the rest of the text. E.g., change “is” to “was” in this line.

Reply: We have checked the grammar in Section 2.1 and corrected the language to past tense.

Pg. 5 Ln. 10: “Less frequently” than what? Do you mean “infrequently”?

Reply: Page 5, Line 6-7: It was infrequently influenced by incense burning and restaurants from the famous tourism spots at Mt. Tai.

Pg. 5 Ln. 22: Instead of “restored under”, I think you mean “stored at”.

Reply: Page 5, Line 17: The filter samples were stored at –20°C until subsequent

mass weighing and chemical analysis of nitrated phenols, organic carbons, and water-soluble ions.

Pg. 6 Ln. 20: Change “kinds” to “species”, here and elsewhere.

Reply: We have changed “kinds” to “species” in the revised manuscript.

Figures:

Figure R1. Source profiles of nitrated phenols and related air pollutants obtained from PMF solution with four factors.

Figure R2. Source profiles of nitrated phenols and related air pollutants obtained from PMF solution with six factors.

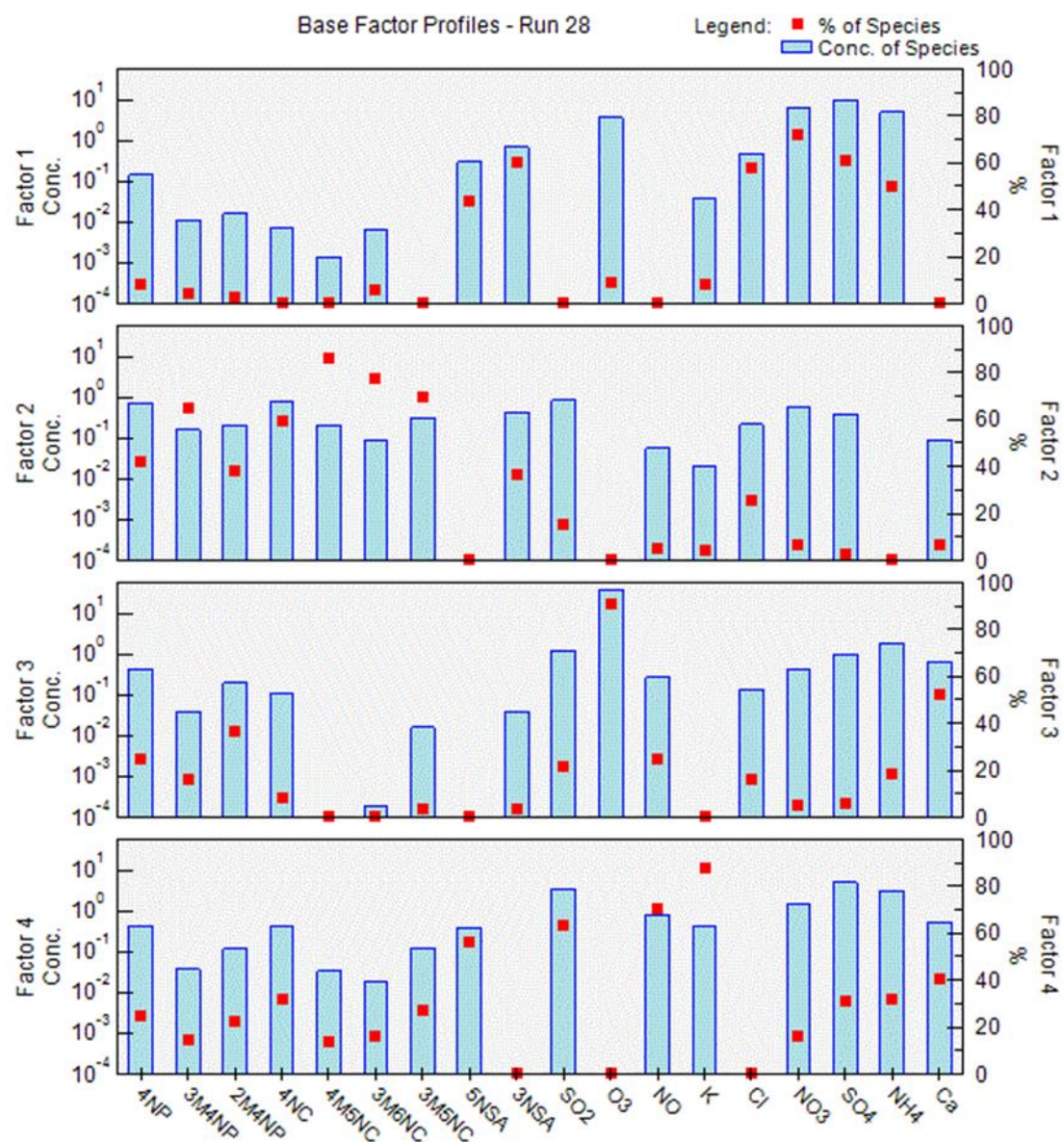


Figure R1. Source profiles of nitrated phenols and related air pollutants obtained from PMF solution with four factors.

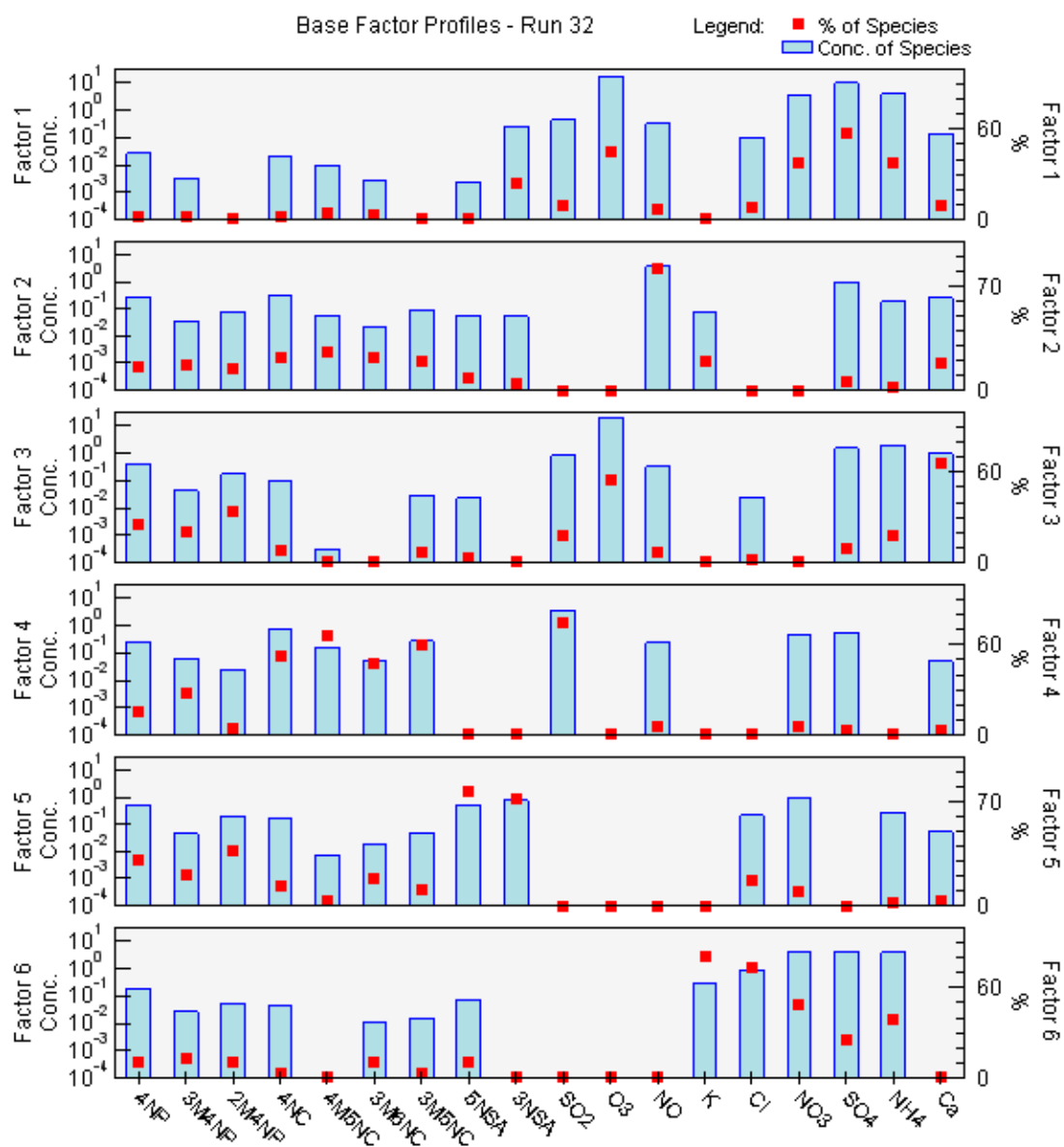


Figure R2. Source profiles of nitrated phenols and related air pollutants obtained from PMF solution with six factors.

Observations of fine particulate nitrated phenols in four sites in North China: Concentrations, source apportionment, and secondary formation

Liwei Wang^{1,a}, Xinfeng Wang¹, Rongrong Gu¹, Hao Wang¹, Lan Yao¹, Liang Wen¹, Fanping Zhu²,
5 Weihao Wang³, Likun Xue¹, Lingxiao Yang^{1,2}, Keding Lu⁴, Jianmin Chen^{1,2,5}, Tao Wang³, Yuanghang
Zhang⁴, and Wenxing Wang¹

¹Environment Research Institute, Shandong University, Ji'nan, Shandong 250100, China

²School of Environmental Science and Engineering, Shandong University, Ji'nan, Shandong 250100, China

10 ³Department of Civil and Environmental Engineering, Hong Kong Polytechnic University, Hong Kong, China

⁴State Key Laboratory for Environment Simulation and Pollution Control, College of Environmental Sciences and Engineering, Peking University, Beijing 100871, China

15 ⁵Shanghai Key Laboratory of Atmospheric Particle Pollution and Prevention, Department of Environmental Science and Engineering, Institute of Atmospheric Sciences, Fudan University, Shanghai 200433, China

^a Now at Laboratory of Atmospheric Chemistry, Paul Scherrer Institute, Villigen PSI, 5232, Switzerland

Correspondence to: Xinfeng Wang (xinfengwang@sdu.edu.cn)

Abstract. Filter samples of fine particulate matters were collected at four sites in North China (urban,
20 rural, and mountain) in summer and winter, and the contents of nine nitrated phenols were quantified in the laboratory with the use of ultra-high-performance liquid chromatography coupled with mass spectrometry. During the sampling periods, the concentrations of particulate nitrated phenols exhibited distinct temporal and spatial variation. On average, the total concentration of particulate nitrated phenols in urban Ji'nan in the wintertime reached 48.4 ng m⁻³, and those in the summertime were 9.8,
25 5.7, 5.9, and 2.5 ng m⁻³ in urban Ji'nan, rural Yucheng and Wangdu, and Mt. Tai, respectively. The elevated concentrations of nitrated phenols in wintertime and in urban areas demonstrate the apparent influences from anthropogenic sources. The positive matrix factorization receptor model was then applied to determine the origins of particulate nitrated phenols in North China. The five major source factors were traffic, coal combustion, biomass burning, secondary formation, and aged coal combustion
30 plume. Among them, coal combustion played a vital role, especially at the urban site in the wintertime,

with a contribution of around 55%. In the summertime, the observed nitrated phenols were highly influenced by aged coal combustion plumes at all of the sampling sites. Meanwhile, in remote areas, contributions from secondary formation were significant. Further correlation analysis indicates that nitrosalicylic acids were produced mostly from secondary formation that was dominated by NO₂ nitration.

1 Introduction

Nitrated phenols, with at least one nitro and one hydroxyl group attached to the aromatic group, have undeniable effects on the environment and on living beings. Due to their strong absorption in the near-ultraviolet and visible regions, nitrated phenols are classified as poorly characterized “Brown Carbon” (BrC) (Desyaterik et al., 2013; Teich et al., 2017). Though the absorption of BrC is weak compared to that of Black Carbon (BC), it can enhance the absorption of solar radiation and may have an indirect effect on regional climate (Feng et al., 2013; Mohr et al., 2013; Laskin et al., 2015; Lu et al., 2015; Zhao et al., 2015). Recent studies have shown that several semivolatile nitrated phenols, including nitrophenol, nitrocatechol, and methylnitrocatechol, are important photochemical oxidation products of gas phase precursors, which may play a part in the formation of secondary organic aerosols (SOA) (Pereira et al., 2015). Via photo-oxidation and aqueous phase reactions, nitrated phenols could alter the tropospheric photochemistry and influence SOA formation, thus affecting regional air quality and atmospheric visibility (Mohr et al., 2013; Laskin et al., 2015; Chow et al., 2016; Yuan et al., 2016). In addition, nitrated phenols are hazardous to plants, animals, aquatic life, and humans (Natangelo et al., 1999; Schüssler and Nitschke, 2001; Harrison et al., 2005a; Ganranoo et al., 2010). The significant roles of nitrated phenols in the atmosphere and their adverse effects on living things have triggered the need to understand their pollution characteristics and their origins.

Nitrated phenols in the troposphere largely originate from primary emissions of anthropogenic activities. In recent decades, nitrated phenols have drawn attention because of their prevalence in biomass burning plumes (Kahnt et al., 2013; Mohr et al., 2013). Due to the good correlation with levoglucosan, Iinuma et al. (2010) pointed out that methylnitrocatechols could be a reasonable tracer for biomass burning events. In addition to biomass burning, other combustion activities (e.g., coal, gasoline,

etc.) are possible sources of nitrated phenols (Nojima et al., 1983; Tremp et al., 1993; Yan et al., 2015); their contributions, however, have not yet been well evaluated. Furthermore, nitrated phenols have been used as pesticides in some farmlands and are widely used as raw materials in industrial processes (Harrison et al., 2005a).

5 Secondary formation also plays an important role in the atmospheric abundance of nitrated phenols (Grosjean, 1985). Various atmospheric processes are responsible for the formation of nitrated phenols, including photochemical oxidation of benzenes in the presence of NO_x (NO and NO_2) and ultraviolet rays (Nojima et al., 1975, 1976), oxidation of phenols by OH and NO_3 radicals in the presence of NO_x (Atkinson et al., 1992; Bolzacchini, et al., 2001), and nitration of phenols in aqueous solutions (Lüttke
10 et al., 1997; Vione et al., 2005; Frka et al., 2016). However, the formation pathways of nitrated phenols from the condensed phase remains more uncertain than those for the gas phase (Harrison et al., 2005a). Once formed in the gas phase, the phenols and nitrated phenols partition between the gas and particle phases according to their saturated vapor pressure (Nojima et al., 1975; Bolzacchini et al., 2001; Harrison et al., 2005b; Xu and Wang, 2013). Chow et al. (2016) found evidence from field
15 measurements that high levels of nitrated phenols in Hong Kong were associated with high concentrations of NO_2 .

As an important economic and industrial center of East Asia, North China experiences severe $\text{PM}_{2.5}$ pollution and high levels of NO_x (Wang et al., 2014; Wang et al., 2015a; Zhang et al., 2015). In recent years, several field studies related to concentrations, size distributions, and light absorption of
20 particulate nitrated phenols have been conducted in and near the region, showing the large influences from anthropogenic sources such as biomass burning and other combustion activities (Li et al., 2016; Teich et al. 2017). In this study, we present the concentrations, compositions, and temporal and spatial differences of nine nitrated phenols in samples of $\text{PM}_{2.5}$ collected from four different sites in North China. PMF model and correlation analysis are then applied to understand the primary sources and
25 secondary formation of particulate nitrated phenols in this region.

2 Experiments and methods

2.1 Sampling sites and on-line instruments

PM_{2.5} filter sampling and related online measurements were conducted in five field campaigns at four sampling sites in North China, which are illustrated in detail in Table 1. As shown, two field campaigns were conducted in urban Ji'nan in winter 2013 and summer 2014, whereas the measurements at the rural and mountain sites took place in summer 2014.

The sampling site in urban Ji'nan was the Atmospheric Environment Observation Station of Shandong University (AEOS-SDU) (N 36°40', E 117°03'). The urban Ji'nan site is surrounded by education, commercial, and residential districts, with several heavily trafficked roads nearby. Therefore, it is frequently influenced by vehicle emissions, urban plumes, and industrial plumes from suburban areas. The NO_x concentration was measured by a chemiluminescence method equipped with a molybdenum oxide converter (Model 42C, Thermo Electronic Corporation (TEC), USA). The O₃ concentration was analyzed with an ultraviolet absorption method (Model 49C, TEC). The SO₂ concentration was measured by the pulsed fluorescence method (Model 43C, TEC). Water-soluble ions, including Cl⁻, NO₃⁻, SO₄²⁻, NH₄⁺, K⁺, and Ca²⁺, were detected with the online Monitor for AeRosols and GAses in ambient air (MARGA, ADI20801, Applikon-ECN, Netherlands). The online instruments and methods used for the winter field campaign were described in detail by Wang et al. (2015b). In the summer campaign, due to logistical issues, water-soluble ions were determined from quartz-filtered samples of PM_{2.5} by ion chromatography (Wang et al., 2017a).

The second sampling site was located in an open field in rural Yucheng (N 36°52', E 116°34'), Dezhou, Shandong Province, about 50 km northwest from the city of Ji'nan (see Fig. 1). During summer, polluted urban plumes arrived with the assistance of prevailing winds from the southeast. The rural Yucheng site was surrounded by farmland, but there was a national road 1.5 km away to the south and a few small-scale factories nearby. Trace gases of NO_x and O₃ were measured with Model 42C and Model 49C analyzers, respectively. Water-soluble ions were detected with the MARGA. Details about the site and the instruments deployed were described by Yao et al. (2016).

The third sampling site was located in rural Wangdu (N 38°42', E 115°08'), Baoding, Hebei Province, near grasslands and gardens. Although it was in a rural area, it could be easily influenced by industrial

and urban plumes from large cities like Beijing, Tianjin, and Shijiazhuang. Trace gases of NO_x and O₃ were measured with Model 42i analyzer coupled with a blue light convertor and Model 49i analyzer (TEC). Water-soluble ions were analyzed by a gas aerosol collector–ion chromatography (GAC-IC) system. More information on the site and instruments may be found in Tham et al. (2016).

5 The fourth sampling site was located near the summit of Mt. Tai (N 36°15', E 117°06'), Tai'an, Shandong Province. It was infrequently influenced by incense burning and restaurants from the famous tourism spots at Mt. Tai. Notably, with an altitude of about 1465 m above sea level, the Mt. Tai site is an ideal place to understand the transport, sources, and formation processes of air pollution in North China. Trace gases of NO_x and O₃ were measured with a Model 42i analyzer coupled with a blue light
10 converter and a Model 49i analyzer, respectively. Water-soluble ions were analyzed with the MARGA. Detailed information of this site and the deployed instruments was given by Wang et al., (2017b).

2.2 PM_{2.5} sampling

PM_{2.5} filter samples were collected using the mid-volume sampler (TH-150A, Wuhan Tianhong, China) with a flow rate of 100 liters per minute (LPM). The sampler was fixed in the open fields with the
15 PM_{2.5} cutting head 1.5 m above the ground or station. Two filter samples were collected each day, with the daytime samples from 07:00 to 18:30 (local time) and the nocturnal samples from 19:00 to 06:30 the next day. The filter samples were stored at –20 °C until subsequent mass weighing and chemical analysis of nitrated phenols, organic carbons, and water-soluble ions. The collected fine particulate matter was weighed with a microbalance (ME5, Sartorius, Germany) for calculation of the PM_{2.5}
20 concentration. The organic carbon concentration was determined by a thermal-optical method with the protocol of NIOSH 5040 (Sunset, OCEC analyzer, USA) and was further used to estimate the concentration of organic matter. According to the OM/OC ratios reported in previous studies, organic matter concentrations were calculated from the organic carbon concentrations by multiplying by a factor of 1.8 at the urban Ji'nan site and by a factor of 2.0 at the remote sites of Yucheng and Mt. Tai as an
25 estimation (Aiken et al., 2008; Yao et al., 2016).

2.3 Analytical method of nitrated phenols

The preparation procedure and analytical method of nitrated phenols used in this study were adopted from those developed by Kitanovski et al. (2012) and Chow et al. (2016). First, the PM_{2.5} filter sample was extracted with 20 ml methanol (containing a small amount of EDTA) twice for 10 minutes. The extracts were evaporated with a rotary evaporator to near dryness. After they were re-dissolved to about 2 ml, the extracts were filtered through a polytetrafluoroethylene syringe filter (0.45 µm; 3 mm). The sample solution was then dried with a gentle stream of nitrogen and re-dissolved to 300 µL with methanol containing 200 µg·L⁻¹ 2,4,6-trinitrophenol as an internal standard.

The determination of nitrated phenols was performed with an Ultimate 3000 ultra-high-performance liquid chromatography system coupled with an LCQ Fleet mass spectrometer (UHPLC-MS, Thermo Scientific, USA) and equipped with an electrospray ionization source. The nitrated phenols were separated with an Atlantis T3 C18 column (2.1 × 150 mm, 3-µm particle size, Waters, USA) with a guard column Atlantis T3 (2.1 × 10 mm, 3-µm particle size). The mobile phase contained 11% acetonitrile in methanol (A) and 11% acetonitrile and 0.1% acetic acid in water (B). The proportion of elution A started at 34% and gradually increased to 66% within 19 min. It was then kept at 66% for 4 minutes and then decreased to 34% for the last 8 minutes.

The mass signals at six mass-to-charge ratios (138, 152, 154, 168, 182, and 228 amu) were monitored under the selective ion mode, and the standards of the target compounds and isomers were applied for identification. As shown in Fig. S1, nine species of nitrated phenols were identified: 4-nitrophenol (4NP), 2-methyl-4-nitrophenol (2M4NP), 3-methyl-4-nitrophenol (3M4NP), 4-nitrocatechol (4NC), 4-methyl-5-nitrocatechol (4M5NC), 3-methyl-5-nitrocatechol (3M5NC), 3-methyl-6-nitrocatechol (3M6NC), 3-nitro-salicylic acid (3NSA), and 5-nitro-salicylic acid (5NSA). With the analysis of gradient concentrations of the standard mixtures, standard curves were applied for quantification of the nine nitrated phenols.

3 Results and discussion

3.1 Temporal and spatial variations

During the sampling periods, the concentrations of nitrated phenols in PM_{2.5} presented distinct seasonal and diurnal variations. As shown in Table 2, in urban Ji'nan, the concentrations of total nitrated phenols (ΣNPs) in the wintertime were much higher than those in the summertime. The mean concentration in the wintertime in urban Ji'nan reached 48.4 ng m⁻³, about five times the mean concentration at this site in the summertime (9.8 ng m⁻³). Meanwhile, the proportion of ΣNPs in PM_{2.5} and the ratio of ΣNPs to organic matter were both high in the wintertime (average, 0.28‰ and 1.69‰, respectively), more than three times those in the summertime. In addition, the diurnal pattern of nitrated phenols differed in winter and summer. During the winter campaign, both the concentration and the proportion of nitrated phenols in PM_{2.5} at night largely outweighed those during the day. In the summertime, however, no significant difference was observed. The above differences in the concentration and proportion of particulate nitrated phenols with seasonal and diurnal changes were possibly associated with the emission sources, formation pathways, and with meteorological factors (e.g., solar radiation, temperature, and relative humidity).

The abundance of nitrated phenols also exhibited large variations among locations and site types. In the summertime, the concentrations of nitrated phenols in urban Ji'nan, rural Yucheng, rural Wangdu, and Mt. Tai were 9.8±4.2, 5.7±2.8, 5.9±3.8, and 2.5±1.6 ng m⁻³, respectively (also shown in Table 2). The higher concentration of ΣNPs in the urban site than those measured at the rural and mountain sites indicates significant contributions from anthropogenic activities. The concentrations of particulate nitrated phenols observed in North China in this study were comparable with those measured in North and East China in previous studies and substantially higher than those found in Germany (Li et al., 2016; Teich et al., 2017).

Spatial differences were also observed in the proportions of the various species of nitrated phenols (shown in Fig. 2). For instance, nitrated phenols that are abundant in biomass burning smoke (Wang et al. 2017c), nitrocatechols and methylnitrocatechols (NCs), appeared in lower concentrations than the other nitrated phenols in this study. Nitrophenols and methylnitrophenols (NPs), however, were predominant in the measurements at the Ji'nan (40%) and Wangdu sites (56%). The domination of NPs

instead of NCs in particulate nitrated phenols at the urban site indicates that a large fraction of the nitrated phenols originated from sources other than biomass burning. The strong correlations between NPs and NCs (see Table 3) suggest that they might have similar sources. At the rural and mountain sites, the proportions of nitrosalicylic acids (NSAs) were much higher than that in urban Ji'nan. Specifically, in Yucheng and Mt. Tai, NSAs contributed about half of the concentration of Σ NPs. The NSAs, which contain carboxyl groups, are naturally more oxidized than the other nitrated phenols measured in this study. They exhibited lower correlation coefficients (lower than 0.6) than most other nitrated phenols (also shown in Table 3). It is notable that 5NSA does not correlate well with 3NSA (correlation coefficient, 0.57), indicating that these two components might have different origins or experience different formation processes.

Overall, obvious temporal and spatial variations were observed in the concentrations and compositions of nitrated phenols in North China. The implied differences in the primary sources and the secondary formation pathways are analyzed in detail in the following sections.

3.2 Source apportionment

3.2.1 Source identification

To obtain a comprehensive understanding of the sources of nitrated phenols observed in North China, the positive matrix factorization (PMF) receptor model (Paatero and Tapper, 1994) was applied with the measurement data from the nine nitrated phenols and from nine additional tracer species. Ninety-one sets of input data were used and the model was run 40 times to choose the optimal solution. Based on the results of the PMF model, we evaluated the solutions with four, five, and six factors. The four-factor solution did not distinguish the factor of coal combustion from those of traffic and biomass burning, which failed to provide reasonable separated sources. The six-factor result, however, exhibited two factors with high levels of both SO_2 and O_3 , which indicated splitting from one factor. Therefore, five major factors were finally identified and are shown in Fig. 3.

The first source factor, traffic, had the highest concentration of NO and contributed an average of 17% of the total nitrated phenols. This source mainly comes from the heavily trafficked urban areas of Ji'nan and major roads near the Yucheng and Wangdu sites. The direct emission of nitrated phenols from car

engines was confirmed in a laboratory study by Tremp et al. (1993), which gave an emission factor of 9 to 36 nmol/L.

The second source factor, which is featured with the highest loading of SO₂ and particulate sulfate, was identified as coal combustion, which accounted for 15% of the nitrated phenol concentrations and included direct emissions from coal combustion from industries and residential usage. Despite a lack of verification on the direct emission of nitrated phenols from coal combustion at this time, previous field studies provided evidence that coal combustion activities could be an important contributor to the observed elevated levels of particulate nitrated phenols. In field measurements at the summit of Great Dun Fell, UK, coal combustion was considered to be associated with the relatively high levels of nitrated phenols in clouds (Lüttke et al., 1997). In addition, the large proportion of nitroaromatic compounds in PM_{2.5} observed in urban Cork, Ireland was attributed to intensive anthropogenic activities including domestic solid fuel burning (peat, coal, and wood) and vehicle emissions (Kourtchev et al., 2014).

The third source factor, biomass burning, was identified with highest concentrations of potassium and chloride and high level of particulate nitrate in PM_{2.5}. This source contributed 18% to the total particulate nitrated phenols. It mainly included biomass burning in nearby farmlands and rural areas and smoke from restaurants and residential kitchens. The direct emission of nitrated phenols from biomass burning was confirmed and determined by several previous studies, with emission factors ranging from 0.4–11.1 mg kg⁻¹ (Hoffmann et al., 2007; Iinuma et al., 2007; Wang et al., 2017c).

The fourth source factor, secondary formation, showed high concentrations of O₃ (one of the major oxidants in the troposphere) coupled with fine particulate nitrate, sulfate, and ammonium. It contributed 23% to the concentrations of nitrated phenols. Secondary nitrated phenols were produced from precursors along with the formation of O₃ and secondary inorganic aerosols. Secondary formation was shown to be an important source of nitrated phenols in atmosphere in recent field and modeling studies (Harrison et al., 2005b; Iinuma et al., 2010; Yuan et al., 2016).

The last source factor, aged coal combustion plume, showed relatively high levels of both SO₂ and O₃ and accounted for 27% of the nitrated phenol concentration. This source, which was also related to coal combustion, was ascribed to the aging processes of coal combustion products. The contribution of aged

coal combustion plumes to the particulate nitrated phenols requires further confirmation and evaluation via chamber simulation and field measurements.

3.2.2 Contributions of primary sources at different sites and in different seasons

Figure 4 compared the average contributions of the five source factors to the concentrations of total particulate nitrated phenols in summertime and wintertime. This clarifies the difference in the sources of particulate nitrated phenols at the four sampling sites in North China.

Biomass burning, which, in previous studies, was usually regarded as the most important source of nitrated phenols, was identified in all five field measurements in this study. However, it was not the dominant contributor at any site, which was attributed to the very strict control measures on open biomass burning activities, comprehensive utilization of biomass, and improved biomass burning techniques in household stoves in recent years (Lin et al., 2015). As shown in Fig. 4, the average contributions of biomass burning in the summertime followed the order Ji'nan (21%) > Yucheng (18%) \approx Wangdu (18%) > Mt. Tai (10%), which are comparable with the contribution of 17% in the wintertime in Ji'nan.

The influence of traffic on the concentrations of particulate nitrated phenols was observed during all sampling periods and played an important role in the summertime. In particular, traffic contributed the most (27%) in urban Ji'nan in the summertime, possibly because of the heavy traffic load nearby. In rural Yucheng and Wangdu, traffic contributed 12% and 20%, respectively, mainly due to the national and high-speed roads nearby, which could be busy at nighttime with more diesel vehicles. The nitrated phenol levels at Mt. Tai were seldom affected by traffic transportation, with an average contribution of only 3%.

Surprisingly, coal combustion emissions and its aged plumes, which received little attention in previous studies, were identified in all five field measurements and often dominated the sources of nitrated phenols. In the wintertime in urban Ji'nan, ~55% of the particulate nitrated phenols originated from coal combustion. This contribution was approximately three times that in the summertime in Ji'nan. Among all the species of nitrated phenols, NC and its derivations contributed most to the coal combustion factor. As shown in Fig.5, the concentration of NCs in urban Ji'nan increased with high

concentrations of SO₂, which originates from coal combustion. Therefore, the large contribution of coal combustion may be the main cause of the elevated nitrated phenol concentrations in the urban areas in wintertime. The high demand of residential heating at nighttime might lead to the elevated nocturnal concentrations of nitrated phenols in PM_{2.5} during winter. In addition, the contribution of aged coal combustion to nitrated phenols was more important in the summertime than in wintertime and reached 37% in Wangdu and 40% at Mt. Tai. The large contribution of aged coal combustion at rural sites in the summertime was likely linked to the rapid oxidation processes of gas-phase products of coal combustion from nearby industries with high atmospheric oxidation capacity in the summertime in North China.

Though there was evidence that coal combustion served as a primary source of nitrated phenols in atmosphere (Lüttke et al., 1997; Kourtchev et al., 2014), it was not identified as a major contributor in East China and eastern Germany in previous studies (Li et al., 2016; Teich et al., 2017). It is probably due to the fact that coal combustion was not an important source contributor in those regions during the measurement periods. In North China, however, as coal still serves as the dominant energy resource and the demand from residential heating increases dramatically during the winter. It is possible that significant consumption of coal resulted in elevated levels of nitrated phenols in this region. Although a series of regulations have been published and strict emission reduction measures have been implemented in the past decade, coal combustion remains a major source of air pollution in North China. Therefore, pertinent strategies and control techniques against coal combustion are still needed to reduce the concentrations of nitrated phenols as well as their precursors and consequently to mitigate their effects on the climate, environment, and human health.

3.3 Secondary formation of nitrated phenols

As mentioned above, secondary formation was recognized as an important source of particulate nitrated phenols in North China, especially in the summertime. It was identified as the dominant contributor in the field measurements in rural Yucheng (41%) and Mt. Tai (42%). To clarify the secondary formation of nitrated phenols and to understand the underlying chemical processes, the relationships between nitrated phenols and the related pollutants (including nitrate, NO₂, and O₃) were analyzed in detail by

discarding the samples with high contributions (>40%) from primary emission sources (including biomass burning, traffic, and coal combustion) based on the results of the PMF model.

Fine inorganic nitrates, which are mainly produced via homogeneous and heterogeneous oxidations of NO_x , are among the most important secondary formed nitrogen-containing constituents (Wen et al., 2015). Scatter plots of the concentrations of fine nitrates and nitrated phenols are presented in Fig. 6. The concentrations of nitrated phenols increased with the increasing nitrate contents at the three remote sites. The good correlations and trends between them indicate that the nitrated phenols in the selected $\text{PM}_{2.5}$ samples in the rural and mountain areas of North China in the summertime originated mainly from secondary formation rather than primary emissions.

To further understand the dominant factors that influence secondary formation of particulate nitrated phenols, we examined the variations of precursors of NO_2 and available oxidants of O_3 . Figure 7 illustrates the concentrations of nitrated phenols and the averaged mixing ratio of NO_2 and O_3 at nighttime in the summer campaigns. Only data from nocturnal samples were analyzed here regarding the photolysis of nitrated phenols in the daytime. In general, higher concentrations of ΣNPs correlated with higher mixing ratio of NO_2 at all four sites in the summertime, and better correlations were found at the three remote sites than in urban Ji'nan. The relevance of nitrated phenols to NO_2 in the rural and mountain areas suggests that NO_2 played an important role in the secondary formation of nitrated phenols in North China, and that nitration of phenolic compounds was thus the probable dominant production process. Concurrent variation of nitrated phenols with O_3 was also observed in rural Yucheng and at Mt. Tai. Nevertheless, little correlation was found between the concentration of nitrated phenols and the O_3 mixing ratio in urban Ji'nan and rural Wangdu, indicating that the oxidant level only acted as a limiting factor to the abundance of nitrated phenols in certain conditions. Further studies are required to obtain a reasonable explanation. However, the daytime samples exhibited no apparent relationship between nitrated phenols and NO_2 or O_3 (not shown here), due to the influence of photolysis.

Fig. 7 shows that distinct differences exist in the concentrations and variations of three kinds of nitrated phenols in the five field measurements. To understand the discrepancy in the formation mechanism among them, we further inspected the correlations of the nocturnal abundances of NPs, NCs,

and NSAs with the NO_2 concentrations. As shown in Fig. 8, NSAs, which increase with the mixing ratio of NO_2 , showed a high correlation coefficient at the remote site of Mt. Tai, and they exhibited a moderately good correlation in rural Wangdu. The similar variation trend and strong correlation between NSAs and NO_2 at the remote sites and the high proportions of NSAs in the source factor of secondary formation are good evidence that most of the NSAs came from secondary transformation of aromatic precursors. However, only weak correlation was identified between NSAs and NO_2 in rural Yucheng (not shown here), where nitration may not be the prevailing aging process in the formation of NSAs. NCs exhibited moderately good correlations with NO_2 at the Yucheng and Wangdu sites rather than at the Mt. Tai site, indicating that the secondary produced NCs were also largely associated with anthropogenic emissions and that the formations were probably associated with emissions of precursor volatile organic compounds from combustion of biomasses and fossil fuels. Furthermore, NPs were found to have good correlation with NO_2 only at the Mt. Tai site, suggesting that secondary formation of NPs was controlled by NO_2 in conditions of low NO_x . With consideration of the better correlations of nitrated phenols with inorganic nitrates than with NO_2 , for the selected nocturnal samples mainly from secondary formation, multiphase reactions of precursors on the surfaces of and/or within particles might be the dominant formation pathways of nitrated phenols. Concurrent measurements of gas- and particle-phase nitrated phenols, aromatic precursors, oxidants, and aerosol physical and chemical properties are needed to clarify the major formation processes.

In summary, NO_2 played a major role in the formation of nitrated phenols in rural and mountainous areas in North China. On the other hand, because of diverse sources and aging processes, the origins of the three kinds of nitrated phenols were distinguished at different types of sites. Further comprehensive field measurements on nitrated phenols, their precursors, and oxidants are required to understand the formation mechanisms in various atmospheric conditions.

4 Summary and conclusions

Nine nitrated phenols in fine particulate matters were measured in four different types of sites in North China. Much higher concentrations of nitrated phenols were observed in the wintertime and in the urban site, indicating strong influences from anthropogenic activities. To clarify the sources of nitrated

phenols in this region, [the](#) PMF receptor model was applied and five major sources were identified, including traffic, biomass burning, coal combustion, secondary formation, and aged coal combustion plume. Surprisingly, coal combustion contributed significantly to the total concentration of nitrated phenols. It was recognized as the dominant source at the urban site in the wintertime, and aged coal combustion contributed a large fraction at the rural and mountain sites in the summertime. In addition, secondary formation was the most important source of nitrated phenols in the summertime in remote areas and the majority of nitrosalicylic acids [are suggested to](#) come from secondary formation of the precursor aromatic compounds with the participation of NO_x. [Further, the](#) strong correlation between nitrated phenols and NO₂ at the rural and mountain sites suggest that the nitration process [is the control process of the secondary formation](#).

This work highlights the crucial roles of anthropogenic sources playing in the pollution levels and variation characteristics of nitrated phenols in the atmosphere in North China. Further control measures on emission reduction in both particulate-phase and gas-phase pollutants from coal combustion are needed to mitigate the pollution and the environmental impacts of nitrated phenols in this region. Concurrent measurements of nitrated phenols, the aromatic precursors, and oxidants are required in the future to obtain a comprehensive understanding on the formation mechanisms in various conditions.

Acknowledgements

This work was supported by National Natural Science Foundation of China (Nos. 41775118, 91544213, 91644214, 21407094) and the National Key Research and Development Program of China (No. [2016YFC0200500](#)). The authors would like to thank Dr. Monique Teich, [Mrs. Shawn Soward Bell, and Dr. David Bell](#) for language corrections and providing valuable suggestions.

References

Aiken, A. C., DeCarlo, P. F., Kroll, J. H., Worsnop, D. R., Huffman, J. A., Docherty, K. S., Ulbrich, I. M., Mohr, C., Kimmel, J. R., Sueper, D., Sun, Y., Zhang, Q., Trimborn, A., Northway, M., Ziemann, P. J., Canagaratna, M. R., Onasch, T. B., Alfarra, M. R., Prevot, A. S. H., Dommen, J., Duplissy, J.,

- Metzger, A., Baltensperger, U., and Jimenez, J. L.: O/C and OM/OC Ratios of Primary, Secondary, and Ambient Organic Aerosols with High-Resolution Time-of-Flight Aerosol Mass Spectrometry, *Environ. Sci. Technol.*, 42, 4478-4485, 10.1021/es703009q, 2008.
- Bolzacchini, E., Bruschi, M., Hjorth, J., Meinardi, S., Orlandi, M., Rindone, B., and Rosenbohm, E.: Gas-Phase Reaction of Phenol with NO₃, *Environ. Sci. Technol.*, 35, 1791-1797, 10.1021/es001290m, 2001.
- Chow, K. S., Huang, X. H. H., and Yu, J. Z.: Quantification of nitroaromatic compounds in atmospheric fine particulate matter in Hong Kong over 3 years: field measurement evidence for secondary formation derived from biomass burning emissions, *Environmental Chemistry*, 13, 665-673, 10.1071/EN15174, 2016.
- Desyaterik, Y., Sun, Y., Shen, X., Lee, T., Wang, X., Wang, T., and Collett, J. L.: Speciation of “brown” carbon in cloud water impacted by agricultural biomass burning in eastern China, *Journal of Geophysical Research: Atmospheres*, 118, 7389-7399, 10.1002/jgrd.50561, 2013.
- Feng, Y., Ramanathan, V., and Kotamarthi, V. R.: Brown carbon: a significant atmospheric absorber of solar radiation?, *Atmos. Chem. Phys.*, 13, 8607-8621, 10.5194/acp-13-8607-2013, 2013.
- Ganranoo, L., Mishra, S. K., Azad, A. K., Shigihara, A., Dasgupta, P. K., Breitbach, Z. S., Armstrong, D. W., Grudpan, K., and Rappenglueck, B.: Measurement of Nitrophenols in Rain and Air by Two-Dimensional Liquid Chromatography–Chemically Active Liquid Core Waveguide Spectrometry, *Anal. Chem.*, 82, 5838-5843, 10.1021/ac101015y, 2010.
- Grosjean, D.: Reactions of o-cresol and nitrocresol with nitrogen oxides (NO_x) in sunlight and with ozone-nitrogen dioxide mixtures in the dark, *Environ. Sci. Technol.*, 19, 968-974, 10.1021/es00140a014, 1985.
- Harrison, M. A. J., Barra, S., Borghesi, D., Vione, D., Arsene, C., and Iulian Olariu, R.: Nitrated phenols in the atmosphere: a review, *Atmos. Environ.*, 39, 231-248, 10.1016/j.atmosenv.2004.09.044, 2005a.
- Harrison, M. A. J., Heal, M. R., and Cape, J. N.: Evaluation of the pathways of tropospheric nitrophenol formation from benzene and phenol using a multiphase model, *Atmos. Chem. Phys.*, 5, 1679-1695, 10.5194/acp-5-1679-2005, 2005b.
- Hoffmann, D., Inuma, Y., Herrmann, H. Development of a method for fast analysis of phenolic

- molecular markers in biomass burning particles using high performance liquid chromatography/atmospheric pressure chemical ionisation mass spectrometry. *J. Chromatogr. A.*, 1143, 168-175, 10.1016/j.chroma.2007.01.035, 2007.
- 5 Iinuma, Y., Brüggemann, E., Gnauk, T., Müller, K., Andreae, M.O., Helas, G., Parmar, R., Herrmann, H.
Source characterization of biomass burning particles: The combustion of selected European conifers,
African hardwood, savanna grass, and German and Indonesian peat. *J. Geophys. Res.*, 112, D08209,
10.1029/2006jd007120, 2007.
- Iinuma, Y., Böge, O., Gräfe, R., and Herrmann, H.: Methyl-Nitrocatechols: Atmospheric Tracer
Compounds for Biomass Burning Secondary Organic Aerosols, *Environ. Sci. Technol.*, 44, 8453-
10 8459, 10.1021/es102938a, 2010.
- Kahnt, A., Behrouzi, S., Vermeylen, R., Safi Shalamzari, M., Vercauteren, J., Roekens, E., Claeys, M.,
and Maenhaut, W.: One-year study of nitro-organic compounds and their relation to wood burning in
PM₁₀ aerosol from a rural site in Belgium, *Atmos. Environ.*, 81, 561-568,
10.1016/j.atmosenv.2013.09.041, 2013.
- 15 Kitanovski, Z., Grgic, I., Vermeylen, R., Claeys, M., and Maenhaut, W.: Liquid chromatography tandem
mass spectrometry method for characterization of monoaromatic nitro-compounds in atmospheric
particulate matter, *J. Chromatogr. A*, 1268, 35-43, 10.1016/j.chroma.2012.10.021, 2012.
- Kourtchev, I., O'Connor, I.P., Giorio, C., Fuller, S.J., Kristensen, K., Maenhaut, W., Wenger, J.C.,
Sodeau, J.R., Glasius, M., Kalberer, M. Effects of anthropogenic emissions on the molecular
20 composition of urban organic aerosols: An ultrahigh resolution mass spectrometry study. *Atmos.*
Environ., 89, 525-532, 10.1016/j.atmosenv.2014.02.051, 2014.
- Laskin, A., Laskin, J., and Nizkorodov, S. A.: Chemistry of Atmospheric Brown Carbon, *Chem. Rev.*,
115, 4335-4382, 10.1021/cr5006167, 2015.
- Li, X., Jiang, L., Hoa, L. P., Lyu, Y., Xu, T., Yang, X., Iinuma, Y., Chen, J., and Herrmann, H.: Size
25 distribution of particle-phase sugar and nitrophenol tracers during severe urban haze episodes in
Shanghai, *Atmos. Environ.*, 145, 115-127, 10.1016/j.atmosenv.2016.09.030, 2016.
- Lin, Y., Ge, X., Liu, Z., and Li, Y.: Integration of Shiitake cultivation and solid-state anaerobic
digestion for utilization of woody biomass, *Bioresource. Technol.*, 182, 128-135,

- 10.1016/j.biortech.2015.01.102, 2015.
- Lu, Z., Streets, D. G., Winijkul, E., Yan, F., Chen, Y., Bond, T. C., Feng, Y., Dubey, M. K., Liu, S., Pinto, J. P., and Carmichael, G. R.: Light Absorption Properties and Radiative Effects of Primary Organic Aerosol Emissions, *Environ. Sci. Technol.*, 49, 4868-4877, 10.1021/acs.est.5b00211, 2015.
- 5 Mohr, C., Lopez-Hilfiker, F. D., Zotter, P., Prevot, A. S., Xu, L., Ng, N. L., Herndon, S. C., Williams, L. R., Franklin, J. P., Zahniser, M. S., Worsnop, D. R., Knighton, W. B., Aiken, A. C., Gorkowski, K. J., Dubey, M. K., Allan, J. D., and Thornton, J. A.: Contribution of nitrated phenols to wood burning brown carbon light absorption in Detling, United Kingdom during winter time, *Environ. Sci. Technol.*, 47, 6316-6324, 10.1021/es400683v, 2013.
- 10 Natangelo, M., Mangiapan, S., Bagnati, R., Benfenati, E., and Fanelli, R.: Increased concentrations of nitrophenols in leaves from a damaged forestal site, *Chemosphere*, 38, 1495-1503, 10.1016/S0045-6535(98)00370-1, 1999.
- Nojima, K., Fukaya, K., Fukui, S., and Kanno, S.: Studies on photochemistry of aromatic hydrocarbons II, *Chemosphere*, 4, 77-82, 10.1016/0045-6535(75)90017-X, 1975.
- 15 Nojima, K., Fukaya, K., Fukui, S., Kanno, S., Nishiyama, S., and Wada, Y.: Studies on photochemistry of aromatic hydrocarbons III, *Chemosphere*, 5, 25-30, 10.1016/0045-6535(76)90052-7, 1976.
- Nojima, K., Kawaguchi, A., Ohya, T., Kanno, S., and Hirobe, M.: Studies on Photochemical Reaction of Air Pollutants. X. Identification of Nitrophenols in Suspended Particulates, *Chem. Pharm. Bull.*, 31, 1047-1051, 10.1248/cpb.31.1047, 1983.
- 20 Paatero, P., and Tapper, U.: Positive matrix factorization: A non-negative factor model with optimal utilization of error estimates of data values, *Environmetrics*, 5, 111-126, 10.1002/env.3170050203, 1994.
- Pereira, K. L., Hamilton, J. F., Rickard, A. R., Bloss, W. J., Alam, M. S., Camredon, M., Ward, M. W., Wyche, K. P., Muñoz, A., Vera, T., Vázquez, M., Borrás, E., and Ródenas, M.: Insights into the
- 25 Formation and Evolution of Individual Compounds in the Particulate Phase during Aromatic Photo-Oxidation, *Environ. Sci. Technol.*, 49, 13168-13178, 10.1021/acs.est.5b03377, 2015.
- Schüssler, W., and Nitschke, L.: Nitrophenols in precipitation, *Chemosphere*, 42, 277-283, 10.1016/S0045-6535(00)00086-2, 2001.

- Teich, M., van Pinxteren, D., Wang, M., Kecorius, S., Wang, Z., Müller, T., Močnik, G., and Herrmann, H.: Contributions of nitrated aromatic compounds to the light absorption of water-soluble and particulate brown carbon in different atmospheric environments in Germany and China, *Atmos. Chem. Phys.*, 17, 1653-1672, 10.5194/acp-17-1653-2017, 2017.
- 5 Tham, Y. J., Wang, Z., Li, Q., Yun, H., Wang, W., Wang, X., Xue, L., Lu, K., Ma, N., Bohn, B., Li, X., Kecorius, S., Größ, J., Shao, M., Wiedensohler, A., Zhang, Y., and Wang, T.: Significant concentrations of nitryl chloride sustained in the morning: investigations of the causes and impacts on ozone production in a polluted region of northern China, *Atmos. Chem. Phys.*, 16, 14959-14977, 10.5194/acp-16-14959-2016, 2016.
- 10 Tremp, J., Mattrel, P., Fingler, S., and Giger, W.: Phenols and nitrophenols as tropospheric pollutants: Emissions from automobile exhausts and phase transfer in the atmosphere, *Water, Air, and Soil Pollution*, 68, 113-123, 10.1007/bf00479396, 1993.
- Vione, D., Maurino, V., Minero, C., and Pelizzetti, E.: Aqueous atmospheric chemistry: Formation of 2, 4-dinitrophenol upon nitration of 2-nitrophenol and 4-nitrophenol in solution, *Environ. Sci. Technol.*, 15 39, 7921-7931, 2005.
- Wang, X., Chen, J., Sun, J., Li, W., Yang, L., Wen, L., Wang, W., Wang, X., Collett Jr, J. L., Shi, Y., Zhang, Q., Hu, J., Yao, L., Zhu, Y., Sui, X., Sun, X., and Mellouki, A.: Severe haze episodes and seriously polluted fog water in Ji'nan, China, *Sci. Total. Environ.*, 493, 133-137, 10.1016/j.scitotenv.2014.05.135, 2014.
- 20 Wang, Y. Q., Zhang, X. Y., Sun, J. Y., Zhang, X. C., Che, H. Z., and Li, Y.: Spatial and temporal variations of the concentrations of PM₁₀, PM_{2.5} and PM₁ in China, *Atmos. Chem. Phys.*, 15, 13585-13598, 10.5194/acp-15-13585-2015, 2015a.
- Wang, L., Wen, L., Xu, C., Chen, J., Wang, X., Yang, L., Wang, W., Yang, X., Sui, X., Yao, L., and Zhang, Q.: HONO and its potential source particulate nitrite at an urban site in North China during 25 the cold season, *Sci. Total. Environ.*, 538, 93-101, 10.1016/j.scitotenv.2015.08.032, 2015b.
- Wang, X., Wang, H., Xue, L., Wang, T., Wang, L., Gu, R., Wang, W., Tham, Y. J., Wang, Z., Yang, L., Chen, J., and Wang, W.: Observations of N₂O₅ and ClNO₂ at a polluted urban surface site in North China: High N₂O₅ uptake coefficients and low ClNO₂ product yields, *Atmos. Environ.*, 156, 125-134,

- 10.1016/j.atmosenv.2017.02.035, 2017a.
- Wang, Z., Wang, W., Tham, Y. J., Li, Q., Wang, H., Wen, L., Wang, X., and Wang, T.: Fast heterogeneous N_2O_5 uptake and ClNO_2 production in power plant plumes observed in the nocturnal residual layer over the North China Plain, *Atmos. Chem. Phys. Discuss.*, 2017, 1-26, 10.5194/acp-5 2017-492, 2017b.
- Wang, X., Gu, R., Wang, L., Xu, W., Zhang, Y., Chen, B., Li, W., Xue, L., Chen, J., and Wang, W.: Emissions of fine particulate nitrated phenols from the burning of five common types of biomass, *Environ. Pollut.*, 230, 405-412, 10.1016/j.envpol.2017.06.072, 2017c.
- Wen, L., Chen, J., Yang, L., Wang, X., Caihong, X., Sui, X., Yao, L., Zhu, Y., Zhang, J., Zhu, T., and 10 Wang, W.: Enhanced formation of fine particulate nitrate at a rural site on the North China Plain in summer: The important roles of ammonia and ozone, *Atmos. Environ.*, 101, 294-302, 10.1016/j.atmosenv.2014.11.037, 2015.
- Xu, C., and Wang, L.: Atmospheric oxidation mechanism of phenol initiated by OH radical, *J. Phys. Chem. A*, 117, 2358-2364, 10.1021/jp308856b, 2013.
- 15 Yan, L., Bai, Y., Zhao, R., Li, F., and Xie, K.: Correlation between coal structure and release of the two organic compounds during pyrolysis, *Fuel*, 145, 12-17, 10.1016/j.fuel.2014.12.056, 2015.
- Yao, L., Yang, L., Chen, J., Wang, X., Xue, L., Li, W., Sui, X., Wen, L., Chi, J., Zhu, Y., Zhang, J., Xu, C., Zhu, T., and Wang, W.: Characteristics of carbonaceous aerosols: Impact of biomass burning and secondary formation in summertime in a rural area of the North China Plain, *Sci. Total. Environ.*, 20 557-558, 520-530, 10.1016/j.scitotenv.2016.03.111, 2016.
- Yuan, B., Liggio, J., Wentzell, J., Li, S.-M., Stark, H., Roberts, J. M., Gilman, J., Lerner, B., Warneke, C., Li, R., Leithead, A., Osthoff, H. D., Wild, R., Brown, S. S., and de Gouw, J. A.: Secondary formation of nitrated phenols: insights from observations during the Uintah Basin Winter Ozone Study (UBWOS) 2014, *Atmospheric Chemistry and Physics*, 16, 2139-2153, 10.5194/acp-16-2139-25 2016, 2016.
- Zhao, R., Lee, A. K. Y., Huang, L., Li, X., Yang, F., and Abbatt, J. P. D.: Photochemical processing of aqueous atmospheric brown carbon, *Atmos. Chem. Phys.*, 15, 6087-6100, 10.5194/acp-15-6087-2015, 2015.

Zhang, Y. L., and Cao, F.: Fine particulate matter (PM_{2.5}) in China at a city level, Scientific Reports, 5, 14884, 10.1038/srep14884, 2015.

Tables:

Table 1. Sampling sites and sampling periods involved in this study.

Sampling site	Type	Altitude	Sampling time	Season
Ji'nan	Urban	~50 m	2013.11.26 - 2014.01.05	Winter
	Urban		2014.09.04 - 2014.09.21	Summer
Yucheng	Rural	~23 m	2014.06.09 - 2014.06.20	Summer
Wangdu	Rural	~14 m	2014.06.19 - 2014.06.29	Summer
Mt. Tai	Mountain	~1465 m	2014.07.27 - 2014.08.06	Summer

Table 2. Average concentration levels of total particulate nitrated phenols (Σ NPs) and the proportions in PM_{2.5} and fine organic matters.

Site	Season	Concentrations (ng m ⁻³)			Σ NPs/PM _{2.5} (‰)	Σ NPs/OM (‰)
		Daytime	Nighttime	Average		
Ji'nan	Winter	38.0±26.3	55.8±24.0	48.4±25.5	0.28±0.09	1.69±0.64
Ji'nan	Summer	10.3±4.9	9.3±3.6	9.8±4.2	0.09±0.04	0.41±0.16
Yucheng	Summer	5.2±2.3	6.3±3.2	5.7±2.8	0.05±0.02	0.23±0.09
Wangdu	Summer	6.0±4.3	5.7±3.3	5.9±3.8	0.07±0.04	
Mt. Tai	Summer	2.8±1.5	2.3±1.8	2.5±1.6	0.06±0.09	0.17±0.14

Table 3. Linear correlation coefficients (*r*) between individual nitrated phenols measured in PM_{2.5} samples in five measurements.

	4NP	3M4NP	2M4NP	4NC	4M5NC	3M6NC	3M5NC	5NSA	3NSA
4NP	1.00								
3M4NP	0.95	1.00							
2M4NP	0.95	0.96	1.00						
4NC	0.77	0.64	0.70	1.00					
4M5NC	0.86	0.81	0.82	0.82	1.00				
3M6NC	0.85	0.78	0.81	0.85	0.94	1.00			
3M5NC	0.85	0.79	0.80	0.92	0.90	0.90	1.00		
5NSA	0.27	0.16	0.29	0.48	0.38	0.43	0.41	1.00	
3NSA	0.58	0.57	0.61	0.52	0.58	0.63	0.57	0.53	1.00

Figure captions:

Figure 1. Maps of the study region show (a) the NO_x emission intensity and (b) the four sampling sites. Squares ■ represent urban site, circles ● represent rural sites, and the triangles ▲ represent mountain site.

- 5 **Figure 2.** Fractions of individual nitrated phenols in the total particulate nitrated phenols at four sampling sites in wintertime and summertime. *W* represents the winter measurement and *S* represents the summer measurement.

Figure 3. Source profiles of nitrated phenols and related air pollutants obtained from PMF analysis.

- 10 **Figure 4.** Contributions of the five source factors to the concentrations of particulate nitrated phenols at four sampling sites in wintertime and summertime. *Total* represents the average contributions of the five field measurements.

Figure 5. Scatter plots of particulate nitrated phenols with SO₂ in urban Ji'nan.

Figure 6. Scatter plots of particulate nitrated phenols with fine inorganic nitrate at the rural and mountain sites. *A* and *B* indicate daytime and nighttime samples, respectively.

- 15 **Figure 7.** Time series of concentrations of three kinds of nitrated phenols in the nocturnal samples collected in the summertime and the corresponding mixing ratios of NO₂ and O₃.

Figure 8. Scatter plots of nocturnal concentrations of nitrated phenols with NO₂. NPs-MT and NSAs-MT indicate samples collected at Mt. Tai, NCs-WD and NSAs-WD samples were collected in Wangdu and NCs-YC samples were collected in Yucheng.

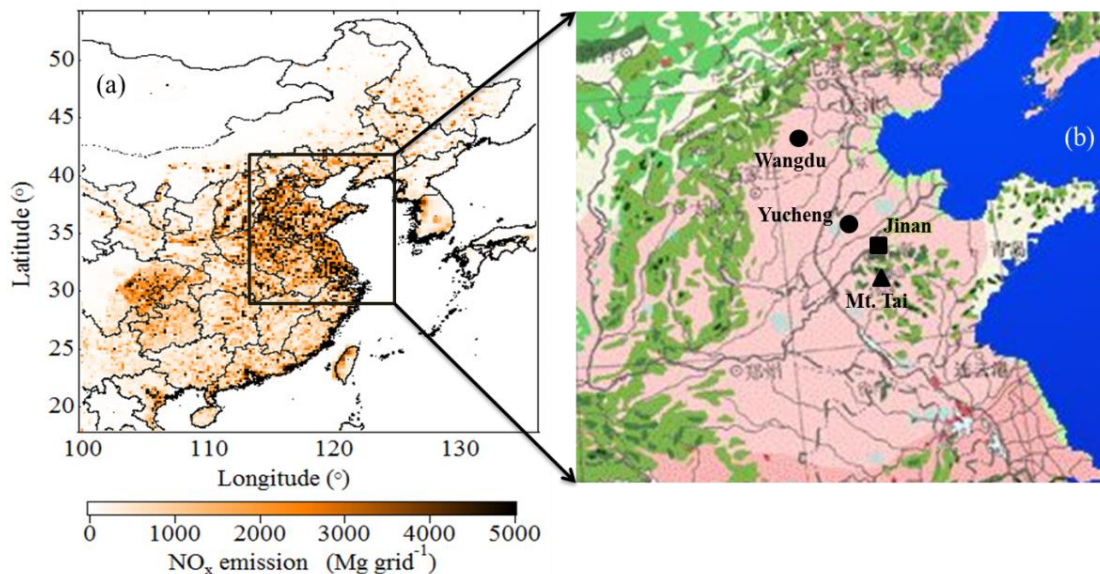


Figure 1. Maps of the study region show (a) the NO_x emission intensity and (b) the four sampling sites. Squares ■ represent urban site, circles ● represent rural sites, and the triangles ▲ represent mountain site.

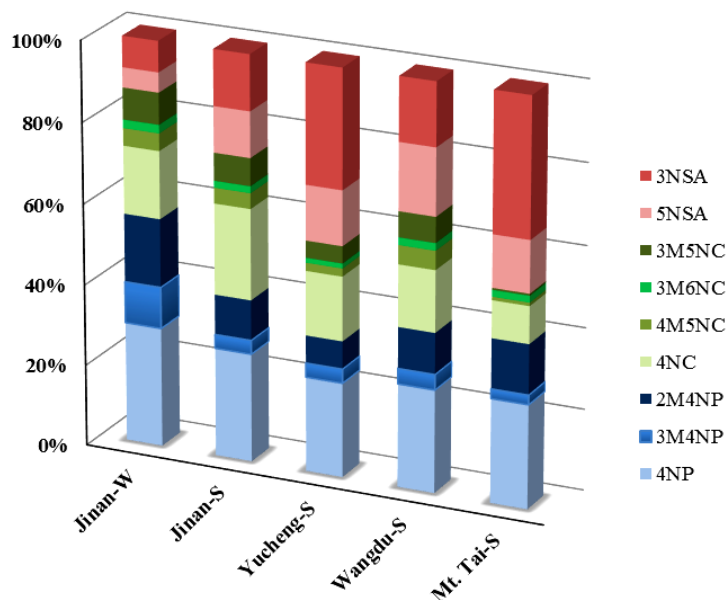


Figure 2. Fractions of individual nitrated phenols in the total particulate nitrated phenols at four sampling sites in wintertime and summertime. *W* represents the winter measurement and *S* represents the summer measurement.

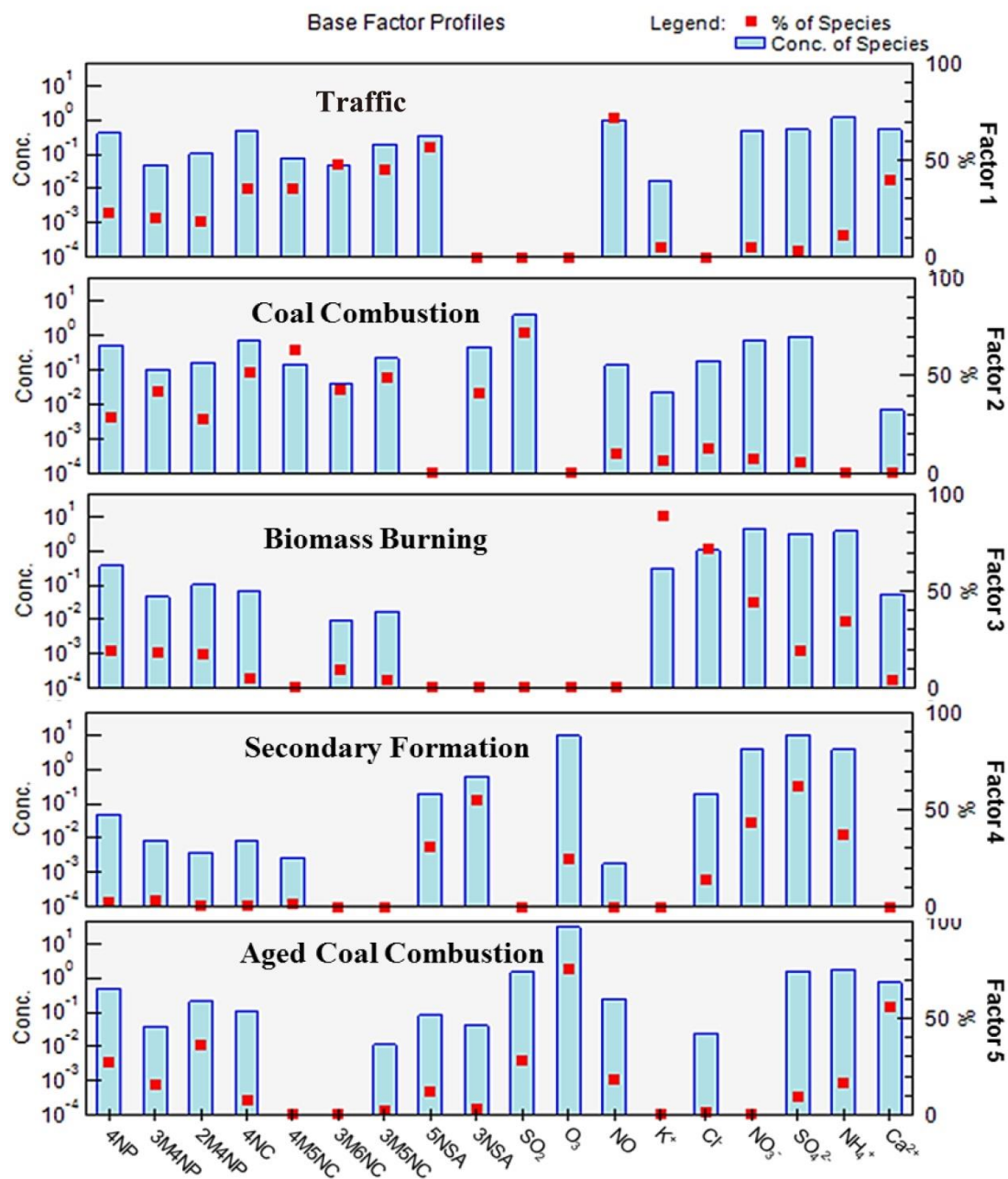


Figure 3. Source profiles of nitrated phenols and related air pollutants obtained from PMF analysis.

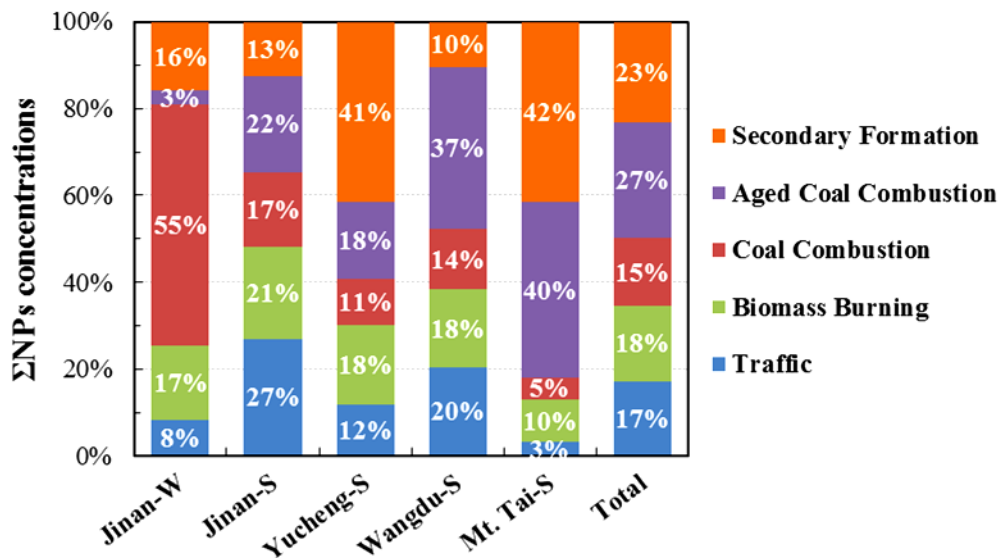


Figure 4. Contributions of the five source factors to the concentrations of particulate nitrated phenols at four sampling sites in wintertime and summertime. *Total* represents the average contributions of the five field measurements.

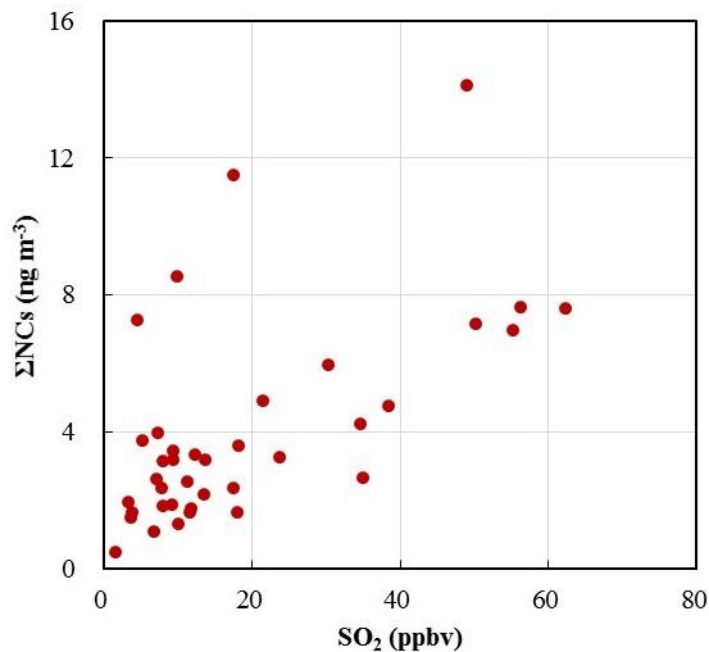


Figure 5. Scatter plots of particulate nitrated phenols with SO_2 in urban Ji'nan.

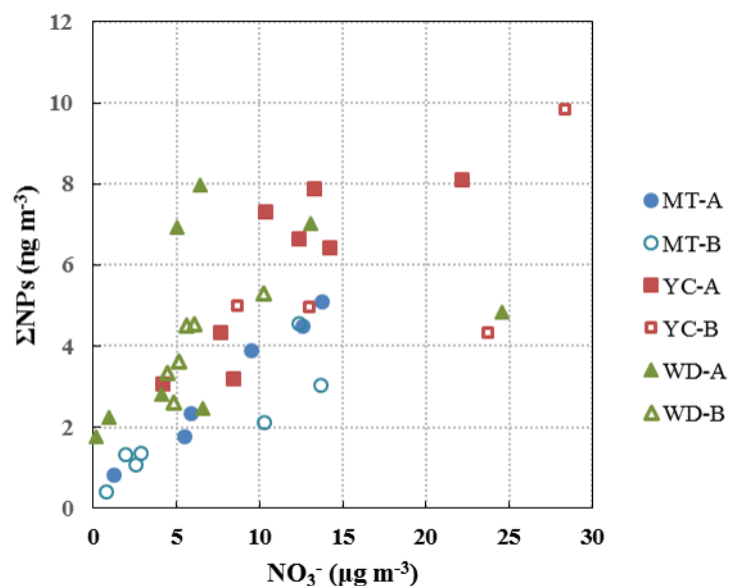
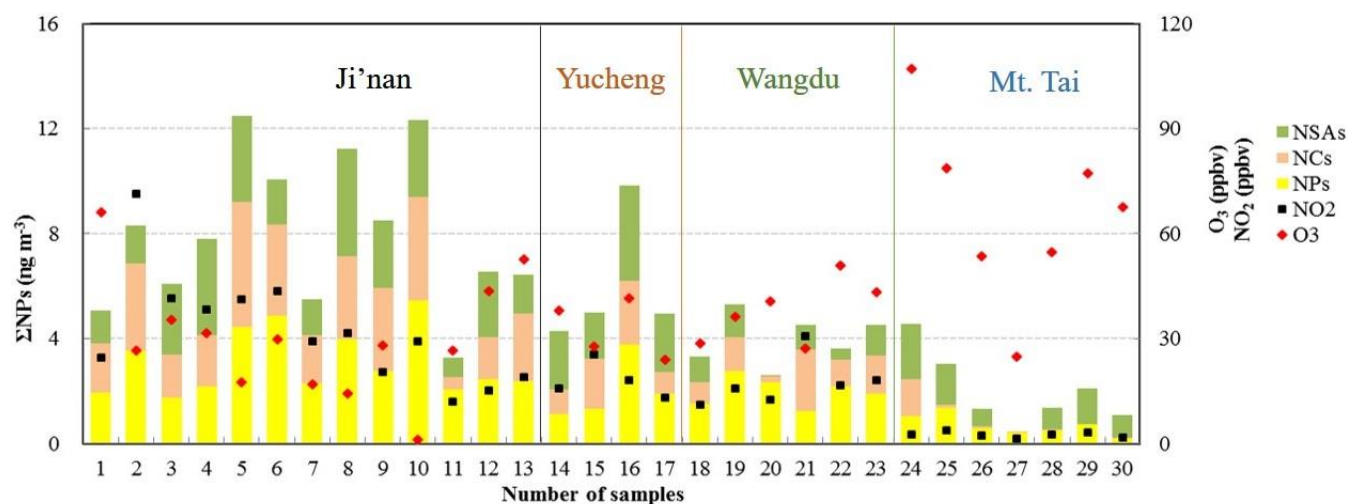


Figure 6. Scatter plots of particulate nitrated phenols with fine inorganic nitrate at the rural and mountain sites. A and B indicate daytime and nighttime samples, respectively.



5 Figure 7. Time series of concentrations of three kinds of nitrated phenols in the nocturnal samples collected in the summertime and the corresponding mixing ratios of NO_2 and O_3 .

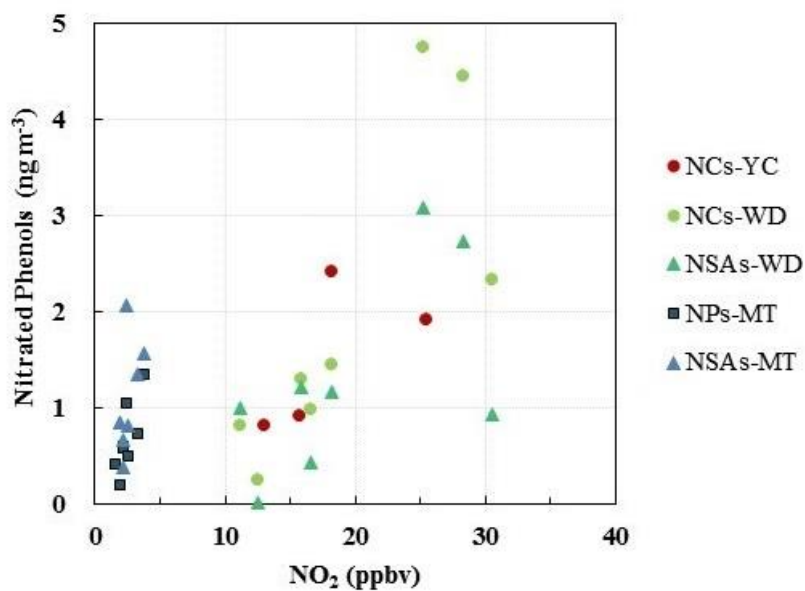


Figure 8. Scatter plots of nocturnal concentrations of nitrated phenols with NO₂. NPs-MT and NSAs-MT indicate samples collected at Mt. Tai, NCs-WD and NSAs-WD samples were collected in Wangdu and NCs-YC samples were collected in Yucheng.

Supporting Information

Observations of fine particulate nitrated phenols in four sites in North China: Concentrations, source apportionment, and secondary formation

5 Liwei Wang^{1,a}, Xinfeng Wang¹, Rongrong Gu¹, Hao Wang¹, Lan Yao¹, Liang Wen¹, Fanping Zhu²,
Weihao Wang³, Likun Xue¹, Lingxiao Yang^{1,2}, Keding Lu⁴, Jianmin Chen^{1,2,5}, Tao Wang³, Yuanghang
Zhang⁴, and Wenxing Wang¹

¹Environment Research Institute, Shandong University, Ji'nan, Shandong 250100, China

10 ²School of Environmental Science and Engineering, Shandong University, Ji'nan, Shandong 250100,
China

³Department of Civil and Environmental Engineering, Hong Kong Polytechnic University, Hong Kong,
China

⁴State Key Laboratory for Environment Simulation and Pollution Control, College of Environmental
Sciences and Engineering, Peking University, Beijing 100871, China

15 ⁵Shanghai Key Laboratory of Atmospheric Particle Pollution and Prevention, Department of
Environmental Science and Engineering, Institute of Atmospheric Sciences, Fudan University,
Shanghai 200433, China

^a Now at Laboratory of Atmospheric Chemistry, Paul Scherrer Institute, Villigen PSI, 5232, Switzerland

Correspondence to: Xinfeng Wang (xinfengwang@sdu.edu.cn)

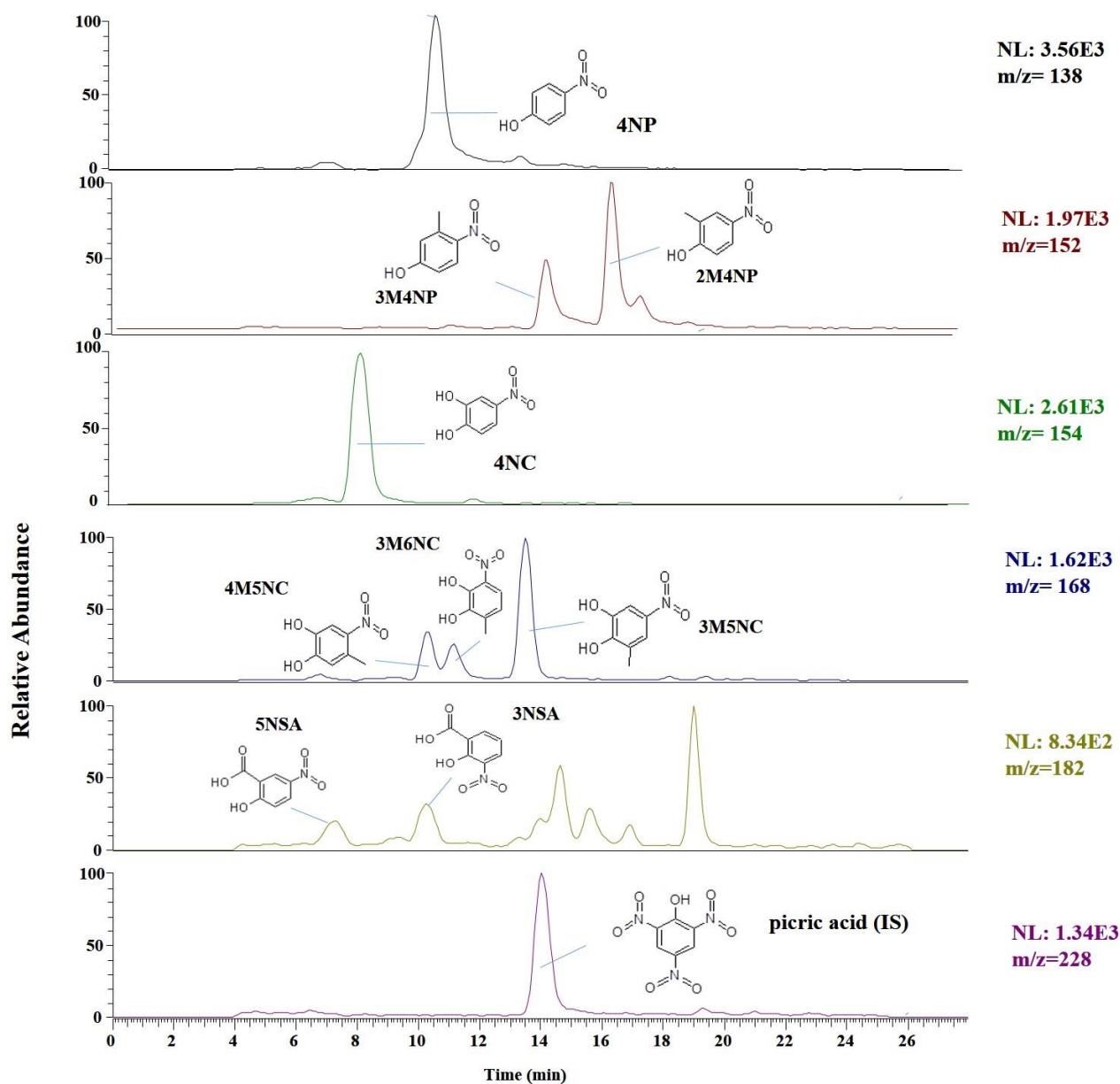


Figure S1. Extracted ion chromatogram spectra for the mass-to-charge ratios of 138, 152, 154, 168, 182, and 228 amu obtained from ambient $PM_{2.5}$ sample and the identified nine nitrated phenols.