

1 Statistical Analysis of Contrail to Cirrus Evolution during the Contrail and Cirrus Experiments  
2 (CONCERT)

3 Aurélien Chauvigné<sup>1</sup>, Olivier Jourdan<sup>1</sup>, Alfons Schwarzenboeck<sup>1</sup>, Christophe Gourbeyre<sup>1</sup>, Jean  
4 François Gayet<sup>1</sup>, Christiane Voigt<sup>2,3</sup>, Hans Schlager<sup>2</sup>, Stefan Kaufmann<sup>2</sup>, Stephan Borrmann<sup>3,4</sup>,  
5 Sergej Molleker<sup>3,4</sup>, Andreas Minikin<sup>2,5</sup>, Tina Jurkat<sup>2</sup>, Ulrich Schumann<sup>2</sup>

6 <sup>1</sup>Laboratoire de Météorologie Physique, UMR 6016 CNRS/Université Clermont Auvergne,  
7 Clermont-Ferrand, France.

8 <sup>2</sup>Institut für Physik der Atmosphäre, Deutsches Zentrum für Luft- und Raumfahrt (DLR),  
9 Oberpfaffenhofen, Germany.

10 <sup>3</sup>Institut für Physik der Atmosphäre, Universität Mainz, Mainz, Germany.

11 <sup>4</sup>Max-Planck-Institute for Chemistry, Department for Particle Chemistry, Mainz, Germany.

12 <sup>5</sup>Now at: Flugexperimente, Deutsches Zentrum für Luft- und Raumfahrt (DLR), Oberpfaffenhofen,  
13 Germany.

14 **Abstract:**

15 Air traffic affects cloudiness, and thus climate, by emitting exhaust gases and particles. The  
16 study of the evolution of contrail properties is very challenging due to the complex interplay of  
17 vortex dynamics and atmospheric environment (e.g. temperature, supersaturation). Despite  
18 substantial progress in recent years, the optical, microphysical, and macrophysical properties of  
19 contrails and ambient cirrus during contrail formation and subsequent ageing are still subject to  
20 large uncertainties due to instrumental and observational limitations and the large number of  
21 variables influencing the contrail life cycle. In this study, various contrail cases corresponding to  
22 different aircraft types and atmospheric conditions are investigated using a statistical method based  
23 on the in situ optical measurements performed during the CONCERT campaigns 2008 and 2011.  
24 The two aircraft campaigns encompass more than 17 aircraft contrail cases. A Principal Component  
25 Analysis (PCA) of the angular scattering coefficients measured by the Polar Nephelometer is  
26 implemented. The goal is to classify the sampled ice cloud measurements in several clusters  
27 representative of different contrail development stages (primary wake, young contrail, aged contrail,  
28 and cirrus). Extinction and asymmetry coefficients, nitrogen oxide concentrations, relative humidity  
29 with respect to ice and particle size distributions are analysed for each cluster to characterize the  
30 evolution of ice-cloud properties during the contrail to cirrus evolution. The PCA demonstrates that  
31 contrail optical properties are well suited to identify and discriminate the different contrail growth  
32 stages and to characterize the evolution of contrail properties.

33 **1 Introduction**

34 Aircraft exhaust plumes have a significant impact on climate and tropospheric chemistry  
35 (Lee et al., 2010; IPCC, 1999). The Intergovernmental Panel for Climate Change IPCC Special  
36 Report on Aviation (1999) estimates that NO<sub>x</sub> emissions from subsonic aircraft increase ozone  
37 concentrations at cruise level. Short and long-lived pollution species have different impact on  
38 atmospheric chemical composition depending on the flight level (Frömming et al, 2012). Emissions  
39 of water vapour, black carbon (BC) / soot particles, sulphate (SO<sub>4</sub>) aerosols and nitrogen oxides  
40 (NO<sub>x</sub>) contribute to the modification of the chemical composition of the upper troposphere on  
41 shorter timescales (Lee et al., 2010, Gettelman and Chen, 2013; Liou et al., 2013). The long-term  
42 climate impact is mainly driven by CO<sub>2</sub> emissions. Modelling studies have shown that the direct  
43 radiative forcing from aviation is expected to represent 3-4% (50-60 mW m<sup>-2</sup>) of the anthropogenic

44 forcing (Lee et al., 2010; De Leon et al., 2012) and could reach  $87 \text{ mW m}^{-2}$  in 2025 (Chen and  
45 Gettelman, 2016). Aircraft induced cloudiness has also an important impact on climate, although  
46 the quantitative assessment of the radiative forcing remains a major source of uncertainties (Lee et  
47 al., 2010).

#### 48 1.1. Contrail formation and evolution

49 Contrail formation is mainly controlled by the thermodynamic properties of the ambient air  
50 and by the aircraft emissions. The conditions for contrail formation can be determined by the  
51 Schmidt-Appleman Criterion (SAC) (Schumann, 1996). Contrail chemical composition can have a  
52 significant impact on the contrail formation (Kärcher et al., 2009). Indeed, contrail microphysical  
53 properties such as the total number densities and ice crystal diameters are directly linked to the  
54 emission index (e.g. soot emission index in  $\text{kg-fuel}^{-1}$ ). Several studies in the past have been  
55 dedicated to the evolution of concentrations of nitrogen oxide (NO) and sulphur dioxide (SO<sub>2</sub>) and  
56 their oxidized forms (Kärcher and Voigt, 2006 ; Voigt et al., 2006 ; Schäuble et al., 2009 ; Jurkat et  
57 al., 2011).

58 Two different processes of contrail formation have been studied: combustion condensation  
59 trails and aerodynamic condensation trails. Different studies (Gierens and Dilger, 2013; Jansen and  
60 Heymsfield, 2015) have illustrated characteristics of aerodynamically controlled contrail formation  
61 associated to warmer temperatures (observations at temperatures above  $-38^{\circ}\text{C}$ ). Contrails primarily  
62 initiated by the combustion processes result from the mixing of hot and humid exhaust gases with  
63 cooler and dryer ambient air. This increases the local relative humidity in the exhaust plume leading  
64 to the formation of contrails when the saturation with respect to liquid water is reached. In this case,  
65 soot and sulphate aerosols emitted by the aircraft (Moore et al., 2017) may act as condensation  
66 nuclei to form liquid droplets. Homogeneous ice nucleation of the liquid droplets can occur when  
67 the exhaust cools down through mixing with the ambient temperature, while preserving ice  
68 saturation. Small ice crystals are then formed in the jet phase within some tenths of a second  
69 (Kärcher and Yu, 2009).

70 The life-cycle of contrails depends on their interaction with the wake vortices behind aircraft  
71 and the ambient atmosphere (Irvine et al., 2012; Graf et al., 2012; Duda et al., 2013; Carleton et al.,  
72 2013; Schumann and Heymsfield, 2017). The ice crystals in the young contrails are captured within  
73 two counter-rotating wake vortices in the downwash behind the aircraft induced by the aircraft lift,  
74 which induce adiabatic compression, heating, and partial sublimation of the ice crystals within the  
75 primary wake (Lewellen and Lewellen, 2001; Sussmann and Gierens, 2001, Unterstrasser et al.,  
76 2008, Unterstrasser et al., 2016; Kärcher and Voigt, 2017). This primary wake may soon disappear  
77 if ambient air is subsaturated with respect to ice. In the case of supersaturation, the secondary wake  
78 becomes visible, thereby detraining ice particles from the primary wake at a higher level (Sussmann  
79 and Gierens, 1999, Kaufmann et al., 2014). Quasi-spherical ice crystals become increasingly  
80 aspherical and grow by uptake of water vapour as long as saturation with respect to ice is  
81 prevailing. In ice-saturated conditions, contrails can persist after the vortex breakdown, spread and  
82 evolve into contrail cirrus (Schumann and Heymsfield, 2017). The associated cloud cover (larger  
83 than for linear contrails alone) increases the radiative forcing of contrail cirrus (Burkhardt and  
84 Kärcher, 2011; Schumann et al., 2015).

#### 85 1.2. Optical and microphysical properties of contrail phases

86 The assessment of the contrail radiative forcing requires, in particular, an accurate  
87 estimation of the cloud cover, the visible optical depth, the single scattering characteristics, the ice  
88 crystal effective size and habit (Yang et al., 2010; Spangenberg et al., 2013). Satellite observations

89 provide a comprehensive dataset to study statistically the contrail to cirrus evolution. The combined  
90 contrail tracking algorithms on the Spinning Enhanced Visible and Infrared Imager (SEVIRI) on  
91 board the Meteosat Second Generation (MSG) satellites with properties inferred by the Moderate  
92 Imaging Spectroradiometer (MODIS) on board the Terra satellite was used by Vazquez-Navarro et  
93 al., (2015) to characterize the properties of 2300 contrails. Properties included the lifetime (mean  
94 values of 1 h), the length (130 km), the optical thickness (0.34), the altitude (11.7 km) and the  
95 radiative forcing ( $-26 \text{ W m}^{-2}$  for shortwave forcing over land) of these contrails.

96 However, detailed in situ optical and microphysical measurements are still needed to  
97 evaluate satellite products and to develop more appropriate retrieval algorithm. Discriminating  
98 contrails from natural cirrus from satellite observations remains extremely challenging. Although  
99 the optical and microphysical properties of young contrails (linear contrails) differ from natural  
100 cirrus properties, the contrail properties are highly time dependent, and persistent contrail cirrus can  
101 be embedded in thin cirrus clouds. Recent in situ measurements (Voigt et al., 2017) show that the  
102 microphysical properties of contrail cirrus can still be distinguished from natural cirrus at contrail  
103 cirrus ages up to several hours.

104 Most of the previous studies (Jessberger et al., 2013; Lewellen et al., 2012 ; Schumann et al.,  
105 2013) separate the contrail analysis between the two wakes phases. Primary and secondary wake  
106 properties depend strongly on atmospheric conditions and aircraft type (emission index, vortex,  
107 flight level, ambient humidity, temperature, ...). In the primary wake, contrail ice crystals are quasi-  
108 spherical with values of the effective diameter ( $D_{\text{eff}}$ ) typically lower than  $4 \mu\text{m}$  (Schumann et al.,  
109 2011; Gayet et al., 2012; Järvinen et al., 2016; Schumann et al., 2017b). The total number  
110 concentration of ice particles is typically larger than  $1000 \text{ cm}^{-3}$  a few seconds after contrail  
111 formation (Baumgardner and Gandrud, 1998; Petzold et al., 1997). Then, it decreases by dilution to  
112 concentrations below  $200 \text{ cm}^{-3}$  within less than a minute after contrail generation (Poellot et al.,  
113 1999; Schröder et al., 2000; Gayet et al., 2012). Gayet et al. (2012) reported mean values of ice  
114 water content of  $3 \text{ mg m}^{-3}$  and maximum extinction coefficients close to  $7 \text{ km}^{-1}$ . In agreement with  
115 these results, the recent overview on contrail studies presented in Schumann et al. (2017b) reports  
116 several microphysical properties at different stages, for different atmospheric conditions as well as  
117 comparisons with the Contrail Cirrus Prediction (CoCIP) model simulations. Their study highlights  
118 the large variability (which increases with contrail age) of contrail properties.

119 Several studies reported findings on the secondary wake and its evolution into contrail  
120 cirrus. Detained from the primary wake and submitted to saturated ambient air with respect to ice,  
121 ice crystals grow rapidly, while crystal concentration decreases. Within the first minutes after  
122 formation, measurements exhibit aspherical ice crystals with effective sizes up to  $6 \mu\text{m}$ , IWC  
123 between  $2.5$  and  $10 \text{ mg m}^{-3}$ , extinction between  $2$  and  $3 \text{ km}^{-1}$ , and crystal concentrations typically  
124 lower than  $100 \text{ cm}^{-3}$  (Goodman et al., 1998; Voigt et al., 2010; Kübbeler et al., 2011; Gayet et al.,  
125 2012; Jeßberger et al., 2013; Schumann et al., 2013; Poellot et al., 1999; Febvre et al., 2009;  
126 Kaufmann et al., 2014). Aged contrails can persist and evolve into contrail cirrus if the ambient air  
127 is saturated with respect to ice. After a few minutes, tracking contrails by visual navigation is  
128 challenging as contrail and contrail cirrus spread in the free troposphere. Aged contrails are often  
129 difficult to identify unambiguously (Schumann et al., 2017a).

130 Observations of the ice crystal shape and their growth over several tens of minutes and up to  
131 an hour illustrate that effective crystal sizes can easily exceed  $20 \mu\text{m}$  with number concentrations  
132 ranging from  $1$  to  $5 \text{ cm}^{-3}$  (Lawson et al., 1998; Schäuble et al., 2009), extinction less than  $0.5 \text{ km}^{-1}$   
133 (Febvre et al., 2009), and IWC up to  $10 \text{ mg m}^{-3}$  (Schröder et al., 2000; De Leon et al., 2012). At this  
134 stage, within a sustained ice-supersaturated environment, contrail microphysical properties may still  
135 differ from those of natural cirrus (Voigt et al., 2017) with concentrations of ice crystals larger than

136 100  $\mu\text{m}$  in the order of  $0.1 \text{ cm}^{-3}$ . These crystals typically show bullet rosette type habits  
137 (Heymsfield et al., 1998; Heymsfield et al., 2010). Optical depth values can reach values of 2.3  
138 (Atlas and Wang, 2010), corresponding to an extinction of  $0.023 \text{ km}^{-1}$ . Nevertheless, the transition  
139 from contrails to cirrus highly depends on the ambient saturation conditions. Modelling studies with  
140 typical atmospheric conditions show a temporal evolution of the optical and microphysical  
141 properties when contrails evolve to contrail cirrus clouds (Burkhardt and Kärcher, 2011;  
142 Unterstrasser et al., 2016 ; Schumann et al., 2015).

143 In this study, we report on a powerful alternative to classify cloud events into young  
144 contrails, aged contrails and cirrus. The method is applied to aircraft data of the CONCERT  
145 (Contrail and Cirrus Experiment) campaigns (Voigt et al., 2010, 2011, 2014). The methodology  
146 consists in implementing a Principal Component Analysis (PCA) of the angular light scattering data  
147 measured by the Polar Nephelometer. The PCA patterns are classified to yield different cluster  
148 representing specific contrail types. Corresponding optical, microphysical, and chemical properties  
149 are derived for each contrail phase (from young contrails to contrail-cirrus). This paper starts with  
150 an overview of the properties of contrails and cirrus clouds observed during two specific  
151 CONCERT flights (19 November 2008 and 16 September 2011) encompassing a series of different  
152 contrail evolution stages. These two flights contain a variety of contrail. The results from these  
153 flights can be regarded as an analytical framework which then can be compared to contrails  
154 properties of other flights.

## 155 **2 CONCERT projects and data processing**

### 156 2.1 CONCERT campaigns

157 The CONCERT-1 and CONCERT-2 campaigns took place in October/November 2008 and  
158 August/September 2011, respectively. Both campaigns deployed the DLR Falcon 20 E research  
159 aircraft from Oberpfaffenhofen, Germany, and sampled contrails and cirrus at mid-latitudes over  
160 Europe. The overall objective was to reduce uncertainties on the microphysical, chemical, and  
161 radiative properties of contrails behind aircraft of different types and to improve the evaluation of  
162 contrail's impact on climate. A few CONCERT flights were also dedicated to study emissions of  
163 Etna and Stromboli volcanos (Voigt et al., 2014; Shcherbakov et al., 2016). A few stratospheric  
164 intrusions were also observed during the flight missions. In total, 23 flights were recorded during  
165 the two measurement campaigns, wherein 12 flights were entirely focused on aircraft contrail  
166 chasing. Overall, more than 17 different aircraft exhausts plumes have been probed. CONCERT-2  
167 campaign mainly focused on the observation of persistent contrails, and hence on the evolution of  
168 contrails to contrail cirrus.

169 During both CONCERT campaigns, the DLR research aircraft Falcon was equipped with a  
170 set of instruments to measure the optical and microphysical properties of cloud particles and also  
171 the trace gas composition in the UTLS (Upper Troposphere / Lower Stratosphere) region. Voigt et  
172 al. (2010) provide a detailed description of the aircraft instrumentation. We briefly introduce the  
173 instruments used in this study.

### 174 2.2 Aircraft instrumentation

175 The microphysical and optical particle properties of contrails and cirrus presented in this  
176 study were mainly derived from the PMS Forward Scattering Spectrometer Probe 300 (FSSP-300),  
177 the Polar Nephelometer (PN), and the PMS 2D-C hydrometeor imaging probe. The combination of  
178 these independent techniques characterizes cloud particles within a range of diameters varying from  
179  $0.5 \mu\text{m}$  to  $2 \text{ mm}$ .

180 The PN (Gayet et al., 1997) measures the angular scattering coefficients (non-normalized  
 181 scattering phase function) of an ensemble of water droplets or ice crystals or a mixture of those  
 182 particles ranging from a few micrometers to approximately 1 mm in diameter. These particles  
 183 intersect a collimated laser beam, at a wavelength of 804 nm, near the focal point of a parabolic  
 184 mirror. The light scattered at angles from 3.49° to 172.5° is reflected onto a circular array of 56  
 185 near-uniformly positioned photodiodes. In this study, reliable measurements were performed at 30  
 186 scattering angles ranging from ±15° to ±162°. Particle phase (water droplets and/or ice crystals) can  
 187 be assessed as well as single scattering properties such as the extinction coefficient and the  
 188 asymmetry coefficient with uncertainties of 25% and 4%, respectively (Gayet et al., 2002; Jourdan  
 189 et al., 2010).

190 Particle size distributions and corresponding microphysical and optical integrated properties  
 191 (IWC, Deff, N, and extinction) were derived from both FSSP-300 and 2DC measurements. The  
 192 FSSP-300 (Baumgardner et al., 1992) measures the intensity of forward scattered light from cloud  
 193 particles passing through the laser beam, with cloud particles in the diameter range 0.35-20 µm. In  
 194 the forward angular region (from 4° to 12°), scattering is mainly described by the particle  
 195 diffraction pattern and therefore depends on the refractive index, the shape, and the size of the  
 196 particles. The method of data processing and size calibration used during the CONCERT campaigns  
 197 have been presented in Gayet et al. (2012). We briefly recall that the asymmetry parameter derived  
 198 from the PN was used to discriminate nearly spherical particles ( $g \geq 0.85$ ) from non-spherical ones  
 199 ( $g < 0.85$ ) at 804 nm. For spherical ice particles, Mie calculations were used to derive the size bin  
 200 limits and the corresponding extinction efficiency. Results were adjusted to the calibrated probe  
 201 response. Additionally, to minimize Mie ambiguities related to the FSSP-300 size response, 31  
 202 channels were rebinned to 13 channels with a diameter ranging from 0.5 µm to 18 µm (upper  
 203 channels 30 and 31 were excluded from the data analysis). For non-spherical particles, the size of  
 204 the contrail particles is expressed in terms of an equivalent surface or area diameter, i.e. the  
 205 diameter of a sphere that has the same area than the projected area of the measured non- spherical  
 206 particle image (Mishchenko et al., 1997; Schumann et al., 2011). The particles were assumed to be  
 207 rotationally symmetric ice ellipsoids with an aspect ratio of 0.5. Accordingly, and contrary to the  
 208 method used for spherical particles, 15 size bins ranging from 0.5 µm to 18 µm were defined based  
 209 on T-Matrix calculations following Borrmann et al., (2000).

210 The bi-dimensional optical array spectrometer probe (2DC) provides information on the  
 211 crystal size and shape within a nominal size range from 25 µm to 800 µm by recording cloud  
 212 particles shadow images with a 25 µm resolution. The method of data processing used in this study  
 213 is described in detail in Gayet et al. (2002) and Febvre et al. (2009). Reconstruction of truncated  
 214 particles has been considered for the PSD calculations and the sampling surfaces have been derived  
 215 according to Heymsfield and Parrish (1978). To improve the statistical significance of low particle  
 216 concentrations, a 5-s running mean was applied. As the sensitivity of the probe to small particles  
 217 decreases with airspeed (Lawson et al., 2006), particles smaller than 100 µm may not be detectable  
 218 at the Falcon airspeed of typically 180 m s<sup>-1</sup>. This may result in larger uncertainties of up to 100%  
 219 in the derived microphysical parameters such as the IWC (Gayet et al., 2002 and 2004).

220 For spherical and non-spherical particles, the extinction coefficients are calculated from the  
 221 following equation:

$$Ext = \frac{\pi}{4} \sum_i \beta_{ext}^i N_i D_i^2 \quad (1)$$

222 where  $\beta_{ext}^i$  is the extinction efficiency (values depend on spherical or aspherical particle  
 223 characterization),  $D_i$  the mean diameter in channel  $i$ , and  $N_i$  the number concentration.

224 Different approaches are used to retrieve ice water content from spherical and non-spherical  
 225 particles (Garret et al., 2003 ; Gayet et al., 2004 ; Gayet et al., 2012). For spherical particles (gPN >  
 226 0.85), IWC is computed from the following equation:

$$IWC_{spherical} = \frac{\pi}{6} \rho_{ice} \sum_i N_i D_i^3 \quad (2)$$

227 with  $\rho_{ice}$  the bulk ice density (0.917 g cm<sup>-3</sup>).

228 For non-spherical ice crystals (gPN < 0.85 and for particle diameters larger than 50  $\mu$ m), an  
 229 equivalent diameter method is used (Gayet et al., 2004). For an ice crystal with an area A, the  
 230 particle equivalent diameter  $D_{equ}$  (in mm for eq. (3) and (4)), the equivalent mass  $x_{equ}$  (in mg), and  
 231 the Ice Water Content (IWC in mg m<sup>-3</sup>) are defined as:

$$A \leq 0.049 \text{ mm}^2 \quad D_{equ} = 0.82A^{0.48} \quad (3)$$

$$A > 0.049 \text{ mm}^2 \quad D_{equ} = 0.56A^{0.32} \quad (4)$$

$$x_{equ} = \frac{\pi}{6} \rho_{water} D_{equ}^3 \quad (5)$$

$$IWC_{non-spherical} = \sum_i N_i x_{equ} \quad (6)$$

233 with  $\rho_{water}$  the bulk water density (1 g cm<sup>-3</sup>).

234 These equations do not account for possible shattering of large ice crystals on the probe  
 235 inlets. This effect is minor in young contrails but can lead to an underestimation of large ice crystal  
 236 concentration (diameters higher than 100  $\mu$ m) and thus an overestimation of small ice crystal  
 237 concentration in contrail cirrus clouds (Febvre et al., 2009).

238 Trace gas measurements were also performed. NO/NO<sub>y</sub> concentrations can be significant in  
 239 young tropospheric aircraft plumes. NO and NO<sub>y</sub> mixing ratio were performed using the  
 240 chemiluminescence technique (Schlager et al., 1997) with a time resolution of 1 s. Instruments used  
 241 for CONCERT campaigns are described in several studies (Jurkat et al., 2010 ; Jurkat et al., 2011 ;  
 242 Voigt et al., 2014 ; Jurkat et al., 2016). The accuracy (and precision) of the NO and NO<sub>y</sub>  
 243 measurements are estimated with 7% (and 10%) and 10% (and 15%), respectively (Ziereis et al.,  
 244 2000).

245 Relative humidity with respect to ice (RHI) is also key parameter to understand contrail  
 246 formation and microphysical properties. Water vapour was measured with the chemical ionization  
 247 mass spectrometer AIMS-H<sub>2</sub>O during CONCERT-2 (Kaufmann et al., 2014; 2016). Hygrometers  
 248 using the Lyman- $\alpha$  technique (FISH, Zöger et al., 1999; Meyer et al., 2015), and frost point  
 249 hygrometers (CR-2, Heller et al., 2017) were deployed on the Falcon during CONCERT-1 and 2.

### 250 3 Results

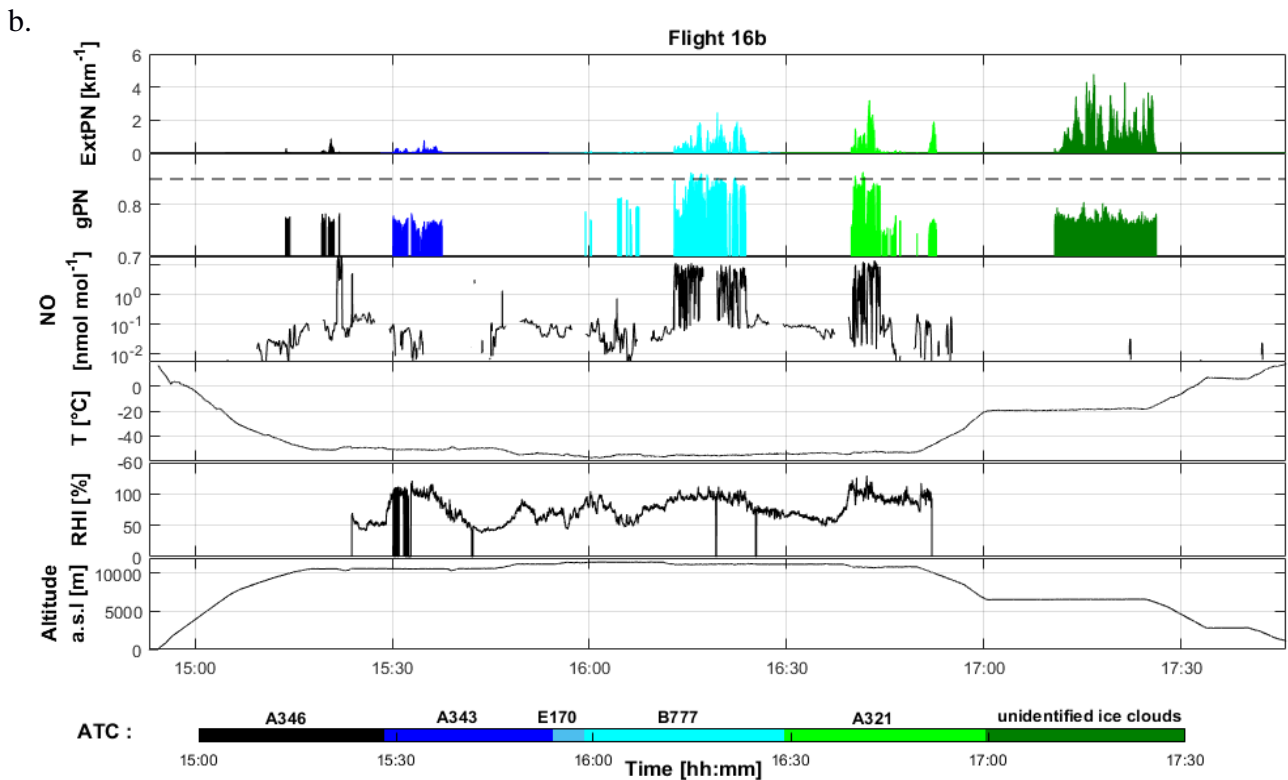
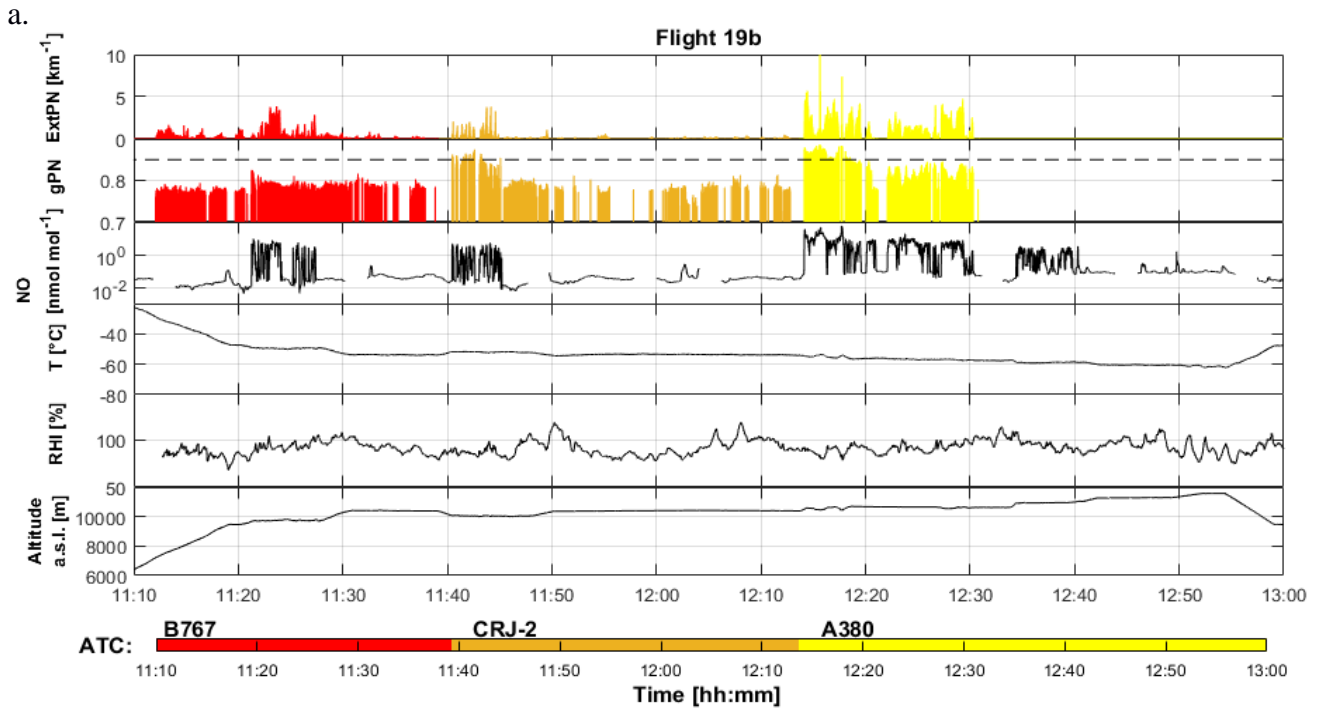


Figure 1: Time series at 1 s resolution for flights a) 19b (CONCERT 1) and b) 16b (CONCERT 2). From top to bottom: extinction coefficient (in  $\text{km}^{-1}$ ) and asymmetry parameter measured by the Polar nephelometer at 804 nm (dashed line corresponds to a 0.85 value), concentration of nitric oxide (in  $\text{nmol mol}^{-1}$ ) measured by chemiluminescence technique, temperature (in  $^{\circ}\text{C}$ ), relative humidity with respect to ice (in %), and altitude a.s.l. (in m). Temporal series are coloured according to time and aircraft chasing information from Air Traffic Control (ATC).

252 The purpose of this section is to give an overview of the contrail optical properties and more  
253 interestingly to evaluate the ability of the Polar Nephelometer measurements to identify contrails.  
254 Two flights, performed on 16 September 2011 during CONCERT-2 (flight 16b) and on 19  
255 November 2008 during CONCERT-1 (flight 19b), respectively, were selected for their variety of  
256 ice clouds sampled during these two flights. The two flights are considered as a benchmark to  
257 illustrate the potential of the PCA methodology described in Sect. 3.2.

258 Figure 1 displays the time series of the extinction coefficient (ExtPN) and the asymmetry  
259 parameter (gPN) at a wavelength of 804 nm, relative humidity with respect to ice (RHI), the nitric  
260 oxide (NO) concentration, the temperature T and the altitude for flights 19b and 16b. RHI measured  
261 with the AIMS mass spectrometer is shown for both flights. For flight 19b, RHI instrument  
262 shortcomings are discussed in details in Kübbeler et al. (2011), Gayet et al. (2012), Jessberger et al.  
263 (2013) and Schumann et al. (2013). For both flights, Air Traffic Control (ATC) provides  
264 information on the flight tracks and on the chased aircraft (aircraft type, engine type, fuel flow,  
265 weight, engine power setting). From this information, the Falcon measurements were attributed to  
266 the exhaust plume of individual aircraft with an estimated plume age. Time series are colour coded  
267 according to ATC information. When no ATC information is available, the cloud segment is called  
268 “unidentified ice cloud”.

269 The PN extinction coefficient coupled with the asymmetry parameter seems to be a  
270 reasonable proxy to detect contrails and cirrus clouds (see amongst other references, Voigt et al.,  
271 2010). ExtPN values, by definition, depend on the cloud particle concentration and size. Values  
272 typically beyond  $0.1 \text{ km}^{-1}$  correspond to cloud events that are well correlated to environmental  
273 conditions supersaturated with respect to ice ( $\text{RHI} > 100\%$ ). Figure 1 shows that relatively high  
274 values of extinction can be found in flights 19b and 16b that are linked to the presence of contrails  
275 or ice clouds. Moreover, the temporal distributions of these values are in accordance with ATC  
276 information for both flights. For instance, most of the contrails induced by commercial aircraft  
277 exhaust plumes are associated with significant extinction coefficient values. The ExtPN values are  
278 between  $0.2 \text{ km}^{-1}$  and  $10 \text{ km}^{-1}$  for contrails induced by A346, A340, and A380 commercial aircraft.

279 The last cloud event (“unidentified ice cloud”) during flight 16b is not a contrail because it  
280 is measured at temperatures significantly above the Schmidt Appleman temperature ( $-38^\circ\text{C}$ ,  
281 Schumann 1996). This is an ice cloud with high extinction ( $> 0.5 \text{ km}^{-1}$ ) and low asymmetry values  
282 ( $< 0.75$ ), characteristic for ice particles (Jourdan et al., 2003b, Febvre et al., 2009). Relative  
283 humidity and NO mixing ratio data are not available for this cloud.

284 Most of the aircraft induced contrails are detected by the PN except for the ones stemming  
285 from the E170 airplane. At 15:50 during flight 16b, ATC identified the E170 position close to the  
286 Falcon flight trajectory, however the ExtPN and the NO mixing ratio remained low. Hence, the  
287 E170 contrail was not probed by the Falcon. In the following we assume that only periods with  
288 ExtPN values above  $0.1 \text{ km}^{-1}$  are considered as a reliable signature of contrails.

289 The absolute values of the asymmetry parameter gPN provide additional information on the  
290 cloud particle shape. Indeed, gPN is a good indicator of the degree of sphericity of ice crystals  
291 (Gayet et al., 2012). Ice clouds with gPN values higher or equal to 0.85 are typically composed of  
292 spherical ice crystals, whereas lower values are indicative of aspherical ice particles. In a  
293 supersaturated environment, crystals grow by water vapour deposition and become increasingly  
294 aspherical with time. However, in very young contrails, spherical ice crystals with an asymmetry  
295 coefficient around 0.85 prevail. gPN is decreasing when water vapour diffusion is generating more  
296 and more aspherical crystal shapes at ice supersaturation. This can be observed for A321 chasing  
297 during flight 16b where gPN is decreasing to a value of 0.75 whilst RHI remains around 100%. This



298 is not the case during B777 chasing where no gPN decrease is observed when RHI < 100%.  
299 However, it is important to note that the RHI measurements during the CRJ-2 chasing events do not  
300 show supersaturated conditions, whereas contrail seems persistent. Indeed, RHI measurements  
301 should be discussed carefully for this campaign due to potential calibration issues.

302 A good example of the evolution of gPN is the CRJ-2 contrail observed between 11:40 and  
303 11:45 during flight 19b. The sequence illustrates the potential of the gPN measurement to  
304 characterize the evolution of contrail properties. The evolution of the ice crystal shape is reflected in  
305 the decrease of the asymmetry parameter from 0.88 to 0.79 (uncertainties around 0.04) after only 5  
306 min and down to 0.77 after 20 min. A weaker decrease of gPN values (around  $0.78 \pm 0.02$ ) is then  
307 observed until 12:10 corresponding to 30 min of contrail ageing. During this period, ice crystals are  
308 expected to grow by water vapour diffusion. A similar decrease of gPN values has been reported by  
309 Gayet et al. (2012) in the ageing contrail from an A380 aircraft, and is also visible in the present  
310 study for the B767 and the A321 contrails.

311 NO concentration measurements can also be used to discriminate natural cirrus clouds from  
312 clouds influenced by aircraft traffic. At the typical altitude of 10 km, NO environmental  
313 concentrations are close to background values. In contrast, NO concentrations in young contrails  
314 may reach several tens of  $\text{nmol mol}^{-1}$  (Voigt et al., 2010). Figure 1 shows a good correlation  
315 between the expected localization of young contrails and NO concentrations. The dilution effect in  
316 the upper troposphere causes an important decay of chemical concentrations. For instance, the first  
317 few seconds of the A380 chasing during flight 19b are characterized by a high NO concentration  
318 (up to  $40 \text{ nmol mol}^{-1}$ ) followed by a fast decrease to  $10 \text{ nmol mol}^{-1}$  in the next 15 min of  
319 observation time, and less than  $5 \text{ nmol mol}^{-1}$  later. NO concentrations finally decrease to  
320 background levels within hours (e.g. Voigt et al., 2017). This decrease of the NO concentration is in  
321 accordance with the decrease of the extinction coefficient (from 10 to  $0.2 \text{ km}^{-1}$ ) and asymmetry  
322 parameter (from 0.88 to 0.77). NO is mainly used as an additional contrail indicator. However,  
323 during some aircraft chasing events, NO concentrations were near background levels, while mass  
324 spectrometric measurements (not shown here) indicate elevated concentrations of HONO,  $\text{HNO}_3$ ,  
325 and  $\text{SO}_2$  representative for contrail chemical species.

326 Flights 19b and 16b clearly show that the optical properties can be used to discriminate  
327 different cloud events. A first order analysis of these parameters (supported by the ATC  
328 information) can be used to roughly distinguish young contrails (mostly quasi-spherical ice crystals)  
329 from aged contrails (mostly aspherical ice crystals). This analysis is mainly qualitative and based  
330 solely on a few typical parameters (Fig. 1). A more robust statistical method should be used to  
331 accurately separate the different contrail phases. In the following section, scattering properties are  
332 investigated more extensively to assess whether the information content of the PN scattering  
333 measurements is sufficient to document changes in the contrail microphysical properties.

### 334 **3.2 Statistical Method**

335 In this section, we present a methodology based on a statistical analysis of the optical  
336 signature of the cloud measurements. The goal is to classify the contrail properties according to the  
337 aircraft origin and evolution stage. The main objective of the Principal Component Analysis (PCA)  
338 is data reduction to allow a better physical interpretation of the light scattering patterns derived  
339 from the Polar Nephelometer measurements (Legendre and Legendre, 1998; Jourdan et al., 2003).  
340 In this study, optical properties of ice crystals in the evolving contrail environment are examined to  
341 evaluate contrail evolution. This statistical analysis was already successfully applied to discriminate  
342 mixed phase clouds (Jourdan et al., 2003; Jourdan et al., 2010) from liquid clouds and ice clouds,  
343 and to identify porous aerosol in degassing plumes (Shcherbakov et al., 2016).

344

### 3.2.1 Reference definition

345 The PCA is first applied to the PN angular scattering coefficients measurements performed  
 346 during flights 16b and 19b which are here considered as our reference dataset. Initially, a  
 347 correlation matrix is calculated to characterize the link between each scattering angle. The PCA is  
 348 designed to generate a new limited set of uncorrelated parameters, called principal components  $C_{lj}$   
 349 representative of the original data set variability.

350 A first implementation of the PCA is performed to detect unreliable data or out of order  
 351 photodiodes. For instance, seven photodiodes presented a low signal to noise ratio and were  
 352 excluded from the dataset. Flight sequences characterized by  $\text{ExtPN} < 0.1$  were also removed.  
 353 Finally, flight sequences dedicated to aircraft chasing and ice cloud sampling were considered to  
 354 perform a second PCA. The analysis is performed on the remaining angular scattering coefficients  
 355 (4669 Angular Scattering Coefficients (ASC) representing PN measurements of flights 16b and  
 356 19b) restricted to 25 angles  $\theta$  ranging from  $15^\circ$  to  $155^\circ$ . The new set of variables or coordinates,  
 357  $C_{lj}$ , can be expressed with the scalar product of the vector of reduced angular scattering coefficients  
 358  $\overline{\sigma}_j(\theta)$  for the  $j^{\text{th}}$  measurements, expressed in log scale, and the  $l^{\text{th}}$  eigenvector  $\xi_l(\theta)$  (i.e. principal  
 359 component) of the total data set correlation matrix (Jourdan et al., 2010).

$$C_{lj} = (\overline{\ln\sigma}_j - \langle \overline{\ln\sigma} \rangle)^T \cdot \xi_l \quad (4)$$

360 where  $\langle \overline{\ln\sigma} \rangle$  represents the average ASC of the dataset.

361 The first three eigenvectors  $\xi_l(\theta)$  of the correlation matrix are displayed in Fig. 2 along with  
 362 their normalized eigenvalues  $\lambda_l$ , representing more than 99% of the variability of the PN angular  
 363 scattering coefficients (ASC).

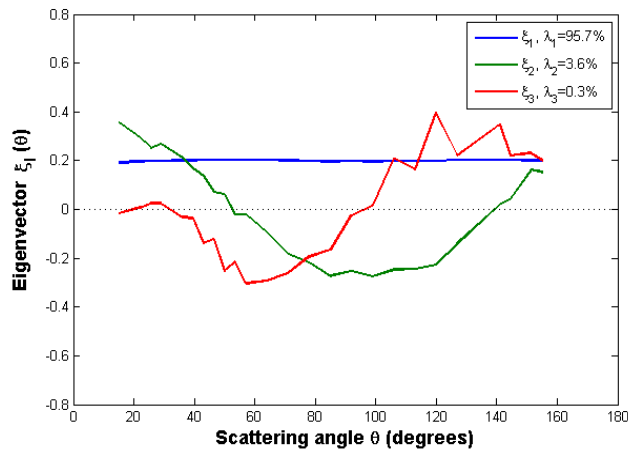


Figure 2: First three eigenvectors for the flights 16b and 19b.

364 The first eigenvector  $\xi_1(\theta)$  is approximately constant versus scattering angle and represents  
 365 95.7% of the total variance. It means that this principal component is representative of changes of  
 366 the magnitude of phase functions without any changes in their global shape. This behaviour means  
 367 that 95.7% of the ASC variations are linked to changes of the cloud particle extinction. Results  
 368 show a good correlation ( $r^2 = 0.98$ ) between the first eigenvector and the extinction derived from the  
 369 PN measurements (ExtPN).

370 The second eigenvector  $\xi_2(\theta)$  reverses sign twice at scattering angles equal to  $50^\circ$  and  $140^\circ$   
371 with an extremum around  $90^\circ$ . Accordingly, 3.6% of the angular scattering variability corresponds  
372 to a redistribution of scattered energy from the angular region ( $50^\circ$ - $140^\circ$ ) to scattering angles lower  
373 than  $50^\circ$  and higher than  $140^\circ$ . Light-scattering modelling studies demonstrate that the scattering  
374 behaviour in the angular region between  $60^\circ$  and  $140^\circ$  is sensitive to the particle shape and  
375 thermodynamic phase (Jourdan et al., 2010). A strong linear correlation ( $r^2=0.97$ ) between the  
376 second eigenvector and the asymmetry coefficient (gPN) at 804 nm is found.

377 The third eigenvector represents only 0.3% of the total variance. However, this eigenvector  
378 provides additional information in scattering regions which are not well described by the first two  
379 principal components. It has opposite signs in the angular region ( $30^\circ$ - $90^\circ$ ) and ( $90^\circ$ - $155^\circ$ ) with  
380 maximum extremal values at  $60^\circ$  and  $120^\circ$ . The shape of the third eigenvector describes the  
381 forward/backward hemisphere partitioning of the scattering. Baran et al. (2012), Xie et al. (2006),  
382 and Xie et al. (2009) showed that the scatter pattern for angles between  $120^\circ$  and  $160^\circ$ ,  
383 corresponding to ice bow-like effects, is sensitive to quasi-spherical particles. Moreover, these  
384 backscattering angles ( $\theta > 120^\circ$ ) and scattering angles around  $22^\circ$  and  $46^\circ$  (corresponding to halo  
385 features) can also be linked to the particle habits and surface roughness (Xie et al., 2009, Jourdan et  
386 al., 2010).

387 Each phase function (or ASC) measured by the PN can be expressed with a good accuracy  
388 as a linear combination of the three principal components (Jourdan et al., 2010). The PN data are  
389 projected into a new space defined by the three principal components (3D-space) instead of the 25-  
390 dimensional space of ASC. The scatterplots of the  $C_{j3}$  and  $C_{j1}$  expansion coefficients versus the  $C_{j2}$   
391 coefficient are represented on Fig. 3a and b respectively. Fig. 3a illustrates the features of the ASC  
392 measurements in one of the most comprehensive way. Each point corresponds to a measured phase  
393 function documented over 25 angles. The variability of  $C_{j2}$  coefficients is significant with values  
394 ranging from -1 to 1.5. The angular variation of the second principal component indicates that large  
395 values of  $C_{j2}$  ( $C_{j2} > 0.75$ ) correspond to ASC with low side scattering ( $60^\circ$ - $130^\circ$ ) and higher forward  
396 scattering ( $15^\circ$ - $40^\circ$ ) and somehow higher backscattering ( $145^\circ$ - $155^\circ$ ). This behaviour is connected to  
397 an increase of the asymmetry parameter with an increase of  $C_{j2}$  values. Thus, the fraction of  
398 spherical particles increases with increasing  $C_{j2}$ . In the region defined by negative values of  $C_{j2}$  the  
399 density of points is relatively high. These cloud events exhibit optical properties characterized by a  
400 large side scattering and low asymmetry parameter. Therefore, specific cloud sequences sharing  
401 similar scattering properties can be identified based on this second principal component. Young  
402 contrails characterized by quasi-spherical ice crystals have high positive values of  $C_{j2}$  while cirrus  
403 clouds and contrail cirrus exhibit high negative values.

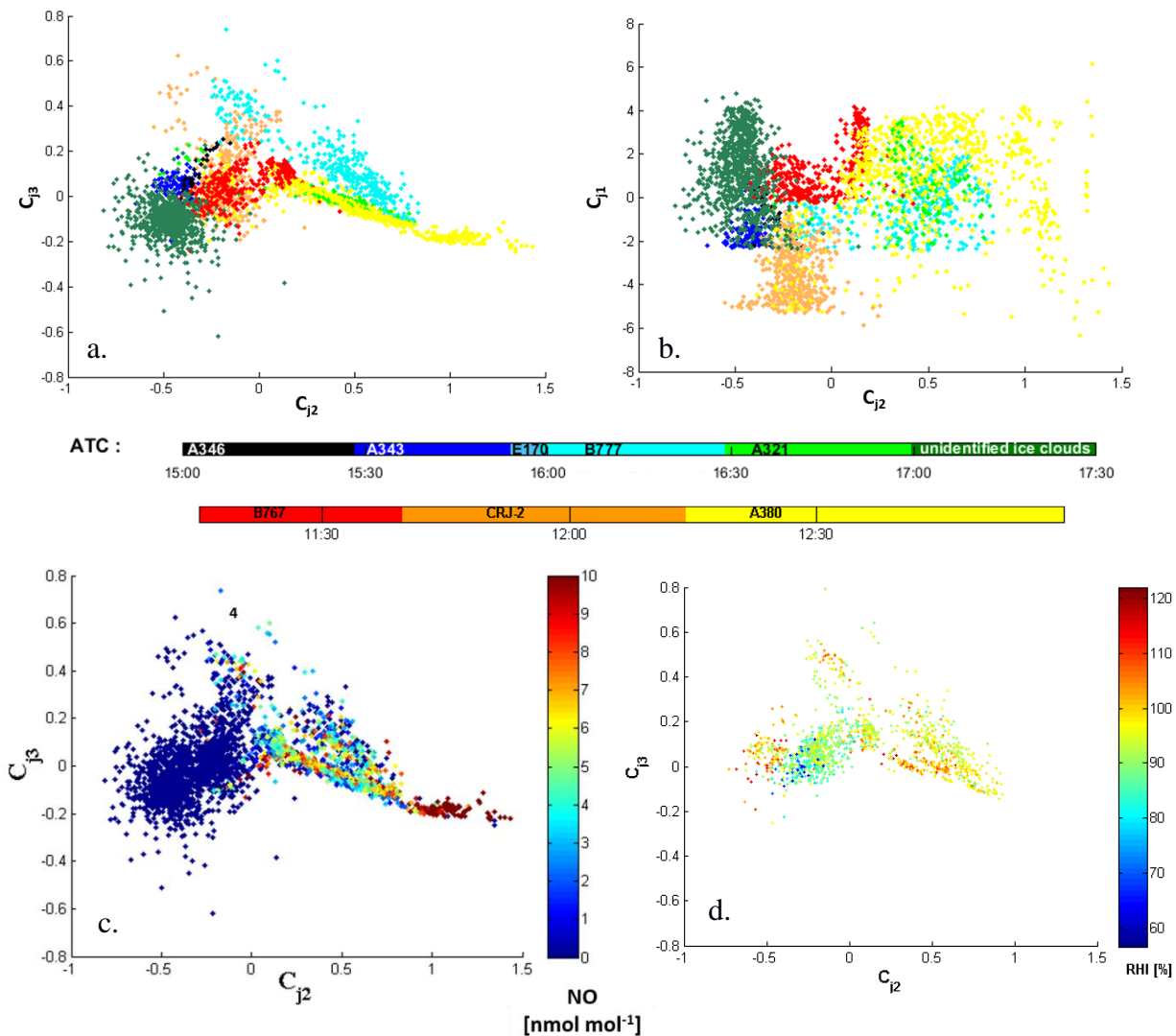


Figure 3: Expansion coefficient diagram for flights 16b and 19b: third versus second principal component for a), c) and d), and first versus second principal component for b). Data points are colour coded according to ATC information for a) and b), by NO concentration for c), and by RHI values for d).

404 In the space of the third principal component high positive values of  $C_{j3}$  imply that less  
 405 energy is scattering in the forward hemisphere and thus more energy is scattered in the backward  
 406 hemisphere. The variability of the expansion coefficients is less pronounced as ASC are distributed  
 407 between -0.4 and 0.6. Most of the measured ASC do not significantly differ from the average ASC  
 408 in the angular ranges (30°-90°) and (90°-155°). However, some specific clusters linked to scattering  
 409 behaviour can be identified for values of  $C_{j3}$  greater than 0.1 and lower than -0.1. These threshold  
 410 values also depend of the position of the ASC on the second principal component. Finally, the first  
 411 principal component is directly linked to the extinction coefficient. High values of  $C_{j1}$  are  
 412 representative of optically dense cloud sequences.

413 Figure 3c shows an increase of  $C_{j2}$  for increasing NO mixing ratio. This clearly indicates  
 414 that the contrails are evolving in space and/or time along the Falcon flight track. Hence, contrails  
 415 characterized by a low side scattering due to the presence of spherical ice crystals correspond to  
 416 high NO concentration. This behaviour can be a signature of young contrail properties. Elder or  
 417 aged contrails composed of a higher fraction of non-spherical crystals or growing more aspherically  
 418 are expected to exhibit an enhanced side scattering and a lower asymmetry parameter associated to

419 lower NO concentrations. RHI measurements also give relevant information on the capacity of the  
 420 cloud to be persistent. Thus, Fig. 3d shows higher RHI values with decreasing gPN values.

### 421 3.2.2 Clustering analyses

422 The new representation of each measurement in the space of the first three principal  
 423 component reveals different clusters, characteristic of specific scattering behaviour. The clustering  
 424 k-mean method (Seber 1984, Spath 1985) is applied to the reference dataset (flights 19b and 16b) to  
 425 partition the observations into k clusters to minimize the variance within each cluster (i.e. to  
 426 minimize the distance between each data point and the centre of the cluster it belongs to). The  
 427 number of cluster k is an adjustable parameter. Then in a first step, each observation is assigned to a  
 428 specific cluster whose mean has the least squared Euclidean distance (i.e. nearest mean). In a  
 429 second step, the position of each cluster is set to the mean of all data points belonging to that cluster  
 430 (i.e. the centroids of each of the k clusters becomes the new means). These two steps are repeated  
 431 until convergence is reached when the assignments no longer change.

432 Sixteen clusters were found to encompass all points of the two flights and to partition each  
 433 aircraft chasing identified from ATC information (Fig. 3a and 3b). For clarity and better  
 434 understanding of the variability of contrail properties, we choose to limit the number of clusters to  
 435 6. 9 of the original clusters are merged into 2 clusters (clusters 3 and 5) presenting similar NO  
 436 concentrations and optical properties. Four of the original clusters are combined into one new  
 437 cluster containing the A321 / A380 contrails (referred to as Cluster 2 hereafter). In addition, only  
 438 data points within the 10% of the maximum Mahalanobis distance (De Maesschalck et al., 2000) to  
 439 the respective cluster's centre are kept for further analysis.

440 Clusters are defined by their means (or centres), standard deviations (or widths), and cross-  
 441 correlations (or tilts). The Mahalanobis distance is given by the equation:

$$D_M(x)_i = \sqrt{(x - \mu_i)^T S_i^{-1} (x - \mu_i)} \quad (5)$$

442 with  $D_M$  the Mahalanobis distance between point  $\chi$  and the  $i^{\text{th}}$  cluster center,  $\mu_i$  the N-dimensional  
 443 mean of this cluster and  $S_i$  its covariance matrix.

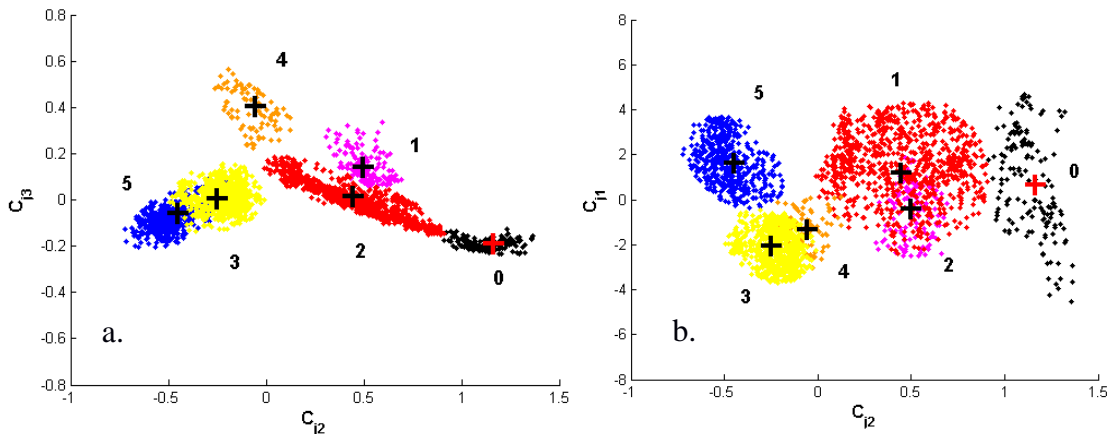


Figure 4: Clustering results of the k-mean method applied to the base (flights 16b and 19b). Third versus second principal component for a), and first versus second principal component for b). Only data within the 10% of the maximum Mahalanobis distance to the respective cluster's centers have been considered for this analyse.

444 Figure 4 shows the partitioning of the dataset into the 6 new clusters (clusters 0 to 5). In the  
 445 following we use data from chemical tracers and optical measurements, and aircraft type  
 446 information to support and discuss the results of the k-means clustering method.

447 Clusters 3 and 5 are characterized by very low NO concentrations (Fig. 3c). These cloud  
 448 events have similar optical properties, in particular a low asymmetry parameter, high side scattering  
 449 behaviour, and often supersaturated ambient conditions with respect to ice. According to ATC  
 450 information, these clusters both contain parts of the measurements in the B767, A343, A346 and  
 451 CRJ-2 contrails. In addition, the unidentified ice cloud event from flight 16b is fully included in  
 452 cluster 5. Unpolluted natural cirrus was rarely observed during the CONCERT campaigns (Voigt et  
 453 al., 2010). Since we have no objective way of discriminating natural cirrus from contrail cirrus  
 454 region, these clouds are referred to polluted cirrus or PC, and cluster 3 to aged contrails.

455 Clusters 0, 1, 2, and 4 correspond to higher NO concentrations representative of a  
 456 significant aircraft exhaust influence. Contrail data for the A380 aircraft are included in clusters 0  
 457 and 2 while the ones corresponding to the B777 are assigned to clusters 1 and 4. Pictures from an  
 458 onboard camera reveal that the data in cluster 0 come mainly from the contrail in the primary wake  
 459 of the A380.

460 The contrail and cirrus classification based on ASC measurements appears to be consistent  
 461 with the independent trace gas measurements. Each cluster represented on Fig. 4 can be linked to a  
 462 distinct cloud event. Therefore, the combination of flights 16b and 19b can provide a relevant test-  
 463 bed database to discriminate contrail properties. Young contrails (spherical ice crystals) are  
 464 associated to clusters 0, 1 or 2, whereas aged contrails (aspherical ice crystals and high RHI values)  
 465 with more pristine ice are categorized in clusters 3 and 4. Table 1 summarizes the cluster definitions  
 466 and names used in this work.

467

Cluster number	definition	name
0	Primary Wake	<b>PW</b>
1	Young Contrail 1	<b>YC1</b>
2	Young Contrail 2	<b>YC2</b>
3	Aged Contrail 1	<b>AC1</b>
4	Aged Contrail 2	<b>AC2</b>
5	Polluted Cirrus	<b>PC</b>

Table 1: Cluster's definitions according to ATC information and tracer measurements (NO concentrations and RHI values)

468 One should keep in mind that some points are still attributed to a particular cluster without  
 469 strong physical justification.

### 470 3.2.3 Merging other CONCERT flights

471 In this section, we complement the previous analysis with additional cloud optical  
 472 measurements performed during other CONCERT flights to increase the robustness of the method.

473 The ASC measured during other flights can be projected in the space of the principal  
 474 components established with flights 16b and 19b dataset. The coordinates of the data points  
 475 corresponding to the other flights are calculated from Eq. (4). An example of this data projection is  
 476 illustrated in Fig. 5 where flight 17a is represented in the  $C_{j2}/C_{j3}$  space. Each data point can be  
 477 attributed to one cluster previously defined by the k-mean clustering method based on flights 16b  
 478 and 19b dataset (black points). In other words, the ASC measured during another flight can be  
 479 merged (projected) into the expansion coefficient diagram displayed on Fig. 3. Data points sharing  
 480 similar optical properties will be close to each other on such plot. Figure 5 shows that different  
 481 contrail phases are observed during flight 17a. Data points are mostly grouped into cluster AC1, but  
 482 are also present in clusters AC2, YC2, and PW. Finally, cloud data gathered during this flight are  
 483 mainly categorized as young and aged contrails. We follow this methodology to project and classify  
 484 each additional contrail event performed during both CONCERT campaigns with minimum  
 485 Mahalanobis distance (see Eq. (5)).

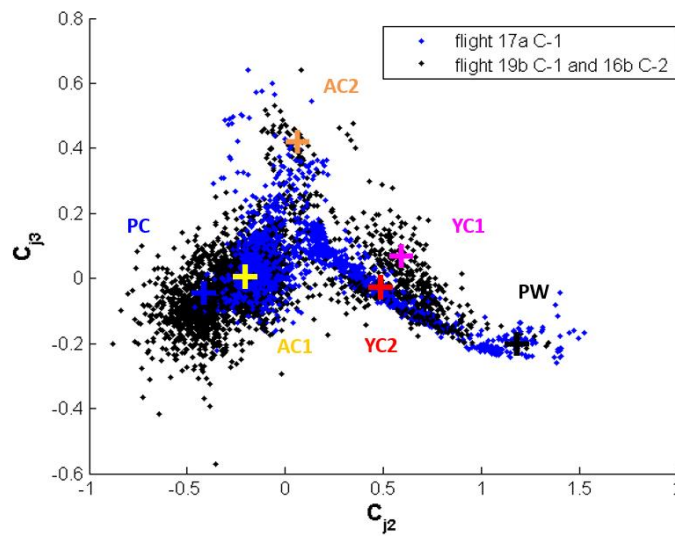


Figure 5: Example of data projection in the  $C_{j2}/C_{j3}$  space where data from flight 17a (blue data points) are superposed on the data from the benchmark flights 19b and 16b (black data points).

486 The assignment of the data points to the six clusters shown on the expansion diagrams is  
 487 summarized in Table 2. Eight flights (6 additional flights) representing 4426 ASC measurements  
 488 were processed. The lengths of the bars in Table 2 represent the distribution of the data points  
 489 within the different clusters: a) black bars correspond to the fraction of cloud events within a  
 490 specific flight (with extinction coefficient higher than  $0.1 \text{ km}^{-1}$ ) and b) blue bars represent cases of  
 491 individual contrails within the flight. Data points with extinction coefficient lower than  $0.1 \text{ km}^{-1}$   
 492 are not shown in the table. More than 30% of the data points are located in clusters AC1 and/or PC  
 493 meaning that they correspond to aged contrail and sometimes polluted cirrus. Flights clearly  
 494 performed in well visible contrails outside cirrus (earlier development stage and/or intensified  
 495 persistent elder contrails) exhibit significant fraction of data points associated to clusters PW, YC1,  
 496 and YC2 (young contrails) for both CONCERT-1 and CONCERT-2 campaigns. However, within  
 497 these flights data points are also gathered in cluster AC1 (aged contrails) and to a lesser extent in  
 498 cluster AC2 (mostly corresponding to measurements performed during two different B777 contrail  
 499 chasing events).

500 These results are in reasonable agreement with previous conclusions (this subsection) drawn  
 501 for the cluster definitions and associated contrail / ice cloud characteristics. Very young contrails  
 502 have been mostly chased during CONCERT-1 (flights 19a and 19b). Another interesting result is

503 related to flight 17 during CONCERT-2 (flight 17 C-2) where no aircraft information was provided  
 504 by ATC. Still ATC data indicate measurements in exhaust plumes and the Falcon flew apparently in  
 505 visible contrails (ExtPN > 0.1 km<sup>-1</sup>) which were probably too old for ATC recognition. Our analysis  
 506 shows that these data points can mainly be attributed to cluster PC and AC1. This observation  
 507 suggests that significantly aged contrails have been sampled. However, crystal formation and  
 508 growth processes in contrails and polluted cirrus suggest that very old contrails more and more  
 509 resemble natural cirrus properties.

Day / Aircraft		Cluster						Number of points	Age (s)
		PW	YC1	YC2	AC1	AC2	PC		
		1st wake	young contrails		aged contrails		Polluted Cirrus		
17a C-1	<b>TOTAL</b>							1435	
	A340-311							359	61 - 144
17b C-1	<b>TOTAL</b>							2715	
	B737-500							310	77 - 151
	A340-642							100	82 - 139
	NC							189	-
19a C-1	<b>TOTAL</b>							2152	
	A319-111							628	94 - 129
	A340-311							175	63 - 90
19b C-1	<b>TOTAL</b>							1647	
	B767-300							319	77 - 107
	CRJ-2							151	80 - 95
	A380-841							677	109 - 240
20 C-1	<b>TOTAL</b>							1434	
	B737-300							64	90 - 290
16b C-2	<b>TOTAL</b>							1511	
	A340-600							128	100 - 132
	B777							378	120 - 160
17 C-2	<b>TOTAL</b>							135	70 - 95
	NC1							498	-
	NC2							233	-
24 C-2	<b>TOTAL</b>							1380	
	B777							371	112 - 178

Table 2: Classification relative to the six clusters on the Cj2/Cj3 representation of the PCA of all data points for each flight of the two CONCERT campaigns (C-1 in November 2008 and C-2 in September 2011). The legend of the bars represents the relative contribution of data points of individual contrails (blue bars) and also entire flights (black bars) to the 6 individual clusters.

510 ATC information on exhaust plume ages was also collected during each chasing. Some  
 511 chasings were performed less than 100 s after contrail formation. This is the case for the A340  
 512 contrail during flight 19a and for the CRJ-2 contrail during flight 19b of CONCERT-1 and for the  
 513 A321 contrail during flight 16b of CONCERT-2. One can notice that the contrail ages are well  
 514 correlated to the chosen cluster definitions, revealing that contrail data relative to the A340 are  
 515 included in cluster PW and YC2 (young contrails) for more than 90% of the data points, and nearly  
 516 63% for the CRJ-2 and 84% for the A321. According to our cluster classification, only 5% of the  
 517 data points gathered during these three flights correspond to aged contrail (cluster AC1 and AC2)  
 518 categories in contrast to other CONCERT-1 and CONCERT-2 flights (with more than 30% of data  
 519 points associated to AC1 and AC2). Even though it is still difficult to associate contrail ages to  
 520 measurement points, the “contrail age” ranges agree with the cluster definitions.

## 521 4 Evolution of contrail properties

### 522 4.1 Optical and chemical cluster properties



523 In the previous section, we showed that cloud events can be separated according to their  
524 light-scattering properties. Six clusters were defined based on two flights having a significant  
525 number of data points distributed in each cluster. In this section, we present the mean optical,  
526 chemical, and microphysical properties for each cluster. The average properties are calculated for  
527 all data points associated to the 6 individual clusters (all flights, both CONCERT campaigns).  
528 Figures 6a, 6c, and 6d show the normalized frequency distributions of the asymmetry parameter  
529 (gPN), the extinction coefficient (ExtPN), and NO concentrations for the six clusters, respectively.  
530 Figure 6b represents the mean normalized scattering phase functions of each clusters. However, it  
531 should be noted that the number of data points could differ significantly from one cluster to another  
532 (from 141 measurements for Cluster YC1 to 8950 measurements for Cluster AC1).

533 The asymmetry parameter gPN statistics shown in Fig. 6a provides the most striking  
534 evidence of the relationship between contrail evolution stage and optical properties. In agreement  
535 with findings of Gayet et al. (2012), aged contrails (cluster AC1 and AC2) and polluted cirrus  
536 (cluster PC) correspond to gPN values ranging from 0.72 to 0.80. Younger contrails (cluster YC1  
537 and YC2) have values of gPN of 0.80 to 0.86. Values of the asymmetry parameter in the primary  
538 wake (cluster PW) are typically above 0.86. These features are a consequence of the time evolution  
539 of ice crystal shapes from quasi-spherical ice particle after exhaust to non-spherical (e.g. column,  
540 needle, bullet, and bullet-rosette type crystals) as the contrail evolves. In the primary wake, the  
541 pressure increases in the descending vortex. This leads to adiabatic heating and subsequent  
542 sublimation of the ice crystals (Lewellen and Lewellen, 2001; Unterstrasser et al., 2016) that can  
543 explain the spherical shapes of ice crystals and thus, the high values of the asymmetry coefficients.

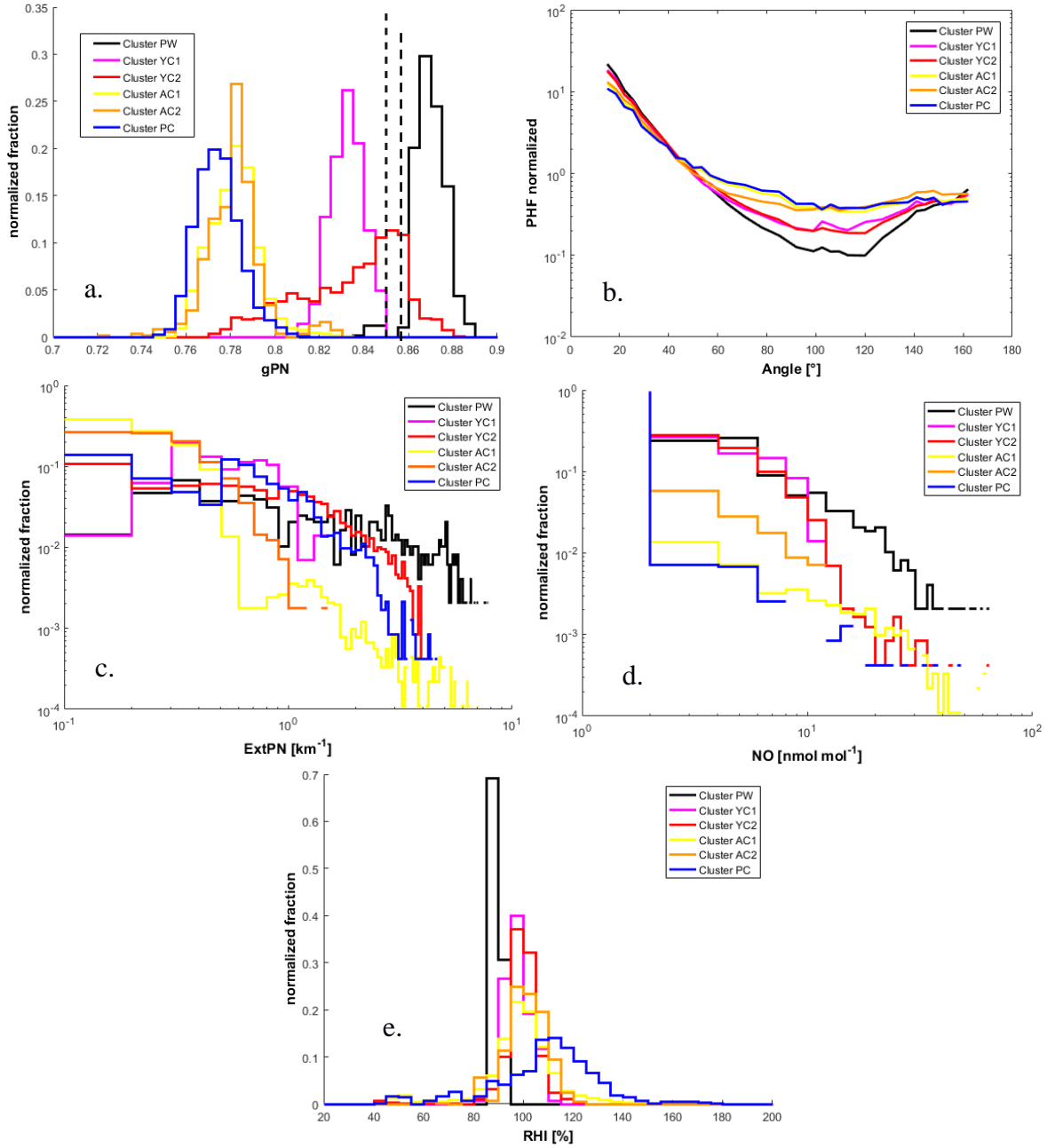


Figure 6: Normalized histograms of a) asymmetry coefficient (dashed line corresponds to a value of 0.85), b) phase function, c) extinction retrieved by Polar Nephelometer, d) NO concentration for all flights, and e) RHI conditions for CONCERT-2 flights.

544 Figure 6b shows the normalized phase functions. Primary wake phase functions (cluster  
 545 PW) are clearly different from the young contrail phase functions (cluster YC1 and YC2), which are  
 546 themselves different from aged contrails (cluster AC1 and AC2) and polluted cirrus (cluster PC)  
 547 phase functions. The main difference can be seen in the side scattering region (50°-140°). This  
 548 region is sensitive to the ice particles shapes and to the fraction of spherical ice crystals within the  
 549 contrails. This behaviour is as expected and agrees with the position of clusters PW, YC2 and YC1  
 550 on the expansion coefficient diagram (Fig. 2). Indeed, the decrease of the  $C_{j2}$  coefficient is  
 551 associated to a side scattering enhancement. Therefore, very young contrails are composed mainly  
 552 of spherical ice crystals for which the phase functions indicate a substantial scattering at forward  
 553 angles and much lower scattering at sideward angles. As the contrails evolve, these features smooth  
 554 out leading to phase functions with a featureless flat behaviour at side scattering angles. Finally, the

555 averaged normalized phase functions of aged contrails and polluted cirrus are similar to each other.  
556 This also explains that they are difficult to discriminate within the PCA.

557 Figure 6c presents the extinction coefficient statistics. All the aged contrails (cluster AC1  
558 and AC2) exhibit extinction coefficients lower than  $2 \text{ km}^{-1}$ . Also 80% of the sampled polluted cirrus  
559 (cluster PC) show such low extinction coefficients. For younger contrails (cluster YC1 and YC2),  
560 the extinction coefficients can reach  $5 \text{ km}^{-1}$ . Largest extinction coefficients are found in primary  
561 wake measurements (cluster PW) with values up to  $8 \text{ km}^{-1}$ . Still, the main fraction (more than 50%  
562 of data points) of young contrail data yields extinction coefficients from 0 to  $1 \text{ km}^{-1}$ .

563 Concentrations of chemical species can also be used to characterize contrail/cirrus  
564 properties. The concentration depends strongly on the type of the tracked aircraft. Figure 6d shows  
565 the mean concentration of nitrogen oxide NO for the six individual clusters. Young contrail NO  
566 concentrations (cluster PW, YC1 and YC2) can reach values up to  $10 \text{ nmol mol}^{-1}$  (corresponding to  
567 10% of measurements). For primary wake measurements (PW in black) a higher concentration can  
568 be reached. Approximately 1% of the data have concentrations close to  $60 \text{ nmol mol}^{-1}$  in the  
569 primary wake. In contrast, in aged contrails and in polluted cirrus (cluster AC1, AC2 and PC) NO  
570 concentrations higher than  $2 \text{ nmol mol}^{-1}$  do not exceed 1% of cases. Indeed, after exhaust,  
571 concentrations of nitrogen oxide NO and sulphur dioxide SO<sub>2</sub> created by combustion reactions  
572 decrease rapidly due to the dispersion in the upper troposphere and reactions with other molecules.

573 Finally, Figure 6e shows the saturation conditions with respect to ice for all clusters. The  
574 median ambient relative humidity of all clusters is near 95%. Cluster AC1 and PC (yellow and blue  
575 lines respectively) exhibit median RHI values close to 110% and 120% respectively. These higher  
576 values are suitable for the persistence of the contrail and the formation of cirrus clouds  
577 Supersaturated conditions are not reached for the measurements gathered in the primary wake  
578 cluster (PW). Low humidity values may well occur in primary wakes with non-persisting contrails.

579 These results highlight that the principal component analysis, based on the ASC  
580 measurements described in Sect. 3, can be used to discriminate contrail phases. Specific optical and  
581 chemical properties can thus be derived for each contrail phase and can be related to their evolution.

## 582 **4.2 Microphysical cluster properties**

583 Microphysical properties are assessed using the combination of FSSP-300 and 2DC  
584 measurements. The data cover hydrometeor diameters ranging from  $0.5 \text{ }\mu\text{m}$  to  $800 \text{ }\mu\text{m}$ , but with an  
585 instrument gap in the size range from  $17 \text{ }\mu\text{m}$  to  $50 \text{ }\mu\text{m}$ . Figure 7 shows the averaged number  
586 particle size distributions (PSD) for each cluster and for all flights of the study (8 flights from  
587 CONCERT-1 and 2). In the instrument gap of the PSD we use linear interpolation in logarithmic  
588 space. Therefore, the derived microphysical properties are to be taken with caution.

589 PSD measurements in cirrus and contrails differ significantly depending on ambient air  
 590 conditions, measurement methods (instrument limitation (Gayet et al., 2002), and air speed (Febvre  
 591 et al., 2009)). Previous studies show that a 3-h old contrail cirrus with an effective diameter close to  
 592 20  $\mu\text{m}$  (Voigt et al., 2017) and number concentration larger than  $0.1\text{cm}^{-3}$  (Schumann et al., 2017)  
 593 can be composed of ice crystals with sizes up to 100  $\mu\text{m}$  (blue dashed line, contrail cirrus figure 7).  
 594 This differs from the PSD of the natural cirrus presented by Voigt et al. (2017) (dashed black line),  
 595 which has an order of magnitude lower particle number concentration. In natural cirrus at mid-  
 596 latitudes, ice crystals with size up to 1600  $\mu\text{m}$  were observed during the ML-CIRRUS campaign  
 597 (dark dashed line Figure 7, Voigt et al., 2017).

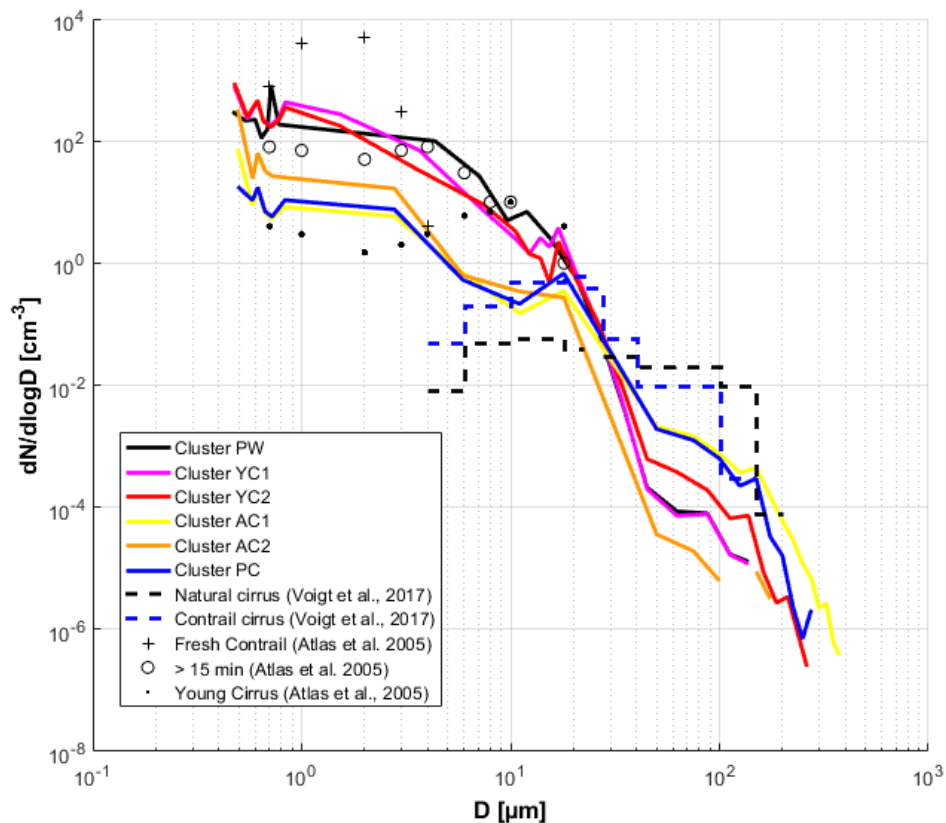


Figure 7: Number particle size distribution for each cluster including all data points of all flights. FSSP-300 measurements from 0.5 to 17  $\mu\text{m}$  and 2DC measurements from 50  $\mu\text{m}$  to 800  $\mu\text{m}$ . The data are linearly interpolated in logarithm space in the gap between 17  $\mu\text{m}$  and 50  $\mu\text{m}$ .

598 Figure 7 shows that the mean number PSDs of each cluster are mainly consistent with the  
 599 cluster definition and previous studies. Indeed, two categories of PSD can be observed. Within the  
 600 FSSP-300 size range, PSD relative to old contrails (cluster AC1 and AC2) and polluted cirrus  
 601 (cluster PC) exhibit number concentration of small ice particles one order of magnitude lower than  
 602 young contrails (clusters YC1 and YC2) and primary wake (cluster PW). Differences in this size  
 603 range may reflect uncertainties of the FSSP-300 number concentration measurements. The  
 604 statistical uncertainty is close to 30% for typical concentrations of  $5\text{cm}^{-3}$  but can reach 75% for  
 605 concentrations of approximately  $0.5\text{cm}^{-3}$  (Gayet et al., 2002). However, we can still discriminate  
 606 primary wake measurements (cluster PW) from secondary wake measurements (clusters YC1 and  
 607 YC2) in the 3 to 10  $\mu\text{m}$  size range. Differences observed between the PSD of PW/YC1/YC2 and  
 608 AC1/AC2/PC can be explained by the production of small ice crystals (from 1 to 10  $\mu\text{m}$ ) in fresh  
 609 exhaust plumes followed by rapid dilution during subsequent minutes after the exhaust.

610 Higher concentrations of ice crystals with diameters larger than 100  $\mu\text{m}$  are observed for  
 611 polluted cirrus (cluster PC) and for well-developed contrails (cluster AC1). The average PSD of  
 612 AC1 cluster shows much larger ice concentrations (around 10 times) compared to YC1 cluster  
 613 within the 2DC size range.

614 It is important to note that shattering effects can significantly influence the PSD  
 615 measurements especially when particles with diameters higher than 100  $\mu\text{m}$  are present. Polluted  
 616 cirrus or aged contrail measurements could be subject to such artefacts even though the  
 617 concentrations of large ice particles were low in the aged contrails and in the polluted cirrus cases  
 618 during these two campaigns. Shattering effects are likely to be small for the measurements in young  
 619 contrails.

Extinction ( $\text{km}^{-1}$ )		mean	std	Median	prctile 25	prctile 75
cluster	PW	4.230	3.820	3.308	1.104	6.485
	YC1	0.720	0.410	0.680	0.351	1.026
	YC2	2.070	2.655	1.017	0.271	2.836
	AC1	0.212 (0.204)	0.465 (0.456)	0.037 (0.033)	0.008 (0.005)	0.152 (0.138)
	AC2	0.114 (0.090)	0.163 (0.149)	0.060 (0.038)	0.007 (0.003)	0.135 (0.094)
	PC	0.207 (0.197)	0.363 (0.360)	0.072 (0.062)	0.032 (0.026)	0.178 (0.160)

IWC ( $\text{mg m}^{-3}$ )		mean	std	Median	prctile 25	prctile 75
cluster	PW	8.173	10.586	5.573	1.665	11.363
	YC1	0.191	0.107	0.168	0.111	0.281
	YC2	4.860	8.918	1.235	0.218	6.604
	AC1	5.707 (5.705)	25.120 (25.120)	0.124 (0.122)	0.007 (0.004)	1.126 (1.123)
	AC2	0.310 (0.304)	1.103 (1.103)	0.112 (0.093)	0.005 (0.002)	0.290 (0.285)
	PC	3.024 (3.022)	8.845 (8.845)	0.218 (0.214)	0.080 (0.079)	0.641 (0.639)

NTOTAL ( $\text{cm}^{-3}$ )		mean	std	Median	prctile 25	prctile 75
cluster	PW	172.965	114.497	152.398	95.564	223.374
	YC1	409.726	205.625	405.127	230.907	603.187
	YC2	188.139	199.736	125.344	52.584	236.100
	AC1	8.148 (0.372)	24.646 (2.103)	1.688 (0.086)	0.027 (0.027)	3.311 (0.179)
	AC2	29.517 (0.427)	44.723 (1.005)	8.021 (0.128)	0.0120 (0.020)	46.762 (0.290)
	PC	6.646 (0.360)	7.237 (0.864)	4.602 (0.213)	0.110 (0.110)	8.354 (0.394)

Table 3: Optical and microphysical properties for each cluster according interpolated particle size distributions from FSSP-300 and 2DC measurements. Values in parenthesis correspond to number concentrations for sizes larger than 3  $\mu\text{m}$ .

620 Table 3 presents ice water content (IWC, in  $\text{mg m}^{-3}$ ) and total number concentrations of ice  
 621 crystals (NTOTAL, in  $\text{cm}^{-3}$ ) derived from the measured PSD for each cluster. The extinction  
 622 coefficient (in  $\text{km}^{-1}$ ) obtained from the PN measurements is also displayed. The aged contrail  
 623 clusters (AC1 and AC2) and the polluted cirrus cluster (PC) include some data points at  
 624 temperatures higher than  $-38^\circ\text{C}$ . These values cannot be contrails and are excluded from this  
 625 analysis. Ice particles with diameters higher than 3  $\mu\text{m}$  are considered for aged contrails and  
 626 polluted cirrus to exclude possible contributions from large aerosol particles, as in the earlier studies  
 627 of Krämer et al. (2009) and Voigt et al. (2017), and these values are shown in parenthesis. These  
 628 results again show that each cluster can be related to a specific contrail phase, and their properties  
 629 can be compared to previous studies.

630 In terms of cluster mean values, the microphysical and optical properties of cluster PW  
 631 agree with the cloud properties expected in the primary wakes. The extinction coefficient has a  
 632 mean value of  $4.23 \text{ km}^{-1}$ , IWC is close to  $8 \text{ mg m}^{-3}$ , and the number concentration yields a typical  
 633 value of  $173 \text{ particles cm}^{-3}$ . These properties are in agreement with previous measurement reported

634 by Gayet et al. (2012) with particle number concentrations close to  $200 \text{ cm}^{-3}$  for contrails less than  
635 60 s after their formation. Their work also reports extinction coefficient around  $7 \text{ km}^{-1}$  presenting  
636 the highest values of the contrail lifetime.

637 Young (clusters YC1 and YC2) and aged contrails (clusters AC1 and AC2) exhibit  
638 distinctive differences in their extinction coefficients and their concentrations of ice particles.  
639 Compared to aged contrails, young contrails have higher extinction coefficients and ice number  
640 concentrations, with values larger than  $0.7 \text{ km}^{-1}$  and  $170 \text{ cm}^{-3}$ , respectively. Indeed, the averaged  
641 extinction and number concentration values of aged contrails do not exceed  $0.4 \text{ km}^{-1}$  and  $30 \text{ cm}^{-3}$   
642 ( $0.5 \text{ cm}^{-3}$  for diameters higher than  $3 \mu\text{m}$ ), respectively. The ice number concentrations are in  
643 agreement with previous results with values between 200 and  $100 \text{ cm}^{-3}$  for contrail ages between 60  
644 s and 3 min, and around  $5 \text{ cm}^{-3}$  for contrail ages around 10 min (Goodman et al., 1998 ; Lawson et  
645 al., 1998 ; Schröder et al., 2000 ; Schäuble et al., 2009 ; Gayet et al., 2012 ; Voigt et al., 2017). For  
646 aged contrail, concentrations of ice particles with sizes greater than  $3 \mu\text{m}$  are below  $0.5 \text{ cm}^{-3}$ , which  
647 is in agreement with concentrations presented in other contrail studies. Also IWC values and  
648 extinction coefficients of aged contrails agree with previous studies and their values are only  
649 weakly sensitive to the cut-off size used (below or above  $3 \mu\text{m}$ ).

650 Another interesting point is that the IWC values differ significantly between clusters YC1  
651 and YC2. This may be due to a lower number of large particles with diameter higher than  $20 \mu\text{m}$  in  
652 YC1 than in YC2 (same results for AC2 and AC1).

653 The polluted cirrus IWC is significantly higher ( $3.02 \text{ mg m}^{-3}$ ) than observed in previous  
654 studies for clean natural cirrus. The same holds for ice number concentration and extinction  
655 coefficient with values of  $6.66 \text{ cm}^{-3}$  and  $0.21 \text{ km}^{-1}$ . For clean cirrus, typical values of concentration  
656 and extinction are close to  $0.1 \text{ cm}^{-3}$  and  $0.023 \text{ km}^{-1}$  respectively (Atlas and Wang, 2010; Voigt et al.,  
657 2017). As mentioned in section 4.1, cirrus observed during CONCERT campaigns are largely  
658 influenced by high-density air traffic over Germany and it is thus still difficult to separate aged-  
659 contrails from natural cirrus based on their scattering properties. When limiting the analysis to ice  
660 particles larger than  $3 \mu\text{m}$ , the ice number concentrations for the polluted cirrus have mean values  
661 of  $0.36 \text{ cm}^{-3}$ , which is in better agreement with previous cirrus studies. However, IWC and  
662 extinction coefficients values ( $3.02 \text{ mg m}^{-3}$  and  $0.20 \text{ km}^{-1}$ , respectively) are still significantly higher  
663 than for clean cirrus cases observed in previous studies ( $0.001 \text{ mg m}^{-3}$  and  $0.023 \text{ km}^{-1}$ , respectively).  
664 Their optical and microphysical properties are closer to aged contrail properties. This is consistent  
665 with our interpretation that high air traffic emissions in the measurement region may have  
666 influenced the cirrus collected in cluster PC.

667

## 668 **Conclusions**

669 In this study, a new form of statistical analysis of contrail to cirrus evolution is presented,  
670 based on two intensive contrail measurement campaigns, CONCERT-1 and CONCERT-2. The data  
671 are used to study optical and microphysical properties of contrails during their evolution from  
672 young contrails to contrail-cirrus clouds. The combination of optical, microphysical, and chemical  
673 airborne measurements with aircraft chasing information from ATC provides an extended view of  
674 cloud properties.

675 A Principal Component Analysis (PCA) methodology was applied to the measured Polar  
676 Nephelometer scattering phase function data to facilitate the discrimination of cloud properties in  
677 different contrail phases. The PCA results were derived first for two reference flights that sampled

678 contrails and cirrus in various development stages, including the primary wake, the young  
679 secondary wake, old contrails (few minutes after formation) and polluted cirrus. For these flights,  
680 the PCA clearly demonstrates its potential to discriminate different groups of clouds, justifying the  
681 use of these two flights as a benchmark. Thereafter, the scattering phase functions measured during  
682 other CONCERT flights were projected into the space of principal components obtained from the  
683 two reference flights. Individual data points were assigned to the predefined cluster with minimum  
684 Mahalanobis distances. From the entire data set, the cloud properties in the various contrail  
685 development stages can be analysed separately.

686 The analysis demonstrates that the clearest separation between clusters is derived from  
687 particle shape, which impacts the scattering phase function and the derived asymmetry parameter  
688 gPN. The asymmetry parameter clearly separates young contrails (gPN of 0.72 to 0.80) from  
689 contrail/cirrus with gPN ranging from 0.80 to 0.88. Since the exact contrail age was not always  
690 known, young and aged contrails are classified also by their optical and chemical properties. The  
691 measured NO concentrations are also useful to distinguish cirrus from old contrails. However, no  
692 strictly clean cirrus has been observed during these two campaigns due to strong influence from  
693 dense air traffic over Germany.

694 Particle size spectra and mean ice particle number concentration, extinction and ice water  
695 content have been also determined for each cluster. The various clusters clearly show different size  
696 distributions. In good agreement with previous findings, we find that young contrails have more  
697 than a factor of ten higher number concentrations of small ice crystals (with diameters lower than  
698 20  $\mu\text{m}$ ) than aged contrails. On the other hand, aged contrails and polluted cirrus contain larger ice  
699 crystals, with diameters larger than 75  $\mu\text{m}$ . The optical and microphysical properties of the aged  
700 contrails are often similar to those found in ambient cirrus which may be polluted cirrus. For  
701 polluted cirrus, the agreement with previous cirrus data is better when considering only ice particles  
702 with diameter higher than 3  $\mu\text{m}$ . The results show that the PCA method allows to identify and  
703 discriminate different contrail growth stages and to provide an independent method for the  
704 characterization of the evolution of contrail properties.

705 In agreement with Shcherbakov et al. (2016), who characterised volcanic and cirrus using  
706 optical measurements, the PCA method has been clearly shown here to be suitable for contrail  
707 studies. The additional use of microphysical and chemical measurements can be added to the PCA  
708 method in order to improve the selection of contrail phases. Different ranges of extinction or  
709 asymmetric coefficients could be also used for PCA analyses in this perspective. However,  
710 additional parameters should be carefully selected to limit the bias introduced by the limitations of  
711 the probes and the optimal selection may vary from one measurement campaign to another.

712 Accurate modelling of cirrus or contrails' single scattering properties is required for the  
713 interpretation of remote sensing measurements. Therefore, measurements of the optical  
714 characteristics of ice crystals in natural conditions are still needed for validation of numerical  
715 techniques and for the determination of free parameters in light scattering models. In this context,  
716 the results from the PCA could be used to develop representative parameterizations of the scattering  
717 properties and the ice crystals' shapes and sizes observed in the visible wavelength range.

## 718 **Acknowledgments**

719 We thank for financial support by the Helmholtz Association under contract VH-NG-309 and  
720 W2/W3-60. Part of this work was funded by DFG SPP HALO 1294 contract VO1504/4-1, and by  
721 the DLR project Eco2Fly in ML-CIRRUS-cirrus special issue. We thank Lufthansa, the DLR flight

722 department and the Deutsche Flugsicherung for excellent support during the campaign. The in-situ  
723 data can be found in the HALO-database (<https://halo-db.pa.op.dlr.de/>).

## 724 **References**

725 Baran, A.J., Gayet, J.-F., and Shcherbakov, V.: On the interpretation of an unusual in-situ measured  
726 ice crystal scattering phase function. *Atmospheric Chemistry and Physics* 12, 9355–9364, 2012.

727  
728 Baumgardner, D., Dye, J.E., Gandrud, B.W., and Knollenberg, R.G.: Interpretation of  
729 measurements made by the forward scattering spectrometer probe (FSSP-300) during the  
730 Airborne Arctic Stratospheric Expedition. *Journal of Geophysical Research* 97, 8035–8046, 1992.

731  
732 Borrmann, S., Luo, B., and Mishchenko, M.: Application of the T-Matrix Method to the  
733 Measurement of Aspherical (Ellipsoidal) Particles with Forward Scattering Optical Particle  
734 Counters. *Journal of Aerosol Science* 31, no. 7 (2000): 789–799, 2000.

735  
736 Burkhardt, U., Kärcher, B., and Schumann, U.: Global modeling of the contrail and contrail cirrus  
737 climate impact. *Bulletin of the American Meteorological Society* 91, 479–484, 2010.

738  
739 Burkhardt, U. and Kärcher, B.: Global radiative forcing from contrail cirrus. *Nature Climate*  
740 *Change*, 1(1), 54–58, 2011.

741  
742 Carleton, A.M., Silva, A.D., Aghazarian, M.S., Bernhardt, J., Travis, D.J., and Allard, J.: Mid-  
743 season climate diagnostics of jet contrail “outbreaks” and implications for eastern US sky-cover  
744 trends. *Climate Research*, 56, 209–230, 2013.

745  
746 Chen, C.-C. and Gettelman, A.: Simulated 2050 aviation radiative forcing from contrails and  
747 aerosols. *Atmospheric Chemistry and Physics*, 16(11), 7317–7333, 2016.

748  
749 Duda, D. P., Minnis, P., Khlopenkov, K., Chee, T.L., and Boeke, R.: Estimation of 2006 Northern  
750 Hemisphere Contrail Coverage Using MODIS Data. *Geophysical Research Letters*, 40, 612-617,  
751 doi:10.1002/grl.50097, 2013.

752  
753 Febvre, G., Gayet, J.-F., Minikin, A., Schlager, H., Shcherbakov, V., Jourdan, O., Busen, R., Fiebig,  
754 M., Kärcher, B., and Schumann, U.: On optical and microphysical characteristics of contrails and  
755 cirrus. *Journal of Geophysical Research: Atmospheres* (1984–2012) 114, 2009.

756  
757 Frömming, C., Ponater, M., Dahlmann, K., Grewe, V., Lee, D.S., and Sausen, R.: Aviation-induced  
758 radiative forcing and surface temperature change in dependency of the emission altitude. *Journal*  
759 *of Geophysical Research: Atmospheres* (1984–2012) 117, 2012.

760  
761 Gayet, J.F., Crépel, O., Fournol, J.F., and Oshchepkov, S.: A new airborne Polar Nephelometer for  
762 the measurements of optical and microphysical cloud properties. Part I: Theoretical design. In  
763 *Annales Geophysicae*, pp. 451–459, 1997.

764  
765 Gayet, J.-F., Auriol, F., Minikin, A., Ström, J., Seifert, M., Krejci, R., Petzold, A., Febvre, G., and  
766 Schumann, U.: Quantitative Measurement of the Microphysical and Optical Properties of Cirrus  
767 Clouds with Four Different in Situ Probes: Evidence of Small Ice Crystals. *Geophysical Research*  
768 *Letters* 29, no. 24: 2230. doi:10.1029/2001GL014342, 2002.

769



770 Gayet, J.-F., Ovarlez J., Shcherbakov, V., Ström, J., Schumann, U., Minikin, A., Auriol, F., Petzold,  
771 A., and Monier M.: Cirrus Cloud Microphysical and Optical Properties at Southern and Northern  
772 Midlatitudes during the INCA Experiment. *Journal of Geophysical Research: Atmospheres* 109,  
773 no. D20 : D20206. doi:10.1029/2004JD004803, 2004.  
774

775 Gayet, J.-F., Shcherbakov, V., Voigt, C., Schumann, U., Schäuble, D., Jeßberger, P., Petzold, A.,  
776 Minikin, A., Schlager, H., Dubovik, O., and Lapyonok, T.: The evolution of microphysical and  
777 optical properties of an A380 contrail in the vortex phase. *Atmospheric Chemistry and Physics*.  
778 12, 6629–6643, 2012.  
779

780 Garrett, T.J., Gerber, H., Baumgardner, D.G., Twohy, C.H., and Weinstock, E.M.: Small, highly  
781 reflective ice crystals in low-latitude cirrus. *Geophysical Research Letters* 30, 2132, 2003.  
782

783 Gettelman, A., and Chen, C.: The climate impact of aviation aerosols. *Geophysical Research*  
784 *Letters*, 40, 2785–2789, doi:10.1002/grl.50520, 2013.  
785

786 Gierens, K. and Dilger, F.: A climatology of formation conditions for aerodynamic contrails,  
787 *Atmospheric Chemistry and Physics*, 13, 10847-10857, doi:10.5194/acp-13-10847-2013, 2013.  
788

789 Graf, K., Schumann, U., Mannstein, H., and Mayer, B.: Aviation induced diurnal North Atlantic  
790 cirrus cover cycle. *Geophysical Research Letters* 39, L16804, doi:10.1029/2012GL052590, 2012.  
791

792 Goodman, J., Pueschel, R.F., Jensen, E.J., Verma, S., Ferry, G.V., Howard, S.D., Kinne, S.A., and  
793 Baumgardner, D.: Shape and size of contrails ice particles. *Geophysical Research Letters* 25,  
794 1327–1330, 1998.  
795

796 Heller, R., Voigt, C., Beaton, S., Dörnbrack, A., Kaufmann, S., Schlager, H., Wagner, J., Young,  
797 K., and Rapp, M.: Mountain waves modulate the water vapor distribution in the UTLS,  
798 *Atmospheric Chemistry and Physics*, doi:10.5194/acp-2017-334, *Atmos. Chem. Phys.*, 2017.  
799

800 Heymsfield, A.J., and Parrish, J.L.: A computational technique for increasing the effective sampling  
801 volume of the PMS two-dimensional particle size spectrometer. *Journal of Applied Meteorology*  
802 17, 1566–1572, 1978.  
803

804 Heymsfield, A., Baumgardner, D., DeMott, P., Forster, P., Gierens, K., and Kärcher, B.: Contrail  
805 Microphysics. *Bulletin of the American Meteorological Society* 91, 465–472, 2010.  
806

807 Irvine, E.A., Hoskins, B.J., and Shine, K.P.: The dependence of contrail formation on the weather  
808 pattern and altitude in the North Atlantic. *Geophysical Research Letters* 39, L12802,  
809 doi:10.1029/2012GL051909, 2012.  
810

811 Järvinen, E., Schnaiter, M., Mioche, G., Jourdan, O., Shcherbakov, V.N., Costa, A., Afchine, A.,  
812 Krämer, M., Heidelberg, F., Jurkat, T., Voigt, C., Schlager, H., Nichman, L., Gallagher, M.,  
813 Hirst, E., Schmitt, C., Bansemmer, A., Heymsfield, A., Lawson, P., Tricoli, U., Pfeilsticker, K.,  
814 Vochezer, P., Möhler, O., and Leisner, T.: Quasi-spherical Ice in Convective Clouds, *Journal of*  
815 *Atmospheric Sciences*, doi:10.1175/JAS-D-15-0365.1, 2016.  
816

817 Jansen, J. and Heymsfield, A. J.: Microphysics of aerodynamic contrail formation processes,  
818 *Journal of Atmospheric Sciences*, 72(9), 3293–3308, 2015.  
819

820 Jeßberger, P., Voigt, C., Schumann, U., Sölch, I., Schlager, H., Kaufmann, S., Petzold, A.,  
821 Schäuble, D., and Gayet, J.F.: Aircraft type influence on contrail properties, *Atmospheric*  
822 *Chemistry and Physics*, 13, 11965-11984, doi:10.5194/acp-13-11965-2013, 2013.

823

824 Jourdan, O., Oshchepkov, S., Gayet, J.-F., Shcherbakov, V., and Isaka, H.: Statistical analysis of  
825 cloud light scattering and microphysical properties obtained from airborne measurements. *Journal*  
826 *of Geophysical Research* 108, 4155, 2003.

827

828 Jourdan, O., Mioche, G., Garrett, T.J., Schwarzenböck, A., Vidot, J., Xie, Y., Shcherbakov, V.,  
829 Yang, P., and Gayet, J.-F.: Coupling of the microphysical and optical properties of an Arctic  
830 nimbostratus cloud during the ASTAR 2004 experiment: Implications for light-scattering  
831 modeling. *Journal of Geophysical Research: Atmospheres* (1984–2012) 115, 2010.

832

833 Jurkat, T., Voigt, C., Arnold, F., Schlager, H., Aufmhoff, H., Schmale, J., Schneider, J.,  
834 Lichtenstern, M., and Dörnbrack, A.: Airborne stratospheric ITCIMS-measurements of SO<sub>2</sub>, HCl,  
835 and HNO<sub>3</sub> in the aged plume of volcano Kasatochi, *Journal of Geophysical Research*, 115,  
836 D00L17, doi:10.1029/2010JD013890, 2010.

837

838 Jurkat, T., Voigt, C., Arnold, F., Schlager, H., Kleffmann, J., Aufmhoff, H., Schäuble, D., Schäfer,  
839 M., and Schumann, U.: Measurements of HONO, NO, NO<sub>y</sub> and SO<sub>2</sub> in aircraft exhaust plumes  
840 at cruise, *Geophysical Research Letters*, 38, L10807, doi:10.1029/2011GL046884, 2011.

841

842 Jurkat, T., Kaufmann, S., Voigt, C., Schäuble, D., Jeßberger, P., and Ziereis, H.: The airborne mass  
843 spectrometer AIMS – Part 2: Measurements of trace gases with stratospheric or tropospheric  
844 origin in the UTLS, *Atmospheric Measurement Technics*, 9, 1907–1923, doi:10.5194/amt-9-  
845 1907-2016, 2016.

846

847 Kärcher, B., and Voigt, C.: Formation of nitric acid/water ice particles in cirrus clouds, *Geophysical*  
848 *Research Letters*, 33, L08806, doi:10.1029/2006GL025927, 2006.

849

850 Kärcher, B., and Voigt, C.: Susceptibility of contrail ice crystal numbers to aircraft soot particle  
851 emissions, *Geophysical Research Letters*, 44, 8037-8046, doi:10.1002/2017GL074949, 2017.

852

853 Kärcher, B., and Yu, F.: Role of aircraft soot emissions in contrail formation. *Geophysical Research*  
854 *Letters*, 36, L01804, doi:10.1029/2008GL036649, 2009.

855

856 Kaufmann, S., Voigt, C., Jeßberger, P., Jurkat, T., Schlager, H., Schwarzenboeck, A., Klingebiel,  
857 M., and Thornberry, T.: In situ measurements of ice saturation in young contrails, *Geophysical*  
858 *Research Letters*, 41, doi:10.1002/2013GL058276, 2014.

859

860 Kaufmann, S., Voigt, C., Jurkat, T., Thornberry, T., Fahey, D. W., Gao, R.-S., Schlage, R.,  
861 Schäuble, D., and Zöger, M.: The airborne mass spectrometer AIMS – Part 1: AIMS-H<sub>2</sub>O for  
862 UTLS water vapor measurements, *Atmospheric Measurement Technics*, 9, 939-953,  
863 doi:10.5194/amt-9-939-2016, 2016.

864

865 Krämer, M., Schiller, C., Afchine, A., Bauer, R., Gensch, I., Mangold, A., Schlicht, S., Spelten, N.,  
866 Sitnikov, N. and Borrmann, S.: Ice supersaturations and cirrus cloud crystal numbers,  
867 *Atmospheric Chemistry and Physics*, 9(11), 3505–3522, 2009.

868 Kübbeler, M., Hildebrandt, M., Meyer, J., Schiller, C., Hamburger, Th., Jurkat, T., Minikin, A.,  
869 Petzold, A., Rautenhaus, M., Schlager, H., Schumann, U., Voigt, C., Spichtinger, P., Gayet, J.-F.,

- 870 Gourbeyre, C., and Krämer, M.: Thin and subvisible cirrus and contrails in a subsaturated  
871 environment, *Atmospheric Chemistry and Physics*, 11, 5853-5865, doi:10.5194/acp-11-5853-  
872 2011, 2011.
- 873
- 874 Lawson, R. Paul, Andrew J. Heymsfield, Steven M. Aulenbach, et Tara L. Jensen. « Shapes, sizes  
875 and light scattering properties of ice crystals in cirrus and a persistent contrail during SUCCESS  
876 ». *Geophysical research letters* 25, no 9: 1331–1334, 1998.
- 877
- 878 Lawson, R.P., O'Connor, D., Zmarzly, P., Weaver, K., Baker, B., Mo, Q., and Jonsson, H.: The 2D-  
879 S (stereo) probe: Design and preliminary tests of a new airborne, high-speed, high-resolution  
880 particle imaging probe. *Journal of Atmospheric and Oceanic Technology* 23, 1462–1477, 2006.
- 881
- 882 Lee, D.S., Pitari, G., Grewe, V., Gierens, K., Penner, J.E., Petzold, A., Prather, M.J., Schumann, U.,  
883 Bais, A., and Bernsten, T.: Transport impacts on atmosphere and climate: Aviation. *Atmospheric  
884 Environment* 44, 4678–4734, 2010.
- 885
- 886 Legendre, P., and Legendre, L.: *Numerical Ecology*, 2nd English ed., 853 pp., Elsevier Science,  
887 New York, 1998.
- 888
- 889 De León, R.R., Krämer, M., Lee, D.S., and Thelen, J.C.: Sensitivity of radiative properties of  
890 persistent contrails to the ice water path. *Atmospheric Chemistry and Physics*. 12, 7893–7901,  
891 2012.
- 892
- 893 Lewellen, D.C.: Analytic solutions for evolving size distributions of spherical crystals or droplets  
894 undergoing diffusional growth in different regimes. *Journal of the Atmospheric Sciences* 69,  
895 417–434, 2012.
- 896
- 897 Lewellen, D.C., and Lewellen, W.S.: The effects of aircraft wake dynamics on contrail  
898 development. *Journal of the Atmospheric Sciences* 58, 390–406, 2001.
- 899
- 900 Liou, K.N., Takano, Y., Yue, Q., and Yang, P.: On the radiative forcing of contrail cirrus  
901 contaminated by black carbon. *Geophysical Research Letters*, 40, 778–784,  
902 doi:10.1002/grl.50110, 2013.
- 903
- 904 De Maesschalck, R., Jouan-Rimbaud, D., and Massart, D.L.: The Mahalanobis Distance.  
905 *Chemometrics and Intelligent Laboratory Systems* 50, no. 1: 1–18. doi:10.1016/S0169-  
906 7439(99)00047-7, 2010.
- 907
- 908 Meyer, J., Rolf, C., Schiller, C., Rohs, S., Spelten, N., Afchine, A., Zöger, M., Sitnikov, N.,  
909 Thornberry, T. D., Rollins, A. W., Bozóki, Z., Tátrai, D., Ebert, V., Kühnreich, B., Mackrodt, P.,  
910 Möhler, O., Saathoff, H., Rosenlof, K. H., and Krämer, M.: Two decades of water vapor  
911 measurements with the FISH fluorescence hygrometer: a review, *Atmospheric Chemistry and  
912 Physics*, 15, 8521–8538, doi:10.5194/acp-15-8521-2015, 2015.
- 913
- 914 Mishchenko, M.I., Travis, L.D., Kahn, R.A., and West, R.A.: Modeling phase functions for dustlike  
915 tropospheric aerosols using a shape mixture of randomly oriented polydisperse spheroids. *Journal  
916 of Geophysical Research* 102, 16831–16, 1997.
- 917
- 918 Moore, R. H., Thornhill, K. L., Weinzierl, B., Sauer, D., D'Ascoli, E., Kim, J., Lichtenstern, M.,  
919 Scheibe, M., Beaton, B., Beyersdorf, A. J., Barrick, J., Bulzan, D., Corr, C. A., Crosbie, E.,

920 Jurkat, T., Martin, R., Riddick, D., Shook, M., Slover, G., Voigt, C., White, R., Winstead, E.,  
921 Yasky, R., Ziembra, L. D., Brown, A., Schlager, H., and Anderson, B. E.: Biofuel blending  
922 reduces particle emissions from aircraft engines at cruise conditions, *Nature*, 543, 411-415,  
923 10.1038/nature21420, 2017.

924  
925 Schäuble, D., Voigt, C., Kärcher, B., Stock, P., Schlager, H., Krämer, M., Schiller, C., Bauer, R.,  
926 Spelten, N., De Reus, M., Szakáll, M., Borrmann, S., Weers, U., and Peter T.: Airborne  
927 measurements of the nitric acid partitioning in persistent contrails, *Atmospheric Chemistry and  
928 Physics*, 9, 8189-8197, 2009.

929  
930 Schlager, H., Konopka, P., Schulte, P., Schumann, U., Ziereis, H., Arnold, F., Klemm, M., Hagen,  
931 D.E., Whitefield, P.D., and Ovarlez, J.: In situ observations of air traffic emission signatures in  
932 the North Atlantic flight corridor. *Journal of Geophysical Research* 102, 10739–10, 1997.

933  
934 Schröder, F., Kärcher, B., Duroure, C., Ström, J., Petzold, A., Gayet, J.-F., Strauss, B., Wendling,  
935 P., and Borrmann, S.: On the Transition of Contrails into Cirrus Clouds. *Journal of the  
936 Atmospheric Sciences* 57, 464–480, 2000.

937  
938 Schumann, U.: On conditions for contrail formation from aircraft exhausts. *Meteorologische  
939 Zeitschrift*, 5, 4–23, 1996.

940  
941 Schumann, U., and Heymsfield, A.: On the lifecycle of individual contrails and contrail cirrus,  
942 *Meteorological Monographs*, 58, 3.1-3.24, doi: 10.1175/AMSMONOGRAPHS-D-16-0005.1,  
943 2017.

944  
945 Schumann, U., Jeßberger, P., and Voigt, C.: Contrail ice particles in aircraft wakes and their  
946 climatic importance, *Geophysical Research Letters*, 40, 2867-2872, doi: 10.1002/grl.50539, 2013.

947  
948 Schumann, U., Mayer, B., Gierens, K., Unterstrasser, S., Jessberger, P., Petzold, A., Voigt, C., and  
949 Gayet, J.-F.: Effective Radius of Ice Particles in Cirrus and Contrails. *Journal of the Atmospheric  
950 Sciences*, 68, 300–321, 2011.

951  
952 Schumann, U., Penner, J.E., Chen, Y., Zhou, C., and Graf, K.: Dehydration effects from contrails in  
953 a coupled contrail-climate model, *Atmospheric Chemistry and Physics*, 15, 11179-11199, doi:  
954 10.5194/acp-15-11179-2015, 2015.

955  
956 Schumann, U., Kiemle, C., Schlager, H., Weigel, R., Borrmann, S., D'Amato, F., Krämer, M.,  
957 Matthey, R., Protat, A., Voigt, C., and Volk, C. M.: Long-lived contrails and convective cirrus  
958 above the tropical tropopause, *Atmospheric Chemistry and Physics*, 17, 2311-2346,  
959 doi:10.5194/acp-17-2311-2017, 2017a.

960  
961 Schumann, U., Baumann, R., Baumgardner, D., Bedka, S. T., Duda, D. P., Freudenthaler, V.,  
962 Gayet, J.-F., Heymsfield, A. J., Minnis, P., Quante, M., Raschke, E., Schlager, H., Vázquez-  
963 Navarro, M., Voigt, C. and Wang, Z.: Properties of individual contrails: a compilation of  
964 observations and some comparisons, *Atmospheric Chemistry and Physics*, 17(1), 403–438,  
965 doi:10.5194/acp-17-403-2017, 2017b.

966  
967 Seber, G. A. F.: *Multivariate analysis of variance and covariance. Multivariate observations*, 433–  
968 495, 1984.

969

970 Shcherbakov, V., Jourdan, O., Voigt, C., Gayet, J.F., Chauvigne, A., Schwarzenboeck, A., Minikin,  
971 A., Klingebiel, M., Weigel, R., Borrmann, S., Jurkat, T., Kaufmann, S., Schlage, R., Gourbeyre,  
972 C., Febvre, G., Lapyonok, T., Frey, W., Molleker, S., and Weinzierl, B.: Porous Aerosol in  
973 Degassing Plumes of Mt. Etna and Mt. Stromboli. *Atmospheric Chemistry Physics* 16, no. 18:  
974 11883–97. doi:10.5194/acp-16-11883-2016, 2016.

975

976 Spath, Helmuth. *The Cluster Dissection and Analysis Theory FORTRAN Programs Examples*.  
977 Prentice-Hall, Inc., 1985.

978

979 Sussmann, R., and Gierens, K.M.: Lidar and numerical studies on the different evolution of vortex  
980 pair and secondary wake in young contrails. *Journal of Geophysical Research: Atmospheres* 104,  
981 2131–2142, 1999.

982

983 Sussmann, R., and Gierens, K.M.: Differences in early contrail evolution of two-engine versus four-  
984 engine aircraft: Lidar measurements and numerical simulations. *Journal of Geophysical*  
985 *Research: Atmospheres* 106, 4899–4911, 2001.

986

987 Vazquez-Navarro, M., Mannstein, H. and Kox, S.: Contrail life cycle and properties from 1 year of  
988 MSG/SEVIRI rapid-scan images, *Atmospheric Chemistry and Physics*, 15(15), 8739–8749, 2015.

989

990 Voigt C., Schlager, H., Ziereis, H., Kärcher, B., Luo, B.P., Schiller, C., Krämer, M., Popp, P.J., Irie,  
991 H., and Kondo, Y.: Nitric acid in cirrus clouds, *Geophysical Research Letters*, 33, L05803,  
992 doi:10.1029/2005GL025159, 2006.

993

994 Voigt, C., Schumann, U., Jurkat, T., Schäuble, D., Schlager, H., Petzold, A., Gayet, J.-F., Krämer,  
995 M., Schneider, J., Borrmann, S., Schmale, J., Jessberger, P., Hamburger, T., Lichtenstern, M.,  
996 Scheibe, M., Gourbeyre, C., Meyer, J., Kübbeler, M., Frey, W., Kalesse, H., Butler, T.,  
997 Lawrence, M.G., Holzäpfel, F., Arnold, F., Wendisch, M., Döpelheuer, A., Gottschaldt, K.,  
998 Baumann, R., Zöger, M., Sölch, I., Rautenhaus, M., and Dörnbrack, A.: In-situ observations of  
999 young contrails - Overview and selected case studies from the CONCERT campaign,  
1000 *Atmospheric Chemistry and Physics*, 10, 9039–9056, doi:10.5194/acp-10-9039-2010, 2010.

1001

1002 Voigt, C., Schumann, U., Jessberger, P., Jurkat, T., Petzold, A., Gayet, J.-F., Krämer, M.,  
1003 Thornberry, T., and Fahey, D.: Extinction and optical depth of contrails, *Geophysical Research*  
1004 *Letters*, 38, L11806, doi:10.1029/2011GL04718, 2011.

1005

1006 Voigt, C., Jessberger, P., Jurkat, T., Kaufmann, S., Baumann, R., Schlager, H., Bobrowski, N.,  
1007 Giuffrida, G., and Salerno, G.: Evolution of CO<sub>2</sub>, SO<sub>2</sub>, HCl, and HNO<sub>3</sub> in the Volcanic Plumes  
1008 from Etna. *Geophysical Research Letters*, 41, 6, 2196–2203. doi:10.1002/2013GL058974, 2014.

1009

1010 Voigt, C., Schumann, U., Minikin, A., Abdelmonem, A., Afchine, A., Borrmann, S., Boettcher, M.,  
1011 Buchholz, B., Bugliaro, L., Costa, A., Curtius, J., Dollner, M., Dörnbrack, A., Dreiling, V., Ebert,  
1012 V., Ehrlich, A., Fix, A., Forster, L., Frank, F., Fütterer, D., Giez, A., Graf, K., Groß, J.-U., Groß,  
1013 S., Heimerl, K., Heinold, B., Hüneke, T., Järvinen, E., Jurkat, T., Kaufmann, S., Kenntner, M.,  
1014 Klingebiel, M., Klimach, T., Kohl, R., Krämer, M., Krisna, T. C., Luebke, A., Mayer, B., Mertes,  
1015 S., Molleker, S., Petzold, A., Pfeilsticker, K., Port, M., Rapp, M., Reutter, P., Rolf, C., Rose, D.,  
1016 Sauer, D., Schäfler, A., Schlage, R., Schnaiter, M., Schneider, J., Spelten, N., Spichtinger, P.,  
1017 Stock, P., Walser, A., Weigel, R., Weinzierl, B., Wendisch, M., Werner, F., Wernli, H., Wirth,  
1018 M., Zahn, A., Ziereis, H., and Zöger, M.: ML-CIRRUS - The airborne experiment on natural

1019 cirrus and contrail cirrus with the high-altitude long-range research aircraft HALO, *Bulletin of*  
1020 *the American Meteorological Society*, doi: 10.1175/BAMS-D-15-00213, 2017.  
1021

1022 Xie, Y., Yang, P., Gao, B.-C., Kattawar, G.W., and Mishchenko, M.I.: Effect of ice crystal shape  
1023 and effective size on snow bidirectional reflectance. *Journal of Quantitative Spectroscopy and*  
1024 *Radiative Transfer* 100, 457–469, 2006.  
1025

1026 Xie, Y., Yang, P., Kattawar, G.W., Minnis, P., and Hu, Y.X.: Effect of the inhomogeneity of ice  
1027 crystals on retrieving ice cloud optical thickness and effective particle size. *Journal of*  
1028 *Geophysical Research: Atmospheres* (1984–2012) 114, 2009.  
1029

1030 Yang, P., Hong, G., Dessler, A.E., Ou, S.S., Liou, K.-N., and Minnis, P.: Contrails and induced  
1031 cirrus: Optics and radiation. *Bulletin of the American Meteorological Society* 91, 473–478, 2010.  
1032

1033 Ziereis, H., Schlager, H., Schulte, P., Velthoven, P. van, and Slemr, F.: Distributions of NO, NO<sub>x</sub>,  
1034 and NO<sub>y</sub> in the upper troposphere and lower stratosphere between 28 and 61 N during  
1035 POLINAT 2. *Journal of Geophysical Research: Atmospheres* (1984–2012) 105, 3653–3664,  
1036 2000.  
1037

1038 Zöger, M., Afchine, A., Eicke, N., Gerhards, M-T., Klein, E., McKenna, D.S., Mörschel, U.,  
1039 Schmidt, U., Tan, V., Tuitjer, F., Woyke, T., and Schiller, C. : Fast in situ stratospheric  
1040 hygrometers: A new family of balloon-borne and airborne Lyman alpha photofragment  
1041 fluorescence hygrometers. *Journal of Geophysical Research: Atmospheres*, 104, 1807-1816,  
1042 1999.  
1043