

5

Answers to co-editor

We would like to thank the co-editor for his comments and we provide the necessary clarifications. Changes on the manuscript (discussed on the authors reply) are indicated with italics. Furthermore, the marked typos are corrected on the manuscript and Table 3 (depicted as figure before) is replaced by the corresponding table format.

10

Co-editor report

I think that the paper shows now enough novel aspects to be a valuable publication for ACP. Measurements in Athens are still scarce especially in the winter season, pollution sources have changed over time (increase of wood burning). Measurement of compounds not yet observed in this region are reported in the paper. Comparisons with previous work have been extended, including also comparison of emission or enhancement ratios.

15

The author argue, that PMF analysis is premature at this point, because results would probably complicate analysis of the major pollution sources (traffic and heating) they focus on. I found this argument acceptable.

20

The importance of evaporative sources is adequately stressed. They seem to be less important during winter time due to low temperatures, but still are significant.

Tunnel results are now better described, and their importance downsized (now in additional information).

I have some few clarifications to ask the authors. Also some typos are marked in the joint text.

25

Page 6 lines 10 - 16: location and built environment (kerbside versus urban background),

This could suggest that one of the sites is a kerbside, and the other an urban background one. Then a comparison of past and present NMHC levels would not make sense, but I guess this is not the case, as authors state that both sites are nearby. Still it could be possible that one site is more impacted by traffic than another, or that traffic locally changed over time. Please clarify.

30

Authors reply: We agree with the remark. Since both sites are close (both are pedestrian zones) the statement about the kerbside versus urban background has been removed and the corrected sentence at P6 L12-15 is: “*Apart changes in emission sources and source strength during the last twenty years, differences in sampling period (summer versus winter), analytical resolution..*”.

5

Page 6 line 16 : NO_x conversion factor

NMHC to NO_x enhancement ratios document the decrease in traffic NMHC emissions. A detail question : Molecular weight of NO_x equal is assumed to 31.6. This value is based on an assumed NO₂/NO_x distribution, but which has probably also have changed during past 20 years. This probably should be taken into account (unless initial measurements were on a molecular density basis and have been translated to mass using the same factor). It is understood that the decrease in ratios still would be present, even if adjusting this factor.

Authors reply: The measurements reported in Kourtidis et al. (1999) were on ppb, thus in their work they converted the ppb/ppb ratios of NMHC-to-NO_x in w/w (weight/weight) and for that they assumed the molecular weight of NO_x equal to 31.6. In order to compare the ratios of Kourtidis et al. (1999) with our ratios (that are in ppb/ppb), we simply re-converted the reported w/w ratios of NMHC-to-NO_x into ppb/ppb, by following the reverse calculations described in Kourtidis et al., (1999). Since the ratio of NO₂/NO_x could be changed with time, we didn't use the molecular weight of 31.6 for NO_x for our ratios. We clarify this in two parts in the manuscript:

- 20 (1) In P6 L16 of the manuscript we clarify as follows “*...to past measurements, enhancement ratios (ppb/ppb) are calculated...*”
- (2) In Table 2 the reference for the 3rd column is modified as follows: “*The NMHC-to-NO_x enhancement ratios of Kourtidis et al. given in w/w (weight/weight) were converted in ppb/ppb by dividing them with the ratio of the molecular weight of the NMHC to the molecular weight of NO_x (equal to 31.6 according to Kourtidis et al., 1999)*”

25

Page 7, lines 7 – 9 : comparison to Paris data

“NMHC levels are also compared with those obtained in Paris, one of the European megacities, with more than 10 million inhabitants with relatively mild winters and warm summers. Again, the observed levels in Athens are significantly higher compared to those reported for Paris (Baudic et al., 2016).”

30

Please put a point after the sentence. And then give some more details, for example concentration differences for classes of compounds or species seen as tracers. The only qualitative comparison is not very informative.

Authors reply: To better present the quantitative differences between the current measurements at Athens and the other cities, not only Paris, we decided to add information about the observed levels. The text on P7 L01-11 is adjusted as follows: *‘Beirut, located in the Eastern Mediterranean basin (approximately 200 Km SE of Greece, 230 m above sea level), has a population of 2000000 inhabitants and a typical Mediterranean climate with mild winter and hot summer (Salameh et al., 2015). On the contrary Bilbao is an urban and industrial city with 400000 inhabitants in northern Spain, located along a river delta in SE–NW direction, with two mountain ranges in parallel to the river (Ibarra-Berastegi et al., 2008). Due to their location, both cities experience intense sea breeze cycles. The NMHCs levels observed in Athens are higher by a factor of approximately two for ethylene, propene, acetylene and pentanes compared to these two cities and up to 3.5 for isopentane at Bilbao. Exceptions are propane, butanes and toluene for Beirut and n-butane, benzene and toluene for Bilbao, which are quite comparable to Athens. NMHC levels are also compared with those obtained in Paris, one of the European megacities, with more than 10 million inhabitants with relatively mild winters and warm summers. Again, the observed levels in Athens are significantly higher (almost 2 to 8 times) compared to those reported for Paris (Baudic et al., 2016), with the most important differences concern acetylene and i-pentane (factor of 8.4 and 6.7 higher in Athens respectively, Table 1).*

20 **Reply to remarks on the manuscript**

Page 8: "The influence of the N to SE sector to the enhanced NMHCs levels is probably related to the northern suburbs of GAA, that are characterized by increased number of fireplaces, while the higher living standards of their inhabitants allow the combined use of heating oil in central heating systems and wood in fireplaces and/or woodstoves. "

25 Just to be sure:

Does the argument of higher living standards apply to population in the northern or southern sector ?

Authors reply: The higher living standards apply to population of the northern suburbs (sector). To better clarify it we modify the sentence as follow: *‘The influence of the N to SE sector to the enhanced NMHCs levels is probably related to the northern suburbs of GAA, that are characterized by increased number of fireplaces and higher living standards allowing the combined use of heating oil in central heating systems and wood in fireplaces and/or woodstoves’.*

Non Methane Hydrocarbons variability in Athens during winter-time: The role of traffic and heating

Anastasia Panopoulou^{1,2,4}, Eleni Liakakou², Valérie Gros³, Stéphane Sauvage⁴, Nadine Locoge⁴, Bernard Bonsang³, Basil E. Psiloglou², Evangelos Gerasopoulos², Nikolaos Mihalopoulos^{1,2}

5 ¹Chemistry Department, University of Crete, 71003 Heraklion, Crete, Greece

²National Observatory of Athens, Institute for Environmental Research and Sustainable Development, 15236 Palea Penteli, Greece.

³LSCE, Laboratoire des Sciences du Climat et de l'Environnement, Unité mixte CNRS-CEA-UVSQ, CEA/Orme des Merisiers, 91191 Gif sur Yvette Cedex, France.

10 ⁴IMT Lille Douai, Univ. Lille, SAGE - Département Sciences de l'Atmosphère et Génie de l'Environnement, 59000 Lille, France

Correspondence to: Eleni Liakakou (liakakou@noa.gr)

Abstract. Non-methane hydrocarbons (NMHCs) play an important role in atmospheric chemistry, contributing to ozone and secondary organic aerosol formation. They can also serve as tracers for various sources such as traffic, solvents, heating and vegetation. The current work presents, for the first time to our knowledge, time resolved data of NMHCs, from two to six carbon atoms, during a period of five months (mid-October 2015 to mid-February 2016) in the Great Athens Area (GAA), Greece. The measured NMHC levels are among the highest reported in literature for the Mediterranean area during winter months and the majority of the compounds demonstrate a remarkable day to day variability. Their levels increase by up to 20 factor of four from autumn (October-November) to winter (December-February). Microscale meteorological conditions and especially wind speed in combination with the PBL height, seem to contribute significantly ~~to~~ the variability of NMHC levels, with an increase up to a factor of 10 under low wind speed ($<3 \text{ m s}^{-1}$), reflecting the impact of local sources rather than long range transport. All NMHCs demonstrated a pronounced bimodal, diurnal pattern with a morning peak followed by a second one before midnight. The amplitude of both peaks is gradually increasing towards winter, respectively to 25 autumn, by a factor of 3 to 6 and nicely follow that of carbon monoxide (CO), indicating contribution from sources other than traffic, related to combustion e.g. domestic heating (fuel or wood burning). By comparing the NMHC diurnal variability with that of black carbon (BC), its fractions associated with wood burning (BC_{wb}) and fossil fuel combustion (BC_{ff}), as well as with source profiles we conclude that the morning peak is attributed to traffic while the night one mainly to heating. For the night peak, the selected tracers and source profiles clearly indicate contribution from both traffic and domestic heating 30 (fossil fuel and wood burning). NMHCs slopes versus BC_{wb} are almost similar when compared to those versus BC_{ff} (slight difference for ethylene), indicating that NMHCs are probably equally produced by wood and oil fossil fuel burning.

1 Introduction

Non-methane hydrocarbons (NMHCs) are key atmospheric constituents for atmospheric chemistry. In the presence of NO_x, their oxidation leads to formation of tropospheric ozone and other species, such as peroxy radicals (RO₂) and peroxy acetyl nitrate (PAN), thus affecting the oxidative capacity of the atmosphere (Atkinson, 2000 and references therein). NMHC oxidation contributes to the formation of secondary organic aerosols (SOA), which in turn affects light scattering, visibility and CCN formation (Tsigaridis and Kanakidou, 2003; Seinfeld and Pandis, 2016 and references therein). In urban areas they mainly originate from anthropogenic sources such as traffic, solvent use, residential heating, natural gas use, industrial activity, but also from natural sources such as vegetation (Guenther et al., 1995; Barletta et al., 2005; Kansal, 2009; Sauvage et al., 2009; Salameh et al., 2015; Baudic et al., 2016; Jaimes-Palomera et al., 2016). Besides their key role as secondary pollutants precursors, NMHCs are of interest because of their association with health issues (EEA report, No 28/2016, 2016). In particular and since 2013, atmospheric substances have been classified by the International Agency for Research on Cancer (WHO-IARC, 2013) in four major groups regarding their carcinogenicity to humans, with benzene and 1,3-butadiene among those NMHCs classified as potential carcinogens (IARC, 2012).

Athens, the capital of Greece with almost five million of inhabitants, is frequently subjected to intense air-pollution episodes, leading to exceedance of the EU air quality limits. The driving processes and atmospheric dynamics of these episodes have been scrutinized during the last decades (Cvitas et al., 1985; Lalas et al., 1982, 1983, 1987; Mantis et al., 1992; Nester, 1995; Melas et al., 1998; Ziomas et al., 1995; Kanakidou et al., 2011). However, the measurements of pollution precursors are mostly limited to ozone and nitrogen oxides. The few existing and non-continuous NMHC measurements in Athens by means of canisters or sorbent tubes have been performed for short period (days) during summertime or autumn (Moschonas and Glavas, 1996; Klemm et al., 1998; Moschonas et al., 2001; Giakoumi et al., 2009). Continuous measurements of NMHCs in Athens for a period of one month have been conducted during summer 20 years ago at three locations, two suburban and one urban, reporting almost 50 C₄ – C₁₂ compounds (Rappenglück et al., 1998, 1999), and recently by Kaltsonoudis et al. (2016), for 1 month in winter 2013 at an urban location (Thissio) and one in summer 2012 at a suburban one (A. Paraskevi), reporting 11 oxygenated organic gaseous compounds and C₅ – C₈ NMHC. Meanwhile, significant changes in pollutant sources occurred in Athens the last 20 years, which lead to significant decreases in the annual concentrations of major pollutants such as CO, SO₂, NO_x (Gratsea et al., 2017; Kalabokas et al., 1999). As this trend was attributed to the car fleet renewal, fuel improvement, metro line extension and industrial emission controls, a decrease in NMHC levels originating from traffic and industrial emissions is also expected. However, after 2012, a new winter-time source of pollution emerged in Greece, due to uncontrolled wood burning for domestic heating (Saffari et al., 2013; Paraskevopoulou et al., 2015; Kaltsonoudis et al., 2016; Fourtziou et al., 2017; Gratsea et al., 2017). This is an important source of various pollutants such as particulate matter (PM), polycyclic aromatic hydrocarbons (PAHs), black carbon (BC) and CO (Gratsea et al., 2017; Hellén et al., 2008; Paraskevopoulou et al., 2015; Schauer et al., 2001 et references therein), while it can represent up to 50% of the mass of Volatile Organic Compounds (VOCs) during winter (case of Paris; Baudic et

al., 2016). Studies for the characterization of the VOC emissions from domestic wood burning based on emissions close to sources, in ambient air or in chambers are published, however, differences are observed in the emission rates or the emission profiles, that are attributed to the type of wood, stove, lightening material and the burning stages (Barrefors and Petersson, 1995; Baudic et al., 2016; Evtugina et al., 2014; Gaeggeler et al., 2008; Gustafson et al., 2007; Hellén et al., 2008; Liu et al., 2008; Schauer et al., 2001 and references therein). Moreover, the studies reporting light NMHC measurements from domestic wood burning are very few (Barrefors and Petersson, 1995; Baudic et al., 2016; Liu et al., 2008; Schauer et al., 2001) and present significant discrepancies. For example, the higher contribution of benzene relatively to acetylene in the residential wood burning profile reported by Baudic et al. (2016) was different from the profile of Liu et al. (2008). In addition, in their recent work, Kaltsonoudis et al. (2016) reported important contribution of wood burning to the wintertime night concentrations of aromatics and oxygenated VOCs. The above clearly demonstrates the increasing need for intensive measurements of NMHCs in Athens, which in turn will allow assessing the impact of future changes (fuel composition changes or other control strategies) on atmospheric composition. In other words, there is a need to establish a “current baseline” for Athens atmospheric composition in terms of NMHC levels.

The current study presents, time-resolved data of 11 selected from 15 determined NMHCs with two to six carbon atoms, during a time span of several months (October 2015 to mid-February 2016) in the Great Athens Area (GAA). In addition, time-resolved data of toluene, ethylbenzene, m- /p- xylenes and o-xylene are used, which were monitored simultaneously from mid-January to mid-February 2016. The emphasis of this work is on: (1) the determination of the ambient levels of C2 – C6 NMHCs during autumn and winter, twenty years after their first summer-time measurements. Especially for C2 – C3, these are the first ever continuous measurements of NMHCs in Athens; (2) the study of the NMHC temporal characteristics and the determination of the factors controlling their variability, and (3) the investigation of traffic and residential heating impact on NMHC levels which are among the most important sources of air pollution in Athens, especially during the “crisis” period characterized by an important decline of industrial activity (Vrekoussis et al., 2013).

2 Experimental

2.1 Sampling site

Measurements were conducted from 16 October 2015 to 15 February 2016, at the urban background station of the National Observatory of Athens (NOA, 37.97° N, 23.72° E, 105 m a.s.l and about 50 m above the mean city level) at Thissio, considered as receptor of pollution plumes of different origins (Paraskevopoulou et al, 2015). The station is located in the historical center of Athens, on top of a hill (Lofos Nimfon), surrounded by a pedestrian zone, a residential area and by the Filopappou (108 m a.s.l) and Acropolis Hills (150 m a.s.l), which are located 500 m and 800 m away respectively (Fig. 1). More information about Athens' morphology, meteorology and dominant transport patterns can be found in Kanakidou et al. (2011), Melas et al. (1998) and references therein.

2.2 On line NMHC measurements

- Two portable gas chromatographs equipped with a flame ionization detector (GC – FID), Chromatotec, Saint Antoine, France) were used for the measurement of NMHCs in Athens. Specifically, the “airmoVOC C2 – C6” (during the whole period, from October 2015 to February 2016) and the “airmoVOC C6 – C12” Chromatrap GC (from mid-January until mid-
- 5 February 2016) analyzers were used for the determination of C2 – C6 and C6 – C12 NMHCs respectively, collecting ambient air through collocated inlets at the rooftop of the station, 4 m above ground. The C2 – C6 NMHC analyzer was set to sample ambient air on a 10 min basis followed by an analysis time of 20 min, while for the C6 – C12 the respective timing was 20 min and 20 min, with a total cycle of 30min (sampling and analysis). Therefore, the synchronized monitoring was performed with an overall 30 min time resolution, for both analyzers.
- 10 For the airmoVOC C2 – C6 analyzer, 189 mL of air was drawn through a 0.315 cm diameter, 6 m-long stainless-steel line with a filter of 4 μm pore size at the sampling inlet, and a flow rate of 18.9 mL min^{-1} . Once sampled, ambient air was passed through a Nafion dryer (activated by gas nitrogen) to reduce the water content and then hydrocarbons were preconcentrated at -9 $^{\circ}\text{C}$ (Peltier cooling system), on a 2.25 mm internal diameter, 8 cm-long glass trap containing the following adsorbents: Carboxen 1000 (50 mg), Carbopack B (10 mg) and Carbotrap C (10 mg) all from Supelco Analytical, Bellefonte, PA, USA.
- 15 The trap was then heated rapidly to 220 $^{\circ}\text{C}$ for 4 min and the pre-concentrated VOCs were thermally desorbed onto a Plot Column (Restek Corp., Bellefonte, PA, USA, $\text{Al}_2\text{O}_3/\text{Na}_2\text{SO}_4$), 25 m x 0.53 mm, 10 mm film thickness). 1 min prior to the analysis, the oven temperature was raised from 36 to 38 $^{\circ}\text{C}$, followed by a constant heating rate of 15 $^{\circ}\text{C min}^{-1}$ to 200 $^{\circ}\text{C}$ by the end of the analysis. Details about the equipment technique and performances, as well as the estimation of the uncertainty, are provided by Gros et al. (2011). The detection limit is in the range of 0.02 ppb (propene, n-pentane) to 0.05 ppb (propane),
- 20 while for ethane and ethylene is 0.1 ppb.
- The airmoVOC C6 – C12 analyzer was collecting 900 mL of air through a 0.315 cm diameter, 6 m-long stainless-steel line with a filter of 4 μm pore size at the sampling inlet, and a flow rate of 45 mL min^{-1} . The hydrocarbons were preconcentrated at ambient temperature on a glass trap containing the adsorbent Carbotrap C. Then the trap was heated to 380 $^{\circ}\text{C}$ over 2 min to desorb the pre-concentrated VOCs into a separation column (MXT30CE, Restek Corp., 30 m x 0.28 mm, 1 mm film
- 25 thickness). With one minute delay, the oven temperature was raised from 36 to 50 $^{\circ}\text{C}$ at a rate of 2 $^{\circ}\text{C min}^{-1}$, followed by a second heating of 10 $^{\circ}\text{C min}^{-1}$ up to 80 $^{\circ}\text{C}$. Finally, at a constant heating rate of 15 $^{\circ}\text{C min}^{-1}$ the temperature reached 200 $^{\circ}\text{C}$ and remained there until the end of the analysis. In the present work, toluene, ethylbenzene, m-/p- xylenes and o-xylene (TEX) will be used from the GC C6 – C12 data series. The uncertainty of the instrument is less than 20% and the detection limit of the BTEX is 0.03 ppb.
- 30 Simultaneous calibration and identification of the compounds were performed by a certified National Physical Laboratory (NPL) standard of NMHC mixture (~4 ppb) containing: ethane, ethylene, propane, propene, i-butane, n-butane, acetylene, i-pentane, n-pentane, isoprene, benzene and 15 additional hydrocarbons.

2.3 Auxiliary measurements

Real time monitoring of carbon monoxide (CO), black carbon (BC) and nitrogen oxides (NO_x = NO and NO₂) was also conducted during the reported period. For CO and NO_x measurements, Horiba 360 Series Gas Analyzers of one-minute resolution were used which were calibrated with certified standards. A seven wavelength Magee Scientific AE33
5 aethalometer (one minute resolution) was operated for the measurement of BC and its fractions associated with fossil fuel and wood burning (BC_{ff} and BC_{wb}, respectively) derived automatically by the instrument software. Meteorological data were provided by NOAA's meteorological station at Thissio premises.

2.4 Street canyon measurements

To identify the NMHCs fingerprint of traffic emissions, NMHCs measurements were conducted at a monitoring station
10 belonging to the air quality agency of Athens and located at a street canyon downtown Athens with increased traffic and frequent traffic jams (Patisson street) on 22 to 24 February 2017 (37.99°N, 23.73°E). Samples were collected every hour during the morning rush hour from 06:55 LT to 10:15 LT (LT = UTC+2), in 6L stainless steel – silonite canisters. The sampling method for ambient air is described in detail elsewhere (Sauvage et al., 2009). Before the analysis, the cylinders were pressurized by adding a known amount of zero-air resulting in a sample dilution by a factor of two. Afterwards each
15 canister was connected to the GC-FID system using a Teflon (PTFE) sampling line and analyzed by the method described in Sect. 2.2. Before sampling, the canisters were cleaned by filling them up with zero air and re-evacuated, at least three times. The content of the cylinders was then analyzed by the GC-FID system to verify the efficiency of the cleaning procedure. The canisters were evacuated a few days prior to the analysis and they were analyzed maximum 1 day after the sampling.

3 Results and discussion

20 3.1 Temporal variability of NMHCs

Figure 2 presents the temporal variability of selected NMHCs for five major groups of compounds: ethane and n-butane (for saturated hydrocarbons), propene and ethylene (for alkenes), acetylene (for alkynes), benzene and toluene (for aromatics) and isoprene (for potential biogenic compounds). Other measured NMHCs are presented in Fig. S1. During the reported period, the data availability (in comparison with the maximum potential data availability) for all C2 – C6 NMHCs was
25 higher than 87%. Most of the data for isoprene are below the limit of detection due to the low vegetation activity at this period of the year (Fuentes et al., 2000; Guenther et al., 1995). Moreover, the significant night time levels (above 300 ppt in some cases) could be indicative of non-vegetation sources, like traffic or domestic wood burning (Borbon et al., 2001, 2003; Gaeggeler et al., 2008; Kaltsonoudis et al., 2016). However due to the low data coverage, it is not possible to determine an accurate diurnal variability for this compound.

The majority of the compounds showed a remarkable day to day variability throughout the study period and levels increasing by up to factor of four, from autumn (October-November) towards winter (December-February; Fig. 2 and S1). The highest values which have been observed for ethane and ethylene ranged mostly between 26 and 23 ppb, and were encountered in wintertime. For these compounds, the lower values were above 0.3 ppb for the whole period. During the period of intensive measurements, toluene exceeded 10 ppb, while benzene was below 6 ppb during the four-month monitoring period. Benzene is the only NMHC included in the European air quality standards due to its possible adverse health effects (IARC, 2012).

In Table 1, the mean values of the measurements of this study are compared with those reported in the literature for Athens in the past and other selected areas. The comparison with those already published data for the GAA, indicates an apparent decrease by a factor of 2 to 6 for the majority of the species lying above C4 (taking as reference the case of Ancient agora urban area in the close vicinity of Thissio Station). This decreasing trend is in agreement with a decrease in primary pollutants CO, SO₂ already reported by Kalabokas et al. (1999) and Gratsea et al. (2017), due to the air quality measures taken by the Greek government and economic recession (since 2012). Apart changes in emission sources and source strength during the last twenty years, differences in sampling period (summer versus winter), analytical resolution ~~Apart changes in emission sources and source strength during the last twenty years, differences in sampling period (summer versus winter), location and built environment (kerbside versus urban background), analytical resolution~~ (morning collected samples compared to continuously averaged levels) should be considered, rendering the direct comparison between the present and past measurements quite difficult in the overall evaluation of the NMHCs decrease. However, in order to better investigate the observed decreasing trend and compare these results to past measurements, enhancement ratios (ppb/ppb) are calculated for i – pentane, benzene, toluene, ethylbenzene and o – xylene to NO_x (sum of NO and NO₂), following the approach of Kourtidis et al., (1999), ~~using from~~ the measurements performed in the street canyon (Patisision) and presented at Table 2. In a summary, the enhancement ratios are the slopes of the x-y plots of the selected NMHC (in ppb) to NO_x (or CO, both in ppb), and for which morning concentrations (07:00 to 10:00 LT) at wind speed lower than 2 m s⁻¹ and of SSW to SWW direction (206° to 237°) are used. The NO_x and CO data for the Patisision site are provided by the Hellenic Ministry of the Environment & Energy, Dept. of Air Quality. Additionally, the same enhancement ratios were calculated for Thissio station, for concentrations associated with wind speed lower than 2 m s⁻¹ (no distinction to wind direction), thus maximizing the local influence. Since the enhancement ratios are calculated during the time-window of the traffic rush hours, it is assumed that they are representatives of traffic emissions only. Both Thissio station and Patisision street canyon demonstrate similar enhancement ratios with differences in the order of 15-30% and 20-35% relatively to NO_x and CO respectively and great differences comparatively to the previously reported values. Enhancement ratios for i-pentane, toluene, ethylbenzene and o-xylene to NO_x for the same station (Patisision) show values which are lower by a factor of 6 ± 1 compared to the ones reported in Kourtidis et al. (1999), whereas a factor of 12 is observed for benzene. The same stands for the present enhancement ratios of the selected NMHCs to CO with a decrease of 2 to 5 times. The lower enhancement ratios reveal the strong impact of the air quality measures to VOC emissions, while the high difference to benzene enhancement ratio is a

direct outcome of the Directive n°2000/69/CE (now Directive n°2008/50/EC) of the European Union for the reduction of this compound, especially in fuels.

Beirut, located in the Eastern Mediterranean basin (approximately 200 Km SE of Greece, 230 m above sea level), has a population of 2000000 inhabitants and a typical Mediterranean climate with mild winter and hot summer (Salameh et al., 2015). On the contrary Bilbao is an urban and industrial city with 400000 inhabitants in northern Spain, located along a river delta in SE–NW direction, with two mountain ranges in parallel to the river (Ibarra-Berastegi et al., 2008). Due to their location, both cities experience intense sea breeze cycles. The NMHCs levels observed in Athens are higher by a factor of approximately two for ethylene, propene, acetylene and pentanes compared to these two cities and up to 3.5 for isopentane at Bilbao. Exceptions are propane, butanes and toluene for Beirut and n-butane, benzene and toluene for Bilbao, which are quite comparable to Athens. NMHC levels are also compared with those obtained in Paris, one of the European megacities, with more than 10 million inhabitants with relatively mild winters and warm summers. Again, the observed levels in Athens are significantly higher (almost 2 to 8 times) compared to those reported for Paris (Baudic et al., 2016), with the most important differences concern acetylene and i-pentane (factor of 8.4 and 6.7 higher in Athens respectively, Table 1). Beirut, located in the Eastern Mediterranean basin (approximately 200 Km SE of Greece, 230 m above sea level), has a population of 2000000 inhabitants and a typical Mediterranean climate with mild winter and hot summer (Salameh et al., 2015). On the contrary Bilbao is an urban and industrial city with 400000 inhabitants in northern Spain, located along a river delta in SE–NW direction, with two mountain ranges in parallel to the river (Ibarra Berastegi et al., 2008). Due to their location, both cities experience intense sea breeze cycles. The levels of NMHCs observed in Athens are higher, almost by a factor of two, with the exception of propane, butanes and toluene for Beirut and n-butane, benzene and toluene for Bilbao, which are quite similar to Athens. NMHC levels are also compared with those obtained in Paris, one of the European megacities, with more than 10 million inhabitants with relatively mild winters and warm summers. Again, the observed levels in Athens are significantly higher compared to those reported for Paris (Baudic et al., 2016)

According to Fig. 2, a common pattern for all NMHC concentrations was their gradual increase from October to December, which reflects the transition from the warmer period to the colder one. This is better illustrated in Fig. 3, which depicts the monthly mean concentration for every NMHC presented in Fig. 2. The increase in NMHC levels during the cold period could be explained by the respective increase in their lifetime due to less photochemistry and the contribution from additional sources, such as heating. However, the role of atmospheric dynamics should not be neglected, since the decrease in the height of the planetary boundary layer (PBL) could also trigger the observed winter-time enhancement of the NMHC levels. Nevertheless, according to Alexiou et al. (2018) the mean winter-time decrease of PBL compared to autumn is in the range of 20% for both day and night periods, thus changes in PBL couldn't be the only factor determining the enhancement of NMHCs level observed during wintertime. Furthermore, according to Kassomenos et al. (1995) the day-night difference on PBL is more pronounced during summer. Thus, the night-time accumulation of the pollutants during winter relatively to summer highlights essentially the impact of additional emission sources. Meteorological conditions such as wind speed and direction have to be also considered and their respective role will be discussed thereafter.

3.2 Diurnal variability of NMHCs

During the whole monitoring period, all hydrocarbons demonstrated a pronounced bimodal diurnal pattern (Fig. 4 and S2). A morning peak was observed lasting from 07:00LT to 10:00LT, followed by a second one before midnight. The amplitude of both peaks is gradually increasing from October to winter time by a factor of 3 to 6 and nicely follows that of carbon monoxide (CO), BC and its fractions associated with wood burning (BC_{wb}) and fossil fuel combustion (BC_{ff}) (Fig. 4). As it was noted in Gratsea et al. (2017), the morning maximum of CO is attributed to morning traffic, while the winter night-time increase to additional sources such as domestic heating (fossil fuel or wood burning). Although the amplitude of both CO peaks (morning and night) is almost similar (with the exception of December), the duration of the night peak is at least a factor of 2 larger, which could imply the impact of heating on air quality during wintertime. Moreover, night-time emissions occur in a shallower boundary layer relatively to the mid-day, resulting into accumulation of pollutants (Alexiou et al., 2018). These observations are indicative of the contribution of traffic and heating to the NMHCs levels. By comparing the NMHC diurnal variability with that of BC, as well as its fractions associated with wood burning (BC_{wb}) and fossil fuel combustion (BC_{ff}), it is deduced that the morning peak could be mainly attributed to traffic and the late evening to traffic and heating, the latter from the combined use of heavy oil and wood burning.

3.3 The role of meteorology on NMHC levels

Once emitted in the atmosphere, NMHCs react mainly with OH and NO_3 radicals during day and night-time, respectively, and with ozone throughout the day (Crutzen 1995, Atkinson 2000), whereas the role of Cl could not be omitted, especially for coastal areas (Arsene et al., 2007). Still, in addition to chemistry, many other factors, such as the strength of the emission sources and the atmospheric dynamics (meteorology and boundary layer evolution), determine their abundance and diurnal variability. To investigate the role of wind speed and wind direction, the dependence of n-butane, acetylene and benzene, selected as representative of alkanes, alkynes and aromatics, against wind speed and direction, is depicted in Fig. 5 and 6 respectively (Fig. S3 and S4 include the rest of the compounds). For all studied NMHCs, the highest concentration occurred under low wind speed ($< 3 \text{ m s}^{-1}$) reflecting the critical role of local sources versus long range transport. On a monthly basis, the NMHC dependence on wind speed remains the same for the total examined period (Fig. S5).

To investigate the impact of wind direction on NMHC levels, fig. 6 presents the distribution of wind sectors frequency of occurrence during the sampling period and that of wind speed per sector. In addition, the variability of n-butane, acetylene and benzene levels as a function of wind direction is also depicted. Enhanced levels of NMHCs are found under the influence of air masses from all directions, especially under low wind speed. During the sampling period, the NE sector associated with relatively strong winds ($u > 3 \text{ m s}^{-1}$), was the most frequent one, resulting in moderate levels of NMHCs. Overall, a similar distribution was found for all NMHCs, indicating moderate to higher values under the N-NE-E-SE directions, and lower levels under the NW-W-SW sector, the latter associated with high wind speeds. The influence of the N to SE sector to the enhanced NMHCs levels is probably related to the northern suburbs of GAA, that are characterized by

increased number of fireplaces ~~and, while the~~ higher living standards ~~of their inhabitants~~ allowing the combined use of heating oil in central heating systems and wood in fireplaces and/or woodstoves. The impact of the N to ESE sector on NMHC levels can be also seen when comparing the concentrations of the morning (07:00 – 09:00) and night (21:00 – 23:00) peaks in October and December (Fig. S6). The wind probability from N to ESE is similar for both months, however significantly higher concentrations are observed during nighttime in December affected by low wind speed ($< 2 \text{ m s}^{-1}$) from the N to NE sector.

The ambient temperature is another parameter which can influence NMHC levels, as high temperatures favor the evaporation of low volatility hydrocarbons and also trigger the production of biogenic compounds, whereas lower temperatures could trigger the emission of NMHCs from increased heating demand, as other tracers as well (Athanasopoulou et al., 2017). The average monthly temperatures varied from $18 \text{ }^{\circ}\text{C}$ in October and November to $10 - 13 \text{ }^{\circ}\text{C}$ in December and late winter, respectively. By examining NMHCs against temperature (Fig. S7), a clear tendency is not evident, although the highest levels are observed at lower temperatures.

3.4 Identification of NMHC emission sources with emphasis on traffic and heating

3.4.1 Interspecies correlation

Table 3 shows the interspecies correlation of NMHCs for the total period of measurements. All NMHCs were well correlated ($R^2 > 0.81$), with the exception of isoprene which as seen before, had only few data above the LoD and thus was excluded from Table 3. Note also the excellent correlation of toluene with ethylbenzene, m-/p- xylenes and o-xylene (R^2 from 0.92 to 0.93), during the common measured period (from mid-January until mid-February 2016) highlighting their common origin. The strong correlation of NMHCs with combustion tracers, such as CO, NO and BC, could indicate their common emission sources and variability. The deconvolution of BC into its fossil fuel and biomass burning fractions enables further classification of NMHCs into groups that could possibly be emitted by those two distinct sources. The stronger correlation ($R^2 > 0.84$) of the hydrocarbons with BC_{ff} compared to BC_{wb} ($R^2 > 0.64$) could imply stronger emission of NMHCs from fossil fuel combustion processes relatively to wood burning. Finally, no change in the correlation coefficients is observed when data sets are separated between day (6:00-18:00) and nighttime (18:00-6:00) time intervals. However, the above analysis could give only a rough idea on the sources impacting NMHCs levels. A more precise picture could emerge with comparison with source profiles and such discussion follows in the paragraph below.

3.4.2 Impact of various sources on the NMHC levels

To identify periods with differentiated impact from the different pollution sources (with emphasis on traffic and heating), the methodology described by Fourtziou et al. (2017) was applied. The criteria for this separation have been the wind speed not to exceed the threshold value of 3 m s^{-1} (light breeze conditions) and the presence of precipitation (on/off criterion). The role of wind speed was clearly seen at the Sect. 3.3 (Fig. 5). Based on these criteria, the first group (non-shaded in Fig. 7)

corresponds to higher wind speeds and thus more efficient dispersion of emitted pollutants (ventilation), as well as the incidents of rain and is characterized as non-smog periods (nSP). The second group (shaded area in Fig. 7) refers to lower wind speeds, favoring accumulation of high pollution loads within the mixing layer and is henceforth referred to as smog periods (SP). The frequency of SP and nSP periods was 65% and 35% respectively. Note that the word "smog" is used as a synonym to highlight cases of relatively high air pollution, as also indicated by the high levels of CO and BC encountered during the SP periods (Fig. 7).

The diurnal variability of all compounds was investigated separately for two distinct months, October and December, representative periods of non-heating and heating activities, respectively (Fig. 8 and S8). Note that SP periods represent 55% of the considered time in October and 73% in December. According to previous findings (Paraskevopoulou et al. 2015; Kaltsonoudis et al. 2016; Fourtziou et al. 2017; Gratsea et al. 2017) wood burning for domestic heating has gained a marking role as a winter-time emission source in Greece, over the last years. Since wood burning is reported as emission source of specific organic compounds such as ethane, ethylene, acetylene, benzene, methanol, acetaldehyde and acetonitrile (Baudic et al., 2016; Gaeggeler et al., 2008; Gustafson et al., 2007; Hellén et al., 2008; Kaltsonoudis et al., 2016), it can be safely considered as a possible factor contributing to the winter time increase of NMHC levels in GAA. Thus, the two selected months are expected to have different source profiles. October, without or very limited heating demand, was used as a reference period, while December in south-central Greece is traditionally the beginning of the heating period. The low values of BC_{wb} recorded in October, even during the SP periods, supports the methodology followed for the separation (Fig. 8).

The levels of all measured NMHCs were significantly higher in December compared to October for the SP periods (Fig. 8 and S8). The most striking difference is related to the night peak, while during mid-day the difference is minimal. For all compounds examined in this work, the night peak in December (SP period) is 2 to 6 times higher compared to October's (SP period) with the highest differences found for ethane, ethylene, propene and acetylene. On the other hand, the December to October ratio during mid-day is ranged between 2.6 (for propene and acetylene) to 0.9 (for benzene). It is worth noting the levels of NMHCs during the traffic related morning peak. Although higher mean levels were observed in December, the amplitude of the morning peak is almost similar in both examined months, denoting no important change in the traffic source between the heating and non-heating periods. In contrast, during the nSP periods in October and December NMHCs levels were equal (Fig. 8 and S8). Furthermore, the concentrations of all compounds during nSP were very low; even lower than the minimum values observed during mid-day during SP periods of the same months. Accordingly, the diurnal variability of all investigated NMHCs was less pronounced compared to the SP periods with a slight increase during night in December, which could be attributed to a background contribution from heating sources. In Sect. 3.4.3 the origin of the morning and nights peaks related to NMHCs will be further investigated.

3.4.3 Impact of sources on morning and night peaks of NMHCs

Morning peak:

As discussed in Sect. 3.2, the morning peak (07:00 – 10:00 LT) of NMHCs could be mainly attributed to traffic. Fig. 9 presents the profile of this peak (% mass contribution of the measured NMHCs), during January and February SP days when toluene, ethylbenzene, m-/p- xylenes and o-xylene data were also available. Additionally, in the same figure the morning profile obtained during the 2 – days campaign conducted in the street canyon located at the center of Athens (Patisision Monitoring Station) is also reported. Details on the calculations for the morning profile for the two sites are provided in Sect. S2. Patisision profile reflects all types of traffic-related emissions due to the combination of the high number of vehicles and buses driving on this street, frequent traffic jam conditions, variety of types of fuels (gasoil, diesel, natural gas), vehicles age, maintenance etc.

The two morning profiles, although performed at sites with different impact of traffic, agree quite well ($R^2 > 0.98$). Iso-pentane, toluene and m-/p- xylenes are the three main compounds contributing to the morning profiles accounting by about 50% of the total measured NMHCs at both locations, followed by n- and i-butane and ethylene accounting for almost 21%. Differences between the two morning profiles regarding these 5 main species are weak (less than a factor of 1.2). Note also that the morning profile at Thissio is the mean of a whole month period compared to the two days campaign at Patisision which could explain the small differences between the two profiles. In addition, a comparison with a tunnel study in Athens is made in the supplement (Sect. 2a.), in which similarities are seen for most of the main compounds (i-pentane, m- / p-xylenes, ethylbenzene, o-xylene, benzene, n-pentane, i-butane, propene and ethane), but with the exception of acetylene and toluene that they are lower by a factor of 4 and 1.5 respectively. The similarity of Thissio and Patisision morning profiles and their difference from the Athens tunnel profile probably indicates the importance of the type of fuel used. The latter is also observed in recent works (Ait-Helal et al., 2015; Zhang Q. et al., 2018; Zhang Y. et al., 2018), where important differences have been reported between tunnel measurements, and attributed to various typologies of the car-fleets (type of vehicles and fuels). In our case there is a possibility that the car-fleet in the tunnel is not representative for the GAA, since the existing tolls reduce the use of the tunnel due to financial issues. Also, measurements are performed during noon when the traffic density is relatively low compared to the morning peak. In any case, the prevalence of i-pentane and toluene in all profiles, indicates the continuing dominance of gasoline powered cars and evaporative losses. The importance of evaporative losses can be seen in Fig. S11 and S12 where the ratios of butanes and pentanes-to-(C2 – C5)Alkanes (%) versus the temperature are respectively examined. Taking into account the positive dependence of the two ratios, especially that of pentanes, to temperature, we can assume that fuel evaporation losses are also an important source of NMHCs. These observations are in agreement with the general behavior of the temperature dependency reported in Kourtidis et al., (1999) (Fig. S13 and Sect. S3), that performed an investigation of the dependence of the fractionation of NMHCs in evaporative emissions from temperature in Athens. Although the examined periods differ in ambient temperature (winter is colder than autumn), the exponential curve fitting of both datasets was similar. In addition, the above results could indicate why the Athens tunnel results performed in May differ from Patisision and Thissio winter morning profiles. Moreover, the higher values of propane and butanes that are depicted in the morning peaks at the urban sites relatively to the tunnel measurement, reflect the increased number of LPG powered vehicles in Athens and natural gas-powered buses (Fameli and Assimakopoulos, 2016).

This is further highlighted when the monthly variation of i-butane relatively to n-butane is examined (Fig. S14). The two compounds have linear relationship with no significant temporal differences on the slopes between the various months. Furthermore, the regression is similar to the one derived from the Patission measurements, thus enhancing our assumption that butanes emissions are traffic related. Moreover, the relation between the high levels of C2 – C4 alkanes and the number of LPG-powered cars was highlighted in other tunnel works as well (Ait-Helal et al., 2015; Zhang Q. et al., 2018).

To obtain a better idea on the variability of the traffic source during the studied period, the variability of selected NMHCs (ethylene, i-pentane and benzene) relatively to BC_{ff} , the latter used as traffic source tracer, was also plotted for October and December (Fig. 10). Significant correlations are revealed with slopes remaining almost stable (within 30%) during both months, indicating similar emission ratios during the whole studied period, and probably equal contribution from traffic.

10 *Night-time enhancement period:* During nighttime both BC_{ff} and BC_{wb} were maximized (e.g. Fig. 4 and 8), denoting significant contribution from both fossil fuel and wood burning (the contribution of the latter was more evident during winter). Figure 11 presents the NMHC profile of the night-time enhancement period for October and December SP nights (details for the calculations are given in S.4). As already discussed, traffic is expected to be the main source of NMHCs during nighttime in October, whereas heating competes traffic during December. When these two profiles are compared
15 (Fig. 11), the statistically significant [difference](#) at $p < 0.01$ [confidence difference](#) is obvious, with a smaller contribution from i-pentane (traffic source contributor) during December. In addition, enhanced contributions from C2 (ethane, ethylene and acetylene) are apparent in December compared to October. These C2 hydrocarbons have been reported as important contributors to the wood burning source profile by Baudic et al. (2016) in Paris. Preliminary data from a fireplace experiment (not part of this work) also confirm these findings; and are in line with our results reported in Fig. 8 indicating
20 impact of wood burning during nighttime in winter months.

Figure 12a (i-iii) presents the relation of ethylene, acetylene and benzene, main contributors of the wood burning profile (Baudic et al., 2016), to BC during the SP night-time periods (18:00 – 05:00 LT), in October and December. During both months, significant correlations were revealed for all examined NMHCs and the slopes remained relatively stable, indicating
almost equivalent emission ratios from both traffic and heating sources. To better tackle [a](#)with possible difference in NMHCs
25 emissions from traffic and residential heating, these NMHCs were also plotted against BC_{wb} and BC_{ff} during the SP periods in December, from 22:00 to 04:00 LT, i.e. the time frame when traffic is quite limited (Fig. 12b, iv-vi). NMHC slopes versus BC_{wb} are almost similar when compared to those versus BC_{ff} (slight difference for ethylene), with a contribution of BC_{wb} and BC_{ff} to BC of 43% ($\pm 10\%$) and 55% ($\pm 11\%$) respectively, indicating that the studied NMHCs are probably equally produced by wood and fossil fuel burning.

30 **4 Conclusions**

For the first time to our knowledge, time resolved measurements of 11 Non Methane Hydrocarbons with two to six carbon atoms (C2 – C6 NMHCs) were conducted for several months (mid-October 2015 to mid-February 2016) in the Great Athens Area (GAA) by means of an automatic chromatograph, in parallel with monitoring of major pollutants and meteorological

parameters. The temporal variability of NMHCs presented an increasing trend from October to December, due to changes in type and strength of sources, and atmospheric dynamics. In comparison with other works, higher concentrations are reported for the majority of NMHCs, indicating an air quality issue in Athens. With the exception of isoprene, all NMHCs presented a bimodal diurnal pattern with morning and a broader night-time maxima, whereas the lower concentrations were observed early in the afternoon. Typical indicators of combustion processes such as CO and BC, which was further deconvoluted into BC_{ff} and BC_{wb} , presented similar seasonal and diurnal variability relatively to the NMHCs, providing the opportunity to investigate their possible emission sources. Thus, the morning maximum, which follows the BC_{ff} tendency, was attributed to traffic, while the second one during night which maximized on December and coincides with those of BC_{wb} and BC_{ff} was attributed mainly to heating by both fossil fuel and wood burning.

For the better understanding of the impact of sources on the NMHCs levels, the studied period was further separated into smog (SP) and no-smog (nSP) periods, based on the absence of rainfall and low wind speed. October and December were chosen for further comparison due to different temperature conditions and possible sources taking into account the already proved increased winter-time heating demand (Athanasopoulou et al., 2017). The comparison of the morning maximum of NMHCs profile during SP days with those obtained at a street canyon of Athens (Patisision) further confirms the role of traffic in the observed morning NMHCs peak. The October and December SP NMHCs' night profiles depicted differences attributed mainly to heating. However, NMHCs slopes versus BC_{wb} are almost similar when compared to those versus BC_{ff} (slight difference for ethylene), indicating that NMHCs are probably equally produced by wood and oil fossil fuel burning. An extended dataset of NMHCs and other organic tracers (future long-term measurements) is needed to apportion different sources types on seasonal basis and quantify their impact on the NMHCs levels.

5 Data availability

All the data presented in this paper are available upon request. For further information, please contact Dr. Eleni Liakakou (liakakou@noa.gr).

Acknowledgements

Support from CEA, CNRS and the Charmex program are acknowledged. We thank F. Dulac and E. Hamonou for the successful management of the Charmex program, D. Baisnée and T. Leonardis for technical support with the GCs, the editor and the two anonymous reviewers for their comments which greatly improved the submitted version. The authors also acknowledge the Hellenic Ministry of the Environment & Energy, Dept. of Air Quality for the access at the Patisision Station and their database for the purposes of the short intensive campaign; and the Attiki Odos, for the access to the tunnel.

References

- Ait-Helal, W., Beeldens, A., Boonen, E., Borbon, A., Boréave, A., Cazaunau, M., Chen, H., Daële, V., Dupart, Y., Gaimoz, C., Gallus, M., George, C., Grand, N., Grosselin, B., Herrmann, H., Ifang, S., Kurtenbach, R., Maille, M., Marjanovic, I., Mellouki, A., Miet, K., Mothes, F., Poulain, L., Rabe, R., Zapf, P., Kleffmann, J. and Doussin, J.-F.: On-road measurements of NMVOCs and NOx: Determination of light-duty vehicles emission factors from tunnel studies in Brussels city center, *Atmos. Environ.*, 122, 799–807, doi:10.1016/j.atmosenv.2015.09.066, 2015.
- Alexiou, D., Kokkalis, P., Papayannis, A., Rocadenbosch, F., Argyrouli, A., Tsaknakis, G. and Tzani, C.G.: Planetary boundary layer height variability over Athens, Greece, based on the synergy of Raman and Radiosonde data: Application of the Kalman filter and other techniques, *EPJ Web of Conferences* 176, 06007, doi.org/10.1051/epjconf/201817606007, 2018
- 10 Arsene, C., Bougiatioti, A., Kanakidou, M., Bonsang, B. and Mihalopoulos, N.: Tropospheric OH and Cl levels deduced from non-methane hydrocarbon measurements in a marine site, *Atmos Chem Phys*, 7(17), 4661–4673, doi:10.5194/acp-7-4661-2007, 2007.
- Athanasopoulou, E., Speyer, O., Brunner, D., Vogel, H., Vogel, B., Mihalopoulos, N. and Gerasopoulos, E.: Changes in domestic heating fuel use in Greece: effects on atmospheric chemistry and radiation, *Atmos Chem Phys*, 17(17), 10597–10618, doi:10.5194/acp-17-10597-2017, 2017.
- 15 Atkinson, R.: Atmospheric chemistry of VOCs and NOx, *Atmos. Environ.*, 34(12), 2063–2101, doi:10.1016/S1352-2310(99)00460-4, 2000.
- Barrefors, G. and Petersson, G.: Volatile hydrocarbons from domestic wood burning, *Chemosphere*, 30(8), 1551–1556, doi:10.1016/0045-6535(95)00048-D, 1995.
- 20 Barletta, B., Meinardi, S., Sherwood Rowland, F., Chan, C.-Y., Wang, X., Zou, S., Yin Chan, L. and Blake, D. R.: Volatile organic compounds in 43 Chinese cities, *Atmos. Environ.*, 39(32), 5979–5990, doi:10.1016/j.atmosenv.2005.06.029, 2005.
- Baudic, A., Gros, V., Sauvage, S., Locoge, N., Sanchez, O., Sarda-Estève, R., Kalogridis, C., Petit, J.-E., Bonnaire, N., Baisnée, D., Favez, O., Albinet, A., Sciare, J. and Bonsang, B.: Seasonal variability and source apportionment of volatile organic compounds (VOCs) in the Paris megacity (France), *Atmos Chem Phys*, 16(18), 11961–11989, doi:10.5194/acp-16-11961-2016, 2016.
- 25 Borbon, A., Fontaine, H., Veillerot, M., Locoge, N., Galloo, J. C. and Guillermo, R.: An investigation into the traffic-related fraction of isoprene at an urban location, *Atmos. Environ.*, 35(22), 3749–3760, doi:10.1016/S1352-2310(01)00170-4, 2001.
- Borbon, A., Fontaine, H., Locoge, N., Veillerot, M. and Galloo, J. C.: Developing receptor-oriented methods for non-methane hydrocarbon characterisation in urban air—Part I: source identification, *Atmos. Environ.*, 37(29), 4051–4064, doi:10.1016/S1352-2310(03)00525-9, 2003.
- 30 Cvitas, T., Gusten, H., Heinrich, G., Klasinc, L., Lalas, D. and Petrakis, M.: Characteristics of summer air pollution during the summer in Athens, Greece, *Staub - Reinhalt Luft*, 45(6), 297-301, 1985.
- Crutzen, Paul J.: Ozone in the troposphere. Composition, chemistry, and climate of the atmosphere, 349-393, 1995

Directive 2000/69/EC of 16 November 2000 relating to limit values for benzene and carbon monoxide in ambient air.

Directive 2008/50/EC of the European Parliament and of the Council of 21 May 2008 on ambient air quality and cleaner air for Europe.

5 Durana, N., Navazo, M., Gómez, M. C., Alonso, L., García, J. A., Ilardia, J. L., Gangoiti, G. and Iza, J.: Long term hourly measurement of 62 non-methane hydrocarbons in an urban area: Main results and contribution of non-traffic sources, *Atmos. Environ.*, 40(16), 2860–2872, doi:10.1016/j.atmosenv.2006.01.005, 2006.

European Environmental Agency (EEA): Air quality in Europe — 2016 report (N^o 28), <https://www.eea.europa.eu/publications/air-quality-in-europe-2016>

10 Evtugina, M., Alves, C., Calvo, A., Nunes, T., Tarelho, L., Duarte, M., Prozil, S. O., Evtuguin, D. V. and Pio, C.: VOC emissions from residential combustion of Southern and mid-European woods, *Atmos. Environ.*, 83, 90–98, doi:10.1016/j.atmosenv.2013.10.050, 2014.

Fameli, K.-M. and Assimakopoulos, V. D.: The new open Flexible Emission Inventory for Greece and the Greater Athens Area (FEI-GREGAA): Account of pollutant sources and their importance from 2006 to 2012, *Atmos. Environ.*, 137, 17–37, 2016.

15 Fourtziou, L., Liakakou, E., Stavroulas, I., Theodosi, C., Zarnpas, P., Psiloglou, B., Sciare, J., Maggos, T., Bairachtari, K., Bougiatioti, A., Gerasopoulos, E., Sarda-Estève, R., Bonnaire, N. and Mihalopoulos, N.: Multi-tracer approach to characterize domestic wood burning in Athens (Greece) during wintertime, *Atmos. Environ.*, 148, 89–101, doi:10.1016/j.atmosenv.2016.10.011, 2017.

20 Fuentes, J. D., Gu, L., Lerdau, M., Atkinson, R., Baldocchi, D., Bottenheim, J., Ciccioli, P., Lamb, B., Geron, C. and Guenther, A.: Biogenic hydrocarbons in the atmospheric boundary layer: a review, *Bull. Am. Meteorol. Soc.*, 81(7), 1537–1575, 2000.

Gaeggeler, K., Prevot, A. S. H., Dommen, J., Legreid, G., Reimann, S. and Baltensperger, U.: Residential wood burning in an Alpine valley as a source for oxygenated volatile organic compounds, hydrocarbons and organic acids, *Atmos. Environ.*, 42(35), 8278–8287, doi:10.1016/j.atmosenv.2008.07.038, 2008.

25 Giakoumi, A., Maggos, T., Michopoulos, J., Helmis, C. and Vasilakos, C.: PM_{2.5} and volatile organic compounds (VOCs) in ambient air: a focus on the effect of meteorology, *Environ. Monit. Assess.*, 152(1–4), 83, doi:10.1007/s10661-008-0298-2, 2009.

30 Gratsea, M., Liakakou, E., Mihalopoulos, N., Adamopoulos, A., Tsilibari, E. and Gerasopoulos, E.: The combined effect of reduced fossil fuel consumption and increasing biomass combustion on Athens' air quality, as inferred from long term CO measurements, *Sci. Total Environ.*, 592(Supplement C), 115–123, doi:10.1016/j.scitotenv.2017.03.045, 2017.

Gros, V., Gaimoz, C., Herrmann, F., Custer, T., Williams, J., Bonsang, B., Sauvage, S., Locoge, N., d'Argouges, O., Sarda-Estève, R. and Sciare, J.: Volatile organic compounds sources in Paris in spring 2007. Part I: qualitative analysis, *Environ. Chem.*, 8(1), 74–90, doi:10.1071/EN10068, 2011.

- Guenther, A., Hewitt, C. N., Erickson, D., Fall, R., Geron, C., Graedel, T., Harley, P., Klinger, L., Lerdau, M., McKay, W. A., Pierce, T., Scholes, B., Steinbrecher, R., Tallamraju, R., Taylor, J. and Zimmerman, P.: A global model of natural volatile organic compound emissions, *J. Geophys. Res. Atmospheres*, 100(D5), 8873–8892, doi:10.1029/94JD02950, 1995.
- 5 Gustafson, P., Barregard, L., Strandberg, B. and Sällsten, G.: The impact of domestic wood burning on personal, indoor and outdoor levels of 1,3-butadiene, benzene, formaldehyde and acetaldehyde, *J. Environ. Monit.*, 9(1), 23–32, doi:10.1039/B614142K, 2007.
- Hellén, H., Hakola, H., Haaparanta, S., Pietarila, H. and Kauhaniemi, M.: Influence of residential wood combustion on local air quality, *Sci. Total Environ.*, 393(2–3), 283–290, doi:10.1016/j.scitotenv.2008.01.019, 2008.
- 10 Ibarra-Berastegi, G., Elias, A., Barona, A., Saenz, J., Ezcurra, A. and Diaz de Argandoña, J.: From diagnosis to prognosis for forecasting air pollution using neural networks: Air pollution monitoring in Bilbao, *Environ. Model. Softw.*, 23(5), 622–637, doi:10.1016/j.envsoft.2007.09.003, 2008.
- Jaimes-Palomera, M., Retama, A., Elias-Castro, G., Neria-Hernández, A., Rivera-Hernández, O. and Velasco, E.: Non-methane hydrocarbons in the atmosphere of Mexico City: Results of the 2012 ozone-season campaign, *Atmos. Environ.*, 132(Supplement C), 258–275, doi:10.1016/j.atmosenv.2016.02.047, 2016.
- 15 IARC, Chemical Agents and Related Occupations, Monographs on the Evaluation of Carcinogenic Risks to Humans, 2012, vol. 100F, 249-285; 309-333 <http://monographs.iarc.fr/ENG/Monographs/vol100F/mono100F.pdf>
- Kalabokas, P., Viras, L. and Repapis, C.: Analysis of the 11-year record (1987–1997) of air pollution measurements in Athens, Greece. Part I: Primary air pollutants, *Glob. Nest Int. J.*, 1(3), 157–168, 1999.
- 20 Kaltsonoudis, C., Kostenidou, E., Florou, K., Psichoudaki, M. and Pandis, S. N.: Temporal variability and sources of VOCs in urban areas of the eastern Mediterranean, *Atmos Chem Phys*, 16(23), 14825–14842, doi:10.5194/acp-16-14825-2016, 2016.
- 25 Kanakidou, M., Mihalopoulos, N., Kindap, T., Im, U., Vrekoussis, M., Gerasopoulos, E., Dermizaki, E., Unal, A., Koçak, M., Markakis, K., Melas, D., Kouvarakis, G., Youssef, A. F., Richter, A., Hatzianastassiou, N., Hilboll, A., Ebojie, F., Wittrock, F., von Savigny, C., Burrows, J. P., Ladstaetter-Weissenmayer, A. and Moubasher, H.: Megacities as hot spots of air pollution in the East Mediterranean, *Atmos. Environ.*, 45(6), 1223–1235, doi:10.1016/j.atmosenv.2010.11.048, 2011.
- Kansal, A.: Sources and reactivity of NMHCs and VOCs in the atmosphere: A review, *J. Hazard. Mater.*, 166(1), 17–26, doi:10.1016/j.jhazmat.2008.11.048, 2009.
- Kassomenos, P., Kotroni, V., and Kallos, G.: Analysis of climatological 710 and air quality observations from Greater Athens Area, *Atmos. Environ.*, 29, 3671-3688, doi.org/10.1016/1352-2310(94)00358-R, 1995.
- 30 Klemm, O., Ziomas, I. C., Balis, D., Suppan, P., Slemr, J., Romero, R. and Vyras, L. G.: A summer air-pollution study in Athens, Greece, *Atmos. Environ.*, 32(12), 2071–2087, doi:10.1016/S1352-2310(97)00424-X, 1998.

- Kourtidis, K. A., Ziomas, I. C., Rappenglueck, B., Proyou, A. and Balis, D.: Evaporative traffic hydrocarbon emissions, traffic CO and speciated HC traffic emissions from the city of Athens, *Atmos. Environ.*, 33(23), 3831–3842, doi:10.1016/S1352-2310(98)00395-1, 1999.
- Lalas, D. P., Veirs, V. R., Karras, G. and Kallos, G.: An analysis of the SO₂ concentration levels in Athens, Greece, *Atmospheric Environ.* 1967, 16(3), 531–544, doi:10.1016/0004-6981(82)90162-7, 1982.
- Lalas, D. P., Asimakopoulos, D. N., Deligiorgi, D. G. and Helmis, C. G.: Sea-breeze circulation and photochemical pollution in Athens, Greece, *Atmospheric Environ.* 1967, 17(9), 1621–1632, doi:10.1016/0004-6981(83)90171-3, 1983.
- Lalas, D. P., Tombrou-Tsella, M., Petrakis, M., Asimakopoulos, D. N. and Helmis, C.: An experimental study of the horizontal and vertical distribution of ozone over Athens, *Atmospheric Environ.* 1967, 21(12), 2681–2693, doi:10.1016/0004-6981(87)90200-9, 1987.
- Liu, Y., Shao, M., Lu, S., Chang, C., Wang, J.-L. and Chen, G.: Volatile organic compound (VOC) measurements in the Pearl River Delta (PRD) region, China, *Atmospheric Chem. Phys.*, 8(6), 1531–1545, 2008.
- Mantis, H. T., Repapis, C. C., Zerefos, C. S. and Ziomas, J. C.: Assessment of the Potential for Photochemical Air Pollution in Athens: A Comparison of Emissions and Air-Pollutant Levels in Athens with Those in Los Angeles, *J. Appl. Meteorol.*, 31(12), 1467–1476, doi:10.1175/1520-0450(1992)031<1467:AOTPPF>2.0.CO;2, 1992.
- Melas, D., Ziomas, I., Klemm, O. and Zerefos, C. S.: Anatomy of the sea-breeze circulation in Athens area under weak large-scale ambient winds, *Atmos. Environ.*, 32(12), 2223–2237, doi:10.1016/S1352-2310(97)00420-2, 1998.
- Moschonas, N. and Glavas, S.: C₃-C₁₀ hydrocarbons in the atmosphere of Athens, Greece, *Atmos. Environ.*, 30(15), 2769–2772, doi:10.1016/1352-2310(95)00488-2, 1996.
- Moschonas, N., Glavas, S. and Kouimtzi, T.: C₃ to C₉ hydrocarbon measurements in the two largest cities of Greece, Athens and Thessaloniki. Calculation of hydrocarbon emissions by species. Derivation of hydroxyl radical concentrations, *Sci. Total Environ.*, 271(1), 117–133, doi:10.1016/S0048-9697(00)00838-X, 2001.
- Nester, K.: Influence of sea breeze flows on air pollution over the Attica peninsula, *Atmos. Environ.*, 29(24), 3655–3670, doi:10.1016/1352-2310(95)98468-N, 1995.
- Paraskevopoulou, D., Liakakou, E., Gerasopoulos, E. and Mihalopoulos, N.: Sources of atmospheric aerosol from long-term measurements (5 years) of chemical composition in Athens, Greece, *Sci. Total Environ.*, 527(Supplement C), 165–178, doi:10.1016/j.scitotenv.2015.04.022, 2015.
- Rappenglück, B., Fabian, P., Kalabokas, P., Viras, L. G. and Ziomas, I. C.: Quasi-continuous measurements of non-methane hydrocarbons (NMHC) in the Greater Athens area during medcaphot-trace, *Atmos. Environ.*, 32(12), 2103–2121, doi:10.1016/S1352-2310(97)00430-5, 1998.
- Rappenglück, B., Kourtidis, K., Melas, D. and Fabian, P.: Observations of biogenic and anthropogenic NMHC in the greater Athens area during the PAUR campaign, *Phys. Chem. Earth Part B Hydrol. Oceans Atmosphere*, 24(6), 717–724, doi:10.1016/S1464-1909(99)00071-4, 1999.

- Saffari, A., Daher, N., Samara, C., Voutsas, D., Kouras, A., Manoli, E., Karagiozidou, O., Vlachokostas, C., Moussiopoulos, N., Shafer, M. M., Schauer, J. J. and Sioutas, C.: Increased Biomass Burning Due to the Economic Crisis in Greece and Its Adverse Impact on Wintertime Air Quality in Thessaloniki, *Environ. Sci. Technol.*, 47(23), 13313–13320, doi:10.1021/es403847h, 2013.
- 5 Salameh, T., Sauvage, S., Afif, C., Borbon, A., Léonardis, T., Brioude, J., Waked, A. and Locoge, N.: Exploring the seasonal NMHC distribution in an urban area of the Middle East during ECOCEM campaigns: very high loadings dominated by local emissions and dynamics, *Environ. Chem.*, 12(3), 316–328, doi:10.1071/EN14154, 2015.
- Sauvage, S., Plaisance, H., Locoge, N., Wroblewski, A., Coddeville, P. and Galloo, J. C.: Long term measurement and source apportionment of non-methane hydrocarbons in three French rural areas, *Atmos. Environ.*, 43(15), 2430–2441, doi:10.1016/j.atmosenv.2009.02.001, 2009.
- 10 Schauer, J. J., Kleeman, M. J., Cass, G. R. and Simoneit, B. R. T.: Measurement of Emissions from Air Pollution Sources. 3. C1–C29 Organic Compounds from Fireplace Combustion of Wood, *Environ. Sci. Technol.*, 35(9), 1716–1728, doi:10.1021/es001331e, 2001.
- Seinfeld, J. H. and Pandis, S. N.: *Atmospheric Chemistry and Physics: From Air Pollution to Climate Change*, John Wiley & Sons., 2016.
- 15 Theodosi, C., Grivas, G., Zarmas, P., Chaloulakou, A. and Mihalopoulos, N.: Mass and chemical composition of size-segregated aerosols (PM₁, PM_{2.5}, PM₁₀) over Athens, Greece: local versus regional sources, *Atmos Chem Phys*, 11(22), 11895–11911, doi:10.5194/acp-11-11895-2011, 2011.
- Tsigaridis, K. and Kanakidou, M.: Global modelling of secondary organic aerosol in the troposphere: a sensitivity analysis, *Atmos Chem Phys*, 3(5), 1849–1869, doi:10.5194/acp-3-1849-2003, 2003.
- 20 Vrekoussis, M., Richter, A., Hilboll, A., Burrows, J. P., Gerasopoulos, E., Lelieveld, J., Barrie, L., Zerefos, C. and Mihalopoulos, N.: Economic crisis detected from space: Air quality observations over Athens/Greece, *Geophys. Res. Lett.*, 40(2), 458–463, doi:10.1002/grl.50118, 2013.
- WHO - IARC: Outdoor air pollution a leading environmental cause of cancer deaths, Press Release no221, 2013.
- 25 Zhang, Q., Wu, L., Fang, X., Liu, M., Zhang, J., Shao, M., Lu, S. and Mao, H.: Emission factors of volatile organic compounds (VOCs) based on the detailed vehicle classification in a tunnel study, *Sci. Total Environ.*, 624, 878–886, doi:10.1016/j.scitotenv.2017.12.171, 2018.
- Zhang, Y., Yang, W., Simpson, I., Huang, X., Yu, J., Huang, Z., Wang, Z., Zhang, Z., Liu, D., Huang, Z., Wang, Y., Pei, C., Shao, M., Blake, D. R., Zheng, J., Huang, Z. and Wang, X.: Decadal changes in emissions of volatile organic compounds (VOCs) from on-road vehicles with intensified automobile pollution control: Case study in a busy urban tunnel in south China, *Environ. Pollut.*, 233, 806–819, doi:10.1016/j.envpol.2017.10.133, 2018.
- 30 Ziomas, I. C., Suppan, P., Rappengluck, B., Balis, D., Tzoumaka, P., Melas, D., Papayiannis, D., Fabian, P., and Zerefos, C. S.: A contribution to the study of photochemical smog in the greater Athens area. *Beitrage zur Physik der Atmosphäre-Contributions to Atmospheric Physics*, 68(3), 191-204, 1995.

Table 1. Comparison of NMHCs mean levels between this study and already published works in Athens, Greek and other Mediterranean or European sites. Information about the analyzing or sampling techniques and data resolution are included when available. The number of measurements^a for each compound determined on the current samples is included below the table.

Studies	Rappenglück et al., 1998		Rappenglück et al. 1999	Moschonas and Glavas, 1996	Kaltsonoudis et al. 2016		Baudic et al., 2016	Salameh et al., 2015	Durana et al., 2006	Current work			
<u>Analysis details</u>	GC – FID Every 20min		GC – FID Every 20min	GC – MS 60 min (morning sampling, 12 canisters)	PTR-MS Every 10s/24h		GC – FID	GC - FID	GC - FID	GC – FID Every 30min			
	20 August – 20 September 1994, Athens, Greece		30 May – 16 June 1996, Athens, Greece	June 1993, May and July 1994, Athens, Greece	3- 26 July 2012 (Demokritos) & 9 January – 6 February 2013 (Thissio)		16 October – 22 November 2010 Paris, France	28 January – 12 February 2012 Beirut, Lebanon	April-October 1998-2001 February-July 2004 Bilbao Spain ^b	16 October 2015 - 15 February 2016, Athens, Greece			
<u>NMHCs</u>	Patision (Urban)	Demokritos (Suburban)	Tatoi (Suburban)	Ancient Agora (urban)	Demokritos (Suburban)	Thissio (Urban background)	Les Halles station (Urban background)	Saint Joseph University (Suburban)	Bilbao (Urban center)	Thissio (Urban background)			
										Mean	Median	Min	Max
	ppbv		ppbv	ppbv	ppb		ppb	ppb	ppbv	ppb			
Ethane							3.8	2.8	2.5 - 3.5	4.5	3.1	0.6	25.9
Ethylene							1.3	2.1	2 - 2.3	4.1	2.2	0.3	22.9
Propane				1.2			1.6	3.0	1.7 - 2.5	3.1	1.8	0.2	17.8
Propene				3.9			0.4	0.6	0.7-0.9	1.5	0.6	0.02	15.7
i-Butane				1.1			0.9	1.9	0.7-2	2.3	1.1	0.1	14.9
n-Butane	12.4	1.6	0.19	2.1			1.5	3.6	1.8 - 2.6	2.6	1.3	0.1	15.2
	(with 1-butene)		(with 1-butene)										
Acetylene							0.5	2.2	1.5 - 2.7	4.2	2.4	0.1	28.5
i-Pentane	26.3	3.2	0.93	11.7			0.7	2.4	1 - 1.7	4.7	2.6	0.2	23.8
n-Pentane	14.2	1.7	0.27	4.2			0.3	0.5	0.4 - 0.7	1.1	0.6	0.1	9.3
	(with 2-methyl-1-butene)		(with 2-methyl-1-butene)										
Isoprene			3.18(with trans-2-pentene & cis-2-pentene)		0.7	1.1	0.1	0.1		0.2	0.1	0.01	1.4
Benzene	11.7	2.5	2.12	5.0	0.2	1.0	0.4	0.5	0.5 - 1	0.8	0.5	0.02	5.3
Toluene	21.2	6.7	1.15	14.3	0.8	2.3	0.8	2.2	2 - 2.6	2.2 ^d	1.0 ^d	0.1 ^d	13.7 ^d
Ethylbenzene	4.0	1.3	0.20	2.7				0.3	0.6 - 0.8	0.4 ^d	0.2 ^d	0.03 ^d	2.7 ^d
m-/p- Xylenes	11.3 ^c	3.2 ^c	0.63 ^c	12.1				0.4	2.0 – 2.4	1.2 ^d	0.5 ^d	0.03 ^d	8.3 ^d
o - Xylene	5.5	1.5	0.3	3.7				0.3	0.4 – 0.5	0.4 ^d	0.2 ^d	0.03 ^d	3.1 ^d

^a ethane N= 2848, ethylene N=2859, propane N=2861, propene N=2842, i-Butane N=2876, n-butane N=2879, acetylene N=2565, i-pentane N=2874, n-pentane N=2859, isoprene N=264, benzene N=2683, toluene N=637.

5

^b Range estimated from Figure 1, included in Durana et al., 2006.

^c Sum of the reported mean value for m – Xylene and p – Xylene.

^d Only from 21st January 2016 to 15 February 2016

Table 2: Enhancement ratios of NMHC to NO_x (ppb/ppb) and to CO (ppb/ppb), calculated from the present data-set for Thissio Station and the Street canyon measurements (Patisision station) for the time-window of the traffic rush hours. The enhancement ratios presented in the 3rd and 6th column are reported in Kourtidis et al., (1999) and they were calculated for the same station in the street canyon.

Ratios of NMHCs to:	NO _x (ppb/ppb)			CO (ppb/ppb)		
	Thissio station (urban background)	Patisision station (traffic)	Patisision station (traffic), 1994*	Thissio station (urban background)	Patisision station (traffic)	Patisision station (traffic), 1994
	21 January - 15 February 2016	23 - 24 February 2017	20 August - 20 September 1994	21 January - 15 February 2016	23 - 24 February 2017	20 August - 20 September 1994
i - Pentane	0.0639	0.0490	0.2468	0.0072	0.0058	0.0098
Benzene	0.0095	0.0083	0.1042	0.0012	0.0009	0.00414
Toluene	0.0417	0.0320	0.1799	0.0056	0.0034	0.00715
Ethylbenzene	0.0073	0.0053	0.0338			
o - Xylene	0.0082	0.0059	0.0471			

*~~The NMHC to NO_x enhancement ratios given in w/w (weight/weight) were converted in ppb/ppb by dividing them with the ratio of the molecular weight of the NMHC to the molecular weight of NO_x (equal to 31.6 according to Kourtidis et al., 1999).~~ The NMHC-to-NO_x enhancement ratios of Kourtidis et al. given in w/w (weight/weight) were converted in ppb/ppb by dividing them with the ratio of the molecular weight of the NMHC to the molecular weight of NO_x (equal to 31.6 according to Kourtidis et al., 1999)

Table 3. Correlation coefficients (R^2) of NMHCs and major gaseous pollutants for the total period of measurements (all significant at $p < 0.01$).

	Ethane	Ethylene	Propane	Propene	i-Butane	n-Butane	Acetylene	i-Pentane	n-Pentane	Benzene	BC	BC _{wb}	BC _{ff}	CO
Ethane														
Ethylene	0.94													
Propane	0.92	0.94												
Propene	0.94	0.97	0.96											
i-Butane	0.82	0.90	0.95	0.92										
n-Butane	0.84	0.91	0.97	0.92	0.99									
Acetylene	0.89	0.91	0.90	0.91	0.88	0.88								
i-Pentane	0.73	0.85	0.88	0.85	0.96	0.95	0.81							
n-Pentane	0.74	0.85	0.90	0.88	0.97	0.96	0.84	0.96						
Benzene	0.87	0.95	0.93	0.96	0.91	0.92	0.89	0.87	0.89					
BC	0.93	0.95	0.92	0.96	0.88	0.89	0.90	0.84	0.85	0.93				
BC_{wb}	0.91	0.87	0.81	0.89	0.70	0.72	0.77	0.65	0.64	0.83	0.91			
BC_{ff}	0.84	0.90	0.89	0.90	0.91	0.91	0.89	0.89	0.90	0.89	0.95	0.75		
CO	0.91	0.95	0.94	0.96	0.92	0.93	0.92	0.87	0.89	0.95	0.97	0.87	0.93	
NO	0.86	0.90	0.90	0.90	0.90	0.91	0.89	0.90	0.88	0.89	0.91	0.76	0.92	0.94

	Ethane	Ethylene	Propane	Propene	i-Butane	n-Butane	Acetylene	i-Pentane	n-Pentane	Benzene	BC	BC _{wb}	BC _{ff}	CO
Ethane														
Ethylene	0.94													
Propane	0.92	0.94												
Propene	0.94	0.97	0.96											
i-Butane	0.82	0.90	0.95	0.92										
n-Butane	0.84	0.91	0.97	0.92	0.99									
Acetylene	0.89	0.91	0.90	0.91	0.88	0.88								
i-Pentane	0.73	0.85	0.88	0.85	0.96	0.95	0.81							
n-Pentane	0.74	0.85	0.90	0.88	0.97	0.96	0.84	0.96						
Benzene	0.87	0.95	0.93	0.96	0.91	0.92	0.89	0.87	0.89					
BC	0.93	0.95	0.92	0.96	0.88	0.89	0.90	0.84	0.85	0.93				
BC_{wb}	0.91	0.87	0.81	0.89	0.70	0.72	0.77	0.65	0.64	0.83	0.91			
BC_{ff}	0.84	0.90	0.89	0.90	0.91	0.91	0.89	0.89	0.90	0.89	0.95	0.75		
CO	0.91	0.95	0.94	0.96	0.92	0.93	0.92	0.87	0.89	0.95	0.97	0.87	0.93	

NO	0.86	0.90	0.90	0.90	0.90	0.91	0.89	0.90	0.88	0.89	0.91	0.76	0.92	0.94
-----------	------	------	------	------	------	------	------	------	------	------	------	------	------	------

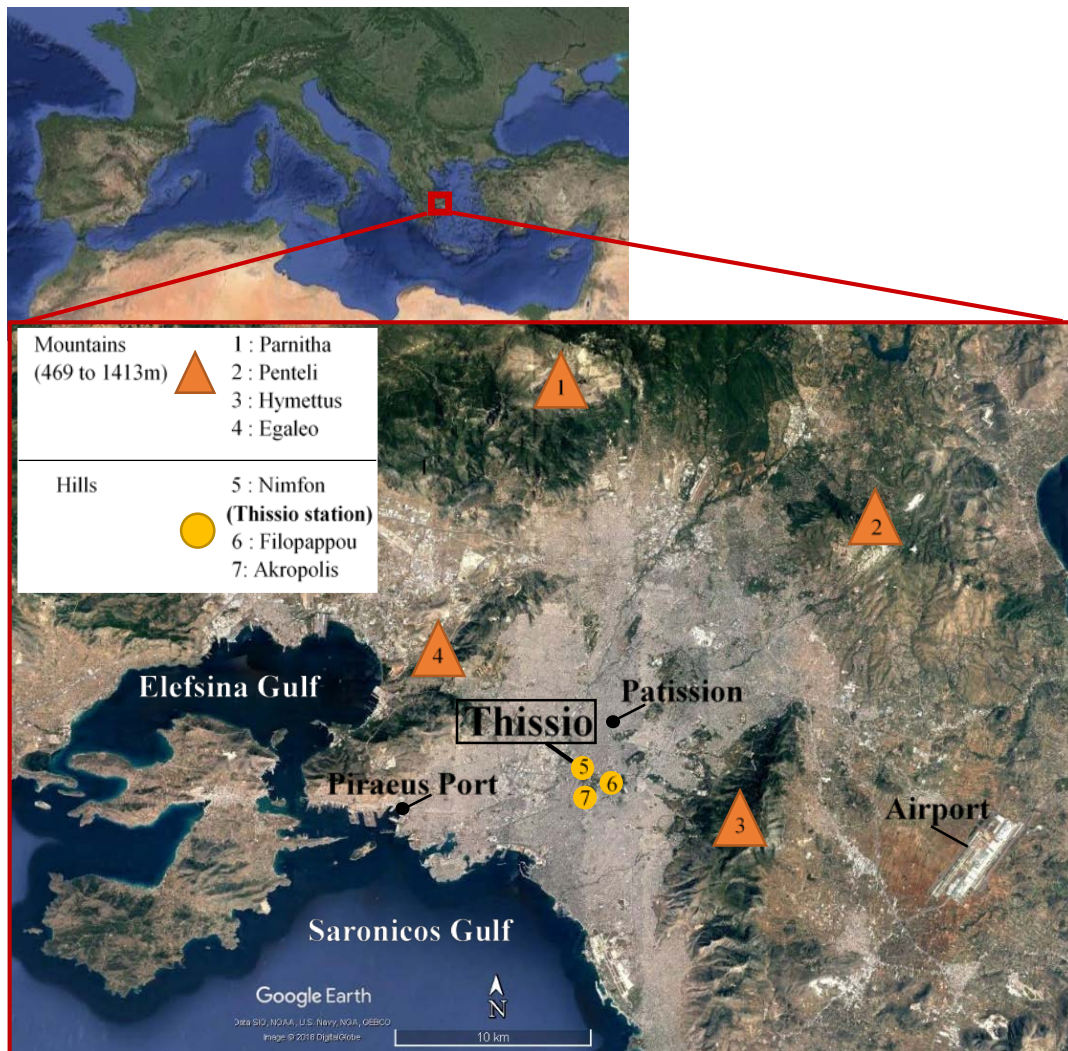


Figure 1. Map of the Greater Athens Area. The four mountains define the borders of the area.

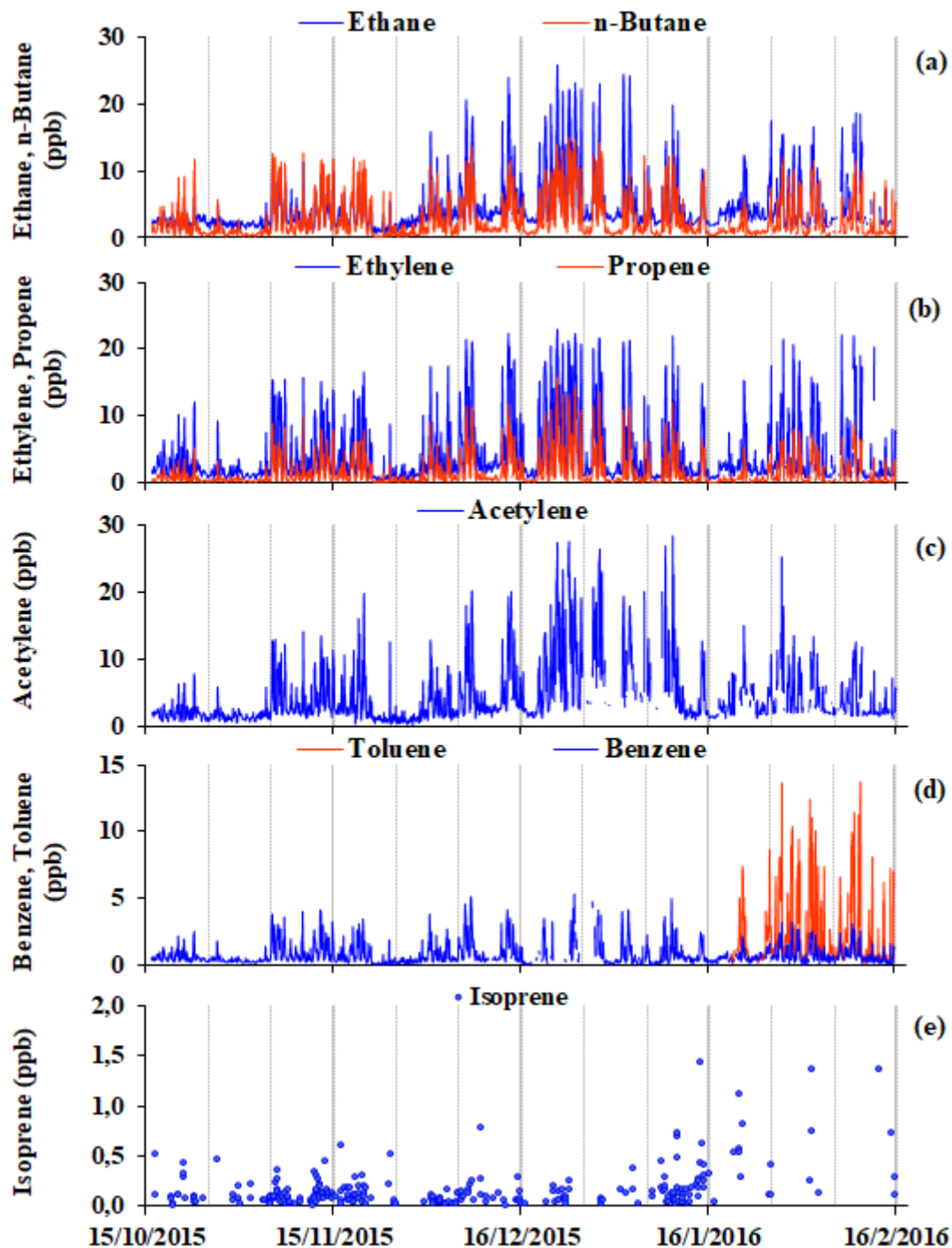


Figure 2. Temporal variability of (a) ethane and n-butane, (b) ethylene and propene, (c) acetylene, (d) benzene and toluene and (e) isoprene, based on hourly averaged levels for the period 16 October 2015 - 15 February 2016, at NOA's urban background site in Thissio, downtown Athens.

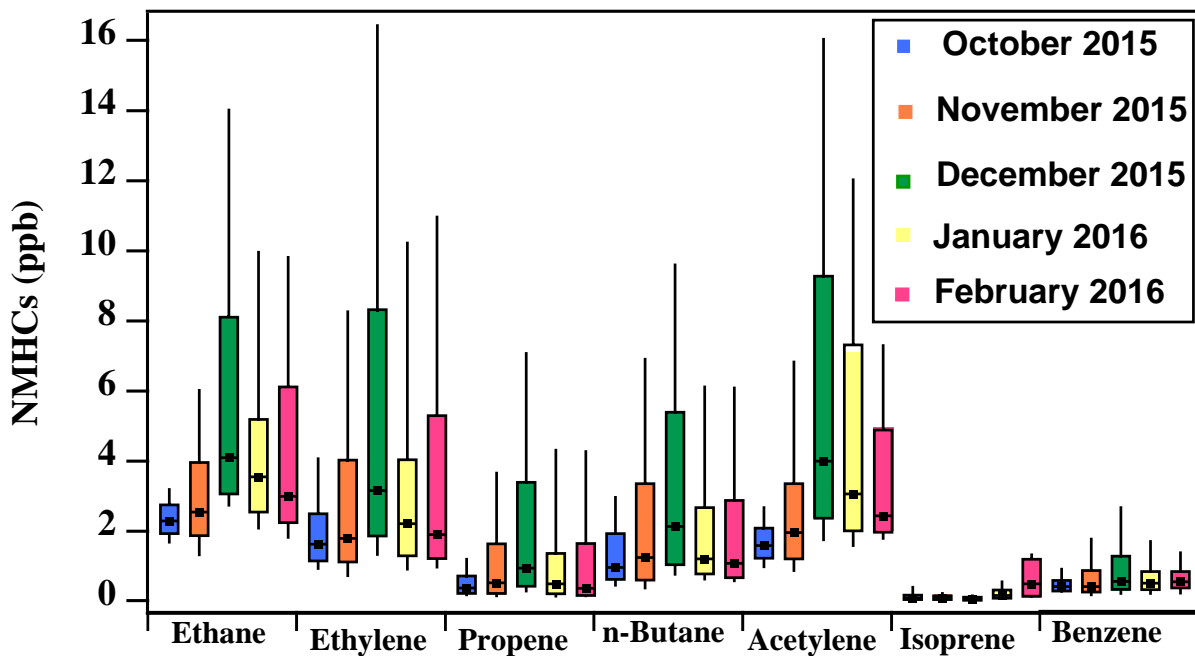


Figure 3. Monthly box plots for ethane, ethylene, propene, n-butane, acetylene, isoprene and benzene. The black dot represents the median value and the box shows the interquartile range. The bottom and the top of the box depict the 1st and 3rd quartiles (i. e. Q1 and Q3). The whiskers correspond to the 1st and the 9th deciles (i. e. D1 and D9).

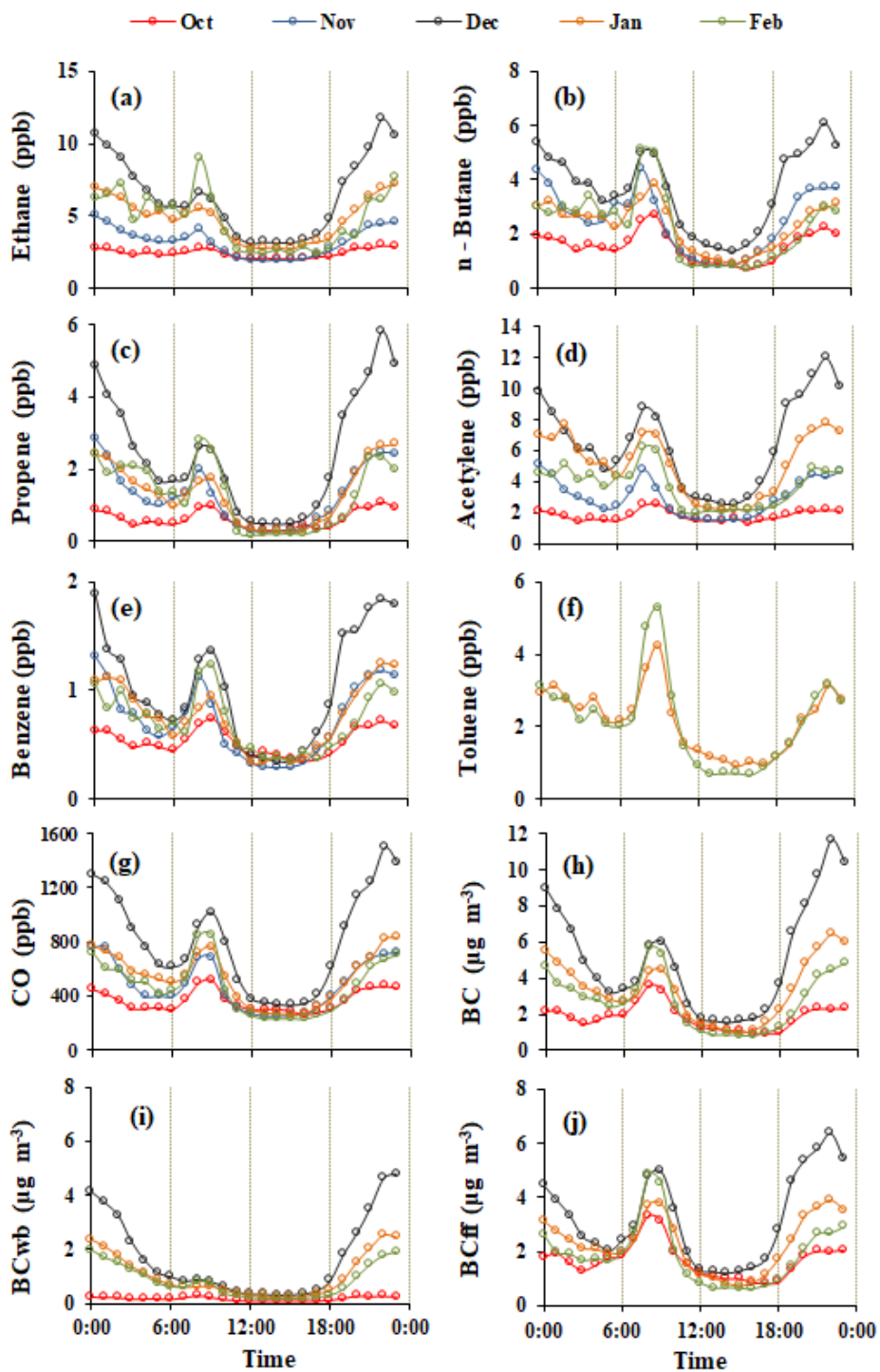


Figure 4. Monthly diurnal variability of (a) ethane, (b) n-butane, (c) propene, (d) acetylene, (e) benzene, (f) toluene, (g) CO, (h) BC, (i) BC_{wb} and (j) BC_{ff} based on hourly averaged values.

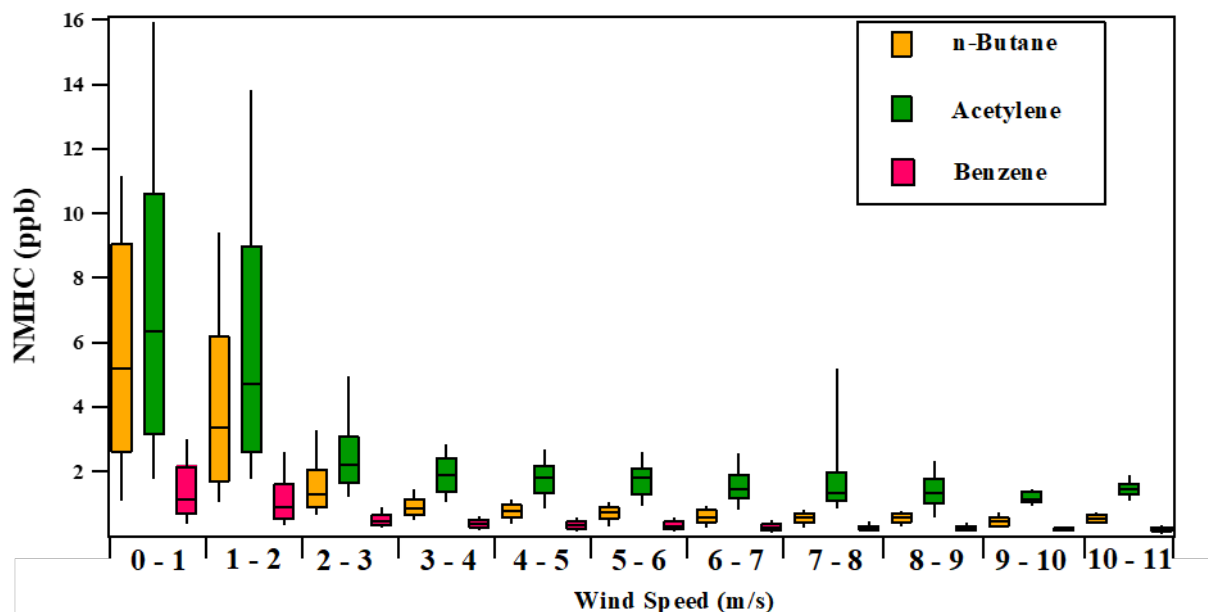


Figure 5. Boxplots for (a) n-butane, (b) acetylene and (c) benzene relatively to wind speed for the period 16 October 2015 - 15 February 2016. The black line represents the median value and the box shows the interquartile range. The bottom and the top of the box depict the 1st and 3rd quartiles (i. e. Q1 and Q3). The whiskers correspond to the 1st and the 9th deciles (i. e. D1 and D9). The range of each wind speed bin is depicted on x-axis.

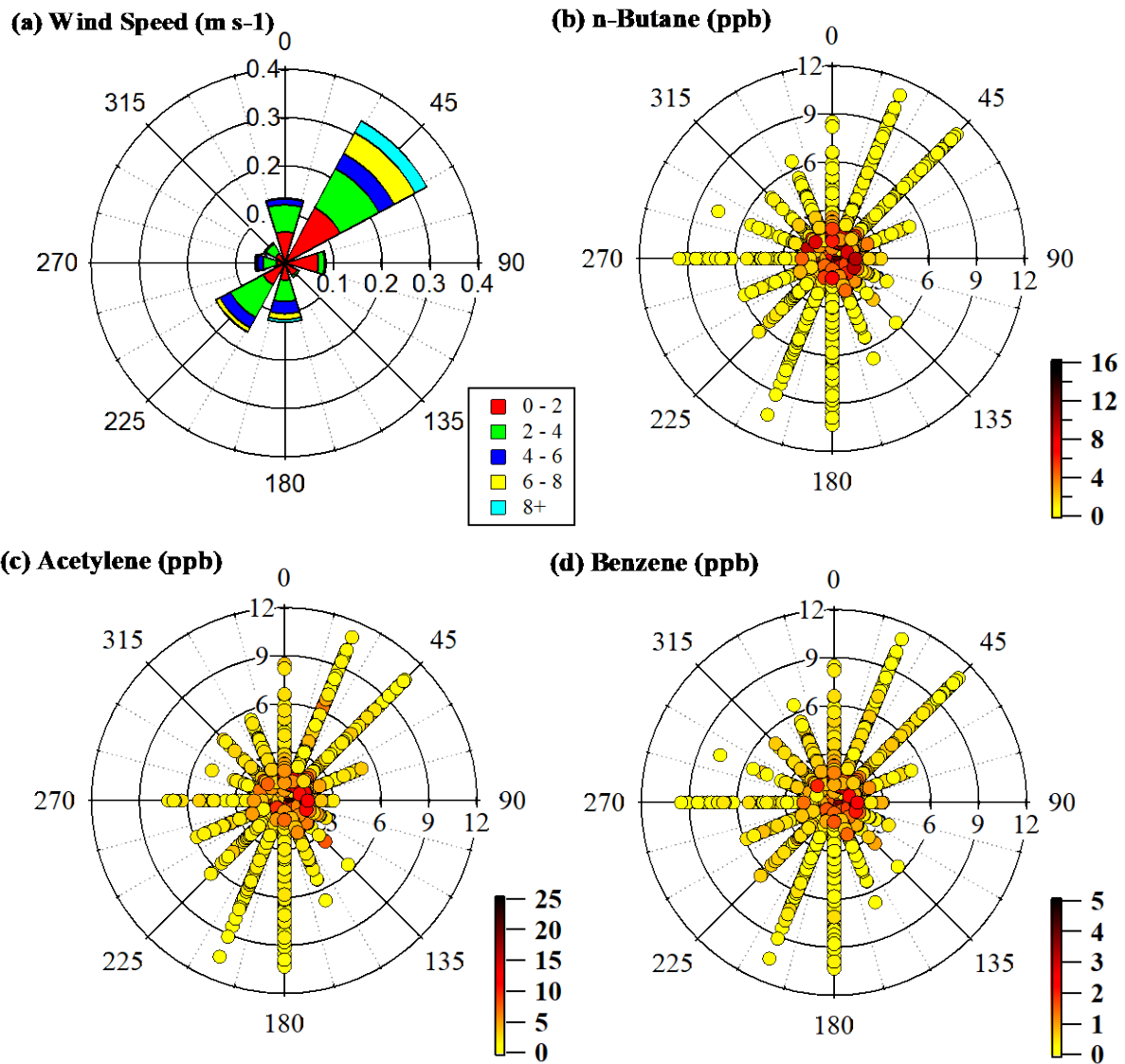


Figure 6. Wind rose (a) and concentration roses of (b) n-butane, (c) acetylene, and (d) benzene for the period 16 October 2015 to 15 February 2016.

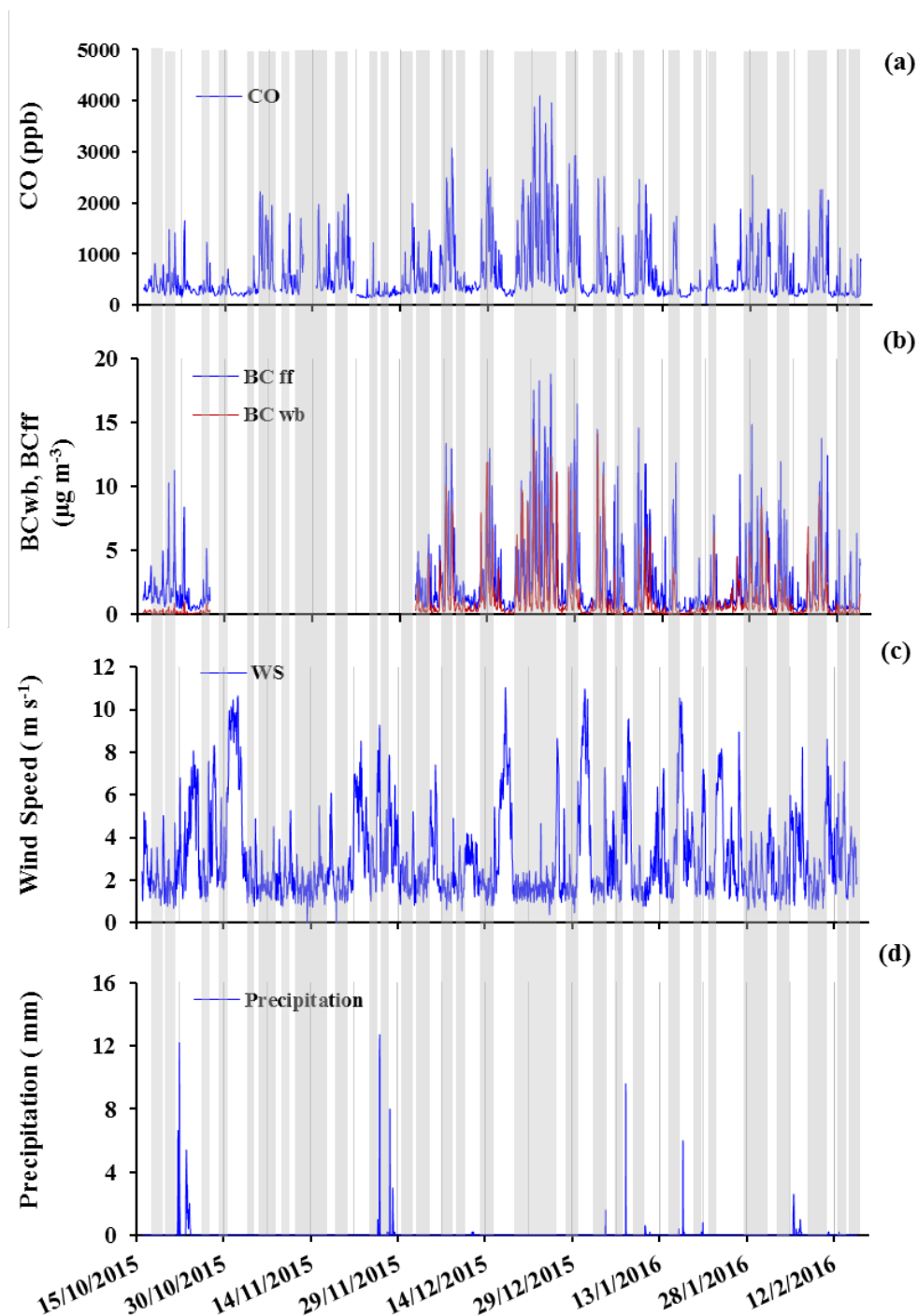


Figure 7. Temporal variability of (a) CO, (b) BC_{wb} and BC_{ff} fractions, (c) wind speed and (d) precipitation for the experimental period. Grey frames correspond to smog periods (SP), while the remaining part to non-smog periods (nSP).

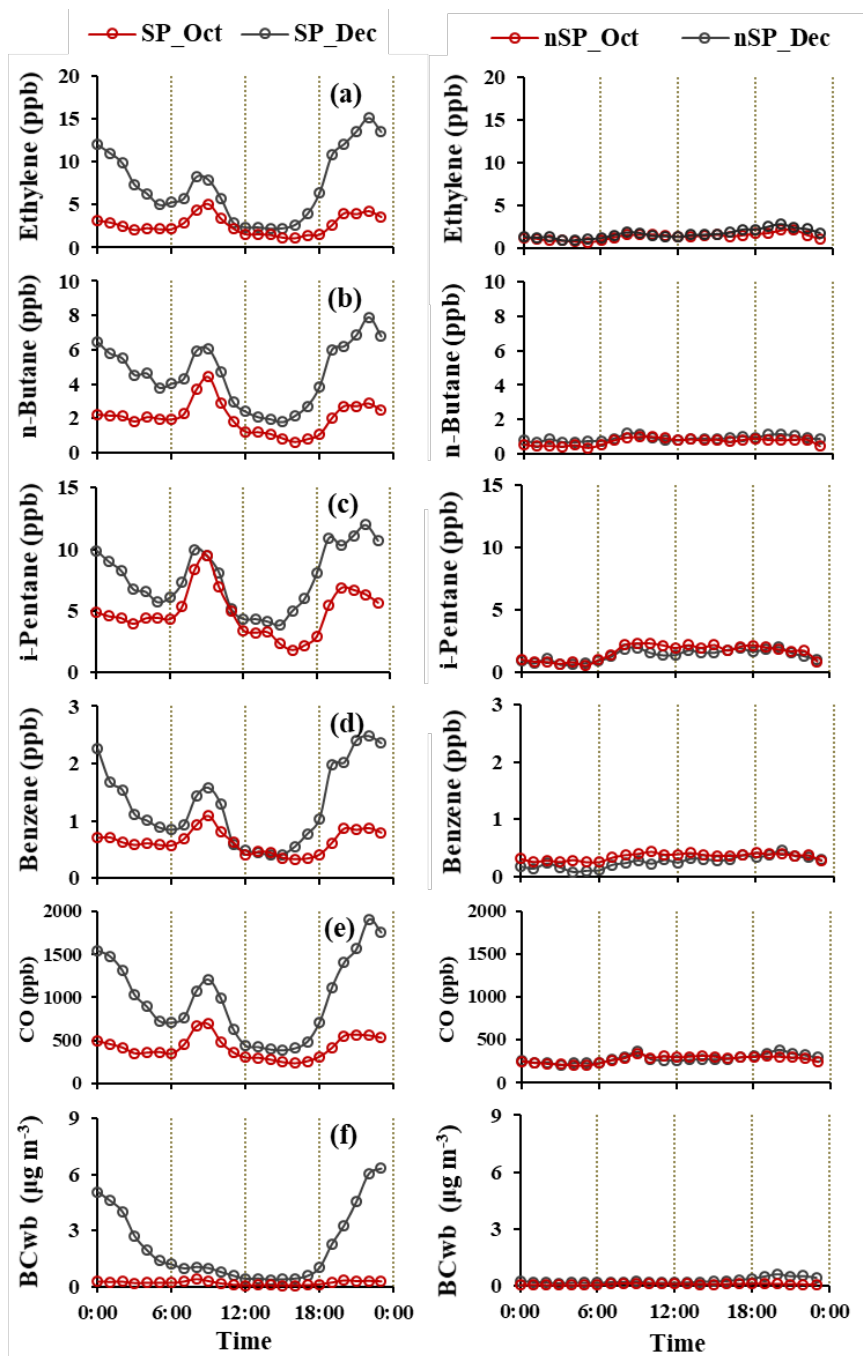


Figure 8. Diurnal patterns of (a) ethylene, (b) n-butane, (c) i-pentane, (d) benzene, (e) CO, (f) BC_{wb} during the SP (left column) and the nSP (right column) periods identified during October 2015 (red) and December 2015 (black) respectively. Note: SP periods are defined by wind-speed lower than 3 m s⁻¹ and absence of rainfall, while nSP periods are defined by winds-speeds higher than 3 m s⁻¹.

5

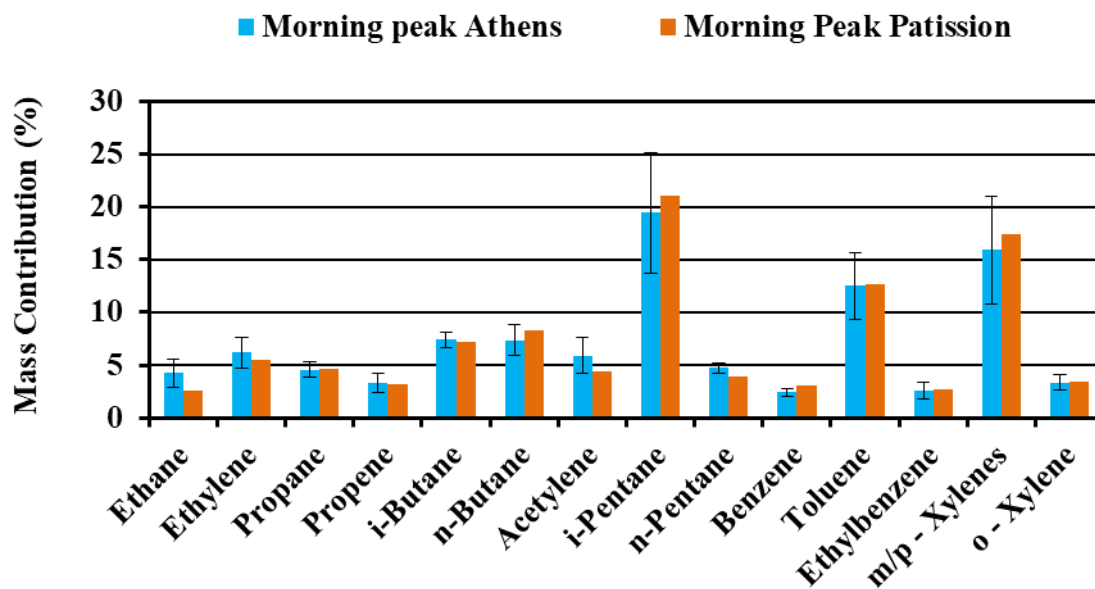


Figure 9. %Mass contribution of the measured NMHCs during the morning peak (07:00 – 10:00LT), median values in Thissio and mean values in Patission Monitoring Station.

5

10

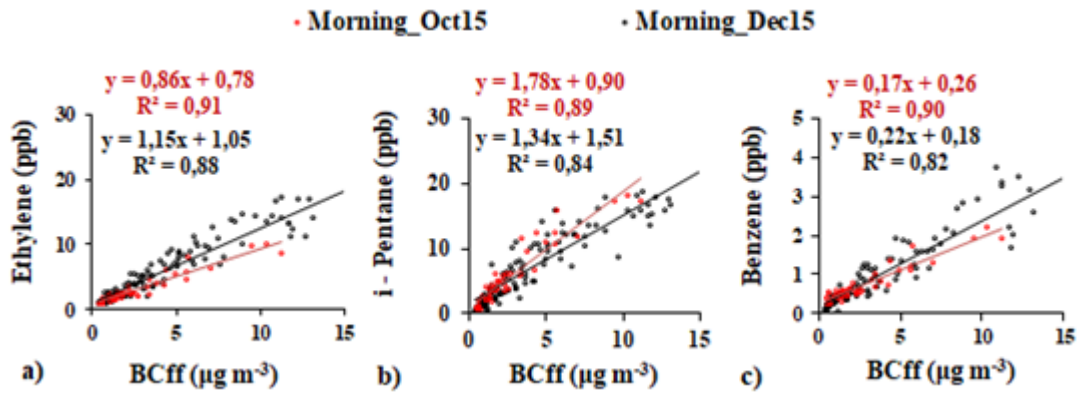


Figure 10. Regressions between ethylene, i-pentane, and benzene versus BC_{ff} (a-c) for the morning period (07:00 – 10:00LT) in October and December 2015.

5

10

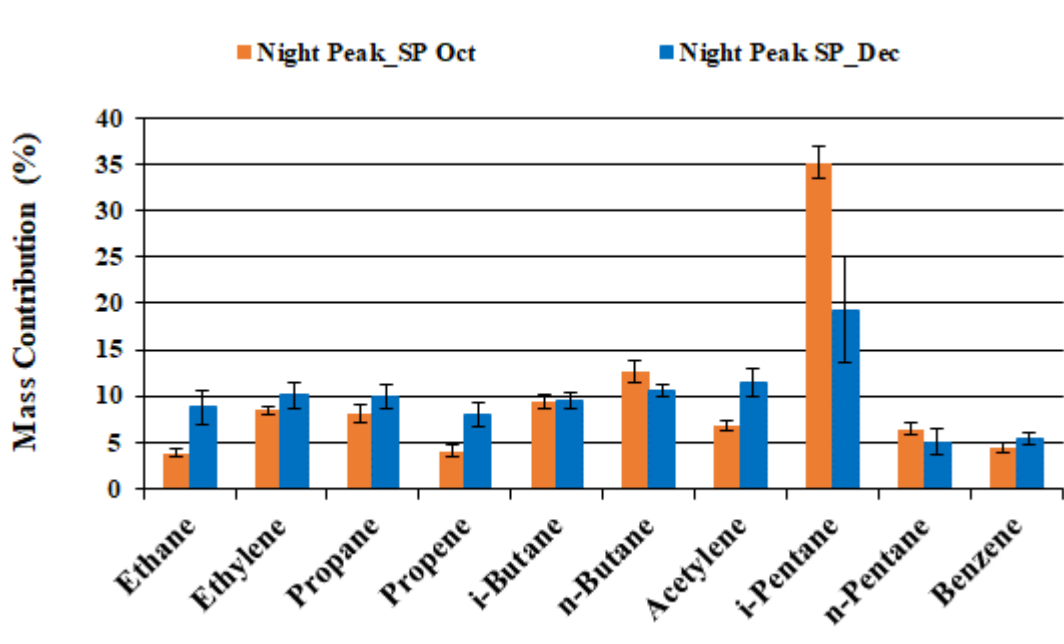


Figure 11. % Mass contribution of the measured NMHCs during the night-time enhancement period (18:00 – 05:00LT) for the SP of October (orange) and the SP of December (black color).

5

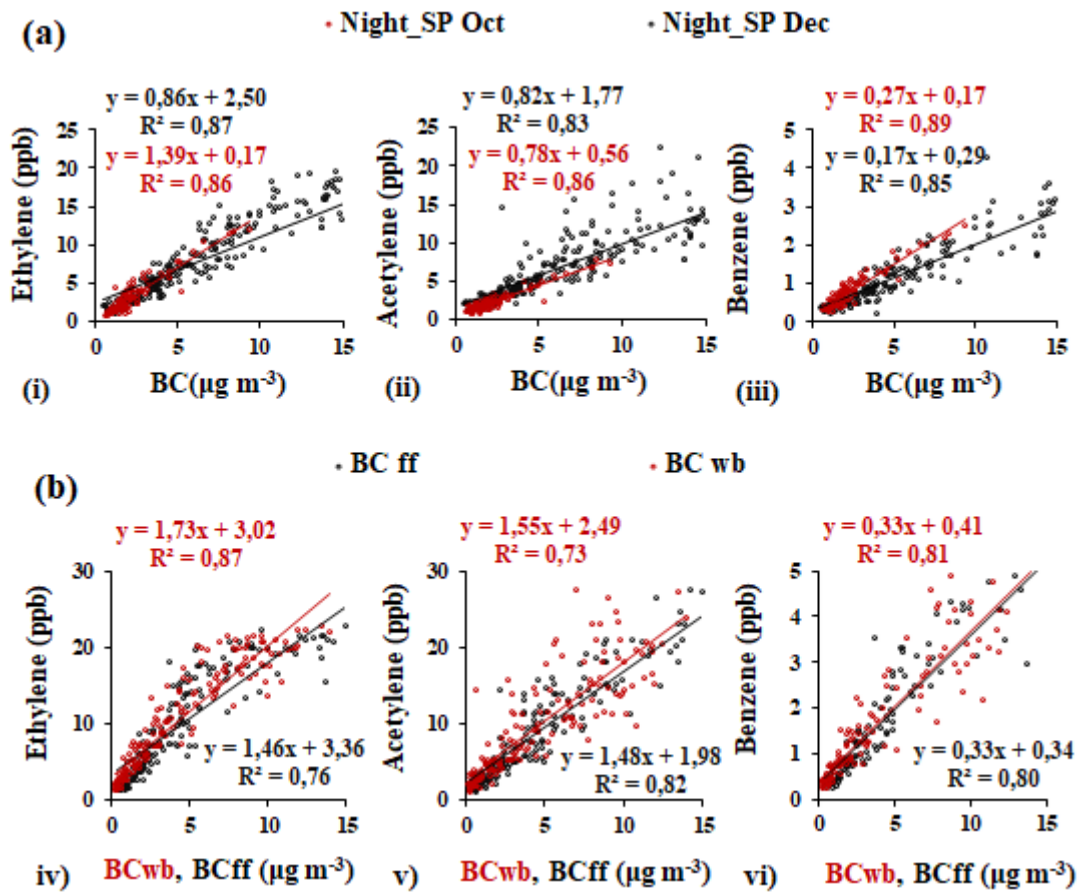


Figure 12. Regressions between ethylene, acetylene and benzene (a) against BC (i-iii) for the night period (18:00 – 05:00LT) of SP October and December 2015 and (b) against BC_{wb} (red) and BC_{ff} (black) for the night period (22:00 – 04:00LT) of SP December 2015.

5

10