

The authors would like to thank the reviewers for the valuable suggestions that helped to improve the paper. In particular, the suggestion to rerun the simulation for the DeMott et al. (2016) data led to discovery of two unit errors in the code concerning the freezing rate of MOA which subsequently propagated throughout the manuscript. Remedying the errors thus led to changes in the quantitative assessment of the results, though the qualitative conclusions remain largely unchanged.

To correct the unit errors, all simulations involving heterogeneous ice nucleation of MOA are re-run. This includes both nudged and free-running simulations, though the analysis performed for the former is mostly unaffected by the bug. The ice-activity of MOA is now three and four orders of magnitude higher than previously stated, for the Wilson et al. (2015) parametrisation and following the fit to the DeMott et al. (2016) data, respectively. This puts them much closer to the ice activity of dust, though mostly still less ice-active. Subsequently, the simulation where the Wilson et al. (2015) parametrisation is scaled up by 100 (i.e. formerly “MOA100”) is now deemed unnecessary. All figures in the manuscript (except Fig. 1 and those in the appendix, which are unaffected by the change) as well as numbers stated and interpretations thereof are now updated according to the new simulations. Figure 10 and related interpretations of it in the previous manuscript have also been changed completely as we found the new approach (looking at seasonal means) to be more helpful in our interpretations.

Replies to reviewers:

Reviewer #1:

Minor comments:

1. Is ice multiplication considered in the ECHAM-HAM model? The present results indicate that MOA can nucleate ice particles at temperatures ranging from 0 to -10°C. This is the same temperature range at which the Hallett-Mossop mechanism is believed to take place. What is the influence of ice multiplication in the ICNC reported by the model, and if it is not considered what could be the uncertainty associated to this “omission”?
 - Ice multiplication is not considered in the current simulations. Previous sensitivity tests have resulted in weak sensitivity of our model to such processes (not published). This is consistent with another manuscript in preparation by Ickes et al. where sedimenting ice crystals were found to dominate over other ice initiation processes in the mixed-phase regime. While our model is able to simulate the general observed cloud properties in the mixed phase regions (Lohmann and Neubauer 2018, ACPD), the source of the ice crystals is not a constrained property, and indeed ice multiplication does have the potential to influence the results. This could be either an amplification of the changes in cloud properties due to heterogeneous ice nucleation (if ice is initiated where it is not previously present, subsequent ice multiplication can lead to an amplified signal in the cloud properties), or a dampening of the effects (if ice multiplication acts on pre-existing ice crystals from other sources, the influence by heterogeneous ice nucleation may be masked simply due to the lower rate of ice

- production). A note is added in Sect. 2.1 of the manuscript to point out the lack of consideration for such processes.
2. Tables 2, 3, and 4. Please add the meaning of the first column abbreviations in the table's caption. This will help the readers to follow the manuscript.
 - This has now been added in the captions.
 3. The reviewer have the impression that a deeper explanation on why high concentrations of MOA are not obtained in the Southern oceans when using the Rinaldi et al. (2013) emission.
 - We now address this in slightly more detail in the manuscript: "...likely also due to the higher wind speeds and moderate chlorophyll concentrations (when using SeaWiFS maps) in these regions."
 4. P24 L10: Are additional uncertainties associated with this 10 additional years?
 - The 10 additional years of simulation should not introduce any additional uncertainties. But rather, the purpose is to increase the sample size for better statistics.
 5. The grammar can be improved in several places.
 - It's not immediately clear which parts of the manuscript the reviewer is referring to, but a few sentences have been re-worded and the grammar corrected in various places. Hopefully it helps with clarifications.

Technical Comments:

1. The use of the word "aerosols" in the title and along the manuscript is incorrect. Aerosol refers to several particles, therefore it is not necessary to use the "s". Either use "Aerosol" or "Aerosol particles".
 - Thank you for pointing this out. It has now been corrected.
2. P1 L5-6, L18-19: I am wondering if the Wegener-Bergeron-Findeisen process is the only pathway for cloud glaciation. How about ice multiplication?
 - Ice multiplication has now been noted in the manuscript as also a pathway to cloud glaciation.
3. P1 L13: Please clarify if this statement refers to a global or regional scale.
 - Global scale. This has now been added in the manuscript.
4. P1 L17: Add a reference after "homogeneously".
 - Added Rogers and Yau (1989).
5. P1 L18: Add a reference after "temperature".
 - Added Kanji et al. (2017).
6. P1 L20: Add more references after "precipitation".
 - Added Korolev (2007) in addition to Lohmann (2002).
7. P2 2: Add a reference after "effects"
 - Since this is a conclusion drawn from the previous (now cited) statements, reference was not added for this sentence.
8. P2 L4: I suggest to replace the Cziczo et al. (2017) reference with a more appropriate one (e.g., Kanji et al., 2017, Coluzza et al., 2017).
 - The Cziczo et al. (2017) reference is now changed to Kanji et al. (2017)
9. P2 L7: Why MOA is not as effective INP as mineral dust? This is based on who?
 - This statement is now changed to "While likely not as ice active as mineral dust especially in the colder mixed-phase temperatures, ..." and a reference is added for Vergara-Temprado et al. (2017).

10. P2 L9: Replace “Marine organic aerosol” with “MOA”.
 - Done.
11. P2 L9: Add a reference after “bursting”.
 - Added “e.g. Caroline and Keith, 2005”.
12. P2 L11: Add a reference after “ocean”.
 - Added “e.g. Bonsang et al., 1992”
13. P2 L12: Why insoluble organic matter only?
 - Only WIOM is considered because it is the most relevant type for ice nucleation, as was also done in previous studies (e.g. Burrows et al. 2013, Vergara-Temprado et al. 2017). Also, our model only contains a very simplistic parametrization for secondary organic aerosol formation (which is likely to be the main source of WSOM) and therefore is not suitable for examining the impact of these aerosol particles (more likely on the droplet activation).
14. P2 L16: “heterogeneously frozen ice crystals” sounds a bit awkward.
 - Now worded “heterogeneously formed ice crystals”
15. P2 L18: Spell out ISCCP.
 - Corrected.
16. P2 L26: Add a reference after “robust”.
 - This sentence is a speculation (thus the words “may not be entirely”) based on the argument laid out in the paragraph previously. There is no additional reference to support the claim. To perhaps express the idea better, the sentence is now reworded as: “...MOA may not be the sole missing ingredient responsible for the model shortfall.”
17. P3 L22: Delete “cloud droplet number concentration” as this was already defined.
 - Replaced with simply “CDNC”.
18. P4 L5: Why is sea salt independent of MOA?
 - This is a modelling choice in order to preserve the properties of the sea salt parametrization in the model, which was validated separately in previous studies. As MOA generally makes up a small fraction of the total sea spray, and as there is large uncertainties also in the sea salt emission, this assumption is not expected to have a strong impact on the results.
19. P4 L10: A hygroscopicity parameter of zero is based on who?
 - This was a rather arbitrary choice as no measurement data were available to constrain this property. Previously identified INP species (e.g. dust) indicate that a low hygroscopicity parameter would generally be expected for a good INP, and a value of zero was chosen for simplicity. The sentence is now changed slightly to “... for the last case, consistency with other potential INP candidates such as dust particles.”
20. P6 L7: Were the droplet freezing experiments conducted using a glass plate and a metal mesh? I don’t think so. This sentence is confusing.
 - The glass plate and metal mesh were referring to the collection method. The words have now been removed to avoid confusion.
21. P15 Figure 4: Add “(left)” after “Island” and “(right)” after “Head” in figure caption.
 - Added.
22. P22 L7-8: How about ice multiplication? This also takes place at this warm temperatures in the presence of ice and supercooled drops.

- Due to changes in the manuscript associated with the model re-runs, the relevant paragraph is no longer included. In terms of interpretation of the general result, possible contributions from ice multiplication were not considered in the simulations.
- 23. P22 L17: Delete "(Wilks, 216)".
 - Corrected.
- 24. P25 L19-20: How about Burrows et al. (2013) and Yun and Penner (2013)?
 - These references have now been added.
- 25. P32 L12-13: Delete <http://www.atmos....>
 - Done.
- 26. P32 L18: Correct the page numbers.
 - Is this referring to the pages 11-1 to 11-4 for Lohmann (2002)? This was double checked and does seem to be the correct page numbers.

Reviewer #2: (Susannah Burrows)

Major comments:

1. The most important comment I have is on the interpretation of the DeMott et al. (2016) dataset. DeMott et al. (2016) reported CFDC measurements of the ice nucleation activity of laboratory-generated sea spray aerosol particles that were composed of a combination of salt and organic matter. It's not completely clear to me whether the fit to the DeMott data (as presented in Fig 2) accounts for this in some way, but if I am understanding correctly, a fit was produced from the data in Fig 3 of DeMott et al. (2016), or a subset of those data, and then applied only to the surface area of the MOA portion of the sea spray aerosol - effectively, the surface area that the sea spray would have if the salt were removed (Eq. 4). It would be more appropriate to treat the DeMott data as representing the INP activity of the total sea spray surface area of particles including both salt and MOA, and to then apply the fit to that total surface area as simulated by the model. This would produce an INP activity that is greater than what is calculated when only considering the organic portion of the sea spray, but still substantially less than what would be calculated using the Wilson et al. (2015) relationship. This needs to be clarified and discussed, and if am understanding correctly what was done, I think the calculations in this one sensitivity case need to be corrected in order to accurately represent the conclusions that can be drawn from the existing experimental data.
 - Thank you for pointing this out. This was indeed incorrectly represented in our model previously. The fit to DeMott et al. (2016) data has now been corrected to be applied for the total sea spray (MOA+SS). The simulation was re-run, and the manuscript corrected accordingly.
2. I'm aware that ECHAM-HAM cloud microphysics is continually being developed further and improved. To provide some perspective the simulated cloud impacts, it would be very helpful if the authors could comment a little further on the current level of confidence in the model's ability to credibly simulate mixed-phase cloud microphysics. In particular, the authors note that the model has a weak sensitivity to heterogeneous ice nucleation, but it's not completely clear what "weak" means here

- i.e. is this in comparison to other models, to observational constraints, or to prior "expert judgement"? I recognize that this is the subject of another manuscript in preparation, but I think it is also important to contextualizing the results presented in this paper.

- In the manuscript "What is triggering ice in mixed-phase clouds in ECHAM-HAM: the importance of ice nucleation" by Ickes et al. (in preparation) the role of ice nucleation for triggering ice in mixed-phase clouds is analyzed compared to other processes, such as sedimentation of ice crystals, vertical transport of ice crystals and entrainment of ice crystals into a supercooled cloud. The analysis is based on the factorial method with the supercooled liquid fraction as a tracer for the microphysical structure of the mixed-phase clouds. It is shown that ice nucleation is less important compared to sedimentation of ice crystals, which is the dominant trigger process for ice in mixed-phase clouds in ECHAM-HAM. Heterogeneous ice nucleation and thus aerosol seems only to be an important for the initial ice in the supercooled cloud if there are no sedimenting ice crystals. This has implications for the sensitivity of the model to variations in ice nucleation parametrisations. However, the source of ice in mixed-phase clouds is in general not a well-constrained property in models and in this case does not have an impact on the general representation of the cloud microphysics in ECHAM-HAM in comparison to observations. A comparison of the mixed-phase cloud microphysics to observational data is shown in Lohmann and Neubauer (2018, ACPD), where the supercooled liquid fraction in ECHAM-HAM is shown to be relatively realistic when compared to Calipso observations.

We changed the wording in the manuscript at the end of the conclusions from "This can be partly attributed to the weak sensitivity of our model to heterogeneous ice nucleation (Ickes et al., in prep.), ..." to "This can be partly attributed to the weak sensitivity of our model to heterogeneous ice nucleation (due to the dominating contribution of cloud ice from sedimentation of crystals originating from cirrus levels; Ickes et al., in prep.), ...".

3. It would be helpful to see comparisons of the MOA100 versus noMOAfrz cloud properties on a seasonal basis, rather than only an annual mean basis. One would expect the strongest effects to occur in summertime at high latitudes (especially Southern hemisphere DJF), when longwave and shortwave radiation fluxes are greater. Could this explain why there are relatively large, and statistically significant effects on annual zonal mean LW and SW radiation at high Southern latitudes (Fig 11) despite limited effects of MOA INP on annual zonal mean cloud properties (Fig 9)?
 - Thank you for the suggestion. The seasonal mean comparisons for the cloud ice properties are now also included in the manuscript, and indeed we find the strongest signal at high latitudes during summer. The signals previously identified in the LW and SW radiation at high southern latitudes, however, have become much weaker in the re-run simulations (pointing indeed to strong internal variability and possibly very strong anomalous years in the previous simulations) and the propagation of changes in cloud properties to changes in the mean TOA radiative properties still appears to be weak.

Minor comments:

1. Figure 12: in the discussion of this figure, it is pointed out that using the statistical significance criterion applied here, some differences that are identified as statistically significant in the 10-year free-running simulation are no longer identified as significant in the 20-year free-running simulation, which the authors attribute to natural variability arising from dynamical feedbacks in the two simulations. How sensitive is this finding to the choice of significance threshold? To what extent does this finding hold if a stricter significance criterion is applied (e.g., $p < 1\%$ or $p < 0.1\%$ instead of $p < 5\%$)?
 - In the re-run simulations, the difference between the 10-year and 20-year free-running simulations is much weaker. A stricter $p < 1\%$ is now used in the manuscript, and the reduction in significance of the changes can still be noted (though on a smaller scale). On the contrary, when a more lenient $p < 5\%$ is used, the latitudes with significant changes remained more consistent between the two analysis periods.
2. Appendix A: For the comparison with Mace Head and Amsterdam Island data, arguably it might be more appropriate to compare the model's MOA with observed water-insoluble organic carbon (as opposed to total organic carbon) – which would actually would produce a better agreement with the Rinaldi et al. (2013) parameterization, at least for the Amsterdam Island seasonal cycle. I don't think this matters for the conclusions of the paper, but it might be worth mentioning.
 - The comparison is actually indeed with the observed water-insoluble organic carbon, which is then converted to WIOM to be consistent with the modelled MOA. This is now also stated in the manuscript to hopefully clear up any ambiguity.
3. Appendix A: Rinaldi et al. (2013) is one of the better available chlorophyll-based MOA parameterizations and is clearly an appropriate choice for this study. However, I think it would be appropriate to explicitly point out to non-specialist readers that considering the large differences between various models, it is not possible to infer from this figure that previous studies (Burrows et al., 2013; Vergara-Temprado et al., 2016) either significantly over- or underestimated MOA INP concentrations, compared to the current paper. This is already alluded to on p. 5, l. 3-5, but it should be pointed out again with respect to this specific analysis. Both previous studies documented that they produced OC concentrations consistent with the value typically observed in the remote marine atmosphere. In addition, the previous studies and Huang et al. have all pointed out that the uncertainty in modelling MOA INP concentrations is currently driven primarily by uncertainty regarding the INP activity of MOA, which is uncertain to at least two orders of magnitude. While important uncertainties remain in modelling of atmospheric MOA concentrations, these are comparatively well-constrained by observations of boundary-layer MOA concentrations from coastal stations and ships.
 - This point is now explicitly noted at the end of the paragraph in Appendix A: "It should be noted, however, that the assessment of the wellness of fit to observations is highly model-dependent. Thus while suitable for choosing an appropriate OMF parametrization for this particular model, no generalizations should be drawn with regards to the quality of the individual parametrisations. Indeed, each of the OMF parametrisations have been separately validated in

their respective studies and found to fit well to observations under their respective set-ups.”

Typographical / technical comments:

1. P. 9, l. 19-20: "the total sea spray is split . . . following Long et al. (2011)." I don't fully understand this sentence. Please reword for clarity.
 - Now reworded as: "...when both MOA and SS are emitted following Long et al. (2011), the total sea spray is divided between sea salt and MOA components. This would therefore also lead to decreases in the sea salt emission rates when compared to the control simulation."
2. Maybe it's just my printer, but the hatching on some figures (e.g., Figure 9) is really difficult to see. Can this be improved?
 - Yes. This was due to the plotting program used, and have now been changed to hopefully improve the clarity of the hatching.
3. P. 21, l. 5: ". . .further diagnostics are performed. . ." ("is" -> "are")
 - Due to changes in the results associated with the reruns, the relevant sentence is no longer included in the manuscript.

Global relevance of marine organic ~~aerosols~~ aerosol as ice nucleating particles

Wan Ting Katty Huang¹, Luisa Ickes^{2,*}, Ina Tegen³, Matteo Rinaldi⁴, Darius Ceburnis⁵, and Ulrike Lohmann¹

¹Institute for Atmospheric and Climate Science, ETH Zurich, Zurich, Switzerland

²Institute of Meteorology and Climate Research, Karlsruhe Institute of Technology, Karlsruhe, Germany

³Leibniz Institute for Tropospheric Research (TROPOS), Leipzig, Germany

⁴Institute of Atmospheric Sciences and Climate, National Research Council, Bologna, Italy

⁵School of Physics and Centre for Climate and Air Pollution Studies, Ryan Institute, National University of Ireland Galway, Galway, Ireland

* now at: Department of Meteorology, Stockholm University, Sweden

Correspondence to: Katty Huang (katty.huang@env.ethz.ch)

Abstract.

Ice nucleating particles (INPs) ~~lower the supersaturation required and/or~~ increase the temperature at which supercooled droplets start to freeze. They are therefore of particular interest in mixed-phase cloud temperature regimes, where supercooled liquid droplets can persist for extended periods of time in the absence of INPs. When INPs are introduced to such an environment, the cloud can quickly glaciate following ice multiplication processes and the Wegener-Bergeron-Findeisen ~~process and possibly precipitate out, altering its~~ (WBF) process. The WBF process can also cause the ice to grow to precipitation size and precipitate out. All of these processes alter the radiative properties.

Despite their potential influence on climate, the ice nucleation ability and importance of different aerosol species is still not well understood and is a field of active research. In this study we ~~used~~ use the aerosol-climate model ECHAM-HAM to examine the global relevance of marine organic ~~aerosols~~ aerosol (MOA), which ~~have~~ has drawn much interest in recent years as a potentially important INP in remote marine regions. We address the uncertainties in ~~emission~~ emissions and ice nucleation activity of MOA with a range of reasonable set-ups and find a wide range of resulting MOA burdens. The relative importance of MOA as an INP compared to dust is investigated and found to depend strongly on the type of ice nucleation parametrisation scheme chosen. On the zonal mean, freezing due to MOA leads to relative increases in the cloud ice occurrence and in-cloud number concentration close to the surface in the polar regions during summer. Slight but consistent decreases in the in-cloud ice crystal effective radius can also be observed over the same regions during all seasons. Regardless, MOA was not found to affect the ~~microphysical properties of clouds or the~~ radiative balance significantly on the global scale, due to its relatively weak ice activity and a low sensitivity of cloud ice properties to heterogeneous ice nucleation in our model.

1 Introduction

In regions with scarce ice nucleating particles (INPs), liquid cloud droplets can remain supercooled for extended periods of time before the drops freeze homogeneously ([Rogers and Yau, 1989](#)). In the presence of INPs, phase change is facilitated and supercooled cloud droplets can freeze at temperatures warmer than the homogeneous freezing temperature ([Kanji et al., 2017](#)).

5 Together with the Wegener-Bergeron-Findeisen process through which ice crystals grow at the expense of liquid droplets due to their difference in saturation vapour pressure, INPs can alter the radiative properties of clouds and thus climate through glaciation and possible precipitation (~~Lohmann, 2002~~) ([Korolev, 2007](#); [Lohmann, 2002](#)). Representation of INPs and their freezing ability is therefore of importance in climate modelling, especially for studies investigating aerosol-cloud effects.

Indeed, the subject of INPs is an area of active research in both modelling as well as laboratory and field work
10 (~~e.g. Hoose and Möhler, 2012; Cziezo et al., 2017~~) ([e.g. Hoose and Möhler, 2012](#); [Kanji et al., 2017](#)). Suggested INP candidates, such as mineral dust, terrestrial biogenic material, and black carbon, are mostly of terrestrial origin. Recently, however, more interest has been drawn to oceans being possible sources of ice-active organic matter (Bigg, 1973; Knopf et al., 2011; Wang et al., 2015; Wilson et al., 2015; DeMott et al., 2016; McCluskey et al., 2017). While likely not as ~~effective-an-INP~~ [ice active](#) as mineral dust [especially in the colder mixed-phase temperatures](#), the difference in geographical locations of their
15 emission sources may cause such marine organic ~~aerosols~~ [aerosol](#) (MOA) to become an important source of INPs in remote marine regions ([Vergara-Temprado et al., 2017](#)).

~~Marine-organic-aerosols~~ [MOA](#) can either be emitted directly as primary aerosol from the ocean surface by bubble bursting ([e.g. Caroline and Keith, 2005](#)) or formed through a secondary process involving the condensation of biogenic volatile organic compounds (BVOCs) emitted from the ocean ([e.g. Bonsang et al., 1992](#)), and the resulting ~~aerosols~~ [aerosol](#) can either be water
20 insoluble (WIOM; water insoluble organic matter) or water soluble (WSOM). The type relevant for ice nucleation is the insoluble organic matter, which ~~forms-originates~~ mainly from primary emissions (Ceburnis et al., 2008). In this study, therefore, we will only focus on the primary emitted WIOM, and thus only refer to such WIOM when discussing MOA.

In investigating the global impact of MOA as INPs using general circulation models, an earlier study by Yun and Penner (2013) found MOA to be the dominant source of heterogeneously ~~frozen-formed~~ ice crystals in the Southern Hemisphere
25 compared to contributions from dust and black carbon. They also noted a better comparison of modelled ice water path to satellite observations from ~~ISCCP-when-MOA-are-the~~ [International Satellite Cloud Climatology Project \(ISCCP\) when MOA is](#) added as an additional source of INPs. Due to the lack of more measurement data at the time of publication, however, the representation of MOA ice-activity in their study is simply constrained by a fixed ratio of nucleation efficiency at -15 °C that is 3 times higher over the Antarctic Ocean at 40° S than over Australia, based on Schnell and Vali (1976)'s evaluation of the
30 Bigg (1973) INP data. It assumes, therefore, implicitly that MOA alone accounts for any shortfall in the model in representing the difference in ice nucleation ability of ~~aerosols-in-Australia-and-over~~ [aerosol over Australia and](#) the Southern Ocean. This would render the calculated MOA ice-activity dependent on aerosol transport and the ice nucleation ability of other species in the model, while at the same time discounting other sources of INPs not yet considered. Thus while a better agreement with

observational data could be obtained, ~~the attribution of MOA being the missing ingredient in climate models~~ MOA may not be ~~entirely robust~~ the sole missing INP responsible for the model shortfall.

In terms of the relative contribution of MOA to the global INP population when compared to other sources, Burrows et al. (2013) found a greater contribution of MOA compared to terrestrial biogenic ~~aerosols~~ aerosol over nearly all regions except central continental areas, and a greater contribution compared to dust over the Southern Ocean. A recent paper by Vergara-Temprado et al. (2017) also found MOA to be the dominant source of INP in remote locations, particularly in the southern high latitudes during Austral autumn to spring. Notably, they also found MOA to be the more dominant source of INP compared to dust (K-feldspar) on 10-30 % of days in the Northern Hemisphere.

MOA can also have impacts on climate through cloud properties of warm liquid clouds. This was investigated by Meskhidze et al. (2011) and Gantt et al. (2012), who concluded a weak influence of MOA on the global CCN concentration but up to a 20 % localized increase in the annually averaged low-level cloud droplet number concentration (CDNC) over remote oceans, as well as up to a 7 % decrease in the anthropogenic aerosol indirect forcing (though their MOA emission rates ~~remain~~ remained fixed between present day and pre-industrial periods). These potential effects, however, will not be the focus of the current study.

The goal of this study is to quantify possible contributions of MOA to heterogeneous ice nucleation and ~~their~~ its subsequent influence on cloud properties on the global scale. We hypothesize a potential impact in remote marine regions, and test our hypothesis while considering various uncertain aspects in the representation of MOA ice nucleation in a global climate model.

2 Methodology

2.1 The aerosol-climate model

Simulations in this study are performed using the aerosol-climate model ECHAM6.3-HAM2.3. The main atmospheric component is ECHAM6.3 (Stevens et al., 2013), except for a two-moment cloud microphysics scheme that is coupled to the aerosol module HAM (Lohmann et al., 2007). Aerosols are represented as a superposition of seven lognormal size distributions, representing aerosol populations in four size modes and two different mixing states, except for the nucleation mode (number median radius $\bar{r} \leq 0.005 \mu\text{m}$) which only contains sulphate ~~aerosols~~ aerosol in the internally mixed/soluble mode. All other size modes (Aitken: $0.005 \mu\text{m} < \bar{r} \leq 0.05 \mu\text{m}$, accumulation: $0.05 \mu\text{m} < \bar{r} \leq 0.5 \mu\text{m}$, coarse: $0.5 \mu\text{m} < \bar{r}$) are divided into an internally mixed/soluble mode in which particles are assumed to contain a fraction of all species present, in particular the soluble sulphate aerosol, and an externally mixed/insoluble mode in which each particle is assumed to contain one species only. Only one size distribution (with one total number concentration, median radius, and standard deviation) is considered per mode, while the contribution of each species is represented by their individual masses, which are traced separately.

Various aerosol processes are explicitly represented as described in Zhang et al. (2012). Changes in recent model updates include the use of the Abdul-Razzak and Ghan (2000) scheme for ~~activation of aerosols~~ aerosol activation to form cloud droplets, which is based on Köhler theory, and the use of the Long et al. (2011) sea salt emission parametrisation with a sea-surface temperature dependence applied following Sofiev et al. (2011). Also, anthropogenic emissions are fixed at year 2000 levels in the

following simulations and the minimum ~~cloud-droplet-number-concentration (CDNC)~~ CDNC is 10 cm^{-3} . In the base version used in the current study, aerosol species considered include sulphate, dust, black carbon, organic carbon, and sea salt, among which dust is allowed to nucleate ice through immersion freezing, following either Ickes et al. (2017) or Niemand et al. (2012) as opposed to Lohmann and Diehl (2006) in the default model set-up. No other ~~types-type~~ of heterogeneous ice nucleation ~~are~~ considered-is considered. Ice multiplication is also not represented in the current model version, as previous study has found ECHAM-HAM to be insensitive to inclusion of the Hallett-Mossop process following Levkov et al. (1992) (David Neubauer, personal communication). The relative importance of the various sources of cloud ice crystals in mixed-phase clouds, however, remains an unconstrained property, and can thus vary between models.

In the current study, MOA is implemented as an additional species in the internally mixed accumulation and coarse modes, as shown in Table 1 which lists the species present in each of the seven aerosol modes. Aitken mode MOA is not considered as our model does not consider sea spray production in that size mode. ~~Additionally,~~ MOA is allowed to nucleate ice through immersion freezing, as described in the following section.

Table 1. List of aerosol species present in each of the seven modes. In bold are tracers added in the current study.

Size mode	Internally mixed/soluble	Externally mixed/insoluble
Nucleation	Sulphate	
Aitken	Sulphate, organic carbon (OC), black carbon (BC)	OC, BC
Accumulation	Sulphate, OC, BC, sea salt (SS), dust, MOA	Dust
Coarse	Sulphate, OC, BC, SS, dust, MOA	Dust

2.2 MOA implementation

2.2.1 Emission of MOA

MOA emission is calculated online and ~~dependent~~ depends on the sea salt (SS) emission, such that the total sea spray emitted is the sum of the two (i.e. sea spray = SS + MOA), with the organic mass fraction (OMF) defined as $\text{OMF} = \frac{\text{MOA}}{\text{total sea spray}} = \frac{\text{MOA}}{\text{MOA} + \text{SS}}$. Sea salt is emitted following Long et al. (2011) and remains independent of the MOA emission for ~~most cases-all~~ cases except where specified. MOA is then emitted additionally as

$$\text{MOA}_{\text{mass flux}} = \frac{\text{SS}_{\text{mass flux}} \times \text{OMF}}{1 - \text{OMF}}. \quad (1)$$

The only exception is when MOA is emitted ~~also~~ following Long et al. (2011), in which case the sea salt emission is reduced due to partitioning of some of the emitted mass into MOA. The density of MOA is set to be 1000 kg m^{-3} (Vignati et al., 2010), with radiative properties identical to that of organic carbon and a hygroscopicity parameter κ of zero. Due to the lack of measurement data, the latter two properties are chosen for simplicity and, for the last case, consistency with other potential INP candidates such as dust particles. While sensitivity to the chosen radiative properties of MOA have yet to be investigated,

a previous study by Gantt et al. (2012) ~~have~~has not shown a strong dependence of the results on the chosen hygroscopicity parameter.

No additional number flux due to MOA is considered, as we assume it to be always internally mixed with sea salt during emission. This is treated differently in different studies, with most emitting MOA as an internal mixture with sea salt (e.g. Long et al., 2011; Vergara-Temprado et al., 2017) while studies by Meskhidze et al. (2011) and Gantt et al. (2012) have noted a stronger impact of MOA on the modelled CDNC when they are assumed to be externally mixed during emission (that is, with an additional number flux but still emitted into internally mixed modes). Unfortunately, no measurement data is available to quantify such potential externally mixed number flux nor the division between internally and externally mixed emissions. Should some of the MOA be emitted separately from sea salt, they would be part of the externally mixed/insoluble mode in our model. However, as we are interested in the immersion freezing property of MOA, which require immersion of the aerosol in a cloud droplet that can only occur for soluble/internally mixed particles, for simplicity, we emit all of the MOA into the internally mixed mode directly in order to give an upper estimate of the potential impact of MOA as INP.

Various OMF parametrisations are available in the literature (e.g. Vignati et al., 2010; Gantt et al., 2011; Rinaldi et al., 2013; Burrows et al., 2014; Vergara-Temprado et al., 2017), which produce a wide range of MOA fluxes when applied to the global scale, as was also shown in Meskhidze et al. (2011) and Lapina et al. (2011). A measure of marine biological activity is often used in these parametrisations, while some also consider a negative dependence on the near surface wind speed based on the argument of oceanic mixing leading to a reduction in surface organic enrichment. The performance of each parametrisation is thus also highly dependent on the model wind speeds and choice of representation ~~for~~of the marine biological activity, in addition to the model's sea salt emission.

In this study, only ocean surface chlorophyll is used to represent the marine biological activity. Despite ongoing debate on the validity of chlorophyll as a proxy for the organic fraction in emitted sea spray, it has been shown that there is currently no better alternative ~~which has a global coverage of~~of global coverage and available data (Rinaldi et al., 2013; O'Dowd et al., 2015). Instead, we address the dependence on ocean biological activity data by using two different sources of chlorophyll datasets. In most simulations, multi-year monthly mean Level 3 observational data from the Sea-viewing Wide Field-of-view Sensor (SeaWiFS; Hu et al., 2012) was fed into the model. Free simulations, as will be described later in Sect. 2.3, ~~uses~~use the full 12 years of available observational data from 1998 to 2010, while for the nudged simulations, a subset corresponding to the nudged period from March 2003 to May 2009 is used. The two choices of averaging time periods ~~resulted~~result in only very slight, localized differences in the chlorophyll concentrations (not shown). Such satellite-based observations, however, have a limited coverage in the polar regions in the winter hemisphere that can create a data void as far equatorward as 50° (though in the less biologically active winter hemisphere). Also in light of the possibility to accommodate pre-industrial and future simulations, a sensitivity study is performed using chlorophyll concentration data from the CMIP5 multi-model ensemble outputs (Taylor et al., 2012). Monthly mean chlorophyll maps were created using results from the last six years (2000 to 2005) of the earth system model (ESM) historical simulations, from which only eight models contain chlorophyll data, as listed in Table A1 in the appendix. ~~Comparison~~A comparison of the two sets of maps is shown in Fig. 1. Notable deviations of the modelled data from observational means include the lack of peak values near coastlines, which could be due to unresolved

coastal processes, coarse model resolution, and averaging across models and/or errors in observations near coastlines, a more widespread coverage of medium concentrations in the high latitude regions of the spring-summer hemisphere, especially over the Southern Ocean, and ~~a~~-persistent local peak concentration in the equatorial upwelling region off the west coast of South America. The impact of such differences is discussed in the results.

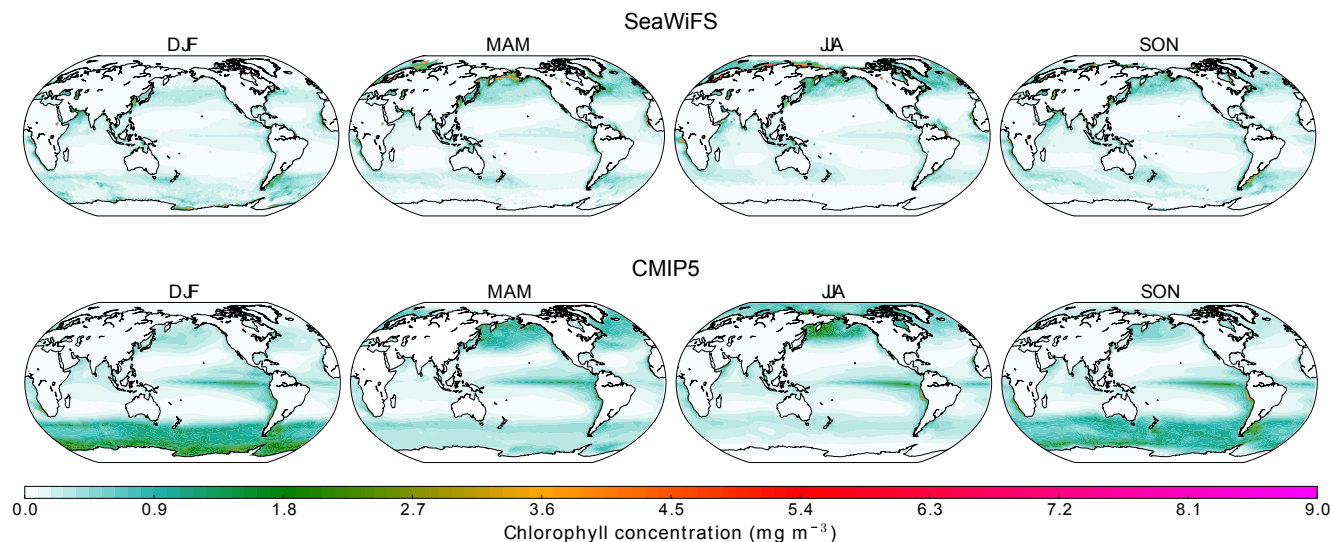


Figure 1. Maps of seasonal mean chlorophyll concentrations used as input files for the nudged simulations. The top row are maps from the SeaWiFS satellite observational dataset from March 2003 to May 2009, and the bottom row the mean from CMIP5 historical simulations for the years 2000 to 2005.

5 Offline calculations were performed to compare the various OMF parametrisations when applied to our model to long-term observations at Amsterdam Island in the southern Indian Ocean (Sciare et al., 2009) and Mace Head in Ireland (Rinaldi et al., 2013), as described in Appendix A. The Rinaldi et al. (2013) parametrisation, which has a maximum OMF set to 78 %, was found to outperform others at both stations when applied to our model. Thus despite the circular logic of the parametrisation having been derived by using the exact same Mace Head data which we used for validation, the Rinaldi et al.
10 (2013) parametrisation is chosen for our control set-up. This does not, however, guarantee the most realistic emission rate when applied at the global scale. More long-term measurements from different parts of the globe would be required for a better validation of the model simulations.

MOA is emitted into the internally mixed accumulation mode and allowed to grow through coagulation and condensation of sulphate into the coarse mode. This is consistent with the Rinaldi et al. (2013) OMF parametrisation, which is based on
15 observations of submicron emissions. Previous studies have ~~also~~ noted a difference in the organic fraction of accumulation and coarse mode sea spray, with higher-fractions-a higher fraction in the smaller size mode (Facchini et al., 2008). Thus it would

not be appropriate to extrapolate the emission parametrisation to coarse mode particles and emission of MOA in the coarse mode ~~is not~~ should not be considered in our simulations.

2.2.2 Heterogeneous ice nucleation of MOA

Quantification of the ice nucleation ability of MOA is still a topic of active research. Currently, only one published parametrisation is available in the literature, namely that of MOA immersion freezing from Wilson et al. (2015). This is an empirical fit to droplet freezing measurements performed using ~~metal-mesh-and-glass-plate~~ samples collected from the marine microlayer, which gives a purely temperature-dependent parametrisation for the number of INPs per mass of total organic carbon. It should be noted, however, that this parametrisation is developed based on sea surface microlayer samples, which does not necessary reflect the concentration of INPs in the MOA that actually gets aerosolised and emitted into the atmosphere (McCluskey et al., 2017). To convert from the number of INPs per mass of total organic carbon to that per mass of total organic matter, division by a conversion factor of 1.9 is applied. This value lies ~~in-at~~ while the latter, which is a fit representing the ice activity of the total sea spray, is applied to the sum of MOA and SS in the two size modes. For comparison, the parametrisations are plotted together with the n_s -based parametrisation of Niemand et al. (2012) for dust aerosol in Fig. 2. Orders of magnitude weaker ice-activity of MOA compared to dust aerosol can be noted, but MOA could still be important in more remote regions where dust concentrations are low.

The surface active site density (n_s) approach described in Connolly et al. (2009) is extended to consider active site density per mass (n_m), and applied to calculate a frozen fraction (FF) given the mean particle mass (m_{MOA}) and temperature. This is then multiplied by the number concentration of MOA immersed in cloud droplets ($N_{\text{MOA,imm}}$), such that the number of drops frozen per time step (N_{frozen}) is

$$\begin{aligned} N_{\text{frozen}} &= N_{\text{MOA,imm}} \times FF \\ &= N_{\text{MOA,imm}} \times [1 - \exp(-m_{\text{MOA}} \times n_{m,\text{MOA}})]. \end{aligned} \quad (2)$$

$N_{\text{MOA,imm}}$ is defined as

$$N_{\text{MOA,imm}} = N_{\text{TOT,act}} \times \left(\frac{V_{\text{MOA}}}{V_{\text{TOT}}} \right)^{\frac{2}{3}} \quad (3)$$

following Hoose et al. (2008), where V_{MOA} is the total volume of MOA in the mode calculated by dividing the mass by the density, and V_{TOT} is the summed volume of all species in the internally mixed mode. $\left(\frac{V_{\text{MOA}}}{V_{\text{TOT}}} \right)^{2/3}$ is therefore a surface area

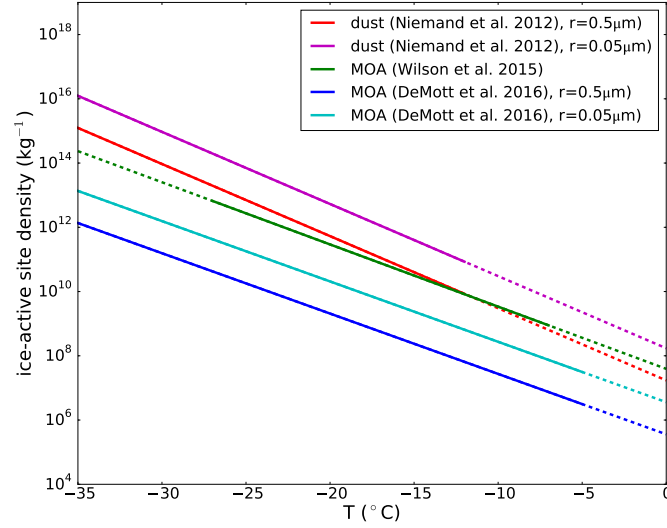


Figure 2. Ice-active site density per unit mass (n_m) of the Wilson et al. (2015) parametrisation and of the fit to the DeMott et al. (2016) data, for MOA, as well as the Niemand et al. (2012) parametrisation for dust [aerosol](#). The Wilson et al. (2015) parametrisation is converted from INP number per total organic carbon mass to INP number per MOA mass by dividing by the conversion factor of 1.9. The DeMott et al. (2016) fit and Niemand et al. (2012) parametrisation are converted from the original representation of ice-active site density per unit surface area (n_s) by division by their respective density and multiplication by the spherical surface-to-volume ratio using the two extremes in accumulation mode median radius in our model. The inverse dependence of the ratio on the radius induces higher ice activity of the smaller particle when converting from n_s to n_m . Solid lines represent the range in which the parametrisations are valid, and dotted lines represent temperature ranges where the parametrisations are linearly extrapolated.

fraction which considers that although the species are internally mixed in the mode, not every particle will contain MOA. A surface area fraction is used as this is the relevant property for ice nucleation. $N_{\text{TOT,act}}$ is the number of aerosol particles in the internally mixed mode that can be activated to cloud droplets under current conditions, as calculated following Abdul-Razzak and Ghan (2000). This is equal to the actual CDNC only if the cloud cover or liquid water content in the grid box increased from the last time step, and only if the newly activated number is greater than the previous CDNC (Lohmann et al., 2007).

Further pertaining to Eq. (2), the mean mass of MOA in the size mode (m_{MOA}) is obtained by dividing the total mass of MOA in the mode by the total number scaled by the surface area fraction as defined above, and $n_{m,\text{MOA}}$ is the temperature-dependent number of active sites per mass, calculated using the Wilson et al. (2015) parametrisation. A slight modification is required for the fit to data from DeMott et al. (2016), which expresses the number of active sites per surface area [of total sea spray](#) instead of per mass. ~~The of MOA. The surface area fraction therefore becomes~~ $\left(\frac{V_{\text{MOA}} + V_{\text{SS}}}{V_{\text{TOT}}}\right)^{2/3}$, and the mean surface area of ~~MOA sea spray~~ per particle is ~~then defined as~~ defined as

$$s_{\text{mean}} = 4\pi r^2 \exp(2 \ln^2 \sigma) \left(\frac{\frac{V_{\text{MOA}}}{V_{\text{TOT}}} \frac{V_{\text{MOA}} + V_{\text{SS}}}{V_{\text{TOT}}}}{\frac{V_{\text{TOT}}}{V_{\text{TOT}}}} \right)^{2/3}, \quad (4)$$

where \bar{r} is the median radius of all particles in the mode and σ is the standard deviation of the lognormal distribution, which is a size mode-dependent constant. The s_{mean} is then multiplied by n_s in the calculation for FF .

One problem with the above method of determining heterogeneous ice nucleation is that, in ECHAM-HAM, ~~aerosols~~ aerosol particles are not removed due to activation. Rather, in-cloud wet removal only occurs due to precipitation in the form of rain or snow. This leads to possible repeat-freezing of the same ~~aerosols~~ aerosol across time steps. Indeed, the active site density approach of Connolly et al. (2009) represents the integrated number of ice crystals that can be frozen when the temperature drops from 0 °C to the current temperature, which would overestimate freezing if the full range of temperature drop from 0 °C is assumed at each time step. One method to address this is to subtract the ice crystal number concentration (ICNC) from the previous time step from the newly ~~activated~~ nucleated number, such that only when the latter is greater than the former, does ICNC change due to heterogeneous freezing. This method has the drawback that it assumes that all ice crystals in the mixed-phase temperature range are produced through heterogeneous nucleation. In fact, the largest contributor to mixed-phase ICNC in our model has been found to be sedimentation from cirrus clouds, which can lead to suppression of contributions from heterogeneous freezing (Ickes et al., in prep.). Thus in the case that the above method does not lead to an increase in ICNC, a second method is applied where n_{frozen} calculated using the previous time step's temperature is subtracted from that calculated using the current temperature, such that new ice crystals are produced if the temperature decreased since the last time step. This second method, in turn, does not consider transport of ~~aerosols~~ aerosol or changes in moisture between time steps and does not have a memory beyond the previous time step. A combination of both methods is therefore applied to achieve a best estimate of the immersion freezing rate.

2.3 Simulations

Summarized in Table 2 is a range of sensitivity runs nudged to the same meteorology from March 2002 to May 2009 in order to investigate the impact of different set-ups on the MOA distribution while minimizing influences from internal variability. The nudging period is chosen to correspond to the maximum period covered by the MOA concentration measurements performed at the two observational sites, ~~to be~~ described in Sect. 2.4. As mentioned previously, sensitivity to the chlorophyll concentration is investigated by replacing the SeaWiFS observations with the CMIP5 model mean outputs, while sensitivity to the sea salt emission is studied by using two different parametrisation schemes. Aside from the default set-up, the Guelle et al. (2001) parametrisation, which was the default sea salt emission set-up in a previous version of ECHAM-HAM and has a much higher emission rate, is also tested.

In most simulations, the Rinaldi et al. (2013) parametrisation for OMF is used, for it was found to fit best to observations when calculated offline using ECHAM6.3-HAM2.3 outputs as mentioned in Sect. 2.2.1 and shown in the appendix. This type of offline calculations, however, does not allow for proper consideration of particle size dependence, which is included in various size-resolved parametrisation schemes (e.g. Gantt et al., 2011; Long et al., 2011). Thus an additional sensitivity study is performed by using the size-resolved MOA emission parametrisation from Long et al. (2011), which also provides a consistent emission scheme for both sea salt particles and MOA. ~~It should be noted, however, that in~~ In the control set-up and ~~most simulations following~~ the simulations with the same sea salt emission scheme, the total sea spray ~~emitted~~ according to the Long

et al. (2011) parametrisation, which includes both sea salt and organic matter, is ~~used to represent the sea salt emission~~ emitted as sea salt. MOA mass is then emitted additionally and separately while the sea salt emission is kept untouched. To be consistent with the original intention of the parametrisation, when both MOA and SS are emitted following Long et al. (2011), the total sea spray is ~~split divided~~ between sea salt and MOA components ~~in the size-resolved MOA simulation where both species are emitted following Long et al. (2011). This would therefore also lead to changes.~~ This therefore leads to decreases in the sea salt emission rates when compared to the control simulation.

Lastly, an additional simulation is performed where the MOA emission following Rinaldi et al. (2013) is doubled, ~~one where the MOA emission is doubled and the ice activity according to Wilson et al. (2015) is scaled up by 100, and~~ and another one where MOA is not emitted at all. The rationale behind ~~the first simulation~~ these simulations will be shown and discussed in ~~Sect. 3.2, while that behind the latter two will be discussed in Sect. 3.4.3.~~ Sections 3.2 and 3.4.3.

Table 2. List of nudged simulations. In bold are fields which are changed from the control (ctl) set-up. Fields marked with dashes (-) are not relevant for the set-up. "CMIP5chl" uses the chlorophyll concentration from CMIP5 models; "GuelleSS" replaces the sea salt emission parametrisation by Guelle et al. (2001); "LongMOA" replaces the Rinaldi et al. (2013) MOA emission by Long et al. (2011); for "2xctlMOA", the control MOA emission is scaled up by two times; and lastly, MOA is not emitted in the "noMOAndg" simulation.

Name	MOA emission	MOA ice nucleation Chlorophyll	Sea salt emission
ctl	Rinaldi et al. (2013)	Wilson et al. (2015) SeaWiFS	Long et al. (2011) + Sofiev et al. (2011)
CMIP5chl	Rinaldi et al. (2013)	Wilson et al. (2015) CMIP5 mean	Long et al. (2011) + Sofiev et al. (2011)
GuelleSS	Rinaldi et al. (2013)	Wilson et al. (2015) SeaWiFS	Guelle et al. (2001)
LongMOA	Long et al. (2011)	Wilson et al. (2015) SeaWiFS	Long et al. (2011) + Sofiev et al. (2011)
2xctlMOA	Rinaldi et al. (2013) \times 2	Wilson et al. (2015) SeaWiFS	Long et al. (2011) + Sofiev et al. (2011)
MOA100ndg	Rinaldi et al. (2013) \times 2	Wilson et al. (2015) \times 100 SeaWiFS	Long et al. (2011) + Sofiev et al. (2011)
noMOAndg	-	-	- Long et al. (2011) + Sofiev et al. (2011)

Following the nudged runs, ~~seven~~ six free-running sensitivity simulations are performed as listed in Table 3. The MOA emission set-up follows the "2xctlMOA" simulation, and is chosen based on the nudged run which best compares to observations, as ~~will be~~ discussed in Sect. 3.2. Each set-up is run for ten years (plus three months of spin up) with fixed year-to-year external forcing, and a ten-year mean is used during analysis to account for internal variability. As the goal of these free simulations is to investigate the impact of ice nucleation by MOA and its climate feedback, focus is placed on the ice nucleation parametrisations.

MOA ice nucleation rates are studied by using the Wilson et al. (2015) parametrisation and a fit to data from DeMott et al. (2016), which has an ice-active surface site density that is around two ~~to three~~ orders of magnitude lower when converted to the same units. ~~To test the potential impact of a highly ice-active MOA, another simulation is performed by increasing the ice activity of the Wilson et al. (2015) parametrisation by two orders of magnitude.~~ Two different immersion freezing parametri-

sations for dust, which is the only other heterogeneous freezing candidate in ~~our model~~this study, are also tested. Control simulations are performed using a physically-based classical nucleation theory (CNT) single- α parametrisation described in Ickes et al. (2017). Properties of montmorillonite as the ice nucleating dust type and an ice nucleation time integration of the first 10 seconds of each time step are chosen. Another set of simulations is done with the Niemand et al. (2012) ice-active sur-
5 face site density (n_s)-based dust freezing parametrisation, which provides a more straight-forward comparison to the ice-active site density parametrisation of MOA. The n_s parametrisation is extrapolated over the whole mixed-phase temperature regime as is consistent with that of MOA.

Two simulations are done where MOA is emitted but not allowed to nucleate ice, each with a different dust freezing parametrisation (CNT vs. n_s), and finally one simulation is set up where MOA is not emitted in the model at all. Analysis
10 of results from all of the above mentioned simulations are discussed in ~~Seet~~Section 3.

Table 3. List of 10-year free-running simulations. Fields marked with dashes (-) are not relevant for the set-up. "MOA" refers to the control free-running simulation where the Rinaldi et al. (2013) MOA emission is scaled up by two times; "MOADeMott" refers to a simulation where immersion freezing by MOA is replaced by the fit to the DeMott et al. (2016) data for total sea spray; "noMOAfrz" refers to a simulation where MOA is emitted but not acting as INP; "MOADUns" is the same as "MOA" but with the dust freezing parametrisation replaced by the n_s scheme following Niemand et al. (2012); "noMOAfrzDUns" is the same as "noMOAfrz" except with a different dust freezing parametrisation; and lastly, "noMOA" is a free-running simulation where MOA is not emitted.

Name	MOA emission	MOA ice nucleation	Dust ice nucleation
MOA	Rinaldi et al. (2013) $\times 2$	Wilson et al. (2015)	CNT (Ickes et al., 2017)
MOA100-	Rinaldi et al. (2013) $\times 2$	Wilson et al. (2015) $\times 100$	CNT (Ickes et al. 2017)
MOADeMott	Rinaldi et al. (2013) $\times 2$	based on DeMott et al. (2016)	CNT (Ickes et al., 2017)
noMOAfrz	Rinaldi et al. (2013) $\times 2$	-	CNT (Ickes et al., 2017)
MOA100ns <u>MOADUns</u>	Rinaldi et al. (2013) $\times 2$	Wilson et al. (2015) $\times 100$	n_s (Niemand et al., 2012)
noMOAfrzns <u>noMOAfrzDUns</u>	Rinaldi et al. (2013) $\times 2$	-	n_s (Niemand et al., 2012)
noMOA	-	-	CNT (Ickes et al., 2017)

2.4 Comparison to observations

Very limited long-term observations of MOA are available for validation of the model results. The two main sites with available data are Mace Head in Ireland and Amsterdam Island in the southern Indian Ocean. ~~Measurement data~~Measured water insoluble organic carbon (WIOC) concentrations from Mace Head spans the time period of 2002 to 2009 (Rinaldi et al., 2013),
15 while that from Amsterdam Island covers the years of 2003 to 2007 (Sciare et al., 2009). For comparison with observations, model simulations nudged towards the meteorology of the respective measurement periods are used. The measured WIOC concentration is converted to WIOM (i.e. MOA) by multiplying by 1.9 as discussed in Sect. 2.2.2. Due to the limited spa-

tial coverage of satellite-observed chlorophyll concentrations over ~~single-month-time-spans~~single months, multi-year monthly mean chlorophyll measurements from SeaWiFS over the time period from March 2002 to May 2009 are used repeatedly for all simulation years. Should the dependence of MOA emissions on chlorophyll concentrations be strong in reality and the chlorophyll concentrations be highly variable from year to year, this ~~may-have-contributed-to~~will cause biases and inconsistencies in the modelled concentrations when compared to observations. Results from the comparisons are shown in Sect. 3.2.

3 Results

3.1 Distribution of MOA concentrations

A summary of MOA and sea salt annual emissions and global burdens from the various simulations is shown in Table 4. A dependence on both the choice of chlorophyll concentration data and the sea salt emission scheme can be observed, as expected. Notably, a roughly doubling of the MOA burden resulted from the doubling of the Rinaldi et al. (2013) MOA flux, indicating a linear dependence of MOA burden on the emission rate. The same cannot be said, however, when the emission parametrisations are changed (for instance, when comparing the "ctl" simulation with "GuelleSS"), which resulted in changes in the spatial distribution of emitted MOA and thus diverging changes in emission and burden.

All emission rates are roughly in line with other quotes in the literature, which consider varying degrees of size resolution (e.g. Langmann et al., 2008; Spracklen et al., 2008; Long et al., 2011) and span a wide range of around 5 to 55 Tg y⁻¹ of organic matter when applying an organic carbon-to-organic matter conversion of 1.9. While studies that emit MOA in all size modes and consider both primary and secondary sources can obtain MOA fluxes of over 140 Tg y⁻¹ (Roelofs, 2008), most studies quote emission rates of less than 20 Tg y⁻¹, especially in the submicron size mode (e.g. Vignati et al., 2010; Lapina et al., 2011; Gantt et al., 2011). On the global annual average, the mass emission of sub-micron primary MOA is less than ~~33.2~~33.2% of the total sea salt mass emission in all our simulation set-ups.

Annual mean global emission distributions and zonal mean cross sections of the mass concentration are shown in Fig. 3. Using the Rinaldi et al. (2013) parametrisation (all but "LongMOA"), the spatial pattern of MOA emission largely follows that of the chlorophyll concentration. For the simulations using SeaWiFS chlorophyll maps (all but "CMIP5chl"), MOA emissions peak in coastal and equatorial upwelling regions. Due to higher surface wind speeds, a lower emission rate is found in mid-to-high latitude open ocean regions despite having chlorophyll concentrations comparable to the tropics. Notably and contrary to expectations based on previous literature (e.g. Burrows et al., 2013; Yun and Penner, 2013; Vergara-Temprado et al., 2017), we do not obtain a high concentration of MOA in the Southern ~~Oceans~~Ocean with the Rinaldi et al. (2013) emission, likely also due to the higher wind speeds and moderate chlorophyll concentrations (when using SeaWiFS maps) in these regions. When using CMIP5 mean chlorophyll concentrations, emissions from coastal upwelling regions are reduced while those from the equatorial upwelling become more pronounced. Much higher MOA emission rates can also be found in mid-to-high latitude open waters and the Southern Ocean (mainly occurring during the respective hemispheric summer months), as was observed in the chlorophyll concentrations (Fig. 1). An anomalously high emission rate of MOA off the coast of the Arabian Peninsula in ~~Boreal~~boreal summer, observable even in the annual mean in all ~~simulation-set-ups~~simulations, is mostly due to the ~~Southwest~~

Table 4. Annual global mean MOA and SS emissions and burdens from nudged simulations. The ratio of MOA to SS emission rates (MOA/SS emission) is a global area-weighted average of the ratio calculated at individual grid boxes. Note that MOA is only emitted in the accumulation mode while SS is emitted in both accumulation and coarse modes. In the "2xctlMOA" and "CMIP5chl" simulations, slightly different MOA emission properties are considered as explained in Table 2; for "GuelleSS", a different SS emission is used; and lastly for "LongMOA", changes are present in both the MOA and SS emissions when compared to the "ctl" run.

Name	MOA emission (Tg y ⁻¹)	MOA burden (Mg)	SS emission (Tg y ⁻¹)	SS burden (Mg)	MOA/SS emission (%)
ctl	9	67	1002 <u>1005</u>	4129 <u>4135</u>	1.4 <u>1.6</u>
2xctlMOA	17 <u>16</u>	132	1002 <u>956</u>	4136 <u>4142</u>	2.8 <u>3.2</u>
CMIP5chl	17 <u>19</u>	119	1002 <u>1004</u>	4139 <u>4136</u>	2.5 <u>3.2</u>
GuelleSS	10 <u>11</u>	63	5196 <u>5741</u>	10558 <u>10556</u>	0.26 <u>0.3</u>
LongMOA	10 <u>11</u>	63 <u>62</u>	956 <u>1114</u>	3959 <u>4189</u>	1.0

~~Monsoon-associated~~southwest monsoon-associated ocean upwelling and particularly strong sea salt fluxes. The annual mean signal is weaker in the "LongMOA" simulation, which exhibits a weaker dependence on the wind speed and chlorophyll concentration. This leads to peak MOA emissions off the coast of the Arabian Peninsula only during ~~Boreal~~boreal summer, while relatively high emission rates are also present during ~~Boreal~~boreal autumn and winter in the other simulations, corresponding to the chlorophyll map. The secondary peak in ocean productivity during winter months is associated with deep water mixing caused by colder air blowing over the water surface during the ~~Northeast-Monsoon~~northeast monsoon season (Mann and Lazier, 2005; Wiggert et al., 2000).

The annual mean MOA burden mostly mirrors the emission pattern, with notable accumulations over source regions that are subject to limited precipitation washout. The peak burden in the equatorial South Pacific found in all simulations, for instance, can be associated with the dry zone related to the South Pacific convergence zone that is largely caused by orographically induced subsidence (Takahashi and Battisti, 2007), as well as contributions from subsiding branches of the Hadley and Walker circulations. On the other hand, high emission rates in the northern North Pacific and North Atlantic Oceans as well as along the Southern Ocean in the "LongMOA" simulation are not reflected in the annual mean burden, due to washout along the storm tracks.

In the zonal mean cross-section, MOA mass is mainly concentrated in the lower altitudes below 700 hPa, and is in general not transported very high up into the atmosphere, as can be expected since MOA is mainly emitted from relatively calm waters. Despite this, non-negligible amounts of MOA still reach mixed-phase temperatures, especially in sub-polar regions. All ~~simulation-set-ups~~simulations produced similar patterns, with some having a more poleward ~~extend~~extent of higher MOA concentrations than others, depending on the emission rates.

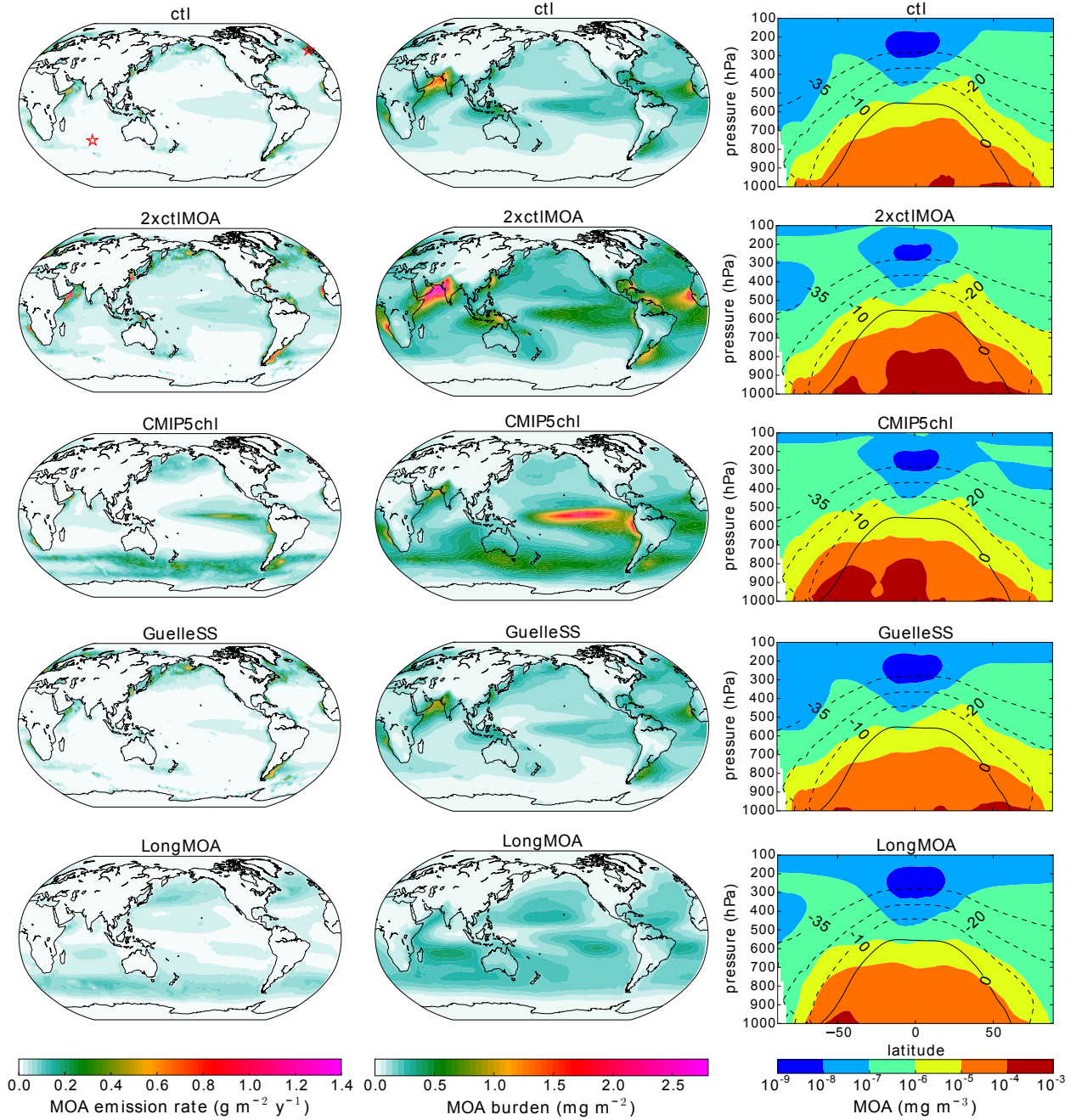


Figure 3. Multi-annual mean emissions (first column), burdens (second column), and zonal mean cross-sections (third column) of MOA from the various nudged simulations described in Table 2 for the period from March 2002 to May 2009. Contour lines in the zonal mean plots are zonal mean isotherms in $^{\circ}\text{C}$ in the mixed-phase temperature range. Red stars in the first plot on the upper left indicate locations of Mace Head in the Northern Hemisphere and Amsterdam Island in the Southern Hemisphere, where long-term observations of MOA are available.

3.2 Comparison of MOA concentrations to the observed annual cycle

A comparison of the monthly mean MOA concentrations simulated using the various nudged set-ups listed in Table 2 to the observations at Amsterdam Island and Mace Head is shown in Fig. 4. Notably, the offline-calculated MOA concentration using the same set-up as the control simulation, which was used for choosing the OMF parametrisation as described in Sect. 2.2.1, is also plotted. It can be observed that even with the same parametrisation set-up, offline calculations yielded a stronger seasonal cycle than online calculations. Possible reasons for this deviation include errors in estimating the source regions (since the back trajectories are not explicitly computed using our model), seasonal variations in the aerosol source regions that is not considered in the offline calculations, and a lack of consideration for depletion and sedimentation during transport of MOA to the measurement site. As most MOA emission parametrisations are developed using similar offline methods, it may be worthwhile to note the possible deviation for future parametrisations. Due to the rather low bias of the control simulation, an additional simulation is set up where the control MOA emission using the Rinaldi et al. (2013) OMF parametrisation is increased ~~two-times~~ by a factor of two (green curve in Fig. 4), and a better agreement to observations is obtained, despite a rather high bias at Mace Head in March and a low bias in January at Amsterdam Island. This increased emission is thus used as the standard set-up for all subsequent free-running 10-year simulations.

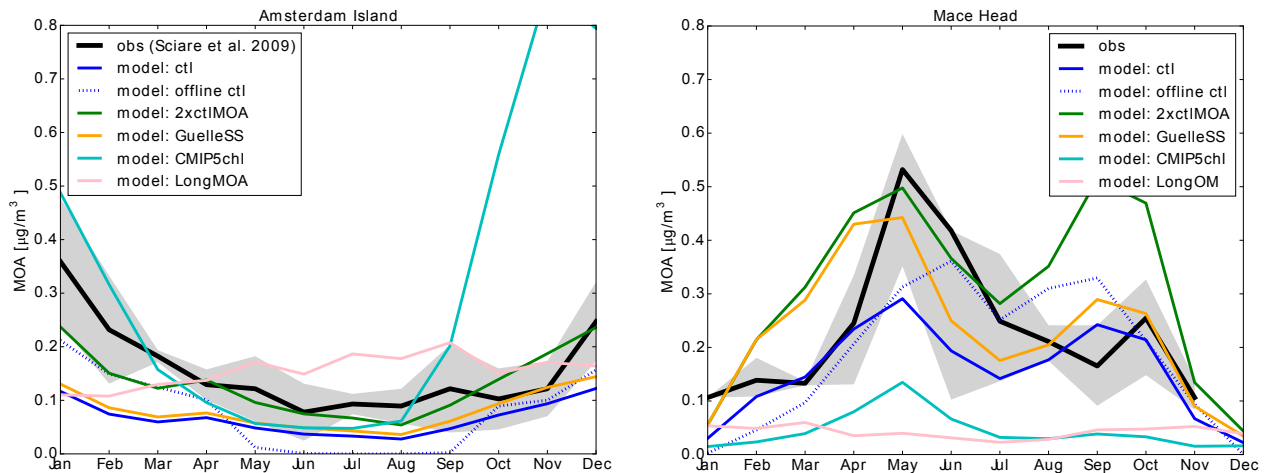


Figure 4. Monthly mean observed MOA concentrations at Amsterdam Island (left) and Mace Head (right) compared to model simulated outputs as described in Table 2. The dotted blue curve ("offline ctl") corresponds to an offline calculation of MOA concentration based on the same parametrisation as the control case. Shaded area corresponds to plus and minus one standard deviation of the observed mean for the Amsterdam Island case, while for Mace Head, it corresponds to the 25th to 75th percentile. In both cases, the bold black line is the ~~monthly~~ observational monthly mean. Note that no measurements are available for Mace Head in December. Model outputs are averaged over the entire nudging period (March 2002 to May 2009) for comparisons to observations at Mace Head, and averaged over the period of May 2003 to November 2007 for Amsterdam Island, ~~as-according-corresponding~~ to the measurement ~~campaigns~~periods.

In examining other simulations with various sea salt or MOA emission set-ups, we found a general and consistent underestimation of MOA concentrations at both stations. One exception is the simulation using the Guelle et al. (2001) sea salt parametrisation, which produced reasonable MOA concentrations ~~in~~at Mace Head and hit the lower range of observations at Amsterdam Island except in the first four months of the year. The control simulation underestimated MOA concentrations at both stations. Simulation with MOA emitted following the size-resolved Long et al. (2011) parametrisation, on the other hand, was not able to reproduce the annual cycle of MOA concentrations well, despite yielding higher concentrations ~~in~~at Amsterdam Island. By replacing the SeaWiFS chlorophyll observations with CMIP5 mean modelled outputs, a significant underestimation of MOA concentrations resulted ~~in~~at Mace Head, while ~~in~~for Amsterdam Island, a relatively good fit to the observed annual cycle of MOA concentration is produced except for the months of October to December, where the CMIP5 models produced a widespread peak in chlorophyll concentrations in the Southern Ocean not observed by the satellite. This led to the decision to not use the CMIP5 mean chlorophyll map for the longer-term simulations, and points to the need for more MOA measurement sites and improvements in the simulation of chlorophyll concentrations in ocean models, as well as a need for caution in future MOA-related model studies where modelled chlorophyll concentrations need to be used. Notably, however, the "CMIP5chl" simulation is the only simulation which is able to reproduce the strong peak in MOA concentrations during the austral summer months (DJF) ~~in~~at Amsterdam Island, which may point to an underestimation of the multi-year mean SeaWiFS chlorophyll concentrations in these months or to other missing marine organic sources not directly associated with chlorophyll.

3.3 Heterogeneous ice nucleation

Ice nucleation rates due to immersion freezing of MOA and dust aerosol and their respective frequencies of occurrence when applying the various parametrisations are shown in Fig. 5. One clear observation is the at least five orders of magnitude difference between the peak freezing rates of dust aerosol and MOA. Aside from this, freezing occurs with the same frequency for all active site density schemes (contour lines in Fig. 5). Freezing calculated using this parametrisation approach occurs whenever the environmental condition is conducive for ~~mixed-phase-freezing (the presence of supercooled liquid droplets with freezing at an~~ ambient temperature between 0 and -35 °C), the relevant ice-active aerosol species is present in sufficient amounts (relative to the respective ice activity), and the considerations for re-freezing as described in Sect. 2.2.2 is fulfilled. This indicates that in most cases, MOA and dust aerosol are both present in sufficient amounts and thus freezing occurs for both species if the environmental factors allow.

Such direct conclusions cannot be drawn from comparison with the CNT results, however. While the CNT-based dust freezing scheme produces a lower freezing occurrence frequency overall and especially in the warmer temperatures compared to MOA (Fig. 5), a similar difference in freezing occurrence frequency can also be noted between the results from the two dust freezing schemes, which ~~point~~points to the parametrisation as the main reason behind the difference. The sharp decrease in freezing occurrence at warmer temperatures following Ickes et al. (2017) when compared to the results using the Niemand et al. (2012) dust parametrisation indicates a faster decrease of the dust ice activity with increasing temperature for the former set-up, which is shown in Fig. 6. Indeed, the FF of 0.5 μm radius particles following Ickes et al. (2017) quickly drops below that

following Niemand et al. (2012) at around -31 °C, and below that of MOA following Wilson et al. (2015) at around ~~-25-29~~ °C. ~~By around~~ At -20 °C, even with the maximum monthly mean immersed dust concentration ~~of on~~ the order of 100 cm⁻³, only around ten droplets ~~will freeze in one per~~ cubic kilometre of air will freeze. Without sufficiently large dust particles and/or sufficiently high number concentrations, the Ickes et al. (2017) CNT parametrisation will thus not lead to much ice nucleation

5 occurrence in the warmer mixed-phase temperatures. Interestingly, a surface active site density approach for montmorillonite (consistent in dust type with the CNT parametrisation), which is also compared in Fig. 6, can be noted to have a less steep slope than the CNT approach, though still ~~with~~ a faster decrease in *FF* than that from Niemand et al. (2012). As the Niemand et al. (2012) parametrisation considers a mixture of dust mineral types, this indicates that the difference in freezing rates between the Ickes et al. (2017) CNT parametrisation and ~~Niemand et al. (2012) may be the~~ the Niemand et al. (2012) parametrisation may

10 be a consequence of both a difference in parametrisation method (CNT vs. *n_s*) and the considered dust type (montmorillonite vs. Saharan dust). A CNT-based parametrisation for MOA cannot be formulated, however, due to the lack of measurement data. It is therefore impossible to conclude how much of the difference in the frequency and regions of occurrence between freezing by MOA and CNT-parametrised dust is related to the different INP species and how much is simply due to differences in the parametrisation approach.

15 Immersion freezing by dust

Dust freezing rates following CNT (Ickes et al., 2017) and the surface active site density approach using the Niemand et al. (2012) parametrisation show consistent results in the spatial distribution and magnitude of peak values mainly in the colder mixed-phase temperature range. The Niemand et al. (2012) parametrisation, which is extrapolated for temperatures warmer than -12 °C, leads to more frequent freezing occurrence, especially notable at warmer temperatures, albeit with significantly

20 lower freezing rates when compared to that in colder regions. This is associated with the differing slopes of the two parametrisations, as discussed in the previous section and shown in Fig. 6. When expressed as the ~~temperature onset freezing temperature,~~ defined as the temperature at which a *FF* of 0.001 is reached, this translates to -21 °C for Niemand et al. (2012) and -28 °C for Ickes et al. (2017), assuming spherical ~~aerosols aerosol~~ of radius 0.5 μm.

Immersion freezing by MOA

25 The MOA freezing rate scales proportionally ~~to~~ with the ice-active site density, with freezing rates increasing by around two orders of magnitude (depending on the aerosol size) when using the Wilson et al. (2015) parametrisation compared to the DeMott et al. (2016) parametrisation, ~~and when scaling up the ice activity of the Wilson et al. (2015) parametrisation by 100 compared to the standard version.~~ The freezing onset temperatures of MOA for the same conditions as described above for dust are ~~,respectively, -59-36 °C, -40 and -24 °C, and -29 °C,~~ respectively, for the parametrisation in the "MOADeMott", ~~and~~

30 "MOA", ~~and "MOA100"~~ set-ups.

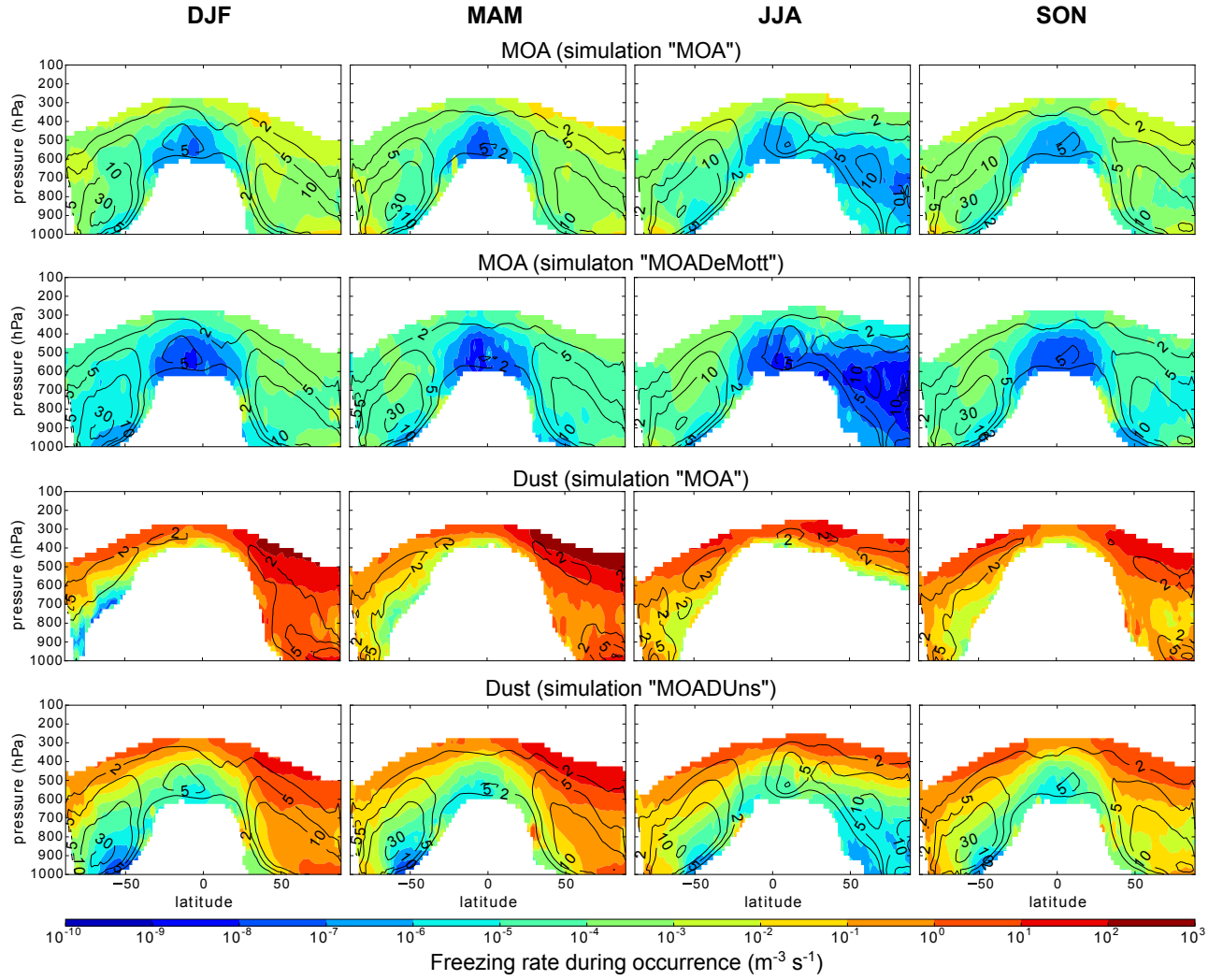


Figure 5. Seasonal and zonal mean freezing rates due to MOA and dust aerosol during freezing occurrence. Contour lines denote the frequency with which freezing occurs, in %. All plots are averages from the 10-year free simulations. Only rates where the freezing occurs more often than 0.1 % of the time are plotted.

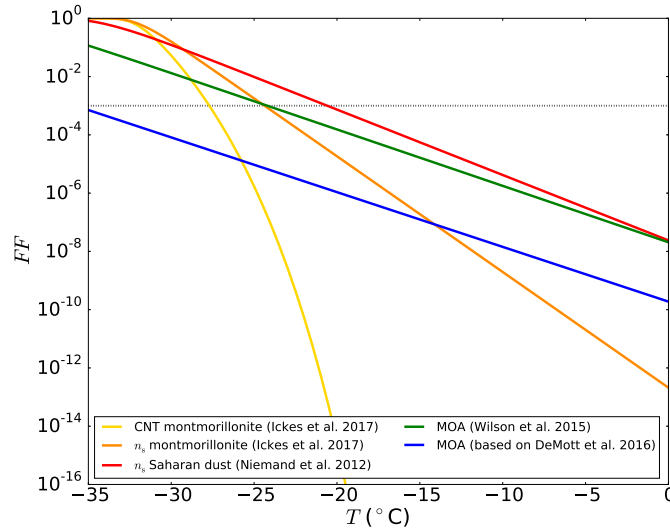


Figure 6. Frozen fraction (FF) versus temperature (T) of the various parametrisations used for dust [aerosol](#) (montmorillonite and Saharan dust) and MOA in this study. Spherical [aerosols-aerosol](#) of radius $0.5 \mu\text{m}$ and an ice nucleation time of 10 seconds for the CNT method are assumed. In addition to the parametrisations previously discussed in the text, an additional n_s -based parametrisation for montmorillonite is also plotted following Ickes et al. (2017). The dotted black line indicates the [freezing onset](#) ($0.001 FF$ level).

3.3.1 MOA vs. dust as INP

The immersion freezing rate, as described by Eq. 2, is calculated by multiplication of the number of aerosol particles available for freezing, which depends on the abundance and distribution of the [aerosols-aerosol](#) as defined in Eq. 3, and the FF , which depends on the property of the [aerosols-aerosol](#) (size- and temperature-dependent ice activity). A decomposition of these two components for MOA and dust is shown in Fig. 7. Here it can be noted that the number [concentration-concentrations](#) of immersed MOA and dust [aerosol](#) span similar orders of magnitude in the accumulation mode, while in the coarse mode the abundance of dust [aerosol](#) can be up to two orders of magnitude [greaterlarger](#). The FF , on the other hand, shows a more [significant-four-uniform two to three](#) orders of magnitude difference between dust [aerosol](#) and MOA regardless of the size mode. Thus the temperature-dependent aerosol ice activity can be attributed as the main controlling factor behind the number concentration of nucleated ice crystals as compared to the availability of the particles. This can also be concluded by noting the small change in MOA freezing rates when different sea salt emission parametrisations or chlorophyll maps are used (not shown). Nonetheless, the larger amount of MOA near the surface can contribute to higher ice nucleation rates in polar near-surface regions despite the warmer temperature.

So far, only seasonal or annual mean freezing rates have been shown. However, monthly mean dust concentrations in the air could be dominated by episodic dust events which would mask potential contributions from MOA during periods of low dust concentrations. Thus online diagnostics of the time frequency when the freezing rate of MOA is greater than that of [dust](#)

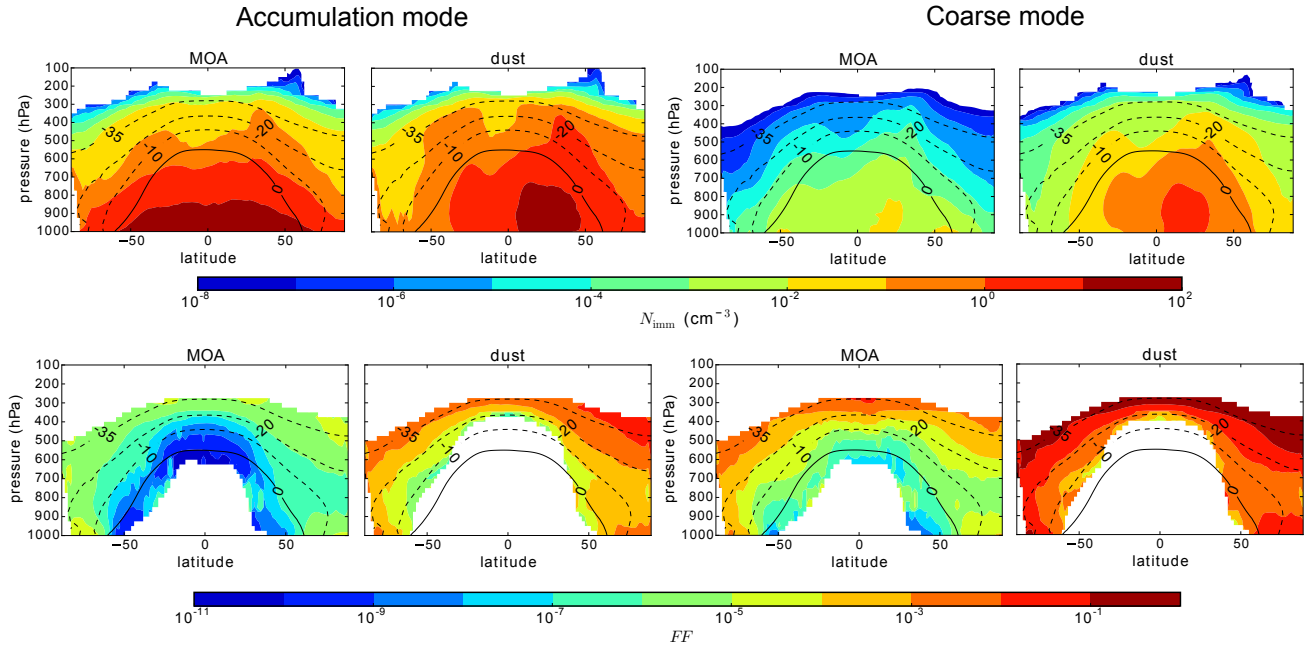


Figure 7. Multi-annual, zonal mean number of accumulation [leftmost two columns] and coarse [rightmost two columns] mode particles immersed in droplets (N_{imm} ; first row) and the frozen fraction (FF ; second row) for MOA [first and third columns] and dust aerosol [second and fourth columns], from the free "MOA" simulation with the Wilson et al. (2015) freezing parametrisation for MOA and CNT for dust. Contour lines denote isotherms in the mixed-phase temperature range. FF is only plotted where the freezing occurs more frequently than 0.1 % of the time.

the dust aerosol is performed for cloudy mixed-phased grids containing supercooled droplets and shown in Fig. 8. Different combinations of MOA and dust freezing parametrisations are investigated.

When comparing between the diagnostic results with varying set-ups of freezing by MOA, no systematic differences are present. In particular, ~~only a very slight increase~~ no noticeable change in the frequency of occurrence resulted from a two orders of magnitude ~~increase~~ decrease in the MOA ice-activity, as can be noted from comparison between the "MOA" and the ~~"MOA100" simulations.~~ "MOA100" simulations. ~~When comparing between the "MOA" and the "MOADeMott" simulations,~~ When comparing between the "MOA" and the "MOADeMott" simulations, ~~a more noticeable decrease in frequency of occurrence can be noted due to the lower MOA ice activity of the DeMott et al. (2016) data.~~ a more noticeable decrease in frequency of occurrence can be noted due to the lower MOA ice activity of the DeMott et al. (2016) data. This can be attributed to the ~~differences/similarities~~ differences/similarities between the frequency of MOA freezing occurrence of the ~~"MOA-Wilson" and "MOA-DeMott"/"MOA-WilsonX100" simulations~~ "MOA-Wilson" and "MOA-DeMott"/"MOA-WilsonX100" simulations ~~two simulations as~~ two simulations as shown in Fig. 5 (contours).

While the choice of MOA freezing parametrisation does not have a significant qualitative influence on the result of such diagnostics, that of the dust ice nucleation parametrisation plays a significant role. This is due to the much lower freezing frequency from the CNT-based approach, especially in warmer temperature regimes. When the ~~100x~~ Wilson et al. (2015) parametrisation for MOA is combined with the Ickes et al. (2017) CNT parametrisation for dust (simulation "MOA"), the

contribution from MOA frequently ~~dominated~~ dominates over that from dust aerosol over much of the warmer mixed-phase regions. When the Niemand et al. (2012) n_s parametrisation is applied for dust, however, MOA only becomes more important than dust in the warmest mixed-phase regions near the surface in polar regions and in the Southern Hemisphere low altitudes. This difference can be attributed to the different slopes and dust freezing onset between the CNT and n_s parametrisations, as

Regardless of differences between different freezing parametrisation set-ups, MOA has been found to contribute to more freezing than dust during up to 20 to 70 % of the time in much of the mixed-phase cloud regions when using the Ickes et al. (2017) CNT dust scheme, and up to 60 % near the surface in the Southern Hemisphere when using the Niemand et al. (2012) dust scheme. This is largely comparable to the values found by Vergara-Temprado et al. (2017), who examined the percentage of days when the INP concentration at ambient temperatures from MOA is greater than that from K-feldspar. As their study also uses a n_s -based freezing parametrisation for dust, the most straightforward comparison would be with our "~~MOA+100ns~~ MOADUns" simulation, in which case slightly lower freezing contributions from MOA are found in our results. This is especially notable in the Northern Hemisphere and in ~~the~~ higher altitudes in the Southern Hemisphere. Possible reasons for this include their choice of only considering freezing by a fraction of the dust (K-feldspar) instead of all dust types in our case, which decreases the availability of dust particles in their study and leads to a more ready scavenging of the dust INP from the atmosphere due to the larger size of feldspar, as noted also by Vergara-Temprado et al. (2017). Additionally, the freezing parametrisations are not extrapolated to all mixed-phase temperatures in their study, and lastly, ~~considerable~~ differences in emission, partitioning, removal, and transport of the ~~aerosols~~ aerosols can also aerosol exist between models. It should be noted, however, that both the current work and the study by Vergara-Temprado et al. (2017) only consider MOA in combination with dust aerosol as the sole INP species. Should other INPs active at relatively warm temperatures be included (e.g. Vali et al., 1976) the relative importance of MOA may be dampened.

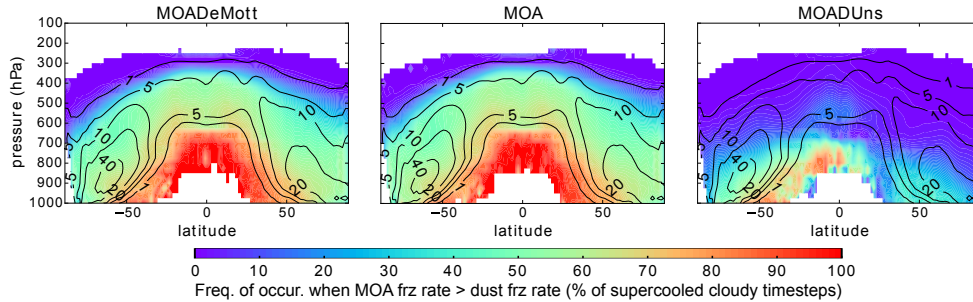


Figure 8. The annually and zonally averaged frequency of occurrence when the freezing contribution from MOA is greater than that from dust aerosol, diagnosed only for cloudy grid boxes containing supercooled droplets. Contour lines denote the frequency of occurrence (in %) of the above-mentioned favourable cloudy condition containing liquid droplets in the mixed-phase temperature range. All plots are from the respectively titled 10-year free-running simulations.

3.4 Impact on clouds and climate

3.4.1 Impact on clouds

INPs can impact clouds through freezing of supercooled liquid droplets and subsequent ice crystal growth at the expense of the remaining liquid drops, leading to glaciation of the cloud. The most direct impact of MOA as an INP would thus be expected in the cloud ice and liquid properties. This is shown in Fig. 9 as the annual mean in-cloud relative difference between one simulation where the expected impact of MOA acting as INP is greatest ("~~MOA100~~MOA") and the corresponding simulation where it is not allowed to initiate freezing ("noMOAfrz"). The most statistically significant ~~change~~ changes in cloud properties ~~is~~ are found near the surface ~~over the Southern Ocean in polar regions~~, with a decrease in the in-cloud zonal and annual mean ice crystal radius ($r_{\text{eff},i}$) by up to 3 to 9 % ~~. This is associated in general with a non-statistically significant and an increase in the ice-cloud-occurrence-frequency as well as decreases in the in-cloud ice-water content (IWC) and ice-crystal-number concentration (ICNC)~~ cloud ice occurrence frequency by 5 to 28 %.

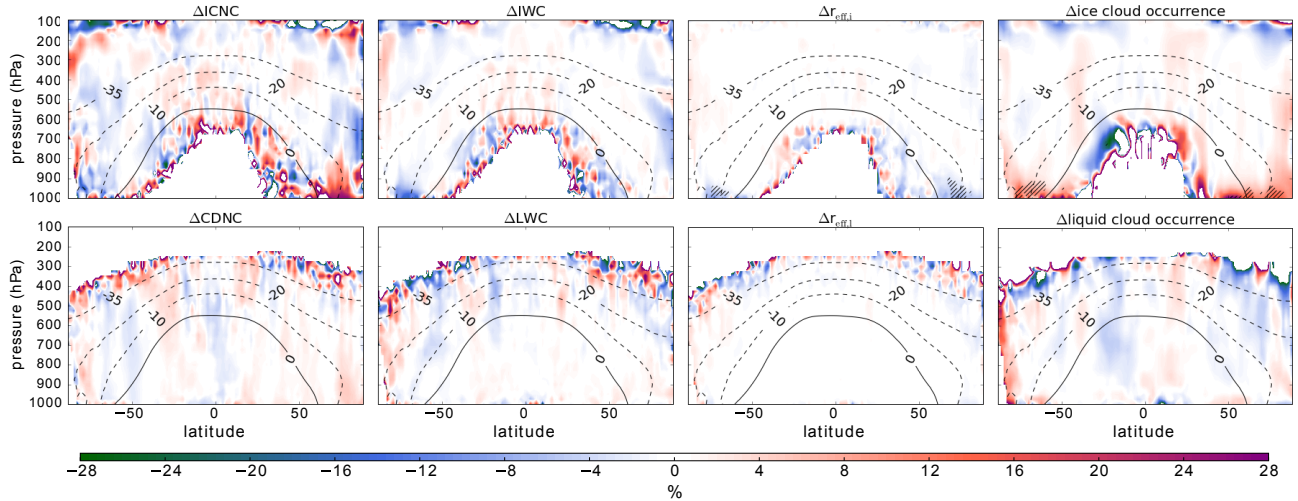


Figure 9. Annual and zonal mean relative change ("~~MOA100~~MOA" minus "noMOAfrz" divided by the mean of the two) in ice crystal number concentration (ICNC), ice water content (IWC), ice crystal effective radius ($r_{\text{eff},i}$), ice cloud occurrence frequency, cloud droplet number concentration (CDNC), liquid water content (LWC), cloud droplet effective radius ($r_{\text{eff},l}$), and liquid cloud occurrence frequency. All values are in-cloud changes (i.e. during liquid/ice cloud occurrence, respectively). Contour lines are zonal mean temperatures in the mixed-phase range in °C. Hatched areas indicate statistical significance at the 95 % level following the Wilks (2016) method for controlling the false discovery rate for data with moderate to strong spatial correlations.

~~Changes in monthly mean cloud properties can be due to formation of new clouds and/or as a result of changes in pre-existing ones. To investigate the cause of the decrease for the changes in $r_{\text{eff},i}$, further diagnostics is performed by separating grid boxes where the monthly mean ice-cloud-occurrence increased (when comparing outputs from "MOA100" to those from~~

"noMOAfrz") and where they decreased or stayed the same. The zonal and multi-annual mean $\Delta r_{\text{eff},1}$ is then diagnosed for these two cases separately and shown in Fig. ?? . An increase in the time-mean cloud occurrence frequency is indicative of an increase and cloud ice occurrence frequency, seasonal mean changes in the cloud lifetime and/or an increase in the cloud initiation frequency. In the absence of stratiform precipitation (e. g. in the tropics at high altitudes), grid boxes with higher humidity can sustain larger ice crystals and for longer lifetimes due to slower depletion through sublimation. Once the ice crystals approach precipitation sizes, however, larger $r_{\text{eff},1}$ would be associated with shorter cloud lifetimes due to depletion through snowfall. Increases ice properties are shown in Fig. 10. Though mostly statistically insignificant following the strict Wilks (2016) criterion, strong relative increases in the cloud initiation frequency, on the other hand, would decrease the time-averaged ice occurrence frequency, in-cloud $r_{\text{eff},1}$ as newly formed ice crystals tend to be smaller than those which have had a chance to grow through aggregation, etc.

In general, the $\Delta r_{\text{eff},1}$ in the two cloud occurrence cases cancels out, simply due to zonal variability and separation of grid boxes with different cloud occurrence changes. Changes that do not cancel out between the two cases can then be attributed to the influence of MOA acting as an INP (Fig. ??a). This is the case over the Southern Ocean, where a decrease in $r_{\text{eff},1}$ during increased ice cloud occurrence (Fig. ??b) is not reflected with a respective $r_{\text{eff},1}$ increase in cases with decreased or constant ice cloud occurrence (Fig. ??c). It can be speculated, therefore, that MOA leads to a decrease in $r_{\text{eff},1}$ over the Southern Ocean through an increase in ice crystal initiation (which would lead to increases in ice cloud occurrence frequency). Freezing of cloud droplets and further depletion ICNC, and to a lesser extent the in-cloud IWC, can be observed in the polar regions especially during their respective summer months. A stronger signal can be noted in the Arctic during boreal summer, likely due to the Wegener-Bergeron-Findeisen process can then lead to reductions in the lifetime of liquid cloud droplets. In support of this hypothesis, a reduction in liquid cloud occurrence frequency in the same regions near the surface over the Southern Ocean, though not statistically significant, can be noted in Fig. 9. Since MOA can nucleate ice under warmer conditions, the newly formed crystals can also be accreted more easily by falling snow, which has a collection efficiency that increases with temperature. This would dampen the correlation between increases in the ice cloud occurrence and decreases in the crystal radius, and can help explain the slight difference in the patterns of the two respective changes in Fig. 9. higher temperatures in these regions leading to rare ice occurrences in general and thus stronger relative sensitivity to contributions by MOA.

The left plot is equivalent to the $\Delta r_{\text{eff},1}$ plot in Fig. 9, except in absolute terms. The rightmost two plots are diagnostics of the same property but separated into cases where the grid (not zonal) mean change in monthly mean ice cloud occurrence frequency is positive (b) and where the change is negative or neutral (c). Grids boxes which do not satisfy the case criterion are omitted from the respective zonal mean analysis. Hatched areas indicate where statistically significant changes are found without case separation (i.e. where significance is found in Fig. 9). Contour lines are zonal mean temperatures in the mixed-phase range in $^{\circ}\text{C}$.

A mirrored The observed decrease in $r_{\text{eff},1}$ in the Arctic can also be noted, though without statistical significance and with less consistent corresponding changes in the ICNC and IWC (Fig. 9). The ice cloud occurrence frequency, on the other hand, increases strongly in these regions and may be better associated with the decrease in $r_{\text{eff},1}$. The lack of a clear statistically significant signal in the Northern Hemisphere can be attributed to the stronger zonal variability due to land-sea contrasts

that is absent over the Southern Ocean. Moreover, the Wilks (2016) method for controlling the false discovery rate tends to underestimate the significance (Wilks, 2016), which may have also contributed to, on the other hand, does not exhibit statistical significance on a seasonal scale (except in the Arctic during boreal autumn). Rather, a consistent but weak decrease in the lack of statistical significance in the Arctic.

- 5 In the cloud liquid properties, the only statistically significant change is a slight increase in the ice crystal size can be observed near the surface over both polar regions for all seasons. A possible explanation is that since MOA initiates ice crystal formation at relatively warm mixed-phase temperatures closer to the surface, the newly formed ice crystals do not have enough time to grow further. This is particularly notable when compared to ice falling from higher levels, which are also more likely to reach lower levels if the crystal sizes are larger. The newly nucleated ice crystals therefore lead to a lower in-cloud cloud droplet-number concentration (CDNC) over the Arctic (Fig. 9). This is, however, more likely dynamically induced, a topic which is discussed further in Sect. 3.4.3. ice crystal radius near the surface.

3.4.2 Impact on the TOA radiative balance

- The change in the zonal mean top-of-atmosphere (TOA) radiative balance due to the emission and/or ice activity of MOA in the various free-running set-ups are is shown in Fig. 11. When comparing our strongest MOA potential set-up ("MOA100MOA") to one where MOA is not emitted at all ("noMOA"), the TOA net solar radiation decreases by 0.34 0.16 W m^{-2} on the global area-weighted mean with the added MOA, while the net outgoing terrestrial radiation decreases by 0.07 0.03 W m^{-2} , leading to a net of 0.27 W m^{-2} more total outgoing radiation at the TOA. The strongest signal of change can be observed over the Southern Ocean and Antarctica, with a decrease in the outgoing radiation of up to 1.5 decrease of 0.13 W m^{-2} in the zonal mean net TOA radiation. When decomposing the contribution into that from the emission of MOA ("noMOAfrz"-noMOA") and that from MOA acting as INP ("MOA100MOA"-noMOAfrz), neither process can be ruled out as a contributor to the change. This can include cooling at the surface due to the scattering-direct direct scattering effect of the emitted MOA and that due to the increased aerosol indirect effect on cloud radiative properties induced by MOA acting as INP, as well as further feedbacks through dynamics triggered by the two processes. In particular, the signal from MOA emission increases toward the South Pole while that from MOA acting as INP is more consistent throughout the latitude bands over the Southern Ocean. Neither of these changes, however, are statistically significant by themselves (except for latitude bands right over Antarctica; for MOAemission), pointing to a synergistic effect of the two processes.

When investigating other free-running set-ups, no consistent result can be observed

- In the shortwave (SW), a statistically significant decrease in the net TOA incoming radiation of around 0.3 to 1 W m^{-2} over Antarctica and in tropical regions south of the equator can be observed in association with the added MOA. Up to a 1.3 W m^{-2} decrease can also be noted in the Arctic region associated with the freezing of MOA. However, the pattern of change is mostly not consistent across the different set-ups. No consistent pattern north of 50° S can be observed in the changes due to MOA acting as INP when the dust ice nucleation parametrisation is changed from Ickes et al. (2017) to Niemand et al. (2012) (i.e. "MOA100"-noMOAfrz vs. "MOA100ns"-noMOAnsfrz). When examining the total changes without the two orders of magnitude increase in the Wilson et al. (2015) MOA ice activity ("dark blue vs. light blue curves in Fig. 11). Similarly,

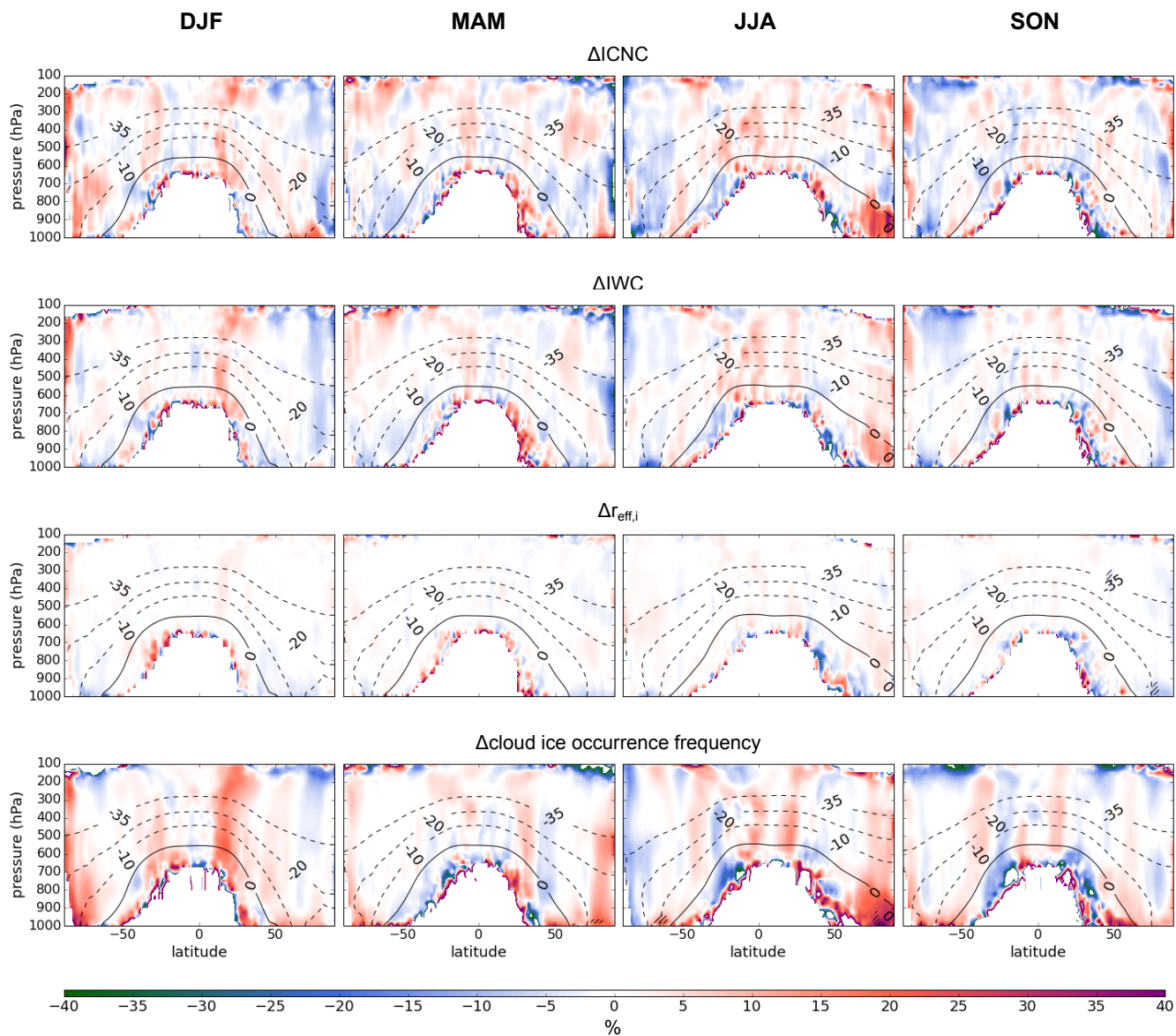


Figure 10. Same as in Fig. 9 but for seasonal mean changes in the cloud ice properties only.

differences in the MOA ("noMOA"), a weaker signal than due to MOA emission alone is observed in the TOA longwave (LW) radiation over the Southern Hemisphere. A similar pattern is present when compared to the stronger "MOA100"-"noMOA" case, but this may be due to both analysis having the same base simulation without MOA ("noMOA") which dominates the signal. The similarity becomes even more elusive for the "MOADeMott"-"noMOA" analysis, especially for latitudes north of 50° S.

In the shortwave (SW), a statistically significant decrease in the net TOA incoming radiation of 0.3 to 1 W m^{-2} over Antarctica and tropical regions south of the equator can be observed in association with the added MOA. However, the statistical significance disappears with any consideration of the freezing property except for the case with the weakest MOA ice activity ("MOADeMott"), indicating more complicated feedback processes. This is ice nucleation parametrisation (i.e. black vs. grey curves in Fig. 11) cause some non-statistically significant changes, especially in the Northern Hemisphere. This is indicative of feedback processes which are further examined in the next section.

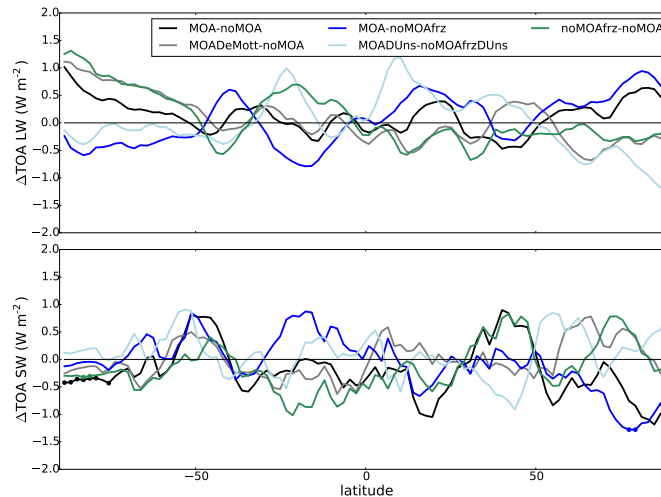


Figure 11. Zonal and multi-annual mean change in the top-of-atmosphere (TOA) solar (SW) and terrestrial (LW) radiative balance for the various free-running 10-year simulations. The black and gray curves indicate changes due to both the emission and ice nucleation of MOA, the blue-coloured curves correspond to changes stemming from MOA ice nucleation, and the green curve indicates changes due to the emission of MOA. It should be noted that the outgoing terrestrial radiation is defined to be negative, so a positive change is indicative of less outgoing radiation. Statistically significant changes at the 99 % level are marked with dots on the respective curves.

3.4.3 Impact on dynamics

The changes in the zonal mean aerosol and cloud properties together with the changes in TOA radiative balance due to the emission and ice activity of MOA in the "MOA100MOA" set-up is shown in the left panel in Fig. 12. In particular, the SW aerosol forcing mirrors rather well the increase in aerosol optical depth (AOD, global mean increase of 0.006) at the various latitudes, indicating an expected increase in scattering effect due to the added MOA. In On the global mean, the TOA all-

sky instantaneous aerosol forcing ~~leads to 0.086 decreases by 0.069 W m⁻² less incoming radiation in the SW and 0.014 and 0.008 W m⁻² less outgoing radiation in the LW, in the SW and LW, respectively, yielding a net cooling forcing of 0.072 decrease of 0.061 W m⁻² at the TOA by the addition of MOA and other feedback processes involving MOA acting as an INP that may affect the aerosol forcing.~~

- 5 ~~The aerosol forcing.~~ This does not, however, translate to changes in the TOA radiative balance, which is ~~dominated by a decrease in outgoing radiation in only significant in the shortwave radiation over~~ the Southern Hemisphere high latitudes, as discussed in Sect. 3.4.2. Rather, the latter signal ~~stems from feedback processes that led to a stronger zonal wind over the Southern Ocean and cooling over Antarctica. The specific pathway leading from the added MOA and INP to this feedback process, however, is not clear~~ may be due to internal variability and feedback processes.
- 10 To further investigate possible causes for the ~~cooling signal in radiative balance changes~~ over Antarctica, the relevant simulations ("~~MOA100MOA~~" and "noMOA") are extended for an additional 10 years and the resulting changes shown in the middle panel in Fig. 12. Notably, ~~while the general pattern of the changes is preserved, the significant decrease in outgoing LW radiation found in the shorter simulation is much diminished. Instead, a more statistically significant increase in the TOA aerosol LW forcing (warming) can be observed in the Arctic. The slight overall increase in snowfall rate observed in the 10-year simulation is also further weakened. This is replaced with a dipole signal of a weak (on the orders of 0.001 mm h⁻¹ or less) but statistically significant decrease in snowfall rate at 60° to 70° N and an approximately mirrored increase in magnitude of the signal is largely diminished in nearly all properties and no statistical significance remains in the changes in the TOA radiative balance. An exception is the Southern Hemisphere. Overall increase in AOD over the Northern Hemisphere tropical- and mid-latitudes and the corresponding change in SW aerosol forcing, both of which show a stronger signal averaged over the 20 years simulation. Virtually no significance can be found, however, in any of the zonal mean cloud or environmental variable investigated. Therefore~~ we conclude that MOA emission and MOA acting as INP do not have significant impacts on the global radiative balance and climate variables, ~~and signals observed in the 10-year simulations are likely to originate from internal variability. The only consistent changes between the 10-year and 20-year simulations are the statistically significant increase in AOD and subsequent increase in negative aerosol SW forcing around 35° to 60° S, as well as greater general increases in AOD in the tropical latitudes.~~
- 20 ~~AOD in the tropical latitudes.~~
- 25 ~~AOD in the tropical latitudes.~~

- 30 Lastly, to suppress feedback processes through dynamics, analysis of nudged simulations with otherwise the same set-ups ("~~MOA100ndg2xctlMOA~~" and "noMOAndg") are performed where the vorticity and divergence of the flow fields are nudged toward the same meteorology for the two simulations. The changes in the climate and cloud properties are shown in the right panel in Fig. 12, where it can be noted that any changes in the examined properties are diminished and no significant impact of MOA on the ~~model+modelled~~ climate can be observed. The pattern of mirrored changes in the AOD and aerosol forcing are, however, consistent with other simulations.

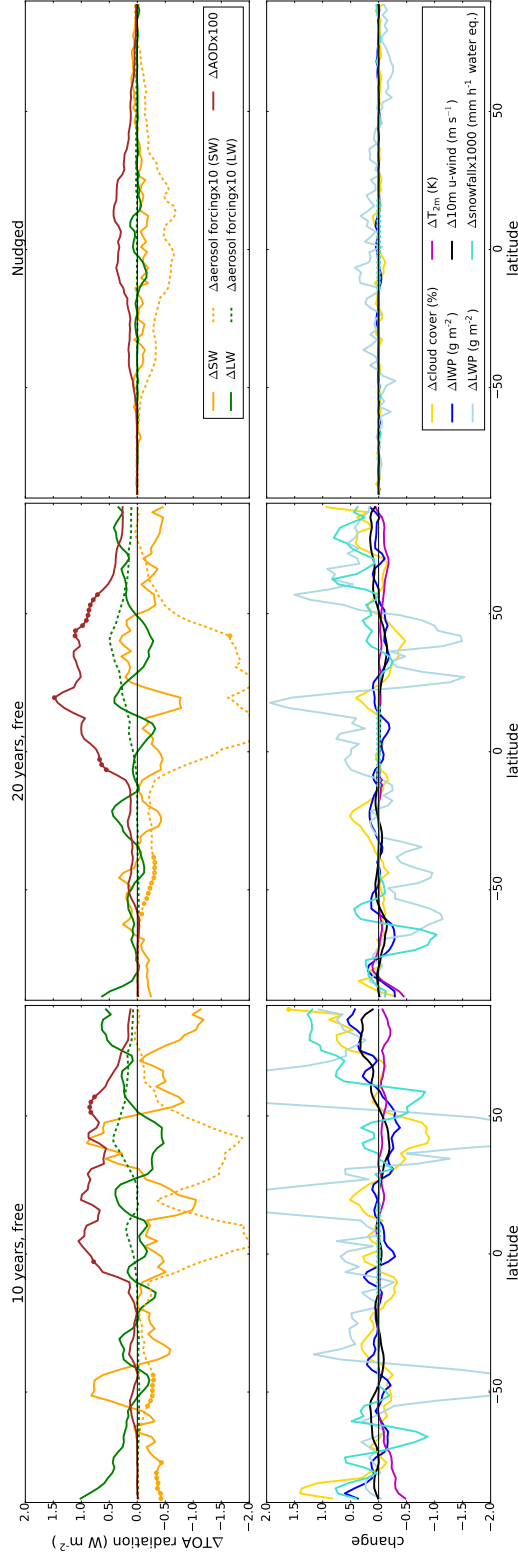


Figure 12. Top row: zonal, multi-year mean changes ("MOA100MOA"-noMOA") in the top-of-atmosphere (TOA) solar (SW) and terrestrial (LW) radiation in all-sky conditions, the corresponding changes in aerosol forcing at the TOA scaled up by an order of magnitude, and the change in aerosol optical depth (AOD) at the 550 nm wavelength scaled up by two orders of magnitude to fit the same scale on the y-axis. Bottom row: zonal, multi-year mean changes in cloud cover, ice water path (IWP), liquid water path (LWP), 2-metre temperature (T_{2m}), 10-metre zonal wind (10m u-wind), and water equivalent snowfall rate. The left panels are changes from the 10-year free simulations, the middle panels are changes from simulations identical to those on the left except they are extended for another 10 years, and those on the right are from the nudged simulations. Small circles on the curves indicate statistical significance at the 95% level.

4 Conclusions

In this study, a range of simulations are set up to investigate the emission and distribution of MOA on the global scale. Three different aspects that control the emission rate are tested, namely the sea salt emission parametrisation, the MOA emission parametrisation, and the chlorophyll map. A weaker dependence on the sea salt emission parametrisation is found compared to the choice of chlorophyll data and MOA emission parametrisation. In particular, the use of the CMIP5 mean modelled chlorophyll data to replace SeaWiFS observations leads to significant changes in the MOA spatial distributions. A cause for this is the systematic overestimation of total chlorophyll concentrations in the Southern Ocean that is common among global ocean models (Le Quéré et al., 2016), ~~and. This~~ should be taken into account for future simulations using modelled chlorophyll concentrations. The vertical distribution of MOA, however, is relatively similar between simulations, with the mass mostly concentrated in the lower levels.

Following previous studies proposing MOA as a potentially important INP (~~e.g. Wilson et al., 2015; Vergara-Temprado et al., 2017~~) (e.g. Burrows et al., 2013; Yun and Penner, 2013; Wilson et al., 2015; Vergara-Temprado et al., 2017), contributions of MOA to heterogeneous ice nucleation is investigated. When compared to dust aerosol, MOA is found to nucleate ~~five to ten~~ three to four orders of magnitude ~~less fewer~~ ice crystals, depending on the choice of parametrisation, due to its weaker ice-activity. When compared to the CNT-based dust parametrisation for montmorillonite (Ickes et al., 2017), however, MOA commonly contributes to more freezing of liquid droplets ~~during half of the favourable supercooled cloudy timesteps~~ in 50 % of the cases in the mixed-phase temperature range. ~~A two orders of magnitude decrease in the MOA ice activity, i.e. without scaling up the Wilson et al. (2015) parametrisation by 100, does not significantly affect the results. On the contrary, the use of the fit to data from DeMott et al. (2016), which indicates a further two orders of magnitude weaker MOA ice activity, brings the frequency of times when MOA nucleates more ice than dust closer to 30 % or less. This indicates a possible threshold where the droplet freezing rate due to background dust during non-dust events may lie somewhere between the "MOADeMott" and the "MOA" set-ups. On the~~ On the other hand, when applied together with the Niemand et al. (2012) parametrisation for dust aerosol, MOA only contributes to more heterogeneous ice nucleation than dust during up to 10 % of the time near the surface in the Arctic and around 30 to 40 % of the time in the Southern Hemisphere low altitudes, where the mass concentration of MOA is higher and where the dust concentration is lower due to the hemispheric dependence of dust emissions that favours the Northern Hemisphere. The difference between the comparisons to the two different dust parametrisations mainly stems from their differing rates of FF decrease with increasing temperature. When expressed in ~~temperatures at which a FF of 0.001 is reached~~ onset freezing temperature, this is 7 °C lower for the Ickes et al. (2017) CNT parametrisation compared to -21 °C for Niemand et al. (2012), assuming a spherical aerosol radius of 0.5 μm . The onset temperatures then further diverge with lower threshold FF s. The overall importance of MOA as an INP when compared to mineral dust is thus highly dependent on the choice of freezing parametrisations, for both MOA and dust. This points to the need for more measurement data to better constrain the parametrisations, especially at warmer temperatures. Additionally, as the current study disregards potential heterogeneous ice nucleation by other aerosol species aside from MOA and dust aerosol, the relative importance of MOA may be overestimated when compared to if other INPs are considered. This would be particularly relevant for INP species that

have a high ice-activity at warmer temperatures, where MOA is more ice-active than dust aerosol in the current study, such as pollen and fungal spore (e.g. Dreischmeier et al., 2017; Fröhlich-Nowoisky et al., 2015). The global atmospheric relevance of the various species, however, can also depend on their abundance and various other factors (e.g. Hoose et al., 2010), and therefore their impact on the relative importance of MOA as an INP cannot be directly inferred.

- 5 Extending the analysis one step further, impacts of MOA on clouds and climate are also investigated in this study. In general, weak to no statistically significant changes in cloud and climate variables are found due to the addition of MOA and due to MOA acting as an INP. More specifically, a decrease in in-cloud $r_{\text{eff},i}$ by up to 3 to 9 % and an increase in cloud ice occurrence frequency by 5 to 28 % near the surface over both polar regions (~~statistically significant over the Southern Ocean~~) can be identified due to MOA initiating ice formation ~~where previously only supercooled droplets are present in the presence of~~
- 10 supercooled droplets. In the climate variables, ~~an overall statistically significant decrease in outgoing radiation at the TOA south of 50° S (associated with an increase in zonal winds over the Southern Ocean, cooling over Antarctica, and an increase in cloud ice properties over this region), is found in the analysis of the 10-year free simulations with the strongest MOA ice nucleation potential. The signal, however, is~~ any statistically significant change is largely diminished when the ~~same~~ simulations are extended to 20 years. This points to the possibility that a ten-year mean is not sufficient to rule out internal variability in high
- 15 latitudes as the reason behind the observed signals, and has implications for future studies focusing on high latitude regions where longer simulations may be advised. When dynamical feedbacks are suppressed through nudged simulations, the changes are further diminished. We therefore conclude that any potential impact of the emitted MOA or MOA acting as an INP on the model climate is masked by the internal variability of the model. This can be partly attributed to the weak sensitivity of our model to heterogeneous ice nucleation (due to the dominating contribution of cloud ice from sedimentation of ice crystals
- 20 originating from cirrus levels; Ickes et al., in prep.), as well as to the weak ice activity of MOA when compared to dust.

Appendix A: Offline comparison of OMF parametrisations

- Offline calculated monthly mean MOA concentrations at the two observational sites are shown in Fig. A1 using various OMF parametrisations. Monthly mean modelled 10-metre wind speeds and sea salt concentrations from a nudged simulation without MOA, averaged over the relevant period for each observational site (March 2002 to May 2009 for Mace Head and May 2003 to
- 25 November 2007 for Amsterdam Island) are used in combination with the mean SeaWiFS observed chlorophyll concentrations from the longer period. Two ~~source regions~~ emission source regions for the aerosol reaching the measurement site are considered for each observational site: one following the region noted in the cited literature with the observational data, and the other approximated from Vergara-Temprado et al. (2017). The two differ slightly due to consideration of atmospheric transport based different observational and modelled data, but both only serve as an approximation as the transport pattern in ECHAM-HAM
- 30 would again be different. OMFs are calculated offline for each source region using each OMF parametrisation and the chlorophyll concentrations and wind speeds from the corresponding region, as needed. Observed water insoluble organic carbon (WIOC) is converted to WIOM with a conversion factor of 1.9 as discussed in Sect. 2.2.2. As the OMF parametrisations are valid for the organic fraction during emission, the MOA concentration shortly after emission is approximated by taking the sea

salt concentration in the lowest model level with the derived OMF, following Eq. 1. The MOA concentration for the measurement site is then taken as the average of the concentrations over the entire source region. A schematic of the source regions **and calculation method** is shown in Fig. A2.

Notably, the calculated MOA concentration can vary by more than $0.1 \mu\text{g m}^{-3}$ with slight shifts in the chosen source region, as can be observed by comparing solid and dotted curves in Fig. A1. When both source regions are considered, the Rinaldi et al. (2013) parametrisation is chosen as the best fitting to observations, though with a general slight underestimation. It should be noted, however, that the assessment for the wellness of fit to observations is highly model-dependent. Thus while suitable for choosing an appropriate OMF parametrisation for this particular model, no generalizations should be drawn with regards to the individual parametrisations when applied to other models. Indeed, each of the OMF parametrisations has been separately validated in their respective studies and found to fit well to observations in its respective set-ups.

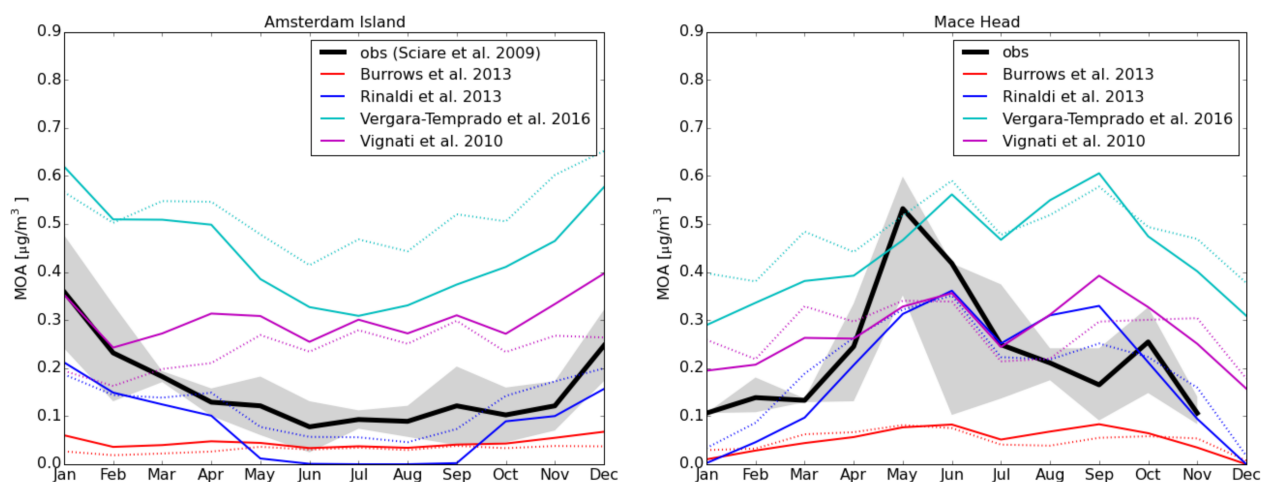


Figure A1. Comparison of MOA concentrations calculated offline using various OMF parametrisations. Coloured lines indicate offline calculated concentrations assuming the same source regions as the observational datasets; dotted lines of the same colours corresponds to the same parametrisations except for the use of source regions from Vergara-Temprado et al. (2017). The black lines and shaded areas are observational mean and the corresponding variances as described in Fig. 4.

Appendix B: CMIP5 models with chlorophyll concentration output

Monthly mean of near-present day values from 2000 to 2005 of the historical ESM simulations are used for the "CMIP5chl" sensitivity study. The eight models for which such outputs can be obtained through the CMIP5 data portal, and thus used herein, are listed in Table A1.

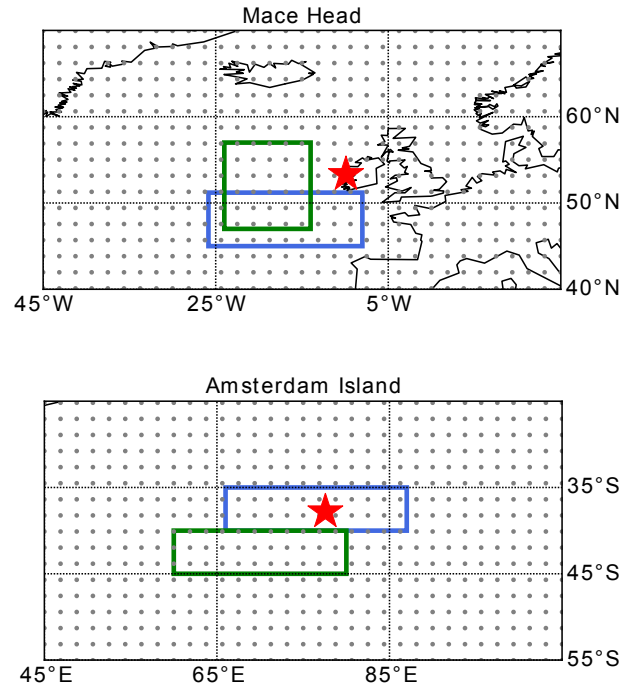


Figure A2. Source regions considered in offline calculations of MOA concentrations at each measurement site according to various OMF parametrisations. The area boxed in green is the source region from the relevant publication related to each observational dataset, while that in blue is approximated from Vergara-Temprado et al. (2017). The red star indicates the location of the measurement station. The gray dots that fill the space are model grid points. ~~The words indicate that the offline calculations are done using the sea salt concentration from the lowest model layer (SS) and the OMF (which depends on the chlorophyll concentration, chl, and in some cases also the 10 m wind speed) at each of the respective source regions.~~

Table A1. List of CMIP5 models containing sea surface chlorophyll concentration data used for the "CMIP5chl" simulation.

Model name	Modelling centre or group	Mean of model versions, if multiple
CanESM2	Canadian Centre for Climate Modelling and Analysis	
CMCC-CESM	Centro Euro-Mediterraneo per I Cambiamenti Climatici	
CNRM-CM5	Centre National de Recherches Météorologiques / Centre Européen de Recherche et Formation Avancée en Calcul Scientifique	
GISS-E2	NASA Goddard Institute for Space Studies	GISS-E2-H-CC, GISS-E2-R-CC
HadGEM2	Met Office Hadley Centre	HadGEM2-CC, HadGEM2-ES
IPSL-CM5	Institut Pierre-Simon Laplace	IPSL-CM5A-LR, IPSL-CM5A-MR, IPSL-CM5B-LR
MPI-ESM	Max-Planck-Institut für Meteorologie	MPI-ESM-MR, MPI-ESM-LR
MRI-ESM1	Meteorological Research Institute	

Author contributions. The manuscript was written by W.T.K.H., who designed and performed the experiments, analysed the outputs, and contributed to the implementation of MOA into the model. L.I. implemented the MOA tracers, ice nucleation due to MOA, as well as the CNT parametrisation for dust following Ickes et al. (2017) into the model and contributed to discussions regarding the technical and scientific details of the study. I.T. implemented into ECHAM-HAM the sea salt and MOA emission parametrisations following Long et al. (2011) with an additional sea-surface temperature dependence described by Sofiev et al. (2011). M.R. and D.C. provided the observed MOA concentrations at Mace Head. U.L. provided scientific guidance in this study and oversaw the project. The manuscript has been read, commented, and approved by all co-authors.

Acknowledgements. The authors would like to acknowledge Jesús Vergara-Temprado for useful discussions regarding the emission and distribution of MOA in models. Thanks are also extended to Jurgita Ovadnevaite for discussions regarding AMS observations of marine organic matter at Mace Head. Lastly, we would like to thank Susannah Burrows and an anonymous reviewer for the valuable feedback and suggestions which led to improvement of the manuscript. The research leading to these results has received funding from the European Union’s Seventh Framework Programme (FP7/2007-2013) project BACCHUS under grant agreement n° 603445. For the CMIP5 data, we acknowledge the World Climate Research Programme’s Working Group on Coupled Modelling, which is responsible for CMIP, and the climate modeling groups (listed in Table A1 of this paper) for producing and making available their model output. The ECHAM-HAMMOZ model is developed by a consortium composed of ETH Zurich, Max Planck Institut für Meteorologie, Forschungszentrum Jülich, University of Oxford, the Finnish Meteorological Institute and the Leibniz Institute for Tropospheric Research, and managed by the Center for Climate Systems Modeling (C2SM) at ETH Zurich. Model simulations in this study were performed on the high performance computing cluster Euler, maintained by ETH Zurich’s High-Performance Computing (HPC) group under the Scientific IT Services (SIS) section.

References

- Abdul-Razzak, H. and Ghan, S. J.: A parameterization of aerosol activation: 2. Multiple aerosol types, *Journal of Geophysical Research: Atmospheres*, 105, 6837–6844, doi:10.1029/1999JD901161, 2000.
- Bigg, E. K.: Ice Nucleus Concentrations in Remote Areas, *Journal of the Atmospheric Sciences*, 30, 1153–1157, doi:10.1175/1520-0469(1973)030<1153:INCIRA>2.0.CO;2, 1973.
- Bonsang, B., Polle, C., and Lambert, G.: Evidence for marine production of isoprene, *Geophysical Research Letters*, 19, 1129–1132, doi:10.1029/92GL00083, 1992.
- Burrows, S. M., Hoose, C., Pöschl, U., and Lawrence, M. G.: Ice nuclei in marine air: biogenic particles or dust?, *Atmospheric Chemistry and Physics*, 13, 245–267, doi:10.5194/acp-13-245-2013, 2013.
- 10 Burrows, S. M., Ogunro, O., Frossard, A. A., Russell, L. M., Rasch, P. J., and Elliott, S. M.: A physically based framework for modeling the organic fractionation of sea spray aerosol from bubble film Langmuir equilibria, *Atmospheric Chemistry and Physics*, 14, 13 601–13 629, doi:10.5194/acp-14-13601-2014, 2014.
- Caroline, L. and Keith, B. E.: Source and evolution of the marine aerosol—A new perspective, *Geophysical Research Letters*, 32, doi:10.1029/2005GL023651, 2005.
- 15 Ceburnis, D., O’Dowd, C. D., Jennings, G. S., Facchini, M. C., Emblico, L., Decesari, S., Fuzzi, S., and Sakalys, J.: Marine aerosol chemistry gradients: Elucidating primary and secondary processes and fluxes, *Geophysical Research Letters*, 35, doi:10.1029/2008GL033462, 2008.
- Connolly, P. J., Möhler, O., Field, P. R., Saathoff, H., Burgess, R., Choularton, T., and Gallagher, M.: Studies of heterogeneous freezing by three different desert dust samples, *Atmospheric Chemistry and Physics*, 9, 2805–2824, doi:10.5194/acp-9-2805-2009, 2009.
- Cziczo, D. J., Ladino, L., Boose, Y., Kanji, Z. A., Kupiszewski, P., Lance, S., Mertes, S., and Wex, H.: Measurements of Ice Nucleating
20 Particles and Ice Residuals, *Meteorological Monographs*, 58, 8.1–8.13, doi:10.1175/AMSMONOGRAPHS-D-16-0008.1, 2017.
- DeMott, P. J., Hill, T. C. J., McCluskey, C. S., Prather, K. A., Collins, D. B., Sullivan, R. C., Ruppel, M. J., Mason, R. H., Irish, V. E., Lee, T., Hwang, C. Y., Rhee, T. S., Snider, J. R., McMeeking, G. R., Dhaniyala, S., Lewis, E. R., Wentzell, J. J. B., Abbatt, J., Lee, C., Sultana, C. M., Ault, A. P., Axson, J. L., Diaz Martinez, M., Venero, I., Santos-Figueroa, G., Stokes, M. D., Deane, G. B., Mayol-Bracero, O. L., Grassian, V. H., Bertram, T. H., Bertram, A. K., Moffett, B. F., and Franc, G. D.: Sea spray aerosol as a unique source of ice nucleating
25 particles, *Proceedings of the National Academy of Sciences*, 113, 5797–5803, doi:10.1073/pnas.1514034112, 2016.
- Dreischmeier, K., Budke, C., Wiehemeier, L., Kottke, T., and Koop, T.: Boreal pollen contain ice-nucleating as well as ice-binding ‘antifreeze’ polysaccharides, *Scientific Reports*, 7, doi:10.1038/srep41890, 2017.
- Facchini, M. C., Rinaldi, M., Decesari, S., Carbone, C., Finessi, E., Mircea, M., Fuzzi, S., Ceburnis, D., Flanagan, R., Nilsson, E. D., de Leeuw, G., Martino, M., Woeltjen, J., and O’Dowd, C. D.: Primary submicron marine aerosol dominated by insoluble organic colloids
30 and aggregates, *Geophysical Research Letters*, 35, doi:10.1029/2008GL034210, 2008.
- Fröhlich-Nowoisky, J., Hill, T. C. J., Pummer, B. G., Yordanova, P., Franc, G. D., and Pöschl, U.: Ice nucleation activity in the widespread soil fungus *Mortierella alpina*, *Biogeosciences*, 12, 1057–1071, doi:10.5194/bg-12-1057-2015, 2015.
- Gantt, B., Meskhidze, N., Facchini, M. C., Rinaldi, M., Ceburnis, D., and O’Dowd, C. D.: Wind speed dependent size-resolved parameteri-
zation for the organic mass fraction of sea spray aerosol, *Atmospheric Chemistry and Physics*, 11, 8777–8790, doi:10.5194/acp-11-8777-
35 2011, 2011.

- Gantt, B., Xu, J., Meskhidze, N., Zhang, Y., Nenes, A., Ghan, S. J., Liu, X., Easter, R., and Zaveri, R.: Global distribution and climate forcing of marine organic aerosol – Part 2: Effects on cloud properties and radiative forcing, *Atmospheric Chemistry and Physics*, 12, 6555–6563, doi:10.5194/acp-12-6555-2012, 2012.
- Guelle, W., Schulz, M., Balkanski, Y., and Dentener, F.: Influence of the source formulation on modeling the atmospheric global distribution of sea salt aerosol, *Journal of Geophysical Research: Atmospheres*, 106, 27 509–27 524, doi:10.1029/2001JD900249, 2001.
- Hoose, C. and Möhler, O.: Heterogeneous ice nucleation on atmospheric aerosols: a review of results from laboratory experiments, *Atmospheric Chemistry and Physics*, 12, 9817–9854, doi:10.5194/acp-12-9817-2012, 2012.
- Hoose, C., Lohmann, U., Erdin, R., and Tegen, I.: The global influence of dust mineralogical composition on heterogeneous ice nucleation in mixed-phase clouds, *Environmental Research Letters*, 3, 025 003, 2008.
- 10 Hoose, C., Kristjánsson, J. E., and Burrows, S. M.: How important is biological ice nucleation in clouds on a global scale?, *Environmental Research Letters*, 5, 024 009, doi:10.1088/1748-9326/5/2/024009, 2010.
- Hu, C., Lee, Z., and Franz, B.: Chlorophyll a algorithms for oligotrophic oceans: A novel approach based on three-band reflectance difference, *Journal of Geophysical Research: Oceans*, 117, doi:10.1029/2011JC007395, 2012.
- Ickes, L., Welti, A., and Lohmann, U.: Classical nucleation theory of immersion freezing: sensitivity of contact angle schemes to thermodynamic and kinetic parameters, *Atmospheric Chemistry and Physics*, 17, 1713–1739, doi:10.5194/acp-17-1713-2017, 2017.
- 15 Kanji, Z. A., Ladino, L. A., Wex, H., Boose, Y., Burkert-Kohn, M., Cziczo, D. J., and Krämer, M.: Overview of Ice Nucleating Particles, *Meteorological Monographs*, 58, 1.1–1.33, doi:10.1175/AMSMONOGRAPH-D-16-0006.1, 2017.
- Knopf, D. A., Alpert, P. A., Wang, B., and Aller, J. Y.: Stimulation of ice nucleation by marine diatoms, *Nature Geoscience*, 4, 88–90, doi:10.1038/ngeo1037, 2011.
- 20 Korolev, A.: Limitations of the Wegener–Bergeron–Findeisen Mechanism in the Evolution of Mixed-Phase Clouds, *Journal of the Atmospheric Sciences*, 64, 3372–3375, doi:10.1175/JAS4035.1, 2007.
- Langmann, B., Scannell, C., and O’Dowd, C.: New Directions: Organic matter contribution to marine aerosols and cloud condensation nuclei, *Atmospheric Environment*, 42, 7821 – 7822, doi:10.1016/j.atmosenv.2008.09.002, 2008.
- Lapina, K., Heald, C. L., Spracklen, D. V., Arnold, S. R., Allan, J. D., Coe, H., McFiggans, G., Zorn, S. R., Drewnick, F., Bates, T. S., Hawkins, L. N., Russell, L. M., Smirnov, A., O’Dowd, C. D., and Hind, A. J.: Investigating organic aerosol loading in the remote marine environment, *Atmospheric Chemistry and Physics*, 11, 8847–8860, doi:10.5194/acp-11-8847-2011, 2011.
- 25 Le Quéré, C., Buitenhuis, E. T., Moriarty, R., Alvain, S., Aumont, O., Bopp, L., Chollet, S., Enright, C., Franklin, D. J., Geider, R. J., Harrison, S. P., Hirst, A. G., Larsen, S., Legendre, L., Platt, T., Prentice, I. C., Rivkin, R. B., Sailley, S., Sathyendranath, S., Stephens, N., Vogt, M., and Vallina, S. M.: Role of zooplankton dynamics for Southern Ocean phytoplankton biomass and global biogeochemical cycles, *Biogeosciences*, 13, 4111–4133, doi:10.5194/bg-13-4111-2016, 2016.
- 30 Levkov, L., Rockel, B., Kapitza, H., and Raschke, E.: 3D mesoscale numerical studies of cirrus and stratus clouds by their time and space evolution, *Beiträge zur Physik der Atmosphäre*, 65, 35–58, 1992.
- Lohmann, U.: A glaciation indirect aerosol effect caused by soot aerosols, *Geophysical Research Letters*, 29, 11–1–11–4, doi:10.1029/2001GL014357, 2002.
- 35 Lohmann, U. and Diehl, K.: Sensitivity Studies of the Importance of Dust Ice Nuclei for the Indirect Aerosol Effect on Stratiform Mixed-Phase Clouds, *Journal of the Atmospheric Sciences*, 63, 968–982, doi:10.1175/JAS3662.1, 2006.
- Lohmann, U., Stier, P., Hoose, C., Ferrachat, S., Kloster, S., Roeckner, E., and Zhang, J.: Cloud microphysics and aerosol indirect effects in the global climate model ECHAM5-HAM, *Atmospheric Chemistry and Physics*, 7, 3425–3446, doi:10.5194/acp-7-3425-2007, 2007.

- Long, M. S., Keene, W. C., Kieber, D. J., Erickson, D. J., and Maring, H.: A sea-state based source function for size- and composition-resolved marine aerosol production, *Atmospheric Chemistry and Physics*, 11, 1203–1216, doi:10.5194/acp-11-1203-2011, 2011.
- Mann, K. and Lazier, J.: *Vertical Structure in Coastal Waters: Coastal Upwelling Regions*, pp. 163–215, Blackwell Publishing Ltd., doi:10.1002/9781118687901.ch5, 2005.
- 5 McCluskey, C. S., Hill, T. C. J., Malfatti, F., Sultana, C. M., Lee, C., Santander, M. V., Beall, C. M., Moore, K. A., Cornwell, G. C., Collins, D. B., Prather, K. A., Jayarathne, T., Stone, E. A., Azam, F., Kreidenweis, S. M., and DeMott, P. J.: A Dynamic Link between Ice Nucleating Particles Released in Nascent Sea Spray Aerosol and Oceanic Biological Activity during Two Mesocosm Experiments, *Journal of the Atmospheric Sciences*, 74, 151–166, doi:10.1175/JAS-D-16-0087.1, 2017.
- Meskhidze, N., Xu, J., Gantt, B., Zhang, Y., Nenes, A., Ghan, S. J., Liu, X., Easter, R., and Zaveri, R.: Global distribution and climate forcing of marine organic aerosol: 1. Model improvements and evaluation, *Atmospheric Chemistry and Physics*, 11, 11 689–11 705, doi:10.5194/acp-11-11689-2011, 2011.
- 10 Niemand, M., Möhler, O., Vogel, B., Vogel, H., Hoose, C., Connolly, P., Klein, H., Bingemer, H., DeMott, P., Skrotzki, J., and Leisner, T.: A Particle-Surface-Area-Based Parameterization of Immersion Freezing on Desert Dust Particles, *Journal of the Atmospheric Sciences*, 69, 3077–3092, doi:10.1175/JAS-D-11-0249.1, 2012.
- 15 O'Dowd, C., Ceburnis, D., Ovadnevaite, J., Bialek, J., Stengel, D. B., Zacharias, M., Nitschke, U., Connan, S., Rinaldi, M., Fuzzi, S., and et al.: Connecting marine productivity to sea-spray via nanoscale biological processes: Phytoplankton Dance or Death Disco?, *Scientific Reports*, 5, 14 883, doi:10.1038/srep14883, 2015.
- Rinaldi, M., Fuzzi, S., Decesari, S., Marullo, S., Santoleri, R., Provenzale, A., von Hardenberg, J., Ceburnis, D., Vaishya, A., O'Dowd, C. D., and Facchini, M. C.: Is chlorophyll-a the best surrogate for organic matter enrichment in submicron primary marine aerosol?, *Journal of Geophysical Research: Atmospheres*, 118, 4964–4973, doi:10.1002/jgrd.50417, 2013.
- 20 Roelofs, G. J.: A GCM study of organic matter in marine aerosol and its potential contribution to cloud drop activation, *Atmospheric Chemistry and Physics*, 8, 709–719, doi:10.5194/acp-8-709-2008, 2008.
- Rogers, R. R. and Yau, M. K.: *A short course in cloud physics*, Butterworth-Heinemann, Oxford, UK, 3 edn., 1989.
- Schnell, R. C. and Vali, G.: Biogenic Ice Nuclei: Part I. Terrestrial and Marine Sources, *Journal of the Atmospheric Sciences*, 33, 1554–1564, doi:10.1175/1520-0469(1976)033<1554:BINPIT>2.0.CO;2, 1976.
- 25 Sciare, J., Favez, O., Sarda-Estève, R., Oikonomou, K., Cachier, H., and Kazan, V.: Long-term observations of carbonaceous aerosols in the Austral Ocean atmosphere: Evidence of a biogenic marine organic source, *Journal of Geophysical Research: Atmospheres*, 114, doi:10.1029/2009JD011998, 2009.
- Sofiev, M., Soares, J., Prank, M., de Leeuw, G., and Kukkonen, J.: A regional-to-global model of emission and transport of sea salt particles in the atmosphere, *Journal of Geophysical Research: Atmospheres*, 116, doi:10.1029/2010JD014713, 2011.
- 30 Spracklen, D. V., Arnold, S. R., Sciare, J., Carslaw, K. S., and Pio, C.: Globally significant oceanic source of organic carbon aerosol, *Geophysical Research Letters*, 35, doi:10.1029/2008GL033359, 112811, 2008.
- Stevens, B., Giorgetta, M., Esch, M., Mauritsen, T., Crueger, T., Rast, S., Salzmann, M., Schmidt, H., Bader, J., Block, K., Brokopf, R., Fast, I., Kinne, S., Kornbluh, L., Lohmann, U., Pincus, R., Reichler, T., and Roeckner, E.: Atmospheric component of the MPI-M Earth System Model: ECHAM6, *Journal of Advances in Modeling Earth Systems*, 5, 146–172, doi:10.1002/jame.20015, 2013.
- 35 Takahashi, K. and Battisti, D. S.: Processes Controlling the Mean Tropical Pacific Precipitation Pattern. Part II: The SPCZ and the Southeast Pacific Dry Zone, *Journal of Climate*, 20, 5696–5706, doi:10.1175/2007JCLI1656.1, 2007.

- Taylor, K. E., Stouffer, R. J., and Meehl, G. A.: An Overview of CMIP5 and the Experiment Design, *Bulletin of the American Meteorological Society*, 93, 485–498, doi:10.1175/BAMS-D-11-00094.1, 2012.
- Turpin, B. and Lim, H.: Species contributions to PM_{2.5} mass concentrations: Revisiting common assumptions for estimating organic mass, *Aerosol Science and Technology*, 35, 602–610, doi:10.1080/02786820119445, 2001.
- 5 Vali, G., Christensen, M., Fresh, R. W., Galyan, E. L., Maki, L. R., and Schnell, R. C.: Biogenic Ice Nuclei. Part II: Bacterial Sources, *Journal of the Atmospheric Sciences*, 33, 1565–1570, doi:10.1175/1520-0469(1976)033<1565:BINPIB>2.0.CO;2, 1976.
- Vergara-Temprado, J., Murray, B. J., Wilson, T. W., O’Sullivan, D., Browse, J., Pringle, K. J., Ardon-Dryer, K., Bertram, A. K., Burrows, S. M., Ceburnis, D., DeMott, P. J., Mason, R. H., O’Dowd, C. D., Rinaldi, M., and Carslaw, K. S.: Contribution of feldspar and marine organic aerosols to global ice nucleating particle concentrations, *Atmospheric Chemistry and Physics*, 17, 3637–3658, doi:10.5194/acp-17-3637-2017, 2017.
- 10 Vignati, E., Facchini, M., Rinaldi, M., Scannell, C., Ceburnis, D., Sciare, J., Kanakidou, M., Myriokefalitakis, S., Dentener, F., and O’Dowd, C.: Global scale emission and distribution of sea-spray aerosol: Sea-salt and organic enrichment, *Atmospheric Environment*, 44, 670 – 677, doi:10.1016/j.atmosenv.2009.11.013, 2010.
- Wang, X., Sultana, C. M., Trueblood, J., Hill, T. C. J., Malfatti, F., Lee, C., Laskina, O., Moore, K. A., Beall, C. M., McCluskey, C. S., Cornwell, G. C., Zhou, Y., Cox, J. L., Pendergraft, M. A., Santander, M. V., Bertram, T. H., Cappa, C. D., Azam, F., DeMott, P. J., Grassian, V. H., and Prather, K. A.: Microbial Control of Sea Spray Aerosol Composition: A Tale of Two Blooms, *ACS Central Science*, 1, 124–131, doi:10.1021/acscentsci.5b00148, 2015.
- 15 Wiggert, J., Jones, B., Dickey, T., Brink, K., Weller, R., Marra, J., and Codispoti, L.: The Northeast Monsoon’s impact on mixing, phytoplankton biomass and nutrient cycling in the Arabian Sea, *Deep Sea Research Part II: Topical Studies in Oceanography*, 47, 1353 – 1385, doi:10.1016/S0967-0645(99)00147-2, 2000.
- 20 Wilks, D. S.: “The Stippling Shows Statistically Significant Grid Points”: How Research Results are Routinely Overstated and Overinterpreted, and What to Do about It, *Bulletin of the American Meteorological Society*, 97, 2263–2273, doi:10.1175/BAMS-D-15-00267.1, 2016.
- Wilson, T. W., Ladino, L. A., Alpert, P. A., Breckels, M. N., Brooks, I. M., Browse, J., Burrows, S. M., Carslaw, K. S., Huffman, J. A., Judd, C., Kilhau, W. P., Mason, R. H., McFiggans, G., Miller, L. A., Nájera, J. J., Polishchuk, E., Rae, S., Schiller, C. L., Si, M., Temprado, J. V., Whale, T. F., Wong, J. P. S., Wurl, O., Yakobi-Hancock, J. D., Abbatt, J. P. D., Aller, J. Y., Bertram, A. K., Knopf, D. A., and Murray, B. J.: A marine biogenic source of atmospheric ice-nucleating particles, *Nature*, 525, 234–238, doi:10.1038/nature14986, 2015.
- 25 Yun, Y. and Penner, J. E.: An evaluation of the potential radiative forcing and climatic impact of marine organic aerosols as heterogeneous ice nuclei, *Geophysical Research Letters*, 40, 4121–4126, doi:10.1002/grl.50794, 2013.
- 30 Zhang, K., O’Donnell, D., Kazil, J., Stier, P., Kinne, S., Lohmann, U., Ferrachat, S., Croft, B., Quaas, J., Wan, H., Rast, S., and Feichter, J.: The global aerosol-climate model ECHAM-HAM, version 2: sensitivity to improvements in process representations, *Atmospheric Chemistry and Physics*, 12, 8911–8949, doi:10.5194/acp-12-8911-2012, 2012.